

# Lackawanna Railroad

THE ROUTE OF  
SCENIC BEAUTY

BEST WAY  
BETWEEN  
**BUFFALO**  
AND  
**NEW YORK**

SUPERIOR THROUGH SERVICE  
BETWEEN

**CHICAGO**  
**DETROIT CLEVELAND**  
**NEW YORK**

In Effect January 1, 1934

FORM 10

# Lackawanna Railroad

THE ROUTE OF  
SCENIC BEAUTY

BEST WAY  
BETWEEN  
**NEW YORK**  
AND  
**BUFFALO**

SUPERIOR THROUGH SERVICE  
BETWEEN

**NEW YORK**  
**CLEVELAND DETROIT**  
**CHICAGO**

In Effect January 1, 1934

FORM 10



# GREAT WHITE FLEET

## GUEST CRUISES

### *to the* **West Indies** *and the* **Caribbean**

Brand new turbo-electric liners add the latest refinements of travel on the route where passengers are privileged guests ashore as well as afloat. Permanent outdoor swimming pools—every modern facility for comfort and entertainment. The finest trips in the long cruise history of the Great White Fleet.

**17 DAYS \$170** to HAVANA, JAMAICA, PANAMA and COSTA RICA—Ample time to inspect Panama Canal. Opportunity to enjoy trip from Port Limon to San Jose, mountain capital of Costa Rica. Stay an extra week at New Gran Hotel at San Jose, for only \$35 more, American plan. *Every Thursday.*

**13 DAYS \$130** *All-Expense* HAVANA-JAMAICA TOUR—including stay at Myrtle Bank Hotel, Kingston, and sightseeing in both ports. Stay an extra week at the Myrtle Bank for only \$35 more. American Plan. Return on steamers in Colombian Cruise Service. *Every Thursday.*

**10 DAYS \$95** *Special All-Expense* HAVANA TOUR—3 days of sightseeing, 4 trips visiting the national game Jai Alai, Morro Castle, cabaret, etc. Room and meals with private bath at a fine hotel included. *Every Thursday.*

No passports required on above cruises  
WINTER RATES IN EFFECT DEC. 9th

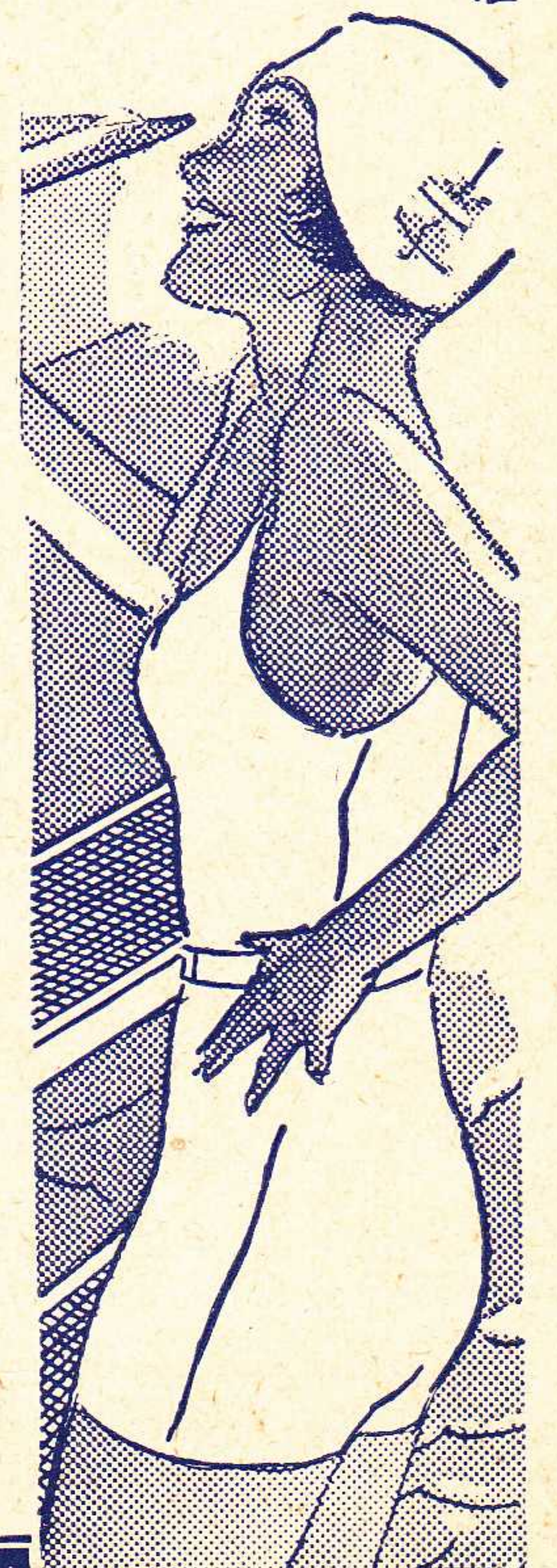
to **CALIFORNIA** Weekly sailings. *First Class:* one way \$180 up. Round trip, both ways water, \$270.00 up; return all rail, \$280 up; liberal stopovers. Similar round trip fares from other cities.

**ALL OUTSIDE ROOMS:** Latest type mechanical ventilation for tropical comfort.  
*Superior accommodations only slightly higher*

Apply Lackawanna Ticket Offices or United Fruit Company, Pier 3, N. R. (Whitehall 4-1880) or 332 Fifth Avenue, at 33rd Street, (Lackawanna 4-6678) New York.



## UNITED FRUIT COMPANY



## STATION INDEX

	Table No.		Table No.		Table No.
Alden, N. Y.	4, 5	Curtis, N. Y.	4, 5	Leicester, N. Y.	4, 5
Alford, Pa.	4, 5, 11	Dalton, Pa.	4, 5	Lime Ridge, Pa.	9
Allentown, Pa.	1, 2, 7-A	Dansville, N. Y.	4, 5	Lincoln Park, N. J.	3, 6
× Ampere, N. J.		Danville, Pa.	9	Linwood, N. Y.	4, 5
Analomink, Pa.	3, 6, 17	Delawanna, N. J.	3, 6	Lisle, N. Y.	7
▲ Andover, N. J.		Delaware, N. J.	3, 6, 17	Litchfield, N. Y.	4, 5
▲ Andover Jct., N. J.		Dellwood, N. Y.	4, 5	* Little Falls, N. J.	
Ann Arbor, Mich.	4, 5	Denville, N. J.	3, 6	Little York, N. Y.	7
Apalachin, N. Y.	4, 5	Depew, N. Y.	4, 5	Lounsbury, N. Y.	4, 5
Apulia, N. Y.	7	Detroit, Mich.	1, 2, 4, 5	Lowman, N. Y.	4, 5
Atlanta, N. Y.	4, 5	Dover, N. J.	3, 6	Luzerne, Pa.	9
Atlantic City, N. J.	7-A	Dunkirk, N. Y.	4, 5	Lyndhurst, N. J.	3, 6
▲ Augusta, N. J.		Duryea, Pa.	9	○ Lyons, N. J.	
Avoca, N. Y.	4, 5	Earlville, N. Y.	8	Madison, N. J.	3, 6
Avondale, Pa.	9	East Alexander, N. Y.	4, 5	Maplewood, N. J.	3, 6
Baldwinsville, N. Y.	7	East Bethany, N. Y.	4, 5	Marathon, N. Y.	7, 7-A
Baltimore, Md.	1, 2, 7-A, 17	East Buffalo, N. Y.	4, 5	Marshall's Creek, Pa.	14
○ Basking Ridge, N. J.		East Freetown, N. Y.	13	Mauch Chunk, Pa.	1, 7-A
Bath, N. Y.	4, 5	East Lancaster, N. Y.	4, 5	Mayburys, N. Y.	13
Battle Creek, Mich.	4, 5	Easton, Pa.	17	McGraw, N. Y.	13
Beach Haven, Pa.	9	East Orange, N. J.	3, 6	Messengersville, N. Y.	7
Belvidere, N. J.	17	East Winfield, N. Y.	15	Millburn, N. J.	3, 6
○ Berkeley Heights, N. J.		Elmhurst, Pa.	3, 6	Millers Mills, N. Y.	15
○ Bernardsville, N. J.		Elmira, N. Y.	1, 2, 4, 5, 17	○ Millington, N. J.	
Berwick, Pa.	9	Elmira Heights, N. Y.	4, 5	○ Mine Brook, N. J.	
Bethlehem, Pa.	1, 2, 7-A	Erie, Pa.	1, 2, 4, 5	Minetto, N. Y.	7
Big Flats, N. Y.	4, 5	Espy, Pa.	9	Minisink Hills (See Water Gap)	3, 6, 17
Binghamton, N. Y.	1, 2, 4, 5, 7, 7-A, 8, 10, 17	Factoryville, Pa.	4, 5	× Montclair, N. J.	
Blairstown, N. J.	3, 6	Fargo, N. Y.	4, 5	Montrose, Pa.	11
Blodgett Mills, N. Y.	7	Far Hills-Bedminster		* Montville, N. J.	
× Bloomfield, N. J.		○ Forty Fort, Pa.	9	Morris Plains, N. J.	3, 6
Bloomsburg, Pa.	9	Foster, Pa.	4, 5	Morristown, N. J.	3, 6
Boonton, N. J.	3, 6	Fort Wayne, Ind.	1, 2, 4, 5	Moscow, Pa.	3, 6
▲ Branchville, N. J.		Fulton, N. Y.	7	Mountainhome, Pa.	
▲ Branchville Jct., N. J.		Galena, N. Y.	8	(See Cresco)	
Briar Creek, Pa.	9	Gee Brook, N. Y.	13	Mountain Lakes, N. J.	3, 6, 17
Brick Church, N. J.	3, 6	○ Gillette, N. J.		Mountain Station, N. J.	3, 6
Bridgeville, N. J.	3, 6	Gladstone, N. J.		Mountain View, N. J.	3, 6
Bridgewater, N. Y.	15	○ Glenburn, Pa.	4, 5	Mount Arlington, N. J.	
Brisben, N. Y.	8	× Glen Ridge, N. J.		Mount Morris, N. Y.	4, 5
× Broadway, N. J.		Gouldsboro, Pa.	3, 6	Mount Pocono, Pa.	3, 6, 17
Buck Hill Falls, Pa.		Grand Rapids, Mich.	4, 5	Mount Tabor, N. J.	
(See Cresco)		Greendell, N. J.	3, 6	○ Murray Hill, N. J.	
Buffalo, N. Y.	1, 2, 4, 5, 16, 17	Greene, N. Y.	8	Nay Aug, Pa.	3, 6
B. R. & P. Jct., N. Y.	4, 5	Greigsville, N. Y.	4, 5	Netcong (Stanhope), N. J.	3, 6
Bushkill, Pa.	14	Groveland, N. Y.	4, 5	Newark, N. J.	1, 2, 3, 4, 5, 6, 7, 8, 9, 10, 16, 17
Cameron, Pa.	9	○ Grove Street, N. J.		Niagara Falls	16
Campbell, N. Y.	4, 5	Hackettstown, N. J.	3, 6	Nichols, N. Y.	4, 5
Canadensis, Pa.		Hallstead, Pa.	4, 5	Nicholson, Pa.	4, 5
(See Cresco)		Harrison. See Newark, N. J.	1, 2, 3, 6, 10	North Alexander, N. Y.	4, 5
Candor, N. Y.	10	Haynes, N. Y.	8	North Brookfield, N. Y.	8
Caroline, N. Y.	10	Heart Lake, Pa.	11	North Darien, N. Y.	4, 5
Catatonk, N. Y.	10	Henryville, Pa.	3, 6	Northumberland, Pa.	9
Catawissa, Pa.	9	Hicks Ferry, Pa.	9	Norwich, N. Y.	8
Cedarville, N. Y.	15	○ Highland Ave., N. J.		Oak Grove, Pa.	14
Chadwick, N. Y.	8	Hoboken, N. J.	1, 2, 3, 4, 5, 6, 7, 8, 9, 10	Old Forge, Pa.	9
Chatham, N. J.	3, 6	Homer, N. Y.	7, 7-A	Onativia, N. Y.	7
Chenango Bridge, N. Y.	7, 8	Horseheads, N. Y.	4, 5	Orange, N. J.	3, 6
Chenango Forks, N. Y.	7, 8	Hubbardsville, N. Y.	8	Oswego, N. Y.	1, 2, 7
Chicago, Ill.	1, 2, 4, 5	Hunlock Creek, Pa.	9	Owego, N. Y.	4, 5, 10
Chulasky, Pa.	9	Indianapolis, Ind.	4, 5	Oxford, N. Y.	8
Cincinnati, Ohio	4, 5	Itaska, N. Y.	7	Oxford Furnace, N. J.	3, 6
Cincinnati, N. Y.	13	Ithaca, N. Y.	1, 2, 4, 5, 10, 17	Painted Post, N. Y.	4, 5
Clarks Summit, Pa.	4, 5	Jackson, Mich.	1, 2, 4, 5	Paris, N. Y.	8
Clayville, N. Y.	8	Jamesville, N. Y.	7	Passaic, N. J.	3, 6
Cleveland, Ohio	1, 2, 4, 5	Johnsonburg, N. J.	3, 6	Paterson, N. J.	3, 6
Clifton, N. J.	3, 6	Johnson City, N. Y.	4, 5	○ Peapack, N. J.	
Cohocton, N. Y.	4, 5	Kalamazoo, Mich.	1, 2	Penna. R. R. Jct., N. Y.	4, 5
Conklin, N. Y.	4, 5	Kanona, N. Y.	4, 5	Philadelphia, Pa.	1, 2, 3, 6, 7-A, 10, 17
Conklin Center, N. Y.	4, 5	Killawog, N. Y.	7	◆ Phillipsburg, N. J.	3, 6, 17
Convent, N. J.	3, 6	Kingsland, N. J.	3, 6		
Coolbaugh, Pa.	14	Kingsley, Pa.	4, 5		
Coopers, N. Y.	4, 5	Kingston, Pa.	1, 2, 9		
Cornin, N. Y.	4, 5	▲ Lafayette, N. J.			
Cortland, N. Y.	1, 7, 7-A, 13	Lake Hopatcong, N. J.	3, 6		
Cortland Jct., N. Y.	7	Lamson, N. Y.	7		
Coventry, N. Y.	8	Lancaster, N. Y.	4, 5		
Craigs, N. Y.	4, 5	Lansdale, Pa.	7-A		
▲ Cranberry Lake, N. J.		LaPlume, Pa.	4, 5		
Cresco, Pa.	3, 6, 17	Lehigh, Pa.	3, 6		

▲ Located on Sussex Branch. Tables 3, 6, show service to and from Netcong, N. J., the junction point. (See local time table.)  
 × Located on Montclair Branch. Tables 3, 6, show service to and from Newark, N. J., the junction point. (See local time table.)  
 ○ Located on Passaic and Delaware Branch. Tables 3, 6, show service to and from Summit, N. J., the junction point. (See local time table.)  
 ◆ Located on Phillipsburg Branch. Tables 3, 6, show service to and from Washington, N. J., the junction point. (See local time table.)  
 \* Located on Boonton Line. (See local time table.)  
 † Located on Main Line. (See local time table.)

# DIRECTORY OF OPERATING AND TRAFFIC DEPARTMENTS

## OPERATING DEPARTMENT

G. J. RAY, Vice-President and General Manager, New York.

E. B. MOFFATT, General Superintendent.....Scranton, Pa.  
 A. E. STAUB, Asst. to Vice-President and Gen. Manager.....New York  
 R. M. WHITE, Supt. Morris and Essex Division.....Hoboken, N. J.  
 G. W. MURPHY, Asst. Supt. Morris and Essex Division.....Hoboken, N. J.  
 H. J. MULLAGHY, Supt. Scranton Division.....Scranton, Pa.  
 W. G. ALEXANDER, Supt. Buffalo Division.....Buffalo, N. Y.  
 FRANK CIZEK, Supt. Syracuse and Utica Division.....Binghamton, N. Y.  
 V. D. THAYER, Car Service Agent.....Scranton, Pa.  
 W. A. WILLIAMS, Supt. Dining Car and Restaurant Service.....Hoboken, N. J.  
 Chief Engineer.....Hoboken, N. J.

C. C. HUBBELL, Purchasing Agent.....New York  
 M. H. DOUGHTY, Engineer of Maintenance of Way.....Hoboken, N. J.  
 H. M. WARREN, Consulting Electrical Engineer.....Scranton, Pa.  
 J. S. THORP, Electrical Engineer.....Hoboken, N. J.  
 J. M. EMERY, Mgr. Marine Dept.....Hoboken, N. J.  
 C. J. SCUDDER, Supt. Motive Power and Equipment.....Scranton, Pa.  
 E. M. JENKINS, Master Car Builder.....Scranton, Pa.  
 I. H. LANCE, General Storekeeper.....Scranton, Pa.  
 HENRY FOULKES, Superintendent Mail Transportation.....New York.

## TRAFFIC DEPARTMENT

NAT DUKE, Vice-President, New York  
 GEORGE HERBERT, Assistant to Vice-President, New York

### PASSENGER DEPARTMENT

W. F. GRIFFITTS.....Passenger Traffic Manager, New York  
 W. H. DOMINICK.....General Passenger Agent, New York  
 J. L. HOMER.....Asst. General Pass. Agt., 500 Fifth Ave., New York  
 C. M. LYON, General Baggage, Express and Milk Traffic Agt., Hoboken, N. J.  
 W. E. CARBONE...Gen. West. Pass. Agt., 111 W. Jackson Blvd., Chicago  
 LOUIS F. HEINECK.....General Agent Passenger Department,  
 297 Main Street, Buffalo, N. Y.  
 R. F. IRWIN.....Advertising Agent, New York  
 C. F. FELTHAM.....Division Pass. Agt., 856 Broad St., Newark, N. J.  
 J. G. BRAY...Special Passenger Representative, 856 Broad St., Newark, N. J.  
 J. H. VAN WIE.....Division Passenger Agent, Room 317  
 Lackawanna Station, Scranton, Pa.  
 J. L. SMITH.....Division Passenger Agent, Press Bldg., Binghamton, N. Y.  
 D. J. WHITE.....Representative, 111 W. Jackson Blvd., Chicago  
 GEO. A. STAPLES.....Representative, 111 W. Jackson Blvd., Chicago  
 G. C. HOWE...Representative, 403 Ry. Exchange Bldg., Kansas City, Mo.  
 K. C. HUBBARD.....Traveling Pass. Agt., 297 Main Street, Buffalo, N. Y.  
 F. W. SCHEPPMANN.....District Passenger Agent, 1917 National Bank  
 Building, Detroit, Mich.  
 M. H. MURPHY.....District Pass. Agt., 500 Fifth Ave., New York  
 W. H. WEBER.....City Passenger Agt., 500 Fifth Ave., New York  
 S. W. HUNT.....City Passenger Agt., 500 Fifth Ave., New York  
 C. E. MILL.....City Passenger Agt., 500 Fifth Ave., New York  
 W. E. BROWN.....City Ticket Agent, 3 West 47th St., New York  
 R. S. FREDERICK.....City Ticket Agent, 4 West 33rd St., New York  
 H. CLENDANIEL.....City Ticket Agent, 17 John Street, New York  
 F. W. JOHNSON.....City Passenger Agent, 856 Broad St., Newark, N. J.  
 R. H. TAYLOR.....City Passenger Agent, 856 Broad St., Newark, N. J.  
 L. J. FANARJIAN.....City Ticket Agent, 856 Broad St., Newark, N. J.  
 O. J. STINGER...City Passenger Agt., Lackawanna Station, Syracuse, N. Y.  
 CHARLES L. SHAFF...City Passenger Agt., 297 Main St., Buffalo, N. Y.  
 J. O. STORMS.....City Ticket Agt., 297 Main St., Buffalo, N. Y.  
 A. C. MEINCK.....Ticket Agent, Scranton, Pa.  
 WM. E. DOWNS.....Ticket Agent, Binghamton, N. Y.  
 C. W. ARNOLD.....Ticket Agent, Elmira, N. Y.  
 C. C. COOPER.....Ticket Agent, Cortland, N. Y.  
 OTTO RICK.....Traveling Passenger Agent, Corning, N. Y.  
 M. F. WOOD.....Ticket Agent, Corning, N. Y.  
 R. H. EDMOND.....City Ticket Agt., 302 Main St., Paterson, N. J.  
 W. R. FREGANS.....Depot Ticket Agent, Newark, N. J.  
 E. WORTMANN.....Steamship Pass. Agt., 500 Fifth Ave., New York City

### FREIGHT DEPARTMENT

J. J. BYRNE.....General Freight Traffic Manager, New York  
 CHARLES F. McTAGUE.....Freight Traffic Manager, New York  
 C. E. HALL.....Western Traffic Mgr., 111 W. Jackson Blvd., Chicago, Ill.  
 J. H. CHRISTY...Asst. West. Traffic Mgr., 111 W. Jackson Blvd., Chicago, Ill.  
 L. A. DALTON...General Dairy Agent, 111 W. Jackson Blvd., Chicago, Ill.  
 A. B. WALLACE...Assistant to General Freight Traffic Manager, New York  
 MAURICE WILLIAMS.....Assistant Freight Traffic Manager, New York  
 J. F. RYDENE.....General Coal Freight Agent, New York  
 W. M. MacPHERSON.....Asst. Freight Traffic Manager,  
 Lackawanna Terminal, Buffalo, N. Y.  
 WM. J. DAILY.....General Freight Agent, New York  
 E. M. SELLERS.....Asst. General Freight Agent, New York  
 J. S. SIKORA.....Asst. General Freight Agent, New York  
 W. A. MILLER...Division Freight Agt., Lackawanna Station, Newark, N. J.  
 C. V. McKOWNE...Div. Freight Agt., Lackawanna Station, Scranton, Pa.  
 H. L. COLE.....Div. Freight Agt., Lackawanna Station, Syracuse, N. Y.  
 HERVEY LOVE.....Commercial Agt., 402 Northampton St., Easton, Pa.  
 C. A. ARENTZEN.....Gen. East. Freight Agt., 302 Broadway, New York  
 P. E. AHERN.....City Freight Agent, 302 Broadway, New York  
 W. B. SPEIRS...City Freight Agt., Lacka. Wallabout Term., Brooklyn, N. Y.  
 F. G. PLATT.....Eastbound Freight Agent, Produce Exchange, New York  
 JOHN M. KERANS.....General Agent, 140 Federal St., Boston, Mass.  
 J. C. DAWSON.....General Agent, Finance Bldg., Philadelphia, Pa.  
 O. H. WARBOLD...General Agent, National Bank Bldg., Detroit, Mich.  
 A. L. BAHLER...Gen. Agt., 1971-1972 Railway Exchange Bldg., St. Louis, Mo.  
 W. R. KNEISS...General Agent, 601 Monadnock Bldg., San Francisco, Cal.  
 J. E. GATHMAN.....General Agent, 707 McDowall Bldg., Seattle, Wash.  
 M. J. NAUGHTON.....General Agent, 310 Park Bldg., Cleveland, Ohio  
 W. J. GEMEINER.....General Agent, 503 Park Bldg., Pittsburgh, Pa.  
 H. E. ALLEN.....Commercial Agent, 108 W. 6th St., Los Angeles, Cal.  
 J. E. GATHMAN.....General Agent, Terminal Sales Bldg., Portland, Ore.  
 C. B. SIGNER.....Commercial Agent, 111 West Jackson Blvd., Chicago  
 W. H. BROWNE...Canadian Agt., 1602 Royal Bank Bldg., Toronto, Ont.  
 WM. K. MARTIN...Commercial Agt., 39 Church St., New Haven, Conn.  
 T. L. EVANS.....Com. Agt., 4th National Bank Bldg., Cincinnati, O.  
 BRUCE L. DILL.....Com. Agt., Railway Exch. Bldg., Kansas City, Mo.  
 J. A. McCOY.....Com. Agt., Guaranty Bldg., Indianapolis, Ind.  
 J. R. McDOWELL.....Commercial Agt., Majestic Bldg., Milwaukee, Wis.  
 D. A. KYLE.....Com. Agt., Metropolitan Life Bldg., Minneapolis, Minn.  
 L. L. NEWELL...Com. Agt., 601 Merchants Bank Bldg., St. Paul, Minn.  
 C. R. HARTSHORN...Com. Agt., 1007 2nd Natl. Bank Bldg., Toledo, Ohio  
 THOMAS L. STEELE...Com. Agt., 5 Delaware & Hudson Bldg., Albany, N. Y.

### FOREIGN FREIGHT DEPARTMENT

H. G. E. PANSIUS...Foreign Freight Agt., Produce Exchange, New York

### INDUSTRIAL DEPARTMENT

W. B. HARAHAH.....Industrial Agent, New York

## GENERAL INFORMATION

**TIME TABLES**—This time table is furnished to the public as a matter of information only. This company is not responsible for errors in same, inconvenience or damage resulting from delayed trains, or failure to make connections; schedules herein are subject to change without notice.

**Purchase Tickets** from starting point through to destination before boarding train and secure the benefit of the lowest available fare.

**Adjustment of Fares**—In case of dispute with conductors or agents, passengers should pay the fare required, take a receipt, and communicate with the General Passenger Agent, 90 West Street, New York.

Passengers leaving train short of destination of the ticket should have the conductor make endorsement on the ticket to that effect.

**Redemption of Tickets**—Wholly or partially unused tickets will be redeemed by charging regular tariff fares for the portions used upon application to the General Passenger Agent.

**Baggage**—(a) 150 pounds of baggage, not exceeding \$100.00 in value, will be checked free on each adult ticket, and 75 pounds, not exceeding \$50.00 in value, on each child's ticket. Excess charges will be collected for excess weight, value and size, but no piece of baggage exceeding 250 pounds in weight, 72 inches in greatest dimension, or single shipment exceeding \$2,500.00 in value will be accepted for checking.

(b) **This Company** cannot guarantee to forward baggage on same train with passenger, and when necessary, will forward it on other trains.

To facilitate prompt delivery at destination passengers are advised to arrange for forwarding on a preceding train.

(c) **Baggage Checked to New York City**—Unless otherwise specified, all baggage checked to New York City will be sent to the West 23rd Street Station.

(d) **Baggage Delivery Service**—Arrangements can be made at the time of checking baggage for delivery of same to residence, hotel or other point in New York City, Newark, Buffalo and other important cities without further attention on the part of the owner.

(e) **Storage** will be charged on each piece of baggage remaining at stations over 24 hours, except that certain concessions will be allowed for Sundays and holidays.

(f) **Baggage** for stations where there is no agent must be claimed at the baggage car door immediately upon arrival at that station; otherwise it will be carried to first station where agent is on duty and held for further orders.

(g) **Parcel Rooms** will be found at the principal stations, where packages, hand baggage, etc., may be checked and cared for at a nominal charge.

**Stop-overs**—All one-way and round trip tickets limited to 30 days in addition to date of issue, as well as All-Year, Summer and Winter Tourist tickets, will permit of stop-over within limit of ticket at any station en route upon application to conductor and without deposit of ticket at stop-over point. For detailed information consult ticket agents.

# LACKAWANNA RAILROAD—THE ROUTE OF SCENIC BEAUTY

CONDENSED THROUGH TIME AND EQUIPMENT OF TRAINS—PULLMAN PARLOR AND SLEEPING CAR LINES, DINING CAR SERVICE.

TABLE 1

## WESTWARD

STANDARD TIME

### No. 3—LACKAWANNA LIMITED. Daily.

Runs via Newark and Blairstown.

Lv. New York....*10 00 AM	<b>Observation</b>	}.....New York to Buffalo.
Lv. Hoboken....*10 20 AM	<b>Parlor</b>	
Lv. Newark....*10 33 AM	<b>Lounge Car</b>	
Lv. Brick Church..*10 40 AM	<b>Sleeping Car</b>	.....New York to Chicago via Nickel Plate No. 5. Drawing Room.
Lv. Philadelphia...* 8 00 AM (Broad St. Station P. R.R.)	<b>Single Bed Rooms-</b>	
Lv. Scranton.....* 1 51 PM	<b>Lounge Car</b>	.....Cleveland to Chicago via Nickel Plate No. 5.
Lv. Binghamton...* 3 15 PM	<b>Parlor Car</b>	.....New York to Oswego. Drawing Room.
Lv. Elmira.....* 4 30 PM	<b>Dining Car</b>	.....New York to Buffalo.
Ar. Syracuse.....* 5 32 PM	<b>Individual Seat</b>	
Ar. Ithaca.....* 5 00 PM	<b>Coach</b>	.....New York to Buffalo.
Ar. Utica.....* 6 15 PM		.....New York to Oswego.
Ar. Oswego.....* 6 45 PM	<b>Coaches</b>	.....New York to Buffalo.
Ar. Buffalo.....* 7 35 PM	<b>Coaches</b>	.....Binghamton to Oswego and Utica.
	<b>Coaches</b>	.....Owego to Ithaca.
	<b>Coaches</b>	.....Buffalo to Chicago.
	<b>(Via Nickel Plate No. 5)</b>	
Lv. Buffalo.....* 7 45 PM		
Ar. Erie.....* 9 38 PM		
Ar. East Cleveland*11 39 PM		
Ar. Cleveland.....*11 57 PM (Union Terminal)		
Ar. Fort Wayne...* 3 41 AM		
Ar. Chicago.....* 7 35 AM		

### No. 5—CHICAGO LIMITED. Daily.

Runs via Newark and Blairstown.

Lv. New York....* 3 40 PM	<b>Observation</b>	}.....New York to Elmira.
Lv. Hoboken....* 4 00 PM	<b>Parlor Car</b>	
Lv. Newark.....* 4 14 PM		
Lv. Brick Church..* 4 21 PM	<b>Drawing Room Sleeping Car</b>	.....New York to Chicago via Mich. Cent. No. 17.
Lv. Scranton.....* 8 00 PM		
Lv. Binghamton...* 9 30 PM	<b>Dining Car</b>	.....New York to Scranton.
Lv. Elmira.....*10 53 PM		
Ar. Buffalo.....* 2 08 AM	<b>Coaches</b>	.....New York to Buffalo.
	<b>(Via Michigan Central No. 17)</b>	
Ar. Detroit ET...* 7 45 AM	<b>Drawing Room Sleeping Car</b>	.....New York to Chicago.
Ar. Ann Arbor CT* 7 45 AM	<b>Club Lounge Car</b>	.....Buffalo to Chicago.
Ar. Jackson.....* 8 27 AM	<b>Dining Car</b>	.....Serving all meals.
Ar. Grand Rapids.*10 43 AM	<b>Parlor Car</b>	.....Detroit to Chicago.
Ar. Battle Creek..* 9 28 AM	<b>Coaches</b>	.....Buffalo to Chicago.
Ar. Kalamazoo....*10 05 AM		
Ar. Chicago.....* 1 00 PM		

### No. 7—WESTERN SPECIAL. Daily.

Runs via Newark and Blairstown.

Lv. New York....* 6 00 PM	<b>Sun-Parlor</b>	} New York to Chicago via Nickel Plate No. 1.
Lv. Hoboken....* 6 20 PM	<b>Buffet Lounge</b>	
Lv. Newark.....* 6 34 PM	<b>Sleeping Car</b>	
Lv. Brick Church..* 6 42 PM	<b>Sleeping Car</b>	.....New York to Cleveland via Nickel Plate No. 1. Drawing Room and Compart.
Lv. Scranton.....*10 05 PM	<b>Coach</b>	.....New York to Chicago via Nickel Plate No. 1.
Lv. Binghamton...*11 40 PM	<b>Coaches</b>	.....New York to Buffalo.
Ar. Buffalo.....* 4 05 AM	<b>Dining Car</b>	.....New York to Stroudsburg—Buffalo to Ft. Wayne via Nickel Plate No. 1.
	<b>(Via Nickel Plate No. 1)</b>	
Ar. Erie.....* 6 11 AM		
Ar. East Cleveland* 8 20 AM		
Ar. Cleveland.....* 8 40 AM (Union Terminal)		
Ar. Fort Wayne...*12 15 PM		
Ar. Chicago.....* 3 59 PM		

### No. 9—WHITELIGHT LIMITED. Daily.

Runs via Newark and Blairstown.

Lv. New York....* 9 30 PM	<b>Sleeping Cars</b>	.....New York to Buffalo. Drawing Room and Compartment.
Lv. Hoboken....* 9 55 PM	<b>Buffet Lounge Car</b>	.....New York to Scranton.
Lv. Newark.....*10 08 PM	<b>Coaches</b>	.....New York to Buffalo and Binghamton to Utica.
Lv. Brick Church..*10 16 PM		
Lv. Philadelphia...* 5 40 PM (Reading Terminal)	<b>Dining Club Car</b>	.....Philadelphia to Bethlehem.
Lv. Scranton.....* 1 35 AM		Buffalo sleeping cars may be occupied until 8.00 A. M.
Lv. Binghamton...* 3 02 AM		
Ar. Utica.....† 7 38 AM		
Ar. Elmira.....* 4 21 AM		
Ar. Buffalo.....* 7 30 AM		

### No. 15—BUFFALO MAIL. Daily.

Runs via Paterson and Blairstown.

Lv. New York....* 1 30 AM	<b>Sleeping Car</b>	.....New York to Buffalo. Drawing Room.
Lv. Hoboken....* 1 55 AM		.....New York to Binghamton.
Lv. Scranton.....* 5 30 AM		.....New York to Scranton.
Lv. Binghamton...* 7 20 AM	<b>Sleeping Car</b>	.....New York to Syracuse. Drawing Room.
Ar. Syracuse.....*10 25 AM		.....New York to Elmira. Drawing Room.
Lv. Elmira.....* 9 00 AM		.....Cleveland to St. Louis, via Nickel Plate No. 9.
Ar. Buffalo.....*12 35 PM		Passengers may remain in Scranton and Binghamton cars until 8.00 a. m. Sleepers open at Hoboken for occupancy at 9.30 p. m.
	<b>Buffet Lounge Car</b>	.....Binghamton to Buffalo. Dining Car Service Conneaut to Lima. Charleston to St. Louis.
	<b>Coaches</b>	{ New York to Buffalo.
		{ Buffalo to St. Louis via Nickel Plate No. 9.
	<b>(Via Nickel Plate No. 9)</b>	
Lv. Buffalo.....*12 45 PM		
Ar. East Cleveland* 4 56 PM		
Ar. Cleveland.....* 5 15 PM (Union Terminal)		
Ar. St. Louis.....* 7 15 AM		

### No. 301—INTERSTATE EXPRESS. Daily.

(Via B. & O., Reading Co., and C. R. R. of N. J.)

Lv. Washington...* 7 00 PM	<b>Parlor Car</b>	.....Washington to Philadelphia.
(B. & O. R. R.)	<b>Dining Car</b>	.....Washington to Baltimore.
Lv. Baltimore....* 7 50 PM	<b>Sleeping Car</b>	.....Philadelphia to Syracuse.
(B. & O. R. R.)		.....Drawing Room.
Ar. Philadelphia...*10 00 PM	<b>Coach</b>	.....Philadelphia to Binghamton.
Lv. Philadelphia...*11 45 PM (Reading Terminal)	<b>Coaches</b>	{ Binghamton to Syracuse and Utica.
Lv. Atlantic City.* 8 00 PM		{ Connects at Binghamton with No. 15 for all points west.
Ar. Binghamton...* 7 04 AM	<b>Baggage Car</b>	.....Philadelphia to Binghamton.
Ar. Ithaca.....*11 20 AM		
Ar. Elmira.....* 8 55 AM		
Ar. Utica.....*11 40 AM		
Ar. Syracuse.....*10 25 AM		

Hudson Tube Trains Run Direct from Broadway and 33rd Street and Cortlandt Street, New York to Lackawanna Terminal, Hoboken.

\*Daily.

†Daily except Sunday.

A. M. time light type; P. M. time heavy type. Leaving time New York is at Barclay Street.

# LACKAWANNA RAILROAD—THE ROUTE OF SCENIC BEAUTY

CONDENSED THROUGH TIME AND EQUIPMENT OF TRAINS—PULLMAN, PARLOR AND SLEEPING CAR LINES; DINING CAR SERVICE.

TABLE 2

## EASTWARD

STANDARD TIME

### No. 2—NEW YORK EXPRESS. Daily.

Runs via Blirstown and Newark.

Lv. Buffalo.....*	4 55	AM	<b>Observation</b>	}.....Elmira to New York.
Ar. Elmira.....*	8 35	AM		
Lv. Ithaca.....*	8 30	AM	<b>Dining Car</b>	}.....Scranton to New York.
Lv. Utica.....*	7 35	AM		
Ar. Binghamton...*	10 50	AM	<b>Coaches</b>	}.....Buffalo to New York.
Ar. Scranton.....*	12 30	PM		
Ar. Brick Church..*	4 07	PM	<b>Coaches</b>	}.....{Utica to Binghamton. Ithaca to Owego.
Ar. Newark.....*	4 15	PM		
Ar. Hoboken.....*	4 30	PM		
Ar. New York.....*	4 50	PM		

### No. 6—LACKAWANNA LIMITED. Daily.

Runs via Blirstown and Newark.

(Via Michigan Central No. 40)

Lv. Chicago.....*	9 00	PM	<b>Sleeping Car</b>	}.....Chicago to New York. Drawing Room.
Lv. Kalamazoo....*	11 55	PM		
Lv. Detroit ET....*	3 52	AM	<b>Dining Car</b>	}.....Chicago to Buffalo.
Lv. Niagara Falls.*	8 25	AM		
Ar. Buffalo.....*	9 18	AM	<b>Coaches</b>	}.....Chicago to Buffalo.
(Cent. Term.)				

Lv. Buffalo.....*	9 30	AM	<b>Observation</b>	}.....Buffalo to New York.
Ar. Elmira.....*	12 43	PM		
Lv. Ithaca.....*	12 25	PM	<b>Lounge Car</b>	}.....Buffalo to New York. D'w'g Rm
Lv. Oswego.....*	10 45	AM		
Lv. Syracuse.....*	12 00	PM	<b>Dining Car</b>	}.....Buffalo to New York.
Ar. Binghamton...*	2 06	PM		
Ar. Scranton.....*	3 30	PM	<b>Individual Seat</b>	}.....{Buffalo to New York. Oswego to New York.
Ar. Philadelphia...*	8 34	PM		
(30th St. Station)			<b>Coaches</b>	}.....{Buffalo to New York. Syracuse to Binghamton. Ithaca to Owego.
Ar. Brick Church..*	6 34	PM		
Ar. Newark.....*	6 42	PM		
Ar. New York.....*	7 12	PM		

Lackawanna Limited, train No. 6, will be held not to exceed forty minutes for connection with Michigan Central train No. 40 at Buffalo.

### No. 10—LACKAWANNA SPECIAL. Daily.

Runs via Blirstown and Paterson.

Lv. Chicago.....*	11 20	PM	<b>Sleeping Car</b>	}.....Chicago to New York, via Nickel Plate No. 6.
(Via Nickel Plate No. 6)				
Lv. St. Louis.....*	6 10	PM	<b>Dining Car</b>	}.....St. Louis to Cleveland, via N. K. P. No. 10.
(Via Nickel Plate No. 10)				
Lv. Cleveland.....*	9 00	AM	<b>Buffet Lounge Car</b>	}.....Buffalo to Binghamton.
(Union Terminal)				
Lv. East Cleveland*	9 19	AM	<b>Sleeping Car</b>	}.....Buffalo to New York. Drawing Room. Syracuse to New York. Drawing Room. Scranton to New York. Binghamton to New York.
Ar. Buffalo.....*	1 45	PM		
Lv. Buffalo.....*	6 15	PM	<b>Coach</b>	}.....Chicago to Buffalo, via Nickel Plate No. 6.
Lv. Syracuse.....*	9 55	PM		
Lv. Binghamton...*	12 20	AM	<b>Coach</b>	}.....St. Louis to Cleveland, via N. K. P. No. 10.
Lv. Scranton.....*	1 45	AM		
Ar. Paterson.....*	4 47	AM	<b>Coaches</b>	}.....Buffalo to New York.
Ar. New York.....*	5 30	AM		

Passengers may occupy Sleeping Cars at Hoboken until 8.00 a. m.

### No. 14—WHITELIGHT LIMITED. Daily.

Runs via Blirstown and Newark.

(Via Nickel Plate No. 8.)

Lv. Chicago.....*	9 25	AM	<b>Sun-Parlor- Buffet-Lounge Sleeping Car</b>	}.....Chicago to New York via Nickel Plate No. 8.
Lv. Fort Wayne...*	12 47	PM		
Lv. Cleveland.....*	6 05	PM	<b>Sleeping Car</b>	}.....Cleveland to New York. Drawing Room and Compartments, via Nickel Plate No. 8.
(Union Terminal)				
Lv. East Cleveland*	6 23	PM	<b>Dining Car</b>	}.....Chicago to Buffalo and Stroudsburg to New York.
Lv. Erie.....*	8 26	PM		
Ar. Buffalo.....*	10 20	PM	<b>Coach</b>	}.....Chicago to New York via Nickel Plate No. 8.

Lv. Buffalo.....*	10 45	PM	<b>Sleeping Cars</b>	}.....{Buffalo to New York. Drawing Room and Compartment. Buffalo to Scranton. Drawing Room. Elmira to New York. Drawing Room.
Lv. Elmira.....*	1 55	AM		
Ar. Scranton.....*	4 32	AM	<b>Coaches</b>	}.....Buffalo to New York.
Ar. Dover.....*	7 16	AM		
Ar. Brick Church..*	8 01	AM	<b>Sleeping Cars</b>	}.....open for occupancy at Buffalo 9:00 p. m. and Elmira 9:30 p. m.
Ar. Newark.....*	8 09	AM		
Ar. New York.....*	8 42	AM		Passengers may occupy Scranton Sleeping Car until 7:30 a. m.

### No. 26—NEW YORK DAY EXPRESS.

Daily Except Sunday.

Runs via Washington and Paterson.

Lv. Scranton.....†	8 00	AM	<b>Individual Seat</b>	}.....Scranton to New York.
Lv. Stroudsburg...†	9 33	AM		
Ar. Philadelphia...†	12 50	PM	<b>Buffet Lounge</b>	}.....Scranton to New York.
(Broad St. Station)				
Ar. New York.....†	12 27	PM		

### No. 306—INTERSTATE EXPRESS. Daily.

(Via C. R. R. of N. J., Reading Co., and B. & O.)

Lv. Syracuse.....*	9 55	PM	<b>Sleeping Car</b>	}.....Syracuse to Philadelphia. Drawing Room. Occupancy at 9:30 P. M.
Lv. Elmira.....*	10 25	PM		
Lv. Binghamton...*	12 30	AM	<b>Coaches</b>	}.....Syracuse to Binghamton.
Ar. Allentown....*	5 23	AM		
Ar. Bethlehem....*	5 51	AM	<b>Parlor Car</b>	}.....Philadelphia to Washington.
Ar. Wayne Jct....*	7 32	AM		
Ar. Philadelphia...*	7 45	AM	<b>Dining Car</b>	}.....Philadelphia to Washington. Via Baltimore and Ohio R. R.
(Reading Terminal)				
Ar. Atlantic City..*	10 15	AM	<b>Baggage Car</b>	}.....Binghamton to Philadelphia.
Ar. Baltimore.....*	9 58	AM		
Ar. Washington...*	10 50	AM		

\*Daily. †Daily except Sunday. §Sunday only. A. M. time light type; P. M. time heavy type. Arriving time in New York is at Barclay Street.  
a—Sunday arrives West Philadelphia Station. b—Sunday arrives 6.00 P. M. f—Stops on signal or on notice to conductor.

# NEW YORK TO BUFFALO, CLEVELAND, DETROIT AND CHICAGO

**WESTWARD**

For condensed time and equipment of trains see pages 7 and 8.

Miles	TABLE 3	15	29	607	1	357	1017	3	363	5	373	25	1067	1117	7	1075 1121	9
		AM	AM	AM	AM	AM	AM	AM	PM	PM	PM	PM	PM	PM	PM	PM	PM
	<b>NEW YORK</b>																
	Hudson Tunnels— 33d St. & B'way (Fare 10c)...	+						*10 00		*3 36						*6 00	*9 34
	Hud. Term. Bldg., Cort- landt St. (Fare 6c)...	+						*10 02		*3 44						*6 02	*9 41
	<b>D. L. &amp; W. Ferries—</b> West 23d St. ....																
	Barclay St. ....																
	Christopher St. ....																
1.0	HOBOKEN.....Lv	*1 30			*7 40			*10 00		*3 40		†3 40				*6 00	*9 30
8.8	Newark.....Lv	*1 55			*8 00			*10 20		*4 00		†4 00				*6 20	*9 55
10.0	Roseville Ave. ....			†7 32				z10 33		z4 14						z6 34	z10 08
10.6	Grove St. ....			7 35													
11.0	East Orange.....			7 38													
11.6	Brick Church.....			7 40				z10 40		z4 21						z6 42	z10 16
12.5	Orange.....			7 45													
13.2	Highland Ave. ....																
14.1	Mountain Station ..																
14.9	South Orange.....			7 49													
16.2	Maplewood.....			7 53													
17.8	Millburn.....			7 56													
18.8	Short Hills.....																
21.1	Summit.....			8 05				a10 52		b4 35						a6 56	a10 30
24.5	Chatham.....			8 11													
26.5	Madison.....			8 16													
28.7	Convent.....			8 21													
30.8	Morristown.....			8 27				a11 07		b4 49							a10 44
33.0	Morris Plains.....			8 33													
37.3	Denville.....			8 42													
8.5	Kingsland.....Lv				8 15		9 49					4 19		\$6 20			*9 45
9.2	Lyndhurst.....						9 52					4 22		6 23			9 48
10.3	Delawanna.....				8 22		9 55					4 25		6 26			9 51
11.6	Passaic.....						9 58					4 28	*6 17	6 29			9 55
13.1	Clifton.....				8 32		10 01					4 32		6 32			10 05
15.7	Paterson.....						10 08					4 39		6 37			10 08
21.5	Mountain View.....						10 18					4 49		6 34			10 15
23.9	Lincoln Park.....						10 23					4 54		6 39			10 19
26.1	Towaco.....						10 28					4 59		6 44			10 23
30.2	Boonton.....				8 55		10 38					5 10		6 53			10 30
32.2	Mountain Lakes.....						10 42					5 14		6 58			10 34
34.9	Denville.....						10 49					5 22		7 05			10 39
36.6	Rockaway.....				9 07		10 57					5 32		7 14			10 47
39.1	Dover.....Ar			†8 48	9 15		11 04	a11 24		b5 07		5 40	*7 23	\$7 17	a7 31	*10 54	a11 01
39.1	Dover.....Lv				9 15			a11 24		b5 07		5 40			a7 31		a11 01
46.4	Lake Hopatcong.....				9 28							5 54					
49.0	Netcong (Stanhope) ..				9 34							6 07					
57.8	Hackettstown.....				9 50							6 22					
67.6	Washington.....Ar				10 05							6 39					
67.6	Washington.....Lv				10 10							6 39					
72.0	Oxford Furnace.....				10 19							6 50					
76.6	Bridgeville.....				10 28							6 58					
80.2	Delaware.....				10 35	f10 *50			†3 f55		†7 02	7 06					
83.6	Portland.....				10 40	10 55			4 00		7 07	7 11					
58.6	Greendell.....									†5 36							
61.7	Johnsonburg.....									†5 41							
65.8	Blairstown.....							f11 57		5 48							
78.2	Water Gap (Station for Shawnee-on-Delaware and Minisink Hills).....				10 49	11 02			4 08	6 05	7 15	7 20					
	Lv. Philadelphia.....P. R. R.					8 00		8 00	10 50		4 13	4 13					\$8 00
	Lv. Trenton....."					8 50		8 50	1 00		5 13	5 13					8 50
	Lv. Phillipsburg....."					10 05		10 05	1 50		6 30	6 30					\$10 05
82.6	Stroudsburg.....Ar	3 48			11 00	*11 10		12 23	†4 16	6 15	†7 23	7 30			8 33		*12 05
82.6	East Stroudsburg.....Lv	3 48			11 00			12 23		6 15		7 30			8 33		12 05
86.8	Analomink.....				11 08							†7 36					
90.2	Henryville (Sta. Paradise Falls)				11 16					⊙6 28		†7 43					
95.6	Cresco (Station for Skytop, Buck Hill Falls, Canadensis Mountainhome).....				11 29			d12 48		6 42		7 53			m8 58		
101.4	Mount Pocono.....				11 47			d1 01		6 58		8 09					x12 42
103.6	Pocono Summit (Station Pocono Mnr. & Lutherland)				11 54			d1 05				8 17					
108.6	Tobyhanna (So. Sterling) ..	†7 00			12 02					7 04		8 26					
113.9	Gouldsboro.....	7 09			12 10					7 12		8 31					
115.7	Lehigh.....	7 13								\$7 19		8 31					
121.5	Moscow.....	7 26			12 23					7 30		8 43					
124.7	Elmhurst.....	7 32			12 28							†8 49					
128.7	Nay Aug.....	7 39			12 36												
134.1	Scranton.....Ar	*5 22	†7 50		*12 45			*1 46		*7 50		†9 05			*9 55		*1 27
	Wilkes-Barre.....Ar	*6 40	†8 40		*1 40			*2 40		*8 40		†10 10			*10 40		*2 40
	(Laurel Line)																
	Carbondale D. & H. Co.....Ar	†8 20															

## CONVENIENT CONNECTIONS

from Local New Jersey Stations to Lackawanna Through Trains.



All Lackawanna through trains make four convenient stops near New York City, for the benefit of passengers living in New Jersey Cities and towns. You will find one of these stations just a short drive in your car from many smaller towns.

### BRICK CHURCH

is in the Oranges, close to Verona, Caldwell and Montclair.

### SUMMIT

is easily reached from Roselle, Cranford, Westfield or Plainfield.

### MORRISTOWN

is convenient to Bernardsville, Chester, Mendham or Whippany.

### DOVER

is the junction point for all stations on the Boonton Line (including Boonton, Paterson, Passaic) and the electrified division of the Lackawanna. It is conveniently reached from Netcong and Lake Mohawk.

You can save time and money, and enjoy Lackawanna service, by taking Lackawanna through trains at these points.

## LACKAWANNA

# NEW YORK TO BUFFALO, CLEVELAND, DETROIT AND CHICAGO

**WESTWARD**

For condensed time and equipment of trains see pages 7 and 8.

Miles	TABLE 4		15	301	27	1	3	5	7	9
	AM	AM	AM	AM	AM	PM	PM	PM	PM	PM
	<b>Wilkes-Barre</b> (Laurel Line).....Lv		*3 15		†7 30	*11 15	*12 45	*7 10	*9 15	*11 45
	<b>Carbondale</b> <b>D. &amp; H. Co.</b> .....Lv				†7 00			†5 20		
134.1	<b>Scranton</b> .....Lv		*5 30		*8 35	*12 55	*1 51	*8 00	*10 05	*1 35
141.5	Clarks Summit.....				8 53	1 13			10 25	
144.0	Glenburn.....				8 58	1 18				
145.0	Dalton.....				9 01	1 21				
147.0	LaPlume.....				9 05	1 25				
149.2	Factoryville.....				9 10	1 29				
153.1	Nicholson-Tunkhannock Viaduct				9 18	1 37				
158.6	Foster.....				9 28	1 46				
162.8	Kingsley.....				9 36	1 54				
166.4	Alford.....				9 45	2 01				
172.6	New Milford.....		6 29	†6 36	9 56	2 11		8 55		
178.5	Hallstead.....		6 38		10 07	2 20			11 11	
182.7	Conklin.....				10 16	2 27				
186.7	Conklin Centre.....									
192.7	<b>Binghamton</b> .....Ar		7 00	*7 04	10 30	2 45	3 10	9 20	11 30	*2 54
235.7	<b>Cortland</b> .....Ar		9 17	9 17		4 35	4 35			
272.1	<b>Syracuse</b> .....Ar		10 25	10 25		5 32	5 32			
307.1	<b>Oswego</b> .....Ar					6 45	6 45			
287.8	<b>Utica</b> .....Ar		11 40	*11 40		*6 15	*6 15			†7 38
192.7	<b>Binghamton</b> .....Lv		7 20		10 50		3 15	9 30	11 40	*3 02
195.4	Johnson City.....		7 25		10 55			j		
197.5	Willow Point.....				f11 00					
200.7	Vestal.....		7 32		11 05		y3 25	9 40		
	Endicott.....									
206.6	Apalachin.....		f7 39		11 14			j		3 27
213.4	<b>Owego</b> .....Ar		7 53		11 25		3 41	9 57	12 06	3 27
247.4	<b>Ithaca</b> .....Ar		11 20				5 00			
218.5	Lounsberry.....				11 33					
221.7	Nichols.....		8 06		11 40			10 08		
227.5	Litchfield.....				f11 50					
232.0	Waverly.....		8 23		11 58		4 04	10 21	12 29	3 50
236.3	Wilawana.....				12 06					
242.9	Lowman.....				12 18					
249.7	<b>Elmira</b> .....Ar		8 55		12 30		4 25	10 45	12 53	4 14
249.7	<b>Elmira</b> .....Lv		9 00		12 35		4 30	10 53	1 00	4 21
251.8	Elmira Heights.....				12 40					
254.1	Horseheads.....				12 45					
259.5	Big Flats.....		e9 13		12 54					
267.7	<b>Corning</b> .....		9 23		1 15		4 52	11 15	1 22	4 43
269.2	Painted Post.....				1 19					
271.9	Coopers.....				1 24					
274.7	Curtis.....				f1 28					
276.7	Campbell.....		e9 35		1 32					
281.2	Savona.....		e9 41		1 41					
286.6	<b>Bath</b> .....		9 50		1 53		5 15	11 40	1 44	5 07
290.5	Kanona.....				2 00					
294.2	Avoca.....		10 01		2 06			g		
296.8	Wallace.....				2 11					
302.0	Cohocton.....		10 15		2 20			g		
306.4	Atlanta.....		10 24		2 29			g		
312.3	Wayland.....		10 33		2 40			g		
314.2	Portway.....				2 43					
319.5	Dansville.....		10 45		2 53		5 55	12 22	f2 24	m5 46
326.8	Groveland.....				3 07					
333.7	<b>Mount Morris</b> .....		11 07		3 21		6 15	12 41	2 44	6 06
334.8	Penna. R. R. Jct.....									
336.8	Leicester.....				3 28					
340.3	Greigsville.....				3 34					
343.5	Craigs.....		p11 22		3 41					
346.3	Linwood.....				3 46					
351.1	B. R. & P. Jct.....		s11 31		3 55					
355.0	East Bethany.....				4 02					
360.1	East Alexander.....				f4 07					
362.4	North Alexander.....				4 12					
365.2	Ray.....				f4 16					
368.1	North Darien.....				f4 21					
372.3	Fargo.....				4 29					
375.2	Alden.....		h11 58		f4 35					
376.8	West Alden.....				f4 39					
379.5	Dellwood.....				f4 43					
381.8	East Lancaster.....				f4 47					
384.2	Lancaster.....				4 52					
385.3	Depew.....				f4 55					
390.7	East Buffalo.....				5 05			1 51		
396.2	<b>Buffalo E.T.</b> .....Ar		*12 35		*5 20		*7 35	*2 08	*4 05	*7 30

**Trains of the Nickel Plate Road, and Baltimore & Ohio Railroad  
leave and arrive at LACKAWANNA Terminal, Buffalo, N. Y.**

## When Winter Comes

The advent of the Holidays usually marks the opening of the annual Winter Sport season in the Pocono Mountains of nearby Pennsylvania.

In ever increasing numbers year after year people come to know the beauty and grandeur of the Pocono Mountains in winter. An ideal place to spend a week-end vacation or longer. Only a few hours comfortable train ride from Times Square. Comfortable hotels and boarding houses at moderate rates. Snow-clad hills for the toboggan sliders and adventurous ski-jumpers. Glistening white ice-covered lakes for skaters and a jolly good time awaiting all lovers of out-door health-giving recreation.

Write today for illustrated and descriptive folder "Winter Sports in Phoebe Snowland."

Address R. F. Irwin, Advertising Agent, Lackawanna Railroad, 90 West Street, New York City.

**TABLE 4—Continued**

	15	3	3	5	7	9
<b>New York</b> .....Lv	1*30	10*00	10*00	*3 40	*6 00	*9 30
<b>Hoboken</b> .....Lv	1 55	10 20	10 20	4 00	6 20	9 55
<b>Newark</b> .....Lv		10z33	10z33	z4 14	z6 34	10z08
<b>Scranton</b> .....Lv	5 30	1 51	1 51	8 00	10 05	1 35
<b>Binghamton</b> .....Lv	7 20	3 15	3 15	9 30	11 40	3 02
<b>Elmira</b> .....Lv	9 00	4 30	4 30	10 53	1 00	4 21
<b>Buffalo</b> .....Ar	12*35	*7 35	*7 35	*2 08	*4 05	*7 30
	PM	PM	PM	AM	AM	AM
<b>NICKEL PLATE</b>	PM	PM	PM	AM	AM	
<b>Buffalo</b> .....(E.T.) Lv	12*45	*7 45	*7 45	*4 20	*4 20	
<b>Dunkirk</b> .....Lv	1 42	f8 39	f8 39	5 14	5 14	
<b>Erie</b> .....Lv	2 44	9 38	9 38	6 11	6 11	
<b>East Cleveland</b> (Superior Ave.)	4 56	11 39	11 39	8 20	8 20	
<b>Cleveland</b> (Union Terminal)	*5 15	11 57	11 57	8 40	8 40	
<b>Fort Wayne</b> .....(C.T.) Ar		3 41	3 41	12 15	12 15	
<b>Chicago</b> (La Salle St. Sta.).....Ar		*7 35	*7 35	*3 59	*3 59	
	PM	AM	AM	PM	PM	
<b>MICHIGAN CENT. R. R.</b>	PM	PM		AM		AM
<b>Buffalo</b> (Cent. Term.).....(E.T.) Lv	*1 30	10*00		2 54		*7 45
<b>Buffalo</b> (Terrace Sta.).....(E.T.) Lv	1 42	10 12				7 57
<b>Detroit</b> .....(E.T.) Ar	7 30	2 47		7 45		12 30
<b>Ann Arbor</b> .....(C.T.) Ar	10 23			7 45		12 24
<b>Jackson</b> .....(C.T.) Ar	11 25	3 35		8 27		1 07
<b>Grand Rapids</b> .....				10 43		
<b>Battle Creek</b> .....	12 53	4 34		9 28		2 02
<b>Kalamazoo</b> .....	1 30	5 06		10 05		2 32
<b>Chicago</b> (Central Station).....Ar	*6 00	*8 15		*1 00		*5 34
	AM	AM		PM		PM
<b>MICHIGAN CENT. R. R.</b>	PM					AM
<b>Buffalo</b> (Cent. Term.).....(E.T.) Lv	*2 45					*8 50
<b>Buffalo</b> (Terrace Sta.).....(E.T.) Lv	2 57					9 02
<b>Toronto</b> .....(E.T.) Ar (C. P. R.)	*6 00					11*55
	AM					AM
<b>N. Y. CENTRAL R. R.</b>	PM	PM	AM	AM	AM	AM
<b>Buffalo</b> (Cent. Term.).....(E.T.) Lv	*1 05	10*05	*1 30	*4 44	*7 24	*8 45
<b>Cleveland</b> .....(E.T.) Ar	5 23	2 10		8 35	12*10	12 32
<b>Toledo</b> .....(E.T.) Ar	7 57	4 30	7 25	11 05		3 06
<b>Chicago</b> .....(C.T.) Ar	*1 00	*8 40	11 45	*3 15		*7 30
	AM	AM	AM	PM		PM
<b>N. Y. Central Big Four R. R.</b>	PM	PM	PM	AM	AM	AM
<b>Buffalo</b> (Cent. Term.).....(E.T.) Lv	*6 30		11*57	*7 19	*7 19	10*10
<b>Cleveland</b> .....(E.T.) Lv	12 15			12 15	12 15	3 30
<b>Cincinnati</b> .....(E.T.) Ar	*7 15		*9 00	6 05	6 05	9 30
	AM		AM	PM	PM	PM
<b>Buffalo</b> (Cent. Term.).....(E.T.) Lv	*1 05	*9 55	11 57	*8 45	*8 45	*8 45
<b>Cleveland</b> .....(E.T.) Lv	6 10	3 00		12 45	12 45	12 45
<b>Indianapolis</b> .....(C.T.) Ar	12 10	8 05	8 05	6 05	6 05	6 05
<b>St. Louis</b> .....(C.T.) Ar	*7 10	*1 23	*1 23	11*30	11*30	11*30
	AM	PM	PM	PM	PM	PM

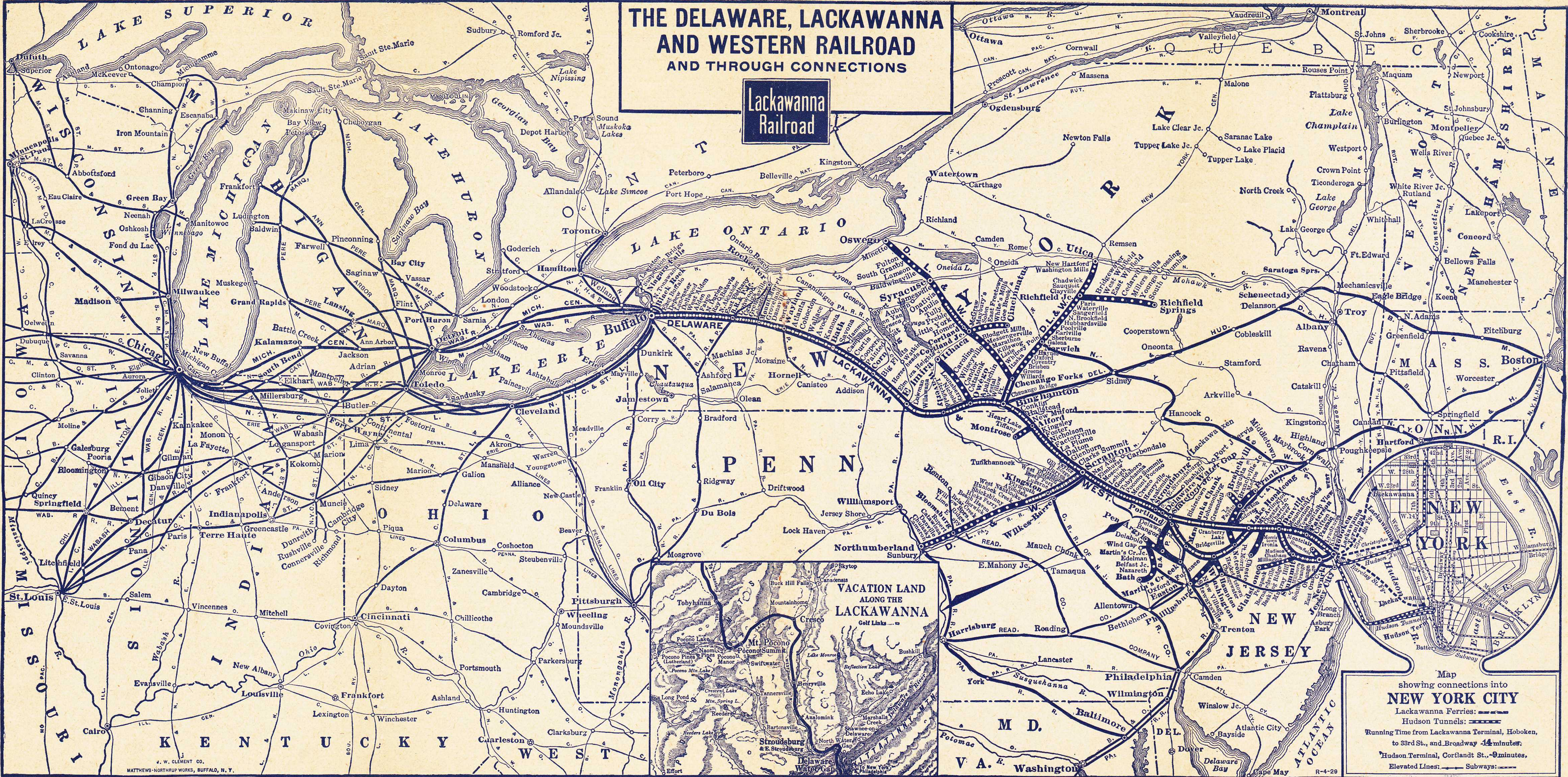
**EXPLANATION OF REFERENCE MARKS.**

\*Daily. †-Daily except Sunday. \*Except Sunday and Holidays. †No Ferry service from Christopher St. on Sundays. †Frequent service via Hudson Tubes, but this train not held for Tube Connection. †-Sundays only. C. T.-Central Time. E. T.-Eastern Time. AM time light type. PM time heavy type. †Stops on notice to conductor to let off passengers from points on C. R. R. of N. J. and Reading Company. &-Except Saturday. #No Ferry service from Christopher Street. a-Stops daily on notice to agent to receive passengers for Stroudsburg and points west. b-Stops on notice to agent to take on passengers for Greendell and points west. c-Stops on notice to agent to receive passengers for Water Gap and points west. d-Stops to let off passengers from Dover and East and points on the Pennsylvania Railroad; also to receive passengers for Buffalo and West. e-Stops on notice to conductor to let off passengers from Binghamton and beyond and on notice to agent to receive passengers for Buffalo and beyond. f-Stops on notice to agent or conductor. g-Stops on notice to conductor to let off passengers from Binghamton and points beyond and will stop on notice to agent to receive passengers for Buffalo and points west. h-Stops on notice to conductor to let off passengers from points east of Stroudsburg. j-Stops on notice to conductor to let off passengers from beyond Binghamton and on notice to agent to receive passengers for Buffalo and points west. k-Saturday only. m-Stops on notice to conductor to discharge passengers from Dover and points east and on notice to agent to receive passengers for Buffalo and points west. p-Stops to let off passengers from Wayland or beyond and to receive passengers for Buffalo and beyond. s-Stops on notice to conductor to let off passengers from Corning and East and to receive passengers for Buffalo or beyond. w-Stops to take on passengers for Binghamton and beyond. x-Stops on notice to agent to receive passengers for Buffalo and points west. y-Stops on notice to conductor to let off passengers for Buffalo and beyond. z-Stops regularly to take on passengers. ©-Stops on notice to conductor to discharge passengers from Dover and points east.



# THE DELAWARE, LACKAWANNA AND WESTERN RAILROAD AND THROUGH CONNECTIONS

Lackawanna  
Railroad



Map showing connections into  
**NEW YORK CITY**  
Lackawanna Ferries: ———  
Hudson Tunnels: ———  
Running Time from Lackawanna Terminal, Hoboken, to 33rd St., and Broadway 14 minutes.  
Hudson Terminal, Cortlandt St., 9 minutes.  
Elevated Lines: ——— Subways: ———

# CHICAGO, DETROIT, CLEVELAND AND BUFFALO TO NEW YORK

**EASTWARD**

For condensed time and equipment of trains see pages 9 and 10.

TABLE 5	2	Mixed 42 Train	6	28	10	306	14
<b>Buffalo</b> .....(E.T.) Lv	*4 55		*9 30		*6 15		10*45
East Buffalo.....	f5 09				r		
Depew.....	f5 16						
Lancaster.....	5 19				h		
East Lancaster.....	f5 22				h		
Dellwood.....	f5 25				h		
West Alden.....	f5 28				h		
Alden.....	f5 31				h		
Fargo.....	f5 33				h		
North Darien.....	f5 38				h		
Ray.....	f5 41				h		
<b>North Alexander</b> .....	f5 44				h		
East Alexander.....	f5 47				h		
East Bethany.....	f5 52				h		
B. R. & P. Junction.....	f5 56				h		
Linwood.....	f6 02				h		
Craigs.....	f6 07				h		
Greigsville.....	f6 12				h		
Leicester.....	f6 17				h		
Penna. R. R. Junction.....					h		
<b>Mount Morris</b> .....	6 25		10 49		7 45		12 03
Groveland.....	f6 35				7 55		
Dansville.....	6 50		11 14		8 14		12s23
Portway.....	f7 03						
Wayland.....	f7 06				8 35		
Atlanta.....	f7 14				8 45		
Cohocton.....	f7 20				8 54		
Wallace.....	f7 27				f9 02		
Avoca.....	f7 31				9 07		
Kanona.....	f7 36				f9 12		
<b>Bath</b> .....	7 43		11 59		f9 21		1 05
Savona.....	f7 51				f9 29		
Campbell.....	f7 56				f9 34		
Curtis.....	f7 58						
Coopers.....	f8 01						
Painted Post.....	f8 04						
<b>Corning</b> .....	8 09		12 21		9 48		1 28
Big Flats.....	f8 21						
Horseheads.....	f8 27						
Elmira Heights.....	f8 29						
<b>Elmira</b> .....Ar	8 35		12 43		10 15		1 50
<b>Elmira</b> .....Lv	8 45		12 50		10 25		1 55
Lowman.....	8 55				10 33		
Wilawana.....	f9 04				c		
Waverly.....	9 10		1 12		10 52		2 17
Litchfield.....	f9 18				f4 05		
Nichols.....	9 35				4 15		
Lounsberry.....	9 39				4 21		
<b>Ithaca</b> .....Lv	8 30		12 25				
<b>Owego</b> .....Lv	10 00		1 37		4 30		11 21
Apalachin.....	10 20				4 40		L
Vestal.....							
Endicott.....	10 30		z1 53		4 51		11 45
Willow Point.....					f4 57		
Johnson City.....	10 42				5 02		z11 54
<b>Binghamton</b> .....Ar	10 50		2 06		5 10		12 00
<b>Utica</b> .....Lv	*7 35						3 05
<b>Oswego</b> .....Lv			10 45				
<b>Syracuse</b> .....Lv			12 00		*9 55		*9 55
<b>Cortland</b> .....Lv			1 04		11 02		11 02
<b>Binghamton</b> .....Lv	11 00	11*05	2 17	5 20	12 20	12*30	3 15
Conklin Center.....		11 f10					
Conklin.....		11 20		5 32			
Hallstead.....	11 19	11 30		5 40	12 37		
New Milford.....	11 30	11 57		5 55			
Alford.....	11 f40	12 25		6 04			
Kingsley.....	11 e45	12 45		6 14			
Foster.....	11 e51	12 58		6 22			
Nicholson-Tunkhannock Viaduct.....	12 00	1 27		6 30			
Factoryville.....		f1 36		6 38			
LaPlume.....		f1 42		6 43			
Dalton.....		1 58		6 48			
Glenburn.....				6 53			
Clarks Summit.....	12 18	2 15		7 01			
<b>Scranton</b> .....Ar	12*30	*2 35	*3 30	*7 15	*1 36		*4 32
<b>Wilkes-Barre</b> .....Ar	1*40	*3 40	*4 40	*8 10	*3 10		*6 10
(Laurel Line)							
<b>Carbondale</b>							
D. & H. Co.....Ar			14 40				

## ALL EXPENSE TOURS TO NEW YORK

A unique and revolutionary travel plan has been inaugurated by the Lackawanna Railroad. The plan is a simple one and makes it possible for Lackawanna patrons to arrange in advance at all Lackawanna ticket offices their New York hotel reservations, sight-seeing tours, theatres, night-clubs, and a hundred and one other entertainments that only New York can offer at tremendously reduced rates.

These all expense tours to New York are sold for one, two, three, four and five days each.

Ask Lackawanna ticket agents for copy of folder entitled "Three Thrilling Days — New York," describing these individual travel plans and budgeted tours. These tours are planned by travel experts to save you time and money.

Try this plan on your next business or pleasure trip to New York.

TABLE 5--Continued	2	6	10	14
<b>N. Y. CENT. BIG FOUR R. R.</b>				
St. Louis.....(C.T.) Lv	*12 00	*12 00		
Indianapolis.....Lv	5 00	5 00		
Cleveland.....Ar	11 40	11 40		
Buffalo (Cent. Term.) (E.T.) Ar	*3 05	*3 05		
<b>Cincinnati</b> .....(E.T.) Lv	*5 50	*7 35		*9 00
Cleveland.....Ar	11 20	1 30		3 20
Buffalo (Cent. Term.).....Ar	*3 05	*6 35		*8 55
<b>N. Y. CENTRAL R. R.</b>				
Chicago (C.T.) Lv (La Salle St.)		PM	AM	AM
Toledo.....(E.T.)		*5 30	*1 50	*8 30
Cleveland.....		12 07	9 55	3 08
Buffalo (Cent. Term.).....		2 30	12 43	6 02
		AM	PM	PM
		*6 35	*5 15	10*02
<b>MICHIGAN CENT. R. R.</b>				
Toronto (E.T.) Lv (C. P. R.)			PM	PM
Buffalo (Terrace St.) (E.T.) Ar			*1 15	*5 00
Buffalo (Cent. Term.) (E.T.) Ar			4 12	8 09
			*4 25	*8 20
<b>MICHIGAN CENT. R. R.</b>				
Chicago (Central Sta.) (C.T.) Lv		PM	PM	AM
Kalamazoo.....		*9 00	*11 59	*9 15
Battle Creek.....		11 55	3 25	12 14
Grand Rapids.....		12 27	4 00	12 45
Jackson.....			11 59	11 25
Ann Arbor.....		1 17	5 05	1 45
Detroit.....(E.T.)			6 05	2 30
Buffalo (Terrace Sta.) (E.T.) Ar		3 52	8 35	4 28
Buffalo (Cent. Term.) (E.T.) Ar		9 05	2 09	9 16
		*9 18	*2 22	*9 30
<b>NICKEL PLATE</b>				
Chicago (LaSalleSt.Sta.C.T.) Lv			PM	AM
Fort Wayne.....			*11 20	*9 25
Cleveland (Union Terminal)			2 43	12 47
East Cleveland (Superior Ave.)			9 00	6 05
Erie.....			9 19	6 23
Dunkirk.....			11 39	8 26
Buffalo.....(E.T.) Ar			12 43	f9 22
			*1 45	*10 20
			PM	PM
<b>Buffalo</b> .....(E.T.) Lv	AM	AM	PM	PM
Elmira.....Ar	*4 55	*9 30	*6 15	*10 45
Binghamton.....	8 35	12 43	10 15	1 50
Scranton.....	10 50	2 06	12 00	3 05
Newark.....	12 30	3 30	1 36	4 32
Hoboken.....	4 15	6 42		8 09
New York.....Ar	4 30	6 57	5 10	8 24
	*4 50	*7 12	*5 30	*8 42
	PM	PM	AM	AM

### EXPLANATION OF REFERENCE MARKS.

\*-Daily. †-Daily except Sunday. §-Sunday only. #-No ferry service to Christopher Street, New York. ‡-Daily except Saturday and Sunday. ¶-No Ferry service to Christopher Street, New York, on Sundays. ▲-Daily train, but on Sunday leaves about five minutes later. E.T.-Eastern Time. C.T.-Central Time. A.M., time in light type. P.M., time in heavy type. a-On Sundays leaves Dover 6.22 P.M. b-Stops on notice to Agent to receive passengers for Dover and points east and on notice to conductor to let off passengers from Buffalo and points west. c-Stops regularly on notice to conductor to let off passengers. d-Regular stop weekdays and on Sundays to let off passengers from points west of Binghamton. e-Stops on notice to Agent to receive passengers for Scranton and points beyond. f-Stops on notice to Agent or conductor. g-Stops on notice to conductor to let off passengers from Buffalo and points beyond and on notice to agent to receive passengers for Binghamton and beyond. h-Stops on notice to Agent to receive passengers for New York and on notice to conductor to let off passengers from points west on Buffalo. j-Stops to discharge passengers from Dover and points west. k-Stops daily on notice to conductor to let off passengers from Stroudsburg and points west. l-Stops on notice to conductor to let off passengers from Buffalo and beyond. m-Stops on notice to conductor to let off passengers from points west of Dover. p-Stops Sundays on notice to conductor to let off passengers from stations west of Binghamton. r-Stops on signal on Saturdays and days preceding holidays to receive passengers. s-Stops on notice to Agent to receive passengers for Elmira and points East and on notice to conductor to discharge passengers from Buffalo and West. t-Stops on signal to take on passengers for New York. u-Regular stop Sundays only. v-Stops on notice to Agent to receive passengers for Dover and points east, also for points on Pennsylvania Railroad and on notice to conductor to discharge passengers from Buffalo and points west. w-Stops to let off passengers from Scranton and points west. x-Stops to let off passengers from points west of Dover. y-Stops Sundays only to let off passengers. z-Stops on notice to Agent to receive passengers for New York and on notice to conductor to let off passengers from Buffalo and points west

# CHICAGO, DETROIT, CLEVELAND AND BUFFALO TO NEW YORK

**EASTWARD**

For condensed time and equipment of trains see pages 9 and 10.

TABLE 6	10	1006	360	14	1018	388	26	616	364	2	1116	1044	Mixed 42 Train	6	376	634 928	1124	1048	30	24	1128
	AM	AM	AM	AM	AM	AM	AM	AM	AM	AM	PM	PM	PM	PM	PM	PM	PM	PM	PM	PM	PM
<b>Wilkes-Barre</b> (Laurel Line)	12*45			*3 15			†7 10			*11 45			*1 45	*2 45					†4 45		\$5 15
<b>Carbondale D. &amp; H. Co.</b>							†7 00						†1 40	†1 40							
<b>Scranton</b> Lv	*1 45			*4 42			†8 00			*12 35			*2 45	*3 35					‡5 30	‡6 20	
Nay Aug.							8 19						‡3 03						‡5 43		
Elmhurst.							8 27			1 03			‡3 11						‡5 51		
Moscow.							8 41			1 18			‡3 18						‡6 05		
Lehigh.							8 48			1 26			‡3 34						‡6 14		
Gouldsboro.							8 54			1 33			‡3 44						‡6 23		
Tobyhanna (So. Sterling)							9 00			1 39			‡4 03	‡4 23					‡6 25		
Pocono Summit (Station for Pocono Manor & Lutherland)				b5 36			9 10			1 49			4 16	4 35					‡6 28		
Mount Pocono.				b5 46			9 19			†1 59			4 29						‡6 30		
Cresco (Station for Skytop, Canadensis, Buck Hill Falls, Mountainhome,							9 25						4 39						‡6 32		
Henryville (Station for Paradise Falls Lutheran Assn.)							9 33						4 50						‡6 34		
Analomink.							9 33			2 17			4 50	4 58					‡6 36		
<b>Stroudsburg &amp; East Stroudsburg</b>	Ar 3 10 Lv 3 15		†5 45	6 10		‡6 50	7 42		†9 45				6 10	6 10					‡6 38		
Ar. Phillipsburg P. R. R.			6 41	†7 42		8 57	10 46		10 46				7 37	7 37					‡6 41		
Ar. Trenton			8 05	†8 57		9 50	12 03		12 03				8 34	8 34					‡6 43		
Ar. Philadelphia			9 16	†9 50			12 50		12 50				8 34	8 34					‡6 45		
<b>Water Gap</b> (Station for Shawnee-on-Delaware and Minisink Hills)			†5 53	b 6 18 f 6 36		6 53	9 41		9 53				5 00	5 18							
Blairstown.										2 29			5 22								
Johnsburg.										2 45											
Greendell.										2 51											
										2 56											
Portland.			6 00			7 06	9 50		10 01				5 10	5 26							
Delaware.			†6 04			†7 10	†9 53		†10 05				5 27	†5 30							
Bridgeville.							†10 00						5 55								
Oxford Furnace.							10 06						5 55								
Washington.							10 15						5 55								
Washington.							10 15						5 55								
Hackettstown.							10 30						5 55								
Netcong (Stanhope).							10 30						5 55								
Lake Hopatcong.													6 50								
Dover.	Ar 4 11			7 16			11 01			3 22			7 05	5 56							
Dover.	Lv 4 11	†5 38		7 16	†7 26		11 01	†11 02		3 22	\$3 40	†3 40	7 05	5 56		*5 58	†6 00	†6 01		8 56	\$9 00
Rockaway.													6 50								
Denville.		5 44											7 05								
Mountain Lakes.		5 54											7 05								
Boonton.		5 59											7 20								
Towaco.		6 04			7 39		11 11														
Lincoln Park.		6 12			7 47		11 15														
Mountain View.		6 17					11 25														
Paterson.		6 21					11 37														
Clifton.	4 47				†7 59		11 44														
Passaic.		6 39					11 44														
Delawanna.		6 43					11 48														
Lyndhurst.		6 46					11 48														
Kingsland.		6 49																			
		†6 52																			
Denville.																					
Morris Plains.																					
Morristown.				w7 34																	
Convent.																					
Madison.																					
Chatham.																					
Summit.				w7 48																	
Short Hills.																					
Millburn.																					
Maplewood.																					
South Orange.																					
Mountain Station.																					
Highland Avenue.																					
Orange.																					
Brick Church.				c8 01						m4 07				c6 34							
East Orange.																					
Grove Street.																					
Roseville Avenue.																					
Newark.				c8 09						c4 15				c6 42							
HOBOKEN.	Ar *5 10			*8 24						*4 30			*8 25	*6 57							
D. L. & W. Ferries.																					
Christopher St.																					
Barclay St.				*8 42																	
West 23d St.	*5 30												*8 42	*7 12							\$10 10
Hudson Tunnels.																					
33d St. & B'way (Fare 10c)	*5 29			*8 45						*4 51				*7 21							
Hud. Term. Bldg.—Cortlandt St. (Fare 6c)	*5 29			*8 39						*4 48				*7 13							

READ DOWN

BINGHAMTON, SYRACUSE AND OSWEGO

READ UP

903		943	915	Miles	TABLE 7			944	906	910
AM	PM	AM	AM		NEW YORK			PM	PM	AM
*10 00			*		Hudson Tunnels—					
*10 02					Lv. 33d St. S. B'way (Fare 10c) Ar					
					Hud. Term. Bldg.—Cortlandt Street (Fare 6c)				*7 21	*5 29
					D. L. & W. Ferries—				*7 13	*5 29
					Lv. { West 23d St. . . . }					
					Lv. { Barclay St. . . . }					
					Lv. { Christopher St. . . }					
					Hoboken					
					Lv. . . . Binghamton . . . Ar				*7 12	*5 30
					Chenango Bridge					
					Chenango Forks				*6 57	*5 10
					Itaska					
					Whitney Point					
					Lisle					
					Killawog					
					Marathon					
					Messengerville					
					Blodgett Mills					
					Cortland Jct.					
					Cortland					
					Homer					
					Little York					
					Preble					
					Tully					
					Apulia					
					Onativia					
					Jamesville					
					Syracuse					
					Lv. . . . Syracuse . . . Ar					
					Baldwinsville					
					Lamson					
					South Granby					
					Fulton					
					Minetto					
					Oswego					
					Lv. . . . Oswego . . . Lv					

The Interstate Express

The famous overnight train that provides the most direct, convenient and shortest route

Between

Syracuse, Binghamton, Philadelphia, Baltimore and Washington

Inter-state Express 306	TABLE 7-A	The Onondaga 327	Inter-state Express 301
PM	<b>Lackawanna Railroad</b>	AM	AM
*9 55	Lv. . . . Syracuse . . . Ar		*10 25
f10 36	Tully		9 41
10 52	Homer		9 23
11 02	Cortland		9 17
f11 22	Marathon		8 50
f11 35	Whitney Point		8 33
*12 05	Ar. . . . Binghamton . . . Lv		*8 00
	Lv. . . . Utica . . . Ar	f7 38	*11 40
	Lv. . . . Norwich . . . Ar	5 34	9 50
	Ar. . . . Binghamton . . . Lv	f4 10	*8 35
*12 30	Lv. . . . Binghamton . . . Ar	*2 54	*7 04
	Lv. . . . Scranton . . . Lv	*1 35	
	<b>C. R. R. of N. J.</b>		
2 49	Ar. . . . Wilkes-Barre . . . Lv	9 55	4 19
4 32	Mauch Chunk	8 24	2 31
5 23	Ar. . . . Allentown . . . Lv	7 41	1 40
	<b>Reading Company</b>		
5 51	Ar. . . . Bethlehem . . . Lv	7 29	1 26
6 56	Lansdale	6 21	12 28
7 32	Wayne Jet	5 53	11 57
*7 45	Ar. . . . Philadelphia . . . Lv	*5 40	*11 45
	<b>Atlantic City R. R.</b>		
*9 00	Lv. . . . Philadelphia . . . Ar	*5 15	*9 15
	(Market St. Wharf)		
*10 15	Ar. . . . Atlantic City . . . Lv	*4 00	*8 00
	<b>Baltimore &amp; Ohio R.R.</b>		
*7 45	Lv. . . . Wayne Jet . . . Ar	*3 55	
8 02	Lv. . . . Philadelphia . . . Ar	3 37	*10 00
	(24th and Chestnut Sts.)		
*9 58	Ar. . . . Baltimore . . . Lv	1 45	7 50
	(Mt. Royal Station)		
*10 50	Ar. . . . Washington . . . Lv	*1 00	*7 00
AM		PM	PM

READ DOWN

BINGHAMTON AND UTICA

READ UP

803		815	Mixed Train 809	Miles	TABLE 8			802	816
AM	AM	PM			NEW YORK			PM	PM
*10 00	*	f9 34			Hudson Tunnels—				
*10 02		f9 41			Lv. 33d St. S. B'way (Fare 10c) Ar				
					Hud. Term. Bldg.—Cortlandt Street (Fare 6c)				
					D. L. & W. Ferries—				
					Lv. { West 23d St. . . . }				
					Lv. { Barclay St. . . . }				
					Lv. { Christopher St. . . }				
					Hoboken				
					Lv. . . . Binghamton . . . Ar				
					Chenango Bridge				
					Chenango Forks				
					Greene				
					Brisben				
					Coventry				
					Oxford				
					Haynes				
					Norwich				
					Galena				
					Sherburne				
					Earlville				
					Poolville				
					Hubbardsville				
					North Brookfield				
					Sangerfield				
					Waterville				
					Paris				
					Richfield Junction				
					Lv. . . . Richfield Junction . . . Ar				
					Clayville				
					Sauquoit				
					Chadwick				
					Washington Mills				
					New Hartford				
					Utica				
					Lv. . . . Utica . . . Lv				

No. 306—THE INTERSTATE EXPRESS

Drawing Room	
Sleeping Car	Syracuse to Philadelphia
Coaches	Syracuse to Binghamton
Coach and Baggage	
Car	Binghamton to Philadelphia
Parlor and Dining	
Car	Philadelphia to Washington

No. 301—THE INTERSTATE EXPRESS

Drawing Room	
Sleeping Car	Philadelphia to Syracuse
Coach and Baggage	
Car	Philadelphia to Binghamton
Parlor Car	Washington to Philadelphia
Dining Car	Washington to Baltimore
Coaches	Binghamton to Syracuse and Utica

No. 327—THE ONONDAGA

Parlor Car	Washington to Philadelphia
Dining Car	Washington to Philadelphia
Dining Club Car	Philadelphia to Bethlehem
Coaches	

†Daily. A. M. time, light type. P. M. time heavy type. f-Stop on signal. ©-Stops to let off passengers from Bethlehem and points beyond. ▲ Passengers to and from Baltimore and Washington will change cars at Wayne Junction.

A. M. time light type. P. M. time heavy type. \*-Daily. †-Daily except Sunday. ‡-Daily except Saturday. §-Sunday only. \*Saturday only. †-No Ferry service between Christopher Street, New York, and Hoboken, N. J., on Sundays. a-Stops on notice to conductor to let off passengers holding tickets from Scranton and stations east and from Elmira and points west. b-Stops on notice to conductor to let off passengers from Binghamton and beyond. c-No boat connection from Christopher Street for this train. e-Stops on notice to Agent to take on passengers for Syracuse and on notice to conductor to let off passengers holding tickets from Scranton and points east and Elmira and points west. f-Stops on notice to Agent or Conductor. g-Stops on notice to Conductor to discharge passengers from Waterville and points south. h-Stops on signal to take on passengers for Scranton and points east, and Elmira and points west, providing agents are notified before 6 P.M. j-Stops on signal to take on passengers for Binghamton and beyond, providing Agent is notified before 6 P.M., and at Earlville on notice to conductor to let off passengers from Utica. k-Regular stop on Sunday only. s-Stops to take on passengers for points on Richfield Springs branch. w-Stops on notice to conductor to let off passengers from Scranton and points east and Elmira and points west and on signal for passengers for Greene and beyond. x-Stops on notice to conductor to let off passengers. \*-Frequent service via Hudson tubes, but this train not held for tube connections. z-Stops on notice to conductor to discharge passengers from Syracuse and receive passengers for Binghamton and beyond.

SCRANTON, WILKES-BARRE AND

NORTHUMBERLAND

Read Down

Read Up

705 PM	703 AM	715 AM	Mls.	TABLE 9	702 PM	708 AM
				<b>New York</b>		
				<b>Hudson Tunnels—</b>		
				33d St. & Broadway		
				(Fare 10c)		
				Hudson Term. Bldg.—		
				Cortlandt St.		
				(Fare 6c)		
				<b>D. L. &amp; W. Ferries—</b>		
				West 23d Street		
				Barclay Street		
				Christopher Street		
				Lv. <b>Hoboken</b> Ar		
				Lv. <b>Scranton</b> Ar		
				Taylor		
				Old Forge		
				Duryea		
				Pittston		
				Susquehanna Ave.		
				West Pittston		
				Wyoming		
				Forty Fort		
				Luzerne		
				Kingston		
				Ar. <b>Wilkes-Barre</b> Lv		
				Lv. <b>Wilkes-Barre</b> Ar		
				Lv. Kingston Ar		
				Plymouth		
				Avondale		
				West Nanticoke		
				Hunlock Creek		
				Shickshinny		
				Hicks Ferry		
				Beach Haven		
				Berwick		
				Briar Creek		
				Willow Springs		
				Lime Ridge		
				Espy		
				<b>Bloomsburg</b>		
				Rupert		
				Catawissa		
				Danville		
				Chulasky		
				Cameron		
				Ar. <b>Northumberland</b> Lv		

This train will be held at Northumberland 15 minutes for P. R. connection.

TO AND FROM ITHACA VIA OWEGO

Read Down

Read Up

	3 AM	15 AM	Mls.	TABLE 10	2 PM	6 PM
				<b>New York</b>		
				<b>Hudson Tunnels—</b>		
				Lv. 33d St. & Broadway Ar		
				(Fare 10c)		
				Hudson Terminal Bldg.—		
				Cortlandt St. (Fare 6c)		
				<b>D. L. &amp; W. Ferries—</b>		
				West 23d Street		
				Barclay Street		
				Christopher Street		
				Lv. <b>Hoboken</b> Ar		
				Lv. Philadelphia P. R. R. Ar		
				Lv. Philadelphia P. & R. Ry. Ar		
				Lv. Scranton Ar		
				Binghamton		
				Ar. Owego Lv		
				Lv. Owego Ar		
				Catatonk		
				Candor		
				Willseyville		
				Caroline		
				Ar. Ithaca Lv		

MONTROSE BRANCH

Read Down

Read Up

	753 AM	751 AM	Mls.	TABLE 11	752 AM	754 PM
				Lv. Alford Ar		
				Heart Lake		
				Tiffany		
				Ar. Montrose Lv		

CINCINNATUS BRANCH

Read Down

Read Up

	4 AM	2 AM	Mls.	TABLE 13	3 AM	5 PM
				Lv. Cortland Ar		
				McGraw		
				Maybury's		
				Solon		
				East Freetown		
				Whites Mills		
				Gee Brook		
				Ar. Cincinnati Lv		

RICHFIELD SPRINGS BRANCH

Read Down

Read Up

	856 PM	Mls.	TABLE 15	853 AM
			Lv. Utica Ar	
			Richfield Jet. Lv	
			Richfield Jet. Ar	
			Bridgewater	
			West Winfield	
			East Winfield	
			Cedarville	
			Millers Mills	
			Young's Crossing	
			South Columbia	
			Ar. Richfield Springs Lv	

DELAWARE VALLEY TRANSPORTATION CO.

Read Down

BUS SCHEDULE

Read Up

	PM	PM	AM	TABLE 14	AM	PM	PM
				Lv. (Stroudsburg and East Stroudsburg) Ar			
				Marshalls Creek			
				Oak Grove			
				Coolbaughs			
				Echo Lake			
				Turn Villa			
				Shoemakers			
				Ar. Bushkill Lv			

NEW YORK, BUFFALO AND NIAGARA FALLS

	9 PM	15 AM	TABLE 16	6 PM	14 AM
			Lv. New York Ar		
			Ar. Buffalo Lv		
			Lv. Buffalo Ar		
			(Central Terminal) (NYC)		
			Ar. Niagara Falls (NYC) Lv		

\*-Daily. †-Daily except Sunday. §-Sunday only. ¶No Ferry service between Christopher Street, New York, and Hoboken, N. J., on Sundays. \*Mixed train. \*Frequent service via Hudson Tubes, but this train will not be held for Tube connection. A.M. time light type. P.M. time, heavy type. a-Stops on notice to conductor to let off passengers from New York and Philadelphia. b-Stops on notice to conductor to let off passengers. c-No boat connection for this train from Christopher St. d-Regular stop to let off passengers. e-Stops on notice to conductor to let off passengers from Scranton and points beyond. f-Stops on notice to Agent or conductor to receive or discharge passengers. k-Saturday only. L-Friday and Saturday only. m-Sunday leaves 8:25 A.M. n-Stops on notice to Agent to receive passengers for Stroudsburg and points west. p-Saturday only. r-Regular stop Sunday only to let off passengers west of Binghamton. s-Stops on notice to conductor to let off passengers from Stroudsburg and points west. t-Stops to let off passengers from points west of Dover. w-Time shown is daily except Saturday and Sunday; Saturday leaves New York 3:20 P.M., Hoboken, 3:45 P.M. z-Stops regularly to take on passengers. \*Slightly later on Holidays.  
Note:—Trains Nos. 4 and 5 on Cincinnatus Branch will be annulled on the following Holidays: New Year's Day, Lincoln's Birthday, Washington's Birthday, Memorial Day, Independence Day, Labor Day, Thanksgiving Day, Christmas Day.

# BUFFALO, SYRACUSE, BINGHAMTON AND SCRANTON TO PHILADELPHIA, BALTIMORE AND WASHINGTON VIA STROUDSBURG AND PENNSYLVANIA RAILROAD

**READ DOWN**

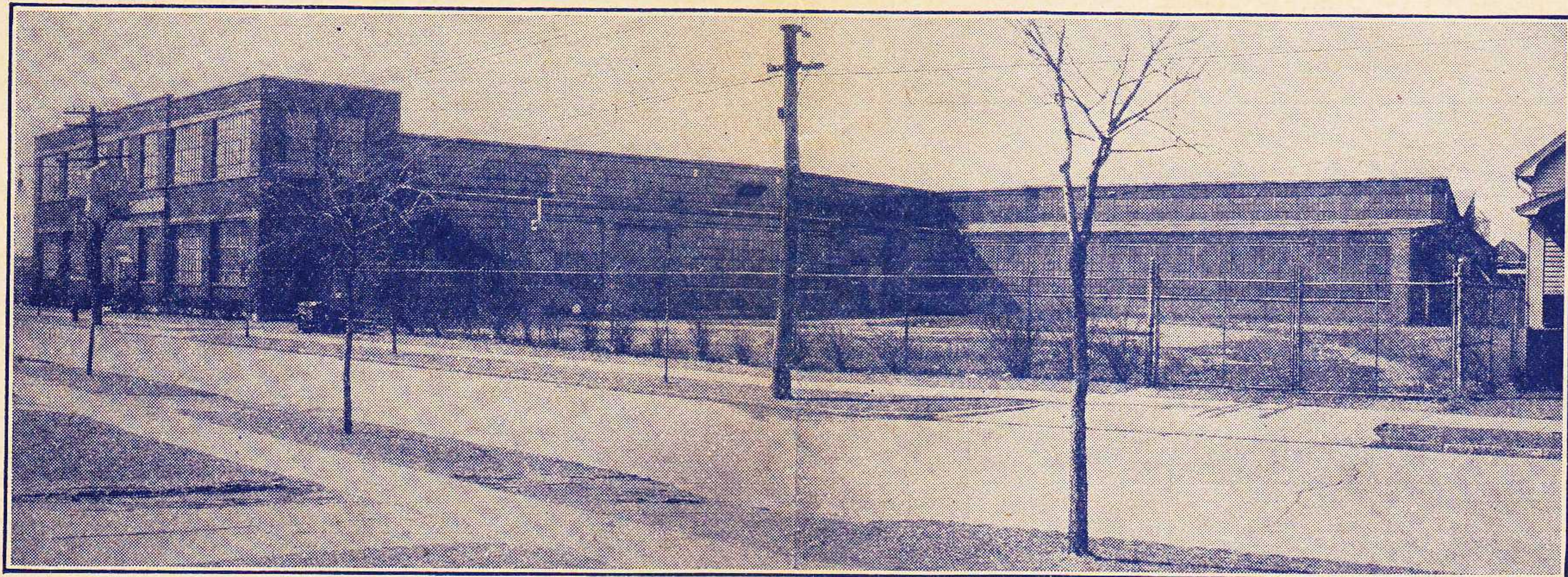
**Northward**

**Southward**

**READ UP**

SUNDAYS			WEEKDAYS			TABLE 17	WEEKDAYS				SUNDAYS														
		385	357			373	363	357					360	364	376	376			388	376	376				
		PM	AM			PM	AM	AM					AM	PM	PM	PM					PM	PM	PM		
		5 00	2 25			1 00	10 00	2 25	Lv. . . . . Washington . . . . . Ar				11 50	4 05	11 30	11 30					1 00	11 30	11 30		
		5 48	3 45			1 52	10 50	3 45	. . . . . Baltimore . . . . .				11 03	3 15	10 37	10 37					12 10	10 37	10 37		
		8 00	8 00			4 13	1 00	8 00	. . . . . Philadelphia, Broad St. . . . .				8 50	12 50	8 34	8 34					9 50	8 34	8 34		
		8 50	8 50			5 13	1 50	8 50	. . . . . Trenton . . . . .				8 05	12 03	7 37	7 37					8 57	7 37	7 37		
		10 05	10 14			6 30	3 18	10 14	. . . . . Phillipsburg (Easton) . . . . .				6 41	10 46	6 10	6 10					7 42	6 10	6 10		
		f10 27	10 40			6 52	3 44	10 40	. . . . . Belvidere . . . . .				6 15	10 16	5 41	5 41					7 21	5 41	5 41		
			f10 50			f7 02	f3 55	f10 50	. . . . . Delaware . . . . .				f6 04	f10 05	f5 30	f5 30					f7 10	f5 30	f5 30		
			10 55			7 07	4 00	10 55	. . . . . Portland . . . . .				6 00	10 01	5 26	5 26					7 06	5 26	5 26		
			11 02			7 15	4 08	11 02	. . . . . Water Gap . . . . .				f5 53	9 53	5 18	5 18					6 58	5 18	5 18		
		10 55	11 10			7 23	4 16	11 10	Ar. . . . . Stroudsburg & . . . . . Lv				5 45	9 45	5 10	5 10					6 50	5 10	5 10		
		12 05	12 23			7 30	6 15	12 23	Lv. . . . . E. Stroudsburg . . . . . Ar					9 33	4 50	4 58					6 10	4 50	4 58		
						f7 36			. . . . . Analomink . . . . .					9 25	4 39							4 39			
						f7 43			. . . . . Henryville . . . . .					9 19	4 29							4 29			
			g12 48			7 53	6 42	g12 48	. . . . . Cresco . . . . .					9 10	4 16	4 35						4 16	4 35		
			g1 01			8 09	6 58	g1 01	. . . . . Mount Pocono . . . . .					9 00	4 03							4 03			
			g1 05			8 17	7 04	g1 05	. . . . . Pocono Summit . . . . .					8 54	3 55							3 55			
						8 26	7 12		. . . . . Tobyhanna . . . . .					8 48	3 44							3 44			
		1 27	1 46			9 05	7 50	1 46	. . . . . Scranton . . . . .					8 00		3 35					4 42		3 35		
		2 54	3 10				9 20	3 10	. . . . . Binghamton . . . . .							2 17					3 15		2 17		
			5 00					5 00	. . . . . Ithaca . . . . .							12 25							12 25		
			5 32					5 32	. . . . . Syracuse . . . . .							12 00							12 00		
		7 38	6 15					6 15	. . . . . Utica . . . . .																
		4 14	4 25					4 25	. . . . . Elmira . . . . .							12 50					1 55		12 50		
		7 30	7 35					7 35	Ar. . . . . Buffalo . . . . . Lv							9 30					h10 45		9 30		
		AM	PM			PM	PM	PM					AM	AM	PM	AM					PM	PM	AM		

f—Stops on signal or on notice to conductor. g—Stops on notice to conductor to let off passengers from points on Pennsylvania Railroad. h—Leaves Buffalo Saturday night. j—Stops on notice to Agent to receive passengers for points on Pennsylvania Railroad and on notice to conductor to discharge passengers from Buffalo and points west. t—Except Saturday. +—Rail motor coach from Trenton. ⊙—Leaves or arrives Pennsylvania Station, (30th Street) Philadelphia. The time of trains south of Delaware is shown for the accommodation of the public and this company will not be responsible for errors or changes that may occur. A. M. time, light face type; P. M. time, heavy type.



*“Northumberland House”*

## NEW HOME OF CATARACT-SHARPE MFG. CO. of BUFFALO, N. Y.

The recent addition of this plant probably gives Cataract-Sharpe Mfg. Company the distinction of being one of the largest concerns in the world devoted exclusively to designing and manufacturing of cut glass. Their Rock Crystal designed glassware trade-marked “Rock Sharpe Crystal” and silver gray cuttings on crystal trade-marked “Sharpe,” are nationally distributed through every large department store, jeweler and glassware shop of distinction.

In addition they manufacture huge quantities of cut glass tumblers in various colors, distributed nationally through chain stores.

Service requirements to place these products promptly in the hands of distributors are provided by a location on the Lackawanna Railroad which serves the plant exclusively with private siding.

For factory sites or warehouse locations address

W. B. HARAHAH, Industrial Agent,  
90 West Street, New York City.

Telephone BARclay 7-2500.

# PULLMAN FARES

(Including Surcharge Where Applicable—Subject to Change)

FROM	HOBOKEN				SCRANTON				BINGHAMTON				BUFFALO				
TO	Lower Berth	Upper Berth	Drawing Room (Sleeping Car)	Parlor Car Seat	Lower Berth	Upper Berth	Drawing Room (Sleeping Car)	Parlor Car Seat	Lower Berth	Upper Berth	Drawing Room (Sleeping Car)	Parlor Car Seat	Lower Berth	Upper Berth	Drawing Room	Parlor Car Seat	
Water Gap, Pa.				.75				.75					.90	\$3.00	\$2.40	\$10.50	\$2.25
Stroudsburg, Pa.				.75				.75					.90	3.00	2.40	10.50	2.25
Cresco, Pa.				.83				.75					.75	3.00	2.40	10.50	2.25
Mount Pocono, Pa.				.90				.75					.75	3.00	2.40	10.50	2.25
Pocono Summit, Pa.				.90				.75					.75	3.00	2.40	10.50	2.25
Scranton, Pa.	\$3.00	\$2.40	\$10.50	1.13				.75					.75	3.00	2.40	10.50	2.03
Kingston (Wilkes-Barre), Pa.				1.13				.75									
New Milford, Pa.	3.00	2.40	10.50	1.43				.75						3.00	2.40	10.50	1.73
Binghamton, N. Y.	3.00	2.40	10.50	1.58				.75						3.00	2.40	10.50	1.58
Cortland, N. Y.	3.00	2.40	10.50	1.88	\$3.00	\$2.40	\$10.50	.83					.75				
Syracuse, N. Y.	3.00	2.40	10.50	2.18	3.00	2.40	10.50	1.13	\$3.00	\$2.40	\$10.50	.75					
Oswego, N. Y.				2.25				1.35					.90				
Owego, N. Y.	3.00	2.40	10.50	1.73	3.00	2.40	10.50	.75					.75	3.00	2.40	10.50	1.43
Ithaca, N. Y.	3.00	2.40	10.50	2.10	3.00	2.40	10.50	.98	3.00	2.40	10.50	.75					
Waverly, N. Y.	3.00	2.40	10.50	1.88	3.00	2.40	10.50	.83					.75	3.00	2.40	10.50	1.28
Elmira, N. Y.	3.00	2.40	10.50	2.03	3.00	2.40	10.50	.90					.75	3.00	2.40	10.50	1.13
Corning, N. Y.	3.00	2.40	10.50	2.18	3.00	2.40	10.50	1.05					.75	3.00	2.40	10.50	.98
Bath, N. Y.	3.75	3.00	13.50	2.33	3.00	2.40	10.50	1.20	3.00	2.40	10.50	.75					.83
Dansville, N. Y.	3.75	3.00	13.50	2.55	3.00	2.40	10.50	1.43	3.00	2.40	10.50	.98					.75
Mount Morris, N. Y.	3.75	3.00	13.50	2.63	3.00	2.40	10.50	1.58	3.00	2.40	10.50	1.13	3.00	2.40	10.50		.75
Buffalo, N. Y.	3.75	3.00	13.50	3.00	3.00	2.40	10.50	2.03	3.00	2.40	10.50	1.58					
Dunkirk, N. Y.	4.50	3.60	16.50		3.75	3.00	13.50		3.75	3.00	13.50		3.00	2.40	10.50		.75
Erie, Pa.	4.50	3.60	16.50		3.75	3.00	13.50		3.75	3.00	13.50		3.00	2.40	10.50		.75
Cleveland, Ohio.	5.63	4.50	21.00		4.50	3.60	16.50		4.50	3.60	16.50		3.75	3.00	13.50		1.35
Fort Wayne, Ind.	7.50	6.00	27.00		6.75	5.40	24.00		6.38	5.10	22.50		4.50	3.60	16.50		2.78
Detroit, Mich.	6.38	5.10	22.50		5.63	4.50	21.00		5.25	4.20	19.50		3.00	2.40	10.50		1.88
Ann Arbor, Mich.	7.50	6.00	27.00		6.00	4.80	21.00		5.63	4.50	21.00		3.75	3.00	13.50		2.10
Jackson, Mich.	7.50	6.00	27.00		6.38	5.10	22.50		6.00	4.80	21.00		3.75	3.00	13.50		2.25
Battle Creek, Mich.	7.88	6.30	28.50		6.75	5.40	24.00		6.38	5.10	22.50		4.13	3.30	15.00		2.63
Kalamazoo, Mich.	8.25	6.60	30.00		7.50	6.00	27.00		6.75	5.40	24.00		4.50	3.60	16.50		2.63
Chicago, Ill.	9.00	7.20	31.50		8.25	6.60	30.00		7.50	6.00	27.00		5.63	4.50	21.00		3.38
St. Louis, Mo.	10.88	8.70	39.00		10.13	8.10	36.00		9.75	7.80	34.50		7.50	6.00	27.00		
Kansas City, Mo.	12.00	9.60	42.50		11.25	9.00	41.00		10.50	8.40	38.00						
Allentown, Pa.									3.00	2.40	10.50						
Philadelphia, Pa.								1.13	3.00	2.40	10.50						
Baltimore									3.75	3.00	13.50						
Washington									3.75	3.00	13.50						
St. Paul & Minneapolis, Minn.	11.50	9.20	40.50		10.75	8.60	39.00		10.00	8.00	36.00						
Duluth, Minn.	12.00	9.60	42.50		11.25	9.00	41.00		10.50	8.40	38.00						
Gardiner, Montana	19.25	15.40	67.50		18.50	14.80	66.00		17.75	14.20	63.00						
Billings, Montana	18.00	14.40	63.50		17.25	13.80	62.00		16.50	13.20	59.00						
Butte, Montana	19.50	15.60	68.50		18.75	15.00	67.00		18.00	14.40	64.00						
Spokane, Wash.	22.25	17.80	78.50		21.50	17.20	77.00		20.75	16.60	74.00						
Seattle, Wash.																	
Portland, Ore. }	24.75	19.80	87.50		24.00	19.20	86.00		23.25	18.60	83.00						
Omaha, Neb.	12.00	9.60	42.50		11.25	9.00	41.00		10.50	8.40	38.00						
Denver & Colorado Springs.	16.25	13.00	57.50		15.50	12.40	56.00		14.75	11.80	53.00						
Salt Lake City & Ogden.	19.25	15.40	67.50		18.50	14.80	66.00		17.75	14.20	63.00						
West Yellowstone, Montana.	19.25	15.40	67.50		18.50	14.80	66.00		17.75	14.20	63.00						
Los Angeles, Cal.																	
San Diego, Cal. }	24.75	19.80	87.50		24.00	19.20	86.00		23.25	18.60	83.00						
San Francisco, Cal. }																	
Grand Canyon, Ariz.	23.25	18.60	81.50		23.00	18.40	82.00		22.25	17.80	79.00						
Los Angeles & San Francisco via Grand Canyon.	27.75	22.20	97.50		27.00	21.60	96.00		26.25	21.00	93.00						

**33%**  
**Reduction**  
**IN**  
**Sleeping Car**  
**Charges**  
**From Chicago**  
**to Points West**

## SHIP VIA RAILWAY EXPRESS

A Railway Express agency is maintained at all principal stations along the Lackawanna. Phone or consult any Express Agent for rates and further detailed information.

### SLEEPING AND PARLOR CAR SPACE

Minimum Number of Railroad Tickets required for Exclusive Occupancy of Sections, Drawing Rooms or Compartments in Sleeping Cars and Drawing Room in Parlor Car.

Minimum Number of Adult Tickets

Sleeping Cars	Adult Tickets
Section.....	1
Compartment, berth service.....	1½
Compartment, seat service.....	1½
Drawing Room, berth service.....	2
Drawing Room, seat service.....	2
Parlor Cars	
Drawing Room.....	2

## Telephone Directory

### Principal Ticket, Information and Pullman Offices

#### NEW YORK, N. Y.

Information Bureau, 500 Fifth Ave., Lackawanna 4-0234.  
Consolidated Ticket Offices:  
17 John St., Cortlandt 7-0820-1.  
4 West 33rd St., Longacre 5-7320-1.  
3 West 47th St., Medallion 3-1822.  
Assistant General Passenger Agent's Office: 500 Fifth Ave., Lackawanna 4-0234.  
Barclay Street Station, Foot Barclay St., Barclay 7-2500.  
West 23rd Street Station, Foot West 23rd St., Chelsea 3-1730.

#### BROOKLYN, N. Y.

Consolidated Ticket Office, 155 Pierpont St., Triangle 5-7440.

#### HOBOKEN, N. J.

Lackawanna Terminal, Hoboken 3-2000.

#### NEWARK, N. J.

Division Passenger Agent's Office, 856 Broad St., Market 3-3440.  
City Ticket Office, 856 Broad St., Market 3-3440.  
Lackawanna Station, North Broad St., Humboldt 2100.

#### EAST ORANGE, N. J.

Lackawanna Brick Church Station, Orange 3-0811.  
East Orange Station (Arlington Ave.), Orange 3-7698.

#### PATERSON, N. J.

City Ticket Office, 302 Main St., Sherwood 2-1134.  
Lackawanna Station, Marshall Street, Sherwood 2-1609.

#### SCRANTON, PA.

Division Passenger Agent's Office, Lackawanna Station, Scranton 5251.  
Lackawanna Station, Scranton 5251.

#### BINGHAMTON, N. Y.

Division Passenger Agent's Office, Press Bldg., Binghamton 2-3697.  
Lackawanna Station, Binghamton 4-1311.

#### SYRACUSE, N. Y.

City Passenger Agent's Office, Lackawanna Station, 2-9211.  
Lackawanna Station, 2-9211.

#### ITHACA, N. Y.

Lackawanna Station, Ithaca 2974.

#### ELMIRA, N. Y.

Lackawanna Station, Elmira 1953.

#### CORNING, N. Y.

Lackawanna Station, Corning 81.

#### BUFFALO, N. Y.

General Agent, Passenger Department, 297 Main St., Cleveland 2488.  
City Ticket Office, 297 Main St., Cleveland 2488.  
Lackawanna Terminal, Foot of Main St., Washington 4800.

#### DETROIT, MICH.

Passenger Agent's Office, 1917 First National Bank Building, Cadillac 6729.

#### CHICAGO, ILL.

General Western Passenger Agent's Office, 111 West Jackson Blvd., Wabash 9200.  
Michigan Central Station:  
Michigan Avenue and Roosevelt Road, Harrison 7620.  
La Salle Street Station, Van Buren and La Salle Sts., Wabash 4200.