

Lackawanna Railroad

TIMETABLES
JANUARY 11, 1948

The Route of
Scenic Beauty

Between

NEW YORK

and

**BUFFALO
CLEVELAND
DETROIT
CHICAGO**

FORM 10

Lackawanna Railroad

TIMETABLES
JANUARY 11, 1948

The Route of
Scenic Beauty

Between

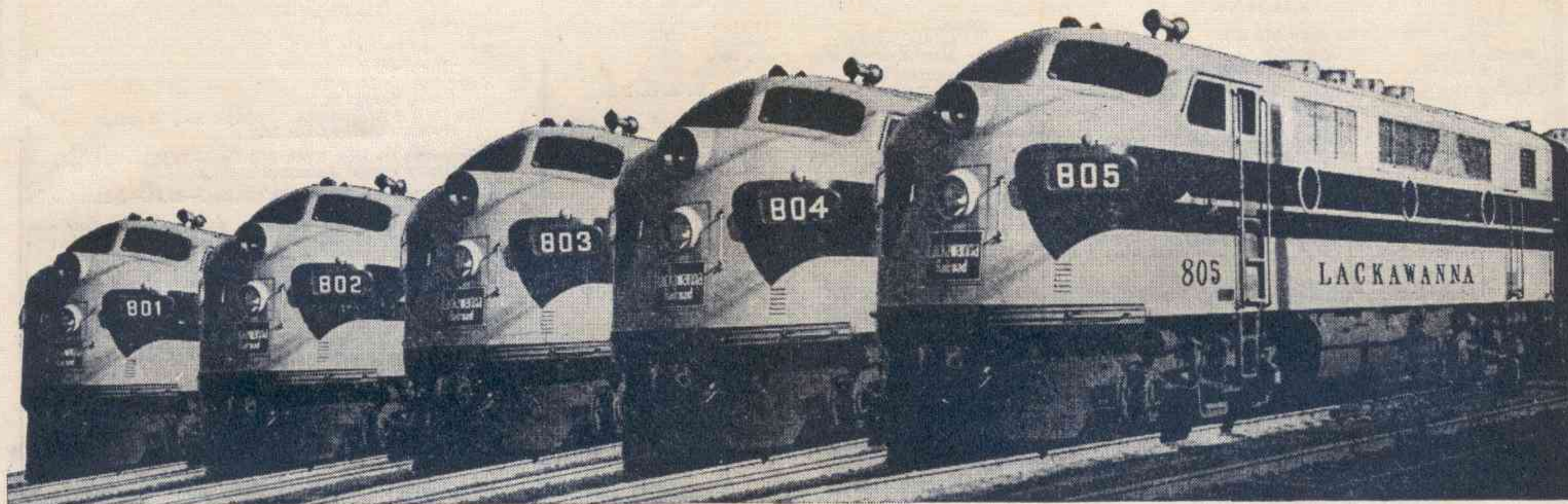
NEW YORK

and

**BUFFALO
CLEVELAND
DETROIT
CHICAGO**

FORM 10

HERE THEY ARE...



Lackawanna's Fleet of Diesel Passenger Locomotives

FULL ENJOYMENT of your winter travel trips depends... on the *way you travel*. Lackawanna's fleet of *all-weather* passenger trains between New York and Buffalo—with through service between New York and Cleveland, Detroit and Chicago—are now *Diesel-Powered*, affording travelers modern, comfortable, well-appointed accommodations... speed, dependable schedules and courteous service.

Passengers traveling between New York, Newark, Scranton, Binghamton, Elmira, Buffalo and intermediate cities and towns are afforded clean, faster, more comfortable day and night service.

These swift, smooth-running 4500 horsepower diesel-electric locomotives are a part of Lackawanna's program of improved passenger service.



★Regularly assigned cars are air-conditioned

LACKAWANNA RAILROAD—THE ROUTE OF SCENIC BEAUTY

CONDENSED EQUIPMENT OF TRAINS—PARLOR AND SLEEPING CAR LINES. DINING CAR SERVICE.

★Regularly assigned cars are air-conditioned

WESTWARD

Lackawanna Limited No. 3—Daily

(Diesel-Powered)
(Via Nickel Plate No. 5)

- Sleeping Car**
★New York to Chicago (12 Sec.—D.R.) (Car L-10)
- Parlor Lounge Car (D. L. & W.)**
★New York to Buffalo. (Drawing Room) (Car 8)
- Dining Car**
★New York to Buffalo
- Buffet Lounge Car**
★Binghamton to Syracuse — *In No. 1903 from Binghamton*
- Diner Lounge Car**
★Buffalo to Chicago
- Coaches**
★New York to Buffalo
★New York to Oswego — *In No. 1903 from Binghamton*
Binghamton to Oswego — *In No. 1905 from Binghamton*
★New York to Chicago
Binghamton to Utica — *In No. 1805 from Binghamton*

The Chicagoan No. 5—Daily

(Diesel-Powered)
(Via New York Central No. 33)

- Sleeping Car**
★New York to Detroit (12 Sec.—D.R.) (Car L-15)
- Buffet Lounge Car**
★New York to Elmira
- Parlor Car (D. L. & W.)**
★New York to Elmira (Drawing Room) (Car 14)
- Dining Car**
★New York to Scranton
★Detroit to Chicago
- Coaches**
★New York to Buffalo
★Buffalo to Chicago

The Westerner No. 7—Daily

(Diesel-Powered)
(Via Nickel Plate No. 7)

- Sleeping Cars**
★New York to Chicago (10 Sec.—D.R.—2 Compt.) (Car L-22)
★New York to Buffalo (10 Sec.—D.R.—2 Double Bedrooms) (Car 25) — *May be occupied until 8.00 A.M.*
- Buffet Lounge Car**
★New York to Scranton
- Dining Car**
★Buffalo to Chicago
- Coaches**
★New York to Chicago
★Buffalo to Chicago
★New York to Buffalo

The Scrantonian No. 11—Daily Except Sunday and Major Holidays

- ★Buffet Diner
New York to Scranton
- Coaches**
New York to Scranton

The Owl No. 15—Daily

(Diesel-Powered)

- Sleeping Cars**
★New York to Elmira (12 Sec.—D.R.) (Car 1)
★New York to Syracuse (12 Sec.—D.R.) (Car 3) — (Daily Except Saturday night.)
In No. 1915 from Binghamton
★New York to Binghamton (10 Sec.—D.R.—2 Double Bedrooms) (Car 2) — *May be occupied until 8.00 A.M.*
★New York to Scranton (12 Sec.—D.R.) (Car 4) — (Daily except Saturday night.)
May be occupied until 8.00 A.M.
Sleeping cars open at Hoboken for occupancy at 9.30 P.M.
- Buffet Lounge Car**
★Binghamton to Buffalo
★Binghamton to Syracuse — *In No. 1915 from Binghamton*
- Coaches**
★New York to Buffalo
Binghamton to Syracuse and Utica

WESTWARD

Interstate Express No. 1301—Daily

(Via B. & O. Reading Co. and C.R.R. of Pa.)

- Sleeping Car**
★Philadelphia to Syracuse (12 Sec.—D.R.) (Car 8) — *In No. 1915 from Binghamton*
May be occupied at 10.00 P.M.
- Parlor—Dining Car**
★Washington to Philadelphia, via B. & O. R.R.
- Buffet Lounge Car**
★Binghamton to Syracuse — *In No. 1915 from Binghamton*
★Binghamton to Buffalo — *In No. 16*
- Coaches**
★Washington to Philadelphia
Philadelphia to Binghamton
Binghamton to Syracuse — *In No. 1915 from Binghamton*
Binghamton to Utica — *In No. 1815 from Binghamton*
★Binghamton to Buffalo — *In No. 16 from Binghamton*

Pittsburgh Express No. 1705—Daily

(Runs via Sunbury and Harrisburg)

- Sleeping Car**
★Scranton to Pittsburgh (12 Sec.—D.R.) (Car P-377)
- Coach Service**

EASTWARD

Pocono Express No. 2—Daily

(Diesel-Powered)

- Sleeping Car**
★Detroit to New York (12 Sec.—D.R.) (Car 440) via New York Central No. 44. *Car may be occupied at Buffalo at 11.00 P.M.*
- Sleeping Car**
★Buffalo to New York (12 Sec.—D.R.) (Car 440) from N. Y. C. No. 44. *Car may be occupied at Buffalo at 11.00 P.M.*
- Parlor Car (D. L. & W.)**
★Elmira to New York (Drawing Room) (Car 200)
- Buffet Lounge Car**
★Elmira to Binghamton
- Dining Car**
★Scranton to New York
- Coaches**
★Buffalo to New York

Lackawanna Limited No. 6—Daily

(Diesel-Powered)

- Parlor Lounge Car (D. L. & W.)**
★Buffalo to New York (Drawing Room) (Car 100)
- Buffet Lounge Car**
★Binghamton to New York
- Dining Car**
★Buffalo to New York
- Buffet Lounge Car**
★Syracuse to Binghamton — *In No. 1906 from Syracuse*
- Coaches**
★Buffalo to New York
★Oswego to New York — *In No. 1906 from Syracuse*
Oswego to Binghamton — *In No. 1906 from Oswego*
Utica to Binghamton — *In No. 1806 from Utica*

The New Yorker No. 8—Daily

(Diesel-Powered)

(Via Nickel Plate No. 8)

- Sleeping Cars**
★Chicago to New York (10 Sec.—D.R.—2 Compt.) (Car C-80) Via Nickel Plate No. 8
★Buffalo to New York (10 Sec.—D.R.—2 Double Bedrooms) (Car 105) — *Open for occupancy at 9.00 P.M.*
★Elmira to New York (12 Sec.—D.R.) (Car 202) — *Open for occupancy at 9.30 p.m.*
- Dining Car**
★Chicago to Buffalo
★Scranton to New York
- Coaches**
★Chicago to New York
★Buffalo to New York

EASTWARD

New York Mail No. 10—Daily

(Diesel-Powered)
(Via Nickel Plate No. 6)

- Sleeping Cars**
★Chicago to New York (12 Sec.—D.R.) (Car C-60) — *Sleeper must be vacated at Hoboken 8.00 A.M.*
★Syracuse to New York (12 Sec.—D.R.) (Car 401) — (Daily except Saturday night.)
In 1910 to Binghamton. Sleeper may be occupied at Hoboken until 8.00 A.M.
- ★Scranton to New York (12 Sec.—D.R.) (Car 300) (Daily except Saturday night.)
- ★Binghamton to New York (10 Sec.—D.R.—2 Double Bedrooms) (Car 252)
Binghamton and Scranton Sleepers are open for occupancy at 9.30 P.M. and may be occupied at Hoboken until 8.00 A.M.
- Diner Lounge Car**
★Chicago to Buffalo
- Buffet Lounge Car**
★Buffalo to Binghamton
★Syracuse to Binghamton — *In No. 1910 from Syracuse*
— *Open for service 9.00 p.m.*
- Coaches**
★Chicago to New York — *In N. K. P. No. 6*
★Buffalo to New York

Merchants Express No. 26—Daily Except Sunday and Major Holidays

- Buffet Lounge Car**
★Scranton to New York
- Coaches**
★Scranton to New York

Interstate Express No. 1306—Daily

(Via C.R.R. of Pa., Reading Co., and B. & O.)

- Sleeping Car**
★Syracuse to Philadelphia (12 Sec.—D.R.) (Car R-415) — *In No. 1910 from Syracuse*
- Buffet Lounge Car**
★Syracuse to Binghamton — *Open for service 9.00 p.m.*
- Dining Club Car**
★Allentown to Philadelphia
- Parlor-Dining Car**
★Philadelphia to Washington, via B. & O. R.R.
- Coaches**
Syracuse to Binghamton — *In No. 1910*
Binghamton to Philadelphia
Philadelphia to Washington

Keystone Express No. 1702—Daily

(Runs via Harrisburg and Sunbury)

- Sleeping Car**
★Pittsburgh to Scranton (12 Sec.—D.R.) (Car 160)
- Coach Service**

Hoboken Terminal Handles 271
Lackawanna Passenger Trains On
Weekdays And 122 On Sundays.

CONDENSED TABLE OF CONNECTING TRAINS

NEW YORK AND BUFFALO, CLEVELAND, DETROIT, CHICAGO AND THE WEST

(For Through Car Service, See Page 2)

TABLE 1 WESTWARD					TABLE 2 EASTWARD				
					12	38	Daily	Daily	
					Daily	Daily	PM	AM	
					AM	PM	PM	AM	
LACKAWANNA RAILROAD					NEW YORK CENTRAL SYSTEM				
New York					St. Louis (C.T.) Lv 9 10 6 00				
Barclay St. (E.T.) Lv	12 15	10 00	4 15	7 43	Indianapolis (C.T.) Lv	1 45	10 40		
Christopher St. (E.T.) Lv	12 30	10 10	4 12	7 48	Cleveland (E.T.) Ar	8 02			
Hoboken (E.T.) Lv	1 05	10 30	4 40	8 15	Buffalo (Cent. Term.) (E.T.) Ar	11 15	8 05		
Newark (E.T.) Lv		10 44	4 54	8 29			424		426
Brick Church (E.T.) Lv		10 51	5 01	8 36			218		244
Dover (E.T.) Lv		11 32	5 43	9 17	Cincinnati (E.T.) Lv		5 20		9 15
Scranton (E.T.) Lv	4 52	1 54	8 08	11 40	Cleveland (E.T.) Ar		11 22		3 30
Binghamton (E.T.) Lv	7 05	3 05	9 25	12 51	Buffalo (Cent. Term.) (E.T.) Ar		7 15		9 25
Cortland (E.T.) Ar	9 10	4 35				98	10		46
Syracuse (E.T.) Ar	10 15	5 35			NEW YORK CENTRAL SYSTEM				
Oswego (E.T.) Ar		7 10			Chicago (La Salle St.) (C.T.) Lv	2 30	5 40		9 35
Norwich (E.T.) Ar	11 52	4 16			Toledo (E.T.) Lv	7 15	11 59		3 05
Utica (E.T.) Ar	1 50	6 00			Cleveland (E.T.) Lv	9 35	2 10		5 40
Ithaca (Via Bus See Table 13) (E.T.) Ar	9 40	4 45			Buffalo (Cent. Term.) (E.T.) Ar	12 45	5 20		9 40
Elmira (E.T.) Lv	8 55	4 16	11 02	1 59	CAN. PAC. R.R.—NEW YORK CENTRAL SYSTEM			382	374
Buffalo (E.T.) Ar	1 05	7 00	2 00	4 30	Toronto (C. P. R.) (E.T.) Lv	9 30			1 20
					Buffalo (Terrace Sta.) (E.T.) Ar	12 29			4 23
					Buffalo (Cent. Term.) (E.T.) Ar	12 40			4 35
								8	358
					NEW YORK CENTRAL SYSTEM				
					Chicago (Central Sta.) (C.T.) Lv	2 15	7 50		*8 45
					Kalamazoo (E.T.) Lv	5 38	11 41		*12 44
					Battle Creek (E.T.) Lv	6 03	12 11		*1 30
					Grand Rapids (E.T.) Lv				*12 35
					Jackson (E.T.) Lv	6 48	1 00		*2 51
					Ann Arbor (E.T.) Lv	7 26	1 49		*3 31
					Detroit (E.T.) Lv	8 25	2 45		*4 45
					Buffalo (Terrace Sta.) (E.T.) Ar		▲8 16		*9 28
					Buffalo (Cent. Term.) (E.T.) Ar	1 05	▲8 30		*9 40
									6
					NICKEL PLATE				8
					Chicago (La Salle St. Sta.) (C.T.) Lv			11 20	10 00
					Fort Wayne (C.T.) Lv			2 45	1 15
					Cleveland (Union Term.) (E.T.) Lv			8 50	6 35
					East Cleveland (Superior Ave.) (E.T.) Lv			9 11	6 53
					Ashtabula (E.T.) Lv			10 34	7 47
					Erie (E.T.) Lv			11 46	8 48
					Buffalo (Lackawanna Terminal) (E.T.) Ar			1 55	10 35
									2
					LACKAWANNA RAILROAD				6
					Buffalo (E.T.) Lv	4 20	9 45	5 40	11 00
					Elmira (E.T.) Ar	7 20	12 24	9 40	1 32
					Ithaca (Via Bus See Table 13) (E.T.) Lv		11 25		
					Utica (E.T.) Lv		10 25	5 40	
					Norwich (E.T.) Lv		12 13	7 36	
					Oswego (E.T.) Lv		9 55		
					Syracuse (E.T.) Lv		11 20	9 20	
					Cortland (E.T.) Lv		12 23	10 25	
					Binghamton (E.T.) Ar	8 56	1 36	11 18	2 38
					Scranton (E.T.) Ar	10 18	2 50	1 15	3 52
					Dover (E.T.) Ar	12 58	5 14	4 25	6 19
					Brick Church (E.T.) Ar	1 38	5 52		7 07
					Newark (E.T.) Ar	1 46	6 01		7 16
					Hoboken (E.T.) Ar	2 00	6 15	5 35	7 30
					New York				
					Christopher St. (E.T.) Ar	2 15	6 34	5 55	7 52
					Barclay St. (E.T.) Ar	2 25	6 40	5 55	7 55
									PM
									PM
									AM
									AM

EXPLANATION OF REFERENCE MARKS

A.M., light type. P.M., heavy type. E.T.—Eastern Time C.T.—Central Time.
 *Through Sleeper on N.Y.C. No. 44 from Detroit runs on D. L. & W. No. 2 from Buffalo—passengers desiring to connect with D. L. & W. No. 8 from Buffalo should transfer at Terrace Station. ▲ Transfer at Terrace Station for D. L. & W. train No. 6.

PRINCIPAL TICKET, INFORMATION AND PULLMAN OFFICES

NEW YORK		NEWARK		PATERSON		BUFFALO		CHICAGO	
General Eastern Passenger Agent's Office 500 Fifth Avenue (at 42nd Street) Room 842		City Ticket Office Griffith Building, 605 Broad Street, Rooms 502-503 Evenings, Sundays and Legal Holidays, phone		Lackawanna Station 220 Marshall St. (near Main St.)		City Ticket Office 11 W. Genesee St. Evenings, Sundays and Legal Holidays, phone		City Passenger Agent's Office 327 South LaSalle Street	
Railroad Ticket Offices: 3 West 47th Street (near Fifth Avenue) 17 John Street (near Broadway) Barclay St. (ft. Barclay Street) Christopher Street (near West 10th Street) Evenings, Saturday afternoons, Sundays and Legal Holidays, phone		Lackawanna 4-0234		MEDallion 3-1822 CORTlandt 7-0820-1 BARELAY 7-2500		HUMboldt 2-2100 SHERwood 2-1609 CLEVELAND 2488 WASHington 4800		BARELAY 7-2500 HOBOKEN 3-2000 WABASH 3443	
Lackawanna Terminal		HOBOKEN 3-2000							

FROM SCRANTON TO BINGHAMTON, SYRACUSE, ELMIRA AND BUFFALO

WESTWARD

For condensed time and equipment of trains see pages 2 and 3.

Miles	TABLE 4	15	1301	Mixed	3	5	7							
		Daily	Daily	47	Daily	Daily	Daily							
		AM	AM	AM	PM	PM	PM							
	Wilkes-Barre (Laurel Line).....Lv	3 15		†10 15 \$9 45	12 45	7 15	10 45							
134.1	ScrantonLv	4 52		11 02	1 54	8 08	11 40							
141.5	Clarks Summit.....			f11 27										
145.0	Dalton.....			f11 34										
147.0	LaPlume.....			f11 39										
153.1	Nicholson (Tunkhannock Viaduct)			f11 52										
158.6	Foster.....			f12 01										
162.9	Kingsley.....			f12 09										
172.6	New Milford.....	5 53		f12 32		8 51								
178.5	Hallstead.....	6 02		f12 42										
183.7	Conklin.....			f12 52										
192.7	BinghamtonAr	6 25	6 42	1 27	2 56	9 13	12 42							
235.7	CortlandAr	9 10	9 10		4 35									
272.1	SyracuseAr	10 15	10 15		5 35									
307.1	OswegoAr				7 10									
287.8	UticaAr	1 50	1 50		6 00									
192.7	BinghamtonLv	7 05			3 05	9 25	12 51							
195.4	Johnson City.....	7 11												
200.7	Vestal.....	7 24			3 15	9 37								
	Endicott;													
206.6	Apalachin.....	f7 30												
213.4	Owego	7 48			3 33	10 03	1 15							
247.4	Ithaca (Via Bus) See Table 13 Ar	9 40	9 40		4 45									
221.7	Nichols.....	8 02												
232.0	Waverly.....	8 20			3 53	10 31	1 36							
249.7	Elmira	8 38			4 10	10 52	1 54							
	Big Flats.....	8 55			4 16	11 02	1 59							
259.5	Corning	e9 13			4 37	11 28	2 18							
267.7	Campbell.....	e9 44												
276.7	Bath	10 03			4 58	11 55								
286.6	Avoca.....	10 15												
294.2	Cohocton.....	10 31												
302.0	Atlanta.....	10 39												
306.4	Wayland.....	10 50												
312.3	Dansville.....	11 04			5 32	12 28								
319.5	Groveland.....													
326.8	Mount Morris	11 30			5 51	12 47	3 21							
333.7	Greigsville.....	11 42												
340.3	B. & O. Jct.....	s11 59												
351.1	East Bethany.....	12 06												
355.0	Lancaster.....													
384.2	BuffaloAr	1 05			7 00	2 00	4 30							
396.2														
	For Connections West of Buffalo See Table 1, Page 3.	PM	AM	PM	PM	AM	AM							

EXPLANATION OF REFERENCE MARKS

For Tables 3 and 4

AM time light type. PM time heavy type.

†-Daily except Sunday. §-Sunday only.

b-Stops on notice to Agent to take on passengers for New Milford and west **weekdays; Sundays and Holidays** (See *Holiday Note*) stops on notice to agent to receive passengers for Blairstown and west.

d-Stops on notice to conductor to let off passengers from Dover and east and on notice to agent to pick up passengers for Buffalo and west **weekdays; Sundays** a regular stop.

e-Stops on notice to conductor to let off passengers from Binghamton and east and on notice to Agent to receive passengers for Buffalo and west.

f-Stops on notice to agent or conductor.

g-Stops on notice to conductor to discharge passengers from Dover and East, also from points on the Penna. R. R. and on notice to agent to receive passengers for Binghamton and west.

m-Stops **Friday only** on notice to conductor to discharge passengers from Dover and east, and on notice to Agent to receive passengers for Buffalo and west; **Sundays and Holidays** a regular stop. (See *Holiday Note*)

r-Stops on notice to conductor to discharge passengers from Dover and east, and on notice to agent to receive passengers for Buffalo and west.

s-Stops on notice to conductor to let off passengers from Corning and east and to receive passengers for Buffalo and west.

t-Stops Jan. 1, May 30, July 4, Sept. 6, Nov. 25 and Dec. 25 only at Delaware Water Gap **6.24 P. M.**, Henryville **6.42 P. M.**, and Mt. Pocono **7.09 P. M.**

v-Stops on notice to Agent to receive passengers for Blairstown and west.

w-Stops **Friday and Saturday** on notice to conductor to discharge passengers from Dover and east and on notice to agent to pick up passengers for Buffalo and west.

x-Stops **Sundays and Holidays only** (See *Holiday Note*) at Tobyhanna **7.21 P.M.** Gouldsboro **7.27 P.M.**, Moscow **7.35 P. M.**

z-Stops regularly to take on passengers.

Holidays-The term holidays used in these timetables applies to New Year's Day, Memorial Day, Independence Day, Labor Day, Thanksgiving and Christmas Day.

THINK ALONG THESE LINES

The Lackawanna is the shortest line between New York and Scranton, Binghamton, Syracuse, Elmira and Buffalo. Therefore, the rates charged are the lowest available.

There are three daily trains, west and east—New York, Buffalo, Cleveland, Detroit, Chicago and the West, stopping on signal at convenient Suburban New Jersey Stations for the accommodation of our patrons.

Passengers ride in air-conditioned comfort and reclining seat coaches at no extra fare and also in modern air-conditioned sleeping cars without a change of cars at Buffalo.

TRANSFERRING LUGGAGE AND PASSENGERS BETWEEN DEPOTS IN CHICAGO

Passengers holding tickets through Chicago may deliver their hand luggage to the Parmelee desk at the **incoming** depots for delivery to the parcel checking rooms of the **outgoing** depots at the cost of only the usual parcel checking fees.

The Parmelee transfer coupon—included as part of your through ticket—also entitles you to the choice of transfer service in Parmelee limousine from your incoming depot to your outgoing depot, or to any hotel or other destination in downtown Chicago.

Ask any Ticket Agent for details

FROM BUFFALO, ELMIRA, SYRACUSE AND BINGHAMTON TO NEW YORK

EASTWARD

For condensed time and equipment of trains see pages 2 and 3.

Miles	TABLE 5	2 Daily	6 Daily	10 Daily	1306 Daily	8 Daily
	For connections from the West see Table 2, page 3.	AM	AM	PM	PM	PM
0.0	BuffaloLv	4 20	9 45	5 40		11 00
12.0	Lancaster.....			5 59		
41.2	East Bethany.....			6 28		
45.1	B. & O. Jet.....			6 35		
55.9	Greigsville.....	Pocono Express	Lackawanna Limited			The New Yorker
62.5	Mount Morris	5 28	10 50	7 03		12 03
69.4	Groveland.....			7 13		
76.7	Dansville.....	5 49	11 10	7 35		12 20
83.9	Wayland.....			8 03		
89.8	Atlanta.....			8 13		
94.2	Cohocton.....			8 24		
102.0	Avoca.....			8 44		12 56
109.6	Bath	6 36	11 46			
119.5	Campbell.....					
128.5	Corning	7 01	12 07	9 12		1 15
136.7	Big Flats.....					
146.5	Elmira	Ar 7 20	12 24	9 40		1 32
	Lv 7 30	12 29	9 50			1 38
164.2	Waverly.....	7 50	12 48	10 13		1 58
174.5	Nichols.....	8 02		10 25		
216.8	Ithaca Via Bus see table 13 Lv		11 25			
182.8	OwegoLv	8 21	1 10	10 40		
189.6	Apalachin.....	8 32				
195.5	Vestal } Endicott }	8 43	1 26	11 03		
200.8	Johnson City.....					
203.5	BinghamtonAr	8 56	1 36	11 18		2 38
	UticaLv		10 25	5 40	5 40	
	OswegoLv		9 55			
	SyracuseLv		11 20	9 20	9 20	
	CortlandLv		12 23	10 25	10 25	
203.5	BinghamtonLv	9 06	1 48	11 59	12 20	2 45
212.5	Conklin.....					
217.7	Hallstead.....	9 21				
223.6	New Milford.....	9 32				
233.3	Kingsley.....					
237.6	Foster.....					
243.1	Nicholson (Tunkhannock Viaduct)					
249.2	LaPlume.....					
251.2	Dalton.....					
254.7	Clarks Summit.....	10 05				
262.1	ScrantonAr	10 18	2 50	1 15		3 52
	Wilkes-BarreAr	11 10	3 40	3 10		4 40
	(Laurel Line)					
		AM	PM	AM	AM	AM

COURTESY — A SYMBOL OF LACKAWANNA SERVICE

It takes more than engines, tracks, and rolling stock to make a railroad tick. The loyal, efficient employees of our railroad, who serve traveler and shipper in a friendly, courteous manner are really the fulcrum of Lackawanna dependability and service.

Many letters have been received from old patrons as well as new friends commending individual acts of courtesy and thoughtfulness on the part of our employees. We are grateful for such letters which encourage our personnel in their efforts to serve you better.

The next time you ship or travel, remember courteous Lackawanna service.

EXPLANATION OF REFERENCE MARKS

For Tables 5 and 6.

†-Daily except Sunday.

§-Sunday only.

A.M. time in light type.

P.M. time in heavy type.

e-Stops regularly on notice to conductor to let off passengers.

d-Stops Sunday and Monday Morning only, at Cresco 5:01 A.M. on notice to Agent to receive passengers for Dover and east and on notice to conductor to let off passengers from Buffalo and west.

f-Stops on notice to Agent or conductor.

m-Stops on notice to conductor to let off passengers from points west of Dover.

r-Stops on notice to Agent to receive passengers for New York.

t-On Sunday leaves Dover 6:51 A.M.

v-Stops on notice to Agent to receive passengers for Dover and east, also for points on Pennsylvania Railroad and on notice to conductor to discharge passengers from Binghamton and points beyond.

Holidays: The term holidays used in these tables applies to New Year's Day, Memorial Day, Independence Day, Labor Day, Thanksgiving and Christmas Day.

RAIL-AUTO SERVICE

A combination of railway and automobile service known as the Rail-Auto travel plan is now available in certain cities served by the principal railroads of the country through arrangements with the Hertz Drivurself System and local drive-yourself companies.

Rail-Auto service is at present available in approximately 200 of the largest cities in the United States and Canada.

Train travelers may make arrangements for the use

of personal automobile service when arranging for railroad tickets. Rates week-days average about \$5.00 per day, plus 7¢ per mile, and will vary in cities providing Rail-Auto service.

Cities served by Lackawanna Railroad offering Drivurself service are New York City, Buffalo, Elmira and Syracuse, N. Y., Scranton, Pa., Newark and Passaic, N. J. Consult local ticket agent for further detailed information.

FROM SCRANTON, POCONO MOUNTAIN POINTS AND STROUDSBURG TO NEW YORK EASTWARD

For condensed time and equipment of trains see pages 2 and 3.

Miles	TABLE 6	10	800	8	1010	1104	604	26	1028	614	2	1116	1036	6	1054	632	928	1124	24	934	1128	
		Daily	904	Daily	Ex.	See	906	Ex.	Ex.	Ex.	Ex.	Daily	See	Ex.	Daily	Ex.	Ex.	See	See	Sun.	See	See
		PM	See note	AM	Sun. & Hol.	AM	AM	See note	Ex. Sun. & Hol.	Ex. Sun. & Hol.	AM	PM	Ex. Sun. & Hol.	PM	Ex. Sun. & Hol.	Ex. Sun. & Hol.	PM	PM	See Note	PM	PM	
.....	Wilkes-Barre (Laurel Line) Lv	11 45		3 15				6 10			19 15			1 45						5 15		
262.1	Scranton Lv	1 30		4 02				7 15			10 28			3 00						6 20		
274.7	Moscow							7 37			10 51											
282.3	Gouldsboro							7 49			11 05									6 57		
287.6	Tobyhanna							7 56			11 13									7 05		
292.6	Pocono Summit (Station for Pocono Manor, Lutherland and Split Rock Lodge)							8 05			11 21			3 44						7 12		
294.9	Mount Pocono							8 10			11 27									7 17		
300.6	Cresco (Station for Skytop, Canadensis, Buck Hill Falls, Mountainhome, So. Sterling Paradise Falls)			d				8 21			11 39			3 56						7 27		
306.0	Henryville							8 29														
313.6	Stroudsburg & East Stroudsburg } Ar Lv	3 12 3 25		5 16 5 20				8 38 8 42			11 56 12 05			4 14 4 19						7 36 7 43		
318.0	Delaware Water Gap										12 12									8 03		
330.4	Blairstown			5 45				9 04			12 28			4 43						8 20		
334.5	Johnsonburg							9 11												8 26		
357.1	Dover Ar	4 25		6 19				9 37			12 58			5 14						8 56		
357.1	Dover Lv	4 25																				
359.9	Rockaway							9 53														
361.3	Denville							10 00														
364.0	Mountain Lakes							10 10														
366.0	Boonton							10 15														
370.1	Towaco							10 20														
372.3	Lincoln Park							10 27														
374.7	Mountain View							10 31														
380.1	Paterson							10 35														
383.1	Athenia							10 44														
384.6	Passaic							10 49														
385.9	Delawanna							10 52														
387.0	Lynchhurst							10 55														
387.7	Kingsland							10 58														
357.1	Dover			5 06				11 00														
361.3	Denville			5 12				7 06														
365.6	Morris Plains			5 19				7 14														
367.8	Morristown			5 23				7 18														
369.9	Convent			5 26				7 21														
372.1	Madison			5 30				7 25														
374.1	Chatham			5 34				7 29														
377.5	Summit			5 40																		
379.8	Short Hills			5 44																		
380.8	Millburn			5 46																		
382.4	Maplewood			5 49																		
383.7	South Orange			5 52																		
384.5	Mountain Station			5 54																		
385.4	Highland Avenue			5 56																		
386.1	Orange			5 58																		
387.0	Brick Church			6 00																		
387.6	East Orange			6 02																		
388.0	Grove Street			6 03																		
388.6	Roseville Avenue			6 05																		
389.8	Newark			6 08																		
395.2	HOBOKEN			5 35				6 10														
	D. L. & W. Ferries			7 30				6 20														
396.2	NEW YORK			5 55				6 30														
	Christopher St.			5 55				10 58														
	Barclay St.			5 55				10 55														
	Hudson Tubes			5 59				10 56														
	33rd St. & 6th Ave. (Fare 10c)			5 59				10 56														
	Hudson Term. Bldg.—Cortlandt St. (Fare 10c)			5 55				10 54														
				AM				AM														

For a DAYLIGHT TRIP of SCENIC BEAUTY

Ride the Diesel-Powered

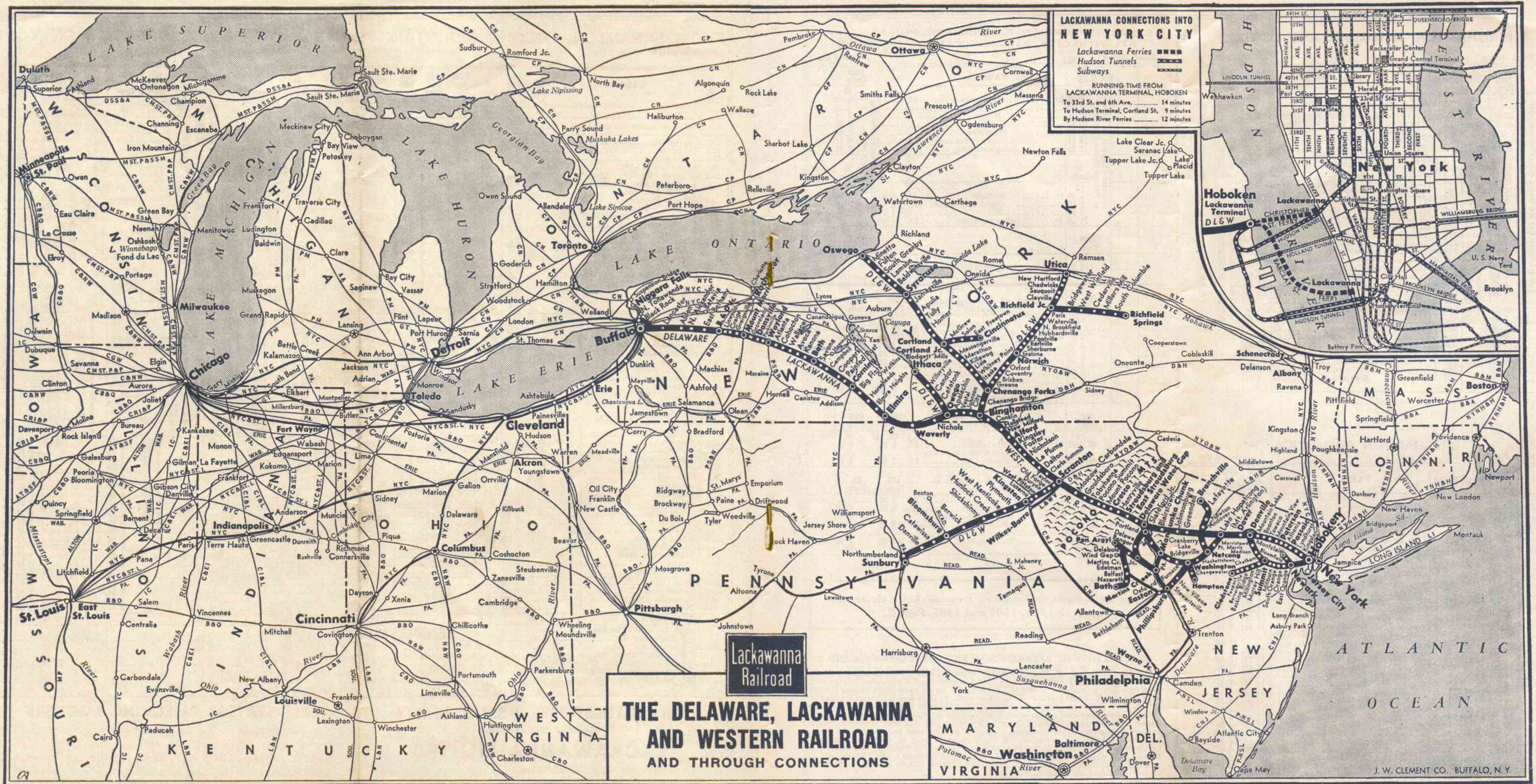
LACKAWANNA LIMITED

Between

New York • Scranton • Binghamton • Elmira • Buffalo

SELF-SERVICE CHECKING LOCKERS

An innovation in the de luxe air-conditioned passenger coaches on Lackawanna through trains are SELF-SERVICE CHECKING LOCKERS for the convenience and insured safety and protection of our patrons' luggage and parcels. Charge 10¢.



LACKAWANNA CONNECTIONS INTO NEW YORK CITY

Lackawanna Ferries 
Hudson Tunnels 
Subways 

RUNNING TIME FROM LACKAWANNA TERMINAL, HOBOKEN

To 33rd St. and 6th Ave. 14 minutes
To Hudson Terminal, Cortland St. 9 minutes
By Hudson River Ferries 12 minutes

Lackawanna Railroad

THE DELAWARE, LACKAWANNA AND WESTERN RAILROAD AND THROUGH CONNECTIONS

LACKAWANNA RAILROAD — The Shortest Route between New York — Scranton — Binghamton — Syracuse — Elmira — Buffalo

J. W. CLEMENT CO. BUFFALO, N. Y.

BINGHAMTON, SYRACUSE AND OSWEGO

SYRACUSE, BUFFALO, BINGHAMTON, PHILADELPHIA, ATLANTIC CITY, BALTIMORE AND WASHINGTON

Read Down Read Up

	TABLE 7		Miles	NEW YORK	TABLE 7		1906 6 Daily	1910 10 Daily	
	3 1903 Daily	15 1915 Daily			1906 6 Daily	1910 10 Daily			
Buffer Lounge Car on Trains Nos. 1903 and 1915.	AM	AM							
	10 00	12 40				6 35	5 59		
	10 07	12 47				6 32	5 55		
	10 00	12 15				6 40	5 55		
	10 10	12 30				6 34	5 55		
	10 30	1 05	1.0			6 15	5 35		
	10 44		8.8			6 01			
	10 51		11.6			5 52			
	11 32		39.1			5 14	4 25		
	3 30	8 00	192.7	Lv	Binghamton	Ar	1 25	11 30	
	a	a	197.8		Chenango Bridge			h11 13	
	3 58	8 31	203.7		Chenango Forks			h11 06	
	a	a	213.1		Whitney Point		12 54	h10 55	
	a	a	215.3		Lisle			h10 52	
	a	a	218.9		Killawog			h10 48	
	4 11	8 45	221.9		Marathon		12 42	10 44	
	a	a	225.8		Messengerville			h10 38	
	a	a	232.1		Blodgett Mills			h10 31	
	4 35	9 10	235.7		Cortland		12 23	10 25	
	4 40	9 16	238.3		Homer		12 14	10 15	
4 56	9 32	250.0		Tully		11 59	9 59		
a	9 37	252.2		Apulia			9 55		
e5 17	9 58	265.4		Jamesville		g11 34	h9 34		
5 35	10 15	272.1	Ar	Syracuse	Lv	11 20	9 20		
5 50		272.1	Lv	Syracuse	Ar	11 05			
6 15		284.1		Baldwinsville		10 42			
f6 23		288.7		Lamson		10 34			
f6 28		291.3		South Granby		f10 28			
6 39		296.0		Fulton		10 20			
6 55		302.5		Minetto		10 05			
7 10		307.1	Ar	Oswego	Lv	9 55			
PM	AM					AM	PM		

Buffer Lounge Car on Trains Nos. 1906 and 1910.

Read Down Read Up

	TABLE 9		7 Daily	1915 Daily
	1910 Daily	TABLE 9		
Interstate Express via Cent. of Pa. and Reading Company	PM		AM	
	9 20	Lv	Syracuse	Ar
	9 59		Tully	
	f10 15		Homer	
	10 25		Cortland	
	10 44		Marathon	
	f10 55		Whitney Point	
	11 30	Ar	Binghamton	Lv
	10 Daily			15 Daily
	PM			PM
5 40	Lv	Buffalo	Ar	
9 12		Corning		
9 50		Elmira		
11 18	Ar	Binghamton	Lv	
1306 Daily			1301 Daily	
AM			AM	
12 20	Lv	Binghamton	Ar	
	Lv	Scranton	Lv	
306 Daily		Cent. of Pa.—Reading Company	327 Daily	
AM			AM	
2 54	Ar	Scranton	Ar	
4 40		Wilkes-Barre	Lv	
5 23		Mauch Chunk		
5 49	Ar	Allentown	Lv	
		Bethlehem	Lv	
d6 56	Ar	Lansdale	Lv	
7 31		Wayne Jct.		
7 45	Ar	Philadelphia (Reading Terminal)	Lv	
1005 Daily		Pennsylvania-Reading (Seashore Lines)	1016 Daily	
AM			PM	
8 25	Lv	Philadelphia (Broad St. Station)	Ar	
10 03	Ar	Atlantic City	Lv	
35 Daily		Baltimore & Ohio R.R.	504 Daily	
7 45	Lv	Wayne Jct.	Ar	
8 01	Lv	Philadelphia (24th and Chestnut Sts.)	Ar	
9 52	Ar	Baltimore (Camden Station)	Lv	
10 35 AM	Ar	Washington	Lv	

BINGHAMTON AND UTICA

Read Down Read Up

	TABLE 8		Miles	NEW YORK	TABLE 8		1806 6 Daily	1816 10 Daily	
	3 1803 Daily	15 1815 Daily			1806 6 Daily	1816 10 Daily			
Buffer Lounge Car on Trains Nos. 1803 and 1815.	AM	AM							
	10 00	12 40				6 35	5 59		
	10 07	12 47				6 32	5 55		
	10 00	12 15				6 40	5 55		
	10 10	12 30				6 34	5 55		
	10 30	1 05	1.0			6 15	5 35		
	10 44		8.8			6 01			
	10 51		11.6			5 52			
	11 32		39.1			5 14	4 25		
	3 15	10 40	192.7	Lv	Binghamton	Ar	1 20	8 50	
	f3 24	10 50	197.8		Chenango Bridge		1 05	8 35	
	3 31	10 58	203.7		Chenango Forks		12 57	8 25	
	3 41	11 10	211.7		Greene		12 45	8 13	
		f11 19	217.6		Brisben				
		f11 27	221.1		Coventry			f7 56	
	4 01	11 34	225.7		Oxford		12 25	7 49	
	4 16	11 52	233.9		Norwich		12 13	7 36	
	f4 24	f12 02	239.6		Galena		f12 02	f7 24	
	4 32	12 11	245.0		Sherburne		11 54	7 15	
	4 40	12 20	250.1		Earlville		11 44	7 06	
4 46	12 26	252.6		Poolville		11 39	7 01		
4 53	12 35	256.8		Hubbardsville		11 32	6 54		
4 59	12 42	260.7		North Brookfield		11 26	6 48		
5 07	12 55	266.3		Waterville		11 15	6 38		
f5 13	1 01	270.6		Paris		f11 08	f6 30		
5 21	1 09	274.2		Richfield Junction		11 01	6 21		
f5 26	1 14	276.5		Clayville		f10 54	6 11		
f5 30	1 19	278.5		Sauquoit		f10 50	6 06		
5 35	1 23	280.0		Chadwicks		f10 47	6 02		
5 43	1 31	283.7		New Hartford		10 40	5 55		
6 00	1 50	287.8	Ar	Utica	Lv	10 25	5 40		
PM	PM					AM	PM		

For Equipment on Interstate Express shown above, see
Trains Nos. 1301 and 1306, Page 2.

EXPLANATION OF REFERENCE MARKS FOR TABLES 7, 8 AND 9

A. M. time light type. P. M. time heavy type. †-Daily except Sunday. ‡-Daily except Saturday. ▲-Passengers to and from Baltimore and Washington change cars at Wayne Jct. a-Stops on notice to Conductor to let off passengers holding tickets from Scranton and east and from Elmira and west. c-Time shown is from Christopher Street, New York; no ferry connection for this train from Barclay Street. d-Stops to let off passengers from points beyond Bethlehem. e-Stops daily on notice to Conductor to discharge passengers holding tickets from Scranton and east and Elmira and west, Sundays stops on signal to receive or discharge passengers. f-Stops on notice to Agent or Conductor. g-Stops Sundays only to receive or discharge passengers. h-Stops on signal to take on passengers for Scranton and east, and Elmira and west, providing Agents are notified in advance. ●-Time shown is weekdays; Sundays and Holidays leaves Philadelphia (Broad St. Sta.) 9.30 A.M. arrives Atlantic City 10.56 A.M.

SCRANTON, KINGSTON (WILKES-BARRE)
SUNBURY AND PITTSBURGH

NEW YORK AND ITHACA, VIA OWEGO

Read Down			Read Up			
DL&W 1705 PRR 35 Daily	P.R.R. 509 Daily	Miles	TABLE 10	STATIONS ON	DL&W 1702 PRR 16 Daily	P.R.R. 512 Daily
PM	AM		New York		AM	PM
	Note		Hudson Tubes—			Note
			33rd St. & 6th Ave.			
			(Fare 10c)			
			Hudson Terminal Bldg.—			
			Cortlandt St.			
			(Fare 10c)			
			D. L. & W. Ferries—			
			{ Barclay Street }			
			{ Christopher Street }			
		1.0	Lv. Hoboken Ar			
5 40		134.1	Lv. Scranton Ar	DL&W	10 45	
5 48		137.7	Taylor	DL&W	10 30	
5 53		141.0	Old Forge	DL&W	10 18	
5 55		142.0	Durvea	DL&W	10 13	
6 04		145.0	West Pittston	DL&W	10 02	
6 08		147.0	Wyoming	DL&W	9 58	
6 14		150.6	Luzerne	DL&W	9 49	
6 30	9 40	151.7	{ #Kingston }	DL&W	9 45	
6 37		154.9	{ #Wilkes-Barre }	P.R.R.	6 04	
6 44		158.4	Plymouth	DL&W	9 18	
6 50	10 01	161.9	{ #West Nanticoke }	DL&W	9 10	5 50
6 58		167.5	{ #Nanticoke }	P.R.R.		
7 35	10 20	178.4	Hunlock Creek	DL&W	19 03	
8 02	10 40	191.0	{ #Shickshinny }	DL&W	8 53	5 28
8 12	11 02	194.3	{ #Mocanaqua }	P.R.R.		
8 26	11 27	202.7	{ #Berwick }	DL&W	8 27	5 08
8 59		214.5	{ #Nescopeck }	P.R.R.		
9 10	11 54	216.4	{ #Bloomsburg }	DL&W	7 54	4 43
10 50	11 35	269.8	{ #East Bloomsburg }	P.R.R.		
7 30	18 25	515.1	{ #Catawissa }	DL&W	7 41	4 34
AM	PM		{ #Catawissa }	P.R.R.		
			{ #Danville }	DL&W	7 27	4 20
			{ #South Danville }	P.R.R.		
			Northumberland	DL&W	7 05	
			Sunbury	DL&W	6 55	3 55
			Harrisburg	P.R.R.	4 05	11 50
			Pittsburgh	P.R.R.	10 05	4 05

Read Down			Read Up		
3 Daily AM	15 Daily AM	Miles	TABLE 13	6 Daily PM	
			New York		
			Hudson Tubes—		
10 00	12 40		Lv. 33rd St. & 6th Ave... Ar		
			(Fare 10c)		6 35
10 07	12 47		Hudson Terminal Bldg.—		6 32
			Cortlandt St. (Fare 10c)		
			D. L. & W. Ferries—		
10 00	12 15		Barclay Street		6 40
10 10	12 30		Christopher Street		6 34
10 30	1 05	1.0	Hoboken		6 15
z10 44		8.8	Newark		6 01
z10 51		11.6	Brick Church		5 52
z11 05		21.1	Summit		5 39
z11 32		39.1	Dover		5 14
	11 45		Lv Philadelphia Read. Co. Ar		
1 54	4 52	134.1	Lv. Scranton		2 50
3 05	7 05	192.7	Binghamton		1 36
3 33	7 48	213.4	Ar. Owego		1 10
Bus	Bus			Bus	
PM	AM			PM	
3 45	8 40	213.4	Lv. Owego		12 45
3 55	8 50	218.8	Catatonk		12 35
4 05	9 00	224.1	Candor		12 25
4 15	9 10	229.4	Willseyville		12 15
4 35	9 30	246.3	Ithaca (Green St. Bus Term.)		11 45
4 45	9 40	247.4	Ar. Ithaca		11 25
PM	AM		(D. L. & W. Station)	AM	

To Our Patrons

All forms of railroad tickets reading via the D. L. & W. R. R. Co. will be honored via the L. D. Dickinson Motor Coach Line between Owego and Ithaca or intermediate stations on the connecting bus schedule shown herein.

Hand baggage may be checked through to destination. Trunks and other bulky baggage will be checked to and from Owego only.

BUFFALO, ELMIRA, SYRACUSE, BINGHAMTON, SCRANTON, POCONO MOUNTAIN POINTS, PHILADELPHIA BALTIMORE AND WASHINGTON VIA NEWARK

Read Down			Read Up					
7 Daily PM	5 Daily Noon	11 Ex. Sun. & Hol. AM	3 Daily AM	TABLE 14	8 Daily AM	26 Ex. Sun. & Hol. PM	2 Daily PM	6 Daily PM
4 00	12 00	11 00	4 45	Lv. P.R.R. Washington	P.R.R. Ar	11 30	2 25	6 40
4 41	12 43	11 43	5 30	Baltimore		10 45	1 42	5 51
5 41	1 50	12 48	6 35	Wilmington		9 41	12 39	4 45
6 08	2 21	1 21		Philadelphia (30th Street)		9 10	12 10	4 12
	2 59	1 58		Trenton		8 31	11 33	3 32
7 20	3 47	2 43	8 59	Ar. P.R.R. Newark	P.R.R. Lv	7 45	10 45	2 45
				P.R.R. Philadelphia	P.R.R. Ar			
6 00	3 00	2 00	8 05	Lv. Broad Street Station	Ar	9 41	12 45	
6 05	3 04	2 04	8 09	30th Street Station		9 37	12 41	
6 47	3 38	2 38	8 43	Trenton		8 59	12 09	
7 34	4 21	3 24	9 30	Ar. P.R.R. Newark	P.R.R. Lv	8 14	11 15	
8 29	4 54	3 49	10 44	Lv. DL&W. Newark	DL&W Ar	7 16	10 20	1 46
10 06	6 26	5 31	12 21	{ Stroudsburg & }		5 20	8 42	12 05
				{ E. Stroudsburg }				4 19
e10 33	a6 55	6 08	12 49	Cresco	d		8 21	11 39
e10 50	a7 14	6 28	1 08	Pocono Summit			8 05	11 21
11 30	7 53	7 15	1 47	Scranton			7 15	10 28
12 42	9 13		2 58	Binghamton			2 45	9 06
				Ithaca (Via Bus) See Table 13				11 25
				Syracuse				11 20
1 54	10 52		4 10	Elmira		1 38		7 30
4 30	2 00		7 00	Ar. DL&W. Buffalo	DL&W Lv	11 00		4 20
AM	AM	PM	PM			PM	AM	AM

DELAWARE VALLEY TRANSPORTATION CO.

Read Down			Read Up		
		3 Ex. Sun. & Hol. AM	TABLE 11	26 Ex. Sun. & Hol. AM	
			D. L. & W. Ferries		
			Lv. Barclay St.	Ar	10 55
			Christopher St.		10 58
			Hoboken		10 35
			{ Stroudsburg and }		
		12 45	Lv. { East Stroudsburg }	Ar	8 35
		1 00	Marshall's Creek		8 20
		1 10	Echo Lake		8 10
		1 20	Ar. Bushkill	Lv.	8 00

STROUDSBURG, PORTLAND, DELAWARE, PHILLIPS-BURG AND PHILADELPHIA

Read Down			Read Up			
7 Daily PM	3 Daily AM	15 Daily AM	TABLE 12	6 Ex.Sun. PM	10 Daily AM	8 Daily AM
7 43	10 00	12 15	D. L. & W. Ferries			
7 48	10 10	12 30	Lv. Barclay St.	Ar	6 40	5 55
8 15	10 30	1 05	Christopher St.		6 34	5 55
4 30	7 00	1 05	Hoboken		6 15	5 35
7 26	8 42	2 48	Ar. Buffalo	Lv	9 45	5 40
			Buffalo	Ar	8 08	4 17
			(Terrace Sta.) (NYC)			9 13
8 11	9 23	3 41	Ar. Niagara Falls	(NYC) Lv	7 20	3 30

EXPLANATION OF REFERENCE MARKS FOR TABLES 10, 11, 12, 13, 14 AND 15

A. M. time light type. P. M. time heavy type. †—Daily except Sunday. §—Sunday only. ‡—Weekdays only, leaving Sunbury 12:12 P.M. #—These towns are located on opposite side of the river but there are bridges across the river at these points. a—Stops Friday only to discharge passengers from Newark and receive passengers for Buffalo and west; Sun. & Hol. a regular stop. (See holiday note page 5). b—Stops to receive or discharge passengers for or from Newark, also for passengers to or from Binghamton and beyond. c—Stops Friday and Saturday only to discharge passengers from Newark and receive passengers for Buffalo and west. d—Stops Sunday and Monday only at 5:01 A.M. to receive passengers for Newark and discharge passengers from Buffalo and beyond. e—Stops on notice to discharge passengers from Newark and receive passengers for Buffalo and west. f—Stops on notice to receive or discharge passengers. g—Sunday leave Harrisburg 4.00 A.M. j—Stops to discharge passengers. z—Stops regularly to receive passengers.

GENERAL INFORMATION

RESPONSIBILITY—This time table is furnished to the public as a matter of information only. The company is not responsible for errors therein, inconvenience or damage resulting from delayed trains or failure to make connections, or for shortage of equipment. The schedules and equipment shown herein are subject to change without notice.

CHILDREN—Under five years of age carried free, when accompanied by parent or guardian; five years of age and under 12, one-half fare; 12 years of age or over, full fare.

ADJUSTMENT OF FARES—In case of dispute with conductors or agents, passengers should pay the fare required, take a receipt, and communicate with the General Passenger Agent, 140 Cedar Street, New York 6, New York.

Passengers leaving train short of destination of the ticket should have the conductor make endorsement on the ticket to that effect.

REDEMPTION OF TICKETS—Tickets unused or partly used will be redeemed under tariff regulations by the General Passenger Agent, 140 Cedar Street, New York 6, New York.

ARTICLES LOST—When articles are lost on trains or left at stations, owners should immediately apply to Agent at station where they leave train, or address Manager Mail, Express, Baggage and Milk Traffic, Lackawanna Terminal, Hoboken, N. J., giving full description of property, stating date of loss and train number.

BAGGAGE—

(a) 150 pounds of baggage, not exceeding \$100.00 in value, will be checked free on each adult ticket, and 75 pounds, not exceeding \$50.00 in value, on each child's ticket. Excess charge

will be collected for excess weight and excess value, but no piece of baggage exceeding 300 pounds in weight (except immigrant baggage checked at port of landing), or single shipment exceeding \$2,500 in value will be accepted for checking.

(b) This Company cannot guarantee to forward baggage on same train with passenger; and when necessary, will forward it on other trains.

(c) Baggage Checked to New York City—Unless otherwise specified, all baggage checked to New York City will be sent to the Christopher Street Station.

(d) Baggage Delivery Service—Arrangements can be made at the time of checking baggage for delivery to residence, hotel or other point in New York City, Newark, Buffalo, and other important cities.

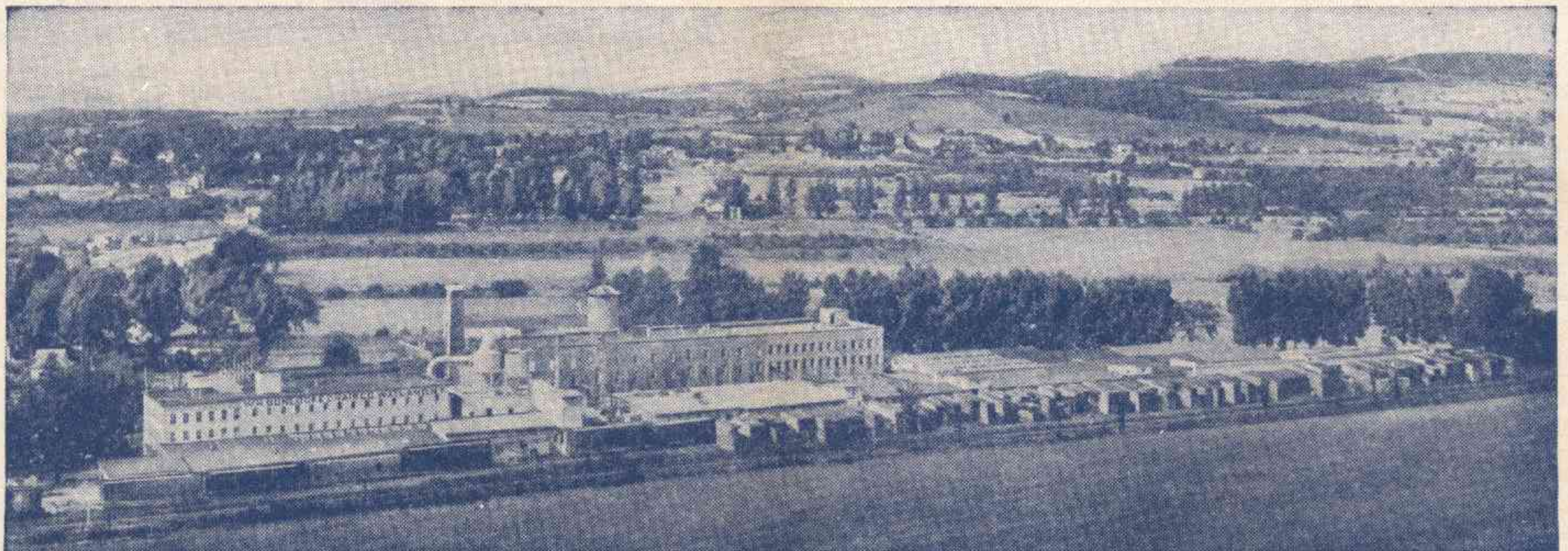
(e) Storage will be charged on each piece of baggage remaining at stations over 24 hours, except that certain concessions will be allowed for Sundays and holidays.

(f) Baggage for stations where there is no agent must be claimed at the baggage car door immediately upon arrival at that station; otherwise it will be carried to first station where agent is on duty and held for further orders.

(g) Parcel Rooms will be found at the principal stations, where packages, hand baggage, etc., may be checked and cared for at a nominal charge.

STOP-OVERS—Practically all tickets permit stop-overs within limit at any station en route on application to Conductor.

For further detailed information consult Ticket Agent.



W. H. GUNLOCKE CHAIR COMPANY

WAYLAND, N. Y.

Home of "The Progressive" W. H. Gunlocke Chair Company, manufacturers of high grade Office Chairs. Equipped with high speed precision machinery, this factory is equipped to produce Office Chairs for efficient working comfort. Converting beautiful cabinet woods and rich leathers into a well-

rounded line of Office Chairs, "Gunlocke's" is one of the best known names in the industry.

This plant, served by a Lackawanna siding, and located near the center of the world's largest marketing areas, has world-wide distribution.

For information concerning industrial sites and buildings, address

W. B. HARAHAAN, Industrial Agent

140 Cedar Street, New York 6, N. Y.

Telephone: BARclay 7-2500

STATION INDEX	Table No.	Table No.	Table No.	Table No.
A				
†Ackermanville, Pa.		Dansville, N. Y.	4, 5	▲Lafayette, N. J.
†Alden, N. Y.		Danville, Pa.	10	†Lake Hopatcong, N. J.
†Alford, Pa.		†Delabole, Pa.		(Mount Arlington)
Allentown, Pa.	9	Delawanna, N. J.	3, 6	†Lake Junction, N. J.
×Ampere, N. J.		Delaware, N. J.	3, 15	†Lakeside, N. Y.
†Analomink, Pa.		Delaware Water Gap, Pa.	3, 6, 15	Lamson, N. Y.
▲Andover, N. J.		Denville, N. J.	3, 6	Lancaster, N. Y.
†Andover Jct., N. J.		†Depew, N. Y.		Lansdale, Pa.
Ann Arbor, Mich.	1, 2	Detroit, Mich.	1, 2	LaPlume, Pa.
Apalachin, N. Y.	4, 5	Dover, N. J.	3, 6, 13, 15	†Lehigh, Pa.
Apulla, N. Y.	7	†Dunmore, Pa.		†Leicester, N. Y.
Ashtabula, Ohio	1, 2	Duryea, Pa.	10	†Lime Ridge, Pa.
Athena, N. J.	3, 6			Lincoln, Park, N. J.
Atlanta, N. Y.	4, 5	E		†Linwood, N. Y.
Atlantic City, N. J.	9	Earlville, N. Y.	8	Lisle, N. Y.
†Auclicloss, Pa.		†East Alexander, N. Y.		†Litchfield, N. Y.
†Augusta, N. J.		†East Bangor, Pa.		*Little Falls, N. J.
Avoca, N. Y.	4, 5	East Bethany, N. Y.	4, 5	†Little York, N. Y.
†Avondale, Pa.		East Bloomsburg, Pa.	10	†Lounsberry, N. Y.
		†East Buffalo, N. Y.		†Lowman, N. Y.
		†East Freetown, N. Y.		Luzerne, Pa.
		†East Lancaster, N. Y.		Luzerne, Pa.
		Easton, Pa.	14	Lyndhurst, N. J.
B		East Orange, N. J.	3, 6	○Lyons, N. J.
Baldwinsville, N. Y.	7	†East Stroudsburg, Pa.		
Baltimore, Md.	9, 14	(See Stroudsburg, Pa.)		M
†Bangor, Pa.		Echo Lake, Pa.	11	Madison, N. J.
○Basking Ridge, N. J.		†Edelman, Pa.		†Manunka Chunk, N. J.
Bath, N. Y.	4, 5	†Elmhurst, Pa.		Maplewood, N. J.
†Bath, Pa.		Elmira, N. Y.	1, 2, 4, 5, 14	Marathon, N. Y.
Battle Creek, Mich.	1, 2	†Elmira Heights, N. Y.		Marshall's Creek, Pa.
†Beach Haven, Pa.		Endicott-Vestal, N. Y.	4, 5	†Martins Creek, N. J.
†Belfast, Pa.		Erie, Pa.	1, 2	†Martins Creek, Pa.
†Bergen Jct., N. J.		†Espy, Pa.		†Martins Creek Jct., Pa.
○Berkeley Heights, N. J.				Mauch Chunk, Pa.
○Bernardsville, N. J.		F		†McGraw, N. Y.
Berwick, Pa.	10	†Factoryville, Pa.		Messengersville, N. Y.
Bethlehem, Pa.	9	†Fargo, N. Y.		Millburn, N. J.
Big Flats, N. Y.	4, 5	○Far Hills-Bedminster, N. J.		†Miller, Pa.
Binghamton, N. Y.	1, 2, 4, 5, 7, 8, 9, 13, 14	†Flicksville, Pa.		†Miller's Mill, N. Y.
		Fort Wayne, Ind.	1, 2	○Millington, N. J.
†Black Rock, N. Y.		†Forty Fort, Pa.		○Mine Brook, N. J.
Blairstown, N. J.	3, 6	Foster, Pa.	4, 5	Minetto, N. Y.
Blodgett Mills, N. Y.	7	†Fox Hill, N. J.	7	Mocanaqua, Pa.
×Bloomfield, N. J.		Fulton, N. Y.		×Montclair, N. J.
Bloomsburg, Pa.	10			*Montville, N. J.
B. & O. Jct., N. Y.	4, 5			†Morchain, N. Y.
Boonton, N. J.	3, 6	G		Morris Plains, N. J.
▲Branchville, N. J.		Galena, N. Y.	8	Morrisstown, N. J.
†Briar Creek, Pa.		○Gillette, N. J.		Moscow, Pa.
Brick Church, N. J.	3, 6, 13	†Gladstone, N. J.		Mountainhome, Pa.
†Bridgeville, N. J.		×Glen Ridge, N. J.		(See Cresco)
†Bridgewater, N. Y.		†Gouldsboro, Pa.	3, 6	Mountain Lakes, N. J.
Brisben, N. Y.	8	†Grand Central, Pa.		Mountain Station, N. J.
†Broadway, N. J.		Grand Rapids, Mich.	1, 2	Mountain View, N. J.
Buck Hill Falls, Pa.		†Greendell, N. J.		†Mount Arlington, N. J.
(See Cresco)		Greene, N. Y.	8	†Mount Bethel, Pa.
Buffalo, N. Y.	3, 6, 14	Greigsville, N. Y.	4, 5	Mount Morris, N. Y.
†Buffalo Jct., N. Y.	1, 2, 4, 5, 12, 14	Groveland, N. Y.	4, 5	Mount Pocono, Pa.
Bushkill, Pa.	11	Grove Street, N. J.	3, 6	†Mount Tabor, N. J.
				○Murray Hill, N. J.
C		H		N
†Cameron, Pa.		†Hackettstown, N. J.	3	Nanticoke, Pa.
Campbell, N. Y.	4, 5	Hallstead, Pa.	4, 5	†Nay Aug, Pa.
Canadensis, Pa.		†Hampton, N. J.		†Nazareth, Pa.
(See Cresco)		†Harriet, N. Y.		Nescopeck, Pa.
Candor, N. Y.	13	Harrisburg, Pa.	10	†Netcong (Stanhope), N. J.
†Caroline, N. Y.		Harrison, N. J.	1, 2, 3, 6, 13	Newark, N. J.
Catatonk, N. Y.	13	Harrison, N. J.		New Hartford, N. Y.
Catawissa, Pa.	10	†Haynes, N. Y.		New Milford, Pa.
†Cedarville, N. Y.		Henryville, Pa.	3, 6	○New Providence, N. J.
Chadwick, N. Y.	8	†Hercules, Pa.		▲Newton, N. J.
†Changewater, N. J.		†Hicks Ferry, Pa.		†New Village, N. J.
Chatham, N. J.	3, 6	Highland Ave., N. J.	3, 6	New York, N. Y.
Chenango Bridge, N. Y.	7, 8	Hoboken, N. J.	1, 2, 3, 6, 7, 8, 10	
Chenango Forks, N. Y.	7, 8			Niagara Falls, N. Y.
Chicago, Ill.	1, 2	†Hollisters, Pa.		Nichols, N. Y.
†Chulasky, Pa.		Homer, N. Y.	7, 9	Nicholson, Pa.
Cincinnati, Ohio	1, 2	†Horseheads, N. Y.		†North Alexander, N. Y.
†Cincinnati, N. Y.		Hubbardsville, N. Y.	8	†North Arlington, N. J.
Clarks Summit, Pa.	4, 5	Hunlock Creek, Pa.	10	North Brookfield, N. Y.
Clayville, N. Y.	8			†North Darien, N. Y.
Cleveland, Ohio	1, 2	I		Northumberland, Pa.
†Clifton, N. J.		Indianapolis, Ind.	1, 2	Norwich, N. Y.
Cohocton, N. Y.	4, 5	Ithaca, N. Y.	1, 2, 4, 5, 13, 14	†No. 6 Jct., Pa.
Conklin, N. Y.	4, 5			
Convent, N. J.	3, 6	J		O
†Coopers, N. Y.		Jackson, Mich.	1, 2	Old Forge, Pa.
Corning, N. Y.	4, 5	Jamesville, N. Y.	7	†Onatitva, N. Y.
Cortland, N. Y.	1, 2, 4, 5, 7, 9, 15	Johnsonburg, N. J.	3, 6	Orange, N. J.
		Johnson City, N. Y.	4, 5	Oswego, N. Y.
				Owego, N. Y.
†Cortland Jct., N. Y.		K		Oxford, N. Y.
Coventry, N. Y.	8	Kalamazoo, Mich.	1, 2	Oxford Furnace, N. J.
†Craigs, N. Y.		†Kearny Jct., N. J.		
▲Cranberry Lake, N. J.		†Kensington, N. Y.		P
Cresco, Pa.	3, 6, 14	†Kenvil, N. J.		†Painted Post, N. Y.
		Killawog, N. Y.	4, 5	Paris, N. Y.
		Kingsland, N. J.	7	Passaic, N. J.
		Kingsley, Pa.	3, 6	Paterson, N. J.
Dalton, Pa.	4, 5	Kingston, Pa.	4, 5, 10	
				○Peapack, N. J.
				†Pen Argyl, Pa.
				†Perkinsville, N. Y.
				Philadelphia, Pa.
				9, 13, 14
				†Phillipsburg, N. J.
				15
				†Pittsburgh, Pa.
				10
				†Pittston, Pa.
				10
				Plymouth, Pa.
				10
				†Plymouth Jct., Pa.
				Pocono Manor, Pa.
				(See Pocono Summit)
				3, 6, 14
				Pocono Summit, Pa.
				3, 6, 14
				Poolville, N. Y.
				8
				Portland, Pa.
				3, 15
				†Port Morris, N. J.
				†Port Murray, N. J.
				†Preble, N. Y.
				†Priceburg, Pa.
				R
				†Ray, N. Y.
				10
				Richfield Jct., N. Y.
				8
				†Richfield Springs, N. Y.
				3, 6
				Rockaway, N. J.
				3, 6
				†Rock Cut, N. Y.
				3, 6
				Roseville Ave., N. J.
				3, 6
				†Rupert, Pa.
				S
				†Sangerfield, N. Y.
				8
				Sauquoit, N. Y.
				4, 5
				†Savona, N. Y.
				1, 2, 3, 4, 5, 6, 9, 10, 13, 14
				Scranton, Pa.
				†Seaboard, N. J.
				8
				Secaucus, N. J.
				8
				Sherburne, N. Y.
				10
				Shickshinny, Pa.
				3, 6
				Short Hills, N. J.
				3, 6, 14
				Skytop, Pa. (See Cresco)
				†Solon, N. Y.
				7
				†Solvay, N. Y.
				10
				†South Columbia, N. Y.
				10
				South Danville, Pa.
				7
				South Granby, N. Y.
				3, 6
				South Orange, N. J.
				†South Scranton, Pa.
				†Stewartsville, N. J.
				†Stiles, N. Y.
				†Stier, Pa.
				○Stirling, N. J.
				1, 2
				St. Louis, Mo.
				†Storr's Jct., Pa.
				3, 6, 11, 14, 15
				Stroudsburg and East Stroudsburg, Pa.
				3, 6, 13
				†Succasunna, N. J.
				10
				Summit, N. J.
				1, 2, 4, 5, 7, 9, 14
				Sunbury, Pa.
				Syracuse, N. Y.
				T
				Taylor, Pa.
				10
				Tobyhanna, Pa.
				3, 6, 14
				Toledo, Ohio
				1, 2
				Toronto, Can.
				3, 6
				Towaco, N. J.
				14
				Trenton, N. J.
				7, 9
				Tully, N. Y.
				U
				Utica, N. Y.
				1, 2, 4, 5, 8, 9, 14
				V
				Vestal (N. Y.)
				4, 5
				Endicott
				W
				†Wallace, N. Y.
				9, 14
				Washington, D. C.
				3
				†Washington, N. J.
				8
				†Waterloo, N. J.
				8
				Waterville, N. Y.
				8
				×Watsessing Ave., N. J.
				4, 5
				Waverly, N. Y.
				4, 5
				Wayland, N. Y.
				9
				Wayne Junction, Pa.
				†West Berwick, Pa.
				10
				West Nanticoke, Pa.
				10
				†West Paterson, N. J.
				10
				West Pittston, Pa.
				10
				†West Winfield, N. Y.
				†Wharton, N. J.
				7, 9
				Whitney Point, N. Y.
				3, 4, 5, 6, 9, 10
				Wilkes-Barre, Pa.
				13
				†Willow Springs, Pa.
				13
				Willseyville, N. Y.
				13
				†Wind Gap, Pa.
				10
				†Winton, Pa.
				Wyoming, Pa.
				10

▲ Located on Sussex Branch. See Suburban time table.

× Located on Montclair Branch. Tables 3, 6, show service to and from Newark, N. J., the junction point. (See Suburban time table.)

○ Located on Gladstone Branch. Tables 3, 6, show service to and from Summit, N. J., the junction point. (See Suburban time table.)

LACKAWANNA RAILROAD

General Offices—140 Cedar Street, New York 6, N. Y. Telephone BARclay 7-2500

EXECUTIVE DEPARTMENT

WM. WHITE, President
E. B. MOFFATT, Assistant to President
J. HAMPTON BAUMGARTNER, Manager of Public Relations

C. F. FARMER, Vice President
P. M. SHOEMAKER, Vice President
G. A. PHILLIPS, Chief Engineer, Hoboken, N. J.

D. I. MACKIE, General Counsel
J. G. ENDERLIN, Secretary and Treasurer
P. D. JONAS, Comptroller

OPERATING DEPARTMENT

P. M. SHOEMAKER, Vice President, New York
J. F. SCANLON, Assistant to Vice President

W. G. WHITE, Supt. Morris and Essex Division.....Hoboken, N. J. | F. DIEGTEL, Supt. Scranton Division.....Scranton, Pa.
C. H. YOUST, Supt. Buffalo Division.....Buffalo, N. Y.

PURCHASING, STORES, DINING CAR DEPARTMENTS

E. B. MOFFATT, Assistant to President, New York

CURTIS F. BAYER, Purchasing Agent.....New York | DANIEL E. MULDOON, Supt. Dining Car Department.....Hoboken, N. J.

TRAFFIC DEPARTMENT

C. F. FARMER, Vice President, New York
H. C. SCHMIDT, General Freight Traffic Manager, New York

FREIGHT

GEORGE HERBERT, Asst. Freight Traffic Manager.....New York	JOSEPH S. SIKORA, Freight Traffic Manager (Rates and Divisions).... New York
HARRY F. DOYLE, Asst. Freight Traffic Manager.....New York	E. M. SELLERS, General Freight Agent.....New York
W. M. MacPHERSON, Asst. Freight Traffic Manager.....Buffalo, N. Y.	W. J. STUMPF, Assistant General Freight Agent.....New York
J. H. CHRISTY, Western Traffic Manager.....Chicago, Ill.	E. J. McGARRY, Assistant to General Freight Agent.....New York
L. A. DALTON, General Dairy Agent.....Chicago, Ill.	T. V. LAMBERT, Chief of Tariff Bureau.....New York
WILLIAM K. MARTIN, Asst. Gen. Freight Agent, Produce Exchange, New York	G. C. ALBIETZ, Chief of Divisions Bureau.....New York
W. H. BROWNE, Foreign Freight Traffic Mgr., Produce Exchange, New York	J. F. RYDENE, General Coal Freight Agent.....New York
W. F. AHEARN, Foreign Freight Agent, Produce Exchange.....New York	J. E. HAYDEN, Coal Freight Agent.....New York
	W. B. HARAHAH, Industrial Agent.....New York

PASSENGER

W. H. DOMINICK, Passenger Traffic Manager.....New York	C. M. LYON, Manager Mail, Express, Baggage and Milk Traffic..Hoboken, N. J.
W. E. CARBONE, General Passenger Agent.....New York	R. F. IRWIN, General Agent, Passenger Department.....New York
C. F. FELTHAM, Gen. Eastern Pass. Agent, 500 Fifth Avenue (18)....New York	

TRAFFIC REPRESENTATIVES

Albany 7, N. Y. —Room 5, Del. & Hud. Bldg.—Phone Albany 3-4517 RAY K. LOVITT, General Agent	New Haven 10, Conn. —Malley Bldg., 902 Chapel St.—Phone New Haven 6-2466 WILLIAM J. WYNNE, General Agent
Atlanta 3, Ga. —22 Marietta Street—Phone Cypress 4386 CHARLES D. SANTOR, General Agent	New York 4, N. Y. —8 Broadway (Produce Exchange Bldg.)— Freight Department Phone Bowling Green 9-5100 ELLIOTT E. BROTHERS, General Agent
Binghamton, N. Y. —Lackawanna Station—Phone Binghamton 4-1311 W. E. DOWNS, Division Passenger Agent	GEORGE L. BOLTON, Dairy Agent, Pier 13, North River— New York, 7, N. Y. Phone BARclay 7-4230
Boston 14, Mass. —N. Station Office Bldg., 150 Causeway St.—Phone Capital 7-8970 DANIEL L. NORTON, General Agent	500 Fifth Avenue at 42nd Street—Room 842, New York 18, N. Y.— Passenger Department Phone LACKawanna 4-0234 W. H. WEBER, District Passenger Agent E. WORTMANN, Steamship Passenger Agent
Brooklyn, N. Y. HAROLD J. AMBRUSTER, City Freight Agent, 8 Broadway (Produce Exchange Bldg.) New York, 4, N. Y. Phone BARclay 7-2500	Paterson 3, N. J. —Lackawanna Station—220 Marshall St. (near Main St.)— Phone SHERwood 2-1609 J. H. ALLAN, Ticket Agent
Buffalo 2, N. Y. —11 W. Genesee St.—Phone CLEVELAND 2488 NEIL A. MITTS, General Agent, Passenger Department	Philadelphia 2, Pa. —1606 Finance Bldg.— Phone Bell, RITTENhouse 6-2848—2849 HOWARD A. WHITNEY, General Agent
Chicago 4, Ill. —327 South LaSalle Street—Phone WABash 3443 C. R. HARTSHORN, Asst. General Freight Agent GEORGE A. STAPLES, City Passenger Agent	Pittsburgh 22, Pa. —503 Park Bldg.—Phone ATLANTIC 0463 J. A. McCOY, General Agent
Cincinnati 2, Ohio —1332 Enquirer Bldg., 617 Vine Street—Phone Main 0730 CLINTON C. RAU, General Agent	Portland 5, Ore. —604 Terminal Sales Bldg.—Phone Beacon 3191 FRED W. DOST, Traveling Freight Agent
Cleveland 14, Ohio —310 Park Bldg.—Phone Main 0435 L. E. TENNEY, General Agent	St. Louis 1, Mo. —1971-1972 Railway Exchange Bldg.—Phone Main 2460 WILLIAM J. NOLAN, General Agent
Detroit 26, Mich. —730 Lafayette Bldg.—Phone Cadillac 6727 O. H. WARBOLD, General Agent	San Francisco 5, Calif. —705 Monadnock Bldg.—Phone SUTTER 1-7515 A. H. SNIDER, General Agent
Easton, Pa. —402 Northampton Street—Phone Easton 9021 Z. LEE MATHERS, General Agent	Scranton 3, Pa. —Lackawanna Station—Phone Scranton 5251 LOUIS F. HEINECK, Division Freight Agent J. H. VAN WIE, Division Passenger Agent
Elmira, N. Y. —Lackawanna Station—Phone Elmira 2-1953 F. W. SCHEPPMANN, Traveling Passenger Agent	Seattle 1, Wash. —707 Jones Bldg.—Phone Main 3055 R. A. WARREN, General Agent
Indianapolis 4, Ind. —622 Board of Trade Bldg.—Phone Franklin 8280 SAMUEL J. NEILL, General Agent	Syracuse 2, N. Y. —Lackawanna Station—Phone Syracuse 2-9211 H. RUSSEL O'HARA, Division Freight Agent O. J. STINGER, City Passenger Agent
Kansas City 6, Mo. —403 Railway Exchange Bldg.—Phone Victor 2226 BRUCE L. DILL, General Agent	Toledo 4, Ohio —1301 Toledo Trust Bldg.—Phone Adams 1817 HAROLD H. BALK, General Agent
Los Angeles 14, Calif. —108 West Sixth Street—Phone Tucker 2067 H. E. ALLEN, General Agent	Toronto 1, Ont. —1806 Royal Bank Bldg.—Phone Elgin 7635 J. S. BRANNING, Canadian Agent
Milwaukee 3, Wis. —1315 Majestic Bldg.—Phone Marquette 6410 GROVER C. HOWE, General Agent	
Minneapolis 1, Minn. —940 Metropolitan Life Building—Phone Main 5301 A. D. LEONARD, General Agent	
Newark 2, N. J. — GEORGE R. MARR, Division Freight Agent Lackawanna Station—Phone HUMBOLDT 2-2100 R. H. TAYLOR, Division Passenger Agent Griffith Bldg., 605 Broad Street, Rooms 502-503—Phone MARKET 3-3440	