

# Lackawanna Railroad

Serving the  
**TRAVELING PUBLIC**  
106 Years

The Route of  
Scenic Beauty

Between

**NEW YORK**

and

**BUFFALO  
CLEVELAND**

**DETROIT**

**CHICAGO**

March 1, 1941

FORM 10

# Lackawanna Railroad

Serving the  
**TRAVELING PUBLIC**  
106 Years

The Route of  
Scenic Beauty

Between

**NEW YORK**

and

**BUFFALO  
CLEVELAND**

**DETROIT**

**CHICAGO**

March 1, 1941

FORM 10

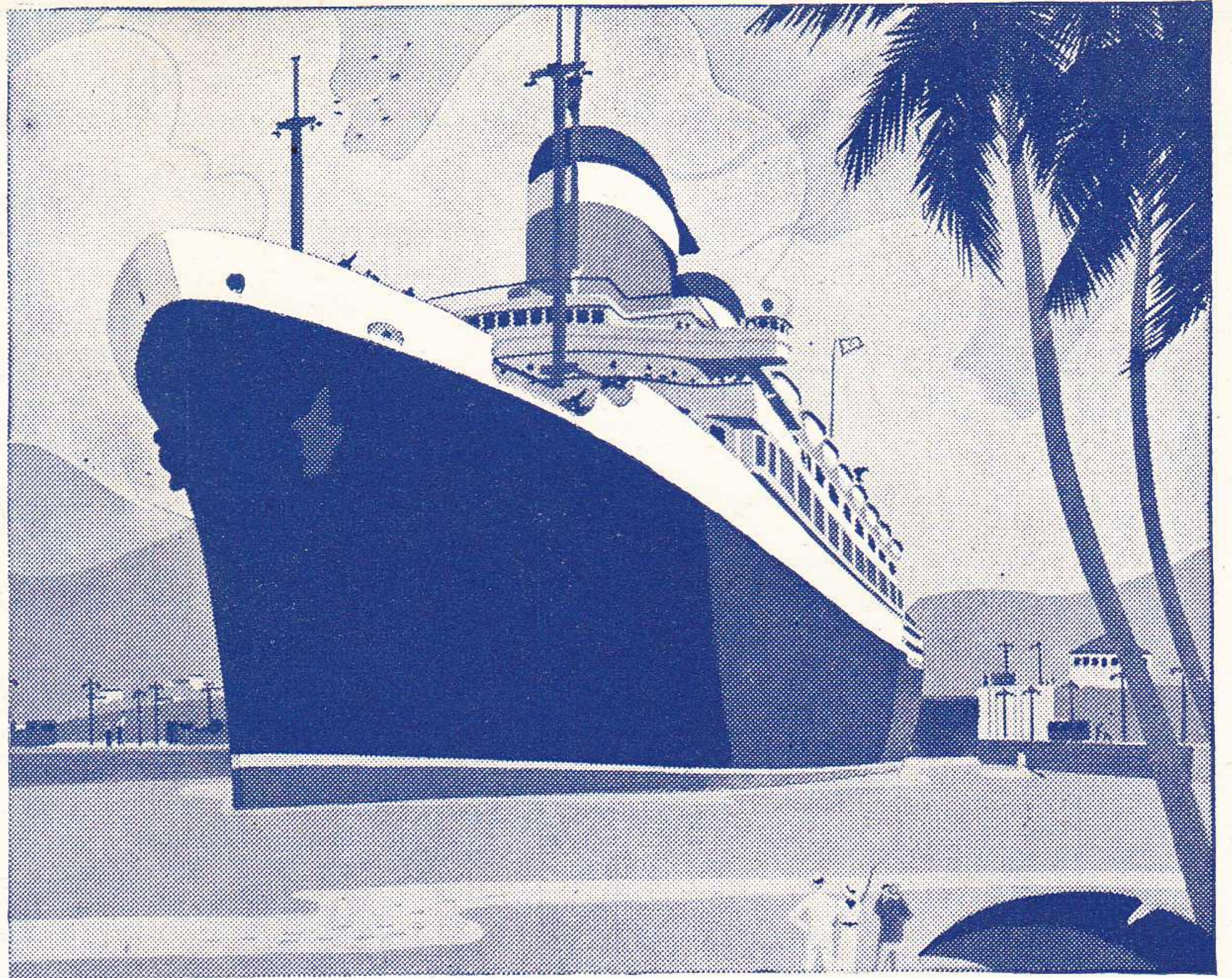


# "Circle Tours"

TO  
AND FROM

# California and Mexico

—one way by RAIL and one way by SEA



Here's a unique opportunity to combine your trip across America by RAIL with a 5500-Mile Cruise around America on America's largest, finest liners.

## SPECIAL COMBINATION RATES Hometown to Hometown

(including both rail and steamer fares)

### CALIFORNIA "Circle Tours"

\$339 up (First Class on Steamer)

\$239 up (Tourist Cabin on Steamer)

### MEXICO "Circle Tours"

\$313 up (First Class on Steamer)

\$223 up (Tourist Cabin on Steamer)

(Rates slightly higher on the ss America)

### Also 12-DAY WEST INDIES CRUISES — \$150 up

Your cruise-ship—the *Manhattan* or *America*—takes you to the most scenic and historic of West Indies ports... San Juan, St. Thomas, Port au Prince and Havana. Frequent sailings. No Passports or visas required.

YOU couldn't ask for a more delightful—more thrilling—vacation trip than this new "Circle Tour" service to and from California and Mexico. For now—plus all the sightseeing features of your cross-country trip by rail, you can enjoy the famous "Sunshine Voyage" around America aboard the famous ss MANHATTAN, WASHINGTON or the superb new AMERICA... a luxurious, carefree two-week cruise through tropical, sun-drenched seas, with visits at Havana, the Panama Canal and Acapulco, Mexico en route. And you'll be surprised how little it actually costs.

For complete details consult your  
Railway Ticket Agent or

# U.S. Lines

One Broadway, New York City

Offices in principal cities



★ Regularly assigned cars are air-conditioned

# LACKAWANNA RAILROAD—THE ROUTE OF SCENIC BEAUTY

CONDENSED EQUIPMENT OF TRAINS—PULLMAN PARLOR AND SLEEPING CAR LINES, DINING CAR SERVICE.

★ Regularly assigned cars are air-conditioned

## WESTWARD

### No. 3—Lackawanna Limited. Daily (Via Nickel Plate No. 5)

Parlor Car  
★New York to Buffalo (Observation Lounge).  
Sleeping Cars  
★New York to Chicago (12 Sec.—D.R.)  
★Cleveland to Chicago (6 Single Bedrooms)  
★Cleveland to Chicago 18 Roomettes. (Except Saturday nights)  
Dining Car  
★New York to Buffalo  
Diner-Lounge  
★Buffalo to Cleveland (Radio Equipped)  
★Cleveland to Chicago  
Coaches  
★New York to Buffalo (Individual Seats—De Luxe)  
★New York to Oswego (Individual Seats—De Luxe)—*In No. 903 from Binghamton*  
★New York to Chicago—De Luxe  
Binghamton to Utica—*In No. 803 from Binghamton*  
Owego to Ithaca—*In No. 953 from Owego*

### No. 5—Chicago Limited. Daily (Via Michigan Central No. 17)

Club-Lounge Car  
★New York to Buffalo  
Lounge Car  
★Buffalo to Chicago (Buffet)  
Sleeping Car  
★New York to Detroit (12 Sec.—D.R.)  
Parlor Car  
★New York to Elmira  
★Detroit to Chicago  
Dining Car  
★New York to Scranton  
★Buffalo to Chicago  
Coaches  
★New York to Buffalo  
★Buffalo to Chicago

### No. 7—The Westerner. Daily (Via Nickel Plate No. 7)

Lounge Car  
★New York to Binghamton (Buffet)  
Sleeping Cars  
★New York to Chicago (10 Sec.—D.R.—Comp.)  
Dining Car  
★New York to Scranton  
★Buffalo to Chicago—Lounge Diner  
Coaches  
★New York to Chicago (De Luxe)  
★Buffalo to Chicago (De Luxe)  
★New York to Buffalo

### No. 9—The Buffalonian. Daily

Club-Lounge Car  
★New York to Scranton  
Sleeping Car  
★New York to Buffalo (10 Sec.—D.R.—2 Double Bedrooms)—*May be occupied until 8.00 a.m.*  
Coaches  
★New York to Buffalo

### No. 15—The Owl. Daily

Club—Diner  
★Binghamton to Buffalo  
★Binghamton to Syracuse—*In No. 915 from Binghamton*  
Dining Car  
★Cleveland to St. Louis  
Sleeping Cars  
★New York to Buffalo (12 Sec.—D.R.)  
★New York to Binghamton (10 Sec.—D.R.—2 Double Bedrooms)—*May be occupied until 8.00 a.m.*  
★New York to Scranton (12 Sec.—D.R.) *May be occupied until 8.00 a.m.*  
★New York to Syracuse (12 Sec.—D.R.)—*In No. 915 from Binghamton*  
Observation Lounge—Sleeping Car  
★Cleveland to St. Louis—*In Nickel Plate No. 9*  
Coaches  
★New York to Buffalo  
★Buffalo to St. Louis—*In Nickel Plate No. 9*  
*Sleeping cars open at Hoboken for occupancy at 9.30 p.m.*

## WESTWARD

### HOBOKEN TERMINAL HANDLES 277 LACKAWANNA PASSENGER TRAINS ON WEEKDAYS AND 126 ON SUNDAYS.

### No. 301—Interstate Express. Daily (Via B. & O. Reading Co. and C.R.R. of N.J.)

Sleeping Cars  
★Philadelphia to Syracuse (12 Sec.—D.R.)—*In No. 915 from Binghamton. May be occupied at 10.00 p.m.*  
Dining Car—Parlor  
★Washington to Philadelphia  
Club—Diner  
★Binghamton to Syracuse—*In No. 915 from Binghamton*  
★Binghamton to Buffalo—*In No. 15*  
Coaches  
Binghamton to Syracuse—*In No. 915 from Binghamton*  
Binghamton to Utica—*In No. 815 from Binghamton*  
★Binghamton to Buffalo—*In No. 15 from Binghamton*  
Coach  
Philadelphia to Binghamton  
Coach  
★Washington to Philadelphia

### No. 705—Pittsburgh Express. Daily (Runs via Sunbury and Harrisburg)

Lounge Car  
★Harrisburg to Pittsburgh  
Sleeping Car  
★Scranton to Pittsburgh (12 Sec.—D.R.)  
Cafe Coach (Serving Breakfast)  
★Altoona to Pittsburgh  
Coach Service

## EASTWARD

### No. 2—Pocono Express. Daily

Parlor Car  
Elmira to Hoboken  
Club-Lounge  
★Elmira to New York (Serving Breakfast)  
Sleeping Car  
★Buffalo to New York (12 Sec.—D.R.)—*Open for occupancy 9.00 p.m.*  
Dining Car Service  
★Scranton to New York  
Coaches  
★Buffalo to New York

### No. 6—Lackawanna Limited. Daily

Parlor Car  
★Buffalo to New York (Observation Lounge)  
★Binghamton to New York (Fri. & Sun.)  
Dining Car  
★Buffalo to New York  
Club—Diner  
★Syracuse to New York  
Coaches  
★Buffalo to New York (Individual seats—De Luxe)  
★Oswego to New York (Individual seats—De Luxe)—*In No. 906, Oswego to Binghamton*  
Coaches  
Ithaca to Owego—*In No. 956*  
Utica to Binghamton—*In No. 806*

### No. 8—The New Yorker. Daily (Via Nickel Plate No. 8)

Lounge Diner Car  
★Chicago to Buffalo  
Club-Lounge Car  
★Buffalo to Elmira—*Open 9.00 p.m.*  
Sleeping Car  
★Chicago to New York (10 Sec.—D.R.—Compt.)  
★Buffalo to New York (10 Sec.—D.R.—2 Double Bedrooms)—*Open for occupancy at 9.00 p.m.*  
★Elmira to New York (12 Sec.—D.R.)—*Open for occupancy at 10.30 p.m.*  
Dining Car  
★Scranton to New York  
Coaches  
★Chicago to New York (De Luxe)  
★Buffalo to New York

## EASTWARD

### No. 10—New York Mail. Daily (Via Nickel Plate No. 6)

Lounge Diner Car  
★St. Louis to Cleveland (8 Sec.—Observation)—*In N. K. P. No. 10*  
Club—Diner  
★Cleveland to Buffalo—Radio  
★Buffalo to Binghamton  
Sleeping Car  
★Chicago to New York (12 Sec.—D.R.) Sleeper remains at Buffalo from 1.05 p.m., E.S.T. until 6.15 p.m., E.S.T. affording opportunity to visit Niagara Falls and Buffalo. Ask Ticket Agent about free side trip to Niagara Falls.  
★Buffalo to New York (12 Sec.—D.R.)  
★Syracuse to New York (12 Sec.—D.R.)—*In No. 910 to Binghamton—Open for occupancy at 9.00 p.m.*  
★Scranton to New York (12 Sec.—D.R.)  
★Binghamton to New York (10 Sec.—D.R.—2 Double Bedrooms)  
*Scranton and Binghamton sleepers are open for occupancy 9.30 p.m. Passengers may occupy sleeping cars at Hoboken until 8.00 a.m.*  
Coaches  
★Chicago to Buffalo (De Luxe)—*In N. K. P. No. 6*  
★St. Louis to Cleveland (De Luxe)—*In N. K. P. No. 10*  
★Buffalo to New York (De Luxe)

### No. 24—Mountain Special. Sunday Only

Coaches  
Scranton to New York

### No. 26—Merchants Express. Daily Except Sunday

Dining Car Service  
★Scranton to New York  
Coaches  
★Scranton to New York (Individual seats)

### No. 306—Interstate Express. Daily (Via C.R.R. of N.J., Reading Co., and B. & O.)

Club—Diner  
★Bethlehem to Philadelphia  
Sleeping Car  
★Syracuse to Philadelphia (12 Sec.—D.R.)—*Open for occupancy at 9.00 p.m.*  
Dining Car  
★Philadelphia to Washington, via B. & O. R.R. (Parlor)  
Coaches  
Syracuse to Binghamton—*In No. 910*  
Binghamton to Philadelphia  
Philadelphia to Washington

### No. 702—Keystone Express. Daily (Runs via Harrisburg and Sunbury)

Lounge Car  
★Pittsburgh to Harrisburg (Buffet)  
Sleeping Car  
★Pittsburgh to Scranton (12 Sec.—D.R.)  
Coach Service











# FROM NEW YORK TO BINGHAMTON, SYRACUSE, ELMIRA AND BUFFALO

WESTWARD

For condensed time and equipment of trains see pages 2 and 3.

Miles	TABLE 4	15	301	Mixed	Mixed	3	5	7	9				
		Daily	Daily	31 Ex. Sun.	47 Daily	Daily	Daily	Daily	Daily				
	<b>Wilkes-Barre</b> (Laurel Line).....Lv	AM 3 15	AM	AM	AM 8 45	PM 12 45	PM 7 15 6 45	PM 8 45	PM 10 45				
134.1	<b>Scranton</b> .....Lv	5 05			9 55	1 55	8 15	10 20	1 35				
141.5	Clarks Summit.....				10 20			10 38					
145.0	Dalton.....				10 27								
147.0	LaPlume.....				10 32								
153.1	Nicholson-Tunkhannock Viaduct				10 45								
158.6	Foster.....				10 55								
162.9	Kingsley.....				11 02								
166.4	Alford.....												
172.6	New Milford.....	6 04	6 17		11 25	2 49	9 07	11 12					
178.5	Hallstead.....	6 13			11 35			11 19					
183.7	Conklin.....				11 45								
192.7	<b>Binghamton</b> .....Ar	6 30	6 42		12 15	3 12	9 30	11 35	2 55				
235.7	<b>Cortland</b> .....Ar	8 43	8 43			4 30							
272.1	<b>Syracuse</b> .....Ar	9 50	9 50			5 30							
307.1	<b>Oswego</b> .....Ar					6 55							
287.8	<b>Utica</b> .....Ar	12 15	12 15			6 10							
192.7	<b>Binghamton</b> .....Lv	7 00				3 20	9 40	11 45	3 05				
195.4	Johnson City.....	7 06											
200.7	Vestal.....	7 18				3 31	9 51	11 55					
	Endicott }												
206.6	Apalachin.....	7 26											
213.4	<b>Owego</b> .....	7 42				3 48	10 09	12 10	3 32				
247.4	<b>Ithaca</b> .....Ar	11 20	11 20			5 10							
221.7	Nichols.....	7 56					10 20						
232.0	Waverly.....	8 12				4 12	10 36	12 31					
249.7	<b>Elmira</b> .....Ar	8 35				4 33	11 05	12 55	4 18				
249.7	<b>Elmira</b> .....Lv	8 40		11 00		4 38	11 10	1 00	4 25				
251.8	Elmira Heights.....			11 06									
254.1	Horseheads.....			11 15									
259.5	Big Flats.....	e8 53		11 25									
267.7	<b>Corning</b> .....	9 04		11 50		4 58	11 30	1 20	4 45				
269.2	Painted Post.....			12 05									
271.9	Coopers.....			12 12									
276.7	Campbell.....	e9 16		12 20									
281.2	Savona.....			12 30									
286.6	<b>Bath</b> .....	9 31		12 55		5 19	11 51	1 41	5 06				
290.5	Kanona.....			1 03									
294.2	Avoca.....	9 42		1 15									
296.8	Wallace.....			1 20									
302.0	Cohocton.....	9 56		1 30									
306.4	Atlanta.....	10 07		1 40									
312.3	Wayland.....	10 15		1 50									
314.2	Perkinsville.....			2 00									
319.5	Dansville.....	10 26		2 15		5 56	12 28	2 18	5 43				
326.8	Groveland.....			2 30									
333.7	<b>Mount Morris</b> .....	10 47		3 00		6 15	12 47	2 37	6 02				
336.8	Leicester.....			3 10									
340.3	Greigsville.....			3 20									
343.5	Craigs.....			3 30									
346.3	Linwood.....			3 38									
351.1	B. R. & P. (B. & O.) Jct.....	s11 11		3 48									
355.0	East Bethany.....	f11 15		3 58									
362.4	North Alexander.....			4 10									
372.3	Fargo.....			f4 30									
375.2	Alden.....	e		f4 37									
384.2	Lancaster.....			5 00									
390.7	East Buffalo.....			5 30									
396.2	<b>Buffalo</b> For Connections West of Ar	12 15		5 45		7 35	2 10	4 00	7 30				
	Buffalo see pages 2 and 3.	PM	AM	PM	PM	PM	AM	AM	AM				

## EXPLANATION OF REFERENCE MARKS

†-Daily except Sunday.

¶-No Ferry service from Christopher Street on Sundays.

\*-Frequent service via Hudson Tubes, but this train not held for Tube Connection.

§-Sundays only.

AM time light type.

PM time heavy type.

#-No Ferry service from Christopher Street.

a-Stops daily on notice to agent to receive passengers for Stroudsburg and west.

b-Stops on notice to Agent to take on passengers for Greendell and west.

e-Stops on notice to conductor to let off passengers from Binghamton and east and on notice to Agent to receive passengers for Buffalo and west.

f-Stops on notice to agent or conductor.

g-Stops on notice to conductor to let off passengers from Binghamton and east and will stop on notice to agent to receive passengers for Buffalo and west.

h-Stops on notice to conductor to let off passengers from Dover and points east.

j-Stops Friday only on notice to conductor to discharge passengers from Dover & East.

m-Stops Friday and Saturday on notice to conductor to discharge passengers Dover and east.

n-Stops on signal to pick up passengers Buffalo and West, or discharge Dover and East and points on the P. R. R.

r-Stops on notice to conductor to discharge passengers from Dover and east, and on notice to agent to receive passengers for Buffalo and west.


s-Stops on notice to conductor to let off passengers from Corning and east and to receive passengers for Buffalo and west.

t-Stops on notice to conductor to let off passengers from points on C. R. R. of N. J. and Reading Company.

v-Stops daily on notice to Agent to receive passengers for Blairstown and west.

y-Stops on signal to discharge passengers Dover and east and to receive passengers for Mt. Morris and west.

z-Stops regularly to take on passengers.

-Train-Auto Service available at this point.

## TRAIN AUTO PLAN

Take the Train.....Then Drive a Car

You'll enjoy the advantages of the Rail-Auto Plan. It's a combination plan that's not only practical, but economical as well. You get the comforts and safety of the modern Day Coach or Pullman for the long ride and the convenience and efficiency of DRIVURSELF car when you arrive.

Ask Ticket Agent for Descriptive Folder Giving Complete Information

Ask Our Ticket Agent About

# TRAVEL ON CREDIT

No Money Down...Pay Later



# FROM BUFFALO, ELMIRA, SYRACUSE AND BINGHAMTON TO NEW YORK

EASTWARD

For condensed time and equipment of trains see pages 2 and 3.

Miles	TABLE 5	2 Daily	6 Daily	306 Daily	10 Daily	8 Daily			
	<i>For connections from the West see pages 2 and 3.</i>	AM	AM	PM	PM	PM			
0.0	<b>Buffalo</b> Lv	3 50	10 00		6 15	10 30			
5.5	East Buffalo				z				
12.0	Lancaster				f6 36				
21.0	Alden				z				
23.9	Fargo				z				
33.8	North Alexander				f7 08				
41.2	East Bethany				z				
45.1	B. R. & P. (B. & O.) Jct.				7 13				
49.9	Linwood				z				
52.7	Craigs				f7 23				
55.9	Greigsville				z				
59.4	Leicester				z				
62.5	<b>Mount Morris</b>	5 00	11 09		7 40	11 45			
69.4	Groveland				7 50				
76.7	Dansville	5 23	11 31		8 09	12s04			
82.0	Perkinsville	f5 36							
83.9	Wayland	f5 39			8 30				
89.8	Atlanta	f5 48			8 41				
94.2	Cohocton	f5 55			8 50				
99.4	Wallace	f6 02			f8 58				
102.0	Avoca	f6 06			9 04				
105.7	Kanona	f6 10			f9 09				
109.6	<b>Bath</b>	6 19	12 13		9 22	12 44			
115.0	Savona	f6 27			f9 31				
119.5	Campbell	f6 33			f9 36				
124.3	Coopers	f6 38							
127.0	Painted Post	f6 43							
128.5	<b>Corning</b>	6 50	12 33		9 52	1 06			
136.7	Big Flats	f7 02							
142.1	Horseheads	f7 08							
144.4	Elmira Heights	f7 11							
146.5	<b>Elmira</b> Ar	7 20	12 55		10 20	1 28			
146.5	<b>Elmira</b> Lv	7 30	1 00		10 30	1 35			
164.2	Waverly	7 52	1 20		10 54	1 56			
174.5	Nichols	8 05			11 06				
216.8	<b>Ithaca</b> Lv		12 30						
182.8	<b>Owego</b> Lv	8 20	1 43		11 21	j			
189.6	Apalachin	f8 30			z				
	Vestal								
195.5	Endicott	8 39	z1 58		11 45				
200.8	Johnson City	f8 46			11z54				
203.5	<b>Binghamton</b> Ar	8 55	2 10		12 00	2 43			
	<b>Utica</b> Lv		11 00						
	<b>Oswego</b> Lv		10 40						
	<b>Syracuse</b> Lv		12 00	9 35	9 35				
	<b>Cortland</b> Lv		1 03	10 40	10 40				
203.5	<b>Binghamton</b> Lv	9 05	2 20	12 20	12 30	2 55			
212.5	Conklin								
217.7	Hallstead	9 23							
223.6	New Milford	9 33	n2 43						
229.8	Alford								
233.3	Kingsley								
237.6	Foster								
243.1	Nicholson-Tunkhan' Viaduct								
249.2	LaPlume								
251.2	Dalton								
254.7	Clarks Summit	10 13							
262.1	<b>Scranton</b> Ar	10 25	3 30		1 40	4 05			
	<b>Wilkes-Barre</b> Ar	†1110	4 40		3 10	6 10			
	(Laurel Line)	‡1140							
		AM	PM	AM	AM	AM			

**Four Famous Lackawanna Trains to CHICAGO CLEVELAND DETROIT and BUFFALO**  
**Lackawanna Limited Chicago Limited**  
**The Westerner The Buffalonian**  
 ●  
**Ask The Lackawanna's Freight Agent About PICK-UP And DELIVERY SERVICE**

## EXPLANATION OF REFERENCE MARKS

†-Daily except Sunday.

§-Sunday only.

¶-No Ferry service to Christopher Street, New York, on Sundays.

A.M. time in light type.

P.M. time in heavy type.

e-Stops regularly on notice to conductor to let off passengers.

d-Stops on notice to Agent to receive passengers for Dover and east and on notice to conductor to let off passengers from Buffalo and west.

e-Stops on notice to Agent to receive passengers for Dover and East and points on Pennsylvania Railroad.

f-Stops on notice to Agent or conductor.

h-Stops on notice to Agent to receive passengers for Dover and points East and to discharge passengers from Binghamton and points beyond.

j-Stops on notice to conductor to let off passengers from Buffalo and west.

m-Stops on notice to conductor to let off passengers from points west of Dover.


n-Stops on signal to discharge passengers Buffalo and West, or pick up Dover and East and points on the P. R. R.

s-Stops on notice to Agent to receive passengers for Bath and east and on notice to conductor to discharge passengers from Mount Morris and west.

v-Stops on notice to Agent to receive passengers for Dover and east, also for points on Pennsylvania Railroad and on notice to conductor to discharge passengers from Binghamton and points beyond.

x-Stops to let off passengers from Scranton and west.

z-Stops on notice to Agent to receive passengers for New York and on notice to conductor to let off passengers from Buffalo and west.

 Train-Auto Service available at this point.

## DIRECT BUS SERVICE TO TIMES SQUARE, N. Y.

Via Lincoln Tunnel from Lackawanna Terminal, Hoboken  
Public Service Bus Terminal in New York is located at 260 West 42nd Street between 7th and 8th Aves., in the heart of the hotel and theatrical district.

**Fast, Frequent and Convenient Service**  
**Fare, One-Way, 20c — Running Time — 19 Minutes**

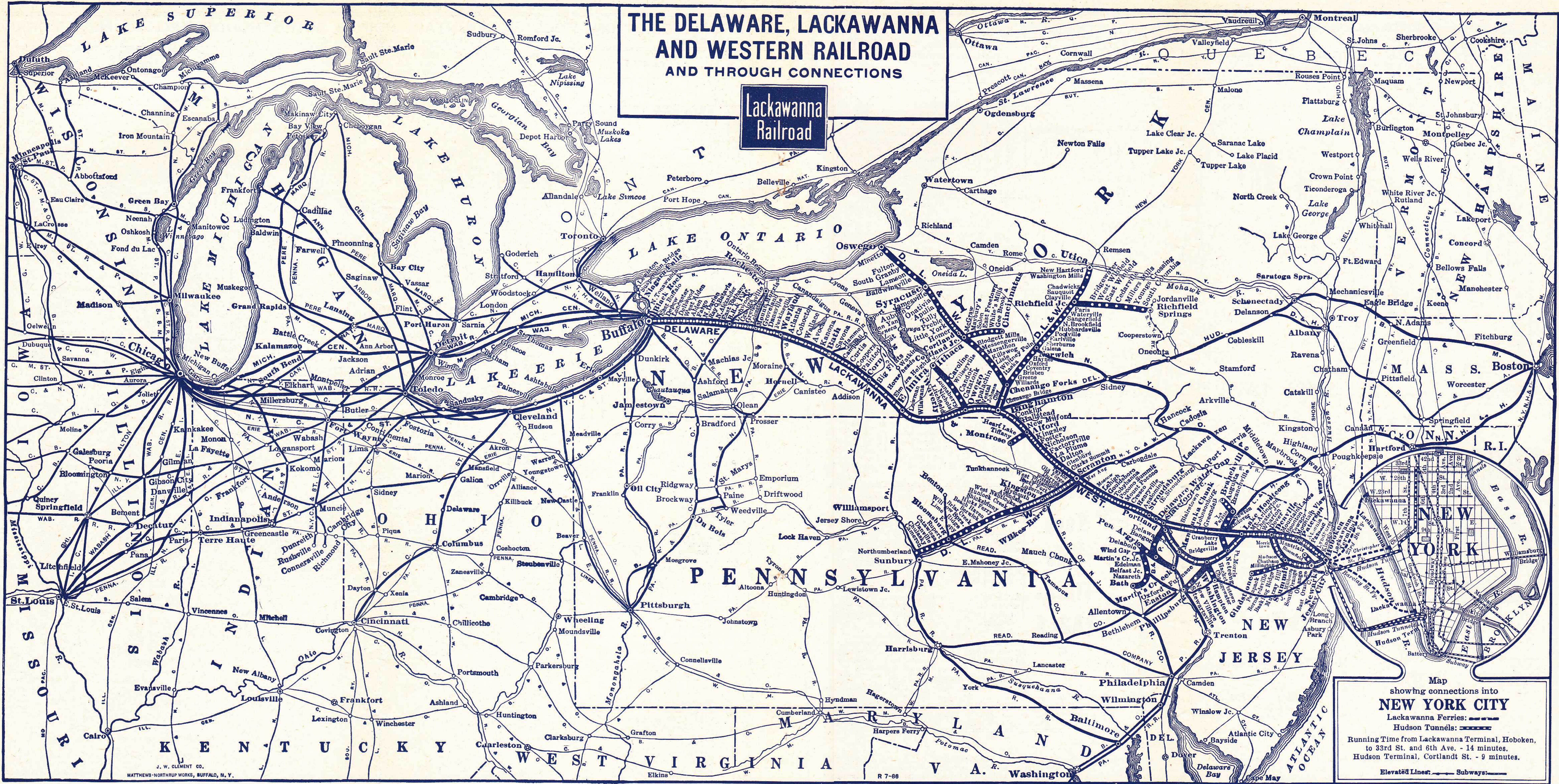


# FROM SCRANTON, POCONO MOUNTAIN POINTS AND STROUDSBURG TO NEW YORK EASTWARD

For condensed time and equipment of trains see pages 2 and 3.

Miles	TABLE 6	10	1018	8	1012	26	1028	614	364	2	1116	6	634	1050	376	386	24	934	1128					
		Daily	Ex. Sun.	Daily	1104 Daily	Ex. Sun.	Ex. Sun.	Ex. Sun.	Ex. Sun.	Ex. Sun.	Daily	Sun. only	Daily	928 Daily	1124 Daily	Ex. Sun.	Sun. only	Sun. only	Sun. only	Sun. only				
		AM	AM	AM	AM	AM	AM	AM	AM	AM	PM	PM	PM	PM	PM	PM	PM	PM	PM	PM				
.....	<b>Wilkes-Barre</b> (Laurel Line) Lv	12 45	.....	3 15	.....	6 45	.....	.....	.....	9 45	.....	2 45	.....	.....	.....	.....	4 45	.....	.....	.....	.....	.....	.....	.....
262.1	<b>Scranton</b> Lv	1 50	.....	4 15	.....	7 30	.....	.....	.....	10 35	.....	3 35	.....	.....	.....	.....	6 20	.....	.....	.....	.....	.....	.....	.....
274.7	Moscow	.....	.....	.....	.....	.....	.....	.....	.....	11 01	.....	.....	.....	.....	.....	.....	.....	.....	.....	.....	.....	.....	.....	.....
282.3	Gouldsboro	.....	.....	.....	.....	.....	.....	.....	.....	11 16	.....	.....	.....	.....	.....	.....	f6 57	.....	.....	.....	.....	.....	.....	.....
287.6	Tobyhanna	.....	.....	.....	.....	.....	.....	.....	.....	11 25	.....	.....	.....	.....	.....	.....	7 05	.....	.....	.....	.....	.....	.....	.....
292.6	Pocono Summit (Station for Pocono Mnr. and Lutherland)	.....	.....	.....	.....	8 20	.....	.....	.....	11 34	.....	v4 25	.....	.....	.....	.....	7 12	.....	.....	.....	.....	.....	.....	.....
294.9	Mount Pocono	.....	.....	.....	.....	8 24	.....	.....	.....	.....	.....	v4 29	.....	.....	.....	.....	7 17	.....	.....	.....	.....	.....	.....	.....
300.6	<b>Cresco</b> (Station for Skytop, Canadensis, Buck Hill Falls, Mountainhome, So. Sterling)	.....	.....	d5 14	.....	8 34	.....	.....	.....	11 49	.....	4 39	.....	.....	.....	.....	7 27	.....	.....	.....	.....	.....	.....	.....
306.0	Henryville (Station for Paradise Falls Lutheran Assn.)	.....	.....	.....	.....	.....	.....	.....	.....	f11 58	.....	.....	.....	.....	.....	.....	f7 36	.....	.....	.....	.....	.....	.....	.....
309.4	Analomink	.....	.....	.....	.....	.....	.....	.....	.....	.....	.....	.....	.....	.....	.....	.....	f7 41	.....	.....	.....	.....	.....	.....	.....
313.6	<b>Stroudsburg &amp;</b>	Ar 3 20	.....	5 35	.....	8 55	.....	.....	.....	12 15	.....	5 03	.....	.....	.....	.....	7 53	.....	.....	.....	.....	.....	.....	.....
313.6	<b>East Stroudsburg</b>	Lv 3 20	5 15	5 35	.....	8 55	.....	.....	8 58	12 15	.....	5 03	.....	.....	5 10	5 13	7 53	.....	.....	.....	.....	.....	.....	.....
.....	Ar Phillipsburg..... P. R. R.	.....	.....	.....	.....	9 54	.....	.....	9 54	.....	.....	6 08	.....	.....	6 08	6 08	.....	.....	.....	.....	.....	.....	.....	.....
.....	Ar Trenton..... "	.....	.....	.....	.....	11 28	.....	.....	11 28	.....	.....	7 33	.....	.....	7 33	7 28	.....	.....	.....	.....	.....	.....	.....	.....
.....	Ar Philadelphia..... "	.....	.....	.....	.....	12 09	.....	.....	12 09	.....	.....	8 16	.....	.....	8 16	8 16	.....	.....	.....	.....	.....	.....	.....	.....
318.0	<b>Water Gap</b> (Station for Shawnee-on-Delaware and Minisink Hills)	.....	f5 23	.....	.....	.....	.....	.....	9 06	12 24	.....	.....	.....	.....	5 18	5 21	8 03	.....	.....	.....	.....	.....	.....	.....
330.4	Blairstown	.....	.....	6 01	.....	.....	.....	.....	.....	12 41	.....	f5 27	.....	.....	.....	.....	8 20	.....	.....	.....	.....	.....	.....	.....
334.5	Johnsonburg	.....	.....	.....	.....	.....	.....	.....	.....	f12 46	.....	.....	.....	.....	.....	.....	.....	.....	.....	.....	.....	.....	.....	.....
337.6	Greendell	.....	.....	.....	.....	.....	.....	.....	.....	f12 50	.....	.....	.....	.....	.....	.....	.....	.....	.....	.....	.....	.....	.....	.....
323.2	Portland	.....	5 31	.....	.....	.....	.....	.....	.....	.....	.....	.....	.....	.....	5 27	5 29	.....	.....	.....	.....	.....	.....	.....	.....
326.6	Delaware	.....	f5 35	.....	.....	.....	.....	.....	f5 18	.....	.....	.....	.....	.....	f5 32	f5 33	.....	.....	.....	.....	.....	.....	.....	.....
330.2	Bridgeville	.....	5 43	.....	.....	.....	.....	.....	.....	.....	.....	.....	.....	.....	.....	.....	.....	.....	.....	.....	.....	.....	.....	.....
334.8	Oxford Furnace	.....	5 50	.....	.....	.....	.....	.....	.....	.....	.....	.....	.....	.....	.....	.....	.....	.....	.....	.....	.....	.....	.....	.....
339.2	<b>Washington</b>	Ar	6 00	.....	.....	.....	.....	.....	.....	.....	.....	.....	.....	.....	.....	.....	.....	.....	.....	.....	.....	.....	.....	.....
339.2	<b>Washington</b>	Lv	6 22	.....	.....	.....	.....	.....	.....	.....	.....	.....	.....	.....	.....	.....	.....	.....	.....	.....	.....	.....	.....	.....
349.0	Hackettstown	.....	6 40	.....	.....	.....	.....	.....	.....	.....	.....	.....	.....	.....	.....	.....	.....	.....	.....	.....	.....	.....	.....	.....
357.8	Netcong (Stanhope)	.....	6 52	.....	.....	.....	.....	.....	.....	.....	.....	.....	.....	.....	.....	.....	.....	.....	.....	.....	.....	.....	.....	.....
349.8	Lake Hopatcong	.....	7 08	.....	.....	.....	.....	.....	.....	.....	.....	.....	.....	.....	.....	.....	.....	.....	.....	.....	.....	.....	.....	.....
357.1	<b>Dover</b>	Ar 4 20	7 22	6 35	.....	9 48	.....	.....	.....	1 18	.....	c6 01	.....	.....	.....	.....	c8 56	.....	.....	.....	.....	.....	.....	.....
357.1	<b>Dover</b>	Lv 4 20	7 22	6 35	.....	9 48	9 50	9 56	.....	1 18	1 30	c6 01	6 03	6 06	.....	.....	c8 56	8 58	9 00	.....	.....	.....	.....	.....
359.9	Rockaway	.....	.....	.....	.....	6 49	.....	.....	.....	.....	.....	.....	.....	.....	.....	.....	.....	.....	.....	.....	.....	.....	.....	.....
361.3	Denville	.....	.....	.....	.....	7 00	.....	.....	.....	.....	.....	.....	.....	.....	.....	.....	.....	.....	.....	.....	.....	.....	.....	.....
364.0	Mountain Lakes	.....	7 33	.....	.....	7 05	.....	.....	.....	.....	.....	.....	.....	.....	.....	.....	.....	.....	.....	.....	.....	.....	.....	.....
366.0	<b>Boonton</b>	.....	7 37	.....	.....	7 10	.....	.....	.....	.....	.....	.....	.....	.....	.....	.....	.....	.....	.....	.....	.....	.....	.....	.....
370.1	Towaco	.....	.....	.....	.....	7 18	.....	.....	.....	.....	.....	.....	.....	.....	.....	.....	.....	.....	.....	.....	.....	.....	.....	.....
372.3	Lincoln Park	.....	.....	.....	.....	7 23	.....	.....	.....	.....	.....	.....	.....	.....	.....	.....	.....	.....	.....	.....	.....	.....	.....	.....
374.7	Mountain View	.....	.....	.....	.....	7 28	.....	.....	.....	.....	.....	.....	.....	.....	.....	.....	.....	.....	.....	.....	.....	.....	.....	.....
380.1	<b>Paterson</b>	4 58	7 56	.....	.....	7 39	.....	.....	.....	.....	.....	.....	.....	.....	.....	.....	.....	.....	.....	.....	.....	.....	.....	.....
383.1	Athenia	.....	.....	.....	.....	7 44	.....	.....	.....	.....	.....	.....	.....	.....	.....	.....	.....	.....	.....	.....	.....	.....	.....	.....
384.6	<b>Passaic</b>	.....	.....	.....	.....	7 46	.....	.....	.....	.....	.....	.....	.....	.....	.....	.....	.....	.....	.....	.....	.....	.....	.....	.....
385.9	Delawanna	.....	.....	.....	.....	7 49	.....	.....	.....	.....	.....	.....	.....	.....	.....	.....	.....	.....	.....	.....	.....	.....	.....	.....
387.0	Lyndhurst	.....	.....	.....	.....	7 53	.....	.....	.....	.....	.....	.....	.....	.....	.....	.....	.....	.....	.....	.....	.....	.....	.....	.....
387.7	Kingsland	.....	.....	.....	.....	7 56	.....	.....	.....	.....	.....	.....	.....	.....	.....	.....	.....	.....	.....	.....	.....	.....	.....	.....
361.3	Denville	.....	.....	.....	.....	.....	.....	.....	.....	.....	.....	.....	.....	.....	.....	.....	.....	.....	.....	.....	.....	.....	.....	.....
365.6	Morris Plains	.....	.....	.....	.....	.....	.....	.....	.....	.....	.....	.....	.....	.....	.....	.....	.....	.....	.....	.....	.....	.....	.....	.....
367.8	<b>Morristown</b>	.....	.....	c6 50	.....	.....	.....	.....	.....	.....	.....	.....	.....	.....	.....	.....	.....	.....	.....	.....	.....	.....	.....	.....
369.9	Convent	.....	.....	.....	.....	.....	.....	.....	.....	.....	.....	.....	.....	.....	.....	.....	.....	.....	.....	.....	.....	.....	.....	.....
372.1	Madison	.....	.....	.....	.....	.....	.....	.....	.....	.....	.....	.....	.....	.....	.....	.....	.....	.....	.....	.....	.....	.....	.....	.....
374.1	Chatham	.....	.....	.....	.....	.....	.....	.....	.....	.....	.....	.....	.....	.....	.....	.....	.....	.....	.....	.....	.....	.....	.....	.....
377.5	<b>Summit</b>	.....	.....	c7 03	.....	.....	.....	.....	.....	.....	.....	.....	.....	.....	.....	.....	.....	.....	.....	.....	.....	.....	.....	.....
379.8	Short Hills	.....	.....	.....	.....	.....	.....	.....	.....	.....	.....	.....	.....	.....	.....	.....	.....	.....	.....	.....	.....	.....	.....	.....
380.8	Millburn	.....	.....	.....	.....	.....	.....	.....	.....	.....	.....	.....	.....	.....	.....	.....	.....	.....	.....	.....	.....	.....	.....	.....
382.4	Maplewood	.....	.....	.....	.....	.....	.....	.....	.....	.....	.....	.....	.....	.....	.....	.....	.....	.....	.....	.....	.....	.....	.....	.....
383.7	South Orange	.....	.....	.....	.....	.....	.....	.....	.....	.....	.....	.....	.....	.....	.....	.....	.....	.....	.....	.....	.....	.....	.....	.....
384.5	Mountain Station	.....	.....	.....	.....	.....	.....	.....	.....	.....	.....	.....	.....	.....	.....	.....	.....	.....	.....	.....	.....	.....	.....	.....
385.4	Highland Avenue	.....	.....	.....	.....	.....	.....	.....	.....	.....	.....	.....	.....	.....	.....	.....	.....	.....	.....	.....	.....	.....	.....	.....
386.1	Orange	.....	.....	.....	.....	.....	.....	.....	.....	.....	.....	.....	.....	.....	.....	.....	.....	.....	.....	.....	.....	.....	.....	.....
387.0	<b>Brick Church</b>	.....	.....	c7 17	.....	.....	.....	.....	.....	.....	.....	.....	.....	.....	.....	.....	.....	.....	.....	.....	.....	.....	.....	.....
387.6	East Orange	.....	.....	.....	.....	.....	.....	.....	.....	.....	.....	.....	.....	.....	.....	.....	.....	.....	.....	.....	.....	.....	.....	.....
388.0	Grove Street	.....																						





**TRAVEL via LACKAWANNA...** *It's The Route of Scenic Beauty and Shortest Line Between Buffalo and New York*



READ DOWN

BINGHAMTON, SYRACUSE AND OSWEGO

READ UP

903 Daily			943 Daily			915 Daily			Miles			TABLE 7			944 Daily			906 Daily			910 Daily		
AM	PM	AM	PM	AM	PM	AM	PM	AM	PM	AM	PM	AM	PM	AM	PM	AM	PM	AM	PM	AM	PM		
9 54				+																			
10 02																							
10 00																							
10 20																							
3 25																							
a																							
a																							
3 54																							
a																							
a																							
4 08																							
a																							
a																							
4 50																							
a																							
a																							
5 30																							
5 40																							
6 09																							
6 17																							
f6 22																							
6 31																							
6 41																							
6 55																							
PM	PM	AM																					

**CLUB DINER ON TRAINS Nos. 915 and 906 BETWEEN Binghamton AND Syracuse**

Note: Last Trip March 31, 1941

READ DOWN

BINGHAMTON AND UTICA

READ UP

803 Daily			815 Daily			Miles			TABLE 8			806 Daily			816 Daily		
AM	PM	AM	PM	AM	PM	AM	PM	AM	PM	AM	PM	AM	PM	AM	PM		
9 54																	
10 02																	
10 00																	
10 20																	
3 20																	
f3 29																	
3 37																	
3 49																	
f3 57																	
f4 02																	
4 09																	
4 25																	
f4 33																	
4 40																	
4 48																	
4 53																	
5 00																	
5 06																	
5 15																	
f5 21																	
5 28																	
5 37																	
f5 41																	
f5 44																	
5 47																	
5 54																	
6 10																	
PM	PM	AM															



**• AVOID WASTE Keep This TIME-TABLE •**

EXPLANATION OF REFERENCE MARKS

A. M. time light type. P. M. time heavy type. †-Daily except Sunday. ‡-Daily except Saturday. \*-Frequent service via Hudson tubes, but this train not held for tube connections. ¶-No Ferry service between Christopher Street, New York, and Hoboken, N. J., on Sundays. a-Stops on notice to conductor to let off passengers holding tickets from Scranton and east and from Elmira and west. c-No boat connection from Christopher Street for this train. f-Stops on notice to Agent or Conductor. h-Stops on signal to take on passengers for Scranton and east, and Elmira and west, providing Agents are notified before 6 P. M. Train-Auto Service available at this point.

Syracuse, Buffalo, Binghamton, Philadelphia, Atlantic City, Baltimore and Washington.

Read Down

Read Up

Inter-state Express 306 Daily		TABLE 9		Onon-daga 327 Daily		Inter-state Express 301 Daily	
PM	AM	AM	AM	AM	AM	AM	AM
9 35							
f10 15							
10 30							
10 40							
11 00							
11 50							
6 15							
9 52							
10 30							
12 00							
12 20							
2 40							
4 26							
5 15							
5 43							
6 56							
7 32							
7 45							
8 15							
9 45							
7 45							
8 02							
10 00							
10 42							

- No. 306—INTERSTATE EXPRESS**
  - ★Drawing Room
  - Sleeping Car.....Syracuse to Philadelphia
  - Open for occupancy 9:00 P.M.
  - Coaches.....Between all points
  - ★Parlor and Diner.....Philadelphia to Washington
  - ★Club-Diner.....Bethlehem to Philadelphia
- No. 301—INTERSTATE EXPRESS**
  - ★Drawing Room
  - Sleeping Car.....Philadelphia to Syracuse
  - Open for occupancy 10:00 P.M.
  - ★Club-Diner.....Binghamton to Syracuse
  - ★Parlor Car.....Washington to Philadelphia
  - ★Dining Car.....Washington to Philadelphia
  - Coaches.....Between all points
- No. 327—ONONDAGA**
  - ★Parlor Car.....Philadelphia to Scranton
  - ★Parlor Dining Car.....Washington to Philadelphia
  - ★Dining Club Car.....Philadelphia to Bethlehem
  - Coaches.....Between all points

EXPLANATION OF REFERENCE MARKS

†Daily except Sunday. A.M. time light type. P.M. time heavy type. ★Regularly assigned car air-conditioned. b-Time shown is weekdays Except Holidays; Sundays and Holidays leaves 8:55 P.M. f-Stop on Signal. ○Stops to let off passengers from Bethlehem and beyond. ▲Passengers to and from Baltimore and Washington change cars at Wayne Junction.



SCRANTON, KINGSTON (WILKES-BARRE)

SUNBURY AND PITTSBURGH

Read Down			Read Up					
DL&W 705 Daily PM	P.R.R. 511 Daily AM	DL&W 715 Ex Sun AM	Miles	TABLE 10	STATIONS ON	DL&W 702 Daily PM	P.R.R. 510 570 Daily PM	DL&W 708 Ex Sun AM
				<b>New York Hudson Tunnels—</b> 33rd St. & 6th Ave. (Fare 10c)		2 44		5 44
				Hudson Terminal Bldg.— Cortlandt St. (Fare 8c)		2 36		5 42
				<b>D. L. &amp; W. Ferries—</b> { West 23d Street... } { Barclay Street... } { Christopher Street... }		2 40		5 40
		1c00		Lv. <b>Hoboken</b> Ar		2 20		5 25
6 00		7 00	134.1	Lv. <b>Scranton</b> Ar	DL&W	10 00		8 55
6 08		7 09	137.7	Taylor	DL&W	9 49		8 43
6 13		7 15	141.0	Old Forge	DL&W	9 42		8 38
6 15		7 19	142.0	Duryea	DL&W	9 37		f8 35
6 18		7 23	143.7	Pittston	DL&W	9 32		f8 32
6 24		7 28	145.0	West Pittston	DL&W	9 25		8 25
6 28		7 33	147.0	Wyoming	DL&W	9 21		f8 21
6 34		7 39	150.6	Luzerne	DL&W	9 14		8 16
6 50		7 52	151.7	# <b>Kingston</b>	DL&W	9 10		8 12
	10 08			#Wilkes-Barre	P.R.R.		5 37	
6 57		8 00	154.9	Plymouth	DL&W	8 51		7 57
7 03		8 08	158.4	# <b>West Nanticoke</b>	DL&W	8 44		7 50
	10 24			#Nanticoke	P.R.R.		5 20	
f7 09		8 13	161.9	Hunlock Creek	DL&W	f8 38		7 43
7 17		8 29	167.5	# <b>Shickshinny</b>	DL&W	8 29		7 33
	10 42			#Mocanaqua	P.R.R.		5 04	
		f8 35	172.1	Hicks Ferry	DL&W			f7 15
		8 40	175.4	Beach Haven	DL&W			7 11
7 43		8 50	178.4	# <b>Berwick</b>	DL&W	8 07		
	11 00			#Nescopeck	P.R.R.		4 48	
			181.4	Briar Creek	DL&W			f6 57
			185.0	Lime Ridge	DL&W			f6 51
			188.5	Espy	DL&W			6 46
8 04		9 13	191.0	# <b>Bloomsburg</b>	DL&W	7 39		6 43
			192.7	Rupert	DL&W			
8 12		9 21	194.3	# <b>East Bloomsburg</b>	P.R.R.	7 26		f6 34
	11 24			#Catawissa	DL&W		4 24	
8 24		9 35	202.7	# <b>Danville</b>	DL&W	7 12		6 22
	11 40			#South Danville	P.R.R.		4 12	
8 45		9 55	214.5	Northumberland	DL&W	6 50		6 02
9 00	12 10	10 20	216.4	Lv. <b>Sunbury</b> Ar	DL&W	6 40	3 50	5 50
10 50	f1 45		269.8	Lv. <b>Harrisburg</b> Ar	P.R.R.	a4 05	11 48	4 10
7 55	8 25		515.1	Lv. <b>Pittsburgh</b> Ar	P.R.R.	9 45	8 23	9 45

Sleeper Scranton to Pittsburgh, via Harrisburg.

Sleeper Pittsburgh to Scranton, via Harrisburg.

TO AND FROM ITHACA VIA OWEGO

Read Down			Read Up		
3 Daily AM	15 Daily AM	Miles	TABLE 13	92 Daily AM	6 Daily PM
			<b>New York Hudson Tunnels—</b> Lv. 33rd St. & 6th Ave. Ar		7 30
			(Fare 10c)		7 19
			Hudson Terminal Bldg.— Cortlandt St. (Fare 8c)		
			<b>D. L. &amp; W. Ferries—</b> { West 23d Street... } { Barclay Street... } { Christopher Street... }		f7 25
	1c00		Lv. <b>Hoboken</b> Ar		7 05
		1.0	<b>Newark</b>		d6 46
10 20	1 25	8.8	Brick Church		d6 41
z10 35		11.6	Summit		d6 27
z10 40		21.1	Morristown		d6 15
n10 52		30.8	Dover		d6 01
n11 07		39.1	Lv. Philadelphia P. R. R. Ar		8 16
n11 24			Lv. Philadelphia P.&R.Ry. Ar		
	11 45		Lv. <b>Scranton</b> Ar		3 30
		134.1	Binghamton	10 45	2 10
1 55	5 05	192.7	Owego	10 05	1 43
3 20	7 00	213.4			
3 48	7 42				
953	971			952	956
PM	AM			AM	PM
3 50	10 10	213.4	Lv. <b>Owego</b> Ar	9 35	1 37
f4 00	f10 22	218.8	Catatonk	f9 13	f1 22
4 13	10 32	224.1	Candor	9 00	1 12
f4 22	f10 42	229.4	Willseyville	8 41	f1 02
4 34	10 53	235.3	Caroline	8 31	12 52
5 10	11 20	247.4	Lv. <b>Ithaca</b> Lv	8 05	12 30

DELAWARE VALLEY TRANSPORTATION CO.

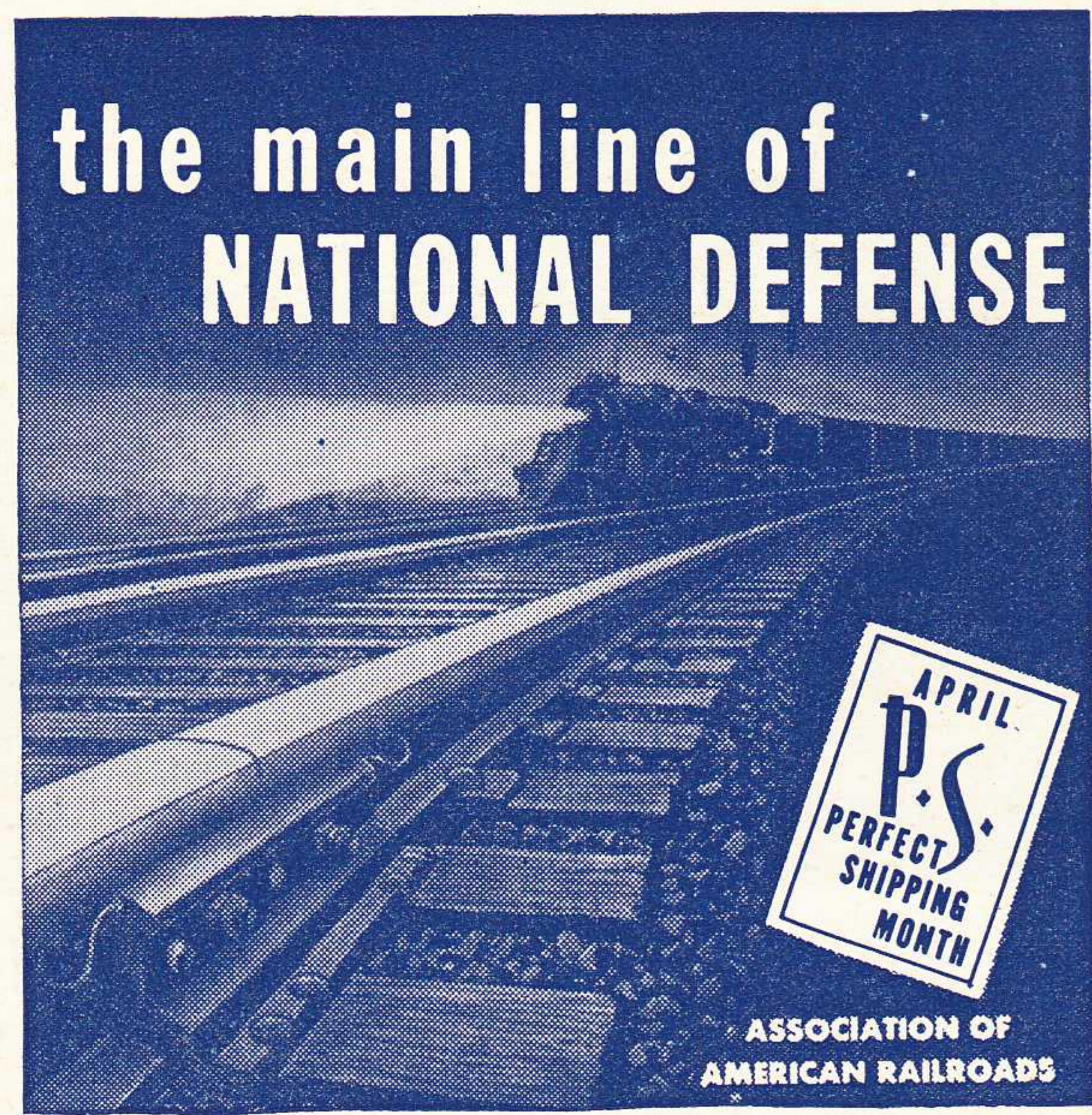
Read Down		TRAIN — BUS SCHEDULE		Read Up	
		TABLE 11	26 Ex. Sun.		
		Lv. <b>New York</b> Ar	AM		
		Lv. {Stroudsburg and East Stroudsburg} Ar	10 55		
		Marshall's Creek	8 25		
		Oak Grove	8 10		
		Coolbaugh	8 07		
		Echo Lake	7 57		
		Turn Villa	7 54		
		Shoemakers	7 51		
		Ar. <b>Bushkill</b> Lv	7 48		
			7 45		

NEW YORK, BUFFALO AND NIAGARA FALLS

9 Daily PM	3 Daily AM	15 Daily AM	TABLE 12	6 Daily PM	10 Daily AM	8 Daily AM
9 30	10 00	1 00	Lv. <b>New York</b> Ar	7 25	5 40	8 10
7 30	7 35	12 15	Lv. <b>Buffalo</b> Lv	10 00	6 15	10 30
9 15	9 05	2 35	Lv. <b>Buffalo</b> Ar	9 25	4 24	9 30
			(Central Terminal) (N Y C)			
10 15	9 55	3 35	Ar. <b>Niagara Falls</b> (NYC) Lv	8 27	3 25	8 30
AM	PM	PM		AM	PM	PM

EXPLANATION OF REFERENCE MARKS

†-Weekdays only, leaving Sunbury 12:28 P. M. ¶-No Ferry service between Christopher Street, New York, and Hoboken, N. J., on Sundays.  
 ‡-Frequent service via Hudson Tubes, but this train will not be held for Tube connections. #-These towns are located on opposite side of the river but there are bridges across the river at these points. A. M. time light type. P. M. time heavy type. a-Sunday, lv. Harrisburg 4:00 A. M. c-No boat connection for this train from Christopher Street. d-Regular stop to let off passengers. e-Stops on notice to conductor to let off passengers from Scranton and west. f-Stops on notice to Agent or conductor to receive or discharge passengers. n-Stops on notice to Agent to receive passengers for Blairstown and west. z-Stops regularly to take on passengers.  
 🚗 Train-Auto Service available at this point.



ASSOCIATION OF AMERICAN RAILROADS



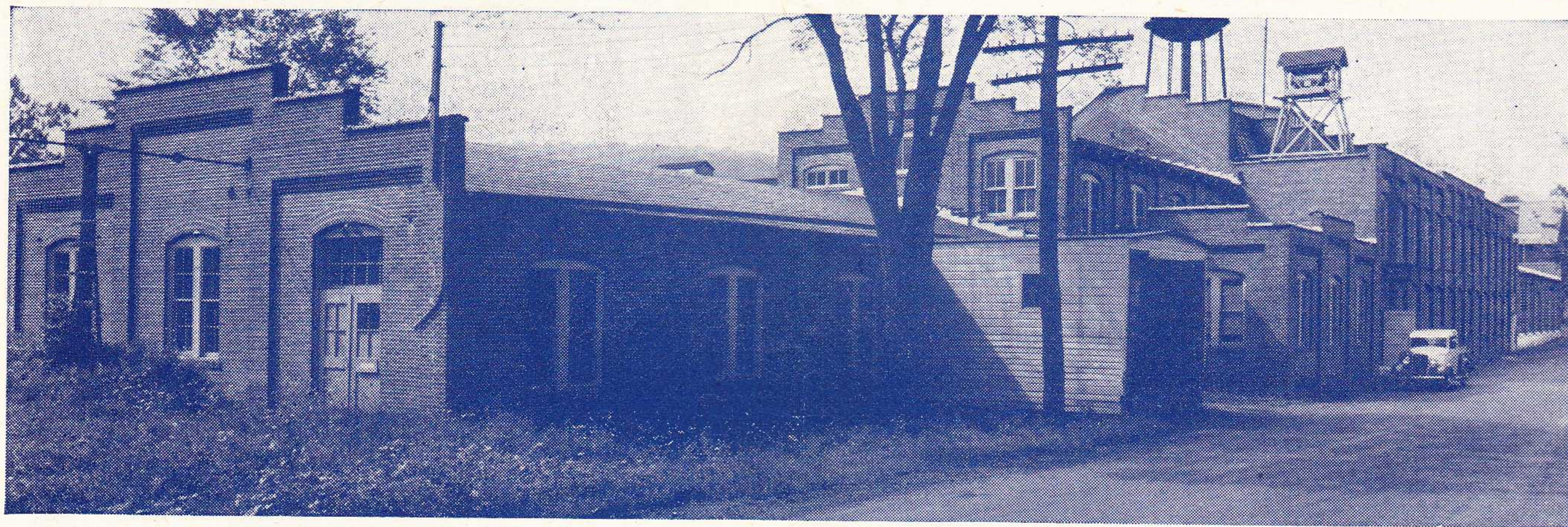
BUFFALO, SYRACUSE, BINGHAMTON AND SCRANTON TO  
PHILADELPHIA, BALTIMORE AND WASHINGTON VIA  
STROUDSBURG AND PENNSYLVANIA RAILROAD

Northward READ DOWN			Southward READ UP						
	385 Sun. Only	363 Ex. Sun.	357 Ex. Sun.	TABLE 17.			364 Ex. Sun.	376 Ex. Sun.	386 Sun. Only
	PM	Noon	AM				PM	PM	PM
.....	6 00	12 00	2 00	Lv. Washington .. Ar	2 25	10 55	10 55		
.....	6 46	12 45	3 13	..... Baltimore ..	1 41	10 08	10 08		
.....	9 00	3 00	8 04	Philadelphia, Broad St.	12 09	8 16	8 16		
.....	9 42	3 41	8 44	..... Trenton ..	11 28	7 33	7 28		
.....	11 04	5 04	10 15	Phillipsburg (Easton)	9 54	6 08	6 08		
.....	11 27	5 27	10 39	..... Belvidere ..	9 29	5 43	5 44		
.....		5 38	10 50	..... Delaware ..	9 18	5 32	5 33		
.....		5 43	10 55	..... Portland ..	9 14	5 27	5 29		
.....		5 52	11 02	..... Water Gap ..	9 06	5 18	5 21		
.....	11 55	6 00	11 10	Ar. Stroudsburg & Lv	8 58	5 10	5 13		
.....	12 05	6 32	12 23	Lv. E. Stroudsburg. Ar	8 55	5 03	5 03		
.....				Ar. Analomink .. Lv					
.....				..... Henryville ..					
.....		6 59	12 47	..... Cresco ..	8 34	4 39	4 39		
.....		7 14	1 01	..... Mount Pocono ..	8 24	4 29	4 29		
.....		7 21	1 07	..... Pocono Summit ..	8 20	4 25	4 25		
.....		7 30		..... Tobyhanna ..					
.....	1 25	8 05	1 48	..... Scranton ..	7 30	3 35	3 35		
.....	2 55	9 30	3 12	..... Binghamton ..		2 20	2 20		
.....			5 10	..... Ithaca ..		12 30	12 30		
.....			5 30	..... Syracuse ..		12 00	12 00		
.....			6 10	..... Utica ..		11 00	11 00		
.....	4 18	11 05	4 33	..... Elmira ..		1 00	1 00		
.....	7 30	2 10	7 35	Ar. Buffalo Lv		10 00	10 00		
.....	AM	AM	PM		AM	AM	AM		

PARLOR CAR SEAT RATES

AND	BETWEEN					
	New York, N. Y.	Newark, N. J.	Scranton, Pa.	Binghamton, N. Y.	Elmira, N. Y.	Buffalo, N. Y.
Bath, N. Y. ....	1.65	1.65	.85	.55	.55	.60
Binghamton, N. Y. ....	1.15	1.15	.55	.....	.55	1.15
Brick Church, N. J. ....	.....	.....	.75	1.10	1.40	2.05
Buffalo, N. Y. ....	2.10	2.10	1.45	1.15	.80	.....
Corning, N. Y. ....	1.55	1.55	.75	.55	.55	.70
Cresco, Pa. ....	.60	.55	.55	.60	.90	1.60
Dansville, N. Y. ....	1.80	1.80	1.00	.70	.55	.55
Elmira, N. Y. ....	1.45	1.45	.65	.55	.....	.80
Mt. Morris, N. Y. ....	1.85	1.85	1.15	.80	.55	.55
Mt. Pocono, Pa. ....	.65	.60	.55	.55	.85	1.60
Newark, N. J. ....	.....	.....	.75	1.15	1.45	2.10
Owego, N. Y. ....	1.25	1.25	.55	.55	.55	1.00
Pocono Summit, Pa. ....	.65	.65	.55	.55	.85	1.60
Scranton, Pa. ....	.80	.75	.....	.55	.65	1.45
Stroudsburg, Pa. ....	.55	.55	.55	.65	.95	1.60
Water Gap, Pa. ....	.55	.55	.55	.65	.95	1.60
Waverly, N. Y. ....	1.35	1.35	.60	.55	.....	.90

A. M. time light face type. P. M. time heavy type. b-Stops on notice to conductor to discharge passengers from points on the Pennsylvania Railroad. f-Stops on signal or on notice to conductor. j-Stops on signal to receive passengers for points on Pennsylvania Railroad and to discharge passengers from Binghamton and beyond. © Leaves or arrives Pennsylvania Station (30th Street), Philadelphia. The time of trains south of Delaware is shown for the accommodation of the public and this company will not be responsible for errors or changes that may occur. Train - Auto service available at this point.



INDUSTRIAL PROPERTY AVAILABLE  
MONTVILLE, N. J.

One and two story mill construction building, approximately 42,000 square feet of floor space, sprinklered; brick powerhouse 4,500 square feet, containing two 250 H.P. Casey Hedges Boilers, one 400 H.P. Cochrane Heater, one 440 H.P. Skinner Uniflow Engine and one 100 H.P. Skinner Uniflow Engine, each with G. E. A.C. Generators; two stone garages and four-room cottage. Site comprises twenty-

eight acres of land, including lake, which provides adequate supply of water. D., L. & W. sidetracks.

For further information regarding this property and other industrial locations, address

W. B. HARAHAAN, *Industrial Agent*,  
Tel.: BARclay 7-2500. 140 Cedar Street, New York City.







STATION INDEX

	Table No.		Table No.		Table No.		Table No.
<b>A</b>		Detroit, Mich.....	1, 2	Lansdale, Pa.....	9	*Phillipsburg, N. J.....	3, 6, 17
Alden, N. Y.....	4, 5	Dover, N. J.....	3, 6, 13	LaPlume, Pa.....	4, 5	Pittston, Pa.....	10
Allentown, Pa.....	9	Duryea, Pa.....	10	Leicester, N. Y.....	4, 5	Plymouth, Pa.....	10
× Ampere, N. J.....				Lime Ridge, Pa.....	10	Pocono Manor, Pa.	
Analomink, Pa.....	3, 6, 17			Lincoln Park, N. J.....	3, 6	(See Pocono Summit)	3, 6, 17
▲ Andover, N. J.....		<b>E</b>		Linwood, N. Y.....	4, 5	Pocono Summit, Pa.....	3, 6, 17
▲ Andover Jct., N. J.....		Earlville, N. Y.....	8	Lisle, N. Y.....	7	Poolville, N. Y.....	8
Ann Arbor, Mich.....	1, 2	East Bethany, N. Y.....	4, 5	*Little Falls, N. J.....	7	Portland, Pa.....	3, 6, 17
Apalachin, N. Y.....	4, 5	East Bloomsburg, Pa.....	10	Little York, N. Y.....	7	†Port Morris, N. J.....	
Apulia, N. Y.....	7	East Buffalo, N. Y.....	4, 5	Luzerne, Pa.....	10	†Port Murray, N. J.....	
Ashtabula, Ohio.....	1, 2	Easton, Pa.....	17	Lyndhurst, N. J.....	3, 6	Preble, N. Y.....	7
Athenia, N. J.....	3, 6	East Orange, N. J.....	3, 6	○ Lyons, N. J.....			
Atlanta, N. Y.....	4, 5	Echo Lake, Pa.....	11			<b>R</b>	
Atlantic City, N. J.....	9	Elmira, N. Y.....	1, 2, 4, 5, 17			Richfield Jct., N. Y.....	8
Avoca, N. Y.....	4, 5	Elmira Heights, N. Y.....	4, 5			Rockaway, N. J.....	3, 6
		Endicott-Vestal, N. Y.....	4, 5	<b>M</b>		Roseville Ave., N. J.....	3, 6
		Erie, Pa.....	1, 2	Madison, N. J.....	3, 6	Rupert, Pa.....	10
		Espy, Pa.....	10	Maplewood, N. J.....	3, 6		
<b>B</b>				Marathon, N. Y.....	7, 9	<b>S</b>	
Baldwinsville, N. Y.....	7			Marshall's Creek, Pa.....	11	Sangerfield, N. Y.....	8
Baltimore, Md.....	9, 17	<b>F</b>		Mauch Chunk, Pa.....	9	Sauquoit, N. Y.....	8
○ Basking Ridge, N. J.....		Fargo, N. Y.....	4, 5	Messengerville, N. Y.....	7	Savona, N. Y.....	4, 5
Bath, N. Y.....	4, 5	○ Far Hills-Bedminster.....	4, 5	Millburn, N. J.....	3, 6	Scranton, Pa.....	1, 2, 3, 4, 5, 6, 9, 10, 13, 17
Battle Creek, Mich.....	1, 2	Foster, Pa.....	4, 5	○ Millington, N. J.....			
Beach Haven, Pa.....	10	Fort Wayne, Ind.....	4, 5	○ Mine Brook, N. J.....	7	*Secaucus, N. J.....	
Belvidere, N. J.....	17	Fulton, N. Y.....	1, 2, 7	Minetto, N. Y.....	7	Shawnee-on-Delaware, Pa.	
○ Berkeley Heights, N. J.....				Minisink Hills (See Water Gap)	3, 6, 17	(See Water Gap)	3, 6, 17
○ Bernardsville, N. J.....				Mocanaqua, Pa.....	10	Sherburne, N. Y.....	8
Berwick, Pa.....	10	<b>G</b>		× Montclair, N. J.....		Shickshinny, Pa.....	10
Bethlehem, Pa.....	9	Galena, N. Y.....	8	*Montville, N. J.....	3, 6	Shoemakers, Pa.....	11
Big Flats, N. Y.....	4, 5	○ Gillette, N. J.....		Morris Plains, N. J.....	3, 6, 13	Short Hills, N. J.....	3, 6
Binghamton, N. Y.....	1, 2, 4, 5, 7, 8, 9, 13, 17	○ Gladstone, N. J.....		Morristown, N. J.....	3, 6, 13	Skytop, Pa. (See Cresco)	3, 6, 17
		× Glen Ridge, N. J.....	3, 6	Moscow, Pa.....	3, 6	South Danville, Pa.....	10
Blairstown, N. J.....	3, 6	Gouldsboro, Pa.....	3, 6	Mountainhome, Pa.		South Granby, N. Y.....	7
Blodgett Mills, N. Y.....	7	Grand Rapids, Mich.....	1, 2	(See Cresco)	3, 6, 17	South Orange, N. J.....	3, 6
× Bloomfield, N. J.....		Greendell, N. J.....	3, 6	Mountain Lakes, N. J.....	3, 6	Stewartsville, N. J.....	
Bloomsburg, Pa.....	10	Greene, N. Y.....	8	Mountain Station, N. J.....	3, 6	Stirling, N. J.....	1, 2
Boonton, N. J.....	3, 6	Greigsville, N. Y.....	4, 5	Mountain View, N. J.....	3, 6	St. Louis, Mo.....	1, 2
▲ Branchville, N. J.....		Groveland, N. Y.....	4, 5	† Mount Arlington, N. J.....		Stroudsburg and East	
Briar Creek, Pa.....	10	Grove Street, N. J.....	3, 6	Mount Morris, N. Y.....	4, 5	Stroudsburg, Pa.....	3, 6, 11, 17
Brick Church, N. J.....	3, 6, 13			Mount Pocono, Pa.....	3, 6, 17	Summit, N. J.....	3, 6, 13
Bridgeville, N. J.....	3, 6	<b>H</b>		† Mount Tabor, N. J.....		Sunbury, Pa.....	10
Brisben, N. Y.....	8	Hackettstown, N. J.....	3, 6	○ Murray Hill, N. J.....		Syracuse, N. Y.....	1, 2, 4, 5, 7, 9, 17
▲ Broadway, N. J.....		Hallstead, Pa.....	4, 5			<b>T</b>	
Buck Hill Falls, Pa.		Harrison, See Newark, N. J.	1, 2, 3, 6, 13	<b>N</b>		Taylor, Pa.....	10
(See Cresco)		Harrisburg, Pa.....	10	Nanticoke, Pa.....	10	Tobyhanna, Pa.....	3, 6, 17
Buffalo, N. Y.....	1, 2, 4, 5, 12, 17	Haynes, N. Y.....	8	Nescopeck, Pa.....	10	Toledo, Ohio.....	1, 2
B.R.&P. (B&O) Jct., N. Y.	4, 5	Henryville, Pa.....	3, 6, 17	Netcong (Stanhope), N. J.	3, 6	Toronto, Can.....	1, 2
Bushkill, Pa.....	11	Hicks Ferry, Pa.....	10	Newark, N. J.....	1, 2, 3, 6, 13	Towaco, N. J.....	3, 6
		Highland Ave., N. J.....	3, 6	New Hartford, N. Y.....	8	Trenton, N. J.....	3, 6, 17
<b>C</b>		Hoboken, N. J.....	1, 2, 3, 6, 7, 8, 10	New Milford, Pa.....	4, 5	Tully, N. Y.....	7, 9
Campbell, N. Y.....	4, 5	Homer, N. Y.....	7, 9	○ New Providence, N. J.....		Turn Villa, Pa.....	11
Canadensis, Pa.		Horseheads, N. Y.....	4, 5	▲ Newton, N. J.....			
(See Cresco)		Hubbardsville, N. Y.....	8	*New Village, N. J.....		<b>U</b>	
Candor, N. Y.....	13	Hunlock Creek, Pa.....	10	New York, N. Y.....	1, 2, 3, 6, 7, 8, 11, 12, 13	Utica, N. Y.....	1, 2, 4, 5, 8, 9, 17
Caroline, N. Y.....	13			Niagara Falls, N. Y.....	12		
Catatonk, N. Y.....	13	<b>I</b>		Nichols, N. Y.....	4, 5	<b>V</b>	
Catawissa, Pa.....	10	Indianapolis, Ind.....	1, 2	Nicholson, Pa.....	4, 5	Vestal } ..... 4, 5	
Chadwicks, N. Y.....	8	Itaska, N. Y.....	7	North Alexander, N. Y.....	4, 5	Endicott } ..... 4, 5	
Chatham, N. J.....	3, 6	Ithaca, N. Y.....	1, 2, 4, 5, 13, 17	North Brookfield, N. Y.....	8		
Chenango Bridge, N. Y.....	7, 8			Northumberland, Pa.....	10	<b>W</b>	
Chenango Forks, N. Y.....	7, 8	<b>J</b>		Norwich, N. Y.....	1, 2, 8, 9	Wallace, N. Y.....	4, 5
Chicago, Ill.....	1, 2	Jackson, Mich.....	1, 2			Washington, D. C.....	9, 17
Cincinnati, Ohio.....	1, 2	Jamesville, N. Y.....	7	Oak Grove, Pa.....	11	Washington, N. J.....	3, 6
Clarks Summit, Pa.....	4, 5	Johnsonburg, N. J.....	4, 5	Old Forge, Pa.....	10	Washington Mills, N. Y.....	8
Clayville, N. Y.....	8	Johnson City, N. Y.....	4, 5	Onativia, N. Y.....	7	Water Gap, Pa.....	3, 6, 17
Cleveland, Ohio.....	1, 2			Orange, N. J.....	3, 6	† Waterloo, N. J.....	
Cohocton, N. Y.....	4, 5	<b>K</b>		Oswego, N. Y.....	1, 2, 4, 5, 7	Waterville, N. Y.....	8
Conklin, N. Y.....	4, 5	Kalamazoo, Mich.....	1, 2	Owego, N. Y.....	4, 5, 13	× Watsessing Ave., N. J.....	
Convent, N. J.....	3, 6	Kanona, N. Y.....	4, 5	Oxford, N. Y.....	8	Waverly, N. Y.....	4, 5
Coolbaugh, Pa.....	11	Killawog, N. Y.....	7	Oxford Furnace, N. J.....	3, 6	Wayland, N. Y.....	4, 5
Coopers, N. Y.....	4, 5	Kingsland, N. J.....	3, 6			Wayne Junction, Pa.....	9
Corning, N. Y.....	4, 5	Kingsley, Pa.....	4, 5	Painted Post, N. Y.....	4, 5	West Nanticoke, Pa.....	10
Cortland, N. Y.....	1, 2, 4, 5, 7, 9, 15	Kingston, Pa.....	10	Paris, N. Y.....	8	West Pittston, Pa.....	10
				Passaic, N. J.....	3, 6	† Wharton, N. J.....	
Cortland Jct., N. Y.....	7	<b>L</b>		Paterson, N. J.....	3, 6	Whitney Point, N. Y.....	7, 9
Coventry, N. Y.....	8	▲ Lafayette, N. J.....	3, 6	○ Peapack, N. J.....		Wilkes-Barre, Pa.....	3, 4, 5, 6, 9, 10
Craigs, N. Y.....	4, 5	Lake Hopatcong, N. J.....	3, 6	Perkinsville, N. Y.....	4, 5	Willseyville, N. Y.....	13
▲ Cranberry Lake, N. J.....		Lamson, N. Y.....	7	Philadelphia, Pa.....	3, 6, 9, 13, 17	Wyoming, Pa.....	10
Cresco, Pa.....	3, 6, 17	Lancaster, N. Y.....	4, 5	Pittsburgh, Pa.....	10		

▲ Located on Sussex Branch. Tables 3, 6, show service to and from Netcong, N. J., the junction point. (See Suburban time table.)  
 × Located on Montclair Branch. Tables 3, 6, show service to and from Newark, N. J., the junction point. (See Suburban time table.)  
 ○ Located on Gladstone Branch. Tables 3, 6, show service to and from Summit, N. J., the junction point. (See Suburban time table.)  
 \* Located on Phillipsburg Branch. Tables 3, 6, show service to and from Washington, N. J., the junction point. (See Suburban time table.)  
 † Located on Boonton Line. (See Suburban time table.)  
 ‡ Located on Main Line. (See Suburban time table.)



# DIRECTORY OF OPERATING AND TRAFFIC DEPARTMENTS

General Offices—140 Cedar Street, New York. Telephone BARclay 7-2500

## OPERATING DEPARTMENT

G. J. RAY, Vice-President, New York

<p>E. B. MOFFATT, General Superintendent.....Scranton, Pa.                  LEON A. JENKINS, Supt. Car Service.....Scranton, Pa.                  W. A. WILLIAMS, Supt. Dining Car Service.....Hoboken, N. J.                  J. H. LERBS, Supt. Morris and Essex Division.....Hoboken, N. J.                  G. W. MURPHY, Supt. Scranton Division.....Scranton, Pa.                  GEORGE D. KENNEDY, Supt. Buffalo Division.....Buffalo, N. Y.                  FRANK CIZEK, Supt. Syracuse and Utica Division.....Binghamton, N. Y.                  HENRY FOULKES, Superintendent Mail and Express Traffic....Hoboken, N. J.</p>	<p>F. H. COGAN, Superintendent Marine Dept. ....Hoboken, N. J.                  J. M. EMERY, Consulting Marine Engineer.....Hoboken, N. J.                  G. A. PHILLIPS, Chief Engineer.....Hoboken, N. J.                  EDWARD E. ROOT, Chief of Motive Power.....Scranton, Pa.                  I. H. LANCE, General Storekeeper.....Scranton, Pa.                  ALBERT A. JOHNSON, Engineer Maintenance of Way.....Hoboken, N. J.                  J. E. SAUNDERS, Signal Engineer.....Hoboken, N. J.                  P. H. MITCHELL, Superintendent Car Department.....Scranton, Pa.                  J. S. THORP, Electrical Engineer.....Hoboken, N. J.</p>
---	---

## TRAFFIC DEPARTMENT

J. J. BYRNE, Vice-President, New York

<p>W. H. DOMINICK, Passenger Traffic Manager.....New York                  J. L. HOMER, General Passenger Agent.....New York                  W. E. CARBONE, Gen. Western Pass. Agent... 327 So. LaSalle St., Chicago, Ill.                  M. H. MURPHY, Gen. Eastern Pass. Agent..... 500 Fifth Ave., New York                  C. M. LYON, Gen. Baggage and Milk Traffic Agent .....Hoboken, N. J.                  R. F. IRWIN, Advertising Agent.....New York</p>	<p>CHARLES F. McTAGUE, General Freight Traffic Manager.....New York                  W. J. DAILY, Freight Traffic Manager.....New York                  C. A. ARENTZEN, Asst. Freight Traffic Manager.....New York                  GEORGE HERBERT Asst. Freight Traffic Manager.....New York                  W. M. MacPHERSON, Asst. Freight Traffic Manager.....Buffalo, N. Y.                  C. E. HALL, Western Traffic Manager.....Chicago, Ill.                  J. H. CHRISTY, Assistant Western Traffic Manager.....Chicago, Ill.                  J. S. SIKORA, General Freight Agent.....New York                  E. M. SELLERS, Assistant General Freight Agent.....New York                  J. F. RYDENE, General Coal Freight Agent.....New York                  W. B. HARAHAHAN, Industrial Agent.....New York                  W. J. GEMEINER, Asst. General Freight Agent, Produce Exchange, New York                  W. H. BROWNE, Foreign Freight Agent, Produce Exchange.....New York                  L. A. DALTON, General Dairy Agent.....Chicago, Ill.</p>
---	--

**Albany, N. Y.**—Room 5, Del. & Hud. Bldg.—Phone Albany 3-4517  
 HARRY F. DOYLE, Commercial Agent

**Atlanta, Ga.**—22 Marietta Street—Phone Jackson 1317  
 CHARLES SANTOR, Commercial Agent

**Binghamton, N. Y.**—Press Bldg.—Phone Binghamton 2-3697  
 W. E. DOWNS, Division Passenger Agent

**Boston, Mass.**—N. Station Office Bldg., 150 Causeway St.—Phone Capital 8970  
 JOHN M. KERANS, General Agent

**Brooklyn, N. Y.**—Wallabout Terminal—Phone Stagg 2-8180  
 GEORGE R. MARR, City Freight Agent

**Buffalo, N. Y.**—11 W. Genesee St.—Phone Cleveland 2488  
 LOUIS F. HEINECK, Gen. Agent, Pass. Dept.

**Chicago, Ill.**—327 South LaSalle Street—Phone Wabash 3443  
 R. G. CARLSON, Commercial Agent  
 D. J. WHITE, Traveling Passenger Agent

**Cincinnati, Ohio**—18 East Fourth Street—Phone Main 0730  
 WILLIAM J. NOLAN, General Agent

**Cleveland, Ohio**—310 Park Bldg.—Phone Main 0435  
 M. J. NAUGHTON, General Agent

**Detroit, Mich.**—2031 National Bank Bldg.—Phone Cadillac 6727  
 O. H. WARMBOLD, General Agent  
 L. E. TENNEY, Assistant General Agent  
 F. W. SCHEPPMANN, District Passenger Agent

**Easton, Pa.**—402 Northampton Street—Phone Easton 9021  
 Z. LEE MATHERS, Commercial Agent

**Elmira, N. Y.**—Lackawanna Station—Phone Elmira 6261  
 N. A. MITTS, Traveling Passenger Agent

**Indianapolis, Ind.**—410 Guaranty Bldg.—Phone Riley 9071  
 SAMUEL J. NEILL, Commercial Agent

**Kansas City, Mo.**—403 Railway Exchange Bldg.—Phone Main 2226  
 BRUCE L. DILL, Commercial Agent

**Los Angeles, Calif.**—108 West Sixth Street—Phone Tucker 2067  
 H. E. ALLEN, Commercial Agent

**Milwaukee, Wis.**—1315 Majestic Bldg.—Phone Marquette 6410  
 J. R. McDOWELL, Commercial Agent

**Minneapolis, Minn.**—823 Metropolitan Life Bldg.—Phone Main 5301  
 L. L. NEWELL, Commercial Agent

**Newark, N. J.**—Lackawanna Station—Phone Humboldt 2-2100  
 THOMAS L. STEELE, Division Freight Agent

856 Broad Street—Phone Market 3-3440  
 C. F. FELTHAM, Division Passenger Agent

**New Haven, Conn.**—157 Church Street—Phone New Haven 6-2466  
 WILLIAM J. WYNNE, General Agent

**New York, N. Y.**—Produce Exchange—Phone Bowling Green 9-5100  
 WILLIAM K. MARTIN, General Agent  
 P. E. AHERN, City Freight Agent

500 Fifth Avenue at 42nd Street—Phone Lackawanna 4-0234  
 W. H. WEBER, District Passenger Agent

E. WORTMANN, Steamship Passenger Agent

**Paterson, N. J.**—302 Main Street—Phone Sherwood 2-8998  
 ROBERT H. EDMOND, City Ticket Agent

**Philadelphia, Pa.**—1602 Finance Bldg.—  
 Phone Bell, Rittenhouse 2848—Keystone, Race 6026  
 J. C. DAWSON, General Agent

**Pittsburgh, Pa.**—503 Park Bldg.—Phone Atlantic 0463  
 J. A. McCOY, General Agent

**Portland, Ore.**—Room 533, Terminal Sales Bldg.—Phone BEacon 0757  
 J. E. GATHMAN, General Agent

**St. Louis, Mo.**—1971-1972 Railway Exchange Bldg.—Phone Main 2460  
 A. L. BAHLER, General Agent

**St. Paul, Minn.**—1008 Pioneer Bldg.—Phone Cedar 5765  
 R. A. WARREN, Commercial Agent

**San Francisco, Calif.**—705 Monadnock Bldg.—Phone Sutter 7515  
 W. R. KNEISS, General Agent

**Scranton, Pa.**—Lackawanna Station—Phone Scranton 5251  
 C. V. McKOWNE, Division Freight Agent  
 J. H. VAN WIE, Division Passenger Agent

**Seattle, Wash.**—1331 Third Avenue—Phone Main 3055  
 J. E. GATHMAN, General Agent

**Syracuse, N. Y.**—Lackawanna Station—Phone Syracuse 2-9211  
 G. W. EGGERT, Division Freight Agent  
 O. J. STINGER, City Passenger Agent

**Toledo, Ohio**—710 Second National Bank Bldg.—Phone Adams 1817  
 C. R. HARTSHORN, Commercial Agent

**Toronto, Ont.**—1806 Royal Bank Bldg.—Phone Elgin 7635  
 J. S. BRANNING, Canadian Agent