

Time Shown in this folder is EASTERN STANDARD TIME
One hour earlier than DAYLIGHT SAVING TIME

Lackawanna Railroad

THE ROAD OF
ANTHRACITE

BEST WAY
BETWEEN
BUFFALO
AND
NEW YORK

SUPERIOR THROUGH SERVICE
BETWEEN
CHICAGO
CLEVELAND DETROIT
NEW YORK

In Effect

April 24, 1927

Printed in U. S. A.

Time Shown in this folder is EASTERN STANDARD TIME
One hour earlier than DAYLIGHT SAVING TIME

Lackawanna Railroad

THE ROAD OF
ANTHRACITE

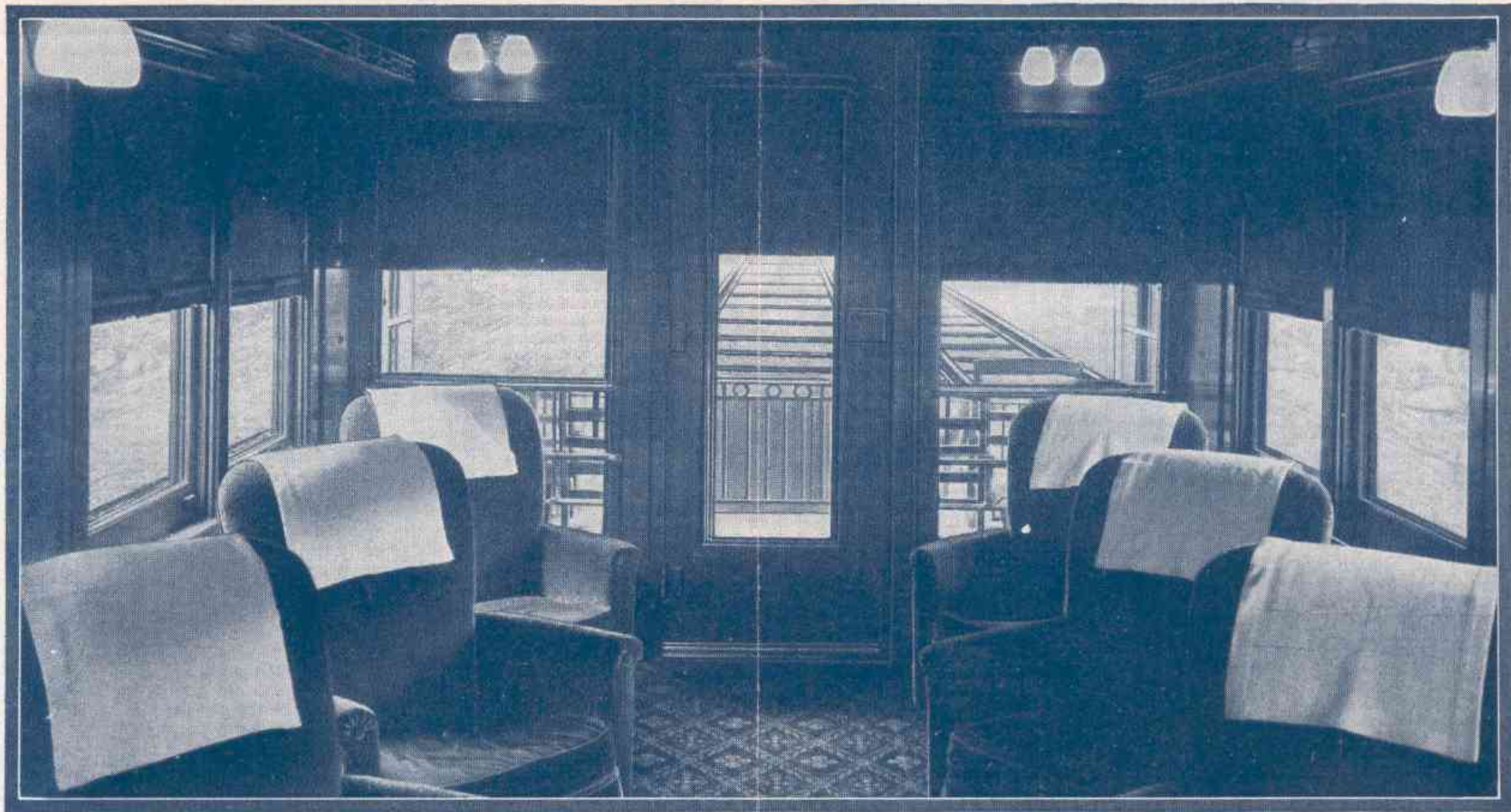
BEST WAY
BETWEEN
NEW YORK
AND
BUFFALO

SUPERIOR THROUGH SERVICE
BETWEEN
NEW YORK
DETROIT CLEVELAND
CHICAGO

In Effect

April 24, 1927

FDRA. D. 3 10



IN HONOR OF FAMOUS WOMEN

It is of particular interest that the new pullman parlor cars now in service on the Lackawanna Limited between New York, Buffalo and Syracuse are named in honor of the following famous women:

American author and reformer. Born in New York City, May, 1819. One of the organizers of American Women's Suffrage. **JULIA WARD HOWE** During Civil War wrote her most famous poem, "The Battle Hymn of the Republic." Died in 1910.

Born in 1806, Coxhoe Hall, Durham, England. Author of many poems. In 1846 was married to the poet, Robert Browning. **ELIZABETH BROWNING** "Sonnets from the Portuguese" and "Aurora Leigh" were perhaps her best known poems. She died in June, 1861.

Born in Manchester, England, Nov. 24th, 1849. Moved to Knoxville, Tenn., in 1865. Her name became well known with the publication of "That Lass o' Lowrie's." **FRANCES BURNETT** "Little Lord Fauntleroy," "Sara Crewe," "Pretty Sister of Jose," were some of her earlier successes. "Little Lord Fauntleroy" was both a stage and screen success. Mrs. Burnett now resides in England.

First child of English parents born in America. Father was Ananias Dare, who married Eleanor, daughter of John White, Governor of Virginia. The little girl was baptized Virginia at Roanoke one month after settlement was made. **VIRGINIA DARE**

A famous actress. Born in Cracow, Poland, 1844. Some of the plays she appeared in were "Mary Stuart," "The Old Love and the New," "Romeo and Juliet." Her first appearance as an English speaking actress was in San Francisco in 1877. Her stage name was taken from her first husband, Modrzejewski, who was her guardian and to whom she was married at the age of seventeen. **HELENA MODJESKA**

Clara Morris. Born in Toronto, Canada, 1849. Made her first appearance on the stage at the age of thirteen at the Academy of Music, Cleveland, Ohio, in "Seven Sisters." **CLARA MORRIS** Later she came to New York City and scored an instantaneous success in "Man and Wife" at the Fifth Avenue Theatre. She also played in "Saratoga," "No Name," "Divorce" and "Article 47." She starred in various plays throughout the United States and Canada. Died November 20th, 1925.

STATION INDEX

Table No.	Table No.	Table No.	Table No.
Ackermanville, Pa. 12	Dalton, Pa. 4, 5	Killawog, N. Y. 7	Peapack, N. J. 12
▶ Ackerson, N. J. 4, 5	Dansville, N. Y. 4, 5	Kingsland, N. J. 3, 6	Pen Argyl, Pa. 4, 5
Alden, N. Y. 4, 5, 11	Danville, Pa. 12	Kingsley, Pa. 1, 2, 9	Penna. R. R. Jct., N. Y. 1, 2, 3, 6, 7-A, 10, 16
Alford, Pa. 4, 5, 11	Delabole, Pa. 3, 6	Kingston, Pa. 3, 6	◀ Phillipsburg, N. J. 3, 6, 16
Allentown, Pa. 1, 2, 7-A	Delawanna, N. J. 3, 6, 16	▶ Lafayette, N. J. 3, 6	Pittston, Pa. 9
× Ampere, N. J. 3, 6, 16	Delaware, N. J. 14	Lake Hopatcong, N. J. 7	Plymouth, Pa. 9
▶ Analomink, Pa. 3, 6, 16	Delaware Valley, Pa. 4, 5	Lamson, N. Y. 4, 5	Pocono Summit, Pa. 3, 6, 16
▶ Andover, N. J. 4, 5	Dellwood, N. Y. 3, 6	Lancaster, N. Y. 7-A	Poolville, N. Y. 3, 6, 12, 16
▶ Andover Jct., N. J. 4, 5	Denville, N. J. 1, 2, 4, 5	Lansdale, Pa. 3, 6	Portland, Pa. 3, 6
Ann Arbor, Mich. 2, 4, 5	Depew, N. Y. 3, 6	LaPlume, Pa. 4, 5	Port Morris, N. J. 3, 6
Apalachin, N. Y. 7	Detroit, Mich. 4, 5	Lehigh, Pa. 4, 5	Port Murray, N. J. 4, 5
Apulla, N. Y. 4, 5	Dover, N. J. 9	Leicester, N. Y. 3, 6	Portway, N. Y. 7
Atlanta, N. Y. 7-A	Dunkirk, N. Y. 8	Lime Ridge, Pa. 4, 5	Preble, N. Y. 4, 5
Atlantic City, N. J. 4, 5	Duryea, Pa. 4, 5	Lincoln Park, N. J. 7	Ray, N. Y. 8, 15
▶ Augusta, N. J. 9	Earlville, N. Y. 12	Linwood, N. Y. 4, 5	Richfield Jct., N. Y. 15
Avoca, N. Y. 4, 5	East Alexander, N. Y. 4, 5	Lisle, N. Y. 4, 5	Richfield Springs, N. Y. 3, 5
Avondale, Pa. 7	East Bangor, Pa. 4, 5	Litchfield, N. Y. 7	Rockaway, N. J. 3, 6
Baldwinsville, N. Y. 1, 2, 7-A, 16	East Bethany, N. Y. 4, 5	* Little Falls, N. J. 4, 5	Roseville, Ave., N. J. 6
Baltimore, Md. 1, 2, 7-A, 16	East Buffalo, N. Y. 13	Little York, N. Y. 4, 5	Rupert, Pa. 9
Bangor, Pa. 12	East Freetown, N. Y. 14	Lounsbury, N. Y. 3, 6	Sangerfield, N. Y. 8
○ Basking Ridge, N. J. 4, 5	East Lancaster, N. Y. 3, 6	Lowman, N. Y. 13	Sauquoit, N. Y. 4, 8
Bath, N. Y. 4, 5	Easton, Pa. 15	Luzerne, Pa. 3, 6	Savona, N. Y. 1, 2, 3, 4, 5
Battle Creek, Mich. 9	East Orange, N. J. 12	Lyndhurst, N. J. 3, 6	Scranton, Pa. 6, 8, 9, 10, 15
Beach Haven, Pa. 4, 5	East Winfield, N. Y. 3, 6	Lyons, N. J. 14	* Secaucus, N. J. 6
Belfast Jct., Pa. 12	Echo Lake, Pa. 1, 2, 4, 5, 16	Madison, N. J. 7, 7-A	Sherburne, N. Y. 8
Belvidere, N. J. 16	Edelman, Pa. 4, 5	Maples, Pa. 14	Shickshinny, Pa. 8
○ Berkeley Heights, N. J. 9	Elmhurst, Pa. 1, 4, 5	Maplewood, N. J. 12	Shoemakers, Pa. 19
○ Bernardsville, N. J. 1, 2, 7-A	Elmira, N. Y. 1, 4, 5	Marathon, N. Y. 12	Short Hills, N. J. 3, 4
Berwick, Pa. 4, 5	Elmira Heights, N. Y. 9	Marshall's Creek, Pa. 1, 7-A	Solon, N. Y. 16
Bethlehem, Pa. 1, 2, 7-A	Espy, Pa. 4, 5	Martins Creek Jct., Pa. 13	South Columbia, N. Y. 13
Big Flats, N. Y. 1, 2, 4, 5, 7, 7-A	Factoryville, Pa. 4, 5	Mauch Chunk, Pa. 7	South Granby, N. Y. 5
Binghamton, N. Y. 8, 10, 16	Fargo, N. Y. 12	Mayburys, N. Y. 3, 6	South Orange, N. J. 3, 6, 7
Blairstown, N. J. 3, 6	○ Far Hills-Bedminster	McGraw, N. Y. 15	◀ Stewartville, N. J. 12
Blodgett Mills, N. Y. 7	Flicksville, Pa. 9	Messingerville, N. Y. 15	Stier, Pa. 4, 5
× Bloomfield, N. J. 3, 6	Forty Fort, Pa. 4, 5	Millburn, N. J. 7	Stirling, N. J. 2, 3, 6, 14
Bloomsburg, Pa. 9	Foster, Pa. 11	Millers Mills, N. Y. 11	Stroudsburg and East
Boonton, N. J. 3, 6	▶ Franklin, N. J. 1, 4, 5	Millington, N. J. 11	Stroudsburg, Pa. 16
▶ Branchville, N. J. 9	Frutcheys, Pa. 7	○ Mine Brook, N. J. 7	† Succasunna, N. J. 3, 6
▶ Branchville, Jct., N. J. 3, 6	Ft. Wayne, Ind. 8	Minetto, N. Y. 3, 6	Summit, N. J. 1, 2, 4, 5, 7
Briar Creek, Pa. 13	Fulton, N. Y. 13	▶ Monroe, N. J. 7-A, 16	Susquehanna Ave., Pa. 9
Brick Church, N. J. 3, 6	Galena, N. Y. 4, 5	× Montclair, N. J. 7	Syracuse, N. Y. 7-A, 16
Bridgeville, N. J. 3, 6	Georgetown, N. Y. 13	Montrose, Pa. 9	Taylor, Pa. 11
Bridgewater, N. Y. 15	○ Gillette, N. J. 4, 5	* Montville, N. J. 3, 6	Tiffany, Pa. 3, 6, 16
Brisben, N. Y. 8	○ Gladstone, N. J. 3, 6	Morris Plains, N. J. 12	Tobyhanna, Pa. 4, 5
◀ Broadway, N. J. 1, 2, 4, 5, 16	○ Glenburn, Pa. 4, 5	Morristown, N. J. 4, 5	Toledo, Ohio. 4, 5
Buffalo, N. Y. 1, 2, 4, 5, 16	× Glen Ridge, N. J. 3, 6	Moscow, Pa. 3, 6	Toronto, Can. 3, 6
B. R. & P. Jct., N. Y. 14	Gouldsboro, Pa. 12	Mountain Lakes, N. J. 3, 6	Towaco, N. J. 3, 6, 16
Bushkill, Pa. 9	Grand Central Pa. 4, 5	Mountain Station, N. J. 3, 6	Trenton, N. J. 7, 7-A
Cameron, Pa. 4, 5	Grand Rapids, Mich. 3, 6	Mountain View, N. J. 4, 5	Turn Villa, Pa. 1, 2, 4, 5, 8, 15
Campbell, N. Y. 10	Greendell, N. J. 4, 5	Mount Arlington, N. J. 12	Utica, N. Y. 4, 5
Candor, N. Y. 10	Greene, N. Y. 4, 5	Mount Bethel, Pa. 6	Vestal } 4, 5
Caroline, N. Y. 10	Gretzville, N. Y. 4, 5	Mount Morris, N. Y. 3, 6, 16	Endicott } 4, 5
Catatonk, N. Y. 10	Groveland, N. Y. 3, 6	Mount Pocono, Pa. 1, 2, 3, 4, 5	Wallace, N. Y. 4, 5
Catawissa, Pa. 15	Grove Street, N. J. 3, 6	Mount Tabor, N. J. 6	Washington, N. J. 3, 6
Cedarville, N. Y. 8	Hackettstown, N. J. 4, 5	○ Murray Hill, N. J. 8	Washington, D. C. 1, 2, 7-A, 16
Chadwick, N. Y. 3, 6	Hallstead, Pa. 4, 5	Nay Aug, Pa. 12	Washington Mills, N. Y. 8
Chatham, N. J. 7, 8	Harrison, See Newark, N. J. 11	Nazareth, Pa. 6	Water Gap, Pa. 1, 2, 3, 6, 16
Chenango Bridge, N. Y. 7, 8	Heart Lake, Pa. 3, 6, 16	Netcong (Stanhope) N. J. 1, 2, 3, 4, 5	Waterloo, N. J. 3, 6
Chenango Forks, N. Y. 1, 2, 4, 5	Henryville, Pa. 9	Newark, N. J. 6, 7, 8, 9, 10	Waterville, N. Y. 8
† Chester, N. J. 4, 5	Hicks Ferry, Pa. 4, 5	New Hartford, N. Y. 4, 5	× Watsessing Ave., N. J. 4, 5
Chicago, Ill. 4, 5	Highland Ave, N. J. 3, 6	New Milford, Pa. 4, 5	Waverly, N. Y. 4, 5
Chulasky, Pa. 13	Hoboken, N. J. 8, 9, 10	▶ Newton, N. J. 1, 5	Wayland, N. Y. 1, 2, 7-A
Cincinnati, Ohio. 4, 5	Homer, N. Y. 7, 7-A	◀ New Village, N. J. 1, 2, 3, 4, 5	Wayne Junction, Pa. 4, 5
Cincinnati, N. Y. 4, 5	Horseheads, N. Y. 4, 5	New York, N. Y. 6, 7, 8, 9, 10	West Alden, N. Y. 4, 5
Clarks Summit, Pa. 1, 2, 4, 5	† Horton, N. J. 8	Nichols, N. Y. 4, 5	West Nantleoke, Pa. 9
Clayville, N. Y. 3, 6	Hubbardsville, N. Y. 8	Nicholson, Pa. 4, 5	West Pittston, Pa. 9
Cleveland, Ohio. 4, 5	Hunlock Creek, Pa. 9	North Alexander, N. Y. 3, 6	○ West Summit, N. J. 8
Clifton, N. J. 4, 5	Indianapolis, Ind. 4, 5	North Brookfield, N. Y. 7	West Utica. 15
Cohocton, N. Y. 4, 5	† Ironia, N. J. 7	North Durien, N. Y. 4, 5	West Winfield, N. Y. 3, 6
Conklin, N. Y. 4, 5	Itaska, N. Y. 1, 2, 4, 5, 10	Northumberland, Pa. 8	Wharton, N. J. 13
Conklin Center, N. Y. 3, 6	Ithaca, N. Y. 16	Norwich, N. Y. 3, 6	Whites Mills, N. Y. 7, 7-A
Convent, N. J. 4, 5	Jackson, Mich. 4, 5	Oak Grove, Pa. 4, 5, 10	Whitney Point, N. Y. 3, 4, 5, 6, 7-A, 9
Coolbaugh, Pa. 7	Jamesville, N. Y. 3, 6	Old Forge, Pa. 8	Willards, N. Y. 4, 5
Coopers, N. Y. 4, 5	Johnsonburg, N. J. 4, 5	Onatvln, N. Y. 3, 6	Wilawana, Pa. 4, 5
Corning, N. Y. 1, 7, 7-A, 13	Johnson City, N. Y. 7	Orange, N. J. 7	Willow Springs, Pa. 4, 9
Cortland, N. Y. 7, 13	Kalamazoo, Mich. 4, 5	Oswego, N. Y. 4, 5, 10	Willow Point, N. Y. 4, 5
Cortland, Jct., N. Y. 8	Kanona, N. Y. 4, 5	Owego, N. Y. 3, 6	Willseyville, N. Y. 10
Coventry, N. Y. 4, 5	† Kenvil, N. J. 4, 5	Oxford, N. Y. 4, 5	Wyoming, Pa. 9
Craigs, N. Y. 3, 6, 16		Oxford Furnace, N. J. 8	Youngs Crossing, N. Y. 15
Craig's Meadows, Pa. 4, 5		Painted Post, N. Y. 1, 3, 6	
▶ Cranberry Lake, N. J. 4, 5		Paris, N. Y. 1, 3, 6	
Cresco, Pa. 4, 5		Passaic, N. J. 1, 3, 6	
Curtis, N. Y. 4, 5		Paterson, N. J. 1, 3, 6	

▶ Located on Sussex Branch. Tables 3, 6, show service to and from Netcong, N. J., the junction point. (See local time table.)
 × Located on Montclair Branch. Tables 3, 6, show service to and from Newark, N. J., the junction point. (See local time table.)
 ○ Located on Passaic and Delaware Branch. Tables 3, 6, show service to and from Summit, N. J., the junction point. (See local time table.)
 ◀ Located on Phillipsburg Branch. Tables 3, 6, show service to and from Washington, N. J., the junction point. (See local time table.)
 † Located on Chester Branch. Tables 3, 6, show service to and from Dover, N. J., the junction point. (See local time tables.)
 * Located on Boonton Line (See local time table.)

General Information for Passengers

TIME TABLES—

This time table is furnished to the public as a matter of information only. This company is not responsible for errors in same, inconvenience or damage resulting from delayed trains, or failure to make connections; schedules herein are subject to change without notice.

Purchase Tickets from starting point through to destination before boarding train and secure the benefit of the lowest available fare.

Children under five years of age, when accompanied by parent or guardian, will be carried free, except that if the sole occupant of Pullman space, they will be charged half railroad fare and regular Pullman fare; children five years of age and under twelve will be charged half fare, and children twelve years of age and over will be charged full fare.

Adjustment of Fares—In case of dispute with conductors or agents, passengers should pay the fare required, take a receipt, and communicate with the General Passenger Agent, 90 West Street, New York.

Passengers leaving train short of destination of the ticket should have the conductor make endorsement on the ticket to that effect.

Redemption of Tickets—Wholly or partially unused tickets will be redeemed by charging regular tariff fares for the portions used upon application to the General Passenger Agent.

Baggage—(a) 150 pounds of baggage, not exceeding \$100.00 in value, will be checked free on each adult ticket, and 75 pounds, not exceeding \$50.00 in value, on each child's ticket. Excess charges will be collected for excess weight, value and size, but no piece of baggage exceeding 250 pounds in weight, 72 inches in greatest dimension, or single shipment exceeding \$2,500.00 in value will be accepted for checking.

(b) This Company cannot guarantee to forward baggage on same train with passenger, and when necessary, will forward it on other trains. To facilitate prompt delivery at destination passengers are advised to arrange for forwarding on a preceding train.

(c) **Baggage Checked to New York City**—Unless otherwise specified, all baggage checked to New York City will be sent to the West 23rd Street Station.

(d) **Baggage Delivery Service**—Arrangements can be made at the time of checking baggage for delivery of same to residence, hotel or other point in New York City, Newark, Buffalo and other important cities without further attention on the part of the owner.

(e) **Storage** will be charged on each piece of baggage remaining at stations over 24 hours, except that certain concessions will be allowed for Sundays and holidays.

(f) Baggage for stations where there is no agent must be claimed at the baggage car door immediately upon arrival at that station; otherwise it will be carried to first station where agent is on duty and held for further orders.

(g) **Parcel Rooms** will be found at the principal stations, where packages, hand baggage, etc; may be checked and cared for at a nominal charge.

Stop-overs—(a) A stop-over of not to exceed ten days will be granted to holders of all one-way tickets at any or all of the following points through which ticket reads, when the journey beyond desired stop-over point is over the Lackawanna Railroad, by depositing ticket immediately upon arrival with Depot Ticket Agent:

Binghamton	Elmira	Owego	Syracuse
Buffalo	Ithaca	Scranton	Utica
Corning	New York	Stroudsburg	Waverly
Dansville			

(b) Stop-overs will be permitted at any point en route, within final limit, upon application to the conductor, on All-Year, Summer and Winter Tourist Tickets.

Optional Routes—Tickets issued east of and including Boonton, N. J.; Morristown, N. J., and Gladstone, N. J., reading to Scranton, Pa., and points beyond, may be made to read via Hoboken without extra charge, when not less than the fare applying from Hoboken has been collected. Also tickets issued at Stations east of and including Morristown, N. J., and Gladstone, N. J., and reading to Scranton, Pa., and points beyond may be made to read via Newark or Brick Church without extra charge, when not less than the fare applying from Newark or Brick Church, as the case may be, has been collected. This arrangement also applies in the reverse direction.

Great Lakes Optional Arrangement — Under optional arrangements, tickets reading via rail lines will be accepted between certain Lake ports on Great Lakes Steamer Lines during the period when boats are in operation. Consult Ticket Agents for details.

Niagara Falls Side-Trip—A free side-trip may be secured from Buffalo to Niagara Falls, N. Y., and return in connection with certain classes of through westbound and eastbound tickets. Consult Ticket Agent relative to details.

Hudson and Manhattan Tube Trains—Tube trains are operated at frequent intervals, day and night, between Lackawanna Terminal (Hoboken) and Cortlandt Street (downtown New York), fare 6c. Also to Christopher Street, 14th Street (6th Avenue), 23rd Street (6th Avenue), and 33rd Street (Broadway)—the hotel and shopping districts—fare 10c. See map on pages 31 and 32.

Lost Articles—Inquire of Mr. G. E. Zippel, General Baggage Agent, Hoboken, N. J. or nearest ticket agent or passenger representative.

National Travelers' Aid Society—Representatives of the National Travelers' Aid Society are at many of the larger stations for the purposes of relief of distress and assistance of the unprotected. Those in need of such service should inquire of the station force for a National Travelers' Aid Society representative.

LACKAWANNA RAILROAD—THE ROAD OF ANTHRACITE

CONDENSED THROUGH TIME AND EQUIPMENT OF TRAINS—PULLMAN PARLOR AND SLEEPING CAR LINES. DINING CAR SERVICE.

TABLE 1

WESTWARD

STANDARD TIME

No. 3—LACKAWANNA LIMITED. Daily.

Runs via Newark and Blairstown.

Extra fare charged between certain points. Consult Ticket Agents.

Lv. New York	10 00 AM	Observation	
Lv. Hoboken	10 20 AM	Parlor Car	New York to Buffalo.
Lv. Newark	10 33 AM	Parlor Car	New York to Buffalo. Drawing Room.
Lv. Philadelphia	8 35 AM	Parlor Car	New York to Oswego. Drawing Room.
(Broad St. Station)			
Lv. Scranton	2 00 PM		
Lv. Binghamton	3 25 PM	Buffet Parlor Car	Philadelphia to Stroudsburg.
Lv. Elmira	4 43 PM	Dining Car	New York to Buffalo.
Ar. Syracuse	5 48 PM		
Ar. Ithaca	5 20 PM	Coaches	New York to Syracuse and Buffalo.
Ar. Utica	6 40 PM	Coaches	Binghamton to Oswego and Utica.
Ar. Oswego	7 15 PM		
Ar. Buffalo	7 55 PM		
Lv. Buffalo	9 00 PM		
Ar. Chicago	8 25 AM		

}} Connecting train via Michigan Central R. R.
}} Through Pullman tickets will be sold in advance.

No. 5.—CHICAGO LIMITED. Daily.

Runs via Newark and Blairstown.

Lv. New York	2 00 PM		
Lv. Hoboken	2 20 PM		
Lv. Newark	2 35 PM	Drawing Room	New York to Chicago via Nickel Plate No. 1
Lv. Philadelphia	12 48 PM	Sleeping Cars	
(Broad St. Station)			Scranton to Bellevue.
Lv. Scranton	6 40 PM		
Lv. Binghamton	8 20 PM	Observation	New York to Binghamton. Drawing Room.
Lv. Elmira	9 50 PM	Parlor Car	New York to Elmira, Saturday Only.
Ar. Buffalo	1 35 AM		
Via Nickel Plate			
Ar. Erie	4 15 AM		
Ar. Cleveland	7 20 AM	Dining Car	For All Meals.
Ar. Fort Wayne	12 06 PM	Through Coaches	New York to Chicago, via Nickel Plate
Ar. Chicago	4 50 PM		No. 1 and Wabash Ry. Nos. 1-11.
Via Wabash			
Ar. Detroit C. T.	7 35 AM	Observation	Detroit to Chicago, via Wabash Ry.
Ar. Ft. Wayne	12 45 PM	Parlor Car	Detroit to St. Louis, via Wabash Ry.
Ar. Logansport	2 34 PM	Dining Car	For All Meals.
Ar. Lafayette	3 35 PM	Coaches	Detroit to St. Louis, via Wabash Ry.
Ar. Danville	4 55 PM		
Ar. Decatur	6 45 PM		
Ar. St. Louis	10 00 PM		
Ar. Chicago	4 50 PM		

No. 7.—BUFFALO SPECIAL. Daily.

Runs via Newark and Blairstown.

Lv. New York	7 30 PM	Sleeping Car	New York to Buffalo. Drawing room.
Lv. Hoboken	7 55 PM		May be occupied at Buffalo until 8.00 A. M.
Lv. Newark	8 10 PM		
Lv. Brick Church	8 18 PM	Sleeping Car	Scranton to Buffalo. Drawing room.
Lv. Philadelphia	6 15 PM		Scranton sleeping car open for occupancy at 9.30 P. M. May be occupied at Buffalo until 8.00 A. M.
(Reading Terminal)			
Lv. Atlantic City	4 00 PM		
Lv. Scranton	12 05 AM	Sleeping Car	New York to Chicago. Drawing room. Via Nickel Plate No. 3.
Ar. Buffalo	6 30 AM		
Via Nickel Plate			
Ar. Erie	9 10 AM	Sleeping Car	Philadelphia to Syracuse. Drawing room. Arrives Scranton D. L. & W. Station 11.45 P. M. May be occupied at Syracuse until 8.00 A. M.
Ar. Cleveland	12 30 PM		
Ar. Fort Wayne	4 45 PM		
Ar. Chicago	9 20 PM	Buffet-Lounge Car	New York to Scranton.
Via Wabash			
Ar. Detroit C. T.	4 50 PM	Through Coach	New York to Chicago, via Nickel Plate No. 3.
Ar. St. Louis	7 15 AM	Coaches	New York to Buffalo.
		Dining Club Car	Philadelphia to Scranton, via Reading-C. R. R. of N. J.
		Dining Car	For all meals on Nickel Plate and Wabash.
		Parlor Car	Buffalo to Chicago, via Nickel Plate No. 3.

No. 9.—WHITELIGHT LIMITED. Daily.

Runs via Newark and Blairstown

Lv. New York	11 30 PM	Sleeping Cars	New York to Buffalo. Drawing room and compartment.
Lv. Hoboken	11 45 PM	Sleeping Car	New York to Syracuse. Drawing room.
Lv. Newark	11 58 PM	Sleeping Car	New York to Ithaca. Drawing room.
Lv. Brick Church	12 06 AM	Sleeping Car	New York to Elmira. Drawing room.
Lv. Scranton	3 28 AM	Buffet-Lounge Car	New York to Scranton.
Lv. Binghamton	4 58 AM	Dining Car	Elmira to Buffalo.
Ar. Syracuse	7 35 AM	Coaches	New York to Buffalo and Binghamton to Utica, Syracuse and Ithaca.
Ar. Ithaca	7 00 AM		
Ar. Elmira	6 11 AM	Sleeping cars	open for occupancy at Hoboken 9.30 P. M.
Ar. Buffalo	9 30 AM		Syracuse, Ithaca and Elmira sleeping cars may be occupied until 8.00 A. M.

No. 15.—BUFFALO MAIL. Daily.

Runs via Paterson and Blairstown.

Lv. New York	1 30 AM	Sleeping Cars	New York to Buffalo. Drawing Room.
Lv. Hoboken	1 55 AM		New York to Binghamton. Drawing Room.
Lv. Scranton	5 42 AM		New York to Scranton. Drawing Room.
Lv. Binghamton	7 26 AM		Buffalo to Chicago, via Nickel Plate No. 5.
Lv. Elmira	9 04 AM	Passengers may remain in Scranton and Binghamton cars	
Ar. Buffalo	12 35 PM	until 8:00 a. m. Sleepers open at Hoboken for occupancy	
Via Nickel Plate		at 9:30 p. m.	
Ar. Cleveland	9 45 PM	Broiler Buffet Car	Binghamton to Buffalo.
Ar. Chicago	7 30 AM	Coaches	New York to Buffalo. Buffalo to Chicago, via Nickel Plate No. 5.

No. 25.—SCRANTON EXPRESS. Daily Except Sunday.

Runs via Paterson and Blairstown.

Lv. New York	5 00 PM	Parlor Car	New York to Kingston (Wilkes-Barre).
Lv. Hoboken	5 20 PM		Drawing Room.
Lv. Philadelphia	3 25 PM	Broiler Buffet Parlor Car	Philadelphia to Scranton
(Broad St. Station)			
Ar. Stroudsburg	7 30 PM	Dining Car	New York to Scranton.
Ar. Scranton	9 25 PM	Coaches	New York to Kingston (Wilkes-Barre).
Ar. Kingston	10 20 PM		

No. 327.—THE ONONDAGA. Daily.

Via Reading Co. and Central Railroad of New Jersey

Lv. Washington	3 00 PM	Parlor Car	Washington to Philadelphia.
B. & O. R. R.			
Lv. Baltimore	3 57 PM	Dining Car	Washington to Philadelphia.
Ar. Wayne Jct.	6 21 PM	Dining Club Car	Philadelphia to Scranton.
Lv. Philadelphia	6 15 PM	Sleeping Car	Philadelphia to Syracuse. Drawing Room
(Reading Terminal)			This car arrives Scranton D. L. & W. Station 11.45 P. M. May be occupied at Syracuse until 8.00 A. M.
Lv. Atlantic City	4 00 PM		
Lv. Wayne Jct.	6 28 PM		
Lv. Bethlehem	7 50 PM	Coaches	
C. R. R. of N. J.			
Lv. Allentown	8 10 PM		
Lv. Mauch Chunk	9 00 PM		
Lv. Wilkes-Barre	10 45 PM		
Lackawanna Railroad			
Lv. Scranton	12 05 AM		
Ar. Binghamton	1 32 AM		
Ar. Cortland	6 21 AM		
Ar. Syracuse	7 35 AM		

No. 301.—THE PHILADELPHIAN. Daily.

Via Reading Company and Central Railroad of New Jersey.

Lv. Washington	7 00 PM	Sleeping Car	Philadelphia to Binghamton. Drawing Room. Sleeper open at 10:00 p. m. at Philadelphia and may be occupied until 8:00 a. m.
(B. & O. R. R.)			
Lv. Baltimore	8 00 PM	Parlor Car	Washington to Philadelphia.
(B. & O. R. R.)			
Ar. Philadelphia	10 40 PM	Dining Car	Washington to Philadelphia.
Lv. Philadelphia	12 05 AM	Through Coach	Philadelphia to Binghamton.
(Reading Terminal)		Coaches	Washington to Philadelphia.
Lv. Bethlehem	1 35 AM		Binghamton to Syracuse and Utica.
Lv. Allentown	1 55 AM		Connects at Binghamton with No. 15 for all points west.
Ar. Binghamton	7 04 AM		
Ar. Utica	12 05 PM		
Ar. Syracuse	11 25 AM		

Hudson Tube Trains Run Direct From Broadway and 33rd Street and Cortlandt Street, New York to Lackawanna Terminal, Hoboken.

*Daily. †Daily except Sunday. a On Sundays will leave at 7.45 A. M. b On Sundays arrive Ithaca 5.50 P. M.
A. M. time light type; P. M. time heavy type. Leaving time New York is at Barclay Street.

LACKAWANNA RAILROAD—THE ROAD OF ANTHRACITE

CONDENSED THROUGH TIME AND EQUIPMENT OF TRAINS—PULLMAN PARLOR AND SLEEPING CAR LINES. DINING CAR SERVICE.

TABLE 2

EASTWARD

STANDARD TIME

No. 2—CHICAGO and NEW YORK EXPRESS. Daily.

Via Nickel Plate, No. 2

Runs via Hackettstown and Newark.

Lv. Chicago	*10 40 AM	Sleeping Cars	Chicago to New York.	Drawing Room.
Lv. Cleveland	* 9 05 PM		Bellevue to Scranton.	Drawing Room.
Lv. Buffalo	* 3 20 AM	Through Coach	Chicago to New York.	
Ar. Elmira	* 6 45 AM	Parlor Car	Chicago to Cleveland.	
Ar. Binghamton	* 8 20 AM	Parlor Car	Elmira to New York.	Sundays only.
Ar. Scranton	*10 05 AM		Drawing Room.	
Ar. Philadelphia	* 5 00 PM	Dining Car	Chicago to Cleveland and Elmira to New York.	
(Broad St. Station)				
Ar. Newark	* 2 55 PM			
Ar. Hoboken	* 3 10 PM			
Ar. New York	* 3 30 PM			

No. 2—CHICAGO and NEW YORK EXPRESS. Daily.

Via Wabash Ry., No. 6

Runs via Hackettstown and Newark.

Lv. Chicago	*10 30 AM	Sleeping Car	Chicago to New York.	Drawing Room.
Lv. Detroit, E. T.	* 7 15 PM			
Lv. Buffalo	* 3 20 AM	Through Coach	Chicago to New York.	
Ar. Elmira	* 6 45 AM	Parlor Car	Elmira to New York.	Sundays only.
Ar. Binghamton	* 8 20 AM		Drawing Room.	
Ar. Scranton	*10 05 AM	Dining Car	Chicago to St. Thomas and Elmira to New York.	
Ar. Philadelphia	* 5 00 PM			
(Broad St. Station)				
Ar. Newark	* 2 55 PM			
Ar. Hoboken	* 3 10 PM			
Ar. New York	* 3 30 PM			

No. 4—NEW YORK AND PHILADELPHIA EXPRESS.

Daily Except Sunday.

Runs via Blairstown and Paterson.

Lv. Syracuse	† 8 30 AM	Observation		
Lv. Cortland	† 9 40 AM	Parlor Car	Syracuse to New York.	Drawing Room.
Lv. Binghamton	†11 00 AM	Parlor Car	Scranton to New York.	
Lv. Scranton	†12 45 PM	Dining Car	Scranton to New York.	
Lv. Stroudsburg	† 2 21 PM	Coaches	Syracuse to New York.	
Ar. Philadelphia	† 5 50 PM			
(Broad St. Station)				
Ar. Paterson	† 4 07 PM			
Ar. New York	† 4 50 PM			

No. 6—LACKAWANNA LIMITED. Daily.

Runs via Blairstown and Newark.

Extra fare charged between certain points. Consult Ticket Agents.

Lv. Chicago	* 2 40 PM	Sleeping Car	Chicago to New York.	Drawing Room.	Via Nickel Plate No. 4.
Lv. Cleveland	* 3 05 AM	Observation			
Lv. Buffalo	* 9 30 AM	Parlor Car	Buffalo to New York.		
Lv. Oswego	*10 35 AM	Parlor Car	Buffalo to New York.	Drawing Room.	
Lv. Utica	*11 10 AM	Parlor Car	Oswego to New York.	Drawing Room.	
Lv. Syracuse	*12 00 PM				
Lv. Ithaca	*12 15 PM	Dining Car	South Wanatah to Bellevue.		
Ar. Elmira	*12 43 PM		Buffalo to New York.		
Ar. Binghamton	* 2 07 PM		Chicago to Buffalo.		
Ar. Scranton	* 3 37 PM		Buffalo to New York.		
Ar. Philadelphia	* 8 59 PM	Coaches	Syracuse to New York.		
(Broad St. Station)			Utica to Binghamton.		
Ar. Newark	* 6 57 PM	Coaches			
Ar. New York	* 7 30 PM	Buffet Parlor Car	Stroudsburg to Philadelphia.		

No. 10—LACKAWANNA SPECIAL. Daily.

Runs via Hackettstown and Paterson.

Lv. Chicago	* 9 30 PM	Sleeping Cars	Chicago to Buffalo, via Nickel Plate No. 6 and Wabash No. 6.
Lv. Cleveland	* 8 45 AM	Sleeping Car	Buffalo to New York.
Lv. Chicago	*11 25 PM		Ithaca to New York. Drawing Room.
(Via Wabash Ry. Nos. 12-2)			Binghamton to New York. Drawing Room.
			Scranton to New York. Drawing Room.
Lv. Detroit, E. T.	* 9 35 AM	Through Coach	Chicago to New York, via Nickel Plate No. 6.
Lv. Buffalo	* 7 40 PM	Dining Car	Buffalo to Elmira.
Ar. Elmira	*10 58 PM	Coaches	Buffalo to New York.
Lv. Ithaca	* 9 50 PM		Ithaca car open at 9:00 p. m., other cars open at 9:30 p. m.
Lv. Utica	* 8 30 PM		Passengers may occupy Sleeping Cars until 8:00 a. m.
Ar. Binghamton	*12 30 AM		
Ar. Scranton	* 2 15 AM		
Ar. New York	* 6 45 AM		

No. 12—GARDEN STATE LIMITED. Daily.

Runs via Blairstown and Newark.

Lv. Buffalo	* 9 15 PM	Sleeping Cars	Buffalo to New York.	Drawing Room and Compartment.
Ar. Elmira	*12 36 AM			
Lv. Syracuse	*10 00 PM	Sleeping Car	Elmira to New York.	Drawing Room.
Lv. Binghamton	* 2 07 AM		Syracuse to New York.	Drawing Room.
Ar. Scranton	* 3 35 AM	Buffet Lounge Car	Buffalo to New York.	
Ar. Philadelphia	* 9 55 AM	Coaches	Buffalo to New York.	
(Broad St. Station)				
Ar. Newark	* 7 32 AM	Elmira Sleeping Car	open for occupancy at 9:30 p. m.	
Ar. New York	* 8 15 AM		Passengers may occupy Sleeping Cars until 8:00 a. m.	

No. 14—WHITELIGHT LIMITED. Daily.

Runs via Blairstown and Newark.

Lv. Buffalo	*11 30 PM	Sleeping Cars	Buffalo to New York.	Drawing Room.
Ar. Scranton	* 5 47 AM		Buffalo to Scranton.	Drawing Room.
Ar. Dover	* 8 20 AM	Buffet-Lounge Car	Scranton to New York.	
Ar. Newark	* 9 20 AM	Coaches	Buffalo to New York.	
Ar. New York	* 9 52 AM		Sleeping Cars open for occupancy at Buffalo 9:30 p. m. Scranton Sleeping Car may be occupied until 8:00 a. m.	

No. 26—NEW YORK DAY EXPRESS.

Daily Except Sunday

Runs via Blairstown and Paterson.

Lv. Kingston	† 7 10 AM	Parlor Car	Kingston (Wilkes-Barre) to New York.
Lv. Scranton	† 8 00 AM	Coaches	Kingston (Wilkes-Barre) to New York.
Lv. Stroudsburg	† 9 33 AM	Broiler Buffet Parlor Car	Scranton to Philadelphia.
Ar. Philadelphia	† 1 17 PM		
(Broad St. Station)			
Ar. New York	†12 09 PM		

No. 306—THE PHILADELPHIAN. Daily.

Via Central Railroad of New Jersey and Reading Company

Lv. Syracuse	*10 00 PM	Sleeping Cars	Syracuse to Philadelphia.	Drawing Room.
Lv. Utica	* 8 30 PM		Binghamton to Philadelphia.	Drawing Room.
Lv. Binghamton	*12 30 AM		Room. Occupancy at 9:30 P. M.	
Ar. Allentown	* 5 28 AM			
Ar. Bethlehem	* 6 01 AM	Coaches	Syracuse to Binghamton.	
Ar. Wayne Jct.	* 7 35 AM	Through Coach	Binghamton to Philadelphia.	
Ar. Philadelphia	* 7 48 AM	Parlor Car, Dining Car and Coaches	Wayne Jct. to Washington. Via Baltimore and Ohio R. R.	
(Reading Terminal)				
Ar. Atlantic City	*10 10 AM			
Ar. Baltimore	*10c05 AM			
Ar. Washington	*11c05 AM			

*Daily. †Daily except Sunday. §Sunday only. b On weekdays this train arrives at time shown North Phila. Station; Sunday arrives Broad St. Station 5.00 P. M. c—For this connection change at Wayne Junction. A. M. time light type; P. M. time heavy type. Arriving time New York is at Barclay Street.

NEW YORK TO BUFFALO, CLEVELAND, DETROIT AND CHICAGO

WESTWARD

For condensed time and equipment of trains see pages 7 and 8.

		15	801 707	Mixed 43 Train	355	1	387 357	3	411	23	361	363	39	5	369	373	25	367	487	469 487	7	9	
TABLE 3																							
NEW YORK	Hudson Tunnels— 33d St. & B'way (Fare 10c)	AM	AM	AM	AM	AM	AM	AM	AM	PM	PM	PM	PM	PM	PM	PM	PM	PM	PM	PM	PM	PM	PM
	Hud. Term Bldg.—Cort- landt St. (Fare 6c)	+	+	+	+	+	+	+	+								+	+		+	+	+	+
	D. L. & W. Ferries— West 23d St.	+	+	+		+												+	+		+	+	+
	Barclay St.	#1*30	\$7 00	#3*00		+8 00											+5 00	+4 10		\$5 30	*7 30	*11 30	
	Christopher St.																						
	HOBOKEN	*1 55	\$7 20	*3 30		+8 15												+5 20	+4 30		\$5 45	*7 55	*11 45
	Newark		7 45																			z8 10	z11 58
	Roseville Ave.																						
	Grove St.																						
	East Orange																						
	Brick Church																						
	Orange		7 54																				
	Highland Ave.																						
	Mountain Station																						
	South Orange																						
	Maplewood																						
	Millburn																						
	Short Hills																						
	Summit		8 08																				
	Chatham		8 15																				
Madison		8 20																					
Convent		8 25																					
Morristown		8 30																					
Morris Plains		8 35																					
Denville		8 40																					
Denville		8 51																					
Kingsland	Lv	7 37																					
Lyndhurst		7 40	3 49			8 30																	
Delawanna		7 44																					
Passaic		7 48																					
Clifton		7 52																					
Paterson		8 00	4 04																				
Mountain View		8 12																					
Lincoln Park		8 17																					
Towaco		8 23																					
Boonton		8 36	4 40			9 11																	
Mountain Lakes		8 41																					
Denville		8 51																					
Rockaway		8 55																					
Dover	Ar	9 04	5 00			9 32																	
Dover	Lv	9 04	5 00			9 32																	
Lake Hopatcong		9 21				9 46																	
Netcong (Stanhope)		9 30				9 52																	
Hackettstown		9 48	6 00			10 08																	
Washington	Ar	10 10	6 25			10 22																	
Washington	Lv	10 15	6 30			10 24																	
Oxford Furnace		10 24	6 40			10 33																	
Bridgeville		10 32	6 55			10 42																	
Delaware		10 42	7 12			10 49																	
Portland		10 48	7 20			10 55																	
Greendell																							
Johnsonburg																							
Blairstown																							
Water Gap (Station for Shawnee-on-Delaware and North Water Gap)		10 57	7 32			11 05																	
Le Philadelphia	P. R. R.	10 15				6 50	8:35	8:35															
Le Trenton	"	11 30				7 55	9:33	9:33															
Le Phillipsburg	"	x1 26				9 54	11:04	11:04															
Stroudsburg & East Stroudsburg	Ar	3 53	\$11 05	7 44		11 16	*12 05	12 27	+3 32	3 50	4 09	+4 35											
Analomink	Lv	3 53	AM	7 44		11 16	12 30	12 27		3 50	4 09												
Henryville				7 53		11 24	12 39			3 59	4 18												
Cresco (Station for Cana- densis and Buck Hill Falls)				18 04		11 33	12 47			4 08	4 28												
Mount Pocono		29	AM	8 25		11 47	1 02			4 23	4 43												
Pocono Summit (Station Pocono Manor & Lutherland)				8 45		12 05	1 17			4 40	4 59												
Tobyhanna				8 54		12 13	1 24			4 46	5 06												
Gouldsboro				9 03		12 22	*1 34			4 55	+5 16												
Lehigh				9 13		12 31				5 04													
Moscow				9 26		12 42				5 17													
Elmhurst				9 32		12 47				5 24													
Nay Aug.				7 39		12 55																	
Scranton	Ar	*5 32	+7 50	*9 50		+1 05				*1 55													
Wilkes-Barre	Ar	+6 40	+8 40	*10 40		+1 51				+2 51													
(Laurel Line)		\$7 20								\$3 00													
Carbondale D.&H.Co.	Ar	+7 20	+9 10	+11 50		+3 00				+3 00													

NEW YORK TO BUFFALO, CLEVELAND, DETROIT AND CHICAGO

WESTWARD

For condensed time and equipment of trains see pages 7 and 8.

Miles	TABLE 4											TABLE 4—Continued									
	7	9	959	35	301	15	27	1	3	1	33	5	15	3	5	7	9				
	PM	AM	AM	AM	AM	AM	AM	PM	PM	PM	PM	PM	AM	AM	PM	PM	PM				
	Wilkes-Barre (Laurel Line) Lv *11 00 *1 45 Carbondale D. & H. Co. Lv \$19 00 Scranton Lv *12 05 *3 28 Clarks Summit 12 25 Glenburn Dalton LaPlume Factoryville Nicholson Foster Kingsley Alford New Milford Hallstead 1 13 Conklin Conklin Centre Binghamton Ar 1 32 *4 53 Cortland Ar *6 21 Syracuse Ar *7 35 Utica Ar *7 55 Binghamton Lv 1 45 *4 58 *5 10 Johnson City Willow Point Vestal Endicott Apalachin Owego 5 37 Ithaca Ar 7 00 *7 00 Lounsberry Nichols Litchfield Waverly Wilawana Lowman Elmira Ar 2 58 6 11 Elmira Lv 3 06 6 18 Elmira Heights Horseheads Big Flats Corning f3 29 6 40 Painted Post Coopers Curtis Campbell Savona Bath 3 55 7 05 Kanona Avoca Wallace Cohocton Atlanta Wayland Portway Dansville f4 43 d7 46 Groveland Mount Morris 5 05 8 07 Penna. R. R. Jct. Leicester Greigsville Craigs Linwood B. R. & P. Jct. East Bethany East Alexander North Alexander Ray North Darlen Fargo Alden West Alden Dellwood East Lancaster Lancaster Depew East Buffalo Buffalo E.T. Ar *6 30 *9 30 *9 20 *12 35 *5 30 *7 55											THE PHILADELPHIAN See Table 7-A BUFFALO MAIL LACKAWANNA LIMITED This train will run daily commencing May 15th *10 18 10 18 *11 25 11 25 *12 05 12 05 7 26 10 50 7 32 10 55 7 40 11 05 7 48 11 14 8 03 11 25 11 10 8 16 8 32 8 59 12 30 9 04 12 40 9 27 1 18 1 21 1 26 1 30 e9 39 1 34 e9 45 1 43 9 55 1 53 2 00 2 06 2 11 10 18 2 20 10 25 2 29 10 35 2 40 2 43 2 53 3 07 11 12 3 21 13 23 3 28 3 34 3 41 3 46 3 55 4 02 7 43 7 51 7 59 8 09 8 20 8 27 h12 05 14 39 14 43 14 48 14 53 4 59 8 50 9 00 *5 15					CHICAGO LIMITED *15 10 *5 30 *6 40 *7 10 *8 20 *9 30 *10 40 *11 50 *12 00 *1 10 *2 20 *3 30 *4 40 *5 50 *6 00 *7 10 *8 20 *9 30 *10 40 *11 50 *12 00 *1 10 *2 20 *3 30 *4 40 *5 50 *6 00 *7 10 *8 20 *9 30 *10 40 *11 50 *12 00 *1 10 *2 20 *3 30 *4 40 *5 50 *6 00 *7 10 *8 20 *9 30 *10 40 *11 50 *12 00 *1 10 *2 20 *3 30 *4 40 *5 50 *6 00 *7 10 *8 20 *9 30 *10 40 *11 50 *12 00 *1 10 *2 20 *3 30 *4 40 *5 50 *6 00 *7 10 *8 20 *9 30 *10 40 *11 50 *12 00 *1 10 *2 20 *3 30 *4 40 *5 50 *6 00 *7 10 *8 20 *9 30 *10 40 *11 50 *12 00 *1 10 *2 20 *3 30 *4 40 *5 50 *6 00 *7 10 *8 20 *9 30 *10 40 *11 50 *12 00 *1 10 *2 20 *3 30 *4 40 *5 50 *6 00 *7 10 *8 20 *9 30 *10 40 *11 50 *12 00 *1 10 *2 20 *3 30 *4 40 *5 50 *6 00 *7 10 *8 20 *9 30 *10 40 *11 50 *12 00 *1 10 *2 20 *3 30 *4 40 *5 50 *6 00 *7 10 *8 20 *9 30 *10 40 *11 50 *12 00 *1 10 *2 20 *3 30 *4 40 *5 50 *6 00 *7 10 *8 20 *9 30 *10 40 *11 50 *12 00 *1 10 *2 20 *3 30 *4 40 *5 50 *6 00 *7 10 *8 20 *9 30 *10 40 *11 50 *12 00 *1 10 *2 20 *3 30 *4 40 *5 50 *6 00 *7 10 *8 20 *9 30 *10 40 *11 50 *12 00 *1 10 *2 20 *3 30 *4 40 *5 50 *6 00 *7 10 *8 20 *9 30 *10 40 *11 50 *12 00 *1 10 *2 20 *3 30 *4 40 *5 50 *6 00 *7 10 *8 20 *9 30 *10 40 *11 50 *12 00 *1 10 *2 20 *3 30 *4 40 *5 50 *6 00 *7 10 *8 20 *9 30 *10 40 *11 50 *12 00 *1 10 *2 20 *3 30 *4 40 *5 50 *6 00 *7 10 *8 20 *9 30 *10 40 *11 50 *12 00 *1 10 *2 20 *3 30 *4 40 *5 50 *6 00 *7 10 *8 20 *9 30 *10 40 *11 50 *12 00 *1 10 *2 20 *3 30 *4 40 *5 50 *6 00 *7 10 *8 20 *9 30 *10 40 *11 50 *12 00 *1 10 *2 20 *3 30 *4 40 *5 50 *6 00 *7 10 *8 20 *9 30 *10 40 *11 50 *12 00 *1 10 *2 20 *3 30 *4 40 *5 50 *6 00 *7 10 *8 20 *9 30 *10 40 *11 50 *12 00 *1 10 *2 20 *3 30 *4 40 *5 50 *6 00 *7 10 *8 20 *9 30 *10 40 *11 50 *12 00 *1 10 *2 20 *3 30 *4 40 *5 50 *6 00 *7 10 *8 20 *9 30 *10 40 *11 50 *12 00 *1 10 *2 20 *3 30 *4 40 *5 50 *6 00 *7 10 *8 20 *9 30 *10 40 *11 50 *12 00 *1 10 *2 20 *3 30 *4 40 *5 50 *6 00 *7 10 *8 20 *9 30 *10 40 *11 50 *12 00 *1 10 *2 20 *3 30 *4 40 *5 50 *6 00 *7 10 *8 20 *9 30 *10 40 *11 50 *12 00 *1 10 *2 20 *3 30 *4 40 *5 50 *6 00 *7 10 *8 20 *9 30 *10 40 *11 50 *12 00 *1 10 *2 20 *3 30 *4 40 *5 50 *6 00 *7 10 *8 20 *9 30 *10 40 *11 50 *12 00 *1 10 *2 20 *3 30 *4 40 *5 50 *6 00 *7 10 *8 20 *9 30 *10 40 *11 50 *12 00 *1 10 *2 20 *3 30 *4 40 *5 50 *6 00 *7 10 *8 20 *9 30 *10 40 *11 50 *12 00 *1 10 *2 20 *3 30 *4 40 *5 50 *6 00 *7 10 *8 20 *9 30 *10 40 *11 50 *12 00 *1 10 *2 20 *3 30 *4 40 *5 50 *6 00 *7 10 *8 20 *9 30 *10 40 *11 50 *12 00 *1 10 *2 20 *3 30 *4 40 *5 50 *6 00 *7 10 *8 20 *9 30 *10 40 *11 50 *12 00 *1 10 *2 20 *3 30 *4 40 *5 50 *6 00 *7 10 *8 20 *9 30 *10 40 *11 50 *12 00 *1 10 *2 20 *3 30 *4 40 *5 50 *6 00 *7 10 *8 20 *9 30 *10 40 *11 50 *12 00 *1 10 *2 20 *3 30 *4 40 *5 50 *6 00 *7 10 *8 20 *9 30 *10 40 *11 50 *12 00 *1 10 *2 20 *3 30 *4 40 *5 50 *6 00 *7 10 *8 20 *9 30 *10 40 *11 50 *12 00 *1 10 *2 20 *3 30 *4 40 *5 50 *6 00 *7 10 *8 20 *9 30 *10 40 *11 50 *12 00 *1 10 *2 20 *3 30 *4 40 *5 50 *6 00 *7 10 *8 20 *9 30 *10 40 *11 50 *12 00 *1 10 *2 20 *3 30 *4 40 *5 50 *6 00 *7 10 *8 20 *9 30 *10 40 *11 50 *12 00 *1 10 *2 20 *3 30 *4 40 *5 50 *6 00 *7 10 *8 20 *9 30 *10 40 *11 50 *12 00 *1 10 *2 20 *3 30 *4 40 *5 50 *6 00 *7 10 *8 20 *9 30 *10 40 *11 50 *12 00 *1 10 *2 20 *3 30 *4 40 *5 50 *6 00 *7 10 *8 20 *9 30 *10 40 *11 50 *12 00 *1 10 *2 20 *3 30 *4 40 *5 50 *6 00 *7 10 *8 20 *9 30 *10 40 *11 50 *12 00 *1 10 *2 20 *3 30 *4 40 *5 50 *6 00 *7 10 *8 20 *9 30 *10 40 *11 50 *12 00 *1 10 *2 20 *3 30 *4 40 *5 50 *6 00 *7 10 *8 20 *9 30 *10 40 *11 50 *12 00 *1 10 *2 20 *3 30 *4 40 *5 50 *6 00 *7 10 *8 20 *9 30 *10 40 *11 50 *12 00 *1 10 *2 20 *3 30 *4 40 *5 50 *6 00 *7 10 *8 20 *9 30 *10 40 *11 50 *12 00 *1 10 *2 20 *3 30 *4 40 *5 50 *6 00 *7 10 *8 20 *9 30 *10 40 *11 50 *12 00 *1 10 *2 20 *3 30 *4 40 *5 50 *6 00 *7 10 *8 20 *9 30 *10 40 *11 50 *12 00 *1 10 *2 20 *3 30 *4 40 *5 50 *6 00 *7 10 *8 20 *9 30 *10 40 *11 50 *12 00 *1 10 *2 20 *3 30 *4 40 *5 50 *6 00 *7 10 *8 20 *9 30 *10 40 *11 50 *12 00 *1 10 *2 20 *3 30 *4 40 *5 50 *6 00 *7 10 *8 20 *9 30 *10 40 *11 50 *12 00 *1 10 *2 20 *3 30 *4 40 *5 50 *6 00 *7 10 *8 20 *9 30 *10 40 *11 50 *12 00 *1 10 *2 20 *3 30 *4 40 *5 50 *6 00 *7 10 *8 20 *9 30 *10 40 *11 50 *12 00 *1 10 *2 20 *3 30 *4 40 *5 50 *6 00 *7 10 *8 20 *9 30 *10 40 *11 50 *12 00 *1 10 *2 20 *3 30 *4 40 *5 50 *6 00 *7 10 *8 20 *9 30 *10 40 *11 50 *12 00 *1 10 *2 20 *3 30 *4 40 *5 50 *6 00 *7 10 *8 20 *9 30 *10 40 *11 50 *12 00 *1 10 *2 20 *3 30 *4 40 *5 50 *6 00 *7 10 *8 20 *9 30 *10 40 *11 50 *12 00 *1 10 *2 20 *3 30 *4 40 *5 50 *6 00 *7 10 *8 20 *9 30 *10 40 *11 50 *12 00 *1 10 *2 20 *3 30 *4 40 *5 50 *6 00 *7 10 *8 20 *9 30 *10 40 *11 50 *12 00 *1 10 *2 20 *3 30 *4 40 *5 50 *6 00 *7 10 *8 20 *9 30 *10 40 *11 50 *12 00 *1 10 *2 20 *3 30 *4 40 *5 50 *6 00 *7 10 *8 20 *9 30 *10 40 *11 50 *12 00 *1 10 *2 20 *3 30 *4 40 *5 50 *6 00 *7 10 *8 20 *9 30 *10 40 *11 50 *12 00 *1 10 *2 20 *3 30 *4 40 *5 50 *6 00 *7 10 *8 20 *9 30 *10 40 *11 50 *12 00 *1 10 *2 20 *3 30 *4 40 *5 50 *6 00 *7 10 *8 20 *9 30 *10 40 *11 50 *12 00 *1 10 *2 20 *3 30 *4 40 *5 50 *6 00 *7 10 *8 20 *9 30 *10 40 *11 50 *12 00 *1 10 *2 20 *3 30 *4 40 *5 50 *6 00 *7 10 *8 20 *9 30 *10 40 *11 50 *12 00 *1 10 *2 20 *3 30 *4 40 *5 50 *6 00 *7 10 *8 20 *9 30 *10 40 *11 50 *12 00 *1 10 *2 20 *3 30 *4 40 *5 50 *6 00 *7 10 *8 20 *9 30 *10 40 *11 50 *12 00 *1 10 *2 20 *3 30 *4 40 *5 50 *6 00 *7 10 *8 20 *9 30 *10 40 *11 50 *12 00 *1 10 *2 20 *3 30 *4 40 *5 50 *6 00 *7 10 *8 20 *9 30 *10 40 *11 50 *12 00 *1 10 *2 20 *3 30 *4 40 *5 50 *6 00 *7 10 *8 20 *9 30 *10 40 *11 50 *12 00 *1 10 *2 20 *3 30 *4 40 *5 50 *6 00 *7 10 *8 20 *9 30 *10 40 *11 50 *12 00 *1 10 *2 20 *3 30 *4 40 *5 50 *6 00 *7 10 *8 20 *9 30 *10 40 *11 50 *12 00 *1 10 *2 20 *3 30 *4 40 *5 50 *6 00 *7 10 *8 20 *9 30 *10 40 *11 50 *12 00 *1 10 *2 20 *3 30 *4 40 *5 50 *6 00 *7 10 *8 20 *9 30 *10 40 *11 50 *12 00 *1 10 *2 20 *3 30 *4 40 *5 50 *6 00 *7 10 *8 20 *9 30 *10 40 *11 50 *12 00 *1 10 *2 20 *3 30 *4 40 *5 50 *6 00 *7 10 *8 20 *9 30 *10 40 *11 50 *12 00 *1 10 *2 20 *3 30 *4 40 *5 50 *6 00 *7 10 *8 20 *9 30 *10 40 *11 50 *12 00 *1 10 *2 20 *3 30 *4 40 *5 50 *6 00 *7 10 *8 20 *9 30 *10 40 *11 50 *12 00 *1 10 *2 20 *3 30 *4 40 *5 50 *6 00 *7 10 *8 20 *9 30 *10 40 *11 50 *12 00 *1 10 *2 20 *3 30 *4 40 *5 50 *6 00 *7 10 *8 20 *9 30 *10 40 *11 50 *12 00 *1 10 *2 20 *3 30 *4 40 *5 50 *6 00 *7 10 *8 20 *9 30 *10 40 *11 50 *12 00 *1 10 *2 20 *3 30 *4 40 *5 50 *6 00 *7 10 *8 20 *9 30 *10 40 *11 50 *12 00 *1 10 *2 20 *3 30 *4 40 *5 50 *6 00 *7 10 *8 20 *9 30 *10 40 *11 50 *12 00 *1 10 *2 20 *3 30 *4 40 *5 50 *6 00 *7 10 *8 20 *9 30 *10 40 *11 50 *12 00 *1 10 *2 20 *3 30 *4 40 *5 50 *6 00 *7 10 *8 20 *9 30 *10 40 *11 50 *12 00 *1 10 *2 20 *3 30 *4 40 *5 50 *6 00 *7 10 *8 20 *9 30 *10 40 *11 50 *12 00 *1 10 *2 20 *3 30 *4 40 *5 50 *6 00 *7 10 *8 20 *9 30 *10 40 *11 50 *12 00 *1 10 *2 20 *3 30 *4 40 *5 50 *6 00 *7 10 *8 20 *9 30 *10 40				

CHICAGO, DETROIT, CLEVELAND AND BUFFALO TO NEW YORK

EASTWARD

For condensed time and equipment of trains see pages 9 and 10.

TABLE 5	32	38	2	4	Mixed 42 Train	28	6	28	36	958	306	8	10	12	14	Table 5—Continued									
	AM	AM	AM	AM	AM	AM	AM	PM	PM	PM	PM	PM	PM	PM	PM	AM	6	10	12	14					
Buffalo... E.T. Lv			*3 20			*8 00	*9 30		*1 30			*6 00	*7 40	*9 15	11*30	WABASH Ry. St. Louis.....C. T. Lv Chicago (Dearborn Sta.).... Detroit.....E.T. Lv Buffalo.....E. T. Ar <hr/> N. Y. CENTRAL AND BIG FOUR R. R. St. Louis C.T.Lv. (Big Four) Indianapolis..... Cincinnati E. T. Chicago (CTLvN.Y.C.R.R.) (La Salle St. Station) Toledo E. T..... Cleveland..... Buffalo E. T. Ar..... <hr/> MICHIGAN CENT. R. R. Toronto E. T. Lv. (C. P. R.) Buffalo.....E. T. Ar. <hr/> MICHIGAN CENT. R. R. Chicago (CentralSta.) C.T.Lv Kalamazoo..... Battle Creek..... Grand Rapids..... Jackson..... Ann Arbor..... Detroit.....E. T. Buffalo.....E. T. Ar. <hr/> NICKEL PLATE Chicago (LaSalleStSta) CTLv Fort Wayne..... Cleveland.....E. T. Cleveland (Euclid Ave.).... Erie..... Dunkirk..... Buffalo.....E. T. Ar. <hr/> Buffalo.....E. T. Lv. Elmira.....Ar. Binghamton..... Scranton..... Newark..... Hoboken..... New York.....Ar. <hr/> EXPLANATION OF REFERENCE MARKS. *-Daily. †-Daily except Sunday. §-Sunday only. E. T. Eastern Time. C. T. Central Time. A. M. time in light type. P. M. time in heavy type. a-On Sundays leaves 12 minutes earlier than time shown. b-Stops on notice to Agent to receive passengers for Dover and points east. c-Stops regularly on notice to conductor to let off passengers. d-Daily stop until May 14 inc. thereafter stop weekdays and on Sundays to let off passengers from points west of Binghamton. e-Regular stop Sunday only until May 8th inc. thereafter on Sundays only to let off passengers from points west of Binghamton. f-Stops on notice to Agent or conductor. g-Stops on notice to conductor to let off passengers from Buffalo and points beyond and on notice to agent to receive passengers for Bingham- ton and beyond. h-Stops on notice to Agent to receive passengers for New York and on notice to conductor to let off passengers from points west of Buffalo. j-Stops to discharge passengers from Dover and points west. k-Will stop on notice to agent to take on passengers for points east of Dover and on notice to conductor to let off passengers from Buffalo or beyond. L-Stops on notice to conductor to let off passengers from Buf- falo and beyond. m-Stops on notice to conductor to let off passengers from points west of Washington. n-Sundays leave at 2.22 P. M. p-Stops Sunday on notice to conductor to let off passengers from stations west of Binghamton. r-Commence stopping May 7th. s-Stops at Factoryville and Tobyhanna on notice to agent to receive passengers for New York and P. R. H. points and to let off passengers Saturdays only at Tobyhanna. t-Stops on signal to take on passengers for New York. u-Dis- continue stopping June 19th. v-Stops Saturday only to let off passengers. w-Stops to let off passengers Sunday only, from Scrant- on and points west. x-Stops to let off passengers from points west of Dover. y-Stops Sunday only to let off passengers. *Slightly later on Sundays and holidays.									
East Buffalo.....						8 15			1 43			h													
Depew.....						8 25			1 53																
Lancaster.....						8 28			1 56			h													
East Lancaster.....						8 33			2 01			h													
Dellwood.....						8 37			2 05			h													
West Alden.....						8 42			2 10																
Alden.....						8 45			2 14																
Fargo.....						8 50			2 19			h													
North Darien.....						9 00			2 29			h													
Ray.....						9 04			2 38			h													
North Alexander.....						9 09			2 46			h													
East Alexander.....						9 13			2 54			h													
East Bethany.....						9 20			2 59			h													
B. R. & P. Junction						9 28			3 07			7 03													
Linwood.....						9 37			3 16			h													
Craigs.....						9 41			3 20			17 13													
Greigsville.....						9 46			3 25			h													
Leicester.....						9 52			3 31			h													
Penna. R. R. Junction						9 55			3 34			h													
Mount Morris.....			4 43			10 02	10 49		4 00			7 32	8 59	10 34	12 50										
Groveland.....						10 12			4 10			7 42		10 56											
Dansville.....			g			10 32	11 14					8 04													
Portway.....						10 45																			
Wayland.....			g			10 52						8 32													
Atlanta.....						11 03						8 43													
Cohocton.....						11 13						8 52													
Wallace.....						11 23						9 01													
Avoca.....						11 28						9 07													
Kanona.....						11 35						9 12													
Bath.....			5 56			11*45	11 59		2 05			9 22	10 05	11 42	1 56										
Savona.....									2 12			9 29													
Campbell.....									2 20			9 35													
Curtis.....									2 24																
Coopers.....									2 28																
Painted Post.....									2 32																
Corning.....			6 21						2 37			9 50	10 28	12 07	2 22										
Big Flats.....									2 51																
Horseheads.....									3 00																
Elmira Heights.....									3 04																
Elmira..... Ar			6 45						3 10			10 20	10 58	12 36	2 50										
Elmira..... Lv			6 53			*8 20			3 25			10 30	11 04	12 42	2 55										
Lowman.....						8 28			3 36			10 38													
Wilawana.....						8 36			3 47			c													
Waverly.....			7 16			8 48		1 12	3 56			10 57	11 27		3 17										
Litchfield.....						8 56			4 04																
Nichols.....			7 30			9 12			4 15			11 11													
Lounsbury.....						9 18			4 22																
Ithaca..... Lv						8 15			12 15				9 50												
Owego..... Lv			7 45			9 40			1 37			11 26													
Apalachin.....			7 56			10 04			4 43			L													
Vestal.....																									
Endicott.....			8 05			10 14			4 55			11 y27													
Willow Point.....						10 34			5 02																
Johnson City.....			8 14			10 43			5 07			h													
Binghamton..... Ar			8 20			10 50		2 07	5 15			12*05	12 30	1 54	4 10										
Utica..... Lv									11 10																
Syracuse..... Lv									12 00			8 30													
Cortland..... Lv			8 20						1 03			11 08													
Binghamton..... Lv	†6 05	†8 05	8 30	11†00	11 05			2 18	5 35			12*30		12 45	2 07	4 20									
Conklin Center.....	†6 12	†8 12			11 12				5 40																
Conklin.....	6 16	8 17			11 23				5 49																
Hallstead.....	6 25	8 27			11 20				6 00																
New Milford.....	6 34	8 38			11 31				6 12																
Alford.....	6 43	8 48			12 06				6 24																
Kingsley.....	6 49	8 54			12 27				6 37																
Foster.....	6 56	9 02			12 44				6 47																
Nicholson.....	7 05	9 12			12 57				6 57																
Factoryville.....	7 13	9 19			1 18				7 07																
LaPlume.....	7 18	9 24			1 27				7 13																
Dalton.....	7 23	9 28			1 32				7 18																
Glenburn.....	7 27	9 32			1 41				7 23																
Clarks Summit.....	7 33	9 39			2 04				7 31																
Scranton..... Ar	†7 47	†9 55	10*05	12†35	*2 20			*3 37	*7 45					*2 15	*3 35	*5 47									
Wilkes-Barre..... Ar	†8 40	11\$00	10†51	†1 40	†3 10			*4 40	*8 40					*3 10	*4 40	*6 40									
(Laurel Line).....		11\$10			\$3 20																				
Carbondale																									
D. & H. Co..... Ar	†9 10		11†50					†4 40																	

CHICAGO, DETROIT, CLEVELAND AND BUFFALO TO NEW YORK

EASTWARD

For condensed time and equipment of trains see pages 9 and 10.

TABLE 6	10	12	372	402 810	402 486	22	14	812	26	38	488	362	2	466	4	276	Mixed 42 Train	376	6	366	410	30	24	
	AM	AM	AM	AM	AM	AM	AM	AM	AM	AM	AM	AM	AM	PM	AM	PM	PM	PM	PM	PM	PM	PM	PM	PM
Wilkes-Barre (Laurel Line)	12*45	*1 45					*4 45		+6 50						+9 25		*1 30		*2 30			+5 25	\$5 30	
Carbondale D. & H. Co.	10+35								+7 00						+10 35		+1 00		+2 30				\$5 20	
Scranton.....Lv	*2 25	*3 40					*5 57		+8 00	10\$00					+12 45		*2 30		*3 42			+6 10	\$6 25	
Nay Aug.....									8 19	10 21					e10 34		v1 05					6 23		
Elmhurst.....									8 27	10 28					d10 43		v1 11					6 31		
Moscow.....									8 41	10 44					d10 59		v1 24					6 39		
Lehigh.....									8 48	10\$54					11 10		s1 32					6 50		
Gouldsboro.....																						6 54		
Tobyhanna.....																						7 05		
Pocono Summit (Station...)																								
Pocono Manor & Lutherland)																								
Mount Pocono.....																								
Cresco (Station for Cana- densis and Buck Hill Falls)																								
Henryville.....																								
Analomink.....																								
Stroudsburg & East Stroudsburg	Ar 4 03	5 27		\$5 45	+5 45																			
Ar. Phillipsburg P. E. R.		7 28																						
Ar. Trenton		9 00																						
Ar. Philadelphia		9 55																						
Water Gap (Station for Shawnee-on-Delaware and North Water Gap.)																								
Blairstown.....				5 54	5 54																			
Johnsburg.....																								
Greendell.....																								
Portland.....				6 04	6 04																			
Delaware.....				6 09	6 09																			
Bridgeville.....				6 17	6 17																			
Oxford Furnace.....				6 26	6 26																			
Washington.....				6 36	6 36																			
Washington.....				6 40	6 40																			
Hackettstown.....				7 00	7 00																			
Netcong (Stanhope).....				7 17	7 17																			
Lake Hopatcong.....				7 23	7 23																			
Dover.....Ar	5 31	6 41		7 40	7 44		8 29	10 22	10 42															
Dover.....Lv	5 31	6 41	+6 55	7 40	7 44		8 29	10 22	10 42															
Rockaway.....				7 47	7 57				10 49															
Denville.....																								
Mountain Lakes.....				7 06	7 56																			
Boonton.....				7 11	8 01				11 01															
Towaco.....				8 08	8 18																			
Lincoln Park.....				8 12	8 22																			
Mountain View.....				8 17	8 27																			
Paterson.....	6 04			8 26	8 36				11 22															
Clifton.....				8 33	8 43				11 28															
Passaic.....				7 36	8 43				11 28															
Delawanna.....									11 32															
Lyndhurst.....				+7 40	8 38																			
Kingsland.....				8 41	8 51																			
Denville.....Lv				7 51	8 00				10 28															
Morris Plains.....				8 00	8 05				10 36															
Morristown.....				8 05	8 10				10 41															
Convent.....				8 10	8 15				10 45															
Madison.....				8 15	8 20				10 50															
Chatham.....				8 20	8 26				10 54															
Summit.....				8 26	8 36				11 02															
Short Hills.....									11 07															
Millburn.....									11 10															
Maplewood.....									11 14															
South Orange.....									11 18															
Mountain Station.....																								
Highland Avenue.....																								
Orange.....					8 40				11 22															
Brick Church.....																								
East Orange.....																								
Grove Street.....																								
Roseville Avenue.....																								
Newark.....																								
HOBOKEN.....Ar	*6 30	*7 47		\$8 55	+9 05	8 18	*9 35	11\$48	11+50															
D. L. & W. Ferris																								
Christopher St. } Barclay St. } West 23d St. }	*6 45	*8 15		\$9 10	+9 27	8 37	*9 52	12\$10	12+09														\$10 45	
Hudson Tunnels																								
33d St. & B'way (Fare 10c)	*6*52	*8*09																						
Hud. Term. Bldg.-Cort- landt St. (Fare 6c)	*6 50	*8*06																						

THE DELAWARE, LACKAWANNA AND WESTERN RAILROAD AND THROUGH CONNECTIONS

Lackawanna Railroad



Map showing connections into
NEW YORK CITY
Lackawanna Ferries: ———
Hudson Tunnels: ———
Running Time from Lackawanna Terminal, Hoboken,
to 33rd St., and Broadway 17 minutes.
Hudson Terminal, Cortlandt St., 9 minutes.
Elevated Lines: ——— Subways: ———

THE MATTHEWS-NORTHROP WORKS., BUFFALO, N. Y.

SCRANTON, WILKES-BARRE AND
NORTHUMBERLAND

Read Down					Read Up						
25	705	703	719	715	Mls.	TABLE 9	26	792	704	720	708
PM	PM	AM	AM	AM		New York Hudson Tunnels— 33d St. & B'way (Fare 10c).....	PM	PM	PM	PM	AM
+	*1 59	†9 59	+	+		Hud. Term Bldg.— Cortlandt St. (Fare 6c).....	†12 12	*3 27	†4 51	*6*52
+	*2 02	†10 02	+	+		D.L. & W. Ferries— West 23d St. } Barclay St. } Christopher St. }	†12 04	*3 22	†4*44	*6 50
†5 00	*2 00	†10 00	*3c00	†1c30		Hoboken Ar	†11 50	*3 06	†4 30	*6 30
†5 20	*2 20	†10 20	*3 30	†1 55	1.0	Lv. Scranton Ar	†7 55	*9 40	†12 40	†4 55	*8 45
†9 33	*6 35	†2 01	10*25	†6 25	134.1	Taylor	7 45	9 29	4 45	8 35
9 41	6 44	2 09	10 35	6 36	137.7	Old Forge	7 37	9 21	4 38	8 29
9 46	6 49	2 15	10 40	6 42	141.0	Duryea	7 32	9 14	4 33	8 24
9 48	6 52	2 18	10 45	6 47	143.7	Pittston	7 30	9 09	12 19	4 29	8 20
9 51	6 56	2 23	10 48	6 47	144.3	Susquehanna Ave.	7 25	9 04	12 15	4 24	8 15
9 54	6 58	2 26	10 48	6 47	144.3	West Pittston	7 22	9 01	4 21	8 12
9 57	7 01	2 29	10 56	6 52	145.0	Wyoming	7 18	8 57	12 09	4 16	8 07
10 00	7 06	2 33	10 56	6 56	147.0	Forty Fort	7 18	8 52	4 11	8 02
10 04	7 10	2 37	10 56	6 56	149.6	Luzerne	7 12	8 49	12 02	4 08	8 00
10 07	7 12	2 40	11 02	7 03	150.6	Kingston Lv	7 10	8 43	11 59	4 03	7 55
10 10	7 18	2 46	11 09	7 11	151.7	Wilkes-Barre Lv	†7 00	8 30	11 40	3 40	7 40
10 20	7 30	3 00	11 30	7 30	Wilkes-Barre Ar	9 00	12 10	4 20	8 10
.....	6 50	2 30	10 50	7 00	Kingston Ar	8 43	11 59	4 03	7 55
.....	7 18	2 46	11 09	7 11	151.7	Plymouth	8 30	11 50	3 50	7 42
.....	7 26	2 55	11 18	7 20	154.9	Avondale	8 26	3 45	7 37
.....	7 31	3 00	11 25	7 24	156.6	West Nanticoke	8 22	11 42	3 41	7 33
.....	7 36	3 04	11 25	7 28	158.4	Hunlock Creek	8 17	11 37	3 33	7 26
.....	7 42	3 12	11 37	7 34	161.9	Shickshinny	8 07	11 30	3 22	7 16
.....	7 51	3 22	11 47	7 47	167.5	Hicks Ferry	7 57	3 09	7 05
.....	7 51	3 22	11 47	7 47	167.5	Beach Haven	7 47	11 18	3 03	7 00
.....	8 00	3 34	11 57	7 57	172.1	Berwick	7 40	11 13	2 58	6 54
.....	8 05	3 41	12 01	8 03	175.4	Briar Creek	7 33	2 50	6 47
.....	8 10	3 48	12 06	8 09	178.4	Willow Springs	7 30	2 47	6 44
.....	3 54	181.4	Lime Ridge	7 26	2 44	6 41
.....	3 58	183.3	Espy	7 20	2 38	6 35
.....	4 02	185.0	Bloomsburg	7 14	10 52	2 33	6 31
.....	4 15	12 25	8 32	191.0	Rupert	7 06	2 27	6 27
.....	4 18	12 30	8 35	192.7	Catawissa	7 02	10 45	2 23	6 23
.....	4 22	12 35	8 41	194.3	Danville	6 49	10 33	2 10	6 10
.....	4 34	12 49	8 55	202.7	Chulasky	6 43	2 06	6 02
.....	4 35	206.1	Cameron	6 41	2 00	6 00
.....	4 43	208.2	North'er'nd Lv	6 30	10 15	†1 50	*5 50
.....	4 55	*1 10	†9 17	214.5

This train will be held at Northumberland 15 minutes for P. R. R. connection

BANGOR & PORTLAND DIVISION

Read Down			Read Up		
▲19	▲17	Mls.	TABLE 12	16	▲18
PM	AM		Lv. Portland Ar	AM	PM
†1 45	†7 40	0.0	Mt. Bethel	†6 55	†1 10
†1 57	†7 50	1.9	Stier	†6 45	†12 55
†2 03	†7 55	4.1	East Bangor	†6 40	†12 50
†2 08	8 05	6.0	Bangor	6 35	12 45
†2 15	8 15	7.6	Flicksville	†6 30	12 35
.....	8 50	9.1	Martin's Creek Jet.	†11 48
.....	8 55	10.3	Ackermanville	†11 45
.....	†8 58	11.8	Delabole	†11 41
.....	†9 03	13.5	Pen Argyl	†11 37
.....	9 40	15.2	Edelman	11 30
.....	†9 55	20.4	Belfast Junction	†11 01
.....	†10 05	22.5	Nazareth Lv	10 56
.....	†10 15	25.7	†10 50

Read Down			Read Up		
▲4	▲2	Mls.	TABLE 13	▲1	▲3
PM	AM		Lv. Cortland Ar	AM	PM
*5 00	†11 00	0.0	McGraw	*10 10	†3 40
5 14	11 18	4.3	Maybury's	9 53	3 22
5 22	†11 25	6.0	Solon	9 47	†3 17
5 32	11 35	8.5	East Freetown	9 37	3 08
5 44	11 55	11.8	Whites Mills	9 29	2 56
5 54	†12 05	15.2	Gee Brook	†9 11	†2 43
5 59	†12 15	16.6	Cincinnati Lv	9 06	2 37
*6 05	†12 25	18.7	*9 00	†2 30

Read Down						Read Up					
5	9	1	TABLE 14	2	8	6
PM	PM	AM	(Stroudsburg &) Lv. E. Stroudsburg Ar	AM	PM	PM
†5 00	†12 35	†7 00	Craig's Meadows	†8 35	†4 10	†6 15
5 12	†12 47	†7 12	Marshall's Creek	†8 23	†3 55	†6 03
5 14	†12 49	†7 14	Oak Grove	†8 21	†3 53	†6 01
5 16	†12 51	†7 16	Frutcheys	†8 19	†3 51	†5 59
5 19	†12 54	†7 19	Delaware Valley	†8 16	†3 48	†5 56
5 21	†12 56	†7 21	Coolbaugh	†8 14	†3 46	†5 54
5 22	†12 57	†7 22	Echo Lake	†8 13	†3 45	†5 53
5 24	†12 59	†7 24	Turn Villa	†8 11	†3 41	†5 51
5 26	†1 01	†7 26	Shoemakers	†8 09	†3 39	†5 49
5 30	†1 05	†7 30	Maples	†8 05	†3 35	†5 45
5 33	†1 08	†7 34	Bushkill Lv	†8 02	†3 32	†5 42
5 35	†1 10	†7 35	†8 00	†3 30	†5 40

TO AND FROM ITHACA VIA OWEGO

Read Down					Read Up					
3	3	15	959	9	Mls.	TABLE 10	4	6	958	10
AM	AM	AM	AM	PM		New York Hudson Tunnels— Lv 33d St. & B'way Ar	PM	PM	PM	AM
§9 59	†9 59	+	11*23	Hud. Term Bldg.— Cortlandt St. (Fare 6c).....	†4 51	*7 32	*6*52
10§02	10†02	+	11*31	D.L. & W. Ferries— West 23d St. } Barclay St. } Christopher St. }	†4*44	*7*24	*6 50
10§00	10†00	*1c30	11*30	Hoboken.....	†4 50	*7 30	*6 45
10§20	10†20	*1 55	11*45	1.0	Lv Philadelphia P.R.R. Ar	†4 30	*7 12	*6 30
7 45	8 35	10 15	Lv Philadelphia P&RRy Ar	5 50	8 59
.....	12 05	Lv Scranton Ar	12 35	3 37	2 15
2 00	2 00	5 42	3 28	134.1	Binghamton	10 50	2 07	11*40	12 45
3 25	3 25	7 26	*5 10	4 58	192.7	Owego Lv	†9 40	*1 37	11 07
3 51	3 51	*8 03	5 37	213.4
955	953	971	959	Lv Owego Ar	*9 35	*1 30	11 05	11*05
PM	PM	AM	AM	Catatonk	†9 21	1 16	10 51	10 51
4 48	4 14	10 12	5 39	5 53	218.8	Candor	9 00	1 05	10 42	10 42
4 58	4 25	10 22	6 07	6 07	224.1	Willseyville	8 50	12 54	10 28	10 28
5 08	4 36	10 32	6 17	6 17	229.4	Caroline	8 40	12 43	10 17	10 17
5 19	4 48	10 43	6 28	6 28	235.3	Ithaca Lv	*8 15	12*15	*9 50	*9 50
5 50	†5 20	11*10	*7 00	*7 00	247.4

Read Down			Read Up				
▲755	▲753	▲751	Mls.	TABLE 11	▲750	752	754
PM	PM	AM		Lv. Alford Ar	AM	PM	PM
†2 25	12*40	*9 45	0.0	Heart Lake	*9 05	12*15	†2 10
2 40	12 55	9 58	5.1	Tiffany	8 44	11 48	1 53
2 45	1 05	10 03	7.2	Montrose Lv	8 37	11 42	1 47
†3 00	*1 25	10*12	10.4	*8 30	11*35	†1 40

Read Down			Read Up		
856	Mls.	TABLE 15	853
PM		Lv. Utica Ar	PM
.....	Richfield Jet. Lv	12*05
.....	Richfield Jet. Ar	11 25
.....	Bridgewater	10 30
.....	West Winfield	10 01
.....	East Winfield	9 55
.....	Cedarville	†9 42
.....	Millers Mills	†9 36
.....	Young's Crossing	†9 32
.....	South Columbia	†9 30
.....	Richfield Springs Lv	9 24
.....	*9 15

* Daily. † Daily except Sunday. § Sunday only. ▲ Mixed train. *Frequent service via Hudson Tubes, but this train will not be held for Tube connection. f-Stops on notice to Agent or conductor to receive or discharge passengers. A.M. time, light type. P. M. time, heavy type. a-Stops on notice to conductor to let off passengers from New York and Philadelphia. b-Stops on notice to conductor to let off passengers. c-No boat connection for this train from Christopher St. e-Stops on notice to conductor to let off passengers from Scranton and points beyond. k-Stops on notice to agent to take on passengers for New York City, Buffalo and beyond.
Note:—Trains Nos. 16, 17, 18, 19 on Bangor and Portland Division and Trains Nos. 2 and 3 on Cincinnatus Branch will be annulled on the following Holidays: New Year's Day, Lincoln's Birthday, Washington's Birthday, Memorial Day, Independence Day, Labor Day, Thanksgiving Day, Christmas Day.
• Slightly later on Sundays and holidays.

BUFFALO, SYRACUSE, BINGHAMTON AND SCRANTON TO PHILADELPHIA, BALTIMORE AND WASHINGTON VIA STROUDSBURG AND PENNSYLVANIA RAILROAD

READ DOWN

Northward

Southward

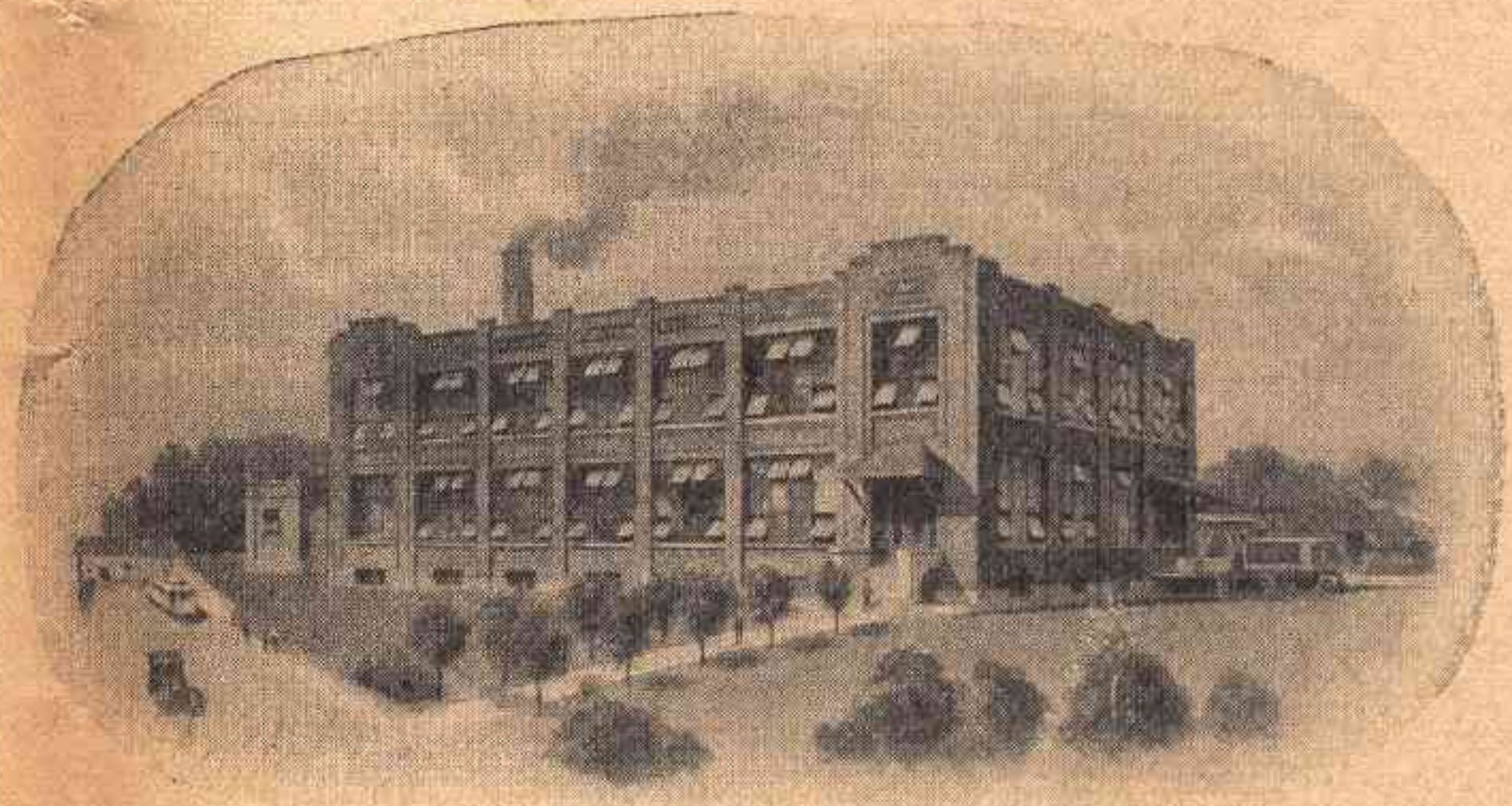
READ UP

SUNDAYS			WEEKDAYS							TABLE 16	WEEKDAYS							SUNDAYS			
385	395	387	381	379	373	363	357	355		354	360	364	372	374	376	376	388	368	376	376	
PM	PM	AM	PM	PM	AM	AM	AM	AM		AM	PM	PM	PM	PM	AM	AM	PM	PM	AM	AM	
7 00	3 00	3 30	7 00	2 30	11 00	9 00	3 30	3 30	Lv. Washington..Ar	11 30	1 30	4 30	9 15	11 59	2 50	2 50	1 30	8 25	2 50	2 50	
7 55	4 00	4 35	7 55	3 25	12 00	9 55	4 35	4 35 Baltimore	10 30	12 30	3 30	8 15	11 03	1 40	1 40	12 30	7 25	1 40	1 40	
10 15	7 03	7 45	10 15	6 05	3 25	12 48	8 35	6 50	Philadelphia, Broad St	8 00	9 55	1 17	5 50	8 35	8 59	8 59	9 55	5 00	8 59	8 59	
11 30	7 55	8 40	11 30	7 02	4 22	1 37	9 33	7 55 Trenton	7 00	9 00	12 21	5 02	7 10	8 12	8 12	9 00	4 00	8 12	8 12	
2 08	9 43	10 39	1 26	8 53	5 54	3 30	11 04	9 54	Phillipsburg (Easton)	5 15	7 28	10 48	3 27	5 05	6 35	6 35	7 18	1 32	6 35	6 35	
12 38	10 19	11 10	11 56	9 27	6 27	4 01	11 32	10 26 Belvidere	4 45	6 58	10 17	3 01	4 35	6 04	6 04	6 46	12 46	6 04	6 04	
	10 32	11 23		9 38	6 41	4 13	11 43	10 38 Delaware	14 33	6 48	10 04	2 50	4 23	5 52	5 52	6 34	12 34	5 52	5 52	
	10 37	11 28		9 43	6 46	4 17	11 46	10 43 Portland	14 28	6 41	9 59	2 46	4 18	5 46	5 46	6 28	12 29	5 46	5 46	
	10 46	11 37		9 51	6 56	4 26	11 55	10 53 Water Gap	14 19	6 30	9 50	2 38	4 09	5 38	5 38	6 19	12 21	5 38	5 38	
3 15	10 55	11 47	2 33	10 00	7 05	4 35	12 05	11 03	Ar Stroudsburg & Lv.	4 10	6 20	9 42	2 30	4 00	5 30	5 30	6 10	12 13	5 30	5 30	
3 53		12 27	3 53	10 12	7 30	4 43	12 27	11 16	Lv. E. Stroudsburg Ar	4 03	5 27	9 33	2 21		4 52	5 08	5 32	12 05	4 52	5 08	
					7 37			11 24 Analomink			9 25			4 41			11 54	4 41		
					7 47			11 33 Henryville			9 19			4 31			b11 47	4 31		
					8 03	5 14		11 47 Cresco			9 10	1 55		4 18			11 37	4 18		
					8 21	5 32		12 05 Mount Pocono			9 00	1 45		4 03			11 26	4 03		
					8 29	5 40		12 13 Pocono Summit			8 54	1 39		3 54			11 21	3 54		
					8 39	5 50		12 22 Tobyhanna			8 48	a1 32		3 42			11 10	3 42		
5 32		1 55	5 32	11 55	9 25	6 30	1 55	1 05 Scranton	2 25	3 40	8 00	12 45		3 42	3 40	10 10			3 42	
7 14		3 20	7 14	1 32		8 10	3 20	3 00 Binghamton	12 45	2 07	6 05	11 00		2 18	2 07	8 30			2 18	
11 10		5 50	11 10				5 20	 Ithaca	9 50			8 15		12 15					12 15	
11 25		5 48	11 25				5 48	 Syracuse		10 00		8 30		12 00	10 00				12 00	
8 59		4 38	8 59	2 58		9 42	4 38	 Elmira	t11 04	12 42		8 20		12 50	12 42	6 53			12 50	
12 35		7 55	12 35	6 30		1 35	7 55		Ar..... Buffalo	t7 40	9 15				9 30	9 15	3 20			9 30	
PM	PM	PM	PM	AM	PM	AM	PM	PM		PM	PM	AM	AM	PM	PM	AM	PM	AM	PM	AM	

a—Stops on signal to take on passengers for points on Pennsylvania Railroad. b—Stops to let off passengers. c—Stops on notice to conductor to let off passengers. f—Stops on signal or on notice to conductor. A. M. time, light type; P. M. time, heavy type. n—North Philadelphia. The time of trains south of Delaware is shown for the accommodation of the public and this Company will not be responsible for errors or changes that may occur. t—Except Saturday.

PLANT OF WILLIAM PETERMAN, Inc. PASSAIC, N. J.

Offices, 200 Fifth Avenue,
NEW YORK CITY



Peterman's preparations for exterminating roaches, water bugs, beetles, bedbugs, ants, fleas, flies and mosquitoes, also for protecting clothing, etc., against moths, have a national distribution and they are being SHIPPED TO ALL PARTS OF THE COUNTRY PROMPTLY and EFFICIENTLY, due to the SPLENDID FAST FREIGHT SERVICE afforded by the LACKAWANNA RAILROAD.

The undersigned will gladly furnish information regarding sites and buildings available for industrial purposes.

J. F. MULLER, Industrial Agent,
90 West Street, New York City.

PULLMAN FARES—INCLUDING SURCHARGE

(Subject to Change)

FROM	HOBOKEN				SCRANTON				BINGHAMTON				BUFFALO			
	Lower Berth	Upper Berth	Drawing Room (Sleeping Car)	Parlor Car Seat	Lower Berth	Upper Berth	Drawing Room (Sleeping Car)	Parlor Car Seat	Lower Berth	Upper Berth	Drawing Room (Sleeping Car)	Parlor Car Seat	Lower Berth	Upper Berth	Drawing Room	Parlor Car Seat
Water Gap, Pa.				\$.75				\$.75				\$.90	\$3.00	\$2.40	\$10.50	\$2.25
Stroudsburg, Pa.				.75				.75				.90	3.00	2.40	10.50	2.25
Cresco, Pa.				.83				.75				.75	3.00	2.40	10.50	2.25
Mount Pocono, Pa.				.90				.75				.75	3.00	2.40	10.50	2.25
Pocono Summit, Pa.				.90				.75				.75	3.00	2.40	10.50	2.25
Scranton, Pa.	\$3.00	\$2.40	\$10.50	1.13								.75	3.00	2.40	10.50	2.03
Kingston (Wilkes-Barre), Pa.				1.13				.75								
New Milford, Pa.	3.00	2.40	10.50	1.43				.75					3.00	2.40	10.50	1.73
Binghamton, N. Y.	3.00	2.40	10.50	1.58				.75					3.00	2.40	10.50	1.58
Cortland, N. Y.	3.00	2.40	10.50	1.88	\$3.00	\$2.40	\$10.50	.83				.75				
Syracuse, N. Y.	3.00	2.40	10.50	2.18	3.00	2.40	10.50	1.13	\$3.00	\$2.40	\$10.50	.75				
Owego, N. Y.	3.00	2.40	10.50	1.73	3.00	2.40	10.50	.75				.75	3.00	2.40	10.50	1.43
Ithaca, N. Y.	3.00	2.40	10.50	2.10	3.00	2.40	10.50	.98	3.00	2.40	10.50	.75				
Waverly, N. Y.	3.00	2.40	10.50	1.88	3.00	2.40	10.50	.83				.75	3.00	2.40	10.50	1.28
Elmira, N. Y.	3.00	2.40	10.50	2.03	3.00	2.40	10.50	.90				.75	3.00	2.40	10.50	1.13
Corning, N. Y.	3.00	2.40	10.50	2.18	3.00	2.40	10.50	1.05				.75	3.00	2.40	10.50	.98
Bath, N. Y.	3.75	3.00	13.50	2.33	3.00	2.40	10.50	1.20	3.00	2.40	10.50	.75	3.00	2.40	10.50	.83
Dansville, N. Y.	3.75	3.00	13.50	2.55	3.00	2.40	10.50	1.43	3.00	2.40	10.50	.98	3.00	2.40	10.50	.75
Mount Morris, N. Y.	3.75	3.00	13.50	2.63	3.00	2.40	10.50	1.58	3.00	2.40	10.50	1.13	3.00	2.40	10.50	.75
Buffalo, N. Y.	3.75	3.00	13.50	3.00	3.00	2.40	10.50	2.03	3.00	2.40	10.50	1.58				
Dunkirk, N. Y.	4.50	3.60	16.50		3.75	3.00	13.50		3.75	3.00	13.50		3.00	2.40	10.50	.75
Erie, Pa.	4.50	3.60	16.50		3.75	3.00	13.50		3.75	3.00	13.50		3.00	2.40	10.50	.75
Cleveland, Ohio.	5.63	4.50	21.00		4.50	3.60	16.50		4.50	3.60	16.50		3.75	3.00	13.50	1.35
Fort Wayne, Ind.	7.50	6.00	27.00		6.75	5.40	24.00		6.38	5.10	22.50		4.50	3.60	16.50	2.78
Detroit, Mich.	6.38	5.10	22.50		5.63	4.50	21.00		5.25	4.20	19.50		3.00	2.40	10.50	1.88
Chicago, Ill.	9.00	7.20	31.50		8.25	6.60	30.00		7.50	6.00	27.00		5.63	4.50	21.00	3.38
St. Louis, Mo.	10.88	8.70	39.00		10.13	8.10	36.00		9.75	7.80	34.50		7.50	6.00	27.00	
Kansas City, Mo.	13.50	10.80	48.00		12.75	10.20	45.00		12.00	9.60	42.00					
Allentown, Pa.									3.00	2.40	10.50					
Philadelphia, Pa.									3.00	2.40	10.50					
St. Paul & Minneapolis, Minn.	12.75	10.20	45.00		12.00	9.60	43.50		11.25	9.00	40.50					
Duluth, Minn.	12.75	10.20	45.00		12.75	10.20	46.50		12.00	9.60	43.50					
Gardiner, Montana.	24.38	19.50	85.50		23.63	18.90	84.00		22.88	18.30	81.00					
Billings, Montana.	22.50	18.00	79.50		21.75	17.40	78.00		21.00	16.80	75.00					
Butte, Montana.	24.75	19.80	87.00		24.00	19.20	85.50		23.25	18.60	82.50					
Spokane, Wash.	28.88	23.10	102.00		28.13	22.50	100.50		27.38	21.90	97.50					
Seattle, Wash.																
Portland, Oregon }	32.63	26.10	115.50		31.88	25.50	114.00		31.13	24.90	111.00					
Omaha, Neb.	13.50	10.80	48.00		12.75	10.20	46.50		12.00	9.60	43.50					
Denver & Colorado Springs.	19.88	15.90	70.50		19.13	15.30	69.00		18.38	14.70	66.00					
Salt Lake City & Ogden.	24.38	19.50	85.50		23.63	18.90	84.00		22.88	18.30	81.00					
West Yellowstone, Montana.	24.38	19.50	85.50		23.63	18.90	84.00		22.88	18.30	81.00					
Los Angeles, Cal.																
San Diego, Cal. }	32.63	26.10	115.50		31.88	25.50	114.00		31.13	24.90	111.00					
San Francisco, Cal. }																
Grand Canyon, Ariz.	30.38	24.30	106.50		30.38	24.30	108.00		29.63	23.70	105.00					
Los Angeles & San Francisco via Grand Canyon—	37.13	29.70	130.50		36.38	29.10	129.00		35.63	28.50	126.00					

SLEEPING AND PARLOR CAR SPACE.

Minimum Number of Railroad Tickets required for Exclusive Occupancy of Sections, Drawing Rooms or Compartments in Sleeping Cars and Drawing Room in Parlor Car.

Sleeping Cars	Minimum Number of Adult Tickets
Section.....	1
Compartment, berth service.....	2
Compartment, seat service.....	3
Drawing Room, berth service.....	2
Drawing Room, seat service.....	3
Parlor Cars	
Drawing Room.....	3

Telephone Directory of Principal Ticket, Information and Pullman Offices

NEW YORK, N. Y.

Information Bureau, 112 West 42nd St., Rector 8200.
Consolidated Ticket Offices:
64 Broadway, Hanover 6740.
57 Chambers St., Worth 5281.
4 West 33rd St., Pennsylvania 5628.
114 West 42nd St., Wisconsin 6000.
General Eastern Passenger Agent's Office:
112 West 42nd St., Wisconsin 0870.
Barclay Street Station, Foot Barclay St., Rector 8200.
Christopher Street Station, Foot Christopher St., Rector 8200.
West 23rd Street Station, Foot West 23rd St., Chelsea 1730.

BROOKLYN, N. Y.

Consolidated Ticket Office, 336 Fulton St., Triangle 7440.

HOBOKEN, N. J.

Lackawanna Terminal, Hoboken 2000.

NEWARK, N. J.

Division Passenger Agent's Office, 32 Clinton St., Mulberry 3440.
City Ticket Office, 32 Clinton St., Mulberry 3440.
Lackawanna Station, North Broad St., Humboldt 2100.

EAST ORANGE, N. J.

Lackawanna Brick Church Station, Orange 811.
East Orange Station (Arlington Ave.) Orange 7698.

PATERSON, N. J.

City Ticket Office, 303 Main St., Sherwood 1134.
Lackawanna Station, Barclay St., Sherwood 1609.

SCRANTON, PA.

Division Passenger Agent's Office, Lackawanna Station, Scranton 5251.
Lackawanna Station, Scranton 5251.

BINGHAMTON, N. Y.

Division Passenger Agent's Office, Press Bldg., Binghamton 3697.
Lackawanna Station, Binghamton 13.

SYRACUSE, N. Y.

City Passenger Agent's Office, Lackawanna Station, 2-9211.
Lackawanna Station, 2-9211.

ITHACA, N. Y.

City Ticket Office, 200 E. State St., Ithaca 2195.
Lackawanna Station, Ithaca 2096.

ELMIRA, N. Y.

Lackawanna Station, Elmira 1953.

CORNING, N. Y.

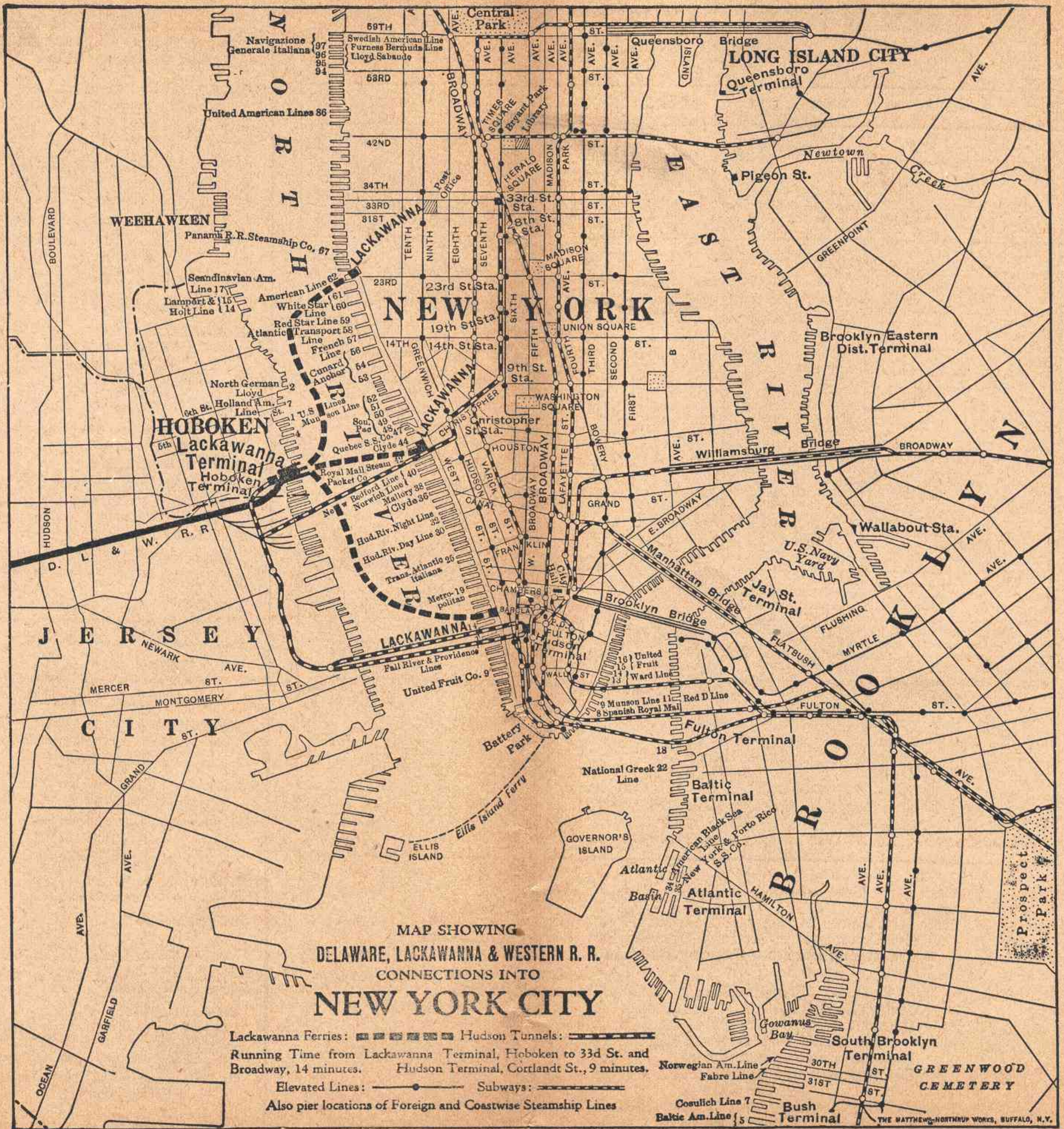
Lackawanna Station, Corning 81.

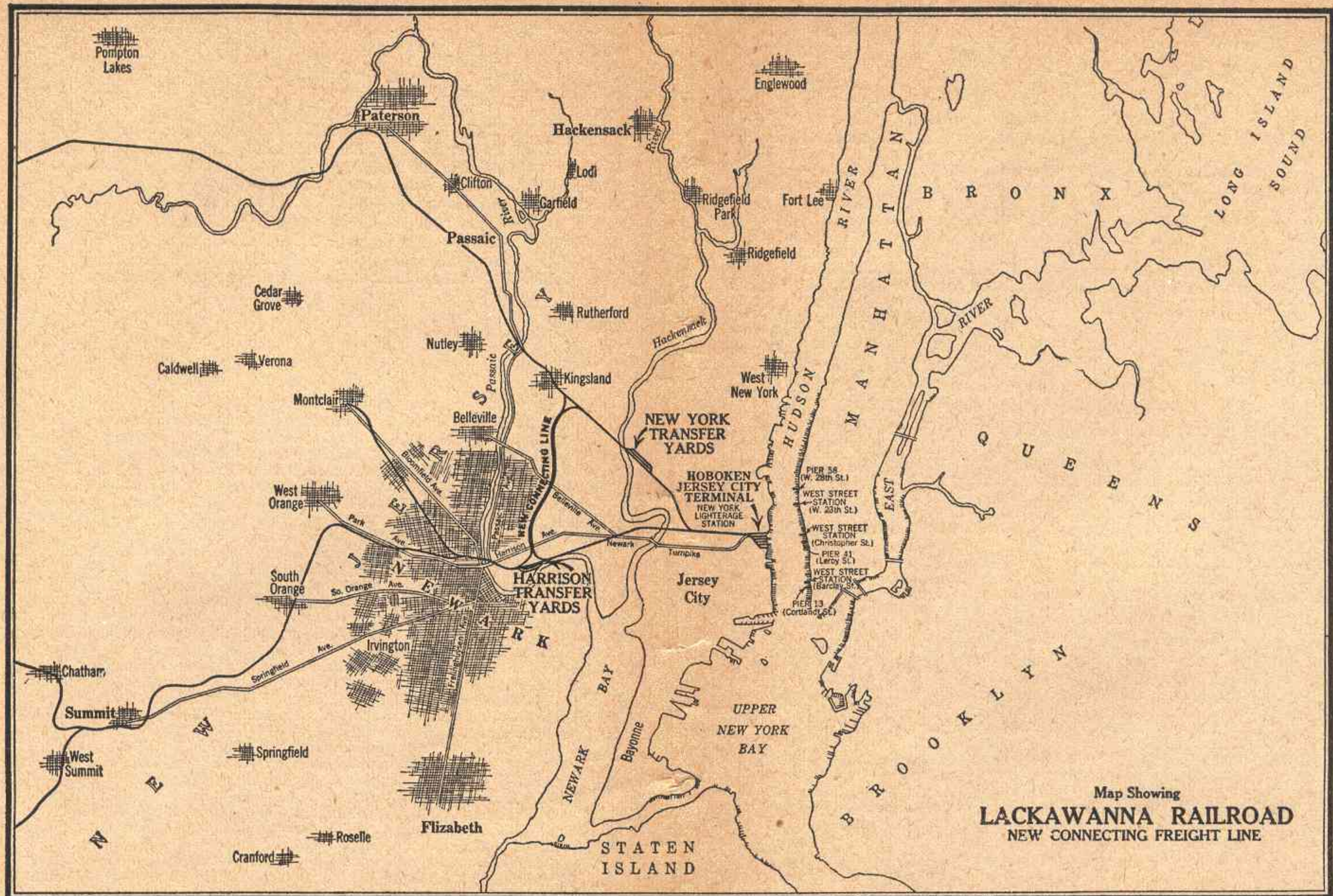
BUFFALO, N. Y.

General Agent, Passenger Department's Office, 297 Main St., Seneca 2488.
City Ticket Office, 297 Main St., Seneca 2488.
Lackawanna Terminal, Foot of Main St., Seneca 4800.

CHICAGO, ILL.

General Western Passenger Agent's Office, 111 West Jackson Blvd., Wabash 9200.
Dearborn Station, Dearborn and Polk Sts., Harrison 9830.
La Salle Street Station, Van Buren and La Salle Sts., Wabash 4200.





Map Showing
LACKAWANNA RAILROAD
 NEW CONNECTING FREIGHT LINE

PLANNING WITH FORESIGHT!

It frequently happens that industries because of growth of business or for other reasons are obliged to give thought to moving to a new location. Such a step always requires most careful consideration and plans for same are made months and maybe a year or more ahead.

It is with this thought in mind that the Lackawanna desires to call attention of manufacturers to its **new Connecting Freight Line** now completed between Harrison, N. J., (a suburb of Newark) and Kingsland, N. J., providing a short route to its Morris and Essex Division with its Boonton Line and adjacent freight yards at New York Transfer (Secaucus, N. J.) which will open up for industrial development a large tract of land at the edge of the Jersey meadows.

Exceptional opportunities are offered here to industries seeking location near the Metropolitan district. The average distance from New York is but eight miles and, as will be seen from above map, the location is in close proximity to a good labor market and can easily be reached by trolley or bus from Jersey City and Newark.

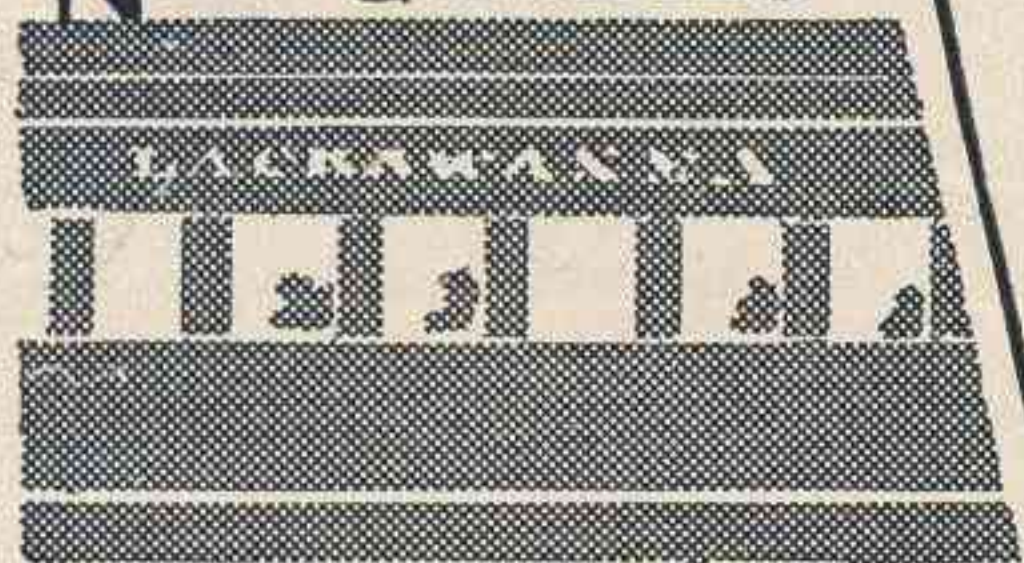
For further particulars apply to

J. F. MULLER, Industrial Agent,
 90 West Street, New York City.

Presenting a New LACKAWANNA LIMITED



NEW COACHES



NEW OBSERVATION CARS



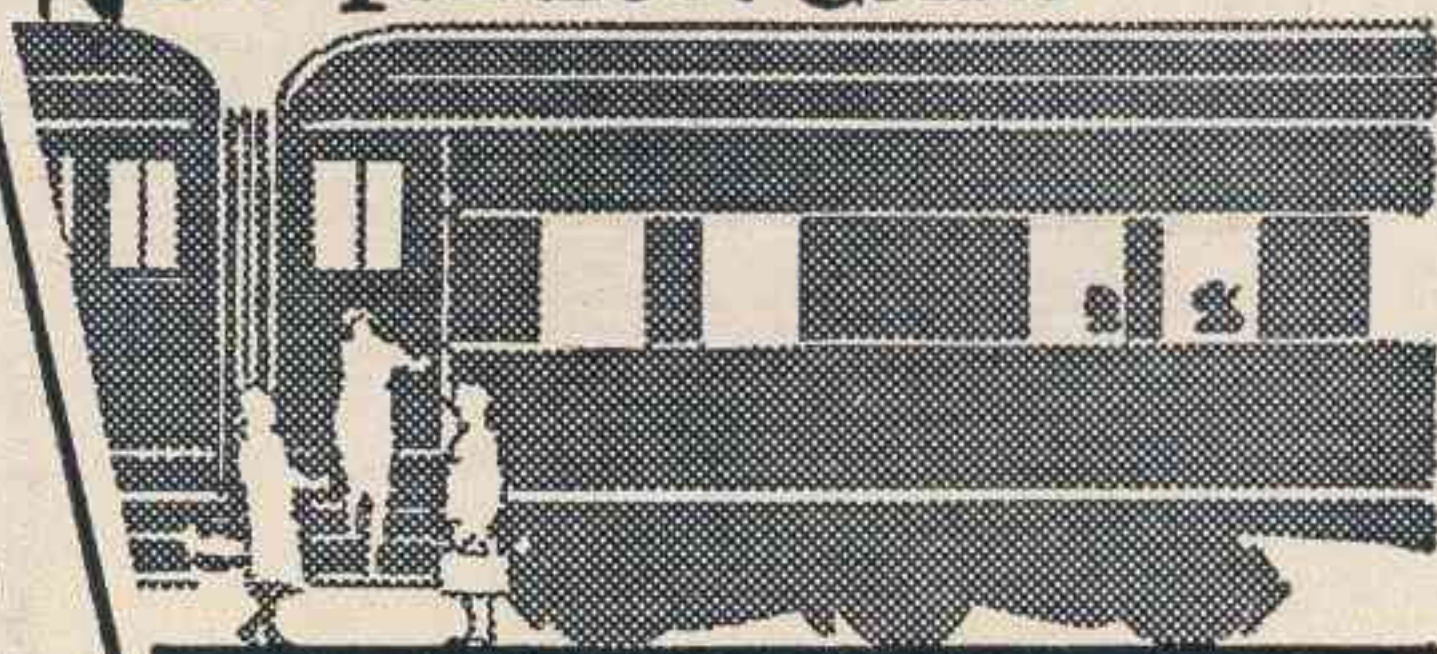
LACKAWANNA LIMITED

NEW from end to end. Coaches, parlor cars, dining cars, observation cars — all shining and new with the latest equipment and every modern luxury.

The Lackawanna Limited, the famous train running between New York City and Buffalo, now offers the last word in convenience and comfort over a daylight route of wondrous beauty.

In addition to the daily service between New York City and Buffalo, direct cars operate to and from Syracuse and connections are made in each direction from Ithaca.

NEW PARLOR CARS



NEW DINING CARS

