

Time Shown in this folder is EASTERN STANDARD TIME
One hour earlier than DAYLIGHT SAVING TIME

Lackawanna Railroad

TIMETABLES
APRIL 25, 1948

The Route of
Scenic Beauty
Between
NEW YORK
and
BUFFALO
CLEVELAND
DETROIT
CHICAGO

FORM 10

Time Shown in this folder is EASTERN STANDARD TIME
One hour earlier than DAYLIGHT SAVING TIME

Lackawanna Railroad

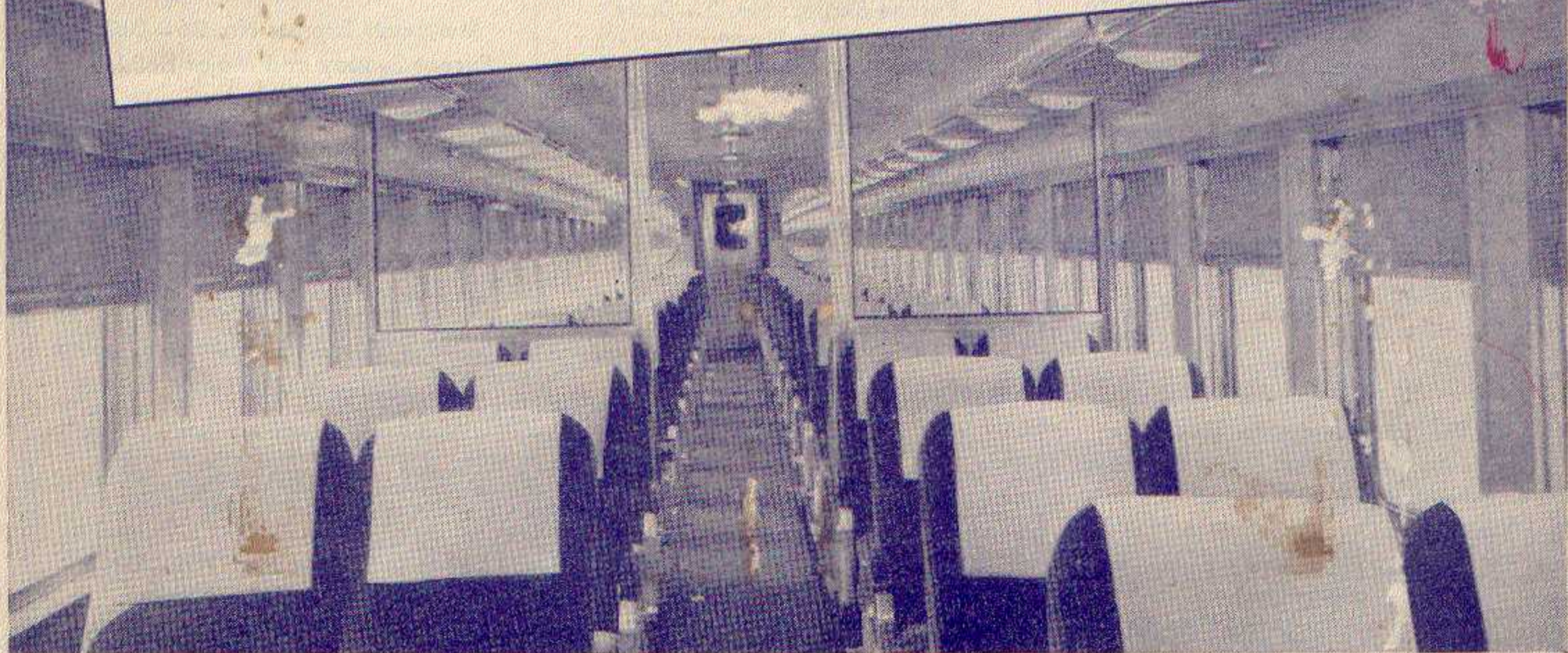
TIMETABLES
APRIL 25, 1948

The Route of
Scenic Beauty
Between
NEW YORK
and
BUFFALO
CLEVELAND
DETROIT
CHICAGO

FORM 10



NOW Lackawanna Coaches
have a "Diesel Look" too!



Passengers on the Lackawanna are seeing a new flashing streak of color on main line coach exteriors. Air-conditioned coaches on trains between New York and Buffalo are being repainted in bands of gray, gold, and maroon to match the colors of the new Diesel-electric passenger locomotives.

Interiors, too, are being renovated in tones that harmonize with the color of the interior appointments of

each coach. Spacious, air-conditioned, modern Pullman and coach accommodations insure rest, comfort, and complete relaxation to Lackawanna patrons.

This fall and winter upon the delivery of 15 additional new de luxe streamlined coaches, 9 new sleeping cars with roomettes and bedrooms, 2 diners and 2 club lounge cars, Lackawanna will put into service a new streamlined daylight train, the "PHOEBE SNOW," between New York and Buffalo.

★Regularly assigned cars are air-conditioned

LACKAWANNA RAILROAD—THE ROUTE OF SCENIC BEAUTY

CONDENSED EQUIPMENT OF TRAINS—PARLOR AND SLEEPING CAR LINES, DINING CAR SERVICE

★Regularly assigned cars are air-conditioned

WESTWARD

Lackawanna Limited No. 3—Daily

(Diesel-Powered)

(Via Nickel Plate No. 5)

- Sleeping Car
★New York to Chicago (12 Sec.—D.R.) (Car L-10)
- Parlor Lounge Car (D. L. & W.)
★New York to Buffalo. (Drawing Room) (Car 8)
- Dining Car
★New York to Buffalo
- Buffet Lounge Car
★Binghamton to Syracuse—*In No. 1903 from Binghamton*
- Diner Lounge Car
★Buffalo to Chicago
- Coaches
★New York to Buffalo
★New York to Oswego—*In No. 1903 from Binghamton*
Binghamton to Oswego—*In No. 1903 from Binghamton*
★New York to Chicago
Binghamton to Utica—*In No. 1803 from Binghamton*

The Chicagoan No. 5—Daily

(Diesel-Powered)

(Via New York Central No. 33)

- Sleeping Car
★New York to Detroit (12 Sec.—D.R.) (Car L-15)
- Buffet Lounge Car
★New York to Elmira
- Parlor Car (D. L. & W.)
★New York to Elmira (Drawing Room) (Car 14)
- Dining Car
★New York to Scranton
★Detroit to Chicago
- Coaches
★New York to Buffalo
★Buffalo to Chicago

The Westerner No. 7—Daily

(Diesel-Powered)

(Via Nickel Plate No. 7)

- Sleeping Cars
★New York to Chicago (10 Sec.—D.R.—2 Compt.) (Car L-22)
- ★New York to Buffalo (10 Sec.—D.R.—2 Double Bedrooms) (Car 25)—*May be occupied until 7.00 A.M.*
- Buffet Lounge Car
★New York to Scranton
- Dining Car
★Buffalo to Chicago
- Coaches
★New York to Chicago
★Buffalo to Chicago
★New York to Buffalo

The Scrantonian No. 11—Daily Except Sunday and Major Holidays

- ★Buffet Diner
New York to Scranton
- Coaches
New York to Scranton

The Owl No. 15—Daily

(Diesel-Powered)

- Sleeping Cars
★New York to Elmira (12 Sec.—D.R.) (Car 1)
★New York to Syracuse (12 Sec.—D.R.) (Car 3)—*(Daily Except Saturday night.)*
In No. 1915 from Binghamton
★New York to Binghamton (10 Sec.—D.R.—2 Double Bedrooms) (Car 2)—*May be occupied until 7.00 A.M.*
★New York to Scranton (12 Sec.—D.R.) (Car 4)—*(Daily except Saturday night.)*
May be occupied until 8.00 A.M.
Sleeping cars open at Hoboken for occupancy at 8.30 P.M.
- Buffet Lounge Car
★Binghamton to Buffalo
★Binghamton to Syracuse—*In No. 1915 from Binghamton*
- Coaches
★New York to Buffalo
Binghamton to Syracuse and Utica

WESTWARD

Interstate Express No. 1301—Daily

(Via B. & O. Reading Co. and C.R.R. of Pa.)

- Sleeping Car
★Philadelphia to Syracuse (12 Sec.—D.R.) (Car S)—*In No. 1915 from Binghamton*
May be occupied at 9.00 P.M.
- Parlor—Dining Car
★Washington to Philadelphia, via B. & O. R.R.
- Buffet Lounge Car
★Binghamton to Syracuse—*In No. 1915 from Binghamton*
★Binghamton to Buffalo—*In No. 15*
- Coaches
★Washington to Philadelphia
Philadelphia to Scranton
No coaches on D. L. & W. train

Pittsburgh Express No. 1705—Daily

(Runs via Sunbury and Harrisburg)

- Sleeping Car
★Scranton to Pittsburgh (12 Sec.—D.R.) (Car P-357)
- Coach Service

EASTWARD

Pocono Express No. 2—Daily

(Diesel-Powered)

- Sleeping Car
★Detroit to New York (12 Sec.—D.R.) (Car 440) via New York Central No. 44. *Car may be occupied at Buffalo at 11.00 P.M.*
- Sleeping Car
★Buffalo to New York (12 Sec.—D.R.) (Car 440) from N. Y. C. No. 44. *Car may be occupied at Buffalo at 11.00 P.M.*
- Parlor Car (D. L. & W.)
★Elmira to New York (Drawing Room) (Car 200)
- Buffet Lounge Car
★Elmira to Binghamton
- Dining Car
★Scranton to New York
- Coaches
★Buffalo to New York

Lackawanna Limited No. 6—Daily

(Diesel-Powered)

- Parlor Lounge Car (D. L. & W.)
★Buffalo to New York (Drawing Room) (Car 100)
- Buffet Lounge Car
★Binghamton to New York
- Dining Car
★Buffalo to New York
- Buffet Lounge Car
★Syracuse to Binghamton—*In No. 1906 from Syracuse*
- Coaches
★Buffalo to New York
★Oswego to New York—*In No. 1906 from Syracuse*
Oswego to Binghamton—*In No. 1906 from Oswego*
Utica to Binghamton—*In No. 1806 from Utica*

The New Yorker No. 8—Daily

(Diesel-Powered)

(Via Nickel Plate No. 8)

- Sleeping Cars
★Chicago to New York (10 Sec.—D.R.—2 Compt.) (Car C-80) Via Nickel Plate No. 8
★Buffalo to New York (10 Sec.—D.R.—2 Double Bedrooms) (Car 105)—*Open for occupancy at 8.00 P.M.*
★Elmira to New York (12 Sec.—D.R.) (Car 202)
Open for occupancy at 8.30 P.M.
- Dining Car
★Chicago to Buffalo
★Scranton to New York
- Coaches
★Chicago to New York
★Buffalo to New York

EASTWARD

New York Mail No. 10—Daily

(Diesel-Powered)

(Via Nickel Plate No. 6)

- Sleeping Cars
★Chicago to New York (12 Sec.—D.R.) (Car C-60)
Sleeper may be occupied at Hoboken until 7.00 A.M.
★Syracuse to New York (12 Sec.—D.R.) (Car 401)—*(Daily except Saturday night.)*
In 1910 to Binghamton. Sleeper may be occupied at Hoboken until 7.00 A.M.
★Scranton to New York (12 Sec.—D.R.) (Car 300)
(Daily except Saturday night.)
★Binghamton to New York (10 Sec.—D.R.—2 Double Bedrooms) (Car 252)
Binghamton and Scranton Sleepers are open for occupancy at 8.30 P.M. and may be occupied at Hoboken until 7.00 A.M.
- Diner Lounge Car
★Chicago to Buffalo
- Buffet Lounge Car
★Buffalo to Binghamton
★Syracuse to Binghamton—*In No. 1910 from Syracuse*
—Open for service 8.00 P.M.

- Coaches
★Chicago to New York—*In N. K. P. No. 6*
★Buffalo to New York

Merchants Express No. 26—Daily Except Sunday and Major Holidays

- Buffet Lounge Car
★Scranton to New York
- Coaches
★Scranton to New York

Interstate Express No. 1306—Daily

(Via C.R.R. of Pa., Reading Co., and B. & O.)

- Sleeping Car
★Syracuse to Philadelphia (12 Sec.—D.R.) (Car R-415)—*In No. 1910 from Syracuse*
- Buffet Lounge Car
★Syracuse to Binghamton—*Open for service 8.00 P.M.*
- Dining Club Car
★Bethlehem to Philadelphia
- Parlor-Dining Car
★Philadelphia to Washington, via B. & O. R.R.
- Coaches
Scranton to Philadelphia
★Philadelphia to Washington
No coaches on D. L. & W. train

Keystone Express No. 1702—Daily

(Runs via Harrisburg and Sunbury)

- Sleeping Car
★Pittsburgh to Scranton (12 Sec.—D.R.) (Car 160)
- Coach Service

Hoboken Terminal Handles 271
Lackawanna Passenger Trains On
Weekdays And 122 On Sundays

CONDENSED TABLE OF CONNECTING TRAINS

NEW YORK AND BUFFALO, CLEVELAND, DETROIT, CHICAGO AND THE WEST

(For Through Car Service, See Page 2)

TABLE 1 WESTWARD—Read Down					TABLE 2 EASTWARD—Read Down				
	15 Daily	3 Daily	5 Daily	7 Daily	12 Daily	38 Daily	Daily	Daily	
	PM	AM	PM	PM	AM	PM	PM	AM	
LACKAWANNA RAILROAD									
New York									
Barclay St. (E.T.) Lv	11 15	9 00	3 15	7 13					
Christopher St. (E.T.) Lv	12 00	9 10	3 12	7 12					
Hoboken (E.T.) Lv	12 25	9 30	3 40	7 45					
Newark (E.T.) Lv		9 44	3 54	7 59					
Brick Church (E.T.) Lv		9 51	4 01	8 06					
Dover (E.T.) Lv		10 32	4 43	8 47					
Scranton (E.T.) Lv	4 00	12 54	7 00	11 10					
Binghamton (E.T.) Lv	6 05	2 05	8 20	12 21					
Cortland (E.T.) Ar	8 10	3 35							
Syracuse (E.T.) Ar	9 15	4 35							
Oswego (E.T.) Ar		6 10							
Norwich (E.T.) Ar	10 17	3 16							
Utica (E.T.) Ar	12 15	5 00							
Ithaca (Via Bus See Table 13) (E.T.) Ar	9 40	3 45							
Elmira (E.T.) Lv	7 55	3 16	10 02	1 29					
Buffalo (E.T.) A	11 50	6 00	1 10	4 00					
NICKEL PLATE									
Buffalo (Lackawanna Terminal) (E.T.) Lv		5	7						
Erie (E.T.) Ar		6 25	4 25						
Ashtabula (E.T.) Ar		8 15	6 01						
East Cleveland (Superior Ave.) (E.T.) Ar		9 14	6 57						
Cleveland (Union Terminal) (E.T.) Ar		10 10	7 49						
Fort Wayne (C.T.) Ar		10 30	8 05						
Chicago (La Salle St. Sta.) (C.T.) Ar		2 25	11 23						
		6 25	3 10						
NEW YORK CENTRAL SYSTEM									
Buffalo (Cent. Term.) (E.T.) Lv		39	33	35					
Buffalo (Terrace Sta.) (E.T.) Lv		9 55	2 45	8 20					
Detroit (E.T.) Ar		2 40	7 30	1 25					
Ann Arbor (E.T.) Ar			8 46						
Jackson (E.T.) Ar		4 39	9 25						
Battle Creek (E.T.) Ar		5 37	10 25						
Kalamazoo (E.T.) Ar		6 12	10 52						
Chicago (Central Station) (C.T.) Ar		8 30	12 45						
NEW YORK CENTRAL SYSTEM— CAN. PAC. R. R.									
Buffalo (Cent. Term.) (E.T.) Lv	379		371	375					
Buffalo (Terrace Sta.) (E.T.) Lv	2 05		5 05	8 45					
Toronto (C.P.R.) (E.T.) Ar	2 16		8 00	11 55					
	6 10								
NEW YORK CENTRAL SYSTEM									
Buffalo (Cent. Term.) (E.T.) Lv	43	5	19	35					
Cleveland (E.T.) Ar	1 14	8 25	2 45	8 05					
Toledo (E.T.) Ar	5 10	12 25	6 05	11 20					
Chicago (La Salle St. Sta.) (C.T.) Ar	7 47	3 05	8 30	1 25					
	12 30	6 55	12 15	5 00					
NEW YORK CENTRAL SYSTEM									
Buffalo (Cent. Term.) (E.T.) Lv		5-417		35-433					
Cleveland (E.T.) Lv		8 25		8 05					
Cincinnati (E.T.) Ar		12 50		12 20					
		7 05		6 20					
NEW YORK CENTRAL SYSTEM									
Buffalo (Cent. Term.) (E.T.) Lv	43-431	5-41	11	35-407					
Cleveland (E.T.) Lv	1 14	8 25	3 20	8 05					
Indianapolis (C.T.) Ar	6 10	2 20	6 50	12 05					
St. Louis (C.T.) Ar	12 05	6 40	11 15	5 15					
	7 10	11 30	4 25	10 45					
	AM	AM	PM	PM					

EXPLANATION OF REFERENCE MARKS

A.M., light type. P.M., heavy type. E.T.—Eastern Time. C.T.—Central Time.

* Through Sleeper on N.Y.C. No. 44 from Detroit runs on D. L. & W. No. 2 from Buffalo—passengers desiring to connect with D. L. & W. No. 8 from Buffalo should transfer at Terrace Station. ▲ Transfer at Terrace Station for D. L. & W. train No. 6.

PRINCIPAL TICKET, INFORMATION AND PULLMAN OFFICES

	Telephone		Telephone
NEW YORK	General Eastern Passenger Agent's Office 500 Fifth Avenue (at 42nd Street) Room 842	Lackawanna 4-0234	NEWARK
	Railroad Ticket Offices: 3 West 47th Street (near Fifth Avenue) 7 17 John Street (near Broadway) Barclay St. (ft. Barclay Street) Christopher Street (near West 10th Street) Evenings, Saturday afternoons, Sundays and Legal Holidays, phone	PLaza 7-5560-1 COrtlandt 7-0820-1 BARclay 7-2500	City Ticket Office Griffith Bldg., 605 Broad St., Rms. 502-503 Evenings, Sundays and Legal Hols., phone
		BARclay 7-2500	HUMboldt 2-2100
HOBOKEN	Lackawanna Terminal	HOboken 3-2000	PATERSON
			Lackawanna Station 220 Marshall St. (near Main St.)
			SHERwood 2-1609
			BUFFALO
			City Ticket Office 11 W. Genesee St. Evenings, Sundays and Legal Holidays, phone
			CLeveland 24881
			WAshington 4800
			CHICAGO
			City Passenger Agent's Office 327 South LaSalle Street
			WAbash 3443

SCRANTON TO BINGHAMTON, SYRACUSE, ELMIRA AND BUFFALO

For condensed time and equipment of trains see pages 2 and 3.

Miles	TABLE 4 WESTWARD—Read Down		15	1301	Mixed	3	5	7				
			Daily	Daily	47	Daily	Daily	Daily				
			AM	AM	AM	AM	PM	PM				
	Wilkes-Barre (Laurel Line)	Lv	2 15		†9 15 §8 45	11 45	5 45	9 45				
134.1	Scranton	Lv	4 00		11 02	12 54	7 00	11 10				
141.5	Clarks Summit				f11 27							
145.0	Dalton				f11 34							
147.0	LaPlume				f11 39							
153.1	Nicholson (Tunkhannock Viaduct)				f11 52							
158.6	Foster				f12 01							
162.9	Kingsley				f12 09							
172.6	New Milford		4 56		f12 32		7 43					
178.5	Hallstead		5 05		f12 42							
183.7	Conklin				f12 52							
192.7	Binghamton	Ar	5 25	5 42	1 27	1 56	8 05	12 12				
235.7	Cortland	Ar	8 10	8 10		3 35						
272.1	Syracuse	Ar	9 15	9 15		4 35						
307.1	Oswego	Ar				6 10						
287.8	Utica	Ar	12 15	12 15		5 00						
192.7	Binghamton	Lv	6 05			2 05	8 20	12 21				
195.4	Johnson City		6 11									
200.7	Vestal		6 24			2 15	8 32					
	Endicott											
206.6	Apalachin		f6 30									
213.4	Owego		6 48			2 33	8 58	f12 45				
247.4	Ithaca (Via Bus) See Table 13.	Ar	8 40	8 40		3 45						
221.7	Nichols		7 02									
232.0	Waverly		7 20			2 53	9 26	1 06				
249.7	Elmira	Ar	7 38			3 10	9 52	1 24				
		Lv	7 55			3 16	10 02	1 29				
259.5	Big Flats		e8 13									
267.7	Corning		8 32			3 37	10 30	1 48				
276.7	Campbell		e8 43									
286.6	Bath		9 01			3 58	10 59					
294.2	Avoca		9 12									
302.0	Cohocton		9 26									
306.4	Atlanta		9 34									
312.3	Wayland		9 45									
319.5	Dansville		9 59			4 32	11 34					
326.8	Groveland											
333.7	Mount Morris		10 23			4 51	11 55	2 51				
340.3	Greigsville		10 35									
351.1	B. & O. Jct.		s10 50									
355.0	East Bethany		f10 55									
384.2	Lancaster											
396.2	Buffalo	Ar	11 50			6 00	1 10	4 00				
			AM	AM	PM	PM	AM	AM				

For Connections West of Buffalo
See Table 1, Page 3.

EXPLANATION OF REFERENCE MARKS

For Tables 3 and 4

- AM time light type. PM time heavy type.
 †—Daily except Sunday. §—Sunday only.
 a—Stops on notice to Agent to receive passengers for Johnsonburg and points west.
 b—Stops on notice to Agent to receive passengers for New Milford and west weekdays; Sundays and Holidays (See Holiday Note) stops on notice to agent to receive passengers for Blairstown and west.
 d—Stops on notice to conductor to discharge passengers from Dover and east and on notice to agent to receive passengers for Buffalo and west weekdays; Sundays a regular stop.
 e—Stops on notice to conductor to discharge passengers from Binghamton and east and on notice to Agent to receive passengers for Buffalo and west.
 f—Stops on notice to agent or conductor.
 g—Stops on notice to conductor to discharge passengers from Dover and East, also from points on the Penna. R. R. and on notice to agent to receive passengers for Binghamton and west.
 m—Stops Friday only on notice to conductor to discharge passengers from Dover and east, and on notice to Agent to receive passengers for Buffalo and west; Sundays and Holidays a regular stop. (See Holiday Note).
 r—Stops on notice to conductor to discharge passengers from Dover and east, and on notice to agent to receive passengers for Buffalo and west.
 s—Stops on notice to conductor to discharge passengers from Corning and east and to receive passengers for Buffalo and west.
 t—Stops Jan. 1, May 31, July 5, Sept. 6, Nov. 25 and Dec. 25 only at Delaware Water Gap 5.24 P.M., Henryville 5.42 P.M., and Mt. Pocono 6.06 P.M.
 v—Stops on notice to Agent to receive passengers for Blairstown and west.
 w—Stops Friday and Saturday on notice to conductor to discharge passengers from Dover and east and on notice to agent to receive passengers for Buffalo and west.
 x—Stops Sundays and Holidays only (See Holiday Note) at Tobyhanna 6.16 P.M., Gouldsboro 6.22 P.M., Moscow 6.30 P.M.
 z—Stops regularly to receive passengers.
 Holidays—The term holidays used in these timetables applies to New Year's Day, Memorial Day (May 31), Independence Day (July 5), Labor Day, Thanksgiving and Christmas Day.

Think Along These Lines

The Lackawanna is the shortest line between New York and Scranton, Binghamton Syracuse, Elmira and Buffalo. Therefore, the rates charged are the lowest available.

There are three daily trains, west and east—New York, Buffalo, Cleveland, Detroit, Chicago and the West, stopping on signal at convenient Suburban New Jersey Stations for the accommodation of our patrons.

Passengers ride in air-conditioned comfort and reclining seat coaches at no extra fare and also in modern air-conditioned sleeping cars without a change of cars at Buffalo.

Transferring Luggage and Passengers Between Depots in Chicago

Passengers holding tickets through Chicago may deliver their hand luggage to the Parmelee desk at the incoming depots for delivery to the parcel checking rooms of the outgoing depots at the cost of only the usual parcel checking fees.

The Parmelee transfer coupon— included as part of your through ticket— also entitles you to the choice of transfer service in Parmelee limousine from your incoming depot to your outgoing depot, or to any hotel or other destination in downtown Chicago.

Ask any Ticket Agent for details

BUFFALO, ELMIRA, SYRACUSE AND BINGHAMTON TO NEW YORK

For condensed time and equipment of trains see pages 2 and 3.

Miles	TABLE 5 EASTWARD—Read Down	2	6	10	1306	8			
		Daily	Daily	Daily	Daily	Daily			
	For connections from the West see Table 2, page 3.	AM	AM	PM	PM	PM			
0.0	Buffalo.....Lv	3 20	8 45	5 00		10 00			
12.0	Lancaster.....			5 18					
41.2	East Bethany.....			5 44					
45.1	B. & O. Jet.....			5 50					
55.9	Greigsville.....	Pocono Express	Lackawanna Limited			The New Yorker			
62.5	Mount Morris.....	4 28	9 48	6 15		11 03			
69.4	Groveland.....			6 25					
76.7	Dansville.....	4 49	10 06	6 45		11 20			
83.9	Wayland.....	Diesel-Powered	Diesel-Powered	7 02					
89.8	Atlanta.....			7 18					
94.2	Cohoeton.....			7 29					
102.0	Avoca.....			7 49					
109.6	Bath.....	5 36	10 41	7 49		11 56			
119.5	Campbell.....								
128.5	Corning.....	6 01	11 03	8 15		12 15			
136.7	Big Flats.....								
146.5	Elmira.....	Ar 6 20	11 22	8 45		12 32			
		Lv 6 30	11 27	8 55		12 38			
164.2	Waverly.....	6 50	11 47	9 18		12 58			
174.5	Nichols.....	7 02		9 30					
216.8	Ithaca Via Bus see table 13 Lv		10 25						
182.8	Owego.....Lv	7 21	12 10	9 45					
189.6	Apalachin.....	7 32							
195.5	Vestal								
	Endicott	7 43	12 26	10 08					
200.8	Johnson City.....								
203.5	Binghamton.....Ar	7 56	12 36	10 23		1 38			
	Utica.....Lv		9 25	4 40	4 40				
	Oswego.....Lv		8 55						
	Syracuse.....Lv		10 20	8 20	8 20				
	Cortland.....Lv		11 23	9 25	9 25				
203.5	Binghamton.....Lv	8 06	12 48	10 59	11 20	1 45			
212.5	Conklin.....								
217.7	Hallstead.....	8 21							
223.6	New Milford.....	8 32							
233.3	Kingsley.....								
237.6	Poster.....								
243.1	Nicholson (Tunkhannock Viaduct)								
249.2	LaPlume.....								
251.2	Dalton.....								
254.7	Clarks Summit.....	9 05							
262.1	Scranton.....Ar	9 18	1 50	12 15		2 52			
	Wilkes-Barre.....Ar	10 10	2 40	2 10		3 40			
	(Laurel Line)								
		AM	PM	AM	PM	AM			

Vacation Suggestions

Let Lackawanna Railroad illustrated vacation folders help you in planning a restful, enjoyable vacation this year at reasonable rates—delightful 8 day all-expense luxury cruises on the Great Lakes or vacation days of fun and relaxation at some nearby Pocono Mountain Resort.

Folders may be obtained by addressing R. F. Irwin, General Agent, Passenger Department, Lackawanna Railroad, 140 Cedar Street, New York 6, N. Y.

EXPLANATION OF REFERENCE MARKS

For Tables 5 and 6.

†—Daily except Sunday.

§—Sunday only.

A.M. time in light type.

P.M. time in heavy type.

c—Stops regularly on notice to conductor to discharge passengers.

d—Stops Sunday and Monday Morning only, at Cresco 4:01 A.M. on notice to Agent to receive passengers for Dover and east and on notice to conductor to discharge passengers from Buffalo and west.

f—Stops on notice to Agent or conductor.

m—Stops on notice to conductor to discharge passengers from points west of Dover.

r—Stops on notice to Agent to receive passengers for New York.

t—On Sunday leaves Dover 5:51 A.M.

v—Stops on notice to Agent to receive passengers for Dover and east, also for points on Pennsylvania Railroad and on notice to conductor to discharge passengers from Binghamton and points beyond.

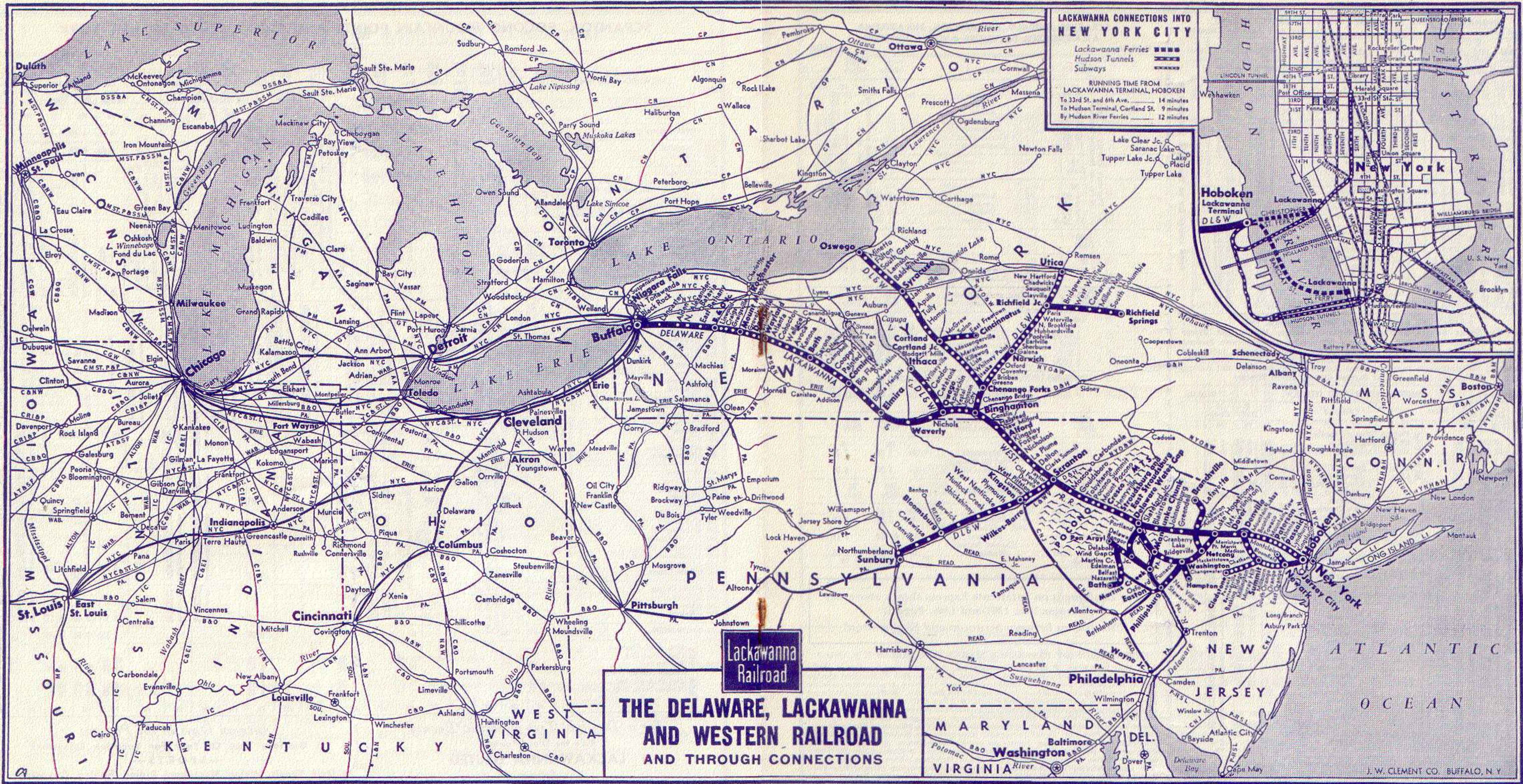
Holidays: The term holidays used in these tables applies to New Year's Day, Memorial Day (May 31), Independence Day (July 5), Labor Day, Thanksgiving and Christmas Day. †

Courtesy—A Symbol of Lackawanna Service

It takes more than engines, tracks, and rolling stock to make a railroad tick. The loyal efficient employees of our railroad, who serve traveler and shipper in a friendly, courteous manner are really the fulcrum of Lackawanna dependability and service.

Many letters have been received from old patrons as well as new friends commending individual acts of courtesy and thoughtfulness on the part of our employees. We are grateful for such letters which encourage our personnel in their efforts to serve you better.

The next time you ship or travel, remember courteous Lackawanna service



LACKAWANNA RAILROAD — The Shortest Route between New York — Scranton — Binghamton — Syracuse — Elmira — Buffalo

BINGHAMTON, SYRACUSE AND OSWEGO

Read Down			Read Up			
3 1903 Daily	15 1915 Daily	Miles	TABLE 7		1906 6 Daily	1910 10 Daily
AM	AM		NEW YORK		PM	AM
9 05	12 00		NEW YORK	Hudson Tubes— Lv 33rd St. & 6th Ave. (Fare 10c) . . . Ar	5 35	4 59
9 07	11 47			Hudson Term. Bldg.—Cortlandt Street (Fare 10c)	5 32	4 55
9 00	11 15			D. L. & W. Ferries— Lv . . . Barclay St. Ar	5 40	4 55
9 10	12 00			Christopher St.	5 34	4 55
9 30	12 25	1.0		Hoboken	5 15	4 30
9 44				Newark	5 01	
9 51				Brick Church	4 52	
10 32				Dover	4 14	3 25
2 30	7 00	192.7		Lv Binghamton Ar	12 25	10 30
a	a	197.8		Chenango Bridge	h10 13	
2 58	7 31	203.7	Chenango Forks	h10 06		
a	a	213.1	Whitney Point	11 56		
a	a	215.3	Lisle	h 9 52		
a	a	218.9	Killawog	h 9 48		
3 11	7 45	221.9	Marathon	11 42		
a	a	225.8	Messengerville	h 9 38		
a	a	232.1	Blodgett Mills	h 9 31		
3 35	8 10	235.7	Cortland	11 23	9 25	
3 40	8 16	238.3	Homer	11 14	9 15	
3 56	8 32	250.0	Tully	10 59	8 59	
a	a	252.2	Apulia	f8 55		
e4 17	8 58	265.4	Jamesville	g10 34	h8 34	
4 35	9 15	272.1	Ar Syracuse Lv	10 20	8 20	
4 50		272.1	Lv Syracuse Ar	10 05		
5 15		284.1	Baldwinsville	9 42		
f5 23		288.7	Lamson	9 34		
f5 28		291.3	South Granby	f9 28		
5 39		296.0	Fulton	9 20		
5 55		302.5	Minetto	9 05		
6 10		307.1	Ar Oswego Lv	8 55		

Read Down			Read Up			
3 1803 Daily	15 1815 Daily	Miles	TABLE 8		1806 6 Daily	1816 10 Daily
AM	AM		NEW YORK		PM	AM
9 05	12 00		NEW YORK	Hudson Tubes— Lv 33rd St. & 6th Ave. (Fare 10c) . . . Ar	5 35	4 59
9 07	11 47			Hudson Term. Bldg.—Cortlandt Street (Fare 10c)	5 32	4 55
9 00	11 15			D. L. & W. Ferries— Lv . . . Barclay St. Ar	5 40	4 55
9 10	12 00			Christopher St.	5 34	4 55
9 30	12 25	1.0		Hoboken	5 15	4 30
9 44				Newark	5 01	
9 51				Brick Church	4 52	
10 32				Dover	4 14	3 25
2 15	9 05	192.7		Lv Binghamton Ar	12 20	7 50
f2 24	9 15	197.8		Chenango Bridge	12 07	7 35
2 31	9 23	203.7	Chenango Forks	12 00	7 25	
2 41	9 35	211.7	Greene	11 47	7 13	
	f9 44	217.6	Brisben			
	f9 52	221.1	Coventry		f6 56	
3 01	9 59	225.7	Oxford	11 24	6 49	
3 16	10 17	233.9	Norwich	11 12	6 36	
f3 24	f10 25	239.6	Galena	f11 02	f6 24	
3 32	10 34	245.0	Sherburne	10 54	6 15	
3 40	10 44	250.1	Earlville	10 44	6 06	
3 46	10 50	252.6	Poolville	10 39	6 01	
3 53	10 59	256.8	Hubbardsville	10 32	5 54	
3 59	11 06	260.7	North Brookfield	10 26	5 48	
4 07	11 19	266.3	Waterville	10 15	5 38	
f4 13	11 25	270.6	Paris	f10 08	f5 30	
4 21	11 33	274.2	Richfield Junction	10 01	5 21	
f4 26	11 38	276.5	Clayville	f9 54	5 11	
f4 30	11 43	278.5	Sauquoit	f9 50	5 06	
4 35	11 47	280.0	Chadwicks	f9 47	5 02	
4 43	11 55	283.7	New Hartford	9 40	4 55	
5 00	12 15	287.8	Ar Utica Lv	9 25	4 40	

SYRACUSE, BUFFALO, BINGHAMTON, PHILADELPHIA, ATLANTIC CITY, BALTIMORE AND WASHINGTON

Read Down			Read Up		
	1910 Daily	TABLE 9	7 Daily	1915 Daily	
	PM		AM	AM	
Interstate Express via Cent. of Pa. and Reading Company	8 20	Lv Syracuse Ar		9 15	
	f8 59	Tully		8 32	
	9 15	Homer		8 16	
	9 25	Cortland		8 10	
	9 44	Marathon		7 45	
	f9 55	Whitney Point		7 31	
	10 30	Ar Binghamton Lv		7 00	
	10 Daily			15 Daily	
	5 00	Lv Buffalo Ar	4 00	AM 11 50	
	8 45	Corning	1 48	8 32	
8 55	Elmira	1 24	7 38		
10 23	Ar Binghamton Lv	12 21	6 05		
1306 Daily			1301 Daily		
PM 11 20	Lv Binghamton Ar	12 12	AM 5 42		
	Lv Scranton Lv	11 10			
306 Daily		Cent. of Pa.—Reading Company	327 Daily	301 Daily	
AM 12 35	Lv Scranton Ar	PM 9 55	AM 4 33		
1 54	Ar Wilkes-Barre Lv	9 11	3 32		
3 40	Mauch Chunk	7 33	1 38		
4 21	Allentown	6 47	12 40		
4 51	Ar Bethlehem Lv	6 33	12 18		
d5 56	Ar Lansdale Lv	5 22	j11 26		
6 31	Wayne Jet.	4 53			
6 45	Ar Philadelphia Lv	4 40	10 45		
		(Reading Terminal)			
1003 Daily		Pennsylvania-Reading (Seashore Lines)	1018 Daily	1026 Daily	
AM 7 15	Lv Philadelphia Ar	PM 2 00	PM 7 02		
8 50	Ar Atlantic City Lv	12 30	5 30		
21 Daily		Baltimore & Ohio R. R.	504 Daily	22 Daily	
6 45	Lv Wayne Jet. Ar	3 08			
7 01	Lv Philadelphia Ar	2 50	9 15		
		(24th and Chestnut Sts.)			
▲8 57	Ar Baltimore Lv	▲1 06	7 15		
		(Camden Station)			
▲9 45	Ar Washington Lv	▲12 30	6 30		

For Equipment on Interstate Express shown above, see Trains Nos. 1301 and 1306, Page 2.

EXPLANATION OF REFERENCE MARKS FOR TABLES 7, 8 AND 9

A.M. time light type, P.M. time heavy type. †—Daily except Sunday. ‡—Daily except Saturday. ▲—Passengers to and from Baltimore and Washington change cars at Wayne Jet. a—Stops on notice to Conductor to discharge passengers holding tickets from Scranton and east and from Elmira and west. c—Time shown is from Christopher Street, New York; no ferry connection for this train from Barclay Street. d—Stops to discharge passengers from points beyond Bethlehem. e—Stops daily on notice to Conductor to discharge passengers holding tickets from Scranton and east and Elmira and west, Sundays stops on signal to receive or discharge passengers. f—Stops on notice to Agent or Conductor. g—Stops Sundays only to receive or discharge passengers. h—Stops on signal to receive passengers for Scranton and east, and Elmira and west, providing Agents are notified in advance. j—Stops to pick up sleeping car passengers only. ●—Time shown is weekdays; Sundays and Holidays leaves Philadelphia (Broad St. Sta.) 8:30 A.M., arrives Atlantic City 10:00 A.M.

GENERAL INFORMATION

RESPONSIBILITY—This time table is furnished to the public as a matter of information only. The company is not responsible for errors therein, inconvenience or damage resulting from delayed trains or failure to make connections, or for shortage of equipment. The schedules and equipment shown herein are subject to change without notice.

CHILDREN—Under five years of age carried free, when accompanied by parent or guardian; five years of age and under 12, one-half fare; 12 years of age or over, full fare.

ADJUSTMENT OF FARES—In case of dispute with conductors or agents, passengers should pay the fare required, take a receipt, and communicate with the General Passenger Agent, 140 Cedar Street, New York 6, New York.

Passengers leaving train short of destination of the ticket should have the conductor make endorsement on the ticket to that effect.

REDEMPTION OF TICKETS—Tickets unused or partly used will be redeemed under tariff regulations by the General Passenger Agent, 140 Cedar Street, New York 6, New York.

ARTICLES LOST—When articles are lost on trains or left at stations, owners should immediately apply to Agent at station where they leave train, or address Manager Mail, Express, Baggage and Milk Traffic, Lackawanna Terminal, Hoboken, N. J., giving full description of property, stating date of loss and train number.

BAGGAGE—

(a) 150 pounds of baggage, not exceeding \$100.00 in value, will be checked free on each adult ticket, and 75 pounds, not exceeding \$50.00 in value, on each child's ticket. Excess charge will be collected

for excess weight and excess value, but no piece of baggage exceeding 300 pounds in weight (except immigrant baggage checked at port of landing), or single shipment exceeding \$2,500 in value will be accepted for checking.

(b) This Company cannot guarantee to forward baggage on same train with passenger; and when necessary, will forward it on other trains.

(c) Baggage Checked to New York City—Unless otherwise specified, all baggage checked to New York City will be sent to the Christopher Street Station.

(d) Baggage Delivery Service—Arrangements can be made at the time of checking baggage for delivery to residence, hotel or other point in New York City, Newark, Buffalo, and other important cities.

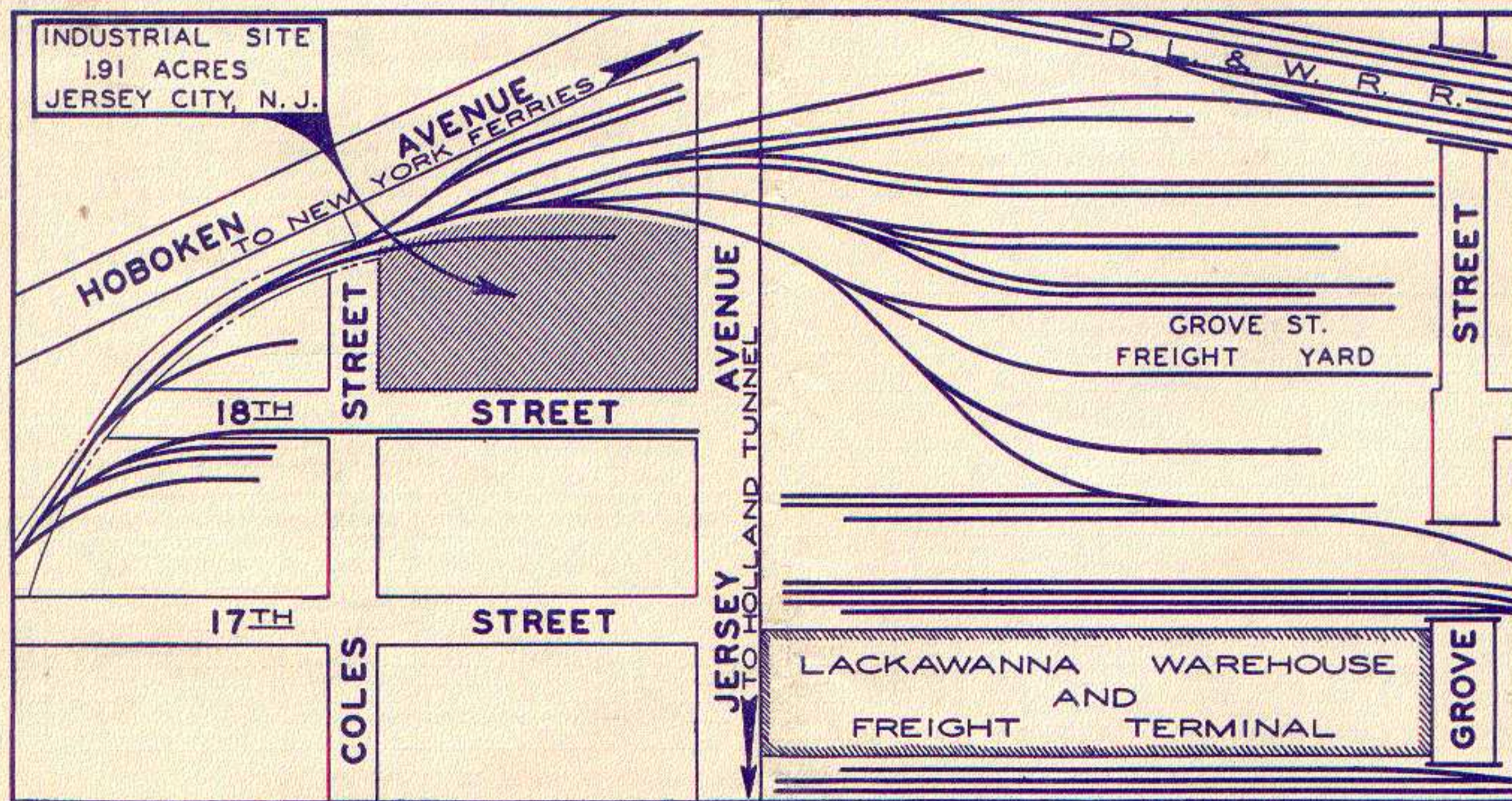
(e) Storage will be charged on each piece of baggage remaining at stations over 24 hours, except that certain concessions will be allowed for Sundays and holidays.

(f) Baggage for stations where there is no agent must be claimed at the baggage car door immediately upon arrival at that station; otherwise it will be carried to first station where agent is on duty and held for further orders.

(g) Parcel Rooms will be found at the principal stations, where packages, hand baggage, etc., may be checked and cared for at a nominal charge.

STOP-OVERS—Practically all tickets permit stop-overs within limit at any station en route on application to Conductor.

For further detailed information consult Ticket Agent.



INDUSTRIAL OR WAREHOUSE SITE ON HOBOKEN-JERSEY CITY TERMINAL OF LACKAWANNA RAILROAD NEAR HOLLAND TUNNEL AND NEW YORK FERRIES—ABOUT 2 MILES TO LINCOLN TUNNEL

For information regarding the above and other manufacturing and warehouse locations inquire of
W. B. HARAHAH, Industrial Agent, 140 Cedar Street, New York 6, N. Y. Telephone: BARclay 7-2500

LACKAWANNA RAILROAD

General Offices—140 Cedar Street, New York 6, N. Y. Telephone Barclay 7-2500

EXECUTIVE DEPARTMENT

W. M. WHITE, President
E. B. MOFFATT, Assistant to President
J. HAMPTON BAUMGARTNER, Manager of Public Relations

C. F. FARMER, Vice President
P. M. SHOEMAKER, Vice President
G. A. PHILLIPS, Chief Engineer, Hoboken, N. J.

D. I. MACKIE, General Counsel
J. G. ENDERLIN, Secretary and Treasurer
P. D. JONAS, Comptroller

OPERATING DEPARTMENT

P. M. SHOEMAKER, Vice President, New York
J. F. SCANLON, Assistant to Vice President

W. G. WHITE, Supt. Morris and Essex Division.....Hoboken, N. J. | F. DIEGTEL, Supt. Scranton Division.....Scranton, Pa.
C. H. YOUST, Supt. Buffalo Division.....Buffalo, N. Y.

PURCHASING, STORES, DINING CAR DEPARTMENTS

E. B. MOFFATT, Assistant to President, New York

CURTIS F. BAYER, Purchasing Agent.....New York | DANIEL E. MULDOON, Supt. Dining Car Department.....Hoboken, N. J.

TRAFFIC DEPARTMENT

C. F. FARMER, Vice President, New York
H. C. SCHMIDT, General Freight Traffic Manager, New York

FREIGHT

GEORGE HERBERT, Asst. Freight Traffic Manager.....New York	JOSEPH S. SIKORA, Freight Traffic Manager (Rates and Divisions).....New York
HARRY F. DOYLE, Asst. Freight Traffic Manager.....New York	E. M. SELLERS, General Freight Agent.....New York
W. M. MacPHERSON, Asst. Freight Traffic Manager.....Buffalo, N. Y.	W. J. STUMPF, Assistant General Freight Agent.....New York
J. H. CHRISTY, Western Traffic Manager.....Chicago, Ill.	E. J. McGARRY, Assistant to General Freight Agent.....New York
L. A. DALTON, General Dairy Agent.....Chicago, Ill.	T. V. LAMBERT, Chief of Tariff Bureau.....New York
WILLIAM K. MARTIN, Asst. Gen. Freight Agent, Produce Exchange, New York	G. C. ALBIETZ, Chief of Divisions Bureau.....New York
W. H. BROWNE, Foreign Freight Traffic Mgr., Produce Exchange, New York	J. F. RYDENE, General Coal Freight Agent.....New York
W. F. AHEARN, Foreign Freight Agent, Produce Exchange.....New York	J. E. HAYDEN, Coal Freight Agent.....New York
	W. B. HARAHAAN, Industrial Agent.....New York

PASSENGER

W. H. DOMINICK, Passenger Traffic Manager.....New York	C. M. LYON, Manager Mail, Express, Baggage and Milk Traffic.....Hoboken, N. J.
W. E. CARBONE, General Passenger Agent.....New York	R. F. IRWIN, General Agent, Passenger Department.....New York
C. F. FELTHAM, Gen. Eastern Pass. Agent, 500 Fifth Avenue (18).....New York	

TRAFFIC REPRESENTATIVES

Albany 7, N. Y. —Room 5, Del. & Hud. Bldg.—Phone Albany 3-4517 RAY K. LOVITT, General Agent	New Haven 10, Conn. —Malley Bldg., 902 Chapel St.—Phone New Haven 6-2466 WILLIAM J. WYNNE, General Agent
Atlanta 3, Ga. —22 Marietta Street—Phone Cypress 4386 CHARLES D. SANTOR, General Agent	New York 4, N. Y. —8 Broadway (Produce Exchange Bldg.)— Freight Department Phone Bowling Green 9-5100 ELLIOTT E. BROTHERS, General Agent
Binghamton, N. Y. —Lackawanna Station—Phone Binghamton 4-1311 W. E. DOWNS, Division Passenger Agent	GEORGE L. BOLTON , Dairy Agent, Pier 13, North River— New York 7, N. Y. Phone Barclay 7-4230
Boston 14, Mass. —N. Station Office Bldg., 150 Causeway St.—Phone Capital 7-8970 DANIEL L. NORTON, General Agent	500 Fifth Avenue at 42nd Street —Room 842, New York 18, N. Y.— Passenger Department Phone Lackawanna 4-0234 W. H. WEBER, District Passenger Agent E. WORTMANN, Steamship Passenger Agent
Brooklyn, N. Y. HAROLD J. AMBRUSTER, City Freight Agent, 8 Broadway (Produce Exchange Bldg.) New York 4, N. Y. Phone Barclay 7-2500	Paterson 3, N. J. —Lackawanna Station—220 Marshall St. (near Main St.)— Phone SHERWOOD 2-1609 S. J. SALLE, Ticket Agent
Buffalo 2, N. Y. —11 W. Genesee St.—Phone CLEVELAND 2488 NEIL A. MITTS, General Agent, Passenger Department	Philadelphia 2, Pa. —1606 Finance Bldg.— Phone Bell, RITTENHOUSE 6-2848—2849 HOWARD A. WHITNEY, General Agent
Chicago 4, Ill. —327 South LaSalle Street—Phone WABASH 3443 C. R. HARTSHORN, Asst. General Freight Agent GEORGE A. STAPLES, City Passenger Agent	Pittsburgh 22, Pa. —503 Park Bldg.—Phone ATLANTIC 0463 J. A. McCOY, General Agent
Cincinnati 2, Ohio —1332 Enquirer Bldg., 617 Vine Street—Phone Main 0730 CLINTON C. RAU, General Agent	Portland 5, Ore. —604 Terminal Sales Bldg.—Phone BEACON 3191 FRED W. DOST, Traveling Freight Agent
Cleveland 14, Ohio —310 Park Bldg.—Phone Main 0435 L. E. TENNEY, General Agent	St. Louis 1, Mo. —1971-1972 Railway Exchange Bldg.—Phone Main 2460 WILLIAM J. NOLAN, General Agent
Detroit 26, Mich. —730 Lafayette Bldg.—Phone CADILLAC 8727 O. H. WARMBOLD, General Agent	San Francisco 5, Calif. —705 Monadnock Bldg.—Phone SUTTER 1-7515 A. H. SNIDER, General Agent
Easton, Pa. —402 Northampton Street—Phone Easton 9021 Z. LEE MATHERS, General Agent	Scranton 3, Pa. —Lackawanna Station—Phone Scranton 5251 LOUIS F. HEINECK, Division Freight Agent J. H. VAN WIE, Division Passenger Agent
Elmira, N. Y. —Lackawanna Station—Phone Elmira 2-1953 F. W. SCHEPPMANN, Traveling Passenger Agent	Seattle 1, Wash. —707 Jones Bldg.—Phone Main 3055 R. A. WARREN, General Agent
Indianapolis 4, Ind. —622 Board of Trade Bldg.—Phone Franklin 8280 SAMUEL J. NEILL, General Agent	Syracuse 2, N. Y. —Lackawanna Station—Phone Syracuse 2-9211 H. RUSSELL O'HARA, Division Freight Agent O. J. STINGER, City Passenger Agent
Kansas City 6, Mo. —403 Railway Exchange Bldg.—Phone Victor 2226 BRUCE L. DILL, General Agent	Toledo 4, Ohio —1301 Toledo Trust Bldg.—Phone Adams 1817 HAROLD H. BALK, General Agent
Los Angeles 14, Calif. —108 West Sixth Street—Phone TUCKER 2067 H. E. ALLEN, General Agent	Toronto 1, Ont. —1806 Royal Bank Bldg.—Phone Elgin 7635 J. S. BRANNING, Canadian Agent
Milwaukee 3, Wis. —1315 Majestic Bldg.—Phone Marquette 6410 GROVER C. HOWE, General Agent	
Minneapolis 1, Minn. —940 Metropolitan Life Building—Phone Main 5301 A. D. LEONARD, General Agent	
Newark 2, N. J. — GEORGE R. MARR, Division Freight Agent Lackawanna Station—Phone Humboldt 2-2100 R. H. TAYLOR, Division Passenger Agent Griffith Bldg., 605 Broad Street, Rooms 502-503—Phone Market 3-3440	