

# Lackawanna Railroad

Serving the  
**TRAVELING PUBLIC**  
107 Years

The Route of  
**Scenic Beauty**

Between

**NEW YORK**

and

**BUFFALO  
CLEVELAND**

**DETROIT**

**CHICAGO**

MAY 10, 1942

FORM 10

# Lackawanna Railroad

Serving the  
**TRAVELING PUBLIC**  
107 Years

The Route of  
**Scenic Beauty**

Between

**NEW YORK**

and

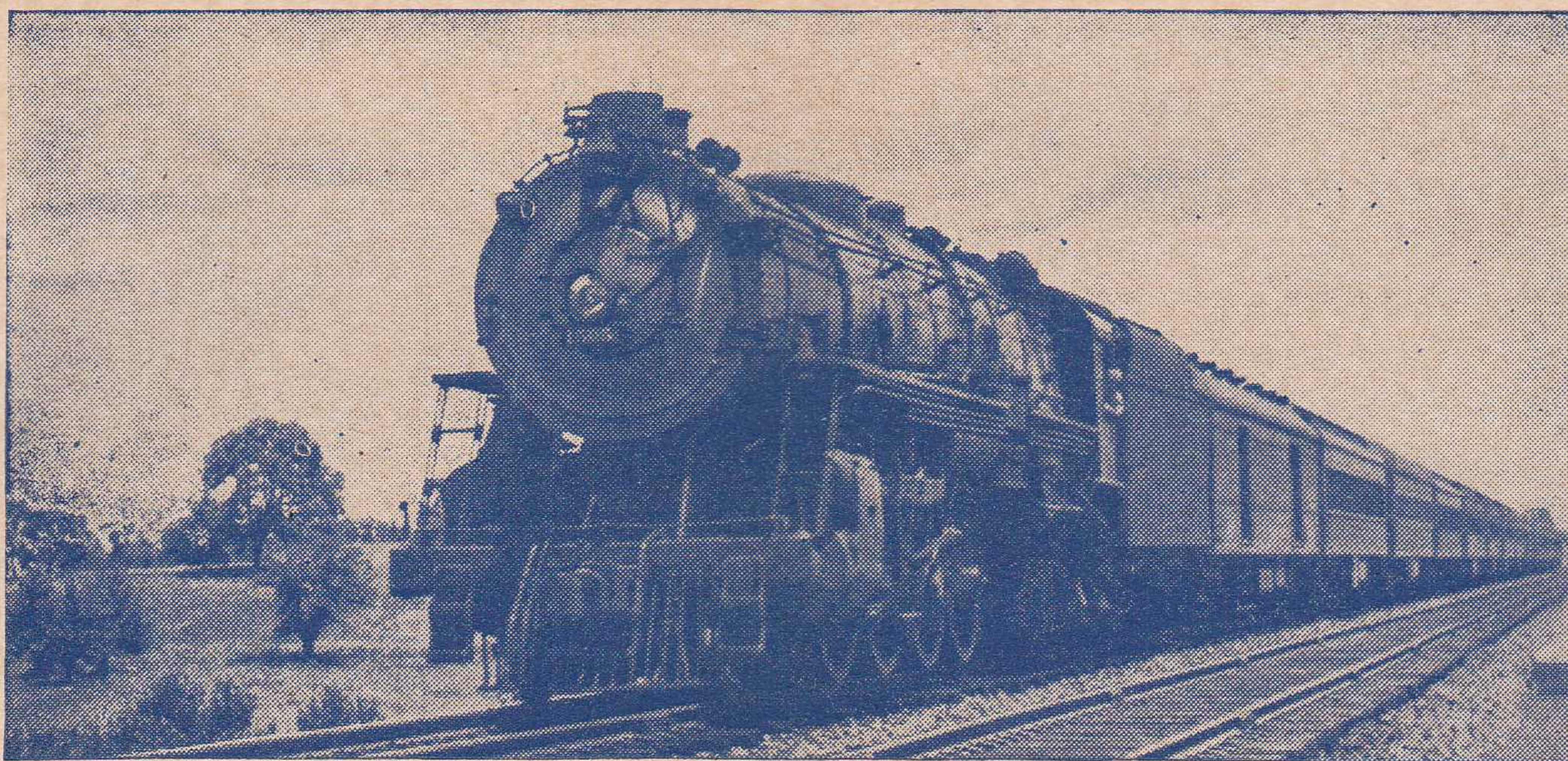
**BUFFALO  
CLEVELAND**

**DETROIT**

**CHICAGO**

MAY 10, 1942

FORM 10



*In wartime, Lackawanna Limited provides even a better service for you . . .*

The Lackawanna Railroad must necessarily play a big part in our Nation's war effort. We must do our full share of the big job of transporting men and materials. We must also provide convenient service for civilian travel to meet wartime needs.

The famous Lackawanna Limited eastward and westward, daylight train traveling the shortest route between New York and Scranton, Binghamton, Syracuse, Elmira and Buffalo, and carrying through sleeping cars and coaches New York to Chicago, is now operating on a new wartime schedule to provide efficient service to those who travel via Lackawanna the "Route of Phoebe Snow."

#### SCHEDULE

Westward Lackawanna Ltd.		Eastward Lackawanna Ltd.	
Lv. New York	9:00 A.M.	Lv. Chicago	
Lv. Hoboken	9:20 A.M.	(Central Sta.)	10:10 P.M.
Lv. Newark	9:35 A.M.	Lv. Buffalo	9:40 A.M.
Lv. Scranton	1:05 P.M.	Lv. Elmira	12:40 P.M.
Lv. Binghamton	2:30 P.M.	Lv. Syracuse	11:40 A.M.
Lv. Elmira	3:55 P.M.	Lv. Binghamton	2:00 P.M.
Ar. Syracuse	4:55 P.M.	Lv. Scranton	3:20 P.M.
Ar. Buffalo	6:50 P.M.	Ar. Newark	6:34 P.M.
Ar. Cleveland	11:35 P.M.	Ar. Hoboken	6:50 P.M.
Ar. Chicago (La Salle St. Sta.)	7:15 A.M.	Ar. New York	7:10 P.M.

**Lackawanna  
Railroad**









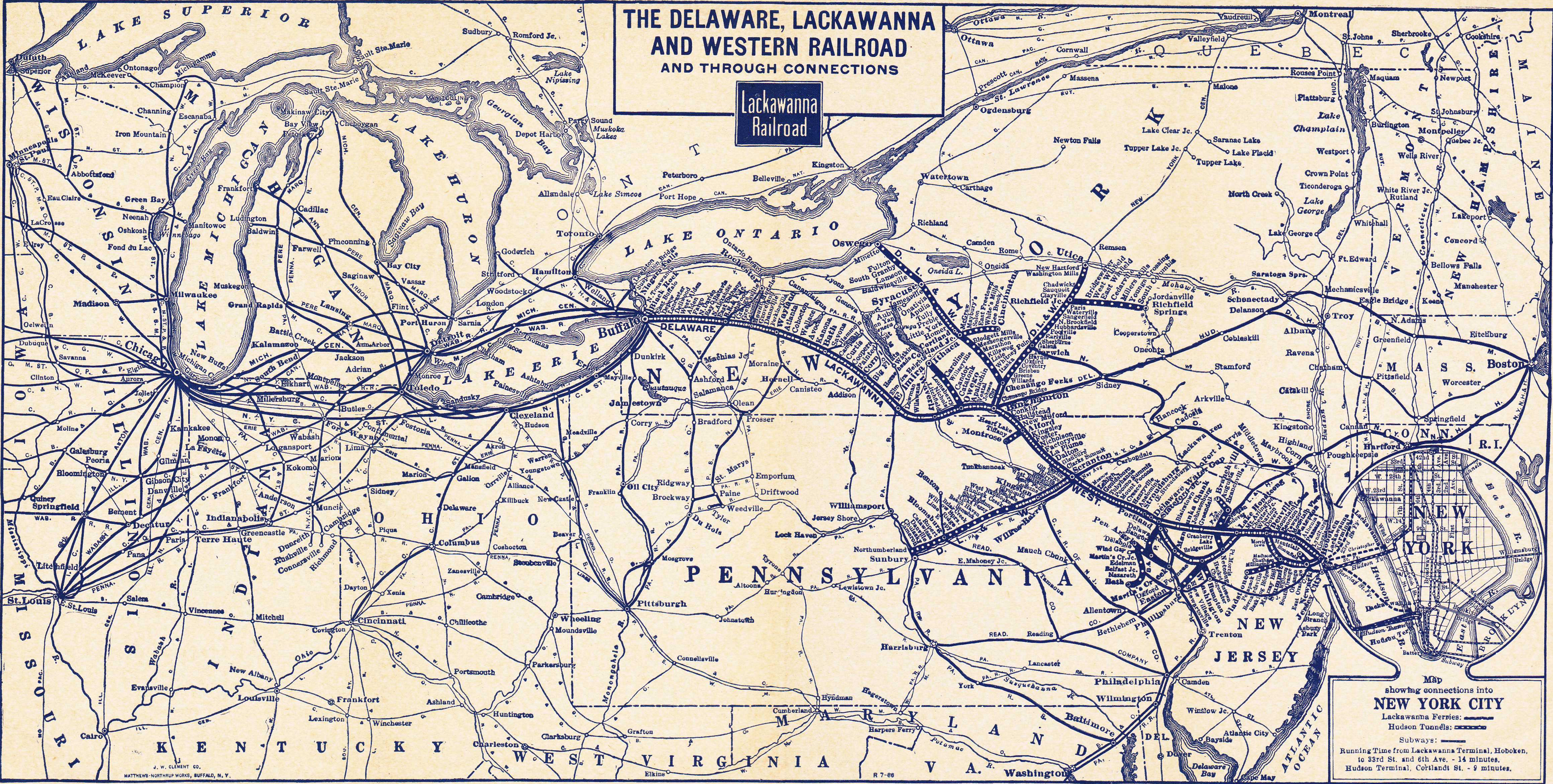






THE DELAWARE, LACKAWANNA  
AND WESTERN RAILROAD  
AND THROUGH CONNECTIONS

Lackawanna  
Railroad



Map showing connections into  
**NEW YORK CITY**  
Lackawanna Ferries:   
Hudson Tunnels:   
Subways:   
Running Time from Lackawanna Terminal, Hoboken,  
to 33rd St. and 6th Ave. - 14 minutes.  
Hudson Terminal, Cortlandt St. - 9 minutes.

**TRAVEL via LACKAWANNA...** It's The Route of Scenic Beauty and Shortest Line Between Buffalo and New York

READ DOWN

BINGHAMTON, SYRACUSE AND OSWEGO

READ UP

Syracuse, Buffalo, Binghamton, Philadelphia, Atlantic City, Baltimore and Washington.

Read Down Read Up

BUY NEXT WINTER'S COAL NOW. It is a Patriotic Duty.

TABLE 7

Table with columns for Daily (903, 915), Miles, NEW YORK, Hudson Tunnels, D. L. & W. Ferries, Hoboken, and destinations like Binghamton, Cortland, Syracuse, Oswego.

CLUB DINER ON TRAIN NO. 915 and No. 906 and Buffet Lounge Car 903 and 910 BETWEEN Binghamton AND SYRACUSE

Table 9: Syracuse, Buffalo, Binghamton, Philadelphia, Atlantic City, Baltimore and Washington. Includes columns for Interstate Express 306, Onondaga 327, and Interstate Express 301.

READ DOWN

BINGHAMTON AND UTICA

READ UP



TABLE 8

Table with columns for Daily (803, 815), Miles, NEW YORK, Hudson Tunnels, D. L. & W. Ferries, Hoboken, and destinations like Binghamton, Norwich, Utica.

AVOID WASTE Keep This TIME-TABLE

EXPLANATION OF REFERENCE MARKS

A. M. time light type. P. M. time heavy type. †-Daily except Sunday. ‡-Daily except Saturday. \*-Frequent service via Hudson tubes...

EXPLANATION OF REFERENCE MARKS

†Daily except Sunday. A.M. time light type. P.M. time heavy type. \*Regularly assigned car air-conditioned...

No. 306-INTERSTATE EXPRESS

\*Drawing Room Sleeping Car Syracuse to Philadelphia Open for occupancy 9:00 P.M. \*Buffet-Lounge Car Syracuse to Binghamton...

No. 301-INTERSTATE EXPRESS

\*Drawing Room Sleeping Car Philadelphia to Syracuse Open for occupancy 10:00 P.M. \*Club-Diner Binghamton to Syracuse...

No. 327-ONONDAGA

\*Parlor Car Philadelphia to Scranton \*Parlor Dining Car Washington to Philadelphia \*Dining Club Car Philadelphia to Bethlehem...

**SCRANTON, KINGSTON (WILKES-BARRE)  
SUNBURY AND PITTSBURGH**

Read Down			TABLE 10	STATIONS ON		Read Up	
DL&W 705 Daily PM	P.R.R. 511 Daily AM	Miles				DL&W 702 Daily PM	P.R.R. 510 Daily PM
			<b>New York Hudson Tunnels—</b>				
			33rd St. & 6th Ave. (Fare 10c)			2 44	
			Hudson Terminal Bldg.— Cortlandt St. (Fare 8c)			2 42	
			<b>D. L. &amp; W. Ferries—</b>				
			West 23d Street.				
			Barclay Street			1 2 40	
			Christopher Street				
		1.0	Lv. Hoboken	Ar		2 20	
<b>5 40</b>		134.1	Lv. Scranton	Ar	DL&W	10 15	
<b>5 48</b>		137.7	Taylor		DL&W	10 00	
<b>5 53</b>		141.0	Old Forge		DL&W	9 48	
<b>5 55</b>		142.0	Duryea		DL&W	9 43	
<b>5 58</b>		143.7	Pittston		DL&W	9 39	
<b>6 04</b>		145.0	West Pittston		DL&W	9 32	
<b>6 08</b>		147.0	Wyoming		DL&W	9 28	
<b>6 14</b>		150.6	Luzerne		DL&W	9 19	
		151.7	<b>#Kingston</b>		DL&W	9 15	
	10 12		<b>#Wilkes-Barre</b>		P.R.R.	<b>5 37</b>	
<b>6 37</b>		154.9	Plymouth		DL&W	8 56	
<b>6 44</b>		158.4	<b>#West Nanticoke</b>		DL&W	8 49	
	10 29		<b>#Nanticoke</b>		P.R.R.	<b>5 20</b>	
<b>6 50</b>		161.9	Hunlock Creek		DL&W	8 43	
<b>6 58</b>		167.5	<b>#Shickshinny</b>		DL&W	8 34	
	10 47		<b>#Mocanaqua</b>		P.R.R.	<b>5 04</b>	
<b>7 35</b>		178.4	<b>#Berwick</b>		DL&W	8 12	
	11 04		<b>#Nescopeck</b>		P.R.R.	<b>4 48</b>	
<b>8 02</b>		191.0	<b>#Bloomsburg</b>		DL&W	7 39	
	11 23		<b>#East Bloomsburg</b>		P.R.R.	<b>4 30</b>	
<b>8 12</b>		194.3	<b>#Catawissa</b>		DL&W	7 26	
	11 30		<b>#Catawissa</b>		P.R.R.	<b>4 24</b>	
<b>8 26</b>		202.7	<b>#Danville</b>		DL&W	7 12	
	11 46		<b>#South Danville</b>		P.R.R.	<b>4 12</b>	
<b>8 57</b>		214.5	Northumberland		DL&W	6 50	
<b>9 10</b>	12 10	216.4	Ar. Sunbury	Lv	DL&W	6 40	<b>3 50</b>
<b>10 50</b>	1 45	269.8	Ar. Harrisburg	Lv	P.R.R.	a4 05	11 48
<b>7 55</b>	8 25	515.1	Ar. Pittsburgh	Lv	P.R.R.	<b>10 00</b>	8 23

Sleeper Scranton to Pittsburgh, via Harrisburg.

Sleeper Pittsburgh to Scranton, via Harrisburg.

**DELAWARE VALLEY TRANSPORTATION CO.**

Read Down		TRAIN - BUS SCHEDULE				Read Up	
	3	TABLE 11	26	6			
	Ex. Sun.	Schedule WILL CHANGE MAY 29.	Ex. Sun.	Ex. Sun.			
	AM		AM	PM			
	9 00	Lv. New York	10 55	7 10			
		Lv. Stroudsburg and East Stroudsburg					
	11 45	Marshall's Creek	8 25	1 10			
	11 55	Oak Grove	8 15	12 50			
	12 02	Coolbaugh	8 13	12 48			
	12 07	Echo Lake	8 08	12 43			
	12 10	Turn Villa	8 05	12 40			
	12 13	Shoemakers	8 02	12 37			
	12 15	Bushkill	8 00	12 35			
	12 20		7 55	12 30			

**NEW YORK, BUFFALO AND NIAGARA FALLS**

	7 Daily	3 Daily	15 Daily	TABLE 12	6 Ex. Sun.	10 Daily	8 Daily
	PM	AM	AM		PM	AM	AM
	<b>7 00</b>	9 00	12 30	Lv. New York	7 10	5 40	8 10
	4 45	<b>6 50</b>	12 55	Ar. Buffalo	9 40	6 00	10 30
	7 00	9 05	2 35	Lv. Buffalo	9 25	4 24	9 30
				(Central Terminal) (N Y C)			
	7 54	9 55	3 35	Ar. Niagara Falls (NYC)	8 27	3 25	8 22
	AM	PM	PM		AM	PM	PM

**EXPLANATION OF REFERENCE MARKS**

†-Weekdays only, leaving Sunbury 12:28 P. M. ‡-No Ferry service between Christopher Street, New York, and Hoboken, N. J., on Sundays.  
 †-Frequent service via Hudson Tubes, but this train will not be held for Tube connections. #-These towns are located on opposite side of the river but there are bridges across the river at these points. A. M. time light type. P. M. time heavy type. a-Sunday, lv. Harrisburg 4:00 A. M. c-No boat connection for this train from Christopher Street. d-Regular stop to let off passengers. e-Stops on notice to conductor to let off passengers from Scranton and west. f-Stops on notice to Agent or conductor to receive or discharge passengers. n-Stops on notice to Agent to receive passengers for Blairstown and west. z-Stops regularly to take on passengers.  
 Train-Auto Service available at this point.

**NEW YORK AND ITHACA, VIA OWEGO**

Read Down			TABLE 13	Read Up	
3 Daily	15 Daily	Miles		6 Daily	
AM	AM		<b>New York Hudson Tunnels—</b>		
8 53	*		Lv. 33rd St. & 6th Ave...	Ar	
			(Fare 10c)		7 11
9 01	*		Hudson Terminal Bldg.— Cortlandt St. (Fare 8c)		7 09
			<b>D. L. &amp; W. Ferries—</b>		
			West 23d Street.		
			Barclay Street		
			Christopher Street		
9 00	12c30		Lv. Hoboken	Ar	7 1
			<b>Hoboken</b>		
9 20	1 05	1.0	Newark		6 50
z 9 35		8.8	Brick Church		d6 34
z 9 42		11.6	Summit		d6 26
n 9 56		21.1	Morristown		d6 12
n10 11		30.8	Dover		d6 00
n10 29		39.1			d5 46
8 04			Lv. Philadelphia P. R. R.	Ar	8 09
	11 45		Lv. Philadelphia P.&R. Ry.	Ar	
			<b>VIA BUS</b>		
			Lv. Scranton	Ar	3 10
1 05	4 50	134.1	Binghamton		2 00
2 30	7 05	192.7	Owego	Lv	1 23
2 59	7 48	213.4			
PM	AM		Lv. Owego	Ar	PM
3 05	8 00	213.4	Catatonk		1 00
3 15	8 10	218.8	Candor		12 50
3 25	8 20	224.1	Willseyville		12 40
3 35	8 30	229.4	Ithaca (Green St. Bus Term.)		12 30
4 05	9 00	235.3	Ithaca	Lv	12 00
4 10	9 05	247.4	(D. L. & W. Station)		11 55
PM	AM			AM	

**To Our Patrons . . . .**  
 All forms of railroad tickets reading via the D. L. & W. R. Co. will be honored via the L. D. Dickinson Motor Coach Line between Owego and Ithaca or intermediate stations.

**"MOUNTAIN and LAKE RESORTS"**

Get — this 56-page illustrated and descriptive booklet of Hotels, Boarding Houses, Farm Cottages, Camps, with rates and complete detailed information. Ask for a copy today at your nearest Lackawanna Ticket Office, or send four cents in stamps to R. F. Irwin, Advertising Agent, Lackawanna Railroad, 140 Cedar Street, New York.

**YES SIR,  
the steak is VERY GOOD!**

The Lackawanna Dining Car Waiter who makes the above answer to a patron's query could receive company decorations for modesty and understatement.

He could have been just a bit more informal and told the customer that Lackawanna steaks are famous for their tender, tasty deliciousness; that each one is cooked to individual order—rare, medium or well done; that it will be served sizzling hot, the platter placed on a snowy white tablecloth, surrounded by gleaming silver and polished glassware.

And we of the Lackawanna feel our steaks almost justify such an enthusiastic though lengthy description. They are that good!

So, may we presume to make a suggestion? When you next travel on the Lackawanna, try one of our Special Steak Dinners. We are sure you will say you've never had a better meal at any price.

**L A C K A W A N N A**

**BUFFALO, SYRACUSE, BINGHAMTON AND SCRANTON TO  
PHILADELPHIA, BALTIMORE AND WASHINGTON VIA  
STROUDSBURG AND PENNSYLVANIA RAILROAD**

Northward READ DOWN			Southward READ UP		
TABLE 17			376 Ex. Sun.	376 Sun. Only	
	385 Sun. Only	357 Ex. Sun.			
	AM	AM	PM	PM	
	4 20	4 20	10 25	10 25	Lv... Washington.. Ar
	5 18	5 18	9 41	9 41	..... Baltimore.....
	8 04	8 04	8 09	8 09	..... Philadelphia, Broad St. ◯
	9 05	8 50	7 20	7 15	..... Trenton.....
	10 25	10 22	5 57	5 55	..... Phillipsburg (Easton).....
		10 46	5 32	5 32	..... Belvidere.....
	f10 59	f10 57	f5 20	f5 20	..... Delaware.....
	11 04	11 02	5 16	5 16	..... Portland.....
	11 12	11 10	5 08	5 08	..... Delaware Water Gap.....
	11 20	11 20	5 00	5 00	..... Ar. Stroudsburg &.. Lv
	11 35	11 35	4 48	4 48	..... Lv. E. Stroudsburg.. Ar
					..... Ar. Henryville.. Lv
	b11 59	b11 59	4 24	4 24	..... Cresco.....
	b12 13	b12 13	j4 14	j4 14	..... Mount Pocono.....
	b12 19	b12 19	j4 10	j4 10	..... Pocono Summit.....
					..... Tobyhanna.....
	12 58	12 58	3 20	3 20	..... Scranton.....
	2 20	2 20	2 00	2 00	..... Binghamton.....
	4 10	4 10	11 55	11 55	Ithaca (VIA BUS) ) See Table 13 }
	4 55	4 55	11 40	11 40	..... Syracuse.....
	5 45	5 45	10 40	10 40	..... Utica.....
	3 48	3 48	12 40	12 40	..... Elmira.....
	6 50	6 50	9 40	9 40	..... Ar. Buffalo Lv
	PM	PM	AM	AM	

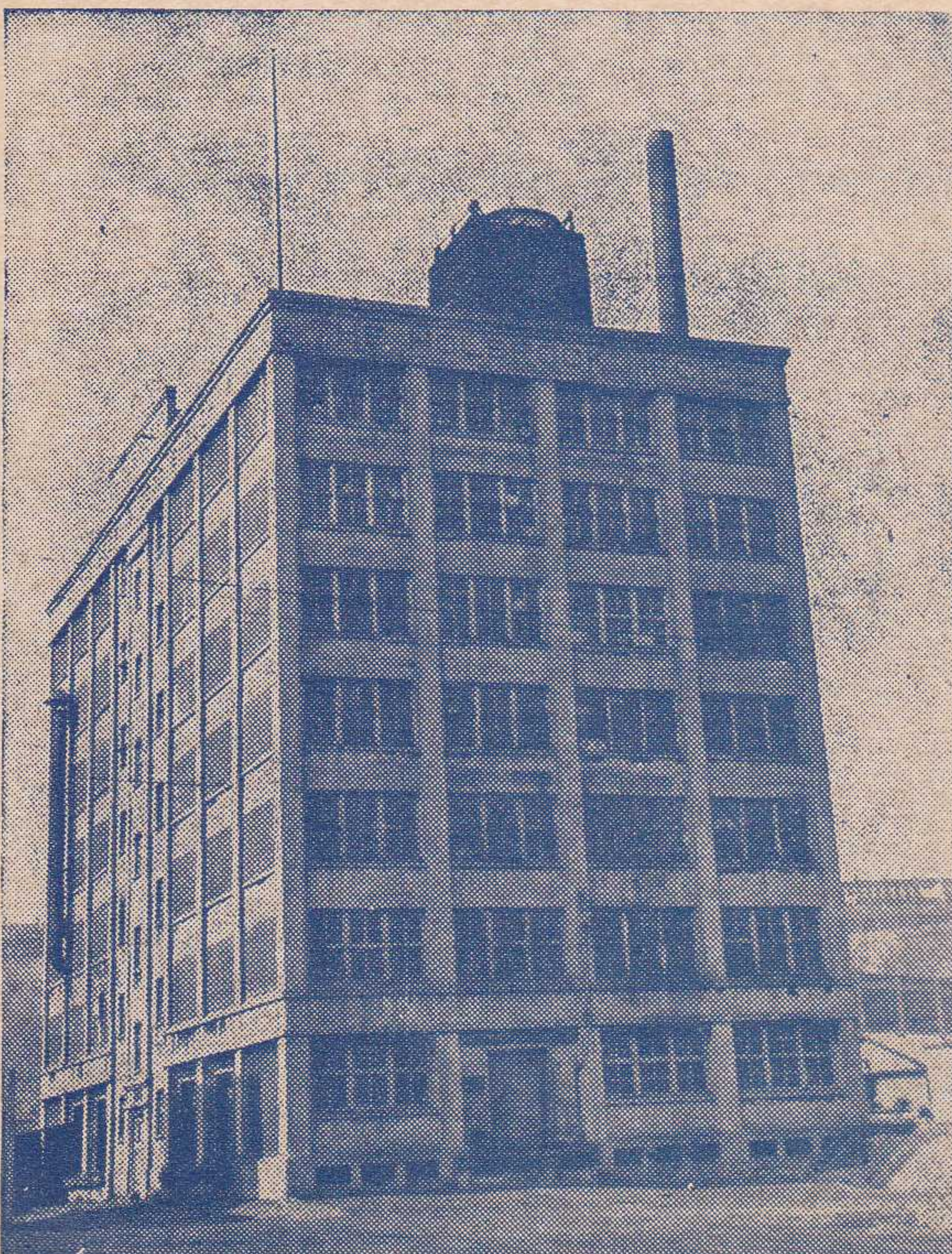
**PARLOR CAR SEAT RATES**

Subject to change—Consult Agents  
RATES SHOWN DO NOT INCLUDE FEDERAL TAX

BETWEEN AND	New York, N. Y.	Newark, N. J.	Scranton, Pa.	Binghamton, N. Y.	Elmira, N. Y.	Buffalo, N. Y.
	\$	\$	\$	\$	\$	\$
Bath, N. Y.	1.85	1.85	.95	c	c	c
Binghamton, N. Y.	1.30	1.30	.65	....	.65	1.30
Brick Church, N. J.			.85	1.25	1.55	2.30
Buffalo, N. Y.	c	2.35	1.60	c	c	....
Corning, N. Y.	1.75	1.75	.85	c	c	c
Cresco, Pa.	.70	.65	.65	.70	1.00	1.80
Dansville, N. Y.	2.00	2.00	1.10	.80	c	c
Delaware Water Gap, Pa.	.65	.65	.65	.75	1.05	1.80
Elmira, N. Y.	1.60	1.60	.75	c	....	c
Mt. Morris, N. Y.	2.05	2.05	1.30	.90	c	c
Mt. Pocono, Pa.	.75	.70	.65	.65	.95	1.80
Newark, N. J.			.85	1.30	1.60	2.35
Owego, N. Y.	1.40	1.40	.65	c	c	c
Pocono Summit, Pa.	.75	.75	.65	.65	.95	1.80
Scranton, Pa.	.90	.85	....	.65	.75	1.60
Stroudsburg, Pa.	.65	.65	.65	.75	1.05	1.80
Waverly, N. Y.	1.50	1.50	.70	c	....	c

c—Consult Agents for fare.

A. M. time light face type. P. M. time heavy type. b-Stops on notice to conductor to discharge passengers from points on the Pennsylvania Railroad. f-Stops on signal or on notice to conductor. j-Stops on signal to receive passengers for points on Pennsylvania Railroad and to discharge passengers from Binghamton and beyond. ◯ Leaves or arrives Pennsylvania Station (30th Street), Philadelphia. The time of trains south of Delaware is shown for the accommodation of the public and this company will not be responsible for errors or changes that may occur. Train - Auto service available at this point.



**Industrial Property Available**

**JERSEY CITY, N. J.**

Seven story and basement reinforced concrete building — approximately 50,000 square feet of floor space — concrete floors; 900 pounds per square foot floor load; ceiling heights: 9-10 feet; sprinklered; hydraulic elevator; two 125 horsepower Sam Smith 118 pound pressure boilers; 1,000 gallon per minute Fire Pump; Garage. Truck level and car floor level loading facilities. 27,000 square feet adjoining land for expansion. D. L. & W. sidetrack.

For further information regarding this property, as well as other industrial sites and buildings, address

W. B. HARAHAAN,  
Industrial Agent,  
140 Cedar Street,  
New York, N. Y.

Telephone: BArclay 7-2500



**STATION INDEX**

Table No.	Table No.	Table No.	Table No.
<b>A</b>			
Alden, N. Y. ....	4, 5	Detroit, Mich. ....	1, 2
Allentown, Pa. ....	9	Dover, N. J. ....	3, 6, 13
× Ampere, N. J. ....		Duryea, Pa. ....	10
▲ Andover, N. J. ....		<b>E</b>	
▲ Andover Jct., N. J. ....		Earlville, N. Y. ....	8
Ann Arbor, Mich. ....	1, 2	East Bethany, N. Y. ....	4, 5
Apalachin, N. Y. ....	4, 5	East Bloomsburg, Pa. ....	10
Apulia, N. Y. ....	7	Easton, Pa. ....	17
Ashtabula, Ohio. ....	1, 2	East Orange, N. J. ....	3, 6
Athenia, N. J. ....	3, 6	Echo Lake, Pa. ....	11
Atlanta, N. Y. ....	4, 5	Elmira, N. Y. ....	1, 2, 4, 5, 17
Atlantic City, N. J. ....	9	Elmira Heights, N. Y. ....	4, 5
Avoca, N. Y. ....	4, 5	Endicott-Vestal, N. Y. ....	4, 5
<b>B</b>			
Baldwinsville, N. Y. ....	7	Erie, Pa. ....	1, 2
Baltimore, Md. ....	9, 17	<b>F</b>	
○ Basking Ridge, N. J. ....		Fargo, N. Y. ....	4, 5
Bath, N. Y. ....	4, 5	○ Far Hills-Bedminster, N. J. ....	4, 5
Battle Creek, Mich. ....	1, 2	Foster, Pa. ....	4, 5
Belvidere, N. J. ....	17	Fort Wayne, Ind. ....	1, 2
○ Berkeley Heights, N. J. ....		Fulton, N. Y. ....	7
○ Bernardsville, N. J. ....		<b>G</b>	
Berwick, Pa. ....	10	Galena, N. Y. ....	8
Bethlehem, Pa. ....	9	○ Gillette, N. J. ....	
Big Flats, N. Y. ....	4, 5	○ Gladstone, N. J. ....	
Binghamton, N. Y. ....	1, 2, 4, 5, 7, 8, 9, 13, 17	× Glen Ridge, N. J. ....	
Blairstown, N. J. ....	3, 6	Goldsboro, Pa. ....	3, 6
Blodgett Mills, N. Y. ....	7	Grand Rapids, Mich. ....	1, 2
× Bloomfield, N. J. ....		Greendell, N. J. ....	3, 6
Bloomsburg, Pa. ....	10	Greene, N. Y. ....	8
B. & O. Jct., N. Y. ....	4, 5	Greigsville, N. Y. ....	4, 5
Boonton, N. J. ....	3, 6	Groveland, N. Y. ....	4, 5
▲ Branchville, N. J. ....		Grove Street, N. J. ....	3, 6
Brick Church, N. J. ....	3, 6, 13	<b>H</b>	
Bridgeville, N. J. ....	3, 6	Hackettstown, N. J. ....	3, 6
Brisben, N. Y. ....	8	Hallstead, Pa. ....	4, 5
▲ Broadway, N. J. ....		Harrison, N. J. ....	1, 2, 3, 6, 13
Buck Hill Falls, Pa. ....		Harrisburg, Pa. ....	10
(See Cresco)		Henryville, Pa. ....	3, 6, 17
Buffalo, N. Y. ....	1, 2, 4, 5, 12, 17	Highland Ave., N. J. ....	3, 6
Bushkill, Pa. ....	11	Hoboken, N. J. ....	1, 2, 3, 6, 7, 8, 10
<b>C</b>			
Campbell, N. Y. ....	4, 5	Homer, N. Y. ....	7, 9
Canadensis, Pa. ....		Horseheads, N. Y. ....	4, 5
(See Cresco)		Hubbardsville, N. Y. ....	8
Candor, N. Y. ....	3, 6, 17	Hunlock Creek, Pa. ....	10
Caroline, N. Y. ....	13	<b>I</b>	
Catonsville, N. Y. ....	13	Indianapolis, Ind. ....	1, 2
Catawissa, Pa. ....	10	Itaska, N. Y. ....	7
Chadwicks, N. Y. ....	8	Ithaca, N. Y. ....	1, 2, 4, 5, 13, 17
Chatham, N. J. ....	3, 6	<b>J</b>	
Chenango Bridge, N. Y. ....	7, 8	Jackson, Mich. ....	1, 2
Chenango Forks, N. Y. ....	7, 8	Jamesville, N. Y. ....	7
Chicago, Ill. ....	1, 2	Johnsonburg, N. J. ....	3, 6
Cincinnati, Ohio. ....	1, 2	Johnson City, N. Y. ....	4, 5
Clarks Summit, Pa. ....	4, 5	<b>K</b>	
Clayville, N. Y. ....	8	Kalamazoo, Mich. ....	1, 2
Cleveland, Ohio. ....	1, 2	Kanona, N. Y. ....	4, 5
Cohocton, N. Y. ....	4, 5	Killawog, N. Y. ....	7
Conklin, N. Y. ....	4, 5	Kingsland, N. J. ....	3, 6
Convent, N. J. ....	3, 6	Kingsley, Pa. ....	4, 5
Coolbaugh, Pa. ....	11	Kingston, Pa. ....	10
Coopers, N. Y. ....	4, 5	<b>L</b>	
Corning, N. Y. ....	4, 5	▲ Lafayette, N. J. ....	
Cortland, N. Y. ....	1, 2, 4, 5, 7, 9, 15	Lake Hopatcong, N. J. ....	3, 6
Cortland Jct., N. Y. ....	7	Lamson, N. Y. ....	7
Coventry, N. Y. ....	8	Lancaster, N. Y. ....	4, 5
Craigs, N. Y. ....	4, 5	Lansdale, Pa. ....	9
▲ Cranberry Lake, N. J. ....		LaPlume, Pa. ....	4, 5
Cresco, Pa. ....	3, 6, 17	Leicester, N. Y. ....	4, 5
<b>D</b>			
Dalton, Pa. ....	4, 5	Lincoln Park, N. J. ....	3, 6
Dansville, N. Y. ....	4, 5	Linwood, N. Y. ....	4, 5
Danville, Pa. ....	10	Lisle, N. Y. ....	7
Delawanna, N. J. ....	3, 6	*Little Falls, N. J. ....	
Delaware, N. J. ....	3, 6, 17	Luzerne, Pa. ....	10
Delaware Water Gap, Pa. ....	3, 6, 17	Lyndhurst, N. J. ....	3, 6
Denville, N. J. ....	3, 6	○ Lyons, N. J. ....	
<b>M</b>			
Madison, N. J. ....			
Maplewood, N. J. ....			
Marathon, N. Y. ....			
Marshall's Creek, Pa. ....			
Mauch Chunk, Pa. ....			
Messengersville, N. Y. ....			
Millburn, N. J. ....			
○ Millington, N. J. ....			
○ Mine Brook, N. J. ....			
Minetto, N. Y. ....			
Minisink Hills, Pa. (See Delaware Water Gap)			
Mocanaqua, Pa. ....			
× Montclair, N. J. ....			
*Montville, N. J. ....			
Morris Plains, N. J. ....			
Morristown, N. J. ....			
Moscow, Pa. ....			
Mountainhome, Pa. ....			
(See Cresco)			
Mountain Lakes, N. J. ....			
Mountain Station, N. J. ....			
Mountain View, N. J. ....			
Mount Arlington, N. J. ....			
Mount Morris, N. Y. ....			
Mount Pocono, Pa. ....			
Mount Tabor, N. J. ....			
○ Murray Hill, N. J. ....			
<b>N</b>			
Nanticoke, Pa. ....			
Nescopeck, Pa. ....			
Netcong (Stanhope), N. J. ....			
Newark, N. J. ....			
New Hartford, N. Y. ....			
New Milford, Pa. ....			
○ New Providence, N. J. ....			
▲ Newton, N. J. ....			
*New Village, N. J. ....			
New York, N. Y. ....			
Niagara Falls, N. Y. ....			
Nichols, N. Y. ....			
Nicholson, Pa. ....			
North Alexander, N. Y. ....			
North Brookfield, N. Y. ....			
Northumberland, Pa. ....			
Norwich, N. Y. ....			
<b>O</b>			
Oak Grove, Pa. ....			
Old Forge, Pa. ....			
Orange, N. J. ....			
Oswego, N. Y. ....			
Owego, N. Y. ....			
Oxford, N. Y. ....			
Oxford Furnace, N. J. ....			
<b>P</b>			
Painted Post, N. Y. ....			
Paris, N. Y. ....			
Passaic, N. J. ....			
Paterson, N. J. ....			
○ Peapack, N. J. ....			
Perkinsville, N. Y. ....			
Philadelphia, Pa. ....			
Pittsburgh, Pa. ....			
<b>Q</b>			
Phillipsburg, N. J. ....			
Pittston, Pa. ....			
Plymouth, Pa. ....			
Pocono Manor, Pa. ....			
(See Pocono Summit)			
Pocono Summit, Pa. ....			
Poolville, N. Y. ....			
Portland, Pa. ....			
Port Morris, N. J. ....			
Port Murray, N. J. ....			
<b>R</b>			
Richfield Jct., N. Y. ....			
Rockaway, N. J. ....			
Roseville Ave., N. J. ....			
<b>S</b>			
Sauquoit, N. Y. ....			
Savona, N. Y. ....			
Scranton, Pa. ....			
*Secaucus, N. J. ....			
Shawnee-on-Delaware, Pa. ....			
(See Water Gap)			
Sherburne, N. Y. ....			
Shickshinny, Pa. ....			
Shoemakers, Pa. ....			
Short Hills, N. J. ....			
Skytop, Pa. (See Cresco)			
South Danville, Pa. ....			
South Granby, N. Y. ....			
South Orange, N. J. ....			
*Stewartsville, N. J. ....			
○ Stirling, N. J. ....			
St. Louis, Mo. ....			
Stroudsburg and East Stroudsburg, Pa. ....			
Summit, N. J. ....			
Sunbury, Pa. ....			
Syracuse, N. Y. ....			
<b>T</b>			
Taylor, Pa. ....			
Tobyhanna, Pa. ....			
Toledo, Ohio. ....			
Toronto, Can. ....			
Towaco, N. J. ....			
Trenton, N. J. ....			
Tully, N. Y. ....			
Turn Villa, Pa. ....			
<b>U</b>			
Utica, N. Y. ....			
<b>V</b>			
Vestal } N. Y. ....			
Endicott }			
<b>W</b>			
Wallace, N. Y. ....			
Washington, D. C. ....			
Washington, N. J. ....			
Waterloo, N. J. ....			
Waterville, N. Y. ....			
× Watsessing Ave., N. J. ....			
Waverly, N. Y. ....			
Wayland, N. Y. ....			
Wayne Junction, Pa. ....			
West Nanticoke, Pa. ....			
West Pittston, Pa. ....			
Wharton, N. J. ....			
Whitney Point, N. Y. ....			
Wilkes-Barre, Pa. ....			
Willseyville, N. Y. ....			
Wyoming, Pa. ....			

- ▲ Located on Sussex Branch. Tables 3, 6, show service to and from Netcong, N. J., the junction point. (See Suburban time table.)
- × Located on Montclair Branch. Tables 3, 6, show service to and from Newark, N. J., the junction point. (See Suburban time table.)
- Located on Gladstone Branch. Tables 3, 6, show service to and from Summit, N. J., the junction point. (See Suburban time table.)
- \* Located on Phillipsburg Branch. Tables 3, 6, show service to and from Washington, N. J., the junction point. (See Suburban time table.)
- \* Located on Boonton Line. (See Suburban time table.)
- Located on Main Line. (See Suburban time table.)

# DIRECTORY OF OPERATING AND TRAFFIC DEPARTMENTS

**General Offices—140 Cedar Street, New York. Telephone BARclay 7-2500**

## OPERATING DEPARTMENT

G. J. RAY, Vice President, New York

E. B. MOFFATT, Asst. to Vice President, New York

<p>P. M. SHOEMAKER, Supt. Morris and Essex Division.....Hoboken, N. J.                      G. W. MURPHY, Supt. Scranton Division.....Scranton, Pa.                      J. H. LERBS, Supt. Buffalo Division.....Buffalo, N. Y.                      FRANK CIZEK, Supt. of Safety.....New York, N. Y.                      L. A. JENKINS, Superintendent Car Service.....Scranton, Pa.                      C. F. BAYER, Supt. Dining Car Service.....Hoboken, N. J.                      F. H. COGAN, Superintendent Marine Department.....Hoboken, N. J.                      J. E. MOHR, Superintendent of Police.....Hoboken, N. J.</p>	<p>B. H. WETTCLAUFER, Freight Claim Agent.....Scranton, Pa.                      G. A. PHILLIPS, Chief Engineer.....Hoboken, N. J.                      A. A. JOHNSON, Engineer Maintenance of Way.....Hoboken, N. J.                      ALBERT REILLY, Signal Engineer.....Hoboken, N. J.                      J. S. THORP, Electrical Engineer.....Hoboken, N. J.                      F. T. H. JAMES, Chief of Motive Power.....Scranton, Pa.                      K. H. CARPENTER, Supt. Car Department.....Scranton, Pa.                      I. H. LANCE, General Storekeeper.....Scranton, Pa.</p>
---	---

## TRAFFIC DEPARTMENT

C. F. FARMER, Vice President, New York

<p>W. H. DOMINICK, Passenger Traffic Manager.....New York                       J. L. HOMER, General Passenger Agent.....New York                       W. E. CARBONE, Gen. Western Pass. Agent... 327 So. LaSalle St., Chicago, Ill.                       M. H. MURPHY, Gen. Eastern Pass. Agent..... 500 Fifth Ave., New York                       C. M. LYON, Gen. Baggage and Milk Traffic Agent .....Hoboken, N. J.                       R. F. IRWIN, Advertising Agent.....New York</p>	<p>W. J. DAILY, Freight Traffic Manager.....New York                      C. A. ARENTZEN, Asst. Freight Traffic Manager.....New York                      GEORGE HERBERT, Asst. Freight Traffic Manager.....New York                      W. M. MacPHERSON, Asst. Freight Traffic Manager.....Buffalo, N. Y.                      C. E. HALL, Western Traffic Manager.....Chicago, Ill.                      J. H. CHRISTY, Assistant Western Traffic Manager.....Chicago, Ill.                      J. S. SIKORA, General Freight Agent.....New York                      E. M. SELLERS, Assistant General Freight Agent.....New York                      J. F. RYDENE, General Coal Freight Agent.....New York                      J. E. HAYDEN, Coal Freight Agent.....New York                      W. B. HARAHAN, Industrial Agent.....New York                      W. J. GEMEINER, Asst. General Freight Agent, Produce Exchange, New York                      W. H. BROWNE, Foreign Freight Agent, Produce Exchange.....New York                      HENRY FOULKES, Superintendent Mail and Express Traffic....Hoboken, N. J.                      L. A. DALTON, General Dairy Agent.....Chicago, Ill.</p>
--	--

**Albany, N. Y.**—Room 5, Del. & Hud. Bldg.—Phone Albany 3-4517  
 HARRY F. DOYLE, Commercial Agent

**Atlanta, Ga.**—22 Marietta Street—Phone Jackson 1317  
 CHARLES SANTOR, Commercial Agent

**Binghamton, N. Y.**—Lackawanna Station—Phone Binghamton 4-1311  
 W. E. DOWNS, Division Passenger Agent

**Boston, Mass.**—N. Station Office Bldg., 150 Causeway St.—Phone Capital 8970  
 JOHN M. KERANS, General Agent

**Buffalo, N. Y.**—11 W. Genesee St.—Phone Cleveland 2488  
 LOUIS F. HEINECK, Gen. Agent, Pass. Dept.

**Chicago, Ill.**—327 South LaSalle Street—Phone Wabash 3443  
 R. G. CARLSON, General Agent  
 R. K. LOVITT, Traveling Passenger Agent

**Cincinnati, Ohio**—18 East Fourth Street—Phone Main 0730  
 WILLIAM J. NOLAN, General Agent

**Cleveland, Ohio**—310 Park Bldg.—Phone Main 0435  
 M. J. NAUGHTON, General Agent

**Detroit, Mich.**—2031 National Bank Bldg.—Phone Cadillac 6727  
 O. H. WARMBOLD, General Agent  
 L. E. TENNEY, Assistant General Agent

**Easton, Pa.**—402 Northampton Street—Phone Easton 9021  
 Z. LEE MATHERS, Commercial Agent

**Elmira, N. Y.**—Lackawanna Station—Phone Elmira 2-1953  
 F. W. SCHEPPMANN, Traveling Passenger Agent

**Indianapolis, Ind.**—410 Guaranty Bldg.—Phone Riley 9071  
 SAMUEL J. NEILL, Commercial Agent

**Kansas City, Mo.**—403 Railway Exchange Bldg.—Phone Victor 2226  
 BRUCE L. DILL, Commercial Agent

**Los Angeles, Calif.**—108 West Sixth Street—Phone Tucker 2067  
 H. E. ALLEN, Commercial Agent

**Milwaukee, Wis.**—1315 Majestic Bldg.—Phone Marquette 6410  
 J. R. McDOWELL, Commercial Agent

**Minneapolis, Minn.**—1460 Rand Tower—Phone Main 5301  
 L. L. NEWELL, Commercial Agent

**Newark, N. J.**—Lackawanna Station—Phone Humboldt 2-2100  
 THOMAS L. STEELE, Division Freight Agent

856 Broad Street—Phone Market 3-3440  
 C. F. FELTHAM, Division Passenger Agent

**New Haven, Conn.**—157 Church Street—Phone New Haven 6-2466  
 WILLIAM J. WYNNE, General Agent

**New York, N. Y.**—Produce Exchange—Phone Bowling Green 9-5100  
 WILLIAM K. MARTIN, General Agent

GEORGE R. MARR, City Freight Agent, Pier 13, North River—  
 Phone Barclay 7-2500  
 GEORGE L. BOLTON, Dairy Agent, Pier 13, North River—  
 Phone Barclay 7-2500

500 Fifth Avenue at 42nd Street—Phone Lackawanna 4-0234  
 W. H. WEBER, District Passenger Agent  
 E. WORTMANN, Steamship Passenger Agent

**Paterson, N. J.**—Lackawanna Station—220 Marshall St. (near Main St.)—  
 Phone Sherwood 2-1609  
 C. YOHE, Ticket Agent

**Philadelphia, Pa.**—1602 Finance Bldg.—  
 Phone Bell, Rittenhouse 2848—Keystone, Race 6026  
 J. C. DAWSON, General Agent

**Pittsburgh, Pa.**—503 Park Bldg.—Phone Atlantic 0463  
 J. A. McCOY, General Agent

**Portland, Ore.**—Room 423, Terminal Sales Bldg.—Phone BEacon 0757  
 J. E. GATHMAN, General Agent

**St. Louis, Mo.**—1971-1972 Railway Exchange Bldg.—Phone Main 2460  
 A. L. BAHLER, General Agent

**St. Paul, Minn.**—1008 Pioneer Bldg.—Phone Cedar 5765  
 R. A. WARREN, Commercial Agent

**San Francisco, Calif.**—705 Monadnock Bldg.—Phone Sutter 7515  
 W. R. KNEISS, General Agent

**Scranton, Pa.**—Lackawanna Station—Phone Scranton 5251  
 C. V. McKOWNE, Division Freight Agent  
 J. H. VAN WIE, Division Passenger Agent

**Seattle, Wash.**—1331 Third Avenue—Phone Main 3055  
 J. E. GATHMAN, General Agent

**Syracuse, N. Y.**—Lackawanna Station—Phone Syracuse 2-9211  
 G. W. EGGERT, Division Freight Agent  
 O. J. STINGER, City Passenger Agent

**Toledo, Ohio**—710 Toledo Trust Bldg.—Phone Adams 1817  
 C. R. HARTSHORN, Commercial Agent

**Toronto, Ont.**—1806 Royal Bank Bldg.—Phone Elgin 7635  
 J. S. BRANNING, Canadian Agent