

Time Shown in this folder is EASTERN STANDARD TIME
One hour earlier than DAYLIGHT SAVING TIME

Lackawanna Railroad

THE ROUTE OF
SCENIC BEAUTY

BEST WAY
BETWEEN
BUFFALO
AND
NEW YORK

SUPERIOR THROUGH SERVICE
BETWEEN

CHICAGO
DETROIT CLEVELAND
NEW YORK

In Effect June 19, 1932

FORM 10

Time Shown in this folder is EASTERN STANDARD TIME
One hour earlier than DAYLIGHT SAVING TIME

Lackawanna Railroad

THE ROUTE OF
SCENIC BEAUTY

BEST WAY
BETWEEN
NEW YORK
AND
BUFFALO

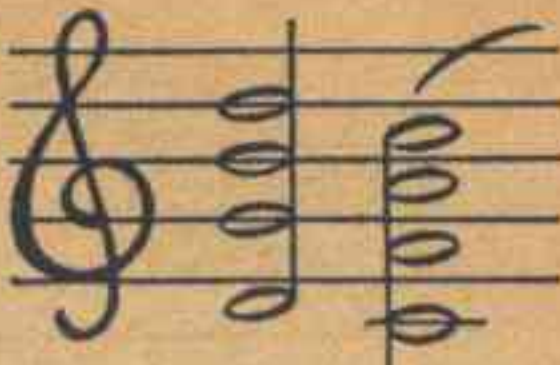
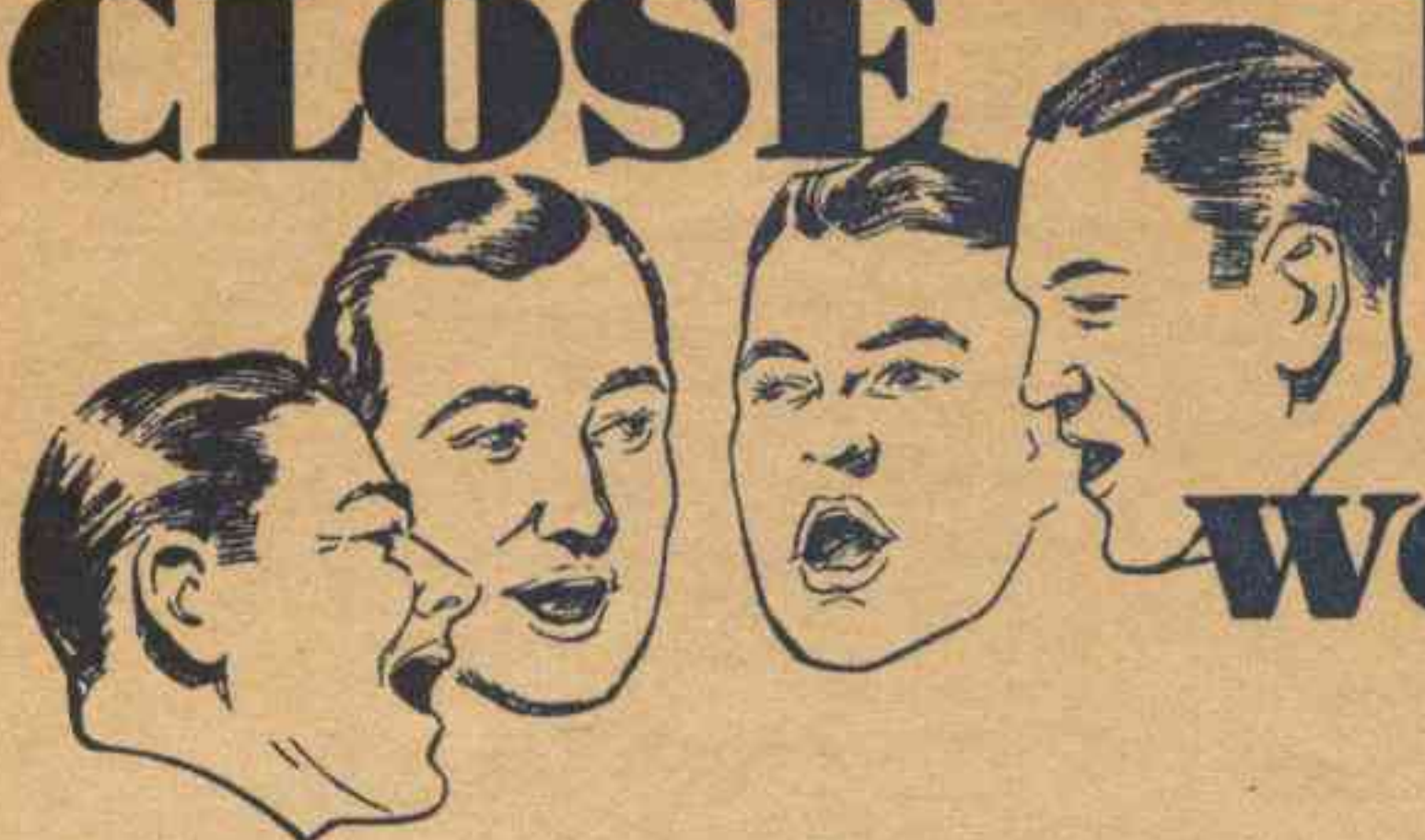
SUPERIOR THROUGH SERVICE
BETWEEN

NEW YORK
CLEVELAND DETROIT
CHICAGO

In Effect June 19, 1932

FORM 10

CLOSE HARMONY

by the famous WONDER QUARTETTE

Here's vacation harmony that will sing itself into bigger popularity than ever this season, now that the Famous Four have been assembled. And that's only natural. Look, for instance, at the numbers selected for 1932.

The WONDER WEEK « TOUR » 7 Complete Days \$83.50 from New York

Personally escorted . . . all expenses included . . . visiting Syracuse . . . 2 full days at Thousand Islands . . . Steamer to Toronto . . . Niagara Falls (General Brock Hotel) . . . Buffalo . . . loads of sightseeing trips! Every Sunday, July 3rd to August 28th.

The WANDERLUST « CRUISE » 12 Complete Days \$139.00 from New York

Personally escorted . . . all expenses included . . . Great Lakes Cruise . . . shore excursions and sightseeing trips galore . . . Buffalo . . . Niagara Falls . . . Cleveland

Cedar Point . . . Detroit . . . thence by *Canadian Steamer* to Duluth . . . Sarnia . . . Sault Ste. Marie . . . Port Arthur . . . Fort William. Every Monday, July 4th to August 22nd.

The WESTERN WONDER TOUR Two Whole Weeks \$240.00 and up From New York

Personally escorted . . . all expenses included . . . Chicago . . . Denver . . . Colorado Springs . . . Pikes Peak . . . Garden of the Gods . . . Royal Gorge . . . Salt Lake City . . . Yellowstone Park . . . Minneapolis . . . St. Paul . . . and, of course, numerous side trips, auto tours, etc. Leaving New York, July 2, 16 and 30, and August 13th.

The CALIFORNIA WONDER TOUR Three Weeks

\$327.00 and up
From New York

Personally escorted . . . all expenses included . . . Chicago . . . Cheyenne and the "Frontier Days" Celebration . . . Ogden Canyon . . . San Francisco . . . Two days in Yosemite Park . . . Mariposa Big Trees . . . Los Angeles and Olympic Games . . . Hollywood . . . Catalina Island . . . San Diego . . . Tia Juana, Mexico . . . Agua Caliente . . . Riverside and the Mission Inn . . . Grand Canyon of Arizona . . . Indian Detour with Pueblo Indians and Puye Cliffs Ruins . . . Kansas City. The California Wonder Tour leaves New York July 24th and returns August 12th.

N.B.—Proportionate rates from other Lackawanna Stations.

LACKAWANNA



STATION INDEX

Station Name	Table No.	Station Name	Table No.	Station Name	Table No.	Station Name	Table No.
Alden, N. Y.	4, 5	Dalton, Pa.	4, 5	Lansdale, Pa.	7-A	Peapack, N. J.	4, 5
Alford, Pa.	4, 5, 11	Dansville, N. Y.	4, 5	LaPlume, Pa.	4, 5	Penna. R. R. Jct., N. Y.	4, 5
Allentown, Pa.	1, 2, 7-A	Danville, Pa.	9	Lehigh, Pa.	3, 6	Philadelphia, Pa.	1, 2, 3, 6, 7-A, 10, 17
✗ Ampere, N. J.		Delawanna, N. J.	3, 6	Leicester, N. Y.	4, 5	Phillipsburg, N. J.	3, 6, 17
✗ Analomink, Pa.	3, 6, 17	Delaware, N. J.	3, 6, 17	Lime Ridge, Pa.	9	Pittston, Pa.	9
▶ Andover, N. J.		Dellwood, N. Y.	4, 5	Lincoln Park, N. J.	3, 6	Plymouth, Pa.	9
▶ Andover Jct., N. J.		Denville, N. J.	3, 6	Linwood, N. Y.	4, 5	Pocono Manor, Pa.	
Ann Arbor, Mich.	4, 5	Depew, N. Y.	4, 5	Lisle, N. Y.	7	(See Pocono Summit)	3, 6, 17
Apalachin, N. Y.	4, 5	Detroit, Mich.	1, 2, 4, 5	Litchfield, N. Y.	4, 5	Pocono Summit, Pa.	3, 6, 17
Apulla, N. Y.	7	Dover, N. J.	3, 6	* Little Falls, N. J.	7	Poolville, N. Y.	8
Atlanta, N. Y.	4, 5	Dunkirk, N. Y.	4, 5	Little York, N. Y.	7	Portland, Pa.	3, 6, 17
Atlantic City, N. J.	7-A	Duryea, Pa.	9	Lounsberry, N. Y.	4, 5	Port Morris, N. J.	
▶ Augusta, N. J.		Earlville, N. Y.	8	Lowman, N. Y.	4, 5	Port Murray, N. J.	
Avoca, N. Y.	4, 5	East Alexander, N. Y.	4, 5	Luzerne, Pa.	9	Portway, N. Y.	4, 5
Avondale, Pa.	9	East Bethany, N. Y.	4, 5	Lyndhurst, N. J.	3, 6	Preble, N. Y.	7
Baldwinsville, N. Y.	7	East Buffalo, N. Y.	4, 5	Lyons, N. J.		Ray, N. Y.	4, 5
Baltimore, Md.	1, 2, 7-A, 17	East Freetown, N. Y.	13	Madison, N. J.	3, 6	Richfield Jct., N. Y.	8, 15
○ Basking Ridge, N. J.		East Lancaster, N. Y.	4, 5	Maplewood, N. J.	3, 6	Richfield Springs, N. Y.	15
Bath, N. Y.	4, 5	Easton, Pa.	17	Marathon, N. Y.	7, 7-A	Rockaway, N. J.	3, 6
Battle Creek, Mich.	4, 5	East Orange, N. J.	3, 6	Marshall's Creek, Pa.	14	Roseville, Ave., N. J.	3, 6
Beach Haven, Pa.	9	East Winfield, N. Y.	15	Mauch Chunk, Pa.	1, 7-A	Rupert, Pa.	9
Belvidere, N. J.	17	Elmhurst, Pa.	3, 6	Mayburys, N. Y.	13	Sangerfield, N. Y.	8
○ Berkeley Heights, N. J.		Elmira, N. Y.	1, 2, 4, 5, 17	McGraw, N. Y.	13	Sauquoit, N. Y.	8
○ Bernardsville, N. J.		Elmira Heights, N. Y.	4, 5	Messengersville, N. Y.	7	Savona, N. Y.	4, 5
Berwick, Pa.	9	Erie, Pa.	1, 2, 4, 5	Millburn, N. J.	3, 6	Scranton, Pa.	1, 2, 3, 4, 5
Bethlehem, Pa.	1, 2, 7-A	Espy, Pa.	9	Millers Mills, N. Y.	15		6, 7-A, 9, 10, 17
Big Flats, N. Y.	4, 5	Factoryville, Pa.	4, 5	○ Millington, N. J.		* Secaucus, N. J.	
Binghamton, N. Y.	1, 2, 4, 5, 7, 7-A	Fargo, N. Y.	4, 5	○ Mine Brook, N. J.		Shawnee-on-Delaware, Pa.	
	8, 10, 17	○ Far Hills-Bedminster		Minetto, N. Y.	7	(See Water Gap)	3, 6, 17
Blairstown, N. J.	3, 6	Forty Fort, Pa.	9	Minisink Hills (See Water Gap)	3, 6, 17	Sherburne, N. Y.	8
Blodgett Mills, N. Y.	7	Foster, Pa.	4, 5	✗ Montclair, N. J.		Shickshinny, Pa.	9
✗ Bloomfield, N. J.		Ft. Wayne, Ind.	1, 2, 4, 5	Montrose, Pa.	11	Short Hills, N. J.	3, 6
Bloomsburg, Pa.	9	Fulton, N. Y.	7	* Montville, N. J.		Skytop Pa. (See Cresco)	3, 6, 17
Boonton, N. J.	3, 6	Galena, N. Y.	8	Morris Plains, N. J.	3, 6	Solon, N. Y.	13
▶ Branchville, N. J.		Gee Brook, N. Y.	13	Morrisstown, N. J.	3, 6	South Columbia, N. Y.	15
▶ Branchville, Jct., N. J.		○ Gillette, N. J.		Moscow, Pa.	3, 6	South Granby, N. Y.	7
Briar Creek, Pa.	9	○ Gladstone, N. J.		Mountainhome, Pa.		South Orange, N. J.	3, 6
Brick Church, N. J.	3, 6	Glenburn, Pa.	4, 5	(See Cresco)	3, 6, 17	○ Stewartville, N. J.	
Bridgeville, N. J.	3, 6	○ Glen Ridge, N. J.		Mountain Lakes, N. J.	3, 6	○ Stirling, N. J.	1, 2, 4, 5
Bridgewater, N. Y.	15	Gouldsboro, Pa.	3, 6	Mountain Station, N. J.	3, 6	St. Louis, Mo.	1, 2, 4, 5
Brisben, N. Y.	8	Grand Rapids, Mich.	4, 5	Mountain View, N. J.	3, 6	Stroudsburg and East Stroudsburg, Pa.	1, 2, 3, 6, 14, 17
▶ Broadway, N. J.		Greendell, N. J.	3, 6	Mount Arlington, N. J.		Succasunna, N. J.	3, 6
Buck Hill Falls, Pa.		Greene, N. Y.	8	Mount Morris, N. Y.	4, 5	Summit, N. J.	9
(See Cresco)	3, 6, 17	Greigsville, N. Y.	4, 5	Mount Pocono, Pa.	3, 6, 17	Susquehanna Ave., Pa.	1, 2, 4, 5, 7
Buffalo, N. Y.	1, 2, 4, 5, 16, 17	Groveland, N. Y.	4, 5	Mount Tabor, N. J.		Syracuse, N. Y.	7-A, 17
B. R. & P. Jct., N. Y.	4, 5	□ Grove Street, N. J.	3, 6	○ Murray Hill, N. J.		Taylor, Pa.	9
Bushkill, Pa.	14	Hackettstown, N. J.	4, 5	Nay Aug, Pa.	3, 6	Tiffany, Pa.	11
Cameron, Pa.	9	Hallstead, Pa.	4, 5	Netcong (Stanhope) N. J.	1, 2, 3, 4, 5	Tobyhanna, Pa.	3, 6, 17
Campbell, N. Y.	4, 5	Harrison, See Newark, N. J.	1, 2, 3, 6, 10	Newark, N. J.	6, 10	Toledo, Ohio	4, 5
Canadensis, Pa. (See Cresco)	3, 6, 17	Haynes, N. Y.	8	New Hartford, N. Y.	8	Toronto, Can.	4, 5
Candor, N. Y.	10	Heart Lake, Pa.	11	New Milford, Pa.	4, 5	Towaco, N. J.	3, 6
Caroline, N. Y.	10	Henryville, Pa.	3, 6	○ New Providence, N. J.		Trenton, N. J.	3, 6, 17
Catatonk, N. Y.	10	Hicks Ferry, Pa.	9	▶ Newton, N. J.		Tully, N. Y.	7, 7-A
Catawissa, Pa.	9	□ Highland Ave., N. J.		○ New Village, N. J.	1, 2, 3, 4, 5	Utica, N. Y.	1, 2, 4, 5, 8, 15, 17
Cedarville, N. Y.	15	Hoboken, N. J.	2, 3, 4, 5, 6, 7, 8, 9, 10	New York, N. Y.	6, 7, 8, 9, 10, 16, 17	Vestal	4, 5
Chadwick, N. Y.	8	Homer, N. Y.	8, 9, 10	Niagara Falls	16	Endicott	4, 5
Chatham, N. J.	3, 6	Horseheads, N. Y.	7, 7-A	Nichols, N. Y.	4, 5	Wallace, N. Y.	4, 5
Chenango Bridge, N. Y.	7, 8	○ Horton, N. J.	4, 5	Nicholson, Pa.	4, 5	Washington, N. J.	3, 6
Chenango Forks, N. Y.	7, 8	Hubardsville, N. Y.	8	North Alexander, N. Y.	4, 5	Washington, D. C.	1, 2, 7-A, 17
✗ Chester, N. J.		Hunlock Creek, Pa.	9	North Brookfield, N. Y.	4, 5	Washington Mills, N. Y.	8
Chicago, Ill.	1, 2, 4, 5	Indianapolis, Ind.	4, 5	North Darien, N. Y.	8	Water Gap, Pa.	3, 6, 17
Chulasky, Pa.	9	Ironia, N. J.		Northumberland, Pa.	4, 5	Waterloo, N. J.	
Cincinnati, Ohio	4, 5	Itaska, N. Y.	7	Norwich, N. Y.	8	Waterville, N. Y.	8
Cincinnati, N. Y.	13	Ithaca, N. Y.	1, 2, 4, 5, 10, 17	Oak Grove, Pa.	14	✗ Watsessing Ave., N. J.	
Clarks Summit, Pa.	4, 5	Jackson, Mich.	1, 2, 4, 5	Old Forge, Pa.	9	Waverly, N. Y.	4, 5
Clayville, N. Y.	8	Jamesville, N. Y.	7	Onatvia, N. Y.	9	Wayland, N. Y.	4, 5
Cleveland, Ohio	1, 2, 4, 5	Johnsonburg, N. J.	3, 6	Orange, N. J.	3, 6	Wayne Junction, Pa.	1, 2, 7-A
Clifton, N. J.	3, 6	Johnson City, N. Y.	4, 5	Oswego, N. Y.	1, 2, 7	West Alden, N. Y.	4, 5
Cohocton, N. Y.	4, 5	Kalamazoo, Mich.	1, 2	Owego, N. Y.	4, 5, 10	West Nanticoke, Pa.	9
Conklin, N. Y.	4, 5	Kanona, N. Y.	4, 5	Oxford, N. Y.	8	West Pittston, Pa.	9
Conklin Center, N. Y.	4, 5	○ Kenil, N. J.		Oxford Furnace, N. J.	3, 6	West Utica	8
Convent, N. J.	3, 6	Killawog, N. Y.	7	Painted Post, N. Y.	4, 5	West Winfield, N. Y.	15
Coolbaugh, Pa.	14	Kingsland, N. J.	3, 6	Paris, N. Y.	8	Wharton, N. J.	
Coopers, N. Y.	4, 5	Kingsley, Pa.	4, 5	Passaic, N. J.	3, 6	Whites Mills, N. Y.	13
Corning, N. Y.	4, 5	Kingston, Pa.	1, 2, 9	Paterson, N. J.	3, 6	Whitney Point, N. Y.	7, 7-A
Cortland, N. Y.	1, 7, 7-A, 13	▶ Lafayette, N. J.				Wilkes-Barre, Pa.	3, 4, 5, 6, 7-A, 9
Cortland, Jct., N. Y.	7	Lake Hopateong, N. J.	3, 6			Wilawana, Pa.	4, 5
Coventry, N. Y.	8	Lamson, N. Y.	7			Willow Springs, Pa.	9
Craigs, N. Y.	4, 5	Lancaster, N. Y.	4, 5			Willow Point, N. Y.	4, 5
▶ Cranberry Lake, N. J.						Willseyville, N. Y.	10
Cresco, Pa.	3, 6, 17					Wyoming, Pa.	9
Curtis, N. Y.	4, 5					Youngs' Crossing, N. Y.	15

▶ Located on Sussex Branch. Tables 3, 6, show service to and from Netcong, N. J., the junction point. (See local time table.)
 ✗ Located on Montclair Branch. Tables 3, 6, show service to and from Newark, N. J., the junction point. (See local time table.)
 ○ Located on Passaic and Delaware Branch. Tables 3, 6, show service to and from Summit, N. J., the junction point. (See local time table.)
 - Located on Phillipsburg Branch. Tables 3, 6, show service to and from Washington, N. J., the junction point. (See local time table.)
 ✦ Located on Chester Branch. Tables 3, 6, show service to and from Dover, N. J., the junction point. (See local time tables.)
 * Located on Boonton Line (See local time table.)
 † Located on Main Line. (See local time table.)

DIRECTORY OF OPERATING AND TRAFFIC DEPARTMENTS

OPERATING DEPARTMENT

E. M. RINE, Vice-President and General Manager, New York.

<p>E. B. MOFFATT, General SuperintendentScranton, Pa. A. E. STAUB, Asst. to Vice-President and Gen. Manager.....New York R. M. WHITE, Supt. Morris and Essex Division.....Hoboken, N. J. H. J. MULLAGHY, Supt. Scranton Division.....Scranton, Pa. G. W. MURPHY, Supt. Bangor and Portland Division.....Bangor, Pa. W. G. ALEXANDER, Supt. Buffalo Division.....Buffalo, N. Y. FRANK CIZEK, Supt. Syracuse and Utica Division.....Binghamton, N. Y. A. STANLEY LEWIS, Supt. Car Service.....Scranton, Pa. V. D. THAYER, Car Accountant.....Scranton, Pa. W. A. WILLIAMS, Supt. Dining Car and Restaurant Service Hoboken, N. J.</p>	<p>G. J. RAY, Chief Engineer.....Hoboken, N. J. A. J. NEAFIE, Principal Asst. Engineer.....Hoboken, N. J. H. M. WARREN, Consulting Electrical EngineerScranton, Pa. J. S. THORP, Electrical EngineerHoboken, N. J. C. C. HUBBELL, Purchasing Agent.....New York J. M. EMERY, Mgr. Marine Dept.Hoboken, N. J. C. J. SCUDDER, Supt. Motive Power and Equipment.....Scranton, Pa. E. M. JENKINS, Master Car Builder.....Scranton, Pa. I. H. LANCE, General Storekeeper.....Scranton, Pa. HENRY FOULKES, Superintendent Mail Transportation.....New York</p>
---	--

TRAFFIC DEPARTMENT

NAT DUKE, Vice-President, New York

PASSENGER DEPARTMENT

W. F. GRIFFITTS.....Passenger Traffic Manager, New York
W. H. DOMINICK.....General Passenger Agent, New York
J. L. HOMER.....Asst. General Pass. Agt., 500 Fifth Ave., New York
C. M. LYON, General Baggage, Express and Milk Traffic Agt., Hoboken, N. J.
G. P. BARRETT.....Gen. West. Pass. Agt., 111 W. Jackson Blvd., Chicago
W. E. CARBONE.....General Agent Passenger Department
297 Main Street, Buffalo, N. Y.
R. F. IRWIN.....Advertising Agent, New York
C. F. FELTHAM.....Division Pass. Agt., 856 Broad St., Newark, N. J.
J. G. BRAY, Special Passenger Representative, 856 Broad St., Newark, N. J.
C. B. TINSMAN.....Division Passenger Agent, Room 317
Lackawanna Station, Scranton, Pa.
J. L. SMITH.....Division Passenger Agent, Press Bldg., Binghamton, N. Y.
D. J. WHITE.....Traveling Pass. Agt., 111 W. Jackson Blvd., Chicago
LOUIS F. HEINECK.....Traveling Pass. Agt., 111 W. Jackson Blvd., Chicago
GEO. A. STAPLES.....Passenger Agt., 111 W. Jackson Blvd., Chicago
G. C. HOWE.....Trav. Pass. Agt., 403 Ry. Exchange Bldg., Kansas City, Mo.
K. C. HUBBARD.....Traveling Pass. Agt., 297 Main Street, Buffalo, N. Y.
F. W. SCHEPPMANN.....District Passenger Agent, 1917 First National
Bank Bldg., Detroit, Mich.
M. H. MURPHY.....District Pass. Agt., 500 Fifth Ave., New York
W. H. WEBER.....City Passenger Agt., 500 Fifth Ave., New York
S. W. HUNT.....City Passenger Agt., 500 Fifth Ave., New York
C. E. MILL.....City Passenger Agt., 500 Fifth Ave., New York
W. E. BROWN.....City Ticket Agent, 114 West 42nd St., New York
J. K. MILLER.....City Ticket Agent, 4 West 33rd St., New York
H. CLENDANIEL.....City Ticket Agent, 17 John Street, New York
J. H. VAN WIE.....City Passenger Agent, 856 Broad St., Newark, N. J.
F. W. JOHNSON.....City Passenger Agent, 856 Broad St., Newark, N. J.
L. J. FANARJIAN.....City Ticket Agent, 856 Broad St., Newark, N. J.
H. B. COOK.....City Passenger Agent, 222 E. State St., Ithaca, N. Y.
O. J. STINGER, City Passenger Agt., Lackawanna Station, Syracuse, N. Y.
CHARLES L. SHAFF, City Passenger Agt., 297 Main St., Buffalo, N. Y.
R. H. TAYLOR.....City Passenger Agt., 297 Main St., Buffalo, N. Y.
J. O. STORMS.....City Ticket Agt., 297 Main St., Buffalo, N. Y.
A. C. MEINCK.....Ticket Agent, Scranton, Pa.
WM. E. DOWNS.....Ticket Agent, Binghamton, N. Y.
C. W. ARNOLD.....Ticket Agent, Elmira, N. Y.
C. C. COOPER.....Ticket Agent, Cortland, N. Y.
OTTO RICK.....Traveling Passenger Agent, Corning, N. Y.
M. F. WOOD.....Ticket Agent, Corning, N. Y.
R. H. EDMOND.....City Ticket Agt., 302 Main St., Paterson, N. J.
W. R. FREGANS.....Depot Ticket Agent, Newark, N. J.
E. WORTMAN.....Steamship Pass. Agt., 500 Fifth Ave., New York City

FREIGHT DEPARTMENT

J. J. BYRNE.....General Freight Traffic Manager, New York
CHARLES F. McTAGUE.....Freight Traffic Manager, New York
H. J. GRAHAM.....Western Traffic Manager, 111 W. Jackson Blvd., Chicago
C. E. HALL, Asst. Western Traffic Mgr., 111 W. Jackson Blvd., Chicago, Ill.
A. B. WALLACE.....Assistant Freight Traffic Manager, New York
MAURICE WILLIAMS.....General Freight Agent, New York
E. S. GILES.....Coal Freight Agent, New York
W. M. MacPHERSON.....Asst. Freight Traffic Manager,
Lackawanna Terminal, Buffalo, N. Y.
WM. J. DAILY.....Asst. General Freight Agent, New York
GEORGE HERBERT.....Asst. General Freight Agent, New York
J. S. SIKORA.....Asst. General Freight Agent, New York
W. A. MILLER, Division Freight Agt., 820 Military Park Bldg., Newark, N. J.
C. V. McKOWNE.....Div. Freight Agt., Lackawanna Station, Scranton, Pa.
H. L. COLE.....Div. Freight Agt., Lackawanna Station, Syracuse, N. Y.
HERVEY LOVE.....Commercial Agt., 402 Northampton St., Easton, Pa.
C. A. ARENTZEN.....Gen. East. Freight Agt., 302 Broadway, New York
P. E. AHERN.....City Freight Agent, 302 Broadway, New York
J. F. RYDENE.....City Freight Agent, 32 Court St., Brooklyn, N. Y.
F. G. PLATT.....Eastbound Freight Agent, Produce Exchange, New York
J. H. CHRISTY.....General Dairy Agent, 111 W. Jackson Blvd., Chicago
J. A. LEARY.....General Agent, 80 Federal St., Boston, Mass.
J. C. DAWSON.....General Agent, Finance Bldg., Philadelphia, Pa.
O. H. WARMBOLD.....General Agent, First Nat. Bank Bldg., Detroit, Mich.
A. L. BAHLER.....General Agent, 112 No. 4th, St. Louis, Mo.
W. R. KNEISS.....General Agent, 601 Monadnock Bldg., San Francisco, Cal.
L. H. SAVAGE.....General Agent, 707 McDowall Bldg., Seattle, Wash.
M. J. NAUGHTON.....General Agent, 310 Park Bldg., Cleveland, Ohio
W. J. GEMEINER.....General Agent, 503 Park Bldg., Pittsburgh, Pa.
H. E. ALLEN.....Commercial Agent, 108 W. 6th St., Los Angeles, Cal.
J. E. GATHMAN.....General Agent, 1318 Yeon Bldg., Portland, Ore.
C. B. SIGNER.....Commercial Agent, 111 West Jackson Blvd., Chicago
W. H. BROWNE.....Canadian Agt., 1602 Royal Bank Bldg., Toronto, Ont.
WM. K. MARTIN.....Commercial Agt., 39 Church St., New Haven, Conn.
T. L. EVANS.....Com. Agt., 4th National Bank Bldg., Cincinnati, O.
BRUCE L. DILL.....Com. Agt., Railway Exch. Bldg., Kansas City, Mo.
J. A. McCOY.....Com. Agt., Guaranty Bldg., Indianapolis, Ind.
J. R. McDOWELL.....Commercial Agt., Majestic Bldg., Milwaukee, Wis.
D. A. KYLE.....Com. Agt., Metropolitan Life Bldg., Minneapolis, Minn.
L. L. NEWELL.....Com. Agt., 601 Merchants Bank Bldg., St. Paul, Minn.
C. R. HARTSHORN.....Com. Agt., 1404 2nd. Natl. Bank Bldg., Toledo Ohio
THOMAS L. STEELE.....Com. Agt., 5 Delaware & Hudson Bldg., Albany, N.Y.

FOREIGN FREIGHT DEPARTMENT

H. G. E. PANSIUS.....Foreign Freight Agt., Produce Exchange, New York

INDUSTRIAL DEPARTMENT

W. B. HARAHAH.....Industrial Agent, New York

AGRICULTURAL DEPARTMENT

L. A. DALTON.....Agriculturist, Press Bldg., Binghamton, N. Y.

GENERAL INFORMATION

TIME TABLES—This time table is furnished to the public as a matter of information only. This company is not responsible for errors in same, inconvenience or damage resulting from delayed trains, or failure to make connections; schedules herein are subject to change without notice.

Purchase Tickets from starting point through to destination before boarding train and secure the benefit of the lowest available fare.

Adjustment of Fares—In case of dispute with conductors or agents, passengers should pay the fare required, take a receipt, and communicate with the General Passenger Agent, 90 West Street, New York.

Passengers leaving train short of destination of the ticket should have the conductor make endorsement on the ticket to that effect.

Redemption of Tickets—Wholly or partially unused tickets will be redeemed by charging regular tariff fares for the portions used upon application to the General Passenger Agent.

Baggage—(a) 150 pounds of baggage, not exceeding \$100.00 in value, will be checked free on each adult ticket, and 75 pounds, not exceeding \$50.00 in value, on each child's ticket. Excess charges will be collected for excess weight, value and size, but no piece of baggage exceeding 250 pounds in weight, 72 inches in greatest dimension, or single shipment exceeding \$2,500.00 in value will be accepted for checking.

(b) This Company cannot guarantee to forward baggage on same train with passenger, and when necessary, will forward it on other trains.

To facilitate prompt delivery at destination passengers are advised to arrange for forwarding on a preceding train.

(c) **Baggage Checked to New York City**—Unless otherwise specified, all baggage checked to New York City will be sent to the West 23rd Street Station.

(d) **Baggage Delivery Service**—Arrangements can be made at the time of checking baggage for delivery of same to residence, hotel or other point in New York City, Newark, Buffalo and other important cities without further attention on the part of the owner.

(e) **Storage** will be charged on each piece of baggage remaining at stations over 24 hours, except that certain concessions will be allowed for Sundays and holidays.

(f) **Baggage** for stations where there is no agent must be claimed at the baggage car door immediately upon arrival at that station; otherwise it will be carried to first station where agent is on duty and held for further orders.

(g) **Parcel Rooms** will be found at the principal stations, where packages, hand baggage, etc., may be checked and cared for at a nominal charge.

Stop-overs—All one-way and round trip tickets limited to 30 days in addition to date of issue, as well as All-Year, Summer and Winter Tourist tickets, will permit of stop-over within limit of ticket at any station enroute upon application to conductor and without deposit of ticket at stop-over point. For detailed information consult ticket agents.

LACKAWANNA RAILROAD—THE ROUTE OF SCENIC BEAUTY

CONDENSED THROUGH TIME AND EQUIPMENT OF TRAINS—PULLMAN PARLOR AND SLEEPING CAR LINES, DINING CAR SERVICE.

TABLE 1

WESTWARD

STANDARD TIME

No. 3—LACKAWANNA LIMITED. Daily.

Runs via Newark and Blairstown.

Lv. New York... *10 00 AM	Observation }	New York to Buffalo.
Lv. Hoboken... *10 20 AM	Parlor Car }	New York to Buffalo.
Lv. Newark... *10 33 AM	Sleeping Car	New York to Chicago via Nickel Plate No. 5. Drawing Room.
Lv. Brick Church *10 40 AM		
Lv. Philadelphia... * 8 00 AM	Single Bed Rooms-	
(Broad St. Station P.R.R.)	Lounge Car	Cleveland to Chicago via Nickel Plate No. 5.
Lv. Scranton... * 1 51 PM	Parlor Car	New York to Oswego. Drawing Room.
Lv. Binghamton... * 3 15 PM	Dining Car	New York to Buffalo and Fort Wayne to Chicago.
Lv. Elmira... * 4 30 PM	Individual Seat	
Ar. Syracuse... * 5 32 PM	Coach	New York to Buffalo.
Ar. Ithaca... * 4 50 PM		New York to Oswego
Ar. Utica... * 6 25 PM	Coaches	New York to Buffalo.
Ar. Oswego... * 6 50 PM	Coaches	Binghamton to Oswego and Utica. Oswego to Ithaca.
Ar. Buffalo... * 7 35 PM	Coaches	Buffalo to Chicago.
(Via Nickel Plate No. 5)		
Lv. Buffalo... * 7 45 PM		
Ar. Erie... * 9 37 PM		
Ar. East Cleveland *11 39 PM		
Ar. Cleveland... *11 57 PM		
(Union Terminal)		
Ar. Fort Wayne... * 3 41 AM		
Ar. Chicago... * 7 35 AM		

No. 5—CHICAGO LIMITED. Daily

Runs via Newark and Blairstown.

Lv. New York... * 3 40 PM	Observation }	New York to Elmira.
Lv. Hoboken... * 4 00 PM	Parlor Car }	New York to Elmira.
Lv. Newark... * 4 15 PM		
Lv. Brick Church... * 4 22 PM		
Lv. Philadelphia... * 3 15 PM	Dining Car	For all meals.
(Broad St. Station P.R.R.)		
Lv. Scranton... * 8 05 PM	Coaches	New York to Buffalo.
Lv. Binghamton... * 9 35 PM		
Lv. Elmira... *11 03 PM		
Ar. Buffalo... * 2 45 AM		
(Via Michigan Central No. 13)		
Ar. Detroit ET... * 8 35 AM	Drawing Room Sleeping Car	New York to Chicago.
Ar. Ann Arbor CT... * 8 25 AM	Club Car	Buffalo to Chicago.
Ar. Jackson... * 9 15 AM	Dining Car	For all meals.
Ar. Battle Creek... *10 11 AM	Parlor Cars	Detroit to Chicago.
Ar. Kalamazoo... *10 49 AM	Coaches	Detroit to Chicago.
Ar. Chicago... * 2 15 PM		

(Via Wabash Nos. 1-11)

Ar. Detroit ET... * 9 10 AM	Drawing Room Sleeping Car	New York to Chicago.
Ar. Chicago CT... * 3 35 PM	Dining Car	For all meals.
Ar. Ft. Wayne... *12 25 PM	Through Coaches	New York to Chicago.
Ar. Logansport... * 2 29 PM	Drawing Room Parlor Car	Detroit to St. Louis.
Ar. Lafayette... * 3 32 PM	Coaches	Detroit to St. Louis.
Ar. Danville... * 4 55 PM		
Ar. Decatur... * 6 35 PM		
Ar. St. Louis... * 9 55 PM		

No. 7—WESTERN SPECIAL. Daily.

Runs via Newark and Blairstown.

Lv. New York... * 6 00 PM	Sun-Parlor }	New York to Chicago via Nickel Plate No. 1.
Lv. Hoboken... * 6 20 PM	Buffet Lounge }	New York to Chicago via Nickel Plate No. 1.
Lv. Newark... * 6 34 PM	Sleeping Car	New York to Chicago via Nickel Plate No. 1. Drawing Room and Compart.
Lv. Brick Church... * 6 42 PM		Scranton to Buffalo. Drawing Room. Scranton sleeping car open for occupancy at 9.30 P.M. May be occupied at Buffalo until 8.00 A.M.
Lv. Scranton... *10 05 PM	Sleeping Car	New York to Chicago via Nickel Plate No. 1.
Lv. Binghamton... *11 40 PM	Through Coach	New York to Chicago via Nickel Plate No. 1.
Ar. Buffalo... * 4 05 AM	Coaches	New York to Buffalo.
(Via Nickel Plate No. 1)	Dining Car	New York to Scranton—Buffalo to Fort Wayne via Nickel Plate No. 1.
Ar. Erie... * 6 11 AM	Parlor Car	New York to Binghamton (except Saturday).
Ar. East Cleveland * 8 20 AM		
Ar. Cleveland... * 8 40 AM		
(Union Terminal)		
Ar. Fort Wayne... *12 05 PM		
Ar. Chicago... * 3 55 PM		

No. 9—WHITELIGHT LIMITED. Daily.

Runs via Newark and Blairstown.

Lv. New York... * 8 30 PM	Sleeping Cars	New York to Buffalo. Drawing room and Compartment.
Lv. Hoboken... * 8 55 PM	Sleeping Car	New York to Syracuse. Drawing Room.
Lv. Newark... * 9 08 PM	Sleeping Car	New York to Ithaca. Drawing Room.
Lv. Brick Church... * 9 16 PM	Sleeping Car	Philadelphia to Syracuse. Drawing Room. May be occupied at Syracuse until 8.00 A.M.
Lv. Philadelphia... * 4 40 PM	(Reading Terminal)	
Lv. Scranton... *12 35 AM	Buffet Lounge Car	New York to Buffalo.
Lv. Binghamton... * 2 02 AM	Dining Club Car	Philadelphia to Bethlehem.
Ar. Syracuse... * 7 30 AM	Coaches	New York to Buffalo and Binghamton to Utica, Syracuse and Ithaca.
Ar. Ithaca... * 6 30 AM		Syracuse, Ithaca and Buffalo sleeping cars may be occupied until 8.00 A.M.
Ar. Elmira... * 3 14 AM		
Ar. Buffalo... * 6 30 AM		

No. 15—BUFFALO MAIL. Daily.

Runs via Paterson and Blairstown.

Lv. New York... * 1 30 AM	Sleeping Cars	New York to Buffalo. Drawing Room.
Lv. Hoboken... * 1 55 AM		New York to Binghamton.
Lv. Scranton... * 5 30 AM		New York to Scranton.
Lv. Binghamton... * 7 20 AM		New York to Elmira. Drawing Room.
Lv. Elmira... * 9 00 AM		Cleveland to St. Louis. via Nickel Plate No. 9.
Ar. Buffalo... *12 35 PM		
(Via Nickel Plate No. 9)		Passengers may remain in Scranton and Binghamton cars until 8.00 a. m. Sleepers open at Hoboken for occupancy at 9.30 p. m.
Lv. Buffalo... * 1 10 PM	Dining Car	Binghamton to Elmira. Buffalo to Lima. Charleston to St. Louis.
Ar. East Cleveland * 5 21 PM	Coaches	New York to Buffalo
Ar. Cleveland... * 5 40 PM		Buffalo to St. Louis via Nickel Plate No. 9
(Union Terminal)		
Ar. St. Louis... * 7 45 AM		

No. 25—SCRANTON EXPRESS. Daily Except Sunday.

Runs via Newark and Blairstown.

Lv. New York... * 1 00 PM	Parlor Car	New York to Scranton. Drawing Room.
Lv. Hoboken... * 1 20 PM		
Lv. Newark... * 1 35 PM	Individual Seat	
Lv. Brick Church... * 1 42 PM	Coach	New York to Scranton.
Lv. Philadelphia... *12 00 PM		
(Broad St. Station P.R.R.)		
Ar. Stroudsburg... * 3 20 PM		
Ar. Scranton... * 5 20 PM		

No. 327—THE ONONDAGA. Daily.

(Via Reading Co. and Central Railroad of New Jersey)

Lv. Washington... * 1 00 PM	Parlor Car	Washington to Philadelphia.
(B. & O. R. R.)	Dining Car	Washington to Philadelphia.
Lv. Baltimore... * 1 45 PM	Dining Club Car	Philadelphia to Allentown.
Ar. Wayne Jct... * 3 55 PM	Sleeping Car	Philadelphia to Syracuse. Drawing Room. This car arrives Scranton D. L. & W. Station 9.40 P.M. May be occupied at Syracuse until 8.00 A.M.
Lv. Philadelphia... * 4 40 PM		
(Reading Terminal)		
Lv. Atlantic City... * 3 00 PM	Coaches	Washington to Philadelphia.
Lv. Wayne Jct... * 4 53 PM		Philadelphia to Syracuse.
Lv. Bethlehem... * 6 29 PM		
(C. R. R. of N. J.)		
Lv. Allentown... * 6 41 PM		
Lv. Mauch Chunk... * 7 23 PM		
Lv. Wilkes-Barre... * 8 55 PM		
(Lackawanna Railroad)		
Lv. Scranton... *12 35 AM		
Ar. Binghamton... * 1 54 AM		
Ar. Cortland... * 6 05 AM		
Ar. Syracuse... * 7 30 AM		

No. 301—INTERSTATE EXPRESS. Daily.

(Via B. & O., Reading Co., and C. R. R. of N. J.)

Lv. Washington... * 7 00 PM	Parlor Car	Washington to Philadelphia.
(B. & O. R. R.)	Dining Car	Washington to Baltimore.
Lv. Baltimore... * 7 50 PM	Sleeping Car	Philadelphia to Binghamton. Drawing Room.
(B. & O. R. R.)	Through Coach	Philadelphia to Binghamton.
Ar. Philadelphia... *10 00 PM		
Lv. Philadelphia... *11 50 PM	Coaches	Binghamton to Syracuse and Utica. Connects at Binghamton with No. 15 for all points west.
(Reading Terminal)		
Lv. Atlantic City... * 7 00 PM	Through Baggage Car	Philadelphia to Binghamton.
Ar. Binghamton... * 7 04 AM		
Ar. Ithaca... *11 20 AM		
Ar. Elmira... * 8 55 AM		
Ar. Utica... *11 50 AM		
Ar. Syracuse... *10 50 AM		

Hudson Tube Trains Run Direct From Broadway and 33rd Street and Cortlandt Street, New York to Lackawanna Terminal, Hoboken.

*Daily.

†Daily except Sunday.

a On Sundays will leave at 8:25 A. M.

A. M. time light type; P. M. time heavy type. Leaving time New York is at Barclay Street.

LACKAWANNA RAILROAD—THE ROUTE OF SCENIC BEAUTY

CONDENSED THROUGH TIME AND EQUIPMENT OF TRAINS—PULLMAN PARLOR AND SLEEPING CAR LINES, DINING CAR SERVICE.

TABLE 2

EASTWARD

STANDARD TIME

No. 2—NEW YORK EXPRESS. Daily.

Runs via Blairstown and Newark.

Lv. Buffalo.....	* 5 00 AM	Observation	}..... Elmira to New York.
Ar. Elmira.....	* 8 40 AM	Parlor Car	
Lv. Syracuse.....	† 8 15 AM	Dining Car.....	Elmira to New York.
Lv. Utica.....	† 7 35 AM	Coaches.....	Buffalo to New York.
Ar. Binghamton..	* 10 50 AM		
Ar. Scranton.....	* 12 30 PM		
Ar. Brick Church..	* 4 07 PM		
Ar. Newark.....	* 4 15 PM		
Ar. Hoboken.....	* 4 30 PM		
Ar. New York....	* 4 50 PM		

No. 6—LACKAWANNA LIMITED. Daily.

Runs via Blairstown and Newark

(Via Michigan Central No. 40)

Lv. Chicago.....	* 9 00 PM	Sleeping Car.....	Chicago to New York. Drawing Room.	
Lv. Kalamazoo....	* 12 02 AM	Club Car.....	Chicago to Buffalo.	
Lv. Detroit ET....	4 03 AM	Dining Car.....	St. Thomas to Buffalo.	
Ar. Buffalo.....	* 9 05 AM	Coaches.....	Chicago to Buffalo	
(Cent. Term.)				
Lv. Buffalo.....	* 9 30 AM	Observation	}..... Buffalo to New York.	
Ar. Elmira.....	* 12 43 PM	Parlor Car		
Lv. Ithaca.....	* 12 25 PM	Parlor Car.....	Oswego to New York. D'w'g Rm	
Lv. Oswego.....	* 10 40 AM	Dining Car.....	Buffalo to New York.	
Lv. Syracuse.....	* 12 00 PM	Individual Seat	{ Buffalo to New York.	
Lv. Utica.....	* 10 35 AM	Coach.....		{ Oswego to New York.
Ar. Binghamton..	* 2 06 PM	Coaches.....	{ Buffalo to New York.	
Ar. Scranton.....	* 3 30 PM			{ Syracuse to Binghamton.
Ar. Philadelphia..	* 9 00 PM			{ Utica to Binghamton.
(Broad St. Station)			{ Ithaca to Owego.	
Ar. Brick Church..	* 6 34 PM			
Ar. Newark.....	* 6 42 PM			
Ar. New York....	* 7 12 PM			

Lackawanna Limited, train No. 6, will be held not to exceed forty minutes for connection with Michigan Central train No. 40 at Buffalo.

No. 10—LACKAWANNA SPECIAL. Daily.

Runs via Blairstown and Paterson.

Lv. Chicago.....	* 11 20 PM	Sleeping Car.....	Chicago to New York, via Nickel Plate No. 6.
(Via Nickel Plate No. 6)			
Lv. St. Louis.....	* 5 45 PM	Sleeping Cars..	St. Louis to Cleveland, via N.K.P. No. 10
(Via Nickel Plate No. 10)		Dining Car..	Bellevue to Buffalo, via Nickel Plate No. 6
Lv. Cleveland.....	* 8 40 AM	Dining Car..	St. Louis to Charleston—Lima to Cleveland, via N. K. P., No. 10.
(Union Terminal)			
Lv. East Cleveland	* 9 04 AM	Sleeping Car..	Buffalo to New York. Drawing Room.
Ar. Buffalo.....	* 1 55 PM		Ithaca to New York. Drawing Room.
			Scranton to New York.
Lv. Buffalo.....	* 6 00 PM	Through Coach..	Chicago to Buffalo, via Nickel Plate No. 6.
Ar. Elmira.....	* 10 20 PM	Through Coach..	St. Louis to Cleveland, via N. K. P., No. 10.
Lv. Ithaca.....	* 10 05 PM	Coaches.....	Buffalo to New York.
Lv. Binghamton..	* 12 20 AM		Ithaca Sleeping Car opened for occupancy at 9:00 p.m.;
Lv. Scranton.....	* 1 45 AM		other cars opened at 9:30 p.m.
Ar. Paterson.....	* 4 47 AM		Passengers may occupy Sleeping Cars at Hoboken until 7:30 a.m.
Ar. New York....	* 5 30 AM		

No. 12—GARDEN STATE LIMITED. Daily.

Runs via Blairstown and Newark.

Lv. Buffalo.....	* 8 30 PM	Sleeping Cars.....	Buffalo to New York. Drawing Room and Compartment.
Lv. Elmira.....	* 11 55 PM	Sleeping Car.....	Elmira to New York. Drawing Room.
Lv. Syracuse.....	* 10 00 PM	Buffet Lounge Car.	Syracuse to New York. Drawing Room.
Lv. Binghamton..	* 1 17 AM		Buffalo to New York.
Lv. Scranton.....	* 2 46 AM	Coaches.....	{ Buffalo to New York.
Ar. Brick Church..	* 6 30 AM		{ Syracuse to Binghamton.
Ar. Newark.....	* 6 36 AM		
Ar. New York....	* 7 15 AM		Buffalo Sleeping Car open at 8:00 p. m.; other cars open at 9:30 p. m.
			Sleepers may be occupied at Hoboken until 7:30 a. m.

No. 14—WHITELIGHT LIMITED. Daily.

Runs via Blairstown and Newark.

(Via Nickel Plate No. 8.)

Lv. Chicago.....	* 9 45 AM	Sun-Parlor- Buffet-Lounge	} Chicago to New York via Nickel Plate No. 8.
Lv. Fort Wayne....	* 1 07 PM	Sleeping Car	
Lv. Cleveland.....	* 6 25 PM	Sleeping Car..	Chicago to New York. Drawing Room and Compartments, via Nickel Plate No. 8
(Union Terminal)		Dining Car.....	Chicago to Buffalo and Scranton to New York.
Lv. East Cleveland	* 6 43 PM	Through Coach..	Chicago to New York via Nickel Plate No. 8.
Lv. Erie.....	* 8 47 PM		
Ar. Buffalo.....	* 10 40 PM		

(Via Wabash Ry. No. 6)

Lv. Chicago.....	* 8 35 AM	Sleeping Car...	Chicago to New York. Drawing Room.
Lv. Detroit.....	* 4 25 PM	Through Coach..	Chicago to New York.
		Dining Car.....	Chicago to St. Thomas and Scranton to New York.
Lv. Buffalo.....	* 11 00 PM	Sleeping Cars..	{ Buffalo to New York. Drawing Room
Ar. Scranton.....	* 5 02 AM		{ Buffalo to Scranton. Drawing Room
Ar. Dover.....	* 7 42 AM	Coaches.....	Buffalo to New York.
Ar. Brick Church..	* 8 26 AM	Sleeping Cars may be occupied until 8:00 a.m.	
Ar. Newark.....	* 8 35 AM	Sleeping Cars open for occupancy at Buffalo at 9:00 p.m.	
Ar. New York....	* 9 15 AM		

No. 26—NEW YORK DAY EXPRESS.

Daily Except Sunday

Runs via Blairstown and Paterson.

Lv. Kingston.....	† 7 10 AM	Individual Seat	
Lv. Scranton.....	† 8 00 AM	Coach.....	Kingston (Wilkes-Barre) to New York
Lv. Stroudsburg..	† 9 33 AM	Parlor Car.....	Scranton to New York (except Monday).
Ar. Philadelphia..	† 1 00 PM		
(Broad St. Station)			
Ar. New York....	† 11 57 AM		

No. 306—INTERSTATE EXPRESS. Daily.

(Via C. R. R. of N. J., Reading Co., and B. & O.)

Lv. Syracuse.....	* 10 00 PM	Sleeping Car ..	{ Syracuse to Philadelphia. Drawing Room
Lv. Ithaca.....	* 10 05 PM		{ Binghamton to Philadelphia. Drawing Room. Occupancy at 9:30 P. M.
Lv. Elmira.....	* 10 30 PM	Coaches.....	Syracuse to Binghamton.
Lv. Binghamton..	* 12 30 AM	Through Coach..	Binghamton to Philadelphia.
Ar. Allentown....	* 5 35 AM	Parlor Car.....	Philadelphia to Washington.
Ar. Bethlehem....	* 5 51 AM	Dining Car.....	Philadelphia to Washington. Via Baltimore and Ohio R. R.
Ar. Wayne Jct....	* 7 32 AM	Dining Club Car	Allentown to Philadelphia
Ar. Philadelphia..	* 7 44 AM	Through Baggage Car..	Binghamton to Philadelphia.
(Reading Terminal)			
Ar. Atlantic City..	* 11 35 AM		
Ar. Baltimore....	* 9 58 AM		
Ar. Washington..	* 10 50 AM		

*Daily. †Daily except Sunday. §Sunday only. A. M. time light type; P. M. time heavy type. Arriving time in New York is at Barclay Street. a—Sunday arrives West Philadelphia Station. b—Sunday arrives 6.00 P. M. f—Stops on signal or on notice to conductor.

THE DELAWARE, LACKAWANNA AND WESTERN RAILROAD AND THROUGH CONNECTIONS



VACATION LAND ALONG THE LACKAWANNA
 Golf Links —

Map showing connections into **NEW YORK CITY**
 Lackawanna Ferries: ———
 Hudson Tunnels: ———
 Running Time from Lackawanna Terminal, Hoboken, to 3rd St. and Broadway 14 minutes.
 Hudson Terminal, Corlandt St. 4 minutes.
 Elevated Lines: ——— Subways: ———

BUFFALO, SYRACUSE, BINGHAMTON AND SCRANTON TO PHILADELPHIA, BALTIMORE AND WASHINGTON VIA STROUDSBURG AND PENNSYLVANIA RAILROAD

READ DOWN

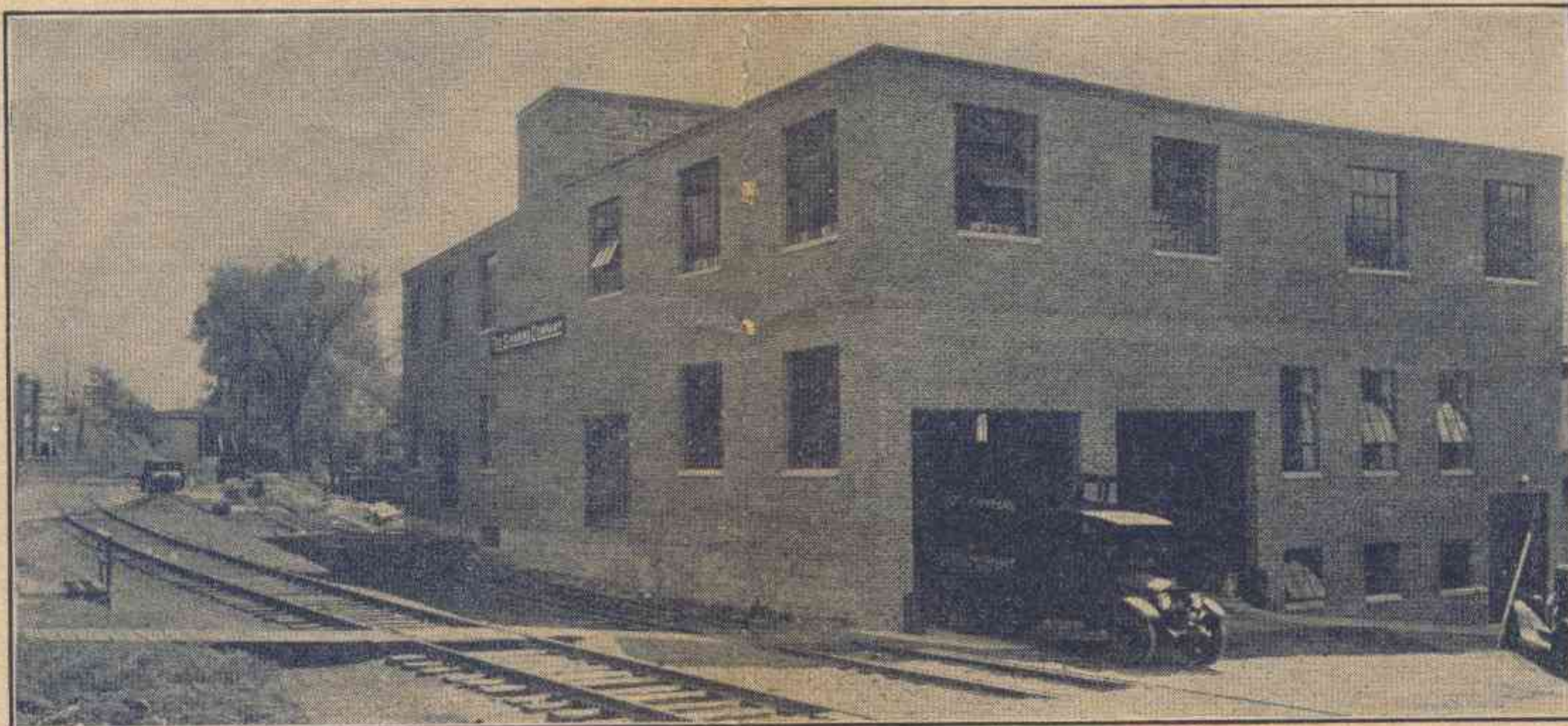
Northward

Southward

READ UP

SUNDAYS		WEEKDAYS					TABLE 17	WEEKDAYS				SUNDAYS					
	385 PM	357 AM	373 PM	367 AM	363 AM	365 AM	357 AM		360 PM	364 PM	376 PM	376 PM	388 PM	376 PM	374 PM	376 PM	358 AM
	4 10	2 35	12 00	9 00	9 00	9 00	2 35	Lv. Washington Ar	12 05	4 20	11 35	11 35	1 15	11 35		11 35	3 00
	5 32	3 50	12 53	9 50	9 50	9 50	3 50	Baltimore	11 15	3 30	10 40	10 40	12 16	10 40		10 40	3 02
	8 00	8 00	3 15	12 05	12 00	12 05	8 00	Philadelphia, Broad St.	8 38	1 00	9 00	9 00	10 00	9 00		9 00	10 35
	8 50	8 45	4 10	1 08	12 50	12 50	8 45	Trenton	7 39	12 10	7 50	7 50	8 53	7 50		7 50	9 48
	10 07	10 06	5 23	2 27	2 18	10 06	10 06	Phillipsburg (Easton)	6 19	10 50	6 25	6 25	7 39	6 25		6 25	
	10 27	10 29	5 43	2 49	2 44	10 29	10 29	Belvidere	5 55	10 22	5 58	5 58	7 17	5 58		5 58	
		10 39	5 53	2 59	2 55	10 39	10 39	Delaware	5 44	10 16	5 47	5 47	7 06	5 47		5 47	
		10 44	5 58	3 04	3 00	10 44	10 44	Portland	5 40	10 06	5 41	5 41	7 02	5 41		5 41	
		10 52	6 06	3 12	3 08	10 52	10 52	Water Gap	5 33	9 58	5 33	5 33	6 54	5 33		5 33	
	10 55	11 00	6 15	3 20	3 16	11 00	11 00	Ar. Stroudsburg & Lv	5 25	9 50	5 25	5 25	6 46	5 25		5 25	8 08
	11 05	12 23	6 18	3 35	3 30	12 23	12 23	Lv. E. Stroudsburg Ar	4 25	9 33	4 50	4 58	6 40	4 58		4 58	7 58
				3 44	3 37			Anaomink		9 25	4 39					4 39	7 46
			6 31	3 54	3 47	2 54		Henryville		9 19	4 29					4 29	7 41
			6 45	4 09	4 02	3 09		Cresco		9 10	4 16	4 35	4 35			4 35	7 32
			7 01	4 24	4 19	3 25		Mount Pocono		9 00	4 03					4 03	7 22
			7 07	4 31	4 27	3 32		Pocono Summit		8 54	3 55					3 55	7 17
			7 16	4 41	4 36	3 42		Tobyhanna		8 48	3 44					3 44	7 10
	12 30	1 46	7 55	5 20	5 20		1 46	Scranton	2 46	8 00		3 35	5 12	3 35		3 35	
	1 54	3 10	9 25				3 10	Binghamton	1 17			2 17	3 42	2 17		2 17	
	6 30	4 50					4 50	Ithaca				12 25		12 25		12 25	
	7 30	5 32					5 32	Syracuse	t10 00			12 00		12 00		12 00	
	7 38	6 25					6 25	Utica				10 35		10 35		10 35	
	3 14	4 25	10 55				4 25	Elmira	t11 55			12 50	2 20	12 50		12 50	
	6 30	7 35	2 45				7 35	Ar. Buffalo Lv	t8 30			9 30	11 00	9 30		9 30	
	AM	PM	AM	PM	PM	PM	PM		PM	AM	PM	AM	PM	AM	PM	PM	PM

f—Stops on signal or on notice to conductor. h—Leaves Buffalo Saturday night. t—Except Saturday. +—Rail motor coach from Trenton.
 g—Will not run Thanksgiving Day, Christmas, New Year's Day or Washington's Birthday.
 The time of trains south of Delaware is shown for the accommodation of the public and this company will not be responsible for errors or changes that may occur. A. M. time, light face type; P. M. time, heavy type. ^—Stops to let off passengers from Philadelphia.



SIMMONS COMPANY Syracuse, N. Y.

The Simmons Company, makers of beds, springs and mattresses, including the famous Beautyrest, have established a warehouse in Syracuse, which is SERVED EXCLUSIVELY BY LACKAWANNA SIDING.
 The facilities offered by the LACKAWANNA make it possible for the customers of the Simmons Company—many furniture and department stores—to maintain low inventories and adequate stocks for the consuming public.
 DEPENDABLE LACKAWANNA SERVICE is an important factor in warehousing. Let the undersigned assist you in finding a suitable warehouse or factory location.

W. B. HARAHAAN, Industrial Agent, 90 West Street, New York City.

