

Lackawanna Railroad

Serving the
TRAVELING PUBLIC
104 Years

The Route of
Scenic Beauty

Between

NEW YORK

and

**BUFFALO
CLEVELAND**

DETROIT

CHICAGO

Oct. 10, 1939

FORM 10

Lackawanna Railroad

Serving the
TRAVELING PUBLIC
104 Years

The Route of
Scenic Beauty

Between

NEW YORK

and

**BUFFALO
CLEVELAND**

DETROIT

CHICAGO

Oct. 10, 1939

FORM 10

AGAIN "CHICAGO LIMITED" STEPS FORWARD WITH MODERN TRAVEL LUXURY ...



New Lackawanna Lounge Car a Luxurious Home on Wheels

Lackawanna has again given its Pullman patrons the smartest and most luxurious club-lounge car on wheels. Expert decorators and Lackawanna engineers have cleverly blended their talents in combining rich beauty with modern travel comfort.

This new club-lounge car is divided in two sections: A buffet and a lounge. The buffet section seats 18 passengers in semi-circular booths, with the seats facing the windows and across the table. The interior color scheme is copper and olive green with aluminum and stainless steel trim. Color photog-

raphy on stainless steel is used for the first time in any railroad car and consists of six photographs of early Lackawanna locomotives printed on steel plates and embedded in plate glass mirrors.

A restful feature of the new car is the soft lighting effect from overhead panels and vertical light columns. The side windows are shaded with venetian blinds in soft harmonious pastel color.

Chicago Limited ... Lv. New York 4:00 P. M.; arrive next day Chicago 12:30 P. M.

TRAVEL BY TRAIN—FOR ECONOMY ... SAFETY ... COMFORT

LACKAWANNA

★ Regularly assigned cars are air-conditioned

LACKAWANNA RAILROAD—THE ROUTE OF SCENIC BEAUTY

CONDENSED EQUIPMENT OF TRAINS—PULLMAN PARLOR AND SLEEPING CAR LINES, DINING CAR SERVICE.

★ Regularly assigned cars are air-conditioned

WESTWARD

No. 3—Lackawanna Limited. Daily (Via Nickel Plate No. 5)

Parlor Car
★New York to Buffalo (Lounge).
Sleeping Cars
★New York to Chicago (12 Sec.—D.R.)
★Cleveland to Chicago (12 Sec.—D.R.—Single Bedrooms)
Dining Car
★New York to Buffalo
Diner Lounge
★Buffalo to Cleveland (Radio Equipped)
★Cleveland to Chicago
Coaches
★New York to Buffalo (Individual Seats—De Luxe)
★New York to Oswego (Individual Seats—De Luxe)—*In No. 903 from Binghamton*
★New York to Chicago—De Luxe
Binghamton to Oswego—*In No. 903 from Binghamton*
Binghamton to Utica—*In No. 803 from Binghamton*
Owego to Ithaca—*In No. 953 from Owego*

No. 5—Chicago Limited Daily (Via Michigan Central No. 17)

Club-Lounge Car
★New York to Buffalo
Lounge Car
★Buffalo to Chicago (Buffet)
Sleeping Car
★New York to Chicago (12 Sec.—D.R.)
Parlor Car
★New York to Binghamton
★Detroit to Chicago
Dining Car
★New York to Scranton
★Buffalo to Chicago
Coaches
★New York to Buffalo
★Buffalo to Chicago

No. 7—The Westerner. Daily (Via Nickel Plate No. 7)

Lounge Car
★New York to Binghamton (Buffet)
Sleeping Cars
★New York to Chicago (10 Sec.—D.R.—Comp.)
Dining Car
★New York to Scranton
★Buffalo to Chicago
Coaches
★New York to Chicago (De Luxe)
★Buffalo to Chicago (De Luxe)
★New York to Buffalo

No. 9—The Buffalonian. Daily

Club-Lounge Car
★New York to Scranton
Sleeping Car
★New York to Buffalo (10 Sec.—D.R.—2 Double Bedrooms)—*May be occupied until 8.00 a.m.*
Coaches
★New York to Buffalo

No. 15—The Owl. Daily

Club—Diner
★Binghamton to Buffalo
★Binghamton to Syracuse—*In No. 915 from Binghamton*
Dining Car
★Cleveland to St. Louis
Sleeping Cars
★New York to Buffalo (12 Sec.—D.R.)
★New York to Binghamton (10 Sec.—D.R.—2 Double Bedrooms)—*May be occupied until 8.00 a.m.*
★New York to Scranton (12 Sec.—D.R.) *May be occupied until 8.00 a.m.*
★New York to Syracuse (12 Sec.—D.R.)—*In No. 915 from Binghamton*
Observation Lounge
★Cleveland to St. Louis—*In Nickel Plate No. 9*
Coaches
★New York to Buffalo
★Buffalo to St. Louis—*In Nickel Plate No. 9*
Sleeping cars open at Hoboken for occupancy at 9.30 p.m.

HOBOKEN TERMINAL HANDLES 276 LACKAWANNA PASSENGER TRAINS ON WEEKDAYS AND 126 ON SUNDAYS.

WESTWARD

No. 301—Interstate Express. Daily (Via B. & O. Reading Co. and C.R.R. of N.J.)

Sleeping Cars
★Philadelphia to Syracuse (12 Sec.—D.R.)—*In No. 915 from Binghamton. May be occupied at 10.00 p.m.*
Dining Car—Parlor
★Washington to Philadelphia
Club—Diner
★Binghamton to Syracuse—*In No. 915 from Binghamton*
★Binghamton to Buffalo—*In No. 15*
Coaches
Binghamton to Syracuse—*In No. 915 from Binghamton*
Binghamton to Utica—*In No. 815 from Binghamton*
★Binghamton to Buffalo—*In No. 15 from Binghamton*
Coach
Philadelphia to Binghamton
Coach
★Washington to Philadelphia

No. 705—Pittsburgh Express. Daily (Runs via Sunbury and Harrisburg)

Lounge Car
★Harrisburg to Pittsburgh
Sleeping Car
★Scranton to Pittsburgh (12 Sec.—D.R.)
Coach Service

EASTWARD

No. 2—Pocono Express. Daily

Club-Lounge
★Elmira to New York
Sleeping Car
★Buffalo to New York (12 Sec.—D.R.)—*Open for occupancy 9.30 p.m.*
Dining Car Service
★Elmira to New York
Coaches
★Buffalo to New York

No. 6—Lackawanna Limited. Daily

Lounge Car
★Binghamton to New York (Buffet)
Parlor Car
★Buffalo to New York (Lounge)
★Binghamton to New York
Dining Car
★Buffalo to New York
Club—Diner
★Syracuse to Binghamton—*In No. 906*
Coaches
★Buffalo to New York (Individual seats—De Luxe)
★Oswego to New York (Individual seats—De Luxe)—*In No. 906, Oswego to Binghamton*
Coaches
★Syracuse to Binghamton—*In No. 906*
Ithaca to Owego—*In No. 956*
Utica to Binghamton—*In No. 806*

No. 8—The New Yorker. Daily (Via Nickel Plate No. 8)

Club-Lounge Car
★Chicago to Buffalo
★Buffalo to Elmira—*(Open 9.00 p.m.)*
Sleeping Car
★Chicago to New York (10 Sec.—D.R.—Compt.)
★Buffalo to New York (10 Sec.—D.R.—2 Double Bedrooms)—*Open for occupancy at 9.00 p.m.*
★Elmira to New York (12 Sec.—D.R.)—*Open for occupancy at 10.30 p.m.*
Dining Car
★Chicago to Buffalo
★Scranton to New York
Coaches
★Chicago to New York (De Luxe)
★Buffalo to New York

EASTWARD

No. 10—New York Mail. Daily (Via Nickel Plate No. 6)

Lounge Car
★St. Louis to Cleveland (8 Sec.—Observation)—*In N. K. P. No. 10*
Dining Car
★St. Louis to Cleveland—*In Nickel Plate No. 10*
Club—Diner
★Buffalo to Binghamton
★Cleveland to Buffalo
Sleeping Car
★Chicago to New York (12 Sec.—D.R.) Sleeper remains at Buffalo from 1.05 p.m., E.S.T. until 6.15 p.m., E.S.T. affording opportunity to visit Niagara Falls and Buffalo. Ask Ticket Agent about free side trip to Niagara Falls.
★Buffalo to New York (12 Sec.—D.R.)
★Syracuse to New York (12 Sec.—D.R.)—*In No. 910 to Binghamton—Open for occupancy at 9.15 p.m.*
Sleeping Car
★Scranton to New York (12 Sec.—D.R.)
★Binghamton to New York (10 Sec.—D.R.—2 Double Bedrooms)
Scranton and Binghamton sleepers are open for occupancy 9.30 p.m. Passengers may occupy sleeping cars at Hoboken until 8.00 a.m.
Coaches
★Chicago to Buffalo (De Luxe)—*In N. K. P. No. 6*
★St. Louis to Cleveland (De Luxe)—*In N. K. P. No. 10*
★Buffalo to New York

No. 24—Mountain Special. Sunday Only

Coaches
Scranton to New York

No. 26—Merchants Express. Daily Except Sunday

Dining Car Service
★Scranton to New York
Coaches
★Scranton to New York (Individual seats)

No. 306—Interstate Express. Daily (Via C.R.R. of N.J., Reading Co., and B. & O.)

Club—Diner
★Bethlehem to Philadelphia
Sleeping Car
★Syracuse to Philadelphia (12 Sec.—D.R.)—*Open for occupancy at 9.15 p.m.*
Dining Car
★Philadelphia to Washington, via B. & O. R.R. (Parlor)
Coaches
Syracuse to Binghamton—*In No. 910*
Binghamton to Philadelphia
Philadelphia to Washington

No. 702—Keystone Express. Daily (Runs via Harrisburg and Sunbury)

Sleeping Car
★Pittsburgh to Scranton (12 Sec.—D.R.)
Coach Service

BETWEEN NEW YORK AND BUFFALO, CLEVELAND, DETROIT, CHICAGO AND THE WEST VIA LACKAWANNA RAILROAD

TABLE 1 WESTWARD		15 Daily	3 Daily	5 Daily	7 Daily	9 Daily	TABLE 2 EASTWARD									
		AM	AM	PM	PM	PM	24 Daily	38 Daily	Daily	Daily						
LACKAWANNA RAILROAD							Noon	PM	AM	PM						
New York	Lv	1 00	10 00	4 00	6 20	9 45	N. Y. CENTRAL BIG FOUR R. R.									
Hoboken	Lv	1 25	10 20	4 20	6 45	10 05	St. Louis	(C.T.) Lv	12 00	6 00						
Newark	Lv		10 35	4 35	7 00	10 20	Indianapolis	Lv	4 30	10 50						
Brick Church	Lv		10 40	4 40	7 05	10 25	Cleveland	Ar	10 45	5 28						
Scranton	Lv	5 05	1 55	8 20	10 20	1 35	Buffalo (Cent. Term.)	(E.T.) Ar	2 15	9 16						
Binghamton	Lv	7 00	3 20	9 45	11 45	3 05	N. Y. CENTRAL R. R.									
Cortland	Ar	8 43	4 30				Chicago (La Salle St.)	(C.T.) Lv	3 00	8 45	9 50					
Syracuse	Ar	9 45	5 30				Toledo	(E.T.) Lv	7 47	3 00	9 45	2 55				
Oswego	Ar		6 50				Cleveland	Lv		5 41	12 20	5 45				
Norwich	Ar	10 25	4 25			†5 50	Buffalo (Cent. Term.)	Lv	12 40	9 16	4 45	9 40				
Utica	Ar	12 15	6 15			†7 40	CAN. PAC. R. R.—MICH. CEN. R. R.									
Ithaca	Ar	11 20	5 10				Toronto	(E.T.) Lv (C. P. R.)	8 15		1 10	6 00				
Elmira	Lv	8 40	4 38	11 10	1 00	4 25	Buffalo (Terrace Sta.)	(E.T.) Ar	11 04		3 48	8 44				
Buffalo	Ar	12 15	7 35	2 15	4 00	7 30	Buffalo (Cent. Term.)	(E.T.) Ar	11 15		4 00	8 55				
		PM	PM	AM	AM	AM	MICHIGAN CENTRAL R. R.									
		9	5		7		Chicago (Central Sta.)	(C.T.) Lv	12 50	10 15	11 59	10 05				
NICKEL PLATE							Kalamazoo	(E.T.) Lv	4 35	1 55	4 20	1 45				
Buffalo (Lackawanna Terminal)	(E.T.) Lv	12 45	7 45		4 20		Battle Creek	(E.T.) Lv	5 00	2 22	4 55	2 12				
Erie	Ar	2 58	9 33		6 05		Grand Rapids	(E.T.) Lv			12 01	12 50				
Ashtabula	Ar	4 08	10 33		7 06		Jackson	(E.T.) Lv	5 55	3 12	6 00	3 05				
East Cleveland (Superior Ave.)	Ar	5 18	11 28		8 05		Ann Arbor	(E.T.) Lv	6 38		6 55	3 45				
Cleveland (Union Terminal)	Ar	5 40	11 53		8 30		Detroit	(E.T.) Lv	7 29	4 40	8 35	4 38				
St. Louis (Union Sta.)	(C.T.) Ar	7 48					Buffalo (Terrace Sta.)	(E.T.) Ar		8 52	2 08	9 16				
Fort Wayne	Ar		3 30		11 53		Buffalo (Cent. Term.)	(E.T.) Ar	12 04	9 05	2 20	9 28				
Chicago (La Salle St. Sta.)	Ar		7 15		3 30		NICKEL PLATE									
		AM	AM		PM		Chicago (La Salle St. Sta.)	(C.T.) Lv			11 20	9 40				
MICHIGAN CENTRAL R. R.		45	39	17		15	Fort Wayne	Lv			2 37	12 49				
Buffalo (Cent. Term.)	(E.T.) Lv	1 30	10 07	2 53		7 47	St. Louis (Union Sta.)	Lv			6 10					
Buffalo (Terrace Sta.)	(E.T.) Lv	1 42				7 58	Cleveland (Union Term.)	(E.T.) Lv			8 30	6 01				
Detroit	(E.T.) Ar	7 10	2 44	7 30		12 22	East Cleveland (Superior Ave.)	Lv			8 48	6 17				
Ann Arbor	(E.T.) Ar	11 15		8 27		1 13	Ashtabula	Lv			9 56	7 12				
Jackson	(E.T.) Ar	12 12	4 23	9 12		1 57	Erie	Lv			11 01	8 07				
Grand Rapids	(E.T.) Ar	5 05		11 25			Buffalo (Lackawanna Terminal)	(E.T.) Ar			1 05	10 05				
Battle Creek	(E.T.) Ar	1 35	5 20	10 07		2 47	LACKAWANNA RAILROAD									
Kalamazoo	(E.T.) Ar	2 20	5 52	10 38		3 12	Buffalo	(E.T.) Lv	3 50	10 00	6 15	10 30				
Chicago (Central Station)	(C.T.) Ar	5 55	7 45	12 30		4 55	Elmira	Ar	7 20	12 55	10 20	1 28				
		AM	AM	PM		PM	Ithaca	Lv			12 30					
MICH. CEN. R. R.—CAN. PAC. R. R.		792			712	752	Utica	Lv			11 00	5 00				
Buffalo (Cent. Term.)	(E.T.) Lv	2 25			4 57	8 30	Norwich	Lv			12 50	6 50				
Buffalo (Terrace Sta.)	(E.T.) Lv	2 36				8 41	Oswego	Lv			10 40					
Toronto	(E.T.) Ar (C. P. R.)	5 20			8 00	11 35	Syracuse	Lv			12 00	9 50				
		PM			AM	AM	Cortland	Lv			1 03	10 54				
N. Y. CENTRAL R. R.		43	5		21	59	Binghamton	Ar	8 55	2 10	12 00	2 43				
Buffalo (Cent. Term.)	(E.T.) Lv	1 14	9 10		4 50	8 00	Scranton	Ar	10 25	3 30	1 35	4 05				
Cleveland	(E.T.) Ar	5 20	1 15		8 30	11 22	Brick Church	Ar	1 56	6 41		7 19				
Toledo	(E.T.) Ar	7 57	3 40			1 28	Newark	Ar	2 05	6 46		7 30				
Chicago (La Salle St. Sta.)	(C.T.) Ar	12 45	7 40			4 55	Hoboken	Ar	2 20	7 05	5 25	7 50				
		AM	AM		AM	PM	New York	Ar	2 40	7 25	5 40	8 10				
N. Y. CENTRAL BIG FOUR R. R.		9			121	151	PRINCIPAL TICKET, INFORMATION AND PULLMAN OFFICES									
Buffalo (Cent. Term.)	(E.T.) Lv	6 00				8 25										
Cleveland	(E.T.) Lv	12 25			8 00	12 05										
Cincinnati	(E.T.) Ar	6 50			1 50	5 55										
		43-31	5-39		151-3	151-3										
Buffalo (Cent. Term.)	(E.T.) Lv	1 14	9 10		8 25	8 25										
Cleveland	(E.T.) Lv	6 10	2 25		12 25	12 25										
Indianapolis	(C.T.) Ar	12 05	7 50		5 45	5 45										
St. Louis	(C.T.) Ar	7 10	1 10		11 10	11 10										
		AM	PM		PM	PM										

A.M., light type. P.M., heavy type. E.T.—Eastern Time. C.T.—Central Time. f—Flag stop. †—Daily Except Sunday.

PRINCIPAL TICKET, INFORMATION AND PULLMAN OFFICES						
		Telephone				
NEW YORK	General Eastern Passenger Agent's Office	Lackawanna 4-0234	NEWARK	City Ticket Office	Telephone Market 3-3440	
	500 Fifth Avenue			856 Broad Street		
	Railroad Ticket Offices:			Evenings, Sundays and Legal Holidays,	phone	Humboldt 2-2100
	3 West 47th Street (near Fifth Avenue)	MEdallion 3-1822				SHerwood 2-1134
BROOKLYN	4 West 33rd Street	LONGacre 5-7320-1	PATERSON	City Ticket Office		
	17 John Street (near Broadway)	CORTlandt 7-0820-1		302 Main Street		
	Barclay St. (ft. Barclay Street)	BARclay 7-2500		Evenings, Sundays and Legal Holidays,	phone	SHerwood 2-1609
	West 23rd St. (ft. W. 23rd Street)					
	Evenings, Saturday afternoons,					
	Sundays and Legal Holidays, phone	BARclay 7-2500				
HOBOKEN	Consolidated Ticket Office	TRiangle 5-7440	CHICAGO	City Ticket Office	CLEVELand 2488	
	Lackawanna Terminal	HOBoken 3-2000		8 No. Division Street (near Main Street)		
				Evenings, Sundays and Legal Holidays,	WASHington 4800	
				phone	WABash 3443	
				General Western Passenger Agent's Office		
				327 South LaSalle Street		

FROM NEW YORK TO BINGHAMTON, SYRACUSE, ELMIRA AND BUFFALO

WESTWARD

For condensed time and equipment of trains see pages 2 and 3.

Miles	TABLE 4		15	301	Mixed	Mixed	Mixed	1	3	5	7	9		
			Daily	Daily	31	47	91	Daily	Daily	Daily	Daily	Daily		
		AM	AM	Ex.	Daily	Daily	Daily	Daily	Daily	Daily	Daily	Daily		
		3 15		Sun.	AM	PM	AM	PM	PM	PM	PM	AM		
	Wilkes-Barre (Laurel Line).....Lv	3 15			†8 30			11 45	12 45	7 15	9 15	12 45		
134.1	ScrantonLv	5 05			9 30			1 00	1 55	8 20	10 20	1 35		
141.5	Clarks Summit.....				9 52			1 18			10 38			
145.0	Dalton.....				10 06			1 26						
147.0	LaPlume.....				10 10			1 32						
149.3	Factoryville.....							f1 36						
153.1	Nicholson-Tunkhannock Viaduct				10 22			f1 44						
158.6	Foster.....				10 32			1 52						
162.9	Kingsley.....				10 38			2 00						
166.4	Alford.....							f2 07						
172.6	New Milford.....	6 04	t6 17		11 22			2 16	n2 49	9 12				
178.5	Hallstead.....	6 13			11 32			2 25			11 19			
183.7	Conklin.....													
192.7	BinghamtonAr	6 30	6 42		12 15			2 50	3 12	9 35	11 35	2 55		
235.7	CortlandAr	8 43	8 43					4 30	4 30					
272.1	SyracuseAr	9 45	9 45					5 30	5 30					
307.1	OswegoAr							6 50	6 50					
287.8	UticaAr	12 15	12 15					6 15	6 15			†7 40		
192.7	BinghamtonLv	7 00					12 45		3 20	9 45	11 45	3 05		
195.4	Johnson City.....	7 06					12 55							
200.7	Vestal.....	7 18					1 30		y3 31	9 56				
	Endicott.....													
206.6	Apalachin.....	f7 26					1 45							
213.4	OwegoAr	7 42					2 15		3 48	10 14	12 10	3 32		
247.4	IthacaAr	11 20	11 20						5 10					
218.5	Lounsberry.....						f2 25							
221.7	Nichols.....	7 56					2 55			10 25				
227.5	Litchfield.....						f3 05							
232.0	Waverly.....	8 12					3 15		4 12	10 41	12 31			
236.3	Wilawana.....						f3 25							
242.9	Lowman.....						f3 37							
249.7	ElmiraAr	8 35					4 00		4 33	11 05	12 55	4 18		
249.7	ElmiraLv	8 40		10 30					4 38	11 10	1 00	4 25		
251.8	Elmira Heights.....			10 36										
254.1	Horseheads.....			10 45										
259.5	Big Flats.....	e8 53		10 55										
267.7	Corning	9 04		11 20					4 58	11 30	1 20	4 45		
269.2	Painted Post.....			11 35										
271.9	Coopers.....			11 42										
276.7	Campbell.....	e9 16		11 50										
281.2	Savona.....			12 00										
286.6	Bath	9 31		12 25					5 19	11 51	1 41	5 06		
290.5	Kanona.....			12 33										
294.2	Avoca.....	9 42		12 45										
296.8	Wallace.....			12 50										
302.0	Cohocton.....	9 56		1 00										
306.4	Atlanta.....	10 07		1 10										
312.3	Wayland.....	10 15		1 20										
314.2	Perkinsville.....			1 30										
319.5	Dansville.....	10 26		1 45					5 56	12 28	f2 18	5 43		
326.8	Groveland.....			2 00										
333.7	Mount Morris	10 47		2 30					6 15	12 47	2 37	6 02		
336.8	Leicester.....			2 40										
340.3	Greigsville.....			2 50										
343.5	Craigs.....			3 00										
346.3	Linwood.....			3 08										
351.1	B. R. & P. (B. & O.) Jct.....	s11 11		3 18										
355.0	East Bethany.....	f11 15		3 28										
362.4	North Alexander.....			3 40										
372.3	Fargo.....			f4 00										
375.2	Alden.....	e		f4 07										
384.2	Lancaster.....			4 30										
390.7	East Buffalo.....			5 00						1 51		7 06		
396.2	BuffaloAr	12 15		5 15					7 35	2 15	4 00	7 30		
		PM	AM	PM	PM	PM	PM	PM	PM	AM	AM	AM		

EXPLANATION OF REFERENCE MARKS

†-Daily except Sunday.

¶-No Ferry service from Christopher Street on Sundays.

+ -Frequent service via Hudson Tubes, but this train not held for Tube Connection.

§-Sundays only.

AM time light type.

PM time heavy type.

#-No Ferry service from Christopher Street.

a-Stops daily on notice to agent to receive passengers for Stroudsburg and west.

b-Stops on notice to Agent to take on passengers for Greendell and west.

e-Stops on notice to conductor to let off passengers from Binghamton and east and on notice to Agent to receive passengers for Buffalo and west.

f-Stops on notice to agent or conductor.

g-Stops on notice to conductor to let off passengers from Binghamton and east and will stop on notice to agent to receive passengers for Buffalo and west.

h-Stops on notice to conductor to let off passengers from Dover and east and points on the Penna. R. R.

m-Stops Friday and Saturday on notice to conductor to discharge passengers Dover and east.

n-Stops on signal to pick up passengers Buffalo and West, or discharge Dover and East and points on the P. R. R.

p-Stops on notice to conductor to discharge passengers from Dover and east and on notice to agent to receive passengers for Buffalo and west, up to and including Oct. 15.

r-Stops on notice to conductor to discharge passengers from Dover and east, and on notice to agent to receive passengers for Buffalo and west.

s-Stops on notice to conductor to let off passengers from Corning and east and to receive passengers for Buffalo and west.

t-Stops on notice to conductor to let off passengers from points on C. R. R. of N. J. and Reading Company.

v-Stops daily on notice to Agent to receive passengers for Blairstown and west.

y-Stops on signal to discharge passengers Dover and east and to receive passengers for Mt. Morris and west.

z-Stops regularly to take on passengers.

GOOD FOOD AND HOW ...

If you travel much you know how much good food counts. On the Lackawanna they serve good food, and how. That's one good reason why experienced travelers like to travel on the Lackawanna's Limited trains between New York and Buffalo, Cleveland, Detroit, Chicago and the West.

FROM BUFFALO, ELMIRA, SYRACUSE AND BINGHAMTON TO NEW YORK

EASTWARD

For condensed time and equipment of trains see pages 2 and 3.

Miles	TABLE 5	2	Mixed	Mixed	6	10	306	8
		Daily	92 Daily	42 Daily	Daily	Daily	Daily	Daily
		AM	AM	AM	AM	PM	PM	PM
0.0	Buffalo	Lv 3 50			10 00	6 15		10 30
5.5	East Buffalo					z		
12.0	Lancaster					f6 36		
21.0	Alden					z		
23.9	Fargo					z		
33.8	North Alexander					f7 08		
41.2	East Bethany					z		
45.1	B. R. & P. (B. & O.) Jct.					7 13		
49.9	Linwood					z		
52.7	Craigs					f7 23		
55.9	Greigsville					z		
59.4	Leicester					z		
62.5	Mount Morris	5 00			11 09	7 40		11 45
69.4	Groveland					7 50		
76.7	Dansville	5 23			11 31	8 09		12s04
82.0	Perkinsville	f5 36						
83.9	Wayland	f5 39				8 30		
89.8	Atlanta	f5 48				8 41		
94.2	Cohocton	f5 55				8 50		
99.4	Wallace	f6 02				f8 58		
102.0	Avoca	f6 06				9 04		
105.7	Kanona	f6 10				f9 09		
109.6	Bath	6 19			12 13	9 22		12 44
115.0	Savona	f6 27				f9 31		
119.5	Campbell	f6 33				f9 36		
124.3	Coopers	f6 38						
127.0	Painted Post	f6 43						
128.5	Corning	6 50			12 33	9 52		1 06
136.7	Big Flats	f7 02						
142.1	Horseheads	f7 08						
144.4	Elmira Heights	f7 11						
146.5	Elmira	Ar 7 20			12 55	10 20		1 28
146.5	Elmira	Lv 7 30	8 15		1 00	10 30		1 35
153.3	Lowman		8 27					
159.9	Wilawana		f8 35					
164.2	Waverly	7 52	8 40		1 20	10 54		1 56
168.7	Litchfield		f8 57					
174.5	Nichols	8 05	9 35			11 06		
177.7	Lounsberry		9 42					
216.8	Ithaca	Lv	8 05		12 30			
182.8	Owego	Lv 8 20	10 05		1 43	11 21		j
189.6	Apalachin	g8 30	10 17			z		
	Vestal							
195.5	Endicott	8 39	10 28		z1 58	11 45		
200.8	Johnson City	g8 46	10 38			11z54		
203.5	Binghamton	Ar 8 55	10 45		2 10	12 00		2 43
	Utica	Lv			11 00			
	Oswego	Lv			10 40			
	Syracuse	Lv			12 00	9 50	9 50	
	Cortland	Lv			1 03	10 54	10 54	
203.5	Binghamton	Lv 9 05			10 55	12 20	12 30	2 55
212.5	Conklin		f11 10					
217.7	Hallstead	9 23	11 20				12 46	
223.6	New Milford	9 33	11 55	n2 43				
229.8	Alford		12 15					
233.3	Kingsley		12 45					
237.6	Foster		f12 58					
243.1	Nicholson-Tunkhan' Viaduct		f1 27					
246.9	Factoryville		1 36					
249.2	LaPlume		f1 42					
251.2	Dalton		2 10					
254.7	Clarks Summit	10 13	2 21					
262.1	Scranton	Ar 10 25	2 35	3 30		1 35	The INTERSTATE EX- PRESS See Table 9.	4 05
	Wilkes-Barre	Ar 11 10	3 40	4 40		3 10		6 10
	(Laurel Line)							

PACKAGES to Send Anywhere?

Speed your parcels, luggage, gifts—anything—by convenient RAILWAY EXPRESS—direct from your door without extra charge in all cities and principal towns. High-speed express trains. Prompt, receipted delivery. 23,000 nationwide offices. Cost? It's moderately low. For complete service merely phone

RAILWAY EXPRESS

AGENCY, INC.



SPECIAL SERVICE—

Without extra charge, Western Union will call for your Railway Express packages on your phone call. Or you can leave them at any Western Union office.

EXPLANATION OF REFERENCE MARKS

†—Daily except Sunday.

§—Sunday only.

¶—No Ferry service to Christopher Street, New York, on Sundays.

A.M. time in light type.

P.M. time in heavy type.

c—Stops regularly on notice to conductor to let off passengers.

d—Stops on notice to Agent to receive passengers for Dover and east and on notice to conductor to let off passengers from Buffalo and west.

f—Stops on notice to Agent or conductor.

g—Stops on notice to Agent to receive passengers for Scranton and points beyond.

j—Stops on notice to conductor to let off passengers from Buffalo and west.

m—Stops on notice to conductor to let off passengers from points west of Dover.

n—Stops on signal to discharge passengers Buffalo and West, or pick up Dover and East and points on the P. R. R.

p—Stops on notice to receive passengers for Dover and points East and to discharge passengers from Binghamton and points beyond up to and inc. Oct. 15.

s—Stops on notice to Agent to receive passengers for Elmira and east and on notice to conductor to discharge passengers from Buffalo and west.

v—Stops on notice to Agent to receive passengers for Dover and east, also for points on Pennsylvania Railroad and on notice to conductor to discharge passengers from Binghamton and points beyond.

x—Stops to let off passengers from Scranton and west.

z—Stops on notice to Agent to receive passengers for New York and on notice to conductor to let off passengers from Buffalo and west.

HUDSON AND MANHATTAN RAILROAD —

33rd STREET STATION, NEW YORK NOW IN SERVICE

The Hudson and Manhattan Railroad Company has recently opened their new and improved terminal at 33rd Street and 6th Avenue, New York, and at the same time have discontinued the 28th Street and Sixth Avenue Station. The running time from Lackawanna Terminal, Hoboken, to 33rd Street and Sixth Avenue, New York, is fourteen minutes. Fare 10c.

FROM SCRANTON, POCONO MOUNTAIN POINTS AND STROUDSBURG TO NEW YORK

EASTWARD

For condensed time and equipment of trains see pages 2 and 3.

Miles	TABLE 6	10	8	1012	26	1028	614	364	1030	2	1120	Mixed	6	634	1050	376	386	24	934	1128			
		Daily	Daily	1104	Ex. Sun.	Ex. Sun.	Ex. Sun.	Ex. Sun.	Ex. Sun.	Ex. Sun.	Daily	Sun. only	42	Daily	928	1124	Ex. Sun.	Sun. only	Sun. only	Sun. only	Sun. only		
		AM	AM	AM	AM	AM	AM	AM	AM	AM	PM	PM	PM	PM	PM	PM	PM	PM	Note PM	PM	PM		
	Wilkes-Barre (Laurel Line).....	12 45	3 15		6 45					9 45			1 45	2 45					5 15				
262.1	ScrantonLv	1 45	4 15		7 30					10 35			2 45	3 35					6 20				
267.5	Nay Aug.....												3 03										
274.7	Moscow.....									11 01			3 18										
282.3	Gouldsboro.....									11 16			3 34						6 57				
287.6	Tobyhanna.....									11 25			3 44						7 05				
292.6	Pocono Summit (Station for Pocono Mnr. and Lutherland).....				8 20					11 34			3 55	v4 25					7 12				
294.9	Mount Pocono.....				8 24					11 39			4 03	v4 29					7 17				
300.6	Cresco (Station for Skytop, Canadensis, Buck Hill Falls, Mountainhome, So. Sterling).....		d5 14		8 34					11 49			4 16	4 39					7 27				
306.0	Henryville.....									f11 58			4 26						f7 36				
309.4	Analomink.....												f4 34						f7 41				
313.6	Stroudsburg &Ar	3 20	5 35		8 55					12 15			4 45	5 03					7 53				
313.6	East StroudsburgLv	3 20	5 35		8 55			8 58	10 30	12 15			4 45	5 03			5 10	5 13	7 53				
	Ar PhillipsburgP. R. R.				9 54			9 54					6 08	6 08			6 08	6 08					
	Ar Trenton"				11 28			11 28					7 33	7 33			7 33	7 28					
	Ar Philadelphia"				12 10			12 10					8 17	8 17			8 17	8 17					
318.0	Water Gap							9 06	10 37	12 24			4 55	p5 11			5 18	5 21	8 03				
	(Station for Shawnee-on-Delaware and Minisink Hills)																						
330.4	Blairstown.....																		8 20				
334.5	Johnsonburg.....																						
337.6	Greendell.....																						
323.2	Portland.....								9 14	10 45			5 05										
326.6	Delaware.....									f10 49			5 10										
330.2	Bridgeville.....									f10 57			5 22										
334.8	Oxford Furnace.....									11 03			5 30										
339.2	Washington									11 12			5 45										
339.2	Washington									11 12			5 45										
349.0	Hackettstown.....									11 25			6 00										
357.8	Netcong (Stanhope).....									11 38			6 18										
349.8	Lake Hopatcong.....									11 42			6 25										
357.1	DoverAr	4 20	6 37		9 45					11 53		1 18	6 37	6 01					8 56				
357.1	DoverLv	4 20	6 37	6 43	9 45	9 47	9 56			11 53	1 30	1 30	6 37	6 01	6 03	6 06			8 56	8 58	9 00		
359.9	Rockaway.....			6 49		9 54																	
361.3	Denville.....			7 00		10 03																	
364.0	Mountain Lakes.....			7 05		10 08				12 03													
366.0	Boonton			7 10		10 12				12 07													
370.1	Towaco.....			7 18		10 18																	
372.3	Lincoln Park.....			7 23		10 22				12 16													
374.7	Mountain View.....			7 28		10 26				12 18													
380.1	Paterson		4 58	7 39		10 35				12 28													
383.1	Athenia.....			7 44		10 40																	
384.6	Passaic			7 46		10 43				12 35													
385.9	Delawanna.....			7 49		10 46																	
387.0	Lyndhurst.....			7 53		10 49				12 39													
387.7	Kingsland.....			7 56		10 51																	
361.3	Denville.....					10 02																	
365.6	Morris Plains.....					10 10																	
367.8	Morristown		x6 52			10 14					m1 33												
369.9	Convent.....					10 17																	
372.1	Madison.....					10 20																	
374.1	Chatham.....					10 24																	
377.5	Summit		x7 05			10 30					m1 44												
379.8	Short Hills.....					10 34																	
380.8	Millburn.....					10 36																	
382.4	Maplewood.....					10 39																	
383.7	South Orange.....					10 42																	
384.5	Mountain Station.....					10 43																	
385.4	Highland Avenue.....					10 45																	
386.1	Orange.....					10 47																	
387.0	Brick Church		e7 19			10 49					c1 56												
387.6	East Orange.....					10 51																	
388.0	Grove Street.....					10 52																	
388.6	Roseville Avenue.....					10 54																	
389.8	Newark		e7 30			10 57					c2 05												
395.2	HOBOKEN	5 25	7 50		10 37					12 55	2 20	7 55	7 05						9 55				
	D. L. & W. Ferries —																						
	Christopher St. }.....																						
396.2	Barclay St. }.....	5 40	8 10		10 55				1 10	2 40		8 10	7 25						10 10				
	West 23d St. }.....																						
	Hudson Tunnels																						
	33rd St. & 6th Ave. (Fare 10c).....	5 44	8 11		10 56						2 44		7 24						10 16				
	Hudson Term. Bldg.—Cortlandt St. (Fare 8c).....	5 42	8 05		10 54						2 36		7 22						10 13				

For complete local service see Suburban Time Table

Note: Will not run Sundays, Dec. 24, 31, Feb. 11, will run Mondays Dec. 25, Jan. 1, Feb. 12.

THE DELAWARE, LACKAWANNA AND WESTERN RAILROAD AND THROUGH CONNECTIONS

Lackawanna Railroad



Map showing connections into **NEW YORK CITY**
 Lackawanna Ferries: ———
 Hudson Tunnels: ———
 Running Time from Lackawanna Terminal, Hoboken, to 33rd St. and 6th Ave. - 14 minutes.
 Hudson Terminal, Cortlandt St. - 9 minutes.
 Elevated Lines: ——— Subways: ———

TRAVEL via LACKAWANNA... It's The Route of Scenic Beauty and Shortest Line Between Buffalo and New York

READ DOWN

BINGHAMTON, SYRACUSE AND OSWEGO

READ UP

903 Daily	943 Daily	915 Daily	Miles	NEW YORK	TABLE 7	944 Daily	906 Daily	910 Daily
AM	PM	AM			Hudson Tunnels—	PM	PM	AM
9 54		+			Lv 33rd St. & 6th Ave. (Fare 10c) Ar		7 24	5 44
10 02		+			Hudson Term. Bldg.—Cortlandt Street (Fare 8c)		7 22	5 42
					D. L. & W. Ferries—			
					Lv... { West 23d St. } Ar		7 25	5 40
					{ Barclay St. }			
					{ Christopher St. }			
					Hoboken		7 05	5 25
					Lv... Binghamton Ar		2 05	12 00
			192.7		Chenango Bridge			h11 47
			203.7		Chenango Forks			h11 40
			209.2		Itaska			
			213.1		Whitney Point		1 34	h11 27
			215.3		Lisle			h11 23
			218.9		Killawog			h11 18
			221.9		Marathon		1 22	11 14
			225.8		Messengersville			h11 08
			232.1		Blodgett Mills			h11 00
			235.1		Cortland Jct.			h10 56
			235.7		Cortland		1 03	10 54
			238.3		Homer		12 54	10 45
			242.6		Little York			h10 39
			245.4		Preble			h10 36
			250.0		Tully		12 39	f10 30
			252.6		Apulia			f10 25
			257.8		Onativia			h10 16
			265.4		Jamesville			h10 04
			272.1		Syracuse		12 00	9 50
			272.1		Lv... Syracuse Ar			11 50
			284.1		Baldwinsville			11 24
			288.7		Lamson			11 14
			291.3		South Granby			f11 08
			296.0		Fulton			11 00
			302.5		Minetto			10 48
			307.1		Oswego			10 40
					Lv... Oswego Ar			AM

Syracuse, Binghamton, Philadelphia, Atlantic City, Baltimore and Washington.

Read Down

Read Up

Inter-state Express	TABLE 9	Onon-daga	Inter-state Express
306 Daily		327 Daily	301 Daily
PM	Lackawanna Railroad	AM	AM
9 50	Lv... Syracuse Ar		9 45
f10 30	Tully		9 04
10 45	Homer		8 49
10 54	Cortland		8 43
11 14	Marathon		8 18
	Whitney Point		8 04
12 00	Ar... Binghamton Lv		7 35
	Lv... Utica Ar	f7 40	12 15
	Lv... Norwich Ar	f5 50	10 25
	Ar... Binghamton Lv	f4 10	9 15
12 30	Lv... Binghamton Ar	2 55	6 42
	Lv... Scranton Ar	10 45	5 20
	C. R. R. of N. J.		
2 57	Ar... Wilkes-Barre Lv	9 58	4 09
4 40	Mauch Chunk	8 24	2 24
5 35	Ar... Allentown Lv	7 42	1 40
	Reading Company		
5 49	Ar... Bethlehem Lv	7 28	1 25
6 56	Lansdale	6 20	12 28
7 32	Wayne Jct.	5 53	11 57
7 45	Ar... Philadelphia Lv	5 40	11 45
	Pennsylvania-Reading (Seashore Lines)		
8 40	Lv... Philadelphia Ar	3 08	10 45
	(Broad Street Station)		
10 10	Ar... Atlantic City Lv	1 45	b9 15
	Baltimore & Ohio R. R.		
7 45	Lv... Wayne Jct. Ar	4 06	
8 02	Lv... Philadelphia Ar	3 51	8 45
	(24th and Chestnut Sts.)		
▲10 00	Ar... Baltimore Lv	▲2 08	6 45
	(Camden Station)		
▲10 42	Ar... Washington Lv	▲1 30	6 00
AM		PM	PM

CLUB DINER ON TRAINS Nos. 915 and 906 BETWEEN Binghamton AND Syracuse

READ DOWN

BINGHAMTON AND UTICA

READ UP

AT THE NEW YORK WORLD'S FAIR BEFORE CLOSING	803 Daily	815 Daily	Mixed 809 Ex Sun	Miles	NEW YORK	TABLE 8	806 Daily	816 Daily
	AM	AM	PM			Hudson Tunnels—	PM	PM
	9 54	+	f9 41			Lv 33rd St. & 6th Ave. (Fare 10c) Ar		
	10 02	+	f9 44			Hud. Term. Bldg.—Cortlandt Street (Fare 8c)		7 24
						D. L. & W. Ferries—		7 22
						Lv... { West 23d St. } Ar		7 25
						{ Barclay St. }		
						{ Christopher St. }		
						Hoboken		7 05
						Lv... Binghamton Ar		2 00
				192.7		Chenango Bridge		8 00
				197.8		Chenango Forks		7 44
				203.7		Greene		7 36
				211.7		Brisben		7 24
				217.6		Coventry		f7 14
				221.1		Oxford		f7 09
				225.7		Haynes		7 02
				228.9		Norwich		12 50
				233.9		Galena		6 50
				239.6		Sherburne		f6 38
				245.0		Earlville		6 30
				250.1		Poolville		6 21
				252.6		Hubbardsville		6 16
				256.8		North Brookfield		6 09
				260.7		Sangerfield		6 03
				265.0		Waterville		
				266.3		Paris		11 52
				270.6		Richfield Junction		5 53
				274.2		Lv... Richfield Junction Ar		5 45
				274.2		Clayville		5 38
				276.5		Sauquoit		5 31
				278.5		Chadwicks		5 26
				280.0		Washington Mills		5 22
				282.1		New Hartford		
				283.7		Ar... Utica Lv		11 15
				287.8				5 15
								5 00
								AM
								PM

Go BY TRAIN THE SAFE AND SANE WAY TO TRAVEL

A. M. time light type. P. M. time heavy type. †—Daily except Sunday. ‡—Daily except Saturday. +—Frequent service via Hudson tubes, but this train not held for tube connections. ¶—No Ferry service between Christopher Street, New York, and Hoboken, N. J., on Sundays. a—Stops on notice to conductor to let off passengers holding tickets from Scranton and east and from Elmira and west. b—Stops on notice to conductor to let off passengers from Binghamton and beyond. c—No boat connection from Christopher Street for this train. f—Stops on notice to Agent or Conductor. h—Stops on signal to take on passengers for Scranton and east, and Elmira and west, providing agents are notified before 6 P. M.

BUFFALO, SYRACUSE, BINGHAMTON AND SCRANTON TO
PHILADELPHIA, BALTIMORE AND WASHINGTON VIA
STROUDSBURG AND PENNSYLVANIA RAILROAD

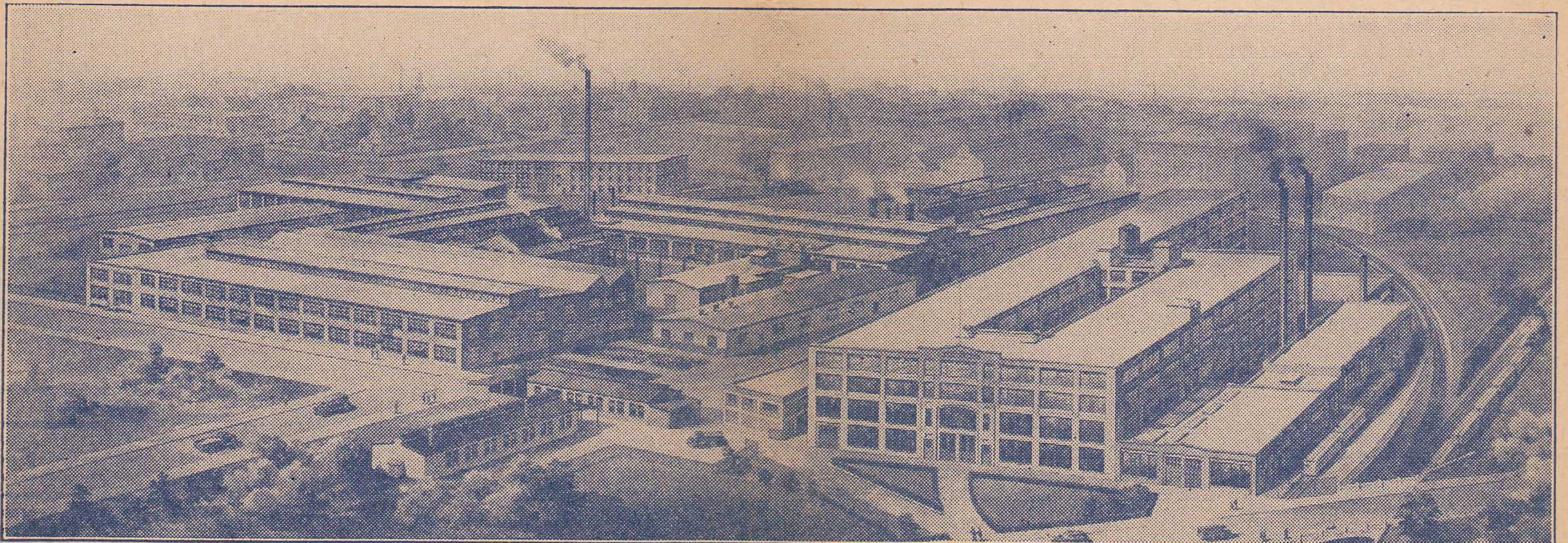
READ DOWN Northward			TABLE 17			Southward READ UP			
	385 Sun. Only	363 Ex. Sun.	357 Ex. Sun.			364 Ex. Sun.	376 Ex. Sun.	386 Sun. Only	
	PM	Noon	AM			PM	PM	PM	
	6 00	12 00	2 00	Lv.	Washington	Ar	2 25	10 55	10 55
	6 46	12 45	3 13		Baltimore		1 42	10 09	10 09
	9 00	3 00	8 04		Philadelphia, Broad St.		12 10	8 17	8 17
	9 42	3 41	8 44		Trenton		11 28	7 33	7 28
	11 04	5 04	10 15		Phillipsburg (Easton)		9 54	6 08	6 08
	f11 27	5 27	10 39		Belvidere		9 28	5 43	5 44
		f5 38			Delaware			f5 32	
		5 43	10 55		Portland		9 14	5 27	5 29
		5 52	11 02		Water Gap		9 06	5 18	5 21
	11 55	6 00	11 10	Ar	Stroudsburg &	Lv	8 58	5 10	5 13
	12 10	6 35	11 15	Lv	E. Stroudsburg	Ar	8 55	5 03	5 03
			11 22	Ar	Analomink	Lv		a	a
			11 29		Henryville			a	a
		7 02	11 40		Cresco		8 34	4 39	4 39
		7 17	11 55		Mount Pocono		8 24	j4 29	j4 29
		7 24	12 02		Pocono Summit		8 20	j4 25	j4 25
		7 33	12 10		Tobyhanna			3 44	3 44
	1 25	8 10	12 50		Scranton		7 30	3 35	3 35
	2 55	9 35	2 50		Binghamton			2 20	2 20
			5 10		Ithaca			12 30	12 30
			5 30		Syracuse			12 00	12 00
			6 15		Utica			11 00	11 00
	4 18	11 05	4 33		Elmira			1 00	1 00
	7 30	2 15	7 35	Ar	Buffalo	Lv		10 00	10 00
	AM	AM	PM				AM	AM	AM

PARLOR CAR SEAT RATES

AND	BETWEEN					
	New York, N. Y.	Newark, N. J.	Scranton, Pa.	Binghamton, N. Y.	Elmira, N. Y.	Buffalo, N. Y.
Bath, N. Y.	1.65	1.65	.85	.55	.55	.60
Binghamton, N. Y.	1.15	1.15	.55		.55	1.15
Brick Church, N. J.75	1.15	1.40	2.05
Buffalo, N. Y.	2.10	2.10	1.45	1.15	.80	
Cresco, Pa.60	.55	.55	.60	.90	1.60
Dansville, N. Y.	1.80	1.80	1.00	.70	.55	.55
Elmira, N. Y.	1.45	1.45	.65	.55		.80
Mt. Morris, N. Y.	1.85	1.85	1.15	.80	.55	.55
Mt. Pocono, Pa.65	.60	.55	.55	.85	1.60
Newark, N. J.75	1.15	1.45	2.10
Owego, N. Y.	1.25	1.25	.55	.55	.55	1.00
Pocono Summit, Pa.65	.65	.55	.55	.85	1.60
Scranton, Pa.80	.75		.55	.65	1.45
Stroudsburg, Pa.55	.55	.55	.65	.95	1.60
Water Gap, Pa.55	.55	.55	.65	.95	1.60
Waverly, N. Y.	1.35	1.35	.60	.55		.90

A. M. time light face type. P. M. time heavy type. a-Train No. 42 leaves Henryville 4.26 P. M., Analomink 4.34 P. M., connecting at Stroudsburg with this train. b-Stops on notice to conductor to discharge passengers from points on the Pennsylvania Railroad. f-Stops on signal or on notice to conductor. j-Stops on signal to receive passengers for points on Pennsylvania Railroad and to discharge passengers from Binghamton and beyond. © Leaves or arrives Pennsylvania Station (30th Street), Philadelphia. The time of trains south of Delaware is shown for the accommodation of the public and this company will not be responsible for errors or changes that may occur.

INDUSTRIAL SPACE AVAILABLE—EAST ORANGE, N. J.



Approximately 120,200 square feet of floor space (6,200 square feet on ground floor; 36,000 square feet on second floor; 34,000 square feet on third floor; 44,000 square feet on fourth floor) in modern reinforced concrete building; sprinklered; two elevators; steam, electric power and heating facilities. Prop-

erty is served by private Lackawanna sidetrack.

For information concerning this space, and other industrial sites, address

W. B. HARAHAAN, Industrial Agent,

140 Cedar Street,

New York, N. Y.

Telephone: BArcley 7-2500

RAILROAD AND PULLMAN FARES

(See Page 12—For Parlor Car Rates)

FROM
TO

	NEW YORK AND HOBOKEN				NEWARK				SCRANTON				BINGHAMTON				ELMIRA				BUFFALO			
	One-Way Fares		+Round-Trip Coach Fares 60 Day Limit	Lower Berth	One-Way Fares		+Round-Trip Coach Fares 60 Day Limit	Lower Berth	One-Way Fares		+Round-Trip Coach Fares 60 Day Limit	Lower Berth	One-Way Fares		+Round-Trip Coach Fares 60 Day Limit	Lower Berth	One-Way Fares		+Round-Trip Coach Fares 60 Day Limit	Lower Berth	One-Way Fares		+Round-Trip Coach Fares 60 Day Limit	Lower Berth
	Tickets Valid In				Tickets Valid In				Tickets Valid In				Tickets Valid In				Tickets Valid In				Tickets Valid In			
	*Pull-man Cars	Coaches			*Pull-man Cars	Coaches			*Pull-man Cars	Coaches			*Pull-man Cars	Coaches			*Pull-man Cars	Coaches			*Pull-man Cars	Coaches		
Allentown, Pa.	20.50	17.35	25.35	5.25	20.30	17.23	25.10	5.25	16.50	14.06	21.20	4.20	15.65	13.47	20.40	3.95	13.90	12.01	18.45	3.70	9.50	8.36	13.25	2.65
Ann Arbor, Mich.									6.60	5.48	9.50		8.40	6.98	11.90		8.90	7.40	12.60		12.50	10.40	16.85	
Baltimore, Md.	8.65	7.19	12.25	2.65	8.45	7.03	11.95	2.65	4.65	3.86	6.80	2.10	2.85	2.36	4.30	2.10	1.10	.91	1.65		3.30	2.73	4.90	
Bath, N. Y.	23.00	19.15	27.45	5.55	22.80	18.98	27.20	5.55	19.00	15.82	23.95	4.75	17.95	15.20	22.75	4.50	16.20	13.74	21.10	4.20	11.80	10.09	16.15	2.90
Battle Creek, Mich.																								
Binghamton, N. Y. (See Note ©)	5.80	4.82	8.45	2.10	5.60	4.65	8.20	2.10	1.80	1.48	2.70						1.75	1.44	2.65		6.15	5.11	8.85	2.10
Brick Church, N. J.	.35	.29	.55		.10				3.75	3.11	5.55	2.10	5.55	4.61	8.10	2.10	7.30	6.07	10.50	2.10	11.70	9.73	16.05	2.65
Buffalo, N. Y. (See Note ●)	11.90	9.90	16.25	2.65	11.75	9.78	16.10	2.65	7.95	6.61	11.25	2.10	6.15	5.11	8.85	2.10	4.40	3.65	6.55	2.10				
Chicago, Ill. (via NYC&St.L.)	25.25	20.69	28.20	6.30	25.25	20.69	28.20	6.30	22.10	18.18	26.85	5.80	20.35	16.68	25.20	5.25	18.60	15.23	23.40	4.50	14.30	11.65	18.25	3.95
" " (via MCRR)	27.25	22.69	30.90	6.30	27.00	22.48	30.70	6.30	23.55	19.61	28.10	5.80	21.80	18.15	26.50	5.25	20.10	16.73	24.85	4.50	15.80	13.15	20.60	3.95
Cleveland, Ohio (via NYC&St.L.)	16.30	13.57	20.50	3.95	16.30	13.57	20.50	3.95	13.35	11.11	17.95	3.15	11.60	9.65	15.90	3.15	9.90	8.23	13.80	2.65	5.55	4.61	8.10	2.65
" " (via NYCRR)	17.15	14.28	22.00	3.95	16.90	14.07	21.65	3.95	13.35	11.11	17.95	3.15	11.60	9.65	15.90	3.15	9.90	8.23	13.80	2.65	5.55	4.61	8.10	2.65
Corning, N. Y.	8.05	6.69	11.40	2.10	7.85	6.53	11.10	2.10	4.05	3.36	6.00	2.10	2.25	1.86	3.40		.55	.45	.85		3.90	3.23	5.80	
Cortland, N. Y.	7.10	5.90	10.20	2.10	6.90	5.73	9.90	2.10	3.10	2.57	4.60	2.10	1.30	1.07	1.95		2.55	2.11	3.85		6.15	5.11	8.85	
Cresco, Pa.	2.90	2.40	4.35		2.70	2.23	4.05		1.20	.98	1.80		2.95	2.44	4.45		4.70	3.90	6.85	2.10	9.10	7.57	12.65	2.10
Dansville, N. Y.	9.65	8.03	13.45	2.65	9.45	7.86	13.15	2.65	5.65	4.69	8.25	2.10	3.85	3.19	5.70	2.10	2.10	1.73	3.15		2.35	1.94	3.55	
Detroit, Mich.	20.30	17.35	25.10	4.50	20.15	17.23	24.95	4.50	16.30	14.06	21.20	3.95	14.55	12.56	19.30	3.70	12.80	11.10	17.25	3.15	8.40	7.45	11.90	2.10
Dunkirk, N. Y.	13.15	10.94	17.70	3.15	12.95	10.78	17.45	3.15	9.10	7.57	12.65	2.65	7.35	6.11	10.55	2.65	5.65	4.69	8.25	2.40	1.25	1.03	1.90	
Elmira, N. Y.	7.55	6.28	10.70	2.10	7.35	6.11	10.55	2.10	3.55	2.94	5.25	2.10	1.75	1.44	2.65						4.40	3.65	6.55	2.10
Erie, Pa.	14.55	12.11	19.30	3.15	14.35	11.94	19.00	3.15	10.50	8.73	14.45	2.65	8.75	7.28	12.40	2.65	7.05	5.86	10.15	2.65	2.65	2.18	4.00	
Fort Wayne, Ind. (via NYC&St.L.)	21.95	18.27	26.65	5.25	21.95	18.27	26.65	5.25	19.00	15.82	23.95	4.75	17.20	14.32	22.05	4.50	15.50	12.90	20.20	3.95	11.15	9.29	15.30	3.15
Ithaca, N. Y.	7.45	6.19	10.70		7.25	6.03	10.40		3.45	2.86	5.10		1.65	1.36	2.50		2.15	1.78	3.25		6.55	5.44	9.40	
Jackson, Mich.	21.65	18.02	26.30	5.25	21.45	17.86	26.05	5.25	17.65	14.69	22.60	4.50	16.60	14.25	21.25	4.20	14.85	12.79	19.60	3.95	10.65	9.14	14.60	2.65
Kalamazoo, Mich.	23.70	19.73	28.15	5.80	23.50	19.57	28.05	5.80	19.65	16.36	24.30	5.25	18.65	15.78	23.50	4.75	16.90	14.32	21.65	4.20	12.50	10.67	16.85	3.15
Mt. Morris, N. Y.	10.05	8.36	14.00	2.65	9.85	8.19	13.70	2.65	6.05	5.03	8.70	2.10	4.25	3.53	6.30	2.10	2.55	2.11	3.85		1.85	1.53	2.80	
Mt. Pocono, Pa.	3.05	2.53	4.55		2.85	2.36	4.30		1.00	.83	1.50		2.75	2.28	4.15		4.50	3.73	6.65	2.10	8.90	7.40	12.60	2.10
Newark, N. J.									3.85	3.19	5.70	2.10	5.60	4.65	8.20	2.10	7.35	6.11	10.55	2.10	11.75	9.78	16.10	2.65
Owego, N. Y.	6.45	5.36	9.25	2.10	6.25	5.19	9.00	2.10	2.45	2.03	3.70	2.10	.65	.54	1.00		1.10	.91	1.65		5.50	4.57	8.05	2.10
Philadelphia, Pa.									4.90	4.07	7.15		6.70	5.57	9.65	2.10	8.15	6.78	11.55		12.50	10.40	16.85	
Pittsburgh, Pa.									11.45	9.53	15.70	2.65									7.75	6.44	10.95	2.65
Pocono Summit, Pa.	3.15	2.61	4.70		2.95	2.44	4.45		.95	.79	1.45		2.70	2.23	4.05		4.45	3.69	6.60	2.10	8.85	7.36	12.50	2.10
Scranton, Pa.	4.05	3.36	6.00	2.10	3.85	3.19	5.70	2.10					1.80	1.48	2.70		3.55	2.94	5.25	2.10	7.95	6.61	11.25	2.10
St. Louis, Mo. (via NYC&St.L.)	29.25	23.31	32.55	7.65	29.25	23.31	32.55	7.65	27.80	22.93	31.55	7.10	26.05	21.43	29.95	6.85	24.30	19.98	28.45	6.30	20.05	16.69	24.05	5.25
" " (via NYCRR)	31.75	25.81	36.00	7.65	31.50	25.60	35.70	7.65	28.00	23.32	31.75	7.10	27.50	22.90	31.20	6.85	25.80	21.48	29.65	6.30	21.55	17.94	26.20	5.25
Stroudsburg, Pa.	2.50	2.07	3.75		2.30	1.90	3.45		1.55	1.28	2.35		3.35	2.78	5.00		5.10	4.23	7.45	2.10	9.50	7.90	13.25	2.10
Syracuse, N. Y.	8.20	6.82	11.60	2.10	8.00	6.65	11.30	2.10	4.20	3.48	6.25	2.10	2.40	1.98	3.60		3.65	3.03	5.40		7.20	5.98	10.35	
Washington, D. C.									7.75	6.44	10.95		9.55	7.94	13.30		9.55	7.94	13.30		13.05	10.86	17.60	
Water Gap, Pa.	2.35	1.94	3.55		2.20	1.82	3.30		1.70	1.40	2.55		3.45	2.86	5.10		5.20	4.32	7.60	2.10	9.60	7.98	13.35	2.10
Waverly, N. Y.	7.00	5.82	10.05	2.10	6.80	5.65	9.80	2.10	3.00	2.48	4.50	2.10	1.20	.98	1.80		.55	.45	.85		4.95	4.11	7.25	2.10

Note ● Between New York and Buffalo, Single occupancy Bedroom \$4.75; Double occupancy Bedroom \$5.25.

Note © Between New York and Binghamton, Single occupancy Bedroom \$3.80; Double occupancy Bedroom \$4.20.

*Tickets valid in Pullman Cars will be accepted upon payment of Pullman charges for space occupied. One-Way Rail Fares in Upper Berths only, approximately 10% less.

*Reduced round-trip fares for Pullman travel are available to most destinations. Consult Agents.

MINIMUM NUMBER OF RAILROAD TICKETS REQUIRED FOR EXCLUSIVE OCCUPANCY OF SPACE IN PULLMAN CARS

Section	1
Bed Room	1
Compartment, berth service	1 1/10
Compartment, seat service (sleeping car)	1 1/2
Drawing Room, berth service	1 1/4
Drawing Room, seat service (sleeping car)	2
Drawing Room in parlor car	2

CHARGES FOR OTHER ACCOMMODATIONS IN PULLMAN SLEEPING CARS

Cost of	WHERE LOWER BERTH RATE IS:														
	\$2.10	2.65	3.15	3.70	3.95	4.20	4.50	4.75	5.25	5.55	5.80	6.30	6.85	7.10	7.65
Upper Berth is { One-Way	1.45	1.80	2.20	2.55	2.70	2.90	3.10	3.25	3.60	3.80	4.00	4.35	4.70	4.90	5.25
{ Round-Trip	2.90	3.55	4.15	4.80	5.10	5.40	5.70	6.05	6.60	6.95	7.30	7.80	8.45	8.75	9.40
Section, one person	2.80	3.55	4.20	4.95	5.30	5.60	6.00	6.35	7.00	7.40	7.75	8.40	9.15	9.50	10.20
" 2 persons	3.25	4.10	4.85	5.70	6.10	6.45	6.90	7.30	8.05	8.55	8.95	9.70	10.55	10.95	11.75
Comp't, one person	4.20	5.25	6.30	7.35	7.90	8.40	8.95	9.45	10.50	11.05	11.55	12.60	13.65	14.20	15.25
" 2 or more persons	6.30	7.35	8.95	10.50	11.05	12.10	12.60	13.65	14.70	15.75	16.30	17.85	19.45	19.95	21.55
Dr. Room, one person	5.25	6.60	7.90	9.20	10.00	10.50	11.30	11.85							

STATION INDEX

	Table No.		Table No.		Table No.		Table No.
A		Detroit, Mich.....	1, 2	Leicester, N. Y.....	4, 5	*Phillipsburg, N. J.....	3, 6, 17
Alden, N. Y.....	4, 5	Dover, N. J.....	3, 6, 13	Lime Ridge, Pa.....	10	Pittston, Pa.....	10
Allentown, Pa.....	9	Duryea, Pa.....	10	Lincoln Park, N. J.....	3, 6	Plymouth, Pa.....	10
× Ampere, N. J.....				Linwood, N. Y.....	4, 5	Pocono Manor, Pa.	
Analomink, Pa.....	3, 6, 17			Lisle, N. Y.....	7	(See Pocono Summit)	3, 6, 17
▲ Andover, N. J.....		E		Litchfield, N. Y.....	4, 5	Pocono Summit, Pa.....	3, 6, 17
▲ Andover Jet., N. J.....		Earlville, N. Y.....	8	*Little Falls, N. J.....		Poolville, N. Y.....	8
Ann Arbor, Mich.....	1, 2	East Bethany, N. Y.....	4, 5	Little York, N. Y.....	7	Portland, Pa.....	3, 6, 17
Apalachin, N. Y.....	4, 5	East Bloomsburg, Pa.....	10	Lounsbury, N. Y.....	4, 5	Port Morris, N. J.....	
Apulia, N. Y.....	7	East Buffalo, N. Y.....	4, 5	Lowman, N. Y.....	4, 5	Port Murray, N. J.....	
Ashtabula, Ohio.....	1, 2	Easton, Pa.....	17	Luzerne, Pa.....	10	Preble, N. Y.....	7
Athena, N. J.....	3, 6	East Orange, N. J.....	3, 6	Lyndhurst, N. J.....	3, 6		
Atlanta, N. Y.....	4, 5	Echo Lake, Pa.....	11	○ Lyons, N. J.....			
Atlantic City, N. J.....	9	Elmira, N. Y.....	1, 2, 4, 5, 16, 17			R	
▲ Augusta, N. J.....		Elmira Heights, N. Y.....	4, 5			Richfield Jet., N. Y.....	8, 16
Avoca, N. Y.....	4, 5	Endicott-Vestal, N. Y.....	4, 5			Rochester, N. Y.....	16
		Erie, Pa.....	1, 2	M		Rockaway, N. J.....	3, 6
		Espy, Pa.....	10	Madison, N. J.....	3, 6	Roseville Ave., N. J.....	3, 6
B				Maplewood, N. J.....	3, 6	Rupert, Pa.....	10
Baldwinsville, N. Y.....	7			Marathon, N. Y.....	7, 9		
Baltimore, Md.....	9, 17	F		Marshall's Creek, Pa.....	11	S	
○ Basking Ridge, N. J.....		Factoryville, Pa.....	4, 5	Mauch Chunk, Pa.....	9	Sangerfield, N. Y.....	8
Bath, N. Y.....	4, 5, 16	Fargo, N. Y.....	4, 5	Messengersville, N. Y.....	7	Sauquoit, N. Y.....	8
Battle Creek, Mich.....	1, 2	○ Far Hills-Bedminster.....		Millburn, N. J.....	3, 6	Savona, N. Y.....	4, 5
Beach Haven, Pa.....	10	Foster, Pa.....	4, 5	○ Millington, N. J.....		Scranton, Pa.....	1, 2, 3, 4, 5, 6, 9, 10, 13, 16, 17
Belvidere, N. J.....	17	Fort Wayne, Ind.....	1, 2	○ Mine Brook, N. J.....			
○ Berkeley Heights, N. J.....		Fulton, N. Y.....	7	Minetto, N. Y.....	7	*Secaucus, N. J.....	
○ Bernardsville, N. J.....				Minisink Hills (See Water Gap)	3, 6, 17	Shawnee-on-Delaware, Pa.	
Berwick, Pa.....	10	G		Mocanaqua, Pa.....	10	(See Water Gap)	3, 6, 17
Bethlehem, Pa.....	9	Galena, N. Y.....	8	○ Montclair, N. J.....		Sherburne, N. Y.....	8
Big Flats, N. Y.....	4, 5	○ Gillette, N. Y.....		*Montville, N. J.....	3, 6	Shickshinny, Pa.....	10
Binghamton, N. Y.....	1, 2, 4, 5, 7, 8, 9, 13, 16, 17	○ Gladstone, N. J.....		Morris Plains, N. J.....	3, 6	Shoemakers, Pa.....	11
		× Glen Ridge, N. J.....		Morristown, N. J.....	3, 6, 13	Short Hills, N. J.....	3, 6
Blairstown, N. J.....	3, 6	Gouldsboro, Pa.....	3, 6	Moscow, Pa.....	3, 6	Skytop, Pa. (See Cresco)	3, 6, 17
Blodgett Mills, N. Y.....	7	Grand Rapids, Mich.....	1, 2	Mountainhome, Pa.		South Danville, Pa.....	10
× Bloomfield, N. J.....		Greendell, N. J.....	3, 6	(See Cresco)	3, 6, 17	South Granby, N. Y.....	7
Bloomsburg, Pa.....	10	Greene, N. Y.....	3, 6	Mountain Lakes, N. J.....	3, 6	South Orange, N. J.....	3, 6
Boonton, N. J.....	3, 6	Greigsville, N. Y.....	4, 5	Mountain Station, N. J.....	3, 6		
▲ Branchville, N. J.....		Groveland, N. Y.....	4, 5	Mountain View, N. J.....	3, 6	*Stewartsville, N. J.....	
Briar Creek, Pa.....	10	Grove Street, N. J.....	3, 6	Mount Arlington, N. J.....		○ Stirling, N. J.....	
Brick Church, N. J.....	3, 6, 13			Mount Morris, N. Y.....	4, 5, 16	St. Louis, Mo.....	1, 2
Bridgeville, N. J.....	3, 6	H		Mount Pocono, Pa.....	3, 6, 17	Stroudsburg and East	
Brisben, N. Y.....	8	Hackettstown, N. J.....	3, 6	Mount Tabor, N. J.....		Stroudsburg, Pa.....	3, 6, 11, 17
▲ Broadway, N. J.....		Hallstead, Pa.....	4, 5	○ Murray Hill, N. J.....		Summit, N. J.....	3, 6, 13
Buck Hill Falls, Pa.		Harrison, See Newark, N. J.	1, 2, 3, 6, 13			Sunbury, Pa.....	10
(See Cresco)		Harrisburg, Pa.....	10	N		Syracuse, N. Y.....	1, 2, 4, 5, 7, 9, 17
Buffalo, N. Y.....	1, 2, 4, 5, 12, 17	Haynes, N. Y.....	8	Nanticoke, Pa.....	10		
B.R.&P. (B&O) Jct., N. Y.	4, 5	Henryville, Pa.....	3, 6, 17	Nay Aug, Pa.....	3, 6	T	
Bushkill, Pa.....	11	Hicks Ferry, Pa.....	10	Nescopeck, Pa.....	10	Taylor, Pa.....	10
		Highland Ave., N. J.....	3, 6	Netcong (Stanhope), N. J.	3, 6	Tobyhanna, Pa.....	3, 6, 17
C		Hoboken, N. J.....	1, 2, 3, 6, 7, 8, 10	Newark, N. J.....	1, 2, 3, 6, 13	Toledo, Ohio.....	1, 2
Campbell, N. Y.....	4, 5	Homer, N. Y.....	7, 9	New Hartford, N. Y.....	8	Toronto, Can.....	1, 2
Canadensis, Pa.		Horseheads, N. Y.....	4, 5	New Milford, Pa.....	4, 5	Towaco, N. J.....	3, 6
(See Cresco)		Hubbardsville, N. Y.....	8	○ New Providence, N. J.....		Trenton, N. J.....	3, 6, 17
Candor, N. Y.....	3, 6, 17	Hunlock Creek, Pa.....	10	▲ Newton, N. J.....		Tully, N. Y.....	7, 9
Caroline, N. Y.....	13			*New Village, N. J.....		Turn Villa, Pa.....	11
Catatonk, N. Y.....	13	I		New York, N. Y.....	1, 2, 3, 6, 7, 8, 11, 12, 13		
Catawissa, Pa.....	10	Indianapolis, Ind.....	1, 2	Niagara Falls, N. Y.....	12	U	
Chadwicks, N. Y.....	8	Itaska, N. Y.....	7	Nichols, N. Y.....	4, 5	Utica, N. Y.....	1, 2, 4, 5, 8, 9, 16, 17
Chatham, N. J.....	3, 6	Ithaca, N. Y.....	1, 2, 4, 5, 13, 17	Nicholson, Pa.....	4, 5		
Chenango Bridge, N. Y.....	7, 8	J		North Alexander, N. Y.....	4, 5	V	
Chenango Forks, N. Y.....	7, 8	Jackson, Mich.....	1, 2	North Brookfield, N. Y.....	8	Vestal	
Chicago, Ill.....	1, 2	Jamesville, N. Y.....	7	Northumberland, Pa.....	10	Endicott	4, 5
Cincinnati, Ohio.....	1, 2	Johnsonburg, N. J.....	3, 6	Norwich, N. Y.....	1, 2, 8, 9		
Clarks Summit, Pa.....	4, 5	Johnson City, N. Y.....	4, 5			W	
Clayville, N. Y.....	8			O		Wallace, N. Y.....	4, 5
Cleveland, Ohio.....	1, 2	K		Oak Grove, Pa.....	11	Washington, D. C.....	9, 17
Cohocton, N. Y.....	4, 5	Kalamazoo, Mich.....	1, 2	Old Forge, Pa.....	10	Washington, N. J.....	3, 6
Conklin, N. Y.....	4, 5	Kanona, N. Y.....	4, 5	Onativia, N. Y.....	7	Washington Mills, N. Y.....	8
Convent, N. J.....	3, 6	Killawog, N. Y.....	7	Orange, N. J.....	3, 6	Water Gap, Pa.....	3, 6, 17
Coolbaugh, Pa.....	11	Kingsland, N. J.....	3, 6	Oswego, N. Y.....	1, 2, 4, 5, 7	Waterloo, N. J.....	
Coopers, N. Y.....	4, 5	Kingsley, Pa.....	4, 5	Owego, N. Y.....	4, 5, 13, 16	Waterville, N. Y.....	8
Corning, N. Y.....	4, 5, 16	Kingston, Pa.....	10	Oxford, N. Y.....	8	× Watsessing Ave., N. J.....	
Cortland, N. Y.....	1, 2, 4, 5, 7, 9, 15	L		Oxford Furnace, N. J.....	3, 6	Waverly, N. Y.....	4, 5, 16
		▲ Lafayette, N. J.....		P		Wayland, N. Y.....	4, 5
Cortland Jet., N. Y.....	7	Lake Hopatcong, N. J.....	3, 6	Painted Post, N. Y.....	4, 5	Wayne Junction, Pa.....	9
Coventry, N. Y.....	8	Lamson, N. Y.....	7	Paris, N. Y.....	8	West Nanticoke, Pa.....	10
Craigs, N. Y.....	4, 5	Lancaster, N. Y.....	4, 5	Passaic, N. J.....	3, 6	West Pittston, Pa.....	10
▲ Cranberry Lake, N. J.....		Lansdale, Pa.....	9	Paterson, N. J.....	3, 6	Wharton, N. J.....	
Cresco, Pa.....	3, 6, 17	LaPlume, Pa.....	4, 5	○ Peapack, N. J.....		Whitney Point, N. Y.....	7, 9
				Perkinsville, N. Y.....	4, 5	Wilkes-Barre, Pa.....	3, 4, 5, 6, 9, 10
D				Philadelphia, Pa.....	3, 6, 9, 13, 17	Wilawana, Pa.....	4, 5
Dalton, Pa.....	4, 5			Pittsburgh, Pa.....	10	Willseyville, N. Y.....	13
Dansville, N. Y.....	4, 5					Wyoming, Pa.....	10
Danville, Pa.....	3, 6						
Delawanna, N. J.....	10						
Delaware, N. J.....	3, 6, 17						
Denville, N. J.....	3, 6						

▲ Located on Sussex Branch. Tables 3, 6, show service to and from Netcong, N. J., the junction point. (See Suburban time table.)
 × Located on Montclair Branch. Tables 3, 6, show service to and from Newark, N. J., the junction point. (See Suburban time table.)
 ○ Located on Passaic and Delaware Branch. Tables 3, 6, show service to and from Summit, N. J., the junction point. (See Suburban time table.)
 ▲ Located on Phillipsburg Branch. Tables 3, 6, show service to and from Washington, N. J., the junction point. (See Suburban time table.)
 * Located on Boonton Line. (See Suburban time table.)
 ¶ Located on Main Line. (See Suburban time table.)

DIRECTORY OF OPERATING AND TRAFFIC DEPARTMENTS

General Offices—140 Cedar Street, New York. Telephone BARclay 7-2500

OPERATING DEPARTMENT

G. J. RAY, Vice-President, New York

<p>E. B. MOFFATT, General Superintendent.....Scranton, Pa. V. D. THAYER, Supt. Car Service.....Scranton, Pa. W. A. WILLIAMS, Supt. Dining Car Service.....Hoboken, N. J. J. H. LERBS, Supt. Morris and Essex Division.....Hoboken, N. J. G. W. MURPHY, Supt. Scranton Division.....Scranton, Pa. W. G. ALEXANDER, Supt. Buffalo Division.....Buffalo, N. Y. FRANK CIZEK, Supt. Syracuse and Utica Division.....Binghamton, N. Y. HENRY FOULKES, Superintendent Mail and Express Traffic.....New York</p>	<p>J. M. EMERY, Mgr. Marine Dept.....Hoboken, N. J. G. A. PHILLIPS, Chief Engineer.....Hoboken, N. J. EDWARD E. ROOT, Chief of Motive Power.....Scranton, Pa. I. H. LANCE, General Storekeeper.....Scranton, Pa. ALBERT A. JOHNSON, Engineer Maintenance of Way.....Hoboken, N. J. J. E. SAUNDERS, Signal Engineer.....Hoboken, N. J. P. H. MITCHELL, Master Car Builder.....Scranton, Pa. J. S. THORP, Electrical Engineer.....Hoboken, N. J.</p>
---	---

TRAFFIC DEPARTMENT

J. J. BYRNE, Vice-President, New York

<p>W. H. DOMINICK, Passenger Traffic Manager.....New York J. L. HOMER, General Passenger Agent.....New York W. E. CARBONE, Gen. Western Pass. Agent...327 So. LaSalle St., Chicago, Ill. M. H. MURPHY, Gen. Eastern Pass. Agent.....500 Fifth Ave., New York C. M. LYON, Gen. Baggage and Milk Traffic Agent.....Hoboken, N. J. R. F. IRWIN, Advertising Agent.....New York</p>	<p>CHARLES F. McTAGUE, General Freight Traffic Manager.....New York W. J. DAILY, Freight Traffic Manager.....New York C. A. ARENTZEN, Asst. Freight Traffic Manager.....New York GEORGE HERBERT, Asst. Freight Traffic Manager.....New York W. M. MacPHERSON, Asst. Freight Traffic Manager.....Buffalo, N. Y. C. E. HALL, Western Traffic Manager.....Chicago, Ill. J. H. CHRISTY, Assistant Western Traffic Manager.....Chicago, Ill. J. S. SIKORA, General Freight Agent.....New York J. F. RYDENE, General Coal Freight Agent.....New York W. B. HARAHAAN, Industrial Agent.....New York W. J. GEMEINER, Asst. General Freight Agent, Produce Exchange, New York E. M. SELLERS, Assistant General Freight Agent.....New York W. H. BROWNE, Foreign Freight Agent, Produce Exchange.....New York L. A. DALTON, General Dairy Agent.....Chicago, Ill.</p>
--	--

Albany, N. Y.—Room 5, Del. & Hud. Bldg.—Phone Albany 3-4517
HARRY F. DOYLE, Commercial Agent

Boston, Mass.—140 Federal Street—Phone Hancock 0054
JOHN M. KERANS, General Agent

Binghamton, N. Y.—Press Bldg.—Phone Binghamton 2-3697
W. E. DOWNS, Division Passenger Agent

Brooklyn, N. Y.—Wallabout Terminal—Phone Stagg 2-8180
GEORGE R. MARR, City Freight Agent

Buffalo, N. Y.—8 No. Division St. (Near Main)—Phone Cleveland 2488
LOUIS F. HEINECK, Gen. Agent, Pass. Dept.

Chicago, Ill.—327 South LaSalle Street—Phone Wabash 3443
R. G. CARLSON, Commercial Agent
D. J. WHITE, Traveling Passenger Agent

Cincinnati, Ohio—18 East Fourth Street—Phone Main 0730
WILLIAM J. NOLAN, General Agent

Cleveland, Ohio—310 Park Bldg.—Phone Main 0435
M. J. NAUGHTON, General Agent

Detroit, Mich.—2031 National Bank Bldg.—Phone Cadillac 6727
O. H. WARMBOLD, General Agent
L. E. TENNEY, Assistant General Agent
F. W. SCHEPPMANN, District Passenger Agent

Easton, Pa.—402 Northampton Street—Phone Easton 9021
Z. LEE MATHERS, Commercial Agent

Elmira, N. Y.—Lackawanna Station—Phone Elmira 6261
N. A. MITTS, Traveling Passenger Agent

Indianapolis, Ind.—410 Guaranty Bldg.—Phone Riley 9071
SAMUEL J. NEILL, Commercial Agent

Kansas City, Mo.—403 Railway Exchange Bldg.—Phone Main 2226
BRUCE L. DILL, Commercial Agent

Los Angeles, Calif.—108 West Sixth Street—Phone Tucker 2067
H. E. ALLEN, Commercial Agent

Milwaukee, Wis.—1315 Majestic Bldg.—Phone Marquette 6410
J. R. McDOWELL, Commercial Agent

Minneapolis, Minn.—216 Metropolitan Life Bldg.—Phone Main 5301
L. L. NEWELL, Commercial Agent

Newark, N. J.—Lackawanna Station—Phone Humboldt 2-2100
THOMAS L. STEELE, Division Freight Agent

856 Broad Street—Phone Market 3-3440
C. F. FELTHAM, Division Passenger Agent

New Haven, Conn.—39 Church Street—Phone New Haven 6-2466
WILLIAM K. MARTIN, General Agent

New York, N. Y.—Produce Exchange—Phone Bowling Green 9-5100
F. G. PLATT, Special Traffic Representative
P. E. AHERN, City Freight Agent
500 Fifth Avenue at 42nd Street—Phone Lackawanna 4-0234
W. H. WEBER, District Passenger Agent
E. WORTMANN, Steamship Passenger Agent

Paterson, N. J.—302 Main Street—Phone Sherwood 2-8998
ROBERT H. EDMOND, City Ticket Agent

Philadelphia, Pa.—1602 Finance Bldg.—
Phone Bell, Rittenhouse 2848—Keystone, Race 6026
J. C. DAWSON, General Agent

Pittsburgh, Pa.—503 Park Bldg.—Phone Atlantic 0463
J. A. McCOY, General Agent

Portland, Ore.—Room 533, Terminal Sales Bldg.—Phone BEacon 0757
J. E. GATHMAN, General Agent

St. Louis, Mo.—1971-1972 Railway Exchange Bldg.—Phone Main 2460
A. L. BAHLER, General Agent

St. Paul, Minn.—1008 Pioneer Bldg.—Phone Cedar 5765
R. A. WARREN, Commercial Agent

San Francisco, Calif.—601 Monadnock Bldg.—Phone Sutter 7515
W. R. KNEISS, General Agent

Scranton, Pa.—Lackawanna Station—Phone Scranton 5251
C. V. McKOWNE, Division Freight Agent
J. H. VAN WIE, Division Passenger Agent

Seattle, Wash.—1331 Third Avenue—Phone Main 3055
J. E. GATHMAN, General Agent

Syracuse, N. Y.—Lackawanna Station—Phone Syracuse 2-9211
H. L. COLE, Division Freight Agent
O. J. STINGER, City Passenger Agent

Toledo, Ohio—710 Second National Bank Bldg.—Phone Adams 1817
C. R. HARTSHORN, Commercial Agent

Toronto, Ont.—1806 Royal Bank Bldg.—Phone Elgin 7635
J. S. BRANNING, Canadian Agent