

Lackawanna Railroad

Serving the
TRAVELING PUBLIC
106 Years

The Route of
Scenic Beauty

Between

NEW YORK

and

**BUFFALO
CLEVELAND**

DETROIT

CHICAGO

Nov. 15, 1941

FORM 10

Lackawanna Railroad

Serving the
TRAVELING PUBLIC
106 Years

The Route of
Scenic Beauty

Between

NEW YORK

and

**BUFFALO
CLEVELAND**

DETROIT

CHICAGO

Nov. 15, 1941

FORM 10



New Passenger Station, Syracuse, N. Y.

The new Lackawanna passenger station located in the heart of Syracuse is of modernistic design, simple in architectural lines but attractive.

The station is two stories high and its ground dimensions 50 by 100 feet. The exterior is of variegated buff color face brick with polished granite base, limestone pilasters and trim window sash is aluminum, and over each of the three entrances from the plaza there is a cantilever marquee, also of aluminum. There are two waiting room entrances, one at the front and the other on the south side of the building, while the third entrance, on the north side, leads to station offices. The large size waiting room has sidewalls of Montana travertine with marble base, a terrazzo floor and acoustical plastered ceiling and cornice. On the ground floor are the ticket office, baggage room, waiting room, Union News stand, lavatories, etc. Aluminum and glass doors are used for the concourse and waiting room.

On the second floor are various offices and rooms for utility purposes with asphalt tile flooring, and painted plaster walls.

Back of the station is the elevated structure. On the axis line of the building a connecting passage extends to a passenger subway leading to two flights of stairs to the station platform. The concrete station platform, northbound track on one side and southbound on the other, is about 600 feet long. The canopy, which has a concrete roof, is 450 feet in length.

The station faces a spacious plaza of asphalt with a triangular shrubbery bed in the center. Two safety islands for pedestrians have been built at the north end of the plaza, and in the southerly section of the area ample parking space has been provided.

LACKAWANNA

★ Regularly assigned cars are air-conditioned

LACKAWANNA RAILROAD—THE ROUTE OF SCENIC BEAUTY

CONDENSED EQUIPMENT OF TRAINS—PULLMAN PARLOR AND SLEEPING CAR LINES, DINING CAR SERVICE.

★ Regularly assigned cars are air-conditioned

WESTWARD

Lackawanna Limited No. 3—Daily

(Via Nickel Plate No. 5)

- Parlor-Lounge Car
 - ★New York to Buffalo.
- Sleeping Cars
 - ★New York to Chicago (12 Sec.—D.R.)
 - ★Cleveland to Chicago (6 Single Bedrooms)
 - ★Cleveland to Chicago 18 Roomettes. (Except Saturday nights)
- Dining Car
 - ★New York to Buffalo
- Diner-Lounge
 - ★Buffalo to Cleveland (Radio Equipped)
 - ★Cleveland to Chicago
- Coaches
 - ★New York to Buffalo (Individual Seats—De Luxe)
 - ★New York to Oswego (Individual Seats—De Luxe)—In No. 903 from Binghamton
 - ★New York to Chicago—De Luxe
 - ★Binghamton to Utica—In No. 803 from Binghamton

The Chicagoan No. 5—Daily

- Buffet-Lounge Car
 - ★New York to Binghamton
- Lounge Car
 - ★Buffalo to Chicago (Buffet)
- Sleeping Car
 - ★New York to Detroit (12 Sec.—D.R.)
- Parlor Car
 - ★New York to Elmira
 - ★Detroit to Chicago { (in N. Y. C. No. 33, leaving Detroit 8:35 A.M.; arriving Chicago 12:55 P.M.)
- Dining Car
 - ★New York to Scranton
 - ★Buffalo to Chicago
- Coaches
 - ★New York to Buffalo
 - ★Buffalo to Chicago

The Westerner No. 7—Daily

(Via Nickel Plate No. 7)

- Buffet-Lounge Car
 - ★New York to Scranton—Open for service 7:00 p.m.
- Sleeping Cars
 - ★New York to Chicago (10 Sec.—D.R.—Comp.)
 - ★New York to Buffalo (10 Sec.—D.R.—2 Double Bedrooms)—May be occupied until 8.00 a.m.
- Dining Car
 - ★Buffalo to Chicago—Lounge Diner
- Coaches
 - ★New York to Chicago (De Luxe)
 - ★Buffalo to Chicago (De Luxe)
 - ★New York to Buffalo

The Owl No. 15—Daily

- Club—Diner
 - ★Binghamton to Buffalo
 - ★Binghamton to Syracuse—In No. 915 from Binghamton
- Dining Car
 - ★Cleveland to St. Louis
- Sleeping Cars
 - ★New York to Buffalo (12 Sec.—D.R.)
 - ★New York to Binghamton (10 Sec.—D.R.—2 Double Bedrooms)—May be occupied until 8.00 a.m.
 - ★New York to Scranton (12 Sec.—D.R.) May be occupied until 8.00 a.m.
 - ★New York to Syracuse (12 Sec.—D.R.)—In No. 915 from Binghamton
- Observation Lounge—Sleeping Car
 - ★Cleveland to St. Louis—In Nickel Plate No. 9
- Coaches
 - ★New York to Buffalo
 - ★Buffalo to St. Louis—In Nickel Plate No. 9
 - Sleeping cars open at Hoboken for occupancy at 9.30 p.m.

WESTWARD

Interstate Express No. 301—Daily

(Via B. & O. Reading Co. and C.R.R. of N.J.)

- Sleeping Cars
 - ★Philadelphia to Syracuse (12 Sec.—D.R.)—In No. 915 from Binghamton. May be occupied at 10.00 p.m.
- Dining Car—Parlor
 - ★Washington to Philadelphia
- Club—Diner
 - ★Binghamton to Syracuse—In No. 915 from Binghamton
 - ★Binghamton to Buffalo—In No. 15
- Coaches
 - Binghamton to Syracuse—In No. 915 from Binghamton
 - Binghamton to Utica—In No. 815 from Binghamton
 - ★Binghamton to Buffalo—In No. 15 from Binghamton
- Coach
 - Philadelphia to Binghamton
- Coach
 - ★Washington to Philadelphia

Pittsburgh Express No. 705—Daily

(Runs via Sunbury and Harrisburg)

- Lounge Car
 - ★Harrisburg to Pittsburgh
- Sleeping Car
 - ★Scranton to Pittsburgh (12 Sec.—D.R.)
- Cafe Coach (Serving Breakfast)
 - ★Altoona to Pittsburgh
- Coach Service

EASTWARD

Pocono Express No. 2—Daily

- Parlor Car
 - ★Elmira to New York
- Buffet-Lounge
 - ★Elmira to Scranton (Serving Breakfast)
- Sleeping Car
 - ★Buffalo to New York (12 Sec.—D.R.)—Open for occupancy 9.00 p.m.
- Dining Car
 - ★Scranton to New York
- Coaches
 - ★Buffalo to New York

Lackawanna Limited No. 6—Daily

- Parlor Car
 - ★Buffalo to New York (Observation Lounge)
 - ★Binghamton to New York (Sun. only)
- Dining Car
 - ★Buffalo to New York
- Coaches
 - ★Buffalo to New York (Individual seats—De Luxe)
 - ★Oswego to New York (Individual seats—De Luxe)—In No. 906, Oswego to Binghamton
- Coaches
 - Utica to Binghamton—In No. 806

The New Yorker No. 8—Daily

(Via Nickel Plate No. 8)

- Lounge Diner Car
 - ★Chicago to Buffalo
- Sleeping Car
 - ★Chicago to New York (10 Sec.—D.R.—Compt.)
 - ★Buffalo to New York (10 Sec.—D.R.—2 Double Bedrooms)—Open for occupancy at 9.00 p.m.
 - ★Elmira to New York (12 Sec.—D.R.)—Open for occupancy at 10.30 p.m.
- Dining Car
 - ★Scranton to New York
- Coaches
 - ★Chicago to New York (De Luxe)
 - ★Buffalo to New York

EASTWARD

New York Mail No. 10—Daily

(Via Nickel Plate No. 6)

- Lounge Diner
 - ★St. Louis to Cleveland (8 Sec.—Observation)—In N. K. P. No. 10
- Club—Diner
 - ★Cleveland to Buffalo—Radio
 - ★Buffalo to Elmira
- Buffet-Lounge
 - ★Syracuse to Binghamton—Open for service 9.00 p.m.
- Sleeping Car
 - ★Chicago to New York (12 Sec.—D.R.) Sleeper remains at Buffalo from 1.05 p.m., E.S.T. until 6.15 p.m., E.S.T. affording opportunity to visit Niagara Falls and Buffalo. Ask Ticket Agent about free side trip to Niagara Falls.
 - ★Buffalo to New York (12 Sec.—D. R.)
 - ★Syracuse to New York (12 Sec.—D.R.)—In No. 910 to Binghamton—Open for occupancy at 9.00 p.m.
 - ★Scranton to New York (12 Sec.—D.R.)
 - ★Binghamton to New York (10 Sec.—D.R.—2 Double Bedrooms)
 - Scranton and Binghamton sleepers are open for occupancy 9.30 p.m. Passengers may occupy sleeping cars at Hoboken until 8.00 a.m.
- Coaches
 - ★Chicago to Buffalo (De Luxe)—In N. K. P. No. 6
 - ★St. Louis to Cleveland (De Luxe)—In N. K. P. No. 10
 - ★Buffalo to New York (De Luxe)

Merchants Express No. 26—Daily Except Sunday

- Buffet Lounge Car
 - ★Scranton to New York
- Coaches
 - ★Scranton to New York (Individual seats)

Interstate Express No. 306—Daily

(Via C.R.R. of N.J., Reading Co., and B. & O.)

- Buffet-Lounge
 - ★Syracuse to Binghamton—Open for service 9.00 p.m.
- Club—Diner
 - ★Bethlehem to Philadelphia
- Sleeping Car
 - ★Syracuse to Philadelphia (12 Sec.—D.R.)—Open for occupancy at 9.00 p.m.
- Dining Car
 - ★Philadelphia to Washington, via B. & O. R.R. (Parlor)
- Coaches
 - Syracuse to Binghamton—In No. 910
 - Binghamton to Philadelphia
 - Philadelphia to Washington

Keystone Express No. 702—Daily

(Runs via Harrisburg and Sunbury)

- Lounge Car
 - ★Pittsburgh to Harrisburg (Buffet)
- Sleeping Car
 - ★Pittsburgh to Scranton (12 Sec.—D.R.)
- Coach Service

Hoboken Terminal Handles 276 Lackawanna Passenger Trains On Week-days And 125 On Sundays.

FROM SCRANTON TO BINGHAMTON, SYRACUSE, ELMIRA AND BUFFALO

WESTWARD

For condensed time and equipment of trains see pages 2 and 3.

Miles	TABLE 4	15 Daily	301 Daily	Mixed 47 Daily	3 Daily	5 Daily	7 Daily							
	Wilkes-Barre (Laurel Line).....Lv	AM 3 15	AM	AM 9 15	PM 12 45	PM 6 45	PM 9 45							
134.1	ScrantonLv	4 50	THE INTERSTATE EXPRESS See Table 9.	10 05	2 00	8 00	11 00							
141.5	Clarks Summit.....			10 30				11 18						
145.0	Dalton.....			10 37										
147.0	La Plume.....			10 42										
153.1	Nicholson-Tunkhannock Viaduct			10 55										
158.6	Foster.....			11 00										
162.9	Kingsley.....			11 12										
166.4	Alford.....													
172.6	New Milford.....	5 50		t6 15	11 35	2 52	8 51	11 52						
178.5	Hallstead.....	5 59			11 45			11 59						
183.7	Conklin.....			f11 55										
192.7	BinghamtonAr	6 20	6 40	12 30	3 15	9 15	12 15							
235.7	CortlandAr	8 50	8 50		4 40									
272.1	SyracuseAr	9 55	9 55		5 40									
307.1	OswegoAr				7 10									
287.8	UticaAr	12 20	12 20		6 20									
192.7	BinghamtonLv	7 05			3 25	9 25	12 25							
195.4	Johnson City.....	7 11												
200.7	Vestal.....	7 24			y3 36	9 36	f12 35							
	Endicott }													
206.6	Apalachin.....	f7 30												
213.4	Owego	7 48			3 54	9 56	12 50							
247.4	IthacaAr	11 20	11 20		5 10									
221.7	Nichols.....	8 02				10 07								
232.0	Waverly.....	8 20			4 20	10 25	1 11							
249.7	ElmiraAr	8 45			4 43	10 55	1 35							
249.7	ElmiraLv	8 50			4 48	11 00	1 45							
251.8	Elmira Heights.....													
254.1	Horseheads.....													
259.5	Big Flats.....	e9 03												
267.7	Corning	9 15			5 08	11 25	2 05							
269.2	Painted Post.....													
271.9	Coopers.....													
276.7	Campbell.....	e9 27												
281.2	Savona.....													
286.6	Bath	9 43			5 29	11 46	2 26							
290.5	Kanona.....													
294.2	Avoca.....	9 55												
296.8	Wallace.....													
302.0	Cohocton.....	10 11												
306.4	Atlanta.....	10 23												
312.3	Wayland.....	10 32												
314.2	Perkinsville.....													
319.5	Dansville.....	10 44			6 05	12 23								
326.8	Groveland.....													
333.7	Mount Morris	11 07			6 24	12 42	3 21							
336.8	Leicester.....													
340.3	Greigsville.....													
343.5	Craigs.....													
346.3	Linwood.....													
351.1	B. & O. Jct.....	s11 31												
355.0	East Bethany.....	f11 35												
362.4	North Alexander.....													
372.3	Fargo.....													
375.2	Alden.....	e												
384.2	Lancaster.....													
396.2	Buffalo For Connections West of Ar Buffalo see pages 2 and 3.	12 35			7 35	2 05	4 35							

EXPLANATION OF REFERENCE MARKS

†-Daily except Sunday.

¶-No Ferry service from Christopher Street on Sundays.

*-Frequent service via Hudson Tubes, but this train not held for Tube Connection.

AM time light type.

PM time heavy type.

#-No Ferry service from Christopher Street.

b-Stops on notice to Agent to take on passengers for Greendell and west.

e-Stops on notice to conductor to let off passengers from Binghamton and east and on notice to Agent to receive passengers for Buffalo and west.

f-Stops on notice to agent or conductor.

g-Stops on notice to conductor to let off passengers from Binghamton and east and will stop on notice to agent to receive passengers for Buffalo and west.

h-Stops on notice to conductor to let off passengers from Dover and points east.

j-Stops on notice to Conductor to discharge passengers Dover and East, also points on the Penna., R. R. and on notice to agent to receive passengers for Buffalo and West.

m-Stops Friday and Saturday on notice to conductor to discharge passengers Dover and east.

p-Stops Friday only on notice to conductor to discharge passengers from Dover and points east, Jan. 9 to Mar. 27 inclusive.

r-Stops on notice to conductor to discharge passengers from Dover and east, and on notice to agent to receive passengers for Buffalo and west.

s-Stops on notice to conductor to let off passengers from Corning and east and to receive passengers for Buffalo and west.

t-Stops on notice to conductor to let off passengers from points on C. R. R. of N. J. and Reading Company.

v-Stops daily on notice to Agent to receive passengers for Blairstown and west.

y-Stops on signal to discharge passengers Dover and east and to receive passengers for Mt. Morris and west.

z-Stops regularly to take on passengers.

Train-Auto Service available at this point.

BUY WINTER FUEL NOW

Industries, householders and all other consumers of Coal can materially aid the National Defense Program by anticipating their fuel requirements for next winter and ordering for immediate delivery.

The shipment of National Defense materials during the winter months will undoubtedly tax American Railroad facilities. Therefore, it is both prudent and patriotic to buy fuel now.

L A C K A W A N N A

See Your America

From Coast to Coast for as little as

\$90⁰⁰ Round Trip

\$135.00 round trip in sleeping and Parlor cars.
(Berth or seat space extra)

See your Local Ticket Agent or Travel Agent

FROM BUFFALO, ELMIRA, SYRACUSE AND BINGHAMTON TO NEW YORK

EASTWARD

For condensed time and equipment of trains see pages 2 and 3.

Miles	TABLE 5	2 Daily	6 Daily	10 Daily	306 Daily	8 Daily			
	<i>For connections from the West see pages 2 and 3.</i>	AM	AM	PM	PM	PM			
0.0	Buffalo Lv	3 50	10 00	6 15	10 30				
12.0	Lancaster			f6 34					
21.0	Alden								
23.9	Fargo								
33.8	North Alexander								
41.2	East Bethany			f7 04					
45.1	B. & O. Jet			7 09					
49.9	Linwood								
52.7	Craigs			f7 18					
55.9	Greigsville								
59.4	Leicester								
62.5	Mount Morris	5 00	11 09	7 33	11 45				
69.4	Groveland			7 43					
76.7	Dansville	5 22	11 31	8 02	12 04				
82.0	Perkinsville	f5 34							
83.9	Wayland	f5 36		8 20					
89.8	Atlanta	f5 44		8 29					
94.2	Cohocton	f5 50		8 38					
99.4	Wallace	f5 57		f8 44					
102.0	Avoca	f6 01		8 49					
105.7	Kanona	f6 05		f8 54					
109.6	Bath	6 14	12 13	9 07	12 44				
115.0	Savona	f6 22		f9 16					
119.5	Campbell	f6 28		f9 21					
124.3	Coopers	f6 33							
127.0	Painted Post	f6 38							
128.5	Corning	6 45	12 33	9 37	1 06				
136.7	Big Flats	f6 57							
142.1	Horseheads	f7 03							
144.4	Elmira Heights	f7 06							
146.5	Elmira Ar	7 15	12 55	10 05	1 28				
146.5	Elmira Lv	7 25	1 00	10 15	1 35				
164.2	Waverly	7 47	1 20	10 39	1 56				
174.5	Nichols	8 00		f10 51					
216.8	Ithaca Lv		12 30						
182.8	Owego Lv	8 17	1 43	11 06					
189.6	Apalachin	8 29							
	Vestal								
195.5	Endicott	8 39	2 58	11 30					
200.8	Johnson City	f8 46							
203.5	Binghamton Ar	8 55	2 10	11 45	2 43				
	Utica Lv		11 00						
	Oswego Lv		10 35						
	Syracuse Lv		12 00	9 35	9 35				
	Cortland Lv		1 03	10 40	10 40				
203.5	Binghamton Lv	9 05	2 20	12 10	12 20	2 55			
212.5	Conklin								
217.7	Hallstead	9 23							
223.6	New Milford	9 33	2 43						
229.8	Alford								
233.3	Kingsley								
237.6	Foster								
243.1	Nicholson-Tunkhan' Viaduct								
249.2	LaPlume								
251.2	Dalton								
254.7	Clarks Summit	10 13							
262.1	Scranton Ar	10 25	3 30	1 25	4 05				
	Wilkes-Barre Ar	11 40	4 40	3 10	6 10				
	(Laurel Line)								

COURTESY TO OUR PATRONS

Safety has long been the key-word of American Railroads. Of equal importance, is friendliness on the part of Railroad Employees to the traveling public.

Our Employees are instructed to be courteous and friendly so as to add to the comfort and enjoyment of your trip. Many letters are received in commendation of individual acts of courtesy by our Employees. We are grateful for such letters, which encourage our Employees in their efforts to serve you better.

EXPLANATION OF REFERENCE MARKS

†-Daily except Sunday.

§-Sunday only.

¶-No Ferry service to Christopher Street, New York, on Sundays.

A.M. time in light type.

P.M. time in heavy type.

a-Stops on notice to Agent to receive passengers for Dover and East and points on the Pennsylvania Railroad.

c-Stops regularly on notice to conductor to let off passengers.

d-Stops on notice to Agent to receive passengers for Dover and east and on notice to conductor to let off passengers from Buffalo and west.

f-Stops on notice to Agent or conductor.

j-Stops on notice to conductor to let off passengers from Buffalo and west.


m-Stops on notice to conductor to let off passengers from points west of Dover.

n-Stops on signal to discharge passengers Buffalo and West, or pick up Dover and East and points on the P. R. R.

s-Stops on notice to Agent to receive passengers for Bath and east and on notice to conductor to discharge passengers from Mount Morris and west.

v-Stops on notice to Agent to receive passengers for Dover and east, also for points on Pennsylvania Railroad and on notice to conductor to discharge passengers from Binghamton and points beyond.

z-Stops on notice to Agent to receive passengers for New York and on notice to conductor to let off passengers from Buffalo and west.

 Train-Auto Service available at this point.

DIRECT BUS SERVICE TO TIMES SQUARE, N. Y.

Via Lincoln Tunnel from Lackawanna Terminal, Hoboken
Public Service Bus Terminal in New York is located at 260 West 42nd Street between 7th and 8th Aves., in the heart of the hotel and theatrical district.

Fast, Frequent and Convenient Service
Fare, One-Way, 20c — Running Time — 19 Minutes

Do You Know?

If you have a friend or relative whom you would like to bring on for a visit, you can deposit their transportation expense with the local Lackawanna agent who will make all arrangements without any extra cost to you.

FROM SCRANTON, POCONO MOUNTAIN POINTS AND STROUDSBURG TO NEW YORK

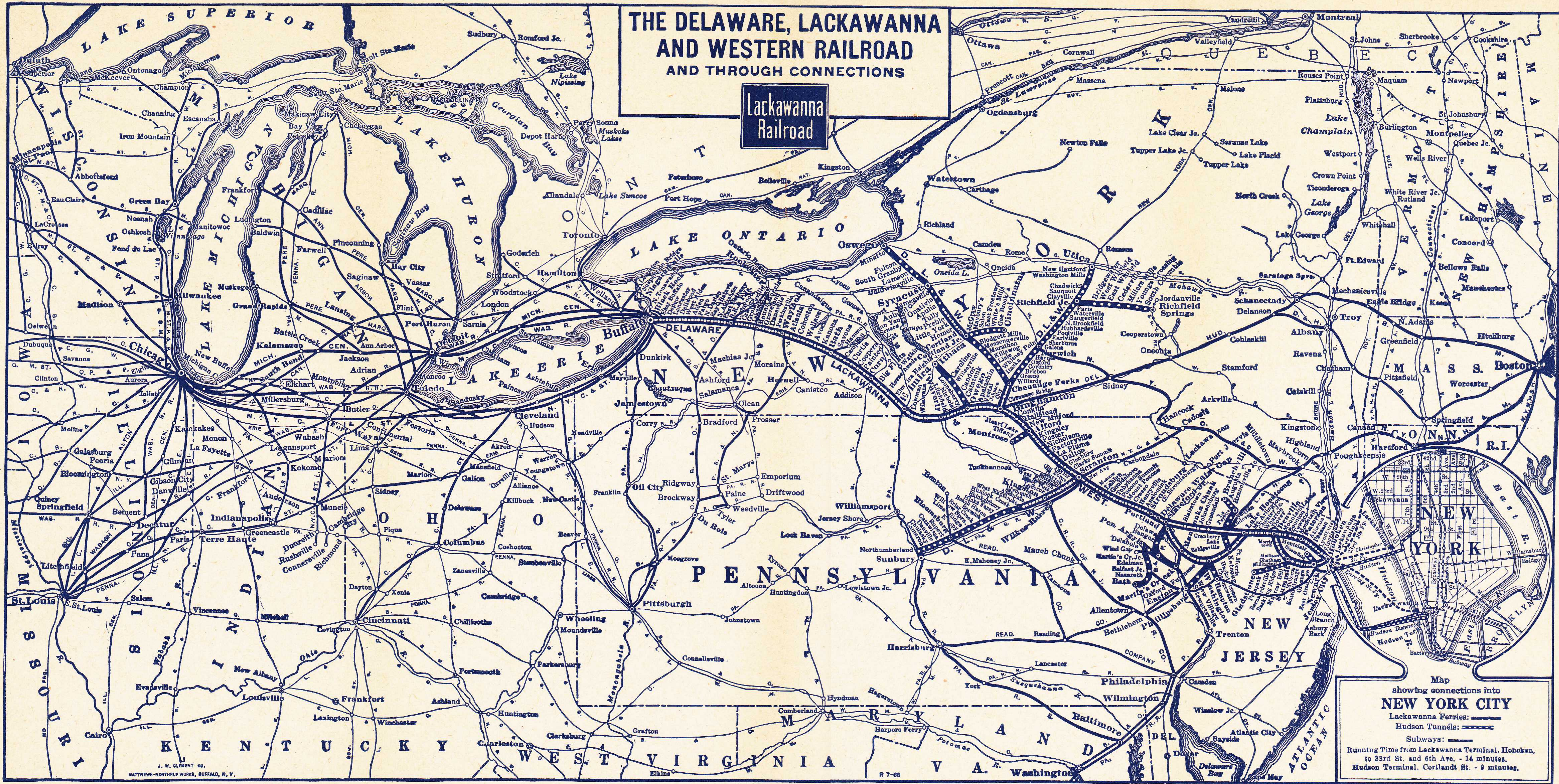
EASTWARD

For condensed time and equipment of trains see pages 2 and 3.

Miles	TABLE 6	10	8	1012	26	1028	614	364	1116	6	928	634	1054	376	24	934	1128					
		Daily	Daily	1104	Ex. Sun.	Ex. Sun.	Ex. Sun.	Ex. Sun.	2	Sun. Only	Daily	Sun. only	Ex. Sun.	Daily	Daily	See Note	Sun. only	Sun. only				
		AM	AM	AM	AM	AM	AM	AM	AM	PM	PM	PM	PM	PM	PM	PM	PM	PM				
.....	Wilkes-Barre (Laurel Line) Lv	12 45	3 15	6 10	9 45	2 45	4 45					
262.1	Scranton Lv	1 40	4 15	7 30	10 35	3 35	6 20					
274.7	Moscow	11 01					
282.3	Gouldsboro	11 16	6 57					
287.6	Tobyhanna	11 25	7 05					
292.6	Pocono Summit (Station for Pocono Mnr. and Lutherland)	8 20	11 34	v4 25	7 12					
294.9	Mount Pocono	8 24	11 39	v4 29	7 17					
300.6	Cresco (Station for Skytop, Canadensis, Buck Hill Falls, Mountainhome, So. Sterling)	d5 12	8 34	11 49	4 39	7 27					
306.0	Henryville (Station for Paradise Falls Lutheran Assn.)	f11 58	7 36					
313.6	Stroudsburg & Ar Phillipsburg P. R. R.	3 20	5 33	8 55	12 15	5 03	7 53					
313.6	East Stroudsburg Lv	3 20	5 33	8 55	12 15	5 03	5 10	7 53					
.....	Ar Trenton	9 57	9 57	6 07	6 07					
.....	Ar Philadelphia	11 28	11 28	7 29	7 29					
.....	Ar Philadelphia	12 10	12 10	8 10	8 10					
318.0	Delaware Water Gap (Station for Shawnee-on-Delaware and Minisink Hills)	9 08	12 24	8 03					
330.4	Blairstown	5 59	f9 18	12 41	8 20					
334.5	Johnsonburg	f12 46					
337.6	Greendell	f12 50					
323.2	Portland					
326.6	Delaware					
330.2	Bridgeville					
334.2	Oxford Furnace					
339.2	Washington					
339.2	Washington					
349.0	Hackettstown					
357.8	Netcong (Stanhope)					
349.8	Lake Hopatcong					
357.1	Dover Ar	4 20	6 35	9 48	1 18	6 01	8 56					
357.1	Dover Lv	4 20	6 35	9 48	1 18	6 01	8 56					
359.9	Rockaway	6 49					
361.3	Denville	7 00					
364.0	Mountain Lakes	7 05					
366.0	Boonton	7 10					
370.1	Towaco	7 18					
372.3	Lincoln Park	7 23					
374.7	Mountain View	7 28					
380.1	Paterson	7 39					
383.1	Athenia	7 44					
384.6	Passaic	7 46					
385.9	Delawanna	7 49					
387.0	Lyndhurst	7 53					
387.7	Kingsland	7 56					
361.3	Denville					
365.6	Morris Plains					
367.8	Morristown					
369.9	Convent					
372.1	Madison					
374.1	Chatham					
377.5	Summit					
379.8	Short Hills					
380.8	Millburn					
382.4	Maplewood					
383.7	South Orange					
384.5	Mountain Station					
385.4	Highland Avenue					
386.1	Orange					
387.0	Brick Church					
387.6	East Orange					
388.0	Grove Street					
388.6	Roseville Avenue					
389.8	Newark					
395.2	HOBOKEN	5 25	7 50	10 40					
.....	D. L. & W. Ferries—					
.....	Christopher St.					
396.2	Barclay St.	5 40	8 10	10 55					
.....	West 23d St.					
.....	Hudson Tunnels					
.....	33rd St. & 6th Ave. (Fare 10c)	5 42	8 11	11 02					
.....	Hudson Term. Bldg.—Cortlandt St. (Fare 8c)	5 44	8 09	10 54					

For complete local service see Suburban Time Table

Note: Runs Sunday only, except will not run Sunday, Feb. 22, Will run Monday, Feb. 23rd instead. Will also run Xmas Day, Dec. 25th



TRAVEL via LACKAWANNA... *It's The Route of Scenic Beauty and Shortest Line Between Buffalo and New York*

READ DOWN

BINGHAMTON, SYRACUSE AND OSWEGO

READ UP

Syracuse, Buffalo, Binghamton, Philadelphia, Atlantic City, Baltimore and Washington.

Read Down

Read Up

		903 Daily	915 Daily	Miles	TABLE 7		906 Daily	910 Daily			
		AM	AM		NEW YORK		PM	AM			
		9 54	+		Hudson Tunnels—		7 30	5 44			
		10 02	+		Lv 33rd St. & 6th Ave. (Fare 10c) Ar		7 19	5 42			
					Hudson Term. Bldg.—Cortlandt Street (Fare 8c)						
		†10 00	c12 30		D. L. & W. Ferries—						
					Lv { West 23d St. } Ar		†7 25	†5 40			
					Barclay St. } Ar						
					Christopher St. } Ar						
		10 20	1 05	1.0	Hoboken		7 05	5 25			
		3 30	7 40	192.7	Lv Binghamton Ar		2 05	11 45	CLUB DINER ON TRAIN NO. 915 and Buffet Lounge Car No. 910 BETWEEN Binghamton AND SYRACUSE		
ASK OUR TICKET AGENT ABOUT TRAVEL ON CREDIT NO MONEY DOWN...PAY LATER		a	a	197.8	Chenango Bridge			h11 28			
		a	a	203.7	Chenango Forks			h11 21			
		a	a	209.2	Itaska						h11 15
		a	a	213.1	Whitney Point		1 34				h11 10
		a	a	215.3	Lisle						h11 07
		a	a	218.9	Killawog						h11 03
		a	a	221.9	Marathon		1 22				10 59
		a	a	225.8	Messengerville						h10 53
		a	a	232.1	Blodgett Mills						h10 46
		a	a	235.1	Cortland Jct.				h10 42		
		4 40	8 50	235.7	Cortland		1 03	10 40			
		4 45	8 56	238.3	Homer		12 54	f10 28			
		5 01	9 12	250.0	Tully		12 39	f10 14			
		a	9 17	252.6	Apulia			f10 10			
		e5 21	9 35	265.4	Jamesville		g12 14	h9 49			
		5 40	9 55	272.1	Syracuse	Lv	12 00	9 35			
		5 50		272.1	Lv Syracuse Ar		11 45				
		6 20		284.1	Baldwinsville		11 22				
		f6 28		288.7	Lamson		11 14				
		f6 33		291.3	South Granby		f11 08				
		6 43		296.0	Fulton		11 00				
		6 58		302.5	Minetto		10 45				
		7 10		307.1	Oswego	Lv	10 35				
		PM	AM				AM	PM			

Inter-state Express	TABLE 9	Onon-daga 327 Daily	Inter-state Express 301 Daily
306 Daily	Lackawanna Railroad Syracuse	AM	AM
PM	Lv Tully Ar		9 55
9 35	9 14		9 12
f10 14	Homer		8 56
f10 28	Cortland		8 50
10 40	Marathon		8 25
10 59	Whitney Point		8 11
f11 10	Binghamton Lv		7 40
11 45	Lv Utica Ar		12 20
	Lv Norwich Ar		10 25
	Ar Binghamton Lv		9 15
6 15	Lv Buffalo Ar	4 35	12 35
9 37	Lv Corning Ar	2 05	9 15
10 15	Lv Elmira Ar	1 35	8 45
11 45	Ar Binghamton Lv	12 25	7 05
12 20	Lv Binghamton Ar	12 15	6 40
	Lv Scranton Ar	10 45	5 24
	C. R. R. of N. J.		
2 50	Ar Wilkes-Barre Lv	9 58	4 24
4 35	Mauch Chunk	8 25	2 40
5 23	Ar Allentown Lv	7 42	1 48
	Reading Company		
5 43	Ar Bethlehem Lv	7 28	1 33
6 56	Lansdale	6 20	12 32
7 32	Wayne Jct.	5 53	12 02
7 45	Ar Philadelphia Lv	5 40	11 45
	Pennsylvania-Reading (Seashore Lines)		
8 15	Lv Philadelphia Ar (Broad Street Station)	3 00	10 35
9 45	Ar Atlantic City Lv	1 45	a9 15
	Baltimore & Ohio R. R.		
7 45	Lv Wayne Jct. Ar	4 06	
8 02	Lv Philadelphia Ar (24th and Chestnut Sts.)	3 51	8 50
▲10 00	Ar Baltimore Lv (Camden Station)	▲2 08	6 45
▲10 42 AM	Ar Washington Lv	▲1 30 PM	6 00 PM

READ DOWN

BINGHAMTON AND UTICA

READ UP

		803 Daily	815 Daily	Miles	TABLE 8		806 Daily	816 Daily		
		AM	AM		NEW YORK		PM	AM		
		9 54	+		Hudson Tunnels—		7 30	5 44		
		10 02	+		Lv 33rd St. & 6th Ave. (Fare 10c) Ar		7 19	5 42		
					Hud. Term. Bldg.—Cortlandt Street (Fare 8c)					
		†10 00	c12 30		D. L. & W. Ferries—					
					Lv { West 23d St. } Ar		†7 25	†5 40		
					Barclay St. } Ar					
					Christopher St. } Ar					
		10 20	1 05	1.0	Hoboken		7 05	5 25		
		3 25	9 15	192.7	Lv Binghamton Ar		2 03	8 00	AVOID WASTE Keep This TIME-TABLE	
		f3 35	9 25	197.8	Chenango Bridge		1 43	7 44		
		3 43	9 33	203.7	Chenango Forks		1 35	7 36		
		3 55	9 45	211.7	Greene		1 23	7 24		
			f9 54	217.6	Brisben					
			f10 00	221.1	Coventry			f7 09		
		4 15	10 07	225.7	Oxford		1 02	7 02		
		4 32	10 25	233.9	Norwich		12 50	6 50		
		f4 40	f10 33	239.6	Galena		f12 37	f6 38		
		4 47	10 41	245.0	Sherburne		12 29	6 30		
		4 55	10 49	250.1	Earlville		12 20	6 21		
		5 00	10 55	252.6	Poolville		12 15	6 16		
		5 07	11 02	256.8	Hubbardsville		12 07	6 09		
		5 13	11 08	260.7	North Brookfield		12 01	6 03		
		5 22	11 18	266.3	Waterville		11 52	5 53		
		f5 28	11 25	270.6	Paris		f11 44	f5 45		
		5 35	11 31	274.2	Richfield Junction	Lv	11 37	5 38		
		5 38	11 40	274.2	Lv Richfield Junction Ar		11 34	5 36		
		f5 42	11 45	276.5	Clayville		f11 29	5 31		
		f5 45	11 49	278.5	Sauquoit		f11 25	5 26		
		5 49	11 53	280.0	Chadwicks		f11 22	5 22		
		5 56	12 02	283.7	New Hartford		11 15	5 15		
		6 15	12 20	287.8	Ar Utica Lv		11 00	5 00		
		PM	PM				AM	PM		

EXPLANATION OF REFERENCE MARKS

A. M. time light type. P. M. time heavy type. †-Daily except Sunday. ‡-Daily except Saturday. *-Frequent service via Hudson tubes, but this train not held for tube connections. †-No Ferry service between Christopher Street, New York, and Hoboken, N. J., on Sundays. a-Stops on notice to conductor to let off passengers holding tickets from Scranton and east and from Elmira and west. c-No boat connection from Christopher Street for this train. f-Stops on notice to Agent or Conductor. e-Stops daily on notice to Conductor to discharge passengers holding tickets from Scranton and east and Elmira and west, Sundays, stops on signal to receive or discharge passengers. g-Stops Sundays only to receive or discharge passengers. h-Stops on signal to take on passengers for Scranton and east, and Elmira and west, providing Agents are notified before 6 P. M. Train-Auto Service available at this point.

EXPLANATION OF REFERENCE MARKS

†Daily except Sunday. A.M. time light type. P.M. time heavy type. ★Regularly assigned car air-conditioned. a-Won't run Sundays, also December 25, January 1 and February 23. f-Stop on signal. ⊙Stops to let off passengers from Bethlehem and beyond. ▲Passengers to and from Baltimore and Washington change cars at Wayne Junction.



SCRANTON, KINGSTON (WILKES-BARRE)
SUNBURY AND PITTSBURGH

Read Down			Read Up			
DL&W 705 Daily PM	P.R.R. 511 Daily AM	Miles	TABLE 10	STATIONS ON	DL&W 702 Daily PM	P.R.R. 510 Daily PM
			New York			
			Hudson Tunnels—			
			33rd St. & 6th Ave.		2 44	
			(Fare 10c)			
			Hudson Terminal Bldg.—			
			Cortlandt St.		2 36	
			(Fare 8c)			
			D. L. & W. Ferries—			
			{ West 23d Street... }		† 2 40	
			{ Barclay Street... }			
			{ Christopher Street... }			
		1.0	Lv. Hoboken Ar		2 20	
6 00		134.1	Lv. Scranton Ar	DL&W	10 00	
6 08		137.7	Taylor	DL&W	9 49	
6 13		141.0	Old Forge	DL&W	9 42	
6 15		142.0	Duryea	DL&W	9 37	
6 18		143.7	Pittston	DL&W	9 32	
6 24		145.0	West Pittston	DL&W	9 25	
6 28		147.0	Wyoming	DL&W	9 21	
6 34		150.6	Luzerne	DL&W	9 14	
6 50		151.7	# Kingston	DL&W	9 10	
	10 12		#Wilkes-Barre	P.R.R.		5 37
6 57		154.9	Plymouth	DL&W	8 51	
7 03		158.4	# West Nanticoke	DL&W	8 44	
	10 29		#Nanticoke	P.R.R.		5 20
7 09		161.9	Hunlock Creek	DL&W	8 38	
7 17		167.5	# Shickshinny	DL&W	8 29	
	10 47		#Mocanaqua	P.R.R.		5 04
7 43		178.4	# Berwick	DL&W	8 07	
	11 04		#Nescopeck	P.R.R.		4 48
8 04		191.0	# Bloomsburg	DL&W	7 39	
	11 23		#East Bloomsburg	P.R.R.		4 30
8 12		194.3	#Catawissa	DL&W	7 26	
	11 30		#Catawissa	P.R.R.		4 24
8 24		202.7	# Danville	DL&W	7 12	
	11 46		#South Danville	P.R.R.		4 12
8 45		214.5	Northumberland	DL&W	6 50	
9 00	12 10	216.4	Ar. Sunbury Lv	DL&W	6 40	3 50
10 50	11 45	269.8	Ar. Harrisburg Lv	P.R.R.	a 4 05	11 48
7 55	8 25	515.1	Ar. Pittsburgh Lv	P.R.R.	10 00	8 23
					PM	AM

Sleeper Scranton to Pittsburgh, via Harrisburg.

Sleeper Pittsburgh to Scranton, via Harrisburg.

DELAWARE VALLEY TRANSPORTATION CO.

Read Down		TRAIN—BUS SCHEDULE		Read Up	
			TABLE 11		26
					Ex. Sun.
			Lv. New York Ar		AM 10 55
			Lv. { Stroudsburg and East Stroudsburg } Ar		8 25
			Marshall's Creek		8 15
			Oak Grove		8 13
			Coolbaugh		8 08
			Echo Lake		8 05
			Turn Villa		8 02
			Shoemakers		8 00
			Ar. Bushkill Lv		7 55
					AM

NEW YORK, BUFFALO AND NIAGARA FALLS

7 Daily PM	3 Daily AM	15 Daily AM	TABLE 12	6 Ex. Sun. PM	10 Daily AM	8 Daily AM
7 00	10 00	12 30	Lv. New York Ar	7 25	5 40	8 10
4 35	7 35	12 35	Ar. Buffalo Lv	10 00	6 15	10 30
7 00	9 05	2 35	Lv. Buffalo Ar	9 25	4 24	9 30
			(Central Terminal) (N Y C)			
7 54	9 55	3 35	Ar. Niagara Falls(NYC) Lv	8 27	3 25	8 22
AM	PM	PM		AM	PM	PM

EXPLANATION OF REFERENCE MARKS

†—Weekdays only, leaving Sunbury 12:28 P. M. †—No Ferry service between Christopher Street, New York, and Hoboken, N. J., on Sundays.
 †—Frequent service via Hudson Tubes, but this train will not be held for Tube connections. #—These towns are located on opposite side of the river but there are bridges across the river at these points. A. M. time light type. P. M. time heavy type. a—Sunday, lv. Harrisburg 4:00 A. M. c—No boat connection for this train from Christopher Street. d—Regular stop to let off passengers. e—Stops on notice to conductor to let off passengers from Scranton and west. f—Stops on notice to Agent or conductor to receive or discharge passengers. n—Stops on notice to Agent to receive passengers for Blairstown and west. z—Stops regularly to take on passengers.
 🚗 Train-Auto Service available at this point.

NEW YORK AND ITHACA, VIA OWEGO

Read Down			Read Up		
3 Daily AM	15 Daily AM	Miles	TABLE 13	Daily	6 Daily PM
			New York		
			Hudson Tunnels—		
			Lv. 33rd St. & 6th Ave. Ar		7 30
			(Fare 10c)		
			Hudson Terminal Bldg.—		
			Cortlandt St. (Fare 8c)		7 19
			D. L. & W. Ferries—		
			{ West 23d Street... }		† 7 25
			{ Barclay Street... }		
			{ Christopher Street... }		
			Hoboken		7 05
		1.0	Ar. Newark		d 6 46
		8.8	Brick Church		d 6 41
		11.6	Summit		d 6 27
		21.1	Morristown		d 6 15
		30.8	Dover		d 6 01
		39.1	Lv. Philadelphia P. R. R. Ar		8 10
			Lv. Philadelphia P. & R. Ry. Ar		
	11 45		Lv. Scranton Ar		3 30
		134.1	Binghamton		2 10
		192.7	Owego Lv		1 43
		213.4			
2 00	4 50			952	956
3 25	7 05			AM	PM
3 54	7 48				
953	971				
PM	AM				
3 54	10 10	213.4	Lv. Owego Ar	9 35	1 37
f 4 03	f 10 22	218.8	Catatonk	f 9 13	f 1 22
4 13	10 32	224.1	Candor	9 00	1 12
f 4 22	f 10 42	229.4	Willseyville	8 41	f 1 02
4 34	10 53	235.3	Caroline	8 31	12 52
5 10	11 20	247.4	Ar. Ithaca Lv	8 05	12 30
PM	AM			AM	PM

CARIBBEAN - SOUTH AMERICAN CRUISES
ON AMERICAN FLAG "SANTA" SHIPS

From any city on the Delaware, Lackawanna & Western Railroad by rail to New York.

From New York a luxurious "Santa" liner especially built for tropical cruising. All outside rooms, each with private bath. Dining rooms on promenade decks with roll-back domes. Outdoor tiled swimming pools.

No passports required. Sailings from New York every Friday.

12-Day Cruises to Curacao, Venezuela and Colombia.

24-Day Cruises to Panama, Colombia, Ecuador and Peru.

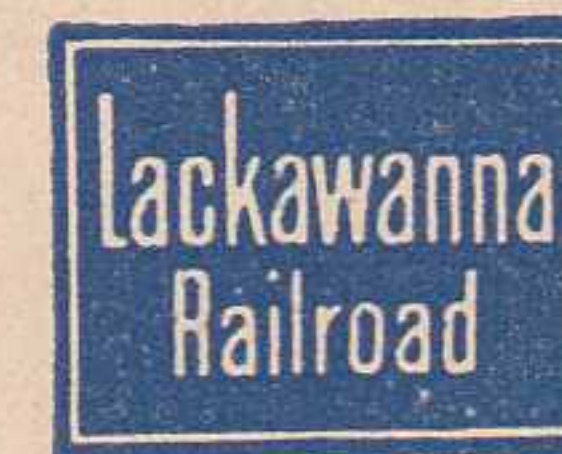
38-Day Cruises to Panama, Colombia, Ecuador, Peru, Bolivia and Chile.

'ROUND SOUTH AMERICA Tours.

HOMETOWN TO HOMETOWN RATES



Ask any ticket agent on the Delaware, Lackawanna & Western Railroad for complete information.



BUFFALO, SYRACUSE, BINGHAMTON AND SCRANTON TO
PHILADELPHIA, BALTIMORE AND WASHINGTON VIA
STROUDSBURG AND PENNSYLVANIA RAILROAD

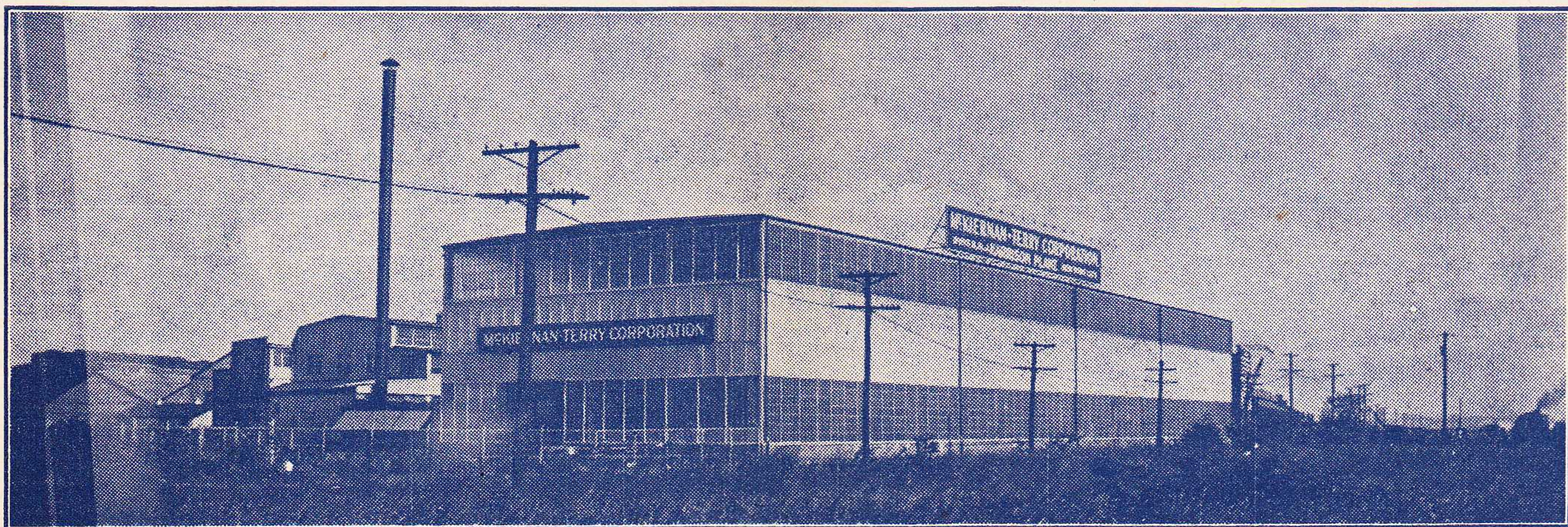
Northward READ DOWN			Southward READ UP			TABLE 17		
385 Sun. Only	363 Ex. Sun.	357 Ex. Sun.	364 Ex. Sun.	376 Ex. Sun.	386 Sun. Only			
PM	Noon	AM	PM	PM	PM			
6 00	12 00	1 50	2 25	10 25	10 25	Lv. Washington.. Ar		
6 46	12 45	2 50	1 41	9 41	9 41	Baltimore		
⊙8 20	⊙2 19	9 00	12⊙09	⊙8 09	⊙8 09	Philadelphia, Broad St.		
9 10	3 15	9 45	11 28	7 29	7 24	Trenton		
10 32	4 37	11 17	9 57	6 07	6 05	Phillipsburg (Easton)		
f10 55	5 00	11 41	9 32	5 42	5 41	Belvidere		
	f5 12	f11 52	f9 20	f5 30	f5 30	Delaware		
	5 18	11 57	9 16	5 26	5 26	Portland		
	5 28	12 05	9 08	5 18	5 18	Delaware Water Gap		
11 23	5 38	12 15	9 00	5 10	5 10	Ar. Stroudsburg & Lv		
	6 17	12 30	8 55	5 03	5 03	Lv. E. Stroudsburg. Ar		
						Ar. Henryville. Lv		
	6 41	b12 54	8 34	4 39	4 39	Cresco		
	6 56	b1 08	8 24	j4 29	j4 29	Mount Pocono		
	7 03	b1 14	8 20	j4 25	j4 25	Pocono Summit		
	7 12					Tobyhanna		
	7 50	1 53	7 30	3 35	3 35	Scranton		
	8 15	3 15		2 20	2 20	Binghamton		
		5 10		12 30	12 30	Ithaca		
		5 40		12 00	12 00	Syracuse		
		6 20		11 00	11 00	Utica		
	10 55	4 43		1 00	1 00	Elmira		
	2 05	7 35		10 00	10 00	Ar. Buffalo Lv		
	PM	AM		AM	AM			

PARLOR CAR SEAT RATES

RATES SHOWN DO NOT INCLUDE FEDERAL TAX

AND	BETWEEN					
	New York, N. Y.	Newark, N. J.	Scranton, Pa.	Binghamton, N. Y.	Elmira, N. Y.	Buffalo, N. Y.
Bath, N. Y.	1.65	1.65	.85	.55	.55	.60
Binghamton, N. Y.	1.15	1.15	.5555	1.15
Brick Church, N. J.75	1.10	1.40	2.05
Buffalo, N. Y.	2.10	2.10	1.45	1.15	.80
Corning, N. Y.	1.55	1.55	.75	.55	.55	.70
Cresco, Pa.	.60	.55	.55	.60	.90	1.60
Dansville, N. Y.	1.80	1.80	1.00	.70	.55	.55
Delaware Water Gap, Pa.	.55	.55	.55	.65	.95	1.60
Elmira, N. Y.	1.45	1.45	.65	.5580
Mt. Morris, N. Y.	1.85	1.85	1.15	.80	.55	.55
Mt. Pocono, Pa.	.65	.60	.55	.55	.85	1.60
Newark, N. J.75	1.15	1.45	2.10
Owego, N. Y.	1.25	1.25	.55	.55	.55	1.00
Pocono Summit, Pa.	.65	.65	.55	.55	.85	1.60
Scranton, Pa.	.80	.7555	.65	1.45
Stroudsburg, Pa.	.55	.55	.55	.65	.95	1.60
Waverly, N. Y.	1.35	1.35	.60	.5590

A. M. time light face type. P. M. time heavy type. b-Stops on notice to conductor to discharge passengers from points on the Pennsylvania Railroad. c-Stops on notice to Agent to receive passengers for points on the Pennsylvania Railroad. f-Stops on signal or on notice to conductor. j-Stops on signal to receive passengers for points on Pennsylvania Railroad and to discharge passengers from Binghamton and beyond. ⊙ Leaves or arrives Pennsylvania Station (30th Street), Philadelphia. The time of trains south of Delaware is shown for the accommodation of the public and this company will not be responsible for errors or changes that may occur. Train - Auto service available at this point.



MCKIERNAN-TERRY CORPORATION, HARRISON, N. J.

This addition to the McKIERNAN-TERRY CORPORATION'S Harrison, N. J. plant was erected in the Spring of 1941 to increase their facilities for the manufacture of marine and construction equipment. The building — 80' x 300' — contains numerous heavy shop tools and is equipped with two 20-ton capacity overhead cranes. Incoming and outgoing shipments are served by a Lackawanna siding entering the east end of the building with trackage inside the building for three cars. The building is connected to their older plant buildings by means of covered passageways served by narrow gauge tracks.

For information concerning industrial sites and buildings, address

Tel.: BArclay 7-2500

W. B. HARAHAAN, Industrial Agent,
140 Cedar Street, New York, N. Y.

RAILROAD AND PULLMAN FARES

(see page 12 for Parlor Car Rates)

Rates shown do not include Federal Tax

FROM TO	NEW YORK AND HOBOKEN				NEWARK				SCRANTON				BINGHAMTON				ELMIRA				BUFFALO			
	One-Way Fares		*Round-Trip Coach Fares 60 Day Limit	Lower Berth	One-Way Fares		*Round-Trip Coach Fares 60 Day Limit	Lower Berth	One-Way Fares		*Round-Trip Coach Fares 60 Day Limit	Lower Berth	One-Way Fares		*Round-Trip Coach Fares 60 Day Limit	Lower Berth	One-Way Fares		*Round-Trip Coach Fares 60 Day Limit	Lower Berth	One-Way Fares		*Round-Trip Coach Fares 60 Day Limit	Lower Berth
	Tickets Valid In	Coaches			Tickets Valid In	Coaches			Tickets Valid In	Coaches			Tickets Valid In	Coaches			Tickets Valid In	Coaches			Tickets Valid In	Coaches		
Allentown, Pa.	21.50	15.20	21.50	5.25	21.35	15.00	21.35	5.25	17.55	12.75	17.55	4.20	4.85	3.25	6.15	2.10	6.35	4.25	7.65	10.65	7.10	12.10	2.65	
Ann Arbor, Mich.	21.50	15.20	21.50	5.25	21.35	15.00	21.35	5.25	17.55	12.75	17.55	4.20	4.85	3.25	6.15	2.10	6.35	4.25	7.65	10.65	7.10	12.10	2.65	
Baltimore, Md.	8.65	5.80	10.40	2.65	8.45	5.65	10.15	2.65	4.65	3.10	5.90	2.10	2.85	1.90	3.80	2.10	1.10	.75	1.50	3.30	2.20	4.20	2.65	
Bath, N. Y.	23.70	16.55	23.70	5.55	23.55	16.35	23.55	5.55	19.75	14.10	19.75	4.75	17.95	12.90	17.95	4.50	16.20	11.75	16.20	4.20	11.80	8.80	13.40	2.90
Battle Creek, Mich.	5.80	3.90	7.35	2.10	5.60	3.75	7.10	2.10	1.80	1.20	2.40	1.75	1.15	2.30	6.15	4.10	7.60	2.10
Binghamton, N. Y. (See Note ○)	35	25	50	10	10	3.75	2.50	4.75	2.10	5.55	3.70	7.10	2.10	7.30	4.85	8.80	2.10	11.70	7.80	13.30	2.65
Brick Church, N. J.	11.90	7.95	13.50	2.65	11.75	7.85	13.35	2.65	7.95	5.30	9.55	2.10	6.15	4.10	7.60	2.10	4.40	2.95	5.60	2.10
Buffalo, N. Y. (See Note ●)	25.25	16.20	24.30	6.30	25.25	16.20	24.30	6.30	22.25	14.35	22.25	5.80	20.45	13.15	20.45	5.25	18.70	12.00	18.70	4.50	14.30	9.05	13.75	3.95
Chicago, Ill. (via NYC&St.L.)	27.25	18.20	27.25	6.30	27.00	18.00	27.00	6.30	23.75	15.85	23.75	5.80	21.95	14.65	21.95	5.25	20.20	13.50	20.20	4.50	15.80	10.55	16.00	3.95
Chicago, Ill. (via NYCRR)	16.10	10.45	15.70	3.95	16.10	10.45	15.70	3.95	13.50	9.00	14.40	3.15	11.70	7.80	13.30	3.15	9.95	6.65	11.30	2.65	5.55	3.70	7.10	2.65
Cleveland, Ohio (via NYC&St.L.)	17.10	11.45	17.10	3.95	16.85	11.25	16.85	3.95	13.50	9.00	14.40	3.15	11.70	7.80	13.30	3.15	9.95	6.65	11.30	2.65	5.55	3.70	7.10	2.65
Cleveland, Ohio (via NYCRR)	8.05	5.40	9.70	2.10	7.85	5.25	9.45	2.10	4.05	2.70	5.15	2.10	2.25	1.50	3.0055	.40	.80	3.90	2.60	4.95
Corning, N. Y.	7.10	4.80	8.55	2.10	6.90	4.65	8.30	2.10	3.10	2.10	4.00	2.10	1.30	.90	1.80	2.55	1.70	3.40	6.15	4.10	7.60
Cortland, N. Y.	2.90	1.95	3.90	2.70	1.80	3.60	1.20	.80	1.60	2.95	1.95	3.90	4.70	3.10	6.00	2.10	9.10	6.05	10.80	2.10
Cresco, Pa.	9.65	6.45	10.95	2.65	9.45	6.30	10.80	2.65	5.65	3.75	7.20	2.10	3.85	2.55	4.90	2.10	2.10	1.40	2.80	2.35	1.55	3.10
Dansville, N. Y.	2.35	1.60	3.20	2.20	1.45	2.90	1.70	1.15	2.30	3.45	2.30	4.40	5.20	3.45	6.60	2.10	9.60	6.40	10.90	2.10
Delaware Water Gap, Pa.	7.00	4.70	8.40	2.10	6.80	4.55	8.20	2.10	3.00	2.00	4.00	2.10	1.20	.80	1.6055	.35	.70	4.95	3.30	6.30	2.10
Waverly, N. Y.	20.40	14.75	20.40	4.50	20.25	14.55	20.25	4.50	16.45	12.30	16.45	3.95	14.65	11.10	15.65	3.70	12.90	9.95	13.80	3.15	8.50	7.00	10.20	2.10
Detroit, Mich.	13.15	8.80	14.10	3.15	13.00	8.70	13.90	3.15	9.20	6.15	10.80	2.65	7.40	4.95	8.90	2.65	5.65	3.80	7.20	2.40	1.25	.85	1.70
Dunkirk, N. Y.	7.55	5.05	9.10	2.10	7.35	4.90	8.85	2.10	3.55	2.35	4.50	2.10	1.75	1.15	2.30	4.40	2.95	5.60	2.10
Elmira, N. Y.	14.55	9.70	15.55	3.15	14.40	9.60	15.40	3.15	10.60	7.05	12.10	2.65	8.80	5.85	10.60	2.65	7.05	4.70	8.50	2.65	2.65	1.75	3.50
Erie, Pa.	21.75	14.20	21.75	5.25	21.75	14.20	21.75	5.25	19.15	12.75	19.15	4.75	17.30	11.55	17.30	4.50	15.55	10.40	16.00	3.95	11.15	7.45	12.65	3.15
Fort Wayne, Ind. (via NYC&St.L.)	7.45	5.00	8.95	7.25	4.85	8.70	3.45	2.30	4.40	1.65	1.10	2.20	2.15	1.45	2.90	6.55	4.35	7.90
Ithaca, N. Y.	22.65	16.00	22.65	5.25	22.50	15.80	22.50	5.25	18.70	13.55	18.70	4.50	16.90	12.35	16.90	4.20	15.15	11.20	16.00	3.95	10.75	8.25	12.20	2.65
Jackson, Mich.	24.40	16.80	24.40	5.80	24.25	16.60	24.25	5.80	20.45	14.35	20.45	5.25	18.65	13.15	18.65	4.75	16.90	12.00	16.90	4.20	12.50	9.05	13.60	3.15
Kalamazoo, Mich.	10.05	6.75	11.40	2.65	9.85	6.60	11.20	2.65	6.05	4.05	7.60	2.10	4.25	2.85	5.40	2.10	2.55	1.70	3.40	1.85	1.25	2.50
Mt. Morris, N. Y.	3.05	2.05	4.00	2.85	1.90	3.80	1.00	.65	1.30	2.75	1.85	3.70	4.50	3.00	5.70	2.10	8.90	5.95	10.70	2.10
Mt. Pocono, Pa.	6.45	4.35	7.75	2.10	6.25	4.20	7.60	2.10	2.45	1.65	3.30	2.10	.65	.45	.90	1.10	.75	1.50	5.50	3.70	7.00	2.10
Newark, N. J.	4.90	3.30	6.25	4.90	3.30	6.25	4.90	3.30	6.25	6.70	4.50	8.10	2.10	8.15	5.45	9.80	12.50	8.35	13.60
Owego, N. Y.	11.45	7.60	13.00	2.65	11.45	7.60	13.00	2.65	11.45	7.60	13.00	2.65	11.45	7.60	13.00	2.65	11.45	7.60	13.00	2.65	11.45	7.60	13.00	2.65
Philadelphia, Pa.	3.15	2.10	4.00	2.95	1.95	3.9095	.65	1.30	2.70	1.80	3.60	4.45	2.95	5.65	2.10	8.85	5.90	10.65	2.10
Pittsburgh, Pa.	4.05	2.70	5.15	2.10	3.85	2.60	4.90	2.10	1.80	1.20	2.40	1.80	1.20	2.40	3.55	2.35	4.50	2.10	7.95	5.30	9.55	2.10
Pocono Summit, Pa.	29.20	18.80	28.00	7.65	29.20	18.80	28.00	7.65	28.00	18.25	28.00	7.10	26.20	17.05	26.20	6.85	24.45	15.90	24.45	6.30	20.05	12.95	19.35	5.25
Scranton, Pa.	31.70	21.30	31.70	7.65	31.45	21.10	31.45	7.65	28.40	19.05	28.40	7.10	27.70	18.55	27.70	6.85	25.95	17.40	25.95	6.30	21.55	14.45	21.55	5.25
St. Louis, Mo. (via NYC&St.L.)	2.50	1.70	3.40	2.30	1.55	3.10	1.55	1.05	2.10	3.35	2.25	4.25	5.10	3.40	6.50	2.10	9.50	6.35	10.80	2.10
St. Louis, Mo. (via NYCRR)	8.20	5.50	9.85	2.10	8.00	5.35	9.60	2.10	4.20	2.80	5.35	2.10	2.40	1.60	3.20	3.65	2.45	4.65	7.20	4.80	8.65
Stroudsburg, Pa.	7.75	5.20	9.30	7.75	5.20	9.30	7.75	5.20	9.30	9.55	6.40	10.85	9.55	6.40	10.85	13.05	8.75	13.95
Syracuse, N. Y.																								
Washington, D. C.																								

Note ● Between New York and Buffalo, Single occupancy Bedroom \$4.75; Double occupancy Bedroom \$5.25.

Note ○ Between New York and Binghamton, Single occupancy Bedroom \$3.80; Double occupancy Bedroom \$4.20.

*Tickets valid in Pullman Cars will be accepted upon payment of Pullman charges for space occupied. One-Way Rail Fares in Upper Berths only, approximately 10% less.

†Reduced round-trip fares for Pullman travel are available to most destinations. Consult Agents.

#Limit 1 Year.

MINIMUM NUMBER OF RAILROAD TICKETS REQUIRED FOR EXCLUSIVE OCCUPANCY OF SPACE IN PULLMAN CARS

Section	1
Bed Room	1
Compartment, berth service	1 1/10
Compartment, seat service (sleeping car)	1 1/2
Drawing Room, berth service	1 1/4
Drawing Room, seat service (sleeping car)	2
Drawing Room in parlor car	2

CHARGES FOR OTHER ACCOMMODATIONS IN PULLMAN SLEEPING CARS

Cost of	WHERE LOWER BERTH RATE IS:														
	\$2.10	2.65	3.15	3.70	3.95	4.20	4.50	4.75	5.25	5.55	5.80	6.30	6.85	7.10	7.65
Upper Berth is { One-Way	1.45	1.80	2.20	2.55	2.70	2.90	3.10	3.25	3.60	3.80	4.00	4.35	4.70	4.90	5.25
Round-Trip	2.90	3.55	4.15	4.80	5.10	5.40	5.70	6.05	6.60	6.95	7.30	7.80	8.45	8.75	9.40
Section, one person ■	2.80	3.55	4.20	4.95	5.30	5.60	6.00	6.35	7.00	7.40	7.75	8.40	9.15	9.50	10.20
2 persons ◆	3.25	4.10	4.85	5.70	6.10	6.45	6.90	7.30	8.05	8.55	8.95	9.70	10.55	10.95	11.75
Comp't, one person ▲	4.20	5.25	6.30	7.35	7.90	8.40	8.95	9.45	10.50	11.05	11.55	12.60	13.65	14.20	15.25
2 or more persons	6.30	7.35	8.95	10.50	11.05	12.10	12.60	1							

DIRECTORY OF OPERATING AND TRAFFIC DEPARTMENTS

General Offices—140 Cedar Street, New York. Telephone Barclay 7-2500

OPERATING DEPARTMENT

G. J. RAY, Vice President, New York

E. B. MOFFATT, General Superintendent.....Scranton, Pa. P. M. SHOEMAKER, Supt. Morris and Essex Division.....Hoboken, N. J. G. W. MURPHY, Supt. Scranton Division.....Scranton, Pa. J. H. LERBS, Supt. Buffalo Division.....Buffalo, N. Y. FRANK CIZEK, Supt. Syracuse and Utica Division.....Binghamton, N. Y. L. A. JENKINS, Superintendent Car Service.....Scranton, Pa. C. F. BAYER, Supt. Dining Car Service.....Hoboken, N. J. F. H. COGAN, Superintendent Marine Department.....Hoboken, N. J. J. E. MOHR, Superintendent of Police.....Hoboken, N. J.	B. H. WETTLAUFER, Freight Claim Agent.....Scranton, Pa. G. A. PHILLIPS, Chief Engineer.....Hoboken, N. J. A. A. JOHNSON, Engineer Maintenance of Way.....Hoboken, N. J. J. E. SAUNDERS, Signal Engineer.....Hoboken, N. J. J. S. THORP, Electrical Engineer.....Hoboken, N. J. F. T. H. JAMES, Chief of Motive Power.....Scranton, Pa. K. H. CARPENTER, Supt. Car Department.....Scranton, Pa. I. H. LANCE, General Storekeeper.....Scranton, Pa.
---	--

TRAFFIC DEPARTMENT

C. F. FARMER, Vice President, New York

W. H. DOMINICK, Passenger Traffic Manager.....New York J. L. HOMER, General Passenger Agent.....New York W. E. CARBONE, Gen. Western Pass. Agent...327 So. LaSalle St., Chicago, Ill. M. H. MURPHY, Gen. Eastern Pass. Agent.....500 Fifth Ave., New York C. M. LYON, Gen. Baggage and Milk Traffic Agent.....Hoboken, N. J. R. F. IRWIN, Advertising Agent.....New York	CHARLES F. McTAGUE, General Freight Traffic Manager.....New York W. J. DAILY, Freight Traffic Manager.....New York C. A. ARENTZEN, Asst. Freight Traffic Manager.....New York GEORGE HERBERT, Asst. Freight Traffic Manager.....New York W. M. MacPHERSON, Asst. Freight Traffic Manager.....Buffalo, N. Y. C. E. HALL, Western Traffic Manager.....Chicago, Ill. J. H. CHRISTY, Assistant Western Traffic Manager.....Chicago, Ill. J. S. SIKORA, General Freight Agent.....New York E. M. SELLERS, Assistant General Freight Agent.....New York J. F. RYDENE, General Coal Freight Agent.....New York J. E. HAYDEN, Coal Freight Agent.....New York W. B. HARAHAHAN, Industrial Agent.....New York W. J. GEMEINER, Asst. General Freight Agent, Produce Exchange, New York W. H. BROWNE, Foreign Freight Agent, Produce Exchange.....New York HENRY FOULKES, Superintendent Mail and Express Traffic....Hoboken, N. J. L. A. DALTON, General Dairy Agent.....Chicago, Ill.
---	---

Albany, N. Y.—Room 5, Del. & Hud. Bldg.—Phone Albany 3-4517
HARRY F. DOYLE, Commercial Agent

Atlanta, Ga.—22 Marietta Street—Phone Jackson 1317
CHARLES SANTOR, Commercial Agent

Binghamton, N. Y.—Press Bldg.—Phone Binghamton 2-3697
W. E. DOWNS, Division Passenger Agent

Boston, Mass.—N. Station Office Bldg., 150 Causeway St.—Phone Capital 8970
JOHN M. KERANS, General Agent

Buffalo, N. Y.—11 W. Genesee St.—Phone Cleveland 2488
LOUIS F. HEINECK, Gen. Agent, Pass. Dept.

Chicago, Ill.—327 South LaSalle Street—Phone Wabash 3443
R. G. CARLSON, General Agent
D. J. WHITE, Traveling Passenger Agent

Cincinnati, Ohio—18 East Fourth Street—Phone Main 0730
WILLIAM J. NOLAN, General Agent

Cleveland, Ohio—310 Park Bldg.—Phone Main 0435
M. J. NAUGHTON, General Agent

Detroit, Mich.—2031 National Bank Bldg.—Phone Cadillac 6727
O. H. WARBOLD, General Agent
L. E. TENNEY, Assistant General Agent

Easton, Pa.—402 Northampton Street—Phone Easton 9021
Z. LEE MATHERS, Commercial Agent

Elmira, N. Y.—Lackawanna Station—Phone Elmira 2-1953
F. W. SCHEPPMANN, Traveling Passenger Agent

Indianapolis, Ind.—410 Guaranty Bldg.—Phone Riley 9071
SAMUEL J. NEILL, Commercial Agent

Kansas City, Mo.—403 Railway Exchange Bldg.—Phone Victor 2226
BRUCE L. DILL, Commercial Agent

Los Angeles, Calif.—108 West Sixth Street—Phone Tucker 2067
H. E. ALLEN, Commercial Agent

Milwaukee, Wis.—1315 Majestic Bldg.—Phone Marquette 6410
J. R. McDOWELL, Commercial Agent

Minneapolis, Minn.—823 Metropolitan Life Bldg.—Phone Main 5301
L. L. NEWELL, Commercial Agent

Newark, N. J.—Lackawanna Station—Phone Humboldt 2-2100
THOMAS L. STEELE, Division Freight Agent

856 Broad Street—Phone Market 3-3440
C. F. FELTHAM, Division Passenger Agent

New Haven, Conn.—157 Church Street—Phone New Haven 6-2466
WILLIAM J. WYNNE, General Agent

New York, N. Y.—Produce Exchange—Phone Bowling Green 9-5100
WILLIAM K. MARTIN, General Agent

P. E. AHERN, City Freight Agent
GEORGE R. MARR, City Freight Agent, Pier 13, North River—
Phone Barclay 7-2500

500 Fifth Avenue at 42nd Street—Phone Lackawanna 4-0234
W. H. WEBER, District Passenger Agent
E. WORTMANN, Steamship Passenger Agent

Paterson, N. J.—302 Main Street—Phone Sherwood 2-8998
ROBERT H. EDMOND, City Ticket Agent

Philadelphia, Pa.—1602 Finance Bldg.—
Phone Bell, Rittenhouse 2848—Keystone, Race 6026
J. C. DAWSON, General Agent

Pittsburgh, Pa.—503 Park Bldg.—Phone Atlantic 0463
J. A. McCOY, General Agent

Portland, Ore.—Room 423, Terminal Sales Bldg.—Phone BEacon 0757
J. E. GATHMAN, General Agent

St. Louis, Mo.—1971-1972 Railway Exchange Bldg.—Phone Main 2460
A. L. BAHLER, General Agent

St. Paul, Minn.—1008 Pioneer Bldg.—Phone Cedar 5765
R. A. WARREN, Commercial Agent

San Francisco, Calif.—705 Monadnock Bldg.—Phone Sutter 7515
W. R. KNEISS, General Agent

Scranton, Pa.—Lackawanna Station—Phone Scranton 5251
C. V. McKOWNE, Division Freight Agent
J. H. VAN WIE, Division Passenger Agent

Seattle, Wash.—1331 Third Avenue—Phone Main 3055
J. E. GATHMAN, General Agent

Syracuse, N. Y.—Lackawanna Station—Phone Syracuse 2-9211
G. W. EGGERT, Division Freight Agent
O. J. STINGER, City Passenger Agent

Toledo, Ohio—710 Second National Bank Bldg.—Phone Adams 1817
C. R. HARTSHORN, Commercial Agent

Toronto, Ont.—1806 Royal Bank Bldg.—Phone Elgin 7635
J. S. BRANNING, Canadian Agent