

BUY WAR BONDS

BUY WAR BONDS

Lackawanna Railroad

Lackawanna Railroad

Serving the
TRAVELING PUBLIC
107 Years

Serving the
TRAVELING PUBLIC
107 Years

The Route of
Scenic Beauty
Between
NEW YORK
and
BUFFALO
CLEVELAND
DETROIT
CHICAGO

The Route of
Scenic Beauty
Between
NEW YORK
and
BUFFALO
CLEVELAND
DETROIT
CHICAGO

DECEMBER 13, 1942

DECEMBER 13, 1942

FORM 10

FORM 10



As vital to Victory
as the fighters
they serve

THIS, more than any other war in history, is a war of movement . . . and America's railroads are the basic measure of our capacity for the swift, efficient movement of men and materials so necessary to win battles . . . and final victory.

We have well over twice as much track and double the number of freight cars as all the Axis powers combined. Our freight cars carry two to three times as much as theirs. Our locomotives, with far more power, pull longer trains at higher speeds.

Yes, we've got more and better equipment . . . thanks to over 11 billions spent by the railroads since 1920. And we're getting maximum service out of every piece of that equipment . . . thanks to twenty years of careful planning and organization *plus* all-out cooperation among railroads, government, shippers, receivers and the public.

That's why the railroads are meeting the tremendous de-

mands of the nation's total war effort without confusion or delay. Every five seconds a freight train starts its run and a passenger train leaves its terminal. Every minute, a million and a quarter tons of freight are hauled one mile.

Troops are being moved at the rate of over 700 million passenger-miles per month . . . about two-thirds of them in Pullmans. Frequently half of the nation's entire Pullman fleet is engaged in troop movements.

On fighting front, production front, training front and home front, America's railroads are as vital to victory as the fighters they serve.

* * * * *

Every Lackawanna man is doing his full share, and then some, in this "Vital to Victory" effort. The load will get tougher . . . the way may be long . . . but these are railroad men doing the job and the job will be done.

Lackawanna Railroad

One of America's Railroads Mobilized for Victory



★ Regularly assigned cars are air-conditioned

LACKAWANNA RAILROAD—THE ROUTE OF SCENIC BEAUTY

CONDENSED EQUIPMENT OF TRAINS—PULLMAN PARLOR AND SLEEPING CAR LINES, DINING CAR SERVICE.

★ Regularly assigned cars are air-conditioned

WESTWARD

Lackawanna Limited No. 3—Daily

(Via Nickel Plate No. 5)

- Parlor Car
★New York to Buffalo. (Drawing Room)
- Buffet-Diner
★Binghamton to Syracuse — *In No. 903 from Binghamton*
- Sleeping Cars
★New York to Chicago (12 Sec.—D.R.)
★Cleveland to Chicago (6 Single Bedrooms)
★Cleveland to Chicago 18 Roomettes. (Except Saturday nights)
- Dining Car
★New York to Buffalo
- Dining Car
★Buffalo to Cleveland
★Cleveland to Chicago
- Coaches
★New York to Buffalo
★New York to Oswego—*In No. 903 from Binghamton*
★New York to Chicago
Binghamton to Utica—*In No. 803 from Binghamton*

The Chicagoan No. 5—Daily

- Buffet-Diner
★New York to Binghamton
- Sleeping Car
★New York to Detroit (12 Sec.—D.R.)
- Parlor Car
★New York to Elmira
- Dining Car
★New York to Scranton
★Buffalo to Chicago
- Coaches
★New York to Buffalo
★Buffalo to Chicago

The Westerner No. 7—Daily

(Via Nickel Plate No. 7)

- Dining Car
★New York to Scranton—*Open for Service 7.00 p.m.*
- Sleeping Cars
★New York to Chicago (10 Sec.—D.R.—Comp.)
★New York to Buffalo (10 Sec.—D.R.—2 Double Bedrooms)—*May be occupied until 8.00 a.m.*
- Dining Car
★Buffalo to Chicago
- Coaches
★New York to Chicago
★Buffalo to Chicago
★New York to Buffalo

The Scrantonian No. 11—Daily Except Sunday

- Buffet-Diner
★New York to Scranton
- Coaches
★New York to Scranton

The Owl No. 15—Daily

- Buffet-Diner
★Binghamton to Buffalo
★Binghamton to Syracuse—*In No. 915 from Binghamton*
- Sleeping Cars
★New York to Buffalo (12 Sec.—D.R.)
★New York to Binghamton (10 Sec.—D.R.—2 Double Bedrooms)—*May be occupied until 8.00 a.m.*
★New York to Scranton (12 Sec.—D.R.) *May be occupied until 8.00 a.m.*
★New York to Syracuse (12 Sec.—D.R.)—*In No. 915 from Binghamton*
Sleeping cars open at Hoboken for occupancy at 9.30 p.m.
- Coaches
★New York to Buffalo
Binghamton to Syracuse and Utica

WESTWARD

Interstate Express No. 301—Daily

(Via B. & O. Reading Co. and C.R.R. of N.J.)

- Sleeping Cars
★Philadelphia to Syracuse (12 Sec.—D.R.)—*In No. 915 from Binghamton. May be occupied at 10.00 p.m.*
- Dining Car—Parlor
★Washington to Philadelphia
- Buffet-Diner
★Binghamton to Syracuse—*In No. 915 from Binghamton*
★Binghamton to Buffalo—*In No. 15*
- Coaches
Binghamton to Syracuse—*In No. 915 from Binghamton*
Binghamton to Utica—*In No. 815 from Binghamton*
★Binghamton to Buffalo—*In No. 15 from Binghamton*
- Coach
Philadelphia to Binghamton
- Coach
★Washington to Philadelphia

Pittsburgh Express No. 705—Daily

(Runs via Sunbury and Harrisburg)

- Sleeping Car
Scranton to Pittsburgh (12 Sec.—D.R.)
- Coach Service

EASTWARD

Pocono Express No. 2—Daily

- Parlor Car
★Elmira to New York
- Buffet-Diner
★Elmira to Binghamton (Serving Breakfast)
- Sleeping Car
★Buffalo to New York (12 Sec.—D.R.)—*Open for occupancy 9.00 p.m.*
- Dining Car
★Scranton to New York
- Coaches
★Buffalo to New York

Lackawanna Limited No. 6—Daily

- Parlor Car
★Buffalo to New York (Drawing Room)
★Binghamton to New York (Sun. only)
- Buffet-Diner
★Binghamton to New York
- Dining Car
★Buffalo to New York
- Buffet-Diner
★Syracuse to Binghamton—*In No. 906 from Syracuse*
- Coaches
★Buffalo to New York
★Oswego to New York
In No. 906, Oswego to Binghamton
- Coaches
Utica to Binghamton—*In No. 806*

The New Yorker No. 8—Daily

(Via Nickel Plate No. 8)

- Dining Car
★Chicago to Buffalo
★Scranton to New York
- Sleeping Car
★Chicago to New York (10 Sec.—D.R.—Compt.)
★Buffalo to New York (10 Sec.—D.R.—2 Double Bedrooms)—*Open for occupancy at 9.00 p.m.*
★Elmira to New York (12 Sec.—D.R.)—*Open for occupancy at 10.30 p.m.*
- Coaches
★Chicago to New York
★Buffalo to New York

EASTWARD

New York Mail No. 10—Daily

(Via Nickel Plate No. 6)

- Buffet-Diner
★Chicago to Buffalo
★Buffalo to Elmira
- Buffet-Diner
★Syracuse to Binghamton—*In No. 910 from Syracuse—Open for service 9.00 p.m.*
- Sleeping Car
★Chicago to New York (12 Sec.—D.R.) Sleeper remains at Buffalo from 1.15 p.m., E.S.T. until 6.00 p.m., E.S.T. affording opportunity to visit Niagara Falls and Buffalo. Ask Ticket Agent about free side trip to Niagara Falls.
★Buffalo to New York (12 Sec.—D.R.)
★Syracuse to New York (12 Sec.—D.R.)—*In No. 910 to Binghamton—Open for occupancy at 9.00 p.m.*
★Scranton to New York (12 Sec.—D.R.)
★Binghamton to New York (10 Sec.—D.R.—2 Double Bedrooms)
Scranton and Binghamton sleepers are open for occupancy 9.30 p.m. Chicago-Buffalo sleeper must be vacated by 7.00 a.m. at Hoboken; balance of cars 8.00 a.m.
- Coaches
★Chicago to New York—*In N. K. P. No. 6*
★Buffalo to New York

Merchants Express No. 26—Daily Except Sunday

- Buffet-Diner
★Scranton to New York
- Coaches
★Scranton to New York (Individual seats)

Interstate Express No. 306—Daily

(Via C.R.R. of N.J., Reading Co., and B. & O.)

- Dining-Car
★Syracuse to Binghamton—*Open for service 9.00 p.m.*
★Bethlehem to Philadelphia
- Sleeping Car
★Syracuse to Philadelphia (12 Sec.—D.R.)—*Open for occupancy at 9.00 p.m.*
- Dining Car
★Philadelphia to Washington, via B. & O. R.R. (Parlor)
- Coaches
Syracuse to Binghamton—*In No. 910*
Binghamton to Philadelphia
Philadelphia to Washington

Keystone Express No. 702—Daily

(Runs via Harrisburg and Sunbury)

- Sleeping Car
Pittsburgh to Scranton (12 Sec.—D.R.)
- Coach Service

Hoboken Terminal Handles 274 Lackawanna Passenger Trains On Week-days And 122 On Sundays.

CONDENSED TABLE OF THROUGH TRAINS

NEW YORK AND BUFFALO, CLEVELAND, DETROIT, CHICAGO AND THE WEST

TABLE 1 WESTWARD	15 Daily	3 Daily	5 Daily	7 Daily		TABLE 2 EASTWARD	12 Daily	24-18 Daily	Daily	Daily	
	AM	AM	PM	PM			AM	Noon	AM	AM	
LACKAWANNA RAILROAD											
New York.....Lv	12 30	9 00	4 15	7 00		NEW YORK CENTRAL SYSTEM					
Hoboken.....Lv	1 05	9 20	4 40	7 20		St. Louis.....(C.T.) Lv	9 25	12 00			
Newark.....Lv		9 35	4 55	7 35		Indianapolis.....Lv	2 15	6 00			
Brick Church.....Lv		9 42	5 02	7 42		Cleveland.....Ar	9 05	12 20			
Dover.....Lv		10 29	5 49	8 29		Buffalo (Cent. Term.).....(E.T.) Ar	12 34	6 50			
Scranton.....Lv	4 52	1 10	8 15	11 13				424-18		428	
Binghamton.....Lv	7 05	2 35	9 42	12 40		Cincinnati.....(E.T.) Lv		6 00		14	
Cortland.....Ar	8 50	4 00				Cleveland.....Ar		12 15		3 45	
Syracuse.....Ar	10 00	5 00				Buffalo (Cent. Term.).....Ar		6 50		9 40	
Oswego.....Ar		6 35									
Norwich.....Ar	10 25	4 01				NEW YORK CENTRAL SYSTEM	28	22-18	52	14	
Utica.....Ar	12 25	5 45				Chicago (La Salle St.).....(C.T.) Lv	1 30	5 30		9 50	
Ithaca (Via Bus See Table 13).....Ar	9 50	4 45				Toledo.....(E.T.) Lv	6 46	11 47	9 45	3 00	
Elmira.....Lv	8 50	4 02	11 10	1 57		Cleveland.....Lv		2 17	12 30	5 45	
Buffalo.....Ar	1 05	7 05	2 10	4 50		Buffalo (Cent. Term.).....Lv	11 48	6 50	5 00	9 40	
	PM	PM	AM	AM			PM	AM	PM	PM	
NICKEL PLATE											
Buffalo (Lackawanna Terminal).....(E.T.) Lv		5		7		CAN. PAC. R. R.—NEW YORK CENTRAL SYSTEM	821		741	801	
Erie.....Ar		7 25		5 10		Toronto.....(C. P. R.) (E.T.) Lv	8 15		1 20	6 15	
Ashtabula.....Ar		9 16		6 58		Buffalo (Terrace Sta.).....(E.T.) Ar	11 01		3 58	9 11	
East Cleveland (Superior Ave.).....Ar		10 24		7 57		Buffalo (Cent. Term.).....(E.T.) Ar	11 12		4 20	9 22	
Cleveland (Union Terminal).....Ar		11 24		8 53			PM		PM	PM	
Fort Wayne.....Ar		11 50		9 20		NEW YORK CENTRAL SYSTEM	8	58	16-50	44	
Chicago (La Salle St. Sta.).....Ar						Chicago (Central Sta.).....(C.T.) Lv	12 01	8 00	11 59	9 30	
		3 42		12 54		Kalamazoo.....(E.T.) Lv	3 55	11 49	4 24	1 30	
		7 33		4 30		Battle Creek.....(E.T.) Lv	4 25	12 16	4 59	2 00	
		AM		PM		Grand Rapids.....(E.T.) Lv				12 50	
		39	33	35		Jackson.....(E.T.) Lv	5 23	1 10	6 05	3 10	
NEW YORK CENTRAL SYSTEM						Ann Arbor.....(E.T.) Lv	6 11	1 52	7 01	3 50	
Buffalo (Cent. Term.).....(E.T.) Lv		10 19	3 04	8 07		Detroit.....(E.T.) Lv	7 20	2 55	8 30	5 00	
Buffalo (Terrace Sta.).....(E.T.) Lv						Buffalo (Terrace Sta.).....(E.T.) Ar		7 40	1 02	9 28	
Detroit.....(E.T.) Ar		2 59	8 00	12 45		Buffalo (Cent. Term.).....(E.T.) Ar	12 05	7 55	1 15	9 40	
Ann Arbor.....(E.T.) Ar			9 19	1 39			AM	AM	PM	PM	
Jackson.....(E.T.) Ar		4 34	9 58	2 18		NICKEL PLATE			6	8	
Grand Rapids.....(E.T.) Ar						Chicago (La Salle St. Sta.).....(C.T.) Lv			11 20	9 40	
Battle Creek.....(E.T.) Ar		5 34	10 25	3 06		Fort Wayne.....Lv			2 33	12 45	
Kalamazoo.....(E.T.) Ar		6 09	11 17	3 31		Cleveland (Union Term.).....(E.T.) Lv			8 15	6 01	
Chicago (Central Station).....(C.T.) Ar		8 15	1 00	5 00		East Cleveland (Superior Ave.).....Lv			8 34	6 17	
		AM	PM	PM		Ashtabula.....Lv			9 49	7 12	
		792	712			Erie.....Lv			11 03	8 07	
NEW YORK CENTRAL SYSTEM—CAN. PAC. R. R.						Buffalo (Lackawanna Terminal).....(E.T.) Ar			1 15	10 05	
Buffalo (Cent. Term.).....(E.T.) Lv		3 05	5 01						PM	PM	
Buffalo (Terrace Sta.).....(E.T.) Lv		3 16				LACKAWANNA RAILROAD	2	6	10	8	
Toronto.....(C. P. R.) (E.T.) Ar		6 15	8 00			Buffalo.....(E.T.) Lv	3 30	9 40	6 00	10 30	
		PM	AM			Elmira.....Ar	7 00	12 35	10 00	1 25	
N. Y. CENTRAL SYSTEM	83-9	5	21			Ithaca (Via Bus See Table 13).....Lv		11 25			
Buffalo (Cent. Term.).....(E.T.) Lv	5 25	8 10	5 09			Utica.....Lv		10 40			
Cleveland.....(E.T.) Ar	9 45	12 25	8 55			Norwich.....Lv		12 31			
Toledo.....(E.T.) Ar	1 00	3 30				Oswego.....Lv		10 15			
Chicago (La Salle St. Sta.).....(C.T.) Ar	5 55	7 40				Syracuse.....Lv		11 40	9 35		
	AM	AM	AM			Cortland.....Lv		12 43	10 40		
N. Y. CENTRAL SYSTEM		5	59			Binghamton.....Ar	8 40	1 50	11 35	2 40	
Buffalo (Cent. Term.).....(E.T.) Lv		8 10	7 50			Scranton.....Ar	10 15	3 10	1 25	4 05	
Cleveland.....(E.T.) Lv		12 40	12 15			Dover.....Ar	1 18	5 55	4 25	6 36	
Cincinnati.....(E.T.) Ar		6 55	5 55			Brick Church.....Ar	1 59	6 38		7 17	
		83-427	41	59-407		Newark.....Ar	2 10	6 48		7 29	
Buffalo (Cent. Term.).....(E.T.) Lv	5 25	11 29	7 50			Hoboken.....Ar	2 25	7 05	5 35	7 50	
Cleveland.....(E.T.) Lv	9 55	2 55	12 05			New York.....Ar	2 45	7 25	5 55	8 10	
Indianapolis.....(C.T.) Ar	2 40	7 40	5 25				PM	PM	AM	AM	
St. Louis.....(C.T.) Ar	7 50	1 10	11 10								

A.M., light type. P.M., heavy type. E.T.—Eastern Time. C.T.—Central Time. f—Flag stop. †—Daily Except Sunday.

PRINCIPAL TICKET, INFORMATION AND PULLMAN OFFICES

<p>NEW YORK General Eastern Passenger Agent's Office 500 Fifth Avenue Railroad Ticket Offices: 3 West 47th Street (near Fifth Avenue) 4 West 33rd Street 17 John Street (near Broadway) Barclay St. (ft. Barclay Street) West 23rd St. (ft. W. 23rd Street) Evenings, Saturday afternoons, Sundays and Legal Holidays, phone</p>	<p style="text-align: center;">Telephone</p> <p>Lackawanna 4-0234</p> <p>MEdallion 3-1822 LONgacre 5-7320-1 COrtlandt 7-0820-1 BArclay 7-2500</p> <p>BArclay 7-2500</p>	<p>NEWARK City Ticket Office 856 Broad Street Evenings, Sundays and Legal Holidays, phone</p> <p>PATERSON Lackawanna Station 220 Marshall St. (near Main St.)</p> <p>BUFFALO City Ticket Office 11 W. Genesee St. Evenings, Sundays and Legal Holidays, phone</p> <p>CHICAGO General Western Passenger Agent's Office 327 South LaSalle Street</p>	<p style="text-align: center;">Telephone</p> <p>MArket 3-3440</p> <p>HUMboldt 2-2100</p> <p>SHerwood 2-1609</p> <p>CLeveland 2488</p> <p>WAshington 4800</p> <p>WAbash 3443</p>
<p>HOBOKEN Lackawanna Terminal</p>	<p>HOboken 3-2000</p>		

FROM SCRANTON TO BINGHAMTON, SYRACUSE, ELMIRA AND BUFFALO

WESTWARD

For condensed time and equipment of trains see pages 2 and 3.

Miles	TABLE 4	15	301	Mixed	3	5	7						
		Daily	Daily	47	Daily	Daily	Daily						
		AM	AM	AM	PM	PM	PM						
	Wilkes-Barre (Laurel Line).....Lv	3 15		8 45	12 15	7 15	9 45						
		THE INTERSTATE EXPRESS See Table 9.											
134.1	ScrantonLv	4 52		10 05	1 10	8 15	11 13						
141.5	Clarks Summit.....			10 30			11 31						
145.0	Dalton.....			10 37									
147.0	LaPlume.....			10 42									
153.1	Nicholson-Tunkhannock Viaduct			10 55									
158.6	Foster.....			11 04									
162.9	Kingsley.....			11 12									
172.6	New Milford.....	5 53	t6 18	11 35	j2 02	9 03							
178.5	Hallstead.....	6 02		11 45			12 10						
183.7	Conklin.....			f11 55									
192.7	BinghamtonAr	6 25	6 42	12 30	2 25	9 27	12 25						
235.7	CortlandAr	8 50	8 50		4 00								
272.1	SyracuseAr	10 00	10 00		5 00								
307.1	OswegoAr				6 35								
287.8	UticaAr	12 25	12 25		5 45								
192.7	BinghamtonLv	7 05			2 35	9 42	12 40						
195.4	Johnson City.....	7 11											
200.7	Vestal.....	7 24			y2 48	9 53	f12 51						
	Endicott.....												
206.6	Apalachin.....	f7 30											
213.4	Owego	7 48			3 06	10 10	1 06						
247.4	Ithaca (Via Bus) See Table 13 Ar	9 50	9 50		4 45								
221.7	Nichols.....	8 02				10 21							
232.0	Waverly.....	8 20			3 32	10 39	1 27						
249.7	ElmiraAr	8 45			3 55	11 05	1 50						
249.7	ElmiraLv	8 50			4 02	11 10	1 57						
251.8	Elmira Heights.....												
254.1	Horseheads.....												
259.5	Big Flats.....	e9 08											
267.7	Corning	9 27			4 24	11 35	2 19						
269.2	Painted Post.....												
271.9	Coopers.....												
276.7	Campbell.....	e9 39											
281.2	Savona.....												
286.6	Bath	9 58			4 46	11 56	2 41						
290.5	Kanona.....												
294.2	Avoca.....	10 10											
296.8	Wallace.....												
302.0	Cohocton.....	10 26											
306.4	Atlanta.....	10 40											
312.3	Wayland.....	10 49											
314.2	Perkinsville.....												
319.5	Dansville.....	11 03			5 24	12 32							
326.8	Groveland.....												
333.7	Mount Morris	11 29			5 45	12 52	3 36						
340.3	Greigsville.....												
343.5	Craigs.....												
346.3	Linwood.....												
351.1	B. & O. Jct.....	s11 53											
355.0	East Bethany.....	f11 58											
362.4	North Alexander.....												
375.2	Alden.....	e											
384.2	Lancaster.....												
396.2	Buffalo For Connections West of Ar Buffalo see page 2.	1 05			7 05	2 10	4 50						
		PM	AM	PM	PM	AM	AM						

EXPLANATION OF REFERENCE MARKS

- †-Daily except Sunday.
- ¶-No Ferry service from Christopher Street on Sundays.
- *-Frequent service via Hudson Tubes, but this train not held for Tube Connection.
- AM time light type.
- PM time heavy type.
- #-No Ferry service from Christopher Street.
- No Ferry service from Barclay Street or Christopher Street.
- a-Stops on notice to agent to receive passengers for Johnsonburg and west.
- b-Stops on notice to Agent to take on passengers for New Milford and west weekdays; Sundays stops on notice to agent to receive passengers for Blairstown and west.
- d-Stops on notice to conductor to let off passenger from Hoboken and Newark daily except Sunday; Sunday regular stop to receive or discharge passengers.
- e-Stops on notice to conductor to let off passengers from Binghamton and east and on notice to Agent to receive passengers for Buffalo and west.
- f-Stops on notice to agent or conductor.
- g-Stops on notice to conductor to let off passengers from Binghamton and east and will stop on notice to agent to receive passengers for Buffalo and west.
- j-Stops on notice to conductor to discharge passengers from Dover and East, also from points on the Penna. R. R. and on notice to agent to receive passengers for Buffalo and West.
- m-Stops Friday only on notice to conductor to discharge passengers from Dover and east, and to receive passengers for Buffalo and west. Sundays a regular stop to discharge or receive passengers.
- r-Stops on notice to conductor to discharge passengers from Dover and east, and on notice to agent to receive passengers for Buffalo and west.
- s-Stops on notice to conductor to let off passengers from Corning and east and to receive passengers for Buffalo and west.
- t-Stops on notice to conductor to let off passengers from points on C. R. R. of N. J. and Reading Company.
- v-Stops on notice to Agent to receive passengers for Blairstown and west.
- w-Stops Friday and Saturday on notice to conductor to discharge passengers from Dover and east.
- x-Stops Sundays only at Tobyhanna 7:32 P.M., Gouldsboro 7:38 P.M., Moscow 7:47 P.M., Clarks Summit 8:31 P.M.
- y-Stops on signal to discharge passengers from Dover and east and to receive passengers for Mt. Morris and west.
- z-Stops regularly to take on passengers.
- Holidays**-The term holidays used in these timetables applies to New Year's Day, Memorial Day, Independence Day, Labor Day, Thanksgiving and Christmas Day.
- Train-Auto Service available at this point.

DIRECT BUS SERVICE TO AND FROM LACKAWANNA TERMINAL (Hoboken) and TIMES SQUARE, N. Y.

Via Lincoln Tunnel from Lackawanna Terminal, Hoboken

Public Service Bus Terminal in New York is located at 260 West 42nd Street between 7th and 8th Aves., in the heart of the hotel and theatrical district.

Fast, Frequent and Convenient Service

Fare, One-Way, 20c — Running Time — 19 Minutes

Life IN THE LACKAWANNA SUBURBS

A 46-page illustrated and descriptive booklet of suburban New Jersey communities out along the Lackawanna.



Whether you want to buy or rent a year round home, or simply lease a summer cottage, this booklet will prove helpful in finding just the right place.

Write today for a free copy — Address Advertising Department, Lackawanna Railroad, 140 Cedar Street, New York.

FROM BUFFALO, ELMIRA, SYRACUSE AND BINGHAMTON TO NEW YORK

EASTWARD

For condensed time and equipment of trains see pages 2 and 3.

Miles	TABLE 5	2 Daily	6 Daily	10 Daily	306 Daily	8 Daily			
0.0	Buffalo  Lv	AM 3 30	AM 9 40	PM 6 00	PM 10 30				
12.0	Lancaster			f6 19					
21.0	Alden			z					
33.8	North Alexander								
41.2	East Bethany			f6 49					
45.1	B. & O. Jct.			6 54					
49.9	Linwood			z					
52.7	Craigs			f7 03					
55.9	Greigsville			z					
62.5	Mount Morris	4 45	10 49	7 20	11 44				
69.4	Groveland			7 32					
76.7	Dansville	5 07	11 11	7 51	12s03				
82.0	Perkinsville	f5 19							
83.9	Wayland	f5 21		8 09					
89.8	Atlanta	f5 29		8 19					
94.2	Cohocton	f5 35		8 29					
99.4	Wallace	f5 42		f8 36					
102.0	Avoca	f5 46		8 42					
105.7	Kanona	f5 50		f8 48					
109.6	Bath	5 59	11 53	9 02	12 41				
115.0	Savona	f6 07		f9 11					
119.5	Campbell	f6 13		f9 16					
124.3	Coopers	f6 18							
127.0	Painted Post	f6 23							
128.5	Corning	6 30	12 13	9 32	1 03				
136.7	Big Flats	f6 42							
142.1	Horseheads	f6 48							
144.4	Elmira Heights	f6 51							
146.5	Elmira Ar	7 00	12 35	10 00	1 25				
146.5	Elmira Lv	7 10	12 40	10 10	1 32				
164.2	Waverly	7 34	1 00	10 33	1 53				
174.5	Nichols	7 47		10 45					
216.8	Ithaca Via Bus see table 13 Lv		11 25						
182.8	Owego Lv	8 06	1 23	10 58	j				
189.6	Apalachin	8 18							
	Vestal }	8 28	z1 38	11 20					
195.5	Endicott }								
200.8	Johnson City	f8 35		z					
203.5	Binghamton Ar	8 40	1 50	11 35	2 40				
	Utica Lv		10 40						
	Oswego Lv		10 15						
	Syracuse Lv		11 40	9 35	9 35				
	Cortland Lv		12 43	10 40	10 40				
203.5	Binghamton Lv	8 55	2 00	12 10	12 30	2 55			
212.5	Conklin								
217.7	Hallstead	9 13							
223.6	New Milford	9 23	n2 23						
233.3	Kingsley								
237.6	Foster								
243.1	Nicholson-Tunkhan' Viaduct								
249.2	LaPlume								
251.2	Dalton								
254.7	Clarks Summit	10 03							
262.1	Scranton  Ar	10 15	3 10	1 25	4 05				
	Wilkes-Barre Ar	11 10	4 10	3 10	6 10				
	(Laurel Line)								

COURTESY TO OUR PATRONS

Safety has long been the key-word of American Railroads. Of equal importance, is friendliness on the part of Railroad Employees to the traveling public.

Our Employees are instructed to be courteous and friendly so as to add to the comfort and enjoyment of your trip. Many letters are received in commendation of individual acts of courtesy by our Employees. We are grateful for such letters, which encourage our Employees in their efforts to serve you better.

EXPLANATION OF REFERENCE MARKS

†-Daily except Sunday.

§-Sunday only.

¶-No Ferry service to Christopher Street, New York, on Sundays.

A.M. time in light type.

P.M. time in heavy type.

b-Stops Monday only on notice to conductor to let off passengers.

c-Stops regularly on notice to conductor to let off passengers.

d-Stops on notice to Agent to receive passengers for Dover and east and on notice to conductor to let off passengers from Buffalo and west.

f-Stops on notice to Agent or conductor.

j-Stops on notice to conductor to let off passengers from Buffalo and west.

m-Stops on notice to conductor to let off passengers from points west of Dover.


n-Stops on signal to discharge passengers from Buffalo and West, or pick up passengers for Dover and East and points on the P. R. R.

s-Stops on notice to Agent to receive passengers for Bath and east and on notice to conductor to discharge passengers from Mount Morris and west.

v-Stops on notice to Agent to receive passengers for Dover and east, also for points on Pennsylvania Railroad and on notice to conductor to discharge passengers from Binghamton and points beyond.

z-Stops on notice to Agent to receive passengers for New York and on notice to conductor to let off passengers from Buffalo and west.

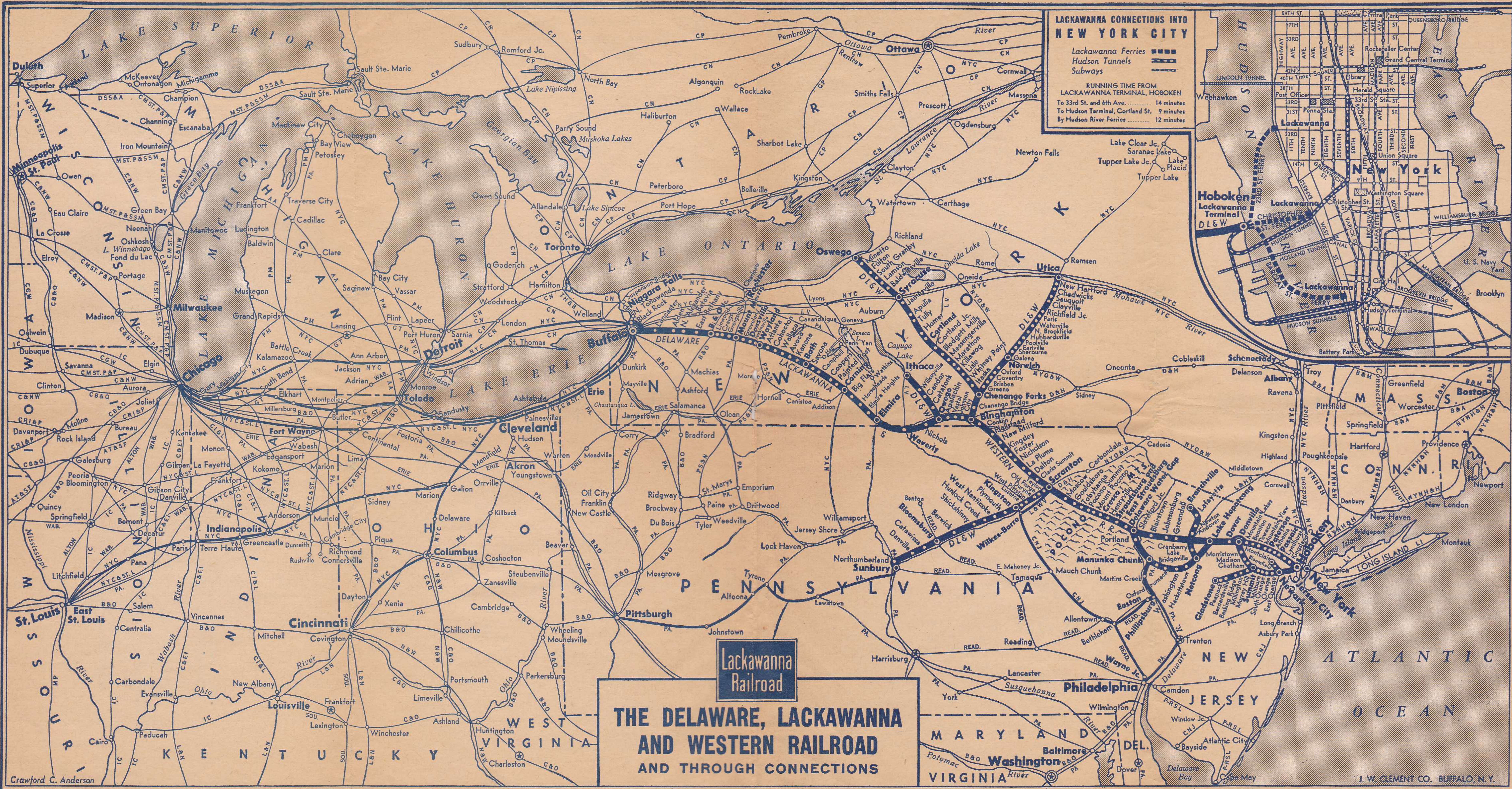
Holidays: The term holidays used in these tables applies to New Year's Day, Memorial Day, Independence Day, Labor Day, Thanksgiving and Christmas Day.

 Train-Auto Service available at this point.

WARTIME TRAVEL TIPS

- ★ Purchase rail and Pullman tickets well in advance of departure.
- ★ Cancel reservations promptly if plans change, thereby permitting others to use such accommodations.

- ★ Travel in mid-week instead of week-ends.
- ★ When through your meal, please leave the diner promptly so that others may be served as soon as possible.



LACKAWANNA CONNECTIONS INTO NEW YORK CITY

Lackawanna Ferries ■■■■
 Hudson Tunnels - - - -
 Subways - - - -

RUNNING TIME FROM LACKAWANNA TERMINAL, HOBOKEN
 To 33rd St. and 6th Ave. 14 minutes
 To Hudson Terminal, Cortland St. 9 minutes
 By Hudson River Ferries 12 minutes

Lackawanna Railroad

THE DELAWARE, LACKAWANNA AND WESTERN RAILROAD AND THROUGH CONNECTIONS

LACKAWANNA RAILROAD — One of America's Railroads — Mobilized for Victory

READ DOWN

BINGHAMTON, SYRACUSE AND OSWEGO

READ UP

		903 Daily	915 Daily	Miles	TABLE 7		906 Daily	910 Daily		
		AM	AM		NEW YORK	Hudson Tunnels— Lv 33rd St. & 6th Ave. (Fare 10c) Ar Hudson Term. Bldg.—Cortlandt Street (Fare 8c).....	PM	AM		
		8 54	+			7 24	5 59			
		9 01	+			7 22	5 55			
		† 9 00	c12 30			† 7 25	† 5 55			
		9 20	1 05	1.0		7 05	5 35			
Don't Waste Transportation Plan Ahead— Avoid Week- ends and holidays. Travel light.		2 50	7 40	192.7		Lv.....	Binghamton.....	Ar	1 45	11 45
		a	a	197.8			Chenango Bridge.....			h11 28
		a	a	203.7			Chenango Forks.....			h11 21
		3 20	8 11	213.1			Itaska.....			h11 15
		a	a	215.3			Whitney Point.....			h11 10
		a	a	218.9			Lisle.....			h11 07
		3 34	8 25	221.9			Killawog.....			h11 03
		a	a	225.8			Marathon.....			10 59
		a	a	232.1			Messengerville.....			h10 53
		a	a	235.1			Blodgett Mills.....			h10 46
		4 00	8 50	235.7		Cortland Jet.....			h10 42	
		4 05	8 56	238.3		Cortland.....			12 43	
		4 21	9 12	250.0		Homer.....			12 34	
		a	a	252.6		Tully.....			12 19	
		e4 42	9 38	265.4		Apulia.....			f10 14	
	5 00	10 00	272.1		Jamesville.....			f10 10		
					Syracuse.....			g11 54		
					Syracuse.....			h9 49		
					Baldwinsville.....			9 35		
					Lamson.....			11 25		
					South Granby.....			11 02		
					Fulton.....			10 54		
					Minetto.....			f10 48		
					Oswego.....			10 40		
								10 25		
								10 15		

BUFFET-DINER ON TRAINS NOS. 903, 906, 910 and 915 BETWEEN Binghamton AND SYRACUSE

Syracuse, Buffalo, Binghamton, Philadelphia, Atlantic City, Baltimore and Washington.

Read Down		Read Up	
Inter-state Express 306 Daily	TABLE 9	Onon-daga 327 Daily	Inter-state Express 301 Daily
PM	Lackawanna Railroad	AM	AM
9 35	Lv..... Syracuse.....	Ar	10 00
f10 14 Tully.....		9 12
f10 28 Homer.....		8 56
10 40 Cortland.....		8 50
10 59 Marathon.....		8 25
f11 10 Whitney Point.....		8 11
11 45	Ar..... Binghamton.....	Lv	7 40
	Lv..... Utica.....	Ar	12 25
	Lv..... Norwich.....	Ar	10 25
	Ar..... Binghamton.....	Lv	9 15
6 00	Lv..... Buffalo.....	Ar	4 50
9 32	Lv..... Corning.....	Ar	2 19
10 10	Lv..... Elmira.....	Ar	1 50
11 35	Ar..... Binghamton.....	Lv	12 40
12 30	Lv..... Binghamton.....	Ar	12 25
	Lv..... Scranton.....	Ar	10 45
	C. R. R. of N. J.		
2 50	Ar..... Wilkes-Barre.....	Lv	10 01
4 35 Mauch Chunk.....		8 25
5 23	Ar..... Allentown.....	Lv	7 42
	Reading Company		
5 49	Ar..... Bethlehem.....	Lv	7 28
6 56 Lansdale.....		6 20
7 32 Wayne Jct.....		5 53
7 45	Ar..... Philadelphia.....	Lv	5 40
	Pennsylvania-Reading (Seashore Lines)		
8 15	Lv..... Philadelphia.....	Ar	3 10
	(Broad Street Station)		
9 46	Ar..... Atlantic City.....	Lv	1 45
	Baltimore & Ohio R. R.		
7 40	Lv..... Wayne Jct.....	Ar	4 06
7 56	Lv..... Philadelphia.....	Ar	3 51
	(24th and Chestnut Sts.)		
9 53	Ar..... Baltimore.....	Lv	2 08
	(Camden Station)		
10 37 AM	Ar..... Washington.....	Lv	1 30 PM

READ DOWN

BINGHAMTON AND UTICA

READ UP

		803 Daily	815 Daily	Miles	TABLE 8		806 Daily	816 Daily			
		AM	AM		NEW YORK	Hudson Tunnels— Lv 33rd St. & 6th Ave. (Fare 10c) Ar Hud. Term. Bldg.—Cortlandt Street (Fare 8c).....	PM	AM			
		8 54	+			7 24	5 59				
		9 01	+			7 22	5 55				
		† 9 00	c12 30			† 7 25	† 5 55				
		9 20	1 05	1.0		7 05	5 35				
● AVOID WASTE Keep This TIME- TABLE ●		2 55	9 15	192.7		Lv.....	Binghamton.....	Ar	1 40	8 00	
		f3 05	9 25	197.8			Chenango Bridge.....			1 24	7 44
		3 13	9 33	203.7			Chenango Forks.....			1 16	7 36
		3 24	9 45	211.7			Greene.....			1 04	7 24
			f9 54	217.6			Brisben.....				
			f10 00	221.1			Coventry.....			f7 09	
		3 44	10 07	225.7			Oxford.....			12 43	7 02
		4 01	10 25	233.9			Norwich.....			12 31	6 50
		f4 09	f10 37	239.6			Galena.....			f12 18	f6 38
		4 17	10 46	245.0			Sherburne.....			12 10	6 30
		4 25	10 55	250.1		Earlville.....			12 01	6 21	
		4 31	11 02	252.6		Poolville.....			11 56	6 16	
		4 38	11 11	256.8		Hubbardsville.....			11 48	6 09	
		4 44	11 19	260.7		North Brookfield.....			11 42	6 03	
		4 54	11 30	266.3		Waterville.....			11 30	5 53	
	f5 00	11 36	270.6		Paris.....			f11 23	f5 45		
	5 06	11 41	274.2		Richfield Junction.....			11 16	5 38		
					Richfield Junction.....			11 14	5 36		
					Clayville.....			f11 09	5 31		
					Sauquoit.....			f11 05	5 26		
					Chadwicks.....			f11 02	5 22		
					New Hartford.....			10 55	5 15		
					Utica.....			10 40	5 00		



No. 306—INTERSTATE EXPRESS
 ★Drawing Room
 Sleeping Car.....Syracuse to Philadelphia
 Open for occupancy 9:00 P.M.
 ★Buffet-DinerSyracuse to Binghamton
 Open for service 9:00 p.m.
 Coaches.....Between all points
 ★Parlor and Diner....Philadelphia to Washington
 ★Dining-Club Car....Bethlehem to Philadelphia
No. 301—INTERSTATE EXPRESS
 ★Drawing Room
 Sleeping Car.....Philadelphia to Syracuse
 Open for occupancy 10:00 P.M.
 ★Buffet-DinerBinghamton to Syracuse
 ★Parlor Car.....Washington to Philadelphia
 ★Dining-Club Car....Washington to Philadelphia
 Coaches.....Between all points
No. 327—ONONDAGA
 ★Parlor Car.....Philadelphia to Scranton
 ★Parlor Dining Car...Washington to Philadelphia
 ★Dining-Club Car....Philadelphia to Bethlehem
 Coaches.....Between all points

EXPLANATION OF REFERENCE MARKS
 †Daily except Sunday. A.M. time light type. P.M. time heavy type.
 ★Regularly assigned car air-conditioned. a-Will run Sundays, also December 25 and January 1 on other days leave 6:40 P.M. arrive Philadelphia 8:03 P.M. f-Stop on signal. ⊙Stops to let off passengers from Bethlehem and beyond.
 ▲Passengers to and from Baltimore and Washington change cars at Wayne Junction. ⊕On Sundays and December 25 and January 1 connection leaves 9:30 A. M. arrives 10:55 A. M.

EXPLANATION OF REFERENCE MARKS

A. M. time light type. P. M. time heavy type. †-Daily except Sunday. ‡-Daily except Saturday. +-Frequent service via Hudson tubes, but this train not held for tube connections. †-No Ferry service between Christopher Street, New York, and Hoboken, N. J., on Sundays. a-Stops on notice to conductor to let off passengers holding tickets from Scranton and east and from Elmira and west. c-No boat connection from Christopher Street for this train. f-Stops on notice to Agent or Conductor. e-Stops daily on notice to Conductor to discharge passengers holding tickets from Scranton and east and from Elmira and west, Sundays, stops on signal to receive or discharge passengers. g-Stops Sundays only to receive or discharge passengers. h-Stops on signal to take on passengers for Scranton and east, and Elmira and west, providing Agents are notified before 6 P. M. Train-Auto Service available at this point.

**SCRANTON, KINGSTON (WILKES-BARRE)
SUNBURY AND PITTSBURGH**

Read Down			Read Up			
DL&W 705 PRR 37 Daily PM	P.R.R. 511 Daily AM	Miles	TABLE 10	STATIONS ON	DL&W 702 PRR 22 Daily PM	P.R.R. 510 Daily PM
			New York Hudson Tunnels— 33rd St. & 6th Ave. (Fare 10c) Hudson Terminal Bldg.— Cortlandt St. (Fare 8c) D. L. & W. Ferries— { West 23d Street... } { Barclay Street... } { Christopher Street... }			
	Note L. & W. V train leaves Scranton 9:00 A.M. arrives Wilkes-Barre 9:40 A.M.					Note L. & W. V train leaves Wilkes-Barre 5:45 P.M. arrives Scranton 6:30 P.M.
		1.0	Lv. Hoboken Ar			
5 40		134.1	Lv. Scranton Ar	DL&W	10 15	
5 48		137.7 Taylor	DL&W	10 00	
5 53		141.0 Old Forge	DL&W	9 48	
5 55		142.0 Duryea	DL&W	9 43	
6 04		145.0 West Pittston	DL&W	9 32	
6 08		147.0 Wyoming	DL&W	9 28	
6 14		150.6 Luzerne	DL&W	9 19	
6 30		151.7 #Kingston	DL&W	9 15	
6 37		154.9 #Wilkes-Barre	P.R.R.	5 37	
6 44		158.4 Plymouth	DL&W	8 56	
		10 17 #West Nanticoke	DL&W	8 49	
6 50		161.9 #Nanticoke	P.R.R.	5 20	
6 58		167.5 Hunlock Creek	DL&W	8 43	
		10 35 #Shickshinny	DL&W	8 34	
7 35		178.4 #Mocanaqua	P.R.R.	5 04	
		10 52 #Berwick	DL&W	8 12	
8 02		191.0 #Nescopeck	P.R.R.	4 48	
		11 11 #Bloomsburg	DL&W	7 39	
8 12		194.3 #East Bloomsburg	P.R.R.	4 30	
		11 18 #Catawissa	DL&W	7 26	
8 26		202.7 #Catawissa	P.R.R.	4 24	
		11 34 #Danville	DL&W	7 12	
8 57		214.5 #South Danville	P.R.R.	4 12	
9 10		216.4 Northumberland	DL&W	6 50	
9 10	11 58	216.4	Ar. Sunbury Lv	DL&W	6 40	3 50
10 50	11 35	269.8	Ar. Harrisburg Lv	P.R.R.	a 05	11 48
7 55	8 25	515.1	Ar. Pittsburgh Lv	P.R.R.	10 00	7 23
AM	PM				PM	AM

Sleeper Scranton to Pittsburgh, via Harrisburg.

Sleeper Pittsburgh to Scranton, via Harrisburg.

NEW YORK AND ITHACA, VIA OWEGO

Read Down			Read Up		
3 Daily AM	15 Daily AM	Miles	TABLE 13	6 Daily PM	
			New York Hudson Tunnels— Lv. 33rd St. & 6th Ave. Ar (Fare 10c) Hudson Terminal Bldg.— Cortlandt St. (Fare 8c) D. L. & W. Ferries— { West 23d Street... } { Barclay Street... } { Christopher Street... }		
			Hoboken		
		1.0 Newark		
		8.8 Brick Church		
		11.6 Summit		
		21.1 Morristown		
		30.8 Dover		
		39.1 Philadelphia, PRR		
		 Broad Street Station		
		 30th Street Station		
			Lv. Philadelphia P.&R.Ry Ar		
			Lv. Scranton Ar		
		 Binghamton		
			Ar. Owego Lv		
			L. D. Dickinson Motor Coach Line		
			Lv. Owego Ar		
		 Catatunk		
		 Candor		
		 Willseyville		
			Ithaca (Green St. Bus Term.)		
			Ar. Ithaca Lv		
			(D. L. & W. Station)		

**To Our
Patrons**
All forms of
railroad tickets
reading via the D.
L. & W. R. R. Co.
will be honored
via the L. D. Dick-
inson Motor Coach
Line between
Owego and Ithaca
or intermediate
stations.

**BUFFALO, SYRACUSE, BINGHAMTON AND
SCRANTON TO PHILADELPHIA, BALTIMORE
AND WASHINGTON VIA STROUDSBURG AND
PENNSYLVANIA RAILROAD**

DELAWARE VALLEY TRANSPORTATION CO.

Read Down			Read Up		
TRAIN—BUS SCHEDULE					
TABLE 11					
			26		
			Ex. Sun.		
			AM		
			Lv. New York Ar	10 55	
			Lv. Hoboken Ar	10 35	
			Ar } Stroudsburg and { Lv	8 42	
			{ East Stroudsburg }		
			Bus		
			Lv { Stroudsburg and { Ar	8 25	
			{ East Stroudsburg }		
		 Marshalls Creek	8 15	
		 Oak Grove	8 13	
		 Coolbaugh	8 08	
		 Echo Lake	8 05	
		 Turn Villa	8 02	
		 Shoemakers	8 00	
			Ar. Bushkill Lv	7 55	
				AM	

NEW YORK, BUFFALO AND NIAGARA FALLS

Read Down			Read Up		
TABLE 12					
			6	10	8
			Ex. Sun.	Daily	Daily
			PM	AM	AM
			Lv. New York Ar	7 25	5 55
			Lv. Buffalo Ar	9 40	6 00
			Lv. Buffalo Ar	9 25	4 24
			(Central Terminal) (NYC)		
			Ar. Niagara Falls (NYC) Lv	8 27	3 25
				AM	PM

Northward READ DOWN

TABLE 14			Southward READ UP		
	385 Sun. Only	357 Ex. Sun.		376 Ex. Sun.	376 Sun. Only
	AM	AM		PM	PM
	4 20	4 20	Lv. Washington Ar	10 25	10 25
	5 18	5 18 Baltimore	9 41	9 41
		 Philadelphia		
		 Broad Street Station		
		 30th Street Station	8 09	8 09
		 Trenton	7 25	7 15
		 Phillipsburg (Easton)	5 57	5 55
		 Belvidere	5 32	5 32
		 Delaware	f 5 20	f 5 20
		 Portland	5 16	5 16
		 Delaware Water Gap	5 08	5 08
			Ar. Stroudsburg & Lv	5 00	5 00
			Lv. E. Stroudsburg Ar	4 43	4 43
			Ar. Henryville Lv		
		 Cresco	4 24	4 24
		 Mount Pocono	j 4 14	j 4 14
		 Pocono Summit	j 4 10	j 4 10
		 Tobyhanna		
		 Scranton	3 20	3 20
		 Binghamton	2 00	2 00
			Ithaca (VIA BUS)		
			See Table 13		
		 Syracuse	11 25	11 25
		 Utica	11 40	11 40
		 Elmira	10 40	10 40
			Ar. Buffalo Lv	12 40	12 40
				9 40	9 40
				AM	AM

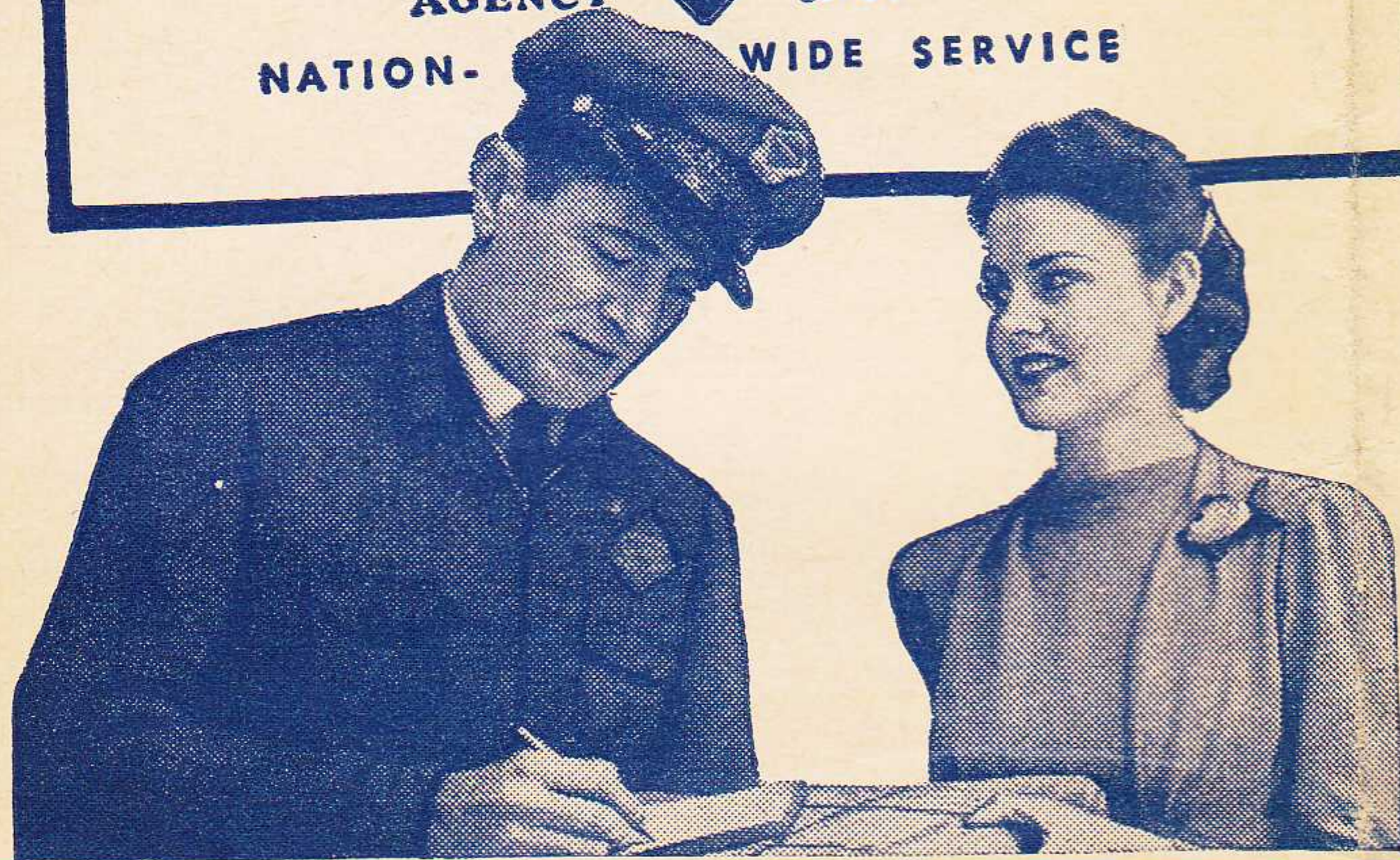
EXPLANATION OF REFERENCE MARKS

A. M. time light type. P. M. time heavy type. †-Weekdays only, leaving Sunbury 12:16 P. M. †-No Ferry service between Christopher Street, New York, and Hoboken, N. J., on Sundays.
+—Frequent service via Hudson Tubes, but this train will not be held for Tube connections. #—These towns are located on opposite side of the river but there are bridges across the river at these points. The time of trains south of Delaware is shown for the accommodation of the public and this company will not be responsible for errors or changes that may occur. a—Sunday, lv. Harrisburg 4:00 A. M. b—Stops on notice to conductor to discharge passengers from points on the Pennsylvania Railroad and on notice to Agent to receive passengers for Buffalo and points west. c—No boat connection for this train from Christopher Street. d—Regular stop to let off passengers. e—Stops on notice to conductor to let off passengers from Scranton and west. f—Stops on notice to Agent or conductor to receive or discharge passengers. j—Stops on signal to receive passengers for points on Pennsylvania Railroad and to discharge passengers from Binghamton and beyond. n—Stops on notice to Agent to receive passengers for Blairstown and west. z—Stops regularly to take on passengers. Train-Auto Service available at this point.

WERE "FIGHTING," TOO!...

At 23,000 nation-wide points 57,000 trained RAILWAY EXPRESS employes are "fighting"—helping to promote America's war effort by supplying top-speed, efficient shipping service for essential war production. Economical rates include pick-up and delivery at no extra charge within our regular vehicle limits in all cities and principal towns. Phone

RAILWAY EXPRESS
 AGENCY INC.
 NATION-WIDE SERVICE



PARLOR CAR SEAT RATES

Subject to change—Consult Agents
 RATES SHOWN DO NOT INCLUDE FEDERAL TAX

BETWEEN AND	New York, N. Y.	Newark, N. J.	Scranton, Pa.	Binghamton, N. Y.	Elmira, N. Y.	Buffalo, N. Y.
Bath, N. Y.	1.85	1.85	.95	.65	.65	.70
Binghamton, N. Y.	1.30	1.30	.6565	1.30
Brick Church, N. J.85	1.25	1.55	2.30
Buffalo, N. Y.	2.35	2.35	1.60	1.30	.90
Corning, N. Y.	1.75	1.75	.85	.65	.65	.80
Cresco, Pa.70	.65	.65	.70	1.00	1.80
Dansville, N. Y.	2.00	2.00	1.10	.80	.65	.65
Delaware Water Gap, Pa. .	.65	.65	.65	.75	1.05	1.80
Elmira, N. Y.	1.60	1.60	.75	.6590
Mt. Morris, N. Y.	2.05	2.05	1.30	.90	.65	.65
Mt. Pocono, Pa.75	.70	.65	.65	.95	1.80
Newark, N. J.85	1.30	1.60	2.35
Owego, N. Y.	1.40	1.40	.65	.65	.65	1.10
Pocono Summit, Pa.75	.75	.65	.65	.95	1.80
Scranton, Pa.90	.8565	.75	1.60
Stroudsburg, Pa.65	.65	.65	.75	1.05	1.80
Waverly, N. Y.	1.50	1.50	.70	.65	1.00

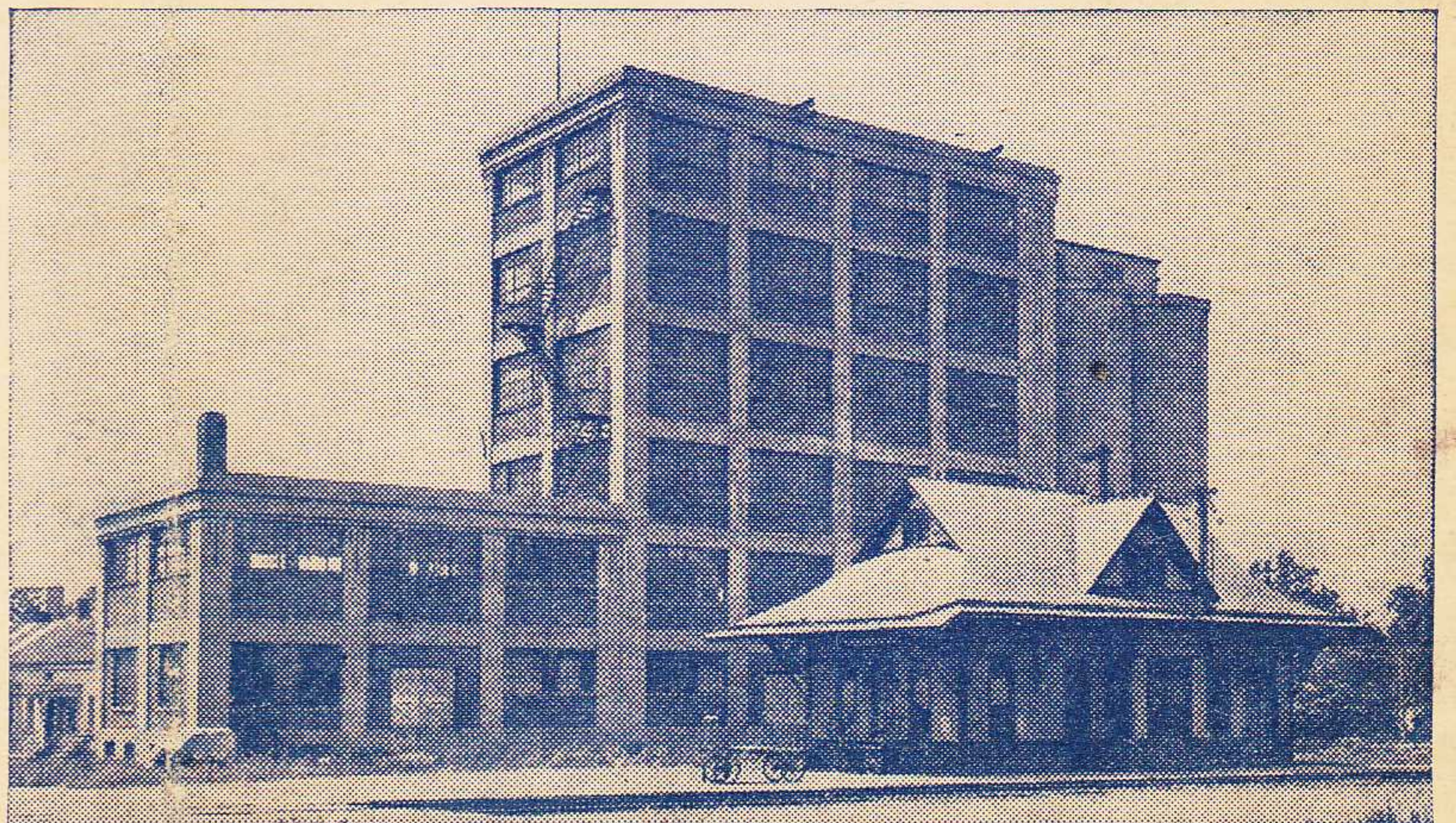
INDUSTRIAL PROPERTY AVAILABLE BALDWINVILLE, N. Y.

Six story Modern, Fireproof Steel and Concrete Building, containing 22,000 square feet of floor space; asphalt roof; twelve foot ceilings; full length loading platform; site comprises about one acre of land. D. L. & W. siding.

For further information concerning the above property, and other industrial buildings and sites, address

W. B. HARAHAAN,
 Industrial Agent,
 140 Cedar Street,
 New York, N. Y.

Telephone: BArclay 7-2500



STATION INDEX

	Table No.		Table No.		Table No.		Table No.
A		Detroit, Mich.....	1, 2	Lansdale, Pa.....	9	Phillipsburg, N. J.....	3, 6, 14
Alden, N. Y.....	4, 5	Dover, N. J.....	3, 6, 13	LaPlume, Pa.....	4, 5	Plymouth, Pa.....	10
Allentown, Pa.....	9	Duryea, Pa.....	10	Lincoln Park, N. J.....	4, 5	Pocono Manor, Pa.	
× Ampere, N. J.....				Linwood, N. Y.....	3, 6	(See Pocono Summit)	3, 6, 14
▲ Andover, N. J.....		E		Lisle, N. Y.....	4, 5	Pocono Summit, Pa.....	3, 6, 14
▲ Andover Jct., N. J.....		Earlville, N. Y.....	8	*Little Falls, N. J.....	7	Poolville, N. Y.....	8
Ann Arbor, Mich.....	1, 2	East Bethany, N. Y.....	4, 5	Luzerne, Pa.....		Portland, Pa.....	3, 6, 14
Apalachin, N. Y.....	4, 5	East Bloomsburg, Pa.....	10	Lyndhurst, N. J.....	10	Port Morris, N. J.....	
Apulla, N. Y.....	7	Easton, Pa.....	14	○ Lyons, N. J.....	3, 6	Port Murray, N. J.....	
Ashtabula, Ohio.....	1, 2	East Orange, N. J.....	3, 6				
Athenia, N. J.....	3, 6	Echo Lake, Pa.....	11	M		R	
Atlanta, N. Y.....	4, 5	Elmira, N. Y.....	1, 2, 4, 5, 14	Madison, N. J.....	3, 6	Richfield Jct., N. Y.....	8
Atlantic City, N. J.....	9	Elmira Heights, N. Y.....	4, 5	Maplewood, N. J.....	3, 6	Rockaway, N. J.....	3, 6
Avoca, N. Y.....	4, 5	Endicott-Vestal, N. Y.....	4, 5	Marathon, N. Y.....	7, 9	Roseville Ave., N. J.....	3, 6
		Erie, Pa.....	1, 2	Marshall's Creek, Pa.....	11		
B				Mauch Chunk, Pa.....	9	S	
Baldwinsville, N. Y.....	7	F		Messengerville, N. Y.....	7	Sauquoit, N. Y.....	8
Baltimore, Md.....	9, 14	○ Far Hills-Bedminster, N. J.....	4, 5	Millburn, N. J.....	3, 6	Savona, N. Y.....	4, 5
○ Basking Ridge, N. J.....		Foster, Pa.....	4, 5	○ Millington, N. J.....		Scranton, Pa.....	1, 2, 3, 4, 5, 6, 9, 10, 13, 14
Bath, N. Y.....	4, 5	Fort Wayne, Ind.....	4, 5	○ Mine Brook, N. J.....			
Battle Creek, Mich.....	1, 2	Fulton, N. Y.....	1, 2	Minetto, N. Y.....	7	*Secaucus, N. J.....	
Belvidere, N. J.....	14			Minisink Hills, Pa. (See Delaware Water Gap)	3, 6, 14	Shawnee-on-Delaware, Pa. (See Water Gap)	3, 6, 14
○ Berkeley Heights, N. J.....		G		Mocanaqua, Pa.....	10	Sherburne, N. Y.....	8
○ Bernardsville, N. J.....		Galena, N. Y.....	8	× Montclair, N. J.....		Shickshinny, Pa.....	10
Berwick, Pa.....	10	○ Gillette, N. J.....		*Montville, N. J.....		Shoemakers, Pa.....	11
Bethlehem, Pa.....	9	○ Gladstone, N. J.....		Morris Plains, N. J.....	3, 6	Short Hills, N. J.....	3, 6
Big Flats, N. Y.....	4, 5	× Glen Ridge, N. J.....		Morristown, N. J.....	3, 6, 13	Skytop, Pa. (See Cresco)	3, 6, 14
Binghamton, N. Y.....	1, 2, 4, 5, 7, 8, 9, 13, 14	Gouldsboro, Pa.....	3, 6	Moscow, Pa.....	3, 6	South Danville, Pa.....	10
		Grand Rapids, Mich.....	1, 2	Mountain Lakes, N. J.....	3, 6, 14	South Granby, N. Y.....	7
Blairstown, N. J.....	3, 6	Greendell, N. J.....	3, 6	Mountain Station, N. J.....	3, 6	South Orange, N. J.....	3, 6
Blodgett Mills, N. Y.....	7	Greene, N. Y.....	3, 8	Mountain View, N. J.....		*Stewartsville, N. J.....	
× Bloomfield, N. J.....		Greigsville, N. Y.....	4, 5	Mount Morris, N. Y.....	4, 5	○ Stirling, N. J.....	
Bloomsburg, Pa.....	10	Groveland, N. Y.....	4, 5	Mount Pocono, Pa.....	3, 6, 14	St. Louis, Mo.....	1, 2
B. & O. Jct., N. Y.....	4, 5	Grove Street, N. J.....	3, 6	○ Mount Tabor, N. J.....		Stroudsburg and East Stroudsburg, Pa.....	3, 6, 11, 14
Boonton, N. J.....	3, 6			○ Murray Hill, N. J.....		Summit, N. J.....	3, 6, 13
▲ Branchville, N. J.....	3, 6, 13	H				Sunbury, Pa.....	10
Brick Church, N. J.....	3, 6	Hackettstown, N. J.....	3, 6	N		Syracuse, N. Y.....	1, 2, 4, 5, 7, 9, 14
Bridgeville, N. J.....	3, 6	Hallstead, Pa.....	4, 5	Nanticoke, Pa.....	10	T	
Brisben, N. Y.....	8	Harrison, N. J. (See Newark, N. J.)	1, 2, 3, 6, 13	Nescopeck, Pa.....	10	Taylor, Pa.....	10
▲ Broadway, N. J.....		Harrisburg, Pa.....	10	Netcong (Stanhope), N. J.....	3, 6	Tobyhanna, Pa.....	3, 6, 14
Buck Hill Falls, Pa. (See Cresco)		Henryville, Pa.....	3, 6, 14	Newark, N. J.....	1, 2, 3, 6, 13	Toledo, Ohio.....	1, 2
Buffalo, N. Y.....	1, 2, 4, 5, 12, 14	Highland Ave., N. J.....	3, 6	New Hartford, N. Y.....	8	Toronto, Can.....	1, 2
Bushkill, Pa.....	11	Hoboken, N. J.....	1, 2, 3, 6, 7, 8, 10	New Millford, Pa.....	4, 5	Towaco, N. J.....	3, 6
				○ New Providence, N. J.....		Trenton, N. J.....	3, 6, 14
C		Homer, N. Y.....	7, 9	▲ Newton, N. J.....		Tully, N. Y.....	7, 9
Campbell, N. Y.....	4, 5	Horseheads, N. Y.....	4, 5	▲ New Village, N. J.....		Turn Villa, Pa.....	11
Canadensis, Pa. (See Cresco)		Hubbardsville, N. Y.....	8	New York, N. Y.....	1, 2, 3, 6, 7, 8, 11, 12, 13		
Candor, N. Y.....	13	Hunlock Creek, Pa.....	10			U	
Catatonk, N. Y.....	13			Niagara Falls, N. Y.....	12	Utica, N. Y.....	1, 2, 4, 5, 8, 9, 14
Catawissa, Pa.....	10	I		Nichols, N. Y.....	4, 5		
Chadwicks, N. Y.....	8	Indianapolis, Ind.....	1, 2	Nicholson, Pa.....	4, 5	V	
Chatham, N. J.....	3, 6	Itaska, N. Y.....	7	North Alexander, N. Y.....	4, 5	Vestal } N. Y.....	4, 5
Chenango Bridge, N. Y.....	7, 8	Ithaca, N. Y.....	1, 2, 4, 5, 13, 14	North Brookfield, N. Y.....	8	Endicott }	
Chenango Forks, N. Y.....	7, 8			Northumberland, Pa.....	10		
Chicago, Ill.....	1, 2	J		Norwich, N. Y.....	1, 2, 8, 9	W	
Cincinnati, Ohio.....	1, 2	Jackson, Mich.....	1, 2			Wallace, N. Y.....	4, 5
Clarks Summit, Pa.....	4, 5	Jamesville, N. Y.....	7	Oak Grove, Pa.....	11	Washington, D. C.....	9, 14
Clayville, N. Y.....	8	Johnsonburg, N. J.....	3, 6	Old Forge, Pa.....	10	Washington, N. J.....	3, 6
Cleveland, Ohio.....	1, 2	Johnson City, N. Y.....	4, 5	Orange, N. J.....	3, 6	Waterloo, N. J.....	
Cohocton, N. Y.....	4, 5			Oswego, N. Y.....	1, 2, 4, 5, 7	Waterville, N. Y.....	8
Conklin, N. Y.....	4, 5	K		Owego, N. Y.....	4, 5, 13	× Watsessing Ave., N. J.....	
Convent, N. J.....	3, 6	Kalamazoo, Mich.....	1, 2	Oxford, N. Y.....	8	Waverly, N. Y.....	4, 5
Coolbaugh, Pa.....	11	Kanona, N. Y.....	4, 5	Oxford Furnace, N. J.....	3, 6	Wayland, N. Y.....	4, 5
Coopers, N. Y.....	4, 5	Killawog, N. Y.....	7			Wayne Junction, Pa.....	9
Corning, N. Y.....	4, 5	Kingsland, N. J.....	3, 6	P		West Nanticoke, Pa.....	10
Cortland, N. Y.....	1, 2, 4, 5, 7, 9, 15	Kingsley, Pa.....	4, 5	Painted Post, N. Y.....	4, 5	West Pittston, Pa.....	10
		Kingston, Pa.....	10	Paris, N. Y.....	8	Wharton, N. J.....	
Cortland Jct., N. Y.....	7	L		Passaic, N. J.....	3, 6	Whitney Point, N. Y.....	7, 9
Coventry, N. Y.....	8	▲ Lafayette, N. J.....		Paterson, N. J.....	3, 6	Wilkes-Barre, Pa.....	3, 4, 5, 6, 9, 10
Craigs, N. Y.....	4, 5	▲ Lake Hopatcong, N. J. (Mount Arlington).....		Peapack, N. J.....		Willseyville, N. Y.....	13
▲ Cranberry Lake, N. J.....		▲ Lafayette, N. J. (Mount Arlington).....		Perkinsville, N. Y.....	4, 5	Wyoming, Pa.....	10
Cresco, Pa.....	3, 6, 14	Lamson, N. Y.....	7	Philadelphia, Pa.....	3, 6, 9, 13, 14		
		Lancaster, N. Y.....	4, 5	Pittsburgh, Pa.....	10		

▲ Located on Sussex Branch. Tables 3, 6, show service to and from Netcong, N. J., the junction point. (See Suburban time table.)
 × Located on Montclair Branch. Tables 3, 6, show service to and from Newark, N. J., the junction point. (See Suburban time table.)
 ○ Located on Gladstone Branch. Tables 3, 6, show service to and from Summit, N. J., the junction point. (See Suburban time table.)
 ▲ Located on Phillipsburg Branch. Tables 3, 6, show service to and from Washington, N. J., the junction point. (See Suburban time table.)
 * Located on Boonton Line. (See Suburban time table.)
 ¶ Located on Main Line. (See Suburban time table.)

DIRECTORY OF OPERATING AND TRAFFIC DEPARTMENTS

General Offices—140 Cedar Street, New York. Telephone Barclay 7-2500

OPERATING DEPARTMENT

G. J. RAY, Vice President, New York

E. B. MOFFATT, Asst. to Vice President, New York

<p>P. M. SHOEMAKER, Supt. Morris and Essex Division.....Hoboken, N. J. G. W. MURPHY, Supt. Scranton Division.....Scranton, Pa. J. H. LERBS, Supt. Buffalo Division.....Buffalo, N. Y. FRANK CIZEK, Supt. of Safety.....New York, N. Y. L. A. JENKINS, Superintendent Car Service.....Scranton, Pa. C. F. BAYER, Supt. Dining Car Service.....Hoboken, N. J. F. H. COGAN, Superintendent Marine Department.....Hoboken, N. J. J. E. MOHR, Superintendent of Police.....Hoboken, N. J.</p>	<p>B. H. WETTLAUFER, Freight Claim Agent.....Scranton, Pa. G. A. PHILLIPS, Chief Engineer.....Hoboken, N. J. A. A. JOHNSON, Engineer Maintenance of Way.....Hoboken, N. J. ALBERT REILLY, Signal Engineer.....Hoboken, N. J. J. S. THORP, Electrical Engineer.....Hoboken, N. J. F. T. H. JAMES, Chief of Motive Power.....Scranton, Pa. K. H. CARPENTER, Supt. Car Department.....Scranton, Pa. I. H. LANCE, General Storekeeper.....Scranton, Pa.</p>
---------------------------------------------------------------------------------------------------------------------------------------------------------------------------------------------------------------------------------------------------------------------------------------------------------------------------------------------------------------------------------------------------------------------------------------------------------------------------------------------------------------------------------------------------------------------------------------------------------------------------------------------	------------------------------------------------------------------------------------------------------------------------------------------------------------------------------------------------------------------------------------------------------------------------------------------------------------------------------------------------------------------------------------------------------------------------------------------------------------------------------------------------------------------------------------------------------------------------------------------------------------

TRAFFIC DEPARTMENT

C. F. FARMER, Vice President, New York

H. C. SCHMIDT, Asst. to Vice President, New York

<p>W. H. DOMINICK, Passenger Traffic Manager.....New York J. L. HOMER, General Passenger Agent.....New York W. E. CARBONE, Gen. Western Pass. Agent... 327 So. LaSalle St., Chicago, Ill. M. H. MURPHY, Gen. Eastern Pass. Agent.....500 Fifth Ave., New York C. M. LYON, Gen. Baggage and Milk Traffic AgentHoboken, N. J. R. F. IRWIN, Advertising Agent.....New York</p>	<p>J. S. SIKORA, Freight Traffic Manager, In Charge of Rates and Divisions. New York C. A. ARENTZEN, Asst. Freight Traffic Manager.....New York GEORGE HERBERT, Asst. Freight Traffic Manager.....New York W. M. MacPHERSON, Asst. Freight Traffic Manager.....Buffalo, N. Y. J. H. CHRISTY, Western Traffic Manager.....Chicago, Ill. E. M. SELLERS, General Freight Agent.....New York W. J. STUMPF, Assistant General Freight Agent.....New York J. F. RYDENE, General Coal Freight Agent.....New York J. E. HAYDEN, Coal Freight Agent.....New York W. B. HARAHAH, Industrial Agent.....New York W. J. GEMEINER, Asst. General Freight Agent, Produce Exchange, New York W. H. BROWNE, Foreign Freight Agent, Produce Exchange.....New York HENRY FOULKES, Superintendent Mail and Express TrafficHoboken, N. J. L. A. DALTON, General Dairy Agent.....Chicago, Ill.</p>
--------------------------------------------------------------------------------------------------------------------------------------------------------------------------------------------------------------------------------------------------------------------------------------------------------------------------------------------------------------------------------------------------------------------------------------------------------------------------------------------	--------------------------------------------------------------------------------------------------------------------------------------------------------------------------------------------------------------------------------------------------------------------------------------------------------------------------------------------------------------------------------------------------------------------------------------------------------------------------------------------------------------------------------------------------------------------------------------------------------------------------------------------------------------------------------------------------------------------------------------------------------------------------------------------------------------------------------------------------------------------------------------------------------------------------------------------------------------------------------------------------------------------------------------------------------------------------------------------------------------------------------------------------------------------

Albany, N. Y.—Room 5, Del. & Hud. Bldg.—Phone Albany 3-4517
 DANIEL L. NORTON, General Agent

Atlanta, Ga.—22 Marietta Street—Phone Jackson 1317
 CHARLES SANTOR, General Agent

Binghamton, N. Y.—Lackawanna Station—Phone Binghamton 4-1311
 W. E. DOWNS, Division Passenger Agent

Boston, Mass.—N. Station Office Bldg., 150 Causeway St.—Phone Capital 8970
 WILLIAM J. NOLAN, General Agent

Brooklyn, N. Y.
 GEORGE R. MARR, City Freight Agent, Pier 13, North River—New York,
 N. Y. Phone Barclay 7-2500

Buffalo, N. Y.—11 W. Genesee St.—Phone Cleveland 2488
 LOUIS F. HEINECK, Gen. Agent, Pass. Dept.

Chicago, Ill.—327 South LaSalle Street—Phone Wabash 3443
 R. G. CARLSON, General Agent
 R. K. LOVITT, Traveling Passenger Agent

Cincinnati, Ohio—18 East Fourth Street—Phone Main 0730
 HARRY F. DOYLE, General Agent

Cleveland, Ohio—310 Park Bldg.—Phone Main 0435
 M. J. NAUGHTON, General Agent

Detroit, Mich.—2031 National Bank Bldg.—Phone Cadillac 6727
 O. H. WARMBOLD, General Agent

Easton, Pa.—402 Northampton Street—Phone Easton 9021
 Z. LEE MATHERS, General Agent

Elmira, N. Y.—Lackawanna Station—Phone Elmira 2-1953
 F. W. SCHEPPMANN, Traveling Passenger Agent

Indianapolis, Ind.—410 Guaranty Bldg.—Phone Riley 9071
 SAMUEL J. NEILL, General Agent

Kansas City, Mo.—403 Railway Exchange Bldg.—Phone Victor 2226
 BRUCE L. DILL, General Agent

Los Angeles, Calif.—108 West Sixth Street—Phone Tucker 2067
 H. E. ALLEN, General Agent

Milwaukee, Wis.—1315 Majestic Bldg.—Phone Marquette 6410
 J. R. McDOWELL, General Agent

Minneapolis, Minn.—1460 Rand Tower—Phone Main 5301
 L. L. NEWELL, General Agent

Newark, N. J.—Lackawanna Station—Phone Humboldt 2-2100
 THOMAS L. STEELE, Division Freight Agent

856 Broad Street—Phone Market 3-3440
 C. F. FELTHAM, Division Passenger Agent

New Haven, Conn.—157 Church Street—Phone New Haven 6-2466
 WILLIAM J. WYNNE, General Agent

New York, N. Y.—Produce Exchange—Phone Bowling Green 9-5100
 WILLIAM K. MARTIN, General Agent
 GEORGE L. BOLTON, Dairy Agent, Pier 13, North River—
 Phone Barclay 7-2500
 500 Fifth Avenue at 42nd Street—Phone Lackawanna 4-0234
 W. H. WEBER, District Passenger Agent
 E. WORTMANN, Steamship Passenger Agent

Paterson, N. J.—Lackawanna Station—220 Marshall St. (near Main St.)—
 Phone Sherwood 2-1609
 C. YOHE, Ticket Agent

Philadelphia, Pa.—1602 Finance Bldg.—
 Phone Bell, Rittenhouse 2848—Keystone, Race 6026
 J. C. DAWSON, General Agent
 L. E. TENNEY, Assistant General Agent

Pittsburgh, Pa.—503 Park Bldg.—Phone Atlantic 0463
 J. A. McCOY, General Agent

Portland, Ore.—Room 423, Terminal Sales Bldg.—Phone BEacon 0757
 J. E. GATHMAN, General Agent

St. Louis, Mo.—1971-1972 Railway Exchange Bldg.—Phone Main 2460
 A. L. BAHLER, General Agent

St. Paul, Minn.—1008 Pioneer Bldg.—Phone Cedar 5765
 R. A. WARREN, General Agent

San Francisco, Calif.—705 Monadnock Bldg.—Phone Sutter 7515
 W. R. KNEISS, General Agent

Scranton, Pa.—Lackawanna Station—Phone Scranton 5251
 C. V. McKOWNE, Division Freight Agent
 J. H. VAN WIE, Division Passenger Agent

Seattle, Wash.—1331 Third Avenue—Phone Main 3055
 J. E. GATHMAN, General Agent

Syracuse, N. Y.—Lackawanna Station—Phone Syracuse 2-9211
 G. W. EGGERT, Division Freight Agent
 O. J. STINGER, City Passenger Agent

Toledo, Ohio—710 Toledo Trust Bldg.—Phone Adams 1817
 C. R. HARTSHORN, General Agent

Toronto, Ont.—1806 Royal Bank Bldg.—Phone Elgin 7635
 J. S. BRANNING, Canadian Agent