



**ERIE RAILROAD SYSTEM
TIME TABLES**

**ERIE RAILROAD SYSTEM
TIME TABLES**

The Scenic Route

BETWEEN

**NEW YORK • BUFFALO
CLEVELAND • CHICAGO**

The Scenic Route

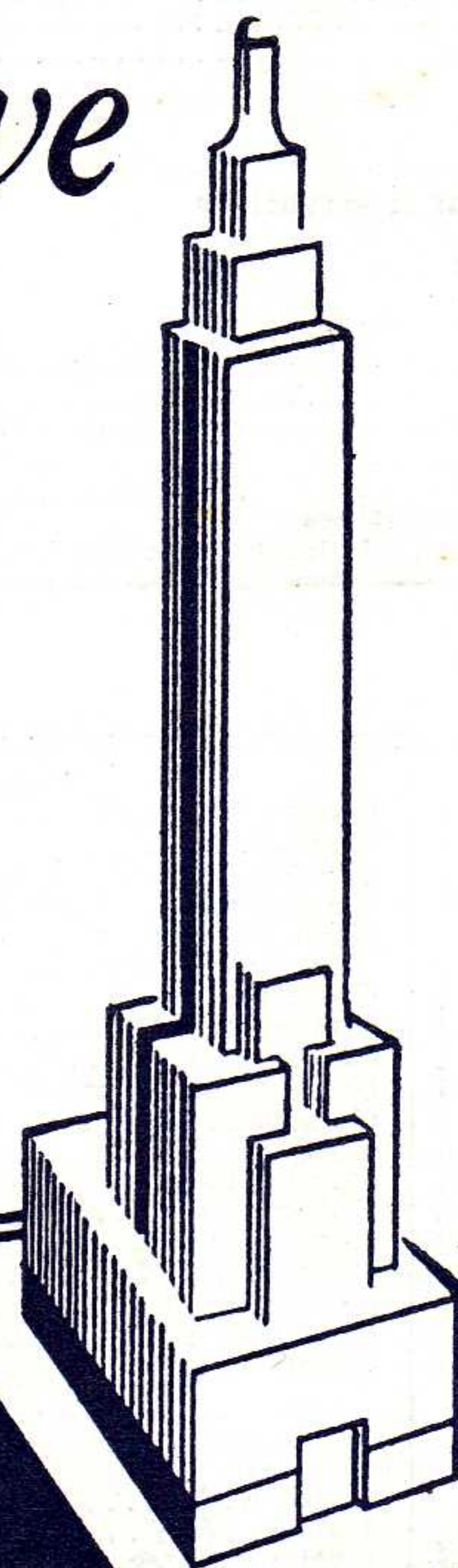
BETWEEN

**NEW YORK • BUFFALO
CLEVELAND • CHICAGO**

It's Your Next Move

to New York and the

World's Fair



THE NATION'S BIGGEST TWIN-FEATURE BILL

You simply must not miss the greatest of all World's Fairs in New York this year. This tremendous \$150,000,000 exposition is the daily mecca of thousands of visitors from all over the nation—from every country in the world.

Picture this mammoth 1,216-acre tract in the population center of the nation's largest metropolitan area. It is a veritable fairyland of beauty—a Living Geography of the Earth and its peoples.

By all means see this thrilling spectacle—and with it the great City of New York, today not only the world's financial capital, but the greatest cultural and amusement center of all time.

Of course, travel by rail to New York. So swift, so safe, so comfortable, so convenient that you'll arrive refreshed and ready for the most exhilarating experience of your life.

For special World's Fair folder and information as to reduced fares and all-expense tours consult any Erie Railroad Ticket Agent, or write to Passenger Traffic Department, Erie Railroad, Cleveland, Ohio.

©NYWF

TABLE OF CONTENTS

Equipment of Through Trains... Page 9, 10
Suggestions... 31
General Information... 7, 8
Standard of Time
Holidays
Fares Paid on Trains
Adjustment of Fares
Sleeping and Parlor Car Reservations
Baggage Regulations
Articles Lost on Trains
Safety First Hints
Equipment of Local Trains... 11, 12, 13, 14
Equipment of Detroit, Toledo, Cleveland, Youngstown and Pittsburgh Trains... 24
Erie Railroad Map... 19, 20, 21, 22
Sleeping and Parlor Car Fares... 7, 8
One-way Rail Fares... 7, 8
Reference Marks and Notes... 5, 6
Traffic Department Representatives... 37, 38
Ticket Offices and Passenger Stations in Principal Cities... 6
Train Service
Condensed Schedule of Through Trains... 9, 10
New York-Binghamton... 11, 12, 13, 14
Binghamton-Akron... 15, 16
Akron-Chicago... 17, 18
New York-Buffalo... 17
Detroit-Toledo-Cleveland-Youngstown-Pittsburgh... 23, 24
New York-Chautauqua... 27
Chautauqua-Akron-Chicago... 27
New York-Kenoza Lake-Jeffersonville... 28
New York-Monticello... 28
New York-Salamanca-Bradford... 28
Bradford-Salamanca-Cleveland-Chicago... 28
Branch Line Service... 27, 28, 29
Hudson & Manhattan R. R. Service... 30
Owego, N. Y... 4
Ferry Schedule... 30
Chautauqua Lake Service... 27

STATIONS ON ERIE RAILROAD
At Which Trains Are Scheduled To Stop
Numerals Opposite Station Names Indicate Time Table Numbers

Table listing stations on the Erie Railroad with corresponding time table numbers. Columns include station names and numerals. Stations listed include Addison, N.Y., Akron, O., Alliquippa, Pa., Albany, N.Y., Alden, N.Y., Alfred, N.Y., Allegany, N.Y., Allendale, N.J., Andover, N.Y., Arden, N.Y., Arkport, N.Y., Ashantee, N.Y., Ashland, O., Atlanta, N.Y., Attica, N.Y., Aurora, O., Avoca, N.Y., Avon, N.Y., Baileys, N.Y., Barberton, O., Barton, N.Y., Bath, N.Y., Beaver, Pa., Beaver Falls (New Brighton, Pa.), Belmont, N.Y., Big Flats, N.Y., Binghamton, N.Y., Blair, N.Y., Blasdell, N.Y., Bradford, Pa., Brooks, N.Y., Buffalo, N.Y., Burns, N.Y., Callicoon, N.Y., Cambridge Springs, Pa., Cameron, N.Y., Cameron Mills, N.Y., Campbell, N.Y., Canaseraga, N.Y., Canisteo, N.Y., Castile, N.Y., Cattaraugus, N.Y., Chautauqua, N.Y., Chautauqua Lake, N.Y., Chemung, N.Y., Cherry Creek, N.Y., Chester, N.Y., Chicago, Ill., Cleveland, O., Cochection, N.Y., Cohocton, N.Y., Collins, N.Y., Conesus, N.Y., Conesus Lake Jct., N.Y., Conewango, N.Y., Cooper's, N.Y., Coraopolis, Pa., Corning, N.Y., Corry, Pa., Crittenden, N.Y., Crown Point, Ind., Cuba, N.Y., Cuylerville, N.Y., Dale, N.Y., Dalton, N.Y., Darien Center, N.Y., Dayton, N.Y., Decatur, Ind., Depew, N.Y., Deposit, N.Y., Detroit, Mich., Dunkirk, N.Y., East Buffalo, N.Y., East Fifty-fifth St. (Cleveland), O., East Honesdale, Pa., East Ninety-third St. (Cleveland), O., East Rutherford, N.J., Eden Center, N.Y., Eden Valley, N.Y., Ellwood City, N.Y., Elmira, N.Y., Elm Place, N.Y., Endicott, N.Y., Englewood (63rd St.), Ill., Falconer, N.Y., Fenner's, N.Y., Forestville, N.Y., Fowler, N.Y., Friendship, N.Y., Galion, O., Gannett, N.Y., Garrettsville-Hiram, O., Garwoods, N.Y., Geauga Lake, O., Geneseo, N.Y., Girard, O., Glen Eyre, Pa., Golah, N.Y., Goshen, N.Y., Gowanda, N.Y., Graham, N.Y., Great Bend, Pa., Greenville, Pa., Greycourt, N.Y., Griswolds, N.Y., Gulf Summit, N.Y., Hale's Eddy, N.Y., Hamburg, N.Y., Hammond, Ind., Hancock, N.Y., Hankins, N.Y., Harriman, N.Y., Hawley, Pa., Hickory Grove, Pa., Hillburn, N.Y., Hohokus, N.J., Honesdale, Pa., Hornell, N.Y., Horseheads, N.Y., Howells, N.Y., Hubbard, O., Huntington, Ind., Huston, N.Y., Industry, N.Y., Jaycocks, N.Y., Jamestown, N.Y., Jeddoe, O., Jersey City, N.J., Johnson City, N.Y., Jones, N.Y., Kanona, N.Y., Kellams, N.Y., Kennedy, N.Y., Kent, O., Kenton, O., Kimbles, Pa., Kirkwood, N.Y., Lackawaxen, Pa., Lake Huntington, N.Y., Lancaster, N.Y., Lawtons, N.Y., Leavittsburg, O., Letchworth Park, N.Y., Lima, O., Limestone, N.Y., Linden, N.Y., Linden St., N.Y., Little Valley, N.Y., Livonia, N.Y., Long Eddy, N.Y., Lordville, N.Y., Mahoning, O., Mahwah, N.J., Mansfield, O., Mantua, O., Marilla, N.Y., Marion, O., Markhams, N.Y., Martin, N.Y., Mast Hope, Pa., Meadow-wood, N.Y., Meadville, Pa., Middletown, N.Y., Mill Rift, Pa., Monaca, Pa., Mongaup, Pa., Monroe, N.Y., Mortimer, N.Y., Mount Morris, N.Y., Narrowsburg, N.Y., Newark, N.J., New Brighton, Pa., New Castle, Pa., New Hampton, N.Y., New York, N.Y., Niles, O., North Collins, N.Y., North Randall, O., Ohio City, O., Olean, N.Y., Oneonta, N.Y., Oquaga, N.Y., Otisville, N.Y., Owego, N.Y., Oxford, N.Y., Painted Post, N.Y., Parker's Glen, Pa., Passaic, N.J., Paterson, N.J., Perrysburg, N.Y., Persia, N.Y., Phalanx, O., Pierce's, N.Y., Pittsburgh, Pa., Pond Eddy, Pa., Portage, N.Y., Port Jervis, N.Y., Ramapo, N.Y., Ramsey, N.J., Randolph, N.Y., Rathbone, N.Y., Ravenna, O., Ridgewood, N.J., Rittman, O., Rochester, Ind., Rochester, N.Y., Rock Glen, N.Y., Rowlands, Pa., Rutherford, N.J., Saegertown, Pa., Salamanca, N.Y., Savona, N.Y., Seven Nations, N.Y., Shakers, N.Y., Sharon, Pa., Sheridan, N.Y., Shimer's Rock Cut, Pa., Shohola, Pa., Silver Springs, N.Y., Skinners, N.Y., Sloatsburg, N.Y., Smithboro, N.Y., Smith's Mills, N.Y., Solon, O., South Avon, N.Y., South Dayton, N.Y., Southfields, N.Y., South Lima, N.Y., South Livonia, N.Y., South Park, N.Y., Sparrowbush, N.Y., Spencerville, O., Spring Street, N.Y., Springwater, N.Y., State Hospital, N.Y., Sterling, N.Y., Stockport, N.Y., Suffern, N.Y., Susquehanna, Pa., Swains, N.Y., Tioga Centre, N.Y., Toledo, O., Town Line, N.Y., Tusten, N.Y., Tuxedo, N.Y., Union City, Pa., Wadsworth, O., Waldwick, N.J., Wallace, N.Y., Warren, O., Warsaw, N.Y., Washington Hunt, N.Y., Water Valley, N.Y., Waverly, N.Y., Wayland, N.Y., Websters, N.Y., Wellsburg, N.Y., Wellsville, N.Y., Wellwood Ave., Hawley, Pa., Westcolang Park, Pa., Westfall, N.Y., West Henrietta, N.Y., West Perrysburg, N.Y., White Mills, Pa., Wiards, N.Y., Youngstown, O.

ADDITIONAL STATIONS ON ERIE RAILROAD

At Which Trains Do NOT Stop Regularly
The distance shown is from New York as indicated in Tables 4 and 5

Table listing additional stations on the Erie Railroad with distances from New York. Columns include station names and miles from New York. Stations listed include Adrian, N.Y., Akron, Ind., Aldine, Ind., Alger, Ohio, Almond, N.Y., Ashville, N.Y., Athens, Ind., Atlantic, Pa., Bass Lake, Ind., Bear Lake, Pa., Belvidere, N.Y., Bippus, Ind., Bolivar, Ind., Boone Grove, Ind., Braceville, Ohio, Burbank, Ohio, Caledonia, Ohio, Columbus, Pa., Creston, Ohio, DeCliff, Ohio, De Long, Ind., Disko, Ind., Elgin, Ohio, Foraker, Ohio, Forty-seventh St. (Chicago, Ill.), Freedom, Ohio, Geneva, Pa., Glenmore, Ohio, Griffith, Ind., Harrods, Ohio, Hegewisch, Ill., Hepburn, Ohio, Highlands, Ind., Hinsdale, N.Y., Hurlburt, Ind., Kemp, Ohio, Kingsland, Ind., Kouts, Ind., Laketon, Ind., Lakewood, N.Y., Leiters, Ind., Markel, Ind., Martel, Ohio, McGuffey, Ohio, Millers, Pa., Mill Village, Pa., Monterey, Ind., Nankin, Ohio, Newton, Ind., Niobe, N.Y., North Judson, Ind., Ontario, Ohio, Ora, Ind., Palmer, Ind., Pavonia, Ohio, Pershing, Ind., Polk, Ohio, Preble, Ind., Red House, N.Y., Scio, N.Y., Servia, Ind., Sharpsville, Pa., Steamburg, N.Y., Sterling, Ohio, Tallmadge, Ohio, Tocsin, Ind., Uniondale, Ind., Venango, Pa., Watts Flats, N.Y., West Salem, Ohio, Wilders, Ind., Windham, Ohio, Winfield, Ind., Wren, Ohio.

REFERENCE MARKS AND NOTES

IMPORTANT—When trains are indicated as stopping conditionally, Conductors should be notified of intention to leave train and Station Agent notified of intention to board train.

- † Runs daily except Sunday.
 § Runs daily except Sundays and Holidays.
 ‡ Will not operate from these stations on Monday morning.
 ⚡ Train 71 will not run west of Waldwick on Saturday nights or May 29, July 3 and Sept. 3.
 f Stops on signal to receive and discharge passengers.
 k Runs Saturdays only. M. C. Motor Car Service. N. B. No Baggage carried.
- ♦ Stops to discharge passengers.
 C Stops on Saturday only.
 ⚡ Stops on Holidays only.
 * Runs Daily.
- ab** Stops Saturday and Sunday only to discharge passengers.
ac Stops Dalton (5.04 A. M.) to discharge passengers from Hornell and east and on signal to receive passengers.
ad Via Allegany Motor Coach Co., Inc. bus between Salamanca and Bradford.
af Train 7 stops Middletown (1.38 A. M.) Sunday and Monday mornings only to discharge passengers.
ag Stops Saturdays only to discharge passengers.
ah Stops on signal Andover (9.36 A. M.); Belmont (10.15 A. M.) to discharge passengers from New York.
ap Train 9 stops on signal Ridgewood (8.51 A. M.) Suffern (9.05 A. M.) to receive passengers for west of Port Jervis.
as Train 701 stops on signal, Sunday only, Oxford (9.54 A. M.) to receive and discharge passengers; will also run to Greycourt on Sunday only, arriving at (10.00 A. M.).
at On Sundays only, Train 30 will arrive West 23rd Street at (12.50 P. M.).
au Does not run from West 23rd St. on Saturday night.
av Does not run from Chambers on Saturday night; will leave Chambers Street at (11.45 P. M.) Sunday night only.
ax Stops Englewood Train 1 (7.40 A. M.); Train 7 (12.43 A. M.) to discharge passengers from east of Hammond.
ba Stops Paterson (8.27 A. M.) to receive passengers.
bb Train 9 stops Paterson (8.42 A. M.) to receive passengers.
bc Stops on signal Paterson (8.29 P. M.), Ridgewood (8.39 P. M.) to receive passengers.
bd Stops on signal Passaic (8.20 P. M.); Suffern (8.53 P. M.) to receive passengers for Hornell and west.
bf Stops Cuba (5.36 A. M.) to discharge passengers from Elmira and east and to receive for Jamestown and west.
bg Stops on signal, Friendship (10.28 A. M.); Cuba (10.42 A. M.) to discharge passengers from New York.
bh Stops Cuba (6.25 P. M.) to discharge passengers from Elmira and east and to receive for Jamestown and west.
bk Train 27 stops Monroe Sundays and Holidays only to discharge passengers.
bm Stops on signal Niles (10.33 A. M.) to discharge passengers from Pittsburgh and from Jamestown and east and to receive passengers for Cleveland.
bn Train 2 will stop on signal Lordville (3.30 P. M.), July 5th to Sept. 1st., inclusive, except Saturdays and Sundays, to receive passengers for New York.
bp Stops Niles (11.30 P. M.) to discharge passengers from Meadville and east and on signal to receive passengers for Akron and west.
bt No Agent on duty. No baggage handled on Trains 5 and 6 to or from Castile.
bv On Sundays only, Train 7 will leave Chambers St. at (11.45 P. M.).
ca Train 27 stops Holidays only Rutherford (3.08 P. M.).
cb On Sundays Train 27 has no connection from Newark.
cd For additional service between Cleveland and Youngstown see Table 7.
cf Stops Tuxedo (4.40 P. M.) daily, except Sunday.
cg Stops on signal Ridgewood (11.13 P. M.) to discharge passengers from Binghamton and west.
ch Train 71 stops Tuxedo to discharge passengers, except Saturday nights or May 29, July 3 and Sept. 3.
cn Stops on signal Union City (8.57 P. M.); Cambridge Springs (9.16 P. M.) to discharge passengers from Jamestown and east and to receive for Youngstown and west.
cp Stops on signal (10.14 P. M.) to receive passengers for east of Hammond.
ct On Sundays Train 61 will not have any connection from West 23rd Street.
cu Bus service provided between Cohecton and Lake Huntington.
cx Stops Endicott (1.55 A. M.) to discharge passengers from Port Jervis and east.
cw Stops to discharge passengers from New York.
cy Stops to discharge passengers from Cleveland and beyond.
db Train 8 stops at Ravenna (7.52 A. M.) to discharge passengers from Marion and west, and on signal to receive for Youngstown and east.
dc Stops Mantua (1.53 P. M.) to discharge passengers from Cleveland and on signal to receive passengers for Warren and east.
de Stops Barberton (5.15 P. M.) to discharge passengers from Youngstown and east and on signal to receive passengers for Mansfield and west.
df Stops on signal Mantua (9.24 A. M.) to receive passengers for Cleveland.
dh Via Dodaro Bus Co. between Salamanca and Bradford.
dp Stops Niles (1.16 A. M.) to discharge passengers from east of Youngstown and signal to receive passengers for Cleveland.
dt No baggage carried on this train east of Hornell. Baggage will be handled on following train.
du Coaches only, west of Salamanca.
dv Stops on signal Union City (7.48 P. M.) to discharge passengers from Youngstown and west and to receive passengers for New York.
dw Stops Cuba (9.53 A. M.) to discharge passengers from Jamestown and west and to receive for Elmira and east.
dy Stops on signal Cambridge Springs (7.17 A. M.), Union City (7.34 A. M.), to discharge passengers from Chicago and to receive for Binghamton and east.
dz Stops Ridgewood (7.03 A. M.), Paterson (7.12 A. M.), Passaic (7.19 A. M.), to discharge passengers from Goshen and west.
eb Stops Paterson (1.56 P. M.) to receive passengers.
ec Bus service between New Castle and New Castle (Washington St.).
ed Bus service between Wampum and Ellwood City.
ef On Sundays only, Train 1 leaves West 23rd St. at (8.05 A. M.)
eg On Sundays connection from Train 62 arrives Newark (4.11 P. M.); on Holidays has no connection for Newark.
eh On Holidays Train 57 has no connection from Newark.
ek Train 2 stops Suffern (6.30 P. M.), Ridgewood (6.43 P. M.), Passaic (7.00 P. M.) to discharge passengers from Binghamton and west.
em Train 1 stops at Cohecton (12.14 P. M.) June 23rd to Sept. 4th, incl., to discharge passengers from New York.
en Stops on signal Paterson (9.27 A. M.), Ridgewood (9.37 A. M.) to receive passengers.
ep Train 1 stops on signal Passaic (9.20 A. M.), Suffern (9.51 A. M.) to receive passengers for Binghamton and west.
er Stops Niles (5.46 A. M.) to discharge passengers from Cleveland and west and on signal to receive for Pittsburgh.
es Stops on signal Niles (5.17 P. M.) to receive passengers for Jamestown and east, and to discharge passengers from Cleveland.
et Stops on signal East 55th Street (1.34 P. M.); East 93rd Street (1.39 P. M.) to receive passengers.
eu Stops Endicott (6.12 P. M.) daily to discharge passengers from Jamestown and west and on signal to receive passengers for New York; also stops Sundays only to receive and discharge passengers.
ev Stops on signal to receive passengers for Cleveland and beyond.
ew Stops (11.46 A. M.) to discharge from Jamestown and east and west of Akron.
ex Stops Endicott (1.47 A. M.) to discharge passengers from Buffalo, Jamestown and west.
ez On Saturday Train 60 has no connection for Newark.
gc Stops West Henrietta (10.51 A. M.) to discharge passengers from east of Avon.
gt In connection with the bus service the Erie Railroad Company acts as agent only and is not responsible beyond its own line, except as such responsibility may be imposed by law with respect to baggage.
ha Stops at Narrowsburg (11.12 P. M.) to discharge passengers from Ridgewood and east.
he Stops Alden (9.14 P. M.) to discharge passengers from Buffalo and on signal to receive passengers.
hf Stops (11.09 P. M.) to discharge passengers from Pittsburgh.
hm On Saturdays connection for Train 69 leaves Newark at (5.16 P. M.); has no connection on Sundays or Holidays.
hn On Sundays Train 2 has no connection for Newark.
ht Trains 5-557 and 560-6 carry through sleeping cars between Bradford and New York.
hu Stops to discharge passengers.
hv Stops on signal East 93rd Street (6.13 P. M.) to receive passengers.
hw Train 7 will stop at Saegertown (1.47 P. M.) to discharge passengers from Binghamton and east and to receive passengers for Marion and west.
hx Train 8 will stop at Saegertown (10.33 A. M.) to discharge passengers from Marion and west and to receive passengers for Binghamton and east.
mh Stops on signal, Sundays only, to discharge passengers from New York.
na Train 6 stops on signal at East 93rd St. (4.13 P. M.) to receive passengers for Sharon and east.
ne Train 626 stops Saturdays only at Solon (1.39 P. M.) and Aurora (1.47 P. M.) to discharge passengers from Cleveland.
nf Stops on signal at Garrettsville-Hiram (2.47 P. M.) to receive passengers for Cleveland.
nh Stops on signal at Garrettsville-Hiram (11.02 A. M.) to discharge passengers from Hornell and east; also discharge from Marion and west.

ERIE TICKET OFFICES AND PASSENGER STATIONS IN PRINCIPAL CITIES

- Akron, O.—Union Station.**
 (Telephone Jefferson 9141)
 B. L. BENDER, Ticket Agent.
- Binghamton, N. Y.—Erie Station.**
 (Telephone 4-3251)
 A. F. WAINSCOTT, Ticket Agent.
- Bradford, Pa.—Erie Station.**
 (Telephone 3716)
 A. J. SULLIVAN, Ticket Agent.
- Brooklyn, N. Y.—City Ticket Office.**
 155 Pierrepont St.
 (Telephone Triangle 5-7440)
 J. W. VAN COTT, Ticket Agent.
- Buffalo, N. Y.—City Ticket Office.**
 6 North Division St.
 (Telephone Washington 4300)
 W. L. MCCREARY, Ticket Agent.
- Chicago, Ill.—City Ticket Office.** 163-165 West Jackson Blvd.
 (Telephone Harrison 4160)
 C. F. KUNDEL, Ticket Agent.
- Hotel Ticket Offices—**
 Congress, Morrison, Sherman, Stevens, Palmer House, Merchandise Mart.
 (Telephone Harrison 2203)
 GEORGE M. NEWHART, Ticket Agent.
- Dearborn Station.**
 (Telephone Harrison 9830)
 W. E. MISCHNICK, Ticket Agent.
- Cleveland, O.—City Ticket Office.**
 2063 East 9th St.
 (Telephone Cherry 8400)
 CASPER J. MILLER, Ticket Agent.
- Erie Station.**
 (Telephone Cherry 8400)
 G. SAUNDERS, Ticket Agent.
- Elmira, N. Y.—Erie Station.**
 (Telephone 2-0380)
 J. V. CLEARY, Ticket Agent.
- Hornell, N. Y.—Erie Station.**
 (Telephone 680)
 R. L. SMITH, Ticket Agent.
- Huntington, Ind.—Erie Station.**
 (Telephone 140)
 D. L. HERENDEEN, Ticket Agent.
- Jamestown, N. Y.—Erie Station.**
 (Telephone 6076)
 FRANK PRIEST, Ticket Agent.
- Jersey City, N. J.—Erie Station.**
 (Telephone Delaware 8-6400)
 G. B. IRVING, Ticket Agent.
- Mansfield, O.—Erie Station.**
 (Telephone Canal 1423)
 E. G. MATHEWS, Ticket Agent.
- Marion, O.—Erie Station.**
 (Telephone 2399)
 L. E. NEBERGALL, Ticket Agent.
- Meadville, Pa.—Erie Station.**
 (Telephone 1212)
 G. W. KROM, Ticket Agent.
- Middletown, N. Y.—Erie Station.**
 (Telephone 3303)
 J. H. DIMKE, Ticket Agent.
- Newark, N. J.—Erie Station.**
 (Telephone Humboldt 2-0600)
 G. J. MCMICHAEL, Ticket Agent.
- New York, N. Y.—City Ticket Office.**
 Information Bureau.
 Train Service and Fares.
 (Telephone Barclay 7-6500)
 City Ticket Office, 12 West 51st Street, Rockefeller Center.
 (Telephone Circle 5-7222)
 G. H. DOWN, Ticket Agent.
- West 23rd Street Station.**
 (Telephone Chelsea 3-0780)
 C. H. POTTER, Ticket Agent.
- Chambers Street Station.**
 (Telephone Cortlandt 7-9200)
 T. I. NEWMAN, Ticket Agent.
- City Ticket Office, 17 John Street.**
 (Telephone Cortlandt 7-6430 and 7-6431)
 W. G. TEDFORD, Ticket Agent.
- Olean, N. Y.—Erie Station.**
 (Telephone 4343)
 D. S. FORDHAM, Ticket Agent.
- Passaic, N. J.—Erie Station.**
 (Telephone 2-1613)
 O. R. KRECH, Ticket Agent.
- Paterson, N. J.—Erie Station.**
 (Telephone Sherwood 2-3337)
 J. H. GRAF, Ticket Agent.
- Port Jervis, N. Y.—Erie Station.**
 (Telephone 300)
 R. FARBER, Ticket Agent.
- Sharon, Pa.—Erie Station.**
 (Telephone 234)
 H. P. MORGAN, Ticket Agent.
- Warren, O.—Erie Station.**
 (Telephone 1000)
 R. S. GETTIG, Ticket Agent.
- Youngstown, O.—Erie Station.**
 (Telephone 41101)
 R. E. TOWNS, Ticket Agent.

NEW YORK, UPTOWN CITY TICKET OFFICE ROCKEFELLER CENTER, RADIO CITY

The uptown city office of the Erie Railroad is now located at 12 West 51st St. This new location in Rockefeller Center is more convenient to more of our passengers. See list above for other New York offices.

RAILROAD AND PULLMAN FARES

For Information Only. Subject to Change Without Notice

Main fare table with columns for 'Between' and 'And' stations, and sub-columns for 'New York', 'Binghamton', 'Buffalo', 'Jamestown', 'Cleveland', and 'Chicago'. Each sub-column lists 'Tickets valid in', 'Lower Berth', and 'Seat Fare' for 'Coach' and 'Pullman' classes.

RATES FOR UPPER BERTH, SECTION, DRAWING ROOM OR COMPARTMENT IN SLEEPING CARS (No Surcharge)

Table showing rates for upper berth, section, drawing room, and compartment in sleeping cars. Columns include 'Where Lower Berth Rate Is', 'Upper Berth Rate Will Be', 'Section Rate For One Passenger', 'Drawing Room Rate For One Passenger', 'Room Rate For Two or More Pas'grs.', and 'Compartment Rate For Two or More Pas'grs.'.

Minimum Number of Railroad Tickets Required for Exclusive Occupancy of Sections, Bedrooms, Drawing Rooms or Compartments in Sleeping Cars and Drawing Room in Parlor Cars

Table listing occupancy requirements: Section (One), Double Bedrooms (One), Comp., Berth Service (One and One-tenth), Comp., Seat Service (One and One-half), Drawing Room, Berth Service (One and One-quarter), Drawing Room, Seat Service (Two), Drawing Room in Parlor Cars (Two).

Note: -▲ For section occupied by two passengers but with lower berth only prepared for night service.

GENERAL INFORMATION

STANDARD OF TIME—Erie Lines east of and including Ohio City, Ohio, are operated by Eastern Standard Time... TRAINS WILL NOT BE HELD for ferries from New York between hours of 4:00 P.M. and 5:30 P.M. Eastern Standard Time... HOLIDAYS—The term "Holidays" (unless covered by special note under schedule) refers to the observance of New Year's Day, Lincoln's Birthday, Washington's Birthday, Memorial Day, Independence Day, Labor Day, Columbus Day, Election Day (November 7), Thanksgiving Day and Christmas Day... THIS COMPANY IS NOT RESPONSIBLE FOR ERRORS in time tables, inconvenience or damage resulting from delayed trains or failure to make connections; schedules are subject to change without notice... FARES PAID ON TRAINS—Conductors are required to charge ten (10) cents in excess of the one-way ticket fare for passengers traveling in coaches only in the territory east of Port Jervis... CHILDREN under five years of age are carried free when accompanied by parent or guardian; five years and under twelve, half fare, twelve years of age and over, full fare... ADJUSTMENT OF FARES—Should any misunderstanding arise with conductors or agents, pay the fare required, take receipt and communicate with General Passenger Agent, Midland Bldg., Cleveland, Ohio... SLEEPING AND PARLOR CAR RESERVATIONS—Space reserved by telegraph or telephone within city limit will be held until: 4:00 P.M. day prior to departure of trains leaving before noon next day. 9:00 A.M. day of departure for trains leaving between noon and 4:00 P.M. 1:00 P.M. day of departure for trains leaving after 4:00 P.M.

When application is by wire or letter from a point outside of city limit, space will be held until fifteen minutes of train time. BAGGAGE TO BE CHECKED should be delivered at station at least thirty minutes before train time. BAGGAGE DELIVERY IN NEW YORK CITY—All baggage checked to New York City will be sent to the West 23rd Street Station unless passenger specifies Chambers Street Station at time of checking. Baggage delivery service in New York will be performed by the Railway Express Agency. HAND-BAGGAGE in Pullman Cars is restricted to what can be conveniently placed in the berth, seat or other accommodations purchased by the passenger. CHICAGO PASSENGER AND BAGGAGE TRANSFER is performed by the Parmelee Company. A uniformed agent meets all incoming trains of the Erie Railroad on arrival at Dearborn Station. ARTICLES LOST ON TRAINS or left in waiting rooms or stations, owners should apply to Lost and Found Bureau, (Baggage Room) Jersey City Depot, or address General Passenger Agent, Midland Bldg., Cleveland, Ohio, giving full description of the property, stating date of loss and number of train. SAFETY FIRST HINTS—Carefulness on your part helps eliminate accidents. Don't get on or off a train in motion; wait for a full stop. Keep hand baggage out of car aisles; this will remove a cause of inconvenience, possibly of harm, to others. Walk carefully when entering or leaving train; high-heeled shoes are sometimes a cause of tripping or stumbling on car steps. Don't stand or walk close to the railroad track; look both ways before starting across. Courtesy toward your fellow travelers increases the pleasure of your journey. DAYLIGHT SAVING TIME is observed until Sept. 23 at all towns and cities east of and including Port Jervis, N. Y., also Chicago, Crown Point, Griffiths, Highlands, Hammond, Rochester, Buffalo, Niagara Falls, Hamburg and Gowanda. It is also observed at Jamestown from June 4 to Sept. 3. For complete list see Official Railway Guide.

TABLE 1

CONDENSED TABLE OF THROUGH TRAINS NEW YORK AND BUFFALO, CLEVELAND AND CHICAGO

(FOR LOCAL TRAINS AND INTERMEDIATE TIME OF THROUGH TRAINS SEE LOCAL TABLES)

WEST BOUND		Air-conditioned Trains		EAST BOUND	
THE ERIE LIMITED TRAIN NO. 1—DAILY New York—Buffalo—Jamestown—Chicago		Air-conditioned equipment has been assigned to regular sections of trains as shown herein. Every effort will be made to provide it as specified, but the right is reserved to employ non-air-conditioned cars as necessitated by volume of traffic or emergencies.		THE ERIE LIMITED TRAIN NO. 2—DAILY Chicago—Jamestown—Buffalo—New York	
EQUIPMENT Air-Conditioned Sleeping Cars: New York to Chicago—8 Section Lounge Restaurant Car. Hornell to Chicago—8 Section, 1 Compartment Lounge Restaurant Car. Air-Conditioned Salon Coaches: New York to Chicago. Air-Conditioned Individual Seat Coach: New York to Buffalo. Dining Service for all meals in Air-Conditioned Lounge Restaurant Cars.		EQUIPMENT Air-Conditioned Sleeping Car: Chicago to New York—8 Section Lounge Restaurant Car. Air-Conditioned Salon Coaches: Chicago to New York. Air-Conditioned Individual Seat Coach: Buffalo to New York. Dining Service for all meals in Air-Conditioned Lounge Restaurant Car.			
THE LAKE CITIES TRAIN NO. 5—DAILY New York—Buffalo—Cleveland		THE LAKE CITIES TRAIN NO. 6—DAILY Cleveland—Buffalo—New York			
EQUIPMENT Air-Conditioned Sleeping Cars: New York to Cleveland—10 Section, 2 Compartment and Drawing-room. New York to Bradford—12 Section and Drawing Room. (Sleeping Car may be occupied at Bradford until 8.00 A. M.). Air-Conditioned Lounge Dining Car: New York to Port Jervis. Hornell to Youngstown. Air-Conditioned Coaches: New York to Cleveland. Coaches: Hornell to Buffalo.		EQUIPMENT Air-Conditioned Sleeping Cars: Cleveland to New York—10 Section, 2 Compartment and Drawing-room. Youngstown to New York—12 Section and Drawing-room Car (operates Sundays only) Bradford to New York—12 Section and Drawing Room. Air-Conditioned Lounge Dining Car: Youngstown to Hornell. Port Jervis to New York. Air-Conditioned Coaches: Cleveland to New York. Coaches: Buffalo to Hornell.			
PACIFIC EXPRESS TRAIN NO. 7—DAILY New York—Buffalo—Jamestown—Chicago		ATLANTIC EXPRESS TRAIN NO. 8—DAILY Chicago—Jamestown—New York			
EQUIPMENT Air-Conditioned Sleeping Car: New York to Salamanca—12 Section and Drawing-room Car (Saturday night operates New York to Youngstown). (Sleeper open Jersey City at 9.30 P. M.) Air-Conditioned Dining Lounge Car: Binghamton to Hornell. Air-Conditioned Salon Coaches: New York to Chicago.		EQUIPMENT Air-Conditioned Sleeping Car: Chicago to Hornell—8 Section, 1 Compartment Lounge Restaurant Car. (Sleeper open at Chicago at 9.30 P. M.) Air-Conditioned Salon Coaches: Chicago to New York. Air-Conditioned Dining Lounge Car: Hornell to New York. (No baggage handled on this train east of Hornell, baggage will be handled on following train.)			
TRAIN NO. 9—DAILY New York—Binghamton		SOUTHERN TIER EXPRESS TRAIN NO. 10—EX. SUN. Buffalo—Hornell—Elmira—Binghamton—New York			
EQUIPMENT Through Coaches...New York to Binghamton.		EQUIPMENT Air-Conditioned Sleeping Car: Hornell to New York—12 Section and Drawing-room Car. (Sleeper may be occupied at Jersey City until 7.00 A. M.) Coaches:—Buffalo to Hornell. Hornell to New York.			
THE MOUNTAIN EXPRESS TRAIN NO. 27—DAILY New York—Binghamton—Elmira—Hornell		THE MOUNTAIN EXPRESS TRAIN NO. 28—DAILY Binghamton—New York			
EQUIPMENT Air-Conditioned Dining Lounge Car: New York to Binghamton. Through Coaches...New York to Hornell.		EQUIPMENT Through Coaches...Binghamton to New York.			

TABLE 2 WESTBOUND

NEW YORK—BINGHAMTON

Hudson and Manhattan Tube Trains operate to and from Erie Railroad Station in Jersey City. Fare, downtown, 8 cents; uptown, 10 cents. (Temporarily H. & M. uptown trains will terminate at 28th Street, main entrance on Sixth Avenue between 29th Street and 30th Street)

Main train schedule table with columns for Miles from New York, Eastern Standard Time, and various train numbers (55, 57, 59, 43, 9, 701, 1, 703, 251, 209, 253, 61, 255, 45, 257, 27, 63, 65, 67, 259, 47, 69, 5, 705, 71, du 7, 51). Rows list stations from New York to Binghamton.

LOCAL PARLOR AND CLUB CAR EQUIPMENT

No. 9—Daily Coaches.....New York to Binghamton.

No. 27—Daily Air-Conditioned Dining Lounge Car New York to Binghamton. Coaches.....New York to Hornell.

No. 43—Runs Saturdays and Sundays only (July 1 to Sept. 3, Inc., also Sat. May 27) Air-Conditioned Parlor Car, Diner.....New York to Deposit. Coaches.....New York to Deposit. No. 45—Runs Sats. only (July 1 to Sept. 2, Inc.) Parlor and Dining Cars.....New York to Deposit. Coaches.....New York to Deposit. No. 47—Fridays only (June 30 to Sept. 1, Inc., also Friday, May 26) Parlor and Dining Cars.....New York to Deposit. Coaches.....New York to Deposit.

No. 63—THE TUXEDO—Ex. Sats., Suns. and Hols. Parlor Car.....New York to Port Jervis. Coaches.....New York to Port Jervis.

No. 67—Ex. Sat., Sun. and Hol. Erie Club Car.....New York to Port Jervis. Coaches.....New York to Port Jervis.

No. 251—Saturdays only Erie Parlor Car.....New York to Middletown. Coaches.....New York to Middletown.

TABLE 3 EASTBOUND

BINGHAMTON—NEW YORK

Hudson and Manhattan Tube Trains operate to and from Erie Railroad Station in Jersey City. Fare downtown, 8 cents; uptown, 10 cents. (Temporarily H. & M. uptown trains will terminate at 28th Street, main entrance on Sixth Avenue between 29th Street and 30th Street.)

Table with columns for Eastern Standard Time, train numbers (50, 52, 204, 6, 56, 58, 30, 6J, 60, 62, 206, 70, 28, 42, 44, 2, 700, 208, 208, 64, 34, 702, 38, 22, 22, 68, dt8, 10), and departure/arrival times for various stations from Binghamton, N.Y. to New York, N.Y. Includes notes like 'No Baggage Carried on this Train' and 'The Erie Limited'.

LOCAL PARLOR AND CLUB CAR EQUIPMENT

No. 8. Air-Conditioned Dining Lounge Car. Hornell to New York. Coaches. Chicago to New York. No. 10—Except Sundays. Air-Conditioned Sleeping Car. Hornell to New York. Coaches. Hornell to New York. No. 28—THE MOUNTAIN EXPRESS—Daily. Coaches. Binghamton to New York.

No. 34—Sundays only, July 9 to Aug. 27, Inc. (also Tuesdays, May 30, July 4 and Monday, Sept. 4) Parlor and Dining Cars. Deposit to New York. Coaches. Deposit to New York. No. 38—Sundays only, July 9 to Sept. 3, Inc. (also Tuesday July 4 and Monday, Sept. 4) Parlor and Dining Cars. Deposit to New York. Coaches. Deposit to New York. No. 42—Saturdays only, July 8 to Aug. 26, Inc. A. C. Parlor Car and Diner. Deposit to New York. Coaches. Deposit to New York.

No. 44—Sundays only, July 9 to Aug. 27, Inc. (also Tuesdays, May 30, July 4 and Monday, Sept. 4) Air-Conditioned Parlor Car. Deposit to New York. Diner. Deposit to New York. Coaches. Deposit to New York. No. 56—THE TUXEDO Parlor Car. Port Jervis to New York. (Except Sundays and Holidays) Erie Club Car. Port Jervis to New York. (Except Saturdays, Sundays and Holidays) Coaches. Port Jervis to New York.

TABLE 5 WESTBOUND

AKRON—CHICAGO

EASTBOUND

Miles from New York	Eastern Standard Time	I		du		Miles from Chicago	Central Standard Time	2		dt	
		Daily	Daily	Daily	Daily			Daily	Daily		
0.0	N. Y., West 23d St. Lv.	AM 8.35	PM 10.55			0.0	Chicago (Dearborn Sta.) . . . Ill. Lv.	PM 6.00	PM 10.00		
0.0	" Chambers St. "	8.40	11.30				(Polk and Dearborn Sts.)				
1.0	Jersey City "	9.00	12.05			6.3	Englewood, 63d Street. "	6.14	cp		
626.0	Akron Ohio "	12.50	5.05			20.6	Hammond Ind. "	6.40	10.40		
633.3	Barberton "		de			36.3	Crown Point "	7.05			
639.9	Wadsworth "					100.9	Rochester "	8.14			
644.3	Rittman "					142.6	Huntington Ar.	8.58	12.45		
676.5	Ashland "	1.54				142.6	Huntington Lv.	9.10	12.52		
693.2	Mansfield "	2.27				173.4	Decatur "	9.48			
708.6	Galion "	2.56					Eastern Standard Time				
729.6	Marion Ar.	3.22					Ohio City Ohio "	11.10			
							Spencerville "				
729.6	Marion Lv.	3.29	8.11			189.9	Lima "	11.53	3.22		
754.5	Kenton "		8.42			204.4	Kenton "		3.56		
781.5	Lima "	4.25	9.22			217.2	Marion Ar.	12.48	4.24		
794.3	Spencerville "					244.2					
808.8	Ohio City "					269.1	Marion Lv.	12.53	4.29		
							Galion "	1.24	4.59		
	Central Standard Time						Mansfield "	1.54	5.29		
825.3	Decatur Ind. "	4.22					Ashland "	2.25	5.56		
856.1	Huntington Ar.	4.55					Rittman "		6.34		
							Wadsworth "		6.45		
856.1	Huntington Lv.	5.02	10.02				Barberton "		6.57		
897.8	Rochester "	5.50					Akron Ar.	3.44	7.22		
962.4	Crown Point "	6.55									
978.1	Hammond "	7.15	12.15				Jersey City Ar.	7.20	11.45		
992.4	Englewood, 63d Street Ill. "	ax	ax				N. Y., Chambers St. "	7.34	11.57		
998.7	Chicago (Dearborn Sta.) Ar.	7.55	1.00				" West 23d St. Ar.	7.55			
		AM	AM					PM	PM		

TABLE 6 NEW YORK AND BUFFALO

WESTBOUND Read Down			Miles from New York	Eastern Standard Time	EASTBOUND Read Up		
I	7-477	5			2	10	6
Daily	Daily Ex. Sun.	Daily			Daily	Daily Ex. Sun.	Daily
AM	PM	PM	0.0	Lv. N. Y., West 23d St. Ar.	PM	AM	AM
ef 8.35	au 10.55	7.10	0.0	" Chambers St.	7.55		8.05
8.40	av 11.30	7.40	0.0	" Jersey City	7.34	4.27	7.54
9.00	12.05	8.00	1.0	Lv. Binghamton Ar.	7.20	4.15	7.40
2.25	5.57	1.45	215.1	" Endicott	1.43	10.25	2.00
2.38	6.09		223.7	" Waverly	1.30	10.14	ex
3.18	6.54		256.2	" Elmira	12.51	9.33	1.12
3.44	7.29	2.58	273.8	" Corning	12.30	9.10	12.50
4.09	8.02	3.23	291.2	Ar. Hornell Lv.	12.06	8.40	12.24
5.02	8.57	4.14	332.3	Lv. Hornell Ar.	11.14	7.30	11.31
5.17	9.15	4.30	332.3	" Arkport	11.00	7.20	11.15
	9.24	4.38	338.0	" Burns		7.09	
			340.7	" Canaseraga	10.28	6.57	
	9.36	4.48	344.9	" Garwoods			
			347.2	" Swains		6.49	
	f9.43		349.2	" Dalton		6.40	
	9.53	ac	356.3	" Washington Hunt		6.36	
	9.58		358.5	{ Portage		6.30	
	10.06		362.5	{ Letchworth Park			
			366.4	" Castile	9.59	6.23	bt 10.22
6.07	10.15	bt 5.23	369.1	" Silver Springs	9.53	6.17	10.15
6.13	10.22	5.28	372.2	" Rock Glen			
	10.27		376.4	" Warsaw	9.41	6.05	10.03
6.24	10.36	5.39	382.2	" Dale		5.56	
	f10.44		386.5	" Linden			
	10.51		393.6	" Attica	9.14	5.39	9.35
6.46	11.03	6.05	397.5	" Griswolds		5.32	
		f6.12	399.7	" Darien Center		5.27	
	11.13	6.17	405.3	Alden (Black Water Baths)	8.49	5.17	he
7.06	11.21	6.25	408.2	" Marilla		5.11	
		6.30	409.5	" Town Line		5.07	
		6.33	414.2	" Lancaster		4.59	
	11.32	6.40	415.5	" Depew		4.56	
		6.43	422.1	" East Buffalo		4.45	
		6.53	425.2	Ar. Buffalo Lv.	8.20	4.35	8.45
7.35	11.55	7.05		(Lehigh Valley Terminal)	AM	PM	PM

BLACK WATER BATHS, ALDEN, N. Y.

An all year resort where sufferers from rheumatism and nervous ailments have found the Black Water Baths beneficial and curative. Alden is located 20 miles east of Buffalo on the Erie Railroad.

HOTELS AT ALDEN, N. Y.

- Empire State Hotel
- Original Black Water Baths and Hotel
- Alden Black Water Sanatorium

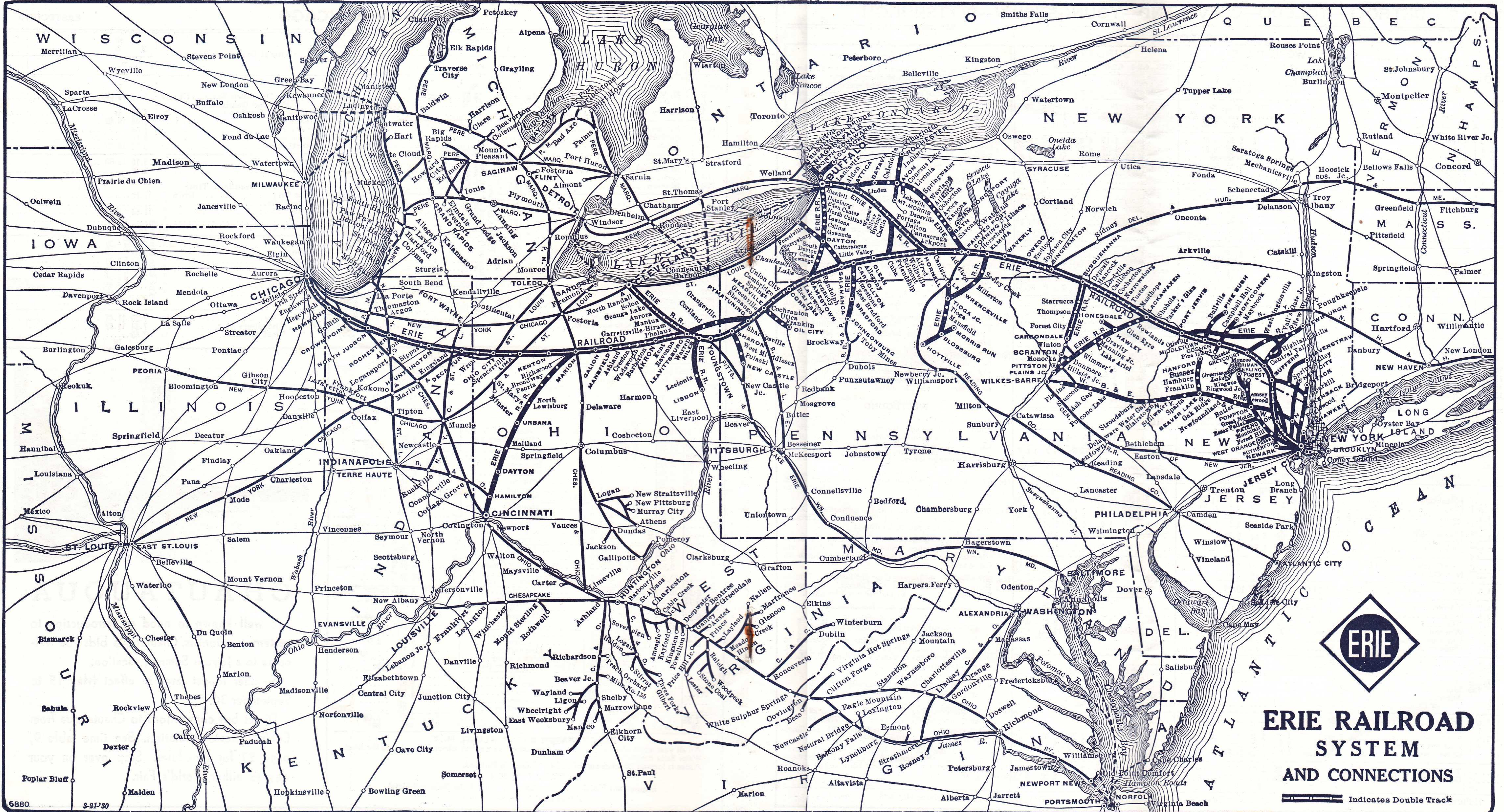


CHAUTAUQUA

Too well known to need an introduction to eastern vacationists, Chautauqua bids you welcome to a joyous Summer vacation.

Summer tourist fares in effect May 15 to September 30.

Direct bus connections to Chautauqua from Erie's Jamestown Station. See time table 9, page 27 for schedules. Stop over on your way to either World's Fair.



ERIE RAILROAD SYSTEM AND CONNECTIONS

Indicates Double Track

TABLE 7 DETROIT—TOLEDO—CLEVELAND—YOUNGSTOWN—PITTSBURGH

Miles from Cleveland	Eastern Standard Time	EASTBOUND											
		WEEK-DAYS						SUNDAYS					
		688	624	626	6	628	686	688	624	626	6	686	620
		Ex. Sun.	Ex. Sun.	Ex. Sun.	Ex. Sun.	Ex. Sun. & Hol.	Ex. Sun.	Sun. only	Sun. only	Sun. only	Sun. only	Sun. only	Sun. only
		AM	AM	AM	PM	PM	PM	AM	AM	AM	PM	PM	PM
	DetroitLv.	12.30	8.00	1.15	12.30	8.00	1.15
	ToledoLv.	2.13	5.05	9.45	3.00	2.13	5.05	9.45	3.00
0.0	ClevelandLv.	4.25	8.00	1.15	4.00	5.30	6.00	4.25	8.00	1.15	4.00	6.00	9.30
3.3	East 55th Street.....	8.07	1.23	4.08	5.38	6.08	8.07	1.23	4.08	6.08	9.40
5.6	E. 93d St., Cleveland.....	8.12	1.27	na	5.43	hv	8.12	1.27	na	hv	9.45
10.7	North Randall.....	5.52
15.8	Solon.....	ne	5.59	10.00
20.4	Geauga Lake.....	6.05	10.05
23.6	Aurora.....	ne	6.10	10.10
30.0	Mantua.....	dc	6.18	dc	10.17
34.2	Jeddoe.....	6.24
36.7	Garrettsville-Hiram.....	8.46	2.02	6.30	8.46	2.02	10.28
40.3	Mahoning.....	6.36
45.3	Phalanx.....	6.42
49.4	Leavittsburg.....	6.49
52.6	Warren.....	5.37	9.05	2.22	5.08	6.57	7.09	5.37	9.05	2.22	5.08	7.09	10.50
57.7	Niles.....	er	9.13	2.30	es	7.23	7.20	er	9.13	2.30	es	7.20	11.00
61.9	Girard.....	7.33	11.08
66.5	YoungstownAr.	6.00	9.25	2.45	5.30	7.45	7.35	6.00	9.25	2.45	5.30	7.35	11.17
66.5	YoungstownLv.	6.10	9.30	2.50	7.40	6.10	9.30	2.50	7.40
84.2	New CastleAr.	6.34	9.55	3.14	8.02	6.34	9.55	3.14	8.02
	New Castle (Wash.St.) ec Ar.	6.49	10.07	3.26	8.14	6.49	10.07	3.26	8.14
95.5	Ellwood City (ed).....	cy7.00	10.16	3.33	The Lake Cities	8.22	cy7.00	10.16	3.33	The Lake Cities	8.22
102.2	{ Beaver Falls..... } { New Brighton..... }	cy6.56	10.18	3.36	The Lake Cities Will not run Sundays and Holidays (See Note Below)	8.25	cy6.56	10.18	3.36	The Lake Cities	8.25
105.6	Beaver.....	cy7.01	10.24	3.41		8.31	cy7.01	10.24	3.41		8.31
112.3	Aliquippa.....	cy7.10	10.33	3.50		8.40	cy7.10	10.33	3.50		8.40
120.8	Coraopolis.....	cy7.20	10.44	4.00		8.50	cy7.20	10.44	4.00		8.50
131.4	PittsburghAr.	7.35	11.00	4.15	9.05	7.35	11.00	4.15	9.05

AIR-CONDITIONED TRAINS
Air-conditioned equipment has been assigned to regular sections of trains as shown herein. Every effort will be made to provide it as specified, but the right is reserved to employ non-air-conditioned cars as necessitated by volume of traffic or emergencies.

EQUIPMENT
Detroit, Toledo, Cleveland, Youngstown, Pittsburgh Trains.
★Indicates Air-Conditioned Cars

EASTBOUND
No. 6—Daily. ★Sleeping Car (10 Section 2 Compartment and Drawing Room Car) Cleveland to New York. ★Coach, Cleveland to New York.
No. 620—Sundays only. Coaches, Cleveland to Youngstown and Sharon.
No. 624 — Daily. ★Pullman Parlor-Lounge-Diner, Cleveland to Pittsburgh. ★Coach, Cleveland to Pittsburgh.
No. 626—Daily. ★Pullman Parlor Car, Cleveland to Pittsburgh. ★Coach, Cleveland to Pittsburgh.
No. 686—Daily. ★Sleeping Car for Parlor Car Service and ★Coaches, Detroit to Pittsburgh, via Cleveland. Dining Lounge Car, Cleveland to Pittsburgh.
No. 688—Daily. ★Sleeping Car (12 Section and Drawing Room), Chicago to Pittsburgh. ★Sleeping Car (12 Section-2 Double Bedrooms), Detroit to Pittsburgh. Through Coaches, ★Chicago and ★Detroit to Pittsburgh, via Cleveland.

Miles from Pittsburgh	Eastern Standard Time	WESTBOUND											
		WEEK-DAYS						SUNDAYS					
		629	5	685	623	679	687	619	5	685	623	679	687
		Ex. Sun. & Hol.	Ex. Sun.	Ex. Sun.	Ex. Sun.	Ex. Sun.	Ex. Sun.	Sun. only	Sun. only	Sun. only	Sun. only	Sun. only	Sun. only
		AM	AM	PM	PM	PM	PM	AM	AM	PM	PM	PM	PM
	PittsburghLv.	8.40	12.30	5.15	9.00	11.30	8.40	12.30	5.15	9.00	11.30
10.6	Coraopolis.....	8.54	12.45	5.29	9.14	11.44	8.54	12.45	5.29	9.14	11.44
19.1	Aliquippa.....	9.03	12.54	5.38	9.23	11.53	9.03	12.54	5.38	9.23	11.53
25.8	Beaver.....	9.11	1.01	5.46	9.31	12.01	9.11	1.01	5.46	9.31	12.01
29.2	{ Beaver Falls..... } { New Brighton..... }	9.16	1.06	5.51	9.36	12.06	9.16	1.06	5.51	9.36	12.06
45.7	Ellwood City (ed).....	9.17	1.07	5.52	9.28	9.17	1.07	5.52	9.28
47.2	New Castle (Wash.St.) Lv. ec	9.26	1.18	5.48	9.41	12.17	9.26	1.18	5.48	9.41	12.17
	New Castle	9.38	1.30	6.14	9.58	12.29	9.38	1.30	6.14	9.58	12.29
64.9	YoungstownAr	10.05	2.00	6.45	10.25	1.00	10.05	2.00	6.45	10.25	1.00
64.9	YoungstownLv	5.55	10.20	2.05	6.50	10.29	1.05	8.30	10.20	2.05	6.50	10.29
69.5	Girard.....	6.04
73.7	Niles.....	6.12	bm	2.19	7.05	10.42	dp	8.44	bm	2.19	7.05	10.42
78.8	Warren.....	6.27	10.44	2.29	7.21	10.51	1.25	8.54	10.44	2.29	7.21	10.51
82.0	Leavittsburg.....	6.33
86.1	Phalanx.....	6.39	9.03
91.1	Mahoning.....	f6.45
94.7	Garrettsville-Hiram.....	6.52	nh	nf	7.41	hf	9.14	nh	nf	7.41	hf
97.2	Jeddoe.....	f6.57
101.4	Mantua.....	7.08
107.8	Aurora.....	7.18	9.32
111.0	Geauga Lake.....	7.23
115.6	Solon.....	7.31
120.7	North Randall.....	7.39
125.8	E. 93d St., Cleveland.....	7.47	11.36	3.25	8.20	11.44	9.55	11.36	3.25	8.20	11.44
128.1	East 55th Street.....	7.53	11.41	3.31	8.26	hu	10.01	11.41	3.31	8.26	hu
131.4	ClevelandAr	8.03	11.50	3.40	8.35	11.58	2.30	10.10	11.50	3.40	8.35	11.58	2.30
	ToledoAr	2.30	6.10	1.00	2.50	5.40	2.30	6.10	1.00	2.50	5.40
	DetroitAr	4.05	7.50	5.00	7.25	4.05	7.50	5.00	7.25

WESTBOUND
No. 5—Daily. ★Sleeping Car (10 Section 2 Compartment and Drawing Room Car) New York to Cleveland. ★Pullman Parlor Car, Pittsburgh to Cleveland. ★Coach, Pittsburgh to Cleveland.
No. 619—Sundays only. Coaches, Youngstown to Cleveland.
No. 623—Daily. ★Pullman Parlor-Lounge-Diner, Pittsburgh to Cleveland. ★Coach, Pittsburgh to Cleveland.
No. 679—Daily. ★Sleeping Car (12 Section and Drawing Room), Pittsburgh to Chicago. ★Through Coaches, Pittsburgh to Chicago.
No. 685—Daily. ★Sleeping Car for Parlor Car Service and ★Coaches, Pittsburgh to Detroit, via Cleveland. Dining Lounge Car, Pittsburgh to Cleveland.
No. 687—Daily. ★Sleeping Car (12 Section-2 Double Bedrooms), Pittsburgh to Detroit. ★Through Coaches, Pittsburgh to Detroit via Cleveland.

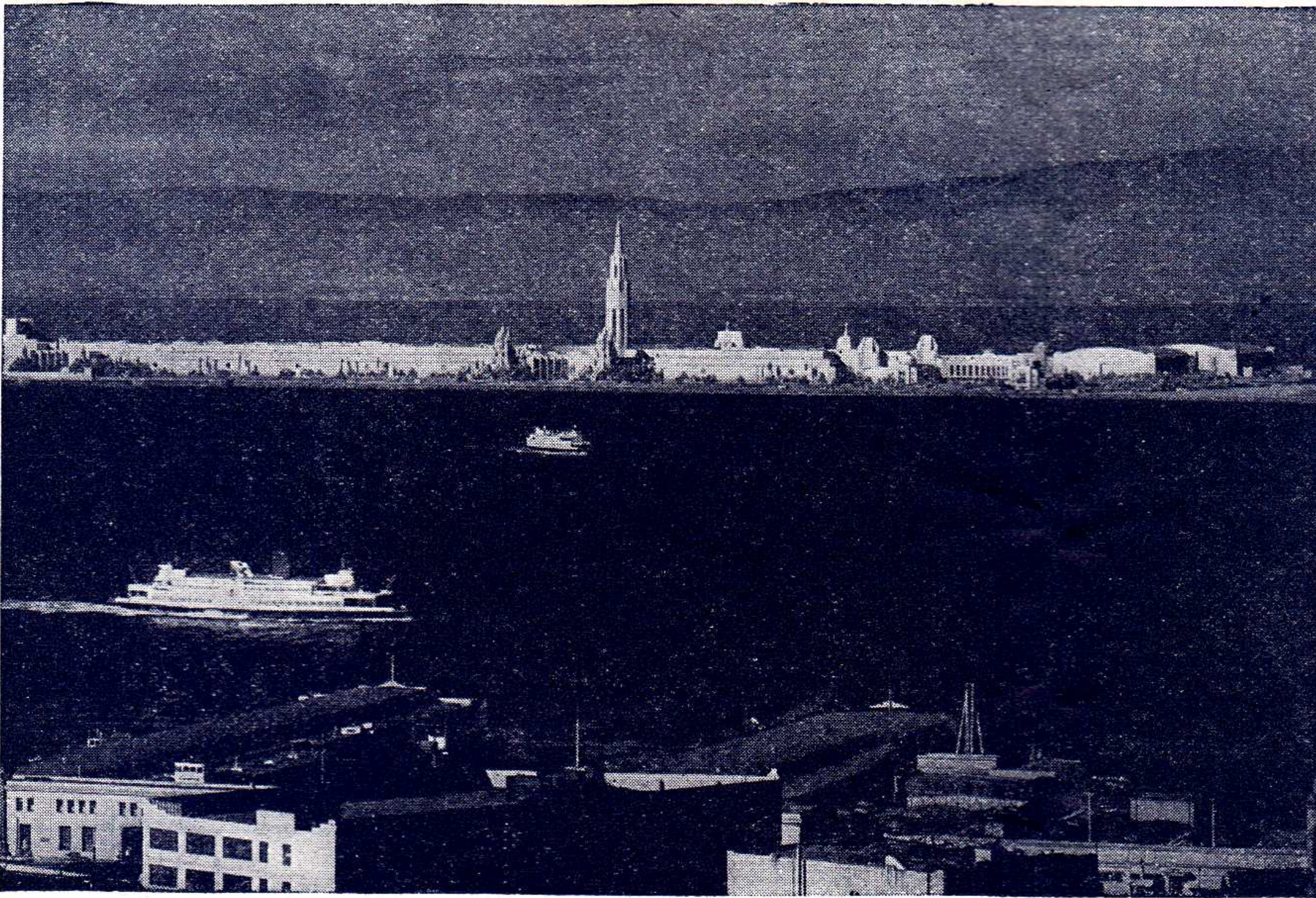
★Cleveland-Pittsburgh Sleeping Car
The Cleveland-Pittsburgh sleeping car operates to and from Union Terminal Cleveland via New York Central (via Ashtabula) to Youngstown, and P. & L. E. Railroad on following schedule:
Eastbound
Lv Cleveland (Union Terminal) 2:10 AM
Ar Pittsburgh (P&LE Station) 7:15 AM
Westbound
Lv Pittsburgh (P&LE Station) 10:35 PM
Ar Cleveland (Union Terminal) 7:15 AM
Sleeper open for occupancy at 9:30 P. M. at Cleveland and 10:00 P. M. at Pittsburgh.
Tickets reading via Erie Railroad between Cleveland and Youngstown, and P. & L. E. Railroad between Youngstown and Pittsburgh, will be honored in this sleeping car.

Holidays in the above table refers to the observance of New Year's Day, Memorial Day, Independence Day, Labor Day, Thanksgiving Day and Christmas Day.

For Explanation of Reference Marks and Notes, see Pages 5 and 6.

For Parlor, Sleeping and Dining Service of Through Trains, see Pages 9 and 10.

YOU'LL ENJOY THE SAN FRANCISCO WORLD'S FAIR



TREASURE ISLAND VIEWED FROM SAN FRANCISCO'S EMBARCADERO

Come to Treasure Island—on a journey through the Western vacationland that will give you the gayest, most memorable holiday of your lifetime. You'll climax your trip at the gateway of California's Exposition—a mile-square Magic City filled with the glamor of the Orient and the rollicking hospitality of the West. Thirty Pacific nations tell their dramatic story here. America's sovereign states, miracles of science and industry, and masterpieces of world art are on parade at this \$50,000,000 Golden Gate International Exposition. Then the Gayway, with the merriment of shows, thrill rides and oddities... the never-ending pageantry of millions of flowers, and the unforgettable spectacle of Treasure Island glittering at nightfall. Plan now to be the Guest of the West this year.

SEE BOTH FAIRS

See America from coast to coast and border to border, on one

"GRAND CIRCLE" RAIL TICKET

\$90 in Coaches--\$135 in Pullmans (plus space charge)

Start from your home town--visit both the New York and the San Francisco World's Fairs--and return. Your own choice of routes; stopovers anywhere! Get the full facts from your ticket agent about *the greatest travel bargain in history!*

SAN FRANCISCO WORLD'S FAIR

NEW YORK WORLD'S FAIR

TABLE 8 BUFFALO—JAMESTOWN

WESTBOUND Read Down		Eastern Standard Time		EASTBOUND Read Up	
519 Daily	Mls.			516 Daily	
PM 5.30	0.0	Lv. Buffalo (Lehigh Valley Terminal)	Ar	10.55	
5.48	7.4	" Blasdell	"	10.37	
6.00	13.3	" Hamburg	"	10.27	
hu	14.4	" Water Valley	"		
hu	16.8	" Eden Valley	"	f10.21	
6.11	19.1	" Eden Center	"	10.16	
6.18	23.4	" North Collins	"	10.08	
6.24	27.3	" Lawtons	"	10.01	
6.30	30.4	" Collins (State Hospital)	"	9.55	
6.38	33.4	" Gowanda	"	9.50	
6.52	38.0	" Dayton	"	9.38	
	39.8	" Markhams	"		
7.02	43.3	" South Dayton	"	9.29	
7.10	48.3	" Cherry Creek	"	9.21	
7.17	52.6	" Conewango	"	9.15	
hu	60.6	" Kennedy	"	9.04	
7.35	66.4	" Falconer	"	8.56	
7.42	69.5	Ar. Jamestown	Lv	8.50	AM

TABLE 9 NEW YORK—CHAUTAUQUA—CHICAGO

(Via Jamestown and BUS of West Ridge Transportation Co.)

WESTBOUND Read Down			EASTBOUND Read Up		
7-Bus Daily	1-Bus Daily	5-Bus Daily Ex. Su. & Hol.	EASTERN STANDARD TIME		
PM 10.55		7.10	Lv. New York, West 23rd St.	Ar	8.05
11.30		7.40	Lv. New York, Chambers St.	Ar	11.57
12.05		8.00	Lv. Jersey City	Ar	11.45
12.24		7.16	Ar. Jamestown	Lv	12.15
12.30		8.45	Lv. Jamestown	Ar	11.15
12.58		9.18	Ar. Chautauqua	Lv	10.42
AM 10.42	PM 5.02		Lv. Chautauqua	Ar	12.58
11.15	5.30		Ar. Jamestown	Lv	12.30
12.24	8.03		Lv. Jamestown	Ar	12.15
			Ar. Cleveland	Lv	
5.05	12.50		Ar. Akron	Lv	7.22
			Ar. Chicago	Lv	10.00
1.00	7.55				6.00
AM	AM				PM

Tickets sold and Baggage checked through to Chautauqua. Hand baggage checked without charge. Trunks checked at charge of 25c each.

STOP-OVER PRIVILEGES

Niagara Falls

Passengers holding tickets reading "via Erie Railroad" from or through Elmira to or through Youngstown or vice versa may exercise their privilege of going by way of Buffalo and stopping over for as long as ten days at Niagara Falls, but not beyond the final limit of their ticket. Upon request, the Erie Ticket Agent at Buffalo will issue without charge a round trip ticket between Buffalo and Niagara Falls. Frequent service via busses of International Ry. direct from Buffalo Terminal.

Other Points

On local one-way tickets sold at regular fares, local round-trip tickets sold at double the one-way fares, All-Year, Summer and Winter Tourist Tickets, stop-overs will be allowed on going and return trips within final limit of tickets at any Erie Railroad Station en route upon notice to conductor and without deposit of ticket.

TABLE 10 NEW YORK—SALAMANCA—BRADFORD—CHICAGO

WESTBOUND Read Down			Via Salamanca and BUS of Allegany Motor Coach Co., Inc. (See Note "X" Below)			EASTBOUND Read Up		
7 Daily	ht 5- 557 Daily	1-Bus Daily	EASTERN STANDARD TIME			Bus-2 Daily	Bus-8 Daily	ht 560- 6 Daily
	PM 7.10	ef 8.35	Lv. New York, West 23rd St.	Ar	7.55	PM 7.55	PM 11.57	AM 8.05
	7.40	8.40	Lv. New York, Chambers St.	Ar	7.34	11.57	7.54	
	8.00	9.00	Lv. Jersey City	Ar	7.20	11.45	7.40	
	6.20	7.08	Ar. Salamanca	Lv	9.15	1.18	9.34	
	6.45	ad 7.10	Lv. Salamanca	Ar	dh 8.55	ad 10.45	9.05	
	7.08	ad 7.50	Lv. Limestone	Ar	dh 8.15	ad 10.02	8.30	
	7.20	AM	Ar. Bradford	Lv	AM	AM	PM	
AM 10.02		PM 5.42	Lv. Bradford	Ar	PM 12.05	PM 2.50	PM 11.45	
10.45		6.20	Ar. Salamanca	Lv	11.20	2.11	dh 11.15	
11.36		7.15	Lv. Salamanca	Ar	9.10	1.11	9.27	
12.24		8.03	Ar. Jamestown	Lv	8.31	12.15	8.48	
3.27		11.09	Ar. Youngstown	Lv	5.12	8.50	5.38	
			Ar. Cleveland	Lv			4.00	
5.05		12.50	Ar. Akron	Lv	3.44	7.22		
			Ar. Chicago	Lv	6.00	10.00		
1.00		7.55			PM	PM	PM	
AM		AM						

Trains 5-557 and 560-6 carry through sleeping car between Bradford and New York. Sleeper on train 557 will be parked at Bradford for occupancy until 8.00 A. M. Busses leave as follows: (running time approximately 45 minutes.) Lv. Salamanca for Bradford, 11.20 A.M., 2.11 P.M., 3.55 P.M., 5.40 P.M., 7.10 P.M., 10.22 P.M. Lv. Bradford for Salamanca, 8.17 A.M., 10.02 A.M., 2.02 P.M., 3.47 P.M., 5.02 P.M., 5.42 P.M. BAGGAGE CHECKED TO BRADFORD—Baggage will be handled only on Trains 557 and 560 between Salamanca, N. Y., and Bradford, Pa.

TABLE 11 Lackawaxen—Honesdale

West-bound Read Down	Miles	EASTERN STANDARD TIME		East- bound Read Up
9- 271				28- 270
Daily				Daily
AM 7.30	0.0	Leave N. Y., W. 23d St.	Arrive	PM 6.05
8.00	0.0	N. Y., Chambers St.		5.54
8.15	1.0	Jersey City		5.40
11.27	111.1	Ar. Lackawaxen	(Lv. Ar.)	2.28
2.05		Lv. Rowlands		1.32
2.13	4.1	Glen Eyre		1.24
f2.21	7.4	Shimers Rock Cut		f1.15
f	8.9	Kimbles		f
2.29	11.6	Wellwood Ave		1.06
f2.37	15.0	Hawley		f12.57
2.45	15.8	White Mills		12.53
2.53	19.5	East Honesdale		12.41
f3.02	23.9	Honesdale		12.33
3.05	24.8	Arrive Honesdale	Leave	12.30
PM				PM

Passengers to and from Honesdale can also make connection via Narrowsburg and busses of the Wayne County Taxicab Co.

TRAVEL IN THE AMERICAS

SOUTH AMERICA
Every other Saturday
From New York to—
Barbados
Rio de Janeiro
Santos
Montevideo
Buenos Aires
Trinidad

38 DAY CRUISES
Round South America Tours
(East and West Coasts)

"THE GOOD NEIGHBOR FLEET"
American Republics Line

MOORE-McCORMACK LINES, Inc., Agents
Five Broadway, New York City



NEW YORK—NEWBURGH
(Via Harriman and bus)
NEW YORK—MONTICELLO—LIBERTY
(Via Middletown and bus)
NEW YORK—KENOZA LAKE—JEFFERSONVILLE
(Via Callicoon and bus)
NEW YORK—HONESDALE
(Via Narrowsburg and bus)

For above services, ask Ticket Agents for Time Table Form 2

NOTE "X" In connection with the bus service the Erie Railroad Company acts as agent only and is not responsible beyond its own line, except as such responsibility may be imposed by law with respect to baggage.

TABLE 12 ELMIRA-ROCHESTER

Table with columns for Westbound Read Down (5-463, 7-467), Miles, Eastern Standard Time, and Eastbound Read Up (468-8, 464-8). Includes departure and arrival times for stations like Elmira, Corning, and Rochester.

TABLE 13 SALAMANCA—DUNKIRK

Table with columns for Westbound Read Down (5-527), Miles, Eastern Standard Time, and Eastbound Read Up (540). Includes departure and arrival times for stations like Salamanca, Buffalo, and Dunkirk.

LOCATE YOUR PLANT WHERE YOU CAN LOCATE MORE PROFITS. Ask us about industrial buildings and vacant land on Erie rails. GEO. F. WESTON Industrial Commissioner Erie Railroad, Midland Bldg., Cleveland, O.

TABLE 14 ROCHESTER—MOUNT MORRIS

Table with columns for EASTBOUND Read Down (N.B. 420, 440, 416, 428, 468) and WESTBOUND Read Up (N.B. 401, 403, 467, 409). Includes departure and arrival times for stations like Rochester, Industry, and Mt. Morris.

TRAINS between Mt. Morris and Avon will stop on signal at Shakers, Jones, Cuylerville, Jaycocks, Seven Nations, Huston, South Avon, Pierces, Fowler, Ashantee, Linden Street and Spring Street and between Avon and Rochester, except Trains 467, 468 at Wiards, Elm Place, Meadowwood, Gannett, Blair, Martin, Brooks, Fenners, Baileys, Crittenden, Westfall and South Park. Note-HOLIDAYS in above tables refer to the observance of New Year's Day, Decoration Day, Independence Day, Labor Day, Thanksgiving Day and Christmas Day.

WESTERN UNION

TELEGRAMS AND CABLEGRAMS accepted at all telegraph offices of this railroad. DAY LETTERS—50 words for 1 1/2 times the cost of a 10 word telegram. NIGHT LETTERS—25 words for the former price of ten words. RESERVATION MESSAGES—Reserve travel tickets and accommodations and hotel rooms by telegraph—only 35 cents (for 15 words). TOURATE MESSAGES—When you travel telegraph the folks at home or at the office the facts they want to know about progress of your trip—only 35 cents (for 15 words).

HUDSON AND MANHATTAN TUBE TRAINS SCHEDULE OF RUNNING TIME BETWEEN ERIE R. R. JERSEY CITY TERMINAL AND

Table showing running times for Downtown New York (Cortlandt St.) and Uptown New York (28th Street and 6th Ave, etc.). Includes note: Allow 10 Minutes additional for connections. Fares—Downtown 8 cents. Uptown 10 cents.

ERIE R. R. FERRY TIME TABLE EASTERN STANDARD TIME CHAMBERS STREET FERRY Ferry Running Time, 9 Minutes WEEK DAYS

Table with columns: Leave New York for Jersey City and Leave Jersey City for New York. Includes departure and arrival times for various times of day (AM, PM, Noon, Mid.).

a Will not run on Holidays. h Holidays only. m Except Saturdays and Holidays.

SUNDAYS

Table showing Sunday departure and arrival times for Chambers Street Ferry between New York and Jersey City.

TWENTY-THIRD STREET FERRY

Ferry Running Time, 20 Minutes WEEK DAYS

Table with columns: Leave New York for Jersey City and Leave Jersey City for New York. Includes departure and arrival times for various times of day (AM, PM, Noon, Mid.).

SUGGESTIONS

• **FREE BAGGAGE SERVICE.** Let us check your baggage to destination and relieve you of the trouble and inconvenience of carrying it to and from the train—150 pounds free on each adult ticket.

If you desire delivery to your residence or hotel at destination, ask the checking agent for information regarding delivery service and rates.

• **INTERCHANGEABLE SCRIP COUPON TICKETS** issued in \$15.00 and \$30.00 denominations are accepted on trains or at ticket offices in payment of rail passage as well as sleeping and parlor car accommodations, and also as payment for meals in restaurant cars.

• **PREPAID ORDERS.** For the convenience of patrons who do not wish to send money by mail, Erie Railroad ticket agents are prepared to sell prepaid ticket orders for the delivery of transportation, rail and Pullman, from practically all points in the United States, Canada and Mexico. These orders may also include the furnishing of cash.

In emergencies arrangements may be made for the delivery of transportation by telegraph or telephone without charge except when commercial wires are used.

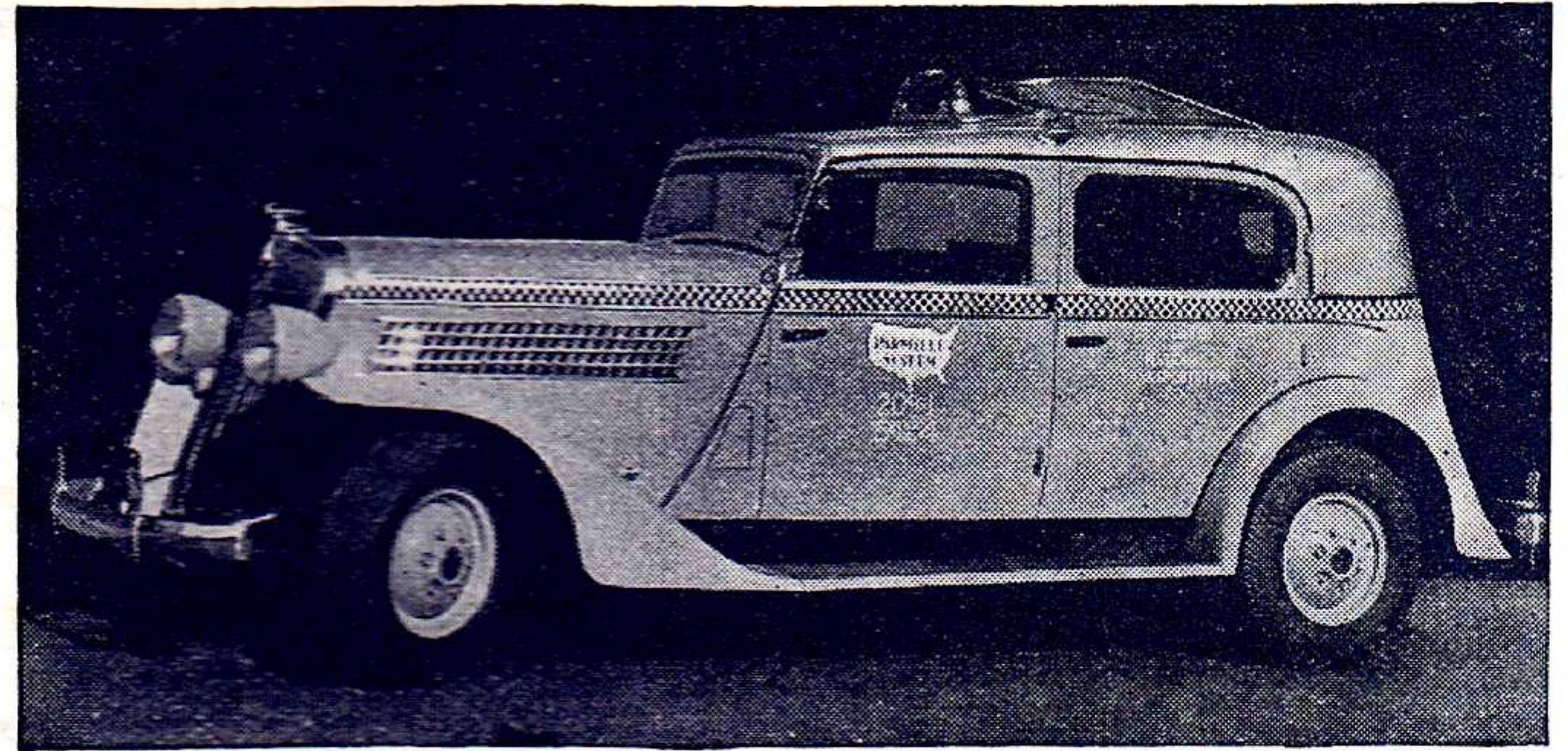
• **BAGGAGE INSURANCE** by the St. Paul Fire & Marine Insurance Co. may be purchased at principal Erie ticket offices. It insures your baggage and personal effects for your entire trip anywhere in the world. Minimum premium twenty-five cents. The ticket agent can give you full particulars.

• **ERIE PLAYING CARDS** are on sale at our ticket offices, excepting in Ohio. Bridge sets one dollar, single decks fifty cents.

• **SPECIAL TOURS AND CONVENTIONS.** Our services are at the disposal of clubs, lodges and other organizations in arranging for trips to conventions and gatherings of all sorts. Concerning fares, train schedules and travel plans, consult or write to any Erie Ticket Agent, or any of the Passenger Department representatives listed on pages 37 & 38 of this folder.

ERIE TRAIN-CAB SERVICE

Takes you from Erie Terminal directly to your door in New York or Brooklyn



ONE Person **90c** TWO Persons **\$1.25** THREE or more **\$1.50**

Thousands have used and praised Erie Train-Cab Service.

Strangers arriving at Erie Terminal, Jersey City are taken all the way to their destination in New York or Brooklyn. They never get "lost" and are never overcharged. Women accompanied by children appreciate this service. Even seasoned travellers enjoy the comfort of settling down in their own taxicab and forgetting about bags and car changes.

The fares shown above apply from our terminal to any place on Manhattan 110th Street and South, also to any point in the Brooklyn business district.

Service beyond the prescribed zones is metered from the zone limits and charged for at regular rates.

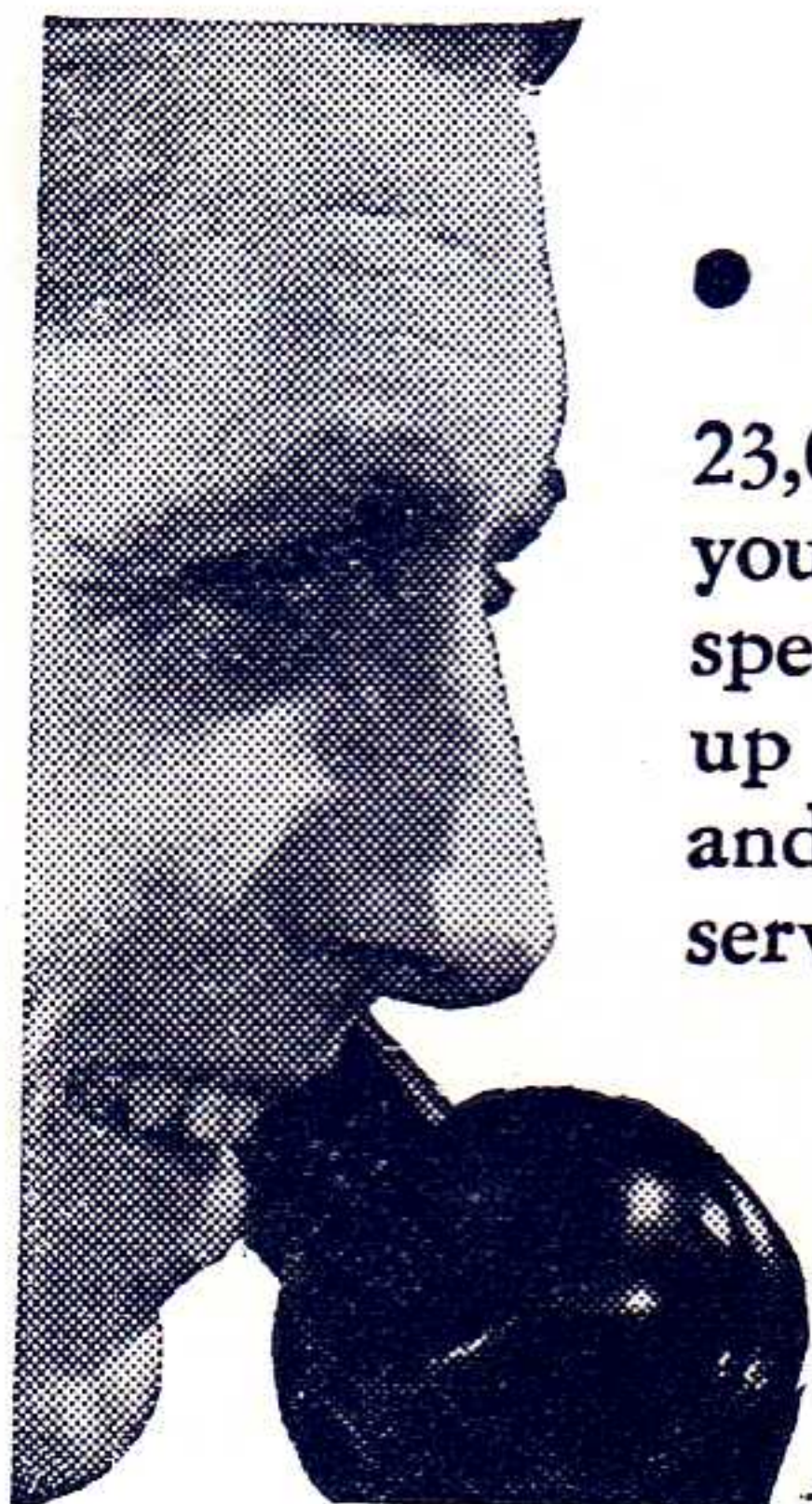
Train-Cab service is available to all who travel from stations west of Middletown, N. Y.

You can buy the Train-Cab coupon with your rail ticket at the ticket office or from the conductor on any through train and you will find your taxicab awaiting the arrival of your train at Jersey City.

Ask the conductor or ticket agent for details.

WIN A FREE ROUND-TRIP TO EITHER FAIR:

Just for naming a new Pullman car, you may win a thrilling free round trip by rail and Pullman for two people to either the New York or San Francisco Fair! And there's also a chance to win \$200.00 in cash spending money! Nothing to buy! No letters to send in! Contest is absolutely free. For full details and free entry blank, see or phone any Erie ticket agent. Do it today!

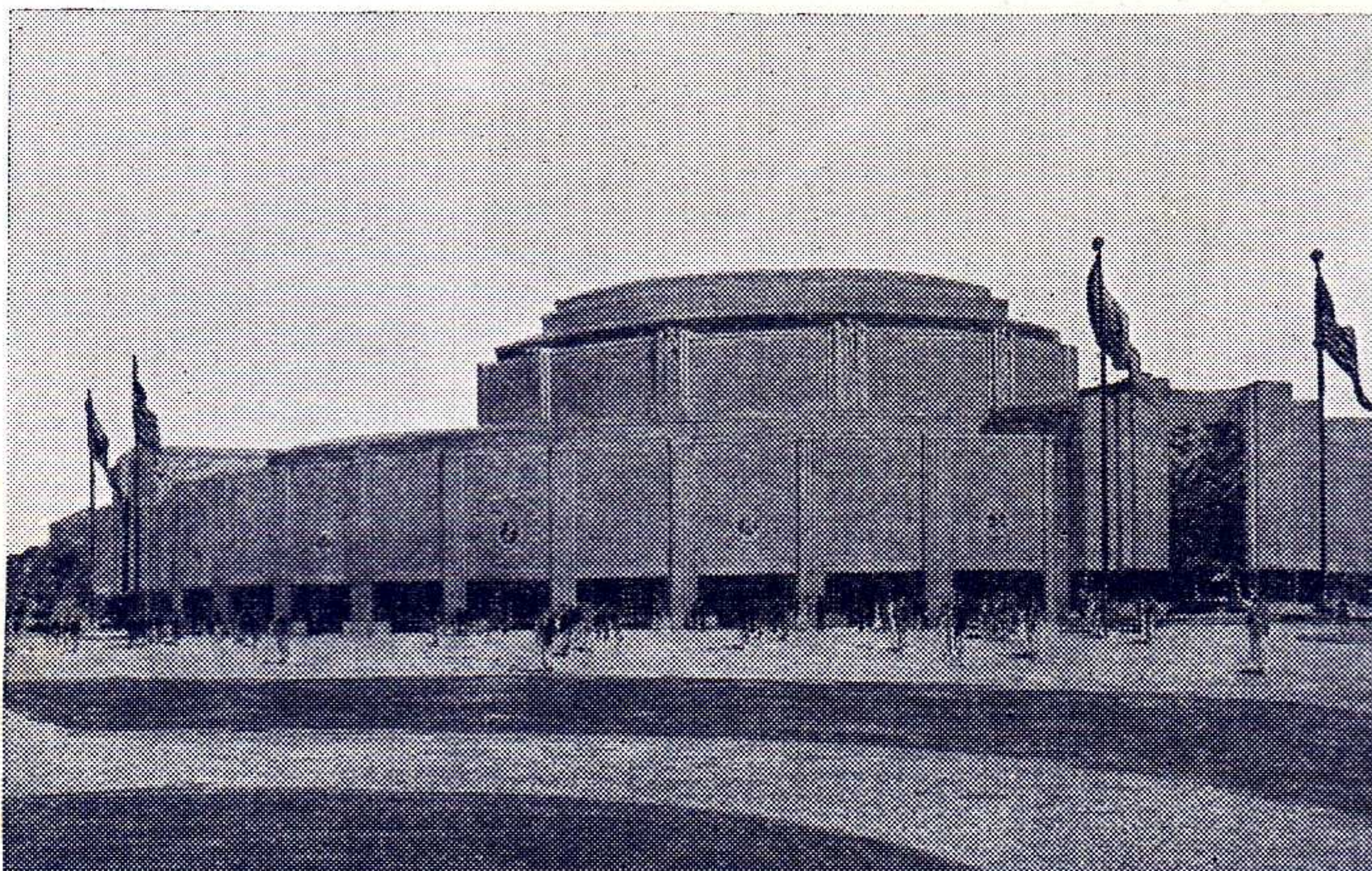


...CONVENIENT

23,000 nation-wide offices of Railway Express at your service, ready to ship your packages at top speed. One *complete*, door-to-door service. Pick-up and delivery at no *extra charge* in all cities and principal towns. Low, economical rates. For service merely phone our nearest office.

RAILWAY EXPRESS
AGENCY INC.

1839—A CENTURY OF SERVICE—1939



RAILROADS AT THE WORLD'S FAIR

The World's Fair Railroad Exhibit, sponsored by 27 Eastern railroads, will have three outstanding features: RAILROADS ON PARADE, RAILROADS AT WORK, and RAILROADS IN BUILDING.

There will also be track exhibits of foreign and American trains and equipment. The railroad building itself is the largest on the Fair site.

RAILROADS ON PARADE is a stage presentation of the story of transport development in America. It will be presented in a great outdoor theatre, with a seating capacity of 4,000, on a stage designed to accommodate two standard-gauge railway tracks, highways for traffic, a cast of 200, and a channel for the passage of early watercraft.

RAILROADS AT WORK will be housed in a theatre within the building. On a huge scenic diorama, 160 feet wide and 40 feet deep—designed to embody the topographical features of eastern states—with 500 model locomotives and cars, operating on 3,800 feet of miniature track, spectators will see the operation in detail of a complete railway system.

RAILROADS IN BUILDING will picture in detail the construction of railroads and building of equipment, from forest clearing for a right-of-way to the completed railway system. The interior of the "mountain" will house the varied exhibits of the supply industry.

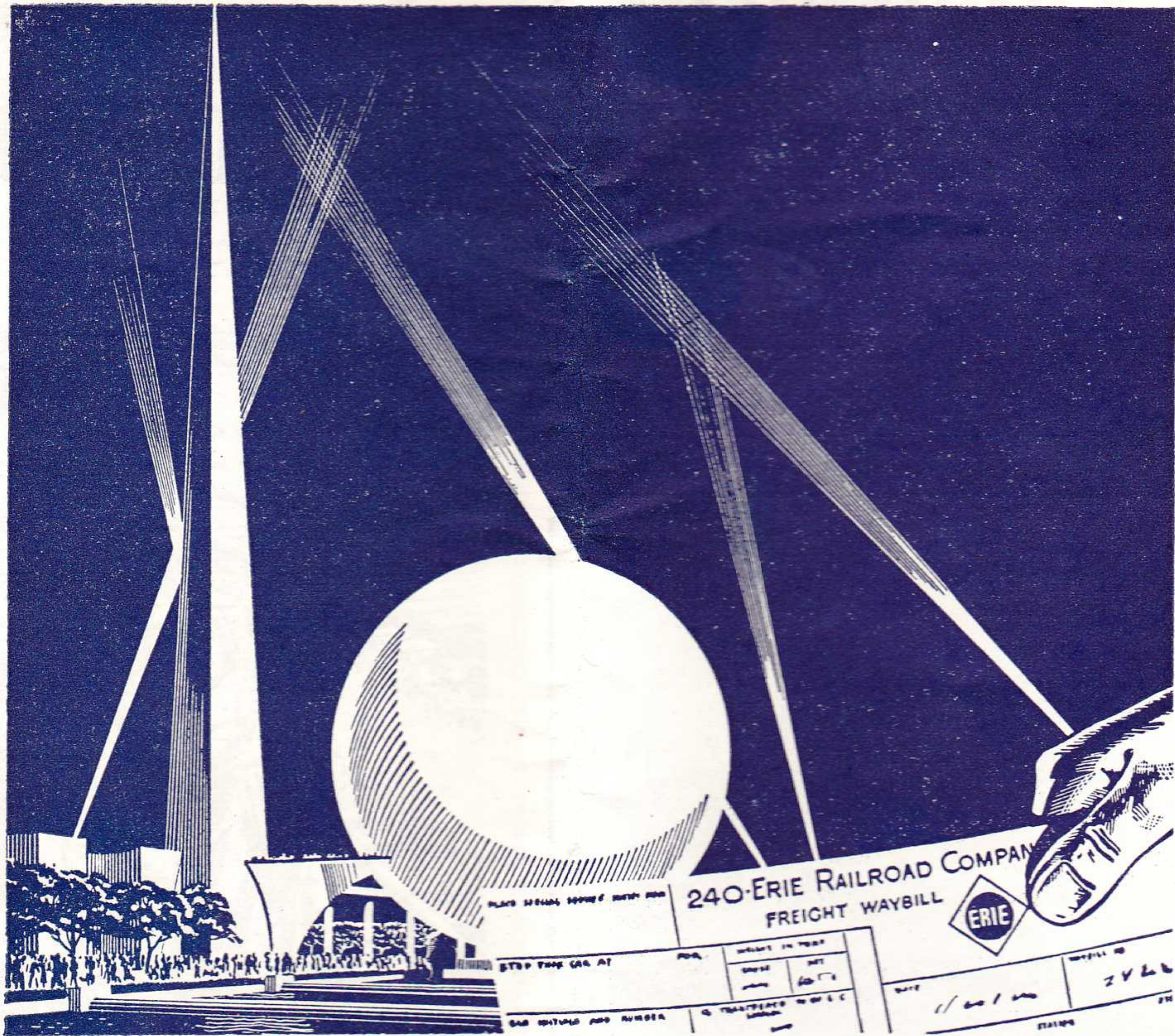
A special thriller among the track exhibits will be a super 526-ton locomotive, the largest of its type ever built—which will operate under its own power on a roller bed.

the RAILROAD way



Railroads provide the only
general transportation ser-
vice that moves over road-
ways maintained without
expense to the taxpayers.

ASSOCIATION OF AMERICAN RAILROADS

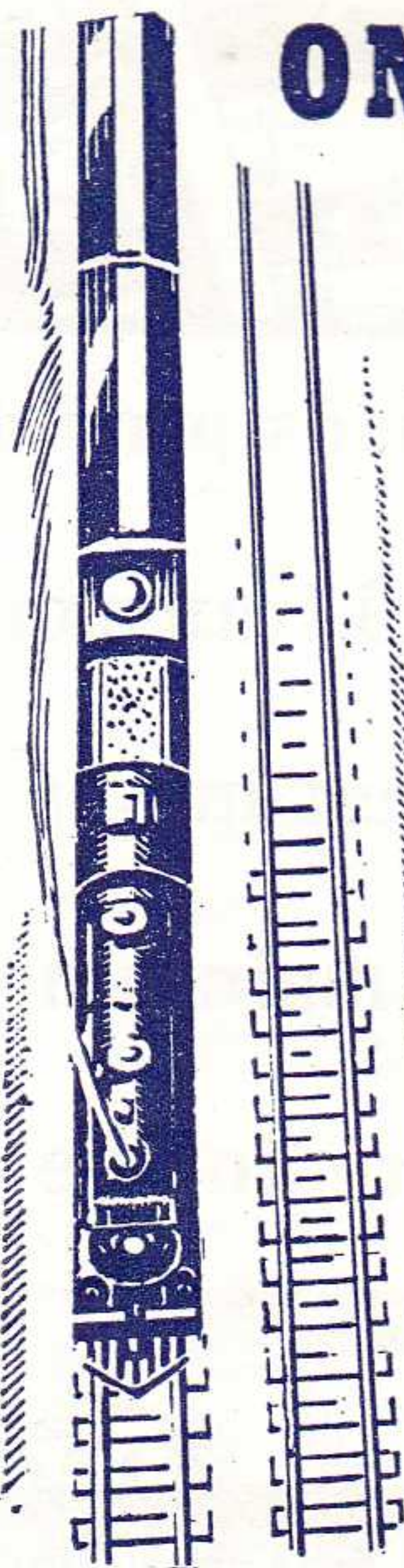


WE KNEW THE TRYLON WHEN IT WAS ONLY A WAYBILL NUMBER

● Seven hundred feet in the air the Trylon at the New York World's Fair scratches the sky. Together with the Perisphere it has become the trade mark of the Fair.

But only yesterday it was 1,830,000 pounds of steel rolling from mill to New York. Rolling swiftly, safely through those high, wide clearances that have made the Erie famous as America's "Heavy Duty Railroad." Beacon tower of the biggest show on earth... just another load on the Erie.

Trust Erie with your Trylon (if you ever have one). But in the meantime, remember: whatever its weight, its size, its money-value, your shipment will be delivered swiftly, safely, economically over the road that's "First in Freight."



*Rephorish Simon Decker
R. I. Lowman N.Y.*

ERIE RAILROAD COMPANY

(C. E. DENNEY AND JOHN A. HADDEN, TRUSTEES)

CHICAGO AND ERIE RAILROAD CO.

GENERAL OFFICES, MIDLAND BUILDING, CLEVELAND. Telephone Cherry 8400.
GENERAL OFFICES, HUDSON TERMINAL, 50 CHURCH STREET, NEW YORK. Telephone Cortlandt 7-9200.
GENERAL OFFICES, UTILITIES BUILDING, 327 SOUTH LA SALLE STREET, CHICAGO. Telephone Harrison 4160.

TRAFFIC AND DEVELOPMENT DEPARTMENTS

TRAFFIC

D. L. GRAY, Vice-President, Cleveland
CARL HOWE, Vice-President, Chicago
G. C. MANNING, Assistant Vice-President, New York
G. A. LAMB, Assistant to Vice-President, Cleveland

PASSENGER

C. C. HOWARD, Passenger Traffic Manager, Cleveland.
R. B. ROGERS, General Passenger Agent, Cleveland.
H. T. HARLOW, General Passenger Agent, Chicago.
T. R. PATTON, Assistant General Passenger Agent, Youngstown.

F. A. WALDRON, Assistant General Passenger Agent, New York.
ALFRED FYNN, Assistant General Passenger Agent, Chicago.
E. J. HAWERKOST, General Western Passenger Agent, Chicago.
H. M. WADE, General Baggage, Mail and Express Agent, New York.

FREIGHT

L. B. BURFORD, Freight Traffic Manager, Cleveland.
H. W. VON WILLER, Assistant Freight Traffic Manager, Cleveland.
O. M. MEYNE, General Freight Agent, Cleveland.
C. L. CHAPMAN, Eastern Freight Traffic Manager, New York.
E. M. KAIN, Special Representative, Buffalo.
G. R. WHEELER, General Freight Agent, New York.
J. T. McENTEE, Assistant General Freight Agent, Buffalo.

D. R. THOMPSON, Assistant General Freight Agent, Pittsburgh.
F. G. LANTZ, Freight Traffic Manager, Chicago.
W. V. KENNEDY, Assistant Freight Traffic Manager, Chicago.
A. BLAUDEL, General Freight Agent, Chicago.
J. G. HILL, General Freight Agent, Chicago.
W. H. KOCH, Assistant General Freight Agent, Detroit.
H. C. SCHMIDT, Assistant General Freight Agent, Youngstown.

FOREIGN FREIGHT TRAFFIC

T. E. McANDREWS, Foreign Freight Traffic Manager, New York.
W. C. OTTEN, Foreign Freight Agent, New York.
A. E. PETERSON, Foreign Freight Agent, Chicago.
W. S. PENCHARD, Export and Import Agent, New York.
EUROPEAN GENERAL AGENTS, Sutherland International Despatch, Ltd.,
London, England.

LIVE STOCK

H. B. ROGERS, General Live Stock Agent, East Buffalo, N. Y.

GRAIN TRAFFIC

T. W. KANE, Grain Agent, New York.

PERISHABLE FREIGHT TRAFFIC

R. E. O'GRADY, Manager, Pier 20, N. R., New York.

COAL AND COKE

W. H. STADELMAN, Coal Traffic Manager, Cleveland.
J. A. FERGUSON, Coal Freight Agent, Cleveland.
F. D. AUSTIN, General Coal and Coke Agent, Chicago.

DAIRY

W. L. KENDALL, General Dairy Agent, Chicago, Ill.

DEVELOPMENT

L. L. WHITE, Vice-President, Cleveland.

GEO. F. WESTON, Industrial Commissioner, Cleveland.

H. J. HART, Industrial Agent, New York.

TRAFFIC DEPARTMENT REPRESENTATIVES

Akron, O.—80 East Exchange St.
(Telephone Hemlock 8194-8195)
J. P. CLARK, Division Passenger Agt.
C. E. KING, General Agent.

Albany, N. Y.—Room 2, D. & H. Bldg.
(Telephone 4-6051)
C. F. WHADCOCK, General Agent.

Antwerp, Belgium—30, Vieille Bourse.
CHAS. CAYMAN, Agent.

Atlanta, Ga.—1515-16 Healey Bldg.
(Telephone Walnut 2135)
S. S. TORREY, General Agent.

Baltimore, Md.—1301-3 Munsey Bldg.
(Telephone Plaza 8691)
W. J. MURRAY, General Agent.

Birmingham, Ala.—1007 Watts Bldg.
(Telephone 3-1327)
CHARLES G. ANDREWS, General Agent.

Birmingham, England—13 Corporation St.,
MAURICE G. COOKE, General Agent.

Boston, Mass.—80 Federal Street.
(Telephone Liberty 7725-7726)
G. W. MADSEN, G. N. E. Agt.

Bradford, Pa.—Erie Station.
(Telephone 3413)
J. C. MOFFATT, General Agent.

Bremen, Germany—Postfach 24,
Tiefen 2
CARL PRIOR, Agent.

Buffalo, N. Y.—6 North Division St.
(Telephone Washington 4300)
J. A. DOLAN, G. A. P. D.
238 Main Street.
(Telephone Wash. 1865)
J. T. McENTEE, Asst. General Freight Agt.
H. B. ROGERS, General Live Stock Agt.

Chicago, Ill.—327 South La Salle St.
(Telephone Harrison 4160)
B. Y. VAUGHN, Trav. Pass. Agent
C. D. TURNER, General Agent.
W. L. KENDALL, General Dairy Agent.

Cincinnati, O.—503 Gwynne Bldg.
(Telephone Main 3420-3421)
R. L. MURPHY, General Agent.

Cleveland, O.—Midland Bldg.
(Telephone Cherry 8400)
J. M. SKAEHILL, Division Freight Agt.
2063 East 9th St.
(Telephone Cherry 8400)
C. D. BURLINGHAM, Div. Passenger Agt.

Columbus, O.—Rooms 309-310 Atlas Bldg., 8 East Long Street.
(Telephone Adams 7331)
C. R. MARTIN, General Agent.

Dallas, Tex.—2113 Tower Petroleum Bldg.
1905 Elm St.
(Telephone 2-7352)
T. J. MARTIN, General Agent.

Dayton, O.—501-506 Miami Savings Bldg.
(Telephone Adams 8481)
W. P. KROMPHARDT, Div. Frt. Agt.

Des Moines, Ia.—Hubbell Bldg.,
904 Walnut Street.
(Telephone 4-0018)
L. T. COULSTON, General Agent.

Detroit, Mich.—Rooms 2-102 and 2-103
General Motors Bldg.
(Telephone Madison 2360-2361)
W. H. KOCH, Assistant General Frt. Agt.

Elmira, N. Y.—Erie Station.
(Telephone 2-1621)
J. W. O'HARA, Division Passenger Agt.
(Telephone 2-0377)
B. F. CONWAY, Division Freight Agent.

Glasgow, Scotland—82 Mitchell St.
W. S. THOMSON, General Agent.

Hamburg, Germany—Dovenhof 118/122.
GEORG A. ANTHONY, General Agent.

Huntington, Ind.—Erie Station.
(Telephone 743)
F. C. MCCARTHY, Division Freight Agt.

Indianapolis, Ind.—143 No. Meridian St.
(Telephone Lincoln 2088)
T. J. WILLIAMSON, General Agent.

Jamestown, N. Y.—Erie Station
F. L. COLLINS, Div. Frt. Agt.
(Telephone 7921-7922)

Jersey City, N. J.—Erie Station
(Telephone Delaware 8-6400)
P. F. ARROYO, G. A. P. D.

Kansas City, Mo.—Rooms 326-7 Railway Exchange Bldg., 7th and Walnut Streets.
(Telephone Victor 6328)
N. C. FRICK, General Agent.

Liverpool, Eng.—17 Brunswick St.
A. G. TAYLOR, General Agent.

London, E. C. 3, Eng.—4 Billiter St.
PETER BUSWELL, General Agent.
D. S. DEANS, Genl. Continental Agt.

Los Angeles, Cal.—108 West 6th Street.
(Telephone Vandike 6542)
L. A. DWELLE, General Agent.

Marion, O.—Terminal Building
(Telephone 2657)
A. R. TENNIS, Division Freight Agent.

Memphis, Tenn.—1628-9 Exchange Bldg.,
Madison & Second Sts.
(Telephone 8-8781)
R. L. MILLER, General Agent.

Milwaukee, Wis.—818-9 Majestic Bldg.,
231 West Wisconsin Ave.
(Telephone Marquette 5555-5556)
H. A. WILSON, General Agent.

Minneapolis, Minn.—125 Third Street,
South.
(Telephone Main 3604)
C. V. HARROW, General Agent.

Newark, N. J.—1801-2 Military Park Bldg.,
60 Park Place.
(Telephone Market 2-0525-26-27)
A. R. WALTON, General Agent.

New Haven, Conn.—505 Powell Bldg.
(Telephone 5-7937)
G. E. ROBB, General Agent.

New Orleans, La.—Room 1417 Whitney Bldg.
(Telephone Raymond 9786)
D. C. KELSEY, General Agent.

New York, N. Y.—630-5th Ave. Room 219,
Rockefeller Center.
(Telephone Circle 5-7222)
F. J. WILD, G. A. P. D.
A. G. OLDENQUIST, City Pass. Agt.
60 Church Street.
(Telephone Cortlandt 7-9200)
E. W. VAIL, General Eastern Frt. Agent.
J. G. VREELAND, Division Freight Agent.

Omaha, Neb.—1319 Farnam St.
(Telephone Jackson 4866)
C. L. COX, General Agent.

Peoria, Ill.—920 Jefferson Building, Cor.
South Jefferson & Fulton Streets.
(Telephone 8007)
E. T. OLANDER, General Agent.

Philadelphia, Pa.—1009-10 Finance Bldg.
(Telephone Rittenhouse 8975-8976)
H. T. YOUNG, General Agent.

Pittsburgh, Pa.—Gulf Building
(Telephone Grant 4831-2-3)
D. R. THOMPSON, A. G. F. A.

Portland, Ore.—Room 421 Pacific Bldg.,
306 Yamhill St.
(Telephone Beacon 3706)
J. A. RUSSELL, General Agent.

Rochester, N. Y.—Erie Station.
(Telephone Main 2826)
B. C. WEDD, Division Freight Agent.

Rotterdam, Holland—Boompjes 82.
J. T. VERVLOET, Agent.

San Francisco, Cal.—681 Market St.
(Telephone Sutter 3875)
J. A. LLOYD, General Agent.

St. Louis, Mo.—Room 906, 1218 Olive St.
(Telephone Chestnut 7723-7724)
G. F. DANIELS, General Agent.

St. Paul, Minn.—336 Robert St.
(Telephone Cedar 5912)
C. R. PETRY, General Agent

Scranton, Pa.—Mill & Smith Sts. (Dunmore, Pa.)
(Telephone—Scranton 8191)
G. W. SHUMAN, Division Freight Agent.

Seattle, Wash.—1116-7 White Bldg.,
1338 Fourth Ave.
(Telephone Eliot 4834)
W. R. SIBLEY, General Agent.

Springfield, O.—516 First National Bank Building.
(Telephone 2-5351)
T. J. FLYNN, General Agent.

Toledo, O.—342 South Erie Street.
(Telephone Main 3816)
H. J. SPANGENBURG, General Agent.

Toronto, Ont.—69 Yonge Street.
(Telephone Elgin 4077)
E. P. MORRILL, General Agent.

Tulsa, Okla.—Room 1511 Hunt Bldg.
(Telephone 3-8613)
A. W. MITCHELL, General Agent.

Youngstown, O.—Terminal Building.
(Telephone 41101)
H. C. SCHMIDT, Asst. Genl. Frt. Agt.
F. W. FISCHER, Div. Frt. Agt.