

Effective June 27, 1947

Effective June 27, 1947



**ERIE RAILROAD
TIME TABLES**

**ERIE RAILROAD
TIME TABLES**

The Scenic Route

BETWEEN

**NEW YORK • BUFFALO
CLEVELAND • CHICAGO**

The Scenic Route

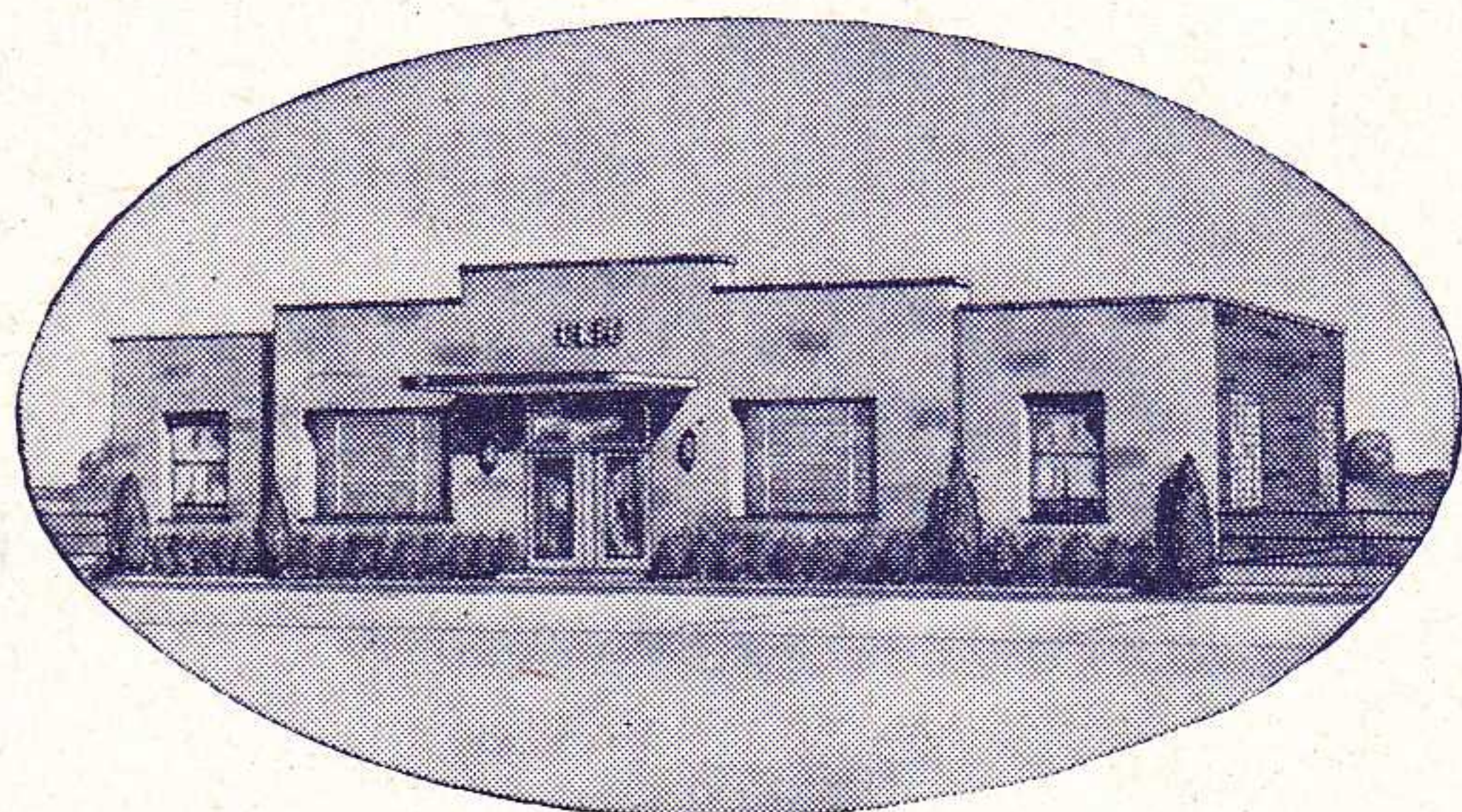
BETWEEN

**NEW YORK • BUFFALO
CLEVELAND • CHICAGO**

Announcing

NEW, IMPROVED ERIE SERVICE

for your greater comfort, convenience

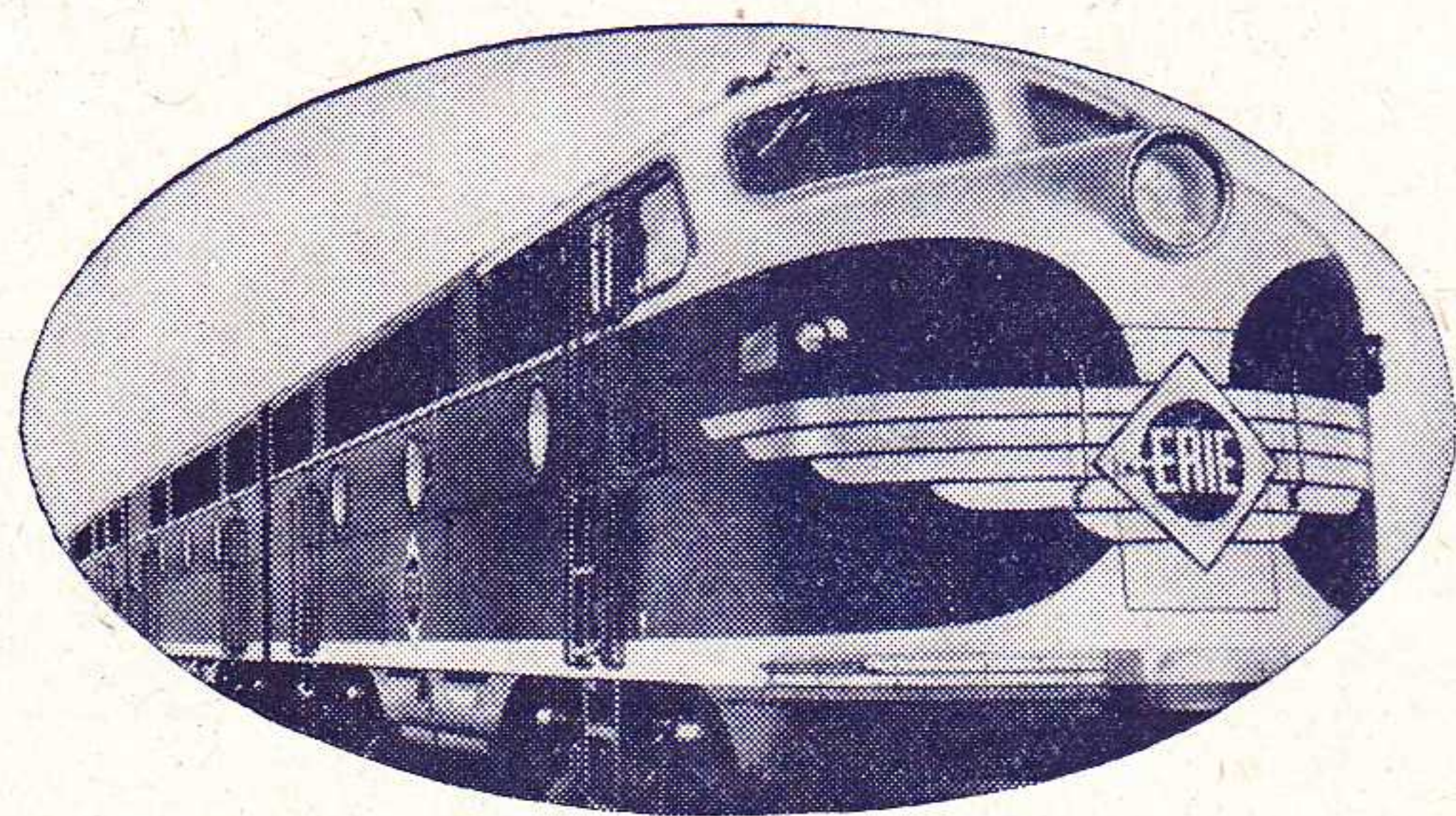


Modern, new station at Akron, Ohio typifies Erie's program of progressiveness in improving service to the traveling public.

NEW OVERNIGHT SLEEPING CAR SERVICE—AKRON—CHICAGO

(Effective July 16)

The Erie now offers modern, air-conditioned sleeping car service, with bedrooms, drawing rooms and sections, between Akron and Chicago. Departing from Akron, car is ready for occupancy at 9:30 P. M. Arriving in Akron, car may be occupied until 8:00 A. M. Schedules shown on pages 9 and 10 of this time table, trains Nos. 1 and 8.



NEW SMOOTH DIESEL POWER FOR COMFORT—CLEANLINESS

The Erie is rapidly converting its through passenger trains to Diesel locomotive power. These powerful new Diesels bring finer performance . . . stops, starts, high and low speeds are all made with effortless smoothness.



NEW IMPROVED EQUIPMENT FOR GREATER TRAVELING PLEASURE

The first of Erie's restful, air-conditioned, latest type coaches and modernized dining cars are now in service. As quickly as possible, new all-room sleeping cars will be added to through trains. Every comfort and convenience to make your trip more pleasant was carefully planned for in the design of this new equipment.

COMING!

With this new equipment in service, through trains will be modern, up-to-date, from Diesel cab to rear car . . . and Erie will soon announce new, faster schedules to round out improved passenger service.

Erie Railroad

Scenic Route  of the East

TABLE OF CONTENTS

Equipment of Through Trains... Page 9, 10
Equipment of Detroit, Toledo, Cleveland, Youngstown, Pittsburgh, Washington and Baltimore Trains... 23, 24
Erie Railroad Map... 19, 20, 21, 22
Fares—One-Way and Round-Trip... 7, 8
Fares—Sleeping and Parlor Car... 7, 8
Map of Downtown Chicago... 26
Map of New York City and adjacent area... 27, 28
Motor Coach Service New York... 29
Suggestions to help you read this folder... 5, 6
Ticket Offices and Passenger Stations in Principal Cities... 6
Traffic and Development Representatives... 37, 38
General Information... 31, 32
Adjustment of fares Fares paid on trains Safety first hints
Articles lost on trains Holidays Standard of time
Baggage regulations Lost tickets Stop-Overs
Fares for children Redemption of tickets

Train Service
Binghamton—New York... 13, 14
Binghamton—Marion... 15, 16
Bradford—Salamanca—Cleveland—Chicago... 18
Buffalo—Jamestown... 25
Chautauqua Lake—Jamestown—Akron—Chicago... 25
Condensed Schedule of Through Trains... 9, 10
Detroit—Toledo—Cleveland—Youngstown—Pittsburgh—Washington—Baltimore... 23, 24
Elmira—Avon... 25
Ferry Schedule... 30
Hudson & Manhattan R. R. Service... 30
Marion—Chicago... 17, 18
New York—Binghamton... 11, 12
New York—Buffalo... 17
New York—Jamestown—Chautauqua Lake... 25
New York—Kenoza Lake—Jeffersonville... 25
New York—Salamanca—Bradford... 18

INDEX OF STATIONS ON ERIE RAILROAD OR CONNECTING LINES
At Which Trains Are Scheduled To Stop
Numerals Opposite Station Names Indicate Time Table Numbers

Table listing stations and their corresponding time table numbers. Columns include station names and numerals. Examples: Addison, N. Y. 4; Akron, O. 1, 4, 7, 12; Albany, N. Y. 4; Alden, N. Y. (Black Water Baths) 6; Alliquippa, Pa. 8; Allendale, N. J. 2, 3; Andover, N. Y. 4; Arden, N. Y. 2, 3; Arkport, N. Y. 6; Ashland, O. 4; Atlanta, N. Y. 9; Attica, N. Y. 6; Aurora, O. 8; Avoca, N. Y. 9; Avon, N. Y. 9; Baltimore, Md. 8; Barborton, O. 4; Bath, N. Y. 9; Beaver, Pa. 8; Beaver Falls (New Brighton, Pa.) 8; Belmont, N. Y. 4; Binghamton, N. Y. 1, 2, 3, 4, 6; Blasdell, N. Y. 10; Braddock, Pa. 8; Bradford, Pa. 1, 7; Buffalo, N. Y. 1, 4, 6, 10; Burns, N. Y. 6; Callicoon, N. Y. 2, 3, 11; Cambridge Springs, Pa. 4; Campbell, N. Y. 9; Canaseraga, N. Y. 6; Canastota, N. Y. 6; Chautauqua, N. Y. 12; Chautauqua Lake, N. Y. 4; Cherry Creek, N. Y. 10; Chester, N. Y. 2, 3; Chicago, Ill. 1, 4, 5, 7, 12; Cleveland, O. 1, 4, 8; Cochection, N. Y. (Lake Huntington) 2, 3; Cohocton, N. Y. 9; Collins, N. Y. 10; Conesus, N. Y. 9; Conesus Lake Jct., N. Y. 9; Conewango, N. Y. 10; Connellsville, Pa. 8; Cooper's, N. Y. 9; Coraopolis, Pa. 8; Corning, N. Y. 1, 4, 6, 9; Corry, Pa. 4; Crown Point, Ind. 5; Cuba, N. Y. 4; Cumberland, Md. 8; Dale, N. Y. 6; Dalton, N. Y. 6; Darlen Center, N. Y. 6; Dayton, N. Y. 10; Decatur, Ind. 5; Depew, N. Y. 6; Deposit, N. Y. 2, 3; Detroit, Mich. 8; East Buffalo, N. Y. 6; East Fifty-fifth St. (Cleveland), O. 8; East Ninety-third St. (Cleveland), O. 8; East Rutherford, N. J. 2, 3; Eden Center, N. Y. 10; Eden Valley, N. Y. 10; Ellwood City, Pa. 8; Elmira, N. Y. 1, 4, 6, 9; Endicott, N. Y. 4; Englewood (63rd St.), Ill. 5; Falconer, N. Y. 10; Friendship, N. Y. 4; Galion, O. 4; Garrettsville-Hiram, O. 8; Garwoods, N. Y. 6; Geauga Lake, O. 8; Girard, O. 4, 8; Goshen, N. Y. 2, 3; Gowanda, N. Y. 10; Graham, N. Y. 2, 3; Great Bend, Pa. 2, 3; Greenville, Pa. 4; Griswolds, N. Y. 6; Gulf Summit, N. Y. 2, 3; Hale's Eddy, N. Y. 2, 3; Hamburg, N. Y. 10; Hammond, Ind. 5; Hancock, N. Y. 2, 3; Hankins, N. Y. 2, 3; Harper's Ferry, W. Va. 8; Harriman, N. Y. 2, 3; Hillburn, N. Y. 2, 3; Hiram, O.—See Garrettsville-Hiram; Hohokus, N. J. 2, 3; Honesdale, Pa. 2, 3; Hornell, N. Y. 1, 4, 6; Howells, N. Y. 2, 3; Hubbard, O. 4; Huntington, Ind. 5; Jamestown, N. Y. 1, 4, 7, 10, 12; Jeddore, O. 8; Jeffersonville, N. Y. 11; Jersey City, N. J. 1, 2, 3, 4, 5, 6, 7, 9, 11, 12; Kanona, N. Y. 9; Kennedy, N. Y. 10; Kenoza Lake, N. Y. 11; Kent, O. 4; Kenton, O. 5; Lackawaxen, Pa. 2, 3; Lake Huntington, N. Y. 2, 3; Lancaster, N. Y. 6; Lawtons, N. Y. 10; Leavittsburg, O. 8; Letchworth Park, N. Y. 6; Lima, O. 5; Limestone, N. Y. 7; Linden, N. Y. 6; Livonia, N. Y. 9; Long Eddy, N. Y. 2, 3; Lordville, N. Y. 2, 3; Mahoning, O. 8; Mahwah, N. J. 2, 3; Mansfield, O. 4; Mantua, O. 8; Marilla, N. Y. 6; Marion, O. 5; Martinsburg, W. Va. 8; McKeesport, Pa. 8; Meadville, Pa. 1, 4; Middletown, N. Y. 2, 3; Mill Rift, Pa. 2, 3; Monroe, N. Y. 2, 3; Narrowsburg, N. Y. 2, 3; New Brighton, Pa. 8; New Castle, Pa. 8; New Hampton, N. Y. 2, 3; New York, N. Y. 1, 2, 3, 4, 5, 6, 7, 9, 11, 12; Niles, O. 4, 8; North Collins, N. Y. 10; North Judson, Ind. 5; North Randall, O. 8; Ohio City, O. 5; Olean, N. Y. 1, 4; Oneonta, N. Y. 4; Otisville, N. Y. 2, 3; Owego, N. Y. 4; Oxford, N. Y. 2, 3; Painted Post, N. Y. 9; Parker's Glen, Pa. 2, 3; Passaic, N. J. 2, 3; Paterson, N. J. 1, 2, 3; Phalanx, O. 8; Pittsburgh, Pa. 4, 8; Pond Eddy, Pa. 2, 3; Portage, N. Y. 6; Port Jervis, N. Y. 2, 3; Ramapo, N. Y. 2, 3; Ramsey, N. J. 2, 3; Randolph, N. Y. 4; Ravenna, O. 4; Ridgewood, N. J. 1, 2, 3; Rittman, O. 4; Rochester, Ind. 5; Rock Glen, N. Y. 6; Rutherford, N. J. 2, 3; Saegertown, Pa. 4; Salamanca, N. Y. 1, 4, 7; Savona, N. Y. 9; Sharon, Pa. 4; Shohola, Pa. 2, 3; Silver Spring, Md. 8; Silver Springs, N. Y. 6; Skinners, N. Y. 2, 3; Sloatsburg, N. Y. 2, 3; Solon, O. 8; South Dayton, N. Y. 10; Southfields, N. Y. 2, 3; South Lima, N. Y. 9; South Livonia, N. Y. 9; Sparrowbush, N. Y. 2, 3; Springwater, N. Y. 9; State Hospital, N. Y. 10; Suffern, N. Y. 2, 3; Susquehanna, Pa. 2, 3; Swains, N. Y. 6; Toledo, O. 8; Town Line, N. Y. 6; Tusten, N. Y. 2, 3; Tuxedo, N. Y. 2, 3; Union City, Pa. 4; Wadsworth, O. 4; Waldwick, N. J. 2, 3; Wallace, N. Y. 9; Wampum, Pa. 8; Warren, O. 4, 8; Warsaw, N. Y. 6; Washington, D. C. 8; Washington Hunt, N. Y. 6; Water Valley, N. Y. 10; Waverly, N. Y. 4, 6; Wayland, N. Y. 9; Websters, N. Y. 9; Wellsville, N. Y. 4; Westcolang Park, Pa. 2, 3; Youngstown, O. 1, 4, 7, 8

INDEX OF STATIONS NOT SHOWN IN TIME TABLES (FREIGHT SERVICE ONLY)
The distance shown is from New York as indicated in Tables 2, 4 and 5

Table with 10 columns: STATION, Miles from New York, STATION, Miles from New York, STATION, Miles from New York, STATION, Miles from New York, STATION, Miles from New York, STATION, Miles from New York. Lists stations like Adrian, Akron, Aldine, Alfred, Alger, Allegany, Almond, Ashville, Athens, Atlantic, Barton, Bass Lake, Bear Lake, Belvidere, Big Flats, Bippus, Bolivar, Boone Grove, Braceville, Burbank, Caledonia, Cameron, Cameron Mills, Canisteo, Chemung, Columbus, Creston, DeCliff, De Long, Disko, Elgin, Foraker, Forty-seventh St., Freedom, Geneva, Glenmore, Greycourt, Griffith, Harrods, Hegewisch, Hepburn, Hickory Grove, Highlands, Hinsdale, Horseheads, Hurlburt, Johnson City, Kellams, Kemp, Kingsland, Kirkwood, Kouts, Laketon, Lakewood, Leiters, Markel, Martel, Mast Hope, McGuffey, Millers, Mill Village, Mongaup, Monterey, Nankin, Newton, Niobe, Ontario, Oquaga, Ora, Palmer, Pavonia, Pershing, Polk, Preble, Rathbone, Red House, Scio, Servia, Sharpville, Smithboro, Spencerville, Steamburg, Sterling, Stockport, Tallmadge, Tioga Center, Tocsin, Uniondale, Venango, Watts Flats, Wellsburg, West Salem, Wilders, Windham, Winfield, Wren.

SUGGESTIONS TO HELP YOU READ THIS FOLDER

THE CONTENTS

The Table of Contents shown at top of Pages 3 and 4 indicates the location, by page number, of the various information contained in this folder. Subjects are listed alphabetically.

LOCATING SCHEDULE TABLES

To find the schedule of service to or from the station in which you are interested, first—locate the station name in the alphabetical index of stations shown on Pages 3 and 4, then—turn to the table or tables indicated by numeral to the right of station name. Tables follow in numerical order in the folder. Table Numbers do not correspond with page numbers.

READING OF TABLES

When stations are listed on tables in a column on the left, and train times are shown in columns to the right of station name, the table is to be read down, from top to bottom. As a further guide, "Read Down" appears at the top of such tables.

When stations are listed on tables in a column in the center, with train times shown in columns both to the left and right of station names, the table is read down from top to bottom on the left side, and read up from bottom to top on the right side. As a further guide, "Read Down" or "Read Up" is shown at top of respective columns.

On all tables, the schedule of each individual train is shown in a separate column, which may be on either side of the column showing station names. Each train has an operating number which appears at the top of the schedule column.

The abbreviation "Lv." next to station name in tables indicates leaving time; "Ar." for arrival time.

Train times from 12.01 a. m. (Midnight) to 12.00 Noon inclusive, are printed in light-faced figures; 12.01 P. M. (Noon) to 12.00 Midnight are printed in dark-faced figures.

Standard Time is used throughout, that is, Eastern Standard Time in the territory Ohio City, O. and east, Central Standard Time west of Ohio City.

Trains make regular stops only at stations where time figures appear in column opposite the station name.

When a letter, letters or symbol appears in column opposite the station name it indicates that the train stops there only on certain conditions which are explained in Reference Notes at bottom of that table. Observe carefully any such letters or symbols appearing on time tables.

IMPORTANT. When trains are shown as stopping conditionally at a station passengers should advise Station Agent, in advance, of their intention to board train or notify Conductor of intention to leave train, as case may be. Conditional stops are made only to receive or discharge revenue passengers.

When dotted lines (.....) only appear in column opposite station name, train does not stop.

A train may operate Daily, Daily Except Sunday, or on certain days only. In general, the days on which trains are scheduled to operate are shown on tables, at the top of columns, under each specific train number. In some instances, a symbol may be used for this purpose, with explanation in Reference Notes.

On main line Table 4, where a station name is indented to the right of balance of stations listed, and has heavy-faced lines above and below it, that station is located on a branch line or connecting service—schedule shown on separate table indicated.

EQUIPMENT

The equipment of principal trains—coach, Pullman, dining cars—is shown on Pages 9, 10, 23 and 24.

First—determine the number of the train, then—refer to equipment listing for that train number. Coaches are available on trains not described in equipment listing.

ADDITIONAL INFORMATION

Among other service features and items of interest to passengers, the following subjects may be found on pages as indicated in Table of Contents:

Fares, one-way and round-trip rail, also Pullman, between principal points.

Stop-over privileges; baggage regulations; children's fare regulations. Maps—Erie Railroad, New York City; Downtown Chicago.

Any Erie ticket agent or representative, including those listed in this folder, will be glad to assist you with information or reservations.

ERIE TICKET OFFICES AND PASSENGER STATIONS IN PRINCIPAL CITIES

- | | |
|---|---|
| Akron, O. —Union Station.
(Telephone Jefferson 9141)
B. L. BENDER, Ticket Agent. | Jamestown, N. Y. —Erie Station.
(Telephone 6076)
D. S. FORDHAM, Ticket Agent. |
| Binghamton, N. Y. —Erie Station.
(Telephone 4-3251)
A. T. JOHNSON, Ticket Agent. | Jersey City, N. J. —Erie Station.
(Telephone Journal Square 2-6400)
G. B. IRVING, Ticket Agent. |
| Bradford, Pa. —Erie Station.
(Telephone 3413)
A. J. SULLIVAN, Ticket Agent. | Mansfield, O. —Erie Station.
(Telephone 1423-6)
J. W. GILKISON, Ticket Agent. |
| Buffalo, N. Y. —Station Ticket Office
(Lehigh Valley Terminal)
Main and Scott Streets
(Telephone Washington 4300)
A. L. SEITZ, Ticket Agent. | Marion, O. —Erie Station.
(Telephone 2399)
R. H. STIEF, Ticket Agent. |
| Chicago, Ill. —Information and Pullman
Reservations.
(Telephone Wabash 3670)
City Ticket Office, 163-165 West Jackson Blvd.
(Telephone Harrison 4160)
C. F. KUNDEL, Ticket Agent. | Meadville, Pa. —Erie Station.
(Telephone 3-3121)
O. E. BLAIR, Ticket Agent. |
| Hotel Ticket Offices —
Drake, Morrison, Sherman, Stevens,
Palmer House, Merchandise Mart,
The Pullman Bldg.
(Telephone Harrison 2203)
H. A. JOHNSON, Ticket Agent. | Middletown, N. Y. —Erie Station.
(Telephone 3303)
C. R. DINEEN, Ticket Agent. |
| Dearborn Station.
(Telephone Harrison 7500)
W. E. MISCHNICK, Ticket Agent. | Newark, N. J. —Erie Station.
(Telephone Humboldt 2-0600)
W. C. HARBOURNE, Ticket Agent. |
| 63rd St. Station
(Telephone Wentworth 3503)
J. E. KING, Ticket Agent. | New York, N. Y.
Information Bureau.
Train Service and Fares.
(Telephone Barclay 7-6500)
Rockefeller Center Terminal and City
Ticket Office, 11 Rockefeller Plaza.
(Telephone Circle 5-7225)
(Open 6:30 A.M. to 10:30 P.M. daily.)
F. J. KEHOE, Ticket Agent. |
| Cleveland, O. —City Ticket Office.
East 9th St. and Chester Ave.
(Telephone Cherry 8400)
S. B. FOLKMAN, Ticket Agent. | Chambers Street Station.
(Telephone Cortlandt 7-9200)
O. R. KRECH, Ticket Agent. |
| Erie Station, Superior Ave.
(Telephone Cherry 8400)
J. N. MONZEL, Ticket Agent. | City Ticket Office, 17 John Street.
(Telephone Cortlandt 7-6430 and
7-6431)
H. T. JAMES, Ticket Agent. |
| Erie Station, East 55th st.
(Telephone Michigan 5118)
Erie Station, East 93rd st.
(Telephone Michigan 1675) | Passaic, N. J. —Erie Station.
(Telephone 2-1613)
M. J. LYNCH, Ticket Agent. |
| Corning, N. Y. —Erie Station.
(Telephone 50)
C. S. SHANAHAN, Ticket Agent. | Paterson, N. J. —Erie Station.
(Telephone Sherwood 2-3337)
J. H. GRAF, Ticket Agent. |
| Elmira, N. Y. —Erie Station.
(Telephone 2-0380)
J. V. CLEARY, Ticket Agent. | Port Jervis, N. Y. —Erie Station.
(Telephone 3-2271)
R. FARBER, Ticket Agent. |
| Hornell, N. Y. —Erie Station.
(Telephone 680)
M. W. DELANY, Ticket Agent | Sharon, Pa. —Erie Station.
(Telephone 6234)
G. E. FRICKER, Ticket Agent. |
| Huntington, Ind. —Erie Station.
(Telephone 139)
M. V. WELLS, Ticket Agent. | Warren, O. —Erie Station.
(Telephone 2-1191)
W. D. OWENS, Ticket Agent. |
| | Youngstown, O. —Erie Station.
(Telephone 4-0295)
R. S. GETTIG, Ticket Agent. |

RAILROAD AND PULLMAN FARES For Information Only. Federal Tax Not Included. Subject to Change Without Notice

Table with columns for 'Between' and 'And' stations, and sub-sections for 'NEW YORK', 'BINGHAMTON', and 'BUFFALO'. It lists fares for 'RAILROAD TICKETS VALID IN' (Coaches, Pullmans) and 'PULLMAN RATES' (Lower Berth, Seat Fare) for various destinations like Akron, Binghamton, Buffalo, Chicago, Cleveland, etc.

Table with columns for 'Between' and 'And' stations, and sub-sections for 'JAMESTOWN', 'CLEVELAND', and 'CHICAGO'. It lists fares for 'RAILROAD TICKETS VALID IN' (Coaches, Pullmans) and 'PULLMAN RATES' (Lower Berth, Seat Fare) for various destinations like Akron, Baltimore, Binghamton, Buffalo, Chicago, Cleveland, etc.

MINIMUM NUMBER OF RAILROAD TICKETS REQUIRED FOR EXCLUSIVE OCCUPANCY OF SPACE IN SLEEPING OR PARLOR CARS. Roomette, Double Bedroom, Compartment, Berth Service, Compartment, Seat Service, Drawing Room, Berth Service, Drawing Room, Seat Service, or Drawing Room in Parlor Car.

RATES FOR UPPER BERTH, DRAWING ROOM, COMPARTMENT, DOUBLE BEDROOM OR ROOMETTE IN SLEEPING CARS

Table with columns for 'Where Lower Berth Rate Is', 'Upper Berth Rate Will Be', and various room types (Drawing Room Rate, Compartment Rate, Double Bedroom Rate, Roomette Rate) with sub-columns for 'One Person' and 'Two or More Persons'.

Note:—Section for single occupancy overnight may be purchased, if available, from conductor. Limit three months, except as otherwise indicated. *Thirty-day limit. †One-year limit.

TABLE 1

CONDENSED TABLE OF THROUGH TRAINS NEW YORK AND BUFFALO, CLEVELAND AND CHICAGO
(FOR LOCAL TRAINS AND INTERMEDIATE TIME OF THROUGH TRAINS SEE LOCAL TABLES)

Air-Conditioned Trains—Air-conditioned equipment has been assigned to regular sections of trains as shown herein. Every effort will be made to provide it as specified, but the right is reserved to employ non-air-conditioned cars as necessitated by volume of traffic or emergencies.

WEST BOUND			
THE ERIE LIMITED		TRAIN NO. 1—DAILY	
New York—Buffalo—Jamestown—Chicago			
Lv New York:			
“ Coach	Rockefeller Center Terminal, 11 Rockefeller Plaza	7.15AM	EST
“ Coach	8th Ave. & W. 41st St. (Northwest Corner)	7.20 “	“
“ Motor Coach	8th Ave. & W. 34th St. (Hotel New Yorker)	7.22 “	“
“	Chambers St. Ferry	7.30 “	“
“	Jersey City	7.50 “	“
“	Paterson	8.18 “	“
“	Ridgewood	8.28 “	“
“	Binghamton	1.21PM	“
“	Elmira	2.38 “	“
Ar Buffalo (Lehigh Valley Term.)		6.40 “	“
Lv Olean		5.41 “	“
“	Buffalo (Lehigh Valley Term.)	4.15 “	“
“	Jamestown	6.59 “	“
“	Meadville	8.32 “	“
“	Youngstown	10.07 “	“
“	Warren	10.34 “	“
Lv Akron		11.41PM	“
Ar Chicago (Dearborn Sta.)		7.25AM	CST

EQUIPMENT

Air-Conditioned Sleeping Cars:
New York to Chicago—10 Section-2 Double Bedroom-1 Drawing Room.
Salamanca to Chicago—6 Roomette-6 Section-4 Double Bedroom.
Akron to Chicago—10 Section-2 Double Bedroom-1 Drawing Room (Effective July 16.) (Sleeper open Akron 9:30 p.m.)

Air-Conditioned Diner-Lounge Car:
New York to Chicago.

Air-Conditioned Individual Reclining Seat Coaches:
New York to Chicago. (Ladies' Lounge.)

Air-Conditioned Coach—Diner:
New York to Buffalo.

THE LAKE CITIES and THE MIDLANDER			
TRAIN NO. 5-15—DAILY			
New York—Buffalo—Jamestown—Cleveland—Akron—Chicago			
Lv New York:			
“ Coach	Rockefeller Center Terminal, 11 Rockefeller Plaza	6.20	PM EST
“ Coach	8th Ave. & W. 41st St. (Northwest Corner)	6.28 “	“
“ Motor Coach	8th Ave. & W. 34th St. (Hotel New Yorker)	6.32 “	“
“	Chambers St. Ferry	6.40 “	“
“	Jersey City	7.00 “	“
“	Paterson	7.30 “	“
“	Ridgewood	7.40 “	“
Ar Buffalo (Lehigh Valley Term.)		6.55	AM “
Lv Olean		5.07	“ “
Ar Bradford		6.55	“ “
Lv Jamestown		6.34	“ “
“	Meadville	8.16	“ “
“	Youngstown	10.12	9.57 “ “
“	Warren	10.35	10.19 “ “
Ar Cleveland		11.40	“ “
Lv Akron		11.23	“ “
“	Marion	1.34PM	“ “
Ar Chicago (Dearborn Sta.)		5.35PM	CST

EQUIPMENT

Air-Conditioned Sleeping Cars:
New York to Chicago—10 Section-1 Compartment-1 Drawing Rm.
New York to Cleveland—6 Roomette-6 Section-4 Double Bedrm.
New York to Bradford—10 Section-1 Compartment-1 Drawing Rm. (Sleeping Car may be occupied at Bradford until 8.00 A.M.)

Air-Conditioned Diner-Lounge Car:
New York to Port Jervis
Salamanca to Chicago.

Air-Conditioned Individual Reclining Seat Coach:
New York to Chicago. (Ladies' Lounge.)

Air-Conditioned Individual Seat Coaches:
New York to Cleveland.
New York to Port Jervis.

Coaches: Hornell to Buffalo; Salamanca to Bradford.

PACIFIC EXPRESS			
TRAIN NO. 7—DAILY			
New York—Jamestown—Chicago			
Lv New York:			
“ Coach	Rockefeller Center Terminal, 11 Rockefeller Plaza	10.20PM	EST
“ Coach	8th Ave. & W. 41st St. (Northwest Corner)	10.28 “	“
“ Motor Coach	8th Ave. & W. 34th St. (Hotel New Yorker)	10.31 “	“
“	Chambers St. Ferry	11.30 “	“
“	Jersey City	12.05AM	“
“	Elmira	7.28 “	“
Ar Buffalo (Lehigh Valley Term.)		12.30PM	“
Lv Olean		11.21AM	“
Ar Salamanca		11.47 “	“
Lv Jamestown		12.44PM	“
“	Meadville	2.28 “	“
“	Youngstown	4.04 “	“
“	Warren	4.30 “	“
“	Akron	5.40 “	“
Ar Chicago (Dearborn Sta.)		1.30AM	CST

EQUIPMENT

Air-Conditioned Sleeping Car:
New York to Salamanca—10 Section-2 Compartment-1 Drawing Room. (Sleeper open Jersey City at 9.00 P.M.)

Air-Conditioned Diner-Lounge Car:
Binghamton to Marion.

Air-Conditioned Individual Seat Coaches:
New York to Chicago.

THE MOUNTAIN EXPRESS			
TRAIN NO. 27—DAILY			
New York—Binghamton—Elmira—Hornell			
Lv New York:			
“ Coach	Rockefeller Center Terminal, 11 Rockefeller Plaza	2.55PM	EST
“ Coach	8th Ave. & W. 41st St. (Northwest Corner)	3.03 “	“
“ Motor Coach	8th Ave. & W. 34th St. (Hotel New Yorker)	3.07 “	“
“	Chambers St. Ferry	3.20 “	“
“	Jersey City	3.35 “	“
Ar Binghamton		9.15 “	“
“	Elmira	10.59 “	“
“	Corning	11.47 “	“
Ar Hornell		1.05AM	EST

EQUIPMENT

Air-Conditioned Diner-Lounge Car:
New York to Binghamton.

Air-Conditioned Coach:
New York to Binghamton-Hornell.

Coaches:
New York to Susquehanna.

EAST BOUND			
THE ERIE LIMITED		TRAIN NO. 2—DAILY	
Chicago—Jamestown—Buffalo—New York			
Lv Chicago (Dearborn Sta.)		5.05PM	CST
“	Akron	2.44AM	EST
“	Warren	3.51 “	“
“	Youngstown	4.25 “	“
“	Meadville	6.29 “	“
“	Jamestown	8.02 “	“
Ar Buffalo (Lehigh Valley Term.)		11.00 “	“
Lv Olean		9.17AM	“
Lv Buffalo (Lehigh Valley Term.)		8.00 “	“
Ar Elmira		12.36PM	“
“	Binghamton	1.52 “	“
“	Ridgewood	6.58 “	“
“	Paterson	7.06 “	“
“	Jersey City	7.35 “	“
Ar New York:			
“	Chambers St. Ferry	7.54 “	“
“	8th Ave. at W. 32nd St.	7.56 “	“
“	8th Ave. at W. 42nd St.	7.58 “	“
“	Motor Coach Rockefeller Center Terminal, 11 Rockefeller Plaza	8.05PM	EST

EQUIPMENT

Air-Conditioned Sleeping Car:
Chicago to New York—10 Section-2 Double Bedroom-1 Drawing Room.

Air-Conditioned Diner-Lounge Car:
Chicago to New York.

Air-Conditioned Individual Reclining Seat Coaches:
Chicago to New York. (Ladies' Lounge.)

Air-Conditioned Coach—Diner:
Buffalo to New York.

THE MIDLANDER and THE LAKE CITIES			
TRAIN No. 16-6—DAILY			
Chicago—Akron—Cleveland—Jamestown—New York			
Lv Chicago (Dearborn Sta.)		9.00	AM CST
“	Marion	2.50	PM EST
“	Akron	4.54	“ “
“	Cleveland	4.35	PM “
“	Warren	5.40	5.49 “ “
“	Youngstown	6.20	“ “
“	Meadville	8.01	“ “
“	Jamestown	9.30	“ “
“	Bradford	9.15	“ “
“	Salamanca	10.16	“ “
“	Olean	10.39	“ “
Lv Buffalo (Lehigh Valley Term.)		9.00	“ “
Ar Elmira		1.29	AM “
“	Ridgewood	7.27	“ “
“	Jersey City	8.00	“ “
Ar New York:			
“	Chambers St. Ferry	8.16	“ “
“	8th Ave. at W. 32nd St.	8.21	“ “
“	8th Ave. at W. 42nd St.	8.23	“ “
“	Motor Coach Rockefeller Center Terminal, 11 Rockefeller Plaza	8.30	“ EST

EQUIPMENT

Air-Conditioned Sleeping Cars:
Chicago to New York—10 Section-1 Compartment-1 Drawing Rm.
Cleveland to New York—6 Roomette-6 Sections-4 Double Bedrm.
Bradford to New York—10 Section-1 Compartment-1 Drawing Rm.

Air-Conditioned Diner-Lounge Car:
Chicago to Salamanca.
Port Jervis to New York.

Air-Conditioned Individual Reclining Seat Coach:
Chicago to New York. (Ladies' Lounge.)

Air-Conditioned Individual Seat Coaches:
Cleveland to New York.

Coaches:
Bradford to Salamanca.
Buffalo to Hornell.

ATLANTIC EXPRESS			
TRAIN NO. 8—DAILY			
Chicago—Jamestown—Elmira—Binghamton—New York			
Lv Chicago (Dearborn Sta.)		9.45PM	CST
“	Akron	7.11AM	EST
“	Warren	8.13 “	“
“	Youngstown	8.44 “	“
“	Meadville	10.30 “	“
“	Jamestown	12.22PM	“
“	Salamanca	1.28 “	“
“	Olean	1.54 “	“
“	Hornell	3.48 “	“
Ar Elmira		5.13 “	“
“	Binghamton	6.26 “	“
“	Jersey City	12.01AM	“
Ar New York:			
“	Chambers St. Ferry	12.24 “	“
“	8th Ave. at W. 32nd St.	12.22 “	“
“	8th Ave. at W. 42nd St.	12.24 “	“
“	Motor Coach Rockefeller Center Terminal, 11 Rockefeller Plaza	12.30	“ EST

EQUIPMENT

Air-Conditioned Sleeping Car:
Chicago to Salamanca—6 Roomette-6 Section-4 Double Bedroom.
Chicago to Akron—10 Section-2 Double Bedroom-Drawing Room (Effective July 16.) (Sleepers open Chicago 9.15 a.m. Sleeper may be occupied at Akron until 8.00 a.m.)

Air-Conditioned Diner-Lounge Cars:
Marion to New York.

Air-Conditioned Individual Seat Coaches:
Chicago to New York.

(No baggage handled on this train east of Hornell baggage will be handled on following train.)

Air-Conditioned Coach:
Hornell to New York.

SOUTHERN TIER EXPRESS			
TRAIN NO. 10—DAILY			
Buffalo—Hornell—Elmira—Binghamton—New York			
Lv Buffalo		4.35PM	EST
“	Hornell	7.45 “	“
“	Corning	8.44 “	“
“	Elmira	9.17 “	“
“	Binghamton	10.59 “	“
Ar Jersey City		4.30AM	“
Ar New York:			
“	Chambers St. Ferry	4.54 “	“
“	8th Ave. at W. 32nd St.	6.46 “	“
“	8th Ave. at W. 42nd St.	6.48 “	“
“	Motor Coach Rockefeller Center Terminal, 11 Rockefeller Plaza	6.55	“ EST

EQUIPMENT

Air-Conditioned Sleeping Car:
Hornell to New York—10 Sec.-2 Compartment-1 Drawing Room—(Sleeper may be occupied at Jersey City until 6.30 a.m.)

Coaches:
Buffalo to Hornell—Daily Ex. Sun.
Hornell to New York—Daily.

AC Stops to discharge passengers from Port Jervis and west.
♦ Stops to discharge passengers. † Daily except Sunday. * Runs Daily.

NEW YORK—BINGHAMTON

TABLE 2 WESTBOUND

Hudson and Manhattan Tube Trains operate between New York and Erie Railroad Station in Jersey City To Erie Station, Jersey City—From Downtown New York—Train marked "Hoboken"—Fare 10 cents. From Uptown New York —Train marked "Journal Square"—Fare 10 cents.

Table with columns for Miles from New York, Eastern Standard Time Read Down, Motor Coach, and various train numbers (55, 57, 59, 1, 701, 43, 9, 703, 251, 253, 61, 255, 45, 257, 63, 27, 67, 259, 69, 47, 71, 5-15, 705, 7, 51). Rows list stations from New York to Binghamton, N.Y.

- A. C. Dining Car, New York to Deposit, Coaches, New York to Deposit.
A. C. Dining Car, A. C. Sleeper as Parlor Car, New York to Deposit, Coaches New York to Deposit.
During period June 28 to Aug. 31 incl., also July 3 will stop Sat. and Sun. to pick up passengers for Susquehanna and west only. Regular stop will be made on other days also Saturday July 5.
Fridays only during period June 27 to Aug. 29 incl., also Thursday July 3, stop will be made to pick up passengers for Binghamton and west only. Regular stop will be made on other days also on Friday July 4.
Stops on signal to receive and discharge revenue passengers.
Stops to discharge passengers.
Does not stop Sunday Mornings. Train terminates at Suffern Sunday mornings.
Stops (1.34 A. M.) Sunday and Monday mornings only to discharge passengers.
Arrives (7.36 P. M.) Saturdays and Sundays.
Stops Wednesdays to discharge passengers from New York.
Stops (11.36 A. M.) Fridays and Saturdays only.
Connecting train to Ridgewood, daily except Sundays and holidays.
Stops to let off passengers from Port Jervis and East.
Stops (4.04 P. M.) to receive passengers only.
Stops Paterson (7.30 P. M.), Ridgewood (7.40 P. M.) to receive passengers.
Stops Passaic (7.22 P. M.), to receive passengers for Hornell and west.
Stops on Fridays, Saturdays, Sundays and Holidays only to discharge passengers from New York.
Stops to discharge passengers from Ridgewood and East.
Stops to discharge passengers from New York.
Stops Paterson (8.18 A. M.), Ridgewood (8.28 A. M.) to receive passengers.
Stops Passaic (8.10 A. M.), Suffern (8.43 A. M.) for Binghamton and west.
During period June 29 to Sept. 8 stops Passaic (10.20 A. M.), Paterson (10.29 A. M.) for Monroe west. Regular stop other dates.
Bus operates between Narrowsburg and Honesdale, and the Erie Railroad acts as agent only and is not responsible beyond its own line, except as such responsibility may be imposed by law with respect to baggage.
Stops Mondays to Fridays June 27 to Aug. 29 incl., to discharge passengers from Ridgewood and East.

TABLE 3 EASTBOUND

BINGHAMTON—NEW YORK

Hudson and Manhattan Tube Trains operate between New York and Erie Railroad Station in Jersey City. From Erie Station, Jersey City—To Downtown New York—Train marked "Hudson Terminal"—Fare 10 cents. To Uptown New York —Train marked "33rd Street"—Fare 10 cents.

Table with columns for station names, times (10, 50, 52, 204, 700, 16-6, 56, 58, 58, 30, 62, 62, 70, 28, 44, 2, 208, 208, 64, 702, 34, 210, 38, 68, CK8), and service details like 'Daily Ex. Sun. and Hol.', 'Sun. only', 'Daily', etc.

- ▲ A. C. Dining Car, A. C. Sleeper as Parlor Car, Deposit to New York, Coaches, Deposit to New York.
† Stops on signal to receive and discharge revenue passengers.
♣ Stops to receive passengers for New York.
† During period June 28 to Aug. 30, stop will be made Sat. and Sun. and also Mon. Sept. 1, to discharge passengers from Susquehanna and west only. Regular stop will be made on other days also Sat. July 5.
♠ Stops Monday to Fridays July 7 to Aug. 29, incl., to receive passengers for Ridgewood and east.
CA Stops (3.58 P. M.) Sundays & Holidays only.
CB Stops Wednesdays to discharge passengers.
CC Stops Ridgewood (6.56 A. M.) Holidays only.
CD Stops at Parker's Glen (2.57 P. M.) and Mill Rift (3.17 P. M.) to receive passengers for Paterson and east.
CE Stops at Middletown (6.25 A. M.) to discharge passengers from Hornell and west.

- CG Stops Ridgewood (11.28 P. M.) to discharge passengers from Binghamton and west.
CK No baggage carried on this train east of Hornell. Baggage will be handled on following train.
CL Stops Ridgewood (7.27 A. M.) to discharge passengers from Port Jervis and west.
CM Train 16-6 operates via Bergen Short Cut. Connecting train to these points leaves Ridgewood 7.40 A. M. daily.
CN Stops Suffern (6.45 P. M.), Passaic (7.14 P. M.) to discharge passengers from Binghamton and west. CP Stops Tuesdays to receive passengers for New York.
CS Bus operates between Narrowsburg and Honesdale, and the Erie Railroad acts as agent only and is not responsible beyond its own line, except as such responsibility may be imposed by law with respect to baggage.
CT Stops Suffern (5.03 P. M.) to discharge passengers from west of Port Jervis.
CU Train 38 operates via Bergen Short Cut. Connecting train leaves Ridgewood (10.18 P. M.)
CV Stops (6.10 P. M.) to receive passengers for New York.

TABLE 4 WESTBOUND

BINGHAMTON—MARION

EASTBOUND

Miles from New York	Coach	Eastern Standard Time Read Down				Miles from Chicago	Central Standard Time Read Down					
		7 Daily PM	1 Daily AM	27 Daily PM	5-15 Daily PM		2 Daily PM	8 Daily PM	10 Daily PM	16 Daily AM	6 Daily PM	620 Sun.on PM
	Motor	Lv. NEW YORK Rockefeller Center Terminal, 11 Rockefeller Plaza.....Lv					Chicago (DearbornSta.) III. Lv.					
		10.20	7.15	2.55	6.20		Eastern Standard Time					
		10.28	7.20	3.03	6.28	269.1	Marion.....Ohio Lv.					
		10.31	7.22	3.07	6.32	290.1	Galion....." " " " " "					
						305.5	Mansfield....." " " " " "					
0.0	Chambers St. Ferry..... " " " "	11.30	7.30	3.20	6.40	322.2	Ashland....." " " " " "					
1.0	Jersey City..... " " " "	12.05	7.50	3.35	7.00	354.4	Rittman....." " " " " "					
						358.8	Wadsworth....." " " " " "					
						365.4	Barberton....." " " " " "					
						372.7	Akron....." " " " " "					
							Kent.....(Ar. Lv.)					
215.1	Binghamton.....N. Y. Lv.	5.43	1.21	9.35	12.40	382.8	Ravenna....." " " " " "					
223.7	Endicott....." " " " " "	6.00	1.34	9.52	12.52	389.1	Cleveland (See Table 8) Lv.					
237.1	Owego....." " " " " "	6.21	1.51	10.12			Warren (▲)....." " " " " "					
256.2	Waverly....." " " " " "	6.46	2.14	10.37			Niles (▲)....." " " " " "					
							Girard (▲)....." " " " " "					
273.8	Elmira....." " " " " "	7.28	2.38	DA1127	1.54		Youngstown (▲).....Ar.					
291.2	Corning....." " " " " "	8.08	3.03	DA1157	2.28		Pittsburgh (See Table 8) Ar					
302.3	Addison....." " " " " "	8.33	3.21	12.30			Youngstown.....Lv.					
332.3	Hornell.....Ar.	9.15	3.57	1.05	3.20		Hubbard.....Pa. "					
425.2	Buffalo (See Table 6).....Ar.	12.30	6.40		6.55		Sharon....." " " " " "					
332.3	Hornell.....Lv.	9.27	4.07		3.29		Greenville....." " " " " "					
349.9	Andover....." " " " " "	DC					Meadville.....Ar.					
358.5	Wellsville....." " " " " "	10.20	4.46		4.10		Saegertown.....Lv.					
366.9	Belmont....." " " " " "	DC					Cambridge Springs....." " " " " "					
374.4	Friendship....." " " " " "	DC					Union City....." " " " " "					
383.3	Cuba....." " " " " "	DC	DG		DG		Corry....." " " " " "					
395.7	Olean....." " " " " "	11.21	5.41		5.07		Jamestown.....N. Y. Ar					
413.6	Salamanca.....Ar.	11.47	6.05		5.32		(Chautauqua Lake)					
430.2	Bradford (See Table 7).....Ar.	DB2.15	DB7.15		6.55		Buffalo (See Table 10).....Lv.					
413.6	Salamanca.....Lv.	11.57	6.13		5.42		Jamestown.....Lv.					
431.1	Randolph....." " " " " "				6.05		(Chautauqua Lake)					
447.3	Jamestown.....Ar.	12.36	6.52		6.27		Corry.....Pa. "					
							Union City....." " " " " "					
447.3	Jamestown.....Lv.	12.44	6.59		6.34		Cambridge Springs....." " " " " "					
474.2	Corry.....Pa. "	1.27	7.35		7.14		Saegertown....." " " " " "					
485.6	Union City....." " " " " "		DL		7.30		Meadville.....Lv.					
501.2	Cambridge Springs....." " " " " "	2.02	DL		7.50		Greenville....." " " " " "					
509.5	Saegertown....." " " " " "	DY					Sharon....." " " " " "					
515.9	Meadville.....Ar.	2.22	8.25		8.10		Hubbard.....Ohio "					
515.9	Meadville.....Lv.	2.28	8.32		8.16		Youngstown.....Ar.					
542.1	Greenville....." " " " " "	3.08	9.11		8.59		Pittsburgh (See Table 8) Lv.					
558.2	Sharon....." " " " " "	3.35	9.37		9.26		Youngstown (▲).....Lv.					
564.2	Hubbard.....Ohio "				9.47		Girard (▲)....." " " " " "					
571.8	Youngstown.....Ar.	3.57	9.58				Niles (▲)....." " " " " "					
							Warren (▲)....." " " " " "					
							Cleveland (See Table 8) Ar.					
571.8	Youngstown (▲).....Lv.	4.04	10.07		8.25		Ravenna....." " " " " "					
576.4	Girard (▲)....." " " " " "				10.12		Kent.....(Ar. Lv.)					
580.6	Niles (▲)....." " " " " "				9.57		Akron....." " " " " "					
585.7	Warren (▲)....." " " " " "	4.30	10.34		10.19		Barberton....." " " " " "					
638.3	Cleveland (See Table 8) Ar.		12.03		11.40		Wadsworth....." " " " " "					
609.6	Ravenna....." " " " " "	5.03					Rittman....." " " " " "					
615.9	Kent.....(Ar. Lv.)	5.15	1115		1102		Ashland....." " " " " "					
626.0	Akron....." " " " " "	5.40	1141		1107		Mansfield....." " " " " "					
633.3	Barberton....." " " " " "	DO			1123		Galion....." " " " " "					
639.9	Wadsworth....." " " " " "						Marion.....Ar.					
644.3	Rittman....." " " " " "	6.11					Central Standard Time					
676.5	Ashland....." " " " " "	6.54					Chicago (DearbornSta.) III. Ar.					
693.2	Mansfield....." " " " " "	7.22					1.30 AM					
708.6	Galion....." " " " " "	8.02					7.25 AM					
729.6	Marion.....Ar.	8.30					5.35 PM					

* Runs Daily.
 f Stops on signal to receive and discharge passengers.
 † Sunday leaves Binghamton (2.25 P. M.). Arrive Oneonta 4.14 P. M.
 ‡ Runs Daily except Sunday.
 ▲ For additional service between Cleveland and Youngstown see Table 8.
 ♣ No baggage carried on this train east of Hornell. Baggage will be handled on following train.
 DA Arrives Elmira (10.59 P. M.); Corning (11.47 P. M.).
 DB Via Buffalo & Erie Coach Corp. bus between Salamanca and Bradford.
 DC Stops Andover (10.01 A. M.); Belmont (10.33 A. M.); Friendship (10.44 A. M.); Cuba (10.58 A. M.) to discharge passengers from New York.
 DF Stops (8.21 A. M.) to discharge passengers from Hammond and Chicago.
 DG Train 1 stops Cuba (5.19 P. M.), Train 5-15 (4.45 A. M.) to discharge passengers from Elmira and east and to receive for Jamestown and west.
 DJ Stops (10.22 P. M.) to discharge passengers from Meadville and east and to receive passengers for Akron and west.
 DL Stops on signal Union City (7.49 P. M.); Cambridge Springs (8.08 P. M.) to discharge passengers from Jamestown and east and to receive for Youngstown and west.
 DO Stops (5.50 P. M.) to discharge passengers from Youngstown and east and to receive passengers for Mansfield and west.
 DP Stops (10.51 A. M.) to discharge passengers from Meadville and east, and to receive passengers for Galion and west.
 DS Stops (8.36 P. M.) to discharge passengers from Youngstown and west and to receive passengers for New York.
 DT Stops (9.35 A. M.) to discharge passengers from Jamestown and west, and to receive for Elmira and east.
 DU Stops Cambridge Springs (6.45 A. M.), Union City (7.01 A. M.) to discharge passengers from Chicago and to receive for Binghamton and east.
 DV Stops Waverly to discharge passengers from Jamestown and west and to receive for New York.
 DW Stops (5.48 P. M.) to receive passengers for Jamestown and east, and to discharge passengers from Cleveland.
 DX Stops (2.22 A. M.) to discharge passengers from Buffalo, Jamestown and west.
 DY Stops (2.14 P. M.) to discharge passengers from Binghamton and east and to receive for Marion and west.
 DZ Stops (10.37 A. M.) to discharge passengers from Marion and west and to receive passengers for Binghamton and east.

TABLE 5 WESTBOUND

MARION—CHICAGO

EASTBOUND

Miles from New York	Eastern Standard Time Read Down	Daily		
		1 AM	5-15 PM	7 PM
	Lv. NEW YORK Rockefeller Center Terminal, 11 Rockefeller Plaza.....Lv.			
	8th Ave. & W. 41st St.....Lv.	7.15	6.20	10.20
	(Northwest Corner)	7.20	6.28	10.28
	8th Ave. & W. 34th St.....Lv.	7.22	6.32	10.31
	(Hotel New Yorker)			
0.0	Chambers St. Ferry.....“	7.30	6.40	11.30
1.0	Jersey City.....“	7.50	7.00	12.05
729.6	Marion.....Lv.	2.20	1.34	8.45
754.5	Kenton.....“	2.50	“	“
781.5	Lima.....“	3.27	2.27	9.46
808.8	Ohio City.....“	“	“	10.25
	Central Standard Time			
825.3	Decatur.....Ind. “	3.26	“	9.46
856.1	Huntington.....Ar.	4.01	2.45	10.20
856.1	Huntington.....Lv.	4.11	2.51	10.30
897.8	Rochester.....“	5.05	3.36	“
928.9	North Judson.....“	f 5.40	“	“
962.4	Crown Point.....“	6.22	“	“
978.1	Hammond.....“	6.45	4.57	12.52
992.4	Englewood, 63d St.....Ill. “	7.10	5.20	EC
998.7	Chicago (Dearborn Sta.)...Ar.	7.25	5.35	1.30 AM

Miles from Chicago	Central Standard Time Read Down	Daily		
		16-6 AM	2 PM	8 EH PM
0.0	Chicago (Dearborn Sta.) Ill. Lv.	9.00	5.05	9.45
6.3	Englewood, 63d Street.....“	9.14	5.19	9.59
20.6	Hammond.....Ind. “	9.37	5.45	10.25
36.3	Crown Point.....“	“	6.10	“
70.1	North Judson.....“	“	6.44	“
100.9	Rochester.....“	10.55	7.21	“
142.6	Huntington.....Ar.	11.34	8.08	12.39
142.6	Huntington.....Lv.	11.40	8.15	12.46
173.4	Decatur.....“	“	8.50	“
	Eastern Standard Time			
189.9	Ohio City.....Ohio “	“	10.11	“
217.2	Lima.....“	1.54	10.52	3.15
244.2	Kenton.....“	“	“	3.47
269.1	Marion.....Ar.	2.44	11.49	4.15
997.7	Jersey City.....Ar.	8.00	7.35	12.01
998.7	NEW YORK Chambers St. Ferry.....“	8.16	7.54	12.24
	8th Ave. at W. 32nd St.....	8.21	7.56	12.22
	8th Ave. at W. 42nd St.....	8.23	7.58	12.24
	Rockefeller Center Terminal, 11 Rockefeller Plaza.....Ar.	8.30 AM	8.05 PM	12.30 AM

TABLE 6 NEW YORK AND BUFFALO

TABLE 7 NEW YORK—SALAMANCA—BRADFORD—CHICAGO

WESTBOUND Read Down			Miles from New York	EASTBOUND Read Up		
1 Daily	7-477 Daily Ex.Sun	5 Daily		2 Daily	10 Daily Ex.Sun	6 Daily
AM	PM	PM		PM	AM	AM
7.15	10.20	6.20	0.0	8.05	6.55	8.30
7.30	11.30	6.40	0.0	7.54	4.54	8.16
7.50	12.05	7.00	1.0	7.35	4.30	8.00
10.04	2.10	9.22	88.2	5.24	2.20	5.50
10.09	2.15	9.27	88.2	5.17	2.15	5.43
1.21	5.43	12.40	215.1	1.52	10.35	2.34
1.34	6.00	12.52	223.7	1.40	10.23	“
2.14	6.46	“	256.2	12.59	9.41	“
2.38	7.28	1.54	273.8	12.36	9.17	1.29
3.03	8.08	2.28	291.2	12.05	8.44	1.03
3.57	9.15	3.20	332.3	11.12	7.45	12.16
4.22	9.45	4.00	332.3	10.55	7.35	11.35
“	9.54	4.09	338.0	10.28	f 7.21	“
4.38	10.07	4.21	340.7	10.17	7.02	“
“	“	“	344.9	“	“	“
“	“	“	347.2	“	“	“
“	f 10.14	“	349.2	“	f 6.54	“
“	10.24	EA	356.3	“	6.45	“
“	10.29	“	358.5	“	“	“
“	10.37	“	362.5	“	f 6.34	“
5.10	10.46	ED 4.58	366.4	9.48	6.27	ED 10.39
5.16	10.53	5.05	369.1	9.42	6.21	10.32
“	10.58	“	372.2	“	“	“
5.27	11.07	5.19	376.4	9.28	6.09	10.19
“	f 11.15	“	382.2	“	f 5.59	“
“	f 11.22	“	386.5	“	“	“
5.51	11.35	5.50	393.6	9.01	5.42	9.51
“	“	f 5.57	397.5	“	5.34	“
“	11.46	6.02	399.7	“	5.29	“
6.09	11.55	6.11	405.3	8.32	5.18	9.29
“	“	6.17	408.2	“	5.11	“
“	“	6.21	409.5	“	5.07	“
“	12.07	6.29	414.2	8.20	4.59	“
“	12.11	6.33	415.5	“	4.55	“
“	“	6.43	422.1	“	4.45	“
6.40 PM	12.30 PM	6.55 AM	425.2	8.00 AM	4.35 PM	9.00 PM

WESTBOUND Read Down			Via Salamanca and BUS of Buffalo and Erie Coach Corp. (See Note "X" Below)	EASTBOUND Read Up		
7-Bus Daily	5-557 Daily	1-Bus Daily		Bus-2 Daily	Bus-8 Daily	560-6 Daily
PM	PM	AM	Lv. NEW YORK	Ar. PM	AM	AM
10.20	6.20	7.15	Rockefeller Center Terminal, 11 Rockefeller Plaza (Note ⊕)	8.05	12.30	8.30
11.30	6.40	7.30	Lv. Chambers St. Ferry. Ar.	7.54	12.24	8.16
12.05	7.00	7.50	Lv. Jersey City.....Ar.	7.35	12.01	8.00
11.47	5.32	6.05	Ar. Salamanca.....Lv.	8.53	1.28	10.16
EB 1.30	6.15	EB 6.28	Lv. Salamanca.....Ar.	7.35	12.45	9.55
“	6.40	“	Lv. Limestone.....Lv.	“	“	“
2.15 PM	6.55 AM	7.15 PM	Ar. Bradford.....Lv.	EB 6.50 AM	EB 12.01 PM	9.15 PM
“	“	“	“	“	“	“
“	“	“	Lv. Bradford.....Ar.	AM	PM	“
“	“	EB 3.20	Ar. Salamanca.....Lv.	EB 9.50	EB 1.30	“
“	“	4.05	“	“	“	“
11.57	“	6.13	Lv. Salamanca.....Ar.	8.43	1.19	“
12.44	“	6.59	Ar. Jamestown.....Lv.	8.02	12.22	“
3.57	“	9.58	Ar. Youngstown.....Lv.	4.25	8.44	“
5.40	“	11.41	Ar. Akron.....Lv.	2.44	7.11	“
“	“	“	Central Standard Time	“	“	“
1.30 AM	“	7.25 AM	Ar. Chicago.....Lv.	5.05 PM	9.45 PM	“

Buses leave as follows: (running time approximately 45 minutes.)

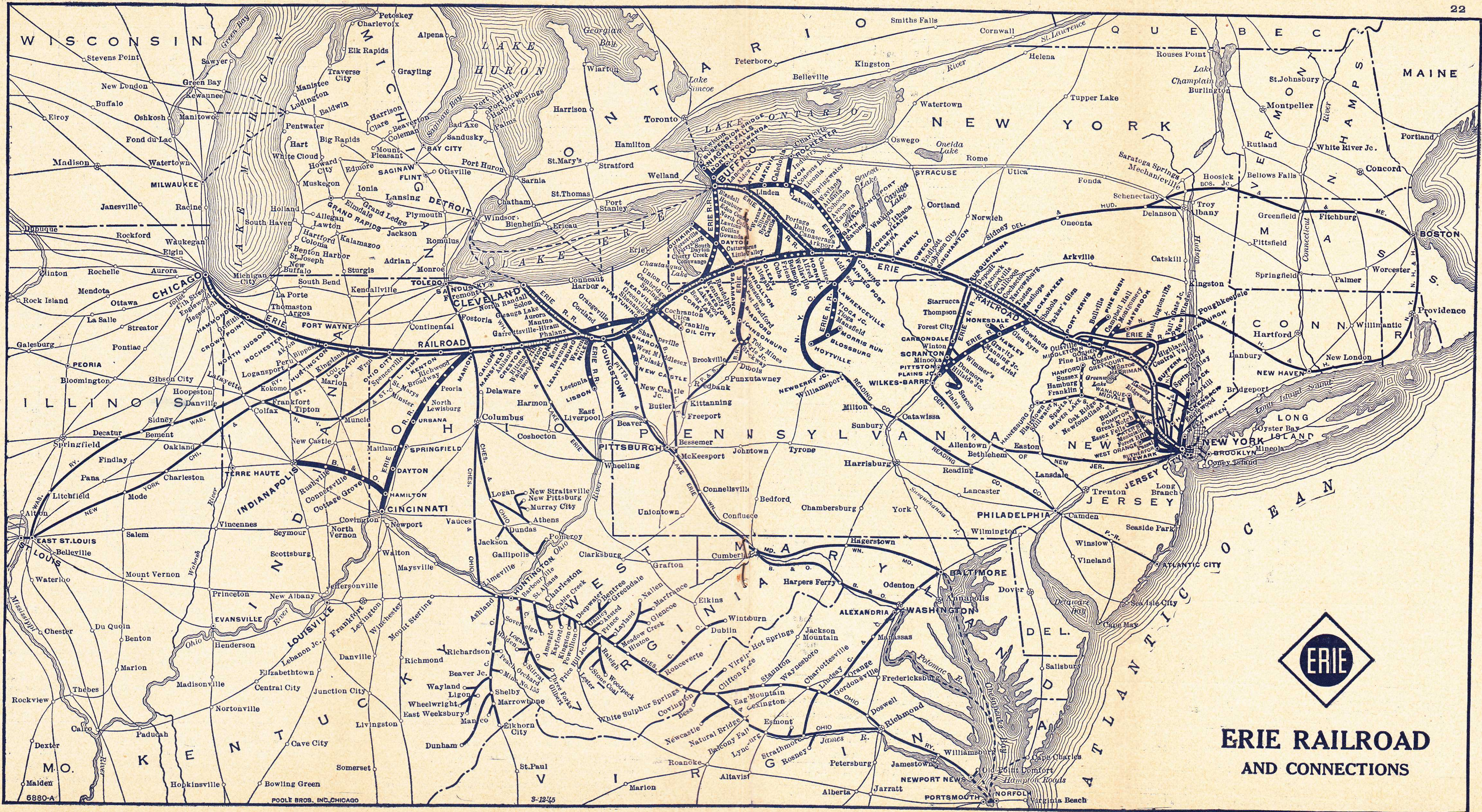
Lv. Salamanca for Bradford, 9.50 A.M., 1.30 P.M., 6.28 P.M., 9.33 P.M.,
Lv. Bradford for Salamanca, 6.50 A.M., 12.01 P.M., 3.20 P.M., 8.00 P.M.

BAGGAGE CHECKED TO BRADFORD—Baggage will be handled only on Trains 557 and 560 between Salamanca, N. Y., and Bradford, Pa.

x In connection with bus service the Erie Railroad acts as agent only and is not responsible beyond its own line, except as such responsibility may be imposed by law with respect to baggage.

♦ Stops Endicott 2.22 A. M. to discharge passengers from Buffalo.
f Stops on signal to receive and discharge revenue passengers.
Note ⊕—See Table 5 for stops of Motor Coach in New York City.
EA Stops (Dalton 4.37 A. M.,) to discharge passengers from Hornell and east and to receive passengers.

EB Via Buffalo & Erie Coach Corp. bus between Salamanca and Bradford.
EC Train 7 stops (1.15 A. M.) to discharge passengers from east of Hammond.
ED No agent on duty. No baggage handled on Trains 5 and 6 to or from Castile.
EH No baggage carried on this train east of Hornell. Baggage will be handled on following train.



**ERIE RAILROAD
AND CONNECTIONS**

TABLE 8 DETROIT—TOLEDO—CLEVELAND—YOUNGSTOWN—PITTSBURGH—WASHINGTON—BALTIMORE

Miles from Cleveland	Eastern Standard Time Read Down	688	624	626	6	628	686	620	Miles from Baltimore	Eastern Standard Time Read Down	629	619	5	685	623	679	687
		Daily	Daily	Daily	Daily	Ex Sun & Hol.	Daily	Sun. only			Ex Sun & Hol.	Sun. only	Daily	Daily	Daily	Daily	Daily
0.0	DetroitLv.	11.05 PM					1.00 PM	5.30 PM	0.0	Baltimore (Mt. Royal Sta.) ..Lv.			9.27 PM				3.15 PM
	ToledoLv.	1.10	4.20	9.45			3.10	6.40	1.5	Baltimore (Camden Sta.)			9.35		8.40		3.23
3.3	ClevelandLv.	3.17	8.00	1.00	4.35	5.30	6.00	10.00	38.3	Washington, D. C.Lv.			10.45	10.00			4.40
5.6	(Erie Station, East End Superior Ave. Viaduct)								45.2	Silver Spring.....			10.59	10.14			4.54
10.7	East 55th Street		8.07	1.07	GB	5.37	6.08	10.08	93.4	Harper's Ferry.....				11.09			
15.8	E. 93d St., Cleveland		8.13	1.11	4.47	5.42	6.13	10.13	111.7	Martinsburg.....			12.22	11.35			
20.4	North Randall					5.51			189.4	Cumberland.....			2.07		1.15		
	Solon			GP		5.59			276.4	Connellsville.....			4.42		4.14		
	Geauga Lake					6.05			319.5	McKeesport.....			5.38		5.12		
23.6	Aurora			GP		6.10			324.7	Braddock.....			5.49		5.22		11.10
30.0	Mantua			GD		6.18			339.5	PittsburghAr.			6.10		5.40		
34.2	Jeddoe					6.24			339.5	PittsburghLv.			8.25	12.30	6.00	9.00	12.40
36.7	Garrettsville-Hiram		8.50	1.51		6.29			350.1	Coraopolis.....			8.40	12.44	6.15	9.14	
40.3	Mahoning					6.35			358.6	Aliquippa.....			8.51	12.54	6.25	9.23	
45.3	Phalanx					6.41			365.2	Beaver.....			8.59	1.03	6.35	9.31	
52.6	Leavittsburg					6.51			368.7	Beaver Falls.....			9.05	1.09	6.42	9.36	
57.7	Warren	4.36	9.11	2.12	5.40	7.00	7.05	11.18		New Brighton.....			9.05	1.03	6.41	9.27	
61.9	Niles	GL	9.20	2.20	GM	7.18	7.16	11.27		Ellwood City (GJ).....			9.20	1.23	6.56	9.50	
66.5	Girard					7.24		11.34	380.3	Wampum (GJ).....			9.15	1.18	6.51	9.44	
	YoungstownAr.	5.00	9.35	2.35	6.01	7.36	7.30	11.43	386.7	New Castle (Wash. St.) GH Lv.			9.30	1.33	7.06	9.59	
66.5	YoungstownLv.	5.10	9.40	2.40					404.4	New CastleAr.			10.00	2.00	7.40	10.30	1.55
84.2	New CastleAr.	5.42	10.06	3.06					404.4	YoungstownLv.	5.50	8.35	10.12	2.05	7.45	10.34	1.58
90.6	New Castle (Wash. St.) GH Ar.	5.57	10.21	3.21					409.0	Girard.....	5.58						
	Wampum (GJ)	5.49	10.13	3.13					413.2	Niles.....	6.07	8.49	10.25	2.19	8.00	10.47	GG
	Ellwood City (GJ)	6.04	10.28	3.28					418.3	Warren.....	6.22	8.59	10.35	2.29	8.15	10.56	2.18
102.2	Beaver Falls	GC6.03	10.28	3.28					421.5	Leavittsburg.....	6.28						
	New Brighton								425.6	Phalanx.....	6.36	9.08					
105.6	Beaver	GC6.09	10.35	3.34					430.6	Mahoning.....	6.45						
112.3	Aliquippa	GC6.19	10.45	3.43					434.2	Garrettsville-Hiram.....	6.52	9.19	GR	2.47	8.34	GN	
120.8	Coraopolis	GC6.31	10.57	3.53					436.7	Jeddoe.....	6.57			f 2.56			
131.4	PittsburghAr.	6.50	11.15	4.10					440.9	Mantua.....	7.06	GE					
	PittsburghLv.	8.20	11.40					10.55	447.5	Aurora.....	7.17	9.37					
141.0	BraddockAr.	8.36	11.58					11.13	450.5	Geauga Lake.....	7.22						
145.2	McKeesport	8.50	12.10					11.25	455.1	Solon.....	7.31						
189.3	Connellsville	9.47	1.10					12.23	460.2	North Randall.....	7.39						
281.5	Cumberland	12.12	3.47					3.05	465.3	E. 93d St., Cleveland.....	7.47	10.00	11.27	3.25	9.11	11.49	
359.2	Martinsburg	1.50	5.31					4.46	467.6	East 55th Street	7.53	10.06	GK	3.31	9.17		
372.5	Harper's Ferry	2.20	5.57					5.16	470.9	ClevelandAr.	8.03	10.15	11.40	3.40	9.25	12.03	3.23
425.7	Silver Spring	3.12	6.55					6.12		(Erie Station, East End Superior Ave. Viaduct)							
432.8	Washington, D. C.Ar.	3.30	7.15					6.30		ToledoAr.			2.58	6.15	1.15	3.05	5.28
469.4	Baltimore (Camden Sta.)Ar.	4.38	8.15					7.38		DetroitAr.				8.05			7.30
470.9	Baltimore (Mt. Royal Sta.)Ar.	4.46						7.46									

Detroit, Toledo, Cleveland, Youngstown, Pittsburgh, Washington, Baltimore Trains. ★Indicates Air-Conditioned Cars

EQUIPMENT—EASTBOUND

No. 6—Daily. ★Sleeping Car (6 Roomette-6 Section-4 Double Bedroom) Cleveland to New York. ★Coach, Cleveland to New York.
 No. 624—The Washingtonian—Daily. ★B&O Parlor-Diner, Cleveland to Baltimore. ★Individual Reclining Seat Coaches, Cleveland to Washington and Baltimore.

No. 686—Daily. ★Sleeping Car for Parlor Car Service and ★Coaches, Detroit to Pittsburgh, via Cleveland. ★Dining Car, Cleveland to Pittsburgh. ★Coaches, Pittsburgh to Washington.
 No. 626—Daily. ★Erie Parlor-Buffer Car, Cleveland to Pittsburgh. ★Coach, Cleveland to Pittsburgh.

No. 688—Daily. ★Sleeping Car (12 Section and 2 Double Bedrooms), Chicago to Pittsburgh. ★Sleeping Car (10 Section-3 Double Bedroom), Detroit to Pittsburgh. Through Coaches, ★Chicago and ★Detroit to Pittsburgh, via Cleveland. ★Parlor Car, ★Dining Car and ★Coaches, Pittsburgh to Washington and Baltimore.

EQUIPMENT—WESTBOUND

No. 5—Daily. ★Sleeping Car (6 Roomette-6 Section-4 Double Bedroom), New York to Cleveland. ★Erie Parlor-Buffer Car, Pittsburgh to Cleveland. ★Coach, Pittsburgh to Cleveland.

No. 623—The Washingtonian—Daily. ★B&O Parlor-Diner, Baltimore to Cleveland. ★Individual Reclining Seat Coaches, Baltimore and Washington to Cleveland.
 No. 685—Daily. ★Sleeping Car for Parlor Car Service and ★Coaches, Pittsburgh to Detroit, via Cleveland. ★Dining Car, Pittsburgh to Cleveland.

No. 679—Daily. ★Sleeping Car (12 Section and 2 Double Bedrooms), Pittsburgh to Chicago, and ★Through Coaches, Pittsburgh to Chicago, via Cleveland.
 No. 687—Daily. ★Sleeping Car (10 Section-3 Double Bedroom), Pittsburgh to Detroit. ★Through Coaches, Pittsburgh to Detroit via Cleveland. ★Coaches only, Washington to Pittsburgh.

- ♦ Stops to discharge passengers.
- f Stops on signal to receive and discharge revenue passengers.
- GB Stops (4.42 P. M.) Sundays only to receive passengers for Youngstown.
- GC Stops to discharge passengers from points beyond Youngstown.
- GD Stops (1.42 P. M.) to discharge passengers from Cleveland and to receive passengers for Warren and east.
- GE Stops (9.29 A. M.) to receive passengers for Cleveland.
- GG Stops (2.09 A. M.) to discharge passengers from east of Youngstown and to receive passengers for Cleveland.
- GH Bus service between New Castle and New Castle (Washington St.).
- GJ Bus service between Wampum and Ellwood City.
- GK Stops Sunday only to discharge passengers.
- GL Stops (4.45 A. M.) to discharge passengers from Cleveland and west and to receive for Pittsburgh.
- GM Stops (5.48 P. M.) to receive passengers for Jamestown and east, and to discharge passengers from Cleveland.
- GN Stops (11.14 P. M.) to discharge passengers from Pittsburgh.
- GP Stops Saturdays only at Solon (1.27 P. M.) and Aurora (1.35 P. M.) to discharge passengers from Cleveland.
- GR Stops (10.53 A. M.) to discharge passengers from Hornell and east.

Round-trip tickets reading via B. & O. R. R. between Cleveland and points east of Pittsburgh are honored via Erie R. R.-P. & L. E. R. R. between Cleveland and Pittsburgh.

Holidays in the above table refers to the observance of New Year's Day, Memorial Day, Independence Day, Labor Day, Thanksgiving Day and Christmas Day.

**TABLE 9
ELMIRA-AVON**

Westbound		Eastbound	
Read Down	Miles	Eastern Standard Time	Read Up
7-467 Daily Ex. Sat. PM		Leave NEW YORK Rockefeller Center Terminal, 11 Rockefeller Plaza (Note ⊕)	468-8 Daily Ex. Mon. AM
10.20		Chambers St. Ferry	12.30
11.30	0.0	Jersey City	12.24
12.05	1.0		12.01
Ex. Sun. AM			Ex. Sun. PM
7.28	0.0	Elmira	5.13
8.08	17.4	Ar. Corning Lv.	4.43
8.30	17.4	Lv. Corning Ar.	3.25
8.37	19.3	Painted Post	3.15
8.46	22.6	Cooper's	3.05
8.55	26.9	Campbell	2.53
9.05	31.5	Savona	2.41
9.19	37.7	Bath	2.27
9.28	41.4	Kanona	2.17
9.36	45.1	Avoca	2.07
9.43	48.0	Wallace	1.59
9.54	52.8	Cohocton	1.47
10.04	57.2	Atlanta	1.36
10.17	63.2	Wayland	1.21
10.27	67.9	Springwater	1.08
10.34	70.7	Websters	1.00
10.42	74.5	Conesus	12.51
10.50	78.3	So. Livonia	12.41
10.59	81.9	Livonia	12.31
11.06	84.5	South Lima	12.23
	86.2	Conesus Lake Jet.	
11.25	93.5	Ar. Avon Lv.	11.55
AM			AM

**TABLE 10
BUFFALO—JAMESTOWN**

WESTBOUND		EASTBOUND	
Read Down	Miles	Eastern Standard Time	Read Up
519 Daily PM		Lv. Buffalo (L.V. Term.) Ar	516 Daily AM
4.15	0.0	Blasdell	11.00
4.35	7.4	Hamburg	10.41
4.49	13.3	Water Valley	10.31
HA	14.4	Eden Valley	10.23
HA	16.8		
5.01	19.1	Eden Center	10.18
5.09	23.4	North Collins	10.08
5.16	27.3	Lawtons	10.00
5.23	30.4	Collins (St. Hosp.)	9.53
5.33	33.4	Gowanda	9.49
5.48	38.0	Dayton	9.34
5.59	43.3	South Dayton	9.25
6.08	48.3	Cherry Creek	9.16
6.16	52.6	Conewango	9.10
HA	60.6	Kennedy	8.59
6.35	66.4	Falconer	8.51
6.42	69.5	Ar. Jamestown Lv	8.45
PM			AM

TABLE 11 NEW YORK—KENOZA LAKE—JEFFERSONVILLE
Train and Bus Service via Callicoon

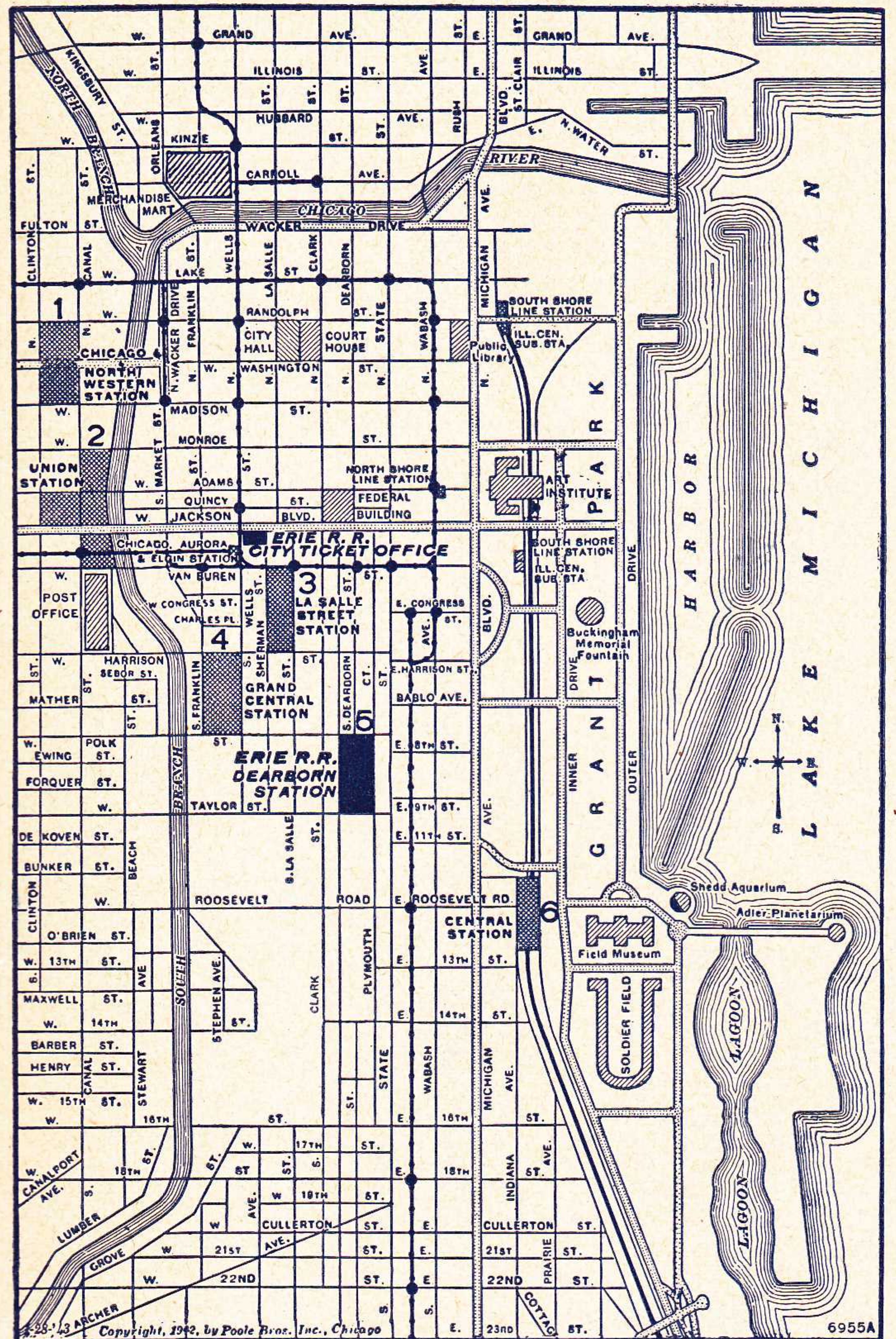
WESTBOUND Read Down			EASTBOUND Read Up		
27 Daily PM	43 Sa. & Su. Only HC AM	1 Daily AM	2 Daily PM	44 Sa. & Su. Only HB PM	
2.55	7.50	7.15	Lv. Rockefeller Center Terminal, 11 Rockefeller Plaza (Note ⊕)	8.05	7.45
3.20	8.10	7.30	Lv. Chambers St. Ferry	7.54	7.39
3.35	8.25	7.50	Lv. Jersey City	7.35	7.15
7.15	11.58	11.16	Ar. Callicoon Lv	4.11	3.53
Via bus of Schultz Auto-Bus Line (See Note X below)					
7.20	12.01	11.30	Lv. Callicoon	3.45	3.45
7.50	12.30	11.59	Lv. Kenoza Lake	3.15	3.15
8.20	1.00	12.30	Ar. Jeffersonville Lv	2.30	2.30

TABLE 12 NEW YORK—CHAUTAUQUA—CHICAGO
(Via Jamestown and BUS of Buffalo and Erie Coach Corp.)

WESTBOUND Read Down			EASTBOUND Read Up		
1-Bu Daily AM	5-Bu Daily Ex. Sun. & Hols. PM	7-Bu Daily PM	EASTERN STANDARD TIME See Note X below		
7.15	6.20	10.20	Lv. NEW YORK Rockefeller Center Terminal, 11 Rockefeller Plaza	AM	
7.30	6.40	11.30	Lv. Chambers St. Ferry	12.30	
7.50	7.00	12.05	Lv. Jersey City	12.24	
6.59	6.34	12.44	Ar. Jamestown Lv	12.01	
7.15	6.40	1.00	Lv. Jamestown	12.22	
7.50	7.20	1.40	Ar. Chautauqua Lv	10.10	
	AM	PM		9.35	
5.55		11.45	Lv. Chautauqua	AM	
6.30		12.20	Ar. Jamestown Lv	1.40	9.40
6.59		12.44	Lv. Jamestown	1.00	9.00
11.41		5.40	Ar. Akron Lv	12.22	8.02
			Central Standard Time	7.11	2.44
7.25		1.30	Ar. Chicago Lv	AM	
AM		AM		9.45	5.05

MAP OF DOWNTOWN CHICAGO

Showing Business District, "Loop," and Railroad Stations



LOCATION OF CHICAGO PASSENGER STATIONS

Tenant Railroad Lines Are Listed. Number Indicates Location On Above Map. Erie trains arrive at and depart from Dearborn Station (5).

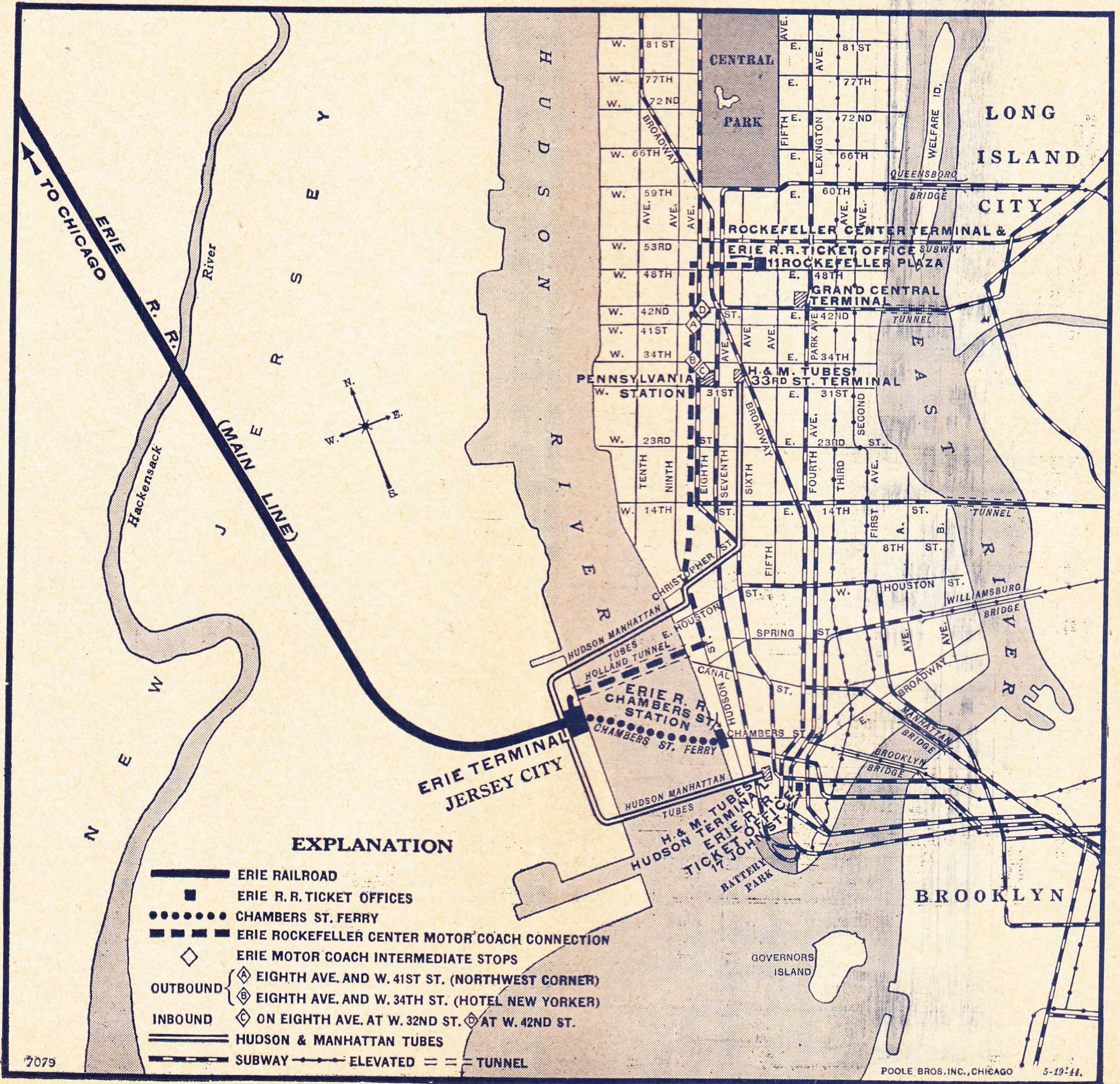
- Dearborn Station (5)**
Polk and Dearborn Sts.
- La Salle St. Station (3)**
La Salle and Van Buren Sts.
1/2 Mile from Dearborn Station
- Grand Central Station (4)**
Harrison and Wells Sts.
3/10 Mile from Dearborn Station
- Central Station (6)**
Roosevelt Road and Michigan Ave.
8/10 Mile from Dearborn Station
- C&NW Terminal (1)**
Madison and Canal Sts.
1 and 2/10 Miles from Dearborn Station
- Union Passenger Station (2)**
Canal, Adams, Jackson and Clinton Sts.
1 Mile from Dearborn Station
- Central Station (6)**
Roosevelt Road and Michigan Ave.
8/10 Mile from Dearborn Station

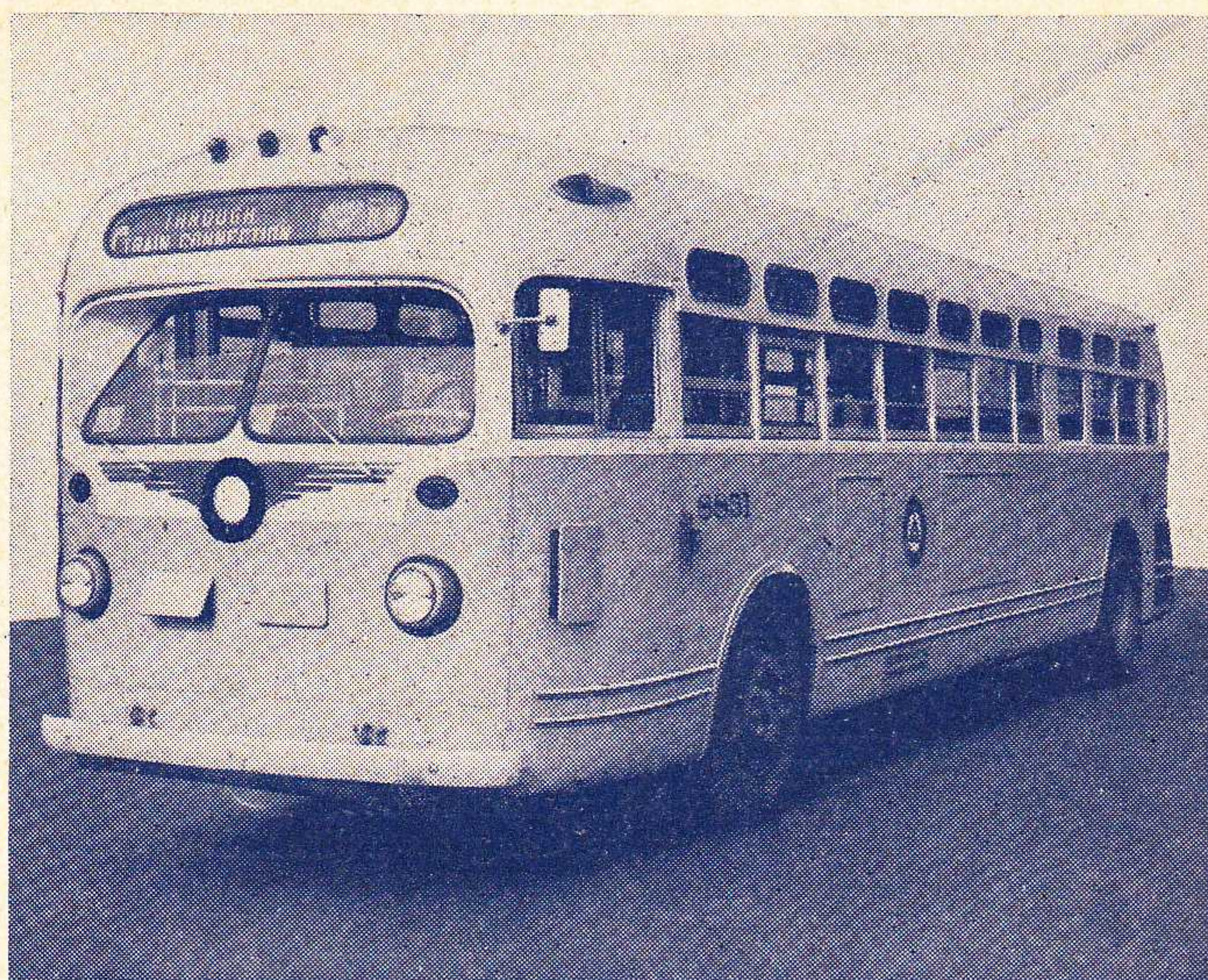
⊕ Stops on signal to receive and discharge revenue passengers.
 ⊕ See Tables 2 and 3 for stops of Motor Coach in New York City.
 HA Stops to discharge passengers.
 HB Sat. and Sun. June 28 to Aug. 30 incl., except July 5. Will also operate Mon. Sept. 1.
 HC Sat. and Sun. June 28 to Aug. 31 incl., except July 5. Will also operate Friday July 4.

Tickets sold and baggage checked through to Chautauqua.
 Hand baggage checked without charge. Trunks checked at charge of 25c each.
Note X. In connection with the bus service the Erie Railroad acts as agent only and is not responsible beyond its own line, except as such responsibility may be imposed by law with respect to baggage.

MAP OF NEW YORK CITY AND ADJACENT AREA

showing Erie Rockefeller Center Motor Coach Connection, Chambers Street Ferry route, Hudson and Manhattan Tube routes, and Erie Terminals and Ticket Offices in Manhattan and Jersey City.





ERIE MOTOR COACH SERVICE

to and from

ROCKEFELLER CENTER TERMINAL IN MIDTOWN NEW YORK

(for through-train passengers)

ERIE MOTOR COACHES connecting with specified trains to and from Goshen, N. Y. and points west thereof will leave and arrive at Rockefeller Center Terminal, 11 Rockefeller Plaza. (Rockefeller Plaza is between Fifth and Sixth Aves.; No. 11 is between W. 48th and 49th Sts.)

Only 30 minutes between Erie Railroad Jersey City Terminal and Rockefeller Center by Motor Coach.

Motor coaches make intermediate stops, inbound—Eighth Ave. at W. 32nd St. and Eighth Ave. at W. 42nd St. Outbound—at Eighth Ave. and W. 41st St. (Northwest Corner), and Eighth Ave. and W. 34th St. (Hotel New Yorker).

Through-train connections guaranteed.

Additional charge for motor coach service is 35c, plus tax, in each direction.

Hand baggage transferred free of charge.

Connections provided eastbound from Trains Nos. 10, 16-6, 2 and 8; westbound for Trains Nos. 1, 27, 5-15, and 7.

During period June 27 to Sept. 1, inclusive, Motor Coach connection will be provided for summer season eastbound Trains Nos. 44, 34, 38 and westbound Trains Nos. 43, 45, 47 on days trains operate.

Consult Ticket Agents for further information.



HUDSON AND MANHATTAN TUBE TRAINS

SCHEDULE OF RUNNING TIME

BETWEEN

ERIE R. R. JERSEY CITY TERMINAL

AND

Downtown New York—

Cortlandt St. (Hudson Terminal Bldg.) 6 Mins.

Uptown New York—

33rd Street and 6th Ave 14 "

23rd Street and 6th Ave 11 "

19th Street and 6th Ave 10 "

14th Street and 6th Ave 9 "

9th Street and 6th Ave 8 "

Christopher and Greenwich Streets 6 "

Allow 10 Minutes additional for connections.

Fares—Downtown or Uptown 10 cents.

Tube Trains From "Erie" Jersey City

To Downtown New York—take train marked "Hudson Terminal."

To Uptown New York—take train marked "33rd St. Local."

To Journal Square, Jersey City—take train marked "Journal Square," also connects to Newark.

To Hoboken—take train marked "Hoboken."

Tube Trains To "Erie" Jersey City

From Downtown New York—take train marked "Hoboken."

From Uptown New York—take train marked "Journal Square."

From Journal Square, Jersey City—take train marked "33rd St. Local," also connects from Newark.

From Hoboken—take train marked "Hudson Terminal."

ERIE R. R. FERRY TIME TABLE

EASTERN STANDARD TIME

CHAMBERS STREET FERRY

Ferry Running Time, 9 Minutes

WEEK DAYS

Leave New York for Jersey City						Leave Jersey City for New York					
AM	AM	AM	PM	PM	PM	AM	AM	AM	PM	PM	PM
12.30	7.15	10.30	12.10	3.50	7.20	12.15	7.08	10.15	12.05	3.45	7.05
1.00	7.20	10.40	12.20	4.00	7.30	12.45	7.17	10.25	12.15	3.53	7.15
1.30	7.30	10.50	12.30	4.08	7.40	1.15	a7.25	10.35	12.25	d4.00	7.25
2.00	7.40	11.00	12.40	d4.15	7.50	1.45	e7.30	10.45	12.35	d4.05	7.35
2.30	7.45	11.10	12.50	4.20	8.00	2.15	7.31	10.55	12.45	4.13	7.45
3.00	7.50	11.20	1.00	4.28	8.15	2.45	7.38	11.05	12.55	4.24	7.55
3.30	8.00	11.30	1.10	4.38	8.30	3.15	7.48	11.15	1.05	4.32	8.05
4.00	8.10	11.40	1.20	4.48	8.45	3.45	7.54	11.25	1.15	4.45	8.15
4.30	8.15	11.50	1.30	5.00	9.00	4.15	a8.02	11.35	1.25	4.55	8.30
4.45	8.20	12.00	1.40	5.10	9.15	4.45	8.07	11.45	1.35	5.05	8.45
5.00	8.30	1.50	5.20	9.30	5.00	8.18	11.55	1.45	5.15	9.00
5.15	8.40	2.00	5.30	10.00	5.15	8.23	2.00	5.25	9.15
5.30	8.50	2.10	5.40	10.30	5.30	8.35	2.05	5.35	9.30
5.45	9.00	2.20	5.50	10.55	5.45	8.45	2.15	5.45	9.45
6.00	9.10	2.30	6.00	11.30	5.57	8.55	2.25	5.55	e9.50
6.10	9.20	2.40	6.10	12.00	6.07	9.05	2.35	6.00	10.15
6.20	9.30	2.50	6.20	6.18	9.15	2.45	6.18	10.45
6.30	9.40	3.00	6.30	6.25	9.25	2.55	6.25	11.15
6.38	9.50	3.10	6.40	6.35	9.35	3.05	6.35	11.45
6.50	10.00	3.20	6.50	6.45	9.45	3.15	6.45
7.00	10.10	3.30	7.00	6.55	9.55	3.25	a6.55
7.10	10.20	3.40	7.10	7.02	10.05	3.35	e7.00
AM	AM	Noon	PM	PM	PM	AM	AM	AM	PM	PM	PM

a—Except Holiday. d—Except Saturday and Holidays. e—Holiday only.

SUNDAYS

AM	AM	PM	PM	PM	AM	AM	PM	PM	PM	PM	
12.30	8.00	12.15	4.45	9.15	12.15	8.00	12.15	4.45	9.15
1.00	8.10	12.30	5.00	9.30	12.45	8.15	12.30	5.00	9.30
1.30	8.30	12.45	5.20	10.00	1.15	8.30	12.45	5.15	9.45
2.00	8.45	1.00	5.30	10.30	1.45	8.45	1.00	5.30	10.15
2.50	9.00	1.15	5.50	10.55	2.15	9.05	1.15	5.45	10.45
3.30	9.20	1.30	6.00	11.30	3.15	9.15	1.30	6.00	11.15
4.15	9.30	1.45	6.20	12.00	3.45	9.35	1.45	6.18	11.45
4.45	9.40	2.00	6.30	4.30	9.45	2.00	6.30
5.15	10.00	2.10	6.40	5.00	10.00	2.15	6.45
5.45	10.10	2.30	7.00	5.45	10.15	2.35	7.00
6.00	10.30	2.45	7.20	6.00	10.30	2.45	7.15
6.15	10.45	3.00	7.30	6.15	10.45	3.00	7.30
6.30	11.00	3.20	7.45	6.30	11.05	3.15	7.45
6.45	11.15	3.30	8.00	6.45	11.15	3.30	8.00
7.00	11.30	3.45	8.15	7.00	11.30	3.45	8.15
7.10	11.45	4.00	8.30	7.15	11.45	4.00	8.30
7.30	12.00	4.15	8.45	7.35	12.00	4.20	8.45
7.45	4.30	9.00	7.45	4.30	9.00
AM	Noon	PM	PM	PM	AM	AM	PM	PM	PM	PM	PM

GENERAL INFORMATION

STANDARD OF TIME—Erie Lines east of and including Ohio City, Ohio, are shown in Eastern Standard Time. Lines west of Ohio City, Ohio, in Central Standard Time. 12:01 Noon to 12:00 Midnight is indicated by heavy-faced type.

THIS COMPANY IS NOT RESPONSIBLE FOR ERRORS in timetables, inconvenience or damage resulting from delayed trains, or failure to make connections; schedules and equipment shown herein are subject to change without notice.

HOLIDAYS—The term "Holidays" (unless covered by special note under schedule) refers to the observance of New Year's Day, Lincoln's Birthday, Washington's Birthday, Memorial Day, Independence Day, Labor Day, Columbus Day, Election Day (November 4), Thanksgiving Day and Christmas Day.

TRAINS WILL NOT BE HELD at Jersey City for ferries from New York between the hours of 4:00 P. M. and 5:30 P. M. Eastern Standard Time.

FARES PAID ON TRAIN—Conductors are required to charge ten (10) cents in excess of the one-way ticket fare for passengers traveling in coaches in the territory east of Port Jervis, including side lines and branches. Buy tickets before boarding trains and avoid payment of this extra fare.

CHILDREN under five years of age are carried free when accompanied by parent or guardian; five years of age and under twelve, half fare; twelve years of age and over, full fare.

ADJUSTMENT OF FARES—Should any misunderstanding arise with conductors or agents, pay the fare required, take receipt and communicate with Passenger Traffic Manager, Midland Bldg., Cleveland, Ohio.

REDEMPTION OF TICKETS—Tickets unused or partly used will be redeemed under tariff regulations at proper value.

LOST TICKETS—Proper care should be taken to guard against the loss of tickets, as Railroads are not responsible for lost tickets or baggage checks.

STOP-OVERS AT NIAGARA FALLS—Passengers holding tickets reading "via Erie Railroad" from Elmira, N. Y., and stations east thereof to or through Youngstown, Ohio, and stations west thereof, or vice versa, may exercise the privilege of going via Buffalo and making side-trip to Niagara Falls. On request, Erie Ticket Agent at Buffalo will issue without charge a round-trip ticket between Buffalo and Niagara Falls—Frequent service via motor coach direct from Buffalo Terminal.

STOP-OVERS AT OTHER POINTS—A stop-over within final limit will be granted on tickets sold at regular fares at all stations on the Erie Railroad (with certain exceptions in the New York suburban area).

ARTICLES LOST ON TRAINS—When articles are lost on trains or left in waiting rooms or stations, owners should apply at once to Agent at station where they leave train or address Manager, Baggage Traffic, Foot of Chambers St., New York City, giving full description of property, stating date of loss and train number.

BAGGAGE—150 pounds of baggage are checked free on adult tickets and 75 pounds on half fare tickets. Free allowance subject to tariff stipulations as to contents, weight, value and size.

Personal baggage is defined as consisting of wearing apparel, toilet articles (except liquid) and similar personal effects in actual use and necessary and appropriate for the wear, use, comfort and convenience of the passenger for the purpose of the journey and not intended for other persons or for sale. Prohibited articles which may not be included in personal baggage are shown in published tariff which is on file at stations and open for public inspection.

Baggage to be checked should be delivered at stations reasonably in advance of train departure. The railroad cannot guarantee to forward baggage on same train with passenger and when necessary will be forwarded on other trains. To facilitate prompt receipt of baggage at destination, passengers are urged to arrange for forwarding on a preceding train.

A charge is made for storage of baggage at destination when it is not claimed within the free time limit.

BAGGAGE DELIVERY IN NEW YORK CITY—All baggage checked to New York City will be sent to Chambers Street Station.

BAGGAGE INSURANCE by the St. Paul Fire and Marine Insurance Co. may be purchased at principal Erie Ticket Offices. It insures your baggage and personal effects for your entire trip anywhere in the world. Minimum premium twenty-five cents. Ask Ticket Agent for full particulars.

BAGGAGE DELIVERY SERVICE—Baggage may be checked through to house address, hotel, steamship dock, etc., at destination, thus avoiding necessity for any further attention. Reliable transfer companies perform the service at nominal charges. This delivery arrangement is in effect at all principal cities.

HAND BAGGAGE in coaches or Pullman cars is restricted to what can be conveniently placed in berth, seat, or other accommodations purchased by passenger. It is urged that passengers carry with them only such baggage as required for their immediate needs and avail themselves of the free baggage service for other baggage required on reaching destination.

SAFETY FIRST HINTS—Carefulness on your part helps eliminate accidents. Don't get on or off a train in motion; wait for a full stop. Keep hand baggage out of car aisles; this will remove a cause of inconvenience, possibly of harm, to others. Walk carefully when entering or leaving train; high-heeled shoes are sometimes a cause of tripping or stumbling on car steps. Don't stand or walk close to the railroad track; look both ways before starting across. Courtesy toward your fellow travelers increases the pleasure of your journey.

RAIL—AUTO PLAN—Effective July 1, 1947 the Rail—Auto Plan will become effective in certain cities of the East and West. Here is a service you enjoyed before the war—rail, comfort, safety and economy for a long trip, auto convenience at your destination—now restored. The railroads and Drivurself Companies are offering a special rate for Rail—Auto Plan customers. Consult Ticket Agent for details.

NEW, CONVENIENT LUGGAGE HANDLING SERVICE at Chicago!

For passengers holding through-tickets to points beyond Chicago

If you have three or more hours in Chicago before the departure time of your train to the West, your luggage is handled for you, free of charge, directly from your Erie coach or pullman to the parcel room of your connecting westbound train. You can forget your luggage until departure time, and spend *all* of your free hours for business or enjoyment in Chicago. Here's how this new Erie service operates:



1 The Erie Train Porter takes your luggage shortly before arrival in Chicago, and gives you a claim check.



2 When you leave your Erie train at Chicago your luggage is handled by the Erie to the parcel room of your connecting line.



3 Unencumbered by luggage, you may spend all of your three or more hours for business or enjoyment in Chicago. (Limousine transfer service to connecting line available if desired, at no additional charge.)



4 Then, shortly before departure time of your westbound train, you pick up your luggage at the parcel room of the station from which you are departing. Still no charge.

This new Erie service is available to all passengers—Pullman or coach, holding through-tickets to points beyond Chicago, who have three hours or more to wait in Chicago while making connections with any westbound train to any destination.

This service, of course, is also available

to passengers departing from Dearborn Station where no station transfer is involved, and where there is one hour or more waiting time.

Limousine transfer service to connecting lines is also available if desired, at no additional charge.

For full details, consult your Erie Ticket Agent.

Erie  Railroad

S E R V I N G T H E H E A R T O F I N D U S T R I A L A M E R I C A

for your convenience...



ERIE OFFERS NEW CHARGE-IT SERVICE...

One Rail Travel Card is honored by 45 Railroads

THE ERIE and forty-four other major railroads now offer a new service to travelers—a charge-it plan for buying passenger transportation, evolved after over a year's study, including a nation-wide survey of 20,000 companies and individuals who expressed complete approval of the plan.

Under this convenient plan, the one Rail Travel Card will be honored at ticket offices of the Erie and other participating railroads for rail and Pullman tickets to any destination in the United States, Canada, and Mexico, also for baggage charges.

The traveler simply presents his card at the ticket office, signs a receipt and gets his tickets. At the end of the month

bill is rendered for tickets so issued. There are no charges for this service, no deposit required.

This service is available to any company or individual with proper credit rating.

FOR DETAILED INFORMATION SEE YOUR ERIE TICKET AGENT OR WRITE TO:

R. B. ROGERS, Passenger Traffic Manager
ERIE RAILROAD COMPANY
 1338 Midland Building, Cleveland 15, Ohio

Erie Railroad

SCENIC ROUTE OF THE EAST—SERVING THE HEART OF INDUSTRIAL AMERICA

ERIE RAILROAD COMPANY

General Offices { **Midland Building, Cleveland 15, Ohio. (Telephone, Cherry 8400)**
Hudson Terminal, 50 Church Street, New York 7, N. Y. (Telephone, Cortlandt 7-9200)
Utilities Building, 327 South La Salle Street, Chicago 4, Ill. (Telephone Harrison 4160)

H. D. BARBER, Vice-President,
 H. W. VON WILLER, Vice-President,
 P. W. JOHNSTON, Vice-President,
 A. B. JOHNSON, Vice-President,
 W. T. PIERSON, General Counsel,

R. E. WOODRUFF, President, Cleveland

Cleveland.
 "
 "
 Cleveland.

T. J. TOBIN, Comptroller,
 G. B. TOWNSEND, Secretary and Treasurer,
 H. A. McALLISTER, Assistant to President,
 G. C. FRANK, Assistant to President,

Cleveland.
 "
 "
 "

TRAFFIC

H. W. VON WILLER, Vice-President, Cleveland.
 D. R. THOMPSON, Asst. Vice-President, Cleveland.
 New York. | R. E. O'GRADY, Assistant Vice-President, Chicago.
 A. BLAUDEL, Assistant Vice-President, New York.

PASSENGER—Sales and Service

R. B. ROGERS, Passenger Traffic Manager, Cleveland. Chicago.
 H. T. HARLOW, General Passenger Agent,
 A. G. OLDENQUIST, Assistant General Passenger Agent,
 E. J. HAWERKOST, General Western Passenger Agent,
 P. F. ARROYO, Manager, Mail, Baggage and Express Traffic, New York.
 HENRY HERRMANN, Milk Traffic Agent, New York.

FREIGHT—Rates

A. BLAUDEL, Assistant Vice-President, New York.
 E. C. HALLBERG, Freight Traffic Manager, Chicago. New York.
 THOMAS GILPIN, Chief of Divisions Bureau,
 F. M. KLITZ, Assistant Freight Traffic Manager, Chicago.
 H. T. SWEENEY, General Freight Agent,
 H. L. VIZARD, Assistant General Freight Agent,
 E. A. JAEHNE, Chief of Divisions Bureau, "

FREIGHT—Sales and Service

E. J. DEAN, Assistant Vice-President, New York. Chicago.
 C. V. HARROW, Assistant Freight Traffic Manager,
 G. W. MADSEN, Assistant General Freight Agent,
 H. G. COOKE, Assistant General Freight Agent,
 R. L. MURPHY, Assistant General Freight Agent, Detroit.
 W. C. OTTEN, Foreign Freight Traffic Manager, Cincinnati.
 C. A. STOEBER, Assistant Foreign Freight Traffic Manager, New York.
 T. W. KANE, Foreign Freight Agent, "
 L. E. NEWMAN, Foreign Freight Agent, Chicago.
 W. S. PENCHARD, Export and Import Agent, New York.
 P. J. NAPOLI, Manager, Pier 20, N. R., New York.
 H. W. BOUMANN, Western Dairy Agent, Chicago.

COAL AND COKE

G. A. LAMB, Coal Traffic Manager, Cleveland.
 J. A. FERGUSON, General Coal Freight Agent, Cleveland. New York.
 E. C. JULIUS, Coal Freight Agent, Chicago.
 W. N. STENFELT, Assistant Coal Freight Agent, "
 M. S. SWEENEY, General Agent, Pittsburgh.

INDUSTRIAL DEVELOPMENT

A. B. JOHNSON, Vice-President, Cleveland. Cleveland. | H. J. HART, Industrial Agent, New York.

R. E. WELSH, Industrial Agent,

TRAFFIC DEPARTMENT REPRESENTATIVES

SALES AND SERVICE

Akron 8, O.—80 East Exchange St.
 (Telephone Hemlock 8194-8195)
 J. P. CLARK, Division Passenger Agt
 R. T. PHILLIPS, General Agent.

Albany 7, N. Y.—D. & H. Bldg.
 (Telephone 4-6051)
 J. E. CAMPBELL, General Agent.

Atlanta 3, Ga.—Healey Bldg.
 (Telephone Walnut 2135)
 W. H. STADELMAN, General Agent.

Baltimore 2, Md.—Munsey Bldg.
 (Telephone Plaza 8691)
 GEORGE PETERSEN, General Agent.

Birmingham 3, Ala.—Watts Bldg.
 (Telephone 3-1327)
 WM. L. THORNTON, General Agent.

Boston 14, Mass.—150 Causeway St.
 (Telephone Capitol 2510-11-12)
 A. M. MONAHAN, Gen. New Eng. Agt.

Buenos Aires, Argentina—
Sarmiento 424,
 Agencia Maritima Dodero, S. A.

Buffalo 2, N. Y.—238 Main Street.
 (Telephone Washington 1865)
 V. F. GREEN, Division Passenger Agt.
 B. F. CONWAY, Asst. Gen. Frt. Agt.

Chicago 4, Ill.—327 South La Salle St.
 (Telephone Harrison 4160)
 A. G. OLDENQUIST, A. G. P. A.
 G. W. MADSEN, Asst. Gen. Frt. Agt.

Cincinnati 2, O.—Gwynne Bldg.
 (Telephone Main 3420-3421)
 R. L. MURPHY, Asst. Genl. Frt. Agt.

Cleveland 15, O.—Midland Bldg.
 (Telephone Cherry 8400)
 D. C. KELSEY, Asst. Gen. Frt. Agt.

Columbus 15, O.—Atlas Bldg.,
8 East Long Street.
 (Telephone Adams 7331)
 L. J. SLACK, General Agent.

Dallas 1, Tex.—Southwestern Life Ins.
Bldg., Main and Akard Sts.
 (Telephone C-7352)
 L. M. SCHUKEL, General Agent.

Dayton 2, O.—Miami Savings Bldg.
 (Telephone Adams 8481)
 F. W. FISCHER, Div. Frt. Agt.

Des Moines 9, Ia.—Hubbell Bldg.,
904 Walnut Street,
 (Telephone 4-0018)
 H. A. BOCKMAN, General Agent.

Detroit 2, Mich.—General Motors Bldg.
 (Telephone Madison 2360-2361)
 H. G. COOKE, Assistant Genl. Frt. Agt.

East Buffalo 6, N. Y.—Live Stock Exch.
Bldg. (Telephone Washington 4300)
 H. B. ROGERS, General Live Stock and
 Agricultural Agt.

Elmira, N. Y.—Erie Station.
 (Telephone 2-1621)
 J. W. O'HARA, Division Passenger Agt.
 (Telephone 2-0377)
 E. W. KEILEY, Division Freight Agent.

Huntington, Ind.—Erie Station.
 (Telephone 743)
 HAROLD L. JOHNSON, Div. Frt. Agt.

Indianapolis 4, Ind.—113 No. Meridian
St. (Telephone Franklin 0255)
 E. C. ADLER, General Agent.

Jamestown 3, N. Y.—Erie Station
 (Telephone 7921-7922)
 D. S. DAY, Div. Frt. Agt.

Jersey City 2, N. J.—Erie Station
 (Telephone Journal Square 2-6400)
 J. H. DIMKE, Genl. Agt. Pass. Dept.
 J. G. VREELAND, Division Freight Agent.

Kansas City 6, Mo.—Room 1016 Dwight
Building.
 (Telephone Victor 6328)
 N. C. FRICK, General Agent.

Los Angeles 14, Cal.—510 West 6th Street.
 (Telephone Vandike 4129)
 G. F. MILLS, General Agent.

Marion, O.—Terminal Building
 (Telephone 2657)
 E. H. HUFFMAN, Division Freight Agent.

Memphis 3, Tenn.—Exchange Bldg.,
Madison & Second Sts.
 (Telephone 8-8781)
 R. L. MILLER, General Agent.

Milwaukee 3, Wis.—Majestic Bldg.,
231 West Wisconsin Ave.
 (Telephone Marquette 5555-5556)
 L. T. COULSTON, General Agent.

Minneapolis 2, Minn.—Rand Tower,
Marquette Ave. and 6th St., So.
 (Telephone Main 3604)
 J. W. CLOUD, General Agent.

Newark 2, N. J.—Military Park Bldg.,
60 Park Place.
 (Telephone Market 2-0525-26-27)
 F. L. COLLINS, General Agent.

New Haven 10, Conn.—W B I B Bldg.
 (Telephone 7-5915)
 G. E. ROBB, General Agent.

New Orleans 12, La.—Whitney Bldg.
 (Telephone Raymond 9786)
 E. W. BURNETT, General Agent.

New York 20, N. Y.—11 Rockefeller Plaza,
Rockefeller Center.
 (Telephone Circle 5-7222)
 G. W. KROM, Genl. Agt. Pass. Dept.
 G. H. DOWN, City Pass. Agent.

New York 7, N. Y.—50 Church Street.
 (Telephone Cortlandt 7-9200)
 H. A. WILSON, Genl. East. Frt. Agt.

Omaha 2, Neb.—1319 Farnam St.
 (Telephone Jackson 4866)
 C. L. COX, General Agent.

Peoria 2, Ill.—Jefferson Building, Cor.
South Jefferson & Fulton Streets.
 (Telephone 8007)
 HAROLD J. SPINDLER, General Agent.

Philadelphia, 2, Pa.—Finance Bldg.
 (Telephone Rittenhouse 6-8975-8976)
 C. F. WHADCOCK, General Agent.

Pittsburgh 19, Pa.—Gulf Building.
 (Telephone Grant 4831-2-3)
 C. E. KING, Asst. Genl. Frt. Agt.

Portland 4, Ore.—Pacific Bldg.,
520 S. W. Yamhill St.
 (Telephone Beacon 3706)
 H. L. SKEEN, General Agent.

Rochester 4, N. Y.—Reynolds Arcade
Building.
 (Telephone Main 2826)
 F. K. CORLETT, Division Freight Agent.

San Francisco 5, Cal.—681 Market St.
 (Telephone Sutter 3875)
 L. J. MARION, General Agent.

St. Louis 1, Mo.—812 Olive St.
 (Telephone Chestnut 7723-7724)
 H. W. GRAY, General Agent.

St. Paul 1, Minn.—336 Robert St.
 (Telephone Cedar 5912)
 C. R. PETRY, General Agent.

Scranton, Pa.—First National Bank Bldg.
 (Telephone—Scranton 7237-7238)
 A. E. BARKALOW, Division Freight Agent.

Seattle 1, Wash.—White Bldg.,
1338 Fourth Ave.
 (Telephone Elliot 4834)
 R. J. DUNDON, General Agent.

Springfield, O.—First National Bank
Building. (Telephone 2-5351)
 H. C. WELL, General Agent.

Toledo 4, O.—507 Toledo Trust Bldg.,
245 Summit Street.
 (Telephone Main 3816)
 H. J. SPANGENBERG, General Agent.

Toronto, Ont.—69 Yonge Street
 (Telephone Adelaide 1311-1312)
 ROBERT WILLIAMSON, Can. Frt. Agt.

Washington 5, D. C.—515 Bond Bldg.,
14th St. and New York Ave., N. W.
 (Telephone National 6075)
 W. J. MURRAY, General Agent.

Youngstown 3, O.—Terminal Building.
 (Telephone 7-0792)
 O. B. CHAPMAN, Div. Passenger Agent.
 C. G. ANDREWS, Asst. Genl. Frt. Agt.
 H. W. McILWAIN, General Agent.