

Effective August 1, 1937

Effective August 1, 1937



**ERIE RAILROAD SYSTEM
TIME TABLES**

**ERIE RAILROAD SYSTEM
TIME TABLES**

The Scenic Route

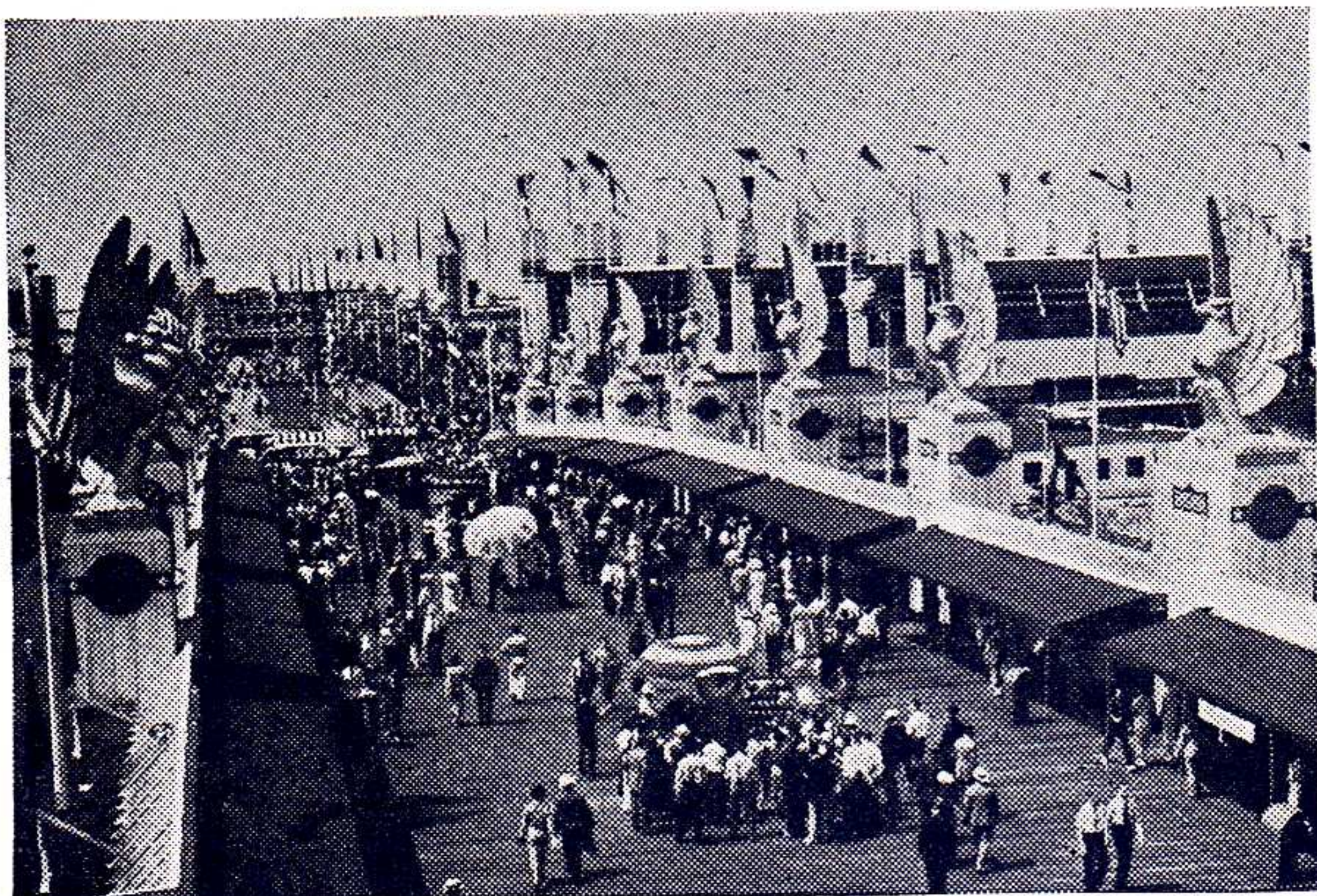
BETWEEN

**NEW YORK • BUFFALO
CLEVELAND • CHICAGO**

The Scenic Route

BETWEEN

**NEW YORK • BUFFALO
CLEVELAND • CHICAGO**



GEM OF EXPOSITIONS

| | |
|----------------------|-------------------|
| Making of a Nation | Aquacade |
| Varied Industries | Winterland |
| Hall of Progress | Pioneer Palace |
| Streets of the World | Tony Sarg Theatre |
| Horticulture Exhibit | Radioland |
| Government Exhibit | New Midway |

And Numerous Other Outstanding Attractions

New and sparkling . . . modern and sweeping in scope . . . a cavalcade of progress . . . breathtaking in its architectural achievements and showmanship . . . inspiring and educational in its countless presentations . . . that's the new 1937 GREAT LAKES EXPOSITION in its incomparable lakefront setting in Cleveland, running through Labor Day, September 6. It's a spectacle of a lifetime; the trip of the year. And Erie brings you to within short walking distance of the main gate on Cleveland's beautiful Mall.

1937 GREAT LAKES EXPOSITION CLEVELAND, OHIO

Plan an *All-Expense Vacation*

ERIECONOMY TOURS

Duluth

Visiting Buffalo, Niagara Falls, Detroit, Sarnia, Soo Canal, Port Arthur, Duluth. 11 days \$103.50 from New York.

Georgian Bay (Chicago)

Visiting Buffalo, Niagara Falls, Detroit, Midland, Mackinac Island, Chicago. 9 days \$87.25 from New York.

Expo-Niagara

Visiting Buffalo, Cleveland (Great Lakes Exposition), Niagara Falls. Week-ends, June 25 to Sept. 3—\$38.30 from New York.

Two Lakes

Visiting Buffalo, Cleveland (Great Lakes Exposition), Detroit, Niagara Falls, Lewiston, Toronto. 6 days, June 27 to Sept. 5—\$60.20 from New York.

Proportionate fares from other stations.

Canadian Frontier

Visiting Buffalo, Niagara Falls, Toronto, the St. Lawrence, Montreal, Lake Champlain. 7-day circle tours \$75.00 from all stations.

Saguenay

Visiting (in addition to points listed on Canadian Frontier Tour) Quebec, Murray Bay, Tadoussac, Saguenay River, St. Alphonse. 11-day circle tours \$125.00 from all stations.

SUMMER TOURS

Western American Luxury Tour

Visiting Grand Canyon, Los Angeles, San Francisco, Portland, Seattle, Victoria, Vancouver, Banff, Lake Louise, 17 Days.

\$252.00 from New York.

National Parks and California Tour

Visiting Glacier Park, American Rockies, Seattle, Rainier Park, Portland, San Francisco, Los Angeles, Grand Canyon, 16 Days.

\$222.00 from New York.

Proportionate fares from other stations.

ALL AMERICA TREASURE TOURS

Grand Canyon, California, Canadian Rockies

Visiting Colorado Springs, Grand Canyon, Los Angeles, San Francisco, Portland, Seattle, Lake Louise, Banff. 16 days \$231.90 from New York.

Yellowstone Park

Visiting Denver, Colorado Springs, Garden of the Gods, Yellowstone Park. 14 days \$212.45 from New York.

Proportionate fares from other stations.

LAKE-LAND TOURS

FROM CHICAGO

Visiting New York, Buffalo, Niagara Falls, Detroit, Mackinac Island. 7 days \$93.75 from Chicago.

*Ask Erie Railroad Ticket Agents
for illustrated folder on any of the
above tours.*

TABLE OF CONTENTS

Equipment of Through Trains... Page 5, 6
Suggestions... 30
General Information... 31, 32
Standard of Time
Holidays
Fares Paid on Trains
Adjustment of Fares
Sleeping and Parlor Car Reservations
Baggage Regulations
Articles left on Trains
Equipment of Local Trains... 7, 8, 9, 10
Equipment of Detroit, Toledo, Cleveland, Youngstown and Pittsburgh Trains... 17, 18
Erie Railroad Map... 19, 20, 21, 22
Sleeping and Parlor Car Fares... 31, 32
One-way Rail Fares... 31, 32
Reference Marks and Notes... 33, 34
Traffic Department Representatives... 35, 36
Ticket Offices and Passenger Stations in Principal Cities... 37

Train Service
Condensed Schedule of Through Trains... 5, 6
New York-Binghamton... 7, 8, 9, 10
Binghamton-Akron... 11, 12
Akron-Chicago... 13, 14
New York-Buffalo... 13
Detroit-Toledo-Cleveland-Youngstown-Pittsburgh... 17, 18
New York-Chautauqua... 24
Chautauqua-Akron-Chicago... 24
New York-Kenoza Lake-Jeffersonville... 26
New York-Monticello... 25
Bradford-Salamanca-Bradford... 24
New York-Meadville-Oil City... 26
Chicago-Meadville-Oil City... 26
Chicago-Salamanca-Cleveland-Chicago... 23
Branch Line Service... 23 to 27, Inc.
Hudson & Manhattan R. R. Service... 28
Ferry Schedule... 28
Chautauqua Lake Service... 24

STATIONS ON ERIE RAILROAD
At Which Trains Are Scheduled To Stop
Numerals Opposite Station Names Indicate Time Table Numbers

Table listing stations on the Erie Railroad with corresponding time table numbers. Columns include station names and numbers. Stations listed include Addison, N.Y.; Akron, O.; Aliquippa, Pa.; Albany, N.Y.; Alden, N.Y.; Alfred, N.Y.; Allegany, N.Y.; Allendale, N.J.; Andover, N.Y.; Arden, N.Y.; Arkport, N.Y.; Ashantee, N.Y.; Ashland, O.; Atlanta, N.Y.; Attica, N.Y.; Aurora, O.; Avoca, N.Y.; Avon, N.Y.; Baileys, N.Y.; Barberton, O.; Barton, N.Y.; Bath, N.Y.; Beaver, Pa.; Beaver Falls (New Brighton, Pa.); Belmont, N.Y.; Big Flats, N.Y.; Binghamton, N.Y.; Blair, N.Y.; Blasdel, N.Y.; Blooming Grove, N.Y.; Bradford, Pa.; Brooks, N.Y.; Buffalo, N.Y.; Bullville, N.Y.; Burns, N.Y.; Callicoon, N.Y.; Cambridge Springs, Pa.; Cameron, N.Y.; Cameron Mills, N.Y.; Campbell, N.Y.; Canaseraga, N.Y.; Canisteo, N.Y.; Carleton, Pa.; Carrollton, N.Y.; Castile, N.Y.; Cattaraugus, N.Y.; Central Valley, N.Y.; Chautauqua, N.Y.; Chautauqua Lake, N.Y.; Chemung, N.Y.; Cherry Creek, N.Y.; Chester, N.Y.; Chicago, Ill.; Circleville, N.Y.; Cleveland, O.; Cochection, N.Y.; Cochran, Pa.; Cohocton, N.Y.; Collins, N.Y.; Conesus, N.Y.; Conesus Lake Jct., N.Y.; Conewango, N.Y.; Cooper's, N.Y.; Coraopolis, Pa.; Corning, N.Y.; Corry, Pa.; Craigville, N.Y.; Crittenden, N.Y.; Crown Point, Ind.; Cuba, N.Y.; Cuyler, N.Y.; Dale, N.Y.; Dalton, N.Y.; Dansville, N.Y.; Darien Center, N.Y.; Dayton, N.Y.; Decatur, Ind.; Depew, N.Y.; Deposit, N.Y.; Detroit, Mich.; Dunkirk, N.Y.; East Bradford, Pa.; East Buffalo, N.Y.; East Fifty-fifth St. (Cleveland), O.; East Honesdale, Pa.; East Ninety-third St. (Cleveland), O.; East Rutherford, N.J.; Eden Center, N.Y.; Eden Valley, N.Y.; Ellwood City; Elmira, N.Y.; Elm Place, N.Y.; Endicott, N.Y.; Englewood (63rd St.), Ill.; Falconer, N.Y.; Fenner, N.Y.; Forestville, N.Y.; Fowler, N.Y.; Franklin, Pa.; Friendship, N.Y.; Gallion, O.; Gannett, N.Y.; Garrettsville-Hiram, O.; Garwoods, N.Y.; Geauga Lake, O.; Geneseo, N.Y.; Girard, O.; Glen Eyre, Pa.; Golah, N.Y.; Goshen, N.Y.; Gowanda, N.Y.; Graham, N.Y.; Great Bend, Pa.; Greenville, Pa.; Greycourt, N.Y.; Griswolds, N.Y.; Groveland, N.Y.; Gulf Summit, N.Y.; Hale's Eddy, N.Y.; Hamburg, N.Y.; Hammond, Ind.; Hancock, N.Y.; Hankins, N.Y.; Harriman, N.Y.; Hawley, Pa.; Hickory Grove, Pa.; Highland Mills, N.Y.; Hillburn, N.Y.; Hohokus, N.J.; Honesdale, Pa.; Hornell, N.Y.; Horseheads, N.Y.; Howells, N.Y.; Hubbard, O.; Huntington, Ind.; Huston, N.Y.; Industry, N.Y.; Jaycocks, N.Y.; Jamestown, N.Y.; Jeddo, O.; Jeffersonville, N.Y.; Jersey City, N.J.; Johnson City, N.Y.; Jones, N.Y.; Kanona, N.Y.; Kellams, N.Y.; Kennedy, N.Y.; Kenoza Lake, N.Y.; Kent, O.; Kenton, O.; Kimbles, Pa.; Kirkwood, N.Y.; Lackawaxen, Pa.; Lake Huntington, N.Y.; Lancaster, N.Y.; Lawtons, N.Y.; Leavittsburg, O.; Letchworth Park, N.Y.; Liberty, N.Y.; Lima, O.; Limestone, N.Y.; Linden, N.Y.; Linden St., N.Y.; Little Valley, N.Y.; Livonia, N.Y.; Long Eddy, N.Y.; Lordville, N.Y.; Mahoning, O.; Mahwah, N.J.; Mansfield, O.; Mantua, O.; Marilla, N.Y.; Marion, O.; Markhams, N.Y.; Martin, N.Y.; Mast Hope, Pa.; Meadow-wood, N.Y.; Meadville, Pa.; Middletown, N.Y.; Mill Rift, Pa.; Monaca, Pa.; Mongaup, Pa.; Monroe, N.Y.; Monticello, N.Y.; Mortimer, N.Y.; Mountainville, N.Y.; Mount Morris, N.Y.; Narrowsburg, N.Y.; Newark, N.J.; New Brighton, Pa.; Newburgh, N.Y.; New Castle, Pa.; New Hampton, N.Y.; New York, N.Y.; Niles, O.; North Collins, N.Y.; North Randall, O.; Ohio City, O.; Oil City, Pa.; Olean, N.Y.; Oneonta, N.Y.; Oquaga, N.Y.; Otisville, N.Y.; Owego, N.Y.; Oxford, N.Y.; Painted Post, N.Y.; Parker's Glen, Pa.; Passaic, N.J.; Paterson, N.J.; Perrysburg, N.Y.; Persia, N.Y.; Phalanx, O.; Pierce's, N.Y.; Pine Bush, N.Y.; Pittsburgh, Pa.; Pond Eddy, Pa.; Portage, N.Y.; Port Jervis, N.Y.; Ramapo, N.Y.; Ramsey, N.J.; Randolph, N.Y.; Rathbone, N.Y.; Ravenna, O.; Reno, Pa.; Ridgewood, N.J.; Rittman, O.; Rochester, Ind.; Rochester, N.Y.; Rock Glen, N.Y.; Rowlands, Pa.; Rutherford, N.Y.; Salamanca, N.Y.; Salisbury Mills, N.Y.; Savona, N.Y.; Seven Nations, N.Y.; Shakers, N.Y.; Sharon, Pa.; Shaws, Pa.; Sheridan, N.Y.; Shimer's Rock Cut, Pa.; Shohola, Pa.; Silver Springs, N.Y.; Skinners, N.Y.; Sloatsburg, N.Y.; Smithboro, N.Y.; Smith's Mills, N.Y.; Solon, O.; Sonyea, N.Y.; South Avon, N.Y.; South Dayton, N.Y.; Southfields, N.Y.; South Lima, N.Y.; South Livonia, N.Y.; South Park, N.Y.; Sparrowbush, N.Y.; Spencerville, O.; Spring Street, N.Y.; Springwater, N.Y.; State Hospital, N.Y.; Sterling, O.; Stockport, N.Y.; Suffern, N.Y.; Sugar Creek, Pa.; Susquehanna, Pa.; Swains, N.Y.; Thompson Ridge, N.Y.; Tioga Centre, N.Y.; Toledo, O.; Town Line, N.Y.; Tusten, N.Y.; Tuxedo, N.Y.; Union City, Pa.; Utica, Pa.; Vail's Gate, N.Y.; Wadsworth, O.; Waldwick, N.J.; Wallace, N.Y.; Warren, O.; Warsaw, N.Y.; Washington Hunt, N.Y.; Washingtonville, N.Y.; Water Valley, N.Y.; Waverly, N.Y.; Wayland, N.Y.; Websters, N.Y.; Wellsburg, N.Y.; Wellsville, N.Y.; Wellwood Ave., Hawley, Pa.; Westcolang Park, Pa.; Westfall, N.Y.; West Henrietta, N.Y.; West Perrysburg, N.Y.; West Sparta, N.Y.; White Mills, Pa.; Wiards, N.Y.; Woodbury, N.Y.; Wurtsboro, N.Y.; Youngstown, O.

ADDITIONAL STATIONS ON ERIE RAILROAD
At Which Trains Do NOT Stop Regularly
The distance shown is from New York as indicated in Tables 4 and 5

Table listing additional stations on the Erie Railroad with distances from New York. Columns include station name, state, and distance in miles. Stations listed include Adrian, Akron, Aldine, Alger, Almond, Ashville, Athens, Atlantic, Bass Lake, Bear Lake, Belvidere, Bippus, Bolivar, Boone Grove, Braceville, Burbank, Caledonia, Columbus, Creston, DeCliff, DeLong, Disko, Elgin, Foraker, Forty-seventh St. (Chicago, Ill.), Freedom, Geneva, Glenmore, Griffith, Harrods, Hegewisch, Hepburn, Highlands, Hinsdale, Hurlburt, Kemp, Kingsland, Kouts, Laketon, Lakewood, Leiters, Markel, Martel, McGuffey, Millers, Mill Village, Monterey, Nankin, Newton, Niobe, North Judson, Ontario, Ora, Palmer, Pavonia, Pershing, Polk, Preble, Red House, Saegertown, Scio, Servia, Sharpsville, Steamburg, Sterling, Tallmadge, Toecin, Uniondale, Venango, Watts Flats, West Salem, Wilders, Windham, Winfield, Wren.

TABLE 1

CONDENSED TABLE OF THROUGH TRAINS NEW YORK AND BUFFALO, CLEVELAND AND CHICAGO

(FOR LOCAL TRAINS AND INTERMEDIATE TIME OF THROUGH TRAINS SEE LOCAL TABLES)

| WEST BOUND | | Air-conditioned Trains | | EAST BOUND | |
|--|--|---|--|---|--|
| | | Air-conditioned equipment has been assigned to regular sections of trains as shown herein. Every effort will be made to provide it as specified, but the right is reserved to employ non-air-conditioned cars as necessitated by volume of traffic or emergencies. | | | |
| THE ERIE LIMITED | | TRAIN NO. 1—DAILY | | THE ERIE LIMITED | |
| New York—Buffalo—Jamestown—Chicago | | Chicago—Jamestown—Buffalo—New York | | TRAIN NO. 2—DAILY | |
| Lv New York, W. 23d St. 8 05AM E.S.T. " " Chambers St. 8 30 " " " Jersey City 8 50 " " " Paterson en 9 17 " " " Ridgewood en 9 27 " " " Binghamton 2 23PM " " " Elmira 3 36 " " Ar Buffalo (Lehigh Valley Term.) 7 15 " " Lv Olean 6 36 " " " Bradford ad 5 42 " " " Buffalo (Lehigh Valley Term.) 5 05 " " " Jamestown 7 56 " " " Meadville 9 31 " " " Youngstown 11 07 " " " Warren 11 33 " " " Akron 12 40AM " " Ar Chicago (Dearborn Sta.) 7 55AM C.S.T. | | EQUIPMENT Air-Conditioned Sleeping Cars: New York to Chicago—8 Section Lounge Restaurant Car. Hornell to Chicago—8 Section, 1 Compartment Lounge Restaurant Car. Air-Conditioned Parlor Buffet Car: New York to Buffalo. Air-Conditioned Salon Coaches: New York to Chicago. Air-Conditioned Individual Seat Coach: New York to Buffalo. Dining Service for all meals in Air-Conditioned Lounge Restaurant Cars. | | EQUIPMENT Air-Conditioned Sleeping Car: Chicago to New York—8 Section Lounge Restaurant Car. Air-Conditioned Parlor Buffet Car: Buffalo to New York. Air-Conditioned Salon Coaches: Chicago to New York. Air-Conditioned Individual Seat Coach: Buffalo to New York. Dining Service for all meals in Air-Conditioned Lounge Restaurant Car. | |
| THE LAKE CITIES | | TRAIN NO. 5—DAILY | | THE LAKE CITIES | |
| New York—Buffalo—Cleveland | | Cleveland—Buffalo—New York | | TRAIN NO. 6—DAILY | |
| Lv New York, W. 23d St. 7 10PM E.S.T. " " Chambers St. 7 30 " " " Jersey City bc 7 50 " " " Paterson bc 8 19 " " " Ridgewood bc 8 29 " " Ar Buffalo (Lehigh Valley Term.) 6 55AM Lv Olean 5 44 " " Ar Bradford 7 10 " " " Jamestown 7 05 " " " Meadville 8 37 " " " Youngstown 10 01 " " " Warren 10 34 " " Ar Cleveland 11 40AM | | EQUIPMENT Air-Conditioned Sleeping Cars: New York to Cleveland—10 Section, 2 Compartment and Drawing-room. New York to Bradford—12 Section and Drawing Room. New York to Buffalo—10 Section Lounge Buffet Car. (Sleeping Car may be occupied at Bradford until 8.00 A. M.). Air-Conditioned Lounge Dining Car: New York to Port Jervis. Hornell to Cleveland. Air-Conditioned Individual Seat Coaches: New York to Cleveland. Coaches: Hornell to Buffalo. | | EQUIPMENT Air-Conditioned Sleeping Cars: Cleveland to New York—10 Section, 2 Compartment and Drawing-room. Youngstown to New York—10 Section Lounge Restaurant Car (operates Sundays only). Bradford to New York—12 Section and Drawing Room. Buffalo to New York—10 Section Lounge Buffet Car. Air-Conditioned Lounge Dining Car: Cleveland to Hornell. Port Jervis to New York. Air-Conditioned Individual Seat Coaches: Cleveland to New York. Coaches: Buffalo to Hornell. | |
| PACIFIC EXPRESS | | TRAIN NO. 7—DAILY | | ATLANTIC EXPRESS | |
| New York—Jamestown—Chicago | | Chicago—Jamestown—New York | | TRAIN NO. 8—DAILY | |
| Lv New York, W. 23d St. 10 55PM E.S.T. " " Chambers St. 11 30 " " " Jersey City 11 45 " " " Elmira 7 14AM Ar Buffalo (Lehigh Valley Term.) 11 40 " " Lv Olean 10 44 " " Ar Salamanca 11 08 " " Lv Buffalo (Lehigh Valley Term.) 8 00 " " " Jamestown 12 10PM " " " Meadville 1 46 " " " Youngstown 3 19 " " " Warren 3 46 " " " Akron 4 49 " " Ar Chicago (Dearborn Sta.) 1 00AM C.S.T. | | EQUIPMENT Air-Conditioned Sleeping Car: New York to Salamanca—10 Section Lounge Restaurant Car (Saturday night operates New York to Youngstown). (Sleeper open Jersey City at 9.30 P. M.) Air-Conditioned Salon Coaches: New York to Chicago. Coaches only, west of Youngstown. Dining Service in Air-Conditioned Lounge Restaurant Cars, New York to Youngstown. | | EQUIPMENT Air-Conditioned Sleeping Car: Chicago to Hornell—8 Section, 1 Compartment Lounge Restaurant Car. (Sleeper open at Chicago at 9.30 P. M.) Air-Conditioned Salon Coaches: Chicago to New York. Air-Conditioned Dining Lounge Car: Hornell to New York. (No baggage handled on this train east of Hornell, baggage will be handled on following train.) | |
| TRAIN NO. 9—DAILY | | TRAIN NO. 10—EX. SUN. | | SOUTHERN TIER EXPRESS | |
| New York—Binghamton | | Hornell—Elmira—Binghamton—New York | | TRAIN NO. 10—EX. SUN. | |
| Lv New York, W. 23d St. 9 30AM E.S.T. " " Chambers St. 9 40 " " " Jersey City 10 00 " " " Paterson 10 29 " " " Ridgewood 10 39 " " Ar Binghamton 4 30PM | | EQUIPMENT Air-Conditioned Dining Lounge Car: New York to Binghamton. (until Sept. 4, incl.) Through Coaches....New York to Binghamton. | | EQUIPMENT Air-Conditioned Sleeping Car: Hornell to New York—10 Section Lounge Buffet Car. (Sleeper may be occupied at Jersey City until 7.00 A. M.) Through Coaches....Hornell to New York. | |
| THE MOUNTAIN EXPRESS | | TRAIN NO. 27—DAILY | | THE MOUNTAIN EXPRESS | |
| New York—Binghamton—Elmira—Hornell | | Binghamton—New York | | TRAIN NO. 28—DAILY | |
| Lv New York, W. 23d St. 2 20 PM E.S.T. " " Chambers St. 2 40 " " " Jersey City 2 55 " " Ar Binghamton 9 05 " " " Elmira 10 31 " " " Corning 10 55 " " Ar Hornell 11 55 " " | | EQUIPMENT Parlor Buffet Car: New York to Binghamton. (until Sept. 4, incl.) Air-Conditioned Dining Lounge Car: New York to Hornell (Sept. 5 to 25, incl.) Through Coaches....New York to Hornell. | | EQUIPMENT Through Coaches... Binghamton to New York. | |

TABLE 2 WESTBOUND

NEW YORK—BINGHAMTON

Hudson and Manhattan Tube Trains operate to and from Erie Railroad Station in Jersey City. Fare, downtown, 6 cents; uptown, 10 cents.

Main train schedule table with columns for Miles from New York, Eastern Standard Time, and various train numbers (53, 55, 57, 59, 43, 701, 1, 9, 703, 251, 209, 253, 61, 45, 255, 27, 63, 65, 67, 259, 47, 69, 5, 705, du 7, 71, 51). Rows list stations from N.Y. to Binghamton with arrival and departure times.

LOCAL PARLOR AND CLUB CAR EQUIPMENT

No. 9—Daily Air-Conditioned Dining Lounge Car... New York to Binghamton. Coaches... New York to Binghamton. No. 27—Daily Parlor-Buffer Car... New York to Binghamton. Air-Conditioned Dining Lounge Car... New York to Hornell. Coaches... New York to Hornell.

No. 43—Runs Saturdays and Sundays only (until Sept. 5, Inc.) Parlor and Dining Cars... New York to Deposit. Coaches... New York to Deposit. No. 45—Runs Sats. only (until Sept. 4, Inc.) Parlor and Dining Cars... New York to Deposit. Coaches... New York to Deposit. No. 47—Fridays only (until Sept. 3, Inc.) Parlor and Dining Cars... New York to Deposit. Coaches... New York to Deposit.

No. 63—Ex. Suns. and Hols. Parlor Car... New York to Port Jervis. Coaches... New York to Port Jervis. No. 67—Ex. Sat., Sun. and Hol. Erie Club Car... New York to Port Jervis. Coaches... New York to Port Jervis. No. 251—Saturdays only Erie Parlor Car... New York to Middletown. Coaches... New York to Middletown.

For Explanation of Reference Marks and Notes, See Pages 33 and 34.

For Parlor, Sleeping and Dining Service of Through Trains See Pages 5 and 6.

TABLE 3 EASTBOUND

BINGHAMTON—NEW YORK

Hudson and Manhattan Tube Trains operate to and from Erie Railroad Station in Jersey City. Fare downtown, 6 cents; uptown, 10 cents.

Table with 28 columns (train numbers) and 48 rows (stations). Includes times, days of operation, and service notes like 'No Baggage Carried on this Train'.

LOCAL PARLOR AND CLUB CAR EQUIPMENT

No. 8. Air-Conditioned Dining Lounge Car. Coaches. No. 10. Except Sundays. Sleeping Lounge-Buffer Car. Coaches. No. 28-Daily. Coaches.

No. 30-Mondays only (until Aug. 30, Inc.) Parlor Car. Coaches. No. 34-Sunday only, until Aug. 29, Inc. (also Monday, Sept. 6) Parlor and Dining Cars. Coaches.

No. 38-Sun. only, until Aug. 29, Inc. (also Mon. Sept. 6) Parlor and Dining Cars. Coaches. No. 44-Saturdays and Sundays only, until Aug. 29, Inc. (also Sept. 4 & 6) Parlor and Dining Cars. Coaches. No. 56-Except Sundays and Holidays. Erie Club Car. Coaches.

For Explanation of Reference Marks and Notes, See Pages 33 and 34.

For Parlor, Sleeping and Dining Service of Through Trains, See Pages 5 and 6.

TABLE 4 WESTBOUND

BINGHAMTON—AKRON

EASTBOUND

Table with columns for Miles from New York/Chicago, Eastern Standard Time, Central Standard Time, and various station names. It includes detailed departure and arrival times for routes like Albany, Binghamton, and Youngstown.

COME! DINE WITH US.

Table D'Hotel prices range as follows: Breakfast 50c to \$1.00, Luncheon 75c to \$1.25, Dinner 75c to \$1.25. A meal on our trains is always a pleasant interlude. Makes the journey seem shorter, too. The freshest food the market

affords, cooked by expert chefs and served in the comfort of spacious Restaurant Cars. If you prefer a light snack without going to the Diner the waiter will bring sandwiches, fruit, coffee, etc., right to your seat.

TABLE 5 WESTBOUND

AKRON—CHICAGO

EASTBOUND

| Miles from New York | Eastern Standard Time | | du 7 | Miles from Chicago | Central Standard Time | | dt 8 |
|---------------------|---------------------------------------|---------|----------|--------------------|---------------------------------------|---------|----------|
| | Daily | Daily | | | Daily | Daily | |
| 0.0 | N. Y., West 23d St. Lv. | AM 8.05 | PM 10.55 | 0.0 | Chicago (Dearborn Sta.) Lv. | PM 6.00 | PM 10.00 |
| 0.0 | “ Chambers St. “ | 8.30 | 11.30 | 6.3 | Englewood, 63d Street. “ | 6.14 | cp |
| 1.0 | Jersey City “ | 8.50 | 11.45 | 20.6 | Hammond. Ind. “ | 6.40 | 10.40 |
| 626.0 | Akron. Ohio “ | 12.40 | 4.49 | 36.3 | Crown Point. “ | 7.05 | |
| 633.3 | Barberton. “ | | de | 100.9 | Rochester. “ | 8.12 | |
| 639.9 | Wadsworth. “ | | | 142.6 | Huntington. Ar. | 8.57 | 12.53 |
| 644.3 | Rittman. “ | | | | | | |
| 676.5 | Ashland. “ | 1.46 | 5.16 | | | | |
| 693.2 | Mansfield. “ | 2.19 | 6.02 | | | | |
| 708.6 | Galion. “ | 2.48 | 6.38 | | | | |
| 729.6 | Marion. Ar. | 3.13 | 7.41 | | | | |
| 729.6 | Marion. Lv. | 3.20 | 7.56 | | | | |
| 754.5 | Kenton. “ | | 8.28 | | | | |
| 781.5 | Lima. “ | 4.16 | 9.10 | | | | |
| 794.3 | Spencerville. “ | | | | | | |
| 808.8 | Ohio City. “ | | | | | | |
| | Central Standard Time | | | | | | |
| 825.3 | Decatur. Ind. “ | 4.13 | | 142.6 | Huntington. Lv. | 9.07 | 12.58 |
| 856.1 | Huntington. Ar. | 4.46 | 9.40 | 173.4 | Decatur. “ | 9.45 | |
| 856.1 | Huntington. Lv. | 4.51 | 9.53 | | | | |
| 897.8 | Rochester. “ | 5.40 | | | | | |
| 962.4 | Crown Point. “ | | | | | | |
| 978.1 | Hammond. “ | 7.15 | 12.15 | | | | |
| 992.4 | Englewood, 63d Street. Ill. “ | ax | ax | | | | |
| 998.7 | Chicago (Dearborn Sta.) Ar. | 7.55 | 1.00 | | | | |
| | | AM | AM | | | | |

TABLE 6 NEW YORK AND BUFFALO

| WESTBOUND Read Down | | | Miles from New York | Eastern Standard Time | EASTBOUND Read Up | | | |
|------------------------|-------|-------|---------------------|--------------------------------------|----------------------|-------|---------|---|
| 1 | 7-477 | 5 | | | 2 | 472 | 480 | 6 |
| Daily | Daily | Daily | | | | | | |
| AM | PM | PM | 0.0 | Lv. N. Y., West 23d St. Ar. | PM 7.50 | | AM 8.05 | |
| 8.05 | 10.55 | 7.10 | 0.0 | “ Chambers St. | 7.34 | | 7.54 | |
| 8.30 | 11.30 | 7.30 | 0.0 | “ Jersey City. | 7.20 | | 7.40 | |
| 8.50 | 11.45 | 7.50 | 1.0 | Lv. Binghamton. Ar. | 1.51 | | 2.12 | |
| 2.23 | 5.42 | 1.35 | 215.1 | “ Endicott. | 1.32 | | ex | |
| 2.35 | 5.54 | | 223.7 | “ Waverly. | 12.51 | | 1.12 | |
| 3.11 | 6.39 | | 256.2 | “ Elmira. | 12.30 | | 12.50 | |
| 3.36 | 7.14 | 2.48 | 273.8 | “ Corning. | 12.07 | | 12.24 | |
| 4.01 | 7.47 | 3.13 | 291.2 | Ar. Hornell. Lv. | 11.14 | | 11.31 | |
| 4.53 | 8.42 | 4.04 | 332.3 | Lv. Hornell. Ar. | 11.05 | 7.50 | 11.15 | |
| 5.07 | 9.00 | 4.20 | 332.3 | “ Arkport. | | 7.39 | | |
| | 9.08 | 4.28 | 338.0 | “ Burns. | | 7.33 | | |
| | | 4.38 | 340.7 | “ Canaseraga. | 10.48 | 7.26 | | |
| | | | 344.9 | “ Garwoods. | | 7.21 | | |
| | | | 347.2 | “ Swains. | | 7.17 | | |
| | 9.27 | | 349.2 | “ Dalton. | | 7.07 | | |
| | 9.37 | ac | 356.3 | “ Washington Hunt. | | 7.02 | | |
| | 9.42 | | 358.5 | { Portage. | | | | |
| | 9.49 | | 362.5 | { Letchworth Park. | | 6.54 | | |
| | | | 366.4 | “ Castile. | 10.19 | 6.45 | 10.31 | |
| | | | 369.1 | “ Silver Springs. | 10.13 | 6.38 | 10.25 | |
| | | | 372.2 | “ Rock Glen. | | | | |
| | | 5.29 | 376.4 | “ Warsaw. | 10.02 | 6.24 | 10.14 | |
| | | | 382.2 | “ Dale. | | 6.14 | | |
| | | | 386.5 | “ Linden. | | | | |
| | | 5.55 | 393.6 | “ Attica. | 9.37 | 1.30 | 9.50 | |
| | | 6.02 | 397.5 | “ Griswolds. | | 1.22 | | |
| | | 6.07 | 399.7 | “ Darien Center. | | 1.17 | | |
| | | 6.15 | 405.3 | Alden (Black Water Baths) | 9.14 | 1.05 | he | |
| | | | 408.2 | “ Marilla. | | 1.00 | | |
| | | | 409.5 | “ Town Line. | | 12.56 | | |
| | | | 414.2 | “ Lancaster. | | 12.49 | | |
| | | | 415.5 | “ Depew. | | 12.46 | | |
| | | | 422.1 | “ East Buffalo. | | 12.35 | | |
| | | | 425.2 | Ar. Buffalo. Lv. | 8.45 | 12.25 | 9.00 | |
| | | | | (Lehigh Valley Terminal) | AM | PM | PM | |

Erie Trains arriving at and departing from BUFFALO, N. Y. now use the LEHIGH VALLEY TERMINAL located at Main and Scott Streets.

New Air-Conditioned Sleeping Car Service

to

NEW YORK

ON TRAIN No. 10

SOUTHERN TIER EXPRESS

Operating Daily Except Sunday

BUFFET AND LOUNGE CAR FACILITIES

Schedule—Eastern Standard Time

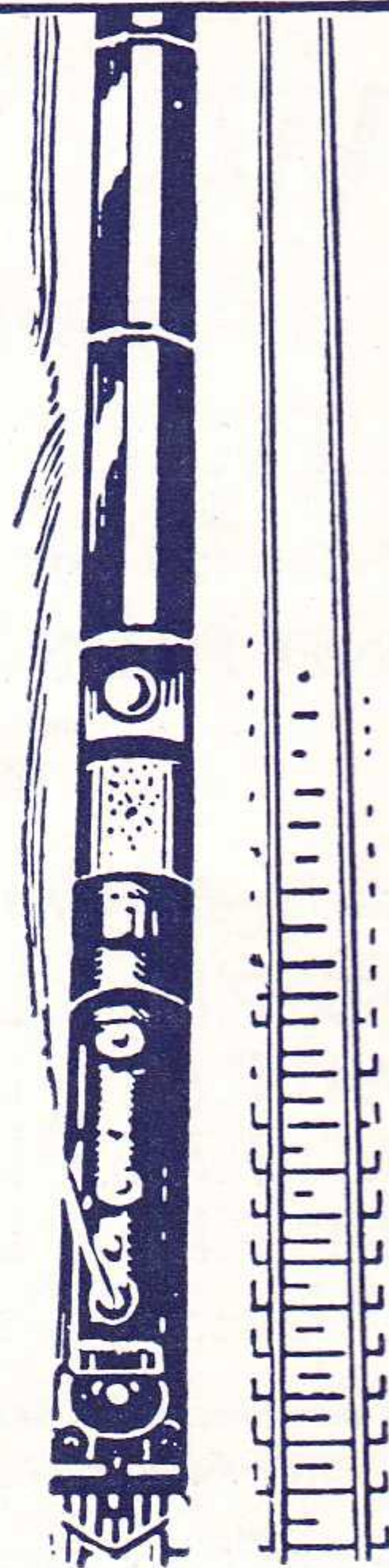
| | | | |
|----------------------------|-----------|----------------|------------|
| Lv. Hornell | 7:00 P.M. | Lv. Waverly | 9:07 P.M. |
| Lv. Addison | 7:41 P.M. | Lv. Owego | 9:30 P.M. |
| Lv. Corning | 8:11 P.M. | Lv. Endicott | 9:49 P.M. |
| Lv. Elmira | 8:43 P.M. | Lv. Binghamton | 10:25 P.M. |
| *Ar. Jersey City 4:15 A.M. | | | |

*Car may be occupied until 7:00 A.M. Eastern Standard Time, 8:00 A.M. Daylight Saving Time

Corresponding air-conditioned service returning leaves Jersey City daily 11:45 P.M. Eastern Standard Time.



Grooming the Iron Horse



● Grooming these thoroughbreds of freight is a 24-hour-a-day job with Erie roundhouse men. Before each run sharp-eyed mechanics limber the steel sinews that send these iron steeds roaring down the rails. Each working part is carefully inspected and serviced for speed—speed matched only by the power of these famous locomotives. Speed is a creed with the Erie. A creed that has gained for the Erie a nation-wide reputation for on-time deliveries.

Shippers dependent on speed ship via Erie. That's why the Erie hauls more western produce to New York and New England than any other railroad. That's why shippers of heavy equipment specify Erie. That's why Erie is first in freight.

Whatever, and wherever you ship, you can profit by the speed, safety and economy of the Erie. Consult your local agent.

TABLE 7 DETROIT—TOLEDO—CLEVELAND—YOUNGSTOWN—PITTSBURGH

Table with columns: Miles from Cleveland/Pittsburgh, Eastern Standard Time, WEEK-DAYS (688, 624, 626, 6, 628, 686, 644), SUNDAYS (688, 624, 626, 6, 686, 620). Rows include stations from Detroit to Pittsburgh.

AIR-CONDITIONED TRAINS
Air-conditioned equipment has been assigned to regular sections of trains as shown herein. Every effort will be made to provide it as specified, but the right is reserved to employ non-air-conditioned cars as necessitated by volume of traffic or emergencies.

EQUIPMENT
Detroit, Toledo, Cleveland, Youngstown, Pittsburgh Trains.
★Indicates Air-Conditioned Cars

EASTBOUND
No. 6—Daily. ★Sleeping Car (10 Section 2 Compartment and Drawing Room Car) Cleveland to New York. ★Lounge Dining Car, Cleveland to Hornell. ★Individual Seat Coach, Cleveland to New York.
No. 620—Sundays only. Coaches, Cleveland to Youngstown and Sharon.
No. 624 — Daily. ★Pullman Parlor-Lounge-Diner, Cleveland to Pittsburgh. ★Coach, Cleveland to Pittsburgh.
No. 626—Daily. ★Pullman Parlor Car, Cleveland to Pittsburgh. ★Coach, Cleveland to Pittsburgh.
No. 644—Except Sundays. Coaches, Cleveland to Youngstown.
No. 686—Daily. ★Sleeping Car for Parlor Car Service and ★Coaches, Detroit to Pittsburgh, via Cleveland. Dining Lounge Car, Cleveland to Pittsburgh.
No. 688—Daily. ★Sleeping Cars, Chicago to Pittsburgh. ★Sleeping Cars, Detroit to Pittsburgh. Through Coaches, Chicago and Detroit to Pittsburgh, via Cleveland.

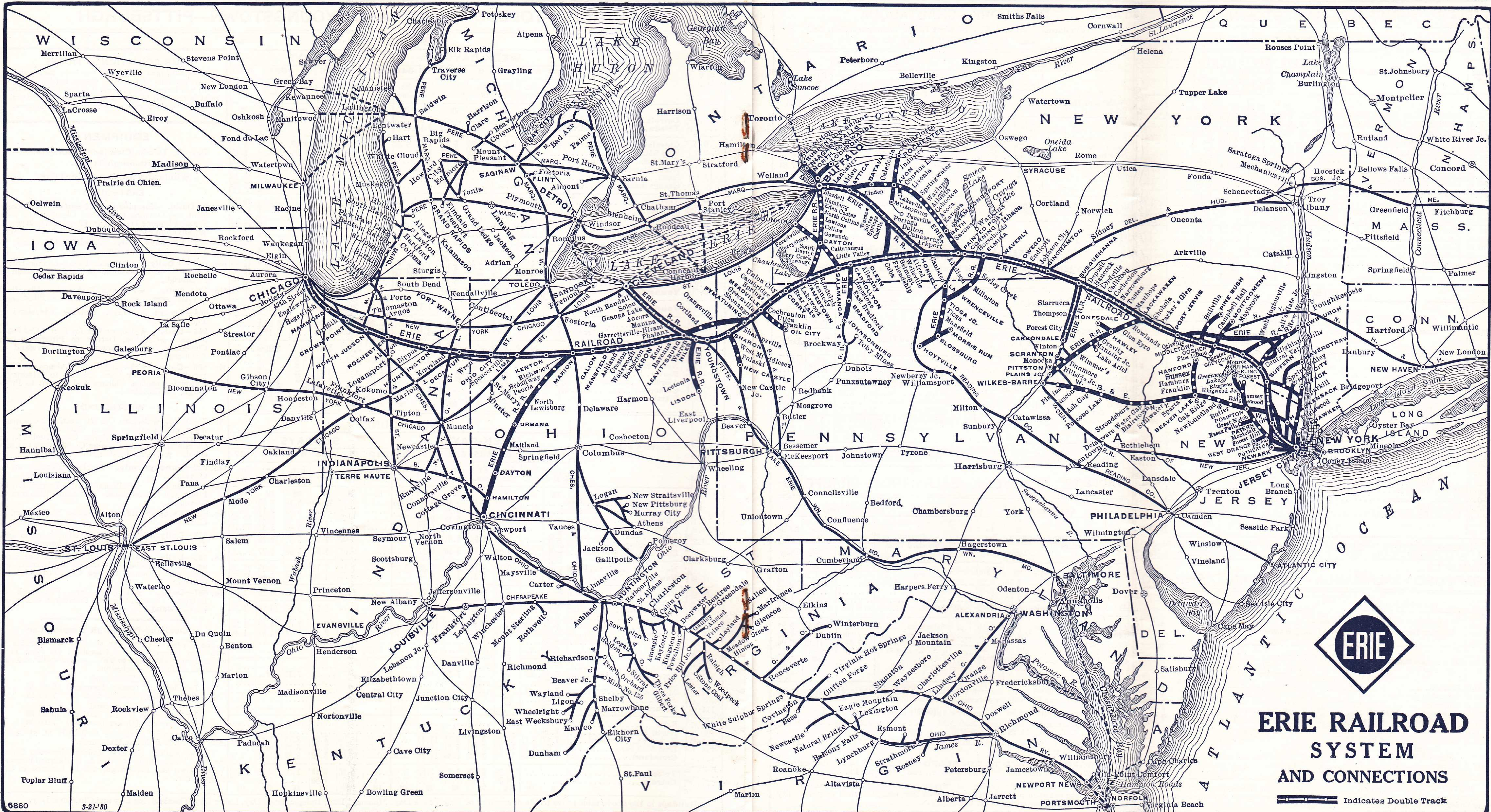
WESTBOUND
No. 5—Daily. ★Sleeping Car (10 Section 2 Compartment and Drawing Room Car) New York to Cleveland. ★Pullman Parlor Car, Pittsburgh to Cleveland. ★Lounge Dining Car, Hornell to Cleveland. ★Coach, Pittsburgh to Cleveland.
No. 619—Sundays only. Coaches, Youngstown to Cleveland.
No. 623—Daily. ★Pullman Parlor-Lounge-Diner, Pittsburgh to Cleveland. ★Coach, Pittsburgh to Cleveland.
No. 625—Except Sundays. Coaches, Youngstown to Cleveland.
No. 679—Daily. ★Sleeping Car, Pittsburgh to Chicago. Through Coaches, Pittsburgh to Chicago.
No. 685—Daily. ★Sleeping Car for Parlor Car Service and ★Coaches, Pittsburgh to Detroit, via Cleveland. Dining Lounge Car, Pittsburgh to Cleveland.
No. 687—Daily. ★Sleeping Cars, Pittsburgh to Detroit. Through Coaches, Pittsburgh to Detroit via Cleveland.

★Cleveland-Pittsburgh Sleeping Car
The Cleveland-Pittsburgh sleeping car operates to and from Union Terminal Cleveland via New York Central (via Ashtabula) to Youngstown, and P. & L. E. Railroad on following schedule:
Eastbound
Lv Cleveland (Union Terminal) 2:18 AM
Ar Pittsburgh (P&LE Station) 7:15 AM
Westbound
Lv Pittsburgh (P&LE Station) 10:40 PM
Ar Cleveland (Union Terminal) 7:10 AM
Sleeper open for occupancy at 9:30 P. M. at Cleveland and 10:00 P. M. at Pittsburgh.
Tickets reading via Erie Railroad between Cleveland and Youngstown, and P. & L. E. Railroad between Youngstown and Pittsburgh, will be honored in this sleeping car.

Holidays in the above table refers to the observance of New Year's Day, Memorial Day, Independence Day, Labor Day, Thanksgiving Day and Christmas Day.

For Explanation of Reference Marks and Notes, see Pages 33 and 34.

For Parlor, Sleeping and Dining Service of Through Trains, see Pages 5 and 6.



ERIE RAILROAD SYSTEM AND CONNECTIONS

Indicates Double Track

ARRIVE FRESH AS A DAISY ON ERIE AIR-CONDITIONED TRAINS

TABLE 8 BUFFALO—JAMESTOWN

| WESTBOUND | | | | | |
|-----------|--|----------|----------------------|----------------------|---------|
| Mls. | Eastern Standard Time | 513 | 515 | 517 | 519 |
| | | Daily | Daily Ex. Su. & Hol. | Daily Ex. Su. & Hol. | Daily |
| 0.0 | Buffalo (Lehigh Valley Terminal)...Lv. | 8.00 AM | 12.30 PM | 4.20 PM | 5.05 PM |
| 7.4 | Blasdell..... | 8.17 | f 12.48 | f 4.38 | 5.23 |
| 13.3 | Hamburg..... | 8.29 | f 1.00 | f 4.49 | 5.35 |
| 14.4 | Water Valley..... | | f 1.03 | f 4.51 | hu |
| 16.8 | Eden Valley..... | f 8.34 | f 1.07 | f 4.55 | hu |
| 19.1 | Eden Center..... | 8.39 | 1.12 | 5.00 | 5.46 |
| 23.4 | North Collins..... | 8.46 | 1.19 | 5.07 | 5.53 |
| 27.3 | Lawtons..... | 8.52 | 1.26 | 5.13 | 5.59 |
| 30.4 | Collins (State Hospital)..... | 8.58 | 1.32 | 5.19 | 6.05 |
| 33.4 | Gowanda..... | 9.05 | 1.45 | 5.25 | 6.13 |
| 38.0 | Dayton..... | 9.19 | | | 6.27 |
| 39.8 | Markhams..... | | | | |
| 43.3 | South Dayton..... | 9.29 | | | 6.37 |
| 48.3 | Cherry Creek..... | 9.37 | | | 6.45 |
| 52.6 | Conewango..... | 9.47 | | | 6.52 |
| 60.6 | Kennedy..... | 9.58 | | | hu |
| 66.4 | Falconer..... | 10.06 | | | 7.11 |
| 69.5 | Jamestown.....Ar. | 10.12 AM | | | 7.17 PM |

| EASTBOUND | | | | | |
|-----------|--|----------------------|----------|----------------------|---------|
| Mls. | Eastern Standard Time | 514 | 516 | 518 | 520 |
| | | Daily Ex. Su. & Hol. | Daily | Daily Ex. Su. & Hol. | Daily |
| 0.0 | Jamestown.....Lv. | | 8.32 AM | | 4.45 PM |
| 3.1 | Falconer..... | | 8.38 | | 4.51 |
| 8.9 | Kennedy..... | | 8.46 | | 4.59 |
| 16.9 | Conewango..... | | 8.58 | | 5.11 |
| 21.2 | Cherry Creek..... | | 9.05 | | 5.18 |
| 26.2 | South Dayton..... | | 9.13 | | 5.26 |
| 29.7 | Markhams..... | | | | |
| 31.5 | Dayton..... | | 9.22 | | 5.35 |
| 36.1 | Gowanda..... | 5.55 | 9.32 | 1.50 | 5.45 |
| 39.1 | Collins (State Hospital)..... | 6.01 | 9.39 | 1.56 | 5.52 |
| 42.2 | Lawtons..... | 6.08 | 9.45 | f 2.02 | 5.59 |
| 46.1 | North Collins..... | 6.15 | 9.52 | 2.09 | 6.06 |
| 50.4 | Eden Center..... | 6.23 | 10.00 | 2.15 | 6.14 |
| 52.7 | Eden Valley..... | f 6.27 | f 10.04 | f 2.21 | f 6.18 |
| 55.1 | Water Valley..... | f 6.31 | | | |
| 56.2 | Hamburg..... | 6.35 | 10.10 | 2.27 | 6.24 |
| 62.1 | Blasdell..... | 6.44 | 10.19 | 2.37 | 6.33 |
| 69.5 | Buffalo (Lehigh Valley Terminal)...Ar. | 7.02 AM | 10.37 AM | 2.55 PM | 6.50 PM |

Holidays in the above table refer to the observance of New Year's Day, Memorial Day, Independence Day, Labor Day, Thanksgiving Day and Christmas Day.

TABLE 11 BRADFORD - SALAMANCA - CLEVELAND - CHICAGO

| WESTBOUND | | | | EASTBOUND | | | | |
|---------------------|---------------------------------------|---------|-----------|--------------------|---|-------|-------|----------|
| Miles from Bradford | Eastern Standard Time | Bus-7 | Bus-1 | Miles from Chicago | Central Standard Time | 2-Bus | 8-Bus | 6-Bus |
| | | Daily | Daily | | | Daily | Daily | Daily |
| Via | BUS of Allegheny Motor (See Note "X") | Coach | Co., Inc. | 0.0 | Chicago.....Lv. | 6.00 | 10.00 | |
| 0.0 | Bradford.....Lv. | 9.17 | 5.42 | 372.7 | Akron..... | 3.39 | 7.22 | |
| 16.6 | Salamanca.....Ar. | 9.55 | 6.20 | 0.0 | Cleveland..... | | | 4.00 |
| 16.6 | Salamanca.....Lv. | 11.18 | 7.06 | 426.9 | Youngstown... | 5.02 | 8.50 | 5.38 |
| 50.3 | Jamestown.....Ar. | 12.10 | 7.56 | 551.4 | Jamestown..... | 8.25 | 12.17 | 8.44 |
| 174.8 | Youngstown... | 3.12 | 11.00 | 585.1 | Salamanca.....Ar. | 9.05 | 1.11 | 9.24 |
| 0.0 | Cleveland..... | | | | Via BUS of Allegheny Motor Co., Inc. (See Note "X") | | | |
| 229.0 | Akron..... | 4.49 | 12.40 | 585.1 | Salamanca.....Lv. | 9.45 | 2.20 | dh 10.35 |
| 601.7 | Chicago.....Ar. | 1.00 AM | 7.55 AM | 601.7 | Bradford.....Ar. | 10.25 | 3.00 | dh 11.10 |

NOTE "X"—In connection with the bus service the Erie Railroad Company acts as agent only and is not responsible beyond its own line, except as such responsibility may be imposed by law with respect to baggage.

For Explanation of Reference Marks and Notes, See Pages 33 and 34.

TABLE 9 NEW YORK—CHAUTAUQUA
(Via Jamestown and BUS of West Ridge Transportation Co.)
(See Note "X" Below)

| WESTBOUND | | | | EASTBOUND | | | |
|-------------------------|---------|---------|----------|------------------------|---------|----------|---------|
| Eastern Standard Time | 1-Bus | 5-Bus | 7-Bus | Eastern Standard Time | Bus-2 | Bus-8 | Bus-6 |
| | Daily | Daily | Daily | | Daily | Daily | Daily |
| N.Y., West 23rd St. Lv. | 8.05 AM | 7.10 PM | 10.55 PM | Chautauqua.....Lv. | 6.57 AM | 10.43 AM | 6.38 PM |
| " Chambers St. Ar. | 8.30 | 7.30 | 11.30 | Jamestown.....Ar. | 7.30 | 11.15 | 7.10 |
| Jersey City..... | 8.50 | 7.50 | 11.45 | Jamestown.....Lv. | 8.25 | 12.17 | 8.44 |
| Jamestown.....Ar. | 7.56 | 7.05 | 12.10 | Jersey City.....Ar. | 7.20 | 11.45 | 7.40 |
| Jamestown.....Lv. | 8.10 | 7.50 | 12.10 | N.Y., Chambers St. Ar. | 7.34 | 11.57 | 7.54 |
| Chautauqua.....Ar. | 8.35 PM | 8.18 AM | 12.43 PM | " West 23rd St. Ar. | 7.50 PM | | 8.05 AM |

Tickets sold and Baggage checked through to Chautauqua. Hand baggage checked without charge. Trunks checked at charge of 25c each.

TABLE 10 CHAUTAUQUA—AKRON—CHICAGO
(Via Jamestown and BUS of West Ridge Transportation Co.)
(See Note "X" Below)

| WESTBOUND | | | | EASTBOUND | | | |
|-----------------------|----------|---------|--|-----------------------|---------|----------|---------|
| Eastern Standard Time | Bus-7 | Bus-1 | | Central Standard Time | 2-Bus | 8-Bus | 6-Bus |
| | Daily | Daily | | | Daily | Daily | Daily |
| Chautauqua.....Lv. | 10.43 AM | 6.38 PM | | Chicago.....Lv. | 6.00 PM | 10.00 PM | |
| Jamestown.....Ar. | 11.15 | 7.10 | | Akron.....Lv. | 3.39 | 7.22 | |
| Jamestown.....Lv. | 12.10 | 7.56 | | Cleveland.....Lv. | | | 4.00 |
| Cleveland.....Ar. | | | | Jamestown.....Ar. | 8.25 | 12.17 | 8.44 |
| Akron.....Ar. | 4.49 | 12.40 | | Jamestown.....Lv. | 8.45 | 1.15 | 8.55 |
| Chicago.....Ar. | 1.00 AM | 7.55 AM | | Chautauqua.....Ar. | 9.18 AM | 1.48 PM | 9.25 PM |

Tickets sold and Baggage checked through to Chautauqua. Hand baggage checked without charge. Trunks checked at charge of 25c each.

TABLE 12 NEW YORK—SALAMANCA—BRADFORD

| WESTBOUND | | | | EASTBOUND | | | |
|------------------|------------------------|----------|------------|------------------------|----------|----------|----------|
| Miles from N. Y. | Eastern Standard Time | ht 5-557 | gt 1-Bus | Eastern Standard Time | gt Bus-2 | gt Bus-8 | ht 560-6 |
| | | Daily | Daily | | Daily | Daily | Daily |
| 0.0 | N. Y., W. 23rd St. Lv. | 7.10 PM | 8.05 AM | Bradford.....Lv. | dh 8.15 | ad 11.17 | 8.35 PM |
| 0.0 | " Chambers St. Ar. | 7.30 | 8.30 | East Bradford.. | | | f 8.38 |
| 1.0 | Jersey City.....Lv. | 7.50 | 8.50 | Limestone..... | | | f 8.46 |
| 413.6 | Salamanca.....Ar. | 6.08 | 6.59 | Carrollton..... | | | f 8.56 |
| 413.6 | Salamanca.....Lv. | 6.35 | ad 7.10 | Salamanca.....Ar. | dh 8.55 | ad 12.00 | 9.10 |
| 419.0 | Carrollton..... | f 6.45 | | Salamanca.....Lv. | 9.10 | 1.18 | 9.32 |
| 425.1 | Limestone..... | 6.58 | | Jersey City.....Ar. | 7.20 | 11.45 | 7.40 |
| 429.0 | East Bradford.. | f 7.06 | | N.Y., Chambers St. Ar. | 7.34 | 11.57 | 7.54 |
| 430.2 | Bradford.....Ar. | 7.10 AM | ad 7.45 PM | " W. 23rd St. Ar. | 7.50 PM | | 8.05 AM |

Trains 5-557 and 560-6 carry through sleeping car between Bradford and New York. Sleeper on train 557 will be parked at Bradford for occupancy until 8.00 A. M.

Busses leave as follows: (running time approximately 45 minutes.)
Lv. Salamanca for Bradford, 8.20 A.M., 9.45 A.M., 2.20 P.M., 4.30 P.M., 5.40 P.M., 7.10 P.M., 11.15 P.M.

Lv. Bradford for Salamanca, 8.17 A.M., 9.17 A.M., 11.17 A.M., 2.17 P.M., 4.27 P.M., 5.42 P.M.

BAGGAGE CHECKED TO BRADFORD—Baggage will be handled only on Trains 557 and 560 between Salamanca, N. Y., and Bradford, Pa.

NOTE "X"—In connection with the bus service the Erie Railroad Company acts as agent only and is not responsible beyond its own line, except as such responsibility may be imposed by law with respect to baggage.

For Parlor, Sleeping and Dining Service, See Pages 5 and 6.

TABLE 13 NEW YORK—NEWBURGH—(VIA HARRIMAN)

Table 13: New York—Newburgh—(via Harriman). Includes Westbound (Read Down) and Eastbound (Read Up) schedules with times and station names like N.Y., W. 23d St., Jersey City, and Newburgh.

TABLE 15 NEW YORK—MEADVILLE—OIL CITY

Table 15: New York—Meadville—Oil City. Includes Westbound (Read Down) and Eastbound (Read Up) schedules with times and station names like N.Y., W. 23d St., Jersey City, and Oil City.

TABLE 14 NEW YORK—NEWBURGH (VIA GREYCOURT)

Table 14: New York—Newburgh (via Greycourt). Includes Westbound (Read Down) and Eastbound (Read Up) schedules with times and station names like N.Y., W. 23d St., Jersey City, and Greycourt.

Tickets sold and baggage checked through to Franklin and Oil City.

TABLE 17 Lackawaxen—Honesdale

Table 17: Lackawaxen—Honesdale. Includes Westbound (Read Down) and Eastbound (Read Up) schedules with times and station names like Lackawaxen and Honesdale.

TABLE 16 Chicago-Meadville-Oil City

Table 16: Chicago-Meadville-Oil City. Includes Westbound (Read Down) and Eastbound (Read Up) schedules with times and station names like Meadville and Oil City.

TABLE 18 MIDDLETOWN—PINE BUSH

Table 18: Middletown—Pine Bush. Includes Westbound (Read Down) and Eastbound (Read Up) schedules with times and station names like Middletown and Pine Bush.

Tickets sold and baggage checked through to Circleville, Bullville, Thompson Ridge and Pine Bush.

TABLE 19 NEW YORK—MONTICELLO—LIBERTY

Table 19: New York—Monticello—Liberty. Includes Westbound and Eastbound schedules with times and station names like Monticello, Wurtsboro, and Liberty.

BLACK WATER BATHS ALDEN, N. Y. An all year resort where sufferers from rheumatism and nervous ailments have found the Black Water Baths beneficial and curative. Alden is located 20 miles east of Buffalo on the Erie Railroad. Hotels at Alden, N. Y. EMPIRE STATE HOTEL ORIGINAL BLACK WATER BATHS AND HOTEL Alden Black Water Sanatorium

TABLE 20 NEW YORK—KENOZA LAKE JEFFERSONVILLE

Table 20: New York—Kenoza Lake Jeffersonville. Includes Westbound and Eastbound schedules with times and station names like Kenoza Lake and Jeffersonville.

Tickets sold and baggage checked through to Jeffersonville and Kenoza Lake

NOTE "X" In connection with the bus service the Erie Railroad Company acts as agent only and is not responsible beyond its own line, except as such responsibility may be imposed by law with respect to baggage. For Explanation of Reference Marks and Notes, See Pages 33 and 34. For Main Line Parlor and Dining Service, See Pages 5 and 6.

TABLE 21 ELMIRA-ROCHESTER

Table with columns for Westbound Read Down (5-463, 7-467), Miles, Eastern Standard Time, and Eastbound Read Up (468-8, 464-8). Rows include stations from N. Y., W. 23d St. to Rochester.

TABLE 22 SALAMANCA—DUNKIRK

Table with columns for Westbound Read Down (5-527), Miles, Eastern Standard Time, and Eastbound Read Up (540). Rows include stations from N. Y., W. 23d St. to Dunkirk.

LOCATE YOUR PLANT WHERE YOU CAN LOCATE MORE PROFITS. Ask us about industrial buildings and vacant land on Erie rails. GEO. F. WESTON Industrial Commissioner Erie Railroad, Midland Bldg., Cleveland, O.

HUDSON AND MANHATTAN TUBE TRAINS SCHEDULE OF RUNNING TIME BETWEEN ERIE R. R. JERSEY CITY TERMINAL AND

Table showing running times for Downtown New York (Cortlandt St.) and Uptown New York (33rd Street to Christopher and Greenwich Streets).

ERIE R. R. FERRY TIME TABLE

EASTERN STANDARD TIME CHAMBERS STREET FERRY Ferry Running Time, 9 Minutes WEEK DAYS

Table with columns for Leave New York for Jersey City and Leave Jersey City for New York, showing times for various stations.

a Will not run on Holidays. m Except Saturdays and Holidays. h Holidays only.

SUNDAYS

Table showing Sunday running times for the Hudson and Manhattan Tube Trains.

TWENTY-THIRD STREET FERRY

Ferry Running Time, 20 Minutes WEEK DAYS

Table with columns for Leave New York for Jersey City and Leave Jersey City for New York, showing times for the 23rd Street Ferry.

SUNDAYS

Table showing Sunday running times for the 23rd Street Ferry.

TABLE 23 ROCHESTER—MOUNT MORRIS—DANSVILLE

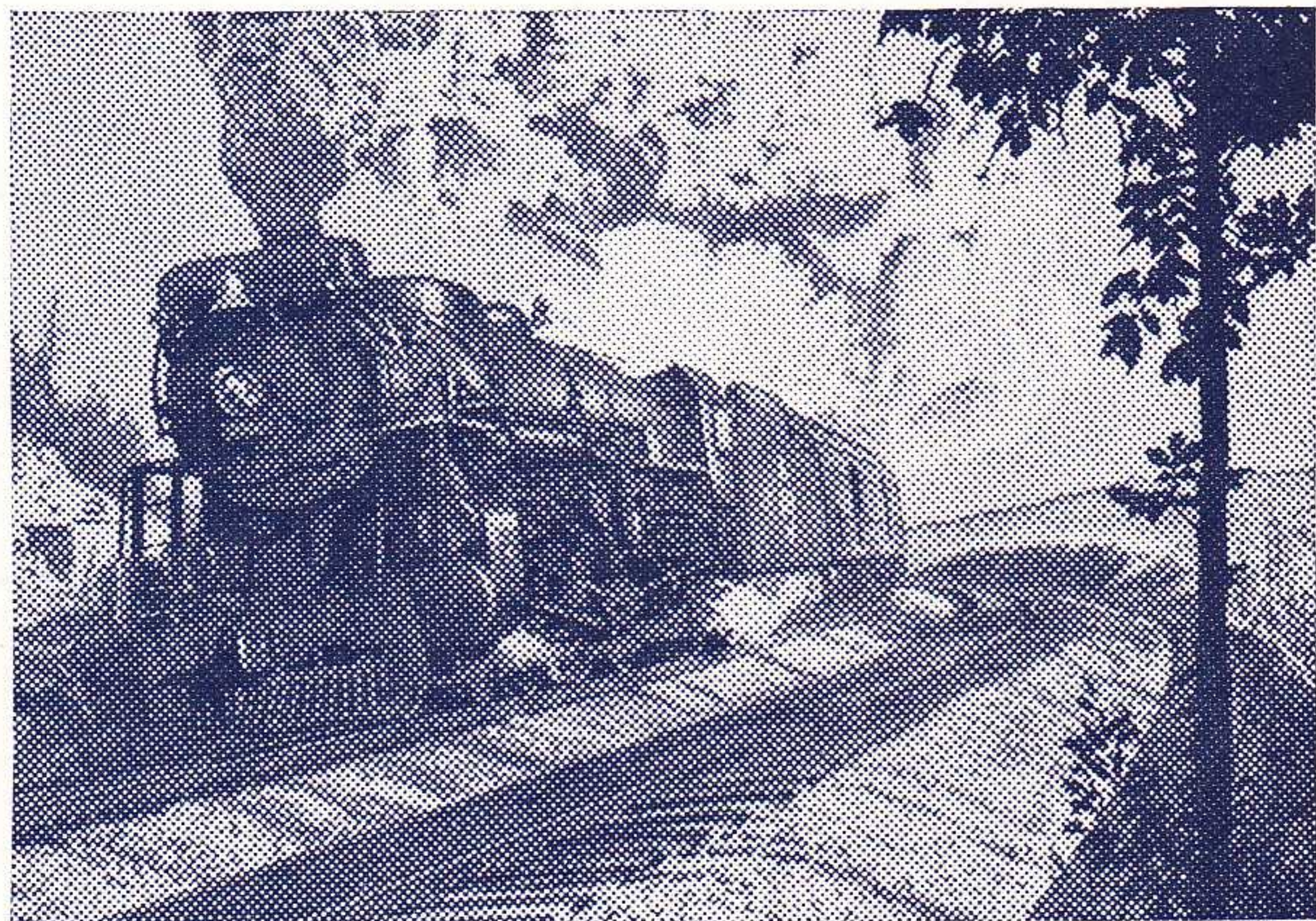
Table with columns for Eastern Standard Time and various train numbers (404, 408, 403, 468, 428, 416, 440, 420, 424). Rows include stations from Rochester to Dansville.

Table with columns for Eastern Standard Time and various train numbers (425, 401, 403, 467, 409, 415, 415, 419). Rows include stations from Dansville to Rochester.

TRAINS between Mt. Morris and Avon will stop on signal at Shakers, Jones, Cuylerville, Jaycocks, Seven Nations, Huston, South Avon, Pierces, Fowler, Ashantee, Linden Street and Spring Street and between Avon and Rochester, except Trains 467, 468 at Wiards, Elm Place, Meadowwood, Gannett, Blair, Martin, Brooks, Fenner, Baileys, Crittenden, Westfall and South Park. HOLIDAYS in above table refer to the observance of New Year's Day, Decoration Day, Independence Day, Labor Day, Thanksgiving Day and Christmas Day.

ERIE TRAIN-CAB SERVICE

Takes you from Erie Terminal directly to your door in New York or Brooklyn



ONE Person **90¢** TWO Persons **\$1.25** THREE or more **\$1.50**

Thousands have used and praised Erie Train-Cab Service. Strangers arriving at Erie Terminal, Jersey City are taken all the way to their destination in New York or Brooklyn. They never get "lost" and are never overcharged. Women accompanied by children appreciate this service. Even seasoned travellers enjoy the comfort of settling down in their own taxicab and forgetting about bags and car changes.

The fares shown above apply from our terminal to any place on Manhattan 110th Street and South, also to any point in the Brooklyn business district.

Service beyond the prescribed zones is metered from the zone limits and charged for at regular rates.

Train-Cab service is available to all who travel from stations west of Middletown, N. Y.

You can buy the Train-Cab coupon with your rail ticket at the ticket office or from the conductor on any through train and you will find your taxicab awaiting the arrival of your train at Jersey City.

Ask the conductor or ticket agent for details.

Checking Hand Baggage at Chicago

Passengers arriving Chicago on Erie trains who desire to stay over for a few hours and depart from a station other than Dearborn Station may have their hand baggage transferred to the station from which they depart. A Parmelee Company agent meets all Erie trains upon arrival at Chicago and he will arrange the transfer for you. The bags will be placed in the parcel check room of the station from which you depart. A charge of fifty cents for each hand bag, including the parcel room fee, will be made for the service, except one piece will be checked free when passenger holds through ticket including transfer through Chicago.

SUGGESTIONS

• **INTERCHANGEABLE SCRIP COUPON TICKETS** issued in \$15.00 and \$30.00 denominations are accepted on trains or at ticket offices in payment of rail passage as well as sleeping and parlor car accommodations, and also as payment for meals in restaurant cars.

• **PREPAID ORDERS.** For the convenience of patrons who do not wish to send money by mail, Erie Railroad ticket agents are prepared to sell prepaid ticket orders for the delivery of transportation, rail and Pullman, from practically all points in the United States, Canada and Mexico. These orders may also include the furnishing of cash.

In emergencies arrangements may be made for the delivery of transportation by telegraph or telephone without charge except when commercial wires are used.

• **BAGGAGE INSURANCE** by the St. Paul Fire & Marine Insurance Co. may be purchased at principal Erie ticket offices. It insures your baggage and personal effects for your entire trip anywhere in the world. Minimum premium twenty-five cents. The ticket agent can give you full particulars.

• **ERIE PLAYING CARDS** are on sale at our ticket offices, excepting in Ohio. Bridge sets one dollar, single decks fifty cents.

• **SPECIAL TOURS AND CONVENTIONS.** Our services are at the disposal of clubs, lodges and other organizations in arranging for trips to conventions and gatherings of all sorts. Concerning fares, train schedules and travel plans, consult or write to any Erie Ticket Agent, or any of the Passenger Department representatives listed on pages 35 to 37 of this folder.

Time Table Mailing Service

If you would like a copy of this time table each time a new one is issued just drop us a post card and your name will be put on the list. No charge. Address your request to Erie Railroad, Passenger Traffic Dept., Midland Bldg., Cleveland, Ohio.

ANYWHERE YOU WANT TO SHIP

To big town, little town, and all points between, Railway Express transports anything anywhere—at passenger train speed. Fast—sure—safe—at low rates and real economy. For service, phone any Railway Express or Western Union office to call for your package, large or small, in all cities and principal towns. No extra charge.

RAILWAY EXPRESS

AGENCY, INC.

NATION-WIDE SHIPPING SERVICE

RAILROAD AND PULLMAN FARES
For Information Only. Subject to Change Without Notice

Main table listing fares between various cities (New York, Binghamton, Buffalo, Jamestown, Cleveland, Chicago) with columns for Pullman, Coach, Lower Berth, and Seat Fare.

RATES FOR UPPER BERTH, SECTION, DRAWING ROOM OR COMPARTMENT IN SLEEPING CARS (No Surcharge)

Table showing rates for different car classes and accommodations, categorized by passenger count and service type.

Note: ▲ For section occupied by two passengers but with lower berth only prepared for night service.

Minimum Number of Railroad Tickets Required for Exclusive Occupancy of Sections, Drawing Rooms or Compartments in Sleeping Cars and Drawing Room in Parlor Cars

Section.....One
Comp., Berth Service...One and One-tenth
Comp., Seat Service...One and One-half
Drawing Room, Berth
Service.....One and One-quarter
Drawing Room, Seat Service.....Two
Drawing Room in Parlor Cars.....Two

GENERAL INFORMATION

STANDARD OF TIME—Erie Lines east of and including Lima, Ohio, are operated by Eastern Standard Time, Lines west of Lima, Ohio, by Central Standard Time.

TRAINS WILL NOT BE HELD for ferries from New York between hours of 4:00 P.M. and 5:30 P.M. Eastern Standard Time.

HOLIDAYS—The term "Holidays" (unless covered by special note) refers to New Year's Day, Lincoln's Birthday, Washington's Birthday, Memorial Day, Independence Day, Labor Day, Election Day (November 2), Thanksgiving Day and Christmas Day.

THIS COMPANY IS NOT RESPONSIBLE FOR ERRORS in time tables, inconvenience or damage resulting from delayed trains or failure to make connections; schedules are subject to change without notice.

FARE PAID ON TRAINS—The lawful fare when paid to conductor is ten (10) cents in excess of the one-way ticket fare.

CHILDREN under five years of age are carried free when accompanied by parent or guardian; five years and under twelve, half fare, twelve years of age and over, full fare.

ADJUSTMENT OF FARES—Should any misunderstanding arise with conductors or agents, pay the fare required, take receipt and communicate with General Passenger Agent, Midland Bldg., Cleveland, Ohio.

SLEEPING AND PARLOR CAR RESERVATIONS—Space reserved by telegraph or telephone within city limit will be held until: 4:00 P.M. day prior to departure of trains leaving before noon next day.

9:00 A.M. day of departure for trains leaving between noon and 5:00 P.M.
1:00 P.M. day of departure for trains leaving after 5:00 P.M.
When application is by wire or letter from a point outside of city limit, space will be held until fifteen minutes of train time.

BAGGAGE TO BE CHECKED should be delivered at station at least thirty minutes before train time.

BAGGAGE DELIVERY IN NEW YORK CITY—All baggage checked to New York City will be sent to the West 23rd Street Station unless passenger specifies Chambers Street Station at time of checking.

Baggage delivery service in New York will be performed by the Railway Express Agency.

HAND-BAGGAGE in Pullman Cars is restricted to what can be conveniently placed in the berth, seat or other accommodations purchased by the passenger.

CHICAGO PASSENGER AND BAGGAGE TRANSFER is performed by the Parmelee Company. A uniformed agent meets all incoming trains of the Erie Railroad on arrival at Dearborn Station.

ARTICLES LOST ON TRAINS or left in waiting rooms or stations, owners should apply to Lost and Found Bureau, (Baggage Room) Jersey City Depot, or address General Passenger Agent, Midland Bldg., Cleveland, Ohio, giving full description of the property, stating date of loss and number of train.

DAYLIGHT SAVING TIME is observed until Sept. 25 at all towns and cities east of and including Port Jervis, N. Y., also Chicago, Crown Point, Griffiths, Highlands, Hammond, Buffalo, Niagara Falls, Hamburg and Gowanda. It is also observed at Jamestown until Sept. 6. For complete list see Official Railway Guide.

REFERENCE MARKS AND NOTES

IMPORTANT—When trains are indicated as stopping conditionally, Conductors should be notified of intention to leave train and Station Agent notified of intention to board train.

- † Runs daily except Sunday. **C** Stops on Saturday only. ♦ Stops to discharge passengers.
 ‡ Will not operate from these stations on Monday morning.
 † Stops on Holidays only.
 ‡ Train 71 will not run west of Waldwick on Saturdays or September 5.
 † Stops on signal to receive and discharge passengers.
k Runs Saturdays only. M. C. Motor Car Service. N. B. No Baggage carried.
- ab** Stops Saturday and Sunday only to discharge passengers.
ac Stops Dalton (4.53 A. M.) to discharge passengers from Hornell and east and on signal to receive passengers.
ad Via Allegany Motor Coach Co., Inc. bus between Salamanca and Bradford.
ae Train 5 will stop on signal at Monroe (9.05 P. M.) to receive passengers for Jamestown and west; and to discharge passengers from New York.
af Train 7 stops Middletown (1.20 A. M.) Sunday and Monday mornings only to discharge passengers.
ag Stops Saturdays only to discharge passengers.
ah Stops on signal Andover (9.22 A. M.); Belmont (9.50 A. M.) to discharge passengers from New York.
ak Train 27 stops at Monroe (4.10 P. M.) on Sundays and Holidays only.
ap Train 55 makes regular stop on week-days at Ramapo (5.24 A. M.); stops on signal only on Sundays.
at On Sundays only, Train 30 will arrive West 23rd Street at (12.50 P. M.).
ax Stops Englewood Train 1 (7.37 A. M.); Train 7 (12.43 A. M.) to discharge passengers from east of Hammond.
ba Stops on signal Paterson (8.27 A. M.) to receive passengers.
bc Stops on signal Paterson (8.19 P. M.), Ridgewood (8.29 P. M.) to receive passengers.
bd Stops on signal Suffern (8.43 P. M.) to receive passengers for Hornell and west.
bf Stops Cuba (5.23 A. M.) to discharge passengers from Elmira and east and to receive for Jamestown and west.
bg Stops on signal, Friendship (10.03 A. M.); Cuba 10.18 A.M.) to discharge passengers from New York.
bh Stops Cuba (6.16 P. M.) to discharge passengers from Elmira and east and to receive for Jamestown and west.
bm Stops on signal Niles (10.23 A. M.) to discharge passengers from Pittsburgh and from Jamestown and east and to receive passengers for Cleveland.
bp Stops Niles (11.21 P. M.) to discharge passengers from Meadville and east and on signal to receive passengers for Akron and west.
bt No Agent on duty. No baggage handled on Trains 5 and 6 to or from Castile.
ca Train 27 stops on Holidays only Rutherford (3.08 P. M.).
cb Stops on signal Passaic (8.10 P. M.) to receive passengers for Jamestown and west.
cf Stops Tuxedo (4.39 P. M.) daily, except Sunday.
cg Stops on signal Ridgewood (11.13 P. M.) to discharge passengers from Binghamton and west.
ch Train 71 stops Tuxedo to discharge passengers, except Saturdays or September 5.
cn Stops on signal Union City (8.48 P. M.); Cambridge Springs (9.08 P. M.) to discharge passengers from Jamestown and east and to receive for Youngstown and west.
cp Stops on signal (10.14 P. M.) to receive passengers for east of Hammond.
ct Bus service provided between Cochection and Lake Huntington.
cw Stops Endicott (1.45 A. M.) to discharge passengers from Port Jervis and east.
cx Stops to discharge passengers from New York.
cy Stops to discharge passengers from Cleveland and beyond.
da If no passengers for this connection, bus will not operate Narrowsburg to Honesdale.
db Train 8 stops at Ravenna (7.52 A. M.) to discharge passengers from Marion and west, and to receive for Youngstown and east.
dc Stops Mantua (1.52 P. M.) to discharge passengers from Cleveland and on signal to receive passengers for Warren and east.
de Stops Barberton (4.58 P. M.) to discharge passengers from Youngstown and east and on signal to receive passengers for Mansfield and west.
df Stops on signal Garrettsville-Hiram (8.32 A. M.); Mantua (8.42 A. M.) to receive passengers for Cleveland.
- dg** Stops on signal at Warren (4.35 A. M.) to discharge passengers from Chicago and to receive passengers for Jamestown and east.
dh Via Dodaro Bus Co. between Salamanca and Bradford.
dt No baggage carried on this train east of Hornell. Baggage will be handled on following train.
du Coaches only, west of Youngstown.
dv Stops on signal Union City (7.45 P. M.) to receive passengers for New York.
dw Stops Cuba (9.49 A. M.) to discharge passengers from Jamestown and west and to receive for Elmira and east.
dx Stops Ridgewood (6.43 P. M.), Passaic (6.59 P. M.) to discharge passengers from Goshen and west.
dy Stops on signal Cambridge Springs (7.08 A. M.), Union City (7.28 A. M.), to discharge passengers from Chicago and to receive for Binghamton and east.
dz Stops Ridgewood (7.03 A. M.), Paterson (7.12 A. M.), Passaic (7.19 A. M.), to discharge passengers from Goshen and west.
ea Train 61 has a connection from Newark Saturday only.
eb Stops on signal Paterson (1.56 P. M.) to receive passengers.
ec Bus service between New Castle and New Castle (Washington St.).
ed Bus service between Wampum and Ellwood City.
eg On Holidays Train 62 has no connection for Newark.
eh On Holidays Train 57 has no connection from Newark.
em Train 1 stops at Cochection (12.11 P. M.) June 25 to Sept. 12 to discharge passengers from New York.
en Stops on signal Paterson (9.17 A. M.), Ridgewood (9.27 A. M.) to receive passengers.
ep Train 1 stops on signal Passaic (9.10 A. M.), Suffern (9.42 A. M.) to receive passengers for Binghamton and west.
er Stops Niles (5.46 A. M.) to discharge passengers from Cleveland and west and on signal to receive for Pittsburgh.
es Stops on signal Niles (5.17 P. M.) to receive passengers for Jamestown and east, and to discharge passengers from Cleveland.
et Stops on signal East 55th Street (1.34 P. M.); East 93rd Street (1.39 P. M.) to receive passengers.
eu Stops Endicott (6.13 P. M.) daily to discharge passengers from Jamestown and west and on signal to receive passengers for New York; also stops Sundays only to discharge passengers.
ev Stops on signal to receive passengers for Cleveland and beyond.
ew Stops (11.46 A. M.) to discharge from Jamestown and east and west of Akron.
ex Stops Endicott (1.47 A. M.) to discharge passengers from Buffalo, Jamestown and west.
ey Stops Hohokus on Saturdays only (11.07 A. M.).
ez On Sundays Train 6 has no connection for Newark.
gc Stops West Henrietta (10.59 A. M.) to discharge passengers from east of Avon.
gt In connection with the bus service the Erie Railroad Company acts as agent only and is not responsible beyond its own line, except as such responsibility may be imposed by law with respect to baggage.
ha Stops at Narrowsburg (11.01 P. M.) to discharge passengers from Ridgewood and east.
he Stops Alden (9.29 P. M.) to discharge passengers from Buffalo and on signal to receive passengers.
hf Stops (11.09 P. M.) to discharge passengers from Pittsburgh.
hm On Saturdays connection for Train 69 leaves Newark at (5.16 P. M.); on holidays leaves Newark at (5.04 P. M.); has no connection on Sundays.
hn On Sundays Train 2 has no connection for Newark.
ho Stops at Mantua (9.24 A. M.) to receive passengers for Cleveland.
hr Train 27 has no connection from Newark on Sundays.
ht Trains 5-557 and 560-6 carry through sleeping cars between Bradford and New York.
hu Stops to discharge passengers.
hv Stops on signal East 93rd Street (6.13 P. M.) to receive passengers.
mh Stops on signal, Sundays only, to discharge passengers from New York.
na Train 6 stops on signal at East 93rd St. (4.13 P. M.) to receive passengers for Warren and east.
ne Train 626 stops Saturdays only at Solon and Aurora to discharge passengers from Cleveland.

STOP-OVER PRIVILEGES

Niagara Falls

Passengers holding tickets reading "via Erie Railroad" from or through Elmira to or through Youngstown or vice versa may exercise their privilege of going by way of Buffalo and stopping over for as long as ten days at Niagara Falls, but not beyond the final limit of their ticket. Upon request, the Erie Ticket Agent at Buffalo will issue without charge a round trip ticket between Buffalo and Niagara Falls. Frequent service via International Ry. (Electric Line) direct from Buffalo Terminal.

Other Points

On local one-way tickets sold at regular fares, local round-trip tickets sold at double the one-way fares, All-Year, Summer and Winter Tourist Tickets, stop-overs will be allowed on going and return trips within final limit of tickets at any Erie Railroad Station en route upon notice to conductor and without deposit of ticket.

WESTERN UNION

TELEGRAMS AND CABLEGRAMS accepted at all telegraph offices of this railroad.

DAY LETTERS—50 words for 1½ times the cost of a 10 word telegram.

NIGHT LETTERS—25 words for the former price of ten words. Maximum only 50 cents from coast to coast. Words over 25 charged for in groups of 5 at rates as low as a fifth of a cent per word.

The longer the message, the lower the rate per word.

RESERVATION MESSAGES—Reserve travel tickets and accommodations and hotel rooms by telegraph—only 35 cents (for 15 words).

TOURATE MESSAGES—When you travel telegraph the folks at home or at the office the facts they want to know about progress of your trip—only 35 cents (for 15 words).

Busses Replace Trolleys on 23rd Street, New York

The new crosstown bus service meeting all ferries to and from our West 23rd St. Station is fast and frequent. It connects with north- and southbound bus lines to other railroad terminals and the theatrical, shopping and hotel districts. Fare 5c, transfer 2c additional.

ERIE RAILROAD COMPANY

GENERAL OFFICES, MIDLAND BUILDING, CLEVELAND. Telephone Cherry 8400.
 GENERAL OFFICES, HUDSON TERMINAL, 50 CHURCH STREET, NEW YORK. Telephone Cortlandt 7-9200.
 GENERAL OFFICES, UTILITIES BUILDING, 327 SOUTH LA SALLE STREET, CHICAGO. Telephone Harrison 4160.

TRAFFIC AND DEVELOPMENT DEPARTMENTS

TRAFFIC

D. L. GRAY, Vice-President, Cleveland
 CARL HOWE, Vice-President, Chicago
 G. C. MANNING, Assistant Vice-President, New York
 G. A. LAMB, Assistant to Vice-President, Cleveland

PASSENGER

C. C. HOWARD, Passenger Traffic Manager, Cleveland.
 R. B. ROGERS, General Passenger Agent, Cleveland.
 H. T. HARLOW, General Passenger Agent, Chicago.
 T. R. PATTON, Assistant General Passenger Agent, Youngstown.

F. A. WALDRON, Assistant General Passenger Agent, New York.
 ALFRED FYNN, Assistant General Passenger Agent, Chicago.
 E. J. HAWERKOST, General Western Passenger Agent, Chicago.
 H. M. WADE, General Baggage, Mail and Express Agent, New York.

FREIGHT

L. B. BURFORD, Freight Traffic Manager, Cleveland.
 L. R. KNAPP, Assistant Freight Traffic Manager, Cleveland.
 O. M. MEYNE, General Freight Agent, Cleveland.
 C. L. CHAPMAN, Eastern Freight Traffic Manager, New York.
 E. M. KAIN, Special Representative, Buffalo.
 G. R. WHEELER, General Freight Agent, New York.
 J. T. McENTEE, Assistant General Freight Agent, Buffalo.
 H. W. VON WILLER, Assistant General Freight Agent, Pittsburgh.

F. G. LANTZ, Freight Traffic Manager, Chicago.
 W. V. KENNEDY, Assistant Freight Traffic Manager, Chicago.
 A. BLAUEL, General Freight Agent, Chicago.
 J. G. HILL, General Freight Agent, Chicago.
 O. R. DAVIES, Assistant General Freight Agent, Cincinnati.
 W. H. KOCH, Assistant General Freight Agent, Detroit.
 C. A. STOEBER, Assistant General Freight Agent, Youngstown.

FOREIGN FREIGHT TRAFFIC

T. E. McANDREWS, Foreign Freight Traffic Manager, New York.
 W. C. OTTEN, Foreign Freight Agent, New York.
 A. E. PETERSON, Foreign Freight Agent, Chicago.
 EUROPEAN GENERAL AGENTS, Sutherland International Despatch, Ltd.,
 London, England.

PERISHABLE FREIGHT TRAFFIC

R. E. O'GRADY, Manager, Pier 20, N. R., New York.

COAL AND COKE

W. H. STADELMAN, Coal Traffic Manager, Cleveland.
 J. A. FERGUSON, Coal Freight Agent, Cleveland.
 F. D. AUSTIN, General Coal and Coke Agent, Chicago.

LIVE STOCK

H. B. ROGERS, General Live Stock Agent, East Buffalo, N. Y.

GRAIN TRAFFIC

T. W. KANE, Grain Agent, New York.

DAIRY

W. L. KENDALL, General Dairy Agent, Chicago, Ill.

DEVELOPMENT

J. K. THOMPSON, Vice-President and Assistant to President, Cleveland.

GEO. F. WESTON, Industrial Commissioner, Cleveland.

V. M. WELLMAN, Industrial Agent, New York.

TRAFFIC DEPARTMENT REPRESENTATIVES

Akron, O.—80 East Exchange St.
 (Telephone Hemlock 8194-8195)
 J. P. CLARK, Division Passenger Agt.
 C. E. KING, General Agent.

Albany, N. Y.—Room 2, D. & H. Bldg.
 (Telephone 4-6051)
 C. F. WHADCOOK, General Agent.

Antwerp, Belgium—30, Vieille Bourse.
 CHAS. CAYMAN, Agent.

Atlanta, Ga.—1419-20 Healy Bldg.
 (Telephone Walnut 2135)
 S. S. TORREY, General Agent.

Baltimore, Md.—1501-3 Munsey Bldg.
 (Telephone Plaza 8691)
 W. J. MURRAY, General Agent.

Birmingham, Ala.—1007 Watts Bldg.
 (Telephone 3-1327)
 CHARLES G. ANDREWS, General Agent.

Boston, Mass.—80 Federal Street.
 (Telephone Liberty 7725-7726)
 E. J. DEAN, G. N. E. Agt.

Bradford, Pa.—Erie Station.
 (Telephone 3413)
 J. C. MOFFATT, General Agent.

Bremen, Germany—Holzspforte 10.
 CARL PRIOR, Agent.

Buffalo, N. Y.—6 North Division St.
 (Telephone Washington 4300)
 J. A. DOLAN, G. A. P. D.
 238 Main Street.
 (Telephone Wash. 1865)
 J. T. McENTEE, Asst. General Freight Agt.
 H. B. ROGERS, General Live Stock Agt.

Chicago, Ill.—327 South La Salle St.
 (Telephone Harrison 4160)
 B. Y. VAUGHN, Trav. Pass. Agent
 C. D. TURNER, General Agent.
 W. L. KENDALL, General Dairy Agent.

Cincinnati, O.—503 Gwynne Bldg.
 (Telephone Main 3420-3421)
 O. R. DAVIES, Asst. General Freight Agt.

Cleveland, O.—Midland Bldg.
 (Telephone Cherry 8400)
 J. M. SKAHILL, Division Freight Agt.
 2063 East 9th St.
 (Telephone Cherry 8400)
 C. D. BURLINGHAM, Div. Passenger Agt.

Columbus, O.—Rooms 309-310 Atlas
 Bldg., 8 East Long Street.
 (Telephone Adams 7331)
 C. R. MARTIN, General Agent.

Dallas, Tex.—2113 Tower Petroleum Bldg.
 1905 Elm St.
 (Telephone 2-7352)
 T. J. MARTIN, General Agent.

Dayton, O.—501-506 Miami Savings Bldg.
 (Telephone Adams 8481)
 W. P. KROMPHARDT, Div. Frt. Agt.

Des Moines, Ia.—Hubbell Bldg.,
 904 Walnut Street.
 (Telephone 4-0018)
 L. T. COULSTON, General Agent.

Detroit, Mich.—Rooms 2-102 and 2-103
 General Motors Bldg.
 (Telephone Madison 2360-2361)
 W. H. KOCH, Assistant General Frt. Agt.

Elmira, N. Y.—Erie Station.
 (Telephone 2-1621)
 J. W. O'HARA, Division Passenger Agt.
 (Telephone 2-0377)
 B. F. CONWAY, Division Freight Agent.

Glasgow, Scotland—82 Mitchell St.
 W. S. THOMSON, General Agent.

Hamburg, Germany—Dovenhof 118/122.
 GEORG A. ANTHONY, General Agent.

Huntington, Ind.—Erie Station.
 (Telephone 743)
 F. C. MCCARTHY, Division Freight Agt.

Indianapolis, Ind.—143 No. Meridian St.
 (Telephone Lincoln 2088)
 T. J. WILLIAMSON, General Agent.

Jamestown, N. Y.—Erie Station
 F. L. COLLINS, Div. Frt. Agt.
 J. A. CLEVELAND, General Agent.
 (Telephone 7921-7922)

Jersey City, N. J.—Erie Station
 (Telephone Delaware 8-6400)
 P. F. ARROYO, G. A. P. D.

Kansas City, Mo.—Rooms 326-7 Railway
 Exchange Bldg., 7th and Walnut Streets.
 (Telephone Victor 6328)
 N. C. FRICK, General Agent.

Liverpool, Eng.—17 Brunswick St.
 A. G. TAYLOR, General Agent.

London, E. C. 3, Eng.—4 Billiter St.
 PETER BUSWELL, General Agent.
 D. S. DEANS, Genl. Continental Agt.

Los Angeles, Cal.—108 West 6th Street.
 (Telephone Vandike 6542)
 C. W. SEELEY, General Agt. Pass. Dept.
 L. A. DWELLE, General Agent.

Marion, O.—Terminal Building
 (Telephone 2657)
 A. R. TENNIS, Division Freight Agent.

Memphis, Tenn.—1628-9 Exchange
 Bldg., Madison & Second Sts.
 (Telephone 8-8781)
 R. L. MILLER, General Agent.

Milwaukee, Wis.—1015 Majestic Bldg.,
 231 Wisconsin Street.
 (Telephone Marquette 5555-5556)
 H. A. WILSON, General Agent.

Minneapolis, Minn.—125 Third Street,
 South.
 (Telephone Main 3604)
 C. V. HARROW, General Agent.

Newark, N. J.—1801-2 Military Park
 Bldg., 60 Park Place.
 (Telephone Market 2-0525-26-27)
 A. R. WALTON, General Agent.

New Haven, Conn.—Room 512 Roger
 Sherman Bldg.
 (Telephone 5-7937)
 G. W. MADSEN, General Agent.

New Orleans, La.—Room 117 Whitney Bldg.
 (Telephone Main 6607)
 D. C. KELSEY, General Agent.

New York, N. Y.—8 West 40th Street.
 (Telephone Pennsylvania 6-0931)
 J. F. WILD, G. A. P. D.
 A. G. OLDENQUIST, City Pass. Agt.
 W. G. TEDFORD, City Passenger Agent.
 50 Church Street.
 (Telephone Cortlandt 7-9200)
 E. W. VAIL, General Eastern Frt. Agent.
 J. G. VREELAND, Division Freight Agent.

Olean, N. Y.—Erie Station.
 (Telephone 7411)
 J. M. HAND, Traveling Freight Agent.

Omaha, Neb.—1319 Farnam St.
 (Telephone Jackson 4866)
 C. L. COX, General Agent.

Peoria, Ill.—920 Jefferson Building, Cor.
 South Jefferson & Fulton Streets.
 (Telephone 8007)
 E. T. OLANDER, General Agent.

Philadelphia, Pa.—1009-10 Finance Bldg.
 (Telephone Rittenhouse 8975-8976)
 H. T. YOUNG, General Agent.

Pittsburgh, Pa.—Gulf Building.
 (Telephone Grant 4831-2-3)
 H. W. VON WILLER, A. G. F. A.

Portland, Ore.—Room 421 Pacific Bldg.,
 306 Yamhill St.
 (Telephone Beacon 3706)
 J. A. RUSSELL, General Agent.

Rochester, N. Y.—Erie Station.
 (Telephone Main 2826)
 B. C. WEDD, Division Freight Agent.

Rotterdam, Holland—Boompjes 82.
 J. T. VERVLOET, Agent.

San Francisco, Cal.—681 Market St.
 (Telephone Sutter 3875)
 J. A. LLOYD, General Agent.

St. Louis, Mo.—Rooms 906-7 Missouri
 Pacific Building, 1218 Olive Blvd.
 (Telephone Chestnut 7723-7724)
 G. F. DANIELS, General Agent.

St. Paul, Minn.—336 Robert St.
 (Telephone Cedar 5912)
 C. R. PETRY, General Agent.

Scranton, Pa.—Erie Station.
 (Telephone 5203)
 G. W. SHUMAN, Division Freight Agent.

Seattle, Wash.—1116-7 White Bldg.,
 1338 Fourth Ave.
 (Telephone Eliot 4834)
 W. R. SIBLEY, General Agent.

Springfield, O.—516 First National Bank
 Building.
 (Telephone Center 1178)
 T. J. FLYNN, General Agent.

Toledo, O.—342 South Erie Street.
 (Telephone Main 3816)
 H. J. SPANGENBURG, General Agent.

Toronto, Ont.—69 Yonge Street.
 (Telephone Elgin 4077)
 E. P. MORRILL, General Agent.

Tulsa, Okla.—Room 1511 Hunt Bldg.
 (Telephone 3-8613)
 A. W. MITCHELL, General Agent.

Youngstown, O.—Terminal Building.
 (Telephone 41101)
 C. A. STOEBER, Asst. Genl. Frt. Agt.
 F. W. FISCHER, Div. Frt. Agt.

ERIE TICKET OFFICES AND PASSENGER STATIONS IN PRINCIPAL CITIES

Akron, O.—Union Station.
(Telephone Jefferson 9141)
B. L. BENDER, Ticket Agent.

Binghamton, N. Y.—Erie Station.
(Telephone 4-3251)
J. H. WEBSTER, Ticket Agent.

Bradford, Pa.—Erie Station.
(Telephone 3716)
A. J. SULLIVAN, Ticket Agent.

Brooklyn, N. Y.—City Ticket Office.
155 Pierrepont St.
(Telephone Triangle 5-7440)
J. W. VAN COTT, Ticket Agent.

Buffalo, N. Y.—City Ticket Office.
6 North Division St.
(Telephone Washington 4300)
J. E. MCINNIS, Ticket Agent.

Station Ticket Office
(Lehigh Valley Terminal)
Main and Scott Streets
Washington 4300)
A. L. SEITZ, Ticket Agent.

Chicago, Ill.—City Ticket Office. 163-
165 West Jackson Blvd.
(Telephone Harrison 4160)
C. F. KUNGEL, Ticket Agent.

Hotel Ticket Offices—
Congress, Morrison, Sherman, Stevens,
Palmer House, Merchandise Mart.
(Telephone Harrison 2203)
GEORGE M. NEWHART, Ticket Agent.

Dearborn Station.
(Telephone Harrison 9830)
W. E. MISCHNICK, Ticket Agent.

Cleveland, O.—City Ticket Office.
2063 East 9th St.
(Telephone Cherry 8400)
CASPER J. MILLER, Ticket Agent.

Erie Station.
(Telephone Cherry 8400)
C. W. GULICK, Ticket Agent.

Elmira, N. Y.—Erie Station.
(Telephone 2-0380)
E. J. STEELE, Ticket Agent.

Hornell, N. Y.—Erie Station.
(Telephone 680)
R. L. SMITH, Ticket Agent.

Huntington, Ind.—Erie Station.
(Telephone 140)
O. M. BELL, Ticket Agent.

Jamestown, N. Y.—Erie Station.
(Telephone 6076)
FRANK PRIEST, Ticket Agent.

Jersey City, N. J.—Erie Station.
(Telephone Delaware 8-6400)
G. B. IRVING, Ticket Agent.

Mansfield, O.—Erie Station.
(Telephone Canal 1423)
J. W. GILKERSON, Ticket Agent.

Marion, O.—Erie Station.
(Telephone 2399)
L. E. NEBERGALL, Ticket Agent.

Meadville, Pa.—Erie Station.
(Telephone 1212)
O. L. ENOS, Ticket Agent.

Middletown, N. Y.—Erie Station.
(Telephone 3303)
J. H. DIMEE, Ticket Agent.

Newark, N. J.—Erie Station.
(Telephone Humboldt 2-0600)
G. J. MCMICHAEL, Ticket Agent.

New York, N. Y.—City Ticket Office.
Information Bureau.
Train Service and Fares.
(Telephone Barclay 7-6500)
City Ticket Office, 8 West 40th Street.
(Telephone Pennsylvania 6-0933)
F. H. RICE, Ticket Agent.

West 23rd Street Station.
(Telephone Chelsea 3-0780)
C. H. POTTER, Ticket Agent.

Chambers Street Station.
(Telephone Cortlandt 7-9200)
T. I. NEWMAN, Ticket Agent.

City Ticket Office, 17 John Street.
(Telephone Cortlandt 7-6430 and
7-6431)
H. T. JAMES, Ticket Agent.

Olean, N. Y.—Erie Station.
(Telephone 4343)
J. F. MITCHELL, Ticket Agent.

Passaic, N. J.—Erie Station.
(Telephone 2-1613)
O. R. KRECH, Ticket Agent.

Paterson, N. J.—Erie Station.
(Telephone Sherwood 2-3337)
J. H. GRAF, Ticket Agent.

Port Jervis, N. Y.—Erie Station.
(Telephone 300)
R. FARBER, Ticket Agent.

Rochester, N. Y.—Erie Station.
(Telephone Main 4378)
C. J. GILBERT, Ticket Agent.

Sharon, Pa.—Erie Station.
(Telephone 234)
A. F. WAINSCOTT, Ticket Agent.

Youngstown, O.—Erie Station.
(Telephone 41101)
R. E. TOWNS, Ticket Agent.

BILLION DOLLAR BUYER

THE Railroads are the nation's
best customer.

They spend more than a billion
dollars a year for equipment,
materials and supplies. They
buy more than 70,000 different
items. They trade in practically
every city, town, and agricultural
community—thus stimulating
business everywhere.

As the railroads go ahead, busi-
ness goes ahead. The railroads
have been doing a good job. To
do a still better job all they ask
is that equality of treatment and
opportunity to which a progres-
sive, competently-managed and
essential business is entitled.

ASSOCIATION OF AMERICAN RAILROADS



VISIT THE

BRITISH ISLES

for HISTORY • SCENERY

GAIETY

AND BEHIND IT ALL THAT BACKGROUND
THAT TRADITION WHICH IS ENGLAND

- See the Abbeys, Castles and Cathedrals, the Mountains and Valleys and the Bright Lights of London

*Enjoy your holiday where they speak your own
language and the OLD Dollar values still exist*

For Itineraries and Maps etc. write dept. E. R.

General Traffic Manager

ASSOCIATED BRITISH AND IRISH RAILWAYS

9 ROCKEFELLER PLAZA, NEW YORK, N. Y.

CHICAGO, 333 North Michigan Drive

LOS ANGELES, 412 West Sixth Street