



**ERIE RAILROAD SYSTEM
TIME TABLES**

**ERIE RAILROAD SYSTEM
TIME TABLES**

The Scenic Route

BETWEEN

**NEW YORK • BUFFALO
CLEVELAND • CHICAGO**

The Scenic Route

BETWEEN

**NEW YORK • BUFFALO
CLEVELAND • CHICAGO**



E Stands for ERIE and ECONOMY



Whether you travel East or West it will pay you to travel Erie. It's the Economy Route . . . and the "See-Way" to and from New York.

See the finest scenery East of the Rockies. Travel through the heart of the American Industrial Empire—Six great states—New York, New Jersey, Pennsylvania, Ohio, Indiana and Illinois.

Travel in air-conditioned Pullmans—3 cents a mile (in addition to charges for space occupied). Travel in well-appointed air-conditioned salon coaches—2 cents a mile.

Erie fares are the lowest in the East.

TABLE OF CONTENTS

Equipment of Through Trains... Page 5, 6
Suggestions... 30
General Information... 31, 32
Standard of Time
Holidays
Fares Paid on Trains
Adjustment of Fares
Sleeping and Parlor Car Reservations
Baggage Regulations
Articles left on Trains
Equipment of Local Trains... 7, 8, 9, 10
Equipment of Detroit, Toledo, Cleveland, Youngstown and Pittsburgh Trains... 17, 18
Erie Railroad Map... 19, 20, 21, 22
Sleeping and Parlor Car Fares... 31, 32
One-way Rail Fares... 31, 32
Reference Marks and Notes... 33, 34
Traffic Department Representatives... 35, 36
Ticket Offices and Passenger Stations in Principal Cities... 37

Train Service
Condensed Schedule of Through Trains... 5, 6
New York—Binghamton... 7, 8, 9, 10
Binghamton—Akron... 11, 12
Akron—Chicago... 13, 14
New York—Buffalo... 13
Detroit—Toledo—Cleveland—Youngstown—Pittsburgh... 17, 18
New York—Chautauqua... 24
Chautauqua—Akron—Chicago... 24
New York—Kenosha Lake—Jeffersonville... 26
New York—Monticello... 25
New York—Salamanca—Bradford... 24
New York—Meadville—Oil City... 26
Chicago—Meadville—Oil City... 26
Bradford—Salamanca—Cleveland—Chicago... 23
Branch Line Service... 23 to 27, Inc.
Hudson & Manhattan R. R. Service... 28
Ferry Schedule... 28
Chautauqua Lake Service... 24

STATIONS ON ERIE RAILROAD
At Which Trains Are Scheduled To Stop
Numerals Opposite Station Names Indicate Time Table Numbers

Table listing stations on the Erie Railroad with corresponding time table numbers. Columns include station names and numerals. Stations listed include Addison, Akron, Albany, Alden, Allegany, Allendale, Andover, Arden, Arkport, Ashantee, Ashland, Atlanta, Attica, Aurora, Avoca, Avon, Baileys, Barborton, Barton, Bath, Beaver, Beaver Falls, Belmont, Big Flats, Binghamton, Blair, Blasdel, Blooming Grove, Bradford, Brooks, Buffalo, Burns, Callicoon, Cambridge Springs, Cameron, Cameron Mills, Campbell, Canaseraga, Canisteo, Carlton, Carrollton, Castle, Cattaraugus, Central Valley, Chautauqua, Chautauqua Lake, Chemung, Cherry Creek, Chester, Chicago, Cleveland, Cohecton, Cochran, Cohocton, Collins, Conesus, Conesus Lake, Cooper's, Coraopolis, Corning, Corry, Craigville, Crittenden, Crown Point, Cuba, Cuylerville, Dale, Dalton, Dansville, Darien Center, Dayton, Decatur, Depew, Deposit, Detroit, Dunkirk, East Bradford, East Buffalo, East Fifty-fifth St., East Honesdale, East Ninety-third St., East Rutherford, Eden Center, Edon Valley, Ellwood City, Elmira, Elm Place, Endicott, Englewood, Falconer, Fenner, Forestville, Fowler, Franklin, Friendship, Gallion, Gannett, Garrettsville-Hiram, Garwoods, Geauga Lake, Geneseo, Girard, Glen Eyre, Golah, Goshen, Gowanda, Graham, Great Bend, Greenville, Greycourt, Griswold, Groveland, Gulf Summit, Hale's Eddy, Hamburg, Hammond, Hancock, Hankins, Harriman, Hawley, Hickory Grove, Highland Mills, Hillburn, Hohokus, Honesdale, Hornell, Horseheads, Howells, Hubbard, Huntington, Huston, Industry, Jaycocks, Jamestown, Jeddore, Jeffersonville, Jersey City, Johnson City, Jones, Kanona, Kellams, Kennedy, Kenosha Lake, Kent, Kenton, Kimbles, Kirkwood, Lackawaxen, Lake Huntington, Lancaster, Lawtons, Leavittsburg, Letchworth Park, Liberty, Lima, Limestone, Linden, Linden St., Little Valley, Livonia, Long Eddy, Lordville, Mahoning, Mahwah, Mansfield, Mantua, Marilla, Marion, Markhams, Martin, Mast Hope, Meadow-wood, Meadville, Middletown, Mill Rift, Monaca, Mongaup, Monroe, Monticello, Mortimer, Mount Morris, Mountsboro, Newark, New Brighton, Newburgh, New Castle, New Hampton, New York, Niles, North Collins, North Randall, Ohio City, Oil City, Olean, Oncont, Oquaga, Otisville, Owego, Oxford, Painted Post, Parker's Glen, Passaic, Paterson, Perrysburg, Persia, Phalanx, Pierce's, Pittsburgh, Pond Eddy, Portage, Port Jervis, Ramapo, Ramsey, Randolph, Rathbone, Ravenna, Reno, Ridgewood, Rittman, Rochester, Rochester, Rock Glen, Rowlands, Rutherford, Salamanca, Salisbury Mills, Savona, Seven Nations, Shakers, Sharon, Shaws, Sheridan, Shimer's Rock Cut, Shohola, Silver Springs, Skippers, Sloatsburg, Smithboro, Smith's Mills, Solon, Sonyea, South Avon, South Dayton, Southfields, South Lima, South Livonia, South Park, Sparrowbush, Spencerville, Spring Street, Springwater, State Hospital, Sterlington, Stockport, Suffern, Sugar Creek, Susquehanna, Swains, Tioga Centre, Toledo, Town Line, Tusten, Tuxedo, Union City, Utica, Vail's Gate, Wadsworth, Waldwick, Wallace, Warren, Warsaw, Washington Hunt, Washingtonville, Water Valley, Waverly, Wayland, Websters, Wellsburg, Wellsville, Wellwood Ave., Westcolong Park, Westfall, West Henrietta, West Perryburg, West Sparta, White Mills, Wields, Woodbury, Wurtsboro, Youngstown.

ADDITIONAL STATIONS ON ERIE RAILROAD
At Which Trains Do NOT Stop Regularly
The distance shown is from New York as indicated in Tables 4 and 5

Table listing additional stations on the Erie Railroad with distances from New York. Columns include station name, state, and miles from New York. Stations include Adrian, Akron, Aldine, Alger, Almond, Ashville, Athens, Atlantic, Bass Lake, Bear Lake, Belvidere, Bippus, Bolivar, Boone Grove, Braceville, Burbank, Caledonia, Columbus, Creston, DeCuff, DeLong, Disko, Elgin, Foraker, Forty-seventh St., Freedom, Geneva, Glenmore, Griffith, Harrods, Hegewisch, Hepburn, Highlands, Hinsdale, Hurlburt, Kemp, Kingsland, Kouts, Laketon, Lakewood, Leiters, Markei, Martel, McGuffey, Millers, Mill Village, Monterey, Nankin, Newton, Niobe, North Judson, Ontario, Ora, Palmer, Pavonia, Pershing, Polk, Preble, Red House, Saegertown, Scio, Servia, Sharpville, Steamburg, Sterling, Tallmadge, Toecin, Uniondale, Venango, Watts Flats, West Salem, Wilders, Windham, Winfield, Wren, Youngstown.

TABLE 1

CONDENSED TABLE OF THROUGH TRAINS NEW YORK AND BUFFALO, CLEVELAND AND CHICAGO

(FOR LOCAL TRAINS AND INTERMEDIATE TIME OF THROUGH TRAINS SEE LOCAL TABLES)

WEST BOUND		Air-conditioned Trains Air-conditioned equipment has been assigned to regular sections of trains as shown herein. Every effort will be made to provide it as specified, but the right is reserved to employ non-air-conditioned cars as necessitated by volume of traffic or emergencies.		EAST BOUND			
THE ERIE LIMITED New York—Buffalo—Jamestown—Chicago		TRAIN NO. 1—DAILY Jamestown—Chicago		THE ERIE LIMITED Chicago—Jamestown—Buffalo—New York			
EQUIPMENT Air-Conditioned Sleeping Cars: New York to Chicago—8 Section Lounge Restaurant Car. Hornell to Chicago—8 Section, 1 Compartment Lounge Restaurant Car. Air-Conditioned Parlor Buffet Car: New York to Buffalo. Air-Conditioned Salon Coaches: New York to Chicago. Air-Conditioned Individual Seat Coach: New York to Buffalo. Dining Service for all meals in Air-Conditioned Lounge Restaurant Cars.		EQUIPMENT Air-Conditioned Sleeping Car: Chicago to New York—8 Section Lounge Restaurant Car. Air-Conditioned Parlor Buffet Car: Buffalo to New York. Air-Conditioned Salon Coaches: Chicago to New York. Air-Conditioned Individual Seat Coach: Buffalo to New York. Dining Service for all meals in Air-Conditioned Lounge Restaurant Car.					
Lv New York, W. 23d St. 8 30AM E.S.T. " " Chambers St. 8 45 " " " Jersey City 9 00 " " " Paterson en 9 27 " " " Ridgewood en 9 37 " " " Binghamton 2 26PM " " " Elmira 3 40 " " Ar Buffalo (Lehigh Valley Term.) 7 20 " " Lv Olean 6 40 " " " Bradford ad 5 42 " " " Buffalo (Lehigh Valley Term.) 5 20 " " " Jamestown 7 58 " " " Meadville 9 35 " " " Youngstown 11 10 " " " Warren 11 37 " " " Akron 12 44AM " " Ar Chicago (Dearborn Sta.) 8 05AM C.S.T.				Lv Chicago (Dearborn Sta.) 6 00PM C.S.T. Ar Akron 3 49AM E.S.T. " Warren dg 4 45 " " " Youngstown 5 02 " " " Meadville 6 55 " " " Jamestown 8 31 " " " Buffalo (Lehigh Valley Term.) 10 42 " " " Bradford ad 10 25 " " " Olean 9 39 " " Lv Buffalo (Lehigh Valley Term.) 8 40 " " Ar Elmira 12 30PM " " " Binghamton 1 51 " " " Ridgewood dx 6 43 " " " Paterson 6 52 " " " Jersey City 7 20 " " " New York, Chambers St. 7 34 " " " " W. 23d St. 7 55PM "			
THE LAKE CITIES New York—Buffalo—Cleveland		TRAIN NO. 5—DAILY New York—Buffalo—Cleveland		THE LAKE CITIES Cleveland—Buffalo—New York			
EQUIPMENT Air-Conditioned Sleeping Cars: New York to Cleveland—10 Section, 2 Compartment and Drawing-room. New York to Bradford—12 Section and Drawing Room. New York to Buffalo—10 Section Lounge Buffet Car. (Sleeping Car may be occupied at Bradford until 8.00 A. M.). Air-Conditioned Lounge Dining Car: New York to Port Jervis. Salamanca to Cleveland. Air-Conditioned Individual Seat Coaches: New York to Cleveland. Coaches: Hornell to Buffalo.		EQUIPMENT Air-Conditioned Sleeping Cars: Cleveland to New York—10 Section, 2 Compartment and Drawing-room. Youngstown to New York—10 Section Lounge Restaurant Car (operates Sundays only). Bradford to New York—12 Section and Drawing Room. Buffalo to New York—10 Section Lounge Buffet Car. Air-Conditioned Lounge Dining Car: Cleveland to Salamanca. Port Jervis to New York. Air-Conditioned Individual Seat Coaches: Cleveland to New York. Coaches: Buffalo to Hornell.					
Lv New York, W. 23d St. 7 10PM E.S.T. " " Chambers St. 7 30 " " " Jersey City 7 50 " " " Paterson bc 8 19 " " " Ridgewood bc 8 29 " " Ar Buffalo (Lehigh Valley Term.) 7 55AM " " Lv Olean 5 46 " " Ar Bradford 7 10 " " " Jamestown 7 06 " " " Meadville 8 37 " " " Youngstown 10 01 " " " Warren 10 34 " " Ar Cleveland 11 40AM "				Lv Cleveland 5 00PM E.S.T. " Warren 6 12 " " " Youngstown 6 43 " " " Meadville 8 13 " " " Jamestown 9 48 " " " Bradford 9 35 " " " Salamanca 10 34 " " " Olean 10 59 " " " Buffalo (Lehigh Valley Term.) 10 00 " " Ar Elmira 1 50AM " " " Ridgewood dz 8 03 " " " Paterson dz 8 12 " " " Jersey City 8 40 " " " New York, Chambers St. 8 54 " " " " W. 23d St. 9 05AM "			
PACIFIC EXPRESS New York—Jamestown—Chicago		TRAIN NO. 7—DAILY New York—Jamestown—Chicago		ATLANTIC EXPRESS Chicago—Jamestown—New York			
EQUIPMENT Air-Conditioned Sleeping Car: New York to Salamanca—10 Section Lounge Restaurant Car (Saturday night operates New York to Youngstown). (Sleeper open Jersey City at 9.30 P. M.). Air-Conditioned Salon Coaches: New York to Chicago. Dining Service in Air-Conditioned Lounge Restaurant Cars, New York to Salamanca. Sundays New York to Youngstown.		EQUIPMENT Air-Conditioned Sleeping Car: Chicago to Hornell—8 Section, 1 Compartment Lounge Restaurant Car. (Sleeper open at Chicago at 9.30 P. M.). Air-Conditioned Salon Coaches: Chicago to New York. Air-Conditioned Dining Lounge Car: Hornell to New York. (No baggage handled on this train east of Hornell, baggage will be handled on following train.)					
Lv New York, W. 23d St. 11 55PM E.S.T. " " Chambers St. 12 05AM " " " Jersey City 12 25 " " " Elmira 7 38 " " Ar Buffalo (Lehigh Valley Term.) 12 10PM " " Lv Olean 11 10AM " " Ar Salamanca 11 34 " " Lv Buffalo (Lehigh Valley Term.) 8 00 " " " Jamestown 12 32PM " " " Meadville 2 06 " " " Youngstown 3 39 " " " Warren 4 06 " " " Akron 5 09 " " Ar Chicago (Dearborn Sta.) 1 00AM C.S.T.				Lv Chicago (Dearborn Sta.) 10 00PM C.S.T. " Akron 7 22AM E.S.T. " Warren 8 22 " " " Youngstown 8 50 " " " Meadville 10 25 " " " Jamestown 12 15PM " " " Bradford 11 17AM " " " Salamanca 1 18PM " " " Olean 1 44 " " Ar Elmira 5 15 " " " Binghamton 6 26 " " " Jersey City 11 45 " " " New York, Chambers St. 11 59PM " " " " W. 23d St.			
TRAIN NO. 9—DAILY New York—Binghamton		TRAIN NO. 10—EX. SUN. Hornell—Elmira—Binghamton—New York		THE MOUNTAIN EXPRESS Binghamton—New York			
EQUIPMENT Through Coaches....New York to Binghamton.		EQUIPMENT Air-Conditioned Sleeping Car: Hornell to New York—10 Section Lounge Buffet Car. (Sleeper may be occupied at Jersey City until 8.00 A. M.) Through Coaches....Hornell to New York.		EQUIPMENT Through Coaches...Binghamton to New York.			
Lv New York, W. 23d St. 10 30AM E.S.T. " " Chambers St. 10 40 " " " Jersey City 11 00 " " " Paterson 11 29 " " " Ridgewood 11 39 " " Ar Binghamton 5 30PM "		Lv Hornell 7 00PM E.S.T. " Corning 8 11 " " " Elmira 8 43 " " " Binghamton 10 25 " " Ar Jersey City 4 15AM " " " New York, Chambers St. 4 27AM " " " " W. 23d St.		Lv Binghamton 11 45AM E.S.T. Ar Ridgewood 5 59PM " " " Paterson 6 09 " " " Jersey City 6 40 " " " New York, Chambers St. 6 54 " " " " W. 23d St. 7 05PM "			
THE MOUNTAIN EXPRESS New York—Binghamton—Elmira—Hornell		TRAIN NO. 27—DAILY New York—Binghamton—Elmira—Hornell		THE MOUNTAIN EXPRESS Binghamton—New York			
EQUIPMENT Air-Conditioned Dining Lounge Car: New York to Hornell. Through Coaches...New York to Hornell.		EQUIPMENT Through Coaches...Binghamton to New York.					
Lv New York, W. 23d St. 2 30 PM E.S.T. " " Chambers St. 2 40 " " " Jersey City 3 00 " " Ar Binghamton 9 05 " " " Elmira 10 31 " " " Corning 10 55 " " Ar Hornell 11 55 PM "							

TABLE 2 WESTBOUND

NEW YORK—BINGHAMTON

Hudson and Manhattan Tube Trains operate to and from Erie Railroad Station in Jersey City. Fare, downtown, 6 cents; uptown, 10 cents. (Temporarily uptown trains will terminate at 28th Street, main entrance on Sixth Avenue between 29th Street and 30th Street)

Main train schedule table with columns for Miles from New York, Station, and Train Numbers (51, 53, 55, 57, 59, 701, 9, 703, 251, 209, 61, 27, 63, 65, 67, 259, 69, 5, 705, du 7, 71). Includes times and service notes.

LOCAL PARLOR AND CLUB CAR EQUIPMENT

No. 9—Daily Coaches... New York to Binghamton. No. 27—Daily Air-Conditioned Dining Lounge Car... New York to Hornell. Coaches... New York to Hornell.

No. 63—Ex. Suns. and Hols. Parlor Car... New York to Port Jervis. Coaches... New York to Port Jervis.

No. 67—Ex. Sat., Sun. and Hol. Erie Club Car... New York to Port Jervis. Coaches... New York to Port Jervis.

No. 251—Saturdays only Erie Parlor Car... New York to Middletown. Coaches... New York to Middletown.

TABLE 3 EASTBOUND

BINGHAMTON—NEW YORK

Hudson and Manhattan Tube Trains operate to and from Erie Railroad Station in Jersey City. Fare downtown, 6 cents; uptown, 10 cents. (Temporarily uptown trains will terminate at 28th Street, main entrance on Sixth Avenue between 29th Street and 30th Street.)

Table with columns for Eastern Standard Time, train numbers (50, 52, 204, 6, 54, 56, 58, 58, 30, 60, 60, 62, 206, 70, 28, 2, 700, 64, 208, 18, 22, dt8, 68, 10), and station names from Binghamton, N.Y. to Jersey City. Includes service frequency (Daily, Sun. only, etc.) and arrival/departure times.

LOCAL PARLOR AND CLUB CAR EQUIPMENT

No. 8. Air-Conditioned Dining Lounge Car. Coaches. Hornell to New York. Chicago to New York.

No. 10 Except Sundays. Sleeping Lounge-Buffer Car (Air-Conditioned). Coaches. Hornell to New York. No. 28-Daily. Coaches. Binghamton to New York.

No. 56-Except Sundays and Holidays. Erie Club Car. Coaches. Port Jervis to New York. Port Jervis to New York.

TABLE 4 WESTBOUND

BINGHAMTON-AKRON

EASTBOUND

Miles from New York	Eastern Standard Time				Miles from Chicago	Central Standard Time										
	du 7 Daily	1 Daily	27 Daily	5 Daily		2 Daily	18 Daily Ex. Sun.	22 Sun. only	dt 8 Daily	10 Daily Ex. Sun.	6 Daily	620 Sun. only				
0.0	N. Y., West 23d St. Lv.	11.55 PM	8.30 AM	2.30 PM	7.10 PM	0.0	Chicago (Dearborn Sta.) Lv.	6.00 PM				10.00 PM				
0.0	Chambers St. Lv.	12.05	8.45	2.40	7.30	372.7	Akron Lv.	3.49				7.22				
1.0	Jersey City Lv.	12.25	9.00	3.00	7.50	382.8	Kent Lv.	4.05				7.37				
	Albany (D. & H.) Lv.		7.00	4.30	AM	389.1	Ravenna Lv.	4.10				7.42				
	Oneonta (D. & H.) Lv.		10.00	6.51								db				
	Binghamton (D. & H.) Ar.		11.55	8.40												
215.1	Binghamton N. Y. Lv.	6.05	2.26	9.05	1.35		Cleveland (See Table 7) Lv.						5.00	9.30		
217.8	Johnson City Lv.					413.0	Warren Lv.	dg				8.22		6.12	10.47	
223.7	Endicott Lv.	6.17	2.38	9.19	cw	418.1	Niles Lv.							es	10.56	
237.1	Owego Lv.	6.36	2.53	9.38		422.3	Girard Lv.								r11.02	
242.8	Tioga Centre Lv.					426.9	Youngstown Ar.	5.02				8.43		6.36	11.11	
246.8	Smithboro Lv.															
249.4	Barton Lv.						Pittsburgh (See Table 7) Lv.									
256.2	Waverly Lv.	7.03	3.14	10.01		426.9	Youngstown Lv.	5.12				8.50		6.43	11.15	
261.0	Chemung Lv.					434.5	Hubbard Lv.								11.28	
266.8	Wellsburg Lv.					440.5	Sharon Pa. Lv.	5.43				9.14		7.06	11.38	
273.8	Elmira Lv.	7.38	3.40	10.31	2.48	456.6	Greenville Lv.	6.18				9.41		7.31		
278.4	Horseheads Lv.					482.8	Meadville Ar.	6.55				10.20		8.08		
283.6	Big Flats Lv.						Franklin (See Table 16) Ar.	8.05								
291.2	Corning Lv.	8.11	4.04	10.55	3.13		Oil City (See Table 16) Ar.	8.30								
293.1	Painted Post Lv.															
302.3	Addison Lv.	8.29	4.20	11.12		482.8	Meadville Lv.	7.00				10.25		8.13		
307.4	Rathbone Lv.					497.5	Cambridge Springs Lv.	dy				10.45		8.32		
312.5	Cameron Mills Lv.					513.1	Union City Lv.	dy				11.09		dv		
315.1	Cameron Lv.					524.5	Corry Lv.	7.52				11.28		9.07		
328.1	Canisteo Lv.					551.4	Jamestown N. Y. Ar.	8.31				12.15		9.48		
332.3	Hornell Ar.	9.15	4.57	11.55	4.04		(Chautauqua Lake)									
425.2	Buffalo (see Table 6) Ar.	12.10	7.20		7.55	620.9	Buffalo (See Table 8) Ar.	10.42				7.05				
332.3	Hornell Lv.	9.20	5.07		4.13	551.4	Jamestown Lv.	8.31				12.15		9.48		
341.5	Alfred Lv.					567.6	(Chautauqua Lake)									
349.9	Andover Lv.	ah				585.1	Randolph Lv.					12.37				
358.5	Wellsville Lv.	10.04	5.47		4.52		Salamanca Ar.	9.10				1.11		10.27		
366.9	Belmont Lv.	ah					Bradford Lv.	8.15				11.17		9.35		
374.4	Friendship Lv.	bg				585.1	Salamanca Lv.	9.15				1.18		10.34		
383.3	Cuba Lv.	bg	bh		bf	599.6	Allegany Lv.									
395.7	Olean Lv.	11.10	6.40		5.46	603.0	Olean Lv.	9.39				1.44		10.59		
399.1	Allegany Lv.					615.4	Cuba Lv.	dw								
413.6	Salamanca Ar.	11.34	7.03		6.10	624.3	Friendship Lv.									
430.2	Bradford Ar.		7.45		7.10	631.8	Belmont Lv.									
413.6	Salamanca Lv.	11.43	7.10		6.17	640.2	Wellsville Lv.	10.30				2.41		11.49		
431.1	Randolph Lv.				6.41	648.8	Andover Lv.									
447.3	Jamestown Ar.	12.32	7.58		7.06	657.2	Alfred Lv.									
	(Chautauqua Lake)					666.4	Hornell Ar.	11.07				3.20		12.25		
	Buffalo (See Table 8) Lv.	8.00	5.20				Buffalo (See Table 6) Lv.	8.40						10.00		
447.3	Jamestown Lv.	12.32	7.58		7.06	666.4	Hornell Lv.	11.14	9.30	11.50	3.30	7.00	12.31			
474.2	Corry Pa. Lv.	1.10	8.38		7.43	670.6	Canisteo Lv.		9.43	12.01	3.43	7.08				
485.6	Union City Lv.		cn		7.59	683.6	Cameron Lv.		10.03	12.17						
501.2	Cambridge Springs Lv.	1.43	cn		8.18	686.2	Cameron Mills Lv.		10.15	12.24						
515.9	Meadville Ar.	2.01	9.30		8.37	691.3	Rathbone Lv.		r10.30	r12.31						
	Oil City (See Table 16) Lv.		7.50			696.4	Addison Lv.	11.50	11.30	12.46	4.20	7.41	1.07			
	Franklin (See Table 16) Lv.		8.15			705.6	Painted Post Lv.		11.47	1.24						
515.9	Meadville Lv.	2.06	9.35		8.42	707.5	Corning Lv.	1207	12.10	1.32	4.48	8.11	1.24			
542.1	Greenville Lv.	2.43	10.14		9.17	715.1	Big Flats Lv.		r12.24	r1.41						
558.2	Sharon Ohio Lv.	3.11	10.41		9.41	720.3	Horseheads Lv.		12.34	1.49						
564.2	Hubbard Ohio Lv.															
571.8	Youngstown Ar.	3.32	11.03		10.01	724.9	Elmira Lv.	1230	1.00	2.07	5.15	8.43	1.50			
	Pittsburgh (See Table 7) Ar.					731.9	Wellsburg Lv.		1.24	2.19						
571.8	Youngstown Lv.	3.39	11.10		10.10	737.7	Chemung Lv.		1.39	2.29						
576.4	Girard Lv.					742.5	Waverly Lv.	1251	2.01	2.39		9.07	2.12			
580.6	Niles Lv.					749.3	Barton Lv.		r2.12	r2.49						
585.7	Warren Lv.	4.06	11.37		10.34	751.9	Smithboro Lv.		r2.22	r2.55						
	Cleveland (See Table 7) Ar.					755.9	Tioga Centre Lv.		2.35	3.03						
609.6	Ravenna Lv.					761.6	Owego Lv.	1.14	3.05	3.23		9.30				
615.9	Kent Ar.	4.44	12.17			775.0	Endicott Lv.	1.32	3.25	3.41	eu	9.49	ex			
626.0	Akron Ar.	4.49	12.22			780.9	Johnson City Lv.		3.40	3.56						
	Central Standard Time Chicago (Dearborn Station) Ar.	1.00 AM	8.05 AM			783.6	Binghamton Ar.	1.51	4.05	4.14	6.26	10.25	3.12			
						783.6	Binghamton (D. & H.) Lv.									
						844.4	Oneonta (D. & H.) Ar.									
						926.1	Albany (D. & H.) Ar.									
						997.7	Jersey City Lv.	7.20				11.45	4.15	8.40		
						998.7	N. Y., Chambers St. Lv.	7.34				11.59	4.27	8.54		
							" West 23d St. Ar.	7.55						9.05		

COME! DINE WITH US.

Table D'Hotel prices range as follows: Breakfast 50c to \$1.00, Luncheon 75c to \$1.25, Dinner 75c to \$1.25. A meal on our trains is always a pleasant interlude. Makes the journey seem shorter, too. The freshest food the market affords, cooked by expert chefs and served in the comfort of spacious Restaurant Cars. If you prefer a light snack without going to the Diner the waiter will bring sandwiches, fruit, coffee, etc., right to your seat.

TABLE 5 WESTBOUND

AKRON—CHICAGO

EASTBOUND

Miles from New York	Eastern Standard Time	du		Miles from Chicago	Central Standard Time	dt	
		1 Daily	7 Daily			2 Daily	8 Daily
0.0	N. Y., West 23d St. Lv.	AM 8.30	PM 11.55	0.0	Chicago (Dearborn Sta.) . . . III. Lv.	PM 6.00	PM 10.00
0.0	" Chambers St. "	8.45	12.05		(Polk and Dearborn Sts.)		
1.0	Jersey City "	9.00	12.25	6.3	Englewood, 63d Street. "	6.14	cp
626.0	Akron Ohio "	12.44	5.09	20.6	Hammond. Ind. "	6.40	10.40
633.3	Barberton "		de	36.3	Crown Point. "	7.05	
639.9	Wadsworth "			100.9	Rochester. "	8.16	
644.3	Rittman. "			142.6	Huntington. Ar.	9.02	12.50
676.5	Ashland. "	1.52	5.36				
693.2	Mansfield. "	2.25	5.22	142.6	Huntington. Lv.	9.12	12.55
708.6	Galion. "	2.55	5.58	173.4	Decatur. "	9.50	
729.6	Marion. Ar.	3.20	8.00				
729.6	Marion. Lv.	3.27	8.15	189.9	Ohio City. Ohio "	11.11	
754.5	Kenton. "	3.57		204.4	Spencerville. "		
781.5	Lima. "	4.29	9.19	217.2	Lima. "	11.56	3.24
794.3	Spencerville. "			244.2	Kenton. "	12.53	4.01
808.8	Ohio City. "			269.1	Marion. Ar.	12.53	4.29
	Central Standard Time			269.1	Marion. Lv.	12.58	4.34
825.3	Decatur. Ind. "	4.29		290.1	Galion. "	1.29	5.04
856.1	Huntington. Ar.	5.02	9.44	305.5	Mansfield. "	1.59	5.34
				322.2	Ashland. "	2.30	6.01
856.1	Huntington. Lv.	5.07	9.57	354.4	Rittman. "		6.38
897.8	Rochester. "	5.55		358.8	Wadsworth. "		6.48
962.4	Crown Point. "	7.03	12.15	365.4	Barberton. "		7.00
978.1	Hammond. "	7.25		372.7	Akron. Ar.	3.49	7.22
992.4	Englewood, 63d Street. Ill. "	ax	ax				
998.7	Chicago (Dearborn Sta.) Ar.	8.05	1.00	997.7	Jersey City. Ar.	7.20	11.45
		AM	AM	998.7	N. Y., Chambers St. "	7.34	11.59
					" West 23d St. Ar.	7.55	
						PM	PM

TABLE 6 NEW YORK AND BUFFALO

WESTBOUND Read Down			Miles from New York	Eastern Standard Time	EASTBOUND Read Up		
1 Daily	7-477 Daily	5 Daily			2 Daily	472 Sat. Only Ex. Hol.	480 Daily
AM 8.30	PM 11.55	PM 7.10	0.0	Lv. N. Y., West 23d St. Ar.	PM 7.55		AM 9.05
8.45	12.05	7.30	0.0	" Chambers St.	7.34		8.54
9.00	12.25	7.50	1.0	" Jersey City.	7.20		8.40
2.26	6.05	1.35	215.1	Lv. Binghamton. Ar.	1.51		3.12
2.38	6.17		223.7	Endicott.	1.32		ex
3.14	7.03		256.2	Waverly.	12.51		2.12
3.40	7.38	2.48	273.8	Elmira.	12.30		1.50
4.04	8.11	3.13	291.2	Corning.	12.07		1.24
4.57	9.15	4.04	332.3	Ar. Hornell. Lv.	11.14		12.31
5.12	9.30	5.20	332.3	Lv. Hornell. Ar.	11.02	8.50	12.15
	9.38	5.28	338.0	Arkport.		8.39	
			340.7	Burns.		8.33	
	9.50	5.38	344.9	Canaseraga.	10.40	8.26	
			347.2	Garwoods.		8.21	
	9.57		349.2	Swains.		8.17	
	10.07	ac	356.3	Dalton.		8.07	
	10.12		358.5	Washington Hunt.		8.02	
	10.19		362.5	{ Portage		7.54	
				{ Letchworth Park			
5.55	10.28	bt6.12	366.4	Castile.	10.12	7.45	bt11.31
6.00	10.34	6.17	369.1	Silver Springs.	10.06	7.38	11.25
	10.39		372.2	Rock Glen.			
6.11	10.48	6.29	376.4	Warsaw.	9.56	7.24	11.14
			382.2	Dale.		7.14	
	11.02		386.5	Linden.			
6.36	11.15	6.55	393.6	Attica.	9.32	2.30	6.55
		7.02	397.5	Griswolds.		2.22	6.48
	11.26	7.07	399.7	Darien Center.		2.17	6.42
6.53	11.35	7.15	405.3	Alden (Black Water Baths)	9.09	2.05	6.30
		7.20	408.2	Marilla.		2.00	6.23
		7.23	409.5	Town Line.		1.56	6.18
	11.47	7.30	414.2	Lancaster.		1.49	6.10
		7.33	415.5	Depew.		1.46	6.06
		7.43	422.1	East Buffalo.		1.35	5.54
7.20	12.10	7.55	425.2	Ar. Buffalo. Lv.	8.40	1.25	10.00
PM	PM	AM		(Lehigh Valley Terminal)	AM	PM	PM



New Air-Conditioned Sleeping Car Service to NEW YORK

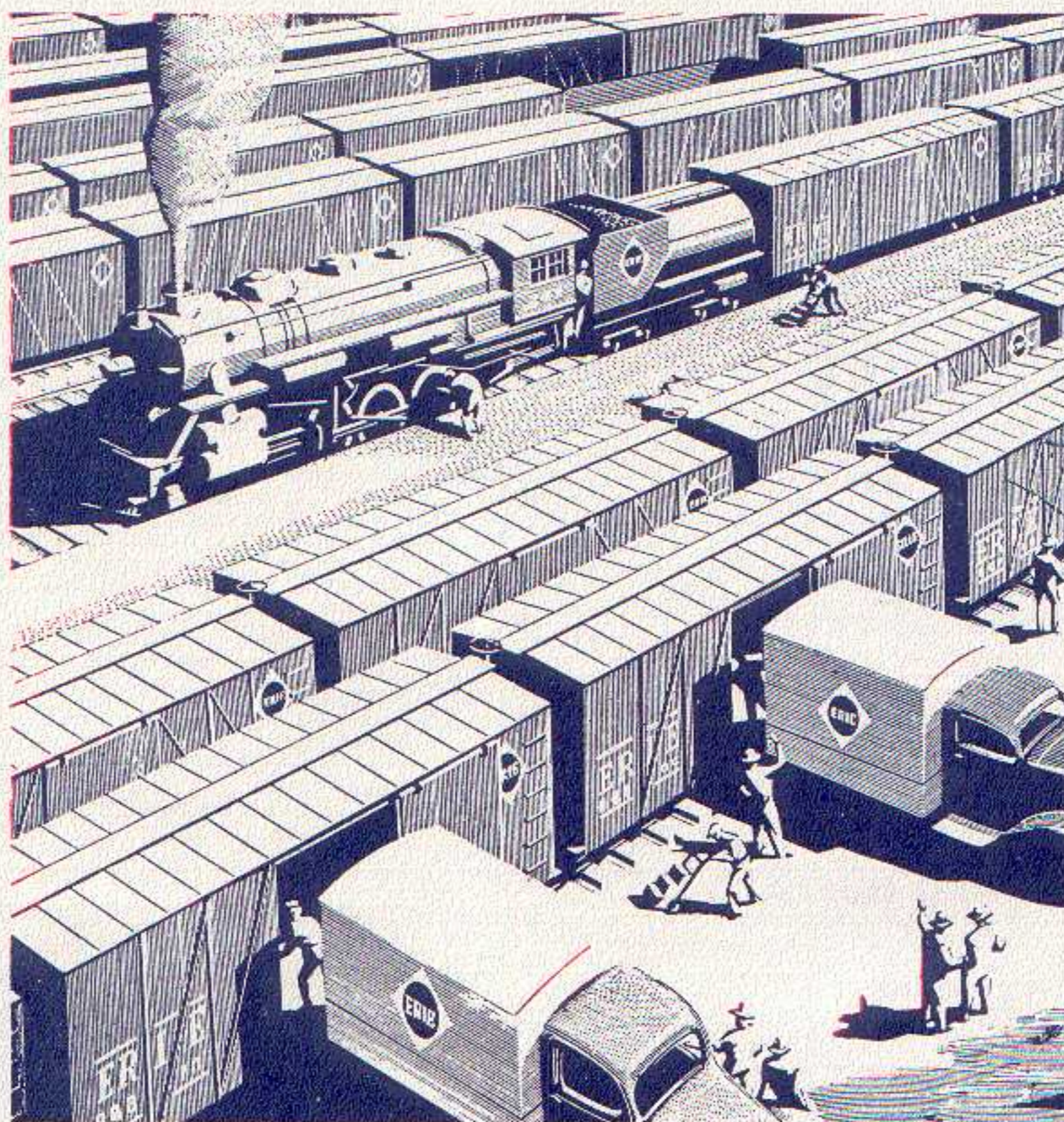
ON TRAIN No. 10
SOUTHERN TIER EXPRESS
Operating Daily Except Sunday
BUFFET AND LOUNGE CAR FACILITIES

Schedule—Eastern Standard Time

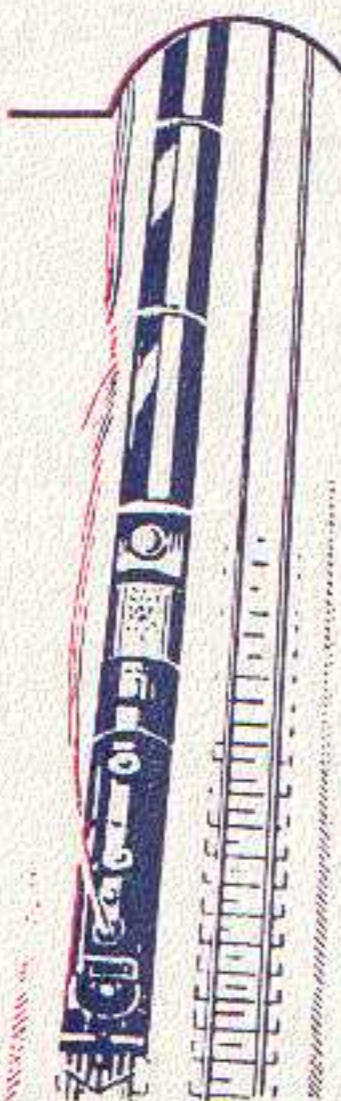
Lv. Hornell 7:00 P.M.	Lv. Waverly 9:07 P.M.
Lv. Addison 7:41 P.M.	Lv. Owego 9:30 P.M.
Lv. Corning 8:11 P.M.	Lv. Endicott 9:49 P.M.
Lv. Elmira 8:43 P.M.	Lv. Binghamton 10:25 P.M.

*Ar. Jersey City 4:15 A.M.
*Car may be occupied until 8:00 A.M.
Corresponding air-conditioned service returning leaves Jersey City daily 12:25 A.M.

Erie Trains arriving at and departing from BUFFALO, N. Y. now use the LEHIGH VALLEY TERMINAL located at Main and Scott Streets.



Erie Rails— Direct to Your Door



● With a fleet of swift motor carriers to extend service at rails' end, the Erie literally runs direct from your shipping room to the consignee's receiving floor.

This pick-up and delivery service on less-than-carload freight eliminates shipping details, cartage charges and lost time. From the moment freight leaves the shipping platform, full responsibility rests with the Erie Railroad.

Fast freight handling methods and reliable "on-time" schedules combine with this new service to save time and reduce costs for Erie shippers.

This extra service costs nothing extra. Phone your Erie agent and save on your next shipment.

TABLE 7 DETROIT—TOLEDO—CLEVELAND—YOUNGSTOWN—PITTSBURGH

Miles from Cleveland	Eastern Standard Time	EASTBOUND													
		WEEK-DAYS							SUNDAYS						
		688	624	626	6	628	686	644	688	624	626	6	686	620	
		Ex. Sun.	Ex. Sun.	Ex. Sun.	Ex. Sun.	Ex. Sun. & Hol.	Ex. Sun.	Ex. Sun.	Sun. only	Sun. only	Sun. only	Sun. only	Sun. only	Sun. only	
		AM	AM	AM	PM	PM	PM	PM	AM	AM	AM	PM	PM	PM	
	DetroitLv.	12.30		8.00			1.25		12.30		8.00		1.25		
	ToledoLv.	2.13	5.05	9.45			3.10		2.13	5.05	9.45		3.10		
0.0	ClevelandLv.	4.25	8.00	1.15	5.00	5.30	6.00	9.30	4.25	8.00	1.15	5.00	6.00	9.30	
3.3	East 55th Street.....		8.07	1.23	5.08	5.38	6.08			8.07	1.23	5.08	6.08	9.40	
5.6	E. 93d St., Cleveland.....		8.12	1.27	na	5.43	hv.			8.12	1.27	na	hv.	9.45	
10.7	North Randall.....					5.52									
15.8	Solon.....			ne		5.59								r10.00	
20.4	Geauga Lake.....					6.05								r10.05	
23.6	Aurora.....			ne		6.11		cy						r10.10	
30.0	Mantua.....			dc		6.20		cy			dc			r10.17	
34.2	Jeddoe.....					6.26									
36.7	Garrettsville-Hiram.....		8.46	2.02		6.30		r1017		8.46	2.02			r10.27	
40.3	Mahoning.....					6.36									
45.3	Phalanx.....					6.42									
49.4	Leavittsburg.....					6.49									
52.6	Warren.....	5.37	9.05	2.22	6.12	6.57	7.09	10.37	5.37	9.05	2.22	6.12	7.09	10.47	
57.7	Niles.....	er	9.13	2.30	es	7.23	7.20	10.45	er	9.13	2.30	es	7.20	10.56	
61.9	Girard.....					7.33								r11.02	
66.5	Youngstown.....Ar.	6.00	9.25	2.45	6.36	7.45	7.35	10.58	6.00	9.25	2.45	6.36	7.35	11.11	
66.5	Youngstown.....Lv.	6.05	9.30	2.50			7.40		6.05	9.30	2.50		7.40		
84.2	New Castle.....Ar.	6.29	9.55	3.14			8.02		6.29	9.55	3.14		8.02		
	New Castle (Wash. St.) ec Ar.	6.42	10.08	3.27			8.15		6.42	10.08	3.27		8.15		
95.5	Ellwood City (ed).....		10.19	3.34			8.23			10.19	3.34		8.23		
102.2	Beaver Falls.....	cy6.51	10.18	3.36			8.25	cy6.51	10.18	3.36		8.25			
	New Brighton.....														
105.6	Beaver.....	cy6.56	10.24	3.41			8.31	cy6.56	10.24	3.41		8.31			
112.3	Aliquippa.....	cy7.05	10.33	3.50			8.40	cy7.05	10.33	3.50		8.40			
120.8	Coraopolis.....	cy7.15	10.44	4.00			8.50	cy7.15	10.44	4.00		8.50			
131.4	Pittsburgh.....Ar.	7.30	11.00	4.15			9.05	7.30	11.00	4.15		9.05			

AIR-CONDITIONED TRAINS
Air-conditioned equipment has been assigned to regular sections of trains as shown herein. Every effort will be made to provide it as specified, but the right is reserved to employ non-air-conditioned cars as necessitated by volume of traffic or emergencies.

EQUIPMENT
Detroit, Toledo, Cleveland, Youngstown, Pittsburgh Trains.
★Indicates Air-Conditioned Cars

EASTBOUND
No. 6—Daily. ★Sleeping Car (10 Section 2 Compartment and Drawing Room Car) Cleveland to New York. ★Lounge Dining Car, Cleveland to Hornell. ★Individual Seat Coach, Cleveland to New York.
No. 620—Sundays only. Coaches, Cleveland to Youngstown and Sharon.
No. 624—Daily. ★Pullman Parlor-Lounge-Diner, Cleveland to Pittsburgh. ★Coach, Cleveland to Pittsburgh.
No. 626—Daily. ★Pullman Parlor Car, Cleveland to Pittsburgh. ★Coach, Cleveland to Pittsburgh.
No. 644—Except Sundays. Coaches, Cleveland to Youngstown.
No. 686—Daily. ★Sleeping Car for Parlor Car Service and ★Coaches, Detroit to Pittsburgh, via Cleveland. Dining Lounge Car, Cleveland to Pittsburgh.
No. 688—Daily. ★Sleeping Cars, Chicago to Pittsburgh. ★Sleeping Cars, Detroit to Pittsburgh. Through Coaches, Chicago and ★Detroit to Pittsburgh, via Cleveland.

Miles from Pittsburgh	Eastern Standard Time	WESTBOUND													
		WEEK-DAYS							SUNDAYS						
		629	625	5	685	623	679	687	619	5	685	623	679	687	
		Ex. Sun. & Hol.	Ex. Sun.	Ex. Sun.	Ex. Sun.	Ex. Sun.	Ex. Sun.	Ex. Sun.	Sun. only	Sun. only	Sun. only	Sun. only	Sun. only	Sun. only	
		AM	AM	AM	PM	PM	PM	AM	AM	AM	PM	PM	PM	AM	
	PittsburghLv.			8.30	12.30	6.00	9.00	12.05			8.30	12.30	6.00	9.00	12.05
10.6	Coraopolis.....			8.44	12.45	6.14	9.14	ev.			8.44	12.45	6.14	9.14	ev.
19.1	Aliquippa.....			8.53	12.54	6.23	9.23	12.28			8.53	12.54	6.23	9.23	12.28
25.8	Beaver.....			9.01	1.01	6.31	9.31	12.38			9.01	1.01	6.31	9.31	12.38
29.2	Beaver Falls.....			9.06	1.06	6.36	9.36	12.44			9.06	1.06	6.36	9.36	12.44
45.7	New Brighton.....			9.04	1.04	6.20	9.37				9.04	1.04	6.20	9.37	
	Ellwood City (ed).....														
47.2	New Castle (Wash. St.) Lv. ec			9.15	1.16	6.35	9.37	12.56			9.15	1.16	6.35	9.37	12.56
	New Castle.....			9.28	1.30	6.58	9.58	1.10			9.28	1.30	6.58	9.58	1.10
64.9	Youngstown.....Ar.			9.55	2.00	7.25	10.25	1.40			9.55	2.00	7.25	10.25	1.40
64.9	Youngstown.....Lv.	5.55	7.55	10.10	2.05	7.30	10.29	1.45	8.30	10.10	2.05	7.30	10.29	1.45	
69.5	Girard.....	6.04													
73.7	Niles.....	6.12	8.06	bm.	2.19	7.45	10.42	dp.	8.44	bm.	2.19	7.45	10.42	dp.	
78.8	Warren.....	6.27	8.13	10.34	2.29	8.01	10.51	2.05	8.54	10.34	2.29	8.01	10.51	2.05	
82.0	Leavittsburg.....	6.33													
86.1	Phalanx.....	6.39						9.03							
91.1	Mahoning.....	r6.45													
94.7	Garrettsville-Hiram.....	6.52	8.32	nh	nf	8.21	hf	9.14		nh	nf	8.21	hf		
97.2	Jeddoe.....	r6.57													
101.4	Mantua.....	7.08	df					ho.		ho.					
107.8	Aurora.....	7.18						9.32							
111.0	Geauga Lake.....	7.25													
115.6	Solon.....	7.31													
120.7	North Randall.....	7.39													
125.8	E. 93d St., Cleveland.....	7.47	9.11	11.26	3.25	9.00	11.44		9.55	11.26	3.25	9.00	11.44		
128.1	East 55th Street.....	7.53	9.15	11.31	3.31	9.06	hu		10.01	11.31	3.31	9.06	hu		
131.4	Cleveland.....Ar.	8.03	9.23	11.40	3.40	9.15	11.58	3.10	10.10	11.40	3.40	9.15	11.58	3.10	
	Toledo.....Ar.			2.25	6.10	1.00	2.55	6.10		2.25	6.10	1.00	2.55	6.10	
	Detroit.....Ar.			4.00	7.50	AM	4.50	7.45		4.00	7.50	AM	4.50	7.45	

WESTBOUND
No. 5—Daily. ★Sleeping Car (10 Section 2 Compartment and Drawing Room Car) New York to Cleveland. ★Pullman Parlor Car, Pittsburgh to Cleveland. ★Lounge Dining Car, Hornell to Cleveland. ★Coach, Pittsburgh to Cleveland.
No. 619—Sundays only. Coaches, Youngstown to Cleveland.
No. 623—Daily. ★Pullman Parlor-Lounge-Diner, Pittsburgh to Cleveland. ★Coach, Pittsburgh to Cleveland.
No. 625—Except Sundays. Coaches, Youngstown to Cleveland.
No. 679—Daily. ★Sleeping Car, Pittsburgh to Chicago. Through Coaches, Pittsburgh to Chicago.
No. 685—Daily. ★Sleeping Car for Parlor Car Service and ★Coaches, Pittsburgh to Detroit, via Cleveland. Dining Lounge Car, Pittsburgh to Cleveland.
No. 687—Daily. ★Sleeping Cars, Pittsburgh to Detroit. ★Through Coaches, Pittsburgh to Detroit via Cleveland.

★Cleveland-Pittsburgh Sleeping Car
The Cleveland-Pittsburgh sleeping car operates to and from Union Terminal Cleveland via New York Central (via Ashtabula) to Youngstown, and P. & L. E. Railroad on following schedule:

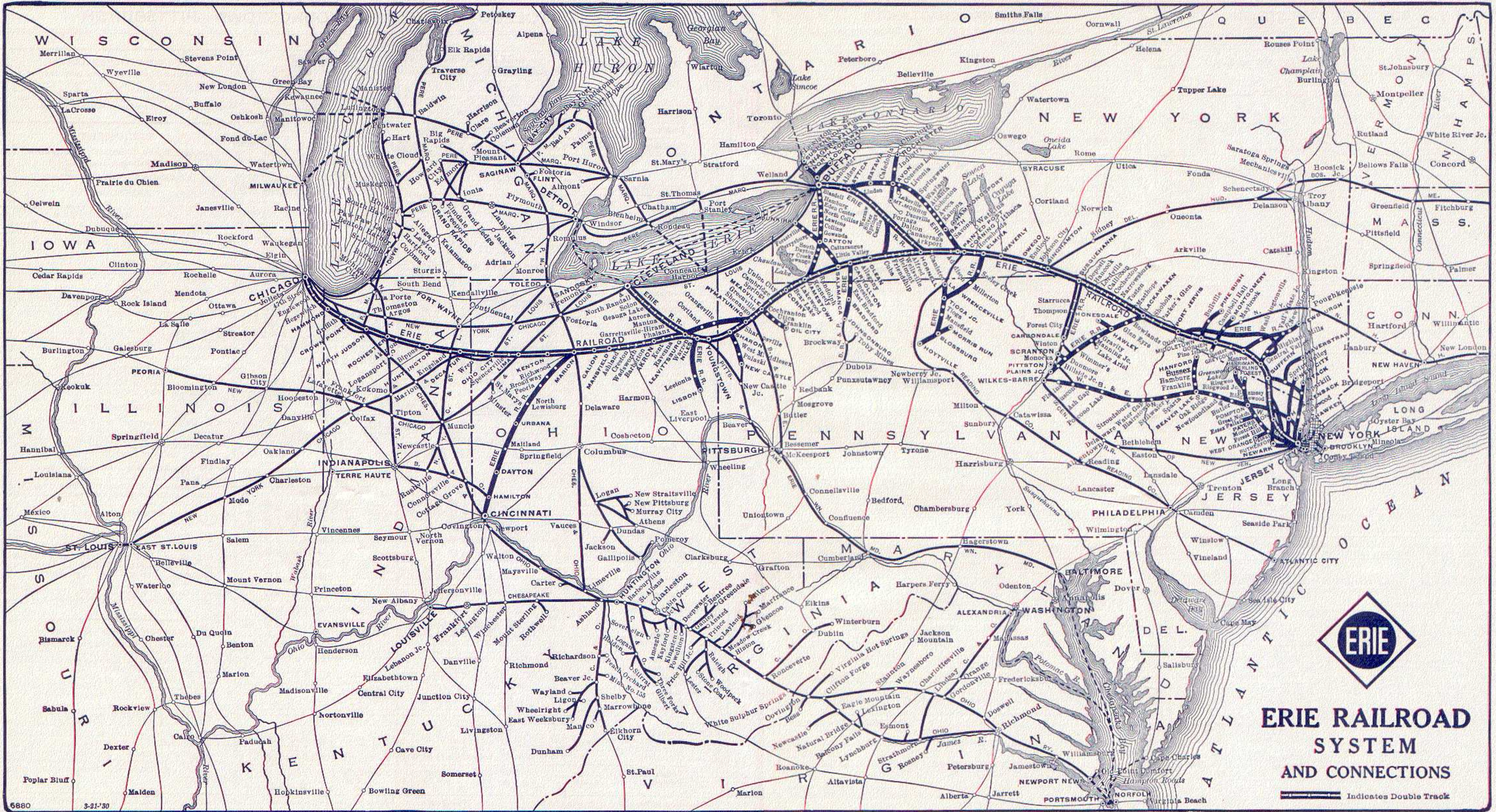
Eastbound
Lv Cleveland (Union Terminal) 2:18 AM
Ar Pittsburgh (P&LE Station) 7:15 AM
Westbound
Lv Pittsburgh (P&LE Station) 11:30 PM
Ar Cleveland (Union Terminal) 7:10 AM

Sleeper open for occupancy at 9:30 P. M. at Cleveland and 10:00 P. M. at Pittsburgh.
Tickets reading via Erie Railroad between Cleveland and Youngstown, and P. & L. E. Railroad between Youngstown and Pittsburgh, will be honored in this sleeping car.

Holidays in the above table refers to the observance of New Year's Day, Memorial Day, Independence Day, Labor Day, Thanksgiving Day and Christmas Day.

For Explanation of Reference Marks and Notes, see Pages 33 and 34.

For Parlor, Sleeping and Dining Service of Through Trains, see Pages 5 and 6.



6880 3-21-'30

ARRIVE FRESH AS A DAISY ON ERIE AIR-CONDITIONED TRAINS

ERIE RAILROAD SYSTEM AND CONNECTIONS

Indicates Double Track

TABLE 8 BUFFALO—JAMESTOWN

		WESTBOUND			
Mls.	Eastern Standard Time	513	515	519	521
		Daily	Daily Ex.Su. & Hol.	Daily	Daily Ex.Su. & Hol.
0.0	Buffalo (Lehigh Valley Terminal)... Lv.	8.00 AM	1.30 PM	5.20 PM	6.05 PM
7.4	Blasdell.....	8.17	1.48	5.38	6.24
13.3	Hamburg.....	8.29	2.00	5.50	6.38
14.4	Water Valley.....		2.03	hu	6.40
16.8	Eden Valley.....	8.34	2.07	hu	6.44
19.1	Eden Center.....	8.39	2.12	6.01	6.49
23.4	North Collins.....	8.46	2.19	6.08	6.56
27.3	Lawtons.....	8.52	2.26	6.14	7.02
30.4	Collins (State Hospital).....	8.58	2.32	6.20	7.08
33.4	Gowanda.....	9.05	2.45	6.28	7.15
38.0	Dayton.....	9.20		6.42	
39.8	Markhams.....				
43.3	South Dayton.....	9.30		6.52	
48.3	Cherry Creek.....	9.38		7.00	
52.6	Conewango.....	9.47		7.05	
60.6	Kennedy.....	9.58		hu	
66.4	Falconer.....	10.06		7.25	
69.5	Jamestown..... Ar.	10.12 AM		7.32 PM	

		EASTBOUND			
Mls.	Eastern Standard Time	514	516	518	520
		Daily Ex.Su. & Hol.	Daily	Daily Ex.Su. & Hol.	Daily
0.0	Jamestown..... Lv.				
3.1	Falconer.....		8.37 AM		5.00 PM
8.9	Kennedy.....		8.43		5.06
16.9	Conewango.....		8.51		5.14
21.2	Cherry Creek.....		9.02		5.26
26.2	South Dayton.....		9.08		5.33
29.7	Markhams.....		9.16		6.41
31.5	Dayton.....		9.25		5.50
36.1	Gowanda.....	6.55	9.35	2.50	6.00
39.1	Collins (State Hospital).....	7.01	9.42	2.56	6.07
42.2	Lawtons.....	7.07	9.48	3.02	6.14
46.1	North Collins.....	7.13	9.55	3.09	6.21
50.4	Eden Center.....	7.20	10.03	3.15	6.29
52.7	Eden Valley.....	7.24	10.08	3.21	6.33
55.1	Water Valley.....	7.29			
56.2	Hamburg.....	7.35	10.14	3.27	6.38
62.1	Blasdell.....	7.44	10.24	3.37	6.47
69.5	Buffalo (Lehigh Valley Terminal)... Ar.	8.02 AM	10.42 AM	3.55 PM	7.05 PM

Holidays in the above table refer to the observance of New Year's Day, Memorial Day, Independence Day, Labor Day, Thanksgiving Day and Christmas Day.

TABLE 11 BRADFORD - SALAMANCA - CLEVELAND - CHICAGO

WESTBOUND				EASTBOUND				
Miles from Bradford	Eastern Standard Time	Bus-7	Bus-1	Miles from Chicago	Central Standard Time	2-Bus	8-Bus	6-Bus
		Daily	Daily			Daily	Daily	Daily
		AM	PM	0.0	Chicago..... Lv.	6.00 PM	10.00 PM	
		Via BUS of Allegheny Motor Coach Co., Inc. (See Note "X" Below)						
0.0	Bradford..... Lv.	9.17	5.42	372.7	Akron.....	3.49	7.22	
16.6	Salamanca..... Ar.	9.55	6.20	0.0	Cleveland.....			5.00
16.6	Salamanca..... Lv.	11.43	7.10	426.9	Youngstown.....	5.12	8.50	6.43
50.3	Jamestown..... Ar.	12.32	7.58	551.4	Jamestown.....	8.31	12.15	9.48
174.8	Youngstown.....	3.32	11.03	585.1	Salamanca..... Ar.	9.10	1.11	10.27
		Via BUS of Allegheny Motor Coach Co., Inc. (See Note "X" Below)						
229.0	Akron.....	5.09	12.44	585.1	Salamanca..... Lv.	9.45	2.20	dh10.35
601.7	Chicago..... Ar.	1.00 AM	8.05 AM	601.7	Bradford..... Ar.	10.25	3.00	dh11.10

NOTE "X"—In connection with the bus service the Erie Railroad Company acts as agent only and is not responsible beyond its own line, except as such responsibility may be imposed by law with respect to baggage.

TABLE 9 NEW YORK—CHAUTAUQUA
(Via Jamestown and BUS of West Ridge Transportation Co.)
(See Note "X" Below)

WESTBOUND				EASTBOUND				
Eastern Standard Time	5-Bus	7-Bus	Eastern Standard Time	Bus-8	Bus-6	Eastern Standard Time	Bus-8	Bus-6
	Daily Ex.Su. & Hol.	Daily Ex.Su. & Hol.		Daily Ex.Su. & Hol.	Daily		Daily	Daily Ex.Su. & Hol.
	PM	PM		AM	PM		AM	PM
N.Y., West 23rd St. Lv.	7.10	11.55	Chautauqua..... Lv.	10.52	8.32			
" Chambers St.	7.30	12.05	Jamestown..... Ar.	11.25	9.05			
Jersey City.....	7.50	12.25	Jamestown..... Lv.	12.15	9.48			
Jamestown..... Ar.	7.06	12.32	Jersey City..... Ar.	11.45	8.40			
Jamestown..... Lv.	8.45	1.30	N. Y., Chambers St.	11.59	8.54			
Chautauqua..... Ar.	9.15 AM	2.03 PM	" West 23rd St. Ar.		9.05 AM			

Tickets sold and Baggage checked through to Chautauqua. Hand baggage checked without charge. Trunks checked at charge of 25c each.

TABLE 10 CHAUTAUQUA—AKRON—CHICAGO
(Via Jamestown and BUS of West Ridge Transportation Co.)
(See Note "X" Below)

WESTBOUND				EASTBOUND				
Eastern Standard Time	Bus-7	Bus-1	Central Standard Time	2-Bus	8-Bus	Eastern Standard Time	2-Bus	8-Bus
	Daily Ex.Su. & Hol.	Daily		Daily Ex.Su. & Hol.	Daily		Daily	Daily Ex.Su. & Hol.
	AM	PM		PM	PM		PM	PM
Chautauqua..... Lv.	10.52	6.37	Chicago..... Lv.	6.00	10.00			
Jamestown..... Ar.	11.25	7.10						
Jamestown..... Lv.	12.32	7.58	Akron..... Lv.	3.49	7.22			
Cleveland..... Ar.			Cleveland..... Lv.					
Akron..... Ar.	5.09	12.44	Jamestown..... Ar.	8.31	12.15			
Chicago..... Ar.	1.00 AM	8.05 AM	Jamestown..... Lv.	8.45	12.15			
			Chautauqua..... Ar.	9.15 AM	12.43 PM			

Tickets sold and Baggage checked through to Chautauqua. Hand baggage checked without charge. Trunks checked at charge of 25c each.

TABLE 12 NEW YORK—SALAMANCA—BRADFORD

WESTBOUND				EASTBOUND			
Miles from N. Y.	Eastern Standard Time	ht 5-557	gt 1-Bus	Eastern Standard Time	gt Bus-2	gt Bus-8	ht 560-6
		Daily	Daily		Daily	Daily	Daily
		PM	AM		AM	AM	PM
0.0	N. Y., W. 23rd St. Lv.	7.10	8.30	Bradford..... Lv.	dh 8.15	ad11.17	9.35
0.0	" Chambers St.	7.30	8.45	East Bradford.....			
1.0	Jersey City..... Lv.	7.50	9.00	Limestone.....			
413.6	Salamanca..... Ar.	6.10	7.03	Carrollton.....			
				Salamanca..... Ar.	dh 8.55	ad12.00	10.10
413.6	Salamanca..... Lv.	6.35	ad7.10	Salamanca..... Lv.	9.15	1.18	10.34
419.0	Carrollton.....			Jersey City..... Ar.	7.20	11.45	8.40
425.1	Limestone.....	6.58		N.Y., Chambers St.	7.34	11.59	8.54
429.0	East Bradford.....			" W. 23rd St.	7.55		9.05
430.2	Bradford..... Ar.	7.10 AM	ad7.45 PM				AM

Trains 5-557 and 560-6 carry through sleeping car between Bradford and New York. Sleeper on train 557 will be parked at Bradford for occupancy until 8.00 A. M.

Busses leave as follows: (running time approximately 45 minutes.)

Lv. Salamanca for Bradford, 8.20 A.M., 9.45 A.M., 2.20 P.M., 4.30 P.M., 5.40 P.M., 7.10 P.M., 11.15 P.M.

Lv. Bradford for Salamanca, 8.17 A.M., 9.17 A.M., 11.17 A.M., 2.17 P.M., 4.27 P.M., 5.42 P.M.

BAGGAGE CHECKED TO BRADFORD—Baggage will be handled only on Trains 557 and 560 between Salamanca, N. Y., and Bradford, Pa.

NOTE "X"—In connection with the bus service the Erie Railroad Company acts as agent only and is not responsible beyond its own line, except as such responsibility may be imposed by law with respect to baggage.

TABLE 13 NEW YORK—NEWBURGH—(VIA HARRIMAN)

Table 13: New York-Newburgh (via Harriman). Includes Westbound (Read Down) and Eastbound (Read Up) schedules with times and stations.

TABLE 15 NEW YORK MEADVILLE—OIL CITY

Table 15: New York-Meadville-Oil City. Includes Westbound (Read Down) and Eastbound (Read Up) schedules with times and stations.

BLACK WATER BATHS

ALDEN, N. Y. An all year resort where sufferers from rheumatism and nervous ailments have found the Black Water Baths beneficial and curative.

TABLE 14 NEW YORK—NEWBURGH (VIA GREYCOURT)

Table 14: New York-Newburgh (via Greycourt). Includes Westbound (Read Down) and Eastbound (Read Up) schedules with times and stations.

TABLE 17 Lackawaxen—Honesdale

Table 17: Lackawaxen-Honesdale. Includes Westbound (Read Down) and Eastbound (Read Up) schedules with times and stations.

TABLE 16 Chicago-Meadville-Oil City

Table 16: Chicago-Meadville-Oil City. Includes Westbound (Read Down) and Eastbound (Read Up) schedules with times and stations.

TABLE 19 NEW YORK—MONTICELLO—LIBERTY

Table 19: New York-Monticello-Liberty. Includes Westbound and Eastbound schedules with times and stations.

TABLE 20 NEW YORK—KENOZA LAKE JEFFERSONVILLE

Table 20: New York-Kenoza Lake-Jeffersonville. Includes Westbound and Eastbound schedules with times and stations.

Spend a WINTER VACATION IN THE South or West

Take advantage of our Winter Excursion Tickets, which offer attractively reduced fares for the 1938 season. They are sold to points in Alabama, Arizona, Arkansas, British Columbia, California, Florida, Georgia, Idaho, Louisiana, Mississippi, Nevada, New Mexico, North and South Carolina, Oregon, Texas, Utah and Washington.

Tickets sold and baggage checked through to Monticello, Wurtsboro and Liberty.

NOTE "X" In connection with the bus service the Erie Railroad Company acts as agent only and is not responsible beyond its own line, except as such responsibility may be imposed by law with respect to baggage.

For Explanation of Reference Marks and Notes, See Pages 33 and 34.

For Main Line Parlor and Dining Service, See Pages 5 and 6.

TABLE 21 ELMIRA-ROCHESTER

Table with columns for Westbound Read Down (5-463, 7-467), Miles, Eastern Standard Time, and Eastbound Read Up (468-8, 464-8). Includes departure and arrival times for various stations like Elmira, Corning, and Rochester.

TABLE 22 SALAMANCA—DUNKIRK

Table with columns for Westbound Read Down (5-527), Miles, Eastern Standard Time, and Eastbound Read Up (540). Includes departure and arrival times for stations like Salamanca, Dayton, and Dunkirk.

LOCATE YOUR PLANT WHERE YOU CAN LOCATE MORE PROFITS Ask us about industrial buildings and vacant land on Erie rails GEO. F. WESTON Industrial Commissioner Erie Railroad, Midland Bldg., Cleveland, O.

TABLE 23 ROCHESTER—MOUNT MORRIS—DANSVILLE

Table with columns for Eastern Standard Time, N.B. (North Bound), and W.B. (West Bound). Includes departure and arrival times for stations like Rochester, Mt. Morris, and Dansville.

TRAINS between Mt. Morris and Avon will stop on signal at Shakers, Jones, Cuylerville, Jaycocks, Seven Nations, Huston, South Avon, Pierces, Fowler, Ashantee, Linden Street and Spring Street and between Avon and Rochester, except Trains 467, 468 at Wiards, Elm Place, Meadowwood, Gannett, Blair, Martin, Brooks, Fenner, Baileys, Crittenden, Westfall and South Park. HOLIDAYS in above table refer to the observance of New Year's Day, Decoration Day, Independence Day, Labor Day, Thanksgiving Day and Christmas Day.

For Explanation of Reference Marks and Notes, See Pages 33 and 34.

HUDSON AND MANHATTAN TUBE TRAINS SCHEDULE OF RUNNING TIME BETWEEN ERIE R. R. JERSEY CITY TERMINAL AND

Table showing running times for Downtown New York and Uptown New York. Includes stations like Cortlandt St., 28th Street, and 9th Street.

ERIE R. R. FERRY TIME TABLE

EASTERN STANDARD TIME CHAMBERS STREET FERRY

Ferry Running Time, 9 Minutes WEEK DAYS

Table with columns for Leave New York for Jersey City and Leave Jersey City for New York. Includes departure and arrival times for various times of day.

a Will not run on Holidays. m Except Saturdays and Holidays. h Holidays only.

SUNDAYS

Table showing Sunday departure and arrival times for the ferry service.

TWENTY-THIRD STREET FERRY

Ferry Running Time, 20 Minutes WEEK DAYS

Table with columns for Leave New York for Jersey City and Leave Jersey City for New York. Includes departure and arrival times for various times of day.

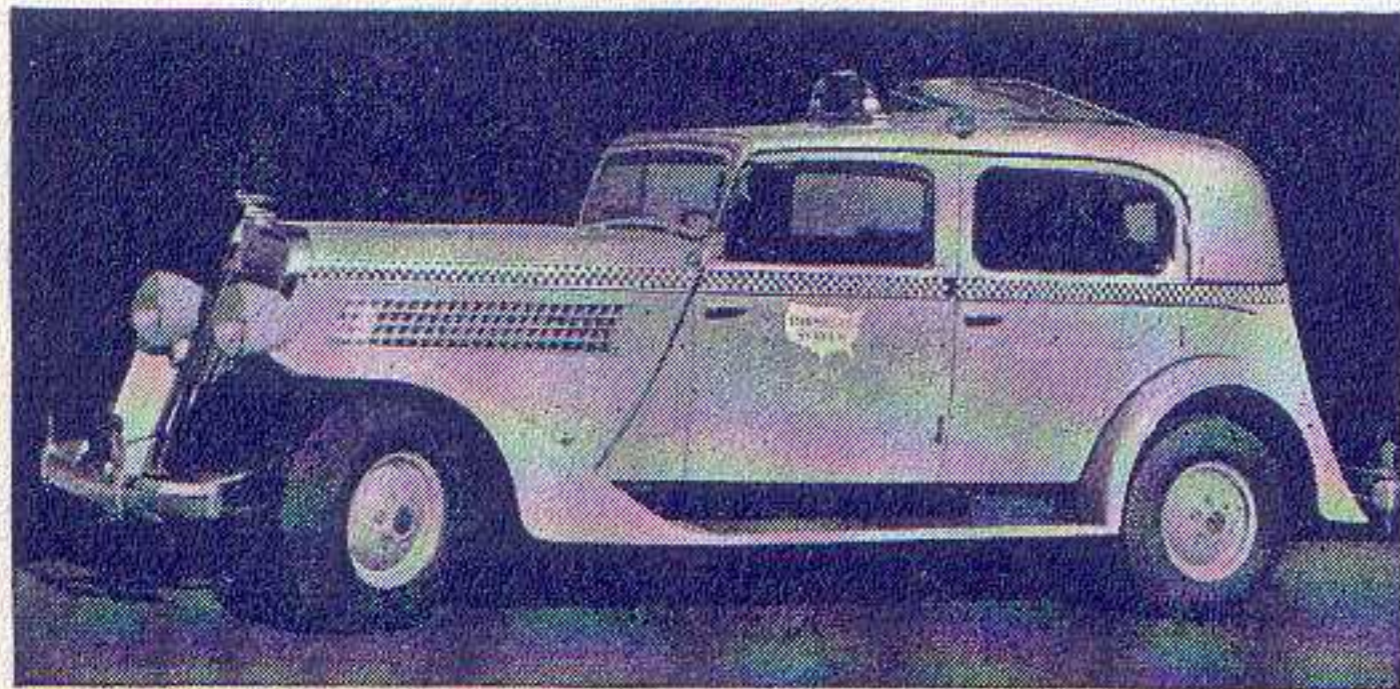
SUNDAYS

Table showing Sunday departure and arrival times for the 23rd Street ferry service.

For Main Line Parlor, Sleeping and Dining Service, See Pages 5 and 6.

ERIE TRAIN-CAB SERVICE

Takes you from Erie Terminal directly to your door in New York or Brooklyn



ONE Person **90¢** TWO Persons **\$1.25** THREE or more **\$1.50**

Thousands have used and praised Erie Train-Cab Service.

Strangers arriving at Erie Terminal, Jersey City are taken all the way to their destination in New York or Brooklyn. They never get "lost" and are never overcharged. Women accompanied by children appreciate this service. Even seasoned travellers enjoy the comfort of settling down in their own taxicab and forgetting about bags and car changes.

The fares shown above apply from our terminal to any place on Manhattan 110th Street and South, also to any point in the Brooklyn business district.

Service beyond the prescribed zones is metered from the zone limits and charged for at regular rates.

Train-Cab service is available to all who travel from stations west of Middletown, N. Y.

You can buy the Train-Cab coupon with your rail ticket at the ticket office or from the conductor on any through train and you will find your taxicab awaiting the arrival of your train at Jersey City.

Ask the conductor or ticket agent for details.

Checking Hand Baggage at Chicago

Passengers arriving Chicago on Erie trains who desire to stay over for a few hours and depart from a station other than Dearborn Station may have their hand baggage transferred to the station from which they depart. A Parmelee Company agent meets all Erie trains upon arrival at Chicago and he will arrange the transfer for you. The bags will be placed in the parcel check room of the station from which you depart. A charge of fifty cents for each hand bag, including the parcel room fee, will be made for the service, except one piece will be checked free when passenger holds through ticket including transfer through Chicago.

SUGGESTIONS

• **INTERCHANGEABLE SCRIP COUPON TICKETS** issued in \$15.00 and \$30.00 denominations are accepted on trains or at ticket offices in payment of rail passage as well as sleeping and parlor car accommodations, and also as payment for meals in restaurant cars.

• **PREPAID ORDERS.** For the convenience of patrons who do not wish to send money by mail, Erie Railroad ticket agents are prepared to sell prepaid ticket orders for the delivery of transportation, rail and Pullman, from practically all points in the United States, Canada and Mexico. These orders may also include the furnishing of cash.

In emergencies arrangements may be made for the delivery of transportation by telegraph or telephone without charge except when commercial wires are used.

• **BAGGAGE INSURANCE** by the St. Paul Fire & Marine Insurance Co. may be purchased at principal Erie ticket offices. It insures your baggage and personal effects for your entire trip anywhere in the world. Minimum premium twenty-five cents. The ticket agent can give you full particulars.

• **ERIE PLAYING CARDS** are on sale at our ticket offices, excepting in Ohio. Bridge sets one dollar, single decks fifty cents.

• **SPECIAL TOURS AND CONVENTIONS.** Our services are at the disposal of clubs, lodges and other organizations in arranging for trips to conventions and gatherings of all sorts. Concerning fares, train schedules and travel plans, consult or write to any Erie Ticket Agent, or any of the Passenger Department representatives listed on pages 35 to 37 of this folder.

Time Table Mailing Service

If you would like a copy of this time table each time a new one is issued just drop us a post card and your name will be put on the list. No charge. Address your request to Erie Railroad, Passenger Traffic Dept., Midland Bldg., Cleveland, Ohio.



And your shipment goes when you send it by **RAILWAY EXPRESS**. Top-speed—safe—sure—anywhere. 23,000 offices. Low cost. *Real* economy. For service, merely phone any Railway Express or Western Union office. Pick-up and delivery in all cities and principal towns. No extra charge.



RAILWAY EXPRESS
AGENCY, INC.

NATION-WIDE SHIPPING SERVICE

RAILROAD AND PULLMAN FARES For Information Only. Subject to Change Without Notice

Between And	New York				Binghamton				Buffalo				Jamestown				Cleveland				Chicago			
	Tickets valid in		Lower Berth	Seat Fare	Tickets valid in		Lower Berth	Seat Fare	Tickets valid in		Lower Berth	Seat Fare	Tickets valid in		Lower Berth	Seat Fare	Tickets valid in		Lower Berth	Seat Fare	Tickets valid in		Lower Berth	Seat Fare
	Pull-man	Coach			Pull-man	Coach			Pull-man	Coach			Pull-man	Coach			Pull-man	Coach			Pull-man	Coach		
Akron.....Ohio	\$ 16.75	\$ 11.20	\$ 3.75	\$	\$ 12.30	\$ 8.20	\$ 3.00	\$ 2.05	\$ 6.70	\$ 4.50	\$	\$	\$ 5.40	\$ 3.60	\$ 2.25	\$.90	\$ 2.60	\$ 1.75	\$	\$	\$ 10.60	\$ 7.10	\$ 2.50	\$ 1.50
Binghamton.....N. Y.	5.80	3.90	2.00	1.05					6.15	4.10	2.00	1.05	6.95	4.65	2.50	1.20	11.60	7.75	3.00	1.95	20.35	13.05	5.00	
Bradford.....Pa.	11.95	8.00	3.00		6.15	4.10	2.25	1.10	2.40	1.60			1.55	1.05			6.00	4.25			15.55	9.90		
Buffalo.....N. Y.	11.90	7.95	2.50	2.00	6.15	4.10	2.00	1.05					2.10	1.40			6.30	4.20			14.30	9.05		
Callicoon.....N. Y.	4.10	2.75	2.00	.70	2.40	1.60		.50	8.55	5.70	2.50	1.45	9.35	6.25	2.50	1.55	14.00	9.35	3.75	2.35	22.70	14.65	5.50	
Cambridge Springs.....Pa.	14.40	9.60	3.00		8.60	5.75	2.50	1.45	3.70	2.45			1.65	1.10		.50	4.05	2.70	2.00	.60	13.05	8.45	3.00	
Chicago.....Ill.	25.25	16.20	6.00		20.35	13.05	5.00		14.30	9.05			14.15	9.05	3.00	2.25	11.75	7.85						
Cleveland.....Ohio	16.30	10.90	3.75		11.60	7.75	3.00	1.95	6.30	4.20			4.70	3.20	2.25	.90					11.75	7.85		
Corning.....N. Y.	8.05	5.40	2.00	1.45	2.25	1.50		.50	3.90	2.60	2.00	.65	4.75	3.15	2.00	.80	9.35	6.25	2.50	1.55	18.10	11.55	4.25	
Corry.....Pa.	13.55	9.05	3.00	2.25	7.75	5.20	2.50	1.30	2.85	1.90			.80	.55		.50	4.05	2.70	2.00	.75	13.35	8.65	3.00	
Deposit.....N. Y.	5.30	3.55	2.00	.90	1.15	.80		.50	7.30	4.90	2.50	1.25	8.10	5.40	2.50	1.35	12.75	8.50	3.00	2.20	21.50	13.85	5.50	
Elmira.....N. Y.	7.55	5.05	2.00	1.35	1.75	1.15		.50	4.40	2.95	2.00	.75	5.25	3.50	2.25	.90	9.90	6.60	2.50	1.65	18.60	11.90	4.25	
Gallon.....Ohio	18.95	12.65	4.25		14.00	9.35	3.75	2.45	7.95	5.30			7.10	4.80	2.50	1.30	5.10	3.40			8.45	5.65	2.50	1.15
Hancock.....N. Y.	4.90	3.30	2.00	.85	1.55	1.05		.50	7.70	5.15	2.50	1.30	8.50	5.70	2.50	1.45	13.15	8.75	3.00	2.25	21.90	14.10	5.50	
Hornell.....N. Y.	9.30	6.25	2.50	1.65	3.50	2.35		.60	2.80	1.90		.50	3.50	2.35		.60	7.95	5.65	2.50	1.40	17.00	10.85	3.75	
Huntington.....Ind.	22.65	15.10	5.00		17.95	11.95	4.25		12.05	8.05			10.85	7.45	2.50	2.00	9.45	6.35			4.30	2.90		.70
Jamestown.....N. Y.	12.75	8.50	3.00	2.20	6.95	4.65	2.50	1.20	2.10	1.40							4.70	3.20	2.25	.90	14.15	9.05	3.00	
Kent.....Ohio	16.45	11.00	3.75		12.00	8.00	3.00	2.00	6.70	4.50			5.10	3.40	2.25	.85	2.30	1.55			10.95	7.35	2.50	1.60
Lackawaxen.....Pa.	3.35	2.20		.55	3.15	2.10		.55	9.30	6.20	2.50	1.60	10.10	6.75	2.50	1.70	14.75	9.85	3.75	2.50	23.45	15.15	5.50	
Lima.....Ohio	20.60	13.75	5.00		15.90	10.60	3.75		9.80	6.55			8.75	6.05	2.50	1.65	7.25	4.85			6.25	4.15	2.00	1.00
Mansfield.....Ohio	18.45	12.30	4.25		14.00	9.35	3.75	2.35	7.95	5.30			7.10	4.80	2.50	1.25	4.65	3.10			8.80	5.90	2.50	1.25
Marion.....Ohio	19.55	13.05	4.25		14.65	9.75	3.75	2.50	8.60	5.75			7.75	5.25	2.50	1.40	5.75	3.85			7.85	5.20	2.50	1.00
Meadville.....Pa.	14.80	9.90	3.00	2.25	9.00	6.00	2.50	1.50	4.15	2.75			2.10	1.40		.50	3.70	2.45	2.00	.55	13.05	8.45	3.00	
Middletown.....N. Y.	2.00	1.35		.50	4.45	3.00	2.00	.75	10.60	7.10	2.50	1.80	11.40	7.60	3.00	1.90	16.05	10.70	3.75		24.80	16.00	6.00	
New York.....N. Y.					5.80	3.90	2.00	1.05	11.90	7.95	2.50	2.00	12.75	8.50	3.00	2.20	16.30	10.90	3.75		25.25	16.20	6.00	
Olean.....N. Y.	11.20	7.50	2.50	1.95	5.40	3.60	2.00	.90	2.20	1.50			1.60	1.05		.50	6.05	4.25	2.50	1.15	15.50	9.85	3.75	
Owego.....N. Y.	6.45	4.35	2.00	1.15	.65	.45		.50	5.50	3.70	2.00	.95	6.35	4.25	2.25	1.05	11.00	7.35	2.50	1.85	19.70	12.65	5.00	
Pittsburgh.....Pa.					12.35	8.25							5.40	3.60			3.95	2.65	2.00	.50	14.10	9.40		
Port Jervis.....N. Y.	2.65	1.75		.50	3.85	2.55	2.00	.65	10.00	6.65	2.50	1.70	10.80	7.20	2.75	1.80	15.40	10.30	3.75		24.15	15.60	5.75	
Salamanca.....N. Y.	11.75	7.85	2.50	2.00	5.95	3.95	2.00	1.00	1.90	1.30			1.05	.70		.50	5.75	3.90	2.50	1.05	15.05	9.55	3.75	
Sharon.....Pa.	15.15	10.10	3.00	2.25	10.30	6.85	2.50	1.75	4.95	3.30			3.35	2.25		.60	2.45	1.65		.50	12.65	8.45	3.00	1.85
Warren.....Ohio	15.60	10.40	3.00		11.10	7.40	2.50	1.90	5.80	3.85			4.20	2.80		.75	1.60	1.10		.50	11.85	7.95	3.00	1.70
Waverly.....N. Y.	7.00	4.70	2.00	1.25	1.20	.80		.50	4.95	3.30	2.00	.85	5.80	3.85	2.25	.95	10.40	6.95	2.50	1.75	19.15	12.25	4.25	
Wellsville.....N. Y.	10.10	6.75	2.50	1.80	4.30	2.85	2.00	.75	3.35	2.25			2.70	1.80		.50	7.20	5.05	2.50	1.35	16.65	10.60	3.75	
Youngstown.....Ohio	15.15	10.10	3.00	2.25	10.70	7.15	2.50	1.80	5.40	3.60			3.75	2.50		.65	2.00	1.35		.50	12.20	8.15	3.00	1.75

RATES FOR UPPER BERTH, SECTION, DRAWING ROOM OR COMPARTMENT IN SLEEPING CARS (No Surcharge)

Where Lower Berth Rate Is	Upper Berth Rate Will Be	Section Rate For One Passenger	▲ Section Rate For Two Passengers	Drawing Room Rate For One Passenger	Drawing Room Rate For Two Pas'rs.	Compart-ment Rate For One Passenger	Compart-ment Rate For Two Pas'rs.	Where Lower Berth Rate Is	Upper Berth Rate Will Be	Section Rate For One Passenger	▲ Section Rate For Two Passengers	Drawing Room Rate For One Passenger	Drawing Room Rate For Two Pas'rs.	Compart-ment Rate For One Passenger	Compart-ment Rate For Two Pas'rs.
\$ 2.00	\$ 1.60	\$ 2.80	\$ 3.20	\$ 5.00	\$ 7.00	\$ 4.00	\$ 6.00	\$ 4.00	\$ 3.20	\$ 5.60	\$ 6.40	\$ 10.00	\$ 14.00	\$ 8.00	\$ 11.50
2.25	1.80	3.15	3.60	5.75	8.00	4.50	6.50	4.25	3.40	5.95	6.80	10.75	15.00	8.50	12.00
2.50	2.00	3.50	4.00	6.25	9.00	5.00	7.00	4.50	3.60	6.30	7.20	11.25	16.00	9.00	13.00
2.75	2.20	3.85	4.40	7.00	10.00	5.50	8.00	5.00	4.00	7.00	8.00	12.50	18.00	10.00	14.00
3.00	2.40	4.20	4.80	7.50	11.00	6.00	8.50	5.25	4.20	7.35	8.40	13.25	19.00	10.50	15.00
3.25	2.60	4.55	5.20	8.25	12.00	6.50	9.50	5.50	4.40	7.70	8.80	13.75	20.00	11.00	15.50
3.50	2.80	4.90	5.60	8.75	13.00	7.00	10.00	5.75	4.60	8.05	9.20	14.50	21.00	11.50	16.50
3.75	3.00	5.25	6.00	9.50	14.00	7.50	10.50	6.00	4.80	8.40	9.60	15.00	21.00	12.00	17.00

Minimum Number of Railroad Tickets Required for Exclusive Occupancy of Sections, Drawing Rooms or Compartments in Sleeping Cars and Drawing Room in Parlor Cars

Section.....	One
Comp., Berth Service.....	One and One-tenth
Comp., Seat Service.....	One and One-half
Drawing Room, Berth Service.....	One and One-quarter
Drawing Room, Seat Service.....	Two
Drawing Room in Parlor Cars.....	Two

Note:—▲ For section occupied by two passengers but with lower berth only prepared for night service.

GENERAL INFORMATION

STANDARD OF TIME—Erie Lines east of and including Lima, Ohio, are operated by Eastern Standard Time. Lines west of Lima, Ohio, by Central Standard Time. 12.01 Midnight to 12.00 Noon is indicated by light-faced type. 12.01 Noon to 12.00 Midnight is indicated by heavy-faced type

TRAINS WILL NOT BE HELD for ferries from New York between hours of 5:00 P.M. and 6:30 P.M. Eastern Standard Time.

HOLIDAYS—The term "Holidays" (unless covered by special note) refers to New Year's Day, Lincoln's Birthday, Washington's Birthday, Memorial Day, Independence Day, Labor Day, Election Day (November 8), Thanksgiving Day and Christmas Day.

THIS COMPANY IS NOT RESPONSIBLE FOR ERRORS in time tables, inconvenience or damage resulting from delayed trains or failure to make connections; schedules are subject to change without notice.

FARES PAID ON TRAINS—Conductors are required to charge ten (10) cents in excess of the one-way ticket fare for passengers traveling in coaches only in the territory east of Port Jervis, including side lines and branches. Buy tickets before boarding trains and avoid payment of this extra fare.

CHILDREN under five years of age are carried free when accompanied by parent or guardian; five years and under twelve, half fare, twelve years of age and over, full fare.

ADJUSTMENT OF FARES—Should any misunderstanding arise with conductors or agents, pay the fare required, take receipt and communicate with General Passenger Agent, Midland Bldg., Cleveland, Ohio.

SLEEPING AND PARLOR CAR RESERVATIONS—Space reserved by telegraph or telephone within city limit will be held until:

- 5:00 P.M. day prior to departure of trains leaving before noon next day.
- 10:00 A.M. day of departure for trains leaving between noon and 5:00 P.M.

2:00 P.M. day of departure for trains leaving after 5:00 P.M.

When application is by wire or letter from a point outside of city limit, space will be held until fifteen minutes of train time.

BAGGAGE TO BE CHECKED should be delivered at station at least thirty minutes before train time.

BAGGAGE DELIVERY IN NEW YORK CITY—All baggage checked to New York City will be sent to the West 23rd Street Station unless passenger specifies Chambers Street Station at time of checking.

Baggage delivery service in New York will be performed by the Railway Express Agency.

HAND-BAGGAGE in Pullman Cars is restricted to what can be conveniently placed in the berth, seat or other accommodations purchased by the passenger.

CHICAGO PASSENGER AND BAGGAGE TRANSFER is performed by the Parmelee Company. A uniformed agent meets all incoming trains of the Erie Railroad on arrival at Dearborn Station.

ARTICLES LOST ON TRAINS or left in waiting rooms or stations, owners should apply to Lost and Found Bureau, (Baggage Room) Jersey City Depot, or address General Passenger Agent, Midland Bldg., Cleveland, Ohio, giving full description of the property, stating date of loss and number of train.

SAFETY FIRST HINTS—Carefulness on your part helps eliminate accidents. Don't get on or off a train in motion; wait for a full stop. Keep hand baggage out of car aisles; this will remove a cause of inconvenience, possibly of harm, to others. Walk carefully when entering or leaving train; high-heeled shoes are sometimes a cause of tripping or stumbling on car steps. Don't stand or walk close to the railroad track; look both ways before starting across. Courtesy toward your fellow travelers increases the pleasure of your journey.

REFERENCE MARKS AND NOTES

IMPORTANT—When trains are indicated as stopping conditionally, Conductors should be notified of intention to leave train and Station Agent notified of intention to board train.

- † Runs daily except Sunday.
 † Stops to discharge passengers.
 † Will not operate from these stations on Monday morning.
 † Stops on Holidays only.
 † Train 71 will not run west of Waldwick on Sundays and Holidays.
 † Stops on signal to receive and discharge passengers.
 † Runs Saturdays only. M. C. Motor Car Service. N. B. No Baggage carried.
ab Stops Saturday and Sunday only to discharge passengers.
ac Stops Dalton (5.53 A. M.) to discharge passengers from Hornell and east and on signal to receive passengers.
ad Via Allegany Motor Coach Co., Inc. bus between Salamanca and Bradford.
ae Train 5 will stop on signal at Monroe (9.05 P. M.) to receive passengers for Jamestown and west; and to discharge passengers from New York.
af Train 7 stops Middletown (1.51 A. M.) Monday mornings only to discharge passengers.
ag Stops Saturdays only to discharge passengers.
ah Stops on signal Andover (9.51 A. M.); Belmont (10.16 A. M.) to discharge passengers from New York.
at On Sundays only, Train 30 will arrive West 23rd Street at (1.50 P. M.).
ax Stops Englewood Train 1 (7.47 A. M.); Train 7 (12.43 A. M.) to discharge passengers from east of Hammond.
bc Stops on signal Paterson (8.19 P. M.), Ridgewood (8.29 P. M.) to receive passengers.
bd Stops on signal Suffern (8.43 P. M.) to receive passengers for Hornell and west.
bf Stops Cuba (5.26 A. M.) to discharge passengers from Elmira and east and to receive for Jamestown and west.
bg Stops on signal, Friendship (10.30 A. M.); Cuba (10.44 A. M.) to discharge passengers from New York.
bh Stops Cuba (6.20 P. M.) to discharge passengers from Elmira and east and to receive for Jamestown and west.
bm Stops on signal Niles (10.23 A. M.) to discharge passengers from Pittsburgh and from Jamestown and east and to receive passengers for Cleveland.
bp Stops Niles (11.25 P. M.) to discharge passengers from Meadville and east and on signal to receive passengers for Akron and west.
bt No Agent on duty. No baggage handled on Trains 5 and 6 to or from Castle.
ca Train 27 stops on Sundays and Holidays only Rutherford (3.13 P. M.).
cb Stops on signal Passaic (8.10 P. M.) to receive passengers for Jamestown and west.
cf Stops Tuxedo (5.39 P. M.) daily, except Sunday.
cg Stops on signal Ridgewood (11.15 P. M.) to discharge passengers from Binghamton and west.
ch Train 71 stops Tuxedo to discharge passengers, except Sundays and Holidays.
cn Stops on signal Union City (8.52 P. M.); Cambridge Springs (9.11 P. M.) to discharge passengers from Jamestown and east and to receive for Youngstown and west.
cp Stops on signal (10.14 P. M.) to receive passengers for east of Hammond.
ct Bus service provided between Cohecton and Lake Huntington.
cw Stops Endicott (1.45 A. M.) to discharge passengers from Port Jervis and east.
cx Stops to discharge passengers from New York.
cy Stops to discharge passengers from Cleveland and beyond.
da If no passengers for this connection, bus will not operate Narrowsburg to Honesdale.
db Train 8 stops at Ravenna (7.52 A. M.) to discharge passengers from Marion and west, and on signal to receive for Youngstown and east.
dc Stops Mantua (1.53 P. M.) to discharge passengers from Cleveland and on signal to receive passengers for Warren and east.
de Stops Barberton (5.18 P. M.) to discharge passengers from Youngstown and east and on signal to receive passengers for Mansfield and west.
df Stops on signal Mantua (8.42 A. M.) to receive passengers for Cleveland.
dg Stops on signal at Warren (4.45 A. M.) to discharge passengers from Chicago and to receive passengers for Jamestown and east.
dh Via Dodaro Bus Co. between Salamanca and Bradford.
dp Stops Niles (1.56 A. M.) to discharge passengers from east of Youngstown and signal to receive passengers for Cleveland.
dt No baggage carried on this train east of Hornell. Baggage will be handled on following train.
du Coaches only, west of Youngstown.
dv Stops on signal Union City (8.50 P. M.) to receive passengers for New York.
dw Stops Cuba (9.54 A. M.) to discharge passengers from Jamestown and west and to receive for Elmira and east.
dx Stops Ridgewood (6.43 P. M.), Passaic (6.59 P. M.) to discharge passengers from Goshen and west.
dy Stops on signal Cambridge Springs (7.17 A. M.), Union City (7.35 A. M.) to discharge passengers from Chicago and to receive for Binghamton and east.
dz Stops Ridgewood (8.03 A. M.), Paterson (8.12 A. M.), Passaic (8.19 A. M.) to discharge passengers from Goshen and west.
ea Train 61 has a connection from Newark Saturday only except Holidays.
eb Train 28 will make stops at Monroe (5.26 P. M.) daily to receive passengers for New York.
ec Bus service between New Castle and New Castle (Washington St.).
ed Bus service between Wampum and Ellwood City.
eg On Holidays Train 62 has no connection for Newark.
eh On Holidays Train 57 has no connection from Newark.
en Stops on signal Paterson (9.27 A. M.), Ridgewood (9.37 A. M.) to receive passengers.
ep Train 1 stops on signal Passaic (9.20 A. M.), Suffern (9.51 A. M.) to receive passengers for Binghamton and west.
er Stops Niles (5.46 A. M.) to discharge passengers from Cleveland and west and on signal to receive for Pittsburgh.
es Stops on signal Niles (6.21 P. M.) to receive passengers for Jamestown and east, and to discharge passengers from Cleveland.
et Stops on signal East 55th Street (1.34 P. M.); East 93rd Street (1.39 P. M.) to receive passengers.
eu Stops Endicott (6.13 P. M.) daily to discharge passengers from Jamestown and west and on signal to receive passengers for New York; also stops Sundays only to discharge passengers.
ev Stops on signal to receive passengers for Cleveland and beyond.
ew Stops (11.46 A. M.) to discharge from Jamestown and east and west of Akron.
ex Stops Endicott (2.47 A. M.) to discharge passengers from Buffalo, Jamestown and west.
ey Stops Hohokus on Saturdays only (12.07 P. M.).
ez On Sundays Train 6 has no connection for Newark.
gc Stops West Henrietta (11.19 A. M.) to discharge passengers from east of Avon.
gt In connection with the bus service the Erie Railroad Company acts as agent only and is not responsible beyond its own line, except as such responsibility may be imposed by law with respect to baggage.
ha Stops at Narrowsburg (11.01 P. M.) to discharge passengers from Ridgewood and east.
he Stops Alden (10.29 P. M.) to discharge passengers from Buffalo and on signal to receive passengers.
hf Stops (11.09 P. M.) to discharge passengers from Pittsburgh.
hm On Saturdays connection for Train 69 leaves Newark at (6.16 P. M.); has no connection on Sundays or Holidays.
hn On Sundays Train 2 has no connection for Newark.
ho Stops at Mantua (9.24 A. M.) to receive passengers for Cleveland.
hr Connection from Newark for Train 27 runs Sat. only except Holidays.
ht Trains 5-557 and 560-6 carry through sleeping cars between Bradford and New York.
hu Stops to discharge passengers.
hv Stops on signal East 93rd Street (6.13 P. M.) to receive passengers.
mh Stops on signal, Sundays only, to discharge passengers from New York.
na Train 6 stops on signal at East 93rd St. (5.13 P. M.) to receive passengers for Sharon and east.
ne Train 626 stops Saturdays only except Holidays at Solon and Aurora to discharge passengers from Cleveland.
nf Stops on signal at Garrettsville-Hiram (2.47 P. M.) to receive passengers for Cleveland.
nh Stops on signal at Garrettsville-Hiram (10.52 A. M.) to discharge passengers from Hornell and east.

STOP-OVER PRIVILEGES

Niagara Falls

Passengers holding tickets reading "via Erie Railroad" from or through Elmira to or through Youngstown or vice versa may exercise their privilege of going by way of Buffalo and stopping over for as long as ten days at Niagara Falls, but not beyond the final limit of their ticket. Upon request, the Erie Ticket Agent at Buffalo will issue without charge a round trip ticket between Buffalo and Niagara Falls. Frequent service via busses of International Ry. direct from Buffalo Terminal.

Other Points

On local one-way tickets sold at regular fares, local round-trip tickets sold at double the one-way fares, All-Year, Summer and Winter Tourist Tickets, stop-overs will be allowed on going and return trips within final limit of tickets at any Erie Railroad Station en route upon notice to conductor and without deposit of ticket.

WESTERN UNION

TELEGRAMS AND CABLEGRAMS accepted at all telegraph offices of this railroad.

DAY LETTERS—50 words for 1½ times the cost of a 10 word telegram.

NIGHT LETTERS—25 words for the former price of ten words. Maximum only 50 cents from coast to coast. Words over 25 charged for in groups of 5 at rates as low as a fifth of a cent per word.

The longer the message, the lower the rate per word.

RESERVATION MESSAGES—Reserve travel tickets and accommodations and hotel rooms by telegraph—only 35 cents (for 15 words).

TOURATE MESSAGES—When you travel telegraph the folks at home or at the office the facts they want to know about progress of your trip—only 35 cents (for 15 words).

Busses Replace Trolleys on 23rd Street, New York

The new crosstown bus service meeting all ferries to and from our West 23rd St. Station is fast and frequent. It connects with north- and southbound bus lines to other railroad terminals and the theatrical, shopping and hotel districts. Fare 5c, transfer 2c additional.

ERIE RAILROAD COMPANY

GENERAL OFFICES, MIDLAND BUILDING, CLEVELAND. Telephone Cherry 8400.
 GENERAL OFFICES, HUDSON TERMINAL, 50 CHURCH STREET, NEW YORK. Telephone Cortlandt 7-9200.
 GENERAL OFFICES, UTILITIES BUILDING, 327 SOUTH LA SALLE STREET, CHICAGO. Telephone Harrison 4160.

TRAFFIC AND DEVELOPMENT DEPARTMENTS

TRAFFIC

D. L. GRAY, Vice-President, Cleveland
 CARL HOWE, Vice-President, Chicago
 G. C. MANNING, Assistant Vice-President, New York
 G. A. LAMB, Assistant to Vice-President, Cleveland

PASSENGER

C. C. HOWARD, Passenger Traffic Manager, Cleveland.
 R. B. ROGERS, General Passenger Agent, Cleveland.
 H. T. HARLOW, General Passenger Agent, Chicago.
 T. R. PATTON, Assistant General Passenger Agent, Youngstown.

F. A. WALDRON, Assistant General Passenger Agent, New York.
 ALFRED FYNN, Assistant General Passenger Agent, Chicago.
 E. J. HAWERKOST, General Western Passenger Agent, Chicago.
 H. M. WADE, General Baggage, Mail and Express Agent, New York.

FREIGHT

L. B. BURFORD, Freight Traffic Manager, Cleveland.
 L. R. KNAPP, Assistant Freight Traffic Manager, Cleveland.
 O. M. MEYNE, General Freight Agent, Cleveland.
 C. L. CHAPMAN, Eastern Freight Traffic Manager, New York.
 E. M. KAIN, Special Representative, Buffalo.
 G. R. WHEELER, General Freight Agent, New York.
 J. T. McENTEE, Assistant General Freight Agent, Buffalo.
 H. W. VON WILLER, Assistant General Freight Agent, Pittsburgh.

F. G. LANTZ, Freight Traffic Manager, Chicago.
 W. V. KENNEDY, Assistant Freight Traffic Manager, Chicago.
 A. BLAUDEL, General Freight Agent, Chicago.
 J. G. HILL, General Freight Agent, Chicago.
 O. R. DAVIES, Assistant General Freight Agent, Cincinnati.
 W. H. KOCH, Assistant General Freight Agent, Detroit.
 C. A. STOEBER, Assistant General Freight Agent, Youngstown.

FOREIGN FREIGHT TRAFFIC

T. E. McANDREWS, Foreign Freight Traffic Manager, New York.
 W. C. OTTEN, Foreign Freight Agent, New York.
 A. E. PETERSON, Foreign Freight Agent, Chicago.
 W. S. PENCHARD, Export and Import Agent, New York.
 EUROPEAN GENERAL AGENTS, Sutherland International Despatch, Ltd.,
 London, England.

LIVE STOCK

H. B. ROGERS, General Live Stock Agent, East Buffalo, N. Y.

GRAIN TRAFFIC

T. W. KANE, Grain Agent, New York.

PERISHABLE FREIGHT TRAFFIC

R. E. O'GRADY, Manager, Pier 20, N. R., New York.

COAL AND COKE

W. H. STADELMAN, Coal Traffic Manager, Cleveland.
 J. A. FERGUSON, Coal Freight Agent, Cleveland.
 F. D. AUSTIN, General Coal and Coke Agent, Chicago.

DAIRY

W. L. KENDALL, General Dairy Agent, Chicago, Ill.

DEVELOPMENT

J. K. THOMPSON, Vice-President and Assistant to President, Cleveland.

GEO. F. WESTON, Industrial Commissioner, Cleveland.

V. M. WELLMAN, Industrial Agent, New York.

TRAFFIC DEPARTMENT REPRESENTATIVES

Akron, O.—80 East Exchange St.
 (Telephone Hemlock 8194-8195)
 J. P. CLARK, Division Passenger Agt.
 C. E. KING, General Agent.

Albany, N. Y.—Room 2, D. & H. Bldg.
 (Telephone 4-6051)
 C. F. WHADCOCK, General Agent.

Antwerp, Belgium—30, Vieille Bourse.
 CHAS. CAYMAN, Agent.

Atlanta, Ga.—1515-16 Healy Bldg.
 (Telephone Walnut 2135)
 S. S. TORREY, General Agent.

Baltimore, Md.—1501-3 Munsey Bldg.
 (Telephone Plaza 8691)
 W. J. MURRAY, General Agent.

Birmingham, Ala.—1007 Watts Bldg.
 (Telephone 3-1327)
 CHARLES G. ANDREWS, General Agent.

Birmingham, England—13 Corporation St.
 MAURICE G. COOKE, General Agent.

Boston, Mass.—80 Federal Street.
 (Telephone Liberty 7725-7726)
 E. J. DEAN, G. N. E. Agt.

Bradford, Pa.—Erte Station.
 (Telephone 3413)
 J. C. MOFFATT, General Agent.

Bremen, Germany—Holzpforte 10.
 CARL PRIOR, Agent.

Buffalo, N. Y.—6 North Division St.
 (Telephone Washington 4300)
 J. A. DOLAN, G. A. P. D.
 238 Main Street.

Chicago, Ill.—327 South La Salle St.
 (Telephone Harrison 4160)
 B. Y. VAUGHN, Trav. Pass. Agent
 C. D. TURNER, General Agent.
 W. L. KENDALL, General Dairy Agent.

Cincinnati, O.—503 Gwynne Bldg.
 (Telephone Main 3420-3421)
 O. R. DAVIES, Asst. General Freight Agt.

Cleveland, O.—Midland Bldg.
 (Telephone Cherry 8400)
 J. M. SKAHILL, Division Freight Agt.
 2063 East 9th St.
 (Telephone Cherry 8400)
 C. D. BURLINGHAM, Div. Passenger Agt.

Columbus, O.—Rooms 309-310 Atlas Bldg., 8 East Long Street.
 (Telephone Adams 7331)
 C. R. MARTIN, General Agent.

Dallas, Tex.—2113 Tower Petroleum Bldg.
 1905 Elm St.
 (Telephone 2-7352)
 T. J. MARTIN, General Agent.

Dayton, O.—501-506 Miami Savings Bldg.
 (Telephone Adams 8481)
 W. P. KROMPHARDT, Div. Frt. Agt.

Des Moines, Ia.—Hubbel Bldg.,
 904 Walnut Street.
 (Telephone 4-0018)
 L. T. COULSTON, General Agent.

Detroit, Mich.—Rooms 2-102 and 2-103 General Motors Bldg.
 (Telephone Madison 2360-2361)
 W. H. KOCH, Assistant General Frt. Agt.

Elmira, N. Y.—Erte Station.
 (Telephone 2-1621)
 J. W. O'HARA, Division Passenger Agt.
 (Telephone 2-0377)

B. F. CONWAY, Division Freight Agent.
 Glasgow, Scotland—82 Mitchell St.
 W. S. THOMSON, General Agent.

Hamburg, Germany—Dovenhof 118/122.
 GEORG A. ANTHONY, General Agent.

Huntington, Ind.—Erte Station.
 (Telephone 743)
 F. C. MCCARTHY, Division Freight Agt.

Indianapolis, Ind.—143 No. Meridian St.
 (Telephone Lincoln 2088)
 T. J. WILLIAMSON, General Agent.

Jamestown, N. Y.—Erte Station
 F. L. COLLINS, Div. Frt. Agt.
 J. A. CLEVELAND, General Agent.
 (Telephone 7921-7922)

Jersey City, N. J.—Erte Station
 (Telephone Delaware 8-6400)
 P. F. ARROYO, G. A. P. D.

Kansas City, Mo.—Rooms 326-7 Railway Exchange Bldg., 7th and Walnut Streets.
 (Telephone Victor 6328)
 N. C. FRICK, General Agent.

Liverpool, Eng.—17 Brunswick St.
 A. G. TAYLOR, General Agent.

London, E. C. 3, Eng.—4 Biltter St.
 PETER BUSWELL, General Agent.
 D. S. DEANS, Genl. Continental Agt.

Los Angeles, Cal.—108 West 6th Street.
 (Telephone Vandike 6542)
 L. A. DWELLE, General Agent.

Marion, O.—Terminal Building
 (Telephone 2657)
 A. R. TENNIS, Division Freight Agent.

Memphis, Tenn.—1628-9 Exchange Bldg., Madison & Second Sts.
 (Telephone 8-8781)
 R. L. MILLER, General Agent.

Milwaukee, Wis.—818-9 Majestic Bldg.,
 231 West Wisconsin Ave.
 (Telephone Marquette 5555-5556)
 H. A. WILSON, General Agent.

Minneapolis, Minn.—125 Third Street,
 South.
 (Telephone Main 3604)
 C. V. HARROW, General Agent.

Newark, N. J.—1801-2 Military Park Bldg., 60 Park Place.
 (Telephone Market 2-0525-26-27)
 A. R. WALTON, General Agent.

New Haven, Conn.—505 Powell Bldg.
 (Telephone 5-7937)
 G. W. MADSEN, General Agent.

New Orleans, La.—Room 1417 Whitney Bldg.
 (Telephone Raymond 9786)
 D. C. KELSEY, General Agent.

New York, N. Y.—8 West 40th Street.
 (Telephone Pennsylvania 6-0931)
 J. F. WILD, G. A. P. D.
 A. G. OLDENQUIST, City Pass. Agt.
 50 Church Street.
 (Telephone Cortlandt 7-9200)
 E. W. VAIL, General Eastern Frt. Agent.
 J. G. VREELAND, Division Freight Agent.

Olean, N. Y.—Erte Station.
 (Telephone 7411)
 J. M. HAND, Traveling Freight Agent.

Omaha, Neb.—1319 Farnam St.
 (Telephone Jackson 4866)
 C. L. COX, General Agent.

Peoria, Ill.—920 Jefferson Building, Cor. South Jefferson & Fulton Streets.
 (Telephone 8007)
 E. T. OLANDER, General Agent.

Philadelphia, Pa.—1009-10 Finance Bldg.
 (Telephone Rittenhouse 8975-8976)
 H. T. YOUNG, General Agent.

Pittsburgh, Pa.—Gulf Building.
 (Telephone Grant 4831-2-3)
 H. W. VON WILLER, A. G. F. A.

Portland, Ore.—Room 421 Pacific Bldg.,
 306 Yamhill St.
 (Telephone Beacon 3706)
 J. A. RUSSELL, General Agent.

Rochester, N. Y.—Erte Station.
 (Telephone Main 2826)
 B. C. WEDD, Division Freight Agent.

Rotterdam, Holland—Boompjes 82.
 J. T. VERVOLET, Agent.

San Francisco, Cal.—681 Market St.
 (Telephone Sutter 3875)
 J. A. LLOYD, General Agent.

St. Louis, Mo.—Rooms 906-7 Missouri Pacific Building, 1218 Olive Blvd.
 (Telephone Chestnut 7723-7724)
 G. F. DANIELS, General Agent.

St. Paul, Minn.—336 Robert St.
 (Telephone Cedar 5912)
 C. R. PETRY, General Agent.

Scranton, Pa.—Erte Station.
 (Telephone 5203)
 G. W. SHUMAN, Division Freight Agent.

Seattle, Wash.—1116-7 White Bldg.,
 1538 Fourth Ave.
 (Telephone Elliot 4834)
 W. R. SIBLEY, General Agent.

Springfield, O.—516 First National Bank Building.
 (Telephone Center 1178)
 T. J. FLYNN, General Agent.

Toledo, O.—342 South Erte Street.
 (Telephone Main 3816)
 H. J. SPANGENBURG, General Agent.

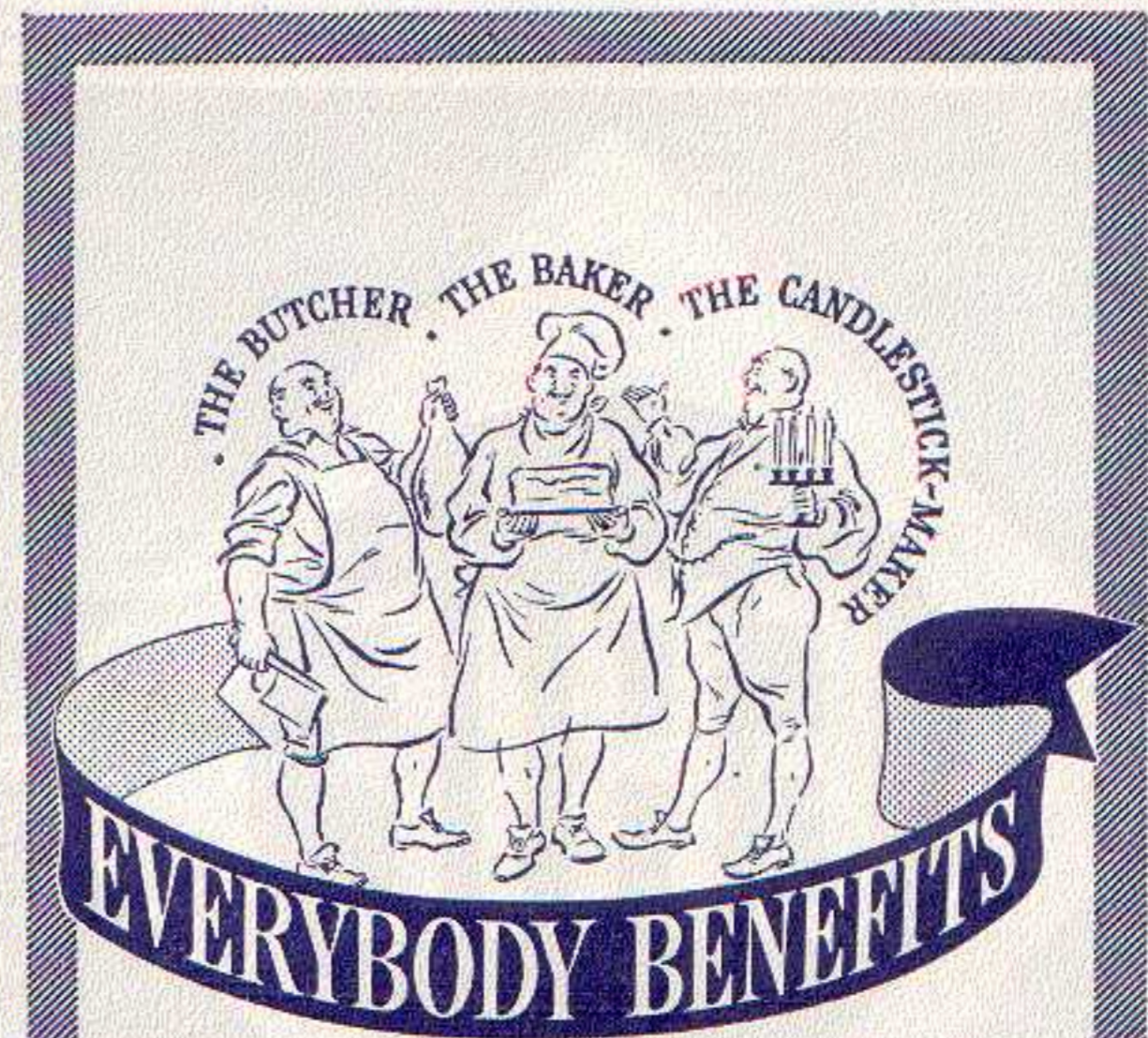
Toronto, Ont.—69 Yonge Street.
 (Telephone Elgin 4077)
 E. P. MORRILL, General Agent.

Tulsa, Okla.—Room 1511 Hunt Bldg.
 (Telephone 3-8613)
 A. W. MITCHELL, General Agent.

Youngstown, O.—Terminal Building.
 (Telephone 41101)
 C. A. STOEBER, Asst. Genl. Frt. Agt.
 F. W. FISCHER, Div. Frt. Agt.

ERIE TICKET OFFICES AND PASSENGER STATIONS IN PRINCIPAL CITIES

- Akron, O.**—Union Station.
(Telephone Jefferson 9141)
B. L. BENDER, Ticket Agent.
- Binghamton, N. Y.**—Erie Station.
(Telephone 4-3251)
J. H. WEBSTER, Ticket Agent.
- Bradford, Pa.**—Erie Station.
(Telephone 3716)
A. J. SULLIVAN, Ticket Agent.
- Brooklyn, N. Y.**—City Ticket Office.
155 Pierpont St.
(Telephone Triangle 5-7440)
J. W. VAN COTT, Ticket Agent.
- Buffalo, N. Y.**—City Ticket Office.
6 North Division St.
(Telephone Washington 4300)
W. L. MCCREARY, Ticket Agent.
Station Ticket Office
(Lehigh Valley Terminal)
Main and Scott Streets
(Telephone Washington 4300)
A. L. SEITZ, Ticket Agent.
- Chicago, Ill.**—City Ticket Office. 163-
165 West Jackson Blvd.
(Telephone Harrison 4160)
C. F. KUNDEL, Ticket Agent.
Hotel Ticket Offices—
Congress, Morrison, Sherman, Stevens,
Palmer House, Merchandise Mart.
(Telephone Harrison 2203)
GEORGE M. NEWHART, Ticket Agent.
Dearborn Station.
(Telephone Harrison 9830)
W. E. MISCHNICK, Ticket Agent.
- Cleveland, O.**—City Ticket Office.
2063 East 9th St.
(Telephone Cherry 8400)
CASPER J. MILLER, Ticket Agent.
Erie Station.
(Telephone Cherry 8400)
A. F. WAINSCOTT, Ticket Agent.
- Elmira, N. Y.**—Erie Station.
(Telephone 2-0380)
E. J. STEELE, Ticket Agent.
- Hornell, N. Y.**—Erie Station.
(Telephone 680)
R. L. SMITH, Ticket Agent.
- Huntington, Ind.**—Erie Station.
(Telephone 140)
D. L. HERENDEEN, Ticket Agent.
- Jamestown, N. Y.**—Erie Station.
(Telephone 6076)
FRANK PRIEST, Ticket Agent.
- Jersey City, N. J.**—Erie Station.
(Telephone Delaware 8-6400)
G. B. IRVING, Ticket Agent.
- Mansfield, O.**—Erie Station.
(Telephone Canal 1423)
J. W. GILKERSON, Ticket Agent.
- Marion, O.**—Erie Station.
(Telephone 2399)
L. E. NEBERGALL, Ticket Agent.
- Meadville, Pa.**—Erie Station.
(Telephone 1212)
O. L. ENOS, Ticket Agent.
- Middletown, N. Y.**—Erie Station.
(Telephone 3303)
J. H. DIMKE, Ticket Agent.
- Newark, N. J.**—Erie Station.
(Telephone Humboldt 2-0600)
G. J. McMICHAEL, Ticket Agent.
- New York, N. Y.**—City Ticket Office.
Information Bureau.
Train Service and Fares.
(Telephone Barclay 7-6500)
City Ticket Office, 8 West 40th Street.
(Telephone Pennsylvania 6-0933)
G. H. DOWN, Ticket Agent.
West 23rd Street Station.
(Telephone Chelsea 3-0780)
C. H. POTTER, Ticket Agent.
Chambers Street Station.
(Telephone Cortlandt 7-9200)
T. I. NEWMAN, Ticket Agent.
City Ticket Office, 17 John Street.
(Telephone Cortlandt 7-6430 and
7-6431)
W. G. TEDFORD, Ticket Agent.
- Olean, N. Y.**—Erie Station.
(Telephone 4343)
J. F. MITCHELL, Ticket Agent.
- Passaic, N. J.**—Erie Station.
(Telephone 2-1613)
O. R. KRECH, Ticket Agent.
- Paterson, N. J.**—Erie Station.
(Telephone Sherwood 2-3337)
J. H. GRAF, Ticket Agent.
- Port Jervis, N. Y.**—Erie Station.
(Telephone 300)
R. FARBER, Ticket Agent.
- Rochester, N. Y.**—Erie Station.
(Telephone Main 4378)
J. H. HAGENS, Ticket Agent.
- Sharon, Pa.**—Erie Station.
(Telephone 234)
R. E. GETTIG, Ticket Agent.
- Youngstown, O.**—Erie Station.
(Telephone 41101)
R. E. TOWNS, Ticket Agent.



WHEN railroads can afford to buy in normal volume—a billion dollars a year—their purchases give tremendous impetus to the nation's business.

Railroad buying goes back to raw materials—to mines, forests, quarries, farms. It affects mills, plants, factories—all business, large and small.

It provides employment for men and women outside the railroad industry, multiplying the railroads' own payroll of five million dollars a day—dollars that go to stimulate local business everywhere.

Prosperous railroads mean a prosperous nation.

SAFETY FIRST
-friendliness too

Association of American Railroads

SEE and ENJOY the BRITISH ISLES *The Modern Complete Way*

Visit England, Scotland, Wales and Ireland by the swift, luxurious services of the Associated British and Irish Railways. Tours to suit any whim, any purse. Scotland by the famous "Flying Scotsman", "Royal Scot", "Coronation Scot" or "Coronation Express". Ireland but a step by steamers or planes. 21 routes to Continental Europe. Paris overnight, without changing, in quiet corridor Pullmans on the Train Ferry.

Associated

**BRITISH & IRISH
RAILWAYS, Inc.**



For guide-books, maps and rates address C. M. Turner, General Traffic Manager, 9 Rockefeller Plaza (16 West 49th Street) New York, N. Y.; L. T. Jones, Middle West Representative, 333 N. Michigan Ave., Chicago, Ill.; J. D. Cameron, Pacific Coast Representative, 412 West Sixth St., Los Angeles, Cal.; or your own Tourist Agent.