



**ERIE RAILROAD SYSTEM  
TIME TABLES**

**ERIE RAILROAD SYSTEM  
TIME TABLES**

*The Scenic Route*

BETWEEN

**NEW YORK • BUFFALO  
CLEVELAND • CHICAGO**

*The Scenic Route*

BETWEEN

**NEW YORK • BUFFALO  
CLEVELAND • CHICAGO**



*Photo, courtesy of The Pullman Company*

## *It's Restful* on **The Scenic Route**

- Winter or Summer the famous scenery along the Erie makes your trip a sheer delight.
- Winter or Summer your weather is made-to-order in the fine air-conditioned Coaches and Pullmans of such trains as The Erie Limited, The Lake Cities, The Pacific Express and The Atlantic Express.
- On the hottest day you are cool and unfatigued; on the coldest you are cozy and comfortable.
- Meals in the Restaurant Car are an interlude you enjoy to the utmost. Fine food, well cooked, inexpensive. If you prefer, the waiter will bring a light snack to your seat.
- And as a crowning touch to Erie's delightful service, its fares are the lowest.

●  
 ASK ANY ERIE TICKET  
 AGENT FOR DETAILS

**TABLE OF CONTENTS**

|  | Page           |   | Page           |
|--|----------------|---|----------------|
| Equipment of Through Trains.....   | 5, 6           | Train Service                                       |                |
| Suggestions.....   | 30             | Condensed Schedule of Through Trains.....           | 7, 8, 9, 10    |
| General Information.....   | 31, 32         | New York—Binghamton.....                            | 11, 12         |
| Standard of Time.....  |                | Binghamton—Akron.....                               | 13, 14         |
| Holidays.....  |                | Akron—Chicago.....                                  | 17, 18         |
| Fares Paid on Trains.....  |                | New York—Buffalo.....                               | 24             |
| Adjustment of Fares.....   |                | Detroit—Toledo—Cleveland—Youngstown—Pittsburgh..... | 24             |
| Sleeping and Parlor Car Reservations.....                                      |                | New York—Chautauqua.....                            | 24             |
| Baggage Regulations.....   |                | Chautauqua—Akron—Chicago.....                       | 26             |
| Articles left on Trains.....   |                | New York—Kenosha Lake—Jeffersonville.....           | 25             |
| Equipment of Local Trains.....   | 7, 8, 9, 10    | New York—Monticello.....                            | 24             |
| Equipment of Detroit, Toledo, Cleveland, Youngstown and Pittsburgh Trains..... | 17, 18         | New York—Salamanca—Bradford.....                    | 26             |
| Erle Railroad Map.....   | 19, 20, 21, 22 | New York—Meadville—Oil City.....                    | 26             |
| Sleeping and Parlor Car Fares.....   | 31, 32         | Chicago—Meadville—Oil City.....                     | 26             |
| One-way Rail Fares.....  | 31, 32         | Bradford—Salamanca—Cleveland—Chicago.....           | 23             |
| Reference Marks and Notes.....   | 33, 34         | Branch Line Service.....                            | 23 to 27, inc. |
| Traffic Department Representatives.....  | 35, 36         | Hudson & Manhattan R. R. Service.....               | 28             |
| Ticket Offices and Passenger Stations in Principal Cities.....                 | 37             | Ferry Schedule.....                                 | 28             |
|  |                | Chautauqua Lake Service.....                        | 24             |

**STATIONS ON ERIE RAILROAD  
At Which Trains Are Scheduled To Stop  
Numerals Opposite Station Names Indicate Time Table Numbers**

| TABLE NO.                               | TABLE NO.                                  | TABLE NO.  | TABLE NO.   | TABLE NO.                                      | TABLE NO.                                       |
|---|--|--|---|--|---|
| <b>Addison, N. Y.</b> ..... 4           | Cherry Creek, N. Y..... 8                  | <b>Gallon, O.</b> ..... 5  | Kent, O..... 4  | <b>Ohio City, O.</b> ..... 5                   | South Lima, N. Y..... 21                        |
| Akron, O. 1, 4, 5, 10, 11, 16           | Chester, N. Y..... 2, 3                    | Gannett, N. Y..... 23  | Kenton, O..... 5  | Oil City, Pa..... 1, 4, 15, 16                 | South Livonia, N. Y..... 21                     |
| Alliquippa, Pa..... 7                   | Chicago, Ill. 1, 4, 5, 10, 11, 16          | Garrettsville-Hiram, O..... 7  | Kimbles, Pa..... 17   | Olean, N. Y..... 1, 4                          | South Park, N. Y..... 23                        |
| Albany, N. Y..... 4                     | Circleville, N. Y..... 18                  | Garwoods, N. Y..... 6  | Kirkwood, N. Y..... 2, 3  | Oneonta, N. Y..... 4                           | Sparrowbush, N. Y..... 2, 3                     |
| Alden, N. Y. (Black Water Baths)..... 6 | Cleveland, O. 1, 4, 7, 10, 11, 16          | Geauga Lake O..... 7   | <b>Lackawaxen, Pa.</b> ..... 2, 3, 17                                   | Oquaga, N. Y..... 2, 3                         | Spencerville, O..... 23                         |
| Alfred, N. Y..... 4                     | Cochecton, N. Y..... 2, 3                  | Geneseo, N. Y..... 23  | Lake Huntington, N. Y..... 2, 3   | Otisville, N. Y..... 2, 3                      | Spring Street, N. Y..... 25                     |
| Alleghany, N. Y..... 4                  | (Lake Huntington)                          | Girard, O..... 4, 7  | Lancaster, N. Y..... 6  | Owego, N. Y..... 2, 3                          | Springwater, N. Y..... 21                       |
| Allendale, N. J..... 2, 3               | Cochranon, Pa..... 15, 16                  | Golah, N. Y..... 21, 23  | Lawtons, N. Y..... 8  | Oxford, N. Y..... 2, 3                         | State Hospital, N. Y..... 8                     |
| Andover, N. Y..... 4                    | Cohocton, N. Y..... 21                     | Goshen, N. Y..... 2, 3   | Leavittsburg, O..... 7  | <b>Painted Post, N. Y.</b> ..... 4, 21         | Sterlington, N. Y..... 2, 3                     |
| Arden, N. Y..... 2, 3                   | Collins, N. Y..... 8                       | Gowanda, N. Y..... 8   | Lechworth Park, N. Y..... 6   | Parker's Glen, Pa..... 2, 3                    | Stockport, N. Y..... 2, 3                       |
| Arden House Station, N. Y. 13           | Conesus, N. Y..... 21                      | Graham, N. Y..... 2, 3   | Liberty, N. Y..... 19   | Passaic, N. J..... 2, 3                        | Suffern, N. Y..... 2, 3                         |
| Arkport, N. Y..... 6                    | Conesus Lake Jet., N. Y. 21                | Great Bend, Pa..... 2, 3   | Liberty St., Endicott, N. Y. 4  | Paterson, N. J..... 1, 2, 3                    | Sugar Creek, Pa..... 15, 16                     |
| Ashantee, N. Y..... 23                  | Conewango, N. Y..... 8                     | Greenville, Pa..... 4  | Lima, O..... 5  | Perrysburg, N. Y..... 22                       | Susquehanna, Pa..... 2, 3                       |
| Ashland, O..... 5                       | Cooper's, N. Y..... 21                     | Greycourt, N. Y..... 2, 3, 14  | Limestone, N. Y..... 12   | Persia, N. Y..... 22                           | Swains, N. Y..... 6                             |
| Atlanta, N. Y..... 21                   | Coraopolis, Pa..... 7                      | Griswold, N. Y..... 6  | Linden, N. Y..... 6   | Phalanx, O..... 7                              | <b>Thompson Ridge, N. Y.</b> ..... 18           |
| Attica, N. Y..... 6                     | Corning, N. Y..... 1, 4, 6, 21             | Groveland, N. Y..... 23  | Linden St., N. Y..... 23  | Pierce's, N. Y..... 23                         | Tioga Centre, N. Y..... 4                       |
| Aurora, O..... 7                        | Corry, Pa..... 4                           | Gulf Summit, N. Y..... 2, 3  | Little Valley, N. Y..... 22   | Pine Bush, N. Y..... 18                        | Toledo, O..... 7                                |
| Avoca, N. Y..... 21                     | Craigville, N. Y..... 14                   | <b>Hale's Eddy, N. Y.</b> ..... 2, 3   | Livonia, N. Y..... 21   | Pittsburgh, Pa..... 4, 7                       | Town Line, N. Y..... 6                          |
| Avon, N. Y..... 21, 23                  | Crittenden, N. Y..... 23                   | Hamburg, N. Y..... 8   | Long Eddy, N. Y..... 2, 3   | Pond Eddy, Pa..... 2, 3                        | Tusten, N. Y..... 2, 3                          |
| <b>Baileys, N. Y.</b> ..... 23          | Crown Point, Ind..... 5                    | Hammond, Ind..... 5  | Lordville, N. Y..... 2, 3   | Portage, N. Y..... 6                           | Tuxedo, N. Y..... 2, 3                          |
| Barberton, O..... 5                     | Cuba, N. Y..... 4                          | Hancock, N. Y..... 2, 3  | <b>Mahoning, O.</b> ..... 7   | Port Jervis, N. Y..... 2, 3                    | <b>Union City, Pa.</b> ..... 4                  |
| Barton, N. Y..... 4                     | Cuylerville, N. Y..... 23                  | Hankins, N. Y..... 2, 3  | Mahwah, N. J..... 2, 3  | <b>Ramapo, N. Y.</b> ..... 2, 3                | Utica, Pa..... 15, 16                           |
| Bath, N. Y..... 21                      | <b>Dale, N. Y.</b> ..... 6                 | Harriman, N. Y..... 2, 3, 13   | Mansfield, O..... 5   | Ramsey, N. J..... 2, 3                         | <b>Vail's Gate, N. Y.</b> ..... 14              |
| Beaver, Pa..... 7                       | Dalton, N. Y..... 6                        | Hawley, Pa..... 17   | Mantua, O..... 7  | Randolph, N. Y..... 4                          | Vail's Gate Junc., N. Y. 13, 14                 |
| Beaver Falls (New Brighton, Pa.)..... 7 | Dansville, N. Y..... 23                    | Hickory Grove, Pa..... 2, 3  | Marilla, N. Y..... 6  | Rathbone, N. Y..... 4                          | <b>Vadsworth, O.</b> ..... 5                    |
| Belmont, N. Y..... 4                    | Darien Center, N. Y..... 6                 | Highland Mills, N. Y..... 13   | Marion, O..... 5  | Ravenna, O..... 4                              | Waldwick, N. J..... 2, 3                        |
| Bethlehem Bridge                        | Dayton, N. Y..... 8, 22                    | Hillburn, N. Y..... 2, 3   | Markhams, N. Y..... 8   | Reno, Pa..... 15, 16                           | Wallace, N. Y..... 21                           |
| Crossing, N. Y..... 14                  | Decatur, Ind..... 5                        | Hohokus, N. J..... 2, 3  | Martin, N. Y..... 23  | Ridgewood, N. J..... 1, 2, 3                   | Warren, O..... 4, 7                             |
| Big Flats, N. Y..... 4                  | Depew, N. Y..... 6                         | Honesdale, Pa..... 2, 3, 17  | Mast Hope, Pa..... 2, 3   | Rittman, O..... 5                              | Warsaw, N. Y..... 6                             |
| Binghamton, N. Y. 1, 2, 3, 4, 6         | Deposit, N. Y..... 2, 3                    | Hornell, N. Y..... 1, 4, 6   | Meadow-wood, N. Y..... 23   | Rochester, Ind..... 5                          | Washington Hunt, N. Y. 6                        |
| Blair, N. Y..... 23                     | Detroit, Mich..... 7                       | Horseheads, N. Y..... 4  | Meadville, Pa. 1, 4, 15, 16   | Rochester, N. Y..... 1, 21, 23                 | Washingtonville, N. Y. 14                       |
| Blasdell, N. Y..... 8                   | Dunkirk, N. Y..... 22                      | Houghton Farm, N. Y. 13  | Middletown, N. Y. 2, 3, 18, 19  | Rock Glen, N. Y..... 6                         | Water Valley, N. Y..... 8                       |
| Blooming Grove, N. Y. 14                | <b>East Bradford, Pa.</b> ..... 12         | Howells, N. Y..... 2, 3  | Mill Rift, Pa..... 2, 3   | Rowlands, Pa..... 17                           | Waverly, N. Y..... 4, 6                         |
| Bradford, Pa..... 1, 11, 12             | East Buffalo, N. Y..... 6                  | Hubbard, O..... 4  | Monaca, Pa..... 7   | Rutherford, N. J..... 2, 3                     | Wayland, N. Y..... 21                           |
| Brooks, N. Y..... 23                    | East Fifty-fifth St. (Cleveland), O..... 7 | Huntington, Ind..... 5   | Mongaup, Pa..... 2, 3   | <b>Salamanca, N. Y.</b> ..... 1, 4, 11, 12, 22 | Websters, N. Y..... 21                          |
| Buffalo, N. Y. 1, 4, 6, 8, 22           | East Honesdale, Pa..... 17                 | Huston, N. Y..... 23   | Monroe, N. Y..... 2, 3  | Salsbury Mills, N. Y. 14                       | West Cornwall, N. Y. 13                         |
| Bullville, N. Y..... 18                 | East Ninety-third St. (Cleveland), O. 7    | <b>Industry, N. Y.</b> ..... 21, 23  | Monticello, N. Y..... 19  | Savona, N. Y..... 21                           | Westfall, N. Y..... 23                          |
| Burns, N. Y..... 6                      | East Rutherford, N. J. 2, 3                | <b>Jaycocks, N. Y.</b> ..... 23  | Mortimer, N. Y..... 23  | Seven Nations, N. Y. 23                        | West Henrietta, N. Y. 21, 23                    |
| <b>Callicoon, N. Y.</b> ..... 2, 3, 20  | Eden Center, N. Y..... 8                   | 9, 10, 11  | Mountainville, N. Y. 13   | Shakers, N. Y..... 23                          | West Newburgh, N. Y. 13, 14                     |
| Cambridge Springs, Pa. 4                | Eden Valley, N. Y..... 8                   | Jeddoe, O..... 7   | Mount Morris, N. Y. 23  | Sharon, Pa..... 4                              | West Perryburg, N. Y. 22                        |
| Cameron, N. Y..... 4                    | Ellwood City..... 7                        | Jeffersonville, N. Y. 20   | <b>Narrowsburg, N. Y.</b> ..... 2, 3                                    | Shaw's, Pa..... 15, 16                         | West Sparta, N. Y. 23                           |
| Cameron Mills, N. Y. 4                  | Elmira, N. Y. 1, 4, 6, 21                  | Jersey City, N. J. 1, 2, 3, 4, 5, 6, 9, 12, 13, 14, 15, 17, 18, 19, 20, 21, 22 | Newark, N. J..... 2, 3  | Sheridan, N. Y..... 22                         | White Mills, Pa..... 17                         |
| Campbell, N. Y..... 21                  | Elm Place, N. Y..... 23                    | Johnson City, N. Y. 4  | New Brighton, Pa..... 7   | Shimer's Rock Cut, Pa. 17                      | Wiards, N. Y..... 23                            |
| Canaseraga, N. Y..... 6                 | Endicott, N. Y..... 4, 6                   | Jones, N. Y..... 23  | New Burgh, N. Y. 13, 14   | Shohola, Pa..... 2, 3                          | Woodbury, N. Y. 13                              |
| Canisteo, N. Y..... 4                   | Englewood (63rd St.), Ill. 5               | <b>Kanona, N. Y.</b> ..... 21  | New Castle, Pa..... 7   | Shohola Springs, N. Y. 6                       | Wurtsboro, N. Y..... 19                         |
| Carlton, Pa..... 15, 16                 | <b>Falconer, N. Y.</b> ..... 8             | Kellams, N. Y..... 2, 3  | New Hampton, N. Y. 2, 3   | Skinner's, N. Y..... 2, 3                      | <b>Youngstown, O.</b> ..... 1, 4, 7, 11, 16, 24 |
| Carrollton, N. Y..... 12                | Fenners, N. Y..... 23                      | Kennedy, N. Y..... 8   | New Windsor, N. Y. 13, 14   | Sloatsburg, N. Y. 2, 3                         |   |
| Castile, N. Y..... 6                    | Forestville, N. Y. 22                      | Kenoza Lake, N. Y. 20  | New York, N. Y. 1, 2, 3, 4, 5, 6, 9, 12, 13, 14, 15, 17, 18, 21, 22, 23 | Smithboro, N. Y..... 4                         |   |
| Cattaraugus, N. Y. 22                   | Fowler, N. Y..... 23                       |  | Niles, O..... 4, 7  | Smith's Mills, N. Y. 22                        |   |
| Central Valley, N. Y. 13                | Franklin, Pa. 4, 15, 16                    |  | North Collins, N. Y. 8  | Solon, O..... 7                                |   |
| Chautauqua, N. Y. 9, 10                 | Friendship, N. Y. 4                        |  | North Randall, O. 7   | Sonyea, N. Y..... 23                           |   |
| Chautauqua Lake, N. Y. 4                |  |  |   | South Avon, N. Y..... 23                       |   |
| Chemung, N. Y..... 4                    |  |  |   | South Dayton, N. Y. 8                          |   |
|   |  |  |   | Southfields, N. Y..... 2, 3                    |   |

**ADDITIONAL STATIONS ON ERIE RAILROAD  
At Which Trains Do NOT Stop Regularly  
The distance shown is from New York as indicated in Tables 4 and 5**

| STATION                | Miles from New York | STATION                           | Miles from New York | STATION              | Miles from New York | STATION                 | Miles from New York | STATION                   | Miles from New York |
|------------------------|---------------------|-----------------------------------|---------------------|----------------------|---------------------|-------------------------|---------------------|---------------------------|---------------------|
| Adrian, N. Y.          | 323.5               | Columbus, Pa.                     | 471.1               | Harrods, Ohio        | 771.7               | Monterey, Ind.          | 913.1               | Scio, N. Y.               | 362.3               |
| Akron, Ind.            | 887.4               | Creston, Ohio                     | 650.8               | Hegewisch, Ill.      | 980.3               | Nankin, Ohio            | 671.5               | Servia, Ind.              | 871.3               |
| Aldine, Ind.           | 923.3               | <b>DeCliff, Ohio</b>              | 740.2               | Hepburn, Ohio        | 746.8               | Newton, Ind.            | 875.5               | Sharpville, Pa.           | 554.9               |
| Alger, Ohio            | 767.5               | De Long, Ind.                     | 910.1               | Highlands, Ind.      | 972.7               | Niobe, N. Y.            | 461.3               | Steamburg, N. Y.          | 425.6               |
| Almond, N. Y.          | 337.3               | Disko, Ind.                       | 882.3               | Hinsdale, N. Y.      | 390.1               | North Judson, Ind.      | 929.1               | Sterling, Ohio            | 648.1               |
| Ashville, N. Y.        | 454.7               | <b>Elgin, Ohio</b>                | 801.3               | Hurlburt, Ind.       | 952.1               | <b>Ontario, Ohio</b>    | 700.4               | Stony Point, Pa.          | 529.8               |
| Athens, Ind.           | 892.6               | Erwins, N. Y.                     | 297.0               | <b>Kemp, Ohio</b>    | 787.7               | Ora, Ind.               | 916.8               | <b>Tallmadge, Ohio</b>    | 621.4               |
| Atlantic, Pa.          | 534.5               | <b>Foraker, Ohio</b>              | 761.8               | Kingsland, Ind.      | 838.8               | <b>Palmer, Ind.</b>     | 955.6               | Toecin, Ind.              | 835.3               |
| <b>Bass Lake, Ind.</b> | 919.7               | Forty-seventh St. (Chicago, Ill.) | 993.9               | Kouts, Ind.          | 943.4               | Pavonia, Ohio           | 685.3               | <b>Uniondale, Ind.</b>    | 842.0               |
| Bear Lake, Pa.         | 464.7               | Freedom, Ohio                     | 603.2               | <b>Laketon, Ind.</b> | 876.1               | Pershing, Ind.          | 903.3               | <b>Venango, Pa.</b>       | 505.3               |
| Belvidere, N. Y.       | 370.0               | <b>Geneva, Pa.</b>                | 523.6               | Lakewood, N. Y.      | 452.2               | Polk, Ohio              | 668.7               | <b>Watts Flats, N. Y.</b> | 458.7               |
| Bippus, Ind.           | 865.0               | Glenmore, Ohio                    | 812.9               | Leiters, Ind.        | 907.2               | Preble, Ind.            | 830.3               | West Salem, Ohio          | 662.7               |
| Bolivar, Ind.          | 873.8               | Griffith, Ind.                    | 970.0               | <b>Markel, Ind.</b>  | 847.4               | <b>Red House, N. Y.</b> | 421.3               | Wilders, Ind.             | 935.8               |
| Boone Grove, Ind.      | 949.4               |                                   |                     | Martel, Ohio         | 715.6               | <b>Saegertown, Pa.</b>  | 509.8               | Windham, Ohio             | 597.6               |
| Braceville, Ohio       | 592.8               |                                   |                     | McGuffey, Ohio       | 764.4               |                         | Winfield, Ind.      | 958.1                     |                     |
| Burbank, Ohio          | 656.2               |                                   |                     | Millers, Pa.         | 498.2               |                         | Wren, Ohio          | 817.1                     |                     |
| <b>Caledonia, Ohio</b> | 719.7               |                                   |                     | Mill Village, Pa.    | 492.7               |                         |                     |                           |                     |

TABLE 1

# CONDENSED TABLE OF THROUGH TRAINS NEW YORK AND BUFFALO, CLEVELAND AND CHICAGO

(FOR LOCAL TRAINS AND INTERMEDIATE TIME OF THROUGH TRAINS SEE LOCAL TABLES)

| WESTBOUND  |  | Air-conditioned Trains  |  | EASTBOUND  |  |
|--|--|---|--|--|--|
| <b>THE ERIE LIMITED TRAIN NO. 1—DAILY</b><br><b>New York—Jamestown—Chicago</b>                           |  | Air-conditioned equipment has been assigned to regular sections of trains as shown herein. Every effort will be made to provide it as specified, but the right is reserved to employ non-air-conditioned cars as necessitated by volume of traffic or emergencies.  |  | <b>THE ERIE LIMITED TRAIN NO. 2—DAILY</b><br><b>Chicago—Jamestown—New York</b>   |  |
| <b>THE LAKE CITIES TRAIN NO. 5—DAILY</b><br><b>New York—Buffalo—Cleveland</b>                            |  | <b>EQUIPMENT</b><br>Air-Conditioned Sleeping Cars:<br>New York to Chicago—8 Section Lounge Restaurant Car.<br>Hornell to Chicago—10 Section Lounge Restaurant Car.<br>Air-Conditioned Salon Coaches:<br>New York to Chicago.<br>Dining Service for all meals in Air-Conditioned Lounge Restaurant Cars.   |  | <b>EQUIPMENT</b><br>Air-Conditioned Sleeping Car:<br>Chicago to New York—8 Section Lounge Restaurant Car.<br>Air-Conditioned Salon Coaches:<br>Chicago to New York.<br>Dining Service for all meals in Air-Conditioned Lounge Restaurant Car.  |  |
| <b>THE PACIFIC EXPRESS TRAIN NO. 7—DAILY</b><br><b>New York—Jamestown—Chicago</b>                        |  | <b>EQUIPMENT</b><br>Air-Conditioned Sleeping Car:<br>New York to Cleveland—8 Section Compartment Lounge Restaurant Car.<br>New York to Bradford—10 Section 2 Compartment 1 Drawing-room Car.<br>New York to Buffalo—12 Section and Drawing-room Car.<br>(Sleeping Car may be occupied at Bradford until 8.00 A. M.)<br>Air-Conditioned Individual Seat Coaches:<br>New York to Cleveland.<br>Coaches:<br>Hornell to Buffalo.<br>Dining Service for all meals in Air-Conditioned Lounge Restaurant Cars. |  | <b>THE LAKE CITIES TRAIN NO. 6—DAILY</b><br><b>Cleveland—Buffalo—New York</b>  |  |
| <b>SOUTHERN TIER EXPRESS TRAIN NO. 9—DAILY</b><br><b>New York—Binghamton—Elmira—Buffalo</b>              |  | <b>EQUIPMENT</b><br>Air-Conditioned Sleeping Car:<br>New York to Youngstown—10 Section Lounge Restaurant Car.<br>(Sleeper open Jersey City at 9.30 P. M.)<br>Air-Conditioned Salon Coaches:<br>New York to Chicago.<br>Coaches only, west of Youngstown.<br>Dining Service for all meals in Air-Conditioned Lounge Restaurant Cars.   |  | <b>ATLANTIC EXPRESS TRAIN NO. 8—DAILY</b><br><b>Chicago—Jamestown—Buffalo—New York</b>   |  |
| <b>THE MOUNTAIN EXPRESS TRAIN NO. 27—DAILY</b><br><b>New York—Binghamton—Elmira—Corning</b>              |  | <b>EQUIPMENT</b><br>Air-Conditioned Individual Seat Coach:<br>New York to Buffalo.<br>Dining Service in Air-Conditioned Parlor Buffet Car.  |  | <b>EQUIPMENT</b><br>Air-Conditioned Sleeping Car:<br>Chicago to Hornell—10 Section Lounge Restaurant Car.<br>(Sleeper open at Chicago at 9.30 P. M.)<br>Air-Conditioned Parlor Buffet Car:<br>Buffalo to New York.<br>Air-Conditioned Salon Coaches:<br>Chicago to Hornell.<br>Buffalo to New York.<br>Dining Service in Air-Conditioned Lounge Restaurant Car and Parlor Buffet Car.<br>(No baggage handled on this train east of Hornell, baggage will be handled on following train.) |  |
| <b>THE MOUNTAIN EXPRESS TRAIN NO. 28—DAILY</b><br><b>Corning—Elmira—Binghamton—New York</b>              |  | <b>EQUIPMENT</b><br>Dining Lounge Car... Corning to New York.<br>Through Coaches... Corning to New York.  |  | <b>SOUTHERN TIER EXPRESS TRAIN NO. 10—EX. SUN.</b><br><b>Hornell—Elmira—Binghamton—New York</b>  |  |
| <b>EQUIPMENT</b><br>Dining Lounge Car... Corning to New York.<br>Through Coaches... Corning to New York. |  | <b>EQUIPMENT</b><br>Through Coaches... Hornell to New York.   |  | <b>EQUIPMENT</b><br>Through Coaches... Hornell to New York.  |  |

TABLE 2 WESTBOUND

NEW YORK—BINGHAMTON

Hudson and Manhattan Tube Trains operate to and from Erie Railroad Station in Jersey City. Fare, downtown, 6 cents; uptown, 10 cents.

Table with columns for Miles from New York, Eastern Standard Time, and various train numbers (71, 51, 53, 55, 57, 57, 1, 701, 59, 9, 251, 209, 61, 27, 63, 65, 67, 259, 69, 5, 703, du 7). Rows list stations from N.Y. W. 23d St. to Binghamton.

LOCAL PARLOR AND CLUB CAR EQUIPMENT.

No. 27—Daily—THE MOUNTAIN EXPRESS

Dining Lounge Car..... New York to Corning. Coaches..... New York to Corning.

No. 63—THE TUXEDO—Ex. Suns. and Hols.

Parlor Car..... New York to Port Jervis. Coaches..... New York to Port Jervis.

No. 67—Ex. Sat., Sun. and Hol.

Erie Club Car..... New York to Port Jervis. Coaches..... New York to Port Jervis.

No. 251—Saturdays only

Erie Parlor Car..... New York to Middletown. Coaches..... New York to Middletown.

TABLE 3 EASTBOUND BINGHAMTON—NEW YORK

Hudson and Manhattan Tube Trains operate to and from Erie Railroad Station in Jersey City. Fare downtown, 6 cents; uptown, 10 cents.

Table with columns for station names, train numbers (50, 52, 6, 54, 204, 56, 58, 58, 30, 60, 60, 166, 28, 62, 206, 70, 2, 700, 64, 208, 18, 22, dt 8, 68, 10), and departure/arrival times. Includes notes like 'No Baggage Carried on this Train' and 'The Orange County'.

LOCAL PARLOR AND CLUB CAR EQUIPMENT

Table listing equipment for three train types: No. 10 (Except Sundays), No. 28—THE MOUNTAIN EXPRESS, and No. 56—THE TUXEDO. Lists coaches, dining lounge cars, and club cars with routes.

For Explanation of Reference Marks and Notes, See Pages 33 and 34. For Parlor, Sleeping and Dining Service of Through Trains, See Pages 5 and 6.

TABLE 4 WESTBOUND

BINGHAMTON-AKRON

EASTBOUND

| Miles from New York | Eastern Standard Time           | du      | 1     | 9     | 27      | 5     | Miles from Chicago | Central Standard Time        | 28    | 2       | 18       | 22        | dt    | 10      | 6     | 644       |
|---------------------|---------------------------------|---------|-------|-------|---------|-------|--------------------|------------------------------|-------|---------|----------|-----------|-------|---------|-------|-----------|
|                     |                                 | 7       |       |       |         |       |                    |                              | Daily | Daily   | Daily    | Sun. only | Daily | Daily   | Daily | Sun. only |
|                     |                                 | Daily   | Daily | Daily | Daily   | Daily |                    |                              | AM    | PM      | Ex. Sun. | AM        | PM    | PM      | AM    | PM        |
| 0.0                 | N. Y., West 23d St. Lv.         | 11.55   | 8.45  | 11.40 | as 2.35 | 7.00  | 0.0                | Chicago (Dearborn Sta.) Lv.  |       | 6.00    |          |           | 10.20 |         |       |           |
| 0.0                 | Chambers St. "                  | 12.00   | 8.50  | 11.40 | 2.40    | 7.30  |                    |                              |       |         |          |           |       |         |       |           |
| 1.0                 | Jersey City Station "           | 12.30   | 9.10  | 12.00 | 3.00    | 7.45  |                    |                              |       |         |          |           |       |         |       |           |
|                     | Albany (D.&H.) Lv.              |         | 7.00  |       | 4.25    | AM    |                    |                              |       |         |          |           |       |         |       |           |
|                     | Oneonta (D.&H.) "               |         | 10.00 |       | 6.48    |       |                    |                              |       |         |          |           |       |         |       |           |
|                     | Binghamton (D.&H.) Ar.          |         | 11.55 |       | 8.35    |       |                    |                              |       |         |          |           |       |         |       |           |
| 215.1               | Binghamton N. Y. Lv.            | 6.12    | 2.35  | 5.40  | 9.10    | 1.22  |                    |                              |       |         |          |           | 17.25 | 5.00    | 9.00  |           |
| 217.8               | Johnson City "                  |         |       |       |         |       |                    |                              |       |         |          |           |       |         |       |           |
| 222.6               | Endicott "                      | cx      | 2.46  | 5.51  | 9.22    |       | 412.8              | Warren "                     | dg    |         |          |           | 8.37  | 6.11    | 10.17 |           |
| 223.7               | Liberty St., Endicott. "        |         |       |       |         |       | 418.0              | Niles. "                     |       |         |          |           |       | 6.20    | 10.26 |           |
| 236.8               | Owego "                         | 6.41    | 3.04  | 6.10  | 9.43    |       | 422.2              | Girard. "                    |       |         |          |           |       | 6.35    | 10.32 |           |
|                     | Tioga Centre. "                 |         |       |       |         |       | 426.7              | Youngstown. Ar.              |       | 4.57    |          |           | 9.00  |         | 6.35  | 10.40     |
|                     | Smithboro. "                    |         |       |       |         |       |                    | Pittsburgh (See Table 7) Lv. |       |         |          |           |       |         |       |           |
| 249.4               | Barton. "                       |         |       |       |         |       |                    | Youngstown. Lv.              |       | 5.07    |          |           | 9.05  | 6.43    | 10.45 |           |
| 256.2               | Waverly. "                      | 7.06    | 3.26  | 6.32  | 10.06   |       | 434.1              | Hubbard. "                   |       |         |          |           |       |         | 10.58 |           |
| 261.0               | Chemung. "                      |         |       |       |         |       | 440.4              | Sharon Pa. "                 |       | 5.35    |          |           | 9.27  | 7.06    |       |           |
| 266.8               | Wellsburg. "                    |         |       |       |         |       | 456.4              | Greenville. "                |       | 6.08    |          |           | 9.52  | 7.31    |       |           |
| 273.8               | Elmira. "                       | 7.40    | 3.52  | 6.56  | 10.36   | 2.35  | 482.5              | Meadville. Ar.               |       | 6.45    |          |           | 10.30 | 8.08    |       |           |
|                     | Horseheads. "                   |         |       |       |         |       |                    | Oil City (See Table 15) Lv.  |       |         |          |           |       |         | 6.15  |           |
| 283.6               | Big Flats. "                    |         |       |       |         |       |                    | Franklin (See Table 15) "    |       |         |          |           |       |         | 6.35  |           |
| 291.1               | Corning. "                      | 8.12    | 4.15  | 7.18  | 11.00   | 3.00  |                    | Meadville. Lv.               |       | 6.50    |          |           | 10.35 | 8.13    |       |           |
| 293.1               | Painted Post. "                 |         |       |       |         |       |                    | Cambridge Springs. "         |       | dy      |          |           | 10.56 | 8.33    |       |           |
| 302.3               | Addison. "                      | 8.29    | 4.31  | 7.43  |         |       |                    | Union City. "                |       | dy      |          |           | 11.20 |         |       |           |
| 307.4               | Rathbone. "                     |         |       |       |         |       |                    | Corry. "                     |       | 7.46    |          |           | 11.39 | 9.07    |       |           |
| 312.5               | Cameron Mills. "                |         |       |       |         |       |                    | Jamestown N. Y. Ar.          |       | 8.25    |          |           | 12.23 | 9.48    |       |           |
| 315.0               | Cameron. "                      |         |       |       |         |       |                    | (Chautauqua Lake) "          |       |         |          |           |       |         |       |           |
| 328.0               | Canisteo. "                     |         |       |       |         |       |                    | Buffalo (See Table 8) Ar.    |       | 10.50   |          |           |       |         |       |           |
| 332.3               | Hornell. Ar.                    | 9.13    | 5.07  | 8.18  |         | 3.51  |                    | Jamestown Lv.                |       | 8.25    |          |           | 12.23 | 9.48    |       |           |
| 425.2               | Buffalo (see Table 6) Ar.       | 12.10   |       | 10.35 |         | 7.55  |                    | (Chautauqua Lake) "          |       |         |          |           | 12.44 |         |       |           |
| 332.3               | Hornell. Lv.                    | 9.20    | 5.15  |       |         | 3.57  |                    | Randolph. "                  |       |         |          |           | 11.17 | 9.35    |       |           |
| 341.5               | Alfred. "                       |         |       |       |         | 4.13  |                    | Bradford Lv.                 |       | 8.15    |          |           |       |         |       |           |
| 349.9               | Andover. "                      | ah      |       |       |         | 4.27  |                    | Salamanca Ar.                |       | 9.05    |          |           | 1.15  | 10.27   |       |           |
| 358.5               | Wellsville. "                   | 10.03   | 5.54  |       |         | 4.40  |                    | Salamanca Lv.                |       | 9.10    |          |           | 1.21  | 10.34   |       |           |
| 366.9               | Belmont. "                      | 10.18   |       |       |         |       |                    | Allegany. "                  |       |         |          |           | 1.46  | 10.59   |       |           |
| 374.4               | Friendship. "                   | bg      |       |       |         | 5.01  |                    | Olean. "                     |       | 9.36    |          |           |       |         |       |           |
| 383.3               | Cuba. "                         | bg      | bh    |       |         | 5.16  |                    | Cuba. "                      |       | dw      |          |           |       |         |       |           |
| 395.7               | Olean. "                        | 11.10   | 6.45  |       |         | 5.38  |                    | Friendship. "                |       |         |          |           |       |         |       |           |
| 399.1               | Allegany. "                     |         |       |       |         | 5.44  |                    | Belmont. "                   |       |         |          |           |       |         |       |           |
| 413.6               | Salamanca. Ar.                  | 11.34   | 7.08  |       |         | 6.03  |                    | Wellsville. "                |       | 10.31   |          |           | 2.42  | 11.49   |       |           |
| 413.6               | Salamanca. Lv.                  | 11.42   | 7.15  |       |         | 6.11  |                    | Andover. "                   |       |         |          |           |       |         |       |           |
| 430.8               | Bradford. Ar.                   |         | 7.45  |       |         | 6.55  |                    | Alfred. "                    |       |         |          |           |       |         |       |           |
| 431.2               | Randolph. Lv.                   |         |       |       |         | 6.35  |                    | Hornell. Ar.                 |       | 11.07   |          |           | 3.20  | 12.25   |       |           |
| 447.3               | Jamestown (Chautauqua Lake) Ar. | 12.33   | 8.05  |       |         | 7.00  |                    | Buffalo (See Table 6) Lv.    |       |         |          |           | 1.00  | 9.55    |       |           |
|                     | Buffalo (See Table 8) Lv.       | 8.05    | 5.15  |       |         |       |                    | Hornell. "                   |       | 11.14   | 10.30    | 12.01     | 3.28  | 6.30    | 12.31 |           |
| 447.3               | Jamestown (Chautauqua Lake) Lv. | 12.33   | 8.05  |       |         | 7.00  |                    | Canisteo. "                  |       |         | 10.43    | 12.14     | 3.42  | 6.38    |       |           |
| 474.4               | Corry Pa. "                     | 1.11    | 8.43  |       |         | 7.37  |                    | Cameron. "                   |       |         | 11.03    | 12.30     |       |         |       |           |
| 485.8               | Union City. "                   |         | cn    |       |         | 7.53  |                    | Cameron Mills. "             |       |         | 11.15    | 12.44     |       |         |       |           |
| 501.8               | Cambridge Springs. "            | 1.43    | cn    |       |         | 8.13  |                    | Rathbone. "                  |       |         | f 11.30  | f 12.51   |       |         |       |           |
| 516.0               | Meadville. Ar.                  | 2.01    | 9.35  |       |         | 8.32  |                    | Addison. "                   |       |         |          |           | 4.20  | 7.07    | 1.07  |           |
|                     | Franklin (See Table 15) Ar.     | 3.15    | 11.00 |       |         |       |                    | Painted Post. "              |       | 11.50   | 11.38    | 1.06      |       |         |       |           |
| 516.0               | Meadville. Lv.                  | 2.06    | 9.40  |       |         | 8.37  |                    | Corning. "                   |       | 8.45    | 12.07    | 1.52      | 4.48  | 7.37    | 1.24  |           |
| 542.1               | Greenville. "                   | 2.44    | 10.19 |       |         | 9.13  |                    | Big Flats. "                 |       |         | f 1.04   | f 2.01    |       |         |       |           |
| 558.1               | Sharon. "                       |         | 10.48 |       |         | 9.37  |                    | Horseheads. "                |       |         | 1.14     | 2.09      |       |         |       |           |
| 564.4               | Hubbard. Ohio "                 |         |       |       |         |       |                    | Elmira. "                    |       | 9.06    | 12.30    | 1.44      | 2.26  | 5.15    | 8.07  | 1.50      |
| 571.8               | Youngstown. Ar.                 | 3.32    | 11.10 |       |         | 9.58  |                    | Wellsburg. "                 |       |         |          | 2.07      | 2.38  |         |       |           |
|                     | Pittsburgh (See Table 7) Ar.    |         |       |       |         |       |                    | Chemung. "                   |       | 9.27    | 12.51    | 2.48      | 2.58  | 8.30    | 2.12  |           |
| 571.8               | Youngstown. Lv.                 | 3.39    | 11.17 |       |         | 10.08 |                    | Waverly. "                   |       |         | f 2.51   | f 3.07    |       |         |       |           |
| 576.3               | Girard. "                       |         |       |       |         |       |                    | Barton. "                    |       |         | f 3.01   | f 3.13    |       |         |       |           |
| 580.5               | Niles. "                        |         | 11.31 |       |         | 10.22 |                    | Smithboro. "                 |       |         | f 3.15   | f 3.20    |       |         |       |           |
| 585.7               | Warren. "                       | 4.01    | 11.42 |       |         | 10.34 |                    | Tioga Centre. "              |       |         |          |           |       |         |       |           |
|                     | Cleveland (See Table 7) Ar.     |         |       |       |         | 11.45 |                    | Owego. "                     |       | 9.50    | 1.14     | 3.35      | 3.40  | 8.51    |       |           |
| 609.6               | Ravenna. "                      |         |       |       |         |       |                    | Liberty St., Endicott. "     |       |         |          | 3.55      | 3.58  |         |       |           |
| 615.9               | Kent. (Ar.)                     | 4.39    | 12.22 |       |         |       |                    | Endicott. "                  |       | 10.08   | 1.33     | 4.00      | 4.03  | es      | 9.11  |           |
| 625.9               | Akron. (Lv.)                    | 4.44    | 12.27 |       |         |       |                    | Johnson City. "              |       |         |          | 4.10      | 4.15  |         |       |           |
|                     | Binghamton (D.&H.) Lv.          |         |       |       |         |       |                    | Binghamton. Ar.              |       | 10.18   | 1.43     | 4.30      | 4.33  | 6.20    | 9.21  | 2.57      |
|                     | Oneonta (D.&H.) Ar.             |         |       |       |         |       |                    | Binghamton (D.&H.) Lv.       |       |         |          |           |       |         |       |           |
|                     | Albany (D.&H.) "                |         |       |       |         |       |                    | Oneonta (D.&H.) Ar.          |       |         |          |           |       |         |       |           |
|                     | Albany (D.&H.) "                |         |       |       |         |       |                    | Albany (D.&H.) "             |       |         |          |           |       |         |       |           |
| 998.5               | N. Y., Jersey City Station "    | 4.40    | 7.20  |       |         |       |                    | N. Y., Jersey City Station " |       | 4.40    | 7.20     |           | 11.40 | 3.10    | 8.40  |           |
|                     | Chambers St. "                  | 4.54    | 7.34  |       |         |       |                    | " Chambers St. "             |       | 4.54    | 7.34     |           | 11.54 | 3.24    | 8.54  |           |
|                     | West 23d St. Ar.                | at 5.05 | 7.50  |       |         |       |                    | " West 23d St. Ar.           |       | at 5.05 | 7.50     |           |       | av 9.10 |       |           |

No Baggage Carried on this Train

COME! DINE WITH US.

Table D'Hotel prices range as follows: Breakfast 60c to \$1.00, Luncheon 75c to \$1.25, Dinner 75c to \$1.25. A meal on our trains is always a pleasant interlude. Makes the journey seem shorter too. The freshest food the market affords, cooked by expert chefs and served in the comfort of spacious Restaurant Cars. If you prefer a light snack without going to the Diner the waiter will bring sandwiches, fruit, coffee, etc., right to your seat.

For Explanation of Reference Marks and Notes, See Pages 33 and 34.

For Parlor, Sleeping and Dining Service, See Pages 5 and 6.

TABLE 5 WESTBOUND

AKRON—CHICAGO

EASTBOUND

| Miles from New York | Eastern Standard Time         |         | Central Standard Time |       | Miles from Chicago                  |       |
|---------------------|-------------------------------|---------|-----------------------|-------|-------------------------------------|-------|
|                     | Daily                         | Daily   | Daily                 | Daily |                                     |       |
| 0.0                 | N. Y., West 23d St. Lv.       | 8.45 AM | 11.55 PM              | 0.0   | Chicago (Dearborn Sta.)... III. Lv. |       |
| 0.0                 | Chambers St. "                | 8.50    | 12.00                 | 6.6   | Englewood, 63d Street. "            |       |
| 1.0                 | Jersey City Station. "        | 9.10    | 12.30                 | 20.8  | Hammond. Ind. "                     |       |
| 625.9               | Akron. Ohio "                 | 12.45   | 5.04                  | 36.0  | Crown Point. "                      |       |
| 633.3               | Barberton. "                  |         | de                    | 100.7 | Rochester. "                        |       |
| 640.0               | Wadsworth. "                  |         |                       | 142.5 | Huntington. Ar.                     |       |
| 644.6               | Rittman. "                    |         |                       |       |                                     |       |
| 676.4               | Ashland. "                    | 1.54    | 5.33                  | 142.5 | Huntington. Lv.                     |       |
| 693.1               | Mansfield. "                  | 2.26    | 6.53                  | 173.0 | Decatur. "                          |       |
| 708.5               | Galion. "                     | 2.54    | 7.25                  | 189.8 | Ohio City. Ohio "                   |       |
| 729.4               | Marion. Ar.                   | 3.19    | 7.51                  | 204.3 | Spencerville. "                     |       |
| 729.4               | Marion. Lv.                   | 3.26    | 8.01                  | 217.0 | Eastern Standard Time               |       |
| 754.4               | Kenton. "                     | 3.54    | 8.09                  | 244.1 | Lima. "                             | 11.59 |
| 781.5               | Lima. "                       | 4.26    | 9.09                  | 269.0 | Kenton. "                           | 4.24  |
|                     | Central Standard Time         |         |                       |       | Marion. Ar.                         | 4.54  |
| 794.2               | Spencerville. "               | 3.39    | 8.23                  | 269.0 | Marion. Lv.                         | 1.06  |
| 808.7               | Ohio City. "                  |         |                       | 290.0 | Galion. "                           | 1.36  |
| 825.5               | Decatur. Ind. "               | 4.25    | 9.08                  | 305.4 | Mansfield. "                        | 2.06  |
| 856.0               | Huntington. Ar.               | 5.01    | 9.43                  | 322.1 | Ashland. "                          | 2.35  |
|                     |                               |         |                       | 353.9 | Rittman. "                          | 3.05  |
| 856.0               | Huntington. Lv.               | 5.06    | 9.53                  | 358.5 | Wadsworth. "                        | 3.35  |
| 897.8               | Rochester. "                  | 5.58    |                       | 365.2 | Barberton. "                        | 3.65  |
| 962.5               | Crown Point. "                | 7.04    |                       | 372.6 | Akron. "                            | 3.95  |
| 977.7               | Hammond. "                    | 7.35    | 12.15                 |       |                                     |       |
| 991.9               | Englewood, 63d Street. III. " | ax      | ax                    | 997.5 | N. Y., Jersey City Station. Ar.     | 7.20  |
| 998.5               | Chicago (Dearborn Sta.) Ar.   | 8.15 AM | 1.00 AM               | 998.5 | Chambers St. "                      | 7.34  |
|                     |                               |         |                       |       | West 23d St. Ar.                    | 7.50  |

TABLE 6 NEW YORK AND BUFFALO

| WESTBOUND<br>Read Down |             |         | Miles from New York | Eastern Standard Time          | EASTBOUND<br>Read Up |           |         |
|------------------------|-------------|---------|---------------------|--------------------------------|----------------------|-----------|---------|
| 9 Daily                | 7-477 Daily | 5 Daily |                     |                                | 8 Daily              | 480 Daily | 6 Daily |
| AM                     |             |         | 0.0                 | Lv. N. Y., West 23d St. Ar.    | PM                   | AM        |         |
| 11.40                  | 11.55       | 7.00    | 0.0                 | Chambers St.                   | 11.54                | av 9.10   |         |
| 11.40                  | 12.00       | 7.30    | 1.0                 | Jersey City Sta.               | 11.40                | 8.54      |         |
| 12.00                  | 12.30       | 7.45    |                     | Lv. Binghamton. Ar.            | 6.20                 | 8.40      |         |
| 5.40                   | 6.12        | 1.22    | 215.1               | Endicott. Ar.                  | es                   | 2.57      |         |
| 5.51                   | ex          |         | 222.6               | Waverly. Ar.                   |                      | 2.12      |         |
| 6.32                   | 7.06        |         | 256.2               | Elmira. Ar.                    | 5.15                 | 1.50      |         |
| 6.56                   | 7.40        | 2.35    | 273.8               | Corning. Ar.                   | 4.48                 | 1.24      |         |
| 7.18                   | 8.12        | 3.00    | 291.1               | Hornell. Lv.                   | 3.28                 | 12.31     |         |
| 8.18                   | 9.13        | 3.51    | 332.3               | Lv. Hornell. Ar.               | 3.14                 | 12.15     |         |
| 8.23                   | 9.30        | 5.20    | 332.3               | Arkport. Ar.                   | 8.50                 |           |         |
|                        | 9.38        | 5.28    | 338.0               | Burns. Ar.                     | 8.39                 |           |         |
|                        |             |         | 340.7               | Canaseraga. Ar.                | 8.33                 |           |         |
|                        | 9.50        | 5.38    | 344.8               | Garwoods. Ar.                  | 2.58                 | 11.58     |         |
|                        |             |         | 347.2               | Swains. Ar.                    | 8.21                 |           |         |
|                        | 9.57        |         | 349.2               | Dalton. Ar.                    | 8.17                 |           |         |
|                        | 10.07       | ac      | 356.4               | Washington Hunt. Ar.           | 8.07                 |           |         |
|                        | 10.12       |         | 358.5               | Portage. Ar.                   | 8.02                 |           |         |
|                        | 10.19       |         | 362.6               | Letchworth Park. Ar.           | 7.54                 |           |         |
|                        |             |         | 366.5               | Castile. Ar.                   | 2.31                 | bt 126    |         |
| 9.05                   | 10.28       | bt 6.12 | 369.2               | Silver Springs. Ar.            | 2.26                 | 7.38      |         |
| 9.10                   | 10.34       | 6.17    | 372.3               | Rock Glen. Ar.                 |                      | 11.20     |         |
|                        |             |         | 376.6               | Warsaw. Ar.                    | 2.15                 | 7.24      |         |
| 9.22                   | 10.48       | 6.29    | 382.4               | Dale. Ar.                      | 7.14                 | 11.08     |         |
|                        |             |         | 386.7               | Linden. Ar.                    |                      |           |         |
| 9.46                   | 11.02       |         | 393.7               | Attica. Ar.                    | 1.50                 | 6.55      |         |
|                        | 11.15       | 6.55    | 397.6               | Griswolds. Ar.                 |                      | 6.48      |         |
|                        |             | 7.02    | 399.9               | Darien Center. Ar.             |                      | 6.42      |         |
| 10.03                  | 11.26       | 7.07    | 405.5               | Alden (Black Water Baths). Ar. | 1.30                 | 6.30      |         |
|                        | 11.35       | 7.15    | 408.3               | Marilla. Ar.                   |                      | 6.23      |         |
|                        |             | 7.20    | 410.3               | Town Line. Ar.                 |                      | 6.18      |         |
| 10.13                  | 11.47       | 7.23    | 414.3               | Lancaster. Ar.                 | 1.19                 | 6.10      |         |
|                        |             | 7.30    | 415.6               | Depew. Ar.                     |                      | 6.06      |         |
|                        |             | 7.43    | 422.2               | East Buffalo. Ar.              |                      | 5.54      |         |
| 10.35                  | 12.10       | 7.55    | 425.2               | Ar. Buffalo. Lv.               | 1.00                 | 5.45      |         |
| PM                     | PM          | AM      |                     | (Lehigh Valley Terminal)       | PM                   | PM        |         |

Erie Trains arriving at and departing from BUFFALO, N. Y. now use the LEHIGH VALLEY TERMINAL located at Main and Scott Streets.

"LET US HANDLE YOUR PACKAGES"

Say 50,000 Railway Expressmen

"We are Eager to Serve You"

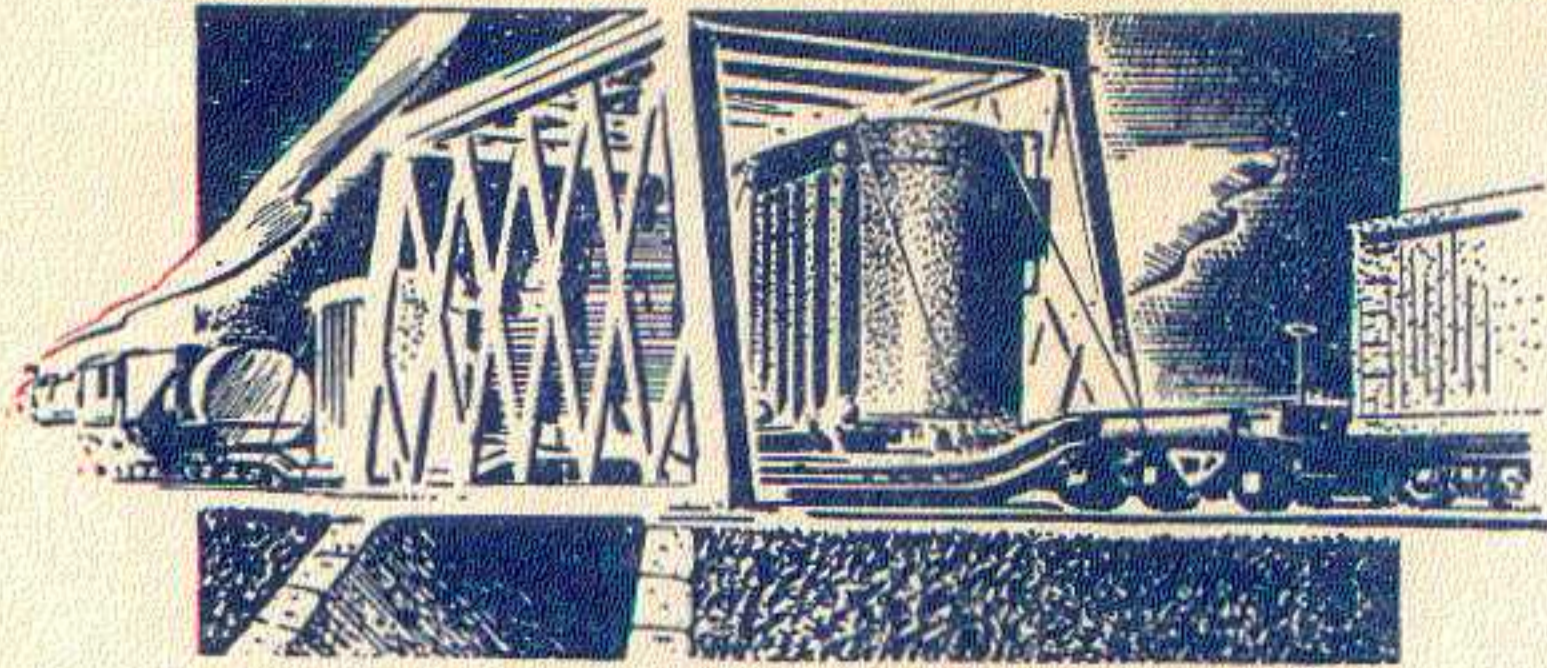


DEPENDABLE through service from sender to receiver, with pick-up and delivery in principal cities and towns is available at your nearest Express Agency. Call on our representative for service and information.

RAILWAY EXPRESS AGENCY

As an added convenience, express packages may be left with Western Union or will be called for by their messengers without extra charge.





# THE COLOSSUS OF ROADS

● You've heard of long railroads—ever hear of a high, wide one? Between New York and Chicago the Erie has the highest and widest clearance of any railroad, and it is built and equipped to carry the heaviest loads.

If you ship massive machinery or ponderous parts, that fact may save you money. You can move complete units over the Erie and move them faster.

But even if your product is as small as pens or pencils, the Erie's wide clearances should be of interest to you. They indicate that the Erie has been planned and is operated for the best interest of shippers. When it's trusted to the Erie, the freight must go through—safe and fast, and to your satisfaction. Call your Erie representative for full details.

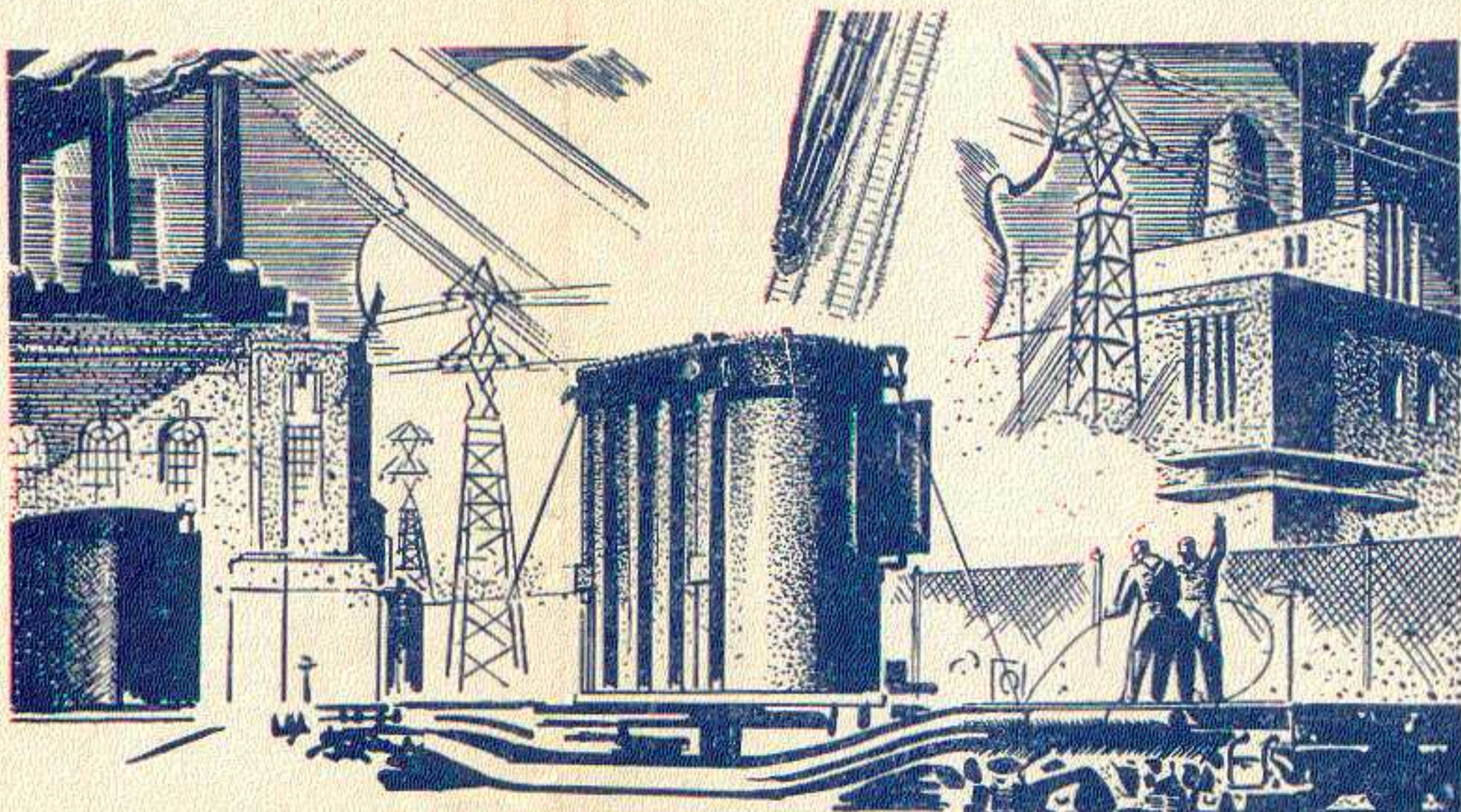


TABLE 7 DETROIT—TOLEDO—CLEVELAND—YOUNGSTOWN—PITTSBURGH

| Miles from Cleveland | Eastern Standard Time         | EASTBOUND |       |       |      |          |         |        |       |       |      |      |       |  |
|----------------------|-------------------------------|-----------|-------|-------|------|----------|---------|--------|-------|-------|------|------|-------|--|
|                      |                               | WEEK-DAYS |       |       |      |          | SUNDAYS |        |       |       |      |      |       |  |
|                      |                               | 688       | 624   | 626   | 6    | 628      | 686     | 688    | 622   | 626   | 6    | 686  | 644   |  |
|                      |                               |           |       |       |      | Ex. Hol. |         |        |       |       |      |      |       |  |
|                      |                               | PM        | AM    | AM    | PM   | PM       | PM      | PM     | AM    | AM    | PM   | PM   | PM    |  |
|                      | <b>Detroit</b> .....Lv.       | 11.45     |       | 8.10  |      |          | 1.30    |        | 11.45 |       | 8.10 |      | 1.30  |  |
|                      | <b>Toledo</b> .....Lv.        | 1.55      |       | 9.55  |      |          | 3.08    |        | 1.55  | 5.17  | 9.55 |      | 3.08  |  |
| 0.0                  | <b>Cleveland</b> .....Lv.     | 4.20      | 7.25  | 1.25  | 5.00 | 5.30     | 6.00    | 4.20   | 8.00  | 1.25  | 5.00 | 6.00 | 9.00  |  |
| 3.2                  | East 55th Street.....         |           |       | 1.34  | 5.10 | 5.40     | 6.10    |        | 8.10  | 1.34  | 5.10 | 6.10 | 9.10  |  |
| 5.5                  | E. 93d St., Cleveland.....    |           | 7.37  | 1.39  |      | 5.45     | 6.15    |        | 8.15  | 1.39  |      | 6.15 | 9.15  |  |
| 10.6                 | North Randall.....            |           |       |       |      | 5.54     |         |        |       |       |      |      |       |  |
| 15.7                 | Solon.....                    |           |       | dc    |      | 6.01     |         |        |       | dc    |      |      | 19.30 |  |
| 20.5                 | Geauga Lake.....              |           |       |       |      | 6.07     |         |        |       |       |      |      | 19.35 |  |
| 23.6                 | Aurora.....                   |           |       | dc    |      | 6.13     |         |        |       | dc    |      |      | 19.40 |  |
| 30.0                 | Mantua.....                   |           |       | 12.04 |      | 6.22     |         |        |       | 12.04 |      |      | 19.47 |  |
| 34.3                 | Jeddoe.....                   |           |       |       |      | 6.28     |         |        |       |       |      |      |       |  |
| 36.7                 | Garrettsville-Hiram.....      |           | 8.11  | 2.13  |      | 6.32     |         |        | 8.53  | 2.13  |      |      | 19.57 |  |
| 40.3                 | Mahoning.....                 |           |       |       |      | 6.37     |         |        |       |       |      |      |       |  |
| 45.4                 | Phalanx.....                  |           |       |       |      | 6.42     |         |        |       |       |      |      |       |  |
| 49.3                 | Leavittsburg.....             |           |       |       |      | 6.49     |         |        |       |       |      |      |       |  |
| 52.4                 | <b>Warren</b> .....           | 5.30      | 8.30  | 2.32  | 6.11 | 6.57     | 7.08    | 5.30   | 9.11  | 2.32  | 6.11 | 7.08 | 10.17 |  |
| 57.6                 | Niles.....                    | er        | 8.38  | 2.40  | 6.20 | 7.21     | 7.17    | er     | 9.20  | 2.40  | 6.20 | 7.17 | 10.26 |  |
| 61.8                 | Girard.....                   |           |       |       |      | 7.30     |         |        |       |       |      |      | 10.32 |  |
| 66.3                 | <b>Youngstown</b> .....Ar.    | 5.55      | 8.50  | 2.55  | 6.35 | 7.40     | 7.32    | 5.55   | 9.35  | 2.55  | 6.35 | 7.32 | 10.40 |  |
| 66.3                 | <b>Youngstown</b> .....Lv.    | 6.00      | 8.55  | 3.00  |      |          | 7.37    | 6.00   | 9.40  | 3.00  |      |      | 7.37  |  |
| 87.5                 | <b>New Castle</b> .....Ar.    | 6.24      | 9.20  | 3.38  |      |          | 8.00    | 6.24   | 10.05 | 3.38  |      |      | 8.00  |  |
|                      | New Castle (Wash. St.) ec Ar. | 6.37      | 9.33  | 3.51  |      |          | 8.14    | 6.37   | 10.18 | 3.51  |      |      | 8.14  |  |
| 91.3                 | Ellwood City (ed).....        | 6.47      | 9.53  | 4.04  |      |          | 8.23    | 6.47   | 10.55 | 4.04  |      |      | 8.23  |  |
| 102.2                | Beaver Falls.....             | cy6.47    | 9.43  | 4.05  |      |          | 8.24    | cy6.47 | 10.28 | 4.05  |      |      | 8.24  |  |
|                      | New Brighton.....             |           |       |       |      |          |         |        |       |       |      |      |       |  |
| 105.4                | Beaver.....                   | cy6.55    | 9.49  | 4.11  |      |          | 8.30    | cy6.55 | 10.34 | 4.11  |      |      | 8.30  |  |
| 112.1                | Aliquippa.....                | cy7.04    | 9.58  | 4.20  |      |          | 8.39    | cy7.04 | 10.43 | 4.20  |      |      | 8.39  |  |
| 120.6                | Coraopolis.....               | cy7.15    | 10.09 | 4.31  |      |          | 8.50    | cy7.15 | 10.54 | 4.31  |      |      | 8.50  |  |
| 131.2                | <b>Pittsburgh</b> .....Ar.    | 7.30      | 10.25 | 4.50  |      |          | 9.05    | 7.30   | 11.10 | 4.50  |      |      | 9.05  |  |
|                      |                               | AM        | AM    | PM    | PM   | PM       | PM      | AM     | AM    | PM    | PM   | PM   | PM    |  |

| Miles from Pittsburgh | Eastern Standard Time                | WESTBOUND |       |       |       |       |         |      |       |       |       |       |       |
|-----------------------|--------------------------------------|-----------|-------|-------|-------|-------|---------|------|-------|-------|-------|-------|-------|
|                       |                                      | WEEK-DAYS |       |       |       |       | SUNDAYS |      |       |       |       |       |       |
|                       |                                      | 629       | 5     | 685   | 623   | 679   | 687     | 625  | 5     | 685   | 623   | 679   | 687   |
|                       |                                      |           |       |       |       |       |         |      |       |       |       |       |       |
|                       |                                      | AM        | AM    | PM    | PM    | PM    | PM      | AM   | AM    | PM    | PM    | PM    | PM    |
|                       | <b>Pittsburgh</b> .....Lv.           |           | 8.15  | 12.30 | 6.00  | 8.45  | 11.45   | 5.40 | 8.15  | 12.30 | 6.00  | 8.45  | 11.45 |
| 10.6                  | Coraopolis.....                      |           | 8.29  | ev    | 6.15  | 9.00  | ev      | 6.00 | 8.29  | ev    | 6.15  | 9.00  | ev    |
| 19.1                  | Aliquippa.....                       |           | 8.38  |       | 6.26  |       | 12.10   | 6.20 | 8.38  |       | 6.26  |       | 12.10 |
| 25.8                  | Beaver.....                          |           | 8.47  | 1.01  | 6.34  | 9.17  | 12.20   | 6.36 | 8.47  | 1.01  | 6.34  | 9.17  | 12.20 |
| 29.0                  | Beaver Falls.....                    |           |       |       |       |       |         |      |       |       |       |       |       |
| 39.9                  | New Brighton.....                    |           | 8.53  | 1.06  | 6.40  | 9.22  | 12.27   | 6.44 | 8.53  | 1.06  | 6.40  | 9.22  | 12.27 |
|                       | Ellwood City (ed).....               |           | 8.55  | 1.04  | 6.39  | 9.10  |         | 6.48 | 8.55  | 1.04  | 6.39  | 9.10  |       |
|                       | <b>New Castle</b> (Wash. St.) Lv. ec |           | 9.05  | 1.16  | 6.51  | 9.31  | 12.22   | 7.03 | 9.05  | 1.16  | 6.51  | 9.31  | 12.22 |
| 43.7                  | <b>New Castle</b> .....              |           | 9.20  | 1.30  | 7.04  | 9.45  | 12.54   | 7.17 | 9.20  | 1.30  | 7.04  | 9.45  | 12.54 |
| 64.9                  | <b>Youngstown</b> .....Ar            |           | 9.50  | 2.00  | 7.35  | 10.11 | 1.25    | 7.50 | 9.50  | 2.00  | 7.35  | 10.11 | 1.25  |
| 64.9                  | <b>Youngstown</b> .....Lv            | 6.05      | 10.08 | 2.05  | 7.40  | 10.16 | 1.30    | 8.00 | 10.08 | 2.05  | 7.40  | 10.16 | 1.30  |
| 69.4                  | Girard.....                          | 6.14      |       |       |       |       |         | 8.14 | 10.22 | 2.19  | 7.53  | 10.29 | 1.46  |
| 73.6                  | Niles.....                           | 6.22      | 10.22 | 2.19  | 7.53  | 10.29 | 1.46    | 8.24 | 10.34 | 2.29  | 8.03  | 10.38 | 1.56  |
| 78.8                  | <b>Warren</b> .....                  | 6.32      | 10.34 | 2.29  | 8.03  | 10.38 | 1.56    |      |       |       |       |       |       |
| 81.9                  | Leavittsburg.....                    | 6.38      |       |       |       |       |         |      |       |       |       |       |       |
| 85.8                  | Phalanx.....                         | 6.44      |       |       |       |       |         | 8.33 |       |       |       |       |       |
| 90.9                  | Mahoning.....                        | 16.50     |       |       |       |       |         |      |       |       |       |       |       |
| 94.5                  | Garrettsville-Hiram.....             | 17.02     | 10.54 |       | 8.22  | 10.56 |         | 8.44 | 10.54 |       | 8.22  | 10.56 |       |
| 96.9                  | Jeddoe.....                          | 7.12      | 11.04 |       | 18.32 |       |         |      | 11.04 |       | 18.32 |       |       |
| 101.2                 | Mantua.....                          | 7.22      |       |       | 18.40 |       |         | 9.02 |       |       | 18.40 |       |       |
| 107.6                 | Aurora.....                          | 7.29      |       |       |       |       |         |      |       |       |       |       |       |
| 110.7                 | Geauga Lake.....                     |           |       |       |       |       |         |      |       |       |       |       |       |
| 115.5                 | Solon.....                           | 7.35      |       |       |       |       |         |      |       |       |       |       |       |
| 120.6                 | North Randall.....                   | 7.42      |       |       |       |       |         |      |       |       |       |       |       |
| 125.7                 | E. 93d St., Cleveland.....           | 7.49      | 11.31 | 3.25  | 9.01  | 11.32 |         | 9.25 | 11.31 | 3.25  | 9.01  | 11.32 |       |
| 128.0                 | East 55th Street.....                | 7.54      | 11.36 | 3.31  | 9.06  | 11.37 |         | 9.31 | 11.36 | 3.31  | 9.06  | 11.37 |       |
| 131.2                 | <b>Cleveland</b> .....Ar             | 8.03      | 11.45 | 3.40  | 9.15  | 11.46 | 3.10    | 9.40 | 11.45 | 3.40  | 9.15  | 11.46 | 3.10  |
|                       | <b>Toledo</b> .....Ar                |           | 2.25  | 6.10  | 1.00  | 2.55  | 5.45    |      | 2.25  | 6.10  | 1.00  | 2.55  | 5.45  |
|                       | <b>Detroit</b> .....Ar               |           | 4.00  | 7.50  |       | 4.50  | 7.30    |      | 4.00  | 7.50  |       | 4.50  | 7.30  |
|                       |                                      | AM        | PM    | PM    | AM    | AM    | AM      | AM   | PM    | PM    | AM    | AM    | AM    |

**AIR-CONDITIONED TRAINS**  
 Air-conditioned equipment has been assigned to regular sections of trains as shown herein. Every effort will be made to provide it as specified, but the right is reserved to employ non-air-conditioned cars as necessitated by volume of traffic or emergencies.

**EQUIPMENT**  
 Detroit, Toledo, Cleveland, Youngstown, Pittsburgh Trains.  
 ★Indicates Air-Conditioned Cars

**EASTBOUND**  
**No. 6—Daily.** ★Sleeping Car (8 Section Compartment Lounge Restaurant Car) Cleveland to New York. ★Individual Seat Coach, Cleveland to New York.  
**No. 622—Sundays only.** ★Pullman Parlor-Lounge-Diner, Cleveland to Pittsburgh. ★Coach, Cleveland to Pittsburgh.  
**No. 624—Daily, except Sunday.** ★Pullman Parlor-Lounge-Diner, Cleveland to Pittsburgh. ★Coach, Cleveland to Pittsburgh.  
**No. 626—Daily.** ★Pullman Parlor Car, Cleveland to Pittsburgh. ★Coach, Cleveland to Pittsburgh.  
**No. 686—Daily.** ★Sleeping Car for Parlor Car Service and ★Coaches, Detroit to Pittsburgh, via Cleveland. Dining Lounge Car, Cleveland to Pittsburgh.  
**No. 688—Daily.** Sleeping Cars, Chicago to Pittsburgh. ★Sleeping Cars, Detroit to Pittsburgh. Through Coaches, Chicago and Detroit to Pittsburgh, via Cleveland.

**WESTBOUND**  
**No. 5—Daily.** ★Sleeping Car (8 Section Compartment Lounge Restaurant Car) New York to Cleveland. ★Pullman Parlor Car, Pittsburgh to Cleveland. ★Coach, Pittsburgh to Cleveland.  
**No. 623—Daily.** ★Pullman Parlor-Lounge-Diner, Pittsburgh to Cleveland. ★Coach, Pittsburgh to Cleveland.  
**No. 679—Daily.** Sleeping Car, Pittsburgh to Chicago. Through Coaches, Pittsburgh to Chicago.  
**No. 685—Daily.** ★Sleeping Car for Parlor Car Service and ★Coaches, Pittsburgh to Detroit, via Cleveland. Dining Lounge Car, Pittsburgh to Cleveland.  
**No. 687—Daily.** ★Sleeping Cars, Pittsburgh to Detroit. Through Coaches, Pittsburgh to Detroit via Cleveland.

**★Cleveland-Pittsburgh Sleeping Car**  
 The Cleveland-Pittsburgh sleeping car operates to and from Union Terminal Cleveland via New York Central (via Ashtabula) to Youngstown, and P. & L. E. Railroad on following schedule:  
 Eastbound  
 Lv Cleveland (Union Terminal) 2:20 AM  
 Ar Pittsburgh (P&LE Station) 7:15 AM  
 Westbound  
 Lv Pittsburgh (P&LE Station) 11:30 PM  
 Ar Cleveland (Union Terminal) 7:10 AM

Sleeper open for occupancy at 9:30 P. M. at Cleveland and Pittsburgh.  
 Tickets reading via Erie Railroad between Cleveland and Youngstown, and P. & L. E. Railroad between Youngstown and Pittsburgh, will be honored in this sleeping car.

Holidays in the above table refers to the observance of New Year's Day, Memorial Day, Independence Day, Labor Day, Thanksgiving Day and Christmas Day.

For Explanation of Reference Marks and Notes, see Pages 33 and 34.

For Parlor, Sleeping and Dining Service of Through Trains, see Pages 5 and 6.



**ERIE RAILROAD  
SYSTEM  
AND CONNECTIONS**

Indicates Double Track

6880 3-21-30

ARRIVE FRESH AS A DAISY ON ERIE AIR-CONDITIONED TRAINS

**TABLE 8 BUFFALO—JAMESTOWN**

|      |  | WESTBOUND |                      |        |                      |
|------|--|-----------|----------------------|--------|----------------------|
| Mls. | Eastern Standard Time                  | 513       | 515                  | 519    | 521                  |
|      |  | Daily     | Daily Ex. Su. & Hol. | Daily  | Daily Ex. Su. & Hol. |
|      |  | AM        | PM                   | PM     | PM                   |
| 0.0  | Buffalo (Lehigh Valley Terminal)...Lv. | 8.05      | 1.30                 | 5.20   | 6.05                 |
| 7.4  | Blasdell.....                          | 8.24      | f 1.48               | 5.38   | f 6.22               |
| 13.3 | Hamburg.....                           | 8.36      | 2.00                 | 5.50   | 6.32                 |
| 14.5 | Water Valley.....                      |           | f 2.03               | f 5.53 | f 6.36               |
| 16.9 | Eden Valley.....                       | f 8.41    | f 2.07               | f 5.58 | 6.41                 |
| 19.2 | Eden Center.....                       | 8.46      | 2.12                 | 6.03   | 6.46                 |
| 23.5 | North Collins.....                     | 8.53      | 2.19                 | 6.10   | 6.55                 |
| 27.5 | Lawtons.....                           | 9.00      | 2.26                 | 6.17   | 7.02                 |
| 30.6 | Collins (State Hospital).....          | 9.06      | 2.32                 | 6.23   | 7.08                 |
| 33.6 | Gowanda.....                           | 9.14      | 2.45                 | 6.33   | 7.15                 |
| 38.1 | Dayton.....                            | 9.30      |                      | 6.47   |                      |
| 39.9 | Markhams.....                          |           |                      |        |                      |
| 43.4 | South Dayton.....                      | 9.42      |                      | 6.57   |                      |
| 48.4 | Cherry Creek.....                      | 9.51      |                      | 7.05   |                      |
| 52.7 | Conewango.....                         | 10.00     |                      | 7.13   |                      |
| 60.6 | Kennedy.....                           | 10.13     |                      | hu     |                      |
| 66.4 | Falconer.....                          | 10.23     |                      | 7.34   |                      |
| 69.7 | Jamestown.....Ar.                      | 10.30     |                      | 7.40   |                      |
|      |  | AM        | PM                   | PM     | PM                   |

|      |  | EASTBOUND            |         |                      |        |
|------|--|----------------------|---------|----------------------|--------|
| Mls. | Eastern Standard Time                  | 514                  | 516     | 518                  | 520    |
|      |  | Daily Ex. Su. & Hol. | Daily   | Daily Ex. Su. & Hol. | Daily  |
|      |  | AM                   | AM      | PM                   | PM     |
| 0.0  | Jamestown.....Lv.                      |                      | 8.32    |                      | 5.05   |
| 3.3  | Falconer.....                          |                      | 8.38    |                      | 5.11   |
| 9.1  | Kennedy.....                           |                      | 8.46    |                      | 5.19   |
| 17.0 | Conewango.....                         |                      | 8.58    |                      | 5.32   |
| 21.3 | Cherry Creek.....                      |                      | 9.05    |                      | 5.39   |
| 26.3 | South Dayton.....                      |                      | 9.13    |                      | 5.48   |
| 29.8 | Markhams.....                          |                      |         |                      |        |
| 31.6 | Dayton.....                            |                      | 9.24    |                      | 6.00   |
| 36.1 | Gowanda.....                           | 6.50                 | 9.38    | 2.50                 | 6.14   |
| 39.1 | Collins (State Hospital).....          | 6.56                 | 9.45    | 2.56                 | 6.23   |
| 42.2 | Lawtons.....                           | 7.03                 | 9.52    | f 3.02               | 6.31   |
| 46.2 | North Collins.....                     | 7.10                 | 10.00   | 3.09                 | 6.38   |
| 50.5 | Eden Center.....                       | 7.18                 | 10.08   | 3.15                 | 6.46   |
| 52.8 | Eden Valley.....                       | 7.23                 | f 10.13 | f 3.21               | f 6.51 |
| 55.2 | Water Valley.....                      | 7.28                 |         |                      |        |
| 56.4 | Hamburg.....                           | 7.33                 | 10.20   | 3.27                 | 6.58   |
| 62.3 | Blasdell.....                          | 7.43                 | 10.31   | 3.37                 | 7.08   |
| 69.7 | Buffalo (Lehigh Valley Terminal)...Ar. | 8.02                 | 10.50   | 3.55                 | 7.25   |
|      |  | AM                   | AM      | PM                   | PM     |

Holidays in the above table refer to the observance of New Year's Day, Memorial Day, Independence Day, Labor Day, Thanksgiving Day and Christmas Day.

**TABLE 11 BRADFORD - SALAMANCA - CLEVELAND - CHICAGO**

| WESTBOUND   |                       |       |       | EASTBOUND   |                       |       |       |          |
|---|-----------------------|-------|-------|---|-----------------------|-------|-------|----------|
| Miles from Bradford   | Eastern Standard Time | Bus-7 | Bus-1 | Miles from Chicago  | Central Standard Time | 2-Bus | 3-Bus | 6-Bus    |
|   |                       | Daily | Daily |   |                       | Daily | Daily | Daily    |
|   |                       | AM    | PM    |   |                       | PM    | PM    | PM       |
| Via BUS of Allegheny Motor Coach Co., Inc. (See Note "X" Below) |                       |       |       | 0.0   | Chicago.....Lv.       | 6.00  | 10.20 |          |
| 0.0   | Bradford.....Lv.      | 9.17  | 5.42  | 372.6   | Akron.....            | 3.44  | 7.37  |          |
| 17.2  | Salamanca.....Ar.     | 9.55  | 6.20  | 0.0   | Cleveland.....        |       |       | 5.00     |
| 17.2  | Salamanca.....Lv.     | 11.42 | 7.15  | 426.7   | Youngstown.....       | 5.07  | 9.05  | 6.43     |
| 51.0  | Jamestown.....Ar.     | 12.33 | 8.05  | 551.1   | Jamestown.....        | 8.25  | 12.23 | 9.48     |
| 175.4   | Youngstown.....       | 3.32  | 11.10 | 584.9   | Salamanca.....Ar.     | 9.05  | 1.15  | 10.27    |
| 0.0   | Cleveland.....        |       |       | Via BUS of Allegheny Motor Coach Co., Inc. (See Note "X" Below) |                       |       |       |          |
| 229.5   | Akron.....            | 5.04  | 12.45 | 584.9   | Salamanca.....Lv.     | 9.35  | 2.20  | dh 10.35 |
| 602.1   | Chicago.....Ar.       | 1.00  | 8.15  | 602.1   | Bradford.....Ar.      | 10.15 | 3.00  | dh 11.10 |
|   |                       | AM    | AM    |   |                       | AM    | PM    | PM       |

**NOTE "X"**—In connection with the bus service the Erie Railroad Company acts as agent only and is not responsible beyond its own line, except as such responsibility may be imposed by law with respect to baggage.

**TABLE 9 NEW YORK—CHAUTAUQUA**  
(Via Jamestown and BUS of West Ridge Transportation Co.)  
(See Note "X" Below)

| WESTBOUND               |                     |       |       | EASTBOUND                  |       |                     |         |
|-------------------------|---------------------|-------|-------|----------------------------|-------|---------------------|---------|
| Eastern Standard Time   | 1-Bus               | 5-Bus | 7-Bus | Eastern Standard Time      | Bus-8 | Bus-6               | Bus-6   |
|                         | Sa. Su. & Hol. only | Daily | Daily |                            | Daily | Sa. Su. & Hol. only | Daily   |
|                         |                     |       |       |                            |       |                     |         |
|                         |                     |       |       |                            |       |                     |         |
| N.Y., West 23rd St. Lv. | 8.45                | 7.00  | 11.55 | Chautauqua.....Lv.         | 10.52 | 8.53                | 6.57    |
| Chambers St. ....       | 8.50                | 7.30  | 12.00 | Jamestown.....Ar.          | 11.25 | 9.25                | 7.25    |
| Jersey City Sta. ....   | 9.10                | 7.45  | 12.30 | Jamestown.....Lv.          | 12.23 | 9.48                | 9.48    |
| Jamestown.....Ar.       | 8.05                | 7.00  | 12.33 | N.Y., Jersey City Sta. Ar. | 11.40 | 8.40                | 8.40    |
| Jamestown.....Lv.       | 9.30                | 7.10  | 1.15  | Chambers St. ....          | 11.54 | 8.54                | 8.54    |
| Chautauqua.....Ar.      | 9.58                | 7.38  | 1.45  | West 23rd St. Ar.          |       | av 9.10             | av 9.10 |
|                         | PM                  | AM    | PM    |                            | PM    | AM                  | AM      |

Tickets sold and Baggage checked through to Chautauqua. Hand baggage checked without charge. Trunks checked at charge of 25c each.

**TABLE 10 CHAUTAUQUA—AKRON—CHICAGO**  
(Via Jamestown and BUS of West Ridge Transportation Co.)  
(See Note "X" Below)

| WESTBOUND             |       |       | EASTBOUND             |       |       |
|-----------------------|-------|-------|-----------------------|-------|-------|
| Eastern Standard Time | Bus-7 | Bus-1 | Central Standard Time | 2-Bus | 3-Bus |
|                       | Daily | Daily |                       | Daily | Daily |
|                       |       |       |                       |       |       |
|                       |       |       |                       |       |       |
| Chautauqua.....Lv.    | 10.52 | 6.57  | Chicago.....Lv.       | 6.00  | 10.20 |
| Jamestown.....Ar.     | 11.25 | 7.25  | Eastern Standard Time |       |       |
| Jamestown.....Lv.     | 12.33 | 8.05  | Akron.....Lv.         | 3.44  | 7.37  |
| Cleveland.....Lv.     |       |       | Cleveland.....Lv.     |       | 7.25  |
| Akron.....Ar.         | 5.04  | 12.45 | Jamestown.....Ar.     | 8.25  | 12.23 |
| Central Standard Time |       |       | Jamestown.....Lv.     | 8.45  | 1.15  |
| Chicago.....Ar.       | 1.00  | 8.15  | Chautauqua.....Ar.    | 9.15  | 1.45  |
|                       | AM    | AM    |                       | AM    | PM    |

Tickets sold and Baggage checked through to Chautauqua. Hand baggage checked without charge. Trunks checked at charge of 25c each.

**TABLE 12 NEW YORK—SALAMANCA—BRADFORD**

| WESTBOUND        |                             |          |          | EASTBOUND                       |          |          |          |
|------------------|-----------------------------|----------|----------|---------------------------------|----------|----------|----------|
| Miles from N. Y. | Eastern Standard Time       | gt 1-Bus | ht 5-557 | Eastern Standard Time           | gt Bus-2 | gt Bus-8 | ht 560-6 |
|                  |                             | Daily    | Daily    |                                 | Daily    | Daily    | Daily    |
|                  |                             | AM       | PM       |                                 |          | AM       | PM       |
| 0.0              | N. Y., W. 23rd St. Lv.      | 8.45     | 7.00     | Bradford.....Lv.                | dh 8.15  | ad 11.17 | 9.35     |
| 0.0              | Chambers St. ....           | 8.50     | 7.30     | East Bradford.....              |          |          | f 9.38   |
| 1.0              | Jersey City Station.....Lv. | 9.10     | 7.45     | Limestone.....                  |          |          | 9.46     |
| 413.6            | Salamanca.....Ar.           | 7.08     | 6.03     | Carrollton.....                 |          |          | 9.56     |
| 413.6            | Salamanca.....Lv.           | ad 7.10  | 6.20     | Salamanca.....Ar.               | dh 8.55  | ad 12.00 | 10.10    |
| 419.0            | Carrollton.....             |          | 6.30     | Salamanca.....Lv.               | 9.10     | 1.21     | 10.34    |
| 425.2            | Limestone.....              |          | 6.43     | N. Y., Jersey City Station..... |          |          |          |
| 429.5            | East Bradford.....          |          | f 6.51   | Chambers St. ....               | 7.20     | 11.40    | 8.40     |
| 430.8            | Bradford.....Ar.            | ad 7.45  | 6.55     | W. 23rd St. ....                | 7.50     |          | av 9.10  |
|                  |                             | PM       | AM       |                                 | PM       | PM       | AM       |

Trains 5-557 and 560-6 carry through sleeping car between Bradford and New York. Sleeper on train 557 will be parked at Bradford for occupancy until 8.00 A. M.

**Busses leave as follows: (running time approximately 45 minutes.)**  
Lv. Salamanca for Bradford, 8.20 A.M., 9.35 A.M., 2.20 P.M., 4.30 P.M., 5.40 P.M., 7.10 P.M., 11.15 P.M.  
Lv. Bradford for Salamanca, 8.17 A.M., 9.17 A.M., 11.17 A.M., 2.17 P.M., 4.27 P.M., 5.42 P.M.

**BAGGAGE CHECKED TO BRADFORD**—Baggage will be handled only on Trains 557 and 560 between Salamanca, N. Y., and Bradford, Pa

**NOTE "X"**—In connection with the bus service the Erie Railroad Company acts as agent only and is not responsible beyond its own line, except as such responsibility may be imposed by law with respect to baggage.

TABLE 13 NEW YORK—NEWBURGH—(VIA HARRIMAN)

Table 13: NEW YORK—NEWBURGH—(VIA HARRIMAN). Includes Westbound and Eastbound schedules with times and stations.

TABLE 15 NEW YORK—MEADVILLE—OIL CITY

Table 15: NEW YORK—MEADVILLE—OIL CITY. Includes Westbound and Eastbound schedules with times and stations.

TABLE 14 NEW YORK—NEWBURGH (VIA GREYCOURT)

Table 14: NEW YORK—NEWBURGH (VIA GREYCOURT). Includes Westbound and Eastbound schedules with times and stations.

Tickets sold and baggage checked through to Cochranton, Franklin and Oil City.

TABLE 17 Lackawaxen—Honesdale

Table 17: Lackawaxen—Honesdale. Includes Westbound and Eastbound schedules with times and stations.

TABLE 16 Chicago-Meadville-Oil City

Table 16: Chicago-Meadville-Oil City. Includes Westbound and Eastbound schedules with times and stations.

Passengers to and from Honesdale can also make connection via Narrowsburg (see Tables 2 and 3), and busses of the Wayne County Taxicab Co. (See Note "X" Below)

Tickets sold and baggage checked through to Cochranton, Franklin and Oil City.

TABLE 18 MIDDLETOWN—PINE BUSH

Table 18: MIDDLETOWN—PINE BUSH. Includes Westbound and Eastbound schedules with times and stations.

Tickets sold and baggage checked through to Circleville, Bullville, Thompson Ridge and Pine Bush.

TABLE 19 NEW YORK—MONTICELLO—LIBERTY

Table 19: NEW YORK—MONTICELLO—LIBERTY. Includes Westbound and Eastbound schedules with times and stations.

Tickets sold and baggage checked through to Monticello, Wurtsboro and Liberty.

NOTE "X" in connection with the bus service the Erie Railroad Company acts as agent only and is not responsible beyond its own line, except as such responsibility may be imposed by law with respect to baggage.

TABLE 20 NEW YORK—KENOZA LAKE—JEFFERSONVILLE

Table 20: NEW YORK—KENOZA LAKE—JEFFERSONVILLE. Includes Westbound and Eastbound schedules with times and stations.

Tickets sold and baggage checked through to Jeffersonville and Kenoza Lake.

Bathe in... SOUTHERN SUNSHINE

Take advantage of our Winter Tourist Tickets, which offer attractively reduced fares for the 1936 season. They are sold to points in Alabama, Arizona, Florida, Georgia, Louisiana, Mississippi, New Mexico, North and South Carolina, Texas, and Mexico.

Tickets on sale until April 30, with return limits 18 days to 9 months according to destination and fare. Consult Erie Ticket Agents for details.

TABLE 21 ELMIRA-ROCHESTER

Table with columns for Westbound Read Down (5-463, 7-467), Miles, Eastern Standard Time, and Eastbound Read Up (468-8, 464-8). Rows include stations like N.Y., W. 23d St., Chambers St., Jersey City Sta., Elmira, Corning, Avon, etc.

TABLE 22 SALAMANCA—DUNKIRK

Table with columns for Westbound Read Down (5-527), Miles, Eastern Standard Time, and Eastbound Read Up (540). Rows include stations like N.Y., W. 23d St., Chambers St., Jersey City Sta., Salamanca, Little Valley, Cattaraugus, etc.

LOCATE YOUR PLANT WHERE YOU CAN LOCATE MORE PROFITS Ask us about industrial buildings and vacant land on Erie rails GEO. F. WESTON Industrial Commissioner Erie Railroad, Midland Bldg., Cleveland, O.

TABLE 23 ROCHESTER—MOUNT MORRIS—DANSVILLE

Table with columns for Eastern Standard Time and train numbers (404, 408, 403, 468, 428, 416, 440, 420, 424). Rows include stations like Rochester, Mt. Morris, Dansville, Avon, etc.

TRAINS between Mt. Morris and Avon will stop on signal at Shakers, Jones, Cuylerville, Jaycocks, Seven Nations, Huston, South Avon, Pierces, Fowler, Ashantee, Linden Street and Spring Street and between Avon and Rochester, except Trains 467, 468 at Wiards, Elm Place, Meadowwood, Gannett, Blair, Martin, Brooks, Fenner, Baileys, Crittenden, Westfall and South Park. HOLIDAYS in above table refer to the observance of New Year's Day, Decoration Day, Independence Day, Labor Day, Thanksgiving Day and Christmas Day.

HUDSON AND MANHATTAN TUBE TRAINS

SCHEDULE OF RUNNING TIME BETWEEN ERIE R. R. JERSEY CITY TERMINAL AND

Table showing running times for Downtown New York (Cortlandt St.) and Uptown New York (33rd Street and 6th Ave, 28th Street and 6th Ave, etc.).

ERIE R. R. FERRY TIME TABLE EASTERN STANDARD TIME CHAMBERS STREET FERRY Ferry Running Time, 9 Minutes WEEK DAYS

Table with columns for Leave New York for Jersey City and Leave Jersey City for New York. Rows show times for various days of the week.

a Will not run on Holidays. m Except Saturdays and Holidays. h Holidays only.

SUNDAYS Table with columns for AM, Noon, PM, Mid. Rows show times for various days of the week.

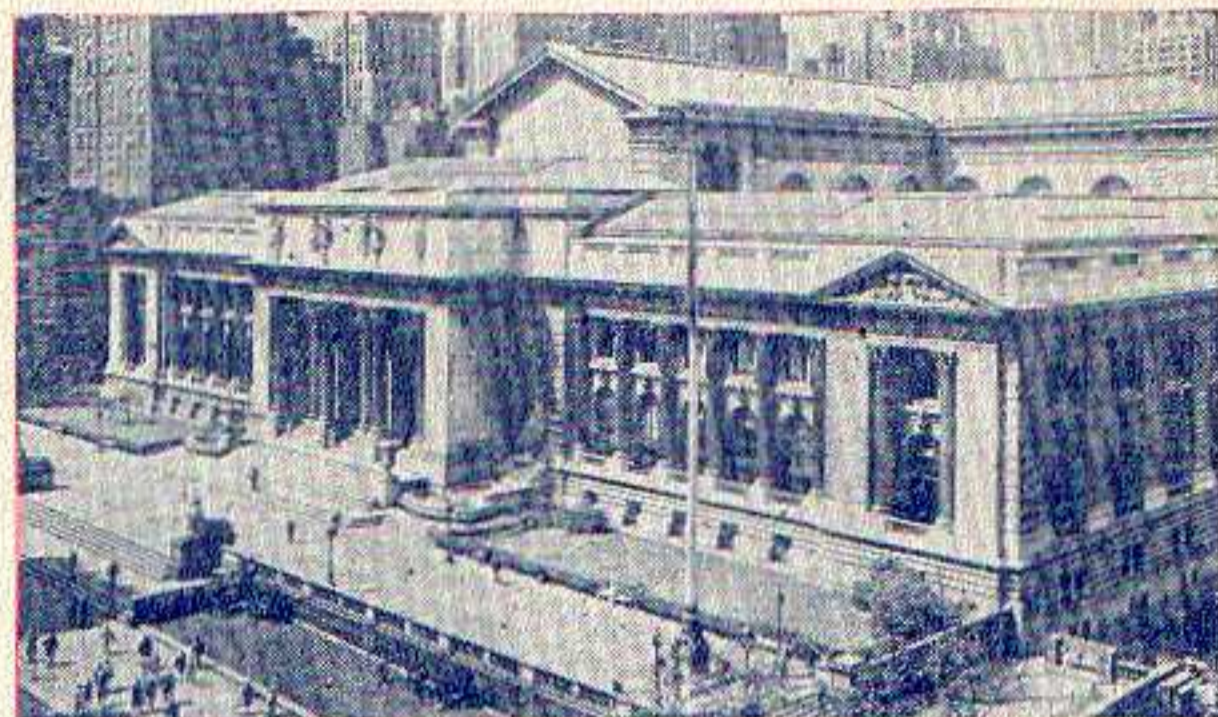
TWENTY-THIRD STREET FERRY Ferry Running Time, 20 Minutes WEEK DAYS

Table with columns for Leave New York for Jersey City and Leave Jersey City for New York. Rows show times for various days of the week.

SUNDAYS Table with columns for AM, PM, PM, PM. Rows show times for various days of the week.

## ERIE TRAIN-CAB SERVICE

Takes You from Erie Terminal Directly to  
Your Door in New York or Brooklyn



The New York Library at Fifth Avenue and 42nd Street

ONE Person **90c** TWO Persons **\$1.25** THREE or more **\$1.50**

Thousands have used and praised Erie Train-Cab Service. Strangers arriving at Erie Terminal, Jersey City are taken all the way to their destination in New York or Brooklyn. They never get "lost" and are never overcharged. Women accompanied by children appreciate this service. Even seasoned travellers enjoy the comfort of settling down in their own taxicab and forgetting about bags and car changes.

The fares shown above apply from our terminal to any place on Manhattan 110th Street and South, also to any point in the Brooklyn business district.

Service beyond the prescribed zones is metered from the zone limits and charged for at regular rates.

Train-Cab service is available to all who travel from stations west of Middletown, N. Y.

You can buy the Train-Cab coupon with your rail ticket at the ticket office or from the conductor on any through train and you will find your taxicab awaiting the arrival of your train at Jersey City.

Ask the conductor or ticket agent for details.

### Checking Hand Baggage at Chicago

Passengers arriving Chicago on Erie trains who desire to stay over for a few hours and depart from a station other than Dearborn Station may have their hand baggage transferred to the station from which they depart. A Parmelee Company agent meets all Erie trains upon arrival at Chicago and he will arrange the transfer for you. The bags will be placed in the parcel check room of the station from which you depart. A charge of fifty cents for each hand bag, including the parcel room fee, will be made for the service, except one piece will be checked free when passenger holds through ticket including transfer through Chicago.

## SUGGESTIONS

• **INTERCHANGEABLE SCRIP COUPON TICKETS** issued in \$15.00 and \$30.00 denominations are accepted on trains or at ticket offices in payment of rail passage as well as sleeping and parlor car accommodations, and also as payment for meals in restaurant cars.

• **PREPAID ORDERS.** For the convenience of patrons who do not wish to send money by mail, Erie Railroad ticket agents are prepared to sell prepaid ticket orders for the delivery of transportation, rail and Pullman, from practically all points in the United States, Canada and Mexico. These orders may also include the furnishing of cash.

In emergencies arrangements may be made for the delivery of transportation by telegraph or telephone without charge except when commercial wires are used.

• **BAGGAGE INSURANCE** by the St. Paul Fire & Marine Insurance Co. may be purchased at principal Erie ticket offices. It insures your baggage and personal effects for your entire trip anywhere in the world. Minimum premium twenty-five cents. The ticket agent can give you full particulars.

• **ERIE PLAYING CARDS** are on sale at our ticket offices, excepting in Ohio. Bridge sets one dollar, single decks fifty cents.

• **SPECIAL TOURS AND CONVENTIONS.** Our services are at the disposal of clubs, lodges and other organizations in arranging for trips to conventions and gatherings of all sorts. Concerning fares, train schedules and travel plans, consult or write to any Erie Ticket Agent, or any of the Passenger Department representatives listed on pages 35 to 37 of this folder.

### Time Table Mailing Service

If you would like a copy of this time table each time a new one is issued just drop us a post card and your name will be put on the list. No charge. Address your request to Erie Railroad, Passenger Traffic Dept., Midland Bldg., Cleveland, Ohio.

### THIRTY DAY ROUND TRIPS MOST ECONOMICAL

These excursions go every Tuesday and Saturday from New York City and other Erie stations east of, and including Port Jervis to all stations Youngstown to Chicago.

Similar excursions also operate in the reverse direction—from Chicago, Youngstown and intermediate stations to Port Jervis, New York City and intermediate stations, and also to many Atlantic Seaboard points.

# RAILROAD AND PULLMAN FARES (Pullman Fares Include Surcharge)

For Information Only. Subject to Change Without Notice.

| Between<br>And           | New York      |           |             | Binghamton    |           |             | Buffalo       |           |             | Jamestown     |           |             | Cleveland     |           |             | Chicago       |           |             |
|--------------------------|---------------|-----------|-------------|---------------|-----------|-------------|---------------|-----------|-------------|---------------|-----------|-------------|---------------|-----------|-------------|---------------|-----------|-------------|
|                          | Railroad Fare | Seat Fare | Lower Berth | Railroad Fare | Seat Fare | Lower Berth | Railroad Fare | Seat Fare | Lower Berth | Railroad Fare | Seat Fare | Lower Berth | Railroad Fare | Seat Fare | Lower Berth | Railroad Fare | Seat Fare | Lower Berth |
| Akron..... Ohio          | 20.08         |           | 5.63        | 14.72         | 3.08      | 4.50        | 7.90          |           |             | 6.41          | 1.35      | 3.38        | 3.12          |           |             | 12.71         | 2.25      | 3.75        |
| Binghamton..... N. Y.    | 6.95          | 1.58      | 3.00        |               |           |             | 7.34          | 1.58      | 3.00        | 8.33          | 1.80      | 3.75        | 13.90         | 2.93      | 4.50        | 24.65         |           | 7.50        |
| Bradford..... Pa.        | 14.20         |           | 4.50        | 7.25          | 2.15      | 3.38        | 2.78          |           |             | 1.85          |           |             | 7.42          |           |             | 18.54         |           |             |
| Buffalo..... N. Y.       | 14.29         | 3.00      | 3.75        | 7.34          | 1.58      | 3.00        |               |           |             | 2.44          | .75       |             | 7.45          |           | 3.75        | 17.31         |           |             |
| Callicoon..... N. Y.     | 4.91          | 1.05      | 3.00        | 2.85          | .75       |             | 10.19         | 2.18      | 3.75        | 11.18         | 2.33      | 3.75        | 16.75         | 3.53      | 5.63        | 27.50         |           | 8.25        |
| Cambridge Springs... Pa. | 17.23         |           | 4.50        | 10.28         | 2.18      | 3.75        | 4.40          |           |             | 1.97          | .75       |             | 4.74          | .90       | 3.00        | 16.02         |           | 4.50        |
| Chicago..... Ill.        | 30.70         |           | 9.00        | 24.65         |           | 7.50        | 17.31         |           |             | 16.69         | 3.38      | 4.50        | 14.06         |           |             |               |           |             |
| Cleveland..... Ohio      | 19.55         |           | 5.63        | 13.90         | 2.93      | 4.50        | 7.45          |           |             | 5.66          | 1.35      | 3.38        |               |           |             | 14.06         |           |             |
| Corning..... N. Y.       | 9.65          | 2.18      | 3.00        | 2.70          | .75       |             | 4.64          | .98       | 3.00        | 5.65          | 1.20      | 3.00        | 11.20         | 2.33      | 3.75        | 21.95         |           | 6.38        |
| Corry..... Pa.           | 16.25         | 3.38      | 4.50        | 9.30          | 1.95      | 3.75        | 3.40          |           |             | .99           | .75       |             | 4.74          | 1.13      | 3.00        | 16.02         |           | 4.50        |
| Deposit..... N. Y.       | 6.38          | 1.35      | 3.00        | 1.38          | .75       |             | 8.72          | 1.88      | 3.75        | 9.71          | 2.03      | 3.75        | 15.28         | 3.30      | 4.50        | 26.03         |           | 8.25        |
| Elmira..... N. Y.        | 9.01          | 2.03      | 3.00        | 2.06          | .75       |             | 5.28          | 1.13      | 3.00        | 6.27          | 1.35      | 3.38        | 11.84         | 2.48      | 3.75        | 22.59         |           | 6.38        |
| Gallon..... Ohio         | 22.70         |           | 6.38        | 16.77         | 3.68      | 5.63        | 9.43          |           |             | 8.53          | 1.95      | 3.75        | 6.09          |           |             | 10.11         | 1.73      | 3.75        |
| Hancock..... N. Y.       | 5.91          | 1.28      | 3.00        | 1.85          | .75       |             | 9.19          | 1.95      | 3.75        | 10.18         | 2.18      | 3.75        | 15.75         | 3.38      | 4.50        | 26.50         |           | 8.25        |
| Hornell..... N. Y.       | 11.12         | 2.48      | 3.75        | 4.17          | .90       |             | 3.34          | .75       |             | 4.16          | .90       |             | 9.73          | 2.10      | 3.75        | 20.65         |           | 5.63        |
| Huntington..... Ind.     | 27.16         |           | 7.50        | 21.51         |           | 6.38        | 14.33         |           |             | 13.27         | 3.00      | 3.75        | 11.25         |           |             | 5.14          | 1.05      |             |
| Jamestown..... N. Y.     | 15.28         | 3.30      | 4.50        | 8.33          | 1.80      | 3.75        | 2.44          | .75       |             |               |           |             | 5.66          | 1.35      | 3.38        | 16.69         |           | 4.50        |
| Kent..... Ohio           | 19.72         |           | 5.63        | 14.36         | 3.00      | 4.50        | 7.90          |           |             | 6.05          | 1.28      | 3.38        | 2.76          |           |             | 13.07         | 2.40      | 3.75        |
| Lackawaxen..... Pa.      | 4.00          | .83       | 3.00        | 3.76          | .83       |             | 11.10         | 2.40      | 3.75        | 12.09         | 2.55      | 3.75        | 17.66         | 3.75      | 5.63        | 28.41         |           | 8.25        |
| Lima..... Ohio           | 24.69         |           | 7.50        | 19.04         |           | 5.63        | 11.70         |           |             | 10.80         | 2.48      | 3.75        | 8.64          |           |             | 7.48          | 1.50      | 3.00        |
| Maasfield..... Ohio      | 22.14         |           | 6.38        | 16.77         | 3.53      | 5.63        | 9.43          |           |             | 8.53          | 1.88      | 3.75        | 5.54          |           |             | 10.56         | 1.88      | 3.75        |
| Marion..... Ohio         | 23.44         |           | 6.38        | 17.53         | 3.75      | 5.63        | 10.19         |           |             | 9.29          | 2.10      | 3.75        | 6.84          |           |             | 9.61          | 1.50      | 3.75        |
| Meadville..... Pa.       | 17.75         | 3.53      | 4.50        | 10.80         | 2.25      | 3.75        | 4.90          |           |             | 2.49          | .75       |             | 4.39          | .83       | 3.00        | 15.67         |           | 4.50        |
| Middletown..... N. Y.    | 2.43          | .75       | 3.00        | 5.33          | 1.13      | 3.00        | 12.67         | 2.70      | 3.75        | 13.66         | 2.85      | 4.50        | 19.23         |           | 5.63        | 29.98         |           | 9.00        |
| New York..... N. Y.      |               |           |             | 6.95          | 1.58      | 3.00        | 14.29         | 3.00      | 3.75        | 15.28         | 3.30      | 4.50        | 19.55         |           | 5.63        | 30.70         |           | 9.00        |
| Olean..... N. Y.         | 13.40         | 2.93      | 3.75        | 6.45          | 1.35      | 3.00        | 2.64          |           |             | 1.88          | .75       |             | 7.45          | 1.73      | 3.75        | 18.57         |           | 5.63        |
| Owego..... N. Y.         | 7.71          | 1.73      | 3.00        | .76           | .75       |             | 6.59          | 1.43      | 3.00        | 7.58          | 1.58      | 3.38        | 13.15         | 2.78      | 3.75        | 23.90         |           | 7.50        |
| Pittsburgh..... Pa.      |               |           |             | 14.79         |           |             |               |           |             | 6.47          |           |             | 4.73          | .75       | 3.00        | 16.88         |           |             |
| Port Jervis..... N. Y.   | 3.20          | .75       | 3.00        | 4.58          | .98       | 3.00        | 11.92         | 2.55      | 3.75        | 12.91         | 2.70      | 4.13        | 18.48         |           | 5.63        | 29.23         |           | 8.63        |
| Salamanca..... N. Y.     | 14.05         | 3.00      | 3.75        | 7.10          | 1.50      | 3.00        | 2.20          |           |             | 1.23          | .75       |             | 6.80          | 1.58      | 3.75        | 17.92         |           | 5.63        |
| Sharon..... Pa.          | 18.16         |           | 4.50        | 12.31         | 2.63      | 3.75        | 5.89          |           |             | 4.00          | .90       |             | 2.88          | .75       |             | 15.13         | 2.78      | 4.50        |
| Warren..... Ohio         | 18.67         |           | 4.50        | 13.31         | 2.85      | 3.75        | 6.89          |           |             | 5.00          | 1.13      |             | 1.90          | .75       |             | 14.17         | 2.63      | 4.50        |
| Waverly..... N. Y.       | 8.37          | 1.88      | 3.00        | 1.42          | .75       |             | 5.92          | 1.28      | 3.00        | 6.91          | 1.43      | 3.38        | 12.48         | 2.63      | 3.75        | 23.23         |           | 6.38        |
| Wellsville..... N. Y.    | 12.06         | 2.70      | 3.75        | 5.12          | 1.13      | 3.00        | 3.89          |           |             | 3.23          | .75       |             | 8.80          | 2.03      | 3.75        | 19.92         |           | 5.63        |
| Youngstown..... Ohio     | 18.16         |           | 4.50        | 12.80         | 2.70      | 3.75        | 6.40          |           |             | 4.49          | .98       |             | 2.39          | .75       |             | 14.62         | 2.63      | 4.50        |

## RATES FOR UPPER BERTH, SECTION, DRAWING ROOM OR COMPARTMENT IN SLEEPING CARS

(Including Surcharge)

| Where Lower Berth Rate Is | Upper Berth Rate Will Be | Section Rate For One Passenger | Section Rate For Two Passengers | Drawing Room Rate Will Be | Compartment Rate Will Be |
|---------------------------|--------------------------|--------------------------------|---------------------------------|---------------------------|--------------------------|
| \$3.00                    | \$2.40                   | \$ 4.20                        | \$ 4.80                         | \$10.50                   | \$ 9.00                  |
| 3.38                      | 2.70                     | 4.73                           | 5.40                            | 12.00                     | 9.75                     |
| 3.75                      | 3.00                     | 5.25                           | 6.00                            | 13.50                     | 10.50                    |
| 4.13                      | 3.30                     | 5.78                           | 6.60                            | 15.00                     | 12.00                    |
| 4.50                      | 3.60                     | 6.30                           | 7.20                            | 16.50                     | 12.75                    |
| 4.88                      | 3.90                     | 6.83                           | 7.80                            | 18.00                     | 14.25                    |
| 5.25                      | 4.20                     | 7.35                           | 8.40                            | 19.50                     | 15.00                    |
| 5.63                      | 4.50                     | 7.88                           | 9.00                            | 21.00                     | 15.75                    |
| 6.00                      | 4.80                     | 8.40                           | 9.60                            | 21.00                     | 17.25                    |
| 6.38                      | 5.10                     | 8.93                           | 10.20                           | 22.50                     | 18.00                    |
| 6.75                      | 5.40                     | 9.45                           | 10.80                           | 24.00                     | 19.50                    |
| 7.50                      | 6.00                     | 10.50                          | 12.00                           | 27.00                     | 21.00                    |
| 7.88                      | 6.30                     | 11.03                          | 12.60                           | 28.50                     | 22.50                    |
| 8.25                      | 6.60                     | 11.55                          | 13.20                           | 30.00                     | 23.25                    |
| 8.63                      | 6.90                     | 12.08                          | 13.80                           | 31.50                     | 24.75                    |
| 9.00                      | 7.20                     | 12.60                          | 14.40                           | 31.50                     | 25.50                    |

Note:—▲For section occupied by two passengers but with lower berth only prepared for night service.

### Minimum Number of Railroad Tickets Required for Exclusive Occupancy of Sections, Drawing Rooms or Compartments in Sleeping Cars and Drawing Room in Parlor Cars

|                                 |                            |                                  |                             |
|---------------------------------|----------------------------|----------------------------------|-----------------------------|
| Section.....                    | One Adult Railroad Ticket. | Drawing Room, Berth Service..... | Two Adult Railroad Tickets. |
| Compartment, Berth Service..... | One and One-half " " "     | Drawing Room, Seat Service.....  | Two " " "                   |
| Compartment, Seat Service.....  | One and One-half " " "     | Drawing Room in Parlor Cars..... | Two " " "                   |

## GENERAL INFORMATION

**STANDARD OF TIME**—Erie Lines east of and including Lima, Ohio, are operated by Eastern Standard Time, Lines west of Lima, Ohio, by Central Standard Time. 12.01 Midnight to 12.00 Noon is indicated by light-faced type. 12.01 Noon to 12.00 Midnight is indicated by heavy-faced type.

**TRAINS WILL NOT BE HELD** for ferries from New York between hours of 5:00 P. M. and 6:30 P. M. Eastern Standard Time.

**HOLIDAYS**—The term "Holidays" (unless covered by special note) refers to the observance of New Year's Day, Lincoln's Birthday, Washington's Birthday, Memorial Day, Independence Day, Labor Day, Thanksgiving Day and Christmas Day.

**THIS COMPANY IS NOT RESPONSIBLE FOR ERRORS** in time tables, inconvenience or damage resulting from delayed trains or failure to make connections; schedules are subject to change without notice.

**FARE PAID ON TRAINS**—The lawful fare when paid to conductor is ten (10) cents in excess of the one-way ticket fare. Conductors cannot deviate therefrom. Buy ticket before boarding trains and avoid payment of this extra fare.

**CHILDREN** under five years of age are carried free when accompanied by parent or guardian; five years and under twelve, half fare, twelve years of age and over, full fare.

**ADJUSTMENT OF FARES**—Should any misunderstanding arise with conductors or agents, pay the fare required, take receipt and communicate with General Passenger Agent, Midland Bldg., Cleveland, Ohio.

**SLEEPING AND PARLOR CAR RESERVATIONS**—Space reserved by telegraph or telephone within city limit will be held until:

- 5:00 P. M. day prior to departure of trains leaving before noon next day.
- 10:00 A. M. day of departure for trains leaving between noon and 5:00 P. M.
- 2:00 P. M. day of departure for trains leaving after 5:00 P. M.

When application is by wire or letter from a point outside of city limit, space will be held until fifteen minutes of train time.

**BAGGAGE TO BE CHECKED** should be delivered at station at least thirty minutes before train time.

**BAGGAGE DELIVERY IN NEW YORK CITY**—All baggage checked to New York City will be sent to the West 23rd Street Station unless passenger specifies Chambers Street Station at time of checking.

Baggage delivery service in New York will be performed by the Railway Express Agency.

**HAND-BAGGAGE** in Pullman Cars is restricted to what can be conveniently placed in the berth, seat or other accommodations purchased by the passenger.

**CHICAGO PASSENGER AND BAGGAGE TRANSFER** is performed by the Parmelee Company. A uniformed agent meets all incoming trains of the Erie Railroad on arrival at Dearborn Station.

**ARTICLES LOST ON TRAINS** or left in waiting rooms or stations, owners should apply to Information Bureau, Jersey City Depot, or address General Passenger Agent, Midland Bldg., Cleveland, Ohio, giving full description of the property, stating date of loss and number of train.



## REFERENCE MARKS AND NOTES

**IMPORTANT**—When trains are indicated as stopping conditionally, Conductors should be notified of intention to leave train and Station Agent notified of intention to board train.

- § Runs Sundays only.  
 † Station restaurant.  
 \* Runs daily.  
 † Runs daily except Sunday.  
 C Stops on Saturday only.  
 † Stops to discharge passengers.  
 ‡ Will not operate from these stations on Monday morning.  
 † Stops on Holidays only.  
 f Stops on signal to receive and discharge passengers.  
 k Runs Saturdays only.  
 M. C. Motor Car Service.  
 N. B. No Baggage carried.
- ab Stops Saturday and Sunday only to discharge passengers.  
 ac Stops Dalton (5.53 A. M.) to discharge passengers from Hornell and east and on signal to receive passengers.  
 ad Via Allegany Motor Coach Co., Inc. bus between Salamanca and Bradford.  
 ae Train 5 will stop on signal at Monroe (9.00 P. M.) to receive passengers for Jamestown and west; and to discharge passengers from New York.  
 ag Stops Saturdays only to discharge passengers.  
 ah Stops on signal Andover (9.50 A. M.) to discharge passengers from New York.  
 as On Sundays only, Train 27 will leave West 23rd Street at (2.05 P. M.).  
 at On Sundays only, Train 28 will arrive West 23rd Street at (5.50 P. M.).  
 av On Sundays only Train 6 will arrive West 23rd Street at (9.30 A. M.)  
 ax Stops to discharge passengers from east of Hammond.  
 bc Stops on signal (8.14 P. M.) to receive passengers.  
 be Stops Hancock (10.59 P. M.) to discharge passengers from Binghamton and west.  
 bg Stops on signal, Friendship (10.32 A. M.); Cuba (10.45 A. M.) to discharge passengers from New York.  
 bh Stops Cuba (6.26 P. M.) to discharge passengers from Elmira and east and to receive for Jamestown and west.  
 bt No Agent on duty. No baggage handled on Trains 5 and 6 to or from Castile.  
 ca Train 27 stops on Sundays and Holidays only Rutherford (3.14 P. M.).  
 cb Stops on signal Passaic (8.05 P. M.), Ridgewood (8.24 P. M.), to receive passengers for Jamestown and west.  
 cg Stops on signal (11.11 P. M.) to discharge passengers from Binghamton and west.  
 cn Stops on signal Union City (8.57 P. M.); Cambridge Springs (9.17 P. M.) to discharge passengers from Jamestown and east and to receive for Youngstown and west.  
 cp Stops on signal (10.35 P. M.) to receive passengers for east of Hammond.  
 ct Tickets sold and baggage checked through to Lake Huntington.  
 cx Stops to discharge passengers from New York.  
 cy Stops to discharge passengers from Cleveland and beyond.  
 da If no passengers for this connection, bus will not operate Narrowsburg to Honesdale.  
 dc Stops at Solon and Aurora on Saturdays only to discharge passengers from Cleveland.  
 de Stops on signal Barberton (5.13 P. M.) to receive passengers for Mansfield and west.
- dg Stops on signal at Warren (4.40 A. M.) to discharge passengers from Chicago and to receive passengers for Jamestown and east.  
 dh Via Dodaro Bus Co. between Salamanca and Bradford.  
 dt No baggage carried on this train east of Hornell. Baggage will be handled on following train.  
 du Coaches only, west of Youngstown.  
 dv Stops on signal (1.23 P. M.) to receive passengers for Tuxedo and west.  
 dw Stops Cuba (9.52 A. M.) to discharge passengers from Jamestown and west and to receive for Elmira and east.  
 dx Stops Ridgewood (6.43 P. M.), Passaic (6.59 P. M.) to discharge passengers from Goshen and west.  
 dy Stops on signal Cambridge Springs (7.08 A. M.), Union City (7.28 A. M.), to discharge passengers from Chicago and to receive for Binghamton and east.  
 dz Stops Ridgewood (8.03 A. M.), Paterson (8.12 A. M.), Passaic (8.19 A. M.), to discharge passengers from Goshen and west.  
 ea Train 61 has a connection from Newark Saturday only, except Holidays.  
 ec Bus service between New Castle and New Castle (Washington St.).  
 ed Bus service between Wampum and Ellwood City.  
 eg On Holidays Train 60 has no connection for Newark.  
 en Stops on signal Passaic (9.30 A. M.), Paterson (9.37 A. M.), Ridgewood (9.47 A. M.) to receive passengers.  
 ep Stops on Saturdays only (12.07 P. M.).  
 er Stops (5.39 A. M.) to discharge passengers from Cleveland and west and on signal to receive for Pittsburgh.  
 es Stops on signal Sundays only to discharge passengers.  
 ev Stops on signal to receive passengers for Cleveland and beyond.  
 ew Stops (11.46 A. M.) to discharge from Jamestown and east and west of Akron.  
 ez On Sundays Train 6 has no connection for Newark.  
 gc Stops (11.29 A. M.) to discharge passengers from east of Avon.  
 gt In connection with the bus service the Erie Railroad Company acts as agent only and is not responsible beyond its own line, except as such responsibility may be imposed by law with respect to baggage.  
 ha Stops at Narrowsburg (10.55 P. M.) Fridays only to discharge passengers from New York.  
 he Stops Alden (10.24 P. M.) to discharge passengers from Buffalo and on signal to receive passengers.  
 hm On Saturdays connection for Train 69 leaves Newark at (6.16 P. M.) on Holidays leaves Newark (6.04 P. M.).  
 hn On Sundays Train 2 has no connection for Newark.  
 hr Stops (4.17 P. M.) to discharge passengers from Binghamton and west and on signal to receive for Port Jervis and east.  
 ht Trains 5-557 and 560-6 carry through sleeping cars between Bradford and New York.  
 hu Stops to discharge passengers.  
 mh Stops on signal, Sundays only, to discharge passengers from New York.  
 mr Stops, except Sundays and Holidays, to discharge passengers.  
 mt Train 7 will stop at Middletown Mondays only (1.56 A. M.) to discharge passengers.

## STOP-OVER PRIVILEGES

### Niagara Falls

Passengers holding tickets reading "via Erie Railroad" from or through Elmira to or through Youngstown or vice versa may exercise their privilege of going by way of Buffalo and stopping over for as long as ten days at Niagara Falls, but not beyond the final limit of their ticket. Upon request, the Erie Ticket Agent at Buffalo will issue without charge a round trip ticket between Buffalo and Niagara Falls. Frequent service via International Ry. (Electric Line) direct from Buffalo Terminal.

### Other Points

On local one-way tickets sold at regular fares, local round-trip tickets sold at double the one-way fares, All-Year, Summer and Winter Tourist and Convention Tickets, stop-overs will be allowed on going and return trips within final limit of tickets at any Erie Railroad Station en route upon notice to conductor and without deposit of ticket.

## WESTERN UNION

**TELEGRAMS AND CABLEGRAMS** accepted at all telegraph offices of this railroad.

**FAST TELEGRAMS**—For urgent business or social messages, announcements of arrivals and departures and reservations.

**DAY LETTERS**—50 words for 1½ times the cost of a 10 word telegram.

**NIGHT LETTERS**—50 words for the cost of a 10 word telegram.

**CABLE NIGHT LETTERS**—An inexpensive service.

## REDUCED ROUND-TRIP FARES EVERY WEEK-END

Between any two points on the Erie Railroad and its connections East of Chicago and St. Louis.

Consult Erie Ticket Agents

# ERIE RAILROAD COMPANY

GENERAL OFFICES, MIDLAND BUILDING, CLEVELAND. Telephone Cherry 8400.  
 GENERAL OFFICES, HUDSON TERMINAL, 50 CHURCH STREET, NEW YORK. Telephone Cortlandt 7-9200.  
 GENERAL OFFICES, UTILITIES BUILDING, 327 SOUTH LA SALLE STREET, CHICAGO. Telephone Harrison 4160.

## TRAFFIC AND DEVELOPMENT DEPARTMENTS

### TRAFFIC

D. L. GRAY, Vice-President, Cleveland  
 CARL HOWE, Vice-President, Chicago

G. C. MANNING, Assistant Vice-President, New York.

C. L. CHAPMAN, Assistant to Vice-President, Cleveland.

### PASSENGER

C. C. HOWARD, Passenger Traffic Manager, Cleveland.  
 R. B. ROGERS, General Passenger Agent, Cleveland.  
 H. T. HARLOW, General Passenger Agent, Chicago.  
 T. R. PATTON, Assistant General Passenger Agent, Youngstown.

F. A. WALDRON, Assistant General Passenger Agent, New York.  
 ALFRED FYNN, Assistant General Passenger Agent, Chicago.  
 E. J. HAWERKOST, General Western Passenger Agent, Chicago.  
 H. M. WADE, General Baggage, Mail and Express Agent, New York.

### FREIGHT

L. B. BURFORD, Freight Traffic Manager, Cleveland.  
 L. R. KNAPP, Assistant Freight Traffic Manager, Cleveland.  
 O. M. MEYNE, General Freight Agent, Cleveland.  
 W. H. STADELMAN, Eastern Freight Traffic Manager, New York.  
 G. R. WHEELER, General Freight Agent, New York.  
 E. M. KAIN, Assistant General Freight Agent, Buffalo.  
 H. W. VON WILLER, Assistant General Freight Agent, Pittsburgh.

F. G. LANTZ, Freight Traffic Manager, Chicago.  
 W. V. KENNEDY, Assistant Freight Traffic Manager, Chicago.  
 A. BLAUDEL, General Freight Agent, Chicago.  
 J. G. HILL, General Freight Agent, Chicago.  
 O. R. DAVIES, Assistant General Freight Agent, Cincinnati.  
 W. H. KOCH, Assistant General Freight Agent, Detroit.

### FOREIGN FREIGHT TRAFFIC

T. E. McANDREWS, Foreign Freight Traffic Manager, New York.  
 A. E. PETERSON, Foreign Freight Agent, Chicago  
 EUROPEAN GENERAL AGENTS, Sutherland International Despatch, Ltd.,  
 London, England.

### LIVE STOCK

H. B. ROGERS, General Live Stock Agent, East Buffalo, N. Y.

### GRAIN TRAFFIC

T. W. KANE, Grain Agent, New York.

### PERISHABLE FREIGHT TRAFFIC

R. E. O'GRADY, Manager, Pier 20, N. R., New York.

### COAL AND COKE

G. H. REINBRECHT, Coal Traffic Manager, Cleveland.  
 J. A. FERGUSON, Coal Freight Agent, Cleveland.  
 F. D. AUSTIN, General Coal and Coke Agent, Chicago.

### DAIRY

W. L. KENDALL, General Dairy Agent, Chicago, Ill.

### DEVELOPMENT

L. L. WHITE, Vice-President and Assistant to President, Cleveland.

GEO. F. WESTON, Industrial Commissioner, Cleveland.  
 V. M. WELLMAN, Industrial Agent, New York.

F. M. AMERICA, Editor and Mgr. Erie R. R. Magazine, Cleveland.

## TRAFFIC DEPARTMENT REPRESENTATIVES

Akron, O.—80 East Exchange St.  
 (Telephone Hemlock 8194-8195)  
 J. P. CLARK, Division Passenger Agt.  
 C. E. KING, General Agent.

Albany, N. Y.—Room 2, D. & H. Bldg.  
 (Telephone 4-6051)  
 C. F. WHADCOCK, General Agent.

Antwerp, Belgium—24 Quai Jardaens  
 L. E. STEINMANN, Agent.

Atlanta, Ga.—1419-20 Healy Bldg.  
 (Telephone Walnut 2135)  
 S. S. TORREY, General Agent.

Baltimore, Md.—1525 Baltimore Trust Bldg.  
 (Telephone Plaza 1373)  
 W. J. MURRAY, General Agent.

Birmingham, Ala.—1007 Watts Bldg.  
 (Telephone 3-1327)  
 CHARLES G. ANDREWS, General Agent.

Boston, Mass.—80 Federal Street.  
 (Telephone Liberty 7725-7726)  
 E. J. DEAN, N. E. F. & P. A.

Bradford, Pa.—Erie Station.  
 (Telephone 3413)  
 J. C. MOFFATT, General Agent.

Bremen, Germany—Holzpoorte 10.  
 CARL PRIOR, Agent.

Buffalo, N. Y.—6 North Division St.  
 (Telephone Washington 4300)  
 J. A. DOLAN, G. A. P. D.

Chicago, Ill.—327 South La Salle St.  
 (Telephone Harrison 4160)  
 C. D. BURLINGHAM, Trav. Pass. Agt.  
 C. D. TURNER, General Agent.

Chicago, Ill.—327 South La Salle St.  
 (Telephone Harrison 4160)  
 C. D. BURLINGHAM, Trav. Pass. Agt.  
 C. D. TURNER, General Agent.

Cincinnati, O.—503 Gwynne Bldg.  
 (Telephone Main 3420-3421)  
 O. R. DAVIES, Asst. General Freight Agt.

Cleveland, O.—Midland Bldg.  
 (Telephone Cherry 8400)  
 J. M. SKAHILL, Division Freight Agt.

Cleveland, O.—3063 East 9th St.  
 (Telephone Cherry 8400)  
 A. F. WAINSCOTT, City Passenger Agent.

Columbus, O.—Rooms 309-310 Atlas  
 Bldg., 8 East Long Street.  
 (Telephone Adams 7331)  
 F. W. FISCHER, General Agent.

Dallas, Tex.—1112 Tower Petroleum Bldg.  
 1905 Elm St.  
 (Telephone 2-7352)  
 T. J. MARTIN, General Agent.

Dayton, O.—509-512 Miami Savings Bldg.  
 (Telephone Adams 8481)  
 W. P. KROMPHARDT, Div. Frt. Agt.

Des Moines, Ia.—Hubbell Bldg.,  
 904 Walnut Street.  
 (Telephone 4-0018)  
 C. L. COX, General Agent.

Detroit, Mich.—Rooms 2-102 and 2-103  
 General Motors Bldg.  
 (Telephone Madison 2360-2361)  
 W. H. KOCH, Assistant General Frt. Agt.

Elmira, N. Y.—Erie Station.  
 (Telephone 2-1621)  
 J. W. O'HARA, Division Passenger Agt.

Elmira, N. Y.—Erie Station.  
 (Telephone 2-0377)  
 A. W. MICHELBAUGH, Division Freight  
 Agent.

Glasgow, Scotland—90 Mitchell St.  
 W. S. THOMSON, General Agent.

Hamburg, Ger'y—Ferdinandstrasse 38-44  
 ERICK GRIEBEL, General Agent.

Huntington, Ind.—Erie Station.  
 (Telephone 743)  
 F. C. MCCARTHY, Division Freight Agt.

Indianapolis, Ind.—148 No. Meridian St.  
 (Telephone Lincoln 2088)  
 T. J. WILLIAMSON, General Agent.

Jamestown, N. Y.—Erie Station  
 F. L. COLLINS, Div. Frt. Agt.  
 J. A. CLEVELAND, General Agent.

Jersey City, N. J.—Erie Station  
 (Telephone Delaware 8-6400)  
 P. F. ARROYO, G. A. P. D.

Kansas City, Mo.—Rooms 326-7 Railway  
 Exchange Bldg., 7th and Walnut Streets.  
 (Telephone Victor 6328)  
 N. C. FRICK, General Agent.

Liverpool, Eng.—17 Brunswick St.  
 A. G. TAYLOR, General Agent.

London, E. C. 3, Eng.—4 Billiter St.  
 PETER BUSWELL, General Agent.  
 D. S. DEANS, Genl. Continental Agt.

Los Angeles, Cal.—108 West 6th Street.  
 (Telephone Vandike 6542)  
 C. W. SEELY, General Agt. Pass. Dept.  
 L. A. DWELLE, General Agent.

Marion, O.—Terminal Building  
 (Telephone 2657)  
 A. R. TENNIS, Division Freight Agent.

Memphis, Tenn.—1628-9 Exchange  
 Bldg., Madison & Second Sts.  
 (Telephone 6-5577)  
 E. L. PARR, General Agent.

Milwaukee, Wis.—1015 Majestic Bldg.,  
 231 Wisconsin Street.  
 (Telephone Marquette 5555-5556)  
 H. A. WILSON, General Agent.

Minneapolis, Minn.—125 Third Street,  
 South.  
 (Telephone Main 3604)  
 D. R. THOMPSON, General Agent.

Newark, N. J.—1801-3 Military Park  
 Bldg., 60 Park Place.  
 (Telephone Market 2-0525-26-27)  
 A. R. WALTON, General Agent.

New Haven, Conn.—Room 512 Roger  
 Sherman Bldg.  
 (Telephone 5-7937)  
 G. W. MADSON, General Agent.

New Orleans, La.—Rooms 1417 Whitney Bldg.  
 (Telephone Main 6607)  
 D. C. KELSEY, General Agent.

New York, N. Y.—8 West 40th Street.  
 (Telephone Pennsylvania 6-0931)  
 J. F. WILD, G. A. P. D.

New York, N. Y.—8 West 40th Street.  
 (Telephone Pennsylvania 6-0931)  
 A. G. OLDENQUIST, City Pass. Agt.  
 W. G. TEDFORD, City Passenger Agent.

New York, N. Y.—8 West 40th Street.  
 (Telephone Cortlandt 7-9200)  
 E. W. VAIL, General Eastern Frt. Agent.  
 J. G. VREELAND, Division Freight Agent.

Olean, N. Y.—Erie Station.  
 (Telephone 7411)  
 J. M. HAND, Traveling Freight Agent.

Omaha, Neb.—1319 Farnam St.  
 (Telephone Jackson 4866)  
 C. V. HARROW, General Agent.

Peoria, Ill.—920 Jefferson Building, Cor  
 South Jefferson & Fulton Streets.  
 (Telephone 8007)  
 E. T. OLANDER, General Agent.

Peoria, Ill.—920 Jefferson Building, Cor  
 South Jefferson & Fulton Streets.  
 (Telephone 8007)  
 E. T. OLANDER, General Agent.

Philadelphia, Pa.—1009-10 Finance Bldg.  
 (Telephone Rittenhouse 8975-8976)  
 H. T. YOUNG, General Agent.

Pittsburgh, Pa.—Gulf Building.  
 (Telephone Grant 4831-2-3)  
 H. W. VON WILLER, A. G. F. A.

Portland, Ore.—Room 421 Pacific Bldg.,  
 306 Yamhill St.  
 (Telephone Beacon 3706)  
 J. A. RUSSELL, General Agent.

Rochester, N. Y.—Erie Station.  
 (Telephone Main 2826)  
 B. C. WEDD, Division Freight Agent.

Rotterdam Holland—N. Binneweg 474-A  
 H. VAN KRIEKEN, Agent.

San Francisco, Cal.—681 Market St.  
 (Telephone Sutter 3875)  
 J. A. LLOYD, General Agent.

St. Louis, Mo.—Rooms 906-7 Missouri  
 Pacific Building, 1218 Olive Blvd.  
 (Telephone Chestnut 7723-7724)  
 G. F. DANIELS, General Agent.

St. Paul, Minn.—336 Robert St.  
 (Telephone Cedar 5912)  
 C. R. PETRY, General Agent.

Scranton, Pa.—Erie Station.  
 (Telephone 5203)  
 G. A. LAMB, Division Freight Agent.

Seattle, Wash.—1116-7 White Bldg.,  
 1338 Fourth Ave.  
 (Telephone Elliot 4834)  
 W. R. SIBLEY, General Agent.

Springfield, O.—516 First National Bank  
 Building.  
 (Telephone Center 1178)  
 T. J. FLYNN, General Agent.

Toledo, O.—342 South Erie Street.  
 (Telephone Main 3816)  
 H. J. SPANGENBURG, General Agent.

Toronto, Ont.—89 Yonge Street.  
 (Telephone Elgin 4077)  
 E. P. MORRILL, General Agent.

Tulsa, Okla.—317-18 Philcade Bldg.  
 (Telephone 3-8613)  
 A. W. MITCHELL, General Agent.

Youngstown, O.—Terminal Building.  
 (Telephone 41101)  
 C. A. STOEBER, Division Frt. Agt.

## ERIE TICKET OFFICES AND PASSENGER STATIONS IN PRINCIPAL CITIES

**Akron, O.**—Union Station.  
(Telephone Jefferson 9141)  
B. L. BENDER, Ticket Agent.

**Binghamton, N. Y.**—Erie Station.  
(Telephone 4-3251)  
J. H. WEBSTER, Ticket Agent.

**Bradford, Pa.**—Erie Station.  
(Telephone 3718)  
A. J. SULLIVAN, Ticket Agent.

**Brooklyn, N. Y.**—City Ticket Office.  
155 Pierrepont St.  
(Telephone Triangle 5-7440)  
W. A. MORRISON, Ticket Agent.

**Buffalo, N. Y.**—City Ticket Office.  
6 North Division St.  
(Telephone Washington 4300)  
J. E. MCINNIS, Ticket Agent.  
Station Ticket Office  
(Lehigh Valley Terminal)  
Main and Scott Streets  
(Telephone Washington 4300)  
A. L. SEITZ, Ticket Agent.

**Chicago, Ill.**—City Ticket Office. 163-  
165 West Jackson Blvd.  
(Telephone Harrison 4160)  
C. F. KUNDEL, Ticket Agent.  
Hotel Ticket Offices—  
Congress, Morrison, Sherman, Stevens,  
Palmer House, Merchandise Mart.  
(Telephone Harrison 2203)  
GEORGE M. NEWHART, Ticket Agent.

**Dearborn Station.**  
(Telephone Harrison 9830)  
H. S. BARE, Ticket Agent.

**Cleveland, O.**—City Ticket Office.  
2063 East 9th St.  
(Telephone Cherry 8400)  
CASPER J. MILLER, Ticket Agent.

**Erie Station.**  
(Telephone Cherry 8400)  
G. W. GULICK, Ticket Agent.

**Elmira, N. Y.**—Erie Station.  
(Telephone 2-0380)  
E. J. STEELE, Ticket Agent.

**Hornell, N. Y.**—Erie Station.  
(Telephone 680)  
R. L. SMITH, Ticket Agent.

**Huntington, Ind.**—Erie Station.  
(Telephone 140)  
O. M. BELL, Ticket Agent.

**Jamestown, N. Y.**—Erie Station.  
(Telephone 6076)  
FRANK PRIEST, Ticket Agent.

**Jersey City, N. J.**—Erie Station.  
(Telephone Delaware 8-6400)  
G. B. IRVING, Ticket Agent.

**Mansfield, O.**—Erie Station.  
(Telephone Canal 1423)  
J. W. GILKERSON, Ticket Agent.

**Marion, O.**—Erie Station.  
(Telephone 2399)  
L. E. NEBERGALL, Ticket Agent.

**Meadville, Pa.**—Erie Station.  
(Telephone 1212)  
O. L. ENOS, Ticket Agent.

**Middletown, N. Y.**—Erie Station.  
(Telephone 3303)  
J. H. DIMKE, Ticket Agent.

**Newark, N. J.**—Erie Station.  
(Telephone Humboldt 2-0600)  
G. J. MCMICHAEL, Ticket Agent.

**New York, N. Y.**—City Ticket Office.  
8 West 40th Street.  
(Telephone Pennsylvania 6-0933)  
F. H. RICE, Ticket Agent.

**West 23rd Street Station.**  
(Telephone Chelsea 3-0780)  
C. H. PORTER, Ticket Agent.

**Chambers Street Station.**  
(Telephone Barclay 7-6500)  
T. I. NEWMAN, Ticket Agent.

**17 John Street.** (Telephone Cortland  
7-6430 and 7-6431)  
H. T. JAMES, Ticket Agent.

**Olean, N. Y.**—Erie Station.  
(Telephone 4343)  
J. F. MITCHELL, Ticket Agent.

**Passaic, N. J.**—Erie Station.  
(Telephone 2-1613)  
O. R. KRECH, Ticket Agent.

**Paterson, N. J.**—Erie Station.  
(Telephone Sherwood 2-3337)  
J. H. GRAF, Ticket Agent.

**Port Jervis, N. Y.**—Erie Station.  
(Telephone 300)  
R. FARRER, Ticket Agent.

**Rochester, N. Y.**—Erie Station.  
(Telephone Main 4378)  
C. J. GILBERT, Ticket Agent.

**Sharon, Pa.**—Erie Station.  
(Telephone 234)  
R. E. TOWNS, Ticket Agent.

**Youngstown, O.**—Erie Station.  
(Telephone 41101)  
M. A. O'NEILL, Ticket Agent.



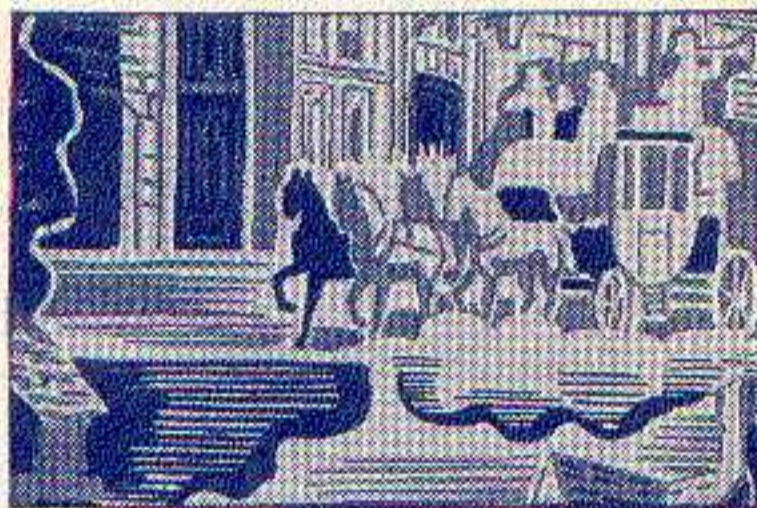
# The Ideal VACATION is in EUROPE

—the romance of lovely villages in the British Isles, the gaiety of Old France, the hospitality and adventure in the lands from the Rhine to the Danube, the splendor of Scandinavia, and the medieval and classic grandeur of the countries which rim the Mediterranean.

SEE  
EUROPE  
NEXT

Consult Ticket Agent for further information

## VISIT GREAT BRITAIN



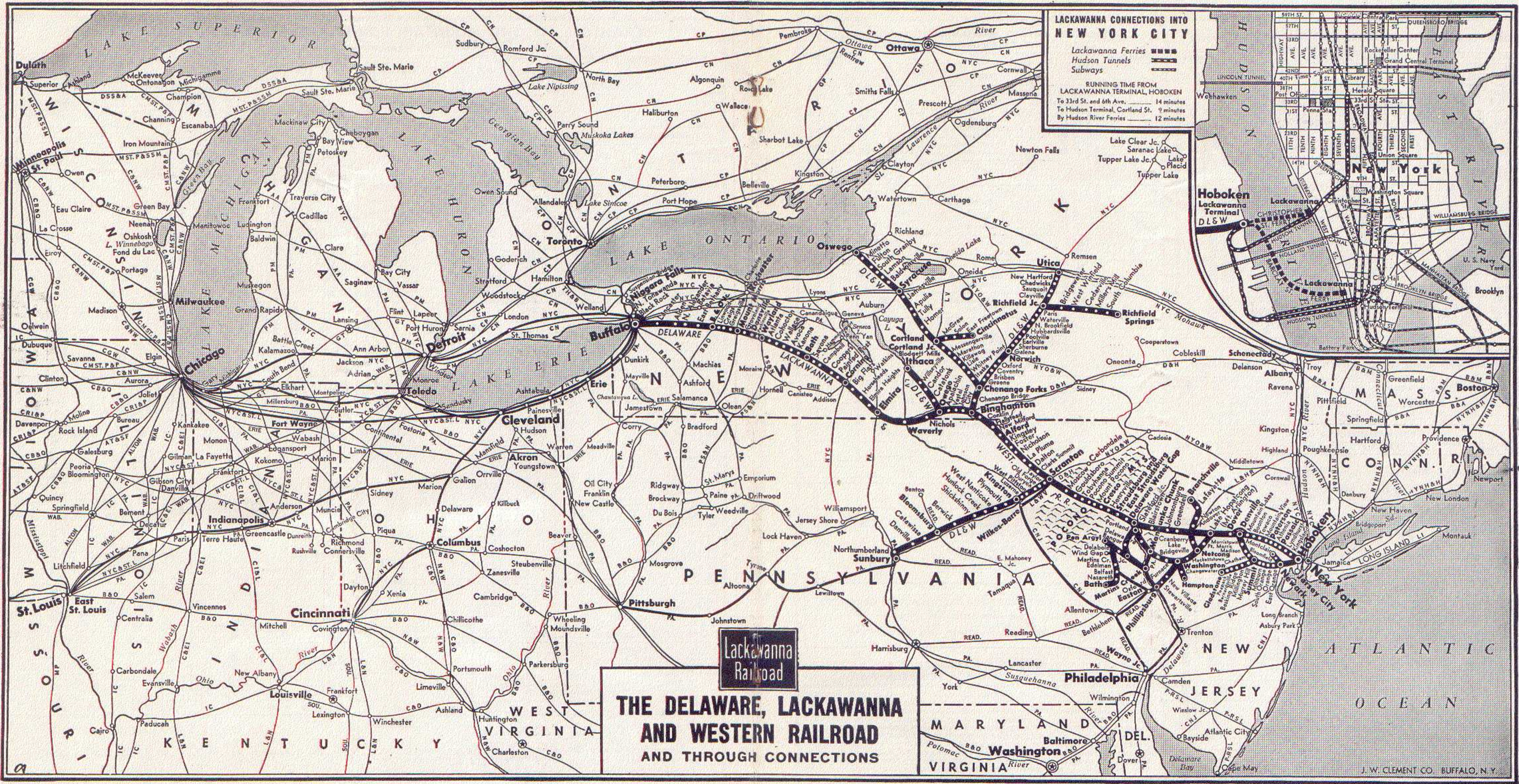
## EASILY AND ECONOMICALLY

☐ England and Scotland have all the ingredients of a perfect trip. History—wondrous cathedrals such as York, Canterbury and Wells—ancient abbeys and castles—the brightest jewels of Europe's treasure chest. Scenery—from the Scottish Highlands and the English Lake District to the Sussex Downs—a picturebook countryside alive with legend and loveliness. Gaiety—shops, theatres, musicales, night clubs, with everything for an "American" good time. Thousand-year-old Oxford and Cambridge are like dreams come true. Wales is a rare land of glorious mountain scenery and unimaginable charm. And all the old dollar values exist in the British Isles, where they speak your own language!

For itineraries, maps, etc., write to Dept. ER

T. R. DESTER, General Traffic Manager  
ASSOCIATED BRITISH RAILWAYS, INC.

551 Fifth Avenue :: :: New York City, N. Y.



**LACKAWANNA CONNECTIONS INTO NEW YORK CITY**

Lackawanna Ferries  
Hudson Tunnels  
Subways

RUNNING TIME FROM LACKAWANNA TERMINAL, HOBOKEN  
To 33rd St. and 6th Ave. .... 14 minutes  
To Hudson Terminal, Corland St. .... 9 minutes  
By Hudson River Ferries ..... 12 minutes

**Lackawanna Railroad**  
**THE DELAWARE, LACKAWANNA AND WESTERN RAILROAD AND THROUGH CONNECTIONS**

**LACKAWANNA RAILROAD** — The Shortest Route between New York — Scranton — Binghamton — Syracuse — Elmira — Buffalo

J. W. CLEMENT CO. BUFFALO, N. Y.