



**ERIE RAILROAD
TIME TABLES**

Daylight Saving Time is shown in this folder

**ERIE RAILROAD
TIME TABLES**

Daylight Saving Time is shown in this folder

The Scenic Route

BETWEEN

NEW YORK • BUFFALO
CLEVELAND • CHICAGO

The Scenic Route

BETWEEN

NEW YORK • BUFFALO
CLEVELAND • CHICAGO

CLEVELAND, OHIO, FEBRUARY 9, 1942

THROUGH TRAIN TRAVEL IS HEAVY

WINTER WEATHER SMALL HANDICAP

Erie Serving Well In the Emergency

Our through trains are experiencing extra heavy travel these days, some of it due to the national emergency. With us it is a matter of pride to do a good transportation job at a time like this.

The Erie Limited, The Midlander, The Atlantic and Pacific Expresses, operating between New York and Chicago; The Lake Cities between New York and Cleveland and The Washingtonian between Cleveland, Washington and Baltimore have all done a job of railroading this winter.

These are air-conditioned trains of excellence. Note the condensed schedules and equipment on pages 9, 10, 17 and 18. The Pullman cars are standard type. Erie's De Luxe Coaches recently put in operation on The Erie Limited, The Midlander, The Washingtonian are a real treat in Coach travel.

The seats of the main salon are of the most modern type. They recline individually at the will of the occupant for complete relaxation, even a good nap if you like. There is wide knee room between your seat and the next one.

Separated from this section is the men's smoking room.

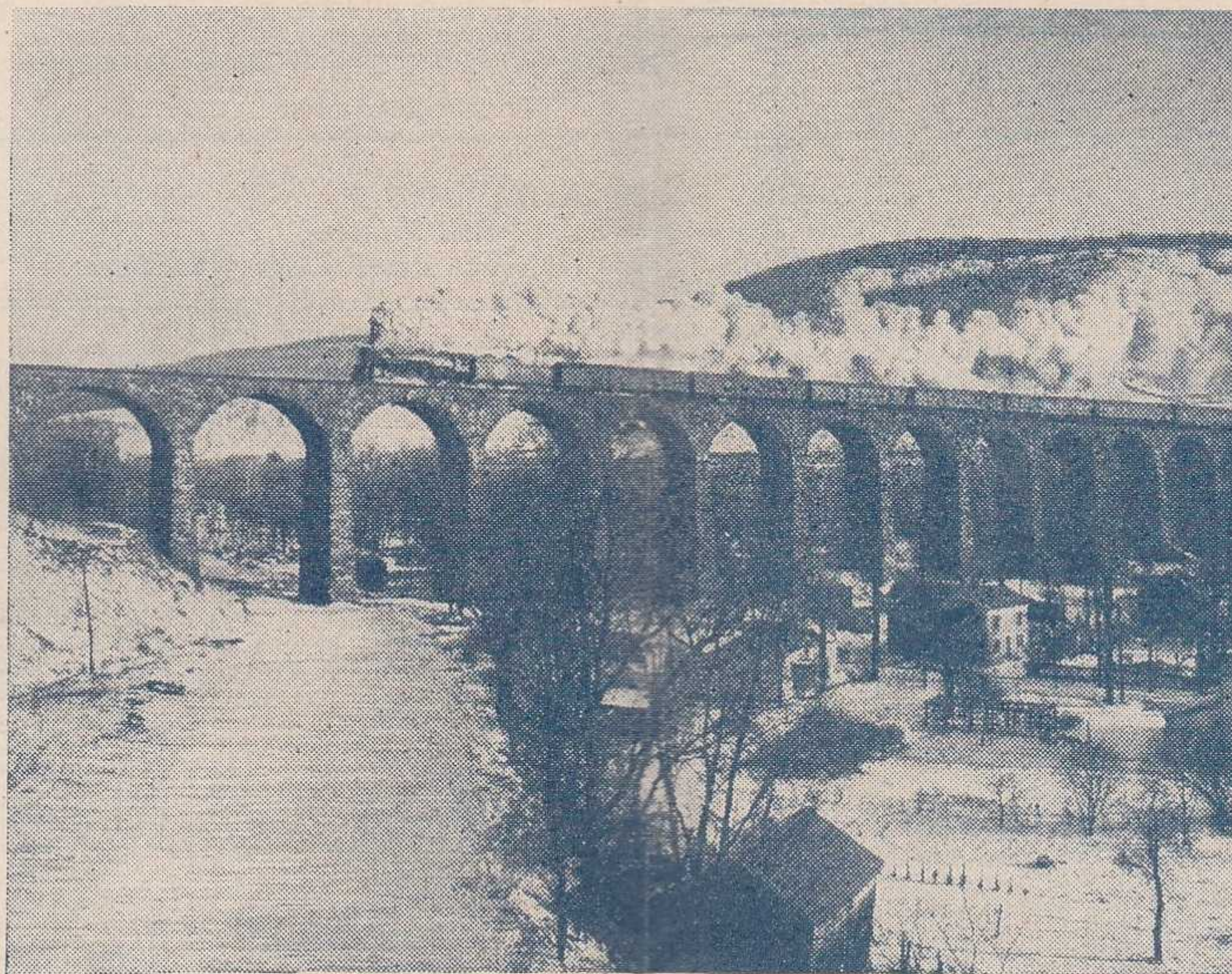
The women's room has a full length couch and individual, movable chairs.

The color scheme throughout the car is restful and in most excellent taste. The already spacious car has its roominess accentuated by long lines in the decorations. Walls, ceilings, upholstery and carpets blend and contrast gracefully.

Other trains, The Lake Cities and The Pacific and Atlantic Expresses, have individual Seat Coaches of modern design with deep comfortable seats.

Meals at surprisingly reasonable prices are served in the pleasant surroundings of our spacious Diner-Lounge Cars.

You will enjoy the spirit of friendliness on these trains. TRY THEM.



Steam hangs in the frosty January air as the Erie Limited crosses Starrucca Viaduct near Susquehanna, Pa.

ERIE IS PREPARED "SCENE FROM THE RAILROAD CHIEF ROBERT E. WOODRUFF ISSUES STATEMENT CAR WINDOW" INTERESTING ERIE TRAVELOG BOOKLET

*Ready for the
 War Effort*

In a recent announcement, Robert E. Woodruff, President of the Erie Railroad Company said: "Erie is prepared. Tracks, roadbed, shops, cars, locomotives and men of the Erie Railroad are ready for the heavy duty of National Defense. Our capital structure has been simplified and our reorganization was completed December 22nd.

"Employees and officers of the NEW Erie Railroad are proud of the transportation service we are now rendering. Together we pledge our heartiest cooperation to the traveling and shipping public—and to our Government and our Army and Navy in this period of national crisis."

(Signed) Robert E. Woodruff
 President
 Erie Railroad Company

We Have a Free Copy for You

"Scene From the Car Window" is an historical booklet covering about 100 cities and towns along the Erie Railroad between New York, Buffalo, Cleveland and Chicago.

It is designed to make your trip on the railroad more interesting by pointing out various bits of legend, history and current fact, along the way. Although our railroad is the tie that binds the pages together, there is no Erie advertising, as such, in it.

You can obtain a copy from any Erie Ticket Agent or Passenger Representative or by writing to R. B. Rogers, Passenger Traffic Manager, Erie Railroad Company, Midland Building, Cleveland, Ohio.

VISIT YOUR SOLDIER ANYWHERE IN THE U.S.A.

BOTH COASTS-NATIONAL PARKS

ROUND TRIP **\$99** IN COACHES

Wherever you live, wherever your boy is stationed, you can visit him. The round trip fare in coaches is \$99. If you wish to travel in Pullman Cars the fare is \$148.50, plus the charge for the Pullman space you occupy.

Think of it. You can travel up to 8,000 miles in one circle tour. These fares are good via any of the many combinations of railroads from your home town, back to your home town via New York and San Francisco. Tickets are on sale daily. Stop-overs may be made at any point where trains are scheduled to stop. Two months are allowed to complete your trip.

You can visit one coast, return home and then visit the other.

These Grand Circle Tour tickets can be purchased on the Travel Credit Plan. No money down and no collateral. Your Ticket Agent will give you complete information.

HOW TO GET TO THE HEART OF N.Y. QUICKLY

For many years Erie's ferry lines supplied the transportation between Jersey City Station and New York City. Then were added the Hudson Tubes, then the Train-Cab and finally the Erie Times Square Terminal served by the Rutherford Motor Coach Connection.

Times Square Terminal is at 260 West 42nd Street, New York, between 7th and 8th Avenues.

The motor coach service is available only to passengers travelling between New York and Goshen, N. Y., and west.

The time saved in using this service averages one-half hour in each direction and the fare is 50c each way for adults and 25c for children of half fare age. Connections are provided for Trains 15, 5, 27 and 1 Westbound and 16, 6, 2 and 8 Eastbound.

TABLE OF CONTENTS

Reference Marks and Notes... Page 5, 6
Ticket Offices and Passenger Stations in Principal Cities... 6
One-Way and Round-Trip Fares... 7, 8
Sleeping and Parlor Car Fares... 7, 8
Equipment of Through Trains... 9, 10
Equipment of Detroit, Toledo, Cleveland, Youngstown, Pittsburgh, Washington and Baltimore Trains... 17, 18
Erie Railroad Map... 19, 20, 21, 22
Equipment of Local Trains... 28
Suggestions... 31
General Information... 32
Standard of Time
Holidays
Fares Paid on Trains
Adjustment of Fares
Sleeping and Parlor Car Reservations
Baggage Regulations
Articles Lost on Trains
Safety First Hints
Traffic and Development Department Representatives... 37, 38
Train Service
Condensed Schedule of Through Trains... 9, 10
New York—Elmira... 11, 12, 13, 14
Elmira—Chicago... 15, 16
Detroit—Toledo—Cleveland—Youngstown—Pittsburgh—Washington—Baltimore... 17, 18
New York—Buffalo... 23
New York—Jamestown—Chautauqua Lake... 23
Chautauqua Lake—Jamestown—Akron—Chicago... 23
New York—Kenosha Lake—Jeffersonville... 24
Buffalo—Jamestown... 24
Lackawaxen—Honesdale... 24
New York—Salamanca—Bradford... 24
Bradford—Salamanca—Cleveland—Chicago... 24
Branch Line Service... 29
Hudson & Manhattan R. R. Service... 30
Ferry Schedule... 30
Freight Schedules... 35, 36

STATIONS ON ERIE RAILROAD
At Which Trains Are Scheduled To Stop
Numerals Opposite Station Names Indicate Time Table Numbers

Table listing stations on the Erie Railroad with corresponding time table numbers. Columns include station names and numerals. Stations listed include Addison, N.Y., Akron, O., Albany, N.Y., Alden, N.Y., Alfred, N.Y., Aliquippa, Pa., Allegany, N.Y., Allendale, N.J., Andover, N.Y., Arden, N.Y., Arkport, N.Y., Ashland, O., Atlanta, N.Y., Attica, N.Y., Aurora, O., Avoca, N.Y., Baltimore, Md., Barborton, O., Bath, N.Y., Beaver, Pa., Beaver Falls (New Brighton, Pa.), Belmont, N.Y., Binghamton, N.Y., Blasdel, N.Y., Braddock, Pa., Bradford, Pa., Buffalo, N.Y., Burns, N.Y., Callicoon, N.Y., Cambridge Springs, Pa., Cameron, N.Y., Cameron Mills, N.Y., Campbell, N.Y., Canaseraga, N.Y., Canisteo, N.Y., Castile, N.Y., Chautauqua, N.Y., Chautauqua Lake, N.Y., Cherry Creek, N.Y., Chester, N.Y., Chicago, Ill., Cleveland, O., Cocheton, N.Y., Cohocton, N.Y., Collins, N.Y., Conesus, N.Y., Conesus Lake Jet., N.Y., Conewango, N.Y., Connellsville, Pa., Cooper's, N.Y., Coraopolis, Pa., Corning, N.Y., Corry, Pa., Crown Point, Ind., Cuba, N.Y., Cumberland, Md., Dale, N.Y., Dalton, N.Y., Darien Center, N.Y., Dayton, N.Y., Decatur, Ind., Depew, N.Y., Deposit, N.Y., Detroit, Mich., East Buffalo, N.Y., East Fifty-fifth St. (Cleveland), O., East Honesdale, Pa., East Ninety-third St. (Cleveland), O., East Rutherford, N.J., Eden Center, N.Y., Eden Valley, N.Y., Ellwood City, Pa., Elmira, N.Y., Endicott, N.Y., Englewood (63rd St.), Ill., Falconer, N.Y., Friendship, N.Y., Galion, O., Garrettsville-Hiram, O., Garwoods, N.Y., Geauga Lake, O., Girard, O., Glen Eyre, Pa., Goshen, N.Y., Gowanda, N.Y., Graham, N.Y., Great Bend, Pa., Greenville, Pa., Greycourt, N.Y., Griswolds, N.Y., Gulf Summit, N.Y., Hale's Eddy, N.Y., Hamburg, N.Y., Hammond, Ind., Hancock, N.Y., Hankins, N.Y., Harper's Ferry, W. Va., Harriman, N.Y., Hawley, Pa., Hillburn, N.Y., Hohokus, N.Y., Honesdale, Pa., Hornell, N.Y., Howells, N.Y., Hubbard, O., Huntington, Ind., Jamestown, N.Y., Jeddoe, O., Jeffersonville, N.Y., Jersey City, N.J., Kenosha Lake, N.Y., Kent, O., Kinton, O., Kimbles, Pa., Lackawaxen, Pa., Lake Huntington, N.Y., Lancaster, N.Y., Lawtons, N.Y., Leavittsburg, O., Letchworth Park, N.Y., Lima, O., Limestone, N.Y., Linden, N.Y., Livonia, N.Y., Long Eddy, N.Y., Lordville, N.Y., Mahoning, O., Mahwah, N.J., Mansfield, O., Mantua, O., Marilla, N.Y., Marion, O., Markhams, N.Y., Martinsburg, W. Va., Mast Hope, Pa., McKeesport, Pa., Meadville, Pa., Meyersdale, Pa., Middletown, N.Y., Mill Rift, Pa., Monroe, N.Y., Narrowsburg, N.Y., New Brighton, Pa., New Castle, Pa., New Hampton, N.Y., New York, N.Y., Niles, O., North Collins, N.Y., North Randall, O., Ohio City, O., Olean, N.Y., Oneonta, N.Y., Otisville, N.Y., Owego, N.Y., Oxford, N.Y., Painted Post, N.Y., Parker's Glen, Pa., Passaic, N.J., Paterson, N.J., Phalanx, O., Pittsburgh, Pa., Pond Eddy, Pa., Portage, N.Y., Port Jervis, N.Y., Ramapo, N.Y., Ramsey, N.J., Randolph, N.Y., Ravenna, O., Ridgewood, N.J., Rittman, O., Rochester, Ind., Rock Glen, N.Y., Rowlands, Pa., Rutherford, N.J., Saegertown, Pa., Salamanca, N.Y., Savona, N.Y., Sharon, Pa., Shimers Rock Cut, Pa., Shohola, Pa., Silver Spring, Md., Silver Springs, N.Y., Skinners, N.Y., Sloatsburg, N.Y., Solon, O., South Dayton, N.Y., Southfields, N.Y., South Lima, N.Y., South Livonia, N.Y., Sparrowbush, N.Y., Springwater, N.Y., State Hospital, N.Y., Suffern, N.Y., Susquehanna, Pa., Swains, N.Y., Toledo, O., Town Line, N.Y., Tusten, N.Y., Tuxedo, N.Y., Union City, Pa., Wadsworth, O., Waldwick, N.J., Wallace, N.Y., Warren, O., Warsaw, N.Y., Washington, D.C., Washington Hunt, N.Y., Water Valley, N.Y., Waverly, N.Y., Wayland, N.Y., Websters, N.Y., Wellsville, N.Y., Wellwood Ave., Hawley, Pa., Westcolang Park, Pa., White Mills, Pa., Youngstown, O.

ADDITIONAL STATIONS ON ERIE RAILROAD
At Which Trains Do NOT Stop Regularly
The distance shown is from New York as indicated in Tables 2, 3 and 4

Table listing additional stations on the Erie Railroad with distances from New York. Columns include station names and distances. Stations listed include Adrian, N.Y., Akron, Ind., Aldine, Ind., Alger, Ohio, Almond, N.Y., Ashville, N.Y., Athens, Ind., Atlantic, Pa., Barton, N.Y., Bass Lake, Ind., Bear Lake, Pa., Belvidere, N.Y., Big Flats, N.Y., Bippus, Ind., Bolivar, Ind., Boone Grove, Ind., Braceville, Ohio, Burbank, Ohio, Caledonia, Ohio, Chemung, N.Y., Columbus, Pa., Creston, Ohio, DeCliff, Ohio, De Long, Ind., Disko, Ind., Elgin, Ohio, Foraker, Ohio, Forty-seventh St. (Chicago, Ill.), Freedom, Ohio, Geneva, Pa., Glenmore, Ohio, Griffith, Ind., Harrods, Ohio, Hegewisch, Ill., Hepburn, Ohio, Hickory Grove, Pa., Highlands, Ind., Hinsdale, N.Y., Horseheads, N.Y., Hurlburt, Ind., Johnson City, N.Y., Kellams, N.Y., Kemp, Ohio, Kingsland, Ind., Kirkwood, N.Y., Kouts, Ind., Laketon, Ind., Lakewood, N.Y., Leiters, Ind., Markel, Ind., Martel, Ohio, McGuffey, Ohio, Millers, Pa., Mill Village, Pa., Mongaup, Pa., Monterey, Ind., Nankin, Ohio, Newton, Ind., Niobe, N.Y., North Judson, Ind., Ontario, Ohio, Oquaga, N.Y., Ora, Ind., Palmer, Ind., Pavonia, Ohio, Pershing, Ind., Polk, Ohio, Preble, Ind., Rathbone, N.Y., Red House, N.Y., Scio, N.Y., Servia, Ind., Sharpville, Pa., Smithboro, N.Y., Spencerville, Ohio, Steamburg, N.Y., Sterling, Ohio, Stockport, N.Y., Tallmadge, Ohio, Tloga Center, N.Y., Tocsin, Ind., Uniondale, Ind., Venango, Pa., Watts Flats, N.Y., Wellsburg, N.Y., West Salem, Ohio, Wilders, Ind., Windham, Ohio, Winfield, Ind., Wren, Ohio.

REFERENCE MARKS AND NOTES

IMPORTANT—When trains are indicated as stopping conditionally, Conductors should be notified of intention to leave train and Station Agent notified of intention to board train. Conditional stops are made only to receive or discharge revenue passengers.

E.D.S.T.—Eastern Daylight Saving Time.

C.D.S.T.—Central Daylight Saving Time.

† Runs daily except Sunday.

§ Runs daily except Sundays and Holidays.

‡ Will not operate from these stations on Monday morning.

f Stops on signal to receive and discharge revenue passengers.

Sundays leaves Binghamton (2.50 P. M.), arrives Oneonta (4.35 P. M.), Albany (6:50 P. M.).

k Runs Saturdays only. M. C. Motor Car Service. N. B. No Baggage carried.

◆ Stops to discharge passengers.

Ⓒ Stops on Saturday only.

♣ Stops on Holiday only.

*Runs Daily.

Note ⊕—Times Square Motor Coach Terminal, 260 West 42nd St. between 7th and 8th Aves., New York City. Taxicab entrance on 41st St. Connection to and from Rutherford. Slight additional charge for Motor Coach service. Consult Ticket Agents.

ab Train 28 stops Otisville (4.43 P. M.) Sundays only.

ac Stops Dalton (5.37 A. M.) to discharge passengers from Hornell and east and on signal to receive passengers.

ad Via Buffalo & Erie Coach Corp. bus between Salamanca and Bradford.

af Train 7 stops Middletown (1.54 A. M.) Sunday and Monday mornings only to discharge passengers.

ag Stops Ridgewood (7.57 A. M.) Sundays and Holidays only.

ah Stops on signal Andover (9.51 A. M.); Belmont (10.16 A. M.) to discharge passengers from New York.

al Train 7 stops Ravenna (4.35 P. M.) Sundays only.

am Stops Saturdays only to receive passengers.

an Train 27 stops at Lordville (7.21 P. M.) to discharge passengers from New York.

as Train 701 will not operate west of Monroe on Holidays.

aw Trains 6 and 16 stop at Middletown (7.04 A. M.) and Goshen (7.15 A. M.) to discharge passengers from Hornell and west, and on Sundays only, to receive passengers for New York.

ax Stops Englewood Train 1 (7.50 A. M.); Train 15 (5.05 P. M.); Train 7 (12.44 A. M.) to discharge passengers from east of Hammond.

bb Stops at Paterson (3.44 P. M.) to receive passengers only.

bc Stops on signal Paterson (8.16 P. M.), Ridgewood (8.26 P. M.) to receive passengers.

bd Stops on signal Passaic (8.07 P. M.); Suffern (8.41 P. M.) to receive passengers for Hornell and west.

bf Stops Cuba (5.21 A. M.) to discharge passengers from Elmira and east and to receive for Jamestown and west.

bg Stops on signal, Friendship (10.30 A. M.); Cuba (10.44 A. M.) to discharge passengers from New York.

bh Stops Cuba (6.35 P. M.) to discharge passengers from Elmira and east and to receive for Jamestown and west.

bm Stops on signal Niles (10.36 A. M.) to discharge passengers from Pittsburgh and from Jamestown and east and to receive passengers for Cleveland.

bp Stops Niles (11.39 P. M.) to discharge passengers from Meadville and east and on signal to receive passengers for Akron and west.

bt No Agent on duty. No baggage handled on Trains 5 and 6 to or from Castile.

bu Train 6 stops at East 55th St. (5.07 P. M.) Sundays only to receive passengers for Youngstown.

bv Stops on Sundays only to discharge passengers.

bx Train 16 stops at Warren (6.18 P. M.) to discharge passengers from Akron and west.

cd For additional service between Cleveland and Youngstown see Table 5.

cg Stops on signal Ridgewood (11.13 P. M.) to discharge passengers from Binghamton and west.

cn Stops on signal Union City (9.07 P. M.); Cambridge Springs (9.26 P. M.) to discharge passengers from Jamestown and east and to receive for Youngstown and west.

cp Train 8 stops on signal (10.14 P. M.), Train 16 (9.50 A. M.) to receive passengers for east of Hammond.

cu Bus service provided between Cohecton and Lake Huntington.

cw Stops Endicott (1.37 A. M.) to discharge passengers from Port Jervis and east.

cx Stops to discharge passengers from New York.

cy Stops to discharge passengers from Cleveland and beyond.

db Train 8 stops at Ravenna (7.49 A. M.) to discharge passengers from Marion and west, and on signal to receive for Youngstown and east.

dc Stops Mantua (1.53 P. M.) to discharge passengers from Cleveland and on signal to receive passengers for Warren and east.

de Stops Barberton (5.19 P. M.) to discharge passengers from Youngstown and east and on signal to receive passengers for Mansfield and west.

df Stops on signal Mantua (9.29 A. M.) to receive passengers for Cleveland.

dg Stops at Ravenna (10.57 A. M.) to discharge passengers from Meadville and east, and on signal to receive passengers for Gallon and west.

dh Stops at (5.51 P. M.) to discharge passengers from Gallon and west, and on signal to receive passengers for Meadville and east.

dp Stops Niles (2.14 A. M.) to discharge passengers from east of Youngstown and signal to receive passengers for Cleveland.

dt No baggage carried on this train east of Hornell. Baggage will be handled on following train. Stops on signal Union City (8.54 P. M.) to discharge passengers from Youngstown and west and to receive passengers for New York.

dw Stops Cuba (9.53 A. M.) to discharge passengers from Jamestown and west and to receive for Elmira and east.

dy Stops on signal Cambridge Springs (7.17 A. M.), Union City (7.34 A. M.), to discharge passengers from Chicago and to receive for Binghamton and east.

dz Stops Ridgewood (8.07 A. M.) to discharge passengers from Port Jervis and west. Has connection for Paterson, Passaic, etc., leaving Ridgewood at (8 14 A. M.) daily except Sundays and Holidays. Leave Ridgewood (8.40 A. M.) Sundays and Holidays only.

ec Bus service between New Castle and New Castle (Washington St.).

ed Bus service between Wampum and Ellwood City.

ef Stops only to receive motor coach passengers from New York.

eg Stops only to discharge motor coach passengers for New York.

eh Stops on signal Mantua (6.41 P. M.) to receive passengers for Pittsburgh.

ek Train 2 stops Suffern (6.30 P. M.), Passaic (6.59 P. M.) to discharge passengers from Binghamton and west.

en Stops on signal Paterson (9.34 A. M.), Ridgewood (9.43 A. M.) to receive passengers.

ep Train 1 stops on signal Passaic (9.27 A. M.), Suffern (9.58 A. M.) to receive passengers for Binghamton and west.

er Stops Niles (5.46 A. M.) to discharge passengers from Cleveland and west and on signal to receive for Pittsburgh.

es Stops on signal Niles (6.13 P. M.) to receive passengers for Jamestown and east, and to discharge passengers from Cleveland.

et Bus operates between Narrowsburg and Honesdale. In connection with which the Erie Railroad acts as agent only and is not responsible beyond its own line, except as such responsibility may be imposed by law with respect to baggage.

ex Stops Endicott (2.55 A. M.) to discharge passengers from Buffalo, Jamestown and west.

gt In connection with the bus service the Erie Railroad acts as agent only and is not responsible beyond its own line, except as such responsibility may be imposed by law with respect to baggage.

ha Stops at Narrowsburg (10.59 P. M.) to discharge passengers from Ridgewood and east.

hf Stops (11.14 P. M.) to discharge passengers from Pittsburgh.

ht Trains 5-557 and 560-6 carry through sleeping cars between Bradford and New York.

hu Stops to discharge passengers.

hv Stops on signal East 93rd Street (6.13 P. M.) to receive passengers.

hw Train 7 will stop at Saegertown (1.52 P. M.) to discharge passengers from Binghamton and east and to receive passengers for Marion and west.

hx Train 8 will stop at Saegertown (10.32 A. M.) to discharge passengers from Marion and west and to receive passengers for Binghamton and east.

na Train 6 stops on signal at East 93rd St. (5.12 P. M.) to receive passengers for Sharon and east.

ne Train 626 stops Saturdays only at Solon (1.39 P. M.) and Aurora (1.47 P. M.) to discharge passengers from Cleveland.

nf Stops on signal at Garrettsville-Hiram (2.47 P. M.) to receive passengers for Cleveland.

nh Stops on signal at Garrettsville-Hiram (11.04 A. M.) to discharge passengers from Hornell and east.

ERIE TICKET OFFICES AND PASSENGER STATIONS IN PRINCIPAL CITIES

Akron, O.—Union Station.

(Telephone Jefferson 9141)

B. L. BENDER, Ticket Agent.

Binghamton, N. Y.—Erie Station.

(Telephone 4-3251)

A. F. WAINSCOTT, Ticket Agent.

Bradford, Pa.—Erie Station.

(Telephone 3413)

A. J. SULLIVAN, Ticket Agent.

Brooklyn, N. Y.—City Ticket Office.

155 Pierrepont St.

(Telephone Triangle 5-7440)

W. J. HAGENEY, Ticket Agent.

Buffalo, N. Y.—City Ticket Office.

6 North Division St.

(Telephone Washington 4300)

W. L. MCCREARY, Ticket Agent.

Chicago, Ill.—City Ticket Office. 163-

165 West Jackson Blvd.

(Telephone Harrison 4160)

C. F. KUNGEL, Ticket Agent.

Hotel Ticket Offices—

Congress, Morrison, Sherman, Stevens,

Palmer House, Merchandise Mart.

(Telephone Harrison 2203)

GEORGE M. NEWHART, Ticket Agent.

Dearborn Station.

(Telephone Harrison 9830)

W. E. MISCHNICK, Ticket Agent.

63rd St. Station

(Telephone Wentworth 3503)

J. E. KING, Ticket Agent.

Cleveland, O.—Erie Station.

(Telephone Cherry 8400)

J. W. STUART, Ticket Agent.

Corning, N. Y.—Erie Station.

(Telephone 50)

A. T. JOHNSON, Ticket Agent.

Elmira, N. Y.—Erie Station.

(Telephone 2-0380)

J. V. CLEARY, Ticket Agent.

Hornell, N. Y.—Erie Station.

(Telephone 680)

M. W. DELANY, Ticket Agent.

Huntington, Ind.—Erie Station.

(Telephone 140)

D. L. HERENDEEN, Ticket Agent.

Jamestown, N. Y.—Erie Station.

(Telephone 6076)

FRANK PRIEST, Ticket Agent.

Jersey City, N. J.—Erie Station.

(Telephone Journal Square 2-6400)

G. B. IRVING, Ticket Agent.

Mansfield, O.—Erie Station.

(Telephone Canal 1423)

J. W. GILKISON, Ticket Agent.

Marion, O.—Erie Station.

(Telephone 2399)

R. H. STIEF, Ticket Agent.

Meadville, Pa.—Erie Station.

(Telephone 1212)

O. E. BLAIR, Ticket Agent.

Middletown, N. Y.—Erie Station.

(Telephone 3303)

C. R. DINEEN, Ticket Agent.

Newark, N. J.—Erie Station.

(Telephone Humboldt 2-0600)

G. J. MCMICHAEL, Ticket Agent.

New York, N. Y.—City Ticket Office,

Information Bureau.

Train Service and Fares.

(Telephone Barclay 7-6500)

City Ticket Office, 12 West 51st Street,

Rocketteller Center.

(Telephone Circle 5-7222)

G. H. DOWN, Ticket Agent.

West 23rd Street Station.

(Telephone Chelsea 3-0780)

A. W. VOSS, Ticket Agent.

Chambers Street Station.

(Telephone Cortlandt 7-9200)

O. R. KRECH, Ticket Agent.

City Ticket Office, 17 John Street.

(Telephone Cortlandt 7-6430 and

7-6431)

W. G. TEDFORD, Ticket Agent.

Times Square Motor Coach Terminal,

260 West 42nd St.

(Telephone Longacre 5-2440)

Passaic, N. J.—Erie Station.

(Telephone 2-1613)

M. J. LYNCH, Ticket Agent.

Paterson, N. J.—Erie Station.

(Telephone Sherwood 2-3337)

J. H. GRAF, Ticket Agent.

Port Jervis, N. Y.—Erie Station.

(Telephone 300)

R. FARBER, Ticket Agent.

Sharon, Pa.—Erie Station.

(Telephone 6234)

H. P. MORGAN, Ticket Agent.

Warren, O.—Erie Station.

(Telephone 1000)

G. W. KROM, Ticket Agent.

Youngstown, O.—Erie Station.

(Telephone 41101)

R. S. GETTIG, Ticket Agent.

RAILROAD AND PULLMAN FARES For Information Only. Federal Tax Not Included. Subject to Change Without Notice

Table with columns for 'Between' and 'And' stations, and sub-columns for 'NEW YORK', 'BINGHAMTON', and 'BUFFALO'. It lists fares for 'RAILROAD TICKETS VALID IN' (Coach, Pullmans) and 'PULLMAN RATES' (Lower Berth, Seat Fare).

Table with columns for 'Between' and 'And' stations, and sub-columns for 'JAMESTOWN', 'CLEVELAND', and 'CHICAGO'. It lists fares for 'RAILROAD TICKETS VALID IN' (Coach, Pullmans) and 'PULLMAN RATES' (Lower Berth, Seat Fare).

RATES FOR UPPER BERTH, ROUND TRIP UPPER BERTH, SECTION, DRAWING ROOM, COMPARTMENT OR DOUBLE BEDROOM IN SLEEPING CARS

Table showing rates for sleeping cars with columns for 'Where Lower Berth Rate Is', 'Upper Berth Rate Will Be', 'Round Trip Upper Berth Rate Will Be', and various rates for Section, Drawing Room, Compartment, and Double Bedroom.

MINIMUM NUMBER OF RAILROAD TICKETS REQUIRED FOR EXCLUSIVE OCCUPANCY OF SPACE IN SLEEPING OR PARLOR CARS

Table listing ticket requirements for different car types: Section (1), Double Bedroom (1), Compartment, Berth Service (1), Compartment, Seat Service (1 1/2), Drawing Room, Berth Service (1 1/4), and Drawing Room, Seat Service, or Drawing Room in Parlor Car (2).

Note: -▲ For section occupied by two passengers but with lower berth only prepared for night service. *Applies from Cleveland to New York only; fare from New York to Cleveland round trip coach \$17.25, on way upper berth \$15.95. ● Railroad ticket valid for lower berth must be presented when occupying seat in parlor car or sleeping car. *Thirty-day limit. †One-year limit.

TABLE 1 CONDENSED TABLE OF THROUGH TRAINS NEW YORK AND BUFFALO, CLEVELAND AND CHICAGO
(FOR LOCAL TRAINS AND INTERMEDIATE TIME OF THROUGH TRAINS SEE LOCAL TABLES)

Air-Conditioned Trains—Air-conditioned equipment has been assigned to regular sections of trains as shown herein. Every effort will be made to provide it as specified, but the right is reserved to employ non-air-conditioned cars as necessitated by volume of traffic or emergencies.

WEST BOUND

THE ERIE LIMITED		TRAIN NO. 1—DAILY	
New York—Buffalo—Jamestown—Chicago			
Lv New York (Times Sq. Motor Coach Term.) (Note ⊕)...	8.45AM EDST	(W. 23rd St. Ferry does not operate on Sundays and Holidays).	
Lv New York, West 23rd St....	8.30 AM EDST		
" " Chambers St....	8.45 " "	EQUIPMENT	
" Jersey City.....	9.05 " "	Air-Conditioned Sleeping Cars:	
" Paterson.....en	9.34 " "	New York to Chicago—12 Section, 2 Double Bedroom.	
" Ridgewood.....en	9.43 " "	Salamanca to Chicago—10 Section, 2 Compartment and Drawing Room.	
" Binghamton.....	2.35PM "	Air-Conditioned Diner-Lounge Car:	
" Elmira.....	3.54 " "	New York to Chicago.	
Ar Buffalo (Lehigh Valley Term.)	7.45 " "	Air-Conditioned De Luxe Coaches:	
Lv Olean.....	6.55 " "	New York to Chicago. (Spacious Ladies' Lounge.)	
" Bradford.....	" "	Air-Conditioned Coach—Diner:	
" Buffalo (Lehigh Valley Term.)	5.30 " "	New York to Buffalo.	
" Jamestown.....	8.13 " "		
" Meadville.....	9.50 " "		
" Youngstown.....	11.24 " "		
" Warren.....	11.52 " "		
" Akron.....	1.00AM "		
Ar Chicago (Dearborn Sta.)....	8.05AM CDST		

THE LAKE CITIES		TRAIN NO. 5—DAILY	
New York—Buffalo—Cleveland			
Lv New York (Times Sq. Motor Coach Term.) (Note ⊕)...	7.25PM EDST	(W. 23rd St. Ferry does not operate on Sundays and Holidays).	
Lv New York, West 23rd St....	7.10PM EDST		
" " Chambers St....	7.30 " "	EQUIPMENT	
" Jersey City.....	7.45 " "	Air-Conditioned Sleeping Cars:	
" Paterson.....bc	8.16 " "	New York to Cleveland—10 Section, 1 Compartment and Drawing Room.	
" Ridgewood.....bc	8.26 " "	New York to Bradford—10 Section, 2 Compartment and Drawing Room (Sleeping Car may be occupied at Bradford until 8.00 A. M.).	
Ar Buffalo (Lehigh Valley Term.)	7.55AM "	Air-Conditioned Diner-Lounge Car:	
Lv Olean.....	5.42 " "	New York to Youngstown.	
Ar Bradford.....	7.10 " "	Air-Conditioned Individual Seat Coaches:	
" Jamestown.....	7.03 " "	New York to Cleveland	
" Meadville.....	8.35 " "	Coaches: Hornell to Buffalo.	
" Youngstown.....	10.00 " "		
" Warren.....	10.46 " "		
Ar Cleveland.....	11.50AM "		

THE MIDLANDER		TRAIN NO. 15—DAILY	
New York—Jamestown—Akron—Chicago			
Lv New York (Times Sq. Motor Coach Term.) (Note ⊕)...	7.25PM EDST	(W. 23rd St. Ferry does not operate on Sundays and Holidays).	
Lv New York, West 23rd St....	7.10 PM EDST		
" " Chambers St....	7.30 " "	EQUIPMENT	
" Jersey City.....	7.45 " "	Air-Conditioned Sleeping Car:	
" Paterson.....bc	8.16 " "	New York to Chicago—10 Section, 1 Compartment and Drawing Room.	
" Ridgewood.....bc	8.26 " "	Air-Conditioned Diner-Lounge Car:	
" Jamestown.....	7.03AM "	New York to Chicago.	
" Meadville.....	8.40 " "	Air-Conditioned De Luxe Coach:	
" Youngstown.....	10.10 " "	New York to Chicago. (Spacious Ladies' Lounge.)	
" Akron.....	11.24 " "		
" Marion.....	1.26PM "		
Ar Chicago (Dearborn Sta.)....	5.20PM CDST		

PACIFIC EXPRESS		TRAIN NO. 7—DAILY	
New York—Buffalo—Jamestown—Chicago			
(W. 23rd St. Ferry does not operate on Sundays and Holidays).			
Lv New York, W. 23rd St....	11.55PM EDST		
" " Chambers St....	12.00Mid. "	EQUIPMENT	
" Jersey City.....	12.25AM "	Air-Conditioned Sleeping Car:	
" Elmira.....	7.40 " "	New York to Salamanca—10 Section, 2 Compartment and Drawing Room Car. (Sleeper open Jersey City at 9.30 P. M.)	
Ar Buffalo (Lehigh Valley Term.)	12.10PM "	Air-Conditioned Diner-Lounge Car:	
Lv Olean.....	11.10AM "	Binghamton to Youngstown.	
Ar Salamanca.....	11.34 " "	Air-Conditioned De Luxe Coaches:	
Lv Jamestown.....	12.29PM "	New York to Chicago.	
" Meadville.....	2.06 " "		
" Youngstown.....	3.38 " "		
" Warren.....	4.07 " "		
" Akron.....	5.09 " "		
Ar Chicago (Dearborn Sta.)....	1.00AM CDST		

THE MOUNTAIN EXPRESS		TRAIN NO. 27—DAILY	
New York—Binghamton—Elmira—Hornell			
Lv New York (Times Sq. Motor Coach Term.) (Note ⊕)...	2.55PM EDST	(W. 23rd St. Ferry does not operate on Sundays and Holidays).	
Lv New York, West 23rd St....	2.50 PM EDST		
" " Chambers St....	3.00 " "	EQUIPMENT	
" Jersey City.....	3.15 " "	Air-Conditioned Diner-Lounge Car:	
Ar Binghamton.....	8.56 " "	New York to Binghamton.	
" Elmira.....	10.42 " "	Coaches: New York to Hornell.	
" Corning.....	11.11 " "		
Ar Hornell.....	12.05AM "		

EAST BOUND

THE ERIE LIMITED		TRAIN NO. 2—DAILY	
Chicago—Jamestown—Buffalo—New York			
Lv Chicago (Dearborn Sta.)....	6.00PM CDST		
Ar Akron.....	3.37AM EDST	EQUIPMENT	
" Warren.....	4.38 " "	Air-Conditioned Sleeping Car:	
" Youngstown.....	4.57 " "	Chicago to New York—10 Section, 2 Compartment and Drawing Room.	
" Meadville.....	6.55 " "	Air-Conditioned Diner-Lounge Car:	
" Jamestown.....	8.31 " "	Chicago to Marion.	
" Buffalo (Lehigh Valley Term.)	10.55 " "	Youngstown to Jersey City.	
" Bradford.....ad	1.00PM "	Air-Conditioned De Luxe Coaches:	
" Olean.....	9.39AM "	Chicago to New York. (Spacious Ladies' Lounge.)	
Lv Buffalo (Lehigh Valley Term.)	8.20 " "	Air-Conditioned Coach—Diner:	
Ar Elmira.....	12.30PM "	Buffalo to New York.	
" Binghamton.....	1.42 " "		
" Ridgewood.....	6.43 " "		
" Paterson.....	6.51 " "		
" Jersey City.....	7.20 " "		
" New York, Chambers St....	7.34 " "		
" " West 23rd St....	7.50 " "		
(W. 23rd St. Ferry does not operate on Sundays and Holidays).			
Ar New York, Times Sq. Motor Coach Term. (Note ⊕)...	7.35 PM EDST		

THE LAKE CITIES		TRAIN NO. 6—DAILY	
Cleveland—Buffalo—New York			
Lv Cleveland.....	5.00PM EDST		
" Warren.....	6.05 " "	EQUIPMENT	
" Youngstown.....	6.42 " "	Air-Conditioned Sleeping Cars:	
" Meadville.....	8.17 " "	Cleveland to New York—10 Section, 1 Compartment and Drawing Room.	
" Jamestown.....	9.54 " "	Bradford to New York—10 Section, 2 Compartment and Drawing Room.	
" Bradford.....	9.40 " "	Air-Conditioned Diner-Lounge Car:	
" Salamanca.....	10.41 " "	Youngstown to New York.	
" Olean.....	11.06 " "	Air-Conditioned Individual Seat Coaches:	
" Buffalo (Lehigh Valley Term.)	9.45 " "	Cleveland to New York.	
Ar Elmira.....	2.02AM "	Coaches:	
" Ridgewood.....dz	8.07 " "	Buffalo to Hornell.	
" Jersey City.....	8.40 " "		
" New York, Chambers St....	8.54 " "		
" " West 23rd St....	9.10 " "		
(W. 23rd St. Ferry does not operate on Sundays and Holidays).			
Ar New York, Times Sq. Motor Coach Term. (Note ⊕)...	8.55 AM EDST		

THE MIDLANDER		TRAIN NO. 16—DAILY	
Chicago—Akron—Jamestown—New York			
Lv Chicago (Dearborn Sta.)....	9.35AM CDST		
" Marion.....	3.26PM EDST	EQUIPMENT	
" Akron.....	5.24 " "	Air-Conditioned Sleeping Car:	
" Youngstown.....	6.42 " "	Chicago to New York—10 Section, 1 Compartment and Drawing Room.	
" Meadville.....	8.17 " "	Air-Conditioned Diner-Lounge Car:	
" Jamestown.....	9.54 " "	Huntington to New York.	
" Ridgewood.....dz	8.07AM "	Air-Conditioned De Luxe Coach:	
Ar Jersey City.....	8.40 " "	Chicago to New York. (Spacious Ladies' Lounge.)	
" New York, Chambers St....	8.54 " "		
" " West 23rd St....	9.10 " "		
(W. 23rd St. Ferry does not operate on Sundays and Holidays).			
Ar New York, Times Sq. Motor Coach Term. (Note ⊕)...	8.55 AM EDST		

ATLANTIC EXPRESS		TRAIN NO. 8—DAILY	
Chicago—Jamestown—New York			
Lv Chicago (Dearborn Sta.)....	10.00PM CDST		
" Akron.....	7.19AM EDST	EQUIPMENT	
" Warren.....	8.19 " "	Air-Conditioned Sleeping Car:	
" Youngstown.....	8.47 " "	Chicago to Hornell—(Daily) 12 Section, 2 Double Bedroom. Chicago to New York (Saturdays only) 12 Section, 2 Double Bedroom. (Sleeper open at Chicago at 9.30 P. M.)	
" Meadville.....	10.25 " "	Air-Conditioned Diner-Lounge Cars:	
" Jamestown.....	12.14PM "	Chicago to Huntington.	
" Salamanca.....	1.18 " "	Marion to New York.	
" Olean.....	1.44 " "	Air-Conditioned De Luxe Coaches:	
Ar Elmira.....	5.20 " "	Chicago to New York.	
" Binghamton.....	6.27 " "		
" Jersey City.....	11.45 " "		
" New York, Chambers St....	11.59 " "		
" " West 23rd St....	" "		
(W. 23rd St. Ferry does not operate on Sundays and Holidays).			
Ar New York, Times Sq. Motor Coach Term. (Note ⊕)...	11.45 PM EDST	(No baggage handled on this train east of Hornell baggage will be handled on following train.)	

SOUTHERN TIER EXPRESS		TRAIN NO. 10—EX. SUN.	
Buffalo—Hornell—Elmira—Binghamton—New York			
Lv Buffalo.....	5.35PM EDST		
" Hornell.....	8.35 " "	EQUIPMENT	
" Corning.....	9.43 " "	Air-Conditioned Sleeping Car:	
" Elmira.....	10.13 " "	Hornell to New York—12 Section, 2 Double Bedroom.	
" Binghamton.....	11.50 " "	(Sleeper and Coaches may be occupied at Jersey City until 7.30 A. M.)	
Ar Jersey City.....	5.25AM "	Coaches: Buffalo to Hornell.	
" New York, Chambers St....	5.54 " "	Hornell to New York.	
" " W. 23rd St....	" "		
(W. 23rd St. Ferry does not operate on Sundays and Holidays).			

NEW YORK—ELMIRA

**TABLE 2
WESTBOUND**

Hudson and Manhattan Tube Trains operate between New York and Erie Railroad Station in Jersey City.
To Erie Station, Jersey City—From Downtown New York—Train marked "Hoboken"—Fare 8 cents.
From Uptown New York —Train marked "Journal Square"—Fare 10 cents.
(West 23rd Street Ferry does not operate Sundays and Holidays)

Miles from New York	Eastern Daylight Saving Time	55	59	1	701	9	703	251	255	61	27	63	65	67	259	69	71	5	15	705	7	51	
		D'y	Sun. only	Daily	Sun. and Hol. only	Daily	Sun. only	Sat. only	Sun. only	Daily Ex. Sun.	Daily	Daily Ex. Sun. and Hol.	Daily Ex. Sat. Sun. and Hol.	Daily Ex. Sat. Su. & Hol.	Sat. & Hol. only	Sat. Su. & Hol. only	Daily Ex. Sat. Sun. & Hol.	Daily	D'y	Sun. only	Daily	Daily Ex. Sun.	
Note	NEW YORK Times Sq. Motor Coach Term. Lv	AM	AM	AM	AM	AM	PM	PM	PM	PM	PM	PM	PM	PM	PM	PM	PM	PM	PM	PM	PM	PM	Night
	West 23rd St. Lv			8.45		10.30		12.30		1.30	2.55	3.40	4.15	5.15	5.15	6.05	6.05	7.25	7.25			11.55	
	Chambers St. Lv	4.30	8.00	8.45	9.00	10.40	12.15	12.40	1.50	1.50	3.00	4.00	4.30	5.28	5.28	6.20	6.20	7.30	7.30	8.30	12.00	1.00	
1.0	Jersey City, N. J.	5.00	8.25	9.05	9.15	11.00	12.30	12.54	2.05	2.05	3.15	4.14	4.45	5.42	5.42	6.35	6.40	7.45	7.45	8.45	12.25	1.15	
9.5	Rutherford, N. J.	5.15	8.40	9.20	9.30		12.45		2.20	2.20	3.30	4.30	4.55	5.57	5.57	6.50	6.50	7.55	7.55	8.55	12.40	1.30	
12.5	E. Rutherford	5.23	8.49	9.20	9.37	11.20	12.55		2.27	2.28													
16.7	Passaic	5.38	9.00	9.20	9.45	11.29	1.06		2.36	2.38	bb	Via Bergen Short Cut	5.10										
21.8	Paterson	5.49	9.12	9.20	9.55	11.39	1.20		2.47	2.51		Via Bergen Short Cut	4.42										
23.2	Ridgewood	5.52					1.23		2.50	2.54													
24.3	Hohokus	5.55	9.16		10.00		1.26		2.53	2.57													
25.7	Waldwick	6.00	9.19		10.03		1.30		3.00	3.04													
27.6	Allendale	6.05	9.24		10.08		1.35		3.05	3.09													
30.2	Ramsey	6.10	9.29				1.40		3.10	3.14													
31.9	Mahwah	6.14	9.33	ep	10.14	11.55	1.43		3.13	3.17													
32.6	Suffern, N. Y.	6.17							3.16	3.20													
32.6	Hillburn	6.17							3.16	3.20													
33.7	Ramapo	6.20							3.19	3.23													
35.6	Sloatsburg	6.26	9.40		10.20			1.46	3.22	3.26													
38.2	Tuxedo	6.32	9.45		10.25			1.52	3.28	3.32													
42.0	Southfields	6.39			10.32			2.00	3.31	3.35													
44.4	Arden	6.43			10.36			2.05	3.34	3.38													
47.0	Harriman	6.49	10.00		10.40			2.10	3.37	3.41													
49.5	Monroe	6.58			10.45	12.18		2.15	3.40	3.44													
52.3	Oxford								3.43	3.47													
54.5	Greycourt								3.46	3.50													
55.3	Chester	7.10						2.25	3.49	3.53													
59.7	Goshen	7.19		10.34		12.32	2.19	2.33	3.52	3.56													
63.7	New Hampton	7.26							3.55	3.59													
67.1	Middletown N. Y.	7.45		10.45		12.44	2.29	2.45	4.00	4.04													
71.0	Howells	7.52							4.03	4.07													
75.7	Otisville	8.12							4.06	4.10													
80.7	Graham	8.19							4.09	4.13													
88.2	Port Jervis Ar	8.30							4.12	4.16													
88.2	Port Jervis Lv								4.15	4.19													
90.8	Sparrowbush N.Y.								4.18	4.22													
92.2	Mill Rift Pa.								4.21	4.25													
99.5	Pond Eddy								4.24	4.28													
103.3	Parker's Glen								4.27	4.31													
107.1	Shohola								4.30	4.34													
111.1	Lackawaxen								4.33	4.37													
114.1	Westecolng Pk								4.36	4.40													
116.4	Mast Hope								4.39	4.43													
118.9	Tusten N. Y.								4.42	4.46													
122.4	Narrowsburg								4.45	4.49													
	Honesdale et.								4.48	4.52													
128.2	Skinnners N.Y. Lv								4.51	4.55													
131.0	Cochecton N. Y. (Lake Hunt'gt'n)								4.54	4.58													
136.2	Callicoon N. Y.								4.57	5.01													
143.0	Hankins								5.00	5.04													
147.3	Long Eddy								5.03	5.07													
153.6	Lordville								5.06	5.10													
164.0	Hancock								5.09	5.13													
172.1	Hale's Eddy								5.12	5.16													
177.1	Deposit								5.15	5.19													
184.2	Gulf Summit								5.18	5.22													
192.6	Susq'ha'na Pa. Ar								5.21	5.25													
200.8	Great Bend Lv								5.24	5.28													
215.1	Binghamton N.Y. Ar								5.27	5.31													
	Albany (D&H) Lv								5.30	5.34													
	Oneonta (D&H)								5.33	5.37													
	Binghamton (D&H) Ar								5.36	5.40													
215.1	Binghamton Lv								5.39	5.43													
223.7	Endicott								5.42	5.46													
237.1	Owego								5.45	5.49													
256.2	Waverly								5.48	5.52													
273.8	Elmira Ar								5.51	5.55													

SAFETY

Constant, rigid inspection discovers equipment defects at once. Rock ballasted double track main line means smooth, safe riding in our all-steel cars. Fourteen million passengers were carried in 1941. Safe is the name for Erie.

COMFORT

Erie through trains carry Salon and Individual Seat Coaches as well as De Luxe Coaches with rotating seats which are also adjustable to four reclining positions. Ladies' Lounges are spacious, comfortable. Luxury type Diner-Lounge cars. Standard modern Pullman Cars. All regularly assigned cars are air-conditioned.

ELMIRA—NEW YORK

TABLE 3 EASTBOUND

Hudson and Manhattan Tube Trains operate between New York and Erie Railroad Station in Jersey City. From Erie Station, Jersey City—To Downtown New York—Train marked "Hudson Terminal"—Fare 8 cents. To Uptown New York —Train marked "33rd Street"—Fare 10 cents. (West 23rd Street Ferry does not operate on Sundays and Holidays.)

	50	52	204	6	16	56	58	58	30	140	62	206	70	28	2	208	208	64	dt8	68	10
Eastern Daylight Saving Time	Daily Ex. Sun. and Hol.	Daily Ex. Sat., Sun. and Hol.	Sat., Sun. and Hol. only	Daily	Daily	Daily Ex. Sun. and Hol.	Daily Ex. Sun.	Sun. only	Daily	Sun. only	Daily Ex. Sun. & Hol.	Sat. only	Sun. and Hol. only	Daily	Daily	Sun. only	Hol. only	Daily Ex. Sun. and Hol.	Daily	Daily	Daily Ex. Sun.
	AM	AM	AM	AM	AM	AM	AM	AM	AM	PM	PM	PM	PM	AM	PM	PM	PM	PM	PM	PM	PM
Elmira, N. Y. Lv.				2.02	2.02										12.30				5.20		10.13
Waverly															12.51						10.36
Owego															1.13						10.59
Endicott				ex	ex										1.30						11.17
Binghamton	Ar.			3.07	3.07										1.42						11.29
Binghamton (D.&H.) Lv.															#2.25						
Oneonta (D.&H.) Ar.															#4.12						
Albany (D.&H.)															#6.30						
Binghamton, N. Y. Lv.				3.20	3.20										11.10						11.50
Great Bend ... Pa. "															11.56						
Susquehanna ... { Ar.															12.10						12.26
{ Lv.															12.12						12.30
Gulf Summit N.Y. "															12.30						
Deposit															12.48						12.59
Hale's Eddy															12.56						
Hancock															1.11						11.17
Lordville															1.30						
Long Eddy															1.39						
Hankins															1.47						
Callicoon															2.05						11.54
Cochecton															2.13						
(Lake Huntington)															cu						
Skinnners ... N. Y. "															2.32						
Honesdale et. ... "																					
Narrowsburg N.Y. "															3.30						
Tusten															2.45						12.17
Mast Hope ... Pa. "																					
Westcolang Park. "																					
Lackawaxen																					
Shohola																					
Parker's Glen																					
Pond Eddy																					
Mill Rift																					
Sparrowbush N.Y. "																					
Port Jervis	Ar.			6.20	6.20																
Port Jervis	Lv.	5.30	5.30	6.27	6.27	7.00	7.57	7.57	10.28		2.30			4.21	5.09	6.30	6.30	6.55	9.40		13.10
Graham	"																				
Otisville	"		am			7.20	8.16	8.16	10.48		2.51			ab		6.51	6.51	7.14			
Howells	"					7.26	8.22	8.22	10.54		2.59					6.58	6.58				
Middletown	"	6.33	6.31	aw	aw	7.33	8.31	8.31	11.02		3.10	3.57	4.25	4.56	5.42	7.09	7.09	7.30	10.15	10.45	13.47
New Hampton ... "	"	6.38	6.36			7.38	8.36	8.36													
Goshen	"	6.45	6.43	aw	aw	7.44	8.42	8.42	11.13		3.22	4.09	4.37	5.07	5.53	7.21	7.21	7.42		10.57	
Chester	"	6.52	6.50			7.51	8.49	8.49	11.20		3.30	4.17				7.29	7.29	7.50		11.04	
Greycourt	"									1.54											
Oxford	"	6.56	6.55																		
Monroe	"	6.30	7.04			8.01	8.58	8.58	11.28	2.03	3.40	4.26	5.00	5.24		7.39	7.39	7.59		11.13	
Harriman	"	6.34	7.08			8.05	9.05	9.05	11.34	2.07	3.48	4.31	5.05			7.47	7.47	8.05		11.18	
Arden	"	6.38		f7.12		8.10										7.51	7.51				
Southfields	"	6.42	7.16			8.14										7.55	7.55				
Tuxedo	"	6.48	7.22			8.20	9.16	9.16	11.45		4.01	4.45	5.23			8.01	8.01	8.17		11.25	
Sloatsburg	"	6.53	7.27			8.25	9.21	9.21		2.22	4.06	4.50	5.28			8.06	8.06			11.31	
Ramapo	"																			11.35	
Hillburn	"	6.57	7.32																		
Suffern	"	7.00	7.36			8.31	9.27	9.27	11.53	2.28	4.13	5.00				8.13	8.13	8.27		11.41	
Mahwah ... N. J. "	"	7.03	7.39			8.34		9.28													
Ramsey	"	7.10						9.32	12.00	2.35	4.20	5.08				8.21	8.21	8.34		11.48	
Allendale	"	7.13						9.34	12.03	2.38		5.11				8.22	8.37			11.51	
Waldwick	"	7.20					9.42	9.42		2.41	4.25	5.14	5.50			8.27	8.41			11.54	
Hohokus	"	7.23	7.52				9.44	9.44		2.44	4.28	5.17									
Ridgewood	"	7.26		ag	dz	8.46	9.46	9.46	12.10	2.47	4.31	5.20	5.55	6.01	6.43	8.32	8.32	8.45	cg	11.58	
Paterson	"																				
Passaic	Lv.																				
Rutherford		Via Bergen Short Cut	Via Bergen Short Cut	Via Bergen Short Cut	Via Bergen Short Cut	Via Bergen Short Cut	Via Bergen Short Cut	Via Bergen Short Cut	Via Bergen Short Cut	Via Bergen Short Cut	Via Bergen Short Cut	Via Bergen Short Cut	Via Bergen Short Cut	Via Bergen Short Cut	Via Bergen Short Cut	Via Bergen Short Cut	Via Bergen Short Cut	Via Bergen Short Cut	Via Bergen Short Cut	Via Bergen Short Cut	Via Bergen Short Cut
E. Rutherford ... }	"																				
Jersey City	"	7.58	8.22	8.28	8.40	8.40	9.14	10.25	10.35	12.50	3.27	5.15	6.10	6.40	7.20	9.12	9.25	9.25	11.45	12.42	5.25
NEW YORK																					
Chambers St. "	"	8.11	8.34	8.40	8.54	8.54	9.27	10.39	10.54	1.04	3.39	5.33	6.24	6.42	7.34	9.24	9.39	9.39	11.59	12.54	5.39
West 23rd St. "	"	8.35	8.50	8.50	9.10	9.10	9.53	10.50	(West 23rd Street Ferry does not operate on Sundays and Holidays.)	1.20		5.45	7.05		7.05	7.50					
Times Sq. Motor Coach Term. Ar.				8.55	8.55										7.35					11.59	
Note ⊕																					

COURTESY

In coaches on night trains tickets are collected through to destination and passengers are not again disturbed during the night hours. Coach lights are dimmed to make sleeping easy. In both Coaches and Pullman Cars employees render a friendly, personalized service which makes each Erie train your "Home on the Rails."

SCENIC ROUTE

Famed for its scenery the Erie line traverses the rolling farmlands and dairylands of North Jersey and southeastern New York. Then, along the Delaware where the mountains become the foothills of the Catskills. Now the rails descend among the lovely hills of the upper Susquehanna. Then through New York's Southern Tier and the corner of Pennsylvania leveling off in the fertile flatlands of Ohio, Indiana and Illinois.

ELMIRA—CHICAGO

TABLE 4 WESTBOUND

EASTBOUND

Miles from New York	Eastern Daylight Saving Time					Miles from Chicago	Central Daylight Saving Time					
	7	1	27	5	15		2	dt 8	10	6	16	620
	Daily	Daily	Daily	Daily	Daily		Daily	Daily	Daily Ex. Sun.	Daily	Daily	Sun. only
	PM	AM	PM	PM	PM		PM	PM	PM	PM	AM	PM
0.0	Lv. NEW YORK					0.0	Chicago (Dearborn Sta.) III. Lv.					
Note ⊕	Times Sq. Motor Coach Term. Lv.	8.45	2.55	7.25	7.25	6.3	(Polk and Dearborn Sts.)					
0.0	(West 23rd Street Ferry does not operate on Sunda ys and Holidays).	8.30	2.50	7.10	7.10	20.6	Englewood, 63d Street. " cp					
0.0	West 23rd St. Lv.	11.55	8.45	3.00	7.30	36.3	Hammond. Ind. " 6.40 10.40					
1.0	Chambers St. " " "	12.00	8.45	3.00	7.30	100.9	Crown Point. " " 7.05					
273.8	Jersey City. " " "	12.25	9.05	3.15	7.45	142.6	Rochester. " " 8.14					
291.2	Elmira. N. Y. " " "	7.40	3.54	10.42	2.38	142.6	Huntington. Ar. 8.58 12.45					
302.3	Corning. " " "	8.13	4.19	11.11	3.07	173.4	Huntington. Lv. 9.05 12.52					
312.5	Addison. " " "	8.32	4.36	11.28			Decatur. " 9.42					
315.1	Cameron Mills. " " "						Eastern Daylight Saving Time					
328.1	Cameron. " " "					189.9	Ohio City. Ohio " 11.04					
332.3	Hornell. Ar. " " "	9.10	5.12	12.05	3.57	217.2	Lima. " " 11.47 3.22					
425.2	Buffalo (see Table 6). Ar. " " "	12.10	7.45		7.55	244.2	Kenton. " " 3.56					
332.3	Hornell. Lv. " " "	9.20	5.22		4.06	269.1	Marion. Ar. 12.43 4.24					
341.5	Alfred. " " "				4.06	269.1	Marion. Lv. 12.48 4.29					
349.9	Andover. " " "	ah				290.1	Galion. " " 1.19 4.59					
358.5	Wellsville. " " "	10.04	6.02		4.47	305.5	Mansfield. " " 1.49 5.29					
366.9	Belmont. " " "	ah				322.2	Ashland. " " 2.20 5.56					
374.4	Friendship. " " "	bg				354.4	Rittman. " " 6.33					
383.3	Cuba. " " "	bg	bh		bf	358.8	Wadsworth. " " 6.44					
395.7	Olean. " " "	11.10	6.55		5.42	365.4	Barberton. " " 6.56					
399.1	Allegany. " " "				5.42	372.7	Akron. Ar. 3.37 7.19					
413.6	Salamanca. Ar. " " "	11.34	7.18		6.07	382.8	Kent. Ar. 3.53 7.34					
430.2	Bradford (See Table 10). Ar. " " "				7.10	389.1	Kent. Lv. 3.58 7.39					
413.6	Salamanca. Lv. " " "	11.41	7.25		6.14		Ravenna. " " 5.00 9.00					
431.1	Randolph. " " "				6.14	413.0	Cleveland (See Table 5). Lv. " " 5.00 9.00					
447.3	Jamestown. Ar. " " "	12.29	8.13		7.03	418.1	Warren (cd). " " 4.38 8.19					
	(Chautauqua Lake)				7.03	422.3	Niles (cd). " " " es 6.05 bx 10.18					
	Buffalo (See Table 8). Lv. " " "		5.30			426.9	Girard (cd). " " " 6.26 6.35 10.27					
447.3	Jamestown. Lv. " " "	12.29	8.13		7.03	426.9	Youngstown (cd). Ar. 4.57 8.40 6.26 6.35 10.42					
474.2	Corry. Pa. " " "	1.08	8.53		7.41	426.9	Pittsburgh (See Table 5). Ar. 7.30 11.20 9.05					
485.6	Union City. " " "		cn		7.41	434.5	Youngstown. Lv. 5.07 8.47 6.42 6.42 10.45					
501.2	Cambridge Springs. " " "	1.41	cn		7.56	440.5	Hubbard. " " " 10.56 11.11					
509.5	Saegertown. " " "	hw			8.16	456.6	Sharon. Pa. " 5.39 9.11 7.07 7.07					
515.9	Meadville. Ar. " " "	2.01	9.45		8.16	482.8	Greenville. " " 6.15 9.39 7.34 7.34					
515.9	Meadville. Lv. " " "	2.06	9.50		8.35	482.8	Meadville. Ar. 6.55 10.20 8.12 8.12					
542.1	Greenville. " " "	2.43	10.29		8.35	489.2	Meadville. Lv. 7.00 10.25 8.17 8.17					
558.2	Sharon. " " "	3.11	10.56		8.40	497.5	Saegertown. " " " hx 8.36 8.36					
564.2	Hubbard. Ohio " " "				9.17	513.1	Cambridge Springs. " " " dy 10.43 8.36					
571.8	Youngstown. Ar. " " "	3.31	11.17		9.17	524.5	Union City. " " " dy 11.05 9.13 9.13					
	Pittsburgh (See Table 5). Lv. " " "	12.30	9.00		9.41	551.4	Corry. " " " 7.51 11.21 9.54 9.54					
571.8	Youngstown (cd). Lv. " " "	3.38	11.24		10.00	620.9	Jamestown. N. Y. Ar. 8.31 12.14 9.54 9.54					
576.4	Girard (cd). " " "				10.00	551.4	Buffalo (See Table 8). Ar. 10.55 9.54					
580.6	Niles (cd). " " "		bp		10.10	567.6	Jamestown. Lv. 8.31 12.14 9.54					
585.7	Warren (cd). " " "	4.07	11.52		10.30	585.1	(Chautauqua Lake) " " " 12.37 10.34					
638.3	Cleveland (See Table 5). Ar. " " "				11.50	615.4	Randolph. " " " 1.11 10.34					
609.6	Ravenna. " " "	al				624.3	Salamanca. Ar. 9.10 1.11 9.40 10.41					
615.9	Kent. Ar. " " "	4.43	12.32		11.05	631.8	Bradford (See Table 10). Lv. ad8.30 1.18 10.41 10.41					
626.0	Akron. Lv. " " "	4.48	12.37		11.10	640.2	Salamanca. Lv. 9.15 1.18 10.41 10.41					
633.3	Barberton. " " "	5.09	1.00		11.24	648.8	Allegany. " " " 1.44 11.06 11.06					
639.9	Wadsworth. " " "					657.2	Olean. " " " dw 11.06 11.06					
644.3	Rittman. " " "					666.4	Cuba. " " " 11.06 11.06					
676.5	Ashland. " " "						Friendship. " " " 11.06 11.06					
693.2	Mansfield. " " "						Belmont. " " " 11.07 11.59 11.59					
708.6	Galion. " " "						Wellsville. " " " 10.29 2.41 11.59 11.59					
729.6	Marion. Ar. " " "						Andover. " " " 11.07 3.20 12.38 12.38					
729.6	Marion. Lv. " " "						Alfred. " " " 8.20 5.35 9.45 9.45					
754.5	Kenton. " " "						Hornell. " " " 11.14 3.35 8.35 12.46					
781.5	Lima. " " "						Hornell. " " " 11.14 3.35 8.35 12.46					
808.8	Ohio City. " " "						Canisteo. " " " 8.44 12.46 12.46					
825.3	Central Daylight Saving Time											
856.1	Decatur. Ind. " " "	9.19	4.36		2.38	666.4	Cameron Mills. " " " 11.49 4.28 9.15 1.37					
856.1	Huntington. Ar. " " "	9.51	5.07		2.44	670.6	Addison. " " " 12.06 4.46 9.43 1.37					
897.8	Huntington. Lv. " " "	10.04	5.14		3.27	683.6	Corning. " " " 12.30 5.20 10.13 2.02					
962.4	Rochester. " " "					686.2	Elmira. " " " 7.20 11.45 5.25 8.40					
978.1	Hammond. " " "					696.4	Jersey City. " " " 7.34 11.59 5.39 8.54					
992.4	Englewood, 63d St. III. " " "					707.5	NEW YORK " " " 7.50 11.59 5.39 8.54					
998.7	Chicago (Dearborn Sta.) Ar. " " "	1.00	8.05		5.20	724.9	Chambers St. " " " 7.50 11.59 5.39 8.54					
	Note ⊕	AM	AM	AM	AM		West 23rd St. " " " 7.50 11.59 5.39 8.54					
		PM	AM	AM	PM		(West 23rd Street Ferry does not operate on Sunda ys and Holidays).					
							Times Sq. Motor Coach Term. Ar. 7.35 11.59 8.55 8.55					

Dining Car Service

Table D'Hotel prices range as follows: Breakfast 50c to 85c, Luncheon 60c to \$1.00, Dinner 90c to \$1.25. A meal on our trains is always a pleasant interlude. Makes the journey seem shorter, too. The freshest food the

market affords, cooked by expert chefs and served in the comfort of spacious Diner-Lounge Cars. If you prefer a light snack without going to the Diner the waiter will bring sandwiches, fruit, coffee, etc., right to your seat.

TABLE 5 DETROIT—TOLEDO—CLEVELAND—YOUNGSTOWN—PITTSBURGH—WASHINGTON—BALTIMORE

Miles from Cleveland	Eastern Daylight Saving Time	688	624	626	6	628	686	620	Miles from Baltimore	Eastern Daylight Saving Time	629	619	5	685	623	679	687
		Daily	Daily	Daily	Daily	Ex Sun & Hol.	Daily	Sun. only			Ex Sun & Hol.	Sun. only	Daily	Daily	Daily	Daily	Daily
0.0	DetroitLv.	AM 12.15	AM	AM 8.00	PM	PM	PM 1.10	PM 5.30	0.0	Baltimore (Mt. Royal Sta.)Lv.	AM	AM	PM 10.35	PM	AM 8.55	PM 12.05	PM 4.33
3.3	ToledoLv.	2.13	4.33	8.45			3.00	6.35	1.5	Baltimore (Camden Sta.).....			10.43		9.00	12.13	4.40
0.0	ClevelandLv.	4.25	8.20	1.15	5.00	5.30	6.00	9.00	38.3	Washington, D. C. ...Ar.			11.30		9.40	1.00	5.25
3.6	East 55th Street.....		8.27	1.23	bu	5.37	6.08	9.08	38.3	Washington, D. C. ...Lv.			11.55		10.10	1.15	5.45
5.6	E. 93d St., Cleveland.....		8.32	1.27	na	5.42	6.08	9.13	45.2	Silver Spring.....			12.09		10.24	1.29	5.59
10.7	North Randall.....					5.51			93.4	Harper's Ferry.....					11.19	2.30	
15.8	Solon.....			no		5.59			111.7	Martinsburg.....			1.38		11.43	3.04	
20.4	Geauga Lake.....					6.05			189.4	Cumberland.....			3.21			1.15	4.55
23.6	Aurora.....			ne		6.10			226.6	Meyersdale.....			4.27			2.24	5.59
30.0	Mantua.....			dc		6.18	eh		226.2	Connellsville.....			5.59			4.05	7.30
34.2	Jeddoe.....					6.24			281.0	McKeesport.....			6.56			5.03	8.28
36.7	Garrettsville-Hiram.....		9.06	2.02		6.30			324.7	Braddock.....			7.05			5.12	8.36
40.3	Mahoning.....					6.36			339.5	PittsburghAr.			7.25			5.30	8.55
45.3	Phalanx.....					6.42			339.5	PittsburghLv.						6.00	9.00
49.4	Leavittsburg.....					6.49			350.1	Coraopolis.....			8.45			6.14	9.14
52.6	Warren.....	5.37	9.25	2.22	6.05	6.57	7.09	10.18	358.6	Aliquippa.....			8.59			6.23	9.23
57.7	Niles.....	er	9.33	2.30	es	7.23	7.20	10.27	365.2	Beaver.....			9.09			6.31	9.31
61.9	Girard.....					7.33			368.7	{ Beaver Falls.....			9.17			6.31	9.31
66.5	YoungstownAr.	6.00	9.45	2.45	6.26	7.45	7.35	10.42	385.2	{ New Brighton.....			9.22			6.36	9.36
66.5	YoungstownLv.	6.05	9.50	2.50			7.40		385.2	{ Ellwood City (ed).....			9.21			6.34	9.35
84.2	New CastleAr.	6.29	10.15	3.14			8.02		386.7	New Castle (Wash. St.)Lv.ec			9.32			6.46	9.46
84.2	New Castle (Wash. St.)ecAr.	6.42	10.28	3.27			8.15		404.4	New Castle			9.45			6.59	9.59
95.5	Ellwood City (ed).....	6.52	10.38	3.41			8.25		404.4	YoungstownAr.			10.15			7.30	10.30
102.2	{ Beaver Falls.....	cy6.50	10.37	3.36			8.25		409.0	YoungstownLv.	5.50	8.35	10.25			7.35	10.34
102.2	{ New Brighton.....								413.2	Girard.....	5.58					7.35	10.34
105.6	Beaver.....		10.43	3.41			8.31		413.2	Niles.....	6.07	8.49	bm			7.50	10.47
112.3	Aliquippa.....		10.52	3.50			8.40		418.3	Warren.....	6.22	8.59	10.46			8.05	10.56
120.8	Coraopolis.....		11.03	4.00			8.50		421.5	Leavittsburg.....	6.28					8.05	10.56
131.4	PittsburghAr.	7.30	11.20	4.15			9.05		425.6	Phalanx.....	6.36	9.08					
131.4	PittsburghLv.	9.05	11.45				10.40		430.6	Mahoning.....	f6.45						
141.0	Braddock.....Ar.	9.21	12.02				10.55		434.2	Garrettsville-Hiram.....	6.52	9.19	nh	nf	8.24	hf	
145.2	McKeesport.....	9.35	12.12				11.10		436.7	Jeddoe.....	f6.57						
189.3	Connellsville.....	10.35	1.12				12.08		440.9	Mantua.....	7.06	df					
244.3	Meyersdale.....	12.03	2.48				1.47		447.5	Aurora.....	7.17	9.37					
281.5	Cumberland.....	1.05	3.49				2.51		450.5	Geauga Lake.....	7.22						
359.2	Martinsburg.....	2.42	5.24				4.33		455.1	Solon.....	7.31						
372.5	Harper's Ferry.....	3.15	5.50				5.05		460.2	North Randall.....	7.39						
425.7	Silver Spring.....	4.12	6.54				6.08		465.3	E. 93d St., Cleveland.....	7.47	10.00	11.37	3.25	9.01	11.49	
432.8	Washington, D. C. ...Ar.	4.30	7.10				6.25		467.6	East 55th Street.....	7.53	10.06	11.50	3.31	9.07	12.03	3.28
432.8	Washington, D. C. ...Lv.	5.00	7.25				6.45		470.9	ClevelandAr.	8.03	10.15	11.50	3.40	9.15	12.03	3.28
469.4	Baltimore (Camden Sta.)...Ar.	5.42	8.10				7.26			ToledoAr.			2.42	6.15	1.00	2.55	5.32
470.9	Baltimore (Mt. Royal Sta.)...Ar.	5.51	8.17				7.35			DetroitAr.			4.25	8.00		5.10	7.25

EQUIPMENT

Detroit, Toledo, Cleveland, Youngstown, Pittsburgh, Washington, Baltimore Trains.

★Indicates Air-Conditioned Cars

EASTBOUND

WESTBOUND

- No. 6—Daily.** ★Sleeping Car (10 Section 1 Compartment and Drawing Room Car) Cleveland to New York. ★Coach, Cleveland to New York.
- No. 624—The Washingtonian—Daily.** ★Pullman Parlor-Diner-Lounge, Cleveland to Baltimore. ★De Luxe Coaches, Cleveland to Washington and Baltimore.
- No. 626—Daily.** ★Erie Parlor-Buffer Car, Cleveland to Pittsburgh. ★Coach, Cleveland to Pittsburgh.
- No. 686—Daily.** ★Sleeping Car for Parlor Car Service and ★Coaches, Detroit to Pittsburgh, via Cleveland. ★Diner-Lounge Car, Cleveland to Pittsburgh. ★Sleeping Car (8 Section-4 Double Bedroom), Pittsburgh to Washington. (Open 9.00 p. m., and may be occupied until 8.00 a. m.).
- No. 688—Daily.** ★Sleeping Car (12 Section and 2 Double Bedrooms), Chicago to Pittsburgh. ★Sleeping Car (8 Section-5 Double Bedrooms), Detroit to Pittsburgh. Through Coaches, ★Chicago and ★Detroit to Pittsburgh, via Cleveland. ★Parlor Car, ★Dining Car and ★Coaches, Pittsburgh to Washington and Baltimore.

- No. 5—Daily.** ★Sleeping Car (10 Section 1 Compartment and Drawing Room Car) New York to Cleveland. ★Erie Parlor-Buffer Car, Pittsburgh to Cleveland. ★Coach, Pittsburgh to Cleveland. ★Sleeping Cars (8 Section-4 Double Bedroom and 12 Section and Drawing Room), Washington to Pittsburgh. (Open 10.00 p. m., and may be occupied until 8.00 a. m.).
- No. 623—The Washingtonian—Daily.** ★Pullman Parlor-Diner-Lounge, Baltimore to Cleveland. ★De Luxe Coaches, Baltimore to Cleveland.
- No. 679—Daily.** ★Sleeping Car (12 Section and 2 Double Bedrooms), Pittsburgh to Chicago. ★Through Coaches, Pittsburgh to Chicago. ★Parlor Car, ★Dining Car and ★Coaches, Baltimore and Washington to Pittsburgh.
- No. 685—Daily.** ★Sleeping Car for Parlor Car Service and ★Coaches Pittsburgh to Detroit, via Cleveland. ★Diner-Lounge Car, Pittsburgh to Cleveland.
- No. 687—Daily.** ★Sleeping Car (8 Section-5 Double Bedrooms), Pittsburgh to Detroit. ★Through Coaches, Pittsburgh to Detroit via Cleveland. ★Pullman Cars only, Washington to Pittsburgh.

Round-trip tickets reading via B. & O. R. R. between Cleveland and points east of Pittsburgh are honored via Erie R. R.-P. & L. E. R. R. between Cleveland and Pittsburgh.

THE WASHINGTONIAN

The only daylight train between Cleveland, Washington and Baltimore. De Luxe Coaches, Parlor Lounge Car and Dining Car. See Schedule on this page.

Holidays in the above table refers to the observance of New Year's Day, Memorial Day, Independence Day, Labor Day, Thanksgiving Day and Christmas Day.

For Explanation of Reference Marks and Notes, see Pages 5 and 6.

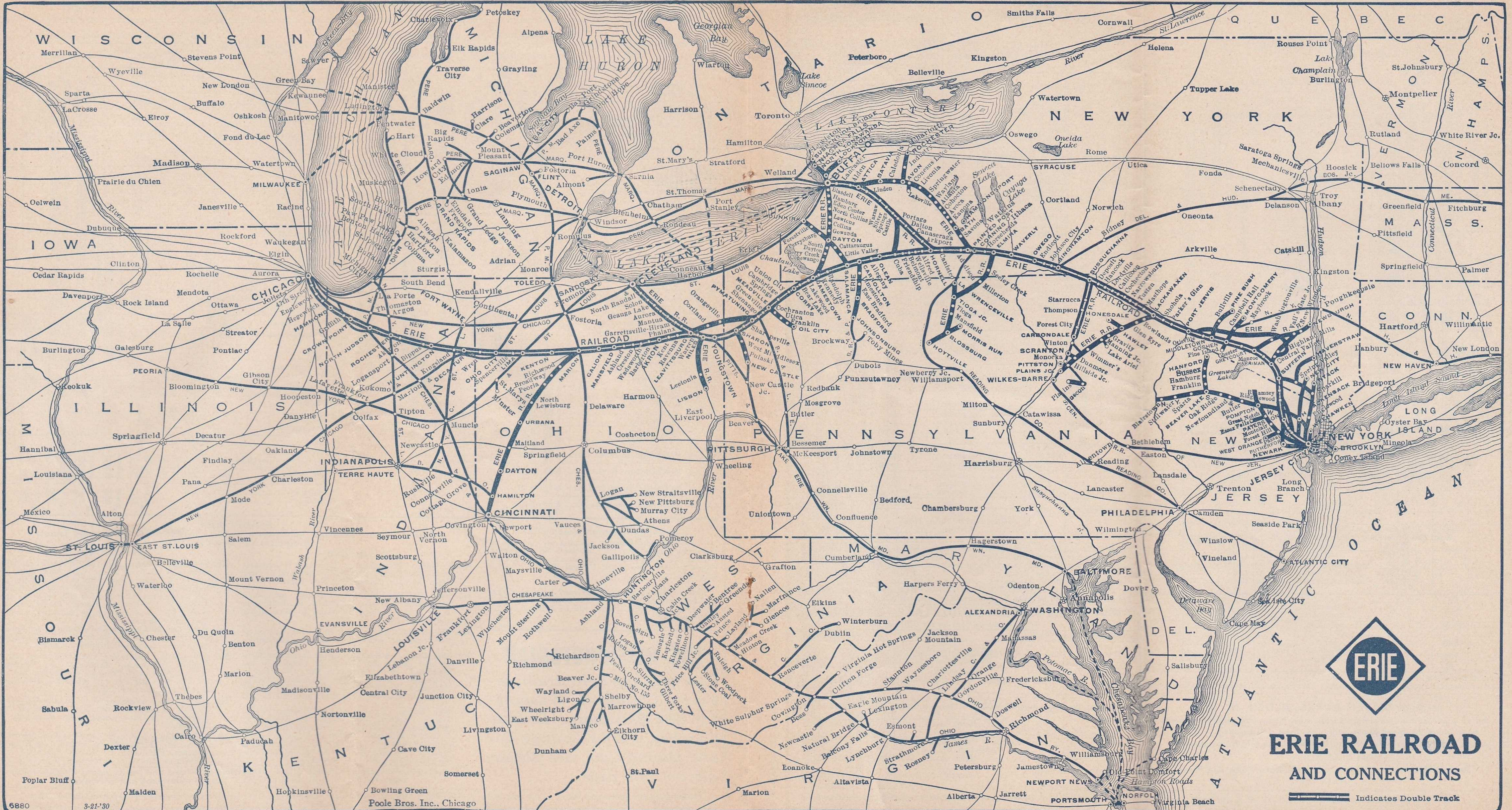


TABLE 6 NEW YORK AND BUFFALO

Table with columns for WESTBOUND Read Down, EASTBOUND Read Up, Miles from New York, and EASTERN DAYLIGHT SAVING TIME. Includes routes from New York to Buffalo via various stations like Jersey City, Hornell, and Salamanca.

TABLE 8 BUFFALO—JAMESTOWN

Table with columns for WESTBOUND Read Down, EASTERN DAYLIGHT SAVING TIME, and Eastbound Read Up. Lists stations between Buffalo and Jamestown.

TABLE 9 LACKAWAXEN—HONESDALE

Table with columns for West-bound Read Down, EASTERN DAYLIGHT SAVING TIME, Miles, and East-bound Read Up. Lists stations between Lackawaxen and Honesdale.

TABLE 10 NEW YORK—SALAMANCA—BRADFORD—CHICAGO

Table with columns for WESTBOUND Read Down, Via Salamanca and BUS of Buffalo and Erie Coach Corp., EASTERN DAYLIGHT SAVING TIME, and EASTBOUND Read Up. Includes routes to Chicago via Salamanca and Bradford.

TABLE 7 NEW YORK—CHAUTAUQUA—CHICAGO

Table with columns for WESTBOUND Read Down, EASTERN DAYLIGHT SAVING TIME, and EASTBOUND Read Up. Includes routes to Chicago via Chautauqua.

Trains 5-557 and 560-6 carry through sleeping car between Bradford and New York. Sleeper on train 557 will be parked at Bradford for occupancy until 8.00 A. M. Busses leave as follows: (running time approximately 45 minutes.)

TABLE 11 NEW YORK—KENOZA LAKE—JEFFERSONVILLE

Table with columns for WESTBOUND Read Down, EASTERN DAYLIGHT SAVING TIME, and EASTBOUND Read Up. Lists routes between New York, Kenosha Lake, and Jeffersonville.

Tickets sold and Baggage checked through to Chautauqua. Hand baggage checked without charge. Trunks checked at charge of 25c each.

BLACK WATER BATHS, ALDEN, N. Y.

An all year resort where sufferers from rheumatism and nervous ailments have found the Black Water Baths beneficial and curative. Alden is located 20 miles east of Buffalo on the Erie Railroad.

HOTELS AT ALDEN, N. Y.

- Empire State Hotel
Original Black Water Baths and Hotel
Alden Inn

NOTE "X" In connection with the bus service the Erie Railroad acts as agent only and is not responsible beyond its own line, except as such responsibility may be imposed by law with respect to baggage.



You're Probably Wrong About Railroad "Cops"!

● "A tough guy who chases small boys and hobos." That's the old-time idea of a railroad policeman. But it just doesn't fit today.

Now, with rail transportation all-important to the National Defense, the ever-present danger of sabotage finds Erie's vigilant police on duty 24 hours a day. It's "hands off" to all who would disrupt the steady flow of defense loads for Uncle Sam.

"The Freight Must Go Through—*Safely* and on Time" is a cherished Erie creed . . . and that *safety* factor is taken care of by one of the most efficient railroad police forces in the world. Every shipment of freight is zealously guarded by men schooled in modern scientific methods of crime prevention and detection. So effective is their work, Erie can point to a record of only a few pennies' loss due to theft per \$1,000 value of goods carried.

Whatever *your* freight, you can trust Erie to deliver it safely—and at lowest costs!

Transportation problem? Call the Erie agent or write—

Carl Howe, Vice President, Erie Railroad
Cleveland, Ohio



Superb new coaches; more comfort at no extra fare
They include the good features of all previous cars.

De Luxe Coaches

- Yes, of course, they are all-steel for smoother, safer riding and air-conditioned for all-weather comfort. But note these additional features:
 - Comfort-type seats that swing in pairs to any desired position: facing the windows; diagonally; completely around. Seat backs decline individually to four restful positions.
 - Smoking and Lounging Salon for men.
 - Spacious Ladies' Lounge with large mirrors, etc.; even a full length couch for a rest or short nap.
 - Decorations are modern, harmonious, smart.
- Admission is the regular coach ticket, nothing more.



Ladies' Lounge

LOCAL PARLOR AND CLUB CAR EQUIPMENT

WESTBOUND

No. 27—Daily

Air-Conditioned Diner-Lounge Car.....New York to Binghamton
Coaches.....New York to Hornell

No. 67—Except Saturdays, Sundays and Holidays

Erie Parlor Car.....New York to Port Jervis
Coaches.....New York to Port Jervis

No. 251—Saturdays only

Erie Parlor Car.....New York to Middletown
Coaches.....New York to Middletown

EASTBOUND

No. 56—THE TUXEDO—Except Sundays and Holidays

Erie Parlor Car.....Port Jervis to New York
Coaches.....Port Jervis to New York

YOU PAY **No** MONEY DOWN
WHEN YOU USE THE
**RAILROAD INSTALLMENT
PLAN!**

Go to Your Railroad Ticket Office

Speed ... your shipments by Railway Express.
One complete, convenient service. Low rates. Just phone.

RAILWAY EXPRESS
AGENCY  INC.

TICKET YOUR CAR AND TRAVEL IN COMFORT BY TRAIN

Two first class passenger fares plus one ticket at a slightly higher fare transports two passengers and your car. Minimum charge \$59.40. Ask Erie Ticket or Freight Agents.

TABLE 12 ELMIRA-AVON

Westbound Read Down		Miles	Eastern Daylight Saving Time	Eastbound Read Up	
7- 467 Daily Ex. Sun. PM	468- 8 Daily Ex. Sun. PM			Leave NEW YORK Times Sq. Mtr. Coach Term. (Note ⊕)	Arrive PM
West 23rd St.	Ferry	does not operate on West 23d St.	Sun. and Hol.		
11.55	0.0	Chambers St.	11.59		
12.00	0.0	Jersey City	11.45		
12.25	1.0				
Ex. Sun. AM			Ex. Sun. PM		
7.40	0.0	Elmira	5.20		
8.13	17.4	Ar. Corning Lv.	4.46		
8.22	17.4	Lv. Corning Ar.	3.54		
8.29	19.3	Painted Post	3.44		
f8.34	22.6	Cooper's	f 3.36		
8.43	26.9	Campbell	3.10		
8.52	31.5	Savona	3.04		
9.04	37.7	Bath	2.54		
9.11	41.4	Kanona	2.38		
9.18	45.1	Avoca	2.26		
9.24	48.0	Wallace	2.16		
9.33	52.8	Cohocton	2.06		
9.41	57.2	Atlanta	1.52		
9.51	63.2	Wayland	1.42		
9.59	67.9	Springwater	1.32		
10.05	70.7	Websters	1.13		
10.12	74.5	Conesus	1.07		
f10.18	78.3	So. Livonia	f1 01		
10.25	81.9	Livonia	12.55		
10.30	84.5	South Lima	12.49		
	86.2	Conesus Lake Jct.			
10.45	93.5	Ar. Avon Lv.	12.31		
AM			PM		

FOR DEFENSE



**BUY
UNITED
STATES
SAVINGS
BONDS
AND STAMPS**

**LOCATE YOUR PLANT
WHERE YOU CAN
LOCATE MORE PROFITS**
Ask us about industrial buildings and vacant
land on Erie rails
GEO. F. WESTON
Industrial Commissioner
Erie Railroad, Midland Bldg., Cleveland, O.

**HUDSON AND MANHATTAN TUBE TRAINS
SCHEDULE OF RUNNING TIME**

**BETWEEN
ERIE R. R. JERSEY CITY TERMINAL
AND**

Downtown New York—
Cortlandt St. (Hudson Terminal Bldg.)..... 6 Mins.

Uptown New York—

33rd Street and 6th Ave.....	14	"
23rd Street and 6th Ave.....	11	"
19th Street and 6th Ave.....	10	"
14th Street and 6th Ave.....	9	"
9th Street and 6th Ave.....	8	"
Christopher and Greenwich Streets.....	6	"

Allow 10 Minutes additional for connections.
Fares—Downtown 8 cents. Uptown 10 cents.

**ERIE R. R. FERRY TIME TABLE
EASTERN DAYLIGHT SAVING TIME
CHAMBERS STREET FERRY**

Ferry Running Time, 9 Minutes
WEEK DAYS

Leave New York for Jersey City						Leave Jersey City for New York					
AM	AM	AM	PM	PM	PM	AM	AM	AM	PM	PM	PM
12.30	8.00	11.10	12.10	3.50	7.10	12.15	7.45	10.55	12.05	3.45	7.05
1.00	8.10	11.20	12.20	4.00	7.20	12.45	7.55	11.05	12.15	3.55	7.15
1.30	8.15	11.30	12.30	4.10	7.30	1.15	m8.02	11.15	12.25	4.05	7.25
2.00	8.20	11.40	12.40	4.20	7.40	1.45	8.08	11.25	12.35	4.15	7.35
2.30	8.32	11.50	12.50	4.40	7.50	2.15	8.17	11.35	12.45	4.25	7.45
3.00	8.40	12.00	1.00	4.30	8.00	2.45	8.25	11.45	12.55	4.35	7.55
3.25	8.45		1.10	4.50	8.10	3.12	8.31	11.55	1.05	4.45	8.05
3.50	8.50		1.20	5.00	8.20	3.35	8.38		1.15	4.53	8.15
4.30	9.00		1.30	5.08	8.30	4.15	8.45		1.25	5.00	8.25
5.00	9.10		1.40	m5.15	8.40	4.45	8.54		1.35	5.05	8.35
5.30	m9.15		1.50	5.20	8.50	5.15	a9.02		1.45	5.13	8.45
5.45	9.20		2.00	5.28	9.00	5.30	9.07		1.55	5.24	8.55
6.00	9.30		2.10	5.38	9.15	5.45	9.18		2.05	5.35	9.05
6.15	9.40		2.20	5.48	9.30	6.00	9.23		2.15	5.45	9.15
6.30	9.50		2.30	6.00	9.45	6.15	9.35		2.25	5.55	9.30
6.45	10.00		2.40	6.10	10.00	6.30	9.45		2.35	6.00	9.45
7.00	10.10		2.50	m6.15	10.15	6.45	9.55		2.45	6.05	10.00
7.10	10.20		3.00	6.20	10.30	7.00	10.05		2.55	6.15	10.15
7.20	10.30		3.10	6.30	11.00	7.07	10.15		3.05	6.25	10.30
7.30	10.40		3.20	6.40	11.30	7.18	10.30		3.15	6.35	10.45
7.38	10.50		3.30	6.50	12.00	7.25	10.35		3.25	6.45	11.15
7.50	11.00		3.40	7.00	Mid.	7.35	10.45		3.35	6.55	11.50
AM	AM	Noon	PM	PM	Mid.	AM	AM	AM	PM	PM	PM

a Will not run on Holidays. m Except Saturdays and Holidays.

SUNDAYS

AM	AM	PM	PM	PM	AM	AM	PM	PM	PM
12.30	8.30	12.10	4.30	8.45	12.15	8.30	12.15	4.30	8.45
1.00	8.45	12.30	4.45	9.00	12.45	8.45	12.30	4.45	9.00
1.30	9.00	12.40	5.00	9.15	1.15	9.00	12.45	5.03	9.15
2.00	9.15	1.00	5.15	9.30	1.45	9.15	1.00	5.15	9.30
2.30	9.30	1.15	5.30	9.45	2.15	10.00	1.15	5.30	9.45
3.00	9.45	1.30	5.45	10.00	2.45	10.15	1.30	5.45	10.00
4.00	10.00	1.45	6.00	10.15	3.15	10.30	1.45	6.00	10.15
4.30	10.15	2.00	6.15	10.30	4.18	10.45	2.00	6.18	10.45
5.15	10.30	2.10	6.30	11.00	5.00	11.00	2.15	6.33	11.15
5.45	10.40	2.30	6.45	11.30	5.30	11.15	2.30	6.45	11.50
6.45	11.00	2.45	7.00	12.00	6.30	11.30	2.45	7.00	
7.00	11.30	3.00	7.15		7.00	11.45	3.00	7.15	
7.15	11.45	3.15	7.30		7.18	12.00	3.15	7.25	
7.30	12.00	3.30	7.45		7.30		3.30	7.45	
7.45		3.45	8.00		7.45		3.50	8.00	
8.00		4.00	8.15		8.00		4.00	8.15	
8.15		4.15	8.30		8.15		4.15	8.30	
AM	Noon	PM	PM	Mid.	AM	Noon	PM	PM	PM

TWENTY-THIRD STREET FERRY

Ferry Running Time, 20 Minutes
WEEK DAYS

23rd Street Ferry does not run on Sundays and Holidays

Leave New York for Jersey City						Leave Jersey City for New York					
AM	AM	PM	PM	PM	PM	AM	AM	PM	PM	PM	PM
7.40	10.00	12.30	3.10	6.05	10.45	7.18	9.33	12.30	3.15	6.45	11.35
8.00	10.30	12.55	3.40	7.10	11.55	7.45	10.00	1.00	3.35	7.30	
8.30	10.55	1.30	4.15	8.00		8.15	10.30	1.30	4.15	8.25	
8.48	11.30	2.10	4.40	8.45		8.32	11.00	2.00	4.45	9.05	
9.05	11.55	2.30	5.15	9.30		8.50	11.30	2.30	5.25	9.45	
9.40		2.50	5.45	10.05		9.10	12.00	2.45	5.40	10.25	
AM	AM	PM	PM	PM	PM	AM	Noon	PM	PM	PM	PM

NO FERRY SERVICE ON SUNDAYS

Luxury between Trains...
...in CHICAGO



... your Parmelee transfer coupon, which is included as part of your through ticket, entitles you to transportation in smart limousine coaches from your incoming railway station to your outgoing station... or from your incoming station to any downtown hotel, club, theatre, store or office building. This service is also available, at a nominal charge, to passengers not holding a Parmelee transfer coupon.

Ask any Ticket Agent about

PARMELEE SERVICE

WESTERN UNION

TELEGRAMS AND CABLEGRAMS accepted at all telegraph offices of this railroad.

DAY LETTERS—50 words for 1½ times the cost of a 10 word telegram.

NIGHT LETTERS—25 words for the former price of ten words. Maximum only 50 cents from coast to coast. Words over 25 charged for in groups of 5 at rates as low as a fifth of a cent per word. The longer the message, the lower the rate per word.

RESERVATION MESSAGES—Reserve travel tickets and accommodations and hotel rooms by telegraph—only 35 cents (for 15 words).

TOURATE MESSAGES—When you travel telegraph the folks at home or at the office the facts they want to know about progress of your trip—only 35 cents (for 15 words).

SUGGESTIONS

• **FREE BAGGAGE SERVICE.** Let us check your baggage to destination and relieve you of the trouble and inconvenience of carrying it to and from the train—150 pounds free on each adult ticket.

If you desire delivery to your residence or hotel at destination, ask the checking agent for information regarding delivery service and rates.

• **INTERCHANGEABLE SCRIP COUPON TICKETS** issued in \$15.00 and \$30.00 denominations are accepted on trains or at ticket offices in payment of rail passage as well as sleeping and parlor car accommodations, and also as payment for meals in restaurant cars.

• **PREPAID ORDERS.** For the convenience of patrons who do not wish to send money by mail, Erie Railroad ticket agents are prepared to sell prepaid ticket orders for the delivery of transportation, rail and Pullman, from practically all points in the United States, Canada and Mexico. These orders may also include the furnishing of cash.

In emergencies arrangements may be made for the delivery of transportation by telegraph or telephone without charge except when commercial wires are used.

• **BAGGAGE INSURANCE** by the St. Paul Fire & Marine Insurance Co. may be purchased at principal Erie ticket offices. It insures your baggage and personal effects for your entire trip anywhere in the world. Minimum premium twenty-five cents. The ticket agent can give you full particulars.

• **ERIE PLAYING CARDS** are on sale at our ticket offices, excepting in Ohio. Bridge sets one dollar, single decks fifty cents.

• **SPECIAL TOURS AND CONVENTIONS.** Our services are at the disposal of clubs, lodges and other organizations in arranging for trips to conventions and gatherings of all sorts. Concerning fares, train schedules and travel plans, consult or write to any Erie Ticket Agent, or any of the Passenger Department representatives listed on pages 37 & 38 of this folder.

STOP-OVER PRIVILEGES

Niagara Falls

Passengers holding tickets reading "via Erie Railroad" from or through Elmira to or through Youngstown or vice versa may exercise their privilege of going by way of Buffalo and stopping over for as long as ten days at Niagara Falls, but not beyond the final limit of their ticket. Upon request, the Erie Ticket Agent at Buffalo will issue without charge a round trip ticket between Buffalo and Niagara Falls. Frequent service via busses of International Ry. direct from Buffalo Terminal.

Other Points

On local one-way tickets sold at regular fares, local round-trip tickets sold at double the one-way fares, All-Year, Summer and Winter Tourist Tickets, stop-overs will be allowed on going and return trips within final limit of tickets at any Erie Railroad Station en route upon notice to conductor and without deposit of ticket.

GENERAL INFORMATION

STANDARD OF TIME—Erie Lines east of and including Ohio City, Ohio, are operated by Eastern Daylight Saving Time, Lines west of Ohio City, Ohio, by Central Daylight Saving Time. 12.01 Midnight to 12.00 Noon is indicated by light-faced type. 12.01 Noon to 12.00 Midnight is indicated by heavy-faced type.

TRAINS WILL NOT BE HELD for ferries from New York between hours of 5:00 P.M. and 6:30 P.M. Eastern Daylight Saving Time.

HOLIDAYS—The term "Holidays" (unless covered by special note under schedule) refers to the observance of New Year's Day, Lincoln's Birthday, Washington's Birthday, Memorial Day, Independence Day, Labor Day, Columbus Day, Armistice Day (Nov. 11), Election Day (November 3), Thanksgiving Day and Christmas Day.

THIS COMPANY IS NOT RESPONSIBLE FOR ERRORS in time tables, inconvenience or damage resulting from delayed trains or failure to make connections; schedules are subject to change without notice.

FARES PAID ON TRAINS—Conductors are required to charge ten (10) cents in excess of the one-way ticket fare for passengers traveling in coaches only in the territory east of Port Jervis, including side lines and branches. Buy tickets before boarding trains and avoid payment of this extra fare.

CHILDREN under five years of age are carried free when accompanied by parent or guardian; five years and under twelve, half fare, twelve years of age and over, full fare

ADJUSTMENT OF FARES—Should any misunderstanding arise with conductors or agents, pay the fare required, take receipt and communicate with Passenger Traffic Manager, Midland Bldg., Cleveland, Ohio.

SLEEPING AND PARLOR CAR RESERVATIONS—Space reserved by telegraph or telephone within city limit will be held until:

5:00 P.M. day prior to departure of trains leaving before noon next day.

10:00 A.M. day of departure for trains leaving between noon and 5:00 P.M.

2:00 P.M. day of departure for trains leaving after 5:00 P.M.

When application is by wire or letter from a point outside of city limit, space will be held until fifteen minutes of train time.

BAGGAGE TO BE CHECKED should be delivered at station reasonably in advance of train departure to insure its being placed aboard the train.

BAGGAGE DELIVERY IN NEW YORK CITY—All baggage checked to New York City will be sent to the West 23rd Street Station unless passenger specifies Chambers Street Station at time of checking. Account no Ferry service to West 23rd Street on Sundays or Holidays, baggage to arrive and wanted that day, should be checked to Jersey City or Chambers Street.

Baggage delivery service in New York will be performed by the Railway Express Agency.

HAND-BAGGAGE in Pullman Cars is restricted to what can be conveniently placed in the berth, seat or other accommodations purchased by the passenger.

CHICAGO PASSENGER AND BAGGAGE TRANSFER is performed by the Parmelee Company. A uniformed agent meets all incoming trains of the Erie Railroad on arrival at Dearborn Station.

ARTICLES LOST ON TRAINS or left in waiting rooms or stations, owners should apply to Lost and Found Bureau, (Baggage Room) Jersey City Depot, or address Passenger Traffic Manager, Midland Bldg., Cleveland, Ohio, giving full description of the property, stating date of loss and number of train.

SAFETY FIRST HINTS—Carefulness on your part helps eliminate accidents. Don't get on or off a train in motion; wait for a full stop. Keep hand baggage out of car aisles; this will remove a cause of inconvenience, possibly of harm, to others. Walk carefully when entering or leaving train; high-heeled shoes are sometimes a cause of tripping or stumbling on car steps. Don't stand or walk close to the railroad track; look both ways before starting across. Courtesy toward your fellow travelers increases the pleasure of your journey.

POSTAGE STAMPS may be purchased from dining car attendants.

SEE AND KNOW AMERICA

Sight-Seeing

THE
GRAY LINE

Everywhere

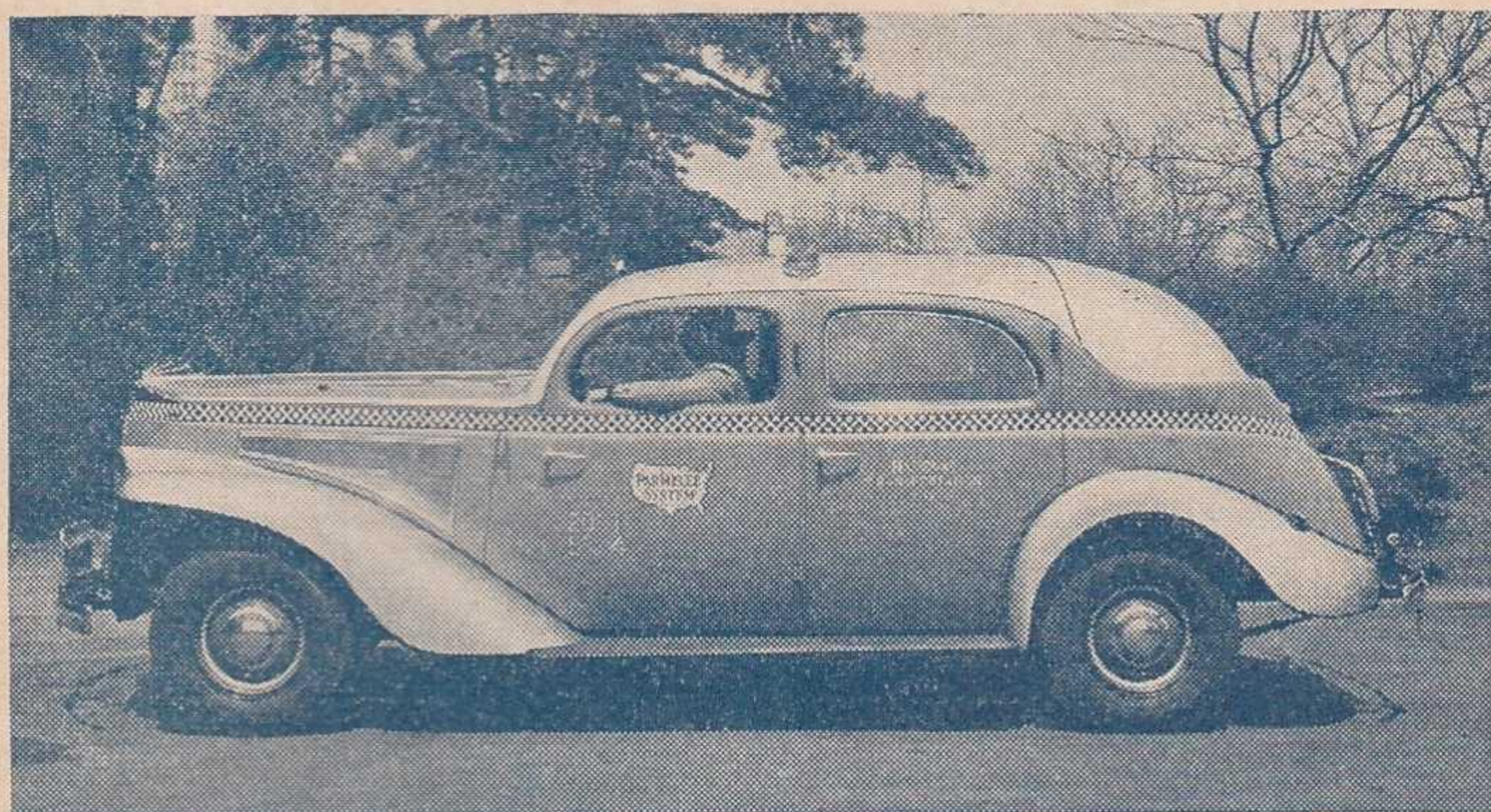
MAKE YOUR RAILROAD TRIP COMPLETE... TAKE SIGHT-SEEING TOURS AT ALL IMPORTANT TOURIST POINTS



See Your Local Railroad Ticket Agent For All Information

ERIE TRAIN-CAB SERVICE

Takes you from Erie Terminal directly to your door in New York or Brooklyn



ONE Person 90c TWO Persons \$1.25 THREE or more \$1.50

Thousands have used and praised Erie Train-Cab Service.

Strangers arriving at Erie Terminal, Jersey City, are taken all the way to their destination in New York or Brooklyn. They never get "lost" and are never overcharged. Women accompanied by children appreciate this service. Even seasoned travelers enjoy the comfort of settling down in their own taxicab and forgetting about bags and car changes.

The fares shown above apply from our terminal to any place on Manhattan 110th Street and South, also to any point in the Brooklyn business district.

Service beyond the prescribed zones is metered from the zone limits and charged for at regular rates.

Train-Cab service is available to all who travel from stations west of Middletown, N. Y.

You can buy the Train-Cab coupon with your rail ticket at the ticket office or from the conductor on any through train and you will find your taxicab awaiting the arrival of your train at Jersey City.

Ask the conductor or ticket agent for details.

RIGHT BEHIND HIM



Seven Days A Week;

24 Hours A Day —

With Continent-wide

Service—The Railroads

ASSOCIATION OF AMERICAN RAILROADS

CONDENSED THROUGH FREIGHT SCHEDULES

FOR INFORMATION ONLY. For details, consult any freight traffic representative shown on opposite pages.

EASTBOUND — READ DOWN

WESTBOUND — READ UP

TRAIN 74 and Connections	Train NE 98 and Connections	TRAIN 98 and Connections	TRAIN 72 and Connections	TRAIN 78 and Connections	TRAIN 90 and Connections	TRAIN 86	Central Daylight Saving Time	TRAIN 77 and Connections	TRAIN 81 and Connections	TRAIN 181 and Connections	Train Adv 87 and Connections	TRAIN 87 and Connections
Example Day 8:00AM Mon. 9:30AM Mon. 1:10PM Mon. 4:15PM Mon. 5:50PM Mon.	Example Day 5:30PM Mon. 7:00PM Mon. 1:40AM Tue. 3:30AM Tue.	Example Day 5:30PM Mon. 7:00PM Mon. 1:40AM Tue. 3:30AM Tue. 6:30AM Tue.	Example Day 9:45PM Mon. 11:15PM Mon. 5:00AM Tue. 9:30AM Tue.	Example Day 12:15AM Mon. 6:00AM Mon. 9:00AM Mon. 11:00AM Mon.	Example Day	Example Day	Lv. Chicago Ar. Lv. Hammond Ar. Lv. Huntington Ar. Lv. Lima Ar. Ar. Marion Lv. <i>Eastern Daylight Saving Time</i>	Example Day 12:01AM Thu. 10:45PM Wed. 3:15PM Wed. 11:30AM Wed.	Example Day 2:00AM Thu. 12:15AM Thu. 8:00PM Wed. 5:30PM Wed.	Example Day 4:00AM Thu. 2:30AM Thu. 10:00PM Wed. 6:30PM Wed.	Example Day	Example Day
		6:50PM Mon. 1:30AM Tue. 2:30AM Tue. 3:15AM Tue.					Lv. Cincinnati Ar. Lv. Dayton Ar. Lv. Maitland (Spfld) Ar. Lv. Urbana Ar.		6:50AM Thu. 11:30PM Wed. 9:00PM Wed. 8:15PM Wed.	6:50AM Thu. 11:30PM Wed. 9:00PM Wed. 8:15PM Wed.		
8:45PM Mon. 12:01AM Tue. 12:50AM Tue.	9:00AM Tue.	9:30AM Tue. 11:50AM Tue. 2:00PM Tue.	12:15PM Tue. 3:45PM Tue. 5:00PM Tue.	2:00PM Mon. 6:55PM Mon. 5:00AM Tue.			Lv. Marion Ar. Lv. Akron Ar. Lv. Kent Ar. Ar. Cleveland Lv.	7:45AM Wed. 2:45AM Wed. 1:35AM Wed.	1:25PM Wed. 8:40AM Wed.	3:30PM Wed. 11:50AM Wed. 10:50AM Wed.		
7:00PM Mon.							Ar. Cleveland Lv. Lv. Cleveland Ar.	6:30AM Wed.	2:15AM Wed. 2:15AM Wed.			
10:00AM Tue. 11:00PM Mon. 7:00PM Tue. 9:00PM Mon. 11:00AM Tue. 12:25AM Tue. 3:25AM Tue. 3:55AM Tue.		7:30AM Tue. 8:00AM Tue. 10:30AM Tue. 5:10PM Tue.	10:00PM Tue. 10:00AM Tue. 12:25AM Wed. 11:00AM Tue. 8:00PM Tue. 8:30PM Tue. 11:30PM Mon. 2:30AM Tue.	10:00AM Tue.			Ar. Youngstown Lv. Lv. Youngstown Ar. Ar. New Castle Lv. Lv. New Castle Ar. Ar. Sharon Lv. Lv. Sharon Ar. Ar. Meadville Lv. Lv. Meadville Ar. Ar. Jamestown Lv.	12:01AM Wed. 2:00AM Wed. 8:00AM Tue. 6:00AM Wed. 10:45PM Tue. 12:45AM Wed. 10:15PM Tue. 9:15PM Tue. 6:15PM Tue.	3:00PM Wed. 5:35AM Wed.	3:00PM Wed. 8:00AM Wed. 4:35AM Wed.		
		12:45AM Wed. 7:30PM Tue.	12:01AM Wed.	8:00AM Tue. 3:00AM Tue.	9:00AM Tue.	6:15PM Tue.	Ar. Buffalo Lv. Lv. Buffalo Ar.	6:00AM Tue.	9:30PM Tue.	10:00PM Tue.	7:00AM Wed.	4:00PM Wed.
		6:15AM Wed. 5:30PM Tue.					Ar. Rochester Lv. Lv. Rochester Ar.	5:30PM Mon.	6:15AM Wed.		9:00AM Wed.	
10:30AM Tue. 12:01PM Tue.		12:15AM Wed. 2:15AM Wed.	4:30AM Wed. 6:30AM Wed.	8:00AM Tue. 12:01PM Tue.	1:00PM Tue. 3:00PM Tue.	8:50PM Tue.	Ar. Hornell Lv. Lv. Hornell Ar. Ar. Philadelphia (Rdg) Lv.	2:30PM Tue.	9:45PM Tue.	12:01AM Wed. 11:30PM Mon.	4:45AM Wed.	12:45PM Wed. 11:30AM Wed.
1:00AM Wed. 7:00PM Tue.	2:30AM Wed.	3:30AM Wed. 5:45AM Wed.	10:00AM Wed. 12:15PM Wed.	1:00AM Wed. 7:00PM Tue.	1:00AM Wed. 7:00PM Tue.	10:30PM Tue. 12:01AM Wed.	Ar. Elmira Lv. Ar. Binghamton Lv.	9:30AM Tue. 7:15AM Tue.	4:30PM Tue. 2:50PM Tue.	4:30PM Tue. 2:50PM Tue.	2:30AM Wed. 1:10AM Wed.	9:30AM Wed. 7:15AM Wed.
9:30AM Wed. 8:00PM Wed. 9:30PM Wed.	4:00PM Wed. 11:55PM Wed. 2:30AM Thu.	5:00PM Wed. 3:00AM Thu. 12:01PM Thu.	4:15AM Thu.	9:30AM Wed. 8:00PM Wed. 9:30PM Wed.	9:30AM Wed. 8:00PM Wed. 9:30PM Wed.		Ar. Albany (D&H) Lv. Ar. Boston (B&M) Lv. Ar. Portland (D&H-B&M) Lv.	10:00AM Mon. 5:00AM Mon. 11:00PM Sun.	10:30PM Mon. 6:30PM Mon.	10:30PM Mon. 6:30PM Mon.		10:00AM Tue. 5:00AM Tue. 11:00PM Mon.
		11:00PM Tue.	8:00AM Thu.				Ar. Scranton Lv. Lv. Scranton Ar.		11:00PM Mon.	11:00PM Mon.		8:00AM Wed.
3:30AM Wed. 8:00PM Wed.	8:30AM Wed. 6:15PM Wed. 11:50PM Wed. 12:01PM Thu.	1:00PM Wed. 8:45PM Wed. 3:00AM Thu. 3:00PM Thu.		3:20AM Wed. 8:00PM Wed.	6:30AM Wed. 6:15PM Wed. 11:50PM Wed. 12:01PM Thu.		Ar. Maybrook Lv. Ar. New Haven (NH) Lv. Ar. Boston (NH) Lv. Ar. Portland (NH-B&M) Lv.		8:30AM Tue. 1:10AM Tue. 6:45PM Mon. 2:00AM Mon.	8:30AM Tue. 1:10AM Tue. 6:45PM Mon. 2:00AM Mon.		
4:30AM Wed. 6:30AM Wed. 1:30AM Wed.		12:30AM Thu. 6:30AM Thu. 4:15PM Wed.	12:30AM Thu. 6:30AM Thu. 1:00AM Thu.	4:30AM Wed. 6:30AM Wed. 1:30AM Wed.	6:00AM Wed. 8:00AM Wed. 5:00AM Wed.	7:30AM Wed. 6:20AM Wed.	Ar. Paterson Lv. Ar. Newark Lv. Ar. Croxton Lv. Ar. Jersey City Lv. NEW YORK (see Note)	5:30PM Mon. 9:00PM Mon. 1:15AM Tue.	5:30PM Mon. 9:00PM Mon. 3:30AM Tue.	5:30PM Mon. 9:00PM Mon. 3:30AM Tue.	5:30PM Tue. 9:00PM Tue.	5:30PM Tue. 9:00PM Tue. 10:30PM Tue.

NOTE—Freight to and from New York City and Brooklyn stations and piers is handled expeditiously on carfloats or lighters via Croxton or Jersey City. Prompt delivery or forwarding is assured.

“SHIP AND TRAVEL ERIE”

ERIE RAILROAD COMPANY

General Offices { Midland Building, Cleveland. Telephone, Cherry 8400.
Hudson Terminal, 50 Church Street, Corner Fulton, New York. Telephone, Cortlandt 7-9200.
Utilities Building, 327 South La Salle Street, Chicago. Telephone, Harrison 4160.

R. E. WOODRUFF, President,
H. D. BARBER, Vice-President,
CARL HOWE, Vice-President,
H. A. TAYLOR, Vice-President and General Counsel,
J. K. THOMPSON, Vice-President,

Cleveland.
"
"
"

T. J. TOBIN, Comptroller,
G. A. W. ACHENBACH, Secretary,
E. F. MORGENROTH, Treasurer,
F. M. AMERICA, Special Representative,

Cleveland.
"
"
"

TRAFFIC AND DEVELOPMENT

CARL HOWE, Vice-President, Cleveland.
H. W. VON WILLER, Asst. Vice-President, Cleveland.
New York. | W. V. KENNEDY, Assistant Vice-President,

L. B. BURFORD, Assistant Vice-President, New York.

Chicago.

PASSENGER—Sales and Service

R. B. ROGERS, Passenger Traffic Manager, Cleveland.

Cleveland.
Youngstown.
New York.

H. T. HARLOW, General Passenger Agent,
E. J. HAWERKOST, General Western Passenger Agent,

Chicago.
"

C. L. CHAPMAN, General Baggage, Mail and Express Agent, New York.

FREIGHT—Rates

L. B. BURFORD, Assistant Vice-President, New York.
F. G. LANTZ, Freight Traffic Manager, Chicago.

New York.
"
"
"
"

A. BLAUDEL, Assistant Freight Traffic Manager,
E. C. HALLBERG, General Freight Agent,
H. T. SWEENEY, Chief of Tariff Bureau,
E. A. JAEHNE, Chief of Divisions Bureau,

Chicago.
"
"
"

O. M. MEYNE, Assistant Freight Traffic Manager,
E. N. HAMBLY, General Freight Agent,
F. M. KLITZ, Assistant General Freight Agent,
C. E. COURTER, Assistant General Freight Agent,
W. P. VAN IDERSTINE, Chief of Tariff Bureau,
J. H. SISCO, Chief of Divisions Bureau,

FREIGHT—Sales and Service

New York.
"

W. V. KENNEDY, Assistant Vice-President,
D. R. THOMPSON, Freight Traffic Manager,
J. G. HILL, General Freight Agent,
W. H. KOCH, Assistant General Freight Agent,
R. L. MURPHY, Assistant General Freight Agent,

Chicago.
"

G. C. MANNING, Assistant Vice-President,
E. J. DEAN, Freight Traffic Manager,
G. R. WHEELER, General Freight Agent,
J. T. McENTEE, Assistant General Freight Agent,
H. C. SCHMIDT, General Eastern Freight Agent,
G. W. MADSEN, General New England Agent,
F. D. HARTNETT, Milk Freight Agent,
H. B. ROGERS, General Live Stock Agent,
G. A. LAMB, Freight Traffic Manager,
C. E. KING, Assistant General Freight Agent,
W. P. KROMPHARDT, Asst. General Freight Agent,

Buffalo.
New York.
Boston.
New York.
East Buffalo, N. Y.
Cleveland.
Pittsburgh.
Youngstown.

FOREIGN FREIGHT TRAFFIC

W. C. OTTEN, Foreign Freight Traffic Manager,
T. W. KANE, Foreign Freight Agent,
A. E. PETERSON, Foreign Freight Agent,
W. S. PENCHARD, Export and Import Agent,

New York.
"

PERISHABLE AND DAIRY TRAFFIC

J. A. RUSSELL, Manager,
P. J. NAPOLI, Assistant Manager,
H. W. BOUMANN, Western Dairy Agent,

Pier 20, N. R., New York.

Chicago.

COAL AND COKE

Cleveland.
"
New York.
"
Buffalo.

E. C. JULIUS, Coal Freight Agent,
W. N. STENFELT, Assistant Coal Freight Agent,
M. S. SWEENEY, Coal Freight Agent,
H. O. DUNKLE, General Agent, Coal and Ore,

Chicago.
"

R. E. O'GRADY, Coal Traffic Manager,
J. A. FERGUSON, General Coal Freight Agent,
D. D. JAMIESON, Coal Freight Agent,
A. E. BARKALOW, Assistant Coal Freight Agent,
J. A. MUCHA, Coal Freight Agent,

Pittsburgh.
Cleveland.

INDUSTRIAL DEVELOPMENT

GEO. F. WESTON, Industrial Commissioner, Cleveland.
H. J. HART, Industrial Agent, New York.

TRAFFIC DEPARTMENT REPRESENTATIVES

Akron, O.—80 East Exchange St.
(Telephone Hemlock 8194-8195)

J. P. CLARK, Division Passenger Agt.
A. R. WALTON, General Agent.

Albany, N. Y.—Room 2, D. & H. Bldg.
(Telephone 4-6051)

H. G. COOKE, General Agent.

Atlanta, Ga.—1515-16 Healey Bldg.
(Telephone Walnut 2135)

W. H. STADELMAN, General Agent.

Baltimore, Md.—1301-3 Munsey Bldg.
(Telephone Plaza 8691)

E. W. VAIL, General Agent.

Birmingham, Ala.—1007 Watts Bldg.
(Telephone 3-1327)

WM. L. THORNTON, General Agent.

Birmingham, England—13 Corporation St.

MAURICE G. COOKE, General Agent.

Boston, Mass.—150 Causeway St.
(Telephone Capitol 2510-11-12)

G. W. MADSEN, Gen. New Eng. Agt.

Bradford, Pa.—Erte Station.
(Telephone 3413)

J. C. MOFFATT, General Agent.

Buffalo, N. Y.—6 North Division St.
(Telephone Washington 4300)

R. E. TOWNS, Division Passenger Agt.

Chicago, Ill.—327 South La Salle St.
(Telephone Harrison 4160)

J. T. McENTEE, Asst. General Freight Agt.

Chicago, Ill.—327 South La Salle St.
(Telephone Harrison 4160)

B. Y. VAUGHN, Trav. Pass. Agt.

Cincinnati, O.—503 Gwynne Bldg
(Telephone Main 3420-3421)

R. L. MURPHY, Asst. Genl. Frt. Agt.

Cleveland, O.—Midland Bldg.
(Telephone Cherry 8400)

J. M. SKAEBILL, Division Freight Agt.

Erte Station,
(Telephone Cherry 8400)

G. SAUNDERS, Div. Passenger Agt.

Columbus, O.—Rooms 309-310 Atlas
Bldg., 8 East Long Street.
(Telephone Adams 7331)

L. J. BURGOTT, General Agent.

Dallas, Tex.—2113 Tower Petroleum Bldg.
1905 Elm St.
(Telephone 2-7352)

L. J. MARION, General Agent.

Dayton, O.—1004-8 Miami Savings Bldg.
(Telephone Adams 8481)

F. W. FISCHER, Div. Frt. Agt.

Des Moines, Ia.—Hubbell Bldg.,
904 Walnut Street,
(Telephone 4-0018)

H. A. BOCKMAN, General Agent.

Detroit, Mich.—Rooms 2-124 and 2-125
General Motors Bldg.
(Telephone Madison 2360-2361)

W. H. KOCH, Assistant General Frt. Agt.

East Buffalo, N. Y.—Live Stock Exch. Bldg.
(Telephone Washington 4300)

H. B. ROGERS, General Live Stock Agt.

Elmira, N. Y.—Erte Station.
(Telephone 2-1621)

J. W. O'HARA, Division Passenger Agt.

Elmira, N. Y.—Erte Station.
(Telephone 2-1621)

C. F. WHADCOCK, Division Freight Agent.

Glasgow, Scotland—82 Mitchell St.
W. S. THOMSON, General Agent.

Huntington, Ind.—Erte Station.
(Telephone 743)

F. C. MCCARTHY, Division Freight Agt.

Indianapolis, Ind.—143 No. Meridian St.
(Telephone Lincoln 2088)

T. J. WILLIAMSON, General Agent.

Jamestown, N. Y.—Erte Station

H. A. WILSON, Div. Frt. Agt.

Jersey City, N. J.—Erte Station
(Telephone Journal Square 2-6400)

P. F. ARROYO, Genl. Agt. Pass. Dept.

J. G. VREELAND, Division Freight Agent.

Kansas City, Mo.—Rooms 326-7 Railway
Exchange Bldg., 7th and Walnut Streets.
(Telephone Victor 6328)

N. C. FRICK, General Agent.

Liverpool, Eng.—10 Victoria St.
A. G. TAYLOR, General Agent.

London, E. C. 3, Eng.—88 Leadenhall St.

PETER BUSWELL, General Agent.
D. S. DEANS, Genl. Continental Agt.

Los Angeles, Cal.—510 West 6th Street.
(Telephone Vandike 6542)

D. C. KELSEY, General Agent.

Marion, O.—Terminal Building
(Telephone 2657)

A. R. TENNIS, Division Freight Agent.

Memphis, Tenn.—1628-9 Exchange
Bldg., Madison & Second Sts.
(Telephone 8-8781)

R. L. MILLER, General Agent.

Milwaukee, Wis.—818-9 Majestic Bldg.,
231 West Wisconsin Ave.
(Telephone Marquette 5555-5556)

L. T. COULSTON, General Agent.

Minneapolis, Minn.—125 Third Street, So.
(Telephone Main 3604)

L. E. NEWMAN, General Agent.

Newark, N. J.—1801-2 Military Park
Bldg., 60 Park Place.
(Telephone Market 2-0525-26-27)

F. L. COLLINS, General Agent.

New Haven, Conn.—401 Powell Bldg.
(Telephone 5-7937)

G. E. ROBB, General Agent.

New Orleans, La.—Room 1417 Whitney Bldg.
(Telephone Raymond 9786)

E. W. BURNETT, General Agent.

New York, N. Y.—630-5th Ave. Room
219, Rockefeller Center.
(Telephone Circle 5-7222)

F. J. WILD, Genl. Agt. Pass. Dept.

A. G. OLDENQUIST, City Pass. Agt.
50 Church Street.
(Telephone Cortlandt 7-9200)

H. C. SCHMIDT, Genl. East. Frt. Agt.

Omaha, Neb.—1319 Farnam St.
(Telephone Jackson 4866)

C. L. COX, General Agent.

Peoria, Ill.—920 Jefferson Building, Cor.
South Jefferson & Fulton Streets.
(Telephone 8007)

E. T. OLANDER, General Agent

Philadelphia, Pa.—1009-10 Finance Bldg.
(Telephone Rittenhouse 8975-8976)

H. F. CONWAY, General Agent.

Pittsburgh, Pa.—Gulf Building.
(Telephone Grant 4831-2-3)

C. E. KING, Asst. Genl. Frt. Agt.

Portland, Ore.—Room 421 Pacific Bldg.,
520 S. W. Yamhill St.
(Telephone Beacon 3706)

H. L. SKEEN, General Agent.

Rochester, N. Y.—Room 220, Reynolds
Arcade Building.
(Telephone Main 2826)

C. V. HARROW, Division Freight Agent.

San Francisco, Cal.—681 Market St.
(Telephone Sutter 3875)

J. A. LLOYD, General Agent.

St. Louis, Mo.—Room 906, 1218 Olive St.
(Telephone Chestnut 7723-7724)

C. G. ANDREWS, General Agent.

St. Paul, Minn.—336 Robert St.
(Telephone Cedar 5912)

C. R. PETRY, General Agent

Scranton, Pa.—Mill & Smith Sts. (Dun-
more, Pa.)
(Telephone—Scranton 8191)

G. W. SHUMAN, Division Freight Agent.

Seattle, Wash.—1116-7 White Bldg.,
1338 Fourth Ave.
(Telephone Elliot 4834)

R. J. DUNDON, General Agent.

Springfield, O.—616 First National Bank
Building.
(Telephone 2-5351)

E. W. KEILEY, General Agent.

Toledo, O.—342 South Erte Street.
(Telephone Main 3816)

H. J. SPANGENBERG, General Agent.

Toronto, Ont.—69 Yonge Street
(Telephone Elgin 4077)

E. P. MORRILL, Canadian Frt. Agt.

Tulsa, Okla.—Room 1511 Hunt Bldg.
(Telephone 3-8613)

H. F. STUDD, General Agent.

Washington, D. C.—903 Southern Bldg.
(Telephone National 6075)

W. J. MURRAY, General Agent.

Youngstown, O.—Terminal Building.
(Telephone 41101)

W. P. KROMPHARDT, Asst. Genl. Frt. Agt.

C. R. MARTIN, Div. Frt. Agt.