



**ERIE RAILROAD SYSTEM  
TIME TABLES**

**ERIE RAILROAD SYSTEM  
TIME TABLES**

*The Scenic Route*

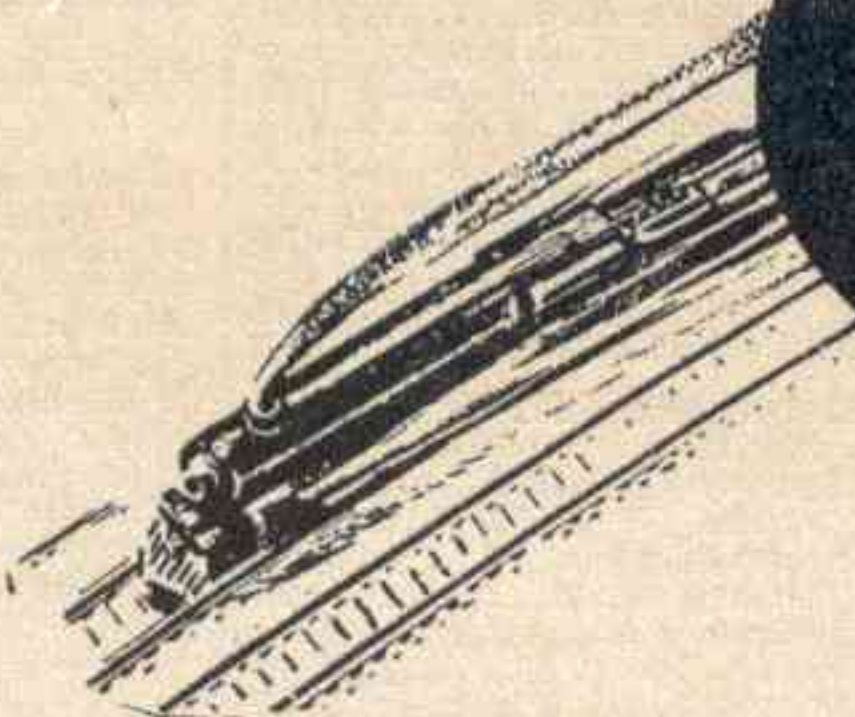
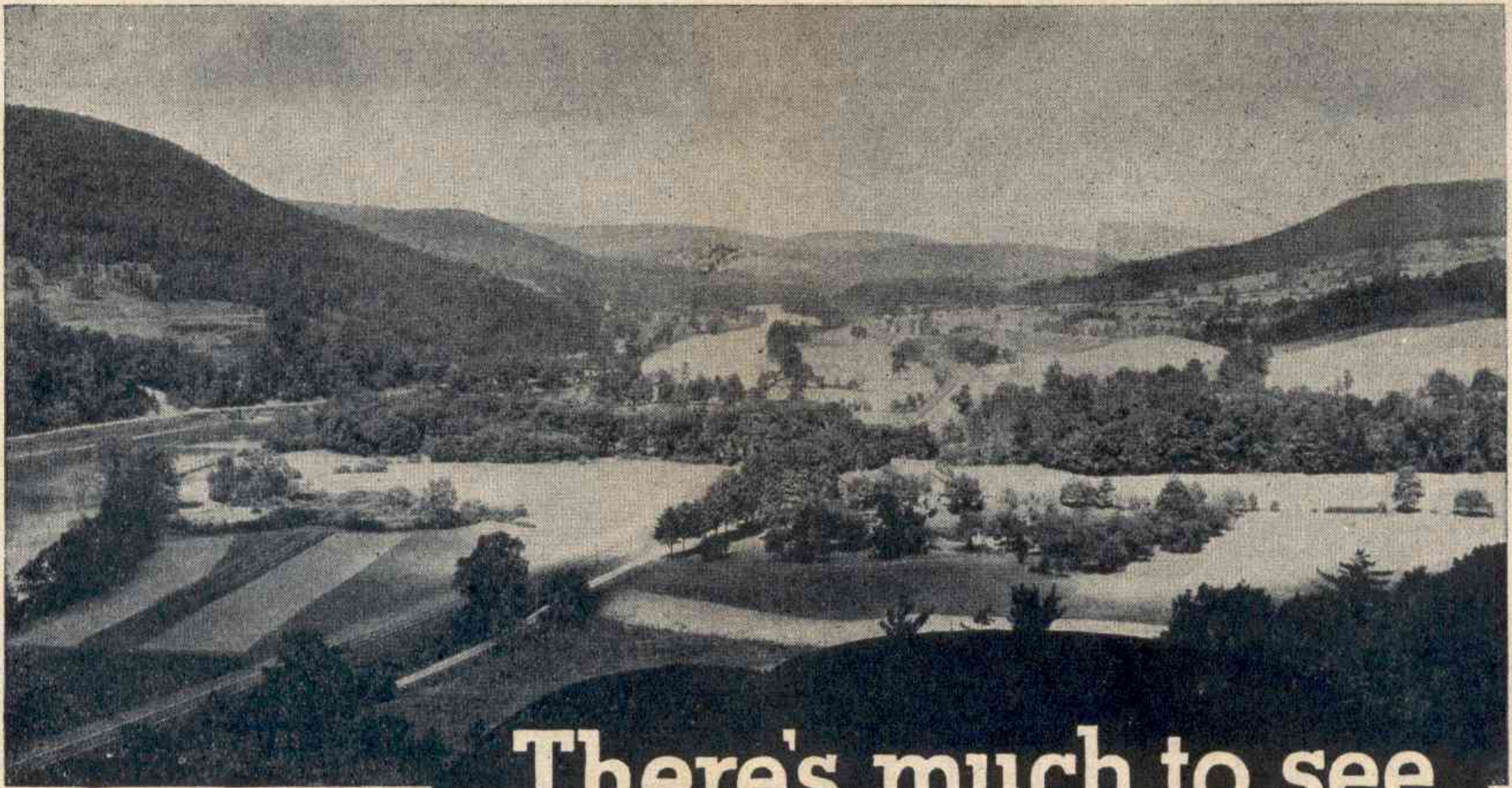
BETWEEN

**NEW YORK • BUFFALO  
CLEVELAND • CHICAGO**

*The Scenic Route*

BETWEEN

**NEW YORK • BUFFALO  
CLEVELAND • CHICAGO**



There's much to see  
along the **ERIE** ★

That's one reason why Erie patrons enjoy Erie travel. Between New York, Cleveland and Chicago the Erie rolls through regions rich in scenic beauty and industrial interest — past sparkling lakes, rugged hills, winding valleys; coal mines, oil fields, steel mills, rich farm lands.

Plus this is Erie's economy of travel; its comfortable air-conditioned trains, its efficient and thoughtful service.

●  
ASK ANY ERIE TICKET  
AGENT FOR DETAILS

TABLE OF CONTENTS

Equipment of Through Trains... Page 5, 6
Suggestions... 30
General Information... 31, 32
Standard of Time
Holidays
Fares Paid on Trains
Adjustment of Fares
Sleeping and Parlor Car Reservations
Baggage Regulations
Articles left on Trains
Equipment of Local Trains... 7, 8, 9, 10
Equipment of Detroit, Toledo, Cleveland, Youngstown and Pittsburgh Trains... 17, 18
Erie Railroad Map... 19, 20, 21, 22
Sleeping and Parlor Car Fares... 31, 32
One-way Rail Fares... 31, 32
Reference Marks and Notes... 33, 34
Traffic Department Representatives... 35, 36
Ticket Offices and Passenger Stations in Principal Cities... 37

Train Service
Condensed Schedule of Through Trains... 5, 6
New York-Binghamton... 7, 8, 9, 10
Binghamton-Akron... 11, 12
Akron-Chicago... 13, 14
New York-Buffalo... 13
Detroit-Toledo-Cleveland-Youngstown-Pittsburgh... 17, 18
New York-Chautauqua... 24
Chautauqua-Akron-Chicago... 24
New York-Kenoza Lake-Jeffersonville... 26
New York-Monticello... 25
New York-Salamanca-Bradford... 24
New York-Meadville-Oil City... 26
Chicago-Meadville-Oil City... 26
Bradford-Salamanca-Cleveland-Chicago... 23
Branch Line Service... 23 to 27, inc.
Hudson & Manhattan R. R. Service... 28
Ferry Schedule... 28
Chautauqua Lake Service... 24

STATIONS ON ERIE RAILROAD
At Which Trains Are Scheduled To Stop
Numerals Opposite Station Names Indicate Time Table Numbers

Table with 6 columns of station names and their corresponding time table numbers. Includes stations like Addison, N.Y., Akron, O., Allouppa, Pa., Albany, N.Y., Alden, N.Y., Alfred, N.Y., Allegany, N.Y., Allendale, N.J., Andover, N.Y., Arden, N.Y., Arkport, N.Y., Ashantee, N.Y., Ashland, O., Atlanta, N.Y., Attica, N.Y., Aurora, O., Avoca, N.Y., Avon, N.Y., Baileys, N.Y., Barberton, O., Barton, N.Y., Bath, N.Y., Beaver, Pa., Beaver Falls (New Brighton, Pa.), Belmont, N.Y., Big Flats, N.Y., Binghamton, N.Y., Blair, N.Y., Blasdell, N.Y., Blooming Grove, N.Y., Bradford, Pa., Brooks, N.Y., Buffalo, N.Y., Bullville, N.Y., Burns, N.Y., Callicoon, N.Y., Cambridge Springs, Pa., Cameron, N.Y., Cameron Mills, N.Y., Campbell, N.Y., Canaseraga, N.Y., Canisteo, N.Y., Carlton, Pa., Carrollton, N.Y., Castle, N.Y., Cattaraugus, N.Y., Central Valley, N.Y., Chautauqua, N.Y., Chautauqua Lake, N.Y., Chemung, N.Y., Cherry Creek, N.Y., Chester, N.Y., Chicago, Ill., Circleville, N.Y., Cleveland, O., Cochection, N.Y., Cochranton, Pa., Cohocton, N.Y., Collins, N.Y., Conesus, N.Y., Conesus Lake Jet., N.Y., Conewango, N.Y., Cooper's, N.Y., Coraopolis, Pa., Corning, N.Y., Corry, Pa., Craigville, N.Y., Crittenden, N.Y., Crown Point, Ind., Cuba, N.Y., Cuylerville, N.Y., Dale, N.Y., Dalton, N.Y., Dansville, N.Y., Darien Center, N.Y., Dayton, N.Y., Decatur, Ind., Depew, N.Y., Deposit, N.Y., Detroit, Mich., Dunkirk, N.Y., East Bradford, Pa., East Buffalo, N.Y., East Fifty-fifth St. (Cleveland), O., East Honesdale, Pa., East Ninety-third St. (Cleveland), O., East Rutherford, N.J., Eden Center, N.Y., Eden Valley, N.Y., Ellwood City, Elmira, N.Y., Elm Place, N.Y., Endicott, N.Y., Englewood (63rd St.), Ill., Falconer, N.Y., Fenners, N.Y., Forestville, N.Y., Fowler, N.Y., Franklin, Pa., Friendship, N.Y., Gallion, O., Gannett, N.Y., Garrettsville-Hiram, O., Garwoods, N.Y., Geauga Lake O., Geneseo, N.Y., Girard, O., Glen Eyre, Pa., Golah, N.Y., Goshen, N.Y., Gowanda, N.Y., Graham, N.Y., Great Bend, Pa., Greenville, Pa., Greycourt, N.Y., Griswolds, N.Y., Groveland, N.Y., Gulf Summit, N.Y., Hale's Eddy, N.Y., Hamburg, N.Y., Hammond, Ind., Hancock, N.Y., Hankins, N.Y., Harriman, N.Y., Hawley, Pa., Hickory Grove, Pa., Highland Mills, N.Y., Hillburn, N.Y., Hohokus, N.J., Honesdale, Pa., Hornell, N.Y., Horseheads, N.Y., Howells, N.Y., Hubbard, O., Huntington, Ind., Huston, N.Y., Industry, N.Y., Jaycocks, N.Y., Jamestown, N.Y., Jeddoe, O., Jeffersonville, N.Y., Jersey City, N.J., Jeddore, O., Johnson City, N.Y., Jones, N.Y., Kanona, N.Y., Kellams, N.Y., Kennedy, N.Y., Kenoza Lake, N.Y., Kent, O., Kenton, O., Kimbles, Pa., Kirkwood, N.Y., Lackawaxen, Pa., Lake Huntington, N.Y., Lancaster, N.Y., Lawtons, N.Y., Leavittsburg, O., Letchworth Park, N.Y., Liberty, N.Y., Lima, O., Limestone, N.Y., Linden, N.Y., Linden St., N.Y., Little Valley, N.Y., Livonia, N.Y., Long Eddy, N.Y., Lordville, N.Y., Mahoning, O., Mahwah, N.J., Mansfield, O., Mantua, O., Marilla, N.Y., Marion, O., Markhams, N.Y., Martin, N.Y., Mast Hope, Pa., Meadow-wood, N.Y., Meadville, Pa., Middletown, N.Y., Mill Rift, Pa., Monaca, Pa., Mongaup, Pa., Monroe, N.Y., Monticello, N.Y., Mortimer, N.Y., Mountainville, N.Y., Mount Morris, N.Y., Narrowsburg, N.Y., Newark, N.J., New Brighton, Pa., Newburgh, N.Y., New Castle, Pa., New Hampton, N.Y., New York, N.Y., Niles, O., North Collins, N.Y., North Randall, O., Ohio City, O., Oil City, Pa., Olean, N.Y., Oneonta, N.Y., Otisville, N.Y., Owego, N.Y., Oxford, N.Y., Painted Post, N.Y., Parker's Glen, Pa., Passaic, N.J., Paterson, N.J., Perrysburg, N.Y., Persia, N.Y., Phalanx, O., Pierce's, N.Y., Pine Bush, N.Y., Pittsburgh, Pa., Pond Eddy, Pa., Portage, N.Y., Port Jervis, N.Y., Ramapo, N.Y., Ramsey, N.J., Randolph, N.Y., Rathbone, N.Y., Ravenna, O., Reno, Pa., Ridgewood, N.J., Rittman, O., Rochester, Ind., Rochester, N.Y., Rock Glen, N.Y., Rowlands, Pa., Rutherford, N.J., Salamanca, N.Y., Salisbury Mills, N.Y., Savona, N.Y., Seven Nations, N.Y., Shakers, N.Y., Sharon, Pa., Shaws, Pa., Sheridan, N.Y., Shimer's Rock Cut, Pa., Shohola, Pa., Silver Springs, N.Y., Skinners, N.Y., Slootsburg, N.Y., Smithboro, N.Y., Smith's Mills, N.Y., Solon, O., Sonyea, N.Y., South Avon, N.Y., South Dayton, N.Y., Southfields, N.Y., South Lima, N.Y., South Livonia, N.Y., South Park, N.Y., Sparrowbush, N.Y., Spencerville, O., Spring Street, N.Y., Springwater, N.Y., State Hospital, N.Y., Sterling, N.Y., Stockport, N.Y., Suffern, N.Y., Sugar Creek, Pa., Susquehanna, Pa., Swains, N.Y., Thompson Ridge, N.Y., Tloga Centre, N.Y., Toledo, O., Town Line, N.Y., Tusten, N.Y., Tuxedo, N.Y., Union City, Pa., Utica, Pa., Vail's Gate, N.Y., Wadsworth, O., Waldwick, N.J., Wallace, N.Y., Warren, O., Warsaw, N.Y., Washington Hunt, N.Y., Washingtonville, N.Y., Water Valley, N.Y., Waverly, N.Y., Wayland, N.Y., Websters, N.Y., Wellsburg, N.Y., Wellsville, N.Y., Wellwood Ave., Hawley, Pa., Westcolang Park, Pa., Westfall, N.Y., West Henrietta, N.Y., West Perrysburg, N.Y., West Sparta, N.Y., White Mills, Pa., Wiards, N.Y., Woodbury, N.Y., Wurtsboro, N.Y., Youngstown, O.

ADDITIONAL STATIONS ON ERIE RAILROAD
At Which Trains Do NOT Stop Regularly
The distance shown is from New York as indicated in Tables 4 and 5

Table with 9 columns: STATION, Miles from New York, STATION, Miles from New York, STATION, Miles from New York, STATION, Miles from New York, STATION, Miles from New York. Includes stations like Adrian, Akron, Aldine, Alger, Almond, Ashville, Athens, Atlantic, Bass Lake, Bear Lake, Belvidere, Bippus, Bolivar, Boone Grove, Braceville, Burbank, Caledonia, Columbus, Creston, DeCliff, DeLong, Disko, Elgin, Erwins, Foraker, Forty-seventh St., Freedom, Geneva, Glenmore, Griffith, Harrods, Hegewisch, Hepburn, Highlands, Hinsdale, Hurlburt, Kemp, Kingsland, Kouts, Laketon, Lakewood, Leiters, Markel, Martel, McGuffey, Millers, Mill Village, Monterey, Nankin, Newton, Niobe, North Judson, Ontario, Ora, Palmer, Pavonia, Pershing, Polk, Preble, Red House, Saegertown, Selo, Servia, Sharpsville, Steamburg, Sterling, Stony Point, Tallmudge, Toecin, Uniondale, Venango, Watts Flats, West Salem, Wilders, Windham, Winfield, Wren.

**TABLE 1 CONDENSED TABLE OF THROUGH TRAINS  
NEW YORK AND BUFFALO, CLEVELAND AND CHICAGO**  
(FOR LOCAL TRAINS AND INTERMEDIATE TIME OF THROUGH TRAINS SEE LOCAL TABLES)

WESTBOUND		Air-conditioned Trains Air-conditioned equipment has been assigned to regular sections of trains as shown herein. Every effort will be made to provide it as specified, but the right is reserved to employ non-air-conditioned cars as necessitated by volume of traffic or emergencies.		EASTBOUND	
<b>THE ERIE LIMITED TRAIN NO. 1—DAILY</b> <b>New York—Buffalo—Jamestown—Chicago</b>		<b>THE ERIE LIMITED TRAIN NO. 2—DAILY</b> <b>Chicago—Jamestown—Buffalo—New York</b>		<b>THE LAKE CITIES TRAIN NO. 5—DAILY</b> <b>New York—Buffalo—Cleveland</b>	
<b>EQUIPMENT</b> Air-Conditioned Sleeping Cars: New York to Chicago—8 Section Lounge Restaurant Car. Hornell to Chicago—10 Section Lounge Restaurant Car. Air-Conditioned Parlor Buffet Car: New York to Buffalo. Air-Conditioned Salon Coaches: New York to Chicago. Air-Conditioned Individual Seat Coach: New York to Buffalo. Dining Service for all meals in Air-Conditioned Lounge Restaurant Cars.		<b>EQUIPMENT</b> Air-Conditioned Sleeping Car: Chicago to New York—8 Section Lounge Restaurant Car. Air-Conditioned Parlor Buffet Car: Buffalo to New York. Air-Conditioned Salon Coaches: Chicago to New York. Air-Conditioned Individual Seat Coach: Buffalo to New York. Dining Service for all meals in Air-Conditioned Lounge Restaurant Car.		<b>EQUIPMENT</b> Air-Conditioned Sleeping Cars: Cleveland to New York—8 Section Compartment Lounge Restaurant Car. Youngstown to New York—10 Section Lounge Restaurant Car. Bradford to New York—10 Section 2 Compartment 1 Drawing-room Car. Buffalo to New York—12 Section and Drawing-room Car. (Sleeping Car may be occupied at Bradford until 8.00 A. M.) Air-Conditioned Individual Seat Coaches: New York to Cleveland. Coaches: Hornell to Buffalo. Dining Service for all meals in Air-Conditioned Lounge Restaurant Cars.	
<b>THE LAKE CITIES TRAIN NO. 6—DAILY</b> <b>Cleveland—Buffalo—New York</b>		<b>ATLANTIC EXPRESS TRAIN NO. 8—DAILY</b> <b>Chicago—Jamestown—New York</b>		<b>THE MOUNTAIN EXPRESS TRAIN NO. 9—DAILY</b> <b>New York—Binghamton</b>	
<b>EQUIPMENT</b> Air-Conditioned Sleeping Car: Cleveland to New York—8 Section Compartment Lounge Restaurant Car. Youngstown to New York—10 Section Lounge Restaurant Car. Bradford to New York—10 Section 2 Compartment 1 Drawing-room Car. Buffalo to New York—12 Section and Drawing-room Car. Air-Conditioned Individual Seat Coaches: Cleveland to New York. Coaches: Buffalo to Hornell. Dining Service for all meals in Air-Conditioned Lounge Restaurant Car.		<b>EQUIPMENT</b> Air-Conditioned Sleeping Car: Chicago to Hornell—10 Section Lounge Restaurant Car. (Sleeper open at Chicago at 9.30 P. M.) Air-Conditioned Salon Coaches: Chicago to New York. Air-Conditioned Dining Lounge Car: Hornell to New York. (No baggage handled on this train east of Hornell, baggage will be handled on following train.)		<b>EQUIPMENT</b> Dining Lounge Car. New York to Binghamton. Through Coaches. New York to Binghamton.	
<b>PACIFIC EXPRESS TRAIN NO. 7—DAILY</b> <b>New York—Jamestown—Chicago</b>		<b>SOUTHERN TIER EXPRESS TRAIN NO. 10—EX. SUN.</b> <b>Hornell—Elmira—Binghamton—New York</b>		<b>THE MOUNTAIN EXPRESS TRAIN NO. 27—DAILY</b> <b>New York—Binghamton—Elmira—Hornell</b>	
<b>EQUIPMENT</b> Air-Conditioned Sleeping Car: New York to Youngstown—10 Section Lounge Restaurant Car. (Sleeper open Jersey City at 9.30 P. M.) Air-Conditioned Salon Coaches: New York to Chicago. Coaches only, west of Youngstown. Dining Service in Air-Conditioned Lounge Restaurant Cars.		<b>EQUIPMENT</b> Through Coaches. Hornell to New York.		<b>EQUIPMENT</b> Air-Conditioned Dining Lounge Car: New York to Hornell. Through Coaches. New York to Hornell.	
<b>THE MOUNTAIN EXPRESS TRAIN NO. 28—DAILY</b> <b>Binghamton—New York</b>		<b>EQUIPMENT</b> Dining Lounge Car. Binghamton to New York. Through Coaches. Binghamton to New York.			



TABLE 3 EASTBOUND

BINGHAMTON—NEW YORK

Hudson and Manhattan Tube Trains operate to and from Erie Railroad Station in Jersey City. Fare downtown, 6 cents; uptown, 10 cents.

Table with columns for Eastern Standard Time, train numbers (50, 52, 6, 54, 204, 56, 58, 58, 30, 60, 60, 62, 206, 70, 28, 2, 700, 64, 208, 208, hx, 38, 18, 22, 68, dt, 8, 10), and rows for stations from Binghamton, N.Y. to New York, Jersey City Sta. Includes service frequency and arrival/departure times.

LOCAL PARLOR AND CLUB CAR EQUIPMENT

No. 10. Except Sundays. Coaches.....Hornell to New York.

No. 28.—THE MOUNTAIN EXPRESS—Daily. Dining Lounge Car....Binghamton to New York. Coaches.....Binghamton to New York.

No. 56—THE TUXEDO—Except Sundays and Holidays. Erie Club Car.....Port Jervis to New York. Coaches.....Port Jervis to New York.

TABLE 4 WESTBOUND

BINGHAMTON—AKRON

EASTBOUND

Main table containing train schedules with columns for Miles from New York, Eastern Standard Time, Central Standard Time, Miles from Chicago, and various station names like Albany, Binghamton, Buffalo, etc.

COME! DINE WITH US.

Table D'Hotte prices range as follows: Breakfast 50c to \$1.00, Luncheon 75c to \$1.25, Dinner 75c to \$1.25. A meal on our trains is always a pleasant interlude. Makes the journey seem shorter, too. The freshest food the market

affords, cooked by expert chefs and served in the comfort of spacious Restaurant Cars. If you prefer a light snack without going to the Diner the waiter will bring sandwiches, fruit, coffee, etc., right to your seat.

TABLE 5 WESTBOUND

AKRON—CHICAGO

EASTBOUND

Miles from New York	Eastern Standard Time		I	du	7				Miles from Chicago	Central Standard Time		2	dt	8			
	Daily	Daily								Daily	Daily						
0.0	N. Y., West 23d St.	Lv.	AM	PM					0.0	Chicago (Dearborn Sta.)	Ill. Lv.	PM	PM				
0.0	" Chambers St.	"	8.05	10.55					6.6	Englewood, 63d Street	"	6.00	10.00				
1.0	" Jersey City Station	"	8.10	11.30					20.8	Hammond	Ind. "	6.15	cp				
			8.30	11.45					36.0	Crown Point	"	6.40	10.40				
625.9	Akron	Ohio	12.13	4.44					100.7	Rochester	"	7.06					
633.3	Barberton	"		de					142.5	Huntington	Ar.	8.17	12.53				
640.0	Wadsworth	"										9.02					
644.6	Rittman	"															
676.4	Ashland	"	1.22	5.13					142.5	Huntington	Lv.	9.10	12.58				
693.1	Mansfield	"	1.54	5.58					173.0	Decatur	"	9.47	1.32				
708.5	Galion	"	2.22	6.35					189.8	Ohio City	Ohio	10.12					
729.4	Marion	Ar.	2.47	7.36					204.3	Spencerville	"						
729.4	Marion	Lv.	2.54	7.51					217.0	Lima	"	11.59	3.30				
754.4	Kenton	"		8.25					244.1	Kenton	"		4.04				
781.5	Lima	"	3.55	9.06					269.0	Marion	Ar.	1.01	4.34				
794.2	Spencerville	"							269.0	Marion	Lv.	1.06	4.39				
808.7	Ohio City	"							290.0	Galion	"	1.36	5.09				
825.5	Decatur	Ind.							305.4	Mansfield	"	2.06	5.38				
856.0	Huntington	Ar.	4.26	9.40					322.1	Ashland	"	2.35	6.05				
									353.9	Rittman	"		6.42				
856.0	Huntington	Lv.	4.31	9.50					358.5	Wadsworth	"		6.52				
897.8	Rochester	"	5.23						365.2	Barberton	"		7.04				
962.5	Crown Point	"							372.6	Akron	"	3.44	7.14				
977.7	Hammond	"	7.00	12.15													
991.9	Englewood, 63d Street	Ill.	ax	ax					997.5	N. Y., Jersey City Station	Ar.	7.20	11.40				
998.5	Chicago (Dearborn Sta.)	Ar.	7.40	1.00					998.5	" Chambers St.	"	7.34	11.54				
			AM	AM						" West 23d St.	Ar.	7.45					

TABLE 6 NEW YORK AND BUFFALO

WESTBOUND Read Down				Miles from New York	EASTBOUND Read Up			
I	7-477	5			2	472	480	6
Daily	Daily	Daily			Daily	Sat. Only	Daily	Daily
AM	PM	PM	0.0	Lv. N. Y., West 23d St. Ar.	PM	PM	AM	
8.05	10.55	7.00	0.0	" Chambers St.	7.45		8.05	
8.10	11.30	7.30	0.0	" Jersey City Sta.	7.34		7.54	
8.30	11.45	7.45	1.0	Lv. Binghamton Ar.	7.20		7.40	
2.01	5.42	1.22	215.1	Endicott	1.43		1.57	
2.14			222.6	Waverly	1.32			
2.51	6.37		256.2	Elmira	12.51		1.12	
3.17	7.12	2.35	273.8	Corning	12.30		12.50	
3.41	7.44	3.00	291.1	Hornell Lv.	12.07		12.24	
4.33	8.45	3.51	332.3	Hornell Ar.	11.14		11.31	
4.48	9.00	4.20	332.3	Arkport	11.05	7.50	11.20	
	9.08	4.28	338.0	Burns	10.55	7.39		
			340.7	Canaseraga		7.33		
	9.20	4.38	344.8	Garwoods	10.40	7.26	11.01	
			347.2	Swains		7.17		
	9.27		349.2	Dalton		7.07		
	9.37	ac	356.4	Washington Hunt.		7.02		
	9.42		358.5	Portage		6.54		
	9.49		362.6	Letchworth Park				
			366.5	Castile	10.12	6.45	bt1029	
	5.30	bt5.12	369.2	Silver Springs	10.06	6.38	10.23	
	5.35	5.17	372.3	Rock Glen				
			376.6	Warsaw	9.55	6.24	10.11	
	5.47	5.29	382.4	Dale		6.14		
			386.7	Linden				
	6.11	5.55	393.7	Attica	9.30	1.30	5.55	
		6.02	397.6	Griswolds		1.22	5.48	
		6.07	399.9	Darien Center		1.17	5.42	
	6.28	6.15	405.5	Alden (Black Water Baths)	9.10	1.05	5.30	
			408.3	Marilla		1.00	5.23	
		6.23	410.3	Town Line		12.56	5.18	
		6.30	414.3	Lancaster	8.59	12.49	5.10	
		6.33	415.6	Depew		12.46	5.06	
		6.43	422.2	East Buffalo		12.35	4.54	
			425.2	Ar. Buffalo Lv.	8.40	12.25	4.45	
6.58	11.40	6.55		(Lehigh Valley Terminal)	AM	PM	PM	

Erie Trains arriving at and departing from BUFFALO, N. Y. now use the LEHIGH VALLEY TERMINAL located at Main and Scott Streets.



Pickup En Route Delivery

FAST SERVICE for PACKAGES

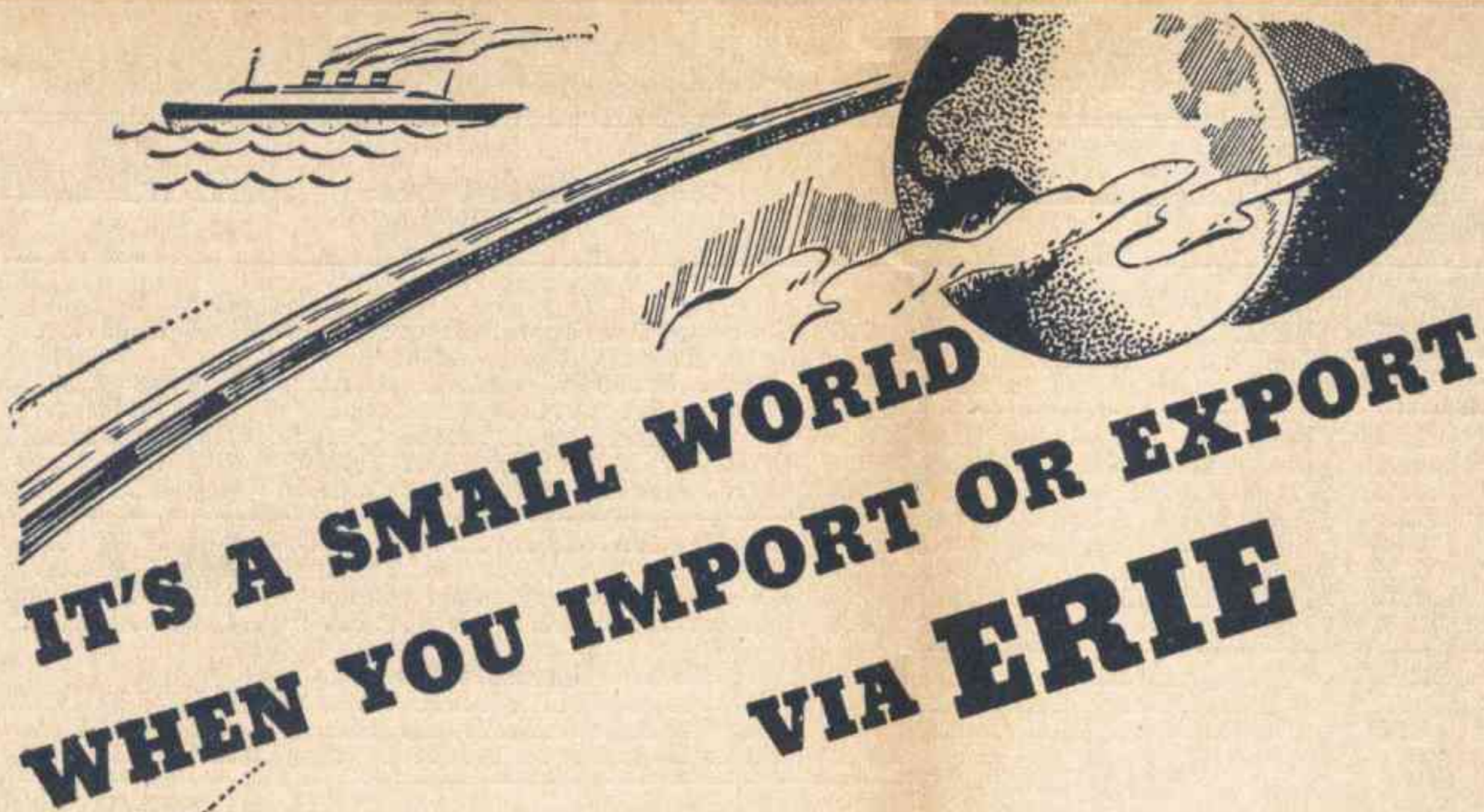
DEPENDABLE through service from sender to receiver, with pick-up and delivery in principal cities and towns, is available at the nearest Express Agency on this Railroad.

We give a receipt on collection and take a receipt on delivery. Ask our representative about this fast, convenient way of sending packages.

RAILWAY EXPRESS AGENCY

As an added convenience, express packages may be left with Western Union or will be called for by their messengers without extra charge.





## IT'S A SMALL WORLD WHEN YOU IMPORT OR EXPORT VIA ERIE

● Buying in Buenos Aires or selling in Shanghai can be as easy as doing business at home—if you let the Erie help.

For almost a century Erie has been handling the details of import and export for thousands of companies. There are no angles of the trade that Erie has not learned in that time.

Erie harbor facilities are efficient, modern. A fleet of fast lighters assures rapid transfer of goods from train to ship, or ship to train. Refrigerated lighters prevent spoilage of perishables in transit. Huge piers with special equipment make for safe handling and storage of delicate machinery, fragile goods or cumbersome commodities.

Experience and equipment are essential, of course, but perhaps Erie's greatest service to importers and exporters is Erie's traditional pride in speeding every shipment through—*on time*. Call your Erie representative for full details.

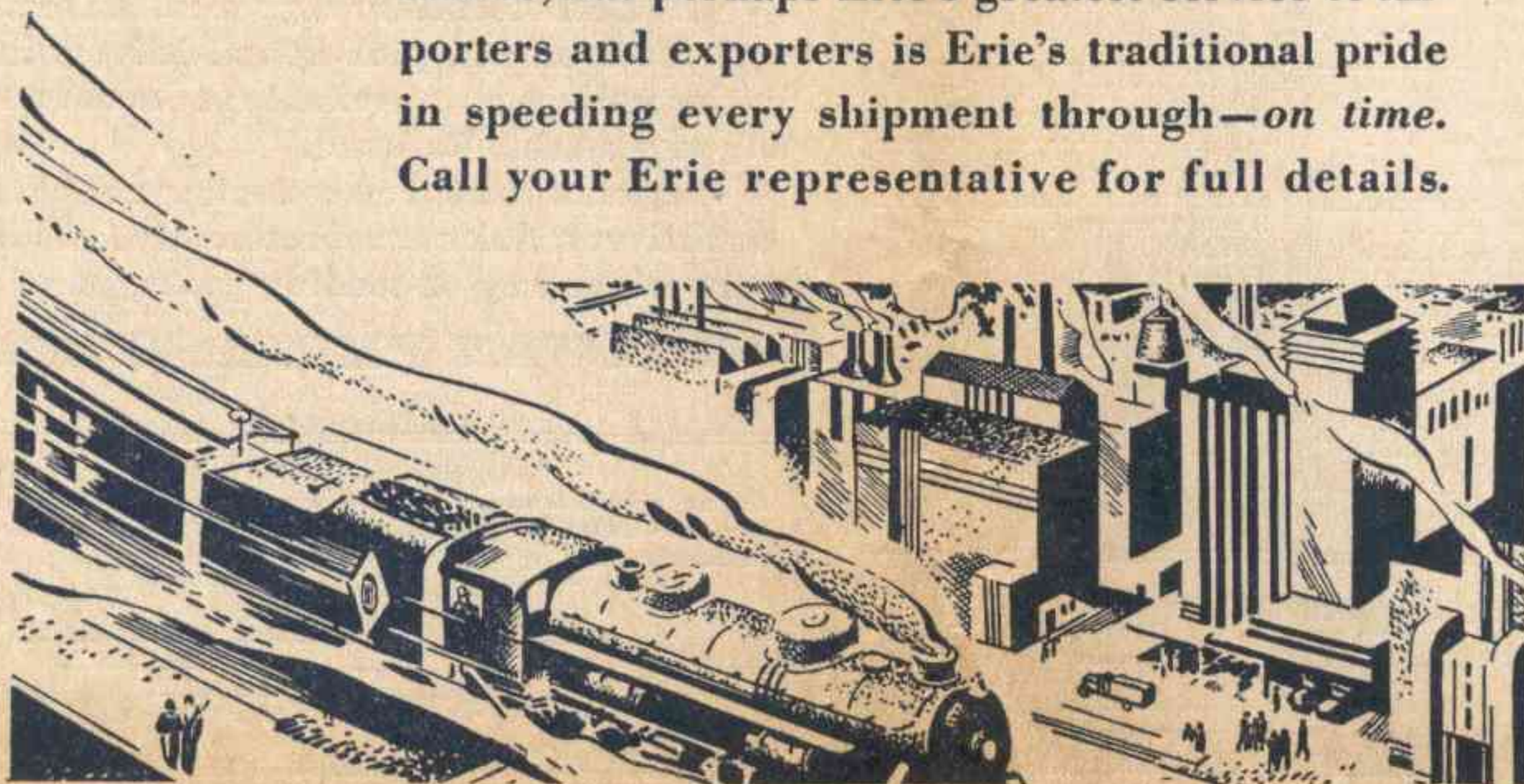


TABLE 7 DETROIT—TOLEDO—CLEVELAND—YOUNGSTOWN—PITTSBURGH

Table with columns: Miles from Cleveland, Eastern Standard Time, WEEK-DAYS (688, 624, 626, 6, 628, 686), SUNDAYS (688, 624, 626, 6, 686, 620). Rows include stations from Detroit to Pittsburgh.

Table with columns: Miles from Pittsburgh, Eastern Standard Time, WEEK-DAYS (629, 5, 685, 623, 679, 687), SUNDAYS (617, 5, 685, 623, 679, 687). Rows include stations from Pittsburgh to Detroit.

AIR-CONDITIONED TRAINS
Air-conditioned equipment has been assigned to regular sections of trains as shown herein.

EQUIPMENT
Detroit, Toledo, Cleveland, Youngstown, Pittsburgh Trains.
★Indicates Air-Conditioned Cars

EASTBOUND
No. 6—Daily. ★Sleeping Car (8 Section Compartment Lounge Restaurant Car) Cleveland to New York.

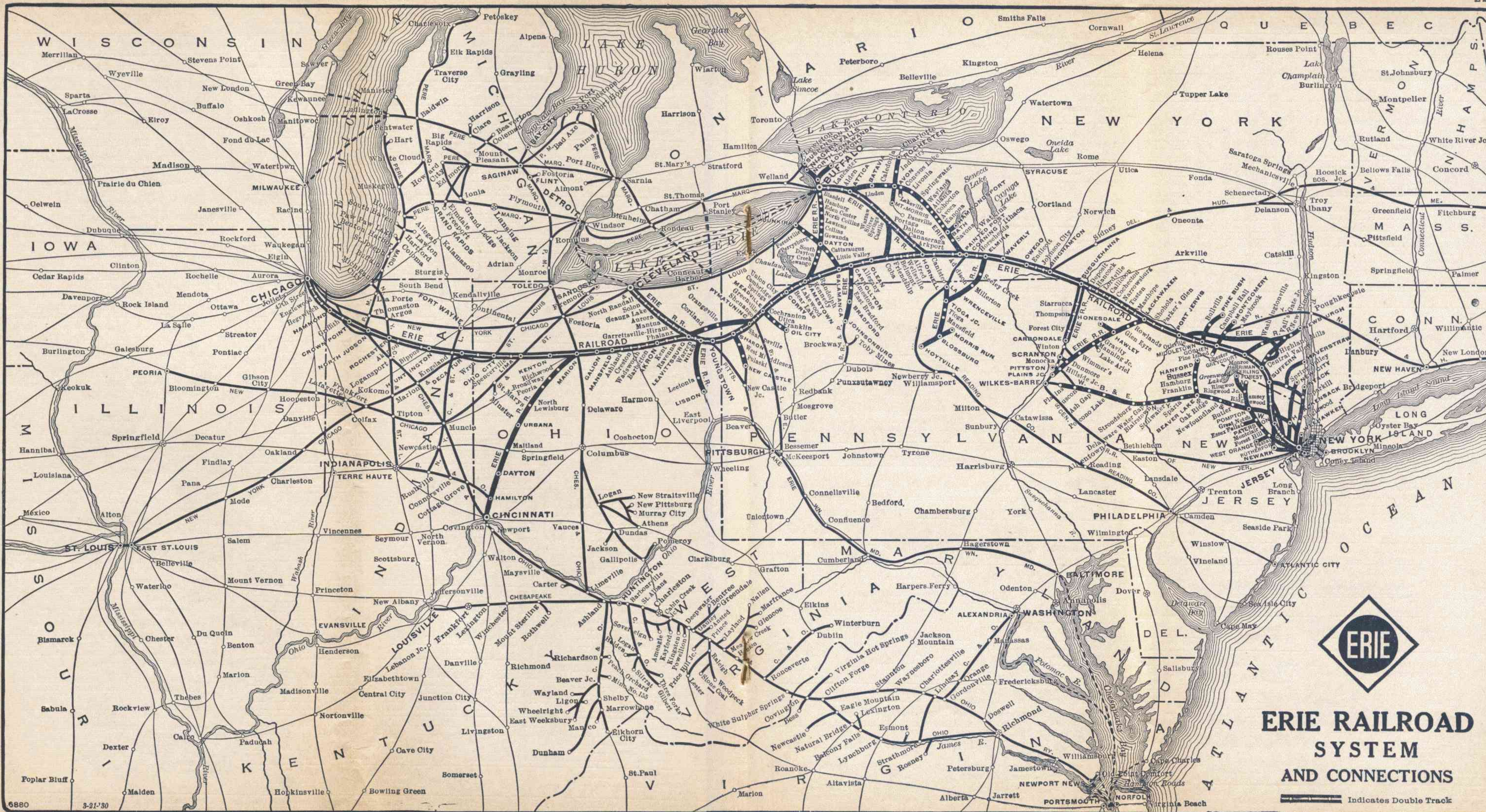
WESTBOUND
No. 5—Daily. ★Sleeping Car (8 Section Compartment Lounge Restaurant Car) New York to Cleveland.

★Cleveland-Pittsburgh Sleeping Car
The Cleveland-Pittsburgh sleeping car operates to and from Union Terminal Cleveland via New York Central (via Ashtabula) to Youngstown, and P. & L. E. Railroad on following schedule:

Holidays in the above table refers to the observance of New Year's Day, Memorial Day, Independence Day, Labor Day, Thanksgiving Day and Christmas Day.

For Explanation of Reference Marks and Notes, see Pages 33 and 34.

For Parlor, Sleeping and Dining Service of Through Trains, see Pages 5 and 6.



ARRIVE FRESH AS A DAISY ON ERIE AIR-CONDITIONED TRAINS

# ERIE RAILROAD SYSTEM AND CONNECTIONS

Indicates Double Track

**TABLE 8 BUFFALO—JAMESTOWN**

		WESTBOUND			
Mls.	Eastern Standard Time	513	515	517	519
		Daily	Daily Ex. Su. & Hol.	Daily Ex. Su. & Hol.	Daily
0.0	Buffalo (Lehigh Valley Terminal)... Lv.	AM 8.05	PM 12.30	PM 4.20	PM 5.05
7.4	Blasdell.....	8.24	12.48	4.38	5.22
13.3	Hamburg.....	8.36	1.00	4.50	5.33
14.5	Water Valley.....		1.03	4.53	5.36
16.9	Eden Valley.....	f 8.41	f 1.07	4.58	f 5.40
19.2	Eden Center.....	8.46	1.12	5.03	5.45
23.5	North Collins.....	8.53	1.19	5.10	5.52
27.5	Lawtons.....	9.00	1.26	5.17	5.58
30.6	Collins (State Hospital).....	9.06	1.32	5.23	6.04
33.6	Gowanda.....	9.14	1.45	5.30	6.11
38.1	Dayton.....	9.30			6.25
39.9	Markhams.....				
43.4	South Dayton.....	9.42			6.35
48.4	Cherry Creek.....	9.51			6.43
52.7	Conewango.....	10.00			6.51
60.6	Kennedy.....	10.13			hu
66.4	Falconer.....	10.23			7.11
69.7	Jamestown..... Ar.	10.30			7.17

		EASTBOUND			
Mls.	Eastern Standard Time	514	516	518	520
		Daily Ex. Su. & Hol.	Daily	Daily Ex. Su. & Hol.	Daily
0.0	Jamestown..... Lv.	AM 8.32	AM 8.32	PM 4.45	PM 4.45
3.3	Falconer.....	8.38		4.51	
9.1	Kennedy.....	8.46		4.59	
17.0	Conewango.....	8.58		5.12	
21.3	Cherry Creek.....	9.05		5.19	
26.3	South Dayton.....	9.13		5.28	
29.8	Markhams.....				
31.6	Dayton.....	9.24		5.40	
36.1	Gowanda.....	5.50	9.38	1.50	5.54
39.1	Collins (State Hospital).....	5.56	9.45	1.56	6.04
42.2	Lawtons.....	6.03	9.52	2.02	6.11
46.2	North Collins.....	6.10	10.00	2.09	6.18
50.5	Eden Center.....	6.18	10.08	2.15	6.26
52.8	Eden Valley.....	6.23	10.13	2.21	6.31
55.2	Water Valley.....	6.28			
56.4	Hamburg.....	6.33	10.20	2.27	6.38
62.3	Blasdell.....	6.43	10.31	2.37	6.48
69.7	Buffalo (Lehigh Valley Terminal)... Ar.	7.02	10.50	2.55	7.05

Holidays in the above table refer to the observance of New Year's Day, Memorial Day, Independence Day, Labor Day, Thanksgiving Day and Christmas Day.

**TABLE 11 BRADFORD - SALAMANCA - CLEVELAND - CHICAGO**

WESTBOUND				EASTBOUND				
Miles from Bradford	Eastern Standard Time	Bus-7	Bus-1	Miles from Chicago	Central Standard Time	2-Bus	3-Bus	6-Bus
		Daily	Daily			Daily	Daily	Daily
Via BUS of Allegheny Motor Coach Co., Inc. (See Note "X" Below)		AM	PM	0.0	Chicago..... Lv.	6.00	10.00	
0.0	Bradford..... Lv.	9.17	5.42	372.6	Akron.....	3.44	7.22	
17.2	Salamanca..... Ar.	9.55	6.20	0.0	Cleveland.....			4.00
17.2	Salamanca..... Lv.	11.18	6.43	426.7	Youngstown.....	5.07	8.50	5.43
51.0	Jamestown..... Ar.	12.10	7.33	551.1	Jamestown.....	8.25	12.16	8.48
175.4	Youngstown.....	3.12	10.38	584.9	Salamanca..... Ar.	9.05	1.11	9.27
0.0	Cleveland.....			Via BUS of Allegheny Motor Coach Co., Inc. (See Note "X" Below)				
229.5	Akron.....	4.44	12.13	584.9	Salamanca..... Lv.	9.35	2.20	dh 10.35
602.1	Chicago..... Ar.	1.00	7.40	602.1	Bradford..... Ar.	10.15	3.00	ah 11.10

**NOTE "X"**—In connection with the bus service the Erie Railroad Company acts as agent only and is not responsible beyond its own line, except as such responsibility may be imposed by law with respect to baggage.

**TABLE 9 NEW YORK—CHAUTAUQUA**

(Via Jamestown and BUS of West Ridge Transportation Co.)  
(See Note "X" Below)

WESTBOUND				EASTBOUND			
Eastern Standard Time	1-Bus	5-Bus	7-Bus	Eastern Standard Time	Bus-8	Bus-6	
	Sa. Su. & Hol. only	Daily	Daily		Daily	Daily	
N.Y., West 23rd St. Lv.	AM 8.05	PM 7.00	PM 10.55	Chautauqua..... Lv.	AM 10.52	PM 6.57	
" Chambers St. ....	8.10	7.30	11.30	Jamestown..... Ar.	11.25	7.25	
" Jersey City Sta. ....	8.30	7.45	11.45	Jamestown..... Lv.	12.16	8.48	
Jamestown..... Ar.	7.33	7.00	12.10	N. Y., Jersey City Sta. Ar.	11.40	7.40	
Jamestown..... Lv.	9.30	7.10	1.15	" Chambers St. ....	11.54	7.54	
Chautauqua..... Ar.	9.58	7.38	1.45	" West 23rd St. .... Ar.		8.05	

Tickets sold and Baggage checked through to Chautauqua. Hand baggage checked without charge. Trunks checked at charge of 25c each.

**TABLE 10 CHAUTAUQUA—AKRON—CHICAGO**  
(Via Jamestown and BUS of West Ridge Transportation Co.)  
(See Note "X" Below)

WESTBOUND			EASTBOUND			
Eastern Standard Time	Bus-7	Bus-1	Central Standard Time	2-Bus	3-Bus	6-Bus
	Daily	Daily		Daily	Daily	Sa. Su. & Hol. only
Chautauqua..... Lv.	AM 10.52	PM 6.57	Chicago..... Lv.	PM 6.00	PM 10.00	
Jamestown..... Ar.	11.25	7.25	Eastern Standard Time			
Jamestown..... Lv.	12.10	7.33	Akron..... Lv.	3.44	7.22	
Cleveland..... Lv.			Cleveland..... Lv.			4.00
Akron..... Ar.	4.44	12.13	Jamestown..... Ar.	8.25	12.16	8.48
Chicago..... Ar.	1.00	7.40	Jamestown..... Lv.	8.45	1.15	9.30
	AM	AM	Chautauqua..... Ar.	9.15	1.45	9.58

Tickets sold and Baggage checked through to Chautauqua. Hand baggage checked without charge. Trunks checked at charge of 25c each.

**TABLE 12 NEW YORK—SALAMANCA—BRADFORD**

WESTBOUND				EASTBOUND			
Miles from N. Y.	Eastern Standard Time	gt 1-Bus	ht 5-557	Eastern Standard Time	gt Bus-2	gt Bus-8	ht 560-6
		Daily	Daily		Daily	Daily	Daily
0.0	N. Y., W. 23rd St. Lv.	AM 8.05	PM 7.00	Bradford..... Lv.	dh 8.15	ad 11.17	8.35
0.0	" Chambers St. ....	8.10	7.30	East Bradford.....			f 8.38
1.0	" Jersey City Station... Lv.	8.30	7.45	Limestone.....			8.46
413.6	Salamanca..... Ar.	6.36	6.03	Carrollton.....			8.56
413.6	Salamanca..... Lv.	ad 7.10	6.20	Salamanca..... Ar.	dh 8.55	ad 12.00	9.10
419.0	Carrollton.....		6.30	Salamanca..... Lv.	9.10	1.18	9.34
425.2	Limestone.....		6.43	N. Y., Jersey City Station.....	7.20	11.40	7.40
429.5	East Bradford.....		f 6.51	" Chambers St. ....	7.34	11.54	7.54
430.8	Bradford..... Ar.	ad 7.45	6.55	" W. 23rd St. ....	7.45		8.05

Trains 5-557 and 560-6 carry through sleeping car between Bradford and New York. Sleeper on train 557 will be parked at Bradford for occupancy until 8.00 A. M.

**Busses leave as follows: (running time approximately 45 minutes.)**

Lv. Salamanca for Bradford, 8.20 A.M., 9.35 A.M., 2.20 P.M., 4.30 P.M., 5.40 P.M., 7.10 P.M., 11.15 P.M.

Lv. Bradford for Salamanca, 8.17 A.M., 9.17 A.M., 11.17 A.M., 2.17 P.M., 4.27 P.M., 5.42 P.M.

**BAGGAGE CHECKED TO BRADFORD**—Baggage will be handled only on Trains 557 and 560 between Salamanca, N. Y., and Bradford, Pa.

**NOTE "X"**—In connection with the bus service the Erie Railroad Company acts as agent only and is not responsible beyond its own line, except as such responsibility may be imposed by law with respect to baggage.

TABLE 13 NEW YORK—NEWBURGH—(VIA HARRIMAN)

Table 13: New York—Newburgh—(via Harriman). Includes Westbound and Eastbound schedules with times and station names like N.Y., W. 23d St., N.Y., Chambers St., N.Y., Jersey City Sta., and Harriman.

TABLE 15 NEW YORK—MEADVILLE—OIL CITY

Table 15: New York—Meadville—Oil City. Includes Westbound and Eastbound schedules with times and station names like N.Y. W. 23d St., N.Y., Cham. St., N.Y., Jersey City Station, and Meadville Lv.

TABLE 14 NEW YORK—NEWBURGH (VIA GREYCOURT)

Table 14: New York—Newburgh (via Greycourt). Includes Westbound and Eastbound schedules with times and station names like N.Y., W. 23d St., N.Y., Chamb. St., N.Y., Jersey City, and Greycourt.

Tickets sold and baggage checked through to Franklin and Oil City.

TABLE 17 Lackawaxen—Honesdale

Table 17: Lackawaxen—Honesdale. Includes Eastbound and Westbound schedules with times and station names like N.Y., W. 23d St., N.Y., Chambers St., N.Y., Jersey City Sta., Lackawaxen, Rowlands, Glen Eyre, Shimers Rock Cut, Kimbles, Wellwood Ave., Hawley, White Mills, East Honesdale, and Honesdale.

TABLE 16 Chicago-Meadville-Oil City

Table 16: Chicago-Meadville-Oil City. Includes Westbound and Eastbound schedules with times and station names like Oil City Ar., Reno, Franklin, Sugar Creek, Utica, Carlton, Cochran, Shaws, Meadville Lv., Youngst'n Lv., Cleveland Lv., and Akron.

Passengers to and from Honesdale can also make connection via Narrowsburg (see Tables 2 and 3), and busses of the Wayne County Taxicab Co. (See Note "X" Below)

Tickets sold and baggage checked through to Franklin and Oil City.

TABLE 18 MIDDLETOWN—PINE BUSH

Table 18: Middletown—Pine Bush. Includes Westbound and Eastbound schedules with times and station names like N.Y., W. 23d St., N.Y., Chambers St., N.Y., Jersey City Sta., Middletown, and Pine Bush.

Tickets sold and baggage checked through to Circleville, Bullville, Thompson Ridge and Pine Bush.

TABLE 20 NEW YORK—KENOZA LAKE—JEFFERSONVILLE

Table 20: New York—Kenoza Lake—Jeffersonville. Includes Westbound and Eastbound schedules with times and station names like N.Y., Jersey City Sta., Callicoon, Kenoza Lake, and Jeffersonville.

Tickets sold and baggage checked through to Jeffersonville and Kenoza Lake.

TABLE 19 NEW YORK—MONTICELLO—LIBERTY

Table 19: New York—Monticello—Liberty. Includes Westbound and Eastbound schedules with times and station names like N.Y., Jersey City Sta., Middletown, Monticello, and Liberty.

Tickets sold and baggage checked through to Monticello, Wurtsboro and Liberty.

NOTE "X" in connection with the bus service the Erie Railroad Company acts as agent only and is not responsible beyond its own line, except as such responsibility may be imposed by law with respect to baggage.

TABLE 21 ELMIRA-ROCHESTER

Table with columns for Westbound Read Down (5-463, 7-467), Miles, Eastern Standard Time, and Eastbound Read Up (468-8, 464-8). Includes departure and arrival times for stations like N. Y., W. 23d St., Chambers St., Jersey City Sta., Elmira, Corning, Avoca, etc.

TABLE 22 SALAMANCA—DUNKIRK

Table with columns for Westbound Read Down (5-527), Miles, Eastern Standard Time, and Eastbound Read Up (540). Includes departure and arrival times for stations like N. Y., W. 23d St., Chambers St., Jersey City Station, Salamanca, Little Valley, Cattaraugus, Persia, Dayton, Buffalo, etc.

LOCATE YOUR PLANT WHERE YOU CAN LOCATE MORE PROFITS Ask us about industrial buildings and vacant land on Erie rails GEO. F. WESTON Industrial Commissioner Erie Railroad, Midland Bldg., Cleveland, O.

TABLE 23 ROCHESTER—MOUNT MORRIS—DANSVILLE

Table with columns for Eastern Standard Time and train numbers (404, 408, 468, 428, 416, 440, 420, 424). Includes departure and arrival times for stations like Rochester, Mortimer, W. Henrietta, Industry, Golah, Avon, Geneseo, Mt. Morris, Mt. Morris (D. & Mt. M. R. R.), Sonyea, Groveland, West Sparta, Dansville.

Table with columns for Eastern Standard Time and train numbers (425, 401, 403, 467, 409, 415, 415, 419). Includes departure and arrival times for stations like Dansville, West Sparta, Groveland, Sonyea, Mt. Morris, Mt. Morris (D. & Mt. M. R. R.), Geneseo, Avon, Golah, Industry, W. Henrietta, Mortimer, Rochester.

TRAINS between Mt. Morris and Avon will stop on signal at Shakers, Jones, Cuylerville, Jaycocks, Seven Nations, Huston, South Avon, Pierces, Fowler, Ashantee, Linden Street and Spring Street and between Avon and Rochester, except Trains 467, 468 at Wiards, Elm Place, Meadowwood, Gannett, Blair, Martin, Brooks, Fenners, Baileys, Crittenden, Westfall and South Park. HOLIDAYS in above table refer to the observance of New Year's Day, Decoration Day, Independence Day, Labor Day, Thanksgiving Day and Christmas Day.

HUDSON AND MANHATTAN TUBE TRAINS SCHEDULE OF RUNNING TIME BETWEEN ERIE R. R. JERSEY CITY TERMINAL AND

Table showing running times for Downtown New York (Cortlandt St. Hudson Terminal Bldg.) and Uptown New York (33rd Street and 6th Ave, 28th Street and 6th Ave, etc.). Includes note: Allow 10 Minutes additional for connections. Fares—Downtown 6 cents. Uptown 10 cents.

ERIE R. R. FERRY TIME TABLE EASTERN STANDARD TIME CHAMBERS STREET FERRY Ferry Running Time, 9 Minutes WEEK DAYS

Table with columns for Leave New York for Jersey City and Leave Jersey City for New York. Includes departure and arrival times for various times of day (AM, PM, Noon, Mid).

a Will not run on Holidays. m Except Saturdays and Holidays. h Holidays only.

SUNDAYS Table with columns for departure and arrival times for various times of day (AM, PM, Noon, Mid).

TWENTY-THIRD STREET FERRY Ferry Running Time, 20 Minutes WEEK DAYS

Table with columns for Leave New York for Jersey City and Leave Jersey City for New York. Includes departure and arrival times for various times of day (AM, PM, Noon).

SUNDAYS Table with columns for departure and arrival times for various times of day (AM, PM).

## ERIE TRAIN-CAB SERVICE

Takes You from Erie Terminal Directly to  
Your Door in New York or Brooklyn



The New York Library at Fifth Avenue and 42nd Street

ONE Person **90¢** TWO Persons **\$1.25** THREE or more **\$1.50**

Thousands have used and praised Erie Train-Cab Service.

Strangers arriving at Erie Terminal, Jersey City are taken all the way to their destination in New York or Brooklyn. They never get "lost" and are never overcharged. Women accompanied by children appreciate this service. Even seasoned travellers enjoy the comfort of settling down in their own taxicab and forgetting about bags and car changes.

The fares shown above apply from our terminal to any place on Manhattan 110th Street and South, also to any point in the Brooklyn business district.

Service beyond the prescribed zones is metered from the zone limits and charged for at regular rates.

Train-Cab service is available to all who travel from stations west of Middletown, N. Y.

You can buy the Train-Cab coupon with your rail ticket at the ticket office or from the conductor on any through train and you will find your taxicab awaiting the arrival of your train at Jersey City.

Ask the conductor or ticket agent for details.

### Checking Hand Baggage at Chicago

Passengers arriving Chicago on Erie trains who desire to stay over for a few hours and depart from a station other than Dearborn Station may have their hand baggage transferred to the station from which they depart. A Parmelee Company agent meets all Erie trains upon arrival at Chicago and he will arrange the transfer for you. The bags will be placed in the parcel check room of the station from which you depart. A charge of fifty cents for each hand bag, including the parcel room fee, will be made for the service, except one piece will be checked free when passenger holds through ticket including transfer through Chicago.

## SUGGESTIONS

• **INTERCHANGEABLE SCRIP COUPON TICKETS** issued in \$15.00 and \$30.00 denominations are accepted on trains or at ticket offices in payment of rail passage as well as sleeping and parlor car accommodations, and also as payment for meals in restaurant cars.

• **PREPAID ORDERS.** For the convenience of patrons who do not wish to send money by mail, Erie Railroad ticket agents are prepared to sell prepaid ticket orders for the delivery of transportation, rail and Pullman, from practically all points in the United States, Canada and Mexico. These orders may also include the furnishing of cash.

In emergencies arrangements may be made for the delivery of transportation by telegraph or telephone without charge except when commercial wires are used.

• **BAGGAGE INSURANCE** by the St. Paul Fire & Marine Insurance Co. may be purchased at principal Erie ticket offices. It insures your baggage and personal effects for your entire trip anywhere in the world. Minimum premium twenty-five cents. The ticket agent can give you full particulars.

• **ERIE PLAYING CARDS** are on sale at our ticket offices, excepting in Ohio. Bridge sets one dollar, single decks fifty cents.

• **SPECIAL TOURS AND CONVENTIONS.** Our services are at the disposal of clubs, lodges and other organizations in arranging for trips to conventions and gatherings of all sorts. Concerning fares, train schedules and travel plans, consult or write to any Erie Ticket Agent, or any of the Passenger Department representatives listed on pages 35 to 37 of this folder.

### Time Table Mailing Service

If you would like a copy of this time table each time a new one is issued just drop us a post card and your name will be put on the list. No charge. Address your request to Erie Railroad, Passenger Traffic Dept., Midland Bldg., Cleveland, Ohio.

### THIRTY DAY ROUND TRIPS MOST ECONOMICAL

These excursions go every Tuesday and Saturday from New York City and other Erie stations east of, and including Port Jervis to all stations Youngstown to Chicago.

Similar excursions also operate in the reverse direction—from Chicago, Youngstown and intermediate stations to Port Jervis, New York City and intermediate stations, and also to many Atlantic Seaboard points.

RAILROAD AND PULLMAN FARES (Pullman Fares Include Surcharge)

For Information Only. Subject to Change Without Notice.

Table with columns for 'Between' and 'And' stations, and rows for various routes including New York, Binghamton, Buffalo, Jamestown, Cleveland, and Chicago. It lists Rail-road Fare, Seat Fare, and Low-er Berth for each route.

RATES FOR UPPER BERTH, SECTION, DRAWING ROOM OR COMPARTMENT IN SLEEPING CARS

(Including Surcharge)

Table with columns: Where Lower Berth Rate Is, Upper Berth Rate Will Be, Section Rate For One Passenger, Section Rate For Two Passengers, Drawing Room Rate Will Be, and Compartment Rate Will Be. It shows rates ranging from \$3.00 to \$10.50.

Note:—▲For section occupied by two passengers but with lower berth only prepared for night service.

Minimum Number of Railroad Tickets Required for Exclusive Occupancy of Sections, Drawing Rooms or Compartments in Sleeping Cars and Drawing Room in Parlor Cars

Table listing ticket requirements for Section, Compartment, and Drawing Room services, such as 'Section... One Adult Railroad Ticket'.

GENERAL INFORMATION

STANDARD OF TIME—Erie Lines east of and including Lima, Ohio, are operated by Eastern Standard Time...

TRAINS WILL NOT BE HELD for ferries from New York between hours of 4:00 P. M. and 5:30 P. M. Eastern Standard Time.

HOLIDAYS—The term "Holidays" (unless covered by special note) refers to New Year's Day, Lincoln's Birthday, Washington's Birthday, Memorial Day, Independence Day, Labor Day, Thanksgiving Day and Christmas Day.

THIS COMPANY IS NOT RESPONSIBLE FOR ERRORS in time tables, inconvenience or damage resulting from delayed trains or failure to make connections; schedules are subject to change without notice.

FARE PAID ON TRAINS—The lawful fare when paid to conductor is ten (10) cents in excess of the one-way ticket fare.

CHILDREN under five years of age are carried free when accompanied by parent or guardian; five years and under twelve, half fare, twelve years of age and over, full fare.

ADJUSTMENT OF FARES—Should any misunderstanding arise with conductors or agents, pay the fare required, take receipt and communicate with General Passenger Agent, Midland Bldg., Cleveland, Ohio.

SLEEPING AND PARLOR CAR RESERVATIONS—Space reserved by telegraph or telephone within city limit will be held until:

- 4:00 P. M. day prior to departure of trains leaving before noon next day.
9:00 A. M. day of departure for trains leaving between noon and 5:00 P. M.
1:00 P. M. day of departure for trains leaving after 4:00 P. M.

When application is by wire or letter from a point outside of city limit, space will be held until fifteen minutes of train time.

BAGGAGE TO BE CHECKED should be delivered at station at least thirty minutes before train time.

BAGGAGE DELIVERY IN NEW YORK CITY—All baggage checked to New York City will be sent to the West 23rd Street Station unless passenger specifies Chambers Street Station at time of checking.

Baggage delivery service in New York will be performed by the Railway Express Agency.

HAND-BAGGAGE in Pullman Cars is restricted to what can be conveniently placed in the berth, seat or other accommodations purchased by the passenger.

CHICAGO PASSENGER AND BAGGAGE TRANSFER is performed by the Parmelee Company. A uniformed agent meets all incoming trains of the Erie Railroad on arrival at Dearborn Station.

ARTICLES LOST ON TRAINS or left in waiting rooms or stations, owners should apply to Information Bureau, Jersey City Depot, or address General Passenger Agent, Midland Bldg., Cleveland, Ohio, giving full description of the property, stating date of loss and number of train.



## REFERENCE MARKS AND NOTES

**IMPORTANT—When trains are indicated as stopping conditionally, Conductors should be notified of intention to leave train and Station Agent notified of intention to board train.**

- § Runs Sundays only.  
 ¶ Station restaurant.  
 \* Runs daily.  
 † Runs daily except Sunday.  
 C Stops on Saturday only.  
 † Stops to discharge passengers.  
 ‡ Will not operate from these stations on Monday morning.  
 † Stops on Holidays only.  
 † Train 71 will not run west of Waldwick on Saturdays or May 29, July 3 and September 6.  
 f Stops on signal to receive and discharge passengers.  
 k Runs Saturdays only  
 M. C. Motor Car Service.  
 N. B. No Baggage carried.
- ab Stops Saturday and Sunday only to discharge passengers.  
 ac Stops Dalton (4.53 A. M.) to discharge passengers from Hornell and east and on signal to receive passengers.  
 ad Via Allegany Motor Coach Co., Inc. bus between Salamanca and Bradford.  
 ae Train 5 will stop on signal at Monroe (9.00 P. M.) to receive passengers for Jamestown and west; and to discharge passengers from New York.  
 ag Stops Saturdays only to discharge passengers.  
 ah Stops on signal Andover (9:22 A. M.) to discharge passengers from New York.  
 at On Sundays only, Train 30 will arrive West 23rd Street at (12.50 P. M.).  
 ax Stops Englewood; Train 1 (7.22 A. M.); Train 7 (12.43 A. M.) to discharge passengers from east of Hammond.  
 bc Stops on signal (8.14 P. M.) to receive passengers.  
 be Stops Hancock (10.59 P. M.) to discharge passengers from Binghamton and west.  
 bg Stops on signal, Friendship (10.03 A. M.); Cuba (10.18 A. M.) to discharge passengers from New York.  
 bh Stops Cuba (5.54 P. M.) to discharge passengers from Elmira and east and to receive for Jamestown and west.  
 bt No Agent on duty. No baggage handled on Trains 5 and 6 to or from Castle.  
 ca Train 27 stops on Sundays and Holidays only Rutherford (2.43 P. M.).  
 cb Stops on signal Passaic (8.05 P. M.), Ridgewood (8.24 P. M.), to receive passengers for Jamestown and west.  
 cc Train 47 will run Friday, May 29, only.  
 cg Stops on signal (11.11 P. M.) to discharge passengers from Binghamton and west.  
 ch Train 71 stops to discharge passengers, except Saturdays or May 29, July 3 and September 6.  
 cn Stops on signal Union City (8.25 P. M.); Cambridge Springs (8.45 P. M.) to discharge passengers from Jamestown and east and to receive for Youngstown and west.  
 cp Stops on signal (10.15 P. M.) to receive passengers for east of Hammond.  
 ct Tickets sold and baggage checked through to Lake Huntington, via Cochection and Dermody Auto Trans. Co.  
 cu Busses of Dermody Auto Trans. Co. operate Lake Huntington to Cochection connecting with trains for points east.  
 cw Stops Endicott (1.32 A. M.) to discharge passengers from Port Jervis and east.  
 cx Stops to discharge passengers from New York.  
 cy Stops to discharge passengers from Cleveland and beyond.  
 da If no passengers for this connection, bus will not operate Narrowsburg to Honesdale.  
 db Stops Endicott (5.53 A. M.) to discharge passengers from New York.  
 dc Stops at Solon and Aurora on Saturdays only to discharge passengers from Cleveland.  
 dd Stops on signal Barberton (4.53 P. M.) to receive passengers for Mansfield and west.  
 de Stops on signal East 93rd Street (4.15 P. M.) to receive passengers for east of Youngstown.
- dg Stops on signal at Warren (4.40 A. M.) to discharge passengers from Chicago and to receive passengers for Jamestown and east.  
 dh Via Dodaro Bus Co. between Salamanca and Bradford.  
 dt No baggage carried on this train east of Hornell. Baggage will be handled on following train.  
 du Coaches only, west of Youngstown.  
 dv Stops on signal Union City (7.50 P. M.) to receive passengers for New York.  
 dw Stops Cuba (9.49 A. M.) to discharge passengers from Jamestown and west and to receive for Elmira and east.  
 dx Stops Ridgewood (6.43 P. M.), Passaic (6.59 P. M.) to discharge passengers from Goshen and west.  
 dy Stops on signal Cambridge Springs (7.08 A. M.), Union City (7.28 A. M.) to discharge passengers from Chicago and to receive for Binghamton and east.  
 dz Stops Ridgewood (7.03 A. M.), Paterson (7.12 A. M.), Passaic (7.19 A. M.), to discharge passengers from Goshen and west.  
 ea Train 61 has a connection from Newark Saturday only, except Holidays.  
 ec Bus service between New Castle and New Castle (Washington St.).  
 ed Bus service between Wampum and Ellwood City.  
 eg On Holidays Train 62 has no connection for Newark.  
 en Stops on signal Passaic (8.50 A. M.), Paterson (8.57 A. M.), Ridgewood (9.07 A. M.) to receive passengers.  
 ep Stops on Saturdays only (11.07 A. M.).  
 er Stops (5.39 A. M.) to discharge passengers from Cleveland and west and on signal to receive for Pittsburgh.  
 es Stops on signal East 55th Street (8.08 A. M.) to receive passengers for Warren and east.  
 et Stops on signal East 55th Street (1.34 P. M.); East 93rd Street (1.39 P. M.) to receive passengers.  
 eu Stops (6.10 P. M.) to discharge passengers from Jamestown and west and on signal to receive passengers for New York.  
 ev Stops on signal to receive passengers for Cleveland and beyond.  
 ew Stops (11.46 A. M.) to discharge from Jamestown and east and west of Akron.  
 ex Stops (1.47 A. M.) to discharge passengers from Buffalo, Jamestown and west.  
 ez On Sundays Train 6 has no connection for Newark.  
 gc Stops (10.59 A. M.) to discharge passengers from east of Avon.  
 gt In connection with the bus service the Erie Railroad Company acts as agent only and is not responsible beyond its own line, except as such responsibility may be imposed by law with respect to baggage.  
 ha Stops at Narrowsburg (10.56 P. M.) to discharge passengers from Ridgewood and east.  
 he Stops Alden (9.27 P. M.) to discharge passengers from Buffalo and on signal to receive passengers.  
 hm On Saturdays connection for Train 69 leaves Newark at (5.16 P. M.); has no connection on Holidays.  
 hn On Sundays Train 2 has no connection for Newark.  
 hr Stops (4.17 P. M.) to discharge passengers from Binghamton and west and on signal to receive for New York.  
 ht Trains 5-557 and 560-6 carry through sleeping cars between Bradford and New York.  
 hu Stops to discharge passengers.  
 hv Stops on signal East 93rd Street (6.15 P. M.) to receive passengers.  
 hx Train 38 will run Sunday, May 31, only.  
 mh Stops on signal, Sundays only, to discharge passengers from New York.  
 mr Stops, except Sundays and Holidays, to discharge passengers.

## STOP-OVER PRIVILEGES

### Niagara Falls

Passengers holding tickets reading "via Erie Railroad" from or through Elmira to or through Youngstown or vice versa may exercise their privilege of going by way of Buffalo and stopping over for as long as ten days at Niagara Falls, but not beyond the final limit of their ticket. Upon request, the Erie Ticket Agent at Buffalo will issue without charge a round trip ticket between Buffalo and Niagara Falls. Frequent service via International Ry. (Electric Line) direct from Buffalo Terminal.

### Other Points

On local one-way tickets sold at regular fares, local round-trip tickets sold at double the one-way fares, All-Year, Summer and Winter Tourist and Convention Tickets, stop-overs will be allowed on going and return trips within final limit of tickets at any Erie Railroad Station en route upon notice to conductor and without deposit of ticket.

## WESTERN UNION

**TELEGRAMS AND CABLEGRAMS** accepted at all telegraph offices of this railroad.

**FAST TELEGRAMS**—For urgent business or social messages, announcements of arrivals and departures and reservations.

**DAY LETTERS**—50 words for 1½ times the cost of a 10 word telegram.

**NIGHT LETTERS**—50 words for the cost of a 10 word telegram.

**CABLE NIGHT LETTERS**—An inexpensive service.

## REDUCED ROUND-TRIP FARES EVERY WEEK-END

Between any two points on the Erie Railroad and its connections East of Chicago and St. Louis.

Consult Erie Ticket Agents

# ERIE RAILROAD COMPANY

GENERAL OFFICES, MIDLAND BUILDING, CLEVELAND. Telephone Cherry 8400.  
 GENERAL OFFICES, HUDSON TERMINAL, 50 CHURCH STREET, NEW YORK. Telephone Cortlandt 7-9200.  
 GENERAL OFFICES, UTILITIES BUILDING, 327 SOUTH LA SALLE STREET, CHICAGO. Telephone Harrison 4160.

## TRAFFIC AND DEVELOPMENT DEPARTMENTS

### TRAFFIC

D. L. GRAY, Vice-President, Cleveland  
 CARL HOWE, Vice-President, Chicago  
 G. C. MANNING, Assistant Vice-President, New York

### PASSENGER

C. C. HOWARD, Passenger Traffic Manager, Cleveland.  
 R. B. ROGERS, General Passenger Agent, Cleveland.  
 H. T. HARLOW, General Passenger Agent, Chicago.  
 T. R. PATTON, Assistant General Passenger Agent, Youngstown.

F. A. WALDRON, Assistant General Passenger Agent, New York.  
 ALFRED FYNN, Assistant General Passenger Agent, Chicago.  
 E. J. HAWERKOST, General Western Passenger Agent, Chicago.  
 H. M. WADE, General Baggage, Mail and Express Agent, New York.

### FREIGHT

L. B. BURFORD, Freight Traffic Manager, Cleveland.  
 L. R. KNAPP, Assistant Freight Traffic Manager, Cleveland.  
 O. M. MEYNE, General Freight Agent, Cleveland.  
 C. L. CHAPMAN, Eastern Freight Traffic Manager, New York.  
 G. R. WHEELER, General Freight Agent, New York.  
 E. M. KAIN, Assistant General Freight Agent, Buffalo.  
 H. W. VON WILLER, Assistant General Freight Agent, Pittsburgh.

F. G. LANTZ, Freight Traffic Manager, Chicago.  
 W. V. KENNEDY, Assistant Freight Traffic Manager, Chicago.  
 A. BLAUDEL, General Freight Agent, Chicago.  
 J. G. HILL, General Freight Agent, Chicago.  
 O. R. DAVIES, Assistant General Freight Agent, Cincinnati.  
 W. H. KOCH, Assistant General Freight Agent, Detroit.

### FOREIGN FREIGHT TRAFFIC

T. E. McANDREWS, Foreign Freight Traffic Manager, New York.  
 A. E. PETERSON, Foreign Freight Agent, Chicago.  
 EUROPEAN GENERAL AGENTS, Sutherland International Despatch, Ltd.,  
 London, England.

### LIVE STOCK

H. B. ROGERS, General Live Stock Agent, East Buffalo, N. Y.

### GRAIN TRAFFIC

T. W. KANE, Grain Agent, New York.

### PERISHABLE FREIGHT TRAFFIC

R. E. O'GRADY, Manager, Pier 20, N. R., New York.

### COAL AND COKE

W. H. STADELMAN, Coal Traffic Manager, Cleveland.  
 J. A. FERGUSON, Coal Freight Agent, Cleveland.  
 F. D. AUSTIN, General Coal and Coke Agent, Chicago.

### DAIRY

W. L. KENDALL, General Dairy Agent, Chicago, Ill.

### DEVELOPMENT

L. L. WHITE, Vice-President and Assistant to President, Cleveland.  
 GEO. F. WESTON, Industrial Commissioner, Cleveland.  
 V. M. WELLMAN, Industrial Agent, New York.  
 F. M. AMERICA, Editor and Mgr. Erie R. R. Magazine, Cleveland.

## TRAFFIC DEPARTMENT REPRESENTATIVES

**Akron, O.**—80 East Exchange St.  
 (Telephone Hemlock 8194-8195)  
 J. P. CLARK, Division Passenger Agt.  
 C. E. KING, General Agent.

**Albany, N. Y.**—Room 2, D. & H. Bldg.  
 (Telephone 4-6051)  
 C. F. WHADCOCK, General Agent.

**Antwerp, Belgium**—24 Quai Jardaens  
 L. E. STEINMANN, Agent.

**Atlanta, Ga.**—1419-20 Healy Bldg.  
 (Telephone Walnut 2135)  
 S. S. TORREY, General Agent.

**Baltimore, Md.**—1525 Baltimore Trust Bldg.  
 (Telephone Plaza 1373)  
 W. J. MURRAY, General Agent.

**Birmingham, Ala.**—1007 Watts Bldg.  
 (Telephone 3-1327)  
 CHARLES G. ANDREWS, General Agent.

**Boston, Mass.**—80 Federal Street.  
 (Telephone Liberty 7725-7726)  
 E. J. DEAN, N. E. F. & P. A.

**Bradford, Pa.**—Erte Station.  
 (Telephone 3413)  
 J. C. MOFFATT, General Agent.

**Bremen, Germany**—Holzpforte 10.  
 CARL PRIOR, Agent.

**Buffalo, N. Y.**—6 North Division St.  
 (Telephone Washington 4300)  
 J. A. DOLAN, G. A. P. D.  
 238 Main Street.  
 (Telephone Wash. 1865)  
 E. M. KAIN, Asst. General Freight Agt.  
 H. B. ROGERS, General Live Stock Agt.

**Chicago, Ill.**—327 South La Salle St.  
 (Telephone Harrison 4160)  
 C. D. BURLINGHAM, Trav. Pass. Agt.  
 C. D. TURNER, General Agent.  
 W. L. KENDALL, General Dairy Agent.

**Cincinnati, O.**—503 Gwynne Bldg.  
 (Telephone Main 3420-3421)  
 O. R. DAVIES, Asst. General Freight Agt.

**Cleveland, O.**—Midland Bldg.  
 (Telephone Cherry 8400)  
 J. M. SKAEHILL, Division Freight Agt.  
 2063 East 9th St.  
 (Telephone Cherry 8400)  
 A. F. WAINSCOTT, City Passenger Agent.

**Columbus, O.**—Rooms 309-310 Atlas  
 Bldg., 8 East Long Street.  
 (Telephone Adams 7331)  
 F. W. FISCHER, General Agent.

**Dallas, Tex.**—1112 Tower Petroleum Bldg.  
 1905 Elm St.  
 (Telephone 2-7352)  
 T. J. MARTIN, General Agent.

**Dayton, O.**—609-512 Miami Savings Bldg.  
 (Telephone Adams 8481)  
 W. P. KROMPHARDT, Div. Frt. Agt.

**Des Moines, Ia.**—Hubbell Bldg.,  
 904 Walnut Street.  
 (Telephone 4-0018)  
 C. L. COX, General Agent.

**Detroit, Mich.**—Rooms 2-102 and 2-103  
 General Motors Bldg.  
 (Telephone Madison 2360-2361)  
 W. H. KOCH, Assistant General Frt. Agt.

**Elmira, N. Y.**—Erte Station.  
 (Telephone 2-1621)  
 J. W. O'HARA, Division Passenger Agt.  
 (Telephone 2-0377)  
 A. W. MICHELBAUGH, Division Freight  
 Agent.

**Glasgow, Scotland**—90 Mitchell St.  
 W. S. THOMSON, General Agent.

**Hamburg, Ger'y**—Ferdinandstrasse 38-44  
 HANS STRUM, General Agent.

**Huntington, Ind.**—Erte Station.  
 (Telephone 743)  
 F. C. MCCARTHY, Division Freight Agt.

**Indianapolis, Ind.**—143 No. Meridian St.  
 (Telephone Lincoln 2088)  
 T. J. WILLIAMSON, General Agent.

**Jamestown, N. Y.**—Erte Station  
 F. L. COLLINS, Div. Frt. Agt.  
 J. A. CLEVELAND, General Agent.  
 (Telephone 7921-7922)

**Jersey City, N. J.**—Erte Station  
 (Telephone Delaware 8-6400)  
 P. F. ARROYO, G. A. P. D.

**Kansas City, Mo.**—Rooms 326-7 Railway  
 Exchange Bldg., 7th and Walnut Streets.  
 (Telephone Victor 6328)  
 N. C. FRICK, General Agent.

**Liverpool, Eng.**—17 Brunswick St.  
 A. G. TAYLOR, General Agent.

**London, E. C. 3, Eng.**—4 Billiter St.  
 PETER BUSWELL, General Agent.  
 D. S. DEANS, Genl. Continental Agt.

**Los Angeles, Cal.**—108 West 6th Street.  
 (Telephone Vandike 6542)  
 C. W. SEELEY, General Agt. Pass. Dept.  
 L. A. DWELLE, General Agent.

**Marion, O.**—Terminal Building  
 (Telephone 2657)  
 A. R. TENNIS, Division Freight Agent.

**Memphis, Tenn.**—1628-9 Exchange  
 Bldg., Madison & Second Sts.  
 (Telephone 6-5577)  
 R. L. MILLER, General Agent.

**Milwaukee, Wis.**—1015 Majestic Bldg.,  
 231 Wisconsin Street.  
 (Telephone Marquette 5555-5556)  
 H. A. WILSON, General Agent.

**Minneapolis, Minn.**—125 Third Street,  
 South.  
 (Telephone Main 3604)  
 D. R. THOMPSON, General Agent.

**Newark, N. J.**—1801-2 Military Park  
 Bldg., 60 Park Place.  
 (Telephone Market 2-0525-26-27)  
 A. R. WALTON, General Agent.

**New Haven, Conn.**—Room 512 Roger  
 Sherman Bldg.  
 (Telephone 5-7937)  
 G. W. MADSEN, General Agent.

**New Orleans, La.**—Room 1417 Whitney Bldg.  
 (Telephone Main 6607)  
 D. C. KELSEY, General Agent.

**New York, N. Y.**—8 West 40th Street.  
 (Telephone Pennsylvania 6-0931)  
 J. F. WILD, G. A. P. D.  
 A. G. OLDENQUIST, City Pass. Agt.  
 W. G. TEDFORD, City Passenger Agent.  
 50 Church Street.  
 (Telephone Cortlandt 7-9200)  
 E. W. VAIL, General Eastern Frt. Agent.  
 J. G. VREELAND, Division Freight Agent.

**Olean, N. Y.**—Erte Station.  
 (Telephone 7411)  
 J. M. HAND, Traveling Freight Agent.

**Omaha, Neb.**—1319 Farnam St.  
 (Telephone Jackson 4866)  
 C. V. HARROW, General Agent.

**Peoria, Ill.**—920 Jefferson Building, Cor  
 South Jefferson & Fulton Streets.  
 (Telephone 8007)  
 E. T. OLANDER, General Agent.

**Philadelphia, Pa.**—1009-10 Finance Bldg.  
 (Telephone Rittenhouse 8975-8976)  
 H. T. YOUNG, General Agent.

**Pittsburgh, Pa.**—Gulf Building.  
 (Telephone Grant 4831-2-3)  
 H. W. VON WILLER, A. G. F. A.

**Portland, Ore.**—Room 421 Pacific Bldg.,  
 306 Yamhill St.  
 (Telephone Beacon 3706)  
 J. A. RUSSELL, General Agent.

**Rochester, N. Y.**—Erte Station.  
 (Telephone Main 2826)  
 B. C. WEDD, Division Freight Agent.

**Rotterdam Holland**—N. Binneweg 474-A  
 H. VAN KRIEKEN, Agent.

**San Francisco, Cal.**—631 Market St.  
 (Telephone Sutter 3875)  
 J. A. LLOYD, General Agent.

**St. Louis, Mo.**—Rooms 906-7 Missouri  
 Pacific Building, 1218 Olive Blvd.  
 (Telephone Chestnut 7723-7724)  
 G. F. DANIELS, General Agent.

**St. Paul, Minn.**—356 Robert St.  
 (Telephone Cedar 5912)  
 C. R. PETRY, General Agent.

**Scranton, Pa.**—Erte Station.  
 (Telephone 5203)  
 G. W. SHUMAN, Division Freight Agent.

**Seattle, Wash.**—1116-7 White Bldg.,  
 1338 Fourth Ave.  
 (Telephone Elliot 4834)  
 W. R. SIBLEY, General Agent.

**Springfield, O.**—518 First National Bank  
 Building.  
 (Telephone Center 1178)  
 T. J. FLYNN, General Agent.

**Toledo, O.**—342 South Erte Street.  
 (Telephone Main 3816)  
 H. J. SPANGENBURG, General Agent.

**Toronto, Ont.**—69 Yonge Street.  
 (Telephone Elgin 4077)  
 E. P. MORRILL, General Agent.

**Tulsa, Okla.**—Room 1511 Hunt Bldg.  
 (Telephone 3-8613)  
 A. W. MITCHELL, General Agent.

**Youngstown, O.**—Terminal Building.  
 (Telephone 41101)  
 C. A. STOEBER, Division Frt. Agt.

## ERIE TICKET OFFICES AND PASSENGER STATIONS IN PRINCIPAL CITIES

**Akron, O.**—Union Station.  
(Telephone Jefferson 9141)  
B. L. BENDER, Ticket Agent.

**Binghamton, N. Y.**—Erie Station.  
(Telephone 4-3251)  
J. H. WEBSTER, Ticket Agent.

**Bradford, Pa.**—Erie Station.  
(Telephone 3716)  
A. J. SULLIVAN, Ticket Agent.

**Brooklyn, N. Y.**—City Ticket Office.  
155 Pierrepont St.  
(Telephone Triangle 5-7440)  
W. A. MORRISON, Ticket Agent.

**Buffalo, N. Y.**—City Ticket Office.  
6 North Division St.  
(Telephone Washington 4300)  
J. E. MCINNIS, Ticket Agent.  
Station Ticket Office  
(Lehigh Valley Terminal)  
Main and Scott Streets  
(Telephone Washington 4300)  
A. L. SEITZ, Ticket Agent.

**Chicago, Ill.**—City Ticket Office. 163-  
165 West Jackson Blvd.  
(Telephone Harrison 4160)  
C. F. KUNDEL, Ticket Agent.  
Hotel Ticket Offices—  
Congress, Morrison, Sherman, Stevens,  
Palmer House, Merchandise Mart.  
(Telephone Harrison 2203)  
GEORGE M. NEWHART, Ticket Agent.

**Dearborn Station.**  
(Telephone Harrison 9830)  
H. S. BARE, Ticket Agent.

**Cleveland, O.**—City Ticket Office.  
2063 East 9th St.  
(Telephone Cherry 8400)  
CASPER J. MILLER, Ticket Agent.

**Erie Station.**  
(Telephone Cherry 8400)  
C. W. GULICK, Ticket Agent.

**Elmira, N. Y.**—Erie Station.  
(Telephone 2-0380)  
E. J. STEELE, Ticket Agent.

**Hornell, N. Y.**—Erie Station.  
(Telephone 680)  
R. L. SMITH, Ticket Agent.

**Huntington, Ind.**—Erie Station.  
(Telephone 140)  
O. M. BELL, Ticket Agent.

**Jamestown, N. Y.**—Erie Station.  
(Telephone 6076)  
FRANK PRIEST, Ticket Agent.

**Jersey City, N. J.**—Erie Station.  
(Telephone Delaware 8-6400)  
G. B. IRVING, Ticket Agent.

**Mansfield, O.**—Erie Station.  
(Telephone Canal 1423)  
J. W. GILKERSON, Ticket Agent.

**Marion, O.**—Erie Station.  
(Telephone 2399)  
L. E. NEBERGALL, Ticket Agent.

**Meadville, Pa.**—Erie Station.  
(Telephone 1212)  
O. L. ENOS, Ticket Agent.

**Middletown, N. Y.**—Erie Station.  
(Telephone 3303)  
J. H. DIMKE, Ticket Agent.

**Newark, N. J.**—Erie Station.  
(Telephone Humboldt 2-0600)  
G. J. MCMICHAEL, Ticket Agent.

**New York, N. Y.**—City Ticket Office.  
8 West 40th Street.  
(Telephone Pennsylvania 6-0933)  
F. H. RICE, Ticket Agent.

**West 23rd Street Station.**  
(Telephone Chelsea 3-0780)  
C. H. POTTER, Ticket Agent.

**Chambers Street Station.**  
(Telephone Barclay 7-6500)  
T. I. NEWMAN, Ticket Agent.

**17 John Street.** (Telephone Cortland  
7-6430 and 7-6431)  
H. T. JAMES, Ticket Agent.

**Olean, N. Y.**—Erie Station.  
(Telephone 4343)  
J. F. MITCHELL, Ticket Agent.

**Passaic, N. J.**—Erie Station.  
(Telephone 2-1613)  
O. R. KRECH, Ticket Agent.

**Paterson, N. J.**—Erie Station.  
(Telephone Sherwood 2-3337)  
J. H. GRAF, Ticket Agent.

**Port Jervis, N. Y.**—Erie Station.  
(Telephone 300)  
R. FARBER, Ticket Agent.

**Rochester, N. Y.**—Erie Station.  
(Telephone Main 4378)  
C. J. GILBERT, Ticket Agent.

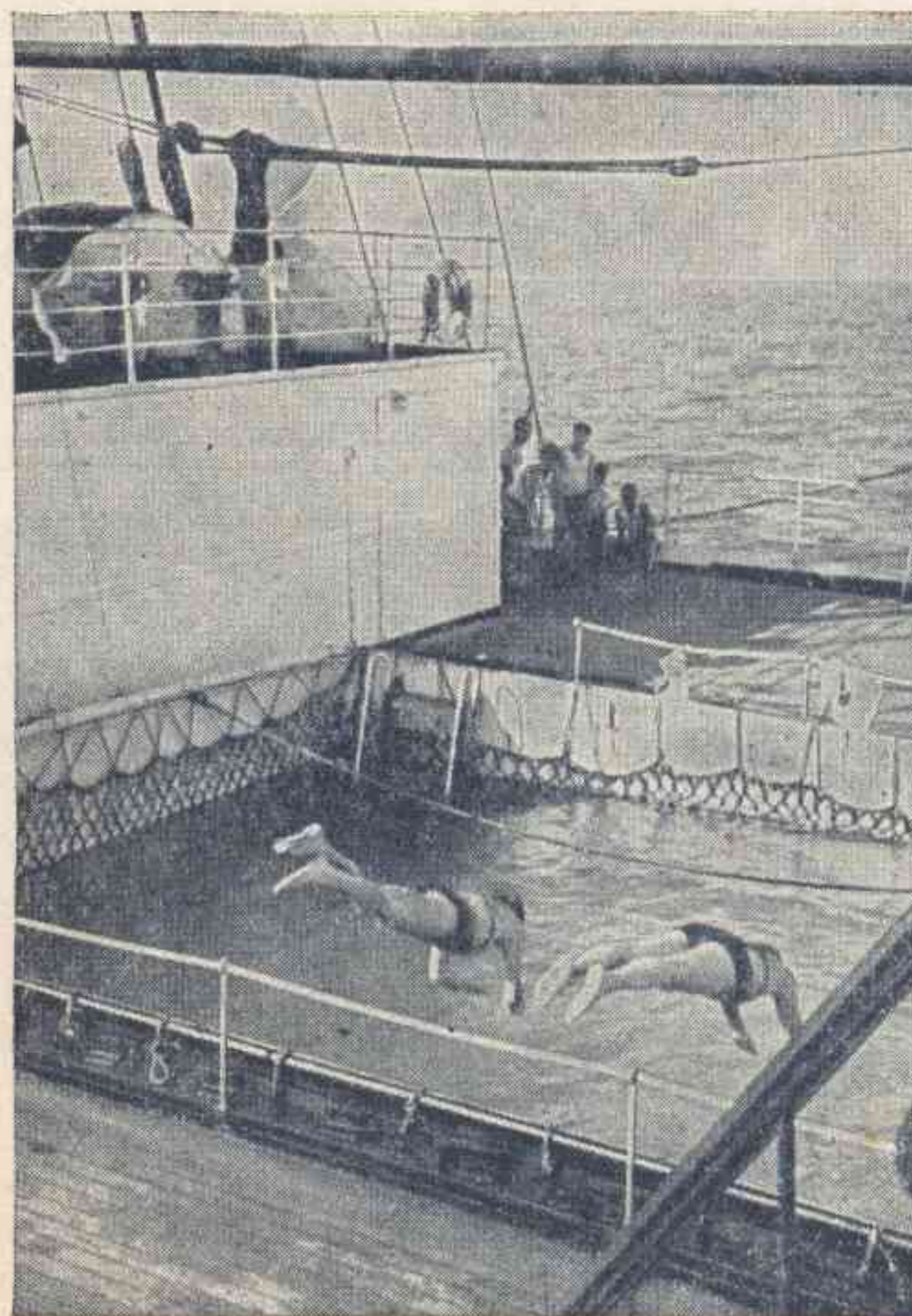
**Sharon, Pa.**—Erie Station.  
(Telephone 234)  
R. E. TOWNS, Ticket Agent.

**Youngstown, O.**—Erie Station.  
(Telephone 41101)  
M. A. O'NEILL, Ticket Agent.

## THERE ARE TWO SIDES TO THE VACATION QUESTION—

this side, where you are, and the other side — EUROPE, to which the luxurious liners of a dozen mighty nations are carrying many thousands of Americans annually.

After your return from Europe, dividends of happy memories, wider experience and distinction among your friends are paid as long as you live.



Consult Ticket Agent for further information

## VISIT GREAT BRITAIN



## EASILY AND ECONOMICALLY

☐ England and Scotland have all the ingredients of a perfect trip. History—wondrous cathedrals such as York, Canterbury and Wells—ancient abbeys and castles—the brightest jewels of Europe's treasure chest. Scenery—from the Scottish Highlands and the English Lake District to the Sussex Downs—a picturebook countryside alive with legend and loveliness. Gaiety—shops, theatres, musicales, night clubs, with everything for an "American" good time. Thousand-year-old Oxford and Cambridge are like dreams come true. Wales is a rare land of glorious mountain scenery and unimaginable charm. And all the old dollar values exist in the British Isles, where they speak your own language!

For itineraries, maps, etc., write to Dept. ER

T. R. DESTER, General Traffic Manager  
ASSOCIATED BRITISH RAILWAYS, INC.

551 Fifth Avenue :: :: New York City, N. Y.