



**ERIE RAILROAD SYSTEM  
TIME TABLES**

**ERIE RAILROAD SYSTEM  
TIME TABLES**

*The Scenic Route*

BETWEEN

**NEW YORK • BUFFALO  
CLEVELAND • CHICAGO**

*The Scenic Route*

BETWEEN

**NEW YORK • BUFFALO  
CLEVELAND • CHICAGO**

CLEVELAND, OHIO, APRIL 28, 1940

# ERIE NOW GETS A NEW YORK MIDTOWN STATION

## TRAINSIDE MOTOR-COACH CONNECTION AT RUTHERFORD

### For Through Passengers

We are happy to announce that, effective Sunday, April 28, 1940, a new terminal (in addition to existing ferry terminals) will be established for the benefit of Erie through-train passengers at Times Square (260 West 42nd St., between 7th and 8th Aves.), New York City, and train-side connecting motor-coach service will be provided between that terminal and Rutherford.

#### THE SERVICE

The service will be available daily, *Inbound*, to passengers from Goshen, N. Y., and points beyond traveling to New York on trains,

No. 2, The Erie Limited,  
No. 6, The Lake Cities,  
No. 16, The Midlander, and  
No. 8, The Atlantic Express;

*Outbound*, to passengers traveling from New York to Goshen, N. Y., and points beyond on trains,

No. 1, The Erie Limited,  
No. 27, The Mountain Express,  
No. 5, The Lake Cities, and  
No. 15, The Midlander.

The charge covering the motor-coach trip between Rutherford, N. J., and the Times Square Motor-Coach Terminal, New York, will be 50c for adults and 25c for children of half-fare age.

#### THE ROUTE

The route is through the new Lincoln Tunnel under the Hudson River, and the running time between Rutherford and the Times Square Motor-Coach Terminal will be 20 minutes. Arrival and departure times at the Terminal will be shown in current time table folders.

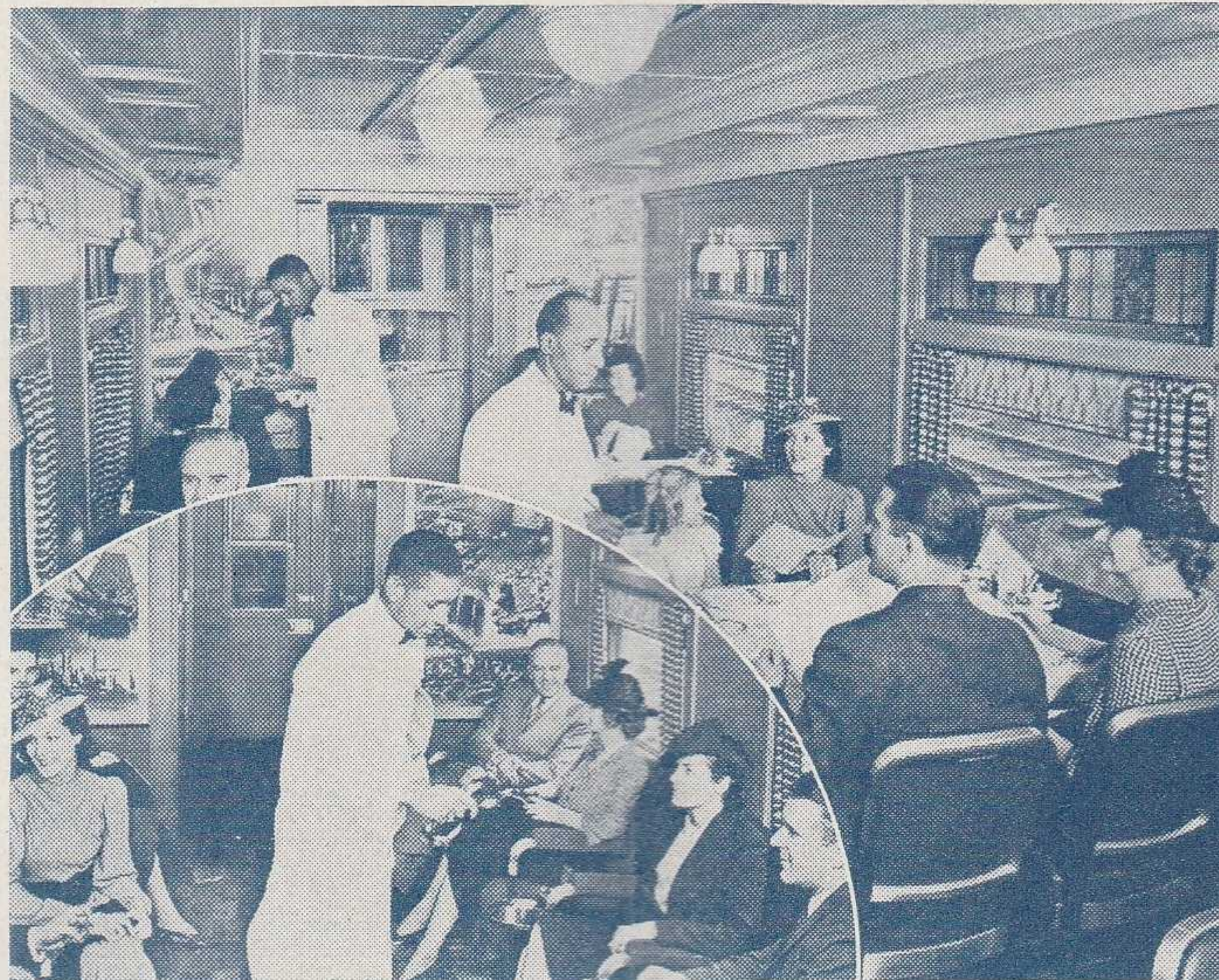
This motor-coach service will be available to passengers holding tickets reading to or from Rutherford, N. J., or New York City, traveling on through trains as specified. Local passengers traveling between stations east of Goshen, N. Y. and New York City will not be carried in the motor-coaches.

#### WHERE TO BUY TICKETS

Inbound passengers desiring to use this convenient method of reaching midtown New York may purchase ticket for the motor-coach service at any Erie ticket office or from the train conductor.

Outbound passengers may purchase motor-coach service ticket at any Erie ticket office in New York City or at the Times Square Motor-Coach Terminal.

Ordinary hand baggage will be carried with the passengers on the motor-coach and will be transferred without charge in each direction.



One of Erie's newly equipped Dining Cars. (Inset) Lounge

This new train-side connecting motor-coach service at the small additional charge involved, and a saving in time in landing passengers in Times Square, New York, located as it is in the heart of the hotel and theatre section of the city, should be particularly attractive.

Ticket agents and conductors will be glad to furnish further detailed information.

### ERIE FAST FREIGHT SCHEDULES

For schedules of Erie's fast freight trains, which operate with the precision of passenger trains, see pages 35 and 36.

## PRESIDENT PROCLAIMS TRAVEL AMERICA YEAR

### Invites All Peoples to See America

The President of the United States has proclaimed 1940 as TRAVEL AMERICA YEAR, and to this end has issued a proclamation, one paragraph of which is particularly striking and apropos:

"Now, therefore, I, Franklin D. Roosevelt, President of the United States of America, do proclaim 1940 as TRAVEL AMERICA YEAR, and do invite our own citizens and friends from other lands to join in a great travel movement so that all peoples may be drawn even more closely to-

gether in sympathy and understanding."

The Erie Railroad is doing its part by offering many attractive travel bargains, including the famous "See America for \$90.00" Tour which is a Grand Circle Tour of the United States and covers both World's Fairs.

## CALLING ALL CAMERA CLICKERS!

We need pictures of Erie trains, equipment, and scenery along the Erie right-of-way. We will pay \$5 for each negative we buy. Send glossy prints, together with a statement that you took them. If people appear in the picture you must be prepared to furnish releases from all such persons. Enclose a self-addressed, stamped envelope if you desire your unused pictures returned.

Address: C. C. Howard, Passenger Traffic Manager Erie Railroad Company, Midland Building, Cleveland, Ohio.



**"See America"**  
**FOR \$90**

Start from your home town now on a Grand Circle Tour of the United States—east coast, west coast, border to border—go by one route, return by another—liberal stopovers—for \$90 railroad fare in coaches—\$135 in Pullmans (plus \$45 for one or two passengers in a lower berth). Get the full facts from your ticket agent about the greatest travel bargain in history!

## RAIL FARES REDUCED

### Added Economies for Travelers

Now, it is more economical than ever before to travel by train. One-way coach fares are 2c a mile, Round trip coach fares are as low as 1½c per mile, based on a lower rate for a longer distance.

Go by train for that week-end trip, plan that your summer vacation will be by rail, and whether you have business in a nearby city or a distant one, you can enjoy a safe, fast, and comfortable ride on the Erie. Of course, you will want to take advantage of the new rates when you visit the World's Fair in New York.

Remember, too, that Erie's excellent meal service has been reduced in price too. No need, now, not to enjoy the dining facilities to the fullest. The 50c breakfast and 75c luncheon and dinner can't be beaten for the money.

## WORLD'S FAIR IN NEW YORK

### Economy Its Watchword

Economy is the watchword for the World's Fair of 1940, opening May 11, in New York City. Admission prices have been lowered to 50c for adults and 25c for children.

The Mayor's rooming bureau stated that New York City can accommodate daily approximately 600,000 visitors. Hotels of the city can care for about 80,000 persons at prices between \$1.50 and \$3.00 per day and about 170,000 additional visitors between \$3.00 and \$5.00 per day. Moreover, there are registered and inspected private homes and rooming houses which will accommodate about 200,000 persons at \$1.00 and \$1.50 per day per person.

Concessionaires have signed contracts to maintain the same prices charged during the closing month of the 1939 Fair. Many popular-priced restaurants will be found throughout the grounds. There will be 82 in all. Most recent announcement is a "5 and 10 Cent Restaurant," the first of its kind in the world.

The Railroad exhibit consists of three separate and outstanding features: (1) Building the Railroad (The Story of Railroad Construction); (2) Railroads at work (The Story of Railroad Operation); and (3) Railroads on Parade, which portrays transportation from the days of the stagecoach to the modern train.

TABLE OF CONTENTS

Equipment of Through Trains... Page 9, 10
Suggestions... 31
General Information... 32
Standard of Time
Holidays
Fares Paid on Trains
Adjustment of Fares
Sleeping and Parlor Car Reservations
Baggage Regulations
Articles Lost on Trains
Safety First Hints
Equipment of Local Trains... 11, 12, 13, 14
Equipment of Detroit, Toledo, Cleveland, Youngstown and Pittsburgh Trains... 18
Erie Railroad Map... 19, 20, 21, 22
Sleeping and Parlor Car Fares... 7, 8
One-way and Round Trip Rail Fares... 7, 8
Reference Marks and Notes... 5, 6
Traffic Department Representatives... 37, 38
Ticket Offices and Passenger Stations in Principal Cities... 6

Train Service

Condensed Schedule of Through Trains... 9, 10
New York—Elmira... 11, 12, 13, 14
Elmira—Chicago... 15, 16
New York—Buffalo... 23
Garrettsville—Hiram, O... 5
Detroit—Toledo—Cleveland—Youngstown—Pittsburgh... 17, 18
New York—Chautauqua... 23
Chautauqua—Akron—Chicago... 23
New York—Kenoza Lake—Jeffersonville... 23
New York—Monticello... 23
New York—Salamanca—Bradford... 24
Bradford—Salamanca—Cleveland—Chicago... 24
Branch Line Service... 29
Hudson & Manhattan R. R. Service... 30
Ferry Schedule... 30
Chautauqua Lake Service... 23

STATIONS ON ERIE RAILROAD
At Which Trains Are Scheduled To Stop
Numerals Opposite Station Names Indicate Time Table Numbers

Table listing stations on the Erie Railroad with corresponding time table numbers. Columns include station names and numerals. Stations listed include Addison, N.Y.; Akron, O.; Albany, N.Y.; Alden, N.Y.; Alfred, N.Y.; Aliquippa, Pa.; Allegany, N.Y.; Allendale, N.J.; Andover, N.Y.; Arden, N.Y.; Arkport, N.Y.; Ashland, O.; Atlanta, N.Y.; Attica, N.Y.; Aurora, O.; Avoca, N.Y.; Avon, N.Y.; Baileys, N.Y.; Barberton, O.; Bath, N.Y.; Beaver, Pa.; Beaver Falls (New Brighton, Pa.); Belmont, N.Y.; Binghamton, N.Y.; Blair, N.Y.; Blasdell, N.Y.; Bradford, Pa.; Brooks, N.Y.; Buffalo, N.Y.; Burns, N.Y.; Callicoon, N.Y.; Cambridge Springs, Pa.; Cameron, N.Y.; Cameron Mills, N.Y.; Campbell, N.Y.; Canaseraga, N.Y.; Canisteo, N.Y.; Castile, N.Y.; Cattaraugus, N.Y.; Chautauqua, N.Y.; Chautauqua Lake, N.Y.; Cherry Creek, N.Y.; Chester, N.Y.; Chicago, Ill.; Cleveland, O.; Cohecton, N.Y.; Cohocton (Lake Huntington); Cohocton, N.Y.; Collins, N.Y.; Conesus, N.Y.; Conesus Lake Jet., N.Y.; Conewango, N.Y.; Cooper's, N.Y.; Coraopolis, Pa.; Corning, N.Y.; Corry, Pa.; Crittenden, N.Y.; Crown Point, Ind.; Cuba, N.Y.; Dale, N.Y.; Dalton, N.Y.; Darien Center, N.Y.; Dayton, N.Y.; Decatur, Ind.; Depew, N.Y.; Deposit, N.Y.; Detroit, Mich.; Dunkirk, N.Y.; East Buffalo, N.Y.; East Fifty-fifth St. (Cleveland), O.; East Ninety-third St. (Cleveland), O.; East Rutherford, N.J.; Eden Center, N.Y.; Eden Valley, N.Y.; Ellwood City; Elmira, N.Y.; Elm Place, N.Y.; Endicott, N.Y.; Englewood (63rd St.), Ill.; Falconer, N.Y.; Fenner's, N.Y.; Forestville, N.Y.; Friendship, N.Y.; Galion, O.; Gannett, N.Y.; Garrettsville-Hiram, O.; Garwoods, N.Y.; Geauga Lake, O.; Girard, O.; Golah, N.Y.; Goshen, N.Y.; Gowanda, N.Y.; Graham, N.Y.; Great Bend, Pa.; Greenville, Pa.; Greycourt, N.Y.; Griswolds, N.Y.; Gulf Summit, N.Y.; Hale's Eddy, N.Y.; Hamburg, N.Y.; Hammond, Ind.; Hancock, N.Y.; Hankins, N.Y.; Harriman, N.Y.; Hillburn, N.Y.; Hohokus, N.J.; Honesdale, Pa.; Hornell, N.Y.; Howells, N.Y.; Hubbard, O.; Huntington, Ind.; Industry, N.Y.; Jamestown, N.Y.; Jeddoe, O.; Jeffersonville, N.Y.; Jersey City, N.J.; Kanona, N.Y.; Kennedy, N.Y.; Kenoza Lake, N.Y.; Kent, O.; Kenton, O.; Lackawaxen, Pa.; Lake Huntington, N.Y.; Lancaster, N.Y.; Lawtons, N.Y.; Leavittsburg, O.; Letchworth Park, N.Y.; Lima, O.; Limestone, N.Y.; Linden, N.Y.; Little Valley, N.Y.; Livonia, N.Y.; Long Eddy, N.Y.; Lordville, N.Y.; Mahoning, O.; Mahwah, N.J.; Mansfield, O.; Mantua, O.; Marilla, N.Y.; Marion, O.; Markhams, N.Y.; Martin, N.Y.; Mast Hope, Pa.; Meadow-wood, N.Y.; Meadville, Pa.; Middletown, N.Y.; Mill Rift, Pa.; Monaca, Pa.; Monroe, N.Y.; Mortimer, N.Y.; Narrowsburg, N.Y.; New Brighton, Pa.; New Castle, Pa.; New Hampton, N.Y.; New York, N.Y.; Niles, O.; North Collins, N.Y.; North Randall, O.; Ohio City, O.; Olean, N.Y.; Oneonta, N.Y.; Otisville, N.Y.; Owego, N.Y.; Oxford, N.Y.; Painted Post, N.Y.; Parker's Glen, Pa.; Passaic, N.J.; Paterson, N.J.; Perrysburg, N.Y.; Persia, N.Y.; Phalanx, O.; Pittsburgh, Pa.; Pond Eddy, Pa.; Portage, N.Y.; Port Jervis, N.Y.; Ramapo, N.Y.; Ramsey, N.J.; Randolph, N.Y.; Ravenna, O.; Ridgewood, N.J.; Rittman, O.; Rochester, Ind.; Rochester, N.Y.; Rock Glen, N.Y.; Rutherford, N.J.; Saegertown, Pa.; Salamanca, N.Y.; Savona, N.Y.; Sharon, Pa.; Sheridan, N.Y.; Shohola, Pa.; Silver Springs, N.Y.; Skinners, N.Y.; Sloatsburg, N.Y.; Smith's Mills, N.Y.; Solon, O.; South Dayton, N.Y.; Southfields, N.Y.; South Lima, N.Y.; South Livonia, N.Y.; South Park, N.Y.; Sparrowbush, N.Y.; Springwater, N.Y.; State Hospital, N.Y.; Sterling, N.Y.; Suffern, N.Y.; Susquehanna, Pa.; Swains, N.Y.; Toledo, O.; Town Line, N.Y.; Tusten, N.Y.; Tuxedo, N.Y.; Union City, Pa.; Wadsworth, O.; Waldwick, N.J.; Wallace, N.Y.; Warren, O.; Warsaw, N.Y.; Washington Hunt, N.Y.; Water Valley, N.Y.; Waverly, N.Y.; Wayland, N.Y.; Websters, N.Y.; Wellsville, N.Y.; Westcolang Park, Pa.; Westfall, N.Y.; West Henrietta, N.Y.; West Perrysburg, N.Y.; Wiards, N.Y.; Youngstown, O.

ADDITIONAL STATIONS ON ERIE RAILROAD
At Which Trains Do NOT Stop Regularly
The distance shown is from New York as indicated in Tables 4 and 5

Table listing additional stations on the Erie Railroad with distances from New York. Columns include station names and miles from New York. Stations listed include Adrian, Akron, Aldine, Alger, Almond, Ashville, Athens, Atlantic, Barton, Bass Lake, Bear Lake, Belvidere, Big Flats, Bippus, Bolivar, Boone Grove, Braceville, Burbank, Caledonia, Chemung, Columbus, Creston, DeCliff, DeLong, Disko, Elgin, Foraker, Fort-seventh St., Geneva, Glenmore, Griffith, Harrods, Hegewisch, Hepburn, Hickory Grove, Highlands, Hinsdale, Horseheads, Hurlburt, Johnson City, Kellams, Kemp, Kingsland, Kirkwood, Kouts, Laketon, Lakewood, Leiters, Markel, Martel, McGuffey, Millers, Mill Village, Mongaup, Monterey, Nankin, Newton, Niobe, North Judson, Ontario, Oquaga, Ora, Palmer, Pavonia, Pershing, Polk, Preble, Rathbone, Red House, Scio, Servia, Sharpsville, Smithboro, Spencerville, Steamburg, Sterling, Stockport, Tallmadge, Tioga Center, Tocsin, Uniondale, Venango, Watts Flats, Wellsburg, West Salem, Wilders, Windham, Winfield, Wren.

## REFERENCE MARKS AND NOTES

**IMPORTANT—When trains are indicated as stopping conditionally, Conductors should be notified of intention to leave train and Station Agent notified of intention to board train. Conditional stops are made only to receive or discharge revenue passengers.**

- † Runs daily except Sunday.  
 § Runs daily except Sundays and Holidays.  
 ‡ Will not operate from these stations on Monday morning.  
 † Stops on signal to receive and discharge revenue passengers.  
 k Runs Saturdays only. M. C. Motor Car Service. N. B. No Baggage carried.  
 Note ⊕—Times Square Motor Coach Terminal, 260 West 42nd St. between 7th and 8th Aves., New York City. Taxicab entrance on 41st St.  
 ac Stops Dalton (4.46 A. M.) to discharge passengers from Hornell and east and on signal to receive passengers.  
 ad Via Buffalo & Erie Coach Corp. bus between Salamanca and Bradford.  
 af Train 7 stops Middletown (1.31 A. M.) Sunday and Monday mornings only to discharge passengers.  
 ag Stops Sundays and Holidays only.  
 ah Stops on signal Andover (9.34 A. M.); Belmont (9.57 A. M.) to discharge passengers from New York.  
 ak Bus operates only from July 3 to Aug. 24.  
 ap On Sundays Trains 6 and 16 will arrive West 23rd St. at (8.45 A. M.).  
 as Train 701 will not operate west of Monroe on Holidays.  
 at On Sundays only, Train 30 will arrive West 23rd Street at (12.45 P. M.).  
 au Does not run from West 23rd St. on Saturday night.  
 av Does not run from Chambers St. on Saturday night; will leave Chambers St. at (11.45 P. M.) Sunday night only.  
 aw Trains 6 and 16 stop at Middletown (6.25 A. M.) to discharge passengers from Hornell and west. Makes regular stop Sunday.  
 ax Stops Englewood Train 1 (7.40 A. M.); Train 15 (5.05 P. M.); Train 7 (12.33 A. M.) to discharge passengers from east of Hammond.  
 ba Stops Paterson (8.27 A. M.) to receive passengers.  
 bb Stops at Paterson (3.29 P. M.) to receive passengers only.  
 bc Stops on signal Paterson (8.16 P. M.), Ridgewood (8.26 P. M.) to receive passengers.  
 bd Stops on signal Passaic (8.07 P. M.); Suffern (8.41 P. M.) to receive passengers for Hornell and west.  
 bf Stops Cuba (5.19 A. M.) to discharge passengers from Elmira and east and to receive for Jamestown and west.  
 bg Stops on signal, Friendship (10.08 A. M.); Cuba (10.23 A. M.) to discharge passengers from New York.  
 bh Stops Cuba (6.25 P. M.) to discharge passengers from Elmira and east and to receive for Jamestown and west.  
 bk On Sundays only leaves from West 23rd St. at (9.05 A. M.).  
 bm Stops on signal Niles (10.26 A. M.) to discharge passengers from Pittsburgh and from Jamestown and east and to receive passengers for Cleveland.  
 bn Train 2 will stop on signal Lordville (3.30 P. M.) daily except Saturdays and Sundays, July 5 to Aug. 30, incl., to receive passengers for New York.  
 bp Stops Niles (11.30 P. M.) to discharge passengers from Meadville and east and on signal to receive passengers for Akron and west.  
 bt No Agent on duty. No baggage handled on Trains 5 and 6 to or from Castile.  
 bu Train 6 stops at East 55th St. (4.37 P. M.) Sundays only to receive passengers for Youngstown.  
 bv Stops on Sundays only to discharge passengers.  
 bx Train 16 stops at Warren (5.48 P. M.) to discharge passengers from Akron and west.  
 cb On Sundays only, Train 204 will arrive West 23rd St. at (8.10 A. M.).  
 cd For additional service between Cleveland and Youngstown see Table 5.  
 ce Train 73 will not operate west of Suffern on May 29, July 3.  
 cf Stops Tuxedo (4.39 P. M.) daily, except Sunday.  
 cg Stops on signal Ridgewood (11.00 P. M.) to discharge passengers from Binghamton and west.  
 ck Stops Sundays only (3.43 P. M.).  
 cn Stops on signal Union City (8.57 P. M.); Cambridge Springs (9.16 P. M.) to discharge passengers from Jamestown and east and to receive for Youngstown and west.  
 cp Train 8 stops on signal (9.59 P. M.), Train 16 (9.20 A. M.) to receive passengers for east of Hammond.  
 ct On Sundays Train 61 will not have any connection from West 23rd Street.  
 cu Bus service provided between Cochection and Lake Huntington.  
 cw Stops Endicott (1.37 A. M.) to discharge passengers from Port Jervis and east.  
 cx Stops to discharge passengers from New York.  
 cy Stops to discharge passengers from Cleveland and beyond.  
 da Stops on Sundays only (6.37 A. M.).  
 db Train 8 stops at Ravenna (7.37 A. M.) to discharge passengers from Marion and west, and on signal to receive for Youngstown and east.  
 dc Stops Mantua (1.53 P. M.) to discharge passengers from Cleveland and on signal to receive passengers for Warren and east.  
 de Stops Barberton (4.56 P. M.) to discharge passengers from Youngstown and east and on signal to receive passengers for Mansfield and west.  
 df Stops on signal Mantua (9.24 A. M.) to receive passengers for Cleveland.  
 dh Stops at Otisville (11.57 A. M.) Sundays only to discharge passengers from New York.  
 dp Stops Niles (1.16 A. M.) to discharge passengers from east of Youngstown and signal to receive passengers for Cleveland.  
 dt No baggage carried on this train east of Hornell. Baggage will be handled on following train.  
 du Stops to receive passengers only (1.56 P. M.).  
 dv Stops on signal Union City (8.25 P. M.) to discharge passengers from Youngstown and west and to receive passengers for New York.  
 dw Stops Cuba (9.53 A. M.) to discharge passengers from Jamestown and west and to receive for Elmira and east.  
 dy Stops on signal Cambridge Springs (7.17 A. M.), Union City (7.34 A. M.), to discharge passengers from Chicago and to receive for Binghamton and east.  
 dz Stops Ridgewood (7.28 A. M.) to discharge passengers from Port Jervis and west. Has connection for Paterson, Passaic, etc., leaving Ridgewood at (7.38 A. M.) daily.  
 eb Stops at Monroe (4.13 P. M.) on Sundays and Holidays only to discharge passengers.  
 ec Bus service between New Castle and New Castle (Washington St.).  
 ed Bus service between Wampum and Ellwood City.  
 ef Stops only to receive motor coach passengers from New York.  
 eg Stops only to discharge motor coach passengers for New York.  
 eh Train 1 stops at Lordville (12.40 P. M.) daily, except Saturdays and Sundays, July 3 to Aug. 31, incl., to discharge passengers from New York.  
 ek Train 2 stops Suffern (6.30 P. M.), Passaic (6.59 P. M.) to discharge passengers from Binghamton and west.

- ♦ Stops to discharge passengers.  
 C Stops on Saturday only.  
 † Stops on Holidays only.  
 \*Runs Daily.

- em Train 1 stops at Cochection (12.09 P. M.) June 21 to Sept. 2, incl., to discharge passengers from New York.  
 en Stops on signal Paterson (9.18 A. M.), Ridgewood (9.28 A. M.) to receive passengers.  
 ep Train 1 stops on signal Passaic (9.11 A. M.), Suffern (9.43 A. M.) to receive passengers for Binghamton and west.  
 er Stops Niles (5.46 A. M.) to discharge passengers from Cleveland and west and on signal to receive for Pittsburgh.  
 es Stops on signal Niles (5.42 P. M.) to receive passengers for Jamestown and east, and to discharge passengers from Cleveland.  
 et Bus operates between Narrowsburg and Honesdale. In connection with which the Erie Railroad Company acts as agent only and is not responsible beyond its own line, except as such responsibility may be imposed by law with respect to baggage.  
 eu Stops Endicott (6.02 P. M.) daily to discharge passengers from Jamestown and west and on signal to receive passengers for New York; also stops Sundays only to receive and discharge passengers.  
 ex Stops Endicott (2.24 A. M.) to discharge passengers from Buffalo, Jamestown and west.  
 gc Stops West Henrietta (10.47 A. M.) to discharge passengers from east of Avon.  
 gt In connection with the bus service the Erie Railroad Company acts as agent only and is not responsible beyond its own line, except as such responsibility may be imposed by law with respect to baggage.  
 ha Stops at Narrowsburg (10.59 P. M.) to discharge passengers from Ridgewood and east.  
 he Stops Alden (9.30 P. M.) to discharge passengers from Buffalo and on signal to receive passengers.  
 hf Stops (11.09 P. M.) to discharge passengers from Pittsburgh.  
 ht Trains 5-557 and 560-6 carry through sleeping cars between Bradford and New York.  
 hu Stops to discharge passengers.  
 hv Stops on signal East 93rd Street (6.13 P. M.) to receive passengers.  
 hw Train 7 will stop at Saegertown (1.30 P. M.) to discharge passengers from Binghamton and east and to receive passengers for Marion and west.  
 hx Train 8 will stop at Saegertown (10.18 A. M.) to discharge passengers from Marion and west and to receive passengers for Binghamton and east.  
 na Train 6 stops on signal at East 93rd St. (4.41 P. M.) to receive passengers for Sharon and east.  
 ne Train 626 stops Saturdays only at Solon (1.39 P. M.) and Aurora (1.47 P. M.) to discharge passengers from Cleveland.  
 nf Stops on signal at Garrettsville-Hiram (2.47 P. M.) to receive passengers for Cleveland.  
 nh Stops on signal at Garrettsville-Hiram (10.54 A. M.) to discharge passengers from Hornell and east; also discharge from Marion and west.

## ERIE TICKET OFFICES AND PASSENGER STATIONS IN PRINCIPAL CITIES

- Akron, O.—Union Station.**  
 (Telephone Jefferson 9141)  
 B. L. BENDER, Ticket Agent.
- Binghamton, N. Y.—Erie Station.**  
 (Telephone 4-3251)  
 A. F. WAINSCOTT, Ticket Agent.
- Bradford, Pa.—Erie Station.**  
 (Telephone 3716)  
 A. J. SULLIVAN, Ticket Agent.
- Brooklyn, N. Y.—City Ticket Office.**  
 155 Pierrepont St.  
 (Telephone Triangle 5-7440)  
 J. W. VAN COTT, Ticket Agent.
- Buffalo, N. Y.—City Ticket Office.**  
 6 North Division St.  
 (Telephone Washington 4300)  
 W. L. MCCREARY, Ticket Agent.  
 Station Ticket Office  
 (Lehigh Valley Terminal)  
 Main and Scott Streets  
 (Telephone Washington 4300)  
 A. L. SEITZ, Ticket Agent.
- Chicago, Ill.—City Ticket Office.** 163-  
 165 West Jackson Blvd.  
 (Telephone Harrison 4160)  
 C. F. KUNDEL, Ticket Agent.
- Hotel Ticket Offices—**  
 Congress, Morrison, Sherman, Stevens,  
 Palmer House, Merchandise Mart.  
 (Telephone Harrison 2203)  
 GEORGE M. NEWHART, Ticket Agent.
- Dearborn Station.**  
 (Telephone Harrison 9830)  
 W. E. MISCHNICK, Ticket Agent.
- Cleveland, O.—City Ticket Office.**  
 913 Huron Road (Telephone Cherry 8400)  
 CASPER J. MILLER, Ticket Agent.  
 Erie Station. (Telephone Cherry 8400)  
 J. W. STUART, Ticket Agent.
- Corning, N. Y.—Erie Station.**  
 (Telephone 50)  
 R. J. GRIFFEN, Ticket Agent.
- Elmira, N. Y.—Erie Station.**  
 (Telephone 2-0380)  
 J. V. CLEARY, Ticket Agent.
- Hornell, N. Y.—Erie Station.**  
 (Telephone 680)  
 A. T. JOHNSON, Ticket Agent.
- Huntington, Ind.—Erie Station.**  
 (Telephone 140)  
 D. L. HERENDEEN, Ticket Agent.
- Jamestown, N. Y.—Erie Station.**  
 (Telephone 6076)  
 FRANK PRIEST, Ticket Agent.
- Jersey City, N. J.—Erie Station.**  
 (Telephone Delaware 8-6400)  
 G. B. IRVING, Ticket Agent.
- Mansfield, O.—Erie Station.**  
 (Telephone Canal 1423)  
 J. W. GILKINSON, Ticket Agent.
- Marion, O.—Erie Station.**  
 (Telephone 2399)  
 L. E. NEBERGALL, Ticket Agent.
- Meadville, Pa.—Erie Station.**  
 (Telephone 1212)  
 G. W. KROM, Ticket Agent.
- Middletown, N. Y.—Erie Station.**  
 (Telephone 3303)  
 C. R. DINEEN, Ticket Agent.
- Newark, N. J.—Erie Station.**  
 (Telephone Humboldt 2-0600)  
 G. J. MCMICHAEL, Ticket Agent.
- New York, N. Y.—City Ticket Office.**  
 Information Bureau.  
 Train Service and Fares.  
 (Telephone Barclay 7-6500)  
 City Ticket Office, 12 West 51st Street,  
 Rockefeller Center.  
 (Telephone Circle 5-7222)  
 G. H. DOWN, Ticket Agent.  
 West 23rd Street Station.  
 (Telephone Chelsea 3-0780)  
 C. H. POTTER, Ticket Agent.  
 Chambers Street Station.  
 (Telephone Cortlandt 7-9200)  
 T. I. NEWMAN, Ticket Agent.  
 City Ticket Office, 17 John Street.  
 (Telephone Cortlandt 7-6430 and  
 7-6431)  
 W. G. TEDFORD, Ticket Agent.  
 Times Square Motor Coach Terminal,  
 260 West 42nd St.  
 (Telephone Longacre 5-2440)
- Passaic, N. J.—Erie Station.**  
 (Telephone 2-1613)  
 O. R. KRECH, Ticket Agent.
- Paterson, N. J.—Erie Station.**  
 (Telephone Sherwood 2-3337)  
 J. H. GRAF, Ticket Agent.
- Port Jervis, N. Y.—Erie Station.**  
 (Telephone 300)  
 R. FARBER, Ticket Agent.
- Sharon, Pa.—Erie Station.**  
 (Telephone 234)  
 H. P. MORGAN, Ticket Agent.
- Warren, O.—Erie Station.**  
 (Telephone 1000)  
 R. S. GETTIG, Ticket Agent.
- Youngstown, O.—Erie Station.**  
 (Telephone 41101)  
 R. E. TOWNS, Ticket Agent.

RAILROAD AND PULLMAN FARES

For Information Only. Subject to Change Without Notice

Table with columns for 'Between' and 'And' cities, and sub-columns for 'NEW YORK', 'BINGHAMTON', and 'BUFFALO'. It lists fares for 'RAILROAD TICKETS VALID IN' (Coach, Pullmans) and 'PULLMAN RATES' (Lower Berth, Seat Fare) for various destinations like Akron, Chicago, Cleveland, etc.

Table with columns for 'Between' and 'And' cities, and sub-columns for 'JAMESTOWN', 'CLEVELAND', and 'CHICAGO'. It lists fares for 'RAILROAD TICKETS VALID IN' (Coach, Pullmans) and 'PULLMAN RATES' (Lower Berth, Seat Fare) for various destinations like Akron, Chicago, Cleveland, etc.

RATES FOR UPPER BERTH, ROUND TRIP UPPER BERTH, SECTION, DRAWING ROOM OR COMPARTMENT IN SLEEPING CARS

Table with columns for 'Where Lower Berth Rate Is', 'Upper Berth Rate Will Be', 'Round Trip Upper Berth Rate Will Be', 'Section Rate For One Passenger', 'Drawing Room Rate For One Passenger', 'Compartments Rate For Two or More Pas'grs.', and 'Where Lower Berth Rate Is', 'Upper Berth Rate Will Be', 'Round Trip Upper Berth Rate Will Be', 'Section Rate For One Passenger', 'Drawing Room Rate For One Passenger', 'Compartments Rate For Two or More Pas'grs.'

Minimum Number of Railroad Tickets Required for Exclusive Occupancy of Space in Sleeping or Parlor Cars.

Table with columns for 'Section', 'Double Bedroom', 'Comp., Berth Service', 'Comp., Seat Service', 'Drawing Room, Berth Service', 'D. R., Seat Service', and 'D. R. in Parlor Car'.

Note: -▲For section occupied by two passengers but with lower berth only prepared for night service. ■Applies from Cleveland to New York only; fare from New York to Cleveland \$14.70.

\*Thirty-day limit. †Limit One Year.

TABLE 1

# CONDENSED TABLE OF THROUGH TRAINS NEW YORK AND BUFFALO, CLEVELAND AND CHICAGO

(FOR LOCAL TRAINS AND INTERMEDIATE TIME OF THROUGH TRAINS SEE LOCAL TABLES)

**Air-Conditioned Trains**—Air-conditioned equipment has been assigned to regular sections of trains as shown herein. Every effort will be made to provide it as specified, but the right is reserved to employ non-air-conditioned cars as necessitated by volume of traffic or emergencies.

**WEST BOUND**
**THE ERIE LIMITED TRAIN NO. 1—DAILY**  
**New York—Buffalo—Jamestown—Chicago**

Lv New York (Times Sq. Motor Coach Term.) (Note ⊕)...	8.35AM E.S.T.
" New York, West 23rd St....	8.05 " "
" " Chambers St....	8.30 " "
" Jersey City.....	8.50 " "
" Paterson.....en	9.18 " "
" Ridgewood.....en	9.28 " "
" Binghamton.....	2.23PM " "
" Elmira.....	3.43 " "
Ar Buffalo (Lehigh Valley Term.)	7.35 " "
Lv Olean.....	6.45 " "
" Bradford.....ad	5.42 " "
" Buffalo (Lehigh Valley Term.)	5.30 " "
" Jamestown.....	8.03 " "
" Meadville.....	9.40 " "
" Youngstown.....	11.16 " "
" Warren.....	11.42 " "
" Akron.....	12.50AM " "
Ar Chicago (Dearborn Sta.)....	7.55AM C.S.T.

**EQUIPMENT**

**Air-Conditioned Sleeping Cars:**  
New York to Chicago—10 Section, 2 Compartment and Drawing Room.  
Salamanca to Chicago—12 Section and Drawing Room.

**Air-Conditioned Lounge Dining Car:**  
New York to Chicago.

**Air-Conditioned Salon Coaches:**  
New York to Chicago.

**Air-Conditioned Coach—Diner:**  
New York to Buffalo.

**EAST BOUND**
**THE ERIE LIMITED TRAIN NO. 2—DAILY**  
**Chicago—Jamestown—Buffalo—New York**

Lv Chicago (Dearborn Sta.)....	6.00PM C.S.T.
Ar Akron.....	3.44AM E.S.T.
" Warren.....	4.43 " "
" Youngstown.....	5.02 " "
" Meadville.....	6.55 " "
" Jamestown.....	8.31 " "
" Buffalo (Lehigh Valley Term.)	10.55 " "
" Bradford.....ad	12.05PM " "
" Olean.....	9.39AM " "
Lv Buffalo (Lehigh Valley Term.)	8.20 " "
Ar Elmira.....	12.30PM " "
" Binghamton.....	1.41 " "
" Ridgewood.....ek	6.43 " "
" Paterson.....	6.51 " "
" Jersey City.....	7.20 " "
" New York, Chambers St....	7.34 " "
" " West 23rd St....	7.55 " "
" New York, Times Sq. Motor Coach Term. (Note ⊕)....	7.30 " "

**EQUIPMENT**

**Air-Conditioned Sleeping Car:**  
Chicago to New York—12 Section and Drawing Room.

**Air-Conditioned Lounge Dining Car:**  
Chicago to New York.

**Air-Conditioned Salon Coaches:**  
Chicago to New York.

**Air-Conditioned Coach—Diner:**  
Buffalo to New York.

**THE LAKE CITIES TRAIN NO. 5—DAILY**  
**New York—Buffalo—Cleveland**

Lv New York (Times Sq. Motor Coach Term.) (Note ⊕)...	7.30PM E.S.T.
" New York, West 23rd St....	7.10 " "
" " Chambers St....	7.30 " "
" Jersey City.....	7.45 " "
" Paterson.....bc	8.16 " "
" Ridgewood.....bc	8.26 " "
Ar Buffalo (Lehigh Valley Term.)	6.55AM " "
Lv Olean.....	5.39 " "
Ar Bradford.....	7.05 " "
" Jamestown.....	6.58 " "
" Meadville.....	8.28 " "
" Youngstown.....	9.50 " "
" Warren.....	10.36 " "
Ar Cleveland.....	11.40AM " "

**EQUIPMENT**

**Air-Conditioned Sleeping Cars:**  
New York to Cleveland—10 Section, 2 Compartment and Drawing Room.  
New York to Bradford—12 Section and Drawing Room.  
(Sleeping Car may be occupied at Bradford until 8.00 A. M.)

**Air-Conditioned Lounge Dining Car:**  
New York to Port Jervis.  
Salamanca to Youngstown.

**Air-Conditioned Coaches:**  
New York to Cleveland.

**Coaches:**  
Hornell to Buffalo.

**THE LAKE CITIES TRAIN NO. 6—DAILY**  
**Cleveland—Buffalo—New York**

Lv Cleveland.....	4.30PM E.S.T.
" Warren.....	5.34 " "
" Youngstown.....	6.15 " "
" Meadville.....	7.50 " "
" Jamestown.....	9.27 " "
" Bradford.....	9.10 " "
" Salamanca.....	10.14 " "
" Olean.....	10.39 " "
" Buffalo (Lehigh Valley Term.)	9.00 " "
Ar Elmira.....	1.30AM " "
" Ridgewood.....dz	7.28 " "
" Jersey City.....	8.00 " "
" New York, Chambers St....	8.16 " "
" " West 23rd St....ap	8.30 " "
" New York, Times Sq. Motor Coach Term. (Note ⊕)....	8.10 " "

**EQUIPMENT**

**Air-Conditioned Sleeping Cars:**  
Cleveland to New York—10 Section, 2 Compartment and Drawing Room.  
Bradford to New York—12 Section and Drawing Room.

**Air-Conditioned Lounge Dining Car:**  
Youngstown to Salamanca.  
Port Jervis to New York.

**Air-Conditioned Coaches:**  
Cleveland to New York.

**Coaches:**  
Buffalo to Hornell.

**THE MIDLANDER TRAIN NO. 15—DAILY**  
**New York—Jamestown—Akron—Chicago**

Lv New York (Times Sq. Motor Coach Term.) (Note ⊕)...	7.30PM E.S.T.
" New York, West 23rd St....	7.10 " "
" " Chambers St....	7.30 " "
" Jersey City.....	7.45 " "
" Paterson.....bc	8.16 " "
" Ridgewood.....bc	8.26 " "
" Jamestown.....	6.58AM " "
" Meadville.....	8.33 " "
" Youngstown.....	10.08 " "
" Akron.....	11.22 " "
" Marion.....	1.23PM " "
Ar Chicago (Dearborn Sta.)....	5.20PM C.S.T.

**EQUIPMENT**

**Air-Conditioned Sleeping Car:**  
New York to Chicago—8 Section Lounge Restaurant Car.

**Air-Conditioned Lounge Dining Cars:**  
New York to Port Jervis.  
Salamanca to Youngstown.

**Air-Conditioned Coach:**  
New York to Chicago.

Additional Dining Service in Air-Conditioned Lounge Restaurant Car.

**THE MIDLANDER TRAIN NO. 16—DAILY**  
**Chicago—Akron—Jamestown—New York**

Lv Chicago (Dearborn Sta.)....	9.05AM C.S.T.
" Marion.....	2.56PM E.S.T.
" Akron.....	4.54 " "
" Youngstown.....	6.15 " "
" Meadville.....	7.50 " "
" Jamestown.....	9.27 " "
" Ridgewood.....dz	7.28AM " "
Ar Jersey City.....	8.00 " "
" New York, Chambers St....	8.16 " "
" " West 23rd St....ap	8.30 " "
" New York, Times Sq. Motor Coach Term. (Note ⊕)....	8.10 " "

**EQUIPMENT**

**Air-Conditioned Sleeping Car:**  
Chicago to New York—8 Section Lounge Restaurant Car.

**Air-Conditioned Lounge Dining Cars:**  
Youngstown to Salamanca.  
Port Jervis to New York.

**Air-Conditioned Coach:**  
Chicago to New York.

Additional Dining Service in Air-Conditioned Lounge Restaurant Car.

**PACIFIC EXPRESS TRAIN NO. 7—DAILY**  
**New York—Buffalo—Jamestown—Chicago**

Lv New York, W. 23d St.....	10.55PM E.S.T.
" " Chambers St....	11.30 " "
" Jersey City.....	12.05AM " "
" Elmira.....	7.24 " "
Ar Buffalo (Lehigh Valley Term.)	11.55 " "
Lv Olean.....	10.48 " "
Ar Salamanca.....	11.12 " "
Lv Jamestown.....	12.07PM " "
" Meadville.....	1.44 " "
" Youngstown.....	3.16 " "
" Warren.....	3.44 " "
" Akron.....	4.46 " "
Ar Chicago (Dearborn Sta.)....	12.50AM C.S.T.

**EQUIPMENT**

**Air-Conditioned Sleeping Car:**  
New York to Salamanca—12 Section and Drawing Room Car.  
(Sleeper open Jersey City at 9.30 P. M.)

**Air-Conditioned Dining Lounge Car:**  
Binghamton to Marion.

**Air-Conditioned Salon Coaches:**  
New York to Chicago.

**ATLANTIC EXPRESS TRAIN NO. 8—DAILY**  
**Chicago—Jamestown—New York**

Lv Chicago (Dearborn Sta.)....	9.45PM C.S.T.
" Akron.....	7.07AM E.S.T.
" Warren.....	8.07 " "
" Youngstown.....	8.35 " "
" Meadville.....	10.10 " "
" Jamestown.....	11.59AM " "
" Bradford.....	10.02AM " "
" Salamanca.....	1.03PM " "
" Olean.....	1.29 " "
Ar Elmira.....	5.00 " "
" Binghamton.....	6.14 " "
" Jersey City.....	11.30 " "
" New York, Chambers St....	11.59 " "
" " West 23rd St....	" "
" New York, Times Sq. Motor Coach Term. (Note ⊕)....	11.40 " "

**EQUIPMENT**

**Air-Conditioned Sleeping Car:**  
Chicago to Hornell—(Daily) 10 Section, 2 Compartment and Drawing Room. Chicago to New York (Saturdays only) 10 Section, 2 Compartment and Drawing Room.  
(Sleeper open at Chicago at 9.30 P. M.)

**Air-Conditioned Dining Lounge Cars:**  
Chicago to Huntington.  
Marion to New York.

**Air-Conditioned Salon Coaches:**  
Chicago to New York.

(No baggage handled on this train east of Hornell, baggage will be handled on following train.)

**THE MOUNTAIN EXPRESS TRAIN NO. 27—DAILY**  
**New York—Binghamton—Elmira—Hornell**

Lv New York (Times Sq. Motor Coach Term.) (Note ⊕)...	2.45PM E.S.T.
" New York, West 23rd St....	2.20 " "
" " Chambers St....	2.40 " "
" Jersey City.....	3.00 " "
Ar Binghamton.....	8.35 " "
" Elmira.....	10.25 " "
" Corning.....	10.55 " "
Ar Hornell.....	11.55 " "

**EQUIPMENT**

**Air-Conditioned Dining Lounge Car:**  
New York to Binghamton.

**Coaches:** New York to Hornell.

**SOUTHERN TIER EXPRESS TRAIN NO. 10—EX. SUN.**  
**Buffalo—Hornell—Elmira—Binghamton—New York**

Lv Buffalo.....	4.35PM E.S.T.
" Hornell.....	7.30 " "
" Corning.....	8.39 " "
" Elmira.....	9.08 " "
" Binghamton.....	10.43 " "
Ar Jersey City.....	4.15AM " "
" New York, Chambers St....	4.27AM " "
" " W. 23d St....	" "

**EQUIPMENT**

**Air-Conditioned Sleeping Car:**  
Hornell to New York—10 Section, 2 Compartment and Drawing Room Car.  
(Sleeper and Coaches may be occupied at Jersey City until 7.30 A. M. E. S. T.)

**Coaches:** Buffalo to Hornell.  
Hornell to New York.

TABLE 2 WESTBOUND

NEW YORK—ELMIRA

Hudson and Manhattan Tube Trains operate to and from Erie Railroad Station in Jersey City. Fare, downtown, 8 cents; uptown, 10 cents.

Table with columns for Miles from New York, Eastern Standard Time, and various station names (e.g., New York, Jersey City, Paterson, etc.) and times. Includes notes and reference marks.

For Explanation of Reference Marks and Notes, See Pages 5 and 6.

For Equipment of Trains See Pages 9, 10 and 28.

TABLE 3 EASTBOUND

ELMIRA—NEW YORK

Hudson and Manhattan Tube Trains operate to and from Erie Railroad Station in Jersey City. Fare downtown, 8 cents; uptown, 10 cents.

Table with columns for train numbers (50, 52, 204, 6, 16, 56, 58, 58, 30, 30, 60, 60, 62, 700, 206, 70, 28, 42, 44, 2, 702, 208, 208, 64, 34, 704, 38, 22, dt8, 68, 10) and rows for stations from Elmira to New York. Includes service types like 'Daily Ex. Sun. and Hol.' and 'No Baggage Carried on this Train'.

For Explanation of Reference Marks and Notes, See Pages 5 and 6.

For Equipment of Trains, See Pages 9, 10 and 28.



TABLE 4 WESTBOUND

ELMIRA—CHICAGO

EASTBOUND

Miles from New York	Eastern Standard Time						Miles from Chicago	Central Standard Time					
	7	1	27	5	15	2		dt 8	10	6	16	620	
	Daily	Daily	Daily	Daily	Daily	Daily		Daily	Daily	Daily Ex. Sun.	Daily	Daily	Sun. only
0.0	Lv. <b>NEW YORK</b>						0.0	<b>Chicago</b> (Dearborn Sta.) Ill. Lv.					
Note ⊕	Times Sq. Motor Coach Term. Lv.	8.35	2.45	7.30	7.30		(Polk and Dearborn Sts.)	6.00	9.45				
0.0	West 23rd St.	8.05	2.20	7.10	7.10		Englewood, 63d Street	6.14	cp			cp	
0.0	Chambers St.	8.30	2.40	7.30	7.30		Hammond	6.40	10.25			9.42	
1.0	<b>Jersey City</b>	8.50	3.00	7.45	7.45		Crown Point	7.05					
273.8	<b>Elmira</b>	7.24	3.43	10.25	2.42	2.42	Rochester	8.14				10.58	
291.2	Corning	8.00	4.09	10.55	3.09	3.09	Huntington	8.58	12.30			11.38	
302.3	Addison	8.20	4.26	11.18			Huntington	9.10	12.37			11.44	
312.5	Cameron Mills						Decatur	9.48					
315.1	Cameron						<b>Eastern Standard Time</b>						
328.1	Canisteo						<b>Ohio City</b> Ohio	11.10					
332.3	<b>Hornell</b> Ar.	8.57	5.02	11.55	3.57	3.57	<b>Lima</b>	11.53	3.07			2.03	
425.2	<b>Buffalo</b> (see Table 6) Ar.	11.55	7.35		6.55		<b>Kenton</b>		3.41				
332.3	<b>Hornell</b> Lv.	9.05	5.12		4.06	4.06	<b>Marion</b> Ar.	12.48	4.09			2.51	
341.5	Alfred						<b>Marion</b> Lv.	12.53	4.14			2.56	
349.9	Andover	ah					Galion	1.24	4.44			3.18	
358.5	<b>Wellsville</b>	9.46	5.52		4.45	4.45	Mansfield	1.54	5.14			3.38	
366.9	Belmont	ah					Ashland	2.25	5.41			3.58	
374.4	Friendship	bg					Rittman		6.19				
383.3	Cuba	bg					Wadsworth		6.30				
395.7	<b>Olean</b>	10.48	6.45		5.39	5.39	Barberton		6.42				
399.1	Allegany						<b>Akron</b> Ar.	3.44	7.07			4.54	
413.6	<b>Salamanca</b> Ar.	11.12	7.08		6.03	6.03	<b>Kent</b> Ar.	4.00	7.22			5.08	
430.2	<b>Bradford</b> Ar.	12.05	7.50		7.05		<b>Kent</b> Lv.	4.05	7.27			5.13	
413.6	<b>Salamanca</b> Lv.	11.19	7.15		6.10	6.10	<b>Ravenna</b>						
431.1	Randolph				6.33	6.33	<b>Cleveland</b> (See Table 7) Lv.					4.30	
447.3	<b>Jamestown</b> Ar.	12.07	8.03		6.58	6.58	<b>Warren</b> (cd)	4.43	8.07			5.34	
	<b>Buffalo</b> (See Table 8) Lv.		5.30				Niles (cd)					bx	
447.3	<b>Jamestown</b> Lv.	12.07	8.03		6.58	6.58	Girard (cd)					es	
474.2	<b>Corry</b> Pa. Ar.	12.46	8.43		7.35	7.35	<b>Youngstown</b> (cd) Ar.	5.02	8.28			5.55	
485.6	Union City		cn		7.50	7.50	<b>Pittsburgh</b> (See Table 7) Ar.	7.30	11.00			9.05	
501.2	Cambridge Springs	1.19	cn		8.09	8.09	<b>Youngstown</b> Lv.	5.12	8.35			6.15	
509.5	Saegertown	hw					Hubbard					6.15	
515.9	<b>Meadville</b> Ar.	1.39	9.35		8.28	8.28	<b>Sharon</b> Pa. Ar.	5.43	8.59			6.41	
515.9	<b>Meadville</b> Lv.	1.44	9.40		8.33	8.33	Greenville	6.18	9.26			6.41	
542.1	Greenville	2.21	10.19		9.09	9.09	<b>Meadville</b> Ar.	6.55	10.05			7.07	
558.2	<b>Sharon</b>	2.49	10.46		9.31	9.31	Saegertown					7.07	
564.2	Hubbard						Cambridge Springs	dy	10.30			7.45	
571.8	<b>Youngstown</b> Ohio Ar.	3.09	11.09		9.50	9.50	Union City	dy	10.50			7.45	
	<b>Pittsburgh</b> (See Table 7) Lv.	12.30	9.00		8.40	8.40	<b>Corry</b>	7.51	11.06			7.50	
571.8	<b>Youngstown</b> (cd) Lv.	3.16	11.16		10.15	10.08	<b>Jamestown</b> N. Y. Ar.	8.31	11.59			7.50	
576.4	Girard (cd)						<b>Jamestown</b> (Chautauqua Lake) Ar.	10.55				7.50	
580.6	Niles (cd)		bp		bm		<b>Buffalo</b> (See Table 8) Lv.	8.31	11.59			8.09	
585.7	<b>Warren</b> (cd)	3.44	11.42		10.36	10.28	<b>Jamestown</b> (Chautauqua Lake) Lv.	8.31	11.59			8.09	
638.3	<b>Cleveland</b> (See Table 7) Ar.				11.40		Randolph					8.09	
609.6	Ravenna						<b>Salamanca</b> Ar.	9.10	12.22			8.09	
615.9	<b>Kent</b> Ar.	4.20	12.22		11.03	11.03	<b>Bradford</b> Lv.	8.17	10.02			8.09	
626.0	<b>Akron</b> Ar.	4.25	12.27		11.08	11.08	<b>Salamanca</b> Lv.	9.15	1.03			8.09	
633.3	Barberton	de					Allegany					8.09	
639.9	Wadsworth						<b>Olean</b>	9.39	1.29			8.09	
644.3	Rittman						Cuba					8.09	
676.5	Ashland						Friendship					8.09	
693.2	Mansfield						Belmont					8.09	
708.6	Galion						<b>Wellsville</b>	10.31	2.26			8.09	
729.6	<b>Marion</b> Ar.	7.40	3.22		1.18	1.18	Andover					8.09	
729.6	<b>Marion</b> Lv.	7.55	3.29		1.23	1.23	Alfred					8.09	
754.5	Kenton						<b>Hornell</b> Ar.	11.07	3.05			8.09	
781.5	<b>Lima</b>	8.26	4.26		2.15	2.15	<b>Buffalo</b> (See Table 6) Lv.	8.20				8.09	
808.8	<b>Ohio City</b>	9.06					<b>Hornell</b>	11.14	3.15			8.09	
							Canisteo					8.09	
825.3	<b>Central Standard Time</b>						Cameron					8.09	
856.1	Decatur Ind. Ar.		4.23				Cameron Mills					8.09	
856.1	<b>Huntington</b> Lv.	9.34	4.55		2.36	2.36	Addison	11.49	4.03			8.09	
897.8	Rochester		5.02		2.42	2.42	Corning	12.06	4.32			8.09	
962.4	Crown Point		5.51		3.26	3.26	<b>Elmira</b>	12.30	5.00			8.09	
978.1	Hammond		6.55				<b>Jersey City</b>	7.20	11.30			8.09	
992.4	Englewood, 63d St. Ill. Ar.	12.05	7.15		4.43	4.43	<b>NEW YORK</b>					8.09	
998.7	<b>Chicago</b> (Dearborn Sta.) Ar.	12.50	7.55		5.20	5.20	Chambers St.	7.34	11.59			8.09	
		AM	AM	PM	AM	PM	West 23rd St.	7.55				8.09	
							Times Sq. Motor Coach Term. Ar.	7.30	11.40			8.10	

# Dining Car Service

Table D'Hotel prices range as follows: Breakfast 50c and 65c, Luncheon 75c to \$1.25, Dinner 75c to \$1.25. A meal on our trains is always a pleasant interlude. Makes the journey seem shorter, too. The freshest food the

market affords, cooked by expert chefs and served in the comfort of spacious Restaurant Cars. If you prefer a light snack without going to the Diner the waiter will bring sandwiches, fruit, coffee, etc., right to your seat.

TABLE 5 DETROIT—TOLEDO—CLEVELAND—YOUNGSTOWN—PITTSBURGH

Miles from Cleveland	Eastern Standard Time	EASTBOUND											
		WEEK-DAYS					SUNDAYS						
		688	624	626	6	628	686	688	624	626	6	686	620
		Ex. Sun.	Ex. Sun.	Ex. Sun.	Ex. Sun.	Ex Sun & Hol.	Ex. Sun.	Sun. only	Sun. only	Sun. only	Sun. only	Sun. only	Sun. only
		AM	AM	AM	PM	PM	PM	AM	AM	AM	PM	PM	PM
	<b>Detroit</b> .....Lv.	12.30		8.00			1.15	12.30		8.00		1.15	
	<b>Toledo</b> .....Lv.	2.13	4.43	9.45			3.00	2.13	4.43	9.45		3.00	
0.0	<b>Cleveland</b> .....Lv.	4.25	8.00	1.15	4.30	5.30	6.00	4.25	8.00	1.15	4.30	6.00	9.30
3.3	East 55th Street.....		8.07	1.23		5.37	6.08		8.07	1.23	bu.	6.08	9.40
5.6	E. 93d St., Cleveland.....		8.12	1.27	na.	5.42	hv.		8.12	1.27	na.	hv.	9.45
10.7	North Randall.....					5.51							
15.8	Solon.....			ne.		5.59							f10.00
20.4	Geauga Lake.....					6.05							f10.05
23.6	<b>Aurora</b> .....			ne.		6.10							f10.10
30.0	<b>Mantua</b> .....			dc.		6.18					dc.		f10.17
34.2	<b>Jeddoe</b> .....					6.24							
36.7	<b>Garrettsville-Hiram</b> .....		8.46	2.02		6.30			8.46	2.02			f10.28
40.3	<b>Mahoning</b> .....					6.36							
45.3	<b>Phalanx</b> .....					6.42							
49.4	<b>Leavittsburg</b> .....					6.49							
52.6	<b>Warren</b> .....	5.37	9.05	2.22	5.34	6.57	7.09	5.37	9.05	2.22	5.34	7.09	10.50
57.7	<b>Niles</b> .....	er.	9.13	2.30	es.	7.23	7.20	er.	9.13	2.30	es.	7.20	11.00
61.9	<b>Girard</b> .....					7.33							f11.08
66.5	<b>Youngstown</b> .....Ar.	6.00	9.25	2.45	5.55	7.45	7.35	6.00	9.25	2.45	5.55	7.35	11.17
66.5	<b>Youngstown</b> .....Lv.	6.10	9.30	2.50			7.40	6.10	9.30	2.50		7.40	
84.2	<b>New Castle</b> .....Ar.	6.34	9.55	3.14			8.02	6.34	9.55	3.14		8.02	
	<b>New Castle (Wash.St.)</b> ecAr.	6.46	10.07	3.26			8.14	6.46	10.07	3.26		8.14	
95.5	<b>Ellwood City (ed)</b> .....	cy7.00	10.16	3.34			8.22	cy7.00	10.16	3.34		8.22	
102.2	<b>Beaver Falls</b> .....	cy6.56	10.18	3.36			8.25	cy6.56	10.18	3.36		8.25	
	<b>New Brighton</b> .....												
105.6	<b>Beaver</b> .....	cy7.01	10.24	3.41			8.31	cy7.01	10.24	3.41		8.31	
112.3	<b>Aliquippa</b> .....	cy7.10	10.33	3.50			8.40	cy7.10	10.33	3.50		8.40	
120.8	<b>Coraopolis</b> .....	cy7.20	10.44	4.00			8.50	cy7.20	10.44	4.00		8.50	
131.4	<b>Pittsburgh</b> .....Ar.	7.35	11.00	4.15			9.05	7.35	11.00	4.15		9.05	

**AIR-CONDITIONED TRAINS**  
Air-conditioned equipment has been assigned to regular sections of trains as shown herein. Every effort will be made to provide it as specified, but the right is reserved to employ non-air-conditioned cars as necessitated by volume of traffic or emergencies.

**EQUIPMENT**  
**Detroit, Toledo, Cleveland, Youngstown, Pittsburgh Trains.**  
★Indicates Air-Conditioned Cars

**EASTBOUND**  
**No. 6—Daily.** ★Sleeping Car (10 Section 2 Compartment and Drawing Room Car) Cleveland to New York. ★Coach, Cleveland to New York.  
**No. 620—Sundays only.** Coaches, Cleveland to Youngstown and Sharon.  
**No. 624 — Daily.** ★Pullman Parlor-Lounge-Diner, Cleveland to Pittsburgh. ★Coach, Cleveland to Pittsburgh.  
**No. 626—Daily.** ★Erie Parlor Car, Cleveland to Pittsburgh. ★Coach, Cleveland to Pittsburgh.  
**No. 686—Daily.** ★Sleeping Car for Parlor Car Service and ★Coaches, Detroit to Pittsburgh, via Cleveland. Dining Lounge Car, Cleveland to Pittsburgh.  
**No. 688—Daily.** ★Sleeping Car (12 Section and Drawing Room), Chicago to Pittsburgh. ★Sleeping Car (12 Section-2 Double Bedrooms), Detroit to Pittsburgh. Through Coaches, ★Chicago and ★Detroit to Pittsburgh, via Cleveland.

Miles from Pittsburgh	Eastern Standard Time	WESTBOUND											
		WEEK-DAYS					SUNDAYS						
		629	5	685	623	679	687	619	5	685	623	679	687
		Ex Sun & Hol.	Ex. Sun.	Ex. Sun.	Ex. Sun.	Ex. Sun.	Ex. Sun.	Sun. only	Sun. only	Sun. only	Sun. only	Sun. only	Sun. only
		AM	AM	PM	PM	PM	PM	AM	AM	PM	PM	PM	PM
10.6	<b>Pittsburgh</b> .....Lv.		8.40	12.30	5.15	9.00	11.30		8.40	12.30	5.15	9.00	11.30
19.1	<b>Coraopolis</b> .....		8.54	12.45	5.29	9.14	11.44		8.54	12.45	5.29	9.14	11.44
25.8	<b>Aliquippa</b> .....		9.03	12.54	5.38	9.23	11.53		9.03	12.54	5.38	9.23	11.53
29.2	<b>Beaver</b> .....		9.11	1.01	5.46	9.31	12.01		9.11	1.01	5.46	9.31	12.01
29.2	<b>Beaver Falls</b> .....												
45.7	<b>New Brighton</b> .....		9.16	1.06	5.51	9.36	12.06		9.16	1.06	5.51	9.36	12.06
	<b>Ellwood City (ed)</b> .....		9.17	1.07	5.52	9.28			9.17	1.07	5.52	9.28	
47.2	<b>New Castle (Wash.St.)</b> Lv.ec		9.26	1.18	6.03	9.46	12.17		9.26	1.18	6.03	9.46	12.17
	<b>New Castle</b> .....		9.38	1.30	6.14	9.58	12.29		9.38	1.30	6.14	9.58	12.29
64.9	<b>Youngstown</b> .....Ar		10.05	2.00	6.45	10.25	1.00		10.05	2.00	6.45	10.25	1.00
64.9	<b>Youngstown</b> .....Lv		5.50	10.15	2.05	6.50	10.29	8.30	10.15	2.05	6.50	10.29	1.05
69.5	<b>Girard</b> .....		5.58										
73.7	<b>Niles</b> .....		6.07	bm.	2.19	7.05	10.42	8.44	6.07	bm.	2.19	7.05	10.42
78.8	<b>Warren</b> .....		6.22	10.36	2.29	7.23	10.51	8.54	6.22	10.36	2.29	7.23	10.51
82.0	<b>Leavittsburg</b> .....		6.28										
86.1	<b>Phalanx</b> .....		6.36					9.03					
91.1	<b>Mahoning</b> .....	f6.45											
94.7	<b>Garrettsville-Hiram</b> .....	6.52	nh.	nf.	7.44	hf.		9.14	nh.	nf.	7.44	hf.	
97.2	<b>Jeddoe</b> .....	f6.57											
101.4	<b>Mantua</b> .....	7.06			7.53			9.32	df.		7.53		
107.8	<b>Aurora</b> .....	7.17											
111.0	<b>Geauga Lake</b> .....	7.22											
115.6	<b>Solon</b> .....	7.31			8.07						8.07		
120.7	<b>North Randall</b> .....	7.39			8.13						8.13		
125.8	<b>E. 93d St., Cleveland</b> .....	7.47	11.27	3.25	8.20	11.44		9.55	11.27	3.25	8.20	11.44	
128.1	<b>East 55th Street</b> .....	7.53		3.31	8.26	hu.		10.01	bv.	3.31	8.26	hu.	
131.4	<b>Cleveland</b> .....Ar	8.03	11.40	3.40	8.35	11.58	2.30	10.10	11.40	3.40	8.35	11.58	2.30
	<b>Toledo</b> .....Ar		2.30	6.15	1.00	2.50	5.20		2.30	6.15	1.00	2.50	5.20
	<b>Detroit</b> .....Ar		4.05	7.50		5.00	7.25		4.05	7.50		5.00	7.25

**WESTBOUND**  
**No. 5—Daily.** ★Sleeping Car (10 Section 2 Compartment and Drawing Room Car) New York to Cleveland. ★Erie Parlor Car, Pittsburgh to Cleveland. ★Coach, Pittsburgh to Cleveland.  
**No. 619—Sundays only.** Coaches, Youngstown to Cleveland.  
**No. 623—Daily.** ★Pullman Parlor-Lounge-Diner, Pittsburgh to Cleveland. ★Coach, Pittsburgh to Cleveland.  
**No. 679—Daily.** ★Sleeping Car (12 Section and Drawing Room), Pittsburgh to Chicago. ★Through Coaches, Pittsburgh to Chicago.  
**No. 685—Daily.** ★Sleeping Car for Parlor Car Service and ★Coaches, Pittsburgh to Detroit, via Cleveland. Dining Lounge Car, Pittsburgh to Cleveland.  
**No. 687—Daily.** ★Sleeping Car (12 Section-2 Double Bedrooms), Pittsburgh to Detroit. ★Through Coaches, Pittsburgh to Detroit via Cleveland.

**★Cleveland-Pittsburgh Sleeping Car**  
The Cleveland-Pittsburgh sleeping car operates to and from Union Terminal Cleveland via New York Central (via Ashtabula) to Youngstown, and P. & L. E. Railroad on following schedule:

Eastbound  
Lv Cleveland (Union Terminal) 2:15 AM  
Ar Pittsburgh (P&LE Station) 7:15 AM  
Westbound  
Lv Pittsburgh (P&LE Station) 10:35 PM  
Ar Cleveland (Union Terminal) 7:15 AM

Sleeper open for occupancy at 9:30 P. M. at Cleveland and 9:30 P. M. at Pittsburgh.  
Tickets reading via Erie Railroad between Cleveland and Youngstown, and P. & L. E. Railroad between Youngstown and Pittsburgh, will be honored in this sleeping car.

Holidays in the above table refers to the observance of New Year's Day, Memorial Day, Independence Day, Labor Day, Thanksgiving Day and Christmas Day.

For Explanation of Reference Marks and Notes, see Pages 5 and 6.



6880

3-21-30

Poole Bros. Inc., Chicago

THE PRESIDENT HAS PROCLAIMED 1940—TRAVEL AMERICA YEAR

**ERIE RAILROAD SYSTEM AND CONNECTIONS**

Indicates Double Track

TABLE 6 NEW YORK AND BUFFALO

Table with columns for WESTBOUND Read Down, Eastern Standard Time, and EASTBOUND Read Up. Includes train numbers like 7-477, 5, 2, 10, 6 and destinations like NEW YORK, Jersey City, Hornell, Buffalo.

TABLE 8 BUFFALO—JAMESTOWN

Table with columns for WESTBOUND Read Down, Eastern Standard Time, and EASTBOUND Read Up. Includes train numbers like 519, 516 and destinations like Buffalo, Blasdell, Hamburg, Water Valley, Eden Valley, etc.

TABLE 9 NEW YORK—SALAMANCA—BRADFORD—CHICAGO

Table with columns for WESTBOUND Read Down, Eastern Standard Time, and EASTBOUND Read Up. Includes train numbers like 7, 5-557, 1-Bus, Bus-2, Bus-8, 560-6 and destinations like NEW YORK, Salamanca, Bradford, Chicago.

Trains 5-557 and 560-6 carry through sleeping car between Bradford and New York. Sleeper on train 557 will be parked at Bradford for occupancy until 8.00 A. M. Buses leave as follows: (running time approximately 45 minutes.)

TABLE 10 NEW YORK—KENOZA LAKE—JEFFERSONVILLE

Table with columns for WESTBOUND Read Down, Eastern Standard Time, and EASTBOUND Read Up. Includes train numbers like 27, 45, 1, 2, 38 and destinations like NEW YORK, West 23d St., Chambers St., Jersey City, Callicoon, Kenoza Lake, Jeffersonville.

NOTE "X" in connection with the bus service the Erie Railroad Company acts as agent only and is not responsible beyond its own line, except as such responsibility may be imposed by law with respect to baggage.

TABLE 7 NEW YORK—CHAUTAUQUA—CHICAGO (Via Jamestown and BUS of Buffalo and Erie Coach Corp.)

Table with columns for WESTBOUND Read Down, Eastern Standard Time, and EASTBOUND Read Up. Includes train numbers like 7-Bus, 1-Bus, 5-Bus, Bus-8, Bus-6, 2-Bus and destinations like NEW YORK, Chautauqua, Jamestown, Cleveland, Akron, Chicago.

Tickets sold and Baggage checked through to Chautauqua. Hand baggage checked without charge. Trunks checked at charge of 25c each.

NEW YORK—NEWBURGH (Via Harriman and Bus) NEW YORK—MONTICELLO—LIBERTY (Via Middletown and Bus) For above services, ask Ticket Agents for Time Table Form 2 BLACK WATER BATHS, ALDEN, N. Y. An all year resort where sufferers from rheumatism and nervous ailments have found the Black Water Baths beneficial and curative. Alden is located 20 miles east of Buffalo on the Erie Railroad. HOTELS AT ALDEN, N. Y. Empire State Hotel Alden Inn Original Black Water Baths and Hotel

# THE GOLDEN GATE INTERNATIONAL EXPOSITION

"Pacifica"



Ralph Stackpole's 80-foot statue, "Pacifica," represents the international amity sought by the \$50,000,000 World's Fair of the West, Treasure Island.

*Invites you to a NEW*

## FAIR in FORTY

It's all new, this 1940 Pageant of the Pacific on Lovely Treasure Island. The air-conditioned West is your host in a setting you will never forget. Remember the dates . . . May 25th to September 29th!

### TREASURE ISLAND

on

### SAN FRANCISCO BAY



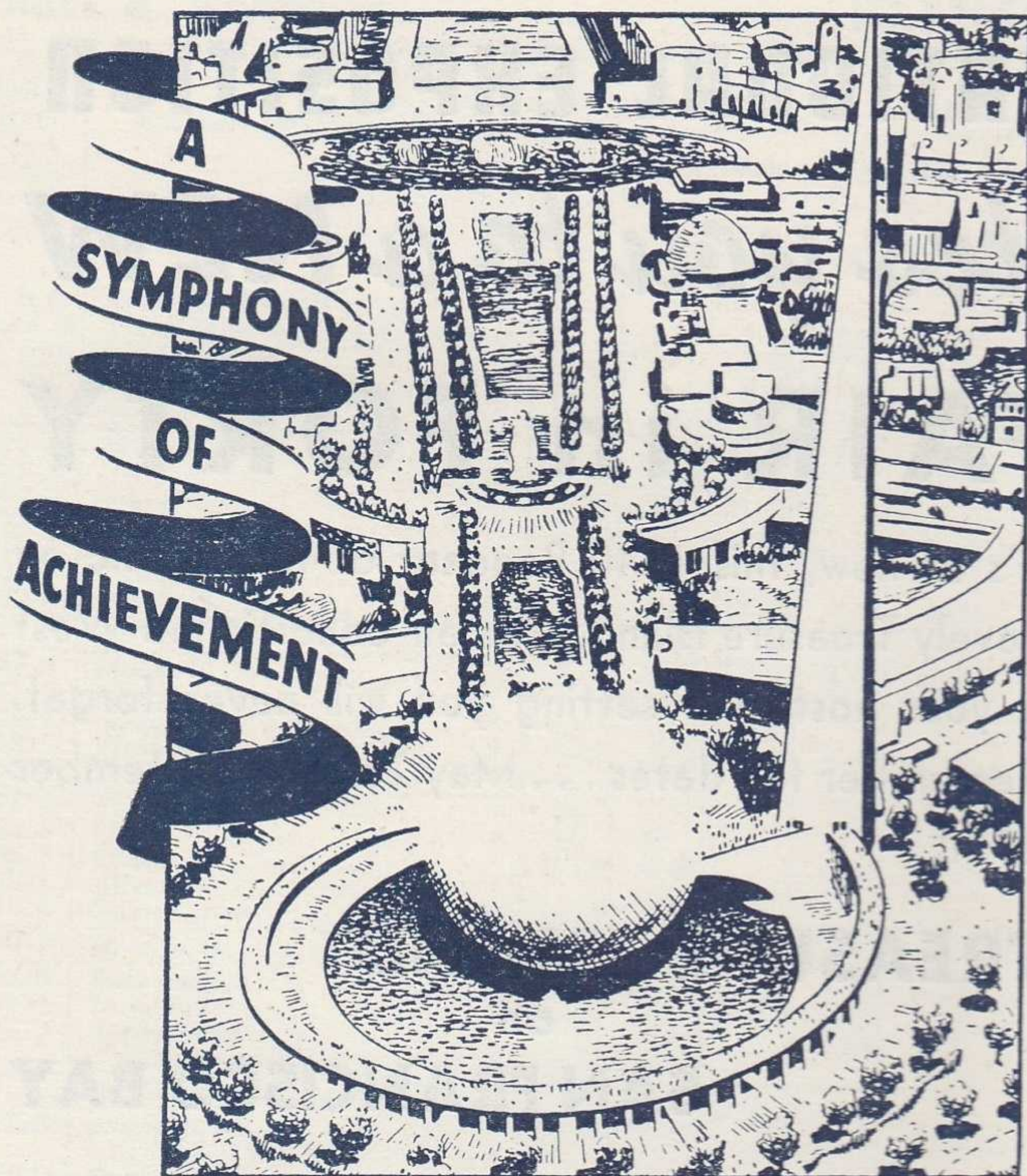
## Erie Turns Hours Into Minutes

### *Streamlines Freight Service with Teletype*

● A new teletype system—typewriting by wire—now connects principal Erie Yards with the General Offices in New York, Cleveland, and Chicago. Car-by-car train lists of all eastbound and westbound trains leaving principal through-train yards are teletyped to the General Offices following departure of each train to enable them to give you quickly information as to location of cars.

In addition, reports prepared in Cleveland General Office from teletyped train lists are mailed daily (many by air mail) to Erie representatives in 65 cities throughout this country and in Canada so that they, too, can give current information about car movements.

It is another example of progressive improvement in Erie freight service. Erie not only handles cars on schedule but can tell you quickly where the cars are. What formerly took hours is now done in minutes—with teletype.



You'll never forget the devastating beauty, the wonders, thrills and delights of the World's Fair of 1940 in New York.

Nothing has been omitted, nothing neglected. It is the most vital, comprehensive presentation of the wonders of the world that has ever been attempted. Art . . . Science . . . Industry . . . Fashion . . . and Entertainment have been assembled and blended to create a symphony of achievement. There are so many amazing and enthralling things to see, you won't know where to begin and you won't want to finish.

In the Exhibit Area, new and enlarged exhibits hold scores of delightful surprises for you. A liberal education awaits you in the Foreign Area where both neutral and war-torn countries present a new and dramatic picture of their life and customs, troubles and triumphs.

And as if all this were not enough, in the new Amusement Area, and about the grounds is Fun . . . Fun . . . Fun. All the way from giant extravaganzas and famous dance bands to pageants, contests and parades. Yes, it's Fun and most of it is Free.

Throughout the season, regular admissions will be 50c for adults . . . 25c for children (up to 14).

Ask any Erie Ticket Agent for special tours and fares to the World's Fair of 1940.

**WORLD'S FAIR - 1940**  
**IN NEW YORK**

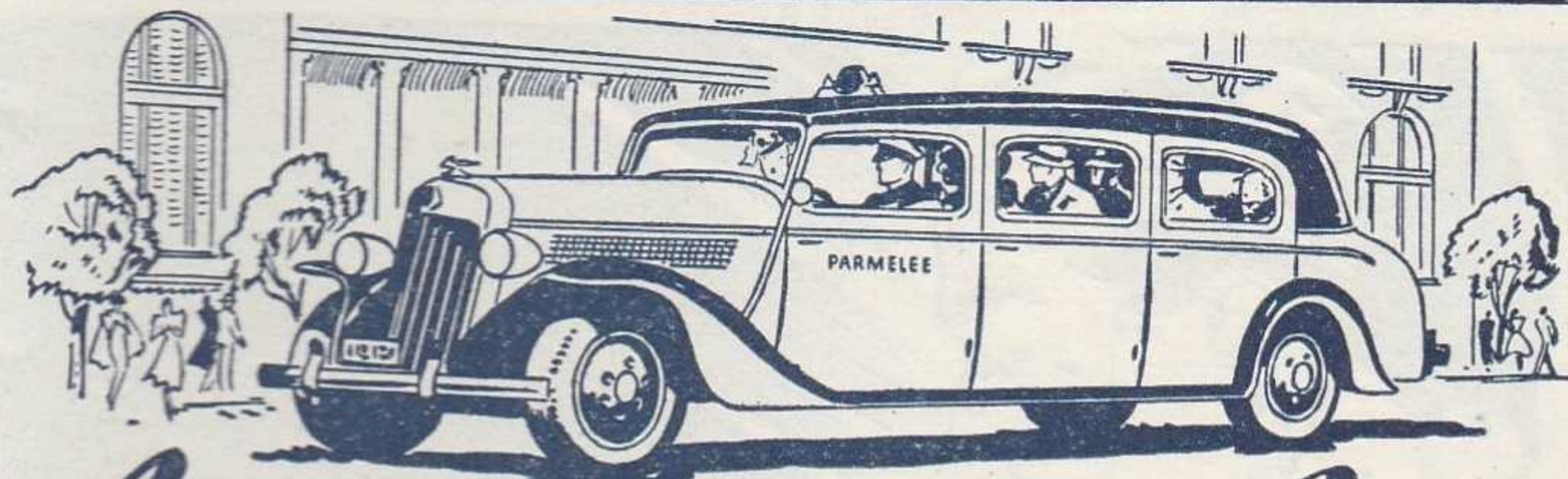
## LOCAL PARLOR AND CLUB CAR EQUIPMENT

### WESTBOUND

<b>No. 9—Daily</b>	Coaches . . . . .	New York to Binghamton
<b>No. 43—Runs Saturdays and Sundays only (June 29 to Sept. 1, incl.)</b>	Buffet Parlor Car . . . . .	New York to Deposit
	Coaches . . . . .	New York to Deposit
<b>No. 45—Runs Saturdays only (June 29 to Aug. 31, incl., also Wednesday July 3)</b>	Parlor and Dining Cars . . . . .	New York to Deposit
	Coaches . . . . .	New York to Deposit
<b>No. 47—Runs Fridays only (June 28 to Aug. 30, incl., also Weds., May 29 and July 3)</b>	Parlor and Dining Cars . . . . .	New York to Deposit
	Coaches . . . . .	New York to Deposit
<b>No. 63—THE TUXEDO—Ex. Sundays and Holidays</b>	Parlor Car . . . . .	New York to Port Jervis
	Coaches . . . . .	(Except Saturdays, Sundays and Holidays) New York to Port Jervis
<b>No. 67—Except Saturdays, Sundays and Holidays</b>	Erie Club Car . . . . .	New York to Port Jervis
	Coaches . . . . .	New York to Port Jervis
<b>No. 251—Saturdays only</b>	Erie Parlor Car . . . . .	New York to Middletown
	Coaches . . . . .	New York to Middletown

### EASTBOUND

<b>No. 28—THE MOUNTAIN EXPRESS—Daily</b>	Coaches . . . . .	Binghamton to New York
<b>No. 34—Sundays only, July 7 to August 25, incl. (also on Holidays, Thursdays, May 30, July 4 and Monday, Sept. 2)</b>	Parlor and Dining Cars . . . . .	Deposit to New York
	Coaches . . . . .	Deposit to New York
<b>No. 38—Sunday only, July 7 to August 25, incl. (also Monday, Sept. 2)</b>	Parlor Car . . . . .	Deposit to New York
	Coaches . . . . .	Deposit to New York
<b>No. 42—Saturdays only, June 29 to August 31, incl.</b>	Buffet Parlor Car . . . . .	Deposit to New York
	Coaches . . . . .	Deposit to New York
<b>No. 44—Sundays only, July 7 to August 25, incl. (also Thursday, July 4 and Monday, Sept. 2)</b>	Buffet Parlor Car . . . . .	Deposit to New York
	Coaches . . . . .	Deposit to New York
<b>No. 56—THE TUXEDO—Except Sundays and Holidays</b>	Erie Club Car . . . . .	Port Jervis to New York
	Parlor Car . . . . .	(Except Saturdays, Sundays and Holidays) Port Jervis to New York
	Coaches . . . . .	Port Jervis to New York



## Luxurious PARMELEE Coaches between Stations in Chicago

Parmelee Transfer service in Chicago keeps pace with the progress of America's railroads. Parmelee limousine coaches, operating between stations, are smart and luxurious. Service offered by the Parmelee organization also includes transportation from your incoming station directly to downtown hotels, clubs, stores, or theatres, and, on advance request, the assistance of a Women's Department in planning between-trains activities for women. There is no additional expense to holders of through tickets with Parmelee coupons.

Baggage transfer to or from train to any address in Chicago or its suburbs.



TABLE 12 ELMIRA-ROCHESTER

Table with columns for Westbound Read Down, Eastbound Read Up, Miles, Eastern Standard Time, and various train numbers (463, 467, 468, 464) and times.

TABLE 13 SALAMANCA—DUNKIRK

Table with columns for Westbound Read Down, Eastbound Read Up, Miles, Eastern Standard Time, and various train numbers (527, 540) and times.

LOCATE YOUR PLANT WHERE YOU CAN LOCATE MORE PROFITS Ask us about industrial buildings and vacant land on Erie rails GEO. F. WESTON Industrial Commissioner Erie Railroad, Midland Bldg., Cleveland, O.

TABLE 14 ROCHESTER—AVON

Table with columns for EASTBOUND Read Down, WESTBOUND Read Up, N. B. numbers (420, 440, 416, 428, 468, 401, 403, 467, 409), Eastern Standard Time, and various train numbers and times.

TRAINS between Avon and Rochester, except Trains 467, 468, will stop on signal at Wiards, Elm Place, Meadowwood, Gannett, Blair, Martin, Brooks, Fenner, Baileys, Crittenden, Westfall and South Park.

Note-HOLIDAYS in above tables refer to the observance of New Year's Day, Decoration Day, Independence Day, Labor Day, Thanksgiving Day and Christmas Day.

WESTERN UNION TELEGRAMS AND CABLEGRAMS accepted at all telegraph offices of this railroad.

DAY LETTERS—50 words for 1 1/2 times the cost of a 10 word telegram.

NIGHT LETTERS—25 words for the former price of ten words. Maximum only 50 cents from coast to coast. Words over 25 charged for in groups of 5 at rates as low as a fifth of a cent per word.

RESERVATION MESSAGES—Reserve travel tickets and accommodations and hotel rooms by telegraph—only 35 cents (for 15 words).

TOURATE MESSAGES—When you travel telegraph the folks at home or at the office the facts they want to know about progress of your trip—only 35 cents (for 15 words).

OLD FORT NIAGARA

Fourteen miles from Niagara Falls, the oldest building of the Great Lakes Region stands today as in 1726. Never destroyed, it has been restored and completely refurnished.

Important during days of exploration, its loss to the British in the French and Indian Wars was a blow.

Active under the British in the Revolution, it became the property of the United States in 1796. In 1812 it was captured by the British and later restored to the U. S. Ask the Ticket Agent about free stopovers at Niagara Falls.

HUDSON AND MANHATTAN TUBE TRAINS SCHEDULE OF RUNNING TIME BETWEEN ERIE R. R. JERSEY CITY TERMINAL AND

Table listing running times for Downtown New York (Cortlandt St.) and Uptown New York (33rd Street and 6th Ave, 23rd Street and 6th Ave, etc.) with times in minutes.

ERIE R. R. FERRY TIME TABLE EASTERN STANDARD TIME CHAMBERS STREET FERRY

Ferry Running Time, 9 Minutes WEEK DAYS

Table with columns for Leave New York for Jersey City and Leave Jersey City for New York, showing times for various days of the week.

a Will not run on Holidays. m Except Saturdays and Holidays. h Holidays only.

SUNDAYS

Table showing Sunday running times for the Chambers Street Ferry, with columns for AM, Noon, PM, and Mid.

TWENTY-THIRD STREET FERRY

Ferry Running Time, 20 Minutes WEEK DAYS

Table with columns for Leave New York for Jersey City and Leave Jersey City for New York, showing times for weekdays.

SUNDAYS

Table showing Sunday running times for the Twenty-Third Street Ferry, with columns for AM, Noon, PM, and Mid.

## SUGGESTIONS

• **FREE BAGGAGE SERVICE.** Let us check your baggage to destination and relieve you of the trouble and inconvenience of carrying it to and from the train—150 pounds free on each adult ticket.

If you desire delivery to your residence or hotel at destination, ask the checking agent for information regarding delivery service and rates.

• **INTERCHANGEABLE SCRIP COUPON TICKETS** issued in \$15.00 and \$30.00 denominations are accepted on trains or at ticket offices in payment of rail passage as well as sleeping and parlor car accommodations, and also as payment for meals in restaurant cars.

• **PREPAID ORDERS.** For the convenience of patrons who do not wish to send money by mail, Erie Railroad ticket agents are prepared to sell prepaid ticket orders for the delivery of transportation, rail and Pullman, from practically all points in the United States, Canada and Mexico. These orders may also include the furnishing of cash.

In emergencies arrangements may be made for the delivery of transportation by telegraph or telephone without charge except when commercial wires are used.

• **BAGGAGE INSURANCE** by the St. Paul Fire & Marine Insurance Co. may be purchased at principal Erie ticket offices. It insures your baggage and personal effects for your entire trip anywhere in the world. Minimum premium twenty-five cents. The ticket agent can give you full particulars.

• **ERIE PLAYING CARDS** are on sale at our ticket offices, excepting in Ohio. Bridge sets one dollar, single decks fifty cents.

• **SPECIAL TOURS AND CONVENTIONS.** Our services are at the disposal of clubs, lodges and other organizations in arranging for trips to conventions and gatherings of all sorts. Concerning fares, train schedules and travel plans, consult or write to any Erie Ticket Agent, or any of the Passenger Department representatives listed on pages 37 & 38 of this folder

## STOP-OVER PRIVILEGES

### Niagara Falls

Passengers holding tickets reading "via Erie Railroad" from or through Elmira to or through Youngstown or vice versa may exercise their privilege of going by way of Buffalo and stopping over for as long as ten days at Niagara Falls, but not beyond the final limit of their ticket. Upon request, the Erie Ticket Agent at Buffalo will issue without charge a round trip ticket between Buffalo and Niagara Falls. Frequent service via busses of International Ry. direct from Buffalo Terminal.

### Other Points

On local one-way tickets sold at regular fares, local round-trip tickets sold at double the one-way fares, All-Year, Summer and Winter Tourist Tickets, stop-overs will be allowed on going and return trips within final limit of tickets at any Erie Railroad Station en route upon notice to conductor and without deposit of ticket.

## GENERAL INFORMATION

**STANDARD OF TIME**—Erie Lines east of and including Ohio City, Ohio, are operated by Eastern Standard Time, Lines west of Ohio City, Ohio, by Central Standard Time. 12.01 Midnight to 12.00 Noon is indicated by light-faced type. 12.01 Noon to 12.00 Midnight is indicated by heavy-faced type.

**TRAINS WILL NOT BE HELD** for ferries from New York between hours of 4:00 P.M. and 5:30 P.M. Eastern Standard Time.

**HOLIDAYS**—The term "Holidays" (unless covered by special note under schedule) refers to the observance of New Year's Day, Lincoln's Birthday, Washington's Birthday, Memorial Day, Independence Day, Labor Day, Columbus Day, Armistice Day (Nov. 11), Election Day (November 5), Thanksgiving Day and Christmas Day.

**THIS COMPANY IS NOT RESPONSIBLE FOR ERRORS** in time tables, inconvenience or damage resulting from delayed trains or failure to make connections; schedules are subject to change without notice.

**FARES PAID ON TRAINS**—Conductors are required to charge ten (10) cents in excess of the one-way ticket fare for passengers traveling in coaches only in the territory east of Port Jervis, including side lines and branches. Buy tickets before boarding trains and avoid payment of this extra fare.

**CHILDREN** under five years of age are carried free when accompanied by parent or guardian; five years and under twelve, half fare, twelve years of age and over, full fare.

**ADJUSTMENT OF FARES**—Should any misunderstanding arise with conductors or agents, pay the fare required, take receipt and communicate with General Passenger Agent, Midland Bldg., Cleveland, Ohio.

**SLEEPING AND PARLOR CAR RESERVATIONS**—Space reserved by telegraph or telephone within city limit will be held until:

4:00 P.M. day prior to departure of trains leaving before noon next day.

9:00 A.M. day of departure for trains leaving between noon and 4:00 P.M.

1:00 P.M. day of departure for trains leaving after 4:00 P.M.

When application is by wire or letter from a point outside of city limit, space will be held until fifteen minutes of train time.

**BAGGAGE TO BE CHECKED** should be delivered at station at least thirty minutes before train time.

**BAGGAGE DELIVERY IN NEW YORK CITY**—All baggage checked to New York City will be sent to the West 23rd Street Station unless passenger specifies Chambers Street Station at time of checking.

Baggage delivery service in New York will be performed by the Railway Express Agency.

**HAND-BAGGAGE** in Pullman Cars is restricted to what can be conveniently placed in the berth, seat or other accommodations purchased by the passenger.

**CHICAGO PASSENGER AND BAGGAGE TRANSFER** is performed by the Parmelee Company. A uniformed agent meets all incoming trains of the Erie Railroad on arrival at Dearborn Station.

**ARTICLES LOST ON TRAINS** or left in waiting rooms or stations, owners should apply to Lost and Found Bureau, (Baggage Room) Jersey City Depot, or address General Passenger Agent, Midland Bldg., Cleveland, Ohio, giving full description of the property, stating date of loss and number of train.

**SAFETY FIRST HINTS**—Carefulness on your part helps eliminate accidents. Don't get on or off a train in motion; wait for a full stop. Keep hand baggage out of car aisles; this will remove a cause of inconvenience, possibly of harm, to others. Walk carefully when entering or leaving train; high-heeled shoes are sometimes a cause of tripping or stumbling on car steps. Don't stand or walk close to the railroad track; look both ways before starting across. Courtesy toward your fellow travelers increases the pleasure of your journey.

**DAYLIGHT SAVING TIME** is observed until Sept. 28 at all towns and cities east of and including Port Jervis, N. Y. and Hancock, N. Y., also Chicago, Crown Point, Griffiths, Huntington, Highlands, Hammond, Rochester, Buffalo, Niagara Falls, Hamburg, Gowanda, Bradford, Jamestown, Olean, Elmira, Hornell, Corning, Binghamton, Endicott, Waverly, etc. For complete list see Official Railway Guide.



# CONVENIENT RAILWAY EXPRESS HOME SERVICE

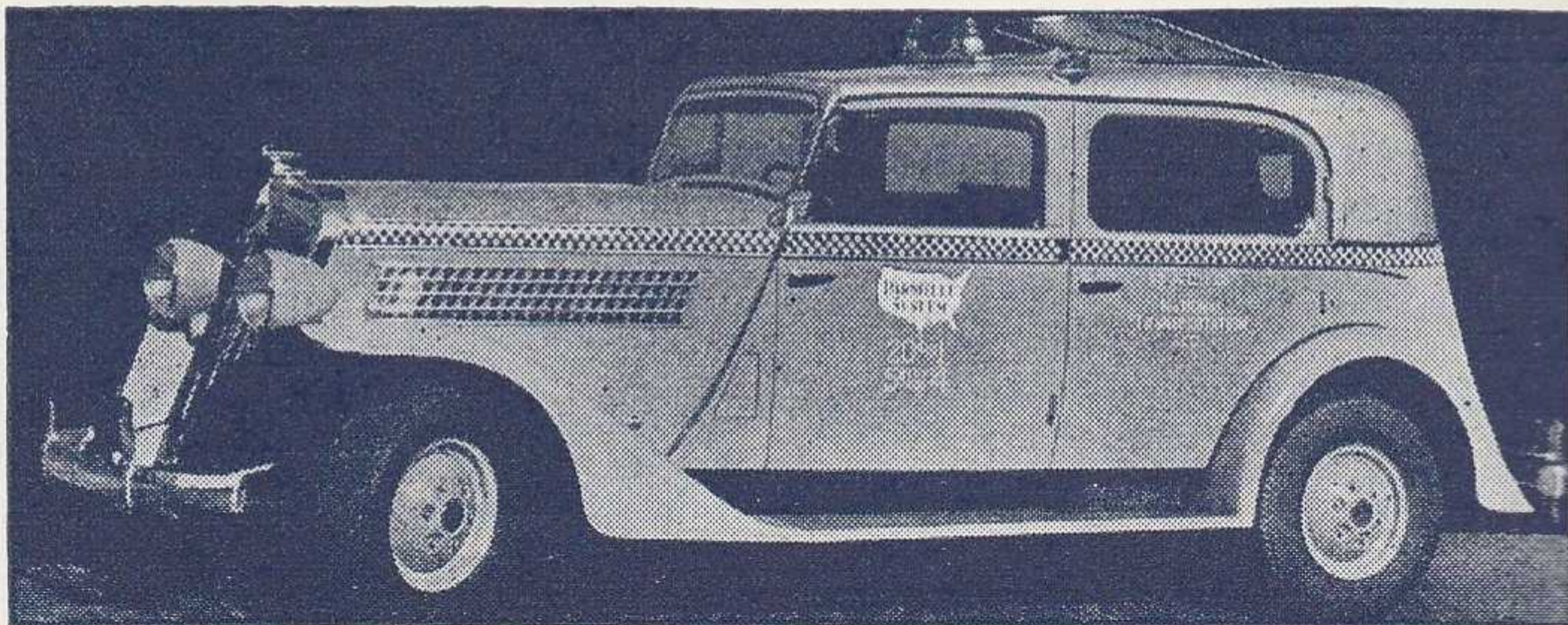


Perfect for sending gifts, pets, packages, boxes—most anything, anywhere—right from your door. Low rates *include* call and delivery service in all cities and principal towns, receipts and \$50 insurance. Careful handling at passenger train speed all the way. Just phone any Railway Express or Western Union office for service.

**RAILWAY EXPRESS**  
AGENCY  INC.  
NATION-WIDE SERVICE

## ERIE TRAIN-CAB SERVICE

Takes you from Erie Terminal directly to your door in New York or Brooklyn



ONE Person **90c** TWO Persons **\$1.25** THREE or more **\$1.50**

Thousands have used and praised Erie Train-Cab Service.

Strangers arriving at Erie Terminal, Jersey City, are taken all the way to their destination in New York or Brooklyn. They never get "lost" and are never overcharged. Women accompanied by children appreciate this service. Even seasoned travelers enjoy the comfort of settling down in their own taxicab and forgetting about bags and car changes.

The fares shown above apply from our terminal to any place on Manhattan 110th Street and South, also to any point in the Brooklyn business district.

Service beyond the prescribed zones is metered from the zone limits and charged for at regular rates.

Train-Cab service is available to all who travel from stations west of Middletown, N. Y.

You can buy the Train-Cab coupon with your rail ticket at the ticket office or from the conductor on any through train and you will find your taxicab awaiting the arrival of your train at Jersey City.

Ask the conductor or ticket agent for details.

# Good Neighbor



**RAILROADS** carry 63% of the nation's freight.

**RAILROADS** spend a billion dollars a year for materials and supplies.

**RAILROADS** pay a million dollars a day in taxes.

**RAILROADS** pay a million employees **TWO BILLION** dollars a year.

**ASSOCIATION OF AMERICAN RAILROADS**

# CONDENSED THROUGH FREIGHT SCHEDULES

FOR INFORMATION ONLY. For details, consult any freight traffic representative shown on opposite pages.

EASTBOUND — READ DOWN

WESTBOUND — READ UP

TRAIN 74 and Connections	Train NE 98 and Connections	TRAIN 98 and Connections	TRAIN 72 and Connections	TRAIN 78 and Connections	TRAIN 90 and Connections	TRAIN 86	Central Time	TRAIN 77 and Connections	TRAIN 81 and Connections	TRAIN 91 and Connections	Train Adv 87 and Connections	TRAIN 87 and Connections
Example Day 8:00AM Mon. 9:30AM Mon. 1:45PM Mon. 4:15PM Mon. 6:15PM Mon.	Example Day 5:30PM Mon. 7:00PM Mon. 12:20AM Tue. 3:35AM Tue.	Example Day 5:30PM Mon. 7:00PM Mon. 12:20AM Tue. 3:35AM Tue. 5:20AM Tue.	Example Day 9:45PM Mon. 11:15PM Mon. 5:00AM Tue. 7:45AM Tue. 9:30AM Tue.	Example Day	Example Day	Example Day	Lv. Chicago Lv. Hammond Lv. Huntington Lv. Lima Ar. Marion	Example Day 11:00PM Wed. 9:45PM Wed. 3:15PM Wed. 11:30AM Wed. 10:30AM Wed.	Example Day 1:45AM Thu. 12:20AM Thu. 6:45PM Wed. 5:30PM Wed. 1:55PM Wed.	Example Day 3:00AM Thu. 1:30AM Thu. 9:30PM Wed. 5:30PM Wed. 4:00PM Wed.	Example Day	Example Day
		6:50PM Mon. 1:30AM Tue. 2:30AM Tue. 3:15AM Tue.					Lv. Cincinnati Lv. Dayton Lv. Maitland (Springfield) Lv. Urbana			6:50AM Thu. 11:30PM Wed. 9:00PM Wed. 8:15PM Wed.		
8:45PM Mon. 12:01AM Tue. 12:50AM Tue.	7:50AM Tue.	8:30AM Tue. 11:50AM Tue. 1:10PM Tue.	12:15PM Tue. 3:45PM Tue. 5:00PM Tue.				Lv. Marion Lv. Akron Lv. Kent	7:45AM Wed. 2:45AM Wed. 1:35AM Wed.	1:25PM Wed.	3:30PM Wed. 11:40AM Wed. 10:35AM Wed.		
1:00PM Tue.			6:30AM Wed.				Ar. Cleveland			1:15AM Wed.		
7:00PM Mon.							Lv. Cleveland	6:30AM Wed.				
6:10AM Tue. 11:00PM Mon. 5:00PM Tue.		6:10AM Tue.	10:00PM Tue.				Ar. Youngstown Lv. Youngstown Ar. New Castle Lv. New Castle	12:01AM Wed. 2:00AM Wed. 8:00AM Tue.		5:00AM Wed. 1:00PM Wed.		
7:00AM Tue. 12:25AM Tue. 3:25AM Tue. 3:55AM Tue.		8:00AM Tue. 10:30AM Tue. 4:30PM Tue.	12:25AM Wed. 8:00PM Tue. 9:00PM Tue. 11:45PM Tue.				Ar. Sharon Lv. Sharon Ar. Meadville Lv. Meadville Ar. Jamestown	10:45PM Tue. 12:45AM Wed. 10:15PM Tue. 9:15PM Tue. 6:15PM Tue.		5:00PM Wed. 3:00PM Wed. 7:25AM Wed. 6:55AM Wed. 4:00AM Wed.		
		12:30AM Wed. 7:30PM Tue.	2:00AM Wed.	7:15AM Wed.	9:00AM Wed.	5:15PM Wed.	Ar. Buffalo Lv. Buffalo			10:00PM Tue. 9:30PM Tue.	6:00AM Wed.	4:00PM Wed.
		5:30AM Wed. 5:30PM Tue.					Ar. Rochester Lv. Rochester			5:30PM Mon. 5:30AM Wed.	9:00AM Wed.	
10:30AM Tue. 12:01PM Tue.		12:01AM Wed. 2:00AM Wed.	5:00AM Wed. 8:00AM Wed.	11:15AM Wed. 1:00PM Wed.	1:00PM Wed. 3:00PM Wed.	7:50PM Wed.	Ar. Hornell Lv. Hornell	2:00PM Tue.	9:45PM Tue.	11:45PM Tue. 6:15PM Tue.	3:45AM Wed.	12:15PM Wed. 11:30AM Wed.
			2:15AM Thu.				Ar. Philadelphia (Rdg)			8:30PM Mon.		
12:01AM Wed. 7:00PM Tue.	3:00AM Wed.	3:30AM Wed. 5:45AM Wed.	9:30AM Wed. 12:01PM Wed.	12:01AM Thu. 7:00PM Wed.	12:01AM Thu. 7:00PM Wed.	9:30PM Wed. 11:01PM Thu.	Ar. Elmira Ar. Binghamton	9:30AM Tue. 7:15AM Tue.		4:30PM Tue. 2:50PM Tue.	1:30AM Wed. 12:10AM Wed.	9:30AM Wed. 7:15AM Wed.
8:00PM Wed. 9:30PM Wed.	4:00PM Wed. 11:55PM Wed.	3:00AM Thu. 9:00AM Thu.	4:50AM Thu.	8:00PM Thu. 9:30PM Thu.	8:00PM Thu. 9:30PM Thu.		Ar. Albany (D&H) Ar. Boston (B&M) Ar. Portland (D&H-B&M)	10:00AM Mon. 4:30AM Mon. 11:00PM Sun.		10:30PM Mon. 5:30PM Mon.		10:00AM Tue. 4:30AM Tue. 11:00PM Mon.
			8:00AM Thu.				Ar. Scranton Lv. Scranton			11:00PM Mon.		8:00AM Wed.
3:30AM Wed. 8:00PM Wed.	9:00AM Wed. 6:00PM Wed. 11:50PM Wed. 9:00AM Thu.	1:00PM Wed. 9:25PM Wed. 3:00AM Thu.		6:30AM Thu. 11:50PM Thu. 9:00AM Fri.	6:30AM Thu. 11:50PM Thu. 9:00AM Fri.		Ar. Maybrook Ar. New Haven (NH) Ar. Boston (NH) Ar. Portland (NH-B&M)			7:45AM Tue. 12:25AM Tue. 5:45PM Mon. 2:00AM Mon.		
4:30AM Wed. 6:30AM Wed. 1:30AM Wed.		12:30AM Thu. 6:30AM Thu. 3:45PM Wed.	12:30AM Thu. 6:30AM Thu. 12:01AM Thu.	4:30AM Thu. 6:30AM Thu. 3:30AM Thu.	6:00AM Thu. 8:00AM Thu. 4:30AM Thu.	6:30AM Thu. 5:20AM Thu.	Ar. Paterson Ar. Newark Ar. Croxton Ar. Jersey City	5:30PM Mon. 9:00PM Mon. 12:20AM Tue.		5:30PM Mon. 9:00PM Mon. 3:30AM Tue.	5:30PM Tue. 5:45PM Tue.	5:30PM Tue. 9:00PM Tue. 10:30PM Tue.

NOTE—Freight to and from New York City and Brooklyn stations and piers is handled expeditiously on carfloats or lighters via Croxton or Jersey City. Prompt delivery or forwarding is assured.

## “SHIP AND TRAVEL ERIE”

# ERIE RAILROAD COMPANY

(ROBERT E. WOODRUFF AND JOHN A. HADDEN, TRUSTEES)

## CHICAGO AND ERIE RAILROAD CO.

General Offices { Midland Building, Cleveland. Telephone, Cherry 8400.  
Hudson Terminal, 50 Church Street, Corner Fulton, New York. Telephone, Cortlandt 7-9200.  
Utilities Building, 327 South La Salle Street, Chicago. Telephone, Harrison 4160.

## TRAFFIC AND DEVELOPMENT DEPARTMENTS

### TRAFFIC

CARL HOWE, Vice-President, Cleveland.

G. C. MANNING, Assistant Vice-President,  
L. B. BURFORD, Assistant Vice-President,

New York.  
Cleveland.

W. V. KENNEDY, Assistant Vice-President,  
G. A. LAMB, Assistant to Vice-President,

Chicago.  
Cleveland.

### PASSENGER

C. C. HOWARD, Passenger Traffic Manager,  
R. B. ROGERS, General Passenger Agent,  
H. T. HARLOW, General Passenger Agent,  
T. R. PATTON, Assistant General Passenger Agent

Cleveland.  
" "  
Chicago.  
Youngstown.

F. A. WALDRON, Assistant General Passenger Agent,  
ALFRED FYNN, Assistant General Passenger Agent,  
E. J. HAWERKOST, General Western Passenger Agent,  
C. L. CHAPMAN, Gen. Baggage, Mail and Express Agent,

New York.  
Chicago.  
" "  
New York.

### FREIGHT—Rates

L. B. BURFORD, Assistant Vice-President, Cleveland.

O. M. MEYNE, Assistant Freight Traffic Manager,  
E. N. HAMBLY, General Freight Agent,  
F. M. KLITZ, Assistant General Freight Agent,

Cleveland.  
" "  
" "

C. E. COURTER, Assistant General Freight Agent,  
ALFRED BLAUDEL, Assistant Freight Traffic Manager,  
E. C. HALLBERG, General Freight Agent,

Cleveland.  
Chicago.  
" "

### FREIGHT—Solicitation

G. C. MANNING, Assistant Vice-President,  
T. E. McANDREWS, Freight Traffic Manager,  
E. J. DEAN, Freight Traffic Manager,  
G. R. WHEELER, General Freight Agent,  
J. T. McENTEE, Assistant General Freight Agent,  
E. W. VAIL, General Eastern Freight Agent,  
F. D. HARTNETT, Milk Freight Agent,  
T. W. KANE, Grain Agent,

New York.  
New York.  
Cleveland.  
New York.  
Buffalo.  
New York.  
" "  
" "

W. V. KENNEDY, Assistant Vice-President,  
H. W. VON WILLER, Freight Traffic Manager,  
J. G. HILL, General Freight Agent,  
G. W. MADSEN, General New England Agent,  
D. R. THOMPSON, Assistant General Freight Agent,  
H. C. SCHMIDT, Assistant General Freight Agent,  
W. H. KOCH, Assistant General Freight Agent,  
H. B. ROGERS, General Live Stock Agent,

Chicago.  
" "  
" "  
Boston.  
Pittsburgh.  
Youngstown.  
Detroit.  
East Buffalo, N. Y.

### COAL AND COKE

W. H. STADELMAN, Coal Traffic Manager,  
J. A. FERGUSON, Coal Freight Agent,  
F. D. AUSTIN, General Coal and Coke Agent,  
E. C. JULIUS, Coal and Coke Agent,  
W. N. STENFELT, Coal Agent,  
M. S. SWEENEY, Coal Freight Agent,  
D. D. JAMIESON, Coal Freight Agent,  
A. E. BARKALOW, Assistant Coal Freight Agent,  
J. A. MUCHA, Assistant Coal Freight Agent,

Cleveland.  
" "  
Chicago.  
" "  
" "  
Pittsburgh.  
New York.  
" "  
Buffalo.

### FOREIGN FREIGHT TRAFFIC

T. E. McANDREWS, Foreign Freight Traffic Manager,  
W. C. OTTEN, Foreign Freight Agent,  
A. E. PETERSON, Foreign Freight Agent,  
W. S. PENCHARD, Export and Import Agent,  
EUROPEAN GENERAL AGENTS—SUTHERLAND INTERNATIONAL  
DESPATCH, LIMITED,

New York.  
" "  
Chicago.  
New York.  
London, Eng.

### PERISHABLE AND DAIRY TRAFFIC

R. E. O'GRADY, Manager,  
H. W. BOUMANN, Western Dairy Agent,  
R. S. WILEY, Eastern Dairy Agent,

Pier 20, N. R., New York.  
Chicago.  
Pier 20, N. R., New York.

## INDUSTRIAL DEVELOPMENT

CARL HOWE, Vice-President, Cleveland.

GEO. F. WESTON, Industrial Commissioner,

Cleveland.

H. J. HART, Industrial Agent,

New York.

## TRAFFIC DEPARTMENT REPRESENTATIVES

Akron, O.—80 East Exchange St.  
(Telephone Hemlock 8194-8195)  
J. P. CLARK, Division Passenger Agt.  
C. E. KING, General Agent.

Albany, N. Y.—Room 2, D. & H. Bldg.  
(Telephone 4-6051)  
L. E. NEWMAN, General Agent.

Antwerp, Belgium—30, Vielle Bourse.  
CHAS. CAYMAN, Agent.

Atlanta, Ga.—1515-16 Healey Bldg.  
(Telephone Walnut 2135)  
C. G. ANDREWS, General Agent.

Baltimore, Md.—1301-3 Munsey Bldg.  
(Telephone Plaza 8691)  
W. J. MURRAY, General Agent.

Birmingham, Ala.—1007 Watts Bldg.  
(Telephone 3-1327)  
WM. L. THORNTON, General Agent.

Birmingham, England—13 Corporation St.,  
MAURICE G. COOKE, General Agent.

Boston, Mass.—150 Causeway St.  
(Telephone Capitol 2510-11-12)  
G. W. MADSEN, G. N. E. Agt.

Bradford, Pa.—Erte Station.  
(Telephone 3413)  
J. C. MOFFATT, General Agent.

Buffalo, N. Y.—6 North Division St.  
(Telephone Washington 4300)  
C. M. LEWIS, D. P. A.  
238 Main Street.  
(Telephone Wash. 1865)  
J. T. McENTEE, Asst. General Freight Agt.

Chicago, Ill.—327 South La Salle St.  
(Telephone Harrison 4160)  
B. Y. VAUGHN, Trav. Pass. Agent  
C. D. TURNER, General Agent.

Cincinnati, O.—503 Gwynne Bldg.  
(Telephone Main 3420-3421)  
R. L. MURPHY, General Agent.

Cleveland, O.—Midland Bldg.  
(Telephone Cherry 8400)  
J. M. SKAEHILL, Division Freight Agt.  
913 Huron Road  
(Telephone Cherry 8400)  
G. SAUNDERS, Div. Passenger Agt.

Columbus, O.—Rooms 309-310 Atlas Bldg., 8 East Long Street.  
(Telephone Adams 7331)  
C. R. MARTIN, General Agent.

Dallas, Tex.—2113 Tower Petroleum Bldg.  
1905 Elm St.  
(Telephone 2-7352)  
L. J. MARION, General Agent.

Dayton, O.—1004-8 Miami Savings Bldg.  
(Telephone Adams 8481)  
W. P. KROMPHARDT, Div. Frt. Agt.

Des Moines, Ia.—Hubbell Bldg.,  
904 Walnut Street,  
(Telephone 4-0018)  
L. T. COULSTON, General Agent.

Detroit, Mich.—Rooms 2-124 and 2-125 General Motors Bldg.  
(Telephone Madison 2360-2361)  
W. H. KOCH, Assistant General Frt. Agt.

East Buffalo, N. Y.—Live Stock Exch. Bldg.  
(Telephone Washington 4300)  
H. B. ROGERS, General Live Stock Agt.

Elmira, N. Y.—Erte Station.  
(Telephone 2-1621)  
J. W. O'HARA, Division Passenger Agt.  
(Telephone 2-0377)  
C. F. WHADCOCK, Division Freight Agent.

Glasgow, Scotland—82 Mitchell St.  
W. S. THOMSON, General Agent.

Huntington, Ind.—Erte Station.  
(Telephone 743)  
F. C. MCCARTHY, Division Freight Agt.

Indianapolis, Ind.—143 No. Meridian St.  
(Telephone Lincoln 2088)  
T. J. WILLIAMSON, General Agent.

Jamestown, N. Y.—Erte Station  
F. L. COLLINS, Div. Frt. Agt.  
(Telephone 7921-7922)

Jersey City, N. J.—Erte Station  
(Telephone Delaware 8-6400)  
P. F. ARROYO, G. A. P. D.

Kansas City, Mo.—Rooms 326-7 Railway Exchange Bldg., 7th and Walnut Streets.  
(Telephone Victor 6328)  
N. C. FRICK, General Agent.

Liverpool, Eng.—17 Brunswick St.  
A. G. TAYLOR, General Agent.

London, E. C. 3. Eng.—4 Billiter St.  
PETER BUSWELL, General Agent.  
D. S. DEANS, Genl. Continental Agt.

Los Angeles, Cal.—108 West 6th Street.  
(Telephone Vandike 6542)  
J. A. RUSSELL, General Agent.

Marion, O.—Terminal Building  
(Telephone 2657)  
A. R. TENNIS, Division Freight Agent.

Memphis, Tenn.—1628-9 Exchange Bldg., Madison & Second Sts.  
(Telephone 8-8781)  
R. L. MILLER, General Agent.

Milwaukee, Wis.—818-9 Majestic Bldg.,  
231 West Wisconsin Ave.  
(Telephone Marquette 5555-5556)  
H. A. WILSON, General Agent.

Minneapolis, Minn.—125 Third Street, So.  
(Telephone Main 3604)  
C. V. HARROW, General Agent.

Newark, N. J.—1801-2 Military Park Bldg., 60 Park Place.  
(Telephone Market 2-0525-26-27)  
A. R. WALTON, General Agent.

New Haven, Conn.—600 Powell Bldg.  
(Telephone 5-7937)  
G. E. ROBB, General Agent.

New Orleans, La.—Room 1417 Whitney Bldg.  
(Telephone Raymond 9786)  
E. W. BURNETT, General Agent.

New York, N. Y.—630-5th Ave. Room 219, Rockefeller Center.  
(Telephone Circle 5-7222)  
F. J. WILD, G. A. P. D.

A. G. OLDENQUIST, City Pass. Agt.  
50 Church Street.  
(Telephone Cortlandt 7-9200)  
E. W. VAIL, General Eastern Frt. Agent.  
J. G. VREELAND, Division Freight Agent.

Omaha, Neb.—1319 Farnam St.  
(Telephone Jackson 4866)  
C. L. COX, General Agent.

Peoria, Ill.—920 Jefferson Building, Cor. South Jefferson & Fulton Streets.  
(Telephone 8007)  
E. T. OLANDER, General Agent.

Philadelphia, Pa.—1009-10 Finance Bldg.  
(Telephone Rittenhouse 8975-8976)  
B. F. CONWAY, General Agent.

Pittsburgh, Pa.—Gulf Building.  
(Telephone Grant 4831-2-3)  
D. R. THOMPSON, A. G. F. A.

Portland, Ore.—Room 421 Pacific Bldg.,  
520 S. W. Yamhill St.  
(Telephone Beacon 3706)  
H. L. SKEEN, General Agent.

Rochester, N. Y.—Erte Station.  
(Telephone Main 2826)  
B. C. WEDD, Division Freight Agent.

Rotterdam, Holland—Boompjes 82.  
J. T. VERVLOET, Agent.

San Francisco, Cal.—681 Market St.  
(Telephone Sutter 3875)  
J. A. LLOYD, General Agent.

St. Louis, Mo.—Room 906, 1218 Olive St.  
(Telephone Chestnut 7723-7724)  
D. C. KELSEY, General Agent.

St. Paul, Minn.—336 Robert St.  
(Telephone Cedar 5912)  
C. R. PETRY, General Agent

Scranton, Pa.—Mill & Smith Sts. (Dunmore, Pa.)  
(Telephone—Scranton 8191)  
G. W. SHUMAN, Division Freight Agent.

Seattle, Wash.—1116-7 White Bldg.,  
1338 Fourth Ave.  
(Telephone Elliot 4834)  
R. J. DUNDON, General Agent.

Springfield, O.—516 First National Bank Building.  
(Telephone 2-5351)  
E. W. KEILY, General Agent.

Toledo, O.—342 South Erte Street.  
(Telephone Main 3816)  
H. J. SPANGENBERG, General Agent.

Toronto, Ont.—69 Yonge Street.  
(Telephone Elgin 4077)  
E. P. MORRILL, General Agent.

Tulsa, Okla.—Room 1511 Hunt Bldg.  
(Telephone 3-8613)  
H. A. BOCKMAN, Commercial Agent.

Youngstown, O.—Terminal Building.  
(Telephone 41101)  
H. C. SCHMIDT, Asst. Genl. Frt. Agt.  
F. W. FISCHER, Div. Frt. Agt.