

Effective May 20, 1943

Effective May 20, 1943



**ERIE RAILROAD  
TIME TABLES**

**ERIE RAILROAD  
TIME TABLES**

*The Scenic Route*

BETWEEN

NEW YORK • BUFFALO  
CLEVELAND • CHICAGO

*The Scenic Route*

BETWEEN

NEW YORK • BUFFALO  
CLEVELAND • CHICAGO



**S**OMEDAY the last train to war will roll on the tracks of America's railroads!

It's possible you may see this train as it makes its historic run — and not recognize it. For, in war or peace, all trains *look* very much alike and operate very much alike.

We like to think of them not so much as *war* trains or *peace* trains, but as swift, sure means of transportation serving the people *all of the time*.

And after this war, the vast resources of America's nationwide railroad network will be recon-

verted to greater peacetime services to the traveling public.

All the experience gained under fire, all the improved operating methods developed during the war, are being combined now to give America, which always has enjoyed the finest rail transportation in the world, even better service.

You can be proud of the record of American railroads in these wartimes — proud of your part in this achievement. You will be thrilled by the even finer transportation of tomorrow which Erie and other railroads will offer — after the last train to war.

## **ERIE RAILROAD**

*The Railroad of Helpful Service*

★ ONE OF AMERICA'S RAILROADS—ALL MOBILIZED FOR WAR! ★

*Buy War Bonds and Stamps*

TABLE OF CONTENTS

Reference Marks and Notes... Ticket Offices and Passenger Stations in Principal Cities... Traffic and Development Department Representatives... Train Service... Condensed Schedule of Through Trains...

STATIONS ON ERIE RAILROAD OR CONNECTING LINES At Which Trains Are Scheduled To Stop

Table listing stations and their corresponding table numbers. Columns include station names and table numbers for various routes.

ADDITIONAL STATIONS ON ERIE RAILROAD

At Which Trains Do NOT Stop Regularly

The distance shown is from New York as indicated in Tables 2, 3 and 4

Table with 9 columns: STATION, Miles from New York, STATION, Miles from New York, STATION, Miles from New York, STATION, Miles from New York, STATION, Miles from New York. Lists stations not served regularly with distances from New York.

## REFERENCE MARKS AND NOTES

**IMPORTANT**—When trains are indicated as stopping conditionally, Conductors should be notified of intention to leave train and Station Agent notified of intention to board train. Conditional stops are made only to receive or discharge revenue passengers.

- E.S.T.—Eastern Standard Time. C.S.T.—Central Standard Time.
- † Runs daily except Sunday. † Stops to discharge passengers.
- ‡ Runs daily except Sundays and Holidays. ‡ Stops on Saturday only.
- § Stops on Holidays only. § \* Runs Daily.
- ¶ Stops on signal to receive and discharge revenue passengers.
- k Runs Saturdays only. M. C. Motor Car Service. N. B. No Baggage carried.
- # Sundays leaves Binghamton (2.50 P. M.), arrives Oneonta (4.35 P. M.), Albany (6:50 P. M.).
- H Runs Sundays and Holidays only.
- L Runs Saturdays, Sundays, Holidays and day preceding a Holiday only.
- Note ⊕—Times Square Motor Coach Terminal, 260 West 42nd St. between 7th and 8th Aves., New York City. Taxicab entrance on 41st St. Connection to and from Rutherford. Slight additional charge for Motor Coach service. Consult Ticket Agents.
- ab Train 28 stops Otisville (4.58 P. M.) Sundays only.
- ac Stops Dalton (5.37 A. M.) to discharge passengers from Hornell and east and on signal to receive passengers.
- ad Via Buffalo & Erie Coach Corp. bus between Salamanca and Bradford.
- ae Stops New Hampton on Wednesdays to discharge passengers.
- af Train 7 stops Middletown (1.54 A. M.) Sunday and Monday mornings only to discharge passengers.
- ag Stops Ridgewood (7.56 A. M.) Holidays only.
- ah Stops on signal Andover (9.46 A. M.); Belmont (10.08 A. M.) to discharge passengers from New York.
- ak Train 71 arrives Middletown (8.36 P. M.) on Saturdays and Sundays.
- al Train 7 stops Ravenna (4.15 P. M.) Sundays only.
- am Stops Saturdays only to receive passengers.
- ao Stops at Mill Rift (4.18 P. M.) to receive passengers for Paterson and east.
- ap Stops at New Hampton on Wednesdays to discharge passengers from New York.
- at Saturdays and Sundays only, June 26 to Sept. 4, incl. (except July 4), also Mondays, July 5 and Sept. 6, will stop to discharge passengers from Susquehanna and west. Regular stop will be made on other days.
- av Train 9 stops Chester (12.26 P. M.) on Fridays and Saturdays only.
- aw Trains 6 and 18 stop at Middletown (7.24 A. M.) and Goshen (7.35 A. M.) to discharge passengers from Hornell and west.
- ax Stops Englewood Train 1 (8.30 A. M.); Train 15 (5.15 P. M.); Train 7 (12.14 A. M.) to discharge passengers from east of Hammond.
- bb Stops at Paterson (3.44 P. M.) to receive passengers only.
- bc Stops on signal Paterson (7.30 P. M.); Ridgewood (7.41 P. M.) to receive passengers.
- bd Stops on signal Passaic (7.22 P. M.); Suffern (7.56 P. M.) to receive passengers for Hornell and west.
- be Stops Lordville, except Saturdays and Sundays, July 6 to Sept. 3, incl., to receive passengers for New York.
- bf Stops Cuba (4.49 A. M.) to discharge passengers from Elmira and east and to receive for Jamestown and west.
- bg Stops on signal, Friendship (10.20 A. M.); Cuba (10.35 A. M.) to discharge passengers from New York.
- bh Stops Cuba (6.30 P. M.) to discharge passengers from Elmira and east and to receive for Jamestown and west.
- bi During period June 21 to Sept. 3, incl., stop will be made Monday to Friday only to discharge passengers from New York.
- bm Stops on signal Niles (10.21 A. M.) to discharge passengers from Pittsburgh and from Jamestown and east and to receive passengers for Cleveland.
- bn During period May 28 to Sept. 4, incl., stop will be made to discharge passengers from Paterson and east.
- bp Stops Niles (11.47 P. M.) to discharge passengers from Meadville and east and on signal to receive passengers for Akron and west.
- bt No Agent on duty. No baggage handled on Trains 5 and 6 to or from Castile.
- bu Train 6 stops at East 55th St. (5.12 P. M.) Sundays only to receive passengers for Youngstown.
- bv Stops on Fridays, Saturdays and Sundays only to discharge passengers from New York.
- bx Train 16 stops at Warren (6.19 P. M.) to discharge passengers from Akron and west.
- cd For additional service between Cleveland and Youngstown see Table 5.
- cg Stops Ridgewood (11.27 P. M.) to discharge passengers from Binghamton and west.
- cn Stops on signal Union City (9.07 P. M.); Cambridge Springs (9.26 P. M.) to discharge passengers from Jamestown and east and to receive for Youngstown and west.
- cp Train 8 stops on signal (10.09 P. M.), Train 16 (9.18 A. M.) to receive passengers for east of Hammond.
- cu Bus service provided between Cohecton and Lake Huntington.
- cw Stops Endicott (1.01 A. M.) to discharge passengers from Port Jervis and east.
- cx Stops to discharge passengers from New York.
- cy Stops to discharge passengers from Cleveland and beyond.
- db Train 8 stops at Ravenna (7.44 A. M.) to discharge passengers from Marion and west, and on signal to receive for Youngstown and east.
- de Stops Mantua (1.53 P. M.) to discharge passengers from Cleveland and on signal to receive passengers for Warren and east.
- de Stops Barberton (5.03 P. M.) to discharge passengers from Youngstown and east and on signal to receive passengers for Mansfield and west.
- df Stops on signal Mantua (9.29 A. M.) to receive passengers for Cleveland.
- dg Stops at Ravenna (10.46 A. M.) to discharge passengers from Meadville and east, and on signal to receive passengers for Gallon and west.
- dh Stops at (5.50 P. M.) to discharge passengers from Gallon and west, and on signal to receive passengers for Meadville and east.
- dp Stops Niles (2.14 A. M.) to discharge passengers from east of Youngstown and signal to receive passengers for Cleveland.
- dt No baggage carried on this train east of Hornell. Baggage will be handled on following train.
- dv Stops on signal Union City (9.01 P. M.) to discharge passengers from Youngstown and west and to receive passengers for New York.
- dw Stops Cuba (9.45 A. M.) to discharge passengers from Jamestown and west and to receive for Elmira and east.
- dy Stops on signal Cambridge Springs (7.05 A. M.), Union City (7.21 A. M.), to discharge passengers from Chicago and to receive for Binghamton and east.
- dz Stops Ridgewood (8.27 A. M.) to discharge passengers from Port Jervis and west. Has connection for Paterson, Passaic, etc., leaving Ridgewood at (8.40 A. M.) daily.
- eb Stops to receive passengers for New York.
- ec Bus service between New Castle and New Castle (Washington St.).
- ed Bus service between Wampum and Ellwood City.
- ef Stops only to receive motor coach passengers from New York.
- eg Stops only to discharge motor coach passengers for New York.
- eh Stops on signal Mantua (6.51 P. M.) to receive passengers for Pittsburgh.
- ek Train 2 stops Suffern (6.45 P. M.), Passaic (7.14 P. M.) to discharge passengers from Binghamton and west.
- el Stops Sundays only to discharge passengers.
- en Stops on signal Paterson (9.19 A. M.), Ridgewood (9.28 A. M.) to receive passengers.
- ep Train 1 stops on signal Passaic (9.12 A. M.), Suffern (9.43 A. M.) to receive passengers for Binghamton and west.
- er Stops Niles (5.53 A. M.) to discharge passengers from Cleveland and west and on signal to receive for Pittsburgh.
- es Stops on signal Niles (6.18 P. M.) to receive passengers for Jamestown and east, and to discharge passengers from Cleveland.
- et Bus operates between Narrowsburg and Honesdale, and the Erie Railroad acts as agent only and is not responsible beyond its own line, except as such responsibility may be imposed by law with respect to baggage.
- ex Stops Endicott (3.10 A. M.) to discharge passengers from Buffalo, Jamestown and west.
- ey Stops to let off passengers from Port Jervis and east.
- fa Stops at Narrowsburg (10.14 P. M.) to discharge passengers from Ridgewood and east.
- hf Stops (11.14 P. M.) to discharge passengers from Pittsburgh.
- ht Trains 5-557 and 560-6 carry through sleeping cars between Bradford and New York.
- hu Stops to discharge passengers.
- hv Stops on signal East 93rd Street (6.23 P. M.) to receive passengers.
- hw Train 7 will stop at Saegertown (1.39 P. M.) to discharge passengers from Binghamton and east and to receive passengers for Marion and west.
- hx Train 8 will stop at Saegertown (10.37 A. M.) to discharge passengers from Marion and west and to receive passengers for Binghamton and east.
- na Train 6 stops on signal at East 93rd St. (5.17 P. M.) to receive passengers for Sharon and east.
- ne Train 626 stops Saturdays only at Solon (1.39 P. M.) and Aurora (1.47 P. M.) to discharge passengers from Cleveland.
- nh Stops on signal at Garrettsville-Hiram (10.49 A. M.) to discharge passengers from Hornell and east.
- nu Stops to receive passengers.

## ERIE TICKET OFFICES AND PASSENGER STATIONS IN PRINCIPAL CITIES

- Akron, O.**—Union Station.  
(Telephone Jefferson 9141)  
B. L. BENDER, Ticket Agent.
- Binghamton, N. Y.**—Erie Station.  
(Telephone 4-3251)  
A. F. WAINSOTT, Ticket Agent.
- Bradford, Pa.**—Erie Station.  
(Telephone 3413)  
A. J. SULLIVAN, Ticket Agent.
- Buffalo, N. Y.**—Station Ticket Office  
(Lehigh Valley Terminal)  
Main and Scott Streets  
(Telephone Washington 4300)  
A. L. SEITZ, Ticket Agent.
- Chicago, Ill.**—City Ticket Office, 163-  
165 West Jackson Blvd.  
(Telephone Harrison 4160)  
C. F. KUNDEL, Ticket Agent.
- Hotel Ticket Offices**—  
Drake, Morrison, Sherman, Palmer  
House, Merchandise Mart, The  
Pullman Bldg.  
(Telephone Harrison 2203)  
GEORGE M. NEWHART, Ticket Agent.
- Dearborn Station.**  
(Telephone Harrison 9830)  
W. E. MISCHNICK, Ticket Agent.
- 63rd St. Station.**  
(Telephone Wentworth 3503)  
J. E. KING, Ticket Agent.
- Cleveland, O.**—Erie Station.  
(Telephone Cherry 8400)  
G. SAUNDERS, Ticket Agent.
- Corning, N. Y.**—Erie Station.  
(Telephone 50)  
A. T. JOHNSON, Ticket Agent.
- Elmira, N. Y.**—Erie Station.  
(Telephone 2-0380)  
J. V. CLEARY, Ticket Agent.
- Hornell, N. Y.**—Erie Station.  
(Telephone 680)  
M. W. DELANY, Ticket Agent.
- Huntington, Ind.**—Erie Station.  
(Telephone 139)  
M. V. WELLS, Ticket Agent.
- Jamestown, N. Y.**—Erie Station.  
(Telephone 6076)  
FRANK PRIEST, Ticket Agent.
- Jersey City, N. J.**—Erie Station.  
(Telephone Journal Square 2-6400)  
G. B. IRVING, Ticket Agent.
- Mansfield, O.**—Erie Station.  
(Telephone 1423-0)  
J. W. GILKISON, Ticket Agent.
- Marion, O.**—Erie Station.  
(Telephone 2399)  
R. H. STIEF, Ticket Agent.
- Meadville, Pa.**—Erie Station.  
(Telephone 1212)  
O. E. BLAIR, Ticket Agent.
- Middletown, N. Y.**—Erie Station.  
(Telephone 3303)  
C. R. DINEEN, Ticket Agent.
- Newark, N. J.**—Erie Station.  
(Telephone Humboldt 2-0600)  
G. J. McMICHAEL, Ticket Agent.
- New York, N. Y.**—City Ticket Office,  
Information Bureau,  
Train Service and Fares.  
(Telephone Barclay 7-6500)  
City Ticket Office, 11 Rockefeller Plaza,  
Rockefeller Center.  
(Telephone Circle 5-7222)  
G. H. DOWN, Ticket Agent.
- Chambers Street Station.**  
(Telephone Cortlandt 7-9200)  
O. R. KRECH, Ticket Agent.
- City Ticket Office, 17 John Street.**  
(Telephone Cortlandt 7-6430 and  
7-6431)  
W. G. TEDFORD, Ticket Agent.
- Times Square Motor Coach Terminal,**  
260 West 42nd St.  
(Telephone Longacre 5-2440)
- Passaic, N. J.**—Erie Station.  
(Telephone 2-1613)  
M. J. LYNCH, Ticket Agent.
- Paterson, N. J.**—Erie Station.  
(Telephone Sherwood 2-3337)  
J. H. GRAF, Ticket Agent.
- Port Jervis, N. Y.**—Erie Station.  
(Telephone 300)  
R. FARBER, Ticket Agent.
- Sharon, Pa.**—Erie Station.  
(Telephone 6234)  
G. E. FRICKER, Ticket Agent.
- Warren, O.**—Erie Station.  
(Telephone 4721-4722)  
H. P. MORGAN, Ticket Agent.
- Youngstown, O.**—Erie Station.  
(Telephone 41101)  
R. S. GETTIG, Ticket Agent.

RAILROAD AND PULLMAN FARES For Information Only. Federal Tax Not Included. Subject to Change Without Notice

Table with columns for 'Between' and 'And' cities, and sub-columns for 'NEW YORK', 'BINGHAMTON', and 'BUFFALO'. It lists fares for 'RAILROAD TICKETS VALID IN' (Coaches, Pullmans) and 'PULLMAN RATES' (Lower Berth, Seat Fare) for various routes.

Table with columns for 'Between' and 'And' cities, and sub-columns for 'JAMESTOWN', 'CLEVELAND', and 'CHICAGO'. It lists fares for 'RAILROAD TICKETS VALID IN' (Coaches, Pullmans) and 'PULLMAN RATES' (Lower Berth, Seat Fare) for various routes.

MINIMUM NUMBER OF RAILROAD TICKETS REQUIRED FOR EXCLUSIVE OCCUPANCY OF SPACE IN SLEEPING OR PARLOR CARS. Roomette, Double Bedroom, Compartment, Berth Service, Compartment, Seat Service, Drawing Room, Berth Service, Drawing Room, Seat Service, or Drawing Room in Parlor Car.

RATES FOR UPPER BERTH, DRAWING ROOM, COMPARTMENT, DOUBLE BEDROOM OR ROOMETTE IN SLEEPING CARS

Table with columns for 'Where Lower Berth Rate Is', 'Upper Berth Rate Will Be', 'Drawing Room Rate', 'Compartment Rate', 'Double Bedroom Rate', and 'Roomette Rate'. It provides rates for one or more persons.

Note:—Section for single occupancy overnight may be purchased, if available, from conductor. \*Limit three months, except as otherwise indicated. \*Thirty-day limit. †One-year limit.

**TABLE 1** CONDENSED TABLE OF THROUGH TRAINS NEW YORK AND BUFFALO, CLEVELAND AND CHICAGO  
(FOR LOCAL TRAINS AND INTERMEDIATE TIME OF THROUGH TRAINS SEE LOCAL TABLES)

Times Square Motor Coach Terminal located at 260 West 42nd St., between 7th and 8th Aves., New York City. Taxicab entrance on 41st St.

**Air-Conditioned Trains**—Air-conditioned equipment has been assigned to regular sections of trains as shown herein. Every effort will be made to provide it as specified, but the right is reserved to employ non-air-conditioned cars as necessitated by volume of traffic or emergencies.

## WESTBOUND

THE ERIE LIMITED		TRAIN NO. 1—DAILY	
New York—Buffalo—Jamestown—Chicago		EQUIPMENT	
Lv New York (Times Sq. Motor Coach Term.) (Note ⊕)...	8.30AM EST	<b>Air-Conditioned Sleeping Cars:</b> New York to Chicago—10 Section-2 Double Bedroom-1 Drawing Room. Salamanca to Chicago—6 Roomette-6 Section-4 Double Bedroom.  <b>Air-Conditioned Dining Car:</b> New York to Youngstown. Marion to Chicago.  <b>Air-Conditioned Individual Reclining Seat Coaches:</b> New York to Chicago. (Ladies' Lounge.)  <b>Air-Conditioned Coach—Diner:</b> New York to Buffalo.	
Lv New York, Chambers St. F'ry	8.30AM "		
" Jersey City	8.50 " "		
" Paterson	9.19 " "		
" Ridgewood	9.28 " "		
" Binghamton	2.25PM "		
" Elmira	3.46 " "		
Ar Buffalo (Lehigh Valley Term.)	7.40 " "		
Lv Olean	6.52 " "		
" Bradford	ad 4.30 " "		
" Buffalo (Lehigh Valley Term.)	5.30 " "		
" Jamestown	8.13 " "		
" Meadville	9.52 " "		
" Youngstown	11.32 " "		
" Warren	11.59 " "		
" Akron	1.10AM "		
Ar Chicago (Dearborn Sta.)	8.45AM CST		

THE LAKE CITIES		TRAIN NO. 5—DAILY	
New York—Buffalo—Cleveland		EQUIPMENT	
Lv New York (Times Sq. Motor Coach Term.) (Note ⊕)...	8.40PM EST	<b>Air-Conditioned Sleeping Cars:</b> New York to Cleveland—6 Roomette-6 Section-4 Double Bedroom. New York to Bradford—10 Section-1 Compartment-1 Drawing Room. (Sleeping Car may be occupied at Bradford until 8.00 A. M.)  <b>Air-Conditioned Dining Car:</b> New York to Port Jervis. Salamanca to Youngstown.  <b>Air-Conditioned Individual Seat Coaches:</b> New York to Cleveland <b>Coaches:</b> Hornell to Buffalo.	
Lv New York, Chambers St. F'ry	8.40PM "		
" Jersey City	7.00 " "		
" Paterson	bc 7.30 " "		
" Ridgewood	bc 7.41 " "		
Ar Buffalo (Lehigh Valley Term.)	7.55AM "		
Lv Olean	5.10 " "		
Ar Bradford	7.00 " "		
" Jamestown	6.38 " "		
" Meadville	8.15 " "		
" Youngstown	9.45 " "		
" Warren	10.31 " "		
Ar Cleveland	11.35AM "		

THE MIDLANDER		TRAIN NO. 15—DAILY	
New York—Jamestown—Akron—Chicago		EQUIPMENT	
Lv New York (Times Sq. Motor Coach Term.) (Note ⊕)...	6.40PM EST	<b>Air-Conditioned Sleeping Car:</b> New York to Chicago—10 Section-1 Compartment-1 Drawing Room.  <b>Air-Conditioned Dining Car:</b> New York to Port Jervis. Salamanca to Chicago.  <b>Air-Conditioned Individual Reclining Seat Coach:</b> New York to Chicago. (Ladies' Lounge.)	
Lv New York, Chambers St. F'ry	6.40PM "		
" Jersey City	7.00 " "		
" Paterson	bc 7.30 " "		
" Ridgewood	bc 7.41 " "		
" Jamestown	6.38AM "		
" Meadville	8.20 " "		
" Youngstown	9.55 " "		
" Akron	11.15 " "		
" Marion	1.27PM "		
Ar Chicago (Dearborn Sta.)	5.30PM CST		

PACIFIC EXPRESS		TRAIN NO. 7—DAILY	
New York—Buffalo—Jamestown—Chicago		EQUIPMENT	
Lv New York, Chambers St. F'ry	11.55PM EST	<b>Air-Conditioned Sleeping Car:</b> New York to Salamanca—10 Section-2 Compartment-1 Drawing Room. (Sleeper open Jersey City at 9.30 P. M.)  <b>Air-Conditioned Dining Car:</b> Binghamton to Marion.  <b>Air-Conditioned Individual Seat Coaches:</b> New York to Chicago.	
" Jersey City	12.25AM "		
" Elmira	7.40 " "		
Ar Buffalo (Lehigh Valley Term.)	12.40PM "		
Lv Olean	10.56AM "		
Ar Salamanca	11.20 " "		
Lv Jamestown	12.13PM "		
" Meadville	1.52 " "		
" Youngstown	3.21 " "		
" Warren	3.46 " "		
" Akron	4.53 " "		
Ar Chicago (Dearborn Sta.)	12.30AM CST		

THE MOUNTAIN EXPRESS		TRAIN NO. 27—DAILY	
New York—Binghamton—Elmira—Hornell		EQUIPMENT	
Lv New York (Times Sq. Motor Coach Term.) (Note ⊕)...	2.55PM EST	<b>Air-Conditioned Dining Car:</b> New York to Binghamton.  <b>Coaches:</b> New York to Hornell.	
Lv New York, Chambers St. F'ry	3.00PM "		
" Jersey City	3.15 " "		
Ar Binghamton	8.57 " "		
" Elmira	11.11 " "		
" Corning	11.38 " "		
Ar Hornell	12.45AM "		

## EASTBOUND

THE ERIE LIMITED		TRAIN NO. 2—DAILY	
Chicago—Jamestown—Buffalo—New York		EQUIPMENT	
Lv Chicago (Dearborn Sta.)	5.15PM CST	<b>Air-Conditioned Sleeping Car:</b> Chicago to New York—10 Section-2 Double Bedroom-1 Drawing Room.  <b>Air-Conditioned Dining Car:</b> Chicago to Marion. Youngstown to New York.  <b>Air-Conditioned Individual Reclining Seat Coaches:</b> Chicago to New York. (Ladies' Lounge.)  <b>Air-Conditioned Coach—Diner:</b> Buffalo to New York.	
" Akron	3.09AM EST		
" Warren	4.15 " "		
" Youngstown	4.50 " "		
" Meadville	6.49 " "		
" Jamestown	8.20 " "		
Ar Buffalo (Lehigh Valley Term.)	10.45 " "		
" Bradford	ad 12.25PM "		
Lv Olean	9.30AM "		
Lv Buffalo (Lehigh Valley Term.)	8.20 " "		
Ar Elmira	12.39PM "		
" Binghamton	1.53 " "		
" Ridgewood	6.58 " "		
" Paterson	7.06 " "		
" Jersey City	7.35 " "		
" New York, Chambers St. F'ry	7.54 " "		
Ar New York, Times Sq. Motor Coach Term. (Note ⊕)...	7.50 PM EST		

THE LAKE CITIES		TRAIN NO. 6—DAILY	
Cleveland—Buffalo—New York		EQUIPMENT	
Lv Cleveland	5.05PM EST	<b>Air-Conditioned Sleeping Cars:</b> Cleveland to New York—6 Roomette-6 Section-4 Double Bedroom. Bradford to New York—10 Section-1 Compartment-1 Drawing Room.  <b>Air-Conditioned Dining Car:</b> Youngstown to Salamanca. Port Jervis to New York.  <b>Air-Conditioned Individual Seat Coaches:</b> Cleveland to New York.  <b>Coaches:</b> Buffalo to Hornell.	
" Warren	6.10 " "		
" Youngstown	6.50 " "		
" Meadville	8.25 " "		
" Jamestown	10.05 " "		
" Bradford	9.40 " "		
" Salamanca	10.51 " "		
" Olean	11.16 " "		
" Buffalo (Lehigh Valley Term.)	10.00 " "		
Ar Elmira	2.17AM "		
" Ridgewood	dz 8.27 " "		
" Jersey City	9.00 " "		
" New York, Chambers St. F'ry	9.16 " "		
Ar New York, Times Sq. Motor Coach Term. (Note ⊕)...	9.15 AM EST		

THE MIDLANDER		TRAIN NO. 16—DAILY	
Chicago—Akron—Jamestown—New York		EQUIPMENT	
Lv Chicago (Dearborn Sta.)	9.05AM CST	<b>Air-Conditioned Sleeping Car:</b> Chicago to New York—10 Section-1 Compartment-1 Drawing Room.  <b>Air-Conditioned Dining Car:</b> Chicago to Salamanca. Port Jervis to New York.  <b>Air-Conditioned Individual Reclining Seat Coach:</b> Chicago to New York. (Ladies' Lounge.)	
" Marion	3.06PM EST		
" Akron	5.20 " "		
" Youngstown	6.50 " "		
" Meadville	8.25 " "		
" Jamestown	10.05 " "		
Ar Ridgewood	dz 8.27AM "		
" Jersey City	9.00 " "		
" New York, Chambers St. F'ry	9.16 " "		
Ar New York, Times Sq. Motor Coach Term. (Note ⊕)...	9.15 AM EST		

ATLANTIC EXPRESS		TRAIN NO. 8—DAILY	
Chicago—Jamestown—New York		EQUIPMENT	
Lv Chicago (Dearborn Sta.)	9.55PM CST	<b>Air-Conditioned Sleeping Car:</b> Chicago to Salamanca—6 Roomette-6 Section-4 Double Bedroom. (Sleeper open at Chicago at 9.15 P. M.)  <b>Air-Conditioned Dining Cars:</b> Marion to New York.  <b>Air-Conditioned Individual Seat Coaches:</b> Chicago to New York. (No baggage handled on this train east of Hornell baggage will be handled on following train.)	
" Akron	7.15AM EST		
" Warren	8.14 " "		
" Youngstown	8.44 " "		
" Meadville	10.30 " "		
" Jamestown	12.23PM "		
" Salamanca	1.28 " "		
" Olean	1.54 " "		
Ar Elmira	5.19 " "		
" Binghamton	6.29 " "		
" Jersey City	12.01AM "		
" New York, Chambers St. F'ry	12.24 " "		
Ar New York, Times Sq. Motor Coach Term. (Note ⊕)...	12.15AM EST		

SOUTHERN TIER EXPRESS		TRAIN NO. 10—DAILY	
Buffalo—Hornell—Elmira—Binghamton—New York		EQUIPMENT	
Lv Buffalo	5.35PM EST	<b>Air-Conditioned Sleeping Car:</b> Hornell to New York—10 Section-2 Compartment-1 Drawing Room. (Sleeper may be occupied at Jersey City until 7.30 A. M.)  <b>Coaches:</b> Buffalo to Hornell daily ex. Sun. Hornell to New York daily.	
" Hornell	8.45 " "		
" Corning	9.55 " "		
" Elmira	10.28 " "		
" Binghamton	12.10AM "		
Ar Jersey City	5.45 " "		
" New York, Chambers St. F'ry	6.09 " "		

TABLE 2 WESTBOUND

NEW YORK—ELMIRA

Hudson and Manhattan Tube Trains operate between New York and Erie Railroad Station in Jersey City. To Erie Station, Jersey City—From Downtown New York—Train marked "Hoboken"—Fare 8 cents. From Uptown New York —Train marked "Journal Square"—Fare 10 cents.

Times Square Motor Coach Terminal located at 260 West 42nd St., between 7th and 8th Aves., New York City. Taxicab entrance on 41st St.

Main table with columns for Miles from New York, Eastern Standard Time, and various station names (e.g., New York, Jersey City, Passaic, Paterson, Ridgewood, etc.) with associated departure times and train service notes.

For Explanation of Reference Marks and Notes, See Pages 5 and 6.

For Equipment of Trains, See Pages 9 and 10.

TABLE 3 EASTBOUND

ELMIRA—NEW YORK

Hudson and Manhattan Tube Trains operate between New York and Erie Railroad Station in Jersey City. From Erie Station, Jersey City—To Downtown New York—Train marked "Hudson Terminal"—Fare 8 cents. To Uptown New York —Train marked "33rd Street"—Fare 10 cents.

Times Square Motor Coach Terminal located at 260 West 42nd St., between 7th and 8th Aves., New York City. Taxicab entrance on 41st St.

Table with columns for station names (Elmira, N.Y., Waverly, Owego, etc.) and train numbers (50, 52, 204, 700, 6, 16, 56, 58, 58, 30, 62, 206, 70, 28, 2, 702, 34, 208, 208, 64, dt8, 68, 10). Rows include train schedules, times, and service notes like 'No Baggage Carried on this Train'.

For Explanation of Reference Marks and Notes, See Pages 5 and 6.

For Equipment of Trains, See Pages 9 and 10



TABLE 4 WESTBOUND

ELMIRA—CHICAGO

EASTBOUND

Times Square Motor Coach Terminal located at 260 West 42nd St., between 7th and 8th Aves., New York City. Taxicab entrance on 41st St.

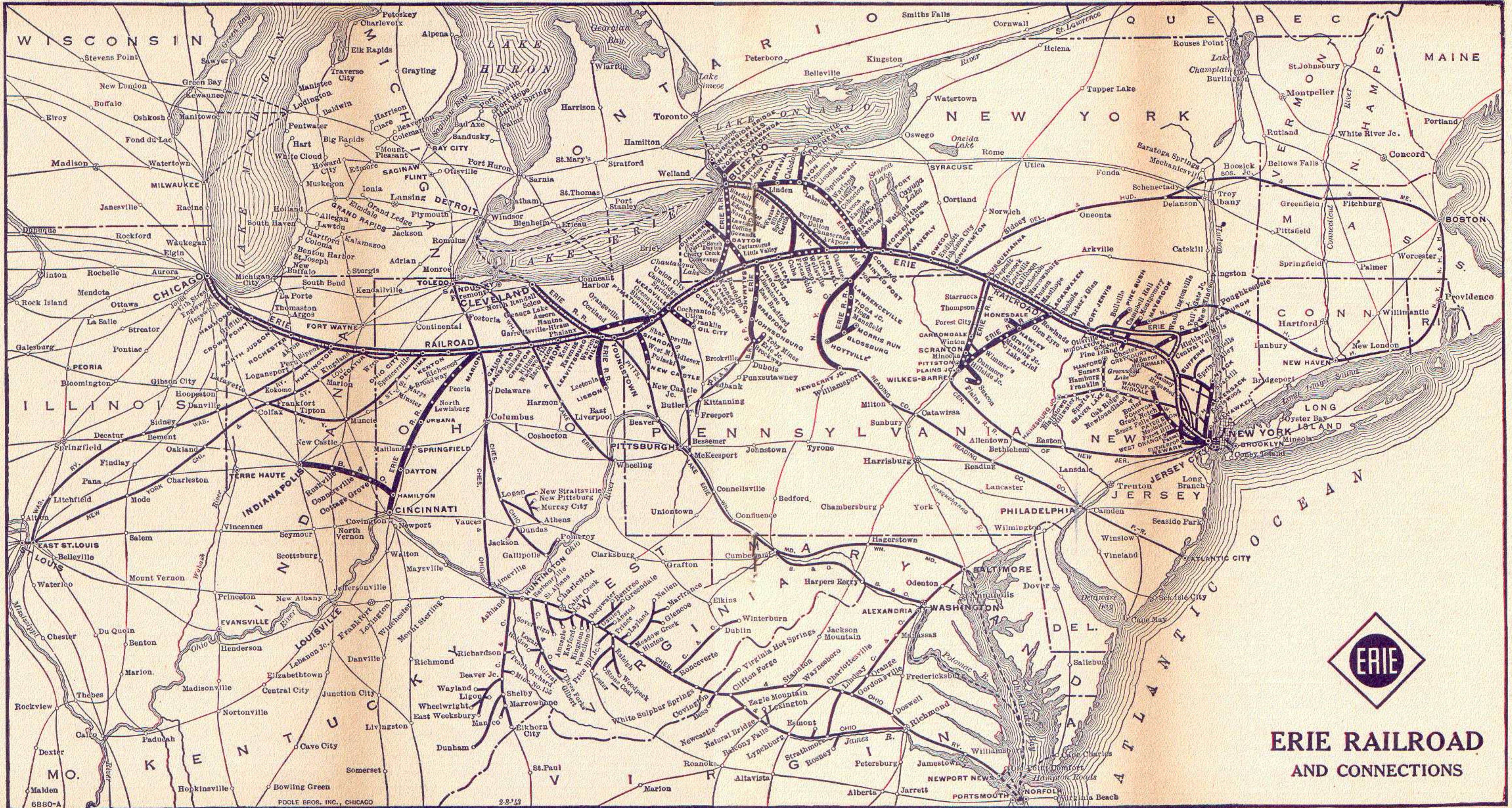
Table with columns for Miles from New York/Chicago, Eastern Standard Time, Central Standard Time, and various station names like NEW YORK, Elmira, Buffalo, and Chicago. Includes time schedules for different train services.

Dining Car Service

TABLE D'HOTE PRICES RANGE AS FOLLOWS

BREAKFAST . . . . . 50c to \$1.00
LUNCHEON . . . . . 50c to \$1.00
DINNER . . . . . \$1.00 to \$1.65





**ERIE RAILROAD**  
AND CONNECTIONS

TABLE 6 NEW YORK AND BUFFALO

Table with columns for WESTBOUND Read Down, EASTBOUND Read Up, Miles from New York, and EASTERN STANDARD TIME. Includes routes to Buffalo and various intermediate stops.

TABLE 9 NEW YORK—CHAUTAUQUA—CHICAGO (Via Jamestown and BUS of Buffalo and Erie Coach Corp.)

Table with columns for WESTBOUND Read Down, EASTBOUND Read Up, and EASTERN STANDARD TIME. Includes routes to Chautauqua and Chicago via Buffalo and Erie Coach Corp.

Tickets sold and Baggage checked through to Chautauqua. Hand baggage checked without charge. Trunks checked at charge of 25c each.

TABLE 10 NEW YORK—SALAMANCA—BRADFORD—CHICAGO

Table with columns for WESTBOUND Read Down, EASTBOUND Read Up, and EASTERN STANDARD TIME. Includes routes to Salamanca, Bradford, and Chicago via Buffalo and Erie Coach Corp.

Trains 5-557 and 560-6 carry through sleeping car between Bradford and New York. Sleeper on train 557 will be parked at Bradford for occupancy until 8.00 A. M.

TABLE 11 NEW YORK—KENOZA LAKE—JEFFERSONVILLE Train and Bus Service via Callicoon

Table with columns for WESTBOUND Read Down, EASTBOUND Read Up, and EASTERN STANDARD TIME. Includes routes to Kenosha Lake and Jeffersonville via Callicoon.

TABLE 7 ELMIRA-AVON

Table with columns for Westbound, Eastbound, Read Down, Read Up, and Eastern Standard Time. Includes routes between Elmira and Avon.

TABLE 8 BUFFALO—JAMESTOWN

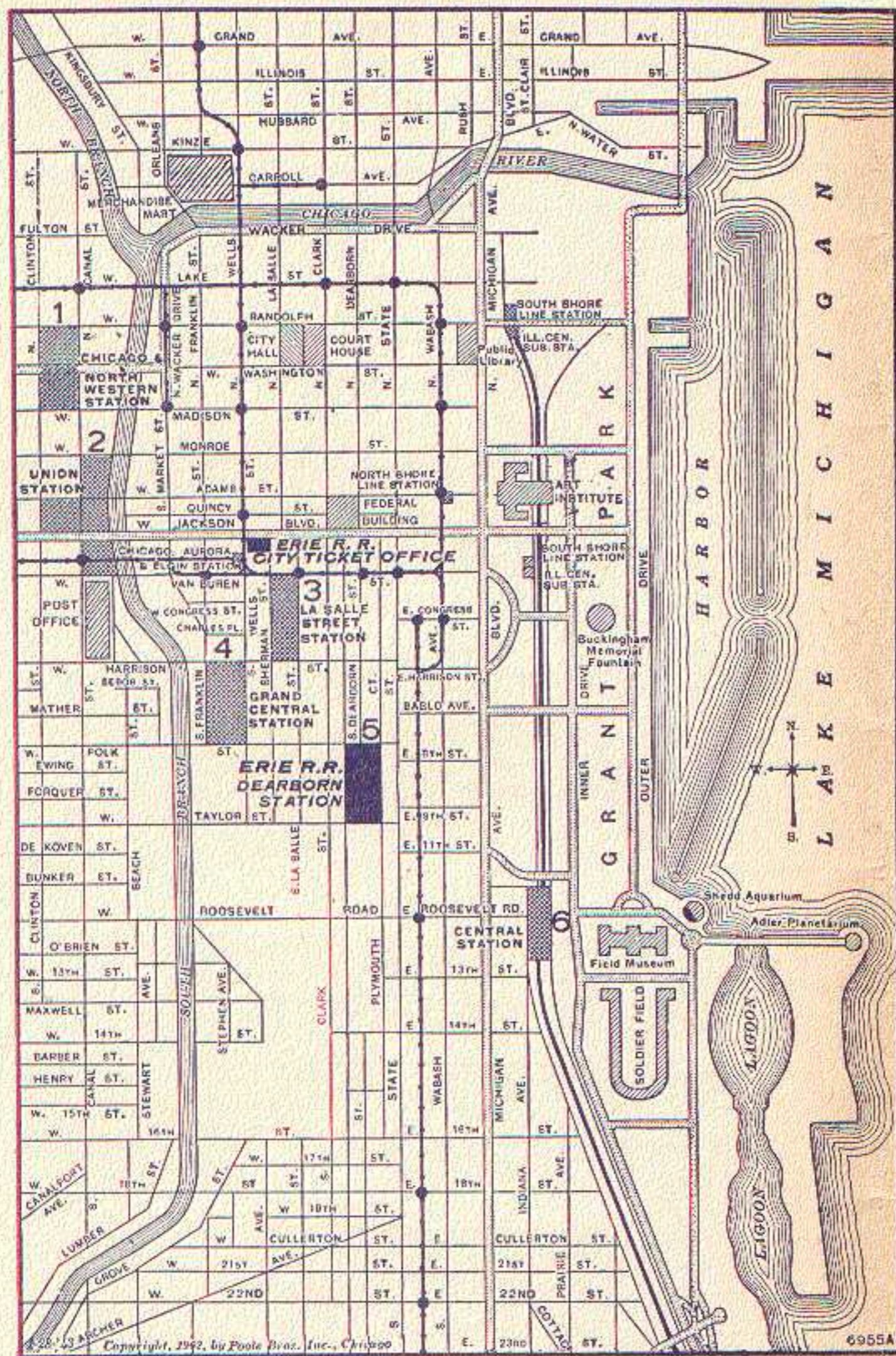
Table with columns for WESTBOUND Read Down, EASTBOUND Read Up, and EASTERN STANDARD TIME. Includes routes between Buffalo and Jamestown.

FOR VICTORY BUY UNITED STATES WAR BONDS

NOTE "X" in connection with the bus service the Erie Railroad acts as agent only and is not responsible beyond its own line, except as such responsibility may be imposed by law with respect to baggage.

# MAP OF DOWNTOWN CHICAGO

Showing Business District, "Loop," and Railroad Stations



## LOCATION OF CHICAGO PASSENGER STATIONS

Tenant Railroad Lines Are Listed. Number Indicates Location On Above Map. Erie trains arrive at and depart from Dearborn Station (5).

- |  |   |
|--|---|
| <p><b>Dearborn Station (5)</b><br/>Polk and Dearborn Sts.</p> <p><b>ERIE.</b><br/>Santa Fe.<br/>Chicago &amp; Eastern Illinois.<br/>Chicago &amp; Western Indiana.<br/>Grand Trunk.<br/>Monon Route.<br/>Wabash.</p> <p><b>C&amp;NW Terminal (1)</b><br/>Madison and Canal Sts.<br/>1 and 2/10 Miles from Dearborn Station.<br/>Chicago &amp; North Western.</p> <p><b>Union Passenger Station (2)</b><br/>Canal, Adams, Jackson and Clinton Sts.<br/>1 Mile from Dearborn Station.<br/>Alton Road.<br/>Burlington Route.<br/>Chicago, Milwaukee, St. Paul and Pacific.<br/>Pennsylvania Lines.</p> <p>North Shore Line, South Shore Line, and Chicago, Aurora &amp; Elgin electric lines' stations are also shown on the map.</p> | <p><b>La Salle St. Station (3)</b><br/>La Salle and Van Buren Sts.<br/>1/2 Mile from Dearborn Station.<br/>New York Central.<br/>Nickel Plate.<br/>Rock Island.</p> <p><b>Grand Central Station (4)</b><br/>Harrison and Wells Sts.<br/>3/10 Mile from Dearborn Station.<br/>Baltimore &amp; Ohio.<br/>Chicago Great Western.<br/>Pere Marquette.<br/>Soo Line.</p> <p><b>Central Station (6)</b><br/>Roosevelt Road and Michigan Ave.<br/>8/10 Mile from Dearborn Station.<br/>Big Four.<br/>Illinois Central.<br/>Michigan Central.</p> |
|--|---|

# "THE WASHINGTONIAN"

Convenient Through Day Train

Between

Cleveland, Washington and  
Baltimore



EASTBOUND (Read down)	WESTBOUND (Read up)
8:05 A.M. Lv... Cleveland... Ar.	9:15 P.M.
9:35 A.M. Lv... Youngstown... Ar.	7:30 P.M.
11:45 A.M. Lv... Pittsburgh... Ar.	5:40 P.M.
7:21 P.M. Ar... Washington... Lv.	10:00 A.M.
	Baltimore
8:20 P.M. Ar. (Camden Sta.) Lv.	9:00 A.M.
..... (Mt. Royal Sta.) Lv.	8:55 A.M.

Via Erie Railroad  
Pittsburgh & Lake Erie Railroad  
Baltimore & Ohio Railroad

## Dependable Connections

... in CHICAGO



... your Parmelee transfer coupon, which is included as part of your through ticket, entitles you to transportation in smart limousine coaches from your incoming railway station to your outgoing station . . . or from your incoming station to any downtown hotel or other downtown destination. This service is also available, at

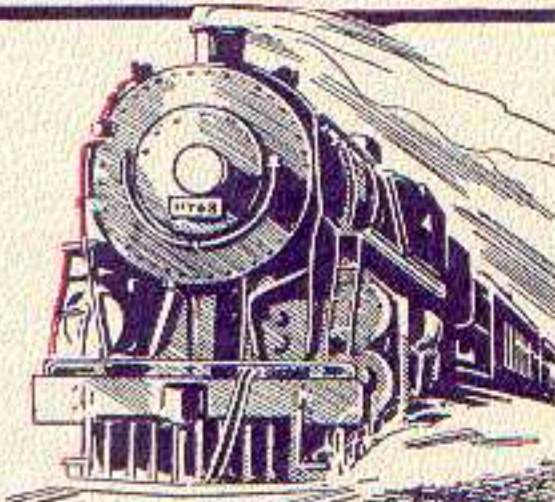
a nominal charge, to passengers not holding a Parmelee transfer coupon.

Ask any Ticket Agent about

## PARMELEE SERVICE

# ...WAR WON'T WAIT!...

Railway Express provides fast transportation for the things the nation needs to win the war—and for vital home-front necessities, too.

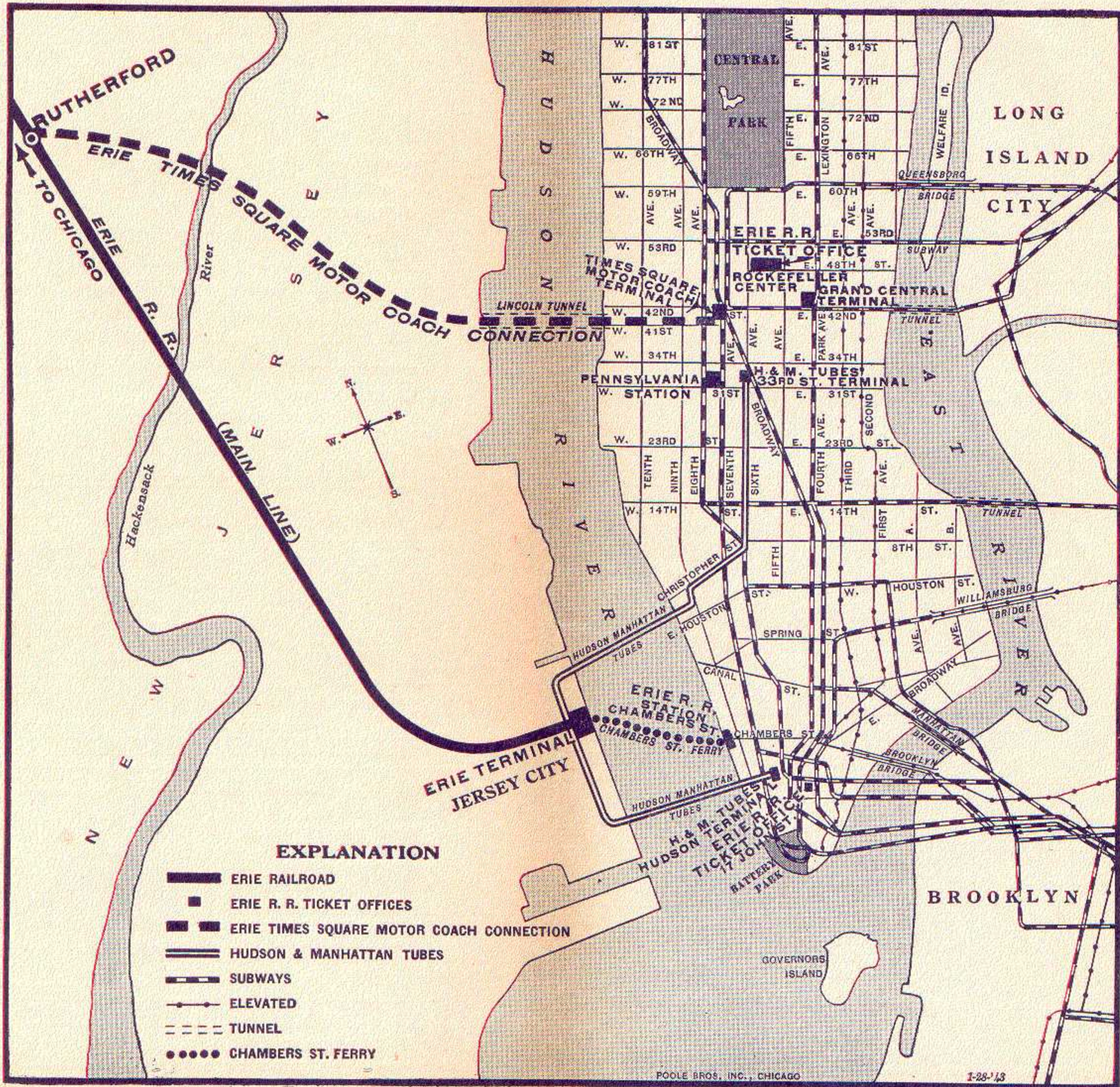


# RAILWAY EXPRESS

AGENCY INC.

NATION-WIDE SERVICE

**MAP OF NEW YORK CITY AND ADJACENT AREA**  
 showing Erie Times Square Motor Coach Connection, Chambers Street Ferry route, Hudson and Manhattan Tube routes, and Erie Terminals and Ticket Offices in Manhattan and Jersey City.



## HUDSON AND MANHATTAN TUBE TRAINS SCHEDULE OF RUNNING TIME BETWEEN ERIE R. R. JERSEY CITY TERMINAL AND

**Downtown New York—**  
Cortlandt St. (Hudson Terminal Bldg.)..... 6 Mins.

**Uptown New York—**  
33rd Street and 6th Ave..... 14 "  
23rd Street and 6th Ave..... 11 "  
19th Street and 6th Ave..... 10 "  
14th Street and 6th Ave..... 9 "  
9th Street and 6th Ave..... 8 "  
Christopher and Greenwich Streets..... 6 "

**Allow 10 Minutes additional for connections.**

**Fares—Downtown 8 cents. Uptown 10 cents.**

### Tube Trains From "Erie" Jersey City

**To Downtown New York—**take train marked "Hudson Terminal."  
**To Uptown New York—**take train marked "33rd St. Local."  
**To Journal Square, Jersey City—**take train marked "Journal Square," also connects to Newark.  
**To Hoboken—**take train marked "Hoboken."

### Tube Trains To "Erie" Jersey City

**From Downtown New York—**take train marked "Hoboken."  
**From Uptown New York—**take train marked "Journal Square."  
**From Journal Square, Jersey City—**take train marked "33rd St. Local," also connects from Newark.  
**From Hoboken—**take train marked "Hudson Terminal."

## ERIE R. R. FERRY TIME TABLE EASTERN STANDARD TIME CHAMBERS STREET FERRY

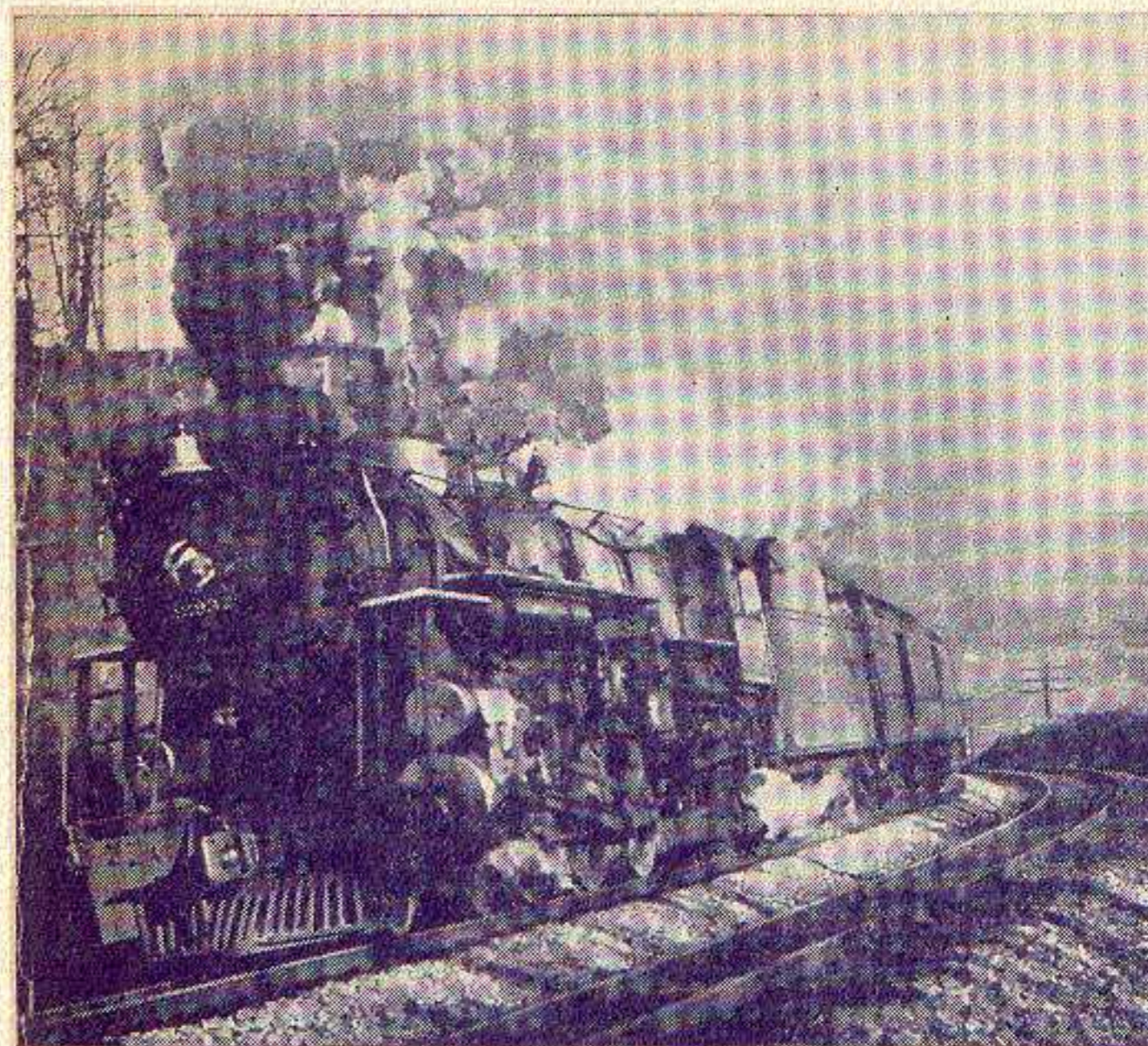
Ferry Running Time, 9 Minutes  
WEEK DAYS

Leave New York for Jersey City						Leave Jersey City for New York					
AM	AM	AM	PM	PM	PM	AM	AM	AM	PM	PM	PM
12.30	8.00	11.10	12.10	3.50	7.20	12.15	m802	11.15	12.05	3.45	7.00
1.00	8.10	11.20	12.20	4.00	7.30	12.45	8.08	11.25	12.15	3.55	7.15
1.30	8.15	11.30	12.30	4.10	7.40	1.15	8.17	11.35	12.25	4.05	7.25
2.00	8.20	11.40	12.40	4.20	7.50	1.45	8.25	11.45	12.35	4.15	7.35
2.30	8.30	11.50	12.50	4.30	8.00	2.15	8.31	11.55	12.45	4.25	7.45
3.00	8.40	12.00	1.00	4.40	8.10	2.45	8.38	.....	12.55	4.35	7.55
3.25	8.45	.....	1.10	4.50	8.20	3.12	8.45	.....	1.05	4.45	8.05
3.50	8.50	.....	1.20	5.00	8.30	3.35	8.54	.....	1.15	4.53	8.15
4.30	9.00	.....	1.30	5.08	8.40	4.15	a9.02	.....	1.25	5.00	8.25
5.00	9.10	.....	1.40	m5.15	8.50	4.45	9.07	.....	1.35	5.05	8.35
5.30	9.15	.....	1.50	5.20	9.00	5.15	9.18	.....	1.45	5.13	8.45
5.45	9.20	.....	2.00	5.28	9.15	5.45	9.23	.....	1.55	5.24	8.55
6.00	9.30	.....	2.10	5.38	9.30	6.00	9.35	.....	2.05	5.35	9.05
6.15	9.40	.....	2.20	5.48	9.45	6.15	9.45	.....	2.15	5.45	9.15
6.30	9.50	.....	2.30	6.00	10.00	6.30	9.55	.....	2.25	5.55	9.30
6.45	10.00	.....	2.40	6.10	10.15	6.45	10.05	.....	2.35	6.00	9.45
7.00	10.10	.....	2.50	6.20	10.30	7.07	10.15	.....	2.45	6.05	10.00
7.10	10.20	.....	3.00	6.30	11.00	7.18	10.30	.....	2.55	6.15	10.15
7.20	10.30	.....	3.10	6.40	11.30	7.25	10.35	.....	3.05	6.25	10.30
7.30	10.40	.....	3.20	6.50	11.55	7.35	10.45	.....	3.15	6.35	10.45
7.38	10.50	.....	3.30	7.00	.....	7.45	10.55	.....	3.25	6.45	11.15
7.50	11.00	.....	3.40	7.10	.....	7.55	11.05	.....	3.35	6.55	11.42
AM	AM	Noon	PM	PM	PM	AM	AM	AM	PM	PM	PM

**a** Will not run on Holidays. **m** Except Saturdays and Holidays.

### SUNDAYS

AM	AM	.....	PM	PM	PM	AM	AM	.....	PM	PM	PM
12.30	8.10	.....	12.15	4.30	8.45	12.15	8.15	.....	12.15	4.30	8.45
1.00	8.30	.....	12.30	4.45	9.00	12.45	8.33	.....	12.30	4.45	9.00
1.30	8.45	.....	12.45	5.00	9.15	1.15	8.45	.....	12.45	5.03	9.15
2.00	9.00	.....	1.00	5.15	9.30	1.45	9.00	.....	1.00	5.15	9.30
2.30	9.10	.....	1.15	5.30	9.45	2.15	9.10	.....	1.15	5.30	9.45
3.00	9.30	.....	1.30	5.45	10.00	2.45	9.30	.....	1.30	5.45	10.00
3.30	9.45	.....	1.45	6.00	10.15	3.15	9.45	.....	1.45	6.00	10.15
4.00	10.00	.....	2.00	6.15	10.30	3.45	10.00	.....	2.00	6.18	10.42
4.30	10.15	.....	2.10	6.30	11.00	4.18	10.15	.....	2.15	6.33	11.15
5.15	10.30	.....	2.30	6.45	11.30	5.00	10.30	.....	2.30	6.45	11.45
6.10	10.40	.....	2.45	7.00	11.55	5.50	10.45	.....	2.45	7.00	.....
6.45	11.00	.....	3.00	7.15	.....	6.30	11.00	.....	3.00	7.15	.....
7.00	11.10	.....	3.10	7.25	.....	6.57	11.15	.....	3.15	7.30	.....
7.10	11.30	.....	3.30	7.45	.....	7.18	11.30	.....	3.35	7.45	.....
7.30	11.45	.....	3.45	8.00	.....	7.30	11.45	.....	3.50	8.00	.....
7.45	12.00	.....	4.00	8.15	.....	7.45	12.00	.....	4.00	8.15	.....
8.00	.....	.....	4.15	8.30	.....	8.00	.....	.....	4.15	8.30	.....
AM	Noon	.....	PM	PM	PM	AM	Noon	.....	PM	PM	PM



## HOW YOU CAN HELP *"Speed Up"* WARTIME TRAVEL

**I**T IS the first duty of all railroads today to get war equipment, soldiers, sailors, and marines delivered where they are needed. This tremendous job sometimes overtaxes our facilities for giving good service to our patrons.

You can help us "speed up" our wartime service and save yourself inconvenience by doing these things —

- planning your trip during mid-week
- traveling by day instead of by night
- reserving your tickets and Pullman space as far in advance as possible
- accepting available space instead of waiting for preferred accommodations
- taking only necessary luggage

The Railroad of  Helpful Service

## GENERAL INFORMATION

**STANDARD OF TIME**—Erie Lines east of and including Ohio City, Ohio, are shown in Eastern Standard Time (commonly known as Eastern War Time), Lines west of Ohio City, Ohio, in Central Standard Time (commonly known as Central War Time). 12:01 Midnight to 12:00 Noon is indicated by light-faced type. 12:01 Noon to 12:00 Midnight is indicated by heavy-faced type.

**THIS COMPANY IS NOT RESPONSIBLE FOR ERRORS** in timetables, inconvenience or damage resulting from delayed trains, or failure to make connections; schedules and equipment shown herein are subject to change without notice.

**HOLIDAYS**—The term "Holidays" (unless covered by special note under schedule) refers to the observance of New Year's Day, Lincoln's Birthday, Washington's Birthday, Memorial Day, Independence Day, Labor Day, Columbus Day, Election Day (November 2), Thanksgiving Day and Christmas Day.

**TRAINS WILL NOT BE HELD** at Jersey City for ferries from New York between the hours of 5:00 P. M. and 6:30 P. M.

**FARES PAID ON TRAIN**—Conductors are required to charge ten (10) cents in excess of the one-way ticket fare for passengers traveling in coaches in the territory east of Port Jervis, including side lines and branches. Buy tickets before boarding trains and avoid payment of this extra fare.

**CHILDREN** under five years of age are carried free when accompanied by parent or guardian; five years of age and under twelve, half fare; twelve years of age and over, full fare.

**ADJUSTMENT OF FARES**—Should any misunderstanding arise with conductors or agents, pay the fare required, take receipt and communicate with Passenger Traffic Manager, Midland Bldg., Cleveland, Ohio.

**REDEMPTION OF TICKETS**—Tickets unused or partly used will be redeemed under tariff regulations at proper value.

**LOST TICKETS**—Proper care should be taken to guard against the loss of tickets, as Railroads are not responsible for lost tickets or baggage checks.

**STOP-OVERS AT NIAGARA FALLS**—Passengers holding tickets reading "via Erie Railroad" from or through Elmira, N. Y., to or through Youngstown, Ohio, or vice versa, may exercise the privilege of going via Buffalo and making side-trip to Niagara Falls. On request, Erie Ticket Agent at Buffalo will issue without charge a round-trip ticket between Buffalo and Niagara Falls—Frequent service via motor coach direct from Buffalo Terminal.

**STOP-OVERS AT OTHER POINTS**—A stop-over within final limit will be granted on tickets sold at regular fares at all stations on the Erie Railroad (with certain exceptions in the New York suburban area).

**ARTICLES LOST ON TRAINS**—When articles are lost on trains or left in waiting rooms or stations, owners should apply at once to Agent at station where they leave train or address Manager, Baggage Traffic, Foot of Chambers St., New York City, giving full description of property, stating date of loss and train number.

**BAGGAGE**—150 pounds of baggage are checked free on adult tickets and 75 pounds on half fare tickets. Free allowance subject to tariff stipulations as to contents, weight, value and size.

Baggage to be checked should be delivered at stations reasonably in advance of train departure. The railroad cannot

guarantee to forward baggage on same train with passenger and when necessary will be forwarded on other trains. To facilitate prompt receipt of baggage at destination, passengers are urged to arrange for forwarding on a preceding train.

A charge is made for storage of baggage at destination when it is not claimed within the free time limit.

**BAGGAGE DELIVERY IN NEW YORK CITY**—All baggage checked to New York City will be sent to Chambers Street Station.

**BAGGAGE INSURANCE** by the St. Paul Fire and Marine Insurance Co. may be purchased at principal Erie Ticket Offices. It insures your baggage and personal effects for your entire trip anywhere in the world. Minimum premium twenty-five cents. Ask Ticket Agent for full particulars.

**BAGGAGE DELIVERY SERVICE**—Baggage may be checked through to house address, hotel, steamship dock, etc., at destination, thus avoiding necessity for any further attention. Reliable transfer companies perform the service at nominal charges. This delivery arrangement is in effect at all principal cities.

**HAND BAGGAGE** in coaches or Pullman cars is restricted to what can be conveniently placed in berth, seat, or other accommodations purchased by passenger. It is urged that passengers carry with them only such baggage as required for their immediate needs and avail themselves of the free baggage service for other baggage required on reaching destination.

**SAFETY FIRST HINTS**—Carefulness on your part helps eliminate accidents. Don't get on or off a train in motion; wait for a full stop. Keep hand baggage out of car aisles; this will remove a cause of inconvenience, possibly of harm, to others. Walk carefully when entering or leaving train; high-heeled shoes are sometimes a cause of tripping or stumbling on car steps. Don't stand or walk close to the railroad track; look both ways before starting across. Courtesy toward your fellow travelers increases the pleasure of your journey.

### WESTERN UNION TELEGRAMS

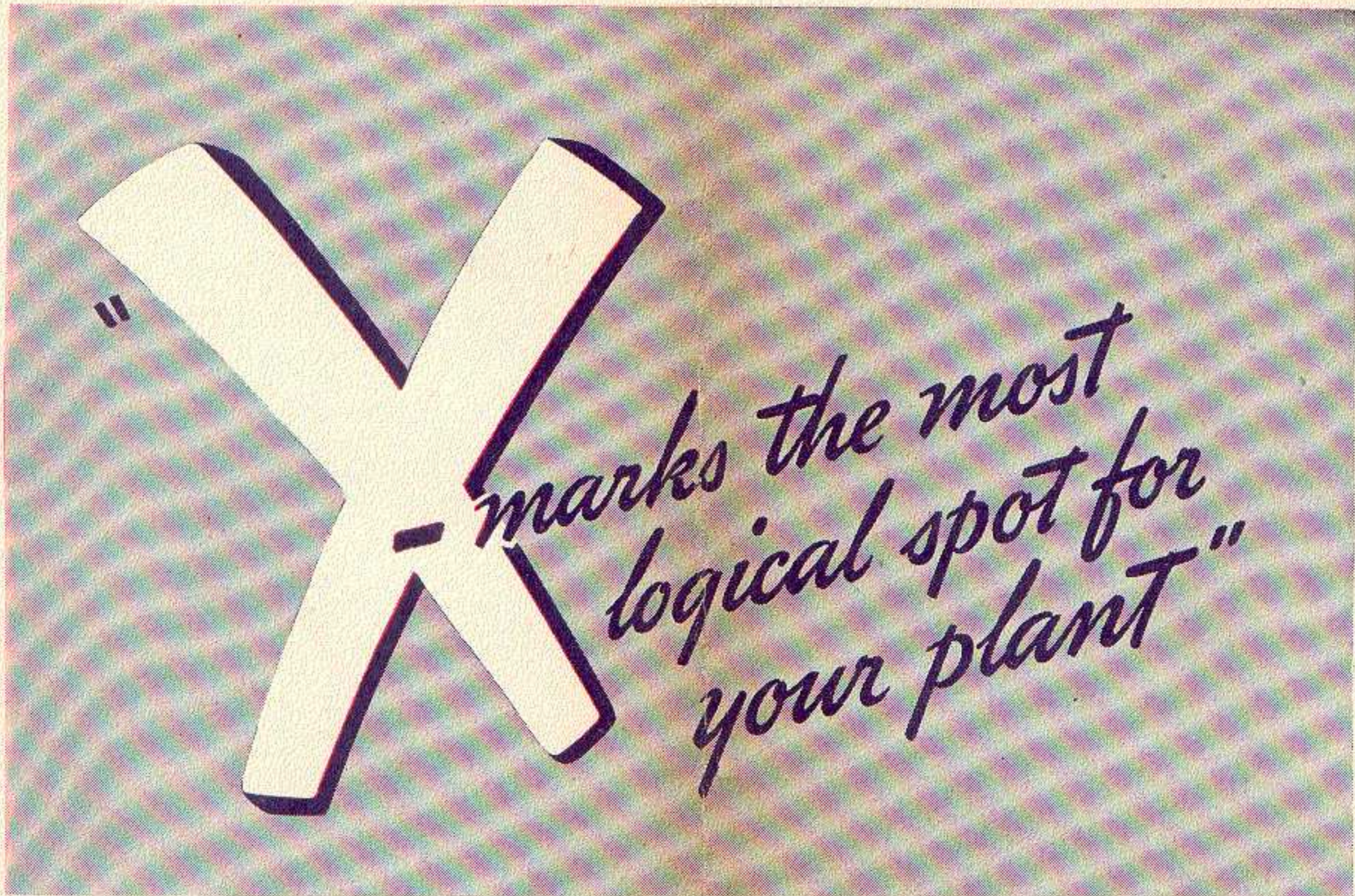
May be sent from any telegraph station. Domestic Service: Full Rate Telegrams (fast service at reasonable rates). Day Letters (inexpensive deferred service). Night Letters (overnight service at reduced rates). The porter will send your telegram or cablegram from the next station.

### HELPFUL HINTS For Wartime Travel

1. Travel during mid-week if possible to do so.
2. Travel by day instead of by night where time will permit.
3. Accept available Pullman space instead of waiting for preferred accommodations.
4. Take only necessary luggage.

Your co-operation in following these suggestions will help us to continue to render comfortable and convenient service.





## ***We Can Help You Find It***

When war came, many peacetime industries located on the Erie converted quickly to war production, found their locations more advantageous than ever before.

The availability of adequate transportation, convenience to supplies of raw materials and labor, and accessibility of markets are essential to successful operation. Industries located on Erie rails are in the

Heart of Industrial America. That they were able to quickly respond to demands of war proved the value of these important factors.

You may be facing a problem of expansion or new location. If so, the Erie's Industrial Development Department can help you find the location best adapted to your particular needs.

## **ERIE RAILROAD COMPANY**

GEO. F. WESTON, *Industrial Commissioner*

MIDLAND BUILDING

CLEVELAND, OHIO

# PARTNERS in service



"Hey there, Dad — I'm railroad-  
ing, too — a railroad soldier of  
the Army Transportation Corps,  
overseas."

"More power to you, Son — and  
while you're doing that, we'll keep  
'em rolling over here, with the  
stuff to throw at 'em over there."

Association of **AMERICAN RAILROADS** *ALL* UNITED FOR VICTORY

# ERIE RAILROAD COMPANY

**General Offices** { Midland Building, Cleveland. Telephone, Cherry 8400.  
Hudson Terminal, 50 Church Street, Corner Fulton, New York. Telephone, Cortlandt 7-9200.  
Utilities Building, 327 South La Salle Street, Chicago. Telephone, Harrison 4160.

R. E. WOODRUFF, President,	Cleveland.	CARL HOWE, Vice-President,	Chicago.
H. D. BARBER, Vice-President,	"	T. J. TOBIN, Comptroller,	Cleveland.
H. A. TAYLOR, Vice-President and General Counsel,	"	G. A. W. ACHENBACH, Secretary,	"
J. K. THOMPSON, Vice-President,	"	E. F. MORGENROTH, Treasurer,	"
H. W. VON WILLER, Vice-President,	"	CHARLES E. COE, Special Representative,	"

## TRAFFIC AND DEVELOPMENT

**H. W. VON WILLER, Vice-President, Cleveland.**  
**D. R. THOMPSON, Asst. Vice-President, Cleveland.**  
**New York.** | **W. V. KENNEDY, Assistant Vice-President, Chicago.**

**L. B. BURFORD, Assistant Vice-President, New York.**

**PASSENGER—Sales and Service**  
**R. B. ROGERS, Passenger Traffic Manager, Cleveland.**  
Cleveland. | **H. T. HARLOW, General Passenger Agent, Chicago.**  
Youngstown. | **A. G. OLDENQUIST, Assistant General Passenger Agent,**  
New York. | **E. J. HAWERKOST, General Western Passenger Agent,**

**C. L. CHAPMAN, Manager, Mail, Baggage and Express Traffic, New York.**

**FREIGHT—Rates**  
**L. B. BURFORD, Assistant Vice-President, New York.**  
**F. G. LANTZ, Freight Traffic Manager, Chicago.**

**New York.** | **A. BLAUDEL, Assistant Freight Traffic Manager, Chicago.**  
" | **E. C. HALLBERG, General Freight Agent,**  
" | **H. T. SWEENEY, Chief of Tariff Bureau,**  
" | **E. A. JAEHNE, Chief of Divisions Bureau,**

**FREIGHT—Sales and Service**  
**New York.** | **W. V. KENNEDY, Assistant Vice-President, Chicago.**  
" | **J. G. HILL, Freight Traffic Manager,**  
" | **J. A. RUSSELL, Western Traffic Manager,**  
" | **C. V. HARROW, Assistant General Freight Agent,**  
**Buffalo.** | **W. H. KOCH, Assistant General Freight Agent,**  
**Boston.** | **R. L. MURPHY, Assistant General Freight Agent,**  
**Jersey City.** | **Detroit.**  
**East Buffalo, N. Y.** | **Cincinnati.**

**FOREIGN FREIGHT TRAFFIC**  
**T. W. KANE, Foreign Freight Agent, New York.**  
**A. E. PETERSON, Foreign Freight Agent, Chicago.**  
**W. S. PENCHARD, Export and Import Agent, New York.**

**PERISHABLE AND DAIRY TRAFFIC**  
**P. J. NAPOLI, Manager, Pier 20, N. R., New York.**  
**H. W. BOUMANN, Western Dairy Agent, Chicago.**

**COAL AND COKE**  
**R. E. O'GRADY, Coal Traffic Manager, Cleveland.**  
**J. A. FERGUSON, General Coal Freight Agent, Cleveland.**  
**New York.** | **E. C. JULIUS, Coal Freight Agent, Chicago.**  
" | **W. N. STENFELT, Assistant Coal Freight Agent,**  
**Buffalo.** | **M. S. SWEENEY, General Agent, Pittsburgh.**

**H. O. DUNKLE, General Agent, Coal and Ore, Cleveland.**

**INDUSTRIAL DEVELOPMENT**  
**GEO. F. WESTON, Industrial Commissioner, Cleveland.**  
**H. J. HART, Industrial Agent, New York.**

## TRAFFIC DEPARTMENT REPRESENTATIVES

<b>Akron, O.—80 East Exchange St.</b> (Telephone Hemlock 8194-8195) <b>J. P. CLARK, Division Passenger Agt.</b> <b>A. R. WALTON, General Agent.</b>	<b>Dallas, Tex.—2113 Tower Petroleum Bldg.</b> 1905 Elm St. (Telephone 2-7352) <b>E. W. KEILEY, General Agent.</b>	<b>Los Angeles, Cal.—510 West 6th Street.</b> (Telephone Vandike 4129) <b>D. C. KELSEY, General Agent.</b>	<b>Pittsburgh, Pa.—Gulf Building.</b> (Telephone Grant 4831-2-3) <b>C. E. KING, Asst. Genl. Frt. Agt.</b>
<b>Albany, N. Y.—Room 2, D. &amp; H. Bldg.</b> (Telephone 4-6051) <b>L. J. MARION, General Agent.</b>	<b>Dayton, O.—1004-8 Miami Savings Bldg.</b> (Telephone Adams 8481) <b>F. W. FISCHER, Div. Frt. Agt.</b>	<b>Marion, O.—Terminal Building</b> (Telephone 2657) <b>A. R. TENNIS, Division Freight Agent.</b>	<b>Portland, Ore.—Room 421 Pacific Bldg.,</b> 620 S. W. Yamhill St. (Telephone Beacon 3706) <b>H. L. SKRIBEN, General Agent.</b>
<b>Atlanta, Ga.—1515-16 Healey Bldg.</b> (Telephone Walnut 2135) <b>W. H. STADELMAN, General Agent.</b>	<b>Des Moines, Ia.—Hubbell Bldg.,</b> 904 Walnut Street, (Telephone 4-0018) <b>H. A. BOCKMAN, General Agent.</b>	<b>Memphis, Tenn.—1628-9 Exchange Bldg.,</b> Madison & Second Sts. (Telephone 8-8781) <b>R. L. MILLER, General Agent.</b>	<b>Rochester, N. Y.—Room 220, Reynolds</b> Arcade Building. (Telephone Main 2826) <b>H. G. COOKE, Division Freight Agent.</b>
<b>Baltimore, Md.—1301-3 Munsey Bldg.</b> (Telephone Plaza 8691) <b>H. E. FEE, General Agent.</b>	<b>Detroit, Mich.—Rooms 2-124 and 2-125</b> General Motors Bldg. (Telephone Madison 2360-2361) <b>W. H. KOCH, Assistant General Frt. Agt.</b>	<b>Milwaukee, Wis.—818-9 Majestic Bldg.,</b> 231 West Wisconsin Ave. (Telephone Marquette 5555-5556) <b>L. T. COULSTON, General Agent.</b>	<b>San Francisco, Cal.—681 Market St.</b> (Telephone Sutter 3875) <b>J. A. LLOYD, General Agent.</b>
<b>Birmingham, Ala.—1007 Watts Bldg.</b> (Telephone 3-1327) <b>WM. L. THORNTON, General Agent.</b>	<b>East Buffalo, N. Y.—Live Stock Exch. Bldg.</b> (Telephone Washington 4300) <b>H. B. ROGERS, General Live Stock Agt.</b>	<b>Minneapolis, Minn.—655 Rand Tower,</b> Marquette Ave. and 6th St., So. (Telephone Main 3604) <b>L. E. NEWMAN, General Agent.</b>	<b>St. Louis, Mo.—Room 206, 1218 Olive St.</b> (Telephone Chestnut 7723-7724) <b>C. G. ANDREWS, General Agent.</b>
<b>Birmingham, England—13 Corporation St.,</b> <b>MAURICE G. COOKE, General Agent.</b>	<b>Elmira, N. Y.—Erte Station.</b> (Telephone 2-1621) <b>J. W. O'HARA, Division Passenger Agt.</b>	<b>Newark, N. J.—1801-2 Military Park Bldg.,</b> 60 Park Place. (Telephone Market 2-0525-26-27) <b>F. L. COLLINS, General Agent.</b>	<b>St. Paul, Minn.—336 Robert St.</b> (Telephone Cedar 5912) <b>C. R. PETRY, General Agent.</b>
<b>Boston, Mass.—150 Causeway St.</b> (Telephone Capitol 2510-11-12) <b>B. F. CONWAY, Gen. New Eng. Agt.</b>	<b>Glasgow, Scotland—82 Mitchell St.</b> <b>W. S. THOMSON, General Agent.</b>	<b>New Haven, Conn.—101 Powell Bldg.</b> (Telephone 5-7937) <b>G. E. ROBB, General Agent.</b>	<b>Scranton, Pa.—Mill &amp; Smith Sts. (Dun-</b> more, Pa.) (Telephone—Scranton 8191) <b>G. W. SHUMAN, Division Freight Agent.</b>
<b>Bradford, Pa.—Erte Station.</b> (Telephone 3413) <b>J. C. MOFFATT, General Agent.</b>	<b>Huntington, Ind.—Erte Station.</b> (Telephone 743) <b>F. C. MCCARTHY, Division Freight Agt.</b>	<b>New Orleans, La.—Room 1417 Whitney Bldg.</b> (Telephone Raymond 9786) <b>E. W. BURNETT, General Agent.</b>	<b>Seattle, Wash.—1116-7 White Bldg.,</b> 1338 Fourth Ave. (Telephone Elliot 4834) <b>R. J. DUNDON, General Agent.</b>
<b>Buffalo, N. Y.—238 Main Street.</b> (Telephone Washington 1865) <b>R. E. TOWNS, Division Passenger Agt.</b>	<b>Indianapolis, Ind.—143 No. Meridian St.</b> (Telephone Franklin 0255) <b>T. J. WILLIAMSON, General Agent.</b>	<b>New York, N. Y.—11 Rockefeller Plaza,</b> Rockefeller Center. (Telephone Circle 5-7222) <b>F. J. WILD, Genl. Agt. Pass. Dept.</b>	<b>Springfield, O.—516 First National Bank</b> Building. (Telephone 2-5351) <b>E. H. HUFFMAN, General Agent.</b>
<b>Chicago, Ill.—327 South La Salle St.</b> (Telephone Harrison 4160) <b>O. B. CHAPMAN, Trav. Pass. Agt.</b>	<b>Jamestown, N. Y.—Erte Station</b> <b>C. R. MARTIN, Div. Frt. Agt.</b>	<b>Omaha, Neb.—1819 Farnam St.</b> (Telephone Jackson 4866) <b>C. L. COX, General Agent.</b>	<b>Toledo, O.—348 South Erte Street.</b> (Telephone Main 3816) <b>H. J. SPANGENBERG, General Agent.</b>
<b>Cincinnati, O.—503 Gwynne Bldg</b> (Telephone Main 3420-3421) <b>R. L. MURPHY, Asst. Genl. Frt. Agt.</b>	<b>Jersey City, N. J.—Erte Station</b> (Telephone Journal Square 2-6400) <b>P. F. ARROYO, Genl. Agt. Pass. Dept.</b>	<b>Peoria, Ill.—920 Jefferson Building, Cor.</b> South Jefferson & Fulton Streets. (Telephone 8007) <b>E. T. OLANDER, General Agent</b>	<b>Toronto, Ont.—69 Yonge Street.</b> (Telephone Elgin 4077) <b>E. P. MORRILL, Canadian Frt. Agt.</b>
<b>Cleveland, O.—Midland Bldg.</b> (Telephone Cherry 8400) <b>J. M. SKAEHILL, Asst. Gen. Frt. Agt.</b>	<b>Kansas City, Mo.—Rooms 326-7 Railway</b> Exchange Bldg., 7th and Walnut Streets. (Telephone Victor 6328) <b>N. C. FRICK, General Agent.</b>	<b>Philadelphia, Pa.—1009-10 Finance Bldg.</b> (Telephone Rittenhouse 8975-8976) <b>H. A. WILSON, General Agent.</b>	<b>Tulsa, Okla.—Room 1511 Hunt Bldg.</b> (Telephone 3-8613) <b>H. F. STUDD, General Agent.</b>
<b>Columbus, O.—Rooms 309-310 Atlas</b> Bldg., 8 East Long Street. (Telephone Adams 7331) <b>L. J. BURGOTT, General Agent.</b>	<b>Liverpool, Eng.—10 Victoria St.</b> <b>A. G. TAYLOR, General Agent.</b>		<b>Washington, D. C.—903 Southern Bldg.</b> (Telephone National 6075) <b>W. J. MURRAY, General Agent.</b>
	<b>London, E. C. 3, Eng.—88 Leadenhall St.</b> <b>PETER BUSWELL, General Agent.</b>		<b>Youngstown, O.—Terminal Building.</b> (Telephone 41101) <b>W. P. KROMPHARDT, Asst. Genl. Frt. Agt.</b>
	<b>D. S. DEANS, Genl. Continental Agt.</b>		<b>J. V. SCANLON, Division Freight Agent.</b>