

Effective June 12, 1949

Effective June 12, 1949



Erie Railroad

TIME TABLES

Erie Railroad

TIME TABLES

The Scenic Route between

NEW YORK • BUFFALO

CLEVELAND • CHICAGO

The Scenic Route between

NEW YORK • BUFFALO

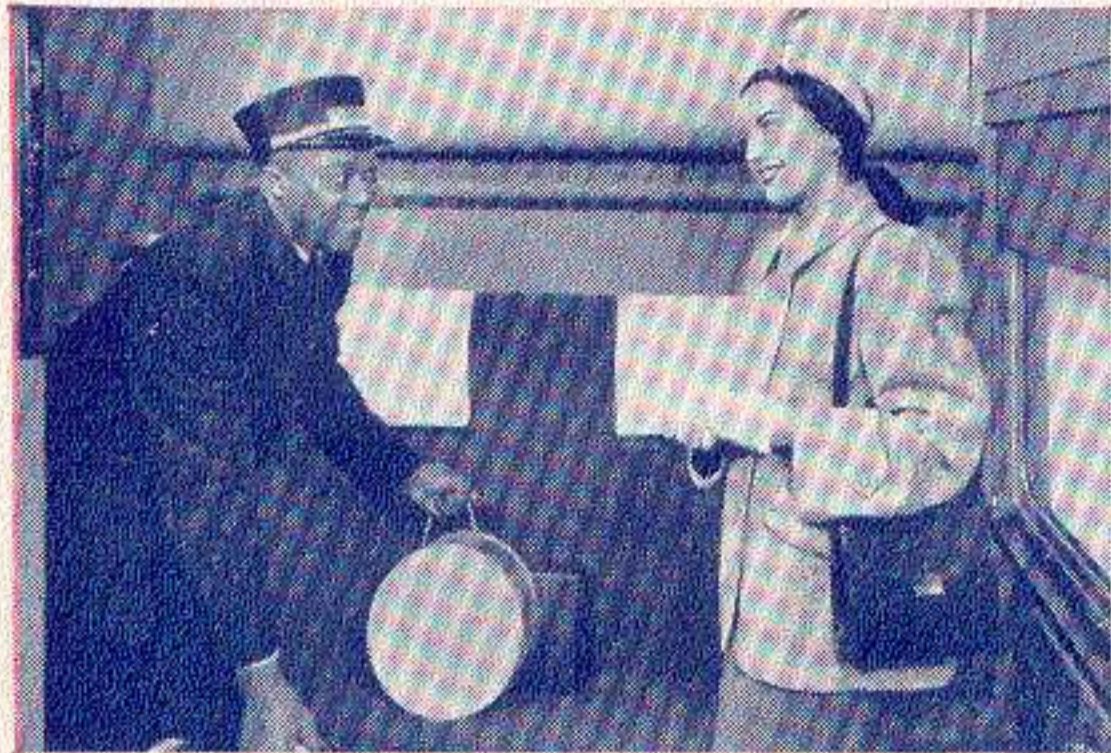
CLEVELAND • CHICAGO

FORM 1 STANDARD (Not Daylight) TIME SHOWN IN THIS FOLDER

FORM 1 STANDARD (Not Daylight) TIME SHOWN IN THIS FOLDER

Good news for your traveling comfort...

ERIE'S NEW ALL-ROOM SLEEPING CARS



You begin enjoying your trip as soon as you step into a modern, tastefully decorated bedroom or roomette.

Tops in travel comfort, Erie's new sleeping cars are completely air-conditioned the year 'round.



Families are "at home" in a living room atmosphere by day, with plenty of space to move around.

And at night, there are downy-soft beds (plus a smooth ride) for relaxing slumber.



● New roomette-bedroom sleeping cars are now in service. These ultra-modern sleeping cars have all the very latest facilities for pleasant, convenient travel. They are operated in the following service:

Between New York and Chicago

The Lake Cities, Trains 5 and 6
The Erie Limited, Trains 1 and 2

Between Akron and Chicago

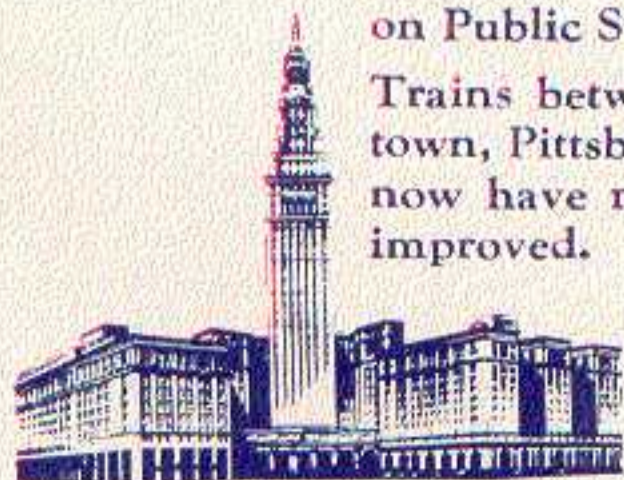
The Erie Limited, Train 1
The Atlantic Express, Train 8

(Trains are also equipped with modern, air-conditioned coaches and dining cars.)

WE'VE MOVED OUR CLEVELAND STATION!

Erie trains now operate from and to the centrally located Cleveland Union Terminal on Public Square.

Trains between Cleveland, Warren, Youngstown, Pittsburgh, Washington and New York now have new diesel-power. Schedules are improved.



And—Erie's Lee Road-Shaker Heights Station is an added convenience, serving Cleveland's east side "Heights" area.

Erie Railroad

... MARK OF PROGRESS IN RAILROADING



TABLE OF CONTENTS

Equipment of Through Trains... Page 9, 10
Equipment of Detroit, Toledo, Cleveland, Youngstown, Pittsburgh, Washington... 23, 24
Erie Railroad Map... 19, 20, 21, 22
Fares—One-Way and Round-Trip... 7, 8
Fares—Sleeping and Parlor Car... 7, 8
Map of Downtown Chicago... 29
Map of New York City and adjacent area... 27, 28
Motor Coach Service New York... 25
Suggestions to help you read this folder... 5, 6
Ticket Offices and Passenger Stations in Principal Cities... 6
Traffic and Development Representatives... 37, 38
General Information... 31, 32
Adjustment of fares Fares paid on trains Redemption of tickets
Articles lost on trains Holidays Safety first hints
Baggage regulations Lost tickets Standard of time
Fares for children Prepaid orders Stop-Overs

Train Service
Binghamton—New York... 13, 14
Binghamton—Marion... 15, 16
Bradford—Salamanca—Cleveland—Chicago... 18
Buffalo—Jamestown... 26
Chautauqua Lake—Jamestown—Akron—Chicago... 26
Condensed Schedule of Through Trains... 9, 10
Detroit—Toledo—Cleveland—Youngstown—Pittsburgh—Washington—Baltimore... 23, 24
Ferry Schedule... 30
Hudson & Manhattan R. R. Service... 30
Marion—Chicago... 17, 18
New York—Binghamton... 11, 12
New York—Buffalo... 17
New York—Jamestown—Chautauqua Lake... 26
New York—Kenosha Lake—Jeffersonville... 26
New York—Salamanca—Bradford... 18

INDEX OF STATIONS ON ERIE RAILROAD OR CONNECTING LINES
At Which Trains Are Scheduled To Stop
Numerals Opposite Station Names Indicate Time Table Numbers
Symbols Before Station Explained at Bottom of Page

Table with 6 columns of station names and table numbers. Includes stations like Addison, N.Y., Cleveland, O., Galion, O., Kent, O., Ohio City, O., and South Dayton, N.Y. with associated table numbers and symbols.

INDEX OF STATIONS NOT SHOWN IN TIME TABLES (FREIGHT SERVICE ONLY)
The distance shown is from New York as indicated in Tables 2, 4 and 5

Table with 10 columns: STATION, Miles from New York, STATION, Miles from New York, STATION, Miles from New York, STATION, Miles from New York, STATION, Miles from New York. Lists stations like Adrian, Akron, Alford, Alger, Allegany, Almond, Ashville, Athens, Atlantic, Barton, Bass Lake, Bear Lake, Belvidere, Big Flats, Bippus, Bolivar, Boone Grove, Braceville, Burbank, Caledonia, Cameron, Cameron Mills, Canisteo, Chemung, Columbus, Creston, DeCliff, De Long, Disko, Elgin, Foraker, Forty-seventh St., Freedom, Geneva, Glenmore, Greycourt, Griffith, Harrods, Hegewisch, Hepburn, Hickory Grove, Highlands, Hinsdale, Horseheads, Hurlburt, Johnson City, Kellams, Kemp, Kingsland, Kirkwood, Kouts, Laketon, Lakewood, Leiters, Markel, Martel, Mast Hope, McGuffey, Millers, Mill Village, Mongaup, Monterey, Nankin, Newton, Niobe, Ontario, Otuga, Ora, Palmer, Pavonia, Pershing, Folk, Preble, Rathbone, Red House, Scio, Servia, Sharpsville, Smithboro, Spencerville, Steamburg, Sterling, Stockport, Tallmadge, Tloga Center, Toecin, Uniondale, Venango, Watts Flats, Wellsburg, West Salem, Wilders, Windham, Winfield, Wren.

□ Not on the Erie Railroad—See schedule indicated.
△ No tickets Sold or Baggage Handled at this station.

SUGGESTIONS TO HELP YOU READ THIS FOLDER

THE CONTENTS

The Table of Contents shown at top of Pages 3 and 4 indicates the location, by page number, of the various information contained in this folder. Subjects are listed alphabetically.

For additional train service between Jersey City and Suffern, not shown in this folder, please refer to local time tables.

LOCATING SCHEDULE TABLES

To find the schedule of service to or from the station in which you are interested, first—locate the station name in the alphabetical index of stations shown on Pages 3 and 4, then—turn to the table or tables indicated by numeral to the right of station name. Tables follow in numerical order in the folder. Table Numbers do not correspond with page numbers.

READING OF TABLES

When stations are listed on tables in a column on the left, and train times are shown in columns to the right of station name, the table is to be read down, from top to bottom. As a further guide, "Read Down" appears at the top of such tables.

When stations are listed on tables in a column in the center, with train times shown in columns both to the left and right of station names, the table is read down from top to bottom on the left side, and read up from bottom to top on the right side. As a further guide, "Read Down" or "Read Up" is shown at top of respective columns.

On all tables, the schedule of each individual train is shown in a separate column, which may be on either side of the column showing station names. Each train has an operating number which appears at the top of the schedule column.

The abbreviation "Lv." next to station name in tables indicates leaving time; "Ar." for arrival time.

Train times from 12.01 a. m. (Midnight) to 12.00 Noon inclusive, are printed in light-faced figures; 12.01 P. M. (Noon) to 12.00 Midnight are printed in dark-faced figures.

Standard Time is used throughout, that is, Eastern Standard Time in the territory Ohio City, O. and east, Central Standard Time west of Ohio City.

Trains make regular stops only at stations where time figures appear in column opposite the station name.

When a letter, letters or symbol appears in column opposite the station name it indicates that the train stops there only on certain conditions which are explained in Reference Notes at bottom of that table. Observe carefully any such letters or symbols appearing on time tables.

IMPORTANT. When trains are shown as stopping conditionally at a station passengers should advise Station Agent, in advance, of their intention to board train or notify Conductor of intention to leave train, as case may be. Conditional stops are made only to receive or discharge revenue passengers.

When dotted lines (.....) only appear in column opposite station name, train does not stop.

A train may operate Daily, Daily Except Sunday, or on certain days only. In general, the days on which trains are scheduled to operate are shown on tables, at the top of columns, under each specific train number. In some instances, a symbol may be used for this purpose, with explanation in Reference Notes.

On main line Table 4, where a station name is indented to the right of balance of stations listed, and has heavy-faced lines above and below it, that station is located on a branch line or connecting service—schedule shown on separate table indicated.

EQUIPMENT

The equipment of principal trains—coach, Pullman, dining cars—is shown on Pages 9, 10, 23 and 24.

First—determine the number of the train, then—refer to equipment listing for that train number. Coaches are available on trains not described in equipment listing.

ADDITIONAL INFORMATION

Among other service features and items of interest to passengers, the following subjects may be found on pages as indicated in Table of Contents:

Fares, one-way and round-trip rail, also Pullman, between principal points.

Stop-over privileges; baggage regulations; children's fare regulations. Maps—Erie Railroad, New York City; Downtown Chicago.

Any Erie ticket agent or representative, including those listed in this folder, will be glad to assist you with information or reservations.

ERIE TICKET OFFICES AND PASSENGER STATIONS IN PRINCIPAL CITIES

Akron, O. —Erie Station. (Telephone Blackstone 4132) O. E. BLAIR, Ticket Agent.	Jamestown, N. Y. —Erie Station. (Telephone 6076) D. S. FORDHAM, Ticket Agent.
Binghamton, N. Y. —Erie Station. (Telephone 4-3251) A. T. JOHNSON, Ticket Agent.	Jersey City, N. J. —Erie Station. (Telephone Journal Square 2-6400) G. B. IRVING, Ticket Agent.
Bradford, Pa. —Erie Station. (Telephone 3413) A. J. SULLIVAN, Ticket Agent.	Mansfield, O. —Erie Station. (Telephone 1423-6) C. A. CRIM, Ticket Agent.
Buffalo, N. Y. —Station Ticket Office (Lehigh Valley Terminal) Main and Scott Streets (Telephone Washington 4300) A. L. SEITZ, Ticket Agent.	Marion, O. —Erie Station. (Telephone 2399) R. H. STIEF, Ticket Agent.
Chicago, Ill. —Information and Pullman Reservations. (Telephone WA bash 2-3670) City Ticket Office, 163-165 West Jackson Blvd. (Telephone Harrison 7-4160) C. F. KUNDEL, Ticket Agent.	Meadville, Pa. —Erie Station. (Telephone 3-3121) R. J. O'GRADY, Ticket Agent.
Hotel Ticket Offices— Drake, Morrison, Sherman, Stevens, Palmer House, Merchandise Mart, Lakeview Bldg., 116 So. Michigan Ave. (Telephone Harrison 7-2203) H. A. JOHNSON, Ticket Agent.	Middletown, N. Y. —Erie Station. (Telephone 3303) C. R. DINEEN, Ticket Agent.
Dearborn Station. (Telephone Harrison 7-7500) W. E. MISCHNICK, Ticket Agent.	Newark, N. J. —Erie Station. (Telephone Humboldt 2-0600) W. C. HARBOURNE, Ticket Agent.
63rd St. Station. (Telephone WENworth 6-3503) J. E. KING, Ticket Agent.	New York, N. Y. Information Bureau. Train Service and Fares. (Telephone Barclay 7-6500) Rockefeller Center Terminal and City Ticket Office, 11 Rockefeller Plaza. (Telephone Circle 5-7225) (Open 7:30 A.M. to 11:30 P.M. daily.) F. J. KEHOE, Ticket Agent.
Cleveland, O. —City Ticket Office. East 9th St. and Chester Ave. (Telephone Cherry 8400) S. B. FOLKMAN, Ticket Agent.	Chambers Street Station. (Telephone Worth 4-4500) O. R. KRECH, Ticket Agent.
Union Terminal, Public Square Information Bureau Train Service and Fares (Telephone Cherry 8200) Parlor Car and Pullman Reservations (Telephone Main 2300) East 55th St., Erie Station (Telephone Michigan 5118) Lee Road, Shaker Hts., Erie Station. (Telephone Washington 4200)	City Ticket Office, 17 John Street (Telephone Cortlandt 7-6430) H. T. JAMES, Ticket Agent.
Corning, N. Y. —Erie Station. (Telephone 50) C. S. SHANAHAN, Ticket Agent.	Passaic, N. J. —Erie Station (Telephone 2-1613) M. J. LYNCH, Ticket Agent.
Elmira, N. Y. —Erie Station. (Telephone 2-0380) J. V. CLEARY, Ticket Agent.	Paterson, N. J. —Erie Station (Telephone Sherwood 2-3337) J. H. GRAF, Ticket Agent.
Hornell, N. Y. —Erie Station. (Telephone 680) M. W. DELANY, Ticket Agent.	Port Jervis, N. Y. —Erie Station (Telephone 3-2271) R. FARBBER, Ticket Agent.
Huntington, Ind. —Erie Station. (Telephone 139) M. V. WELLS, Ticket Agent.	Sharon, Pa. —Erie Station (Telephone 6234) G. E. FRICKER, Ticket Agent.
	Warren, O. —Erie Station (Telephone 2-2194) R. L. O'GRADY, Ticket Agent.
	Youngstown, O. —Erie Station (Telephone 4-0295) R. S. GETTIG, Ticket Agent.

RAILROAD AND PULLMAN FARES For Information Only. Federal Tax Not Included. Subject to Change Without Notice

Table with columns: Between (New York, Binghamton, Buffalo), And, Fares via Motor Coach to and from Rockefeller Center—35c additional in each direction, RAILROAD TICKETS VALID IN (Coaches, Pullmans), PULLMAN RATES (Lower Berth, Seat Fare). Rows list destinations like Akron, Binghamton, Buffalo, Chicago, Cleveland, etc.

Table with columns: Between (Jamestown, Cleveland, Chicago), And, RAILROAD TICKETS VALID IN (Coaches, Pullmans), PULLMAN RATES (Lower Berth, Seat Fare). Rows list destinations like Akron, Baltimore, Binghamton, Buffalo, Chicago, Cleveland, etc.

MINIMUM NUMBER OF RAILROAD TICKETS REQUIRED FOR EXCLUSIVE OCCUPANCY OF SPACE IN SLEEPING OR PARLOR CARS. Roomette... 1. Double Bedroom... 1. Compartment, Berth Service... 1 1/2. Compartment, Seat Service... 1 1/2. Drawing Room, Berth Service... 1 1/4. Drawing Room, Seat Service, or Drawing Room in Parlor Car... 2.

RATES FOR UPPER BERTH, DRAWING ROOM, COMPARTMENT, DOUBLE BEDROOM OR ROOMETTE IN SLEEPING CARS

Table with columns: Where Lower Berth Rate Is, Upper Berth Rate Will Be, Section Rate (See Note), Drawing Room Rate, Compartment Rate, Double Bedroom Rate, Roomette Rate. Rows show rates for one and two persons in various categories.

Note:—Single occupancy sections available in certain cars on certain trains. Consult ticket agents. ▲ For section occupied by two passengers, but with lower berth only prepared for night service. *Limit three months, except as otherwise indicated. *Thirty-day limit. †One-year limit.

TABLE 1 CONDENSED TABLE OF THROUGH TRAINS NEW YORK AND BUFFALO, CLEVELAND AND CHICAGO
(FOR LOCAL TRAINS AND INTERMEDIATE TIME OF THROUGH TRAINS SEE LOCAL TABLES)

Air-Conditioned Trains—Air-conditioned equipment has been assigned to regular sections of trains as shown herein. Every effort will be made to provide it as specified, but the right is reserved to employ non-air-conditioned cars as necessitated by volume of traffic or emergencies.

WEST BOUND

THE ERIE LIMITED		TRAIN NO. 1—DAILY	
New York—Jamestown—Chicago			
Lv New York:			Diesel Powered
" Coach	Rockefeller Center Terminal, 11 Rockefeller Plaza	7.55AM	EST
" Motor Coach	8th Ave. & W. 34th St. (Hotel New Yorker)	8.02	"
"	Chambers St. Ferry	8.15	"
"	Jersey City	8.40	"
"	Paterson	AA 9.06	"
"	Ridgewood	AA 9.15	"
"	Binghamton	2.06PM	"
"	Elmira	3.22	"
Ar Buffalo (Lehigh Valley Term.)		7.15	"
Lv Olean		6.19	"
" Buffalo (Lehigh Valley Term.)		4.35	"
" Jamestown		7.43	"
" Meadville		9.16	"
" Youngstown		10.40	"
" Warren		11.01	"
Lv Akron		12.06AM	"
Ar Chicago (Dearborn Sta.)		7.05AM	CST

EQUIPMENT

Air-Conditioned Sleeping Cars:
New York to Chicago—10 Roomette, 6 Double Bedroom.
Salamanca to Chicago—6 Roomette-6 Section-4 Double Bedroom.
Akron to Chicago—10 Roomette, 6 Double Bedroom (Sleeper open Akron 9:30 p.m.)

Air-Conditioned Diner-Lounge Car:
New York to Chicago.

Air-Conditioned Individual Reclining Seat Coaches:
New York to Chicago.

Air-Conditioned Coach
New York to Buffalo.

THE LAKE CITIES		TRAIN NO. 5—DAILY	
New York—Jamestown—Cleveland—Akron—Chicago			
Lv New York:			Diesel Powered
" Coach	Rockefeller Center Terminal, 11 Rockefeller Plaza	6.50	PM EST
" Motor Coach	8th Ave. & W. 34th St. (Hotel New Yorker)	6.57	"
"	Chambers St. Ferry	7.15	"
"	Jersey City	7.30	"
"	Paterson	AA 7.57	"
"	Ridgewood	AA 8.06	"
Lv Olean		4.58	AM
Ar Bradford		6.30	"
Lv Jamestown		6.15	"
" Meadville		7.43	"
" Pittsburgh		7.35	7.35
" Youngstown		9.20	9.14
" Warren		9.41	9.35
Ar Cleveland Union Terminal		10.48	"
Lv Akron		10.31	"
" Marion		12.27PM	"
Ar Chicago (Dearborn Sta.)		4.10PM	CST

EQUIPMENT

Air-Conditioned Sleeping Cars:
New York to Chicago—10 Roomette, 6 Double Bedroom.
New York to Cleveland—6 Roomette-6 Section-4 Double Bedrm.
New York to Bradford—10 Section-1 Compartment-1 Drawing Rm. (Sleeping Car may be occupied at Bradford until 8.00 A.M.)

Air-Conditioned Diner-Lounge Car:
New York to Chicago.

Air-Conditioned Individual Reclining Seat Coach:
New York to Chicago.
New York to Cleveland.

Coaches:
New York to Port Jervis.
Salamanca to Bradford.

PACIFIC EXPRESS		TRAIN NO. 7—DAILY	
New York—Jamestown—Chicago			
Lv New York:			Diesel Powered
" Coach	Rockefeller Center Terminal, 11 Rockefeller Plaza	10.20PM	EST
" Motor Coach	8th Ave. & W. 34th St. (Hotel New Yorker)	10.32	"
"	Chambers St. Ferry	11.30	"
"	Jersey City	11.55PM	"
"	Elmira	7.25AM	"
Lv Olean		11.10	"
Ar Salamanca		11.34	"
Lv Jamestown		12.34PM	"
" Meadville		2.14	"
" Youngstown		3.47	"
" Warren		4.08	"
" Akron		5.15	"
Ar Chicago (Dearborn Sta.)		12.45AM	CST

EQUIPMENT

Air-Conditioned Sleeping Car:
New York to Salamanca—10 Section-2 Double Bedroom—1 Drawing Room. (Sleeper open Jersey City at 9.00 P.M.)

Air-Conditioned Erie Diner-Lounge Car:
Elmira to Marion.

Air-Conditioned Individual Seat Coaches:
New York to Chicago.

THE MOUNTAIN EXPRESS		TRAIN NO. 27—DAILY	
New York—Binghamton—Elmira—Hornell			
Lv New York:			EQUIPMENT
" Coach	Rockefeller Center Terminal, 11 Rockefeller Plaza	2.05PM	EST
" Motor Coach	8th Ave. & W. 34th St. (Hotel New Yorker)	2.17	"
"	Chambers St. Ferry	2.30	"
"	Jersey City	2.50	"
Ar Binghamton		8.45	"
" Elmira		10.25	"
" Corning		11.12	"
Ar Hornell		12.25AM	EST

Air-Conditioned Erie Diner-Lounge Car:
New York to Elmira.

Air-Conditioned Coach:
New York to Hornell.

Coaches:
New York to Susquehanna.

AA Stops to receive passengers. ♦ Stops to discharge passengers.
AD Stops to discharge passengers from Port Jervis and west.

EAST BOUND

THE ERIE LIMITED		TRAIN NO. 2—DAILY	
Chicago—Jamestown—Buffalo—New York			
Lv Chicago (Dearborn Sta.)		5.15PM	CST
" Akron		2.24AM	EST
" Warren		3.26	"
" Youngstown		4.02	"
" Meadville		5.58	"
" Jamestown		7.34	"
Ar Buffalo (Lehigh Valley Term.)		10.15	"
Lv Olean		8.50AM	"
Lv Buffalo (Lehigh Valley Term.)		7.15	"
Ar Elmira		11.32AM	"
" Binghamton		12.46PM	"
" Ridgewood		5.39	"
" Paterson		5.47	"
" Jersey City		6.15	"
Ar New York:			
" Chambers St. Ferry		6.34	"
" 8th Ave. at W. 32nd St.		6.36	"
" 8th Ave. at W. 42nd St.		6.38	"
" Motor Coach	Rockefeller Center Terminal, 11 Rockefeller Plaza	6.45PM	EST

EQUIPMENT

Air-Conditioned Sleeping Car:
Chicago to New York—10 Roomette, 6 Double Bedroom.

Air-Conditioned Diner-Lounge Car:
Chicago to New York.

Air-Conditioned Individual Reclining Seat Coaches:
Chicago to New York.

Air-Conditioned Coach
Buffalo to New York.

THE LAKE CITIES		TRAIN No. 6—DAILY	
Chicago—Akron—Cleveland—Jamestown—New York			
Lv Chicago (Dearborn Sta.)		9.35	AM CST
" Marion		3.14	PM EST
" Akron		5.08	"
" Cleveland Union Terminal		4.45	PM
" Warren		5.52	6.02
" Youngstown		6.32	"
Ar Pittsburgh		8.40	"
Lv Meadville		8.00	"
" Jamestown		9.24	"
" Bradford		8.50	"
" Salamanca		10.11	"
" Olean		10.39	"
Ar Elmira		1.16	AM
" Ridgewood		AD 6.50	"
" Paterson		AD 6.59	"
" Jersey City		7.25	"
Ar New York:			
" Chambers St. Ferry		7.43	"
" 8th Ave. at W. 32nd St.		7.46	"
" 8th Ave. at W. 42nd St.		7.48	"
" Motor Coach	Rockefeller Center Terminal, 11 Rockefeller Plaza	7.55	" EST

EQUIPMENT

Air-Conditioned Sleeping Cars:
Chicago to New York—10 Roomette, 6 Double Bedroom.
Cleveland to New York—6 Roomette-6 Sections-4 Double Bedrm.
Bradford to New York—10 Section-1 Compartment-1 Drawing Rm.

Air-Conditioned Diner-Lounge Car:
Chicago to New York.

Air-Conditioned Individual Reclining Seat Coach:
Chicago to New York.
Cleveland to New York.

Coaches:
Bradford to Salamanca.

ATLANTIC EXPRESS		TRAIN NO. 8—DAILY EXCEPT SUNDAY	
Chicago—Jamestown—Elmira—Binghamton—New York			
		Ex. Sun.	Sun. Only
Lv Chicago (Dearborn Sta.)		9.55	9.55PM CST
" Akron		6.39	7.09AM EST
" Warren		7.38	8.22
" Youngstown		8.05	8.50
" Meadville		9.46	10.16
" Jamestown		11.29	11.47
" Salamanca		12.44	12.57PM
" Olean		1.11	1.22
" Hornell		3.01	"
" Elmira		4.21	"
Ar Binghamton		5.24	"
" Jersey City		10.20	"
Ar New York:			
" Chambers St. Ferry		10.49	"
" 8th Ave. at W. 32nd St.		10.41	"
" 8th Ave. at W. 42nd St.		10.43	"
" Motor Coach	Rockefeller Center Terminal, 11 Rockefeller Plaza	10.50	" EST

EQUIPMENT

Air-Conditioned Sleeping Car:
Chicago to Salamanca—6 Roomette-6 Section-4 Double Bedroom.
Chicago to Akron—10 Roomette 6 Double Bedroom (Sleepers open Chicago 9.15 p.m. Sleeper may be occupied at Akron until 8.00 a.m.)

Air-Conditioned Erie Diner-Lounge
Akron to New York.

Air-Conditioned Individual Seat Coaches:
Chicago to New York.
(No baggage handled on this train east of Hornell baggage will be handled on following train.)

Air-Conditioned Coach:
Hornell to New York.

SOUTHERN TIER EXPRESS		TRAIN NO. 10—DAILY	
Buffalo—Hornell—Elmira—Binghamton—New York			
Lv Buffalo		4.30PM	EST
" Hornell		7.20	"
" Corning		8.29	"
" Elmira		9.09	"
" Binghamton		10.31	"
Ar Jersey City		4.30AM	"
Ar New York:			
" Chambers St. Ferry		4.54	"
" 8th Ave. at W. 32nd St.		8.46	"
" 8th Ave. at W. 42nd St.		6.48	"
" Motor Coach	Rockefeller Center Terminal, 11 Rockefeller Plaza	6.55	" EST

EQUIPMENT

Air-Conditioned Sleeping Car:
Hornell to New York—10 Sec.-2 Double Bedroom-1 Drawing Room—(Sleeper may be occupied at Jersey City until 6.30 a.m.)

Air-Conditioned Coach:
Buffalo to New York.

IMPORTANT. When trains are shown as stopping conditionally at a station, passengers should advise Station Agent, in advance, of their intention to board train or notify Conductor of intention to leave train, as case may be.

NEW YORK—BINGHAMTON

**TABLE 2
WESTBOUND**

For additional train service between Jersey City and Suffern, not shown in this folder, please refer to local time tables.
Hudson and Manhattan Tube Trains operate between New York and Erie Railroad Station in Jersey City
To Erie Station, Jersey City—From Downtown New York—Train marked "Hoboken"—Fare 10 cents.
From Uptown New York —Train marked "Journal Square"—Fare 10 cents.

Miles from New York	Eastern Standard Time Read Down	55	57	59	43	1	701	9	703	205	61	705	27	63	207	67	69	71	47	5	707	7	51
Motor Coach		D'y Ex. Sun.	Sun. only	Sun. only	△ Sat. and Sun. only	Daily	Sun. and Hol. only	Daily Local	Sun. only	Sat. only	Daily Ex. Sun.	Sun. only	Daily	Daily Ex. Sun. and Hol.	Sat. & Hol. only	Daily Ex. Sat., Sun. and Hol.	Hol. only	Daily Ex. Hol.	Fri. only	Daily	Sun. only	Daily	Daily Ex. Sat.
	NEW YORK	AM	AM	AM	AM	AM	AM	AM	AM	AM	PM	PM	PM	PM	PM	PM	PM	PM	PM	PM	PM	PM	PM
	Rockefeller Center Terminal, 11 Rockefeller Plaza..... Lv				7.15	7.55							2.05						5.00	6.50		10.20	
	8th Ave. & W. 34th St. (Hotel New Yorker)				7.22	8.02							2.17						5.12	6.57		10.32	
	(Erie Ferry)																						
	Chambers St. Lv	3.00	3.30	7.10	7.30	8.15	8.30	9.30	11.00	11.40	12.50	1.00	2.30	3.00	4.08	4.28	5.00	5.20	5.30	7.15	7.30	11.30	11.30
	Jersey City, N. J. "	3.30	3.55	7.25	8.00	8.40	8.50	9.45	11.15	11.52	1.10	1.15	2.50	3.14	4.30	4.40	5.13	5.38	5.50	7.30	7.45	11.55	11.50
9.5	Rutherford, N. J. "	3.50	4.10	7.40					11.30		1.25	1.30			4.45		5.28				8.00		12.05
	E. Rutherford. " "																						
12.5	Passaic. "	4.05	4.18	7.49		BR	9.12	B1005	11.40		1.33	1.37	BG		4.56		5.39				8.10		12.15
16.7	Paterson. "	4.27	4.31	8.00	BA	BP	9.21	B1014	11.51		1.45	1.46	BG		5.12		5.50				8.21		12.27
21.8	Ridgewood. "	4.45	4.42	8.12		BP	9.30	B1026	12.04		1.59	1.59	BG		5.26		6.02				8.33		12.39
	Hohokus. "	4.49	4.46						12.07		2.02	2.02			5.29		6.04						
23.2	Waldwick. "	4.53	4.49	8.16			9.35		12.10		2.05	2.05			5.34		6.06				8.38		12.42
24.3	Allendale. "	4.58	4.53	8.19			9.40		12.12		2.09	2.09			5.38		6.11				8.42		12.46
25.7	Ramsey. "	5.03	4.58	8.24			9.45		12.17		2.13	2.13			5.43		6.14				8.47		12.50
27.6	Mahwah. "	5.10	5.04	8.29					12.23		2.18	2.18			5.48		6.18						
30.2	Suffern. N. Y.	5.18	5.09	8.33		BR	9.53	10.47	12.26		2.22	2.22		3.55	5.51	5.30	6.21	6.33			8.53		1.00
31.9	Hillburn. "	5.27	5.12								2.24	2.24			5.53	5.33							1.03
32.6	Ramapo. "	5.30																					
33.7	Sloatsburg. "	5.35	5.17	8.40							2.31			4.00	6.01	5.41	6.26	6.38			8.59		
35.6	Tuxedo. "	5.45	5.22	8.45			9.59		12.42		2.36	2.34		4.04	6.07	5.47	6.31	6.43					
38.2	Southfields. "	5.50	5.28				10.04		12.47		2.43			4.11	6.14	5.54	6.48	7.00					
42.0	Arden. "	5.55	5.33				10.11		12.54					4.15	6.24	6.04	6.53	7.05					
44.4	Harriman. "	6.02	5.39				10.20		12.58		2.50	2.49		4.20	6.29	6.08	6.53	7.05					
47.0	Monroe. "	6.12	5.44				10.25	11.18		1.03	2.55	2.54		4.25	6.29	6.08	6.53	7.05					
49.5	Oxford. "									1.08	3.00			4.25	6.29	6.08	6.53	7.05					
52.3	Chester. "	6.25	5.54							1.18	3.06	3.04		4.34	6.38	6.20	7.02	7.15					
55.3	Goshen. "	6.32	6.02			f 9.59		11.39	1.12	1.26	3.15	3.12	4.21	4.42	6.45	6.28	7.11	7.24	7.12		f 8.49	9.37	1.37
59.7	New Hampton. "	6.40	6.07					BC			3.20			4.47									
63.7	Middletown. N. Y.	7.05	6.25						1.25	1.40	3.29	3.24	4.34	4.55	6.56	6.39	7.25	7.38	7.25		f 9.00	9.50	2.05
67.1	Howells. "	7.15	6.33								3.36			5.04	7.06	6.46							
71.0	Ottsville. "	7.30	6.45					BK			3.45	f 3.39		5.11	7.13	6.54							
75.7	Graham. "	7f38	6.53																				
80.7	Port Jervis. Ar	7.50	7.05																				
88.2	Port Jervis. Lv				10.05	10.40			12.39		4.05	4.00	5.10	5.30	7.33	7.15							
88.2	Sparrowbush. N.Y.				10.10	10.50			12.49				5.15										
90.8	Mill Rift. Pa.				f1015				12.56														
92.2	Pond Eddy. "				f1019				1.01														
99.5	Parker's Glen. "				f1031				1.12														
103.3	Shohola. "				f1036				1.26														
107.1	Lackawaxen. "				10.44				1.26														
111.1	Westcolang Pk. "				10.52				1.51														
114.1	Tusten. N. Y.				f1057				2.11														
118.9	Narrowsburg. "				11.12	11.37			2.11														
122.4	Honesdale, Pa. BU. Ar				11.50	12.15			2.24														
128.2	Skinnners. N.Y. Lv				11.25	11.58			2.48														
131.0	Cochecton. N. Y.				11.33	12.04			2.48														
136.2	Callicoon. N. Y.				11.43	12.13			2.48														
143.0	Hankins. "				12.00	12.34			3.39														
147.3	Long Eddy. "				12.15	12.52			4.10														
153.6	Lordville. "																						
164.0	Hancock. "																						
172.1	Hale's Eddy. "																						
177.1	Deposit. "																						
184.2	Gulf Summit. "																						
192.6	Susq'ha'na, Pa. { Ar					1.17		4.40															
	{ Lv					1.19		4.42															
200.8	Great Bend. "							5.12															
215.1	Binghamton, N.Y. Ar					1.55		5.30															

△ Air-Conditioned Dining Car and Air-Conditioned Parlor Car, New York to Deposit.
 □ Air-Conditioned Dining Car, New York to Deposit; Coaches, New York to Deposit.
 f Stops on signal to receive and discharge revenue passengers.
 † Stops to discharge passengers.
 ‡ During period July 2 to Sept. 4 incl., will stop Saturdays and Sundays to receive passengers for Susquehanna and west only. Will stop on other days to receive and discharge passengers.
 + During period July 1 to Sept. 2 incl., will stop on Fridays to receive passengers for Susquehanna and west only. Will stop on other days to receive and discharge passengers.
 B During period July 2 to Sept. 4 incl., stops only to receive passengers for Monroe and west. Regular stops other dates.
 BA Stops (8.27 A. M.) to receive passengers.
 BC Stops Wednesdays to discharge passengers from New York.
 BD Stops (11.28 A. M.) Fridays and Saturdays only.
 BG Stops Passaic (3.10 P. M.), Paterson (3.19 P. M.), Ridgewood (3.29 P. M.) to receive passengers for Goshen and west.
 BH Stops Paterson (7.57 P. M.), Ridgewood (8.06 P. M.) to receive passengers.
 BJ Stops Passaic (7.49 P. M.), to receive passengers for Hornell and west.
 BK Stops on Fri., Sat., Sun. and Hol. only to discharge passengers from New York.
 BL Stops to discharge passengers from Ridgewood and east.
 BN Stops to discharge passengers from New York.
 BP Stops Paterson (9.06 A. M.), Ridgewood (9.15 A. M.) to receive passengers.
 BR Stops Passaic (8.59 A. M.), Suffern (9.28 A. M.) for Binghamton and west.
 BT Stops to discharge passengers from Port Jervis and east.
 BU Bus operates between Narrowsburg and Honesdale. See Note X, Page 26.
 BV Bus connection to Honesdale will be effective July 1.
 BW Stops Monday to Friday July 1 to Sept. 2 incl., to discharge passengers from Ridgewood and east.
IMPORTANT. When trains are shown as stopping conditionally at a station, passengers should advise Station Agent, in advance, of their intention to board train or notify Conductor of intention to leave train, as case may be.

**TABLE 3
EASTBOUND**

BINGHAMTON—NEW YORK

For additional train service between Jersey City and Suffern, not shown in this folder, please refer to local timetables.

Hudson and Manhattan Tube Trains operate between New York and Erie Railroad Station in Jersey City.
From Erie Station, Jersey City—To Downtown New York—Train marked "Hudson Terminal"—Fare 10 cents.
To Uptown New York —Train marked "33rd Street"—Fare 10 cents.

Eastern Standard Time	10	50	52	6	204	700	56	58	30	62	62	70	28	2	44	708	64	34	704	706	38	CKB	68
Read Down	Daily	Daily Ex. Sat. Sun. and Hol.	Daily Ex. Sat., Sun. and Hol.	Daily	Sat. and Hol. only	Sun. only	Daily Ex. Sun. and Hol.	Sun. and Hol.	Daily	Daily Ex. Sat., Sun. & Hol.	Sat. only	Sun. and Hol. only	Daily Local	Daily	▲ Sat. and Sun. only	Sun. and Hol. only	Daily Ex. Sun. and Hol.	Runs July 4 and Sept. 5 only	Sun. only	Sun. only	Sun. only	Daily	Daily
	PM	AM	AM	AM	AM	AM	AM	AM	AM	PM	PM	PM	AM	PM	PM	PM	PM	PM	PM	PM	PM	PM	PM
Binghamton, N. Y. Lv.	10 56			2 26									9 47	12 58									5 26
Great Bend, Pa.				2 55									10 37										5 53
Susquehanna, Pa. Ar.	11 37			2 57									10 57	1 31									5 55
Susquehanna, Pa. Lv.	11 41												11 07	1 33									
Gulf Summit N.Y. Deposit	12 10												11 25										
Hale's Eddy													11 47	2 00	2 45								
Hancock													11 56										
Lordville	12 30												12 20	2 18	3 04								
Long Eddy													12 36	2 31	3 20								
Hankins													12 47										
Callicoon	1 08												12 56										
Cohecton													1 14	2 55	3 38								
Skinnerville, N. Y.													1 36		3 52								
Honesdale, Pa. CS													1 42		4 01								
Narrowsburg, N.Y.	1 31												1 58	2 30	3 30								
Tusten													2 02	3 16	4 16								
Westcolang Park, Pa.													2 18		4 33								
Lackawaxen													2 41		4 42								
Shohola													CD										
Parker's Glen													CD										
Pond Eddy													CD										
Mill Rift													3 12										
Sparrowbush, N.Y.													3 18	4 03	5 10								
Port Jervis, N.Y. Ar.	2 21			5 16																			
Port Jervis, N.Y. Lv.	2 26		4 30	5 26	4 30	5 40	6 00	6 57	9 20	1 25			3 30	4 13	5 15	5 35	5 55	6 10	6 10	6 15	8 30	8 25	
Graham																							
Ottsville																							
Howells													CA										
Middletown	2 57		5 29	CE	5 29	6 20	6 33	7 31	9 40	1 45													
New Hampton			5 34		5 34	6 30	6 38	7 36	9 58	2 10	2 10	3 25	4 06	4 42	5 15	5 56	6 14	6 30	6 43	6 43	6 54	9 03	8 55
Goshen			5 41		5 41	6 30	6 44	7 42	10 09	2 22	2 22	3 36	4 17	4 52	5 15	5 56	6 14	6 30	6 43	6 43	6 54	9 03	8 55
Chester			5 48		5 48	6 37	6 51	7 49	10 17	2 30	2 30	3 44	4 24	5 00	5 15	5 56	6 14	6 30	6 43	6 43	6 54	9 03	8 55
Oxford			5 52		5 52																		
Monroe			6 00		6 00	6 46	7 00	7 58	10 27	2 40	2 40	3 55	4 34	5 10	5 15	5 56	6 14	6 30	6 43	6 43	6 54	9 03	8 55
Harriman			6 08		6 08	6 51	7 05	8 05	10 32	2 48	2 48	4 00											
Arden			6 16		6 16																		
Southfields			6 22		6 22																		
Tuxedo			6 27		6 27																		
Sloatsburg			6 32		6 32																		
Ramapo			6 35		6 35	7 11	7 31	8 27	10 53	3 13	3 13												
Hillburn			6 38		6 38																		
Suffern			6 45		6 45	7 18	7 39	8 35	11 00	3 20	3 20												
Mahwah, N. J.			6 48		6 48	7 21		8 38	11 03	3 25	3 25												
Ramsey			6 51		6 51			8 41		3 28	3 28												
Allendale			6 55		6 55			8 43		3 31	3 31												
Waldwick			6 58		6 58	7 28	7 47	8 46	11 10	3 31	3 31	4 50	5 11	5 39	6 45	7 37	7 47	7 46	7 46	8 17	10 04	10 49	10 57
Hohokus			7 00		7 00			8 48		3 34	3 34												
Ridgewood			7 04		7 04			8 52		3 37	3 37												
Paterson			7 08		7 08			8 56		3 40	3 40												
Passaic, N. J. Lv.			7 11		7 11			9 00		3 43	3 43												
Rutherford			7 15		7 15			9 04		3 46	3 46												
E. Rutherford			7 19		7 19			9 08		3 49	3 49												
Jersey City, N. J. Ar.	4 30	6 58	7 22	7 25	7 28	8 00	8 14	9 30	11 50	4 15	4 15	5 25	5 52	6 15	7 15	8 17	8 27	8 15	8 15	9 00	10 35	10 20	11 42
NEW YORK																							
Chambers St. Ferry	4 54	7 11	7 37	7 43	7 43	8 19	8 27	9 44	12 04	4 33	4 33	5 39	6 14	6 34	7 39	8 39	8 39	8 39	8 39	9 24	10 49	10 49	11 54
8th Ave. at W. 32nd St.	6 46			7 46																			
8th Ave. at W. 42nd St.	6 48			7 48																			
Rockefeller Center Terminal, 11 Rockefeller Plaza, N. Y. Ar.	6 55			7 55																			

▲ Air-Conditioned Dining Car and Air-Conditioned Parlor Car, Deposit to New York.
 Coaches, Deposit to New York.
 † Stops on signal to receive and discharge passengers.
 ‡ Stops to discharge passengers.
 †† Stops to receive or discharge passengers except Sats. or Suns. July 2 to Sept. 3 incl., and Mon. July 4 and Sept. 5 when stop will be made only to discharge passengers from Susquehanna and west. Will stop on Sun. July 3 to receive or discharge passengers.
 ††† Stops Mon. to Fri. July 5 to Sept. 2, incl., to receive passengers for Ridgewood and east.
 CA Bus connection from Honesdale will be effective July 2.
 CA Stops (3:52 P. M.) Fridays, Saturdays, Sundays & Holidays only.
 CB Stops Wednesdays to discharge passengers.
 CD Stops at Parker's Glen (2:47 P. M.) and Mill Rift (3:05 P. M.) to receive passengers for Paterson and east.
 CE Stops at Middletown (5:55 A. M.) to discharge passengers from Hornell and west.
 CG Stops Ridgewood (9:48 P. M.) to discharge passengers from Binghamton and west.
 CH Train 8 operates via Bergen Short Cut. Connecting train to these points leaves Ridgewood 9:52 P. M. daily except Saturday.
 CK No baggage carried on this train east of Hornell. Baggage will be handled on following train.
 CL Stops Ridgewood (6:50 A. M.) Paterson (6:59 A. M.) to discharge passengers from Port Jervis and west.
 CN Stops Suffern (6:26 P. M.), Passaic (6:55 P. M.) to discharge passengers from Binghamton and west.
 CP Stops Tuesdays to receive passengers.
 CS Bus operates between Narrowsburg and Honesdale. See Note X, page 26.
 CV Stops to receive passengers for New York.

IMPORTANT. When trains are shown as stopping conditionally at a station, passengers should advise Station Agent, in advance, of their intention to board train or notify Conductor or intention to leave train, as case may be.

TABLE 4 WESTBOUND

BINGHAMTON—MARION

EASTBOUND

Main schedule table with columns for Miles from New York, Eastern Standard Time Read Down, and Central Standard Time Read Down. Includes stations like Lv. NEW YORK, Binghamton, and Chicago (Dearborn Sta.) III. Ar.

* Runs Daily. + Runs Daily except Sunday.
I Stops on signal to receive and discharge passengers.
▲ For additional service between Cleveland and Youngstown see Table 8.
DA No baggage carried on this train east of Hornell. Baggage handled on next train.
DB Arrives Elmira (10.25 P. M.); Corning (11.12 P. M.).
DB Via Buffalo & Erie Coach Corp. bus between Salamanca and Bradford.
DC Stops Andover (9.46 A. M.); Belmont (10.16 A. M.); Friendship (10.27 A. M.); to discharge passengers from New York.
DF Train 8 stops (7.45 A. M.), Train 80 (8.30 A. M.) to discharge passengers from Hammond and Chicago.
DG Train 1 stops Cuba (5.58 P. M.), Train 5 (4.34 A. M.) to discharge passengers from Elmira and east and to receive for Jamestown and west.
DJ Stops (10.50 P. M.) to discharge passengers from Meadville and east and to receive passengers for Akron and west.
DK Stops (1.04 A. M.) to discharge passengers from Ridgewood and east.
DL Stops on signal Union City (8.34 P. M.); Cambridge Springs (8.53 P. M.) to discharge passengers from Jamestown and east and to receive for Youngstown and west.
DN Train 8 stops Wadsworth, (6.12 A. M.), Barberton (6.20 A. M.) to discharge from Galion and west and to receive for Youngstown and east.
DO Stops (5.23 P. M.) to discharge passengers from Youngstown and east and to receive passengers for Mansfield and west.

DP Stops (10.01 A. M.) to discharge passengers from Meadville and east, and to receive passengers for Galion and west.
DS Stops (8.30 P. M.) daily to discharge passengers from Youngstown and west and to receive for New York.
DT Stops (9.04 A. M.) to discharge passengers from Jamestown and west, and to receive for Elmira and east.
DU Stops Cambridge Springs (6.14 A. M.), Union City (6.31 A. M.) to discharge passengers from Chicago and to receive for Binghamton and east.
DV Stops (4.41 P. M.) Waverly to discharge passengers from Jamestown and west and to receive for New York.
DW Stops (6.00 P. M.) to receive passengers for Jamestown and east, and to discharge passengers from Cleveland.
DX Stops (2.08 A. M.) to discharge passengers from Jamestown and west.

IMPORTANT. When trains are shown as stopping conditionally at a station, passengers should advise Station Agent, in advance of their intention to board train or notify Conductor of intention to leave train, as case may be.

TABLE 5 WESTBOUND

MARION—CHICAGO

EASTBOUND

Miles from New York	Eastern Standard Time Read Down			Miles from Chicago	Central Standard Time Read Down			
	1 Daily AM	5 Daily PM	7 Daily PM		6 Daily AM	2 Daily PM	8 EH Daily PM	
0.0	Lv. NEW YORK Rockefeller Center Terminal, 11 Rockefeller Plaza... Lv. 8th Ave. & W. 34th St. (Hotel New Yorker)	7.55	6.50	1020	0.0 Chicago (Dearborn Sta.) III. Lv.	9.35	5.15	9.55
	Chambers St. Ferry	8.02	6.57	1032	6.3 Englewood, 63d and Wallace Sts. "	9.49	5.29	10.09
	Jersey City	8.15	7.15	1130	20.6 Hammond... Ind. "	10.11	5.53	10.34
729.6	Marion... Lv.	8.40	7.30	1155	36.3 Crown Point... "		6.15	
754.5	Kenton... ED	2.34	12.27	8.11	70.1 North Judson... "		6.49	
781.5	Lima... ED	3.35	1.16	8.37	100.9 Rochester... "	11.25	7.23	11.59
808.8	Ohio City... Pacific Express			9.13	142.6 Huntington... Ar.	12.02	8.05	12.43
	Central Standard Time			9.43				
825.3	Decatur... Ind. "	3.25		9.05				
856.1	Huntington... Ar.	3.55	1.23	9.36				
	Huntington... Lv.	4.05	1.33	9.46				
897.8	Rochester... "	4.53	2.14	10.35				
928.9	North Judson... "	5.26						
962.4	Crown Point... "	6.03						
978.1	Hammond... III.	6.30	3.35	12.10				
	Englewood, 63d and Wallace Sts. "	6.50	3.55	EC				
992.4	Chicago (Dearborn Sta.)... Ar.	7.05	4.10	12.45				
998.7		AM	PM	AM				

TABLE 6 NEW YORK AND BUFFALO

WESTBOUND Read Down			Miles from New York	EASTERN STANDARD TIME		EASTBOUND Read Up	
1 Daily	7-477 Daily ExSun	471 Ex. Sun. and Hol.		2 Daily	10 Daily ExSun	2 Daily	10 Daily ExSun
AM	PM	AM			PM	AM	
7.55	10.20		0.0	Lv. NEW YORK Rockefeller Center Terminal, 11 Rockefeller Plaza (Note ⊕)	6.45	6.55	
8.15	11.30		0.0	Lv. Chambers St. Ferry... Ar.	6.34	4.54	
8.40	11.55		88.2	Lv. Jersey City... Ar.	6.15	4.30	
10.40	1.50		88.2	Ar. Port Jervis... Lv.	4.13	2.26	
10.50	2.00		215.1	Lv. Port Jervis... Ar.	4.03	2.21	
2.06	5.41		223.7	Binghamton...	12.46	10.31	
2.18	5.56		256.2	Endicott...	12.34	10.18	
2.55	6.44		273.8	Waverly...	11.54	9.34	
3.22	7.25		291.2	Elmira...	11.32	9.09	
3.49	8.01		291.2	Corning... Ar.	11.08	8.29	
4.41	9.08		332.3	Ar. Hornell... Lv.	10.19	7.20	
5.00	9.35		332.3	Lv. Hornell... Ar.	9.55	7.10	
5.15	9.43		338.0	Arkport...	9.34	6.58	
	9.54		344.9	Canaseraga...	9.24	6.47	
	10.00		349.2	Swains...		6.39	
	10.10		356.3	Dalton...		6.30	
	10.15		358.5	Washington Hunt. Portage		6.19	
	10.22		366.4	Letchworth Park			
5.45	10.29		369.1	Castile...	8.56	6.13	
5.51	10.35		372.2	Silver Springs...	8.50	6.07	
6.02	10.40		376.4	Rock Glen...			
	10.47		382.2	Warsaw...	8.39	5.56	
	10.54		386.5	Dale...		5.46	
6.26	11.00	5.50	393.6	Linden...	8.13	5.30	
	11.13	5.57	397.5	Attica...		5.22	
	11.23	6.02	399.7	Griswolds...		5.18	
6.43	11.32	6.11	405.3	Darien Center...	7.47	5.09	
		6.17	408.2	Alden (Black Water Baths)			
		6.21	409.5	Marilla...		5.03	
	11.46	6.29	414.2	Town Line...		5.00	
	11.51	6.33	415.5	Lancaster...	7.35	4.53	
		6.43	422.1	Depew...		4.49	
			425.2	East Buffalo...		4.40	
7.15	12.10	6.55		Ar. Buffalo... Lv. (Lehigh Valley Terminal)	7.15	4.30	
PM	PM	AM			AM	PM	

TABLE 7 NEW YORK—SALAMANCA—BRADFORD—CHICAGO

WESTBOUND Read Down			Via Salamanca and BUS of Buffalo and Erie Coach Corp. (See Note "X" Below)	EASTERN STANDARD TIME			EASTBOUND Read Up		
7-Bus Daily	5-557 Daily	1-Bus Daily		Bus-2 Daily	Bus-8 Daily	560-6 Daily			
PM	PM	AM	Lv. NEW YORK Rockefeller Center Terminal, 11 Rockefeller Plaza (Note ⊕)	PM	PM	AM			
10.20	6.50	7.55	Lv. Chambers St. Ferry... Ar.	6.45		7.55			
11.30	7.15	8.15	Lv. Jersey City... Ar.	6.34		7.43			
11.55	7.30	8.40	Ar. Salamanca... Lv.	6.15		7.25			
11.34	5.19	6.42	Lv. Salamanca... Ar.	8.26		10.11			
EB 1.30	5.50	EB 9.33	Lv. Limestone... Lv.	7.45		9.35			
	6.15		Ar. Bradford... Lv.	EB 7.00		8.50			
2.15	6.30	10.20		AM	PM	PM			
PM	AM	PM							
		EB 3.20	Lv. Bradford... Ar.	10.30		2.15			
		4.05	Ar. Salamanca... Lv.	EA 9.45		EB 1.30			
		6.52	Lv. Salamanca... Ar.	8.16		12.34			
		7.32	Ar. Jamestown... Lv.	7.34		11.29			
		10.33	Ar. Youngstown... Lv.	4.02		8.05			
		12.06	Ar. Akron... Lv.	2.24		6.39			
		7.05	Central Standard Time						
		AM	Ar. Chicago... Lv.	5.15		9.55			
				PM		PM			

Buses leave as follows: (running time approximately 45 minutes.)

Lv. Salamanca for Bradford, EA 9.45 A.M., 1.30 P.M., 6.28 P.M., 9.33 P.M.,

Lv. Bradford for Salamanca, 7.00 A.M., 12.15 P.M., 3.20 P.M., EA 8.20 P.M.

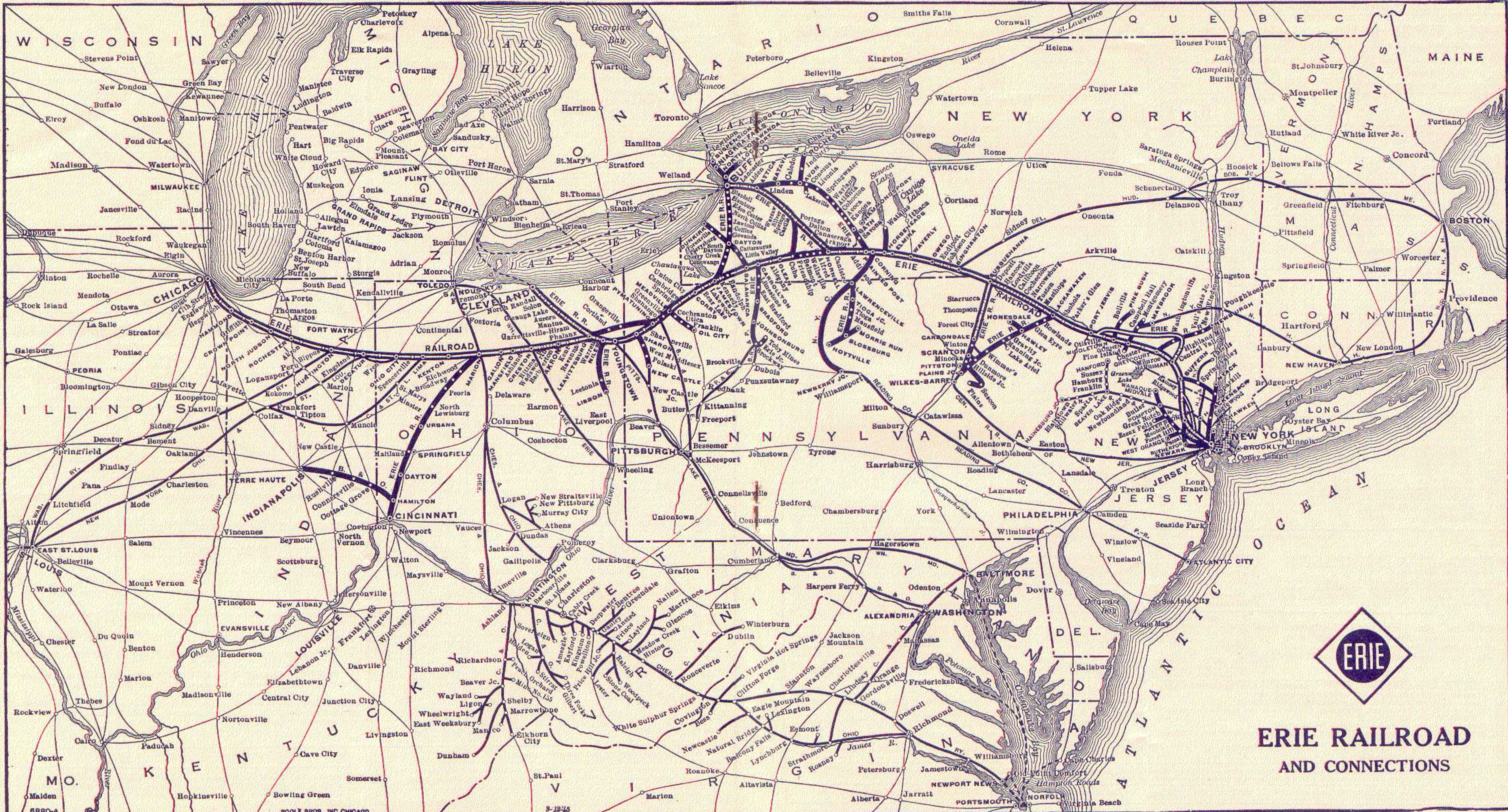
BAGGAGE CHECKED TO BRADFORD—Baggage will be handled only on Trains 557 and 560 between Salamanca, N. Y., and Bradford, Pa.

x In connection with bus service the Erie Railroad acts as agent only and is not responsible beyond its own line, except as such responsibility may be imposed by law with respect to baggage.

Note ⊕—See Table 5 for stops of Motor Coach in New York City.

IMPORTANT. When trains are shown as stopping conditionally at a station, passengers should advise Station Agent, in advance, of their intention to board train or notify Conductor of Intention to leave train, as case may be.

f Stops on signal to receive and discharge passengers.
 EA Fri., Sat., Sun. and Hol. only via Buffalo & Erie Coach Corp. bus.
 EB Via Buffalo & Erie Coach Corp. bus between Salamanca and Bradford.
 EC Train 7 stops (12.30 A. M.) to discharge passengers from east of Hammond.
 ED Stops on signal (12.51 P.M.) to receive passengers for Chicago.
 EF Stops on signal (2.43 P.M.) to discharge passengers from Chicago.
 EH No baggage carried on this train east of Hornell. Baggage will be handled on following train.



**ERIE RAILROAD
AND CONNECTIONS**

TABLE 8 DETROIT—TOLEDO—CLEVELAND—YOUNGSTOWN—PITTSBURGH—WASHINGTON—BALTIMORE—PHILADELPHIA

Miles from Cleveland	Eastern Standard Time Read Down	688	624	626	606	628	686	620	Miles from Philadelphia	Eastern Standard Time Read Down	629	621	619	625	685	623	679	687
		Daily	Daily	Daily	Daily	Ex Sun & Hol.	Daily	Sun. only			Ex Sun & Hol.	Ex Sun & Hol.	Sun. only	Daily	Daily	Daily	Sun. & Hol. only	Daily
		PM	AM	AM	PM	PM	PM	PM			AM	AM	AM	PM	PM	AM	PM	AM
	DetroitLv.	10.50		8.05			1.00	5.40	0.0	PhiladelphiaLv.				7.47				1.37
	ToledoLv.	1.00	3.55	9.45			2.55	6.50	94.0	Baltimore (Mt. Royal Sta.)Lv.				9.27		8.00		3.18
0.0	ClevelandLv.	3.05	7.00	1.00	4.45	4.20	5.35	9.00	95.9	Baltimore (Camden Sta.)				9.35		8.05		3.25
3.3	Union Terminal, Public Square								132.7	Washington, D. C.Lv.				10.45		9.05		4.40
5.6	E. 55th St. and McBride Ave.		7.08	1.08		4.29	5.44	9.09	139.6	Silver Spring.....				10.59		9.18		4.54
8.6	E. 93d St. & Richmond Ave.					4.34			187.8	Harper's Ferry.....						10.11		
10.7	Lee Road-Shaker Hts. Station, Cleveland, O.		7.20	1.19	5.03	4.40	5.55	9.19	206.1	Martinsburg.....				12.20		10.36		
15.8	North Randall.....					4.45			283.8	Cumberland.....				1.59		12.15		
20.4	Solon.....			GP		4.51		9.28	370.8	Connellsville.....				4.33		3.14		
23.6	Geauga Lake.....					4.57		9.33	413.9	McKeesport.....				5.28		4.12		
23.6	Aurora			GP		5.02		9.38	419.1	Braddock.....				5.39		4.22		
30.0	Mantua			GD		5.10		9.46	433.9	PittsburghAr.				6.00		4.40		11.25
34.2	Jeddoe					5.16			433.9	PittsburghLv.				7.35	12.30	5.05	8.00	11.50
36.7	Garrettsville-Hiram	4.04	7.50	1.50		5.20		9.57	444.5	Coraopolis.....				7.49	12.44	5.20	8.14	
40.3	Mahoning					5.25			453.0	Aliquippa.....				7.58	12.54	5.30	8.23	
45.3	Phalanx					5.31			459.6	Beaver.....				8.06	1.02	5.40	8.31	
52.6	Leavittsburg					5.58			463.1	Beaver Falls.....				8.11	1.08	5.47	8.36	
57.7	Warren	4.33	8.08	2.09	5.52	6.13	6.42	10.18	474.7	New Brighton.....				8.12	1.04	5.48	8.37	
61.9	Niles	GL	8.16	2.17	GM	6.25	6.52	10.27	481.1	Ellwood City (GJ).....				8.25	1.23	6.01	8.50	
66.5	Girard					6.31		10.34	498.8	Wampum (GJ).....				8.23	1.22	6.00	8.48	
66.5	YoungstownAr.	5.00	8.30	2.30	6.13	6.40	7.05	10.43	498.8	New Castle (Wash. St.) GH Lv.				8.34	1.33	6.11	8.59	
66.5	YoungstownLv.	5.10	8.35	2.40			7.10		520.0	New Castle				9.05	2.00	6.45	9.25	1.10
84.2	New CastleAr.	5.38	9.00	3.05			7.34		525.0	YoungstownLv.	4.50	6.15	7.35	9.20	2.10	6.50	9.30	1.20
90.6	New Castle (Wash. St.) GH Ar.	5.49	9.11	3.16			7.45		528.6	Girard.....	4.58			9.20	2.10	6.50	9.30	1.20
90.6	Wampum (GJ).....	5.47	9.07	3.12			7.41		531.1	Niles.....	5.06	6.26	7.49	9.31	2.22	7.01	9.41	GG
102.2	Ellwood City (GJ).....	6.00	9.20	3.45			7.54		535.3	Warren	5.20	6.35	7.59	9.41	2.33	7.18	9.50	1.45
102.2	Beaver Falls.....	GC6.01	9.21	3.26			7.56		541.9	Leavittsburg	5.26							
102.2	New Brighton.....								544.9	Phalanx.....	5.33		8.08					
105.6	Beaver	GC6.07	9.27	3.32			8.02		549.5	Mahoning.....								
112.3	Aliquippa	GC6.17	9.37	3.42			8.12		554.6	Garrettsville-Hiram.....	5.49		8.19	GR	2.50	7.35	GN	
120.8	Coraopolis	GC6.28	9.46	3.51			8.22		557.6	Jeddoe.....	f 5.54							
131.4	PittsburghAr.	6.45	10.05	4.05			8.40		559.7	Mantua.....	6.03		8.37	GE	f 3.00			
131.4	PittsburghLv.	8.20	10.40				10.55		562.0	Aurora.....	6.13							
141.0	Braddock.....Ar.	8.36					11.13		565.3	Geauga Lake.....	6.19							
145.2	McKeesport.....	8.50	11.10				11.25			Solon.....	6.28							
189.3	Connellsville.....	9.47	12.08				12.25			North Randall.....	6.36							
281.5	Cumberland.....	12.12	2.42				3.05			Lee Road-Shaker Hts. Station, Cleveland, O.....	6.39	7.23	8.54	10.32	3.23	6.28.08	6.21.038	
359.2	Martinsburg.....	1.50	4.26				4.46			E. 93d St. & Richmond Ave. GY6.45	6.51		9.06		3.31	8.16		
372.5	Harper's Ferry.....	2.20	4.52				5.16			E. 55th St. and McBride Ave. GY6.45	6.51		9.15	10.48	3.40	8.25	10.55	2.50
425.7	Silver Spring.....	3.12	5.50				6.15			ClevelandAr.	7.00	7.40	9.15	10.48	3.40	8.25	10.55	2.50
432.8	Washington, D. C.Ar.	3.30	6.10				6.35			Union Terminal, Public Square								
469.4	Baltimore (Camden Sta.)Ar.	4.38	7.15				7.38			ToledoAr.				1.20	6.15	1.15	2.55	4.57
470.9	Baltimore (Mt. Royal Sta.)Ar.	4.46					7.46			DetroitAr.				3.40	8.00	AM	AM	7.00
565.3	PhiladelphiaAr.	6.26					9.28											

New diesel power on all trains between Cleveland, Youngstown and Pittsburgh.

EQUIPMENT—EASTBOUND

- No. 606—Daily. *Sleeping Car (6 Roomette-6 Section 4 Double Bedroom) Cleveland to New York. *Coach, Cleveland to New York.
- No. 624—The Washingtonian—Daily. *B&O Parlor-Diner, Cleveland to Baltimore. *Individual Reclining Seat Coaches, Cleveland to Washington and Baltimore.
- No. 626—Daily. *Erie Parlor-Buffer Car, Cleveland to Pittsburgh. *Coach, Cleveland to Pittsburgh.
- No. 686—Daily. *Sleeping Car for Parlor Car Service and *Coaches, Detroit to Pittsburgh, via Cleveland. *Dining Car, Cleveland to Pittsburgh. *Coaches, Pittsburgh to Washington, Baltimore and Philadelphia.
- No. 688—Daily. *Sleeping Car (12 Section-2 Double Bedroom), Detroit to Pittsburgh daily. (6 Section-6 Double Bedroom), Detroit to Pittsburgh, daily except Saturday. Through Coaches *Detroit to Pittsburgh, via Cleveland *Parlor Car. *Dining Car and *Coaches, Pittsburgh to Washington and Baltimore.

EQUIPMENT—WESTBOUND

- No. 625—Daily. *Sleeping Car (6 Roomette-6 Section-4 Double Bedroom), New York to Cleveland. *Erie Parlor-Buffer Car, Pittsburgh to Cleveland. *Coach, New York to Cleveland, Pittsburgh to Cleveland.
- No. 623—The Washingtonian—Daily. *B&O Parlor-Diner, Baltimore to Cleveland. *Individual Reclining Seat Coaches, Baltimore and Washington to Cleveland.
- No. 679—Sun. & Hol. *Coach, Pittsburgh to Cleveland.
- No. 621—Daily exc. Sun. and Hol. *Coach, Youngstown to Cleveland.
- No. 687—Daily. *Sleeping Car (12 Section-2 Double Bedroom) Pittsburgh to Detroit daily. (6 Section-6 Double Bedroom) Pittsburgh to Detroit, daily except Sunday. *Through Coaches, Pittsburgh to Detroit via Cleveland. *Coaches on y, Washington to Pittsburgh.

- † Stops to discharge passengers. *Indicates Air-Conditioned Cars
- f Stops on signal to receive and discharge revenue passengers.
- GC Stops to discharge passengers from points beyond Youngstown.
- GD Stops (1.41 P. M.) to discharge passengers from Cleveland and to receive passengers for Warren and east.
- GE Stops (8.29 A. M.) to receive passengers for Cleveland.
- GG Stops (1.33 A. M.) to discharge passengers from east of Youngstown and to receive passengers for Cleveland.
- GH Bus service between New Castle and New Castle (Washington St.).
- GJ Bus service between Wampum and Ellwood City.
- GL Stops (4.45 A. M.) to discharge passengers from Cleveland and west and to receive for Pittsburgh.
- GM Stops (8.00 P. M.) to receive passengers for Jamestown and east, and to discharge passengers from Cleveland.
- GN Stops (10.07 P. M.) to discharge passengers from Pittsburgh.
- GP Stops Saturdays only at Solon (1.27 P. M.) and Aurora (1.34 P. M.) to discharge passengers from Cleveland.
- GR Stops (9.59 A. M.) to discharge passengers from Hornell and east.
- GY Baggage will not be checked to or from E. 93rd St. Station.
- GZ Baggage checked on train 623 will be taken to Union Terminal Cleveland and will be available at Lee Rd. station following morning.

IMPORTANT. When trains are shown as stopping conditionally at a station, passengers should advise Station Agent, in advance, of their intention to board train or notify Conductor of intention to leave train, as case may be.

Holidays in the above table refers to the observance of New Year's Day, Memorial Day, Independence Day, Labor Day, Thanksgiving Day and Christmas Day.

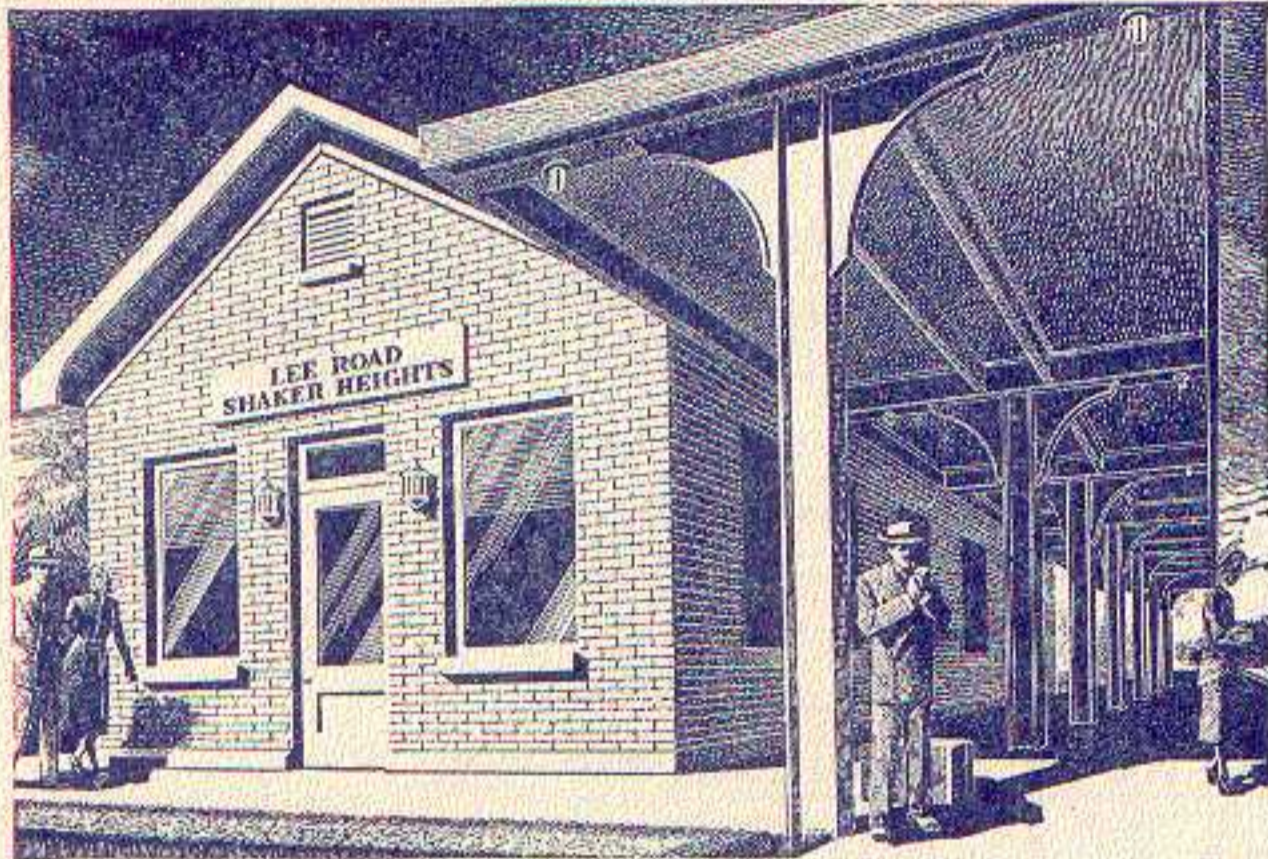
NEW ERIE PASSENGER STATION

LEE ROAD and MILES AVE., CLEVELAND

Serving

SHAKER HEIGHTS CLEVELAND HEIGHTS
UNIVERSITY HEIGHTS MAPLE HEIGHTS

and Adjacent Area



A time saving, modern station at which to board or leave Erie trains operating — Between
CLEVELAND YOUNGSTOWN WARREN
PITTSBURGH WASHINGTON NEW YORK



ERIE MOTOR COACH SERVICE

to and from

ROCKEFELLER CENTER TERMINAL IN MIDTOWN NEW YORK
 (for through-train passengers)

ERIE MOTOR COACHES connecting with specified trains to and from Goshen, N. Y., and points west thereof will leave and arrive at Rockefeller Center Terminal, 11 Rockefeller Plaza. (Rockefeller Plaza is between Fifth and Sixth Aves.; No. 11 is between W. 48th and 49th Sts.) Only 30 minutes between Erie Railroad Jersey City Terminal and Rockefeller Center by Motor Coach.

Motor coaches make intermediate stops, inbound—Eighth Ave. at W. 32nd St. and Eighth Ave. at W. 42nd St. Outbound—at Eighth Ave. and W. 34th St (Hotel New Yorker).

Through-train connections guaranteed.

Additional charge for motor coach service is 35c, plus tax, in each direction.

Hand baggage handled free of charge—restricted to personal hand baggage of ordinary size that can be conveniently placed on motor coach.

Connections provided eastbound from Trains Nos. 10, 6, 2, 8 and 38; westbound for Trains Nos. 1, 27, 5, 7, 43 and 47.

Consult Ticket Agents for further information.

TABLE 9 BUFFALO—JAMESTOWN

WESTBOUND Read Down		EASTERN STANDARD TIME		Eastbound Read Up	
519	Mls.			516	
Daily				Daily	
PM				AM	
4.35	0.0	Lv. Buffalo (L.V. Term.)	Ar	10.15	
4.55	7.4	" Bladell	"	9.56	
5.09	13.3	" Hamburg	"	9.46	
HA	14.4	" Water Valley	"		
HA	16.8	" Eden Valley	"	9.36	
5.21	19.1	" Eden Center	"	9.33	
5.29	23.4	" North Collins	"	9.23	
5.36	27.3	" Lawtons	"	9.15	
5.43	30.4	" Collins (St. Hosp.)	"	9.08	
5.53	33.4	" Gowanda	"	9.04	
6.08	38.0	" Dayton	"	8.49	
6.19	43.3	" South Dayton	"	8.40	
6.28	48.3	" Cherry Creek	"	8.31	
6.36	52.6	" Conewango	"	8.25	
HA	60.6	" Kennedy	"	8.14	
6.55	66.4	" Falconer	"	8.06	
7.02	69.5	Ar. Jamestown	Lv	8.00	
PM				AM	

HA Stops to discharge passengers.

TABLE 10 NEW YORK—KENOZA LAKE—JEFFERSONVILLE

Train and Bus Service via Callicoon

WESTBOUND Read Down			EASTBOUND Read Up		
27	43	1	EASTERN STANDARD TIME		
Daily	Sat. and Sun. only HC	Daily		2	44
PM	AM	AM		PM	PM
2.05	7.15	7.55	Lv. Rockefeller Center Terminal, Ar 11 Rockefeller Plaza (Note ⊕)	6.45	7.45
2.30	7.30	8.15	Lv. Chambers St. Ferry, Ar	6.34	7.39
2.50	8.00	8.40	Lv. Jersey City, Ar	6.15	7.15
6.32	11.33	11.58	Ar. Callicoon, Lv	2.55	3.52
Via bus of Schultz Auto-Bus Line (See Note X below)					
HD6 4.5	11.45	12.15	Lv. Callicoon, Ar	2.30	3.30
7.15	12.15	12.45	Lv. Kenoza Lake, Ar	2.00	3.00
7.45	12.45	1.15	Ar. Jeffersonville, Lv	1.30	2.30
PM	PM	PM		PM	PM

TABLE 11 NEW YORK—CHAUTAUQUA—CHICAGO

(Via Jamestown and BUS of Buffalo and Erie Coach Corp.)

WESTBOUND Read Down			EASTERN STANDARD TIME		EASTBOUND Read Up	
1-Bus	5-Bus	7-Bus	See Note X below		Bus-8	Bus-2
Daily	Daily	Daily			Daily	Daily
	PM	PM	Lv. NEW YORK Rockefeller Center Terminal, 11 Rockefeller Plaza	Ar	PM	
	6.50	10.20			10.50	
	7.15	11.30	Lv. Chambers St. Ferry, Ar		10.49	
	7.30	11.55	Lv. Jersey City, Ar		10.20	
	6.08	12.23	Ar. Jamestown, Lv		11.29	
	7.00	12.45	Lv. Jamestown, Ar		10.10	
	7.35	1.35	Ar. Chautauqua, Lv		9.35	
	AM	PM			AM	
PM		AM	Lv. Chautauqua, Ar		PM	AM
6.15		11.45	Ar. Jamestown, Lv		1.35	9.35
6.50		12.20			12.45	9.00
7.43		12.34	Lv. Jamestown, Ar		11.12	7.24
12.06		5.15	Ar. Akron, Lv		6.39	2.24
			Central Standard Time			
7.05		12.45	Ar. Chicago, Lv		9.55	5.15
AM		AM			PM	PM

1 Stops on signal to receive and discharge passengers.

⊕ See explanation of reference note on pages 11-12.

HB Runs Sat. and Sun. only July 2 to Sept. 3 incl., except July 3. Will run July 4 and Sept. 5.

HC Runs Sat. and Sun. only July 2 to Sept. 4 incl.

HD Bus connection to be effective July 2.

⊕ See Tables 2 and 3 for stops of Motor Coach in New York City.

† See explanation of reference note on pages 13 and 14.

Tickets sold and baggage checked through to Chautauqua.

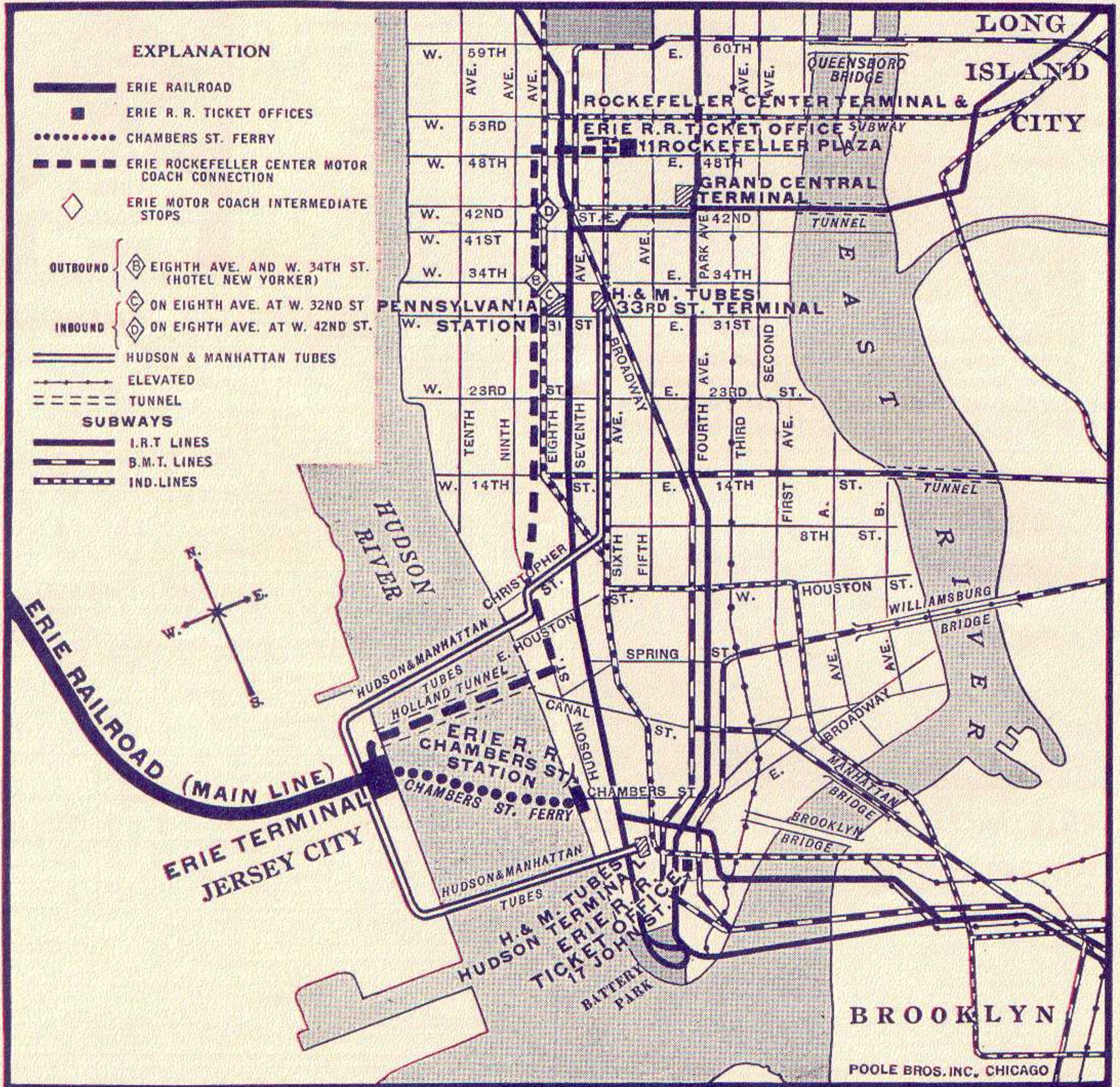
Hand baggage checked without charge. Trunks checked at charge of 25c each.

Note X. In connection with the bus service the Erie Railroad acts as agent only and is not responsible beyond its own line, except as such responsibility may be imposed by law with respect to baggage.

IMPORTANT. When trains are shown as stopping conditionally at a station, passengers should advise Station Agent, in advance, of their intention to board train or notify Conductor of intention to leave train, as case may be.

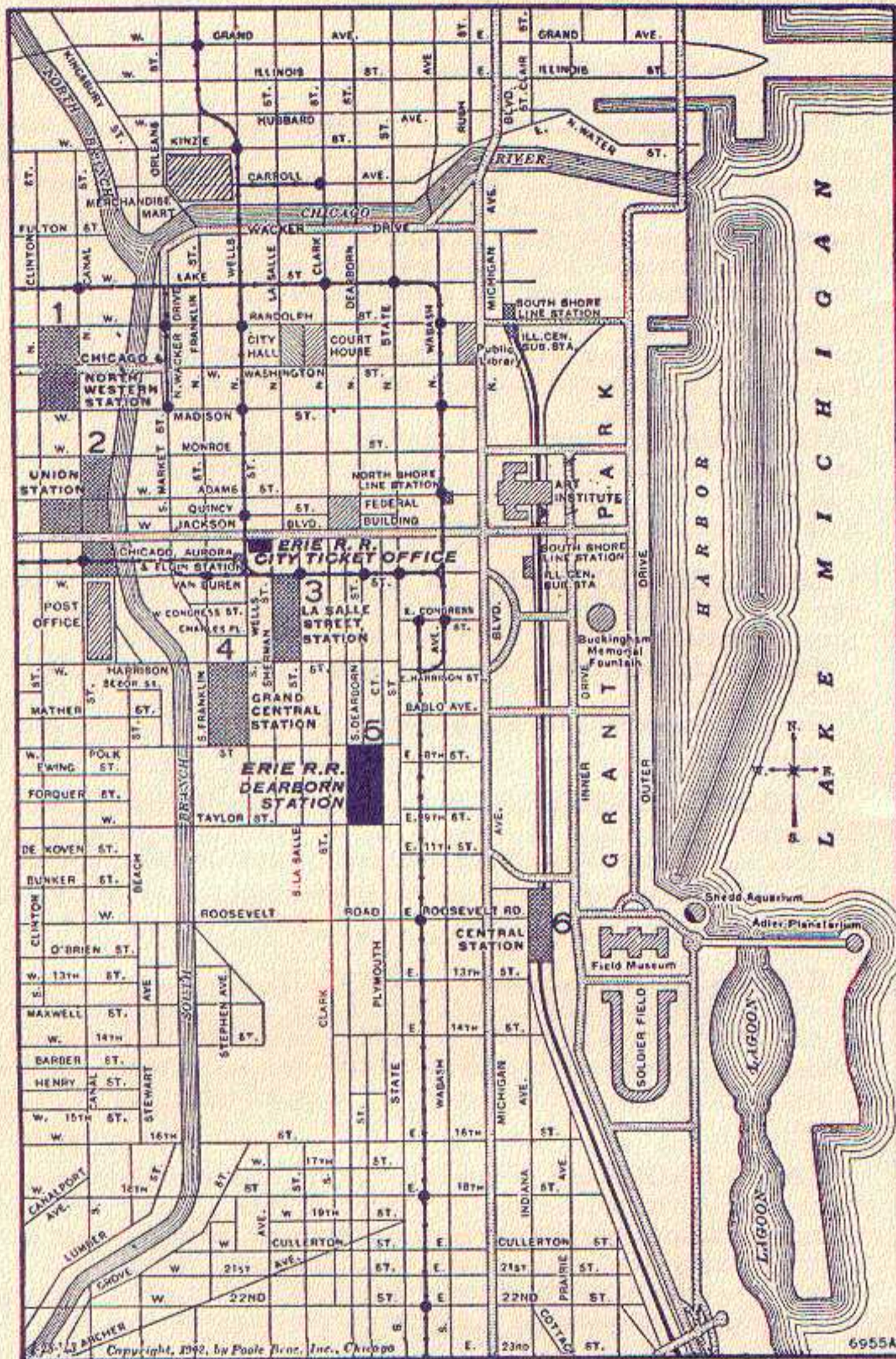
MAP OF NEW YORK CITY AND ADJACENT AREA

showing Erie Rockefeller Center Motor Coach Connection, Chambers Street Ferry route, Hudson and Manhattan Tube routes, and Erie Terminals and Ticket Offices in Manhattan and Jersey City.



MAP OF DOWNTOWN CHICAGO

Showing Business District, "Loop," and Railroad Stations



LOCATION OF CHICAGO PASSENGER STATIONS

Tenant Railroad Lines Are Listed. Number Indicates Location On Above Map. Erie trains arrive at and depart from Dearborn Station (5).

- | | |
|----------------------------------------------------------------------------------------------------------------------------------------------------------------------------------------------------------------------------------|-----------------------------------------------------------------------------------------------------------------------------------------------------------------------------------------------|
| <p>Dearborn Station (5)
Polk and Dearborn Sts.</p> <p>ERIE
Santa Fe
Chicago & Eastern Illinois
Chicago & Western Indiana
Grand Trunk
Monon Route
Wabash</p> | <p>La Salle St. Station (3)
La Salle and Van Buren Sts.</p> <p>1/2 Mile from Dearborn Station
New York Central
Nickel Plate
Rock Island</p> |
| <p>C&NW Terminal (1)
Madison and Canal Sts.</p> <p>1 and 2/10 Miles from Dearborn Station
Chicago & North Western</p> | <p>Grand Central Station (4)
Harrison and Wells Sts.</p> <p>3/10 Mile from Dearborn Station
Baltimore & Ohio
Chicago Great Western
Pere Marquette
Soo Line</p> |
| <p>Union Passenger Station (2)
Canal, Adams, Jackson and Clinton Sts.</p> <p>1 Mile from Dearborn Station
Alton Road
Burlington Route
Chicago, Milwaukee, St. Paul and Pacific
Pennsylvania Lines</p> | <p>Central Station (6)
Roosevelt Road and Michigan Ave.</p> <p>8/10 Mile from Dearborn Station
Big Four
Illinois Central
Michigan Central</p> |
- North Shore Line, South Shore Line, and Chicago, Aurora & Elgin electric lines, stations are also shown on the map.

HUDSON AND MANHATTAN TUBE TRAINS

SCHEDULE OF RUNNING TIME

BETWEEN

ERIE R. R. JERSEY CITY TERMINAL

AND

Downtown New York—

Cortlandt St. (Hudson Terminal Bldg.)..... 6 Mins.

Uptown New York—

33rd Street and 6th Ave..... 14 "
23rd Street and 6th Ave..... 11 "
19th Street and 6th Ave..... 10 "
14th Street and 6th Ave..... 9 "
9th Street and 6th Ave..... 8 "
Christopher and Greenwich Streets..... 6 "

Allow 10 Minutes additional for connections.

Fares—Downtown or Uptown 10 cents.

Tube Trains From "Erie" Jersey City

To Downtown New York—take train marked "Hudson Terminal."

To Uptown New York—take train marked "33rd St. Local."

To Journal Square, Jersey City—take train marked "Journal Square," also connects to Newark.

To Hoboken—take train marked "Hoboken."

Tube Trains To "Erie" Jersey City

From Downtown New York—take train marked "Hoboken."

From Uptown New York—take train marked "Journal Square."

From Journal Square, Jersey City—take train marked "33rd St. Local," also connects from Newark.

From Hoboken—take train marked "Hudson Terminal."

ERIE R. R. FERRY TIME TABLE

EASTERN STANDARD TIME

CHAMBERS STREET FERRY

Ferry Running Time, 9 Minutes

WEEK DAYS

Leave New York for Jersey City						Leave Jersey City for New York					
AM	AM	AM	PM	PM	PM	AM	AM	AM	PM	PM	PM
12.30	d7.15	10.30	12.10	3.50	7.20	12.15	7.08	10.25	12.05	3.45	7.05
1.00	7.20	10.40	12.20	4.00	7.30	12.45	7.17	10.35	12.15	3.55	7.15
1.30	7.30	10.50	12.30	4.08	7.40	1.15	d7.23	10.45	12.25	d4.00	7.25
2.00	d7.35	11.00	12.40	d4.15	7.50	1.45	7.28	10.55	12.35	4.05	7.35
2.30	7.40	11.10	12.50	4.20	8.00	2.15	d7.34	11.05	12.45	4.13	7.45
3.00	7.50	11.20	1.00	4.28	8.15	2.45	7.40	11.15	12.55	4.24	7.55
3.30	8.00	11.30	1.10	4.38	8.30	3.15	7.48	11.25	1.05	4.32	8.05
4.00	d8.10	11.40	1.20	4.48	8.40	3.45	7.54	11.35	1.15	4.45	8.15
4.30	8.15	11.50	1.30	5.00	9.00	4.15	8.05	11.45	1.25	4.55	8.30
4.45	8.20	12.00	1.40	5.10	9.15	4.45	8.18	11.55	1.35	5.05	8.45
5.00	8.30	1.50	5.20	9.30	5.00	8.23	1.45	5.15	9.00
5.15	8.40	2.00	5.30	10.00	5.15	8.35	2.00	5.25	9.15
5.30	8.50	2.10	5.40	10.30	5.30	8.45	2.05	5.35	9.30
5.45	9.00	2.20	5.50	10.55	5.45	8.55	2.15	5.45	a9.45
6.00	9.10	2.30	6.00	11.30	5.57	9.05	2.25	5.55	e9.50
6.10	9.20	2.40	6.10	12.00	6.07	9.15	2.35	6.05	10.15
6.20	9.30	2.50	6.20	6.18	9.25	2.45	6.18	10.40
6.30	9.40	3.00	6.30	6.25	9.35	2.55	6.25	11.10
6.38	9.50	3.10	6.45	6.35	9.45	3.05	6.35	11.45
6.50	10.00	3.20	6.50	6.45	9.55	3.15	6.45
7.00	10.10	3.30	7.00	6.55	10.05	3.25	a6.55
7.10	10.20	3.40	7.15	d7.02	10.15	3.35	e7.00
AM	AM	Noon	PM	PM	PM	AM	AM	AM	PM	PM	PM

a—Except Holiday. d—Except Saturday and Holidays. e—Holiday only.

SUNDAYS

AM	AM	PM	PM	PM	AM	AM	PM	PM	PM
12.30	8.00	12.10	4.45	9.15	12.15	8.00	12.15	4.45	9.15
1.00	8.15	12.30	5.00	9.30	12.45	8.10	12.30	5.00	9.30
1.30	8.30	12.45	5.20	10.00	1.15	8.30	12.45	5.15	9.45
2.00	8.45	1.00	5.30	10.30	1.45	8.45	1.00	5.30	10.15
2.50	9.00	1.15	5.50	10.55	2.15	9.00	1.15	5.45	10.40
3.30	9.20	1.30	6.00	11.30	3.15	9.15	1.30	6.05	11.10
4.15	9.30	1.45	6.20	12.00	3.45	9.35	1.45	6.18	11.45
4.45	9.45	2.00	6.30	4.30	9.45	2.00	6.30
5.15	10.00	2.10	6.40	5.00	10.00	2.15	6.45
5.45	10.10	2.30	7.00	5.45	10.15	2.35	7.00
6.00	10.30	2.45	7.15	6.00	10.30	2.45	7.15
6.15	10.45	3.00	7.30	6.15	10.45	3.00	7.30
6.30	11.00	3.20	7.45	6.35	11.05	3.15	7.45
6.45	11.15	3.30	8.00	6.45	11.15	3.30	8.00
7.00	11.30	3.45	8.15	7.00	11.30	3.45	8.15
7.10	11.45	4.00	8.30	7.15	11.45	4.00	8.30
7.30	12.00	4.15	8.45	7.34	12.00	4.20	8.45
7.45	4.30	9.00	7.45	4.30	9.00
AM	Noon	PM	PM	PM	AM	AM	PM	PM	PM

GENERAL INFORMATION

STANDARD OF TIME—Erie Lines east of and including Ohio City, Ohio, are shown in Eastern Standard Time. Lines west of Ohio City, Ohio, in Central Standard Time. 12:01 Noon to 12:00 Midnight is indicated by heavy-faced type.

DAYLIGHT SAVING TIME is observed until Sept. 24 at New York City and all points, including branch lines, to Cleveland and Rittman, Ohio, inclusive, also at points Decatur, Ind. to Chicago, Ill., inclusive.

THIS COMPANY IS NOT RESPONSIBLE FOR ERRORS in timetables, inconvenience or damage resulting from delayed trains, or failure to make connections; schedules and equipment shown herein are subject to change without notice.

HOLIDAYS—The term "Holidays" (unless covered by special note under schedule) refers to the observance of New Year's Day, Lincoln's Birthday, Washington's Birthday, Memorial Day, Independence Day, Labor Day, Columbus Day, Election Day (November 8), Thanksgiving Day and Christmas Day.

TRAINS WILL NOT BE HELD at Jersey City for ferries from New York between the hours of 4:00 P. M. and 5:30 P. M. Eastern Standard Time.

CHILDREN under five years of age are carried free when accompanied by parent or guardian; five years of age and under twelve, half fare; twelve years of age and over, full fare.

ADJUSTMENT OF FARES—Should any misunderstanding arise with conductors or agents, pay the fare required, take receipt and communicate with Passenger Traffic Manager, Midland Bldg., Cleveland, Ohio.

REDEMPTION OF TICKETS—Tickets unused or partly used will be redeemed under tariff regulations at proper value.

LOST TICKETS—Proper care should be taken to guard against the loss of tickets, as Railroads are not responsible for lost tickets or baggage checks.

STOP-OVERS AT NIAGARA FALLS—Passengers holding tickets reading "via Erie Railroad" from Elmira, N. Y., and stations east thereof to or through Youngstown, Ohio, and stations west thereof, or vice versa, may exercise the privilege of going via Buffalo and making side-trip to Niagara Falls. On request, Erie Ticket Agent at Buffalo will issue without charge a round-trip ticket between Buffalo and Niagara Falls—Frequent service via motor coach direct from Buffalo Terminal.

STOP-OVERS AT OTHER POINTS—A stop-over within final limit will be granted on tickets sold at regular fares at all stations on the Erie Railroad (with certain exceptions in the New York suburban area).

ARTICLES LOST ON TRAINS—When articles are lost on trains or left in waiting rooms or stations, owners should apply at once to Agent at station where they leave train or address Manager, Baggage Traffic, Foot of Chambers St., New York City, giving full description of property, stating date of loss and train number.

BAGGAGE—150 pounds of baggage are checked free on adult tickets and 75 pounds on half fare tickets. Free allow-

ance subject to tariff stipulations as to contents, weight, value and size.

Personal baggage is defined as consisting of wearing apparel, toilet articles (except liquid) and similar personal effects in actual use and necessary and appropriate for the wear, use, comfort and convenience of the passenger for the purpose of the journey and not intended for other persons or for sale. Prohibited articles which may not be included in personal baggage are shown in published tariff which is on file at stations and open for public inspection.

Baggage to be checked should be delivered at stations reasonably in advance of train departure. The railroad cannot guarantee to forward baggage on same train with passenger and when necessary will be forwarded on other trains. To facilitate prompt receipt of baggage at destination, passengers are urged to arrange for forwarding on a preceding train.

A charge is made for storage of baggage at destination when it is not claimed within the free time limit.

BAGGAGE DELIVERY IN NEW YORK CITY—All baggage checked to New York City will be sent to Chambers Street Station.

Baggage checked from New York City must be sent to Chambers Street Station.

Checked baggage will not be handled on through train Motor Coach connections.

BAGGAGE INSURANCE by the St. Paul Fire and Marine Insurance Co. may be purchased at principal Erie Ticket Offices. It insures your baggage and personal effects for your entire trip anywhere in the world. Minimum premium twenty-five cents. Ask Ticket Agent for full particulars.

BAGGAGE DELIVERY SERVICE—Baggage may be checked through to house address, hotel, steamship dock, etc., at destination, thus avoiding necessity for any further attention. Reliable transfer companies perform the service at nominal charges. This delivery arrangement is in effect at all principal cities.

HAND BAGGAGE in coaches or Pullman cars is restricted to what can be conveniently placed in berth, seat, or other accommodations purchased by passenger. It is urged that passengers carry with them only such baggage as required for their immediate needs and avail themselves of the free baggage service for other baggage required on reaching destination.

SAFETY FIRST HINTS—Carefulness on your part helps eliminate accidents. Don't get on or off a train in motion; wait for a full stop. Keep hand baggage out of car aisles; this will remove a cause of inconvenience, possibly of harm, to others. Walk carefully when entering or leaving train; high-heeled shoes are sometimes a cause of tripping or stumbling on car steps. Don't stand or walk close to the railroad track; look both ways before starting across. Courtesy toward your fellow travelers increases the pleasure of your journey.

PREPAID TRANSPORTATION—For the convenience of patrons who do not wish to send money by mail, Erie Railroad ticket agents are prepared to sell prepaid ticket orders for the delivery of transportation, rail and Pullman, from practically all points in the United States, Canada and Mexico. These orders may also include the furnishing of cash.

In emergencies arrangements may be made for the delivery of transportation by telegraph or telephone without charge except when commercial wires are used. Consult Ticket Agents for Details.

CONVENIENT LUGGAGE HANDLING SERVICE

at Chicago!

FOR PASSENGERS HOLDING THROUGH TICKETS TO POINTS BEYOND CHICAGO

If you have three or more hours in Chicago before the departure time of your train to the west, your luggage is handled for you, free of charge, directly from your Erie coach or Pullman to the parcel room of your connecting westbound train. You can forget your luggage until departure time, and spend *all* of your free hours for business or enjoyment in Chicago. Here's how this Erie service operates:

1. *The Erie Train Porter takes your luggage shortly before arrival in Chicago, and gives you a claim check.*
2. *When you leave your Erie train at Chicago your luggage is transferred to the parcel room of your connecting line.*
3. *Unencumbered by luggage, you may spend all of your three or more hours for business or enjoyment in Chicago.*
4. *Before departure time of your westbound train, you pick up your luggage at the parcel room of the station from which you are departing.*

This service, of course, is also available to passengers departing from Dearborn Station where no station transfer is involved, and where there is one hour or more waiting time.

Limousine transfer service to connecting lines is also available if desired, at no additional charge.

HERE IS
SOMETHING
YOU SHOULD
KNOW

GOING BEYOND CHICAGO?

Parmelee Transportation Company maintains a fleet of Limousines in Chicago—new, sleek looking and luxurious—to assure through passengers dependable station-to-station service. A Parmelee agent meets incoming trains and arranges for transportation to your outgoing station or, if you wish, to any downtown hotel or other downtown destination.

This Parmelee service is offered *without extra charge* to all passengers holding through tickets with Parmelee coupon.

Any Railway Ticket Agent
will gladly furnish
full information about
PARMELEE SERVICE



For full details, consult your Erie Ticket Agent

NOW! NEW ALL-ROOM SLEEPING CARS

BETWEEN
CHICAGO AND AKRON



You'll find all the latest developments for your comfort—including year 'round air conditioning—in Erie's new 6 double bedroom, 10 roomette sleeping cars.

For restful, relaxing overnight travel, with smooth diesel power, reserve a roomette or bedroom. This improved service is available on the following schedule, replacing present Pullmans:

Leave Chicago . . . 9:55 P.M. C.S.T.
Arrive Akron . . . *6:39 A.M. E.S.T.
*7:09 A. M. (Sundays)

Leave Akron . . . 12:06 A.M. E.S.T.
Arrive Chicago . . . 7:05 A.M. C.S.T.

Sleeping car may be occupied until 8:00 A.M. at Akron, and is ready for occupancy at 9:30 P.M. at new Erie Station in Akron.

Erie Railroad

Serving the Heart of Industrial America

Be sure to visit the
CHICAGO RAILROAD FAIR

June 25—October 2



Last year over 2½ million people were thrilled by the Railroad Fair. This year there are even more exhibitions and entertainment features, covering over 50 beautiful acres on Chicago's lake front. Here are some of the things you'll see:

- "Wheels A-Rolling"—Stirring pageant of American transportation progress, enacted on huge outdoor stage—450 feet long!
- Famous old locomotives
- Dude ranch and rodeo
- New, fast streamliners
- Indian Village
- . . . And many, many other features

GO ERIE to Chicago

—direct connections to the West. Ask your Erie ticket agent for complete information.

**CHARGE-IT
service**

**FOR YOUR
CONVENIENCE**

RAIL TRAVEL CARD	
ACCOUNT NO	600-2
CARD HOLDERS NAME	John Doe
NAME OF SUBSCRIBER	XYZ Company
CARD HOLDERS SIGNATURE	<i>John Doe</i>

The Erie and the majority of other railroads offer a new service to travelers—a charge-it plan for buying passenger transportation.

Under this convenient plan, your Rail Travel Card is honored for rail, Pullman and baggage charges to any destination in the United States, Canada, and Mexico.

Simply present your card at the ticket office, sign a receipt and get your tickets. At the end of the month a bill is rendered for tickets so issued. There are no charges for this service, no deposit required. It is available to any company or individual with proper credit rating.

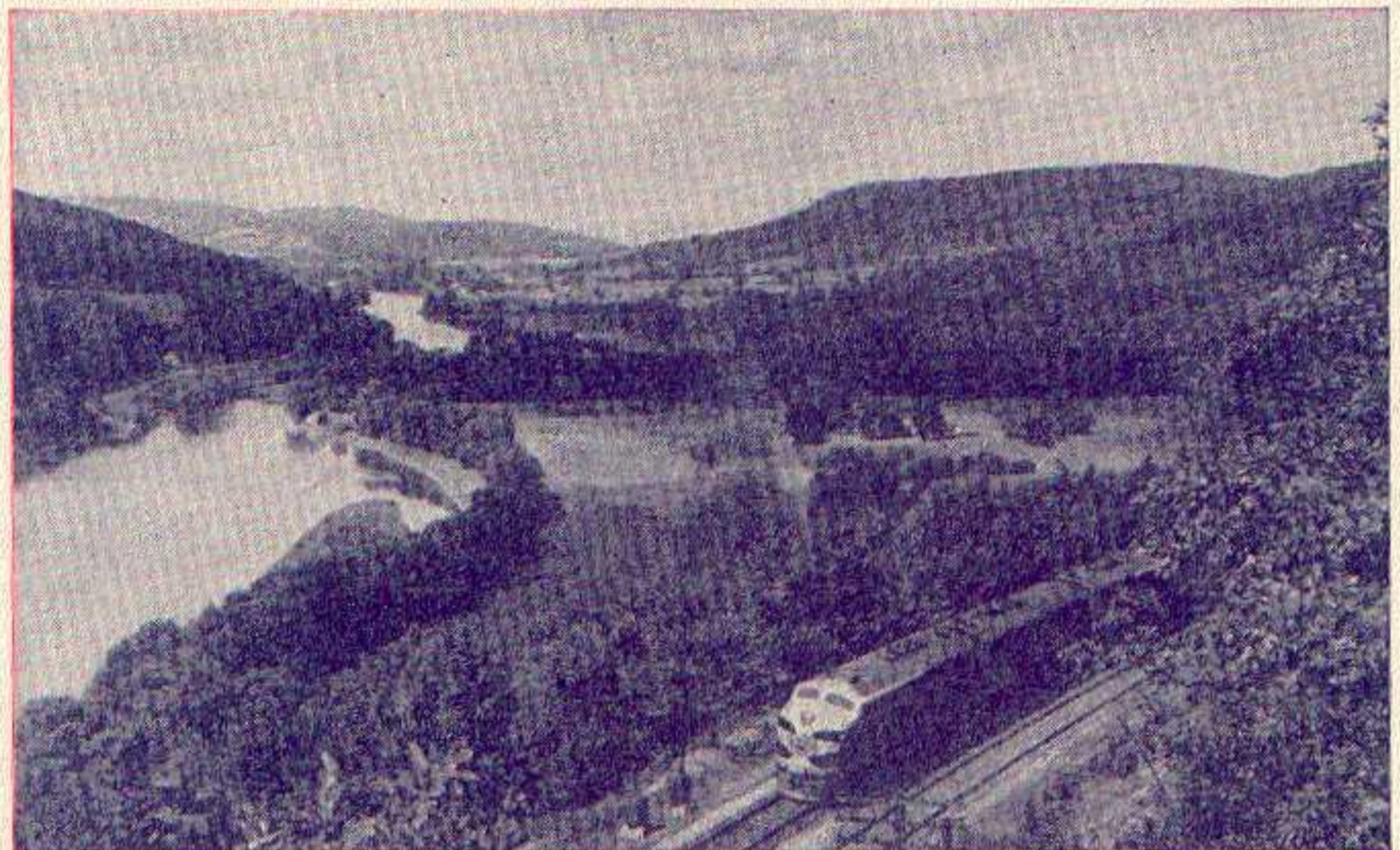
FOR DETAILED INFORMATION SEE YOUR
ERIE TICKET AGENT OR WRITE TO:

RAIL TRAVEL CREDIT AGENCY
E. B. PADRICK, Chairman
436 Union Station, Chicago 6, Ill.

*For Vacation
or Business*

GO ERIE

**THE SCENIC ROUTE
OF THE EAST**



For over 300 miles the Erie follows the picturesque Alleghany, Genesee, Susquehanna and Delaware River valleys—some of the most beautiful scenery in the East.

Enjoy this "extra" along with Erie's smooth Diesel power, and courteous service in modern air-conditioned cars.

ERIE RAILROAD COMPANY

General Offices { **Midland Building, Cleveland 15, Ohio.** (Telephone, Cherry 8400)
Hudson Terminal, 50 Church Street, New York 7, N. Y. (Telephone, Worth 4-4500)
Utilities Building, 327 South La Salle Street, Chicago 4, Ill. (Telephone Harrison 7-4160)

R. E. WOODRUFF, President, Cleveland
P. W. JOHNSTON, Executive Vice President, Cleveland

H. D. BARBER, Vice-President,
H. W. VON WILLER, Vice-President,
R. C. RANDALL, Vice-President,
A. B. JOHNSON, Vice-President,
W. T. PIERSON, Vice President and General Counsel,

Cleveland.
T. J. TOBIN, Comptroller,
G. B. TOWNSEND, Secretary and Treasurer,
H. A. McALLISTER, Assistant to President,
G. C. FRANK, Assistant to President,
Cleveland.

Cleveland.
"
"
"

TRAFFIC

H. W. VON WILLER, Vice-President, Cleveland.
D. R. THOMPSON, Asst. Vice-President, Cleveland.
New York. | **R. E. O'GRADY, Assistant Vice-President,**
A. BLAUDEL, Assistant Vice-President, New York. **Chicago.**

PASSENGER—Sales and Service
R. B. ROGERS, Passenger Traffic Manager, Cleveland.

ALFRED FYNN, General Passenger Agent,
A. G. OLDENQUIST, Assistant General Passenger Agent,
R. E. TOWNS, Assistant General Passenger Agent,
F. J. WILD, Assistant General Passenger Agent.
Cleveland. | **P. F. ARROYO, Manager, Mail, Baggage and Express Traffic,**
HENRY HERRMANN, Milk Traffic Agent,
New York.

FREIGHT—Rates

A. BLAUDEL, Assistant Vice-President, New York.
E. C. HALLBERG, Freight Traffic Manager, Chicago.
New York. | **F. K. NOONBURG, Chief of Divisions Bureau,**
F. M. KLITZ, Assistant Freight Traffic Manager,
H. T. SWEENEY, General Freight Agent,
H. L. VIZARD, Assistant General Freight Agent,
E. A. JAEHNE, Chief of Divisions Bureau,
New York. | **New York.**

FREIGHT—Sales and Service

E. J. DEAN, Assistant Vice-President,
J. T. McENTEE, Freight Traffic Manager,
A. R. WALTON, Assistant Freight Traffic Manager,
H. A. WILSON, General Eastern Freight Agent,
B. F. CONWAY, Assistant General Freight Agent,
A. M. MONAHAN, General New England Agent,
H. B. ROGERS, General Live Stock and Agricultural Agent,
C. R. MARTIN, Freight Traffic Manager,
D. C. KELSEY, Asst. General Freight Agent,
C. E. KING, Assistant General Freight Agent,
C. G. ANDREWS, Asst. General Freight Agent,
New York. | **R. E. O'GRADY, Assistant Vice-President,**
J. A. RUSSELL, Freight Traffic Manager,
C. V. HARROW, Assistant Freight Traffic Manager,
G. W. MADSEN, Assistant General Freight Agent,
L. J. MARION, Assistant General Freight Agent,
R. L. MURPHY, Assistant General Freight Agent,
Chicago.
Chicago.
Chicago.
Detroit.
Cincinnati.

FOREIGN FREIGHT TRAFFIC

W. C. OTTEN, Foreign Freight Traffic Manager,
C. A. STOEBER, Assistant Foreign Freight Traffic Manager,
T. W. KANE, Foreign Freight Agent,
L. E. NEWMAN, Foreign Freight Agent,
W. S. PENCHARD, Export and Import Agent,
New York.
"
Chicago.
New York.

PERISHABLE AND DAIRY TRAFFIC

P. J. NAPOLI, Manager,
H. W. BOUMANN, Western Dairy Agent,
Pier 20, N. R., New York.
Chicago.

COAL AND COKE

G. A. LAMB, Coal Traffic Manager, Cleveland.
J. A. FERGUSON, General Coal Freight Agent, Cleveland.
New York. | **E. C. JULIUS, Coal Freight Agent,**
W. N. STENFELT, Assistant Coal Freight Agent,
M. S. SWEENEY, General Agent,
Buffalo. | **Chicago.**
Pittsburgh.

INDUSTRIAL DEVELOPMENT

A. B. JOHNSON, Vice-President, Cleveland.
Cleveland. | **H. J. HART, Industrial Agent,**
New York.

TRAFFIC DEPARTMENT REPRESENTATIVES

SALES AND SERVICE

Akron 8, O.—Erie Station
J. P. CLARK, Division Passenger Agent.
(Telephone Blackstone 8812)
R. T. PHILLIPS, General Agent.
(Telephone Hemlock 8194-8195)
80 East Exchange St.

Albany 7, N. Y.—D. & H. Bldg.
(Telephone 4-6051)
J. E. CAMPBELL, General Agent.

Atlanta 3, Ga.—Healey Bldg.
(Telephone Walnut 2135)
W. H. STADELMAN, General Agent.

Baltimore 2, Md.—Munsey Bldg.
(Telephone Plaza 8691)
GEORGE PETERSEN, General Agent.

Birmingham 3, Ala.—Watts Bldg.
(Telephone 3-1327)
WM. L. THORNTON, General Agent.

Boston 14, Mass.—150 Causeway St.
(Telephone Capitol 7-2510-11-12)
A. M. MONAHAN, Gen. New Eng. Agt.

Buffalo 2, N. Y.—238 Main Street.
(Telephone Washington 1865)
V. F. GREEN, Division Passenger Agt.
B. F. CONWAY, Asst. Gen. Freight Agt.

Chicago 4, Ill.—327 South La Salle St.
(Telephone Harrison 7-4160)
A. G. OLDENQUIST, A. G. P. A.
G. W. MADSEN, Asst. Gen. Frt. Agt.

Cincinnati 2, O.—831 Enquirer Bldg.
(Telephone Main 3420-3421)
R. L. MURPHY, Asst. Genl. Frt. Agt.

Cleveland 15, O.—Midland Bldg.
(Telephone Cherry 8400)
D. C. KELSEY, Asst. Gen. Frt. Agt.

Columbus 15, O.—Atlas Bldg.,
8 East Long Street.
(Telephone Adams 7331)
L. J. SLACK, General Agent.

Dallas 1, Tex.—Southwestern Life Ins.
Bldg., Main and Akard Sts.
(Telephone C-7352)
L. M. SCHUCKEL, General Agent.

Dayton 2, O.—Miami Savings Bldg.
(Telephone Adams 8481)
F. W. FISCHER, Div. Frt. Agt.

Des Moines 9, Ia.—Hubbell Bldg.,
904 Walnut Street,
(Telephone 4-0018)
H. A. BOCKMAN, General Agent.

Detroit 2, Mich.—General Motors Bldg.
(Telephone Madison 2360-2361)
L. J. MARION, Assistant Genl. Frt. Agt.

East Buffalo 6, N. Y.—Live Stock Exch.
Bldg. (Telephone Washington 4300)
H. B. ROGERS, General Live Stock and
Agricultural Agt.

Elmira, N. Y.—Erie Station.
(Telephone 2-1621)
J. W. O'HARA, Division Passenger Agt.
(Telephone 2-0377)
F. K. CORLETT, Division Freight Agent.

Huntington, Ind.—Erie Station.
(Telephone 743)
HAROLD L. JOHNSON, Div. Frt. Agt.

Indianapolis 4, Ind.—11 So. Meridian
St. (Telephone Franklin 0255)
E. C. ADLER, General Agent.

Jamestown 3, N. Y.—Erie Station
D. S. DAY, Div. Frt. Agt.
(Telephone 7921-7922)

Jersey City 2, N. J.—Erie Station
(Telephone Journal Square 2-6400)
J. H. DIMKE, Genl. Agt. Pass. Dept.
J. G. VREELAND, Division Freight Agent.

Kansas City 6, Mo.—Room 1016 Dwight
Building
(Telephone Victor 6328)
N. C. FRICK, General Agent.

Los Angeles 14, Cal.—510 West 6th Street.
(Telephone Vandike 4129)
G. F. MILLS, General Agent.

Marion, O.—Terminal Building
(Telephone 2657)
E. H. HUFFMAN, Division Freight Agent.

Memphis 3, Tenn.—Exchange Bldg.,
Madison & Second Sts.
(Telephone 8-8781)
R. L. MILLER, General Agent.

Milwaukee 3, Wis.—Majestic Bldg.,
331 West Wisconsin Ave.
(Telephone Marquette 8-5555-5556)
L. T. COULSTON, General Agent.

Minneapolis 2, Minn.—Rand Tower,
Marquette Ave. and 6th St., So.
(Telephone Main 3604)
J. W. CLOUD, General Agent.

Newark 2, N. J.—Military Park Bldg.,
60 Park Place.
(Telephone Market 2-0525-26-27)
F. L. COLLINS, General Agent.

New Haven 10, Conn.—W B I Bldg.
(Telephone 7-5915)
C. C. MITCHELL, General Agent.

New Orleans 12, La.—Room 308, Pere
Marquette Bldg.
(Telephone Raymond 9786)
E. W. BURNETT, General Agent.

New York 20, N. Y.—11 Rockefeller Plaza,
Rockefeller Center.
(Telephone Circle 5-7222)
G. W. KROM, Genl. Agt. Pass. Dept.
G. H. DOWN, City Pass. Agent.

New York 7, N. Y.—50 Church Street.
(Telephone Worth 4-4500)
H. A. WILSON, Genl. East. Frt. Agt.

Omaha 2, Neb.—1319 Farnam St.
(Telephone Jackson 4866)
C. L. COX, General Agent.

Peoria 2, Ill.—Jefferson Building, Cor.
South Jefferson & Fulton Streets.
(Telephone 8007)
HAROLD J. SPINDLER, General Agent.

Philadelphia, 2, Pa.—Finance Bldg.
(Telephone Rittenhouse 6-8975-8976)
C. F. WHADCOCK, General Agent

Pittsburgh 19, Pa.—Koppers Bldg.
(Telephone Grant 4831-2-3)
C. E. KING, Asst. Genl. Frt. Agt.

Portland 4, Ore.—Pacific Bldg.,
520 S. W. Yamhill St.
(Telephone Beacon 3706)
H. F. KEELAN, General Agent.

Rochester 4, N. Y.—Reynolds Arcade
Building.
(Telephone Hamilton 7938)
H. C. WELL, Division Freight Agent.

San Francisco 5, Cal.—681 Market St.
(Telephone Sutter 1-3875)
E. W. KEILEY, General Agent.

St. Louis 1, Mo.—721 Olive St.
(Telephone Chestnut 7723-7724)
H. W. GRAY, General Agent.

St. Paul 1, Minn.—336 Robert St.
(Telephone Cedar 5912)
C. R. PETRY, General Agent.

Scranton, Pa.—First National Bank Bldg.
(Telephone—Scranton 4-7237-7238)
A. E. BARKALOW, Division Freight Agent.

Seattle 1, Wash.—White Bldg.,
1338 Fourth Ave.
(Telephone Elliot 4834)
R. J. DUNDON, General Agent.

Springfield, O.—First National Bank
Building. (Telephone 2-5351)
W. W. THOMS, General Agent.

Toledo 4, O.—1506 Toledo Trust Bldg.,
245 Summit Street.
(Telephone Main 3816)
H. J. SPANGENBERG, General Agent.

Toronto, Ont.—69 Yonge Street
(Telephone Adelaide 1311-1312)
ROBERT WILLIAMSON, Can. Frt. Agt.

Washington 5, D. C.—515 Bond Bldg.,
14th St. and New York Ave., N. W.
(Telephone National 6075)
W. J. MURRAY, General Agent.

Youngstown 3, O.—Terminal Building.
(Telephone 7-0792)
O. B. CHAPMAN, Div. Passenger Agent.
C. G. ANDREWS, Asst. Genl. Frt. Agt.
H. W. McILWAIN, General Agent.