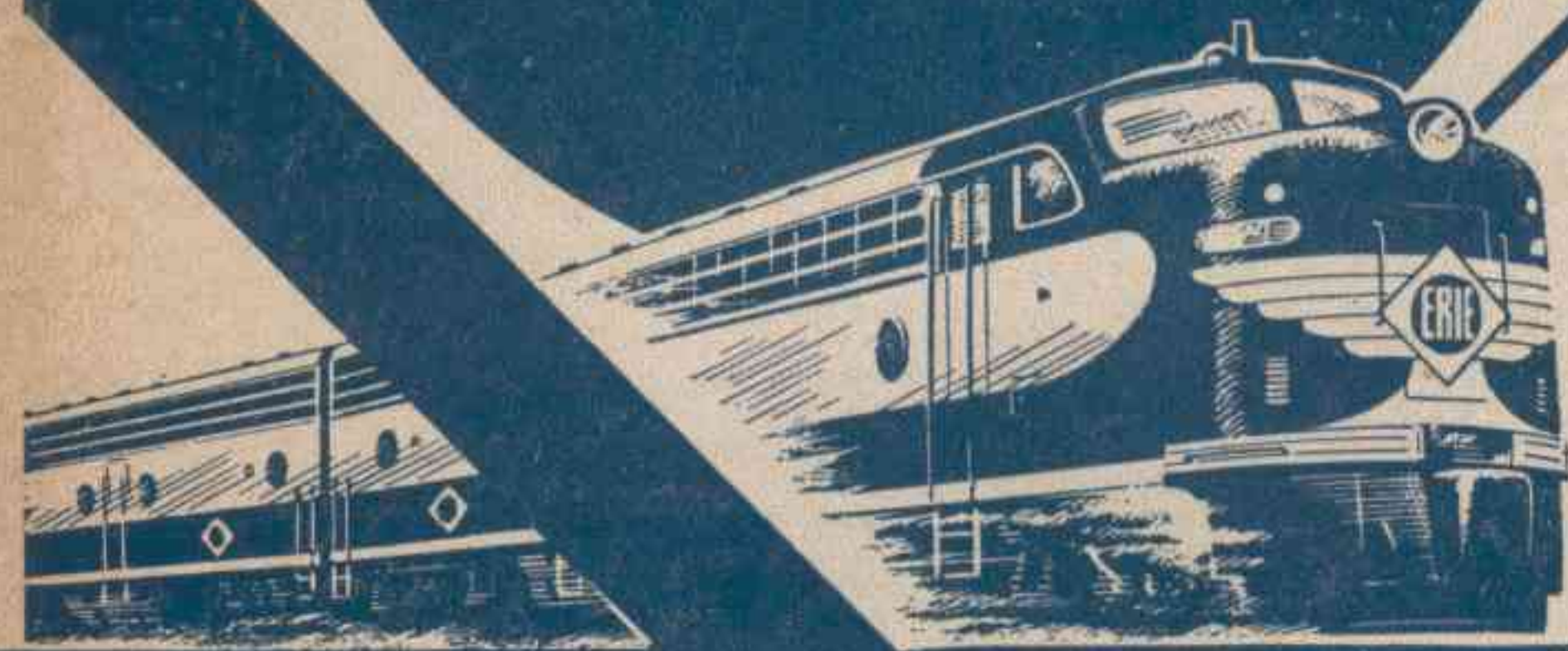
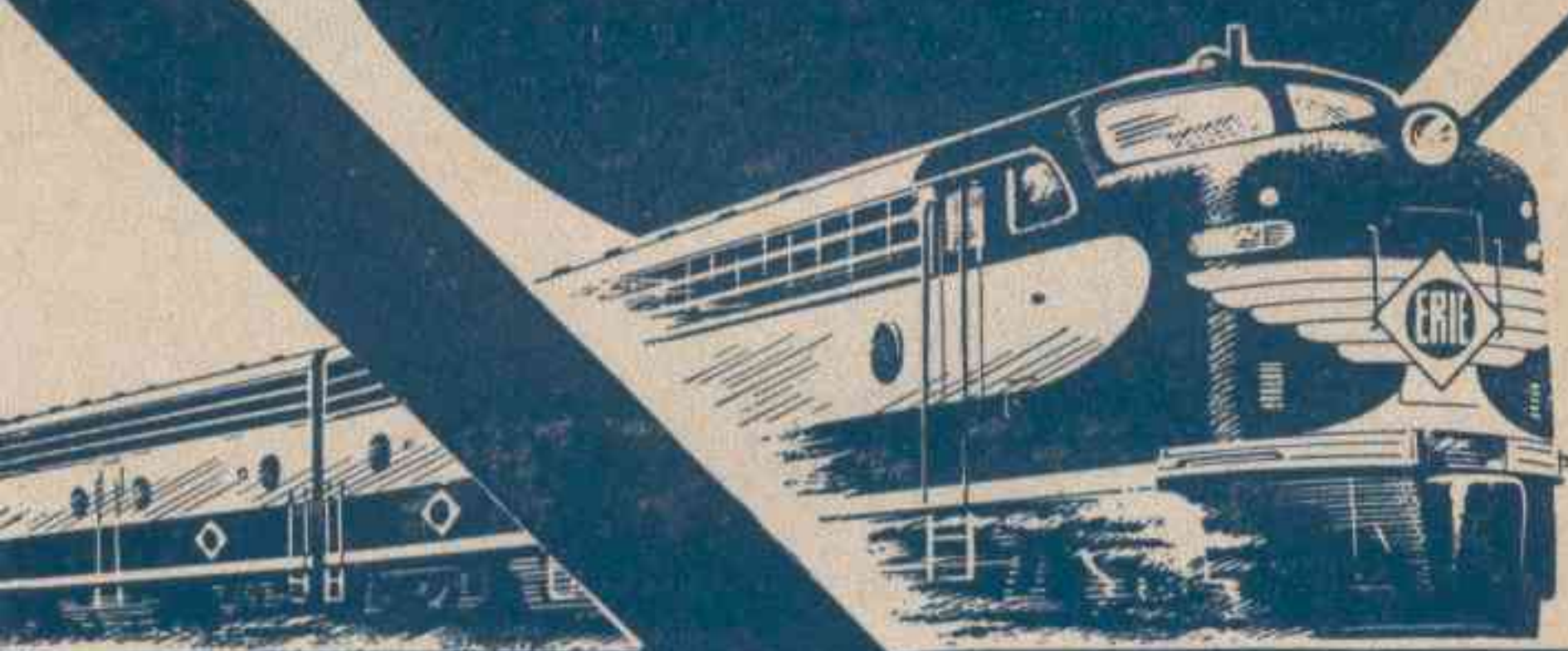


Effective
JUNE 14, 1953

Effective
JUNE 14, 1953

ERIE

ERIE



TIME TABLES TIME TABLES

The Scenic Route between

NEW YORK
JAMESTOWN
YOUNGSTOWN
CLEVELAND
AKRON
CHICAGO

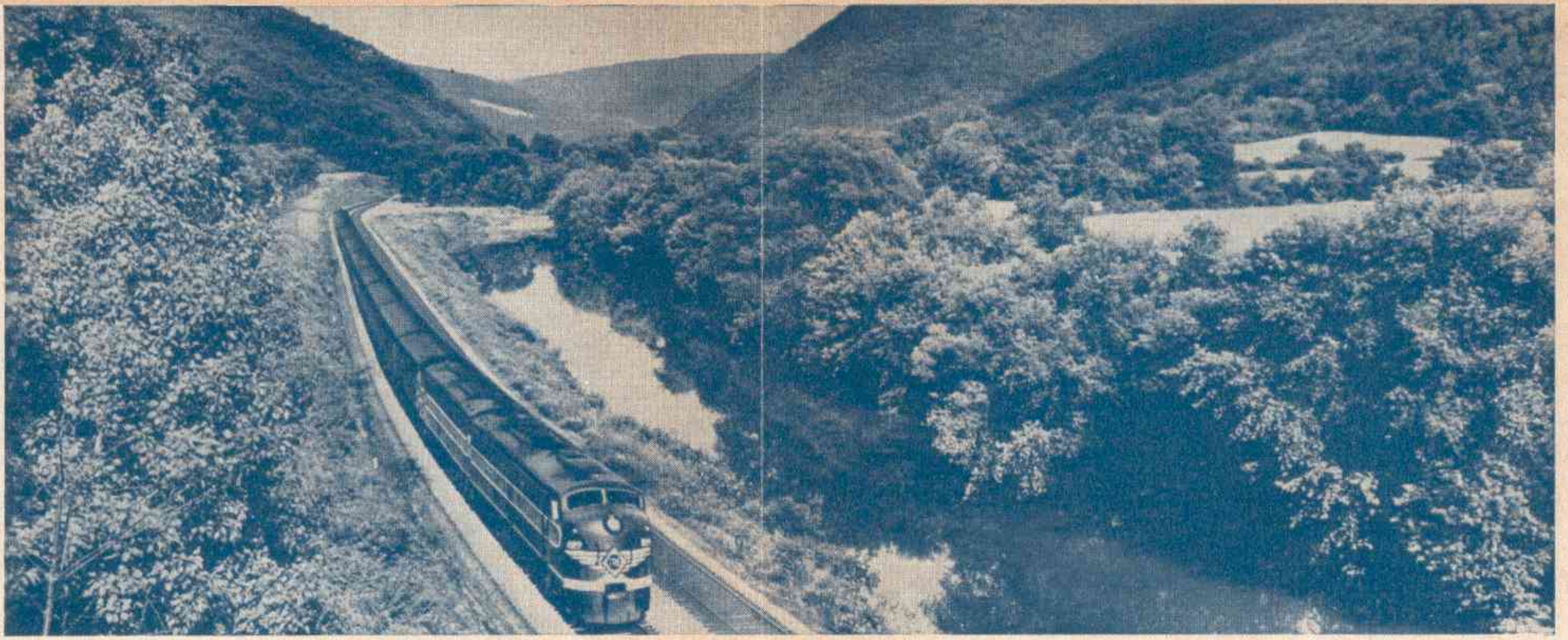
FORM 1 STANDARD (Not Daylight) TIME SHOWN IN THIS FOLDER

The Scenic Route between

NEW YORK
JAMESTOWN
YOUNGSTOWN
CLEVELAND
AKRON
CHICAGO

FORM 1 STANDARD (Not Daylight) TIME SHOWN IN THIS FOLDER

Erie Railroad Erie Railroad



The Erie Limited winding through the beautiful Canisteo River Valley, east of Hornell, N. Y.

The Big Extra you get on the ERIE



SPACIOUS BEDROOMS — For day or night travel. Restful and comfortable, with your own private toilet facilities. At night, your porter will prepare a soft bed that lets you sleep away the miles, awake relaxed and refreshed. Individually controlled air conditioning.

ROOMETTES — Completely private travel accommodations for one person. Luxuriously comfortable sofa-seat, complete toilet facilities. Ample wardrobe space and separate ventilation control.

The Scenic Route of the East!

You enjoy some of the most picturesque scenery in the Eastern United States — right from your Erie car window! For the Erie follows the valleys of the Allegheny, Canisteo, Susquehanna and Delaware rivers for over 300 miles. It's some of the most beautiful scenery you'll see in this section of the country.

And you'll enjoy this "extra" along with Erie's smooth, diesel power, riding in air-conditioned coaches or Pullmans, with friendly and helpful Erie service.



AIR-CONDITIONED COACHES — Thrifty, yet thoroughly comfortable travel is yours in Erie's coaches. Adjustable, deep-cushioned seats, broadvision windows, individual lighting. Whatever the weather, you arrive safe and well-rested.



Delicious meals at moderate prices in pleasant surroundings.



Suggestions to help you read this folder

Reading of Tables

On all tables, the schedule of each individual train is shown in a separate column. Each train has an operating number which appears at the top of the schedule column.

Train times from 12:01 a.m. (Midnight) to 12:00 Noon inclusive, are printed in light-faced figures; 12:01 p.m. (Noon) to 12:00 Midnight are printed in dark-face throughout the timetable.

Trains make regular stops only at stations where time figures appear in column opposite the station name. Symbols are opposite some schedule figures. They are important. They indicate exceptions and should be checked carefully with the explanation under Reference Notes at the bottom of each page.

On main line Table 4, where a station name is indented, that station is located on a Branch Line or connecting service.

The equipment of principal trains is shown on pages 9, 10, 23 and 24. Coach equipment is carried on all trains.

Any Erie Ticket Agent or representative will be glad to assist you with information and reservations.

General Information

Erie Lines east of and including Ohio City, Ohio, are shown in EASTERN STANDARD TIME. Lines west of Ohio City, Ohio, in CENTRAL STANDARD TIME.

DAYLIGHT SAVING TIME is observed until Sept. 26, incl., at New York City and most points, including branch lines, to Cleveland and Rittman, Ohio, inclusive, also at points Decatur, Ind. to Chicago, Ill., inclusive. There will be a few exceptions where standard time will remain in effect but the information is not available at the printing of this time table.

THIS COMPANY IS NOT RESPONSIBLE FOR ERRORS in timetables, inconvenience or damage resulting from delayed trains, or failure to make connections; schedules and equipment shown herein are subject to change without notice.

The term HOLIDAYS (unless covered by special note under schedule) refers to New Year's Day, Lincoln's Birthday, Washington's Birthday, Memorial Day, Independence Day, Labor Day, Columbus Day, Election Day (November 3), Armistice Day, Thanksgiving and Christmas.

Trains will not be held at JERSEY CITY for ferries from New York between the hours of 4:00 P.M. and 5:30 P.M. Eastern Standard Time.

CHILDREN under five years of age are carried free when accompanied by parent or guardian; five years of age and under twelve, half fare; twelve years of age and over, full fare.

Should ANY MISUNDERSTANDING arise with conductors or agents, pay the fare required, take receipt and communicate with Passenger Traffic Manager, Midland Bldg., Cleveland, Ohio.

TICKETS UNUSED or partly used will be redeemed under tariff regulations at proper value. Railroads are not responsible for lost tickets or baggage checks.

A STOP-OVER within final limit will be granted on tickets sold at regular fares at all stations on the Erie Railroad (with certain exceptions in the New York suburban area).

WHEN ARTICLES ARE LOST on trains or left in waiting rooms, owners should apply at once to Agent at station where they leave train or address Manager, Baggage Traffic, Erie Railroad, Chambers St. Terminal, New York 7, N. Y., giving full description of property, stating date of loss and train number.

150 pounds of baggage are checked on adult tickets and 75 pounds on half fare tickets subject to tariff stipulations as to contents, weight, value and size.

Personal baggage is wearing apparel, toilet articles (except liquid) and personal effects in actual use and necessary and appropriate for the wear, use, comfort and convenience of the passenger for the purpose of the journey and not intended for other persons or for sale. Articles which may not be included in personal baggage are shown in published tariff which is on file at stations.

Baggage to be checked should be delivered at stations reasonably in advance of train departure. The railroad cannot guarantee to forward baggage on same train with passenger and when necessary will be forwarded on other trains. To facilitate prompt receipt of baggage at destination, passengers are urged to arrange for forwarding on a preceding train.

A charge is made for storage of baggage at destination when it is not claimed within full time limit.

ALL BAGGAGE CHECKED IN BAGGAGE CAR TO OR FROM NEW YORK CITY will be sent to Chambers Street Station.

BAGGAGE CHECKED FOR HANDLING IN BAGGAGE CAR WILL NOT BE CARRIED ON MOTOR COACHES.

BAGGAGE INSURANCE may be purchased at principal Erie Ticket Offices. It insures your baggage and personal effects for your entire trip anywhere in the world. Minimum premium twenty-five cents. Ask Ticket Agent for full particulars.

BAGGAGE may be checked through to house address, hotel, steamship dock, etc., at destination. Reliable transfer companies perform this service at nominal charges at all principal cities.

HAND BAGGAGE in coaches or Pullman cars is restricted to what can be conveniently placed in accommodations purchased by passenger. It is urged that passengers carry with them only such baggage as required for their immediate needs. Other baggage may be checked in baggage car at a nominal charge.

FOR YOUR OWN SAFETY—don't get on or off a train in motion; wait for a full stop. Keep hand baggage out of car aisles. Walk carefully when entering or leaving train; high-heeled shoes are sometimes a cause of tripping or stumbling on car steps. Don't stand or walk close to the railroad track; look both ways before starting across.

PREPAID TICKET ORDERS—for patrons who do not wish to send money by mail, Erie Railroad Ticket Agents sell prepaid ticket orders for the delivery of transportation, rail and Pullman, from practically all points in the United States, Canada and Mexico. These orders may also include the furnishing of cash.

In an emergency, arrangement may be made for the delivery of transportation by telegraph or telephone without charge except when commercial wires are used. Consult Ticket Agents for details.

RAILROAD AND PULLMAN FARES For Information Only. Federal Tax Not Included. Subject to Change Without Notice

Table with columns for 'Between' and 'And' cities, and sub-sections for 'NEW YORK', 'BINGHAMTON', and 'YOUNGSTOWN'. Each sub-section includes 'RAILROAD TICKETS VALID IN' (Coaches, Pullmans) and 'PULLMAN RATES' (Lower Berth, Seat Fare).

Table with columns for 'Between' and 'And' cities, and sub-sections for 'JAMESTOWN', 'CLEVELAND', and 'CHICAGO'. Each sub-section includes 'RAILROAD TICKETS VALID IN' (Coaches, Pullmans) and 'PULLMAN RATES' (Lower Berth, Seat Fare). Includes a vertical note on the right: 'MINIMUM NUMBER OF RAILROAD TICKETS REQUIRED FOR EXCLUSIVE OCCUPANCY OF SPACE IN SLEEPING OR PARLOR CARS'.

RATES FOR UPPER BERTH, DRAWING ROOM, COMPARTMENT, DOUBLE BEDROOM OR ROOMETTE IN SLEEPING CARS

Table with columns for 'Where Lower Berth Rate Is', 'Upper Berth Rate Will Be', and various occupancy rates for Roomette, Double Bedroom, Jedroom Suite, Section Rate, Compartment Rate, Drawing Room Rate, and Drawing Room Rate.

Note:—Single occupancy sections available in certain cars on certain trains. Consult ticket agents. ▲ For section occupied by two passengers, but with lower berth only prepared for night service. *Limit six months, except as otherwise indicated. †One-year limit.

TABLE 1

CONDENSED TABLE OF THROUGH TRAINS NEW YORK, CLEVELAND AND CHICAGO
 (FOR LOCAL TRAINS AND INTERMEDIATE TIME OF THROUGH TRAINS SEE LOCAL TABLES)

Air-Conditioned Trains—Air-conditioned equipment has been assigned to regular sections of trains as shown herein. Every effort will be made to provide it as specified, but the right is reserved to employ non-air-conditioned cars as necessitated by volume of traffic or emergencies.

WESTBOUND

THE ERIE LIMITED		TRAIN NO. 1—DAILY	
New York—Jamestown—Akron—Chicago		Chicago—Akron—Jamestown—New York	
Lv New York:			Diesel Powered EQUIPMENT
" Motor Coach	Rockefeller Center Terminal, 11 Rockefeller Plaza 7.40AM EST		Air-Conditioned Sleeping Cars:
"	8th Ave. & W. 34th St. 7.47 " "		New York to Chicago—10 Roomette, 6 Double Bedroom (Car No. 11).
⊕	Chambers St. Ferry 8.15 " "		Salamanca to Chicago—6 Roomettes, 6 Section, 4 Double Bedroom (Car No. 12).
"	Jersey City 8.30 " "		Youngstown to Chicago—12 Roomette, 2 Single Bedroom, 3 Double Bedroom (Car No. 14).
"	Paterson AA 8.56 " "		(Sleeper open Youngstown 8:30 p.m.)
"	Ridgewood AA 9.05 " "		Akron to Chicago—10 Roomette, 6 Double Bedroom (Car No. 15) (Sleeper open Akron 8:30 p.m.)
"	Binghamton 2.01PM " "		Air-Conditioned Diner-Lounge Car:
"	Elmira 3.17 " "		New York to Chicago.
"	Olean 6.13 " "		Air-Conditioned Individual Reclining Seat Coaches:
"	Salamanca 6.45 " "		New York to Chicago.
"	Jamestown 7.32 " "		(Pillows May Be Rented From Train Porter For 25c)
"	Meadville 9.06 " "		
"	Youngstown 10.46 " "		
"	Warren 11.10PM " "		
Lv Akron	12.14AM " "		
Ar Chicago (Dearborn Sta.)	6.55AM CST		

THE LAKE CITIES		TRAIN NO. 5—DAILY	
New York—Jamestown—Cleveland—Akron—Chicago		Chicago—Akron—Cleveland—Jamestown—New York	
Lv New York:			Diesel Powered EQUIPMENT
" Motor Coach	Rockefeller Center Terminal, 11 Rockefeller Plaza 6.45PM EST		Air-Conditioned Sleeping Cars:
"	8th Ave. & W. 34th St. 6.52 " "		New York to Chicago—10 Roomette, 6 Double Bedroom (Car No. 52).
⊕	Chambers St. Ferry 7.15 " "		New York to Cleveland—6 Roomettes, 6 Section, 4 Double Bedroom (Car No. 51).
"	Jersey City 7.30 " "		New York to Salamanca—4 Section, 6 Roomette, 4 Double Bedroom (Car No. 53).
"	Paterson AA 7.57 " "		(Sleeping Car may be occupied at Salamanca until 7:30 a.m.)
"	Ridgewood AA 8.06 " "		Air-Conditioned Diner-Lounge Car:
Lv Olean	4.57AM " "		New York to Chicago.
Ar Bradford (Erie Limousine)	7.05 " "		Air-Conditioned Individual Reclining Seat Coach:
Lv Salamanca	5.29 " "		New York to Cleveland.
"	Jamestown 6.15 " "		(Pillows May Be Rented From Train Porter For 25c)
"	Meadville 7.46 " "		
"	Youngstown 9.25 9.17 " "		
"	Warren 9.45 9.36 " "		
Ar Cleveland Union Terminal	10.42 " "		
Lv Akron	10.27 " "		
"	Marion 12.26PM " "		
Ar Chicago (Dearborn Sta.)	3.55PM CST		

PACIFIC EXPRESS		TRAIN NO. 7—DAILY	
New York—Jamestown—Chicago		Chicago—Jamestown—New York	
Lv New York:			Diesel Powered EQUIPMENT
" Motor Coach	Rockefeller Center Terminal, 11 Rockefeller Plaza 10.20PM EST		Air-Conditioned Sleeping Car:
"	8th Ave. & W. 34th St. 10.27 " "		New York to Hornell—10 Section, 1 Drawing Room, 2 Double Bedroom (Car No. 71).
⊕	Chambers St. Ferry 10.58 " "		(Sleeper open Jersey City at 9:30 p.m.)
"	Jersey City 11.40 " "		Air-Conditioned Erie Diner-Lounge Car:
"	Elmira 7.18AM " "		Binghamton to Marion.
"	Hornell 9.05 " "		Air-Conditioned Individual Reclining Seat Coaches:
Lv Olean	10.50 " "		New York to Chicago.
Ar Salamanca	11.12 " "		
Lv Jamestown	12.09PM " "		
"	Meadville 1.42 " "		
"	Youngstown 3.12 " "		
"	Warren 3.35 " "		
"	Akron 4.50 " "		
"	Marion 7.42 " "		
Ar Chicago (Dearborn Sta.)	12.25AM CST		

THE MOUNTAIN EXPRESS		TRAIN NO. 27—DAILY	
New York—Binghamton		Binghamton—New York	
Lv New York:			Diesel Powered EQUIPMENT
" Motor Coach	Rockefeller Center Terminal, 11 Rockefeller Plaza 12.45PM EST		Air-Conditioned Erie Diner-Lounge Car:
"	8th Ave. & W. 34th St. 12.57 " "		New York to Binghamton.
⊕	Chambers St. Ferry 1.10 " "		Air-Conditioned Coach:
"	Jersey City 1.30 " "		New York to Binghamton.
"	Ridgewood AA 2.11 " "		Coaches:
"	Middletown 3.30 " "		New York to Susquehanna.
"	Port Jervis 4.19 " "		
Ar Binghamton	7.50PM " "		

EASTBOUND

THE ERIE LIMITED		TRAIN NO. 2—DAILY	
Chicago—Jamestown—New York		New York—Jamestown—Chicago	
Lv Chicago (Dearborn Sta.)	5.00PM CST		Diesel Powered EQUIPMENT
"	Akron 2.16AM EST		Air-Conditioned Sleeping Car:
"	Warren 3.21 " "		Chicago to New York—10 Roomette, 6 Double Bedroom (Car No. 21).
"	Youngstown 3.57 " "		Chicago to Salamanca—6 Roomette, 6 Section, 4 Double Bedroom (Car No. 22).
"	Meadville 5.48 " "		Air-Conditioned Diner-Lounge Car:
"	Jamestown 7.24 " "		Chicago to New York.
"	Salamanca 8.13 " "		Air-Conditioned Individual Reclining Seat Coaches:
Lv Olean	8.37 " "		Chicago to New York.
Ar Elmira	11.19 " "		(Pillows May Be Rented From Train Porter For 25c)
"	Binghamton 12.31PM " "		
"	Ridgewood 5.19 " "		
"	Paterson 5.27 " "		
"	Jersey City 5.55 " "		
Ar New York:			
"	Chambers St. Ferry 6.14 " "		
"	Motor Coach		
"	8th Ave. at W. 32nd St. 6.21 " "		
"	8th Ave. at W. 42nd St. 6.23 " "		
⊕	Rockefeller Center Terminal, 11 Rockefeller Plaza 6.30PM EST		

THE LAKE CITIES		TRAIN NO. 6—DAILY	
Chicago—Akron—Cleveland—Jamestown—New York		New York—Jamestown—Cleveland—Akron—Chicago	
Lv Chicago (Dearborn Sta.)	9.25AM CST		Diesel Powered EQUIPMENT
"	Marion 3.02PM EST		Air-Conditioned Sleeping Cars:
"	Akron 4.52 " "		Chicago to New York—10 Roomette, 6 Double Bedroom (Car No. 62).
"	Cleveland Union Terminal 4.25 PM " "		Cleveland to New York—6 Roomette, 6 Sections—4 Double Bedroom (Car No. 61).
"	Warren 5.29 5.44 " "		Salamanca to New York—4 Section, 6 Roomette, 4 Double Bedroom (Car No. 63).
"	Youngstown 6.13 " "		(Salamanca Sleeper open for occupancy at 9:30 p.m.)
Ar Pittsburgh	9.20 " "		Air-Conditioned Diner-Lounge Car:
Lv Meadville	7.42 " "		Chicago to New York.
"	Jamestown 9.16 " "		Air-Conditioned Individual Reclining Seat Coach:
"	Bradford (Erie Limousine) 9.00 " "		Chicago to New York.
"	Salamanca 10.03 " "		Cleveland to New York.
"	Olean 10.32 " "		(Pillows May Be Rented From Train Porter For 25c)
"	Elmira 1.14 AM " "		
Ar Ridgewood	AD 6.53 " "		
"	Paterson AD 6.53 " "		
"	Jersey City 7.25 " "		
Ar New York:			
"	Chambers St. Ferry 7.37 " "		
"	Motor Coach		
"	8th Ave. at W. 32nd St. 7.51 " "		
"	8th Ave. at W. 42nd St. 7.53 " "		
⊕	Rockefeller Center Terminal, 11 Rockefeller Plaza 8.00 AM EST		

ATLANTIC EXPRESS		TRAIN NO. 8—DAILY EX. SUN.		TRAIN NO. 80—SUNDAY ONLY	
Chicago—Akron—Jamestown—Elmira—Binghamton—New York		New York—Binghamton—Elmira—Jamestown—Akron—Chicago		Chicago—Akron—Jamestown—Elmira—Binghamton—New York	
Lv Chicago (Dearborn Sta.)	10.00 Ex. Sun. 10.00PM CST		Diesel Powered EQUIPMENT		Air-Conditioned Sleeping Car:
"	Akron 6.35 7.05AM EST		Air-Conditioned Erie Diner-Lounge Car:		Chicago to Meadville—12 Roomette, 2 Single Bedroom, 3 Double Bedroom (Car No. 81).
"	Warren 7.33 8.26 " "		Chicago to Akron—10 Roomette, 6 Double Bedroom (Car No. 82). (Sleepers open Chicago 8:30 p.m. Sleeper may be occupied at Akron until 8:00 a.m.)		Air-Conditioned Erie Diner-Lounge Car:
"	Youngstown 8.05 8.57 " "		Ashland to New York.		Air-Conditioned Individual Reclining Seat Coaches:
"	Meadville 9.37 10.20 " "		Chicago to New York.		Air-Conditioned Coach:
"	Jamestown 11.08 11.55 " "		Hornell to New York.		
"	Salamanca 12.09 1.05PM " "				
"	Olean 12.35 1.35 " "				
"	Hornell 2.25 3.15 " "				
"	Elmira 3.55 4.36 " "				
Ar Binghamton	5.07 5.44 " "				
"	Jersey City 10.25 10.55 " "				
Ar New York:					
"	Chambers St. Ferry 10.54 11.19 " "				
"	Motor Coach				
"	8th Ave. at W. 32nd St. 10.46 11.16 " "				
"	8th Ave. at W. 42nd St. 10.48 11.18 " "				
⊕	Rockefeller Center Terminal, 11 Rockefeller Plaza 10.55 11.25PM EST				

AA Stops to receive passengers.
 AD Stops to discharge passengers from Port Jervis and west.
 ♦ Stops to discharge passengers.
 ⊕ Motor Coach service operates direct to and from trainside Jersey City.
 • Motor Coach connection effective June 14 to Sept. 13, incl.

IMPORTANT. When trains are shown as stopping conditionally at a station, passengers should advise Station Agent, in advance, of their intention to board train or notify Conductor of intention to leave train, as case may be.

NEW YORK—BINGHAMTON

**TABLE 2
WESTBOUND**

For additional train service between Jersey City and Suffern, not shown in this folder, please refer to local time tables.
Hudson and Manhattan Tube Trains operate between New York and Erie Railroad Station in Jersey City
To Erie Station, Jersey City—From Downtown New York—Train marked "Hoboken" Fare 20 cents.—
From Uptown New York —Train marked "Journal Square"—Fare 20 cents.

Miles from New York	Eastern Standard Time Read Down	51	55	43	59	1	703	27	63	207	67	47*	71	271	5	707	7
Motor Coach Service Direct to train-side Jersey City		Daily Ex. Sun.	D'yly Ex. Sun.	Δ Sat. only	Sun. only	Daily	Sat. & Sun. only Ex. Hols.	Daily	Daily Ex. Sun. and Hol.	Sat. & Hol. only	Daily Ex. Sat. Sun. and Hol.	Δ Fri. only	Daily Ex. Sun. and Hol.	Sun. and Hol. only	Daily	Sun. only	Daily
	NEW YORK Rockefeller Center Terminal, 11 Rockefeller Plaza, 8th Ave. & W. 34th St. (Hotel New Yorker)	AM	AM	AM	AM	AM	AM	PM	PM	PM	PM	PM	PM	PM	PM	PM	PM
0.0	Chambers St. Lv	12.01	3.30	7.42	7.43	8.15	11.10	1.10	3.00	4.10	4.28	5.10	5.20	5.25	7.15	7.39	10.58
9.5	Jersey City, N. J. " "	12.15	3.45	7.55	8.00	8.30	11.30	1.30	3.14	4.30	4.40	5.30	5.38	5.45	7.30	7.55	11.40
12.5	Rutherford, N. J. " "	12.29	4.02		8.14		11.44		4.44	4.44				5.59		8.09	
16.7	Passaic " "	12.39	4.14		8.21	BR	11.53	BE 1.50	4.54	4.54				6.09	BJ	8.19	
21.8	Paterson " "	12.47	4.30	8.22	8.29	BP	12.01	BE 1.59	5.03	5.03		5.58		6.19	BH	8.29	
23.2	Ridgewood " "	12.58	4.45		8.38	BP	12.13	BE 2.11	5.14	5.14			6.14	6.29	BH	8.39	
24.3	Hohokus " "	1.00	4.49				12.16		5.17	5.17	5.11			6.32			
25.7	Waldwick " "	1.03	4.53				12.19		5.20	5.20				6.35		8.43	
27.6	Allendale " "	1.06	4.58				12.22		5.23	5.23				6.38		8.46	
30.2	Ramsey " "	1.09	5.03				12.25		5.26	5.26				6.41		8.49	
31.9	Mahwah " "	1.13	5.09				12.29		5.30	5.30				6.46			
32.6	Suffern " N. Y.	1.15	5.16		8.50	BR	12.32	2.29	5.33	5.33				6.49		8.54	
32.6	Hillburn " "		5.25														
33.7	Ramapo " "		5.28														
35.6	Sloatsburg " "		5.33														
38.2	Tuxedo " "		5.42														
42.0	Southfields " "		5.49														
44.4	Arden " "		5.53														
47.0	Harriman " "		6.00														
49.5	Monroe " "	1.39	6.10		9.13												
55.3	Chester " "	1.49	6.22		9.17												
59.7	Goshen " "	1.56	6.32														
63.7	New Hampton " "		6.40														
67.1	Middletown, N. Y.	2.20	7.05														
71.0	Howells " "		7.15														
75.7	Otisville " "		7.30														
88.2	Port Jervis, Ar	2.57	7.50	9.55	BG	10.30	BW	4.12	5.04	6.40	6.38				9.28	10.15	1.40
88.2	Port Jervis, Lv			10.00		10.40		4.19									
90.8	Sparrowbush, N. Y.			f10.05													
92.2	Mill Rift, Pa.			f10.09													
99.5	Pond Eddy " "			f10.21													
103.3	Parker's Glen " "			f10.26													
107.1	Shohola " "			10.34													
111.1	Lackawaxen " "			10.42													
114.1	Westcolang P'k. " "			f10.47													
118.9	Tusten, N. Y.																
122.4	Narrowsburg " "			11.02													
128.2	Honesdale, Pa. B.U. Ar			12.05													
131.0	Skinnerville, N. Y. Lv																
136.2	Callicoon, N. Y.			11.25													
143.0	Hankins " "			11.36													
147.3	Long Eddy " "			BT													
153.6	Lordville " "			11.54													
164.0	Hancock " "			12.10													
172.1	Hale's Eddy " "																
177.1	Deposit " "			12.30													
184.2	Gulf Summit " "																
192.6	Susq'ha'na, Pa. { Ar																
200.8	Great Bend " "																
215.1	Binghamton, N. Y. Ar																



**ERIE
MOTOR
COACH
SERVICE**

TO AND FROM
**ROCKEFELLER CENTER
TERMINAL IN
MIDTOWN NEW YORK**

(for through-train passengers)

ERIE MOTOR COACHES connecting with specified trains leave and arrive at Rockefeller Center Terminal, 11 Rockefeller Plaza. Located between Fifth and Sixth Aves. No. 11 is between W. 48th and 49th Sts.

Only 30 minutes between Erie Railroad Jersey City Terminal and Rockefeller Center.

Motor coaches make stops, inbound—Eighth Ave. at W. 32nd St. and Eighth Ave. at W. 42nd St. Outbound—Eighth Ave. and W. 34th St. (Hotel New Yorker).

Through-train connections guaranteed.

Motor coach service is 50c, plus tax, in each direction. Personal hand baggage of ordinary size handled free of charge. Baggage checked for handling in baggage car will not be carried on Motor Coaches.

Connections eastbound from Trains Nos. 6, 2, 8, 80, 34 and 44, westbound for Trains Nos. 1, 5, 7, *27, 43 and 47.

Consult Ticket Agents for further information.

ALL ABOVE PASSENGER TRAINS ARE DIESEL POWERED

- Δ All Conditional Stops are for Revenue Passengers Only.
- f Air-Conditioned Dining Car, New York to Deposit; Coaches, New York to Deposit.
- Stops on signal to receive and discharge revenue passengers.
- Stops to discharge passengers.
- Motor coach connection effective June 14 to Sept. 13, incl.
- During period July 11 to Sept. 5, incl., also June 27, will stop on Saturdays to receive passengers for Susquehanna and west only. Will stop on other days, also Sat. Hol. July 4, to receive and discharge passengers.
- During period July 3 to Sept. 4, incl., will stop on Fridays to receive passengers for Binghamton and west only. Will stop on other days to receive and discharge passengers.
- BD Stops (3.08 P. M.) Fridays and Saturdays only.
- BE Stops to receive passengers for Suffern and west.
- BF Stops (3.45 P. M.) Monday to Saturday, incl.
- BG Stops (10.10 A. M.), Sundays only during period July 5 to August 30, incl.
- BH Stops Paterson (7.57 P. M.), Ridgewood (8.06 P. M.) to receive passengers.
- BJ Stops Passaic (7.49 P. M.) to receive passengers for Hornell and west.
- BK Stops Mondays to Fridays incl. to receive and discharge passengers.
- BL Stops daily except Saturdays from June 28 to Sept. 5, incl., to discharge passengers from Ridgewood and east. On Sat. Hol. July 4 a regular stop will be made.
- BN Stops to discharge passengers from New York.
- BP Stops Paterson (8.56 A. M.), Ridgewood (9.05 A. M.) to receive passengers.
- BR Stops Passaic (8.49 A. M.), Suffern (9.18 A. M.) for Binghamton and west.
- BT Stops to discharge passengers from Port Jervis and east.
- BU Bus operates between Narrowsburg and Honesdale. See Note X, Page 22.
- BV On Saturdays Ferry for Train 63 Lv. (2.50 P. M.).
- BW Runs West of Middletown Saturdays only. Stops Otisville (1.40 P. M.) and arrives Port Jervis (2.00 P. M.).

BINGHAMTON—NEW YORK

**TABLE 3
EASTBOUND**

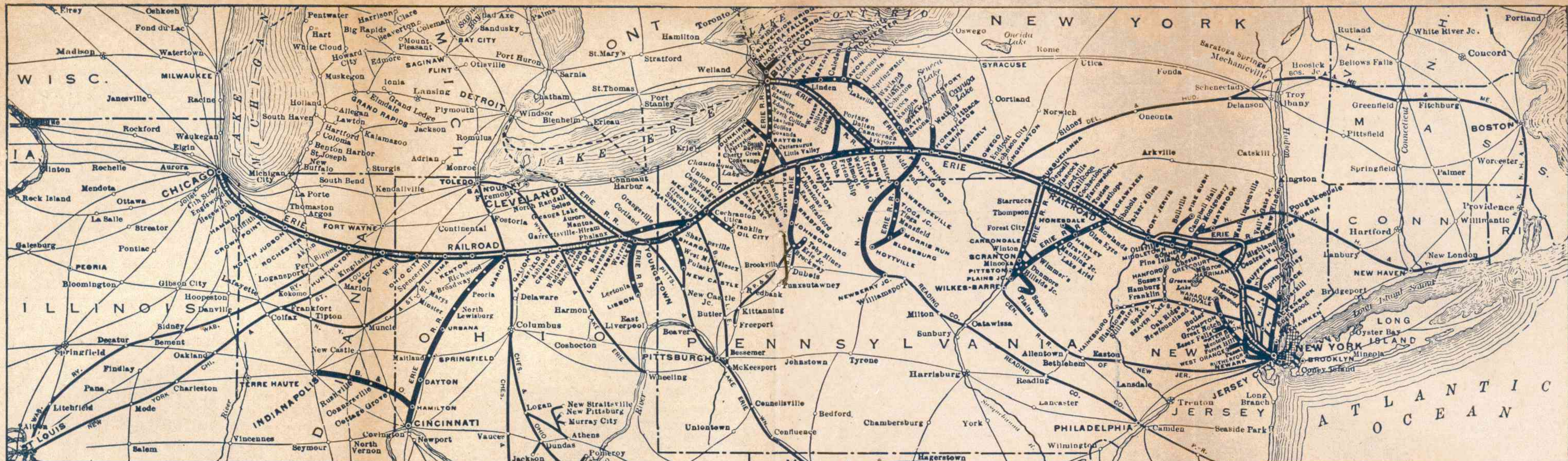
For additional train service between Jersey City and Suffern, not shown in this folder, please refer to local time tables.
Hudson and Manhattan Tube Trains operate between New York and Erie Railroad Station in Jersey City
From Erie Station, Jersey City—To Downtown New York—Train marked "Hudson Terminal"—Fare 20 cents.
To Uptown New York —Train marked "33rd Street"—Fare 20 cents.

Miles from Chicago	Eastern Standard Time	50	52	6	202	56	204	700	30	62	28-280	28	2	34	704	44	8	80	68
		Daily Ex. Sat., Sun. and Hol.	Daily Ex. Sat., Sun. and Hol.	Daily	Sat. only Ex. Hol.	Daily Ex. Sat., Sun. and Hol.	Sat. & Hol. only	Sun. only	Daily	Daily Ex. Sun. & Hol.	Sun. and Hol. only	Daily Ex. Sun. and Hol.	Daily	Sept. 7 only	Sun. and Hol. only	▲ Sun. only	Daily Ex. Sun.	Sun. only	Daily
Read Down		AM	AM	AM	AM	AM	AM	AM	AM	PM	AM	AM	PM	PM	PM	PM	PM	PM	PM
783.6	Binghamton, N. Y. Lv.			2.29							10.55	10.55	12.42				5.22	5.52	
797.9	Great Bend, Pa. "Ar.										11.15	11.15							
806.1	Susquehanna "Lv.			2.55							11.28	11.28	1.11				5.51	6.22	
				2.57							11.33	11.33	1.13				5.53	6.24	
814.5	Gulf Summit N. Y. "Ar.										11.51	11.51							
821.6	Deposit "Ar.										12.03	12.03	1.40	2.30			3.30	6.22	6.51
826.6	Hale's Eddy "Ar.										12.11	12.11							
834.7	Hancock "Ar.										12.32	12.32	1.58	2.49			3.50	6.40	7.08
845.1	Lordville "Ar.										12.47	12.47	2.11	3.05			4.05		
851.4	Long Eddy "Ar.										12.56	12.56					4.14		
855.7	Hankins "Ar.										1.04	1.04		3.23			4.22		
862.5	Callicoon "Ar.										1.19	1.19	2.35	3.37			4.36	7.16	7.43
867.7	Cochection "Ar.										1.29	1.29		3.46			4.44		
870.5	Skinner's N. Y. "Ar.										1.35	1.35					4.49		
	Honesdale Pa. CS "Ar.										1.00	1.00	2.10	3.10			4.15		
876.3	Narrowsburg N. Y. "Ar.			CP							1.48	1.48	2.56	4.01			4.59	7.36	8.03
879.8	Tusten "Ar.										1.52	1.52							
884.6	Westcolang Park Pa. "Ar.													CF			5.12		
887.6	Lackawaxen "Ar.										2.06	2.06		4.18			5.19		
891.6	Shohola "Ar.										2.16	2.16		4.27			5.28		
895.4	Parker's Glen "Ar.										CD	CD					CF		
899.2	Pond Eddy "Ar.										2.29	2.29					5.41		
906.5	Mill Rift "Ar.										CD	CD					5.55		
907.9	Sparrowbush N. Y. "Ar.										2.45	2.45					CF		
910.5	Port Jervis "Ar.			5.16							2.51	2.51	3.43	4.55			6.05	8.25	8.50
910.5	Port Jervis "Lv.		5.04	5.26	5.04	6.00	6.00	7.22	9.20	12.27	2.56	2.58	3.53	5.00	5.50	6.10	8.35	9.00	
923.0	Otisville "Ar.		5.22		5.22	6.19	6.19	7.40	9.38	12.45	3.14	CA			6.09				
927.7	Howells "Ar.					6.25	6.25	7.46	9.44	12.51					6.16				
931.6	Middletown "Ar.		5.34	CE	5.34	6.32	6.31	7.52	9.55	1.03	3.29	3.40	4.22	5.32	6.25	6.40	9.05	9.30	9.45
935.0	New Hampton "Ar.		5.39			6.37	6.36	7.57	9.55										
939.0	Goshen "Ar.		5.45		5.44	6.43	6.42	8.02	10.07	1.15	3.40	3.52	4.32	5.42	6.35	6.50			9.55
943.4	Chester "Ar.		5.52		5.51	6.50	6.49	8.09	10.14	1.23	3.48	3.59			6.42				10.02
949.2	Monroe "Ar.	5.26	6.01		6.01	6.59	6.58	8.18	10.24	1.33	3.58	4.09		5.54	6.53	7.04			10.12
951.7	Harriman "Ar.	5.30	6.05		6.05	7.03	7.02	8.22	10.28	1.38	4.03	4.14			6.58				10.16
954.3	Arden "Ar.	5.34				7.07					4.07				7.03				
956.7	Southfields "Ar.	5.37	6.11			7.11					4.11				7.07				10.22
960.5	Tuxedo "Ar.	5.43	6.17		6.16	7.17	7.13	8.33	10.39	1.50	4.17				7.13				10.28
963.1	Sloatsburg "Ar.	5.47	6.21		6.20	7.21	7.17	8.37	10.42	1.54	4.22				7.17				10.32
965.0	Ramapo "Ar.																		
966.1	Hillburn "Ar.	5.51	6.25		6.24						1.58								
966.8	Suffern "Ar.	6.02	6.36		6.27	7.27	7.23	8.43	10.50	2.03	4.29	4.36	CN		7.23				10.39
968.5	Mahwah N. J. "Ar.	6.05	6.39		6.30	7.30	7.25	8.45		2.05									CV
971.1	Ramsey "Ar.	6.12			6.35	7.36	7.30		10.57	2.12	4.34				7.31				10.45
973.0	Allendale "Ar.	6.16			6.38		CB 732		11.00	2.15	CB 437								10.48
974.4	Waldwick "Ar.	6.19			6.41		7.34		CK	2.18	4.39				7.37				10.51
975.5	Hohokus "Ar.	6.22	6.50		6.43		7.36												
976.9	Ridgewood "Ar.	6.25		CL	6.46	7.44	7.39	8.56	11.08	2.24	4.44	4.49	5.19	6.28	7.44	7.40	CG	CG	10.55
982.0	Paterson "Ar.			CL	6.56		7.48	9.03	11.18	2.37	4.55	4.59	5.27		7.53		CH 10.32	10.28	11.05
986.2	Passaic "Lv.			CR	7.05		7.57	9.10	11.27	2.49	5.05	5.10	CN		8.01		CH 10.43		11.14
989.2	(Rutherford "Ar.) (E. Rutherford "Ar.)				7.14		8.06	9.16	11.35	2.58	CB 512				8.08		CH 10.51		11.22
	Jersey City "Ar.	6.58	7.20	7.25	7.27	8.09	8.20	9.30	11.50	3.12	5.25	5.30	5.55	6.55	8.21	8.10	10.25	10.55	11.36
	NEW YORK																		
998.7	Chambers St. Ferry "Ar.	7.11	7.32	7.37	7.39	8.21	8.37	9.43	12.04	3.24	5.48	5.44	6.14	7.09	8.37	8.37	10.54	11.19	11.54
	8th Ave. at W. 32nd St. "Ar.			7.51									6.21	7.21		8.36	10.46	11.16	
	8th Ave. at W. 42nd St. "Ar.			7.53									6.23	7.23		8.38	10.48	11.18	
	Rockefeller Center "Ar.																		
	Terminal, 11 Rockefeller Plaza "Ar.			8.00									6.30	7.30		8.45	10.55	11.25	

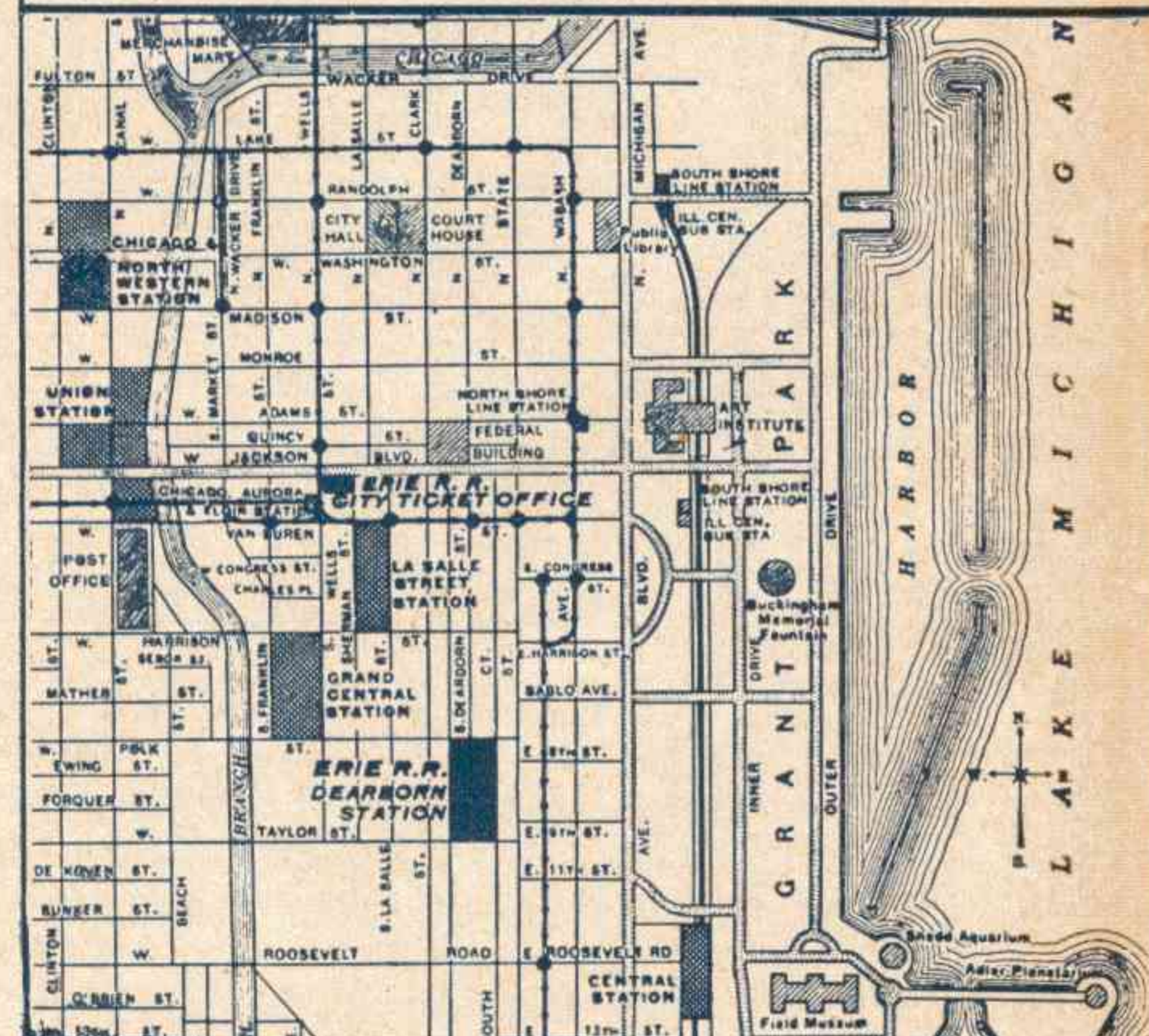
ALL ABOVE PASSENGER TRAINS ARE DIESEL POWERED

All Conditional Stops are for Revenue Passengers Only.
 ▲ Air-Conditioned Dining Car, Deposit to New York; Coaches, Deposit to New York.
 f Stops on signal to receive and discharge passengers.
 Δ Stops to receive passengers.
 ⊙ Bus operates Saturdays and Sundays only.
 † Stops to discharge passengers.
 ‡ Stops to receive and discharge passengers, except on Sundays, July 5 to August 30, incl., also Monday, September 7, when stop will be made only to discharge passengers from Susquehanna and west.
 † Stops Mondays to Fridays, July 6 to September 4, incl., to receive passengers for Ridgewood and east.
 CA Stops (3.22 P. M.) Fridays and Saturdays only.
 CB Stops on Holidays only.
 CD Stops at Parker's Glen (2.22 P. M.) and Mill Rift (2.39 P. M.) to receive passengers for Paterson and east.

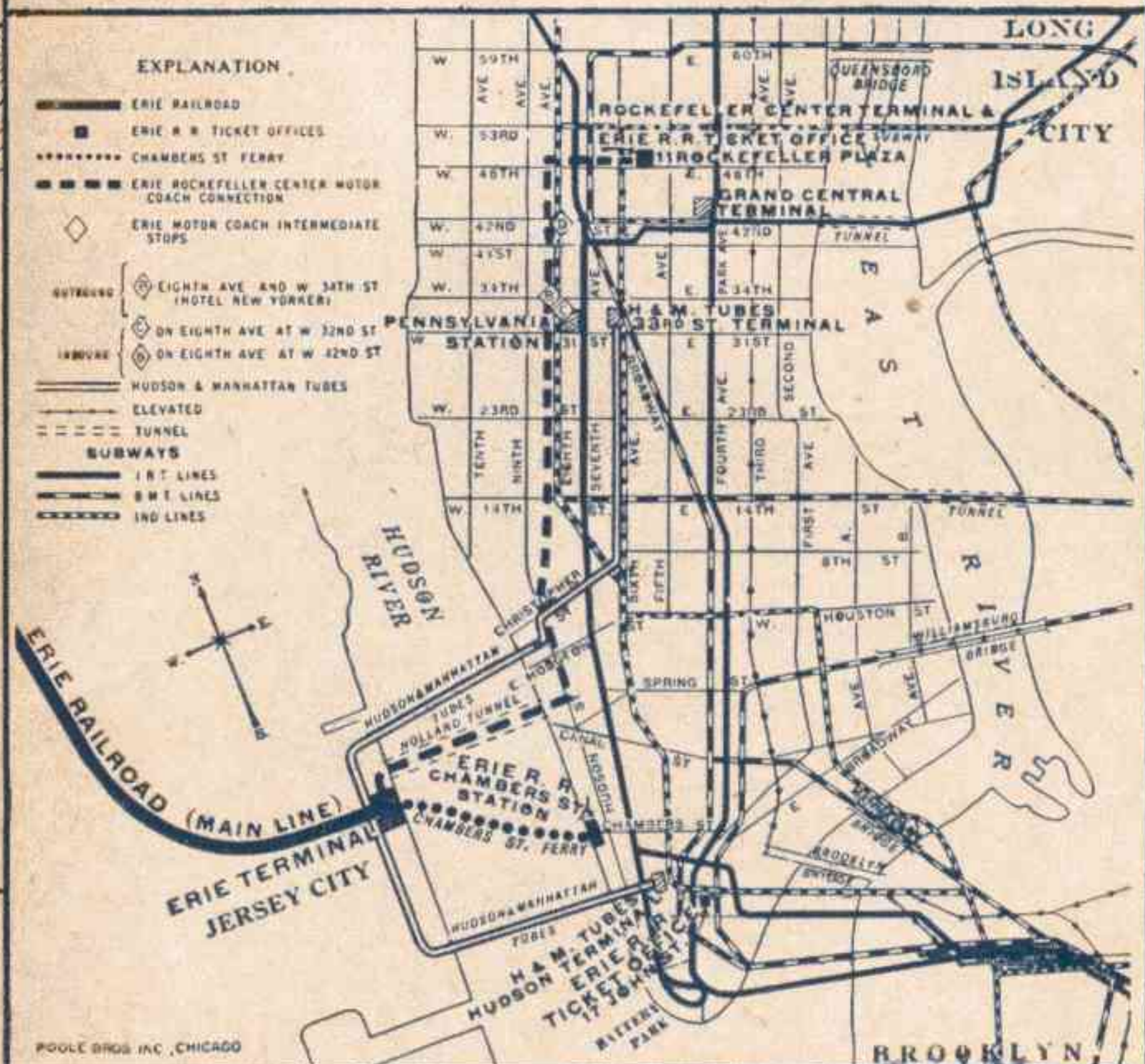
CE Stops at Middletown (5.55 A. M.) to discharge passengers from Binghamton and west, also on Sun. and Hols. stops to receive passengers for New York.
 CF Stops to receive passengers for New York.
 CG Train 8 stops (9.55 P. M.), Train 80 (10.20 P. M.), Ridgewood to discharge passengers from Binghamton and west.
 CH Train 8 operates via Bergen Short Cut. Connecting train to these points leaves Ridgewood (10.18 P. M.) Daily except Holidays.
 CK Stops Saturdays only (11.03 A. M.) to receive and discharge passengers.
 CL Stops Ridgewood (6.44 A. M.) Paterson (6.53 A. M.) to discharge passengers from Port Jervis and west.
 CN Stops Suffern (5.06 P. M.), Passaic (5.35 P. M.) to discharge passengers from Binghamton and west.
 CP Stops (4.32 A. M.) Mondays only, July 6 to August 31, incl., to receive passengers for New York.
 CR Stops on Sundays only to discharge passengers from Port Jervis and west.
 CS Bus operates between Narrowsburg and Honesdale. See Note X, Page 22.
 CV Stops (10.41 P. M.) Sundays only.



MAP OF DOWNTOWN CHICAGO
 Showing Business District, "Loop," and Railroad Stations. For detailed information see page 25.



MAP OF NEW YORK CITY AREA
 showing Erie Rockefeller Center Motor Coach, Chambers Street Ferry, H. & M. Tube routes, Erie Terminals and Ticket Offices.



ERIE RAILROAD AND CONNECTIONS



POOLE BROS. INC., CHICAGO

TABLE 4 WESTBOUND

BINGHAMTON—CHICAGO

EASTBOUND

Miles from New York	Eastern Standard Time Read Down			Miles from Chicago	Central Standard Time Read Down				
	Daily AM	Daily PM	Daily PM		Daily PM	Daily PM	Daily AM	Daily PM	
0.0	Lv. NEW YORK Rockefeller Center Terminal, 11 Rockefeller Plaza.....Lv 8th Ave. & W. 34th St..... (Hotel New Yorker)				0.0	Chicago (Dearborn Sta.) III. Lv.			
	7.40	6.45	10.20		6.3	Englewood, 63d and Wallace Sts. "			
	7.47	6.52	10.27		20.6	Hammond.....Ind. "			
					36.3	Crown Point....." "			
					70.1	North Judson....." "			
					100.9	Rochester....." "			
	8.15	7.15	10.58		142.6	Huntington.....Ar.			
	8.30	7.30	11.40						
					142.6	Huntington.....Lv.			
					173.4	Decatur....." "			
						Eastern Standard Time			
						Ohio City.....Ohio "			
215.1	2.01	12.46	5.36		189.9	Lima....." "			
223.7	2.13	DK	5.51		217.2	Kenton....." "			
237.1	f 2.29		6.09		244.2	Marion.....Ar.			
256.2	f 2.50		6.37		269.1				
273.8	3.17	2.01	7.18						
291.2	3.43	2.31	7.54						
302.3	3.58		8.11						
332.3	4.36	3.18	8.53		269.1	Marion.....Ohio Lv.			
332.3	4.46	3.28	9.05		290.1	Galion....." "			
349.9					305.5	Mansfield....." "			
358.5	5.24	4.06	9.52		322.2	Ashland....." "			
366.9			DC		354.4	Rittman....." "			
374.4			DC		358.8	Wadsworth....." "			
383.3	DG	DG	f10.25		365.4	Barberton....." "			
395.7	6.13	4.57	10.50		372.7	Akron....." "			
413.6	6.35	5.19	11.12						
430.2	DB7.25	DB7.05	DB12.49		382.8	Kent.....Ar.			
413.6	6.45	5.29	11.22		389.1	Ravenna.....Lv.			
431.1		5.50	11.43			Cleveland (See Table 8) Lv. Union Terminal, Public Square			
447.3	7.23	6.08	12.01		413.0	Warren (▲)....." "			
447.3	7.32	6.15	12.09		418.1	Niles (▲)....." "			
474.2	8.09	6.50	12.45		426.9	Youngstown (▲).....Ar.			
485.6	DL	f 7.04	12.58			Pittsburgh (See Table 8) Ar.			
501.2	DL	7.22	1.16		426.9	Youngstown.....Lv.			
515.9	8.56	7.39	1.32		440.5	Sharon.....Pa. "			
515.9	9.06	7.46	1.42		456.6	Greenville....." "			
542.1	9.44	8.21	2.15		482.8	Meadville.....Ar.			
558.2	10.11	8.45	2.39		482.8	Meadville.....Lv.			
571.8	10.31	9.06	2.58		497.5	Cambridge Springs....." "			
					513.1	Union City....." "			
		605	5		524.5	Corry....." "			
		7.00	7.00	11.30	551.4	Jamestown.....N. Y. Ar. (Chautauqua Lake)			
571.8	10.46	9.25	9.17	3.12	551.4	Jamestown.....Lv. (Chautauqua Lake)			
580.6	DJ	9.36	9.36	3.35	567.6	Randolph....." "			
585.7	11.10	9.45	9.36	3.35	585.1	Salamanca.....Ar.			
638.3		10.42				Bradford (See Table 5) Lv.			
609.6			DP	4.08	585.1	Salamanca.....Lv.			
615.9			10.06	4.18	603.0	Olean....." "			
626.0			10.13	4.25	615.4	Cuba....." "			
633.3			10.27	4.50	624.3	Friendship....." "			
639.9					631.8	Belmont....." "			
644.3					640.2	Wellsville....." "			
676.5					648.8	Andover....." "			
693.2					666.4	Hornell.....Ar.			
708.6					666.4	Hornell.....Lv.			
729.6					696.4	Addison....." "			
729.6					707.5	Corning....." "			
754.5					724.9	Elmira....." "			
781.5					742.5	Waverly.....Lv.			
808.8					761.6	Owego....." "			
					775.0	Endicott....." "			
					783.6	Binghamton.....Ar.			
825.3						Binghamton (D. & H.) Lv.			
856.1						Oneonta (D. & H.) Ar.			
856.1						Albany (D. & H.) "			
897.8						Jersey City.....Ar.			
928.9						NEW YORK			
962.4						Chambers St. Ferry....." "			
978.1						8th Ave. at W. 32nd St....." "			
992.4						8th Ave. at W. 42nd St....." "			
998.7						Rockefeller Center Terminal, 11 Rockefeller Plaza.....Ar			

ALL ABOVE PASSENGER TRAINS ARE DIESEL POWERED
SEE REFERENCE NOTES ON PAGE 21

TABLE 5 NEW YORK—SALAMANCA—BRADFORD—CHICAGO

WESTBOUND Read Down			Via Salamanca and Limousine Service operated by Erie Railroad Co. EASTERN STANDARD TIME	EASTBOUND Read Up			
7-Bus	5-Bus	1-Bus		Bus-2	Bus-8	Bus 80-8	Bus-6
Daily	Daily	Daily		Daily	Daily Ex.Sun.	Sun. Only	Daily
PM 10 20	PM 6 45	AM 7.40	Lv NEW YORK Ar Rockefeller Center Terminal, 11 Rockefeller Plaza (Note ⊕)	PM 6 30	PM 10 55	PM 11 25	AM 8.00
10 58	7 15	8.15	Lv..Chambers St. Ferry Ar	6 14	10 54	11 19	7 37
11 40	7 30	8.30	Lv.....Jersey City.....Ar	5 55	10 25	10 55	7 25
11 12	5 19	6 35	Ar.....Salamanca.....Lv	8 13	12 09	1 05	10 03
EA12.09	EA 6.25	EA 6.45	Lv.....Salamanca.....Ar	7 55	11.10	11.10	9 40
12 49	7 05	7 25	Ar.....Bradford.....Lv (EMERY HOTEL)	EA 7.15	EA10.30	EA10.30	EA 9.00
PM	AM	PM		AM	AM	AM	PM
AM		PM	Lv.....Bradford.....Ar	AM	PM	PM	PM
EA 10.30	EA 5.45	EA 6.25	Ar.....Salamanca.....Lv	EA 8.13	EA12.09	EA 1.05	EA10.03
11 10	6 25						
11 22	6 45		Lv.....Salamanca.....Ar	8 03	11 59	12 55	9 53
12 01	7 23		Ar.....Jamestown.....Lv	7 24	11 08	11 55	9 16
2 58	10 31		Ar.....Youngstown.....Lv	3 57	8 05	8 57	6 13
4 50	12 14		Ar.....Akron.....Lv	2 16	6 35	7 05	4 52
			Central Standard Time				
12 25	6 55		Ar.....Chicago.....Lv	5 00	10 00	10 00	9 25
AM	AM			PM	PM	PM	AM

REFERENCE NOTES

All Conditional Stops are for Revenue Passengers only.

- # Runs Sunday only.
- I Runs Daily except Sunday and Holiday.
- f Stops on signal to receive and discharge passengers.
- ▲ For additional service between Cleveland and Youngstown see Table 8.
- DB Via Erie Railroad Limousine Service between Salamanca and Bradford.
- DC Stops Andover (9.31 A.M.); Belmont (10.02 A.M.); Friendship (10.11 A.M.); to discharge passengers from New York.
- DF Train 8 stops (7.40 A.M.), Train 80 (8.34 A.M.) to discharge passengers from Hammond and Chicago.
- DG Train 1 stops Cuba (5.53 P.M.), Train 5 (4.36 A.M.) to discharge passengers from Elmira and east and to receive for Jamestown and west.
- DJ Stops (10.57 P.M.) to discharge passengers from Meadville and east and to receive passengers for Akron and west.
- DK Stops Endicott (12.57 A.M.) to discharge passengers from Ridgewood and east.
- DL Stops on signal Union City (8.21 P.M.); Cambridge Springs (8.39 P.M.) to discharge passengers from Jamestown and east and to receive for Youngstown and west.
- DN Train 8 stops Wadsworth, (6.08 A.M.), Barberton (6.16 A.M.) to discharge from Gallon and west and to receive for Youngstown and east.
- DO Stops (4.57 P.M.) to discharge passengers from Youngstown and east and to receive passengers for Mansfield and west.
- DP Stops (9.58 A.M.) to discharge passengers from Meadville and east, and to receive passengers for Gallon and west.
- DS Stops (8.13 P.M.) daily to discharge passengers from Youngstown and west and to receive for New York.
- DT Stops (8.51 A.M.) to discharge passengers from Jamestown and west, and to receive for Elmira and east.
- DU Stops Cambridge Springs (6.04 A.M.), Union City (6.21 A.M.) to discharge passengers from Chicago and to receive for Binghamton and east.
- DV Stops (5.21 P.M.) to discharge Passengers from Chicago.
- DX Stops Waverly (1.33 A.M.), Endicott (2.06 A.M.) to discharge passengers from Jamestown and west.
- EA Erie limousine service, operates between Erie Railroad Station, Salamanca and Emery Hotel, Bradford.
- EC Train 7 stops (12.10 A.M.) to discharge passengers from east of Hammond.
- ED Stops on signal (12.49 P.M.) to receive passengers for Chicago.
- EF Stops on signal (2.31 P.M.) to discharge passengers from Chicago and receive passengers for Youngstown and east.

Note ⊕—See Table 4 for stops of Motor Coach in New York City.

"FURLOUGH FARES" ON THE ERIE!

(Coach Fares reduced for service personnel)

• If you are a uniformed member of the armed forces, traveling at your own expense, you can save on round-trip coach fares. Cost is only slightly higher than one-way coach fare, and applies between any two points on the Erie as well as to points on connecting lines. Ask your Erie Ticket Agent for details.

You'll have it soft....
when you rest with a

**FRESH, CLEAN
PILLOW**
ONLY 25¢

Just ask the coach porter
On The Erie Limited and Lake Cities

ANOTHER  SERVICE



TABLE 6 NEW YORK—KENOZA LAKE—JEFFERSONVILLE
Train and Bus Service via Callicoon

WESTBOUND Read Down			EASTERN STANDARD TIME	EASTBOUND Read Up		
27	① 43 Sat. Only	I Daily		2 Daily	34 Sept. 7 Only	② 44 Sun. Only
PM *12.45	AM 7.10	AM 7.40	Lv..Rockefeller Center Terminal..Ar 11 Rockefeller Plaza (Note ⊕)	PM 6 30	PM 7 30	PM 8 45
1 10	7 42	8 15	Lv.....Chambers St. Ferry.....Ar	6 14	7 09	8 37
1 30	7 55	8 30	Lv.....Jersey City.....Ar	5 55	6 55	8 10
5 49	11 25	11 49	Ar.....Callicoon.....Lv	12 35	3 37	4 36
Via Bus of Schultz Auto-Bus Line (See Note X below)						
6 00	11 30	12 01	Lv.....Callicoon.....Ar	2 30	3 30	4 30
6 30	12 01	12 30	Lv.....Kenoza Lake.....Ar	2 00	3 00	4 00
7 00	12 30	1 00	Ar.....Jeffersonville.....Lv	1 30	2 30	3 30
PM	PM	PM		PM	PM	PM

TABLE NEW YORK—CHAUTAUQUA—CHICAGO
7 (Via Jamestown and BUS of Buffalo and Erie Coach Corp.)

WESTBOUND Read Down			EASTERN STANDARD TIME See Note X below	EASTBOUND Read Up		
1-Bus Daily	5-Bus Daily	7-Bus Daily		Bus-8 Daily	Bus-2 Daily	Bus-6 Daily
	PM 6.45	PM 10.20	Lv NEW YORK Ar Rockefeller Center Terminal, 11 Rockefeller Plaza (Note ⊕)	PM 10.55		AM 8.00
	7.15	10.58	Lv.....Chambers St. Ferry.....Ar	10.54		7.37
	7.30	11.40	Lv.....Jersey City.....Ar	10.25		7.25
	6.08	12.01	Ar.....Jamestown.....Lv	11.08		9.16
	I 7.00	1 00	Lv.....Jamestown.....Ar	8.10		6.45
	7.35	1 35	Ar.....Chautauqua.....Lv	I 7.35		I 6.10
	AM	PM		AM		PM
PM I 6.10		AM 11.05	Lv.....Chautauqua.....Ar	PM 1.35	AM 9.20	
6.45		11.40	Ar.....Jamestown.....Lv	1.00	8.45	
7 32		12 09	Lv.....Jamestown.....Ar	11 00	7 14	
12 14		4 50	Ar.....Akron.....Lv	6 35	2 16	
			Central Standard Time			
6 55		12 25	Ar.....Chicago.....Lv	10 00	5 00	
AM		AM		PM	PM	

- ① Runs Saturday only July 11 to Sept. 5, incl., also June 27.
- ② Runs Sunday only July 5 to Aug. 30, incl., also Monday, Sept. 7.
- ▲ See explanation of reference notes on Page 11-12.
- † See explanation of reference notes on Page 13 and 14.
- f Stops on signal to receive and discharge passengers.
- Motor coach connection effective June 14 to Sept. 13, incl.
- ⊕ See Tables 2 and 3 for stops of Motor Coach in New York City.

Tickets sold and baggage checked through to Chautauqua.
Note X. In connection with the bus service the Erie Railroad acts as agent only and is not responsible beyond its own line, except as such responsibility may be imposed by law with respect to baggage.

TABLE 8 DETROIT—TOLEDO—CLEVELAND—YOUNGSTOWN—PITTSBURGH—WASHINGTON—BALTIMORE—PHILADELPHIA

Miles from Cleveland	Eastern Standard Time Read Down							Miles from Philadelphia	Eastern Standard Time Read Down						
	624 Daily AM	624 Daily AM	626 Daily AM	606 Daily PM	628 Ex Sun & Hol. PM	686 Daily PM	629 Ex Sun & Hol. AM		625 Daily PM	605 Daily AM	685 Daily AM	623 Daily AM	623 Daily PM		
0.0	Detroit Lv.					1.30	0.0	Philadelphia Lv.							
3.3	Toledo Lv.	4.22	4.22	7.45		3.15	94.0	Baltimore (Mt. Royal Sta.) Lv.							
0.0	Cleveland Lv.	7.15	7.15	11.15	4.25	4.30	95.9	Baltimore (Camden Sta.)							
3.3	Union Terminal Public Square						132.7	Washington, D. C. Lv.							
5.0	E. 55th St. and McBride Ave.					4.39	139.6	Silver Spring							
8.6	E. 93d St. & Richmond Ave.					4.44	187.8	Harper's Ferry							
10.7	Lee Road Shaker Hts. Station, Cleveland, O.	7.31	7.31	11.29	GK 4.40	4.49	206.1	Martinsburg							
15.8	North Randall					4.54	283.8	Cumberland							
20.4	Solon					5.01	370.8	Connellsville							
23.6	Geauga Lake					5.07	413.9	McKeesport							
30.0	Aurora			GR1145		5.13	419.1	Braddock							
34.2	Mantua			GD1152		5.22	433.9	Pittsburgh Ar.							
36.7	Jeddoe					5.27	444.5	Pittsburgh Lv.							
40.3	Garrettsville-Hiram			12.00		5.32	453.0	Coraopolis							
45.3	Mahoning					5.37	459.6	Aliquippa							
52.6	Phalanx					5.43	463.1	Beaver							
57.7	Warren	8.19	8.19	12.22	5.29	5.58	474.7	Beaver Falls							
66.5	Niles	GG8.26	GG8.26	12.30	5.39	6.08	481.1	New Brighton							
66.5	Youngstown Ar.	8.36	8.36	12.40	5.51	6.20	498.8	Ellwood City (GJ)							
84.2	Youngstown Lv.	8.42	8.42	12.50		7.50	498.8	Wampum (GJ)							
90.6	New Castle Ar.	9.06	9.06	1.14		8.14	507.6	New Castle Lv.							
90.6	Wampum (GJ)	9.13	9.13	1.21		8.21	512.7	Youngstown Ar.							
102.2	Ellwood City (GJ)	9.26	9.26	1.34		8.34	520.0	Youngstown Lv.							
102.2	Beaver Falls	9.28	9.28	1.36		8.36	525.0	Niles							
102.2	New Brighton	9.28	9.28	1.36		8.36	528.6	Warren							
105.6	Beaver	9.34	9.34	1.42		8.42	531.1	Phalanx							
112.3	Aliquippa	9.43	9.43	1.51		8.51	535.3	Mahoning							
120.8	Coraopolis	9.54	9.54	2.02		9.02	541.9	Garrettsville-Hiram							
131.4	Pittsburgh Ar.	10.10	10.10	2.20		9.20	544.9	Jeddoe							
131.4	Pittsburgh Lv.		10.30			10.30	549.5	Mantua							
141.0	Braddock					10.48	554.6	Aurora							
145.2	McKeesport					11.00	557.6	Geauga Lake							
189.3	Connellsville					11.59	559.7	Solon							
281.5	Cumberland					2.45	562.0	North Randall							
359.2	Martinsburg					4.20	565.3	Lee Road-Shaker H's. Station, Cleveland, O.							
372.5	Harper's Ferry					4.53		E. 93d St. & Richmond Ave.							
425.7	Silver Spring					5.58		E. 55th St. and McBride Ave.							
432.8	Washington, D. C. Ar.					6.20		Cleveland Ar.							
469.4	Baltimore (Camden Sta.) Ar.					8.08		Union Terminal, Public Square							
470.9	Baltimore (Mt. Royal Sta.) Lv.					8.16		Toledo Ar.							
565.3	Philadelphia Ar.					9.57		Detroit Ar.							

NEW DIESEL POWER ON ALL TRAINS BETWEEN CLEVELAND, YOUNGSTOWN AND PITTSBURGH, EQUIPMENT—EASTBOUND

No. 606—Daily. Sleeping Car (Car No. 61) (6 Roomette-6 Section 4 Double Bedroom) Cleveland to New York. Ind. Reclining Seat Coach, Cleveland to New York.
 No. 624—Morning Steel King—Daily. B&O Parlor-Diner, Cleveland to Pittsburgh. Ind. Reclining Seat Coaches, Cleveland to Pittsburgh.
 No. 324—The Washingtonian—Daily. B&O Parlor-Diner, Cleveland to Baltimore. Individual Reclining Seat Coaches, Cleveland to Washington and Baltimore.

No. 686—Evening Steel King—Daily. Ind. Reclining Seat Coaches, Detroit to Pittsburgh, via Cleveland. NYC Parlor-Diner Cleveland to Pittsburgh. Ind. Reclining Seat Coaches, Pittsburgh to Washington, Baltimore and Philadelphia.
 No. 626—Daily. Erie Parlor-Diner, Cleveland to Pittsburgh. Ind. Reclining Seat Coaches, Cleveland to Pittsburgh.

EQUIPMENT—WESTBOUND

No. 625—Morning Steel King—Daily. Erie Parlor-Diner. Pittsburgh to Cleveland. Ind. Reclining Seat Coaches, Pittsburgh to Cleveland.
 No. 605—Daily. Sleeping Car (Car No. 51) (6 Roomette-6 Section 4 Double Bedroom) New York to Cleveland. Ind. Reclining Seat Coaches, New York to Cleveland.
 No. 623—Evening Steel King—Daily. B&O Parlor-Diner. Ind. Reclining Seat

Coaches, Pittsburgh to Cleveland.
 No. 623—The Washingtonian—Daily. B&O Parlor-Diner, Baltimore to Cleveland. Individual Reclining Seat Coaches, Baltimore and Washington to Cleveland.
 No. 685—Daily. Ind. Reclining Seat Coaches, Pittsburgh to Detroit, via Cleveland. NYC Parlor-Diner, Pittsburgh to Cleveland.

All regularly assigned equipment is air-conditioned.

All Conditional Stops are for Revenue Passengers only.
 f Stops on signal to receive and discharge revenue passengers.
 GD Stops Mantua to discharge passengers from Cleveland and receive passengers for Youngstown and east.
 GE Stops to discharge passengers from New Castle and east and to receive passengers for Cleveland.
 GG Stops to discharge passengers from Cleveland and to receive passengers for New Castle and east.

GJ Bus service between Wampum and Ellwood City.
 GK Stops to receive passengers for Warren and beyond.
 GL Stops on signal to receive passengers for Toledo or Detroit.
 GR Stops Saturdays only to discharge passengers from Cleveland.
 GX Stops to discharge passengers from Youngstown and receive for Cleveland.
 GZ Baggage checked on train 623 will be taken to Union Terminal Cleveland and will be available at Lee Rd. station following morning.

IMPORTANT. When trains are shown as stopping conditionally at a station, passengers should advise Station Agent, in advance, of their intention to board train or notify Conductor of intention to leave train, as case may be.

Holidays in the above table refers to the observance of New Year's Day, Memorial Day, Independence Day, Labor Day, Thanksgiving Day and Christmas Day

Ride "THE STEEL KING"

Between CLEVELAND and PITTSBURGH

	MORNING STEEL KING	EVENING STEEL KING
Leave Cleveland Union Terminal	7:15 A. M.	6:20 P. M.
Leave Lee Road Station	7:31 A. M.	6:35 P. M.
Arrive Warren	8:19 A. M.	7:24 P. M.
Arrive Youngstown	8:36 A. M.	7:45 P. M.
Arrive Pittsburgh	10:10 A. M.	9:20 P. M.

Smooth diesel service, modern air-conditioned equipment, parlor-diner service

Convenient schedules returning!

LEE ROAD-SHAKER HEIGHTS PASSENGER STATION

Located at Lee Road and
Miles Avenue

Plenty of Parking Space Available

You may leave your car at the station during
the day—ready for you when you return.

BUS SERVICE • TAXI SERVICE



SERVING

Shaker Heights

Cleveland
Heights

University
Heights

Maple Heights
and
adjacent areas

LAY-OVER SLEEPING CARS AT YOUNGSTOWN AND AKRON FOR CHICAGO TRAVELERS

Latest type sleeping cars with year 'round air conditioning provide Erie passengers with the most modern and luxurious accommodations for overnight travel. Smooth diesel power all the way.

For your convenience, sleeping cars are ready for occupancy at Erie Station in Youngstown and Akron at 8:30 p.m. and may be occupied until 8:00 a.m. at Akron on the return.

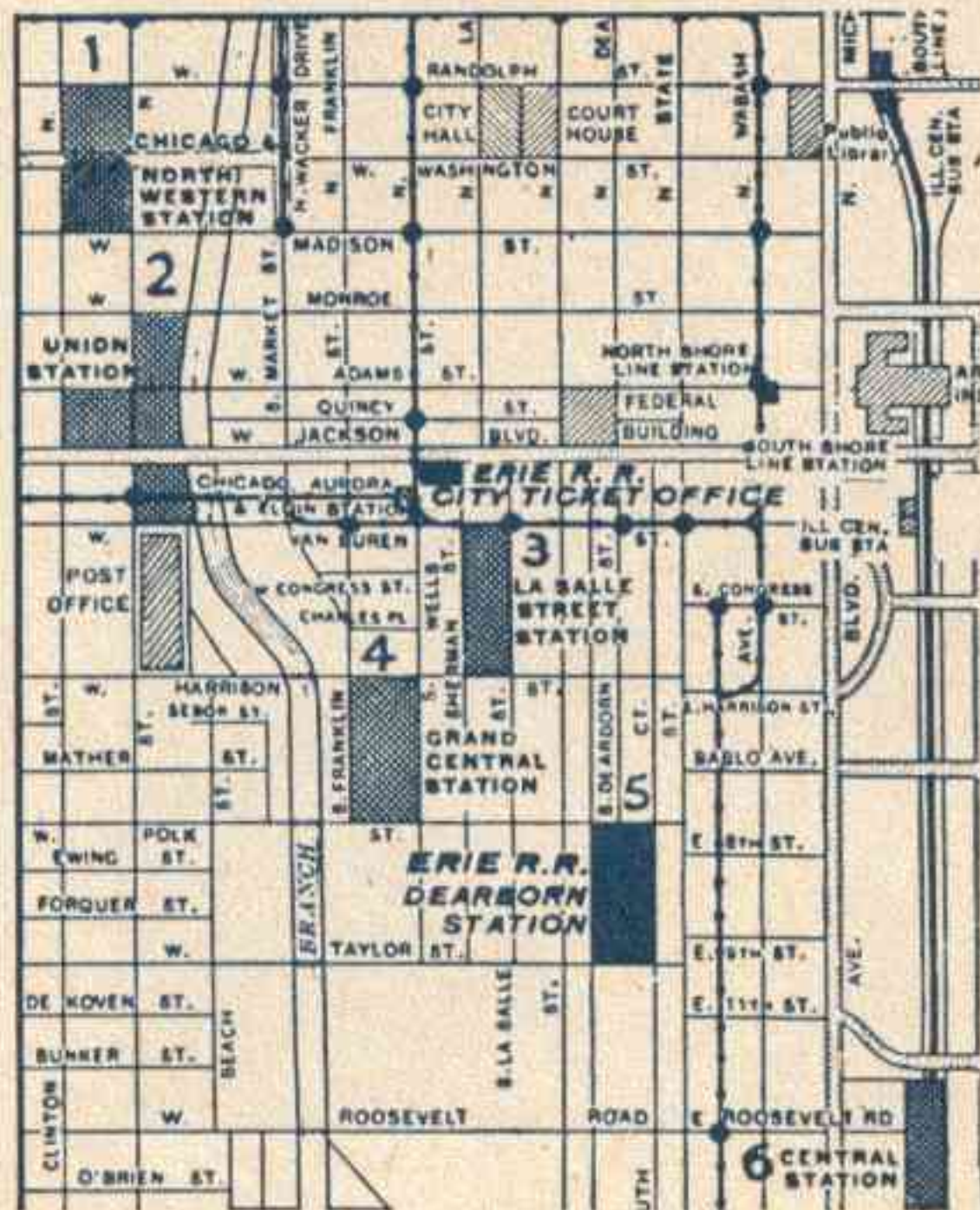
Lv. Youngstown 10.46 p.m. E.S.T.
Lv. Akron 12.14 a.m. E.S.T.
Ar. Chicago 6.55 a.m. C.S.T.
(Dearborn Station)

Lv. Chicago 10:00 p.m. C.S.T.
Ar. Akron 6:35 a.m. E.S.T.*
*7:05 a.m. E.S.T. Sundays
Ar. Youngstown 7:50 a.m. E.S.T.*
*8:45 a.m. E.S.T. Sundays



For your convenience, day service is also provided to Chicago and day and night service to New York.

 **Erie Railroad**



CHICAGO PASSENGER STATIONS

Number Indicates Location On Map.

DEARBORN STATION (5)
Polk and Dearborn Sts.
ERIE — SANTA FE
CHICAGO & EASTERN ILLINOIS —
CHICAGO & WESTERN INDIANA —
GRAND TRUNK — MONON ROUTE — WABASH

C & NW TERMINAL (1)
Madison and Canal Sts.
1 and 2/10 miles from Dearborn Station
CHICAGO & NORTH WESTERN

UNION PASSENGER STATION (2)
Canal, Adams, Jackson and Clinton Sts.
1 mile from Dearborn Station
GULF MOBILE AND OHIO —
BURLINGTON ROUTE — CHICAGO,
MILWAUKEE, ST. PAUL AND PACIFIC
— PENNSYLVANIA LINES

LA SALLE ST. STATION (3)
La Salle and Van Buren Sts.
1/2 mile from Dearborn Station
NEW YORK CENTRAL — NICKEL PLATE
— ROCK ISLAND

GRAND CENTRAL STATION (4)
Harrison and Wells Sts.
3/10 miles from Dearborn Station
BALTIMORE & OHIO —
CHICAGO GREAT WESTERN —
CHESAPEAKE & OHIO
(PERE MARQUETTE DISTRICT) — SOO LINE

CENTRAL STATION (6)
Roosevelt Road and Michigan Ave.
8/10 miles from Dearborn Station
BIG FOUR — ILLINOIS CENTRAL —
MICHIGAN CENTRAL

North Shore Line, South Shore Line, and Chicago, Aurora & Elgin electric lines, stations are also shown on the map.

FREE TRANSFER OF PASSENGERS AND LUGGAGE BETWEEN DEPOTS IN CHICAGO



Parmelee Limousine transfer service to connecting lines at other depots is available to passengers holding through tickets at no additional charge.

If you change stations and have three or more hours in Chicago before departure of your train, your luggage is handled for you, free of charge, directly to the parcel room of your train. You can spend *all* of your free hours for business or enjoyment in Chicago. Here's how this Erie service operates: 1. The Erie Train Porter takes your luggage shortly before arrival in Chicago, and gives you a claim check. 2. When you

leave your Erie train at Chicago your luggage is transferred to the parcel room of your connecting line. 3. Before departure time of your westbound train, you pick up your luggage at the parcel room of the station from which you are departing.

This service is also available to passengers departing from Dearborn Station where no station transfer is involved, and where there is one hour or more waiting time.

SAVE 25 PER CENT ON NEW ROUND-TRIP FARES

Travel on Erie's Group Economy Coach Fares!

Three or more adults (individual groups, conventions, athletic events, etc.) can save 25 per cent of their coach fares on any round trip over 100 miles in one direction. These new dollar-saving fares will be in effect for a limited time only—consult your Agent.

Get together a group and travel on the Erie at almost the prewar level. Compare these travel bargains:

SAMPLE ROUND TRIP FARES

		You Save
New York—Cleveland.....	\$23.40	\$7.80
Chicago—Akron.....	16.75	5.55
New York—Jamestown.....	19.30	6.40
Chicago—Youngstown.....	18.60	6.20
	(Plus Federal Tax)	

Here is real economy plus safe, dependable, comfortable travel. Forget traffic problems, congested highways—settle back and enjoy the countryside from one of the big picture windows on air-conditioned Erie trains. Get there safely!

FAMILY TRAVEL PLAN

Erie also offers "Family Plan" fares—children under 12 years of age free and 12 years and under 16 years of age half-fare, when traveling together with a parent, purchasing a round-trip coach ticket at regular fare, between points of 100 miles or more. Ask your Erie Ticket Agent about this money-savings opportunity.



SAMPLE OF SAVINGS ▼

Round-trip coach fare—New York to Chicago.....\$48.85

Group-Economy Fare (per person).....\$36.65

You save \$12.20 plus Fed. Tax

You'll look forward to mealtime on the Erie!

Sit down at an immaculate table in an Erie diner, pick up your menu—at breakfast, luncheon or dinner—choose and enjoy a delicious meal.

Notice the tempting selection of tasty dishes, the prompt, cheerful service and genuine hospitality. Much careful planning has gone into every detail to make your mealtimes on the Erie pleasant and enjoyable occasions.



ERIE RAILROAD COMPANY

General Offices { **Midland Building, Cleveland 15, Ohio.** (Telephone, Cherry 1-8400)
Hudson Terminal, 50 Church Street, New York 7, N. Y. (Telephone, Worth 4-4500)
Utilities Building, 327 South La Salle Street, Chicago 4, Ill. (Telephone HARRISON 7-4160)

R. E. WOODRUFF, Chairman of the Board, Cleveland
P. W. JOHNSTON, President, Cleveland

H. W. VON WILLER, Vice-President,
 M. G. McINNES, Vice-President,
 W. T. PIERSON, Vice-President and General Counsel,
 T. J. TOBIN, Vice-President,
 G. W. OAKLEY, Comptroller,

Cleveland, " " " "
 R. H. HANN, Secretary,
 W. H. MEYN, Treasurer,
 G. C. FRANK, Assistant to President,
 E. E. SEISE, Assistant to President,
 P. J. KINDLER, Assistant to President,

Cleveland,
 " " " "

TRAFFIC AND DEVELOPMENT

H. W. VON WILLER, Vice-President, Cleveland
 D. R. THOMPSON, Asst. Vice-President, Cleveland
 G. F. MILLS, Asst. to Vice-President, Cleveland

E. J. DEAN, Assistant Vice-President,
 A. BLAUDEL, Assistant Vice-President,

New York, " " " "
 R. E. O'GRADY, Assistant Vice-President,
 D. M. LYNN, Assistant Vice-President,

Chicago,
 Cleveland,

PASSENGER—Sales, Rates and Service
 A. G. OLDENQUIST, Passenger Traffic Manager, Cleveland

F. J. WILD, General Passenger Agent,
 R. E. TOWNS, Assistant General Passenger Agent,
 V. F. GREEN, Assistant General Passenger Agent,

Cleveland, " " " "
 Chicago, " " " "
 Youngstown, " " " "
 J. H. DIMKE, Assistant General Passenger Agent,
 P. F. ARROYO, Manager Mail, Baggage and Express Traffic,
 HENRY HERRMANN, Milk Traffic Agent,

New York,
 " " " "

J. VAN DER VELDE, Assistant to Passenger Traffic Manager, Cleveland
 J. M. COLLINS, Superintendent Dining Cars, Jersey City

FREIGHT—Rates

A. BLAUDEL, Assistant Vice-President, New York

O. M. MEYNE, Freight Traffic Manager,
 E. N. HAMBLY, General Freight Agent,
 J. H. SISCO, Assistant General Freight Agent,
 THOMAS GILPIN, Assistant General Freight Agent,
 F. K. NOONBURG, Chief of Tariff Bureau,
 F. J. NELSON, Chief of Divisions Bureau,

New York, " " " "
 " " " "
 " " " "
 " " " "
 " " " "
 E. C. HALLBERG, Freight Traffic Manager,
 F. M. KLITZ, Assistant Freight Traffic Manager,
 H. T. SWEENEY, General Freight Agent,
 H. C. WELL, Assistant General Freight Agent,
 E. R. BURTON, Chief of Tariff Bureau,
 E. A. JAEHNE, Chief of Divisions Bureau,

Chicago,
 " " " "
 " " " "
 " " " "

FREIGHT—Sales and Service

New York,

E. J. DEAN, Assistant Vice President,
 G. W. MADSEN, Freight Traffic Manager,
 B. F. CONWAY, Assistant Freight Traffic Manager,
 H. A. WILSON, General Eastern Freight Agent,
 L. E. NEWMAN, Assistant General Freight Agent,
 A. M. MONAHAN, General New England Agent,
 C. R. MARTIN, Freight Traffic Manager,
 D. C. KELSEY, Asst. General Freight Agent,
 H. W. GRAY, Assistant General Freight Agent,
 C. G. ANDREWS, Assistant General Freight Agent,
 D. S. DAY, Assistant General Freight Agent,

New York, " " " "
 " " " "
 " " " "
 Buffalo, " " " "
 Boston, " " " "
 Cleveland, " " " "
 Cincinnati, " " " "
 Pittsburgh, " " " "
 Youngstown, " " " "
 R. E. O'GRADY, Assistant Vice President,
 J. A. RUSSELL, Western Traffic Manager,
 C. V. HARROW, Freight Traffic Manager,
 L. J. BURGOTT, Assistant General Freight Agent,
 L. J. MARION, Assistant General Freight Agent,

Chicago,
 Los Angeles,
 Chicago,
 " " " "
 Detroit,

FOREIGN FREIGHT TRAFFIC

W. C. OTTEN, Foreign Freight Traffic Manager,
 C. A. STOEBER, Assistant Foreign Freight Traffic Manager,
 T. W. KANE, Foreign Freight Agent,
 C. C. MITCHELL, Foreign Freight Agent,
 W. S. PENCHARD, Export and Import Agent,

New York,
 " " " "
 " " " "
 Chicago,
 New York

PERISHABLE AND DAIRY TRAFFIC

P. J. NAPOLI, Perishable Traffic Manager,

Pier 20, N. R., New York.

COAL AND COKE

G. A. LAMB, Coal Traffic Manager, Cleveland
 R. T. PHILLIPS, General Coal Freight Agent, Cleveland

A. E. BARKALOW, Coal Freight Agent,
 J. A. STERL, Assistant Coal Freight Agent,
 J. A. MUCHA, Coal Freight Agent,

New York, " " " "
 Buffalo, " " " "
 W. N. STENFELT, Coal Freight Agent,
 M. S. SWEENEY, Coal Freight Agent,

Chicago,
 Pittsburgh,

INDUSTRIAL DEVELOPMENT

D. M. LYNN, Assistant Vice-President, Cleveland

E. T. BUTLER, JR., Industrial Commissioner,
 R. W. SCHEUCH, Industrial Agent,
 D. F. MACKERLY, Industrial Engineer,

New York, " " " "
 " " " "
 L. J. SLACK, Industrial Commissioner,
 G. W. MOORHOUSE, Industrial Agent,
 " " " " Industrial Engineer,

Cleveland,
 " " " "

TRAFFIC DEPARTMENT REPRESENTATIVES SALES AND SERVICE

Akron 8, Ohio.—Erte Station
 J. P. CLARK, Division Passenger Agent.
 (Telephone Blackstone 8812)
 F. K. CORLETT, General Agent.
 (Telephone Hemlock 8194-8195)
 80 East Exchange St.

Albany 7, N. Y.—D. & H. Bldg.
 (Telephone 4-6051)
 J. E. CAMPBELL, General Agent.

Atlanta 3, Ga.—Healey Bldg.
 (Telephone Walnut 2135)
 H. A. BOCKMAN, General Agent.

Baltimore 2, Md.—Munsey Bldg.
 (Telephone Plaza 2-8691)
 GEORGE PETERSEN, General Agent.

Birmingham 3, Ala.—605 Frank Nelson Bldg.
 (Telephone 3-1327)
 WM. L. THORNTON, General Agent.

Boston 14, Mass.—150 Causeway St.
 (Telephone Capitol 7-2510-11-12)
 A. M. MONAHAN, Gen. New Eng. Agt.

Buffalo 2, N. Y.—238 Main Street.
 (Telephone Washington 1865)
 L. E. NEWMAN, Asst. Gen. Freight Agt.

Chicago 4, Ill.—327 South La Salle St.
 (Telephone HARRISON 7-4160)
 A. W. MEINKE, City Passenger Agent.
 L. J. BURGOTT, Asst. Gen. Frt. Agt.

Cincinnati 2, O.—931 Enquirer Bldg.
 (Telephone Main 3420-3421)
 H. W. GRAY, Asst. Genl. Frt. Agt.

Cleveland 15, O.—Midland Bldg.
 (Telephone Cherry 1-8400)
 D. C. KELSEY, Asst. Gen. Frt. Agt.

Columbus 15, O.—Atlas Bldg., 8 East Long Street.
 (Telephone Adams 7331)
 J. L. CHAPMAN, General Agent.

Dallas 1, Tex.—1509 Main Street.
 (Telephone RA-7352)
 J. A. MOORE, General Agent.

Dayton 2, O.—25 So. Main Bldg.
 (Telephone Adams 8481)
 F. W. FISCHER, Div. Frt. Agt.

Des Moines 9, Ia.—Hubbell Bldg., 904 Walnut Street.
 (Telephone 4-0018)
 G. A. KIEL, General Agent.

Detroit 2, Mich.—General Motors Bldg.
 (Telephone Trinity 5-2360-61)
 L. J. MARION, Assistant Genl. Frt. Agt.

Elmira, N. Y.—Erte Station.
 (Telephone 2-1621)
 G. B. SAUNDERS, Division Passenger Agt.
 (Telephone 2-0377)
 H. J. SPINDLER, Division Freight Agent.

Huntington, Ind.—Erte Station.
 (Telephone 743)
 HAROLD L. JOHNSON, Div. Frt. Agt.

Indianapolis 4, Ind.—11 So. Meridian St.
 (Telephone Franklin 0255)
 L. R. BRECKENRIDGE, General Agent.

Jamestown 3, N. Y.—Erte Station.
 O. B. CHAPMAN, Div. Passenger Agt.
 (Telephone 6026)
 W. W. THOMS, Div. Frt. Agt.
 (Telephone 7921-7922)

Jersey City 2, N. J.—Erte Station.
 (Telephone Journal Square 2-6400)
 G. W. KROM, Genl. Agt. Pass. Dept.
 E. H. HUFFMAN, Division Freight Agent.

Kansas City 5, Mo.—Room 1018 Dwight Building.
 (Telephone Victor 6328)
 N. C. FRICK, General Agent.
 H. F. STUDDT, Asst. Gen. Agt.

Los Angeles 14, Cal.—510 West 6th Street.
 (Telephone Vandike 4129)
 E. C. ADLER, General Agent.

Marion, O.—Terminal Building.
 (Telephone 2-0126)
 J. L. THADEN, Division Freight Agent.

Memphis 3, Tenn.—Exchange Bldg. (Madison & Second Sts.)
 (Telephone 8-8781)
 L. L. HARRIS, General Agent.

Mexico City 1, D. F., Mexico
 Isabel La Catolica 45
 R. M. CAMPOS, Gen. Mex. Mgr.

Milwaukee 3, Wis.—Majestic Bldg., 231 West Wisconsin Ave.
 (Telephone Broadway 1-3320-3321)
 C. O. EWING, General Agent.

Minneapolis 2, Minn.—Rand Tower, Marquette Ave. and 6th St., So.
 (Telephone Main 3604)
 J. W. CLOUD, General Agent.

Newark 2, N. J.—Military Park Bldg., 60 Park Place.
 (Telephone Market 2-0525-26-27)
 F. L. COLLINS, General Agent.

New Haven 10, Conn.—W B I B Bldg.
 (Telephone State 7-5915-16)
 M. R. FITZGERALD, General Agent.

New Orleans 12, La.—Room 308, Pere Marquette Bldg.
 (Telephone Raymond 9786)
 E. W. BURNETT, General Agent.

New York 20, N. Y.—11 Rockefeller Plaza, Rockefeller Center.
 (Telephone Circle 5-7222)
 G. H. DOWN, City Pass. Agent.
 H. T. JAMES, City Pass. Agent.
 J. N. MONZEL, Steamship Pass. Agent.

New York 7, N. Y.—50 Church Street.
 (Telephone Worth 4-4500)
 H. A. WILSON, Genl. East. Frt. Agt.

Omaha 2, Neb.—1319 Farnam St.
 (Telephone Jackson 4866)
 C. L. COX, General Agent.

Peoria 2, Ill.—Jefferson Building, Cor. South Jefferson & Fulton Streets.
 (Telephone 3-0479)
 K. O. HEMMING, General Agent.

Philadelphia 2, Pa.—Finance Bldg.
 (Telephone Rittenhouse 6-8975-8976)
 C. F. WHADCOOK, General Agent.

Pittsburgh 19, Pa.—Koppers Bldg.
 (Telephone Grant 1-4831-2-3)
 C. G. ANDREWS, Asst. Genl. Frt. Agt.

Portland 5, Ore.—American Bank Bldg., 621 S. W. Morrison St.
 (Telephone Beacon 3706)
 W. E. REAGER, General Agent.

Rochester 4, N. Y.—Reynolds Arcade Building.
 (Telephone Hamilton 7938)
 C. P. BELL, Division Freight Agent.

San Francisco 5, Cal.—681 Market St.
 (Telephone Sutter 1-3875)
 H. F. KEELAN, General Agent.

St. Louis 1, Mo.—721 Olive St.
 (Telephone Chestnut 7723-7724)
 L. M. SCHUKEL, General Agent.

Scranton, Pa.—First National Bank Bldg.
 (Telephone—Scranton 4-7237-7238)
 G. T. DOLAN, Division Freight Agent.

Seattle 1, Wash.—White Bldg., 1338 Fourth Ave.
 (Telephone Elliot 4834)
 R. J. DUNDON, General Agent.

Springfield, O.—First National Bank Building.
 (Telephone 2-5351)
 C. P. UNDERWOOD, General Agent.

Toledo 4, O.—1506 Toledo Trust Bldg., 245 Summit Street.
 (Telephone Main 3816)
 H. J. SPANGENBERG, General Agent.

Toronto, Ont.—69 Yonge Street.
 (Telephone Empire 3-1311-12)
 ROBERT WILLIAMSON, Cad. Frt. Agt.

Washington 5, D. C.—519 Bond Bldg., 14th St. and New York Ave., N. W.
 (Telephone National 8-6075)
 H. F. HECK, General Agent.

Youngstown 3, O.—Terminal Building.
 (Telephone 7-0792)
 W. L. SCHORR, Div. Passenger Agent.
 D. S. DAY, Asst. Genl. Frt. Agt.
 H. W. McILWAIN, General Agent.