

Effective June 18, 1941

Effective June 18, 1941



**ERIE RAILROAD
TIME TABLES**

**ERIE RAILROAD
TIME TABLES**

The Scenic Route

BETWEEN

**NEW YORK • BUFFALO
CLEVELAND • CHICAGO**

The Scenic Route

BETWEEN

**NEW YORK • BUFFALO
CLEVELAND • CHICAGO**

CLEVELAND, OHIO, JUNE 18, 1941

NEW DE LUXE COACHES ON THE ERIE

SOMETHING NEW IN TRAVEL COMFORT

RESTFUL, ATTRACTIVE COLOR SCHEMES

So many people have praised the beauty, comfort and all around excellence of our new through-line coaches that even we were surprised with the warmth of their reception.

The seats of the main salon are of the individual reclining and rotating type. They swing in pairs to any desired direction and recline individually to the position most comfortable for the occupant. There is wide knee-room between the seats.

Separated from the main salon by a glass partition is the men's smoking room with spacious "bucket" type seats.

The women's room has a full length couch and individual, movable chairs.

The color scheme throughout the car is restful and in most excellent taste. The already spacious car has its roominess accentuated by long lines in the decorations. Walls, ceilings, upholstery and carpets blend and contrast gracefully.

Little travel niceties like dimmed



Superb new coaches; more comfort at no extra fare

lights at night, real individual drinking cups, plenty of clean towels, etc., make these cars really superb.

Treat yourself to a hundred or a thousand miles of our thoughtful service and air-conditioned comfort, and learn why travelers call Erie the friendly way.

Pullman, Parlor and Dining Cars of the finest type. The trip is one of great scenic beauty, interspersed with glimpses of industrial activity. You see the majestic Allegheny and Blue Ridge Mountains—the historic Cumberland Valley—the scenic beauties of Harper's Ferry. Inviting spectacles that make your ride a glorious sightseeing journey every mile of the way!

★ SEE AMERICA

\$90⁰⁰
IN
COACHES

BOTH coasts. National Parks, California, Colorado. Circle tour, home town to home town. Go one way, return another. Stop over anywhere. \$135 in Sleeping or Parlor Cars plus charge for space occupied.

THE "WASHINGTONIAN"

CLEVELAND'S FIRST DAY TRAIN THROUGH TO WASHINGTON

For those who like daylight travel, the Erie has inaugurated new daily service between Cleveland, Ohio, Washington, D.C., and Baltimore, Md. Leave Cleveland 9:00 A. M., arrive Washington 7:45 P. M., Baltimore 8:40 P. M. Leave Baltimore 9:00 A. M., Washington 9:50 A. M., arrive Cleveland 8:40 P. M. See page 7 for all fares and page 17 for all schedules.

The equipment of these trains consists of De Luxe Coaches,

GOOD FOOD REASONABLY PRICED

IT IS TRADITIONAL WITH THE ERIE

Our modern diners have a home-like friendly atmosphere. There is a wide choice of dishes, well cooked, carefully served. The reasonable prices will surprise and please you. People talk about the food served on trains. We therefore try to make our Dining Car meals a feature of our service.

RAIL COMFORT FOR LONG TRIPS

AUTO CONVENIENCE AT DESTINATION

Rail-Auto Plan applies in key cities of the East and Middle West.

The railroads and Drivurself Co. are offering a special for Rail-Auto customers, \$3.00 per day plus 5 cents per mile. In New York City \$4.00 per day plus 6 cents per mile, Monday to Friday, inclusive.

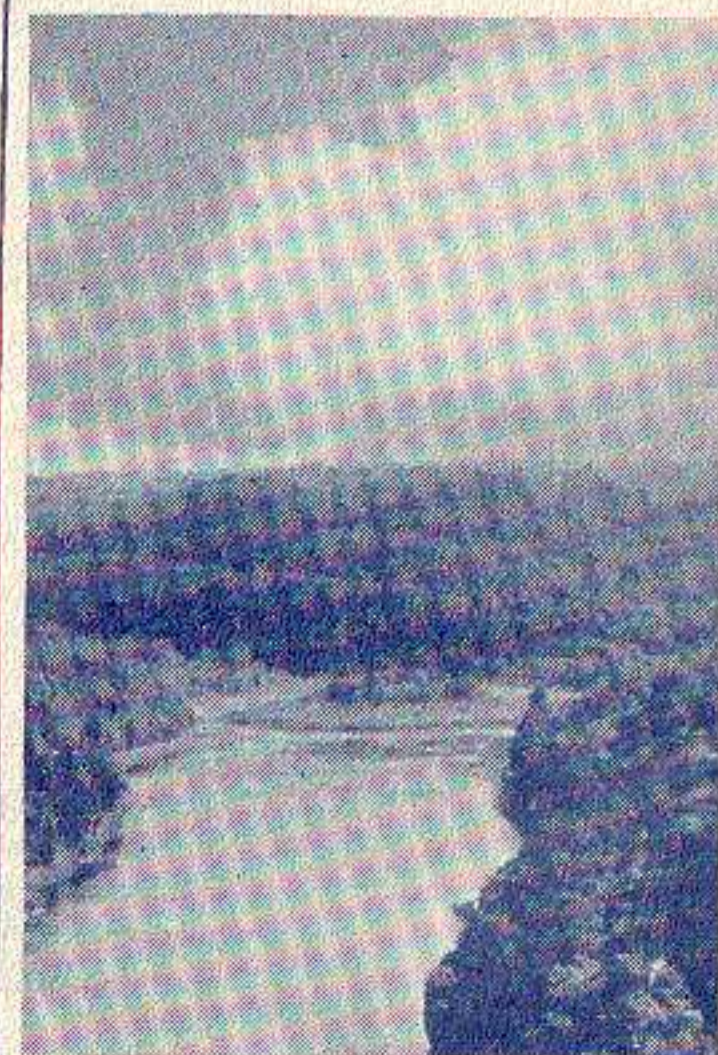
Taxi from the railroad or your hotel to the Drivurself Co., fare will be paid to 35c, deducted from bill. Late model cars. Ask any Erie ticket agent.

The Train-Taxi Plan

Concentrate on your business instead of your driving!

Erie passengers now have this service available in: CHICAGO, AKRON, CLEVELAND, YOUNGSTOWN, and BUFFALO.

In each of these cities, except Chicago, the taxicab company will furnish a cab and driver from 9:00 A.M. to 3:00 P.M. for \$5.00. In Chicago, any continuous four hours for \$5.00. Ask ticket agents.



In the heart of Erie Summerland. Here our rails follow the Delaware River for 100 miles.

TABLE OF CONTENTS

Reference Marks and Notes... Ticket Offices and Passenger Stations in Principal Cities... One-Way and Round-Trip Fares... Sleeping and Parlor Car Fares... Equipment of Through Trains... Equipment of Detroit, Toledo, Cleveland, Youngstown, Pittsburgh, Washington and Baltimore Trains... Erie Railroad Map... Equipment of Local Trains... Suggestions... General Information... Standard of Time... Holidays... Fares Paid on Trains... Adjustment of Fares... Sleeping and Parlor Car Reservations... Baggage Regulations... Articles Lost on Trains... Safety First Hints... Traffic and Development Department Representatives... Train Service... Condensed Schedule of Through Trains... New York—Elmira... Elmira—Chicago... Detroit—Toledo—Cleveland—Youngstown—Pittsburgh—Washington—Baltimore... New York—Buffalo... New York—Jamestown—Chautauqua Lake... Chautauqua Lake—Jamestown—Akron—Chicago... New York—Kenosha Lake—Jeffersonville... Buffalo—Jamestown... Lackawaxen—Honesdale... New York—Salamanca—Bradford... Bradford—Salamanca—Cleveland—Chicago... Branch Line Service... Hudson & Manhattan R. R. Service... Ferry Schedule... Freight Schedules...

STATIONS ON ERIE RAILROAD At Which Trains Are Scheduled To Stop Numerals Opposite Station Names Indicate Time Table Numbers

Table listing stations on the Erie Railroad with corresponding time table numbers. Columns include station names and numerals. Stations listed include Addison, N.Y.; Akron, O.; Albany, N.Y.; Alden, N.Y.; Allentown, N.J.; Andover, N.Y.; Arden, N.Y.; Arkport, N.Y.; Ashland, O.; Atlanta, N.Y.; Attica, N.Y.; Aurora, O.; Avoca, N.Y.; Avon, N.Y.; Baileys, N.Y.; Baltimore, Md.; Barberton, O.; Bath, N.Y.; Beaver, Pa.; Beaver Falls (New Brighton, Pa.); Belmont, N.Y.; Binghamton, N.Y.; Blair, N.Y.; Blasdel, N.Y.; Braddock, Pa.; Bradford, Pa.; Brooks, N.Y.; Buffalo, N.Y.; Burns, N.Y.; Callicoon, N.Y.; Cambridge Springs, Pa.; Cameron, N.Y.; Cameron Mills, N.Y.; Campbell, N.Y.; Canaseraga, N.Y.; Canisteo, N.Y.; Castile, N.Y.; Cattaraugus, N.Y.; Chautauqua, N.Y.; Chautauqua Lake, N.Y.; Cherry Creek, N.Y.; Chester, N.Y.; Chicago, Ill.; Cleveland, O.; Cocheaton, N.Y.; Cohocton, N.Y.; Collins, N.Y.; Conesus, N.Y.; Conesus Lake Jct., N.Y.; Conewango, N.Y.; Connellsville, Pa.; Cooper's, N.Y.; Coraopolis, Pa.; Corning, N.Y.; Corry, Pa.; Crittenden, N.Y.; Crown Point, Ind.; Cuba, N.Y.; Cumberland, Md.; Dale, N.Y.; Dalton, N.Y.; Darton Center, N.Y.; Dayton, N.Y.; Decatur, Ind.; Depew, N.Y.; Depoett, N.Y.; Detroit, Mich.; Dunkirk, N.Y.; East Buffalo, N.Y.; East Fifty-fifth St. (Cleveland), O.; East Honesdale, Pa.; East Ninety-third St. (Cleveland), O.; East Rutherford, N.J.; Eden Center, N.Y.; Eden Valley, N.Y.; Ellwood City, Pa.; Elmira, N.Y.; Elm Place, N.Y.; Endicott, N.Y.; Englewood (63rd St.), Ill.; Falconer, N.Y.; Fenners, N.Y.; Forestville, N.Y.; Friendship, N.Y.; Gallion, O.; Gannett, N.Y.; Garrettsville-Hiram, O.; Garwoods, N.Y.; Genuga Lake, O.; Girard, O.; Glen Eyre, Pa.; Golah, N.Y.; Goshen, N.Y.; Gowanda, N.Y.; Graham, N.Y.; Great Bend, Pa.; Greenvill, Pa.; Greycourt, N.Y.; Griswolds, N.Y.; Gulf Summit, N.Y.; Hale's Eddy, N.Y.; Hamburg, N.Y.; Hammond, Ind.; Hancock, N.Y.; Hankins, N.Y.; Harper's Ferry, W. Va.; Harriman, N.Y.; Hawley, Pa.; Hillburn, N.Y.; Hohokus, N.Y.; Honesdale, Pa.; Hornell, N.Y.; Howells, N.Y.; Hubbard, O.; Huntington, Ind.; Industry, N.Y.; Jamestown, N.Y.; Jeddoe, O.; Jeffersonville, N.Y.; Jersey City, N.J.; Kenosha Lake, N.Y.; Kent, O.; Kenton, O.; Kimbles, Pa.; Lackawaxen, Pa.; Lake Huntington, N.Y.; Lancaster, N.Y.; Lawtons, N.Y.; Leavittsburg, O.; Letchworth Park, N.Y.; Lima, O.; Limestone, N.Y.; Linden, N.Y.; Little Valley, N.Y.; Livonia, N.Y.; Long Eddy, N.Y.; Lordville, N.Y.; Mahoning, O.; Mahwah, N.J.; Mansfield, O.; Mantua, O.; Marilla, N.Y.; Marion, O.; Markhams, N.Y.; Martin, N.Y.; Martinsburg, W. Va.; Mast Hope, Pa.; Meadow-wood, N.Y.; Meadville, Pa.; Meyersdale, Pa.; Middletown, N.Y.; Mill Rift, Pa.; Monroe, N.Y.; Mortimer, N.Y.; McKeesport, Pa.; Narrowsburg, N.Y.; New Brighton, Pa.; New Castle, Pa.; New Hampton, N.Y.; New York, N.Y.; Niles, O.; North Collins, N.Y.; North Randall, O.; Ohio City, O.; Olean, N.Y.; Oneonta, N.Y.; Otisville, N.Y.; Owego, N.Y.; Oxford, N.Y.; Painted Post, N.Y.; Parker's Glen, Pa.; Passaic, N.J.; Paterson, N.J.; Perrysburg, N.Y.; Persia, N.Y.; Phalanx, O.; Pittsburgh, Pa.; Pond Eddy, Pa.; Portage, N.Y.; Port Jervis, N.Y.; Ramapo, N.Y.; Ramsey, N.J.; Randolph, N.Y.; Ravenna, O.; Ridgewood, N.J.; Rittman, O.; Rochester, Ind.; Rochester, N.Y.; Rock Glen, N.Y.; Rowlands, Pa.; Rutherford, N.J.; Saegertown, Pa.; Salamanca, N.Y.; Savona, N.Y.; Sharon, Pa.; Sheridan, N.Y.; Shimers Rock Cut, Pa.; Shohola, Pa.; Silver Spring, Md.; Silver Springs, N.Y.; Skippers, N.Y.; Sloatsburg, N.Y.; Smith's Mills, N.Y.; Solon, O.; South Dayton, N.Y.; Southfields, N.Y.; South Lima, N.Y.; South Livonia, N.Y.; South Park, N.Y.; Sparrowbush, N.Y.; Springwater, N.Y.; State Hospital, N.Y.; Suffern, N.Y.; Susquehanna, Pa.; Swains, N.Y.; Toledo, O.; Town Line, N.Y.; Tusten, N.Y.; Tuxedo, N.Y.; Union City, Pa.; Ramapo, N.Y.; Ramsey, N.J.; Randolph, N.Y.; Ravenna, O.; Ridgewood, N.J.; Rittman, O.; Rochester, Ind.; Rochester, N.Y.; Rock Glen, N.Y.; Rowlands, Pa.; Rutherford, N.J.; Saegertown, Pa.; Salamanca, N.Y.; Savona, N.Y.; Sharon, Pa.; Sheridan, N.Y.; Shimers Rock Cut, Pa.; Shohola, Pa.; Silver Spring, Md.; Silver Springs, N.Y.; Skippers, N.Y.; Sloatsburg, N.Y.; Smith's Mills, N.Y.; Solon, O.; South Dayton, N.Y.; Southfields, N.Y.; Youngstown, O.

ADDITIONAL STATIONS ON ERIE RAILROAD

At Which Trains Do NOT Stop Regularly

The distance shown is from New York as indicated in Tables 2, 3 and 4

Table listing additional stations on the Erie Railroad with distances from New York. Columns include station names and distances. Stations listed include Adrian, N.Y.; Akron, Ind.; Aldine, Ind.; Alger, Ohio; Almond, N.Y.; Ashville, N.Y.; Athens, Ind.; Atlantic, Pa.; Barton, N.Y.; Bass Lake, Ind.; Bear Lake, Pa.; Belvidere, N.Y.; Big Flats, N.Y.; Bippus, Ind.; Bolivar, Ind.; Boone Grove, Ind.; Braceville, Ohio; Burbank, Ohio; Caledonia, Ohio; Chemung, N.Y.; Columbus, Pa.; Creston, Ohio; DeCliff, Ohio; De Long, Ind.; Disko, Ind.; Elgin, Ohio; Foraker, Ohio; Forty-seventh St. (Chicago, Ill.); Freedom, Ohio; Geneva, Pa.; Glenmore, Ohio; Griffith, Ind.; Harrods, Ohio; Hegewisch, Ill.; Hepburn, Ohio; Hickory Grove, Pa.; Highlands, Ind.; Hinsdale, N.Y.; Horseheads, N.Y.; Hurlburt, Ind.; Johnson City, N.Y.; Kellams, N.Y.; Kemp, Ohio; Kingsland, Ind.; Kirkwood, N.Y.; Kouts, Ind.; Laketon, Ind.; Lakewood, N.Y.; Leiters, Ind.; Market, Ind.; Martel, Ohio; McGuffey, Ohio; Millers, Pa.; Mill Village, Pa.; Mongaup, Pa.; Monterey, Ind.; Nankin, Ohio; Newton, Ind.; Niobe, N.Y.; North Judson, Ind.; Ontario, Ohio; Oquaga, N.Y.; Ora, Ind.; Palmer, Ind.; Pavonia, Ohio; Pershing, Ind.; Polk, Ohio; Preble, Ind.; Rathbone, N.Y.; Red House, N.Y.; Scio, N.Y.; Servia, Ind.; Sharpville, Pa.; Smithboro, N.Y.; Spenterville, Ohio; Steamburg, N.Y.; Sterling, Ohio; Stockport, N.Y.; Tallmadge, Ohio; Tloga Center, N.Y.; Toecin, Ind.; Uniondale, Ind.; Venango, Pa.; Watts Flats, N.Y.; Wellsburg, N.Y.; West Salem, Ohio; Wilders, Ind.; Windham, Ohio; Winfield, Ind.; Wren, Ohio.

REFERENCE MARKS AND NOTES

IMPORTANT—When trains are indicated as stopping conditionally, Conductors should be notified of intention to leave train and Station Agent notified of intention to board train. Conditional stops are made only to receive or discharge revenue passengers.

- † Runs daily except Sunday. † Stops to discharge passengers.
 § Runs daily except Sundays and Holidays. ‡ Stops on Saturday only.
 ‡ Will not operate from these stations on Monday morning. † Stops on Holidays only.
 ‡ Stops on signal to receive and discharge revenue passengers. *Runs Daily.
 k Runs Saturdays only. M. C. Motor Car Service. N. B. No Baggage carried.
- Note ⊕—Times Square Motor Coach Terminal, 260 West 42nd St. between 7th and 8th Aves., New York City. Taxicab entrance on 41st St. Connection to and from Rutherford.
- ab Train 28 stops Otisville (3.43 P. M.) Sundays only.
 ac Stops Dalton (4.46 A. M.) to discharge passengers from Hornell and east and on signal to receive passengers.
 ad Via Buffalo & Erie Coach Corp. bus between Salamanca and Bradford.
 af Train 7 stops Middletown (1.31 A. M.) Sunday and Monday mornings only to discharge passengers.
 ag Stops Ridgewood (6.57 A. M.) Sundays and Holidays only.
 ah Stops on signal Andover (9.34 A. M.); Belmont (9.57 A. M.) to discharge passengers from New York.
 an Train 27 stops at Pond Eddy (6.08 P. M.); Lordville (7.29 P. M.) to discharge passengers from New York.
 as Train 701 will not operate west of Monroe on Holidays.
 au Does not run from West 23rd St. on Saturday night.
 av Does not run from Chambers St. on Saturday night.
 aw Trains 6 and 16 stop at Middletown (6.25 A. M.) and Goshen (6.37 A. M.) to discharge passengers from Hornell and west, and on Sundays only, to receive passengers for New York.
 ax Stops Englewood Train 1 (7.40 A. M.); Train 15 (4.50 P. M.); Train 7 (12.33 A. M.) to discharge passengers from east of Hammond.
 bb Stops at Paterson (4.04 P. M.) to receive passengers only.
 bc Stops on signal Paterson (8.01 P. M.); Ridgewood (8.11 P. M.) to receive passengers.
 bd Stops on signal Passaic (7.52 P. M.); Suffern (8.26 P. M.) to receive passengers for Hornell and west.
 be Stops on signal at Lordville (3.30 P. M.) daily, except Saturday and Sunday, July 7 to August 28, inclusive, to receive passengers for New York.
 bf Stops Cuba (5.06 A. M.) to discharge passengers from Elmira and east and to receive for Jamestown and west.
 bg Stops on signal, Friendship (10.08 A. M.); Cuba (10.23 A. M.) to discharge passengers from New York.
 bh Stops Cuba (6.25 P. M.) to discharge passengers from Elmira and east and to receive for Jamestown and west.
 bm Stops on signal Niles (10.21 A. M.) to discharge passengers from Pittsburgh and from Jamestown and east and to receive passengers for Cleveland.
 bn Train 2 stops on signal at Lordville (3.30 P. M.) daily except Saturdays and Sundays July 7 to Aug. 29, incl., to receive passengers for New York.
 bp Stops Niles (11.29 P. M.) to discharge passengers from Meadville and east and on signal to receive passengers for Akron and west.
 bt No Agent on duty. No baggage handled on Trains 5 and 6 to or from Castle.
 bu Train 6 stops at East 55th St. (4.37 P. M.) Sundays only to receive passengers for Youngstown.
 bv Stops on Sundays only to discharge passengers.
 bx Train 16 stops at Warren (5.48 P. M.) to discharge passengers from Akron and west.
 cd For additional service between Cleveland and Youngstown see Table 5.
 cg Stops on signal Ridgewood (11.00 P. M.) to discharge passengers from Binghamton and west.
 cn Stops on signal Union City (8.57 P. M.); Cambridge Springs (9.16 P. M.) to discharge passengers from Jamestown and east and to receive for Youngstown and west.
 cp Train 8 stops on signal (9.59 P. M.); Train 16 (9.20 A. M.) to receive passengers for east of Hammond.
 cu Bus service provided between Cochection and Lake Huntington.
 cw Stops Endicott (1.22 A. M.) to discharge passengers from Port Jervis and east.
 cx Stops to discharge passengers from New York.
 cy Stops to discharge passengers from Cleveland and beyond.
 db Train 8 stops at Ravenna (7.34 A. M.) to discharge passengers from Marion and west, and on signal to receive for Youngstown and east.
 dc Stops Mantua (1.53 P. M.) to discharge passengers from Cleveland and on signal to receive passengers for Warren and east.
 dd Stops Barberton (4.56 P. M.) to discharge passengers from Youngstown and east and on signal to receive passengers for Mansfield and west.
 df Stops on signal Mantua (9.34 A. M.) to receive passengers for Cleveland.
 dg Stops at Ravenna (10.42 A. M.) to discharge passengers from Meadville and east, and on signal to receive passengers for Gallon and west.
 dh Stops at (5.21 P. M.) to discharge passengers from Gallon and west, and on signal to receive passengers for Meadville and east.
 di Stops Saturdays and Sundays only July 6 to August 31, incl., also Monday, September 1, to discharge motor coach passengers for New York.
 dm Times Square Motor Coach operates Saturdays and Sundays only July 6 to August 31, incl., also Monday, September 1.
 dp Stops Niles (2.14 A. M.) to discharge passengers from east of Youngstown and signal to receive passengers for Cleveland.
 dt No baggage carried on this train east of Hornell. Baggage will be handled on following train.
 du Stops Sundays and Holidays only to discharge passengers.
 dv Stops on signal Union City (8.25 P. M.) to discharge passengers from Youngstown and west and to receive passengers for New York.
 dw Stops Cuba (9.53 A. M.) to discharge passengers from Jamestown and west and to receive for Elmira and east.
 dy Stops on signal Cambridge Springs (7.17 A. M.); Union City (7.34 A. M.) to discharge passengers from Chicago and to receive for Binghamton and east.
 dz Stops Ridgewood (7.28 A. M.) to discharge passengers from Port Jervis and west. Has connection for Paterson, Passaic, etc., leaving Ridgewood at (7.40 A. M.) daily.
 ec Bus service between New Castle and New Castle (Washington St.).
 ed Bus service between Wampum and Ellwood City.
 ef Stops only to receive motor coach passengers from New York.
 eg Stops only to discharge motor coach passengers for New York.
 eh Stops on signal Mantua (6.41 P. M.) to receive passengers for Pittsburgh.

- ek Train 2 stops Suffern (6.30 P. M.); Passaic (6.59 P. M.) to discharge passengers from Binghamton and west.
 el Train 1 stops at Lordville (12.39 P. M.) daily, except Saturdays and Sundays, July 3 to Aug. 30, incl., to discharge passengers from New York.
 em Train 1 stops at Cochection (12.08 P. M.), June 20 to Sept. 1, incl., to discharge passengers from New York.
 en Stops on signal Paterson (9.19 A. M.); Ridgewood (9.28 A. M.) to receive passengers.
 ep Train 1 stops on signal Passaic (9.12 A. M.); Suffern (9.43 A. M.) to receive passengers for Binghamton and west.
 er Stops Niles (5.46 A. M.) to discharge passengers from Cleveland and west and on signal to receive for Pittsburgh.
 es Stops on signal Niles (5.43 P. M.) to receive passengers for Jamestown and east, and to discharge passengers from Cleveland.
 et Bus operates between Narrowsburg and Honesdale. In connection with which the Erie Railroad acts as agent only and is not responsible beyond its own line, except as such responsibility may be imposed by law with respect to baggage.
 ex Stops Endicott (2.22 A. M.) to discharge passengers from Buffalo, Jamestown and west.
 go Stops West Henrietta (10.47 A. M.) to discharge passengers from east of Avon.
 gt In connection with the bus service the Erie Railroad acts as agent only and is not responsible beyond its own line, except as such responsibility may be imposed by law with respect to baggage.
 ha Stops at Narrowsburg (10.44 P. M.) to discharge passengers from Ridgewood and east.
 he Stops Alden (10.14 P. M.) to discharge passengers from Buffalo and on signal to receive passengers.
 hf Stops (11.14 P. M.) to discharge passengers from Pittsburgh.
 hg Train 257 stops at Paterson (1.56 P. M.) to receive passengers.
 ht Trains 5-557 and 560-6 carry through sleeping cars between Bradford and New York.
 hu Stops to discharge passengers.
 hv Stops on signal East 93rd Street (6.13 P. M.) to receive passengers.
 hw Train 7 will stop at Saegertown (1.30 P. M.) to discharge passengers from Binghamton and east and to receive passengers for Marion and west.
 hx Train 8 will stop at Saegertown (10.17 A. M.) to discharge passengers from Marion and west and to receive passengers for Binghamton and east.
 na Train 6 stops on signal at East 93rd St. (4.42 P. M.) to receive passengers for Sharon and east.
 ne Train 626 stops Saturdays only at Solon (1.39 P. M.) and Aurora (1.47 P. M.) to discharge passengers from Cleveland.
 nf Stops on signal at Garrettsville-Hiram (2.47 P. M.) to receive passengers for Cleveland.
 nh Stops on signal at Garrettsville-Hiram (10.49 A. M.) to discharge passengers from Hornell and east.

ERIE TICKET OFFICES AND PASSENGER STATIONS IN PRINCIPAL CITIES

- Akron, O.—Union Station.**
 (Telephone Jefferson 9141)
 B. L. BENDER, Ticket Agent.
- Binghamton, N. Y.—Erie Station.**
 (Telephone 4-3251)
 A. P. WAINSCOTT, Ticket Agent.
- Bradford, Pa.—Erie Station.**
 (Telephone 3716)
 A. J. SULLIVAN, Ticket Agent.
- Brooklyn, N. Y.—City Ticket Office.**
 155 Pierpoint St.
 (Telephone Triangle 5-7440)
 W. J. HAGENY, Ticket Agent.
- Buffalo, N. Y.—City Ticket Office.**
 6 North Division St.
 (Telephone Washington 4300)
 W. L. MCCREARY, Ticket Agent.
 Station Ticket Office
 (Lehigh Valley Terminal)
 Main and Scott Streets
 (Telephone Washington 4300)
 A. L. SEITZ, Ticket Agent.
- Chicago, Ill.—City Ticket Office.** 163-165 West Jackson Blvd.
 (Telephone Harrison 4160)
 C. F. KUNDEL, Ticket Agent.
- Hotel Ticket Offices—**
 Congress, Morrison, Sherman, Stevens, Palmer House, Merchandise Mart.
 (Telephone Harrison 2203)
 GEORGE M. NEWHART, Ticket Agent.
- Dearborn Station.**
 (Telephone Harrison 9830)
 W. E. MISCHNICK, Ticket Agent.
- 63rd St. Station.**
 (Telephone Wentworth 3503)
 H. W. BEARD, Ticket Agent.
- Cleveland, O.—City Ticket Office.**
 913 Huron Road (Telephone Cherry 8400)
 CASPER J. MILLER, Ticket Agent.
 Erie Station. (Telephone Cherry 8400)
 J. W. STUART, Ticket Agent.
- Corning, N. Y.—Erie Station.**
 (Telephone 50)
 A. T. JOHNSON, Ticket Agent.
- Elmira, N. Y.—Erie Station.**
 (Telephone 2-0380)
 J. V. CLEARY, Ticket Agent.
- Hornell, N. Y.—Erie Station.**
 (Telephone 680)
 M. W. DELANY, Ticket Agent.
- Huntington, Ind.—Erie Station.**
 (Telephone 140)
 D. L. HERGENDEEN, Ticket Agent.
- Jamestown, N. Y.—Erie Station.**
 (Telephone 6076)
 FRANK PRIEST, Ticket Agent.
- Jersey City, N. J.—Erie Station.**
 (Telephone Journal Square 2-6400)
 G. B. IRVING, Ticket Agent.
- Mansfield, O.—Erie Station.**
 (Telephone Canal 1423)
 J. W. GILKISON, Ticket Agent.
- Marion, O.—Erie Station.**
 (Telephone 2399)
 L. E. NEBERGALL, Ticket Agent.
- Meadville, Pa.—Erie Station.**
 (Telephone 1212)
 O. E. BLAIR, Ticket Agent.
- Middletown, N. Y.—Erie Station.**
 (Telephone 3303)
 C. R. DINEEN, Ticket Agent.
- Newark, N. J.—Erie Station.**
 (Telephone Humboldt 2-0600)
 G. J. MCMICHAEL, Ticket Agent.
- New York, N. Y.—City Ticket Office.**
 Information Bureau.
 Train Service and Fares.
 (Telephone Barclay 7-6500)
 City Ticket Office, 12 West 51st Street, Rockefeller Center.
 (Telephone Circle 5-7222)
 G. H. DOWN, Ticket Agent.
- West 23rd Street Station.**
 (Telephone Chelsea 3-0780)
 C. H. POTTER, Ticket Agent.
- Chambers Street Station.**
 (Telephone Cortlandt 7-9200)
 O. R. KRECH, Ticket Agent.
- City Ticket Office, 17 John Street.**
 (Telephone Cortlandt 7-6430 and 7-5431)
 W. G. TEDFORD, Ticket Agent.
- Times Square Motor Coach Terminal,**
 260 West 42nd St.
 (Telephone Longacre 5-2440)
- Passaic, N. J.—Erie Station.**
 (Telephone 2-1613)
 M. J. LYNCH, Ticket Agent.
- Paterson, N. J.—Erie Station.**
 (Telephone Sherwood 2-3337)
 J. H. GRAF, Ticket Agent.
- Port Jervis, N. Y.—Erie Station.**
 (Telephone 300)
 R. FARRER, Ticket Agent.
- Sharon, Pa.—Erie Station.**
 (Telephone 6234)
 H. P. MORGAN, Ticket Agent.
- Warren, O.—Erie Station.**
 (Telephone 1000)
 G. W. KROM, Ticket Agent.
- Youngstown, O.—Erie Station.**
 (Telephone 41101)
 R. S. GETTIG, Ticket Agent.

RAILROAD AND PULLMAN FARES For Information Only. Subject to Change Without Notice

Table with columns for 'NEW YORK', 'BINGHAMTON', and 'BUFFALO'. Rows list various cities like Akron, Binghamton, Buffalo, Chicago, Cleveland, etc., with fare details for Coach, Pullmans, and Pullman Rates.

Table with columns for 'JAMESTOWN', 'CLEVELAND', and 'CHICAGO'. Rows list various cities like Akron, Baltimore, Binghamton, Buffalo, Chicago, Cleveland, etc., with fare details for Coach, Pullmans, and Pullman Rates.

RATES FOR UPPER BERTH, ROUND TRIP UPPER BERTH, SECTION, DRAWING ROOM, COMPARTMENT OR DOUBLE BEDROOM IN SLEEPING CARS

Table showing rates for different car types and berth configurations. Columns include 'Where Lower Berth Rate Is', 'Upper Berth Rate Will Be', 'Round Trip Upper Berth Rate Will Be', 'Section Rate', 'Drawing Room Rate', 'Compartment Rate', and 'Double Bedroom Rate'.

MINIMUM NUMBER OF RAILROAD TICKETS REQUIRED FOR EXCLUSIVE OCCUPANCY OF SPACE IN SLEEPING OR PARLOR CARS

Table listing ticket requirements for different car types: Section (1), Double Bedroom (1), Compartment, Berth Service (1), and Drawing Room, Berth Service (1/4).

Note: -▲ For section occupied by two passengers but with lower berth only prepared for night service. *Applies from Cleveland to New York only; fare from New York to Cleveland \$14.70. ● Railroad ticket valid for lower berth must be presented when occupying seat in parlor car or sleeping car. *Thirty-day limit. †One-year limit.

TABLE 1 CONDENSED TABLE OF THROUGH TRAINS NEW YORK AND BUFFALO, CLEVELAND AND CHICAGO
(FOR LOCAL TRAINS AND INTERMEDIATE TIME OF THROUGH TRAINS SEE LOCAL TABLES)

Air-Conditioned Trains—Air-conditioned equipment has been assigned to regular sections of trains as shown herein. Every effort will be made to provide it as specified, but the right is reserved to employ non-air-conditioned cars as necessitated by volume of traffic or emergencies.

WESTBOUND		EASTBOUND	
THE ERIE LIMITED Train No. 1—Daily New York—Buffalo—Jamestown—Chicago		THE ERIE LIMITED Train No. 2—Daily Chicago—Jamestown—Buffalo—New York	
Lv New York (Times Sq. Motor Coach Term.) (Note ⊕)... 8.30AM E.S.T. (W. 23rd St. Ferry does not operate on Sundays and Holidays). Lv New York, West 23rd St.... 8.05 AM E.S.T. " " " Chambers St.... 8.30 " "		Lv Chicago (Dearborn Sta.)... 6.00PM C.S.T. Ar Akron... 3.39AM E.S.T. " Warren... 4.40 " " " Youngstown... 4.59 " " " Meadville... 6.55 " " " Jamestown... 8.31 " " " Buffalo (Lehigh Valley Term.)... 10.55 " " " Bradford... ad 12.05PM " " " Olean... 9.39AM " " Lv Buffalo (Lehigh Valley Term.)... 8.20 " " Ar Elmira... 12.30PM " " " Binghamton... 1.42 " " " Ridgewood... 6.43 " " " Paterson... 6.51 " " " Jersey City... 7.20 " " " New York, Chambers St.... 7.34 " " " " " West 23rd St.... 7.55 " " (W. 23rd St. Ferry does not operate on Sundays and Holidays). Ar New York, Times Sq. Motor Coach Term. (Note ⊕)... 7.35 PM E.S.T.	
EQUIPMENT Air-Conditioned Sleeping Cars: New York to Chicago—12 Section, 2 Double Bedroom. Salamanca to Chicago—10 Section, 2 Compartment and Drawing Room. Air-Conditioned Diner-Lounge Car: New York to Chicago. Air-Conditioned De Luxe Coaches: New York to Chicago. Air-Conditioned Coach—Diner: New York to Buffalo.		EQUIPMENT Air-Conditioned Sleeping Car: Chicago to New York—10 Section, 2 Compartment and Drawing Room. Air-Conditioned Diner-Lounge Car: Chicago to New York. Air-Conditioned De Luxe Coaches: Chicago to New York. Air-Conditioned Coach—Diner: Buffalo to New York.	
THE LAKE CITIES Train No. 5—Daily New York—Buffalo—Cleveland		THE LAKE CITIES Train No. 6—Daily Cleveland—Buffalo—New York	
Lv New York (Times Sq. Motor Coach Term.) (Note ⊕)... 7.10PM E.S.T. (W. 23rd St. Ferry does not operate on Sundays and Holidays). Lv New York, West 23rd St.... 7.05 PM E.S.T. " " " Chambers St.... 7.10 " "		Lv Cleveland... 4.30PM E.S.T. " Warren... 5.35 " " " Youngstown... 6.13 " " " Meadville... 7.50 " " " Jamestown... 9.27 " " " Bradford... 9.10 " " " Salamanca... 10.14 " " " Olean... 10.39 " " " Buffalo (Lehigh Valley Term.)... 9.00 " " Ar Elmira... 1.30AM " " " Ridgewood... dz 7.28 " " " Jersey City... 8.00 " " " New York, Chambers St.... 8.16 " " " " " West 23rd St.... 8.30 " " (W. 23rd St. Ferry does not operate on Sundays and Holidays). Ar New York, Times Sq. Motor Coach Term. (Note ⊕)... 8.15 AM E.S.T.	
EQUIPMENT Air-Conditioned Sleeping Cars: New York to Cleveland—10 Section, 1 Compartment and Drawing Room. New York to Bradford—10 Section, 2 Compartment and Drawing Room. (Sleeping Car may be occupied at Bradford until 8.00 A. M.). Air-Conditioned Diner-Lounge Car: New York to Port Jervis. Hornell to Youngstown. Air-Conditioned Coaches: New York to Cleveland. Coaches: Hornell to Buffalo.		EQUIPMENT Air-Conditioned Sleeping Cars: Cleveland to New York—10 Section, 1 Compartment and Drawing Room. Bradford to New York—10 Section, 2 Compartment and Drawing Room. Air-Conditioned Diner-Lounge Car: Youngstown to Hornell. Port Jervis to New York. Air-Conditioned Coaches: Cleveland to New York. Coaches: Buffalo to Hornell.	
THE MIDLANDER Train No. 15—Daily New York—Jamestown—Akron—Chicago		THE MIDLANDER Train No. 16—Daily Chicago—Akron—Jamestown—New York	
Lv New York (Times Sq. Motor Coach Term.) (Note ⊕)... 7.10PM E.S.T. (W. 23rd St. Ferry does not operate on Sundays and Holidays). Lv New York, West 23rd St.... 7.05 PM E.S.T. " " " Chambers St.... 7.10 " "		Lv Chicago (Dearborn Sta.)... 9.05AM C.S.T. " Marion... 2.56PM E.S.T. " Akron... 4.54 " " " Youngstown... 6.13 " " " Meadville... 7.50 " " " Jamestown... 9.27 " " " Ridgewood... dz 7.28AM " " Ar Jersey City... 8.00 " " " New York, Chambers St.... 8.16 " " " " " West 23rd St.... 8.30 " " (W. 23rd St. Ferry does not operate on Sundays and Holidays). Ar New York, Times Sq. Motor Coach Term. (Note ⊕)... 8.15 AM E.S.T.	
EQUIPMENT Air-Conditioned Sleeping Car: New York to Chicago—10 Section, 1 Compartment and Drawing Room. Air-Conditioned Diner-Lounge Cars: New York to Port Jervis. Hornell to Chicago. Air-Conditioned De Luxe Coach: New York to Chicago.		EQUIPMENT Air-Conditioned Sleeping Car: Chicago to New York—10 Section, 1 Compartment and Drawing Room. Air-Conditioned Diner-Lounge Cars: Huntington to Hornell. Port Jervis to New York. Air-Conditioned De Luxe Coach: Chicago to New York.	
PACIFIC EXPRESS Train No. 7—Daily New York—Buffalo—Jamestown—Chicago		ATLANTIC EXPRESS Train No. 8—Daily Chicago—Jamestown—New York	
(W. 23rd St. Ferry does not operate on Sundays and Holidays). Lv New York, W. 23d St.... 10.55PM E.S.T. " " " Chambers St.... 11.30PM " " " Jersey City... 12.05AM " " " Elmira... 7.23 " " Ar Buffalo (Lehigh Valley Term.)... 11.55AM " " Lv Olean... 10.48AM " " Ar Salamanca... 11.12 " " Lv Jamestown... 12.07PM " " " Meadville... 1.44 " " " Youngstown... 3.16 " " " Warren... 3.44 " " " Akron... 4.46 " " Ar Chicago (Dearborn Sta.)... 12.50AM C.S.T.		Lv Chicago (Dearborn Sta.)... 9.45PM C.S.T. " Akron... 7.04AM E.S.T. " Warren... 8.04 " " " Youngstown... 8.32 " " " Meadville... 10.10 " " " Jamestown... 11.59 " " " Salamanca... 1.03PM " " " Olean... 1.29 " " Ar Elmira... 5.01 " " " Binghamton... 6.08 " " " Jersey City... 11.30 " " " New York, Chambers St.... 11.54 " " " " " West 23rd St.... " " (W. 23rd St. Ferry does not operate on Sundays and Holidays). Ar New York, Times Sq. Motor Coach Term. (Note ⊕)... 11.45 PM E.S.T.	
EQUIPMENT Air-Conditioned Sleeping Car: New York to Salamanca—10 Section, 2 Compartment and Drawing Room Car. (Sleeper open Jersey City at 9.30 P. M.). Air-Conditioned Diner-Lounge Car: Binghamton to Marion. Air-Conditioned Salon Coaches: New York to Chicago.		EQUIPMENT Air-Conditioned Sleeping Car: Chicago to Hornell—(Daily) 12 Section, 2 Double Bedroom. Chicago to New York (Saturdays only) 12 Section, 2 Double Bedroom. (Sleeper open at Chicago at 9.15 P. M.) Air-Conditioned Diner-Lounge Cars: Chicago to Huntington. Marion to New York. Air-Conditioned Salon Coaches: Chicago to New York.	
THE MOUNTAIN EXPRESS Train No. 27—Daily New York—Binghamton—Elmira—Hornell		SOUTHERN TIER EXPRESS Train No. 10—EX. SUN. Buffalo—Hornell—Elmira—Binghamton—New York	
Lv New York (Times Sq. Motor Coach Term.) (Note ⊕)... 3.15PM E.S.T. (W. 23rd St. Ferry does not operate on Sundays and Holidays). Lv New York, West 23rd St.... 2.40 PM E.S.T. " " " Chambers St.... 3.20 " "		Lv Buffalo... 4.35PM E.S.T. " Hornell... 7.35 " " " Corning... 8.43 " " " Elmira... 9.13 " " " Binghamton... 10.50 " " Ar Jersey City... 4.25AM " " " New York, Chambers St.... 4.54 " " " " " W. 23d St.... " " (W. 23rd St. Ferry does not operate on Sundays and Holidays).	
EQUIPMENT Air-Conditioned Diner-Lounge Car: New York to Binghamton. Coaches... New York to Hornell.		EQUIPMENT Air-Conditioned Sleeping Car: Hornell to New York—12 Section, 2 Double Bedroom. (Sleeper and Coaches may be occupied at Jersey City until 7.00 A. M. E. S. T.) Coaches: Buffalo to Hornell. Hornell to New York.	

TABLE 2 WESTBOUND

NEW YORK—ELMIRA

Hudson and Manhattan Tube Trains operate between New York and Erie Railroad Station in Jersey City. To Erie Station, Jersey City—From Downtown New York—Train marked "Hoboken"—Fare 8 cents. From Uptown New York—Train marked "Journal Square"—Fare 10 cents. (West 23rd Street Ferry does not operate Sundays and Holidays)

Table with columns for Miles from New York, Eastern Standard Time, and various station names (e.g., Chambers St, Jersey City, Passaic, Paterson, Ridgewood, Hobokus, Waldwick, Aliendale, Ramsey, Mahwah, Suffern, Hillburn, Ramapo, Sloatsburg, Tuxedo, Southfields, Arden, Harriman, Monroe, Oxford, Greycourt, Chester, Goshen, New Hampton, Middletown N. Y., Howells, Otisville, Graham, Port Jervis, Sparrowbush N. Y., Mill Rift, Pond Eddy, Parker's Glen, Shohola, Lackawaxen, Westeolang P'k, Mast Hope, Tusten, Narrowsburg, Honesdale et., Skimmers, Cocheaton, Calicoon, Hankins, Long Eddy, Lordville, Hancock, Hale's Eddy, Deposit, Gulf Summit, Susq'ha'na Pa., Great Bend, Binghamton, Albany, Oneonta, Binghamton, Binghamton, Endicott, Owego, Waverly, Elmira). Rows include train numbers (55, 59, 43, 701, 1, 9, 703, 251, 253, 255, 61, 45, 257, 63, 27, 65, 67, 259, 47, 69, 71, 5, 15, 705, 7, 51) and departure times.

For Explanation of Reference Marks and Notes, See Pages 5 and 6.

For Equipment of Trains See Pages 9, 10 and 28.

TABLE 3 EASTBOUND

ELMIRA—NEW YORK

Hudson and Manhattan Tube Trains operate between New York and Erie Railroad Station in Jersey City. From Erie Station, Jersey City—To Downtown New York—Train marked "Hudson Terminal"—Fare 8 cents. To Uptown New York—Train marked "33rd Street"—Fare 10 cents. (West 23rd Street Ferry does not operate on Sundays and Holidays.)

Table with columns for stations (Elmira, N.Y. to New York) and times for various train services (Daily Ex., Daily, Sat., Sun., etc.). Includes notes like 'No Baggage Carried on this Train' and 'The Erie Limited'.

TABLE 4 WESTBOUND

ELMIRA—CHICAGO

EASTBOUND

Miles from New York	Eastern Standard Time					Miles from Chicago	Central Standard Time					
	7 Daily	1 Daily	27 Daily	5 Daily	15 Daily		2 Daily	dt 8 Daily	10 Daily Ex. Sun.	6 Daily	16 Daily	620 Sun. only
	PM	AM	PM	PM	PM		PM	PM	PM	PM	AM	PM
0.0	Lv. NEW YORK					0.0	Chicago (Dearborn Sta.) III. Lv.					
Note ⊕	Times Sq. Motor Coach Term. Lv.						(Polk and Dearborn Sts.)					
0.0	West 23rd Street Ferry does not operate on Sundays and Holidays.					6.3	Englewood, 63d Street. " "					
0.0	Lv. West 23rd St.					20.6	Hammond Ind. " "					
1.0	Chambers St. " "					36.3	Crown Point " "					
273.8	Jersey City " "					100.9	Rochester " "					
291.2	Elmira N. Y. " "					142.6	Huntington Ar. " "					
302.3	Corning " "					142.6	Huntington Lv. " "					
312.5	Addison " "					173.4	Decatur " "					
315.1	Cameron Mills " "						Eastern Standard Time					
328.1	Cameron " "					189.9	Ohio City Ohio " "					
332.3	Hornell Ar. " "					217.2	Lima " "					
425.2	Buffalo (see Table 6) Ar. " "					244.2	Kenton " "					
332.3	Hornell Lv. " "					269.1	Marion Ar. " "					
341.5	Alfred " "					269.1	Marion Lv. " "					
349.9	Andover " "					290.1	Galion " "					
358.5	Wellsville " "					305.5	Mansfield " "					
366.9	Belmont " "					322.2	Ashland " "					
374.4	Friendship " "					354.4	Rittman " "					
383.3	Cuba " "					358.8	Wadsworth " "					
395.7	Olean " "					365.4	Barberton " "					
399.1	Allegany " "					372.7	Akron Ar. " "					
413.6	Salamanca Ar. " "					382.8	Kent (Ar. Lv.) " "					
430.2	Bradford (See Table 10) Ar. " "					389.1	Ravenna " "					
413.6	Salamanca Lv. " "					413.0	Cleveland (See Table 5) Lv. " "					
431.1	Randolph " "					418.1	Warren (cd) " "					
447.3	Jamestown Ar. (Chautauqua Lake) " "					422.3	Niles (cd) " "					
	Buffalo (See Table 8) Lv. " "					426.9	Girard (cd) " "					
447.3	Jamestown Lv. (Chautauqua Lake) " "					426.9	Youngstown (cd) Ar. " "					
474.2	Corry Pa. " "					426.9	Pittsburgh (See Table 5) Ar. " "					
485.6	Union City " "					426.9	Youngstown Lv. " "					
501.2	Cambridge Springs " "					434.5	Hubbard " "					
509.5	Saegertown " "					440.5	Sharon Pa. " "					
515.9	Meadville Ar. " "					456.6	Greenville " "					
515.9	Meadville Lv. " "					482.8	Meadville Ar. " "					
542.1	Greenville " "					482.8	Meadville Lv. " "					
558.2	Sharon " "					489.2	Saegertown " "					
564.2	Hubbard Ohio " "					497.5	Cambridge Springs " "					
571.8	Youngstown Ar. (Chautauqua Lake) " "					513.1	Union City " "					
	Pittsburgh (See Table 5) Lv. " "					524.5	Corry " "					
571.8	Youngstown (cd) Lv. " "					551.4	Jamestown N. Y. Ar. (Chautauqua Lake) " "					
576.4	Girard (cd) " "					620.9	Buffalo (See Table 8) Ar. " "					
580.6	Niles (cd) " "					551.4	Jamestown Lv. (Chautauqua Lake) " "					
585.7	Warren (cd) " "					567.6	Randolph " "					
638.3	Cleveland (See Table 5) Ar. " "					585.1	Salamanca Ar. " "					
609.6	Ravenna " "						Bradford (See Table 10) Lv. " "					
615.9	Kent Ar. " "					585.1	Salamanca Lv. " "					
626.0	Akron Ar. " "					599.6	Allegany " "					
633.3	Barberton " "					603.0	Olean " "					
639.9	Wadsworth " "					615.4	Cuba " "					
644.3	Rittman " "					624.3	Friendship " "					
676.5	Ashland " "					631.8	Belmont " "					
693.2	Mansfield " "					640.2	Wellsville " "					
708.6	Galion " "					648.8	Andover " "					
729.6	Marion Ar. " "					657.2	Alfred " "					
729.6	Marion Lv. " "					666.4	Hornell Ar. " "					
754.5	Kenton " "						Buffalo (See Table 6) Lv. " "					
781.5	Lima " "					666.4	Hornell " "					
808.8	Ohio City " "					670.6	Canisteo " "					
	Central Standard Time					683.6	Cameron " "					
825.3	Decatur Ind. " "					686.2	Cameron Mills " "					
856.1	Huntington Ar. " "					696.4	Addison " "					
856.1	Huntington Lv. " "					707.5	Corning " "					
897.8	Rochester " "					724.9	Elmira " "					
962.4	Crown Point " "					997.7	Jersey City NEW YORK " "					
978.1	Hammond " "					998.7	Chambers St. " "					
992.4	Englewood, 63d St. III. " "						West 23rd St. " "					
998.7	Chicago (Dearborn Sta.) Ar. " "					Note ⊕	Times Sq. Motor Coach Term. Ar. " "					

Dining Car Service

Table D'Hotel prices range as follows: Breakfast 50c to 75c, Luncheon 85c to \$1.10, Dinner 85c to \$1.50. A meal on our trains is always a pleasant interlude. Makes the journey seem shorter, too. The freshest food the

market affords, cooked by expert chefs and served in the comfort of spacious Diner-Lounge Cars. If you prefer a light snack without going to the Diner the waiter will bring sandwiches, fruit, coffee, etc., right to your seat.



6880 3-21-30



**ERIE RAILROAD
SYSTEM
AND CONNECTIONS**

Indicates Double Track

ARRIVE FRESH AS A DAISY ON ERIE AIR-CONDITIONED TRAINS

TABLE 6 NEW YORK AND BUFFALO

Table with columns for WESTBOUND Read Down (1, 477, 5), Miles from New York, EASTERN STANDARD TIME, and EASTBOUND Read Up (2, 10, 6). Includes routes from New York to Buffalo via various stops like Jersey City, Binghamton, and Hornell.

TABLE 8 BUFFALO—JAMESTOWN

Table with columns for WESTBOUND Read Down (519, Mls.), EASTERN STANDARD TIME, and EASTBOUND Read Up (516). Lists routes from Buffalo to Jamestown via stops like Eden Valley, Gowanda, and Dayton.

TABLE 9 LACKAWAXEN—HONESDALE

Table with columns for West-bound Read Down (9-35, Miles), EASTERN STANDARD TIME, and East-bound Read Up (28-34, Daily). Shows routes between Lackawaxen and Honesdale via Rowlands and Glen Eyre.

TABLE 10 NEW YORK—SALAMANCA—BRADFORD—CHICAGO

Table with columns for WESTBOUND Read Down (557, I-Bus, I-Bus), Via Salamanca and BUS of Buffalo and Erie Coach Corp., EASTERN STANDARD TIME, and EASTBOUND Read Up (Bus-2, Bus-8, 560-6). Details routes from New York to Chicago via Salamanca and Bradford.

TABLE 7 NEW YORK—CHAUTAUQUA—CHICAGO (Via Jamestown and BUS of Buffalo and Erie Coach Corp.)

Table with columns for WESTBOUND Read Down (7-Bus, 7-Bus, 5-Bus), EASTERN STANDARD TIME, and EASTBOUND Read Up (Bus-8, Bus-8, Bus-6). Shows routes from New York to Chicago via Chautauqua and Jamestown.

Trains 5-557 and 560-6 carry through sleeping car between Bradford and New York. Sleeper on train 557 will be parked at Bradford for occupancy until 8.00 A. M. Busses leave as follows: (running time approximately 45 minutes.)

TABLE 11 NEW YORK—KENOZA LAKE—JEFFERSONVILLE Train and Bus Service via Callcoon

Table with columns for WESTBOUND Read Down (43, Sun. only, Daily), EASTERN STANDARD TIME, and EASTBOUND Read Up (2, 38, Daily, Sun. only). Details routes from New York to Jeffersonville via Callcoon.

Tickets sold and Baggage checked through to Chautauqua. Hand baggage checked without charge. Trunks checked at charge of 25c each.

BLACK WATER BATHS, ALDEN, N. Y.

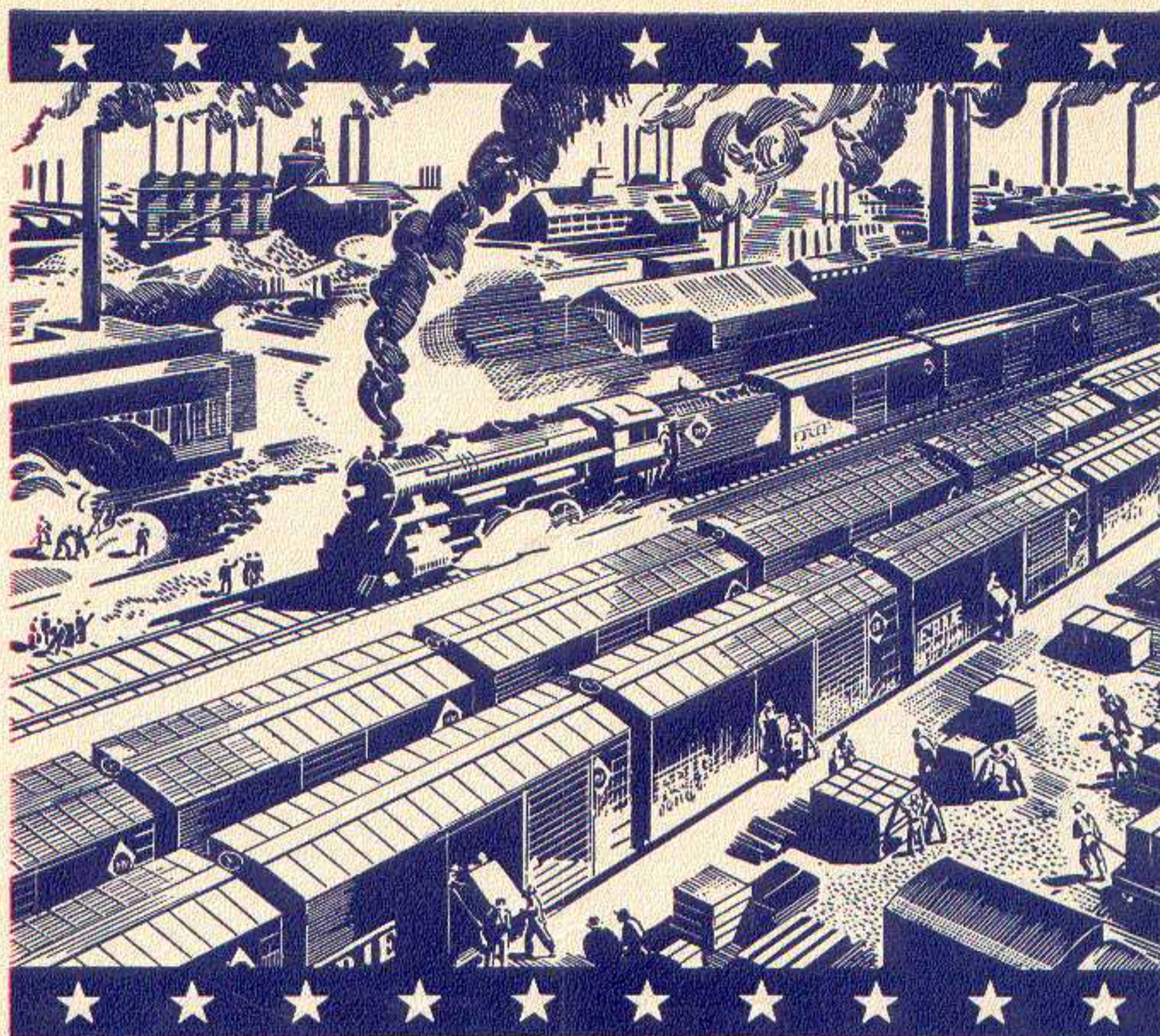
An all year resort where sufferers from rheumatism and nervous ailments have found the Black Water Baths beneficial and curative.

Alden is located 20 miles east of Buffalo on the Erie Railroad.

HOTELS AT ALDEN, N. Y.

Empire State Hotel Original Black Water Baths and Hotel Alden Inn

NOTE "X" In connection with the bus service the Erie Railroad acts as agent only and is not responsible beyond its own line, except as such responsibility may be imposed by law with respect to baggage.



We're Ready—and Willing!

• Things happen fast along the tracks where the fast freights roll. We were getting ready for a national emergency long before there was an emergency.

And today we're helping in every way possible to speed the job of National Defense. Spanning the very heart of the Nation's "arsenal," Erie is the conveyor belt of America's defense industries. Erie delivers the goods.

We're "in for the duration." Both men and equipment. We are ready at all times to provide safe, dependable, on-time service to small or large shippers. Just call the Erie man—or write

**Carl Howe, Vice President, Erie Railroad,
Cleveland, Ohio**



Luxury between Trains... ...in CHICAGO



... your Parmelee transfer coupon, which is included as part of your through ticket, entitles you to transportation in smart limousine coaches from your incoming railway station to your outgoing station... or from your incoming station to any downtown hotel, club, theatre, store or office building. This service is also available, at a nominal charge, to passengers not holding a Parmelee transfer coupon.

Ask any Ticket Agent about

PARMELEE SERVICE

SEE AND KNOW AMERICA

Sight-Seeing



Everywhere

MAKE YOUR RAILROAD TRIP COMPLETE... TAKE SIGHT-SEEING TOURS AT ALL IMPORTANT TOURIST POINTS



See Your Local Railroad Ticket Agent For All Information



SCENE AT CHAUTAUQUA LAKE

CHAUTAUQUA

- Too well known to need an introduction to eastern vacationists, Chautauqua bids you welcome to a joyous Summer vacation.
- Summer tourist fares in effect May 15 to September 30.
- Direct bus connections to Chautauqua from Erie's Jamestown Station. See time table 7, page 23, for schedules.

TICKET YOUR CAR AND TRAVEL IN COMFORT BY TRAIN

Two first class passenger fares plus one ticket at a slightly higher fare transports two passengers and your car. Minimum charge \$54.00. Ask Erie Ticket or Freight Agents.

LOCAL PARLOR AND CLUB CAR EQUIPMENT

WESTBOUND

No. 9—Daily	
Coaches.....	New York to Binghamton
No. 43—Runs Saturdays and Sundays only (June 28 to Aug. 31, incl.) Will not operate July 5	
Buffet Club Car.....	New York to Deposit
Coaches.....	New York to Deposit
No. 45—Runs Saturdays only (June 28 to Aug. 30, incl., also Thursday, July 3) Will not operate July 5	
Parlor-Observation Car (Air-Conditioned).....	New York to Deposit
Dining Car.....	New York to Deposit
Coaches.....	New York to Deposit
No. 47—Runs Fridays only (June 27 to Aug. 29, incl., also Thursday, July 3) Will not operate July 4	
Parlor-Observation Car (Air-Conditioned).....	New York to Deposit
Dining Car.....	New York to Deposit
Coaches.....	New York to Deposit
No. 67—Except Saturdays, Sundays and Holidays	
Erie Parlor Car.....	New York to Port Jervis
Coaches.....	New York to Port Jervis
No. 251—Saturdays only	
Erie Parlor Car.....	New York to Middletown
Coaches.....	New York to Middletown

EASTBOUND

No. 28—THE MOUNTAIN EXPRESS—Daily	
Coaches.....	Binghamton to New York
No. 34—Sundays and Holidays only, July 6 to August 24, incl. (also on Holidays, Friday, July 4 and Monday, Sept. 1)	
Parlor-Observation Car (Air-Conditioned).....	Deposit to New York
Dining Car.....	Deposit to New York
Coaches.....	Deposit to New York
No. 38—Sunday only, July 6 to August 24, incl. (also Monday, Sept. 1)	
Coaches.....	Deposit to New York
No. 42—Saturdays only, June 28 to August 30, incl. Will not operate July 5	
Buffet Club Car.....	Deposit to New York
Coaches.....	Deposit to New York
No. 44—Sundays only, July 6 to August 24, incl. (also Friday, July 4 and Monday, Sept. 1)	
Buffet Club Car.....	Deposit to New York
Coaches.....	Deposit to New York
No. 56—THE TUXEDO—Except Sundays and Holidays	
Erie Parlor Car.....	Port Jervis to New York
Coaches.....	Port Jervis to New York



Travel Now!

**PAY LATER IN
EASY MONTHLY
INSTALLMENTS**

Ask Any Ticket Agent

TABLE 12 ELMIRA-ROCHESTER

Table with columns for Westbound Read Down (5-463, 7-467), Miles, Eastern Standard Time, and Eastbound Read Up (468-8, 464-8). Includes routes like Elmira, Corning, Avoca, etc.

TABLE 13 SALAMANCA—DUNKIRK

Table with columns for Westbound Read Down (5-527), Miles, Eastern Standard Time, and Eastbound Read Up (540). Includes routes like Salamanca, Little Valley, Cattaraugus, etc.

LOCATE YOUR PLANT WHERE YOU CAN LOCATE MORE PROFITS. Ask us about industrial buildings and vacant land on Erie rails. GEO. F. WESTON, Industrial Commissioner, Erie Railroad, Midland Bldg., Cleveland, O.

TABLE 14 ROCHESTER—AVON

Table with columns for EASTBOUND Read Down (N. B. 420, 440, 416, 428, 468) and WESTBOUND Read Up (N. B. 401, 403, 467, 409). Includes routes like Rochester, Mortimer, W. Henrietta, Industry, Golah, Avon.

TRAINS between Avon and Rochester, except Trains 467, 468, will stop on signal at Wiards, Elm Place, Meadowood, Gannett, Blair, Martin, Brooks, Fenners, Baileys, Crittenden, Westfall and South Park. Note-HOLIDAYS in above tables refer to the observance of New Year's Day, Decoration Day, Independence Day, Labor Day, Thanksgiving Day and Christmas Day.

WESTERN UNION

TELEGRAMS AND CABLEGRAMS accepted at all telegraph offices of this railroad. DAY LETTERS—50 words for 1 1/2 times the cost of a 10 word telegram. NIGHT LETTERS—25 words for the former price of ten words. RESERVATION MESSAGES—Reserve travel tickets and accommodations and hotel rooms by telegraph—only 35 cents (for 15 words). TOURATE MESSAGES—When you travel telegraph the folks at home or at the office the facts they want to know about progress of your trip—only 35 cents (for 15 words).

HUDSON AND MANHATTAN TUBE TRAINS SCHEDULE OF RUNNING TIME BETWEEN ERIE R. R. JERSEY CITY TERMINAL AND

Table showing running times for Downtown New York (Cortlandt St.) and Uptown New York (33rd Street and 6th Ave, 23rd Street and 6th Ave, etc.).

ERIE R. R. FERRY TIME TABLE EASTERN STANDARD TIME CHAMBERS STREET FERRY Ferry Running Time, 9 Minutes WEEK DAYS

Table with columns: Leave New York for Jersey City (AM, PM) and Leave Jersey City for New York (AM, PM). Includes times from 12.30 AM to 6.38 AM.

a Will not run on Holidays. m Except Saturdays and Holidays. e Holidays only.

SUNDAYS

Table showing Sunday running times for the Chambers Street Ferry, with columns for AM, Noon, PM, and Mid.

TWENTY-THIRD STREET FERRY Ferry Running Time, 20 Minutes WEEK DAYS 23rd Street Ferry does not run on Sundays and Holidays

Table with columns: Leave New York for Jersey City and Leave Jersey City for New York. Includes times from 6.40 AM to 8.35 AM.

NO FERRY SERVICE ON SUNDAYS

SUGGESTIONS

• **FREE BAGGAGE SERVICE.** Let us check your baggage to destination and relieve you of the trouble and inconvenience of carrying it to and from the train—150 pounds free on each adult ticket.

If you desire delivery to your residence or hotel at destination, ask the checking agent for information regarding delivery service and rates.

• **INTERCHANGEABLE SCRIP COUPON TICKETS** issued in \$15.00 and \$30.00 denominations are accepted on trains or at ticket offices in payment of rail passage as well as sleeping and parlor car accommodations, and also as payment for meals in restaurant cars.

• **PREPAID ORDERS.** For the convenience of patrons who do not wish to send money by mail, Erie Railroad ticket agents are prepared to sell prepaid ticket orders for the delivery of transportation, rail and Pullman, from practically all points in the United States, Canada and Mexico. These orders may also include the furnishing of cash.

In emergencies arrangements may be made for the delivery of transportation by telegraph or telephone without charge except when commercial wires are used.

• **BAGGAGE INSURANCE** by the St. Paul Fire & Marine Insurance Co. may be purchased at principal Erie ticket offices. It insures your baggage and personal effects for your entire trip anywhere in the world. Minimum premium twenty-five cents. The ticket agent can give you full particulars.

• **ERIE PLAYING CARDS** are on sale at our ticket offices, excepting in Ohio. Bridge sets one dollar, single decks fifty cents.

• **SPECIAL TOURS AND CONVENTIONS.** Our services are at the disposal of clubs, lodges and other organizations in arranging for trips to conventions and gatherings of all sorts. Concerning fares, train schedules and travel plans, consult or write to any Erie Ticket Agent, or any of the Passenger Department representatives listed on pages 37 & 38 of this folder.

STOP-OVER PRIVILEGES

Niagara Falls

Passengers holding tickets reading "via Erie Railroad" from or through Elmira to or through Youngstown or vice versa may exercise their privilege of going by way of Buffalo and stopping over for as long as ten days at Niagara Falls, but not beyond the final limit of their ticket. Upon request, the Erie Ticket Agent at Buffalo will issue without charge a round trip ticket between Buffalo and Niagara Falls. Frequent service via busses of International Ry. direct from Buffalo Terminal.

Other Points

On local one-way tickets sold at regular fares, local round-trip tickets sold at double the one-way fares, All-Year, Summer and Winter Tourist Tickets, stop-overs will be allowed on going and return trips within final limit of tickets at any Erie Railroad Station en route upon notice to conductor and without deposit of ticket.

GENERAL INFORMATION

STANDARD OF TIME—Erie Lines east of and including Ohio City, Ohio, are operated by Eastern Standard Time, Lines west of Ohio City, Ohio, by Central Standard Time. 12.01 Midnight to 12.00 Noon is indicated by light-faced type. 12.01 Noon to 12.00 Midnight is indicated by heavy-faced type.

TRAINS WILL NOT BE HELD for ferries from New York between hours of 4:00 P.M. and 5:30 P.M. Eastern Standard Time.

HOLIDAYS—The term "Holidays" (unless covered by special note under schedule) refers to the observance of New Year's Day, Lincoln's Birthday, Washington's Birthday, Memorial Day, Independence Day, Labor Day, Columbus Day, Armistice Day (Nov. 11), Election Day (November 4), Thanksgiving Day and Christmas Day.

THIS COMPANY IS NOT RESPONSIBLE FOR ERRORS in time tables, inconvenience or damage resulting from delayed trains or failure to make connections; schedules are subject to change without notice.

FARES PAID ON TRAINS—Conductors are required to charge ten (10) cents in excess of the one-way ticket fare for passengers traveling in coaches only in the territory east of Port Jervis, including side lines and branches. Buy tickets before boarding trains and avoid payment of this extra fare.

CHILDREN under five years of age are carried free when accompanied by parent or guardian; five years and under twelve, half fare, twelve years of age and over, full fare.

ADJUSTMENT OF FARES—Should any misunderstanding arise with conductors or agents, pay the fare required, take receipt and communicate with General Passenger Agent, Midland Bldg., Cleveland, Ohio.

SLEEPING AND PARLOR CAR RESERVATIONS—Space reserved by telegraph or telephone within city limit will be held until:

4:00 P.M. day prior to departure of trains leaving before noon next day.

9:00 A.M. day of departure for trains leaving between noon and 4:00 P.M.

1:00 P.M. day of departure for trains leaving after 4:00 P.M.

When application is by wire or letter from a point outside of city limit, space will be held until fifteen minutes of train time.

BAGGAGE TO BE CHECKED should be delivered at station reasonably in advance of train departure to insure its being placed aboard the train.

BAGGAGE DELIVERY IN NEW YORK CITY—All baggage checked to New York City will be sent to the West 23rd Street Station unless passenger specifies Chambers Street Station at time of checking.

Baggage delivery service in New York will be performed by the Railway Express Agency.

HAND-BAGGAGE in Pullman Cars is restricted to what can be conveniently placed in the berth, seat or other accommodations purchased by the passenger.

CHICAGO PASSENGER AND BAGGAGE TRANSFER is performed by the Parmelee Company. A uniformed agent meets all incoming trains of the Erie Railroad on arrival at Dearborn Station.

ARTICLES LOST ON TRAINS or left in waiting rooms or stations, owners should apply to Lost and Found Bureau, (Baggage Room) Jersey City Depot, or address General Passenger Agent, Midland Bldg., Cleveland, Ohio, giving full description of the property, stating date of loss and number of train.

SAFETY FIRST HINTS—Carefulness on your part helps eliminate accidents. Don't get on or off a train in motion; wait for a full stop. Keep hand baggage out of car aisles; this will remove a cause of inconvenience, possibly of harm, to others. Walk carefully when entering or leaving train; high-heeled shoes are sometimes a cause of tripping or stumbling on car steps. Don't stand or walk close to the railroad track; look both ways before starting across. Courtesy toward your fellow travelers increases the pleasure of your journey.

DAYLIGHT SAVING TIME is observed until Sept. 28 at all towns and cities east of and including Port Jervis, N. Y. and Hancock, N. Y., also Chicago, Crown Point, Griffiths, Huntington, Highlands, Hammond, Rochester, Buffalo, Niagara Falls, Hamburg, Gowanda, Bradford, Jamestown, Olean, Elmira, Hornell, Corning, Binghamton, Endicott, Waverly, etc. For complete list see Official Railway Guide.

POSTAGE STAMPS may be purchased from dining car attendants.



...SPECIAL HOME SERVICE!

You'll find RAILWAY EXPRESS service especially convenient for all your gifts and packages sent right from your residence or office. Low rates. Passenger-train speed. No extra charge for pick-up and delivery within our regular vehicle limits in all cities and principal towns. Handy. Fast. Economical. For service, phone RAILWAY EXPRESS or Western Union.

RAILWAY EXPRESS
AGENCY INC.

NATION-WIDE SERVICE

ERIE TRAIN-CAB SERVICE

Takes you from Erie Terminal directly to your door in New York or Brooklyn



ONE Person **90c** TWO Persons **\$1.25** THREE or more **\$1.50**

Thousands have used and praised Erie Train-Cab Service.

Strangers arriving at Erie Terminal, Jersey City, are taken all the way to their destination in New York or Brooklyn. They never get "lost" and are never overcharged. Women accompanied by children appreciate this service. Even seasoned travelers enjoy the comfort of settling down in their own taxicab and forgetting about bags and car changes.

The fares shown above apply from our terminal to any place on Manhattan 110th Street and South, also to any point in the Brooklyn business district.

Service beyond the prescribed zones is metered from the zone limits and charged for at regular rates.

Train-Cab service is available to all who travel from stations west of Middletown, N. Y.

You can buy the Train-Cab coupon with your rail ticket at the ticket office or from the conductor on any through train and you will find your taxicab awaiting the arrival of your train at Jersey City.

Ask the conductor or ticket agent for details.

Cruise the Great Lakes on the "Luxury Liners"



S. S. NORTH AMERICAN
S. S. SOUTH AMERICAN
S. S. ALABAMA

Take the Erie Railroad to Buffalo, Cleveland or Chicago—then board one of these gleaming white "Ocean Liners of the Lakes" for a fun-filled vacation cruise on America's Inland Seas!

CHOOSE ONE OF THESE 3 GREAT TRIPS

S. S. NORTH AMERICAN

A 7-day cruise between Chicago and Buffalo (Niagara Falls) via Mackinac Island, Detroit, Cleveland, and Harbor Springs.

S. S. SOUTH AMERICAN

7-day Adventure Cruise from Buffalo or Cleveland to Duluth via Detroit, Mackinac Island, the locks at Sault Ste. Marie, and unspoiled Isle Royale—new National Park in Lake Superior.

S. S. ALABAMA

5-day cruise from Chicago to beautiful Isle Royale via Mackinac Island, and Sault Ste. Marie.

5- and 7-day cruises including transportation, meals, and berth in comfortable OUTSIDE stateroom, only...\$57.50/up

Also Special Week-End "Fun Ship" Cruise from Chicago to Mackinac Island and Sturgeon Bay, only...\$29.50/up

See any ERIE Railroad Ticket Agent or your own Travel Agent

GEORGIAN BAY LINE

E. J. GOEBEL, P. T. M.

CHICAGO, DULUTH and GEORGIAN BAY TRANSIT CO.

CHICAGO.....128 West Monroe Street

DETROIT.....1253 Washington Blvd.

CLEVELAND.....Union Commerce Bldg.

BUFFALO.....205 Lackawanna Terminal

NEW YORK.....8 West 40th Street

DULUTH.....344 West Superior Street

CONDENSED THROUGH FREIGHT SCHEDULES

FOR INFORMATION ONLY. For details, consult any freight traffic representative shown on opposite pages.

EASTBOUND — READ DOWN							WESTBOUND — READ UP						
TRAIN 74 and Connections	Train NE 98 and Connections	TRAIN 98 and Connections	TRAIN 72 and Connections	TRAIN 78 and Connections	TRAIN 90 and Connections	TRAIN 86	Central Time	TRAIN 77 and Connections	TRAIN 81 and Connections	TRAIN 91 and Connections	Train Adv 87 and Connections	TRAIN 87 and Connections	
Example Day	Example Day	Example Day	Example Day	Example Day	Example Day	Example Day		Example Day	Example Day	Example Day	Example Day	Example Day	
8:00AM Mon. 9:30AM Mon. 1:45PM Mon. 4:15PM Mon. 6:15PM Mon.	5:30PM Mon. 7:00PM Mon. 1:40AM Tue. 3:35AM Tue.	5:30PM Mon. 7:00PM Mon. 1:40AM Tue. 3:35AM Tue. 6:30AM Tue.	9:45PM Mon. 11:15PM Mon. 5:00AM Tue. 7:45AM Tue. 9:30AM Tue.				Lv. Chicago Lv. Hammond Lv. Huntington Lv. Lima Ar. Marion	11:00PM Wed. 9:45PM Wed. 3:15PM Wed. 11:30AM Wed. 10:30AM Wed.	2:00AM Thu. 12:15AM Thu. 8:00PM Wed. 5:30PM Wed. 3:30PM Wed.	5:30AM Thu. 4:00AM Thu. 12:20AM Wed. 10:35PM Wed. 9:00PM Wed.			
		6:50PM Mon. 1:30AM Tue. 2:30AM Tue. 3:15AM Tue.					Lv. Cincinnati Lv. Dayton Lv. Maitland (Springfield) Lv. Urbana		6:50AM Thu. 11:30PM Wed. 9:00PM Wed. 8:15PM Wed.				
8:45PM Mon. 12:01AM Tue. 12:50AM Tue.	9:00AM Tue.	9:30AM Tue. 11:50AM Tue. 2:00PM Tue.	12:15PM Tue. 3:45PM Tue. 5:00PM Tue.				Lv. Marion Lv. Akron Lv. Kent	7:45AM Wed. 2:45AM Wed. 1:35AM Wed.	1:25PM Wed. 11:50AM Wed. 8:04AM Wed.	8:50PM Wed. 6:00PM Wed. 4:00PM Wed.			
2:30PM Tue.			6:30AM Wed.				Ar. Cleveland	Lv.	2:15AM Wed.				
7:00PM Mon.							Lv. Cleveland	Ar.	6:30AM Wed.				
7:30AM Tue. 11:00PM Mon. 5:00PM Tue.		7:30AM Tue.	10:00PM Tue.				Ar. Youngstown Lv. Youngstown Ar. New Castle Lv. New Castle Ar. Sharon Lv. Sharon Ar. Meadville Lv. Meadville Ar. Jamestown	12:01AM Wed. 2:00AM Wed. 8:00AM Tue. 10:45PM Tue. 12:45AM Wed. 10:15PM Tue. 9:15PM Tue. 6:15PM Tue.	1:00PM Wed. 5:00PM Wed. 3:00PM Wed. 5:35AM Wed. 12:30PM Wed. 11:59AM Wed. 2:10AM Wed.	5:00AM Wed.			
8:30AM Tue. 12:25AM Tue. 3:25AM Tue. 3:55AM Tue.		10:30AM Tue. 5:10PM Tue.	12:25AM Wed. 8:00PM Tue. 9:00PM Tue. 11:45PM Tue.										
		12:30AM Wed. 7:30PM Tue.	2:00AM Wed.	7:15AM Wed.	9:00AM Wed.	5:15PM Wed.	Ar. Buffalo Lv. Buffalo	Lv.		10:00PM Tue. 9:30PM Tue.	6:00AM Wed.	4:00PM Wed.	
		5:30AM Wed. 5:30PM Tue.					Ar. Rochester Lv. Rochester	Lv.		4:30PM Mon. 5:30AM Wed.	8:00AM Wed.		
10:30AM Tue. 12:01PM Tue.		12:15AM Wed. 2:15AM Wed.	5:00AM Wed. 8:30AM Wed.	11:15AM Wed. 1:00PM Wed.	1:00PM Wed. 3:00PM Wed.	7:50PM Wed.	Ar. Hornell Lv. Hornell	Lv.	2:30PM Tue.	9:45PM Tue.	4:00AM Wed. 6:15PM Tue.	3:45AM Wed. 12:45PM Wed. 11:30AM Wed.	
			2:15AM Thu.				Ar. Philadelphia (Rdg)	Lv.		8:30PM Mon.	8:30PM Mon.		
1:00AM Wed. 7:00PM Tue.	2:30AM Wed.	3:30AM Wed. 5:45AM Wed.	10:00AM Wed. 12:01PM Wed.	12:01AM Thu. 7:00PM Wed.	12:01AM Thu. 7:00PM Wed.	9:30PM Wed. 11:00PM Thu.	Ar. Elmira Ar. Binghamton	Lv.	9:30AM Tue. 7:15AM Tue.	4:30PM Tue. 2:50PM Tue.	4:30PM Tue. 2:50PM Tue.	1:30AM Wed. 12:10AM Wed.	9:30AM Wed. 7:15AM Wed.
9:30AM Wed. 8:00PM Wed. 9:30PM Wed.	4:00PM Wed. 11:55PM Wed. 2:30AM Thu.	5:00PM Wed. 3:00AM Thu. 11:55AM Thu.	4:15AM Thu.	9:30AM Thu. 8:00PM Thu. 9:30PM Thu.	9:30AM Thu. 8:00PM Thu. 9:30PM Thu.		Ar. Albany (D&H) Ar. Boston (B&M) Ar. Portland (D&H-B&M)	Lv.	10:00AM Mon. 5:00AM Mon. 11:00PM Sun.	10:30PM Mon. 5:30PM Mon.	10:30PM Mon. 5:30PM Mon.		10:00AM Tue. 5:00AM Tue. 11:00PM Mon.
		11:00PM Tue.	8:00AM Thu.				Ar. Scranton Lv. Scranton	Lv.		11:00PM Mon.	11:00PM Mon.		8:00AM Wed.
3:30AM Wed. 8:00PM Wed.	8:30AM Wed. 6:15PM Wed. 11:50PM Wed. 12:01PM Thu.	1:00PM Wed. 9:25PM Wed. 3:00AM Thu. 3:00PM Thu.		6:30AM Thu. 11:50PM Thu. 12:01PM Fri.	6:30AM Thu. 11:50PM Thu. 12:01PM Fri.		Ar. Maybrook Ar. New Haven (NH) Ar. Boston (NH) Ar. Portland (NH-B&M)	Lv.		8:30AM Tue. 12:25AM Tue. 5:45PM Mon. 2:00AM Mon.	8:30AM Tue. 12:25AM Tue. 5:45PM Mon. 2:00AM Mon.		
4:30AM Wed. 6:30AM Wed. 1:30AM Wed.		12:30AM Thu. 6:30AM Thu. 3:45PM Wed.	12:30AM Thu. 6:30AM Thu. 12:30AM Thu.	4:30AM Thu. 6:30AM Thu. 3:30AM Thu.	6:00AM Thu. 8:00AM Thu. 4:30AM Thu.	6:30AM Thu. 5:20AM Thu.	Ar. Paterson Ar. Newark Ar. Croxton Ar. Jersey City	Lv.	5:30PM Mon. 9:00PM Mon. 1:15AM Tue.		5:30PM Mon. 9:00PM Mon. 3:30AM Tue.	4:30PM Tue. 5:45PM Tue.	5:30PM Tue. 9:00PM Tue. 10:30PM Tue.
NEW YORK (see note)													

NOTE—Freight to and from New York City and Brooklyn stations and piers is handled expeditiously on earfloats or lighters via Croxton or Jersey City. Prompt delivery or forwarding is assured.

“SHIP AND TRAVEL ERIE”

ERIE RAILROAD COMPANY

(ROBERT E. WOODRUFF AND JOHN A. HADDEN, TRUSTEES)

CHICAGO AND ERIE RAILROAD CO.

General Offices { Midland Building, Cleveland. Telephone, Cherry 8400.
Hudson Terminal, 50 Church Street, Corner Fulton, New York. Telephone, Cortlandt 7-9200.
Utilities Building, 327 South La Salle Street, Chicago. Telephone, Harrison 4160.

TRAFFIC AND DEVELOPMENT

CARL HOWE, Vice-President, Cleveland.

G. C. MANNING, Assistant Vice-President,
L. B. BURFORD, Assistant Vice-President,

New York.
Cleveland.

W. V. KENNEDY, Assistant Vice-President,
H. W. VON WILLER, Assistant to Vice-President,

Chicago.
Cleveland.

PASSENGER—Sales and Service

C. C. HOWARD, Passenger Traffic Manager,
R. B. ROGERS, General Passenger Agent,
T. R. PATTON, Assistant General Passenger Agent,
F. A. WALDRON, Assistant General Passenger Agent,

Cleveland.
Cleveland.
Youngstown.
New York.

H. T. HARLOW, General Passenger Agent,
A. FYNN, Assistant General Passenger Agent,
E. J. HAWERKOST, General Western Passenger Agent,
C. L. CHAPMAN, Genl. Baggage, Mail & Express Agent,

Chicago.
"
"
New York.

FREIGHT—Rates

L. B. BURFORD, Assistant Vice-President, Cleveland.
F. G. LANTZ, Freight Traffic Manager, Chicago.

Cleveland.
"
"
"

J. H. SISCO, Chief of Divisions Bureau,
A. BLAUDEL, Assistant Freight Traffic Manager,
E. C. HALLBERG, General Freight Agent,
H. T. SWEENEY, Chief of Tariff Bureau,
E. A. JAEHNE, Chief of Divisions Bureau,

Cleveland.
Chicago.
"
"
"

FREIGHT—Sales and Service

G. C. MANNING, Assistant Vice-President,
E. J. DEAN, Freight Traffic Manager,
G. R. WHEELER, General Freight Agent,
J. T. McENTEE, Assistant General Freight Agent,
H. C. SCHMIDT, General Eastern Freight Agent,
G. W. MADSEN, General New England Agent,
F. D. HARTNETT, Milk Freight Agent,
T. W. KANE, Grain Agent,

New York.
"
"
Buffalo.
New York.
Boston.
New York.
"

H. B. ROGERS, General Live Stock Agent,
G. A. LAMB, Freight Traffic Manager,
C. E. KING, Assistant General Freight Agent,
W. P. KROMPHARDT, Assistant General Freight Agent,
W. V. KENNEDY, Assistant Vice-President,
D. R. THOMPSON, Freight Traffic Manager,
J. G. HILL, General Freight Agent,
W. H. KOCH, Assistant General Freight Agent,
R. L. MURPHY, Assistant General Freight Agent,

East Buffalo.
Cleveland.
Pittsburgh.
Youngstown.
Chicago.
"
"
Detroit.
Cincinnati.

COAL AND COKE

R. E. O'GRADY, Coal Traffic Manager,
J. A. FERGUSON, Coal Freight Agent,
M. S. SWEENEY, Coal Freight Agent,
D. D. JAMIESON, Coal Freight Agent,
A. E. BARKALOW, Assistant Coal Freight Agent,
J. A. MUCHA, Assistant Coal Freight Agent,
F. D. AUSTIN, General Coal & Coke Agent,
E. C. JULIUS, Coal & Coke Agent,
W. N. STENFELT, Coal Agent,
H. O. DUNKLE, General Agent, Coal & Ore,

Cleveland.
"
Pittsburgh.
New York.
"
Buffalo.
Chicago.
"
"
Cleveland.

FOREIGN FREIGHT TRAFFIC

W. C. OTTEN, Foreign Freight Agent,
A. E. PETERSON, Foreign Freight Agent,
W. S. PENCHARD, Export and Import Agent,

New York.
Chicago.
New York.

PERISHABLE AND DAIRY TRAFFIC

J. A. RUSSELL, Manager, Pier 20, N. R.,
P. J. NAPOLI, Assistant Manager, Pier 20, N. R.,
H. W. BOUMANN, Western Dairy Agent,

New York.
"
Chicago.

INDUSTRIAL DEVELOPMENT

GEO. F. WESTON, Industrial Commissioner,
H. J. HART, Industrial Agent,

Cleveland.
New York.

TRAFFIC DEPARTMENT REPRESENTATIVES

Akron, O.—80 East Exchange St.
(Telephone Hemlock 8194-8195)
J. P. CLARK, Division Passenger Agt.
A. R. WALTON, General Agent.

Albany, N. Y.—Room 2, D. & H. Bldg.
(Telephone 4-6051)
H. G. COOKE, General Agent.

Atlanta, Ga.—1515-16 Healey Bldg.
(Telephone Walnut 2135)
W. H. STADELMAN, General Agent.

Baltimore, Md.—1301-8 Munsey Bldg.
(Telephone Plaza 8891)
E. W. VAIL, General Agent.

Birmingham, Ala.—1007 Watts Bldg.
(Telephone 3-1327)
WM. L. THORNTON, General Agent.

Birmingham, England—13 Corporation St.
MAURICE G. COOKE, General Agent.

Boston, Mass.—150 Causeway St.
(Telephone Capitol 2510-11-12)
G. W. MADSEN, Gen. New Eng. Agt.

Bradford, Pa.—Erie Station.
(Telephone 3413)
J. C. MOFFATT, General Agent.

Buffalo, N. Y.—6 North Division St.
(Telephone Washington 4300)
R. E. TOWNS, Division Passenger Agt.
838 Main Street.
(Telephone Wash. 1865)
J. T. McENTEE, Asst. General Freight Agt.

Chicago, Ill.—327 South La Salle St.
(Telephone Harrison 4160)
B. Y. VAUGHN, Trav. Pass. Agent
C. D. TURNER, General Agent.

Cincinnati, O.—503 Gwynne Bldg.
(Telephone Main 3420-3421)
R. L. MURPHY, Asst. Genl. Frt. Agt.

Cleveland, O.—Midland Bldg.
(Telephone Cherry 8400)
J. M. SKAEBILL, Division Freight Agt.
913 Huron Road
(Telephone Cherry 8400)
G. SAUNDERS, Div. Passenger Agt.

Columbus, O.—Rooms 309-310 Atlas Bldg., 8 East Long Street.
(Telephone Adams 7331)
L. J. BURGOTT, General Agent.

Dallas, Tex.—2118 Tower Petroleum Bldg.
1905 Elm St.
(Telephone 2-7352)
L. J. MARION, General Agent.

Dayton, O.—1004-8 Miami Savings Bldg.
(Telephone Adams 8481)
F. W. FISCHER, Div. Frt. Agt.

Des Moines, Ia.—Hubbell Bldg.,
904 Walnut Street,
(Telephone 4-0018)
H. A. BOCKMAN, General Agent.

Detroit, Mich.—Rooms 2-124 and 2-125 General Motors Bldg.
(Telephone Madison 2360-2361)
W. H. KOCH, Assistant General Frt. Agt.

East Buffalo, N. Y.—Live Stock Exch. Bldg.
(Telephone Washington 4300)
H. B. ROGERS, General Live Stock Agt.

Elmira, N. Y.—Erie Station.
(Telephone 2-1621)
J. W. O'HARA, Division Passenger Agt.
(Telephone 2-0377)
C. F. WHADCOOK, Division Freight Agent.

Glasgow, Scotland—82 Mitchell St.
W. S. THOMSON, General Agent.

Huntington, Ind.—Erie Station.
(Telephone 743)
F. C. MCCARTHY, Division Freight Agt.

Indianapolis, Ind.—143 No. Meridian St.
(Telephone Lincoln 2088)
T. J. WILLIAMSON, General Agent.

Jamestown, N. Y.—Erie Station
H. A. WILSON, Div. Frt. Agt.
(Telephone 7921-7922)

Jersey City, N. J.—Erie Station
(Telephone Journal Square 2-6400)
P. F. ARROYO, Genl. Agt. Pass. Dept.

Kansas City, Mo.—Rooms 826-7 Railway Exchange Bldg., 7th and Walnut Streets.
(Telephone Victor 6328)
N. C. FRICK, General Agent.

Liverpool, Eng.—17 Brunswick St.
A. G. TAYLOR, General Agent.

London, E. C. 3, Eng.—4 Billiter St.
PETER BUSWELL, General Agent.
D. S. DEANS, Genl. Continental Agt.

Los Angeles, Cal.—510 West 6th Street.
(Telephone Marquette 6542)
D. C. KELSEY, General Agent.

Marion, O.—Terminal Building
(Telephone 2657)
A. R. TENNIS, Division Freight Agent.

Memphis, Tenn.—1628-9 Exchange Bldg., Madison & Second Sts.
(Telephone 8-8781)
R. L. MILLER, General Agent.

Milwaukee, Wis.—818-9 Majestic Bldg.,
231 West Wisconsin Ave.
(Telephone Marquette 5555-5556)
L. T. COULSTON, General Agent.

Minneapolis, Minn.—125 Third Street, So.
(Telephone Main 3604)
L. E. NEWMAN, General Agent.

Newark, N. J.—1801-2 Military Park Bldg., 60 Park Place.
(Telephone Market 2-0525-26-27)
F. L. COLLINS, General Agent.

New Haven, Conn.—401 Powell Bldg.
(Telephone 5-7937)
G. E. ROBB, General Agent.

New Orleans, La.—Room 1417 Whitney Bldg.
(Telephone Raymond 9786)
E. W. BURNETT, General Agent.

New York, N. Y.—680-5th Ave. Room 219, Rockefeller Center.
(Telephone Circle 5-7222)
F. J. WILD, Genl. Agt. Pass. Dept.
A. G. OLDENQUIST, City Pass. Agt.
50 Church Street.
(Telephone Cortlandt 7-9200)

H. C. SCHMIDT, Genl. East. Frt. Agt.
J. G. FREELAND, Division Freight Agent.

Omaha, Neb.—1519 Farnam St.
(Telephone Jackson 4866)
C. L. COX, General Agent.

Peoria, Ill.—920 Jefferson Building, Cor. South Jefferson & Fulton Streets.
(Telephone 8007)
E. T. OLANDER, General Agent.

Philadelphia, Pa.—1009-10 Finance Bldg.
(Telephone Rittenhouse 8975-8976)
B. F. CONWAY, General Agent.

Pittsburgh, Pa.—Gulf Building.
(Telephone Grant 4831-2-3)
C. E. KING, Asst. Genl. Frt. Agt.

Portland, Ore.—Room 421 Pacific Bldg.,
520 S. W. Yamhill St.
(Telephone Main 3706)
H. L. SKEEN, General Agent.

Rochester, N. Y.—Erie Station.
(Telephone Main 2826)
C. V. HARROW, Division Freight Agent.

San Francisco, Cal.—681 Market St.
(Telephone Sutter 3875)
J. A. LLOYD, General Agent.

St. Louis, Mo.—Room 806, 1218 Olive St.
(Telephone Chestnut 7723-7724)
C. G. ANDREWS, General Agent.

St. Paul, Minn.—336 Robert St.
(Telephone Cedar 5912)
C. R. PETRY, General Agent.

Scranton, Pa.—Mill & Smith Sts. (Dunmore, Pa.)
(Telephone—Scranton 8191)
G. W. SHUMAN, Division Freight Agent.

Seattle, Wash.—1116-7 White Bldg.,
1338 Fourth Ave.
(Telephone Elliot 4834)
R. J. DUNDON, General Agent.

Springfield, O.—518 First National Bank Building.
(Telephone 2-5351)
E. W. KEILEY, General Agent.

Toledo, O.—342 South Erie Street.
(Telephone Main 3816)
H. J. SPANGENBERG, General Agent.

Toronto, Ont.—69 Yonge Street.
(Telephone Elgin 4077)
E. P. MORRILL, Canadian Frt. Agt.

Tulsa, Okla.—Room 1511 Hunt Bldg.
(Telephone 3-8613)
H. F. STUDD, General Agent.

Washington, D. C.—903 Southern Bldg.
(Telephone National 6075)
W. J. MURRAY, General Agent.

Youngstown, O.—Terminal Building.
(Telephone 41101)
W. P. KROMPHARDT, Asst. Genl. Frt. Agt.
C. R. MARTIN, Div. Frt. Agt.