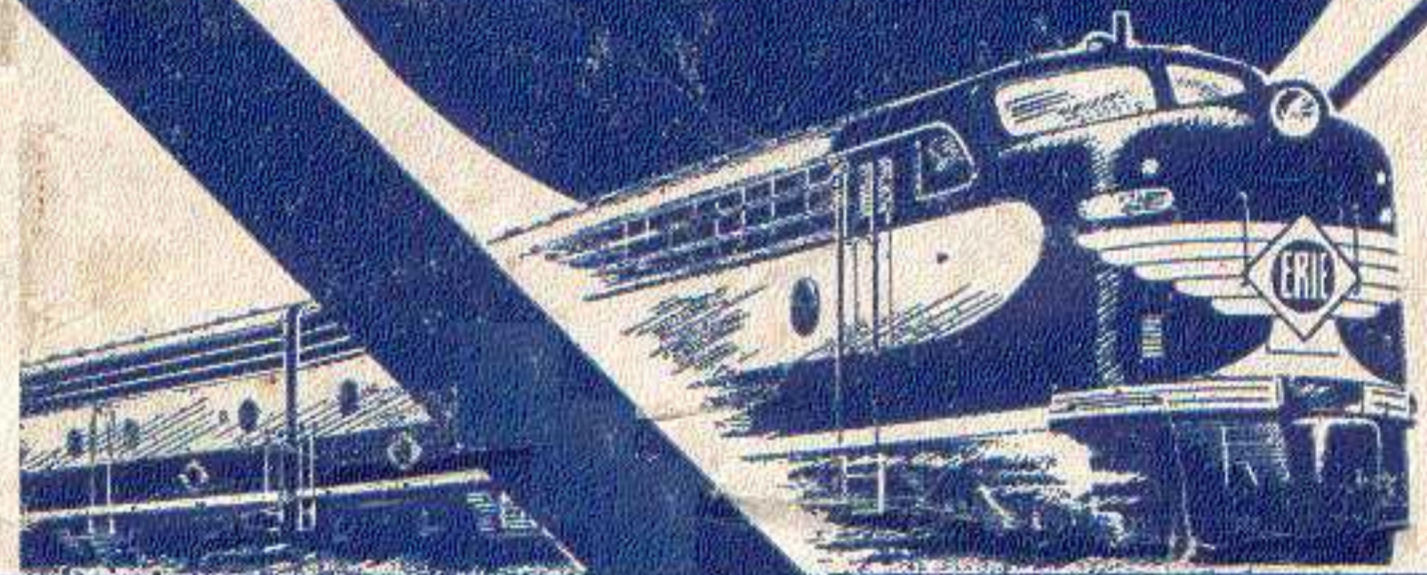
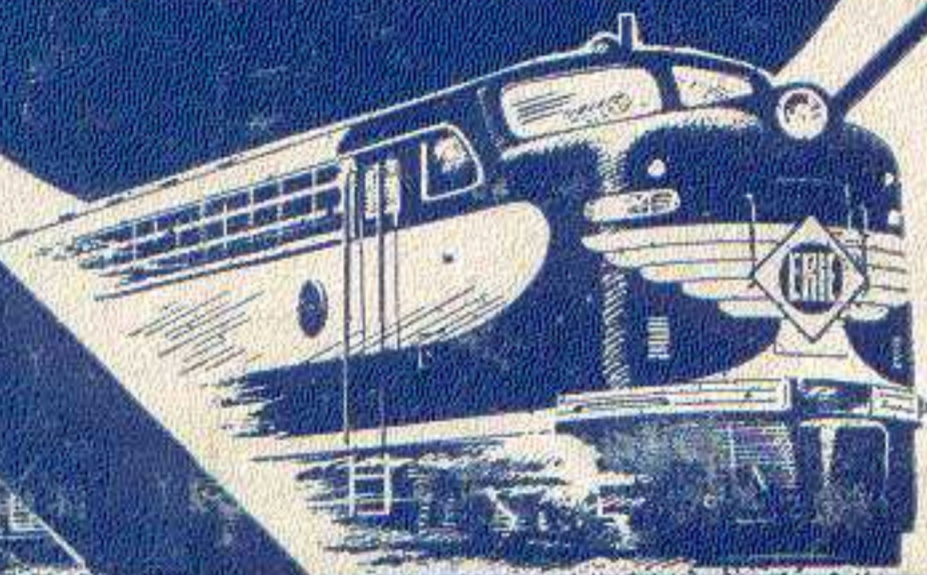


Effective  
JUNE 22, 1952

Effective  
JUNE 22, 1952

**ERIE**

**ERIE**



**TIME TABLES      TIME TABLES**

*The Scenic Route between*

NEW YORK  
JAMESTOWN  
YOUNGSTOWN  
CLEVELAND  
AKRON  
CHICAGO

*The Scenic Route between*

NEW YORK  
JAMESTOWN  
YOUNGSTOWN  
CLEVELAND  
AKRON  
CHICAGO

FORM 1    STANDARD (Not Daylight) TIME SHOWN IN THIS FOLDER

FORM 1    STANDARD (Not Daylight) TIME SHOWN IN THIS FOLDER

**Erie Railroad**

**Erie Railroad**

# Your Ticket on the ERIE

## IS YOUR ASSURANCE OF COMFORTABLE TRAVEL

*on smooth, diesel-powered, air-conditioned trains*

### RECLINING-SEAT COACHES

You can ride in Erie's air-conditioned coaches on all through trains. Adjustable, deep-cushioned seats next to broad-vision windows, individual lighting, spic and span washrooms—everything possible for your comfort is waiting for you on an Erie coach. Sit back and relax—forget weather worries—whatever the weather, you arrive at your destination safe and rested.

### SPACIOUS BEDROOMS

Really spacious accommodations, with complete privacy, are yours in these modern, pastel-toned bedrooms. Completely private toilet facilities and individually controlled air-conditioning. At night, your porter will prepare the softest beds you've ever enjoyed. There's plenty of wardrobe space and other features that make these bedrooms ideal for family travel.

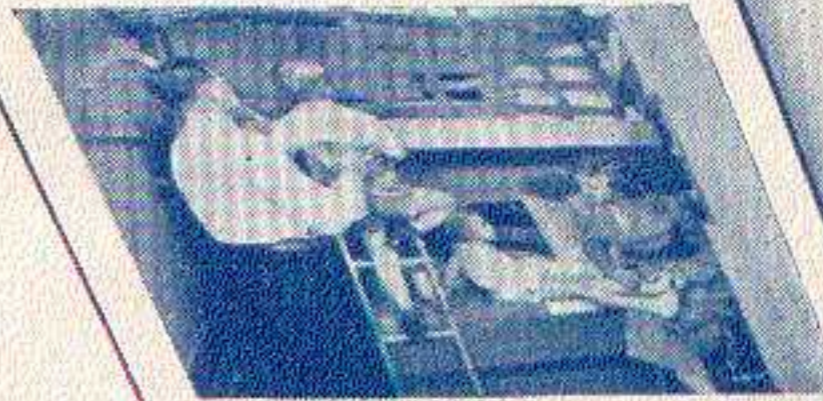
### ROOMETTES

The inexpensive way for one person to travel in complete privacy and comfort. A soft sofa seat next to a huge picture window. Private toilet facilities. Separate ventilation control and plenty of wardrobe space. At night you sleep in complete privacy in your own room, in one of the most comfortable beds you've ever slept in.

Cheerful,  
Courteous Service,  
always on the



Issued by  
ERIE RAILROAD CO.



*Delicious  
foods in  
pleasant  
surroundings*



*Large,  
modern  
convenient  
washrooms*



Issued by  
ERIE RAILROAD CO.

**TABLE OF CONTENTS**

Equipment of Through Trains.....	Page
Equipment of Detroit, Toledo, Cleveland, Youngstown, Pittsburgh, Washington and Baltimore Trains.....	9, 10
Erie Railroad Map.....	23, 24
Fares—One-Way and Round-trip.....	15, 16, 17, 18
Fares—Sleeping and Parlor Car.....	7, 8
Map of Downtown Chicago.....	7, 8
Map of New York City and adjacent area.....	15, 25
Motor Coach Service New York.....	18
Suggestions to help you read this folder.....	12
Ticket Offices and Passenger Stations in Principal Cities.....	5, 6
Traffic and Development Representatives.....	3, 4
General Information.....	29, 30
Adjustment of fares.....	5, 6
Articles lost on trains.....	Holidays
Baggage regulations.....	Lost tickets
Fares for children.....	Prepaid orders
	Redemption of tickets
	Safety first hints
	Standard of time
	Stop-Overs

<b>Train Service</b>	Page
Binghamton—New York.....	13, 14
Binghamton—Chicago.....	19, 20
Bradford—Salamanca—Akron—Chicago.....	21
Chautauqua Lake—Jamestown—Akron—Chicago.....	22
Condensed Schedule of Through Trains.....	9, 10
Detroit—Toledo—Cleveland—Youngstown—Pittsburgh—Washington—Baltimore.....	23, 24
Marion—Chicago.....	19, 20
New York—Binghamton.....	11, 12
New York—Jamestown—Chautauqua Lake.....	22
New York—Kenoza Lake—Jeffersonville.....	22
New York—Salamanca—Bradford.....	21

**INDEX OF STATIONS ON ERIE RAILROAD OR CONNECTING LINES**  
**At Which Trains Are Scheduled To Stop**  
**Numerals Opposite Station Names Indicate Time Table Numbers**  
**Symbols Before Station Explained at Bottom of Page**

TABLE NO.	TABLE NO.	TABLE NO.	TABLE NO.	TABLE NO.	TABLE NO.
<b>Addison, N. Y.</b> .....4	<input type="checkbox"/> <b>Coraopolis, Pa.</b> .....8	<b>Goshen, N. Y.</b> .....2, 3	<b>Kent, O.</b> .....4	<b>Niles, O.</b> .....4, 8	<b>Salamanca, N. Y.</b> .....1, 4, 5
<b>Akron, O.</b> .....1, 4, 5, 7	<b>Corning, N. Y.</b> .....1, 4	<b>Great Bend, Pa.</b> .....2, 3	<b>Kenton, O.</b> .....4	<b>North Judson, Ind.</b> .....4	<b>Sharon, Pa.</b> .....4
<input type="checkbox"/> <b>Albany, N. Y.</b> .....4	<b>Corry, Pa.</b> .....4	<b>Greenville, Pa.</b> .....4	<b>Lackawaxen, Pa.</b> .....2, 3	<b>North Randall, O.</b> .....8	<input type="checkbox"/> <b>Shobola, Pa.</b> .....2, 3
<input type="checkbox"/> <b>Aliquippa, Pa.</b> .....8	<b>Crown Point, Ind.</b> .....4	<input type="checkbox"/> <b>Gulf Summit, N. Y.</b> .....2, 3	<b>Leavittsburg, O.</b> .....8	<input type="checkbox"/> <b>Silver Spring, Md.</b> .....8	<b>Skinner's, N. Y.</b> .....2, 3
<b>Allendale, N. J.</b> .....2, 3	<b>Cuba, N. Y.</b> .....4	<b>Δ Hale's Eddy, N. Y.</b> .....2, 3	<b>Lee Road-Shaker Hts. Station (Cleveland, Ohio)</b> .....8	<b>Skoon, O.</b> .....8	<b>Stoatsburg, N. Y.</b> .....2, 3
<b>Andover, N. Y.</b> .....4	<input type="checkbox"/> <b>Cumberland, Md.</b> .....8	<b>Hammond, Ind.</b> .....4	<b>Lima, O.</b> .....4	<b>Southfields, N. Y.</b> .....2, 3	<b>Solon, O.</b> .....8
<b>Arden, N. Y.</b> .....2, 3	<b>Decatur, Ind.</b> .....4	<b>Hancock, N. Y.</b> .....2, 3	<b>Long Eddy, N. Y.</b> .....2, 3	<b>Δ Sparrowbush, N. Y.</b> .....2, 3	<b>Suffern, N. Y.</b> .....2, 3
<b>Ashland, O.</b> .....4	<b>Deposit, N. Y.</b> .....2, 3	<b>Hankins, N. Y.</b> .....2, 3	<b>Lordville, N. Y.</b> .....2, 3	<b>Susquehanna, Pa.</b> .....2, 3	
<b>Aurora, O.</b> .....8	<input type="checkbox"/> <b>Detroit, Mich.</b> .....8	<b>Harper's Ferry, W. Va.</b> .....8	<b>Δ Mahoning, O.</b> .....8	<b>Δ Parker's Glen, Pa.</b> .....2, 3	<input type="checkbox"/> <b>Toledo, O.</b> .....8
<input type="checkbox"/> <b>Baltimore, Md.</b> .....8	<b>Δ East Fifty-fifth St. (Cleveland), O.</b> .....8	<b>Harriman, N. Y.</b> .....2, 3	<b>Mahwah, N. J.</b> .....2, 3	<b>Passaic, N. J.</b> .....2, 3	<b>Δ Tusten, N. Y.</b> .....2, 3
<b>Barberton, O.</b> .....4	<b>Δ East Ninety-third St. (Cleveland), O.</b> .....8	<b>Hillburn, N. Y.</b> .....2, 3	<b>Mansfield, O.</b> .....4	<b>Paterson, N. J.</b> .....1, 2, 3	<b>Tuxedo, N. Y.</b> .....2, 3
<input type="checkbox"/> <b>Beaver, Pa.</b> .....8	<b>East Rutherford, N. J.</b> .....2, 3	<b>Hiram, O.—See Garrettsville-Hiram.</b>	<b>Mantua, O.</b> .....8	<b>Phalanx, O.</b> .....8	
<input type="checkbox"/> <b>Beaver Falls (New Brighton, Pa.)</b> .....8	<input type="checkbox"/> <b>Ellwood City, Pa.</b> .....8	<b>Hobokus, N. J.</b> .....2, 3	<b>Marion, O.</b> .....4	<input type="checkbox"/> <b>Pittsburgh, Pa.</b> .....4, 8	<b>Union City, Pa.</b> .....4
<b>Belmont, N. Y.</b> .....4	<b>Elmira, N. Y.</b> .....1, 4	<input type="checkbox"/> <b>Honesdale, Pa.</b> .....2, 3	<input type="checkbox"/> <b>Martinsburg, W. Va.</b> .....8	<b>Pond Eddy, Pa.</b> .....2, 3	
<b>Binghamton, N. Y.</b> .....1, 2, 3, 4	<b>Englewood (63rd St.), Ill.</b> .....4	<b>Hornell, N. Y.</b> .....1, 4	<input type="checkbox"/> <b>McKeesport, Pa.</b> .....8	<b>Port Jervis, N. Y.</b> .....2, 3	
<input type="checkbox"/> <b>Braddock, Pa.</b> .....8	<b>Friendship, N. Y.</b> .....4	<b>Howells, N. Y.</b> .....2, 3	<b>Meadville, Pa.</b> .....1, 4	<b>Wadsworth, O.</b> .....4	
<b>Bradford, Pa.</b> .....1, 5	<b>Gallon, O.</b> .....4	<b>Huntington, Ind.</b> .....4	<b>Middletown, N. Y.</b> .....2, 3	<b>Waldwick, N. J.</b> .....2, 3	
	<b>Garrettsville-Hiram, O.</b> .....8	<b>Jamestown, N. Y.</b> .....1, 4, 5, 7	<b>Δ Mill Rift, Pa.</b> .....2, 3	<input type="checkbox"/> <b>Wampum, Pa.</b> .....8	
<b>Callicoon, N. Y.</b> .....2, 3, 6	<b>Girard, O.</b> .....8	<b>Δ Jeddoe, O.</b> .....8	<b>Monroe, N. Y.</b> .....2, 3	<b>Warren, O.</b> .....4, 8	
<b>Cambridge Springs, Pa.</b> .....4	<b>Girard, O.</b> .....8	<input type="checkbox"/> <b>Jeffersonville, N. Y.</b> .....6	<b>Narrowsburg, N. Y.</b> .....2, 3	<input type="checkbox"/> <b>Washington, D. C.</b> .....8	
<input type="checkbox"/> <b>Chautauqua, N. Y.</b> .....7	<b>Geauga Lake, O.</b> .....8	<b>Jersey City, N. J.</b> .....1, 2, 3, 4, 5, 6, 7.	<input type="checkbox"/> <b>New Brighton, Pa.</b> .....8	<b>Waverly, N. Y.</b> .....4	
<input type="checkbox"/> <b>Chautauqua Lake, N. Y.</b> .....4	<b>Girard, O.</b> .....8	<input type="checkbox"/> <b>Kenoza Lake, N. Y.</b> .....6	<input type="checkbox"/> <b>New Castle, Pa.</b> .....8	<b>Wellsville, N. Y.</b> .....4	
<b>Chester, N. Y.</b> .....2, 3			<b>New Hampton, N. Y.</b> .....2, 3	<b>Δ Westcolang Park, Pa.</b> .....2, 3	
<b>Chicago, Ill.</b> .....1, 4, 5, 7			<b>New York, N. Y.</b> .....1, 2, 3, 4, 5, 6, 7.	<b>Youngstown, O.</b> .....1, 4, 5, 8	
<b>Cleveland, O.</b> .....1, 4, 8					
<b>Cochecton, N. Y.</b> .....2, 3					
<b>Connellsville, Pa.</b> .....8					

**ERIE TICKET OFFICES AND PASSENGER STATIONS IN PRINCIPAL CITIES**

<b>Akron, O.</b> —Erie Station. (Telephone Blackstone 4132) O. E. BLAIR, Ticket Agent.	<b>Corning, N. Y.</b> —Erie Station. (Telephone 64021) C. S. SHANAHAN, Ticket Agent.	<b>Lima, O.</b> — (Telephone 4-9891) F. T. GARVEY, Ticket Agent.	<b>Niles, O.</b> —Erie Station. (Telephone 2-2569) W. L. CARTWRIGHT, Ticket Agent.
<b>Binghamton, N. Y.</b> —Erie Station. (Telephone 4-3251) A. T. JOHNSON, Ticket Agent.	<b>Corry, Pa.</b> — (Telephone 2-4974) D. JONES, Ticket Agent	<b>Mansfield, O.</b> —Erie Station. (Telephone 1423-6) W. F. RATHBURN, Ticket Agent.	<b>Olean, N. Y.</b> — (Telephone 4343) W. M. BRAMLEE, Ticket Agent
<b>Chicago, Ill.</b> —Information and Pullman Reservations. (Telephone WA bash 2-3670) City Ticket Office, 163-165 West Jackson Blvd. (Telephone HA rrisson 7-4160) C. F. KUNDEL, Ticket Agent.	<b>Elmira, N. Y.</b> —Erie Station. (Telephone 2-0380) J. V. CLARY, Ticket Agent.	<b>Marion, O.</b> —Erie Station. (Telephone 2-2607) R. H. STIEF, Ticket Agent.	<b>Passaic, N. J.</b> —Erie Station (Telephone Prescott 9-5693) M. J. LYNCH, Ticket Agent.
<b>Hotel Ticket Offices</b> — Drake, Morrison, Sherman, Conrad Hilton, Palmer House, Merchandise Mart, Lakeview Bldg., 116 So. Michigan Ave. (Telephone HA rrisson 7-2203) H. A. JOHNSON, Ticket Agent.	<b>Galion, O.</b> — (Telephone 2-4151) J. F. BLAZER, Ticket Agent.	<b>Meadville, Pa.</b> —Erie Station. (Telephone 3-3121) R. J. O'GRADY, Ticket Agent.	<b>Paterson, N. J.</b> —Erie Station (Telephone Sherwood 2-3337) J. H. GRAF, Ticket Agent.
<b>Dearborn Station.</b> (Telephone HA rrisson 7-7500) W. E. MISCHNICK, Ticket Agent.	<b>Hammond, Ind.</b> — (Telephone Sheffield 184) W. G. WITWER, Ticket Agent.	<b>Middletown, N. Y.</b> —Erie Station. (Telephone 3303) C. R. DINEEN, Ticket Agent.	<b>Port Jervis, N. Y.</b> —Erie Station (Telephone 3-2271) R. FARBER, Ticket Agent.
<b>63rd St. Station.</b> (Telephone WE ntworth 6-3503) S. S. NIELSON, Ticket Agent.	<b>Hornell, N. Y.</b> —Erie Station. (Telephone 680) M. W. DELANY, Ticket Agent.	<b>New York, N. Y.</b> Information Bureau. Train Service and Fares. (Telephone Barclay 7-6500) Rockefeller Center Terminal and City Ticket Office, 11 Rockefeller Plaza. (Telephone Circle 5-7225) R. B. HUNT, Ticket Agent.	<b>Salamanca, N. Y.</b> —Erie Station. (Telephone 348) C. E. BROOKS, Ticket Agent.
<b>Cleveland, O.</b> — Union Terminal, Public Square Information Bureau Train Service and Fares (Telephone Cherry 1-8200) Parlor Car and Pullman Reservations (Telephone Main 1-2800) Lee Road, Shaker Hts., Erie Station. (Telephone Washington 1-4200)	<b>Huntington, Ind.</b> —Erie Station. (Telephone 139) M. V. WELLS, Ticket Agent.	<b>Chambers Street Station</b> (Telephone Worth 4-4500) O. R. KRECH, Ticket Agent.	<b>Sharon, Pa.</b> —Erie Station (Telephone 6234) G. E. FRICKER, Ticket Agent.
	<b>Jamestown, N. Y.</b> —Erie Station. (Telephone 6076) D. S. FORDHAM, Ticket Agent.	<b>City Ticket Office, 17 John Street</b> (Telephone Cortlandt 7-6430) R. F. WAGNER, Ticket Agent.	<b>Warren, O.</b> —Erie Station (Telephone 2-2194) R. L. O'GRADY, Ticket Agent.
	<b>Jersey City, N. J.</b> —Erie Station. (Telephone Journal Square 2-6400) G. B. IRVING, Ticket Agent.		<b>Youngstown, O.</b> —Erie Station (Telephone 4-0295) R. S. GETTIG, Ticket Agent.
	<b>Kent, O.</b> —Erie Station. (Telephone 3231) S. D. MCNEILL, Ticket Agent.		

Not on the Erie Railroad—See schedule indicated.

Δ—No tickets sold or Baggage Handled at this station.



# Suggestions to help you read this folder

## Reading of Tables

On all tables, the schedule of each individual train is shown in a separate column. Each train has an operating number which appears at the top of the schedule column.

Train times from 12:01 a.m. (Midnight) to 12:00 Noon inclusive, are printed in light-faced figures; 12:01 p.m. (Noon) to 12:00 Midnight are printed in dark-face throughout the timetable.

Trains make regular stops only at stations where time figures appear in column opposite the station name. Symbols are opposite some schedule figures. They are important. They indicate exceptions and should be checked carefully with the explanation under Reference Notes at the bottom of each page.

On main line Table 4, where a station name is indented, that station is located on a Branch Line or connecting service.

The equipment of principal trains is shown on pages 9, 10, 23 and 24. Coach equipment is carried on all trains.

Any Erie Ticket Agent or representative will be glad to assist you with information and reservations.

## General Information

Erie Lines east of and including Ohio City, Ohio, are shown in EASTERN STANDARD TIME. Lines west of Ohio City, Ohio, in CENTRAL STANDARD TIME.

DAYLIGHT SAVING TIME is observed until Sept. 27, incl., at New York City and most points, including branch lines, to Cleveland and Rittman, Ohio, inclusive, also at points Decatur, Ind. to Chicago, Ill., inclusive. There will be a few exceptions where standard time will remain in effect but the information is not available at the printing of this time table.

THIS COMPANY IS NOT RESPONSIBLE FOR ERRORS in timetables, inconvenience or damage resulting from delayed trains, or failure to make connections; schedules and equipment shown herein are subject to change without notice.

The term HOLIDAYS (unless covered by special note under schedule) refers to New Year's Day, Lincoln's Birthday, Washington's Birthday, Memorial Day, Independence Day, Labor Day, Columbus Day, Election Day (November 4), Thanksgiving and Christmas.

Trains will not be held at JERSEY CITY for ferries from New York between the hours of 4:00 P.M. and 5:30 P.M. Eastern Standard Time.

CHILDREN under five years of age are carried free when accompanied by parent or guardian; five years of age and under twelve, half fare; twelve years of age and over, full fare.

Should ANY MISUNDERSTANDING arise with conductors or agents, pay the fare required, take receipt and communicate with Passenger Traffic Manager, Midland Bldg., Cleveland, Ohio.

TICKETS UNUSED or partly used will be redeemed under tariff regulations at proper value. Railroads are not responsible for lost tickets or baggage checks.

A STOP-OVER within final limit will be granted on tickets sold at regular fares at all stations on the Erie Railroad (with certain exceptions in the New York suburban area).

WHEN ARTICLES ARE LOST on trains or left in waiting rooms, owners should apply at once to Agent at station where they leave train or address Manager, Baggage Traffic, Erie Railroad, Chambers St. Terminal, New York 7, N. Y., giving full description of property, stating date of loss and train number.

Effective July 1, 1952, a charge of 25c per piece of hand baggage and 50c per trunk will be assessed when checked on tickets. 150 pounds of baggage are checked on adult tickets and 75 pounds on half fare tickets subject to tariff stipulations as to contents, weight, value and size.

Personal baggage is wearing apparel, toilet articles (except liquid) and personal effects in actual use and necessary and appropriate for the wear, use, comfort and convenience of the passenger for the purpose of the journey and not intended for other persons or for sale. Articles which may not be included in personal baggage are shown in published tariff which is on file at stations.

Baggage to be checked should be delivered at stations reasonably in advance of train departure. The railroad cannot guarantee to forward baggage on same train with passenger and when necessary will be forwarded on other trains. To facilitate prompt receipt of baggage at destination, passengers are urged to arrange for forwarding on a preceding train.

A charge is made for storage of baggage at destination when it is not claimed within full time limit.

ALL BAGGAGE CHECKED IN BAGGAGE CAR TO OR FROM NEW YORK CITY will be sent to Chambers Street Station.

BAGGAGE CHECKED FOR HANDLING IN BAGGAGE CAR WILL NOT BE CARRIED ON MOTOR COACHES.

BAGGAGE INSURANCE may be purchased at principal Erie Ticket Offices. It insures your baggage and personal effects for your entire trip anywhere in the world. Minimum premium twenty-five cents. Ask Ticket Agent for full particulars.

BAGGAGE may be checked through to house address, hotel, steamship dock, etc., at destination. Reliable transfer companies perform this service at nominal charges at all principal cities.

HAND BAGGAGE in coaches or Pullman cars is restricted to what can be conveniently placed in accommodations purchased by passenger. It is urged that passengers carry with them only such baggage as required for their immediate needs. Other baggage may be checked in baggage car at a nominal charge.

FOR YOUR OWN SAFETY—don't get on or off a train in motion; wait for a full stop. Keep hand baggage out of car aisles. Walk carefully when entering or leaving train; high-heeled shoes are sometimes a cause of tripping or stumbling on car steps. Don't stand or walk close to the railroad track; look both ways before starting across.

PREPAID TICKET ORDERS—for patrons who do not wish to send money by mail, Erie Railroad Ticket Agents sell prepaid ticket orders for the delivery of transportation, rail and Pullman, from practically all points in the United States, Canada and Mexico. These orders may also include the furnishing of cash.

In an emergency, arrangement may be made for the delivery of transportation by telegraph or telephone without charge except when commercial wires are used. Consult Ticket Agents for details.

RAILROAD AND PULLMAN FARES For Information Only. Federal Tax Not Included. Subject to Change Without Notice

Table with columns for 'Between' and 'And' stations, and sub-sections for NEW YORK, BINGHAMTON, and YOUNGSTOWN. Each sub-section includes 'RAILROAD TICKETS VALID IN' (Coaches, Pullmans) and 'PULLMAN RATES' (Lower Berth, Seat Fare).

Table with columns for 'Between' and 'And' stations, and sub-sections for JAMESTOWN, CLEVELAND, and CHICAGO. Each sub-section includes 'RAILROAD TICKETS VALID IN' (Coaches, Pullmans) and 'PULLMAN RATES' (Lower Berth, Seat Fare). Includes a vertical note on the right: 'MINIMUM NUMBER OF RAILROAD TICKETS REQUIRED FOR EXCLUSIVE OCCUPANCY OF SPACE IN SLEEPING OR PARLOR CARS'.

RATES FOR UPPER BERTH, DRAWING ROOM, COMPARTMENT, DOUBLE BEDROOM OR ROOMETTE IN SLEEPING CARS

Table with columns for 'Where Lower Berth Rate Is', 'Upper Berth Rate Will Be', and various car types (Roomette, Double Bedroom, Bedroom Suite, Section Rate, Compartment, Drawing Room) with sub-columns for occupancy (One, Two or More).

Note:—Single occupancy sections available in certain cars on certain trains. Consult ticket agents.
▲ For section occupied by two passengers, but with lower berth only prepared for night service.
\*Limit six months, except as otherwise indicated.
\*Thirty-day limit.
†One-year limit.

TABLE 1

CONDENSED TABLE OF THROUGH TRAINS NEW YORK, CLEVELAND AND CHICAGO (FOR LOCAL TRAINS AND INTERMEDIATE TIME OF THROUGH TRAINS SEE LOCAL TABLES)

Air-Conditioned Trains—Air-conditioned equipment has been assigned to regular sections of trains as shown herein. Every effort will be made to provide it as specified, but the right is reserved to employ non-air-conditioned cars as necessitated by volume of traffic or emergencies.

WESTBOUND

THE ERIE LIMITED TRAIN NO. 1—DAILY New York—Jamestown—Akron—Chicago Diesel Powered EQUIPMENT Air-Conditioned Sleeping Cars: New York to Chicago—10 Roomette, 6 Double Bedroom. Salamanca to Chicago—6 Roomettes, 6 Section, 4 Double Bedroom. Youngstown to Chicago—12 Roomette, 2 Single Bedroom, 3 Double Bedroom. (Sleeper open Youngstown 8:30 p.m.) Akron to Chicago—10 Roomette, 6 Double Bedroom (Sleeper open Akron 8:30 p.m.) Air-Conditioned Diner-Lounge Car: New York to Chicago. Air-Conditioned Individual Reclining Seat Coaches: New York to Chicago. (Pillows May Be Rented From Train Porter For 25c)

THE LAKE CITIES TRAIN NO. 5—DAILY New York—Jamestown—Cleveland—Akron—Chicago Diesel Powered EQUIPMENT Air-Conditioned Sleeping Cars: New York to Chicago—10 Roomette, 6 Double Bedroom. New York to Cleveland—6 Roomettes, 6 Section, 4 Double Bedroom. New York to Salamanca—4 Section, 6 Roomette, 4 Double Bedroom. (Sleeping Car may be occupied at Salamanca until 7:30 a.m.) Air-Conditioned Diner-Lounge Car: New York to Chicago. Air-Conditioned Individual Reclining Seat Coach: New York to Chicago. New York to Cleveland. (Pillows May Be Rented From Train Porter For 25c)

PACIFIC EXPRESS TRAIN NO. 7—DAILY New York—Jamestown—Chicago Diesel Powered EQUIPMENT Air-Conditioned Sleeping Car: New York to Hornell—10 Section, 1 Drawing Room, 2 Double Bedroom. (Sleeper open Jersey City at 9:30 p.m.) Air-Conditioned Erie Diner-Lounge Car: Binghamton to Marion. Air-Conditioned Individual Reclining Seat Coaches: New York to Chicago.

THE MOUNTAIN EXPRESS TRAIN NO. 27—DAILY New York—Binghamton Diesel Powered EQUIPMENT Air-Conditioned Erie Diner-Lounge Car: New York to Binghamton. Air-Conditioned Coach: New York to Binghamton. Coaches: New York to Susquehanna.

EASTBOUND

THE ERIE LIMITED TRAIN NO. 2—DAILY Chicago—Jamestown—New York Diesel Powered EQUIPMENT Air-Conditioned Sleeping Car: Chicago to New York—10 Roomette, 6 Double Bedroom. Chicago to Salamanca—6 Roomette, 6 Section, 4 Double Bedroom. Air-Conditioned Diner-Lounge Car: Chicago to New York. Air-Conditioned Individual Reclining Seat Coaches: Chicago to New York. (Pillows May Be Rented From Train Porter For 25c)

THE LAKE CITIES TRAIN No. 6—DAILY Chicago—Akron—Cleveland—Jamestown—New York Diesel Powered EQUIPMENT Air-Conditioned Sleeping Cars: Chicago to New York—10 Roomette, 6 Double Bedroom. Cleveland to New York—6 Roomette, 6 Sections—4 Double Bedroom. Salamanca to New York—4 Section, 6 Roomette, 4 Double Bedroom (Salamanca Sleeper open for occupancy at 9:30 p.m.) Air-Conditioned Diner-Lounge Car: Chicago to New York. Air-Conditioned Individual Reclining Seat Coach: Chicago to New York. Cleveland to New York. (Pillows May Be Rented From Train Porter For 25c)

ATLANTIC EXPRESS TRAIN NO. 8—DAILY EX. SUN. TRAIN NO. 80—SUNDAY ONLY Chicago—Akron—Jamestown—Elmira—Binghamton—New York DAILY Diesel Powered EQUIPMENT Air-Conditioned Sleeping Car: Chicago to Meadville—12 Roomette, 2 Single Bedroom, 3 Double Bedroom. Chicago to Akron—10 Roomette, 6 Double Bedroom. (Sleepers open Chicago 8:30 p.m. Sleeper may be occupied at Akron until 8:00 a.m.) Air-Conditioned Erie Diner-Lounge Car: Ashland to New York. Air-Conditioned Individual Reclining Seat Coaches: Chicago to New York. Air-Conditioned Coach: Hornell to New York.

AA Stops to receive passengers; AD Stops to discharge passengers from Port Jervis and west. ♦ Stops to discharge passengers. % Motor Coach connection in effect until Sept. 15 incl.



**TABLE 3  
EASTBOUND**

**BINGHAMTON—NEW YORK**

For additional train service between Jersey City and Suffern, not shown in this folder, please refer to local time tables.

Hudson and Manhattan Tube Trains operate between New York and Erie Railroad Station in Jersey City.  
From Erie Station, Jersey City—To Downtown New York—Train marked "Hudson Terminal"—Fare 20 cents.  
To Uptown New York —Train marked "33rd Street"—Fare 20 cents.

Eastern Standard Time	50	52	6	202	56	204	700	30	62	70	28	2	34	704	44	8	80	68		
	Daily Ex. Sat., Sun. and Hol.	Daily Ex. Sat., Sun. and Hol.	Daily	Sat. only	Daily Ex. Sat., Sun. and Hol.	Sat. only	Sun. & Hol. only	Daily	Daily Ex. Sat., Sun. & Hol.	Sun. and Hol. only	Daily Local	Daily	Sept. 1 only	Sun. and Hol. only	Sun. only	Daily Ex. Sun.	Sun. only	Daily		
Read Down	AM	AM	AM	AM	AM	AM	AM	AM	PM	PM	AM	PM	PM	PM	PM	PM	PM	PM	PM	PM
Binghamton, N. Y. Lv.			2.29								10.30	12.45				5.25	5.57			
Great Bend, Pa. "Ar.											11.00									
Susquehanna "Lv.			2.55								11.13	1.16				5.54	6.27			
Gulf Summit N. Y. Deposit.			2.57								11.23	1.18				5.56	6.29			
Hale's Eddy	Daily except Sat., Sun. and Hols. No Baggage Carried on this Train	Daily except Sat., Sun. and Hols. No Baggage Carried on this Train		Saturdays only No Baggage Carried on this Train	Daily except Sat., Sun. and Hols. The Tuxedo	Runs Saturdays Only No Baggage Carried on this Train	Runs Sundays and Holidays only No Baggage Carried on this Train	Daily except Sundays and Holidays	Runs Sundays and Holidays only	No Baggage Carried on this Train	11.41									
Hancock			11.53								1.45	2.30	3.30	6.25	6.56					
Lordville			12.01																	
Long Eddy			12.22								2.03	2.49	3.50	6.43	7.12					
Hankins			12.37								2.16	3.05	4.05							
Callicoon			12.46										4.14							
Cochecton			12.54										4.22							
Skinner, N. Y.			1.09								2.40	3.23	4.22	7.19	7.48					
Honesdale Pa. CS			1.29									3.37	4.36							
Narrowsburg N. Y.			1.35									3.46	4.44							
Tusten			1.00								2.15	3.15	4.15							
Westcolang Park Pa.			1.48								3.01	4.01	4.59	7.39	8.08					
Lackawaxen	1.52			5.12																
Shohola	2.06			5.19																
Parker's Glen	2.16			5.28																
Pond Eddy	CD			CF																
Mill Rift	2.29			5.41																
Sparrowbush N. Y.	CD			5.55																
Port Jervis "Ar.	2.45			CF																
Port Jervis "Lv.	2.51	3.48	4.55	6.05	8.28	8.58														
Otisville	2.58	3.58	5.00	6.10	8.38	9.08														
Howells	CA			6.09																
Middletown				6.16																
New Hampton	3.27	3.40	4.27	6.40	9.08	9.38	9.50													
Goshen	3.39	3.52	4.37	6.50			10.00													
Chester	3.46	3.59	4.37	6.50			10.06													
Monroe	3.56	4.09	4.54	7.04			10.15													
Harriman	4.00	4.14		7.04			10.19													
Arden	4.04			7.03			10.25													
Southfields	4.08			7.07			10.31													
Tuxedo	4.14			7.13			10.35													
Sloatsburg	4.18			7.17																
Ramapo				7.21																
Hillburn	1.58			7.24																
Suffern	2.03			7.27																
Mahwah, N. J.				7.23																
Ramsey	2.05			7.25																
Allendale	2.12			7.30																
Waldwick	2.15			7.36																
Hohokus	2.18			7.38																
Ridgewood	4.33			7.34																
Paterson	2.24	4.38	4.49	7.39																
Passaic "Lv.	2.27	4.37	4.59	7.44																
Rutherford	2.37	4.48	5.10	7.48																
E. Rutherford	2.49	4.59	5.10	7.57																
Jersey City "Ar.	3.12	5.05	6.00	8.09																
NEW YORK	3.12	5.05	6.00	8.09																
Chambers St. Ferry	3.24	5.25	6.14	8.21																
8th Ave. at W. 32nd St.			6.14	8.21																
8th Ave. at W. 42nd St.			6.21	8.28																
Rockefeller Center Terminal, 11 Rockefeller Plaza "Ar.			6.23	8.37																
Motor Coach			6.30	8.45																

**ALL ABOVE PASSENGER TRAINS ARE DIESEL POWERED**

All Conditional Stops are for Revenue Passengers Only.

▲ Air-Conditioned Dining Car, Deposit to New York; Coaches, Deposit to New York.

f Stops on signal to receive and discharge passengers.

♦ Stops to discharge passengers.

† Stops to receive and discharge passengers, except on Sundays, July 6 to August 24 incl., also September 1, when stop will be made only to discharge passengers from Susquehanna and west.

‡ Stops Mondays to Fridays, incl., July 7 to August 29, to receive passengers for Ridgewood and east.

CA Stops (3.22 P. M.) Fridays, Saturdays, Sundays & Holidays only.

CB Stops on Holidays only.

CC Ferry arrives (5.51 P. M.) on Saturdays, Sundays & Holidays.

CD Stops at Parker's Glen (2.22 P. M.) and Mill Rift (2.39 P. M.) to receive passengers for Paterson and east.

CE Stops at Middletown (5.55 A. M.) to discharge passengers from Binghamton and west, also on Sun. & Hols. stops to receive passengers for New York.

CF Stops to receive passengers for New York.

CG Train 8 stops (9.58 P. M.) Train 80 (10.28 P. M.) Ridgewood to discharge passengers from Binghamton and west.

CH Train 8 operates via Bergen Short Cut. Connecting train to these points leaves Ridgewood (10.18 P. M.) daily except Sundays and Holidays.

CK Stops Saturdays only (11.03 A. M.) to receive and discharge passengers.

CL Stops Ridgewood (6.44 A. M.) Paterson (6.53 A. M.) to discharge passengers from Port Jervis and west.

CN Stops Suffern (5.11 P. M.), Passaic (5.40 P. M.) to discharge passengers from Binghamton and west.

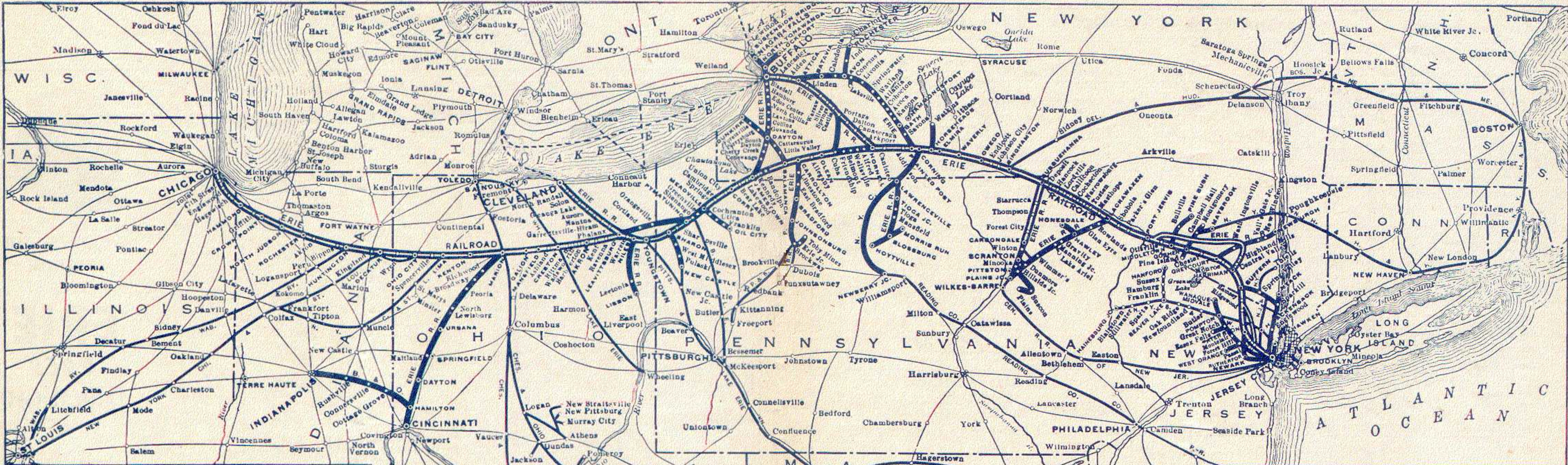
CP Stops Tuesdays to receive passengers.

CR Stops on Sundays only to discharge passengers from Port Jervis and west.

CS Bus operates between Narrowsburg and Honesdale. See Note X, page 22.

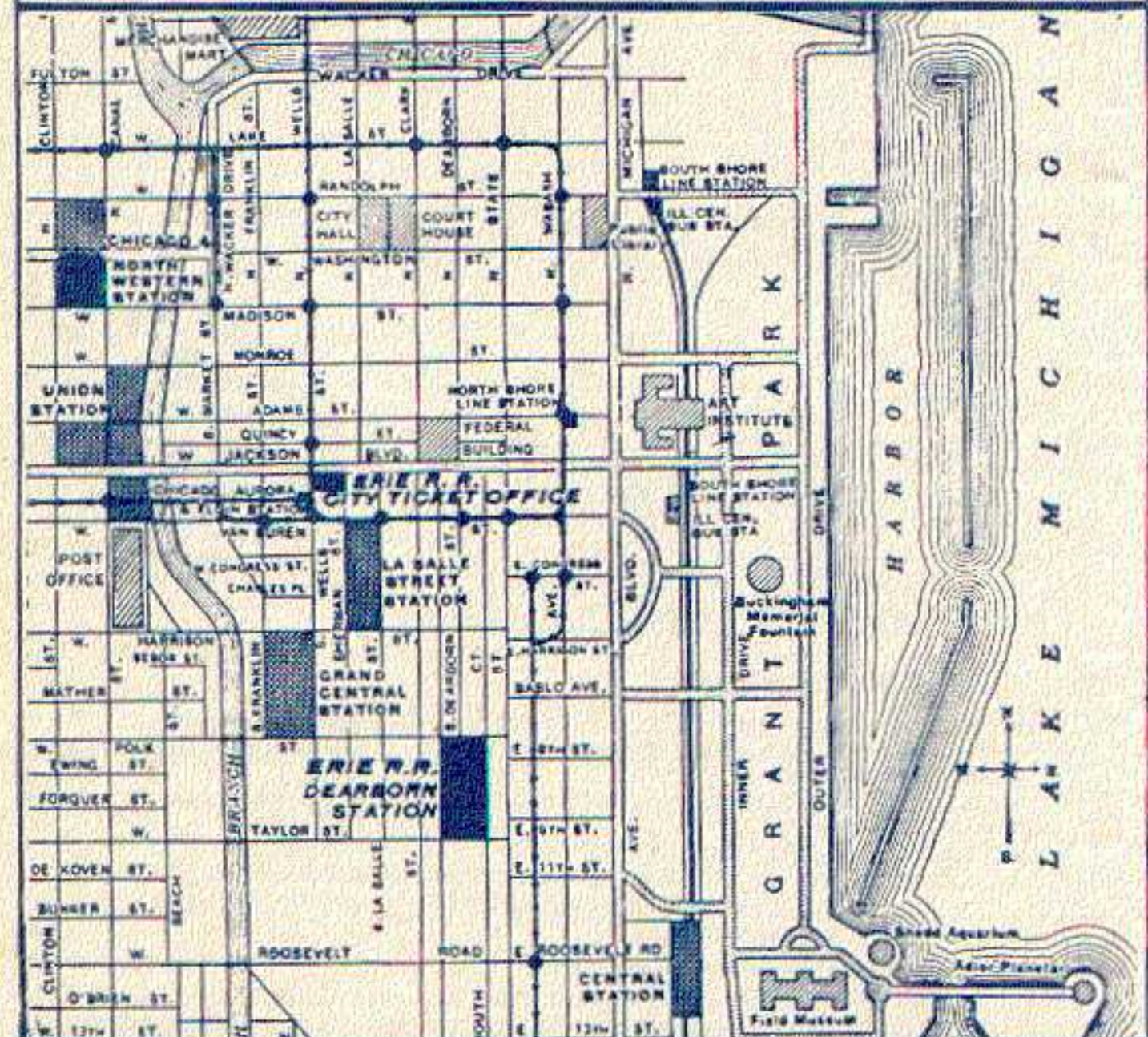
CV Stops (10.41 P. M.) Sundays only.





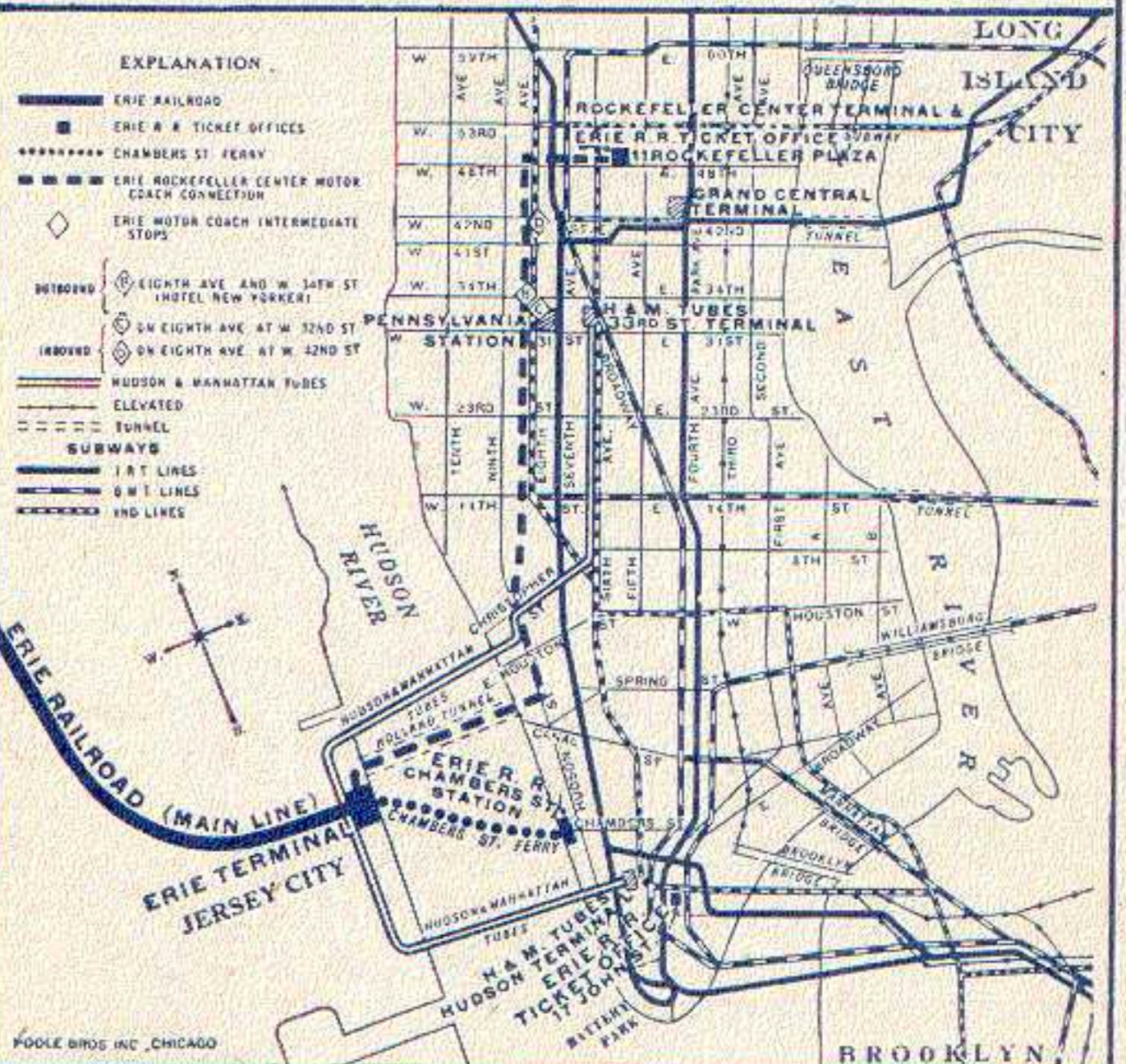
MAP OF DOWNTOWN CHICAGO

Showing Business District, "Loop," and Railroad Stations. For detailed information see page 25.



MAP OF NEW YORK CITY AREA

showing Erie Rockefeller Center Motor Coach, Chambers Street Ferry, H. & M. Tube routes, Erie Terminals and Ticket Offices.



# ERIE RAILROAD AND CONNECTIONS



POOLE BROS. INC. CHICAGO

BROOKLYN

TABLE 4 WESTBOUND

BINGHAMTON-CHICAGO

EASTBOUND

Miles from New York	Eastern Standard Time Read Down				Miles from Chicago	Central Standard Time Read Down			
	Daily AM	Daily PM	Daily PM	Daily PM		Daily PM	Daily PM	Daily AM	Daily PM
0.0	<b>Lv. NEW YORK</b> Rockefeller Center Terminal, 11 Rockefeller Plaza.....Lv 8th Ave. & W. 34th St. (Hotel New Yorker)				0.0	<b>Chicago (Dearborn Sta.) Ill. Lv.</b>			
0.0	7.45	6.50	10.20		6.3	10.00	9.25		
	7.52	6.57	10.32		20.6	10.14	9.39		
	8.15	7.15	11.25		36.3	10.39	10.01		
	8.30	7.30	11.40		70.1				
					100.9				
					142.6				
					142.6				
					173.4				
					189.9				
215.1	2.01	12.52	5.31		217.2				
223.7	2.13	DK	5.46		244.2				
237.1	2.29		6.05		269.1				
256.2	2.50		6.34						
273.8	3.17	2.10	7.15						
291.2	3.44	2.40	7.51						
302.3	3.59		8.12						
332.3	4.36	3.27	8.53						
332.3	4.46	3.38	9.05						
349.9			DC						
358.5	5.24	4.16	9.52						
366.9			DC						
374.4			DC						
383.3	DG	DG	f10.23						
395.7	6.13	5.07	10.48						
413.6	6.35	5.29	11.10						
430.2	DB7.25	DB7.05	DB12.58						
413.6	6.45	5.39	11.20						
431.1		6.00	11.41						
447.3	7.23	6.18	11.59						
447.3	7.32	6.25	12.07						
474.2	8.09	7.00	12.43						
485.6	DL	f 7.14	12.56						
501.2	DL	7.32	1.15						
515.9	8.56	7.49	1.32						
515.9	9.06	7.56	1.42						
542.1	9.44	8.31	2.15						
558.2	10.11	8.53	2.39						
571.8	10.31	9.14	2.58						
		605	5						
		7.00	7.00	11.30					
571.8	10.46	9.33	9.25	3.12					
580.6	DJ	9.44							
585.7	11.10	9.55	9.44	3.35					
638.3	10.55								
609.6		DP	4.08						
615.9	1143	10.15	4.18						
626.0	1150	10.22	4.25						
633.3	1214	10.36	4.47						
639.9			DO						
644.3			Pacific Express						
676.5	1.11	11.25	5.58						
693.2	1.37	11.44	6.27						
708.6	2.04	12.03	7.05						
729.6	2.27	12.25	7.27						
729.6	2.37	12.32	7.42						
754.5		ED	8.11						
781.5	3.35	1.19	8.51						
808.8	4.03		9.20						
825.3	3.26		8.44						
856.1	3.57	1.22	9.16						
856.1	4.07	1.30	9.26						
897.8	4.50	2.08	10.15						
928.9	f 5.22								
962.4	5.57								
978.1	6.20	3.20	11.50						
992.4	6.40	3.40	EC						
998.7	6.55	3.55	12.25						
	AM	AM	PM	AM					

ALL ABOVE PASSENGER TRAINS ARE DIESEL POWERED  
SEE REFERENCE NOTES ON PAGE 21

**TABLE 5 NEW YORK—SALAMANCA—BRADFORD—CHICAGO**

WESTBOUND Read Down			Via Salamanca and Limousine Service operated by Erie Railroad Co. <b>EASTERN STANDARD TIME</b>	EASTBOUND Read Up			
7-Bus	5-Bus	1-Bus		Bus-2	Bus-8	Bus 80-8	Bus-6
Daily	Daily	Daily		Daily	Daily Ex.Sun.	Sun. Only	Daily
PM 10.20	PM 6.50	AM 7.45	Lv. NEW YORK Rockefeller Center Terminal, 11 Rockefeller Plaza (Note ⊕)	PM 6.30	PM 10.58	PM 11.28	AM 7.55
11.25	7.15	8.15	Lv. Chambers St. Ferry	6.14	10.54	11.19	7.37
11.40	7.30	8.30	Lv. Jersey City	6.00	10.28	10.58	7.25
11.10	5.29	6.35	Ar. Salamanca	8.11	12.18	1.05	10.03
EA 12.08	EA 6.25	EA 6.45	Lv. Salamanca	7.55	11.05	11.05	9.45
12.58	7.05	7.25	Ar. Bradford (EMERY HOTEL)	EA 7.15	EA 10.25	EA 10.25	EA 9.05
AM 10.25	AM 5.50	PM 6.30	Lv. Bradford	AM 8.51	PM 12.58	PM 1.45	PM 10.43
11.05	6.30	6.45	Ar. Salamanca	EA 8.11	EA 12.18	EA 1.05	EA 10.03
11.20	6.45	6.45	Lv. Salamanca	8.01	12.08	12.55	9.53
11.59	7.23	7.23	Ar. Jamestown	7.19	11.08	11.55	9.16
2.58	10.31	10.31	Ar. Youngstown	3.52	8.00	8.52	6.13
4.47	12.14	12.14	Ar. Akron	2.13	6.35	7.05	4.52
12.25	6.55	6.55	Ar. Chicago	5.00	10.00	10.00	9.25
AM	AM	AM	Central Standard Time	PM	PM	PM	AM

**REFERENCE NOTES**

- All Conditional Stops are for Revenue Passengers only.
- I Runs Daily except Sunday and Holiday. \* Runs Sunday Only.
- f Stops on signal to receive and discharge passengers.
- ▲ For additional service between Cleveland and Youngstown see Table 8.
- ↓ On Sundays Limousine leaves Salamanca (1.05 P.M.), arriving Bradford (1.45 P.M.).
- DB Via Erie Railroad Limousine Service between Salamanca and Bradford.
- DC Stops Andover (9.31 A.M.); Belmont (10.01 A.M.); Friendship (10.10 A.M.); to discharge passengers from New York.
- DF Train 8 stops (7.40 A.M.), Train 80 (8.29 A.M.) to discharge passengers from Hammond and Chicago.
- DG Train 1 stops Cuba (5.5 P.M.), Train 5 (4.46 A.M.) to discharge passengers from Elmira and east and to receive for Jamestown and west.
- DJ Stops (10.57 P.M.) to discharge passengers from Meadville and east and to receive passengers for Akron and west.
- DK Stops Endicott (4.03 A.M.) to discharge passengers from Ridgewood and east.
- DL Stops on signal Union City (8.21 P.M.); Cambridge Springs (8.40 P.M.) to discharge passengers from Jamestown and east and to receive for Youngstown and west.
- DN Train 8 stops Wadsworth, (6.08 A.M.), Barberton (6.16 A.M.) to discharge from Gallon and west and to receive for Youngstown and east.
- DO Stops (4.55 P.M.) to discharge passengers from Youngstown and east and to receive passengers for Mansfield and west.
- DP Stops (10.07 A.M.) to discharge passengers from Meadville and east, and to receive passengers for Gallon and west.
- DS Stops (8.13 P.M.) daily to discharge passengers from Youngstown and west and to receive for New York.
- DT Stops (8.49 A.M.) to discharge passengers from Jamestown and west, and to receive for Elmira and east.
- DU Stops Cambridge Springs (5.59 A.M.), Union City (6.16 A.M.) to discharge passengers from Chicago and to receive for Binghamton and east.
- DV Stops (5.21 P.M.) to Discharge Passengers from Chicago.
- DW Stops (5.39 P.M.) to receive passengers for Jamestown and east, and to discharge passengers from Cleveland.
- DX Stops Waverly (1.33 A.M.), Endicott (2.06 A.M.) to discharge passengers from Jamestown and west.
- EA Erie limousine service, operates between Erie Railroad Station, Salamanca and Emery Hotel, Bradford.
- EC Train 7 stops (12.10 A.M.) to discharge passengers from east of Hammond.
- ED Stops on signal (12.55 P.M.) to receive passengers for Chicago.
- EF Stops on signal (2.31 P.M.) to discharge passengers from Chicago.
- Note ⊕—See Table 4 for stops of Motor Coach in New York City.

**"FURLOUGH FARES" ON THE ERIE!**

(Coach Fares reduced for service personnel)

• If you are a uniformed member of the armed forces, traveling at your own expense, you can save on round-trip coach fares. Cost is only slightly higher than one-way coach fare, and applies between any two points on the Erie as well as to points on connecting lines. Ask your Erie Ticket Agent for details.

You'll have it soft....  
when you rest with a  
**FRESH, CLEAN  
PILLOW**  
ONLY 25¢

Just ask the coach porter  
On The Erie Limited and Lake Cities



**TABLE 6 NEW YORK—KENOZA LAKE—JEFFERSONVILLE**  
Train and Bus Service via Callicoon

WESTBOUND Read Down			EASTERN STANDARD TIME	EASTBOUND Read Up		
27	43 ⊕ Sat. Only	1		2	34 Runs Sept. 1 Only	44 ⊕ Sun. Only
Daily	Daily	Daily	Daily	Daily	Daily	
PM 12.45	AM 7.15	AM 7.45	Lv. NEW YORK Rockefeller Center Terminal, 11 Rockefeller Plaza (Note ⊕)	PM 6.30	PM 7.25	PM 8.45
1.10	7.42	8.15	Lv. Chambers St. Ferry	6.14	7.09	8.37
1.30	7.55	8.30	Lv. Jersey City	6.00	6.55	8.10
6.07	11.25	11.49	Ar. Callicoon	12.40	3.37	4.36
Via bus of Schultz Auto-Bus Line (See Note X below)						
6.15	11.30	12.00	Lv. Callicoon	2.30	3.30	4.30
6.45	12.00	12.30	Lv. Kenosza Lake	2.00	3.00	4.00
7.15	12.30	1.00	Ar. Jeffersonville	1.30	2.30	3.30
PM	PM	PM		PM	PM	PM

**TABLE 7 NEW YORK—CHAUTAUQUA—CHICAGO**  
7 (Via Jamestown and BUS of Buffalo and Erie Coach Corp.)

WESTBOUND Read Down			EASTERN STANDARD TIME See Note X below	EASTBOUND Read Up		
1-Bus	5-Bus	7-Bus		Bus-8	Bus-2	Bus-6
Daily	Daily	Daily	Daily	Daily	Daily	
PM 6.50	PM 10.20	PM 10.20	Lv. NEW YORK Rockefeller Center Terminal, 11 Rockefeller Plaza (Note ⊕)	PM 10.58		AM 7.55
7.15	11.25	11.25	Lv. Chambers St. Ferry	10.54		7.37
7.30	11.40	11.40	Lv. Jersey City	10.28		7.25
6.18	11.59	11.59	Ar. Jamestown	11.08		9.16
7.00	1.00	1.00	Lv. Jamestown	10.10		7.00
7.35	1.33	1.33	Ar. Chautauqua	9.35		6.25
AM	PM	PM		AM		PM
PM 6.25	AM 9.35	AM 10.10	Lv. Chautauqua	PM 1.33	AM 9.05	
7.00	10.10	10.10	Ar. Jamestown	1.00	8.30	
7.32	12.07	12.07	Lv. Jamestown	10.57	7.09	
12.14	4.47	4.47	Ar. Akron	6.35	2.13	
6.55	12.25	12.25	Ar. Chicago	10.00	5.00	
AM	AM	AM	Central Standard Time	PM	PM	

- ⊕ Motor Coach connection in effect until Sept. 15 incl.
- ⊙ Runs Saturday only July 12 to Aug. 30 incl., also June 28 and July 4.
- ⊚ Runs Sunday only July 6 to Aug. 24 incl., also Sept. 1.
- ▲ See explanation of reference notes on Page 11-12.
- † See explanation of reference notes on Page 13 and 14.
- f Stops on signal to receive and discharge passengers.
- ⊕ See Tables 2 and 3 for stops of Motor Coach in New York City.
- Tickets sold and baggage checked through to Chautauqua.
- Hand baggage checked without charge. Trunks checked at charge of 25c each.
- Note X. In connection with the bus service the Erie Railroad acts as agent only and is not responsible beyond its own line, except as such responsibility may be imposed by law with respect to baggage.

TABLE 8 DETROIT—TOLEDO—CLEVELAND—YOUNGSTOWN—PITTSBURGH—WASHINGTON—BALTIMORE—PHILADELPHIA

Miles from Cleveland	Eastern Standard Time Read Down							Miles from Philadelphia	Eastern Standard Time Read Down						
	624 Daily AM	624 Daily AM	626 Daily AM	606 Daily PM	628 Ex Sun & Hol. PM	686 Daily PM	629 Ex Sun & Hol. AM		625 Daily PM	605 Daily AM	685 Daily AM	623 Daily AM			
0.0	<b>Detroit</b> Lv. 1.30							0.0	<b>Philadelphia</b> Lv. 7.47						
3.3	<b>Toledo</b> Lv. 3.30							94.0	<b>Baltimore (Mt. Royal Sta.)</b> Lv. 9.32						
5.6	<b>Cleveland</b> Lv. 7.15							95.9	<b>Baltimore (Camden Sta.)</b> Lv. 9.40						
8.6	Union Terminal, Public Square							132.7	<b>Washington, D. C.</b> Lv. 10.55						
10.7	E. 55th St. and McBride Ave.							139.6	Silver Spring 11.09						
15.8	E. 93d St., & Richmond Ave.							187.8	Harper's Ferry 10.11						
20.4	Lee Road-Shaker Hts. Station, Cleveland, O.							206.1	Martinsburg 10.35						
23.6	North Randall							283.8	Cumberland 12.32						
30.0	Solon							370.8	Connellsville 2.07						
34.2	Geauga Lake							413.9	McKeesport 4.31						
36.7	Aurora							419.1	Braddock 5.28						
40.3	Mantua							433.9	Pittsburgh Ar. 6.00						
45.3	Jeddoe							433.9	<b>Pittsburgh</b> Lv. 7.00						
52.6	Garrettsville-Hiram							444.5	Coraopolis 7.13						
57.7	Mahoning							453.0	Aliquippa 7.22						
61.9	Phalanx							459.6	Beaver 7.30						
66.5	Leavittsburg							463.1	Beaver Falls 7.35						
66.5	Warren							474.7	New Brighton 7.35						
84.2	Niles							481.1	Ellwood City (GJ) 7.23						
90.6	Girard							498.8	Wampum (GJ) 7.50						
102.2	Youngstown Ar. 8.33							498.8	New Castle (Wash. St.) GH Lv. 7.47						
105.6	Youngstown Lv. 8.37							525.0	New Castle Ar. 8.23						
112.3	New Castle Ar. 9.01							528.6	Youngstown Lv. 4.50						
120.8	New Castle (Wash. St.) GH Ar. 9.12							531.1	Girard 5.04						
131.4	Wampum (GJ) GB							535.3	Niles 5.18						
131.4	Ellwood City (GJ) 9.21							541.9	Warren 5.24						
141.0	Beaver Falls 9.21							544.9	Leavittsburg 5.30						
145.2	New Brighton 9.21							549.5	Phalanx 5.30						
189.3	Beaver 9.21							554.6	Mahoning 5.45						
281.5	Aliquippa GP							557.6	Garrettsville-Hiram 5.45						
359.2	Coraopolis GC 2.50							559.7	Jeddoe f 5.51						
372.5	Pittsburgh Ar. 9.55							562.0	Mantua 6.00						
425.7	Pittsburgh Lv. 10.30							565.3	Aurora 6.10						
432.8	Braddock Ar. 10.53								Geauga Lake 6.16						
469.4	McKeesport 11.05								Solon 6.24						
470.9	Connellsville 12.05								North Randall 6.31						
565.3	Cumberland 2.22								Lee Road-Shaker Hts. Station, Cleveland, O. 6.36						
	Martinsburg 4.02								E. 93d St., & Richmond Ave. 6.41						
	Harper's Ferry 4.27								E. 55th St. and McBride Ave. 6.47						
	Silver Spring 5.24								Cleveland Ar. 6.55						
	Washington, D. C. Ar. 5.45								Union Terminal, Public Square						
	Baltimore (Camden Sta.) Ar. 6.45								<b>Toledo</b> Ar. 1.40						
	Baltimore (Mt. Royal Sta.) Ar. 6.45								<b>Detroit</b> Ar. 4.00						
	Philadelphia Ar. 9.57														

NEW DIESEL POWER ON ALL TRAINS BETWEEN CLEVELAND, YOUNGSTOWN AND PITTSBURGH. EQUIPMENT—EASTBOUND

- No. 606—Daily. Sleeping Car (6 Roomette-6 Section 4 Double Bedroom) Cleveland to New York. Coach, Cleveland to New York.
- No. 624—The Steel King—Daily. B&O Parlor-Diner, Cleveland to Pittsburgh. Coaches, Cleveland to Pittsburgh.
- No. 624—The Washingtonian—Daily. B&O Parlor-Diner, Cleveland to Baltimore. Individual Reclining Seat Coaches, Cleveland to Washington and Baltimore.

- No. 686—Daily. Coaches; Detroit to Pittsburgh; via Cleveland. NYC Diner-Lounge, Cleveland to Pittsburgh. Coaches Pittsburgh to Washington, Baltimore and Philadelphia.
- No. 626—Daily. Erie Parlor-Diner, Cleveland to Pittsburgh. Coaches, Cleveland to Pittsburgh.

EQUIPMENT—WESTBOUND

- No. 625—The Steel King—Daily. Erie Parlor-Diner, Pittsburgh to Cleveland. Coaches, Pittsburgh to Cleveland.
- No. 605—Daily. Sleeping Car (6 Roomette 6 Section 4 Double Bedroom) New York to Cleveland. Coach, New York to Cleveland.

- No. 623—The Washingtonian—Daily. B&O Parlor Diner, Baltimore to Cleveland. Individual Reclining Seat Coaches, Baltimore and Washington to Cleveland.
- No. 685—Daily. Coaches. Pittsburgh to Detroit, via Cleveland. NYC Diner-Lounge, Pittsburgh to Cleveland.

- All regularly assigned equipment is air-conditioned.
- All Conditional Stops are for Revenue Passengers only
- f Stops on signal to receive and discharge revenue passengers.
- GB Stops to discharge passengers from Cleveland and beyond
- GC Stops to discharge passengers from points beyond Youngstown.
- GD Stops Mantua to discharge passengers from Cleveland and receive passengers for Youngstown and east.
- GE Stops to discharge passengers from New Castle and east and to receive passengers for Cleveland.
- GF Stops to discharge passengers from points west of Youngstown.

- GG Stops to discharge passengers from Cleveland and to receive passengers for New Castle and east.
- GH Bus service between New Castle and New Castle (Washington St.).
- GJ Bus service between Wampum and Ellwood City.
- GK Stops to receive passengers for Warren and beyond.
- GL Stops on signal to receive passengers for Toledo or Detroit.
- GP Stops to receive and discharge passengers on Saturdays only.
- GR Stops Saturdays only to discharge passengers from Cleveland.
- GX Stops to discharge passengers from Youngstown and receive for Cleveland.
- GZ Baggage checked on train 623 will be taken to Union Terminal Cleveland and will be available at Lee Rd. station following morning.

IMPORTANT. When trains are shown as stopping conditionally at a station, passengers should advise Station Agent, in advance, of their intention to board train or notify Conductor of intention to leave train, as case may be.

Holidays in the above table refers to the observance of New Year's Day, Memorial Day, Independence Day, Labor Day, Thanksgiving Day and Christmas Day

# Ride "THE STEEL KING" } 2 HOURS 40 MINUTES

Between CLEVELAND and PITTSBURGH

Leave Cleveland Union Terminal	7:15 A.M. E.S.T.
Leave Lee Road Station	7:29 A.M. E.S.T.
Arrive Warren	8:16 A.M. E.S.T.
Arrive Youngstown	8:33 A.M. E.S.T.
Arrive Pittsburgh	9:55 A.M. E.S.T.

Smooth diesel service, modern air-conditioned equipment, parlor-diner service

Convenient schedules for return the same day!

## LEE ROAD-SHAKER HEIGHTS PASSENGER STATION

Located at Lee Road and  
Miles Avenue

### Plenty of Parking Space Available

You may leave your car at the station during the day—ready for you when you return.

**BUS SERVICE • TAXI SERVICE**



**SERVING**  
Shaker Heights

•  
Cleveland  
Heights

•  
University  
Heights

•  
Maple Heights  
and  
adjacent areas

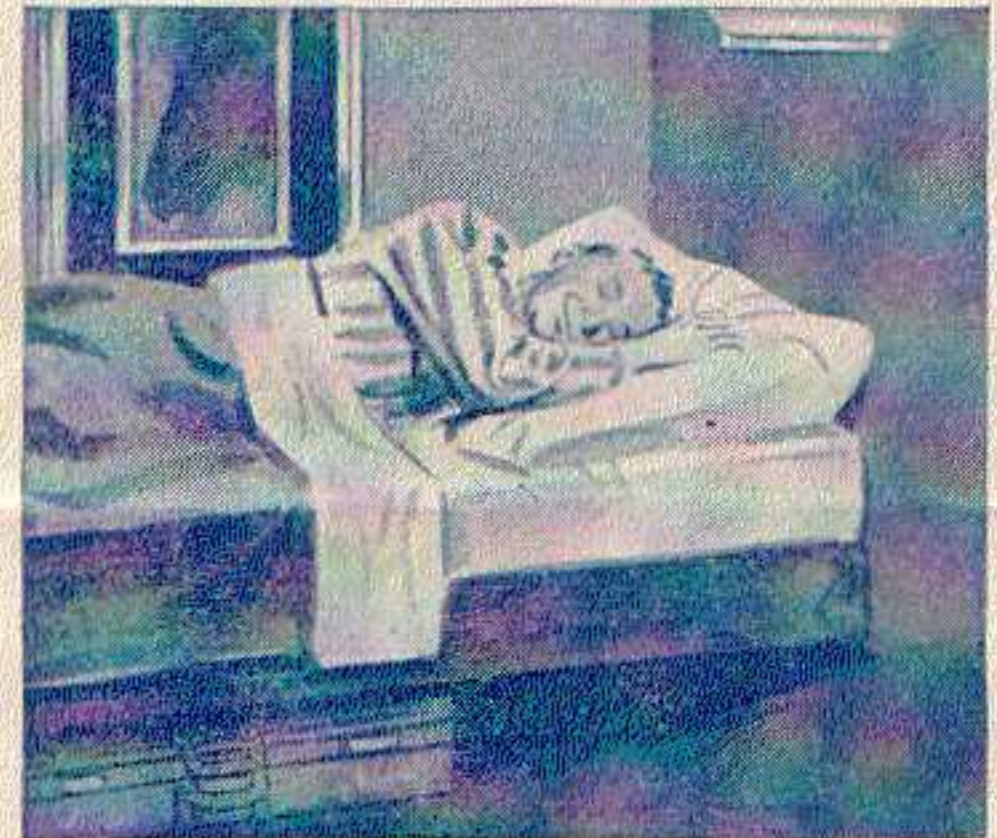
## LAY-OVER SLEEPING CARS AT YOUNGSTOWN AND AKRON FOR CHICAGO TRAVELERS

Latest type sleeping cars with year-round air conditioning provide Erie passengers with the most modern and luxurious accommodations for overnight travel. Smooth diesel power all the way.


For your convenience, sleeping cars are ready for occupancy at Erie Station in Youngstown and Akron at 8:30 p.m. and may be occupied until 8:00 a.m. at Akron on the return.

Lv. Youngstown	10:46 p.m. E.S.T.
Lv. Akron	12:14 a.m. E.S.T.
Ar. Chicago	6:55 a.m. C.S.T.
(Dearborn Station)	

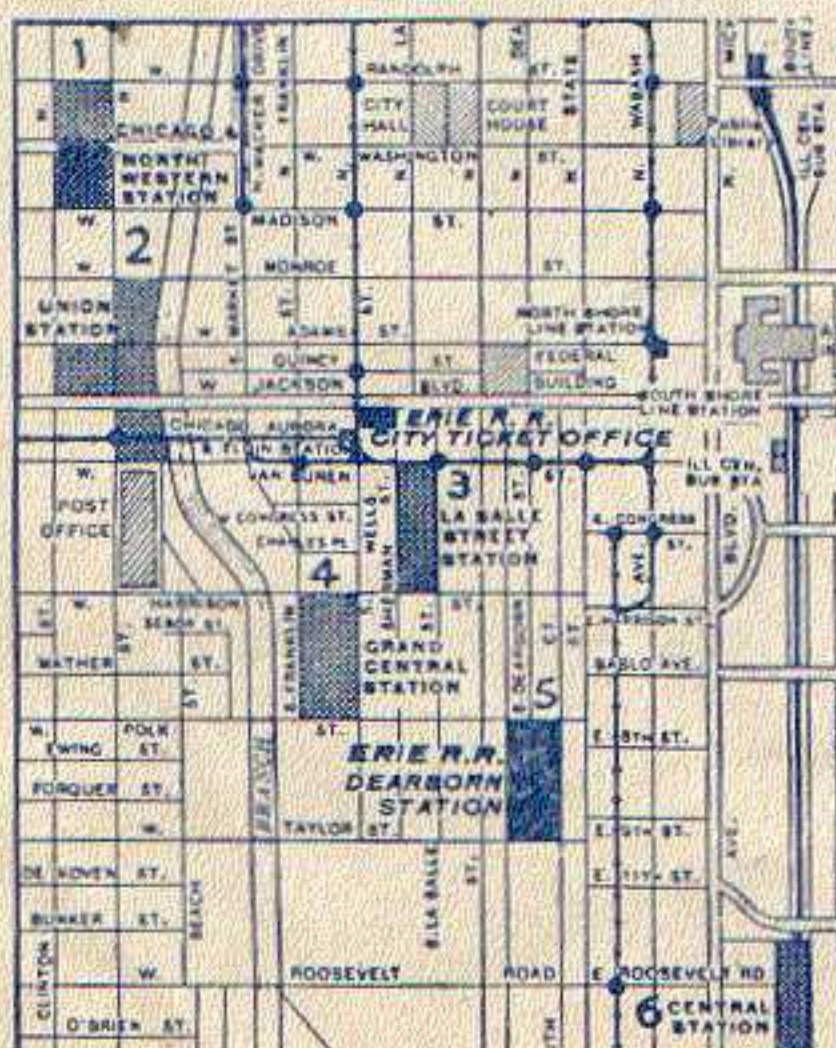
Lv. Chicago	10:00 p.m. C.S.T.
Ar. Akron	6:35 a.m. E.S.T.*
	*7:05 a.m. E.S.T. Sundays
Ar. Youngstown	7:50 a.m. E.S.T.*
	*8:40 a.m. E.S.T. Sundays



For your convenience, day service is also provided to Chicago and day and night service to New York.



# Erie Railroad



### CHICAGO PASSENGER STATIONS

- Number Indicates Location On Map.
- DEARBORN STATION (5)**  
Polk and Dearborn Sts.  
ERIE — SANTA FE  
CHICAGO & EASTERN ILLINOIS —  
CHICAGO & WESTERN INDIANA —  
GRAND TRUNK — MONON ROUTE — WABASH
- C & NW TERMINAL (1)**  
Madison and Canal Sts.  
1 and 2 1/10 miles from Dearborn Station  
CHICAGO & NORTH WESTERN
- UNION PASSENGER STATION (2)**  
Canal, Adams, Jackson and Clinton Sts.  
1 mile from Dearborn Station  
GULF MOBILE AND OHIO —  
BURLINGTON ROUTE — CHICAGO,  
MILWAUKEE, ST. PAUL AND PACIFIC  
— PENNSYLVANIA LINES
- LA SALLE ST. STATION (3)**  
La Salle and Van Buren Sts.  
1/2 mile from Dearborn Station  
NEW YORK CENTRAL — NICKEL PLATE  
— ROCK ISLAND
- GRAND CENTRAL STATION (4)**  
Harrison and Wells Sts.  
3/10 miles from Dearborn Station  
BALTIMORE & OHIO —  
CHICAGO GREAT WESTERN —  
CHESAPEAKE & OHIO  
(PERE MARQUETTE DISTRICT) — SOO LINE
- CENTRAL STATION (6)**  
Roosevelt Road and Michigan Ave.  
8/10 miles from Dearborn Station  
BIG FOUR — ILLINOIS CENTRAL —  
MICHIGAN CENTRAL
- North Shore Line, South Shore Line, and Chicago, Aurora & Elgin electric lines, stations are also shown on the map.

## LUGGAGE TRANSFER FOR PASSENGERS HOLDING THROUGH TICKETS TO POINTS BEYOND CHICAGO



If you change stations and have three or more hours in Chicago before departure of your train, your luggage is handled for you, free of charge, directly to the parcel room of your train. You can spend all of your free hours for business or enjoyment in Chicago. Here's how this Erie service operates: 1. The Erie Train Porter takes your luggage shortly before arrival in Chicago, and gives you a claim check. 2. When you leave your Erie train at Chicago your luggage is transferred to the parcel room of your connecting line. 3. Before departure time of your

westbound train, you pick up your luggage at the parcel room of the station from which you are departing.

This service is also available to passengers departing from Dearborn Station where no station transfer is involved, and where there is one hour or more waiting time.

Limousine transfer service to connecting lines is also available to passengers holding through tickets at no additional charge.

## SAVE 25 PER CENT ON NEW ROUND-TRIP FARES

### Travel on Erie's Group Economy Coach Fares!

Three or more adults (individual groups, conventions, athletic events, etc.) can save 25 per cent of their coach fares on any round trip over 100 miles in one direction. These new dollar-saving fares will be in effect from June 25 to October 22, inclusive.

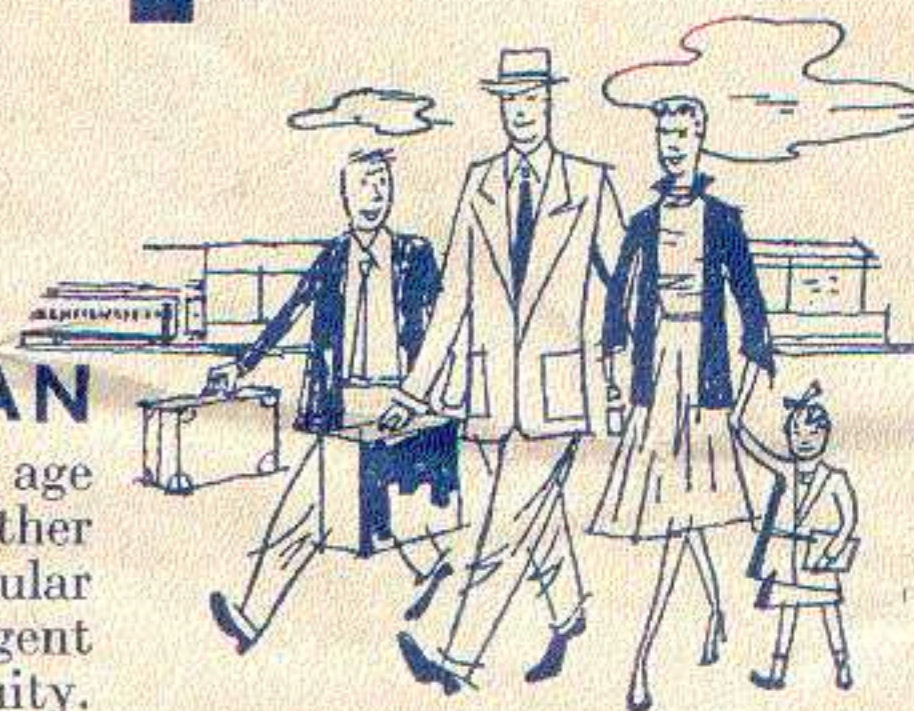
Get together a group and travel on the Erie at almost the prewar level. Compare these travel bargains:

SAMPLE ROUND TRIP FARES		You Save
New York—Cleveland.....	\$23.40	\$7.80
Chicago—Akron.....	16.75	5.55
New York—Jamestown.....	19.30	6.40
Chicago—Youngstown.....	18.60	6.20
	(Plus Federal Tax)	

Here is real economy plus safe, dependable, comfortable travel. Forget traffic problems, congested highways—settle back and enjoy the countryside from one of the big picture windows on air-conditioned Erie trains. Get there safely!

### FAMILY TRAVEL PLAN

Erie also offers "Family Plan" fares—children under 12 years of age free and 12 years and under 16 years of age half-fare, when traveling together with a parent, purchasing a round-trip coach ticket at regular fare, between points of 100 miles or more. Ask your Erie Ticket Agent about this money-savings opportunity.



### SAMPLE OF SAVINGS ▼

Round-trip coach fare—New York to Chicago.....\$48.85

Group-Economy Fare (per person).....\$36.65

You save \$12.20 plus Fed. Tax

## You'll look forward to mealtime on the Erie!

Sit down at an immaculate table in an Erie diner, pick up your menu—at breakfast, luncheon or dinner—choose and enjoy a delicious meal.

Notice the tempting selection of tasty dishes, the prompt, cheerful service and genuine hospitality. Much careful planning has gone into every detail to make your mealtimes on the Erie pleasant and enjoyable occasions.



# ERIE RAILROAD COMPANY

**General Offices** { **Midland Building, Cleveland 15, Ohio.** (Telephone, Cherry 1-8400)  
**Hudson Terminal, 50 Church Street, New York 7, N. Y.** (Telephone, Worth 4-4500)  
**Utilities Building, 327 South La Salle Street, Chicago 4, Ill.** (Telephone HArrison 7-4160)

**R. E. WOODRUFF, Chairman of the Board, Cleveland**  
**P. W. JOHNSTON, President, Cleveland**

**H. W. VON WILLER, Vice-President,**  
**M. G. McINNES, Vice-President,**  
**W. T. PIERSON, Vice-President and General Counsel,**  
**T. J. TOBIN, Vice-President and Comptroller.**

**G. B. TOWNSEND, Secretary and Treasurer,**  
**G. C. FRANK, Assistant to President,**  
**E. E. SEISE, Assistant to President,**  
**P. J. KINDLER, Assistant to President,**

**Cleveland.**  
 " "  
 " "

## TRAFFIC AND DEVELOPMENT

**H. W. VON WILLER, Vice-President, Cleveland**  
**D. R. THOMPSON, Asst. Vice-President, Cleveland**  
**G. F. MILLS, Asst. to Vice-President, Cleveland**

**E. J. DEAN, Assistant Vice-President,**  
**A. BLAUDEL, Assistant Vice-President,**

**New York.** | **R. E. O'GRADY, Assistant Vice-President,**  
**Chicago.** | **D. M. LYNN, Assistant Vice-President,**

**Chicago.**  
**Cleveland.**

### PASSENGER—Sales, Rates and Service

**F. J. WILD, General Passenger Agent,**  
**R. E. TOWNS, Assistant General Passenger Agent,**  
**V. F. GREEN, Assistant General Passenger Agent,**

**J. VAN DER VELDE, Assistant to Passenger Traffic Manager, Cleveland**  
**J. M. COLLINS, Superintendent Dining Cars, Jersey City**

### FREIGHT—Rates

**O. M. MEYNE, Freight Traffic Manager,**  
**E. N. HAMBLY, General Freight Agent,**  
**W. P. VAN IDERSTINE, Assistant General Freight Agent,**  
**J. H. SISCO, Assistant General Freight Agent,**  
**THOMAS GILPIN, Chief of Tariff Bureau,**  
**F. K. NOONBURG, Chief of Divisions Bureau.**

**New York.** | **E. C. HALLBERG, Freight Traffic Manager,**  
**Chicago.** | **F. M. KLITZ, Assistant Freight Traffic Manager,**  
**Youngstown.** | **H. T. SWEENEY, General Freight Agent,**  
**Cleveland.** | **H. C. WELL, Assistant General Freight Agent,**  
**Cincinnati.** | **E. R. BURTON, Chief of Tariff Bureau,**  
**Pittsburgh.** | **E. A. JAEHNE, Chief of Divisions Bureau,**  
**Youngstown.** | **Chicago.**

**Chicago.**  
 " "  
 " "  
 " "

### FREIGHT—Sales and Service

**E. J. DEAN, Assistant Vice President,**  
**G. W. MADSEN, Freight Traffic Manager,**  
**B. F. CONWAY, Assistant Freight Traffic Manager,**  
**H. A. WILSON, General Eastern Freight Agent,**  
**L. E. NEWMAN, Assistant General Freight Agent,**  
**A. M. MONAHAN, General New England Agent,**  
**C. R. MARTIN, Freight Traffic Manager,**  
**D. C. KELSEY, Asst. General Freight Agent,**  
**H. W. GRAY, Assistant General Freight Agent,**  
**C. G. ANDREWS, Assistant General Freight Agent,**  
**D. S. DAY, Assistant General Freight Agent,**  
**R. E. O'GRADY, Assistant Vice-President,**

**New York.** | **J. A. RUSSELL, Western Traffic Manager,**  
**Chicago.** | **C. V. HARROW, Freight Traffic Manager,**  
**Buffalo.** | **L. J. BURGOTT, Assistant General Freight Agent,**  
**Cleveland.** | **L. J. MARION, Assistant General Freight Agent,**

**Los Angeles.**  
**Chicago.**  
**Detroit.**

### FOREIGN FREIGHT TRAFFIC

**New York.** | **W. C. OTTEN, Foreign Freight Traffic Manager,**  
**Chicago.** | **C. A. STOEBER, Assistant Foreign Freight Traffic Manager,**  
**Pittsburgh.** | **T. W. KANE, Foreign Freight Agent,**  
**Youngstown.** | **C. C. MITCHELL, Foreign Freight Agent,**  
**Chicago.** | **W. S. PENCHARD, Export and Import Agent,**

**New York.**  
 " "  
 " "  
 " "

### PERISHABLE AND DAIRY TRAFFIC

**New York.** | **P. J. NAPOLI, Perishable Traffic Manager,**  
**Pier 20, N. R., New York.**

### COAL AND COKE

**A. E. BARKALOW, Coal Freight Agent,**  
**J. A. STERL, Assistant Coal Freight Agent,**  
**J. A. MUCHA, Coal Freight Agent.**

**G. A. LAMB, Coal Traffic Manager, Cleveland**  
**J. A. FERGUSON, General Coal Freight Agent, Cleveland**

**New York.** | **W. N. STENFELT, Coal Freight Agent,**  
**Buffalo.** | **M. S. SWEENEY, Coal Freight Agent,**

**Chicago.**  
**Pittsburgh.**

### INDUSTRIAL DEVELOPMENT

**E. T. BUTLER, JR., Industrial Commissioner,**  
**R. W. SCHEUCH, Industrial Agent,**  
**D. F. MACKERLY, Industrial Engineer.**

**D. M. LYNN, Assistant Vice-President, Cleveland**

**New York.** | **L. J. SLACK, Industrial Commissioner,**  
**Chicago.** | **G. W. MOORHOUSE, Industrial Agent,**  
**Pittsburgh.** | **J. B. HOLT, Industrial Engineer,**  
**Cleveland.**

## TRAFFIC DEPARTMENT REPRESENTATIVES

### SALES AND SERVICE

**Akron 8, Ohio.—Erie Station**  
**J. P. CLARK, Division Passenger Agent.**  
**(Telephone Blackstone 8812)**  
**R. T. PHILLIPS, General Agent.**  
**(Telephone Hemlock 8194-8195)**  
**80 East Exchange St.**  
**Albany 7, N. Y.—D. & H. Bldg.**  
**(Telephone 4-6051)**  
**J. E. CAMPBELL, General Agent.**  
**Atlanta 3, Ga.—Healey Bldg.**  
**(Telephone Walnut 2135)**  
**W. H. STADELMAN, General Agent.**  
**Baltimore 2, Md.—Munsey Bldg.**  
**(Telephone Plaza 8691)**  
**GEORGE PETERSEN, General Agent.**  
**Birmingham 3, Ala.—Watts Bldg.**  
**(Telephone 3-1327)**  
**WM. L. THORNTON, General Agent.**  
**Boston 14, Mass.—150 Causeway St.**  
**(Telephone Capitol 7-2510-11-12)**  
**A. M. MONAHAN, Gen. New Eng. Agt.**  
**Buffalo 2, N. Y.—238 Main Street.**  
**(Telephone Washington 1865)**  
**L. E. NEWMAN, Asst. Gen. Freight Agt.**  
**Chicago 4, Ill.—327 South La Salle St.**  
**(Telephone HArrison 7-4160)**  
**W. L. SCHORR, City Passenger Agent.**  
**E. J. BURGOTT, Asst. Gen. Frt. Agt.**  
**Cincinnati 2, O.—331 Engletrier Bldg.**  
**(Telephone Main 3420-3421)**  
**H. W. GRAY, Asst. Genl. Frt. Agt.**  
**Cleveland 15, O.—Midland Bldg.**  
**(Telephone Cherry 1-8400)**  
**D. C. KELSEY, Asst. Gen. Frt. Agt.**  
**Columbus 15, O.—Atlas Bldg., 8 East**  
**Long Street.**  
**(Telephone Adams 7331)**  
**J. L. CHAPMAN, General Agent.**  
**Dallas 1, Tex.—1509 Main Street.**  
**(Telephone Ra-7352)**  
**J. A. MOORE, General Agent.**  
**Dayton 2, O.—Miami Savings Bldg.**  
**(Telephone Adams 8481)**  
**F. W. FISCHER, Div. Frt. Agt.**

**Des Moines 9, Ia.—Hubbell Bldg.,**  
**904 Walnut Street.**  
**(Telephone 4-0018)**  
**H. A. BOCKMAN, General Agent.**  
**Detroit 2, Mich.—General Motors Bldg.**  
**(Telephone Trinity 5-2360-61)**  
**L. J. MARION, Assistant Genl. Frt. Agt.**  
**Elmira, N. Y.—Erie Station.**  
**(Telephone 2-1621)**  
**J. W. O'HARA, Division Passenger Agt.**  
**(Telephone 2-0377)**  
**H. J. SPINDLER, Division Freight Agent.**  
**Huntington, Ind.—Erie Station.**  
**(Telephone 743)**  
**HAROLD L. JOHNSON, Div. Frt. Agt.**  
**Indianapolis 4, Ind.—11 So. Meridian**  
**St. (Telephone Franklin 0255)**  
**L. R. BRECKENRIDGE, General Agent.**  
**Jamestown 3, N. Y.—Erie Station.**  
**O. B. CHAPMAN, Div. Passenger Agt.**  
**(Telephone 6026)**  
**W. W. THOMS, Div. Frt. Agt.**  
**(Telephone 7921-7922)**  
**Jersey City 2, N. J.—Erie Station.**  
**(Telephone Journal Square 2-6400)**  
**G. W. KNOM, Genl. Agt. Pass. Dept.**  
**F. K. CORLETT, Division Freight Agent.**  
**Kansas City 6, Mo.—Room 1018 Dwight**  
**Building.**  
**(Telephones Victor 6328)**  
**N. C. FRICK, General Agent.**  
**H. F. STUDD, Asst. Gen. Agt.**  
**Los Angeles 14, Cal.—510 West 6th Street.**  
**(Telephone Vandike 4129)**  
**E. C. ADLER, General Agent.**  
**Marion, O.—Terminal Building.**  
**(Telephone 2-0126)**  
**E. H. HUFFMAN, Division Freight Agent.**  
**Memphis 3, Tenn.—Exchange Bldg.**  
**(Madison & Second Sts.)**  
**(Telephone 8-8781)**  
**L. L. HARRIS, General Agent.**

**Mexico City 1, Mexico**  
**Isabel La Católica 45**  
**MR. RUAL M. CAMPOS, Gen. Mex. Mgr.**  
**Milwaukee 3, Wis.—Majestic Bldg.,**  
**231 West Wisconsin Ave.**  
**(Telephone Broadway 1-3320-3321)**  
**L. T. COULSTON, General Agent.**  
**Minneapolis 2, Minn.—Rand Tower,**  
**Marquette Ave. and 6th St., So.**  
**(Telephone Main 3604)**  
**J. W. CLOUD, General Agent.**  
**C. R. PERRY, Asst. Gen. Agt.**  
**Newark 2, N. J.—Military Park Bldg.,**  
**60 Park Place.**  
**(Telephone Market 2-0525-26-27)**  
**F. L. COLLINS, General Agent.**  
**New Haven 10, Conn.—W B I B Bldg.**  
**(Telephone 7-5915)**  
**M. R. FITZGERALD, General Agent.**  
**New Orleans 12, La.—Room 308, Pere**  
**Marquette Bldg.**  
**(Telephone Raymond 9780)**  
**E. W. BURNETT, General Agent.**  
**New York 20, N. Y.—11 Rockefeller Plaza,**  
**Rockefeller Center.**  
**(Telephone Circle 5-7222)**  
**G. H. DOWN, City Pass. Agent.**  
**H. T. JAMES, City Pass. Agent.**  
**New York 7, N. Y.—50 Church Street.**  
**(Telephone Worth 4-4500)**  
**H. A. WILSON, Genl. East. Frt. Agt.**  
**Omaha 2, Neb.—1319 Farnam St.**  
**(Telephone Jackson 4866)**  
**C. L. COX, General Agent.**  
**Peoria 2, Ill.—Jefferson Building, Cor.**  
**South Jefferson & Fulton Streets.**  
**(Telephone 8007)**  
**K. O. HEMMING, General Agent.**  
**Philadelphia 2, Pa.—Finance Bldg.**  
**(Telephone Rittenhouse 6-8975-8976)**  
**C. F. WEADCOCK, General Agent.**

**Pittsburgh 19, Pa.—Koppers Bldg.**  
**(Telephone Grant 1-4831-2-3)**  
**C. G. ANDREWS, Asst. Genl. Frt. Agt.**  
**Portland 4, Ore.—Pacific Bldg.,**  
**520 S. W. Yamhill St.**  
**(Telephone Beacon 3706)**  
**W. E. REAGER, General Agent.**  
**Rochester 4, N. Y.—Reynolds Arcade**  
**Building.**  
**(Telephone Hamilton 7938)**  
**C. P. BELL, Division Freight Agent.**  
**San Francisco 5, Cal.—681 Market St.**  
**(Telephone Sutter 1-3875)**  
**H. F. KEELLEN, General Agent.**  
**St. Louis 1, Mo.—721 Olive St.**  
**(Telephone Chestnut 7723-7724)**  
**L. M. SCHUKEL, General Agent.**  
**Scranton, Pa.—First National Bank Bldg.**  
**(Telephone—Scranton 4-7237-7258)**  
**G. T. DOLAN, Division Freight Agent.**  
**Seattle 1, Wash.—White Bldg.,**  
**1335 Fourth Ave.**  
**(Telephone Eliot 4834)**  
**R. J. DUNDON, General Agent.**  
**Springfield, O.—First National Bank**  
**Building. (Telephone 2-5351)**  
**J. L. TJAEN, General Agent.**  
**Toledo 4, O.—1506 Toledo Trust Bldg.,**  
**315 Summit Street.**  
**(Telephone Main 3816)**  
**H. J. SPANGENBERG, General Agent.**  
**Toronto, Ont.—85 Yonge Street.**  
**(Telephone Empire 3-1311-12)**  
**ROBERT WILLIAMSON, Can. Frt. Agt.**  
**Washington 5, D. C.—515 Bond Bldg.,**  
**14th St. and New York Ave., N. W.**  
**(Telephone National 6075)**  
**W. J. MURRAY, General Agent.**  
**Youngstown 3, O.—Terminal Building.**  
**(Telephone 7-0792)**  
**G. B. SAUNDERS, Div. Passenger Agent.**  
**D. S. DAY, Asst. Genl. Frt. Agt.**  
**H. W. MCILWAIN, General Agent.**