

Effective July 3, 1938

Effective July 3, 1938



**ERIE RAILROAD SYSTEM
TIME TABLES**

**ERIE RAILROAD SYSTEM
TIME TABLES**

The Scenic Route

BETWEEN

**NEW YORK • BUFFALO
CLEVELAND • CHICAGO**

The Scenic Route

BETWEEN

**NEW YORK • BUFFALO
CLEVELAND • CHICAGO**

FORM 1 STANDARD (Not Daylight) TIME SHOWN IN THIS FOLDER

FORM 1 STANDARD (Not Daylight) TIME SHOWN IN THIS FOLDER



From the upper deck of one of Erie's Chambers St. Ferries

ERIE FERRIES COMPLETE THE "AIR-CONDITION- ING" OF YOUR TRIP

*They give you the
grandest view of the
largest city in the U. S. A.*

ERIECONOMY TOURS

DULUTH Visiting Buffalo, Niagara Falls, Detroit, Sarnia, Soo Canal, Port Arthur, Duluth. 11 days \$125.00 from New York.

GEORGIAN BAY (To Chicago) Visiting Buffalo, Niagara Falls, Detroit, Midland, Mackinac Island, Chicago. 9 days \$94.25 from New York.

TWO LAKES Visiting Buffalo, Detroit, Niagara Falls, Lewiston, Toronto. 5 days \$59.95 from New York.

Proportionate fares from other stations.

CANADIAN FRONTIER Visiting Buffalo, Niagara Falls, Toronto, the St. Lawrence, Montreal, Lake Champlain. 7-day circle tours \$75.00 from all stations, New York to Buffalo.

SAGUENAY Visiting (in addition to points listed on Canadian Frontier Tour) Quebec, Murray Bay, Tadoussac, Saguenay River, St. Alphonse. 11-day circle tours \$125.00 from all stations, New York to Buffalo.

LAKE-LAND (From Chicago) Visiting New York, Buffalo, Niagara Falls, Detroit, Mackinac Island. 7 days \$72.50 in air-conditioned coaches from Chicago. Pullman service available at slight additional cost.

BERMUDA (From Chicago) Visiting New York City and Bermuda. 12 days \$129.00 in air-conditioned coaches from Chicago. 13 days \$136.50. Pullman service available at slight additional cost.

Ask Erie Railroad Ticket Agents for illustrated folder on any of the above tours

And from the moment a passenger boards an Erie train until he steps down at his destination he finds the kind of service he wants. The man of affairs finds the same smart, courteous service he enjoys at his favorite club. The pleasant treatment extended to a family group makes them feel right at home, too.

See the finest scenery east of the Rockies. Travel through the heart of the American Industrial Empire . . . six great states . . . New York, New Jersey, Pennsylvania, Ohio, Indiana and Illinois. Travel in air-conditioned Pullmans . . . 3 cents a mile (in addition to charges for space occupied). Travel in well-appointed air-conditioned salon coaches . . . 2 cents a mile. Erie fares are the lowest in the East.

Ask the ticket agent about Erie Train-Cab Service from Erie Terminal, Jersey City, directly to your door in New York or Brooklyn, or see page 32 of this folder.

E stands for **ERIE** and **ECONOMY**.

TABLE OF CONTENTS

Equipment of Through Trains... Page 9, 10
Suggestions... Page 31
General Information... Page 7, 8
Standard of Time
Holidays
Fares Paid on Trains
Adjustment of Fares
Sleeping and Parlor Car Reservations
Baggage Regulations
Articles left on Trains
Equipment of Local Trains... Page 11, 12, 13, 14
Equipment of Detroit, Toledo, Cleveland, Youngstown and Pittsburgh Trains... Page 24
Erie Railroad Map... Page 19, 20, 21, 22
Sleeping and Parlor Car Fares... Page 7, 8
One-way Rail Fares... Page 7, 8
Reference Marks and Notes... Page 5, 6
Traffic Department Representatives... Page 37, 38
Ticket Offices and Passenger Stations in Principal Cities... Page 6
Train Service
Condensed Schedule of Through Trains... Page 9, 10
New York-Binghamton... Page 11, 12, 13, 14
Binghamton-Akron... Page 15, 16
Akron-Chicago... Page 17, 18
New York-Buffalo... Page 17
Detroit-Toledo-Cleveland-Youngstown-Pittsburgh... Page 23, 24
New York-Chautauqua... Page 27
Chautauqua-Akron-Chicago... Page 27
New York-Kenoza Lake-Jeffersonville... Page 28
New York-Monticello... Page 28
New York-Salamanca-Bradford... Page 28
New York-Meadville-Oil City... Page 28
Chicago-Meadville-Oil City... Page 28
Bradford-Salamanca-Cleveland-Chicago... Page 28
Branch Line Service... Page 27, 28, 29
Hudson & Manhattan R. R. Service... Page 30
Ferry Schedule... Page 30
Chautauqua Lake Service... Page 27

STATIONS ON ERIE RAILROAD
At Which Trains Are Scheduled To Stop
Numerals Opposite Station Names Indicate Time Table Numbers

Table listing stations on the Erie Railroad with corresponding time table numbers. Columns include station names and numerals. Stations listed include Addison, Akron, Alliquippa, Albany, Alden, Alfred, Allegany, Allendale, Andover, Arden, Arkport, Ashantee, Ashland, Atlanta, Attica, Aurora, Avoca, Avon, Baileys, Barberton, Barton, Bath, Beaver, Beaver Falls, Belmont, Big Flats, Binghamton, Blair, Blasdel, Bradford, Brooks, Buffalo, Burns, Callicoon, Cambridge Springs, Cameron, Cameron Mills, Campbell, Canaseraga, Canisteo, Carlton, Castle, Cattaraugus, Chautauqua, Chautauqua Lake, Chemung, Cherry Creek, Chester, Chicago, Cleveland, Cochection, Cochran, Cohocton, Collins, Conesus, Conesus Lake Jct., Conewango, Cooper's, Coraopolis, Corning, Corry, Crittenden, Crown Point, Cuba, Cuylerville, Dale, Dalton, Dansville, Darien Center, Dayton, Decatur, Depew, Deposit, Detroit, Dunkirk, East Buffalo, East Fifty-fifth St., East Honesdale, East Ninety-third St., East Rutherford, Eden Center, Eden Valley, Ellwood City, Elmira, Elm Place, Endicott, Englewood, Falconer, Fenners, Forestville, Fowler, Franklin, Friendship, Gallon, Gannett, Garrettsville-Hiram, Garwoods, Geauga Lake, Geneseo, Girard, Glen Eyre, Golah, Goshen, Gowanda, Graham, Great Bend, Greenville, Greycourt, Griswolds, Groveland, Gulf Summit, Hale's Eddy, Hamburg, Hammond, Hancock, Hankins, Harriman, Hawley, Hickory Grove, Hillburn, Hobokus, Honesdale, Hornell, Horseheads, Howells, Hubbard, Huntington, Huston, Industry, Jaycocks, Jamestown, Jeddoe, Jersey City, Johnson City, Jones, Kanona, Kellams, Kennedy, Kent, Kenton, Kimbles, Kirkwood, Lackawaxen, Lake Huntington, Lancaster, Lawtons, Leavittsburg, Letchworth Park, Lima, Limestone, Linden, Linden St., Little Valley, Livonia, Long Eddy, Lordville, Mahoning, Mahwah, Mansfield, Mantua, Marilla, Marion, Markhams, Martin, Mast Hope, Meadow-wood, Meadville, Middletown, Mill Rift, Monaca, Mongaup, Monroe, Mortimer, Mount Morris, Narrowsburg, Newark, New Brighton, New Castle, New Hampton, New York, Niles, North Collins, North Randall, Ohio City, Oil City, Olean, Oneonta, Otisville, Owego, Oxford, Painted Post, Parker's Glen, Passaic, Paterson, Perrysburg, Persia, Phalanx, Pierce's, Pittsburgh, Pond Eddy, Portage, Port Jervis, Ramapo, Ramsey, Randolph, Rathbone, Ravenna, Reno, Ridgewood, Rittman, Rochester, Rochester N.Y., Rock Glen, Rowlands, Rutherford, Salamanca, Savona, Seven Nations, Shakers, Sharon, Shaws, Sheridan, Shimer's Rock Cut, Shohola, Silver Springs, Skinners, Sloatsburg, Smithboro, Smith's Mills, Solon, Sonyea, South Avon, South Dayton, Southfields, South Lima, South Livonia, South Park, Sparrowbush, Spencerville, Spring Street, Springwater, State Hospital, Sterling, Stockport, Suffern, Sugar Creek, Susquehanna, Swains, Tioga Centre, Toledo, Town Line, Tusten, Tuxedo, Union City, Wadsworth, Waldwick, Wallace, Warren, Warsaw, Washington Hunt, Water Valley, Waverly, Wayland, Webster, Wellsburg, Wellsville, Wellwood Ave., Westcolang Park, Westfall, West Henrietta, West Perrysburg, West Sparta, White Mills, Wiards, Youngstown.

ADDITIONAL STATIONS ON ERIE RAILROAD
At Which Trains Do NOT Stop Regularly

The distance shown is from New York as indicated in Tables 4 and 5

Table with 9 columns: STATION, Miles from New York, STATION, Miles from New York, STATION, Miles from New York, STATION, Miles from New York, STATION, Miles from New York. Lists additional stations such as Adrian, Akron, Aldine, Alger, Almond, Ashville, Athens, Atlantic, Bass Lake, Bear Lake, Belvidere, Bippus, Bolivar, Boone Grove, Braceville, Burbank, Caledonia, Columbus, Creston, DeCliff, De Long, Disko, Elgin, Foraker, Forty-seventh St., Freedom, Geneva, Glenmore, Griffith, Harrods, Hegewisch, Hepburn, Highlands, Hinsdale, Hurlburt, Kemp, Kingsland, Kouts, Laketon, Lakewood, Letters, Markel, Martel, McGuffey, Millers, Mill Village, Monterey, Nankin, Newton, Nlobe, North Judson, Ontario, Ora, Palmer, Pavonia, Pershing, Polk, Preble, Red House, Saegertown, Selo, Servia, Sharpsville, Steamburg, Sterling, Tallmadge, Tocsin, Uniondale, Venango, Watts Flats, West Salem, Wilders, Windham, Winfield, Wren.

REFERENCE MARKS AND NOTES

IMPORTANT—When trains are indicated as stopping conditionally, Conductors should be notified of intention to leave train and Station Agent notified of intention to board train.

- † Runs daily except Sunday.
 † Stops to discharge passengers.
 † Will not operate from these stations on Monday morning.
 † Train 71 will not run west of Waldwick on Saturday nights or Sunday nights, July 3 and Sept. 4.
 † Stops on signal to receive and discharge passengers.
 k Runs Saturdays only. M. C. Motor Car Service. N. B. No Baggage carried.
 ab Stops Saturday and Sunday only to discharge passengers.
 ac Stops Dalton (4.53 A. M.) to discharge passengers from Hornell and east and on signal to receive passengers.
 ad Via Allegany Motor Coach Co., Inc. bus between Salamanca and Bradford.
 ae Train 5 will stop on signal at Monroe (9.05 P. M.) to receive passengers for Jamestown and west; and to discharge passengers from New York.
 af Train 7 stops Middletown (1.20 A. M.) Sunday and Monday mornings only to discharge passengers.
 ag Stops Saturdays only to discharge passengers.
 ah Stops on signal Andover (9.24 A. M.); Belmont (9.51 A. M.) to discharge passengers from New York.
 ak Train 27 stops at Monroe (4.10 P. M.) on Sundays and Holidays only.
 an Stops at Lordville (3.37 P. M.) July 5 to Sept. 2, Incl., daily except Saturdays, Sundays and holidays to receive passengers for New York only.
 at On Sundays only, Train 30 will arrive West 23rd Street at (12.50 P. M.).
 ax Stops Englewood Train 1 (7.37 A. M.); Train 7 (12.43 A. M.) to discharge passengers from east of Hammond.
 ba Stops on signal Paterson (8.27 A. M.) to receive passengers.
 bc Stops on signal Paterson (8.19 P. M.), Ridgewood (8.29 P. M.) to receive passengers.
 bd Stops on signal Suffern (8.43 P. M.) to receive passengers for Hornell and west.
 bf Stops Cuba (5.26 A. M.) to discharge passengers from Elmira and east and to receive for Jamestown and west.
 bg Stops on signal, Friendship (10.06 A. M.); Cuba (10.22 A. M.) to discharge passengers from New York.
 bh Stops Cuba (6.20 P. M.) to discharge passengers from Elmira and east and to receive for Jamestown and west.
 bm Stops on signal Niles (10.23 A. M.) to discharge passengers from Pittsburgh and from Jamestown and east and to receive passengers for Cleveland.
 bp Stops Niles (11.26 P. M.) to discharge passengers from Meadville and east and on signal to receive passengers for Akron and west.
 bt No Agent on duty. No baggage handled on Trains 5 and 6 to or from Castile.
 ca Train 27 stops Holidays only Rutherford (3.07 P. M.)
 cb Stops on signal Passaic (8.10 P. M.) to receive passengers for Jamestown and west.
 cd For additional service between Cleveland and Youngstown see Table 7.
 cf Stops Tuxedo (4.39 P. M.) daily, except Sunday.
 cg Stops on signal Ridgewood (11.13 P. M.) to discharge passengers from Binghamton and west.
 ch Train 71 stops Tuxedo to discharge passengers, except Saturday nights or Sunday nights: July 3 and Sept. 4.
 cn Stops on signal Union City (8.53 P. M.); Cambridge Springs (9.12 P. M.) to discharge passengers from Jamestown and east and to receive for Youngstown and west.
 cp Stops on signal (10.14 P. M.) to receive passengers for east of Hammond.
 ct Bus service provided between Cochection and Lake Huntington.
 cw Stops Endicott (1.45 A. M.) to discharge passengers from Port Jervis and east.
 cx Stops to discharge passengers from New York.
 cy Stops to discharge passengers from Cleveland and beyond.
 db Train 8 stops at Ravenna (7.52 A. M.) to discharge passengers from Marion and west, and on signal to receive for Youngstown and east.
 dc Stops Mantua (1.53 P. M.) to discharge passengers from Cleveland and on signal to receive passengers for Warren and east.
 de Stops Barberton (5.00 P. M.) to discharge passengers from Youngstown and east and on signal to receive passengers for Mansfield and west.
 df Stops on signal Mantua (8.42 A. M.) to receive passengers for Cleveland.
 dg Stops on signal at Warren (4.45 A. M.) to discharge passengers from Chicago and to receive passengers for Jamestown and east.
 dh Via Dodaro Bus Co. between Salamanca and Bradford.
 dp Stops Niles (1.16 A. M.) to discharge passengers from east of Youngstown and signal to receive passengers for Cleveland.
 dt No baggage carried on this train east of Hornell. Baggage will be handled on following train.
 du Coaches only, west of Salamanca.
 dv Stops on signal Union City (7.45 P. M.) to discharge passengers from Youngstown and west and to receive passengers for New York.
 dw Stops Cuba (9.54 A. M.) to discharge passengers from Jamestown and west and to receive for Elmira and east.
 dx Stops Ridgewood (6.48 P. M.), Passaic (7.04 P. M.) to discharge passengers from Goshen and west.
 dy Stops on signal Cambridge Springs (7.17 A. M.), Union City (7.34 A. M.), to discharge passengers from Chicago and to receive for Binghamton and east.
 dz Stops Ridgewood (7.03 A. M.), Paterson (7.12 A. M.), Passaic (7.19 A. M.), to discharge passengers from Goshen and west.
 ea Train 61 has a connection from Newark Saturday only.
 eb Stops on signal Paterson (1.56 P. M.) to receive passengers.
 ec Bus service between New Castle and New Castle (Washington St.).
 ed Bus service between Wampum and Ellwood City.
 eg On Holidays Train 62 has no connection for Newark.
 eh On Holidays Train 57 has no connection from Newark.
 ek Train 1 stops at Lordville (12.39 P. M.) daily, except Saturdays and Sundays, July 1 to Sept. 2, Inc., to discharge New York passengers.
 em Train 1 stops at Cochection (12.06 P. M.) until Sept. 5, Inc., to discharge New York passengers.
 en Stops on signal Paterson (9.12 A. M.), Ridgewood (9.22 A. M.) to receive passengers.
 ep Train 1 stops on signal Passaic (9.05 A. M.), Suffern (9.37 A. M.) to receive passengers for Binghamton and west.
 er Stops Niles (5.46 A. M.) to discharge passengers from Cleveland and west and on signal to receive for Pittsburgh.
 es Stops on signal Niles (5.17 P. M.) to receive passengers for Jamestown and east, and to discharge passengers from Cleveland.
 et Stops on signal East 55th Street (1.34 P. M.); East 93rd Street (1.39 P. M.) to receive passengers.

- eu Stops Endicott (6.12 P. M.) daily to discharge passengers from Jamestown and west and on signal to receive passengers for New York; also stops Sundays only to receive and discharge passengers.
 ev Stops on signal to receive passengers for Cleveland and beyond.
 ew Stops (11.46 A. M.) to discharge from Jamestown and east and west of Akron.
 ex Stops Endicott (1.47 A. M.) to discharge passengers from Buffalo, Jamestown and west.
 ey Stops Hohokus on Saturdays only (11.07 A. M.).
 ez On Sundays Train 6 has no connection for Newark.
 gc Stops West Henrietta (10.48 A. M.) to discharge passengers from east of Avon.
 gt In connection with the bus service the Erie Railroad Company acts as agent only and is not responsible beyond its own line, except as such responsibility may be imposed by law with respect to baggage.
 ha Stops at Narrowsburg (11.01 P. M.) to discharge passengers from Ridgewood and east.
 he Stops Alden (9.14 P. M.) to discharge passengers from Buffalo and on signal to receive passengers.
 hf Stops (11.09 P. M.) to discharge passengers from Pittsburgh.
 hm On Saturdays connection for Train 69 leaves Newark at (5.16 P. M.); has no connection on Sundays or Holidays.
 hn On Sundays Train 2 has no connection for Newark.
 ho Stops at Mantua (9.24 A. M.) to receive passengers for Cleveland.
 hr Train 27 has no connection on Sunday.
 ht Trains 5-557 and 560-6 carry through sleeping cars between Bradford and New York.
 hu Stops to discharge passengers.
 hv Stops on signal East 93rd Street (6.13 P. M.) to receive passengers.
 mh Stops on signal, Sundays only, to discharge passengers from New York.
 na Train 6 stops on signal at East 93rd St. (4.13 P. M.) to receive passengers for Sharon and east.
 ne Train 626 stops Saturdays only at Solon (1.39 P. M.) and Aurora (1.47 P. M.) to discharge passengers from Cleveland.
 nf Stops on signal at Garrettsville-Hiram (2.47 P. M.) to receive passengers for Cleveland.
 nh Stops on signal at Garrettsville-Hiram (10.52 A. M.) to discharge passengers from Hornell and east.

ERIE TICKET OFFICES AND PASSENGER STATIONS IN PRINCIPAL CITIES

- Akron, O.**—Union Station.
(Telephone Jefferson 9141)
B. L. BENDER, Ticket Agent.
- Binghamton, N. Y.**—Erie Station.
(Telephone 4-3251)
A. F. WAINSCOTT, Ticket Agent.
- Bradford, Pa.**—Erie Station.
(Telephone 3716)
A. J. SULLIVAN, Ticket Agent.
- Brooklyn, N. Y.**—City Ticket Office.
155 Pierrepont St.
(Telephone Triangle 5-7440)
J. W. VAN COTT, Ticket Agent.
- Buffalo, N. Y.**—City Ticket Office.
6 North Division St.
(Telephone Washington 4300)
W. L. MCCREARY, Ticket Agent.
Station Ticket Office
(Lehigh Valley Terminal)
Main and Scott Streets
(Telephone Washington 4300)
A. L. SEITZ, Ticket Agent.
- Chicago, Ill.**—City Ticket Office. 163-165 West Jackson Blvd.
(Telephone Harrison 4160)
C. F. KUNDEL, Ticket Agent.
Hotel Ticket Offices—
Congress, Morrison, Sherman, Stevens,
Palmer House, Merchandise Mart.
(Telephone Harrison 2203)
GEORGE M. NEWHART, Ticket Agent.
- Dearborn Station.**
(Telephone Harrison 9830)
W. E. MISCHNICK, Ticket Agent.
- Cleveland, O.**—City Ticket Office.
2063 East 9th St.
(Telephone Cherry 8400)
CASPER J. MILLER, Ticket Agent.
- Erie Station.**
(Telephone Cherry 8400)
G. SAUNDERS, Ticket Agent.
- Elmira, N. Y.**—Erie Station.
(Telephone 2-0380)
E. J. STEELE, Ticket Agent.
- Hornell, N. Y.**—Erie Station.
(Telephone 680)
R. L. SMITH, Ticket Agent.
- Huntington, Ind.**—Erie Station.
(Telephone 140)
D. L. HERENDEN, Ticket Agent.
- Jamestown, N. Y.**—Erie Station.
(Telephone 6076)
FRANK PRIEST, Ticket Agent.
- Jersey City, N. J.**—Erie Station.
(Telephone Delaware 8-5400)
G. B. IRVING, Ticket Agent.
- Mansfield, O.**—Erie Station.
(Telephone Canal 1423)
J. W. GILKERSON, Ticket Agent.
- Marion, O.**—Erie Station.
(Telephone 2399)
L. E. NEBERGALL, Ticket Agent.
- Meadville, Pa.**—Erie Station.
(Telephone 1212)
O. L. ENOS, Ticket Agent.
- Middletown, N. Y.**—Erie Station.
(Telephone 3303)
J. H. DIMKE, Ticket Agent.
- Newark, N. J.**—Erie Station.
(Telephone Humboldt 2-0600)
G. J. McMICHAEL, Ticket Agent.
- New York, N. Y.**—City Ticket Office,
Information Bureau,
Train Service and Fares.
(Telephone Barclay 7-6500)
City Ticket Office, 12 West 51st Street,
Rockefeller Center.
(Telephone Circle 5-7222)
G. H. DOWN, Ticket Agent.
West 23rd Street Station.
(Telephone Chelsea 3-0780)
C. H. POTTER, Ticket Agent.
Chambers Street Station.
(Telephone Cortlandt 7-9200)
T. I. NEWMAN, Ticket Agent.
City Ticket Office, 17 John Street.
(Telephone Cortlandt 7-6430 and
7-6431)
W. G. TEDFORD, Ticket Agent.
- Olean, N. Y.**—Erie Station.
(Telephone 4343)
J. F. MITCHELL, Ticket Agent.
- Passaic, N. J.**—Erie Station.
(Telephone 2-1613)
O. R. KRECH, Ticket Agent.
- Paterson, N. J.**—Erie Station.
(Telephone Sherwood 2-3337)
J. H. GRAF, Ticket Agent.
- Port Jervis, N. Y.**—Erie Station.
(Telephone 300)
R. FARBER, Ticket Agent.
- Sharon, Pa.**—Erie Station.
(Telephone 234)
H. P. MORGAN, Ticket Agent.
- Warren, O.**—Erie Station.
(Telephone 1000)
R. S. GETTIG, Ticket Agent.
- Youngstown, O.**—Erie Station.
(Telephone 41101)
R. E. TOWNS, Ticket Agent.

NEW YORK, UPTOWN CITY TICKET OFFICE ROCKEFELLER CENTER, RADIO CITY

Effective May 1, 1938, the uptown city office of the Erie Railroad moved from 8 West 40th St. to 12 West 51st St. This new location in Rockefeller Center is more convenient to more of our passengers. See list above for other New York offices.

RAILROAD AND PULLMAN FARES

For Information Only. Subject to Change Without Notice

Main fare table with columns for destinations (New York, Binghamton, Buffalo, Jamestown, Cleveland, Chicago) and rows for various routes (Akron, Binghamton, Buffalo, etc.).

RATES FOR UPPER BERTH, SECTION, DRAWING ROOM OR COMPARTMENT IN SLEEPING CARS (No Surcharge)

Table showing rates for upper berth, section, drawing room, and compartment in sleeping cars, categorized by where lower berth rate will be.

Minimum Number of Railroad Tickets Required for Exclusive Occupancy of Sections, Drawing Rooms or Compartments in Sleeping Cars and Drawing Room in Parlor Cars

Table detailing the minimum number of tickets required for different car services like Section, Comp., Berth Service, etc.

Note: For section occupied by two passengers but with lower berth only prepared for night service.

GENERAL INFORMATION

STANDARD OF TIME—Erie Lines east of and including Ohio City, Ohio, are operated by Eastern Standard Time...

TRAINS WILL NOT BE HELD for ferries from New York between hours of 4:00 P.M. and 5:30 P.M. Eastern Standard Time.

HOLIDAYS—The term "Holidays" (unless covered by special note) refers to New Year's Day, Lincoln's Birthday, Washington's Birthday, Memorial Day, Independence Day, Labor Day, Election Day (November 8), Thanksgiving Day and Christmas Day.

THIS COMPANY IS NOT RESPONSIBLE FOR ERRORS in time tables, inconvenience or damage resulting from delayed trains or failure to make connections; schedules are subject to change without notice.

FARES PAID ON TRAINS—Conductors are required to charge ten (10) cents in excess of the one-way ticket fare for passengers traveling in coaches only in the territory east of Port Jervis...

CHILDREN under five years of age are carried free when accompanied by parent or guardian; five years and under twelve, half fare, twelve years of age and over, full fare.

ADJUSTMENT OF FARES—Should any misunderstanding arise with conductors or agents, pay the fare required, take receipt and communicate with General Passenger Agent, Midland Bldg., Cleveland, Ohio.

SLEEPING AND PARLOR CAR RESERVATIONS—Space reserved by telegraph or telephone within city limit will be held until:

- 4:00 P.M. day prior to departure of trains leaving before noon next day.
9:00 A.M. day of departure for trains leaving between noon and 4:00 P.M.
1:00 P.M. day of departure for trains leaving after 4:00 P.M.

When application is by wire or letter from a point outside of city limit, space

will be held until fifteen minutes of train time.

BAGGAGE TO BE CHECKED should be delivered at station at least thirty minutes before train time.

BAGGAGE DELIVERY IN NEW YORK CITY—All baggage checked to New York City will be sent to the West 23rd Street Station unless passenger specifies Chambers Street Station at time of checking.

Baggage delivery service in New York will be performed by the Railway Express Agency.

HAND-BAGGAGE in Pullman Cars is restricted to what can be conveniently placed in the berth, seat or other accommodations purchased by the passenger.

CHICAGO PASSENGER AND BAGGAGE TRANSFER is performed by the Parmelee Company. A uniformed agent meets all incoming trains of the Erie Railroad on arrival at Dearborn Station.

ARTICLES LOST ON TRAINS or left in waiting rooms or stations, owners should apply to Lost and Found Bureau, (Baggage Room) Jersey City Depot, or address General Passenger Agent, Midland Bldg., Cleveland, Ohio, giving full description of the property, stating date of loss and number of train.

SAFETY FIRST HINTS—Carefulness on your part helps eliminate accidents. Don't get on or off a train in motion; wait for a full stop. Keep hand baggage out of car aisles; this will remove a cause of inconvenience, possibly of harm, to others.

DAYLIGHT SAVING TIME is observed until Sept. 24 at all towns and cities east of and including Port Jervis, N. Y., also Chicago, Crown Point, Griffiths, Highlands, Hammond, Buffalo, Niagara Falls, Hamburg and Gowanda. It is also observed at Jamestown until Sept. 5. For complete list see Official Railway Guide.

TABLE 1

CONDENSED TABLE OF THROUGH TRAINS NEW YORK AND BUFFALO, CLEVELAND AND CHICAGO

(FOR LOCAL TRAINS AND INTERMEDIATE TIME OF THROUGH TRAINS SEE LOCAL TABLES)

WESTBOUND		Air-conditioned Trains Air-conditioned equipment has been assigned to regular sections of trains as shown herein. Every effort will be made to provide it as specified, but the right is reserved to employ non-air-conditioned cars as necessitated by volume of traffic or emergencies.		EASTBOUND	
THE ERIE LIMITED Train No. 1—Daily New York—Buffalo—Jamestown—Chicago		THE ERIE LIMITED Train No. 2—Daily Chicago—Jamestown—Buffalo—New York		THE LAKE CITIES Train No. 5—Daily New York—Buffalo—Cleveland	
Lv New York, W. 23d St. 8.05AM E.S.T. Chambers St. 8.22 " " Jersey City 8.45 " " Paterson en 9.12 " " Ridgewood en 9.22 " " Binghamton 2.22PM " " Elmira 3.41 " " Ar Buffalo (Lehigh Valley Term.) 7.30 " " Lv Olean 6.41 " " Bradford ad 5.42 " " Buffalo (Lehigh Valley Term.) 5.05 " " Jamestown 7.59 " " Meadville 9.36 " " Youngstown 11.12 " " Warren 11.38 " " Akron 12.45AM " " Ar Chicago (Dearborn Sta.) 7.55AM C.S.T.		EQUIPMENT Air-Conditioned Sleeping Cars: New York to Chicago—8 Section Lounge Restaurant Car. Hornell to Chicago—8 Section, 1 Compartment Lounge Restaurant Car. Air-Conditioned Parlor Buffet Car: New York to Buffalo. Air-Conditioned Salon Coaches: New York to Chicago. Air-Conditioned Individual Seat Coach: New York to Buffalo. Dining Service for all meals in Air-Conditioned Lounge Restaurant Cars.		EQUIPMENT Air-Conditioned Sleeping Car: Chicago to New York—8 Section Lounge Restaurant Car. Air-Conditioned Parlor Buffet Car: Buffalo to New York. Air-Conditioned Salon Coaches: Chicago to New York. Air-Conditioned Individual Seat Coach: Buffalo to New York. Dining Service for all meals in Air-Conditioned Lounge Restaurant Car.	
THE LAKE CITIES Train No. 6—Daily Cleveland—Buffalo—New York		THE LAKE CITIES Train No. 7—Daily New York—Buffalo—Jamestown—Chicago		ATLANTIC EXPRESS Train No. 8—Daily Chicago—Jamestown—New York	
Lv New York, W. 23d St. 7.10PM E.S.T. Chambers St. 7.30 " " Jersey City 7.50 " " Paterson bc 8.19 " " Ridgewood bc 8.29 " " Ar Buffalo (Lehigh Valley Term.) 6.55AM " " Lv Olean 5.46 " " Ar Bradford 7.10 " " Jamestown 7.06 " " Meadville 8.37 " " Youngstown 10.01 " " Warren 10.34 " " Ar Cleveland 11.40AM " "		EQUIPMENT Air-Conditioned Sleeping Cars: New York to Cleveland—10 Section, 2 Compartment and Drawing-room. New York to Bradford—12 Section and Drawing Room. (Sleeping Car may be occupied at Bradford until 8.00 A. M.). Air-Conditioned Lounge Dining Car: New York to Port Jervis. Hornell to Youngstown. Air-Conditioned Individual Seat Coaches: New York to Cleveland. Coaches: Hornell to Buffalo.		EQUIPMENT Air-Conditioned Sleeping Cars: Cleveland to New York—10 Section, 2 Compartment and Drawing-room. Youngstown to New York—12 Section and Drawing-room Car (operates Sundays only). Bradford to New York—12 Section and Drawing Room. Air-Conditioned Lounge Dining Car: Youngstown to Hornell. Port Jervis to New York. Air-Conditioned Individual Seat Coaches: Cleveland to New York. Coaches: Buffalo to Hornell.	
PACIFIC EXPRESS Train No. 9—Daily New York—Buffalo—Jamestown—Chicago		ATLANTIC EXPRESS Train No. 10—EX. SUN. Buffalo—Hornell—Elmira—Binghamton—New York		THE MOUNTAIN EXPRESS Train No. 27—Daily New York—Binghamton—Elmira—Hornell	
Lv New York, W. 23d St. 10.55PM E.S.T. Chambers St. 11.30 " " Jersey City 11.45 " " Elmira 7.14AM " " Ar Buffalo (Lehigh Valley Term.) 11.40 " " Lv Olean 10.47 " " Ar Salamanca 11.10 " " Lv Buffalo (Lehigh Valley Term.) 8.00 " " Jamestown 12.07PM " " Meadville 1.46 " " Youngstown 3.19 " " Warren 3.46 " " Akron 4.50 " " Ar Chicago (Dearborn Sta.) 1.00AM C.S.T.		EQUIPMENT Air-Conditioned Sleeping Car: New York to Salamanca—12 Section and Drawing-room Car (Saturday night operates New York to Youngstown). (Sleeper open Jersey City at 9.30 P. M.) Air-Conditioned Dining Lounge Car: Binghamton to Salamanca. Air-Conditioned Salon Coaches: New York to Chicago.		EQUIPMENT Air-Conditioned Sleeping Car: Chicago to Hornell—8 Section, 1 Compartment Lounge Restaurant Car. (Sleeper open at Chicago at 9.30 P. M.) Air-Conditioned Salon Coaches: Chicago to New York. Air-Conditioned Dining Lounge Car: Salamanca to New York. (No baggage handled on this train east of Hornell, baggage will be handled on following train.)	
THE MOUNTAIN EXPRESS Train No. 28—Daily Binghamton—New York		THE MOUNTAIN EXPRESS Train No. 28—Daily Binghamton—New York		THE MOUNTAIN EXPRESS Train No. 28—Daily Binghamton—New York	
Lv New York, W. 23d St. 9.30AM E.S.T. Chambers St. 9.40 " " Jersey City 10.00 " " Paterson 10.29 " " Ridgewood 10.39 " " Ar Binghamton 4.30PM " "		EQUIPMENT Air-Conditioned Dining Lounge Car: New York to Binghamton (until Sept. 3, Inc.). Through Coaches... New York to Binghamton.		EQUIPMENT Air-Conditioned Sleeping Car: Hornell to New York—12 Section and Drawing-room Car. (Sleeper may be occupied at Jersey City until 7.00 A. M.) Coaches: Buffalo to Hornell. Hornell to New York.	
EQUIPMENT Parlor Buffet Car: New York to Binghamton (until Sept. 3, Inc.). Air-Conditioned Dining Lounge Car: New York to Binghamton. (Sept. 4 to 24, Incl.) Through Coaches... New York to Hornell.		EQUIPMENT Parlor Buffet Car: New York to Binghamton (until Sept. 3, Inc.). Air-Conditioned Dining Lounge Car: New York to Binghamton. (Sept. 4 to 24, Incl.) Through Coaches... New York to Hornell.		EQUIPMENT Lv Binghamton 10.40AM E.S.T. Ar Ridgewood 4.59PM " " Paterson 5.09 " " Jersey City 5.40 " " New York, Chambers St. 5.54 " " W. 23d St. 6.05PM " "	

For Explanation of Reference Marks and Notes, See Pages 5 and 6.

TABLE 2 WESTBOUND

NEW YORK—BINGHAMTON

Hudson and Manhattan Tube Trains operate to and from Erie Railroad Station in Jersey City. Fare, downtown, 6 cents; uptown, 10 cents. (Temporarily H. & M. uptown trains will terminate at 28th Street, main entrance on Sixth Avenue between 29th Street and 30th Street)

Main train schedule table with columns for Miles from New York, Eastern Standard Time, and various train numbers (53, 55, 57, 59, 43, 1, 701, 9, 703, 251, 209, 253, 61, 45, 255, 27, 63, 65, 67, 259, 47, 69, 5, 705, du 7, 71, 51). Rows list stations from New York to Binghamton with departure times.

LOCAL PARLOR AND CLUB CAR EQUIPMENT

No. 9—Daily Air-Conditioned Diner-Lounge New York to Binghamton. (Until Sept. 3, Inc.) Coaches... New York to Binghamton. No. 27—Daily Parlor-Buffer Car... New York to Binghamton. (Until Sept. 3, Inc.) Air-Conditioned Dining Lounge Car... New York to Binghamton (Sept. 4 to 24, Inc.) Coaches... New York to Hornell.

No. 43—Runs Saturdays and Sundays only (until Sept. 4, Inc.) Air-Conditioned Parlor Car. Diner... New York to Deposit. Coaches... New York to Deposit. No. 45—Runs Sats. only (until Sept. 3, Inc.) Parlor Car. Diner... New York to Deposit. Coaches... New York to Deposit. No. 47—Fridays only (until Sept. 2, Inc.) Parlor Car. Diner... New York to Deposit. Coaches... New York to Deposit.

No. 63—THE TUXEDO—Ex. Suns. and Hols. Parlor Car... New York to Port Jervis. Coaches... New York to Port Jervis. No. 67—Ex. Sat., Sun. and Hol. Erie Club Car... New York to Port Jervis. Coaches... New York to Port Jervis. No. 251—Saturdays only Erie Parlor Car... New York to Middletown. Coaches... New York to Middletown.

TABLE 3 EASTBOUND

BINGHAMTON—NEW YORK

Hudson and Manhattan Tube Trains operate to and from Erie Railroad Station in Jersey City. Fare downtown, 6 cents; uptown, 10 cents. (Temporarily H. & M. uptown trains will terminate at 28th Street, main entrance on Sixth Avenue between 29th Street and 30th Street.)

Main train schedule table with columns for station names, train numbers (50, 52, 204, 6, 54, 56, 58, 58, 30, 30, 60, 60, 62, 206, 70, 28, 44, 2, 700, 64, 208, 208, 34, 702, 38, 22, 22, 68, dt8, 10), and arrival/departure times.

No. 8—ATLANTIC EXPRESS—Daily.

Air-Conditioned Dining Lounge Car... Salamanca to New York. Air-Conditioned Coaches... Chicago to New York. No. 10—Except Sundays. Air-Conditioned Sleeping Car... Hornell to New York. Coaches... Hornell to New York. No. 28—THE MOUNTAIN EXPRESS—Daily. Coaches... Binghamton to New York. No. 34—Sunday only, July 10 to Aug. 28, Inc. (also Mondays, July 4 and Sept. 5) Parlor Car, Diner... Deposit to New York. Coaches... Deposit to New York.

LOCAL PARLOR AND CLUB CAR EQUIPMENT

No. 38—Sunday only, July 10 to Sept. 4, Inc. (also Mondays, July 4 and Sept. 5) Parlor Car... Deposit to New York. Buffet Club Car... Deposit to New York. Coaches... Deposit to New York. No. 44—Saturdays and Sundays only, July 9 to Sept. 4, Inc. (also Monday, July 4 and Sept. 5) Air-Conditioned Parlor Car, Diner... Deposit to New York. Coaches... Deposit to New York.

No. 30—Except Sun. and Hol. Erie Club Car... Port Jervis to New York. Coaches... Port Jervis to New York. also Mondays only (July 11 to Aug. 29, Inc.) Erie Club Car... Callicoon to New York. Coaches... Callicoon to New York. No. 56—THE TUXEDO—Except Sun. and Hol. Erie Club Car... Port Jervis to New York. Coaches... Port Jervis to New York.

For Explanation of Reference Marks and Notes, See Pages 5 and 6.

For Parlor, Sleeping and Dining Service of Through Trains, See Pages 9 and 10.

TABLE 4 WESTBOUND

BINGHAMTON—AKRON

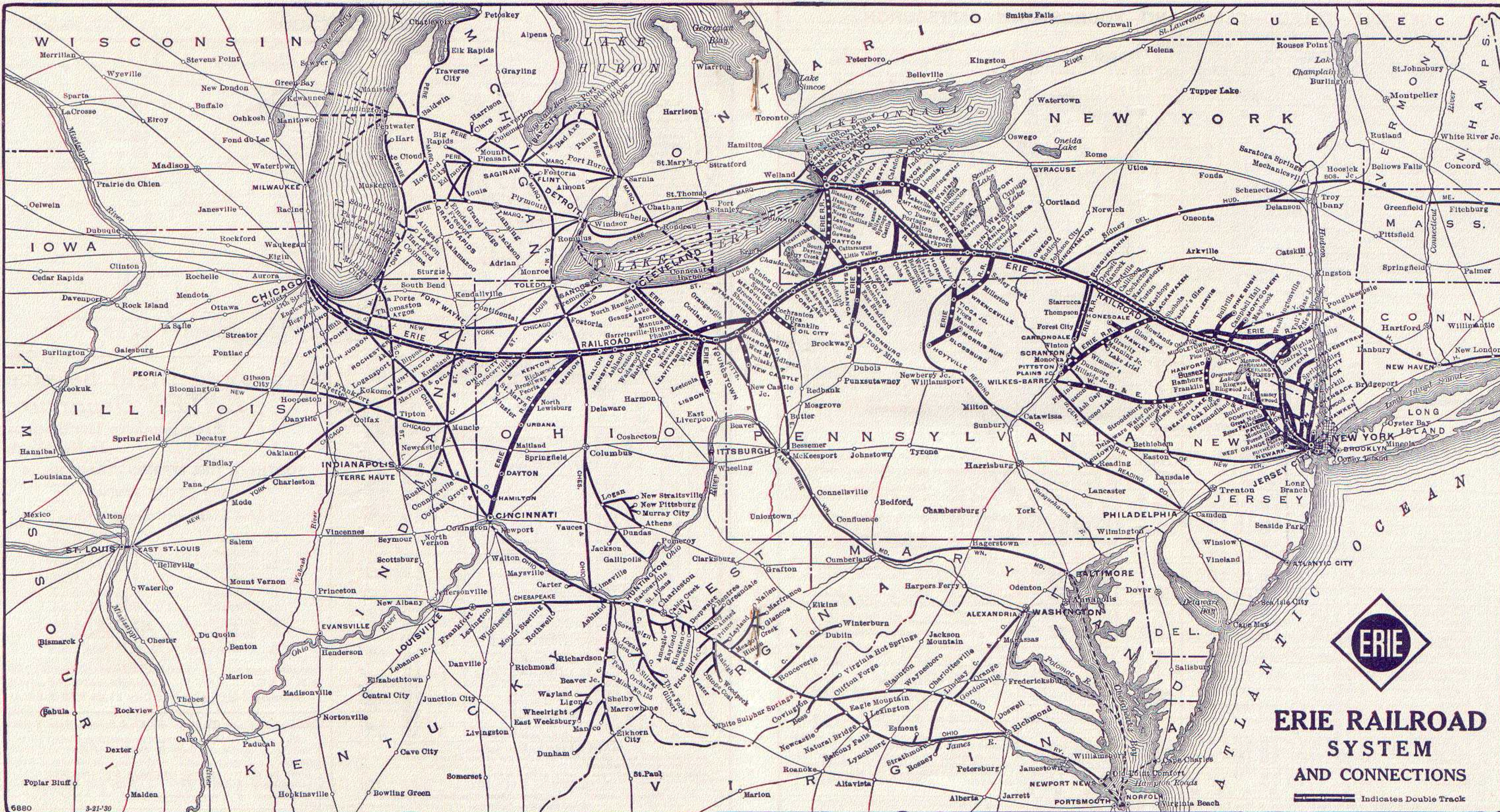
EASTBOUND

Miles from New York	Eastern Standard Time				Miles from Chicago	Central Standard Time								
	du 7 Daily	1 Daily	27 Daily	5 Daily		2 Daily	22 Sun. only	dt 8 Daily	10 Daily Ex. Sun.	6 Daily	620 Sun. only			
0.0	N. Y., West 23d St. Lv.	10.55 PM	8.05 AM	2.20 PM	7.10 PM	0.0	Chicago (Dearborn Sta.) Lv.	6.00 PM		10.00 PM				
0.0	Chambers St. " "	11.30	8.22	2.40	7.30									
1.0	Jersey City. " "	11.45	8.45	2.55	7.50									
	Albany (D.& H.) Lv.		† 7.00	4.20		372.7	Akron. Ohio " "	3.49		7.22				
	Oneonta (D.& H.) " "		† 10.00	6.47		382.8	Kent. " " {Ar.	4.05		7.37				
	Binghamton (D.& H.) Ar.		† 11.55	8.40		389.1	Ravenna. " " {Lv.	4.10		7.42				
										db				
215.1	Binghamton. N. Y. Lv.	5.42	2.22	9.05	1.35		Cleveland (See Table 7) Lv.				4.00	9.30		
217.8	Johnson City. " "					413.0	Warren (cd) " "	dg	8.22		5.08	10.47		
223.7	Endicott. " "	5.54	2.35	9.19	cw	418.1	Niles (cd) " "				es	10.57		
237.1	Owego. " "	6.13	2.52	9.38		422.3	Girard (cd) " "					11.04		
						426.9	Youngstown (cd) Ar.	5.02	8.43		5.30	11.13		
242.8	Tioga Centre. " "													
246.8	Smithboro. " "													
249.4	Barton. " "													
256.2	Waverly. " "	6.39	3.15	10.01										
261.0	Chemung. " "					426.9	Youngstown. Lv.	5.12	8.50		5.38	11.17		
266.8	Wellsburg. " "					434.5	Hubbard. " "					11.28		
273.8	Elmira. " "	7.14	3.41	10.35	2.48	440.5	Sharon. Pa. " "	5.43	9.14		6.01	11.38		
						456.6	Greenville. " "	6.18	9.41		6.26			
278.4	Horseheads. " "					482.8	Meadville. Ar.	6.55	10.20		7.03			
283.6	Big Flats. " "													
291.2	Corning. " "	7.47	4.05	11.02	3.13		Franklin (See Table 11-A) Ar.	9.25						
293.1	Painted Post. " "						Oil City (See Table 11-A) " "	9.45						
302.3	Addison. " "	8.05	4.22	11.25		482.8	Meadville. Lv.	7.00	10.25		7.08			
307.4	Rathbone. " "					497.5	Cambridge Springs. " "	dy	10.45		7.27			
312.5	Cameron Mills. " "					513.1	Union City. " "	dy	11.09		dv			
315.1	Cameron. " "					524.5	Corry. " "	7.51	11.28		8.03			
328.1	Canisteo. " "					551.4	Jamestown. N. Y. Ar.	8.31	12.15		8.44			
332.3	Hornell. Ar.	8.42	4.58	12.05	4.04		(Chautauqua Lake)							
425.2	Buffalo (see Table 6) Ar.	11.40	7.30		6.55	620.9	Buffalo (See Table 8) Ar.	10.42	6.50					
332.3	Hornell. Lv.	8.50	5.08		4.13	551.4	Jamestown. Lv.	8.31	12.15		8.44			
341.5	Alfred. " "						(Chautauqua Lake)							
349.9	Andover. " "	ah				567.6	Randolph. " "		12.37					
358.5	Wellsville. " "	9.39	5.48		4.52	585.1	Salamanca. Ar.	9.10	1.11		9.23			
366.9	Belmont. " "	ah					Bradford. Lv.	8.15	11.17		8.30			
374.4	Friendship. " "	bg				585.1	Salamanca. Lv.	9.15	1.18		9.31			
383.3	Cuba. " "	bg	bh		bf	599.6	Allegany. " "							
395.7	Olean. " "	10.47	6.41		5.46	603.0	Olean. " "	9.39	1.44		9.56			
399.1	Allegany. " "					615.4	Cuba. " "	dw						
413.6	Salamanca. Ar.	11.10	7.04		6.10	624.3	Friendship. " "							
430.2	Bradford. Ar.		7.45		7.10	631.8	Belmont. " "							
413.6	Salamanca. Lv.	11.17	7.11		6.17	640.2	Wellsville. " "	10.29	2.41		10.47			
431.1	Randolph. Lv.				6.41	648.8	Andover. " "							
447.3	Jamestown. Ar.	12.07	7.59		7.06	657.2	Alfred. " "							
	(Chautauqua Lake)					666.4	Hornell. Ar.	11.07	3.20		11.25			
	Buffalo (See Table 8) Lv.	8.00	5.05											
447.3	Jamestown. Lv.	12.07	7.59		7.06		Buffalo (See Table 6) Lv.	8.30		4.35	8.45			
474.2	Corry. Pa. " "	12.48	8.39		7.43	666.4	Hornell. " "	11.14	11.50	3.30	7.30	11.31		
485.6	Union City. " "		cn		7.59	670.6	Canisteo. " "		12.01	3.41	7.38			
501.2	Cambridge Springs. " "	1.21	cn		8.18	683.6	Cameron. " "		12.17					
515.9	Meadville. Ar.	1.41	9.31		8.37	686.2	Cameron Mills. " "		12.24					
						691.3	Rathbone. " "		12.31					
	Oil City (See Table 11-A) Lv.		7.10			696.4	Addison. " "	11.51	12.46	4.16	8.11	12.07		
	Franklin (See Table 11-A) " "		7.35			705.6	Painted Post. " "		1.24					
515.9	Meadville. Lv.	1.46	9.36		8.42	707.5	Corning. " "	1208	1.32	4.44	8.40	1224		
542.1	Greenville. " "	2.23	10.15		9.17	715.1	Big Flats. " "		1.41					
558.2	Sharon. " "	2.51	10.42		9.41	720.3	Horseheads. " "		1.49					
564.2	Hubbard. Ohio " "													
571.8	Youngstown. Ar.	3.12	11.05		10.01	724.9	Elmira. " "	1232	2.07	5.11	9.10	1250		
						731.9	Wellsburg. " "		2.19					
	Pittsburgh (See Table 7) Ar.					737.7	Chemung. " "		2.29					
						742.5	Waverly. " "	1253	2.39		9.33	1.12		
571.8	Youngstown (cd) Lv.	3.19	11.12		10.10	749.3	Barton. " "		2.49					
576.4	Girard (cd) " "					751.9	Smithboro. " "		2.55					
580.6	Niles (cd) " "		bp		bm	755.9	Tioga Centre. " "		3.03					
585.7	Warren (cd) " "	3.46	11.38		10.34									
638.3	Cleveland (See Table 7) Ar.				11.40	761.6	Owego. " "	1.16	3.23		9.56			
609.6	Ravenna. " "					775.0	Endicott. " "	1.35	3.41	eu	10.14	ex		
						780.9	Johnson City. " "		3.56					
615.9	Kent. {Ar.	4.24	12.18			783.6	Binghamton. Ar.	1.57	4.14	6.26	10.41	2.12		
626.0	Akron. {Lv.	4.29	12.23			783.6	Binghamton (D.& H.) Lv.	† 2.15						
		4.50	12.45			844.4	Oneonta (D.& H.) Ar.	† 4.01						
						926.1	Albany (D.& H.) " "	† 6.25						
	Central Standard Time													
998.7	Chicago (Dearborn Station) Ar.	1.00 AM	7.55 AM			997.7	Jersey City. " "	7.25		11.45	4.15	7.40		
						998.7	N. Y., Chambers St. " "	7.44		11.57	4.27	7.54		
							" West 23d St. Ar.	7.55				8.05		

COME! DINE WITH US.

Table D'Hotel prices range as follows: Breakfast 50c to \$1.00, Luncheon 75c to \$1.25, Dinner 75c to \$1.25. A meal on our trains is always a pleasant interlude. Makes the journey seem shorter, too. The freshest food the market

affords, cooked by expert chefs and served in the comfort of spacious Restaurant Cars. If you prefer a light snack without going to the Diner the waiter will bring sandwiches, fruit, coffee, etc., right to your seat.



ARRIVE FRESH AS A DAISY ON ERIE AIR-CONDITIONED TRAINS

TABLE 7 DETROIT—TOLEDO—CLEVELAND—YOUNGSTOWN—PITTSBURGH

Miles from Cleveland	Eastern Standard Time	EASTBOUND													
		WEEK-DAYS							SUNDAYS						
		688	624	626	6	628	686	644	688	624	626	6	686	620	
		Ex. Sun.	Ex. Sun.	Ex. Sun.	Ex. Sun.	Ex. Sun. & Hol.	Ex. Sun.	Ex. Sun.	Sun. only	Sun. only	Sun. only	Sun. only	Sun. only	Sun. only	
		AM	AM	AM	PM	PM	PM	PM	AM	AM	AM	PM	PM	PM	
N.Y.C.	Detroit.....Lv.	12.30	8.00	1.20	12.30	8.00	1.20	
	Toledo.....Lv.	2.13	5.05	9.45	3.00	2.13	5.05	9.45	3.00	
0.0	Cleveland.....Lv.	4.25	8.00	1.15	4.00	5.30	6.00	9.30	4.25	8.00	1.15	4.00	6.00	9.30	
3.3	East 55th Street.....	8.07	1.23	4.08	5.38	6.08	8.07	1.23	4.08	6.08	9.40	
5.6	E. 93d St., Cleveland.....	8.12	1.27	na	5.43	hv	8.12	1.27	na	hv	9.45	
10.7	North Randall.....	5.52	
15.8	Solon.....	ne	5.59	10.00	
20.4	Geauga Lake.....	6.05	10.05	
23.6	Aurora.....	ne	6.10	cy	10.10	
30.0	Mantua.....	dc	6.18	cy	dc	10.17	
34.2	Jeddoe.....	6.24	
36.7	Garrettsville-Hiram.....	8.46	2.02	6.30	10.17	8.46	2.02	10.27	
40.3	Mahoning.....	6.36	
45.3	Phalanx.....	6.42	
49.4	Leavittsburg.....	6.49	
52.6	Warren.....	5.37	9.05	2.22	5.08	6.57	7.09	10.37	5.37	9.05	2.22	5.08	7.09	10.47	
57.7	Niles.....	er	9.13	2.30	es	7.23	7.20	10.45	er	9.13	2.30	es	7.20	10.57	
61.9	Girard.....	7.33	11.04	
66.5	Youngstown.....Ar.	6.00	9.25	2.45	5.30	7.45	7.35	10.58	6.00	9.25	2.45	5.30	7.35	11.13	
66.5	Youngstown.....Lv.	6.10	9.30	2.50	7.40	6.10	9.30	2.50	7.40	
84.2	New Castle.....Ar.	6.34	9.55	3.14	8.02	6.34	9.55	3.14	8.02	
	New Castle (Wash. St.) ec Ar.	6.49	10.07	3.27	8.14	6.49	10.07	3.27	8.14	
95.5	Ellwood City (ed).....	10.16	3.34	8.22	10.16	3.34	8.22	
102.2	Beaver Falls.....	cy6.56	10.18	3.36	8.25	cy6.56	10.18	3.36	8.25	
	New Brighton.....	
105.6	Beaver.....	cy7.01	10.24	3.41	8.31	cy7.01	10.24	3.41	8.31	
112.3	Aliquippa.....	cy7.10	10.33	3.50	8.40	cy7.10	10.33	3.50	8.40	
120.8	Coraopolis.....	cy7.20	10.44	4.00	8.50	cy7.20	10.44	4.00	8.50	
131.4	Pittsburgh.....Ar.	7.35	11.00	4.15	9.05	7.35	11.00	4.15	9.05	

AIR-CONDITIONED TRAINS
Air-conditioned equipment has been assigned to regular sections of trains as shown herein. Every effort will be made to provide it as specified, but the right is reserved to employ non-air-conditioned cars as necessitated by volume of traffic or emergencies.

EQUIPMENT
Detroit, Toledo, Cleveland, Youngstown, Pittsburgh Trains.
★Indicates Air-Conditioned Cars

EASTBOUND
No. 6—Daily. ★Sleeping Car (10 Section 2 Compartment and Drawing Room Car) Cleveland to New York. ★Lounge Dining Car, Youngstown to Hornell. ★Individual Seat Coach, Cleveland to New York.
No. 620—Sundays only. Coaches, Cleveland to Youngstown and Sharon.

No. 624—Daily. ★Pullman Parlor-Lounge-Diner, Cleveland to Pittsburgh. ★Coach, Cleveland to Pittsburgh.
No. 626—Daily. ★Pullman Parlor Car, Cleveland to Pittsburgh. ★Coach, Cleveland to Pittsburgh.
No. 644—Except Sundays. Coaches, Cleveland to Youngstown.
No. 686—Daily. ★Sleeping Car for Parlor Car Service and ★Coaches, Detroit to Pittsburgh, via Cleveland. Dining Lounge Car, Cleveland to Pittsburgh.
No. 688—Daily. ★Sleeping Cars, Chicago to Pittsburgh. ★Sleeping Cars, Detroit to Pittsburgh. Through Coaches, ★Chicago and ★Detroit to Pittsburgh, via Cleveland.

WESTBOUND
No. 5—Daily. ★Sleeping Car (10 Section 2 Compartment and Drawing Room Car) New York to Cleveland. ★Pullman Parlor Car, Pittsburgh to Cleveland. ★Lounge Dining Car, Hornell to Youngstown. ★Coach, Pittsburgh to Cleveland.

No. 619—Sundays only. Coaches, Youngstown to Cleveland.
No. 623—Daily. ★Pullman Parlor-Lounge-Diner, Pittsburgh to Cleveland. ★Coach, Pittsburgh to Cleveland.
No. 625—Except Sundays. Coaches, Youngstown to Cleveland.
No. 679—Daily. ★Sleeping Car, Pittsburgh to Chicago. ★Through Coaches, Pittsburgh to Chicago.
No. 685—Daily. ★Sleeping Car for Parlor Car Service and ★Coaches, Pittsburgh to Detroit, via Cleveland. Dining Lounge Car, Pittsburgh to Cleveland.
No. 687—Daily. ★Sleeping Cars, Pittsburgh to Detroit. ★Through Coaches, Pittsburgh to Detroit via Cleveland.

★Cleveland-Pittsburgh Sleeping Car
The Cleveland-Pittsburgh sleeping car operates to and from Union Terminal Cleveland via New York Central (via Ashtabula) to Youngstown, and P. & L. E. Railroad on following schedule:

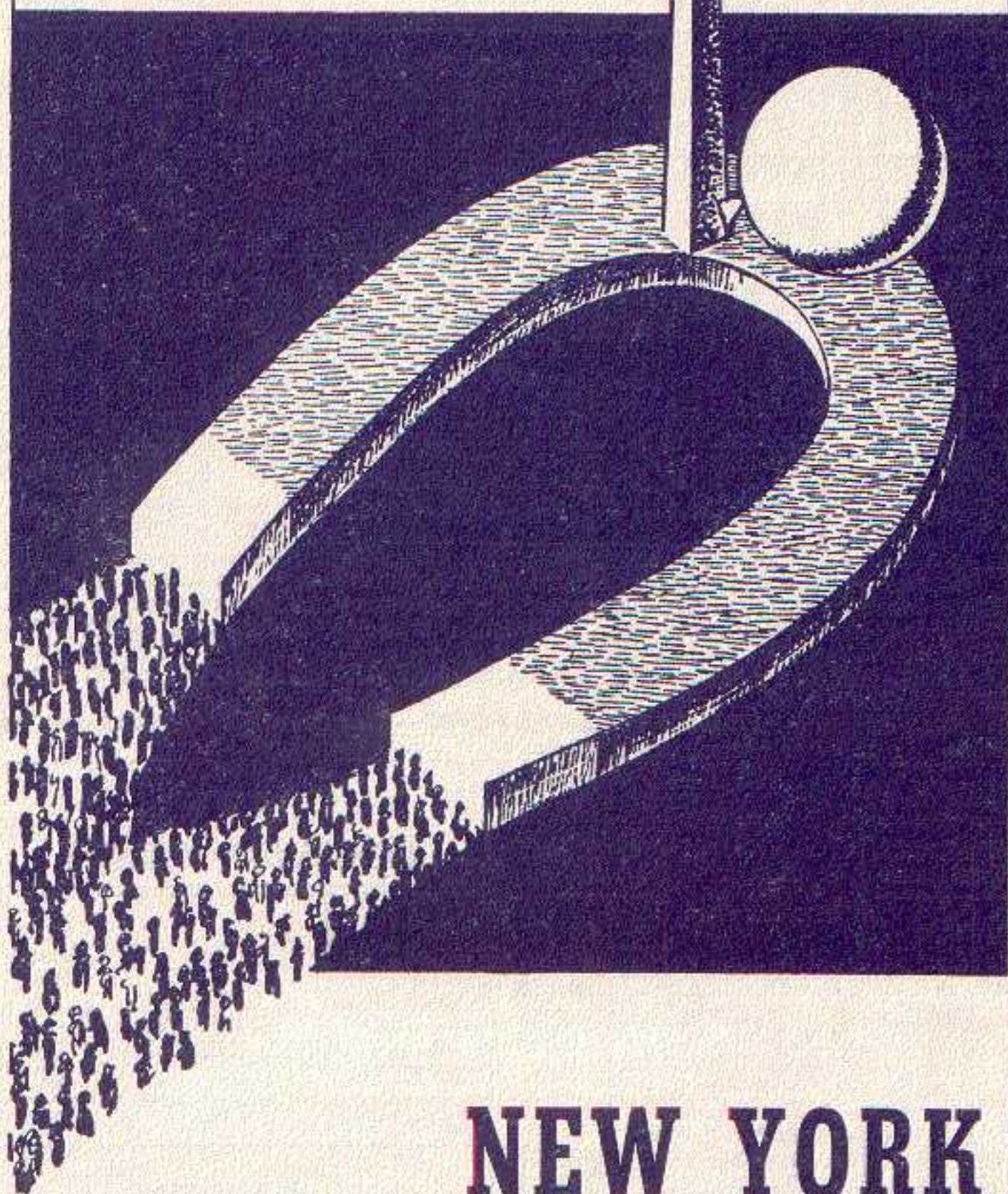
Eastbound
Lv Cleveland (Union Terminal) 2:18 AM
Ar Pittsburgh (P&LE Station) 7:15 AM
Westbound
Lv Pittsburgh (P&LE Station) 10:40 PM
Ar Cleveland (Union Terminal) 7:15 AM

Sleeper open for occupancy at 9:30 P. M. at Cleveland and 10:00 P. M. at Pittsburgh.
Tickets reading via Erie Railroad between Cleveland and Youngstown, and P. & L. E. Railroad between Youngstown and Pittsburgh, will be honored in this sleeping car.

Miles from Pittsburgh	Eastern Standard Time	WESTBOUND													
		WEEK-DAYS							SUNDAYS						
		629	625	5	685	623	679	687	619	5	685	623	679	687	
		Ex. Sun. & Hol.	Ex. Sun.	Ex. Sun.	Ex. Sun.	Ex. Sun.	Ex. Sun.	Ex. Sun.	Sun. only	Sun. only	Sun. only	Sun. only	Sun. only	Sun. only	
		AM	AM	AM	PM	PM	PM	PM	AM	AM	PM	PM	PM	PM	
	Pittsburgh.....Lv	8.30	12.30	5.15	9.00	11.30	8.30	12.30	5.15	9.00	11.30
10.6	Coraopolis.....	8.44	12.45	5.29	9.14	ev	8.44	12.45	5.29	9.14	ev
19.1	Aliquippa.....	8.53	12.54	5.38	9.23	11.53	8.53	12.54	5.38	9.23	11.53
25.8	Beaver.....	9.01	1.01	5.46	9.31	12.01	9.01	1.01	5.46	9.31	12.01
29.2	Beaver Falls.....	9.06	1.06	5.51	9.36	12.06	9.06	1.06	5.51	9.36	12.06
45.7	New Brighton.....	9.07	1.07	5.53	9.37	9.07	1.07	5.53	9.37
	Ellwood City (ed).....
47.2	New Castle (Wash. St.) Lv.ec	9.16	1.18	5.48	9.38	12.17	9.16	1.18	5.48	9.38	12.17
	New Castle.....	9.28	1.30	6.14	9.58	12.29	9.28	1.30	6.14	9.58	12.25
64.9	Youngstown.....Ar	9.55	2.00	6.45	10.25	1.00	9.55	2.00	6.45	10.25	1.00
64.9	Youngstown.....Lv	5.55	7.55	10.10	2.05	6.50	10.29	1.05	8.30	10.10	2.05	6.50	10.29	1.05
69.5	Girard.....	6.04
73.7	Niles.....	6.12	8.06	bm	2.19	7.05	10.42	dp	8.44	bm	2.19	7.05	10.42	dp
78.8	Warren.....	6.27	8.13	10.34	2.29	7.21	10.51	1.25	8.54	10.34	2.29	7.21	10.51	1.25
82.0	Leavittsburg.....	6.33
86.1	Phalanx.....	6.39	9.03
91.1	Mahoning.....	6.45
94.7	Garrettsville-Hiram.....	6.52	8.32	nh	7.41	hf	9.14	nh	7.41	hf
97.2	Jeddoe.....	6.57
101.4	Mantua.....	7.08	df
107.8	Aurora.....	7.18	9.32
111.0	Geauga Lake.....	7.25
115.6	Solon.....	7.31
120.7	North Randall.....	7.39
125.8	E. 93d St., Cleveland.....	7.47	9.11	11.26	3.25	8.20	11.44	9.55	11.26	3.25	8.20	11.44
128.1	East 55th Street.....	7.53	9.15	11.31	3.31	8.26	hu	10.01	11.31	3.31	8.26	hu
131.4	Cleveland.....Ar	8.03	9.23	11.40	3.40	8.35	11.58	2.30	10.10	11.40	3.40	8.35	11.58	2.30
	Toledo.....Ar	2.30	6.10	1.00	2.50	5.20	2.30	6.10	1.00	2.50	5.20
	Detroit.....Ar	4.00	7.50	4.50	7.15	4.00	7.50	4.50	7.15

Holidays in the above table refers to the observance of New Year's Day, Memorial Day, Independence Day, Labor Day, Thanksgiving Day and Christmas Day.

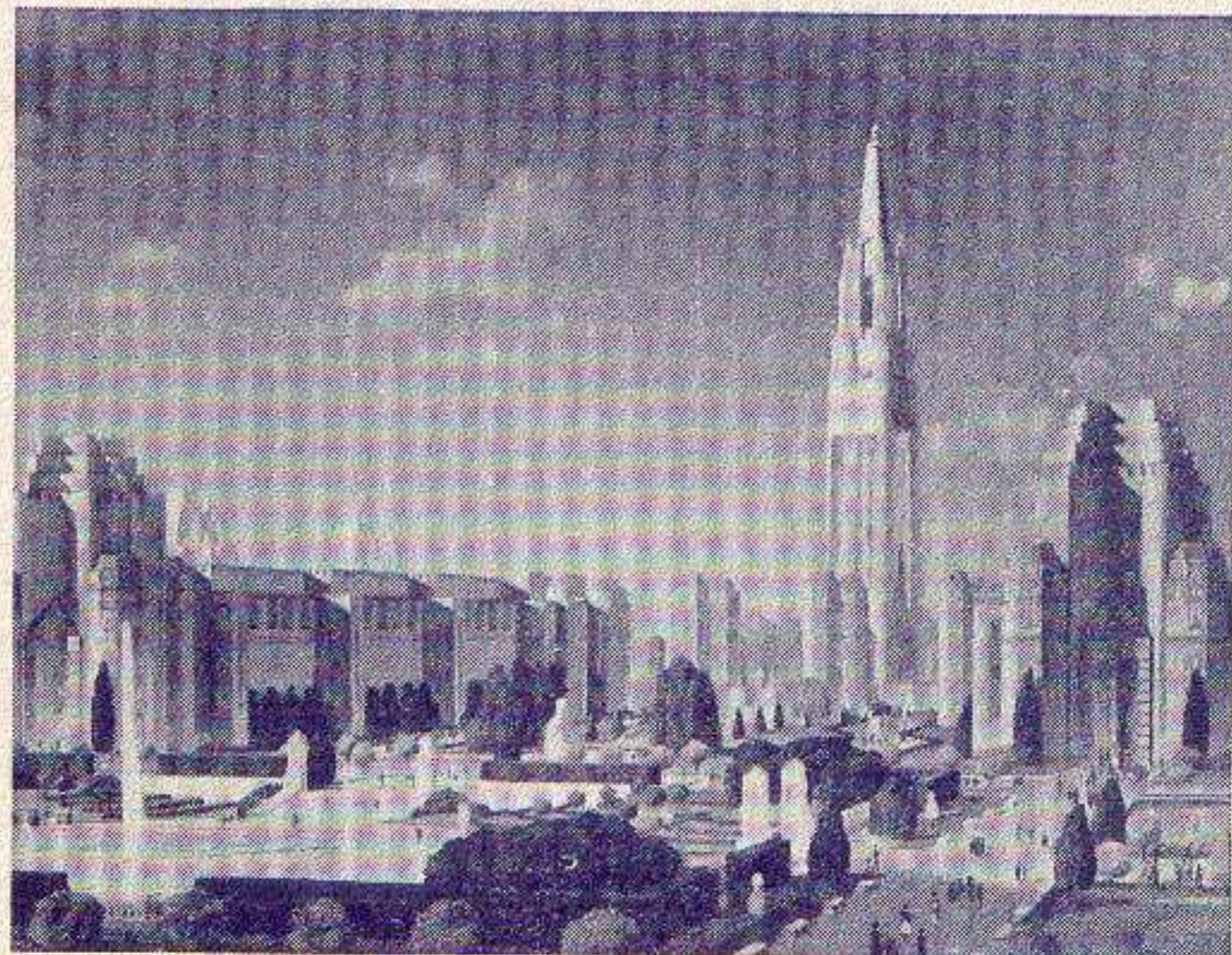
A MAMMOTH MAGNET



NEW YORK WORLD'S FAIR 1939

In every corner of the nation and every country in the world, the attraction of New York World's Fair, 1939, is felt. You must not miss this \$150,000,000 spectacle—this fascinating, awe-inspiring prediction of "The World of Tomorrow." Plan now to visit the world's Greatest Metropolis during the World's Fair. You can also enjoy the conveniences—the speed, safety and comfort—of the scenic Erie route to and from New York.

The Fair Grounds are readily accessible from Manhattan by subway, or the Long Island Railroad.



South Gardens with the Tower of the Sun in the Background

1 9 3 9

GOLDEN GATE INTERNATIONAL EXPOSITION On San Francisco Bay

The communities of San Francisco Bay and the Western States invite you to the 1939 Golden Gate International Exposition—America's World's Fair at the Pacific gateway. Two great bridges span San Francisco Bay, one of them leading directly to the Fair's Treasure Island. China Clippers soar by on their route to the Orient. Travel lanes point to giant redwood groves, to the Sierra and Rocky Mountains, to the beaches of the South, and to the Western vacationlands radiating from San Francisco Bay. The wonders that have long tempted you to all these places will converge at Treasure Island in Exposition Year. Plan now to be the Guest of the West in '39!

TABLE 8 BUFFALO—JAMESTOWN

		WESTBOUND			
Mls.	Eastern Standard Time	513	515	517	519
		Daily	Daily Ex. Su. & Hol.	Daily Ex. Su. & Hol.	Daily
0.0	Buffalo (Lehigh Valley Terminal)... Lv.	AM 8.00	PM 12.30	PM 4.20	PM 5.05
7.4	Blasdel	8.17	12.48	4.38	5.23
13.3	Hamburg	8.29	1.00	4.49	5.35
14.4	Water Valley		1.03	4.51	hu
16.8	Eden Valley	8.34	1.07	4.55	hu
19.1	Eden Center	8.39	1.12	5.00	5.46
23.4	North Collins	8.46	1.19	5.07	5.53
27.3	Lawtons	8.52	1.26	5.13	5.59
30.4	Collins (State Hospital)	8.58	1.32	5.19	6.05
33.4	Gowanda	9.05	1.45	5.25	6.13
38.0	Dayton	9.20			6.27
39.8	Markhams				
43.3	South Dayton	9.30			6.37
48.3	Cherry Creek	9.38			6.45
52.6	Conewango	9.47			6.52
60.6	Kennedy	9.58			hu
66.4	Falconer	10.06			7.11
69.5	Jamestown... Ar.	AM 10.12	PM	PM	PM 7.17

		EASTBOUND			
Mls.	Eastern Standard Time	514	516	518	520
		Daily Ex. Su. & Hol.	Daily	Daily Ex. Su. & Hol.	Daily
0.0	Jamestown... Lv.	AM	AM 8.37	PM	PM 4.45
3.1	Falconer		8.43		4.51
8.9	Kennedy		8.51		4.59
16.9	Conewango		9.02		5.11
21.2	Cherry Creek		9.08		5.18
26.2	South Dayton		9.16		5.26
29.7	Markhams				
31.5	Dayton		9.25		5.35
36.1	Gowanda	5.55	9.35	1.50	5.45
39.1	Collins (State Hospital)	6.01	9.42	1.56	5.52
42.2	Lawtons	6.07	9.48	2.02	5.59
46.1	North Collins	6.13	9.55	2.09	6.06
50.4	Eden Center	6.20	10.03	2.15	6.14
52.7	Eden Valley	6.24	10.08	2.21	6.18
55.1	Water Valley	6.29			
56.2	Hamburg	6.35	10.14	2.27	6.24
62.1	Blasdel	6.44	10.24	2.37	6.33
69.5	Buffalo (Lehigh Valley Terminal)... Ar.	AM 7.02	AM 10.42	PM 2.55	PM 6.50

Holidays in the above table refer to the observance of New Year's Day, Memorial Day, Independence Day, Labor Day, Thanksgiving Day and Christmas Day.

TABLE 9 NEW YORK—CHAUTAUQUA—CHICAGO
(Via Jamestown and BUS of West Ridge Transportation Co.)

WESTBOUND Read Down			EASTBOUND Read Up		
7-Bus	1-Bus	5-Bus	EASTERN STANDARD TIME		
Daily Ex. Su. & Hol.	Daily	Daily Ex. Su. & Hol.	Bus-8 Daily Ex. Su. & Hol.	Bus-6 Daily	2-Bus Daily Ex. Su. & Hol.
PM 10.55	AM 8.05	PM 7.10	Lv. New York, West 23rd St.	Ar. 8.05	PM 7.55
11.30	8.22	7.30	Lv. New York, Chambers St.	Ar. 11.57	7.44
11.45	8.45	7.50	Lv. Jersey City	Ar. 11.45	7.25
12.07	7.59	7.06	Ar. Jamestown	Lv. 12.15	8.44
1.30	8.55	7.50	Lv. Jamestown	Ar. 11.25	7.10
2.03	9.20	8.20	Ar. Chautauqua	Lv. 10.52	6.37
AM 10.52	PM 6.37		Lv. Chautauqua	Ar. 2.03	9.20
11.25	7.10		Ar. Jamestown	Lv. 1.30	8.55
12.07	7.59		Lv. Jamestown	Ar. 12.15	8.44
4.50	12.45		Ar. Cleveland	Lv. 4.00	8.31
			Ar. Akron	Lv. 7.22	3.49
1.00	7.55		Ar. Chicago	Lv. 10.00	6.00

Tickets sold and Baggage checked through to Chautauqua. Hand baggage checked without charge. Trunks checked at charge of 25c each.

TABLE 10 NEW YORK—SALAMANCA—BRADFORD—CHICAGO

WESTBOUND Read Down			Via Salamanca and BUS of Allegany Motor Coach Co., Inc. (See Note "X" Below)		EASTBOUND Read Up		
7	ht 5-557	1-Bus	EASTERN STANDARD TIME		Bus-2	Bus-8	ht 560-6
Daily Ex. Sun.	Daily	Daily			Daily	Daily Ex. Sun.	Daily
	PM 7.10	AM 8.05	Lv. New York, West 23rd St.	Ar. 7.55	PM 7.55	PM	AM 8.05
	7.30	8.22	Lv. New York, Chambers St.	Ar. 7.44	11.57		7.54
	7.50	8.45	Lv. Jersey City	Ar. 7.25	11.45		7.40
	6.10	7.04	Ar. Salamanca	Lv. 9.15	1.18		9.31
	6.35	ad 7.10	Lv. Salamanca	Ar. dh 8.55	ad 12.00		9.05
	6.58		Lv. Limestone	Ar. dh 8.15	ad 11.17		8.30
	7.10	ad 7.45	Ar. Bradford	Lv. AM	AM		PM
AM 9.17		PM 5.42	Lv. Bradford	Ar. 10.25	3.00		dh 11.45
9.55		6.20	Ar. Salamanca	Lv. 9.45	2.20		dh 11.12
11.17		7.11	Lv. Salamanca	Ar. 9.10	1.11		9.23
12.07		7.59	Ar. Jamestown	Lv. 8.31	12.15		8.44
3.12		11.05	Ar. Youngstown	Lv. 5.12	8.50		5.38
			Ar. Cleveland	Lv.			4.00
4.50		12.45	Ar. Akron	Lv. 3.49	7.22		
1.00		7.55	Ar. Chicago	Lv. 6.00	10.00		

Trains 5-557 and 560-6 carry through sleeping car between Bradford and New York. Sleeper on train 557 will be parked at Bradford for occupancy until 8.00 A. M. Busses leave as follows: (running time approximately 45 minutes.) Lv. Salamanca for Bradford, 8.20 A.M., 9.45 A.M., 2.20 P.M., 4.30 P.M., 5.40 P.M., 7.10 P.M., 11.15 P.M. Lv. Bradford for Salamanca, 8.17 A.M., 9.17 A.M., 11.17 A.M., 2.17 P.M., 4.27 P.M., 5.42 P.M. **BAGGAGE CHECKED TO BRADFORD**—Baggage will be handled only on Trains 557 and 560 between Salamanca, N. Y., and Bradford, Pa.

TABLE 11 NEW YORK—MEADVILLE OIL CITY

Westbound Read Down		Eastern Standard Time		Eastbound Read Up	
Bus Dly.	Bus Dly.	Lv.	Ar.	Bus Dly.	Bus Dly.
PM 1055	PM	N. Y. W. 23d St.			
1130		N. Y., Cham. St.			
1146		Jersey City			
1.41		Ar. Meadville	Lv.		
		Via BUS of Harmony Short Line (See Note "X" below)			
5.00	3.00	Lv. Meadville	Ar. 1220	2.25	
5.15	3.15	Shaws	1205	2.10	
5.25	3.25	Cochran	1155	2.00	
		Carlton			
		Sugar Creek			
6.25	4.30	Franklin	1055	1.05	
		Reno			
6.45	4.45	Ar. Oil City	Lv. 1035	1245	

TABLE 11-A CHICAGO—MEADVILLE OIL CITY

Eastbound Read Down		Central Standard Time		Westbound Read Up	
2 Dly.	1 Dly.	Lv.	Ar.	1 Dly.	AM
PM 6.00		Lv. Chicago	Ar. 7.55		
		Eastern Standard Time			
		Ar. Akron	1245		
		Lv. Cleveland			
		Lv. Youngst'n	Lv. 1112		
		Ar. Meadville	9.36		
		Via BUS of Harmony Short Line			
		Lv. Meadville	Ar. 9.05		
		Shaws	8.45		
		Cochran	8.35		
		Carlton			
		Sugar Creek			
		Franklin	7.35		
		Reno			
		Ar. Oil City	Lv. 7.10		

Tickets sold and baggage checked through to Franklin and Oil City.

TABLE 12 Lackawaxen—Honesdale

Westbound Read Down		Miles		EASTERN STANDARD TIME		Eastbound Read Up	
9-271	Daily					28-270	Daily
AM 9.30	0.0	Leave	N. Y., W. 23d St.	Arrive	PM 6.05		
9.40	0.0	N. Y., Chambers St.			5.54		
10.00	1.0	Jersey City			5.40		
1.25	111.1	Ar. Lackawaxen	(Lv. 2.28				
2.00		Lv. Rowlands	(Ar. 1.25				
2.07	4.1	Glen Eyre	1.18				
2.14	7.4	Shiners Rook Cut	1.10				
2.22	8.9	Kimble	1.01				
2.29	11.6	Wellwood Ave	1.25				
2.37	15.8	Hawley	12.48				
2.46	19.5	White Mills	12.37				
2.55	23.9	East Honesdale	12.29				
3.00	24.8	Honesdale	12.15				

Passengers to and from Honesdale can also make connection via Narrowsburg and busses of the Wayne County Taxicab Co.

- NEW YORK—NEWBURGH** (Via Harriman and bus)
 - NEW YORK—NEWBURGH** (Via Greycourt and bus)
 - NEW YORK—MONTICELLO—LIBERTY** (Via Middletown and bus)
 - NEW YORK—KENOZA LAKE—JEFFERSONVILLE** (Via Callicoon and bus)
 - NEW YORK—HONESDALE** (Via Narrowsburg and bus)
- For above services, ask Ticket Agents for Time Table Form 2

NOTE "X" In connection with the bus service the Erie Railroad Company acts as agent only and is not responsible beyond its own line, except as such responsibility may be imposed by law with respect to baggage.

TABLE 13 ELMIRA-ROCHESTER

Table with columns for Westbound Read Down (5-463, 7-467), Eastbound Read Up (468-8, 464-8), Miles, Eastern Standard Time, and various station names like N. Y., W. 23d St., Chambers St., Jersey City, Elmira, Corning, Avoca, Wallace, Cohocton, Atlanta, Wayland, Springwater, Webster, Conesus, Livonia, South Lima, Conesus Lake Jet, Avon, Golah, Industry, West Henrietta, Rochester.

TABLE 14 SALAMANCA—DUNKIRK

Table with columns for Westbound Read Down (5-527), Eastbound Read Up (540), Miles, Eastern Standard Time, and station names like N. Y., W. 23d St., Chambers St., Jersey City, Salamanca, Little Valley, Cattaraugus, Persla, Dayton, Buffalo, Dayton, Perrysburg, West Perrysburg, Smith's Mills, Forestville, Sheridan, Dunkirk.

LOCATE YOUR PLANT WHERE YOU CAN LOCATE MORE PROFITS Ask us about industrial buildings and vacant land on Erie rails GEO. F. WESTON Industrial Commissioner Erie Railroad, Midland Bldg., Cleveland, O.

TABLE 15 ROCHESTER—MOUNT MORRIS—DANSVILLE

Table with columns for Eastern Standard Time, Mil., and station names like Rochester, Mortimer, W. Henrietta, Industry, Golah, Avon, Geneseo, Mt. Morris, Sonyea, Groveland, West Sparta, Dansville.

Table with columns for Eastern Standard Time, Mil., and station names like Dansville, West Sparta, Groveland, Sonyea, Mt. Morris, Mt. Morris, Geneseo, Avon, Golah, Industry, W. Henrietta, Mortimer, Rochester.

TRAINS between Mt. Morris and Avon will stop on signal at Shakers, Jones, Cuylerville, Jaycocks, Seven Nations, Huston, South Avon, Pierces, Fowler, Ashantee, Linden Street and Spring Street and between Avon and Rochester, except Trains 467, 468 at Wiards, Elm Place, Meadowwood, Gannett, Blair, Martin, Brooks, Fenners, Baileys, Crittenden, Westfall and South Park. HOLIDAYS in above table refer to the observance of New Year's Day, Decoration Day, Independence Day, Labor Day, Thanksgiving Day and Christmas Day.

HUDSON AND MANHATTAN TUBE TRAINS SCHEDULE OF RUNNING TIME BETWEEN ERIE R. R. JERSEY CITY TERMINAL AND

Table listing running times for Downtown New York (Cortlandt St.) and Uptown New York (28th Street and 6th Ave, 23rd Street and 6th Ave, 19th Street and 6th Ave, 14th Street and 6th Ave, 9th Street and 6th Ave, Christopher and Greenwich Streets).

ERIE R. R. FERRY TIME TABLE EASTERN STANDARD TIME CHAMBERS STREET FERRY Ferry Running Time, 9 Minutes WEEK DAYS

Table with columns for Leave New York for Jersey City and Leave Jersey City for New York, listing times in AM, PM, Noon, and Mid.

a Will not run on Holidays. b Holidays only. m Except Saturdays and Holidays.

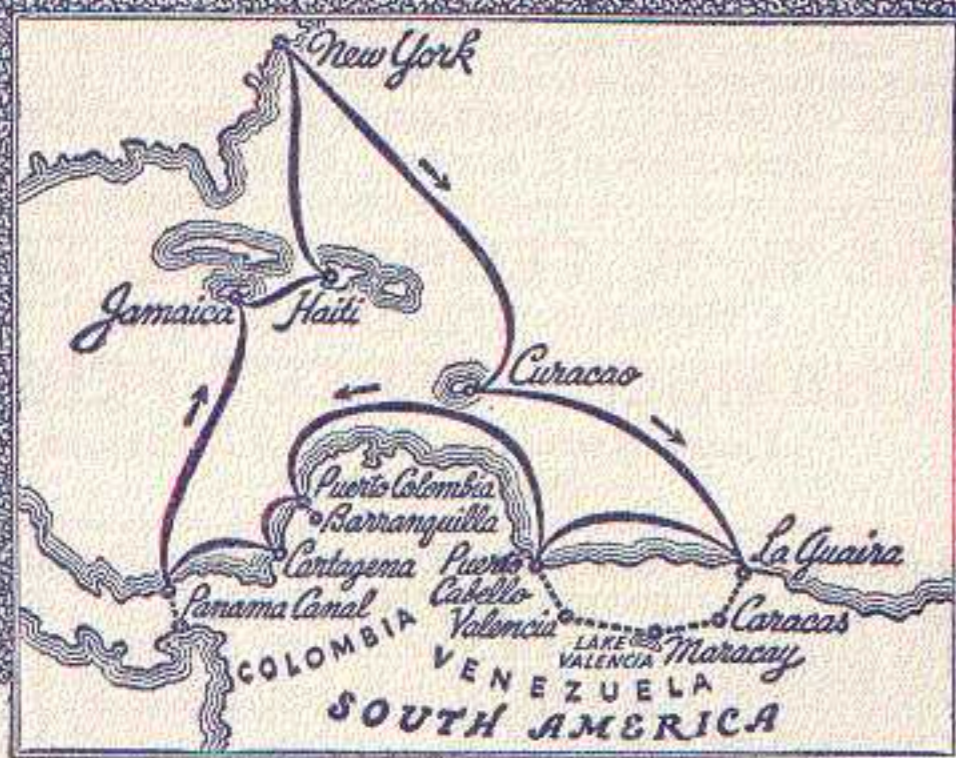
SUNDAYS table with columns for AM, PM, Noon, and Mid, listing times for various routes.

TWENTY-THIRD STREET FERRY Ferry Running Time, 20 Minutes WEEK DAYS

Table with columns for Leave New York for Jersey City and Leave Jersey City for New York, listing times in AM, PM, Noon, and Mid.

SUNDAYS table with columns for AM, PM, Noon, and Mid, listing times for various routes.

CRUISE THE CARIBBEAN



From any point on the Erie Railroad by rail to New York.

16 glorious days in one of the luxurious "Santa" ships of the Grace Line (built especially for tropical cruising, these liners provide every comfort and luxury, including all outside rooms, each with private fresh water bath, outdoor tiled swimming pools, and dining rooms with roll back ceilings so you may dine under the stars).

8 ports, permitting visits to 15 interesting Caribbean and South American cities.

Shore trips, including exclusive 2-day trip through interior Venezuela and full day at Panama Canal with opportunity to see Gatun Locks in operation.

No passports required.

Sailings from New York every Friday.

Ask any ticket agent on the Erie Railroad for complete information and

HOMETOWN-TO-HOMETOWN RATES



For Explanation of Reference Marks and Notes, See Pages 5 and 6.

ERIE TRAIN-CAB SERVICE

Takes you from Erie Terminal directly to your door in New York or Brooklyn



ONE Person **90¢** TWO Persons **\$1.25** THREE or more **\$1.50**

Thousands have used and praised Erie Train-Cab Service.

Strangers arriving at Erie Terminal, Jersey City are taken all the way to their destination in New York or Brooklyn. They never get "lost" and are never overcharged. Women accompanied by children appreciate this service. Even seasoned travellers enjoy the comfort of settling down in their own taxicab and forgetting about bags and car changes.

The fares shown above apply from our terminal to any place on Manhattan 110th Street and South, also to any point in the Brooklyn business district.

Service beyond the prescribed zones is metered from the zone limits and charged for at regular rates.

Train-Cab service is available to all who travel from stations west of Middletown, N. Y.

You can buy the Train-Cab coupon with your rail ticket at the ticket office or from the conductor on any through train and you will find your taxicab awaiting the arrival of your train at Jersey City.

Ask the conductor or ticket agent for details.

Checking Hand Baggage at Chicago

Passengers arriving Chicago on Erie trains who desire to stay over for a few hours and depart from a station other than Dearborn Station may have their hand baggage transferred to the station from which they depart. A Parmelee Company agent meets all Erie trains upon arrival at Chicago and he will arrange the transfer for you. The bags will be placed in the parcel check room of the station from which you depart. A charge of fifty cents for each hand bag, including the parcel room fee, will be made for the service, except one piece will be checked free when passenger holds through ticket including transfer through Chicago.

For Main Line Parlor, Sleeping and Dining Service, See Pages 9 and 10.

DAY & Night

It's top speed... when you ship by dependable Railway Express. Direct, through, nation-wide service. 23,000 offices. Low cost. Real economy. All packages, large or small, called for and delivered without extra charge in all cities and principal towns. For service, phone any Railway Express or Western Union office. No extra cost.

RAILWAY EXPRESS

AGENCY INC.

NATION-WIDE SHIPPING SERVICE

WESTERN UNION

TELEGRAMS AND CABLEGRAMS accepted at all telegraph offices of this railroad.

DAY LETTERS—50 words for 1½ times the cost of a 10 word telegram.

NIGHT LETTERS—25 words for the former price of ten words. Maximum only 50 cents from coast to coast. Words over 25 charged for in groups of 5 at rates as low as a fifth of a cent per word.

The longer the message, the lower the rate per word.

RESERVATION MESSAGES—Reserve travel tickets and accommodations and hotel rooms by telegraph—only 35 cents (for 15 words).

TOURATE MESSAGES—When you travel telegraph the folks at home or at the office the facts they want to know about progress of your trip—only 35 cents (for 15 words).



For guide-books, maps and rates address C. M. Turner, General Traffic Manager, 9 Rockefeller Plaza (16 West 49th Street) New York, N. Y.; L. T. Jones, Middle West Representative, 333 N. Michigan Ave., Chicago, Ill.; J. D. Cameron, Pacific Coast Representative, 412 West Sixth St., Los Angeles, Cal.; or your own Tourist Agent.

SEE and ENJOY the BRITISH ISLES

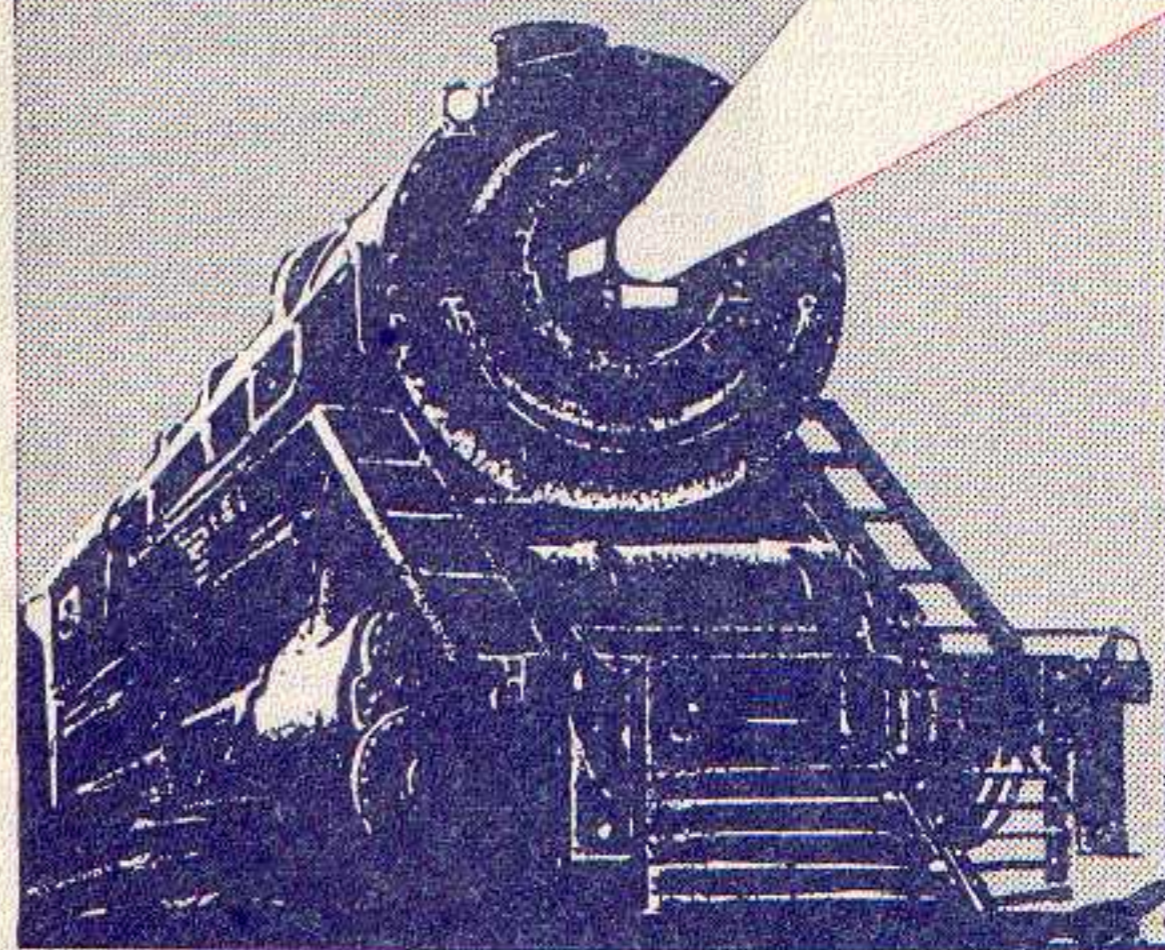
The Modern Complete Way

Visit England, Scotland, Wales and Ireland by the swift, luxurious services of the Associated British and Irish Railways. Tours to suit any whim, any purse. Scotland by the famous "Flying Scotsman", "Royal Scot", "Coronation Scot" or "Coronation Express". Ireland but a step by steamers or planes. 21 routes to Continental Europe. Paris overnight, without changing, in quiet corridor Pullmans on the Train Ferry.

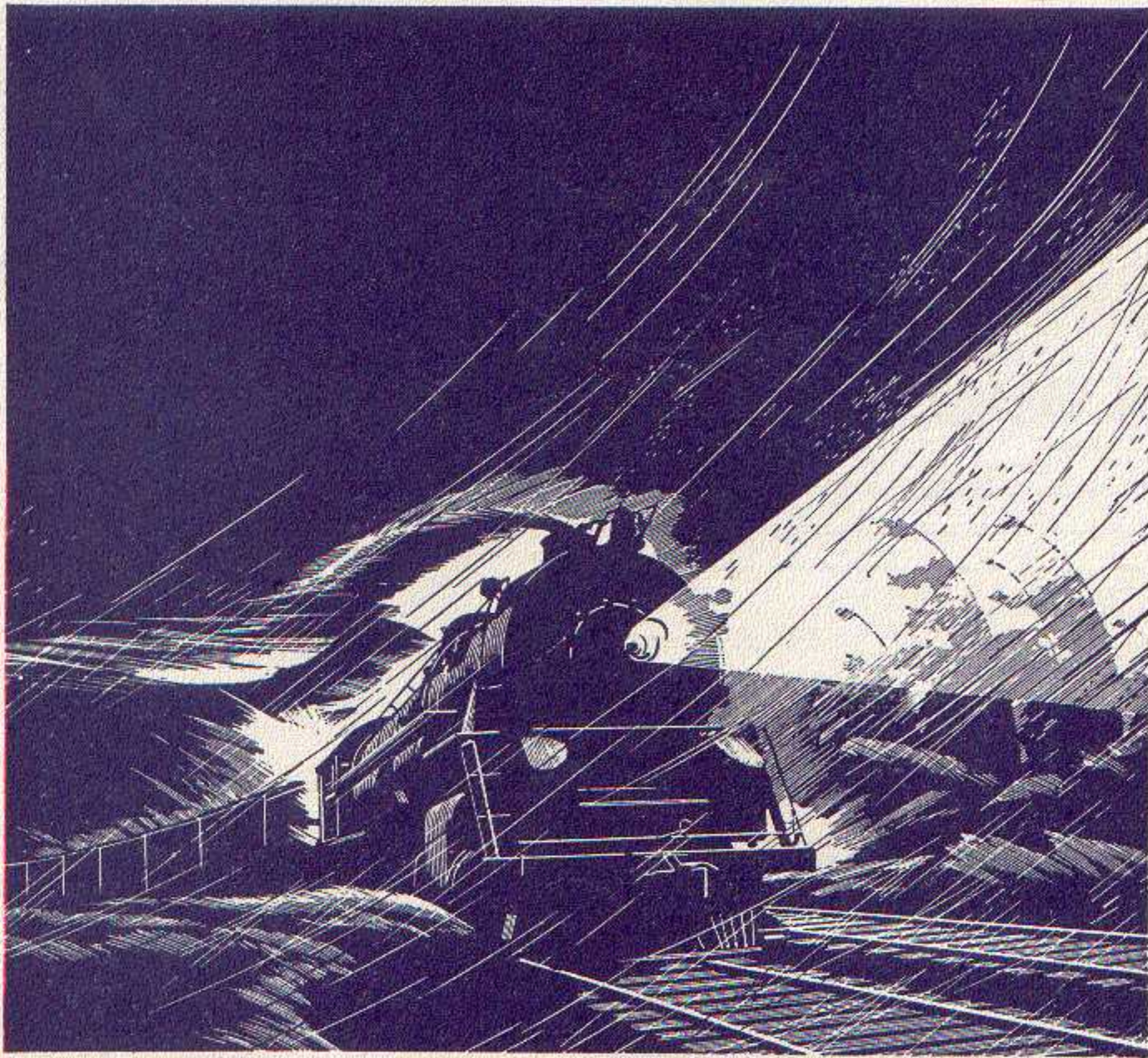
Associated

BRITISH & IRISH RAILWAYS, Inc.

for **BETTER TIMES**



SHIP & TRAVEL
by RAIL



Night Life is Part of the Day's Work on the ERIE

● Far down the line a green light swings into view. It's clear track for the freight. And through the black night your shipment roars down the rails, speeding safely to its destination. Night is part of the day's work for many a man on the Erie.

Neither zero January nor broiling July—neither night nor storm—holds back these men whose creed is "The freight must go through."

If you want your freight, too, to travel faster, specify Erie.

ERIE RAILROAD COMPANY

(C. E. DENNEY AND JOHN A. HADDEN, TRUSTEES)

CHICAGO AND ERIE RAILROAD CO.

GENERAL OFFICES, MIDLAND BUILDING, CLEVELAND. Telephone Cherry 8400.
GENERAL OFFICES, HUDSON TERMINAL, 50 CHURCH STREET, NEW YORK. Telephone Cortlandt 7-9200.
GENERAL OFFICES, UTILITIES BUILDING, 327 SOUTH LA SALLE STREET, CHICAGO. Telephone Harrison 4160.

TRAFFIC AND DEVELOPMENT DEPARTMENTS

TRAFFIC

D. L. GRAY, Vice-President, Cleveland
CARL HOWE, Vice-President, Chicago
G. C. MANNING, Assistant Vice-President, New York
G. A. LAMB, Assistant to Vice-President, Cleveland

PASSENGER

C. C. HOWARD, Passenger Traffic Manager, Cleveland.
R. B. ROGERS, General Passenger Agent, Cleveland.
H. T. HARLOW, General Passenger Agent, Chicago.
T. R. PATTON, Assistant General Passenger Agent, Youngstown.

F. A. WALDRON, Assistant General Passenger Agent, New York.
ALFRED FYNN, Assistant General Passenger Agent, Chicago.
E. J. HAWERKOST, General Western Passenger Agent, Chicago.
H. M. WADE, General Baggage, Mail and Express Agent, New York.

FREIGHT

L. B. BURFORD, Freight Traffic Manager, Cleveland.
O. M. MEYNE, General Freight Agent, Cleveland.
C. L. CHAPMAN, Eastern Freight Traffic Manager, New York.
E. M. KAIN, Special Representative, Buffalo.
G. R. WHEELER, General Freight Agent, New York.
J. T. McENTEE, Assistant General Freight Agent, Buffalo.
H. W. VON WILLER, Assistant General Freight Agent, Pittsburgh.

F. G. LANTZ, Freight Traffic Manager, Chicago.
W. V. KENNEDY, Assistant Freight Traffic Manager, Chicago.
A. BLAUDEL, General Freight Agent, Chicago.
J. G. HILL, General Freight Agent, Chicago.
O. R. DAVIES, Assistant General Freight Agent, Cincinnati.
W. H. KOCH, Assistant General Freight Agent, Detroit.
C. A. STOEBER, Assistant General Freight Agent, Youngstown.

FOREIGN FREIGHT TRAFFIC

T. E. McANDREWS, Foreign Freight Traffic Manager, New York.
W. C. OTTEN, Foreign Freight Agent, New York.
A. E. PETERSON, Foreign Freight Agent, Chicago.
W. S. PENCHARD, Export and Import Agent, New York.
EUROPEAN GENERAL AGENTS, Sutherland International Despatch, Ltd.,
London, England.

LIVE STOCK

H. B. ROGERS, General Live Stock Agent, East Buffalo, N. Y.

GRAIN TRAFFIC

T. W. KANE, Grain Agent, New York.

PERISHABLE FREIGHT TRAFFIC

R. E. O'GRADY, Manager, Pier 20, N. R., New York.

COAL AND COKE

W. H. STADELMAN, Coal Traffic Manager, Cleveland.
J. A. FERGUSON, Coal Freight Agent, Cleveland.
F. D. AUSTIN, General Coal and Coke Agent, Chicago.

DAIRY

W. L. KENDALL, General Dairy Agent, Chicago, Ill.

DEVELOPMENT

J. K. THOMPSON, Vice-President and Assistant to President, Cleveland.

GEO. F. WESTON, Industrial Commissioner, Cleveland.

V. M. WELLMAN, Industrial Agent, New York.

TRAFFIC DEPARTMENT REPRESENTATIVES

Akron, O.—80 East Exchange St.
(Telephone Hemlock 8194-8195)
J. P. CLARK, Division Passenger Agt.
C. E. KING, General Agent.

Albany, N. Y.—Room 2, D. & H. Bldg.
(Telephone 4-6051)
C. F. WHADCOCK, General Agent.

Antwerp, Belgium—30, Vieille Bourse.
CHAS. CAYMAN, Agent.

Atlanta, Ga.—1515-16 Healy Bldg.
(Telephone Walnut 2135)
S. S. TORREY, General Agent.

Baltimore, Md.—1301-3 Munsey Bldg.
(Telephone Plaza 8691)
W. J. MURRAY, General Agent.

Birmingham, Ala.—1007 Watts Bldg.
(Telephone 3-1327)
CHARLES G. ANDREWS, General Agent.

Birmingham, England—13 Corporation St.
MAURICE G. COOKE, General Agent.

Boston, Mass.—80 Federal Street.
(Telephone Liberty 7725-7726)
G. W. MADSEN, G. N. E. Agt.

Bradford, Pa.—Erte Station.
(Telephone 3413)
J. C. MOFFATT, General Agent.

Bremen, Germany—Postfach 24,
Tiefer 2
CARL PRIOR, Agent.

Buffalo, N. Y.—6 North Division St.
(Telephone Washington 4300)
J. A. DOLAN, G. A. P. D.

Chicago, Ill.—327 South La Salle St.
(Telephone Harrison 4160)
B. Y. VAUGHN, Trav. Pass. Agent

Chicago, Ill.—327 South La Salle St.
(Telephone Harrison 4160)
C. D. TURNER, General Agent.

Chicago, Ill.—327 South La Salle St.
(Telephone Harrison 4160)
W. L. KENDALL, General Dairy Agent.

Cincinnati, O.—503 Gwynne Bldg.
(Telephone Main 3420-3421)
O. R. DAVIES, Asst. General Freight Agt.

Cleveland, O.—Midland Bldg.
(Telephone Cherry 8400)
J. M. SKAHEILL, Division Freight Agt.

Cleveland, O.—Midland Bldg.
(Telephone Cherry 8400)
C. D. BURLINGHAM, Div. Passenger Agt.

Columbus, O.—Rooms 309-310 Atlas
Bldg., 8 East Long Street.
(Telephone Adams 7331)
C. R. MARTIN, General Agent.

Dallas, Tex.—2113 Tower Petroleum Bldg.
1905 Elm St.
(Telephone 2-7352)
T. J. MARTIN, General Agent.

Dayton, O.—501-506 Miami Savings Bldg.
(Telephone Adams 8481)
W. P. KROMPHARDT, Div. Frt. Agt.

Des Moines, Ia.—Hubbell Bldg.,
904 Walnut Street.
(Telephone 4-0018)
L. T. COULSTON, General Agent.

Detroit, Mich.—Rooms 2-102 and 2-103
General Motors Bldg.
(Telephone Madison 2360-2361)
W. H. KOCH, Assistant General Frt. Agt.

Elmira, N. Y.—Erte Station.
(Telephone 2-1621)
J. W. O'HARA, Division Passenger Agt.

Elmira, N. Y.—Erte Station.
(Telephone 2-1621)
B. F. CONWAY, Division Freight Agent.

Glasgow, Scotland—82 Mitchell St.
W. S. THOMSON, General Agent.

Hamburg, Germany—Dovenhof 118/122.
GEORGE A. ANTHONY, General Agent.

Huntington, Ind.—Erte Station.
(Telephone 743)
F. C. MCCARTHY, Division Freight Agt.

Indianapolis, Ind.—143 No. Meridian St.
(Telephone Lincoln 2088)
T. J. WILLIAMSON, General Agent.

Jamestown, N. Y.—Erte Station
F. L. COLLINS, Div. Frt. Agt.

Jersey City, N. J.—Erte Station
(Telephone Delaware 8-6400)
P. F. ARROYO, G. A. P. D.

Kansas City, Mo.—Rooms 326-7 Railway
Exchange Bldg., 7th and Walnut Streets.
(Telephone Victor 6328)
N. C. FRICK, General Agent.

Liverpool, Eng.—17 Brunswick St.
A. G. TAYLOR, General Agent.

London, E. C. 3, Eng.—4 Billiter St.
PETER BUSWELL, General Agent.

London, E. C. 3, Eng.—4 Billiter St.
PETER BUSWELL, General Agent.

London, E. C. 3, Eng.—4 Billiter St.
PETER BUSWELL, General Agent.

London, E. C. 3, Eng.—4 Billiter St.
PETER BUSWELL, General Agent.

London, E. C. 3, Eng.—4 Billiter St.
PETER BUSWELL, General Agent.

London, E. C. 3, Eng.—4 Billiter St.
PETER BUSWELL, General Agent.

London, E. C. 3, Eng.—4 Billiter St.
PETER BUSWELL, General Agent.

London, E. C. 3, Eng.—4 Billiter St.
PETER BUSWELL, General Agent.

London, E. C. 3, Eng.—4 Billiter St.
PETER BUSWELL, General Agent.

London, E. C. 3, Eng.—4 Billiter St.
PETER BUSWELL, General Agent.

Los Angeles, Cal.—108 West 8th Street.
(Telephone Vandike 6542)
L. A. DWELLE, General Agent.

Marion, O.—Terminal Building
(Telephone 2657)
A. R. TENNIS, Division Freight Agent.

Memphis, Tenn.—1628-9 Exchange
Bldg., Madison & Second Sts.
(Telephone 8-8781)
R. L. MILLER, General Agent.

Milwaukee, Wis.—818-9 Majestic Bldg.,
231 West Wisconsin Ave.
(Telephone Marquette 5555-5556)
H. A. WILSON, General Agent.

Minneapolis, Minn.—125 Third Street,
South.
(Telephone Main 3604)
C. V. HARROW, General Agent.

Newark, N. J.—1801-2 Military Park
Bldg., 60 Park Place.
(Telephone Market 2-0525-26-27)
A. R. WALTON, General Agent.

New Haven, Conn.—505 Powell Bldg.
(Telephone 5-7937)
FRED C. LOTZ, General Agent.

New Orleans, La.—Room 1417 Whitney Bldg.
(Telephone Raymond 9786)
D. C. KELSEY, General Agent.

New York, N. Y.—630-5th Ave. Room
219, Rockefeller Center.
(Telephone Circle 5-7222)
F. J. WILD, G. A. P. D.

New York, N. Y.—630-5th Ave. Room
219, Rockefeller Center.
(Telephone Circle 5-7222)
A. G. OLDENQUIST, City Pass. Agt.

New York, N. Y.—630-5th Ave. Room
219, Rockefeller Center.
(Telephone Circle 5-7222)
E. W. VAIL, General Eastern Frt. Agent.

New York, N. Y.—630-5th Ave. Room
219, Rockefeller Center.
(Telephone Circle 5-7222)
J. G. VRELAND, Division Freight Agent.

Olean, N. Y.—Erte Station.
(Telephone 7411)
J. M. HAND, Traveling Freight Agent.

Omaha, Neb.—1319 Farnam St.
(Telephone Jackson 4866)
C. L. COX, General Agent.

Peoria, Ill.—920 Jefferson Building, Cor.
South Jefferson & Fulton Streets.
(Telephone 8007)
E. T. OLANDER, General Agent.

Peoria, Ill.—920 Jefferson Building, Cor.
South Jefferson & Fulton Streets.
(Telephone 8007)
E. T. OLANDER, General Agent.

Peoria, Ill.—920 Jefferson Building, Cor.
South Jefferson & Fulton Streets.
(Telephone 8007)
E. T. OLANDER, General Agent.

Philadelphia, Pa.—1009-10 Finance Bldg.
(Telephone Rittenhouse 8975-8976)
H. T. YOUNG, General Agent.

Pittsburgh, Pa.—Gulf Building.
(Telephone Grant 4831-2-3)
H. W. VON WILLER, A. G. F. A.

Portland, Ore.—Room 421 Pacific Bldg.,
306 Yamhill St.
(Telephone Beacon 3706)
J. A. RUSSELL, General Agent.

Rochester, N. Y.—Erte Station.
(Telephone Main 2826)
B. C. WEDD, Division Freight Agent.

Rotterdam, Holland—Boompjes 82.
J. T. VERVOLOET, Agent.

San Francisco, Cal.—681 Market St.
(Telephone Sutter 3875)
J. A. LLOYD, General Agent.

St. Louis, Mo.—Rooms 906-7 Missouri
Pacific Building, 1218 Olive Blvd.
(Telephone Chestnut 7723-7724)
G. F. DANIELS, General Agent.

St. Paul, Minn.—536 Robert St.
(Telephone Cedar 5012)
C. R. PETRY, General Agent.

Scranton, Pa.—Erte Station.
(Telephone 5203)
G. W. SHUMAN, Division Freight Agent.

Seattle, Wash.—1116-7 White Bldg.,
1338 Fourth Ave.
(Telephone Elliot 4834)
W. R. SIBLEY, General Agent.

Springfield, O.—516 First National Bank
Building.
(Telephone 2-5351)
T. J. FLYNN, General Agent.

Toledo, O.—342 South Erte Street.
(Telephone Main 3816)
H. J. SPANGENBURG, General Agent.

Toronto, Ont.—69 Yonge Street.
(Telephone Elgin 4077)
E. P. MORRILL, General Agent.

Tulsa, Okla.—Room 1511 Hunt Bldg.
(Telephone 3-8613)
A. W. MITCHELL, General Agent.

Youngstown, O.—Terminal Building.
(Telephone 41101)
C. A. STOEBER, Asst. Genl. Frt. Agt.

Youngstown, O.—Terminal Building.
(Telephone 41101)
F. W. FISCHER, Div. Frt. Agt.

Youngstown, O.—Terminal Building.
(Telephone 41101)
F. W. FISCHER, Div. Frt. Agt.