

EFFECTIVE AUGUST 5, 1935



**ERIE  
RAILROAD  
SYSTEM**

**TIME TABLES**

**SCENIC ROUTE  
BETWEEN  
NEW YORK  
BUFFALO  
CLEVELAND  
CHICAGO**

FORM 1 STANDARD (Not Daylight) TIME SHOWN IN THIS FOLDER

EFFECTIVE AUGUST 5, 1935



**ERIE  
RAILROAD  
SYSTEM**

**TIME TABLES**

**SCENIC ROUTE  
BETWEEN  
NEW YORK  
BUFFALO  
CLEVELAND  
CHICAGO**

FORM 1 STANDARD (Not Daylight) TIME SHOWN IN THIS FOLDER



*Glorious California—Orange Groves and Snow-Capped Mountain Peaks*

# RECREATION TOURS

Look them over and see which of these all expense tours clicks with you. For illustrated folders or reservations apply to any Erie Railroad Ticket Agent.

## Showboat Cruises (Great Lakes)

Going every Sunday until August 25. Eight days. A rail trip to Buffalo, thence the palatial liner Seeandbee to Chicago and return with stops at Cleveland, Mackinac Island, The Soo. Two hours in Georgian Bay. Nine hours in Chicago. Entertainment at Grand Hotel, Mackinac. Dancing and floor shows nightly with an outstanding Orchestra. Deck Sports daily.

## Duluth Cruises (Great Lakes)

Going August 7, 12, 16, 21, 25, 30. Ten glorious days. Train to and from Buffalo. Eight days cruising the Great Lakes with stops to visit Cleveland, Detroit, Mackinac Islands, Duluth. Through the Soo Locks, Beautiful St. Mary's River. Dancing. Community singing. Masquerade Ball. Captain's Ball. Tea at 4:00 P. M. daily in the Music Room. Superb trains and steamer.

## Canadian Frontier Tour Cruises

Going every Sunday until August 25. A swing around Buffalo, Niagara Falls, Toronto, Montreal, Rutland, Green Mountains, Boston, New York. Seven days of frolic. Train and Lake, River and Coastwise Steamers.

## Around America Tours

Going Saturday August 17. Seventeen days. Chicago, St. Louis, Ozarks, Little Rock, San Antonio, El Paso, excursion into old Mexico, Carlsbad Caverns, Tucson, Palm Springs, Los Angeles, Hollywood, San Francisco, Portland, Columbia River Highway, Seattle, Vancouver, Canadian Rockies, Lake Louise, Banff, Alberta, Saskatchewan, St. Paul, Chicago, Home. Special sightseeing trips. Optional side trips to Honolulu and Alaska.

## New York Rail-Lake Tours

*(From Chicago)*

Going Saturdays until August 24 from Chicago. A six day tour. Rail to New York. Hotel Taft. Sightseeing. Night Club, Radio City Music Hall performance. Excellent meals. Rail to Buffalo. Sightseeing, Niagara Falls. Great Lakes Steamer, Buffalo to Chicago with entertainment on board and stops at Detroit and quaint Mackinac Island.

## TABLE OF CONTENTS

	Page
Equipment of Through Trains.....	5, 6
General Information.....	31, 32
Standard of Time	
Holidays	
Fares Paid on Trains	
Adjustment of Fares	
Sleeping and Parlor Car Reservations	
Baggage Regulations	
Articles left on Trains	
Equipment of Local Trains.....	7, 8, 9, 10
Equipment of Detroit, Toledo, Cleveland, Youngstown and Pittsburgh Trains.....	17, 18
Erie Railroad Map.....	19, 20, 21, 22
Sleeping and Parlor Car Fares.....	31, 32
One-way Rail Fares.....	31, 32
Reference Marks and Notes.....	33, 34
Traffic Department Representatives.....	35, 36
Ticket Offices and Passenger Stations in Principal Cities.....	37, 38
<b>Train Service</b>	
Condensed Schedule of Through Trains.....	5, 6
New York—Binghamton.....	7, 8, 9, 10
Binghamton—Meadville.....	11, 12
Meadville—Huntington.....	13, 14
Huntington—Chicago.....	15, 16
New York—Buffalo.....	15
Detroit—Toledo—Cleveland—Youngstown—Pittsburgh.....	17, 18
New York—Chautauqua.....	24
Chautauqua—Akron—Chicago.....	24
New York—Kenosha Lake—Jeffersonville.....	26
New York—Monticello.....	25
New York—Salamanca—Bradford.....	24
New York—Meadville—Oil City.....	28
Chicago—Meadville—Oil City.....	27
Bradford—Salamanca—Cleveland—Chicago.....	23
Branch Line Service.....	23 to 28, inc.
Hudson & Manhattan R. R. Service.....	30
Ferry Schedule.....	30
Chautauqua Lake Service.....	24

## STATIONS ON ERIE RAILROAD

Numerals Opposite Station Names Indicate Time Table Numbers.

TABLE NO.	TABLE NO.	TABLE NO.
<b>Addison, N. Y.</b> ..... 4	<b>Caledonia, O.</b> ..... 5	<b>East Honesdale, Pa.</b> ..... 15
Adrian, N. Y. .... 4	Callicoon, N. Y. .... 2, 3, 22	East Ninety-third St. (Cleveland), O. .... 8
Akron, Ind. .... 6	Cambridge Springs, Pa. .... 4	East Rutherford, N. J. .... 2, 3
Akron, O. .... 1, 5, 11, 12, 24	Cameron, N. Y. .... 4	Eden Center, N. Y. .... 9
Alliquippa, Pa. .... 8	Cameron Mills, N. Y. .... 4	Eden Valley, N. Y. .... 9
Albany, N. Y. .... 4	Campbell, N. Y. .... 23	Elgin, O. .... 5
Alden, N. Y. (Black Water Baths)..... 7	Campville, N. Y. .... 4	Ellwood City..... 8
Aldine, Ind. .... 6	Canaseraga, N. Y. .... 7	Elmira, N. Y. .... 1, 4, 7, 13, 23
Alfred, N. Y. .... 4	Canisteo, N. Y. .... 4	Elm Place, N. Y. .... 25
Alger, O. .... 5	Carbondale, Pa. .... 17	Endicott, N. Y. .... 4, 7
Allegheny, N. Y. .... 4	Carlton, Pa. .... 24, 26	Englewood (63rd St.), Ill. .... 5, 6
Allendale, N. J. .... 2, 3	Carrollton, N. Y. .... 4, 13	Erwins, N. Y. .... 4
Almond, N. Y. .... 4	Castile, N. Y. .... 7	
Andover, N. Y. .... 4	Cattaraugus, N. Y. .... 18	<b>Falconer, N. Y.</b> ..... 4, 9
Ararat, Pa. .... 17	Central Valley, N. Y. .... 14	Fenners, N. Y. .... 25
Arden, N. Y. .... 2, 3	Chautauqua, N. Y. .... 10, 11	Foraker, O. .... 5
Arden House Station, N. Y. .... 14	Chautauqua Lake, N. Y. .... 4	Forest City, Pa. .... 17
Arkport, N. Y. .... 7	Chemung, N. Y. .... 4	Forestville, N. Y. .... 18
Ashantee, N. Y. .... 25	Cherry Creek, N. Y. .... 9	Forty-seventh St. (Chicago), Ill. .... 5, 6
Ashland, O. .... 5	Chester, N. Y. .... 2, 3	Fowler, N. Y. .... 25
Ashville, N. Y. .... 4	Chicago, Ill. .... 1, 4, 5, 6, 11, 12, 24	Franklin, Pa. .... 4, 24, 26
Athens, Ind. .... 6	Circleville, N. Y. .... 19	Freedom, O. .... 5
Atlanta, N. Y. .... 23	Cleveland, O. .... 1, 5, 8, 11, 12, 24	Friendship, N. Y. .... 4
Atlantic, Pa. .... 5	Cochecton, N. Y. .... 2, 3	
Attica, N. Y. .... 7	(Lake Huntington)	<b>Gallon, O.</b> ..... 5
Aurora, O. .... 8	Cochran, Pa. .... 24, 26	Gannett, N. Y. .... 25
Avoca, N. Y. .... 23	Cohocton, N. Y. .... 23	Garrettsville-Hiram, O. .... 8
Avon, N. Y. .... 23, 25	Collins, N. Y. .... 9	Garwoods, N. Y. .... 7
	Columbus, Pa. .... 4	Geauga Lake O. .... 8
	Conesus, N. Y. .... 23	Geneseo, N. Y. .... 25
	Conesus Lake Jet., N. Y. .... 23	Geneva, Pa. .... 5
	Conewango, N. Y. .... 9	Girard, O. .... 5, 8
	Coopers, N. Y. .... 23	Glen Eyre, Pa. .... 15
	Coraopolis, Pa. .... 8	Glenmore, O. .... 5
	Corning, N. Y. .... 1, 4, 7, 13, 23	Golah, N. Y. .... 23, 25
	Corry, Pa. .... 4	Goshen, N. Y. .... 2, 3
	Craigville, N. Y. .... 16	Gowanda, N. Y. .... 9
	Creston, O. .... 5	Graham, N. Y. .... 2, 3
	Crittenden, N. Y. .... 25	Great Bend, Pa. .... 2, 3
	Crown Point, Ind. .... 5, 6	Greenville, Pa. .... 5
	Cuba, N. Y. .... 4	Greycourt, N. Y. .... 2, 3, 16
	Cuylerville, N. Y. .... 25	Griffith, Ind. .... 6
<b>Baileys, N. Y.</b> ..... 25		Griswolds, N. Y. .... 7
Barberton, O. .... 5	<b>Dale, N. Y.</b> ..... 7	Groveland, N. Y. .... 25
Barton, N. Y. .... 4	Dalton, N. Y. .... 7	Gulf Summit, N. Y. .... 2, 3
Bass Lake, Ind. .... 6	Dansville, N. Y. .... 25	
Bath, N. Y. .... 23	Darien Center, N. Y. .... 7	<b>Mahoning, O.</b> ..... 8
Bear Lake, Pa. .... 4	Dayton, N. Y. .... 9, 18	Mahwah, N. J. .... 2, 3
Beaver, Pa. .... 8	Decatur, Ind. .... 5	Main St., Middletown, N. Y. .... 2, 3
Beaver Falls (New Brighton, Pa.)..... 8	De Cliff, O. .... 5	Mansfield, O. .... 5
Belmont, N. Y. .... 4	DeLong, Ind. .... 6	Mantua, O. .... 8
Belvidere, N. Y. .... 4	Depew, N. Y. .... 7	Marilla, N. Y. .... 7
Bethlehem Bridge Crossing, N. Y. .... 16	Deposit, N. Y. .... 2, 3	Marion, O. .... 4, 5
Big Flats, N. Y. .... 4	Detroit, Mich. .... 8	Markhams, N. Y. .... 9
Binghamton, N. Y. .... 1, 2, 3, 4, 7, 13	Disko, Ind. .... 6	Markle, Ind. .... 5
Bippus, Ind. .... 6	Dunkirk, N. Y. .... 18	Martel, O. .... 5
Blair, N. Y. .... 25		Martin, N. Y. .... 25
Blasdell, N. Y. .... 9	<b>East Bradford, Pa.</b> ..... 13	Mast Hope, Pa. .... 2, 3
Blooming Grove, N. Y. .... 16	East Buffalo, N. Y. .... 7	
Bolivar, Ind. .... 6	East Fifty-fifth St. (Cleveland), O. .... 8	<b>Mahoning, O.</b> ..... 8
Boone Grove, Ind. .... 6		Mahwah, N. J. .... 2, 3
Braceville, O. .... 5		Main St., Middletown, N. Y. .... 2, 3
Bradford, Pa. .... 1, 12, 13		Mansfield, O. .... 5
Brandt, Pa. .... 17		Mantua, O. .... 8
Brooks, N. Y. .... 25		Marilla, N. Y. .... 7
Brookville, N. Y. .... 1, 4, 7, 9, 18		Marion, O. .... 4, 5
Burbank, O. .... 5		Markhams, N. Y. .... 9
Burns, N. Y. .... 7		Markle, Ind. .... 5
Burnwood, Pa. .... 17		Martel, O. .... 5
		Martin, N. Y. .... 25
		Mast Hope, Pa. .... 2, 3

## STATIONS ON ERIE RAILROAD—Concluded

TABLE NO.	TABLE NO.	TABLE NO.
Hankins, N. Y. .... 2, 3	McGuffey, O. .... 5	Seranton, Pa. .... 17
Harriman, N. Y. .... 2, 3, 14	Meadow-wood, N. Y. .... 25	Servia, Ind. .... 6
Harrods, O. .... 5	Meadville, Pa. .... 1, 4, 5, 24, 26	Seven Nations, N. Y. .... 25
Hawley, Pa. .... 15	Middletown, N. Y. .... 2, 3, 19, 21	Shakers, N. Y. .... 25
Hegewisch, Ill. .... 6	Millers, Pa. .... 4	Sharon, Pa. .... 5
Heppburn, O. .... 5	Mill Rift, Pa. .... 2, 3	Sharpsville, Pa. .... 5
Herrick Centre, Pa. .... 17	Mill Village, Pa. .... 4	Shaws, Pa. .... 24, 26
Hickory Grove, Pa. .... 2, 3	Monaca, Pa. .... 8	Sheridan, N. Y. .... 18
Highland Mills, N. Y. .... 14	Mongaup, Pa. .... 2, 3	Shimer's Rock Cut, Pa. .... 15
Highlands, Ind. .... 6	Monroe, N. Y. .... 2, 3	Shohola, Pa. .... 2, 3
Hillburn, N. Y. .... 2, 3	Monterey, Ind. .... 6	Silver Springs, N. Y. .... 7
Hinsdale, N. Y. .... 4	Monticello, N. Y. .... 21	Skinnners, N. Y. .... 2, 3
Hohokus, N. J. .... 2, 3	Mortimer, N. Y. .... 25	Sloatsburg, N. Y. .... 2, 3
Honesdale, Pa. .... 2, 3, 15	Mountainville, N. Y. .... 14	Smithboro, N. Y. .... 4
Hornell, N. Y. .... 1, 4, 7, 13	Mount Morris, N. Y. .... 25	Smith's Mills, N. Y. .... 18
Horseheads, N. Y. .... 4		Solon, O. .... 8
Houghton Farm, N. Y. .... 14		Sonyea, N. Y. .... 25
Howells, N. Y. .... 2, 3		South Avon, N. Y. .... 25
Hubbard, O. .... 5		South Dayton, N. Y. .... 9
Huntington, Ind. .... 5, 6		Southfields, N. Y. .... 2, 3
Hurlburt, Ind. .... 6		South Lima, N. Y. .... 23
Huston, N. Y. .... 25		South Livonia, N. Y. .... 23
		South Park, N. Y. .... 25
		Sparrowbush, N. Y. .... 2, 3
<b>Industry, N. Y.</b> ..... 23, 25	<b>Nankin, O.</b> ..... 5	Spencerville, O. .... 5
	Narrowsburg, N. Y. .... 2, 3	Spring Street, N. Y. .... 25
	Newark, N. J. .... 2, 3	Springwater, N. Y. .... 23
	New Brighton, Pa. .... 8	Starrucca, Pa. .... 17
	Newburgh, N. Y. .... 14	State Hospital, N. Y. .... 9
	New Castle, Pa. .... 8	Steamburg, N. Y. .... 4
	New Hampton, N. Y. .... 2, 3	Sterling, O. .... 5
	Newton, Ind. .... 6	Sterlington, N. Y. .... 2, 3
	New Windsor, N. Y. .... 14	Steven's Point, Pa. .... 17
	New York, N. Y. .... 1, 2, 3, 4, 5, 6, 7, 10, 13, 14, 15, 16, 17, 19, 21, 22, 23, 26	Stockport, N. Y. .... 2, 3
	Niles, O. .... 5, 8	Stony Point, Pa. .... 5
<b>Jaycocks, N. Y.</b> ..... 25	Niobe, N. Y. .... 4	Suffern, N. Y. .... 2, 3
Jamestown, N. Y. .... 1, 4, 9, 10, 11, 12, 13	North Collins, N. Y. .... 9	Sugar Creek, Pa. .... 24, 26
Jeddoe, O. .... 8	North Judson, Ind. .... 6	Susquehanna, Pa. .... 2, 3, 17
Jeffersonville, N. Y. .... 22	North Randall, O. .... 8	Swains, N. Y. .... 7
Jersey City, N. J. .... 1, 2, 3, 4, 5, 6, 7, 10, 13, 14, 15, 16, 17, 19, 21, 22, 23, 26		
Johnson City, N. Y. .... 4		
Jones, N. Y. .... 25		
	<b>Kanona, N. Y.</b> ..... 23	<b>Ohio City, O.</b> ..... 5
	Kellams, N. Y. .... 2, 3	Oil City, Pa. .... 1, 4, 24, 26
	Kemp, O. .... 5	Olean, N. Y. .... 1, 4, 13
	Kennedy, N. Y. .... 4, 9	Oneonta, N. Y. .... 4
	Kenosha Lake, N. Y. .... 22	Ontario, O. .... 5
	Kent, O. .... 5	Oquaga, N. Y. .... 2, 3
	Kenton, O. .... 5	Ora, Ind. .... 6
	Kimble, Pa. .... 15	Otisville, N. Y. .... 2, 3
	Kingsland, Ind. .... 5	Owego, N. Y. .... 4
	Kirkwood, N. Y. .... 2, 3	Oxford, N. Y. .... 2, 3
	Kouts, Ind. .... 6	
		<b>Painted Post, N. Y.</b> ..... 4, 23
		Palmer, Ind. .... 6
		Parker's Glen, Pa. .... 2, 3
		Passaic, N. J. .... 2, 3
		Paterson, N. J. .... 1, 2, 3
		Pavonia, O. .... 5
		Perrysburg, N. Y. .... 18
		Pershing, Ind. .... 6
		Persia, N. Y. .... 18
		Phalanx, O. .... 8
		Pierce's, N. Y. .... 25
		Pine Bush, N. Y. .... 19
		Pittsburgh, Pa. .... 5, 8
		Polk, O. .... 5
		Pond Eddy, Pa. .... 2, 3
		Portage, N. Y. .... 7
		Port Jervis, N. Y. .... 2, 3
		Preble, Ind. .... 5
		<b>Ramapo, N. Y.</b> ..... 2, 3
		Ramsey, N. J. .... 2, 3
		Randolph, N. Y. .... 4
		Rathbone, N. Y. .... 4
		Ravenna, O. .... 5
		Red House, N. Y. .... 4
		Reno, Pa. .... 24, 26
		Ridgewood, N. J. .... 1, 2, 3
		Rittman, O. .... 5
		Rochester, Ind. .... 5, 6
		Rochester, N. Y. .... 1, 23, 25
		Rock Glen, N. Y. .... 7
		Rowlands, Pa. .... 15
		Rutherford, N. J. .... 2, 3
		<b>Saegertown, Pa.</b> ..... 4
		Salamanca, N. Y. .... 1, 4, 12, 13, 18
		Salsbury Mills, N. Y. .... 16
		Savona, N. Y. .... 23
		Scio, N. Y. .... 4
		<b>Tallmadge, O.</b> ..... 5
		Thompson, Pa. .... 17
		Thompson Ridge, N. Y. .... 19
		Tioga Centre, N. Y. .... 4
		Tocsin, Ind. .... 5
		Toledo, O. .... 8
		Town Line, N. Y. .... 7
		Tusten, N. Y. .... 2, 3
		Tuxedo, N. Y. .... 2, 3
		<b>Union City, Pa.</b> ..... 4
		Unfondale, Ind. .... 5
		Unfondale, Pa. .... 17
		Utica, Pa. .... 24, 26
		<b>Vall's Gate, N. Y.</b> ..... 16
		Vall's Gate Junc., N. Y. .... 14, 16
		Venango, Pa. .... 4
		<b>Wadsworth, O.</b> ..... 5
		Waldwick, N. J. .... 2, 3
		Wallace, N. Y. .... 23
		Warren, O. .... 5, 8
		Warsaw, N. Y. .... 7
		Washington Hunt, N. Y. .... 7
		Washingtonville, N. Y. .... 16
		Water Valley, N. Y. .... 9
		Watts Flats, N. Y. .... 4
		Waverly, N. Y. .... 4, 7
		Wayland, N. Y. .... 23
		Websters, N. Y. .... 23
		Wellsburg, N. Y. .... 4
		Wellsville, N. Y. .... 4
		Wellwood Ave., Hawley, Pa. .... 15
		Westcolang Park, Pa. .... 2, 3
		West Cornwall, N. Y. .... 14
		Westfall, N. Y. .... 25
		West Henrietta, N. Y. .... 23, 25
		West Newburgh, N. Y. .... 14
		West Perrysburg, N. Y. .... 18
		West Salem, O. .... 5
		West Sparta, N. Y. .... 25
		White Mills, Pa. .... 15
		Wiards, N. Y. .... 25
		Wilder's, Ind. .... 6
		Windham, O. .... 5
		Winfield, Ind. .... 6
		Woodbury, N. Y. .... 14
		Wren, O. .... 5
		Wurtsboro, N. Y. .... 21
		<b>Youngstown, O.</b> ..... 1, 5, 8, 12, 24

TABLE 1

# CONDENSED TABLE OF THROUGH TRAINS NEW YORK AND BUFFALO, CLEVELAND AND CHICAGO

(FOR LOCAL TRAINS AND INTERMEDIATE TIME OF THROUGH TRAINS SEE LOCAL TABLES)

## WESTBOUND

## THE ERIE LIMITED TRAIN NO. 1—DAILY

## New York—Buffalo—Chicago

Lv New York, W. 23d St.	8.40AM E.S.T.
" " " Chambers St.	8.50 " "
" " " Jersey City Sta.	9.10 " "
" Paterson	9.37 " "
" Ridgewood	9.47 " "
" Binghamton	2.35PM " "
" Elmira	3.52 " "
Ar Buffalo (Lehigh Valley Term.)	7.40 " "
Lv Olean	6.45 " "
" Bradford	ad 5.32 " "
" Jamestown	8.05 " "
" Meadville	9.40 " "
Ar Oil City	11.20 " "
Lv Youngstown	11.17 " "
" Akron	12.45AM " "
Ar Chicago (Dearborn Sta.)	8.15AM C.S.T.

## EQUIPMENT

Sleeping Cars.....New York to Chicago.  
8 Section Lounge Restaurant Car.  
Hornell to Chicago.  
10 Section Lounge Restaurant Car.  
Pullman Parlor—  
Buffet Car.....New York to Buffalo.  
Dining Service for all meals.  
Salon Coaches.....New York to Chicago.  
Coaches.....New York to Buffalo.  
*All regular equipment is fully air conditioned.*

## EASTBOUND

## THE ERIE LIMITED TRAIN NO. 2—DAILY

## Chicago—Buffalo—New York

Lv Chicago (Dearborn Sta.)	6.00PM C.S.T.
" Akron	3.44AM E.S.T.
" Youngstown	5.07 " "
" Meadville	6.50 " "
" Jamestown	8.25 " "
Ar Bradford	ad 10.05 " "
Ar Olean	9.36 " "
Lv Buffalo (Lehigh Valley Term.)	8.20 " "
Ar Elmira	12.30PM " "
" Binghamton	1.43 " "
" Ridgewood	6.43 " "
" Paterson	6.52 " "
" New York, Jersey City Sta.	7.20 " "
" " " Chambers St.	7.34 " "
" " " W. 23d St.	7.45PM " "

## EQUIPMENT

Sleeping Car.....Chicago to New York.  
8 Section Lounge Restaurant Car.  
Pullman Parlor Buffet Car..Buffalo to New York.  
Dining Service for all meals.  
Salon Coaches.....Chicago to New York.  
Coaches.....Buffalo to New York.

*All regular equipment is fully air conditioned.*

## THE LAKE CITIES TRAIN NO. 5—DAILY

## New York—Buffalo—Cleveland

Lv New York, W. 23d St.	7.00PM E.S.T.
" " " Chambers St.	7.30 " "
" " " Jersey City Sta.	7.45 " "
" Paterson	8.14 " "
" Ridgewood	8.24 " "
Ar Buffalo (Lehigh Valley Term.)	6.58AM " "
Lv Olean	5.38 " "
Ar Bradford	6.55 " "
Lv Jamestown	7.00 " "
" Meadville	8.37 " "
Ar Oil City	10.10 " "
Lv Youngstown	10.08 " "
Ar Cleveland	11.50AM " "

## EQUIPMENT

Sleeping Cars.....New York to Cleveland.  
8 Section Compartment Lounge Restaurant Car.  
New York to Bradford—  
10 Section, 2 Compartment, 1 Drawing-Room Car.  
New York to Buffalo—  
12 Section and Drawing-Room Car.  
(Sleeping cars may be occupied at Bradford and Buffalo until 8.00 A. M.)  
Club Lounge New York to Hornell.  
(not air-conditioned)  
Individual Seat Coaches..New York to Cleveland.  
Coaches(not air-conditioned) Hornell to Buffalo  
*Regular equipment is fully air conditioned, except as shown above.*

## THE LAKE CITIES TRAIN NO. 6—DAILY

## Cleveland—Buffalo—New York

Lv Cleveland	4.00PM E.S.T.
" Youngstown	5.43 " "
" Oil City	5.30 " "
" Meadville	7.13 " "
" Jamestown	8.48 " "
" Bradford	8.40 " "
" Salamanca	9.34 " "
" Olean	9.59 " "
" Buffalo (Lehigh Valley Term.)	8.50 " "
Ar Elmira	12.50AM " "
" Ridgewood	dz 7.03 " "
" Paterson	dz 7.12 " "
" New York, Jersey City Sta.	7.40 " "
" " " Chambers St.	7.54 " "
" " " W. 23d St.	av 8.10AM " "

## EQUIPMENT

Cleveland to New York—  
8 Section Compartment Lounge Restaurant Car.  
Youngstown to New York—  
10 Section Lounge Restaurant Car.  
Bradford to New York—  
10 Section, 2 Compartment, 1 Drawing-Room Car.  
Buffalo to New York—  
12 Section and Drawing-Room Car.  
Individual Seat Coaches..Cleveland to New York.  
Coaches(not air-conditioned) Buffalo to Hornell

*Regular equipment is fully air conditioned, except as shown above.*

## PACIFIC EXPRESS TRAIN NO. 7—DAILY

## New York—Jamestown—Chicago

Lv New York, W. 23d St.	11.05PM E.S.T.
" " " Chambers St.	11.30 " "
" " " Jersey City Sta.	11.45 " "
" Elmira	7.13AM " "
Ar Rochester	†11.20 " "
Lv Olean	10.45 " "
" Jamestown	12.10PM " "
" Meadville	1.47 " "
Ar Oil City	
Lv Youngstown	3.22 " "
" Akron	4.55 " "
Ar Chicago (Dearborn Sta.)	1.00AM C.S.T.

## EQUIPMENT

Sleeping Car.....New York to Youngstown.  
10 Section Lounge Restaurant Car.  
(Sleepers open Jersey City at 9.30 P. M.)  
Through Coaches...New York to Chicago.  
Coaches only, west of Youngstown.

*All regular equipment is fully air conditioned.*

## ATLANTIC EXPRESS TRAIN NO. 8—DAILY

## Chicago—Jamestown—New York

Lv Chicago (Dearborn Sta.)	10.20PM C.S.T.
" Akron	7.36AM E.S.T.
" Youngstown	9.05 " "
" Oil City	
" Meadville	10.35 " "
" Jamestown	12.23PM " "
" Bradford	11.17AM " "
" Salamanca	1.21PM " "
" Olean	1.46 " "
" Rochester	†12.10 " "
" Elmira	5.15 " "
" Binghamton	6.22 " "
" New York, Jersey City Sta.	11.40 " "
" " " Chambers St.	11.59PM " "
" " " W. 23d St.	

## EQUIPMENT

Sleeping Car.....Chicago to Hornell.  
10 Section Lounge Restaurant Car.  
(Sleeper open at Chicago at 9.30 P. M.)  
Lounge Diner.....Hornell to New York.  
(not air-conditioned)  
Through Coaches.....Chicago to New York.  
(No baggage handled on this train east of Hornell, baggage will be handled on following train.)

*Regular equipment is fully air conditioned, except as shown above.*

## TRAIN NO. 27—DAILY

## New York—Binghamton—Elmira—Hornell

Lv New York, W. 23d St.	2.10 PM E.S.T.
" " " Chambers St.	2.10 " "
" " " Jersey City Sta.	2.30 " "
" Binghamton	8.53 " "
" Elmira	10.22 " "
" Corning	10.47 " "
Ar Hornell	12.05 AM " "

## EQUIPMENT

Parlor-Buffet Car...New York to Binghamton  
(Runs until Sept. 7, Incl.)  
Through Coaches..New York to Hornell.

## SOUTHERN TIER EXPRESS TRAIN NO. 10—EX. SUN.

## Hornell—Elmira—Binghamton—New York

Lv Hornell	6.30PM E.S.T.
" Corning	7.37 " "
" Elmira	8.07 " "
" Binghamton	9.30 " "
Ar New York, Jersey City Sta.	3.00AM " "
" " " Chambers St.	3.24AM " "
" " " W. 23d St.	

## EQUIPMENT

Through Coaches...Hornell to New York.  
Parlor-Buffet Car...Binghamton to New York.  
(Runs until Sept. 7, Incl.)

TABLE 2 WESTBOUND

NEW YORK—BINGHAMTON

Hudson and Manhattan Tube Trains operate to and from Erie Railroad Station in Jersey City. Fare, downtown, 6 cents; uptown, 10 cents.

Main train schedule table with columns for Miles from New York, Eastern Standard Time, and various train numbers (51, 53, 55, 57, 43, 59, 61, 27, 63, 65, 67, 259, 47, 69, 5, 7, 71, 251, 253, 45, 255, 701, 703, 705, 707, 709, 711, 713). Includes notes like 'Runs through to Newburgh' and 'No Baggage Carried on this Train'.

LOCAL PARLOR AND CLUB CAR EQUIPMENT.

No. 27—Daily Parlor-Buffer Car... New York to Binghamton (until Sept. 7, Inc.) Coaches... New York to Hornell. No. 43—Daily (until Sept. 7, Inc.) Parlor-Buffer Car... New York to Deposit. Coaches... New York to Deposit.

No. 45—Runs Saturdays only until Aug. 31, Inc. Parlor Car... New York to Deposit. Coaches... New York to Deposit. No. 47—Fridays only (until Aug. 30) Parlor Car... New York to Deposit. Coaches... New York to Deposit.

No. 63—THE TUXEDO—Ex. Suns. and Hols. Parlor Car and Coaches... New York to Port Jervis. No. 67—Ex. Sat., Sun. and Hol. Erie Club Car... New York to Port Jervis. Coaches... New York to Port Jervis. No. 251—Saturdays only Erie Parlor Car... New York to Harriman. Coaches... New York to Harriman.

For Explanation of Reference Marks and Notes, See Pages 33 and 34.

For Parlor, Sleeping and Dining Service of Through Trains, See Pages 5 and 6.

TABLE 3 EASTBOUND BINGHAMTON—NEW YORK

Hudson and Manhattan Tube Trains operate to and from Erie Railroad Station in Jersey City. Fare downtown, 6 cents; uptown, 10 cents.

Main train schedule table with columns for Eastern Standard Time, train numbers (50, 52, 6, 54, 206, 56, 58, 30, 60, 62, 44, 46, 2, 64, 18, 34, 38, 68, dt 8, 10), and destinations. Includes notes like 'No Baggage Carried on this Train' and 'Southern Tier Express'.

LOCAL PARLOR AND CLUB CAR EQUIPMENT

No. 34—Sundays only until Aug. 25, Inc. (also Monday, Sept. 2). Parlor Car... Deposit to New York. Coaches... Deposit to New York.

No. 44—Daily. Parlor Buffet Car... Deposit to New York. Coaches... Susquehanna to New York. No. 46—Sundays only until Sept. 1, Inc. (also Monday, Sept. 2). Parlor Buffet Car... Deposit to New York. Coaches... Deposit to New York.

No. 56—THE TUXEDO—Except Sundays and Holidays. Erie Club Car... Port Jervis to New York. Coaches... Port Jervis to New York. No. 8. Lounge-Diner... Hornell to New York. Coaches... Hornell to New York.

For Explanation of Reference Marks and Notes, See Pages 33 and 34.

For Parlor, Sleeping and Dining Service of Through Trains, See Pages 5 and 6.

TABLE 4

WESTBOUND

BINGHAMTON—MEADVILLE

EASTBOUND

Miles from New York	Eastern Standard Time	du	1	27	5			Miles from Chicago	Central Standard Time	2	18	dt	10	6		
		7	1	27	5					2	18	8	Ex-Sun.	6		
		Daily	Daily	Daily	Daily					Daily	Daily	Daily	PM	Daily		
		PM	AM	PM	PM					PM	AM	PM	PM	PM		
0.0	N. Y., West 23d St. Lv.	11.05	8.40	2.10	7.00			0.0	Chicago (Dearborn Station) Lv.	6.00		10.20				
0.0	" Chambers St. Lv.	11.30	8.50	2.10	7.30				Eastern Standard Time							
1.0	" Jersey City Station Lv.	11.45	9.10	2.30	7.45				Oil City (See Table 26) Lv.					5.30		
									Franklin (See Table 26) Lv.					5.50		
	Albany (D. & H.) Lv.		7.00	4.15				482.5	Meadville Pa. Lv.	6.50		10.35		7.13		
	Oneonta (D. & H.) Lv.		10.00	6.48				488.7	Saegertown " "							
	Binghamton (D. & H.) Ar.		12.05	8.35				493.2	Venango " "							
215.1	Binghamton N. Y. Lv.	5.43	2.35	8.53	1.22			496.7	Cambridge Springs " "	dy		10.56		7.33		
217.8	Johnson City " "							499.7	Millers " "							
222.6	Endicott " "	5.53	2.46	9.05				505.8	Mill Village " "							
223.7	Liberty St., Endicott " "							512.7	Union City " "	dy		11.20				
230.2	Campville " "															
236.8	Owego " "	6.14	3.04	9.26				524.1	Corry " "	7.46		11.39		8.07		
242.7	Tioga Centre " "							527.4	Columbus " "							
246.7	Smithboro " "							533.8	Bear Lake " "							
249.4	Barton " "							537.2	Niobe N. Y. " "							
256.2	Waverly " "	6.39	3.26	9.50				539.8	Watts Flats " "							
261.0	Chemung " "							543.8	Ashville " "							
266.8	Wellsburg " "							546.3	Lakewood " "							
273.8	Elmira " "	7.13	3.52	10.22	2.37			551.1	Jamestown Ar.	8.25		12.23		8.48		
278.3	Horseheads " "								(Chautauqua Lake)							
283.6	Big Flats " "							618.6	Buffalo (See Table 9) Ar.	10.50						
291.1	Corning " "	7.44	4.15	10.47	3.04				Jamestown Lv.	8.25		12.23		8.48		
293.1	Painted Post " "							551.1	(Chautauqua Lake)							
297.0	Erwins " "							554.7	Falconer " "							
302.3	Addison " "	8.00	4.31	11.22				560.2	Kennedy " "							
307.4	Rathbone " "							567.3	Randolph " "			12.44				
312.5	Cameron Mills " "							572.9	Steamburg " "							
315.0	Cameron " "							577.2	Red House " "							
323.5	Adrian " "							584.9	Salamanca Ar.	9.05		1.15		9.27		
328.0	Canisteo " "	8.34	5.07	12.05	3.56			584.9	Salamanca Lv.	9.10		1.21		9.34		
332.3	Hornell Ar.	8.42	7.40		6.58			590.3	Carrollton " "							
424.9	Buffalo (see Table 7) Ar.		7.40		6.58			599.4	Allegany " "							
332.3	Hornell Lv.	8.50	5.15		4.02			602.8	Olean " "	9.36		1.46		9.59		
337.3	Almond " "							608.4	Hinsdale " "							
341.5	Alfred " "	9.10						615.2	Cuba " "	dw						
349.9	Andover " "	9.27						624.1	Friendship " "							
358.5	Wellsville " "	9.40	5.54		4.41			628.5	Belvidere " "							
362.3	Scio " "				5.02			631.6	Belmont " "							
366.9	Belmont " "	9.52			5.17			636.2	Scio " "							
370.0	Belvidere " "							640.0	Wellsville " "	10.31		2.42		10.49		
374.4	Friendship " "	bg			5.02			648.6	Andover " "							
383.3	Cuba " "	bg	bh		5.17			657.0	Alfred " "							
390.1	Hinsdale " "							661.2	Almond " "							
395.7	Olean " "	10.45	6.45		5.38			666.2	Hornell Ar.	11.07		3.20		11.25		
399.1	Allegany " "				5.44				Buffalo (See Table 7) Lv.	8.20				8.50		
408.2	Carrollton " "							666.2	Hornell " "	11.14	11.30	3.28	6.30	11.31		
413.6	Salamanca Ar.	11.09	7.08		6.03			670.5	Canisteo " "		11.43	3.42	6.38			
413.6	Salamanca Lv.	11.20	7.15		6.11			675.0	Adrian " "							
421.3	Red House " "							683.5	Cameron " "		11.59					
425.6	Steamburg " "							686.0	Cameron Mills " "		12.13					
431.2	Randolph " "				6.35			691.1	Rathbone " "		12.20					
438.3	Kennedy " "							696.2	Addison " "	11.50	12.37	4.20	7.07	12.07		
443.8	Falconer " "							701.5	Erwins " "							
447.3	Jamestown Ar.	12.10	8.05		7.00			705.4	Painted Post " "			1.15				
	Buffalo (See Table 9) Lv.	8.05	5.10					707.4	Corning " "	12.07	1.25	4.48	7.37	12.24		
447.3	Jamestown Lv.	12.10	8.05		7.00			714.9	Big Flats " "		f 1.34					
452.2	Lakewood " "							720.2	Horseheads " "		f 1.42					
454.7	Ashville " "							724.7	Elmira " "	12.30	2.15	5.15	8.07	12.50		
458.7	Watts Flats " "							731.7	Wellsburg " "		2.28					
461.3	Niobe " "							737.5	Chemung " "		2.38					
464.7	Bear Lake, Pa. " "							742.3	Waverly " "	12.51	2.50		8.30	1.12		
471.1	Columbus " "							749.1	Barton " "		f 2.59					
474.4	Corry " "	12.50	8.43		7.37			751.8	Smithboro " "		f 3.05					
485.8	Union City " "		cn		7.53			755.8	Tioga Centre " "		f 3.12					
492.7	Mill Village " "							761.7	Owego " "	1.14	3.34		8.48			
498.2	Millers " "							768.3	Campville " "							
501.8	Cambridge Springs " "	1.23	cn		8.13			774.8	Liberty St., Endicott " "		3.53					
505.3	Venango " "							775.9	Endicott " "	1.33	3.58	es	9.09			
509.8	Saegertown " "							780.7	Johnson City " "		4.08					
516.0	Meadville Ar.	1.42	9.35		8.32			783.4	Binghamton Ar.	1.43	4.29	6.20	9.20	1.57		
	Franklin (See Table 26) Ar.		11.00		9.50			783.4	Binghamton (D. & H.) Lv.	2.10						
	Oil City (See Table 26) Ar.		11.20		10.10			844.3	Oneonta (D. & H.) Ar.	3.54						
	Central Standard Time							926.0	Albany (D. & H.) " "	6.20						
998.5	Chicago (Dearborn Station) Ar.	1.00	8.15					997.5	N. Y., Jersey City Station " "	7.20		11.40	3.00	7.40		
		AM	AM	AM	AM			998.5	" Chambers St. " "	7.34		11.59	3.24	7.54		
									" West 23d St. Ar.	7.45				av 8.10		

COME! DINE WITH US.

Table D'Hot prices range as follows: Breakfast 60c to \$1.00, Luncheon 75c to \$1.25, Dinner 75c to \$1.25. A meal on our trains is always a pleasant interlude. Makes the journey seem shorter too. The freshest food the market affords, cooked by expert chefs and served in the comfort of spacious Restaurant Cars. If you prefer a light snack without going to the Diner the waiter will bring sandwiches, fruit, coffee, etc., right to your seat.





TABLE 6 WESTBOUND

HUNTINGTON—CHICAGO

EASTBOUND

Miles from New York	Eastern Standard Time		1	du 7				Miles from Chicago	Central Standard Time		2	dt 8			
	Daily	Daily							Daily	Daily					
0.0	N. Y., West 23d St.	Lv.	8.40	11.05				0.0	Chicago (Dearborn Sta.)	Lv.	6.00	10.20			
0.0	" Chambers St.	"	8.50	11.30				4.6	(Polk and Dearborn Sts.)	"					
1.0	" Jersey City Station	"	9.10	11.45				6.6	47th St., Chicago	"	6.15	cp			
	Central Standard Time							18.2	Englewood, 63d St.	"					
856.0	Huntington	Ind. Lv.	5.06	9.50				20.8	Hegewisch	"					
865.0	Bippus	"						25.8	Hammond, Ind.	"	6.40	11.00			
871.3	Servia	"						28.5	Highlands	"					
873.8	Bolivar	"						36.0	Griffith	"					
875.5	Newton	"						40.4	Crown Point	"	7.06				
876.1	Laketon	"						42.9	Winfield	"					
882.3	Disko	"						46.4	Palmer	"					
887.4	Akron	"						49.1	Hurlburt	"					
892.6	Athens	"						55.1	Boone Grove	"					
897.8	Rochester	"	5.58					62.7	Kouts	"					
903.3	Pershing	"						69.4	Wilder's	"					
907.2	Leiter's	"						75.2	North Judson	"					
910.1	De Long	"						78.8	Aldine	"					
913.1	Monterey	"						81.7	Bass Lake	"					
916.8	Ora	"						85.4	Ora	"					
919.7	Bass Lake	"						88.4	Monterey	"					
923.3	Aldine	"						91.3	De Long	"					
929.1	North Judson	"						95.2	Leiter's	"					
935.8	Wilder's	"						100.7	Pershing	"					
943.4	Kouts	"						105.9	Rochester	"	8.20				
949.4	Boone Grove	"						111.1	Athens	"					
952.1	Hurlburt	"						116.2	Akron	"					
955.6	Palmer	"						122.4	Disko	"					
958.1	Winfield	"						123.0	Laketon	"					
962.5	Crown Point	"	7.11					124.7	Newton	"					
970.0	Griffith	"						127.2	Bolivar	"					
972.7	Highlands	"						133.5	Servia	"					
977.7	Hammond	"	7.35	12.13				142.5	Bippus	"					
980.3	Hegewisch	"							Huntington	Ar.	9.05	1.13			
991.9	Englewood, 63d St., Ill.	"	ax	ax					Eastern Standard Time						
993.9	47th St., Chicago	"						997.5	N. Y., Jersey City Station	Ar.	7.20	11.40			
998.5	Chicago (Dearborn Sta.)	Ar.	8.15	1.00				998.5	" Chambers St.	"	7.34	11.59			
			AM	AM					" West 23d St.	"	7.45				
											PM	PM			

TABLE 7 NEW YORK AND BUFFALO

WESTBOUND Read Down			Miles from New York	Eastern Standard Time	EASTBOUND Read Up			
1	5				2	472	480	6
Daily	Daily		Daily	Sat. only	Ex. Sun.	Daily		
AM	PM		PM	PM	PM	AM		
8.40	7.00	0.0	Lv. N. Y., West 23d St.	Ar.	7.45	av8.10		
8.50	7.30	0.0	" Chambers St.		7.34	7.54		
9.10	7.45	1.0	" Jersey City Sta.		7.20	7.40		
2.35	1.22	215.1	Lv. Binghamton	Ar.	1.43	1.57		
2.46		222.6	Endicott		1.33			
3.26		256.2	Waverly		12.51	1.12		
3.52	2.37	273.8	Elmira		12.30	12.50		
4.15	3.04	291.1	Corning		12.07	12.24		
5.07	3.56	332.3	Ar. Hornell	Lv.	11.14	11.31		
5.20	4.25		Lv. Arkport	Ar.	11.02	11.10		
5.27	4.33	338.0	Burns		10.53			
5.37	4.43	340.7	Canaseraga		cd			
gs		344.8	Garwoods		10.26	10.53		
5.52	ac	349.2	Swains		10.21			
gs		356.4	Dalton		10.11			
6.03		358.5	Washington Hunt.					
6.10	bt5.17	362.6	Portage		10.01			
6.16	5.22	366.5	Letchworth Park					
6.28	5.34	372.3	Castile		9.53	bt10.21		
6.37		376.6	Silver Springs		9.47	10.15		
6.44		382.4	Rock Glen					
6.55	6.00	386.7	Warsaw		9.34	10.03		
	6.07	393.7	Dale					
	6.12	397.6	Linden		9.09	9.38		
	6.20	399.9	Attica		1.30	5.55		
	6.25	405.5	Griswolds		1.22	5.48		
	6.28	408.3	Darien Center		cd	5.42		
	6.35	410.3	Alden (Black Water Baths)		8.49	5.30	he	
	6.38	414.3	Marilla			1.00		
	6.48	415.6	Town Line			12.56		
	6.58	422.2	Lancaster		8.38	12.49		
		424.9	Depew			12.46		
			East Buffalo			12.35		
7.23			Ar. Buffalo	Lv.	8.20	12.25	8.50	
7.40	6.58		(Lehigh Valley Terminal)		AM	PM	PM	

ERIE TRAINS

Arriving at and Departing from

BUFFALO, N. Y.

Now Use the

LEHIGH VALLEY TERMINAL

Located at MAIN and SCOTT STS.

Present schedules will continue in effect until further notice

**TABLE 8 DETROIT—TOLEDO—CLEVELAND—YOUNGSTOWN—PITTSBURGH**

Miles from Cleveland	Eastern Standard Time	EASTBOUND							Eastern Standard Time	WESTBOUND								
		688 Daily	624 Daily	626 Daily	6 Daily	628 Ex. Sun. & Hol	686 Daily	644 Sun-days Only		629 Ex. Sun. & Hol	625 Sun-days only	5 Daily	685 Daily	623 Daily	679 Daily	687 Daily		
	<b>Detroit</b> .....Lv.	PM 11.45	AM	AM	PM	PM	PM	PM										
	<b>Toledo</b> .....Lv.	1.55	5.17	8.10				1.30										
0.0	<b>Cleveland</b> .....Lv.	4.20	8.40	1.15	4.00	5.30	6.00	9.00										
3.2	East 55th Street.....		8.49	1.25	4.10	5.40	6.10	9.10										
5.5	E. 93d St., Cleveland.....		8.54	1.30		5.45	6.15	9.15										
10.6	North Randall.....					5.54												
15.7	Solon.....			dc		6.01		9.30										
20.5	Geauga Lake.....					6.07		9.35										
23.6	Aurora.....			1.52		6.13		9.40										
30.0	Mantua.....			2.01		6.22		9.47										
34.3	Jeddoe.....					6.28												
36.7	Garrettsville-Hiram.....		9.33	2.12		6.32		9.57										
40.3	Mahoning.....					6.37												
45.4	Phalanx.....					6.42												
49.3	Leavittsburg.....					6.49												
52.4	<b>Warren</b> .....	5.30	9.53	2.31	5.11	6.57	7.08	10.17										
57.6	Niles.....	er	10.01	2.40	5.20	7.21	7.17	10.26										
61.8	Girard.....		10.07	2.47		7.30		10.32										
66.3	<b>Youngstown</b> .....Ar.	5.55	10.15	2.55	5.35	7.40	7.32	10.40										
66.3	<b>Youngstown</b> .....Lv.	6.00	10.15	3.00			7.37											
87.5	<b>New Castle</b> .....Ar.	6.24	10.40	3.38			8.00											
	New Castle (Wash.St.) ec Ar.	6.37	10.54	3.51			8.14											
91.3	Ellwood City (ed).....	6.44	11.01	4.01			8.02											
102.2	(Beaver Falls.....)	cy6.47	11.03	4.05			8.24											
	(New Brighton.....)																	
105.4	Beaver.....	cy6.55	11.09	4.11			8.30											
106.7	Monaca.....																	
112.1	Aliquippa.....	cy7.04	11.18	4.20			8.39											
120.6	Coraopolis.....	cy7.15	11.29	4.31			8.50											
131.2	<b>Pittsburgh</b> .....Ar.	7.30	11.45	4.50			9.05											
		AM	AM	PM	PM	PM	PM	PM										

Holidays in the above table refers to the observance of New Year's Day, Memorial Day, Independence Day, Labor Day, Thanksgiving Day and Christmas Day:

**EASTBOUND**

**No. 6—Daily.** ★ Sleeping Car (8 Section Compartment Lounge Restaurant Car) Cleveland to New York. ★ Individual Seat Coach, Cleveland to New York.

**No. 624—Daily.** ★ Pullman Parlor-Lounge-Diner, Cleveland to Pittsburgh. ★ Coach, Cleveland to Pittsburgh.

**No. 626—Daily.** ★ Pullman Parlor Car, Cleveland to Pittsburgh. ★ Coach, Cleveland to Pittsburgh.

**No. 686—Daily.** Pullman Parlor Buffet Car and ★ Coaches, Detroit to Pittsburgh, via Cleveland. Dining Lounge Car, Cleveland to Pittsburgh.

**No. 688—Daily.** Sleeping Cars, Chicago to Pittsburgh. ★ Sleeping Cars, Detroit to Pittsburgh. Through Coaches, Chicago and Detroit to Pittsburgh, via Cleveland.

**EQUIPMENT**

**Detroit, Toledo, Cleveland, Youngstown, Pittsburgh Trains.**

★ Indicates Air-conditioned Cars

**★Cleveland-Pittsburgh Sleeping Car**

The Cleveland-Pittsburgh sleeping car operates to and from Union Terminal Cleveland via New York Central (via Ashtabula) to Youngstown, and P. & L. E. Railroad on following schedule:

Eastbound	Westbound
Lv Cleveland (Union Terminal) 2:20 AM	Lv Pittsburgh (P&LE Station) 10:45 PM
Ar Pittsburgh (P&LE Station) 7:25 AM	Ar Cleveland (Union Terminal) 7:10 AM

Sleeper open for occupancy at 9:30 P. M. at Cleveland and Pittsburgh.

Tickets reading via Erie Railroad between Cleveland and Youngstown, and P. & L. E. Railroad between Youngstown and Pittsburgh, will be honored in this sleeping car.

**WESTBOUND**

**No. 5—★ Sleeping Car** (8 Section Compartment Lounge Restaurant Car) New York to Cleveland. ★ Pullman Parlor Car, Pittsburgh to Cleveland. ★ Coach, Pittsburgh to Cleveland.

**No. 623—Daily.** ★ Pullman Parlor-Lounge-Diner, Pittsburgh to Cleveland. ★ Coach, Pittsburgh to Cleveland.

**No. 679—Daily.** Sleeping Car, Pittsburgh to Chicago. Through Coaches, Pittsburgh to Chicago.

**No. 685—Daily.** Pullman Parlor Buffet Car and ★ Coaches, Pittsburgh to Detroit, via Cleveland. Dining Lounge Car, Pittsburgh to Cleveland.

**No. 687—Daily.** ★ Sleeping Cars, Pittsburgh to Detroit. Through Coaches, Pittsburgh to Detroit via Cleveland.

## All Round-Trip Fares Reduced

### Every Week-End

These fares apply between any two points on the Erie Railroad and its connections east of Chicago and St. Louis. Tickets good going Friday noon to Sunday noon, also from certain stations Friday morning and all day Sunday. Return limit the following Monday. Tickets good in coaches, also in Pullman cars. Round trip Pullman sleeping car rates reduced 25% for these week-end excursions. With certain exceptions, stop-overs permitted at all points on return trip. Consult Erie Ticket Agents.

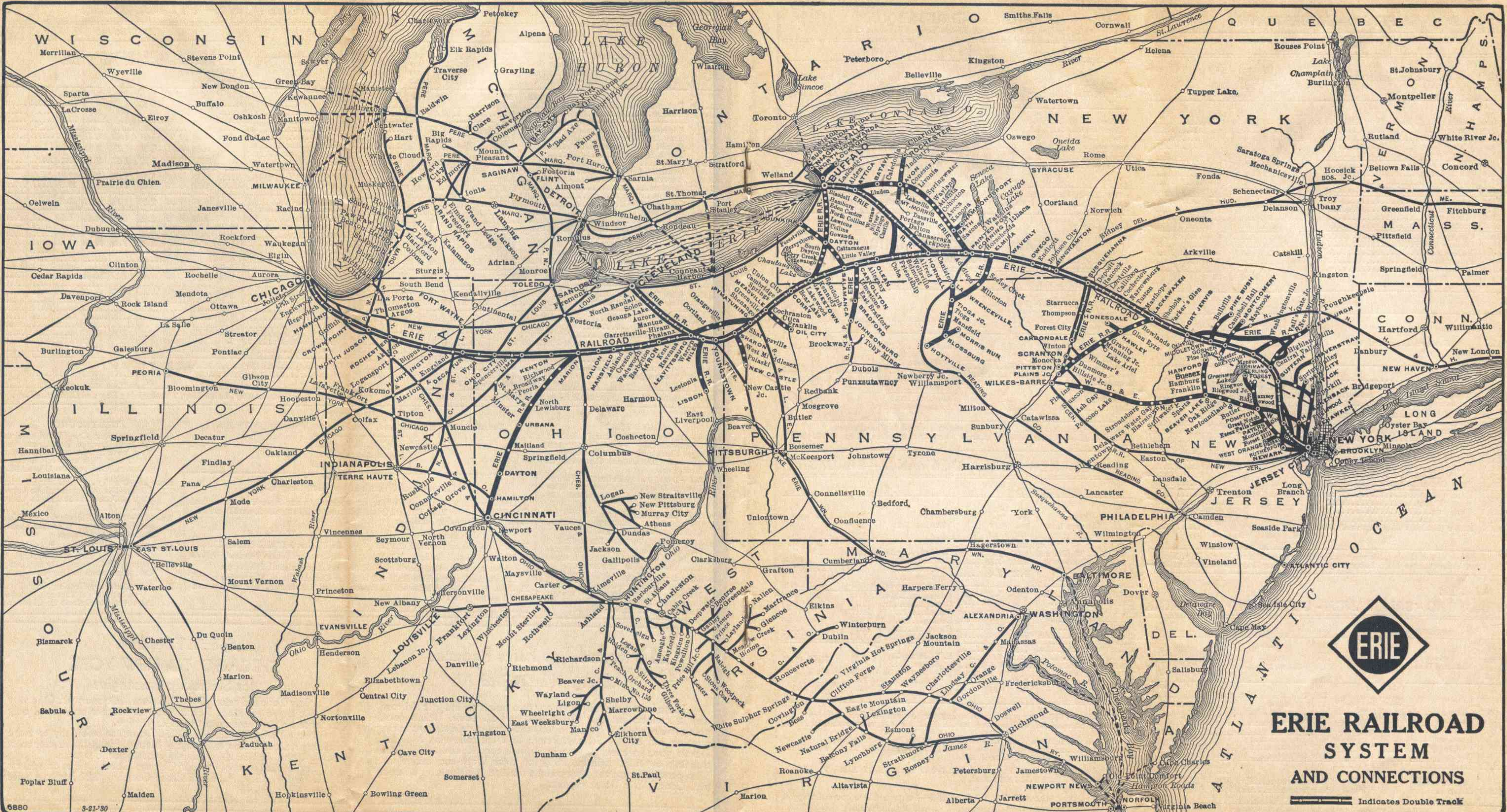
## Special Fares from CHICAGO TO NEW YORK

### for Steamship Passengers

New York and return \$47.00. Return limit one year. One way \$23.50. Leave any time. Tickets good in coaches only. Sold only to those holding steamship tickets to Europe.

New York and return \$46.05. Tickets on sale daily to those holding steamer tickets to Bermuda, Nassau, Halifax, and east coast ports. Return limit 30 days. Pullman accommodations extra.

For particulars apply to our Chicago Ticket Offices or address H. T. Harlow, G. P. A., Erie Railroad Company, 327 South La Salle Street, Chicago, Ill.



5880 3-21-30

ARRIVE FRESH AS A DAISY ON ERIE AIR-CONDITIONED TRAINS

# ERIE RAILROAD SYSTEM AND CONNECTIONS

Indicates Double Track

**TABLE 9 BUFFALO—JAMESTOWN**

WESTBOUND					
Mls.	Eastern Standard Time	513 Daily	515 Ex. Sun. & Hol.	517 Ex. Sun. & Hol.	519 Daily
0.0	Buffalo (Lehigh Valley Terminal)... Lv.	8.05 AM	12.30 PM	4.20 PM	5.10 PM
5.6	Blasdell.....	8.24	12.48	4.38	5.28
11.7	Hamburg.....	8.36	1.00	4.50	5.40
12.5	Water Valley.....		1.03	4.53	5.43
15.0	Eden Valley.....	8.41	1.07	4.58	5.48
17.3	Eden Center.....	8.46	1.12	5.03	5.54
21.6	North Collins.....	8.53	1.19	5.10	6.01
25.6	Lawtons.....	9.00	1.26	5.17	6.08
28.6	Collins (State Hospital).....	9.06	1.32	5.23	6.15
31.6	Gowanda.....	9.14	1.45	5.30	6.23
36.0	Dayton.....	9.30			6.37
38.0	Markhams.....				
41.5	South Dayton.....	9.42			6.47
46.5	Cherry Creek.....	9.51			6.55
50.8	Conewango.....	10.00			7.03
58.5	Kennedy.....	10.13			7.03 hu
64.0	Falconer.....	10.23			7.24
67.5	Jamestown..... Ar.	10.30 AM			7.30 PM

EASTBOUND					
Mls.	Eastern Standard Time	514 Ex. Sun. & Hol.	516 Daily	518 Ex. Su. & Hol.	520 Daily
0.0	Jamestown..... Lv.		8.32 AM		5.00 PM
3.5	Falconer.....		8.38		5.06
9.0	Kennedy.....		8.46		5.14
16.7	Conewango.....		8.58		5.27
21.0	Cherry Creek.....		9.05		5.34
26.0	South Dayton.....		9.13		5.43
29.5	Markhams.....				
31.5	Dayton.....		9.24		5.54
35.9	Gowanda.....	5.50	9.38	1.50	6.07
38.9	Collins (State Hospital).....	5.56	9.45	1.56	6.15
41.9	Lawtons.....	6.03	9.52	2.02	6.24
45.9	North Collins.....	6.10	10.00	2.09	6.31
50.2	Eden Center.....	6.18	10.08	2.15	6.39
52.5	Eden Valley.....	6.23	10.13	2.21	6.44
55.0	Water Valley.....	6.28			
55.8	Hamburg.....	6.33	10.20	2.27	6.51
61.9	Blasdell.....	6.43	10.31	2.37	7.01
67.5	Buffalo (Lehigh Valley Terminal)... Ar.	7.02 AM	10.50 AM	2.55 PM	7.20 PM

Holidays in the above table refer to the observance of New Year's Day, Memorial Day, Independence Day, Labor Day, Thanksgiving Day and Christmas Day.

**TABLE 12 BRADFORD - SALAMANCA - CLEVELAND - CHICAGO**

WESTBOUND				EASTBOUND				
Miles from Bradford	Eastern Standard Time	Bus-7 Daily	Bus-1 Daily	Miles from Chicago	Central Standard Time	2-Bus Daily	8-Bus Daily	6-Bus Daily
0.0	Bradford..... Lv.	9.17 AM	5.32 PM	0.0	Chicago..... Lv.	6.00 PM	10.20 PM	
17.2	Salamanca..... Ar.	9.55	6.10	372.6	Akron.....	3.44	7.36	
17.2	Salamanca..... Lv.	11.20	7.15	0.0	Cleveland.....			4.00
51.0	Jamestown..... Ar.	12.10	8.05	426.7	Youngstown.....	5.07	9.05	5.43
175.4	Youngstown.....	3.15	11.10	551.1	Jamestown.....	8.25	12.23	8.48
0.0	Cleveland.....			584.9	Salamanca..... Ar.	9.05	1.15	9.27
229.5	Akron.....	4.55	12.45					
602.1	Chicago..... Ar.	1.00 AM	8.15 AM	584.9	Salamanca..... Lv.	9.20 AM	2.20 PM	dh10.35
				602.1	Bradford..... Ar.	10.05 AM	3.00 PM	dh11.45

See table 13, page 24 for baggage arrangements.

**TABLE 10 NEW YORK—CHAUTAUQUA**  
(Via Jamestown and West Ridge Transportation Co.)

WESTBOUND				EASTBOUND			
Eastern Standard Time	1-Bus Daily	5-Bus Daily	7-Bus Daily	Eastern Standard Time	Bus-2 Daily	Bus-8 Daily	Bus-6 Daily
N.Y., West 23rd St. Lv.	8.40 AM	7.00 PM	11.05 PM	Chautauqua..... Lv.	7.07 AM	10.52 AM	8.12 PM
" Chambers St. ....	8.50	7.30	11.30	Jamestown..... Ar.	7.35	11.25	8.40
" Jersey City Sta. ....	9.10	7.45	11.45	Jamestown..... Lv.	8.25	12.23	8.48
Jamestown..... Ar.	8.05	7.00	12.10	N. Y., Jersey City Sta. Ar.	7.20	11.40	7.40
Jamestown..... Lv.	8.50	7.10	12.10	" Chambers St. ....	7.34	11.59	7.54
Chautauqua..... Ar.	9.15 PM	7.38 AM	12.38 PM	" West 23rd St. .... Ar.	7.45		av8.10 AM

NOTE—Tickets sold and Baggage checked through to Chautauqua. Hand baggage checked without charge. Trunks checked at charge of 25c each.

**TABLE 11 CHAUTAUQUA—AKRON—CHICAGO**  
(Via Jamestown and West Ridge Transportation Co.)

WESTBOUND			EASTBOUND			
Eastern Standard Time	Bus-7 Daily	Bus-1 Daily	Central Standard Time	2-Bus Daily	8-Bus Daily	6-Bus Daily
Chautauqua..... Lv.	10.52 AM	6.52 PM	Chicago..... Lv.	6.00 PM	10.20 PM	
Jamestown..... Ar.	11.25	7.20	Eastern Standard Time			
Jamestown..... Lv.	12.10	8.05	Cleveland..... Lv.			4.00
Akron..... Ar.	4.55	12.45	Akron..... Lv.	3.44	7.36	
Cleveland..... Lv.			Jamestown..... Ar.	8.25	12.23	8.48
Central Standard Time			Jamestown..... Lv.	8.25	1.15	8.50
Chicago..... Ar.	1.00 AM	8.15 AM	Chautauqua..... Ar.	8.53	1.45	9.15

NOTE—Tickets sold and Baggage checked through to Chautauqua. Hand baggage checked without charge. Trunks checked at charge of 25c each.

**TABLE 13 NEW YORK—SALAMANCA—BRADFORD**

WESTBOUND				EASTBOUND			
Miles from N. Y.	Eastern Standard Time	ad 1-Bus Daily	ht 5-557 Daily	Eastern Standard Time	ad Bus-2 Daily	ad Bus-8 Daily	ht 560-6 Daily
0.0	N. Y., W. 23rd St. Lv.	8.40 AM	7.00 PM	Bradford..... Lv.	dh 8.15	11.17 AM	8.40 PM
0.0	" Chambers St. ....	8.50	7.30	East Bradford..			f 8.43
1.0	" Jersey City Station... Lv.	9.10	7.45	Limestone.....			8.51
215.1	Binghamton... Lv.	2.35	1.22	Carrollton.....			9.01
273.8	Elmira.....	3.52	2.37	Salamanca..... Ar.	dh 8.55	12.00	9.15
291.1	Corning.....	4.15	3.04	Salamanca..... Lv.	9.10	1.21	9.34
332.3	Hornell.....	5.15	4.02	Olean..... Ar.	9.36	1.46	9.59
395.7	Olean.....	6.45	5.38	Hornell.....	11.07	3.20	11.25
413.6	Salamanca..... Ar.	7.08	6.03	Corning.....	12.07	4.48	12.24
413.6	Salamanca..... Lv.	7.10	6.20	Elmira.....	12.30	5.15	12.50
419.0	Carrollton.....		6.30	Binghamton....	1.43	6.20	1.57
425.2	Limestone.....		6.43	N. Y., Jersey City Station.....	7.20	11.40	7.40
429.5	East Bradford..		f 6.51	" Chambers St. ....	7.34	11.59	7.54
430.8	Bradford..... Ar.	7.45	6.55	" W. 23rd St. ....	7.45		av8.10 AM

Trains 5-557 and 560-6 carry through sleeping car between Bradford and New York. Sleeper on train 557 will be parked at Bradford for occupancy until 8.00 A. M.

Buses leave as follows: (running time approximately 45 minutes.)  
Lv. Salamanca for Bradford, 8.15 A.M., 9.20 A.M., 2.20 P.M., 4.20 P.M., 5.35 P.M., 7.10 P.M., 11.15 P.M.  
Lv. Bradford for Salamanca, 8.17 A.M., 9.17 A.M., 11.17 A.M., 2.17 P.M., 4.17 P.M., 5.32 P.M., 8.02 P.M.

BAGGAGE CHECKED TO BRADFORD—Baggage will be handled only on Trains 557 and 560 between Salamanca, N. Y., and Bradford, Pa.

TABLE 14 NEW YORK—NEWBURGH—(VIA HARRIMAN)

Table 14: New York—Newburgh—(via Harriman). Includes Westbound (Read Down) and Eastbound (Read Up) schedules with times and distances.

TABLE 15 Lackawaxen—Honesdale

Table 15: Lackawaxen—Honesdale. Includes Westbound (Read Down) and Eastbound (Read Up) schedules with times and distances.

NOTE.—Passengers to and from Honesdale can also make connection via Narrowsburg (see Tables 2 and 3), and buses of the Wayne County Taxicab Co.

TABLE 16 NEW YORK—NEWBURGH (VIA GREYCOURT)

Table 16: New York—Newburgh (via Greycourt). Includes Westbound (Read Down) and Eastbound (Read Up) schedules with times and distances.

TABLE 17 CARBONDALE LINE

Table 17: Carbondale Line. Includes Westbound (Read Down) and Eastbound (Read Up) schedules with times and distances.

TABLE 18 SALAMANCA—DUNKIRK

Table 18: Salamanca—Dunkirk. Includes Westbound (Read Down) and Eastbound (Read Up) schedules with times and distances.

TABLE 19 MIDDLETOWN—PINE BUSH

Table 19: Middletown—Pine Bush. Includes Westbound (Read Down) and Eastbound (Read Up) schedules with times and distances.

TABLE 22 NEW YORK—KENOZA LAKE—JEFFERSONVILLE

Table 22: New York—Kenoza Lake—Jeffersonville. Includes Westbound and Eastbound schedules with times and distances.

TABLE 21 NEW YORK—MONTICELLO—LIBERTY

Table 21: New York—Monticello—Liberty. Includes Westbound and Eastbound schedules with times and distances.

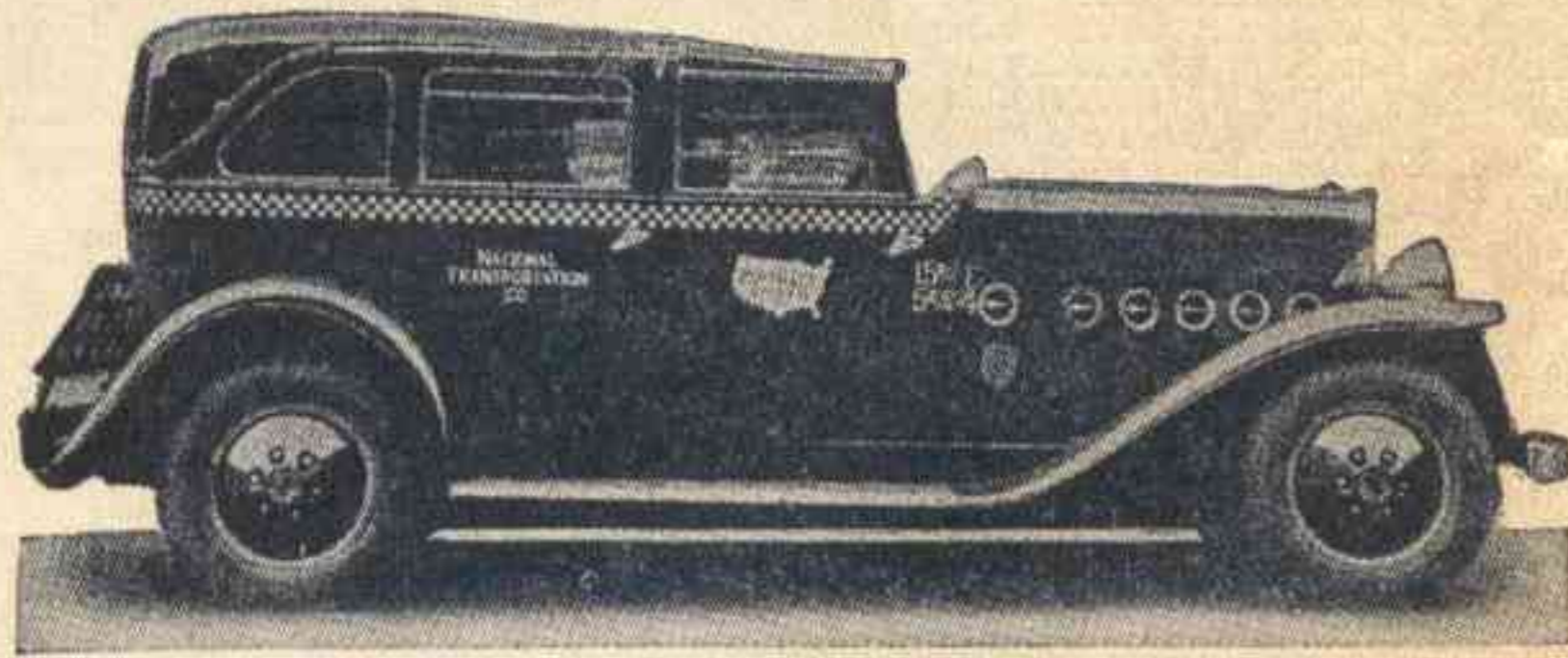
NOTE.—Tickets sold and baggage checked through to Monticello, Wurtsboro and Liberty.

NOTE.—Tickets sold and baggage checked through to Jeffersonville and Kenoza Lake.



# ERIE TRAIN-CAB SERVICE

Takes You from Erie Terminal Directly to Your Door in New York or Brooklyn



ONE Person **90c** TWO Persons **\$1.25** THREE or more **\$1.50**

Thousands have used and praised Erie Train-Cab Service.

Strangers arriving at Erie Terminal, Jersey City are taken all the way to their destination in New York or Brooklyn. They never get "lost" and are never overcharged. Women accompanied by children appreciate this service. Even seasoned travellers enjoy the comfort of settling down in their own taxicab and forgetting about bags and car changes.

The fares shown above apply from our terminal to any place on Manhattan, 110th Street and South, also to any point in the Brooklyn business district.

Service beyond the prescribed zones is metered from the zone limits and charged for at regular rates.

Train-Cab service is available to all who travel from stations west of Middletown, N. Y.

You can buy the Train-Cab coupon with your rail ticket at the ticket office or from the conductor on any through train and you will find your taxicab awaiting the arrival of your train at Jersey City.

Ask the conductor or ticket agent for details.

## Checking Hand Baggage at Chicago

Passengers arriving Chicago on Erie trains who desire to stay over for a few hours and depart from a station other than Dearborn Station may have their hand baggage transferred to the station from which they depart. A Parmelee Company agent meets all Erie trains upon arrival at Chicago and he will arrange the transfer for you. The bags will be placed in the parcel check room of the station from which you depart. A charge of fifty cents for each hand bag, including the parcel room fee, will be made for the service, except one piece will be checked free when passenger holds through ticket including transfer through Chicago.

## HUDSON AND MANHATTAN TUBE TRAINS

### SCHEDULE OF RUNNING TIME BETWEEN ERIE R. R. JERSEY CITY TERMINAL AND

Downtown New York—  
Cortlandt St. (Hudson Terminal Bldg.)..... 6 Mins.

Uptown New York—

33rd Street and 6th Ave.....	14	"
28th Street and 6th Ave.....	13	"
23rd Street and 6th Ave.....	11	"
19th Street and 6th Ave.....	10	"
14th Street and 6th Ave.....	9	"
9th Street and 6th Ave.....	8	"
Christopher and Greenwich Streets.....	6	"

Allow 10 Minutes additional for connections.  
Fares—Downtown 6 cents. Uptown 10 cents.

## ERIE R. R. FERRY TIME TABLE

### EASTERN STANDARD TIME

### CHAMBERS STREET FERRY

Ferry Running Time, 9 Minutes

#### WEEK DAYS

Leave New York for Jersey City							Leave Jersey City for New York						
AM	AM	AM	PM	PM	PM	PM	AM	AM	AM	PM	PM	PM	PM
12.30	6.50	9.30	12.10	3.20	6.00	10.00	12.15	6.45	9.15	12.05	3.15	5.55	9.30
1.00	7.00	9.40	12.20	3.30	6.10	10.30	12.45	6.55	9.30	12.15	3.25	6.05	9.45
1.30 <sup>a</sup>	7.05	9.50	12.30	3.40	6.20	11.00	1.15 <sup>a</sup>	7.02	9.35	12.25	3.35	6.15	9.50
2.00	7.10	10.00	12.40	3.50	6.30	11.30	1.50	7.08	9.45	12.35	3.45	6.25	10.20
2.30	7.20	10.10	12.50	4.00	6.40	12.00	2.15	7.17	9.55	12.45	3.53	6.35	10.45
2.50	7.30	10.20	1.00	4.08	6.50	.....	2.40 <sup>a</sup>	7.24	10.05	12.55	4.00	6.45	11.15
3.30	7.38	10.30	1.10 <sup>m</sup>	4.15	7.00	.....	3.15 <sup>b</sup>	7.25	10.15	1.05	4.05	6.55	11.50
4.00	7.45	10.40	1.20	4.20	7.10	.....	3.45 <sup>a</sup>	7.32	10.25	1.15	4.13	7.05	.....
4.30	7.50	10.50	1.30	4.28	7.20	.....	4.15	7.38	10.35	1.25	4.24	7.15	.....
4.45	8.00	11.00	1.40	4.38	7.30	.....	4.50	7.45	10.45	1.35	4.35	7.25	.....
5.00	8.10	11.10	1.50	4.50	7.40	.....	5.00	7.54	10.55	1.45	4.45	7.35	.....
5.15 <sup>a</sup>	8.15	11.20	2.00	5.00	7.50	.....	5.15 <sup>a</sup>	8.02	11.05	1.55	4.55	7.45	.....
5.30	8.20	11.30	2.10	5.10	8.00	.....	5.30	8.07	11.15	2.05	5.00	7.55	.....
5.45	8.30	11.40	2.20 <sup>m</sup>	5.15	8.15	.....	5.45	8.17	11.25	2.15	5.05	8.05	.....
6.00	8.40	11.50	2.30	5.20	8.30	.....	6.00	8.23	11.35	2.25	5.15	8.15	.....
6.10	8.50	12.00	2.40	5.30	8.50	.....	6.07	8.35	11.45	2.35	5.20	8.33	.....
6.20	9.00	.....	2.50	5.35	9.00	.....	6.18	8.45	11.55	2.45	5.25	8.45	.....
6.30	9.10	.....	3.00	5.40	9.15	.....	6.25	8.55	.....	2.55	5.35	9.05	.....
6.38	9.20	.....	3.10	5.50	9.30	.....	6.35	9.05	.....	3.05	5.45	9.15	.....
AM	AM	Noon	PM	PM	PM	Mid.	AM	AM	AM	PM	PM	PM	PM

a Will not run on Holidays. k Runs Saturdays only.  
b Will not run Saturdays. m Except Saturdays and Holidays.  
h Holidays only.

#### SUNDAYS

AM	AM	AM	PM	PM	PM	PM	AM	AM	AM	PM	PM	PM	PM
12.30	6.30	9.30	12.15	3.15	6.15	9.15	12.15	6.30	9.30	12.15	3.15	6.15	9.15
1.00	6.45	9.45	12.30	3.30	6.30	9.30	12.45	6.45	9.45	12.30	3.30	6.30	9.30
1.30	7.00	10.00	12.45	3.45	6.45	10.00	1.15	7.00	10.00	12.45	3.45	6.45	9.50
2.00	7.15	10.15	1.00	4.00	7.00	10.30	1.45	7.15	10.15	1.00	4.00	7.00	10.00
2.30	7.30	10.30	1.15	4.15	7.15	11.00	2.15	7.30	10.30	1.15	4.15	7.15	10.15
3.00	7.45	10.45	1.30	4.30	7.30	11.30	2.45	7.45	10.45	1.30	4.30	7.30	10.45
4.00	8.00	11.00	1.45	4.45	7.45	12.00	3.15	8.00	11.00	1.45	4.45	7.45	11.15
4.45	8.15	11.15	2.00	5.00	8.00	.....	4.15	8.15	11.15	2.00	5.00	8.00	11.50
5.30	8.30	11.30	2.15	5.15	8.15	.....	5.00	8.30	11.30	2.15	5.15	8.15	.....
5.45	8.50	11.45	2.30	5.30	8.30	.....	5.45	8.45	11.45	2.30	5.30	8.30	.....
6.00	9.00	12.00	2.45	5.45	8.45	.....	6.00	9.00	12.00	2.50	5.45	8.45	.....
6.15	9.15	.....	3.05	6.00	9.00	.....	6.15	9.15	.....	3.00	6.00	9.00	.....
AM	AM	Noon	PM	PM	PM	Mid.	AM	AM	Noon	PM	PM	PM	PM

## TWENTY-THIRD STREET FERRY

Ferry Running Time, 20 Minutes

#### WEEK DAYS

Leave New York for Jersey City							Leave Jersey City for New York						
AM	AM	AM	PM	PM	PM	PM	AM	AM	AM	PM	PM	PM	PM
6.40	8.40	10.55	12.30	2.40	5.05	9.05	6.18	8.10	10.30	12.30	2.35	5.35	9.30
7.00	9.00	11.30	1.10	3.15	6.00	10.30	6.45	8.33	11.00	1.00	3.15	6.35	10.50
7.30	9.30	11.55	1.30	3.40	7.00	11.05	7.10	9.00	11.30	1.30	3.45	7.25	.....
7.45	9.55	.....	1.50	4.15	7.45	.....	7.25	9.30	12.00	1.45	4.25	8.05	.....
8.15	10.30	.....	2.10	4.45	8.30	.....	7.50	10.00	.....	2.15	4.40	8.45	.....
AM	AM	AM	PM	PM	PM	PM	AM	AM	NOON	PM	PM	PM	PM

#### SUNDAYS

AM	PM	PM	AM	PM	PM	AM	PM	PM	AM	PM	PM
6.40	12.45	6.00	.....	.....	.....	6.15	12.30	5.35	.....	.....	.....
7.30	1.30	7.00	.....	.....	.....	7.10	1.05	6.35	.....	.....	.....
8.40	2.10	7.55	.....	.....	.....	8.10	1.50	7.25	.....	.....	.....
9.45	3.00	9.00	.....	.....	.....	9.30	2.35	8.45	.....	.....	.....
10.45	4.10	10.30	.....	.....	.....	10.30	3.30	9.30	.....	.....	.....
11.45	4.55	11.05	.....	.....	.....	11.30	4.30	10.50	.....	.....	.....
AM	PM	PM	AM	PM	PM	AM	PM	PM	AM	PM	PM

**RAILROAD AND PULLMAN FARES (Pullman Fares Include Surcharge)**

For Information Only. Subject to Change Without Notice.

Between And	New York			Binghamton			Buffalo			Jamestown			Cleveland			Chicago		
	Railroad Fare	Seat Fare	Lower Berth	Railroad Fare	Seat Fare	Lower Berth	Railroad Fare	Seat Fare	Lower Berth	Railroad Fare	Seat Fare	Lower Berth	Railroad Fare	Seat Fare	Lower Berth	Railroad Fare	Seat Fare	Lower Berth
Akron.....Ohio	20.08		5.63	14.72	3.08	4.50	7.90			6.41	1.35	3.38	3.12			12.71	2.25	3.75
Binghamton.....N. Y.	6.95	1.58	3.00				7.34	1.58	3.00	8.33	1.80	3.75	13.90	2.93	4.50	24.65		7.50
Bradford.....Pa.	14.20		4.50	7.25	2.15	3.38	2.78			1.85			7.42			18.54		
Buffalo.....N. Y.	14.29	3.00	3.75	7.34	1.58	3.00				2.44	.75		7.45		3.75	17.31		
Callicoon.....N. Y.	4.91	1.05	3.00	2.85	.75		10.19	2.18	3.75	11.18	2.33	3.75	16.75	3.53	5.63	27.50		8.25
Cambridge Springs.....Pa.	17.23		4.50	10.28	2.18	3.75	4.40			1.97	.75		4.74	.90	3.00	16.02		4.50
Chicago.....Ill.	30.70		9.00	24.65		7.50	17.31			16.69	3.38	4.50	14.06					
Cleveland.....Ohio	19.55		5.63	13.90	2.93	4.50	7.45			5.66	1.35	3.38				14.06		
Corning.....N. Y.	9.65	2.18	3.00	2.70	.75		4.64	.98	3.00	5.65	1.20	3.00	11.20	2.33	3.75	21.95		6.38
Corry.....Pa.	16.25	3.38	4.50	9.30	1.95	3.75	3.40			.99	.75		4.74	1.13	3.00	16.02		4.50
Deposit.....N. Y.	6.38	1.35	3.00	1.38	.75		8.72	1.88	3.75	9.71	2.03	3.75	15.28	3.30	4.50	26.03		8.25
Elmira.....N. Y.	9.01	2.03	3.00	2.06	.75		5.28	1.13	3.00	6.27	1.35	3.38	11.84	2.48	3.75	22.59		6.38
Gallon.....Ohio	22.70		6.38	16.77	3.68	5.63	9.43			8.53	1.95	3.75	6.09			10.11	1.73	3.75
Hancock.....N. Y.	5.91	1.28	3.00	1.85	.75		9.19	1.95	3.75	10.18	2.18	3.75	15.75	3.38	4.50	26.50		8.25
Hornell.....N. Y.	11.12	2.48	3.75	4.17	.90		3.34	.75		4.16	.90		9.73	2.10	3.75	20.65		5.63
Huntington.....Ind.	27.16		7.50	21.51		6.38	14.33			13.27	3.00	3.75	11.25			5.14	1.05	
Jamestown.....N. Y.	15.28	3.30	4.50	8.33	1.80	3.75	2.44	.75					5.66	1.35	3.38	16.69		4.50
Kent.....Ohio	19.72		5.63	14.36	3.00	4.50	7.90			6.05	1.28	3.38	2.76			13.07	2.40	3.75
Lackawaxen.....Pa.	4.00	.83	3.00	3.76	.83		11.10	2.40	3.75	12.09	2.55	3.75	17.66	3.75	5.63	28.41		8.25
Lima.....Ohio	24.69		7.50	19.04		5.63	11.70			10.80	2.48	3.75	8.64			7.48	1.50	3.00
Mansfield.....Ohio	22.14		6.38	16.77	3.53	5.63	9.43			8.53	1.88	3.75	5.54			10.56	1.88	3.75
Marion.....Ohio	23.44		6.38	17.53	3.75	5.63	10.19			9.29	2.10	3.75	6.84			9.61	1.50	3.75
Meadville.....Pa.	17.75	3.53	4.50	10.80	2.25	3.75	4.90			2.49	.75		4.39	.83	3.00	15.67		4.50
Middletown.....N. Y.	2.43	.75	3.00	5.33	1.13	3.00	12.67	2.70	3.75	13.66	2.85	4.50	19.23		5.63	29.98		9.00
New York.....N. Y.				6.95	1.58	3.00	14.29	3.00	3.75	15.28	3.30	4.50	19.55		5.63	30.70		9.00
Olean.....N. Y.	13.40	2.93	3.75	6.45	1.35	3.00	2.64			1.88	.75		7.45	1.73	3.75	18.57		5.63
Owego.....N. Y.	7.71	1.73	3.00	.76	.75		6.59	1.43	3.00	7.58	1.58	3.38	13.15	2.78	3.75	23.90		7.50
Pittsburgh.....Pa.				14.79						6.47			4.73	.75	3.00	16.88		
Port Jervis.....N. Y.	3.20	.75	3.00	4.58	.98	3.00	11.92	2.55	3.75	12.91	2.70	4.13	18.48		5.63	29.23		8.63
Salamanca.....N. Y.	14.05	3.00	3.75	7.10	1.50	3.00	2.20			1.23	.75		6.80	1.58	3.75	17.92		5.63
Sharon.....Pa.	18.16		4.50	12.31	2.63	3.75	5.89			4.00	.90		2.88	.75		15.13	2.78	4.50
Warren.....Ohio	18.67		4.50	13.31	2.85	3.75	6.89			5.00	1.13		1.90	.75		14.17	2.63	4.50
Waverly.....N. Y.	8.37	1.88	3.00	1.42	.75		5.92	1.28	3.00	6.91	1.43	3.38	12.48	2.63	3.75	23.23		6.38
Wellsville.....N. Y.	12.06	2.70	3.75	5.12	1.13	3.00	3.89			3.23	.75		8.80	2.03	3.75	19.92		5.63
Youngstown.....Ohio	18.16		4.50	12.80	2.70	3.75	6.40			4.49	.98		2.39	.75		14.62	2.63	4.50

**RATES FOR UPPER BERTH, SECTION, DRAWING ROOM OR COMPARTMENT IN SLEEPING CARS**

(Including Surcharge)

Where Lower Berth Rate Is	Upper Berth Rate Will Be	Section Rate For One Passenger	Section Rate For Two Passengers	Drawing Room Rate Will Be	Compartment Rate Will Be
\$3.00	\$2.40	\$ 4.20	\$ 4.80	\$10.50	\$ 9.00
3.38	2.70	4.73	5.40	12.00	9.75
3.75	3.00	5.25	6.00	13.50	10.50
4.13	3.30	5.78	6.60	15.00	12.00
4.50	3.60	6.30	7.20	16.50	12.75
4.88	3.90	6.83	7.80	18.00	14.25
5.25	4.20	7.35	8.40	19.50	15.00
5.63	4.50	7.88	9.00	21.00	15.75
6.00	4.80	8.40	9.60	21.00	17.25
6.38	5.10	8.93	10.20	22.50	18.00
6.75	5.40	9.45	10.80	24.00	19.50
7.50	6.00	10.50	12.00	27.00	21.00
7.88	6.30	11.03	12.60	28.50	22.50
8.25	6.60	11.55	13.20	30.00	23.25
8.63	6.90	12.08	13.80	31.50	24.75
9.00	7.20	12.60	14.40	31.50	25.50

Note:—▲For section occupied by two passengers but with lower berth only prepared for night service.

**Minimum Number of Railroad Tickets Required for Exclusive Occupancy of Sections, Drawing Rooms or Compartments in Sleeping Cars and Drawing Room in Parlor Cars**

Section.....	One Adult Railroad Ticket.	Drawing Room, Berth Service.....	Two Adult Railroad Tickets.
Compartment, Berth Service.....	One and One-half " " "	Drawing Room, Seat Service.....	Two " " "
Compartment, Seat Service.....	One and One-half " " "	Drawing Room in Parlor Cars.....	Two " " "

**GENERAL INFORMATION**

**STANDARD OF TIME**—Erie Lines east of and including Lima, Ohio, are operated by Eastern Standard Time, Lines west of Lima, Ohio, by Central Standard Time. 12.01 Midnight to 12.00 Noon is indicated by light-faced type. 12.01 Noon to 12.00 Midnight is indicated by heavy-faced type.

**TRAINS WILL NOT BE HELD** for ferries from New York between hours of 4:00 P. M. and 5:30 P. M. Eastern Standard Time.

**HOLIDAYS**—The term "Holidays" (unless covered by special note) refers to the observance of New Year's Day, Lincoln's Birthday, Washington's Birthday, Memorial Day, Independence Day, Labor Day, Election Day (November), Thanksgiving Day and Christmas Day.

**THIS COMPANY IS NOT RESPONSIBLE FOR ERRORS** in time tables, inconvenience or damage resulting from delayed trains or failure to make connections; schedules are subject to change without notice.

**FARE PAID ON TRAINS**—The lawful fare when paid to conductor is ten (10) cents in excess of the one-way ticket fare. Conductors cannot deviate therefrom. Buy ticket before boarding trains and avoid payment of this extra fare.

**CHILDREN** under five years of age are carried free when accompanied by parent or guardian; five years and under twelve, half fare, twelve years of age and over, full fare.

**ADJUSTMENT OF FARES**—Should any misunderstanding arise with conductors or agents, pay the fare required, take receipt and communicate with General Passenger Agent, Midland Bldg., Cleveland, Ohio.

**SLEEPING AND PARLOR CAR RESERVATIONS**—Space reserved by telegraph or telephone within city limit will be held until:

- 4:00 P. M. day prior to departure of trains leaving before noon next day.
- 9:00 A. M. day of departure for trains leaving between noon and 4:00 P. M.
- 1:00 P. M. day of departure for trains leaving after 4:00 P. M.

When application is by wire or letter from a point outside of city limit, space will be held until fifteen minutes of train time.

**BAGGAGE TO BE CHECKED** should be delivered at station at least thirty minutes before train time.

**BAGGAGE DELIVERY IN NEW YORK CITY**—All baggage checked to New York City will be sent to the West 23rd Street Station unless passenger specifies Chambers Street Station at time of checking.

Baggage delivery service in New York will be performed by the Railway Express Agency.

**HAND-BAGGAGE** in Pullman Cars is restricted to what can be conveniently placed in the berth, seat or other accommodations purchased by the passenger.

**CHICAGO PASSENGER AND BAGGAGE TRANSFER** is performed by the Parmelee Company. A uniformed agent meets all incoming trains of the Erie Railroad on arrival at Dearborn Station.

**ARTICLES LOST ON TRAINS** or left in waiting rooms or stations, owners should apply to Information Bureau, Jersey City Depot, or address General Passenger Agent, Midland Bldg., Cleveland, Ohio, giving full description of the property, stating date of loss and number of train.

**DAYLIGHT SAVING TIME** is observed until Sept. 28 at all towns and cities east of and including Port Jervis, N. Y., also Buffalo, Chicago, Crown Point, Griffiths, Highlands, Hammond and Niagara Falls. It is also observed at Jamestown until Sept. 2.



## REFERENCE MARKS AND NOTES

**IMPORTANT—When trains are indicated as stopping conditionally, Conductors should be notified of intention to leave train and Station Agent notified of intention to board train.**

- § Runs Sundays only.  
 || Station restaurant.  
 \* Runs daily.  
 † Runs daily except Sunday.  
 C Stops on Saturday only.  
 † Stops to discharge passengers.  
 ‡ Will not operate from these stations on Monday morning.  
 † Stops on Holidays only.  
 ¶ Train 53 will not operate west of Suffern on Holidays  
 † Train 71 will not run west of Waldwick on Saturdays or July 3 and Sept. 1.  
 † Stops on signal to receive and discharge passengers.  
 k Runs Saturdays only  
 M. C. Motor Car Service.  
 N. B. No Baggage carried.  
 ab Stops Saturday and Sunday only to discharge passengers.  
 ac Stops Dalton (4.58 A. M. to discharge passengers from Hornell and east and on signal to receive passengers.  
 ad Via Bus to or from Salamanca.  
 ae Train 5 will stop on signal at Monroe (9.00 P. M.) to receive passengers for Jamestown and west; and to discharge passengers from New York.  
 af Makes regular stop (4.21 P. M.) except Saturdays and Sundays.  
 ag Stops Saturdays only to discharge passengers.  
 ah Stops Sundays only until August 25, inc. to discharge passengers from New York.  
 an Stops Sundays only at Arden (6.23 P. M.), Southfields (6.26 P. M.) to receive passengers for New York.  
 av On Sundays only Train 6 will arrive West 23rd Street at (8.30 A. M.)  
 ax Stops to discharge passengers from east of Hammond.  
 ba Stops on signal (8.27 A. M.) to receive passengers.  
 bc Stops on signal (8.14 P. M.) to receive passengers.  
 bd Stops Hancock (11.52 P. M.) to discharge passengers from New York and to receive for Hornell and west.  
 be Stops Hancock (10.59 P. M.) to discharge passengers from Binghamton and west.  
 bg Stops on signal, Friendship (10.06 A. M.); Cuba (10.19 A. M.) to discharge passengers from New York.  
 bh Stops Cuba (6.26 P. M.) to discharge passengers from Elmira and east and to receive for Jamestown and west.  
 bm Stops on signal (4.58 P. M.) daily except Sundays.  
 bn On Saturdays only stops Greycourt (2.12 P. M.).  
 bt No Agent on duty. No baggage handled on Trains 5 and 6 to or from Castile.  
 bu Train 27 stops Holidays only (3.53 P. M.); stops to discharge passengers Sundays only.  
 ca Train 27 stops on Sundays and Holidays only Rutherford (2.44 P. M.).  
 cb Stops on signal Passaic (8.05 P. M.), Ridgewood (8.24 P. M.), to receive passengers for Jamestown and west.  
 cd Stops Darien Center (8.57 A. M.), Burns (10.31 A. M.) to discharge passengers from Buffalo and on signal to receive passengers.  
 cg Stops on signal (11.11 P. M.) to discharge passengers from Binghamton and west.  
 cn Stops on signal Union City (8.57 P. M.); Cambridge Springs (9.17 P. M.) to discharge passengers from Jamestown and east and to receive for Youngstown and west.  
 cp Stops on signal to receive passengers for east of Hammond, Train 8 (10.35 P. M.).  
 ct Tickets sold and baggage checked through to Lake Huntington.  
 cx Stops to discharge passengers from New York.  
 cy Stops to discharge passengers from Cleveland and beyond.  
 da On Sundays Train 5 has no connection from Newark.  
 db Stops on signal at Arden (2.26 P. M.) to receive passengers.  
 dc Stops on Saturdays only to discharge passengers from Cleveland.  
 df Stops on signal Southfields (2.28 P. M.), Sloatsburg (2.37 P. M.), to receive passengers.  
 dg Stops on signal at Warren (4.40 A. M.) to discharge passengers from Chicago and to receive passengers for Jamestown and east.  
 dh Via Dodaro Bus Co. between Salamanca and Bradford.  
 dt No baggage carried on this train east of Hornell. Baggage will be handled on following train.  
 du Coaches only, west of Youngstown.  
 dv Stops on signal (12.24 P. M.) to receive passengers for Central Valley and Newburgh Branch.  
 dw Stops Cuba (9.52 A. M.) to discharge passengers from Jamestown and west and to receive for Elmira and east.  
 dx Stops Ridgewood (6.43 P. M.), Passaic (6.59 P. M.) to discharge passengers from Goshen and west.  
 dy Stops on signal Cambridge Springs (7.08 A. M.), Union City (7.28 A. M.), to discharge passengers from Chicago and to receive for Binghamton and east.  
 dz Stops Ridgewood (7.03 A. M.), Paterson (7.12 A. M.), Passaic (7.19 A. M.), to discharge passengers from Goshen and west.  
 eb Stop on signal (1.56 P. M.) to receive passengers.  
 ec Bus service between New Castle and New Castle (Washington St.).  
 ed Bus service between Wampum and Ellwood City.  
 eg Train 1 will stop Fridays and Saturdays only (12.23 P. M.) July 12 to August 31, Inc., to discharge passengers from Ridgewood and east.  
 em Stops on signal (12.11 P. M.) to discharge passengers from Ridgewood and east and to receive for Binghamton and west.  
 en Stops on signal Passaic (9.30 A. M.), Paterson (9.37 A. M.), Ridgewood (9.47 A. M.) to receive passengers.  
 ep Stops on Saturdays only (12.07 P. M.).  
 er Stops (5.39 A. M.) to discharge passengers from Cleveland and west and on signal to receive for Pittsburgh.  
 es Stops on signal Sundays only to discharge passengers.  
 ev Stops on signal to receive passengers for Cleveland and beyond.  
 ew Stops (11.46 A. M.) to discharge from Jamestown and east and west of Akron.  
 ez On Sundays connection from Train 6 arrives Newark (7.49 A. M.).  
 gc Stops (11.03 A. M.) to discharge passengers from east of Avon.  
 gs Stops Swains (5.42 P. M.) Washington Hunt (5.57 P. M.) to discharge passengers from Hornell and east and on signal to receive passengers.  
 gt Private parties operate bus service between Susquehanna and Lanesboro.  
 gz Will not run Saturdays and Holidays.  
 ha Will not run Holidays.  
 hc Will not run Mondays.  
 he Stops Alden (9.19 P. M.) to discharge passengers from Buffalo and on signal to receive passengers.  
 hg Runs Saturdays and Holidays only.  
 hm On Saturdays connection for Train 69 leaves Newark at (5.16 P. M.) on Holidays leaves Newark (5.04 P. M.).  
 hn On Sundays connection from Train 2 arrives Newark (7.22 P. M.).  
 hr Stops (4.17 P. M.) to discharge passengers from Binghamton and west and on signal to receive for New York.  
 ht Trains 5-557 and 560-6 carry through sleeping cars between Bradford and New York.  
 hu Stops to discharge passengers.  
 hv Stops daily except Sunday to discharge passengers from New York.  
 hw Stops daily except Sundays and Holidays.  
 hx Stops on signal (1.57 P. M.) to receive passengers.  
 hz Will not run Sundays and Holidays.  
 mh Stops on signal, Sundays only, to discharge passengers from New York.  
 mr Stops, except Saturdays, also July 3 and Sept. 1, to discharge passengers.  
 ms Busses of Schultz Auto Bus Co. will meet Trains 10, 34, 38 and 44 with passengers from Kenoza Lake and Jeffersonville.  
 mt Busses of Schultz Auto Bus Co. will meet Trains 5, 27, 43, 45 and 47 for Kenoza Lake and Jeffersonville.  
 mu Stops Sundays only.

## STOP-OVER PRIVILEGES

### Niagara Falls

Passengers holding tickets reading "via Erie Railroad" from or through Elmira to or through Youngstown or vice versa may exercise their privilege of going by way of Buffalo and stopping over for as long as ten days at Niagara Falls, but not beyond the final limit of their ticket. Upon request, the Erie Ticket Agent at Buffalo will issue without charge a round trip ticket between Buffalo and Niagara Falls.

### Other Points

On local one-way tickets sold at regular fares, local round-trip tickets sold at double the one-way fares, All-Year, Summer and Winter Tourist and Convention Tickets, stop-overs will be allowed on going and return trips within final limit of tickets at any Erie Railroad Station en route upon notice to conductor and without deposit of ticket.

## WESTERN UNION

### Play Safe—Telegraph Ahead for Reservations

It gives one a delightful feeling of security to know that upon reaching his destination, the clerk at the hotel will greet him with: "Yessir. Got your telegram. Room all ready!"

If you have not already telegraphed for reservations, you can do so while traveling. Ask the porter for blanks, give him your message and he will have it sent from the next station.

## ORGANIZED PARTIES

Our services are at the disposal of clubs, lodges and other organizations in arranging for trips to conventions and gatherings of all sorts. Concerning fares, train schedules and travel plans consult or write to any Erie Ticket Agent, or any of the Passenger Department representatives listed on pages 35 to 37 of this folder.

# ERIE RAILROAD COMPANY

GENERAL OFFICES, MIDLAND BUILDING, CLEVELAND. Telephone Cherry 8400.  
GENERAL OFFICES, HUDSON TERMINAL, 50 CHURCH STREET, NEW YORK. Telephone Cortlandt 7-9200.  
GENERAL OFFICES, UTILITIES BUILDING, 327 SOUTH LA SALLE STREET, CHICAGO. Telephone Harrison 4160.

## TRAFFIC AND DEVELOPMENT DEPARTMENTS

### TRAFFIC

D. L. GRAY, Vice-President, Cleveland  
CARL HOWE, Vice-President, Chicago

G. C. MANNING, Assistant Vice-President, New York.

C. L. CHAPMAN, Assistant to Vice-President, Cleveland.

### PASSENGER

C. C. HOWARD, Passenger Traffic Manager, Cleveland.  
R. B. ROGERS, General Passenger Agent, Cleveland.  
H. T. HARLOW, General Passenger Agent, Chicago.  
T. R. PATTON, Assistant General Passenger Agent, Youngstown.

F. A. WALDRON, Assistant General Passenger Agent, New York.  
ALFRED FYNN, Assistant General Passenger Agent, Chicago.  
E. J. HAWERKOST, General Western Passenger Agent, Chicago.  
H. M. WADE, General Baggage, Mail and Express Agent, New York.

### FREIGHT

L. B. BURFORD, Freight Traffic Manager, Cleveland.  
L. R. KNAPP, Assistant Freight Traffic Manager, Cleveland.  
O. M. MEYNE, General Freight Agent, Cleveland.  
W. H. STADELMAN, Eastern Freight Traffic Manager, New York.  
G. R. WHEELER, General Freight Agent, New York.  
E. M. KAIN, Assistant General Freight Agent, Buffalo.  
T. E. McANDREWS, Assistant General Freight Agent, Pittsburgh.

F. G. LANTZ, Freight Traffic Manager, Chicago.  
W. V. KENNEDY, Assistant Freight Traffic Manager, Chicago.  
A. BLAUEL, General Freight Agent, Chicago.  
J. G. HILL, General Freight Agent, Chicago.  
O. R. DAVIES, Assistant General Freight Agent, Cincinnati.  
W. H. KOCH, Assistant General Freight Agent, Detroit.

### FOREIGN FREIGHT TRAFFIC

H. F. BELL, Foreign Freight Traffic Manager, New York.  
A. E. PETERSON, Foreign Freight Agent, Chicago.  
EUROPEAN GENERAL AGENTS, Sutherland International Despatch, Ltd.,  
London, England.

### LIVE STOCK

H. B. ROGERS, General Live Stock Agent, East Buffalo, N. Y.

### GRAIN TRAFFIC

T. W. KANE, Grain Agent, New York.

### PERISHABLE FREIGHT TRAFFIC

R. E. O'GRADY, Manager, Pier 20, N. R., New York.

### COAL AND COKE

G. H. REINBRECHT, Coal Traffic Manager, Cleveland.  
J. A. FERGUSON, Coal Freight Agent, Cleveland.  
F. D. AUSTIN, General Coal and Coke Agent, Chicago.

### DAIRY

W. L. KENDALL, General Dairy Agent, Chicago, Ill.

### DEVELOPMENT

L. L. WHITE, Vice-President and Assistant to President, Cleveland.

GEO. F. WESTON, Industrial Commissioner, Cleveland.  
V. M. WELLMAN, Industrial Agent, New York.

F. M. AMERICA, Editor and Mgr. Erie R. R. Magazine, Cleveland.

## TRAFFIC DEPARTMENT REPRESENTATIVES

**Akron, O.**—80 East Exchange St.  
(Telephone Hemlock 8194-8195)  
J. P. CLARK, Division Passenger Agt.  
C. E. KING, General Agent.

**Albany, N. Y.**—Room 2, D. & H. Bldg.  
(Telephone 4-6051)  
C. F. WHADCOCK, General Agent.

**Antwerp, Belgium**—24 Quat Jardaens  
L. E. STEINMANN, Agent.

**Atlanta, Ga.**—1419-20 Healy Bldg.  
(Telephone Walnut 2135)  
S. S. TORREY, General Agent.

**Baltimore, Md.**—1525 Baltimore Trust Bldg.  
(Telephone Plaza 1373)  
W. J. MURRAY, General Agent.

**Birmingham, Ala.**—1216-17 Watts Bldg.  
(Telephone 3-5980)  
W. K. VANDIVER, General Agent.

**Boston, Mass.**—80 Federal Street.  
(Telephone Liberty 7725-7726)  
E. J. DEAN, N. E. F. & P. A.

**Bradford, Pa.**—Erie Station.  
(Telephone 3413)  
J. C. MOFFATT, General Agent.

**Bremen, Germany**—Holzpforte 10.  
CARL PRIOR, Agent.

**Buffalo, N. Y.**—6 North Division St.  
(Telephone Washington 4300)  
J. A. DOLAN, G. A. P. D.  
238 Main Street,  
(Telephone Wash. 1865)

**Chicago, Ill.**—327 South La Salle St.  
(Telephone Harrison 4160)  
C. D. BURLINGHAM, Trav. Pass. Agt.  
C. D. TURNER, General Agent.  
W. L. KENDALL, General Dairy Agent.

**Cincinnati, O.**—503 Gwynne Bldg.  
(Telephone Main 3420-3421)  
O. R. DAVIES, Asst. General Freight Agt.

**Cleveland, O.**—Midland Bldg.  
(Telephone Cherry 8400)  
J. M. SKAEHILL, Division Freight Agt.  
2065 East 9th St.  
(Telephone Cherry 8400)

A. F. WAINSCOTT, City Passenger Agent.

**Columbus, O.**—Rooms 309-310 Atlas  
Bldg., 8 East Long Street.  
(Telephone Adams 7331)

F. W. FISCHER, General Agent.

**Dallas, Tex.**—1112 Tower Petroleum Bldg.  
1905 Elm St.  
(Telephone 2-7352)  
T. J. MARTIN, General Agent.

**Dayton, O.**—509-512 Miami Savings Bldg.  
(Telephone Adams 8481)  
W. P. KROMPHARDT, Div. Frt. Agt.

**Des Moines, Ia.**—Hubbell Bldg.,  
904 Walnut Street.  
(Telephone 4-0018)  
C. L. COX, General Agent.

**Detroit, Mich.**—Room 3-157 General Motors  
Bldg.  
(Telephone Madison 2360-2361)  
W. H. KOCH, Assistant General Frt. Agt.

**Elmira, N. Y.**—Erie Station.  
(Telephone 2-1621)  
J. W. O'HARA, Division Passenger Agt.  
(Telephone 2-0377)  
A. W. MICHELBAUGH, Division Freight  
Agent.

**Glasgow, Scotland**—90 Mitchell St.  
W. S. THOMPSON, General Agent.

**Hamburg, Ger'y**—Ferdinandstrasse 38-44  
ERICK GRIEBEL, General Agent.

**Huntington, Ind.**—Erie Station.  
(Telephone 743)  
F. C. MCCARTHY, Division Freight Agt.

**Indianapolis, Ind.**—143 No. Meridian St.  
(Telephone Lincoln 2088)  
T. J. WILLIAMSON, General Agent.

**Jamestown, N. Y.**—Erie Station  
F. L. COLLINS, Div. Frt. Agt.  
J. A. CLEVELAND, General Agent.  
(Telephone 4832)

**Jersey City, N. J.**—Erie Station  
(Telephone Delaware 8-6400)  
P. F. ARROYO, G. A. P. D.

**Kansas City, Mo.**—Rooms 326-7 Railway  
Exchange Bldg., 7th and Walnut Streets.  
(Telephone Victor 6328)  
N. C. FRICK, General Agent.

**Liverpool, Eng.**—17 Brunswick St.  
A. G. TAYLOR, General Agent.

**London, E. C. 3, Eng.**—4 Billiter St.  
PETER BUDWELL, General Agent.  
D. S. DEANS, Genl. Continental Agt.

**Los Angeles, Cal.**—108 West 6th Street.  
(Telephone Vandike 6542)  
C. W. SEELEY, General Agt. Pass. Dept.  
L. A. DWELLE, General Agent.

**Marion, O.**—Terminal Building  
(Telephone 2657)  
A. R. TENNIS, Division Freight Agent.

**Memphis, Tenn.**—1628-9 Exchange  
Bldg., Madison & Second Sts.  
(Telephone 6-5577)  
E. L. PARR, General Agent.

**Milwaukee, Wis.**—1015 Majestic Bldg.,  
231 Wisconsin Street.  
(Telephone Marquette 5555-5556)  
J. G. VREELAND, General Agent.

**Minneapolis, Minn.**—125 Third Street,  
South.  
(Telephone Main 3604)  
D. R. THOMPSON, General Agent.

**Newark, N. J.**—1801-2 Military Park  
Bldg., 60 Park Place.  
(Telephone Market 2-0525-26-27)  
C. A. STOEBER, General Agent.

**New Haven, Conn.**—Room 512 Roger  
Sherman Bldg.  
(Telephone 5-7937)  
G. W. MADSON, General Agent.

**New Orleans, La.**—Room 117 Whitney Bldg.  
(Telephone Main 6607)  
D. C. KELSEY, General Agent.

**New York, N. Y.**—8 West 40th Street.  
(Telephone Pennsylvania 6-0931)  
J. F. WILD, G. A. P. D.  
A. G. OLDENQUIST, City Pass. Agt.  
W. G. TEDFORD, City Passenger Agent.  
50 Church Street.  
(Telephone Cortlandt 7-9200)

E. W. VAIL, General Eastern Frt. Agent.  
A. R. WALTON, Division Freight Agent.

**Olean, N. Y.**—Erie Station.  
(Telephone 7411)  
J. M. HAND, Traveling Freight Agent.

**Omaha, Neb.**—1319 Farnam St.  
(Telephone Jackson 4866)  
C. V. HARROW, General Agent.

**Peoria, Ill.**—920 Jefferson Building, Cor.  
South Jefferson & Fulton Streets.  
(Telephone 8007)  
E. T. OLANDER, General Agent.

**Philadelphia, Pa.**—1009-10 Finance Bldg.  
(Telephone Rittenhouse 8975-8976)  
H. T. YOUNG, General Agent.

**Pittsburgh, Pa.**—Gulf Building.  
(Telephone Grant 4831-2-3)  
T. E. McANDREWS, A. G. F. A.

**Portland, Ore.**—Room 421 Pacific Bldg.,  
308 Yamhill St.  
(Telephone Beacon 3706)  
J. A. RUSSELL, General Agent.

**Rochester, N. Y.**—Erie Station.  
(Telephone Main 2826)  
B. C. WEDD, Division Freight Agent.

**Rotterdam Holland**—N. Binneweg 474-A  
H. VAN KRIEKEN, Agent.

**San Francisco, Cal.**—681 Market St.  
(Telephone Sutter 3875)  
J. A. LLOYD, General Agent.

**St. Louis, Mo.**—Rooms 906-7 Missouri  
Pacific Building, 1218 Olive Bldg.  
(Telephone Chestnut 7723-7724)  
G. F. DANIELS, General Agent.

**St. Paul, Minn.**—336 Robert St.  
(Telephone Cedar 5912)  
C. R. PETRY, General Agent.

**Scranton, Pa.**—Erie Station.  
(Telephone 5203)  
G. A. LAMB, Division Freight Agent.

**Seattle, Wash.**—1116-7 White Bldg.,  
1338 Fourth Ave.  
(Telephone Elliot 4834)  
W. R. SIBLEY, General Agent.

**Springfield, O.**—516 First National Bank  
Building.  
(Telephone Center 1178)  
T. J. FLYNN, General Agent.

**Toledo, O.**—342 South Erie Street.  
(Telephone Main 3816)  
H. J. SPANGENBURG, General Agent.

**Toronto, Ont.**—89 Yonge Street.  
(Telephone Elgin 4077)  
E. P. MORRILL, General Agent.

**Tulsa, Okla.**—317-18 Philcade Bldg.  
(Telephone 3-8613)  
A. W. MITCHELL, General Agent.

**Youngstown, O.**—Terminal Building.  
(Telephone 41101)  
H. W. VON WILLER, Division Frt. Agt.

## ERIE TICKET OFFICES AND PASSENGER STATIONS IN PRINCIPAL CITIES

**Akron, O.**—Union Station.  
(Telephone Jefferson 9141)  
B. L. BENDER, Ticket Agent.

**Binghamton, N. Y.**—Erie Station.  
(Telephone 4-3251)  
J. H. WEBSTER, Ticket Agent.

**Bradford, Pa.**—Erie Station.  
(Telephone 3716)  
A. J. SULLIVAN, Ticket Agent.

**Brooklyn, N. Y.**—City Ticket Office.  
155 Pierrepont St.  
(Telephone Triangle 5-7440)  
W. A. MORRISON, Ticket Agent.

**Buffalo, N. Y.**—City Ticket Office.  
6 North Division St.  
(Telephone Washington 4300)  
J. E. MCINNIS, Ticket Agent.

Station Ticket Office  
(Lehigh Valley Terminal)  
Main and Scott Streets  
(Telephone Cleveland 5900)  
A. L. FEITZ, Ticket Agent.

**Chicago, Ill.**—City Ticket Office. 163-  
165 West Jackson Blvd.  
(Telephone Harrison 4160)  
C. F. KUNGEL, Ticket Agent.

Hotel Ticket Offices—  
Congress, La Salle, Sherman, Stevens,  
Palmer House, Merchandise Mart.  
(Telephone Harrison 2203)  
GEORGE M. NEWHART, Ticket Agent.

**Dearborn Station.**  
(Telephone Harrison 9830)  
H. S. BARE, Ticket Agent.

**Cleveland, O.**—City Ticket Office.  
2063 East 9th St.  
(Telephone Cherry 8400)  
CASPER J. MILLER, Ticket Agent.

**Erie Station.**  
(Telephone Cherry 8400)  
G. W. GULICK, Ticket Agent.

**Elmira, N. Y.**—Erie Station.  
(Telephone 2-0380)  
E. J. STEELE, Ticket Agent.

**Hornell, N. Y.**—Erie Station.  
(Telephone 680)  
R. L. SMITH, Ticket Agent.

**Huntington, Ind.**—Erie Station.  
(Telephone 140)  
O. M. BELL, Ticket Agent.

**Jamestown, N. Y.**—Erie Station.  
(Telephone 6076)  
FRANK PRIEST, Ticket Agent.

**Jersey City, N. J.**—Erie Station.  
(Telephone Delaware 8-6400)  
G. B. IRVING, Ticket Agent.

**Mansfield, O.**—Erie Station.  
(Telephone Canal 1423)  
O. L. ENOS, Ticket Agent.

**Marion, O.**—Erie Station.  
(Telephone 2399)  
L. E. NEBERGALL, Ticket Agent.

**Meadville, Pa.**—Erie Station.  
(Telephone 1212)  
R. E. TOWNS, Ticket Agent.

**Middletown, N. Y.**—Erie Station.  
(Telephone 3303)  
J. H. DIMKE, Ticket Agent.

**Newark, N. J.**—Erie Station.  
(Telephone Humboldt 2-0600)  
G. J. MCMICHAEL, Ticket Agent.

**New York, N. Y.**—City Ticket Office.  
8 West 40th Street.  
(Telephone Pennsylvania 6-0933)  
F. H. RICE, Ticket Agent.

**West 23rd Street Station.**  
(Telephone Chelsea 3-0780)  
C. H. POTTER, Ticket Agent.

**Chambers Street Station.**  
(Telephone Barelay 7-6500)  
T. I. NEWMAN, Ticket Agent.

**17 John Street.** (Telephone Cortland  
7-6430 and 7-6431)  
H. T. JAMES, Ticket Agent.

**Olean, N. Y.**—Erie Station.  
(Telephone 4343)  
J. F. MITCHELL, Ticket Agent.

**Passaic, N. Y.**—Erie Station.  
(Telephone 2-1613)  
O. R. KRECH, Ticket Agent.

**Paterson, N. J.**—Erie Station.  
(Telephone Sherwood 2-3337)  
J. H. GRAF, Ticket Agent.

**Port Jervis, N. Y.**—Erie Station.  
(Telephone 300)  
R. FARRER, Ticket Agent.

**Rochester, N. Y.**—Erie Station.  
(Telephone Main 4378)  
C. J. GILBERT, Ticket Agent.

**Youngstown, O.**—Erie Station.  
(Telephone 41101)  
G. D. HUGHES, Ticket Agent.



For reduced fares to Jamboree, consult Ticket Agents

# Your Platform Is an ERIE Siding

● Wherever your location, your shipping and receiving platforms can be on Erie sidings. The Erie picks up less-than-carload freight at your door, loads it for you on fast trains, and then unloads and delivers it to your customer's receiving room. ● For incoming freight you can specify to your supplier that he give you the same convenient Erie service. Then you won't have to pick up your shipments at a freight terminal—Erie will do it for you. ● The entire door-to-door haul is one simple transaction for you. Erie makes only one charge and assumes full responsibility. You save time and trouble, and no longer have to deal with several agencies. Call your Erie freight agent, and see how helpful this service can be.

SHIP IT  
QUICKLY,  
SAFELY BY  
RAILWAY  
EXPRESS

FOR sending your packages you'll find Railway Express quick, safe, and convenient.

This dependable through service from sender to receiver is available at every Express Agency along the lines of this Railroad.

Serving The Nation  
For 95 Years

RAILWAY  
EXPRESS  
Agency, Inc.

Nation-Wide Service