



**ERIE RAILROAD SYSTEM  
TIME TABLES**

**ERIE RAILROAD SYSTEM  
TIME TABLES**

*The Scenic Route*

BETWEEN

**NEW YORK • BUFFALO  
CLEVELAND • CHICAGO**

*The Scenic Route*

BETWEEN

**NEW YORK • BUFFALO  
CLEVELAND • CHICAGO**

CLEVELAND, OHIO, AUGUST 13, 1939

# NEW TRAIN, THE MIDLANDER

## IS PROVING A POPULAR SERVICE

Our new fast New York-Chicago train which went into service on June 3 started off with a bang—it seems to be filling a long-felt want, particularly on that portion of the line west of Youngstown.

The fact that the eastbound train leaves Chicago at 9:05 in the morning, Central Standard Time, insures a good connection with the early morning arrivals of trains from the west—and the westbound train reaching Chicago as it does at 5:20, affords splendid connection with practically all of the western trains leaving in the evening.

The Midlander, with its companion train, the Erie Limited, provides an ideal double-daily service between New York and Chicago—and the principal towns and cities in the Heart of Industrial America.

### GOOD MEAL SERVICE

We have had many compliments on our Restaurant Car service—and on the moderate charges. The restaurant cars are fully air-conditioned, of course, as are all of the other cars—coaches and Pullmans, and in these days, when the thermometer is hovering near the top of the stem, air-conditioned, clean and quiet comfort is a real boon to the traveler.

Women and children seem to like Erie service. The crews of our trains, all picked men, do their best to make passengers comfortable with thoughtful consideration without obtrusive attention.

Whether you are visiting the World's Fair at New York or the Exposition on Treasure Island, San Francisco, or just taking a business or pleasure trip, you will find rest and comfort on Erie trains—and please keep in mind that Erie fares are the lowest. Any Erie man will be glad to tell you about the well-planned, attractive, economical, all-expense tours that have been set up to save you time and money, or a card of inquiry, addressed to the Passenger Traffic Department at Cleveland, will bring a prompt response.

### LOW PRICE MEALS ON THE MIDLANDER AND THE LAKE CITIES

Breakfast .....50c  
Luncheon and dinner.....75c



DINING ON THE MIDLANDER

## NEW YORK WORLD'S FAIR ADMISSIONS

Monday to Friday.....75c  
Saturday and Sunday.....50c  
Every day after 9:30 P. M. .40c  
Wednesday, special for children .....10c

Any Erie Ticket Agent  
will tell you how little  
it costs to see the  
**NEW YORK  
WORLD'S FAIR**

Everyone says it beats any  
they have ever seen.

## FOR THE COMFORT OF ERIE COACH PASSENGERS

Lights are dimmed at night. Transportation is collected through so that passengers are not disturbed during the night hours.

## THE RAILROADS THRILL THROUGHS

### NEW YORK FAIR'S GREATEST SHOW

All aboard, young and old for the thrill of a lifetime. This great show demonstrates for the first time the complete inner workings of a modern railroad system.

An entire railroad in actual operation. The complicated mechanism for the speed and comfort of passenger travel; facilities for the loading, hauling and distribution of freight, and the rapid and safe transit of perishables.

See old locomotives and modern giants in "Railroads on Parade" with music and hundreds of actors.

Put the Railroad Building and its wonderful shows on your "must" list.

"Railroads on Parade" is shown four times in the afternoon—12:30, 2:00, 3:30 and 5:00; admission 25 cents.

## BOTH FAIRS AT SPECIAL LOW FARES

GRAND CIRCLE RAIL TOUR  
TICKETS SHOW YOU BOTH  
FAIRS

\$90 IN COACHES

\$135 in Pullmans (plus space charge)

Limit two months  
Stop over at will.

## SWEEPING REDUCTION IN ROUND-TRIP FARES

### NEW UPPER BERTH FARES

As a further step to increase the attractiveness of travel by rail, a substantial reduction in round-trip fares, both coach and Pullman, became effective Friday, June 30.

The new reduced round-trip fares will be based upon mileage rates, which decrease as the distance increases, thus putting into effect for regular travel the principle which was applied for the first time in American railroad history to the special reduced fare tickets offered for travel to the New York World's Fair.

The present one-way coach and Pullman passage fares will remain unchanged, at 2½c and 3c per mile respectively, regardless

of distance. The coach round-trip fares, however, will be on the basis of 2¼c per mile for the first 100 miles, then will diminish by 50-mile zones to a minimum of 1.7c per mile at a distance of 901 miles and over. This minimum mileage rate applicable to the longer distances will represent a reduction of 32% below the one-way fare.

In the case of round-trip tickets valid in Pullman lower berths, parlor cars, or other forms of accommodations, except upper berths, the fares will diminish from the present 3c per mile level to a minimum at 901 miles and over of 2.7c per mile, the latter representing a reduction of 10% below the one-way fare.

### UPPER BERTH FARES

Another class of fares has been added for rail tickets valid in upper berths. The one-way fares in this instance will be 2.7c per mile, regardless of distance. For the round-trip, they will be sold at mileage rates scaling down to a minimum of 2.43c per mile at 901 miles and over, representing a reduction of 10% below the new one-way upper berth fare and 19% below the one-way fare now in effect.

All round-trip tickets sold at the proposed new fares will bear the generous limit of 60 days.

The Pullman Company have also announced a reduction of 10% in the one-way upper berth occupancy charge, also a reduction in the round-trip upper berth rates on a scale of graduated percentages approximating that of the rail lines.

The reductions offered, particularly over the longer distances, are substantial, and are expected to create new travel. Also it is hoped that the new fares for the upper berth will bring about a more general use of the upper berths in Pullman cars.

The above reductions apply in the Eastern section of the country, which lies generally eastward from Chicago and St. Louis to the Atlantic seaboard, and northward from the Ohio and Potomac Rivers and the Washington gateway to the Great Lakes and the Canadian border, with certain exceptions in the New England territory.

Incidentally, both one-way and round-trip fares of all classes between New York and Chicago and New York and Cleveland are somewhat lower on the Erie Railroad than via other lines.

Leave your car at home.  
You will be glad you went  
to the World's Fairs by rail

TABLE OF CONTENTS

Equipment of Through Trains... Page 9, 10
Suggestions... 31
General Information... 7, 8
Standard of Time
Holidays
Fares Paid on Trains
Adjustment of Fares
Sleeping and Parlor Car Reservations
Baggage Regulations
Articles Lost on Trains
Safety First Hints
Equipment of Local Trains... 11, 12, 13, 14
Equipment of Detroit, Toledo, Cleveland, Youngstown and Pittsburgh Trains... 24
Erie Railroad Map... 19, 20, 21, 22
Sleeping and Parlor Car Fares... 7, 8
One-way Rail Fares... 7, 8
Reference Marks and Notes... 5, 6
Traffic Department Representatives... 37, 38
Ticket Offices and Passenger Stations in Principal Cities... 6

Train Service

Condensed Schedule of Through Trains... 9, 10
New York—Binghamton... 11, 12, 13, 14
Binghamton—Akron... 15, 16
Akron—Chicago... 17, 18
New York—Buffalo... 17
Detroit—Toledo—Cleveland—Youngstown—Pittsburgh... 23, 24
New York—Chautauqua... 27
Chautauqua—Akron—Chicago... 27
New York—Kenoza Lake—Jeffersonville... 28
New York—Monticello... 28
New York—Salamanca—Bradford... 28
Bradford—Salamanca—Cleveland—Chicago... 28
Branch Line Service... 27, 28, 29
Hudson & Manhattan R. R. Service... 30
Ferry Schedule... 30
Chautauqua Lake Service... 27

STATIONS ON ERIE RAILROAD

At Which Trains Are Scheduled To Stop

Numerals Opposite Station Names Indicate Time Table Numbers

Table listing stations on the Erie Railroad with corresponding time table numbers. Columns include station names and numerals. Stations listed include Addison, N.Y.; Akron, O.; Allquippa, Pa.; Albany, N.Y.; Alden, N.Y.; Alfred, N.Y.; Allegany, N.Y.; Allendale, N.J.; Andover, N.Y.; Arden, N.Y.; Arkport, N.Y.; Ashantee, N.Y.; Ashland, O.; Atlanta, N.Y.; Attica, N.Y.; Aurora, O.; Avoca, N.Y.; Avon, N.Y.; Baileys, N.Y.; Barberton, O.; Barton, N.Y.; Bath, N.Y.; Beaver, Pa.; Beaver Falls (New Brighton, Pa.); Belmont, N.Y.; Big Flats, N.Y.; Binghamton, N.Y.; Blair, N.Y.; Blasdell, N.Y.; Bradford, Pa.; Brooks, N.Y.; Buffalo, N.Y.; Burns, N.Y.; Callicoon, N.Y.; Cambridge Springs, Pa.; Cameron, N.Y.; Cameron Mills, N.Y.; Campbell, N.Y.; Canaseraga, N.Y.; Canisteo, N.Y.; Castile, N.Y.; Cattaraugus, N.Y.; Chautauqua, N.Y.; Chautauqua Lake, N.Y.; Chemung, N.Y.; Cherry Creek, N.Y.; Chester, N.Y.; Chicago, Ill.; Cleveland, O.; Cohecton, N.Y.; Cohocton, N.Y.; Collins, N.Y.; Conesus, N.Y.; Conesus Lake Jct., N.Y.; Conewango, N.Y.; Cooper's, N.Y.; Coraopolis, Pa.; Corning, N.Y.; Corry, Pa.; Crittenden, N.Y.; Crown Point, Ind.; Cuba, N.Y.; Cuylerville, N.Y.; Dale, N.Y.; Dalton, N.Y.; Darlen Center, N.Y.; Dayton, N.Y.; Decatur, Ind.; Depew, N.Y.; Deposit, N.Y.; Detroit, Mich.; Dunkirk, N.Y.; East Buffalo, N.Y.; East Fifty-fifth St. (Cleveland), O.; East Honesdale, Pa.; East Ninety-third St. (Cleveland), O.; East Rutherford, N.J.; Eden Center, N.Y.; Eden Valley, N.Y.; Ellwood City; Elmira, N.Y.; Elm Place, N.Y.; Endicott, N.Y.; Englewood (63rd St.), Ill.; Falconer, N.Y.; Fenner's, N.Y.; Forestville, N.Y.; Fowler, N.Y.; Friendship, N.Y.; Gallion, O.; Gannett, N.Y.; Garrettsville-Hiram, O.; Garwoods, N.Y.; Geauga Lake, O.; Geneseo, N.Y.; Girard, O.; Glen Eyre, Pa.; Golah, N.Y.; Goshen, N.Y.; Gowanda, N.Y.; Graham, N.Y.; Great Bend, Pa.; Greenville, Pa.; Greycourt, N.Y.; Griswolds, N.Y.; Gulf Summit, N.Y.; Hale's Eddy, N.Y.; Hamburg, N.Y.; Hammond, Ind.; Hancock, N.Y.; Hankins, N.Y.; Harriman, N.Y.; Hawley, Pa.; Hickory Grove, Pa.; Hillburn, N.Y.; Hohokus, N.J.; Honesdale, Pa.; Hornell, N.Y.; Horseheads, N.Y.; Howells, N.Y.; Hubbard, O.; Huntington, Ind.; Huston, N.Y.; Industry, N.Y.; Jaycocks, N.Y.; Jamestown, N.Y.; Jeddoe, O.; Jersey City, N.J.; Johnson City, N.Y.; Jones, N.Y.; Kanona, N.Y.; Kellams, N.Y.; Kennedy, N.Y.; Kent, O.; Kenton, O.; Kimbles, Pa.; Kirkwood, N.Y.; Lackawaxen, Pa.; Lake Huntington, N.Y.; Lancaster, N.Y.; Lawtons, N.Y.; Leavittsburg, O.; Letchworth Park, N.Y.; Lima, O.; Limestone, N.Y.; Linden, N.Y.; Linden St., N.Y.; Little Valley, N.Y.; Livonia, N.Y.; Long Eddy, N.Y.; Lordville, N.Y.; Mahoning, O.; Mahwah, N.J.; Mansfield, O.; Mantua, O.; Marilla, N.Y.; Marion, O.; Markhams, N.Y.; Martin, N.Y.; Mast Hope, Pa.; Meadow-wood, N.Y.; Meadville, Pa.; Middletown, N.Y.; Mill Rift, Pa.; Monaca, Pa.; Mongaup, Pa.; Monroe, N.Y.; Mortimer, N.Y.; Mount Morris, N.Y.; Narrowsburg, N.Y.; Newark, N.J.; New Brighton, Pa.; New Castle, Pa.; New Hampton, N.Y.; New York, N.Y.; Niles, O.; North Collins, N.Y.; North Randall, O.; Ohio City, O.; Olean, N.Y.; Oneonta, N.Y.; Oquaga, N.Y.; Otisville, N.Y.; Owego, N.Y.; Oxford, N.Y.; Painted Post, N.Y.; Parker's Glen, Pa.; Passaic, N.J.; Paterson, N.J.; Perrysburg, N.Y.; Persia, N.Y.; Phalanx, O.; Pierce's, N.Y.; Pittsburgh, Pa.; Pond Eddy, Pa.; Portage, N.Y.; Port Jervis, N.Y.; Ramapo, N.Y.; Ramsey, N.J.; Randolph, N.Y.; Rathbone, N.Y.; Ravenna, O.; Ridgewood, N.J.; Rittman, O.; Rochester, Ind.; Rochester, N.Y.; Rock Glen, N.Y.; Rowlands, Pa.; Rutherford, N.J.; Saegertown, Pa.; Salamanca, N.Y.; Savona, N.Y.; Seven Nations, N.Y.; Shakers, N.Y.; Sharon, Pa.; Sheridan, N.Y.; Shimer's Rock Cut, Pa.; Shohola, Pa.; Silver Springs, N.Y.; Skinners, N.Y.; Sloatsburg, N.Y.; Smithboro, N.Y.; Smith's Mills, N.Y.; Solon, O.; South Avon, N.Y.; South Dayton, N.Y.; Southfields, N.Y.; South Lima, N.Y.; South Livonia, N.Y.; South Park, N.Y.; Sparrowbush, N.Y.; Suffern, N.Y.; Susquehanna, Pa.; Swains, N.Y.; Tioga Centre, N.Y.; Toledo, O.; Town Line, N.Y.; Tusten, N.Y.; Tuxedo, N.Y.; Union City, Pa.; Wadsworth, O.; Waldwick, N.J.; Wallace, N.Y.; Warren, O.; Warsaw, N.Y.; Washington Hunt, N.Y.; Water Valley, N.Y.; Waverly, N.Y.; Wayland, N.Y.; Websters, N.Y.; Wellsburg, N.Y.; Wellsville, N.Y.; Wellwood Ave., Hawley, Pa.; Westcolang Park, Pa.; Westfall, N.Y.; West Henrietta, N.Y.; West Perrysburg, N.Y.; White Mills, Pa.; Wiards, N.Y.; Youngstown, O.

ADDITIONAL STATIONS ON ERIE RAILROAD

At Which Trains Do NOT Stop Regularly

The distance shown is from New York as indicated in Tables 4 and 5

Table listing additional stations on the Erie Railroad with distances from New York. Columns include station names and distances. Stations listed include Adrian, N.Y.; Akron, Ind.; Aldine, Ind.; Alger, Ohio; Almond, N.Y.; Ashville, N.Y.; Athens, Ind.; Atlantic, Pa.; Bass Lake, Ind.; Bear Lake, Pa.; Belvidere, N.Y.; Bippus, Ind.; Bolivar, Ind.; Boone Grove, Ind.; Braceville, Ohio; Burbank, Ohio; Caledonia, Ohio; Columbus, Pa.; Creston, Ohio; DeCliff, Ohio; DeLong, Ind.; Disko, Ind.; Elgin, Ohio; Foraker, Ohio; Forty-seventh St. (Chicago, Ill.); Freedom, Ohio; Geneva, Pa.; Glenmore, Ohio; Griffith, Ind.; Harrods, Ohio; Hegewisch, Ill.; Hepburn, Ohio; Highlands, Ind.; Hinsdale, N.Y.; Huriburt, Ind.; Kemp, Ohio; Kingsland, Ind.; Kouts, Ind.; Laketon, Ind.; Lakewood, N.Y.; Leiters, Ind.; Markel, Ind.; Martel, Ohio; McGuffey, Ohio; Millers, Pa.; Mill Village, Pa.; Monterey, Ind.; Nankin, Ohio; Newton, Ind.; Niobe, N.Y.; North Judson, Ind.; Ontario, Ohio; Ora, Ind.; Palmer, Ind.; Pavonia, Ohio; Pershing, Ind.; Polk, Ohio; Preble, Ind.; Red House, N.Y.; Scio, N.Y.; Servia, Ind.; Sharpville, Pa.; Steamburg, N.Y.; Sterling, Ohio; Tallmadge, Ohio; Toecin, Ind.; Uniondale, Ind.; Venango, Pa.; Watts Flats, N.Y.; West Salem, Ohio; Wilders, Ind.; Windham, Ohio; Winfield, Ind.; Wren, Ohio.

## REFERENCE MARKS AND NOTES

**IMPORTANT**—When trains are indicated as stopping conditionally, Conductors should be notified of intention to leave train and Station Agent notified of intention to board train. Conditional stops are made only to receive and discharge revenue passengers.

- † Runs daily except Sunday.  
 § Runs daily except Sundays and Holidays.  
 ‡ Will not operate from these stations on Monday morning.  
 † Stops on signal to receive and discharge revenue passengers.  
 k Runs Saturdays only. M. C. Motor Car Service. N. B. No Baggage carried.
- ac Stops Dalton (5.04 A. M.) to discharge passengers from Hornell and east and on signal to receive passengers.  
 ad Via Allegany Motor Coach Co., Inc. bus between Salamanca and Bradford.  
 af Train 7 stops Middletown (1.38 A. M.) Sunday and Monday mornings only to discharge passengers.  
 ah Stops on signal Andover (9.36 A. M.); Belmont (10.15 A. M.) to discharge passengers from New York.  
 ap Train 9 stops on signal Ridgewood (8.51 A. M.) Suffern (9.05 A. M.) to receive passengers for west of Port Jervis.  
 as Train 701 stops on signal, Sunday only, Oxford (9.54 A. M.) to receive and discharge passengers; will also run to Greycourt on Sunday only, arriving at (10.00 A. M.).  
 at On Sundays only, Train 30 will arrive West 23rd Street at (12.50 P. M.).  
 au Does not run from West 23rd St. on Saturday night.  
 av Does not run from Chambers on Saturday night; will leave Chambers Street at (11.45 P. M.) Sunday night only.  
 aw Trains 6 and 16 stop at Middletown (6.11 A. M.) to discharge passengers from Hornell and west, and to receive passengers for New York.  
 ax Stops Englewood Train 1 (7.40 A. M.); Train 15 (5.05 P. M.); Train 7 (12.43 A. M.) to discharge passengers from east of Hammond.  
 ba Stops Paterson (8.27 A. M.) to receive passengers.  
 bb Train 9 stops Paterson (8.42 A. M.) to receive passengers.  
 bc Stops on signal Paterson (8.29 P. M.), Ridgewood (8.39 P. M.) to receive passengers.  
 bd Stops on signal Passaic (8.20 P. M.); Suffern (8.53 P. M.) to receive passengers for Hornell and west.  
 bf Stops Cuba (5.36 A. M.) to discharge passengers from Elmira and east and to receive for Jamestown and west.  
 bg Stops on signal, Friendship (10.28 A. M.); Cuba (10.42 A. M.) to discharge passengers from New York.  
 bh Stops Cuba (6.25 P. M.) to discharge passengers from Elmira and east and to receive for Jamestown and west.  
 bk Train 27 stops Monroe Sundays and Holidays only to discharge passengers.  
 bm Stops on signal Niles (10.33 A. M.) to discharge passengers from Pittsburgh and from Jamestown and east and to receive passengers for Cleveland.  
 bn Train 2 will stop on signal Lordville (3.30 P. M.), until Sept. 1st., inclusive, except Saturdays and Sundays, to receive passengers for New York.  
 bp Stops Niles (11.30 P. M.) to discharge passengers from Meadville and east and on signal to receive passengers for Akron and west.  
 bt No Agent on duty. No baggage handled on Trains 5 and 6 to or from Castle.  
 bu Train 15 stops at Sharon (9.23 A. M.), Warren (10.10 A. M.) to receive passengers for Akron and west.  
 bv On Sundays only, Train 7 will leave Chambers St. at (11.45 P. M.).  
 bx Train 16 stops at Warren (6.09 P. M.), Sharon (6.51 P. M.) to discharge passengers from Akron and west.  
 ca Train 27 stops Holidays only Rutherford (3.08 P. M.).  
 cb On Sundays Train 27 has no connection from Newark.  
 cd For additional service between Cleveland and Youngstown see Table 7.  
 ce Train 703 will not operate west of Suffern on Saturdays and Holidays and will not operate west of Waldwick on Sundays.  
 cf Stops Tuxedo (4.40 P. M.) daily, except Sunday  
 cg Stops on signal Ridgewood (11.13 P. M.) to discharge passengers from Binghamton and west.  
 ch Train 173 stops at Tuxedo (9.51 P. M.) daily except Saturday, Sunday and Holiday. On Sundays and Holidays only, Train 71 leaving Jersey City at (10.15 P. M.) stops Tuxedo to discharge passengers.  
 ck Train 69 will operate west of Waldwick Saturdays, Sundays and Holidays only.  
 cm Train 173 runs to Monroe (10.07 P. M.) daily except Saturdays, Sundays and Holidays. On Sundays and Holidays only, Train 71, leaving Jersey City at (10.15 P. M.) operates to Monroe, arriving at (11.53 P. M.).  
 cn Stops on signal Union City (8.57 P. M.); Cambridge Springs (9.16 P. M.) to discharge passengers from Jamestown and east and to receive for Youngstown and west.  
 cp Train 8 stops on signal (10.14 P. M.), Train 16 (9.20 A. M.) to receive passengers for east of Hammond.  
 ct On Sundays Train 61 will not have any connection from West 23rd Street.  
 cu Bus service provided between Cochection and Lake Huntington.  
 cx Stops Endicott (1.53 A. M.) to discharge passengers from Port Jervis and east.  
 cw Stops to discharge passengers from New York.  
 cy Stops to discharge passengers from Cleveland and beyond.  
 db Train 8 stops at Ravenna (7.52 A. M.) to discharge passengers from Marion and west, and on signal to receive for Youngstown and east.  
 dc Stops Mantua (1.53 P. M.) to discharge passengers from Cleveland and on signal to receive passengers for Warren and east.  
 de Stops Barborton (5.15 P. M.) to discharge passengers from Youngstown and east and on signal to receive passengers for Mansfield and west.  
 df Stops on signal Mantua (9.24 A. M.) to receive passengers for Cleveland.  
 dp Stops Niles (1.16 A. M.) to discharge passengers from east of Youngstown and signal to receive passengers for Cleveland.  
 dt No baggage carried on this train east of Hornell. Baggage will be handled on following train.  
 du Coaches only, west of Salamanca.  
 dv Stops on signal Union City (7.55 P. M.) to discharge passengers from Youngstown and west and to receive passengers for New York.  
 dw Stops Cuba (9.53 A. M.) to discharge passengers from Jamestown and west and to receive for Elmira and east.  
 dy Stops on signal Cambridge Springs (7.17 A. M.), Union City (7.34 A. M.), to discharge passengers from Chicago and to receive for Binghamton and east.  
 dz Stops Ridgewood (7.10 A. M.) to discharge passengers from Port Jervis and west. Has connection for Paterson, Passaic, etc., leaving Ridgewood at (7.17 A. M.) daily.  
 eb Stops Paterson (1.56 P. M.) to receive passengers.  
 ec Bus service between New Castle and New Castle (Washington St.).
- ♦ Stops to discharge passengers.  
 C Stops on Saturday only.  
 † Stops on Holidays only.  
 \*Runs Daily.
- ed Bus service between Wampum and Ellwood City.  
 ef On Sundays only, Train 1 leaves West 23rd St. at (8.05 A. M.)  
 eg On Sundays connection from Train 62 arrives Newark (4.11 P. M.); on Holidays has no connection for Newark.  
 eh On Holidays Train 57 has no connection from Newark.  
 ek Train 2 stops Suffern (6.30 P. M.), Ridgewood (6.43 P. M.), Passaic (7.00 P. M.) to discharge passengers from Binghamton and west.  
 em Train 1 stops at Cochection (12.14 P. M.) until Sept. 4th, incl., to discharge passengers from New York.  
 en Stops on signal Paterson (9.27 A. M.), Ridgewood (9.37 A. M.) to receive passengers.  
 ep Train 1 stops on signal Passaic (9.20 A. M.), Suffern (9.51 A. M.) to receive passengers for Binghamton and west.  
 er Stops Niles (5.46 A. M.) to discharge passengers from Cleveland and west and on signal to receive for Pittsburgh.  
 es Stops on signal Niles (5.17 P. M.) to receive passengers for Jamestown and east, and to discharge passengers from Cleveland.  
 et Bus connection to and from Honesdale shown in Table 11-A, page 28.  
 eu Stops Endicott (6.12 P. M.) daily to discharge passengers from Jamestown and west and on signal to receive passengers for New York; also stops Sundays only to receive and discharge passengers.  
 ex Stops Endicott (2.11 A. M.) to discharge passengers from Buffalo, Jamestown and west.  
 ez On Saturday Train 60 has no connection for Newark.  
 gc Stops West Henrietta (10.51 A. M.) to discharge passengers from east of Avon.  
 gf Train 68 stops at Tuxedo (10.43 P. M.) to receive passengers.  
 gh Train 61 stops daily, except Saturday and Sunday, at Sterlington (2.19 P. M.), Arden (2.36 P. M.) and New Hampton (3.15 P. M.).  
 gt In connection with the bus service the Erie Railroad Company acts as agent only and is not responsible beyond its own line, except as such responsibility may be imposed by law with respect to baggage.  
 ha Stops at Narrowsburg (11.12 P. M.) to discharge passengers from Ridgewood and east.  
 he Stops Alden (9.30 P. M.) to discharge passengers from Buffalo and on signal to receive passengers.  
 hf Stops (11.09 P. M.) to discharge passengers from Pittsburgh.  
 hm On Saturdays connection for Train 69 leaves Newark at (5.16 P. M.); has no connection on Sundays or Holidays.  
 hn On Sundays Train 2 has no connection for Newark.  
 ht Trains 5-557 and 560-6 carry through sleeping cars between Bradford and New York.  
 hu Stops to discharge passengers.  
 hv Stops on signal East 93rd Street (6.13 P. M.) to receive passengers.  
 hw Train 7 will stop at Saegertown (1.47 P. M.) to discharge passengers from Binghamton and east and to receive passengers for Marion and west.  
 hx Train 8 will stop at Saegertown (10.33 A. M.) to discharge passengers from Marion and west and to receive passengers for Binghamton and east.  
 na Train 6 stops on signal at East 93rd St. (4.13 P. M.) to receive passengers for Sharon and east.  
 ne Train 626 stops Saturdays only at Solon (1.39 P. M.) and Aurora (1.47 P. M.) to discharge passengers from Cleveland.  
 nf Stops on signal at Garrettsville-Hiram (2.47 P. M.) to receive passengers for Cleveland.  
 nh Stops on signal at Garrettsville-Hiram (11.02 A. M.) to discharge passengers from Hornell and east; also discharge from Marion and west.

## ERIE TICKET OFFICES AND PASSENGER STATIONS IN PRINCIPAL CITIES

- Akron, O.**—Union Station.  
 (Telephone Jefferson 9141)  
 B. L. BENDER, Ticket Agent.
- Binghamton, N. Y.**—Erie Station.  
 (Telephone 4-3251)  
 A. F. WAINSCOTT, Ticket Agent.
- Bradford, Pa.**—Erie Station.  
 (Telephone 3716)  
 A. J. SULLIVAN, Ticket Agent.
- Brooklyn, N. Y.**—City Ticket Office.  
 155 Pierrepont St.  
 (Telephone Triangle 5-7440)  
 J. W. VAN COTT, Ticket Agent.
- Buffalo, N. Y.**—City Ticket Office.  
 6 North Division St.  
 (Telephone Washington 4300)  
 W. L. MCCREARY, Ticket Agent.  
 Station Ticket Office  
 (Lehigh Valley Terminal)  
 Main and Scott Streets  
 (Telephone Washington 4300)  
 A. L. SEITZ, Ticket Agent.
- Chicago, Ill.**—City Ticket Office. 163-165 West Jackson Blvd.  
 (Telephone Harrison 4160)  
 C. F. KUNGEL, Ticket Agent.
- Hotel Ticket Offices**—  
 Congress, Morrison, Sherman, Stevens,  
 Palmer House, Merchandise Mart.  
 (Telephone Harrison 2203)  
 GEORGE M. NEWHART, Ticket Agent.
- Dearborn Station.**  
 (Telephone Harrison 9830)  
 W. E. MISCHNICK, Ticket Agent.
- Cleveland, O.**—City Ticket Office.  
 2063 E. 9th St. (Telephone Cherry 8400)  
 CASPER J. MILLER, Ticket Agent.  
 Erie Station. (Telephone Cherry 8400)  
 J. W. STUART, Ticket Agent.
- Elmira, N. Y.**—Erie Station.  
 (Telephone 2-0380)  
 J. V. CLEARY, Ticket Agent.
- Hornell, N. Y.**—Erie Station.  
 (Telephone 680)  
 A. T. JOHNSON, Ticket Agent.
- Jamestown, N. Y.**—Erie Station.  
 (Telephone 6076)  
 FRANK PRIEST, Ticket Agent.
- Jersey City, N. J.**—Erie Station.  
 (Telephone Delaware 8-6400)  
 G. B. IRVING, Ticket Agent.
- Mansfield, O.**—Erie Station.  
 (Telephone Canal 1423)  
 J. W. GILKINSON, Ticket Agent.
- Marion, O.**—Erie Station.  
 (Telephone 2399)  
 L. E. NEBERGALL, Ticket Agent.
- Meadville, Pa.**—Erie Station.  
 (Telephone 1212)  
 G. W. KROM, Ticket Agent.
- Middletown, N. Y.**—Erie Station.  
 (Telephone 3303)  
 J. H. DIMKE, Ticket Agent.
- New York, N. Y.**—City Ticket Office,  
 Information Bureau.  
 Train Service and Fares.  
 (Telephone Barclay 7-6500)  
 City Ticket Office, 12 West 51st Street,  
 Rockefeller Center.  
 (Telephone Circle 5-7222)  
 G. H. DOWN, Ticket Agent.
- West 23rd Street Station.**  
 (Telephone Chelsea 3-0780)  
 C. H. POTTER, Ticket Agent.
- Chambers Street Station.**  
 (Telephone Cortlandt 7-9200)  
 T. I. NEWMAN, Ticket Agent.
- City Ticket Office, 17 John Street.**  
 (Telephone Cortlandt 7-6430 and  
 7-6431)  
 W. G. TEDFORD, Ticket Agent.
- Olean, N. Y.**—Erie Station.  
 (Telephone 4343)  
 D. S. FORDHAM, Ticket Agent.
- Paterson, N. J.**—Erie Station.  
 (Telephone Sherwood 2-3337)  
 J. H. GRAF, Ticket Agent.
- Sharon, Pa.**—Erie Station.  
 (Telephone 234)  
 H. P. MORGAN, Ticket Agent.
- Warren, O.**—Erie Station.  
 (Telephone 1000)  
 R. S. GETTIG, Ticket Agent.
- Youngstown, O.**—Erie Station.  
 (Telephone 41101)  
 R. E. TOWNS, Ticket Agent.

RAILROAD AND PULLMAN FARES

For Information Only. Subject to Change Without Notice

Table with columns for 'Between' and 'And' cities, and sub-columns for 'NEW YORK', 'BINGHAMTON', and 'BUFFALO'. It lists fares for 'RAILROAD TICKETS VALID IN' (Coach, Pullmans) and 'PULLMAN RATES' (Lower Berth, Seat Fare) for various routes.

Table with columns for 'Between' and 'And' cities, and sub-columns for 'JAMESTOWN', 'CLEVELAND', and 'CHICAGO'. It lists fares for 'RAILROAD TICKETS VALID IN' (Coach, Pullmans) and 'PULLMAN RATES' (Lower Berth, Seat Fare) for various routes.

RATES FOR UPPER BERTH, ROUND TRIP UPPER BERTH, SECTION, DRAWING ROOM OR COMPARTMENT IN SLEEPING CARS

Table with columns for 'Where Lower Berth Rate Is', 'Upper Berth Rate Will Be', 'Round Trip Upper Berth Rate Will Be', 'Section Rate For One Passenger', 'Drawing Room Rate For One Passenger', 'Drawing Room Rate For Two or More Pas'grs.', 'Compartment Rate For One Passenger', 'Compartment Rate For Two or More Pas'grs.', and 'Where Lower Berth Rate Is'.

Minimum Number of Railroad Tickets Required for Exclusive Occupancy of Space in Sleeping or Parlor Cars.

Table listing ticket requirements for various services: Section, Double Bedroom, Comp., Berth Service, Comp., Seat Service, Drawing Room, Berth Service, D. R., Seat Service, and D. R. in Parlor Car.

Note:—▲For section occupied by two passengers but with lower berth only prepared for night service. ■Applies from Cleveland to New York only; fare from New York to Cleveland \$14.70.

TABLE 1

# CONDENSED TABLE OF THROUGH TRAINS NEW YORK AND BUFFALO, CLEVELAND AND CHICAGO

(FOR LOCAL TRAINS AND INTERMEDIATE TIME OF THROUGH TRAINS SEE LOCAL TABLES)

**Air-Conditioned Trains**—Air-conditioned equipment has been assigned to regular sections of trains as shown herein. Every effort will be made to provide it as specified, but the right is reserved to employ non-air-conditioned cars as necessitated by volume of traffic or emergencies.

**WEST BOUND****EAST BOUND**

<b>THE ERIE LIMITED</b>		<b>TRAIN NO. 1—DAILY</b>	
<b>New York—Buffalo—Jamestown—Chicago</b>			
Lv New York, W. 23d St.	8.35AM E.S.T.		
" " Chambers St.	8.40 " "		
" Jersey City	9.00 " "		
" Paterson	9.27 " "		
" Ridgewood	9.37 " "		
" Binghamton	2.25PM " "		
" Elmira	3.44 " "		
Ar Buffalo (Lehigh Valley Term.)	7.35 " "		
Lv Olean	6.45 " "		
" Bradford	5.42 " "		
" Buffalo (Lehigh Valley Term.)	5.30 " "		
" Jamestown	8.03 " "		
" Meadville	9.40 " "		
" Youngstown	11.16 " "		
" Warren	11.42 " "		
" Akron	12.50AM " "		
Ar Chicago (Dearborn Sta.)	7.55AM C.S.T.		

**EQUIPMENT**

**Air-Conditioned Sleeping Cars:**  
New York to Chicago—8 Section Lounge Restaurant Car.  
Hornell to Chicago—8 Section, 1 Compartment Lounge Restaurant Car.

**Air-Conditioned Salon Coaches:**  
New York to Chicago.

**Air-Conditioned Coach—Diner:**  
New York to Buffalo.

Additional Dining Service for all meals in Air-Conditioned Lounge Restaurant Cars.

<b>THE ERIE LIMITED</b>		<b>TRAIN NO. 2—DAILY</b>	
<b>Chicago—Jamestown—Buffalo—New York</b>			
Lv Chicago (Dearborn Sta.)	6.00PM C.S.T.		
Ar Akron	3.44AM E.S.T.		
" Warren	4.43 " "		
" Youngstown	5.02 " "		
" Meadville	6.55 " "		
" Jamestown	8.31 " "		
" Buffalo (Lehigh Valley Term.)	10.55 " "		
" Bradford	ad12.05PM " "		
" Olean	9.39AM " "		
Lv Buffalo (Lehigh Valley Term.)	8.20 " "		
Ar Elmira	12.30PM " "		
" Binghamton	1.43 " "		
" Ridgewood	ek 6.43 " "		
" Paterson	6.52 " "		
" Jersey City	7.20 " "		
" New York, Chambers St.	7.34 " "		
" " W. 23d St.	7.55PM " "		

**EQUIPMENT**

**Air-Conditioned Sleeping Car:**  
Chicago to New York—8 Section Lounge Restaurant Car.

**Air-Conditioned Salon Coaches:**  
Chicago to New York.

**Air-Conditioned Coach—Diner:**  
Buffalo to New York.

Additional Dining Service for all meals in Air-Conditioned Lounge Restaurant Car.

<b>THE LAKE CITIES</b>		<b>TRAIN NO. 5—DAILY</b>	
<b>New York—Buffalo—Cleveland</b>			
Lv New York, W. 23d St.	7.10PM E.S.T.		
" " Chambers St.	7.40 " "		
" Jersey City	8.00 " "		
" Paterson	bc 8.29 " "		
" Ridgewood	bc 8.39 " "		
Ar Buffalo (Lehigh Valley Term.)	7.05AM " "		
Lv Olean	5.56 " "		
Ar Bradford	7.20 " "		
" Jamestown	7.21 " "		
" Meadville	8.52 " "		
" Youngstown	10.11 " "		
" Warren	10.44 " "		
Ar Cleveland	11.50AM " "		

**EQUIPMENT**

**Air-Conditioned Sleeping Cars:**  
New York to Cleveland—10 Section, 2 Compartment and Drawing-room.  
New York to Bradford—12 Section and Drawing Room.  
(Sleeping Car may be occupied at Bradford until 8.00 A. M.).

**Air-Conditioned Lounge Dining Car:**  
New York to Port Jervis.  
Salamanca to Youngstown.

**Air-Conditioned Coaches:**  
New York to Cleveland.

**Coaches:**  
Hornell to Buffalo.

<b>THE LAKE CITIES</b>		<b>TRAIN NO. 6—DAILY</b>	
<b>Cleveland—Buffalo—New York</b>			
Lv Cleveland	4.00PM E.S.T.		
" Warren	5.08 " "		
" Youngstown	5.38 " "		
" Meadville	7.19 " "		
" Jamestown	8.59 " "		
" Bradford	8.55 " "		
" Salamanca	10.01 " "		
" Olean	10.26 " "		
" Buffalo (Lehigh Valley Term.)	9.00 " "		
Ar Elmira	1.16AM " "		
" Ridgewood	dz 7.10 " "		
" Jersey City	7.40 " "		
" New York, Chambers St.	7.54 " "		
" " W. 23d St.	8.05AM " "		

**EQUIPMENT**

**Air-Conditioned Sleeping Cars:**  
Cleveland to New York—10 Section, 2 Compartment and Drawing-room.  
Bradford to New York—12 Section and Drawing Room.

**Air-Conditioned Lounge Dining Car:**  
Youngstown to Salamanca.  
Port Jervis to New York.

**Air-Conditioned Coaches:**  
Cleveland to New York.

**Coaches:**  
Buffalo to Hornell.

<b>THE MIDLANDER</b>		<b>TRAIN NO. 15—DAILY</b>	
<b>New York—Jamestown—Akron—Chicago</b>			
Lv New York, W. 23rd St.	7.10PM E.S.T.		
" " Chambers St.	7.40PM " "		
" Jersey City	8.00PM " "		
" Paterson	bc 8.29PM " "		
" Ridgewood	bc 8.39PM " "		
" Jamestown	7.07AM " "		
" Meadville	8.28AM " "		
" Youngstown	9.48AM " "		
" Akron	11.04AM " "		
" Marion	1.13PM " "		
Ar Chicago (Dearborn Sta.)	5.20PM C.S.T.		

**EQUIPMENT**

Effective from New York June 2

**Air-Conditioned Sleeping Car:**  
New York to Chicago—10 Section, 2 Compartment and Drawing Room.

**Air-Conditioned Lounge Dining Cars:**  
New York to Port Jervis.  
Hornell to Chicago.

**Air-Conditioned Coach:**  
New York to Chicago.

<b>THE MIDLANDER</b>		<b>TRAIN NO. 16—DAILY</b>	
<b>Chicago—Akron—Jamestown—New York</b>			
Lv Chicago (Dearborn Sta.)	9.05AM C.S.T.		
" Marion	3.10PM E.S.T.		
" Akron	5.15PM " "		
" Youngstown	6.31PM " "		
" Meadville	7.56PM " "		
" Jamestown	9.13PM " "		
" Ridgewood	dz 7.10AM " "		
Ar Jersey City	7.40AM " "		
" New York, Chambers St.	7.54AM " "		
" " W. 23rd St.	8.05AM " "		

**EQUIPMENT**

Effective from Chicago June 3

**Air-Conditioned Sleeping Car:**  
Chicago to New York—10 Section, 2 Compartment and Drawing Room.

**Air-Conditioned Lounge Dining Cars:**  
Chicago to Hornell.  
Port Jervis to New York.

**Air-Conditioned Coach:**  
Chicago to New York.

<b>PACIFIC EXPRESS</b>		<b>TRAIN NO. 7—DAILY</b>	
<b>New York—Buffalo—Jamestown—Chicago</b>			
Lv New York, W. 23d St.	10.55PM E.S.T.		
" " Chambers St.	bv11.30 " "		
" Jersey City	12.05AM " "		
" Elmira	7.29 " "		
Ar Buffalo (Lehigh Valley Term.)	†11.55AM " "		
Lv Olean	11.07AM " "		
Ar Salamanca	11.29 " "		
Lv Jamestown	12.24PM " "		
" Meadville	2.01 " "		
" Youngstown	3.34 " "		
" Warren	4.01 " "		
" Akron	5.05 " "		
Ar Chicago (Dearborn Sta.)	1.00AM C.S.T.		

**EQUIPMENT**

**Air-Conditioned Sleeping Car:**  
New York to Salamanca—12 Section and Drawing-room Car.  
(Sleeper open Jersey City at 9.30 P. M.)

**Air-Conditioned Dining Lounge Car:**  
Binghamton to Hornell.

**Air-Conditioned Salon Coaches:**  
New York to Chicago.

<b>ATLANTIC EXPRESS</b>		<b>TRAIN NO. 8—DAILY</b>	
<b>Chicago—Jamestown—New York</b>			
Lv Chicago (Dearborn Sta.)	10.00PM C.S.T.		
" Akron	7.22AM E.S.T.		
" Warren	8.22 " "		
" Youngstown	8.50 " "		
" Meadville	10.25 " "		
" Jamestown	12.15PM " "		
" Bradford	10.02AM " "		
" Salamanca	1.18PM " "		
" Olean	1.44 " "		
Ar Elmira	5.11 " "		
" Binghamton	6.23 " "		
" Jersey City	11.45 " "		
" New York, Chambers St.	11.57PM " "		
" " W. 23d St.			

**EQUIPMENT**

**Air-Conditioned Sleeping Car:**  
Chicago to Hornell—8 Section, 1 Compartment Lounge Restaurant Car.  
(Sleeper open at Chicago at 9.30 P. M.)

**Air-Conditioned Salon Coaches:**  
Chicago to New York.

**Air-Conditioned Dining Lounge Car:**  
Hornell to New York.

(No baggage handled on this train east of Hornell, baggage will be handled on following train.)

<b>TRAIN NO. 9—DAILY</b>			
<b>New York—Binghamton</b>			
Lv New York, W. 23d St.	7.30AM E.S.T.		
" " Chambers St.	8.00 " "		
" Jersey City	8.15 " "		
" Paterson	bb 8.42 " "		
" Ridgewood	ap 8.51 " "		
Ar Binghamton	2.35PM " "		

**EQUIPMENT**

Through Coaches... New York to Binghamton.

<b>SOUTHERN TIER EXPRESS</b>		<b>TRAIN NO. 10—EX. SUN.</b>	
<b>Buffalo—Hornell—Elmira—Binghamton—New York</b>			
Lv Buffalo	4.35PM E.S.T.		
" Hornell	7.30 " "		
" Corning	8.40 " "		
" Elmira	9.10 " "		
" Binghamton	10.41 " "		
Ar Jersey City	4.15AM " "		
" New York, Chambers St.	4.27AM " "		
" " W. 23d St.			

**EQUIPMENT**

**Air-Conditioned Sleeping Car:**  
Hornell to New York—12 Section and Drawing-room Car.  
(Sleeper and Coaches may be occupied at Jersey City until 7.00 A. M. E. S. T.)

**Coaches:**—Buffalo to Hornell.  
Hornell to New York.

<b>THE MOUNTAIN EXPRESS</b>		<b>TRAIN NO. 27—DAILY</b>	
<b>New York—Binghamton—Elmira—Hornell</b>			
Lv New York, W. 23d St.	2.20 PM E.S.T.		
" " Chambers St.	2.40 " "		
" Jersey City	2.55 " "		
Ar Binghamton	8.45 " "		
" Elmira	10.35 " "		
" Corning	11.02 " "		
Ar Hornell	12.05 AM " "		

**EQUIPMENT**

**Air-Conditioned Dining Lounge Car:**  
New York to Binghamton.

Through Coaches... New York to Hornell.

<b>THE MOUNTAIN EXPRESS</b>		<b>TRAIN NO. 28—DAILY</b>	
<b>Binghamton—New York</b>			
Lv Binghamton	10.15AM E.S.T.		
Ar Ridgewood	5.02PM " "		
" Paterson	5.11 " "		
" Jersey City	5.40 " "		
" New York, Chambers St.	5.54 " "		
" " W. 23rd St.	6.05PM " "		

**EQUIPMENT**

Through Coaches... Binghamton to New York.

TABLE 2 WESTBOUND

NEW YORK—BINGHAMTON

Hudson and Manhattan Tube Trains operate to and from Erie Railroad Station in Jersey City. Fare, downtown, 8 cents; uptown, 10 cents. (Temporarily H. & M. uptown trains will terminate at 28th Street, main entrance on Sixth Avenue between 29th Street and 30th Street)

Main train schedule table with columns for Miles from New York, Eastern Standard Time, and various train numbers (55, 57, 59, 43, 9, 701, 1, 703, 251, 209, 253, 61, 255, 45, 257, 27, 63, 65, 67, 259, 47, 69, 703, 5, 15, 705, 173, 7, 51). Rows list stations from New York to Binghamton with arrival and departure times.

LOCAL PARLOR AND CLUB CAR EQUIPMENT

No. 9—Daily Coaches... New York to Binghamton. No. 27—Daily Air-Conditioned Dining Lounge Car New York to Binghamton. Coaches... New York to Hornell.

No. 43—Runs Saturdays and Sundays only until Sept. 3, Inc. Air-Conditioned Parlor Car, Diner... New York to Deposit. No. 45—Runs Sats. only until Sept. 2, Inc. Parlor and Dining Cars... New York to Deposit. No. 47—Fridays only until Sept. 1, Inc. Parlor and Dining Cars... New York to Deposit.

No. 63—THE TUXEDO—Ex. Sats., Suns. and Hols. Parlor Car... New York to Port Jervis. Coaches... New York to Port Jervis. No. 67—Ex. Sat., Sun. and Hol. Erie Club Car... New York to Port Jervis. Coaches... New York to Port Jervis. No. 251—Saturdays only Erie Parlor Car... New York to Middletown. Coaches... New York to Middletown.

TABLE 3 EASTBOUND

BINGHAMTON—NEW YORK

Hudson and Manhattan Tube Trains operate to and from Erie Railroad Station in Jersey City. Fare downtown, 8 cents; uptown, 10 cents. (Temporarily H. & M. uptown trains will terminate at 28th Street, main entrance on Sixth Avenue between 29th Street and 30th Street.)

Table with 26 columns representing train numbers (50, 52, 204, 6, 16, 56, 58, 58, 30, 60, 60, 62, 206, 70, 28, 42, 44, 2, 700, 208, 208, 64, 34, 702, 38, 22, 22, dt8, 10) and rows for stations from Binghamton, N.Y. to Newark, N.J. Includes service frequency and times.

LOCAL PARLOR AND CLUB CAR EQUIPMENT

No. 8—Daily Air-Conditioned Dining Lounge Car... No. 10—Except Sundays. Air-Conditioned Sleeping Car... No. 28—THE MOUNTAIN EXPRESS—Daily. Coaches...

No. 34—Sundays only until Aug. 27, Inc. (also Monday, Sept. 4) Parlor and Dining Cars... No. 38—Sundays only until Sept. 3, Inc. (also Monday, Sept. 4) Parlor Car... No. 42—Saturdays only until Aug. 26, Inc. A. C. Parlor Car and Diner...

No. 44—Sundays only until Aug. 27, Inc. (also Monday, Sept. 4) Air-Conditioned Parlor Car... No. 56—THE TUXEDO—Ex. Sats., Suns and Hols. Erie Club Car... Parlor Car... Coaches...



TABLE 4 WESTBOUND

BINGHAMTON—AKRON

EASTBOUND

Table with columns for Miles from New York/Chicago, Eastern Standard Time, Central Standard Time, and various station names like Albany, Binghamton, and Akron.

COME! DINE WITH US.

Table D'Hote prices range as follows: Breakfast 50c to \$1.00, Luncheon 75c to \$1.25, Dinner 75c to \$1.25. A meal on our trains is always a pleasant interlude.

affords, cooked by expert chefs and served in the comfort of spacious Restaurant Cars. If you prefer a light snack without going to the Diner the waiter will bring sandwiches, fruit, coffee, etc., right to your seat.

TABLE 5 WESTBOUND

AKRON—CHICAGO

EASTBOUND

Miles from New York	Eastern Standard Time			Miles from Chicago	Central Standard Time				
	1 Daily	15 Daily	du 7 Daily		2 Daily	dt 8 Daily	16 Daily		
0.0	N. Y., West 23d St. . . . . Lv.	AM 8.35	PM 7.10	PM 10.55	0.0	Chicago (Dearborn Sta.) . . . III. Lv.	PM 6.00	PM 10.00	AM 9.05
0.0	" Chambers St. . . . . " "	8.40	7.40	11.30	6.3	(Polk and Dearborn Sts.)	6.14	cp	cp
1.0	Jersey City . . . . . " "	9.00	8.00	12.05	20.6	Englewood, 63d Street . . . . . " "	6.40	10.40	9.43
626.0	Akron . . . . . Ohio " "	12.50	11.04	5.05	36.3	Hammond . . . . . Ind. " "	7.05		
633.3	Barberton . . . . . " "			de	100.9	Crown Point . . . . . " "	8.14		11.05
639.9	Wadsworth . . . . . " "				142.6	Rochester . . . . . " "	8.58	12.45	11.46
644.3	Rittman . . . . . " "					Huntington . . . . . Ar.			
676.5	Ashland . . . . . " "	1.54	11.58	5.33	142.6	Huntington . . . . . Lv.	9.10	12.52	11.52
693.2	Mansfield . . . . . " "	2.27	12.21	6.16	173.4	Decatur . . . . . " "	9.48		
708.6	Galion . . . . . " "	2.56	12.44	6.53					
729.6	Marion . . . . . Ar.	3.22	1.08	7.56					
729.6	Marion . . . . . Lv.	3.29	1.13	8.11	189.9	Ohio City . . . . . Ohio " "	11.10		
754.5	Kenton . . . . . " "			8.42	204.4	Spencerville . . . . . " "	11.53	3.22	2.13
781.5	Lima . . . . . " "	4.25	2.07	9.22	217.2	Lima . . . . . " "		3.56	
794.3	Spencerville . . . . . " "				244.2	Kenton . . . . . " "		4.24	
808.8	Ohio City . . . . . " "				269.1	Marion . . . . . Ar.		4.29	3.10
					269.1	Marion . . . . . Lv.	12.53	4.29	3.10
					290.1	Galion . . . . . " "	1.24	4.59	3.35
825.3	Decatur . . . . . Ind. " "	4.22		9.49	305.5	Mansfield . . . . . " "	1.54	5.29	3.57
856.1	Huntington . . . . . Ar.	4.55	2.30		322.2	Ashland . . . . . " "	2.25	5.56	4.17
					354.4	Rittman . . . . . " "		6.34	
856.1	Huntington . . . . . Lv.	5.02	2.37	10.02	358.8	Wadsworth . . . . . " "		6.45	
897.8	Rochester . . . . . " "	5.50	3.22		365.4	Barberton . . . . . " "		6.57	
962.4	Crown Point . . . . . " "	6.55			372.7	Akron . . . . . Ar.	3.44	7.22	5.15
978.1	Hammond . . . . . " "	7.15	4.42	12.15					
992.4	Englewood, 63d Street . . . . . III. " "	ax	ax	ax	997.7	Jersey City . . . . . Ar.	7.20	11.45	7.40
998.7	Chicago (Dearborn Sta.) . . . . . Ar.	7.55	5.20	1.00 AM	998.7	N. Y., Chambers St. . . . . " "	7.34	11.57	7.54
						" West 23d St. . . . . Ar.	7.55		8.05

TABLE 6 NEW YORK AND BUFFALO

WESTBOUND Read Down			Miles from New York	Eastern Standard Time	EASTBOUND Read Up		
1 Daily	7-477 Daily Ex. Sun.	5 Daily			2 Daily	10 Daily Ex. Sun.	6 Daily
AM 8.35	PM 10.55	PM 7.10	0.0	Lv. N. Y., West 23d St. Ar.	PM 7.55	AM 8.05	
8.40	11.30	7.40	0.0	" Chambers St.	7.34	4.27	
9.00	12.05	8.00	1.0	Jersey City . . . . .	7.20	4.15	
2.25	5.57	1.43	215.1	Lv. Binghamton . . . . . Ar.	1.43	10.25	
2.38	6.09		223.7	Endicott . . . . .	1.30	10.14	
3.18	6.54		256.2	Waverly . . . . .	12.51	9.33	
3.44	7.29	2.57	273.8	Elmira . . . . .	12.30	9.10	
4.09	8.02	3.24	291.2	Corning . . . . .	12.06	8.40	
5.02	8.57	4.14	332.3	Ar. Hornell . . . . . Lv.	11.14	7.30	
5.17	9.15	4.30	332.3	Lv. Hornell . . . . . Ar.	11.00	7.20	
	9.24	4.38	338.0	Arkport . . . . .		7.09	
	9.36	4.48	340.7	Burns . . . . .			
			344.9	Canaseraga . . . . .	10.28	6.57	
			347.2	Garwoods . . . . .			
	9.43		349.2	Swains . . . . .		6.49	
	9.53	ac	356.3	Dalton . . . . .		6.40	
	9.58		358.5	Washington Hunt. . . . .		6.36	
	10.06		362.5	{ Portage . . . . .		6.30	
				{ Letchworth Park . . . . .			
6.07	10.15	bt5.23	366.4	Castile . . . . .	9.59	6.23	
6.13	10.22	5.28	369.1	Silver Springs . . . . .	9.53	6.17	
	10.27		372.2	Rock Glen . . . . .			
6.24	10.36	5.39	376.4	Warsaw . . . . .	9.41	6.05	
	10.44		382.2	Dale . . . . .		5.56	
	10.51		386.5	Linden . . . . .			
6.46	11.03	6.05	393.6	Attica . . . . .	9.14	5.39	
		f6.12	397.5	Griswolds . . . . .		5.32	
	11.13	6.17	399.7	Darien Center . . . . .		5.27	
7.06	11.21	6.25	405.3	Alden (Black Water Baths)	8.49	5.17	
		6.30	408.2	Marilla . . . . .		5.11	
		6.33	409.5	Town Line . . . . .		5.07	
	11.32	6.40	414.2	Lancaster . . . . .		4.59	
		6.43	415.5	Depew . . . . .		4.56	
		6.53	422.1	East Buffalo . . . . .		4.45	
7.35	11.55	7.05	425.2	Ar. Buffalo . . . . . Lv.	8.20	4.35	
PM	AM	AM		(Lehigh Valley Terminal)	AM	PM	

BLACK WATER BATHS, ALDEN, N. Y.

An all year resort where sufferers from rheumatism and nervous ailments have found the Black Water Baths beneficial and curative. Alden is located 20 miles east of Buffalo on the Erie Railroad.

EMPIRE STATE HOTEL  
HOTELS AT ALDEN, N. Y.  
Original Black Water Baths and Hotel  
Alden Black Water Sanatorium

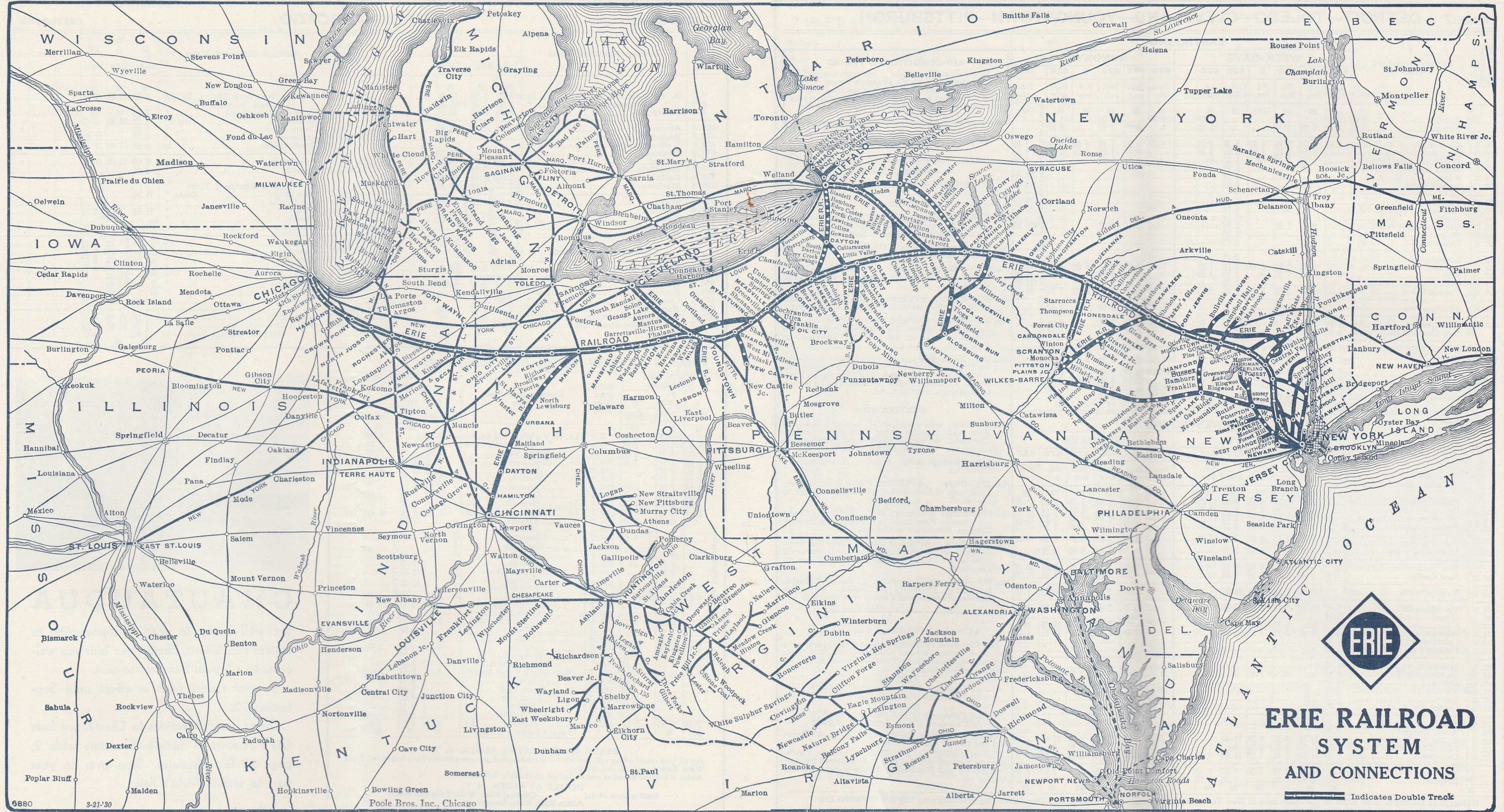


CHAUTAUQUA

Too well known to need an introduction to eastern vacationists, Chautauqua bids you welcome to a joyous Summer vacation.

Summer tourist fares in effect until September 30.

Direct bus connections to Chautauqua from Erie's Jamestown Station. See time table 9, page 27 for schedules. Stop over on your way to either World's Fair.



**ERIE RAILROAD SYSTEM AND CONNECTIONS**

Indicates Double Track

TABLE 7 DETROIT—TOLEDO—CLEVELAND—YOUNGSTOWN—PITTSBURGH

Miles from Cleveland	Eastern Standard Time	EASTBOUND											
		WEEK-DAYS						SUNDAYS					
		688	624	626	6	628	686	688	624	626	6	686	620
		Ex. Sun.	Ex. Sun.	Ex. Sun.	Ex. Sun.	Ex. Sun. & Hol.	Ex. Sun.	Sun. only	Sun. only	Sun. only	Sun. only	Sun. only	Sun. only
		AM	AM	AM	PM	PM	PM	AM	AM	AM	PM	PM	PM
.....	<b>N.Y.C.</b>												
	Detroit.....Lv.	12.30	5.05	8.00			1.15	12.30	5.05	8.00		1.15	
	Toledo.....Lv.	2.13		9.45			3.00	2.13		9.45		3.00	
0.0	<b>Cleveland.....Lv.</b>	4.25	8.00	1.15	4.00	5.30	6.00	4.25	8.00	1.15	4.00	6.00	9.30
3.3	East 55th Street.....		8.07	1.23	4.08	5.38	6.08		8.07	1.23	4.08	6.08	9.40
5.6	E. 93d St., Cleveland.....		8.12	1.27	na	5.43	hv		8.12	1.27	na	hv	9.45
10.7	North Randall.....					5.52							
15.8	Solon.....			ne		5.59							f10.00
20.4	Geauga Lake.....					6.05							f10.05
23.6	Aurora.....			ne		6.10							f10.10
30.0	Mantua.....			dc		6.18				dc			f10.17
34.2	Jeddoe.....					f6.24							
36.7	Garrettsville-Hiram.....		8.46	2.02		6.30		8.46	2.02				f10.28
40.3	Mahoning.....					f6.36							
45.3	Phalanx.....					6.42							
49.4	Leavittsburg.....					6.49							
52.6	<b>Warren.....Lv.</b>	5.37	9.05	2.22	5.08	6.57	7.09	5.37	9.05	2.22	5.08	7.09	10.50
57.7	Niles.....	er	9.13	2.30	es	7.23	7.20	er	9.13	2.30	es	7.20	11.00
61.9	Girard.....					7.33							f11.08
66.5	<b>Youngstown.....Ar.</b>	6.00	9.25	2.45	5.30	7.45	7.35	6.00	9.25	2.45	5.30	7.35	11.17
66.5	<b>Youngstown.....Lv.</b>	6.10	9.30	2.50			7.40	6.10	9.30	2.50		7.40	
84.2	<b>New Castle.....Ar.</b>	6.34	9.55	3.14			8.02	6.34	9.55	3.14		8.02	
	New Castle (Wash.St.) ec Ar.	6.46	10.07	3.26			8.14	6.46	10.07	3.26		8.14	
95.5	Ellwood City (ed).....	cy7.05	10.16	3.33			8.22	cy7.05	10.16	3.33		8.22	
102.2	Beaver Falls.....	cy6.56	10.18	3.36			8.25	cy6.56	10.18	3.36		8.25	
	New Brighton.....												
105.6	Beaver.....	cy7.01	10.24	3.41			8.31	cy7.01	10.24	3.41		8.31	
112.3	Aliquippa.....	cy7.10	10.33	3.50			8.40	cy7.10	10.33	3.50		8.40	
120.8	Coraopolis.....	cy7.20	10.44	4.00			8.50	cy7.20	10.44	4.00		8.50	
131.4	<b>Pittsburgh.....Ar.</b>	7.35	11.00	4.15			9.05	7.35	11.00	4.15		9.05	

**AIR-CONDITIONED TRAINS**  
 Air-conditioned equipment has been assigned to regular sections of trains as shown herein. Every effort will be made to provide it as specified, but the right is reserved to employ non-air-conditioned cars as necessitated by volume of traffic or emergencies.

**EQUIPMENT**  
 Detroit, Toledo, Cleveland, Youngstown, Pittsburgh Trains.  
 ★Indicates Air-Conditioned Cars

**EASTBOUND**  
**No. 6—Daily.** ★Sleeping Car (10 Section 2 Compartment and Drawing Room Car) Cleveland to New York. ★Coach, Cleveland to New York.  
**No. 620—Sundays only.** Coaches, Cleveland to Youngstown and Sharon.  
**No. 624 — Daily.** ★Pullman Parlor-Lounge-Diner, Cleveland to Pittsburgh. ★Coach, Cleveland to Pittsburgh.  
**No. 626—Daily.** ★Pullman Parlor Car, Cleveland to Pittsburgh. ★Coach, Cleveland to Pittsburgh.  
**No. 686—Daily.** ★Sleeping Car for Parlor Car Service and ★Coaches, Detroit to Pittsburgh, via Cleveland. Dining Lounge Car, Cleveland to Pittsburgh.  
**No. 688—Daily.** ★Sleeping Car (12 Section and Drawing Room), Chicago to Pittsburgh. ★Sleeping Car (12 Section-2 Double Bedrooms), Detroit to Pittsburgh. Through Coaches, ★Chicago and ★Detroit to Pittsburgh, via Cleveland.

**WESTBOUND**  
**No. 5—Daily.** ★Sleeping Car (10 Section 2 Compartment and Drawing Room Car) New York to Cleveland. ★Pullman Parlor Car, Pittsburgh to Cleveland. ★Coach, Pittsburgh to Cleveland.  
**No. 619—Sundays only.** Coaches, Youngstown to Cleveland.  
**No. 623—Daily.** ★Pullman Parlor-Lounge-Diner, Pittsburgh to Cleveland. ★Coach, Pittsburgh to Cleveland.  
**No. 679—Daily.** ★Sleeping Car (12 Section and Drawing Room), Pittsburgh to Chicago. ★Through Coaches, Pittsburgh to Chicago.  
**No. 685—Daily.** ★Sleeping Car for Parlor Car Service and ★Coaches, Pittsburgh to Detroit, via Cleveland. Dining Lounge Car, Pittsburgh to Cleveland.  
**No. 687—Daily.** ★Sleeping Car (12 Section-2 Double Bedrooms), Pittsburgh to Detroit. ★Through Coaches, Pittsburgh to Detroit via Cleveland.

**★Cleveland-Pittsburgh Sleeping Car**  
 The Cleveland-Pittsburgh sleeping car operates to and from Union Terminal Cleveland via New York Central (via Ashtabula) to Youngstown, and P. & L. E. Railroad on following schedule:  
 Eastbound  
 Lv Cleveland (Union Terminal) 2:10 AM  
 Ar Pittsburgh (P&LE Station) 7:15 AM  
 Westbound  
 Lv Pittsburgh (P&LE Station) 10:35 PM  
 Ar Cleveland (Union Terminal) 7:15 AM  
 Sleeper open for occupancy at 9:30 P. M. at Cleveland and 10:00 P. M. at Pittsburgh.  
 Tickets reading via Erie Railroad between Cleveland and Youngstown, and P. & L. E. Railroad between Youngstown and Pittsburgh, will be honored in this sleeping car.

Holidays in the above table refers to the observance of New Year's Day, Memorial Day, Independence Day, Labor Day, Thanksgiving Day and Christmas Day.

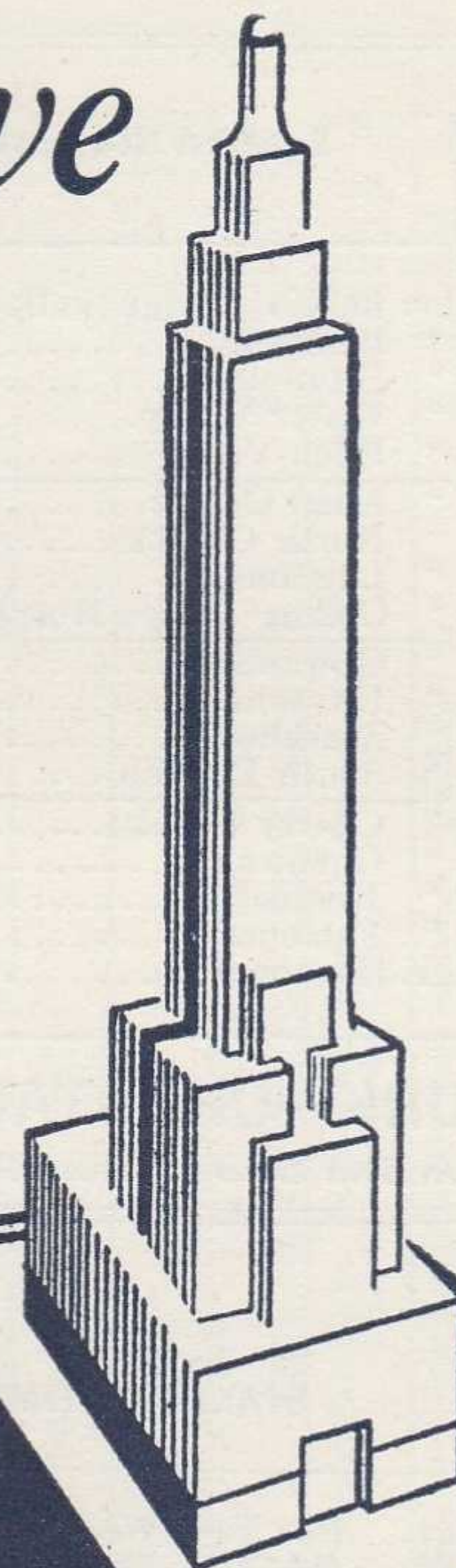
For Explanation of Reference Marks and Notes, see Pages 5 and 6.

For Parlor, Sleeping and Dining Service of Through Trains, see Pages 9 and 10.

*It's Your Next Move*

to New York and the

*World's Fair*



## THE NATION'S BIGGEST TWIN-FEATURE BILL

You simply must not miss the greatest of all World's Fairs in New York this year. This tremendous \$150,000,000 exposition is the daily mecca of thousands of visitors from all over the nation—from every country in the world.

Picture this mammoth 1,216-acre tract in the population center of the nation's largest metropolitan area. It is a veritable fairyland of beauty—a Living Geography of the Earth and its peoples.

By all means see this thrilling spectacle—and with it the great City of New York, today not only the world's financial capital, but the greatest cultural and amusement center of all time.

Of course, travel by rail to New York. So swift, so safe, so comfortable, so convenient that you'll arrive refreshed and ready for the most exhilarating experience of your life.

For special World's Fair folder and information as to reduced fares and all-expense tours consult any Erie Railroad Ticket Agent, or write to Passenger Traffic Department, Erie Railroad, Cleveland, Ohio.

©NYWF

TABLE 8 BUFFALO—JAMESTOWN

Table with columns for WESTBOUND Read Down, Eastern Standard Time, and EASTBOUND Read Up. Includes times for Buffalo, Blasdell, Hamburg, Water Valley, Eden Valley, etc.

TABLE 9 NEW YORK—CHAUTAUQUA—CHICAGO

(Via Jamestown and BUS of West Ridge Transportation Co.)

Table with columns for WESTBOUND Read Down, EASTERN STANDARD TIME, and EASTBOUND Read Up. Includes times for New York, Chautauqua, Jamestown, Cleveland, Akron, Chicago.

Tickets sold and Baggage checked through to Chautauqua. Hand baggage checked without charge. Trunks checked at charge of 25c each.

STOP-OVER PRIVILEGES

Niagara Falls

Passengers holding tickets reading "via Erie Railroad" from or through Elmira to or through Youngstown or vice versa may exercise their privilege of going by way of Buffalo and stopping over for as long as ten days at Niagara Falls, but not beyond the final limit of their ticket.

Other Points

On local one-way tickets sold at regular fares, local round-trip tickets sold at double the one-way fares, All-Year, Summer and Winter Tourist Tickets, stop-overs will be allowed on going and return trips within final limit of tickets at any Erie Railroad Station en route upon notice to conductor and without deposit of ticket.

TABLE 10 NEW YORK—SALAMANCA—BRADFORD—CHICAGO

Table with columns for WESTBOUND Read Down, Via Salamanca and BUS of Allegany Motor Coach Co., Inc., EASTERN STANDARD TIME, and EASTBOUND Read Up. Includes times for New York, Salamanca, Bradford, Cleveland, Akron, Chicago.

Trains 5-557 and 560-6 carry through sleeping car between Bradford and New York. Sleeper on train 557 will be parked at Bradford for occupancy until 8.00 A. M.

Busses leave as follows: (running time approximately 45 minutes.) Lv. Salamanca for Bradford, 11.20 A.M., 2.11 P.M., 3.55 P.M., 5.40 P.M., 7.10 P.M., 10.22 P.M.

BAGGAGE CHECKED TO BRADFORD—Baggage will be handled only on Trains 557 and 560 between Salamanca, N. Y., and Bradford, Pa.

TABLE 11 Lackawaxen—Honesdale

Table with columns for West-bound Read Down, Miles, EASTERN STANDARD TIME, and East-bound Read Up. Includes times for Lackawaxen, Rowlands, Glen Eyre, etc.

NEW YORK—NEWBURGH

NEW YORK—MONTICELLO—LIBERTY

NEW YORK—KENOZA LAKE—JEFFERSONVILLE

For above services, ask Ticket Agents for Time Table Form 2.

TABLE 11-A NEW YORK—HONESDALE Via Narrowsburg and BUS of Wayne County Taxicab Co., Inc.

Table with columns for WESTBOUND Read Down, EASTERN STANDARD TIME, and EASTBOUND READ UP. Includes times for New York, Narrowsburg, Honesdale.

NOTE "X" In connection with the bus service the Erie Railroad Company acts as agent only and is not responsible beyond its own line, except as such responsibility may be imposed by law with respect to baggage.

TABLE 12 ELMIRA-ROCHESTER

Table with columns for Westbound Read Down (5-463, 7-467), Miles, Eastern Standard Time, and Eastbound Read Up (468-8, 464-8). Includes train numbers and departure/arrival times for stations like Elmira, Corning, and Rochester.

TABLE 13 SALAMANCA—DUNKIRK

Table with columns for Westbound Read Down (5-527), Miles, Eastern Standard Time, and Eastbound Read Up (540). Includes train numbers and departure/arrival times for stations like Salamanca, Buffalo, and Dunkirk.

LOCATE YOUR PLANT WHERE YOU CAN LOCATE MORE PROFITS. Ask us about industrial buildings and vacant land on Erie rails. GEO. F. WESTON, Industrial Commissioner, Erie Railroad, Midland Bldg., Cleveland, O.

HUDSON AND MANHATTAN TUBE TRAINS SCHEDULE OF RUNNING TIME BETWEEN ERIE R. R. JERSEY CITY TERMINAL AND

Table showing running times for Downtown New York (Cortlandt St.) and Uptown New York (28th Street and 6th Ave, etc.). Includes fares: Downtown 8 cents, Uptown 10 cents.

ERIE R. R. FERRY TIME TABLE EASTERN STANDARD TIME CHAMBERS STREET FERRY Ferry Running Time, 9 Minutes WEEK DAYS

Table with columns for Leave New York for Jersey City and Leave Jersey City for New York. Shows departure times for various days of the week.

a Will not run on Holidays. m Except Saturdays and Holidays. h Holidays only.

SUNDAYS

Table showing Sunday departure times for the Chambers Street Ferry between New York and Jersey City.

TWENTY-THIRD STREET FERRY Ferry Running Time, 20 Minutes WEEK DAYS

Table with columns for Leave New York for Jersey City and Leave Jersey City for New York. Shows departure times for weekdays and Sundays.

TABLE 14 ROCHESTER—MOUNT MORRIS

Table with columns for EASTBOUND Read Down (N.B. 420, 440, 416, 428, 468) and WESTBOUND Read Up (N.B. 401, 403, 467, 409). Includes train numbers and departure/arrival times for stations like Rochester, Mt. Morris, and Avon.

TRAINS between Mt. Morris and Avon will stop on signal at Shakers, Jones, Cuylerville, Jaycocks, Seven Nations, Huston, South Avon, Pierces, Fowler, Ashantee, Linden Street and Spring Street and between Avon and Rochester, except Trains 467, 468 at Wiards, Elm Place, Meadowwood, Gannett, Blair, Martin, Brooks, Fenner, Baileys, Crittenden, Westfall and South Park. Note-HOLIDAYS in above tables refer to the observance of New Year's Day, Decoration Day, Independence Day, Labor Day, Thanksgiving Day and Christmas Day.

WESTERN UNION

TELEGRAMS AND CABLEGRAMS accepted at all telegraph offices of this railroad.

DAY LETTERS—50 words for 1 1/2 times the cost of a 10 word telegram.

NIGHT LETTERS—25 words for the former price of ten words. Maximum only 50 cents from coast to coast. Words over 25 charged for in groups of 5 at rates as low as a fifth of a cent per word.

The longer the message, the lower the rate per word.

RESERVATION MESSAGES—Reserve travel tickets and accommodations and hotel rooms by telegraph—only 35 cents (for 15 words).

TOURATE MESSAGES—When you travel telegraph the folks at home or at the office the facts they want to know about progress of your trip—only 35 cents (for 15 words).

## SUGGESTIONS

• **FREE BAGGAGE SERVICE.** Let us check your baggage to destination and relieve you of the trouble and inconvenience of carrying it to and from the train—150 pounds free on each adult ticket.

If you desire delivery to your residence or hotel at destination, ask the checking agent for information regarding delivery service and rates.

• **INTERCHANGEABLE SCRIP COUPON TICKETS** issued in \$15.00 and \$30.00 denominations are accepted on trains or at ticket offices in payment of rail passage as well as sleeping and parlor car accommodations, and also as payment for meals in restaurant cars.

• **PREPAID ORDERS.** For the convenience of patrons who do not wish to send money by mail, Erie Railroad ticket agents are prepared to sell prepaid ticket orders for the delivery of transportation, rail and Pullman, from practically all points in the United States, Canada and Mexico. These orders may also include the furnishing of cash.

In emergencies arrangements may be made for the delivery of transportation by telegraph or telephone without charge except when commercial wires are used.

• **BAGGAGE INSURANCE** by the St. Paul Fire & Marine Insurance Co. may be purchased at principal Erie ticket offices. It insures your baggage and personal effects for your entire trip anywhere in the world. Minimum premium twenty-five cents. The ticket agent can give you full particulars.

• **ERIE PLAYING CARDS** are on sale at our ticket offices, excepting in Ohio. Bridge sets one dollar, single decks fifty cents.

• **SPECIAL TOURS AND CONVENTIONS.** Our services are at the disposal of clubs, lodges and other organizations in arranging for trips to conventions and gatherings of all sorts. Concerning fares, train schedules and travel plans, consult or write to any Erie Ticket Agent, or any of the Passenger Department representatives listed on pages 37 & 38 of this folder.

## ERIE TRAIN-CAB SERVICE

**Takes you from Erie Terminal directly to your door in New York or Brooklyn**

ONE Person **90c** TWO Persons **\$1.25** THREE or more **\$1.50**

**Ask the conductor or ticket agent for details**

## GENERAL INFORMATION

**STANDARD OF TIME**—Erie Lines east of and including Ohio City, Ohio, are operated by Eastern Standard Time, Lines west of Ohio City, Ohio, by Central Standard Time. 12.01 Midnight to 12.00 Noon is indicated by light-faced type. 12.01 Noon to 12.00 Midnight is indicated by heavy-faced type.

**TRAINS WILL NOT BE HELD** for ferries from New York between hours of 4:00 P.M. and 5:30 P.M. Eastern Standard Time.

**HOLIDAYS**—The term "Holidays" (unless covered by special note under schedule) refers to the observance of New Year's Day, Lincoln's Birthday, Washington's Birthday, Memorial Day, Independence Day, Labor Day, Columbus Day, Election Day (November 7), Thanksgiving Day and Christmas Day.

**THIS COMPANY IS NOT RESPONSIBLE FOR ERRORS** in time tables, inconvenience or damage resulting from delayed trains or failure to make connections; schedules are subject to change without notice.

**FARES PAID ON TRAINS**—Conductors are required to charge ten (10) cents in excess of the one-way ticket fare for passengers traveling in coaches only in the territory east of Port Jervis, including side lines and branches. Buy tickets before boarding trains and avoid payment of this extra fare.

**CHILDREN** under five years of age are carried free when accompanied by parent or guardian; five years and under twelve, half fare, twelve years of age and over, full fare.

**ADJUSTMENT OF FARES**—Should any misunderstanding arise with conductors or agents, pay the fare required, take receipt and communicate with General Passenger Agent, Midland Bldg., Cleveland, Ohio.

**SLEEPING AND PARLOR CAR RESERVATIONS**—Space reserved by telegraph or telephone within city limit will be held until:

4:00 P.M. day prior to departure of trains leaving before noon next day.

9:00 A.M. day of departure for trains leaving between noon and 4:00 P.M.

1:00 P.M. day of departure for trains leaving after 4:00 P.M.

When application is by wire or letter from a point outside of city limit, space will be held until fifteen minutes of train time.

**BAGGAGE TO BE CHECKED** should be delivered at station at least thirty minutes before train time.

**BAGGAGE DELIVERY IN NEW YORK CITY**—All baggage checked to New York City will be sent to the West 23rd Street Station unless passenger specifies Chambers Street Station at time of checking.

Baggage delivery service in New York will be performed by the Railway Express Agency.

**HAND-BAGGAGE** in Pullman Cars is restricted to what can be conveniently placed in the berth, seat or other accommodations purchased by the passenger.

**CHICAGO PASSENGER AND BAGGAGE TRANSFER** is performed by the Parmelee Company. A uniformed agent meets all incoming trains of the Erie Railroad on arrival at Dearborn Station.

**ARTICLES LOST ON TRAINS** or left in waiting rooms or stations, owners should apply to Lost and Found Bureau, (Baggage Room) Jersey City Depot, or address General Passenger Agent, Midland Bldg., Cleveland, Ohio, giving full description of the property, stating date of loss and number of train.

**SAFETY FIRST HINTS**—Carefulness on your part helps eliminate accidents. Don't get on or off a train in motion; wait for a full stop. Keep hand baggage out of car aisles; this will remove a cause of inconvenience, possibly of harm, to others. Walk carefully when entering or leaving train; high-heeled shoes are sometimes a cause of tripping or stumbling on car steps. Don't stand or walk close to the railroad track; look both ways before starting across. Courtesy toward your fellow travelers increases the pleasure of your journey.

**DAYLIGHT SAVING TIME** is observed until Sept. 23 at all towns and cities east of and including Port Jervis, N. Y., also Chicago, Crown Point, Griffiths, Highlands, Hammond, Rochester, Buffalo, Niagara Falls, Hamburg, Gowanda, Elmira, Hornell, Corning, Honesdale, Binghamton and Endicott. It is also observed at Jamestown and Chautauqua, N. Y., from June 4 to Sept. 3. For complete list see Official Railway Guide.

## CHECKING HAND BAGGAGE AT CHICAGO

Passengers arriving Chicago on Erie trains who desire to stay over for a few hours and depart from a station other than Dearborn Station may have their hand baggage transferred to the station from which they depart. A Parmelee Company agent meets all Erie trains upon arrival at Chicago and he will arrange the transfer for you. The bags will be placed in the parcel check room of the station from which you depart. A charge of fifty cents for each hand bag, including the parcel room fee, will be made for the service, except one piece will be checked free when passenger holds through ticket including transfer through Chicago.





# RAILWAY EXPRESS

**Nation-wide, Fast, Handy...**

Ship your packages, products—anything—by this complete, dependable express service, right from your door *without extra charge* for prompt, receipted delivery, in all cities and principal towns. Passenger train speed and safety. Low cost. Merely phone any Railway Express or Western Union office.

**RAILWAY EXPRESS**  
AGENCY INC.

1839—A CENTURY OF SERVICE—1939

**AT THE FAIR!**  
**CRITICS ACCLAIM**  
**RAILROADS**  
An Exciting Drama of Transport  
by Edward Hungerford  
Music by Kurt Weill



**ON PARADE**  
IN THE RAILROAD EXHIBIT

The World's Fair Railroad Exhibit, sponsored by 27 Eastern railroads, have three outstanding features: RAILROADS ON PARADE, RAILROADS AT WORK, and RAILROADS IN BUILDING.

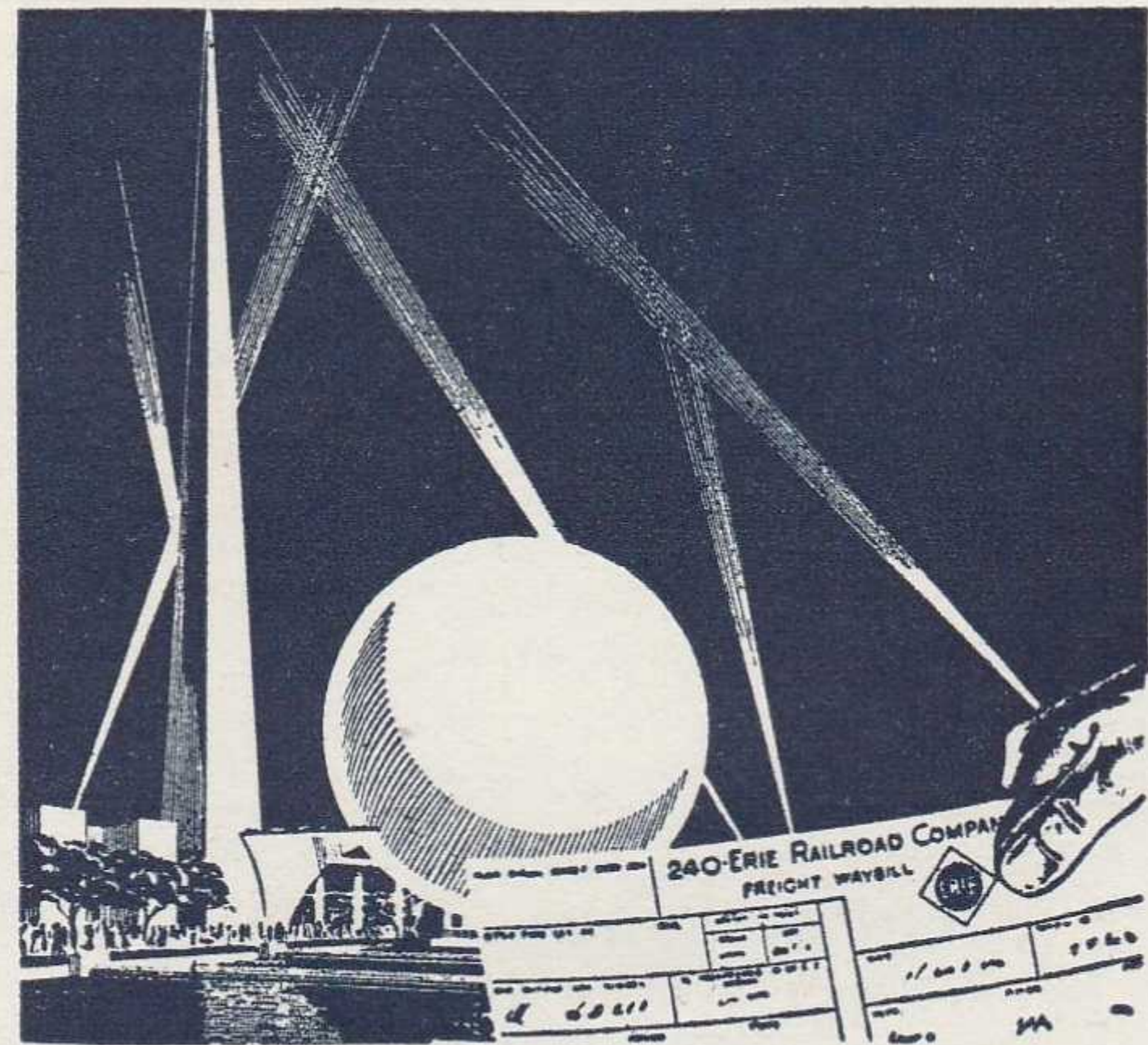
There are also track exhibits of foreign and American trains and equipment. The railroad building itself is the largest on the Fair site.

RAILROADS ON PARADE is a stage presentation of the story of transport development in America. It is presented in a great outdoor theatre, with a seating capacity of 4,000, on a stage designed to accommodate two standard-gauge railway tracks, highways for traffic, a cast of 200, and a channel for the passage of early watercraft.

RAILROADS AT WORK is housed in a theatre within the building. On a huge scenic diorama, 160 feet wide and 40 feet deep—designed to embody the topographical features of eastern states—with 500 model locomotives and cars, operating on 3,800 feet of miniature track, spectators see the operation in detail of a complete railway system.

RAILROADS IN BUILDING pictures in detail the construction of railroads and building of equipment, from forest clearing for a right-of-way to the completed railway system. The interior of the "mountain" houses the varied exhibits of the supply industry.

A special thriller among the track exhibits is a super 526-ton locomotive, the largest of its type ever built—which operates under its own power on a roller bed.

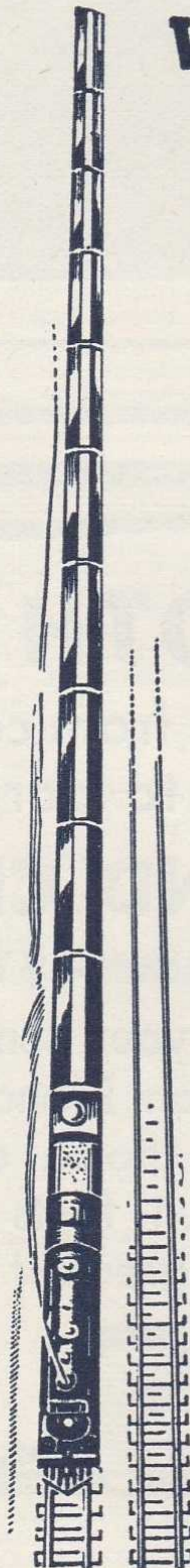


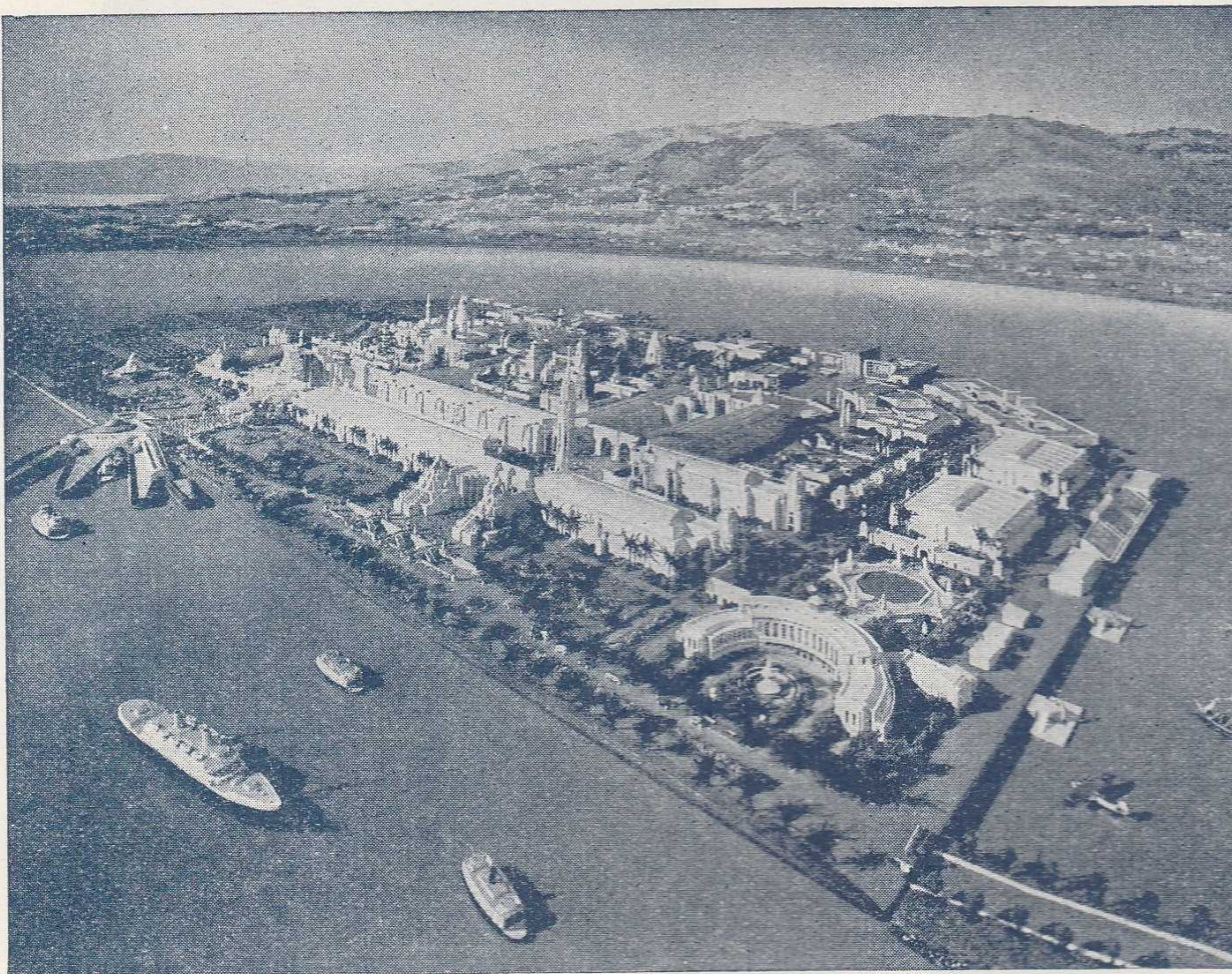
## WE KNEW THE TRYLON WHEN IT WAS ONLY A WAYBILL NUMBER

● Seven hundred feet in the air the Trylon at the New York World's Fair scratches the sky. Together with the Perisphere it has become the trade mark of the Fair.

But only yesterday it was 1,830,000 pounds of steel rolling from mill to New York. Rolling swiftly, safely through those high, wide clearances that have made the Erie famous as America's "Heavy Duty Railroad." Beacon tower of the biggest show on earth... just another load on the Erie.

Trust Erie with your Trylon (if you ever have one). But in the meantime, remember: whatever its weight, its size, its money-value, your shipment will be delivered swiftly, safely, economically over the road that's "First in Freight."





## San Francisco WORLD'S FAIR

ON Treasure Island all this year is the World's Fair of the West, gleaming with the drama of America and the legendary beauty of Pacific nations.

Here is a \$50,000,000 Magic City on the largest island ever built by man, and between the world's two largest bridges that link it to California's nearby vacationland.

Ask your travel Agent how to route your Western trip to Treasure Island on San Francisco Bay. You'll enjoy being the Guest of the West this year.

## SEE BOTH FAIRS

See America from coast to coast and border to border, on one

### "GRAND CIRCLE" RAIL TICKET

\$90 in Coaches--\$135 in Pullmans (plus space charge)

Start from your home town--visit both the New York and the San Francisco World's Fairs--and return. Your own choice of routes; stopovers anywhere! Get the full facts from your ticket agent about *the greatest travel bargain in history!*

SAN FRANCISCO  
WORLD'S FAIR

NEW YORK  
WORLD'S FAIR

# ERIE RAILROAD COMPANY

(C. E. DENNEY AND JOHN A. HADDEN, TRUSTEES)

## CHICAGO AND ERIE RAILROAD CO.

General Offices { **Midland Building, Cleveland.** Telephone, Cherry 8400.  
**Hudson Terminal, 50 Church Street, Corner Fulton, New York.** Telephone, Cortlandt 7-9200.  
**Utilities Building, 327 South La Salle Street, Chicago.** Telephone, Harrison 4160.

## TRAFFIC AND DEVELOPMENT DEPARTMENTS

### TRAFFIC

**CARL HOWE, Vice-President, Cleveland.**

New York.  
Cleveland.

**W. V. KENNEDY, Assistant Vice-President,**  
**G. A. LAMB, Assistant to Vice-President,**

Chicago.  
Cleveland.

### PASSENGER

Cleveland.

Chicago.

Youngstown.

**F. A. WALDRON, Assistant General Passenger Agent,**  
**ALFRED FYNN, Assistant General Passenger Agent,**  
**E. J. HAWERKOST, General Western Passenger Agent,**  
**H. M. WADE, Gen. Baggage, Mail and Express Agent,**

New York.  
Chicago.  
New York.

### FREIGHT—Rates

**L. B. BURFORD, Assistant Vice-President, Cleveland.**

Cleveland.

**C. E. COURTER, Assistant General Freight Agent,**  
**ALFRED BLAUDEL, Assistant Freight Traffic Manager,**  
**E. C. HALLBERG, General Freight Agent,**

Cleveland.  
Chicago.

### FREIGHT—Solicitation

New York.

New York.

Cleveland.

Chicago.

New York.

"

"

"

**W. V. KENNEDY, Assistant Vice-President,**  
**J. G. HILL, General Freight Agent,**  
**G. W. MADSEN, General New England Agent,**  
**J. T. McENTEE, Assistant General Freight Agent,**  
**D. R. THOMPSON, Assistant General Freight Agent,**  
**H. C. SCHMIDT, Assistant General Freight Agent,**  
**W. H. KOCH, Assistant General Freight Agent,**  
**H. B. ROGERS, General Live Stock Agent,**

Chicago.  
Chicago.  
Boston.  
Buffalo.  
Pittsburgh.  
Youngstown.  
Detroit.  
East Buffalo, N. Y.

### FOREIGN FREIGHT TRAFFIC

**T. E. McANDREWS, Foreign Freight Traffic Manager,**  
**W. C. OTTEN, Foreign Freight Agent,**  
**A. E. PETERSON, Foreign Freight Agent,**  
**W. S. PENCHARD, Export and Import Agent,**  
**EUROPEAN GENERAL AGENTS—SUTHERLAND INTERNATIONAL**

New York.  
Chicago.  
New York.

### DESPATCH, LIMITED,

London, Eng.

### PERISHABLE AND DAIRY TRAFFIC

**R. E. O'GRADY, Manager,**  
**H. W. BOUMANN, Western Dairy Agent,**  
**R. S. WILEY, Eastern Dairy Agent,**

Pier 20, N. R., New York.  
Chicago.  
Pier 20, N. R., New York.

### DEVELOPMENT

**L. L. WHITE, Vice-President, Cleveland.**

Cleveland.

**H. J. HART, Industrial Agent,**

New York.

**GEO. F. WESTON, Industrial Commissioner,**

## TRAFFIC DEPARTMENT REPRESENTATIVES

**Akron, O.—80 East Exchange St.**  
 (Telephone Hemlock 8194-8195)  
**J. P. CLARK, Division Passenger Agt.**  
**C. E. KING, General Agent.**

**Albany, N. Y.—Room 2, D. & H. Bldg.**  
 (Telephone 4-6051)  
**C. F. WHADCOCK, General Agent.**

**Antwerp, Belgium—30, Vieille Bourse.**  
**CHAS. CAYMAN, Agent.**

**Atlanta, Ga.—1515-16 Healey Bldg.**  
 (Telephone Walnut 2135)  
**S. S. TORREY, General Agent.**

**Baltimore, Md.—1301-3 Munsey Bldg.**  
 (Telephone Plaza 8691)  
**W. J. MURRAY, General Agent.**

**Birmingham, Ala.—1007 Watts Bldg.**  
 (Telephone 3-1327)  
**CHARLES G. ANDREWS, General Agent.**

**Birmingham, England—13 Corporation St.**  
**MAURICE G. COOKE, General Agent.**

**Boston, Mass.—80 Federal Street.**  
 (Telephone Liberty 7725-7726)  
**G. W. MADSEN, G. N. E. Agt.**

**Bradford, Pa.—Erte Station.**  
 (Telephone 3413)  
**J. C. MOFFATT, General Agent.**

**Bremen, Germany—Postfach 24, Tiefer 2**  
**CARL PRIOR, Agent.**

**Buffalo, N. Y.—6 North Division St.**  
 (Telephone Washington 4300)  
**J. A. DOLAN, G. A. P. D.**  
**238 Main Street.**  
 (Telephone Wash. 1865)  
**J. T. McENTEE, Asst. General Freight Agt.**

**Chicago, Ill.—327 South La Salle St.**  
 (Telephone Harrison 4160)  
**B. Y. VAUGHN, Trav. Pass. Agent**  
**C. D. TURNER, General Agent.**  
**W. L. KENDALL, General Dairy Agent.**

**Cincinnati, O.—503 Gwynne Bldg.**  
 (Telephone Main 3420-3421)  
**R. L. MURPHY, General Agent.**

**Cleveland, O.—Midland Bldg.**  
 (Telephone Cherry 8400)  
**J. M. SKAEBILL, Division Freight Agt.**  
**2063 East 9th St.**  
 (Telephone Cherry 8400)  
**G. SAUNDERS, Div. Passenger Agt.**

**Columbus, O.—Rooms 309-310 Atlas Bldg., 8 East Long Street.**  
 (Telephone Adams 7331)  
**C. R. MARTIN, General Agent.**

**Dallas, Tex.—2113 Tower Petroleum Bldg 1905 Elm St.**  
 (Telephone 2-7352)  
**T. J. MARTIN, General Agent.**

**Dayton, O.—501-506 Miami Savings Bldg.**  
 (Telephone Adams 8481)  
**W. P. KROMPHARDT, Div. Frt. Agt.**

**Des Moines, Ia.—Hubbell Bldg., 904 Walnut Street.**  
 (Telephone 4-0018)  
**L. T. COULSTON, General Agent.**

**Detroit, Mich.—Rooms 2-102 and 2-103 General Motors Bldg.**  
 (Telephone Madison 2360-2361)  
**W. H. KOCH, Assistant General Frt. Agt.**

**East Buffalo, N. Y.—Live Stock Exch. Bldg.**  
 (Telephone Washington 4300)  
**H. B. ROGERS, General Live Stock Agt.**

**Elmira, N. Y.—Erte Station.**  
 (Telephone 2-1621)  
**J. W. O'HARA, Division Passenger Agt.**  
 (Telephone 2-0377)  
**B. F. CONWAY, Division Freight Agent.**

**Glasgow, Scotland—82 Mitchell St.**  
**W. S. THOMSON, General Agent.**

**Hamburg, Germany—Dovenhof 118/122.**  
**GEORG A. ANTHONY, General Agent.**

**Huntington, Ind.—Erte Station.**  
 (Telephone 743)  
**F. C. MCCARTHY, Division Freight Agt.**

**Indianapolis, Ind.—143 No. Meridian St.**  
 (Telephone Lincoln 2088)  
**T. J. WILLIAMSON, General Agent.**

**Jamestown, N. Y.—Erte Station**  
**F. L. COLLINS, Div. Frt. Agt.**  
 (Telephone 7921-7922)

**Jersey City, N. J.—Erte Station**  
 (Telephone Delaware 8-6400)  
**P. F. ARROYO, G. A. P. D.**

**Kansas City, Mo.—Rooms 326-7 Railway Exchange Bldg., 7th and Walnut Streets.**  
 (Telephone Victor 6328)  
**N. C. FRICK, General Agent.**

**Liverpool, Eng.—17 Brunswick St.**  
**A. G. TAYLOR, General Agent.**

**London, E. C. 3. Eng.—4 Billiter St.**  
**PETER BUSWELL, General Agent.**  
**D. S. DEANS, Genl. Continental Agt.**

**Los Angeles, Cal.—108 West 6th Street.**  
 (Telephone Vandike 6542)  
**L. A. DWELLE, General Agent.**

**Marion, O.—Terminal Building**  
 (Telephone 2657)  
**A. R. TENNIS, Division Freight Agent.**

**Memphis, Tenn.—1628-9 Exchange Bldg., Madison & Second Sts.**  
 (Telephone 8-8781)  
**R. L. MILLER, General Agent.**

**Milwaukee, Wis.—818-9 Majestic Bldg., 231 West Wisconsin Ave.**  
 (Telephone Marquette 5555-5556)  
**H. A. WILSON, General Agent.**

**Minneapolis, Minn.—125 Third Street, So.**  
 (Telephone Main 3604)  
**C. V. HARROW, General Agent.**

**Newark, N. J.—1801-2 Military Park Bldg., 60 Park Place.**  
 (Telephone Market 2-0525-26-27)  
**A. R. WALTON, General Agent.**

**New Haven, Conn.—505 Powell Bldg.**  
 (Telephone 5-7937)  
**G. E. ROBB, General Agent.**

**New Orleans, La.—Room 1417 Whitney Bldg.**  
 (Telephone Raymond 9786)  
**D. C. KELSEY, General Agent.**

**New York, N. Y.—630-5th Ave. Room 219, Rockefeller Center.**  
 (Telephone Circle 5-7222)  
**F. J. WILD, G. A. P. D.**  
**A. G. OLDENQUIST, City Pass. Agt.**  
**50 Church Street.**  
 (Telephone Cortlandt 7-9200)  
**E. W. VAIL, General Eastern Frt. Agent.**  
**J. G. VREELAND, Division Freight Agent.**

**Omaha, Neb.—1319 Farnam St.**  
 (Telephone Jackson 4866)  
**C. L. COX, General Agent.**

**Peoria, Ill.—920 Jefferson Building, Cor. South Jefferson & Fulton Streets.**  
 (Telephone 8007)  
**E. T. OLANDER, General Agent.**

**Philadelphia, Pa.—1009-10 Finance Bldg.**  
 (Telephone Rittenhouse 8975-8976)  
**H. T. YOUNG, General Agent.**

**Pittsburgh, Pa.—Gulf Building.**  
 (Telephone Grant 4831-2-3)  
**D. R. THOMPSON, A. G. F. A.**

**Portland, Ore.—Room 421 Pacific Bldg., 520 S. W. Yamhill St.**  
 (Telephone Beacon 3706)  
**J. A. RUSSELL, General Agent.**

**Rochester, N. Y.—Erte Station.**  
 (Telephone Main 2826)  
**B. C. WEDD, Division Freight Agent.**

**Rotterdam, Holland—Boompjes 82.**  
**J. T. VERVLOET, Agent.**

**San Francisco, Cal.—681 Market St.**  
 (Telephone Sutter 3875)  
**J. A. LLOYD, General Agent.**

**St. Louis, Mo.—Room 906, 1218 Olive St.**  
 (Telephone Chestnut 7723-7724)  
**G. F. DANIELS, General Agent.**

**St. Paul, Minn.—336 Robert St.**  
 (Telephone Cedar 5912)  
**C. R. PETRY, General Agent.**

**Scranton, Pa.—Mill & Smith Sts. (Dunmore, Pa.)**  
 (Telephone—Scranton 8191)  
**G. W. SHUMAN, Division Freight Agent.**

**Seattle, Wash.—1116-7 White Bldg., 1338 Fourth Ave.**  
 (Telephone Elliot 4834)  
**W. R. SIBLEY, General Agent.**

**Springfield, O.—516 First National Bank Building.**  
 (Telephone 2-5351)  
**T. J. FLYNN, General Agent.**

**Toledo, O.—342 South Erte Street.**  
 (Telephone Main 3816)  
**H. J. SPANGENBURG, General Agent.**

**Toronto, Ont.—69 Yonge Street.**  
 (Telephone Elgin 4077)  
**E. P. MORRILL, General Agent.**

**Tulsa, Okla.—Room 1511 Hunt Bldg.**  
 (Telephone 3-8613)  
**A. W. MITCHELL, General Agent.**

**Youngstown, O.—Terminal Building.**  
 (Telephone 41101)  
**H. C. SCHMIDT, Asst. Genl. Frt. Agt.**  
**F. W. FISCHER, Div. Frt. Agt.**