



**ERIE RAILROAD SYSTEM
TIME TABLES**

**ERIE RAILROAD SYSTEM
TIME TABLES**

The Scenic Route

BETWEEN

**NEW YORK • BUFFALO
CLEVELAND • CHICAGO**

The Scenic Route

BETWEEN

**NEW YORK • BUFFALO
CLEVELAND • CHICAGO**

HER GREAT-GREAT GRANDMA RODE THE ERIE, TOO



For that thrilling first ride on a railroad train this little miss has chosen the Erie.

Choosing the Erie is a tradition in her family — as it is in so many families. Her Grandma and Great-Grandma and her Great-Great Grandma before her all took their first rides over the scenic Erie route.

The Erie has been an American institution since 1832. Today — as yesterday — Erie dependability, Erie service, Erie comfort, and Erie economy bring discriminating travelers **MORE** for less.

Ask the ticket agent about Erie Train-Cab Service from Erie Terminal, Jersey City, directly to your door in New York or Brooklyn, or see page 32 of this folder.

TABLE OF CONTENTS

Equipment of Through Trains... Page 9, 10
Suggestions... 31
General Information... 7, 8
Standard of Time
Holidays
Fares Paid on Trains
Adjustment of Fares
Sleeping and Parlor Car Reservations
Baggage Regulations
Articles left on Trains
Equipment of Local Trains... 11, 12, 13, 14
Equipment of Detroit, Toledo, Cleveland, Youngstown and Pittsburgh Trains... 24
Erie Railroad Map... 19, 20, 21, 22
Sleeping and Parlor Car Fares... 7, 8
One-way Rail Fares... 7, 8
Reference Marks and Notes... 5, 6
Traffic Department Representatives... 37, 38
Ticket Offices and Passenger Stations in Principal Cities... 6
Train Service
Condensed Schedule of Through Trains... 9, 10
New York-Binghamton... 11, 12, 13, 14
Binghamton-Akron... 15, 16
Akron-Chicago... 17, 18
New York-Buffalo... 17
Detroit-Toledo-Cleveland-Youngstown-Pittsburgh... 23, 24
New York-Chautauqua... 27
Chautauqua-Akron-Chicago... 27
New York-Kenoza Lake-Jeffersonville... 28
New York-Monticello... 28
New York-Salamanca-Bradford... 28
New York-Meadville-Oil City... 28
Chicago-Meadville-Oil City... 28
Bradford-Salamanca-Cleveland-Chicago... 28
Branch Line Service... 27, 28, 29
Hudson & Manhattan R. R. Service... 30
Ferry Schedule... 30
Chautauqua Lake Service... 27

STATIONS ON ERIE RAILROAD
At Which Trains Are Scheduled To Stop
Numerals Opposite Station Names Indicate Time Table Numbers

Table listing stations on the Erie Railroad with corresponding time table numbers. Columns include station names and numerals. Stations listed include Addison, N. Y.; Akron, O.; Allentown, Pa.; Albany, N. Y.; Alden, N. Y.; Alfred, N. Y.; Allegany, N. Y.; Allentown, Pa.; Andover, N. Y.; Arden, N. Y.; Arkport, N. Y.; Ashantee, N. Y.; Ashland, O.; Atlanta, N. Y.; Attica, N. Y.; Aurora, O.; Avoca, N. Y.; Avon, N. Y.; Baileys, N. Y.; Barberton, O.; Barton, N. Y.; Bath, N. Y.; Beaver, Pa.; Beaver Falls (New Brighton, Pa.); Belmont, N. Y.; Big Flats, N. Y.; Binghamton, N. Y.; Blair, N. Y.; Blasdel, N. Y.; Bradford, Pa.; Brooks, N. Y.; Buffalo, N. Y.; Burns, N. Y.; Callicoon, N. Y.; Cambridge Springs, Pa.; Cameron, N. Y.; Cameron Mills, N. Y.; Campbell, N. Y.; Canaseraga, N. Y.; Canisteo, N. Y.; Carlton, Pa.; Castile, N. Y.; Cattaraugus, N. Y.; Chautauqua, N. Y.; Chautauqua Lake, N. Y.; Chemung, N. Y.; Cherry Creek, N. Y.; Chester, N. Y.; Chicago, Ill.; Cleveland, O.; Cocheton, N. Y.; Cochran, Pa.; Cohocton, N. Y.; Collins, N. Y.; Conesus, N. Y.; Conesus Lake Jct., N. Y.; Conewango, N. Y.; Cooper's, N. Y.; Coraopolis, Pa.; Corning, N. Y.; Corry, Pa.; Crittenden, N. Y.; Crown Point, Ind.; Cuba, N. Y.; Cuyler, N. Y.; Dale, N. Y.; Dalton, N. Y.; Dansville, N. Y.; Darien Center, N. Y.; Dayton, N. Y.; Decatur, Ind.; Depew, N. Y.; Deposit, N. Y.; Detroit, Mich.; Dunkirk, N. Y.; East Buffalo, N. Y.; East Fifty-fifth St. (Cleveland), O.; East Honesdale, Pa.; East Ninety-third St. (Cleveland), O.; East Rutherford, N. J.; Eden Center, N. Y.; Eden Valley, N. Y.; Ellwood City; Elmira, N. Y.; Elm Place, N. Y.; Endicott, N. Y.; Englewood (63rd St.), Ill.; Falconer, N. Y.; Fenners, N. Y.; Forestville, N. Y.; Fowler, N. Y.; Franklin, Pa.; Friendship, N. Y.; Galion, O.; Gannett, N. Y.; Garrettsville-Hiram, O.; Garwoods, N. Y.; Geauga Lake, O.; Geneseo, N. Y.; Girard, O.; Glen Eyre, Pa.; Golah, N. Y.; Goshen, N. Y.; Gowanda, N. Y.; Graham, N. Y.; Great Bend, Pa.; Greenville, Pa.; Greycourt, N. Y.; Griswolds, N. Y.; Groveland, N. Y.; Gulf Summit, N. Y.; Hale's Eddy, N. Y.; Hamburg, N. Y.; Hammond, Ind.; Hancock, N. Y.; Hankins, N. Y.; Harriman, N. Y.; Hawley, Pa.; Hickory Grove, Pa.; Hillburn, N. Y.; Hohokus, N. Y.; Honesdale, Pa.; Hornell, N. Y.; Horseheads, N. Y.; Howells, N. Y.; Hubbard, O.; Huntington, Ind.; Huston, N. Y.; Industry, N. Y.; Jaycocks, N. Y.; Jamestown, N. Y.; Jeddore, O.; Jersey City, N. J.; Johnson City, N. Y.; Jones, N. Y.; Kanona, N. Y.; Kellams, N. Y.; Kennedy, N. Y.; Kent, O.; Kenton, O.; Kimbles, Pa.; Kirkwood, N. Y.; Lackawaxen, Pa.; Lake Huntington, N. Y.; Lancaster, N. Y.; Lawtons, N. Y.; Leavittsburg, O.; Letchworth Park, N. Y.; Lima, O.; Limestone, N. Y.; Linden, N. Y.; Linden St., N. Y.; Little Valley, N. Y.; Livonia, N. Y.; Long Eddy, N. Y.; Lordville, N. Y.; Mahoning, O.; Mahwah, N. J.; Mansfield, O.; Mantua, O.; Marilla, N. Y.; Marion, O.; Markhams, N. Y.; Martin, N. Y.; Mast Hope, Pa.; Meadow-wood, N. Y.; Meadville, Pa.; Middletown, N. Y.; Mill Rift, Pa.; Monaca, Pa.; Mongaup, Pa.; Monroe, N. Y.; Mortimer, N. Y.; Mount Morris, N. Y.; Narrowsburg, N. Y.; Newark, N. J.; New Brighton, Pa.; New Castle, Pa.; New Hampton, N. Y.; New York, N. Y.; Niles, O.; North Collins, N. Y.; North Randall, O.; Ohio City, O.; Oil City, Pa.; Olean, N. Y.; Oneonta, N. Y.; Oquaga, N. Y.; Otisville, N. Y.; Owego, N. Y.; Oxford, N. Y.; Painted Post, N. Y.; Parker's Glen, Pa.; Passaic, N. J.; Paterson, N. J.; Perrysburg, N. Y.; Persia, N. Y.; Phalanx, O.; Pierce's, N. Y.; Pittsburgh, Pa.; Pond Eddy, Pa.; Portage, N. Y.; Port Jervis, N. Y.; Ramapo, N. Y.; Ramsey, N. J.; Randolph, N. Y.; Rathbone, N. Y.; Ravenna, O.; Reno, Pa.; Ridgewood, N. J.; Rittman, O.; Rochester, Ind.; Rochester, N. Y.; Rock Glen, N. Y.; Rowlands, Pa.; Rutherford, N. J.; Salamanca, N. Y.; Savona, N. Y.; Seven Nations, N. Y.; Shakers, N. Y.; Sharon, Pa.; Shaws, Pa.; Sheridan, N. Y.; Shimer's Rock Cut, Pa.; Shohola, Pa.; Silver Springs, N. Y.; Skinners, N. Y.; Sloatsburg, N. Y.; Smithboro, N. Y.; Smith's Mills, N. Y.; Solon, O.; Sonyea, N. Y.; South Avon, N. Y.; South Dayton, N. Y.; Southfields, N. Y.; South Lima, N. Y.; South Livonia, N. Y.; South Park, N. Y.; Sparrowbush, N. Y.; Spencerville, O.; Sugar Creek, N. Y.; Springwater, N. Y.; State Hospital, N. Y.; Sterlington, N. Y.; Stockport, N. Y.; Suffern, N. Y.; Sugar Creek, Pa.; Susquehanna, Pa.; Swains, N. Y.; Tioga Centre, N. Y.; Toledo, O.; Town Line, N. Y.; Tusten, N. Y.; Tuxedo, N. Y.; Union City, Pa.; Wadsworth, O.; Waldwick, N. J.; Wallace, N. Y.; Warren, O.; Warsaw, N. Y.; Washington Hunt, N. Y.; Water Valley, N. Y.; Waverly, N. Y.; Wayland, N. Y.; Websters, N. Y.; Wellsburg, N. Y.; Wellsville, N. Y.; Wellwood Ave., Hawley, Pa.; Westcolang Park, Pa.; Westfall, N. Y.; West Henrietta, N. Y.; West Perryburg, N. Y.; West Sparta, N. Y.; White Mills, Pa.; Wiards, N. Y.; Youngstown, O.

ADDITIONAL STATIONS ON ERIE RAILROAD

At Which Trains Do NOT Stop Regularly

The distance shown is from New York as indicated in Tables 4 and 5

Table with 10 columns: STATION, Miles from New York, STATION, Miles from New York, STATION, Miles from New York, STATION, Miles from New York, STATION, Miles from New York. Lists additional stations and their distances from New York.

REFERENCE MARKS AND NOTES

IMPORTANT—When trains are indicated as stopping conditionally, Conductors should be notified of intention to leave train and Station Agent notified of intention to board train.

- † Runs daily except Sunday. c Stops on Saturday only.
 ♦ Stops to discharge passengers. † Stops on Holidays only.
 ‡ Will not operate from these stations on Monday morning.
 ⚡ Train 71 will not run west of Waldwick on Sundays or Holidays.
 f Stops on signal to receive and discharge passengers. * Runs Daily.
 k Runs Saturdays only. M. C. Motor Car Service. N. B. No Baggage carried.
- ab Stops Saturday and Sunday only to discharge passengers.
 ac Stops Dalton (5.46 A. M.) to discharge passengers from Hornell and east and on signal to receive passengers.
 ad Via Allegany Motor Coach Co., Inc. bus between Salamanca and Bradford.
 ae Train 5 will stop on signal at Monroe (9.05 P. M.) to receive passengers for Hornell and west; and to discharge passengers from New York.
 af Train 7 stops Middletown (1.51 A. M.) Monday mornings only to discharge passengers.
 ag Stops Saturdays only to discharge passengers.
 ah Stops on signal Andover (9.51 A. M.); Belmont (10.16 A. M.) to discharge passengers from New York.
 at On Sundays only, Train 30 will arrive West 23rd Street at (1.50 P. M.).
 au Does not run from West 23rd St. on Saturday night.
 ax Stops Englewood Train 1 (7.47 A. M.); Train 7 (12.43 A. M.) to discharge passengers from east of Hammond.
 bc Stops on signal Paterson (8.19 P. M.), Ridgewood (8.29 P. M.) to receive passengers.
 bd Stops on signal Passaic (8.10 P. M.); Suffern (8.43 P. M.) to receive passengers for Hornell and west.
 bf Stops Cuba (5.26 A. M.) to discharge passengers from Elmira and east and to receive for Jamestown and west.
 bg Stops on signal, Friendship (10.30 A. M.); Cuba (10.44 A. M.) to discharge passengers from New York.
 bh Stops Cuba (6.25 P. M.) to discharge passengers from Elmira and east and to receive for Jamestown and west.
 bm Stops on signal Niles (10.23 A. M.) to discharge passengers from Pittsburgh and from Jamestown and east and to receive passengers for Cleveland.
 bp Stops Niles (11.30 P. M.) to discharge passengers from Meadville and east and on signal to receive passengers for Akron and west.
 bt No Agent on duty. No baggage handled on Trains 5 and 6 to or from Castile.
 ca Train 27 stops Sundays and Holidays only Rutherford (3.13 P. M.).
 cd For additional service between Cleveland and Youngstown see Table 7.
 cf Stops Tuxedo (5.39 P. M.) daily, except Sunday.
 cg Stops on signal Ridgewood (11.15 P. M.) to discharge passengers from Binghamton and west.
 ch Train 71 stops Tuxedo to discharge passengers, except Sundays and Holidays.
 cn Stops on signal Union City (8.57 P. M.); Cambridge Springs (9.16 P. M.) to discharge passengers from Jamestown and east and to receive for Youngstown and west.
 cp Stops on signal (10.14 P. M.) to receive passengers for east of Hammond.
 ct Bus service provided between Cocheton and Lake Huntington.
 cw Stops Endicott (1.45 A. M.) to discharge passengers from Port Jervis and east.
 cx Stops to discharge passengers from New York.
 cy Stops to discharge passengers from Cleveland and beyond.
 db Train 8 stops at Ravenna (7.52 A. M.) to discharge passengers from Marion and west, and on signal to receive for Youngstown and east.
 dc Stops Mantua (1.53 P. M.) to discharge passengers from Cleveland and on signal to receive passengers for Warren and east.
 de Stops Barberton (5.20 P. M.) to discharge passengers from Youngstown and east and on signal to receive passengers for Mansfield and west.
 df Stops on signal Mantua (8.42 A. M.) to receive passengers for Cleveland.
 dg Stops on signal at Warren (4.45 A. M.) to discharge passengers from Chicago and to receive passengers for Jamestown and east.
 dh Via Dodaro Bus Co. between Salamanca and Bradford.
 dp Stops Niles (1.16 A. M.) to discharge passengers from east of Youngstown and signal to receive passengers for Cleveland.
 dt No baggage carried on this train east of Hornell. Baggage will be handled on following train.
 du Coaches only, west of Salamanca.
 dv Stops on signal Union City (8.50 P. M.) to discharge passengers from Youngstown and west and to receive passengers for New York.
 dw Stops Cuba (9.54 A. M.) to discharge passengers from Jamestown and west and to receive for Elmira and east.
 dx Stops Ridgewood (6.43 P. M.), Passaic (6.59 P. M.) to discharge passengers from Goshen and west.
 dy Stops on signal Cambridge Springs (7.17 A. M.), Union City (7.34 A. M.), to discharge passengers from Chicago and to receive for Binghamton and east.
 dz Stops Ridgewood (8.03 A. M.), Paterson 8.12 A. M.), Passaic (8.19 A. M.), to discharge passengers from Goshen and west.
 ea Train 61 has a connection from Newark Saturday only.
 ec Bus service between New Castle and New Castle (Washington St.).
 ed Bus service between Wampum and Ellwood City.
 eg On Holidays Train 62 has no connection for Newark.
 eh On Holidays Train 57 has no connection from Newark.
 ek Train 2 stops Suffern (6.30 P. M.) to discharge passengers from Binghamton and west.
 en Stops on signal Paterson (9.27 A. M.), Ridgewood (9.37 A. M.) to receive passengers.
 ep Train 1 stops on signal Passaic (9.20 A. M.), Suffern (9.51 A. M.) to receive passengers for Binghamton and west.
 er Stops Niles (5.46 A. M.) to discharge passengers from Cleveland and west and on signal to receive for Pittsburgh.
 es Stops on signal Niles (6.17 P. M.) to receive passengers for Jamestown and east, and to discharge passengers from Cleveland.
 et Stops on signal East 55th Street (1.34 P. M.); East 93rd Street (1.39 P. M.) to receive passengers.

- eu Stops Endicott (6.12 P. M.) daily to discharge passengers from Jamestown and west and on signal to receive passengers for New York; also stops Sundays only to receive and discharge passengers.
 ev Stops on signal to receive passengers for Cleveland and beyond.
 ew Stops (11.46 A. M.) to discharge from Jamestown and east and west of Akron.
 ex Stops Endicott (2.47 A. M.) to discharge passengers from Buffalo, Jamestown and west.
 ey Stops Hohokus on Saturdays only (12.07 P. M.).
 ez On Saturday Train 60 has no connection for Newark.
 ge Stops West Henrietta (11.08 A. M.) to discharge passengers from east of Avon.
 gt In connection with the bus service the Erie Railroad Company acts as agent only and is not responsible beyond its own line, except as such responsibility may be imposed by law with respect to baggage.
 ha Stops at Narrowsburg (11.02 P. M.) to discharge passengers from Ridgewood and east.
 he Stops Alden (10.14 P. M.) to discharge passengers from Buffalo and on signal to receive passengers.
 hf Stops (11.09 P. M.) to discharge passengers from Pittsburgh.
 hm On Saturdays connection for Train 69 leaves Newark at (6.16 P. M.); has no connection on Sundays or Holidays.
 hn On Sundays Train 2 has no connection for Newark.
 ho Stops at Mantua (9.24 A. M.) to receive passengers for Cleveland.
 ht Trains 5-557 and 560-6 carry through sleeping cars between Bradford and New York.
 hu Stops to discharge passengers.
 hv Stops on signal East 93rd Street (6.13 P. M.) to receive passengers.
 mh Stops on signal, Sundays only, to discharge passengers from New York.
 na Train 6 stops on signal at East 93rd St. (5.13 P. M.) to receive passengers for Sharon and east.
 ne Train 626 stops Saturdays only at Solon (1.39 P. M.) and Aurora (1.47 P. M.) to discharge passengers from Cleveland.
 nf Stops on signal at Garrettsville-Hiram (2.47 P. M.) to receive passengers for Cleveland.
 nh Stops on signal at Garrettsville-Hiram (10.52 A. M.) to discharge passengers from Hornell and east; also discharge from Marion and west.

ERIE TICKET OFFICES AND PASSENGER STATIONS IN PRINCIPAL CITIES

- Akron, O.—Union Station.**
(Telephone Jefferson 9141)
B. L. BENDER, Ticket Agent.
- Binghamton, N. Y.—Erie Station.**
(Telephone 4-3251)
A. F. WAINSCOTT, Ticket Agent.
- Bradford, Pa.—Erie Station.**
(Telephone 3716)
A. J. SULLIVAN, Ticket Agent.
- Brooklyn, N. Y.—City Ticket Office.**
155 Pierrepont St.
(Telephone Triangle 5-7440)
J. W. VAN COTT, Ticket Agent.
- Buffalo, N. Y.—City Ticket Office.**
6 North Division St.
(Telephone Washington 4300)
W. L. MCCREARY, Ticket Agent.
Station Ticket Office
(Lehigh Valley Terminal)
Main and Scott Streets
(Telephone Washington 4300)
A. L. SEITZ, Ticket Agent.
- Chicago, Ill.—City Ticket Office.** 163-
165 West Jackson Blvd.
(Telephone Harrison 4160)
C. F. KUNDEL, Ticket Agent.
- Hotel Ticket Offices—**
Congress, Morrison, Sherman, Stevens,
Palmer House, Merchandise Mart.
(Telephone Harrison 2203)
GEORGE M. NEWHART, Ticket Agent.
- Dearborn Station.**
(Telephone Harrison 9830)
W. E. MISCHNICK, Ticket Agent.
- Cleveland, O.—City Ticket Office.**
2063 East 9th St.
(Telephone Cherry 8400)
CASPER J. MILLER, Ticket Agent.
- Erie Station.**
(Telephone Cherry 8400)
G. SAUNDERS, Ticket Agent.
- Elmira, N. Y.—Erie Station.**
(Telephone 2-0380)
E. J. STEELE, Ticket Agent.
- Hornell, N. Y.—Erie Station.**
(Telephone 680)
D. S. FORDHAM, Ticket Agent.
- Huntington, Ind.—Erie Station.**
(Telephone 140)
D. L. HERENDEEN, Ticket Agent.
- Jamestown, N. Y.—Erie Station.**
(Telephone 6076)
FRANK PRIEST, Ticket Agent.
- Jersey City, N. J.—Erie Station.**
(Telephone Delaware 8-6400)
G. B. IRVING, Ticket Agent.
- Mansfield, O.—Erie Station.**
(Telephone Canal 1423)
J. W. GILKERSON, Ticket Agent.
- Marion, O.—Erie Station.**
(Telephone 2399)
L. E. NEBERGALL, Ticket Agent.
- Meadville, Pa.—Erie Station.**
(Telephone 1212)
O. L. ENOS, Ticket Agent.
- Middletown, N. Y.—Erie Station.**
(Telephone 3303)
J. H. DIMKE, Ticket Agent.
- Newark, N. J.—Erie Station.**
(Telephone Humboldt 2-0600)
G. J. MCMICHAEL, Ticket Agent.
- New York, N. Y.—City Ticket Office.**
Information Bureau.
Train Service and Fares.
(Telephone Barclay 7-6500)
City Ticket Office, 12 West 51st Street,
Rockefeller Center.
(Telephone Circle 5-7222)
G. H. DOWN, Ticket Agent.
West 23rd Street Station.
(Telephone Chelsea 3-0780)
C. H. POTTER, Ticket Agent.
Chambers Street Station.
(Telephone Cortlandt 7-9200)
T. I. NEWMAN, Ticket Agent.
City Ticket Office, 17 John Street.
(Telephone Cortlandt 7-6430 and
7-6431)
W. G. TEDFORD, Ticket Agent.
- Olean, N. Y.—Erie Station.**
(Telephone 4343)
_____, Ticket Agent.
- Passaic, N. J.—Erie Station.**
(Telephone 2-1613)
O. R. KRECH, Ticket Agent.
- Paterson, N. J.—Erie Station.**
(Telephone Sherwood 2-3337)
J. H. GRAF, Ticket Agent.
- Port Jervis, N. Y.—Erie Station.**
(Telephone 300)
R. FARBER, Ticket Agent.
- Sharon, Pa.—Erie Station.**
(Telephone 234)
H. P. MORGAN, Ticket Agent.
- Warren, O.—Erie Station.**
(Telephone 1000)
R. S. GETTIG, Ticket Agent.
- Youngstown, O.—Erie Station.**
(Telephone 41101)
R. E. TOWNS, Ticket Agent.

NEW YORK, UPTOWN CITY TICKET OFFICE ROCKEFELLER CENTER, RADIO CITY

The uptown city office of the Erie Railroad is now located at 12 West 51st St. This new location in Rockefeller Center is more convenient to more of our passengers. See list above for other New York offices.

RAILROAD AND PULLMAN FARES

For Information Only. Subject to Change Without Notice

Between And	New York				Binghamton				Buffalo				Jamestown				Cleveland				Chicago			
	Tickets valid in		Lower Berth	Seat Fare	Tickets valid in		Lower Berth	Seat Fare	Tickets valid in		Lower Berth	Seat Fare	Tickets valid in		Lower Berth	Seat Fare	Tickets valid in		Lower Berth	Seat Fare	Tickets valid in		Lower Berth	Seat Fare
	Pull-man	Coach		Pull-man	Coach		Pull-man	Coach		Pull-man	Coach		Pull-man	Coach		Pull-man	Coach		Pull-man	Coach		Pull-man	Coach	
Akron.....Ohio	\$ 16.75	\$ 13.94	\$ 3.95	\$ 12.30	\$ 10.23	\$ 3.15	\$ 2.20	\$ 6.70	\$ 5.57	\$ 2.10	\$ 1.15	\$ 6.95	\$ 5.78	\$ 2.65	\$ 1.30	\$ 2.60	\$ 2.15	\$ 2.05	\$ 10.60	\$ 8.82	\$ 2.65	\$ 1.60		
Binghamton.....N. Y.	5.80	4.82	2.10	1.15	6.15	5.11	2.40	1.20	2.40	1.98	2.10	1.55	1.28	2.65	1.30	11.60	9.65	3.15	20.35	16.76	5.25		
Bradford.....Pa.	11.95	9.94	3.15	6.15	5.11	2.40	1.20	2.40	1.98	2.10	1.55	1.28	2.65	1.30	6.00	4.98	15.55	12.68		
Buffalo.....N. Y.	11.90	9.90	2.10	2.10	6.15	5.11	2.10	1.15	2.40	1.98	2.10	1.55	1.28	2.65	1.30	6.30	5.23	14.30	11.65		
Callicoon.....N. Y.	4.10	3.40	2.65	2.40	1.98	8.55	7.11	2.65	1.55	9.35	7.78	2.65	1.65	14.00	11.65	3.95	2.50	22.70	18.74	5.80	
Cambridge Springs...Pa.	14.40	11.98	3.15	8.60	7.15	2.65	1.55	3.70	3.07	1.65	1.36	4.05	3.36	2.10	13.05	10.86	3.15		
Chicago.....Ill.	25.25	20.69	6.30	20.35	16.76	5.25	14.30	11.65	14.15	11.65	3.15	2.40	11.75	9.78	11.75	9.78	
Cleveland.....Ohio	16.30	13.57	3.95	11.60	9.65	3.15	2.05	6.30	5.23	2.10	1.15	4.70	3.90	2.40	9.35	7.78	2.65	1.65	18.10	14.88	4.50	
Corning.....N. Y.	8.05	6.69	2.10	1.55	2.25	1.86	3.90	3.23	2.10	1.15	4.75	3.94	2.10	9.35	7.78	2.65	1.65	18.10	14.88	4.50	
Corry.....Pa.	13.55	11.28	3.15	2.40	7.75	6.44	2.65	1.40	2.85	2.36	1.80	1.66	4.05	3.36	2.10	13.35	11.11	3.15		
Deposit.....N. Y.	5.30	4.40	2.10	1.15	7.30	6.07	2.65	1.35	8.10	6.73	2.65	1.45	12.75	10.61	3.15	2.35	21.50	17.71	5.80	
Elmira.....N. Y.	7.55	6.28	2.10	1.45	1.75	1.44	4.40	3.65	2.10	1.80	5.25	4.36	2.40	9.90	8.23	2.65	1.75	18.60	15.30	4.50	
Gallon.....Ohio	18.95	15.78	4.50	14.00	11.65	3.95	2.60	7.95	6.61	7.10	5.90	2.65	1.40	5.10	4.23	8.45	7.03	2.65	
Hancock.....N. Y.	4.90	4.07	2.10	1.55	1.28	7.70	6.40	2.65	1.40	8.50	7.07	2.65	1.55	13.15	10.94	3.15	2.40	21.90	18.04	5.80	
Hornell.....N. Y.	9.30	7.73	2.65	1.75	3.50	2.90	2.80	2.32	3.50	2.90	7.95	6.61	2.65	1.50	17.00	13.97	3.95	
Huntington.....Ind.	22.65	18.86	5.25	17.95	14.94	4.50	12.05	10.03	10.85	9.03	2.65	2.10	9.45	7.86	4.30	3.57	
Jamestown.....N. Y.	12.75	10.61	3.15	2.35	6.95	5.78	2.65	1.30	2.10	1.73	4.70	3.90	2.40	14.15	11.65	3.15		
Kent.....Ohio	16.45	13.69	3.95	12.00	9.98	3.15	2.10	6.70	5.57	5.10	4.23	2.40	2.30	1.90	10.95	9.11	2.65	
Lackawaxen.....Pa.	3.35	2.78	3.15	2.61	9.30	7.73	2.65	1.70	10.10	8.40	2.65	1.80	14.75	12.28	3.95	2.65	23.45	19.37	5.80	
Lima.....Ohio	20.60	17.15	5.25	15.90	13.23	3.95	9.80	8.15	8.75	7.25	2.65	1.75	7.25	6.03	6.25	5.19	2.10	
Mansfield.....Ohio	18.45	15.36	4.50	14.00	11.65	3.95	2.50	7.95	6.61	7.10	5.90	2.65	1.35	4.65	3.86	8.80	7.32	2.65	
Marion.....Ohio	19.55	16.28	4.50	14.65	12.19	3.95	2.65	8.60	7.15	7.75	6.44	2.65	1.50	5.75	4.78	7.85	6.53	2.65	
Meadville.....Pa.	14.80	12.32	3.15	2.40	9.00	7.48	2.65	1.60	4.15	3.44	2.10	1.73	3.70	3.07	2.10	13.05	10.86	3.15	
Middletown.....N. Y.	2.00	1.65	4.45	3.69	2.10	10.60	8.82	2.65	1.90	11.40	9.48	3.15	2.00	16.05	13.36	3.95	24.80	20.45	6.30	
New York.....N. Y.	5.80	4.82	2.10	1.15	11.90	9.90	2.65	2.10	12.75	10.61	3.15	2.35	16.30	13.57	3.95	25.25	20.69	6.30	
Olean.....N. Y.	11.20	9.32	2.65	2.05	5.40	4.48	2.10	1.95	2.20	1.82	1.60	1.32	6.05	5.03	2.65	1.25	15.50	12.72	3.95	
Owego.....N. Y.	6.45	5.36	2.10	1.25	5.50	4.57	2.10	1.00	6.35	5.28	2.40	1.15	11.00	9.15	2.65	1.95	19.70	16.22	5.25	
Pittsburgh.....Pa.	12.35	10.28	5.40	4.48	3.95	3.28	2.10	14.10	11.73	
Port Jervis.....N. Y.	2.65	2.19	3.85	3.19	2.10	1.70	10.00	8.32	2.65	1.80	10.80	8.98	2.90	1.90	15.40	12.82	3.95	24.15	19.95	6.05	
Salamanca.....N. Y.	11.75	9.78	2.65	2.10	5.95	4.94	2.10	1.05	1.90	1.57	1.05	5.75	4.78	2.65	1.15	15.05	12.27	3.95	
Sharon.....Pa.	15.15	12.61	3.15	2.40	10.30	8.57	2.65	1.85	4.95	4.11	3.35	2.78	2.45	2.03	12.65	10.53	3.15	
Warren.....Ohio	15.60	12.98	3.15	11.10	9.23	2.65	2.00	5.80	4.82	4.20	3.48	1.60	1.32	11.85	9.86	3.15	
Waverly.....N. Y.	7.00	5.82	2.10	1.35	1.20	4.95	4.11	2.10	4.82	2.40	10.40	8.65	2.65	1.85	19.15	15.76	4.50	
Wellsville.....N. Y.	10.10	8.40	2.65	1.90	4.30	3.57	2.10	3.35	2.78	2.70	2.23	7.20	5.98	2.65	1.45	16.65	13.67	3.95	
Youngstown.....Ohio	15.15	12.61	3.15	2.40	10.70	8.90	2.65	1.90	5.40	4.48	3.75	3.11	2.00	1.65	12.20	10.15	3.15	

RATES FOR UPPER BERTH, SECTION, DRAWING ROOM OR COMPARTMENT IN SLEEPING CARS (No Surcharge)

Where Lower Berth Rate Is	Upper Berth Rate Will Be	Section Rate For One Passenger	▲ Section Rate For Two Passengers	Drawing Room Rate For One Passenger	Drawing Room Rate For Two or More Pas'grs.	Com-partment Rate For One Passenger	Com-partment Rate For Two or More Pas'grs.	Where Lower Berth Rate Is	Upper Berth Rate Will Be	Section Rate For One Passenger	▲ Section Rate For Two Passengers	Drawing Room Rate For One Passenger	Drawing Room Rate For Two or More Pas'grs.	Com-partment Rate For One Passenger	Com-partment Rate For Two or More Pas'grs.
\$ 2.10	\$ 1.60	\$ 2.95	\$ 3.40	\$ 5.25	\$ 7.35	\$ 4.20	\$ 6.30	\$ 4.20	\$ 3.20	\$ 5.90	\$ 6.75	\$ 10.50	\$ 14.70	\$ 8.40	\$ 12.10
2.40	1.80	3.35	3.80	6.05	8.40	4.75	6.85	4.50	3.40	6.25	7.15	11.30	15.75	8.95	12.60
2.65	2.00	3.70	4.20	6.60	9.45	5.25	7.35	4.75	3.60	6.65	7.60	11.85	16.80	9.45	13.65
2.90	2.20	4.05	4.65	7.35	10.50	5.80	8.40	5.25	4.00	7.35	8.40	13.15	18.90	10.50	14.70
3.15	2.40	4.45	5.05	7.90	11.55	6.30	8.95	5.55	4.20	7.75	8.85	13.95	19.95	11.05	15.75
3.45	2.60	4.80	5.50	8.70	12.60	6.85	10.00	5.80	4.40	8.10	9.25	14.45	21.00	11.55	16.30
3.70	2.80	5.15	5.90	9.20	13.65	7.35	10.50	6.05	4.60	8.50	9.70	15.25	22.05	12.10	17.35
3.95	3.00	5.55	6.30	10.00	14.70	7.90	11.05	6.30	4.80	8.85	10.10	15.75	22.05	12.60	17.85

Minimum Number of Railroad Tickets Required for Exclusive Occupancy of Sections, Drawing Rooms or Compartments in Sleeping Cars and Drawing Room in Parlor Cars

Section.....One
 Comp., Berth Service...One and One-tenth
 Comp., Seat Service...One and One-half
 Drawing Room, Berth Service.....One and One-quarter
 Drawing Room, Seat Service.....Two
 Drawing Room in Parlor Cars.....Two

Note:—▲ For section occupied by two passengers but with lower berth only prepared for night service.

GENERAL INFORMATION

STANDARD OF TIME—Erie Lines east of and including Ohio City, Ohio, are operated by Eastern Standard Time, Lines west of Ohio City, Ohio, by Central Standard Time. 12.01 Midnight to 12.00 Noon is indicated by light-faced type. 12.01 Noon to 12.00 Midnight is indicated by heavy-faced type.

TRAINS WILL NOT BE HELD for ferries from New York between hours of 5:00 P.M. and 6:30 P.M. Eastern Standard Time.

HOLIDAYS—The term "Holidays" (unless covered by special note) refers to New Year's Day, Lincoln's Birthday, Washington's Birthday, Memorial Day, Independence Day, Labor Day, Columbus Day, Election Day (November 8), Thanksgiving Day and Christmas Day.

THIS COMPANY IS NOT RESPONSIBLE FOR ERRORS in time tables, inconvenience or damage resulting from delayed trains or failure to make connections; schedules are subject to change without notice.

FARES PAID ON TRAINS—Conductors are required to charge ten (10) cents in excess of the one-way ticket fare for passengers traveling in coaches only in the territory east of Port Jervis, including side lines and branches. Buy tickets before boarding trains and avoid payment of this extra fare.

CHILDREN under five years of age are carried free when accompanied by parent or guardian; five years and under twelve, half fare, twelve years of age and over, full fare.

ADJUSTMENT OF FARES—Should any misunderstanding arise with conductors or agents, pay the fare required, take receipt and communicate with General Passenger Agent, Midland Bldg., Cleveland, Ohio.

SLEEPING AND PARLOR CAR RESERVATIONS—Space reserved by telegraph or telephone within city limit will be held until:
 5:00 P.M. day prior to departure of trains leaving before noon next day.
 10:00 A.M. day of departure for trains leaving between noon and 5:00 P.M.
 2:00 P.M. day of departure for trains leaving after 4:00 P.M.

When application is by wire or letter from a point outside of city limit, space will be held until fifteen minutes of train time.

BAGGAGE TO BE CHECKED should be delivered at station at least thirty minutes before train time.

BAGGAGE DELIVERY IN NEW YORK CITY—All baggage checked to New York City will be sent to the West 23rd Street Station unless passenger specifies Chambers Street Station at time of checking.

Baggage delivery service in New York will be performed by the Railway Express Agency.

HAND-BAGGAGE in Pullman Cars is restricted to what can be conveniently placed in the berth, seat or other accommodations purchased by the passenger.

CHICAGO PASSENGER AND BAGGAGE TRANSFER is performed by the Parmelee Company. A uniformed agent meets all incoming trains of the Erie Railroad on arrival at Dearborn Station.

ARTICLES LOST ON TRAINS or left in waiting rooms or stations, owners should apply to Lost and Found Bureau, (Baggage Room) Jersey City Depot, or address General Passenger Agent, Midland Bldg., Cleveland, Ohio, giving full description of the property, stating date of loss and number of train.

SAFETY FIRST HINTS—Carefulness on your part helps eliminate accidents. Don't get on or off a train in motion; wait for a full stop. Keep hand baggage out of car aisles; this will remove a cause of inconvenience, possibly of harm, to others. Walk carefully when entering or leaving train; high-heeled shoes are sometimes a cause of tripping or stumbling on car steps. Don't stand or walk close to the railroad track; look both ways before starting across. Courtesy toward your fellow travelers increases the pleasure of your journey.

TABLE 1

CONDENSED TABLE OF THROUGH TRAINS NEW YORK AND BUFFALO, CLEVELAND AND CHICAGO

(FOR LOCAL TRAINS AND INTERMEDIATE TIME OF THROUGH TRAINS SEE LOCAL TABLES)

WEST BOUND		Air-conditioned Trains	EAST BOUND	
THE ERIE LIMITED			THE ERIE LIMITED	
New York—Buffalo—Jamestown—Chicago			Chicago—Jamestown—Buffalo—New York	
TRAIN NO. 1—DAILY Lv New York, W. 23d St. 8.30AM E.S.T. " " Chambers St. 8.45 " " " Jersey City 9.00 " " " Paterson en 9.27 " " " Ridgewood en 9.37 " " " Binghamton 2.25PM " " " Elmira 3.44 " " Ar Buffalo (Lehigh Valley Term.) 7.35 " " Lv Olean 6.45 " " " Bradford ad 5.42 " " " Buffalo (Lehigh Valley Term.) 5.20 " " " Jamestown 8.03 " " " Meadville 9.40 " " " Youngstown 11.16 " " " Warren 11.42 " " " Akron 12.50AM " " Ar Chicago (Dearborn Sta.) 8.05AM C.S.T.		Air-conditioned equipment has been assigned to regular sections of trains as shown herein. Every effort will be made to provide it as specified, but the right is reserved to employ non-air-conditioned cars as necessitated by volume of traffic or emergencies.	TRAIN NO. 2—DAILY Lv Chicago (Dearborn Sta.) 6.00PM C.S.T. Ar Akron 3.49AM E.S.T. " Warren dg 4.45 " " " Youngstown 5.02 " " " Meadville 6.55 " " " Jamestown 8.31 " " " Buffalo (Lehigh Valley Term.) 10.42 " " " Bradford ad 10.50 " " " Olean 9.39 " " Lv Buffalo (Lehigh Valley Term.) 8.20 " " Ar Elmira 12.30PM " " " Binghamton 1.51 " " " Ridgewood dx 6.43 " " " Paterson 6.52 " " " Jersey City 7.20 " " " New York, Chambers St. 7.34 " " " " W. 23d St. 7.55PM "	
EQUIPMENT Air-Conditioned Sleeping Cars: New York to Chicago—8 Section Lounge Restaurant Car. Hornell to Chicago—8 Section, 1 Compartment Lounge Restaurant Car. Air-Conditioned Parlor Buffet Car: New York to Hornell. Air-Conditioned Salon Coaches: New York to Chicago. Air-Conditioned Individual Seat Coach: New York to Buffalo. Dining Service for all meals in Air-Conditioned Lounge Restaurant Cars.		EQUIPMENT Air-Conditioned Sleeping Car: Chicago to New York—8 Section Lounge Restaurant Car. Air-Conditioned Parlor Buffet Car: Hornell to New York. Air-Conditioned Salon Coaches: Chicago to New York. Air-Conditioned Individual Seat Coach: Buffalo to New York. Dining Service for all meals in Air-Conditioned Lounge Restaurant Car.		
THE LAKE CITIES		THE LAKE CITIES		
TRAIN NO. 5—DAILY New York—Buffalo—Cleveland		TRAIN NO. 6—DAILY Cleveland—Buffalo—New York		
EQUIPMENT Air-Conditioned Sleeping Cars: New York to Cleveland—10 Section, 2 Compartment and Drawing-room. New York to Bradford—12 Section and Drawing Room. (Sleeping Car may be occupied at Bradford until 8.00 A. M.). Air-Conditioned Lounge Dining Car: New York to Port Jervis. Hornell to Youngstown. Air-Conditioned Coaches: New York to Cleveland. Coaches: Hornell to Buffalo.		EQUIPMENT Air-Conditioned Sleeping Cars: Cleveland to New York—10 Section, 2 Compartment and Drawing-room. Youngstown to New York—12 Section and Drawing-room Car (operates Sundays only). Bradford to New York—12 Section and Drawing Room. Air-Conditioned Lounge Dining Car: Youngstown to Hornell. Port Jervis to New York. Air-Conditioned Coaches: Cleveland to New York. Coaches: Buffalo to Hornell.		
PACIFIC EXPRESS		PACIFIC EXPRESS		
TRAIN NO. 7—DAILY New York—Buffalo—Jamestown—Chicago		TRAIN NO. 8—DAILY Chicago—Jamestown—New York		
EQUIPMENT Air-Conditioned Sleeping Car: New York to Salamanca—12 Section and Drawing-room Car (Saturday night operates New York to Youngstown). (Sleeper open Jersey City at 9.30 P. M.) Air-Conditioned Dining Lounge Car: Binghamton to Hornell. Air-Conditioned Salon Coaches: New York to Chicago.		EQUIPMENT Air-Conditioned Sleeping Car: Chicago to Hornell—8 Section, 1 Compartment Lounge Restaurant Car. (Sleeper open at Chicago at 9.30 P. M.) Air-Conditioned Salon Coaches: Chicago to New York. Air-Conditioned Dining Lounge Car: Hornell to New York. (No baggage handled on this train east of Hornell, baggage will be handled on following train.)		
TRAIN NO. 9—DAILY New York—Binghamton		SOUTHERN TIER EXPRESS		
EQUIPMENT Through Coaches...New York to Binghamton.		TRAIN NO. 10—EX. SUN. Hornell—Elmira—Binghamton—New York		
Lv New York, W. 23d St. 10.30AM E.S.T. " " Chambers St. 10.40 " " " Jersey City 11.00 " " " Paterson 11.29 " " " Ridgewood 11.39 " " Ar Binghamton 5.30PM "		EQUIPMENT Air-Conditioned Sleeping Car: Hornell to New York—12 Section and Drawing-room Car. (Sleeper may be occupied at Jersey City until 8.00 A. M.) Coaches: Hornell to New York.		
THE MOUNTAIN EXPRESS		THE MOUNTAIN EXPRESS		
TRAIN NO. 27—DAILY New York—Binghamton—Elmira—Hornell		TRAIN NO. 28—DAILY Binghamton—New York		
EQUIPMENT Air-Conditioned Dining Lounge Car: New York to Binghamton. Through Coaches...New York to Hornell.		EQUIPMENT Through Coaches...Binghamton to New York.		

TABLE 3 EASTBOUND

BINGHAMTON—NEW YORK

Hudson and Manhattan Tube Trains operate to and from Erie Railroad Station in Jersey City. Fare downtown, 8 cents; uptown, 10 cents. (Temporarily H. & M. uptown trains will terminate at 28th Street, main entrance on Sixth Avenue between 29th Street and 30th Street.)

Table with 23 columns representing train numbers (50, 52, 204, 6, 54, 56, 58, 58, 30, 60, 60, 62, 206, 70, 28, 2, 700, 64, 208, 208, 22, dt8, 68, 10) and rows for stations from Binghamton, N. Y. to Jersey City, N. Y. Columns include arrival and departure times and service frequency (Daily Ex., Sun., Hol.).

LOCAL PARLOR AND CLUB CAR EQUIPMENT

No. 10—Except Sundays. Air-Conditioned Sleeping Car... Hornell to New York. Coaches... Hornell to New York.

No. 28—THE MOUNTAIN EXPRESS—Daily. Coaches... Binghamton to New York.

No. 30—Except Sat., Sun. and Hol. Erie Club Car... Port Jervis to New York. Coaches... Port Jervis to New York. No. 56—THE TUXEDO—Except Sun. and Hol. Parlor Car... Port Jervis to New York. Coaches... Port Jervis to New York.

TABLE 4 WESTBOUND

BINGHAMTON—AKRON

EASTBOUND

Miles from New York	Eastern Standard Time				Miles from Chicago	Central Standard Time								
	du 7 Daily	1 Daily	27 Daily	5 Daily		2 Daily	22 Sun. only	dt 8 Daily	10 Daily Ex. Sun.	6 Daily	620 Sun. only			
0.0	PM 11.55	AM 8.30	PM 2.30	PM 7.10	0.0	Chicago (Dearborn Sta.)... Lv.	PM 6.00		PM 10.00					
0.0	12.05	8.45	2.40	7.30										
1.0	12.25	9.00	3.00	7.50										
				AM										
215.1	6.09	2.25	9.05	1.35	372.7	Akron... Ohio	3.49		7.22					
217.8					382.8	Kent... Ohio	4.05		7.37					
223.7					389.1	Ravenna... Ohio	4.10		7.42					
237.1						Cleveland (See Table 7)... Lv.			db					
242.8					413.0	Warren (cd)	dg		8.22					
246.8					418.1	Niles (cd)								
249.4					422.3	Girard (cd)								
256.2					426.9	Youngstown (cd)	5.02		8.43					
261.0						Pittsburgh (See Table 7)... Lv.								
266.8					426.9	Youngstown... Lv.	5.12		8.50					
273.8					434.5	Hubbard... Pa.	5.43		9.14					
278.4					440.5	Sharon... Pa.	6.18		9.41					
283.6					456.6	Greenville... Pa.	6.55		10.20					
291.2					482.8	Meadville... Ar.								
293.1						Franklin (See Table 11)... Ar.								
302.3						Oil City (See Table 11)... Ar.								
307.4					482.8	Meadville... Lv.	7.00		10.25					
312.5					497.5	Cambridge Springs... Pa.	dy		10.45					
315.1					513.1	Union City... Pa.	dy		11.05					
328.1					524.5	Corry... Pa.	7.51		11.21					
332.3					551.4	Jamestown... N. Y. Ar.	8.31		12.15					
425.2						(Chautauqua Lake)								
332.3					620.9	Buffalo (See Table 8)... Ar.	10.42		7.05					
341.5					551.4	Jamestown... Lv.	8.31		12.15					
349.9					567.6	(Chautauqua Lake)								
358.5					585.1	Randolph... Pa.			12.37					
366.9						Salamanca... Ar.	9.10		1.11					
374.4						Bradford... Lv.	8.15		11.17					
383.3					585.1	Salamanca... Lv.	9.15		1.18					
395.7					599.6	Allegany... Pa.								
399.1					603.0	Olean... Pa.	9.39		1.44					
413.6					615.4	Cuba... Pa.	dw							
430.2					624.3	Friendship... Pa.								
447.3					631.8	Belmont... Pa.								
474.2					640.2	Wellsville... Pa.	10.29		2.41					
485.6					648.8	Andover... Pa.								
501.2					657.2	Alfred... Pa.								
515.9					666.4	Hornell... Ar.	11.07		3.20					
						Buffalo (See Table 6)... Lv.	8.20							
515.9					666.4	Hornell... Pa.	11.14		11.50					
542.1					670.6	Canisteo... Pa.			12.01					
558.2					683.6	Cameron... Pa.			12.17					
564.2					686.2	Cameron Mills... Pa.			12.24					
571.8					691.3	Rathbone... Pa.			f 12.31					
						Addison... Pa.	11.49		12.46					
571.8					705.6	Painted Post... Pa.			1.24					
576.4					707.5	Corning... Pa.			1.32					
580.6					715.1	Big Flats... Pa.			f 1.41					
585.7					720.3	Horseheads... Pa.			1.49					
						Elmira... Pa.								
638.3					724.9	Wellsburg... Pa.								
609.6					731.9	Chemung... Pa.								
615.9					737.7	Waverly... Pa.								
626.0					742.5	Barton... Pa.								
					749.3	Smithboro... Pa.								
					751.9	Tioga Centre... Pa.								
					755.9	Owego... Pa.								
					761.6	Endicott... Pa.	1.13		3.23					
					775.0	Johnson City... Pa.	1.30		3.41					
					780.9	Binghamton... Ar.	1.51		3.56					
					783.6	Binghamton (D.& H.)... Lv.			4.14					
					783.6	Oneonta (D.& H.)... Ar.								
					844.4	Albany (D.& H.)... Ar.								
					926.1	Jersey City... Ar.	7.20		11.45					
						N. Y., Chambers St. ... Ar.	7.34		11.59					
						West 23d St. ... Ar.	7.55							
997.7														
998.7														

COME! DINE WITH US.

Table D'Hotel prices range as follows: Breakfast 50c to \$1.00, Luncheon 75c to \$1.25, Dinner 75c to \$1.25. A meal on our trains is always a pleasant interlude. Makes the journey seem shorter, too. The freshest food the market

affords, cooked by expert chefs and served in the comfort of spacious Restaurant Cars. If you prefer a light snack without going to the Diner the waiter will bring sandwiches, fruit, coffee, etc., right to your seat.

For Explanation of Reference Marks and Notes, See Pages 5 and 6.

For Parlor, Sleeping and Dining Service, See Pages 9 and 10.

TABLE 5 WESTBOUND

AKRON—CHICAGO

EASTBOUND

Miles from New York	Eastern Standard Time		1	du 7				Miles from Chicago	Central Standard Time		2	dt 8			
	Daily	Daily							Daily	Daily					
0.0	N. Y., West 23d St. Lv.	8.30	AM	11.55				0.0	Chicago (Dearborn Sta.)... III. Lv.	6.00	PM	10.00			
0.0	" Chambers St. " " "	8.45		12.05				6.3	Englewood, 63d Street. " " "	6.14	cp				
1.0	Jersey City " " "	9.00		12.25				20.6	Hammond. Ind. " " "	6.40	10.40				
626.0	Akron. Ohio " " "	12.50		5.10				36.3	Crown Point. " " "	7.06					
633.3	Barberton. " " "			de				100.9	Rochester. " " "	8.15					
639.9	Wadsworth. " " "							142.6	Huntington. Ar. " " "	9.02	12.48				
644.3	Rittman. " " "														
676.5	Ashland. " " "	1.57						142.6	Huntington. Lv. " " "	9.12	12.55				
693.2	Mansfield. " " "	2.30						173.4	Decatur. " " "	9.50					
708.6	Galion. " " "	2.59													
729.6	Marion. Ar. " " "	3.25													
729.6	Marion. Lv. " " "	3.32		8.15				189.9	Ohio City. Ohio " " "	11.12					
754.5	Kenton. " " "	4.01						204.4	Spencerville. " " "						
781.5	Lima. " " "	4.33		9.19				217.2	Lima. " " "	11.56	3.24				
794.3	Spencerville. " " "							244.2	Kenton. " " "		4.01				
808.8	Ohio City. " " "							269.1	Marion. Ar. " " "	1253	4.29				
	Central Standard Time														
825.3	Decatur. Ind. " " "	4.28						269.1	Marion. Lv. " " "	1258	4.34				
856.1	Huntington. Ar. " " "	5.02		9.44				290.1	Galion. " " "	1.29	5.04				
								305.5	Mansfield. " " "	1.59	5.34				
856.1	Huntington. Lv. " " "	5.09		9.57				322.2	Ashland. " " "	2.30	6.01				
897.8	Rochester. " " "	5.59						354.4	Rittman. " " "		6.38				
962.4	Crown Point. " " "	7.05						358.8	Wadsworth. " " "		6.48				
978.1	Hammond. " " "	7.27		12.15				365.4	Barberton. " " "		7.00				
992.4	Englewood, 63d Street. Ill. " " "	ax		ax				372.7	Akron. Ar. " " "	3.49	7.22				
998.7	Chicago (Dearborn Sta.).... Ar. " " "	8.05	AM	1.00	AM			997.7	Jersey City. Ar. " " "	7.20	11.45				
								998.7	N. Y., Chambers St. " " "	7.34	11.59				
									" West 23d St. Ar. " " "	7.55	PM	PM			

TABLE 6 NEW YORK AND BUFFALO

WESTBOUND Read Down			Miles from New York	Eastern Standard Time	EASTBOUND Read Up		
1	7-477	5			2	480	6
Daily	Daily Ex. Sun.	Daily			Daily	Daily Ex. Sun.	Daily
AM	PM	PM			PM	PM	AM
8.30	11.55	7.10	0.0	Lv. N. Y., West 23d St. Ar.	7.55		9.05
8.45	12.05	7.30	0.0	" Chambers St. " " "	7.34		8.54
9.00	12.25	7.50	1.0	Jersey City. Ar.	7.20		8.40
2.25	6.09	1.35	215.1	Lv. Binghamton. Ar.	1.51		3.12
2.38	6.22		223.7 Endicott.	1.30		ex
3.18	7.08		256.2 Waverly.	12.51		2.12
3.44	7.43	2.48	273.8 Elmira.	12.30		1.50
4.09	8.17	3.13	291.2 Corning.	12.06		1.24
5.02	9.15	4.04	332.3	Ar. Hornell. Lv.	11.14		12.31
5.17	9.25	5.10	332.3	Lv. Hornell. Ar.	11.00	8.30	12.15
	9.34	5.19	338.0 Arkport.		8.17	
			340.7 Burns.			
	9.47	5.30	344.9 Canaseraga.	10.28	8.05	
			347.2 Garwoods.			
	f9.54		349.2 Swains.		f7.57	
	10.04	ac	356.3 Dalton.		7.48	
	10.09		358.5 Washington Hunt.		f7.44	
	10.17		362.5	{ Portage. }		f7.37	
				{ Letchworth Park. }			
	6.07	bt6.07	366.4 Castile.	9.59	7.30	bt1122
	6.13	6.13	369.1 Silver Springs.	9.53	7.24	11.15
			372.2 Rock Glen.			
	6.24	6.26	376.4 Warsaw.	9.41	7.11	11.03
	f10.55		382.2 Dale.		f7.02	
			386.5 Linden.			
	6.46	6.55	393.6 Attica.	9.14	6.44	10.35
		7.02	397.5 Griswolds.		6.35	
		7.07	399.7 Darien Center.		6.30	
	7.06	7.15	405.3	Alden (Black Water Baths)	8.49	6.19	he
		7.20	408.2 Marilla.		6.12	
		7.23	409.5 Town Line.		6.08	
		7.30	414.2 Lancaster.		6.00	
		7.33	415.5 Depew.		5.57	
		7.43	422.1 East Buffalo.		5.45	
	7.35	7.55	425.2	Ar. Buffalo. Lv.	8.20	5.35	9.45
	PM	AM		(Lehigh Valley Terminal)	AM	PM	PM

BLACK WATER BATHS, ALDEN, N. Y.

An all year resort where sufferers from rheumatism and nervous ailments have found the Black Water Baths beneficial and curative. Alden is located 20 miles east of Buffalo on the Erie Railroad.

HOTELS AT ALDEN, N. Y.

Empire State Hotel Original Black Water Baths and Hotel
Alden Black Water Sanatorium

OVERNIGHT

From Southern Tier Stations
To New York

SOUTHERN TIER EXPRESS—TRAIN No. 10

DAILY EXCEPT SUNDAY

Air-Conditioned Sleeping Cars

Lv. Hornell	7.00 P.M. E.S.T.
Lv. Addison	7.41 P.M. E.S.T.
Lv. Corning	8.11 P.M. E.S.T.
Lv. Elmira	8.43 P.M. E.S.T.
Lv. Waverly	9.07 P.M. E.S.T.
Lv. Owego	9.30 P.M. E.S.T.
Lv. Endicott	9.49 P.M. E.S.T.
Lv. Binghamton	10.25 P.M. E.S.T.
Ar. Jersey City	4.15 A.M. E.S.T.

Sleeping cars may be occupied at Jersey City until 8.00 A.M. E.S.T. • Air-conditioned night service

returning daily Lv. Jersey City 12.25 A.M. E.S.T.

Busses Replace Trolleys on 23rd Street, New York

The new crosstown bus service meeting all ferries to and from our West 23rd St. Station is fast and frequent. It connects with north- and southbound bus lines to other railroad terminals and the theatrical, shopping and hotel districts. Fare 5c, transfer 2c additional.



6880 3-21-30

ARRIVE FRESH AS A DAISY ON ERIE AIR-CONDITIONED TRAINS

ERIE RAILROAD SYSTEM AND CONNECTIONS

Indicates Double Track

TABLE 7 DETROIT—TOLEDO—CLEVELAND—YOUNGSTOWN—PITTSBURGH

Miles from Cleveland	Eastern Standard Time	EASTBOUND											
		WEEK-DAYS						SUNDAYS					
		688	624	626	6	628	686	688	624	626	6	686	620
		Ex. Sun.	Ex. Sun.	Ex. Sun.	Ex. Sun.	Ex. Sun. & Hol.	Ex. Sun.	Sun. only	Sun. only	Sun. only	Sun. only	Sun. only	Sun. only
		AM	AM	AM	PM	PM	PM	AM	AM	AM	PM	PM	PM
	DetroitLv.	12.30		8.00			1.20	12.30		8.00		1.20	
	ToledoLv.	2.13	5.05	9.45			3.00	2.13	5.05	9.45		3.00	
0.0	ClevelandLv.	4.25	8.00	1.15	5.00	5.30	6.00	4.25	8.00	1.15	5.00	6.00	9.30
3.3	East 55th Street.....		8.07	1.23	5.08	5.38	6.08		8.07	1.23	5.08	6.08	9.40
5.6	E. 93d St., Cleveland.....		8.12	1.27	na	5.43	6.13		8.12	1.27	na	6.13	9.45
10.7	North Randall.....					5.52							
15.8	Solon.....			ne		5.59							10.00
20.4	Geauga Lake.....					6.05							10.05
23.6	Aurora.....			ne		6.10							10.10
30.0	Mantua.....			dc		6.18				dc			10.17
34.2	Jeddoe.....					6.24							
36.7	Garrettsville-Hiram.....		8.46	2.02		6.30			8.46	2.02			10.28
40.3	Mahoning.....					6.36							
45.3	Phalanx.....					6.42							
49.4	Leavittsburg.....					6.49							
52.6	Warren.....	5.37	9.05	2.22	6.08	6.57	7.09	5.37	9.05	2.22	6.08	7.09	10.50
57.7	Niles.....	er	9.13	2.30	es	7.23	7.20	er	9.13	2.30	es	7.20	11.00
61.9	Girard.....					7.33							11.08
66.5	YoungstownAr.	6.00	9.25	2.45	6.30	7.45	7.35	6.00	9.25	2.45	6.30	7.35	11.17
66.5	YoungstownLv.	6.10	9.30	2.50			7.40	6.10	9.30	2.50		7.40	
84.2	New CastleAr.	6.34	9.55	3.14			8.02	6.34	9.55	3.14		8.02	
	New Castle (Wash. St.) ec Ar.	6.48	10.09	3.28			8.16	6.48	10.09	3.28		8.16	
95.5	Ellwood City (ed).....		10.19	3.37			8.25		10.19	3.37		8.25	
102.2	Beaver Falls.....	cy6.56	10.18	3.36			8.25	cy6.56	10.18	3.36		8.25	
	New Brighton.....												
105.6	Beaver.....	cy7.01	10.24	3.41			8.31	cy7.01	10.24	3.41		8.31	
112.3	Aliquippa.....	cy7.10	10.33	3.50			8.40	cy7.10	10.33	3.50		8.40	
120.8	Coraopolis.....	cy7.20	10.44	4.00			8.50	cy7.20	10.44	4.00		8.50	
131.4	PittsburghAr.	7.35	11.00	4.15			9.05	7.35	11.00	4.15		9.05	
		AM	AM	PM	PM	PM	PM	AM	AM	PM	PM	PM	PM

AIR-CONDITIONED TRAINS
Air-conditioned equipment has been assigned to regular sections of trains as shown herein. Every effort will be made to provide it as specified, but the right is reserved to employ non-air-conditioned cars as necessitated by volume of traffic or emergencies.

EQUIPMENT
Detroit, Toledo, Cleveland, Youngstown, Pittsburgh Trains.
★Indicates Air-Conditioned Cars

EASTBOUND
No. 6—Daily. ★Sleeping Car (10 Section 2 Compartment and Drawing Room Car) Cleveland to New York. ★Coach, Cleveland to New York.
No. 620—Sundays only. Coaches, Cleveland to Youngstown and Sharon.
No. 624—Daily. ★Pullman Parlor-Lounge-Diner, Cleveland to Pittsburgh. ★Coach, Cleveland to Pittsburgh.
No. 626—Daily. ★Pullman Parlor Car, Cleveland to Pittsburgh. ★Coach, Cleveland to Pittsburgh.
No. 686—Daily. ★Sleeping Car for Parlor Car Service and ★Coaches, Detroit to Pittsburgh, via Cleveland. Dining Lounge Car, Cleveland to Pittsburgh.
No. 588—Daily. ★Sleeping Cars, Chicago to Pittsburgh. ★Sleeping Cars, Detroit to Pittsburgh. Through Coaches, ★Chicago and ★Detroit to Pittsburgh, via Cleveland.

WESTBOUND
No. 5—Daily. ★Sleeping Car (10 Section 2 Compartment and Drawing Room Car) New York to Cleveland. ★Pullman Parlor Car, Pittsburgh to Cleveland. ★Coach, Pittsburgh to Cleveland.
No. 619—Sundays only. Coaches, Youngstown to Cleveland.
No. 623—Daily. ★Pullman Parlor-Lounge-Diner, Pittsburgh to Cleveland. ★Coach, Pittsburgh to Cleveland.
No. 679—Daily. ★Sleeping Car, Pittsburgh to Chicago. ★Through Coaches, Pittsburgh to Chicago.
No. 685—Daily. ★Sleeping Car for Parlor Car Service and ★Coaches, Pittsburgh to Detroit, via Cleveland. Dining Lounge Car, Pittsburgh to Cleveland.
No. 687—Daily. ★Sleeping Cars, Pittsburgh to Detroit. ★Through Coaches, Pittsburgh to Detroit via Cleveland.

★Cleveland-Pittsburgh Sleeping Car
The Cleveland-Pittsburgh sleeping car operates to and from Union Terminal Cleveland via New York Central (via Ashtabula) to Youngstown, and P. & L. E. Railroad on following schedule:
Eastbound
Lv Cleveland (Union Terminal) 2:35 AM
Ar Pittsburgh (P&LE Station) 7:15 AM
Westbound
Lv Pittsburgh (P&LE Station) 11:45 PM
Ar Cleveland (Union Terminal) 7:15 AM
Sleeper open for occupancy at 9:30 P. M. at Cleveland and 10:00 P. M. at Pittsburgh.
Tickets reading via Erie Railroad between Cleveland and Youngstown, and P. & L. E. Railroad between Youngstown and Pittsburgh, will be honored in this sleeping car.

Holidays in the above table refers to the observance of New Year's Day, Memorial Day, Independence Day, Labor Day, Thanksgiving Day and Christmas Day.

For Explanation of Reference Marks and Notes, see Pages 5 and 6.

For Parlor, Sleeping and Dining Service of Through Trains, see Pages 9 and 10.

50,000,000 AMERICANS Can't Be Wrong!

NEW YORK WORLD'S FAIR

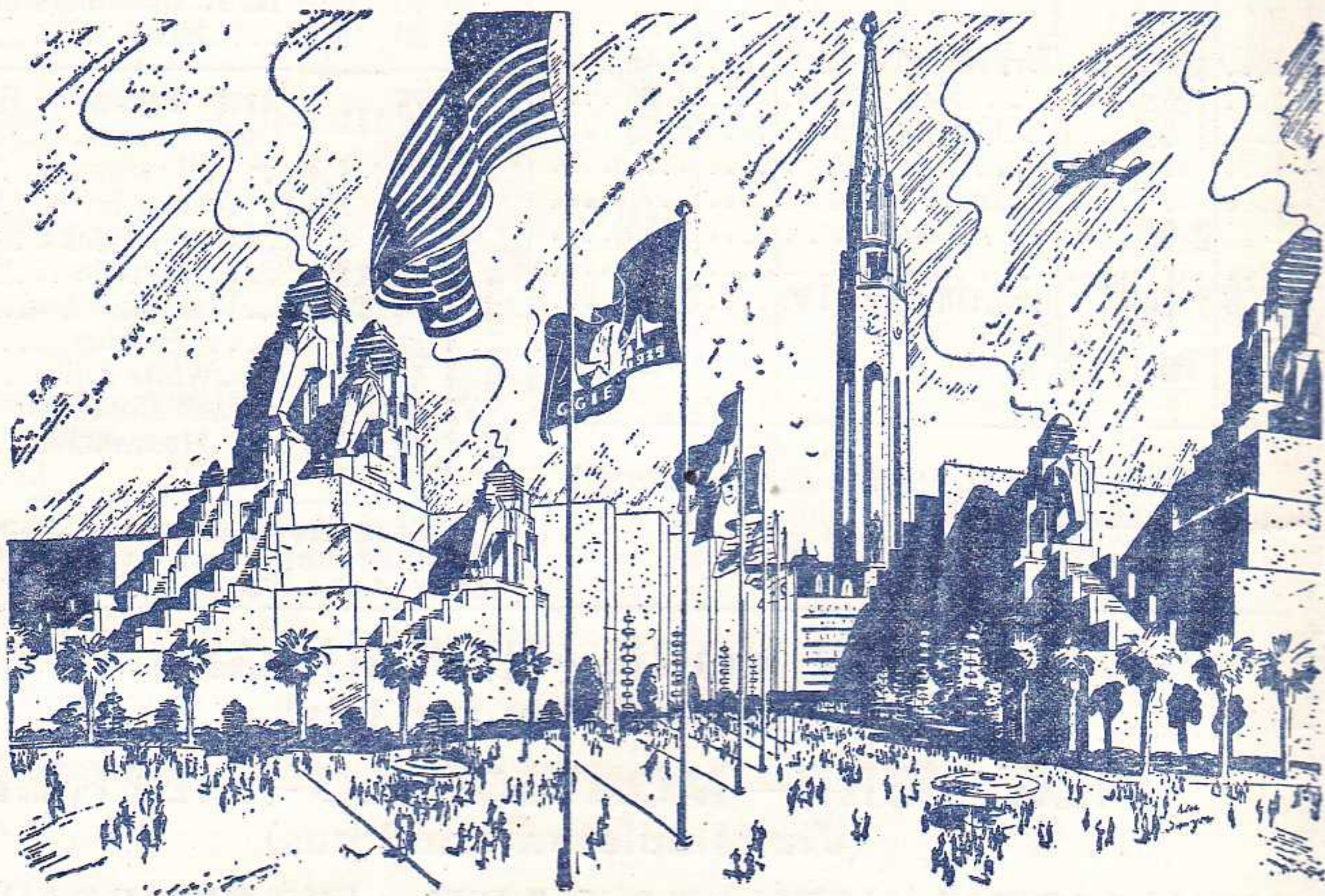
1939

"THE WORLD OF
TOMORROW"

That is the number of visitors anticipated by the New York World's Fair 1939. Already well advanced in construction, this great international exposition promises to be the spectacle of the century. People from every corner of the globe await the opening of "The World of Tomorrow." Of course, the more discriminating in this proposed pilgrimage will travel to and from New York by rail. Make your plans now and enjoy the speed, safety and comfort of the Erie direct rail route to New York City.

The Fair Grounds are readily accessible from Manhattan by subway or the Long Island Railroad.

1939 WORLD'S FAIR *on San Francisco Bay*



Be the Guest of the West in '39

Thousands of visitors are thrilling to the experience of their first preview of Treasure Island . . . and the Golden Gate International Exposition being created for 1939. You will see this \$50,000,000 Magic City being built to greet the millions who will come West in Exposition Year. You will enjoy the swift ferryboat trip to America's World's Fair on the Pacific. Guides will escort you over tree-lined avenues, past the 400-foot Tower of the Sun, the majestic Courts of the Moon and Seven Seas, the Port of the Trade Winds and 1939's rollicking Gayway—all nearing completion. Join this preview parade today—see the Pageant of the Pacific in the making.

Look forward to 1939—when Fiesta Year in the West will provide a twelve months' log of celebrations throughout the Western vacationland—and America's travel trails will lead to Treasure Island on San Francisco Bay.

GOLDEN GATE INTERNATIONAL EXPOSITION
February 18 to December 2, 1939

TABLE 8 BUFFALO—JAMESTOWN

		WESTBOUND			
Mls.	Eastern Standard Time	513	519		
		Daily	Daily		
0.0	Buffalo (Lehigh Valley Terminal)... Lv.	8.00 AM	5.20 PM		
7.4	Blasdell.....	8.17	5.38		
13.3	Hamburg.....	8.29	5.50		
14.4	Water Valley.....		hu		
16.8	Eden Valley.....	f 8.34	hu		
19.1	Eden Center.....	8.39	6.01		
23.4	North Collins.....	8.46	6.08		
27.3	Lawtons.....	8.52	6.14		
30.4	Collins (State Hospital).....	8.58	6.20		
33.4	Gowanda.....	9.05	6.28		
38.0	Dayton.....	9.20	6.42		
39.8	Markhams.....				
43.3	South Dayton.....	9.30	6.52		
48.3	Cherry Creek.....	9.38	7.00		
52.6	Conewango.....	9.47	7.07		
60.6	Kennedy.....	9.58	hu		
66.4	Falconer.....	10.06	7.25		
69.5	Jamestown..... Ar.	10.12 AM	7.32 PM		

		EASTBOUND			
Mls.	Eastern Standard Time	516	520		
		Daily	Daily		
0.0	Jamestown..... Lv.	8.37 AM	5.00 PM		
3.1	Falconer.....	8.43	5.06		
8.9	Kennedy.....	8.51	5.14		
16.9	Conewango.....	9.02	5.26		
21.2	Cherry Creek.....	9.08	5.33		
26.2	South Dayton.....	9.16	5.41		
29.7	Markhams.....				
31.5	Dayton.....	9.25	5.50		
36.1	Gowanda.....	9.35	6.00		
39.1	Collins (State Hospital).....	9.42	6.07		
42.2	Lawtons.....	9.48	6.14		
46.1	North Collins.....	9.55	6.21		
50.4	Eden Center.....	10.03	6.29		
52.7	Eden Valley.....	f 10.08	f 6.33		
55.1	Water Valley.....				
56.2	Hamburg.....	10.14	6.38		
62.1	Blasdell.....	10.24	6.47		
69.5	Buffalo (Lehigh Valley Terminal)... Ar.	10.42 AM	7.05 PM		

Holidays in the above table refer to the observance of New Year's Day, Memorial Day, Independence Day, Labor Day, Thanksgiving Day and Christmas Day.

TABLE 9 NEW YORK—CHAUTAUQUA—CHICAGO
9 (Via Jamestown and BUS of West Ridge Transportation Co.)

WESTBOUND Read Down			EASTBOUND Read Up		
7-Bus	1-Bus	5-Bus	EASTERN STANDARD TIME		
Daily Ex. Su.	Daily	Daily Ex. Su.	Bus-8 Daily Ex. Su.	Bus-6 Daily	2-Bus Daily Ex. Su.
PM		PM			
au 11.55		7.10	PM	AM	
12.05		7.30			
12.25		7.50			
12.29		7.06			
1.30		8.45			
2.03		9.18			
PM		AM			
AM	PM		PM		AM
10.42	6.38		*12.43		9.18
11.15	7.10		*12.15		8.45
12.29	8.03		*12.15		8.31
5.10	12.50		*7.22		3.49
1.00	8.05		*10.00		6.00
AM	AM		PM		PM

Tickets sold and Baggage checked through to Chautauqua. Hand baggage checked without charge. Trunks checked at charge of 25c each.

TABLE 10 NEW YORK—SALAMANCA—BRADFORD—CHICAGO

WESTBOUND Read Down			Via Salamanca and BUS of Allegany Motor Coach Co., Inc. (See Note "X" Below)	EASTBOUND Read Up		
7	ht 5-557	1-Bus		Bus-2	Bus-8	ht 560-6
Daily	Daily	Daily	Daily	Daily	Daily	
	PM	AM		PM	AM	
	7.10	8.30	Lv. New York, West 23rd St. Ar	7.55	9.05	
	7.30	8.45	Lv. New York, Chambers St. Ar	7.34	11.59	
	7.50	9.00	Lv. Jersey City Ar	7.20	11.45	
	6.10	7.08	Ar. Salamanca Lv	9.15	10.34	
	6.35	ad 7.10	Lv. Salamanca Ar	dh 8.55	ad 12.00	
	6.58		Lv. Limestone Ar			
	7.10	ad 7.50	Ar. Bradford Lv	dh 8.15	ad 11.17	
	AM	PM		AM	PM	
AM	AM	PM	Lv. Bradford Ar	AM	PM	
10.02	4.50	5.42	Ar. Salamanca Lv	10.50	2.50	
10.45	5.20	6.20		10.11	2.11	
11.41	6.17	7.15	Lv. Salamanca Ar	9.10	1.11	
12.29	7.06	8.03	Ar. Jamestown Lv	8.31	12.15	
3.32	10.01	11.09	Ar. Youngstown Lv	5.12	8.50	
	11.40		Ar. Cleveland Lv			
5.10		12.50	Ar. Akron Lv	3.49	7.22	
1.00		8.05	Ar. Chicago Lv	6.00	10.00	
AM	AM	AM		PM	PM	

Trains 5-557 and 560-6 carry through sleeping car between Bradford and New York. Sleeper on train 557 will be parked at Bradford for occupancy until 8.00 A. M. Busses leave as follows: (running time approximately 45 minutes.) Lv. Salamanca for Bradford, 8.20 A.M., 10.11 A.M., 11.20 A.M., 2.11 P.M., 4.30 P.M., 5.40 P.M., 7.10 P.M., 11.15 P.M. Lv. Bradford for Salamanca, 8.17 A.M., 10.02 A.M., 11.17 A.M., 1.02 P.M., 4.17 P.M., 5.42 P.M. **BAGGAGE CHECKED TO BRADFORD**—Baggage will be handled only on Trains 557 and 560 between Salamanca, N. Y., and Bradford, Pa.

TABLE 11 Meadville—Oil City

Westbound Read Down		Eastbound Read Up	
Bus	Eastern Standard Time	Bus	Eastern Standard Time
Dly.		Dly.	
Via BUS of Harmony Short (See Note "X" below)		Line	
1240	Lv. Meadville Ar.	4.45	
1255	Shaws	4.05	
1.05	Cochranston	3.50	
	Carlton		
	Sugar Creek		
2.05	Franklin	2.50	
	Reno		
2.20	Ar. Oil City Lv.	2.30	
PM		PM	

Tickets sold and baggage checked*through to Franklin and Oil City.

TABLE 12 Lackawaxen—Honesdale

Westbound Read Down	Miles	EASTERN STANDARD TIME		Eastbound Read Up
9-271		Leave	Arrive	28-270
Daily				Daily
AM				PM
10.30	0.0	N. Y., W. 23d St.		7.05
10.40	0.0	N. Y., Chambers St.		6.54
11.00	1.0	Jersey City		6.40
2.25	111.1	Ar. Lackawaxen (Lv.)		3.26
2.45		Lv. Rowlands (Ar.)		2.15
2.52	4.1	Rowlands		2.08
f 2.59	7.4	Glen Eyre		f 2.00
f	8.9	Shimers Rock Cut		f
3.07	11.6	Kimbles		1.51
3.14	15.0	Wellwood Ave.		f 1.41
3.22	15.8	Hawley		1.38
3.31	19.5	White Mills		1.27
3.40	23.9	East Honesdale		1.19
3.45	24.8	Honesdale		1.10
PM		Arrive	Leave	PM

Passengers to and from Honesdale can also make connection via Narrowsburg and busses of the Wayne County Taxicab Co.

NEW YORK—NEWBURGH (Via Harriman and bus)
NEW YORK—MONTICELLO—LIBERTY (Via Middletown and bus)
NEW YORK—KENOZA LAKE—JEFFERSONVILLE (Via Callicoon and bus)
NEW YORK—HONESDALE (Via Narrowsburg and bus)

For above services, ask Ticket Agents for Time Table Form 2

NOTE "X" in connection with the bus service the Erie Railroad Company acts as agent only and is not responsible beyond its own line, except as such responsibility may be imposed by law with respect to baggage.

TABLE 13 ELMIRA-ROCHESTER

Table with columns for Westbound Read Down (5-463, 7-467), Miles, Eastern Standard Time, and Eastbound Read Up (468-8, 464-8). Rows include stations like N. Y., W. 23d St., Chambers St., Jersey City, Elmira, Corning, etc.

TABLE 14 SALAMANCA—DUNKIRK

Table with columns for Westbound Read Down (5-527), Miles, Eastern Standard Time, and Eastbound Read Up (540). Rows include stations like N. Y., W. 23d St., Chambers St., Jersey City, Salamanca, Little Valley, etc.

LOCATE YOUR PLANT WHERE YOU CAN LOCATE MORE PROFITS Ask us about industrial buildings and vacant land on Erie rails GEO. F. WESTON Industrial Commissioner Erie Railroad, Midland Bldg., Cleveland, O.

HUDSON AND MANHATTAN TUBE TRAINS SCHEDULE OF RUNNING TIME BETWEEN ERIE R. R. JERSEY CITY TERMINAL AND

Table showing running times for Downtown New York (Cortlandt St.) and Uptown New York (28th Street and 6th Ave, etc.) with times in minutes.

ERIE R. R. FERRY TIME TABLE EASTERN STANDARD TIME CHAMBERS STREET FERRY Ferry Running Time, 9 Minutes WEEK DAYS

Table with two main sections: Leave New York for Jersey City and Leave Jersey City for New York. Columns show times for AM, PM, and Noon.

a Will not run on Holidays. h Holidays only. m Except Saturdays and Holidays.

SUNDAYS

Table showing Sunday running times for the Hudson and Manhattan Tube Trains, with columns for AM, Noon, and PM.

TWENTY-THIRD STREET FERRY Ferry Running Time, 20 Minutes WEEK DAYS

Table with two main sections: Leave New York for Jersey City and Leave Jersey City for New York. Columns show times for AM, Noon, and PM.

SUNDAYS

Table showing Sunday running times for the Twenty-Third Street Ferry, with columns for AM, Noon, and PM.

TABLE 15 ROCHESTER—MOUNT MORRIS—DANVILLE

Table with columns for Eastern Standard Time, N. B. numbers (404, 408, 403, 468, 428, 416, 440, 420, 424), and Daily/Ex. Sun. & Hol. times. Rows include stations like Rochester, Mt. Morris, Dansville, etc.

Table with columns for Eastern Standard Time, N. B. numbers (425, 401, 403, 467, 409, 415, 419), and Daily/Ex. Sun. & Hol. times. Rows include stations like Dansville, West Sparta, Groveland, etc.

TRAINS between Mt. Morris and Avon will stop on signal at Shakers, Jones, Cuylerville, Jaycocks, Seven Nations, Huston, South Avon, Pierces, Fowler, Ashantee, Linden Street and Spring Street and between Avon and Rochester, except Trains 467, 468 at Wiards, Elm Place, Meadowwood, Gannett, Blair, Martin, Brooks, Fenner, Baileys, Crittenden, Westfall and South Park. Note-HOLIDAYS in above tables refer to the observance of New Year's Day, Decoration Day, Independence Day, Labor Day, Thanksgiving Day and Christmas Day.

SUGGESTIONS

• **INTERCHANGEABLE SCRIP COUPON TICKETS** issued in \$15.00 and \$30.00 denominations are accepted on trains or at ticket offices in payment of rail passage as well as sleeping and parlor car accommodations, and also as payment for meals in restaurant cars.

• **PREPAID ORDERS.** For the convenience of patrons who do not wish to send money by mail, Erie Railroad ticket agents are prepared to sell prepaid ticket orders for the delivery of transportation, rail and Pullman, from practically all points in the United States, Canada and Mexico. These orders may also include the furnishing of cash.

In emergencies arrangements may be made for the delivery of transportation by telegraph or telephone without charge except when commercial wires are used.

• **BAGGAGE INSURANCE** by the St. Paul Fire & Marine Insurance Co. may be purchased at principal Erie ticket offices. It insures your baggage and personal effects for your entire trip anywhere in the world. Minimum premium twenty-five cents. The ticket agent can give you full particulars.

• **ERIE PLAYING CARDS** are on sale at our ticket offices, excepting in Ohio. Bridge sets one dollar, single decks fifty cents.

• **SPECIAL TOURS AND CONVENTIONS.** Our services are at the disposal of clubs, lodges and other organizations in arranging for trips to conventions and gatherings of all sorts. Concerning fares, train schedules and travel plans, consult or write to any Erie Ticket Agent, or any of the Passenger Department representatives listed on pages 37 & 38 of this folder.

Time Table Mailing Service

If you would like a copy of this time table each time a new one is issued just drop us a post card and your name will be put on the list. No charge. Address your request to Erie Railroad, Passenger Traffic Dept., Midland Bldg., Cleveland, Ohio.

STOP-OVER PRIVILEGES

Niagara Falls

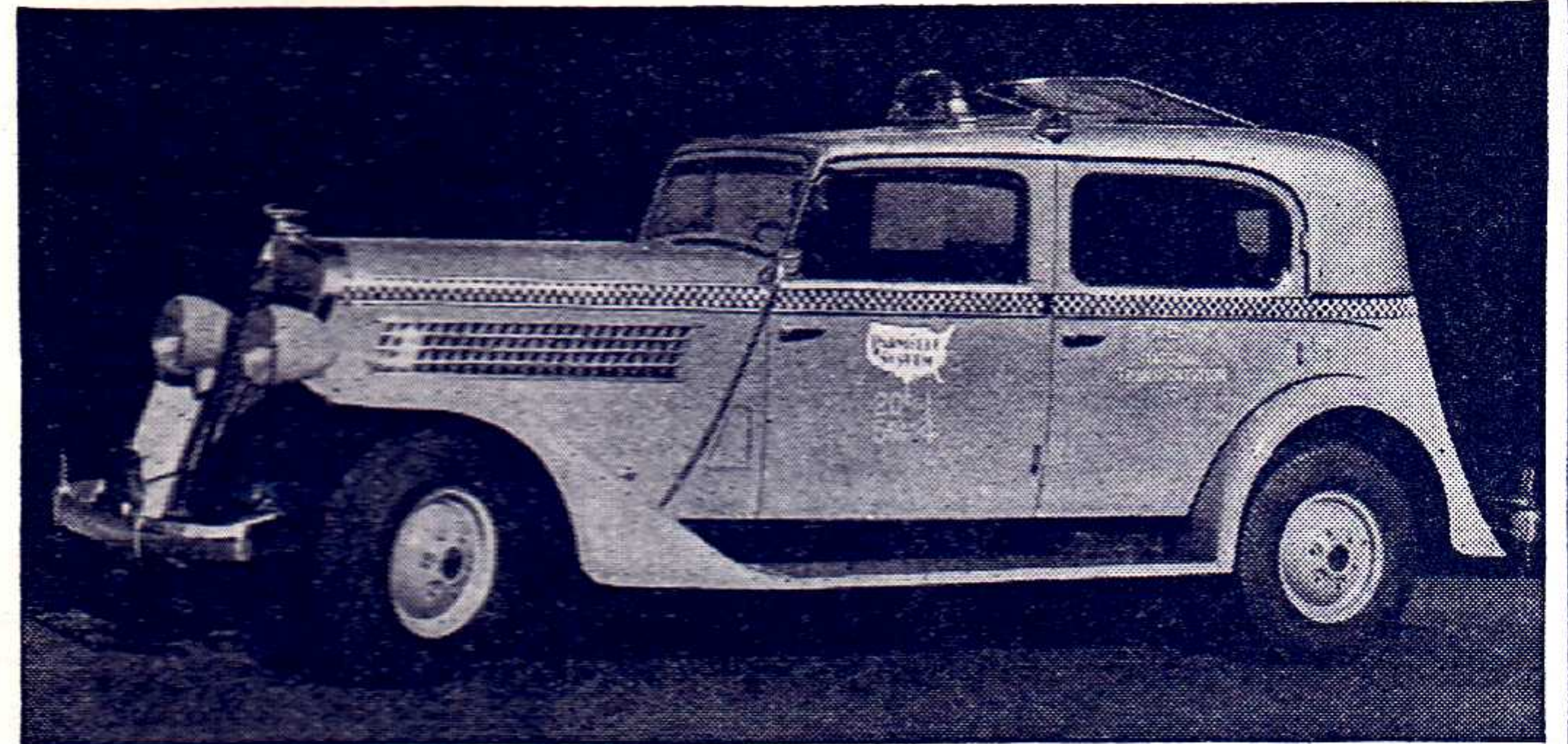
Passengers holding tickets reading "via Erie Railroad" from or through Elmira to or through Youngstown or vice versa may exercise their privilege of going by way of Buffalo and stopping over for as long as ten days at Niagara Falls, but not beyond the final limit of their ticket. Upon request, the Erie Ticket Agent at Buffalo will issue without charge a round trip ticket between Buffalo and Niagara Falls. Frequent service via busses of International Ry. direct from Buffalo Terminal.

Other Points

On local one-way tickets sold at regular fares, local round-trip tickets sold at double the one-way fares, All-Year, Summer and Winter Tourist Tickets, stop-overs will be allowed on going and return trips within final limit of tickets at any Erie Railroad Station en route upon notice to conductor and without deposit of ticket.

ERIE TRAIN-CAB SERVICE

Takes you from Erie Terminal directly to your door in New York or Brooklyn



ONE Person **90c** TWO Persons **\$1.25** THREE or more **\$1.50**

Thousands have used and praised Erie Train-Cab Service.

Strangers arriving at Erie Terminal, Jersey City are taken all the way to their destination in New York or Brooklyn. They never get "lost" and are never overcharged. Women accompanied by children appreciate this service. Even seasoned travellers enjoy the comfort of settling down in their own taxicab and forgetting about bags and car changes.

The fares shown above apply from our terminal to any place on Manhattan 110th Street and South, also to any point in the Brooklyn business district.

Service beyond the prescribed zones is metered from the zone limits and charged for at regular rates.

Train-Cab service is available to all who travel from stations west of Middletown, N. Y.

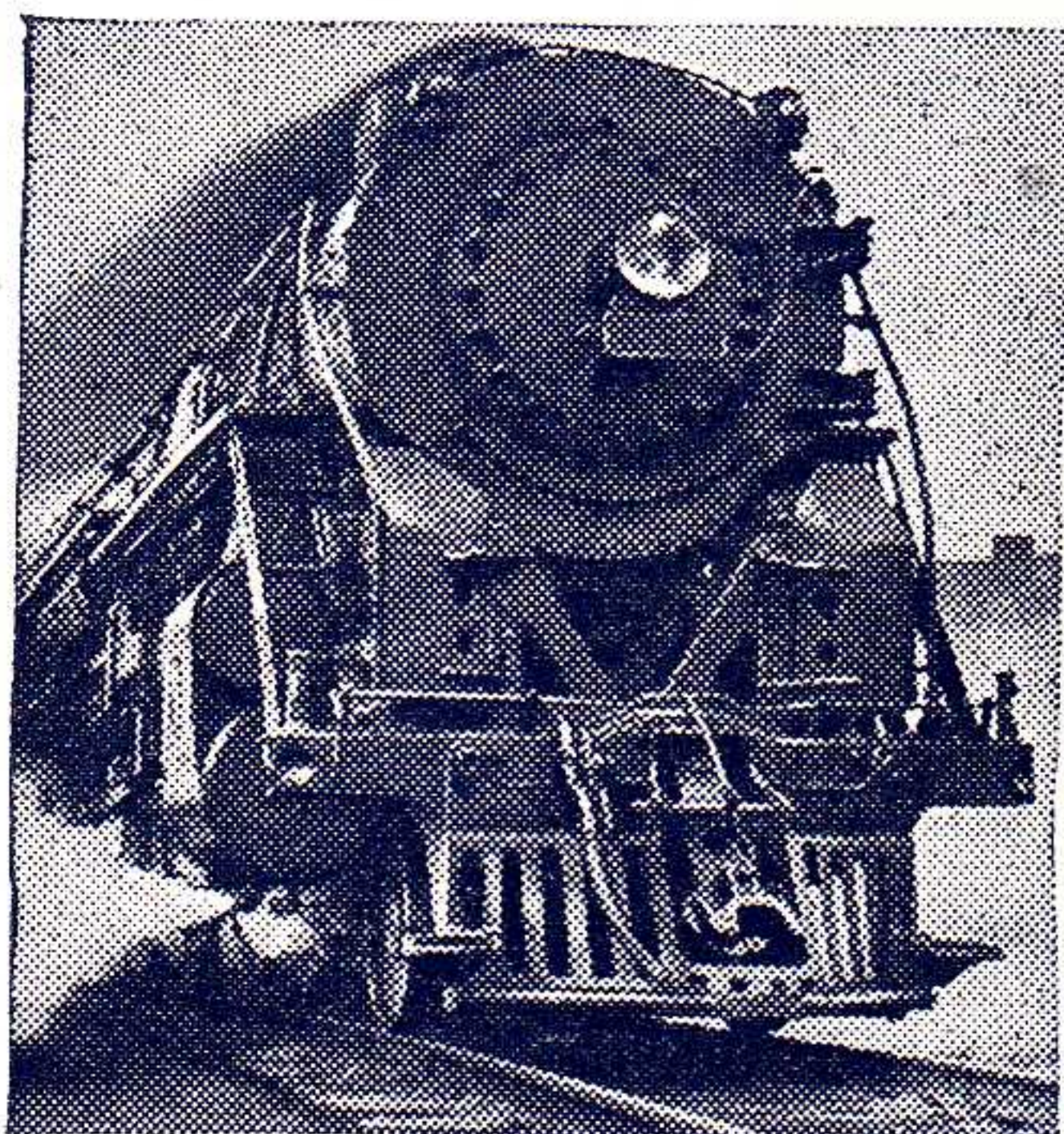
You can buy the Train-Cab coupon with your rail ticket at the ticket office or from the conductor on any through train and you will find your taxicab awaiting the arrival of your train at Jersey City.

Ask the conductor or ticket agent for details.

Checking Hand Baggage at Chicago

Passengers arriving Chicago on Erie trains who desire to stay over for a few hours and depart from a station other than Dearborn Station may have their hand baggage transferred to the station from which they depart. A Parmelee Company agent meets all Erie trains upon arrival at Chicago and he will arrange the transfer for you. The bags will be placed in the parcel check room of the station from which you depart. A charge of fifty cents for each hand bag, including the parcel room fee, will be made for the service, except one piece will be checked free when passenger holds through ticket including transfer through Chicago.

... SPEED YOUR PACKAGES BY RAILWAY EXPRESS



NATION-WIDE SHIPPING SERVICE

The fast, sure, time-saving way. Nation-wide service with 23,000 offices. Low cost. Railway Express calls for and delivers packages, large or small, without extra charge. For service, merely phone your nearest Railway Express office.

RAILWAY EXPRESS

AGENCY, INC.



WESTERN UNION

TELEGRAMS AND CABLEGRAMS accepted at all telegraph offices of this railroad.

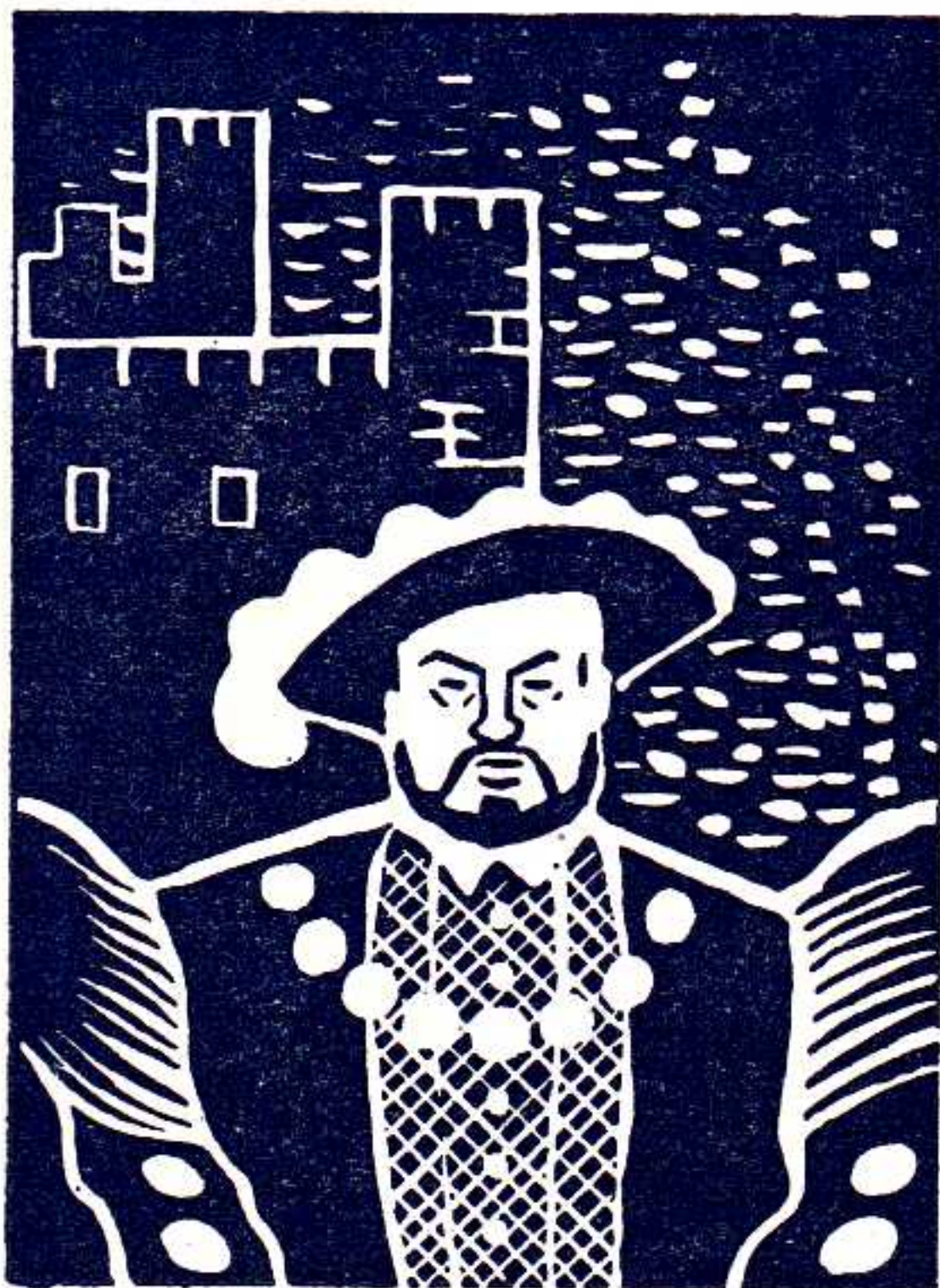
DAY LETTERS—50 words for 1½ times the cost of a 10 word telegram.

NIGHT LETTERS—25 words for the former price of ten words. Maximum only 50 cents from coast to coast. Words over 25 charged for in groups of 5 at rates as low as a fifth of a cent per word.

The longer the message, the lower the rate per word.

RESERVATION MESSAGES—Reserve travel tickets and accommodations and hotel rooms by telegraph—only 35 cents (for 15 words).

TOURATE MESSAGES—When you travel telegraph the folks at home or at the office the facts they want to know about progress of your trip—only 35 cents (for 15 words).



For guide-books, maps and rates address C. M. Turner, General Traffic Manager, 9 Rockefeller Plaza (16 West 49th Street) New York, N. Y.; L. T. Jones, Middle West Representative, 333 N. Michigan Ave., Chicago, Ill.; J. D. Cameron, Pacific Coast Representative, 412 West Sixth St., Los Angeles, Cal.; or your own Tourist Agent.

SEE and ENJOY the BRITISH ISLES

The Modern Complete Way

Visit England, Scotland, Wales and Ireland by the swift, luxurious services of the Associated British and Irish Railways. Tours to suit any whim, any purse. Scotland by the famous "Flying Scotsman", "Royal Scot", "Coronation Scot" or "Coronation Express". Ireland but a step by steamers or planes. 21 routes to Continental Europe. Paris overnight, without changing, in quiet corridor sleeping cars on the Train Ferry.

Associated

BRITISH & IRISH RAILWAYS, Inc.

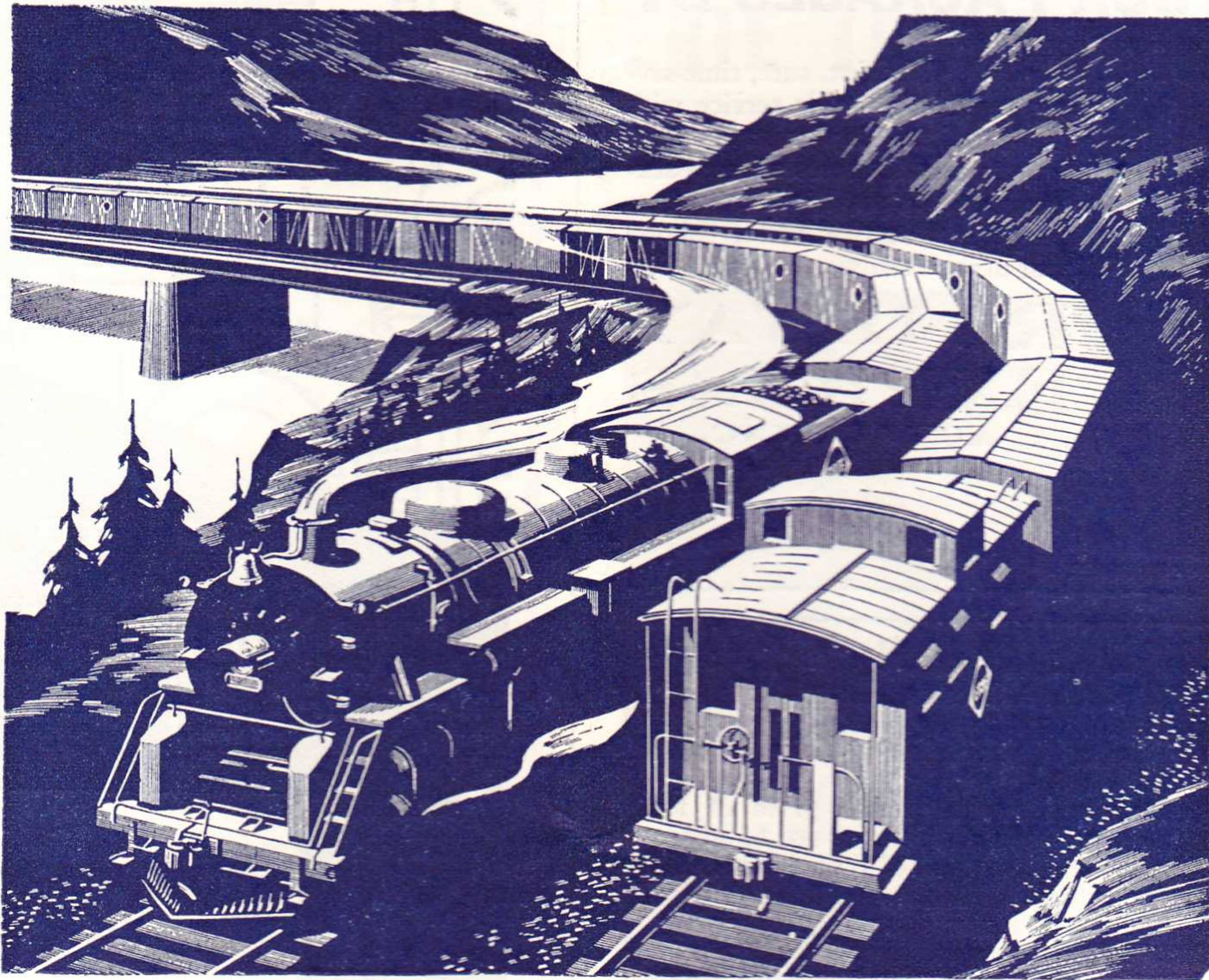


A BLUE PRINT for BUILDING BETTER TIMES

GIVE the American Railroads the square deal to which they are entitled—the freedom to operate their business as a business—the right to meet competition on equal terms—equality in regulation and taxation.

There's a blueprint for building Better Times—national prosperity is geared to railroad prosperity.

ASSOCIATION OF AMERICAN RAILROADS



420 Mules



55 Cars of Salt

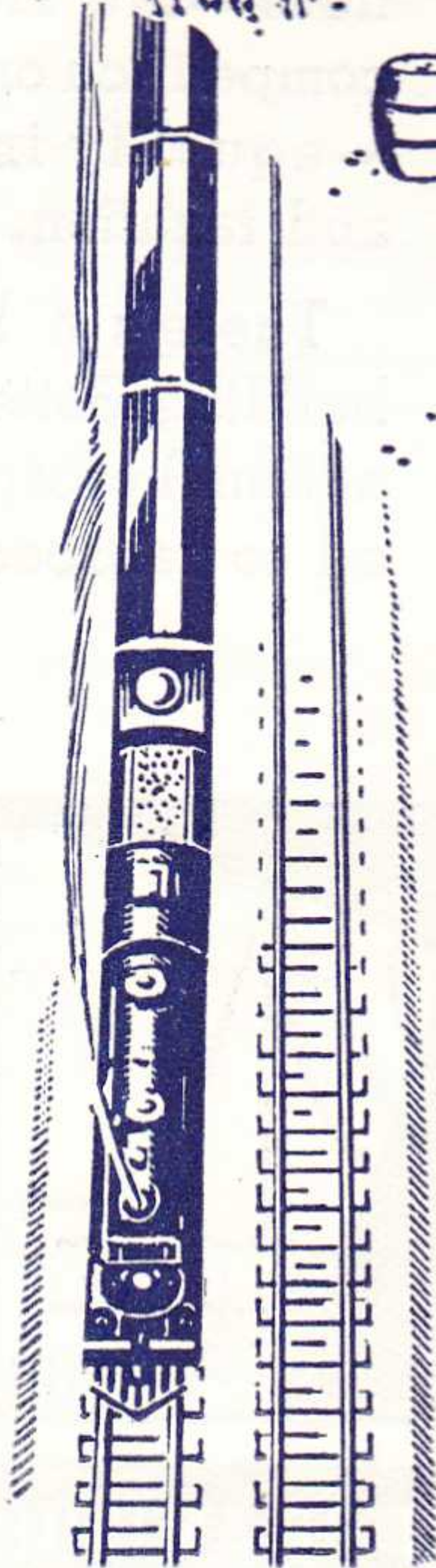


9 Steam Shovels

● On one Erie freight speeding eastward 420 mules bound for India ... on another 55 cars of salt ... on another 9 mammoth steam shovels that only Erie's extra-wide clearances could accommodate.

A coincidence? Not at all! Every day thousands of products just as diverse as these roll to market over Erie tracks. Whether the freight's measured in inches or yards, weighed in pounds or tons—shippers know they can trust it with Erie for faster, safer, more economical delivery.

Route your next shipment via Erie. You will see how Erie earned the reputation of being "first in freight".



ERIE RAILROAD COMPANY

(C. E. DENNEY AND JOHN A. HADDEN, TRUSTEES)

CHICAGO AND ERIE RAILROAD CO.

GENERAL OFFICES, MIDLAND BUILDING, CLEVELAND. Telephone Cherry 8400.
GENERAL OFFICES, HUDSON TERMINAL, 50 CHURCH STREET, NEW YORK. Telephone Cortlandt 7-9200.
GENERAL OFFICES, UTILITIES BUILDING, 327 SOUTH LA SALLE STREET, CHICAGO. Telephone Harrison 4160.

TRAFFIC AND DEVELOPMENT DEPARTMENTS

TRAFFIC

D. L. GRAY, Vice-President, Cleveland
CARL HOWE, Vice-President, Chicago
G. C. MANNING, Assistant Vice-President, New York
G. A. LAMB, Assistant to Vice-President, Cleveland

PASSENGER

C. C. HOWARD, Passenger Traffic Manager, Cleveland.
R. B. ROGERS, General Passenger Agent, Cleveland.
H. T. HARLOW, General Passenger Agent, Chicago.
T. R. PATTON, Assistant General Passenger Agent, Youngstown.

F. A. WALDRON, Assistant General Passenger Agent, New York.
ALFRED FYNN, Assistant General Passenger Agent, Chicago.
E. J. HAWERKOST, General Western Passenger Agent, Chicago.
H. M. WADE, General Baggage, Mail and Express Agent, New York.

FREIGHT

L. B. BURFORD, Freight Traffic Manager, Cleveland.
H. W. VON WILLER, Assistant Freight Traffic Manager, Cleveland.
O. M. MEYNE, General Freight Agent, Cleveland.
C. L. CHAPMAN, Eastern Freight Traffic Manager, New York.
E. M. KAIN, Special Representative, Buffalo.
G. R. WHEELER, General Freight Agent, New York.
J. T. McENTEE, Assistant General Freight Agent, Buffalo.
D. R. THOMPSON, Assistant General Freight Agent, Pittsburgh.

F. G. LANTZ, Freight Traffic Manager, Chicago.
W. V. KENNEDY, Assistant Freight Traffic Manager, Chicago.
A. BLAUEL, General Freight Agent, Chicago.
J. G. HILL, General Freight Agent, Chicago.
O. R. DAVIES, Assistant General Freight Agent, Cincinnati.
W. H. KOCH, Assistant General Freight Agent, Detroit.
H. C. SCHMIDT, Assistant General Freight Agent, Youngstown.

FOREIGN FREIGHT TRAFFIC

T. E. McANDREWS, Foreign Freight Traffic Manager, New York.
W. C. OTTEN, Foreign Freight Agent, New York.
A. E. PETERSON, Foreign Freight Agent, Chicago.
W. S. PENCHARD, Export and Import Agent, New York.
EUROPEAN GENERAL AGENTS, Sutherland International Despatch, Ltd.,
London, England.

LIVE STOCK

H. B. ROGERS, General Live Stock Agent, East Buffalo, N. Y.

GRAIN TRAFFIC

T. W. KANE, Grain Agent, New York.

PERISHABLE FREIGHT TRAFFIC

R. E. O'GRADY, Manager, Pier 20, N. R., New York.

COAL AND COKE

W. H. STADELMAN, Coal Traffic Manager, Cleveland.
J. A. FERGUSON, Coal Freight Agent, Cleveland.
F. D. AUSTIN, General Coal and Coke Agent, Chicago.

DAIRY

W. L. KENDALL, General Dairy Agent, Chicago, Ill.

DEVELOPMENT

J. K. THOMPSON, Vice-President and Assistant to President, Cleveland.
GEO. F. WESTON, Industrial Commissioner, Cleveland.
V. M. WELLMAN, Industrial Agent, New York.

TRAFFIC DEPARTMENT REPRESENTATIVES

Akron, O.—80 East Exchange St.
(Telephone Hemlock 8194-8195)
J. P. CLARK, Division Passenger Agt.
C. E. KING, General Agent.

Albany, N. Y.—Room 2, D. & H. Bldg.
(Telephone 4-6051)
C. F. WHADCOCK, General Agent.

Antwerp, Belgium—30, Vieille Bourse.
CHAS. CAYMAN, Agent.

Atlanta, Ga.—1515-16 Healy Bldg.
(Telephone Walnut 2135)
S. S. TORREY, General Agent.

Baltimore, Md.—1301-3 Munsey Bldg.
(Telephone Plaza 8691)
W. J. MURRAY, General Agent.

Birmingham, Ala.—1007 Watts Bldg.
(Telephone 3-1327)
CHARLES G. ANDREWS, General Agent.

Birmingham, England—13 Corporation St.
MAURICE G. COOKE, General Agent.

Boston, Mass.—80 Federal Street.
(Telephone Liberty 7725-7726)
G. W. MADSEN, G. N. E. Agt.

Bradford, Pa.—Erie Station.
(Telephone 3413)
J. C. MOFFATT, General Agent.

Bremen, Germany—Postfach 24,
Tiefer 2
CARL PRIOR, Agent.

Buffalo, N. Y.—6 North Division St.
(Telephone Washington 4300)
J. A. DOLAN, G. A. P. D.
238 Main Street.
(Telephone Wash. 1865)
J. T. McENTEE, Asst. General Freight Agt.
H. B. ROGERS, General Live Stock Agt.

Chicago, Ill.—327 South La Salle St.
(Telephone Harrison 4160)
B. Y. VAUGHN, Trav. Pass. Agent
C. D. TURNER, General Agent.
W. L. KENDALL, General Dairy Agent.

Cincinnati, O.—503 Gwynne Bldg.
(Telephone Main 3420-3421)
O. R. DAVIES, Asst. General Freight Agt.

Cleveland, O.—Midland Bldg.
(Telephone Cherry 8400)
J. M. SKAEHILL, Division Freight Agt.
2063 East 9th St.
(Telephone Cherry 8400)
C. D. BURLINGHAM, Div. Passenger Agt.

Columbus, O.—Rooms 309-310 Atlas
Bldg., 8 East Long Street.
(Telephone Adams 7331)
C. R. MARTIN, General Agent.

Dallas, Tex.—2113 Tower Petroleum Bldg.
1905 Elm St.
(Telephone 2-7352)
T. J. MARTIN, General Agent.

Dayton, O.—501-506 Miami Savings Bldg.
(Telephone Adams 8481)
W. P. KROMPHARDT, Div. Frt. Agt.
(Telephone 4-0018)

Des Moines, Ia.—Hubbell Bldg.,
904 Walnut Street.
(Telephone 4-0018)
L. T. COULSTON, General Agent.

Detroit, Mich.—Rooms 2-102 and 2-103
General Motors Bldg.
(Telephone Madison 2360-2361)
W. H. KOCH, Assistant General Frt. Agt.

Elmira, N. Y.—Erie Station.
(Telephone 2-1621)
J. W. O'HARA, Division Passenger Agt.
(Telephone 2-0377)
B. F. CONWAY, Division Freight Agent.

Glasgow, Scotland—82 Mitchell St.
W. S. THOMSON, General Agent.

Hamburg, Germany—Dovenhof 118/122.
GEORG A. ANTHONY, General Agent.

Huntington, Ind.—Erie Station.
(Telephone 743)
F. C. MCCARTHY, Division Freight Agt.

Indianapolis, Ind.—143 No. Meridian St.
(Telephone Lincoln 2088)
T. J. WILLIAMSON, General Agent.

Jamestown, N. Y.—Erie Station
F. L. COLLINS, Div. Frt. Agt.
J. A. CLEVELAND, General Agent.
(Telephone 7921-7922)

Jersey City, N. J.—Erie Station
(Telephone Delaware 8-6400)
P. F. ARROYO, G. A. P. D.

Kansas City, Mo.—Rooms 326-7 Railway
Exchange Bldg., 7th and Walnut Streets.
(Telephone Victor 6328)
N. C. FRICK, General Agent.

Liverpool, Eng.—17 Brunswick St.
A. G. TAYLOR, General Agent.

London, E. C. 3, Eng.—4 Billiter St.
PETER BUSWELL, General Agent.
D. S. DEANS, Genl. Continental Agt.

Los Angeles, Cal.—108 West 6th Street.
(Telephone Vandike 6542)
L. A. DWELLE, General Agent.

Marion, O.—Terminal Building
(Telephone 2657)
A. R. TENNIS, Division Freight Agent.

Memphis, Tenn.—1628-9 Exchange
Bldg., Madison & Second Sts.
(Telephone 8-8781)
R. L. MILLER, General Agent.

Milwaukee, Wis.—818-9 Majestic Bldg.,
231 West Wisconsin Ave.
(Telephone Marquette 5555-5556)
H. A. WILSON, General Agent.

Minneapolis, Minn.—125 Third Street,
South.
(Telephone Main 3604)
C. V. HARROW, General Agent.

Newark, N. J.—1801-2 Military Park
Bldg., 60 Park Place.
(Telephone Market 2-0525-26-27)
A. R. WALTON, General Agent.

New Haven, Conn.—505 Powell Bldg.
(Telephone 5-7937)
FRED C. LOTZ, General Agent.

New Orleans, La.—Room 1417 Whitney Bldg.
(Telephone Raymond 9786)
D. C. KELSEY, General Agent.

New York, N. Y.—630-5th Ave. Room
219, Rockefeller Center.
(Telephone Circle 5-7222)
F. J. WILD, G. A. P. D.
A. G. OLDENQUIST, City Pass. Agt.
50 Church Street.
(Telephone Cortlandt 7-9200)
E. W. VAIL, General Eastern Frt. Agent.
J. G. VREELAND, Division Freight Agent.

Olean, N. Y.—Erie Station.
(Telephone 7411)
J. M. HAND, Traveling Freight Agent.

Omaha, Neb.—1319 Farnam St.
(Telephone Jackson 4866)
C. L. COX, General Agent.

Peoria, Ill.—920 Jefferson Building, Cor.
South Jefferson & Fulton Streets.
(Telephone 8007)
E. T. OLANDER, General Agent.

Philadelphia, Pa.—1009-10 Finance Bldg.
(Telephone Rittenhouse 8975-8976)
H. T. YOUNG, General Agent.

Pittsburgh, Pa.—Gulf Building.
(Telephone Grant 4831-2-3)
D. R. THOMPSON, A. G. F. A.

Portland, Ore.—Room 421 Pacific Bldg.,
306 Yamhill St.
(Telephone Beacon 3706)
J. A. RUSSELL, General Agent.

Rochester, N. Y.—Erie Station.
(Telephone Main 2826)
B. C. WEDD, Division Freight Agent.

Rotterdam, Holland—Boompjes 82.
J. T. VERVOLET, Agent.

San Francisco, Cal.—681 Market St.
(Telephone Sutter 3875)
J. A. LLOYD, General Agent.

St. Louis, Mo.—Rooms 906-7 Missouri
Pacific Building, 1218 Olive Bldg.
(Telephone Chestnut 7723-7724)
G. F. DANIELS, General Agent.

St. Paul, Minn.—336 Robert St.
(Telephone Cedar 5912)
C. R. PETRY, General Agent.

Scranton, Pa.—Erie Station.
(Telephone 5203)
G. W. SHUMAN, Division Freight Agent.

Seattle, Wash.—1116-7 White Bldg.,
1338 Fourth Ave.
(Telephone Elliot 4834)
W. R. SIBLEY, General Agent.

Springfield, O.—516 First National Bank
Building.
(Telephone 2-5351)
T. J. FLYNN, General Agent.

Toledo, O.—342 South Erie Street.
(Telephone Main 3816)
H. J. SPANGENBURG, General Agent.

Toronto, Ont.—69 Yonge Street.
(Telephone Elgin 4077)
E. P. MORRILL, General Agent.

Tulsa, Okla.—Room 1511 Hunt Bldg.
(Telephone 3-8613)
A. W. MITCHELL, General Agent.

Youngstown, O.—Terminal Building.
(Telephone 41101)
H. C. SCHMIDT, Asst. Genl. Frt. Agt.
F. W. FISCHER, Div. Frt. Agt.