

EFFECTIVE September 27, 1936

EFFECTIVE September 27, 1936



ERIE RAILROAD SYSTEM
TIME TABLES

ERIE RAILROAD SYSTEM
TIME TABLES

The Scenic Route

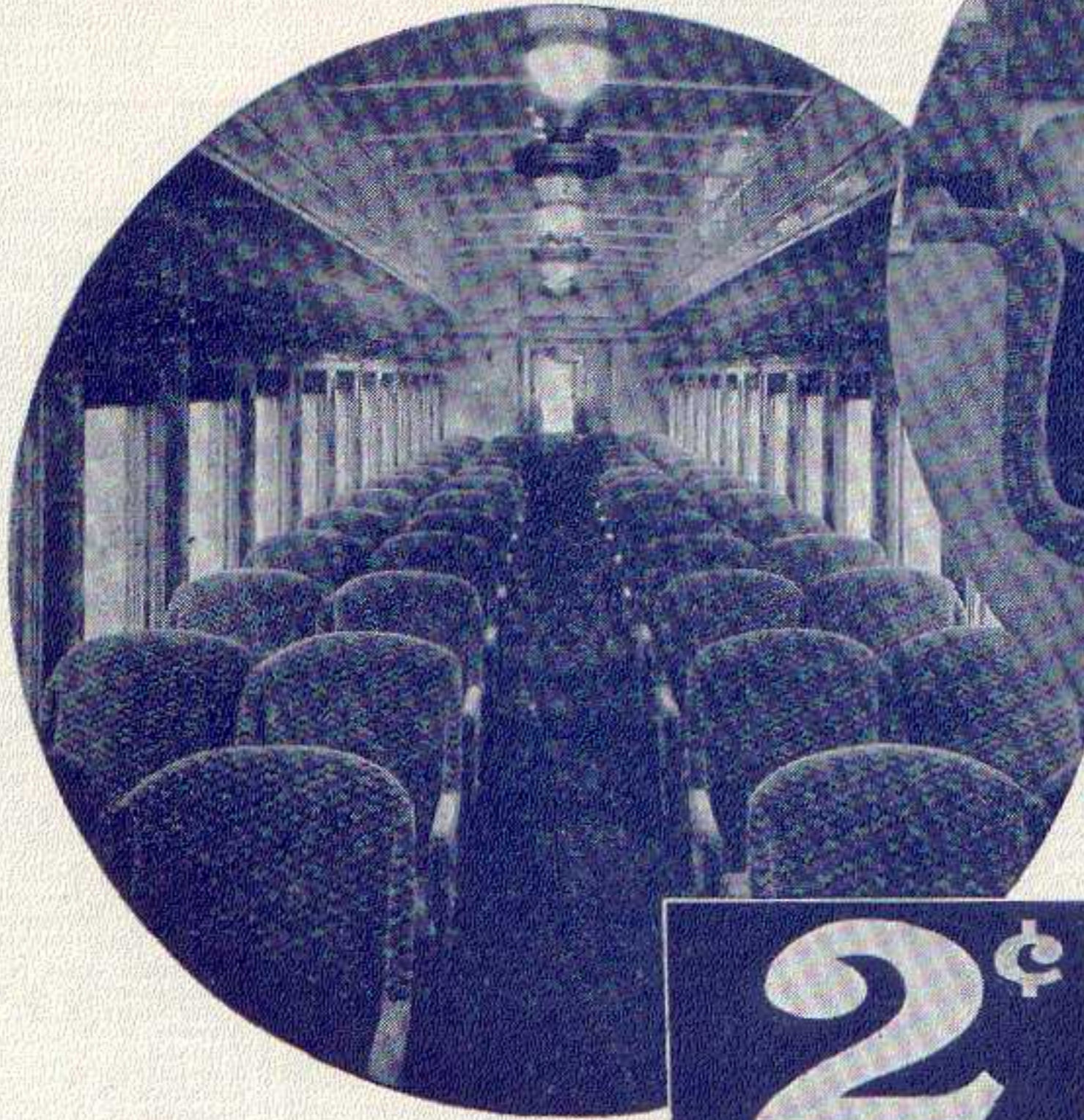
BETWEEN

NEW YORK • BUFFALO
CLEVELAND • CHICAGO

The Scenic Route

BETWEEN

NEW YORK • BUFFALO
CLEVELAND • CHICAGO



2[¢]

PER MILE



3[¢]

PER MILE

PLUS NEWLY REDUCED PULLMAN CHARGES
FOR ACCOMMODATIONS OCCUPIED

Nice Going!

No need now to forego the pleasure and safety of train travel in Erie air-conditioned Coaches and Pullmans

TABLE OF CONTENTS

Equipment of Through Trains... Page 5, 6
Suggestions... 30
General Information... 31, 32
Standard of Time
Holidays
Fares Paid on Trains
Adjustment of Fares
Sleeping and Parlor Car Reservations
Baggage Regulations
Articles left on Trains
Equipment of Local Trains... 7, 8, 9, 10
Equipment of Detroit, Toledo, Cleveland, Youngstown and Pittsburgh Trains... 17, 18
Erie Railroad Map... 19, 20, 21, 22
Sleeping and Parlor Car Fares... 31, 32
One-way Rail Fares... 31, 32
Reference Marks and Notes... 33, 34
Traffic Department Representatives... 35, 36
Ticket Offices and Passenger Stations in Principal Cities... 37

Train Service
Condensed Schedule of Through Trains... 5, 6
New York-Binghamton... 7, 8, 9, 10
Binghamton-Akron... 11, 12
Akron-Chicago... 13, 14
New York-Buffalo... 13
Detroit-Toledo-Cleveland-Youngstown-Pittsburgh... 17, 18
New York-Chautauqua... 24
Chautauqua-Akron-Chicago... 24
New York-Kenoza Lake-Jeffersonville... 26
New York-Monticello... 25
New York-Salamanca-Bradford... 24
New York-Meadville-Oil City... 26
Chicago-Meadville-Oil City... 26
Bradford-Salamanca-Cleveland-Chicago... 23
Branch Line Service... 23 to 27, inc.
Hudson & Manhattan R. R. Service... 28
Ferry Schedule... 28
Chautauqua Lake Service... 24

STATIONS ON ERIE RAILROAD
At Which Trains Are Scheduled To Stop
Numerals Opposite Station Names Indicate Time Table Numbers

Table listing stations on the Erie Railroad with corresponding time table numbers. Columns include station names and numerals. Stations listed include Addison, N.Y.; Akron, O.; Alliquippa, Pa.; Albany, N.Y.; Aiden, N.Y.; Alfred, N.Y.; Allegany, N.Y.; Allendale, N.J.; Andover, N.Y.; Arden, N.Y.; Arkport, N.Y.; Ashantee, N.Y.; Ashland, O.; Atlanta, N.Y.; Attica, N.Y.; Aurora, O.; Avoca, N.Y.; Avon, N.Y.; Balleys, N.Y.; Barberton, O.; Barton, N.Y.; Bath, N.Y.; Beaver, Pa.; Beaver Falls (New Brighton, Pa.); Belmont, N.Y.; Big Flats, N.Y.; Binghamton, N.Y.; Blair, N.Y.; Blasdell, N.Y.; Blooming Grove, N.Y.; Bradford, Pa.; Brooks, N.Y.; Buffalo, N.Y.; Bullville, N.Y.; Burns, N.Y.; Callicoon, N.Y.; Cambridge Springs, Pa.; Cameron, N.Y.; Cameron Mills, N.Y.; Campbell, N.Y.; Canaseraga, N.Y.; Canisteo, N.Y.; Carlton, Pa.; Carrollton, N.Y.; Castle, N.Y.; Cattaraugus, N.Y.; Central Valley, N.Y.; Chautauqua, N.Y.; Chautauqua Lake, N.Y.; Chemung, N.Y.; Cherry Creek, N.Y.; Chester, N.Y.; Chicago, Ill.; Circleville, N.Y.; Cleveland, O.; Cocheaton, N.Y.; Cochran, Pa.; Cohocton, N.Y.; Collins, N.Y.; Conesus, N.Y.; Conesus Lake Jet., N.Y.; Conewango, N.Y.; Cooper's, N.Y.; Coraopolis, Pa.; Corning, N.Y.; Corry, Pa.; Craigville, N.Y.; Crittenden, N.Y.; Crown Point, Ind.; Cuba, N.Y.; Cuylerville, N.Y.; Dale, N.Y.; Dalton, N.Y.; Dansville, N.Y.; Darlen Center, N.Y.; Dayton, N.Y.; Decatur, Ind.; Depew, N.Y.; Deposit, N.Y.; Detroit, Mich.; Dunkirk, N.Y.; East Bradford, Pa.; East Buffalo, N.Y.; East Fifty-fifth St. (Cleveland), O.; East Honesdale, Pa.; East Ninety-third St. (Cleveland), O.; East Rutherford, N.J.; Eden Center, N.Y.; Eden Valley, N.Y.; Ellwood City; Elmira, N.Y.; Elm Place, N.Y.; Endicott, N.Y.; Englewood (83rd St.), Ill.; Falconer, N.Y.; Fenner's, N.Y.; Forestville, N.Y.; Fowler, N.Y.; Franklin, Pa.; Friendship, N.Y.; Gallon, O.; Gannett, N.Y.; Garrettsville-Hiram, O.; Garwoods, N.Y.; Geauga Lake, O.; Geneseo, N.Y.; Girard, O.; Glen Eyre, Pa.; Golah, N.Y.; Goshen, N.Y.; Gowanda, N.Y.; Graham, N.Y.; Great Bend, Pa.; Greenville, Pa.; Greycourt, N.Y.; Griswolds, N.Y.; Groveland, N.Y.; Gulf Summit, N.Y.; Hale's Eddy, N.Y.; Hamburg, N.Y.; Hammond, Ind.; Hancock, N.Y.; Hankins, N.Y.; Harriman, N.Y.; Hawley, Pa.; Hickory Grove, Pa.; Highland Mills, N.Y.; Hillburn, N.Y.; Hohokus, N.Y.; Honesdale, Pa.; Hornell, N.Y.; Horseheads, N.Y.; Howells, N.Y.; Hubbard, O.; Huntington, Ind.; Huston, N.Y.; Industry, N.Y.; Jaycocks, N.Y.; Jamestown, N.Y.; Jeddore, O.; Jeffersonville, N.Y.; Jersey City, N.J.; Johnson City, N.Y.; Jones, N.Y.; Kanona, N.Y.; Kellams, N.Y.; Kennedy, N.Y.; Kenoza Lake, N.Y.; Kent, O.; Kenton, O.; Kimbles, Pa.; Kirkwood, N.Y.; Lackawaxen, Pa.; Lake Huntington, N.Y.; Lancaster, N.Y.; Lawtons, N.Y.; Leavittsburg, O.; Letchworth Park, N.Y.; Liberty, N.Y.; Lima, O.; Limestone, N.Y.; Linden, N.Y.; Linden St., N.Y.; Little Valley, N.Y.; Livonia, N.Y.; Long Eddy, N.Y.; Lordville, N.Y.; Mahoning, O.; Mahwah, N.J.; Mansfield, O.; Mantua, O.; Marilla, N.Y.; Marion, O.; Markhams, N.Y.; Martin, N.Y.; Mast Hope, Pa.; Meadow-wood, N.Y.; Meadville, Pa.; Middletown, N.Y.; Mill Rift, Pa.; Monaca, Pa.; Mongaup, Pa.; Monroe, N.Y.; Monticello, N.Y.; Mortimer, N.Y.; Mountainville, N.Y.; Mount Morris, N.Y.; Narrowsburg, N.Y.; Newark, N.J.; New Brighton, Pa.; Newburgh, N.Y.; New Castle, Pa.; New Hampton, N.Y.; New York, N.Y.; Niles, O.; North Collins, N.Y.; North Randall, O.; Ohio City, O.; Oil City, Pa.; Olean, N.Y.; Onondaga, N.Y.; Oquaga, N.Y.; Otisville, N.Y.; Owego, N.Y.; Oxford, N.Y.; Painted Post, N.Y.; Parker's Glen, Pa.; Passaic, N.J.; Paterson, N.J.; Perrysburg, N.Y.; Persia, N.Y.; Phalanx, O.; Pierce's, N.Y.; Pine Bush, N.Y.; Pittsburgh, Pa.; Pond Eddy, Pa.; Portage, N.Y.; Port Jervis, N.Y.; Ramapo, N.Y.; Ramsey, N.J.; Randolph, N.Y.; Rantholme, N.Y.; Ravenna, O.; Reno, Pa.; Ridgewood, N.J.; Rittman, O.; Rochester, Ind.; Rochester, N.Y.; Rock Glen, N.Y.; Rowlands, Pa.; Rutherford, N.J.; Salamanca, N.Y.; Salisbury Mills, N.Y.; Savona, N.Y.; Seven Nations, N.Y.; Shakers, N.Y.; Sharon, Pa.; Shaws, Pa.; Sheridan, N.Y.; Shiner's Rock Cut, Pa.; Shohola, Pa.; Silver Springs, N.Y.; Skinners, N.Y.; Sloatsburg, N.Y.; Smithboro, N.Y.; Smith's Mills, N.Y.; Solon, O.; Sonyea, N.Y.; South Avon, N.Y.; South Dayton, N.Y.; Southfields, N.Y.; South Lima, N.Y.; South Livonia, N.Y.; South Park, N.Y.; Sparrowbush, N.Y.; Spencerville, O.; Spring Street, N.Y.; Springwater, N.Y.; State Hospital, N.Y.; Sterlington, N.Y.; Stockport, N.Y.; Suffern, N.Y.; Sugar Creek, Pa.; Susquehanna, Pa.; Swains, N.Y.; Thompson Ridge, N.Y.; Tioga Centre, N.Y.; Toledo, O.; Town Line, N.Y.; Tusten, N.Y.; Tuxedo, N.Y.; Union City, Pa.; Utica, Pa.; Vall's Gate, N.Y.; Wadsworth, O.; Waldwick, N.J.; Wallace, N.Y.; Warren, O.; Warsaw, N.Y.; Washington Hunt, N.Y.; Washingtonville, N.Y.; Water Valley, N.Y.; Waverly, N.Y.; Wayland, N.Y.; Websters, N.Y.; Wellsburg, N.Y.; Wellsville, N.Y.; Wellwood Ave., Hawley, Pa.; Westcolang Park, Pa.; Westfall, N.Y.; West Henrietta, N.Y.; West Perryburg, N.Y.; West Sparta, N.Y.; White Mills, Pa.; Wiards, N.Y.; Woodbury, N.Y.; Wurtsboro, N.Y.; Youngstown, O.

ADDITIONAL STATIONS ON ERIE RAILROAD

At Which Trains Do NOT Stop Regularly
The distance shown is from New York as indicated in Tables 4 and 5

Table with 10 columns: STATION, Miles from New York, STATION, Miles from New York, STATION, Miles from New York, STATION, Miles from New York, STATION, Miles from New York. Lists additional stations and their distances from New York, such as Adrian, N.Y. (323.5 miles), Columbus, Pa. (471.1 miles), Harrods, Ohio (771.7 miles), Monterey, Ind. (913.1 miles), Scio, N.Y. (362.3 miles).

TABLE 1

CONDENSED TABLE OF THROUGH TRAINS NEW YORK AND BUFFALO, CLEVELAND AND CHICAGO

(FOR LOCAL TRAINS AND INTERMEDIATE TIME OF THROUGH TRAINS SEE LOCAL TABLES)

WESTBOUND		Air-conditioned Trains Air-conditioned equipment has been assigned to regular sections of trains as shown herein. Every effort will be made to provide it as specified, but the right is reserved to employ non-air-conditioned cars as necessitated by volume of traffic or emergencies.		EASTBOUND	
THE ERIE LIMITED Train No. 1—Daily New York—Buffalo—Jamestown—Chicago		THE ERIE LIMITED Train No. 2—Daily Chicago—Jamestown—Buffalo—New York		THE ERIE LIMITED Train No. 2—Daily Chicago—Jamestown—Buffalo—New York	
EQUIPMENT Air-Conditioned Sleeping Cars: New York to Chicago—8 Section Lounge Restaurant Car. Hornell to Chicago—10 Section 2 Compartment and Drawing Room. Hornell to Chicago—10 Section Lounge Restaurant Car. Air-Conditioned Parlor Buffet Car: New York to Buffalo. Air-Conditioned Salon Coaches: New York to Chicago. Air-Conditioned Individual Seat Coach: New York to Buffalo. Dining Service for all meals in Air-Conditioned Lounge Restaurant Cars.		EQUIPMENT Air-Conditioned Sleeping Car: Chicago to New York—8 Section Lounge Restaurant Car. Chicago to Hornell—10 Section, 2 Compartment and Drawing Room. Air-Conditioned Parlor Buffet Car: Buffalo to New York. Air-Conditioned Salon Coaches: Chicago to New York. Air-Conditioned Individual Seat Coach: Buffalo to New York. Dining Service for all meals in Air-Conditioned Lounge Restaurant Car.		EQUIPMENT Air-Conditioned Sleeping Car: Chicago to New York—8 Section Lounge Restaurant Car. Chicago to Hornell—10 Section, 2 Compartment and Drawing Room. Air-Conditioned Parlor Buffet Car: Buffalo to New York. Air-Conditioned Salon Coaches: Chicago to New York. Air-Conditioned Individual Seat Coach: Buffalo to New York. Dining Service for all meals in Air-Conditioned Lounge Restaurant Car.	
THE LAKE CITIES Train No. 5—Daily New York—Buffalo—Cleveland		THE LAKE CITIES Train No. 6—Daily Cleveland—Buffalo—New York		THE LAKE CITIES Train No. 6—Daily Cleveland—Buffalo—New York	
EQUIPMENT Air-Conditioned Sleeping Cars: New York to Cleveland—8 Section Compartment Lounge Restaurant Car. New York to Bradford—12 Section and Drawing Room. New York to Buffalo—12 Section and Drawing-room Car. (Sleeping Car may be occupied at Bradford until 8.00 A. M.). Air-Conditioned Individual Seat Coaches: New York to Cleveland. Coaches: Hornell to Buffalo. Dining Service for all meals in Air-Conditioned Lounge Restaurant Cars.		EQUIPMENT Air-Conditioned Sleeping Cars: Cleveland to New York—8 Section Compartment Lounge Restaurant Car. Youngstown to New York—10 Section Lounge Restaurant Car. Bradford to New York—12 Section and Drawing Room. Buffalo to New York—12 Section and Drawing-room Car. Air-Conditioned Individual Seat Coaches: Cleveland to New York. Coaches: Buffalo to Hornell. Dining Service for all meals in Air-Conditioned Lounge Restaurant Car.		EQUIPMENT Air-Conditioned Sleeping Cars: Cleveland to New York—8 Section Compartment Lounge Restaurant Car. Youngstown to New York—10 Section Lounge Restaurant Car. Bradford to New York—12 Section and Drawing Room. Buffalo to New York—12 Section and Drawing-room Car. Air-Conditioned Individual Seat Coaches: Cleveland to New York. Coaches: Buffalo to Hornell. Dining Service for all meals in Air-Conditioned Lounge Restaurant Car.	
PACIFIC EXPRESS Train No. 7—Daily New York—Jamestown—Chicago		ATLANTIC EXPRESS Train No. 8—Daily Chicago—Jamestown—New York		ATLANTIC EXPRESS Train No. 8—Daily Chicago—Jamestown—New York	
EQUIPMENT Air-Conditioned Sleeping Car: New York to Youngstown—10 Section Lounge Restaurant Car. (Sleeper open Jersey City at 9.30 P. M.). Air-Conditioned Salon Coaches: New York to Chicago. Coaches only, west of Youngstown. Dining Service in Air-Conditioned Lounge Restaurant Cars.		EQUIPMENT Air-Conditioned Sleeping Car: Chicago to Hornell—10 Section Lounge Restaurant Car. (Sleeper open at Chicago at 9.30 P. M.) Air-Conditioned Salon Coaches: Chicago to New York. Air-Conditioned Dining Lounge Car: Hornell to New York. (No baggage handled on this train east of Hornell, baggage will be handled on following train.)		EQUIPMENT Air-Conditioned Sleeping Car: Chicago to Hornell—10 Section Lounge Restaurant Car. (Sleeper open at Chicago at 9.30 P. M.) Air-Conditioned Salon Coaches: Chicago to New York. Air-Conditioned Dining Lounge Car: Hornell to New York. (No baggage handled on this train east of Hornell, baggage will be handled on following train.)	
TRAIN NO. 9—DAILY New York—Binghamton		SOUTHERN TIER EXPRESS Train No. 10—EX. SUN. Hornell—Elmira—Binghamton—New York		SOUTHERN TIER EXPRESS Train No. 10—EX. SUN. Hornell—Elmira—Binghamton—New York	
EQUIPMENT Dining Lounge Car: New York to Binghamton. Through Coaches....New York to Binghamton.		EQUIPMENT Through Coaches....Hornell to New York.		EQUIPMENT Through Coaches....Hornell to New York.	
THE MOUNTAIN EXPRESS Train No. 27—Daily New York—Binghamton—Elmira—Hornell		THE MOUNTAIN EXPRESS Train No. 28—Daily Binghamton—New York		THE MOUNTAIN EXPRESS Train No. 28—Daily Binghamton—New York	
EQUIPMENT Air-Conditioned Dining Lounge Car: New York to Hornell. Through Coaches...New York to Hornell.		EQUIPMENT Dining Lounge Car: Binghamton to New York. Through Coaches....Binghamton to New York.		EQUIPMENT Dining Lounge Car: Binghamton to New York. Through Coaches....Binghamton to New York.	

TABLE 2 WESTBOUND

NEW YORK—BINGHAMTON

Hudson and Manhattan Tube Trains operate to and from Erie Railroad Station in Jersey City. Fare, downtown, 6 cents; uptown, 10 cents.

Miles from New York	Eastern Standard Time	71	51	53	55	57	59	1	701	9	251	209	61	27	63	65	67	259	69	5	705	du 7
	Lv.	AM	AM	Daily Ex. Sun. and Hol. AM	Daily AM	Daily Ex. Sun. AM	Sun. only AM	Daily AM	Sun. only AM	Daily AM	Sat. only PM	Sun. only PM	Daily PM	Daily PM	Daily Ex. Sun. and Hol. PM	Daily Ex. Sun. and Hol. PM	Daily Ex. Sat. Su. & Hol. PM	Sat. & Hol. only PM	Daily PM	Daily PM	Sun. only PM	Daily PM
1.0	N. Y. W. 23d St. "Chambers St. " Jersey City Sta.	12.30	1.00	3.50	4.30	7.10	8.00	8.30	9.05	10.30	12.30	12.45	1.30	2.30	3.40	4.15	5.15	5.15	5.55	7.10	8.00	11.55
9.5	Rutherford, N. J. E. Rutherford " Passaic	12.50	1.15	4.05	5.00	7.30	8.25	8.45	9.15	10.40	12.40	1.00	1.45	2.40	4.00	4.30	5.28	5.28	6.15	7.30	8.30	12.00
12.7	Newark	1.05	1.30	4.22	5.15	7.45	8.40	9.00	9.30	11.00	12.54	1.17	2.05	3.00	4.14	4.45	5.42	5.42	6.35	7.50	8.45	12.25
16.7	Paterson	1.13	1.39	4.34	5.25	7.52	8.49	ep	9.52	11.20	Via Bergen Short Cut	1.42	2.29	3.20	Via Bergen Short Cut	Via Bergen Short Cut	6.04	6.04	7.00	cb	9.09	Via Bergen Short Cut
21.9	Ridgewood	1.22	1.51	4.46	5.39	8.04	9.00	en	10.00	11.29	Via Bergen Short Cut	1.54	2.39	3.28	Via Bergen Short Cut	Via Bergen Short Cut	6.12	6.12	7.11	bc	9.19	Via Bergen Short Cut
23.1	Hohokus	1.32	2.06	4.59	5.53	8.15	9.12	en	10.10	11.39	Via Bergen Short Cut	2.08	2.52	3.38	Via Bergen Short Cut	Via Bergen Short Cut	6.26	6.26	7.21	bc	9.33	Via Bergen Short Cut
24.4	Waldwick	1.35	2.09	5.04	5.57	8.18						2.13	2.55					6.29	7.24			
25.6	Alendale	1.38	2.13	5.09	6.01	8.21			10.18			2.17	3.06		5.25			6.34	7.28		9.38	
27.6	Ramsey	1.41	2.18	5.14	6.06	8.25	9.19		10.23			2.22	3.11		5.30			6.38	7.32		9.42	
30.2	Mahwah	1.46	2.23	5.14	6.11	8.30	9.24					1.34	2.23					6.43	7.37		9.47	
31.9	Suffern N. Y.	1.50	2.28	5.20	6.15	8.34	9.29	ep	10.29	11.56	1.39	2.27	3.15	3.52	5.36	6.22	6.47	6.47	7.41		9.51	
32.6	Hillburn	1.53	2.33	5.20	6.19	8.37	9.33				1.43	2.30	3.20	3.52	5.36	6.26	6.51	6.51	7.44	bd	9.54	
33.8	Ramapo			5.27	6.21							2.36	3.24		5.40	6.28	6.53	6.53	7.46			
34.6	Sterlington			5.31	6.26							2.41	3.26		5.44	6.34	6.59	6.59	7.52		10.00	
35.6	Sloatsburg			5.31	6.29	8.43	9.40		10.35			2.41	3.29		5.44	6.38	6.59	6.59	7.52		10.00	
38.2	Tuxedo	ch		5.31	6.35	8.48	9.45		10.40			2.41	3.34		5.04	5.49	6.45	6.45	7.06		10.05	
41.9	Southfields			5.31	6.41	8.55			10.47			2.41	3.34		5.11	5.56	6.52	6.52	7.13			
44.3	Arden			5.31	6.45				10.51			2.41	3.34		5.16	6.00	6.52	6.52	7.13			
47.0	Harriman			5.31	6.51	9.03	10.00		10.55			2.41	3.34		5.21	6.05	7.01	7.01	7.23		10.17	
49.6	Monroe			5.31	6.57	9.08			11.00			2.41	3.34		5.26	6.10	7.06	7.06	7.28		10.22	
52.2	Oxford			5.31	7.01				11.04			2.41	3.34		5.26	6.14	7.06	7.06	7.28		10.22	
54.4	Greycourt			5.31	7.15	9.20			11.10			2.41	3.34		5.35	6.23	7.19	7.19	7.39		10.30	
55.2	Chester			5.31	7.18	9.22			11.10			2.41	3.34		5.38	6.28	7.22	7.22	7.41		10.32	
59.7	Goshen		3.22		7.27	9.30		10.25		12.31		2.35	3.26		5.46	6.35	7.29	7.29	7.48		10.39	
63.7	New Hampton		3.30		7.34	9.36		10.25		12.31		2.35	3.26		5.52	6.41	7.35	7.35	7.54		10.44	
67.1	Middletown N. Y.		3.40		7.50	9.45		10.35		12.42		2.45	3.36		6.00	6.48	7.40	7.40	7.58		10.51	af
71.0	Howells			7.57									4.41		6.07	6.55	7.47	7.47	8.05		10.58	
75.7	Otisville			8.08									4.48		6.15	7.03	7.55	7.55	8.12		11.06	
80.7	Graham			8.16									4.56		6.23	7.11	8.03	8.03	8.20		11.14	
88.4	Port Jervis Ar			8.30				11.09		1.19			5.08	5.20	6.35	7.23	8.15	8.32		10.07	11.25	2.25
88.4	Port Jervis Lv							11.14		1.24				5.25						10.12	11.30	2.30
90.8	Sparrowbush N. Y.																					
92.3	Mill Rift Pa.									1.33												
95.9	Mongaup									1.46												
99.5	Pond Eddy									1.54												
103.3	Parker's Glen									2.03												
107.1	Shohola									2.03												
111.0	Lackawaxen									2.17												
114.2	Westcolang P'k									2.17												
116.4	Mast Hope									2.17												
119.0	Tusten N. Y.									2.28												
122.4	Narrowsburg									2.37												
128.3	Honesdale Pa. (via BHS) gt Ar.							12.03		5.00												
128.3	Skinnerville N. Y. Lv.							12.03		5.00												
130.9	Cochecton N. Y. (Lake Hunt'gt'n)							12.03		5.00												
136.1	Callicoon N. Y.							12.25		3.06												
143.0	Hankins							12.25		3.18												
144.8	Kellams							12.25		3.27												
147.3	Long Eddy							12.25		3.37												
153.6	Lordville							12.25		3.37												
159.4	Stockport							12.25		3.37												
164.0	Hancock							1.03		3.53												
172.1	Hale's Eddy							1.21		4.12												
177.0	Deposit							1.21		4.12												
180.5	Oquaga							1.21		4.12												
184.1	Gulf Summit							1.45		4.38												
192.6	Susq'ha'na Pa. Ar							1.47		4.40												
196.4	Hickory Grove Lv							1.47		4.40												
200.8	Great Bend							1.47		4.40												
206.5	Kirkwood N. Y.							2.26		5.15												
215.1	Binghamton Ar							2.26		5.15												

LOCAL PARLOR AND CLUB CAR EQUIPMENT.

No. 9—Daily
Dining Lounge Car..... New York to Binghamton.
Coaches..... New York to Binghamton.

No. 27—Daily
Dining Lounge Car..... New York to Hornell.
Coaches..... New York to Hornell.

No. 63—THE TUXEDO—Ex. Suns. and Hols.
Parlor Car..... New York to Port Jervis.
Coaches..... New York to Port Jervis.

No. 67—Ex. Sat., Sun. and Hol.
Erie Club Car..... New York to Port Jervis.
Coaches..... New York to Port Jervis.

No. 251—Saturdays only
Erie Parlor Car..... New York to Middletown.
Coaches..... New York to Middletown.

TABLE 3 EASTBOUND

BINGHAMTON—NEW YORK

Hudson and Manhattan Tube Trains operate to and from Erie Railroad Station in Jersey City. Fare downtown, 6 cents; uptown, 10 cents.

Eastern Standard Time	50	52	204	6	54	56	58	58	30	60	60	62	206	70	28	2	700	64	208	208	18	22	dt 8	68	10
	Daily Ex. Sun. and Hol.	Daily Ex. Sun. and Hol.	Sun. and Hol. only	Daily	Daily Ex. Sun. and Hol.	Daily Ex. Sun. and Hol.	Daily Ex. Sun.	Sun. only	Daily	Daily Ex. Sun.	Sun. only	Daily	Sat. only	Sun. and Hol. only	Daily	Daily	Sun. only	Daily Ex. Sun. and Hol.	Sun. only	Hol. only	Daily Ex. Sun.	Sun. only	Daily	Daily	Daily Ex. Sun.
Binghamton, N. Y. Lv.	AM	AM	AM	AM	AM	AM	AM	AM	AM	PM	PM	PM	PM	PM	PM	PM	PM	PM	PM	PM	PM	PM	PM	PM	PM
Kirkwood				3.12											12.01	1.51					4.05	4.33	6.26		10.25
Great Bend Pa.																					5.01	5.20			
Hickory Grove																					5.25	5.40	6.56		11.01
Susquehanna	Ar.			3.48											12.42	2.27					6.25	6.40	7.05		11.04
Gulf Summit N.Y.				3.50											12.44	2.29									
Oquaga																									
Deposit															1.19	2.58									11.35
Hale's Eddy															1.39	3.18									11.56
Hancock															1.55										
Stockport															2.05										
Lordville															2.14										
Long Eddy															2.28	3.57									12.36
Kellams															2.40										
Hankins																									
Callicoon																									
Cochecton																									
(Lake Huntington)																									
Skinnners N. Y.																									
Honesdale Pa.																									
(via Bus) gt																									
Narrowsburg N.Y.															2.57	4.17									12.58
Tusten															3.02										
Mast Hope Pa.																									
Westcolang Park																									
Lackawaxen																									
Shohola																									
Parker's Glen																									
Pond Eddy																									
Mongaup																									
Mill Rift																									
Sparrowbush N.Y.																									
Port Jervis Ar.				6.20											4.19	5.04							9.30		11.45
Port Jervis Lv.				6.25											4.27	5.09						9.35		11.50	
Graham						6.55	7.50	7.50	10.15						2.20										
Otisville						7.17	8.11	8.11	10.37						2.34										
Howells						7.24	8.18	8.18	10.44						2.41										
Middletown		6.37	6.40	7.00		7.31	8.27	8.27	10.52	1.00					2.48										
New Hampton		6.42	6.45			7.36	8.32	8.32		1.05					3.07	3.57									
Goshen		6.49	6.52	7.12		7.43	8.39	8.39	11.04	1.12					3.15	4.05									
Chester		6.57	6.58			7.50	8.44	8.44	11.10	1.18					3.22	4.13									
Greycourt			7.00		7.27	7.52	8.50	8.50	11.15	1.21	1.21				3.25	4.16									
Oxford			7.04		7.31																				
Monroe	6.28	7.07	7.11		7.38	8.00	8.58	8.58	11.24	1.36	1.36	3.34	4.25		4.55										
Harriman	6.32	7.12	7.15		7.42	8.05	9.02	9.02	11.29	1.41	1.41	3.39	4.30		5.00										
Arden	6.36	7.16	7.19			8.10	9.07	9.07		1.46	1.46	3.44	4.34		5.08										
Southfields	6.40	7.20	7.23			8.15	9.09	9.09		1.50	1.50	3.49	4.38		5.13										
Tuxedo	6.46	7.27	7.30			8.23	9.15	9.15	11.41	1.57	1.57	3.56	4.45		5.18										
Sloatsburg	6.51	7.31	7.34																						
Sterlington	6.53					8.29	9.20	9.20		2.01	2.01	4.01	4.50		5.23										
Ramapo	6.55		7.37																						
Hillburn	6.58	7.36	7.40																						
Suffern	7.01	7.39	7.43		8.03		9.24	9.24		2.07	2.07														
Mahwah N. J.	7.05	7.43	7.46				9.27	9.27	11.51	2.09	2.09	4.09	5.00												
Ramsey	7.10						9.29	9.29	11.54	2.12	2.12		5.03												
Allendale	7.13		7.54				9.33	9.33	11.59	2.17	2.17	4.16	5.08												
Waldwick	7.20						9.35	9.35	12.02	2.20	2.20	4.19	5.11												
Hohokus	7.23						9.40	9.40		2.23	2.23	4.22	5.14												
Ridgewood	7.26						9.42	9.42		2.31	2.31	4.27	5.17												
Paterson			7.59	dz	8.26	8.46	9.45	9.45	12.10	2.35	2.35	4.30	5.20												
Newark Ar.				dz			9.54	9.54	12.20	2.50	2.50	4.41	5.32												
Passaic Lv.				dz	8.35		10.03	10.03	12.28	3.00	3.00	4.52	5.44												
Rutherford							10.11	10.11	12.35	3.09	3.09	5.00	5.55												
E. Rutherford																									
N. Y. Jersey City Sta.	7.57	8.26	8.35	8.40	8.58	9.14	10.25	10.35	12.50	3.25	3.25	5.15	6.10	6.25	6.40	7.20	8.42	9.25	9.15	9.25					
Chambers St.	8.11	8.41	8.54	8.54	9.11	9.27	10.39	10.54	1.04	3.44	3.39	5.33	6.24	6.39	6.54	7.34	8.54	9.39	9.39	9.39					
W. 23rd St. Ar.	8.30	9.05	9.05	9.05	9.30	9.53	10.50		at 1.20	3.55	3.55	5.45	7.05	7.05	7.05	7.55	10.05	10.05	10.05						

LOCAL PARLOR AND CLUB CAR EQUIPMENT

No. 8.
Dining Lounge Car... Binghamton to New York.
Coaches..... Binghamton to New York.

No. 10. Except Sundays.
Coaches..... Hornell to New York.

No. 28.—THE MOUNTAIN EXPRESS—Daily.
Dining Lounge Car.... Binghamton to New York.
Coaches..... Binghamton to New York.

No. 56—THE TUXEDO—Except Sundays and Holidays.
Erie Club Car..... Port Jervis to New York.
Coaches..... Port Jervis to New York.

TABLE 4 WESTBOUND

BINGHAMTON—AKRON

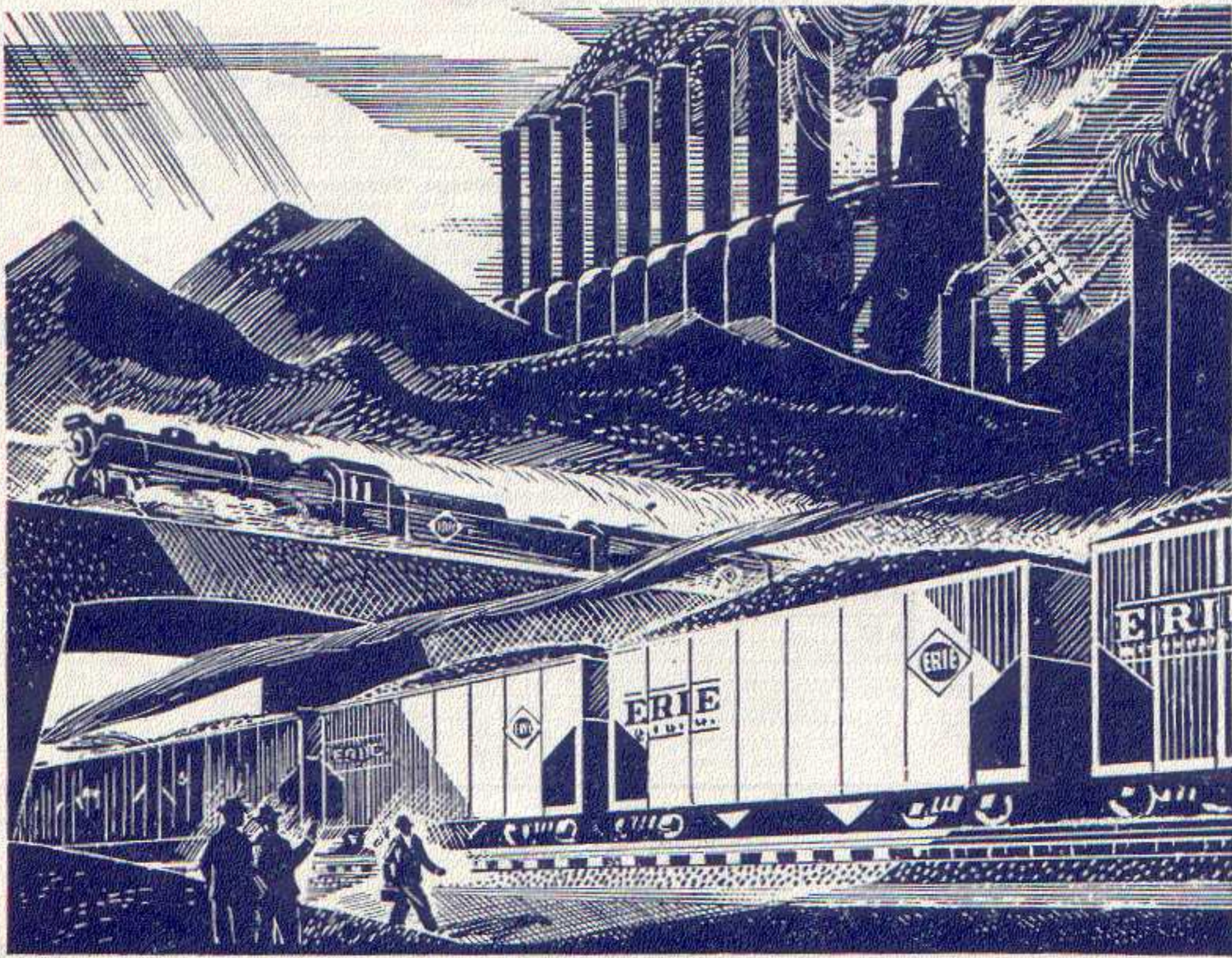
EASTBOUND

Miles from New York	Eastern Standard Time				Miles from Chicago	Central Standard Time										
	du 7 Daily	1 Daily	27 Daily	5 Daily		2 Daily	18 Daily Ex. Sun.	22 Sun. only	dt 8 Daily	10 Daily Ex. Sun.	6 Daily	620 Sun. only				
0.0	N. Y., West 23d St. Lv.	11.55 PM	8.30 AM	2.30 PM	7.10 PM	0.0	Chicago (Dearborn Sta.) Lv.	6.00 PM				10.00 PM				
0.0	" Chambers St. "	12.00	8.45	2.40	7.30											
1.0	" Jersey City Station "	12.25	9.00	3.00	7.50											
	Albany (D. & H.) Lv.		7.00	4.35		372.6	Akron Ohio " Lv.	3.44				7.22				
	Oneonta (D. & H.) "		10.00	6.55		382.6	Kent " (Ar. Lv.)	4.00				7.37				
	Binghamton (D. & H.) Ar.		11.55	8.40		388.9	Ravenna " "	4.05				7.42				
215.1	Binghamton N. Y. Lv.	6.05	2.26	9.05	1.35		Cleveland (See Table 7) Lv.							5.00	9.00	
217.8	Johnson City " "						Warren " "	dg				8.23			6.11	10.17
223.7	Endicott " "	db	2.38	9.19	cw		Niles " "							6.20	10.26	
236.8	Owego " "	6.36	2.53	9.38			Girard " "								10.32	
242.7	Tioga Centre " "						Youngstown Ar.	4.57				8.47			6.35	10.40
246.7	Smithboro " "						Pittsburgh (See Table 7) Lv.									
249.4	Barton " "						Youngstown Lv.	5.07				8.54			6.43	10.45
256.2	Waverly " "	7.03	3.14	10.01			Hubbard " "								10.58	
261.0	Chemung " "						Sharon Pa. " "	5.35				9.17			7.06	11.03
266.8	Wellsburg " "						Greenville " "	6.08				9.42			7.31	
273.8	Elmira " "	7.38	3.40	10.31	2.48		Meadville Ar.	6.45				10.20			8.08	
278.3	Horseheads " "						Oil City (See Table 15) Lv.					5.55				
283.6	Big Flats " "						Franklin (See Table 15) "					6.25				
291.1	Corning " "	8.11	4.04	10.55	3.13		Meadville Lv.	6.50				10.25			8.13	
293.1	Painted Post " "						Cambridge Springs " "	dy				10.45			8.32	
302.3	Addison " "	8.29	4.20	11.12			Union City " "	dy				11.09			dv	
307.4	Rathbone " "						Corry " "	7.46				11.28			9.07	
312.5	Cameron Mills " "						Jamestown N. Y. Ar.	8.25				12.17			9.48	
315.0	Cameron " "						(Chautauqua Lake)									
328.0	Canistota " "						Buffalo (See Table 8) Ar.	10.50				7.25				
332.3	Hornell Ar.	9.15	4.57	11.55	4.04		Jamestown Lv.	8.25				12.17			9.48	
425.2	Buffalo (see Table 6) Ar.	12.10	7.20		7.55		(Chautauqua Lake)									
332.3	Hornell Lv.	9.20	5.07		4.10		Randolph " "					12.39				
341.5	Alfred " "						Salamanca Ar.	9.05				1.11			10.27	
349.9	Andover " "	ah					Bradford Lv.	8.15				11.17			9.35	
358.5	Wellsville " "	10.03	5.47		4.49		Salamanca Lv.	9.10				1.18			10.34	
366.9	Belmont " "	ah					Allegany " "								10.59	
374.4	Friendship " "	bg					Olean " "	9.34				1.44				
383.3	Cuba " "	bg	bh		bf		Cuba " "	dw								
395.7	Olean " "	11.10	6.40		5.44		Friendship " "									
399.1	Allegany " "				5.50		Belmont " "									
413.6	Salamanca Ar.	11.35	7.03		6.08		Wellsville " "	10.30				2.41			11.49	
430.8	Bradford Ar.		7.45		7.10		Andover " "									
413.6	Salamanca Lv.	11.44	7.10		6.16		Alfred " "									
431.2	Randolph Lv.				6.40		Hornell Ar.	11.07				3.20			12.25	
447.3	Jamestown Ar. (Chautauqua Lake)	12.36	8.00		7.05		Buffalo (See Table 6) Lv.	8.45							10.00	
474.4	Corry Pa. " "	1.14	8.38		7.42		Hornell " "	11.14	9.30	12.01	3.30	7.00	12.31			
485.8	Union City " "		cn		7.58		Canistota " "		9.43	12.14	3.43	7.08				
501.8	Cambridge Springs " "	1.48	cn		8.18		Cameron " "		10.03	12.30						
516.0	Meadville Ar.	2.06	9.30		8.37		Cameron Mills " "		10.15	12.44						
	Franklin (See Table 15) Ar.	3.20			11.30		Rathbone " "	f10.30	f12.51							
	Oil City (See Table 15) Ar.	3.45			12.30		Addison " "	11.50	11.30	1.06	4.22	7.41	1.07			
516.0	Meadville Lv.	2.11	9.35		8.42		Painted Post " "		11.47	1.44						
542.1	Greenville " "	2.47	10.14		9.19		Corning " "	12.07	12.10	1.52	4.50	8.11	1.24			
558.1	Sharon " "	3.16	10.43		9.43		Big Flats " "		f12.24	f2.01						
564.4	Hubbard Ohio " "						Horseheads " "		12.34	2.09						
571.8	Youngstown Ar.	3.37	11.05		10.03		Elmira " "									
	Pittsburgh (See Table 7) Ar.						Wellsburg " "	The Erie Limited 1230	1.00	2.26	5.17	8.43	1.50			
571.8	Youngstown Lv.	3.44	11.12		10.13		Chemung " "		1.24	2.38						
576.3	Girard " "						Waverly " "		1.39	2.48						
580.5	Niles " "		f11.26		10.27		Barton " "		2.01	3.07		9.07	2.12			
585.7	Warren " "	4.06	11.37		10.39		Smithboro " "		f2.12	f3.13						
638.1	Cleveland (See Table 7) Ar.				11.45		Tioga Centre " "		f2.22	f3.20						
609.6	Ravenna " "						Owego " "		2.35	3.20						
615.9	Kent " (Ar. Lv.)	4.44	12.17				Endicott " "	1.14	3.05	3.40		9.30				
625.9	Akron " "	4.49	12.22				Johnson City " "	1.32	3.25	3.58	eu	9.49	ex			
	Central Standard Time Chicago (Dearborn Station) Ar.	1.00 AM	8.05 AM				Binghamton Ar.	1.51	4.05	4.33	6.26	10.25	3.12			
							Binghamton (D. & H.) Lv.	2.10								
							Oneonta (D. & H.) Ar.	3.53								
							Albany (D. & H.) Ar.	6.15								
997.5	N. Y., Jersey City Station " "	7.20										11.45	4.15	8.40		
998.5	" Chambers St. " "	7.34										11.59	4.27	8.54		
	" West 23d St. Ar.	7.55												9.05		

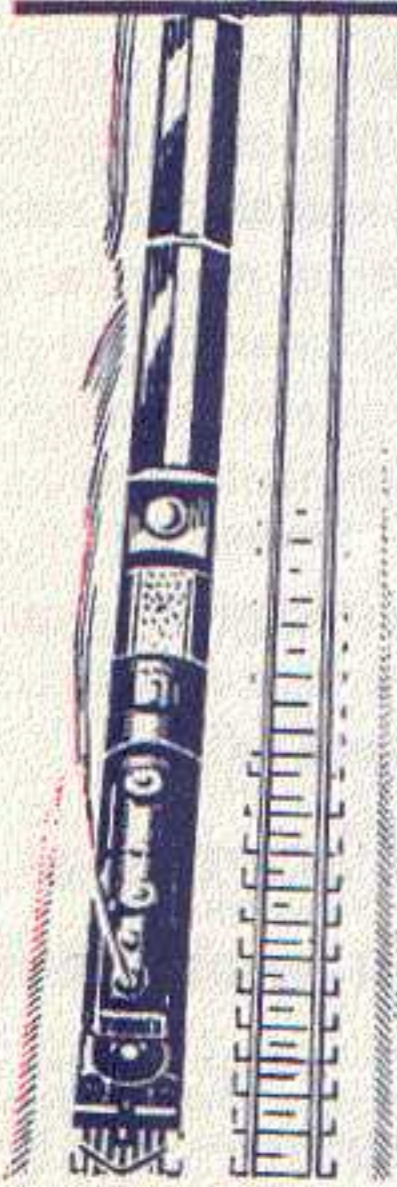
COME! DINE WITH US.

Table D'Hotel prices range as follows: Breakfast 50c to \$1.00, Luncheon 75c to \$1.25, Dinner 75c to \$1.25. A meal on our trains is always a pleasant interlude. Makes the journey seem shorter, too. The freshest food the market

affords, cooked by expert chefs and served in the comfort of spacious Restaurant Cars. If you prefer a light snack without going to the Diner the waiter will bring sandwiches, fruit, coffee, etc., right to your seat.



FROM PIG TO PIPE Steel Men Depend on ERIE



IRON ORE from Duluth—pig iron from the Ruhr of America—finally the finished product—pipe and sheets and girders and a thousand and one parts fabricated from steel. Erie trains speed them all on their way.

Erie service is a vital part of the steel industry. In every phase of handling and hauling the raw materials, semi-finished and finished products, the speed of Erie trains saves time and cuts costs for makers and users of steel.

If speed and dependability count in your shipments or receipts, specify Erie—and see how Erie service saves.

TABLE 7 DETROIT—TOLEDO—CLEVELAND—YOUNGSTOWN—PITTSBURGH

Miles from Cleveland	Eastern Standard Time	EASTBOUND													
		WEEK-DAYS							SUNDAYS						
		688	624	626	6	628	686	644	688	624	626	6	686	620	
		Ex. Sun.	Ex. Sun.	Ex. Sun.	Ex. Sun.	Ex. Sun. & Hol.	Ex. Sun.	Ex. Sun.	Sun. only	Sun. only	Sun. only	Sun. only	Sun. only	Sun. only	
		PM	AM	AM	PM	PM	PM	PM	PM	AM	AM	PM	PM	PM	
	N.Y.C.														
	DetroitLv.	11.45		8.00				1.30	11.45		8.00		1.30		
	ToledoLv.	1.55	5.14	9.50				3.08	1.55	5.14	9.50		3.08		
0.0	ClevelandLv.	4.20	8.00	1.15	5.00	5.30	6.00	9.30	4.20	8.00	1.15	5.00	6.00	9.00	
3.2	East 55th Street.....		8.08	1.24	5.10	5.40	6.10			8.08	1.24	5.10	6.10	9.10	
5.5	E. 93d St., Cleveland.....		8.12	1.29	5.16	5.45	6.15			8.12	1.29	5.15	6.15	9.15	
10.6	North Randall.....					5.54									
15.7	Solon.....			dc.		6.01								9.30	
20.5	Geauga Lake.....					6.07								9.35	
23.6	Aurora			dc.		6.13								9.40	
30.0	Mantua			1.54		6.22		cy			1.54			9.47	
34.3	Jeddoe					6.28									
36.7	Garrettsville-Hiram		8.46	2.03		6.32		10.14		8.46	2.03			9.57	
40.3	Mahoning					6.37									
45.4	Phalanx					6.42									
49.3	Leavittsburg					6.49									
52.4	Warren	5.30	9.05	2.22	6.11	6.57	7.08	10.34	5.30	9.05	2.22	6.11	7.08	10.17	
57.6	Niles	er	9.13	2.30	6.20	7.21	7.17	10.42	er	9.13	2.30	6.20	7.17	10.26	
61.8	Girard					7.30								10.32	
66.3	YoungstownAr.	5.55	9.25	2.45	6.35	7.40	7.32	10.55	5.55	9.25	2.45	6.35	7.32	10.40	
66.3	YoungstownLv.	6.00	9.30	2.50			7.37		6.00	9.30	2.50		7.37		
87.5	New CastleAr.	6.24	9.55	3.14			8.00		6.24	9.55	3.14		8.00		
	New Castle (Wash. St.) ec Ar.	6.37	10.09	3.46			8.14		6.37	10.09	3.46		8.14		
91.3	Ellwood City (ed)	6.47	10.19	3.35			8.23		6.47	10.19	3.35		8.23		
102.2	Beaver Falls	cy6.47	10.18	3.36			8.24		cy6.47	10.18	3.36		8.24		
	New Brighton														
105.4	Beaver	cy6.55	10.24	3.41			8.30		cy6.55	10.24	3.41		8.30		
112.1	Aliquippa	cy7.04	10.33	3.50			8.39		cy7.04	10.33	3.50		8.39		
120.6	Coraopolis	cy7.15	10.44	4.00			8.50		cy7.15	10.44	4.00		8.50		
131.2	PittsburghAr.	7.30	11.00	4.15			9.05		7.30	11.00	4.15		9.05		
		AM	AM	PM	PM	PM	PM	PM	AM	AM	PM	PM	PM	PM	

Miles from Pittsburgh	Eastern Standard Time	WESTBOUND													
		WEEK-DAYS							SUNDAYS						
		629	625	5	685	623	679	687	619	5	685	623	679	687	
		Ex. Sun. & Hol.	Ex. Sun.	Ex. Sun.	Ex. Sun.	Ex. Sun.	Ex. Sun.	Sun. only	Sun. only	Sun. only	Sun. only	Sun. only	Sun. only		
		AM	AM	AM	PM	PM	PM	AM	AM	PM	PM	PM	PM		
	PittsburghLv.			8.30	12.30	6.00	9.00	11.45		8.30	12.30	6.00	9.00	11.45	
10.6	Coraopolis			8.44	ev	6.15	9.14	ev		8.44	ev	6.15	9.14	ev	
19.1	Aliquippa			8.53		6.26	9.23	12.08		8.53		6.26	9.23	12.08	
25.8	Beaver			9.01	1.01	6.34	9.31	12.18		9.01	1.01	6.34	9.31	12.18	
29.0	Beaver Falls														
	New Brighton			9.06	1.06	6.40	9.36	12.24		9.06	1.06	6.40	9.36	12.24	
39.9	Ellwood City (ed)			9.03	1.04	6.15	9.13			9.03	1.04	6.15	9.13		
	New Castle (Wash. St.) Lv. ec			9.14	1.16	6.50	9.33	12.21		9.14	1.16	6.50	9.33	12.21	
43.7	New Castle			9.28	1.30	7.04	9.58	12.50		9.28	1.30	7.04	9.58	12.50	
64.9	YoungstownAr.			9.55	2.00	7.35	10.25	1.20		9.55	2.00	7.35	10.25	1.20	
64.9	YoungstownLv.	6.05	7.55	10.13	2.05	7.40	10.29	1.25	8.30	10.13	2.05	7.40	10.29	1.25	
69.4	Girard	6.14													
73.6	Niles	6.22	8.06	10.27	2.19	7.53	10.42	1.36	8.44	10.27	2.19	7.53	10.42	1.36	
78.8	Warren	6.32	8.13	10.39	2.29	8.03	10.51	1.45	8.54	10.39	2.29	8.03	10.51	1.45	
81.9	Leavittsburg	6.38													
85.8	Phalanx	6.44													
90.9	Mahoning	6.50													
94.5	Garrettsville-Hiram	6.57	df			8.22	hf	9.14				8.22	hf		
96.9	Jeddoe	7.02													
101.2	Mantua	7.12	df			8.32		9.32				8.32			
107.6	Aurora	7.22				8.40						8.40			
110.7	Geauga Lake	7.29													
115.5	Solon	7.35													
120.6	North Randall	7.42													
125.7	E. 93d St., Cleveland	7.49		11.31	3.25	9.01	11.44		9.55	11.31	3.25	9.01	11.44		
128.0	East 55th Street	7.54		11.36	3.31	9.06	hu		10.01	11.36	3.31	9.06	hu		
131.2	ClevelandAr.	8.03	9.23	11.45	3.40	9.15	11.58	2.50	10.10	11.45	3.40	9.15	11.58	2.50	
	ToledoAr.			2.25	6.10	1.00	2.55	5.32		2.25	6.10	1.00	2.55	5.32	
	DetroitAr.			4.00	7.50		4.50	7.25		4.00	7.50		4.50	7.25	
		AM	AM	PM	PM	AM	AM	AM	AM	PM	PM	AM	AM	AM	

AIR-CONDITIONED TRAINS
 Air-conditioned equipment has been assigned to regular sections of trains as shown herein. Every effort will be made to provide it as specified, but the right is reserved to employ non-air-conditioned cars as necessitated by volume of traffic or emergencies.

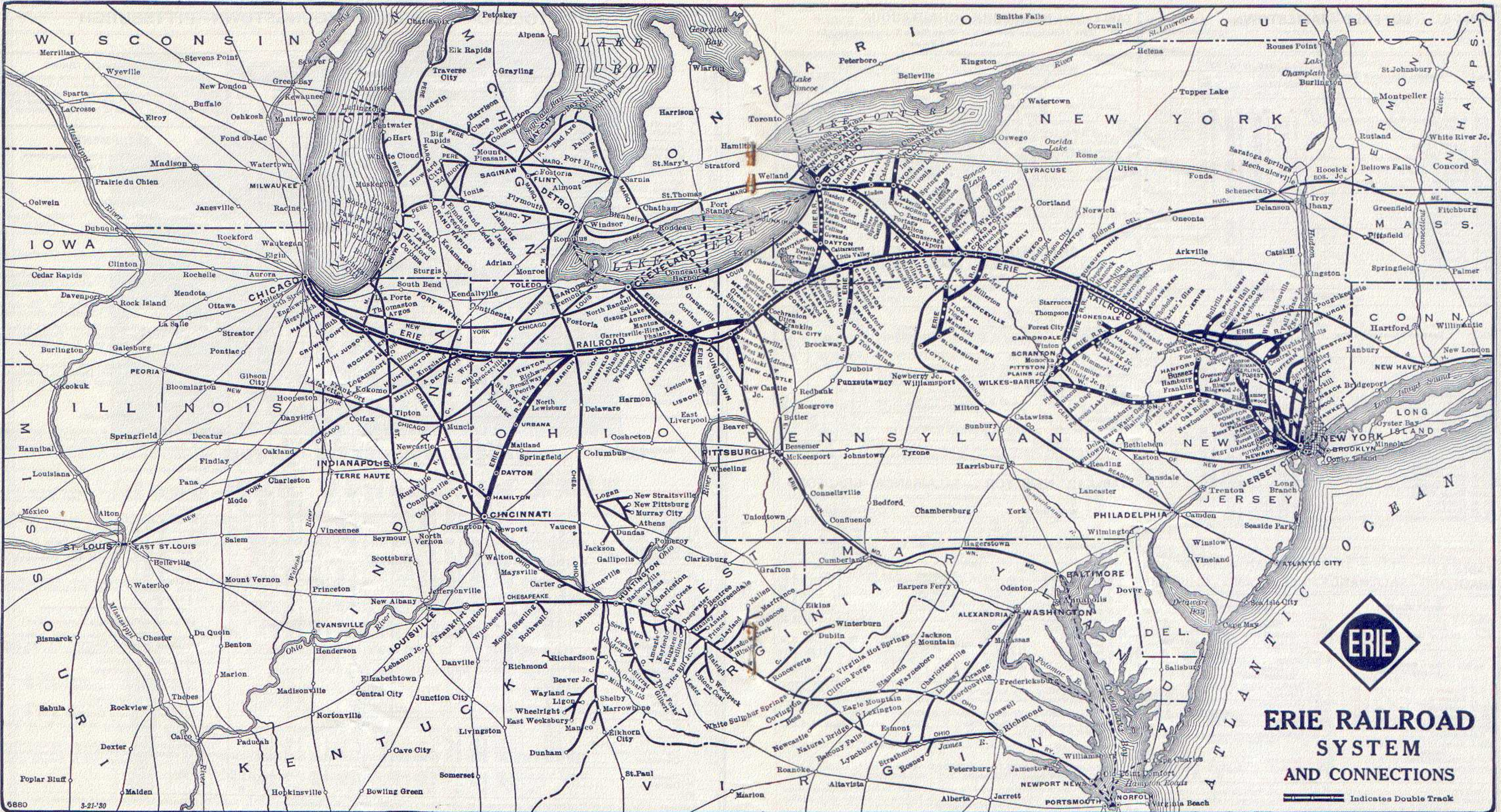
EQUIPMENT
 Detroit, Toledo, Cleveland, Youngstown, Pittsburgh Trains.
 ★Indicates Air-Conditioned Cars

EASTBOUND
No. 6—Daily. ★Sleeping Car (8 Section Compartment Lounge Restaurant Car) Cleveland to New York. ★Individual Seat Coach, Cleveland to New York.
No. 620—Sundays only. Coaches, Cleveland to Pittsburgh and Sharon.
No. 624 — Daily. ★Pullman Parlor-Lounge-Diner, Cleveland to Pittsburgh. ★Coach, Cleveland to Pittsburgh.
No. 626—Daily. ★Pullman Parlor Car, Cleveland to Pittsburgh. ★Coach, Cleveland to Pittsburgh.
No. 686—Daily. ★Sleeping Car for Parlor Car Service and ★Coaches, Detroit to Pittsburgh, via Cleveland. Dining Lounge Car, Cleveland to Pittsburgh.
No. 688—Daily. ★Sleeping Cars, Chicago to Pittsburgh. ★Sleeping Cars, Detroit to Pittsburgh. Through Coaches, Chicago and Detroit to Pittsburgh, via Cleveland.

WESTBOUND
No. 5—Daily. ★Sleeping Car (8 Section Compartment Lounge Restaurant Car) New York to Cleveland. ★Pullman Parlor Car, Pittsburgh to Cleveland. ★Coach, Pittsburgh to Cleveland.
No. 617—Sundays only. Coaches, Pittsburgh to Cleveland.
No. 623—Daily. ★Pullman Parlor-Lounge-Diner, Pittsburgh to Cleveland. ★Coach, Pittsburgh to Cleveland.
No. 679—Daily. ★Sleeping Car, Pittsburgh to Chicago. Through Coaches, Pittsburgh to Chicago.
No. 685—Daily. ★Sleeping Car for Parlor Car Service and ★Coaches, Pittsburgh to Detroit, via Cleveland. Dining Lounge Car, Pittsburgh to Cleveland.
No. 687—Daily. ★Sleeping Cars, Pittsburgh to Detroit. Through Coaches, Pittsburgh to Detroit via Cleveland.

★Cleveland-Pittsburgh Sleeping Car
 The Cleveland-Pittsburgh sleeping car operates to and from Union Terminal Cleveland via New York Central (via Ashtabula) to Youngstown, and P. & L. E. Railroad on following schedule:
 Eastbound
 Lv Cleveland (Union Terminal) 2:20 AM
 Ar Pittsburgh (P&LE Station) 7:15 AM
 Westbound
 Lv Pittsburgh (P&LE Station) 11:30 PM
 Ar Cleveland (Union Terminal) 7:10 AM
 Sleeper open for occupancy at 9:30 P. M. at Cleveland and Pittsburgh.
 Tickets reading via Erie Railroad between Cleveland and Youngstown, and P. & L. E. Railroad between Youngstown and Pittsburgh, will be honored in this sleeping car.

Holidays in the above table refers to the observance of New Year's Day, Memorial Day, Independence Day, Labor Day, Thanksgiving Day and Christmas Day.



**ERIE RAILROAD
SYSTEM
AND CONNECTIONS**

Indicates Double Track

ARRIVE FRESH AS A DAISY ON ERIE AIR-CONDITIONED TRAINS

TABLE 8 BUFFALO—JAMESTOWN

WESTBOUND					
Mls.	Eastern Standard Time	513	515	519	521
		Daily	Daily Ex. Su. & Hol.	Daily	Daily Ex. Su. & Hol.
0.0	Buffalo (Lehigh Valley Terminal).... Lv.	8.05	1.30	5.20	6.05
7.4	Blasdeil.....	8.24	1.48	5.38	6.22
13.3	Hamburg.....	8.36	2.00	5.50	6.32
14.5	Water Valley.....		2.03	5.53	6.36
16.9	Eden Valley.....	8.41	2.07	5.58	6.41
19.2	Eden Center.....	8.46	2.12	6.03	6.46
23.5	North Collins.....	8.53	2.19	6.10	6.55
27.5	Lawtons.....	9.00	2.26	6.17	7.02
30.6	Collins (State Hospital).....	9.06	2.32	6.23	7.08
33.6	Gowanda.....	9.14	2.45	6.33	7.15
38.1	Dayton.....	9.30		6.47	
39.9	Markhams.....				
43.4	South Dayton.....	9.42		6.57	
48.4	Cherry Creek.....	9.51		7.05	
52.7	Conewango.....	10.00		7.13	
60.6	Kennedy.....	10.13		hu	
66.4	Falconer.....	10.23		7.34	
69.7	Jamestown..... Ar.	10.30		7.40	

EASTBOUND					
Mls.	Eastern Standard Time	514	516	518	520
		Daily Ex. Su. & Hol.	Daily	Daily Ex. Su. & Hol.	Daily
0.0	Jamestown..... Lv.		8.32		5.05
3.3	Falconer.....		8.38		5.11
9.1	Kennedy.....		8.46		5.19
17.0	Conewango.....		8.58		5.32
21.3	Cherry Creek.....		9.05		5.39
26.3	South Dayton.....		9.13		5.48
29.8	Markhams.....				
31.6	Dayton.....		9.24		6.00
36.1	Gowanda.....	6.50	9.38	2.50	6.14
39.1	Collins (State Hospital).....	6.56	9.45	2.56	6.23
42.2	Lawtons.....	7.03	9.52	3.02	6.31
46.2	North Collins.....	7.10	10.00	3.09	6.38
50.5	Eden Center.....	7.18	10.08	3.15	6.46
52.8	Eden Valley.....	7.23	10.13	3.21	6.51
55.2	Water Valley.....	7.28			
56.4	Hamburg.....	7.33	10.20	3.27	6.58
62.3	Blasdeil.....	7.43	10.31	3.37	7.08
69.7	Buffalo (Lehigh Valley Terminal).... Ar.	8.02	10.50	3.55	7.25

Holidays in the above table refer to the observance of New Year's Day, Memorial Day, Independence Day, Labor Day, Thanksgiving Day and Christmas Day.

TABLE 11 BRADFORD - SALAMANCA - CLEVELAND - CHICAGO

WESTBOUND				EASTBOUND				
Miles from Bradford	Eastern Standard Time	Bus-7	Bus-1	Miles from Chicago	Central Standard Time	2-Bus	3-Bus	6-Bus
		Daily	Daily			Daily	Daily	Daily
		AM	PM	0.0	Chicago..... Lv.	6.00	10.00	
0.0	Bradford..... Lv.	9.17	5.42	372.6	Akron.....	3.44	7.22	
17.2	Salamanca..... Ar.	9.55	6.20	0.0	Cleveland.....			5.00
17.2	Salamanca..... Lv.	11.44	7.10	426.7	Youngstown....	5.07	8.54	6.43
51.0	Jamestown..... Ar.	12.36	8.00	551.1	Jamestown.....	8.25	12.17	9.48
175.4	Youngstown....	3.37	11.05	584.9	Salamanca..... Ar.	9.05	1.11	10.27
0.0	Cleveland.....							
229.5	Akron.....	5.09	12.44					
602.1	Chicago..... Ar.	1.00	8.05	584.9	Salamanca..... Lv.	9.35	2.20	dh10.35
		AM	AM	602.1	Bradford..... Ar.	10.15	3.00	dh11.10

NOTE "X"—In connection with the bus service the Erie Railroad Company acts as agent only and is not responsible beyond its own line, except as such responsibility may be imposed by law with respect to baggage.

TABLE 9 NEW YORK—CHAUTAUQUA

(Via Jamestown and BUS of West Ridge Transportation Co.)
(See Note "X" Below)

WESTBOUND				EASTBOUND			
Eastern Standard Time	1-Bus	5-Bus	7-Bus	Eastern Standard Time	Bus-2	Bus-8	Bus-6
	Sa., Su. & Hol. only	Daily	Daily		Daily Ex. Su. & Hol.	Daily	Daily
N.Y., West 23rd St. Lv.	8.30	7.10	11.55	Chautauqua..... Lv.	6.30	10.52	8.32
" Chambers St.	8.45	7.30	12.00	Jamestown..... Ar.	7.00	11.25	9.05
" Jersey City Sta.	9.00	7.50	12.25	Jamestown..... Lv.	8.25	12.17	9.48
Jamestown..... Ar.	8.00	7.05	12.36	N. Y., Jersey City Sta. Ar.	7.20	11.45	8.40
Jamestown..... Lv.	9.50	8.10	1.15	" Chambers St.	7.34	11.59	8.54
Chautauqua..... Ar.	10.23	8.38	1.45	" West 23rd St. Ar.	7.55		9.05

Tickets sold and Baggage checked through to Chautauqua. Hand baggage checked without charge. Trunks checked at charge of 25c each.

TABLE 10 CHAUTAUQUA—AKRON—CHICAGO
(Via Jamestown and BUS of West Ridge Transportation Co.)
(See Note "X" Below)

WESTBOUND				EASTBOUND			
Eastern Standard Time	Bus-5	Bus-7	Bus-1	Central Standard Time	2-Bus	3-Bus	6-Bus
	Daily	Daily	Daily		Daily	Daily	Sa., Su. & Hol. only
Chautauqua..... Lv.	6.30	10.52	6.37	Chicago..... Lv.	6.00	10.00	
Jamestown..... Ar.	7.00	11.25	7.10				
Jamestown..... Lv.	7.05	12.36	8.00	Akron..... Lv.	3.44	7.22	
Cleveland..... Lv.	11.45			Cleveland..... Lv.			5.00
Akron..... Ar.		5.09	12.44	Jamestown..... Ar.	8.25	12.17	9.48
Chicago..... Ar.		1.00	8.05	Jamestown..... Lv.	9.10	1.15	9.50
	AM	AM	AM	Chautauqua..... Ar.	9.43	1.45	10.23

Tickets sold and Baggage checked through to Chautauqua. Hand baggage checked without charge. Trunks checked at charge of 25c each.

TABLE 12 NEW YORK—SALAMANCA—BRADFORD

WESTBOUND				EASTBOUND			
Miles from N. Y.	Eastern Standard Time	gt 1-Bus	ht 5-557	Eastern Standard Time	gt Bus-2	gt Bus-8	ht 560-6
		Daily	Daily		Daily	Daily	Daily
0.0	N. Y., W. 23rd St. Lv.	AM	PM	Bradford..... Lv.	AM	AM	PM
0.0	" Chambers St.	8.30	7.10	East Bradford..	dh 8.15	ad11.17	9.35
1.0	" Jersey City Station..... Lv.	8.45	7.30	Limestone.....			9.38
413.6	Salamanca..... Ar.	9.00	7.50	Carrollton.....			9.46
		7.03	6.08	Salamanca..... Ar.	dh 8.55	ad12.00	10.10
413.6	Salamanca..... Lv.	ad7.10	6.35	Salamanca..... Lv.	9.10	1.18	10.34
419.0	Carrollton.....		6.45	N. Y., Jersey City Station.....	7.20	11.45	8.40
425.2	Limestone.....		6.58	" Chambers St.	7.34	11.59	8.54
429.5	East Bradford..		7.06	" W. 23rd St. ...	7.55		9.05
430.8	Bradford..... Ar.	ad7.45	7.10		PM	PM	AM

Trains 5-557 and 560-6 carry through sleeping car between Bradford and New York. Sleeper on train 557 will be parked at Bradford for occupancy until 8.00 A. M.

Busses leave as follows: (running time approximately 45 minutes.)
Lv. Salamanca for Bradford, 8.20 A.M., 9.35 A.M., 2.20 P.M., 4.30 P.M., 5.40 P.M., 7.10 P.M., 11.15 P.M.
Lv. Bradford for Salamanca, 8.17 A.M., 9.17 A.M., 11.17 A.M., 2.17 P.M., 4.27 P.M., 5.42 P.M.

BAGGAGE CHECKED TO BRADFORD—Baggage will be handled only on Trains 557 and 560 between Salamanca, N. Y., and Bradford, Pa.

NOTE "X"—In connection with the bus service the Erie Railroad Company acts as agent only and is not responsible beyond its own line, except as such responsibility may be imposed by law with respect to baggage.

TABLE 13 NEW YORK—NEWBURGH—(VIA HARRIMAN)

Table 13: New York—Newburgh—(via Harriman). Includes Westbound (Read Down) and Eastbound (Read Up) schedules with times and station names like N.Y., W. 23d St., Chambers St., Jersey City Sta., and Harriman.

TABLE 15 NEW YORK—MEADVILLE—OIL CITY

Table 15: New York—Meadville—Oil City. Includes Westbound (Read Down) and Eastbound (Read Up) schedules with times and station names like N.Y., W. 23d St., Cham. St., Jersey City Station, and Meadville Lv.

TABLE 14 NEW YORK—NEWBURGH (VIA GREYCOURT)

Table 14: New York—Newburgh (via Greycourt). Includes Westbound (Read Down) and Eastbound (Read Up) schedules with times and station names like N.Y., W. 23d St., Chambers St., Jersey City, and Greycourt.

Tickets sold and baggage checked through to Franklin and Oil City.

TABLE 17 Lackawaxen—Honesdale

Table 17: Lackawaxen—Honesdale. Includes Westbound (Read Down) and Eastbound (Read Up) schedules with times and station names like N.Y., W. 23d St., Chambers St., Jersey City, Lackawaxen, Rowlands, Glen Eyre, Shimers Rock Cut, Kimbles, Wellwood Ave., Hawley, White Mills, East Honesdale, and Honesdale.

TABLE 16 Chicago-Meadville-Oil City

Table 16: Chicago-Meadville-Oil City. Includes Westbound (Read Down) and Eastbound (Read Up) schedules with times and station names like Oil City Ar., Reno, Franklin, Sugar Creek, Utica, Carlton, Cochranton, Shaws, and Meadville Lv.

Passengers to and from Honesdale can also make connection via Narrowsburg (see Tables 2 and 3), and busses of the Wayne County Taxicab Co. (See Note "X" Below)

Tickets sold and baggage checked through to Franklin and Oil City.

TABLE 18 MIDDLETOWN—PINE BUSH

Table 18: Middletown—Pine Bush. Includes Westbound (Read Down) and Eastbound (Read Up) schedules with times and station names like N.Y., W. 23d St., Chambers St., Jersey City, Middletown, Circleville, Bullville, Thompson Ridge, and Pine Bush.

Tickets sold and baggage checked through to Circleville, Bullville, Thompson Ridge and Pine Bush.

TABLE 20 NEW YORK—KENOZA LAKE—JEFFERSONVILLE

Table 20: New York—Kenoza Lake—Jeffersonville. Includes Westbound (Read Down) and Eastbound (Read Up) schedules with times and station names like N.Y., Jersey City Sta., Callicoon, Kenoza Lake, and Jeffersonville.

TABLE 19 NEW YORK—MONTICELLO—LIBERTY

Table 19: New York—Monticello—Liberty. Includes Westbound and Eastbound schedules with times and station names like N.Y., Jersey City Sta., Middletown, Wurtsboro, Monticello, Liberty, Hudson, and Pine Bush.

Tickets sold and baggage checked through to Monticello, Wurtsboro and Liberty.

Tickets sold and baggage checked through to Jeffersonville and Kenoza Lake.

FARES REDUCED To All Points On All Trains At All Times COACHES 2c PER MILE Increased to end in "0" or "5" *3c PER MILE Increased to end in "0" or "5" *Plus reduced Pullman charges for accommodations occupied. No surcharge. TRAVEL BY TRAIN SAFETY — COMFORT ECONOMY!

NOTE "X" in connection with the bus service the Erie Railroad Company acts as agent only and is not responsible beyond its own line, except as such responsibility may be imposed by law with respect to baggage.

TABLE 21 ELMIRA-ROCHESTER

Table with columns for Westbound Read Down (5-463, 7-467), Miles, Eastern Standard Time, and Eastbound Read Up (468-8, 464-8). Rows include stations like N. Y., W. 23d St., Chambers St., Jersey City Sta., Elmira, Corning, Ar., Kanona, Avoca, Wallace, Cohocton, Atlanta, Wayland, Springwater, Webster, Conesus, So. Livonia, Livonia, South Lima, Conesus Lake Jet., Avon, Golah, Industry, West Henrietta, Rochester.

TABLE 22 SALAMANCA—DUNKIRK

Table with columns for Westbound Read Down (5-527), Miles, Eastern Standard Time, and Eastbound Read Up (540). Rows include stations like N. Y., W. 23d St., Chambers St., Jersey City Station, Salamanca, Little Valley, Cattaraugus, Persia, Dayton, Buffalo, Dayton, Perrysburg, West Perrysburg, Smith's Mills, Forestville, Sheridan, Dunkirk.

LOCATE YOUR PLANT WHERE YOU CAN LOCATE MORE PROFITS Ask us about industrial buildings and vacant land on Erie rails GEO. F. WESTON Industrial Commissioner Erie Railroad, Midland Bldg., Cleveland, O.

HUDSON AND MANHATTAN TUBE TRAINS

SCHEDULE OF RUNNING TIME BETWEEN ERIE R. R. JERSEY CITY TERMINAL AND

Table showing running times for Downtown New York (Cortlandt St. to Hudson Terminal Bldg.) and Uptown New York (33rd Street and 6th Ave to Christopher and Greenwich Streets). Includes fares: Downtown 6 cents, Uptown 10 cents.

ERIE R. R. FERRY TIME TABLE EASTERN STANDARD TIME CHAMBERS STREET FERRY Ferry Running Time, 9 Minutes WEEK DAYS

Table with columns: Leave New York for Jersey City (AM, PM) and Leave Jersey City for New York (AM, PM). Rows show departure and arrival times for various times of day.

a Will not run on Holidays. m Except Saturdays and Holidays. h Holidays only.

SUNDAYS

Table showing Sunday departure and arrival times for the Chambers Street Ferry between New York and Jersey City.

TWENTY-THIRD STREET FERRY Ferry Running Time, 20 Minutes WEEK DAYS

Table with columns: Leave New York for Jersey City and Leave Jersey City for New York. Rows show departure and arrival times for weekdays.

SUNDAYS

Table showing Sunday departure and arrival times for the Twenty-Third Street Ferry between New York and Jersey City.

TABLE 23 ROCHESTER—MOUNT MORRIS—DANSVILLE

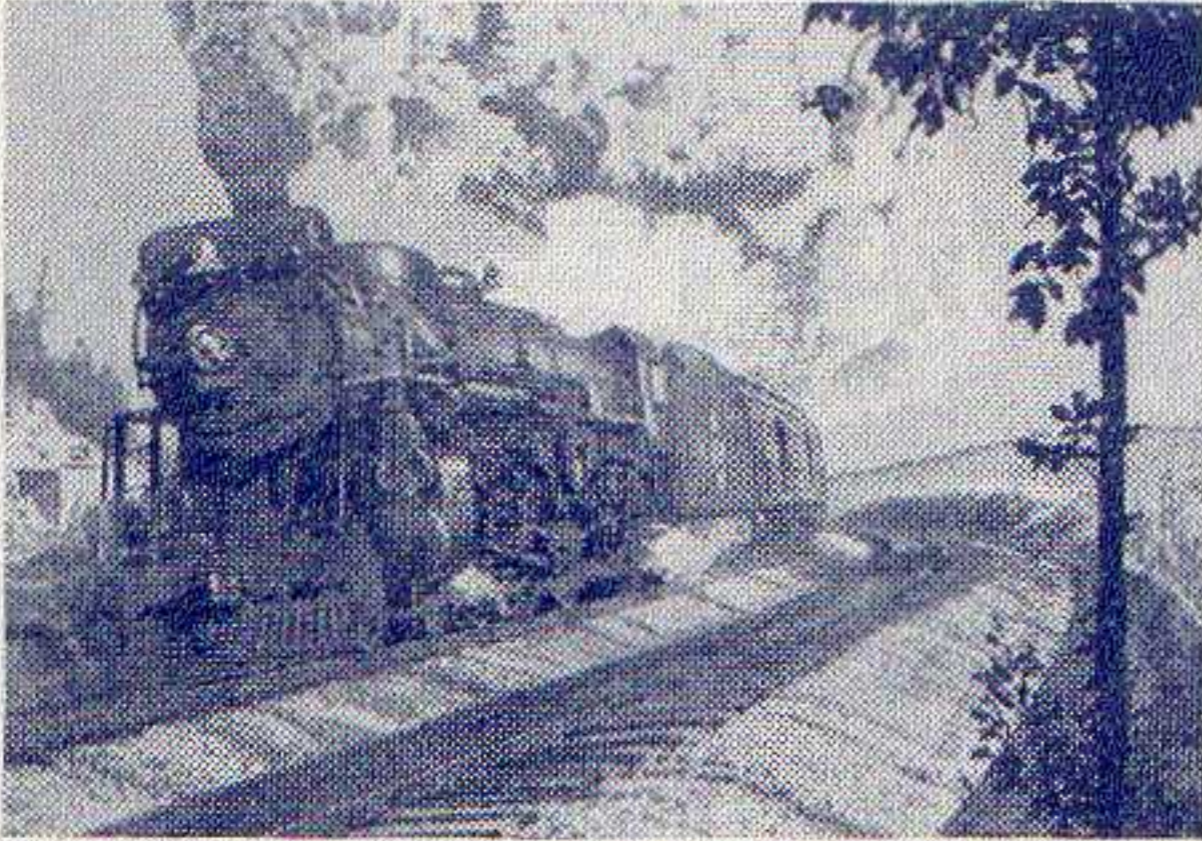
Table with columns: Eastern Standard Time, N. B. (404, 408, 408, 468, 428, 416, 440, 420, 424). Rows include stations: Rochester, Mortimer, W. Henrietta, Industry, Golah, Avon, Geneseo, Mt. Morris, Mt. Morris (D. & Mt. M. R. R.), Sonyea, Groveland, West Sparta, Dansville.

Table with columns: Eastern Standard Time, N. B. (425, 401, 403, 403, 467, 409, 415, 415, 419). Rows include stations: Dansville, West Sparta, Groveland, Sonyea, Mt. Morris, Mt. Morris (D. & Mt. M. R. R.), Geneseo, Avon, Golah, Industry, W. Henrietta, Mortimer, Rochester.

TRAINS between Mt. Morris and Avon will stop on signal at Shakers, Jones, Cuylerville, Jaycocks, Seven Nations, Huston, South Avon, Pierces, Fowler, Ashantee, Linden Street and Spring Street and between Avon and Rochester, except Trains 467, 468 at Wiards, Elm Place, Meadowwood, Gannett, Blair, Martin, Brooks, Fenner, Baileys, Crittenden, Westfall and South Park. HOLIDAYS in above table refer to the observance of New Year's Day, Decoration Day, Independence Day, Labor Day, Thanksgiving Day and Christmas Day.

ERIE TRAIN-CAB SERVICE

Takes you from Erie Terminal directly to your door in New York or Brooklyn



ONE Person **90¢** TWO Persons **\$1.25** THREE or more **\$1.50**

Thousands have used and praised Erie Train-Cab Service. Strangers arriving at Erie Terminal, Jersey City are taken all the way to their destination in New York or Brooklyn. They never get "lost" and are never overcharged. Women accompanied by children appreciate this service. Even seasoned travellers enjoy the comfort of settling down in their own taxicab and forgetting about bags and car changes.

The fares shown above apply from our terminal to any place on Manhattan 110th Street and South, also to any point in the Brooklyn business district.

Service beyond the prescribed zones is metered from the zone limits and charged for at regular rates.

Train-Cab service is available to all who travel from stations west of Middletown, N. Y.

You can buy the Train-Cab coupon with your rail ticket at the ticket office or from the conductor on any through train and you will find your taxicab awaiting the arrival of your train at Jersey City.

Ask the conductor or ticket agent for details.

Checking Hand Baggage at Chicago

Passengers arriving Chicago on Erie trains who desire to stay over for a few hours and depart from a station other than Dearborn Station may have their hand baggage transferred to the station from which they depart. A Parmelee Company agent meets all Erie trains upon arrival at Chicago and he will arrange the transfer for you. The bags will be placed in the parcel check room of the station from which you depart. A charge of fifty cents for each hand bag, including the parcel room fee, will be made for the service, except one piece will be checked free when passenger holds through ticket including transfer through Chicago.

• **INTERCHANGEABLE SCRIP COUPON TICKETS** issued in \$15.00 and \$30.00 denominations are accepted on trains or at ticket offices in payment of rail passage as well as sleeping and parlor car accommodations, and also as payment for meals in restaurant cars.

• **PREPAID ORDERS.** For the convenience of patrons who do not wish to send money by mail, Erie Railroad ticket agents are prepared to sell prepaid ticket orders for the delivery of transportation, rail and Pullman, from practically all points in the United States, Canada and Mexico. These orders may also include the furnishing of cash.

In emergencies arrangements may be made for the delivery of transportation by telegraph or telephone without charge except when commercial wires are used.

• **BAGGAGE INSURANCE** by the St. Paul Fire & Marine Insurance Co. may be purchased at principal Erie ticket offices. It insures your baggage and personal effects for your entire trip anywhere in the world. Minimum premium twenty-five cents. The ticket agent can give you full particulars.

• **ERIE PLAYING CARDS** are on sale at our ticket offices, excepting in Ohio. Bridge sets one dollar, single decks fifty cents.

• **SPECIAL TOURS AND CONVENTIONS.** Our services are at the disposal of clubs, lodges and other organizations in arranging for trips to conventions and gatherings of all sorts. Concerning fares, train schedules and travel plans, consult or write to any Erie Ticket Agent, or any of the Passenger Department representatives listed on pages 35 to 37 of this folder.



OVER 100 LINERS for EUROPE

regularly leave the ports between New York and Montreal carrying passengers to the Old World . . . That European travel is costly and for the privileged few has been proved a fallacy. Find out to-day how inexpensive a trip can be.

It gives distinction to have seen EUROPE

Consult Ticket Agent for further information

RAILROAD AND PULLMAN FARES

For Information Only. Subject to Change Without Notice

Between And	New York				Binghamton				Buffalo				Jamestown				Cleveland				Chicago			
	Tickets valid in		Lower Berth	Seat Fare	Tickets valid in		Lower Berth	Seat Fare	Tickets valid in		Lower Berth	Seat Fare	Tickets valid in		Lower Berth	Seat Fare	Tickets valid in		Lower Berth	Seat Fare	Tickets valid in		Lower Berth	Seat Fare
	Pullman	Coach			Pullman	Coach			Pullman	Coach			Pullman	Coach			Pullman	Coach			Pullman	Coach		
Akron.....Ohio	\$ 16.75	\$ 11.20	\$ 3.75	\$ 1.05	\$ 12.30	\$ 8.20	\$ 3.00	\$ 2.05	\$ 6.60	\$ 4.40	\$ 2.00	\$ 1.05	\$ 5.35	\$ 3.60	\$ 2.25	\$.90	\$ 2.60	\$ 1.75	\$ 3.00	\$ 1.95	\$ 10.60	\$ 7.10	\$ 2.50	\$ 1.50
Binghamton.....N. Y.	5.80	3.90	2.00	1.05	6.05	4.05	2.25	1.10	6.15	4.10	2.00	1.05	6.95	4.65	2.50	1.20	11.60	7.75	3.00	1.95	20.35	13.05	5.00
Bradford.....Pa.	11.85	7.90	3.00	6.05	4.05	2.25	1.10	2.35	1.55	1.55	1.05	6.20	4.15	15.50	9.80
Buffalo.....N. Y.	11.95	7.95	2.50	2.00	6.15	4.10	2.00	1.05	2.05	1.40	6.25	4.15	14.20	8.95
Callicoon.....N. Y.	4.10	2.75	2.00	.70	2.40	1.6050	8.50	5.70	2.50	1.45	9.35	6.25	2.50	1.55	14.00	9.35	3.75	2.35	22.70	14.65	5.50
Cambridge Springs.....Pa.	14.40	9.60	3.00	8.60	5.75	2.50	1.45	3.70	2.45	1.65	1.10	3.95	2.65	2.00	.60	13.35	8.90	3.00
Chicago.....Ill.	25.25	16.20	6.00	20.35	13.05	5.00	14.20	8.95	13.95	8.95	3.00	2.25	11.75	7.85
Cleveland.....Ohio	16.30	10.90	3.75	11.60	7.75	3.00	1.95	6.25	4.15	4.75	3.15	2.25	.90	11.75	7.85
Corning.....N. Y.	8.05	5.40	2.00	1.45	2.25	1.5050	3.90	2.60	2.00	.65	4.75	3.15	2.00	.80	9.35	6.25	2.50	1.55	18.10	11.55	4.25
Corry.....Pa.	13.55	9.05	3.00	2.25	7.75	5.20	2.50	1.30	2.85	1.9085	.55	3.95	2.65	2.00	.75	13.35	8.90	3.00
Deposit.....N. Y.	5.35	3.55	2.00	.90	1.15	.8050	7.30	4.85	2.50	1.25	8.10	5.40	2.50	1.35	12.75	8.50	3.00	2.20	21.50	13.85	5.50
Elmira.....N. Y.	7.55	5.05	2.00	1.35	1.75	1.1550	4.40	2.95	2.00	.75	5.25	3.50	2.25	.90	9.90	6.60	2.50	1.65	18.60	11.90	4.25
Gallon.....Ohio	18.95	12.65	4.25	14.00	9.35	3.75	2.45	7.90	5.25	7.15	4.75	2.50	1.30	5.10	3.40	8.45	5.65	2.50	1.15
Hancock.....N. Y.	4.95	3.30	2.00	1.55	1.0550	7.70	5.15	2.50	1.30	8.50	5.70	2.50	1.45	13.15	8.75	3.00	2.25	21.90	14.10	5.50
Hornell.....N. Y.	9.30	6.20	2.50	1.65	3.50	2.3560	2.80	1.90	3.50	2.3560	8.15	5.45	2.50	1.40	17.00	10.85	3.75
Huntington.....Ind.	22.65	15.10	5.00	17.95	11.95	4.25	11.95	8.00	11.10	7.40	2.50	2.00	9.40	6.25	4.30	2.9070
Jamestown.....N. Y.	12.75	8.50	3.00	2.20	6.95	4.65	2.50	1.20	2.05	1.40	4.75	3.15	2.25	.90	13.95	8.95	3.00
Kent.....Ohio	16.45	11.00	3.75	12.00	8.00	3.00	2.00	6.60	4.40	5.05	3.40	2.25	.85	2.30	1.55	10.90	7.30	2.50	1.60
Lackawaxen.....Pa.	3.35	2.2555	3.15	2.1055	9.25	6.20	2.50	1.60	10.10	6.75	2.50	1.70	14.75	9.85	3.75	2.50	23.45	15.15	5.50
Lima.....Ohio	20.60	13.75	5.00	15.90	10.60	3.75	9.75	6.50	9.00	6.00	2.50	1.65	7.20	4.80	6.25	4.20	2.00	1.00
Mansfield.....Ohio	18.45	12.30	4.25	14.00	9.35	3.75	2.35	7.90	5.25	7.15	4.75	2.50	1.25	4.65	3.10	8.80	5.90	2.50	1.25
Marion.....Ohio	19.55	13.05	4.25	14.65	9.75	3.75	2.50	8.50	5.70	7.75	5.20	2.50	1.40	5.70	3.80	8.05	5.35	2.50	1.00
Meadville.....Pa.	14.80	9.90	3.00	2.25	9.00	6.00	2.50	1.50	4.10	2.75	2.10	1.4050	3.70	2.45	2.00	.55	13.10	8.75	3.00
Middletown.....N. Y.	2.05	1.3550	4.45	3.00	2.00	.75	10.60	7.05	2.50	1.80	11.40	7.60	3.00	1.90	16.05	10.70	3.75	24.80	16.00	6.00
New York.....N. Y.	5.80	3.90	2.00	1.05	11.95	7.95	2.50	2.00	12.75	8.50	3.00	2.20	16.30	10.90	3.75	25.25	16.20	6.00
Olean.....N. Y.	11.20	7.45	2.50	1.95	5.40	3.60	2.00	.90	2.20	1.50	1.60	1.0550	6.25	4.15	2.50	1.15	15.50	9.85	3.75
Owego.....N. Y.	6.45	4.30	2.00	1.15	.65	.4550	5.50	3.70	2.00	.95	6.35	4.25	2.25	1.05	11.00	7.35	2.50	1.85	19.70	12.65	5.00
Pittsburgh.....Pa.	12.35	8.25	5.40	3.60	3.95	2.65	2.00	.50	14.10	9.40
Port Jervis.....N. Y.	2.70	1.8050	3.85	2.55	2.00	.65	9.95	6.65	2.50	1.70	10.80	7.20	2.75	1.80	15.40	10.30	3.75	24.15	15.60	5.75
Salamanca.....N. Y.	11.75	7.85	2.50	2.00	5.95	3.95	2.00	1.00	1.85	1.25	1.05	.7050	5.70	3.80	2.50	1.05	14.95	9.45	3.75
Sharon.....Pa.	15.15	10.10	3.00	2.25	10.30	6.85	2.50	1.75	4.95	3.30	3.35	2.2560	2.40	1.6050	12.65	8.45	3.00	1.85
Warren.....Ohio	15.60	10.40	3.00	11.10	7.40	2.50	1.90	5.75	3.85	4.20	2.8075	1.60	1.1050	11.85	7.90	3.00	1.70
Waverly.....N. Y.	7.00	4.65	2.00	1.25	1.20	.8050	4.95	3.30	2.00	.85	5.80	3.85	2.25	.95	10.40	6.95	2.50	1.75	19.15	12.25	4.25
Wellsville.....N. Y.	10.05	6.70	2.50	1.80	4.30	2.85	2.00	.75	3.25	2.20	2.70	1.8050	7.35	4.90	2.50	1.35	16.65	10.60	3.75
Youngstown.....Ohio	15.15	10.10	3.00	2.25	10.70	7.15	2.50	1.80	5.35	3.60	3.75	2.5065	2.00	1.3550	12.20	8.15	3.00	1.75

RATES FOR UPPER BERTH, SECTION, DRAWING ROOM OR COMPARTMENT IN SLEEPING CARS (No Surcharge)

Where Lower Berth Rate Is	Upper Berth Rate Will Be	Section Rate For One Passenger	▲ Section Rate For Two Passengers	Drawing Room Rate For One Passenger	Drawing Room Rate For Two or More Pas'grs.	Room Rate For One Passenger	Room Rate For Two or More Pas'grs.	Where Lower Berth Rate Is	Upper Berth Rate Will Be	Section Rate For One Passenger	▲ Section Rate For Two Passengers	Drawing Room Rate For One Passenger	Drawing Room Rate For Two or More Pas'grs.	Room Rate For One Passenger	Room Rate For Two or More Pas'grs.
\$ 2.00	\$ 1.60	\$ 2.80	\$ 3.20	\$ 5.00	\$ 7.00	\$ 4.00	\$ 6.00	\$ 4.00	\$ 3.20	\$ 5.60	\$ 6.40	\$ 10.00	\$ 14.00	\$ 8.00	\$ 11.50
2.25	1.80	3.15	3.60	5.75	8.00	4.50	6.50	4.25	3.40	5.95	6.80	10.75	15.00	8.50	12.00
2.50	2.00	3.50	4.00	6.25	9.00	5.00	7.00	4.50	3.60	6.30	7.20	11.25	16.00	9.00	13.00
2.75	2.20	3.85	4.40	7.00	10.00	5.50	8.00	5.00	4.00	7.00	8.00	12.50	18.00	10.00	14.00
3.00	2.40	4.20	4.80	7.50	11.00	6.00	8.50	5.25	4.20	7.35	8.40	13.25	19.00	10.50	15.00
3.25	2.60	4.55	5.20	8.25	12.00	6.50	9.50	5.50	4.40	7.70	8.80	13.75	20.00	11.00	15.50
3.50	2.80	4.90	5.60	8.75	13.00	7.00	10.00	5.75	4.60	8.05	9.20	14.50	21.00	11.50	16.50
3.75	3.00	5.25	6.00	9.50	14.00	7.50	10.50	6.00	4.80	8.40	9.60	15.00	21.00	12.00	17.00

Minimum Number of Railroad Tickets Required for Exclusive Occupancy of Sections, Drawing Rooms or Compartments in Sleeping Cars and Drawing Room in Parlor Cars

Section.....One
 Comp., Berth Service.....One and One-tenth
 Comp., Seat Service...One and One-half
 Drawing Room, Berth Service.....One and One-quarter
 Drawing Room, Seat Service.....Two
 Drawing Room in Parlor Cars.....Two

Note:—▲ For section occupied by two passengers but with lower berth only prepared for night service.

GENERAL INFORMATION

STANDARD OF TIME—Erie Lines east of and including Lima, Ohio, are operated by Eastern Standard Time, Lines west of Lima, Ohio, by Central Standard Time. 12.01 Midnight to 12.00 Noon is indicated by light-faced type. 12.01 Noon to 12.00 Midnight is indicated by heavy-faced type.

TRAINS WILL NOT BE HELD for ferries from New York between hours of 5:00 P.M. and 6:30 P.M. Eastern Standard Time.

HOLIDAYS—The term "Holidays" (unless covered by special note) refers to New Year's Day, Lincoln's Birthday, Washington's Birthday, Memorial Day, Independence Day, Labor Day, Election Day (November 3), Thanksgiving Day and Christmas Day.

THIS COMPANY IS NOT RESPONSIBLE FOR ERRORS in time tables, inconvenience or damage resulting from delayed trains or failure to make connections; schedules are subject to change without notice.

FARE PAID ON TRAINS—The lawful fare when paid to conductor is ten (10) cents in excess of the one-way ticket fare. Conductors cannot deviate therefrom. Buy ticket before boarding trains and avoid payment of this extra fare.

CHILDREN under five years of age are carried free when accompanied by parent or guardian; five years and under twelve, half fare, twelve years of age and over, full fare.

ADJUSTMENT OF FARES—Should any misunderstanding arise with conductors or agents, pay the fare required, take receipt and communicate with General Passenger Agent, Midland Bldg., Cleveland, Ohio.

SLEEPING AND PARLOR CAR RESERVATIONS—Space reserved by telegraph or telephone within city limit will be held until:

5:00 P.M. day prior to departure of trains leaving before noon next day.
 10:00 A.M. day of departure for trains leaving between noon and 5:00 P.M.
 2:00 P.M. day of departure for trains leaving after 5:00 P.M.

When application is by wire or letter from a point outside of city limit, space will be held until fifteen minutes of train time.

BAGGAGE TO BE CHECKED should be delivered at station at least thirty minutes before train time.

BAGGAGE DELIVERY IN NEW YORK CITY—All baggage checked to New York City will be sent to the West 23rd Street Station unless passenger specifies Chambers Street Station at time of checking.

Baggage delivery service in New York will be performed by the Railway Express Agency.

HAND-BAGGAGE in Pullman Cars is restricted to what can be conveniently placed in the berth, seat or other accommodations purchased by the passenger.

CHICAGO PASSENGER AND BAGGAGE TRANSFER is performed by the Parmelee Company. A uniformed agent meets all incoming trains of the Erie Railroad on arrival at Dearborn Station.

ARTICLES LOST ON TRAINS or left in waiting rooms or stations, owners should apply to Information Bureau, Jersey City Depot, or address General Passenger Agent, Midland Bldg., Cleveland, Ohio, giving full description of the property, stating date of loss and number of train.

REFERENCE MARKS AND NOTES

IMPORTANT—When trains are indicated as stopping conditionally, Conductors should be notified of intention to leave train and Station Agent notified of intention to board train.

- § Runs Sundays only.
 || Station restaurant.
 * Runs daily.
 † Runs daily except Sunday.
 C Stops on Saturday only.
 † Stops to discharge passengers.
 ‡ Will not operate from these stations on Monday morning.
 † Stops on Holidays only.
 † Train 71 will not run west of Waldwick on Holidays.
 † Stops on signal to receive and discharge passengers.
 k Runs Saturdays only.
 M. C. Motor Car Service.
 N. B. No Baggage carried.
- ab Stops Saturday and Sunday only to discharge passengers.
 ac Stops Dalton (5.53 A. M.) to discharge passengers from Hornell and east and on signal to receive passengers.
 ad Via Allegany Motor Coach Co., Inc. bus between Salamanca and Bradford.
 ae Train 5 will stop on signal at Monroe (9.05 P. M.) to receive passengers for Jamestown and west; and to discharge passengers from New York.
 af Train 7 stops Monday only Middletown (1.51 A. M.) to discharge passengers.
 ag Stops Saturdays only to discharge passengers.
 ah Stops on signal Andover (9.50 A. M.); Belmont (10.16 A. M.) to discharge passengers from New York.
 at On Sundays only, Train 30 will arrive West 23rd Street at (1.50 P. M.).
 ax Stops Englewood Train 1 (7.47 A. M.); Train 7 (12.43 A. M.) to discharge passengers from east of Hammond.
 bc Stops on signal Paterson (8.19 P. M.), Ridgewood (8.29 P. M.) to receive passengers.
 bd Stops on signal Suffern (8.43 P. M.) to receive passengers for Hornell and west.
 bf Stops Cuba (5.23 A. M.) to discharge passengers from Elmira and east and to receive for Jamestown and west.
 bg Stops on signal, Friendship (10.30 A. M.); Cuba (10.44 A. M.) to discharge passengers from New York.
 bh Stops Cuba (6.20 P. M.) to discharge passengers from Elmira and east and to receive for Jamestown and west.
 bt No Agent on duty. No baggage handled on Trains 5 and 6 to or from Castile.
 ca Train 27 stops on Sundays and Holidays only Rutherford (3.13 P. M.).
 cb Stops on signal Passaic (8.10 P. M.) to receive passengers for Jamestown and west.
 cg Stops on signal Ridgewood (11.15 P. M.) to discharge passengers from Binghamton and west.
 ch Train 71 stops Tuxedo to discharge passengers, except Holidays.
 cn Stops on signal Union City (8.52 P. M.); Cambridge Springs (9.12 P. M.) to discharge passengers from Jamestown and east and to receive for Youngstown and west.
 cp Stops on signal (10.15 P. M.) to receive passengers for east of Hammond.
 ct Tickets sold through to Lake Huntington, via Cochection and Dermody Auto Trans. Co.
 cu Busses of Dermody Auto Trans. Co. operate Lake Huntington to Cochection connecting with trains for points east.
 cw Stops Endicott (1.45 A. M.) to discharge passengers from Port Jervis and east.
 cx Stops to discharge passengers from New York.
 cy Stops to discharge passengers from Cleveland and beyond.
 da If no passengers for this connection, bus will not operate Narrowsburg to Honesdale.
 db Stops Endicott (6.17 A. M.) to discharge passengers from New York.
 dc Stops at Solon and Aurora on Saturdays only to discharge passengers from Cleveland.
- de Stops on signal Barberton (5.18 P. M.) to receive passengers for Mansfield and west.
 df Stops on signal Garrettsville-Hiram (8.32 A. M.); Mantua (8.42 A. M.) to receive passengers for Cleveland.
 dg Stops on signal at Warren (4.40 A. M.) to discharge passengers from Chicago and to receive passengers for Jamestown and east.
 dh Via Dodaro Bus Co. between Salamanca and Bradford.
 dt No baggage carried on this train east of Hornell. Baggage will be handled on following train.
 du Coaches only, west of Youngstown.
 dv Stops on signal Union City (8.50 P. M.) to receive passengers for New York.
 dw Stops Cuba (9.50 A. M.) to discharge passengers from Jamestown and west and to receive for Elmira and east.
 dx Stops Ridgewood (6.43 P. M.), Passaic (6.59 P. M.) to discharge passengers from Goshen and west.
 dy Stops on signal Cambridge Springs (7.08 A. M.), Union City (7.28 A. M.) to discharge passengers from Chicago and to receive for Binghamton and east.
 dz Stops Ridgewood (8.03 A. M.), Paterson (8.12 A. M.), Passaic (8.19 A. M.) to discharge passengers from Goshen and west.
 ea Train 61 has a connection from Newark Saturday only.
 eb Stops on signal Paterson (1.56 P. M.) to receive passengers.
 ec Bus service between New Castle and New Castle (Washington St.).
 ed Bus service between Wampum and Ellwood City.
 eg On Holidays Train 62 has no connection for Newark.
 en Stops on signal Paterson (9.27 A. M.), Ridgewood (9.37 A. M.) to receive passengers.
 ep Train 1 stops on signal Passaic (9.20 A. M.), Suffern (9.51 A. M.) to receive passengers for Binghamton and west.
 er Stops Niles (5.39 A. M.) to discharge passengers from Cleveland and west and on signal to receive for Pittsburgh.
 et Stops on signal East 55th Street (1.34 P. M.); East 93rd Street (1.39 P. M.) to receive passengers.
 eu Stops Endicott (6.13 P. M.) to discharge passengers from Jamestown and west and on signal to receive passengers for New York.
 ev Stops on signal to receive passengers for Cleveland and beyond.
 ew Stops (11.46 A. M.) to discharge from Jamestown and east and west of Akron.
 ex Stops Endicott (2.47 A. M.) to discharge passengers from Buffalo, Jamestown and west.
 ey Stops Hohokus on Saturdays only (12.07 P. M.).
 ez On Sundays Train 6 has no connection for Newark.
 gc Stops West Henrietta (11.19 A. M.) to discharge passengers from east of Avon.
 gt In connection with the bus service the Erie Railroad Company acts as agent only and is not responsible beyond its own line, except as such responsibility may be imposed by law with respect to baggage.
 ha Stops at Narrowsburg (11.01 P. M.) to discharge passengers from Ridgewood and east.
 he Stops Alden (10.29 P. M.) to discharge passengers from Buffalo and on signal to receive passengers.
 hf Stops (11.09 P. M.) to discharge passengers from Pittsburgh.
 hm On Saturdays connection for Train 69 leaves Newark at (6.16 P. M.); on holidays leaves Newark at (6.04 P. M.); has no connection on Sundays.
 hn On Sundays Train 2 has no connection for Newark.
 ht Trains 5-557 and 560-6 carry through sleeping cars between Bradford and New York.
 hu Stops to discharge passengers.
 hv Stops on signal East 93rd Street (6.15 P. M.) to receive passengers.
 mh Stops on signal, Sundays only, to discharge passengers from New York.

STOP-OVER PRIVILEGES

Niagara Falls

Passengers holding tickets reading "via Erie Railroad" from or through Elmira to or through Youngstown or vice versa may exercise their privilege of going by way of Buffalo and stopping over for as long as ten days at Niagara Falls, but not beyond the final limit of their ticket. Upon request, the Erie Ticket Agent at Buffalo will issue without charge a round trip ticket between Buffalo and Niagara Falls. Frequent service via International Ry. (Electric Line) direct from Buffalo Terminal.

Other Points

On local one-way tickets sold at regular fares, local round-trip tickets sold at double the one-way fares, All-Year, Summer and Winter Tourist and Convention Tickets, stop-overs will be allowed on going and return trips within final limit of tickets at any Erie Railroad Station en route upon notice to conductor and without deposit of ticket.

WESTERN UNION

TELEGRAMS AND CABLEGRAMS accepted at all telegraph offices of this railroad.

FAST TELEGRAMS—For urgent business or social messages, announcements of arrivals and departures and reservations.

DAY LETTERS—50 words for 1½ times the cost of a 10 word telegram.

NIGHT LETTERS—50 words for the cost of a 10 word telegram.

CABLE NIGHT LETTERS—An inexpensive service.

WHEN YOU TRAVEL—telegraph the folks at home or at the office the facts they want about progress of your trip—only 35 cents (for 15 words).

Busses Replace Trolleys on 23rd Street, New York

The new crosstown bus service meeting all ferries to and from our West 23rd St. Station is fast and frequent. It connects with north- and southbound bus lines to other railroad terminals and the theatrical, shopping and hotel districts. Fare 5c, transfer 2c additional.

ERIE RAILROAD COMPANY

GENERAL OFFICES, MIDLAND BUILDING, CLEVELAND. Telephone Cherry 8400.
 GENERAL OFFICES, HUDSON TERMINAL, 50 CHURCH STREET, NEW YORK. Telephone Cortlandt 7-9200.
 GENERAL OFFICES, UTILITIES BUILDING, 327 SOUTH LA SALLE STREET, CHICAGO. Telephone Harrison 4160.

TRAFFIC AND DEVELOPMENT DEPARTMENTS

TRAFFIC

D. L. GRAY, Vice-President, Cleveland
 CARL HOWE, Vice-President, Chicago
 G. C. MANNING, Assistant Vice-President, New York
 G. A. LAMB, Assistant to Vice-President, Cleveland

PASSENGER

C. C. HOWARD, Passenger Traffic Manager, Cleveland.
 R. B. ROGERS, General Passenger Agent, Cleveland.
 H. T. HARLOW, General Passenger Agent, Chicago.
 T. R. PATTON, Assistant General Passenger Agent, Youngstown.

F. A. WALDRON, Assistant General Passenger Agent, New York.
 ALFRED FYNN, Assistant General Passenger Agent, Chicago.
 E. J. HAWERKOST, General Western Passenger Agent, Chicago.
 H. M. WADE, General Baggage, Mail and Express Agent, New York.

FREIGHT

L. B. BURFORD, Freight Traffic Manager, Cleveland.
 L. R. KNAPP, Assistant Freight Traffic Manager, Cleveland.
 O. M. MEYNE, General Freight Agent, Cleveland.
 C. L. CHAPMAN, Eastern Freight Traffic Manager, New York.
 E. M. KAIN, Special Representative, Buffalo.
 G. R. WHEELER, General Freight Agent, New York.
 J. T. McENTEE, Assistant General Freight Agent, Buffalo.
 H. W. VON WILLER, Assistant General Freight Agent, Pittsburgh.

F. G. LANTZ, Freight Traffic Manager, Chicago.
 W. V. KENNEDY, Assistant Freight Traffic Manager, Chicago.
 A. BLAUDEL, General Freight Agent, Chicago.
 J. G. HILL, General Freight Agent, Chicago.
 O. R. DAVIES, Assistant General Freight Agent, Cincinnati.
 W. H. KOCH, Assistant General Freight Agent, Detroit.
 C. A. STOEBER, Assistant General Freight Agent, Youngstown.

FOREIGN FREIGHT TRAFFIC

T. E. McANDREWS, Foreign Freight Traffic Manager, New York.
 A. E. PETERSON, Foreign Freight Agent, Chicago
 EUROPEAN GENERAL AGENTS, Sutherland International Despatch, Ltd.,
 London, England.

LIVE STOCK

H. B. ROGERS, General Live Stock Agent, East Buffalo, N. Y.

GRAIN TRAFFIC

T. W. KANE, Grain Agent, New York.

PERISHABLE FREIGHT TRAFFIC

R. E. O'GRADY, Manager, Pier 20, N. R., New York.

COAL AND COKE

W. H. STADELMAN, Coal Traffic Manager, Cleveland.
 J. A. FERGUSON, Coal Freight Agent, Cleveland.
 F. D. AUSTIN, General Coal and Coke Agent, Chicago.

DAIRY

W. L. KENDALL, General Dairy Agent, Chicago, Ill.

DEVELOPMENT

J. K. THOMPSON, Vice-President and Assistant to President, Cleveland.
 GEO. F. WESTON, Industrial Commissioner, Cleveland.
 V. M. WELLMAN, Industrial Agent, New York.

TRAFFIC DEPARTMENT REPRESENTATIVES

Akron, O.—80 East Exchange St.
 (Telephone Hemlock 8194-8195)
 J. P. CLARK, Division Passenger Agt.
 C. E. KING, General Agent.

Albany, N. Y.—Room 2, D. & H. Bldg.
 (Telephone 4-6051)
 C. F. WHADCOCK, General Agent.

Antwerp, Belgium—
 CHAS. CAYMAN & Co., Agent.

Atlanta, Ga.—1419-20 Healy Bldg.
 (Telephone Walnut 2135)
 S. S. TORREY, General Agent.

Baltimore, Md.—1525 Baltimore Trust Bldg.
 (Telephone Plaza 1373)
 W. J. MURRAY, General Agent.

Birmingham, Ala.—1007 Watts Bldg.
 (Telephone 3-1327)
 CHARLES G. ANDREWS, General Agent.

Boston, Mass.—80 Federal Street.
 (Telephone Liberty 7725-7726)
 E. J. DEAN, N. E. F. & P. A.

Bradford, Pa.—Erte Station.
 (Telephone 3413)
 J. C. MOFFATT, General Agent.

Bremen, Germany—Holzporfte 10.
 CARL PRIOR, Agent.

Buffalo, N. Y.—6 North Dietson St.
 (Telephone Washington 4300)
 J. A. DOLAN, G. A. P. D.
 238 Main Street.
 (Telephone Wash. 1865)
 J. T. McENTEE, Asst. General Freight Agt.
 H. B. ROGERS, General Live Stock Agt.

Chicago, Ill.—327 South La Salle St.
 (Telephone Harrison 4160)
 B. Y. VAUGHN, Trav. Pass. Agent
 C. D. TURNER, General Agent.
 W. L. KENDALL, General Dairy Agent.

Cincinnati, O.—508 Gwynne Bldg.
 (Telephone Main 3420-3421)
 O. R. DAVIES, Asst. General Freight Agt.

Cleveland, O.—Midland Bldg.
 (Telephone Cherry 8400)
 J. M. SKAEBILL, Division Freight Agt.
 2063 East 9th St.
 (Telephone Cherry 8400)
 C. D. BURLINGHAM, City Passenger Agt.

Columbus, O.—Rooms 309-310 Atlas
 Bldg., 8 East Long Street.
 (Telephone Adams 7331)
 C. R. MARTIN, General Agent.

Dallas, Tex.—1112 Tower Petroleum Bldg.
 1905 Elm St.
 (Telephone 2-7352)
 T. J. MARTIN, General Agent.

Dayton, O.—501-506 Miami Savings Bldg.
 (Telephone Adams 8481)
 W. P. KROMPHARDT, Div. Frt. Agt.

Des Moines, Ia.—Hubbell Bldg.,
 904 Walnut Street.
 (Telephone 4-0018)
 L. T. COULSTON, General Agent.

Detroit, Mich.—Rooms 2-102 and 2-103
 General Motors Bldg.
 (Telephone Madison 2360-2361)
 W. H. KOCH, Assistant General Frt. Agt.

Elmira, N. Y.—Erte Station.
 (Telephone 2-1621)
 J. W. O'HARA, Division Passenger Agt.
 (Telephone 2-0377)
 B. F. CONWAY, Division Freight Agent.

Glasgow, Scotland—90 Mitchell St.
 W. S. THOMPSON, General Agent.

Hamburg, Ger'y—
 BLOTHNER & GRAFE, General Agent.

Huntington, Ind.—Erte Station.
 (Telephone 743)
 F. C. MCCARTHY, Division Freight Agt.

Indianapolis, Ind.—143 No. Meridian St.
 (Telephone Lincoln 2088)
 T. J. WILLIAMSON, General Agent.

Jamestown, N. Y.—Erte Station
 F. L. COLLINS, Div. Frt. Agt.
 J. A. CLEVELAND, General Agent.
 (Telephone 7921-7922)

Jersey City, N. J.—Erte Station
 (Telephone Delaware 8-6400)
 P. F. ARROYO, G. A. P. D.

Kansas City, Mo.—Rooms 326-7 Railway
 Exchange Bldg., 7th and Walnut Streets.
 (Telephone Victor 6328)
 N. C. FRICK, General Agent.

Liverpool, Eng.—17 Brunswick St.
 A. G. TAYLOR, General Agent.

London, E. C. 3, Eng.—4 Biltter St.
 PETER BUSWELL, General Agent.
 D. S. DEANS, Genl. Continental Agt.

Los Angeles, Cal.—108 West 6th Street.
 (Telephone Vandike 6542)
 C. W. SEELEY, General Agt. Pass. Dept.
 L. A. DWELLE, General Agent.

Marion, O.—Terminal Building
 (Telephone 2657)
 A. R. TENNIS, Division Freight Agent.

Memphis, Tenn.—1628-9 Exchange
 Bldg., Madison & Second Sts.
 (Telephone 6-5577)
 R. L. MILLER, General Agent.

Milwaukee, Wis.—1015 Majestic Bldg.,
 231 Wisconsin Street.
 (Telephone Marquette 5555-5556)
 H. A. WILSON, General Agent.

Minneapolis, Minn.—125 Third Street,
 South.
 (Telephone Main 3604)
 C. V. HARROW, General Agent.

Newark, N. J.—1801-2 Military Park
 Bldg., 60 Park Place.
 (Telephone Market 2-0525-26-27)
 A. R. WALTON, General Agent.

New Haven, Conn.—Room 513 Roger
 Sherman Bldg.
 (Telephone 5-7937)
 G. W. MADSEN, General Agent.

New Orleans, La.—Room 1417 Whitney Bldg.
 (Telephone Main 6607)
 D. C. KELSEY, General Agent.

New York, N. Y.—8 West 40th Street.
 (Telephone Pennsylvania 6-0931)
 J. F. WILD, G. A. P. D.
 A. G. OLDENQUIST, City Pass. Agt.
 W. G. TEDFORD, City Passenger Agent.
 60 Church Street.
 (Telephone Cortlandt 7-9200)
 E. W. VAIL, General Eastern Frt. Agent.
 J. G. VREELAND, Division Freight Agent.

Olean, N. Y.—Erte Station.
 (Telephone 7411)
 J. M. HAND, Traveling Freight Agent.

Omaha, Neb.—1319 Farnam St.
 (Telephone Jackson 4866)
 C. L. COX, General Agent.

Peoria, Ill.—320 Jefferson Building, Cor
 South Jefferson & Fulton Streets.
 (Telephone 8007)
 E. T. OLANDER, General Agent.

Philadelphia, Pa.—1009-10 Finance Bldg.
 (Telephone Rittenhouse 8975-8976)
 H. T. YOUNG, General Agent.

Pittsburgh, Pa.—Gulf Building.
 (Telephone Grant 4831-2-3)
 H. W. VON WILLER, A. G. F. A.

Portland, Ore.—Room 421 Pacific Bldg.,
 308 Yamhill St.
 (Telephone Beacon 3706)
 J. A. RUSSELL, General Agent.

Rochester, N. Y.—Erte Station.
 (Telephone Main 2826)
 B. C. WEDD, Division Freight Agent.

Rotterdam Holland—
 J. F. VERVLOTTE & Co., Agent.

San Francisco, Cal.—681 Market St.
 (Telephone Sutter 3875)
 J. A. LLOYD, General Agent.

St. Louis, Mo.—Rooms 906-7 Missouri
 Pacific Building, 1218 Olive Bld.
 (Telephone Chestnut 7723-7724)
 G. F. DANIELS, General Agent.

St. Paul, Minn.—336 Robert St.
 (Telephone Cedar 5912)
 C. R. PETRY, General Agent.

Scranton, Pa.—Erte Station.
 (Telephone 5203)
 G. W. SHUMAN, Division Freight Agent.

Seattle, Wash.—1116-7 White Bldg.,
 1338 Fourth Ave.
 (Telephone Elliot 4834)
 W. R. SIBLEY, General Agent.

Springfield, O.—516 First National Bank
 Building.
 (Telephone Center 1178)
 T. J. FLYNN, General Agent.

Toledo, O.—342 South Erte Street.
 (Telephone Main 3816)
 H. J. SPANGENBURG, General Agent.

Toronto, Ont.—69 Yonge Street.
 (Telephone Elgin 4077)
 E. P. MORRILL, General Agent.

Tulsa, Okla.—Room 1511 Hunt Bldg.
 (Telephone 3-8613)
 A. W. MITCHELL, General Agent.

Youngstown, O.—Terminal Building.
 (Telephone 41101)
 C. A. STOEBER, Asst. Genl. Frt. Agt.
 T. W. FISHER, Div. Frt. Agt.

ERIE TICKET OFFICES AND PASSENGER STATIONS IN PRINCIPAL CITIES

Akron, O.—Union Station.
(Telephone Jefferson 9141)
B. L. BENDER, Ticket Agent.

Binghamton, N. Y.—Erie Station.
(Telephone 4-3251)
J. H. WEBSTER, Ticket Agent.

Bradford, Pa.—Erie Station.
(Telephone 3716)
A. J. SULLIVAN, Ticket Agent.

Brooklyn, N. Y.—City Ticket Office.
155 Pierpont St.
(Telephone Triangle 5-7440)
J. W. VAN COTT, Ticket Agent.

Buffalo, N. Y.—City Ticket Office.
6 North Division St.
(Telephone Washington 4300)
J. E. MCINNIS, Ticket Agent.
Station Ticket Office
(Lehigh Valley Terminal)
Main and Scott Streets
(Telephone Washington 4300)
A. L. SEITZ, Ticket Agent.

Chicago, Ill.—City Ticket Office, 163-
165 West Jackson Blvd.
(Telephone Harrison 4160)
C. F. KUNDEL, Ticket Agent.
Hotel Ticket Offices—
Congress, Morrison, Sherman, Stevens,
Palmer House, Merchandise Mart.
(Telephone Harrison 2203)
GEORGE M. NEWHART, Ticket Agent.

Dearborn Station.
(Telephone Harrison 9830)
H. S. BARE, Ticket Agent.

Cleveland, O.—City Ticket Office.
2063 East 9th St.
(Telephone Cherry 8400)
CASPER J. MILLER, Ticket Agent.

Erie Station.
(Telephone Cherry 8400)
C. W. GULICK, Ticket Agent.

Elmira, N. Y.—Erie Station.
(Telephone 2-0380)
E. J. STEELE, Ticket Agent.

Hornell, N. Y.—Erie Station.
(Telephone 680)
R. L. SMITH, Ticket Agent.

Huntington, Ind.—Erie Station.
(Telephone 140)
O. M. BELL, Ticket Agent.

Jamestown, N. Y.—Erie Station.
(Telephone 6076)
FRANK PRIEST, Ticket Agent.

Jersey City, N. J.—Erie Station.
(Telephone Delaware 8-6400)
G. B. IRVING, Ticket Agent.

Mansfield, O.—Erie Station.
(Telephone Canal 1423)
J. W. GILKERSON, Ticket Agent.

Marion, O.—Erie Station.
(Telephone 2399)
L. E. NEBERGALL, Ticket Agent.

Meadville, Pa.—Erie Station.
(Telephone 1212)
O. L. ENOS, Ticket Agent.

Middletown, N. Y.—Erie Station.
(Telephone 3303)
J. H. DIMKE, Ticket Agent.

Newark, N. J.—Erie Station.
(Telephone Humboldt 2-0600)
G. J. MCMICHAEL, Ticket Agent.

New York, N. Y.—City Ticket Office,
8 West 40th Street.
(Telephone Pennsylvania 6-0933)
F. H. RICE, Ticket Agent.

West 23rd Street Station.
(Telephone Chelsea 3-0780)
C. H. POTTER, Ticket Agent.

Chambers Street Station.
(Telephone Barclay 7-6500)
T. I. NEWMAN, Ticket Agent.

17 John Street. (Telephone Cortland
7-6430 and 7-6431)
H. T. JAMES, Ticket Agent.

Olean, N. Y.—Erie Station.
(Telephone 4343)
J. F. MITCHELL, Ticket Agent.

Passaic, N. J.—Erie Station.
(Telephone 2-1613)
O. R. KRECH, Ticket Agent.

Paterson, N. J.—Erie Station.
(Telephone Sherwood 2-3337)
J. H. GRAF, Ticket Agent.

Port Jervis, N. Y.—Erie Station.
(Telephone 300)
R. FARMER, Ticket Agent.

Rochester, N. Y.—Erie Station.
(Telephone Main 4378)
C. J. GILBERT, Ticket Agent.

Sharon, Pa.—Erie Station.
(Telephone 234)
A. F. WAINSCOTT, Ticket Agent.

Youngstown, O.—Erie Station.
(Telephone 41101)
R. E. TOWNS, Ticket Agent.

"This is news!"



THIS veteran of the throttle has been high-balling freight for many a crowded year — all the crates of perishables he has hauled would total a pile to dwarf the mightiest mountain.

But it took a little printed paragraph about grapefruit to open his eyes fully to the great job the railroads are doing, both service-wise and cost-wise. The paragraph he read was this unimpeachable statement by the United States Department of Commerce:

"It costs more to cart four boxes of grapefruit across Manhattan Island than it does at carload rate to ship a box from Florida to New York by rail."

Anyway you take that statement, it tells an eloquent story — a story reflecting credit even on a transportation system recognized as the finest in the world.

For this contrast in costs exists in face of the fact that railroad wages are the highest transportation wages paid anywhere today. Or that the railroads of the country for the past ten years have paid taxes to the extent of nearly a million dollars every twenty-four hours!

Railroad men take pride in records like this, though they are more inclined to tend to their business of moving the bulk of the nation's freight than to make fanfare about how well and economically they do it.

That is why the achievements of the railroads — outstanding and numerous and progressive as those achievements are — come as news sometimes even to the very men whose unassuming diligence and quiet competence make them possible.

ASSOCIATION OF AMERICAN RAILROADS

HEADQUARTERS: Transportation Building, Washington, D. C.

VISIT GREAT BRITAIN



EASILY AND ECONOMICALLY

☐ England and Scotland have all the ingredients of a perfect trip. History—wondrous cathedrals such as York, Canterbury and Wells—ancient abbeys and castles—the brightest jewels of Europe's treasure chest. Scenery—from the Scottish Highlands and the English Lake District to the Sussex Downs—a picturebook countryside alive with legend and loveliness. Gaiety—shops, theatres, musicales, night clubs, with everything for an "American" good time. Thousand-year-old Oxford and Cambridge are like dreams come true. Wales is a rare land of glorious mountain scenery and unimaginable charm. And all the old dollar values exist in the British Isles, where they speak your own language!

For itineraries, maps, etc., write to Dept. ER

T. R. DESTER, General Traffic Manager
ASSOCIATED BRITISH RAILWAYS, INC.

551 Fifth Avenue :: :: New York City, N. Y.