



**ERIE RAILROAD SYSTEM
TIME TABLES**

**ERIE RAILROAD SYSTEM
TIME TABLES**

The Scenic Route

BETWEEN

**NEW YORK • BUFFALO
CLEVELAND • CHICAGO**

The Scenic Route

BETWEEN

**NEW YORK • BUFFALO
CLEVELAND • CHICAGO**

CLEVELAND, OHIO, SEPTEMBER 29, 1940.

NEW N. Y. ERIE TERMINAL STILL WINS FRIENDS

MOTOR COACH LINKS IT WITH THROUGH TRAINS AT RUTHERFORD, N. J. Takes Passengers to and From Times Square Area

On April 28 the Erie inaugurated a new motor coach connecting service for through train passengers between trainside at Rutherford to and from midtown New York.

The new Terminal is located at 260 W. 42nd St. between 7th and 8th Aves., and is in addition to existing ferry terminals at Chambers St. and W. 23rd St. Motor coach service is provided eastbound from trains—

No. 2—The Erie Limited
 No. 6—The Lake Cities
 No. 16—The Midlander
 No. 8—The Atlantic Express
 and westbound for trains:
 No. 1—The Erie Limited
 No. 27—The Mountain Express
 No. 5—The Lake Cities
 No. 15—The Midlander

WHAT USERS SAY

"I think the new service to New York with bus connection at Rutherford direct to the center of New York City is one of the most convenient innovations introduced by your Railroad in a long time."

Another user says: "We consider it of the utmost advantage to us, for it will enable us to make more of our New York City trips via the Erie."

"The writer usually stops at a midtown hotel, consequently this new motor service is made to order for us. It is our hope that you too will be benefited by this innovation."

The charge covering the motor-coach trip between Rutherford, N. J., and the Times Square Motor-Coach Terminal, New York, is 50c for adults and 25c for children of half-fare age.

THE ROUTE

The route is through the new Lincoln Tunnel under the Hudson River and the running time between Rutherford and the Times Square Motor-Coach Terminal is 20 minutes. Eastbound stops are made at 40th St. and 8th Ave. and 40th St. and 7th Ave. to discharge passengers. Westbound no intermediate stops are made to receive passengers after leaving Terminal. Arrival and departure times at the Terminal are shown in time table folders.

This motor-coach service is available to passengers holding tickets reading to or from Rutherford, N. J., or New York City, traveling on through trains specified. Local passengers traveling between stations east of Goshen, N. Y., and New York City will not be carried in the motor-coaches.



Autumn comes to the Middle Falls of the Genesee River near Portage, N. Y.

ERIE FAST FREIGHT SCHEDULES

For schedules of Erie's fast freight trains, which operate with the precision of passenger trains, see pages 35 and 36.

WHERE TO BUY TICKETS

Eastbound passengers desiring to use this convenient method of reaching midtown New York may purchase tickets for the motor-coach service at any Erie ticket office or from the train conductor.

Westbound passengers may purchase motor-coach service tickets at any Erie ticket office in New York City or at the Times Square Motor-Coach Terminal.

Ordinary hand baggage will be carried with the passengers on the motor-coach and will be transferred without charge in each direction.

This new trainside connecting motor-coach service at the small additional charge and a saving in time in landing passengers in Times Square, New York, located as it is in the heart of the hotel and theatre section of the city, is particularly attractive.

Ticket agents and conductors will be glad to furnish detailed information.

TRAIN TAXI PLAN IS VERY POPULAR

Concentrate on your business instead of your driving! Use the new train-taxi service.

Erie passengers now have this service available in key cities along the line: CHICAGO, ILL., AKRON, CLEVELAND and YOUNGSTOWN, OHIO, and BUFFALO, N. Y.

In each of the cities mentioned, with the exception of Chicago, the taxicab company will furnish a cab and driver from 9:00 A.M. to 3:00 P.M. for \$5.00. In Chicago a special rate will be any continuous four hours for \$5.00. Ask ticket agents.

Southern California

"All-Winter SUN CARNIVAL"

Three hundred events. More than one a day, including National Orange Show, Mexican Fiestas, Yachting Regattas, China City's New Year's Day Ceremonies, Tournament of Roses.

Attractive low fares in effect.

THE TRAVEL-ON-CREDIT PLAN

Pay No Money Down

The Erie Railroad is cooperating with the other major railroads of the U. S. in a Travel-on-Credit plan, which is available for any railroad trip costing \$50 or more.

Use your travel credit for rail transportation, sleeping or parlor car charges, or for all-expense tours, where hotels, meals, and sight-seeing are all included in the cost.

Your railroad ticket agent will handle your application for credit at the time the cost of your trip is computed. You merely supply the credit information. No collateral—your signature is sufficient—and your application will be acted upon within 24 hours. The whole transaction is quick and business-like.

You receive your ticket just as soon as your application is approved. You pay for your trip in small monthly installments. No down payment and there is only a nominal service charge.

TRY THE RAIL-AUTO PLAN

Rail comfort, safety, and economy for a long trip, auto convenience at destination.

The rail-auto plan applies in key cities of the East and Middle West.

The railroads and Drivurself Companies are offering a special rate for Rail-Auto Plan customers, \$3.00 per day plus 5 cents per mile. In New York City the Special Rate will be \$4.00 per day plus 6 cents per mile, applying Monday to Friday, inclusive.

You may taxi from the railroad depot or your hotel to the Drivurself Company office, or garage, and your fare will be paid up to 35c, this amount being deducted from your bill. Late model cars are available at the garage, and you can have the convenience of a car to make your calls without the responsibility of having to drive to the next city. Ask any Erie ticket agent. He will be glad to tell you where cars are available and to reserve one for you.



"See America"
 FOR \$90

Start from your home town now on a Grand Circle Tour of the United States—east coast, west coast, border to border—go by one route, return by another—liberal stopovers—for \$90 railroad fare in coaches—\$135 in Pullmans (plus \$45 for one or two passengers in a lower berth). Get the full facts from your ticket agent about the greatest travel bargain in history!

TABLE OF CONTENTS

Equipment of Through Trains.....	Page 9, 10
Suggestions.....	31
General Information.....	32
Standard of Time	
Holidays	
Fares Paid on Trains	
Adjustment of Fares	
Sleeping and Parlor Car Reservations	
Baggage Regulations	
Articles Lost on Trains	
Safety First Hints	
Equipment of Local Trains.....	28
Equipment of Detroit, Toledo, Cleveland, Youngstown and Pittsburgh Trains.....	18
Erie Railroad Map.....	19, 20, 21, 22
Sleeping and Parlor Car Fares.....	7, 8
One-way and Round Trip Rail Fares.....	7, 8
Reference Marks and Notes.....	5, 6
Traffic Department Representatives.....	37, 38
Ticket Offices and Passenger Stations in Principal Cities.....	6

Train Service

Condensed Schedule of Through Trains.....	Page 9, 10
New York—Elmira.....	11, 12, 13, 14
Elmira—Chicago.....	15, 16
New York—Buffalo.....	23
Detroit—Toledo—Cleveland—Youngstown—Pittsburgh.....	17, 18
New York—Chautauqua.....	23
Chautauqua—Akron—Chicago.....	23
New York—Kenosha Lake—Jeffersonville.....	24
New York—Monticello.....	24
New York—Salamanca—Bradford.....	24
Bradford—Salamanca—Cleveland—Chicago.....	24
Branch Line Service.....	29
Hudson & Manhattan R. R. Service.....	30
Ferry Schedule.....	30
Chautauqua Lake Service.....	23

STATIONS ON ERIE RAILROAD

At Which Trains Are Scheduled To Stop

Numerals Opposite Station Names Indicate Time Table Numbers

TABLE NO.	TABLE NO.	TABLE NO.	TABLE NO.	TABLE NO.	TABLE NO.
Addison, N. Y. 4	Chester, N. Y. 2, 3	Galion, O. 4	Kenoza Lake, N. Y. 10	Ohio City, O. 4	South Lima, N. Y. 12
Akron, O. 1, 4, 7, 9	Chicago, Ill. 1, 4, 7, 9	Gannett, N. Y. 14	Kent, O. 4	Olean, N. Y. 1, 4	South Livonia, N. Y. 12
Albany, N. Y. 2, 3	Cleveland, O. 1, 4, 5, 7, 9	Garrettsville-Hiram, O. 5	Kenton, O. 4	Oneonta, N. Y. 2, 3	South Park, N. Y. 14
Alden, N. Y. (Black Water Baths) 6	Cochecton, N. Y. (Lake Huntington) 2, 3	Garwoods, N. Y. 6	Kimble, Pa. 11	Otisville, N. Y. 2, 3	Sparrowbush, N. Y. 2, 3
Alfred, N. Y. 4	Cohocton, N. Y. 12	Geauga Lake, O. 5		Owego, N. Y. 2, 3	Springwater, N. Y. 12
Alliquippa, Pa. 5	Collins, N. Y. 8	Girard, O. 4, 5		Oxford, N. Y. 2, 3	State Hospital, N. Y. 8
Alleghany, N. Y. 4	Conesus, N. Y. 12	Glen Eyre, Pa. 11			Sterlington, N. Y. 2, 3
Allendale, N. J. 2, 3	Coraopolis, Pa. 5	Golah, N. Y. 12, 14	Lackawaxen, Pa. 2, 3, 11	Painted Post, N. Y. 12	Suffern, N. Y. 2, 3
Andover, N. Y. 4	Conesus Lake Jet., N. Y. 12	Goshen, N. Y. 2, 3	Lake Huntington, N. Y. 2, 3	Parker's Glen, Pa. 2, 3	Susquehanna, Pa. 2, 3
Arden, N. Y. 2, 3	Conewango, N. Y. 8	Gowanda, N. Y. 8	Lancaster, N. Y. 6	Passaic, N. J. 2, 3	Swains, N. Y. 6
Arkport, N. Y. 6	Cooper's, N. Y. 12	Graham, N. Y. 2, 3	Lawtons, N. Y. 8	Paterson, N. J. 1, 2, 3	
Ashland, O. 4	Coraopolis, Pa. 5	Great Bend, Pa. 2, 3	Leavittsburg, O. 5	Perrysburg, N. Y. 13	Toledo, O. 5
Atlanta, N. Y. 12	Corning, N. Y. 1, 4, 6, 12	Greenville, Pa. 4	Letchworth Park, N. Y. 6	Persla, N. Y. 13	Town Line, N. Y. 6
Attica, N. Y. 6	Corry, Pa. 4	Greycourt, N. Y. 2, 3	Lima, O. 4	Phalanx, O. 5	Tusten, N. Y. 2, 3
Aurora, O. 5	Crittenden, N. Y. 14	Griswolds, N. Y. 6	Limestone, N. Y. 9	Pittsburgh, Pa. 4, 5	Tuxedo, N. Y. 2, 3
Avoca, N. Y. 12	Crown Point, Ind. 4	Gulf Summit, N. Y. 2, 3	Linden, N. Y. 6	Pond Eddy, Pa. 2, 3	
Avon, N. Y. 12, 14	Cuba, N. Y. 4		Little Valley, N. Y. 13	Portage, N. Y. 6	
			Livonia, N. Y. 12	Port Jervis, N. Y. 2, 3	
			Long Eddy, N. Y. 2, 3		
			Lordville, N. Y. 2, 3		
Balleys, N. Y. 14	Dale, N. Y. 6	Hale's Eddy, N. Y. 2, 3	Mahoning, O. 5	Ramapo, N. Y. 2, 3	Union City, Pa. 4
Barberton, O. 4	Dalton, N. Y. 6	Hamburg, N. Y. 8	Mahwah, N. J. 2, 3	Ramsey, N. J. 2, 3	
Bath, N. Y. 12	Darlen Center, N. Y. 6	Hammond, Ind. 4	Mansfield, O. 4	Randolph, N. Y. 4	
Beaver, Pa. 5	Dayton, N. Y. 8, 13	Hancock, N. Y. 2, 3	Mantua, O. 5	Ravenna, O. 4	
Beaver Falls (New Brighton, Pa.) 5	Decatur, Ind. 4	Hankins, N. Y. 2, 3	Marilla, N. Y. 6	Ridgewood, N. J. 1, 2, 3	Wadsworth, O. 4
Belmont, N. Y. 4	Depew, N. Y. 6	Harriman, N. Y. 2, 3	Marion, O. 4	Rittman, O. 4	Waldwick, N. J. 2, 3
Binghamton, N. Y. 1, 2, 3, 6	Detroit, Mich. 5	Hawley, Pa. 11	Markhams, N. Y. 8	Rochester, Ind. 4	Wallace, N. Y. 12
Blair, N. Y. 14	Dunkirk, N. Y. 13	Hillburn, N. Y. 2, 3	Martin, N. Y. 14	Rochester, N. Y. 12, 14	Warren, O. 4, 5
Blasdell, N. Y. 8		Hohokus, N. J. 2, 3	Mast Hope, Pa. 2, 3	Rock Glen, N. Y. 6	Warsaw, N. Y. 6
Bradford, Pa. 1, 9	East Buffalo, N. Y. 6	Honesdale, Pa. 2, 3, 11	Meadow-wood, N. Y. 14	Rowlands, Pa. 11	Washington Hunt, N. Y. 8
Brooks, N. Y. 14	East Fifty-fifth St. (Cleveland), O. 5	Hornell, N. Y. 1, 4, 6	Meadville, Pa. 1, 4	Rutherford, N. J. 2, 3	Water Valley, N. Y. 8
Buffalo, N. Y. 1, 4, 6, 8, 13	East Honesdale, Pa. 11	Howells, N. Y. 2, 3	Middletown, N. Y. 2, 3		Waverly, N. Y. 2, 3, 6
Burns, N. Y. 6	East Ninety-third St. (Cleveland), O. 5	Hubbard, O. 4	Mill Rift, Pa. 2, 3		Wayland, N. Y. 12
	East Rutherford, N. J. 2, 3	Huntington, Ind. 4	Monaca, Pa. 7		Websters, N. Y. 12
	Eden Center, N. Y. 8		Monroe, N. Y. 2, 3		Wellsville, N. Y. 4
	Eden Valley, N. Y. 8	Industry, N. Y. 12, 14	Mortimer, N. Y. 14		Wellwood Ave., Hawley, Pa. 11
	Ellwood City 5				Westcolang Park, Pa. 2, 3
Callicoon, N. Y. 2, 3, 10	Elmira, N. Y. 1, 2, 3, 4, 6, 12	Jamestown, N. Y. 1, 4, 7, 8, 9, 10			Westfall, N. Y. 14
Cambridge Springs, Pa. 4	Elm Place, N. Y. 14	Jeddoe, O. 5	Narrowsburg, N. Y. 2, 3	Saegertown, Pa. 4	West Henrietta, N. Y. 12, 14
Cameron, N. Y. 4	Endicott, N. Y. 2, 3	Jeffersonville, N. Y. 10	New Brighton, Pa. 5	Salamanca, N. Y. 1, 4, 9, 13	West Perryburg, N. Y. 13
Cameron Mills, N. Y. 4	Englewood (63rd St.), Ill. 4	Jersey City, N. J. 1, 2, 3, 4, 6, 7, 9, 10, 11, 12, 13	New Castle, Pa. 5	Savona, N. Y. 12	White Mills, Pa. 11
Campbell, N. Y. 12			New Hampton, N. Y. 2, 3	Sharon, Pa. 4	Wiards, N. Y. 14
Canaseraga, N. Y. 6			New York, N. Y. 1, 2, 3, 4, 6, 7, 9, 11, 12, 13	Sheridan, N. Y. 13	
Canisteo, N. Y. 4				Shimers Rock Cut, Pa. 11	
Castile, N. Y. 6				Shohola, Pa. 2, 3	
Cattaraugus, N. Y. 13	Falconer, N. Y. 8			Silver Springs, N. Y. 6	
Chautauqua, N. Y. 7	Fenners, N. Y. 14			Skinnners, N. Y. 2, 3	
Chautauqua Lake, N. Y. 4	Forestville, N. Y. 13			Sloatsburg, N. Y. 2, 3	
Cherry Creek, N. Y. 8	Friendship, N. Y. 4			Smith's Mills, N. Y. 13	
				Solon, O. 5	
				South Dayton, N. Y. 8	
				Southfields, N. Y. 2, 3	
					Youngstown, O. 1, 4, 5, 9

ADDITIONAL STATIONS ON ERIE RAILROAD

At Which Trains Do NOT Stop Regularly

The distance shown is from New York as indicated in Tables 2, 3 and 4

STATION	Miles from New York	STATION	Miles from New York	STATION	Miles from New York	STATION	Miles from New York	STATION	Miles from New York
Adrian, N. Y.	323.5	Chemung, N. Y.	261.0	Hickory Grove, Pa.	196.3	Mongaup, Pa.	95.8	Sharpsville, Pa.	554.9
Akron, Ind.	887.4	Columbus, Pa.	470.8	Highlands, Ind.	972.7	Monterey, Ind.	913.1	Smithboro, N. Y.	246.8
Aldine, Ind.	923.3	Creston, Ohio	650.7	Hinsdale, N. Y.	390.1	Nankin, Ohio	671.6	Spencerville, Ohio	794.3
Alger, Ohio	767.7	DeCliff, Ohio	740.2	Horseheads, N. Y.	278.4	Newton, Ind.	875.6	Steamburg, N. Y.	425.5
Almond, N. Y.	337.3	De Long, Ind.	909.2	Hurlburt, Ind.	952.1	Niobe, N. Y.	461.2	Sterling, Ohio	647.9
Ashville, N. Y.	454.9	Disko, Ind.	882.3	Johnson City, N. Y.	217.8	North Judson, Ind.	928.9	Stockport, N. Y.	159.4
Athens, Ind.	892.8	Elgin, Ohio	801.3	Kellams, N. Y.	144.7	Ontario, Ohio	700.4	Tallmadge, Ohio	621.4
Atlantic, Pa.	534.2	Foraker, Ohio	761.9	Kemp, Ohio	787.7	Oruaga, N. Y.	180.5	Tioga Center, N. Y.	242.8
		Forty-seventh St. (Chicago, Ill.)	994.2	Kingsland, Ind.	838.7	Ora, Ind.	916.8	Toesin, Ind.	835.3
Barton, N. Y.	249.4	Freedom, Ohio	603.3	Kirkwood, N. Y.	206.5	Palmer, Ind.	955.6	Uniondale, Ind.	842.1
Bass Lake, Ind.	919.5	Geneva, Pa.	523.5	Kouts, Ind.	943.4	Pavonia, Ohio	685.4	Venango, Pa.	505.2
Bear Lake, Pa.	464.6	Glenmore, Ohio	813.3	Laketon, Ind.	876.1	Pershing, Ind.	903.2	Watts Flats, N. Y.	458.6
Belvidere, N. Y.	370.0	Griffith, Ind.	969.8	Lakewood, N. Y.	452.2	Polk, Ohio	668.8	Wellsburg, N. Y.	266.8
Big Flats, N. Y.	293.1	Harrods, Ohio	771.7	Leiters, Ind.	907.2	Preble, Ind.	830.3	West Salem, Ohio	662.6
Bippus, Ind.	865.1	Hegewisch, Ill.	980.6	Markel, Ind.	847.3	Rathbone, N. Y.	307.4	Wilders, Ind.	935.8
Bolivar, Ind.	873.8	Hepburn, Ohio	746.8	Martel, Ohio	715.8	Red House, N. Y.	421.3	Windham, Ohio	597.7
Boone Grove, Ind.	949.6			McGuffey, Ohio	764.5	Scio, N. Y.	362.3	Winfield, Ind.	958.1
Braceville, Ohio	593.0			Millers, Pa.	497.4	Servia, Ind.	871.3	Wren, Ohio	817.4
Burbank, Ohio	656.2			Mill Village, Pa.	492.2				
Caledonia, Ohio	719.9								

REFERENCE MARKS AND NOTES

IMPORTANT—When trains are indicated as stopping conditionally, Conductors should be notified of intention to leave train and Station Agent notified of intention to board train. Conditional stops are made only to receive or discharge revenue passengers.

- † Runs daily except Sunday. ♦ Stops to discharge passengers.
 § Runs daily except Sundays and Holidays. C Stops on Saturday only.
 ‡ Will not operate from these stations on Monday morning. † Stops on Holidays only.
 f Stops on signal to receive and discharge revenue passengers. *Runs Daily.
 k Runs Saturdays only. M. C. Motor Car Service. N. B. No Baggage carried.
- Note ⊕—Times Square Motor Coach Terminal, 260 West 42nd St. between 7th and 8th Aves., New York City. Taxicab entrance on 41st St. Connection to and from Rutherford.
- ac Stops Dalton (5.37 A. M.) to discharge passengers from Hornell and east and on signal to receive passengers.
 ad Via Buffalo & Erie Coach Corp. bus between Salamanca and Bradford.
 af Train 7 stops Middletown (1.54 A. M.) Sunday and Monday mornings only to discharge passengers.
 ag Stops Ridgewood (7.57 A. M.) Sundays and Holidays only.
 ah Stops on signal Andover (9.51 A. M.); Belmont (10.16 A. M.) to discharge passengers from New York.
 an Train 27 stops at Lordville (7.21 P. M.) to discharge passengers from New York.
 ap On Sundays Train 27 will leave West 23rd St. at (2.30 P. M.).
 as Train 701 will not operate west of Monroe on Holidays.
 at On Sundays only, Train 30 will arrive West 23rd Street at (1.45 P. M.).
 au Does not run from West 23rd St. on Saturday night.
 av Does not run from Chambers St. on Saturday night.
 aw Trains 6 and 16 stop at Middletown (7.04 A. M.) and Goshen (7.15 A. M.) to discharge passengers from Hornell and west, and to receive passengers for New York.
 ax Stops Englewood Train 1 (7.50 A. M.); Train 15 (4.55 P. M.); Train 7 (12.43 A. M.) to discharge passengers from east of Hammond.
 ba Stops Paterson (8.27 A. M.) to receive passengers.
 bb Stops at Paterson (3.44 P. M.) to receive passengers only.
 bc Stops on signal Paterson (8.16 P. M.); Ridgewood (8.26 P. M.) to receive passengers.
 bd Stops on signal Passaic (8.07 P. M.); Suffern (8.41 P. M.) to receive passengers for Hornell and west.
 bf Stops Cuba (5.19 A. M.) to discharge passengers from Elmira and east and to receive for Jamestown and west.
 bg Stops on signal, Friendship (10.30 A. M.); Cuba (10.44 A. M.) to discharge passengers from New York.
 bh Stops Cuba (6.35 P. M.) to discharge passengers from Elmira and east and to receive for Jamestown and west.
 bm Stops on signal Niles (10.26 A. M.) to discharge passengers from Pittsburgh and from Jamestown and east and to receive passengers for Cleveland.
 bp Stops Niles (11.40 P. M.) to discharge passengers from Meadville and east and on signal to receive passengers for Akron and west.
 bt No Agent on duty. No baggage handled on Trains 5 and 6 to or from Castle.
 bu Train 6 stops at East 55th St. (5.07 P. M.) Sundays only to receive passengers for Youngstown.
 bv Stops on Sundays only to discharge passengers.
 bx Train 16 stops at Warren (6.18 P. M.) to discharge passengers from Akron and west.
 cb On Sundays only, Train 204 will arrive West 23rd St. at (9.10 A. M.).
 cd For additional service between Cleveland and Youngstown see Table 5.
 ce Train 73 will not operate west of Suffern on Oct. 11, Nov. 4, Nov. 20, Dec. 24, Dec. 31, Feb. 11 or Feb. 21.
 cf Stops Tuxedo (5.39 P. M.) daily, except Sunday.
 cg Stops on signal Ridgewood (11.00 P. M.) to discharge passengers from Binghamton and west.
 ck Runs Sundays only except Nov. 10, and Holidays only, except Oct. 12 and Feb. 22.
 en Stops on signal Union City (9.07 P. M.); Cambridge Springs (9.26 P. M.) to discharge passengers from Jamestown and east and to receive for Youngstown and west.
 cp Train 8 stops on signal (9.59 P. M.), Train 16 (9.50 A. M.) to receive passengers for east of Hammond.
 ct On Sundays Train 61 will not have any connection from West 23rd Street.
 cu Bus service provided between Cochection and Lake Huntington.
 cw Stops Endicott (1.37 A. M.) to discharge passengers from Port Jervis and east.
 ex Stops to discharge passengers from New York.
 ey Stops to discharge passengers from Cleveland and beyond.
 db Train 8 stops at Ravenna (7.37 A. M.) to discharge passengers from Marion and west, and on signal to receive for Youngstown and east.
 dc Stops Mantua (1.53 P. M.) to discharge passengers from Cleveland and on signal to receive passengers for Warren and east.
 de Stops Barberton (5.19 P. M.) to discharge passengers from Youngstown and east and on signal to receive passengers for Mansfield and west.
 df Stops on signal Mantua (9.24 A. M.) to receive passengers for Cleveland.
 dp Stops Niles (2.14 A. M.) to discharge passengers from east of Youngstown and signal to receive passengers for Cleveland.
 dt No baggage carried on this train east of Hornell. Baggage will be handled on following train.
 du Stops to receive passengers only (1.56 P. M.).
 dv Stops on signal Union City (8.54 P. M.) to discharge passengers from Youngstown and west and to receive passengers for New York.
 dw Stops Cuba (9.53 A. M.) to discharge passengers from Jamestown and west and to receive for Elmira and east.
 dy Stops on signal Cambridge Springs (7.17 A. M.), Union City (7.34 A. M.), to discharge passengers from Chicago and to receive for Binghamton and east.
 dz Stops Ridgewood (8.07 A. M.) to discharge passengers from Port Jervis and west. Has connection for Paterson, Passaic, etc., leaving Ridgewood at (8.14 A. M.) daily except Sundays and Holidays. On Sundays and Holidays leaves Ridgewood at (8.40 A. M.).
 ec Bus service between New Castle and New Castle (Washington St.).
 ed Bus service between Wampum and Ellwood City.
 ef Stops only to receive motor coach passengers from New York.
 eg Stops only to discharge motor coach passengers for New York.
 ek Train 2 stops Suffern (6.30 P. M.), Passaic (6.59 P. M.) to discharge passengers from Binghamton and west.
 en Stops on signal Paterson (9.33 A. M.); Ridgewood (9.43 A. M.) to receive passengers.
 ep Train 1 stops on signal Passaic (9.26 A. M.); Suffern (9.58 A. M.) to receive passengers for Binghamton and west.
 er Stops Niles (5.46 A. M.) to discharge passengers from Cleveland and west and on signal to receive for Pittsburgh.
 es Stops on signal Niles (6.14 P. M.) to receive passengers for Jamestown and east, and to discharge passengers from Cleveland.
 et Bus operates between Narrowsburg and Honesdale. In connection with which the Erie Railroad Company acts as agent only and is not responsible beyond its own line, except as such responsibility may be imposed by law with respect to baggage.
 eu Stops Endicott (6.05 P. M.) daily to discharge passengers from Jamestown and west and on signal to receive passengers for New York; also stops Sundays only to receive and discharge passengers.
 ex Stops Endicott (2.55 A. M.) to discharge passengers from Buffalo, Jamestown and west.
 gc Stops West Henrietta (11.06 A. M.) to discharge passengers from east of Avon.
 gt In connection with the bus service the Erie Railroad Company acts as agent only and is not responsible beyond its own line, except as such responsibility may be imposed by law with respect to baggage.
 ha Stops at Narrowsburg (10.59 P. M.) to discharge passengers from Ridgewood and east.
 he Stops Alden (10.14 P. M.) to discharge passengers from Buffalo and on signal to receive passengers.
 hf Stops (11.14 P. M.) to discharge passengers from Pittsburgh.
 ht Trains 5-557 and 560-6 carry through sleeping cars between Bradford and New York.
 hu Stops to discharge passengers.
 hv Stops on signal East 93rd Street (6.13 P. M.) to receive passengers.
 hw Train 7 will stop at Saegertown (1.52 P. M.) to discharge passengers from Binghamton and east and to receive passengers for Marion and west.
 hx Train 8 will stop at Saegertown (10.17 A. M.) to discharge passengers from Marion and west and to receive passengers for Binghamton and east.
 na Train 6 stops on signal at East 93rd St. (5.12 P. M.) to receive passengers for Sharon and east.
 ne Train 626 stops Saturdays only at Solon (1.39 P. M.) and Aurora (1.47 P. M.) to discharge passengers from Cleveland.
 nf Stops on signal at Garrettsville-Hiram (2.47 P. M.) to receive passengers for Cleveland.
 nh Stops on signal at Garrettsville-Hiram (10.54 A. M.) to discharge passengers from Hornell and east; also discharge from Marion and west.

ERIE TICKET OFFICES AND PASSENGER STATIONS IN PRINCIPAL CITIES

- Akron, O.**—Union Station.
 (Telephone Jefferson 9141)
 B. L. BENDER, Ticket Agent.
- Binghamton, N. Y.**—Erie Station.
 (Telephone 4-3251)
 A. F. WAINSCOTT, Ticket Agent.
- Bradford, Pa.**—Erie Station.
 (Telephone 3716)
 A. J. SULLIVAN, Ticket Agent.
- Brooklyn, N. Y.**—City Ticket Office.
 155 Pierrepont St.
 (Telephone Triangle 5-7440)
 W. J. HAGENEY, Ticket Agent.
- Buffalo, N. Y.**—City Ticket Office.
 6 North Division St.
 (Telephone Washington 4300)
 W. L. MCCREARY, Ticket Agent.
 Station Ticket Office
 (Lehigh Valley Terminal)
 Main and Scott Streets
 (Telephone Washington 4300)
 A. L. SEITZ, Ticket Agent.
- Chicago, Ill.**—City Ticket Office. 163-165 West Jackson Blvd.
 (Telephone Harrison 4160)
 C. F. KUNGEL, Ticket Agent.
 Hotel Ticket Offices—
 Congress, Morrison, Sherman, Stevens,
 Palmer House, Merchandise Mart.
 (Telephone Harrison 2203)
 GEORGE M. NEWHART, Ticket Agent.
- Dearborn Station.**
 (Telephone Harrison 9830)
 W. E. MISCHNICK, Ticket Agent.
- Cleveland, O.**—City Ticket Office.
 913 Huron Road (Telephone Cherry 8400)
 CASPER J. MILLER, Ticket Agent.
 Erie Station, (Telephone Cherry 8400)
 J. W. STUART, Ticket Agent.
- Corning, N. Y.**—Erie Station.
 (Telephone 50)
 R. J. GRIFFEN, Ticket Agent.
- Elmira, N. Y.**—Erie Station.
 (Telephone 2-0380)
 J. V. CLEARY, Ticket Agent.
- Hornell, N. Y.**—Erie Station.
 (Telephone 680)
 A. T. JOHNSON, Ticket Agent.
- Huntington, Ind.**—Erie Station.
 (Telephone 140)
 D. L. HERENDEEN, Ticket Agent.
- Jamestown, N. Y.**—Erie Station.
 (Telephone 6076)
 FRANK PRIEST, Ticket Agent.
- Jersey City, N. J.**—Erie Station.
 (Telephone Journal Square 2-6400)
 G. B. IRVING, Ticket Agent.
- Mansfield, O.**—Erie Station.
 (Telephone Canal 1423)
 J. W. GILKISON, Ticket Agent.
- Marion, O.**—Erie Station.
 (Telephone 2399)
 L. E. NEBERGALL, Ticket Agent.
- Meadville, Pa.**—Erie Station.
 (Telephone 1212)
 O. E. BLAIR, Ticket Agent.
- Middletown, N. Y.**—Erie Station.
 (Telephone 3303)
 C. R. DINEEN, Ticket Agent.
- Newark, N. J.**—Erie Station.
 (Telephone Humboldt 2-0600)
 G. J. McMICHAEL, Ticket Agent.
- New York, N. Y.**—City Ticket Office.
 Information Bureau.
 Train Service and Fares.
 (Telephone Barclay 7-6500)
 City Ticket Office, 12 West 51st Street,
 Rockefeller Center.
 (Telephone Circle 5-7222)
 G. H. DOWN, Ticket Agent.
 West 23rd Street Station.
 (Telephone Chelsea 3-0780)
 C. H. POTTER, Ticket Agent.
 Chambers Street Station.
 (Telephone Cortlandt 7-9200)
 O. R. KRECH, Ticket Agent.
 City Ticket Office, 17 John Street.
 (Telephone Cortlandt 7-6430 and 7-6431)
 W. G. TEDFORD, Ticket Agent.
 Times Square Motor Coach Terminal,
 260 West 42nd St.
 (Telephone Longacre 5-2440)
- Passaic, N. J.**—Erie Station.
 (Telephone 2-1613)
 M. J. LYNCH, Ticket Agent.
- Paterson, N. J.**—Erie Station.
 (Telephone Sherwood 2-3337)
 J. H. GRAF, Ticket Agent.
- Port Jervis, N. Y.**—Erie Station.
 (Telephone 300)
 R. FARBER, Ticket Agent.
- Sharon, Pa.**—Erie Station.
 (Telephone 234)
 H. P. MORGAN, Ticket Agent.
- Warren, O.**—Erie Station.
 (Telephone 1000)
 G. W. KROM, Ticket Agent.
- Youngstown, O.**—Erie Station.
 (Telephone 41101)
 R. S. GETTIG, Ticket Agent.

RAILROAD AND PULLMAN FARES

For Information Only. Subject to Change Without Notice

Table with columns for 'Between' (NEW YORK, BINGHAMTON, BUFFALO) and 'And' (various cities like Akron, Chicago, Cleveland, etc.). Rows show fares for Railroad Tickets Valid In (Coach, Pullmans) and Pullman Rates (Lower Berth, Seat Fare) for One Way and Round Trip.

Table with columns for 'Between' (JAMESTOWN, CLEVELAND, CHICAGO) and 'And' (various cities like Akron, Chicago, Cleveland, etc.). Rows show fares for Railroad Tickets Valid In (Coach, Pullmans) and Pullman Rates (Lower Berth, Seat Fare) for One Way and Round Trip.

RATES FOR UPPER BERTH, ROUND TRIP UPPER BERTH, SECTION, DRAWING ROOM OR COMPARTMENT IN SLEEPING CARS

Table with columns for 'Where Lower Berth Rate Is', 'Upper Berth Rate Will Be', 'Round Trip Upper Berth Rate Will Be', 'Section Rate For One Passenger', 'Drawing Room Rate For One Passenger', 'Drawing Room Rate For Two or More Pas'grs.', 'Compartment Rate For One Passenger', 'Compartment Rate For Two or More Pas'grs.', and 'Where Lower Berth Rate Is'.

Minimum Number of Railroad Tickets Required for Exclusive Occupancy of Space in Sleeping or Parlor Cars. Section1 Double Bedroom.....1 Comp., Berth Service...1 1/4 Comp., Seat Service...1 1/2 Drawing Room, Berth Service1 1/4 D. R., Seat Service.....2 D. R. in Parlor Car.....2

Note: -▲For section occupied by two passengers but with lower berth only prepared for night service. *Applies from Cleveland to New York only; fare from New York to Cleveland \$14.70. †Thirty-day limit. ‡Limit One Year.

TABLE 1

CONDENSED TABLE OF THROUGH TRAINS NEW YORK AND BUFFALO, CLEVELAND AND CHICAGO

(FOR LOCAL TRAINS AND INTERMEDIATE TIME OF THROUGH TRAINS SEE LOCAL TABLES)

Air-Conditioned Trains—Air-conditioned equipment has been assigned to regular sections of trains as shown herein. Every effort will be made to provide it as specified, but the right is reserved to employ non-air-conditioned cars as necessitated by volume of traffic or emergencies.

WEST BOUND**EAST BOUND**

THE ERIE LIMITED		TRAIN NO. 1—DAILY	
New York—Buffalo—Jamestown—Chicago			
Lv New York (Times Sq. Motor Coach Term.) (Note ⊕)...	8.45AM E.S.T.		
" New York, West 23rd St....	8.30 " "		
" " Chambers St....	8.45 " "		
		EQUIPMENT	
" Jersey City.....	9.05 " "	Air-Conditioned Sleeping Cars:	
" Paterson.....en	9.33 " "	New York to Chicago—10 Section, 2	
" Ridgewood.....en	9.43 " "	Compartment and Drawing Room.	
" Binghamton.....	2.35PM " "	Salamanca to Chicago—12 Section and	
" Elmira.....	3.54 " "	Drawing Room.	
Ar Buffalo (Lehigh Valley Term.)	7.45 " "	Air-Conditioned Lounge Dining Car:	
Lv Olean.....	6.55 " "	New York to Chicago.	
" Bradford.....	5.00 " "	Air-Conditioned Salon Coaches:	
" Buffalo (Lehigh Valley Term.)	5.30 " "	New York to Chicago.	
" Jamestown.....	8.13 " "	Air-Conditioned Coach—Diner:	
" Meadville.....	9.50 " "	New York to Buffalo.	
" Youngstown.....	11.26 " "		
" Warren.....	11.52 " "		
" Akron.....	1.00AM " "		
Ar Chicago (Dearborn Sta.).....	8.05AM C.S.T.		

THE ERIE LIMITED		TRAIN NO. 2—DAILY	
Chicago—Jamestown—Buffalo—New York			
Lv Chicago (Dearborn Sta.).....	6.00PM C.S.T.		
Ar Akron.....	3.44AM E.S.T.		
" Warren.....	4.43 " "		
" Youngstown.....	5.02 " "		
" Meadville.....	6.55 " "		
" Jamestown.....	8.31 " "		
" Buffalo (Lehigh Valley Term.)	10.55 " "		
" Bradford.....	ad12.05PM " "		
" Olean.....	9.30AM " "		
Lv Buffalo (Lehigh Valley Term.)	8.20 " "		
Ar Elmira.....	12.30PM " "		
" Binghamton.....	1.41 " "		
" Ridgewood.....	6.43 " "		
" Paterson.....	6.51 " "		
" Jersey City.....	7.20 " "		
" New York, Chambers St....	7.34 " "		
" " West 23rd St....	7.50 " "		
" New York, Times Sq. Motor Coach Term. (Note ⊕)....	7.35 " "		
		EQUIPMENT	
		Air-Conditioned Sleeping Car:	
		Chicago to New York—12 Section and	
		Drawing Room.	
		Air-Conditioned Lounge Dining Car:	
		Chicago to New York.	
		Air-Conditioned Salon Coaches:	
		Chicago to New York.	
		Air-Conditioned Coach—Diner:	
		Buffalo to New York.	

THE LAKE CITIES		TRAIN NO. 5—DAILY	
New York—Buffalo—Cleveland			
Lv New York (Times Sq. Motor Coach Term.) (Note ⊕)...	7.25PM E.S.T.		
" New York, West 23rd St....	7.10 " "		
" " Chambers St....	7.30 " "		
		EQUIPMENT	
" Jersey City.....	7.45 " "	Air-Conditioned Sleeping Cars:	
" Paterson.....bc	8.16 " "	New York to Cleveland—10 Section, 1	
" Ridgewood.....bc	8.26 " "	Compartment and Drawing Room.	
Ar Buffalo (Lehigh Valley Term.)	7.55AM " "	New York to Bradford—12 Section and	
Lv Olean.....	5.39 " "	Drawing Room.	
Ar Bradford.....	7.05 " "	(Sleeping Car may be occupied at Brad-	
" Jamestown.....	6.58 " "	ford until 8.00 A. M.).	
" Meadville.....	8.28 " "	Air-Conditioned Lounge Dining Car:	
" Youngstown.....	9.50 " "	New York to Port Jervis.	
" Warren.....	10.36 " "	Hornell to Youngstown.	
Ar Cleveland.....	11.40AM " "	Air-Conditioned Coaches:	
		New York to Cleveland.	
		Coaches:	
		Hornell to Buffalo.	

THE LAKE CITIES		TRAIN NO. 6—DAILY	
Cleveland—Buffalo—New York			
Lv Cleveland.....	5.00PM E.S.T.		
" Warren.....	6.06 " "		
" Youngstown.....	6.42 " "		
" Meadville.....	8.17 " "		
" Jamestown.....	9.54 " "		
" Bradford.....	9.30 " "		
" Salamanca.....	10.41 " "		
" Olean.....	11.06 " "		
" Buffalo (Lehigh Valley Term.)	9.45 " "		
Ar Elmira.....	2.02AM " "		
" Ridgewood.....	dz 8.07 " "		
" Jersey City.....	8.40 " "		
" New York, Chambers St....	8.54 " "		
" " West 23rd St....	9.10 " "		
" New York, Times Sq. Motor Coach Term. (Note ⊕)....	8.55 " "		
		EQUIPMENT	
		Air-Conditioned Sleeping Cars:	
		Cleveland to New York—10 Section, 1	
		Compartment and Drawing Room.	
		Bradford to New York—12 Section and	
		Drawing Room.	
		Air-Conditioned Lounge Dining Car:	
		Youngstown to Hornell.	
		Port Jervis to New York.	
		Air-Conditioned Coaches:	
		Cleveland to New York.	
		Coaches:	
		Buffalo to Hornell.	

THE MIDLANDER		TRAIN NO. 15—DAILY	
New York—Jamestown—Akron—Chicago			
Lv New York (Times Sq. Motor Coach Term.) (Note ⊕)...	7.25PM E.S.T.		
" New York, West 23rd St....	7.10 " "		
" " Chambers St....	7.30 " "		
		EQUIPMENT	
" Jersey City.....	7.45 " "	Air-Conditioned Sleeping Car:	
" Paterson.....bc	8.16 " "	New York to Chicago—10 Section, 1	
" Ridgewood.....bc	8.26 " "	Compartment and Drawing Room.	
" Jamestown.....	6.58AM " "	Air-Conditioned Lounge Dining Cars:	
" Meadville.....	8.33 " "	New York to Port Jervis.	
" Youngstown.....	10.00 " "	Hornell to Chicago.	
" Akron.....	11.14 " "	Air-Conditioned Coach:	
" Marion.....	1.13PM " "	New York to Chicago.	
Ar Chicago (Dearborn Sta.).....	5.10PM C.S.T.		

THE MIDLANDER		TRAIN NO. 16—DAILY	
Chicago—Akron—Jamestown—New York			
Lv Chicago (Dearborn Sta.).....	9.35AM C.S.T.		
" Marion.....	3.26PM E.S.T.		
" Akron.....	5.26 " "		
" Youngstown.....	6.42 " "		
" Meadville.....	8.17 " "		
" Jamestown.....	9.54 " "		
" Ridgewood.....	dz 8.07AM " "		
Ar Jersey City.....	8.40 " "		
" New York, Chambers St....	8.54 " "		
" " West 23rd St....	9.10 " "		
" New York, Times Sq. Motor Coach Term. (Note ⊕)....	8.55 " "		
		EQUIPMENT	
		Air-Conditioned Sleeping Car:	
		Chicago to New York—10 Section, 1	
		Compartment and Drawing Room.	
		Air-Conditioned Lounge Dining Cars:	
		Huntington to Hornell.	
		Port Jervis to New York.	
		Air-Conditioned Coach:	
		Chicago to New York.	

PACIFIC EXPRESS		TRAIN NO. 7—DAILY	
New York—Buffalo—Jamestown—Chicago			
Lv New York, W. 23d St....	11.55PM E.S.T.		
" " Chambers St....	12.00Mid. " "		
" Jersey City.....	12.25AM " "		
" Elmira.....	7.45 " "		
Ar Buffalo (Lehigh Valley Term.)	12.10PM " "		
Lv Olean.....	11.10AM " "		
Ar Salamanca.....	11.34 " "		
Lv Jamestown.....	12.29PM " "		
" Meadville.....	2.06 " "		
" Youngstown.....	3.38 " "		
" Warren.....	4.07 " "		
" Akron.....	5.09 " "		
Ar Chicago (Dearborn Sta.).....	1.00AM C.S.T.		
		EQUIPMENT	
		Air-Conditioned Sleeping Car:	
		New York to Salamanca—12 Section and	
		Drawing Room Car.	
		(Sleeper open Jersey City at 9.30 P. M.)	
		Air-Conditioned Dining Lounge Car:	
		Binghamton to Marion.	
		Air-Conditioned Salon Coaches:	
		New York to Chicago.	

ATLANTIC EXPRESS		TRAIN NO. 8—DAILY	
Chicago—Jamestown—New York			
Lv Chicago (Dearborn Sta.).....	9.45PM C.S.T.		
" Akron.....	7.07AM E.S.T.		
" Warren.....	8.07 " "		
" Youngstown.....	8.35 " "		
" Meadville.....	10.10 " "		
" Jamestown.....	11.59 " "		
" Bradford.....	11.00 " "		
" Salamanca.....	1.03PM " "		
" Olean.....	1.29 " "		
Ar Elmira.....	5.10 " "		
" Binghamton.....	6.15 " "		
" Jersey City.....	11.30 " "		
" New York, Chambers St....	11.54 " "		
" " West 23rd St....	11.55 " "		
" New York, Times Sq. Motor Coach Term. (Note ⊕)....	11.45 " "		
		EQUIPMENT	
		Air-Conditioned Sleeping Car:	
		Chicago to Hornell—(Daily) 10 Section, 2	
		Compartment and Drawing Room. Chicago	
		to New York (Saturdays only) 10 Sec-	
		tion, 2 Compartment and Drawing Room.	
		(Sleeper open at Chicago at 9.30 P. M.)	
		Air-Conditioned Dining Lounge Cars:	
		Chicago to Huntington.	
		Marion to New York.	
		Air-Conditioned Salon Coaches:	
		Chicago to New York.	
		(No baggage handled on this train east of Hornell,	
		baggage will be handled on following train.)	

THE MOUNTAIN EXPRESS		TRAIN NO. 27—DAILY	
New York—Binghamton—Elmira—Hornell			
Lv New York (Times Sq. Motor Coach Term.) (Note ⊕)...	2.55PM E.S.T.		
" New York, West 23rd St. ap	2.50 " "		
" " Chambers St....	3.00 " "		
		EQUIPMENT	
" Jersey City.....	3.15 " "	Air-Conditioned Dining Lounge Car:	
Ar Binghamton.....	8.55 " "	New York to Binghamton.	
" Elmira.....	10.42 " "	Coaches....	
" Corning.....	11.11 " "	New York to Hornell.	
Ar Hornell.....	12.05AM " "		

SOUTHERN TIER EXPRESS		TRAIN NO. 10—EX. SUN.	
Hornell—Elmira—Binghamton—New York			
Lv Hornell.....	7.30PM E.S.T.		
" Corning.....	8.41 " "		
" Elmira.....	9.12 " "		
" Binghamton.....	10.50 " "		
Ar Jersey City.....	4.25AM " "		
" New York, Chambers St....	4.54 " "		
" " W. 23d St.....			
		EQUIPMENT	
		Air-Conditioned Sleeping Car:	
		Hornell to New York—10 Section, 2 Com-	
		partment and Drawing Room Car.	
		(Sleeper and Coaches may be occupied at	
		Jersey City until 7.30 A. M. E. S. T.)	
		Coaches:	
		Hornell to New York.	

TABLE 2 WESTBOUND

NEW YORK—ELMIRA

Hudson and Manhattan Tube Trains operate to and from Erle Railroad Station in Jersey City. Fare, downtown, 8 cents; uptown, 10 cents.

Miles from New York	Eastern Standard Time	55	57	59	1	701	9	703	251	209	61	27	63	65	67	259	69	71	5	15	705	ce 73	ck 173	7	51	
		D'y	D'y Ex. Sun.	Sun. only	Daily	Sun. and Hol. only	Daily	Sun. only	Sat. Ex. only Hol.	Sun. only	Daily	Daily	Daily Ex. Sun. and Hol.	Daily Ex. Sun. and Hol.	Daily Ex. Sat. Su. & Hol.	Sat. & Hol. only	Sat. Su. & Hol. only	Daily Ex. Sat. Sun. & Hol.	Daily	D'y	Sun. only	Daily Ex. Sat. Sun. & Hol.	Su. & Hol. only	Daily	D'y	
Note	NEW YORK Times Sq. Motor Coach Term. Lv	AM	AM	AM	AM	AM	AM	AM	PM	PM	PM	PM	PM	PM	PM	PM	PM	PM	PM	PM	PM	PM	PM	PM	PM	AM
	8.45																		7.25	7.25						
	7.40																									
	4.30	7.10	7.40	8.30	8.30	10.30	11.45	12.30	12.45	1.00	1.45	3.00	4.00	4.30	5.28	5.28	6.15	6.20	7.10	7.10	7.55	8.45	10.45	11.55	1.00	
1.0	5.00	7.25	8.25	9.05	9.15	11.00	12.30	12.54	1.17	2.05	3.15	4.14	4.45	5.42	5.42	6.35	6.40	7.30	7.30	8.30	9.15	11.00	12.00	12.25	1.15	
9.5	5.15	7.40	8.40	9.20	9.30	12.45			1.32	2.20	3.30	4.30	5.42	5.42	6.35	6.40	7.30	7.30	8.45	9.30	11.15	12.25	12.25	1.30	1.30	
12.5	5.23	7.48	8.49	9.37	9.37	11.20	12.55		1.42	2.28	3.38	4.38	5.42	5.42	6.35	6.40	7.30	7.30	8.45	9.30	11.15	12.25	12.25	1.30	1.30	
16.7	5.38	8.02	9.00	9.45	9.45	11.29	1.06		1.54	2.38	3.48	4.48	5.42	5.42	6.35	6.40	7.30	7.30	8.45	9.30	11.15	12.25	12.25	1.30	1.30	
21.8	5.49	8.15	9.12	9.55	9.55	11.39	1.20		2.08	2.51	3.61	4.61	5.42	5.42	6.35	6.40	7.30	7.30	8.45	9.30	11.15	12.25	12.25	1.30	1.30	
23.2		8.18					1.23		2.13	2.57	3.67	4.67	5.42	5.42	6.35	6.40	7.30	7.30	8.45	9.30	11.15	12.25	12.25	1.30	1.30	
24.3	5.54	8.21	9.16			10.00	1.26		2.17	3.02	4.12	5.12	5.42	5.42	6.35	6.40	7.30	7.30	8.45	9.30	11.15	12.25	12.25	1.30	1.30	
25.7	5.59	8.25	9.19			10.03	1.30		2.22	3.07	4.17	5.17	5.42	5.42	6.35	6.40	7.30	7.30	8.45	9.30	11.15	12.25	12.25	1.30	1.30	
27.6	6.04	8.30	9.24			10.08	1.35		2.27	3.12	4.22	5.22	5.42	5.42	6.35	6.40	7.30	7.30	8.45	9.30	11.15	12.25	12.25	1.30	1.30	
30.2		8.35	9.29				1.40		2.30	3.15	4.25	5.25	5.42	5.42	6.35	6.40	7.30	7.30	8.45	9.30	11.15	12.25	12.25	1.30	1.30	
31.9	6.13	8.39	9.33	ep		10.14	1.43		2.33	3.18	4.28	5.28	5.42	5.42	6.35	6.40	7.30	7.30	8.45	9.30	11.15	12.25	12.25	1.30	1.30	
32.6	6.16								2.36	3.21	4.31	5.31	5.42	5.42	6.35	6.40	7.30	7.30	8.45	9.30	11.15	12.25	12.25	1.30	1.30	
33.7	6.19								2.39	3.24	4.34	5.34	5.42	5.42	6.35	6.40	7.30	7.30	8.45	9.30	11.15	12.25	12.25	1.30	1.30	
34.8									2.42	3.27	4.37	5.37	5.42	5.42	6.35	6.40	7.30	7.30	8.45	9.30	11.15	12.25	12.25	1.30	1.30	
35.6	6.25	8.45	9.40			10.20	1.49		2.45	3.30	4.40	5.40	5.42	5.42	6.35	6.40	7.30	7.30	8.45	9.30	11.15	12.25	12.25	1.30	1.30	
38.2	6.31	8.50	9.45			10.25	1.54		2.50	3.35	4.45	5.45	5.42	5.42	6.35	6.40	7.30	7.30	8.45	9.30	11.15	12.25	12.25	1.30	1.30	
42.0	6.38	8.57				10.32	2.00		2.57	3.42	4.52	5.52	5.42	5.42	6.35	6.40	7.30	7.30	8.45	9.30	11.15	12.25	12.25	1.30	1.30	
44.4	6.42					10.36	2.05		3.02	3.47	4.57	5.57	5.42	5.42	6.35	6.40	7.30	7.30	8.45	9.30	11.15	12.25	12.25	1.30	1.30	
47.0	6.48	9.05	10.00			10.40	2.10		3.07	3.52	5.02	6.02	5.42	5.42	6.35	6.40	7.30	7.30	8.45	9.30	11.15	12.25	12.25	1.30	1.30	
49.5	6.54	9.10				10.45	2.15		3.12	3.57	5.07	6.07	5.42	5.42	6.35	6.40	7.30	7.30	8.45	9.30	11.15	12.25	12.25	1.30	1.30	
52.3									3.15	4.00	5.10	6.10	5.42	5.42	6.35	6.40	7.30	7.30	8.45	9.30	11.15	12.25	12.25	1.30	1.30	
54.5	7.07								3.18	4.03	5.13	6.13	5.42	5.42	6.35	6.40	7.30	7.30	8.45	9.30	11.15	12.25	12.25	1.30	1.30	
55.3	7.10	9.21							3.21	4.06	5.16	6.16	5.42	5.42	6.35	6.40	7.30	7.30	8.45	9.30	11.15	12.25	12.25	1.30	1.30	
59.7	7.19	9.30							3.24	4.09	5.19	6.19	5.42	5.42	6.35	6.40	7.30	7.30	8.45	9.30	11.15	12.25	12.25	1.30	1.30	
63.7	7.26	9.36							3.27	4.12	5.22	6.22	5.42	5.42	6.35	6.40	7.30	7.30	8.45	9.30	11.15	12.25	12.25	1.30	1.30	
67.1	7.42	9.45							3.30	4.15	5.25	6.25	5.42	5.42	6.35	6.40	7.30	7.30	8.45	9.30	11.15	12.25	12.25	1.30	1.30	
71.0	7.50								3.33	4.18	5.28	6.28	5.42	5.42	6.35	6.40	7.30	7.30	8.45	9.30	11.15	12.25	12.25	1.30	1.30	
75.7	8.02								3.36	4.21	5.31	6.31	5.42	5.42	6.35	6.40	7.30	7.30	8.45	9.30	11.15	12.25	12.25	1.30	1.30	
80.7	8.11								3.39	4.24	5.34	6.34	5.42	5.42	6.35	6.40	7.30	7.30	8.45	9.30	11.15	12.25	12.25	1.30	1.30	
88.2	8.25								3.42	4.27	5.37	6.37	5.42	5.42	6.35	6.40	7.30	7.30	8.45	9.30	11.15	12.25	12.25	1.30	1.30	
88.2									3.45	4.30	5.40	6.40	5.42	5.42	6.35	6.40	7.30	7.30	8.45	9.30	11.15	12.25	12.25	1.30	1.30	
90.8									3.48	4.33	5.43	6.43	5.42	5.42	6.35	6.40	7.30	7.30	8.45	9.30	11.15	12.25	12.25	1.30	1.30	
92.2									3.51	4.36	5.46	6.46	5.42	5.42	6.35	6.40	7.30	7.30	8.45	9.30	11.15	12.25	12.25	1.30	1.30	
99.5									3.54	4.39	5.49	6.49	5.42	5.42	6.35	6.40	7.30	7.30	8.45	9.30	11.15	12.25	12.25	1.30	1.30	
103.3									3.57	4.42	5.52	6.52	5.42	5.42	6.35	6.40	7.30	7.30	8.45	9.30	11.15	12.25	12.25	1.30	1.30	
107.1									4.00	4.45	5.55	6.55	5.42	5.42	6.35	6.40	7.30	7.30	8.45	9.30	11.15	12.25	12.25	1.30	1.30	
111.1									4.03	4.48	5.58	6.58	5.42	5.42	6.35	6.40	7.30	7.30	8.45	9.30	11.15	12.25	12.25	1.30	1.30	
114.1									4.06	4.51	6.01	7.01	5.42	5.42	6.35	6.40	7.30	7.30	8.45	9.30	11.15	12.25	12.25	1.30	1.30	
116.4									4.09	4.54	6.04	7.04	5.42	5.42	6.35	6.40	7.30	7.30	8.45	9.30	11.15	12.25	12.25	1.30	1.30	
118.9									4.12	4.57	6.07	7.07	5.42	5.42	6.35	6.40	7.30	7.30	8.45	9.30	11.15	12.25	12.25	1.30	1.30	
122.4									4.15	5.00	6.10	7.10	5.42	5.42	6.35	6.40	7.30	7.30	8.45	9.30	11.15	12.25	12.25	1.30	1.30	
									4.18	5.03	6.13	7.13	5.42	5.42	6.35	6.40	7.30	7.30	8.45	9.30	11.15	12.25	12.25	1.30	1.30	
128.2									4.21	5.06	6.16	7.16	5.42	5.42	6.35	6.40	7.30	7.30	8.45	9.30	11.15	12.25	12.25	1.30	1.30	
131.0									4.24	5.09	6.19	7.19	5.42	5.42	6.35	6.40	7.30	7.30	8.45	9.30	11.15	12.25	12.25	1.30	1.30	
136.2									4.27	5.12	6.22	7.22	5.42	5.42	6.35	6.40	7.30	7.30	8.45	9.30	11.15	12.25	12.25</			

TABLE 3 EASTBOUND

ELMIRA—NEW YORK

Hudson and Manhattan Tube Trains operate to and from Erie Railroad Station in Jersey City. Fare downtown, 8 cents; uptown, 10 cents.

Eastern Standard Time	50	52	204	6	16	56	58	58	30	60	60	62	700	206	70	28	2	702	208	208	64	dt8	68	10		
	Daily Ex. Sun. and Hol.	Daily Ex. Sat., Sun. and Hol.	Sat., Sun. and Hol. only	Daily	Daily	Daily Ex. Sun. and Hol.	Daily Ex. Sun.	Sun. only	Daily	Daily Ex. Sun.	Sun. only	Daily Ex. Sun. & Hol.	Sun. & Hol. only	Sat. only Ex. Hol.	Sun. and Hol. only	Daily	Daily	Sun. only	Sun. only	Hol. only	Daily Ex. Sun. and Hol.	Daily	Daily	Daily Ex. Sun.		
Elmira, N. Y. Lv.	AM	AM	AM	AM	AM	AM	AM	AM	AM	PM	PM	PM	PM	PM	PM	AM	PM	PM	PM	PM	PM	PM	PM	PM	PM	
Waverly				2.02	2.02												12.30						5.10		9.12	
Owego																	12.51								9.35	
Endicott				ex	ex												1.13						eu		9.58	
Binghamton Ar.				3.06	3.06												1.30						6.15		10.16	
Binghamton (D.&H.) Lv.																	1.41								10.27	
Oneonta (D.&H.) Ar.																	2.25									
Albany (D.&H.) Ar.																	4.07									
Binghamton, N. Y. Lv.				3.20	3.20												16.30									
Great Bend Pa. Lv.																	11.10						6.17		10.50	
Susquehanna Ar.																	11.56						6.46		11.25	
Susquehanna Lv.																	12.10						6.55		11.29	
Gulf Summit N.Y. Deposit																	12.30								11.58	
Hale's Eddy																	12.48									
Hancock																	1.11								12.16	
Lordville																	1.30									
Long Eddy																	1.39									
Hankins																	1.47									
Callicoon																	2.05								12.54	
Cochecton (Lake Huntington)																	2.13									
Skinners N. Y.																	2.32									
Honesdale et.																	3.30									
Narrowsburg N.Y.																	3.46									
Tusten																	4.15								11.17	
Mast Hope Pa.																	5.20									
Westcolang Park																	5.29									
Laskawaxen																	6.20									
Shohola																	6.29									
Parker's Glen																	7.20									
Pond Eddy																	7.29									
Mill Rift																	8.20									
Sparrowbush N.Y.																	8.29									
Port Jervis Ar.				6.20	6.20												8.46									
Port Jervis Lv.																	9.02						9.20		12.05	
Graham																	9.21								12.10	
Otisville																	9.59									
Howells																	10.09									
Middletown				aw	aw												10.28									
New Hampton																	2.25									
Goshen				aw	aw												2.43									
Chester																	2.45									
Greycourt																	3.03									
Oxford																	3.08									
Monroe																	3.18									
Harriman																	3.30									
Arden																	3.37									
Southfields																	3.46									
Tuxedo																	4.25									
Sloatsburg																	4.56									
Sterlington																	5.09									
Ramapo																	5.42									
Hillburn																	6.24									
Suffern																	7.18									
Mahwah N. J.																	7.43									
Ramsey																	7.50									
Allendale																	7.55									
Waldwick																	8.00									
Hohokus																	8.07									
Ridgewood																	8.12									
Paterson																	8.19									
Passaic Lv.																	8.26									
Rutherford																	8.34									
E. Rutherford																	8.37									
Jersey City																	8.41									
NEW YORK																	8.45									
Chambers St.																	8.55									
West 23rd St.																	9.03									
Times Sq. Motor Coach Term.																	9.09									
Note ⊕																	9.39									
	AM	AM	AM	AM	AM	AM	AM	AM	PM	PM	PM	PM	PM	PM	PM	PM	PM	PM	PM	PM	PM	PM	PM	PM	AM	AM

For Explanation of Reference Marks and Notes, See Pages 5 and 6.

For Equipment of Trains, See Pages 9, 10 and 28.

TABLE 4 WESTBOUND

ELMIRA—CHICAGO

EASTBOUND

Miles from New York	Eastern Standard Time					Miles from Chicago	Central Standard Time					
	7	1	27	5	15		2	dt 8	10	6	16	620
	Daily	Daily	Daily	Daily	Daily		Daily	Daily	Daily	Daily	Daily	Sun. only
0.0	Lv. NEW YORK					0.0	Chicago (Dearborn Sta.) Ill. Lv.					
Note ⊕	Times Sq. Motor Coach Term. Lv.						(Polk and Dearborn Sts.)					
0.0	West 23rd St.	8.45	2.55	7.25	7.25	6.3	Englewood, 63d Street	6.14	cp		cp	
0.0	Chambers St.	11.55	8.30	ap 2.50	7.10	7.10	Hammond	6.40	10.25		10.12	
1.0	Jersey City	12.00	8.45	3.00	7.30	7.30	Crown Point	7.05				
273.8	Elmira N. Y.	12.25	9.05	3.15	7.45	7.45	Rochester	8.14			11.28	
291.2	Corning						Huntington	8.58	12.30		12.08	
302.3	Addison						Huntington	9.10	12.37		12.14	
312.5	Cameron Mills						Decatur	9.48				
315.1	Cameron						Eastern Standard Time					
328.1	Canistota						Ohio City Ohio	11.10				
332.3	Hornell	9.15	5.12	12.05	3.57	3.57	Lima	11.53	3.07		2.32	
425.2	Buffalo (see Table 6)	12.10	7.45		7.55		Kenton		3.41			
332.3	Hornell	9.20	5.22		4.06	4.06	Marion	12.48	4.09		3.21	
341.5	Alfred						Marion	12.53	4.14		3.26	
349.9	Andover	ah					Galion	1.24	4.44		3.48	
358.5	Wellsville	10.04	6.02		4.45	4.45	Mansfield	1.54	5.14		4.08	
366.9	Belmont	ah					Ashland	2.25	5.41		4.28	
374.4	Friendship	bg					Rittman		6.19			
383.3	Cuba	bg	bh		bf	bf	Wadsworth		6.30			
395.7	Olean	11.10	6.55		5.39	5.39	Barberton		6.42			
399.1	Allegany						Akron	3.44	7.07		5.24	
413.6	Salamanca	11.34	7.18		6.03	6.03	Kent	4.00	7.22		5.38	
430.2	Bradford (See Table 9)				7.05		Ravenna	4.05	7.27		5.43	
413.6	Salamanca	11.41	7.25		6.10	6.10	Cleveland (See Table 5)				5.00	9.00
431.1	Randolph				6.33	6.33	Warren (cd)	4.43	8.07		6.06	bx 10.18
447.3	Jamestown	12.29	8.13		6.58	6.58	Niles (cd)				es	10.27
	Buffalo (See Table 8)		5.30				Girard (cd)					10.34
447.3	Jamestown	12.29	8.13		6.58	6.58	Youngstown (cd)	5.02	8.28		6.26	6.35 10.42
474.2	Corry Pa.	1.08	8.53				Pittsburgh (See Table 5)	7.30	11.00			9.05
485.6	Union City		cn		7.35	7.35	Youngstown	5.12	8.35		6.42	6.42 10.45
501.2	Cambridge Springs	1.41	cn		7.50	7.50	Hubbard					10.56
509.5	Saegertown	hw			8.09	8.09	Sharon Pa.	5.43	8.59		7.08	7.08 11.11
515.9	Meadville	2.01	9.45		8.28	8.28	Greenville	6.18	9.26		7.34	7.34
515.9	Meadville	2.06	9.50		8.33	8.33	Meadville	6.55	10.05		8.12	8.12
542.1	Greenville	2.43	10.29		9.09	9.09	Saegertown	7.00	10.10		8.17	8.17
558.2	Sharon	3.11	10.56		9.31	9.31	Cambridge Springs		hx			
564.2	Hubbard				9.31	9.31	Union City	dy	10.28		8.36	8.36
571.8	Youngstown	3.31	11.19		9.50	9.50	Corry	dy	10.50		dv	9.13
	Pittsburgh (See Table 5)	12.30	9.00		8.35		Jamestown N. Y.	7.51	11.06		9.13	9.13
571.8	Youngstown (cd)	3.38	11.26		10.15	10.00	(Chautauqua Lake)	8.31	11.59		9.54	9.54
576.4	Girard (cd)						Buffalo (See Table 8)	10.55				
580.6	Niles (cd)		bp				Jamestown	8.31	11.59		9.54	9.54
585.7	Warren (cd)	4.07	11.52		10.36	10.20	(Chautauqua Lake)					
638.3	Cleveland (See Table 5)				11.40		Randolph		12.22			
609.6	Ravenna						Salamanca	9.10	12.56		10.34	10.34
615.9	Kent	Ar. 4.43	12.32			10.55	Bradford (See Table 9)	8.00	11.00		9.30	9.30
626.0	Akron	Lv. 4.48	12.37			11.00	Salamanca	9.15	1.03		10.41	10.41
633.3	Barberton	Ar. 5.09	1.00			11.14	Allegany					
639.9	Wadsworth						Olean	9.39	1.29		11.06	11.06
644.3	Rittman						Cuba	dw				
676.5	Ashland						Friendship					
693.2	Mansfield						Belmont					
708.6	Galion						Wellsville	10.29	2.26		11.59	11.59
729.6	Marion						Andover					
729.6	Marion						Alfred					
754.5	Kenton						Hornell	11.07	3.05		12.38	12.38
781.5	Lima						Buffalo (See Table 6)	8.20			9.45	9.45
808.8	Ohio City						Hornell	11.14	3.15	7.30	12.46	12.46
							Canistota			7.39		
							Cameron					
							Cameron Mills					
825.3	Decatur Ind.		4.36				Addison	11.49	4.08	8.11		
856.1	Huntington	9.46	5.07			2.26	Corning	12.06	4.39	8.41	1.37	1.37
856.1	Huntington	9.59	5.14			2.32	Elmira	12.30	5.10	9.12	2.02	2.02
897.8	Rochester					3.16	Jersey City	7.20	11.30	4.25	8.40	8.40
962.4	Crown Point						NEW YORK					
978.1	Hammond						Chambers St.	7.34	11.54	4.54	8.54	8.54
992.4	Englewood, 63d St. Ill.	12.15	7.25			4.33	West 23rd St.	7.50	11.55		9.10	9.10
998.7	Chicago (Dearborn Sta.)	1.00	8.05			5.10	Times Sq. Motor Coach Term.	7.35	11.45		8.55	8.55

Dining Car Service

Table D'Hotel prices range as follows: Breakfast 50c and 65c, Luncheon 75c to \$1.25, Dinner 75c to \$1.25. A meal on our trains is always a pleasant interlude. Makes the journey seem shorter, too. The freshest food the

market affords, cooked by expert chefs and served in the comfort of spacious Restaurant Cars. If you prefer a light snack without going to the Diner the waiter will bring sandwiches, fruit, coffee, etc., right to your seat.

TABLE 5 DETROIT—TOLEDO—CLEVELAND—YOUNGSTOWN—PITTSBURGH

Miles from Cleveland	Eastern Standard Time	EASTBOUND										
		WEEK-DAYS						SUNDAYS				
		688	624	626	6	628	686	688	624	626	6	686
	Ex. Sun.	Ex. Sun.	Ex. Sun.	Ex. Sun.	Ex. Sun. & Hol.	Ex. Sun.	Sun. only	Sun. only	Sun. only	Sun. only	Sun. only	Sun. only
	DetroitLv.	AM 12.30	AM	AM	PM	AM	AM	AM	PM	PM	PM	PM
	ToledoLv.	2.13	4.53	8.00	11.35	1.15	2.13	4.53	8.00	1.15	3.00	3.00
0.0	ClevelandLv.	4.25	8.00	1.15	5.00	5.30	4.25	8.00	1.15	5.00	6.00	9.00
3.3	East 55th Street.....		8.07	1.23		5.37		8.07	1.23	bu.	6.08	9.08
5.6	E. 93d St., Cleveland.....		8.12	1.27	na.	5.42		8.12	1.27	na.	6.08	9.13
10.7	North Randall.....					5.51						
15.8	Solon.....			ne		5.59						9.28
20.4	Geauga Lake.....					6.05						9.33
23.6	Aurora.....			ne		6.10						9.38
30.0	Mantua.....			dc		6.18			dc			9.45
34.2	Jeddoe.....					6.24						
36.7	Garrettsville-Hiram.....		8.46	2.02		6.30		8.46	2.02			9.56
40.3	Mahoning.....					6.36						
45.3	Phalanx.....					6.42						
49.4	Leavittsburg.....					6.49						
52.6	Warren	5.37	9.05	2.22	6.06	6.57	5.37	9.05	2.22	6.06	7.09	10.18
57.7	Niles.....	er	9.13	2.30	es	7.23	er	9.13	2.30	es	7.20	10.27
61.9	Girard.....					7.33						10.34
66.5	YoungstownAr.	6.00	9.25	2.45	6.26	7.45	6.00	9.25	2.45	6.26	7.35	10.42
66.5	YoungstownLv.	6.05	9.30	2.50		7.40	6.05	9.30	2.50		7.40	
84.2	New CastleAr.	6.29	9.55	3.14		8.02	6.29	9.55	3.14		8.02	
	New Castle (Wash. St.) ec Ar.	6.42	10.08	3.27		8.15	6.42	10.08	3.27		8.15	
95.5	Ellwood City (ed).....	cy6.52	10.19	3.41		8.25	cy6.52	10.19	3.41		8.25	
102.2	Beaver Falls.....	cy6.50	10.18	3.36		8.25	cy6.50	10.18	3.36		8.25	
	New Brighton.....											
105.6	Beaver.....	cy6.56	10.24	3.41		8.31	cy6.56	10.24	3.41		8.31	
112.3	Aliquippa.....	cy7.05	10.33	3.50		8.40	cy7.05	10.33	3.50		8.40	
120.8	Coraopolis.....	cy7.15	10.44	4.00		8.50	cy7.15	10.44	4.00		8.50	
131.4	PittsburghAr.	7.30	11.00	4.15		9.05	7.30	11.00	4.15		9.05	

AIR-CONDITIONED TRAINS
Air-conditioned equipment has been assigned to regular sections of trains as shown herein. Every effort will be made to provide it as specified, but the right is reserved to employ non-air-conditioned cars as necessitated by volume of traffic or emergencies.

EQUIPMENT
Detroit, Toledo, Cleveland, Youngstown, Pittsburgh Trains.
★Indicates Air-Conditioned Cars

EASTBOUND
No. 6—Daily. ★Sleeping Car (10 Section 2 Compartment and Drawing Room Car) Cleveland to New York. ★Coach, Cleveland to New York.
No. 620—Sundays only. Coaches, Cleveland to Youngstown and Sharon.
No. 624—Daily. ★Pullman Parlor-Lounge-Diner, Cleveland to Pittsburgh. ★Coach, Cleveland to Pittsburgh.
No. 626—Daily. ★Erie Parlor Car, Cleveland to Pittsburgh. ★Coach, Cleveland to Pittsburgh.
No. 686—Daily. ★Sleeping Car for Parlor Car Service and ★Coaches, Detroit to Pittsburgh, via Cleveland. Dining Lounge Car, Cleveland to Pittsburgh.
No. 688—Daily. ★Sleeping Car (12 Section and Drawing Room), Chicago to Pittsburgh. ★Sleeping Car (12 Section-2 Double Bedrooms), Detroit to Pittsburgh. Through Coaches, ★Chicago and ★Detroit to Pittsburgh, via Cleveland.

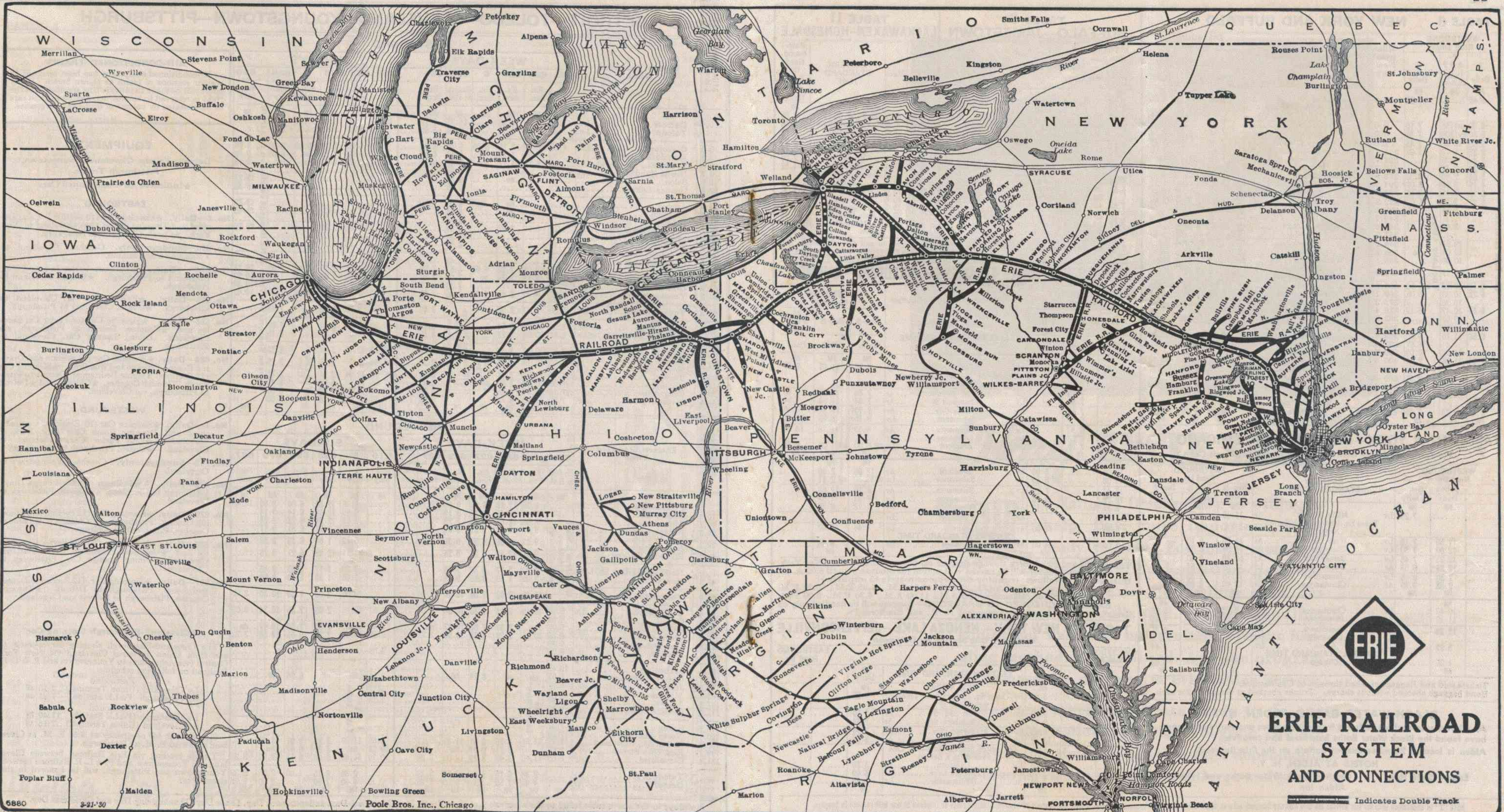
WESTBOUND
No. 5—Daily. ★Sleeping Car (10 Section 2 Compartment and Drawing Room Car) New York to Cleveland. ★Erie Parlor Car, Pittsburgh to Cleveland. ★Coach, Pittsburgh to Cleveland.
No. 619—Sundays only. Coaches, Youngstown to Cleveland.
No. 623—Daily. ★Pullman Parlor-Lounge-Diner, Pittsburgh to Cleveland. ★Coach, Pittsburgh to Cleveland.
No. 679—Daily. ★Sleeping Car (12 Section and Drawing Room), Pittsburgh to Chicago. ★Through Coaches, Pittsburgh to Chicago.
No. 685—Daily. ★Sleeping Car for Parlor Car Service and ★Coaches, Pittsburgh to Detroit, via Cleveland. Dining Lounge Car, Pittsburgh to Cleveland.
No. 687—Daily. ★Sleeping Car (12 Section-2 Double Bedrooms), Pittsburgh to Detroit. ★Through Coaches, Pittsburgh to Detroit via Cleveland.

★Cleveland-Pittsburgh Sleeping Car
The Cleveland-Pittsburgh sleeping car operates to and from Union Terminal Cleveland via New York Central (via Ashtabula) to Youngstown, and P. & L. E. Railroad on following schedule:

Eastbound
Lv Cleveland (Union Terminal) 2:15 AM
Ar Pittsburgh (P&LE Station) 7:25 AM
Westbound
Lv Pittsburgh (P&LE Station) 11:40 PM
Ar Cleveland (Union Terminal) 7:15 AM
Sleeper open for occupancy at 9:30 P. M. at Cleveland and 9:30 P. M. at Pittsburgh.
Tickets reading via Erie Railroad between Cleveland and Youngstown, and P. & L. E. Railroad between Youngstown and Pittsburgh, will be honored in this sleeping car.

Holidays in the above table refers to the observance of New Year's Day, Memorial Day, Independence Day, Labor Day, Thanksgiving Day and Christmas Day.

For Explanation of Reference Marks and Notes, see Pages 5 and 6.



THE PRESIDENT HAS PROCLAIMED 1940—TRAVEL AMERICA YEAR

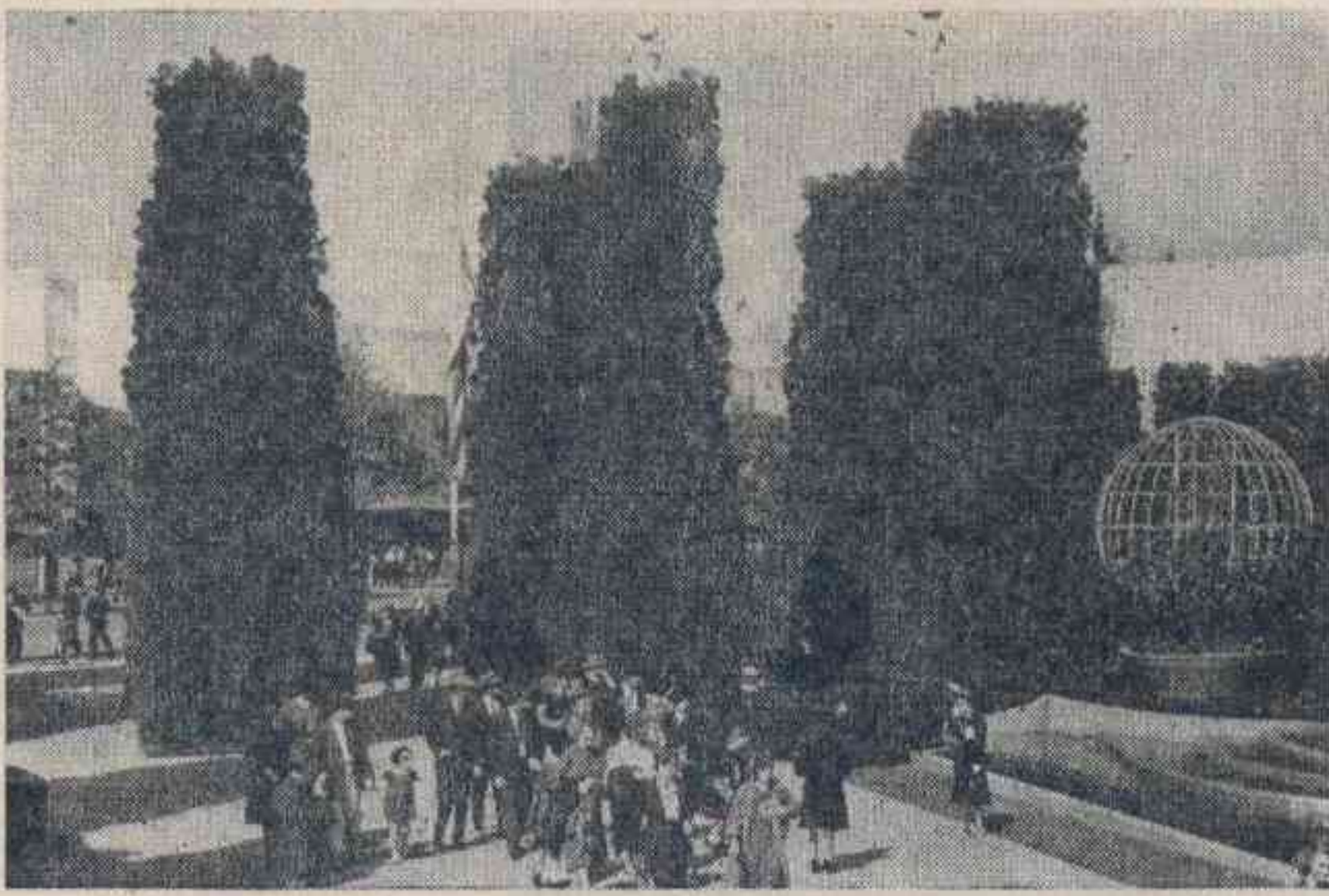


Okay, **UNCLE SAM!**



● National Defense? We're willing to help. But, more important, we're ready to help. For many months a program of modernization has been under way on the Erie. New rolling stock has been added. New rails laid. Freight handling equipment has been modernized. Freight handling methods streamlined. And the program continues—for our aim is ever-better service.

Man and machine, we are ready to do our part in the National Defense Program. We are ready at all times to provide safe, dependable, on-time service to shippers both large and small.



Red cedars form an inviting gateway to a large industrial exhibit at the Fair

"CLEAN-UP"
FARES TO

World's Fair-1940
IN NEW YORK

For a time we have had in mind some travel bargains for late comers to the World's Fair. Now here they are. We call them "Clean-Up" Fares for they ring down the curtain on the greatest World's Fair in history.

These fares will be in effect until October 26. They apply week-ends in coaches from all Erie Stations, Jamestown, N. Y. to Lima, Ohio, inclusive, and average about a twenty-five percent reduction.

These are week-end trips going each Friday and Saturday and leaving New York on the Sunday evening immediately following.

Fall days are ideal for a visit to New York with Summer activities still in full swing and the torrid season past.

Any Erie ticket agent will gladly be helpful, or, if you prefer, a postcard to the Erie Railroad Passenger Department, Cleveland, Ohio, will bring particulars.

TICKET YOUR CAR AND TRAVEL IN COMFORT BY TRAIN

Two first class passenger fares plus one ticket at a slightly higher fare transports two passengers and your car. Minimum charge \$54.00. Ask Erie Ticket or Freight Agents.

LOCAL PARLOR AND CLUB CAR EQUIPMENT

WESTBOUND

No. 9—Daily
Coaches.....New York to Binghamton

No. 27—Daily
Air Conditioned Dining Lounge Car.....New York to Binghamton
Coaches.....New York to Hornell

No. 63—THE TUXEDO—Ex. Sundays and Holidays
Parlor Car.....New York to Port Jervis
(Except Saturdays, Sundays and Holidays)
Coaches.....New York to Port Jervis

No. 67—Except Saturdays, Sundays and Holidays
Erie Club Car.....New York to Port Jervis
Coaches.....New York to Port Jervis

No. 251—Saturdays only Except Holidays
Erie Parlor Car.....New York to Middletown
Coaches.....New York to Middletown

EASTBOUND

No. 28—THE MOUNTAIN EXPRESS—Daily
Coaches.....Binghamton to New York

No. 56—THE TUXEDO—Except Sundays and Holidays
Erie Club Car.....Port Jervis to New York
(Except Saturdays, Sundays and Holidays)
Parlor Car.....Port Jervis to New York
Coaches.....Port Jervis to New York

Going Beyond Chicago?

**HERE'S SOMETHING YOU
REALLY SHOULD KNOW**

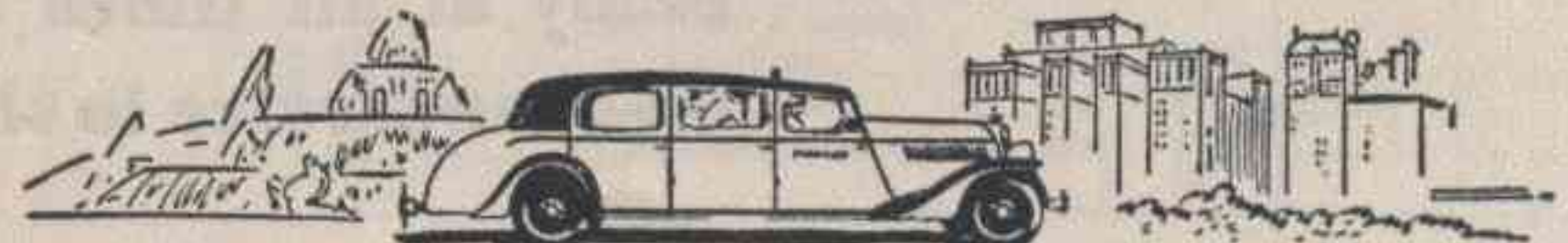


Parmelee Transportation Company maintains a fleet of Limousine Coaches in Chicago to assure through passengers dependable station-to-station service at all times. A Parmelee agent meets incoming trains and arranges for your transportation either to your outgoing station or to any downtown hotel, club or department store.

A special Women's Department, upon advance request, will assist women travelers passing through the city to plan their stop-over time to best advantage.

These special Parmelee services are offered without extra charge to all passengers holding through tickets with Parmelee coupon.

*Any Railway Ticket Agent Will Gladly Furnish Full
Information About Parmelee Service in Chicago*



PARMELEE TRANSPORTATION COMPANY

TABLE 12 ELMIRA-ROCHESTER

Westbound Read Down		Miles	Eastern Standard Time	Eastbound Read Up	
5- 463	7- 467			468- 8	464- 8
Sat. o'ly	Daily Ex. Sun.		Leave	Arrive	
PM	PM		NEW YORK Times Sq. Mtr. Coach Term. (Note ⊕)		11.45 11.45
7.25			West 23d St.		11.55 11.55
7.10	11.55	0.0	Chambers St.		11.54 11.54
7.30	12.00	0.0	Jersey City		11.30 11.30
7.45	12.25	1.0			
Sun. only	Ex. Sun.		Leave	Arrive	
AM	AM		Elmira		5.10 5.10
2.38	7.45	0.0	Ar. Corning Lv.		4.39 4.39
3.07	8.18	17.4	Lv. Corning Ar.		3.54 3.50
3.30	8.22	17.4	Painted Post		3.44 3.40
3.37	8.29	19.3	Cooper's		3.36 3.30
3.43	8.34	22.6	Campbell		3.10 3.01
3.53	8.43	26.9	Savona		3.04 2.54
4.02	8.52	31.5	Bath		2.54 2.44
4.16	9.04	37.7			
4.23	9.11	41.4	Kanona		2.38 2.29
4.30	9.18	45.1	Avoca		2.26 2.08
4.35	9.24	48.0	Wallace		2.16 2.03
4.45	9.33	52.8	Cohocton		2.06 1.53
4.52	9.41	57.2	Atlanta		1.52 1.38
5.02	9.51	63.2	Wayland		1.42 1.28
5.10	9.59	67.9	Springwater		1.32 1.20
5.26	10.05	70.7	Websters		1.13 12.49
5.34	10.12	74.5	Conesus		1.07 12.42
5.43	10.18	78.3	So. Livonia		1.01 12.36
5.51	10.25	81.9	Livonia		12.55 12.30
5.56	10.30	84.5	South Lima		12.49 12.24
		86.2	Conesus Lake Jet.		
		93.5	Avon		12.31 11.50
		97.7	Golah		
	11.00	100.1	Industry		12.15
	gc	103.3	West Henrietta		12.09
	11.25	112.1	Ar. Rochester Lv.		11.55

TABLE 13 SALAMANCA—DUNKIRK

Westbound Read Down		Miles	Eastern Standard Time	Eastbound Read Up	
5- 527	540			540	540
Daily Ex. Sun. & Hol.	Daily Ex. Sun. & Hol.		Lv.	Ar.	
PM	PM		NEW YORK Times Sq. Mtr. Coach Term. (Note ⊕)		
7.25			West 23rd St.		
7.10	0.0		Chambers St.		
7.30	0.0		Jersey City		
7.45	1.0		Ar. Salamanca Lv.		
6.03	413.6				
Mixed Train (See Note Below)			Lv. Salamanca Ar.		PM
7.20	0.0		Little Valley		5.00
7.55	8.3		Cattaraugus		4.40
8.50	15.7		Persia		4.05
	21.9		Ar. Dayton Lv.		3.25
9.10	25.0		Ar. Buffalo Lv.		
10.55			Lv. Dayton Ar.		3.25
9.40	25.0		Perrysburg		3.15
9.48	28.0		West Perrysburg		3.05
9.55	30.9		Smith's Mills		2.55
10.05	34.9		Forestville		2.45
10.13	38.8		Sheridan		2.30
10.28	42.6		Ar. Dunkirk Lv.		2.15
10.40	46.9				

LOCATE YOUR PLANT
WHERE YOU CAN
LOCATE MORE PROFITS
Ask us about industrial buildings and vacant land on Erie rails
GEO. F. WESTON
Industrial Commissioner
Erie Railroad, Midland Bldg., Cleveland, O.

HUDSON AND MANHATTAN TUBE TRAINS
SCHEDULE OF RUNNING TIME
BETWEEN
ERIE R. R. JERSEY CITY TERMINAL
AND

Downtown New York—
Cortlandt St. (Hudson Terminal Bldg.)..... 6 Mins.

Uptown New York—

33rd Street and 6th Ave.....	14 "
23rd Street and 6th Ave.....	11 "
19th Street and 6th Ave.....	10 "
14th Street and 6th Ave.....	9 "
9th Street and 6th Ave.....	8 "
Christopher and Greenwich Streets.....	6 "

Allow 10 Minutes additional for connections.
Fares—Downtown 8 cents. Uptown 10 cents.

ERIE R. R. FERRY TIME TABLE
EASTERN STANDARD TIME
CHAMBERS STREET FERRY
Ferry Running Time, 9 Minutes
WEEK DAYS

Leave New York for Jersey City							Leave Jersey City for New York						
AM	AM	AM	PM	PM	PM	PM	AM	AM	AM	PM	PM	PM	PM
12.30	7.30	10.10	12.10	3.20	6.15	9.30	12.15	7.18	9.55	12.05	3.15	6.05	9.15
1.00	7.38	10.20	12.20	3.30	6.20	9.45	12.45	7.25	10.05	12.15	3.25	6.15	9.30
1.30	7.50	10.30	12.30	3.40	6.30	10.00	1.15	7.35	10.15	12.25	3.35	6.25	9.45
2.00	8.00	10.40	12.40	3.50	6.40	10.15	1.45	7.45	10.30	12.35	3.45	6.35	10.00
2.30	8.10	10.50	12.50	4.00	6.50	10.30	2.15	7.55	10.35	12.45	3.55	6.45	10.15
3.00	8.15	11.00	1.00	4.10	7.00	11.00	2.45	8.02	10.45	12.55	4.05	6.55	10.30
3.25	8.20	11.10	1.10	4.20	7.10	11.30	3.12	8.08	10.55	1.05	4.15	7.05	10.45
3.50	8.32	11.20	1.20	4.30	7.20	12.00	3.35	8.17	11.05	1.15	4.25	7.15	11.15
4.30	8.40	11.30	1.30	4.40	7.30		4.15	8.25	11.15	1.25	4.35	7.25	11.45
5.00	8.45	11.40	1.40	4.50	7.40		4.45	8.31	11.25	1.35	4.45	7.35	
5.30	8.50	11.50	1.45	5.00	7.50		5.15	8.38	11.35	1.45	4.53	7.45	
5.45	9.00	12.00	2.00	5.08	8.00		5.30	8.45	11.45	1.55	5.00	7.55	
6.00	9.10		2.10	5.15	8.10		5.48	8.54	11.55	2.05	5.05	8.05	
6.15	9.15		2.20	5.20	8.20		6.00	9.02		2.15	5.13	8.15	
6.30	9.20		2.30	5.28	8.30		6.15	9.07		2.25	5.24	8.25	
6.45	9.30		2.40	5.38	8.40		6.30	9.18		2.35	5.35	8.35	
7.00	9.40		2.50	5.48	8.50		6.45	9.23		2.45	5.45	8.45	
7.10	9.50		3.00	6.00	9.00		7.00	9.35		2.55	5.55	8.55	
7.20	10.00		3.10	6.10	9.15		7.07	9.45		3.05	6.00	9.05	

a Will not run on Holidays. m Except Saturdays and Holidays.

TABLE 14 ROCHESTER—AVON

EASTBOUND Read Down					Mil.	Eastern Standard Time	WESTBOUND Read Up				
N. B. 420	N. B. 440	N. B. 416	N. B. 428	N. B. 468			N. B. 401	N. B. 403	467	409	
Daily Ex. Sun. & Hol.	Daily Ex. Sun. & Hol.	Daily Ex. Sun. & Hol.	Sat. only	Daily Ex. Sun.		Daily Ex. Sun. & Hol.	Daily	Daily Ex. Sun. & Hol.	Daily Ex. Sun. & Hol.		
PM	PM	PM	PM	AM		AM	AM	AM	PM		
6.15	5.15	4.15	1.25	11.55	0.0	Lv. Rochester	Ar.	7.45	8.45	11.25	1.05
6.25	5.25	4.25	1.35		4.6	Mortimer		7.30	8.27		12.52
6.32	5.33	4.34	1.43	12.09	8.8	W. Henrietta		7.22	8.18	gc	12.44
6.38	5.40	4.42	1.50	12.15	12.0	Industry		7.15	8.12	11.00	12.37
6.43	5.45	4.47	1.55		14.4	Golah		7.10	8.07		12.32
6.57	5.55	5.00	2.04	12.25	18.6	Ar. Avon	Lv.	7.02	8.00	10.48	12.25

TRAINS between Avon and Rochester, except Trains 467, 468, will stop on signal at Wiards, Elm Place, Meadowood, Gannett, Blair, Martin, Brooks, Fenner, Baileys, Crittenden, Westfall and South Park.

Note-HOLIDAYS in above tables refer to the observance of New Year's Day, Decoration Day, Independence Day, Labor Day, Thanksgiving Day and Christmas Day.

WESTERN UNION

TELEGRAMS AND CABLEGRAMS accepted at all telegraph offices of this railroad.

DAY LETTERS—50 words for 1½ times the cost of a 10 word telegram.

NIGHT LETTERS—25 words for the former price of ten words. Maximum only 50 cents from coast to coast. Words over 25 charged for in groups of 5 at rates as low as a fifth of a cent per word. The longer the message, the lower the rate per word.

RESERVATION MESSAGES—Reserve travel tickets and accommodations and hotel rooms by telegraph—only 35 cents (for 15 words).

TOURATE MESSAGES—When you travel telegraph the folks at home or at the office the facts they want to know about progress of your trip—only 35 cents (for 15 words).

SUNDAYS

Leave New York for Jersey City							Leave Jersey City for New York						
AM	AM	PM	PM	PM	PM	PM	AM	AM	AM	PM	PM	PM	PM
12.30	8.15	12.15	4.30	8.45			12.15	8.15	12.15	4.30	8.45		
1.00	8.30	12.30	4.45	9.00			12.50	8.30	12.30	4.45	9.00		
1.30	8.50	12.45	5.00	9.15			1.15	8.45	12.45	5.03	9.18		
2.00	9.00	1.00	5.15	9.30			1.45	9.00	1.00	5.15	9.30		
2.50	9.15	1.15	5.30	9.45			2.15	9.15	1.15	5.30	9.45		
3.00	9.30	1.30	5.45	10.00			2.45	9.30	1.30	5.45	10.00		
3.30	9.45	1.45	6.00	10.15			3.15	9.45	1.45	6.00	10.15		
4.00	10.00	2.00	6.15	10.30			3.45	10.00	2.00	6.18	10.45		
4.30	10.15	2.10	6.30	11.00			4.18	10.15	2.15	6.33	11.15		
5.15	10.30	2.30	6.45	11.30			5.00	10.30	2.30	6.45	11.45		
5.45	10.40	2.45	7.00	12.00			5.50	10.45	2.45	7.00			
6.45	11.00	3.00	7.15				6.30	11.00	3.00	7.15			
7.00	11.15	3.15	7.30				7.00	11.15	3.15	7.25			
7.15	11.30	3.30	7.45				7.18	11.30	3.30	7.45			
7.30	11.45	3.45	8.00				7.30	11.45	3.50	8.00			
7.45	12.00	4.00	8.15				7.45	12.00	4.00	8.15			
8.00		4.15	8.30				8.00		4.15	8.30			

TWENTY-THIRD STREET FERRY
Ferry Running Time, 20 Minutes
WEEK DAYS

Leave New York for Jersey City							Leave Jersey City for New York						
AM	AM	PM	PM	PM	PM	PM	AM	AM	AM	PM	PM	PM	PM
7.40	10.00	12.30	3.10	6.05	10.45		7.18	9.33	12.30	3.15	6.45	11.35	
8.00	10.30	12.55	3.40	7.10	11.55		7.45	10.00	1.00	3.35	7.30		
8.30	10.55	1.30	4.15	8.00			8.15	10.30	1.30	4.15	8.25		
8.48	11.30	2.10	4.40	8.45			8.32	11.00	2.00	4.45	9.05		
9.05	11.55	2.30	5.15	9.30			8.50	11.30	2.30	5.25	9.45		
9.40		2.50	5.45	10.05			9.10	12.00	2.45	5.40	10.25		

SUNDAYS

|--|

SUGGESTIONS

• **FREE BAGGAGE SERVICE.** Let us check your baggage to destination and relieve you of the trouble and inconvenience of carrying it to and from the train—150 pounds free on each adult ticket.

If you desire delivery to your residence or hotel at destination, ask the checking agent for information regarding delivery service and rates.

• **INTERCHANGEABLE SCRIP COUPON TICKETS** issued in \$15.00 and \$30.00 denominations are accepted on trains or at ticket offices in payment of rail passage as well as sleeping and parlor car accommodations, and also as payment for meals in restaurant cars.

• **PREPAID ORDERS.** For the convenience of patrons who do not wish to send money by mail, Erie Railroad ticket agents are prepared to sell prepaid ticket orders for the delivery of transportation, rail and Pullman, from practically all points in the United States, Canada and Mexico. These orders may also include the furnishing of cash.

In emergencies arrangements may be made for the delivery of transportation by telegraph or telephone without charge except when commercial wires are used.

• **BAGGAGE INSURANCE** by the St. Paul Fire & Marine Insurance Co. may be purchased at principal Erie ticket offices. It insures your baggage and personal effects for your entire trip anywhere in the world. Minimum premium twenty-five cents. The ticket agent can give you full particulars.

• **ERIE PLAYING CARDS** are on sale at our ticket offices, excepting in Ohio. Bridge sets one dollar, single decks fifty cents.

• **SPECIAL TOURS AND CONVENTIONS.** Our services are at the disposal of clubs, lodges and other organizations in arranging for trips to conventions and gatherings of all sorts. Concerning fares, train schedules and travel plans, consult or write to any Erie Ticket Agent, or any of the Passenger Department representatives listed on pages 37 & 38 of this folder.

STOP-OVER PRIVILEGES

Niagara Falls

Passengers holding tickets reading "via Erie Railroad" from or through Elmira to or through Youngstown or vice versa may exercise their privilege of going by way of Buffalo and stopping over for as long as ten days at Niagara Falls, but not beyond the final limit of their ticket. Upon request, the Erie Ticket Agent at Buffalo will issue without charge a round trip ticket between Buffalo and Niagara Falls. Frequent service via busses of International Ry. direct from Buffalo Terminal.

Other Points

On local one-way tickets sold at regular fares, local round-trip tickets sold at double the one-way fares, All-Year, Summer and Winter Tourist Tickets, stop-overs will be allowed on going and return trips within final limit of tickets at any Erie Railroad Station en route upon notice to conductor and without deposit of ticket.

GENERAL INFORMATION

STANDARD OF TIME—Erie Lines east of and including Ohio City, Ohio, are operated by Eastern Standard Time, Lines west of Ohio City, Ohio, by Central Standard Time. 12.01 Midnight to 12.00 Noon is indicated by light-faced type. 12.01 Noon to 12.00 Midnight is indicated by heavy-faced type.

TRAINS WILL NOT BE HELD for ferries from New York between hours of 5:00 P.M. and 6:30 P.M. Eastern Standard Time.

HOLIDAYS—The term "Holidays" (unless covered by special note under schedule) refers to the observance of New Year's Day, Lincoln's Birthday, Washington's Birthday, Memorial Day, Independence Day, Labor Day, Columbus Day, Armistice Day (Nov. 11), Election Day (November 5), Thanksgiving Day and Christmas Day.

THIS COMPANY IS NOT RESPONSIBLE FOR ERRORS in time tables, inconvenience or damage resulting from delayed trains or failure to make connections; schedules are subject to change without notice.

FARES PAID ON TRAINS—Conductors are required to charge ten (10) cents in excess of the one-way ticket fare for passengers traveling in coaches only in the territory east of Port Jervis, including side lines and branches. Buy tickets before boarding trains and avoid payment of this extra fare.

CHILDREN under five years of age are carried free when accompanied by parent or guardian; five years and under twelve, half fare, twelve years of age and over, full fare.

ADJUSTMENT OF FARES—Should any misunderstanding arise with conductors or agents, pay the fare required, take receipt and communicate with General Passenger Agent, Midland Bldg., Cleveland, Ohio.

SLEEPING AND PARLOR CAR RESERVATIONS—Space reserved by telegraph or telephone within city limit will be held until:

5:00 P.M. day prior to departure of trains leaving before noon next day.

10:00 A.M. day of departure for trains leaving between noon and 5:00 P.M.

2:00 P.M. day of departure for trains leaving after 5:00 P.M.

When application is by wire or letter from a point outside of city limit, space will be held until fifteen minutes of train time.

BAGGAGE TO BE CHECKED should be delivered at station at least thirty minutes before train time.

BAGGAGE DELIVERY IN NEW YORK CITY—All baggage checked to New York City will be sent to the West 23rd Street Station unless passenger specifies Chambers Street Station at time of checking.

Baggage delivery service in New York will be performed by the Railway Express Agency.

HAND-BAGGAGE in Pullman Cars is restricted to what can be conveniently placed in the berth, seat or other accommodations purchased by the passenger.

CHICAGO PASSENGER AND BAGGAGE TRANSFER is performed by the Parmelee Company. A uniformed agent meets all incoming trains of the Erie Railroad on arrival at Dearborn Station.

ARTICLES LOST ON TRAINS or left in waiting rooms or stations, owners should apply to Lost and Found Bureau, (Baggage Room) Jersey City Depot, or address General Passenger Agent, Midland Bldg., Cleveland, Ohio, giving full description of the property, stating date of loss and number of train.

SAFETY FIRST HINTS—Carefulness on your part helps eliminate accidents. Don't get on or off a train in motion; wait for a full stop. Keep hand baggage out of car aisles; this will remove a cause of inconvenience, possibly of harm, to others. Walk carefully when entering or leaving train; high-heeled shoes are sometimes a cause of tripping or stumbling on car steps. Don't stand or walk close to the railroad track; look both ways before starting across. Courtesy toward your fellow travelers increases the pleasure of your journey.

COURTESY TO OUR PATRONS

SAFETY FIRST has long been the watchword of American Railroads. Equally important is Friendliness on the part of Railroad employes to all patrons.

Our employes are anxious to be Friendly and Courteous so as to add to the enjoyment of your trip. Many letters are received in commendation of individual acts of courtesy. We are grateful for such letters, which encourage our employes in their efforts to serve you better.



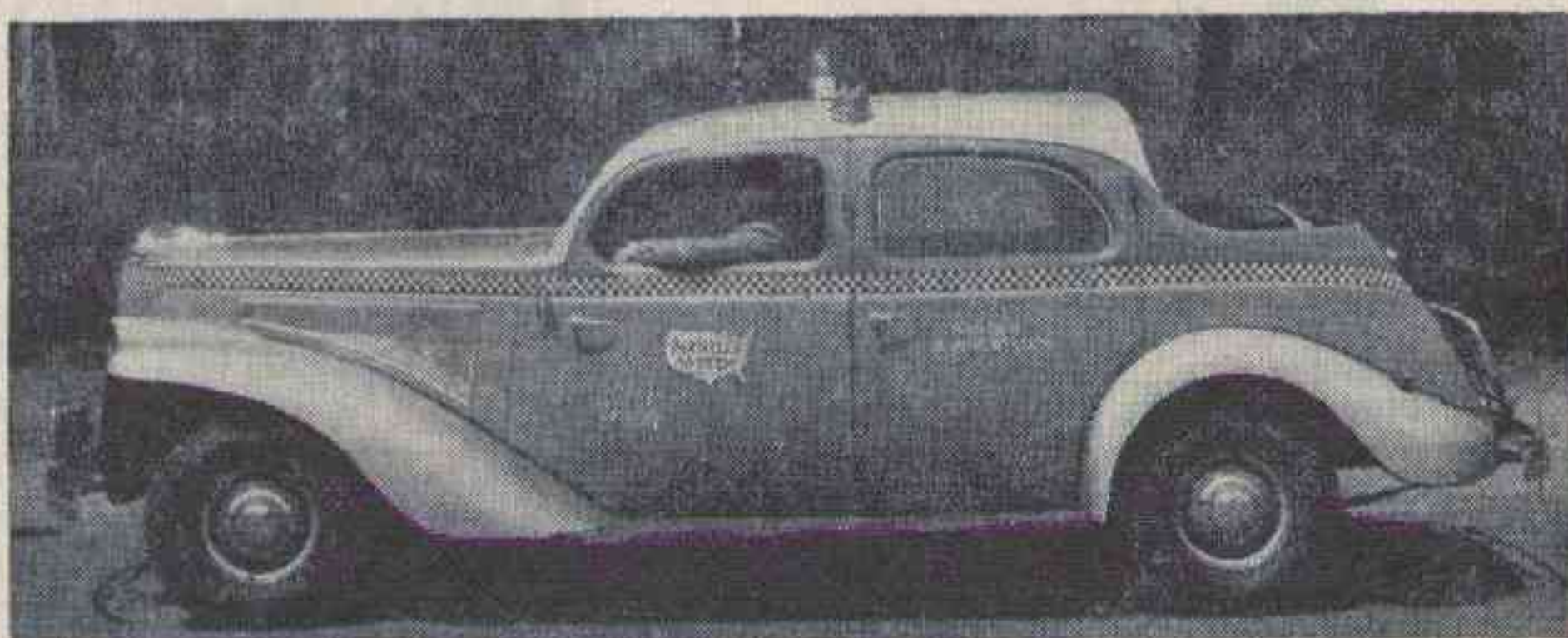
RUSH YOUR SHIPMENTS, TOO!

Fast as passenger trains travel—and just as direct, Railway Express whisks your shipments to their destination. Call and delivery service in all cities and principal towns. Low rates include receipts and insurance up to \$50. Whatever your shipment, large or small, just phone Railway Express or Western Union for service.

RAILWAY EXPRESS
 AGENCY  INC.
 NATION-WIDE SERVICE

ERIE TRAIN-CAB SERVICE

Takes you from Erie Terminal directly to your door in New York or Brooklyn



ONE Person 90c TWO Persons \$1.25 THREE or more \$1.50

Thousands have used and praised Erie Train-Cab Service.

Strangers arriving at Erie Terminal, Jersey City, are taken all the way to their destination in New York or Brooklyn. They never get "lost" and are never overcharged. Women accompanied by children appreciate this service. Even seasoned travelers enjoy the comfort of settling down in their own taxicab and forgetting about bags and car changes.

The fares shown above apply from our terminal to any place on Manhattan 110th Street and South, also to any point in the Brooklyn business district.

Service beyond the prescribed zones is metered from the zone limits and charged for at regular rates.

Train-Cab service is available to all who travel from stations west of Middletown, N. Y.

You can buy the Train-Cab coupon with your rail ticket at the ticket office or from the conductor on any through train and you will find your taxicab awaiting the arrival of your train at Jersey City.

Ask the conductor or ticket agent for details.

at a price of standard price

WANTED: More work to do. Am at present employed in carrying the nation's freight and passengers safely, quickly, and at low cost. Can handle and need more work. This will enable me to employ more men and to keep my plant at the peak of efficiency both for commercial business and for national defense.—The American Railroads.

WANTED: More work to do.

ASSOCIATION OF AMERICAN RAILROADS
 Washington, D. C.

CONDENSED THROUGH FREIGHT SCHEDULES

FOR INFORMATION ONLY. For details, consult any freight traffic representative shown on opposite pages.

EASTBOUND — READ DOWN

WESTBOUND — READ UP

TRAIN 74 and Connections	Train NE 98 and Connections	TRAIN 98 and Connections	TRAIN 72 and Connections	TRAIN 78 and Connections	TRAIN 90 and Connections	TRAIN 86	Central Time	TRAIN 77 and Connections	TRAIN 81 and Connections	TRAIN 91 and Connections	Train Adv 87 and Connections	TRAIN 87 and Connections
Example Day	Example Day	Example Day	Example Day	Example Day	Example Day	Example Day		Example Day	Example Day	Example Day	Example Day	Example Day
8:00AM Mon. 9:30AM Mon. 1:45PM Mon. 4:15PM Mon. 6:15PM Mon.	5:30PM Mon. 7:00PM Mon. 1:40AM Tue. 3:35AM Tue.	5:30PM Mon. 7:00PM Mon. 1:40AM Tue. 3:35AM Tue. 6:30AM Tue.	9:45PM Mon. 11:15PM Mon. 5:00AM Tue. 7:45AM Tue. 9:30AM Tue.				Lv. Chicago Lv. Hammond Lv. Huntington Lv. Lima Ar. Marion	11:00PM Wed. 9:45PM Wed. 3:15PM Wed. 11:30AM Wed. 10:30AM Wed.	2:00AM Thu. 12:20AM Thu. 8:00PM Wed. 5:30PM Wed. 3:30PM Wed.	3:00AM Thu. 1:30AM Thu. 9:30PM Wed. 5:30PM Wed. 4:00PM Wed.		
		6:50PM Mon. 1:30AM Tue. 2:30AM Tue. 3:15AM Tue.					Lv. Cincinnati Lv. Dayton Lv. Maitland (Springfield) Lv. Urbana			6:50AM Thu. 11:30PM Wed. 9:00PM Wed. 8:15PM Wed.		
8:45PM Mon. 12:01AM Tue. 12:50AM Tue.	9:00AM Tue.	9:30AM Tue. 11:50AM Tue. 2:00PM Tue.	12:15PM Tue. 3:45PM Tue. 5:00PM Tue.				Lv. Marion Lv. Akron Lv. Kent	7:45AM Wed. 2:45AM Wed. 1:35AM Wed.	1:25PM Wed.	3:30PM Wed. 11:50AM Wed. 10:50AM Wed.		
2:30PM Tue.			6:30AM Wed.				Ar. Cleveland			2:15AM Wed.		
7:00PM Mon.							Lv. Cleveland	6:30AM Wed.				
7:00AM Tue. 11:00PM Mon. 5:00PM Tue.		7:30AM Tue.	10:00PM Tue.				Ar. Youngstown Lv. Youngstown Ar. New Castle Lv. New Castle Ar. Sharon Lv. Sharon Ar. Meadville Lv. Meadville Ar. Jamestown	12:01AM Wed. 2:00AM Wed. 8:00AM Tue. 10:45PM Tue. 12:45AM Wed. 10:15PM Tue. 9:15PM Tue. 6:15PM Tue.		5:00AM Wed. 1:00PM Wed. 5:00PM Wed. 3:00PM Wed. 8:00AM Wed. 7:15AM Wed. 4:35AM Wed.		
		12:45AM Wed. 7:30PM Tue.	2:00AM Wed.	7:15AM Wed.	9:00AM Wed.	6:15PM Wed.	Ar. Buffalo Lv. Buffalo			10:00PM Tue. 9:30PM Tue.	7:00AM Wed.	4:00PM Wed.
		6:15AM Wed. 5:30PM Tue.					Ar. Rochester Lv. Rochester			5:30PM Mon. 6:15AM Wed.	9:00AM Wed.	
10:30AM Tue. 12:01PM Tue.		12:15AM Wed. 2:15AM Wed.	5:00AM Wed. 8:30AM Wed.	11:15AM Wed. 1:00PM Wed.	1:00PM Wed. 3:00PM Wed.	8:50PM Wed.	Ar. Hornell Lv. Hornell	2:00PM Tue.	9:45PM Tue.	12:30AM Wed. 6:15PM Tue.	4:45AM Wed.	12:15PM Wed. 11:30AM Wed.
			2:15AM Thu.				Ar. Philadelphia (Rdg)			8:30PM Mon.		
12:01AM Wed. 7:00PM Tue.	3:00AM Wed.	3:30AM Wed. 5:45AM Wed.	10:00AM Wed. 12:01PM Wed.	12:01AM Thu. 7:00PM Wed.	12:01AM Thu. 7:00PM Wed.	10:30PM Wed. 12:01AM Thu.	Ar. Elmira Ar. Binghamton	9:30AM Tue. 7:15AM Tue.		4:30PM Tue. 2:50PM Tue.	2:30AM Wed. 1:10AM Wed.	9:30AM Wed. 7:15AM Wed.
9:30AM Wed. 8:00PM Wed. 9:30PM Wed.	4:00PM Wed. 11:55PM Wed. 2:30AM Thu.	5:00PM Wed. 3:00AM Thu. 10:00AM Thu.	4:15AM Thu.	9:30AM Thu. 8:00PM Thu. 9:30PM Thu.	9:30AM Thu. 8:00PM Thu. 9:30PM Thu.		Ar. Albany (D&H) Ar. Boston (B&M) Ar. Portland (D&H-B&M)	10:00AM Mon. 4:30AM Mon. 11:00PM Sun.		10:30PM Mon. 6:30PM Mon.		10:00AM Tue. 5:00AM Tue. 11:00PM Mon.
			8:00AM Thu.				Ar. Scranton Lv. Scranton			11:00PM Mon.		8:00AM Wed.
3:30AM Wed. 8:00PM Wed.	9:00AM Wed. 6:15PM Wed. 11:50PM Wed. 10:00AM Thu.	1:00PM Wed. 9:25PM Wed. 3:00AM Thu.		6:30AM Thu. 11:50PM Thu. 10:00AM Fri.	6:30AM Thu. 11:50PM Thu. 10:00AM Fri.		Ar. Maybrook Ar. New Haven (NH) Ar. Boston (NH) Ar. Portland (NH-B&M)			8:30AM Tue. 1:25AM Tue. 6:45PM Mon. 2:00AM Mon.		
4:30AM Wed. 6:30AM Wed. 1:30AM Wed.		12:30AM Thu. 6:30AM Thu. 3:45PM Wed.	12:30AM Thu. 6:30AM Thu. 12:30AM Thu.	4:30AM Thu. 6:30AM Thu. 3:30AM Thu.	6:00AM Thu. 8:00AM Thu. 4:30AM Thu.	7:30AM Thu. 6:20AM Thu.	Ar. Paterson Ar. Newark Ar. Croxton Ar. Jersey City	5:30PM Mon. 9:00PM Mon. 12:20AM Tue.		5:30PM Mon. 9:00PM Mon. 3:30AM Tue.	5:30PM Tue. 6:45PM Tue.	10:30PM Tue.
							NEW YORK (see note)					

NOTE—Freight to and from New York City and Brooklyn stations and piers is handled expeditiously on earfloats or lighters via Croxton or Jersey City. Prompt delivery or forwarding is assured.

“SHIP AND TRAVEL ERIE”

ERIE RAILROAD COMPANY

(ROBERT E. WOODRUFF AND JOHN A. HADDEN, TRUSTEES)

CHICAGO AND ERIE RAILROAD CO.

General Offices { Midland Building, Cleveland. Telephone, Cherry 8400.
Hudson Terminal, 50 Church Street, Corner Fulton, New York. Telephone, Cortlandt 7-9200.
Utilities Building, 327 South La Salle Street, Chicago. Telephone, Harrison 4160.

TRAFFIC AND DEVELOPMENT DEPARTMENTS

TRAFFIC	
G. C. MANNING, Assistant Vice-President, L. B. BURFORD, Assistant Vice-President,	CARL HOWE, Vice-President, Cleveland. New York. Cleveland.
C. C. HOWARD, Passenger Traffic Manager, R. B. ROGERS, General Passenger Agent, H. T. HARLOW, General Passenger Agent, T. R. PATTON, Assistant General Passenger Agent	W. V. KENNEDY, Assistant Vice-President, G. A. LAMB, Assistant to Vice-President, Cleveland. Chicago. Youngstown.
O. M. MEYNE, Assistant Freight Traffic Manager, E. N. HAMBLY, General Freight Agent, F. M. KLITZ, Assistant General Freight Agent,	FREIGHT—Rates L. B. BURFORD, Assistant Vice-President, Cleveland. F. G. LANTZ, Freight Traffic Manager, Chicago. Cleveland. " "
G. C. MANNING, Assistant Vice-President, T. E. McANDREWS, Freight Traffic Manager, E. J. DEAN, Freight Traffic Manager, G. R. WHEELER, General Freight Agent, J. T. McENTEE, Assistant General Freight Agent, E. W. VAIL, General Eastern Freight Agent, F. D. HARTNETT, Milk Freight Agent, T. W. KANE, Grain Agent,	FREIGHT—Solicitation New York. New York. Cleveland. New York. Buffalo. New York. " "
W. H. STADELMAN, Coal Traffic Manager, J. A. FERGUSON, Coal Freight Agent, F. D. AUSTIN, General Coal and Coke Agent, E. C. JULIUS, Coal and Coke Agent, W. N. STENFELT, Coal Agent, M. S. SWEENEY, Coal Freight Agent, D. D. JAMIESON, Coal Freight Agent, A. E. BARKALOW, Assistant Coal Freight Agent, J. A. MUCHA, Assistant Coal Freight Agent,	FOREIGN FREIGHT TRAFFIC T. E. McANDREWS, Foreign Freight Traffic Manager, W. C. OTTEN, Foreign Freight Agent, A. E. PETERSON, Foreign Freight Agent, W. S. PENCHARD, Export and Import Agent, EUROPEAN GENERAL AGENTS—SUTHERLAND INTERNATIONAL. DESPATCH, LIMITED, PERISHABLE AND DAIRY TRAFFIC R. E. O'GRADY, Manager, P. J. NAPOLI, Assistant Manager, H. W. BOUMANN, Western Dairy Agent,
	Chicago. Cleveland. Chicago. " " Boston. Pittsburgh. Youngstown. Detroit. East Buffalo, N. Y. New York. Chicago. New York. London, Eng. New York. Chicago.

INDUSTRIAL DEVELOPMENT

CARL HOWE, Vice-President, Cleveland.

GEO. F. WESTON, Industrial Commissioner, Cleveland. | H. J. HART, Industrial Agent, New York.

TRAFFIC DEPARTMENT REPRESENTATIVES

Akron, O. —80 East Exchange St. (Telephone Hemlock 8194-8195) J. P. CLARK, Division Passenger Agt. C. E. KING, General Agent.	Columbus, O. —Rooms 809-810 Atlas Bldg., 8 East Long Street. (Telephone Adams 7331) C. R. MARTIN, General Agent.	London, E. C. 3. Eng. —4 Billiter St. PETER BUSWELL, General Agent. D. S. DEANS, Genl. Continental Agt.	Philadelphia, Pa. —1009-10 Finance Bldg. (Telephone Rittenhouse 8975-8976) B. F. CONWAY, General Agent.
Albany, N. Y. —Room 2, D. & H. Bldg. (Telephone 4-6051) L. E. NEWMAN, General Agent.	Dallas, Tex. —2118 Tower Petroleum Bldg. 1905 Elm St. (Telephone 2-7352) L. J. MARION, General Agent.	Los Angeles, Cal. —510 West 6th Street. (Telephone Vandike 6542) J. A. RUSSELL, General Agent.	Pittsburgh, Pa. —Gulf Building. (Telephone Grant 4831-2-3) D. R. THOMPSON, A. G. F. A.
Atlanta, Ga. —1515-16 Healey Bldg. (Telephone Walnut 2135) C. G. ANDREWS, General Agent.	Dayton, O. —1004-8 Miami Savings Bldg. (Telephone Adams 8481) W. P. KROMPHARDT, Div. Frt. Agt.	Marion, O. —Terminal Building (Telephone 2657) A. R. TENNIS, Division Freight Agent.	Portland, Ore. —Room 421 Pacific Bldg., 520 S. W. Yamhill St. (Telephone Beacon 3706) H. L. SKEEN, General Agent.
Baltimore, Md. —1301-3 Munsey Bldg. (Telephone Plaza 8691) W. J. MURRAY, General Agent.	Des Moines, Ia. —Hubbell Bldg., 904 Walnut Street, (Telephone 4-0018) L. T. COULSTON, General Agent.	Memphis, Tenn. —1628-9 Exchange Bldg., Madison & Second Sts. (Telephone 8-8781) R. L. MILLER, General Agent.	Rochester, N. Y. —Erie Station. (Telephone Main 2826) B. C. WEDD, Division Freight Agent.
Birmingham, Ala. —1007 Watts Bldg. (Telephone 3-1327) WM. L. THORNTON, General Agent.	Detroit, Mich. —Rooms 2-124 and 2-125 General Motors Bldg. (Telephone Madison 2360-2361) W. H. KOCH, Assistant General Frt. Agt.	Milwaukee, Wis. —818-9 Majestic Bldg., 231 West Wisconsin Ave. (Telephone Marquette 5555-5556) H. A. WILSON, General Agent.	San Francisco, Cal. —681 Market St. (Telephone Sutter 3875) J. A. LLOYD, General Agent.
Birmingham, England —13 Corporation St., MAURICE G. COOKE, General Agent.	East Buffalo, N. Y. —Live Stock Exch. Bldg. (Telephone Washington 4300) H. B. ROGERS, General Live Stock Agt.	Minneapolis, Minn. —125 Third Street, So. (Telephone Main 3604) C. V. HARROW, General Agent.	St. Louis, Mo. —Room 906, 1218 Olive St. (Telephone Chestnut 7723-7724) D. C. KELSEY, General Agent.
Boston, Mass. —150 Causeway St. (Telephone Capitol 2510-11-12) G. W. MADSEN, G. N. E. Agt.	Elmira, N. Y. —Erie Station. (Telephone 2-1621) J. W. O'HARA, Division Passenger Agt. (Telephone 2-0377) C. F. WHADCOCK, Division Freight Agent.	Newark, N. J. —1801-2 Military Park Bldg., 60 Park Place. (Telephone Market 2-0525-26-27) A. R. WALTON, General Agent.	St. Paul, Minn. —336 Robert St. (Telephone Cedar 5912) C. R. PETRY, General Agent.
Bradford, Pa. —Erie Station. (Telephone 3413) J. C. MOFFATT, General Agent.	Glasgow, Scotland —82 Mitchell St. W. S. THOMSON, General Agent.	New Haven, Conn. —401 Powell Bldg. (Telephone 5-7937) G. E. ROBB, General Agent.	Scranton, Pa. —Mill & Smith Sts. (Dunmore, Pa.) (Telephone—Scranton 8191) G. W. SHUMAN, Division Freight Agent.
Buffalo, N. Y. —6 North Division St. (Telephone Washington 4300) R. E. TOWNS, D. P. A. 238 Main Street. (Telephone Wash. 1865) J. T. McENTEE, Asst. General Freight Agt.	Huntington, Ind. —Erie Station. (Telephone 743) F. C. MCCARTHY, Division Freight Agt.	New Orleans, La. —Room 1417 Whitney Bldg. (Telephone Raymond 9786) E. W. BURNETT, General Agent.	Seattle, Wash. —1116-7 White Bldg., 1338 Fourth Ave. (Telephone Elliot 4834) R. J. DUNDON, General Agent.
Chicago, Ill. —327 South La Salle St. (Telephone Harrison 4160) B. Y. VAUGHN, Trav. Pass. Agt. C. D. TURNER, General Agent.	Indianapolis, Ind. —143 No. Meridian St. (Telephone Lincoln 2088) T. J. WILLIAMSON, General Agent.	New York, N. Y. —630-5th Ave. Room 219, Rockefeller Center. (Telephone Circle 5-7222) F. J. WILD, G. A. P. D. A. G. OLDENQUIST, City Pass. Agt. (Telephone Cortlandt 7-9200) E. W. VAIL, General Eastern Frt. Agent. J. G. VREELAND, Division Freight Agent.	Springfield, O. —516 First National Bank Building. (Telephone 2-5351) E. W. KEILEY, General Agent.
Cincinnati, O. —503 Gwynne Bldg. (Telephone Main 3420-3421) R. L. MURPHY, General Agent.	Jamestown, N. Y. —Erie Station F. L. COLLINS, Div. Frt. Agt. (Telephone 7921-7922)	Omaha, Neb. —1319 Farnam St. (Telephone Jackson 4866) C. L. COX, General Agent.	Toledo, O. —342 South Erie Street. (Telephone Main 3816) H. J. SPANGENBERG, General Agent.
Cleveland, O. —Midland Bldg. (Telephone Cherry 8400) J. M. SKEHILL, Division Freight Agt. 918 Huron Road (Telephone Cherry 8400) G. SAUNDERS, Div. Passenger Agt.	Jersey City, N. J. —Erie Station (Telephone Journal Square 2-6400) P. F. ARROYO, G. A. P. D.	Peoria, Ill. —920 Jefferson Building, Cor. South Jefferson & Fulton Streets. (Telephone 8007) E. T. OLANDER, General Agent.	Toronto, Ont. —69 Yonge Street. (Telephone Elgin 4077) E. P. MORRILL, General Agent.
	Kansas City, Mo. —Rooms 326-7 Railway Exchange Bldg., 7th and Walnut Streets. (Telephone Victor 6328) N. C. FRICK, General Agent.		Tulsa, Okla. —Room 1511 Hunt Bldg. (Telephone 3-8613) H. A. BOCKMAN, Commercial Agent.
	Liverpool, Eng. —17 Brunswick St. A. G. TAYLOR, General Agent.		Washington, D. C. —903 Southern Bldg. (Telephone National 6075) W. J. MURRAY, General Agent.
			Youngstown, O. —Terminal Building. (Telephone 41101) H. C. SCHMIDT, Asst. Genl. Frt. Agt. F. W. FISCHER, Div. Frt. Agt.