

Effective November 16, 1941

Effective November 16, 1941



**ERIE RAILROAD
TIME TABLES**

**ERIE RAILROAD
TIME TABLES**

The Scenic Route

BETWEEN

**NEW YORK • BUFFALO
CLEVELAND • CHICAGO**

The Scenic Route

BETWEEN

**NEW YORK • BUFFALO
CLEVELAND • CHICAGO**

FORM 1

FORM 1

CLEVELAND, OHIO, NOVEMBER 16, 1941

DE LUXE COACHES -- DELIGHTFUL

PRESENT A NEW HIGH IN COACH RIDEABILITY

Little Niceties Not Overlooked

Erie's De Luxe Coaches recently put in operation on The Erie Limited, The Midlander, The Washingtonian are a real treat in Coach travel.

The seats of the main salon are of the rotating type. They rotate in pairs to face the windows or turn directly around to form intimate groups of four. They recline individually at the will of the occupant for complete relaxation, even a good nap, if you like. There is wide knee room between your seat and the next one.

Separated from this section is the men's smoking room.

The women's room has a full length couch and individual, movable chairs.

The color scheme throughout the car is restful and in most excellent taste. The already spacious car has its roominess accentuated by long lines in the decorations. Walls, ceilings, upholstery and carpets blend and contrast gracefully.

Little travel niceties like dimmed lights at night, real individual drinking cups, plenty of clean towels, etc., make these cars really superb.

"NEITHER SNOW NOR RAIN—"

Carry the mail. The very words have a thrilling sound. "Neither snow nor rain nor heat nor gloom of night stays these couriers from the swift completion of their appointed rounds." The Erie has carried the mail for Uncle Sam since 1845, ninety-six years. Still carries it. "Neither snow nor rain—"



NOW—more than ever—
KNOW YOUR AMERICA!

See it all on a trip to and from

SOUTHERN CALIFORNIA

AND THE ALL-WINTER

"SUN FESTIVAL"

More than ever, during these times, a trip across this country of ours is an exciting, stirring experience. Step aboard a fast, modern train... see America... and let Southern California and the gay All-Winter Sun Festival be the glamorous climax to a trip you'll never forget. More than 300 thrilling events. One of our representatives or ticket offices will be glad to plan your complete itinerary.



The Erie Limited en route to New York through the beautiful Delaware River Valley

ERIE'S NEW TERMINAL IN TIMES SQ. AREA

Heart of Gay New York

The Erie Railroad offers direct motor coach service to and from a terminal in midtown Manhattan (in addition to existing ferry terminals), connecting with certain trains at Rutherford, N. J.

The new Erie terminal is in the Times Square Area at 260 West 42nd Street, between 7th and 8th Avenues.

The charge for the motor coach service is 50c each way for adults and 25c for children of half-fare age in addition to rail fare from or to New York or Rutherford.

Ordinary hand baggage is carried on motor coach with passenger and is transferred between motor coach and train free.

Consult time tables for schedules.

...BUY...
DEFENSE BONDS

"WASHINGTONIAN"

CLEVELAND-WASHINGTON
DAY TRAINS POPULAR

Link Important Cities

Doubly Important Today

Daily these fine trains cover the route between Cleveland, Washington and Baltimore, scheduled as follows: Leave Cleveland 8:20 A. M., arrive Washington 7:10 P. M., Baltimore 8:17 P. M. Leave Baltimore 8:55 A. M., Washington 10:10 A. M., arrive Cleveland 9:15 P. M. See page 7 for all fares and page 17 for all schedules.

The equipment of these trains consists of De Luxe Coaches, Pullman, Parlor and Dining Cars of the finest type. The trip is one of great scenic beauty, plus interesting glimpses of industrial activity. You see the majestic Allegheny and Blue Ridge Mountains—the historic Cumberland Valley—the scenic beauties of Harper's Ferry.

TRAIN-TAXI PLAN

In Chicago, Akron, Cleveland,
Youngstown and Buffalo

In Chicago the taxicab company will furnish a cab and driver for any continuous four hours for \$5.00. In the other cities named, cab and driver from 9:00 A. M. to 3:00 P. M. may be hired for \$5.00.

TRAVEL WHEN YOU WANT TO

PAY LATER

Installment Plan

Thousands now use this way to go. Pay later. No money down. Repayment is in easy, monthly installments. Can be used on any trip or tour costing fifty dollars or more. Ask any ticket agent for full particulars.

SUNNY SOUTH
SNOWY NORTH

SEE
AMERICA

NOW!

See it all \$90^{In} Coaches

See the boy in camp. See both coasts; California, Colorado. Your home town, back to your home town. Stop over anywhere. If you prefer Parlor or Sleeping Cars, \$135 plus charge for space occupied.

TABLE OF CONTENTS

Reference Marks and Notes.....	Page	Traffic and Development Department Representatives.....	Page
Ticket Offices and Passenger Stations in Principal Cities.....	5, 6	Train Service	37, 38
One-Way and Round-Trip Fares.....	7, 8	Condensed Schedule of Through Trains.....	9, 10
Sleeping and Parlor Car Fares.....	7, 8	New York—Elmira.....	11, 12, 13, 14
Equipment of Through Trains.....	9, 10	Elmira—Chicago.....	15, 16
Equipment of Detroit, Toledo, Cleveland, Youngstown, Pittsburgh, Washington and Baltimore Trains.....	17, 18	Detroit—Toledo—Cleveland—Youngstown—Pittsburgh—Washington—Balti- more.....	17, 18
Erie Railroad Map.....	19, 20, 21, 22	New York—Buffalo.....	23
Equipment of Local Trains.....	28	New York—Jamestown—Chautauqua Lake.....	23
Suggestions.....	31	Chautauqua Lake—Jamestown—Akron—Chicago.....	23
General Information.....	32	New York—Kenosha Lake—Jeffersonville.....	24
Standard of Time.....		Buffalo—Jamestown.....	24
Holidays.....		Lackawaxen—Honesdale.....	24
Fares Paid on Trains.....		New York—Salamanca—Bradford.....	24
Adjustment of Fares.....		Bradford—Salamanca—Cleveland—Chicago.....	24
Sleeping and Parlor Car Reservations.....		Branch Line Service.....	29
Baggage Regulations.....		Hudson & Manhattan R. R. Service.....	30
Articles Lost on Trains.....		Ferry Schedule.....	30
Safety First Hints.....		Freight Schedules.....	35, 36

STATIONS ON ERIE RAILROAD

At Which Trains Are Scheduled To Stop

Numerals Opposite Station Names Indicate Time Table Numbers

TABLE NO.	STATION	TABLE NO.	STATION	TABLE NO.	STATION	TABLE NO.	STATION	TABLE NO.	STATION
4	Addison, N. Y.	2, 3	Chester, N. Y.	4	Galion, O.	11	Kenosha Lake, N. Y.	4	Ohio City, O.
1, 4, 7, 10	Akron, O.	1, 4, 7, 10	Chicago, Ill.	5	Garrettsville-Hiram, O.	4	Kent, O.	1	Olean, N. Y.
2, 3	Albany, N. Y.	1, 4, 5, 7, 10	Cleveland, O.	6	Garwoods, N. Y.	4	Kenton, O.	2, 3	Oneonta, N. Y.
6	Alden, N. Y. (Black Water Baths)	2, 3	Cochecton, N. Y. (Lake Huntington)	5	Geauga Lake, O.	9	Kimbles, Pa.	2, 3	Otisville, N. Y.
4	Alfred, N. Y.	12	Cohocton, N. Y.	4, 5	Girard, O.	2, 3		2, 3	Owego, N. Y.
5	Allquippa, Pa.	8	Collins, N. Y.	9	Glen Eyre, Pa.	2, 3		2, 3	Oxford, N. Y.
4	Alleghany, N. Y.	8	Conesus, N. Y.	2, 3	Goshen, N. Y.	8			
2, 3	Allendale, N. J.	12	Conesus Lake Jct., N. Y.	2, 3	Gowanda, N. Y.	8			
4	Andover, N. Y.	8	Coneango, N. Y.	2, 3	Graham, N. Y.	2, 3			
2, 3	Arden, N. Y.	8	Connellsville, Pa.	2, 3	Great Bend, Pa.	2, 3			
6	Arkport, N. Y.	5	Coopers, N. Y.	4	Greenville, Pa.	4			
4	Ashland, O.	12	Coraopolis, Pa.	2, 3	Greycourt, N. Y.	2, 3			
12	Atlanta, N. Y.	5	Corning, N. Y.	6	Griswolds, N. Y.	6			
6	Attica, N. Y.	1, 4, 6, 12	Corry, Pa.	2, 3	Gulf Summit, N. Y.	2, 3			
5	Aurora, O.	4	Crown Point, Ind.	2, 3					
12	Avoca, N. Y.	4	Cuba, N. Y.	6					
		4	Cumberland, Md.	2, 3, 9					
		5		2, 3					
		6		2, 3					
		8		2, 3					
		9		2, 3					
		10		2, 3					
		11		2, 3					
		12		2, 3					
		13		2, 3					
		14		2, 3					
		15		2, 3					
		16		2, 3					
		17		2, 3					
		18		2, 3					
		19		2, 3					
		20		2, 3					
		21		2, 3					
		22		2, 3					
		23		2, 3					
		24		2, 3					
		25		2, 3					
		26		2, 3					
		27		2, 3					
		28		2, 3					
		29		2, 3					
		30		2, 3					
		31		2, 3					
		32		2, 3					
		33		2, 3					
		34		2, 3					
		35		2, 3					
		36		2, 3					
		37		2, 3					
		38		2, 3					
		39		2, 3					
		40		2, 3					
		41		2, 3					
		42		2, 3					
		43		2, 3					
		44		2, 3					
		45		2, 3					
		46		2, 3					
		47		2, 3					
		48		2, 3					
		49		2, 3					
		50		2, 3					
		51		2, 3					
		52		2, 3					
		53		2, 3					
		54		2, 3					
		55		2, 3					
		56		2, 3					
		57		2, 3					
		58		2, 3					
		59		2, 3					
		60		2, 3					
		61		2, 3					
		62		2, 3					
		63		2, 3					
		64		2, 3					
		65		2, 3					
		66		2, 3					
		67		2, 3					
		68		2, 3					
		69		2, 3					
		70		2, 3					
		71		2, 3					
		72		2, 3					
		73		2, 3					
		74		2, 3					
		75		2, 3					
		76		2, 3					
		77		2, 3					
		78		2, 3					
		79		2, 3					
		80		2, 3					
		81		2, 3					
		82		2, 3					
		83		2, 3					
		84		2, 3					
		85		2, 3					
		86		2, 3					
		87		2, 3					
		88		2, 3					
		89		2, 3					
		90		2, 3					
		91		2, 3					
		92		2, 3					
		93		2, 3					
		94		2, 3					
		95		2, 3					
		96		2, 3					
		97		2, 3					
		98		2, 3					
		99		2, 3					
		100		2, 3					

ADDITIONAL STATIONS ON ERIE RAILROAD

At Which Trains Do NOT Stop Regularly

The distance shown is from New York as indicated in Tables 2, 3 and 4

STATION	Miles from New York	STATION	Miles from New York	STATION	Miles from New York	STATION	Miles from New York	STATION	Miles from New York
Adrian, N. Y.	323.5	Chemung, N. Y.	261.0	Hickory Grove, Pa.	196.3	Mongaup, Pa.	95.8	Sharpsville, Pa.	554.9
Akron, Ind.	887.4	Columbus, Pa.	470.8	Highlands, Ind.	972.7	Monterey, Ind.	913.1	Smithboro, N. Y.	246.8
Aldine, Ind.	923.3	Creston, Ohio	650.7	Hinsdale, N. Y.	390.1	Nankin, Ohio	671.6	Spencerville, Ohio	794.3
Alger, Ohio	767.7	DeCliff, Ohio	740.2	Horseheads, N. Y.	278.4	Newton, Ind.	875.6	Steamburg, N. Y.	425.5
Almond, N. Y.	337.3	De Long, Ind.	909.2	Hurlburt, Ind.	952.1	Niobe, N. Y.	461.2	Sterling, Ohio	647.9
Ashville, N. Y.	454.9	Disko, Ind.	882.3	Johnson City, N. Y.	217.8	North Judson, Ind.	928.9	Stockport, N. Y.	159.4
Athens, Ind.	892.8	Elgin, Ohio	801.3	Kellams, N. Y.	144.7	Ontario, Ohio	700.4	Tallmadge, Ohio	621.4
Atlantic, Pa.	534.2	Foraker, Ohio	761.9	Kemp, Ohio	787.7	Oquaga, N. Y.	180.5	Tioga Center, N. Y.	242.8
Barton, N. Y.	249.4	Forty-seventh St. (Chicago, Ill.)	994.2	Kingsland, Ind.	838.7	Ora, Ind.	916.8	Toesin, Ind.	835.3
Bass Lake, Ind.	919.5	Freedom, Ohio	603.3	Kirkwood, N. Y.	206.5	Palmer, Ind.	955.6	Uniondale, Ind.	842.1
Bear Lake, Pa.	464.6	Geneva, Pa.	523.5	Kouts, Ind.	943.4	Pavonia, Ohio	685.4	Venango, Pa.	505.2
Belvidere, N. Y.	370.0	Glenmore, Ohio	813.3	Laketon, Ind.	876.1	Pershing, Ind.	903.2	Watts Flats, N. Y.	458.6
Big Flats, N. Y.	293.1	Griffith, Ind.	969.8	Lakewood, N. Y.	452.2	Polk, Ohio	668.8	Wellsburg, N. Y.	266.8
Bippus, Ind.	865.1	Harrods, Ohio	771.7	Leiters, Ind.	907.2	Preble, Ind.	830.3	West Salem, Ohio	662.6
Bolivar, Ind.	873.8	Hegewisch, Ill.	980.6	Markel, Ind.	847.3	Rathbone, N. Y.	307.4	Wilders, Ind.	935.8
Boone Grove, Ind.	949.6	Hepburn, Ohio	746.8	Martel, Ohio	715.8	Red House, N. Y.	421.3	Windham, Ohio	597.7
Braceville, Ohio	593.0			McGuffey, Ohio	764.5	Scio, N. Y.	362.3	Winfield, Ind.	958.1
Burbank, Ohio	656.2			Millers, Pa.	497.4	Servia, Ind.	871.3	Wren, Ohio	817.4
Caledonia, Ohio	719.9			Mill Village, Pa.	492.2				

REFERENCE MARKS AND NOTES

IMPORTANT—When trains are indicated as stopping conditionally, Conductors should be notified of intention to leave train and Station Agent notified of intention to board train. Conditional stops are made only to receive or discharge revenue passengers.

- † Runs daily except Sunday.
 § Runs daily except Sundays and Holidays.
 ‡ Will not operate from these stations on Monday morning.
 † Stops on signal to receive and discharge revenue passengers.
 * Sundays leaves Binghamton (2.50 P. M.), arrives Oneonta (4.35 P. M.), Albany (6:50 P. M.).
 ‡ Runs Saturdays only. M. C. Motor Car Service. N. B. No Baggage carried.
- Note** ⊕—Times Square Motor Coach Terminal, 260 West 42nd St. between 7th and 8th Aves., New York City. Taxicab entrance on 41st St. Connection to and from Rutherford. Slight additional charge for Motor Coach service. Consult Ticket Agents.
- ab Train 28 stops Otisville (4.43 P. M.) Sundays only.
 ac Stops Dalton (5.37 A. M.) to discharge passengers from Hornell and east and on signal to receive passengers.
 ad Via Buffalo & Erie Coach Corp. bus between Salamanca and Bradford.
 af Train 7 stops Middletown (1.54 A. M.) Sunday and Monday mornings only to discharge passengers.
 ag Stops Ridgewood (7.57 A. M.) Sundays and Holidays only.
 ah Stops on signal Andover (9.51 A. M.); Belmont (10.16 A. M.) to discharge passengers from New York.
 al Train 7 stops Ravenna (4.35 P. M.) Sundays only.
 am Stops Saturdays only to receive passengers.
 an Train 27 stops at Lordville (7.21 P. M.) to discharge passengers from New York.
 as Train 701 will not operate west of Monroe on Holidays.
 aw Trains 6 and 16 stop at Middletown (7.04 A. M.) and Goshen (7.15 A. M.) to discharge passengers from Hornell and west, and on Sundays only, to receive passengers for New York.
 ax Stops Englewood Train 1 (7.50 A. M.); Train 15 (5.05 P. M.); Train 7 (12.44 A. M.) to discharge passengers from east of Hammond.
 bb Stops at Paterson (3.44 P. M.) to receive passengers only.
 bc Stops on signal Paterson (8.16 P. M.), Ridgewood (8.26 P. M.) to receive passengers.
 bd Stops on signal Passaic (8.07 P. M.); Suffern (8.41 P. M.) to receive passengers for Hornell and west.
 bf Stops Cuba (5.21 A. M.) to discharge passengers from Elmira and east and to receive for Jamestown and west.
 bg Stops on signal, Friendship (10.30 A. M.); Cuba (10.44 A. M.) to discharge passengers from New York.
 bh Stops Cuba (6.35 P. M.) to discharge passengers from Elmira and east and to receive for Jamestown and west.
 bm Stops on signal Niles (10.36 A. M.) to discharge passengers from Pittsburgh and from Jamestown and east and to receive passengers for Cleveland.
 bp Stops Niles (11.39 P. M.) to discharge passengers from Meadville and east and on signal to receive passengers for Akron and west.
 bt No Agent on duty. No baggage handled on Trains 5 and 6 to or from Castle.
 bu Train 6 stops at East 55th St. (5.07 P. M.) Sundays only to receive passengers for Youngstown.
 bv Stops on Sundays only to discharge passengers.
 bx Train 16 stops at Warren (6.18 P. M.) to discharge passengers from Akron and west.
 cd For additional service between Cleveland and Youngstown see Table 5.
 cg Stops on signal Ridgewood (11.13 P. M.) to discharge passengers from Binghamton and west.
 cn Stops on signal Union City (9.07 P. M.); Cambridge Springs (9.26 P. M.) to discharge passengers from Jamestown and east and to receive for Youngstown and west.
 cp Train 8 stops on signal (10.14 P. M.), Train 16 (9.50 A. M.) to receive passengers for east of Hammond.
 cu Bus service provided between Cohecton and Lake Huntington.
 cw Stops Endicott (1.37 A. M.) to discharge passengers from Port Jervis and east.
 cx Stops to discharge passengers from New York.
 cy Stops to discharge passengers from Cleveland and beyond.
 db Train 8 stops at Ravenna (7.49 A. M.) to discharge passengers from Marion and west, and on signal to receive for Youngstown and east.
 dc Stops Mantua (1.53 P. M.) to discharge passengers from Cleveland and on signal to receive passengers for Warren and east.
 de Stops Barberton (5.19 P. M.) to discharge passengers from Youngstown and east and on signal to receive passengers for Mansfield and west.
 df Stops on signal Mantua (9.29 A. M.) to receive passengers for Cleveland.
 dg Stops at Ravenna (10.57 A. M.) to discharge passengers from Meadville and east, and on signal to receive passengers for Galion and west.
 dh Stops at (5.51 P. M.) to discharge passengers from Galion and west, and on signal to receive passengers for Meadville and east.
 dp Stops Niles (2.14 A. M.) to discharge passengers from east of Youngstown and signal to receive passengers for Cleveland.
 dt No baggage carried on this train east of Hornell. Baggage will be handled on following train.
 dv Stops on signal Union City (8.54 P. M.) to discharge passengers from Youngstown and west and to receive passengers for New York.
 dw Stops Cuba (9.53 A. M.) to discharge passengers from Jamestown and west and to receive for Elmira and east.
 dy Stops on signal Cambridge Springs (7.17 A. M.), Union City (7.34 A. M.), to discharge passengers from Chicago and to receive for Binghamton and east.
 dz Stops Ridgewood (8.07 A. M.) to discharge passengers from Port Jervis and west. Has connection for Paterson, Passaic, etc., leaving Ridgewood at (8.14 A. M.) daily except Sundays and Holidays. Leave Ridgewood (8.40 A. M.) Sundays and Holidays only.
- ec Bus service between New Castle and New Castle (Washington St.).
 ed Bus service between Wampum and Ellwood City.
 ef Stops only to receive motor coach passengers from New York.
- ‡ Stops to discharge passengers.
 C Stops on Saturday only.
 ‡ Stops on Holidays only.
 *Runs Daily.
- eg Stops only to discharge motor coach passengers for New York.
 eh Stops on signal Mantua (6.41 P. M.) to receive passengers for Pittsburgh.
 ek Train 2 stops Suffern (6.30 P. M.), Passaic (6.59 P. M.) to discharge passengers from Binghamton and west.
 en Stops on signal Paterson (9.34 A. M.), Ridgewood (9.43 A. M.) to receive passengers.
 ep Train 1 stops on signal Passaic (9.27 A. M.), Suffern (9.58 A. M.) to receive passengers for Binghamton and west.
 er Stops Niles (5.46 A. M.) to discharge passengers from Cleveland and west and on signal to receive for Pittsburgh.
 es Stops on signal Niles (6.13 P. M.) to receive passengers for Jamestown and east, and to discharge passengers from Cleveland.
 et Bus operates between Narrowsburg and Honesdale. In connection with which the Erie Railroad acts as agent only and is not responsible beyond its own line, except as such responsibility may be imposed by law with respect to baggage.
 ex Stops Endicott (2.55 A. M.) to discharge passengers from Buffalo, Jamestown and west.
 gt In connection with the bus service the Erie Railroad acts as agent only and is not responsible beyond its own line, except as such responsibility may be imposed by law with respect to baggage.
 ha Stops at Narrowsburg (10.59 P. M.) to discharge passengers from Ridgewood and east.
 hf Stops (11.14 P. M.) to discharge passengers from Pittsburgh.
 ht Trains 5-557 and 560-6 carry through sleeping cars between Bradford and New York.
 hu Stops to discharge passengers.
 hv Stops on signal East 93rd Street (6.13 P. M.) to receive passengers.
 hw Train 7 will stop at Saegertown (1.52 P. M.) to discharge passengers from Binghamton and east and to receive passengers for Marion and west.
 hx Train 8 will stop at Saegertown (10.32 A. M.) to discharge passengers from Marion and west and to receive passengers for Binghamton and east.
 na Train 6 stops on signal at East 93rd St. (5.12 P. M.) to receive passengers for Sharon and east.
 ne Train 826 stops Saturdays only at Solon (1.39 P. M.) and Aurora (1.47 P. M.) to discharge passengers from Cleveland.
 nf Stops on signal at Garrettsville-Hiram (2.47 P. M.) to receive passengers for Cleveland.
 nh Stops on signal at Garrettsville-Hiram (11.04 A. M.) to discharge passengers from Hornell and east.

ERIE TICKET OFFICES AND PASSENGER STATIONS IN PRINCIPAL CITIES

- Akron, O.**—Union Station.
 (Telephone Jefferson 9141)
 B. L. BENDER, Ticket Agent.
- Binghamton, N. Y.**—Erie Station.
 (Telephone 4-3251)
 A. F. WAINSCOTT, Ticket Agent.
- Bradford, Pa.**—Erie Station.
 (Telephone 3413)
 A. J. SULLIVAN, Ticket Agent.
- Brooklyn, N. Y.**—City Ticket Office.
 155 Pierrepont St.
 (Telephone Triangle 5-7440)
 W. J. HAGENEY, Ticket Agent.
- Buffalo, N. Y.**—City Ticket Office.
 6 North Division St.
 (Telephone Washington 4300)
 W. L. MCCREARY, Ticket Agent.
 Station Ticket Office
 (Lehigh Valley Terminal)
 Main and Scott Streets
 (Telephone Washington 4300)
 A. L. SEITZ, Ticket Agent.
- Chicago, Ill.**—City Ticket Office. 163-165 West Jackson Blvd.
 (Telephone Harrison 4160)
 C. F. KUNDEL, Ticket Agent.
- Hotel Ticket Offices—**
 Congress, Morrison, Sherman, Stevens,
 Palmer House, Merchandise Mart.
 (Telephone Harrison 2203)
 GEORGE M. NEWHART, Ticket Agent.
- Dearborn Station.**
 (Telephone Harrison 9830)
 W. E. MISCHNICK, Ticket Agent.
- 63rd St. Station**
 (Telephone Wentworth 3503)
 J. E. KING, Ticket Agent.
- Cleveland, O.**—City Ticket Office.
 913 Huron Road (Telephone Cherry 8400)
 CASPER J. MILLER, Ticket Agent.
 Erie Station. (Telephone Cherry 8400)
 J. W. STUART, Ticket Agent.
- Corning, N. Y.**—Erie Station.
 (Telephone 50)
 A. T. JOHNSON, Ticket Agent.
- Elmira, N. Y.**—Erie Station.
 (Telephone 2-0380)
 J. V. CLEARY, Ticket Agent.
- Hornell, N. Y.**—Erie Station.
 (Telephone 680)
 M. W. DELANY, Ticket Agent.
- Huntington, Ind.**—Erie Station.
 (Telephone 140)
 D. L. HERENDEEN, Ticket Agent.
- Jamestown, N. Y.**—Erie Station.
 (Telephone 6076)
 FRANK PRIEST, Ticket Agent.
- Jersey City, N. J.**—Erie Station.
 (Telephone Journal Square 2-6400)
 G. B. IRVING, Ticket Agent.
- Mansfield, O.**—Erie Station.
 (Telephone Canal 1423)
 J. W. GILKISON, Ticket Agent.
- Marion, O.**—Erie Station.
 (Telephone 2399)
 Ticket Agent.
- Meadville, Pa.**—Erie Station.
 (Telephone 1212)
 O. E. BLAIR, Ticket Agent.
- Middletown, N. Y.**—Erie Station.
 (Telephone 3303)
 C. R. DINEEN, Ticket Agent.
- Newark, N. J.**—Erie Station.
 (Telephone Humboldt 2-0600)
 G. J. MCMICHAEL, Ticket Agent.
- New York, N. Y.**—City Ticket Office.
 Information Bureau.
 Train Service and Fares.
 (Telephone Barclay 7-6500)
 City Ticket Office, 12 West 51st Street.
 Rockefeller Center.
 (Telephone Circle 5-7222)
 G. H. DOWN, Ticket Agent.
- West 23rd Street Station.**
 (Telephone Chelsea 3-0780)
 A. W. VOSS, Ticket Agent.
- Chambers Street Station.**
 (Telephone Cortlandt 7-9200)
 O. R. KRECH, Ticket Agent.
- City Ticket Office, 17 John Street.**
 (Telephone Cortlandt 7-6430 and 7-6431)
 W. G. TEDFORD, Ticket Agent.
- Times Square Motor Coach Terminal,**
 260 West 42nd St.
 (Telephone Longacre 5-2440)
- Passaic, N. J.**—Erie Station.
 (Telephone 2-1613)
 M. J. LYNCH, Ticket Agent.
- Paterson, N. J.**—Erie Station.
 (Telephone Sherwood 2-3337)
 J. H. GRAF, Ticket Agent.
- Port Jervis, N. Y.**—Erie Station.
 (Telephone 300)
 R. FARBER, Ticket Agent.
- Sharon, Pa.**—Erie Station.
 (Telephone 6234)
 H. P. MORGAN, Ticket Agent.
- Warren, O.**—Erie Station.
 (Telephone 1000)
 G. W. KROM, Ticket Agent.
- Youngstown, O.**—Erie Station.
 (Telephone 41101)
 R. S. GETTIG, Ticket Agent.

RAILROAD AND PULLMAN FARES For Information Only. Federal Tax Not Included. Subject to Change Without Notice

Table with columns for 'Between' and 'And' stations, and sub-columns for 'NEW YORK', 'BINGHAMTON', and 'BUFFALO'. It lists fares for 'RAILROAD TICKETS VALID IN' (Coach, Pullmans) and 'PULLMAN RATES' (Lower Berth, Seat Fare) for various routes.

Table with columns for 'Between' and 'And' stations, and sub-columns for 'JAMESTOWN', 'CLEVELAND', and 'CHICAGO'. It lists fares for 'RAILROAD TICKETS VALID IN' (Coach, Pullmans) and 'PULLMAN RATES' (Lower Berth, Seat Fare) for various routes.

RATES FOR UPPER BERTH, ROUND TRIP UPPER BERTH, SECTION, DRAWING ROOM, COMPARTMENT OR DOUBLE BEDROOM IN SLEEPING CARS

Table with columns for 'Where Lower Berth Rate Is', 'Upper Berth Rate Will Be', 'Round Trip Upper Berth Rate Will Be', and various fare rates for 'Section Rate', 'Drawing Room Rate', 'Compartment Rate', and 'Double Bed-room Rate'.

MINIMUM NUMBER OF RAILROAD TICKETS REQUIRED FOR EXCLUSIVE OCCUPANCY OF SPACE IN SLEEPING OR PARLOR CARS

Table listing ticket requirements for 'Section', 'Double Bedroom', 'Compartment, Berth Service', 'Compartment, Seat Service', 'Drawing Room, Berth Service', and 'Drawing Room, Seat Service, or Drawing Room in Parlor Car'.

Note: For section occupied by two passengers but with lower berth only prepared for night service. Applies from Cleveland to New York only; fare from New York to Cleveland round trip coach \$15.70, one way upper berth \$14.50. Railroad ticket valid for lower berth must be presented when occupying seat in parlor car or sleeping car. *Thirty-day limit. †One-year limit.

TABLE 1 CONDENSED TABLE OF THROUGH TRAINS NEW YORK AND BUFFALO, CLEVELAND AND CHICAGO (FOR LOCAL TRAINS AND INTERMEDIATE TIME OF THROUGH TRAINS SEE LOCAL TABLES)

Air-Conditioned Trains—Air-conditioned equipment has been assigned to regular sections of trains as shown herein. Every effort will be made to provide it as specified, but the right is reserved to employ non-air-conditioned cars as necessitated by volume of traffic or emergencies.

WEST BOUND THE ERIE LIMITED TRAIN NO. 1—DAILY New York—Buffalo—Jamestown—Chicago

EAST BOUND THE ERIE LIMITED TRAIN NO. 2—DAILY Chicago—Jamestown—Buffalo—New York

THE LAKE CITIES TRAIN NO. 5—DAILY New York—Buffalo—Cleveland

THE LAKE CITIES TRAIN NO. 6—DAILY Cleveland—Buffalo—New York

THE MIDLANDER TRAIN NO. 15—DAILY New York—Jamestown—Akron—Chicago

THE MIDLANDER TRAIN NO. 16—DAILY Chicago—Akron—Jamestown—New York

PACIFIC EXPRESS TRAIN NO. 7—DAILY New York—Buffalo—Jamestown—Chicago

ATLANTIC EXPRESS TRAIN NO. 8—DAILY Chicago—Jamestown—New York

THE MOUNTAIN EXPRESS TRAIN NO. 27—DAILY New York—Binghamton—Elmira—Hornell

SOUTHERN TIER EXPRESS TRAIN NO. 10—EX. SUN. Buffalo—Hornell—Elmira—Binghamton—New York

TABLE 2 WESTBOUND

NEW YORK—ELMIRA

Hudson and Manhattan Tube Trains operate between New York and Erie Railroad Station in Jersey City.
 To Erie Station, Jersey City—From Downtown New York—Train marked "Hoboken"—Fare 8 cents.
 From Uptown New York —Train marked "Journal Square"—Fare 10 cents.
 (West 23rd Street Ferry does not operate Sundays and Holidays)

Miles from New York	Eastern Standard Time	55	59	1	701	9	703	251	255	61	27	63	65	67	259	69	71	5	15	705	7	51	
		D'y	Sun. only	Daily	Sun. and Hol. only	Daily	Sun. only	Sat. only	Sun. only	Daily Ex. Sun.	Daily	Daily Ex. Sun. and Hol.	Daily Ex. Sat. Sun. and Hol.	Daily Ex. Sat. Su. & Hol.	Sat. & Hol. only	Sat. Su. & Hol. only	Daily Ex. Sat. Sun. & Hol.	Daily	D'y	Sun. only	Daily	Daily Ex. Sun.	
		AM	AM	AM	AM	AM	PM	PM	PM	PM	PM	PM	PM	PM	PM	PM	PM	PM	PM	PM	PM	PM	Night
Note ⊕	NEW YORK Times Sq. Motor Coach Term. Lv			8.45							2.55							7.25	7.25				
	West 23rd St. Lv			8.30		10.30					2.50	3.40	4.15	5.15	5.15	6.05	6.05	7.10	7.10			11.55	
	Chambers St. Lv	4.30	8.00	8.45	9.00	10.40	12.15	12.40	1.50	1.50	3.00	4.00	4.30	5.28	5.28	6.20	6.20	7.30	7.30	8.30	12.00		1.00
1.0	Jersey City, N. J.	5.00	8.25	9.05	9.15	11.00	12.30	12.54	2.05	2.05	3.15	4.14	4.45	5.42	5.42	6.35	6.40	7.45	7.45	8.45	12.25		1.15
9.5	Rutherford, N. J.	5.15	8.40	9.20	9.30		12.45		2.20	2.20	3.30							8.00	8.00	9.00			1.30
12.5	E. Rutherford	5.23	8.49	9.37	9.45	11.20	12.55		2.27	2.28								8.00	8.00	9.09			1.39
16.7	Passaic	5.38	9.00	9.45	9.55	11.29	1.06		2.36	2.38	bb							8.00	8.00	9.19			1.52
21.8	Paterson	5.49	9.12	9.55	11.39	1.20			2.47	2.51								8.00	8.00	9.30			2.06
23.2	Ridgewood	5.52				1.23			2.50	2.54								8.00	8.00	9.30			2.09
24.3	Hohokus	5.55	9.16		10.00	1.26			2.53	2.57								8.00	8.00	9.35			2.13
25.7	Waldwick	6.00	9.19		10.03	1.30			2.56	3.04								8.00	8.00	9.39			2.18
27.6	Allendale	6.05	9.24		10.08	1.35			3.00	3.09								8.00	8.00	9.44			2.23
30.2	Ramsey	6.10	9.29			1.40			3.05	3.14								8.00	8.00	9.44			2.28
31.9	Mahwah	6.14	9.33	ep	10.14	1.43			3.08	3.19								8.00	8.00	9.50			2.33
32.6	Suffern, N. Y.	6.17							3.10	3.21								8.00	8.00				
33.7	Hillburn	6.20							3.13	3.23								8.00	8.00				
35.6	Ramapo	6.26	9.40		10.20				3.16	3.29								8.00	8.00				
38.2	Sloatsburg	6.32	9.45		10.25				3.19	3.34								8.00	8.00				
42.0	Tuxedo	6.39			10.32				3.22	3.41								8.00	8.00				
44.4	Southfields	6.43			F1032				3.25	3.46								8.00	8.00				
47.0	Arden	6.49			F1036				3.28	3.49								8.00	8.00				
49.5	Harriman	6.58	10.00		10.40				3.31	3.48								8.00	8.00				
52.3	Monroe				10.45	12.18			3.36	3.53								8.00	8.00				
54.5	Oxford								3.39	3.58								8.00	8.00				
55.3	Greycourt				as				3.42	4.05								8.00	8.00				
59.7	Chester	7.10							3.45	4.14								8.00	8.00				
63.7	Goshen	7.19		10.34		12.32	2.19		3.48	4.19	4.44							8.00	8.00				
67.1	New Hampton	7.26							3.51	4.22	4.58							8.00	8.00				
71.0	Middletown N. Y.	7.45		10.45		12.44	2.29		3.54	4.25	4.58							8.00	8.00				
75.7	Howells	7.52							3.57	4.28								8.00	8.00				
80.7	Otisville	8.12			bv				4.00	4.31								8.00	8.00				
88.2	Graham	f815							4.03	4.34								8.00	8.00				
88.2	Port Jervis	8.30		11.19		1.19			4.06	4.37	5.05	5.35	6.30	7.10	8.11	8.25		8.00	8.00				
88.2	Port Jervis Lv			11.24		1.29			4.09	4.40	5.05	5.35	6.30	7.10	8.11	8.25		8.00	8.00				
90.8	Sparrowbush N.Y.					1.34			4.12	4.43	5.05	5.35	6.30	7.10	8.11	8.25		8.00	8.00				
92.2	Mill Rift, Pa.					1.38			4.15	4.46	5.05	5.35	6.30	7.10	8.11	8.25		8.00	8.00				
99.5	Pond Eddy					1.52			4.18	4.49	5.05	5.35	6.30	7.10	8.11	8.25		8.00	8.00				
103.3	Parker's Glen					2.11			4.21	4.52	5.05	5.35	6.30	7.10	8.11	8.25		8.00	8.00				
107.1	Shohola					2.25			4.24	4.55	5.05	5.35	6.30	7.10	8.11	8.25		8.00	8.00				
111.1	Lackawaxen					2.25			4.27	4.58	5.05	5.35	6.30	7.10	8.11	8.25		8.00	8.00				
114.1	Westcolang P'k					2.25			4.30	5.01	5.05	5.35	6.30	7.10	8.11	8.25		8.00	8.00				
116.4	Mast Hope					2.25			4.33	5.04	5.05	5.35	6.30	7.10	8.11	8.25		8.00	8.00				
118.9	Tusten, N. Y.					2.25			4.36	5.07	5.05	5.35	6.30	7.10	8.11	8.25		8.00	8.00				
122.4	Narrowsburg			12.10		2.48			4.39	5.10	5.05	5.35	6.30	7.10	8.11	8.25		8.00	8.00				
128.2	Honesdale et.			12.40		2.48			4.42	5.13	5.05	5.35	6.30	7.10	8.11	8.25		8.00	8.00				
131.0	Skinner's N.Y. Lv					3.05			4.45	5.16	5.05	5.35	6.30	7.10	8.11	8.25		8.00	8.00				
131.0	Cochecton N. Y. (Lake Hunt'gt'n)					3.05			4.48	5.19	5.05	5.35	6.30	7.10	8.11	8.25		8.00	8.00				
136.2	Callicoon N. Y.			12.32		3.17			4.51	5.22	5.05	5.35	6.30	7.10	8.11	8.25		8.00	8.00				
143.0	Hankins					3.29			4.54	5.25	5.05	5.35	6.30	7.10	8.11	8.25		8.00	8.00				
147.3	Long Eddy					3.38			4.57	5.28	5.05	5.35	6.30	7.10	8.11	8.25		8.00	8.00				
153.6	Lordville					3.47			5.00	5.31	5.05	5.35	6.30	7.10	8.11	8.25		8.00	8.00				
164.0	Hancock			1.08		4.04			5.03	5.34	5.05	5.35	6.30	7.10	8.11	8.25		8.00	8.00				
172.1	Hale's Eddy					4.23			5.06	5.37	5.05	5.35	6.30	7.10	8.11	8.25		8.00	8.00				
177.1	Deposit			1.26		4.23			5.09	5.40	5.05	5.35	6.30	7.10	8.11	8.25		8.00	8.00				
184.2	Gulf Summit					4.23			5.12	5.43	5.05	5.35	6.30	7.10	8.11	8.25		8.00	8.00				
192.6	Susq'ha'na Pa. Ar			1.51		4.49			5.15	5.46	5.05	5.35	6.30	7.10	8.11	8.25		8.00	8.00				
200.8	Great Bend			1.53		4.51			5.18	5.49	5.05	5.35	6.30	7.10	8.11	8.25		8.00	8.00				
215.1	Binghamton, N.Y. Ar			2.25		5.12			5.21	5.52	5.05	5.35	6.30	7.10	8.11	8.25		8.00	8.00				
215.1	Albany (D&H) Lv			7.05		5.12			5.24	5.55	5.05	5.35	6.30	7.10	8.11	8.25		8.00	8.00				
215.1	Oneonta (D&H) Ar			7.55		5.12			5.27	5.58	5.05	5.35	6.30	7.10	8.11	8.25		8.00	8.00				
215.1	Binghamton (D&H) Ar			11.50		5.12			5.30	6.01	5.05	5.35	6.30	7.10	8.11	8.25		8.00	8.00				

TABLE 4 WESTBOUND

ELMIRA—CHICAGO

EASTBOUND

Miles from New York	Eastern Standard Time	7	1	27	5	15	Miles from Chicago	Central Standard Time	2	dt 8	10	6	16	620		
		Daily	Daily	Daily	Daily	Daily			Daily	Daily	Daily	Daily	Daily	Daily	Daily	Sun. only
		PM	AM	PM	PM	PM			PM	PM	PM	PM	PM	PM	AM	AM
0.0	Lv. NEW YORK						0.0	Chicago (Dearborn Sta.) III. Lv.	6.00	10.00						
Note ⊕	Times Sq. Motor Coach Term. Lv.		8.45	2.55	7.25	7.25	6.3	(Polk and Dearborn Sts.)								
0.0	West 23rd Street Ferry does not operate on Sunda ys and Holid ays).		8.30	2.50	7.10	7.10	20.6	Englewood, 63d Street	6.14	cp			cp			
0.0	West 23rd St. Lv.	11.55					36.3	Hammond Ind.	6.40	10.40			10.12			
1.0	Chambers St.	12.00	8.45	3.00	7.30	7.30	100.9	Crown Point	7.05				11.28			
273.8	Jersey City	12.25	9.05	3.15	7.45	7.45	142.6	Rochester	8.14				12.08			
291.2	Elmira N. Y.	7.40	3.54	10.42	2.38	2.38	142.6	Huntington Lv.	9.05	12.52			12.14			
302.3	Corning	8.13	4.19	11.11	3.07	3.07	173.4	Decatur	9.42							
312.5	Addison	8.32	4.36	11.28												
315.1	Cameron Mills															
328.1	Cameron						189.9	Ohio City Ohio	11.04				2.32			
328.1	Canistota						217.2	Lima	11.47	3.22						
332.3	Hornell Ar.	9.10	5.12	12.05	3.57	3.57	244.2	Kenton		3.56						
425.2	Buffalo (see Table 6) Ar.	12.10	7.45		7.55		269.1	Marion Ar.	12.43	4.24			3.21			
332.3	Hornell Lv.	9.20	5.22		4.06	4.06	290.1	Marion Lv.	12.48	4.29			3.26			
341.5	Alfred						290.1	Galion	1.19	4.59			3.48			
349.9	Andover	ah					305.5	Mansfield	1.49	5.29			4.08			
358.5	Wellsville	10.04	6.02		4.47	4.47	322.2	Ashland	2.20	5.56			4.28			
366.9	Belmont	ah					354.4	Rittman		6.33						
374.4	Friendship	bg					358.8	Wadsworth		6.44						
383.3	Cuba	bg	bh		bf	bf	365.4	Barberton		6.56						
395.7	Olean	11.10	6.55		5.42	5.42	372.7	Akron Ar.	3.37	7.19			5.24			
399.1	Allegany						382.8	Kent Ar.	3.53	7.34			5.38			
413.6	Salamanca Ar.	11.34	7.18		6.07	6.07	389.1	Ravenna Lv.	3.58	7.39			5.43			
430.2	Bradford (See Table 10) Ar.				7.10											
413.6	Salamanca Lv.	11.41	7.25		6.14	6.14	413.0	Cleveland (See Table 5) Lv.					5.00	9.00		
431.1	Randolph				6.37	6.37	418.1	Warren (cd)	4.38	8.19			6.05	bx 10.18		
447.3	Jamestown Ar.	12.29	8.13		7.03	7.03	422.3	Niles (cd)					es	10.27		
	(Chautauqua Lake)						426.9	Girard (cd)						10.34		
	Buffalo (See Table 8) Lv.		5.30				426.9	Youngstown (cd) Ar.	4.57	8.40			6.26	6.35 10.42		
447.3	Jamestown Lv.	12.29	8.13		7.03	7.03	426.9	Pittsburgh (See Table 5) Ar.	7.30	11.20			9.05			
	(Chautauqua Lake)						434.5	Youngstown Lv.	5.07	8.47			6.42	6.42 10.45		
474.2	Corry Pa.	1.08	8.53		7.41	7.41	440.5	Hubbard	5.39	9.11			7.07	7.07 10.56		
485.6	Union City		cn		7.56	7.56	450.6	Sharon Pa.	6.15	9.39			7.34	7.34 11.11		
501.2	Cambridge Springs	1.41	cn		8.16	8.16	482.8	Greenville	6.55	10.20			8.12	8.12		
509.5	Saegertown	hw					482.8	Meadville Ar.	7.00	10.25			8.17	8.17		
515.9	Meadville Ar.	2.01	9.45		8.35	8.35	489.2	Meadville Lv.	7.00	10.25			8.17	8.17		
515.9	Meadville Lv.	2.06	9.50		8.40	8.40	497.5	Saegertown		hx						
542.1	Greenville	2.43	10.29		9.17	9.17	513.1	Cambridge Springs	dy	10.43			8.36	8.36		
558.2	Sharon	3.11	10.56		9.41	9.41	524.5	Union City	dy	11.05			dv 8.36	dv 8.36		
564.2	Hubbard						551.4	Corry	7.51	11.21			9.13	9.13		
571.8	Youngstown Ohio Ar.	3.31	11.17		10.00	10.00	620.9	Jamestown N. Y. Ar.	8.31	12.14			9.54	9.54		
	(Chautauqua Lake)															
	Pittsburgh (See Table 5) Lv.	12.30	9.00		8.45		620.9	Buffalo (See Table 8) Ar.	10.55							
571.8	Youngstown (cd) Lv.	3.38	11.24		10.25	10.10	551.4	Jamestown Lv.	8.31	12.14			9.54	9.54		
576.4	Girard (cd)						567.6	(Chautauqua Lake)								
580.6	Niles (cd)		bp		bm		585.1	Randolph		12.37						
585.7	Warren (cd)	4.07	11.52		10.46	10.30		Salamanca Ar.	9.10	1.11			10.34	10.34		
638.3	Cleveland (See Table 5) Ar.				11.50			Bradford (See Table 10) Lv.	ad 8.30				9.40			
609.6	Ravenna	al				dg	585.1	Salamanca Lv.	9.15	1.18			10.41	10.41		
615.9	Kent Ar.	4.43	12.32			11.05	599.6	Allegany								
626.0	Kent Lv.	4.48	12.37			11.10	603.0	Olean	9.39	1.44			11.06	11.06		
633.3	Akron	5.09	1.00			11.24	615.4	Cuba	dw							
639.9	Barberton						624.3	Friendship								
644.3	Wadsworth						631.8	Belmont								
676.5	Rittman						640.2	Wellsville	10.29	2.41			11.59	11.59		
693.2	Ashland						648.8	Andover								
708.6	Galion						657.2	Alfred								
729.6	Marion Ar.						666.4	Hornell Ar.	11.07	3.20			12.38	12.38		
729.6	Marion Lv.							Buffalo (See Table 6) Lv.	8.20		5.35		9.45			
754.5	Kenton						666.4	Hornell	11.14	3.35	8.35		12.46	12.46		
781.5	Lima	9.19	4.40				670.6	Canistota			8.44					
808.8	Ohio City						683.6	Cameron								
	Central Standard Time						686.2	Cameron Mills								
825.3	Decatur Ind.	9.19	4.36				696.4	Addison	11.49	4.28	9.15		1.37	1.37		
856.1	Huntington Ar.	9.51	5.07				707.5	Corning	12.06	4.46	9.43		2.02	2.02		
856.1	Huntington Lv.	10.04	5.14				724.9	Elmira	12.30	5.20	10.13					
897.8	Rochester						997.7	Jersey City	7.20	11.45	5.25		8.40	8.40		
962.4	Crown Point							NEW YORK								
978.1	Hammond	12.20	7.25				998.7	Chambers St.	7.34	11.59	5.39		8.54	8.54		
992.4	Englewood, 63d St. III.	ax	ax					West 23rd St.	7.50				9.10	9.10		
998.7	Chicago (Dearborn Sta.) Ar.	1.00	8.05				Note ⊕	West 23rd Street Ferry does not operate on Sunda ys and Holid ays).	7.35	11.59			8.55	8.55		
		AM	AM	AM	AM	PM		Times Sq. Motor Coach Term. Ar.	PM	PM	AM	AM	AM	PM		

Dining Car Service

Table D'Hote prices range as follows: Breakfast 50c to 85c, Luncheon 65c to \$1.00, Dinner 90c to \$1.25. A meal on our trains is always a pleasant interlude. Makes the journey seem shorter, too. The freshest food the

market affords, cooked by expert chefs and served in the comfort of spacious Diner-Lounge Cars. If you prefer a light snack without going to the Diner the waiter will bring sandwiches, fruit, coffee, etc., right to your seat.

TABLE 5 DETROIT—TOLEDO—CLEVELAND—YOUNGSTOWN—PITTSBURGH—WASHINGTON—BALTIMORE

Table with multiple columns for routes (Eastern Standard Time, Miles from Cleveland/Baltimore), train numbers (688, 624, 626, 6, 628, 686, 620, 629, 619, 5, 685, 623, 679, 687), and arrival/departure times. Includes sub-tables for 'The Washingtonian', 'The Lake Cities', and 'The Erie'. A vertical note reads 'Runs to Sharon (See Table 4) No Baggage carried on this train.' and another reads 'Will not run Sundays and Holidays (See Note Below)'.

Cleveland-Pittsburgh Sleeping Car

The Cleveland-Pittsburgh sleeping car operates to and from Union Terminal Cleveland via New York Central (via Ashtabula) to Youngstown, and P. & L. E. Railroad. See New York Central Time Table for schedule.

Tickets reading via Erie Railroad between Cleveland and Youngstown, and P. & L. E. Railroad between Youngstown and Pittsburgh, will be honored in this sleeping car.

THE WASHINGTONIAN

The only daylight train between Cleveland, Washington and Baltimore. De Luxe Coaches, Parlor Lounge Car and Dining Car. See Schedule on this page.

EQUIPMENT

Detroit, Toledo, Cleveland, Youngstown, Pittsburgh, Washington, Baltimore Trains. *Indicates Air-Conditioned Cars

EASTBOUND

- No. 6—Daily. *Sleeping Car (10 Section 1 Compartment and Drawing Room Car) Cleveland to New York. *Coach, Cleveland to New York.
No. 624—The Washingtonian—Daily. *Pullman Parlor-Diner-Lounge, Cleveland to Baltimore. *De Luxe Coaches, Cleveland to Washington and Baltimore.
No. 626—Daily. *Erie Parlor-Buffer Car, Cleveland to Pittsburgh. *Coach, Cleveland to Pittsburgh.
No. 686—Daily. *Sleeping Car for Parlor Car Service and *Coaches, Detroit to Pittsburgh, via Cleveland. *Diner-Lounge Car, Cleveland to Pittsburgh. *Sleeping Car (8 Section-4 Double Bedroom), Pittsburgh to Washington. (Open 9.00 p. m., and may be occupied until 8.00 a. m.).
No. 688—Daily. *Sleeping Car (12 Section and 2 Double Bedrooms), Chicago to Pittsburgh. *Sleeping Car (8 Section-5 Double Bedrooms), Detroit to Pittsburgh. Through Coaches, *Chicago and *Detroit to Pittsburgh, via Cleveland. *Parlor Car, *Dining Car and *Coaches, Pittsburgh to Washington and Baltimore.

WESTBOUND

- No. 5—Daily. *Sleeping Car (10 Section 1 Compartment and Drawing Room Car) New York to Cleveland. *Erie Parlor-Buffer Car, Pittsburgh to Cleveland. *Coach, Pittsburgh to Cleveland. *Sleeping Cars (8 Section-4 Double Bedroom and 12 Section and Drawing Room), Washington to Pittsburgh. (Open 10.00 p. m., and may be occupied until 8.00 a. m.).
No. 623—The Washingtonian—Daily. *Pullman Parlor-Diner-Lounge, Baltimore to Cleveland. *De Luxe Coaches, Baltimore to Cleveland.
No. 679—Daily. *Sleeping Car (12 Section and 2 Double Bedrooms), Pittsburgh to Chicago. *Parlor Car, *Dining Car and *Coaches, Baltimore and Washington to Pittsburgh.
No. 685—Daily. *Sleeping Car for Parlor Car Service and *Coaches Pittsburgh to Detroit, via Cleveland. *Diner-Lounge Car, Pittsburgh to Cleveland.
No. 687—Daily. *Sleeping Car (8 Section-5 Double Bedrooms), Pittsburgh to Detroit. *Through Coaches, Pittsburgh to Detroit via Cleveland. *Parlor Car, *Dining Car and *Coaches, Baltimore and Washington to Pittsburgh.

Round-trip tickets reading via B. & O. R. R. between Cleveland and points east of Pittsburgh are honored via Erie R. R.—P. & L. E. R. R. between Cleveland and Pittsburgh.

Holidays in the above table refers to the observance of New Year's Day, Memorial Day, Independence Day, Labor Day, Thanksgiving Day and Christmas Day.



TABLE 6 NEW YORK AND BUFFALO

Table with columns for WESTBOUND Read Down, EASTBOUND Read Up, EASTERN STANDARD TIME, and Miles from New York. Includes train numbers 477, 5, 2, 10, 6 and various station names like NEW YORK, Jersey City, Hornell, Buffalo.

TABLE 8 BUFFALO—JAMESTOWN

Table with columns for WESTBOUND Read Down, EASTERN STANDARD TIME, Eastbound Read Up. Includes train numbers 519, 516 and station names like Buffalo, Blasdell, Hamburg, Water Valley, Eden Valley, etc.

TABLE 9 LACKAWAXEN—HONESDALE

Table with columns for West-bound Read Down, EASTERN STANDARD TIME, East-bound Read Up. Includes train numbers 9-35, 28-34 and station names like N. Y., W. 23d St., N. Y., Chambers St., Jersey City, Lackawaxen, etc.

TABLE 10 NEW YORK—SALAMANCA—BRADFORD—CHICAGO

Table with columns for WESTBOUND Read Down, Via Salamanca and BUS of Buffalo and Erie Coach Corp., EASTERN STANDARD TIME, EASTBOUND Read Up. Includes train numbers 557, 560-6 and station names like NEW YORK, Salamanca, Bradford, Chicago.

Trains 5-557 and 560-6 carry through sleeping car between Bradford and New York. Sleeper on train 557 will be parked at Bradford for occupancy until 8.00 A. M. Busses leave as follows: (running time approximately 45 minutes.)

TABLE NEW YORK—CHAUTAUQUA—CHICAGO

Table with columns for WESTBOUND Read Down, EASTERN STANDARD TIME, EASTBOUND Read Up. Includes train numbers 7-Bus, 5-Bus, Bus-8 and station names like NEW YORK, Chautauqua, Jamestown, Cleveland, Akron, Chicago.

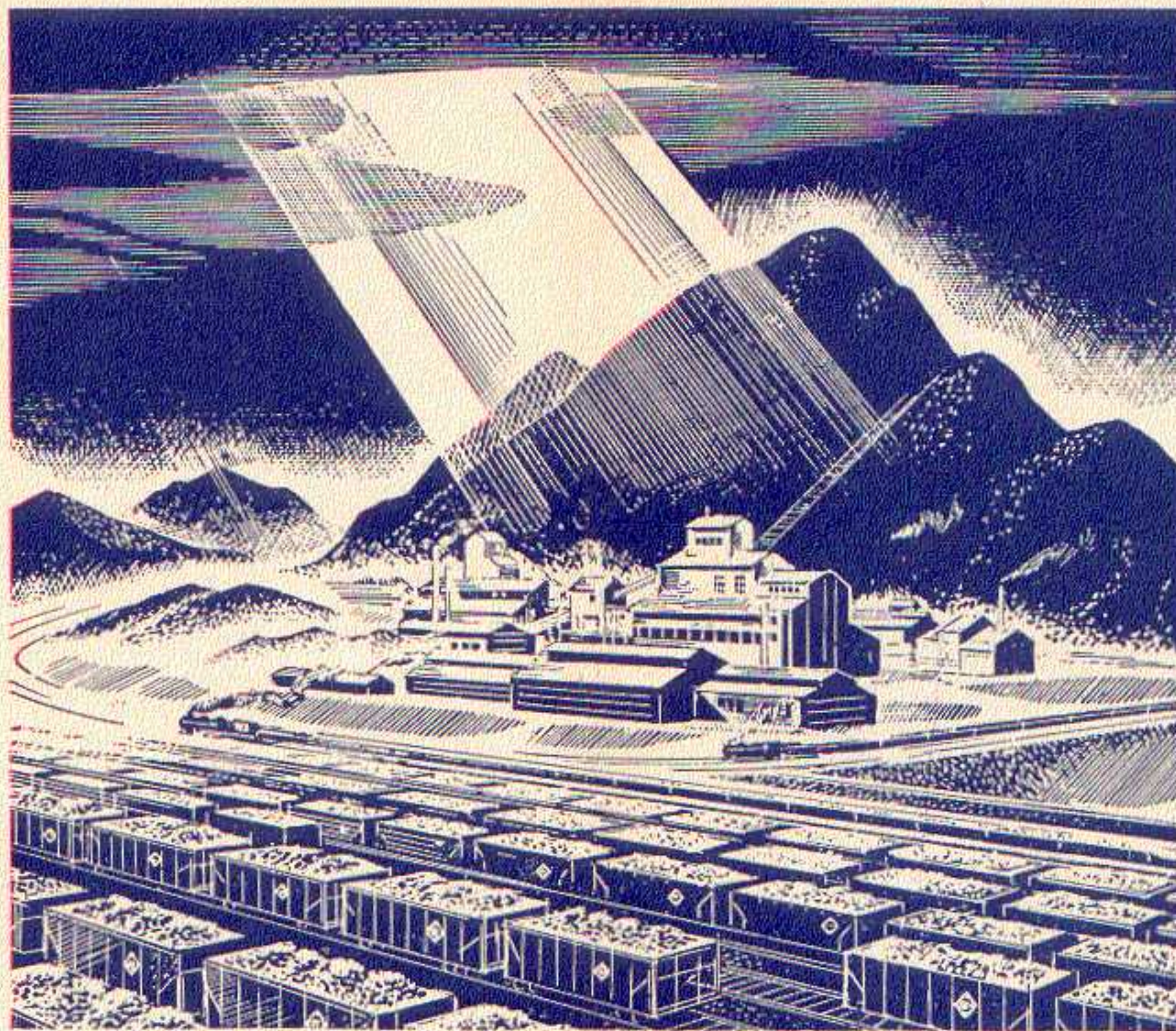
TABLE 11 NEW YORK—KENOZA LAKE—JEFFERSONVILLE

Table with columns for WESTBOUND Read Down, EASTERN STANDARD TIME, EASTBOUND Read Up. Includes train numbers 1, 2 and station names like NEW YORK, Kenoza Lake, Jeffersonville.

Tickets sold and Baggage checked through to Chautauqua. Hand baggage checked without charge. Trunks checked at charge of 25c each.

BLACK WATER BATHS, ALDEN, N. Y. An all year resort where sufferers from rheumatism and nervous ailments have found the Black Water Baths beneficial and curative. Alden is located 20 miles east of Buffalo on the Erie Railroad. HOTELS AT ALDEN, N. Y. Empire State Hotel Original Black Water Baths and Hotel Alden Inn

NOTE "X" In connection with the bus service the Erie Railroad acts as agent only and is not responsible beyond its own line, except as such responsibility may be imposed by law with respect to baggage.



Erie Burns the Rails to Keep You Warm!

• Imagine the suspicious burghers of old Philadelphia trying to arrest a man for selling anthracite coal as a fuel! That happened in 1812. Now every year the Erie Railroad alone carries *millions* of tons of anthracite and bituminous to help keep America warm . . . to help keep the wheels of industry turning.

Erie rails serve the anthracite region directly, are linked by connecting lines with the principal bituminous and coke producing areas. Here's the *convenient* coal route to the North, East, and West. Improved consistently, Erie coal service today offers shipper and consignee the advantages of the most modern equipment and facilities and streamlined handling methods.

Chances are Erie can save you time and money—whatever the nature of your shipment. Get the proof. Call the Erie agent or write—

Carl Howe, Vice President, Erie Railroad
Cleveland, Ohio





Linking the Americas

Grace Line transportation services stand recognized throughout the Americas as long-established ties which join the nations of the Western Hemisphere. Through these channels of commerce, this eighty-year old organization has been diligently contributing to that basic understanding upon which good-will, friendship and unity depend.

TO THE CARIBBEAN AND SOUTH AMERICA ON LUXURIOUS AMERICAN FLAG GRACE "SANTA" LINERS

12-DAY CRUISES
to Curacao, Venezuela and Colombia.

24-DAY CRUISES
to Panama, Colombia, Ecuador and Peru.

38-DAY CRUISES
to Panama, Colombia, Ecuador, Peru, Bolivia and Chile.

'ROUND SOUTH AMERICA Tours.

Ask any ticket agent on the Erie Railroad
for complete information and

HOMETOWN TO HOMETOWN RATES



LOCAL PARLOR AND CLUB CAR EQUIPMENT

WESTBOUND

No. 9—Daily	
Coaches.....	New York to Binghamton
No. 27—Daily	
Air-Conditioned Diner-Lounge Car.....	New York to Binghamton
Coaches.....	New York to Hornell
No. 67—Except Saturdays, Sundays and Holidays	
Erie Parlor Car.....	New York to Port Jervis
Coaches.....	New York to Port Jervis
No. 251—Saturdays only	
Erie Parlor Car.....	New York to Middletown
Coaches.....	New York to Middletown

EASTBOUND

No. 28—THE MOUNTAIN EXPRESS—Daily	
Coaches.....	Binghamton to New York
No. 56—THE TUXEDO—Except Sundays and Holidays	
Erie Parlor Car.....	Port Jervis to New York
Coaches.....	Port Jervis to New York

YOU PAY **No** MONEY DOWN
WHEN YOU USE THE
**RAILROAD INSTALLMENT
PLAN!**

Go to Your Railroad Ticket Office

Speed ... your shipments by Railway Express.
One complete, convenient service. Low rates. Just phone.

RAILWAY EXPRESS
AGENCY  INC.

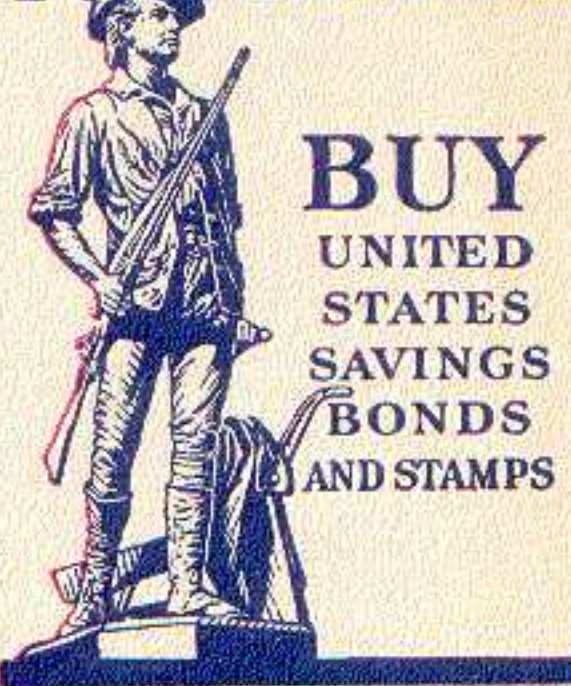
TICKET YOUR CAR AND TRAVEL IN COMFORT BY TRAIN

Two first class passenger fares plus one ticket at a slightly higher fare transports two passengers and your car. Minimum charge \$54.00. Ask Erie Ticket or Freight Agents.

TABLE 12 ELMIRA-AVON

Table with columns for Westbound Read Down, Eastbound Read Up, Miles, Eastern Standard Time, and station names like West 23rd St., Jersey City, Elmira, and Avon.

FOR DEFENSE



BUY UNITED STATES SAVINGS BONDS AND STAMPS

LOCATE YOUR PLANT WHERE YOU CAN LOCATE MORE PROFITS. Ask us about industrial buildings and vacant land on Erie rails. GEO. F. WESTON Industrial Commissioner, Erie Railroad, Midland Bldg., Cleveland, O.

HUDSON AND MANHATTAN TUBE TRAINS SCHEDULE OF RUNNING TIME BETWEEN ERIE R. R. JERSEY CITY TERMINAL AND

Table showing running times for Tube Trains between Jersey City Terminal and Downtown/Uptown New York, including stops like Cortlandt St., 33rd Street, and 9th Street.

ERIE R. R. FERRY TIME TABLE EASTERN STANDARD TIME CHAMBERS STREET FERRY Ferry Running Time, 9 Minutes WEEK DAYS

Table with two columns: 'Leave New York for Jersey City' and 'Leave Jersey City for New York', showing departure and arrival times in AM and PM.

Will not run on Holidays. Except Saturdays and Holidays. Holidays only.

SUNDAYS

Table showing Sunday departure and arrival times for the Chambers Street Ferry.

TWENTY-THIRD STREET FERRY Ferry Running Time, 20 Minutes WEEK DAYS

23rd Street Ferry does not run on Sundays and Holidays

Table with two columns: 'Leave New York for Jersey City' and 'Leave Jersey City for New York', showing departure and arrival times for the 23rd Street Ferry.

NO FERRY SERVICE ON SUNDAYS

Luxury between Trains... in CHICAGO



... your Parmelee transfer coupon, which is included as part of your through ticket, entitles you to transportation in smart limousine coaches from your incoming railway station to your outgoing station...

Ask any Ticket Agent about

PARMELEE SERVICE

WESTERN UNION

TELEGRAMS AND CABLEGRAMS accepted at all telegraph offices of this railroad.

DAY LETTERS—50 words for 1 1/2 times the cost of a 10 word telegram.

NIGHT LETTERS—25 words for the former price of ten words. Maximum only 50 cents from coast to coast. Words over 25 charged for in groups of 5 at rates as low as a fifth of a cent per word.

RESERVATION MESSAGES—Reserve travel tickets and accommodations and hotel rooms by telegraph—only 35 cents (for 15 words).

TOURATE MESSAGES—When you travel telegraph the folks at home or at the office the facts they want to know about progress of your trip—only 35 cents (for 15 words).

SUGGESTIONS

• **FREE BAGGAGE SERVICE.** Let us check your baggage to destination and relieve you of the trouble and inconvenience of carrying it to and from the train—150 pounds free on each adult ticket.

If you desire delivery to your residence or hotel at destination, ask the checking agent for information regarding delivery service and rates.

• **INTERCHANGEABLE SCRIP COUPON TICKETS** issued in \$15.00 and \$30.00 denominations are accepted on trains or at ticket offices in payment of rail passage as well as sleeping and parlor car accommodations, and also as payment for meals in restaurant cars.

• **PREPAID ORDERS.** For the convenience of patrons who do not wish to send money by mail, Erie Railroad ticket agents are prepared to sell prepaid ticket orders for the delivery of transportation, rail and Pullman, from practically all points in the United States, Canada and Mexico. These orders may also include the furnishing of cash.

In emergencies arrangements may be made for the delivery of transportation by telegraph or telephone without charge except when commercial wires are used.

• **BAGGAGE INSURANCE** by the St. Paul Fire & Marine Insurance Co. may be purchased at principal Erie ticket offices. It insures your baggage and personal effects for your entire trip anywhere in the world. Minimum premium twenty-five cents. The ticket agent can give you full particulars.

• **ERIE PLAYING CARDS** are on sale at our ticket offices, excepting in Ohio. Bridge sets one dollar, single decks fifty cents.

• **SPECIAL TOURS AND CONVENTIONS.** Our services are at the disposal of clubs, lodges and other organizations in arranging for trips to conventions and gatherings of all sorts. Concerning fares, train schedules and travel plans, consult or write to any Erie Ticket Agent, or any of the Passenger Department representatives listed on pages 37 & 38 of this folder.

STOP-OVER PRIVILEGES

Niagara Falls

Passengers holding tickets reading "via Erie Railroad" from or through Elmira to or through Youngstown or vice versa may exercise their privilege of going by way of Buffalo and stopping over for as long as ten days at Niagara Falls, but not beyond the final limit of their ticket. Upon request, the Erie Ticket Agent at Buffalo will issue without charge a round trip ticket between Buffalo and Niagara Falls. Frequent service via busses of International Ry. direct from Buffalo Terminal.

Other Points

On local one-way tickets sold at regular fares, local round-trip tickets sold at double the one-way fares, All-Year, Summer and Winter Tourist Tickets, stop-overs will be allowed on going and return trips within final limit of tickets at any Erie Railroad Station en route upon notice to conductor and without deposit of ticket.

GENERAL INFORMATION

STANDARD OF TIME—Erie Lines east of and including Ohio City, Ohio, are operated by Eastern Standard Time, Lines west of Ohio City, Ohio, by Central Standard Time. 12.01 Midnight to 12.00 Noon is indicated by light-faced type. 12.01 Noon to 12.00 Midnight is indicated by heavy-faced type.

TRAINS WILL NOT BE HELD for ferries from New York between hours of 5:00 P.M. and 6:30 P.M. Eastern Standard Time.

HOLIDAYS—The term "Holidays" (unless covered by special note under schedule) refers to the observance of New Year's Day, Lincoln's Birthday, Washington's Birthday, Memorial Day, Independence Day, Labor Day, Columbus Day, Armistice Day (Nov. 11), Election Day (November 4), Thanksgiving Day and Christmas Day.

THIS COMPANY IS NOT RESPONSIBLE FOR ERRORS in time tables, inconvenience or damage resulting from delayed trains or failure to make connections; schedules are subject to change without notice.

FARES PAID ON TRAINS—Conductors are required to charge ten (10) cents in excess of the one-way ticket fare for passengers traveling in coaches only in the territory east of Port Jervis, including side lines and branches. Buy tickets before boarding trains and avoid payment of this extra fare.

CHILDREN under five years of age are carried free when accompanied by parent or guardian; five years and under twelve, half fare, twelve years of age and over, full fare.

ADJUSTMENT OF FARES—Should any misunderstanding arise with conductors or agents, pay the fare required, take receipt and communicate with General Passenger Agent, Midland Bldg., Cleveland, Ohio.

SLEEPING AND PARLOR CAR RESERVATIONS—Space reserved by telegraph or telephone within city limit will be held until:

5:00 P.M. day prior to departure of trains leaving before noon next day.
10:00 A.M. day of departure for trains leaving between noon and 5:00 P.M.
2:00 P.M. day of departure for trains leaving after 5:00 P.M.

When application is by wire or letter from a point outside of city limit, space will be held until fifteen minutes of train time.

BAGGAGE TO BE CHECKED should be delivered at station reasonably in advance of train departure to insure its being placed aboard the train.

BAGGAGE DELIVERY IN NEW YORK CITY—All baggage checked to New York City will be sent to the West 23rd Street Station unless passenger specifies Chambers Street Station at time of checking. Account no Ferry service to West 23rd Street on Sundays or Holidays, baggage to arrive and wanted that day, should be checked to Jersey City or Chambers Street.

Baggage delivery service in New York will be performed by the Railway Express Agency.

HAND-BAGGAGE in Pullman Cars is restricted to what can be conveniently placed in the berth, seat or other accommodations purchased by the passenger.

CHICAGO PASSENGER AND BAGGAGE TRANSFER is performed by the Parmelee Company. A uniformed agent meets all incoming trains of the Erie Railroad on arrival at Dearborn Station.

ARTICLES LOST ON TRAINS or left in waiting rooms or stations, owners should apply to Lost and Found Bureau, (Baggage Room) Jersey City Depot, or address General Passenger Agent, Midland Bldg., Cleveland, Ohio, giving full description of the property, stating date of loss and number of train.

SAFETY FIRST HINTS—Carefulness on your part helps eliminate accidents. Don't get on or off a train in motion; wait for a full stop. Keep hand baggage out of car aisles; this will remove a cause of inconvenience, possibly of harm, to others. Walk carefully when entering or leaving train; high-heeled shoes are sometimes a cause of tripping or stumbling on car steps. Don't stand or walk close to the railroad track; look both ways before starting across. Courtesy toward your fellow travelers increases the pleasure of your journey.

POSTAGE STAMPS may be purchased from dining car attendants.

SEE AND KNOW AMERICA

Sight-Seeing

THE
GRAY LINE

Everywhere

MAKE YOUR RAILROAD TRIP COMPLETE... TAKE SIGHT-SEEING TOURS AT ALL IMPORTANT TOURIST POINTS



See Your Local Railroad Ticket Agent For All Information

ERIE TRAIN-CAB SERVICE

Takes you from Erie Terminal directly to your door in New York or Brooklyn



ONE Person **90c** TWO Persons **\$1.25** THREE or more **\$1.50**

Thousands have used and praised Erie Train-Cab Service.

Strangers arriving at Erie Terminal, Jersey City, are taken all the way to their destination in New York or Brooklyn. They never get "lost" and are never overcharged. Women accompanied by children appreciate this service. Even seasoned travelers enjoy the comfort of settling down in their own taxicab and forgetting about bags and car changes.

The fares shown above apply from our terminal to any place on Manhattan 110th Street and South, also to any point in the Brooklyn business district.

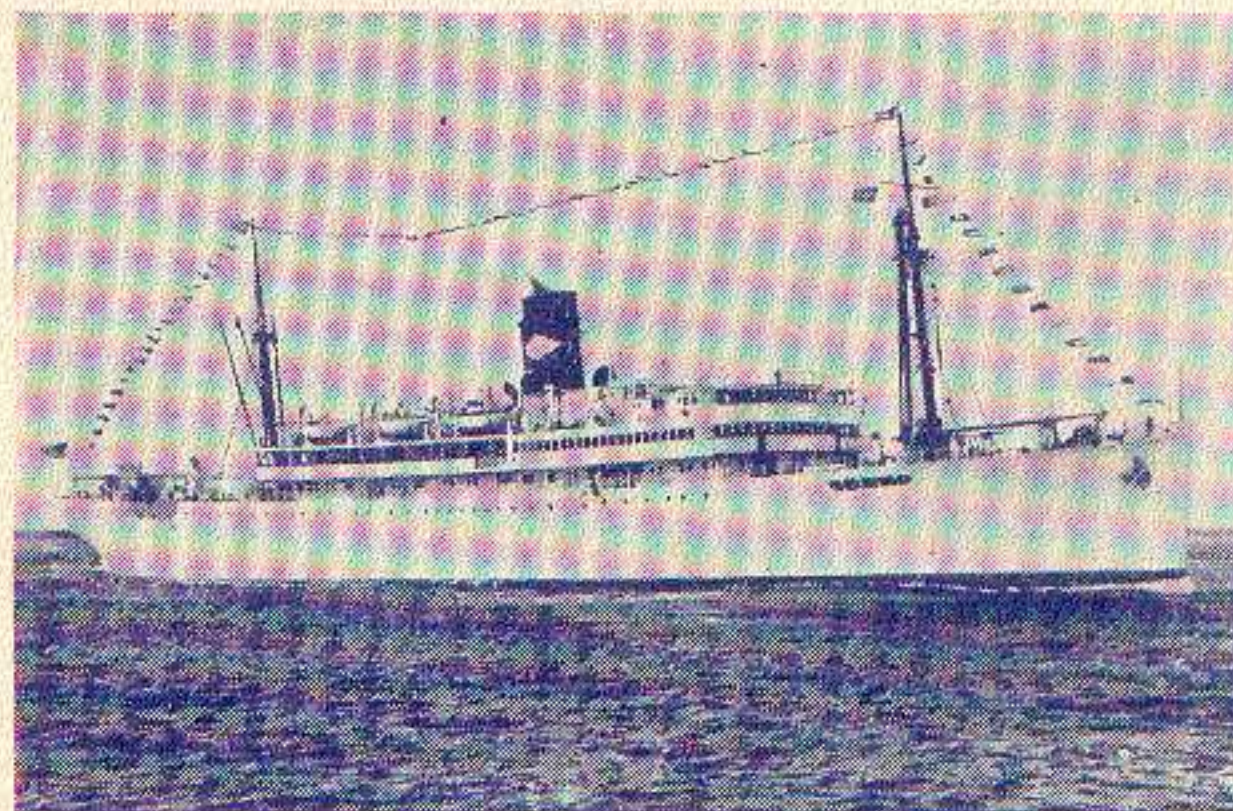
Service beyond the prescribed zones is metered from the zone limits and charged for at regular rates.

Train-Cab service is available to all who travel from stations west of Middletown, N. Y.

You can buy the Train-Cab coupon with your rail ticket at the ticket office or from the conductor on any through train and you will find your taxicab awaiting the arrival of your train at Jersey City.

Ask the conductor or ticket agent for details.

GREAT WHITE FLEET



● Turbo-electric liner TALAMANCA, Flagship of the United Fruit Company's Great White Fleet. Ships of this type offer regular and dependable service to Cuba, Jamaica, Guatemala, Honduras, Costa Rica and Panama. They are modern and commodious with all outside state-rooms, outdoor swimming pools and attractive public rooms. Service is strictly first-class throughout.



This Guatemalan boy with his beaming smile typifies the friendly feeling of the magnificent Republic of Guatemala and is a certain indication that the traveller will thoroughly enjoy himself while exploring the wonders of that country



Write for attractive
free folders



UNITED FRUIT COMPANY
Pier 3, North River NEW YORK, N. Y.
R. W. LINEN, General Passenger Agent

CONDENSED THROUGH FREIGHT SCHEDULES

FOR INFORMATION ONLY. For details, consult any freight traffic representative shown on opposite pages.

EASTBOUND — READ DOWN

WESTBOUND — READ UP

TRAIN 74 and Connections	Train NE 98 and Connections	TRAIN 98 and Connections	TRAIN 72 and Connections	TRAIN 78 and Connections	TRAIN 90 and Connections	TRAIN 86	Central Time	TRAIN 77 and Connections	TRAIN 81 and Connections	TRAIN 181 and Connections	TRAIN 91 and Connections	Train Adv 87 and Connections	TRAIN 87 and Connections
Example Day 8:00AM Mon. 9:30AM Mon. 1:10PM Mon. 4:15PM Mon. 5:50PM Mon.	Example Day 5:30PM Mon. 7:00PM Mon. 1:40AM Tue. 3:30AM Tue.	Example Day 5:30PM Mon. 7:00PM Mon. 1:40AM Tue. 3:30AM Tue. 6:30AM Tue.	Example Day 9:45PM Mon. 11:15PM Mon. 5:00AM Tue. 9:30AM Tue.	Example Day 12:15AM Mon. 6:00AM Mon. 9:00AM Mon. 11:00AM Mon.	Example Day	Example Day	Lv. Chicago Ar. Lv. Hammond Ar. Lv. Huntington Ar. Lv. Lima Ar. Ar. Marion Lv.	Example Day 12:01AM Thu. 10:45PM Wed. 3:15PM Wed. 11:30AM Wed.	Example Day 2:00AM Thu. 12:15AM Thu. 8:00PM Wed. 5:30PM Wed.	Example Day 4:00AM Thu. 2:30AM Thu. 10:00PM Wed. 6:30PM Wed.	Example Day 5:00AM Thu.	Example Day	Example Day
		6:50PM Mon. 1:30AM Tue. 2:30AM Tue. 3:15AM Tue.					Eastern Time Lv. Cincinnati Ar. Lv. Dayton Ar. Lv. Maitland (Spfld) Ar. Lv. Urbana Ar.		6:50AM Thu. 11:30PM Wed. 8:15PM Wed.	6:50AM Thu. 11:30PM Wed. 8:15PM Wed.			
8:45PM Mon. 12:01AM Tue. 12:50AM Tue.	9:00AM Tue.	9:30AM Tue. 11:50AM Tue. 2:00PM Tue.	12:15PM Tue. 3:45PM Tue. 5:00PM Tue.	2:00PM Mon. 6:55PM Mon.			Lv. Marion Ar. Lv. Akron Ar. Lv. Kent Ar.	7:45AM Wed. 2:45AM Wed. 1:35AM Wed.	1:25PM Wed. 8:40AM Wed.	3:30PM Wed. 11:50AM Wed. 10:50AM Wed.	4:30PM Wed.		
2:30PM Tue.				2:30PM Tue.			Ar. Cleveland Lv.		2:15AM Wed.	2:15AM Wed.			
7:00PM Mon.							Lv. Cleveland Ar.	6:30AM Wed.					
7:30AM Tue. 11:00PM Mon. 5:00PM Tue.		7:30AM Tue.	10:00PM Tue.	7:00AM Tue.			Ar. Youngstown Lv. Lv. Youngstown Ar. Ar. New Castle Lv. Lv. New Castle Ar. Ar. Sharon Lv. Lv. Sharon Ar. Ar. Meadville Lv. Lv. Meadville Ar. Ar. Jamestown Lv.	12:01AM Wed. 2:00AM Wed. 8:00AM Tue. 10:45PM Tue. 12:45AM Wed. 10:15PM Tue. 9:15PM Tue. 6:15PM Tue.	5:00PM Wed. 5:00PM Wed. 3:00PM Wed. 5:35AM Wed.	3:00PM Wed. 3:00PM Wed. 8:00AM Wed.	12:15PM Wed.		
8:30AM Tue. 12:25AM Tue. 3:25AM Tue. 3:55AM Tue.		10:30AM Tue.	12:25AM Wed. 8:00PM Tue. 8:30PM Tue.	8:30AM Tue. 11:30PM Mon. 2:30AM Tue.									
		12:45AM Wed. 7:30PM Tue.	12:01AM Wed.	8:00AM Tue. 3:00AM Tue.	9:00AM Tue.	6:15PM Tue.	Ar. Buffalo Lv. Lv. Buffalo Ar.		9:30PM Tue.	10:00PM Tue.	4:00AM Wed.	7:00AM Wed.	4:00PM Wed.
		6:15AM Wed. 5:30PM Tue.					Ar. Rochester Lv. Lv. Rochester Ar.		6:15AM Wed.		5:30PM Tue.	9:00AM Wed.	
10:30AM Tue. 12:01PM Tue.		12:15AM Wed. 2:15AM Wed.	4:30AM Wed. 6:30AM Wed.	8:00AM Tue. 12:01PM Tue.	1:00PM Tue. 3:00PM Tue.	8:50PM Tue.	Ar. Hornell Lv. Lv. Hornell Ar.	2:30PM Tue.	9:45PM Tue.	12:01AM Wed.	4:30AM Wed.	4:45AM Wed.	12:45PM Wed. 11:30AM Wed.
			2:15AM Thu.				Ar. Philadelphia (Rdg) Lv.			11:30PM Mon.	11:30PM Mon.		
1:00AM Wed. 7:00PM Tue.	2:30AM Wed.	3:30AM Wed. 5:45AM Wed.	10:00AM Wed. 12:15PM Wed.	1:00AM Wed. 7:00PM Tue.	1:00AM Wed. 7:00PM Tue.	10:30PM Tue. 12:01AM Wed.	Ar. Elmira Lv. Ar. Binghamton Lv.	9:30AM Tue. 7:15AM Tue.	4:30PM Tue. 2:50PM Tue.	4:30PM Tue. 2:50PM Tue.		2:30AM Wed. 1:10AM Wed.	9:30AM Wed. 7:15AM Wed.
9:30AM Wed. 8:00PM Wed. 9:30PM Wed.	4:00PM Wed. 11:55PM Wed. 2:30AM Thu.	5:00PM Wed. 3:00AM Thu. 12:01PM Thu.	4:15AM Thu.	9:30AM Wed. 8:00PM Wed. 9:30PM Wed.	9:30AM Wed. 8:00PM Wed. 9:30PM Wed.		Ar. Albany (D&H) Lv. Ar. Boston (B&M) Lv. Ar. Portland (D&H-B&M) Lv.	10:00AM Mon. 5:00AM Mon. 11:00PM Sun.	10:30PM Mon. 6:30PM Mon.	10:30PM Mon. 6:30PM Mon.			10:00AM Tue. 5:00AM Tue. 11:00PM Mon.
		11:00PM Tue.	8:00AM Thu.				Ar. Scranton Lv. Lv. Scranton Ar.		11:00PM Mon.	11:00PM Mon.			8:00AM Wed.
3:30AM Wed. 8:00PM Wed.	8:30AM Wed. 6:15PM Wed. 11:50PM Wed. 12:01PM Thu.	1:00PM Wed. 8:45PM Wed. 3:00AM Thu. 3:00PM Thu.		3:30AM Wed. 8:00PM Wed.	6:30AM Wed. 6:15PM Wed. 11:50PM Wed. 12:01PM Thu.		Ar. Maybrook Lv. Ar. New Haven (NH) Lv. Ar. Boston (NH) Lv. Ar. Portland (NH-B&M) Lv.		8:30AM Tue. 1:10AM Tue. 6:45PM Mon. 2:00AM Mon.	8:30AM Tue. 1:10AM Tue. 6:45PM Mon. 2:00AM Mon.			
4:30AM Wed. 6:30AM Wed. 1:30AM Wed.		12:30AM Thu. 6:30AM Thu. 4:15PM Wed.	12:30AM Thu. 6:30AM Thu. 1:00AM Thu.	4:30AM Wed. 6:30AM Wed. 1:30AM Wed.	6:00AM Wed. 8:00AM Wed. 5:00AM Wed.	7:30AM Wed. 6:20AM Wed.	Ar. Paterson Lv. Ar. Newark Lv. Ar. Croxton Lv. Ar. Jersey City Lv. NEW YORK (see Note)	5:30PM Mon. 9:00PM Mon. 1:15AM Tue.	5:30PM Mon. 9:00PM Mon. 3:30AM Tue.	5:30PM Mon. 9:00PM Mon. 3:30AM Tue.		5:30PM Tue. 6:45PM Tue.	5:30PM Tue. 9:00PM Tue. 10:30PM Tue.

NOTE—Freight to and from New York City and Brooklyn stations and piers is handled expeditiously on carfloats or lighters via Croxton or Jersey City. Prompt delivery or forwarding is assured.

“SHIP AND TRAVEL ERIE”

ERIE RAILROAD COMPANY

(ROBERT E. WOODRUFF AND JOHN A. HADDEN, TRUSTEES)

H. A. TAYLOR, COUNSEL FOR TRUSTEES

CHICAGO AND ERIE RAILROAD CO.

General Offices { Midland Building, Cleveland. Telephone, Cherry 8400.
Hudson Terminal, 50 Church Street, Corner Fulton, New York. Telephone, Cortlandt 7-9200.
Utilities Building, 327 South La Salle Street, Chicago. Telephone, Harrison 4160.

C. L. BRADLEY, Chairman of the Board,
R. E. WOODRUFF, Chief Executive Officer,
H. D. BARBER, Vice-President,
CARL HOWE, Vice-President,
H. A. TAYLOR, Vice-President and General Counsel,

Cleveland,

J. K. THOMPSON, Vice-President,
T. J. TOBIN, Comptroller,
G. A. W. ACHENBACH, Secretary,
E. F. MORGENROTH, Treasurer,
F. M. AMERICA, Special Representative,

Cleveland.

TRAFFIC AND DEVELOPMENT

CARL HOWE, Vice-President, Cleveland.

G. C. MANNING, Assistant Vice-President,

L. B. BURFORD, Assistant Vice-President, New York.
W. V. KENNEDY, Assistant Vice-President, New York.
H. W. VON WILLER, Asst. to Vice-President, Cleveland.

Chicago.

PASSENGER—Sales and Service

R. B. ROGERS, General Passenger Agent,
T. R. PATTON, Assistant General Passenger Agent,
F. A. WALDRON, Assistant General Passenger Agent,

C. C. HOWARD, Passenger Traffic Manager, Cleveland.

H. T. HARLOW, General Passenger Agent,
ALFRED FYNN, Assistant General Passenger Agent,
E. J. HAWERKOST, General Western Passenger Agent,

Chicago.

C. L. CHAPMAN, General Baggage, Mail and Express Agent, New York.

FREIGHT—Rates

O. M. MEYNE, Assistant Freight Traffic Manager,
E. N. HAMBLY, General Freight Agent,
F. M. KLITZ, Assistant General Freight Agent,
C. E. COURTER, Assistant General Freight Agent,
W. P. VAN IDERSTINE, Chief of Tariff Bureau,
J. H. SISCO, Chief of Divisions Bureau,

L. B. BURFORD, Assistant Vice-President, New York.

F. G. LANTZ, Freight Traffic Manager, Chicago.

A. BLAUDEL, Assistant Freight Traffic Manager,
E. C. HALLBERG, General Freight Agent,
H. T. SWEENEY, Chief of Tariff Bureau,
E. A. JAEHNE, Chief of Divisions Bureau,

Chicago.

FREIGHT—Sales and Service

G. C. MANNING, Assistant Vice-President,
E. J. DEAN, Freight Traffic Manager,
G. R. WHEELER, General Freight Agent,
J. T. McENTEE, Assistant General Freight Agent,
H. C. SCHMIDT, General Eastern Freight Agent,
G. W. MADSEN, General New England Agent,
F. D. HARTNETT, Milk Freight Agent,
H. B. ROGERS, General Live Stock Agent,
G. A. LAMB, Freight Traffic Manager,
C. E. KING, Assistant General Freight Agent,
W. P. KROMPHARDT, Asst. General Freight Agent,

New York.

W. V. KENNEDY, Assistant Vice-President,
D. R. THOMPSON, Freight Traffic Manager,
J. G. HILL, General Freight Agent,
W. H. KOCH, Assistant General Freight Agent,
R. L. MURPHY, Assistant General Freight Agent,

Chicago.

FOREIGN FREIGHT TRAFFIC

W. C. OTTEN, Foreign Freight Traffic Manager,
T. W. KANE, Foreign Freight Agent,
A. E. PETERSON, Foreign Freight Agent,
W. S. PENCHARD, Export and Import Agent,

New York.

PERISHABLE AND DAIRY TRAFFIC

J. A. RUSSELL, Manager,
P. J. NAPOLI, Assistant Manager,
H. W. BOUMANN, Western Dairy Agent,

Pier 20, N. R., New York.

Chicago.

COAL AND COKE

R. E. O'GRADY, Coal Traffic Manager,
J. A. FERGUSON, General Coal Freight Agent,
D. D. JAMIESON, Coal Freight Agent,
A. E. BARKALOW, Assistant Coal Freight Agent,
J. A. MUCHA, Coal Freight Agent,

Cleveland.

New York.

Buffalo.

E. C. JULIUS, Coal Freight Agent,
W. N. STENFELT, Assistant Coal Freight Agent,
M. S. SWEENEY, Coal Freight Agent,
H. O. DUNKLE, General Agent, Coal and Ore,

Chicago.

Pittsburgh.

Cleveland.

INDUSTRIAL DEVELOPMENT

GEO. F. WESTON, Industrial Commissioner, Cleveland.
H. J. HART, Industrial Agent, New York.

TRAFFIC DEPARTMENT REPRESENTATIVES

Akron, O.—80 East Exchange St.
(Telephone Hemlock 8194-8195)
J. P. CLARK, Division Passenger Agt.
A. R. WALTON, General Agent.
Albany, N. Y.—Room 2, D. & H. Bldg.
(Telephone 4-6051)
H. G. COOKE, General Agent.
Atlanta, Ga.—1515-16 Healey Bldg.
(Telephone Walnut 2135)
W. H. STADELMAN, General Agent.
Baltimore, Md.—1301-3 Munsey Bldg.
(Telephone Plaza 8691)
E. W. VAIL, General Agent.
Birmingham, Ala.—1007 Watts Bldg.
(Telephone 3-1327)
WM. L. THORNTON, General Agent.
Birmingham, England—13 Corporation St.
MAURICE G. COOKE, General Agent.
Boston, Mass.—150 Causeway St.
(Telephone Capitol 2510-11-12)
G. W. MADSEN, Gen. New Eng. Agt.
Bradford, Pa.—Erie Station.
(Telephone 3413)
J. C. MOFFATT, General Agent.
Buffalo, N. Y.—8 North Division St.
(Telephone Washington 4300)
R. E. TOWNS, Division Passenger Agt.
238 Main Street.
(Telephone Wash. 1865)
J. T. McENTEE, Asst. General Freight Agt.
Chicago, Ill.—327 South La Salle St.
(Telephone Harrison 4160)
B. Y. VAUGHN, Trav. Pass. Agt.
C. D. TURNER, General Agent.
Cincinnati, O.—503 Gwynne Bldg.
(Telephone Main 3420-3421)
R. L. MURPHY, Asst. Genl. Frt. Agt.
Cleveland, O.—Midland Bldg.
(Telephone Cherry 8400)
J. M. SKAETHILL, Division Freight Agt.
913 Huron Road
(Telephone Cherry 8400)
G. SAUNDERS, Div. Passenger Agt.
Columbus, O.—Rooms 309-310 Atlas Bldg., 8 East Long Street.
(Telephone Adams 7331)
L. J. BURGOTT, General Agent.

Dallas, Tex.—2113 Tower Petroleum Bldg.
1905 Elm St.
(Telephone 2-7352)
L. J. MARION, General Agent.
Dayton, O.—1004-8 Miami Savings Bldg.
(Telephone Adams 8481)
F. W. FISCHER, Div. Frt. Agt.
Des Moines, Ia.—Hubbell Bldg.,
904 Walnut Street,
(Telephone 4-0018)
H. A. BOCKMAN, General Agent.
Detroit, Mich.—Rooms 2-124 and 2-125
General Motors Bldg.
(Telephone Madison 2360-2361)
W. H. KOCH, Assistant General Frt. Agt.
East Buffalo, N. Y.—Live Stock Exch. Bldg.
(Telephone Washington 4300)
H. B. ROGERS, General Live Stock Agt.
Elmira, N. Y.—Erie Station.
(Telephone 2-1621)
J. W. O'HARA, Division Passenger Agt.
(Telephone 2-0377)
C. F. WHADCOCK, Division Freight Agent.
Glasgow, Scotland—82 Mitchell St.
W. S. THOMSON, General Agent.
Huntington, Ind.—Erie Station.
(Telephone 743)
F. C. MCCARTHY, Division Freight Agt.
Indianapolis, Ind.—143 No. Meridian St.
(Telephone Lincoln 2088)
T. J. WILLIAMSON, General Agent.
Jamestown, N. Y.—Erie Station
H. A. WILSON, Div. Frt. Agt.
(Telephone 7921-7922)
Jersey City, N. J.—Erie Station
(Telephone Journal Square 2-6400)
P. F. ARROYO, Genl. Agt. Pass. Dept.
J. G. VREELAND, Division Freight Agent.
Kansas City, Mo.—Rooms 326-7 Railway
Exchange Bldg., 7th and Walnut Streets.
(Telephone Victor 6328)
N. C. FRICK, General Agent.
Liverpool, Eng.—10 Victoria St.
A. G. TAYLOR, General Agent.
London, E. C. 3, Eng.—88 Leadenhall St.
PETER BUSWELL, General Agent.
D. S. DEANS, Genl. Continental Agt.

Los Angeles, Cal.—510 West 6th Street.
(Telephone Vandike 6542)
D. C. KELSEY, General Agent.
Marion, O.—Terminal Building
(Telephone 2657)
A. R. TENNIS, Division Freight Agent.
Memphis, Tenn.—1623-9 Exchange
Bldg., Madison & Second Sts.
(Telephone 8-8781)
R. L. MILLER, General Agent.
Milwaukee, Wis.—818-9 Majestic Bldg.,
231 West Wisconsin Ave.
(Telephone Marquette 5555-5556)
L. T. COULSTON, General Agent.
Minneapolis, Minn.—125 Third Street, So.
(Telephone Main 3604)
L. E. NEWMAN, General Agent.
Newark, N. J.—1801-2 Military Park
Bldg., 60 Park Place.
(Telephone Market 2-0525-26-27)
F. L. COLLINS, General Agent.
New Haven, Conn.—401 Powell Bldg.
(Telephone 5-7937)
G. E. ROBB, General Agent.
New Orleans, La.—Room 1417 Whitney Bldg.
(Telephone Raymond 9786)
E. W. BURNETT, General Agent.
New York, N. Y.—630-5th Ave. Room
219, Rockefeller Center.
(Telephone Circle 5-7222)
F. J. WILD, Genl. Agt. Pass. Dept.
A. G. OLDENQUIST, City Pass. Agt.
50 Church Street.
(Telephone Cortlandt 7-9200)
H. C. SCHMIDT, Genl. East. Frt. Agt.
Omaha, Neb.—1319 Farnam St.
(Telephone Jackson 4866)
C. L. COX, General Agent.
Peoria, Ill.—920 Jefferson Building, Cor.
South Jefferson & Fulton Streets.
(Telephone 8007)
E. T. OLANDER, General Agent
Philadelphia, Pa.—1009-10 Finance Bldg.
(Telephone Rittenhouse 8975-8976)
B. F. CONWAY, General Agent.

Pittsburgh, Pa.—Gulf Building.
(Telephone Grant 4831-2-3)
C. E. KING, Asst. Genl. Frt. Agt.
Portland, Ore.—Room 421 Pacific Bldg.,
520 S. W. Yamhill St.
(Telephone Beacon 3706)
H. L. SKEEN, General Agent.
Rochester, N. Y.—Room 220, Reynolds
Arcade Building.
(Telephone Main 2826)
C. V. HARROW, Division Freight Agent.
San Francisco, Cal.—681 Market St.
(Telephone Sutter 3875)
J. A. LLOYD, General Agent.
St. Louis, Mo.—Room 906, 1218 Olive St.
(Telephone Chestnut 7723-7724)
C. G. ANDREWS, General Agent.
St. Paul, Minn.—336 Robert St.
(Telephone Cedar 5912)
C. R. PETRY, General Agent
Scranton, Pa.—Mill & Smith Sts. (Dun-
more, Pa.)
(Telephone—Scranton 8191)
G. W. SHUMAN, Division Freight Agent.
Seattle, Wash.—1116-7 White Bldg.,
1338 Fourth Ave.
(Telephone Elliot 4834)
R. J. DUNDON, General Agent.
Springfield, O.—516 First National Bank
Building.
(Telephone 2-5351)
E. W. KEILEY, General Agent.
Toledo, O.—342 South Erie Street.
(Telephone Main 3816)
H. J. SPANGENBERG, General Agent.
Toronto, Ont.—69 Yonge Street.
(Telephone Elgin 4077)
E. P. MORRILL, Canadian Frt. Agt.
Tulsa, Okla.—Room 1511 Hunt Bldg.
(Telephone 3-8613)
H. F. STUPT, General Agent.
Washington, D. C.—303 Southern Bldg.
(Telephone National 6075)
W. J. MURRAY, General Agent.
Youngstown, O.—Terminal Building.
(Telephone 41101)
W. P. KROMPHARDT, Asst. Genl. Frt. Agt.
C. R. MARTIN, Div. Frt. Agt.