

Effective November 24, 1940

Effective November 24, 1940



**ERIE RAILROAD SYSTEM
TIME TABLES**

**ERIE RAILROAD SYSTEM
TIME TABLES**

The Scenic Route

BETWEEN

NEW YORK • BUFFALO
CLEVELAND • CHICAGO

The Scenic Route

BETWEEN

NEW YORK • BUFFALO
CLEVELAND • CHICAGO

CLEVELAND, OHIO, NOVEMBER 24, 1940.

BEDROOMS AVAILABLE ON TRAINS Nos. 1, 8 and 10

AFFORD REAL PRIVACY

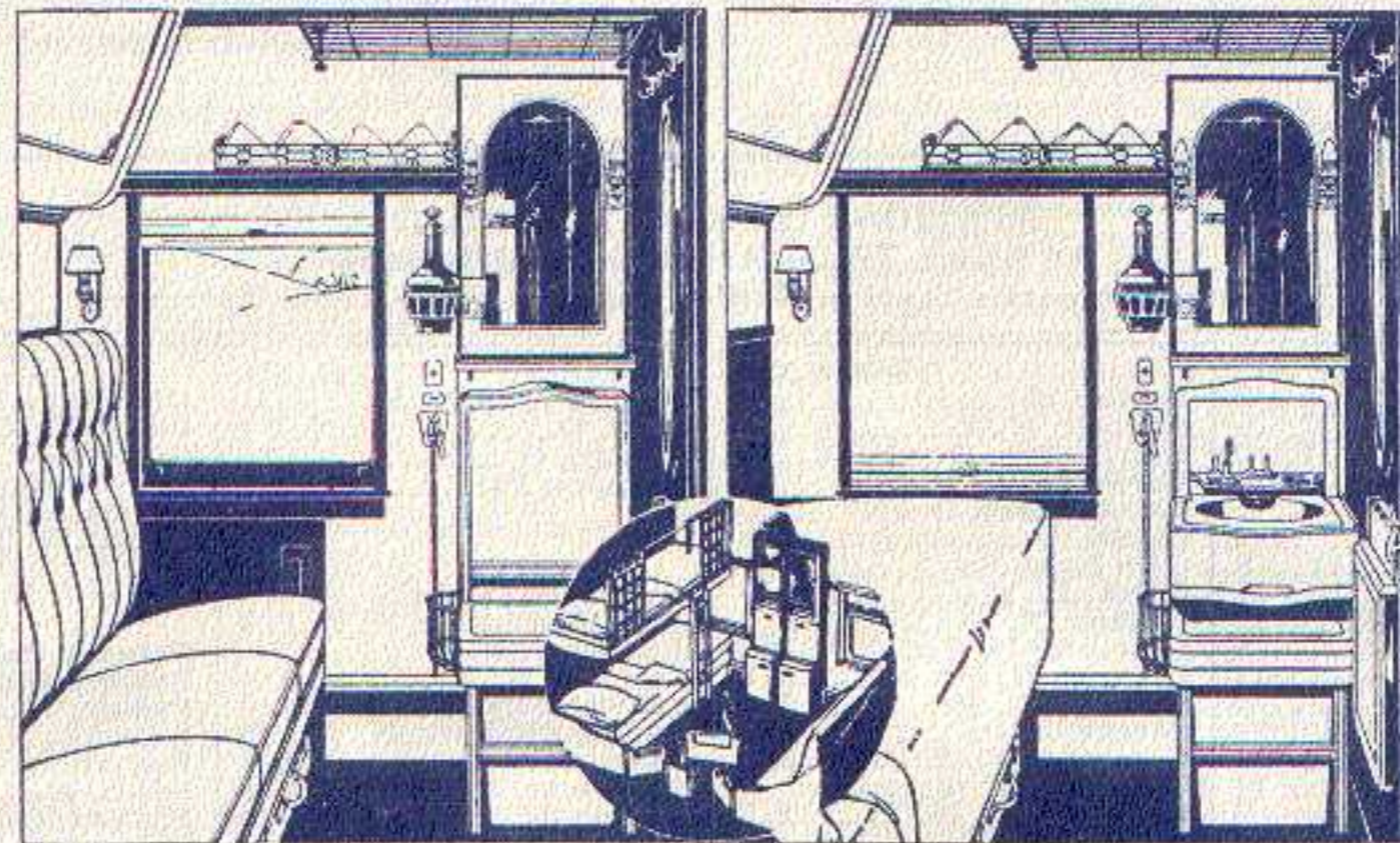
Individual Beds

For ONE or TWO

In the Double Bedroom for one or two persons, as with all private room accommodations, individual toilet and lavatory are included. The sofa becomes a bed at night, over which there is a comfortable berth.

The double bedrooms, complete with every facility, are designed so that the walls fold to unite two rooms, when desired, giving unusual spaciousness.

These bedrooms are available on Train No. 1, The Erie Limited between New York and Chicago; on Train No. 8, The Atlantic Express, between Chicago and Hornell, and on Train No. 10, The Southern Tier Express, between Hornell and New York.



Double Bedroom: (left) Daytime, (right) Night, (in circle) Partition between two Double Bedrooms partly folded

ERIE APPOINTS AID TO WOMEN

Women who travel by railroad are recognized as a privileged class in an order issued by the Erie Railroad, appointing Miss Alice Bagley as counselor, traveling public research. Her duties will be to study the needs and requirements of women passengers and recommend improvements or changes that will enable the railroad to serve them better.

Miss Bagley will spend a major part of her time traveling up and down the Erie Railroad studying the service for spots where improvements in the handling of women passengers can be suggested, training passenger personnel in the niceties of service and courtesy from a woman's standpoint.



FOR YOUR WINTER VACATION

Three hundred events. More than one a day, including National Orange Show, Mexican Fiestas, Yachting Regattas, China City's New Year's Day Ceremonies, Tournament of Roses.

Attractive low fares in effect.

NOW ERIE SERVES NEW YORK BETTER THAN EVER BEFORE

Just 30 Minutes Between Your Train and Midtown New York by Motor Coach

Erie tracks on Broadway! Not literally, of course. But today you can step from Erie trains No. 2, No. 6 and No. 8 at Rutherford, N. J., directly into a waiting motor coach. A 30-minute hop via the Lincoln Tunnel takes you to the new Erie Terminal at 260 W. 42nd St., between 7th and 8th Avenues (or you can step off at the 7th and 8th Avenue subway entrances on 40th Street). On return trips the same service is available from the Terminal to trainside at Rutherford for trains No. 1, No. 27 and No. 5.

There is a small additional charge for this time-saving short cut. Hand baggage is transferred free! Get motor coach tickets from your Erie Agent or the conductor.

No motor coach connection for trains No. 10 east, and No. 7 west.

No change in existing ferry terminals.

Visit the
**INTERNATIONAL LIVE
 STOCK EXPOSITION**
 Chicago, Nov. 30 to Dec. 7
UNION STOCK YARDS
BRILLIANT EVENING SHOWS

TWO NEW TRAVEL SERVICES

TRAIN-TAXI PLAN

Concentrate on your business instead of your driving! Use the new train-taxi service.

Erie passengers now have this service available in key cities along the line: CHICAGO, ILL., AKRON, CLEVELAND and YOUNGSTOWN, OHIO, and BUFFALO, N. Y.

In each of the cities mentioned, with the exception of Chicago, the taxicab company will furnish a cab and driver from 9:00 A.M. to 3:00 P.M. for \$5.00. In Chicago a special rate will be any continuous four hours for \$5.00. Ask ticket agents.

THE RAIL-AUTO PLAN

Rail comfort, safety and economy for a long trip, auto convenience at destination.

The rail-auto plan applies in key cities of the East and Middle West.

The railroads and Drivurself Companies are offering a special rate for Rail-Auto Plan customers, \$3.00 per day plus 5 cents per mile. In New York City the Special Rate will be \$4.00 per day plus 6 cents per mile, applying Monday to Friday, inclusive.

You may taxi from the railroad depot or your hotel to the Drivurself Company office, or garage, and your fare will be paid up to

ERIE FAST FREIGHT SCHEDULES

For schedules of Erie's fast freight trains, which operate with the precision of passenger trains, see pages 35 and 36.

35c, this amount being deducted from your bill. Late model cars are available at the garage, and you can have the convenience of a car to make your calls without the responsibility of having to drive to the next city. Ask any Erie ticket agent. He will be glad to tell you where cars are available and to reserve one for you.

AN OLD SERVICE TRIED AND TRUE

INCREASINGLY POPULAR

The three and four ticket rail-auto passenger plan enables you and one other to travel in comfort by passenger train and ship your car by fast freight for only one first class passenger ticket. Excellent for long trips to Florida, California, New England, etc., or family moving and all cases where car is needed at destination. Save Time. Save Money. Save Your Car.



VISIT BOTH THE ATLANTIC AND
 PACIFIC COASTS FOR AS LITTLE AS

\$90⁰⁰

ROUND TRIP

\$135.00 Round Trip in Sleeping and Parlor Cars
 (Berth or Seat Space Extra)

**GO ONE WAY . RETURN ANOTHER
 STOP OVER ANYWHERE**

REFERENCE MARKS AND NOTES

IMPORTANT—When trains are indicated as stopping conditionally, Conductors should be notified of intention to leave train and Station Agent notified of intention to board train. Conditional stops are made only to receive or discharge revenue passengers.

- † Runs daily except Sunday.
 § Runs daily except Sundays and Holidays.
 ‡ Will not operate from these stations on Monday morning.
 † Stops on signal to receive and discharge revenue passengers.
 k Runs Saturdays only. M. C. Motor Car Service. N. B. No Baggage carried.
 Note ⊕—Times Square Motor Coach Terminal, 260 West 42nd St. between 7th and 8th Aves., New York City. Taxicab entrance on 41st St. Connection to and from Rutherford.
 ac Stops Dalton (5.37 A. M.) to discharge passengers from Hornell and east and on signal to receive passengers.
 ad Via Buffalo & Erie Coach Corp. bus between Salamanca and Bradford.
 af Train 7 stops Middletown (1.54 A. M.) Sunday and Monday mornings only to discharge passengers.
 ag Stops Ridgewood (7.57 A. M.) Sundays and Holidays only.
 ah Stops on signal Andover (9.51 A. M.); Belmont (10.16 A. M.) to discharge passengers from New York.
 an Train 27 stops at Lordville (7.21 P. M.) to discharge passengers from New York.
 ap On Sundays Train 27 will leave West 23rd St. at (2.30 P. M.).
 as Train 701 will not operate west of Monroe on Holidays.
 at On Sundays only, Train 30 will arrive West 23rd Street at (1.45 P. M.).
 au Does not run from West 23rd St. on Saturday night.
 av Does not run from Chambers St. on Saturday night.
 aw Trains 6 and 16 stop at Middletown (7.04 A. M.) and Goshen (7.15 A. M.) to discharge passengers from Hornell and west, and to receive passengers for New York.
 ax Stops Englewood Train 1 (7.50 A. M.); Train 15 (5.05 P. M.); Train 7 (12.43 A. M.) to discharge passengers from east of Hammond.
 ba Stops Paterson (8.27 A. M.) to receive passengers.
 bb Stops at Paterson (3.44 P. M.) to receive passengers only.
 bc Stops on signal Paterson (8.16 P. M.); Ridgewood (8.26 P. M.) to receive passengers.
 bd Stops on signal Passaic (8.07 P. M.); Suffern (8.41 P. M.) to receive passengers for Hornell and west.
 bf Stops Cuba (5.19 A. M.) to discharge passengers from Elmira and east and to receive for Jamestown and west.
 bg Stops on signal, Friendship (10.30 A. M.); Cuba (10.44 A. M.) to discharge passengers from New York.
 bh Stops Cuba (6.35 P. M.) to discharge passengers from Elmira and east and to receive for Jamestown and west.
 bm Stops on signal Niles (10.26 A. M.) to discharge passengers from Pittsburgh and from Jamestown and east and to receive passengers for Cleveland.
 bp Stops Niles (11.40 P. M.) to discharge passengers from Meadville and east and on signal to receive passengers for Akron and west.
 bt No Agent on duty. No baggage handled on Trains 5 and 6 to or from Castle.
 bu Train 6 stops at East 55th St. (5.07 P. M.) Sundays only to receive passengers for Youngstown.
 bv Stops on Sundays only to discharge passengers.
 bx Train 16 stops at Warren (6.18 P. M.) to discharge passengers from Akron and west.
 cb On Sundays only, Train 204 will arrive West 23rd St. at (9.10 A. M.).
 cd For additional service between Cleveland and Youngstown see Table 5.
 ce Train 73 will not operate west of Suffern on Nov. 20, Dec. 24, Dec. 31, Feb. 11 or Feb. 21.
 cf Stops Tuxedo (5.39 P. M.) daily, except Sunday.
 cg Stops on signal Ridgewood (11.00 P. M.) to discharge passengers from Binghamton and west.
 ck Runs Sundays only and Holidays only, except Feb. 22.
 cn Stops on signal Union City (9.07 P. M.); Cambridge Springs (9.26 P. M.) to discharge passengers from Jamestown and east and to receive for Youngstown and west.
 cp Train 8 stops on signal (9.59 P. M.), Train 16 (9.50 A. M.) to receive passengers for east of Hammond.
 ct On Sundays Train 61 will not have any connection from West 23rd Street.
 cu Bus service provided between Cochection and Lake Huntington.
 cw Stops Endicott (1.37 A. M.) to discharge passengers from Port Jervis and east.
 cx Stops to discharge passengers from New York.
 cy Stops to discharge passengers from Cleveland and beyond.
 db Train 8 stops at Ravenna (7.37 A. M.) to discharge passengers from Marion and west, and on signal to receive for Youngstown and east.
 dc Stops Mantua (1.53 P. M.) to discharge passengers from Cleveland and on signal to receive passengers for Warren and east.
 de Stops Barberton (5.19 P. M.) to discharge passengers from Youngstown and east and on signal to receive passengers for Mansfield and west.
 df Stops on signal Mantua (9.24 A. M.) to receive passengers for Cleveland.
 dp Stops Niles (2.14 A. M.) to discharge passengers from east of Youngstown and signal to receive passengers for Cleveland.
 dt No baggage carried on this train east of Hornell. Baggage will be handled on following train.
 du Stops to receive passengers only (1.56 P. M.).
 dv Stops on signal Union City (8.54 P. M.) to discharge passengers from Youngstown and west and to receive passengers for New York.
 dw Stops Cuba (9.53 A. M.) to discharge passengers from Jamestown and west and to receive for Elmira and east.
 dy Stops on signal Cambridge Springs (7.17 A. M.), Union City (7.34 A. M.) to discharge passengers from Chicago and to receive for Binghamton and east.
 dz Stops Ridgewood (8.07 A. M.) to discharge passengers from Port Jervis and west. Has connection for Paterson, Passaic, etc., leaving Ridgewood at (8.14 A. M.) daily except Sundays and Holidays. On Sundays and Holidays leaves Ridgewood at (8.40 A. M.).
 eb Train 61 stops New Hampton (4.15 P. M.) daily, except Sundays.
 ec Bus service between New Castle and New Castle (Washington St.).
 ed Bus service between Wampum and Ellwood City.
 ef Stops only to receive motor coach passengers from New York.
 eg Stops only to discharge motor coach passengers for New York.
 eh Stops on signal Mantua (6.41 P. M.) to receive passengers for Pittsburgh.
 ek Train 2 stops Suffern (6.30 P. M.), Passaic (6.59 P. M.) to discharge passengers from Binghamton and west.
 en Stops on signal Paterson (9.33 A. M.), Ridgewood (9.43 A. M.) to receive passengers.
 ep Train 1 stops on signal Passaic (9.26 A. M.), Suffern (9.58 A. M.) to receive passengers for Binghamton and west.
 er Stops Niles (5.46 A. M.) to discharge passengers from Cleveland and west and on signal to receive for Pittsburgh.
 es Stops on signal Niles (6.14 P. M.) to receive passengers for Jamestown and east, and to discharge passengers from Cleveland.
 et Bus operates between Narrowsburg and Honesdale. In connection with which the Erie Railroad Company acts as agent only and is not responsible beyond its own line, except as such responsibility may be imposed by law with respect to baggage.
 eu Stops Endicott (6.05 P. M.) daily to discharge passengers from Jamestown and west and on signal to receive passengers for New York; also stops Sundays only to receive and discharge passengers.
 ex Stops Endicott (2.55 A. M.) to discharge passengers from Buffalo, Jamestown and west.
 gc Stops West Henrietta (11.06 A. M.) to discharge passengers from east of Avon.
 gt In connection with the bus service the Erie Railroad Company acts as agent only and is not responsible beyond its own line, except as such responsibility may be imposed by law with respect to baggage.
 ha Stops at Narrowsburg (10.59 P. M.) to discharge passengers from Ridgewood and east.
 he Stops Alden (10.14 P. M.) to discharge passengers from Buffalo and on signal to receive passengers.
 hf Stops (11.14 P. M.) to discharge passengers from Pittsburgh.
 ht Trains 5-557 and 560-6 carry through sleeping cars between Bradford and New York.
 hu Stops to discharge passengers.
 hv Stops on signal East 93rd Street (6.13 P. M.) to receive passengers.
 hw Train 7 will stop at Saegertown (1.52 P. M.) to discharge passengers from Binghamton and east and to receive passengers for Marion and west.
 hx Train 8 will stop at Saegertown (10.17 A. M.) to discharge passengers from Marion and west and to receive passengers for Binghamton and east.
 na Train 6 stops on signal at East 93rd St. (5.12 P. M.) to receive passengers for Sharon and east.
 ne Train 626 stops Saturdays only at Solon (1.39 P. M.) and Aurora (1.47 P. M.) to discharge passengers from Cleveland.
 nf Stops on signal at Garrettsville-Hiram (2.47 P. M.) to receive passengers for Cleveland.
 nh Stops on signal at Garrettsville-Hiram (10.54 A. M.) to discharge passengers from Hornell and east; also discharge from Marion and west.

ERIE TICKET OFFICES AND PASSENGER STATIONS IN PRINCIPAL CITIES

- Akron, O.—Union Station.**
 (Telephone Jefferson 9141)
 B. L. BENDER, Ticket Agent.
- Binghamton, N. Y.—Erie Station.**
 (Telephone 4-3251)
 A. F. WAINSCOTT, Ticket Agent.
- Bradford, Pa.—Erie Station.**
 (Telephone 3716)
 A. J. SULLIVAN, Ticket Agent.
- Brooklyn, N. Y.—City Ticket Office.**
 155 Pierpoint St.
 (Telephone Triangle 5-7440)
 W. J. HAGENEY, Ticket Agent.
- Buffalo, N. Y.—City Ticket Office.**
 6 North Division St.
 (Telephone Washington 4300)
 W. L. MCCREARY, Ticket Agent.
 Station Ticket Office
 (Lehigh Valley Terminal)
 Main and Scott Streets
 (Telephone Washington 4300)
 A. L. SEITZ, Ticket Agent.
- Chicago, Ill.—City Ticket Office.** 163-165 West Jackson Blvd.
 (Telephone Harrison 4160)
 C. F. KUNGEL, Ticket Agent.
 Hotel Ticket Offices—
 Congress, Morrison, Sherman, Stevens, Palmer House, Merchandise Mart.
 (Telephone Harrison 2203)
 GEORGE M. NEWHART, Ticket Agent.
- Dearborn Station.**
 (Telephone Harrison 9830)
 W. E. MISCHNICK, Ticket Agent.
- Cleveland, O.—City Ticket Office.**
 913 Huron Road (Telephone Cherry 8400)
 CASPER J. MILLER, Ticket Agent.
 Erie Station. (Telephone Cherry 8400)
 J. W. STUART, Ticket Agent.
- Corning, N. Y.—Erie Station.**
 (Telephone 50)
 R. J. GRIFFEN, Ticket Agent.
- Elmira, N. Y.—Erie Station.**
 (Telephone 2-0380)
 J. V. CLEARY, Ticket Agent.
- Hornell, N. Y.—Erie Station.**
 (Telephone 680)
 A. T. JOHNSON, Ticket Agent.
- Huntington, Ind.—Erie Station.**
 (Telephone 140)
 D. L. HERBENDEN, Ticket Agent.
- Jamestown, N. Y.—Erie Station.**
 (Telephone 6076)
 FRANK PRIEST, Ticket Agent.
- Jersey City, N. J.—Erie Station.**
 (Telephone Journal Square 2-6400)
 G. B. IRVING, Ticket Agent.
- Mansfield, O.—Erie Station.**
 (Telephone Canal 1423)
 J. W. GILKISON, Ticket Agent.
- Marion, O.—Erie Station.**
 (Telephone 2399)
 L. E. NEBERGALL, Ticket Agent.
- Meadville, Pa.—Erie Station.**
 (Telephone 1212)
 O. E. BLAIR, Ticket Agent.
- Middletown, N. Y.—Erie Station.**
 (Telephone 3303)
 C. R. DINEEN, Ticket Agent.
- Newark, N. J.—Erie Station.**
 (Telephone Humboldt 2-0600)
 G. J. MCMICHAEL, Ticket Agent.
- New York, N. Y.—City Ticket Office.**
 Information Bureau.
 Train Service and Fares.
 (Telephone Barclay 7-6500)
 City Ticket Office, 12 West 51st Street, Rockefeller Center.
 (Telephone Circle 5-7222)
 G. H. DOWN, Ticket Agent.
 West 23rd Street Station.
 (Telephone Chelsea 3-0780)
 C. H. POTTER, Ticket Agent.
 Chambers Street Station.
 (Telephone Cortlandt 7-9200)
 O. R. KRECH, Ticket Agent.
 City Ticket Office, 17 John Street.
 (Telephone Cortlandt 7-6430 and 7-6431)
 W. G. TEDFORD, Ticket Agent.
 Times Square Motor Coach Terminal, 260 West 42nd St.
 (Telephone Longacre 5-2440)
- Passaic, N. J.—Erie Station.**
 (Telephone 2-1613)
 M. J. LYNCH, Ticket Agent.
- Paterson, N. J.—Erie Station.**
 (Telephone Sherwood 2-3337)
 J. H. GRAF, Ticket Agent.
- Port Jervis, N. Y.—Erie Station.**
 (Telephone 300)
 R. FARBER, Ticket Agent.
- Sharon, Pa.—Erie Station.**
 (Telephone 234)
 H. P. MORGAN, Ticket Agent.
- Warren, O.—Erie Station.**
 (Telephone 1000)
 G. W. KROM, Ticket Agent.
- Youngstown, O.—Erie Station.**
 (Telephone 41101)
 R. S. GETTIG, Ticket Agent.

RAILROAD AND PULLMAN FARES

For Information Only. Subject to Change Without Notice

Table with columns for 'Between' and 'And' cities, and sub-columns for 'NEW YORK', 'BINGHAMTON', and 'BUFFALO'. Each sub-column contains 'RAILROAD TICKETS VALID IN' (Coach, Pullmans) and 'PULLMAN RATES' (Lower Berth, Seat Fare).

Table with columns for 'Between' and 'And' cities, and sub-columns for 'JAMESTOWN', 'CLEVELAND', and 'CHICAGO'. Each sub-column contains 'RAILROAD TICKETS VALID IN' (Coach, Pullmans) and 'PULLMAN RATES' (Lower Berth, Seat Fare).

RATES FOR UPPER BERTH, ROUND TRIP UPPER BERTH, SECTION, DRAWING ROOM, COMPARTMENT OR DOUBLE BEDROOM IN SLEEPING CARS

Table with columns for 'Where Lower Berth Rate Is', 'Upper Berth Rate Will Be', 'Round Trip Upper Berth Rate Will Be', 'Section Rate', 'Drawing Room Rate', 'Compartment Rate', and 'Double Bed-room Rate'.

MINIMUM NUMBER OF RAILROAD TICKETS REQUIRED FOR EXCLUSIVE OCCUPANCY OF SPACE IN SLEEPING OR PARLOR CARS

Table with columns for 'Section', 'Double Bedroom', 'Compartment, Berth Service', 'Compartment, Seat Service', 'Drawing Room, Berth Service', and 'Drawing Room, Seat Service, or Drawing Room in Parlor Car'.

Note: —▲ For section occupied by two passengers but with lower berth only prepared for night service. *Applies from Cleveland to New York only; fare from New York to Cleveland \$14.70. ● Railroad ticket valid for lower berth must be presented when occupying seat in parlor car or sleeping car. *Thirty-day limit. †One-year limit.

TABLE 1

CONDENSED TABLE OF THROUGH TRAINS NEW YORK AND BUFFALO, CLEVELAND AND CHICAGO

(FOR LOCAL TRAINS AND INTERMEDIATE TIME OF THROUGH TRAINS SEE LOCAL TABLES)

Air-Conditioned Trains—Air-conditioned equipment has been assigned to regular sections of trains as shown herein. Every effort will be made to provide it as specified, but the right is reserved to employ non-air-conditioned cars as necessitated by volume of traffic or emergencies.

WEST BOUND		EAST BOUND	
THE ERIE LIMITED TRAIN NO. 1—DAILY New York—Buffalo—Jamestown—Chicago		THE ERIE LIMITED TRAIN NO. 2—DAILY Chicago—Jamestown—Buffalo—New York	
Lv New York (Times Sq. Motor Coach Term.) (Note ⊕)... 8.45AM E.S.T.		Lv Chicago (Dearborn Sta.)... 6.00PM C.S.T.	
" New York, West 23rd St... 8.30 " "		Ar Akron... 3.44AM E.S.T.	
" " Chambers St... 8.45 " "		" Warren... 4.43 " "	
" Jersey City... 9.05 " "	EQUIPMENT	" Youngstown... 5.02 " "	EQUIPMENT
" Paterson... en 9.33 " "	Air-Conditioned Sleeping Cars:	" Meadville... 6.55 " "	Air-Conditioned Sleeping Car:
" Ridgewood... en 9.43 " "	New York to Chicago—12 Section, 2	" Jamestown... 8.31 " "	Chicago to New York—10 Section, 2 Com-
" Binghamton... 2.35PM " "	Double Bedroom.	" Buffalo (Lehigh Valley Term.) 10.55 " "	partment and Drawing Room.
" Elmira... 3.54 " "	Salamanca to Chicago—10 Section, 2 Com-	" Bradford... ad12.05PM " "	
Ar Buffalo (Lehigh Valley Term.) 7.45 " "	partment and Drawing Room.	" Olean... 9.39AM " "	Air-Conditioned Lounge Dining Car:
Lv Olean... 6.55 " "		Lv Buffalo (Lehigh Valley Term.) 8.20 " "	Chicago to New York.
" Bradford... 5.00 " "	Air-Conditioned Lounge Dining Car:	Ar Elmira... 12.30PM " "	
" Buffalo (Lehigh Valley Term.) 5.30 " "	New York to Chicago.	" Binghamton... 1.41 " "	Air-Conditioned Salon Coaches:
" Jamestown... 8.13 " "		" Ridgewood... ♦ 6.43 " "	Chicago to New York.
" Meadville... 9.50 " "	Air-Conditioned Salon Coaches:	" Paterson... ♦ 6.51 " "	
" Youngstown... 11.26 " "	New York to Chicago.	" Jersey City... 7.20 " "	Air-Conditioned Coach—Diner:
" Warren... 11.52 " "	Air-Conditioned Coach—Diner:	" New York, Chambers St... 7.34 " "	Buffalo to New York.
" Akron... 1.00AM " "	New York to Buffalo.	" " West 23rd St... 7.50 " "	
Ar Chicago (Dearborn Sta.)... 8.05AM C.S.T.		" New York, Times Sq. Motor	
		Coach Term. (Note ⊕)... 7.35 " "	
THE LAKE CITIES TRAIN NO. 5—DAILY New York—Buffalo—Cleveland		THE LAKE CITIES TRAIN NO. 6—DAILY Cleveland—Buffalo—New York	
Lv New York (Times Sq. Motor Coach Term.) (Note ⊕)... 7.25PM E.S.T.	EQUIPMENT	Lv Cleveland... 5.00PM E.S.T.	EQUIPMENT
" New York, West 23rd St... 7.10 " "	Air-Conditioned Sleeping Cars:	" Warren... 6.06 " "	Air-Conditioned Sleeping Cars:
" " Chambers St... 7.30 " "	New York to Cleveland—10 Section, 1	" Youngstown... 6.42 " "	Cleveland to New York—10 Section, 1
" Jersey City... 7.45 " "	Compartment and Drawing Room.	" Meadville... 8.17 " "	Compartment and Drawing Room.
" Paterson... bc 8.16 " "	New York to Bradford—10 Section, 2	" Jamestown... 9.54 " "	Bradford to New York—10 Section, 2
" Ridgewood... bc 8.26 " "	Compartment and Drawing Room	" Bradford... 9.30 " "	Compartment and Drawing Room.
Ar Buffalo (Lehigh Valley Term.) 7.55AM " "	(Sleeping Car may be occupied at Brad-	" Salamanca... 10.41 " "	
Lv Olean... 5.39 " "	ford until 8.00 A. M.).	" Olean... 11.06 " "	Air-Conditioned Lounge Dining Car:
Ar Bradford... 7.05 " "		" Buffalo (Lehigh Valley Term.) 9.45 " "	Youngstown to Hornell.
" Jamestown... 6.58 " "	Air-Conditioned Lounge Dining Car:	Ar Elmira... 2.02AM " "	Port Jervis to New York.
" Meadville... 8.28 " "	New York to Port Jervis.	" Ridgewood... dz 8.07 " "	Air-Conditioned Coaches:
" Youngstown... 9.50 " "	Hornell to Youngstown.	" Jersey City... 8.40 " "	Cleveland to New York.
" Warren... 10.36 " "	Air-Conditioned Coaches:	" New York, Chambers St... 8.54 " "	
Ar Cleveland... 11.40AM " "	New York to Cleveland.	" " West 23rd St... 9.10 " "	Coaches:
	Coaches:	" New York, Times Sq. Motor	Buffalo to Hornell.
	Hornell to Buffalo.	Coach Term. (Note ⊕)... 8.55 " "	
THE MIDLANDER TRAIN NO. 15—DAILY New York—Jamestown—Akron—Chicago		THE MIDLANDER TRAIN NO. 16—DAILY Chicago—Akron—Jamestown—New York	
Lv New York (Times Sq. Motor Coach Term.) (Note ⊕)... 7.25PM E.S.T.	EQUIPMENT	Lv Chicago (Dearborn Sta.)... 9.35AM C.S.T.	EQUIPMENT
" New York, West 23rd St... 7.10 " "	Air-Conditioned Sleeping Car:	" Marion... 3.26PM E.S.T.	Air-Conditioned Sleeping Car:
" " Chambers St... 7.30 " "	New York to Chicago—10 Section, 1	" Akron... 5.26 " "	Chicago to New York—10 Section, 1
" Jersey City... 7.45 " "	Compartment and Drawing Room.	" Youngstown... 6.42 " "	Compartment and Drawing Room.
" Paterson... bc 8.16 " "	Air-Conditioned Lounge Dining Cars:	" Meadville... 8.17 " "	
" Ridgewood... bc 8.26 " "	New York to Port Jervis.	" Jamestown... 9.54 " "	Air-Conditioned Lounge Dining Cars:
" Jamestown... 6.58AM " "	Hornell to Chicago.	" Ridgewood... dz 8.07AM " "	Huntington to Hornell.
" Meadville... 8.33 " "	Air-Conditioned Coach:	Ar Jersey City... 8.40 " "	Port Jervis to New York.
" Youngstown... 10.00 " "	New York to Chicago.	" New York, Chambers St... 8.54 " "	Air-Conditioned Coach:
" Akron... 11.15 " "		" " West 23rd St... 9.10 " "	Chicago to New York.
" Marion... 1.21PM " "		" New York, Times Sq. Motor	
Ar Chicago (Dearborn Sta.)... 5.20PM C.S.T.		Coach Term. (Note ⊕)... 8.55 " "	
PACIFIC EXPRESS TRAIN NO. 7—DAILY New York—Buffalo—Jamestown—Chicago		ATLANTIC EXPRESS TRAIN NO. 8—DAILY Chicago—Jamestown—New York	
Lv New York, W. 23d St... 11.55PM E.S.T.	EQUIPMENT	Lv Chicago (Dearborn Sta.)... 9.45PM C.S.T.	EQUIPMENT
" " Chambers St... 12.00Mid. " "	Air-Conditioned Sleeping Car:	" Akron... 7.07AM E.S.T.	Air-Conditioned Sleeping Car:
" Jersey City... 12.25AM " "	New York to Salamanca—10 Section, 2	" Warren... 8.07 " "	Chicago to Hornell—(Daily) 12 Section, 2
" Elmira... 7.45 " "	Compartment and Drawing Room Car.	" Youngstown... 8.35 " "	Double Bedroom. Chicago to New York
Ar Buffalo (Lehigh Valley Term.) †12.10PM " "	(Sleeper open Jersey City at 9.30 P. M.)	" Meadville... 10.10 " "	(Saturdays only) 12 Section, 2 Double
Lv Olean... 11.10AM " "		" Jamestown... 11.59 " "	Bedroom. (Sleeper open at Chicago at
Ar Salamanca... 11.34 " "	Air-Conditioned Dining Lounge Car:	" Bradford... 11.00 " "	9.30 P. M.)
Lv Jamestown... 12.29PM " "	Binghamton to Marion.	" Salamanca... 1.03PM " "	Air-Conditioned Dining Lounge Cars:
" Meadville... 2.06 " "		" Olean... 1.29 " "	Chicago to Huntington.
" Youngstown... 3.38 " "	Air-Conditioned Salon Coaches:	Ar Elmira... 5.10 " "	Marion to New York.
" Warren... 4.07 " "	New York to Chicago.	" Binghamton... 6.15 " "	Air-Conditioned Salon Coaches:
" Akron... 5.09 " "		" Jersey City... 11.30 " "	Chicago to New York.
Ar Chicago (Dearborn Sta.)... 1.00AM C.S.T.		" New York, Chambers St... 11.54 " "	(No baggage handled on this train east of Hornell,
		" " West 23rd St... 11.55 " "	baggage will be handled on following train.)
		" New York, Times Sq. Motor	
		Coach Term. (Note ⊕)... 11.45 " "	
THE MOUNTAIN EXPRESS TRAIN NO. 27—DAILY New York—Binghamton—Elmira—Hornell		SOUTHERN TIER EXPRESS TRAIN NO. 10—EX. SUN. Hornell—Elmira—Binghamton—New York	
Lv New York (Times Sq. Motor Coach Term.) (Note ⊕)... 2.55PM E.S.T.	EQUIPMENT	Lv Hornell... 7.30PM E.S.T.	EQUIPMENT
" New York, West 23rd St... ap 2.50 " "	Air-Conditioned Dining Lounge Car:	" Corning... 8.41 " "	Air-Conditioned Sleeping Car:
" " Chambers St... 3.00 " "	New York to Binghamton.	" Elmira... 9.12 " "	Hornell to New York—12 Section, 2 Double
" Jersey City... 3.15 " "	Coaches... New York to Hornell.	" Binghamton... 10.50 " "	Bedroom.
Ar Binghamton... 8.55 " "		Ar Jersey City... 4.25AM " "	(Sleeper and Coaches may be occupied at
" Elmira... 10.42 " "		" New York, Chambers St... 4.54 " "	Jersey City until 7.30 A. M. E. S. T.)
" Corning... 11.11 " "		" " W. 23d St... " "	Coaches:
Ar Hornell... 12.05AM " "			Hornell to New York.

For Explanation of Reference Marks and Notes, See Pages 5 and 6.

For Local Parlor and Club Car Equipment, See Page 28.

TABLE 2 WESTBOUND

NEW YORK—ELMIRA

Hudson and Manhattan Tube Trains operate to and from Erie Railroad Station in Jersey City. Fare, downtown, 8 cents; uptown, 10 cents.

Table with columns for Miles from New York, Eastern Standard Time, and various station names (e.g., Jersey City, N.J., Rutherford, N.J., Passaic, Paterson, Ridgewood, etc.). It includes departure times and service notes for multiple train lines.

For Explanation of Reference Marks and Notes, See Pages 5 and 6.

For Equipment of Trains See Pages 9, 10 and 28.

TABLE 5 DETROIT—TOLEDO—CLEVELAND—YOUNGSTOWN—PITTSBURGH

Miles from Cleveland	Eastern Standard Time	EASTBOUND												
		WEEK-DAYS						SUNDAYS						
		688	624	626	6	628	686	688	624	626	6	686	620	
	Ex. Sun.	Ex. Sun.	Ex. Sun.	Ex. Sun.	Ex Sun & Hol.	Ex. Sun.	Sun. only	Sun. only	Sun. only	Sun. only	Sun. only	Sun. only	Sun. only	
	N.Y.C.													
	DetroitLv.	AM 12.30	AM	AM	PM	AM	PM	AM	AM	AM	PM	PM	PM	PM
	ToledoLv.	2.13	4.53	8.00	9.45	11.35	1.15	2.55	3.00	4.53	8.00	9.45	1.15	5.30
0.0	ClevelandLv.	4.25	8.00	1.15	5.00	5.30	6.00	4.25	8.00	1.15	5.00	6.00	6.00	9.00
3.3	East 55th Street.....		8.07	1.23		5.37	6.08		8.07	1.23	bu.	6.08		9.08
5.6	E. 93d St., Cleveland.....		8.12	1.27	na.	5.42	6.08		8.12	1.27	na.	6.08		9.13
10.7	North Randall.....					5.51								
15.8	Solon.....			ne		5.59								9.28
20.4	Geauga Lake.....					6.05								9.33
23.6	Aurora			ne		6.10								9.38
30.0	Mantua			dc		6.18	eh				dc	eh		9.45
34.2	Jeddoe					6.24								
36.7	Garrettsville-Hiram		8.46	2.02		6.30			8.46	2.02				9.56
40.3	Mahoning					6.36								
45.3	Phalanx					6.42								
49.4	Leavittsburg					6.49								
52.6	Warren	5.37	9.05	2.22	6.06	6.57	7.09	5.37	9.05	2.22	6.06	7.09		10.18
57.7	Niles	er	9.13	2.30	es	7.23	7.20	er	9.13	2.30	es	7.20		10.27
61.9	Girard					7.33								10.34
66.5	YoungstownAr.	6.00	9.25	2.45	6.26	7.45	7.35	6.00	9.25	2.45	6.26	7.35		10.42
66.5	YoungstownLv.	6.05	9.30	2.50			7.40	6.05	9.30	2.50		7.40		
84.2	New CastleAr.	6.29	9.55	3.14			8.02	6.29	9.55	3.14		8.02		
	New Castle (Wash. St.) ec Ar.	6.42	10.08	3.27			8.15	6.42	10.08	3.27		8.15		
95.5	Ellwood City (ed)	cy6.52	10.19	3.41			8.25	cy6.52	10.19	3.41		8.25		
102.2	Beaver Falls	cy6.50	10.18	3.36			8.25	cy6.50	10.18	3.36		8.25		
	New Brighton													
105.6	Beaver	cy6.56	10.24	3.41			8.31	cy6.56	10.24	3.41		8.31		
112.3	Aliquippa	cy7.05	10.33	3.50			8.40	cy7.05	10.33	3.50		8.40		
120.8	Coraopolis	cy7.15	10.44	4.00			8.50	cy7.15	10.44	4.00		8.50		
131.4	PittsburghAr.	7.30	11.00	4.15			9.05	7.30	11.00	4.15		9.05		
		AM	AM	PM	PM	PM	PM	AM	AM	PM	PM	PM	PM	PM

AIR-CONDITIONED TRAINS
Air-conditioned equipment has been assigned to regular sections of trains as shown herein. Every effort will be made to provide it as specified, but the right is reserved to employ non-air-conditioned cars as necessitated by volume of traffic or emergencies.

EQUIPMENT
Detroit, Toledo, Cleveland, Youngstown, Pittsburgh Trains.
★Indicates Air-Conditioned Cars

EASTBOUND
No. 6—Daily. ★Sleeping Car (10 Section 1 Compartment and Drawing Room Car) Cleveland to New York. ★Coach, Cleveland to New York.
No. 620—Sundays only. Coaches, Cleveland to Youngstown and Sharon.
No. 624 — Daily. ★Pullman Parlor-Lounge-Diner, Cleveland to Pittsburgh. ★Coach, Cleveland to Pittsburgh.
No. 626—Daily. ★Erie Parlor Car, Cleveland to Pittsburgh. ★Coach, Cleveland to Pittsburgh.
No. 686—Daily. ★Sleeping Car for Parlor Car Service and ★Coaches, Detroit to Pittsburgh, via Cleveland. ★Dining Lounge Car, Cleveland to Pittsburgh.
No. 688—Daily. ★Sleeping Car (10 Section and 2 Drawing Room), Chicago to Pittsburgh. ★Sleeping Car (12 Section-2 Double Bedrooms), Detroit to Pittsburgh. Through Coaches, ★Chicago and ★Detroit to Pittsburgh, via Cleveland.

WESTBOUND
No. 5—Daily. ★Sleeping Car (10 Section 1 Compartment and Drawing Room Car) New York to Cleveland. ★Erie Parlor Car, Pittsburgh to Cleveland. ★Coach, Pittsburgh to Cleveland.
No. 619—Sundays only. Coaches, Youngstown to Cleveland.
No. 623—Daily. ★Pullman Parlor-Lounge-Diner, Pittsburgh to Cleveland. ★Coach, Pittsburgh to Cleveland.
No. 679—Daily. ★Sleeping Car (10 Section and 2 Drawing Room), Pittsburgh to Chicago. ★Through Coaches, Pittsburgh to Chicago.
No. 685—Daily. ★Sleeping Car for Parlor Car Service and ★Coaches, Pittsburgh to Detroit, via Cleveland. ★Dining Lounge Car, Pittsburgh to Cleveland.
No. 687—Daily. ★Sleeping Car (12 Section-2 Double Bedrooms), Pittsburgh to Detroit. ★Through Coaches, Pittsburgh to Detroit via Cleveland.

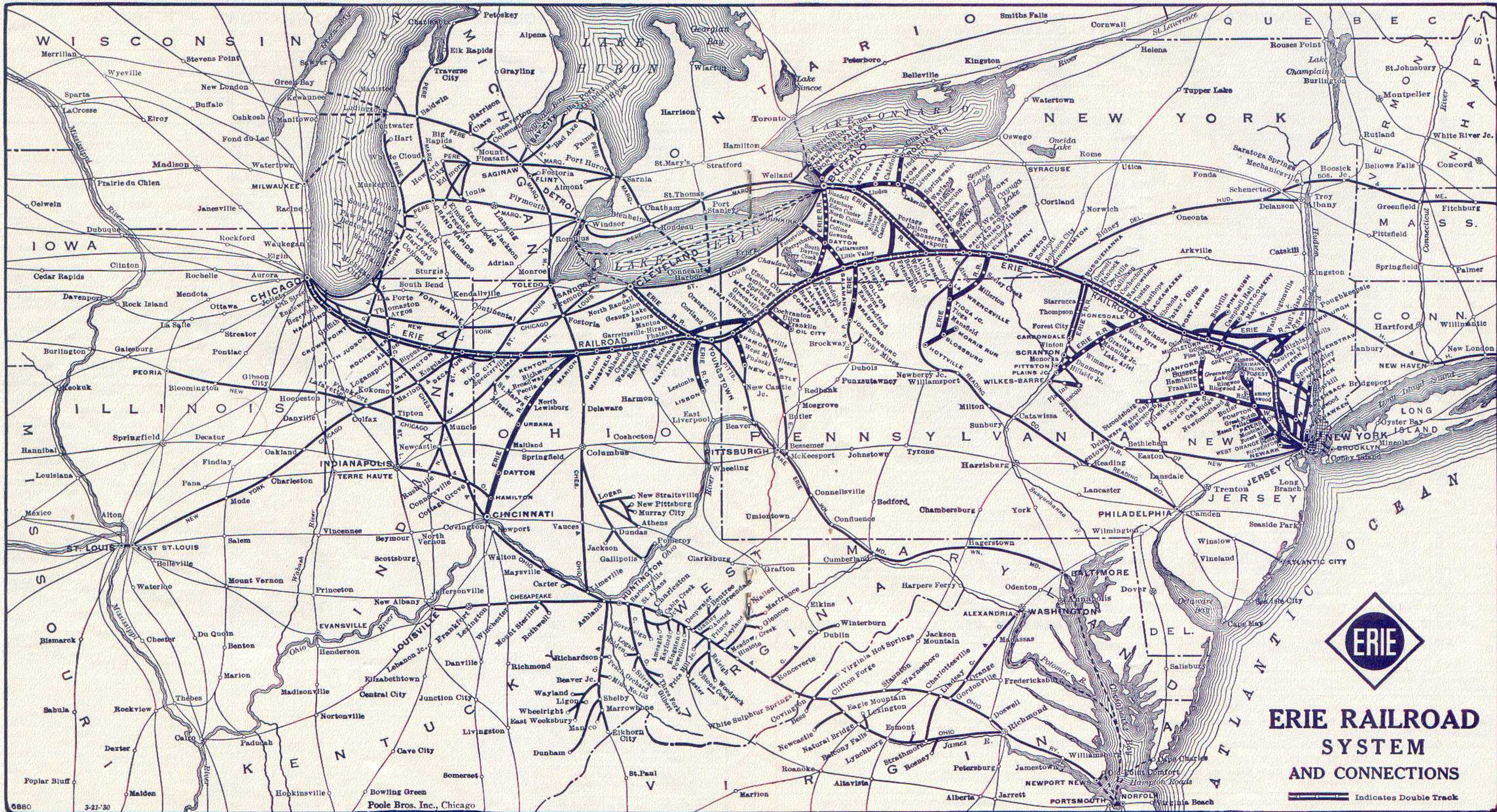
★Cleveland-Pittsburgh Sleeping Car
The Cleveland-Pittsburgh sleeping car operates to and from Union Terminal Cleveland via New York Central (via Ashtabula) to Youngstown, and P. & L. E. Railroad on following schedule:

Eastbound	
Lv Cleveland (Union Terminal)	2:15 AM
Ar Pittsburgh (P&LE Station)	7:25 AM
Westbound	
Lv Pittsburgh (P&LE Station)	11:40 PM
Ar Cleveland (Union Terminal)	7:15 AM

Sleeper open for occupancy at 9:30 P. M. at Cleveland and 9:30 P. M. at Pittsburgh.
Tickets reading via Erie Railroad between Cleveland and Youngstown, and P. & L. E. Railroad between Youngstown and Pittsburgh, will be honored in this sleeping car.

Holidays in the above table refers to the observance of New Year's Day, Memorial Day, Independence Day, Labor Day, Thanksgiving Day and Christmas Day.

For Explanation of Reference Marks and Notes, see Pages 5 and 6.



ERIE RAILROAD SYSTEM AND CONNECTIONS

Indicates Double Track

TABLE 6 NEW YORK AND BUFFALO

Table with columns: WESTBOUND Read Down, EASTERN STANDARD TIME, EASTBOUND Read Up. Includes routes from New York to Buffalo and back, with times and distances.

TABLE 8 BUFFALO—JAMESTOWN

Table with columns: WESTBOUND Read Down, EASTERN STANDARD TIME, EASTBOUND Read Up. Includes routes from Buffalo to Jamestown and back.

TABLE 9 LACKAWAXEN—HONESDALE

Table with columns: West-bound Read Down, EASTERN STANDARD TIME, East-bound Read Up. Includes routes from Lackawaxen to Honesdale and back.

TABLE 10 NEW YORK—SALAMANCA—BRADFORD—CHICAGO

Table with columns: WESTBOUND Read Down, Via Salamanca and BUS of Buffalo and Erie Coach Corp., EASTBOUND Read Up. Includes routes from New York to Chicago via Salamanca, Bradford, and Chicago.

TABLE 7 NEW YORK—CHAUTAUQUA—CHICAGO (Via Jamestown and BUS of Buffalo and Erie Coach Corp.)

Table with columns: WESTBOUND Read Down, EASTERN STANDARD TIME, EASTBOUND Read Up. Includes routes from New York to Chicago via Chautauqua and Jamestown.

Trains 5-557 and 560-6 carry through sleeping car between Bradford and New York. Sleeper on train 557 will be parked at Bradford for occupancy until 8.00 A. M. Busses leave as follows: (running time approximately 45 minutes.)

TABLE 11 NEW YORK—KENOZA LAKE—JEFFERSONVILLE Train and Bus Service via Callicoon

Table with columns: WESTBOUND Read Down, EASTERN STANDARD TIME, EASTBOUND Read Up. Includes routes from New York to Jeffersonville via Kenoza Lake and Callicoon.

Tickets sold and Baggage checked through to Chautauqua. Hand baggage checked without charge. Trunks checked at charge of 25c each.

BLACK WATER BATHS, ALDEN, N. Y.

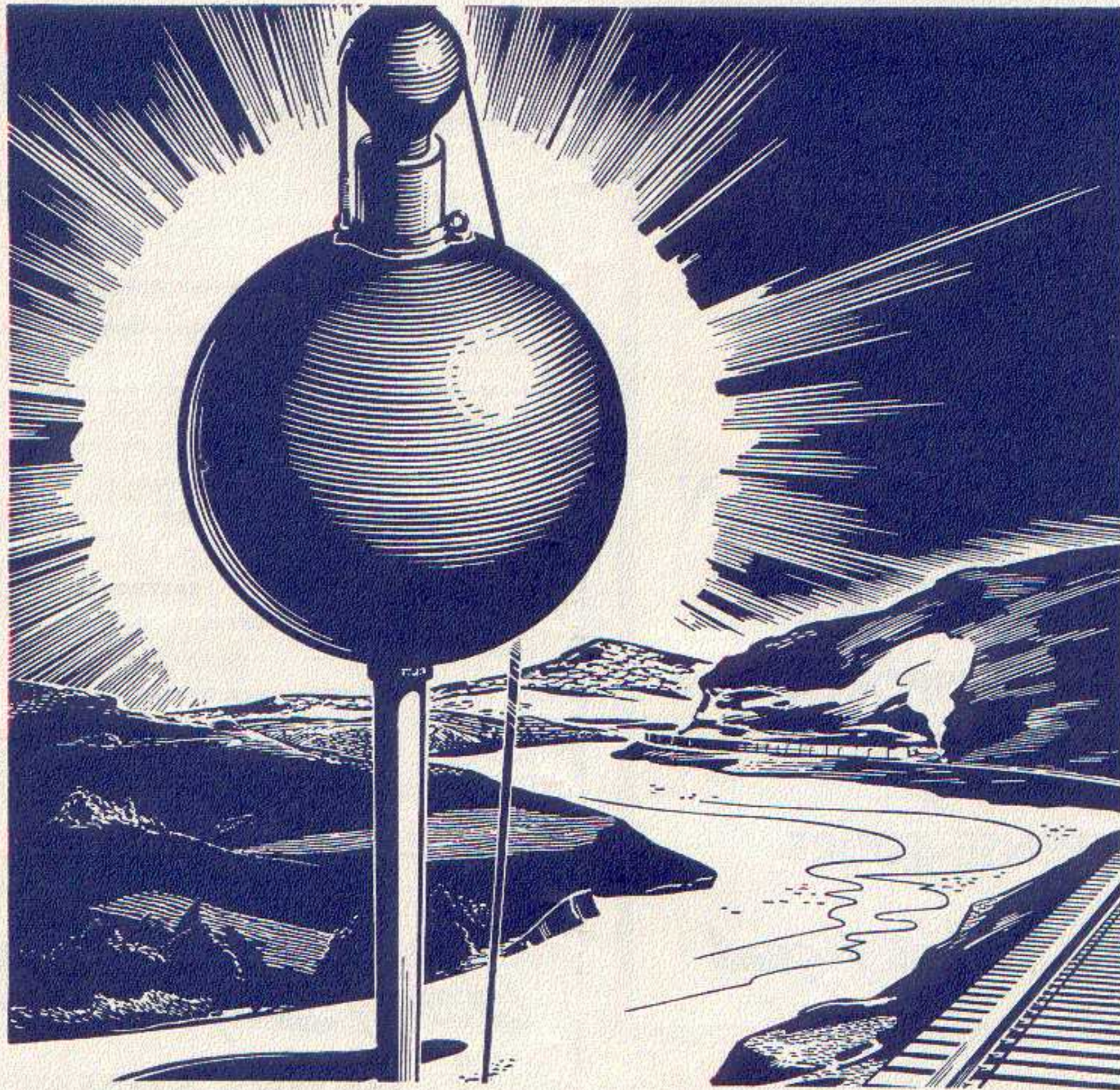
An all year resort where sufferers from rheumatism and nervous ailments have found the Black Water Baths beneficial and curative.

Alden is located 20 miles east of Buffalo on the Erie Railroad.

HOTELS AT ALDEN, N. Y.

- Empire State Hotel Original Black Water Baths and Hotel Alden Inn

NOTE "X" In connection with the bus service the Erie Railroad Company acts as agent only and is not responsible beyond its own line, except as such responsibility may be imposed by law with respect to baggage.



Introducing **THE ORIGINAL Highball**

In the railroading days of Casey Jones, semaphore and disc signals hadn't been invented. With ropes and pulleys they used to raise a ball high on a pole to indicate a clear track. From that came the word "highball"—meaning full speed ahead.

And today, guided by modern signal systems, Erie freight trains highball between New York and Chicago on the fastest of freight schedules.

Erie service is streamlined to save you money. Speed is the watchword. On-time delivery is the goal. Call the Erie agent and see for yourself.



Use Our INSTALLMENT PLAN

For Purchase of
PASSENGER TRANSPORTATION
PULLMAN

ALL-EXPENSE TOURS

Ask Any Ticket Agent

SEE AND KNOW AMERICA

Sight-Seeing



Everywhere

MAKE YOUR RAILROAD TRIP COMPLETE... TAKE SIGHT-SEEING TOURS AT ALL IMPORTANT TOURIST POINTS



See Your Local Railroad Ticket Agent For All Information

TICKET YOUR CAR AND TRAVEL IN COMFORT BY TRAIN

Two first class passenger fares plus one ticket at a slightly higher fare transports two passengers and your car. Minimum charge \$54.00. Ask Erie Ticket or Freight Agents.

LOCAL PARLOR AND CLUB CAR EQUIPMENT

WESTBOUND

No. 9—Daily
Coaches.....New York to Binghamton

No. 27—Daily
Air Conditioned Dining Lounge Car.....New York to Binghamton
Coaches.....New York to Hornell

No. 63—THE TUXEDO—Ex. Sundays and Holidays
Parlor Car.....New York to Port Jervis
(Except Saturdays, Sundays and Holidays)
Coaches.....New York to Port Jervis

No. 67—Except Saturdays, Sundays and Holidays
Erie Club Car.....New York to Port Jervis
Coaches.....New York to Port Jervis

No. 251—Saturdays only Except Holidays
Erie Parlor Car.....New York to Middletown
Coaches.....New York to Middletown

EASTBOUND

No. 28—THE MOUNTAIN EXPRESS—Daily
Coaches.....Binghamton to New York

No. 56—THE TUXEDO—Except Sundays and Holidays
Erie Club Car.....Port Jervis to New York
(Except Saturdays, Sundays and Holidays)
Parlor Car.....Port Jervis to New York
Coaches.....Port Jervis to New York

Going Beyond Chicago?

HERE'S SOMETHING YOU REALLY SHOULD KNOW

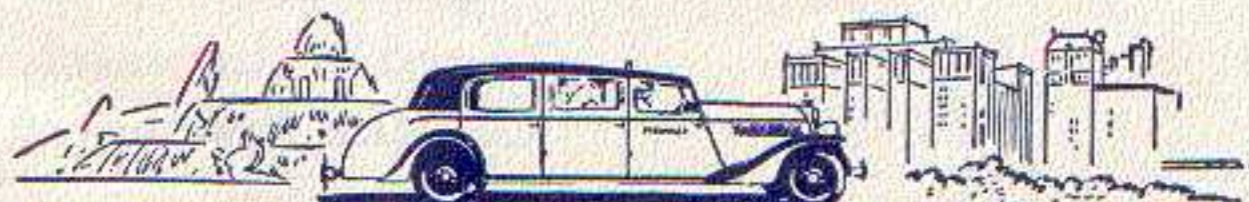


Parmelee Transportation Company maintains a fleet of Limousine Coaches in Chicago to assure through passengers dependable station-to-station service at all times. A Parmelee agent meets incoming trains and arranges for your transportation either to your outgoing station or to any downtown hotel, club or department store.

A special Women's Department, upon advance request, will assist women travelers passing through the city to plan their stop-over time to best advantage.

These special Parmelee services are offered without extra charge to all passengers holding through tickets with Parmelee coupon.

Any Railway Ticket Agent Will Gladly Furnish Full Information About Parmelee Service in Chicago



PARMELEE TRANSPORTATION COMPANY

TABLE 12 ELMIRA-ROCHESTER

Table with columns for Westbound Read Down (5-463, 7-467), Miles, Eastern Standard Time, and Eastbound Read Up (468-8, 464-8). Includes stations like Elmira, Corning, Avoca, Wallace, Cohocton, etc.

TABLE 13 SALAMANCA—DUNKIRK

Table with columns for Westbound Read Down (5-527), Miles, Eastern Standard Time, and Eastbound Read Up (540). Includes stations like Salamanca, Little Valley, Cattaraugus, etc.

LOCATE YOUR PLANT WHERE YOU CAN LOCATE MORE PROFITS Ask us about industrial buildings and vacant land on Erie rails GEO. F. WESTON Industrial Commissioner Erie Railroad, Midland Bldg., Cleveland, O.

TABLE 14 ROCHESTER—AVON

Table with columns for EASTBOUND Read Down (420, 440, 416, 428, 468) and WESTBOUND Read Up (401, 403, 467, 409). Includes stations like Rochester, Mortimer, W. Henrietta, Industry, Golah, Avon.

TRAINS between Avon and Rochester, except Trains 467, 468, will stop on signal at Wiards, Elm Place, Meadowwood, Gannett, Blair, Martin, Brooks, Fenner, Baileys, Crittenden, Westfall and South Park.

Note-HOLIDAYS in above tables refer to the observance of New Year's Day, Decoration Day, Independence Day, Labor Day, Thanksgiving Day and Christmas Day.

WESTERN UNION

TELEGRAMS AND CABLEGRAMS accepted at all telegraph offices of this railroad. DAY LETTERS—50 words for 1 1/2 times the cost of a 10 word telegram. NIGHT LETTERS—25 words for the former price of ten words. RESERVATION MESSAGES—Reserve travel tickets and accommodations and hotel rooms by telegraph—only 35 cents (for 15 words).

HUDSON AND MANHATTAN TUBE TRAINS SCHEDULE OF RUNNING TIME BETWEEN ERIE R. R. JERSEY CITY TERMINAL AND

Table showing running times for Downtown New York (Cortlandt St.) and Uptown New York (33rd Street and 6th Ave, 23rd Street and 6th Ave, etc.).

ERIE R. R. FERRY TIME TABLE EASTERN STANDARD TIME CHAMBERS STREET FERRY Ferry Running Time, 9 Minutes WEEK DAYS

Table with columns for Leave New York for Jersey City and Leave Jersey City for New York, showing times for various routes.

SUNDAYS table with columns for Leave New York for Jersey City and Leave Jersey City for New York, showing times for various routes.

TWENTY-THIRD STREET FERRY Ferry Running Time, 20 Minutes WEEK DAYS

Table with columns for Leave New York for Jersey City and Leave Jersey City for New York, showing times for various routes.

For Explanation of Reference Marks and Notes, See Pages 5 and 6.

SUGGESTIONS

• **FREE BAGGAGE SERVICE.** Let us check your baggage to destination and relieve you of the trouble and inconvenience of carrying it to and from the train—150 pounds free on each adult ticket.

If you desire delivery to your residence or hotel at destination, ask the checking agent for information regarding delivery service and rates.

• **INTERCHANGEABLE SCRIP COUPON TICKETS** issued in \$15.00 and \$30.00 denominations are accepted on trains or at ticket offices in payment of rail passage as well as sleeping and parlor car accommodations, and also as payment for meals in restaurant cars.

• **PREPAID ORDERS.** For the convenience of patrons who do not wish to send money by mail, Erie Railroad ticket agents are prepared to sell prepaid ticket orders for the delivery of transportation, rail and Pullman, from practically all points in the United States, Canada and Mexico. These orders may also include the furnishing of cash.

In emergencies arrangements may be made for the delivery of transportation by telegraph or telephone without charge except when commercial wires are used.

• **BAGGAGE INSURANCE** by the St. Paul Fire & Marine Insurance Co. may be purchased at principal Erie ticket offices. It insures your baggage and personal effects for your entire trip anywhere in the world. Minimum premium twenty-five cents. The ticket agent can give you full particulars.

• **ERIE PLAYING CARDS** are on sale at our ticket offices, excepting in Ohio. Bridge sets one dollar, single decks fifty cents.

• **SPECIAL TOURS AND CONVENTIONS.** Our services are at the disposal of clubs, lodges and other organizations in arranging for trips to conventions and gatherings of all sorts. Concerning fares, train schedules and travel plans, consult or write to any Erie Ticket Agent, or any of the Passenger Department representatives listed on pages 37 & 38 of this folder.

STOP-OVER PRIVILEGES

Niagara Falls

Passengers holding tickets reading "via Erie Railroad" from or through Elmira to or through Youngstown or vice versa may exercise their privilege of going by way of Buffalo and stopping over for as long as ten days at Niagara Falls, but not beyond the final limit of their ticket. Upon request, the Erie Ticket Agent at Buffalo will issue without charge a round trip ticket between Buffalo and Niagara Falls. Frequent service via busses of International Ry. direct from Buffalo Terminal.

Other Points

On local one-way tickets sold at regular fares, local round-trip tickets sold at double the one-way fares, All-Year, Summer and Winter Tourist Tickets, stop-overs will be allowed on going and return trips within final limit of tickets at any Erie Railroad Station en route upon notice to conductor and without deposit of ticket.

GENERAL INFORMATION

STANDARD OF TIME—Erie Lines east of and including Ohio City, Ohio, are operated by Eastern Standard Time, Lines west of Ohio City, Ohio, by Central Standard Time. 12.01 Midnight to 12.00 Noon is indicated by light-faced type. 12.01 Noon to 12.00 Midnight is indicated by heavy-faced type.

TRAINS WILL NOT BE HELD for ferries from New York between hours of 5:00 P.M. and 6:30 P.M. Eastern Standard Time.

HOLIDAYS—The term "Holidays" (unless covered by special note under schedule) refers to the observance of New Year's Day, Lincoln's Birthday, Washington's Birthday, Memorial Day, Independence Day, Labor Day, Columbus Day, Armistice Day (Nov. 11), Election Day (November 5), Thanksgiving Day and Christmas Day.

THIS COMPANY IS NOT RESPONSIBLE FOR ERRORS in time tables, inconvenience or damage resulting from delayed trains or failure to make connections; schedules are subject to change without notice.

FARES PAID ON TRAINS—Conductors are required to charge ten (10) cents in excess of the one-way ticket fare for passengers traveling in coaches only in the territory east of Port Jervis, including side lines and branches. Buy tickets before boarding trains and avoid payment of this extra fare.

CHILDREN under five years of age are carried free when accompanied by parent or guardian; five years and under twelve, half fare, twelve years of age and over, full fare.

ADJUSTMENT OF FARES—Should any misunderstanding arise with conductors or agents, pay the fare required, take receipt and communicate with General Passenger Agent, Midland Bldg., Cleveland, Ohio.

SLEEPING AND PARLOR CAR RESERVATIONS—Space reserved by telegraph or telephone within city limit will be held until:

5:00 P.M. day prior to departure of trains leaving before noon next day.

10:00 A.M. day of departure for trains leaving between noon and 5:00 P.M.

2:00 P.M. day of departure for trains leaving after 5:00 P.M.

When application is by wire or letter from a point outside of city limit, space will be held until fifteen minutes of train time.

BAGGAGE TO BE CHECKED should be delivered at station at least thirty minutes before train time.

BAGGAGE DELIVERY IN NEW YORK CITY—All baggage checked to New York City will be sent to the West 23rd Street Station unless passenger specifies Chambers Street Station at time of checking.

Baggage delivery service in New York will be performed by the Railway Express Agency.

HAND-BAGGAGE in Pullman Cars is restricted to what can be conveniently placed in the berth, seat or other accommodations purchased by the passenger.

CHICAGO PASSENGER AND BAGGAGE TRANSFER is performed by the Parmelee Company. A uniformed agent meets all incoming trains of the Erie Railroad on arrival at Dearborn Station.

ARTICLES LOST ON TRAINS or left in waiting rooms or stations, owners should apply to Lost and Found Bureau, (Baggage Room) Jersey City Depot, or address General Passenger Agent, Midland Bldg., Cleveland, Ohio, giving full description of the property, stating date of loss and number of train.

SAFETY FIRST HINTS—Carefulness on your part helps eliminate accidents. Don't get on or off a train in motion; wait for a full stop. Keep hand baggage out of car aisles; this will remove a cause of inconvenience, possibly of harm, to others. Walk carefully when entering or leaving train; high-heeled shoes are sometimes a cause of tripping or stumbling on car steps. Don't stand or walk close to the railroad track; look both ways before starting across. Courtesy toward your fellow travelers increases the pleasure of your journey.

COURTESY TO OUR PATRONS

SAFETY FIRST has long been the watchword of American Railroads. Equally important is Friendliness on the part of Railroad employes to all patrons.

Our employes are anxious to be Friendly and Courteous so as to add to the enjoyment of your trip. Many letters are received in commendation of individual acts of courtesy. We are grateful for such letters, which encourage our employes in their efforts to serve you better.



THREE ROUSING COOS!!

for RAILWAY EXPRESS—official "Releaser" of America's record-breaking carrier pigeons—Nation-wide carrier of America's goods: pigeons, polo ponies—merchandise—home-baked cakes—anything—everything at low, economical cost. For service phone any Railway Express or Western Union office.

RAILWAY EXPRESS

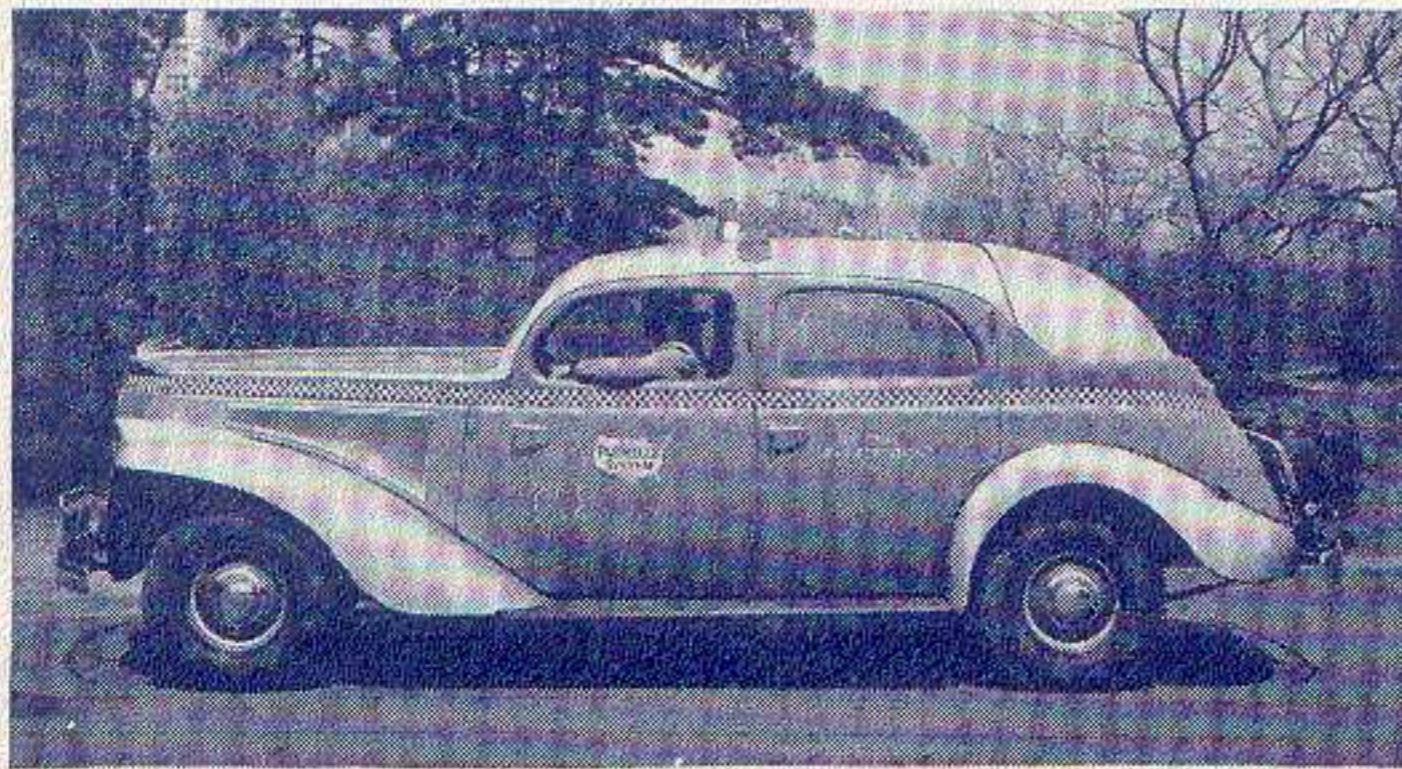


AGENCY, INC.

NATION-WIDE SHIPPING SERVICE

ERIE TRAIN-CAB SERVICE

Takes you from Erie Terminal directly to your door in New York or Brooklyn



ONE Person **90c** TWO Persons **\$1.25** THREE or more **\$1.50**

Thousands have used and praised Erie Train-Cab Service.

Strangers arriving at Erie Terminal, Jersey City, are taken all the way to their destination in New York or Brooklyn. They never get "lost" and are never overcharged. Women accompanied by children appreciate this service. Even seasoned travelers enjoy the comfort of settling down in their own taxicab and forgetting about bags and car changes.

The fares shown above apply from our terminal to any place on Manhattan 110th Street and South, also to any point in the Brooklyn business district.

Service beyond the prescribed zones is metered from the zone limits and charged for at regular rates.

Train-Cab service is available to all who travel from stations west of Middletown, N. Y.

You can buy the Train-Cab coupon with your rail ticket at the ticket office or from the conductor on any through train and you will find your taxicab awaiting the arrival of your train at Jersey City.

Ask the conductor or ticket agent for details.



BERMUDA-CARIBBEAN-SOUTH AMERICA

on American Flag "Santa" Ships

From any city on the Erie Railroad by rail to New York.

From New York a luxurious "Santa" liner especially built for tropical cruising. All outside rooms, each with private bath. Dining rooms on promenade decks with roll back domes. Outdoor tiled swimming pools.

12 days—permitting visits to 8 cities in Bermuda, Netherlands West Indies and Venezuela. Optional shore excursions include 2 day auto trip thru Venezuela visiting La Guaira, Caracas, Maracay, Valencia and Puerto Cabello.

No passports required.

Sailings from New York every Friday.

Ask any ticket agent of the Erie Railroad for complete information and

HOMETOWN TO HOMETOWN RATES



CONDENSED THROUGH FREIGHT SCHEDULES

FOR INFORMATION ONLY. For details, consult any freight traffic representative shown on opposite pages.

EASTBOUND — READ DOWN							WESTBOUND — READ UP					
TRAIN 74 and Connections	Train NE 98 and Connections	TRAIN 98 and Connections	TRAIN 72 and Connections	TRAIN 78 and Connections	TRAIN 90 and Connections	TRAIN 86	Central Time	TRAIN 77 and Connections	TRAIN 81 and Connections	TRAIN 91 and Connections	Train Adv 87 and Connections	TRAIN 87 and Connections
Example Day	Example Day	Example Day	Example Day	Example Day	Example Day	Example Day		Example Day	Example Day	Example Day	Example Day	Example Day
8:00AM Mon. 9:30AM Mon. 1:45PM Mon. 4:15PM Mon. 6:15PM Mon.	5:30PM Mon. 7:00PM Mon. 1:40AM Tue. 3:35AM Tue.	5:30PM Mon. 7:00PM Mon. 1:40AM Tue. 3:35AM Tue. 6:30AM Tue.	9:45PM Mon. 11:15PM Mon. 5:00AM Tue. 7:45AM Tue. 9:30AM Tue.				Lv. Chicago Lv. Hammond Lv. Huntington Lv. Lima Ar. Marion <i>Eastern Time</i>	11:00PM Wed. 9:45PM Wed. 3:15PM Wed. 11:30AM Wed. 10:30AM Wed.	2:00AM Thu. 12:15AM Thu. 8:00PM Wed. 5:30PM Wed. 3:30PM Wed.	3:00AM Thu. 1:30AM Thu. 9:30PM Wed. 5:30PM Wed. 4:00PM Wed.		
		6:50PM Mon. 1:30AM Tue. 2:30AM Tue. 3:15AM Tue.					Lv. Cincinnati Lv. Dayton Lv. Maitland (Springfield) Lv. Urbana			6:50AM Thu. 11:30PM Wed. 9:00PM Wed. 8:15PM Wed.		
8:45PM Mon. 12:01AM Tue. 12:50AM Tue.	9:00AM Tue.	9:30AM Tue. 11:50AM Tue. 2:00PM Tue.	12:15PM Tue. 3:45PM Tue. 5:00PM Tue.				Lv. Marion Lv. Akron Lv. Kent	7:45AM Wed. 2:45AM Wed. 1:35AM Wed.	1:25PM Wed.	3:30PM Wed. 11:50AM Wed. 10:50AM Wed.		
2:30PM Tue.			6:30AM Wed.				Ar. Cleveland			2:15AM Wed.		
7:00PM Mon.							Lv. Cleveland	6:30AM Wed.				
7:30AM Tue. 11:00PM Mon. 5:00PM Tue.		7:30AM Tue.	10:00PM Tue.				Ar. Youngstown Lv. Youngstown Ar. New Castle Lv. New Castle Ar. Sharon Lv. Sharon Ar. Meadville Lv. Meadville Ar. Jamestown	12:01AM Wed. 2:00AM Wed. 8:00AM Tue. 10:45PM Tue. 12:45AM Wed. 10:15PM Tue. 9:15PM Tue. 6:15PM Tue.		5:00AM Wed. 1:00PM Wed. 5:00PM Wed. 3:00PM Wed. 8:00AM Wed. 7:15AM Wed. 4:35AM Wed.		
8:30AM Tue. 12:25AM Tue. 3:25AM Tue. 3:55AM Tue.		8:00AM Tue. 10:30AM Tue.	12:25AM Wed. 8:00PM Tue. 9:00PM Tue. 11:45PM Tue.									
		12:45AM Wed. 7:30PM Tue.	2:00AM Wed.	7:15AM Wed.	9:00AM Wed.	6:15PM Wed.	Ar. Buffalo Lv. Buffalo			10:00PM Tue. 9:30PM Tue.	7:00AM Wed.	4:00PM Wed.
		6:15AM Wed. 5:30PM Tue.					Ar. Rochester Lv. Rochester			5:30PM Mon. 6:15AM Wed.	9:00AM Wed.	
10:30AM Tue. 12:01PM Tue.		12:15AM Wed. 2:15AM Wed.	5:00AM Wed. 8:30AM Wed.	11:15AM Wed. 1:00PM Wed.	1:00PM Wed. 3:00PM Wed.	8:50PM Wed.	Ar. Hornell Lv. Hornell	2:00PM Tue.	9:45PM Tue.	12:30AM Wed. 6:15PM Tue.	4:45AM Wed.	12:15PM Wed. 11:30AM Wed.
			2:15AM Thu.				Ar. Philadelphia (Rdg)			8:30PM Mon.		
12:01AM Wed. 7:00PM Tue.	3:00AM Wed.	3:30AM Wed. 5:45AM Wed.	10:00AM Wed. 12:01PM Wed.	12:01AM Thu. 7:00PM Wed.	12:01AM Thu. 7:00PM Wed.	10:30PM Wed. 12:01AM Thu.	Ar. Elmira Ar. Binghamton	9:30AM Tue. 7:15AM Tue.		4:30PM Tue. 2:50PM Tue.	2:30AM Wed. 1:10AM Wed.	9:30AM Wed. 7:15AM Wed.
9:30AM Wed. 8:00PM Wed. 9:30PM Wed.	4:00PM Wed. 11:55PM Wed. 2:30AM Thu.	5:00PM Wed. 3:00AM Thu. 3:00PM Thu.	4:15AM Thu.	9:30AM Thu. 8:00PM Thu. 9:30PM Thu.	9:30AM Thu. 8:00PM Thu. 9:30PM Thu.		Ar. Albany (D&H) Ar. Boston (B&M) Ar. Portland (D&H-B&M)	10:00AM Mon. 5:00AM Mon. 11:00PM Sun.		10:30PM Mon. 6:30PM Mon.		10:00AM Tue. 5:00AM Tue. 11:00PM Mon.
			8:00AM Thu.				Ar. Scranton Lv. Scranton			11:00PM Mon.		8:00AM Wed.
3:30AM Wed. 8:00PM Wed.	9:00AM Wed. 6:15PM Wed. 11:50PM Wed. 3:00PM Thu.	1:00PM Wed. 9:25PM Wed. 3:00AM Thu.		6:30AM Thu. 11:50PM Thu. 3:00PM Fri.	6:30AM Thu. 11:50PM Thu. 3:00PM Fri.		Ar. Maybrook Ar. New Haven (NH) Ar. Boston (NH) Ar. Portland (NH-B&M)			8:30AM Tue. 1:25AM Tue. 6:45PM Mon. 2:00AM Mon.		
4:30AM Wed. 6:30AM Wed. 1:30AM Wed.		12:30AM Thu. 6:30AM Thu. 3:45PM Wed.	12:30AM Thu. 6:30AM Thu. 12:30AM Thu.	4:30AM Thu. 6:30AM Thu. 3:30AM Thu.	6:00AM Thu. 8:00AM Thu. 4:30AM Thu.	7:30AM Thu. 6:20AM Thu.	Ar. Paterson Ar. Newark Ar. Croxton Ar. Jersey City	5:30PM Mon. 9:00PM Mon. 12:20AM Tue.		5:30PM Mon. 9:00PM Mon. 3:30AM Tue.	5:30PM Tue. 6:45PM Tue.	5:30PM Tue. 9:00PM Tue. 10:30PM Tue.
							NEW YORK (see note)					

NOTE—Freight to and from New York City and Brooklyn stations and piers is handled expeditiously on carfloats or lighters via Croxton or Jersey City. Prompt delivery or forwarding is assured.

“SHIP AND TRAVEL ERIE”

ERIE RAILROAD COMPANY

(ROBERT E. WOODRUFF AND JOHN A. HADDEN, TRUSTEES)

CHICAGO AND ERIE RAILROAD CO.

General Offices } Midland Building, Cleveland. Telephone, Cherry 8400.
 Hudson Terminal, 50 Church Street, Corner Fulton, New York. Telephone, Cortlandt 7-9200.
 Utilities Building, 327 South La Salle Street, Chicago. Telephone, Harrison 4160.

TRAFFIC AND DEVELOPMENT DEPARTMENTS

TRAFFIC

CARL HOWE, Vice-President, Cleveland.

G. C. MANNING, Assistant Vice-President,
 L. B. BURFORD, Assistant Vice-President,

New York.
 Cleveland.

W. V. KENNEDY, Assistant Vice-President,
 G. A. LAMB, Assistant to Vice-President,

Chicago.
 Cleveland.

PASSENGER

C. C. HOWARD, Passenger Traffic Manager,
 R. B. ROGERS, General Passenger Agent,
 H. T. HARLOW, General Passenger Agent,
 T. R. PATTON, Assistant General Passenger Agent

Cleveland.
 " "
 Chicago.
 Youngstown.

F. A. WALDRON, Assistant General Passenger Agent,
 ALFRED FYNN, Assistant General Passenger Agent,
 E. J. HAWERKOST, General Western Passenger Agent,
 C. L. CHAPMAN, Gen. Baggage, Mail and Express Agent,

New York.
 Chicago.
 " "
 New York.

FREIGHT—Rates

L. B. BURFORD, Assistant Vice-President, Cleveland.
 F. G. LANTZ, Freight Traffic Manager, Chicago.

Cleveland.
 " "

C. E. COURTER, Assistant General Freight Agent,
 ALFRED BLAUDEL, Assistant Freight Traffic Manager,
 E. C. HALLBERG, General Freight Agent,

Cleveland.
 Chicago.
 " "

FREIGHT—Sales and Service

G. C. MANNING, Assistant Vice-President,
 T. E. McANDREWS, Freight Traffic Manager,
 E. J. DEAN, Freight Traffic Manager,
 G. R. WHEELER, General Freight Agent,
 J. T. McENTEE, Assistant General Freight Agent,
 E. W. VAIL, General Eastern Freight Agent,
 F. D. HARTNETT, Milk Freight Agent,
 T. W. KANE, Grain Agent,

New York.
 New York.
 Cleveland.
 New York.
 Buffalo.
 New York.
 " "

W. V. KENNEDY, Assistant Vice-President,
 H. W. VON WILLER, Freight Traffic Manager,
 J. G. HILL, General Freight Agent,
 G. W. MADSEN, General New England Agent,
 D. R. THOMPSON, Assistant General Freight Agent,
 H. C. SCHMIDT, Assistant General Freight Agent,
 W. H. KOCH, Assistant General Freight Agent,
 H. B. ROGERS, General Live Stock Agent,

Chicago.
 " "
 " "
 Boston.
 Pittsburgh.
 Youngstown.
 Detroit.
 East Buffalo, N. Y.

COAL AND COKE

W. H. STADELMAN, Coal Traffic Manager,
 J. A. FERGUSON, Coal Freight Agent,
 F. D. AUSTIN, General Coal and Coke Agent,
 E. C. JULIUS, Coal and Coke Agent,
 W. N. STENFELT, Coal Agent,
 M. S. SWEENEY, Coal Freight Agent,
 D. D. JAMIESON, Coal Freight Agent,
 A. E. BARKALOW, Assistant Coal Freight Agent,
 J. A. MUCHA, Assistant Coal Freight Agent,

Cleveland.
 " "
 Chicago.
 " "
 " "
 Pittsburgh.
 New York.
 " "
 Buffalo.

FOREIGN FREIGHT TRAFFIC

T. E. McANDREWS, Foreign Freight Traffic Manager,
 W. C. OTTEN, Foreign Freight Agent,
 A. E. PETERSON, Foreign Freight Agent,
 W. S. PENCHARD, Export and Import Agent,
 EUROPEAN GENERAL AGENTS—SUTHERLAND INTERNATIONAL
 DESPATCH, LIMITED,

New York.
 " "
 Chicago.
 New York.
 London, Eng.

PERISHABLE AND DAIRY TRAFFIC

R. E. O'GRADY, Manager,
 P. J. NAPOLI, Assistant Manager,
 H. W. BOUMANN, Western Dairy Agent,

Pier 20, N. R., New York.
 " "
 Chicago.

INDUSTRIAL DEVELOPMENT

CARL HOWE, Vice-President, Cleveland.

GEO. F. WESTON, Industrial Commissioner,

Cleveland.

H. J. HART, Industrial Agent,

New York.

TRAFFIC DEPARTMENT REPRESENTATIVES

Akron, O.—80 East Exchange St.
 (Telephone Hemlock 8194-8195)
 J. P. CLARK, Division Passenger Agt.
 C. E. KING, General Agent.

Albany, N. Y.—Room 2, D. & H. Bldg.
 (Telephone 4-6051)
 L. E. NEWMAN, General Agent.

Atlanta, Ga.—1515-16 Healey Bldg.
 (Telephone Walnut 2135)
 C. G. ANDREWS, General Agent.

Baltimore, Md.—1301-3 Munsey Bldg.
 (Telephone Plaza 8691)
 W. J. MURRAY, General Agent.

Birmingham, Ala.—1007 Watts Bldg.
 (Telephone 3-1327)
 WM. L. THORNTON, General Agent.

Birmingham, England—13 Corporation
 St.
 MAURICE G. COOKE, General Agent.

Boston, Mass.—150 Causeway St.
 (Telephone Capitol 2510-11-12)
 G. W. MADSEN, Gen. New Eng. Agt.

Bradford, Pa.—Erie Station.
 (Telephone 3413)
 J. C. MOFFATT, General Agent.

Buffalo, N. Y.—6 North Division St.
 (Telephone Washington 4300)
 R. E. TOWNS, Division Passenger Agt.
 238 Main Street.
 (Telephone Wash. 1865)
 J. T. McENTEE, Asst. General Freight Agt.

Chicago, Ill.—327 South La Salle St.
 (Telephone Harrison 4160)
 B. Y. VAUGHN, Trav. Pass. Agent
 C. D. TURNER, General Agent.

Cincinnati, O.—503 Gwynne Bldg.
 (Telephone Main 3420-3421)
 R. L. MURPHY, General Agent.

Cleveland, O.—Midland Bldg.
 (Telephone Cherry 8400)
 J. M. SKAEHILL, Division Freight Agt.
 913 Huron Road
 (Telephone Cherry 8400)
 G. SAUNDERS, Div. Passenger Agt.

Columbus, O.—Rooms 309-310 Atlas
 Bldg., 8 East Long Street.
 (Telephone Adams 7331)
 C. R. MARTIN, General Agent.

Dallas, Tex.—2113 Tower Petroleum Bldg.
 1905 Elm St.
 (Telephone 2-7352)
 L. J. MARION, General Agent.

Dayton, O.—1004-8 Miami Savings Bldg.
 (Telephone Adams 8481)
 W. P. KROMPHARDT, Div. Frt. Agt.

Des Moines, Ia.—Hubbell Bldg.,
 904 Walnut Street,
 (Telephone 4-0018)
 L. T. COULSTON, General Agent.

Detroit, Mich.—Rooms 2-124 and 2-125
 General Motors Bldg.
 (Telephone Madison 2360-2361)
 W. H. KOCH, Assistant General Frt. Agt.

East Buffalo, N. Y.—Live Stock Exch. Bldg.
 (Telephone Washington 4300)
 H. B. ROGERS, General Live Stock Agt.

Elmira, N. Y.—Erie Station.
 (Telephone 2-1621)
 J. W. O'HARA, Division Passenger Agt.
 (Telephone 2-0377)
 C. F. WHADCOCK, Division Freight Agent.

Glasgow, Scotland—82 Mitchell St.
 W. S. THOMSON, General Agent.

Huntington, Ind.—Erie Station.
 (Telephone 743)
 F. C. McCARTHY, Division Freight Agt.

Indianapolis, Ind.—143 No. Meridian St.
 (Telephone Lincoln 2088)
 T. J. WILLIAMSON, General Agent.

Jamestown, N. Y.—Erie Station
 F. L. COLLINS, Div. Frt. Agt.
 (Telephone 7921-7922)

Jersey City, N. J.—Erie Station
 (Telephone Journal Square 2-6400)
 P. F. ARROYO, Genl. Agt. Pass. Dept.

Kansas City, Mo.—Rooms 326-7 Railway
 Exchange Bldg., 7th and Walnut Streets.
 (Telephone Victor 6328)
 N. C. FRICK, General Agent.

Liverpool, Eng.—17 Brunswick St.
 A. G. TAYLOR, General Agent.

London, E. C. 3. Eng.—4 Billiter St.
 PETER BUSWELL, General Agent.
 D. S. DEANS, Genl. Continental Agt.

Los Angeles, Cal.—510 West 6th Street.
 (Telephone Vandike 6542)
 J. A. RUSSELL, General Agent.

Marion, O.—Terminal Building
 (Telephone 2657)
 A. R. TENNIS, Division Freight Agent.

Memphis, Tenn.—1628-9 Exchange
 Bldg., Madison & Second Sts.
 (Telephone 8-8781)
 R. L. MILLER, General Agent.

Milwaukee, Wis.—818-8 Majestic Bldg.,
 231 West Wisconsin Ave.
 (Telephone Marquette 5555-5556)
 H. A. WILSON, General Agent.

Minneapolis, Minn.—125 Third Street, So.
 (Telephone Main 3604)
 C. V. HARROW, General Agent.

Newark, N. J.—1801-2 Military Park
 Bldg., 60 Park Place.
 (Telephone Market 2-0525-26-27)
 A. R. WALTON, General Agent.

New Haven, Conn.—401 Powell Bldg.
 (Telephone 5-7937)
 G. E. ROBB, General Agent.

New Orleans, La.—Room 1417 Whitney Bldg.
 (Telephone Raymond 9786)
 E. W. BURNETT, General Agent.

New York, N. Y.—630-5th Ave. Room
 219, Rockefeller Center.
 (Telephone Circle 5-7222)
 F. J. WILD, Genl. Agt. Pass. Dept.
 A. G. OLDENQUIST, City Pass. Agt.
 50 Church Street.
 (Telephone Cortlandt 7-9200)

E. W. VAIL, General Eastern Frt. Agent.
 J. G. VREELAND, Division Freight Agent.

Omaha, Neb.—1819 Farnam St.
 (Telephone Jackson 4866)
 C. L. COX, General Agent.

Peoria, Ill.—920 Jefferson Building, Cor.
 South Jefferson & Fulton Streets.
 (Telephone 8007)

E. T. OLANDER, General Agent.

Philadelphia, Pa.—1009-10 Finance Bldg.
 (Telephone Rittenhouse 8975-8976)
 B. F. CONWAY, General Agent.

Pittsburgh, Pa.—Gulf Building.
 (Telephone Grant 4831-2-3)
 D. R. THOMPSON, Asst. Genl. Frt. Agt.

Portland, Ore.—Room 421 Pacific Bldg.,
 520 S. W. Yamhill St.
 (Telephone Beacon 3706)
 H. L. SKEEN, General Agent.

Rochester, N. Y.—Erie Station.
 (Telephone Main 2826)
 B. C. WEDD, Division Freight Agent.

San Francisco, Cal.—681 Market St.
 (Telephone Sutter 3875)
 J. A. LLOYD, General Agent.

St. Louis, Mo.—Room 906, 1218 Olive St.
 (Telephone Chestnut 7723-7724)
 D. C. KELSEY, General Agent.

St. Paul, Minn.—336 Robert St.
 (Telephone Cedar 5912)
 C. R. PETRY, General Agent

Scranton, Pa.—Mill & Smith Sts. (Dun-
 more, Pa.)
 (Telephone—Scranton 8191)
 G. W. SHUMAN, Division Freight Agent.

Seattle, Wash.—1116-7 White
 1338 Fourth Ave.
 (Telephone Elliot 4834)
 R. J. DUNDON, General Agent.

Springfield, O.—516 First National Bank
 Building.
 (Telephone 2-5351)
 E. W. KEILEY, General Agent.

Toledo, O.—542 South Erie Street.
 (Telephone Main 3816)
 H. J. SPANGENBERG, General Agent.

Toronto, Ont.—69 Yonge Street.
 (Telephone Elgin 4077)
 E. P. MORRILL, General Agent.

Tulsa, Okla.—Room 1511 Hunt Bldg.
 (Telephone 3-8613)
 H. A. BOCKMAN, Commercial Agent.

Washington, D. C.—903 Southern Bldg.
 (Telephone National 6075)
 W. J. MURRAY, General Agent.

Youngstown, O.—Terminal Building.
 (Telephone 41101)
 H. C. SCHMIDT, Asst. Genl. Frt. Agt.
 F. W. FISCHER, Div. Frt. Agt.