



**ERIE RAILROAD SYSTEM
TIME TABLES**

**ERIE RAILROAD SYSTEM
TIME TABLES**

The Scenic Route

BETWEEN

**NEW YORK • BUFFALO
CLEVELAND • CHICAGO**

The Scenic Route

BETWEEN

**NEW YORK • BUFFALO
CLEVELAND • CHICAGO**

"A TRACK OF RAILS WITH CARS PASSING AND REPASSING"



Bronze tablet beside the Erie rails at Deposit, New York

● It is November 7, 1835. Sunrise traces frosty, golden edges on the mountains surrounding Deposit, N. Y. In the valley between, on the east side of the Delaware a group of prosperous looking men in satin-lapelled greatcoats and tall beaver hats are engaged in a curious occupation. One, his name is James G. King, shovels up a wheelbarrow full of dirt, another, Samuel B. Ruggles, wheels it away and dumps it.

● Each one present goes through the same routine. No dainty spadeful of earth for these pioneers—they are breaking ground for the Erie Railroad.

● Mr. King, president of the company, makes a speech, saying in part: "What now appears a beautiful meadow will, in a few years, present a far different aspect, a track of rails with cars passing and repassing. The freight will amount to \$200,000 per annum—eventually," he added, for safety's sake.

● We wish that today (a hundred years later) Mr. King, and those in his audience who took his statement with a grain of salt, could stand a while where they stood that November morning and watch a few big Erie freights and fast air-conditioned passenger trains go by.

● Sometimes even our dreams are too modest.

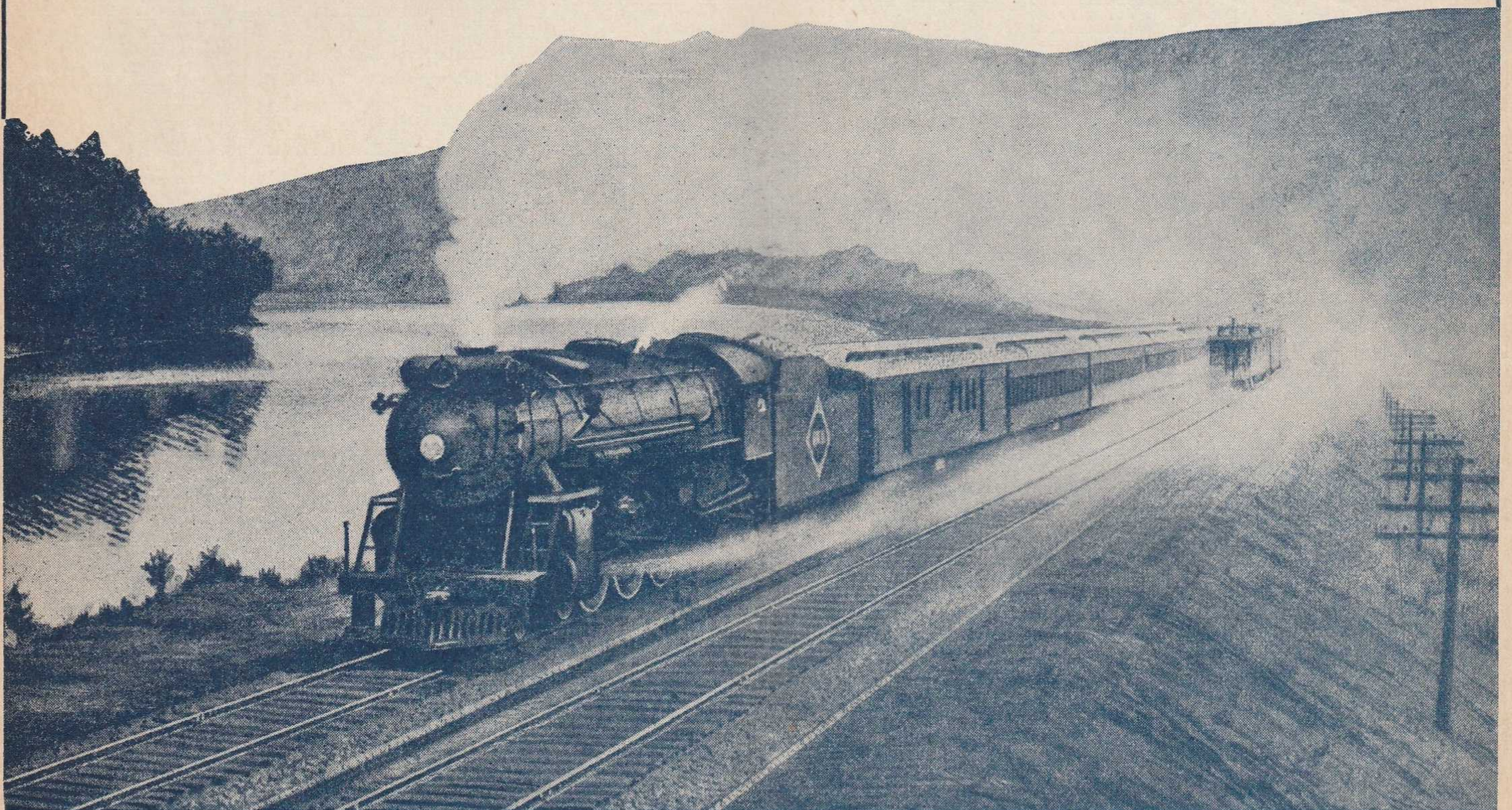


TABLE OF CONTENTS

Equipment of Through Trains... Page 5, 6
Suggestions... 30
General Information... 31, 32
Standard of Time
Holidays
Fares Paid on Trains
Adjustment of Fares
Sleeping and Parlor Car Reservations
Baggage Regulations
Articles left on Trains
Equipment of Local Trains... 7, 8, 9, 10
Equipment of Detroit, Toledo, Cleveland, Youngstown and Pittsburgh Trains... 17, 18
Erie Railroad Map... 19, 20, 21, 22
Sleeping and Parlor Car Fares... 31, 32
One-way Rail Fares... 31, 32
Reference Marks and Notes... 33, 34
Traffic Department Representatives... 35, 36
Ticket Offices and Passenger Stations in Principal Cities... 37

Train Service
Condensed Schedule of Through Trains... 5, 6
New York-Binghamton... 7, 8, 9, 10
Binghamton-Akron... 11, 12
Akron-Chicago... 13, 14
New York-Buffalo... 13
Detroit-Toledo-Cleveland-Youngstown-Pittsburgh... 17, 18
New York-Chautauqua... 24
Chautauqua-Akron-Chicago... 24
New York-Kenoza Lake-Jeffersonville... 26
New York-Monticello... 25
New York-Salamanca-Bradford... 24
New York-Meadville-Oil City... 26
Chicago-Meadville-Oil City... 26
Bradford-Salamanca-Cleveland-Chicago... 23
Branch Line Service... 23 to 27, inc.
Hudson & Manhattan R. R. Service... 28
Ferry Schedule... 28
Chautauqua Lake Service... 24

STATIONS ON ERIE RAILROAD
At Which Trains Are Scheduled To Stop
Numerals Opposite Station Names Indicate Time Table Numbers

Table listing stations on the Erie Railroad with corresponding time table numbers. Columns include station names and numerals. Stations listed include Addison, Akron, Alliquippa, Albany, Alden, Alfred, Allegany, Allendale, Andover, Arden, Arden House Station, Arkport, Ashantee, Ashland, Atlanta, Attica, Aurora, Avoca, Avon, Baileys, Barberton, Barton, Bath, Beaver, Beaver Falls, Belmont, Bethlehem Bridge, Big Flats, Binghamton, Blair, Blasdel, Blooming Grove, Bradford, Brooks, Buffalo, Bullville, Burns, Callicoon, Cambridge Springs, Cameron, Cameron Mills, Campbell, Canaseraga, Canisteo, Carlton, Carrollton, Castile, Cattaraugus, Central Valley, Chautauqua, Chautauqua Lake, Chemung, Cherry Creek, Chester, Chicago, Circleville, Cleveland, Cochection, Cochran, Cohocton, Collins, Conesus, Conesus Lake Jet, Conewango, Cooper's, Coraopolis, Corning, Corry, Craigville, Crittenden, Crown Point, Cuba, Cuyler, Dale, Dalton, Dansville, Darien Center, Dayton, Decatur, Depew, Deposit, Detroit, Dunkirk, East Bradford, East Buffalo, East Fifty-fifth St., East Honesdale, East Ninety-third St., East Rutherford, Eden Center, Eden Valley, Ellwood City, Elmira, Elm Place, Endicott, Englewood, Falconer, Fenners, Forestville, Fowler, Franklin, Friendship, Gallion, Gannett, Garrettsville, Garwoods, Geauga Lake, Geneseo, Girard, Glen Eyre, Golah, Goshen, Gowanda, Graham, Great Bend, Greenville, Greycourt, Griswolds, Groveland, Gulf Summit, Hale's Eddy, Hamburg, Hammond, Hancock, Hankins, Harriman, Hawley, Hickory Grove, Highland Mills, Hillburn, Hohokus, Honesdale, Hornell, Horseheads, Houghton Farm, Howells, Hubbard, Huntington, Huston, Industry, Jaycocks, Jamestown, Jeddoe, Jeffersonville, Jersey City, Johnson City, Jones, Kanona, Kellams, Kennedy, Kenoza Lake, Kent, Kenton, Kimbles, Kirkwood, Lackawaxen, Lake Huntington, Lancaster, Lawtons, Leavittsburg, Letchworth Park, Liberty, Liberty St., Lima, Limestone, Linden, Linden St., Little Valley, Livonia, Long Eddy, Lordville, Mahoning, Mahwah, Mansfield, Mantua, Marilla, Marion, Markhams, Martin, Mast Hope, Meadowwood, Meadville, Middletown, Mill Rift, Monaca, Mongaup, Monroe, Monticello, Mortimer, Mountainville, Mount Morris, Narrowsburg, Newark, New Brighton, Newburgh, New Castle, New Hampton, New Windsor, New York, Niles, North Collins, North Randall, Ohio City, Oil City, Olean, Oneonta, Oquaga, Otisville, Owego, Oxford, Painted Post, Parker's Glen, Passaic, Paterson, Perrysburg, Persia, Phalanx, Pierce's, Pine Bush, Pittsburgh, Pond Eddy, Portage, Port Jervis, Ramapo, Ramsey, Randolph, Rathbone, Ravenna, Reno, Ridgewood, Rittman, Rochester, Rochester, Rock Glen, Rowlands, Rutherford, Salamanca, Salisbury Mills, Savona, Seven Nations, Shakers, Sharon, Shaws, Sheridan, Shimer's Rock Cut, Shohola, Silver Springs, Skinners, Sloatsburg, Smithboro, Smith's Mills, Solon, Sonyea, South Avon, South Dayton, Southfields, South Lima, South Livonia, South Park, Sparrowbush, Spencerville, Spring Street, Springwater, State Hospital, Sterling, Stockport, Suffern, Sugar Creek, Susquehanna, Swains, Thompson Ridge, Tioga Centre, Toledo, Town Line, Tusten, Tuxedo, Union City, Utica, Vail's Gate, Vall's Gate Junc., Wadsworth, Waldwick, Wallace, Warren, Warsaw, Washington Hunt, Washingtonville, Water Valley, Waverly, Wayland, Webster, Wellsburg, Wellsville, Wellwood Ave., West Colang Park, West Cornwall, Westfall, West Henrietta, West Newburgh, West Perryburg, West Sparta, White Mills, Wards, Woodbury, Wurtsboro, Youngstown.

ADDITIONAL STATIONS ON ERIE RAILROAD
At Which Trains Do NOT Stop Regularly
The distance shown is from New York as indicated in Tables 4 and 5

Table listing additional stations on the Erie Railroad with distances from New York. Columns include station name, location, and distance. Stations listed include Adrian, Akron, Aldine, Alger, Almond, Ashville, Athens, Atlantic, Bass Lake, Bear Lake, Belvidere, Bippus, Bolivar, Boone Grove, Braceville, Burbank, Caledonia, Campville, Columbus, Creston, DeCliff, De Long, Disko, Elgin, Erwins, Foraker, Forty-seventh St., Freedom, Geneva, Glenmore, Griffith, Harrods, Hegewisch, Hepburn, Highlands, Hinsdale, Hurlburt, Kemp, Kingsland, Kouts, Laketon, Lakewood, Leiters, Markel, Martel, McGuffey, Millers, Mill Village, Monterey, Nankin, Newton, Niobe, North Judson, Ontario, Ora, Palmer, Pavonia, Pershing, Polk, Preble, Red House, Saegertown, Scio, Servia, Sharpsville, Steamburg, Sterling, Stony Point, Tallmadge, Toecin, Uniondale, Venango, Watts Flats, West Salem, Wilders, Windham, Winfield, Wren.

TABLE 1

CONDENSED TABLE OF THROUGH TRAINS NEW YORK AND BUFFALO, CLEVELAND AND CHICAGO

(FOR LOCAL TRAINS AND INTERMEDIATE TIME OF THROUGH TRAINS SEE LOCAL TABLES)

Air-conditioned Trains

Air-conditioned equipment has been assigned to regular sections of trains as shown herein. Every effort will be made to provide it as specified, but the right is reserved to employ non-air-conditioned cars as necessitated by volume of traffic or emergencies.

WEST BOUND

EAST BOUND

THE ERIE LIMITED TRAIN NO. 1—DAILY
New York—Jamestown—Chicago

Lv New York, W. 23d St.	8.45AM E.S.T.
" " Chambers St.	8.50 " "
" " Jersey City Sta.	9.10 " "
" Paterson	9.37 " "
" Ridgewood	9.47 " "
" Binghamton	2.35PM " "
" Elmira	3.52 " "
" Olean	6.45 " "
" Bradford	ad 5.32 " "
" Jamestown	8.05 " "
" Meadville	9.40 " "
Ar Oil City	11.20 " "
Lv Youngstown	11.17 " "
" Akron	12.45AM " "
Ar Chicago (Dearborn Sta.)	8.15AM C.S.T.

EQUIPMENT

Air-Conditioned Sleeping Cars:

New York to Chicago—8 Section Lounge
Restaurant Car.
Hornell to Chicago—10 Section Lounge
Restaurant Car.

Air-Conditioned Salon Coaches:

New York to Chicago.

Dining Service for all meals in Air-Conditioned
Lounge Restaurant Cars.

THE ERIE LIMITED TRAIN NO. 2—DAILY
Chicago—Jamestown—New York

Lv Chicago (Dearborn Sta.)	6.00PM C.S.T.
" Akron	3.44AM E.S.T.
" Youngstown	5.07 " "
" Meadville	6.50 " "
" Jamestown	8.25 " "
Ar Bradford	ad 10.15 " "
" Olean	9.36 " "
" Elmira	12.30PM " "
" Binghamton	1.43 " "
" Ridgewood	dx 6.43 " "
" Paterson	6.52 " "
" New York, Jersey City Sta.	7.20 " "
" " Chambers St.	7.34 " "
" " W. 23d St.	7.50PM " "

EQUIPMENT

Air-Conditioned Sleeping Car:

Chicago to New York—8 Section Lounge
Restaurant Car.

Air-Conditioned Salon Coaches:

Chicago to New York.

Dining Service for all meals in Air-Conditioned
Lounge Restaurant Car.

THE LAKE CITIES TRAIN NO. 5—DAILY
New York—Buffalo—Cleveland

Lv New York, W. 23d St.	7.00PM E.S.T.
" " Chambers St.	7.30 " "
" " Jersey City Sta.	7.45 " "
" Paterson	bc 8.14 " "
" Ridgewood	cb 8.24 " "
Ar Buffalo (Lehigh Valley Term.)	7.55AM " "
Lv Olean	5.38 " "
Ar Bradford	6.55 " "
Lv Jamestown	7.00 " "
" Meadville	8.37 " "
Lv Youngstown	10.08 " "
Ar Cleveland	11.45AM " "

EQUIPMENT

Air-Conditioned Sleeping Cars:

New York to Cleveland—8 Section Com-
partment Lounge Restaurant Car.
New York to Bradford—10 Section 2 Com-
partment 1 Drawing-room Car.

New York to Buffalo—12 Section and
Drawing-room Car.
(Sleeping Car may be occupied at Brad-
ford until 8.00 A. M.).

Air-Conditioned Individual Seat Coaches:

New York to Cleveland.

Coaches:

Hornell to Buffalo.

THE LAKE CITIES TRAIN NO. 6—DAILY
Cleveland—Buffalo—New York

Lv Cleveland	5.00PM E.S.T.
" Youngstown	6.43 " "
" Oil City	6.15 " "
" Meadville	8.13 " "
" Jamestown	9.48 " "
" Bradford	9.35 " "
" Salamanca	10.34 " "
" Olean	10.59 " "
" Buffalo (Lehigh Valley Term.)	9.55 " "
Ar Elmira	1.50AM " "
" Ridgewood	dz 8.03 " "
" Paterson	dz 8.12 " "
" New York, Jersey City Sta.	8.40 " "
" " Chambers St.	8.54 " "
" " W. 23d St.	av 9.10AM " "

EQUIPMENT

Air-Conditioned Sleeping Cars:

Cleveland to New York—8 Section Com-
partment Lounge Restaurant Car.
Youngstown to New York—10 Section
Lounge Restaurant Car.
Bradford to New York—10 Section 2 Com-
partment 1 Drawing-room Car.
Buffalo to New York—12 Section and
Drawing-room Car.

Air-Conditioned Individual Seat Coaches:

Cleveland to New York.

Coaches:

Buffalo to Hornell.

PACIFIC EXPRESS TRAIN NO. 7—DAILY
New York—Jamestown—Chicago

Lv New York, W. 23d St.	11.55PM E.S.T.
" " Chambers St.	12.00Mid " "
" " Jersey City Sta.	12.30AM " "
" Elmira	7.40AM " "
Ar Rochester	†11.45 " "
Ar Buffalo (Lehigh Valley Term.)	12.10PM " "
Lv Olean	11.10AM " "
" Jamestown	12.33PM " "
" Meadville	2.06 " "
Ar Oil City	" " " "
Lv Youngstown	3.39 " "
" Akron	5.04 " "
Ar Chicago (Dearborn Sta.)	1.00AM C.S.T.

EQUIPMENT

Air-Conditioned Sleeping Car:

New York to Youngstown—10 Section
Lounge Restaurant Car.
(Sleeper open Jersey City at 9.30 P. M.)

Air-Conditioned Salon Coaches:

New York to Chicago.

Coaches only, west of Youngstown.

ATLANTIC EXPRESS TRAIN NO. 8—DAILY
Chicago—Jamestown—Buffalo—New York

Lv Chicago (Dearborn Sta.)	10.20PM C.S.T.
" Akron	7.37AM E.S.T.
" Cleveland	†7.25 " "
" Youngstown	9.05 " "
" Oil City	" " " "
" Meadville	10.35 " "
" Jamestown	12.23PM " "
" Bradford	11.17AM " "
" Salamanca	1.21PM " "
" Olean	1.46 " "
" Buffalo (Lehigh Valley Term.)	1.00 " "
" Rochester	†12.20 " "
" Elmira	5.15 " "
" Binghamton	6.22 " "
Ar New York, Jersey City Sta.	11.40 " "
" " Chambers St.	11.54PM " "
" " W. 23d St.	" " " "

EQUIPMENT

Air-Conditioned Sleeping Car:

Chicago to Hornell—10 Section Lounge
Restaurant Car.
(Sleeper open at Chicago at 9.30 P. M.)

Air-Conditioned Parlor Buffet Car:

Buffalo to New York.

Air-Conditioned Salon Coaches:

Chicago to New York.

Buffalo to New York.

Dining Service in Air-Conditioned Parlor Buffet
Car.

(No baggage handled on this train east of
Hornell, baggage will be handled on following
train.)

SOUTHERN TIER EXPRESS TRAIN NO. 9—DAILY
New York—Binghamton—Elmira—Buffalo

Lv New York, W. 23d St.	11.40AM E.S.T.
" " Chambers St.	11.40 " "
" " Jersey City Sta.	12.00N'n " "
" Paterson	12.29PM " "
" Ridgewood	12.39 " "
" Binghamton	5.40 " "
" Elmira	6.56 " "
Ar Buffalo (Lehigh Valley Term.)	10.35 " "

EQUIPMENT

Air-Conditioned Parlor Buffet Car:

New York to Buffalo.

Air-Conditioned Coach:

New York to Buffalo.

Dining Service in Air-Conditioned Parlor Buffet
Car.

SOUTHERN TIER EXPRESS TRAIN NO. 10—EX. SUN.
Hornell—Elmira—Binghamton—New York

Lv Hornell	6.30PM E.S.T.
" Corning	7.37 " "
" Elmira	8.07 " "
" Binghamton	9.35 " "
Ar New York, Jersey City Sta.	3.10AM " "
" " Chambers St.	3.24AM " "
" " W. 23d St.	" " " "

EQUIPMENT

Through Coaches....Hornell to New York.

THE MOUNTAIN EXPRESS TRAIN NO. 27—DAILY
New York—Binghamton—Elmira—Corning

Lv New York, W. 23d St.	as 2.35 PM E.S.T.
" " Chambers St.	2.40 " "
" " Jersey City Sta.	3.00 " "
Ar Binghamton	9.00 " "
" Elmira	10.36 " "
Ar Corning	11.00 " "

EQUIPMENT

Dining Lounge Car...New York to Corning.

Through Coaches....New York to Corning.

THE MOUNTAIN EXPRESS TRAIN NO. 28—DAILY
Corning—Elmira—Binghamton—New York

Lv Corning	8.45AM E.S.T.
" Elmira	9.06 " "
" Binghamton	10.21 " "
Ar Ridgewood	3.59PM " "
" Paterson	4.09 " "
" New York, Jersey City Sta.	4.40 " "
" " Chambers St.	4.54 " "
" " W. 23rd St.	at 5.05 " "

EQUIPMENT

Dining Lounge Car...Corning to New York.

Through Coaches....Corning to New York.

TABLE 2 WESTBOUND

NEW YORK—BINGHAMTON

Hudson and Manhattan Tube Trains operate to and from Erie Railroad Station in Jersey City. Fare, downtown, 6 cents; uptown, 10 cents.

Main train schedule table with columns for Miles from New York, Eastern Standard Time, and various train numbers (71, 51, 53, 55, 57, 57, 1, 701, 59, 9, 251, 209, 61, 27, 63, 65, 67, 259, 69, 5, 703, du 7) and rows for stations from N. Y. W. 23d St. to Binghamton.

LOCAL PARLOR AND CLUB CAR EQUIPMENT.

No. 27—Daily—THE MOUNTAIN EXPRESS

Dining Lounge Car.....New York to Corning. Coaches.....New York to Corning.

No. 63—THE TUXEDO—Ex. Suns. and Hols.

Parlor Car.....New York to Port Jervis. Coaches.....New York to Port Jervis.

No. 67—Ex. Sat., Sun. and Hol.

Erie Club Car.....New York to Port Jervis. Coaches.....New York to Port Jervis.

No. 251—Saturdays only

Erie Parlor Car.....New York to Middletown. Coaches.....New York to Middletown.

TABLE 4

WESTBOUND

BINGHAMTON—AKRON

EASTBOUND

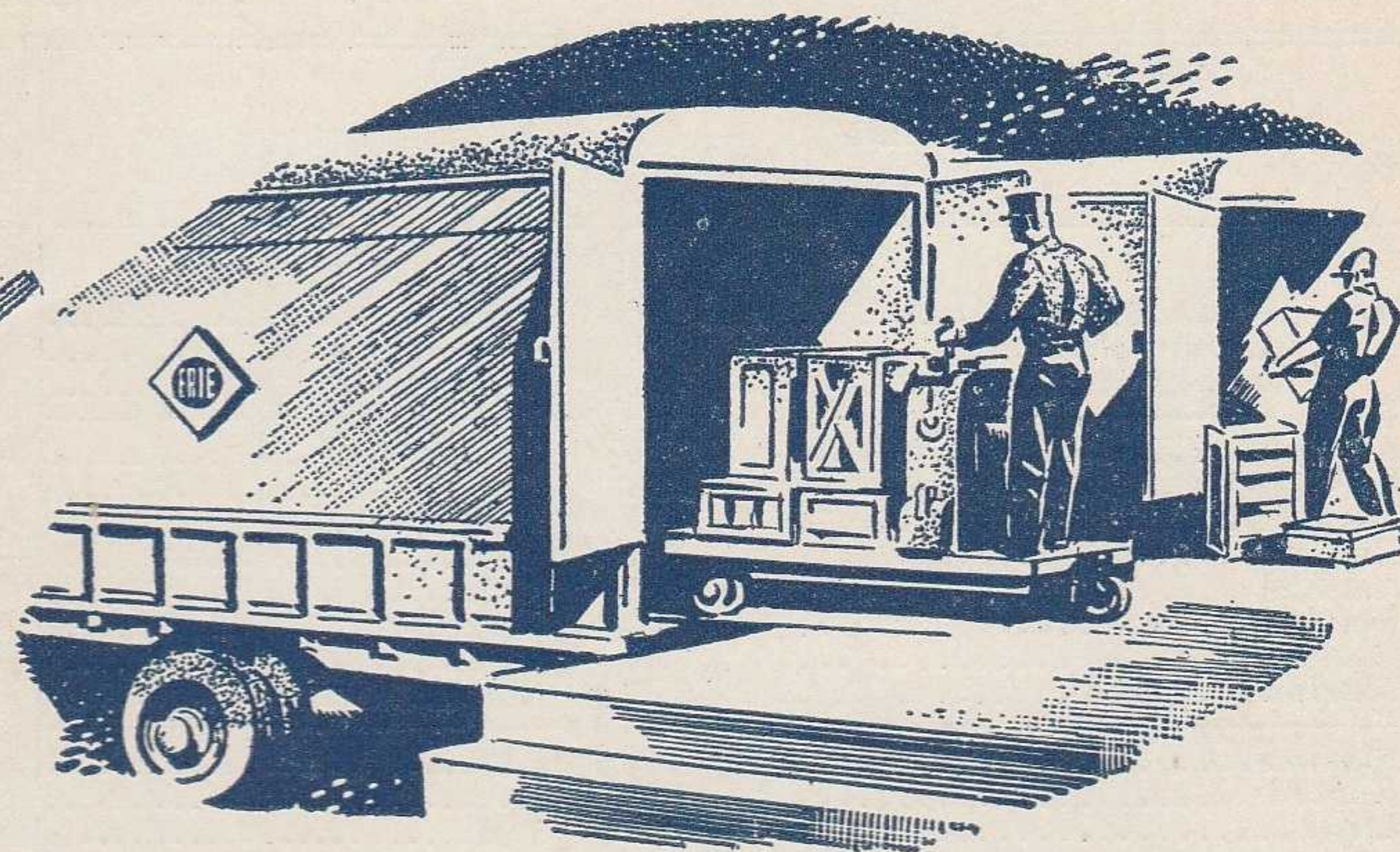
Miles from New York	Eastern Standard Time					Miles from Chicago	Central Standard Time									
	du 7 Daily	1 Daily	9 Daily	27 Daily	5 Daily		28 Daily	2 Daily	18 Daily Ex. Sun.	22 Sun. only	dt 8 Daily	10 Daily Ex. Sun.	6 Daily	644 Sun. only		
	PM	AM	AM	PM	PM		AM	PM	AM	PM	PM	PM	PM	PM		
0.0	N. Y., West 23d St. Lv.	11.55	8.45	11.40	as 2.35	7.00	0.0	Chicago (Dearborn Sta.) Lv.								
0.0	" Chambers St. "	12.00	8.50	11.40	2.40	7.30										
1.0	" Jersey City Station "	12.30	9.10	12.00	3.00	7.45										
	Albany (D.& H.) Lv.		7.00		4.25		372.6	Akron Ohio " Ar.		3.44			7.37			
	Oneonta (D.& H.) Lv.		10.00		6.48		382.6	Kent " Lv.		4.00			7.52			
	Binghamton (D.& H.) Ar.		11.55		8.35		388.9	Ravenna " "		4.05			7.57			
													8.08			
215.1	Binghamton N. Y. Lv.	6.12	2.35	5.40	9.10	1.22		Cleveland (See Table 7) Lv.					7.25	5.00	9.00	
217.8	Johnson City " "						412.8	Warren " "		dg			8.37	6.11	10.17	
222.6	Endicott " "	cx	2.46	5.51	9.22		418.0	Niles " "					6.20	10.26		
223.7	Liberty St., Endicott. " "						422.2	Girard " "						6.35	10.32	
236.8	Owego " "	6.41	3.04	6.10	9.43		426.7	Youngstown Ar.		4.57			9.00	6.35	10.40	
242.7	Tioga Centre " "							Pittsburgh (See Table 7) Lv.								
246.7	Smithboro " "						426.7	Youngstown Lv.		5.07			9.05	6.43	10.45	
249.4	Barton " "						434.1	Hubbard " "					9.27	7.06	10.58	
256.2	Waverly " "	7.06	3.26	6.32	10.06		440.4	Sharon Pa. " "		5.35			9.52	7.31	11.08	
261.0	Chemung " "						456.4	Greenville " "		6.08			10.30	8.08		
266.8	Wellsburg " "						482.5	Meadville Ar.		6.45						
273.8	Elmira " "	7.40	3.52	6.56	10.36	2.35		Oil City (See Table 15) Lv.						6.15		
278.3	Horseheads " "							Franklin (See Table 15) " "						6.35		
283.6	Big Flats " "															
291.1	Corning " "	8.12	4.15	7.18	11.00	3.00	482.5	Meadville Lv.		6.50			10.35	8.13		
293.1	Painted Post " "						496.7	Cambridge Springs " "		dy			10.56	8.33		
302.3	Addison " "	8.29	4.31	7.43			512.7	Union City " "		dy			11.20			
307.4	Rathbone " "						524.1	Corry " "		7.46			11.39	9.07		
312.5	Cameron Mills " "						551.1	Jamestown N. Y. Ar.		8.25			12.23	9.48		
315.0	Cameron " "							(Chautauqua Lake)								
328.0	Canistota " "						618.6	Buffalo (See Table 8) Ar.		10.50						
332.3	Hornell Ar.	9.13	5.07	8.18		3.51	551.1	Jamestown Lv.		8.25			12.23	9.48		
425.2	Buffalo (see Table 6) Ar.	12.10		10.35		7.55		(Chautauqua Lake)					12.44			
332.3	Hornell Lv.	9.20	5.15			3.57	567.3	Randolph " "					11.17	9.35		
341.5	Alfred " "					4.13		Bradford Lv.		8.15				10.27		
349.9	Andover " "	ah				4.27	584.9	Salamanca Ar.		9.05			1.15			
358.5	Wellsville " "	10.03	5.54			4.40		Salamanca Lv.		9.10			1.21	10.34		
366.9	Belmont " "	10.18					584.9	Allegany " "					1.46	10.59		
374.4	Friendship " "	bg				5.01	599.4	Olean " "		9.36						
383.3	Cuba " "	bg	bh			5.16	602.8	Cuba " "		dw						
395.7	Olean " "	11.10	6.45			5.38	615.2	Friendship " "								
399.1	Allegany " "					5.44	624.1	Belmont " "								
413.6	Salamanca Ar.	11.34	7.08			6.03	631.6	Wellsville " "		10.31			2.42	11.49		
413.6	Salamanca Lv.	11.42	7.15			6.11	640.0	Andover " "								
430.8	Bradford Ar.		7.45			6.55	648.6	Alfred " "								
431.2	Randolph Lv.					6.35	657.0	Hornell Ar.		11.07			3.20	12.25		
447.3	Jamestown Ar.	12.33	8.05			7.00	666.2	Buffalo (See Table 6) Lv.					1.00	9.55		
	Buffalo (See Table 8) Lv.	8.05	5.15					Hornell " "		11.14	10.30	12.01	3.28	6.30	12.31	
447.3	Jamestown Lv.	12.33	8.05			7.00	666.2	Canistota " "			10.43	12.14	3.42	6.38		
474.4	Corry Pa. " "	1.11	8.43			7.37	670.5	Cameron " "			11.03	12.30				
485.8	Union City " "		cn			7.53	683.5	Cameron Mills " "			11.15	12.44				
501.8	Cambridge Springs " "	1.43	cn			8.13	686.0	Rathbone " "			f 11.30	f 12.51				
516.0	Meadville Ar.	2.01	9.35			8.32	691.1	Addison " "					4.20	7.07	1.07	
	Franklin (See Table 15) Ar.	3.15	11.00				696.2	Painted Post " "		11.50	11.38	1.06	4.20	7.07	1.07	
	Oil City (See Table 15) " "	3.35	11.20				705.4	Corning " "	8.45	1207	12.45	1.44	4.48	7.37	1.24	
516.0	Meadville Lv.	2.06	9.40			8.37	707.4	Big Flats " "			f 1.04	f 2.01				
542.1	Greenville " "	2.44	10.19			9.13	714.9	Horseheads " "			1.14	2.09				
558.1	Sharon Ohio " "	3.11	10.48			9.37	720.2	Elmira " "	9.06	1230	1.44	2.26	5.15	8.07	1.50	
564.4	Hubbard " "						724.7	Wellsburg " "			2.07	2.38				
571.8	Youngstown Ar.	3.32	11.10			9.58	731.7	Chemung " "			2.22	2.48				
	Pittsburgh (See Table 7) Ar.						737.5	Waverly " "	9.27	1251	2.40	2.58		8.30	2.12	
571.8	Youngstown Lv.	3.39	11.17			10.08	742.3	Barton " "			f 2.51	f 3.07				
576.3	Girard " "						749.1	Smithboro " "			f 3.01	f 3.13				
580.5	Niles " "						751.8	Tioga Centre " "			3.15	3.20				
585.7	Warren " "	4.01	11.42			10.34	755.8	Owego " "	9.50	1.14	3.35	3.40		8.51		
638.1	Cleveland (See Table 7) Ar.					11.45	761.7	Liberty St., Endicott. " "			3.55	3.58	es	9.11		
609.6	Ravenna " "						774.8	Endicott " "	10.08	1.33	4.00	4.03				
615.9	Kent " Ar.	4.39	12.22				775.9	Johnson City " "			4.10	4.15				
625.9	Akron " Lv.	4.44	12.27				780.7	Binghamton Ar.	10.18	1.43	4.30	4.33	6.20	9.21	2.57	
		5.04	12.45				783.4	Binghamton (D.& H.) Lv.								
							783.4	Oneonta (D.& H.) Ar.								
							844.3	Albany (D.& H.) Ar.								
							926.0	N. Y., Jersey City Station " "	4.40	7.20			11.40	3.10	8.40	
997.5	Chicago (Dearborn Station) Ar.	1.00	8.15				997.5	" Chambers St. " "	4.54	7.34			11.54	3.24	8.54	
998.5		AM	AM	PM	PM	AM	998.5	" West 23d St. " Ar.	at 5.05	7.50				av 9.10		

No Baggage Carried on this Train

COME! DINE WITH US.

Table D'Hote prices range as follows: Breakfast 60c to \$1.00, Luncheon 75c to \$1.25, Dinner 75c to \$1.25. A meal on our trains is always a pleasant interlude. Makes the journey seem shorter too. The freshest food the market

affords, cooked by expert chefs and served in the comfort of spacious Restaurant Cars. If you prefer a light snack without going to the Diner the waiter will bring sandwiches, fruit, coffee, etc., right to your seat.



Now You Can Ship C.O.D. *on the* **ERIE**

• Erie not only picks up your L. C. L. shipments at your door and delivers them direct to the consignees—but also will collect for you the money value of the shipments—and promptly forward it to you.

The addition of C. O. D. service to Erie's door-to-door pick up and delivery gives you the advantage of dealing with only one responsible agency for all these operations. Erie does the whole job—assumes full responsibility throughout.

Let Erie handle your L. C. L. freight and cut your shipping and collection costs. Call your Erie representative today.



TABLE 7 DETROIT—TOLEDO—CLEVELAND—YOUNGSTOWN—PITTSBURGH

Miles from Cleveland	Eastern Standard Time	EASTBOUND								Eastern Standard Time	WESTBOUND						
		688 Daily	624 Daily Ex. Sun.	622 Sun-days Only	626 Daily	6 Daily	628 Daily Ex. Sun. & Hol.	686 Daily	644 Sun-days Only		629 Daily Ex. Sun. & Hol.	625 Sun-days only.	5 Daily	685 Daily	623 Daily	679 Daily	687 Daily
		PM 11.45	AM	AM	AM	PM	PM	PM	PM		AM	AM	AM	PM	PM	PM	PM
	N.Y.C.																
	DetroitLv.	11.45			8.10			1.30									
	ToledoLv.	1.55		5.17	9.55			3.08									
0.0	ClevelandLv.	4.20	7.25	8.00	1.25	5.00	5.30	6.00	9.00								
3.2	East 55th Street.....			8.10	1.34	5.10	5.40	6.10	9.10								
5.5	E. 93d St., Cleveland.....			7.37	1.39		5.45	6.15	9.15								
10.6	North Randall.....						5.54										
15.7	Solon.....						6.01										
20.5	Geauga Lake.....						6.07										
23.6	Aurora.....						6.13										
30.0	Mantua.....				2.04		6.22										
34.3	Jeddoe.....						6.28										
36.7	Garrettsville-Hiram.....		8.11	8.53	2.13		6.32										
40.3	Mahoning.....						6.37										
45.4	Phalanx.....						6.42										
49.3	Leavittsburg.....						6.49										
52.4	Warren	5.30	8.30	9.11	2.32	6.11	6.57	7.08	10.17								
57.6	Niles.....	er	8.38	9.20	2.40	6.20	7.21	7.17	10.26								
61.8	Girard.....						7.30		10.32								
66.3	YoungstownAr.	5.55	8.50	9.35	2.55	6.35	7.40	7.32	10.40								
66.3	YoungstownLv.	6.00	8.55	9.40	3.00			7.37									
87.5	New CastleAr.	6.24	9.20	10.05	3.38			8.00									
	New Castle (Wash. St.) ec Ar.	6.37	9.33	10.18	3.51			8.14									
91.3	Ellwood City (ed).....	6.47	9.53	10.55	4.04			8.23									
102.2	Beaver Falls.....	cy6.47	9.43	10.28	4.05			8.24									
	New Brighton.....	cy6.55	9.49	10.34	4.11			8.30									
105.4	Beaver.....																
106.7	Monaca.....																
112.1	Aliquippa.....	cy7.04	9.58	10.43	4.20			8.39									
120.6	Coraopolis.....	cy7.15	10.09	10.54	4.31			8.50									
131.2	PittsburghAr.	7.30	10.25	11.10	4.50			9.05									
		AM	AM	AM	PM	PM	PM	PM	PM		AM	AM	PM	PM	AM	AM	AM

Holidays in the above table refers to the observance of New Year's Day, Memorial Day, Independence Day, Labor Day, Thanksgiving Day and Christmas Day.

EQUIPMENT

Detroit, Toledo, Cleveland, Youngstown, Pittsburgh Trains.

★Indicates Air-conditioned Cars

- EASTBOUND**
- No. 6—Daily. ★Sleeping Car (8 Section Compartment Lounge Restaurant Car) Cleveland to New York. ★Individual Seat Coach, Cleveland to New York.
 - No. 622—Sundays only. ★Pullman Parlor-Lounge-Diner, Cleveland to Pittsburgh. ★Coach, Cleveland to Pittsburgh.
 - No. 624—Daily, except Sunday. ★Pullman Parlor-Lounge-Diner, Cleveland to Pittsburgh. ★Coach, Cleveland to Pittsburgh.
 - No. 626—Daily. ★Pullman Parlor Car, Cleveland to Pittsburgh. ★Coach, Cleveland to Pittsburgh.
 - No. 686—Daily. Pullman Parlor Buffet Car and ★Coaches, Detroit to Pittsburgh, via Cleveland. Dining Lounge Car, Cleveland to Pittsburgh.
 - No. 688—Daily. Sleeping Cars, Chicago to Pittsburgh. ★Sleeping Cars, Detroit to Pittsburgh. Through Coaches, Chicago and Detroit to Pittsburgh, via Cleveland.

★Cleveland-Pittsburgh Sleeping Car
 The Cleveland-Pittsburgh sleeping car operates to and from Union Terminal Cleveland via New York Central (via Ashtabula) to Youngstown, and P. & L. E. Railroad on following schedule:
 Eastbound
 Lv Cleveland (Union Terminal) 2:20 AM
 Ar Pittsburgh (P&LE Station) 7:15 AM
 Westbound
 Lv Pittsburgh (P&LE Station) 11:30 PM
 Ar Cleveland (Union Terminal) 7:10 AM
 Sleeper open for occupancy at 9:30 P. M. at Cleveland and Pittsburgh.
 Tickets reading via Erie Railroad between Cleveland and Youngstown, and P. & L. E. Railroad between Youngstown and Pittsburgh, will be honored in this sleeping car.

Air-conditioned Trains
 Air-conditioned equipment has been assigned to regular sections of trains as shown herein. Every effort will be made to provide it as specified, but the right is reserved to employ non-air-conditioned cars as necessitated by volume of traffic or emergencies.

- WESTBOUND**
- No. 5—★Sleeping Car (8 Section Compartment Lounge Restaurant Car) New York to Cleveland. ★Pullman Parlor Car, Pittsburgh to Cleveland. ★Coach, Pittsburgh to Cleveland.
 - No. 623—Daily. ★Pullman Parlor-Lounge-Diner, Pittsburgh to Cleveland. ★Coach, Pittsburgh to Cleveland.
 - No. 679—Daily. Sleeping Car, Pittsburgh to Chicago. Through Coaches, Pittsburgh to Chicago.
 - No. 685—Daily. Pullman Parlor Buffet Car and ★Coaches, Pittsburgh to Detroit, via Cleveland. Dining Lounge Car, Pittsburgh to Cleveland.
 - No. 687—Daily. ★Sleeping Cars, Pittsburgh to Detroit. Through Coaches, Pittsburgh to Detroit via Cleveland.

All Round-Trip Fares Reduced Every Week-End

These fares apply between any two points on the Erie Railroad and its connections east of Chicago and St. Louis. Tickets good going Friday noon to Sunday noon, also from certain stations Friday morning and all day Sunday. Return limit the following Monday. Tickets good in coaches, also in Pullman cars. Round trip Pullman sleeping car rates reduced 25% for these week-end excursions. With certain exceptions, stop-overs permitted at all points on return trip. Consult Erie Ticket Agents.

Special Fares from CHICAGO TO NEW YORK for Steamship Passengers

New York and return \$47.00. Return limit one year. One way \$23.50. Leave any time. Tickets good in coaches only. Sold only to those holding steamship tickets to Europe.
 New York and return \$46.05. Tickets on sale daily to those holding steamer tickets to Bermuda, Nassau, Halifax, and east coast ports. Return limit 30 days. Pullman accommodations extra.
 For particulars apply to our Chicago Ticket Offices or address H. T. Harlow, G. P. A., Erie Railroad Company, 327 South La Salle Street, Chicago, Ill.



ERIE RAILROAD SYSTEM AND CONNECTIONS

Indicates Double Track

ARRIVE FRESH AS A DAISY ON ERIE AIR-CONDITIONED TRAINS

TABLE 8 BUFFALO—JAMESTOWN

WESTBOUND

Mls.	Eastern Standard Time	513 Daily	515 Daily Ex. Su. & Hol.	519 Daily	521 Daily Ex. Su. & Hol.
0.0	Buffalo (Lehigh Valley Terminal)...Lv.	AM 8.05	PM 1.30	PM 5.20	PM 6.05
7.4	Blasdell.....	8.24	f 1.48	f 5.38	f 6.22
13.3	Hamburg.....	8.36	2.00	5.50	6.32
14.5	Water Valley.....		f 2.03	f 5.53	6.36
16.9	Eden Valley.....	f 8.41	f 2.07	f 5.58	6.41
19.2	Eden Center.....	8.46	2.12	6.03	6.46
23.5	North Collins.....	8.53	2.19	6.10	6.55
27.5	Lawtons.....	9.00	2.26	6.17	7.02
30.6	Collins (State Hospital).....	9.06	2.32	6.23	7.08
33.6	Gowanda.....	9.14	2.45	6.33	7.15
38.1	Dayton.....	9.30		6.47	
39.9	Markhams.....				
43.4	South Dayton.....	9.42		6.57	
48.4	Cherry Creek.....	9.51		7.05	
52.7	Conewango.....	10.00		7.13	
60.6	Kennedy.....	10.13		hu	
66.4	Falconer.....	10.23		7.34	
69.7	Jamestown.....Ar.	10.30		7.40	

EASTBOUND

Mls.	Eastern Standard Time	514 Daily Ex. Su. & Hol.	516 Daily	518 Daily Ex. Su. & Hol.	520 Daily
0.0	Jamestown.....Lv.	AM	AM 8.32	PM	PM 5.05
3.3	Falconer.....		8.38		6.11
9.1	Kennedy.....		8.46		5.19
17.0	Conewango.....		8.58		5.32
21.3	Cherry Creek.....		9.05		5.39
26.3	South Dayton.....		9.13		5.48
29.8	Markhams.....				
31.6	Dayton.....		9.24		6.00
36.1	Gowanda.....	6.50	9.38	2.50	6.14
39.1	Collins (State Hospital).....	6.56	9.45	2.56	6.23
42.2	Lawtons.....	7.03	9.52	f 3.02	6.31
46.2	North Collins.....	7.10	10.00	3.09	6.38
50.5	Eden Center.....	7.18	10.08	3.15	6.46
52.8	Eden Valley.....	7.23	f 10.13	f 3.21	f 6.51
55.2	Water Valley.....	7.28			
56.4	Hamburg.....	7.33	10.20	3.27	6.58
62.3	Blasdell.....	7.43	10.31	3.37	7.08
69.7	Buffalo (Lehigh Valley Terminal)...Ar.	8.02	10.50	3.55	7.25

Holidays in the above table refer to the observance of New Year's Day, Memorial Day, Independence Day, Labor Day, Thanksgiving Day and Christmas Day.

TABLE 11 BRADFORD - SALAMANCA - CLEVELAND - CHICAGO

WESTBOUND				EASTBOUND			
Miles from Bradford	Eastern Standard Time	Bus-7 Daily	Bus-1 Daily	Miles from Chicago	Central Standard Time	2-Bus Daily	8-Bus Daily
0.0	Bradford.....Lv.	AM 9.17	PM 5.42	0.0	Chicago.....Lv.	PM 6.00	PM 10.20
17.2	Salamanca.....Ar.	9.55	6.20	372.6	Akron.....	3.44	7.37
17.2	Salamanca.....Lv.	11.42	7.15	0.0	Cleveland.....		5.00
51.0	Jamestown.....Ar.	12.33	8.05	426.7	Youngstown.....	5.07	9.05
175.4	Youngstown.....	3.32	11.10	551.1	Jamestown.....	8.25	12.23
0.0	Cleveland.....			584.9	Salamanca.....Ar.	9.05	1.15
229.5	Akron.....	5.04	12.45				
602.1	Chicago.....Ar.	AM 1.00	AM 8.15	584.9	Salamanca.....Lv.	9.35	2.20
				602.1	Bradford.....Ar.	10.15	3.00

NOTE "X"—In connection with the bus service the Erie Railroad Company acts as agent only and is not responsible beyond its own line, except as such responsibility may be imposed by law with respect to baggage.

TABLE 9 NEW YORK—CHAUTAUQUA
(Via Jamestown and BUS of West Ridge Transportation Co.)
(See Note "X" Below)

WESTBOUND				EASTBOUND			
Eastern Standard Time	1-Bus Sa. Su. & Hol. only	5-Bus Daily	7-Bus Daily	Eastern Standard Time	Bus-8 Daily	Bus-6 Sa. Su. & Hol. only	Bus-6 Daily
N.Y., West 23rd St. Lv.	AM 8.45	PM 7.00	PM 11.55	Chautauqua.....Lv.	AM 10.52	PM 8.53	PM 6.57
" Chambers St.....	8.50	7.30	12.00	Jamestown.....Ar.	11.25	9.25	7.25
" Jersey City Sta....	9.10	7.45	12.30	Jamestown.....Lv.	12.23	9.48	9.48
Jamestown.....Ar.	8.05	7.00	12.33	N. Y., Jersey City Sta. Ar.	11.40	8.40	8.40
Jamestown.....Lv.	9.30	7.10	1.15	" Chambers St.....	11.54	8.54	8.54
Chautauqua.....Ar.	9.58	7.38	1.45	" West 23rd St...Ar.		av9.10	av9.10

Tickets sold and Baggage checked through to Chautauqua. Hand baggage checked without charge. Trunks checked at charge of 25c each.

TABLE 10 CHAUTAUQUA—AKRON—CHICAGO
(Via Jamestown and BUS of West Ridge Transportation Co.)
(See Note "X" Below)

WESTBOUND			EASTBOUND		
Eastern Standard Time	Bus-7 Daily	Bus-1 Daily	Central Standard Time	2-Bus Daily	8-Bus Daily
Chautauqua.....Lv.	AM 10.52	PM 6.57	Chicago.....Lv.	PM 6.00	PM 10.20
Jamestown.....Ar.	11.25	7.25	Akron.....Lv.	3.44	7.37
Jamestown.....Lv.	12.33	8.05	Cleveland.....Lv.		7.25
Cleveland.....Lv.			Jamestown.....Ar.	8.25	12.23
Akron.....Ar.	5.04	12.45	Jamestown.....Lv.	8.45	1.15
Chicago.....Ar.	1.00	8.15	Chautauqua.....Ar.	9.15	1.45

Tickets sold and Baggage checked through to Chautauqua. Hand baggage checked without charge. Trunks checked at charge of 25c each.

TABLE 12 NEW YORK—SALAMANCA—BRADFORD

WESTBOUND				EASTBOUND			
Miles from N. Y.	Eastern Standard Time	gt 1-Bus Daily	ht 5-557 Daily	Eastern Standard Time	gt Bus-2 Daily	gt Bus-8 Daily	ht 560-6 Daily
0.0	N. Y., W. 23rd St. Lv.	AM 8.45	PM 7.00	Bradford.....Lv.	AM dh 8.15	AM ad 11.17	PM 9.35
0.0	" Chambers St.....	8.50	7.30	East Bradford..			f 9.38
1.0	" Jersey City Station...Lv.	9.10	7.45	Limestone.....			9.46
215.1	Binghamton...Lv.	2.35	1.22	Carrollton.....			9.56
273.8	Elmira.....	3.52	2.35	Salamanca.....Ar.	dh 8.55	ad 12.00	10.10
291.1	Corning.....	4.15	3.00	Salamanca.....Lv.	9.10	1.21	10.34
332.3	Hornell.....	5.15	3.57	Olean.....Ar.	9.36	1.46	10.59
395.7	Olean.....	6.45	5.38	Hornell.....	11.07	3.20	12.25
413.6	Salamanca.....Ar.	7.08	6.03	Corning.....	12.07	4.48	1.24
413.6	Salamanca.....Lv.	ad 7.10	6.20	Elmira.....	12.30	5.15	1.50
419.0	Carrollton.....		6.30	Binghamton....	1.43	6.20	2.57
425.2	Limestone.....		6.43	N. Y., Jersey City Station.....	7.20	11.40	8.40
429.5	East Bradford..		f 6.51	" Chambers St.	7.34	11.54	8.54
430.8	Bradford.....Ar.	ad 7.45	6.55	" W. 23rd St...	7.50		av9.10

Trains 5-557 and 560-6 carry through sleeping car between Bradford and New York. Sleeper on train 557 will be parked at Bradford for occupancy until 8.00 A. M.

Busses leave as follows: (running time approximately 45 minutes.)
Lv. Salamanca for Bradford, 8.20 A.M., 9.35 A.M., 2.20 P.M., 4.30 P.M., 5.40 P.M., 7.10 P.M., 11.15 P.M.
Lv. Bradford for Salamanca, 8.17 A.M., 9.17 A.M., 11.17 A.M., 2.17 P.M., 4.27 P.M., 5.42 P.M.

BAGGAGE CHECKED TO BRADFORD—Baggage will be handled only on Trains 557 and 560 between Salamanca, N. Y., and Bradford, Pa.

NOTE "X"—In connection with the bus service the Erie Railroad Company acts as agent only and is not responsible beyond its own line, except as such responsibility may be imposed by law with respect to baggage.

TABLE 13 NEW YORK—NEWBURGH—(VIA HARRIMAN)

Table 13: New York—Newburgh—(via Harriman). Includes Westbound and Eastbound schedules with times and stations.

TABLE 15 NEW YORK—MEADVILLE—OIL CITY

Table 15: New York—Meadville—Oil City. Includes Westbound and Eastbound schedules with times and stations.

TABLE 14 NEW YORK—NEWBURGH (VIA GREYCOURT)

Table 14: New York—Newburgh (via Greycourt). Includes Westbound and Eastbound schedules with times and stations.

Tickets sold and baggage checked through to Cochranton, Franklin and Oil City.

TABLE 17 Lackawaxen—Honesdale

Table 17: Lackawaxen—Honesdale. Includes Eastern Standard Time and Mixed Train schedules.

TABLE 16 Chicago-Meadville-Oil City

Table 16: Chicago-Meadville-Oil City. Includes Westbound and Eastbound schedules with times and stations.

Passengers to and from Honesdale can also make connection via Narrowsburg (see Tables 2 and 3), and busses of the Wayne County Taxicab Co. (See Note "X" Below)

Tickets sold and baggage checked through to Cochranton, Franklin and Oil City.

TABLE 18 MIDDLETOWN—PINE BUSH

Table 18: Middletown—Pine Bush. Includes Westbound and Eastbound schedules with times and stations.

Tickets sold and baggage checked through to Circleville, Bullville, Thompson Ridge and Pine Bush.

TABLE 19 NEW YORK—MONTICELLO—LIBERTY

Table 19: New York—Monticello—Liberty. Includes Westbound and Eastbound schedules with times and stations.

Tickets sold and baggage checked through to Monticello, Wurtsboro and Liberty. NOTE "X" In connection with the bus service, the Erie Railroad Company acts as agent only and is not responsible beyond its own line, except as such responsibility may be imposed by law with respect to baggage.

TABLE 20 NEW YORK—KENOZA LAKE—JEFFERSONVILLE

Table 20: New York—Kenoza Lake—Jeffersonville. Includes Westbound and Eastbound schedules with times and stations.

Tickets sold and baggage checked through to Jeffersonville and Kenoza Lake.

Bathe in... SOUTHERN SUNSHINE

Take advantage of our Winter Tourist Tickets, which offer attractively reduced fares for the 1935-1936 season. They are sold to points in Alabama, Arizona, Florida, Georgia, Louisiana, Mississippi, New Mexico, North and South Carolina, Texas, and Mexico.

Tickets on sale until April 30, with return limits 18 days to 9 months according to destination and fare. Consult Erie Ticket Agents for details.

TABLE 21 ELMIRA-ROCHESTER

Table with columns for Westbound Read Down, Eastbound Read Up, Miles, Eastern Standard Time, and specific train numbers (463, 467, 468, 464) with their respective departure and arrival times.

TABLE 22 SALAMANCA—DUNKIRK

Table with columns for Westbound Read Down, Eastbound Read Up, Miles, Eastern Standard Time, and specific train numbers (527, 540) with their respective departure and arrival times.

INQUIRIES ARE INVITED REGARDING INDUSTRIAL BUILDINGS AND VACANT LAND ON ERIE RAILS. GEO. F. WESTON Industrial Commissioner Erie Railroad, Midland Bldg., Cleveland, O.

HUDSON AND MANHATTAN TUBE TRAINS SCHEDULE OF RUNNING TIME BETWEEN ERIE R. R. JERSEY CITY TERMINAL AND

Table showing running times for Downtown New York and Uptown New York, including specific street crossings and connection allowances.

ERIE R. R. FERRY TIME TABLE EASTERN STANDARD TIME CHAMBERS STREET FERRY Ferry Running Time, 9 Minutes WEEK DAYS

Table with columns for Leave New York for Jersey City and Leave Jersey City for New York, showing departure times for various days of the week.

a Will not run on Holidays. m Except Saturdays and Holidays. h Holidays only.

SUNDAYS

Table showing Sunday departure times for the Chambers Street Ferry.

TWENTY-THIRD STREET FERRY Ferry Running Time, 20 Minutes WEEK DAYS

Table with columns for Leave New York for Jersey City and Leave Jersey City for New York, showing departure times for weekdays.

SUNDAYS

Table showing Sunday departure times for the Twenty-Third Street Ferry.

TABLE 23 ROCHESTER—MOUNT MORRIS—DANSVILLE

Large table with columns for Eastern Standard Time, N. B. Daily, and specific train numbers (404, 408, 468, 428, 416, 440, 424, 425, 401, 403, 467, 409, 415, 415, 419) with their respective departure and arrival times.

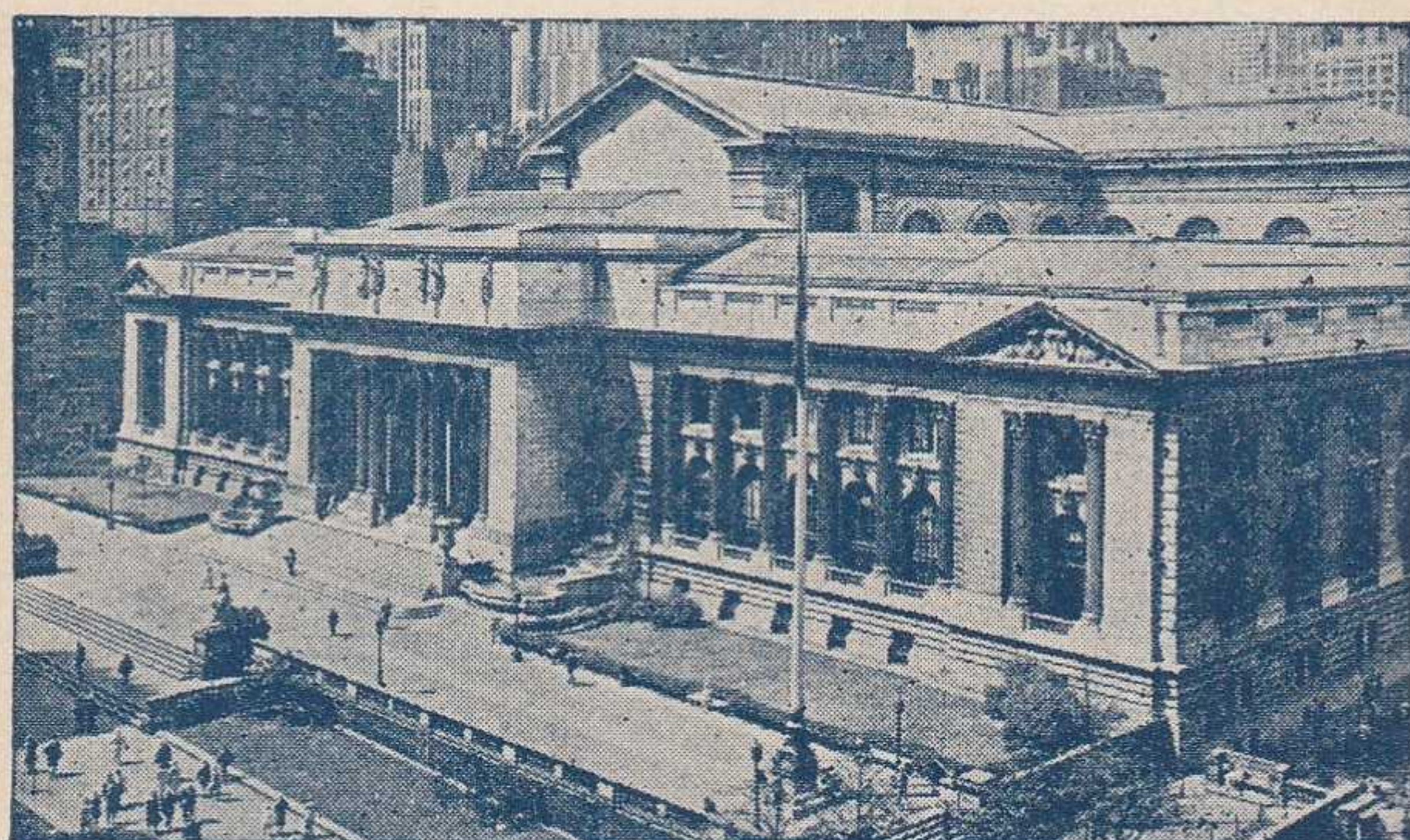
TRAINS between Mt. Morris and Avon will stop on signal at Shakers, Jones, Cuylerville, Jaycocks, Seven Nations, Huston, South Avon, Pierces, Fowler, Ashantee, Linden Street and Spring Street and between Avon and Rochester, except Trains 467, 468 at Wiards, Elm Place, Meadowwood, Gannett, Blair, Martin, Brooks, Fenner, Baileys, Crittenden, Westfall and South Park. HOLIDAYS in above table refer to the observance of New Year's Day, Decoration Day, Independence Day, Labor Day, Thanksgiving Day and Christmas Day.

For Explanation of Reference Marks and Notes, See Pages 33 and 34.

For Main Line Parlor, Sleeping and Dining Service, See Pages 5 and 6.

ERIE TRAIN-CAB SERVICE

Takes You from Erie Terminal Directly to
Your Door in New York or Brooklyn



The New York Library at Fifth Avenue and 42nd Street

ONE Person **90c** TWO Persons **\$1.25** THREE or more **\$1.50**

Thousands have used and praised Erie Train-Cab Service.

Strangers arriving at Erie Terminal, Jersey City are taken all the way to their destination in New York or Brooklyn. They never get "lost" and are never overcharged. Women accompanied by children appreciate this service. Even seasoned travellers enjoy the comfort of settling down in their own taxicab and forgetting about bags and car changes.

The fares shown above apply from our terminal to any place on Manhattan 110th Street and South, also to any point in the Brooklyn business district.

Service beyond the prescribed zones is metered from the zone limits and charged for at regular rates.

Train-Cab service is available to all who travel from stations west of Middletown, N. Y.

You can buy the Train-Cab coupon with your rail ticket at the ticket office or from the conductor on any through train and you will find your taxicab awaiting the arrival of your train at Jersey City.

Ask the conductor or ticket agent for details.

Checking Hand Baggage at Chicago

Passengers arriving Chicago on Erie trains who desire to stay over for a few hours and depart from a station other than Dearborn Station may have their hand baggage transferred to the station from which they depart. A Parmelee Company agent meets all Erie trains upon arrival at Chicago and he will arrange the transfer for you. The bags will be placed in the parcel check room of the station from which you depart. A charge of fifty cents for each hand bag, including the parcel room fee, will be made for the service, except one piece will be checked free when passenger holds through ticket including transfer through Chicago.

SUGGESTIONS

- Interchangeable scrip coupon tickets issued in \$15.00 and \$30.00 denominations are accepted on trains or at ticket offices in payment of rail passage as well as sleeping and parlor car accommodations, and also as payment for meals in restaurant cars.

- For the convenience of patrons who do not wish to send money by mail, Erie Railroad ticket agents are prepared to sell prepaid ticket orders for the delivery of transportation, rail and Pullman, from practically all points in the United States, Canada and Mexico. These orders may also include the furnishing of cash.

In emergencies arrangements may be made for the delivery of transportation by telegraph or telephone without charge except when commercial wires are used.

- Baggage insurance by the St. Paul Fire & Marine Insurance Co. may be purchased at principal Erie ticket offices. It insures your baggage and personal effects for your entire trip anywhere in the world. Minimum premium twenty-five cents. The ticket agent can give you full particulars.

- Erie Playing Cards are on sale at our ticket offices, excepting in Ohio. Bridge sets one dollar, single decks fifty cents.

- Our services are at the disposal of clubs, lodges and other organizations in arranging for trips to conventions and gatherings of all sorts. Concerning fares, train schedules and travel plans consult or write to any Erie Ticket Agent, or any of the Passenger Department representatives listed on pages 35 to 37 of this folder.

Time Table Mailing Service

If you would like a copy of this time table each time a new one is issued just drop us a post card and your name will be put on the list. No charge. Address your request to Erie Railroad, Passenger Traffic Dept., Midland Bldg., Cleveland, Ohio.

THIRTY DAY ROUND TRIPS MOST ECONOMICAL

These excursions go every Tuesday and Saturday *from* New York City and all other Erie stations east of, and including Port Jervis *to* all stations Youngstown to Chicago.

Similar excursions also operate in the reverse direction—*from* Chicago, Youngstown and intermediate stations *to* Port Jervis, New York City and intermediate stations, and also to many Atlantic Seaboard points.

RAILROAD AND PULLMAN FARES (Pullman Fares Include Surcharge)

For Information Only. Subject to Change Without Notice.

Between And	New York			Binghamton			Buffalo			Jamestown			Cleveland			Chicago		
	Railroad Fare	Seat Fare	Low-er Berth	Railroad Fare	Seat Fare	Low-er Berth	Railroad Fare	Seat Fare	Low-er Berth	Railroad Fare	Seat Fare	Low-er Berth	Railroad Fare	Seat Fare	Low-er Berth	Railroad Fare	Seat Fare	Low-er Berth
Akron.....Ohio	20.08		5.63	14.72	3.08	4.50	7.90			6.41	1.35	3.38	3.12			12.71	2.25	3.75
Binghamton.....N. Y.	6.95	1.58	3.00				7.34	1.58	3.00	8.33	1.80	3.75	13.90	2.93	4.50	24.65		7.50
Bradford.....Pa.	14.20		4.50	7.25	2.15	3.38	2.78			1.85			7.42			18.54		
Buffalo.....N. Y.	14.29	3.00	3.75	7.34	1.58	3.00				2.44	.75		7.45		3.75	17.31		
Callicoon.....N. Y.	4.91	1.05	3.00	2.85	.75		10.19	2.18	3.75	11.18	2.33	3.75	16.75	3.53	5.63	27.50		8.25
Cambridge Springs.....Pa.	17.23		4.50	10.28	2.18	3.75	4.40			1.97	.75		4.74	.90	3.00	16.02		4.50
Chicago.....Ill.	30.70		9.00	24.65			7.50	17.31		16.69	3.38	4.50	14.06					
Cleveland.....Ohio	19.55		5.63	13.90	2.93	4.50	7.45			5.66	1.35	3.38				14.06		
Corning.....N. Y.	9.65	2.18	3.00	2.70	.75		4.64	.98	3.00	5.65	1.20	3.00	11.20	2.33	3.75	21.95		6.38
Corry.....Pa.	16.25	3.38	4.50	9.30	1.95	3.75	3.40			.99	.75		4.74	1.13	3.00	16.02		4.50
Deposit.....N. Y.	6.38	1.35	3.00	1.38	.75		8.72	1.88	3.75	9.71	2.03	3.75	15.28	3.30	4.50	26.03		8.25
Elmira.....N. Y.	9.01	2.03	3.00	2.06	.75		5.28	1.13	3.00	6.27	1.35	3.38	11.84	2.48	3.75	22.59		6.38
Galion.....Ohio	22.70		6.38	16.77	3.68	5.63	9.43			8.53	1.95	3.75	6.09			10.11	1.73	3.75
Hancock.....N. Y.	5.91	1.28	3.00	1.85	.75		9.19	1.95	3.75	10.18	2.18	3.75	15.75	3.38	4.50	26.50		8.25
Hornell.....N. Y.	11.12	2.48	3.75	4.17	.90		3.34	.75		4.16	.90		9.73	2.10	3.75	20.65		5.63
Huntington.....Ind.	27.16		7.50	21.51			6.38	14.33		13.27	3.00	3.75	11.25			5.14	1.05	
Jamestown.....N. Y.	15.28	3.30	4.50	8.33	1.80	3.75	2.44	.75					5.66	1.35	3.38	16.69		4.50
Kent.....Ohio	19.72		5.63	14.36	3.00	4.50	7.90			6.05	1.28	3.38	2.76			13.07	2.40	3.75
Lackawaxen.....Pa.	4.00	.83	3.00	3.76	.83		11.10	2.40	3.75	12.09	2.55	3.75	17.66	3.75	5.63	28.41		8.25
Lima.....Ohio	24.69		7.50	19.04			5.63	11.70		10.80	2.48	3.75	8.64			7.48	1.50	3.00
Mansfield.....Ohio	22.14		6.38	16.77	3.53	5.63	9.43			8.53	1.88	3.75	5.54			10.56	1.88	3.75
Marion.....Ohio	23.44		6.38	17.53	3.75	5.63	10.19			9.29	2.10	3.75	6.84			9.61	1.50	3.75
Meadville.....Pa.	17.75	3.53	4.50	10.80	2.25	3.75	4.90			2.49	.75		4.39	.83	3.00	15.67		4.50
Middletown.....N. Y.	2.43	.75	3.00	5.33	1.13	3.00	12.67	2.70	3.75	13.66	2.85	4.50	19.23		5.63	29.98		9.00
New York.....N. Y.				6.95	1.58	3.00	14.29	3.00	3.75	15.28	3.30	4.50	19.55		5.63	30.70		9.00
Olean.....N. Y.	13.40	2.93	3.75	6.45	1.35	3.00	2.64			1.88	.75		7.45	1.73	3.75	18.57		5.63
Owego.....N. Y.	7.71	1.73	3.00	.76	.75		6.59	1.43	3.00	7.58	1.58	3.38	13.15	2.78	3.75	23.90		7.50
Pittsburgh.....Pa.				14.79						6.47			4.73	.75	3.00	16.88		
Port Jervis.....N. Y.	3.20	.75	3.00	4.58	.98	3.00	11.92	2.55	3.75	12.91	2.70	4.13	18.48		5.63	29.23		8.63
Salamanca.....N. Y.	14.05	3.00	3.75	7.10	1.50	3.00	2.20			1.23	.75		6.80	1.58	3.75	17.92		5.63
Sharon.....Pa.	18.16		4.50	12.31	2.63	3.75	5.89			4.00	.90		2.88	.75		15.13	2.78	4.50
Warren.....Ohio	18.67		4.50	13.31	2.85	3.75	6.89			5.00	1.13		1.90	.75		14.17	2.63	4.50
Waverly.....N. Y.	8.37	1.88	3.00	1.42	.75		5.92	1.28	3.00	6.91	1.43	3.38	12.48	2.63	3.75	23.23		6.38
Wellsville.....N. Y.	12.06	2.70	3.75	5.12	1.13	3.00	3.89			3.23	.75		8.80	2.03	3.75	19.92		5.63
Youngstown.....Ohio	18.16		4.50	12.80	2.70	3.75	6.40			4.49	.98		2.39	.75		14.62	2.63	4.50

RATES FOR UPPER BERTH, SECTION, DRAWING ROOM OR COMPARTMENT IN SLEEPING CARS

(Including Surcharge)

Where Lower Berth Rate Is	Upper Berth Rate Will Be	Section Rate For One Passenger	Section Rate For Two Passengers	Drawing Room Rate Will Be	Compartment Rate Will Be
\$3.00	\$2.40	\$ 4.20	\$ 4.80	\$10.50	\$ 9.00
3.38	2.70	4.73	5.40	12.00	9.75
3.75	3.00	5.25	6.00	13.50	10.50
4.13	3.30	5.78	6.60	15.00	12.00
4.50	3.60	6.30	7.20	16.50	12.75
4.88	3.90	6.83	7.80	18.00	14.25
5.25	4.20	7.35	8.40	19.50	15.00
5.63	4.50	7.88	9.00	21.00	15.75
6.00	4.80	8.40	9.60	21.00	17.25
6.38	5.10	8.93	10.20	22.50	18.00
6.75	5.40	9.45	10.80	24.00	19.50
7.50	6.00	10.50	12.00	27.00	21.00
7.88	6.30	11.03	12.60	28.50	22.50
8.25	6.60	11.55	13.20	30.00	23.25
8.63	6.90	12.08	13.80	31.50	24.75
9.00	7.20	12.60	14.40	31.50	25.50

Note:—▲For section occupied by two passengers but with lower berth only prepared for night service.

Minimum Number of Railroad Tickets Required for Exclusive Occupancy of Sections, Drawing Rooms or Compartments in Sleeping Cars and Drawing Room in Parlor Cars

Section.....	One Adult Railroad Ticket.	Drawing Room, Berth Service.....	Two Adult Railroad Tickets.
Compartment, Berth Service.....	One and One-half " " "	Drawing Room, Seat Service.....	Two " " "
Compartment, Seat Service.....	One and One-half " " "	Drawing Room in Parlor Cars.....	Two " " "

GENERAL INFORMATION

STANDARD OF TIME—Erie Lines east of and including Lima, Ohio, are operated by Eastern Standard Time, Lines west of Lima, Ohio, by Central Standard Time. 12.01 Midnight to 12.00 Noon is indicated by light-faced type. 12.01 Noon to 12.00 Midnight is indicated by heavy-faced type.

TRAINS WILL NOT BE HELD for ferries from New York between hours of 5:00 P. M. and 6:30 P. M. Eastern Standard Time.

HOLIDAYS—The term "Holidays" (unless covered by special note) refers to the observance of New Year's Day, Lincoln's Birthday, Washington's Birthday, Memorial Day, Independence Day, Labor Day, Thanksgiving Day and Christmas Day.

THIS COMPANY IS NOT RESPONSIBLE FOR ERRORS in time tables, inconvenience or damage resulting from delayed trains or failure to make connections; schedules are subject to change without notice.

FARE PAID ON TRAINS—The lawful fare when paid to conductor is ten (10) cents in excess of the one-way ticket fare. Conductors cannot deviate therefrom. Buy ticket before boarding trains and avoid payment of this extra fare.

CHILDREN under five years of age are carried free when accompanied by parent or guardian; five years and under twelve, half fare, twelve years of age and over, full fare.

ADJUSTMENT OF FARES—Should any misunderstanding arise with conductors or agents, pay the fare required, take receipt and communicate with General Passenger Agent, Midland Bldg., Cleveland, Ohio.

SLEEPING AND PARLOR CAR RESERVATIONS—Space reserved by telegraph or telephone within city limit will be held until:

5:00 P. M. day prior to departure of trains leaving before noon next day.
10:00 A. M. day of departure for trains leaving between noon and 5:00 P. M.
2:00 P. M. day of departure for trains leaving after 5:00 P. M.

When application is by wire or letter from a point outside of city limit, space will be held until fifteen minutes of train time.

BAGGAGE TO BE CHECKED should be delivered at station at least thirty minutes before train time.

BAGGAGE DELIVERY IN NEW YORK CITY—All baggage checked to New York City will be sent to the West 23rd Street Station unless passenger specifies Chambers Street Station at time of checking.

Baggage delivery service in New York will be performed by the Railway Express Agency.

HAND-BAGGAGE in Pullman Cars is restricted to what can be conveniently placed in the berth, seat or other accommodations purchased by the passenger.

CHICAGO PASSENGER AND BAGGAGE TRANSFER is performed by the Parmelee Company. A uniformed agent meets all incoming trains of the Erie Railroad on arrival at Dearborn Station.

ARTICLES LOST ON TRAINS or left in waiting rooms or stations, owners should apply to Information Bureau, Jersey City Depot, or address General Passenger Agent, Midland Bldg., Cleveland, Ohio, giving full description of the property, stating date of loss and number of train.

REFERENCE MARKS AND NOTES

IMPORTANT—When trains are indicated as stopping conditionally, Conductors should be notified of intention to leave train and Station Agent notified of intention to board train.

- § Runs Sundays only.
 ¶ Station restaurant.
 * Runs daily.
 † Runs daily except Sunday.
C Stops on Saturday only.
 † Stops to discharge passengers.
 ‡ Will not operate from these stations on Monday morning.
 † Stops on Holidays only.
 ‡ Stops on signal to receive and discharge passengers.
k Runs Saturdays only
M. C. Motor Car Service.
N. B. No Baggage carried.
ab Stops Saturday and Sunday only to discharge passengers.
ac Stops Dalton (5.53 A. M.) to discharge passengers from Hornell and east and on signal to receive passengers.
ad Via Allegany Motor Coach Co., Inc. bus between Salamanca and Bradford.
ae Train 5 will stop on signal at Monroe (9.00 P. M.) to receive passengers for Jamestown and west; and to discharge passengers from New York.
ag Stops Saturdays only to discharge passengers.
ah Stops on signal Andover (9:50 A. M.) to discharge passengers from New York.
as On Sundays only, Train 27 will leave West 23rd Street at (2.05 P. M.).
at On Sundays only, Train 28 will arrive West 23rd Street at (5.50 P. M.).
av On Sundays only Train 6 will arrive West 23rd Street at (9.30 A. M.)
ax Stops to discharge passengers from east of Hammond.
bc Stops on signal (8.14 P. M.) to receive passengers.
be Stops Hancock (10.59 P. M.) to discharge passengers from Binghamton and west.
bg Stops on signal, Friendship (10.32 A. M.); Cuba (10.45 A.M.) to discharge passengers from New York.
bh Stops Cuba (6.26 P. M.) to discharge passengers from Elmira and east and to receive for Jamestown and west.
bt No Agent on duty. No baggage handled on Trains 5 and 6 to or from Castile.
ca Train 27 stops on Sundays and Holidays only Rutherford (3.14 P. M.).
cb Stops on signal Passaic (8.05 P. M.), Ridgewood (8.24 P. M.), to receive passengers for Jamestown and west.
cg Stops on signal (11.11 P. M.) to discharge passengers from Binghamton and west.
cn Stops on signal Union City (8.57 P. M.); Cambridge Springs (9.17 P. M.) to discharge passengers from Jamestown and east and to receive for Youngstown and west.
cp Stops on signal (10.35 P. M.) to receive passengers for east of Hammond.
ct Tickets sold and baggage checked through to Lake Huntington.
cx Stops to discharge passengers from New York.
cy Stops to discharge passengers from Cleveland and beyond.
dc Stops at Solon and Aurora on Saturdays only to discharge passengers from Cleveland.
de Stops on signal Barberton (5.13 P. M.) to receive passengers for Mansfield and west.
dg Stops on signal at Warren (4.40 A. M.) to discharge passengers from Chicago and to receive passengers for Jamestown and east.
dh Via Dodaro Bus Co. between Salamanca and Bradford.
dt No baggage carried on this train east of Hornell. Baggage will be handled on following train.
du Coaches only, west of Youngstown.
dv Stops on signal (1.23 P. M.) to receive passengers for Tuxedo and west.
dw Stops Cuba (9.52 A. M.) to discharge passengers from Jamestown and west and to receive for Elmira and east.
dx Stops Ridgewood (6.43 P. M.), Passaic (6.59 P. M.) to discharge passengers from Goshen and west.
dy Stops on signal Cambridge Springs (7.08 A. M.), Union City (7.28 A. M.), to discharge passengers from Chicago and to receive for Binghamton and east.
dz Stops Ridgewood (8.03 A. M.), Paterson (8.12 A. M.), Passaic (8.19 A. M.), to discharge passengers from Goshen and west.
ea Train 61 has a connection from Newark Saturday only, except Holidays.
ec Bus service between New Castle and New Castle (Washington St.).
ed Bus service between Wampum and Ellwood City.
eg On Holidays Train 60 has no connection for Newark.
en Stops on signal Passaic (9.30 A. M.), Paterson (9.37 A. M.), Ridgewood (9.47 A. M.) to receive passengers.
ep Stops on Saturdays only (12.07 P. M.).
er Stops (5.39 A. M.) to discharge passengers from Cleveland and west and on signal to receive for Pittsburgh.
es Stops on signal Sundays only to discharge passengers.
ev Stops on signal to receive passengers for Cleveland and beyond.
ew Stops (11.46 A. M.) to discharge from Jamestown and east and west of Akron.
ez On Sundays Train 6 has no connection for Newark.
gc Stops (11.29 A. M.) to discharge passengers from east of Avon.
gt In connection with the bus service the Erie Railroad Company acts as agent only and is not responsible beyond its own line, except as such responsibility may be imposed by law with respect to baggage.
he Stops Alden (10.24 P. M.) to discharge passengers from Buffalo and on signal to receive passengers.
hm On Saturdays connection for Train 69 leaves Newark at (6.16 P. M.) on Holidays leaves Newark (6.04 P. M.).
hn On Sundays Train 2 has no connection for Newark.
hr Stops (4.17 P. M.) to discharge passengers from Binghamton and west and on signal to receive for New York.
ht Trains 5-557 and 560-6 carry through sleeping cars between Bradford and New York.
hu Stops to discharge passengers.
mh Stops on signal, Sundays only, to discharge passengers from New York.
mr Stops, except Sundays and Holidays, to discharge passengers.
mt Train 7 will stop at Middletown Mondays only (1.56 A. M.) to discharge passengers.

STOP-OVER PRIVILEGES

Niagara Falls

Passengers holding tickets reading "via Erie Railroad" from or through Elmira to or through Youngstown or vice versa may exercise their privilege of going by way of Buffalo and stopping over for as long as ten days at Niagara Falls, but not beyond the final limit of their ticket. Upon request, the Erie Ticket Agent at Buffalo will issue without charge a round trip ticket between Buffalo and Niagara Falls. Frequent service via International Ry. (Electric Line) direct from Buffalo Terminal.

Other Points

On local one-way tickets sold at regular fares, local round-trip tickets sold at double the one-way fares, All-Year, Summer and Winter Tourist and Convention Tickets, stop-overs will be allowed on going and return trips within final limit of tickets at any Erie Railroad Station en route upon notice to conductor and without deposit of ticket.

WESTERN UNION

TELEGRAMS AND CABLEGRAMS accepted at all telegraph offices of this railroad.

FAST TELEGRAMS—For urgent business or social messages, announcements of arrivals and departures and reservations.

DAY LETTERS—50 words for 1½ times the cost of a 10 word telegram.

NIGHT LETTERS—50 words for the cost of a 10 word telegram.

CABLE NIGHT LETTERS—An inexpensive service.

ERIE RAILROAD COMPANY

GENERAL OFFICES, MIDLAND BUILDING, CLEVELAND. Telephone Cherry 8400.
 GENERAL OFFICES, HUDSON TERMINAL, 50 CHURCH STREET, NEW YORK. Telephone Cortlandt 7-9200.
 GENERAL OFFICES, UTILITIES BUILDING, 327 SOUTH LA SALLE STREET, CHICAGO. Telephone Harrison 4160.

TRAFFIC AND DEVELOPMENT DEPARTMENTS

TRAFFIC

D. L. GRAY, Vice-President, Cleveland
 CARL HOWE, Vice-President, Chicago

G. C. MANNING, Assistant Vice-President, New York.

C. L. CHAPMAN, Assistant to Vice-President, Cleveland.

PASSENGER

C. C. HOWARD, Passenger Traffic Manager, Cleveland.
 R. B. ROGERS, General Passenger Agent, Cleveland.
 H. T. HARLOW, General Passenger Agent, Chicago.
 T. R. PATTON, Assistant General Passenger Agent, Youngstown.

F. A. WALDRON, Assistant General Passenger Agent, New York.
 ALFRED FYNN, Assistant General Passenger Agent, Chicago.
 E. J. HAWERKOST, General Western Passenger Agent, Chicago.
 H. M. WADE, General Baggage, Mail and Express Agent, New York.

FREIGHT

L. B. BURFORD, Freight Traffic Manager, Cleveland.
 L. R. KNAPP, Assistant Freight Traffic Manager, Cleveland.
 O. M. MEYNE, General Freight Agent, Cleveland.
 W. H. STADELMAN, Eastern Freight Traffic Manager, New York.
 G. R. WHEELER, General Freight Agent, New York.
 E. M. KAIN, Assistant General Freight Agent, Buffalo.
 H. W. VON WILLER, Assistant General Freight Agent, Pittsburgh.

F. G. LANTZ, Freight Traffic Manager, Chicago.
 W. V. KENNEDY, Assistant Freight Traffic Manager, Chicago.
 A. BLAUDEL, General Freight Agent, Chicago.
 J. G. HILL, General Freight Agent, Chicago.
 O. R. DAVIES, Assistant General Freight Agent, Cincinnati.
 W. H. KOCH, Assistant General Freight Agent, Detroit.

FOREIGN FREIGHT TRAFFIC

T. E. McANDREWS, Foreign Freight Traffic Manager, New York.
 A. E. PETERSON, Foreign Freight Agent, Chicago.
 EUROPEAN GENERAL AGENTS, Sutherland International Despatch, Ltd.,
 London, England.

LIVE STOCK

H. B. ROGERS, General Live Stock Agent, East Buffalo, N. Y.

GRAIN TRAFFIC

T. W. KANE, Grain Agent, New York.

PERISHABLE FREIGHT TRAFFIC

R. E. O'GRADY, Manager, Pier 20, N. R., New York.

COAL AND COKE

G. H. REINBRECHT, Coal Traffic Manager, Cleveland.
 J. A. FERGUSON, Coal Freight Agent, Cleveland.
 F. D. AUSTIN, General Coal and Coke Agent, Chicago.

DAIRY

W. L. KENDALL, General Dairy Agent, Chicago, Ill.

DEVELOPMENT

L. L. WHITE, Vice-President and Assistant to President, Cleveland.

GEO. F. WESTON, Industrial Commissioner, Cleveland.
 V. M. WELLMAN, Industrial Agent, New York.

F. M. AMERICA, Editor and Mgr. Erie R. R. Magazine, Cleveland.

TRAFFIC DEPARTMENT REPRESENTATIVES

- | | | | |
|--|---|--|---|
| <p>Akron, O.—80 East Exchange St.
 (Telephone Hemlock 8194-8195)
 J. P. CLARK, Division Passenger Agt.
 C. E. KING, General Agent.</p> <p>Albany, N. Y.—Room 2, D. & H. Bldg.
 (Telephone 4-6051)
 C. F. WHADCOCK, General Agent.</p> <p>Antwerp, Belgium—24 Quat Jardaens
 L. E. STEINMANN, Agent.</p> <p>Atlanta, Ga.—1419-20 Healy Bldg.
 (Telephone Walnut 2135)
 S. S. TORREY, General Agent.</p> <p>Baltimore, Md.—1525 Baltimore Trust Bldg.
 (Telephone Plaza 1373)
 W. J. MURRAY, General Agent.</p> <p>Birmingham, Ala.—1216-17 Watts Bldg.
 (Telephone 3-5980)
 CHARLES G. ANDREWS, General Agent.</p> <p>Boston, Mass.—80 Federal Street.
 (Telephone Liberty 7725-7726)
 E. J. DEAN, N. E. F. & P. A.</p> <p>Bradford, Pa.—Erte Station.
 (Telephone 3413)
 J. C. MOFFATT, General Agent.</p> <p>Bremen, Germany—Holsport 10.
 CARL PRIOR, Agent.</p> <p>Buffalo, N. Y.—6 North Diston St.
 (Telephone Washington 4300)
 J. A. DOLAN, G. A. P. D.
 238 Main Street.
 (Telephone Wash. 1865)
 E. M. KAIN, Asst. General Freight Agt.
 H. B. ROGERS, General Live Stock Agt.</p> <p>Chicago, Ill.—327 South La Salle St.
 (Telephone Harrison 4160)
 C. D. BURLINGHAM, Trav. Pass. Agt.
 C. D. TURNER, General Agent.
 W. L. KENDALL, General Dairy Agent.</p> <p>Cincinnati, O.—503 Gwynne Bldg.
 (Telephone Main 3420-3421)
 O. R. DAVIES, Asst. General Freight Agt.</p> <p>Cleveland, O.—Midland Bldg.
 (Telephone Cherry 8400)
 J. M. SKABHILL, Division Freight Agt.
 2063 East 9th St.
 (Telephone Cherry 8400)
 A. F. WAINSCOTT, City Passenger Agent.</p> <p>Columbus, O.—Rooms 309-310 Atlas
 Bldg., 8 East Long Street.
 (Telephone Adams 7331)
 F. W. FISCHER, General Agent.</p> | <p>Dallas, Tex.—1112 Tower Petroleum Bldg.
 1905 Elm St.
 (Telephone 2-7352)
 T. J. MARTIN, General Agent.</p> <p>Dayton, O.—509-512 Miami Savings Bldg.
 (Telephone Adams 8481)
 W. P. KROMPHARDT, Div. Frt. Agt.</p> <p>Des Moines, Ia.—Hubbell Bldg.,
 904 Walnut Street.
 (Telephone 4-0018)
 C. L. COX, General Agent.</p> <p>Detroit, Mich.—Room 5-157 General Motors
 Bldg.
 (Telephone Madison 2360-2361)
 W. H. KOCH, Assistant General Frt. Agt.</p> <p>Elmira, N. Y.—Erte Station.
 (Telephone 2-1621)
 J. W. O'HARA, Division Passenger Agt.
 (Telephone 2-0377)
 A. W. MICHELBAUGH, Division Freight
 Agent.</p> <p>Glasgow, Scotland—90 Mitchell St.
 W. S. THOMSON, General Agent.</p> <p>Hamburg, Ger'y—Ferdinandstrasse 33-44
 ERICK GRIEBEL, General Agent.</p> <p>Huntington, Ind.—Erte Station.
 (Telephone 743)
 F. C. MCCARTHY, Division Freight Agt.</p> <p>Indianapolis, Ind.—148 No. Meridian St.
 (Telephone Lincoln 2088)
 T. J. WILLIAMSON, General Agent.</p> <p>Jamestown, N. Y.—Erte Station
 F. L. COLLINS, Div. Frt. Agt.
 J. A. CLEVELAND, General Agent.
 (Telephone 4832)</p> <p>Jersey City, N. J.—Erte Station
 (Telephone Delaware 8-6400)
 P. F. ARBOYO, G. A. P. D.</p> <p>Kansas City, Mo.—Rooms 326-7 Railway
 Exchange Bldg., 7th and Walnut Streets.
 (Telephone Victor 6328)
 N. C. FRICK, General Agent.</p> <p>Liverpool, Eng.—17 Brunswick St.
 A. G. TAYLOR, General Agent.</p> <p>London, E. C. 3, Eng.—4 Billiter St.
 PETER BUSWELL, General Agent.
 D. S. DEANS, Genl. Continental Agt.</p> | <p>Los Angeles, Cal.—108 West 6th Street.
 (Telephone Vandike 6542)
 C. W. SEELEY, General Agt. Pass. Dept.
 L. A. DWELLE, General Agent.</p> <p>Marion, O.—Terminal Building
 (Telephone 2657)
 A. R. TENNIS, Division Freight Agent.</p> <p>Memphis, Tenn.—1628-9 Exchange
 Bldg., Madison & Second Sts.
 (Telephone 6-5577)
 E. L. PARR, General Agent.</p> <p>Milwaukee, Wis.—1015 Majestic Bldg.,
 231 Wisconsin Street.
 (Telephone Marquette 5555-5556)
 H. A. WILSON, General Agent.</p> <p>Minneapolis, Minn.—125 Third Street,
 South.
 (Telephone Main 3604)
 D. R. THOMPSON, General Agent.</p> <p>Newark, N. J.—1801-2 Military Park
 Bldg., 60 Park Place.
 (Telephone Market 2-0525-26-27)
 A. R. WALTON, General Agent.</p> <p>New Haven, Conn.—Room 512 Roger
 Sherman Bldg.
 (Telephone 5-7937)
 G. W. MADSON, General Agent.</p> <p>New Orleans, La.—Room 1417 Whitney Bldg.
 (Telephone Main 6607)
 D. C. KELSEY, General Agent.</p> <p>New York, N. Y.—8 West 40th Street.
 (Telephone Pennsylvania 6-0931)
 J. F. WILD, G. A. P. D.
 A. G. OLDENQUIST, City Pass. Agt.
 W. G. TEDFORD, City Passenger Agent.
 50 Church Street.
 (Telephone Cortlandt 7-9200)
 E. W. VAIL, General Eastern Frt. Agent.
 J. G. VREELAND, Division Freight Agent.</p> <p>Olean, N. Y.—Erte Station.
 (Telephone 7411)
 J. M. HAND, Traveling Freight Agent.</p> <p>Omaha, Neb.—1319 Farnam St.
 (Telephone Jackson 4866)
 C. V. HARROW, General Agent.</p> <p>Peoria, Ill.—920 Jefferson Building, Cor
 South Jefferson & Fulton Streets.
 (Telephone 8007)
 E. T. OLANDER, General Agent.</p> | <p>Philadelphia, Pa.—1009-10 Finance Bldg.
 (Telephone Rittenhouse 8975-8976)
 H. T. YOUNG, General Agent.</p> <p>Pittsburgh, Pa.—Gulf Building.
 (Telephone Grant 4831-2-3)
 H. W. VON WILLER, A. G. F. A.</p> <p>Portland, Ore.—Room 421 Pacific Bldg.,
 306 Yamhill St.
 (Telephone Beacon 3706)
 J. A. RUSSELL, General Agent.</p> <p>Rochester, N. Y.—Erte Station.
 (Telephone Main 2826)
 B. C. WEDD, Division Freight Agent.</p> <p>Rotterdam Holland—N. Binneweg 474-A
 H. VAN KRIEKEN, Agent.</p> <p>San Francisco, Cal.—681 Market St.
 (Telephone Sutter 3875)
 J. A. LLOYD, General Agent.</p> <p>St. Louis, Mo.—Rooms 906-7 Missouri
 Pacific Building, 1218 Olive Blvd.
 (Telephone Chestnut 7723-7724)
 G. F. DANIELS, General Agent.</p> <p>St. Paul, Minn.—336 Robert St.
 (Telephone Cedar 5912)
 C. R. PETRY, General Agent.</p> <p>Scranton, Pa.—Erte Station.
 (Telephone 5203)
 G. A. LAMB, Division Freight Agent.</p> <p>Seattle, Wash.—1116-7 White Bldg.,
 1338 Fourth Ave.
 (Telephone Elliot 4834)
 W. R. SIBLEY, General Agent.</p> <p>Springfield, O.—516 First National Bank
 Building.
 (Telephone Center 1178)
 T. J. FLYNN, General Agent.</p> <p>Toledo, O.—342 South Erte Street.
 (Telephone Main 3816)
 H. J. SPANGENBURG, General Agent.</p> <p>Toronto, Ont.—69 Yonge Street.
 (Telephone Elgin 4077)
 E. P. MORRILL, General Agent.</p> <p>Tulsa, Okla.—317-18 Philcade Bldg.
 (Telephone 3-8613)
 A. W. MITCHELL, General Agent.</p> <p>Youngstown, O.—Terminal Building.
 (Telephone 41101)
 C. A. STOEBER, Division Frt. Agt.</p> |
|--|---|--|---|

ERIE TICKET OFFICES AND PASSENGER STATIONS IN PRINCIPAL CITIES

Akron, O.—Union Station.
(Telephone Jefferson 9141)
B. L. BENDER, Ticket Agent.

Binghamton, N. Y.—Erie Station.
(Telephone 4-3251)
J. H. WEBSTER, Ticket Agent.

Bradford, Pa.—Erie Station.
(Telephone 3716)
A. J. SULLIVAN, Ticket Agent.

Brooklyn, N. Y.—City Ticket Office.
155 Pierrepont St.
(Telephone Triangle 5-7440)
W. A. MORRISON, Ticket Agent.

Buffalo, N. Y.—City Ticket Office.
6 North Division St.
(Telephone Washington 4300)
J. E. MCINNIS, Ticket Agent.

Station Ticket Office
(Lehigh Valley Terminal)
Main and Scott Streets
(Telephone Washington 4300)
A. L. SEITZ, Ticket Agent.

Chicago, Ill.—City Ticket Office. 163-
165 West Jackson Blvd.
(Telephone Harrison 4160)
C. F. KUNGEL, Ticket Agent.

Hotel Ticket Offices—
Congress, Morrison, Sherman, Stevens,
Palmer House, Merchandise Mart.
(Telephone Harrison 2203)
GEORGE M. NEWHART, Ticket Agent.

Dearborn Station.
(Telephone Harrison 9830)
H. S. BARE, Ticket Agent.

Cleveland, O.—City Ticket Office.
2063 East 9th St.
(Telephone Cherry 8400)
CASPER J. MILLER, Ticket Agent.

Erie Station.
(Telephone Cherry 8400)
G. W. GULICK, Ticket Agent.

Elmira, N. Y.—Erie Station.
(Telephone 2-0380)
E. J. STEELE, Ticket Agent.

Hornell, N. Y.—Erie Station.
(Telephone 680)
R. L. SMITH, Ticket Agent.

Huntington, Ind.—Erie Station.
(Telephone 140)
O. M. BELL, Ticket Agent.

Jamestown, N. Y.—Erie Station.
(Telephone 6076)
FRANK PRIEST, Ticket Agent.

Jersey City, N. J.—Erie Station.
(Telephone Delaware 8-6400)
G. B. IRVING, Ticket Agent.

Mansfield, O.—Erie Station.
(Telephone Canal 1423)
J. W. GILKERSON, Ticket Agent.

Marion, O.—Erie Station.
(Telephone 2399)
L. E. NEBERGALL, Ticket Agent.

Meadville, Pa.—Erie Station.
(Telephone 1212)
O. L. ENOS, Ticket Agent.

Middletown, N. Y.—Erie Station.
(Telephone 3303)
J. H. DIMKE, Ticket Agent.

Newark, N. J.—Erie Station.
(Telephone Humboldt 2-0600)
G. J. MCMICHAEL, Ticket Agent.

New York, N. Y.—City Ticket Office.
8 West 40th Street.
(Telephone Pennsylvania 6-0933)
F. H. RICE, Ticket Agent.

West 23rd Street Station.
(Telephone Chelsea 3-0780)
C. H. POTTER, Ticket Agent.

Chambers Street Station.
(Telephone Barclay 7-6500)
T. I. NEWMAN, Ticket Agent.

17 John Street. (Telephone Cortland
7-6430 and 7-6431)
H. T. JAMES, Ticket Agent.

Olean, N. Y.—Erie Station.
(Telephone 4343)
J. F. MITCHELL, Ticket Agent.

Passaic, N. J.—Erie Station.
(Telephone 2-1613)
O. R. KRECH, Ticket Agent.

Paterson, N. J.—Erie Station.
(Telephone Sherwood 2-3337)
J. H. GRAF, Ticket Agent.

Port Jervis, N. Y.—Erie Station.
(Telephone 300)
R. FARBER, Ticket Agent.

Rochester, N. Y.—Erie Station.
(Telephone Main 4378)
C. J. GILBERT, Ticket Agent.

Youngstown, O.—Erie Station.
(Telephone 41101)
M. A. O'NEILL, Ticket Agent.



OVER 100 LINERS FOR EUROPE

regularly leave the ports between
New York and Montreal carrying
passengers to the Old World —

That European travel is costly and for
the privileged few has been proved
a fallacy. Find out to-day how
inexpensive a trip can be.

IT GIVES DISTINCTION TO HAVE SEEN EUROPE

Consult Ticket Agent for further information

VISIT GREAT BRITAIN



EASILY AND ECONOMICALLY

☐ England and Scotland have all the ingredients of a perfect trip. History—wondrous cathedrals such as York, Canterbury and Wells—ancient abbeys and castles—the brightest jewels of Europe's treasure chest. Scenery—from the Scottish Highlands and the English Lake District to the Sussex Downs—a picturebook countryside alive with legend and loveliness. Gaiety—shops, theatres, musicales, night clubs, with everything for an "American" good time. Thousand-year-old Oxford and Cambridge are like dreams come true. Wales is a rare land of glorious mountain scenery and unimaginable charm. And all the old dollar values exist in the British Isles, where they speak your own language!

For itineraries, maps, etc., write to Dept. ER

T. R. DESTER, General Traffic Manager
ASSOCIATED BRITISH RAILWAYS, INC.

551 Fifth Avenue :: :: New York City, N. Y.