



**ERIE RAILROAD  
TIME TABLES**

**ERIE RAILROAD  
TIME TABLES**

*The Scenic Route*

BETWEEN

NEW YORK • BUFFALO  
CLEVELAND • CHICAGO

*The Scenic Route*

BETWEEN

NEW YORK • BUFFALO  
CLEVELAND • CHICAGO

# 130 MILLION QUARTERBACKS

*run this "All-American" Team*

**YOU** are doing an outstanding job calling the signals for your railroads to score with a volume of traffic which exceeds anything in transportation history.

Without your help Erie and other American railroads on the "All-American" transportation team would not be able to do this tremendous job.

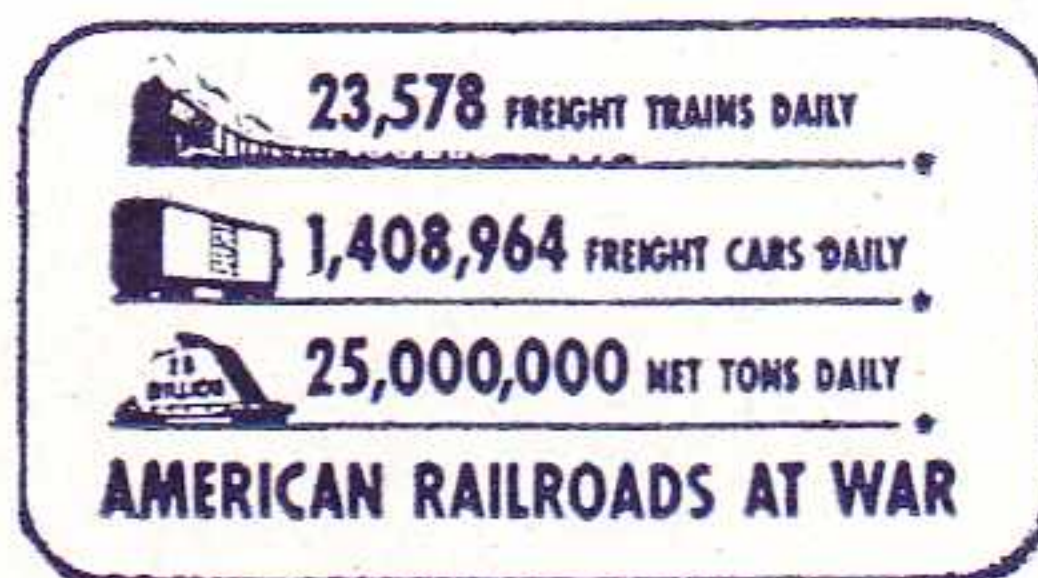
True, your railroads are sharing equipment and facilities to provide a great national transportation system.

Your railroad men—your shippers and receivers of freight—all are working together to keep cars moving without undue delays . . .

All government agencies are giving invaluable assistance in coordinating this teamwork.

And your Army and Navy are doing a wonderful job in organizing and planning their transportation requirements.

But it has been your patient understanding and willing assistance that have made possible the amazing record of your railroads. And, with your continued help, your railroads will continue winning the battle of transportation whatever may be the ultimate demands necessary to achieve victory.



## Erie Railroad

ONE OF AMERICA'S RAILROADS — ALL OUT FOR VICTORY

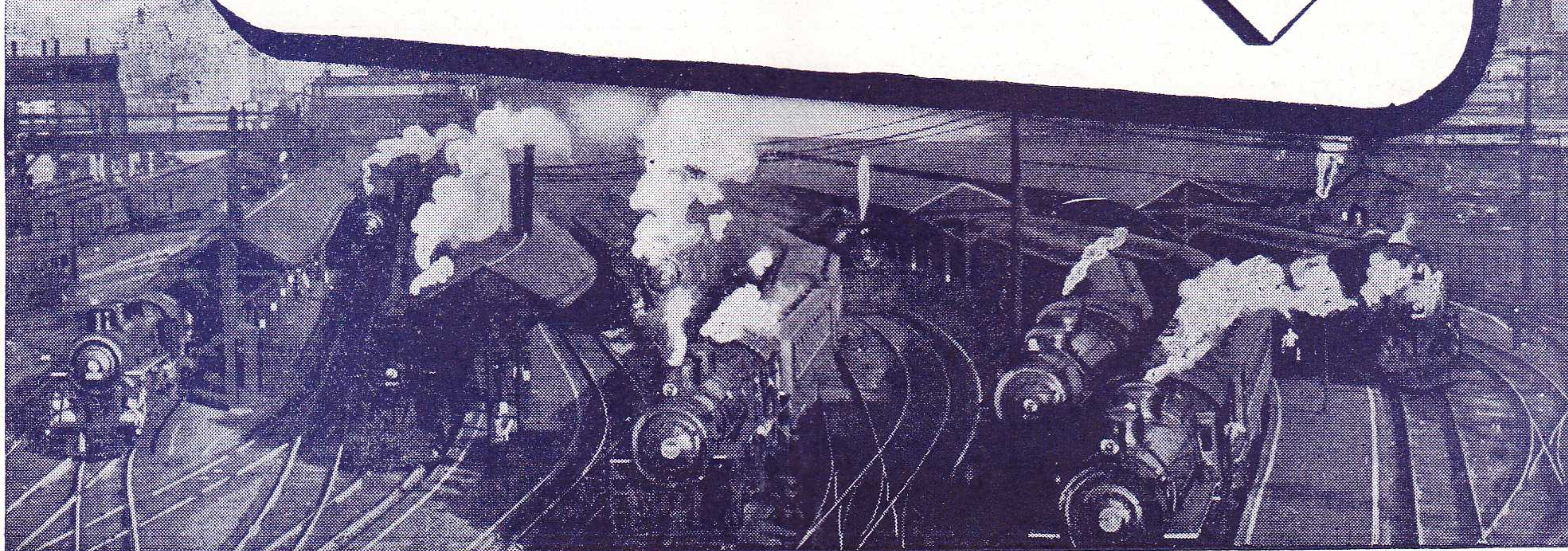


TABLE OF CONTENTS

Reference Marks and Notes... Page 5, 6
Ticket Offices and Passenger Stations in Principal Cities... 6
One-Way and Round-Trip Fares... 7, 8
Sleeping and Parlor Car Fares... 7, 8
Equipment of Through Trains... 9, 10
Equipment of Detroit, Toledo, Cleveland, Youngstown, Pittsburgh, Washington and Baltimore Trains... 17, 18
Erie Railroad Map... 19, 20, 21, 22
Map of New York City and adjacent area... 27, 28
Map of Downtown Chicago... 25
General Information... 31, 32
Standard of Time
Holidays
Fares Paid on Trains
Adjustment of Fares
Baggage Regulations
Articles Lost on Trains
Safety First Hints
Traffic and Development Department Representatives... 37, 38
Train Service
Condensed Schedule of Through Trains... 9, 10
New York—Elmira... 11, 12, 13, 14
Elmira—Chicago... 15, 16
Detroit—Toledo—Cleveland—Youngstown—Pittsburgh—Washington—Baltimore... 17, 18
New York—Buffalo... 23
New York—Jamestown—Chautauqua Lake... 24
Chautauqua Lake—Jamestown—Akron—Chicago... 24
New York—Kenoza Lake—Jeffersonville... 24
Buffalo—Jamestown... 23
New York—Salamanca—Bradford... 24
Bradford—Salamanca—Cleveland—Chicago... 24
Elmira—Avon... 23
Hudson & Manhattan R. R. Service... 29
Ferry Schedule... 29

STATIONS ON ERIE RAILROAD OR CONNECTING LINES
At Which Trains Are Scheduled To Stop
Numerals Opposite Station Names Indicate Time Table Numbers

Table listing stations and their corresponding time table numbers. Columns include station names and numerals. Stations listed include Addison, N.Y.; Akron, O.; Albany, N.Y.; Alden, N.Y.; Alfred, N.Y.; Alliquippa, Pa.; Allegany, N.Y.; Allendale, N.J.; Andover, N.Y.; Arden, N.Y.; Arkport, N.Y.; Ashland, O.; Atlanta, N.Y.; Attica, N.Y.; Aurora, O.; Avoca, N.Y.; Avon, N.Y.; Baltimore, Md.; Barborton, O.; Bath, N.Y.; Beaver, Pa.; Beaver Falls, N.Y.; Belmont, N.Y.; Binghamton, N.Y.; Blasdell, N.Y.; Braddock, Pa.; Bradford, Pa.; Buffalo, N.Y.; Burns, N.Y.; Callicoon, N.Y.; Cambridge Springs, Pa.; Campbell, N.Y.; Canaseraga, N.Y.; Canisteo, N.Y.; Castile, N.Y.; Chautauqua, N.Y.; Chautauqua Lake, N.Y.; Cherry Creek, N.Y.; Chester, N.Y.; Chicago, Ill.; Cleveland, O.; Cohecton, N.Y.; Cohocton, N.Y.; Collins, N.Y.; Conesus, N.Y.; Conesus Lake Jct., N.Y.; Conewango, N.Y.; Connellsville, Pa.; Cooper's, N.Y.; Coraopolis, Pa.; Corning, N.Y.; Corry, Pa.; Crown Point, Ind.; Cuba, N.Y.; Cumberland, Md.; Dale, N.Y.; Dalton, N.Y.; Darien Center, N.Y.; Dayton, N.Y.; Decatur, Ind.; Depew, N.Y.; Deposit, N.Y.; Detroit, Mich.; East Buffalo, N.Y.; East Fifty-fifth St. (Cleveland), O.; East Ninety-third St. (Cleveland), O.; East Rutherford, N.J.; Eden Center, N.Y.; Eden Valley, N.Y.; Ellwood City, Pa.; Elmira, N.Y.; Endicott, N.Y.; Englewood (63rd St.), Ill.; Falconer, N.Y.; Friendship, N.Y.; Gallon, O.; Garrettsville-Hiram, O.; Garwoods, N.Y.; Geauga Lake, O.; Girard, O.; Goshen, N.Y.; Gowanda, N.Y.; Graham, N.Y.; Great Bend, Pa.; Greenville, Pa.; Greycourt, N.Y.; Griswolds, N.Y.; Gulf Summit, N.Y.; Hale's Eddy, N.Y.; Hamburg, N.Y.; Hammond, Ind.; Hancock, N.Y.; Hankins, N.Y.; Harper's Ferry, W. Va.; Harriman, N.Y.; Hillburn, N.Y.; Hillburn, N.Y.; Hohokus, N.J.; Honesdale, Pa.; Hornell, N.Y.; Howells, N.Y.; Hubbard, O.; Huntington, Ind.; Jamestown, N.Y.; Jeddore, O.; Jeffersonville, N.Y.; Jersey City, N.J.; Kanona, N.Y.; Kennedy, N.Y.; Kenoza Lake, N.Y.; Kent, O.; Kenton, O.; Lackawaxen, Pa.; Lake Huntington, N.Y.; Lancaster, N.Y.; Lawtons, N.Y.; Leavittsburg, O.; Letchworth Park, N.Y.; Lima, O.; Limestone, N.Y.; Linden, N.Y.; Livonia, N.Y.; Long Eddy, N.Y.; Lordville, N.Y.; Mahoning, O.; Mahwah, N.J.; Mansfield, O.; Mantua, O.; Marilla, N.Y.; Marion, O.; Markhams, N.Y.; Martinsburg, W. Va.; Mast Hope, Pa.; McKeesport, Pa.; Meadville, Pa.; Meyersdale, Pa.; Middletown, N.Y.; Mill Rift, Pa.; Monroe, N.Y.; Narrowsburg, N.Y.; New Brighton, Pa.; New Castle, Pa.; New Hampton, N.Y.; New York, N.Y.; Niles, O.; North Collins, N.Y.; North Judson, Ind.; North Randall, O.; Ohio City, O.; Olean, N.Y.; Oneonta, N.Y.; Otisville, N.Y.; Owego, N.Y.; Oxford, N.Y.; Painted Post, N.Y.; Parker's Glen, Pa.; Passaic, N.J.; Paterson, N.J.; Phalanx, O.; Pittsburgh, Pa.; Pond Eddy, Pa.; Portage, N.Y.; Port Jervis, N.Y.; Ramapo, N.Y.; Ramsey, N.J.; Randolph, N.Y.; Ravenna, O.; Ridgewood, N.J.; Rittman, O.; Rochester, Ind.; Rock Glen, N.Y.; Rutherford, N.J.; Saegertown, Pa.; Salamanca, N.Y.; Savona, N.Y.; Sharon, Pa.; Shohola, Pa.; Silver Spring, Md.; Silver Springs, N.Y.; Skinners, N.Y.; Sloatsburg, N.Y.; Solon, O.; South Dayton, N.Y.; Southfields, N.Y.; South Lima, N.Y.; South Livonia, N.Y.; Sparrowbush, N.Y.; Springwater, N.Y.; State Hospital, N.Y.; Suffern, N.Y.; Susquehanna, Pa.; Swains, N.Y.; Toledo, O.; Town Line, N.Y.; Tusten, N.Y.; Tuxedo, N.Y.; Union City, Pa.; Wadsworth, O.; Waldwick, N.J.; Wallace, N.Y.; Warren, O.; Warsaw, N.Y.; Washington, D.C.; Washington Hunt, N.Y.; Water Valley, N.Y.; Waverly, N.Y.; Wayland, N.Y.; Websters, N.Y.; Wellsville, N.Y.; Westcolang Park, Pa.; Youngstown, O.

ADDITIONAL STATIONS ON ERIE RAILROAD

At Which Trains Do NOT Stop Regularly

The distance shown is from New York as indicated in Tables 2, 3 and 4

Table listing additional stations and their distances from New York. Columns include station names and miles from New York. Stations listed include Adrian, N.Y.; Akron, Ind.; Aldine, Ind.; Alger, Ohio; Almond, N.Y.; Ashville, N.Y.; Athens, Ind.; Atlantic, Pa.; Barton, N.Y.; Bass Lake, Ind.; Bear Lake, Pa.; Belvidere, N.Y.; Big Flats, N.Y.; Bippus, Ind.; Bolivar, Ind.; Boone Grove, Ind.; Braceville, Ohio; Burbank, Ohio; Caledonia, Ohio; Cameron, N.Y.; Cameron Mills, N.Y.; Chemung, N.Y.; Columbus, Pa.; Creston, Ohio; DeCliff, Ohio; De Long, Ind.; Disko, Ind.; Elgin, Ohio; Foraker, Ohio; Forty-seventh St. (Chicago, Ill.); Freedom, Ohio; Geneva, Pa.; Glenmore, Ohio; Griffith, Ind.; Harrods, Ohio; Hegewisch, Ill.; Hepburn, Ohio; Hickory Grove, Pa.; Highlands, Ind.; Hinsdale, N.Y.; Horseheads, N.Y.; Hurlburt, Ind.; Johnson City, N.Y.; Kellams, N.Y.; Kemp, Ohio; Kingsland, Ind.; Kirkwood, N.Y.; Kouts, Ind.; Laketon, Ind.; Lakewood, N.Y.; Leiters, Ind.; Markel, Ind.; Martel, Ohio; McGuffey, Ohio; Millers, Pa.; Mill Village, Pa.; Mongaup, Pa.; Monterey, Ind.; Nankin, Ohio; Newton, Ind.; Niobe, N.Y.; Ontario, Ohio; Oquaga, N.Y.; Ora, Ind.; Palmer, Ind.; Pavonia, Ohio; Pershing, Ind.; Polk, Ohio; Preble, Ind.; Rathbone, N.Y.; Red House, N.Y.; Scio, N.Y.; Servia, Ind.; Sharpville, Pa.; Smithboro, N.Y.; Spencerville, Ohio; Steamburg, N.Y.; Sterling, Ohio; Stockport, N.Y.; Tallmadge, Ohio; Tloga Center, N.Y.; Tocsin, Ind.; Uniondale, Ind.; Venango, Pa.; Watts Flats, N.Y.; Wellsburg, N.Y.; West Salem, Ohio; Wilders, Ind.; Windham, Ohio; Winfield, Ind.; Wren, Ohio.

## REFERENCE MARKS AND NOTES

**IMPORTANT—When trains are indicated as stopping conditionally, Conductors should be notified of intention to leave train and Station Agent notified of intention to board train. Conditional stops are made only to receive or discharge revenue passengers.**

- E.W.T.—Eastern War Time. C.W.T.—Central War Time.
- \* Runs Daily.
  - † Runs daily except Sunday.
  - ‡ Runs daily except Monday.
  - § Runs daily except Sundays and Holidays.
  - ↓ Stops on Holidays only.
  - f Stops on signal to receive and discharge revenue passengers.
  - k Runs Saturdays only.
  - ♦ Stops to discharge passengers.
  - ▲ Stops to receive passengers.
  - © Stops on Saturday only.
- M. C. Motor Car Service. N. B. No Baggage carried.
- # Sundays leaves Binghamton (2.35 P. M.).
  - H Runs Sundays and Holidays only.
  - L Runs Saturdays, Sundays, Holidays and day preceding a Holiday only.
- Note** ⊕—Times Square Motor Coach Terminal, 260 West 42nd St. between 7th and 8th Aves., New York City. Taxicab entrance on 41st St. Motor coach also stops at 34th St. and 8th Ave. (at north-west corner to receive and south-east corner to discharge passengers.) Connection to and from Jersey City. Slight additional charge for Motor Coach service. Consult Ticket Agents.
- ab Train 28 stops Otisville (4.58 P. M.) Sundays only.
  - ac Stops Dalton (5.37 A. M.) to discharge passengers from Hornell and east and on signal to receive passengers.
  - ad Via Buffalo & Erie Coach Corp. bus between Salamanca and Bradford.
  - ae Stops New Hampton on Wednesdays to discharge passengers.
  - af Train 7 stops Middletown (1.54 A. M.) Sunday and Monday mornings only to discharge passengers.
  - ag Stops Ridgewood (7.56 A. M.) Holidays only.
  - ah Stops on signal Andover (9.46 A. M.); Belmont (10.08 A. M.) to discharge passengers from New York.
  - ak Train 71 arrives Middletown (8.36 P. M.) on Saturdays and Sundays.
  - al Train 7 stops Ravenna (4.37 P. M.) Sundays only, and to receive passengers for Gallon and west on weekdays.
  - am Stops Saturdays only to receive passengers.
  - ao Stops at Parker's Glen (3.55 P. M.) and Mill Rift (4.18 P. M.) to receive passengers for Paterson and east.
  - ap Stops at New Hampton on Wednesdays to discharge passengers from New York.
  - av Train 9 stops Chester (12.26 P. M.) on Fridays and Saturdays only.
  - aw Trains 6 and 16 stop at Middletown (7.24 A. M.) and Goshen (7.35 A. M.) to discharge passengers from Hornell and west.
  - ax Stops Englewood Train 1 (8.30 A. M.); Train 15 (5.40 P. M.); Train 7 (12.44 A. M.) to discharge passengers from east of Hammond.
  - bb Stops at Paterson (3.44 P. M.) to receive passengers only.
  - bc Stops on signal Paterson (7.30 P. M.), Ridgewood (7.41 P. M.) to receive passengers.
  - bd Stops on signal Passaic (7.22 P. M.); Suffern (7.56 P. M.) to receive passengers for Hornell and west.
  - bf Stops Cuba (4.50 A. M.) to discharge passengers from Elmira and east and to receive for Jamestown and west.
  - bg Stops on signal, Friendship (10.20 A. M.); Cuba (10.35 A. M.) to discharge passengers from New York.
  - bh Stops Cuba (6.30 P. M.) to discharge passengers from Elmira and east and to receive for Jamestown and west.
  - bm Stops on signal Niles (10.30 A. M.) to discharge passengers from Pittsburgh and from Jamestown and east and to receive passengers for Cleveland.
  - bp Stops Niles (11.47 P. M.) to discharge passengers from Meadville and east and on signal to receive passengers for Akron and west.
  - bt No Agent on duty. No baggage handled on Trains 5 and 6 to or from Castle.
  - bu Train 6 stops at East 55th St. (5.02 P. M.) Sundays only to receive passengers for Youngstown.
  - bv Stops on Fridays, Saturdays and Sundays only to discharge passengers from New York.
  - bx Train 16 stops at Warren (6.06 P. M.) to discharge passengers from Akron and west.
  - cd For additional service between Cleveland and Youngstown see Table 5.
  - cg Stops Ridgewood (11.27 P. M.) to discharge passengers from Binghamton and west.
  - cn Stops on signal Union City (9.07 P. M.); Cambridge Springs (9.26 P. M.) to discharge passengers from Jamestown and east and to receive for Youngstown and west.
  - cp Train 8 stops on signal (9.59 P. M.), Train 16 (8.58 A. M.) to receive passengers for east of Hammond.
  - cu Bus service provided between Cocheaton and Lake Huntington.
  - ew Stops Endicott (12.54 A. M.) to discharge passengers from Port Jervis and east.
  - ox Stops to discharge passengers from New York.
  - ey Stops to discharge passengers from Cleveland and beyond.
  - db Train 8 stops at Ravenna (7.41 A. M.) to discharge passengers from Marion and west, and on signal to receive for Youngstown and east.
  - dc Stops Mantua (2.38 P. M.) to discharge passengers from Cleveland and on signal to receive passengers for Warren and east.
  - de Stops Barberton (5.23 P. M.) to discharge passengers from Youngstown and east and on signal to receive passengers for Mansfield and west.
  - df Stops on signal Mantua (10.29 A. M.) to receive passengers for Cleveland.
  - dg Stops at Ravenna (10.56 A. M.) to discharge passengers from Meadville and east, and on signal to receive passengers for Gallon and west.
  - dh Stops at (5.37 P. M.) to discharge passengers from Gallon and west, and on signal to receive passengers for Meadville and east.
  - dp Stops Niles (2.14 A. M.) to discharge passengers from east of Youngstown and signal to receive passengers for Cleveland.
  - dt No baggage carried on this train east of Hornell. Baggage will be handled on following train.
  - dv Stops on signal Union City (8.58 P. M.) to discharge passengers from Youngstown and west and to receive passengers for New York.
  - dw Stops Cuba (9.43 A. M.) to discharge passengers from Jamestown and west and to receive for Elmira and east.
  - dy Stops on signal Cambridge Springs (6.58 A. M.), Union City (7.14 A. M.), to discharge passengers from Chicago and to receive for Binghamton and east.

- dz Stops Ridgewood (8.27 A. M.) to discharge passengers from Port Jervis and west. Has connection for Paterson, Passaic, etc., leaving Ridgewood at (8.40 A. M.) daily.
- eb Stops to receive passengers for New York.
- ec Bus service between New Castle and New Castle (Washington St.).
- ed Bus service between Wampum and Ellwood City
- ek Train 2 stops Suffern (6.45 P. M.), Passaic (7.14 P. M.) to discharge passengers from Binghamton and west.
- el Stops Sundays only to discharge passengers.
- en Stops on signal Paterson (9.19 A. M.), Ridgewood (9.28 A. M.) to receive passengers.
- ep Train 1 stops on signal Passaic (9.12 A. M.), Suffern (9.43 A. M.) to receive passengers for Binghamton and west.
- er Stops Niles (5.53 A. M.) to discharge passengers from Cleveland and west and on signal to receive for Pittsburgh.
- es Stops on signal Niles (6.08 P. M.) to receive passengers for Jamestown and east, and to discharge passengers from Cleveland.
- et Bus operates between Narrowsburg and Honesdale, and the Erie Railroad acts as agent only and is not responsible beyond its own line, except as such responsibility may be imposed by law with respect to baggage.
- ex Stops Endicott (3.10 A. M.) to discharge passengers from Buffalo, Jamestown and west.
- ey Stops to let off passengers from Port Jervis and east.
- ha Stops at Narrowsburg (10.11 P. M.) to discharge passengers from Ridgewood and east.
- hf Stops (11.14 P. M.) to discharge passengers from Pittsburgh.
- ht Trains 5-557 and 560-6 carry through sleeping cars between Bradford and New York.
- hu Stops to discharge passengers.
- hv Stops on signal East 93rd Street (6.13 P. M.) to receive passengers.
- hw Train 7 will stop at Saegertown (1.53 P. M.) to discharge passengers from Binghamton and east and to receive passengers for Marion and west.
- hx Train 8 will stop at Saegertown (10.37 A. M.) to discharge passengers from Marion and west and to receive passengers for Binghamton and east.
- ne Train 626 stops Saturdays only at Solon (2.24 P. M.) and Aurora (2.32 P. M.) to discharge passengers from Cleveland.
- nh Stops on signal at Garrettsville-Hiram (10.58 A. M.) to discharge passengers from Hornell and east.

## ERIE TICKET OFFICES AND PASSENGER STATIONS IN PRINCIPAL CITIES

- Akron, O.—Union Station.**  
(Telephone Jefferson 9141)  
B. L. BENDER, Ticket Agent.
- Binghamton, N. Y.—Erie Station.**  
(Telephone 4-3251)  
A. F. WAINSCOTT, Ticket Agent.
- Bradford, Pa.—Erie Station.**  
(Telephone 8413)  
A. J. SULLIVAN, Ticket Agent.
- Buffalo, N. Y.—Station Ticket Office**  
(Lehigh Valley Terminal)  
Main and Scott Streets  
(Telephone Washington 4300)  
A. L. SEITZ, Ticket Agent.
- Chicago, Ill.—City Ticket Office.** 163-165 West Jackson Blvd.  
(Telephone Harrison 4160)  
C. F. KUNDEL, Ticket Agent.
- Hotel Ticket Offices—**  
Drake, Morrison, Sherman, Palmer House, Merchandise Mart, The Pullman Bldg.  
(Telephone Harrison 2203)  
GEORGE M. NEWHART, Ticket Agent.
- Dearborn Station.**  
(Telephone Harrison 9880)  
W. E. MISCHNICK, Ticket Agent.
- 63rd St. Station**  
(Telephone Wentworth 3503)  
J. E. KING, Ticket Agent.
- Cleveland, O.—City Ticket Office.**  
East 9th St. and Chester Ave.  
(Telephone Cherry 8400)  
Erie Station.  
(Telephone Cherry 8400)  
G. SAUNDERS, Ticket Agent.
- Corning, N. Y.—Erie Station.**  
(Telephone 50)  
A. T. JOHNSON, Ticket Agent.
- Elmira, N. Y.—Erie Station.**  
(Telephone 2-0380)  
J. V. CLEARY, Ticket Agent.
- Hornell, N. Y.—Erie Station.**  
(Telephone 680)  
M. W. DELANY, Ticket Agent.
- Huntington, Ind.—Erie Station.**  
(Telephone 139)  
M. V. WELLS, Ticket Agent.
- Jamestown, N. Y.—Erie Station.**  
(Telephone 6076)  
FRANK PRIEST, Ticket Agent.
- Jersey City, N. J.—Erie Station.**  
(Telephone Journal Square 2-6400)  
G. B. IRVING, Ticket Agent.
- Mansfield, O.—Erie Station.**  
(Telephone 1423-6)  
J. W. GILKISON, Ticket Agent.
- Marion, O.—Erie Station.**  
(Telephone 2399)  
R. H. STIEF, Ticket Agent.
- Meadville, Pa.—Erie Station.**  
(Telephone 1212)  
O. E. BLAIR, Ticket Agent.
- Middletown, N. Y.—Erie Station.**  
(Telephone 3303)  
C. R. DINEEN, Ticket Agent.
- Newark, N. J.—Erie Station.**  
(Telephone Humboldt 2-0600)  
G. J. MCMICHAEL, Ticket Agent.
- New York, N. Y.—City Ticket Office.**  
Information Bureau.  
Train Service and Fares.  
(Telephone Barclay 7-6500)  
City Ticket Office, 11 Rockefeller Plaza, Rockefeller Center.  
(Telephone Circle 5-7225 and 5-7226)  
G. H. DOWN, Ticket Agent.
- Chambers Street Station.**  
(Telephone Cortlandt 7-9200)  
O. R. KRECH, Ticket Agent.
- City Ticket Office, 17 John Street.**  
(Telephone Cortlandt 7-6430 and 7-6431)  
W. G. TEDFORD, Ticket Agent.
- Times Square Motor Coach Terminal,**  
260 West 42nd St.  
(Telephone Longacre 5-2440)
- Passaic, N. J.—Erie Station.**  
(Telephone 2-1613)  
M. J. LYNCH, Ticket Agent.
- Paterson, N. J.—Erie Station.**  
(Telephone Sherwood 2-3337)  
J. H. GRAF, Ticket Agent.
- Port Jervis, N. Y.—Erie Station.**  
(Telephone 300)  
B. FARBER, Ticket Agent.
- Sharon, Pa.—Erie Station.**  
(Telephone 6234)  
G. E. FRICKER, Ticket Agent.
- Warren, O.—Erie Station.**  
(Telephone 4721-4722)  
H. P. MORGAN, Ticket Agent.
- Youngstown, O.—Erie Station.**  
(Telephone 41101)  
R. S. GETTIE, Ticket Agent.

RAILROAD AND PULLMAN FARES For Information Only. Federal Tax Not Included. Subject to Change Without Notice

Table with columns for 'Between' and 'And' stations, and sub-sections for NEW YORK, BINGHAMTON, and BUFFALO. It lists fares via Motor Coach and Railroad Tickets Valid In (Coaches and Pullmans) with Lower Berth and Seat Fare rates.

Table with columns for 'Between' and 'And' stations, and sub-sections for JAMESTOWN, CLEVELAND, and CHICAGO. It lists Railroad Tickets Valid In (Coaches and Pullmans) and Pullman Rates (Lower Berth and Seat Fare). Includes a vertical note on the right: 'MINIMUM NUMBER OF RAILROAD TICKETS REQUIRED FOR EXCLUSIVE OCCUPANCY OF SPACE IN SLEEPING OR PARLOR CARS'.

RATES FOR UPPER BERTH, DRAWING ROOM, COMPARTMENT, DOUBLE BEDROOM OR ROOMETTE IN SLEEPING CARS

Table showing rates for Upper Berth, Drawing Room, Compartment, Double Bedroom, and Roomette. Columns include 'Where Lower Berth Rate Is', 'Upper Berth Rate Will Be', and various occupancy rates for one or more persons.

Note:—Section for single occupancy overnight may be purchased, if available, from conductor.

Limit three months, except as otherwise indicated. \*Thirty-day limit. †One-year limit.

**TABLE 1** **CONDENSED TABLE OF THROUGH TRAINS NEW YORK AND BUFFALO, CLEVELAND AND CHICAGO**  
(FOR LOCAL TRAINS AND INTERMEDIATE TIME OF THROUGH TRAINS SEE LOCAL TABLES)

Times Square Motor Coach Terminal located at 260 West 42nd St., between 7th and 8th Aves., New York City. Taxicab entrance on 41st St. Motor Coach stop at 34th St. and 8th Ave. is at north-west corner.

**Air-Conditioned Trains**—Air-conditioned equipment has been assigned to regular sections of trains as shown herein. Every effort will be made to provide it as specified, but the right is reserved to employ non-air-conditioned cars as necessitated by volume of traffic or emergencies.

WEST BOUND		EAST BOUND	
<b>THE ERIE LIMITED</b> <b>TRAIN NO. 1—DAILY</b> <b>New York—Buffalo—Jamestown—Chicago</b>		<b>THE ERIE LIMITED</b> <b>TRAIN NO. 2—DAILY</b> <b>Chicago—Jamestown—Buffalo—New York</b>	
<b>EQUIPMENT</b> <b>Air-Conditioned Sleeping Cars:</b> New York to Chicago—10 Section-2 Double Bedroom-1 Drawing Room. Salamanca to Chicago—6 Roomette-6 Section-4 Double Bedroom. <b>Air-Conditioned Dining Car:</b> New York to Youngstown. Marion to Chicago. <b>Air-Conditioned Individual Reclining Seat Coaches:</b> New York to Chicago. (Ladies' Lounge.) <b>Air-Conditioned Coach—Diner:</b> New York to Buffalo.		<b>EQUIPMENT</b> <b>Air-Conditioned Sleeping Car:</b> Chicago to New York—10 Section-2 Double Bedroom-1 Drawing Room. <b>Air-Conditioned Dining Car:</b> Chicago to Marion. Youngstown to New York. <b>Air-Conditioned Individual Reclining Seat Coaches:</b> Chicago to New York. (Ladies' Lounge.) <b>Air-Conditioned Coach—Diner:</b> Buffalo to New York.	
<b>THE LAKE CITIES</b> <b>TRAIN NO. 5—DAILY</b> <b>New York—Buffalo—Cleveland</b>		<b>THE LAKE CITIES</b> <b>TRAIN NO. 6—DAILY</b> <b>Cleveland—Buffalo—New York</b>	
<b>EQUIPMENT</b> <b>Air-Conditioned Sleeping Cars:</b> New York to Cleveland—6 Roomette-6 Section-4 Double Bedroom. New York to Bradford—10 Section-1 Compartment-1 Drawing Room. (Sleeping Car may be occupied at Bradford until 8.00 A. M.) <b>Air-Conditioned Dining Car:</b> New York to Port Jervis. Salamanca to Youngstown. <b>Air-Conditioned Individual Seat Coaches:</b> New York to Cleveland <b>Coaches:</b> Hornell to Buffalo.		<b>EQUIPMENT</b> <b>Air-Conditioned Sleeping Cars:</b> Cleveland to New York—6 Roomette-6 Section-4 Double Bedroom. Bradford to New York—10 Section-1 Compartment-1 Drawing Room. <b>Air-Conditioned Dining Car:</b> Youngstown to Salamanca. Port Jervis to New York. <b>Air-Conditioned Individual Seat Coaches:</b> Cleveland to New York. <b>Coaches:</b> Buffalo to Hornell.	
<b>THE MIDLANDER</b> <b>TRAIN NO. 15—DAILY</b> <b>New York—Jamestown—Akron—Chicago</b>		<b>THE MIDLANDER</b> <b>TRAIN NO. 16—DAILY</b> <b>Chicago—Akron—Jamestown—New York</b>	
<b>EQUIPMENT</b> <b>Air-Conditioned Sleeping Car:</b> New York to Chicago—10 Section-1 Compartment-1 Drawing Room. <b>Air-Conditioned Dining Car:</b> New York to Port Jervis. Salamanca to Chicago. <b>Air-Conditioned Individual Reclining Seat Coach:</b> New York to Chicago. (Ladies' Lounge.)		<b>EQUIPMENT</b> <b>Air-Conditioned Sleeping Car:</b> Chicago to New York—10 Section-1 Compartment-1 Drawing Room. <b>Air-Conditioned Dining Car:</b> Chicago to Salamanca. Port Jervis to New York. <b>Air-Conditioned Individual Reclining Seat Coach:</b> Chicago to New York. (Ladies' Lounge.)	
<b>PACIFIC EXPRESS</b> <b>TRAIN NO. 7—DAILY</b> <b>New York—Buffalo—Jamestown—Chicago</b>		<b>ATLANTIC EXPRESS</b> <b>TRAIN NO. 8—DAILY</b> <b>Chicago—Jamestown—New York</b>	
<b>EQUIPMENT</b> <b>Air-Conditioned Sleeping Car:</b> New York to Salamanca—10 Section-2 Compartment-1 Drawing Room. (Sleeper open Jersey City at 9.30 P. M.) <b>Air-Conditioned Dining Car:</b> Binghamton to Marion. <b>Air-Conditioned Individual Seat Coaches:</b> New York to Chicago.		<b>EQUIPMENT</b> <b>Air-Conditioned Sleeping Car:</b> Chicago to Salamanca—6 Roomette-6 Section-4 Double Bedroom. (Sleeper open at Chicago at 9.15 P. M.) <b>Air-Conditioned Dining Cars:</b> Marion to New York. <b>Air-Conditioned Individual Seat Coaches:</b> Chicago to New York. (No baggage handled on this train east of Hornell baggage will be handled on following train.)	
<b>THE MOUNTAIN EXPRESS</b> <b>TRAIN NO. 27—DAILY</b> <b>New York—Binghamton—Elmira—Hornell</b>		<b>SOUTHERN TIER EXPRESS</b> <b>TRAIN NO. 10—DAILY</b> <b>Salamanca—Buffalo—Hornell—Elmira—Binghamton—New York</b>	
<b>EQUIPMENT</b> <b>Air-Conditioned Dining Car:</b> New York to Binghamton. <b>Coaches:</b> New York to Hornell.		<b>EQUIPMENT</b> <b>Air-Conditioned Sleeping Car:</b> Salamanca to New York—10 Sec.-2 Compartment-1 Drawing Room—Daily except Monday. From Hornell on Monday. (Sleeper may be occupied at Jersey City until 7.30 A. M.) <b>Coaches:</b> Salamanca to Hornell—Daily except Monday. Buffalo to Hornell—Daily except Sunday. Hornell to New York—Daily.	

For Explanation of Reference Marks and Notes, See Pages 5 and 6.

NEW YORK—ELMIRA

TABLE 2 WESTBOUND

Hudson and Manhattan Tube Trains operate between New York and Erie Railroad Station in Jersey City. To Erie Station, Jersey City—From Downtown New York—Train marked "Hoboken"—Fare 8 cents. From Uptown New York —Train marked "Journal Square"—Fare 10 cents.

Times Square Motor Coach Terminal located at 260 West 42nd St., between 7th and 8th Aves., New York City. Taxicab entrance on 41st St. Motor Coach stop at 34th St. and 8th Ave. is at north-west corner.

Table with columns for Miles from New York, Eastern War Time, and various train numbers (55, 59, 1, 701, 9, 703, 251, 255, 61, 27, 63, 65, 67, 259, 69, 71, 5, 15, 705, 7, 51). Rows list stations from New York to Elmira with departure times and service notes.

TABLE 3 EASTBOUND

ELMIRA—NEW YORK

Hudson and Manhattan Tube Trains operate between New York and Erie Railroad Station in Jersey City. From Erie Station, Jersey City—To Downtown New York—Train marked "Hudson Terminal"—Fare 8 cents. To Uptown New York —Train marked "33rd Street"—Fare 10 cents.

Times Square Motor Coach Terminal located at 260 West 42nd St., between 7th and 8th Aves., New York City. Taxicab entrance on 41st St.

Table with columns for station names (Elmira, N.Y. to New York) and train numbers (50, 52, 204, 700, 6, 16, 56, 58, 58, 30, 62, 206, 70, 28, 2, 208, 208, 64, dt8, 68, 10). Rows include departure and arrival times and service notes like 'No Baggage Carried on this Train'.



TABLE 4 WESTBOUND

ELMIRA—CHICAGO

EASTBOUND

Times Square Motor Coach Terminal located at 260 West 42nd St., between 7th and 8th Aves., New York City. Taxicab entrance on 41st St. Motor Coach stop at 34th St. and 8th Ave. is at north-west corner.

Table with columns for Miles from New York/Chicago, Eastern War Time, Central War Time, and various station names with associated times and codes.

Certain towns in Ohio are operating on Central Time, which is one hour earlier than time shown in this folder. Consult Agent for information.

**TABLE 5 DETROIT—TOLEDO—CLEVELAND—YOUNGSTOWN—PITTSBURGH—WASHINGTON—BALTIMORE**

Miles from Cleveland	Eastern War Time	688	624	626	6	628	686	620	Miles from Baltimore	Eastern War Time	629	619	5	685	623	679	687
		Daily	Daily	Daily	Daily	Ex Sun & Hol.	Daily	Sun. only			Ex Sun & Hol.	Sun. only	Daily	Daily	Daily	Daily	Daily
	<b>N.Y.C.</b>																
	Detroit.....Lv.	12.05		8.00	PM		1.10	6.00									
	Toledo.....Lv.	2.08	5.00	9.45			3.00	7.20									
0.0	Cleveland.....Lv.	4.25	9.05	2.00	4.55	6.30	6.00	10.00									
3.3	East 55th Street.....		9.12	2.08	bu.	6.37	6.08	10.08									
5.6	E. 93d St., Cleveland.....		9.17	2.12	5.07	6.42	hv.	10.13									
10.7	North Randall.....					6.51											
15.8	Solon.....			ne.		6.59		f10.28									
20.4	Geauga Lake.....					7.05		f10.33									
23.6	Aurora.....			ne.		7.10		f10.38									
30.0	Mantua.....			dc.		7.18		f10.45									
34.2	Jeddoe.....					f7.24											
36.7	Garrettsville-Hiram.....		9.51	2.47		7.30		f10.56									
40.3	Mahoning.....					f7.36											
45.3	Phalanx.....					7.42											
49.4	Leavittsburg.....					7.49											
52.6	Warren.....	5.44	10.10	3.07	6.00	7.57	7.05	11.18									
57.7	Niles.....	er.	10.18	3.15	es.	8.06	7.16	11.27									
61.9	Girard.....					8.11		f11.34									
66.5	Youngstown.....Ar.	6.10	10.30	3.30	6.21	8.20	7.30	11.42									
66.5	Youngstown.....Lv.	6.20	10.35	3.35			7.35										
84.2	New Castle.....Ar.	6.52	11.00	3.59			8.00										
	New Castle (Wash.St.)ecAr.	7.05	11.13	4.12			8.13										
95.5	Ellwood City (ed).....	7.14	11.34	4.22			8.23										
102.2	Beaver Falls.....	cy7.12	11.22	4.21			8.23										
	New Brighton.....																
105.6	Beaver.....	cy7.18	11.28	4.26			8.29										
112.3	Aliquippa.....	cy7.26	11.37	4.35			8.38										
120.8	Coraopolis.....	cy7.38	11.48	4.45			8.49										
131.4	Pittsburgh.....Ar.	7.55	12.05	5.00			9.05										
131.4	Pittsburgh.....Lv.	9.10	12.25				11.07										
141.0	Braddock.....Ar.	9.26	12.43				11.23										
145.2	McKeesport.....	9.40	12.55				11.34										
189.3	Connellsville.....	10.40	1.55				12.32										
244.3	Meyersdale.....	12.07	3.31														
281.5	Cumberland.....	1.07	4.32				2.57										
359.2	Martinsburg.....	2.50	6.16				4.44										
372.5	Harper's Ferry.....	3.23	6.42														
425.7	Silver Spring.....	4.19	7.42				6.07										
432.8	Washington, D. C. Ar.	4.38	8.00				6.25										
432.8	Washington, D. C. Lv.	5.00	8.15				6.45										
469.4	Baltimore (Camden Sta.) Ar.	5.42	9.00				7.28										
470.9	Baltimore (Mt. Royal Sta.) Ar.	5.51					7.38										
		PM	PM	PM	PM	PM	AM	PM									

(Certain towns in Ohio observe Central Time—one hour earlier than time shown)

**EQUIPMENT**

Detroit, Toledo, Cleveland, Youngstown, Pittsburgh, Washington, Baltimore Trains.

★Indicates Air-Conditioned Cars

**EASTBOUND**

**No. 6—Daily.** ★Sleeping Car (6 Roomette-6 Section-4 Double Bedroom) Cleveland to New York. ★Coach, Cleveland to New York.

**No. 626—Daily.** ★Erie Parlor-Buffer Car, Cleveland to Pittsburgh. ★Coach, Cleveland to Pittsburgh.

**No. 688—Daily.** ★Sleeping Car (12 Section and 2 Double Bedrooms), Chicago to Pittsburgh. ★Sleeping Car (8 Section-5 Double Bedrooms), Detroit to Pittsburgh. Through Coaches, ★Chicago and ★Detroit to Pittsburgh, via Cleveland. ★Parlor Car, ★Dining Car and ★Coaches, Pittsburgh to Washington and Baltimore.

**No. 624—The Washingtonian—Daily.** ★Parlor-Diner, Cleveland to Baltimore. ★Individual Reclining Seat Coaches, Cleveland to Washington and Baltimore.

**No. 686—Daily.** ★Sleeping Car for Parlor Car Service and ★Coaches, Detroit to Pittsburgh, via Cleveland. ★Dining Car, Cleveland to Pittsburgh. ★Sleeping Car (8 Section-4 Double Bedroom), Pittsburgh to Washington. (Open 9.00 p. m., and may be occupied until 7.30 a. m.)

**WESTBOUND**

**No. 5—Daily.** ★Sleeping Car (6 Roomette-6 Section-4 Double Bedroom) New York to Cleveland. ★Erie Parlor-Buffer Car, Pittsburgh to Cleveland. ★Coach, Pittsburgh to Cleveland. ★Sleeping Cars (8 Section-4 Double Bedroom and 12 Section and Drawing Room), Washington to Pittsburgh. (Open 10.00 p. m., and may be occupied until 8.00 a. m.)

**No. 623—The Washingtonian—Daily.** ★Parlor-Diner, Baltimore to Cleveland. ★Individual Reclining Seat Coaches, Baltimore and Washington to Cleveland.

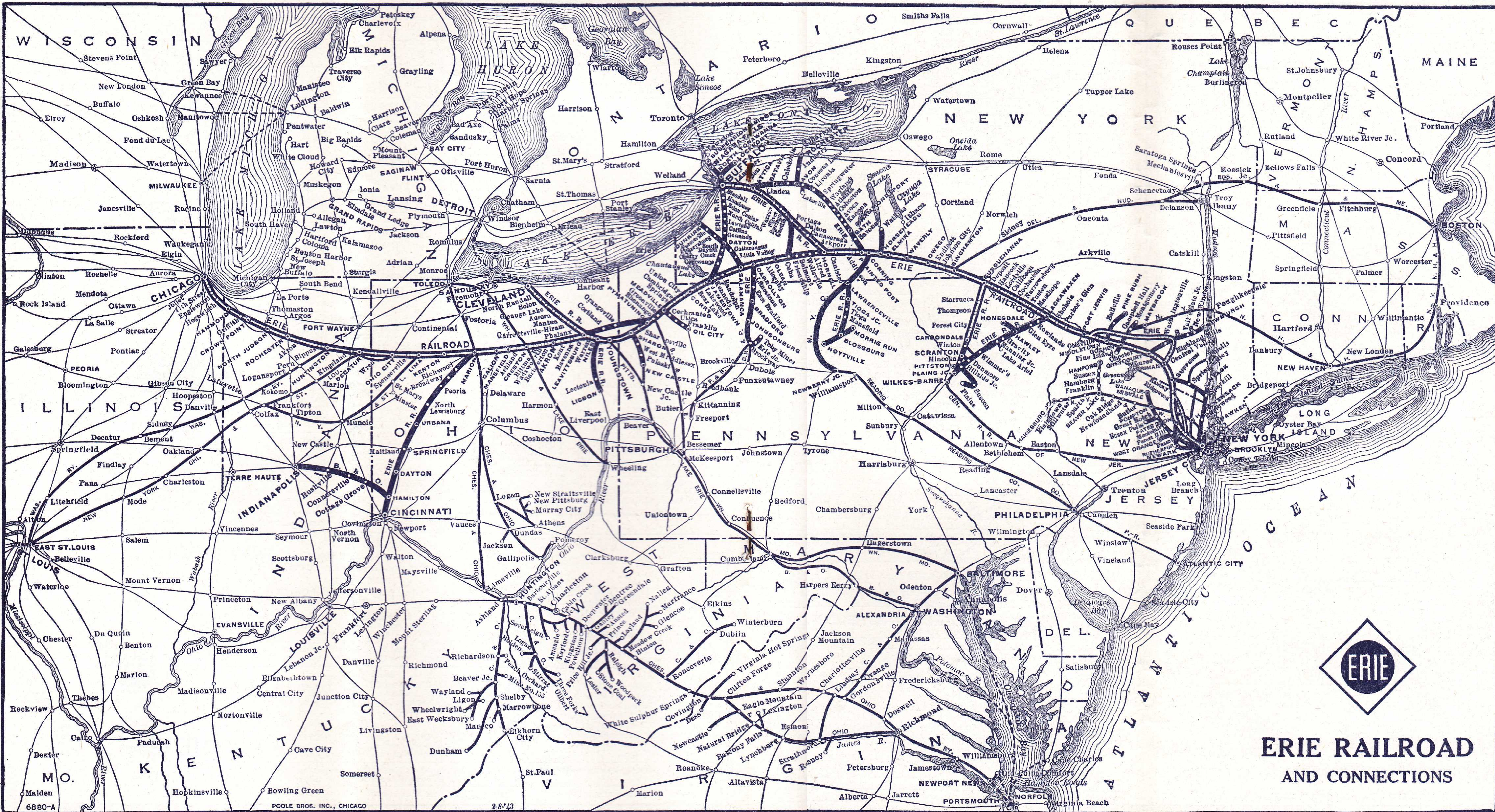
**No. 685—Daily.** ★Sleeping Car for Parlor Car Service and ★Coaches Pittsburgh to Detroit, via Cleveland. ★Dining Car, Pittsburgh to Cleveland.

**No. 679—Daily.** ★Sleeping Car (12 Section and 2 Double Bedrooms), Pittsburgh to Chicago. ★Through Coaches, Pittsburgh to Chicago.

**No. 687—Daily.** ★Sleeping Car (8 Section-5 Double Bedrooms), Pittsburgh to Detroit. ★Through Coaches, Pittsburgh to Detroit via Cleveland. ★Pullman Cars only, Washington to Pittsburgh.

Round-trip tickets reading via B. & O. R. R. between Cleveland and points east of Pittsburgh are honored via Erie R. R.-P. & L. E. R. R. between Cleveland and Pittsburgh.

Holidays in the above table refers to the observance of New Year's Day, Memorial Day, Independence Day, Labor Day, Thanksgiving Day and Christmas Day.



**ERIE RAILROAD  
AND CONNECTIONS**

TABLE 6 NEW YORK AND BUFFALO

Table with columns for WESTBOUND Read Down, EASTBOUND Read Up, Miles from New York, and EASTERN WAR TIME. Includes train numbers like 477, 5, 2, 10, 6 and destinations like NEW YORK, Jersey City, Hornell, Buffalo.

TABLE 9 NEW YORK—CHAUTAUQUA—CHICAGO

Table with columns for WESTBOUND Read Down, EASTERN WAR TIME, and EASTBOUND Read Up. Includes train numbers like 5-Bus, 1-Bus, 7-Bus, 8, 2 and destinations like NEW YORK, Jersey City, Jamestown, Chautauqua, Chicago.

Tickets sold and Baggage checked through to Chautauqua. Hand baggage checked without charge. Trunks checked at charge of 25c each.

TABLE 10 NEW YORK—SALAMANCA—BRADFORD—CHICAGO

Table with columns for WESTBOUND Read Down, Via Salamanca and BUS of Buffalo and Erie Coach Corp., EASTERN WAR TIME, and EASTBOUND Read Up. Includes train numbers like 7-Bus, 5-557, 1-Bus, 2, 8, 560-6, 10 and destinations like NEW YORK, Salamanca, Bradford, Chicago.

Trains 5-557 and 560-6 carry through sleeping car between Bradford and New York. Sleeper on train 557 will be parked at Bradford for occupancy until 8.00 A. M. Busses leave as follows: (running time approximately 45 minutes.)

TABLE 11 NEW YORK—KENOZA LAKE—JEFFERSONVILLE

Table with columns for WESTBOUND Read Down, EASTERN WAR TIME, and EASTBOUND Read Up. Includes train numbers like 27, 1, 2 and destinations like NEW YORK, Jersey City, Callicoon, Kenoza Lake, Jeffersonville.

TABLE 7 ELMIRA-AVON

Table with columns for Westbound, Eastbound, Read Down, Read Up, Miles, and Eastern War Time. Includes train numbers like 467, 8 and destinations like NEW YORK, Elmira, Avon.

TABLE 8 BUFFALO—JAMESTOWN

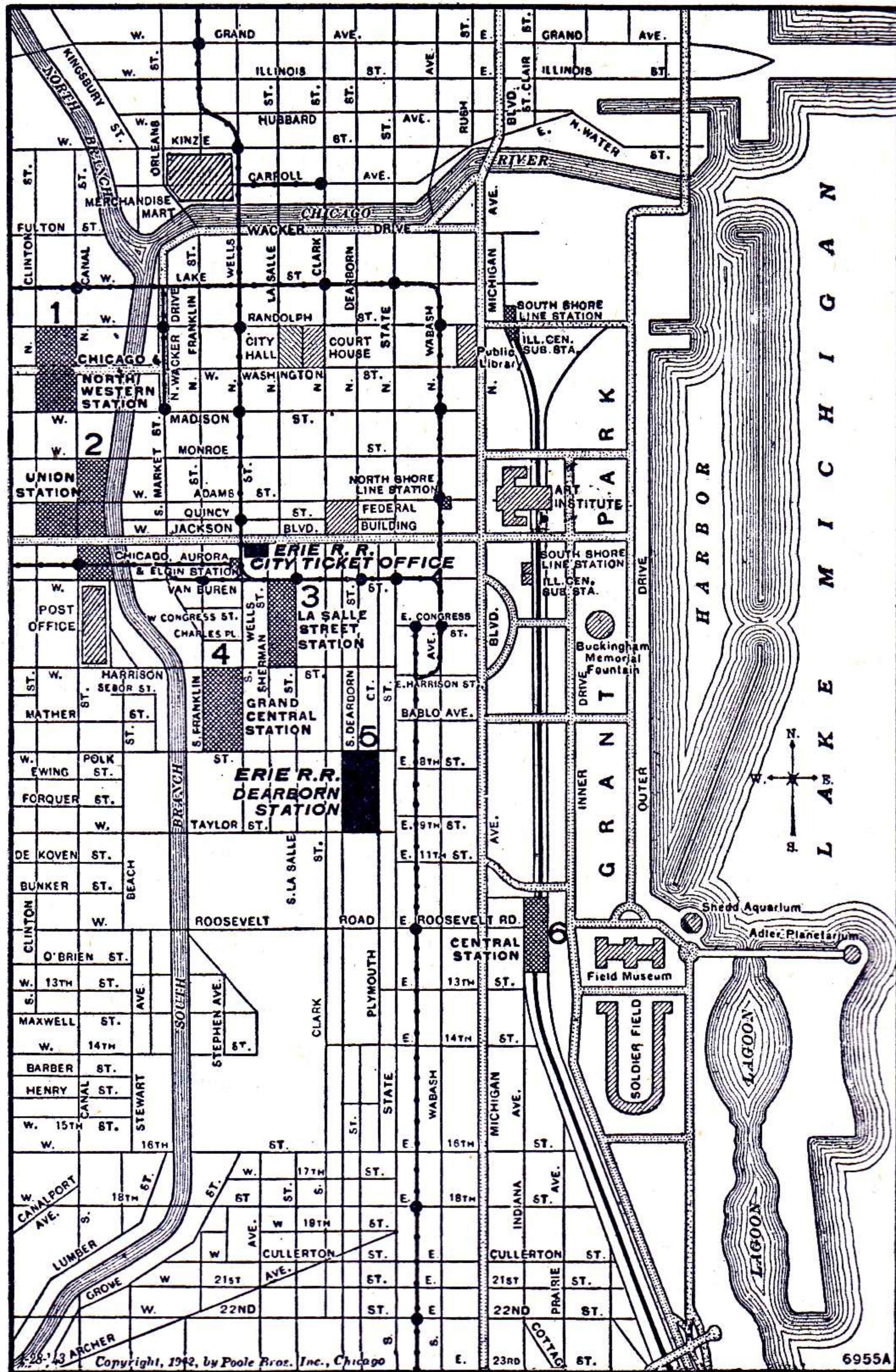
Table with columns for WESTBOUND Read Down, EASTERN WAR TIME, and Eastbound Read Up. Includes train numbers like 519, 516 and destinations like Buffalo, Blasdell, Hamburg, Water Valley, Eden Valley, etc.

FOR VICTORY BUY UNITED STATES WAR BONDS

NOTE "X" In connection with the bus service the Erie Railroad acts as agent only and is not responsible beyond its own line, except as such responsibility may be imposed by law with respect to baggage.

# MAP OF DOWNTOWN CHICAGO

Showing Business District, "Loop," and Railroad Stations



## LOCATION OF CHICAGO PASSENGER STATIONS

Tenant Railroad Lines Are Listed. Number Indicates Location On Above Map. Erie trains arrive at and depart from Dearborn Station (5).

- |  |  |
|--|--|
| <p><b>Dearborn Station (5)</b><br/>Polk and Dearborn Sts.</p> <p><b>ERIE</b><br/>Santa Fe<br/>Chicago &amp; Eastern Illinois<br/>Chicago &amp; Western Indiana<br/>Grand Trunk<br/>Monon Route<br/>Wabash</p> <p><b>C&amp;NW Terminal (1)</b><br/>Madison and Canal Sts.<br/>1 and 2/10 Miles from Dearborn Station<br/>Chicago &amp; North Western</p> <p><b>Union Passenger Station (2)</b><br/>Canal, Adams, Jackson and Clinton Sts.<br/>1 Mile from Dearborn Station<br/>Alton Road<br/>Burlington Route<br/>Chicago, Milwaukee, St. Paul and Pacific<br/>Pennsylvania Lines</p> <p>North Shore Line, South Shore Line, and Chicago, Aurora &amp; Elgin electric lines' stations are also shown on the map.</p> | <p><b>La Salle St. Station (3)</b><br/>La Salle and Van Buren Sts.<br/>1/2 Mile from Dearborn Station<br/>New York Central<br/>Nickel Plate<br/>Rock Island</p> <p><b>Grand Central Station (4)</b><br/>Harrison and Wells Sts.<br/>3/10 Mile from Dearborn Station<br/>Baltimore &amp; Ohio<br/>Chicago Great Western<br/>Pere Marquette<br/>Soo Line</p> <p><b>Central Station (6)</b><br/>Roosevelt Road and Michigan Ave.<br/>8/10 Mile from Dearborn Station<br/>Big Four<br/>Illinois Central<br/>Michigan Central</p> |
|--|--|

# "THE WASHINGTONIAN"

Convenient Through Day Train

Between

Cleveland, Washington and  
Baltimore



EASTERN WAR TIME

EASTBOUND

WESTBOUND

(Read down)

(Read up)

9:05 A.M. Lv... Cleveland... Ar.	9:25 P.M.
10:35 A.M. Lv... Youngstown... Ar.	7:40 P.M.
12:25 P.M. Lv... Pittsburgh... Ar.	5:40 P.M.
8:00 P.M. Ar... Washington... Lv.	10:00 A.M.
	Baltimore
9:00 P.M. Ar.. (Camden Sta.) Lv.	9:00 A.M.
..... (Mt. Royal Sta.) Lv.	8:55 A.M.

(Cleveland and Youngstown observe Central Time — one hour earlier than time shown.)

Via Erie Railroad

Pittsburgh & Lake Erie Railroad

Baltimore & Ohio Railroad

## Dependable Connections

... in CHICAGO

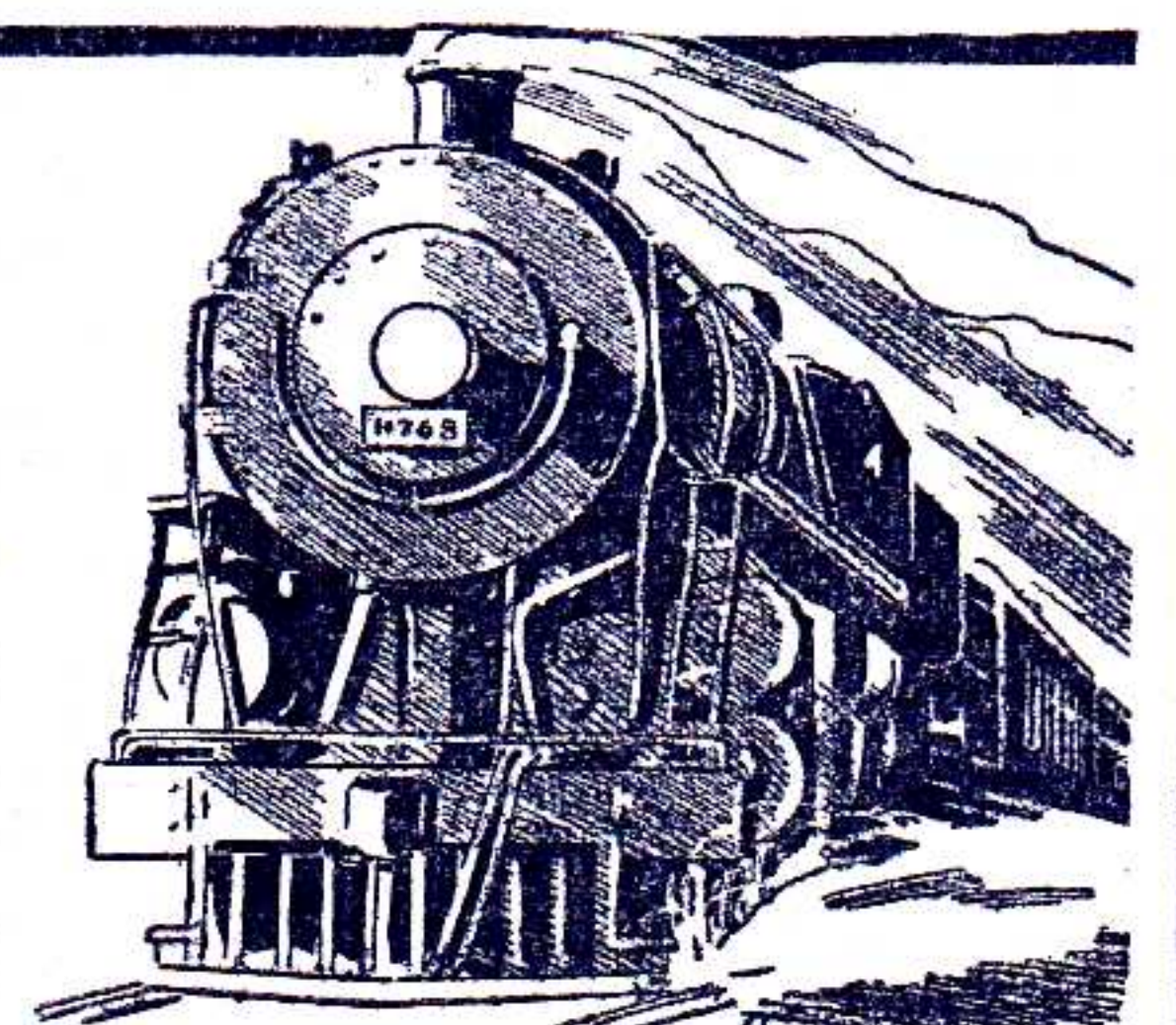


... your Parmelee transfer coupon, which is included as part of your through ticket, entitles you to transportation in smart limousine coaches from your incoming railway station to your outgoing station . . . or from your incoming station to any downtown hotel or other downtown destination. This service is also available, at a nominal charge, to passengers not holding a Parmelee transfer coupon.

Ask any Ticket Agent about

### PARMELEE SERVICE

# ...WAR WON'T WAIT!...



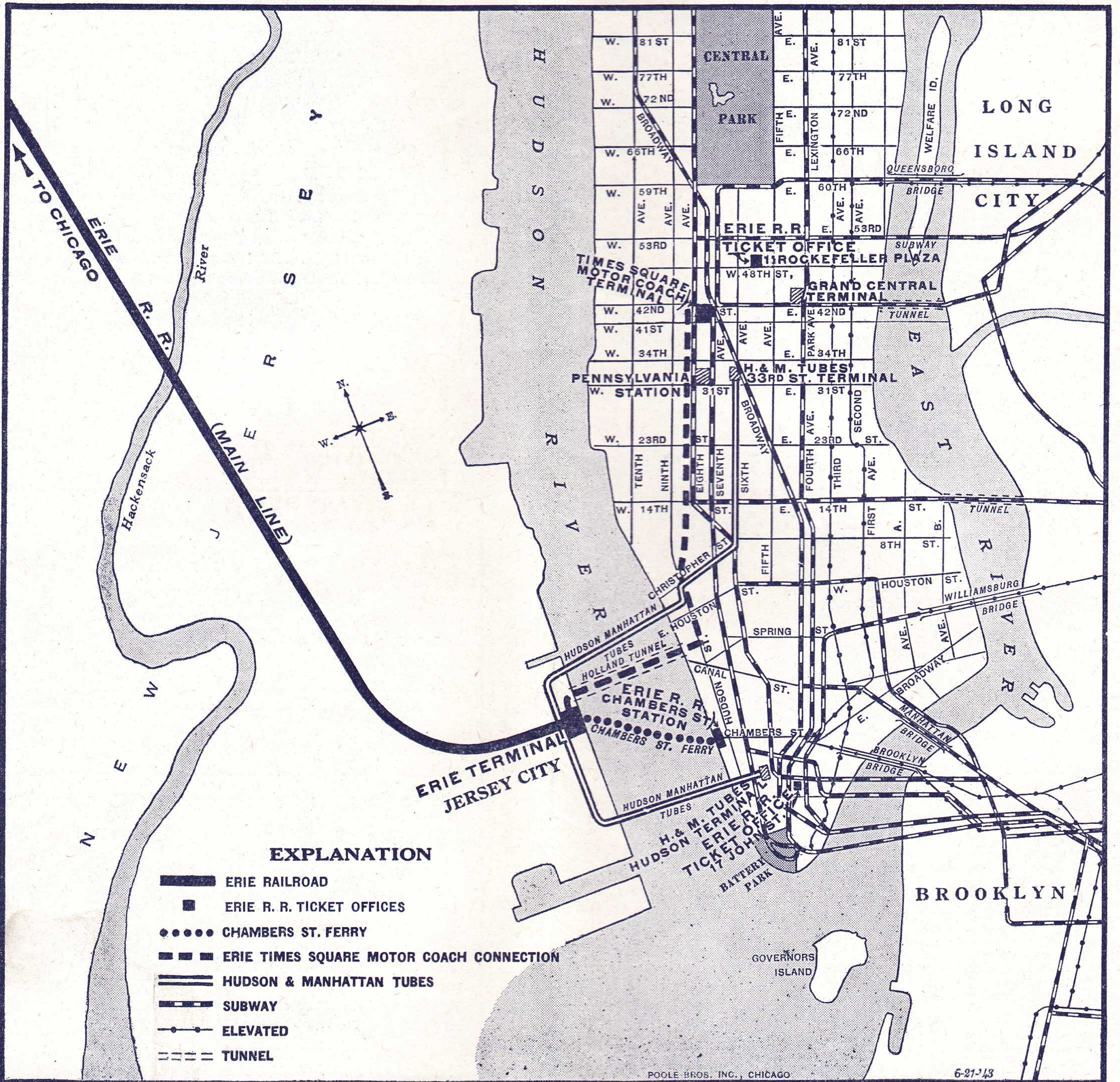
Railway Express provides fast transportation for the things the nation needs to win the war—and for vital home-front necessities, too.

# RAILWAY EXPRESS

AGENCY INC.

NATION-WIDE SERVICE

**MAP OF NEW YORK CITY AND ADJACENT AREA**  
 showing Erie Times Square Motor Coach Connection, Chambers Street Ferry route, Hudson and Manhattan Tube routes, and Erie Terminals and Ticket Offices in Manhattan and Jersey City.



## HUDSON AND MANHATTAN TUBE TRAINS

### SCHEDULE OF RUNNING TIME BETWEEN ERIE R. R. JERSEY CITY TERMINAL AND

**Downtown New York—**  
Cortlandt St. (Hudson Terminal Bldg.)..... 6 Mins.

**Uptown New York—**  
33rd Street and 6th Ave..... 14 "  
23rd Street and 6th Ave..... 11 "  
19th Street and 6th Ave..... 10 "  
14th Street and 6th Ave..... 9 "  
9th Street and 6th Ave..... 8 "  
Christopher and Greenwich Streets..... 6 "

**Allow 10 Minutes additional for connections.**

**Fares—Downtown 8 cents. Uptown 10 cents.**

#### Tube Trains From "Erie" Jersey City

**To Downtown New York—**take train marked "Hudson Terminal."  
**To Uptown New York—**take train marked "33rd St. Local."  
**To Journal Square, Jersey City—**take train marked "Journal Square," also connects to Newark.  
**To Hoboken—**take train marked "Hoboken."

#### Tube Trains To "Erie" Jersey City

**From Downtown New York—**take train marked "Hoboken."  
**From Uptown New York—**take train marked "Journal Square."  
**From Journal Square, Jersey City—**take train marked "33rd St. Local," also connects from Newark.  
**From Hoboken—**take train marked "Hudson Terminal."



## ERIE R. R. FERRY TIME TABLE

EASTERN STANDARD TIME

### CHAMBERS STREET FERRY

Ferry Running Time, 9 Minutes  
WEEK DAYS

Leave New York for Jersey City						Leave Jersey City for New York					
AM	AM	AM	PM	PM	PM	AM	AM	AM	PM	PM	PM
12.30	8.00	11.10	12.10	3.50	7.20	12.15	m8.02	11.15	12.05	3.45	7.00
1.00	8.10	11.20	12.20	4.00	7.30	12.45	8.08	11.25	12.15	3.55	7.15
1.30	8.15	11.30	12.30	4.10	7.40	1.15	8.17	11.35	12.25	4.05	7.25
2.00	8.20	11.40	12.40	4.20	7.50	1.45	8.25	11.45	12.35	4.15	7.35
2.30	8.30	11.50	12.50	4.30	8.00	2.15	8.31	11.55	12.45	4.25	7.45
3.00	8.40	12.00	1.00	4.40	8.10	2.45	8.38	.....	12.55	4.35	7.55
3.25	8.45	.....	1.10	4.50	8.20	3.12	8.45	.....	1.05	4.45	8.05
3.50	8.50	.....	1.20	5.00	8.30	3.35	8.54	.....	1.15	4.53	8.15
4.30	9.00	.....	1.30	5.08	8.40	4.15	a9.02	.....	1.25	5.00	8.25
5.00	9.10	.....	1.40	m5.15	8.50	4.45	9.07	.....	1.35	5.05	8.35
5.30	9.15	.....	1.50	5.20	9.00	5.15	9.18	.....	1.45	5.13	8.45
5.45	9.20	.....	2.00	5.28	9.15	5.45	9.23	.....	1.55	5.24	8.55
6.00	9.30	.....	2.10	5.38	9.30	6.00	9.35	.....	2.05	5.35	9.05
6.15	9.40	.....	2.20	5.48	9.45	6.15	9.45	.....	2.15	5.45	9.15
6.30	9.50	.....	2.30	6.00	10.00	6.30	9.55	.....	2.25	5.55	9.30
6.45	10.00	.....	2.40	6.10	10.15	6.45	10.05	.....	2.35	6.00	9.45
7.00	10.10	.....	2.50	6.20	10.30	7.07	10.15	.....	2.45	6.05	10.00
7.10	10.20	.....	3.00	6.30	11.00	7.18	10.30	.....	2.55	6.15	10.15
7.20	10.30	.....	3.10	6.40	11.30	7.25	10.35	.....	3.05	6.25	10.30
7.30	10.40	.....	3.20	6.50	11.55	7.35	10.45	.....	3.15	6.35	10.45
7.38	10.50	.....	3.30	7.00	.....	7.45	10.55	.....	3.25	6.45	11.15
7.50	11.00	.....	3.40	7.10	.....	7.55	11.05	.....	3.35	6.55	11.42
AM	AM	Noon	PM	PM	PM	AM	AM	AM	PM	PM	PM

a Will not run on Holidays.      m Except Saturdays and Holidays.

#### SUNDAYS

AM	AM	PM	PM	PM	AM	AM	PM	PM	PM
12.30	8.10	12.15	4.30	8.45	12.15	8.15	12.15	4.30	8.45
1.00	8.30	12.30	4.45	9.00	12.45	8.33	12.30	4.45	9.00
1.30	8.45	12.45	5.00	9.15	1.15	8.45	12.45	5.03	9.15
2.00	9.00	1.00	5.15	9.30	1.45	9.00	1.00	5.15	9.30
2.30	9.10	1.15	5.30	9.45	2.15	9.10	1.15	5.30	9.45
3.00	9.30	1.30	5.45	10.00	2.45	9.30	1.30	5.45	10.00
3.30	9.45	1.45	6.00	10.15	3.15	9.45	1.45	6.00	10.15
4.00	10.00	2.00	6.15	10.30	3.45	10.00	2.00	6.18	10.42
4.30	10.15	2.10	6.30	11.00	4.18	10.15	2.15	6.33	11.15
5.15	10.30	2.30	6.45	11.30	5.00	10.30	2.30	6.45	11.42
6.10	10.40	2.45	7.00	11.55	5.50	10.45	2.45	7.00	.....
6.45	11.00	3.00	7.15	.....	6.30	11.00	3.00	7.15	.....
7.00	11.10	3.10	7.25	.....	6.57	11.15	3.15	7.30	.....
7.10	11.30	3.30	7.45	.....	7.18	11.30	3.35	7.45	.....
7.30	11.45	3.45	8.00	.....	7.30	11.45	3.50	8.00	.....
7.45	12.00	4.00	8.15	.....	7.45	12.00	4.00	8.15	.....
8.00	.....	4.15	8.30	.....	8.00	.....	4.15	8.30	.....
AM	Noon	PM	PM	PM	AM	Noon	PM	PM	PM

## HOW YOU CAN HELP

*"Speed Up"*

## WARTIME TRAVEL

IT IS the first duty of all railroads today to get war equipment, soldiers, sailors, and marines delivered where they are needed. This tremendous job sometimes overtaxes our facilities for giving good service to our patrons.

You can help us "speed up" our wartime service and save yourself inconvenience by doing these things —

- planning your trip during mid-week
- traveling by day instead of by night
- accepting available space instead of waiting for preferred accommodations
- canceling reservations immediately if for any reason your travel plans change
- taking only necessary luggage



The Railroad of *Helpful Service*

## GENERAL INFORMATION

**STANDARD OF TIME**—Erie Lines east of and including Ohio City, Ohio, are shown in Eastern War Time. Lines west of Ohio City, Ohio, in Central War Time. 12:01 Midnight to 12:00 Noon is indicated by light-faced type. 12:01 Noon to 12:00 Midnight is indicated by heavy-faced type. (Certain towns in Ohio are operating on Central Time, which is one hour earlier than time shown in this folder.)

**THIS COMPANY IS NOT RESPONSIBLE FOR ERRORS** in timetables, inconvenience or damage resulting from delayed trains, or failure to make connections; schedules and equipment shown herein are subject to change without notice.

**HOLIDAYS**—The term "Holidays" (unless covered by special note under schedule) refers to the observance of New Year's Day, Lincoln's Birthday, Washington's Birthday, Memorial Day, Independence Day, Labor Day, Columbus Day, Election Day (November 2), Thanksgiving Day and Christmas Day.

**TRAINS WILL NOT BE HELD** at Jersey City for ferries from New York between the hours of 5:00 P. M. and 6:30 P. M.

**FARES PAID ON TRAIN**—Conductors are required to charge ten (10) cents in excess of the one-way ticket fare for passengers traveling in coaches in the territory east of Port Jervis, including side lines and branches. Buy tickets before boarding trains and avoid payment of this extra fare.

**CHILDREN** under five years of age are carried free when accompanied by parent or guardian; five years of age and under twelve, half fare; twelve years of age and over, full fare.

**ADJUSTMENT OF FARES**—Should any misunderstanding arise with conductors or agents, pay the fare required, take receipt and communicate with Passenger Traffic Manager, Midland Bldg., Cleveland, Ohio.

**REDEMPTION OF TICKETS**—Tickets unused or partly used will be redeemed under tariff regulations at proper value.

**LOST TICKETS**—Proper care should be taken to guard against the loss of tickets, as Railroads are not responsible for lost tickets or baggage checks.

**STOP-OVERS AT NIAGARA FALLS**—Passengers holding tickets reading "via Erie Railroad" from Elmira, N. Y., and stations east thereof to or through Youngstown, Ohio, and stations west thereof, or vice versa, may exercise the privilege of going via Buffalo and making side-trip to Niagara Falls. On request, Erie Ticket Agent at Buffalo will issue without charge a round-trip ticket between Buffalo and Niagara Falls—Frequent service via motor coach direct from Buffalo Terminal.

**STOP-OVERS AT OTHER POINTS**—A stop-over within final limit will be granted on tickets sold at regular fares at all stations on the Erie Railroad (with certain exceptions in the New York suburban area).

**ARTICLES LOST ON TRAINS**—When articles are lost on trains or left in waiting rooms or stations, owners should apply at once to Agent at station where they leave train or address Manager, Baggage Traffic, Foot of Chambers St., New York City, giving full description of property, stating date of loss and train number.

**BAGGAGE**—150 pounds of baggage are checked free on adult tickets and 75 pounds on half fare tickets. Free allowance subject to tariff stipulations as to contents, weight, value and size.

Baggage to be checked should be delivered at stations reasonably in advance of train departure. The railroad cannot guarantee to forward baggage on same train with passenger and when necessary will be forwarded on other trains. To facilitate prompt receipt of baggage at destination, passengers are urged to arrange for forwarding on a preceding train.

A charge is made for storage of baggage at destination when it is not claimed within the free time limit.

**BAGGAGE DELIVERY IN NEW YORK CITY**—All baggage checked to New York City will be sent to Chambers Street Station.

**BAGGAGE INSURANCE** by the St. Paul Fire and Marine Insurance Co. may be purchased at principal Erie Ticket Offices. It insures your baggage and personal effects for your entire trip anywhere in the world. Minimum premium twenty-five cents. Ask Ticket Agent for full particulars.

**BAGGAGE DELIVERY SERVICE**—Baggage may be checked through to house address, hotel, steamship dock, etc., at destination, thus avoiding necessity for any further attention. Reliable transfer companies perform the service at nominal charges. This delivery arrangement is in effect at all principal cities.

**HAND BAGGAGE** in coaches or Pullman cars is restricted to what can be conveniently placed in berth, seat, or other accommodations purchased by passenger. It is urged that passengers carry with them only such baggage as required for their immediate needs and avail themselves of the free baggage service for other baggage required on reaching destination.

**SAFETY FIRST HINTS**—Carefulness on your part helps eliminate accidents. Don't get on or off a train in motion; wait for a full stop. Keep hand baggage out of car aisles; this will remove a cause of inconvenience, possibly of harm, to others. Walk carefully when entering or leaving train; high-heeled shoes are sometimes a cause of tripping or stumbling on car steps. Don't stand or walk close to the railroad track; look both ways before starting across. Courtesy toward your fellow travelers increases the pleasure of your journey.

### ***Erie Service to and from Midtown New York*** (For through-train passengers)



Only 30 minutes between Erie Railroad Jersey City Terminal and Times Square by motor coach.

Stop also made at 34th St. and 8th Ave. (northwest corner to board motor coach).

Through-train connections guaranteed.

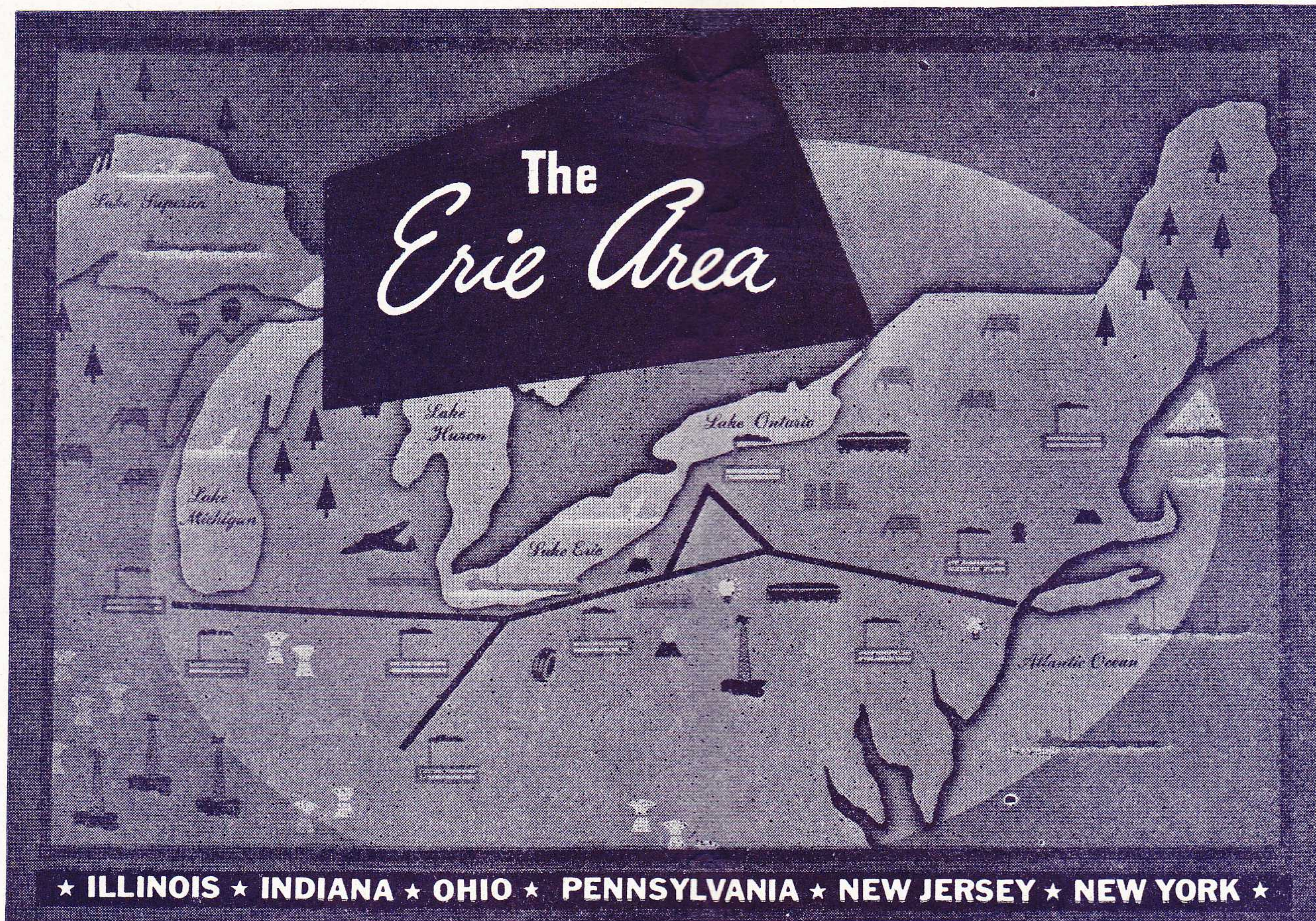
Additional charge for motor coach service is 25c in each direction.

Hand baggage transferred free.

Connections provided eastbound from Trains Nos. 2, 6, 8, 10 and 16; westbound, for Trains Nos. 1, 5, 7, 15 and 27.

Consult Ticket Agents for further information.





## THE INDUSTRIAL HEART OF AMERICA

**C**ONCENTRATED in the six states directly served by the Erie Railroad is the "Industrial Heart of America".

Mines, streams, and forests in this rich, fertile region furnish an endless supply of raw materials — coal, steel, petroleum, lumber, sand, lime, and a score of other products.

From fields come abundant crops of soya beans, wheat, corn, oats, fruits, vegetables, and a great variety of other agricultural products.

With all these natural resources, industry finds it

more advantageous to be located in "The Erie Area". For everything, from raw materials to ideal manufacturing conditions, is available here, and it is near the greatest American markets for finished products.

The Erie Railroad serves well this great industrial heart. In war as in peace the Erie provides fast, safe, dependable transportation in bringing raw materials to industry and finished products to markets.

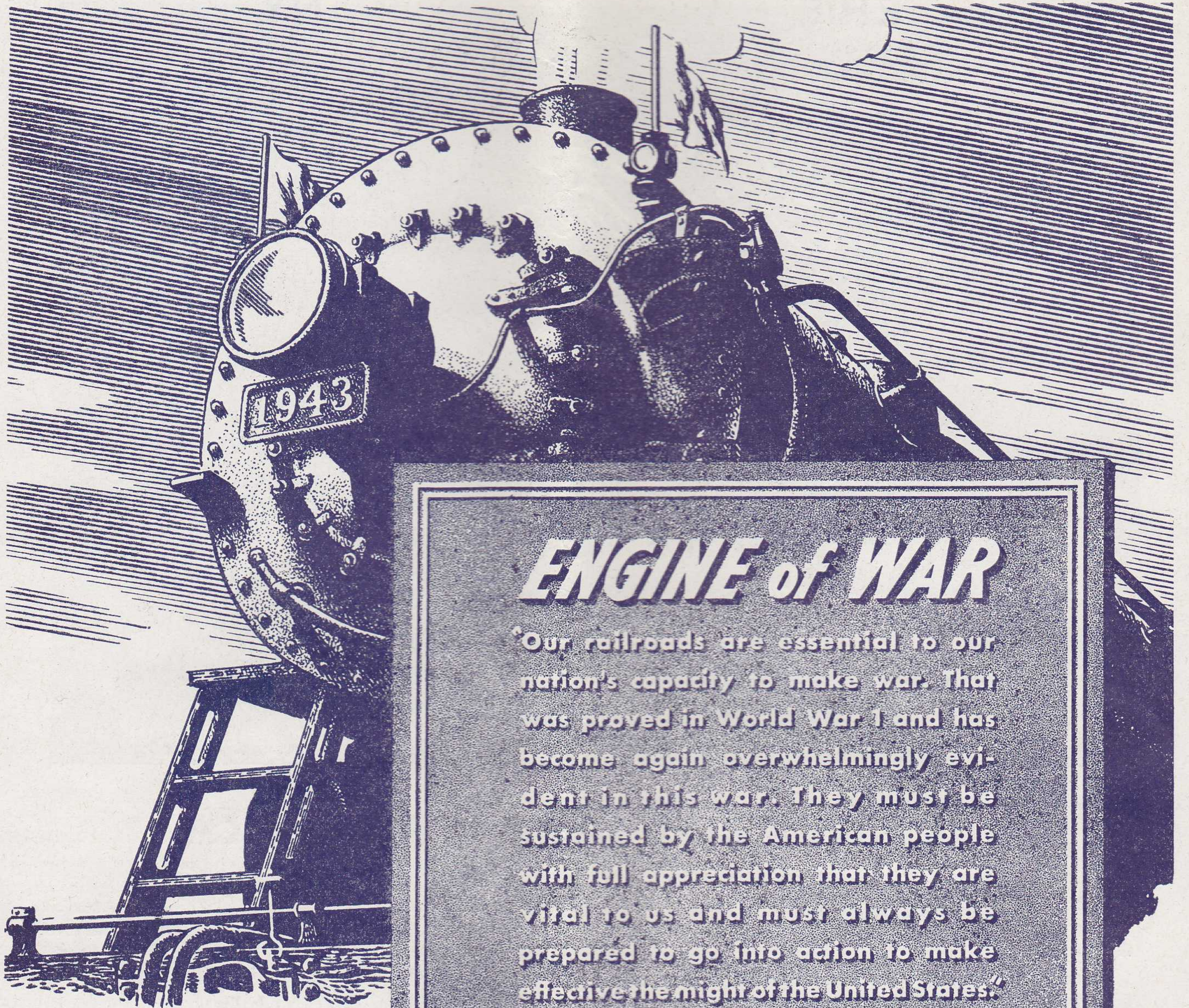
Get the facts about "The Erie Area". A copy of our new map of this region and specific information will be furnished without obligation.

### ERIE RAILROAD COMPANY

GEORGE F. WESTON, *Industrial Commissioner*

MIDLAND BUILDING

CLEVELAND OHIO

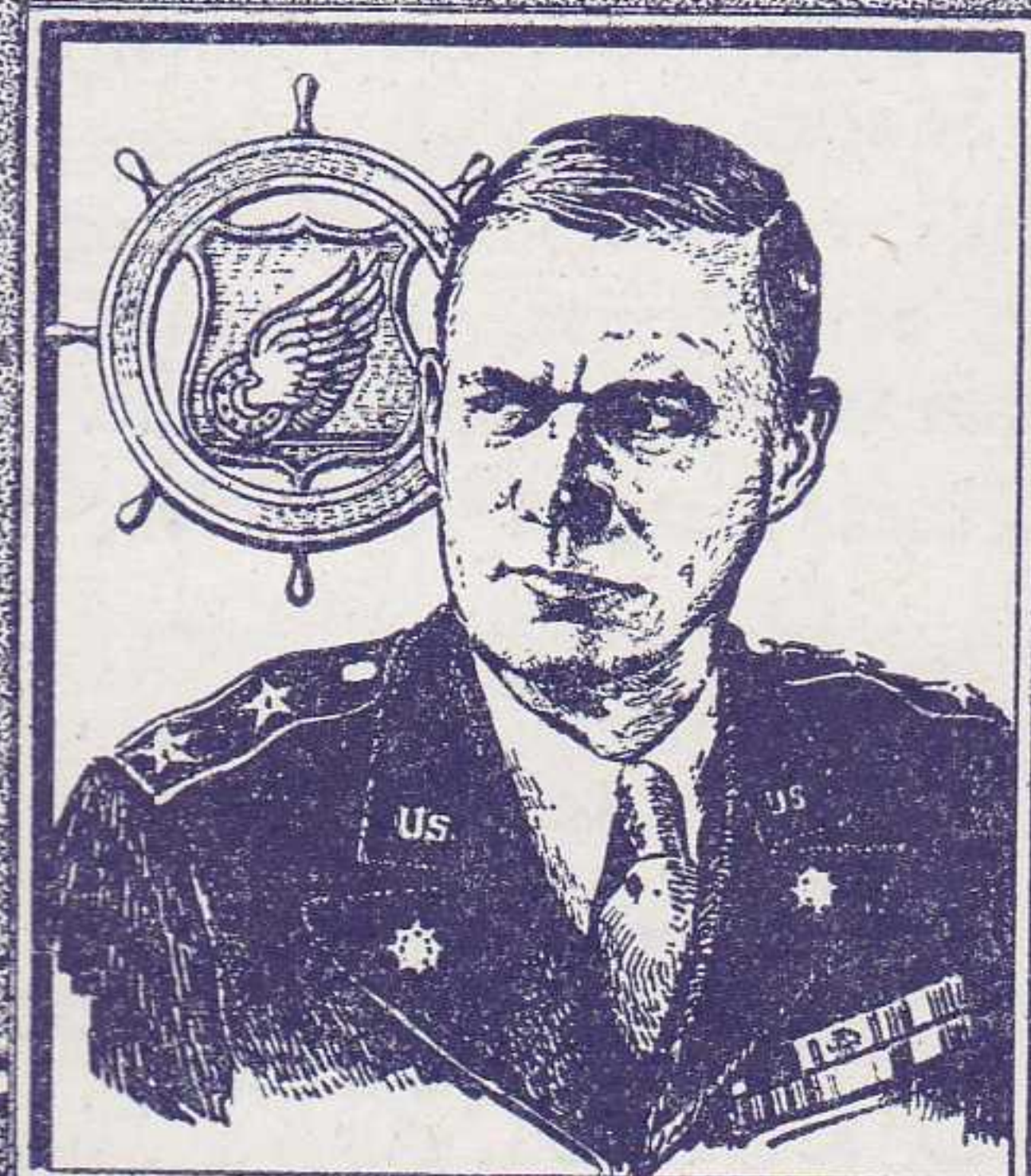


## *ENGINE of WAR*

"Our railroads are essential to our nation's capacity to make war. That was proved in World War I and has become again overwhelmingly evident in this war. They must be sustained by the American people with full appreciation that they are vital to us and must always be prepared to go into action to make effective the might of the United States."

*C. P. Gross*

C. P. GROSS  
Major General  
Chief of Transportation  
United States Army



Association of  
**AMERICAN  
RAILROADS**

# ERIE RAILROAD COMPANY

**General Offices** { **Midland Building, Cleveland 15, Ohio.** (Telephone, Cherry 8400)  
**Hudson Terminal, 50 Church Street, New York 7, N. Y.** (Telephone, Cortlandt 7-9200)  
**Utilities Building, 327 South La Salle Street, Chicago 4, Ill.** (Telephone Harrison 4160)

R. E. WOODRUFF, President,	Cleveland.	CARL HOWE, Vice-President,	Chicago.
H. D. BARBER, Vice-President,	"	T. J. TOBIN, Comptroller,	Cleveland.
H. A. TAYLOR, Vice-President and General Counsel,	"	G. A. W. ACHENBACH, Secretary,	"
J. K. THOMPSON, Vice-President,	"	E. F. MORGENROTH, Treasurer,	"
H. W. VON WILLER, Vice-President,	"	CHARLES E. COE, Special Representative,	"

## TRAFFIC AND DEVELOPMENT

G. C. MANNING, Assistant Vice-President,		H. W. VON WILLER, Vice-President, Cleveland.	
		D. R. THOMPSON, Asst. Vice-President, Cleveland.	
		New York.	W. V. KENNEDY, Assistant Vice-President,
		L. B. BURFORD, Assistant Vice-President, New York.	Chicago.
<b>PASSENGER—Sales and Service</b>			
ALFRED FYNN, Assistant General Passenger Agent,	Cleveland.	R. B. ROGERS, Passenger Traffic Manager, Cleveland.	Chicago.
T. R. PATTON, Assistant General Passenger Agent,	Youngstown.	H. T. HARLOW, General Passenger Agent,	"
F. A. WALDRON, Assistant General Passenger Agent,	New York.	A. G. OLDENQUIST, Assistant General Passenger Agent,	"
		E. J. HAWERKOST, General Western Passenger Agent,	"
		C. L. CHAPMAN, Manager, Mail, Baggage and Express Traffic, New York.	
<b>FREIGHT—Rates</b>			
L. B. BURFORD, Assistant Vice-President, New York.		F. G. LANTZ, Freight Traffic Manager, Chicago.	
O. M. MEYNE, Assistant Freight Traffic Manager,	New York.	A. BLAUDEL, Assistant Freight Traffic Manager,	Chicago.
E. N. HAMBLY, General Freight Agent,	"	E. C. HALLBERG, General Freight Agent,	"
F. M. KLITZ, Assistant General Freight Agent,	"	H. T. SWEENEY, Chief of Tariff Bureau,	"
C. E. COURTER, Assistant General Freight Agent,	"	E. A. JAEHNE, Chief of Divisions Bureau,	"
W. P. VAN IDERSTINE, Chief of Tariff Bureau,	"		
J. H. SISCO, Chief of Divisions Bureau,	"		
<b>FREIGHT—Sales and Service</b>			
G. C. MANNING, Assistant Vice-President,	New York.	W. V. KENNEDY, Assistant Vice-President,	Chicago.
E. J. DEAN, Freight Traffic Manager,	"	J. G. HILL, Freight Traffic Manager,	"
G. R. WHEELER, General Freight Agent,	"	J. A. RUSSELL, Western Traffic Manager,	"
J. T. McENTEE, General Eastern Freight Agent,	"	C. V. HARROW, Assistant General Freight Agent,	"
G. W. MADSEN, Assistant General Freight Agent,	Buffalo.	W. H. KOCH, Assistant General Freight Agent,	Detroit.
B. F. CONWAY, General New England Agent,	Boston.	R. L. MURPHY, Assistant General Freight Agent,	Cincinnati.
F. D. HARTNETT, Milk Freight Agent,	Jersey City.		
H. B. ROGERS, General Live Stock Agent,	East Buffalo, N. Y.		
<b>FOREIGN FREIGHT TRAFFIC</b>			
G. A. LAMB, Freight Traffic Manager,	Cleveland.	T. W. KANE, Foreign Freight Agent,	New York.
C. R. MARTIN, Asst. General Freight Agent,	"	A. E. PETERSON, Foreign Freight Agent,	Chicago.
C. E. KING, Assistant General Freight Agent,	"	W. S. PENCHARD, Export and Import Agent,	New York.
W. P. KROMPHARDT, Asst. General Freight Agent,	Pittsburgh.		
	Youngstown.	<b>PERISHABLE AND DAIRY TRAFFIC</b>	
		P. J. NAPOLI, Manager,	Pier 20, N. R., New York.
		H. W. BOUMANN, Western Dairy Agent,	Chicago.
<b>COAL AND COKE</b>			
R. E. O'GRADY, Coal Traffic Manager, Cleveland.			
J. A. FERGUSON, General Coal Freight Agent, Cleveland.	New York.	E. C. JULIUS, Coal Freight Agent,	Chicago.
	"	W. N. STENFELT, Assistant Coal Freight Agent,	"
	Buffalo.	M. S. SWEENEY, General Agent,	Pittsburgh.
H. O. DUNKLE, General Agent, Coal and Ore, Cleveland.			
<b>INDUSTRIAL DEVELOPMENT</b>			
GEO. F. WESTON, Industrial Commissioner, Cleveland.			
H. J. HART, Industrial Agent, New York.			

## TRAFFIC DEPARTMENT REPRESENTATIVES

<b>Akron 8, O.—80 East Exchange St.</b> (Telephone Hemlock 8194-8195) J. P. CLARK, Division Passenger Agt. A. R. WALTON, General Agent.	<b>Dallas 1, Tex.—Tower Petroleum Bldg.</b> 1905 Elm St. (Telephone 2-7352) E. W. KEILEY, General Agent.	<b>Los Angeles 14, Cal.—510 West 6th Street.</b> (Telephone Vandike 4129) D. C. KELSEY, General Agent.	<b>Pittsburgh 19, Pa.—Gulf Building.</b> (Telephone Grant 4831-2-3) C. E. KING, Asst. Genl. Frt. Agt.
<b>Albany 7, N. Y.—D. &amp; H. Bldg.</b> (Telephone 4-6051) L. J. MARION, General Agent.	<b>Dayton 2, O.—Miami Savings Bldg.</b> (Telephone Adams 8481) F. W. FISCHER, Div. Frt. Agt.	<b>Marion, O.—Terminal Building</b> (Telephone 2657) A. R. TENNIS, Division Freight Agent.	<b>Portland 4, Ore.—Pacific Bldg.,</b> 520 S. W. Yamhill St. (Telephone Beacon 3706) H. L. SKEEN, General Agent.
<b>Atlanta 3, Ga.—Healey Bldg.</b> (Telephone Walnut 2135) W. H. STADELMAN, General Agent.	<b>Des Moines 9, Ia.—Hubbell Bldg.,</b> 904 Walnut Street, (Telephone 4-0018) H. A. BOCKMAN, General Agent.	<b>Memphis 3, Tenn.—Exchange Bldg.,</b> Madison & Second Sts. (Telephone 8-8781) H. W. GRAY, General Agent.	<b>Rochester 4, N. Y.—Reynolds Arcade</b> Building. (Telephone Main 2826) G. F. MILLS, Division Freight Agent.
<b>Baltimore 2, Md.—Munsey Bldg.</b> (Telephone Plaza 8691) H. E. FEE, General Agent.	<b>Detroit 2, Mich.—General Motors Bldg.</b> (Telephone Madison 2360-2361) W. H. KOCH, Assistant General Frt. Agt.	<b>Milwaukee 3, Wis.—Majestic Bldg.,</b> 231 West Wisconsin Ave. (Telephone Marquette 5555-5556) L. T. COULSTON, General Agent.	<b>San Francisco 5, Cal.—681 Market St.</b> (Telephone Sutter 3875) J. A. LLOYD, General Agent.
<b>Birmingham 3, Ala.—Watts Bldg.</b> (Telephone 3-1327) WM. L. THORNTON, General Agent.	<b>East Buffalo 6, N. Y.—Live Stock Exch.</b> Bldg. (Telephone Washington 4300) H. B. ROGERS, General Live Stock Agt.	<b>Minneapolis 2, Minn.—Rand Tower,</b> Marquette Ave. and 6th St., So. (Telephone Main 3604) L. E. NEWMAN, General Agent.	<b>St. Louis 3, Mo.—812 Olive St.</b> (Telephone Chestnut 7723-7724) C. G. ANDREWS, General Agent.
<b>Birmingham, England—18 Corporation</b> St., MAURICE G. COOKE, General Agent.	<b>Elmira, N. Y.—Erte Station.</b> (Telephone 2-1621) J. W. O'HARA, Division Passenger Agt.	<b>Newark 2, N. J.—Military Park Bldg.,</b> 60 Park Place. (Telephone Market 2-0525-26-27) F. L. COLLINS, General Agent.	<b>St. Paul 1, Minn.—336 Robert St.</b> (Telephone Cedar 5912) C. R. PETRY, General Agent.
<b>Boston 14, Mass.—150 Causeway St.</b> (Telephone Capitol 2510-11-12) B. F. CONWAY, Gen. New Eng. Agt.	<b>Glasgow, Scotland—82 Mitchell St.</b> W. S. THOMSON, General Agent.	<b>New Haven 10, Conn.—Powell Bldg.</b> (Telephone 5-7937) G. E. ROBB, General Agent.	<b>Scranton, Pa.—Mill &amp; Smith Sts. (Dun-</b> more, Pa.) (Telephone—Scranton 8191) G. W. SHUMAN, Division Freight Agent.
<b>Bradford, Pa.—Erte Station.</b> (Telephone 3413) J. C. MOFFATT, General Agent.	<b>Huntington, Ind.—Erte Station.</b> (Telephone 743) F. C. MCCARTHY, Division Freight Agt.	<b>New Orleans 12, La.—Whitney Bldg.</b> (Telephone Raymond 9786) E. W. BURNETT, General Agent.	<b>Seattle 1, Wash.—White Bldg.,</b> 1338 Fourth Ave. (Telephone Elliot 4834) R. J. DUNDON, General Agent.
<b>Buffalo 2, N. Y.—233 Main Street.</b> (Telephone Washington 1865) R. E. TOWNS, Division Passenger Agt.	<b>Indianapolis 4, Ind.—143 No. Meridian</b> St. (Telephone Franklin 0255) T. J. WILLIAMSON, General Agent.	<b>New York 20, N. Y.—11 Rockefeller Plaza,</b> Rockefeller Center. (Telephone Circle 5-7222) F. J. WILD, Genl. Agt. Pass. Dept.	<b>Springfield, O.—First National Bank</b> Building. (Telephone 2-5351) E. H. HUFFMAN, General Agent.
<b>Chicago 4, Ill.—327 South La Salle St.</b> (Telephone Harrison 4160) O. B. CHAPMAN, Trav. Pass. Agent,	<b>Jamestown 3, N. Y.—Erte Station</b> (Telephone Journal Square 2-6400) P. F. ARROYO, Genl. Agt. Pass. Dept.	<b>New York 7, N. Y.—50 Church Street.</b> (Telephone Cortlandt 7-9200) J. T. MCENTEE, Genl. East. Frt. Agt.	<b>Toledo 1, O.—342 South Erte Street.</b> (Telephone Main 3816) H. J. SPANGENBERG, General Agent.
<b>Cincinnati 2, O.—Gwynne Bldg</b> (Telephone Main 3420-3421) R. L. MURPHY, Asst. Genl. Frt. Agt.	<b>Kansas City 6, Mo.—Railway Exchange</b> Bldg., 7th and Walnut Streets. (Telephone Victor 6328) N. C. FRICK, General Agent.	<b>Omaha 2, Neb.—1319 Farnam St.</b> (Telephone Jackson 4866) C. L. COX, General Agent.	<b>Toronto, Ont.—69 Yonge Street.</b> (Telephone Elgin 4077) E. P. MORRILL, Canadian Frt. Agt.
<b>Cleveland 15, O.—Midland Bldg.</b> (Telephone Cherry 8400) C. R. MARTIN, Asst. Gen. Frt. Agt.	<b>Liverpool, Eng.—10 Victoria St.</b> A. G. TAYLOR, General Agent.	<b>Peoria 2, Ill.—Jefferson Building, Cor.</b> South Jefferson & Fulton Streets. (Telephone 8007) J. W. CLOUD, General Agent	<b>Tulsa 3, Okla.—Hunt Bldg.</b> (Telephone 3-8613) H. F. STUDD, General Agent.
<b>Cleveland 13, O.—Erte Station,</b> (Telephone Cherry 8400) V. F. GREEN, Div. Passenger Agent.	<b>London, E. C. 3, Eng.—88 Leadenhall St.</b> PETER BUSWELL, General Agent.	<b>Philadelphia 2, Pa.—Finance Bldg.</b> (Telephone Rittenhouse 8975-8976) H. A. WILSON, General Agent.	<b>Washington 5, D. C.—Southern Bldg.</b> (Telephone National 6075) W. J. MURRAY, General Agent.
<b>Columbus 15, O.—Atlas Bldg.,</b> 8 East Long Street. (Telephone Adams 7331) L. J. BURGOTT, General Agent.	<b>D. S. DEANS, Genl. Continental Agt.</b>		<b>Youngstown 3, O.—Terminal Building.</b> (Telephone 41101) W. P. KROMPHARDT, Asst. Genl. Frt. Agt.