

Effective December 31, 1944

Effective December 31, 1944



**ERIE RAILROAD  
TIME TABLES**

**ERIE RAILROAD  
TIME TABLES**

*The Scenic Route*

BETWEEN

NEW YORK • BUFFALO  
CLEVELAND • CHICAGO

*The Scenic Route*

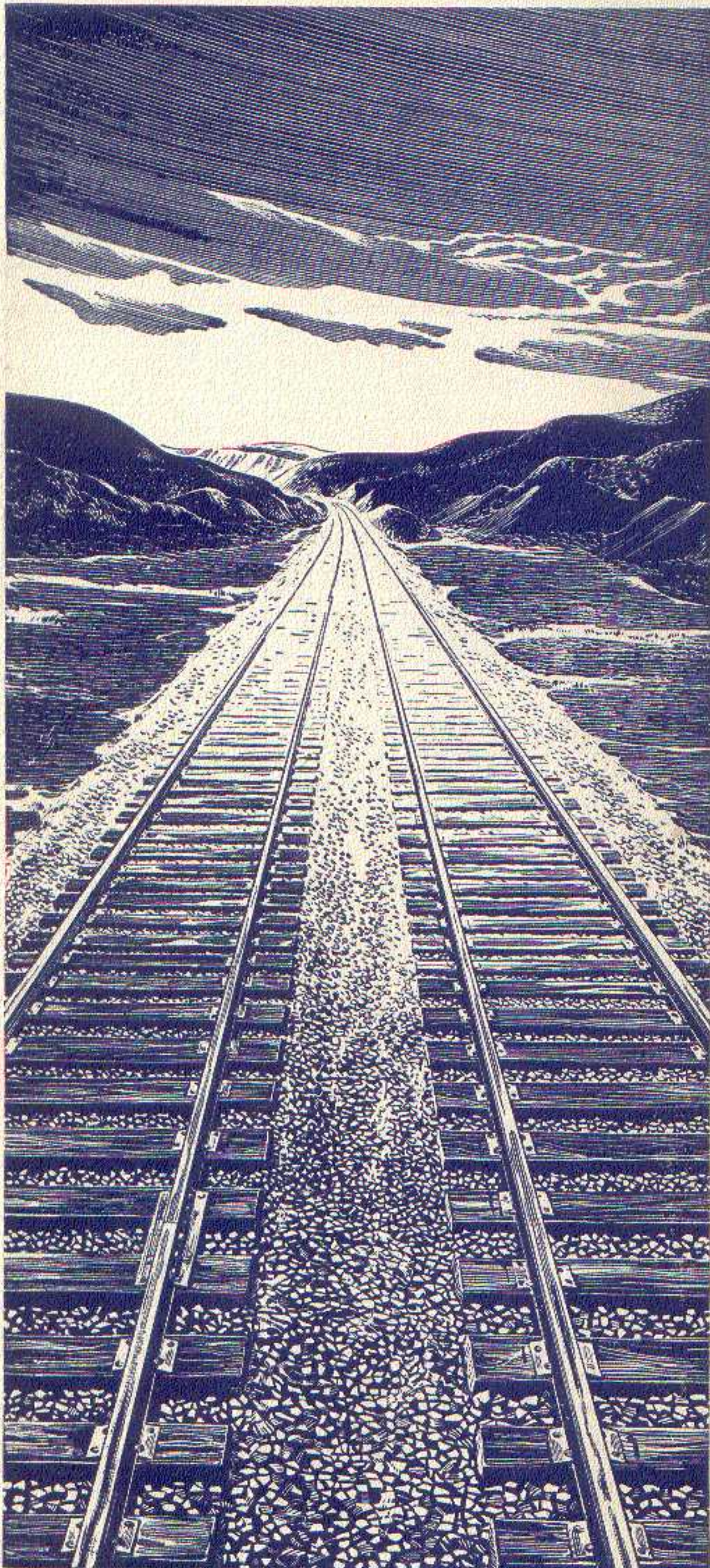
BETWEEN

NEW YORK • BUFFALO  
CLEVELAND • CHICAGO

FORM 1

FORM 1

# Ties That Bind All America!



WHEREVER you are, along these endless bands of steel, you're close to all America. For into every corner of the Nation are laid the tracks and ties of our railroads.

Whether you're a New Yorker eating fresh fruits grown in the far west, a Texan building an oil well with steel from the "Erie Area," or a Westerner wearing eastern-made shoes, the railroads are playing an important part in your life.

For this broad Nation has been welded together by the ties that bind all America.

Over 231,000 miles of track reach into every section of fertile plain, desert or mountain range. In every home, in some way, the influence of this vast system of railroads has been felt.

In peace, through wars, in times of prosperity and depression, the railroads have pioneered, served and kept pace with a growing Nation. And the continued success of the railroads is an essential part of the American way of life.

 23,578 FREIGHT TRAINS DAILY

 1,408,964 FREIGHT CARS DAILY

 25,000,000 NET TONS DAILY

AMERICAN RAILROADS AT WAR

## HELP WIN THE BATTLE OF TRANSPORTATION

Do war work and get excellent pay working for the Erie. Both skilled and unskilled workers are needed immediately to keep supplies flowing to the battle front. Apply to the nearest Erie office or the Railroad Retirement Board.



# Erie Railroad

ONE OF AMERICA'S RAILROADS—ALL UNITED FOR VICTORY

Buy War Bonds and Stamps

TABLE OF CONTENTS

Reference Marks and Notes... Ticket Offices and Passenger Stations in Principal Cities... Traffic and Development Department Representatives... Train Service... Condensed Schedule of Through Trains...

STATIONS ON ERIE RAILROAD OR CONNECTING LINES At Which Trains Are Scheduled To Stop

Table listing stations and their corresponding table numbers. Columns include station names and table numbers for various routes.

ADDITIONAL STATIONS ON ERIE RAILROAD At Which Trains Do NOT Stop Regularly The distance shown is from New York as indicated in Tables 2, 3 and 4

Table listing additional stations and their distances from New York. Columns include station names, distances, and station names with distances.

## REFERENCE MARKS AND NOTES

**IMPORTANT**—When trains are indicated as stopping conditionally, Conductors should be notified of intention to leave train and Station Agent notified of intention to board train. Conditional stops are made only to receive or discharge revenue passengers.

- E.W.T.—Eastern War Time. C.W.T.—Central War Time.  
 \* Runs daily. † Runs daily except Sunday. ♥ Runs daily except Monday.  
 § Runs daily except Sundays and Holidays. ‡ Stops on Holidays only.  
 † Stops on signal to receive and discharge revenue passengers. k Runs Saturdays only.  
 ‡ Stops to discharge passengers. ^ Stops to receive passengers. c Stops on Saturday only.  
 N. B. No Baggage carried. # Sundays leaves Binghamton (2.35 P. M.).  
 H Runs Sundays and Holidays only.  
 L Runs Saturdays, Sundays, Holidays and day preceding a Holiday only.  
 Note ⊕—See Tables 2 and 3 for stops of Motor Coach in New York City.
- ab Train 28 stops Otisville (4.58 P. M.) Sundays only.  
 ac Stops Dalton (5.37 A. M.) to discharge passengers from Hornell and east and to receive passengers.  
 ad Via Buffalo & Erie Coach Corp. bus between Salamanca and Bradford.  
 ae Train 62 stops New Hampton on Wednesdays to discharge passengers.  
 af Train 7 stops Middletown (1.54 A. M.) Sunday and Monday mornings only to discharge passengers.  
 ag Train 204 stops Ridgewood (7.56 A. M.) Holidays only.  
 ah Stops Andover (9.46 A. M.); Belmont (10.08 A. M.) to discharge passengers from New York.  
 ak Train 71 arrives Middletown (8.36 P. M.) on Saturdays and Sundays.  
 al Train 7 stops Ravenna (4.37 P. M.) Sundays only, and to receive passengers for Galion and west on weekdays.  
 am Stops Saturdays only to receive passengers.  
 ao Train 28 stops at Parker's Glen (3.56 P. M.) and Mill Rift (4.20 P. M.) to receive passengers for Paterson and east.  
 ap Train 9 stops at New Hampton on Wednesdays to discharge passengers from New York.  
 av Train 9 stops Chester (12.36 P. M.) on Fridays and Saturdays only.  
 aw Train 16-6 stops at Middletown (7.24 A. M.) and Goshen (7.35 A. M.) to discharge passengers from Hornell and west.  
 ax Stops Englewood Train 1 (8.30 A. M.); Train 15 (5.40 P. M.); Train 7 (12.44 A. M.) to discharge passengers from east of Hammond.  
 bb Train 27 stops at Paterson (3.44 P. M.) to receive passengers only.  
 bc Train 5-15 stops Paterson (7.30 P. M.), Ridgewood (7.41 P. M.) to receive passengers.  
 bd Train 5-15 stops Passaic (7.22 P. M.), Suffern (7.56 P. M.) to receive passengers for Hornell and west.  
 bf Stops Cuba (4.50 A. M.) to discharge passengers from Elmira and east and to receive for Jamestown and west.  
 bg Stops Friendship (10.20 A. M.); Cuba (10.35 A. M.) to discharge passengers from New York.  
 bh Stops Cuba (6.30 P. M.) to discharge passengers from Elmira and east and to receive for Jamestown and west.  
 bm Train 5 stops Niles (10.30 A. M.) to discharge passengers from Pittsburgh and from Jamestown and east and to receive passengers for Cleveland.  
 bp Train 1 stops Niles (11.47 P. M.) to discharge passengers from Meadville and east and to receive passengers for Akron and west.  
 bt No Agent on duty. No baggage handled on Trains 5 and 6 to or from Castile.  
 bu Train 6 stops at East 55th St. (5.02 P. M.) Sundays only to receive passengers for Youngstown.  
 bv Stops on Fridays, Saturdays and Sundays only to discharge passengers from New York.  
 bx Train 16 stops at Warren (6.06 P. M.) to discharge passengers from Akron and west.  
 cd For additional service between Cleveland and Youngstown see Table 5.  
 cg Train 8 stops Ridgewood (11.27 P. M.) to discharge passengers from Binghamton and west.  
 cn Stops on signal Union City (9.07 P. M.); Cambridge Springs (9.26 P. M.) to discharge passengers from Jamestown and east and to receive for Youngstown and west.  
 cp Train 8 stops (9.59 P. M.), Train 16 (8.58 A. M.) to receive passengers for east of Hammond.  
 cu Bus service provided between Cohecton and Lake Huntington.  
 cw Train 5-15 stops Endicott (12.54 A. M.) to discharge passengers from Port Jervis and east.  
 cx Stops to discharge passengers from New York.  
 cy Stops to discharge passengers from points beyond Youngstown.  
 db Train 8 stops at Ravenna (7.41 A. M.) to discharge passengers from Marion and west, and to receive for Youngstown and east.  
 dc Train 626 stops Mantua (2.38 P. M.) to discharge passengers from Cleveland and to receive passengers for Warren and east.  
 de Stops Barberton (5.23 P. M.) to discharge passengers from Youngstown and east and to receive passengers for Mansfield and west.  
 df Train 619 stops Mantua (10.29 A. M.) to receive passengers for Cleveland.  
 dg Train 15 stops at Ravenna (10.56 A. M.) to discharge passengers from Meadville and east, and to receive passengers for Galion and west.  
 dh Train 16 stops at Ravenna (5.37 P. M.) to discharge passengers from Galion and west, and to receive passengers for Meadville and east.  
 dp Train 687 stops Niles (2.14 A. M.) to discharge passengers from east of Youngstown and to receive passengers for Cleveland.  
 dt No baggage carried on this train east of Hornell. Baggage will be handled on following train.  
 dv Stops Union City (8.58 P. M.) to discharge passengers from Youngstown and west and to receive passengers for New York.  
 dw Stops Cuba (9.43 A. M.) to discharge passengers from Jamestown and west and to receive for Elmira and east.  
 dy Stops Cambridge Springs (6.58 A. M.), Union City (7.14 A. M.), to discharge passengers from Chicago and to receive for Binghamton and east.  
 dz Train 16-6 stops Ridgewood (8.27 A. M.) to discharge passengers from Port Jervis and west. Has connection for Paterson, Passaic, etc., leaving Ridgewood at (8.40 A. M.) daily.  
 eb Stops to receive passengers for New York.  
 ec Bus service between New Castle and New Castle (Washington St.).  
 ed Bus service between Wampum and Ellwood City.  
 ee Train 8 stops Waverly to discharge passengers from Jamestown and west and to receive for New York.  
 ek Train 2 stops Suffern (6.45 P. M.), Passaic (7.14 P. M.) to discharge passengers from Binghamton and west.  
 el Stops Sundays only to discharge passengers.  
 en Train 1 stops Paterson (9.18 A. M.), Ridgewood (9.28 A. M.) to receive passengers.  
 ep Train 1 stops Passaic (9.10 A. M.), Suffern (9.43 A. M.) to receive passengers for Binghamton and west.  
 er Train 688 stops Niles (5.53 A. M.) to discharge passengers from Cleveland and west and to receive for Pittsburgh.  
 es Train 6 stops Niles (6.08 P. M.) to receive passengers for Jamestown and east, and to discharge passengers from Cleveland.  
 et Bus operates between Narrowsburg and Honesdale, and the Erie Railroad acts as agent only and is not responsible beyond its own line, except as such responsibility may be imposed by law with respect to baggage.  
 ex Train 16-6 stops Endicott (3.10 A. M.) to discharge passengers from Buffalo, Jamestown and west.  
 ey Stops to let off passengers from Port Jervis and east.  
 ha Train 5-15 stops Narrowsburg (10.11 P. M.) to discharge passengers from Ridgewood and east.  
 hf Train 679 stops Garrettsville-Hiram (11.14 P. M.) to discharge passengers from Pittsburgh.  
 ht Trains 5-557 and 560-6 carry through sleeping cars between Bradford and New York.  
 hu Stops to discharge passengers.  
 hv Train 680 stops East 93rd Street (6.13 P. M.) to receive passengers.  
 hw Train 7 will stop at Saegertown (1.53 P. M.) to discharge passengers from Binghamton and east and to receive passengers for Marion and west.  
 hx Train 8 will stop at Saegertown (10.37 A. M.) to discharge passengers from Marion and west and to receive passengers for Binghamton and east.  
 ne Train 626 stops Saturdays only at Solon (2.24 P. M.) and Aurora (2.32 P. M.) to discharge passengers from Cleveland.  
 nh Train 5 stops Garrettsville-Hiram (10.58 A. M.) to discharge passengers from Hornell and east.

## ERIE TICKET OFFICES AND PASSENGER STATIONS IN PRINCIPAL CITIES

- Akron, O.**—Union Station.  
 (Telephone Jefferson 9141)  
 B. L. BENDER, Ticket Agent.
- Binghamton, N. Y.**—Erie Station.  
 (Telephone 4-3251)  
 A. T. JOHNSON, Ticket Agent.
- Bradford, Pa.**—Erie Station.  
 (Telephone 3413)  
 A. J. SULLIVAN, Ticket Agent.
- Buffalo, N. Y.**—Station Ticket Office  
 (Lehigh Valley Terminal)  
 Main and Scott Streets  
 (Telephone Washington 4300)  
 A. L. SEITZ, Ticket Agent.
- Chicago, Ill.**—Information and Pullman  
 Reservations.  
 (Telephone Wabash 3670)  
 City Ticket Office, 163-165 West Jackson Blvd.  
 (Telephone Harrison 4160)  
 C. F. KUNDEL, Ticket Agent.
- Hotel Ticket Offices**—  
 Drake, Morrison, Sherman, Stevens,  
 Palmer House, Merchandise Mart,  
 The Pullman Bldg.  
 (Telephone Harrison 2203)  
 H. A. JOHNSON, Ticket Agent.
- Dearborn Station.**  
 (Telephone Harrison 9830)  
 W. E. MISCHNICK, Ticket Agent.
- 63rd St. Station**  
 (Telephone Wentworth 3503)  
 J. E. KING, Ticket Agent.
- Cleveland, O.**—City Ticket Office.  
 East 9th St. and Chester Ave.  
 (Telephone Cherry 8400)  
 Erie Station, Superior Ave.  
 (Telephone Cherry 8400)  
 G. SAUNDERS, Ticket Agent.  
 Erie Station, East 55th st.  
 (Telephone Michigan 5118)  
 Erie Station, East 93rd st.  
 (Telephone Michigan 1675)
- Corning, N. Y.**—Erie Station.  
 (Telephone 50)  
 C. S. SHANABAN, Ticket Agent.
- Elmira, N. Y.**—Erie Station.  
 (Telephone 2-0380)  
 J. V. CLEARY, Ticket Agent.
- Hornell, N. Y.**—Erie Station.  
 (Telephone 680)  
 M. W. DELANY, Ticket Agent.
- Huntington, Ind.**—Erie Station.  
 (Telephone 139)  
 M. V. WELLS, Ticket Agent.
- Jamestown, N. Y.**—Erie Station.  
 (Telephone 6076)  
 D. S. FORDHAM, Ticket Agent.
- Jersey City, N. J.**—Erie Station.  
 (Telephone Journal Square 2-6400)  
 G. B. IRVING, Ticket Agent.
- Mansfield, O.**—Erie Station.  
 (Telephone 1423-6)  
 J. W. GILKISON, Ticket Agent.
- Marion, O.**—Erie Station.  
 (Telephone 2399)  
 R. H. STIEF, Ticket Agent.
- Meadville, Pa.**—Erie Station.  
 (Telephone 1212)  
 O. E. BLAIR, Ticket Agent.
- Middletown, N. Y.**—Erie Station.  
 (Telephone 3303)  
 C. R. DINEEN, Ticket Agent.
- Newark, N. J.**—Erie Station.  
 (Telephone Humboldt 2-0600)  
 W. C. HARBOURNE, Ticket Agent.
- New York, N. Y.**  
 Information Bureau.  
 Train Service and Fares.  
 (Telephone Barclay 7-6500)  
 Rockefeller Center Terminal and City  
 Ticket Office, 11 Rockefeller Plaza.  
 (Telephone Circle 5-7225)  
 (Open 7:30 A. M. to 11:30 P. M. daily.)  
 G. H. DOWN, Ticket Agent.
- Chambers Street Station.**  
 (Telephone Cortlandt 7-9200)  
 O. R. KRECH, Ticket Agent.
- City Ticket Office, 17 John Street.**  
 (Telephone Cortlandt 7-6430 and  
 7-6431)  
 H. T. JAMES, Ticket Agent.
- Passaic, N. J.**—Erie Station.  
 (Telephone 2-1613)  
 M. J. LYNCH, Ticket Agent.
- Paterson, N. J.**—Erie Station.  
 (Telephone Sherwood 2-3337)  
 J. H. GRAF, Ticket Agent.
- Port Jervis, N. Y.**—Erie Station.  
 (Telephone 300)  
 R. FARBER, Ticket Agent.
- Sharon, Pa.**—Erie Station.  
 (Telephone 6234)  
 G. E. FRICKER, Ticket Agent.
- Warren, O.**—Erie Station.  
 (Telephone 4721)  
 J. N. MONZEL, Ticket Agent.
- Youngstown, O.**—Erie Station.  
 (Telephone 4-0295)  
 R. S. GETTIG, Ticket Agent.

RAILROAD AND PULLMAN FARES For Information Only. Federal Tax Not Included. Subject to Change Without Notice

Table with columns for 'NEW YORK', 'BINGHAMTON', and 'BUFFALO'. Sub-columns include 'RAILROAD TICKETS VALID IN' (Coaches, Pullmans) and 'PULLMAN RATES' (Lower Berth, Seat Fare). Rows list various cities like Akron, Binghamton, Buffalo, Chicago, etc.

Table with columns for 'JAMESTOWN', 'CLEVELAND', and 'CHICAGO'. Sub-columns include 'RAILROAD TICKETS VALID IN' (Coaches, Pullmans) and 'PULLMAN RATES' (Lower Berth, Seat Fare). Rows list various cities like Akron, Baltimore, Binghamton, Buffalo, Chicago, etc.

MINIMUM NUMBER OF RAILROAD TICKETS REQUIRED FOR EXCLUSIVE OCCUPANCY OF SPACE IN SLEEPING OR PARLOR CARS. Roomette, Double Bedroom, Compartment, Berth Service, etc.

RATES FOR UPPER BERTH, DRAWING ROOM, COMPARTMENT, DOUBLE BEDROOM OR ROOMETTE IN SLEEPING CARS. Table with columns for 'Where Lower Berth Rate Is', 'Upper Berth Rate Will Be', and various room types (Drawing Room, Compartment, Double Bedroom, Roomette) with 'One' and 'Two or More' person rates.

Note:—Section for single occupancy overnight may be purchased, if available, from conductor. Limit three months, except as otherwise indicated. \*Thirty-day limit. †One-year limit.

**TABLE 1** CONDENSED TABLE OF THROUGH TRAINS NEW YORK AND BUFFALO, CLEVELAND AND CHICAGO  
(FOR LOCAL TRAINS AND INTERMEDIATE TIME OF THROUGH TRAINS SEE LOCAL TABLES)

**Air-Conditioned Trains**—Air-conditioned equipment has been assigned to regular sections of trains as shown herein. Every effort will be made to provide it as specified, but the right is reserved to employ non-air-conditioned cars as necessitated by volume of traffic or emergencies.

WESTBOUND		EASTBOUND	
<b>THE ERIE LIMITED</b> <b>TRAIN NO. 1—DAILY</b> <b>New York—Buffalo—Jamestown—Chicago</b>		<b>THE ERIE LIMITED</b> <b>TRAIN NO. 2—DAILY</b> <b>Chicago—Jamestown—Buffalo—New York</b>	
<b>EQUIPMENT</b> <b>Air-Conditioned Sleeping Cars:</b> New York to Chicago—10 Section-2 Double Bedroom-1 Drawing Room. Salamanca to Chicago—6 Roomette-6 Section-4 Double Bedroom. <b>Air-Conditioned Dining Car:</b> New York to Youngstown. Marion to Chicago. <b>Air-Conditioned Individual Reclining Seat Coaches:</b> New York to Chicago. (Ladies' Lounge.) <b>Air-Conditioned Coach—Diner:</b> New York to Buffalo.		<b>EQUIPMENT</b> <b>Air-Conditioned Sleeping Car:</b> Chicago to New York—10 Section-2 Double Bedroom-1 Drawing Room. <b>Air-Conditioned Dining Car:</b> Chicago to Marion. Youngstown to New York. <b>Air-Conditioned Individual Reclining Seat Coaches:</b> Chicago to New York. (Ladies' Lounge.) <b>Air-Conditioned Coach—Diner:</b> Buffalo to New York.	
Lv New York: " Coach Rockefeller Center Terminal, 11 Rockefeller Plaza 8.15AM EWT " 8th Ave. & W. 41st St. (Northwest Corner) 8.20 " " " Motor 8th Ave. & W. 34th St. (Hotel New Yorker) 8.22 " " " Chambers St. Ferry 8.30 " " " Jersey City 8.50 " " " Paterson 9.18 " " " Ridgewood 9.28 " " " Binghamton 2.25PM " " " Elmira 3.46 " " Ar Buffalo (Lehigh Valley Term.) 7.45 " " Lv Olean 6.52 " " " Buffalo (Lehigh Valley Term.) 5.15 " " " Jamestown 8.13 " " " Meadville 9.52 " " " Youngstown 11.32 " " " Warren 11.59 " " " Akron 1.10AM " " Ar Chicago (Dearborn Sta.) 8.45AM CWT	Lv Chicago (Dearborn Sta.) 4.56PM CWT " Akron 2.54AM EWT " Warren 4.01 " " " Youngstown 4.38 " " " Meadville 6.42 " " " Jamestown 8.15 " " Ar Buffalo (Lehigh Valley Term.) 11.00 " " Lv Olean 9.27AM " " Lv Buffalo (Lehigh Valley Term.) 8.20 " " Ar Elmira 12.39PM " " " Binghamton 1.53 " " " Ridgewood 6.58 " " " Paterson 7.06 " " " Jersey City 7.35 " " Ar New York: " Chambers St. Ferry 7.54 " " " 8th Ave. at W. 32nd St. 7.56 " " " 8th Ave. at W. 42nd St. 7.58 " " " Motor Coach Rockefeller Center Terminal, 11 Rockefeller Plaza 8.05PM EWT		
<b>THE LAKE CITIES and THE MIDLANDER</b> <b>TRAIN NO. 5-15—DAILY</b> <b>New York—Buffalo—Jamestown—Cleveland—Akron—Chicago</b>		<b>THE MIDLANDER and THE LAKE CITIES</b> <b>TRAIN No. 16-6—DAILY</b> <b>Chicago—Akron—Cleveland—Jamestown—Buffalo—New York</b>	
<b>EQUIPMENT</b> <b>Air-Conditioned Sleeping Cars:</b> New York to Chicago—10 Section-1 Compartment-1 Drawing Rm. New York to Cleveland—6 Roomette-6 Section-4 Double Bedrm. New York to Bradford—10 Section-1 Compartment-1 Drawing Room. (Sleeping Car may be occupied at Bradford until 8.00 A. M.) <b>Air-Conditioned Dining Car:</b> New York to Port Jervis. Salamanca to Chicago. <b>Air-Conditioned Individual Reclining Seat Coach:</b> New York to Chicago. (Ladies' Lounge.) <b>Air-Conditioned Individual Seat Coaches:</b> New York to Cleveland. Coaches: Hornell to Buffalo.		<b>EQUIPMENT</b> <b>Air-Conditioned Sleeping Cars:</b> Chicago to New York—10 Section-1 Compartment-1 Drawing Rm. Cleveland to New York—6 Roomette-6 Sections-4 Double Bedrm. Bradford to New York—10 Section-1 Compartment-1 Drawing Room. <b>Air-Conditioned Dining Car:</b> Chicago to Salamanca. Port Jervis to New York. <b>Air-Conditioned Individual Reclining Seat Coach:</b> Chicago to New York. (Ladies' Lounge.) <b>Air-Conditioned Individual Seat Coaches:</b> Cleveland to New York. Coaches: Buffalo to Hornell.	
Lv New York: " Coach Rockefeller Center Terminal, 11 Rockefeller Plaza 6.25 PM EWT " 8th Ave. & W. 41st St. (Northwest Corner) 6.30 " " " Motor 8th Ave. & W. 34th St. (Hotel New Yorker) 6.32 " " " Chambers St. Ferry 6.40 " " " Jersey City 7.00 " " " Paterson 7.30 " " " Ridgewood 7.41 " " Ar Buffalo (Lehigh Valley Term.) 7.55 AM " " Lv Olean 5.12 " " Ar Bradford 7.05 " " Lv Jamestown 6.39 " " " Meadville 8.21 " " " Youngstown 10.17 10.02 " " " Warren 10.40 10.24 " " Ar Cleveland 11.45 " " Lv Akron 11.28 " " " Marion 1.44PM " " Ar Chicago (Dearborn Sta.) 5.55PM CWT	Lv Chicago (Dearborn Sta.) 8.45 AM CWT " Marion 2.50 PM EWT " Akron 5.07 " " " Cleveland 4.55 " " " Warren 6.00 bx " " " Youngstown 6.40 " " " Meadville 8.21 " " " Jamestown 10.02 " " " Bradford 9.35 " " " Salamanca 10.51 " " " Olean 11.16 " " " Buffalo (Lehigh Valley Term.) 10.00 " " Ar Elmira 2.17 AM " " " Ridgewood dz 8.27 " " " Jersey City 9.00 " " Ar New York: " Chambers St. Ferry 9.16 " " " 8th Ave. at W. 32nd St. 9.21 " " " 8th Ave. at W. 42nd St. 9.23 " " " Motor Coach Rockefeller Center Terminal, 11 Rockefeller Plaza 9.30 " EWT		
<b>PACIFIC EXPRESS</b> <b>TRAIN NO. 7—DAILY</b> <b>New York—Buffalo—Jamestown—Chicago</b>		<b>ATLANTIC EXPRESS</b> <b>TRAIN NO. 8—DAILY</b> <b>Chicago—Jamestown—New York</b>	
<b>EQUIPMENT</b> <b>Air-Conditioned Sleeping Car:</b> New York to Salamanca—10 Section-2 Compartment-1 Drawing Room. (Sleeper open Jersey City at 9.30 P. M.) <b>Air-Conditioned Dining Car:</b> Binghamton to Marion. <b>Air-Conditioned Individual Seat Coaches:</b> New York to Chicago.		<b>EQUIPMENT</b> <b>Air-Conditioned Sleeping Car:</b> Chicago to Salamanca—6 Roomette-6 Section-4 Double Bedroom. (Sleeper open at Chicago at 9.15 P. M.) <b>Air-Conditioned Dining Cars:</b> Marion to New York. <b>Air-Conditioned Individual Seat Coaches:</b> Chicago to New York. (No baggage handled on this train east of Hornell baggage will be handled on following train.)	
Lv New York: " Coach Rockefeller Center Terminal, 11 Rockefeller Plaza 10.30PM EWT " 8th Ave. & W. 41st St. (Northwest Corner) 10.35 " " " Motor 8th Ave. & W. 34th St. (Hotel New Yorker) 10.37 " " " Chambers St. Ferry 11.55 " " " Jersey City 12.25AM " " " Elmira 7.34 " " Ar Buffalo (Lehigh Valley Term.) 12.30PM " " Lv Olean 11.05AM " " Ar Salamanca 11.30 " " Lv Jamestown 12.26PM " " " Meadville 2.07 " " " Youngstown 3.43 " " " Warren 4.08 " " " Akron 5.13 " " Ar Chicago (Dearborn Sta.) 1.00AM CWT	Lv Chicago (Dearborn Sta.) 9.45PM CWT " Akron 7.11AM EWT " Warren 8.13 " " " Youngstown 8.44 " " " Meadville 10.30 " " " Jamestown 12.23PM " " " Salamanca 1.28 " " " Olean 1.54 " " Ar Elmira 5.19 " " " Binghamton 6.29 " " " Jersey City 12.01AM " " Ar New York: " Chambers St. Ferry 12.24 " " " 8th Ave. at W. 32nd St. 12.22 " " " 8th Ave. at W. 42nd St. 12.24 " " " Motor Coach Rockefeller Center Terminal, 11 Rockefeller Plaza 12.30 " EWT		
<b>THE MOUNTAIN EXPRESS</b> <b>TRAIN NO. 27—DAILY</b> <b>New York—Binghamton—Elmira—Hornell</b>		<b>SOUTHERN TIER EXPRESS</b> <b>TRAIN NO. 10—DAILY</b> <b>Salamanca—Buffalo—Hornell—Elmira—Binghamton—New York</b>	
<b>EQUIPMENT</b> <b>Air-Conditioned Dining Car:</b> New York to Binghamton. <b>Coaches:</b> New York to Hornell.		<b>EQUIPMENT</b> <b>Air-Conditioned Sleeping Car:</b> Salamanca to New York—10 Sec.-2 Compartment-1 Drawing Room—Daily except Monday. From Hornell on Monday. (Sleeper may be occupied at Jersey City until 7.30 A. M.) <b>Coaches:</b> Salamanca to New York—Daily except Monday. Buffalo to Hornell—Daily except Sunday. Hornell to New York—Daily.	
Lv New York: " Coach Rockefeller Center Terminal, 11 Rockefeller Plaza 2.40PM EWT " 8th Ave. & W. 41st St. (Northwest Corner) 2.45 " " " Motor 8th Ave. & W. 34th St. (Hotel New Yorker) 2.47 " " " Chambers St. Ferry 3.00 " " " Jersey City 3.15 " " Ar Binghamton 9.08 " " " Elmira 11.22 " " " Corning 11.49 " " Ar Hornell 12.50AM EWT	Lv Salamanca 5.40PM EWT " Buffalo 5.35 " " " Hornell 8.45 " " " Corning 9.55 " " " Elmira 10.28 " " " Binghamton 12.10AM " " Ar Jersey City 6.00 " " Ar New York: " Chambers St. Ferry 6.29 " " " 8th Ave. at W. 32nd St. 7.46 " " " 8th Ave. at W. 42nd St. 7.48 " " " Motor Coach Rockefeller Center Terminal, 11 Rockefeller Plaza 7.55 " EWT		

TABLE 2 WESTBOUND

NEW YORK—ELMIRA

Hudson and Manhattan Tube Trains operate between New York and Erie Railroad Station in Jersey City To Erie Station, Jersey City—From Downtown New York—Train marked "Hoboken"—Fare 10 cents. From Uptown New York —Train marked "Journal Square"—Fare 10 cents.

Main table with columns for Miles from New York, Motor Coach, Eastern War Time, and train numbers 55, 59, 1, 701, 9, 703, 251, 255, 61, 27, 63, 65, 67, 259, 69, 71, 5-15, 705, 7, 51. It lists departure and arrival times for various stations like New York, Jersey City, Paterson, and Elmira.

For Explanation of Reference Marks and Notes, See Pages 5 and 6.

For Equipment of Trains, See Pages 9 and 10.

ELMIRA—NEW YORK

TABLE 3 EASTBOUND

Hudson and Manhattan Tube Trains operate between New York and Erie Railroad Station in Jersey City. From Erie Station, Jersey City—To Downtown New York—Train marked "Hudson Terminal"—Fare 10 cents. To Uptown New York —Train marked "33rd Street"—Fare 10 cents.

Table with columns for station names and train numbers (50, 52, 204, 700, 16-6, 56, 58, 58, 30, 62, 206, 70, 28, 2, 208, 208, dt8, 68, 10). Rows list stations from Elmira, N.Y. to New York, including times and service notes like 'No Baggage Carried on this Train'.

For Explanation of Reference Marks and Notes, See Pages 5 and 6.

For Equipment of Trains, See Pages 9 and 10.



TABLE 4 WESTBOUND

ELMIRA—CHICAGO

EASTBOUND

Miles from New York	Eastern War Time				Miles from Chicago	Central War Time						
	7 Daily	1 Daily	27 Daily	5-15 Daily		2 Daily	dt 8 Daily	10 Daily	16 Daily	6 Daily	620 Sun.on	
	PM	AM	PM	PM		PM	PM	PM	AM	PM	PM	
<b>Motor Coach</b>	<b>Lv. NEW YORK</b> Rockefeller Center Terminal, 11 Rockefeller Plaza.....Lv				0.0	<b>Chicago</b> (Dearborn Sta.)Ill. Lv. (Polk and Dearborn Sts.)						
0.0	10.30	8.15	2.40	6.25	6.3	Englewood, 63d Street..... " 5.09 cp						
1.0	10.35	8.20	2.45	6.30	20.6	Hammond.....Ind. " 5.35 10.26						
273.8	10.37	8.22	2.47	6.32	36.3	Crown Point..... " 6.01						
291.2					70.1	North Judson..... " f 6.35						
302.3					100.9	Rochester..... " 7.12						
328.1					142.6	<b>Huntington</b> .....Ar. 7.58 12.36						
332.3					142.6	<b>Huntington</b> .....Lv. 8.05 12.43						
					173.4	Decatur..... " 8.42						
						<b>Eastern War Time</b>						
					189.9	<b>Ohio City</b> .....Ohio " 10.04						
					217.2	<b>Lima</b> ..... " 10.47 f 3.13						
					244.2	Kenton..... " f 3.47						
					269.1	<b>Marion</b> .....Ar. 11.45 4.15						
					269.1	<b>Marion</b> .....Lv. 11.52 4.25						
					290.1	Galion..... " 12.24 4.53						
					305.5	Mansfield..... " 12.56 5.20						
					322.2	Ashland..... " 1.29 5.46						
					354.4	Rittman..... " 6.27						
					358.8	Wadsworth..... " 6.39						
					365.4	Barberton..... " 6.51						
					372.7	<b>Akron</b> ..... " 7.11						
						<b>Kent</b> .....Ar. 3.12 7.26						
						<b>Kent</b> .....Lv. 3.17 7.31						
						Ravenna..... " 7.26 7.31						
						<b>Cleveland</b> (See Table 5)...Lv. 7.55 12.15						
						<b>Warren</b> (cd)..... " 4.01 8.13						
						<b>Niles</b> (cd)..... " 4.01 8.13						
						<b>Girard</b> (cd)..... " 4.25 8.35						
						<b>Youngstown</b> (cd).....Ar. 4.25 8.35						
						<b>Pittsburgh</b> (See Table 5)...Ar. 7.55 12.15						
						<b>Youngstown</b> .....Lv. 4.38 8.44						
						<b>Hubbard</b> ..... " 5.12 9.18						
						<b>Sharon</b> .....Pa. " 5.51 9.45						
						<b>Greenville</b> ..... " 6.36 10.25						
						<b>Meadville</b> .....Ar. 6.42 10.30						
						<b>Meadville</b> .....Lv. 6.42 10.30						
						<b>Saegertown</b> ..... " 10.48						
						<b>Cambridge Springs</b> ..... " 11.10						
						<b>Union City</b> ..... " 11.27						
						<b>Corry</b> ..... " 11.27 12.23						
						<b>Jamestown</b> .....N. Y. Ar. 8.15 12.23						
						<b>Jamestown</b> .....Lv. 11.00						
						<b>Buffalo</b> (See Table 8).....Ar. 8.15 12.23						
						<b>Jamestown</b> .....Lv. 8.15 12.23						
						<b>Chautauqua Lake</b> ..... " f 12.45						
						<b>Randolph</b> ..... " 8.56 1.21						
						<b>Salamanca</b> .....Ar. 8.56 1.21						
						<b>Bradford</b> (See Table 10)...Lv. ad 8.00 ad 4.30						
						<b>Salamanca</b> .....Lv. 9.03 1.28 ♡ 5.40						
						<b>Allegany</b> ..... " 9.27 1.54 ♡ 6.14						
						<b>Olean</b> ..... " 9.27 1.54 ♡ 6.39						
						<b>Cuba</b> ..... " 11.12 3.35 ♡ 8.15						
						<b>Friendship</b> ..... " 11.12 3.35 ♡ 8.15						
						<b>Belmont</b> ..... " 11.12 3.35 ♡ 8.15						
						<b>Wellsville</b> ..... " 10.25 2.54 ♡ 7.28						
						<b>Andover</b> ..... " 11.12 3.35 ♡ 8.15						
						<b>Alfred</b> ..... " 11.12 3.35 ♡ 8.15						
						<b>Hornell</b> .....Ar. 11.12 3.35 ♡ 8.15						
						<b>Buffalo</b> (See Table 6).....Lv. 8.20 f 5.35 10.00						
						<b>Hornell</b> ..... " 11.20 3.48 8.45 1.01						
						Canisteo..... " 11.55 4.28 9.26 1.52						
						Addison..... " 12.13 4.53 9.55 2.17						
						Corning..... " 12.39 5.19 10.28 2.17						
						<b>Elmira</b> ..... " 12.39 5.19 10.28 2.17						
						<b>Jersey City</b> .....Ar. 7.35 12.01 6.00 9.00						
						<b>NEW YORK</b>						
						<b>Chambers St. Ferry</b> ..... " 7.54 12.24 6.29 9.16						
						8th Ave. at W. 32nd St..... " 7.56 12.22 7.46 9.21						
						8th Ave. at W. 42nd St..... " 7.58 12.24 7.48 9.23						
						Rockefeller Center Terminal, 11 Rockefeller Plaza.....Ar. 8.05 12.30 7.55 9.30						
						AM AM AM AM AM PM AM AM AM AM AM						

Certain towns in Ohio are operating on Central War Time, which is one hour earlier than time shown in this folder. Consult Agent for information.

TABLE 5 DETROIT—TOLEDO—CLEVELAND—YOUNGSTOWN—PITTSBURGH—WASHINGTON—BALTIMORE

Miles from Cleveland	Eastern War Time								Miles from Baltimore	Eastern War Time							
	688	624	626	6	686	628	620			629	619	5	685	623	679	687	
	Daily	Daily	Daily	Daily	Daily	Ex Sun & Hol.	Sun. only			Ex Sun & Hol.	Sun. only	Daily	Daily	Daily	Daily	Daily	
	N.Y.C. Detroit Lv. 12.05 AM Toledo Lv. 2.08 AM									Baltimore (Mt. Royal Sta.) Lv. 10.26 PM							
0.0	Cleveland Lv. 4.25 (Erie Station, East End Superior Ave. Viaduct) 9.07 AM								1.5	Baltimore (Camden Sta.) 10.35							
3.3	East 55th Street 2.08 AM								38.3	Washington, D. C. Ar. 11.23							
5.6	E. 93d St., Cleveland 2.12 AM								38.3	Washington, D. C. Lv. 11.45							
10.7	North Randall 5.07 PM								45.2	Silver Spring 11.59							
15.8	Solon ne								93.4	Harper's Ferry 11.09							
20.4	Geauga Lake								111.7	Martinsburg 1.29							
23.6	Aurora ne								189.4	Cumberland 3.15							
30.0	Mantua dc								226.6	Meyersdale 4.21							
34.2	Jeddoe								226.2	Connellsville 5.51							
36.7	Garrettsville-Hiram 9.50 AM								281.0	McKeesport 6.48							
40.3	Mahoning 2.47 PM								324.7	Braddock 6.59							
45.3	Phalanx								339.5	Pittsburgh Ar. 7.20							
49.4	Leavittsburg								339.5	Pittsburgh Lv. 8.25							
52.6	Warren 5.44 AM								350.1	Coraopolis 8.40							
57.7	Niles 10.20 AM								358.6	Aliquippa 8.51							
61.9	Girard								365.2	Beaver 8.59							
66.5	Youngstown Ar. 6.10								368.7	Beaver Falls 9.05							
66.5	Youngstown Lv. 6.20								385.2	New Brighton 9.04							
84.2	New Castle Ar. 6.52								386.7	Ellwood City (ed) 9.04							
95.5	New Castle (Wash. St.) Ar. 7.05								404.4	New Castle (Wash. St.) Lv. 9.17							
102.2	Ellwood City (ed) 7.14								404.4	New Castle 9.30							
105.6	Beaver Falls 7.12								409.0	Youngstown Ar. 10.00							
112.3	New Brighton 7.18								413.2	Youngstown Lv. 6.50							
120.8	Beaver 7.26								418.3	Girard 6.58							
131.4	Aliquippa 7.38								421.5	Niles 7.07							
131.4	Pittsburgh Ar. 7.55								425.6	Warren 7.22							
141.0	Pittsburgh Lv. 9.10								430.6	Leavittsburg 7.28							
145.2	Braddock Ar. 9.26								434.2	Phalanx 7.36							
189.3	McKeesport 9.40								440.9	Mahoning 7.45							
244.3	Connellsville 10.40								447.5	Garrettsville-Hiram 7.52							
281.5	Meyersdale 12.07								455.1	Jeddoe 7.57							
359.2	Cumberland 1.07								460.2	Mantua 8.06							
372.5	Martinsburg 2.50								465.3	Aurora 8.17							
425.7	Harper's Ferry 3.23								470.9	Geauga Lake 8.22							
432.8	Silver Spring 4.19									Solon 8.31							
432.8	Washington, D. C. Ar. 4.38									North Randall 8.39							
432.8	Washington, D. C. Lv. 5.00									E. 93d St., Cleveland 8.47							
469.4	Baltimore (Camden Sta.) Ar. 5.42									East 55th Street 8.53							
470.9	Baltimore (Mt. Royal Sta.) Ar. 5.51									Cleveland Ar. 9.03							

(Certain towns in Ohio observe Central War Time—One hour earlier than time shown)

EQUIPMENT

Detroit, Toledo, Cleveland, Youngstown, Pittsburgh, Washington, Baltimore Trains.

★Indicates Air-Conditioned Cars

EASTBOUND

No. 6—Daily. ★Sleeping Car (6 Roomette-8 Section-4 Double Bedroom) Cleveland to New York. ★Coach, Cleveland to New York.

No. 626—Daily. ★Erie Parlor-Buffet Car, Cleveland to Pittsburgh. ★Coach, Cleveland to Pittsburgh.

No. 588—Daily. ★Sleeping Car (12 Section and 2 Double Bedrooms), Chicago to Pittsburgh. ★Sleeping Car (8 Section-5 Double Bedrooms), Detroit to Pittsburgh. Through Coaches, ★Chicago and ★Detroit to Pittsburgh, via Cleveland. ★Parlor Car, ★Dining Car and ★Coaches, Pittsburgh to Washington and Baltimore.

No. 624—The Washingtonian—Daily. ★Parlor-Diner, Cleveland to Baltimore. ★Individual Reclining Seat Coaches, Cleveland to Washington and Baltimore.

No. 686—Daily. ★Sleeping Car for Parlor Car Service and ★Coaches, Detroit to Pittsburgh, via Cleveland. ★Dining Car, Cleveland to Pittsburgh. ★Sleeping Car (8 Section-4 Double Bedroom), Pittsburgh to Washington. (Open 9.00 p. m., and may be occupied until 7.30 a. m.)

WESTBOUND

No. 5—Daily. ★Sleeping Car (6 Roomette-6 Section-4 Double Bedroom) New York to Cleveland. ★Erie Parlor-Buffet Car, Pittsburgh to Cleveland. ★Coach, Pittsburgh to Cleveland. ★Sleeping Cars (8 Section-4 Double Bedroom and 12 Section and Drawing Room), Washington to Pittsburgh. (Open 10.00 p. m., and may be occupied until 8.00 a. m.)

No. 623—The Washingtonian—Daily. ★Parlor-Diner, Baltimore to Cleveland. ★Individual Reclining Seat Coaches, Baltimore and Washington to Cleveland.

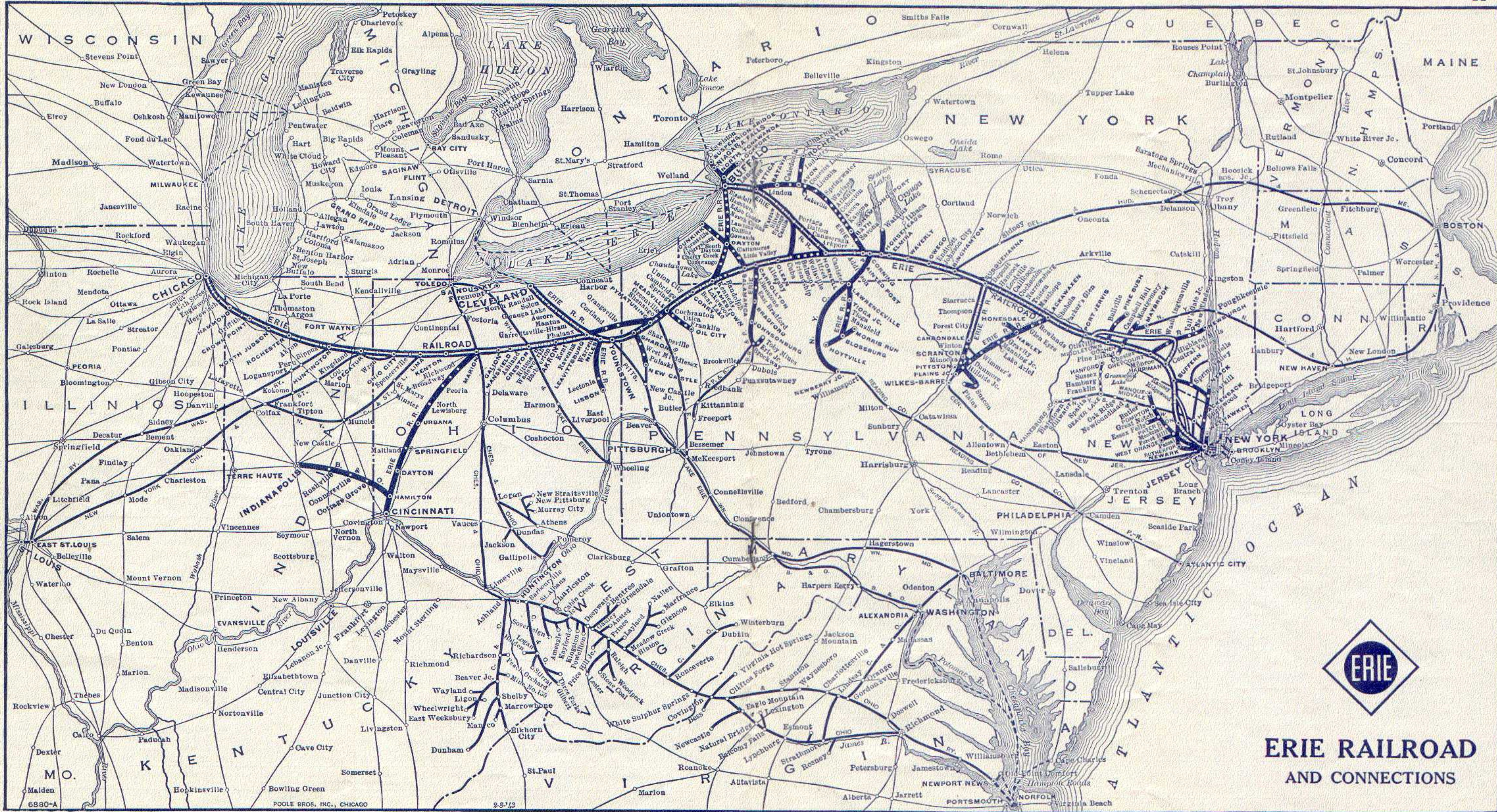
No. 685—Daily. ★Sleeping Car for Parlor Car Service and ★Coaches Pittsburgh to Detroit, via Cleveland. ★Dining Car, Pittsburgh to Cleveland.

No. 679—Daily. ★Sleeping Car (12 Section and 2 Double Bedrooms), Pittsburgh to Chicago and ★Through Coaches, Pittsburgh to Chicago via Cleveland.

No. 687—Daily. ★Sleeping Car (8 Section-5 Double Bedrooms), Pittsburgh to Detroit and ★Through Coaches, Pittsburgh to Detroit via Cleveland. ★Pullman Cars only, Washington to Pittsburgh.

Round-trip tickets reading via B. & O. R. R. between Cleveland and points east of Pittsburgh are honored via Erie R. R.-P. & L. E. R. R. between Cleveland and Pittsburgh.

Holidays in the above table refers to the observance of New Year's Day, Memorial Day, Independence Day, Labor Day, Thanksgiving Day and Christmas Day.



**ERIE RAILROAD  
AND CONNECTIONS**

TABLE 6 NEW YORK AND BUFFALO

Table with columns for WESTBOUND (Read Down) and EASTBOUND (Read Up). Includes sub-headers for 1, 7-477, 5, Miles from New York, and 2, 10, 6. Lists stations from NEW YORK to BUFFALO.

TABLE 9 NEW YORK—CHAUTAUQUA—CHICAGO

Table with columns for WESTBOUND (Read Down) and EASTBOUND (Read Up). Includes sub-headers for 5-Bus, 7-Bus, Eastern War Time, Bus-8, Bus-2. Lists stations from NEW YORK to CHICAGO.

Tickets sold and Baggage checked through to Chautauqua. Hand baggage checked without charge. Trunks checked at charge of 25c each.

TABLE 10 NEW YORK—SALAMANCA—BRADFORD—CHICAGO

Table with columns for WESTBOUND (Read Down) and EASTBOUND (Read Up). Includes sub-headers for 7-Bus, ht, 1-Bus, Bus-2, Bus-3, ht, Bus-10. Lists stations from NEW YORK to CHICAGO.

Trains 5-557 and 560-6 carry through sleeping car between Bradford and New York. Sleeper on train 557 will be parked at Bradford for occupancy until 8.00 A. M. Busses leave as follows: (running time approximately 45 minutes.)

TABLE 7 ELMIRA-AVON

Table with columns for Westbound and Eastbound. Includes sub-headers for Read Down, 7-467, Miles, Eastern War Time, Read Up, 468-8. Lists stations from NEW YORK to AVON.

TABLE 8 BUFFALO—JAMESTOWN

Table with columns for WESTBOUND (Read Down) and EASTBOUND (Read Up). Includes sub-headers for 519, Miles, Eastern War Time, 516. Lists stations from BUFFALO to JAMESTOWN.

FOR VICTORY BUY UNITED STATES WAR BONDS

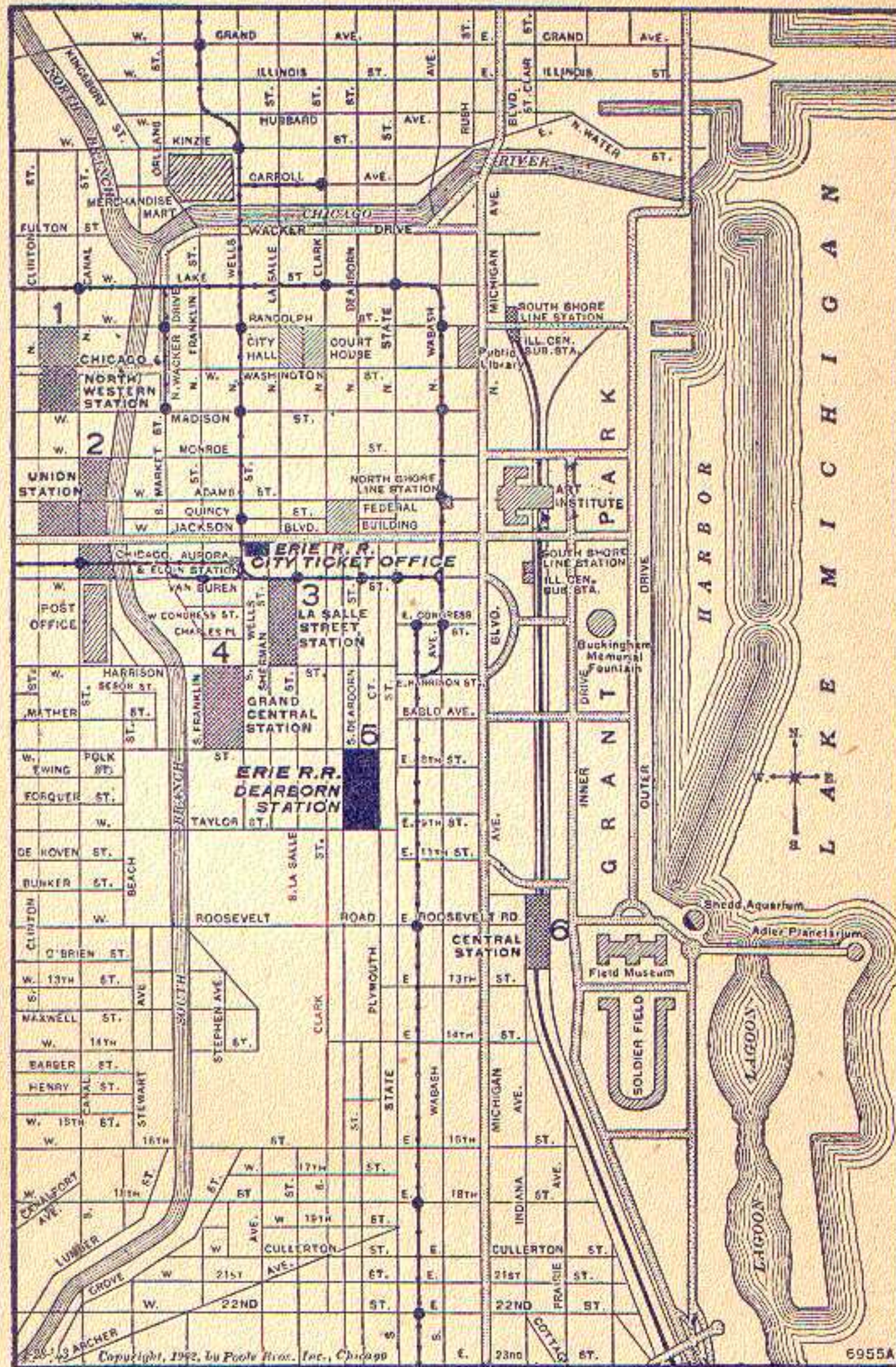
TABLE 11 NEW YORK—KENOZA LAKE—JEFFERSONVILLE

Table with columns for WESTBOUND (Read Down) and EASTBOUND (Read Up). Includes sub-headers for 27, 1, Eastern War Time, 2. Lists stations from NEW YORK to JEFFERSONVILLE.

NOTE "X" In connection with the bus service the Erie Railroad acts as agent only and is not responsible beyond its own line, except as such responsibility may be imposed by law with respect to baggage.

## MAP OF DOWNTOWN CHICAGO

Showing Business District, "Loop," and Railroad Stations



### LOCATION OF CHICAGO PASSENGER STATIONS

Tenant Railroad Lines Are Listed. Number Indicates Location On Above Map. Erie trains arrive at and depart from Dearborn Station (5).

**Dearborn Station (5)**  
Polk and Dearborn Sts.

**ERIE**  
Santa Fe  
Chicago & Eastern Illinois  
Chicago & Western Indiana  
Grand Trunk  
Monon Route  
Wabash

**C&NW Terminal (1)**  
Madison and Canal Sts.  
1 and 2/10 Miles from Dearborn Station  
Chicago & North Western

**Union Passenger Station (2)**  
Canal, Adams, Jackson and Clinton Sts.  
1 Mile from Dearborn Station  
Alton Road  
Burlington Route  
Chicago, Milwaukee, St. Paul and Pacific  
Pennsylvania Lines

**La Salle St. Station (3)**  
La Salle and Van Buren Sts.  
1/2 Mile from Dearborn Station  
New York Central  
Nickel Plate  
Rock Island

**Grand Central Station (4)**  
Harrison and Wells Sts.  
3/10 Mile from Dearborn Station  
Baltimore & Ohio  
Chicago Great Western  
Pere Marquette  
Soo Line

**Central Station (6)**  
Roosevelt Road and Michigan Ave.  
8/10 Mile from Dearborn Station  
Big Four  
Illinois Central  
Michigan Central

North Shore Line, South Shore Line, and Chicago, Aurora & Elgin electric lines' stations are also shown on the map.

## "THE WASHINGTONIAN"

Convenient Through Day Train

Between

Cleveland, Washington and  
Baltimore



EASTERN WAR TIME

EASTBOUND

WESTBOUND

(Read down)

(Read up)

9:00 A.M. Lv... Cleveland... Ar. 9:25 P.M.  
10:40 A.M. Lv... Youngstown... Ar. 7:40 P.M.  
12:40 P.M. Lv... Pittsburgh... Ar. 5:40 P.M.  
8:15 P.M. Ar... Washington... Lv. 10:00 A.M.  
Baltimore  
9:15 P.M. Ar. (Camden Sta.) Lv. 9:00 A.M.  
..... (Mt. Royal Sta.) Lv. 8:55 A.M.

Via Erie Railroad

Pittsburgh & Lake Erie Railroad

Baltimore & Ohio Railroad

### Dependable Connections

... in CHICAGO

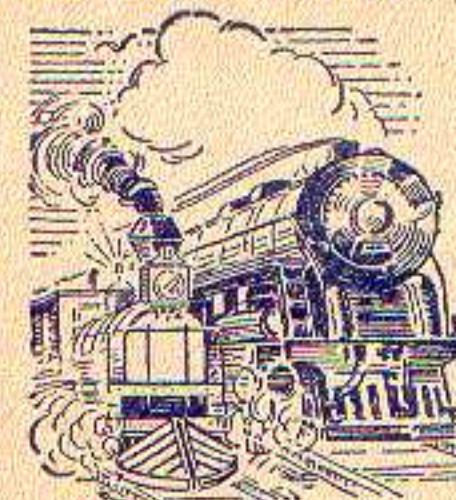


... your Parmelee transfer coupon, which is included as part of your through ticket, entitles you to transportation in smart limousine coaches from your incoming railway station to your outgoing station... or from your incoming station to any downtown hotel or other downtown destination. This service is also available, at a nominal charge, to passengers not holding a Parmelee transfer coupon.

Ask any Ticket Agent about

### PARMELEE SERVICE

### AT PASSENGER TRAIN SPEED



1839 1944

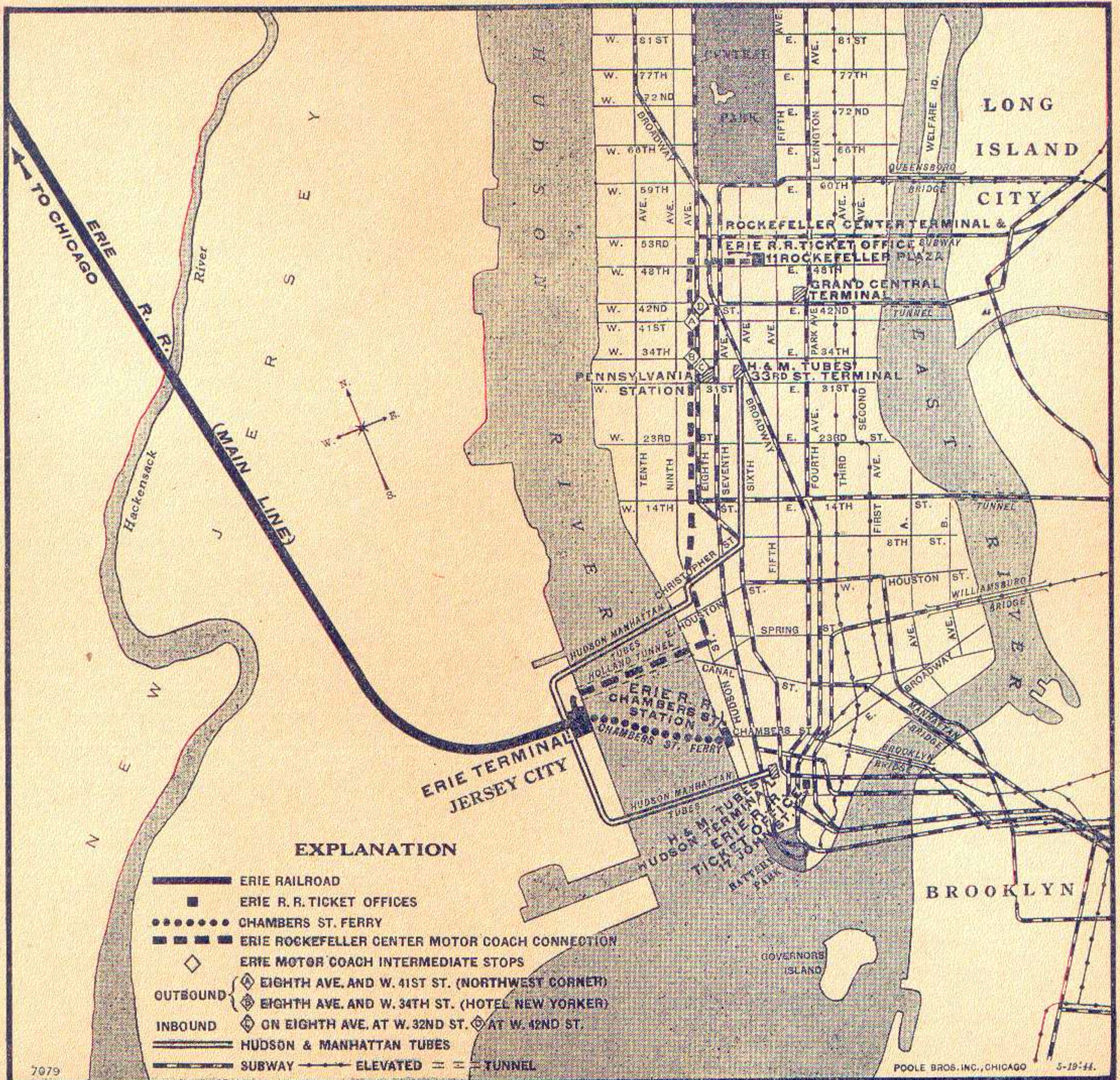
RAILWAY EXPRESS, for 105 years, has kept the nation's shipments moving fast and sure. Today, time is more vital than ever. Help us save time by packing your shipments securely—addressing them clearly—starting them early.

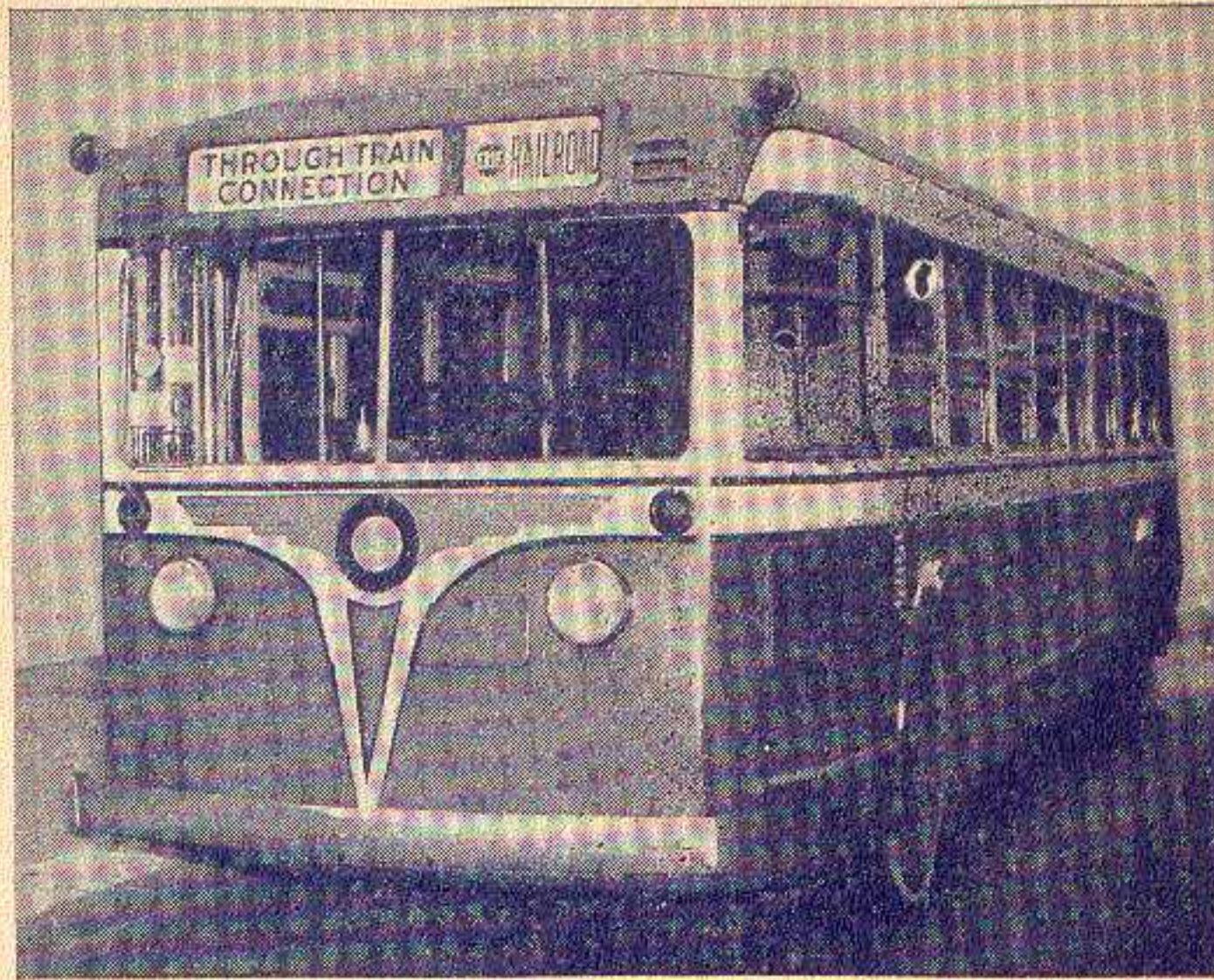
## RAILWAY EXPRESS

AGENCY INC.

NATION-WIDE SERVICE

**MAP OF NEW YORK CITY AND ADJACENT AREA**  
 showing Erie Rockefeller Center Motor Coach Connection, Chambers Street Ferry route, Hudson and Manhattan Tube routes, and Erie Terminals and Ticket Offices in Manhattan and Jersey City.





# ERIE MOTOR COACH SERVICE

to and from

## ROCKEFELLER CENTER TERMINAL IN MIDTOWN NEW YORK

(for through-train passengers)

**E**RIE MOTOR COACHES connecting with specified trains to and from Goshen, N. Y. and points west thereof will leave and arrive at Rockefeller Center Terminal, 11 Rockefeller Plaza. (Rockefeller Plaza is between Fifth and Sixth Aves.; No. 11 is between W. 48th and 49th Sts.)

Only 30 minutes between Erie Railroad Jersey City Terminal and Rockefeller Center by Motor Coach.

Motor coaches make intermediate stops, inbound—Eighth Ave. at W. 32nd St. and Eighth Ave. at W. 42nd St. Outbound—at Eighth Ave. and W. 41st St. (Northwest Corner), and Eighth Ave. and W. 34th St. (Hotel New Yorker).

Through-train connections guaranteed.

Additional charge for motor coach service is 25c, plus tax, in each direction.

Hand baggage transferred free of charge.

Connections provided eastbound from Trains Nos. 2, 6, 8, 10, and 16; westbound for Trains Nos. 1, 5, 7, 15, and 27.

Consult Ticket Agents for further information.



The Railroad of *Helpful Service*

## HUDSON AND MANHATTAN TUBE TRAINS

### SCHEDULE OF RUNNING TIME

BETWEEN

## ERIE R. R. JERSEY CITY TERMINAL

AND

Downtown New York—

Cortlandt St. (Hudson Terminal Bldg.)..... 6 Mins.

Uptown New York—

33rd Street and 6th Ave..... 14 "

23rd Street and 6th Ave..... 11 "

19th Street and 6th Ave..... 10 "

14th Street and 6th Ave..... 9 "

9th Street and 6th Ave..... 8 "

Christopher and Greenwich Streets..... 6 "

Allow 10 Minutes additional for connections.

Fares—Downtown or Uptown 10 cents.

### Tube Trains From "Erie" Jersey City

To Downtown New York—take train marked "Hudson Terminal."

To Uptown New York—take train marked "33rd St. Local."

To Journal Square, Jersey City—take train marked "Journal Square," also connects to Newark.

To Hoboken—take train marked "Hoboken."

### Tube Trains To "Erie" Jersey City

From Downtown New York—take train marked "Hoboken."

From Uptown New York—take train marked "Journal Square."

From Journal Square, Jersey City—take train marked "33rd St. Local," also connects from Newark.

From Hoboken—take train marked "Hudson Terminal."

## ERIE R. R. FERRY TIME TABLE

EASTERN WAR TIME

## CHAMBERS STREET FERRY

Ferry Running Time, 9 Minutes

WEEK DAYS

Leave New York for Jersey City						Leave Jersey City for New York					
AM	AM	AM	PM	PM	PM	AM	AM	AM	PM	PM	PM
12.30	8.00	11.10	12.10	3.50	7.20	12.15	m8.02	11.15	12.05	3.45	7.00
1.00	8.10	11.20	12.20	4.00	7.30	12.45	8.08	11.25	12.15	3.55	7.15
1.30	8.15	11.30	12.30	4.10	7.40	1.15	8.17	11.35	12.25	4.05	7.25
2.00	8.20	11.40	12.40	4.20	7.50	1.45	8.25	11.45	12.35	4.15	7.35
2.30	8.30	11.50	12.50	4.30	8.00	2.15	8.31	11.55	12.45	4.25	7.45
3.00	8.40	12.00	1.00	4.40	8.10	2.45	8.38	.....	12.55	4.35	7.55
3.25	8.45	.....	1.10	4.50	8.20	3.12	8.45	.....	1.05	4.45	8.05
3.50	8.50	.....	1.20	5.00	8.30	3.35	8.54	.....	1.15	4.53	8.15
4.30	9.00	.....	1.30	5.08	8.40	4.15	a9.02	.....	1.25	5.00	8.25
5.00	9.10	.....	1.40	m5.15	8.50	4.45	9.07	.....	1.35	5.05	8.35
5.30	9.15	.....	1.50	5.20	9.00	5.15	9.18	.....	1.45	5.13	8.45
5.45	9.20	.....	2.00	5.28	9.15	5.45	9.23	.....	1.55	5.24	8.55
6.00	9.30	.....	2.10	5.38	9.30	6.00	9.35	.....	2.05	5.35	9.05
6.15	9.40	.....	2.20	5.48	9.45	6.20	9.45	.....	2.15	5.45	9.15
6.30	9.50	.....	2.30	6.00	10.00	6.30	9.55	.....	2.25	5.55	9.30
6.45	10.00	.....	2.40	6.10	10.15	6.45	10.05	.....	2.35	6.00	9.45
7.00	10.10	.....	2.50	6.20	10.30	7.07	10.15	.....	2.45	6.05	10.00
7.10	10.20	.....	3.00	6.30	11.00	7.18	10.30	.....	2.55	6.15	10.15
7.20	10.30	.....	3.10	6.40	11.30	7.25	10.35	.....	3.05	6.25	10.30
7.30	10.40	.....	3.20	6.50	11.55	7.35	10.45	.....	3.15	6.35	10.45
7.38	10.50	.....	3.30	7.00	.....	7.45	10.55	.....	3.25	6.45	11.15
7.50	11.00	.....	3.40	7.10	.....	7.55	11.05	.....	3.35	6.55	11.42
AM	AM	Noon	PM	PM	PM	AM	AM	AM	PM	PM	PM

a Will not run on Holidays. m Except Saturdays and Holidays.

### SUNDAYS

AM	AM	PM	PM	PM	AM	AM	PM	PM	PM
12.30	8.10	12.15	4.30	8.45	12.15	8.15	12.05	4.15	8.30
1.00	8.30	12.30	4.45	9.00	12.45	8.33	12.15	4.30	8.45
1.30	8.45	12.45	5.00	9.15	1.15	8.45	12.30	4.45	9.00
2.00	9.00	1.00	5.15	9.30	1.45	9.00	12.45	5.03	9.15
2.30	9.10	1.15	5.30	9.45	2.15	9.10	1.00	5.15	9.30
3.00	9.30	1.30	5.45	10.00	2.45	9.30	1.15	5.30	9.45
3.30	9.45	1.45	6.00	10.15	3.15	9.45	1.30	5.45	10.00
4.00	10.00	2.00	6.15	10.30	3.45	10.00	1.45	6.00	10.15
4.30	10.15	2.10	6.30	11.00	4.18	10.15	2.00	6.18	10.42
5.15	10.30	2.30	6.45	11.30	5.00	10.30	2.15	6.33	11.15
6.10	10.40	2.45	7.00	11.55	5.50	10.45	2.30	6.45	11.42
6.45	11.00	3.00	7.15	.....	6.20	11.00	2.45	7.00	.....
7.00	11.10	3.10	7.25	.....	6.57	11.15	3.00	7.15	.....
7.10	11.30	3.30	7.45	.....	7.18	11.30	3.15	7.30	.....
7.30	11.45	3.45	8.00	.....	7.30	11.45	3.35	7.45	.....
7.45	12.00	4.00	8.15	.....	7.45	.....	3.50	8.00	.....
8.00	.....	4.15	8.30	.....	8.00	.....	4.00	8.15	.....
AM	Noon	PM	PM	PM	AM	AM	PM	PM	PM

## GENERAL INFORMATION

**STANDARD OF TIME**—Erie Lines east of and including Ohio City, Ohio, are shown in Eastern War Time. Lines west of Ohio City, Ohio, in Central War Time. 12:01 Midnight to 12:00 Noon is indicated by light-faced type. 12:01 Noon to 12:00 Midnight is indicated by heavy-faced type. (Certain towns in Ohio are operating on Central War Time, which is one hour earlier than time shown in this folder.)

**THIS COMPANY IS NOT RESPONSIBLE FOR ERRORS** in timetables, inconvenience or damage resulting from delayed trains, or failure to make connections; schedules and equipment shown herein are subject to change without notice.

**HOLIDAYS**—The term "Holidays" (unless covered by special note under schedule) refers to the observance of New Year's Day, Lincoln's Birthday, Washington's Birthday, Memorial Day, Independence Day, Labor Day, Columbus Day, Election Day (November 7), Thanksgiving Day and Christmas Day.

**TRAINS WILL NOT BE HELD** at Jersey City for ferries from New York between the hours of 5:00 P. M. and 6:30 P. M.

**FARES PAID ON TRAIN**—Conductors are required to charge ten (10) cents in excess of the one-way ticket fare for passengers traveling in coaches in the territory east of Port Jervis, including side lines and branches. Buy tickets before boarding trains and avoid payment of this extra fare.

**CHILDREN** under five years of age are carried free when accompanied by parent or guardian; five years of age and under twelve, half fare; twelve years of age and over, full fare.

**ADJUSTMENT OF FARES**—Should any misunderstanding arise with conductors or agents, pay the fare required, take receipt and communicate with Passenger Traffic Manager, Midland Bldg., Cleveland, Ohio.

**REDEMPTION OF TICKETS**—Tickets unused or partly used will be redeemed under tariff regulations at proper value.

**LOST TICKETS**—Proper care should be taken to guard against the loss of tickets, as Railroads are not responsible for lost tickets or baggage checks.

**STOP-OVERS AT NIAGARA FALLS**—Passengers holding tickets reading "via Erie Railroad" from Elmira, N. Y., and stations east thereof to or through Youngstown, Ohio, and stations west thereof, or vice versa, may exercise the privilege of going via Buffalo and making side-trip to Niagara Falls. On request, Erie Ticket Agent at Buffalo will issue without charge a round-trip ticket between Buffalo and Niagara Falls—Frequent service via motor coach direct from Buffalo Terminal.

**STOP-OVERS AT OTHER POINTS**—A stop-over within final limit will be granted on tickets sold at regular fares at all stations on the Erie Railroad (with certain exceptions in the New York suburban area).

**ARTICLES LOST ON TRAINS**—When articles are lost on trains or left in waiting rooms or stations, owners should apply at once to Agent at station where they leave train or address Manager, Baggage Traffic, Foot of Chambers St., New York City, giving full description of property, stating date of loss and train number.

**BAGGAGE**—150 pounds of baggage are checked free on adult tickets and 75 pounds on half fare tickets. Free allowance subject to tariff stipulations as to contents, weight, value and size.

Baggage to be checked should be delivered at stations reasonably in advance of train departure. The railroad cannot guarantee to forward baggage on same train with passenger and when necessary will be forwarded on other trains. To facilitate prompt receipt of baggage at destination, passengers are urged to arrange for forwarding on a preceding train.

A charge is made for storage of baggage at destination when it is not claimed within the free time limit.

**BAGGAGE DELIVERY IN NEW YORK CITY**—All baggage checked to New York City will be sent to Chambers Street Station.

**BAGGAGE INSURANCE** by the St. Paul Fire and Marine Insurance Co. may be purchased at principal Erie Ticket Offices. It insures your baggage and personal effects for your entire trip anywhere in the world. Minimum premium twenty-five cents. Ask Ticket Agent for full particulars.

**BAGGAGE DELIVERY SERVICE**—Baggage may be checked through to house address, hotel, steamship dock, etc., at destination, thus avoiding necessity for any further attention. Reliable transfer companies perform the service at nominal charges. This delivery arrangement is in effect at all principal cities.

**HAND BAGGAGE** in coaches or Pullman cars is restricted to what can be conveniently placed in berth, seat, or other accommodations purchased by passenger. It is urged that passengers carry with them only such baggage as required for their immediate needs and avail themselves of the free baggage service for other baggage required on reaching destination.

**SAFETY FIRST HINTS**—Carefulness on your part helps eliminate accidents. Don't get on or off a train in motion; wait for a full stop. Keep hand baggage out of car aisles; this will remove a cause of inconvenience, possibly of harm, to others. Walk carefully when entering or leaving train; high-heeled shoes are sometimes a cause of tripping or stumbling on car steps. Don't stand or walk close to the railroad track; look both ways before starting across. Courtesy toward your fellow travelers increases the pleasure of your journey.

## HOW YOU CAN HELP

*"Speed Up"*

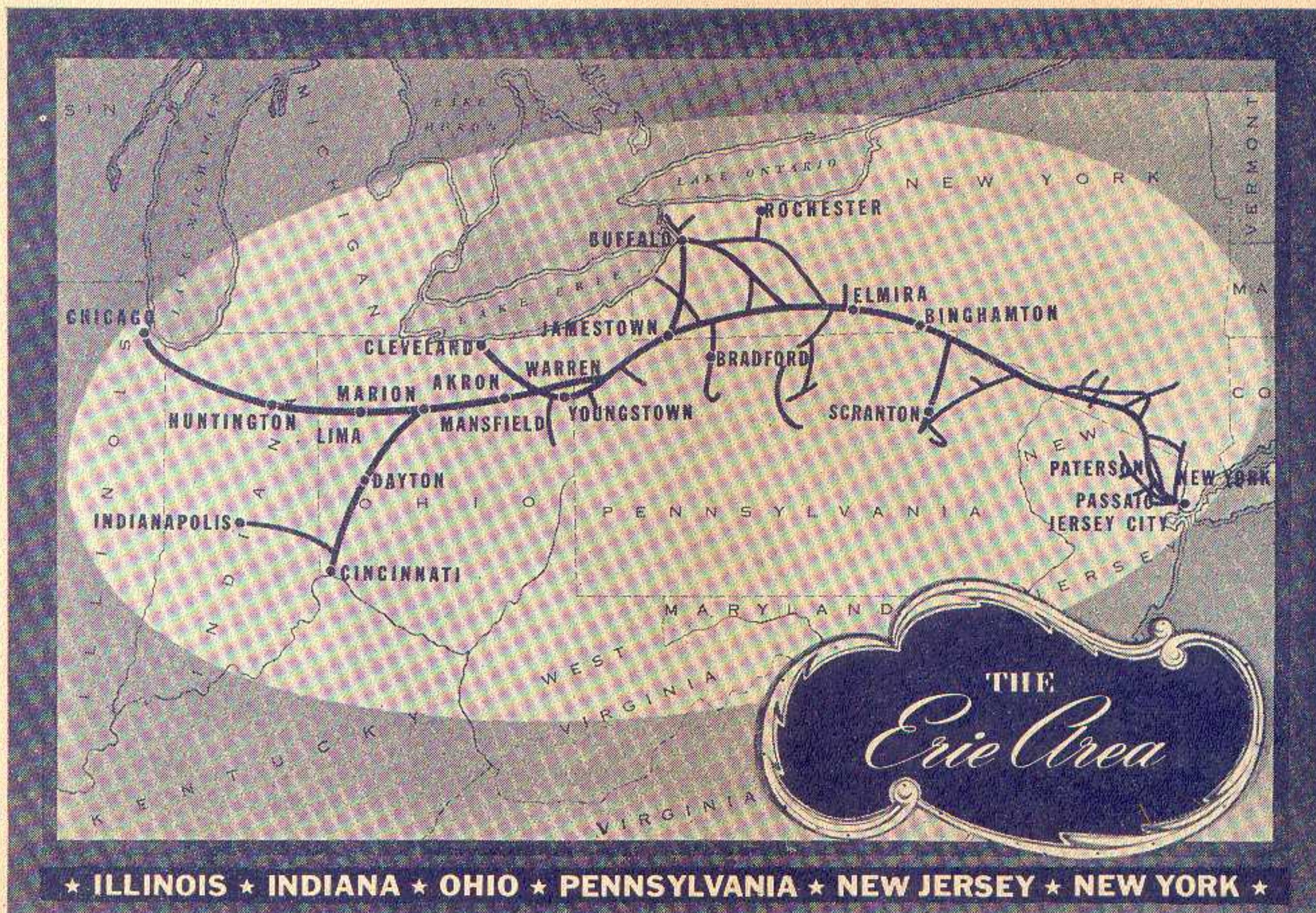
## WARTIME TRAVEL

**IT IS** the first duty of all railroads today to get war equipment, soldiers, sailors, and marines delivered where they are needed. This tremendous job sometimes overtaxes our facilities for giving good service to our patrons.

You can help us "speed up" our wartime service and save yourself inconvenience by doing these things —

- planning your trip during mid-week
- traveling by day instead of by night
- accepting available space instead of waiting for preferred accommodations
- canceling reservations immediately if for any reason your travel plans change
- taking only necessary luggage





## THE INDUSTRIAL HEART OF AMERICA

**C**ONCENTRATED in the six states directly served by the Erie Railroad is the "Industrial Heart of America".

Mines, streams, and forests in this rich, fertile region furnish an endless supply of raw materials — coal, steel, petroleum, lumber, sand, lime, and a score of other products.

From fields come abundant crops of soya beans, wheat, corn, oats, fruits, vegetables, and a great variety of other agricultural products.

With all these natural resources, industry finds it more

advantageous to be located in "The Erie Area". For everything, from raw materials to ideal manufacturing conditions, is available here, and it is near the greatest American markets for finished products.

The Erie Railroad serves well this great industrial heart. In war as in peace the Erie provides fast, safe, dependable transportation in bringing raw materials to industry and finished products to markets.

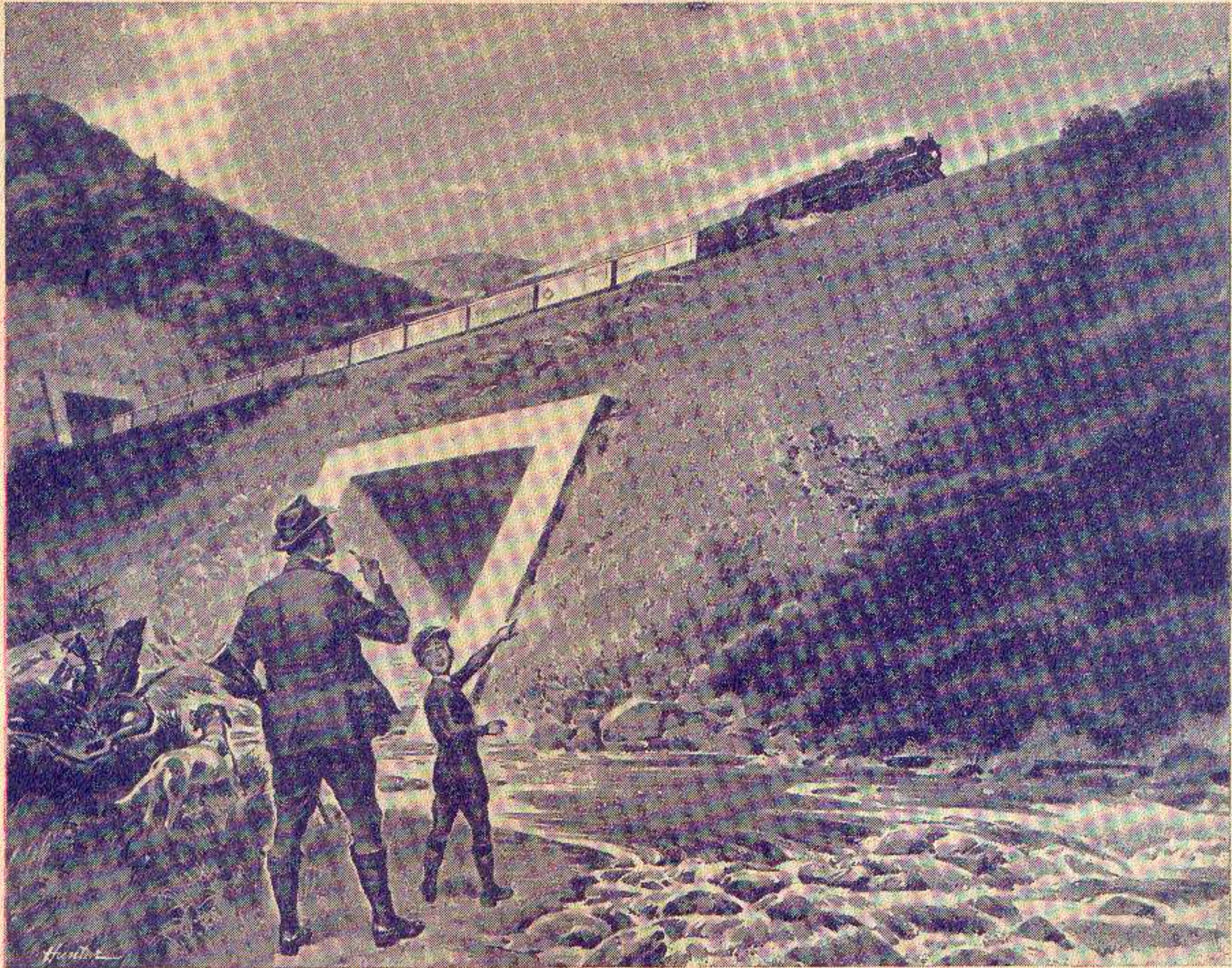
Get the facts about "The Erie Area". A copy of our new map of this region and specific information will be furnished without obligation.

## ERIE RAILROAD COMPANY

GEORGE F. WESTON, *Industrial Commissioner*

MIDLAND BUILDING

CLEVELAND 15, OHIO



## You own the world's finest transportation system

**T**HE successful performance of American railroads, speeding men, equipment and supplies for a Nation at war, proves that you *have* the world's finest transportation system.

You, the American public, own these railroads. You may not be one of the hundreds of thousands of railroad stockholders, but if you have money in the bank or insurance, the railroads are partly yours. For most banks and insurance companies are heavy investors in the solid securities railroads offer. So, part of your funds are safely reinvested in the world's finest transportation system.

But, you have more than a financial interest in the railroads. Most of your household articles, the materials of which your home is built, much of

your food, come to you *by rail*. If you work in a factory or office, the chances are that your products are distributed *by rail*, so they can be sold to pay your salary.

Your interest in the railroads is in every way a great one. And the Erie and other American Railroads will continue to justify your confidence in them.



## Erie Railroad

ONE OF AMERICA'S RAILROADS—ALL UNITED FOR VICTORY

Buy War Bonds and Stamps

# ERIE RAILROAD COMPANY

**General Offices** { **Midland Building, Cleveland 15, Ohio.** (Telephone, Cherry 8400)  
**Hudson Terminal, 50 Church Street, New York 7, N. Y.** (Telephone, Cortlandt 7-9200)  
**Utilities Building, 327 South La Salle Street, Chicago 4, Ill.** (Telephone Harrison 4160)

R. E. WOODRUFF, President,  
 H. D. BARBER, Vice-President,  
 H. A. TAYLOR, Vice-President and General Counsel,  
 H. W. VON WILLER, Vice-President,  
 CARL HOWE, Vice-President,

Cleveland,  
 " "  
 " "  
 Chicago.

T. J. TOBIN, Comptroller,  
 G. A. W. ACHENBACH, Secretary,  
 E. F. MORGENROTH, Treasurer,  
 H. A. McALLISTER, Assistant to President,  
 G. C. FRANK, Assistant to President,

Cleveland,  
 " "  
 " "  
 " "

## TRAFFIC AND DEVELOPMENT

H. W. VON WILLER, Vice-President, Cleveland.  
 D. R. THOMPSON, Asst. Vice-President, Cleveland.

G. C. MANNING, Assistant Vice-President,

New York. | W. V. KENNEDY, Assistant Vice-President,  
 L. B. BURFORD, Assistant Vice-President, New York.

Chicago.

### PASSENGER—Sales and Service

ALFRED FYNN, Assistant General Passenger Agent,  
 T. R. PATTON, Assistant General Passenger Agent,  
 F. A. WALDRON, Assistant General Passenger Agent.

R. B. ROGERS, Passenger Traffic Manager, Cleveland.

H. T. HARLOW, General Passenger Agent,  
 A. G. OLDENQUIST, Assistant General Passenger Agent,  
 E. J. HAWERKOST, General Western Passenger Agent,  
 C. L. CHAPMAN, Manager, Mail, Baggage and Express Traffic, New York.

Chicago.

### FREIGHT—Rates

O. M. MEYNE, Assistant Freight Traffic Manager,  
 E. N. HAMBLY, General Freight Agent,  
 F. M. KLITZ, Assistant General Freight Agent,  
 C. E. COURTER, Assistant General Freight Agent,  
 W. P. VAN IDERSTINE, Chief of Tariff Bureau,  
 J. H. SISCO, Chief of Divisions Bureau.

L. B. BURFORD, Assistant Vice-President, New York.  
 F. G. LANTZ, Freight Traffic Manager, Chicago.

A. BLAUDEL, Assistant Freight Traffic Manager,  
 E. C. HALLBERG, General Freight Agent,  
 H. T. SWEENEY, Chief of Tariff Bureau,  
 E. A. JAEHNE, Chief of Divisions Bureau,

Chicago.

### FREIGHT—Sales and Service

G. C. MANNING, Assistant Vice-President,  
 E. J. DEAN, Freight Traffic Manager,  
 G. R. WHEELER, General Freight Agent,  
 J. T. McENTEE, General Eastern Freight Agent,  
 G. W. MADSEN, Assistant General Freight Agent,  
 B. F. CONWAY, General New England Agent,  
 F. D. HARTNETT, Milk Freight Agent,  
 H. B. ROGERS, General Live Stock Agent,

New York,  
 " "  
 " "  
 " "  
 Buffalo,  
 Boston,  
 New York,  
 East Buffalo, N. Y.

W. V. KENNEDY, Assistant Vice-President,  
 J. G. HILL, Freight Traffic Manager,  
 J. A. RUSSELL, Western Traffic Manager,  
 C. V. HARROW, Assistant General Freight Agent,  
 W. H. KOCH, Assistant General Freight Agent,  
 R. L. MURPHY, Assistant General Freight Agent,

Chicago.

### FOREIGN FREIGHT TRAFFIC

G. A. LAMB, Freight Traffic Manager,  
 C. R. MARTIN, Asst. General Freight Agent,  
 C. E. KING, Assistant General Freight Agent,  
 W. P. KROMPHARDT, Asst. General Freight Agent,

Cleveland,  
 " "  
 Pittsburgh,  
 Youngstown.

T. W. KANE, Foreign Freight Agent,  
 A. E. PETERSON, Foreign Freight Agent,  
 W. S. PENCHARD, Export and Import Agent,

New York,  
 Chicago,  
 New York.

### PERISHABLE AND DAIRY TRAFFIC

D. D. JAMIESON, Coal Freight Agent,  
 A. E. BARKALOW, Assistant Coal Freight Agent,  
 J. A. MUCHA, Coal Freight Agent.

R. E. O'GRADY, Coal Traffic Manager, Cleveland.  
 J. A. FERGUSON, General Coal Freight Agent, Cleveland.  
 New York.  
 Buffalo.  
 H. O. DUNKLE, General Agent, Coal and Ore, Cleveland.

P. J. NAPOLI, Manager,  
 H. W. BOUMANN, Western Dairy Agent,

Pier 20, N. R., New York,  
 Chicago.

E. C. JULIUS, Coal Freight Agent,  
 W. N. STENFELT, Assistant Coal Freight Agent,  
 M. S. SWEENEY, General Agent,

Chicago,  
 Pittsburgh.

### INDUSTRIAL DEVELOPMENT

GEO. F. WESTON, Industrial Commissioner, Cleveland.  
 H. J. HART, Industrial Agent, New York.

## TRAFFIC DEPARTMENT REPRESENTATIVES

Akron 8, O.—80 East Exchange St.  
 (Telephone Hemlock 8194-8195)  
 J. P. CLARK, Division Passenger Agt.  
 A. R. WALTON, General Agent.

Albany 7, N. Y.—D. & H. Bldg.  
 (Telephone 4-8051)

L. J. MARTON, General Agent.

Atlanta 3, Ga.—Healey Bldg.  
 (Telephone Walnut 2135)

W. H. STADELMAN, General Agent.

Baltimore 2, Md.—Munsey Bldg.  
 (Telephone Plaza 8691)

H. E. FEE, General Agent.

Birmingham 3, Ala.—Watts Bldg.  
 (Telephone 3-1327)

WM. L. THORNTON, General Agent.

Birmingham, England—13 Corporation St.

MAURICE G. COOKE, General Agent.

Boston 14, Mass.—150 Causeway St.  
 (Telephone Capitol 2510-11-12)

B. F. CONWAY, Gen. New Eng. Agt.

Buffalo 2, N. Y.—238 Main Street,  
 (Telephone Washington 1865)

R. E. TOWNS, Division Passenger Agt.  
 G. W. MADSEN, Asst. General Freight Agt.

Chicago 4, Ill.—327 South La Salle St.  
 (Telephone Harrison 4160)

O. B. CHAPMAN, Trav. Pass. Agent,  
 C. V. HARROW, Asst. Gen. Freight Agt.

Cincinnati 2, O.—Gwynne Bldg.  
 (Telephone Main 3420-3421)

R. L. MURPHY, Asst. Genl. Frt. Agt.

Cleveland 15, O.—Midland Bldg.  
 (Telephone Cherry 8400)

C. R. MARTIN, Asst. Gen. Frt. Agt.

Cleveland 13, O.—Erte Station,  
 (Telephone Cherry 8400)

V. F. GREEN, Div. Passenger Agent.

Columbus 15, O.—Atlas Bldg.,  
 8 East Long Street,  
 (Telephone Adams 7331)

L. J. BURGOTT, General Agent.

Dallas 1, Tex.—Southwestern Life Ins.  
 Bldg., Main and Akard Sts.  
 (Telephone 2-7352)

E. W. KELLEY, General Agent.

Dayton 2, O.—Miami Savings Bldg.  
 (Telephone Adams 8481)

F. W. FISCHER, Div. Frt. Agt.

Des Moines 9, Ia.—Hubbell Bldg.,  
 904 Walnut Street,  
 (Telephone 4-0018)

H. A. BOCKMAN, General Agent.

Detroit 2, Mich.—General Motors Bldg.  
 (Telephone Madison 2360-2361)

W. H. KOCH, Assistant General Frt. Agt.

East Buffalo 6, N. Y.—Live Stock Exch.  
 Bldg. (Telephone Washington 4300)

H. B. ROGERS, General Live Stock Agt.

Elmira, N. Y.—Erte Station,  
 (Telephone 2-1621)

J. W. O'HARA, Division Passenger Agt.  
 (Telephone 2-0377)

C. F. WHADCOCK, Division Freight Agent.

Glasgow, Scotland—88 Mitchell St.

W. S. THOMSON, General Agent.

Huntington, Ind.—Erte Station,  
 (Telephone 743)

HAROLD L. JOHNSON, Div. Frt. Agt.

Indianapolis 4, Ind.—145 No. Meridian  
 St. (Telephone Franklin 0255)

T. J. WILLIAMSON, General Agent.

Jamestown 3, N. Y.—Erte Station  
 (Telephone 7921-7922)

H. G. COOKE, Div. Frt. Agt.

Jersey City 2, N. J.—Erte Station  
 (Telephone Journal Square 2-6400)

P. F. ARROYO, Genl. Art. Pass. Dept.

J. G. VREBLAND, Division Freight Agent.

Kansas City 6, Mo.—Railway Exchange  
 Bldg., 7th and Walnut Streets.  
 (Telephone Victor 6328)

N. C. FRICK, General Agent.

Liverpool, Eng.—10 Victoria St.  
 A. G. TAYLOR, General Agent.

London, E. C. 3, Eng.—88 Leadenhall St.  
 PETER BUSWELL, General Agent.

D. S. DEANS, Genl. Continental Agt.

Los Angeles 14, Cal.—510 West 6th Street,  
 (Telephone Vandike 4129)

D. C. KELSEY, General Agent.

Marion, O.—Terminal Building  
 (Telephone 2657)

A. R. TENNIS, Division Freight Agent.

Memphis 3, Tenn.—Exchange Bldg.,  
 Madison & Second Sts.  
 (Telephone 8-8781)

H. W. GRAY, General Agent.

Milwaukee 3, Wis.—Majestic Bldg.,  
 231 West Wisconsin Ave.  
 (Telephone Marquette 5555-5556)

L. T. COULSTON, General Agent.

Minneapolis 2, Minn.—Rand Tower,  
 Marquette Ave. and 6th St., So.  
 (Telephone Main 3604)

L. E. NEWMAN, General Agent.

Newark 2, N. J.—Military Park Bldg.,  
 60 Park Place,  
 (Telephone Market 2-0525-26-27)

F. L. COLLINS, General Agent.

New Haven 10, Conn.—Powell Bldg.  
 (Telephone 5-7937)

G. E. ROBB, General Agent.

New Orleans 12, La.—Whitney Bldg.  
 (Telephone Raymond 9786)

E. W. BURNETT, General Agent.

New York 20, N. Y.—11 Rockefeller Plaza,  
 Rockefeller Center,  
 (Telephone Circle 5-7222)

F. J. WILD, Genl. Agt. Pass. Dept.

G. W. KROM, City Pass. Agent

New York 7, N. Y.—50 Church Street,  
 (Telephone Cortlandt 7-9200)

J. T. McENTEE, Genl. East. Frt. Agt.

Omaha 2, Neb.—1519 Farnam St.  
 (Telephone Jackson 4866)

C. L. COX, General Agent.

Peoria 2, Ill.—Jefferson Building, Cor.  
 South Jefferson & Fulton Streets,  
 (Telephone 8007)

J. W. CLOUD, General Agent.

Philadelphia, 2, Pa.—Finance Bldg.  
 (Telephone Rittenhouse 8975-8976)

H. A. WILSON, General Agent.

Pittsburgh 19, Pa.—Gulf Building,  
 (Telephone Grant 4831-2-3)

C. E. KING, Asst. Genl. Frt. Agt.

Portland 4, Ore.—Pacific Bldg.,  
 520 S. W. Yamhill St.  
 (Telephone Beacon 3706)

H. L. SKREEN, General Agent.

Rochester 4, N. Y.—Reynolds Arcade  
 Building,  
 (Telephone Main 2826)

G. F. MILLS, Division Freight Agent.

San Francisco 5, Cal.—681 Market St.  
 (Telephone Sutter 3875)

J. A. LLOYD, General Agent.

St. Louis 3, Mo.—812 Olive St.  
 (Telephone Chestnut 7723-7724)

C. G. ANDREWS, General Agent.

St. Paul 1, Minn.—536 Robert St.  
 (Telephone Cedar 5912)

C. R. PETRY, General Agent.

Scranton, Pa.—First National Bank Bldg.  
 (Telephone—Scranton 7237)

G. W. SHUMAN, Division Freight Agent.

Seattle 1, Wash.—White Bldg.,  
 1338 Fourth Ave.  
 (Telephone Elliot 4834)

R. J. DUNDON, General Agent.

Springfield, O.—First National Bank  
 Building,  
 (Telephone 2-5351)

E. H. HUFFMAN, General Agent.

Toledo 4, O.—2012 Toledo Trust Bldg.,  
 215 Summit Street,  
 (Telephone Main 3816)

H. J. SPANGENBERG, General Agent.

Toronto, Ont.—69 Yonge Street,  
 (Telephone Elgin 4077)

ROBERT WILLIAMSON, Can. Frt. Agt.

Tulsa 3, Okla.—Hunt Bldg.,  
 (Telephone 3-8613)

H. F. STUDDT, General Agent.

Washington 5, D. C.—Southern Bldg.  
 (Telephone National 6075)

W. J. MURRAY, General Agent.

Youngstown 3, O.—Terminal Building,  
 (Telephone 4-1101)

W. P. KROMPHARDT, Asst. Genl. Frt. Agt.  
 J. V. SCANLON, Division Freight Agent.