

# BALOWINSVILLE

INCLUDING  
PLAINFIELD AND LYANDER  
Schenectady County  
New York

Sanborn  
MAP COMPANY  
of New York  
Dec. 1923

C. S. P. 3119

Copyright 1924 by the Sanborn Map Co.

Copyright 1924 by the Sanborn Map Co.

Population 5000

Prevailing Wind, West

Scale: 1 inch = 500 feet

### WATER FACILITIES:

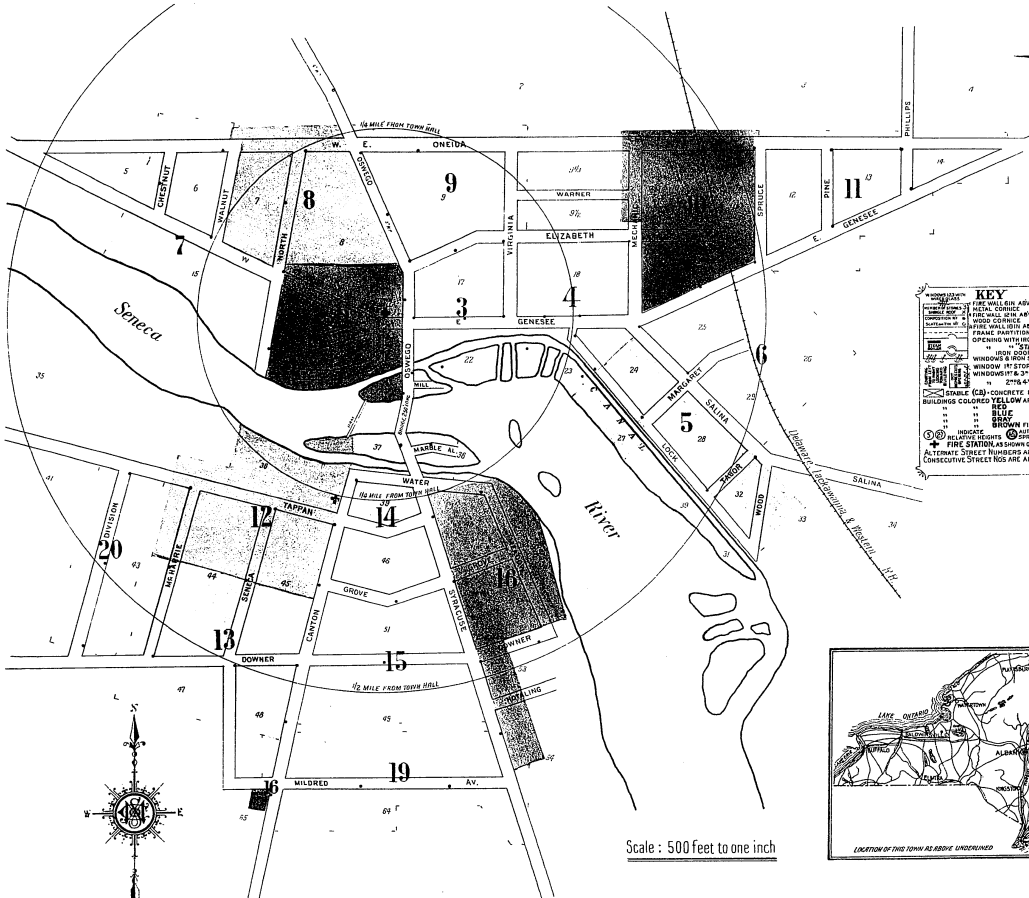
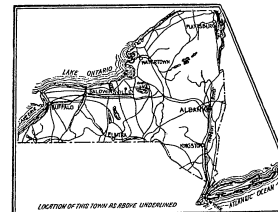
Standard and direct pressure system of water works. Baldwinsville Water Works, owned by the city, installed in 1888. Water supply from unconsolidated rock, 200' deep, 20' dia. well located at pumping station. (See sheet 19-10) One elevated tank, 100-100 ft high, 2000 gals. water per run, pump from well to stand pipe, 200' dia. 200' high, only 10,000 gals. below of water, 50' ft above business section of town. Inlet pressure obtained by closing valve at stand pipe. 1/2 miles of water pipe, 6" to 12" diam. 70 double end triple hydrants. Average gravity pressure 87 lbs. Direct fire pressure 80 lbs. Average daily consumption, 350,000 gals.

### FIRE DEPARTMENT:

Volunteer 26 men. Chief, assistant chief, 12 call men partly paid. Three fire engines, driven on tracks R.R. 2, 40 and 12. One American-LaFrance triple combination auto truck with 200 gal. pump, 4000 lbs. capacity, and 100 ft. 2 1/2" cotton rubber hose. One hook & ladder, 200' x 2 1/2" cotton rubber hose. One hook & ladder, truck with 50 ft. of ladders. One supply wagon. Five 3 gal. chemical extinguishers. Telephone fire alarm system, 12 boxes. Horn at fire station, 2 brick building.

**KEY**

CONCRETE (C) CONCRETE BLOCK  
BUILDINGS COLORED YELLOW AND FRAME  
BRICK (B) BRICK  
WOOD (W) WOOD  
GLASS (G) GLASS  
IRON (I) IRON  
STEEL (S) STEEL  
COPPER (CO) COPPER  
ZINC (Z) ZINC  
SILVER (SI) SILVER  
GOLD (GO) GOLD  
COPPER (CO) COPPER  
ZINC (Z) ZINC  
SILVER (SI) SILVER  
GOLD (GO) GOLD



Scale: 500 feet to one inch

## INDEX

STREETS	INDEX	INDEX	INDEX
Canton, C	1-19	14	1-30
"	2-28	12	1-15
"	21-51	15	2-14
"	30-52	13	16-69
"	53-62	19	16 & 3
"	63-67	19	
"	64-68	16	
Charlotte, N	1-28	2	1-15
Chestnut, N	1-16	7	2-22
			17-23
			24-45
			18
			17
Division, D	1-40	20	
Downer, D	2-12	16	
"	13-14	16	
"	15-48	15	
"	49-82	13	
"	84-92	20	
East, at Lysander, E	18		
Elizabeth, E	1-25	9	
"	2-22	3	
"	24-26	4	
"	27-50	4	
"	51-68	10	
Genesee, E, G	1-30	3	
"	31-50	4	
"	51-85	10	
"	86-139	11	
"	1-30	2	
"	31-49	7	
"	50-50	8	
"	50-60	7	
Grove, S	1-14	16	
"	15-35	15	
"	16-36	14	
Hotaling, H	1-30	2	
"	31-49	7	
"	50-50	8	
"	50-60	7	
Lock, L	1-12	4	
"	13-74	5	
Luce Road, L	20		
McHarrie, M	1-14	12	
"	15-36	13	
Maple Road, M	20		
Marble Alley, M	1-16	14	
Margaret, M	1-14	6	
"	15-24	5	
Meadow, M	1-30	16	
Mechanic, M	1-15	4	
"	2-14	10	
"	16-69	10	
Mildred Ave., M	16 & 3		
North, N	1-15	7	
"	17-23	8	
"	24-45	8	
at Lysander, N	18		
Plainville, N	17		
Oneida, E, O	1-34	9	
"	50-75	10	
"	76-109	11	
"	1-20	8	
W, O	21-34	7	
Oswego, O	1-51	2	
"	52-75	3	
"	60-84	9	
Phillips, P	1-12	11	
Pine, P	1-18	11	
River, R	1-43	9	
"	2-46	14	
"	8-50	5	
"	1-22	12	
"	23-30	13	
Salina, S	1-21	10	
"	2-22	11	
"	21-75	16	
"	22-38	14	
"	40-68	15	
"	70-74	12	
"	76-99	13	
Seneca, S	1-21	10	
"	2-22	11	
"	21-75	16	
"	22-38	14	
"	40-68	15	
"	70-74	12	
"	76-99	13	
South, at Plainville, S	1-21	10	
"	2-22	11	
"	21-75	16	
"	22-38	14	
"	40-68	15	
"	70-74	12	
"	76-99	13	
Spruce, S	1-21	10	
"	2-22	11	
"	21-75	16	
"	22-38	14	
"	40-68	15	
"	70-74	12	
"	76-99	13	
Syracuse, S	1-21	10	
"	2-22	11	
"	21-75	16	
"	22-38	14	
"	40-68	15	
"	70-74	12	
"	76-99	13	
Tabor, T	1-16	5	
Tappan, T	1-14	14	
"	15-23	14	
"	16-22	12	
"	24-53	12	
"	57-69	20	
Virginia, V	1-15	3	
"	2-14	10	
"	16-39	10	
Walnut, W	1-19	7	
"	2-20	8	
Warner, W	1-16	6	
Water, W	17-40	14	
West, at Lysander, W	17		
"	18		
Plainville, W	17		
Wood, W	1-26	5	
Lysander Hotel, L	18		
Mahoney, F. L., Cider Mill, M	4		
Mawhinney, F., Cider Mill, M	17		
Mercer Milling Co., Flour Mill, M	14		
Methodist Episcopal Church, M	9		
"	18		
Miller Equipment Co., Machine Shop, &c., M	16		
Morris Machine Works, M	3 & 4		
Northport, C. R., Tobacco Warehouse, N	18		
Odd Fellows Temple, O	3		
Penn Spring Works Inc., Auto & Truck Springs, P	4		
Post Office, P	5		
"	18		
"	17		
Public School, at Lysander, P	9		
"	18		
"	17		
Pure Oil Co., P	14		
St. Mary's Roman Catholic Church, S	12		
Sciler Bros. Creamery, S	6		
Seneca House, S	2		
"	14		
Shea's Hotel, S	13		
South Side Graded School, S	6		
Standard Oil Co., S	10		
State of N. Y. Barge Canal, Middle Division, S	16		
"	12		
Steel & Donahue Coal Co., Coal Storage, &c., S	12		
Stewart, J., & Co., Contractors Yard, S	16		
D. L. & W. R. R. Freight Depot, D	12		
"	10		
"	2		
Dunham, Mrs. N., Tobacco Warehouse, D	17		
Episcopal Church, E	3		
Fire Department, Station, Canton St., F	12		
"	10		
"	2		
First Presbyterian Church, F	9		
Fraze, J., Milling Co., Flour Mills, F	4 & 10		
Genesee House, G	8		
Grange Theatre, G	14		
Hoffman, R. S. Co., Paper Factory, H	2		
Youman's Paper Mills, H	12		
Water Works, Pumping Station, W	16		

\* Indicates only one side of Street shown.

DEC. 1923  
**BALDWINVILLE**  
N. Y.



NORTH

W. GENESEE

CHARLOTTE

W. GENESEE

RIVER

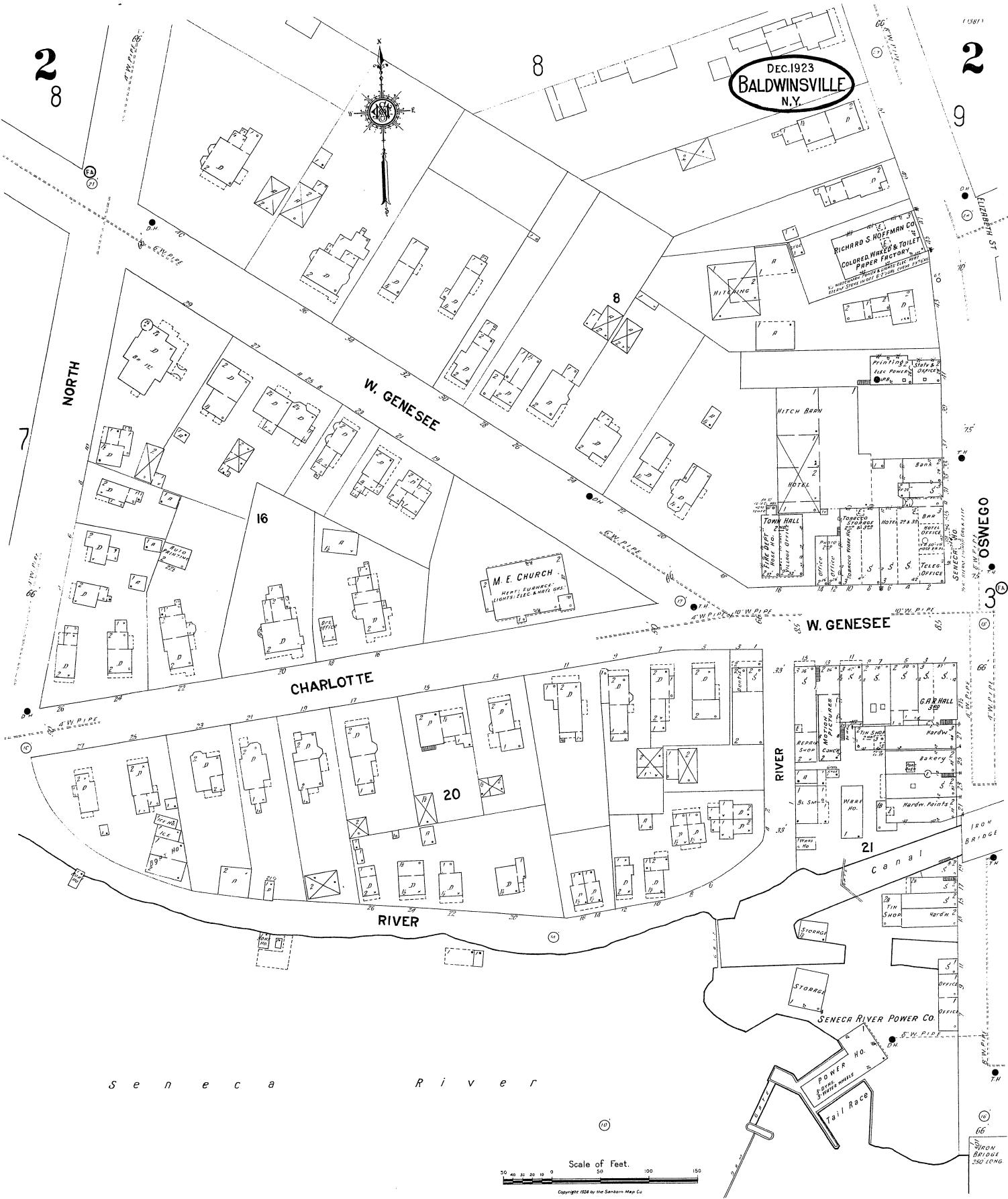
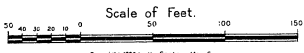
RIVER

SENECA RIVER POWER CO.

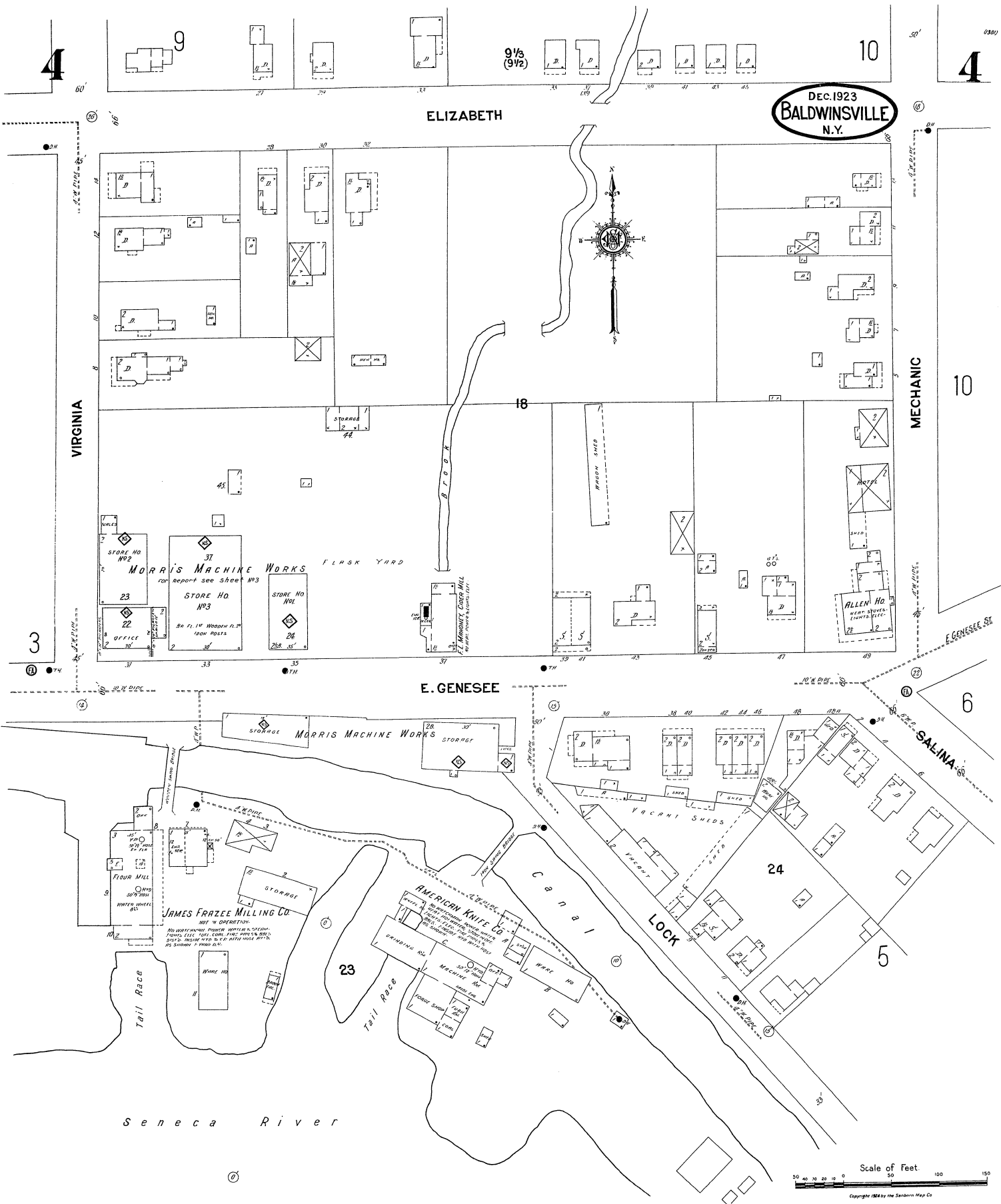
POWER HO.  
3-1/2 MILE HOUSE  
Tail Race

OSWEGO

S e n e c a R i v e r







DEC. 1923  
BALDWINVILLE  
N.Y.

ELIZABETH

VIRGINIA

MECHANIC

E. GENESEE

SALINA

LOCK

Seneca River

Scale of Feet  
0 50 100 150  
Copyright 1924 by the Sanborn Map Co.



DEC. 1923  
BALDWINVILLE  
N.Y.



10

6

4

5

11

26

29

25

MARGARET

E. GENESEE

SALINA

TRABER ST

SPRUCE ST

FREIGHT DEPOT

BALDWINVILLE TRADING CORPORATION

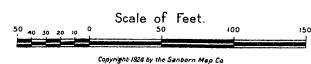
STANBROOK OIL CO

SEILER BROS CREAMERY  
POWER BY WEST SYSTEM LIGHTNING  
FUEL CON. CITY WATER

CRAGO & KELLY CON. CO

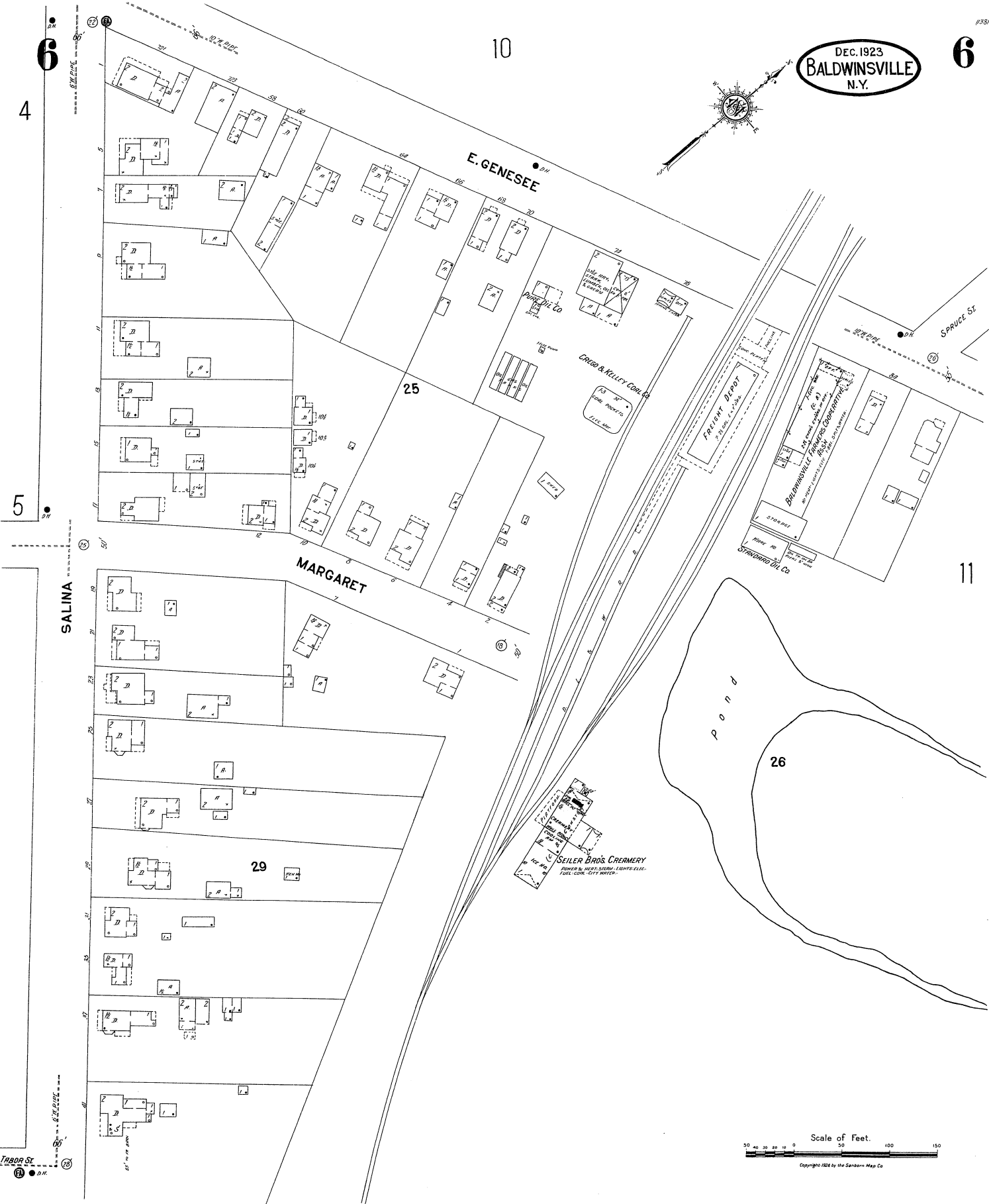
PUMPHREY CO

POND

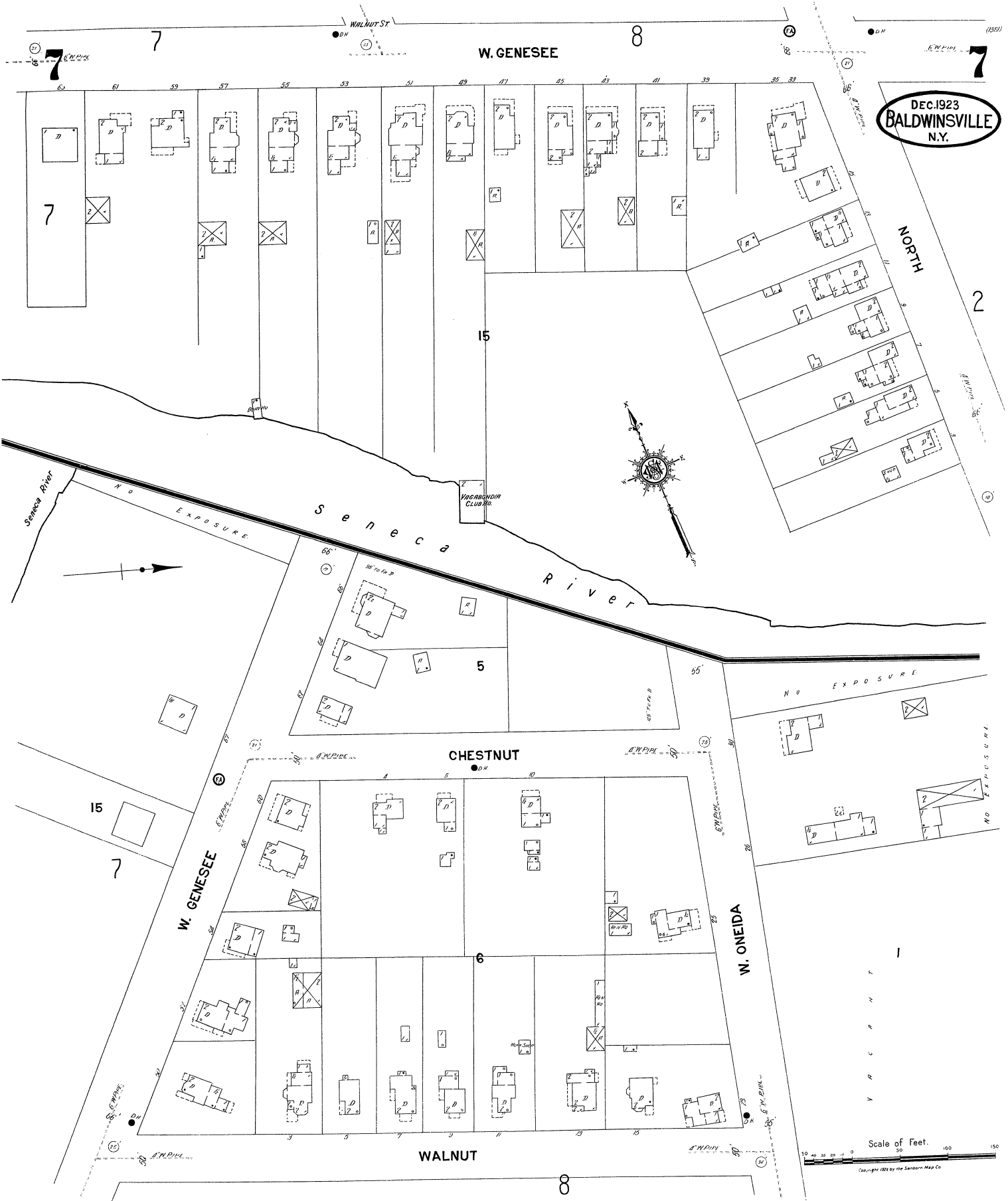


Scale of Feet.

Copyright 1924 by the Sanborn Map Co



DEC. 1923  
BALDWINVILLE  
N.Y.



W. GENESEE

15

5

CHESTNUT

6

WALNUT

NORTH

2

W. ONEIDA

Scale of Feet.

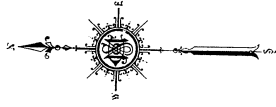
Copyright 1923 by the Sanborn Map Co

8

9

DEC. 1923  
BALDWINVILLE  
N.Y.

8



E. ONEIDA ST.

OSWEGO

E.W. PIPE  
S.W. PIPE

E.W. PIPE

150' to R.R.D.

2

8

W. ONEIDA

NORTH

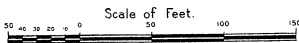
S.W. PIPE

7

WALNUT

W. GENESEE

7



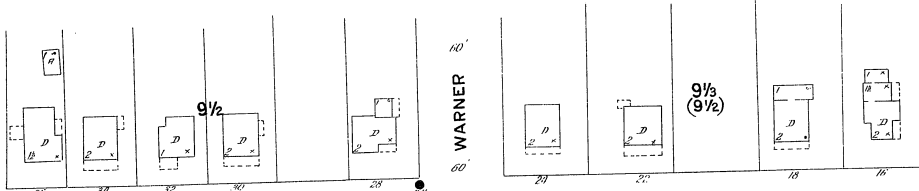
Copyright 1924 by the Sanborn Map Co.

7

S.W. PIPE  
S.E. PIPE

9

6" W. PIPE



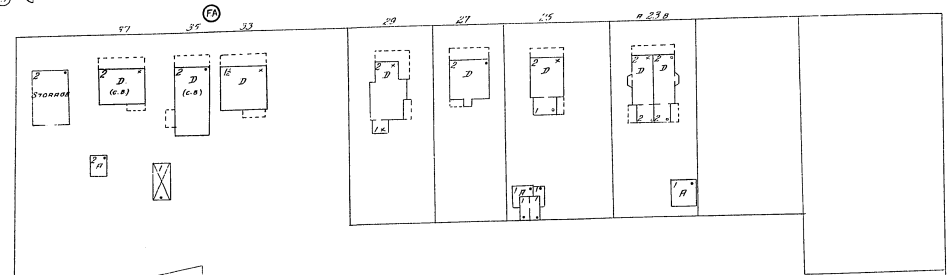
DEC. 1923  
BALDWINVILLE  
N. Y.

(1381)

9

4

VIRGINIA



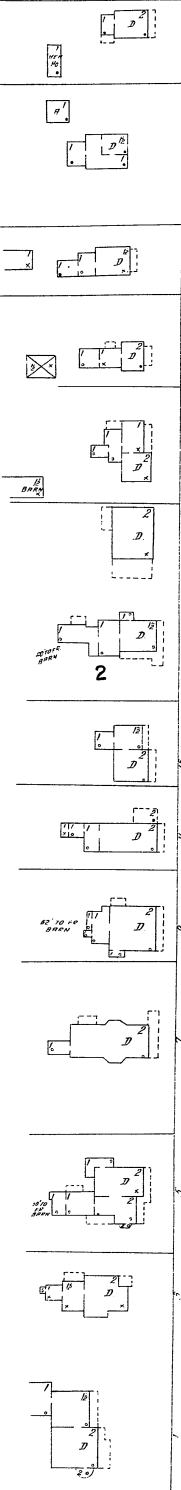
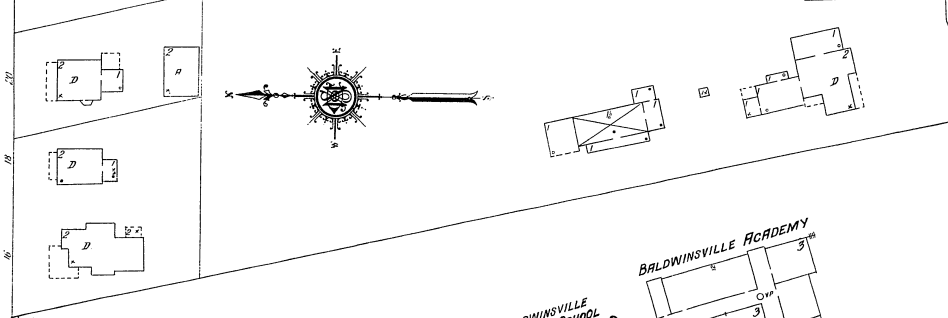
6" W. PIPE

6" W. PIPE

ELIZABETH

3

E. ONEIDA



2

12" W. PIPE

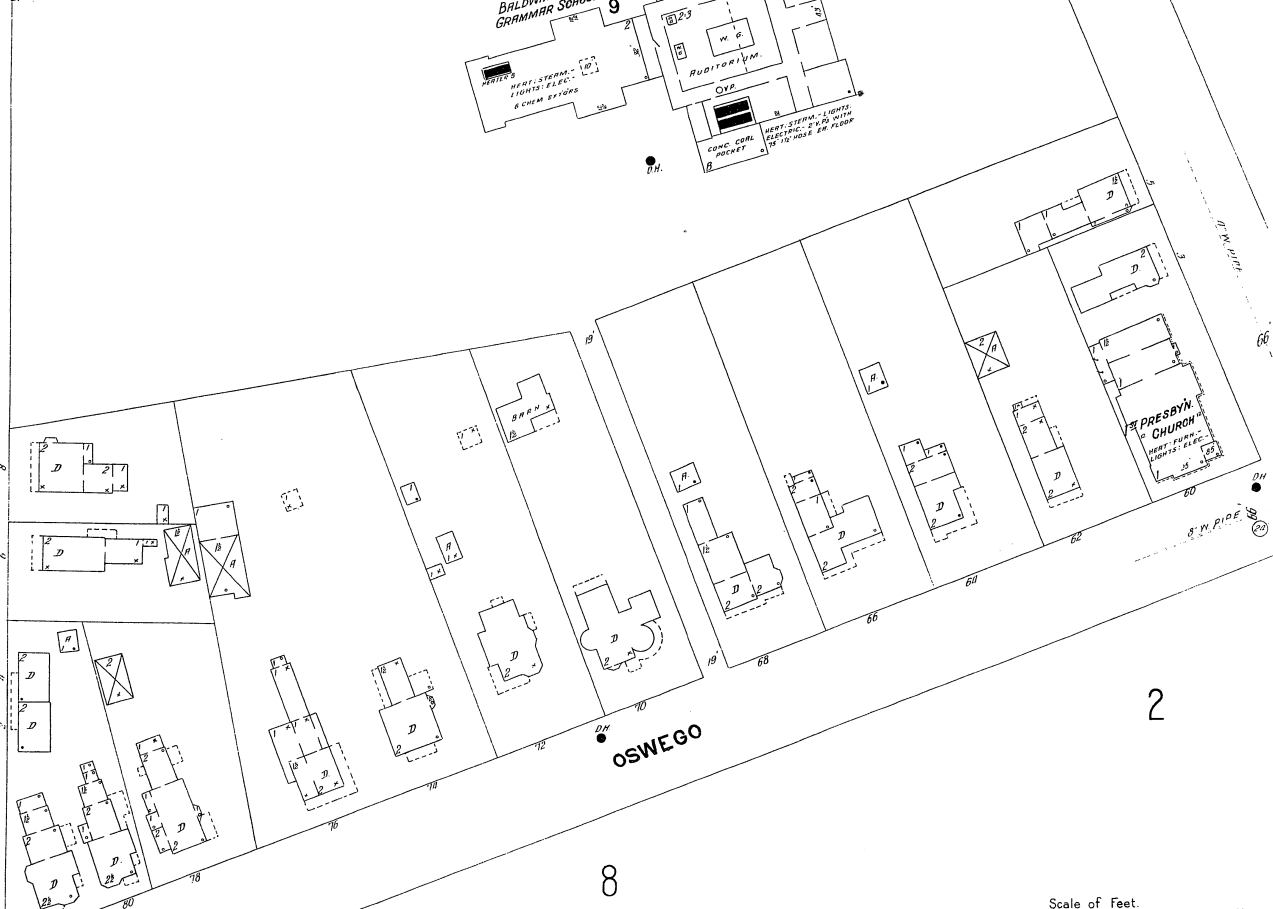
12" W. PIPE

12" W. PIPE

12" W. PIPE

12" W. PIPE

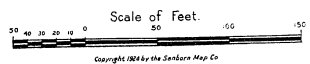
6" W. PIPE



OSWEGO

2

8



10

10

E. ONEIDA

DEC. 1923  
BALDWINVILLE  
N. Y.

MECHANIC



10

ELIZABETH

19

E. GENESEE

JAMES FRAZEE  
MILLING CORP.  
GRINDS 350 BAGS  
POWER DRIVEN  
MILLS AND ELEVATORS  
BEST GRADE

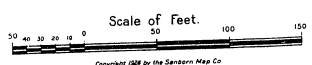
PASSENGER  
DEPOT

TAPPEN & BROOKS COAL YARD.

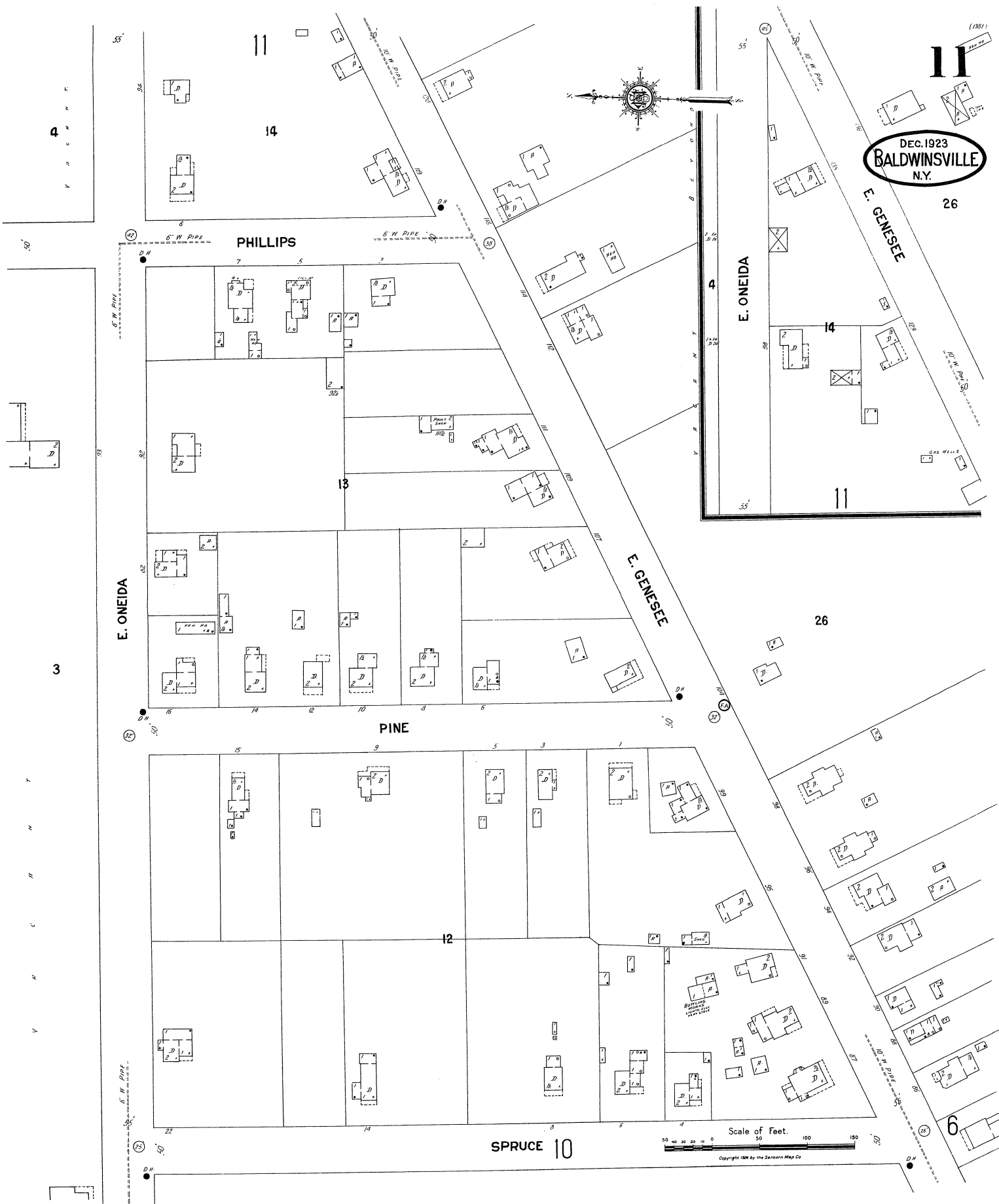
SPRUCE

11

6



Copyright 1923 by the Searns Map Co.



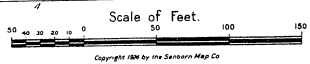
DEC. 1923  
**BALDWINVILLE**  
N.Y.

26

26

6

SPRUCE 10



4

3

V  
N  
C  
R  
N  
T

6" W. PIPE

6" W. PIPE

E. ONEIDA

PHILLIPS

PINE

E. GENESEE

E. ONEIDA

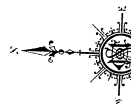
E. GENESEE

6" W. PIPE

6" W. PIPE

D.H.

D.H.





13

13

DEC. 1923  
BALDWINVILLE  
N. Y.

Mc HARRIE

44

12

SENECA

47

CLEAR MFG  
MACH. CO.

DOWNER

SENECA

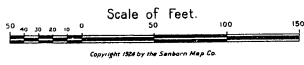
45

48

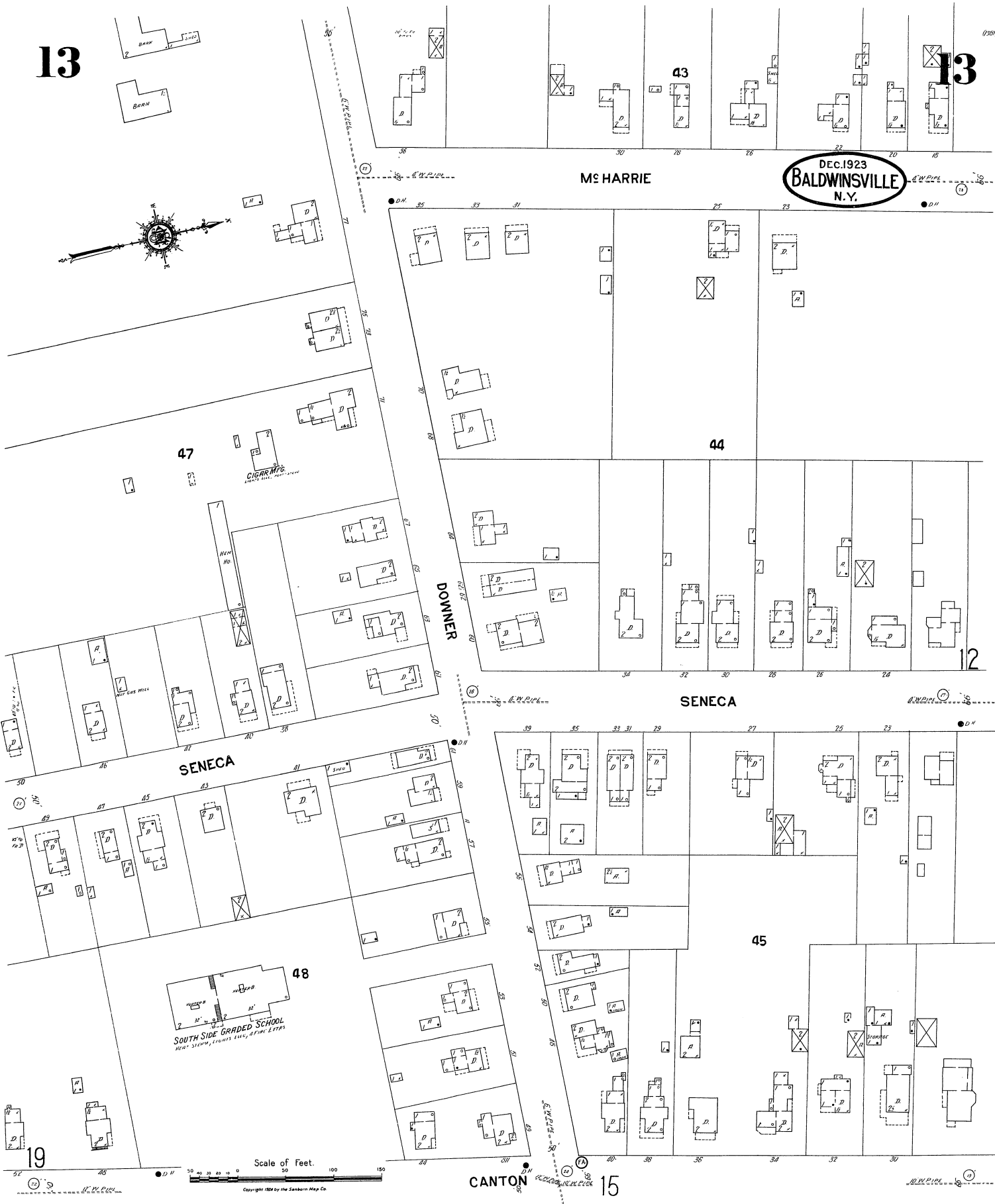
SOUTH SIDE GRADED SCHOOL  
HEAT STOVE, LIGHTS, LOCK, PAINT, ETC.

CANTON

15



Copyright 1924 by the Samsom Map Co.



14

Seneca

River

DEC. 1923  
BALDWINVILLE  
N.Y.

14

12

37

MERCER MILLING CO.  
NO. 1000 CHAS. POWER, WATER & ELEC. HEAT.  
STEAM LIGHT & ELEC. 12" FIRE PIPES & BRASS  
DIPPER SYSTEM

Head Race

Barge Canal Lock

WATER

SYRACUSE

16

TAPPAN ST 12

TAPPAN

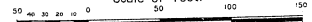
CANTON

46

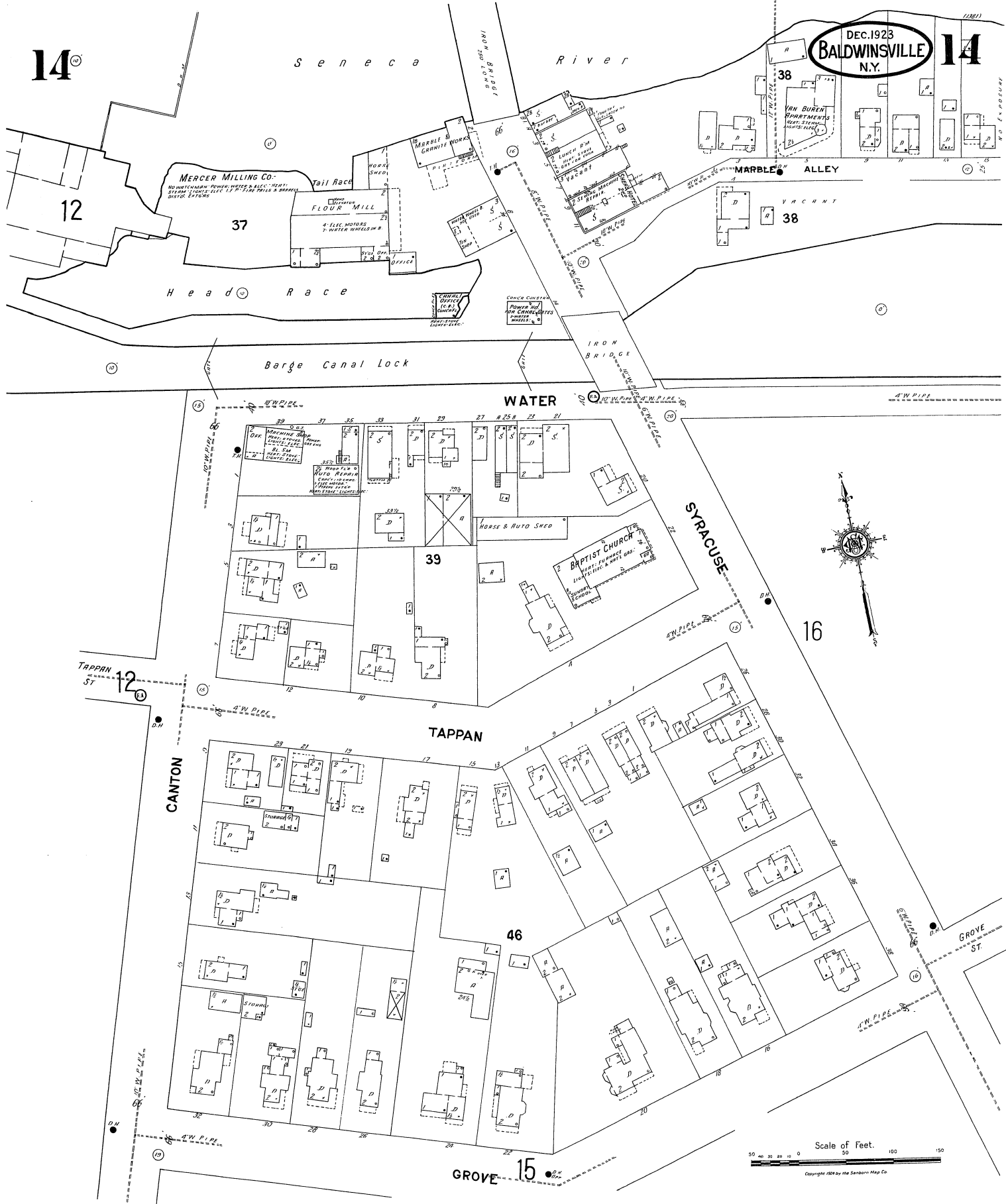
GROVE 15

GROVE ST

Scale of Feet.



Copyright 1923 by the Sanborn-Map Co.



DEC. 1923  
BALDWINVILLE  
N.Y.

FRONTING ON CANTON ST.

CANTON

12

15

NO EXPOSURE

15



DOWNER

GROVE

14

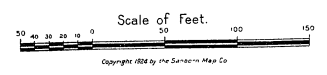
51

49

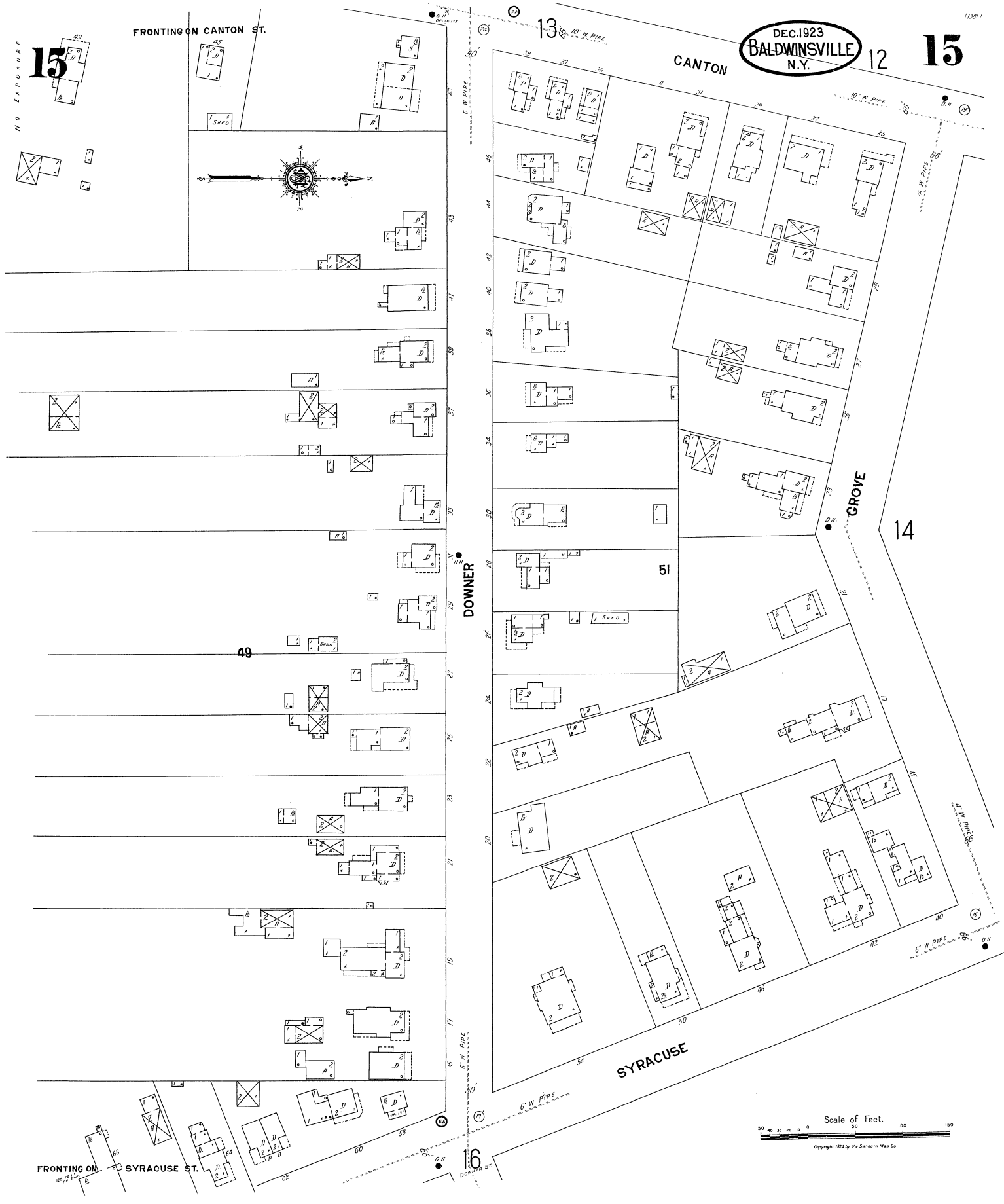
SYRACUSE

FRONTING ON SYRACUSE ST.

16



Copyright 1924 by the Sanborn Map Co.





17

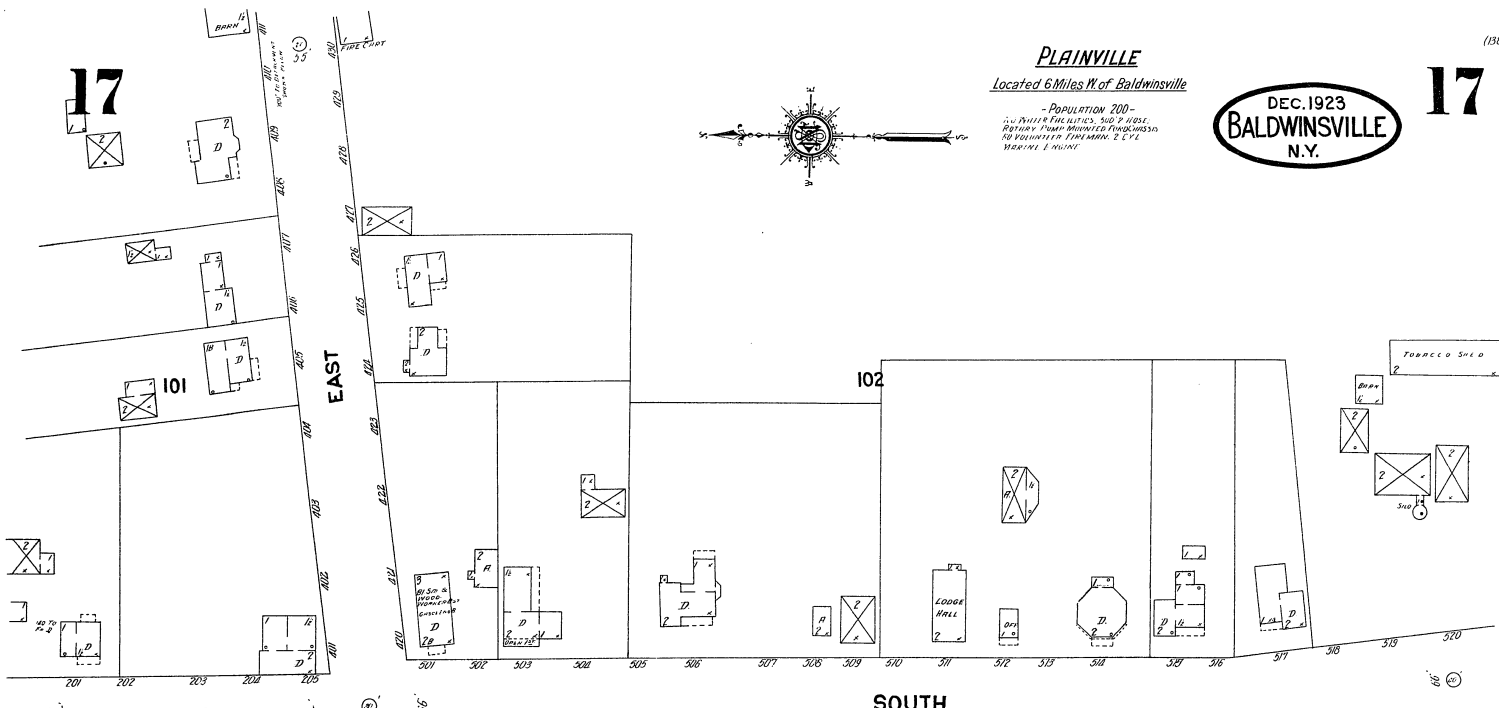
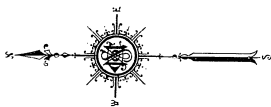
# PLAINVILLE

Located 6 Miles W. of Baldwinsville

POPULATION 200  
2-1/2 WATER FACILITIES, 100' P. HOLE,  
FIREHYDRANT, PUMP-MOUNTED FRIGIDIZER,  
NO REFRIGERATOR, 2' x 12'  
BRICK, 1' WIDE

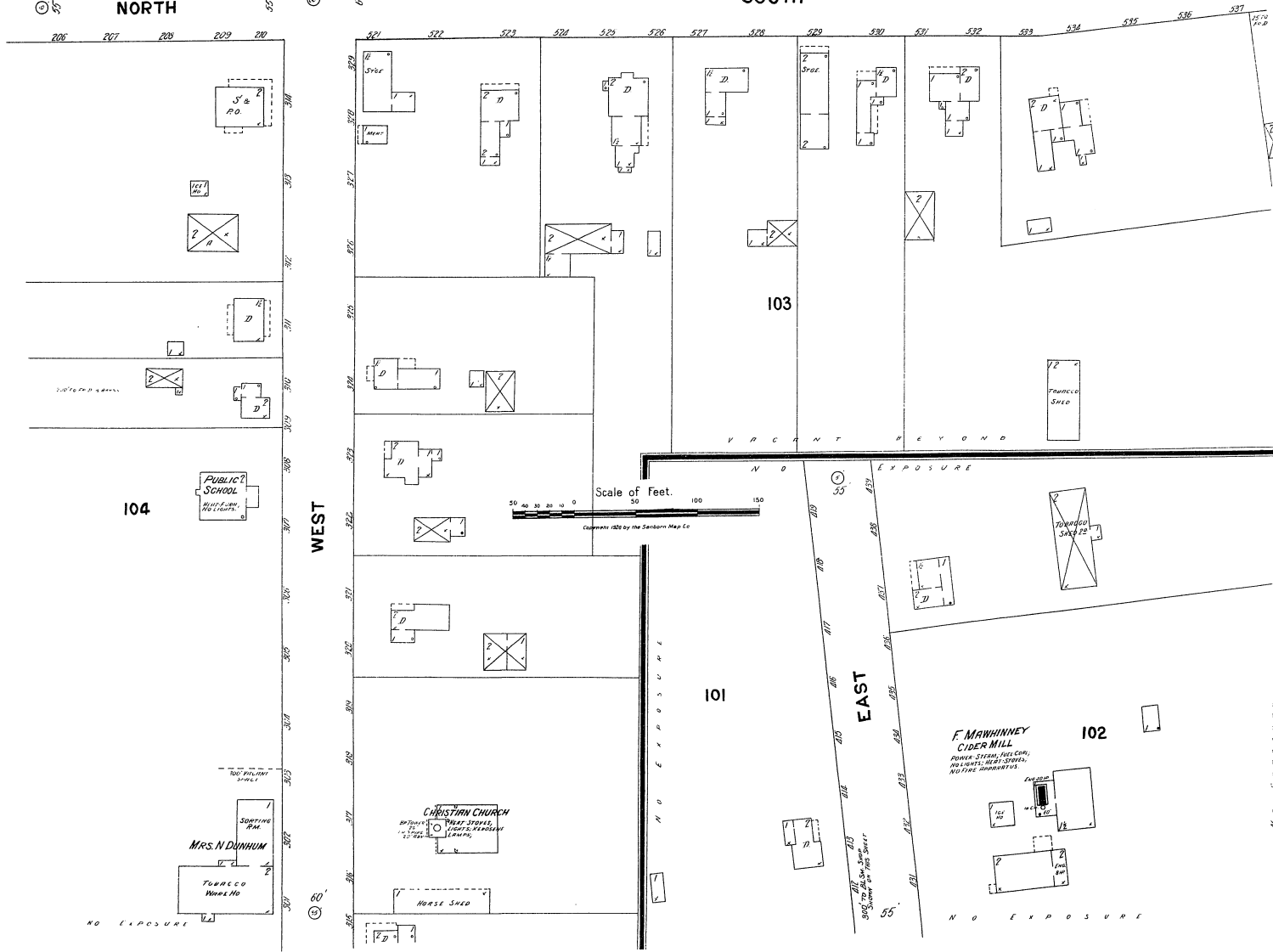
DEC. 1923  
**BALDWINVILLE**  
N.Y.

17



NORTH

SOUTH



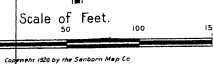
104

103

102

F. MAWHINNEY  
CIDER MILL

POWER STEAM, FUEL OIL,  
WATER, HEAT, STEPS,  
NO FINE ANCHORAGE



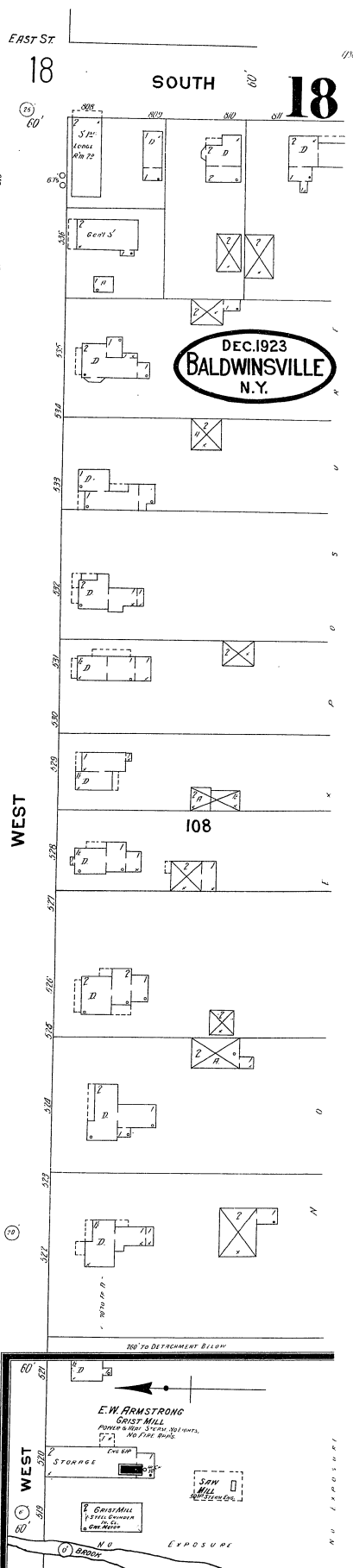
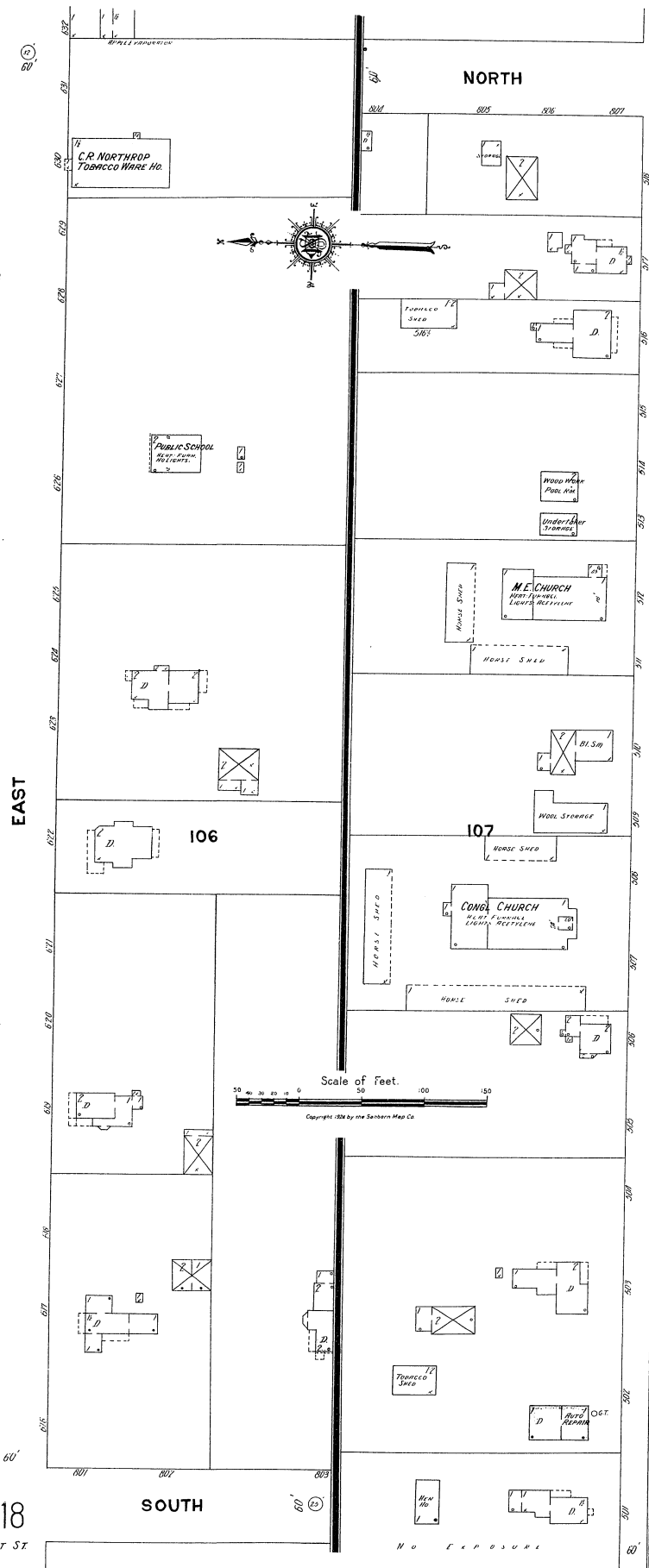
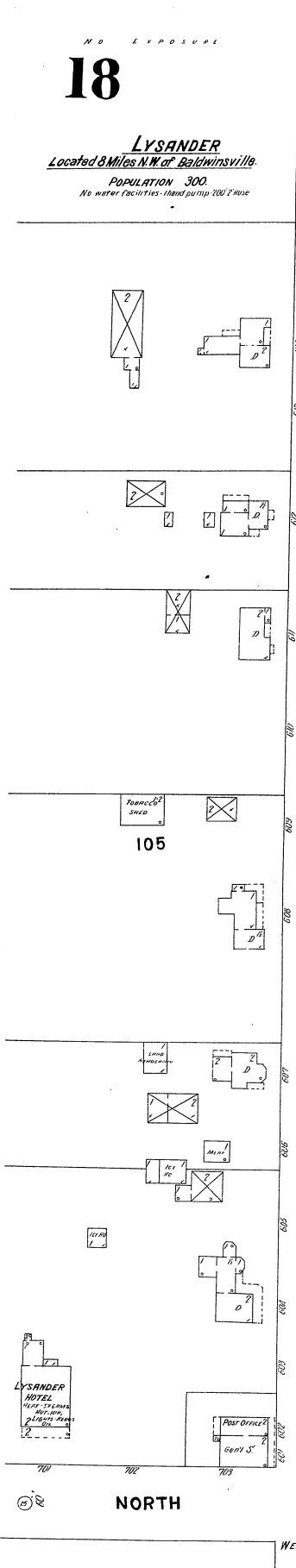
NO EXPOSURE

NO EXPOSURE

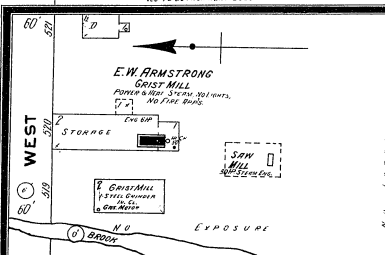
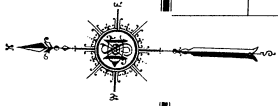
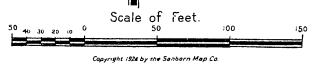
NO EXPOSURE

18

**LYSANDER**  
Located 8 Miles N.W. of Baldwinsville.  
POPULATION 300.  
No water Facilities - Hand pump 100' rise



DEC. 1923  
**BALDWINVILLE**  
N.Y.



19

DEC. 1923  
BALDWINVILLE  
N.Y.

19

16

54

49

MILDRED AV.

19

64

SYRACUSE

13

48

49

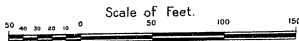
CANTON

MILDRED AV.

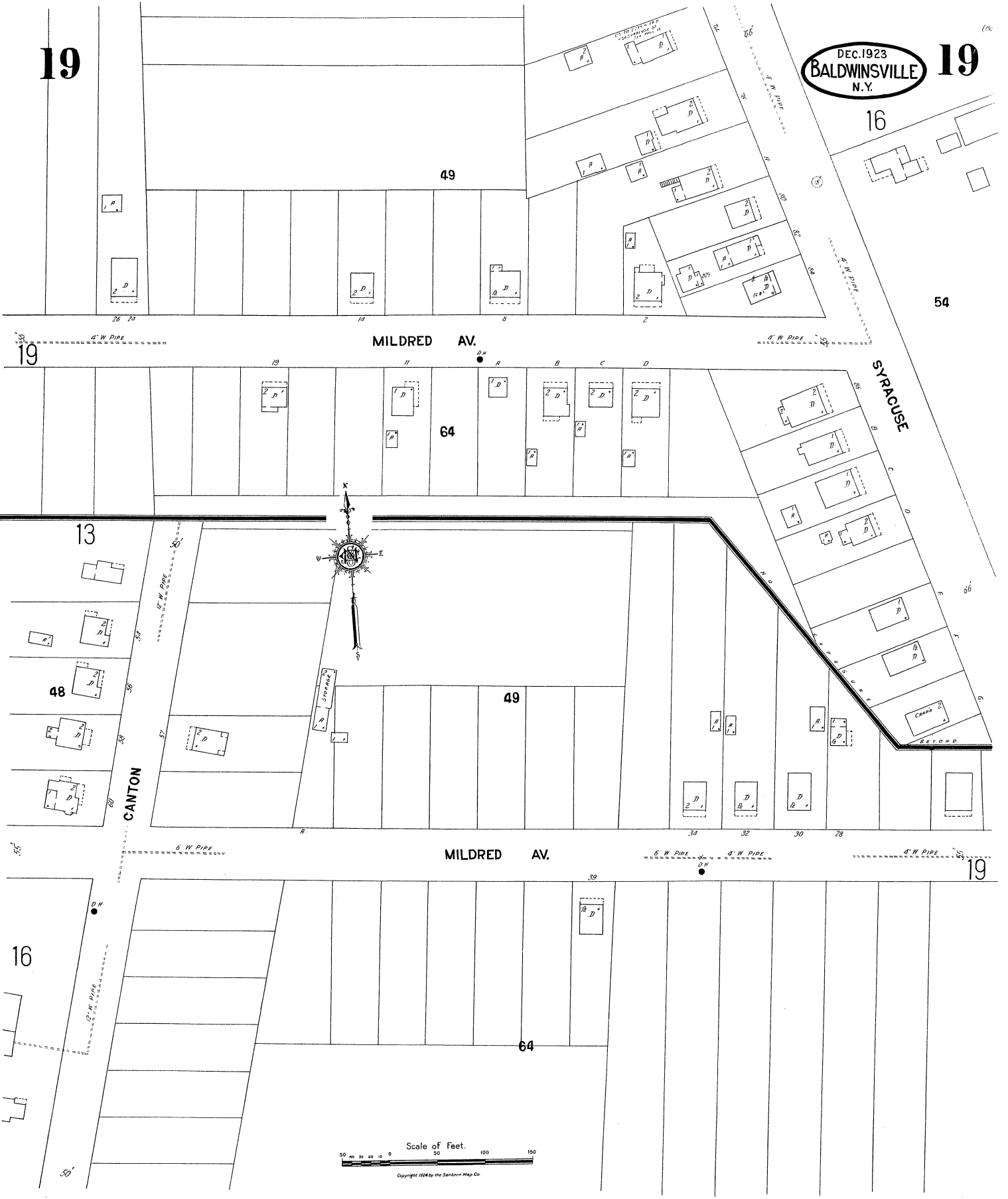
16

64

19



Copyright 1924 by the Sanborn Map Co



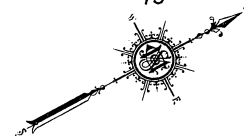
20

20

DEC. 1923  
BALDWINVILLE  
N.Y.

Located 1/2 Miles S.E. of  
Baldwinsville P.O.

73



LUCE RD.

71

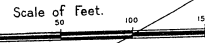
RD.  
MAPLE

NOT NAMED

74

72

HEN HO



Copyright 1923 by the Southern Map Co.

100' WIDE EMPIRE STATE RAILWAYS RIGHT OF WAY

TAPPAN

DIVISION

43

41

42

DOWNER

