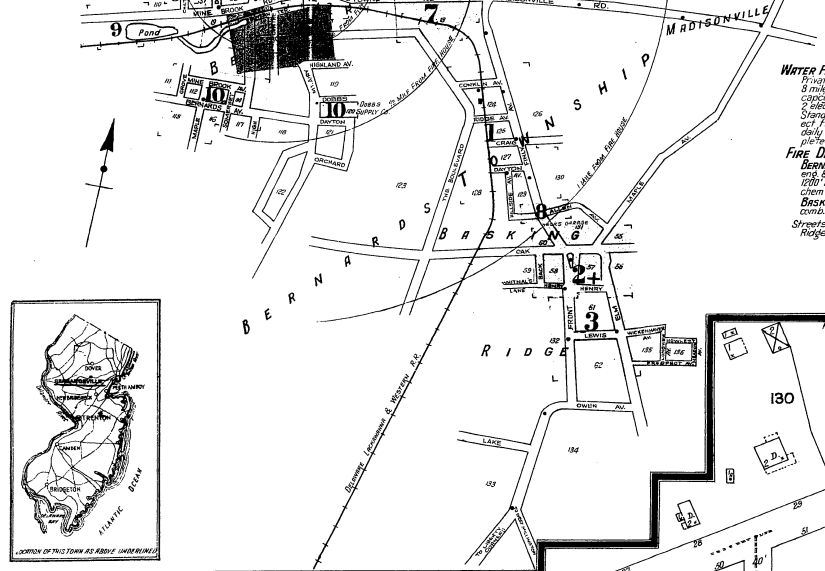


INDEX

STREETS		SPECIALS	
A	B	A	B
Allen Ave. at Basking Ridge	1-2	Ridge Ave. at Basking Ridge	1
Anderson Road	1-2	River Drive	1-24
...

KEY

STABLE (S) CONCRETE BLOCK
 BUSINESS COLONY YELLOW BRICK
 BRICK
 RED
 BROWN FIRE PROOF
 ...



SANBORN MAP COMPANY

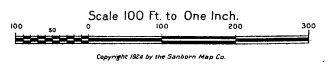
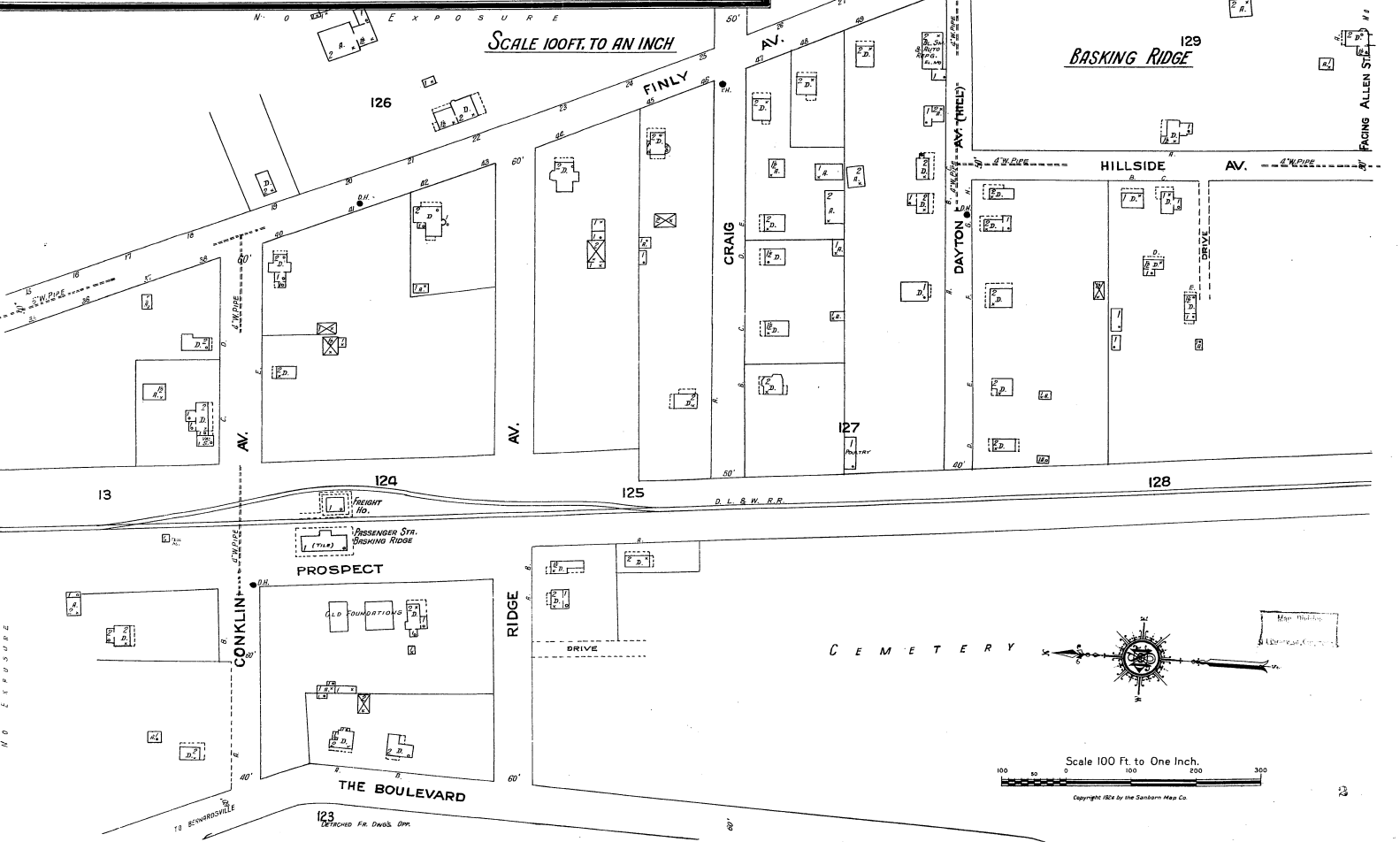
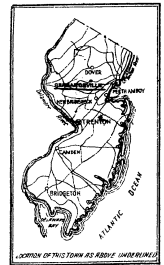
POPULATION 2500
 FOR WATER FACILITIES AND FIRE DEPARTMENT USE REPORT
 N. W.
BASKING RIDGE
 SOMERSET COUNTY
 NEW JERSEY
 OCTOBER 1923
 NEW YORK

INCLUDING BASKING RIDGE

WATER FACILITIES:
 Privately owned system supplying both towns. Reservoir in Passaic River about 3 miles N. capacity approximately 3,000,000 gals. Pumping station 7 miles N. 1 duplex S.F.P. capacity 300,000 gals per 24 hrs. 1 duplex S.F.P. capacity 700,000 gals per 24 hrs. 2 sets pumps capacity 500,000 gals per 24 hrs. 1 fire pump capacity 10,000 gals per 24 hrs. Stand pipe 7 1/2 in. N. capacity 500,000 gals. elev. at base 207 ft. 100 above town to current fire pressure. About 10 miles N. & S. mains. About 30 double & triple hydr. Average daily consumption 5,000 gals. Note: If new mains & hydr. shown from plans to be completed 1923.

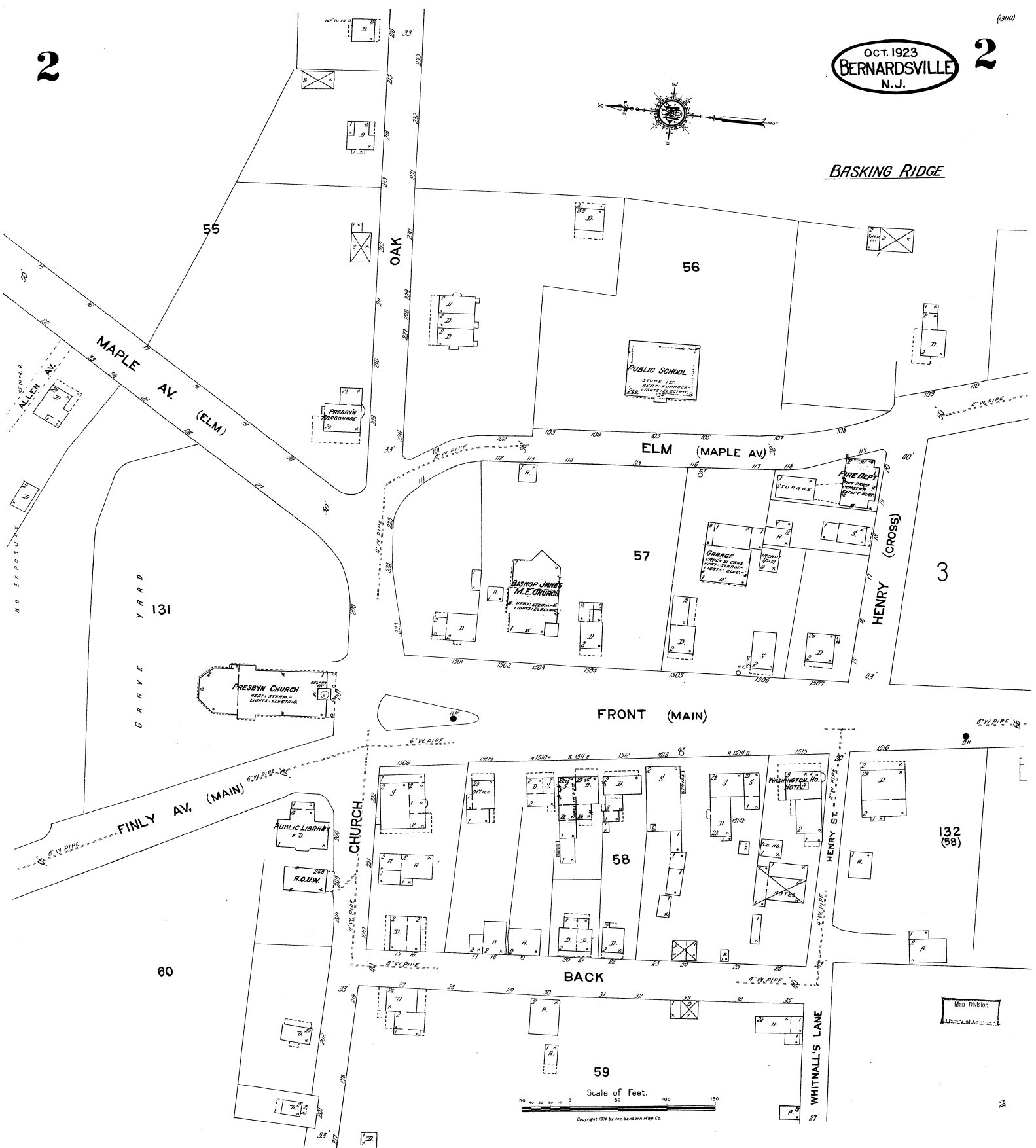
FIRE DEPT:
BASKING RIDGE - 40 men, vol. team eng. co. 17 men. American La France comb. pumping eng. & hose car with 750 gal. pump, 400 ft. hose. Hose Co. 12 men. Motor hose car. 600 ft. hose (out of use of 100 ft. to be replaced). Chem. Co. 3 men. Motor chem. eng. 1000 cfm. hose. 500 reserve hose. Fire alarm - elec. siren.
BASKING RIDGE - Volunteer. 40 men in 1 Co. 1 Ford chem. comb. wagon, 1 American La France comb. pumping eng. & chem. eng. 1000 cfm. hose. Fire alarm siren at headquarters.

Streets conc. paved or oiled macadam. Grades rather heavy but light in Basking Ridge. Public lights - elec. No fire limit laws.





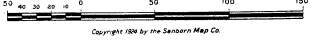
BASKING RIDGE



FRONT (MAIN)

BACK

Scale of Feet.



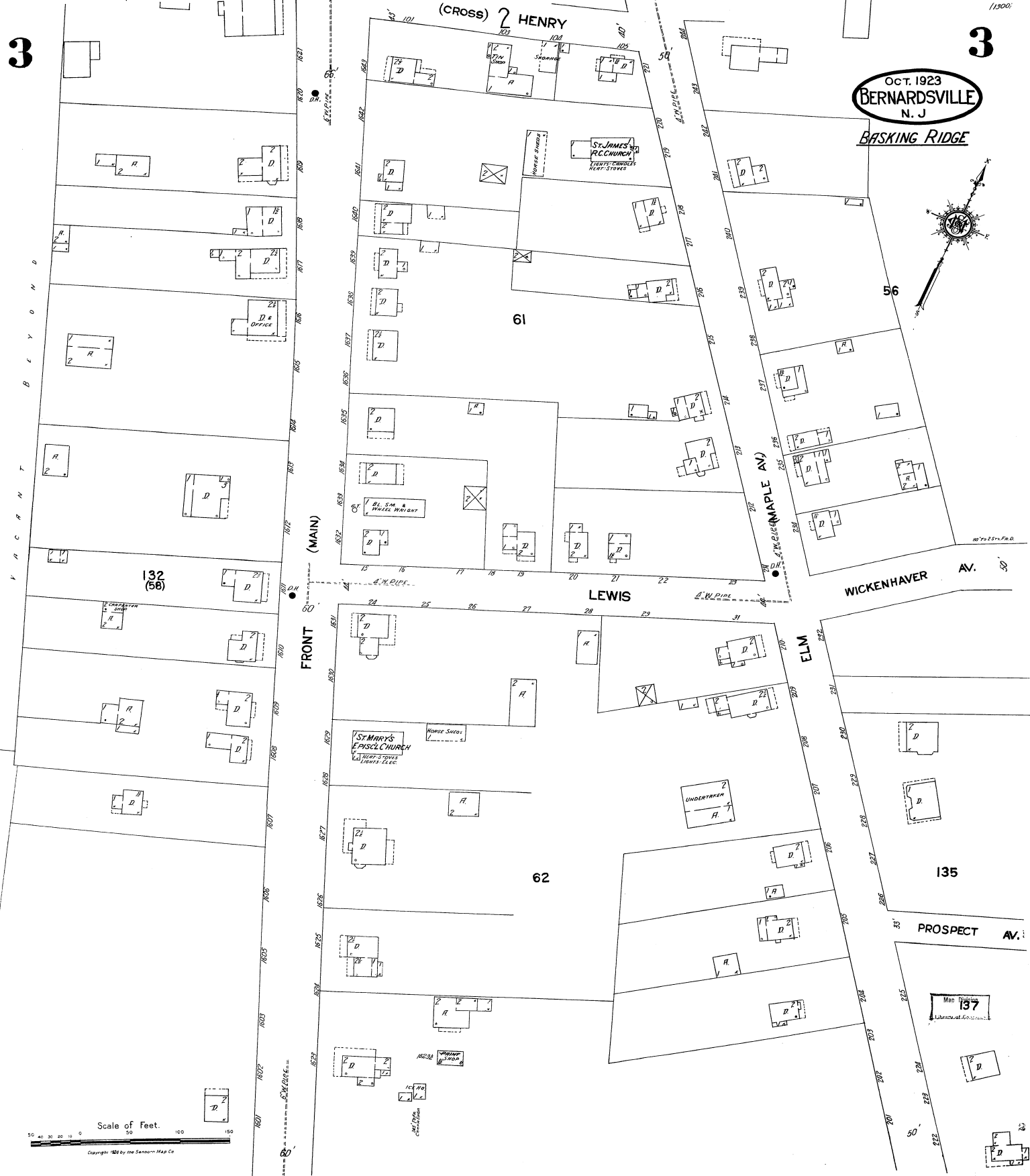
Copyright 1924 by the Sanborn Map Co.

3

3

OCT. 1923
BERNARDSVILLE
N. J.

BASKING RIDGE



132
(58)

61

LEWIS

62

135

PROSPECT AV.

WICKENHAVER AV.

ELM

FRONT (MAIN)

(CROSS) HENRY

ST. MARY'S
EPISC. CHURCH

ST. JAMES
R.C. CHURCH

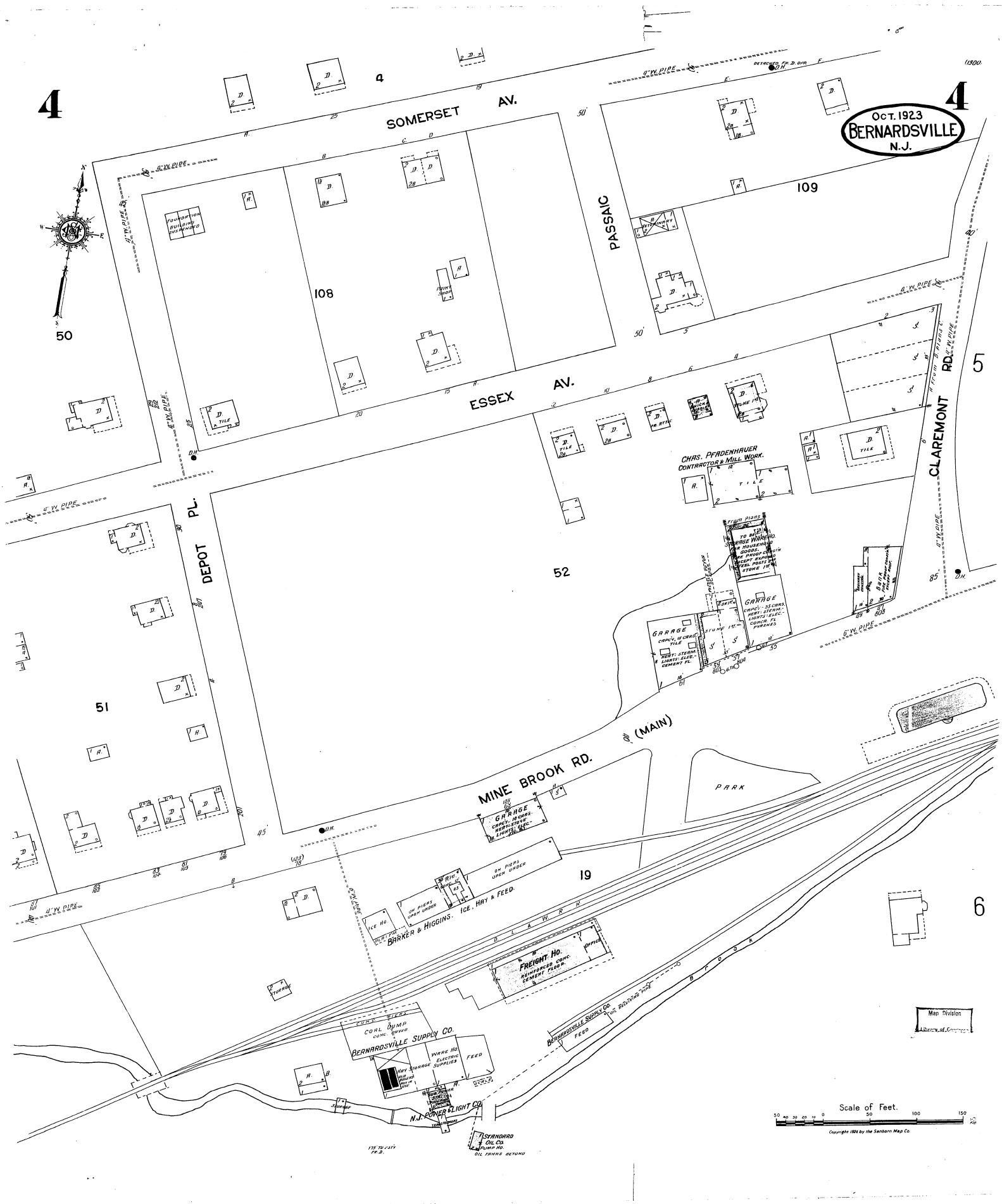
UNDERTAKEN



4

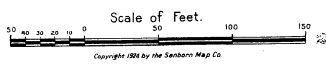
4

OCT. 1923
BERNARDSVILLE
N.J.



5

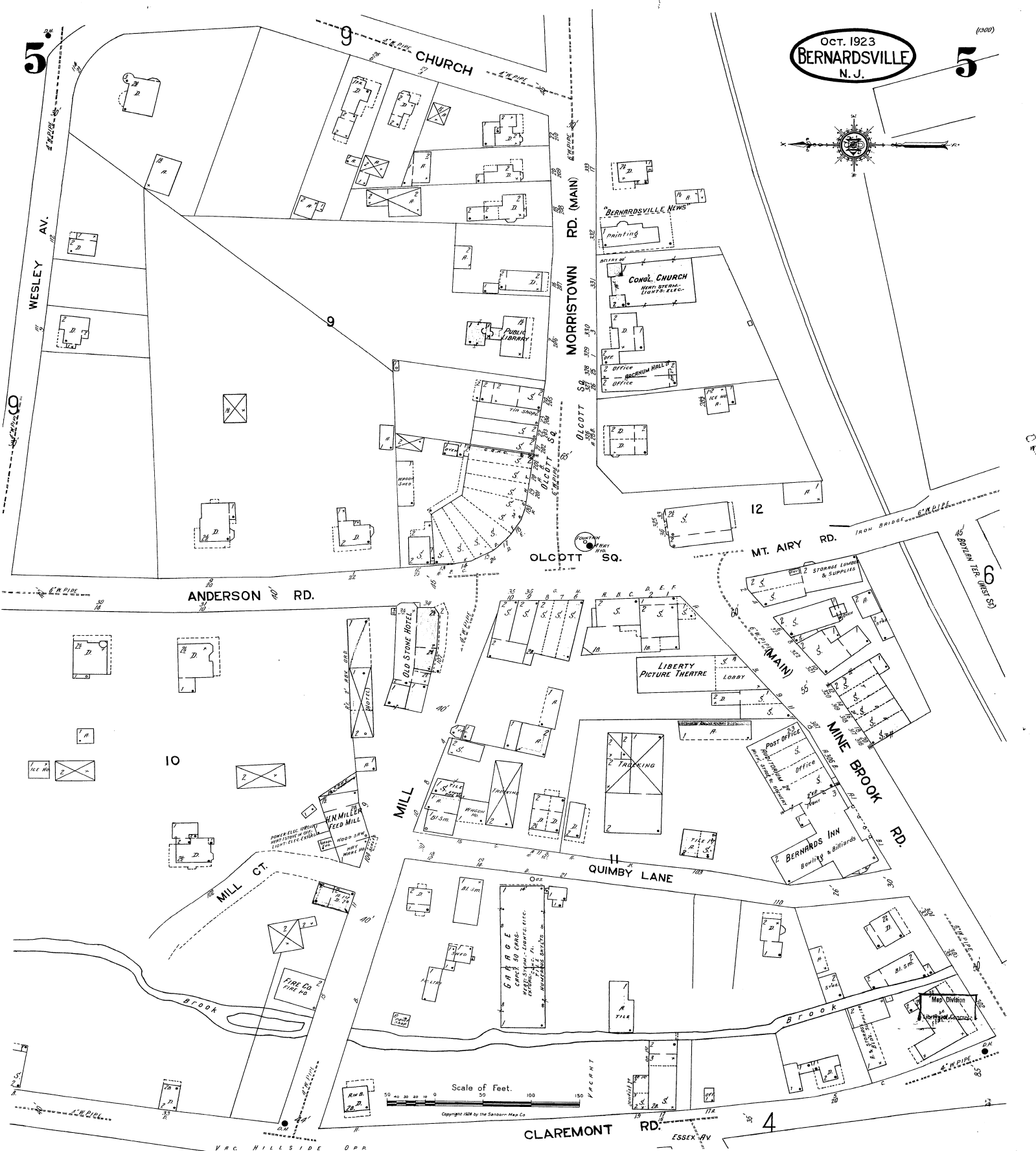
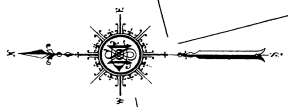
6



Map Division
Library of Congress

STANDARD OIL CO.
175 TO 177
FR. B.
OIL TRAYS BEYOND

Oct. 1923
BERNARDSVILLE
N. J.



Scale of Feet.
0 50 100 150
Copyright 1923 by the Sanborn Map Co.

4

5

6

(300)

6

5

OCT. 1923
BERNARDSVILLE
N. J.

6

(300)



HIGHLAND AV.

MOUNT AIRY RD.

BOYLAN TER.

PROSPECT

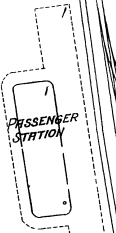
CENTRE

WEST

5

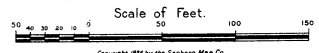
4

4



PASSENGER STATION

BERNARDS TOWNSHIP STORE BLDG.



Scale of Feet.

Copyright 1923 by the Sanborn Map Co.



OCT. 1923
BERNARDSVILLE
N. J.

HIGHVIEW AV. (FORD AV.)

FORD AV.

103

6

9
OLCOTT AV.

OLCOTT AV.

HIGH SCHOOL
HART STERNLIGHTS
VOLUME 10
P. 217
AND P. 218

8
VIRGINIA SUMMER HOME
HARD CEMENT FLOOR
LIGHTS ELECTRIC
CONCRETE ALL YEAR

ATHLETIC FIELD

(MAIN) MORRISTOWN RD.

GARAGE
CONC. FLOOR
HEAT SYSTEM
ELECTRIC
CERAMIC FLOOR

LUMBER PILE

LUMBER SHEDS
DRIVEWAY
CONKLING LUMBER CO.
LUMBER PILES 8' TO 10' HIGH
LUMBER SHED
DRIVEWAY PLANNED
LUMBER TO BE SHED
BOARD FENCE

PROSPECT ST. OR BLVD.

14

8
ELEMENTARY SCHOOL
SOUTH CORNER CHURCH
FIVE AND EIGHT ROOMS
REAR PORCH
REAR DRIVE

Scale of Feet.
0 50 100 150

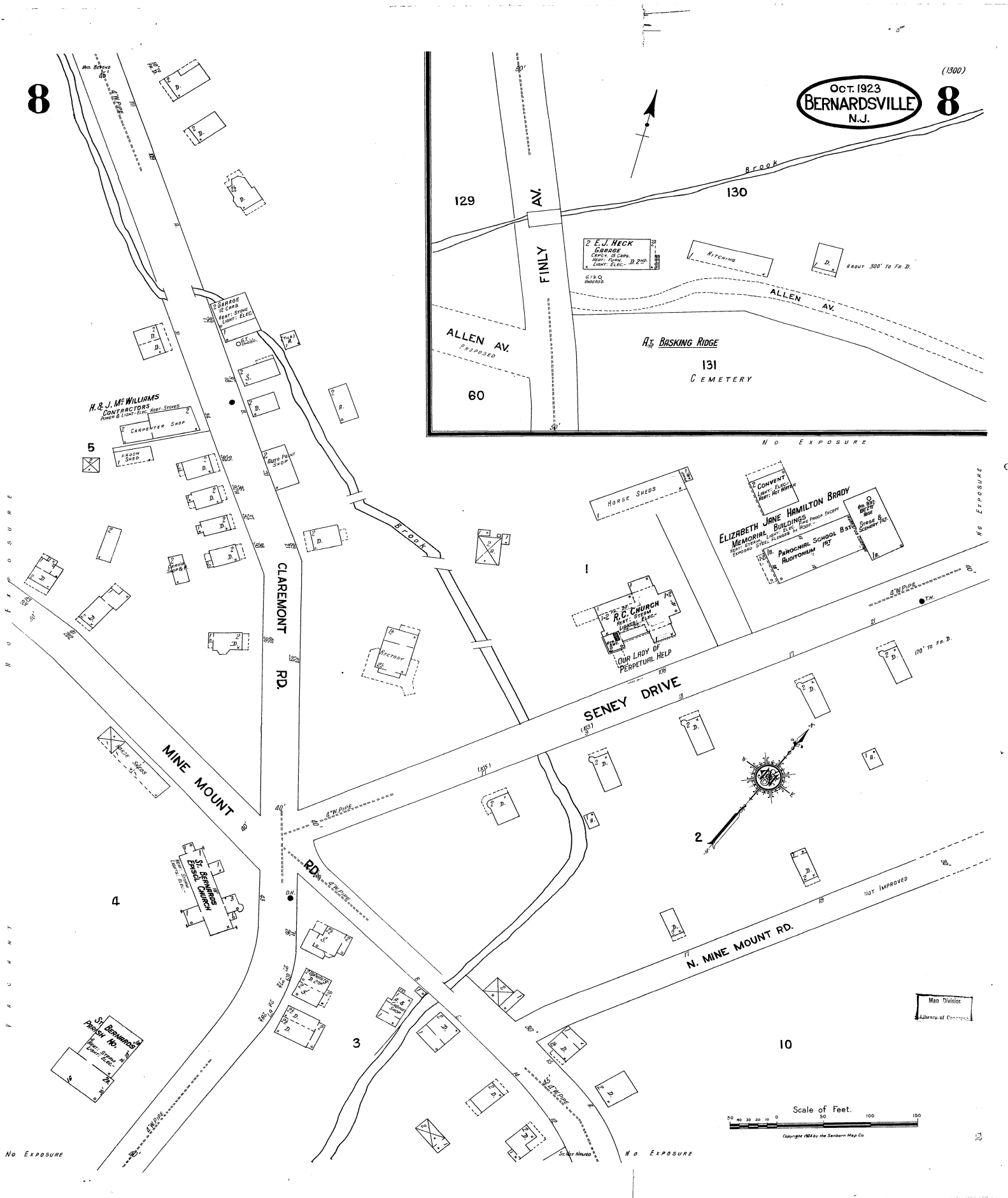
Copyright 1924 by the Sanborn Map Co.

NO EXPOSURE

8

OCT. 1923
BERNARDSVILLE
N.J.

(1300) 8

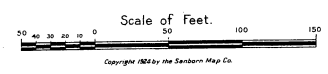


NO EXPOSURE

NO EXPOSURE

NO EXPOSURE

NO EXPOSURE



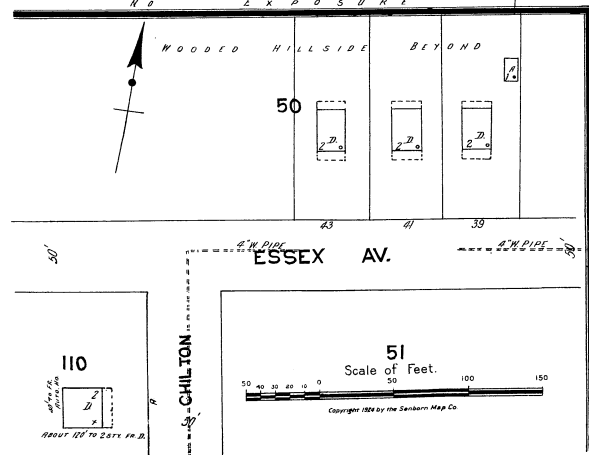
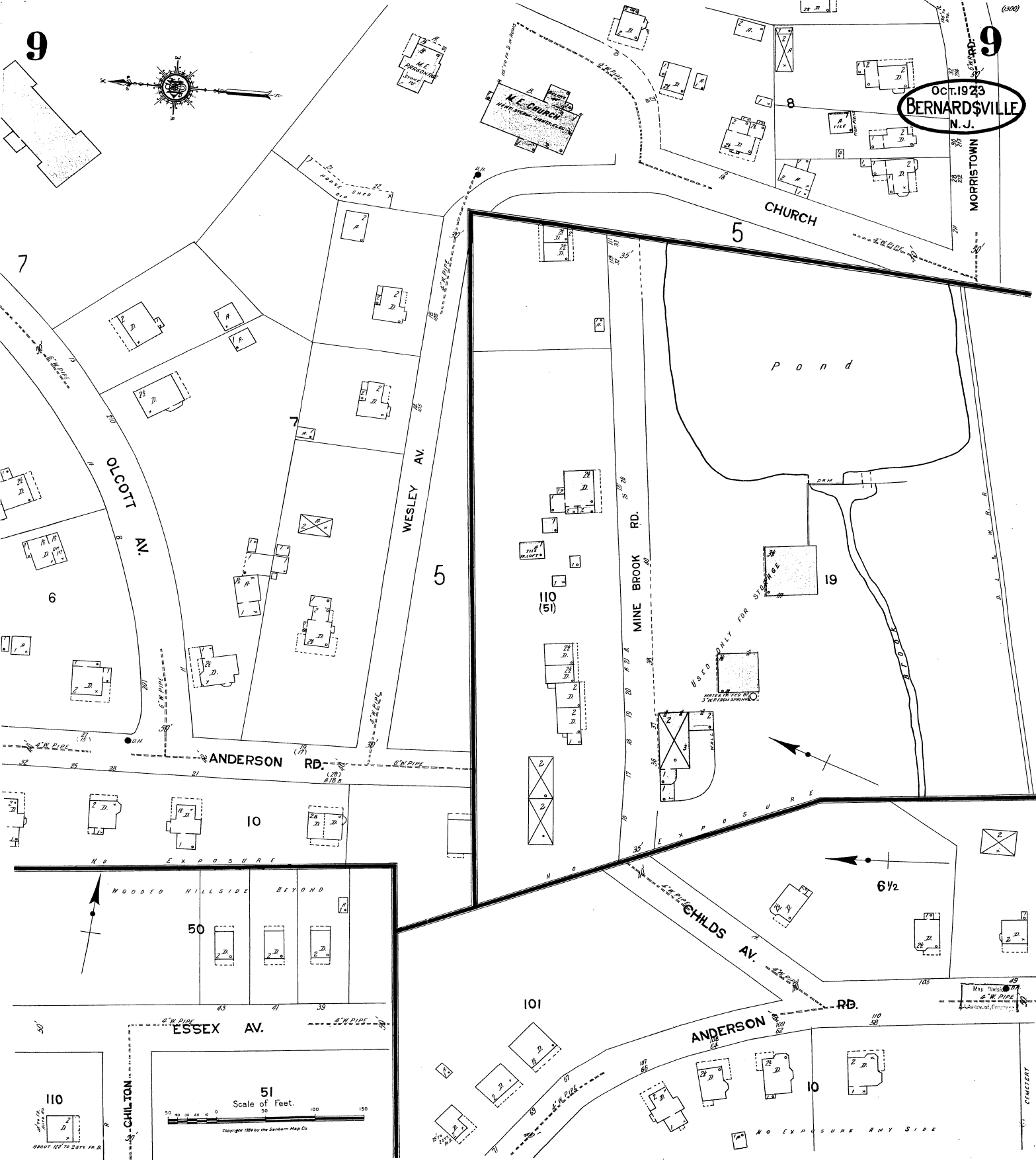
Map Division
Library of Congress

9



9

OCT. 1923
BERNARDSVILLE
N. J.



Scale of Feet.
50 100 150
Copyright 1926 by the Sanborn Map Co.

CEMETERY

NO EXPOSURE ANY SIDE

USED ONLY FOR STORAGE
SHEDS IN TREE GROVE
3 WOODS LANE

Pond

M.E. CHURCH
107 TO 110 W. MINE BROOK RD.

M.E. PARSONS
107 W. MINE BROOK RD.

OLCOTT AV.

WESLEY AV.

MINE BROOK RD.

ANDERSON RD.

CHILDS AV.

ESSEX AV.

ANDERSON RD.

CHILTON

110

ABOUT 100 TO 200 FT. D.

6 1/2

110 (51)

19

10

101

10

7

6

5

5

8

(300)

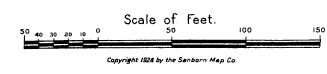
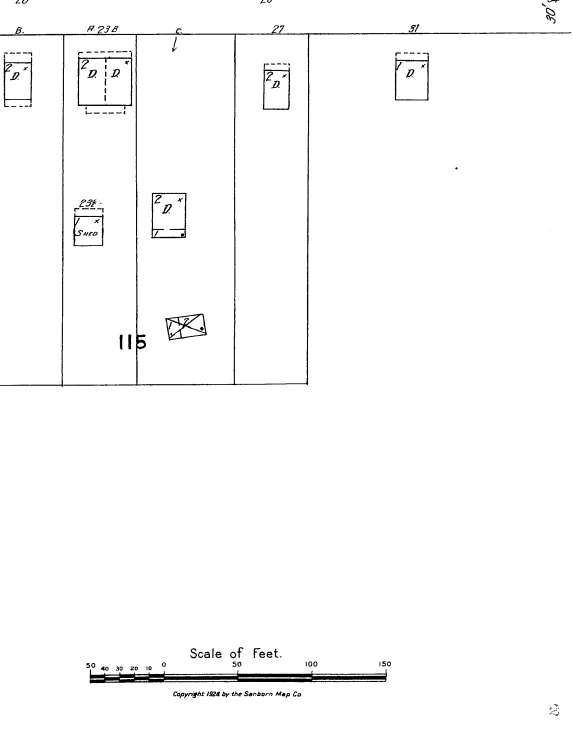
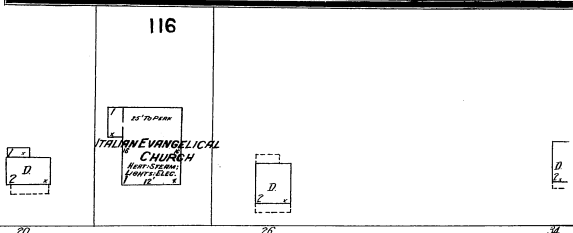
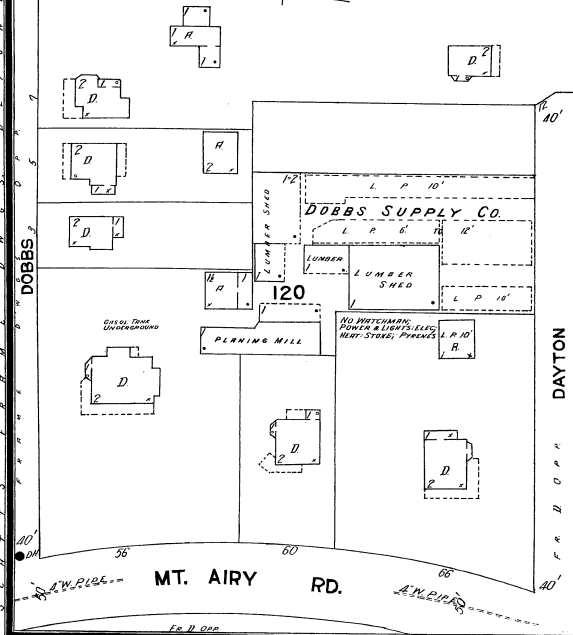
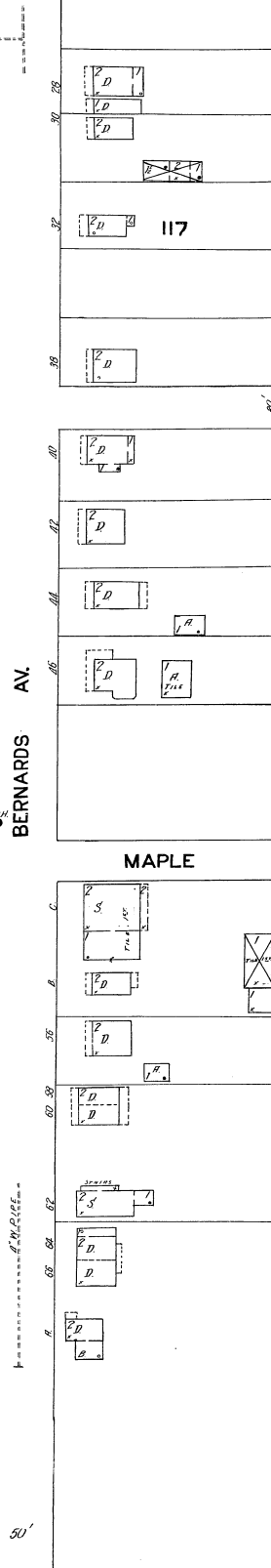
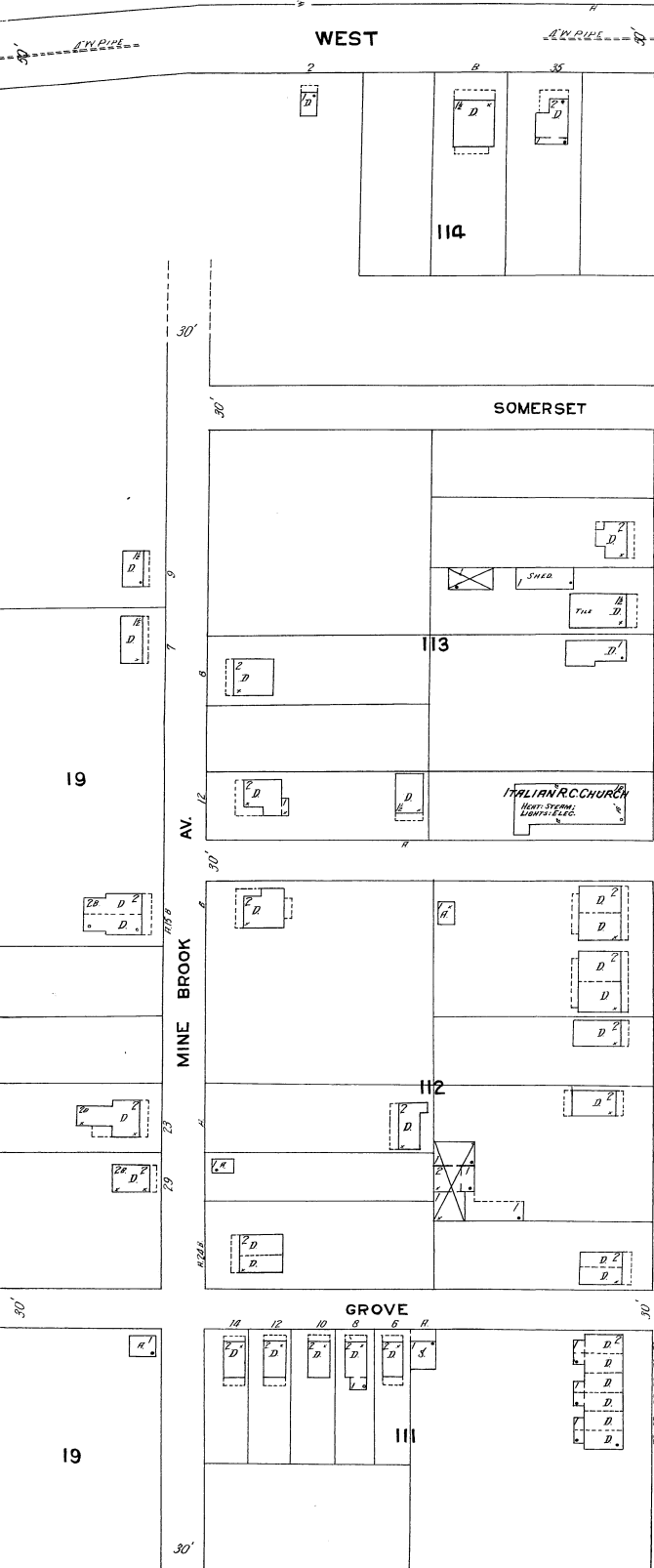
10



OCT. 1923
BERNARDSVILLE
N.J.

10

(1300)



23