

BINGHAMTON

NEW YORK

SANBORN MAP & PUBLISHING CO. LIMITED
 SCALE 50 FT TO AN INCH
 117 BROADWAY, NEW YORK

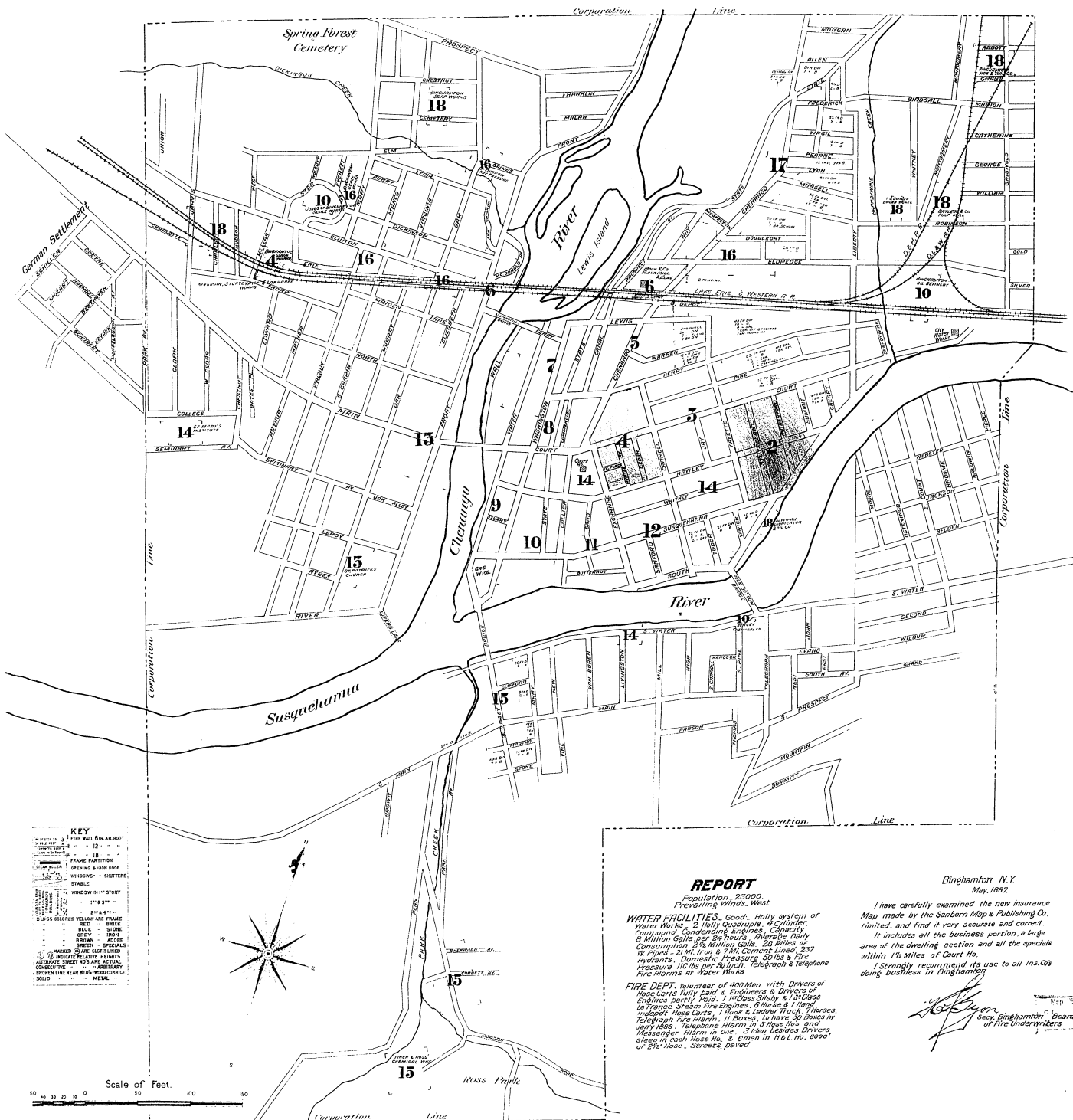
MAY 1887

Copyright, 1887, by the Sanborn Map & Publishing Co. Limited

INDEX.

STREETS.		SPECIALS.	
Butternut, B	11	Alden, H. T., & Co., Cigar Factory	13
Canal, C	1-55	A. M. E. Church	16
Carroll, C	21-60	Armory	7
Cedar, C	61-107	Automatic Gas Mach. Co.	7
Chenango, C	62-93	Baptist Church	5
Clinton, C	1-63	Barlow Block	2
Collier, C	2-30	Barnard & Co., Cigar Fact.	17
Commercial Ave., C	85-140	Barnes Block	17
Corbett Ave., near Park, C	142-152	Bartlett & Co., Sash & B. Factory	10
Court, C	154-195	Bayless & Co., Pulp Mill	10
Depot, N., C	209-232	" Bros., Paper Box Factory	18
De Russay, C	239-420	Beecher Bros., Birch Beer Factory	8
Dickinson, near Front, C	1-8	Bennet & Daylen, Hending Fact.	17
Doubleday, C	1-20	Bennett Hotel	12
Eldredge, C	42-87	Binghamton Brewery	10
Exchange, C	87-100	" Cigar Co.	16
Fayette, C	1-57	" Electric Light & Power Co.	9
Ferry, near Front, C	1-57	" Gas Works	9
Frederick, C	1-12	" Glass Works	4
Front, C	80-121	" Hoe & Tool Co.	18
Hawley, C	1-10	" Iron Works	9
		" Mfg Co.	5
		" Oil Refinery	10
		" Herald, J., Foundry	7
		" High School	13
		" Hints, C. A., & Co., Bottling Works	2
		" Hong & Tichenor Wire Staple M'g	14
		" Hoffman Lubricator & Oil Co.	18
		" Horton, H. L., Paper Box Factory	14
		" Hotel Bennett	8
		" European	11
		" Johnson	10
		" Hull, Grunnamond & Co., Cigar Factory	10
		" Jackson, C. C., Bakery	8
		" Jefferson, J. J., Cigar Factory	12
		" Johnson Hotel	9
		" Jones of Binghamton Sash Works	10
		" Kent, G. A., & Co., Cigar Factory	8
		" Kilmer & Co., Pat. Med. Factory	17
		" Kingman, Sturtevant & Larrabee, Cutter & Sleigh M'g	18
		" Knapp & Son, Machine Shop	7
		" Knappe, S. W., Coal Yard	16
		" Lacy, J. W., Cigar Box Factory	10
		" Lafayette Block	9
		" Lester & Co., Shoe Factory	8
		" Lewis Hotel	2
		" Lymondock & Son, Tobacco Factory	7
		" Lyon, A. J., Saw Mill	15
		" McElroy & Fancher, Furniture Fact.	8
		" McKinney, W. S., Machine Shop	4
		" & Everts, Wholes. Gro.	7
		" McNamara, D. O., Whip Socket Fact.	14
		" Milson, M., Canning Works	8
		" & S. M. & Co., Mince Meat Factory	6
		" Matthews, I. S., Chair Factory	16
		" Meagher, R. G., & Co., Bakery	5
		" Meador Block	18
		" Methodist Episc. Church	13
		" Middlebrook, C. D., & Co., Warehouse	12
		" Millville Tannery	7
		" Miner, A. S., Block	2
		" Moon, G. O., & Co., Mill & Elevator	6
		" North Presbyterian Church	17
		" Northside Hall	16
		" O'Brien, M. J., Cigar Factory	7
		" O'Neil, J., Canning Shop	9
		" Opera House	8
		" Ostrom, Barnes & Co., Cigar Factory	8
		" Palmer House	6
		" Paper Cabinet Co.	10
		" Parlor City Furniture Fact.	15
		" Perry Block	8
		" Perseis, Nicoll & Mack, Harness M'g	4
		" Phelps Block	4
		" Presbyterian Church	14
		" Ragan's Hotel	15
		" Republican Printing Office	8
		" Revore House	15
		" Reynolds, Rogers & Co., Cigar Factory	6
		" Roberson, A., Sash & Blind Factory	17
		" Rock Bottom Flour Mill	12
		" Ross Memorial Presb. Church	15
		" St. Joseph's Current & School	13
		" Mary's Institute	14
		" Patrick's Catholic Church	13
		" Schunmehl, Barrett & Co., Cigar Factory	15
		" Schultz, J., Machine Shop	12
		" Scott, W., Machine Shop	7
		" Seara, O. W., Coal Yard	16
		" Severson & Coats, Spoke Factory	10
		" Shapley & Wells, Iron Works	9
		" Shuck, Lester & Co., Cigar Factory	8
		" Smith, G. B., Jr., & Co., Cigar Factory	8
		" Spaulding & Van De Bogart, Paper Box Fac.	2
		" Sprague Mills	7
		" Stickle Bros., Chair Factory	12
		" Stickle's Furniture Warehouse	8
		" Sullivan & Rita, Cigar Factory	7
		" Tan Warner, Gunberg & Co., Cigar Fact.	8
		" Voorhees, H. W., Canning Factory	10
		" Waite, J. E., Lumber Yard	7
		" Warner House	17
		" Washington Street Electr. Ry. Stables, &c.	15
		" Ward, J. B., & F. M., & Co., Tannery	10
		" W. S., & Co., Lumber	18
		" Welcome Methodist Church	17
		" Westcott, H., & Co., Cigar Factory	8
		" White, O. N., Factory	9
		" White Hotel	9
		" S. T. & E. L., Brewery	10
		" Whitney & Noyes, Seed Co.	8
		" Wideman & Co., Shoe Factory	8
		" Wilcox, P., Cigar Factory	6
		" Wilkison & Bastwood, Chair & Sleigh Fac.	7
		" Son & Co., Tannery	12
		" Windsor Hotel	9
		" Winton Mfg Co.	12
		" Woodruff & Woodruff, Whip Factory	14
		" C. Cigar Box Factory	12
		" Wright, F. F., Cigar Factory	8
		" Zion Methodist Episc. Church	14

* Indicates only one side of Street shown.



REPORT

Binghamton, N.Y.
 May, 1887.

Population - 23000
 Prevailing Winds, West

WATER FACILITIES. Good. Holly system of
 Water Works - 2 Holly Quadruple 4 Cylinder,
 3 Million Galls per 24 Hours. Average Daily
 Consumption 2 1/2 Million Galls. 20 Mills of
 12 Paces - 2000 Iron & 2000 Cement lined, 237
 Hydrants. Domestic Pressure 30 lbs & Fire
 Pressure 100 lbs per 24 inch. Telegraph & Telephone
 Fire Alarms at Water Works

FIRE DEPT. Volunteer of 400 Men with Drivers of
 hose carts fully paid & Engineers & Drivers of
 Engines partly Paid. 1 Hoses, 5000, & 1300 lbs
 La France Steam Fire Engines, 6 Horses & 1 Hand
 Ladder, Hose Carts, 1 Hook & Ladder Truck, 7 Horses,
 Telegraph Fire Alarm, 11 Boxes, to have 30 Boxes in
 every block. Telephone Alarm in 3 Hoses, 100 and
 Messenger Alarm in one. 3 Men besides Drivers
 sleep in each Hose No. & 2 men in 1 & 2 No. 1000
 of 2 1/2" hose - Streets paved

I have carefully examined the new insurance
 Map made by the Sanborn Map & Publishing Co.
 Limited, and find it very accurate and correct.
 It includes all the business portion, a large
 area of the dwelling section and all the specials
 within 1/4 miles of Court Ho.
 I strongly recommend its use to all Ins. Cos
 doing business in Binghamton

[Signature]
 Secy. Binghamton Board
 of Fire Underwriters

KEY

- FIRE WALL SIX IN. AB. ROOF
- FRAME PARTITION
- OPENING IN FRAME DOOR
- WINDOWS - SHUTTERS
- STABLE
- WINDOW IN 1ST STORY
- 1ST & 2ND STORIES
- 2ND & 3RD STORIES
- 3RD & 4TH STORIES
- 4TH & 5TH STORIES
- 5TH & 6TH STORIES
- 6TH & 7TH STORIES
- 7TH & 8TH STORIES
- 8TH & 9TH STORIES
- 9TH & 10TH STORIES
- 10TH & 11TH STORIES
- 11TH & 12TH STORIES
- 12TH & 13TH STORIES
- 13TH & 14TH STORIES
- 14TH & 15TH STORIES
- 15TH & 16TH STORIES
- 16TH & 17TH STORIES
- 17TH & 18TH STORIES
- 18TH & 19TH STORIES
- 19TH & 20TH STORIES
- 20TH & 21TH STORIES
- 21TH & 22TH STORIES
- 22TH & 23TH STORIES
- 23TH & 24TH STORIES
- 24TH & 25TH STORIES
- 25TH & 26TH STORIES
- 26TH & 27TH STORIES
- 27TH & 28TH STORIES
- 28TH & 29TH STORIES
- 29TH & 30TH STORIES
- 30TH & 31TH STORIES
- 31TH & 32TH STORIES
- 32TH & 33TH STORIES
- 33TH & 34TH STORIES
- 34TH & 35TH STORIES
- 35TH & 36TH STORIES
- 36TH & 37TH STORIES
- 37TH & 38TH STORIES
- 38TH & 39TH STORIES
- 39TH & 40TH STORIES
- 40TH & 41TH STORIES
- 41TH & 42TH STORIES
- 42TH & 43TH STORIES
- 43TH & 44TH STORIES
- 44TH & 45TH STORIES
- 45TH & 46TH STORIES
- 46TH & 47TH STORIES
- 47TH & 48TH STORIES
- 48TH & 49TH STORIES
- 49TH & 50TH STORIES
- 50TH & 51TH STORIES
- 51TH & 52TH STORIES
- 52TH & 53TH STORIES
- 53TH & 54TH STORIES
- 54TH & 55TH STORIES
- 55TH & 56TH STORIES
- 56TH & 57TH STORIES
- 57TH & 58TH STORIES
- 58TH & 59TH STORIES
- 59TH & 60TH STORIES
- 60TH & 61TH STORIES
- 61TH & 62TH STORIES
- 62TH & 63TH STORIES
- 63TH & 64TH STORIES
- 64TH & 65TH STORIES
- 65TH & 66TH STORIES
- 66TH & 67TH STORIES
- 67TH & 68TH STORIES
- 68TH & 69TH STORIES
- 69TH & 70TH STORIES
- 70TH & 71TH STORIES
- 71TH & 72TH STORIES
- 72TH & 73TH STORIES
- 73TH & 74TH STORIES
- 74TH & 75TH STORIES
- 75TH & 76TH STORIES
- 76TH & 77TH STORIES
- 77TH & 78TH STORIES
- 78TH & 79TH STORIES
- 79TH & 80TH STORIES
- 80TH & 81TH STORIES
- 81TH & 82TH STORIES
- 82TH & 83TH STORIES
- 83TH & 84TH STORIES
- 84TH & 85TH STORIES
- 85TH & 86TH STORIES
- 86TH & 87TH STORIES
- 87TH & 88TH STORIES
- 88TH & 89TH STORIES
- 89TH & 90TH STORIES
- 90TH & 91TH STORIES
- 91TH & 92TH STORIES
- 92TH & 93TH STORIES
- 93TH & 94TH STORIES
- 94TH & 95TH STORIES
- 95TH & 96TH STORIES
- 96TH & 97TH STORIES
- 97TH & 98TH STORIES
- 98TH & 99TH STORIES
- 99TH & 100TH STORIES

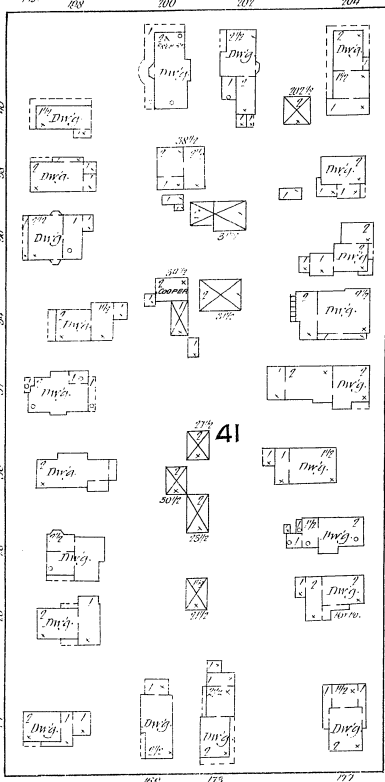
Scale of Feet.

SEE SHEET NO. 3.

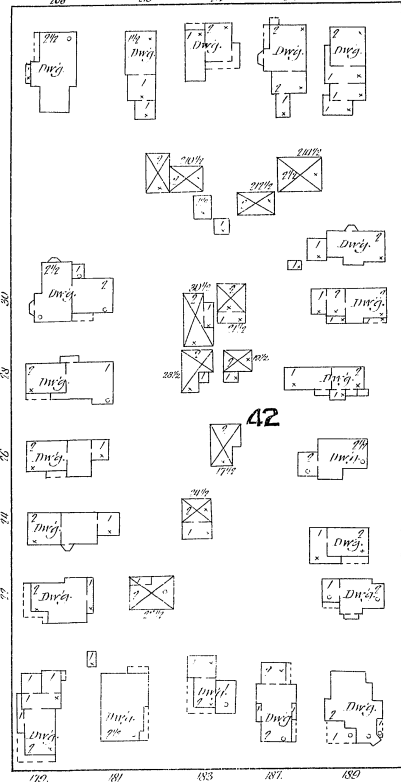
UNPACKED DWGS. SECOND COURTS

2

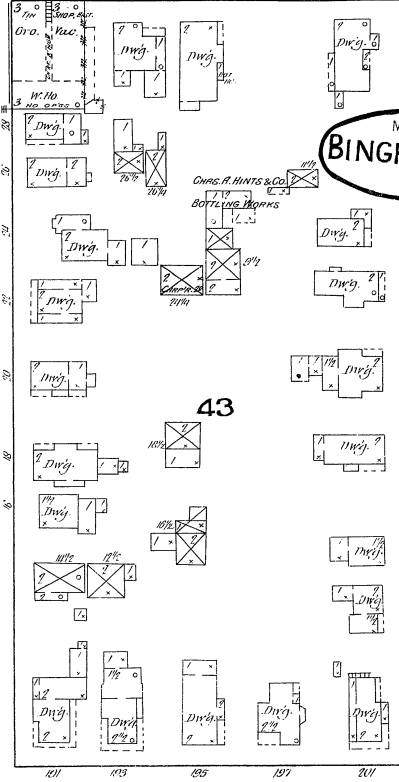
SEE SHEET NO. 3. FAYETTE



STUYVESANT



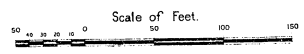
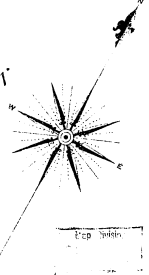
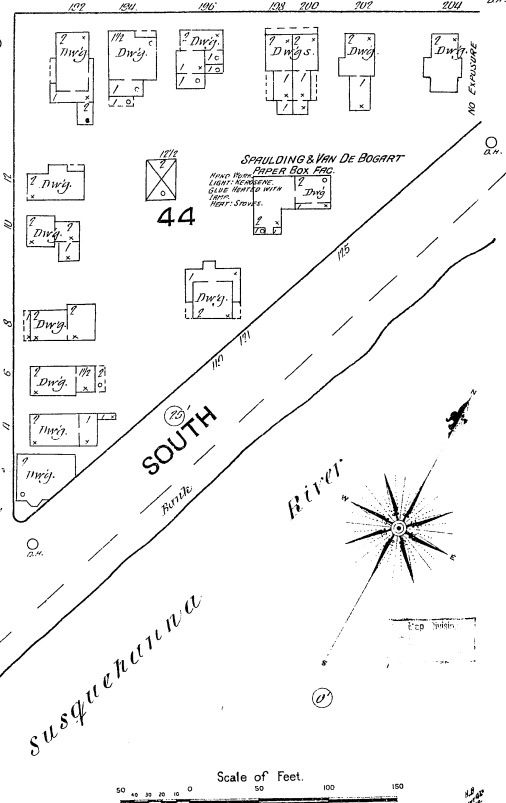
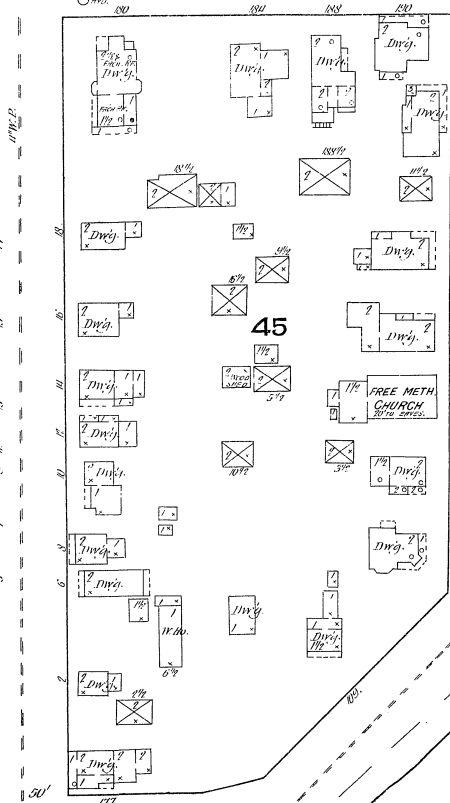
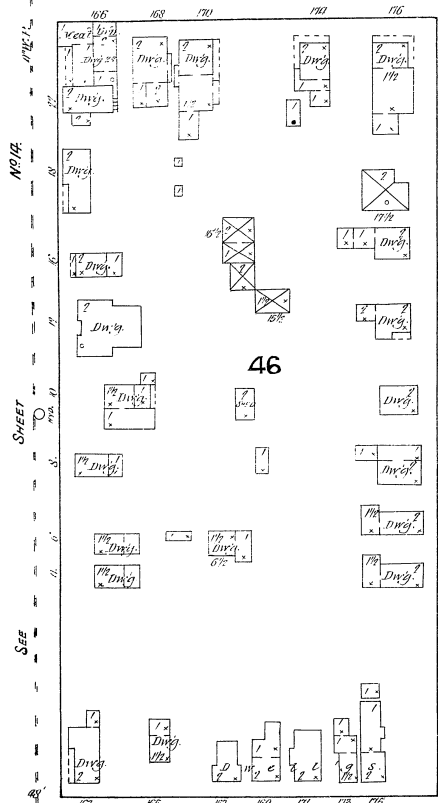
RUTHERFORD



MAY 1887 BINGHAMTON N.Y.

SUMMIT

HAWLEY



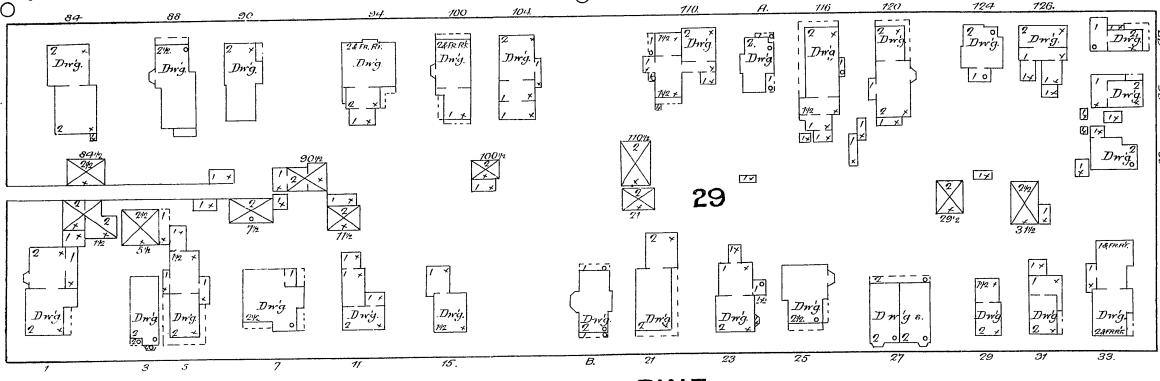
SUSQUEHANNA

SEE SHEET No. 5.

HENRY

3

No. 4.

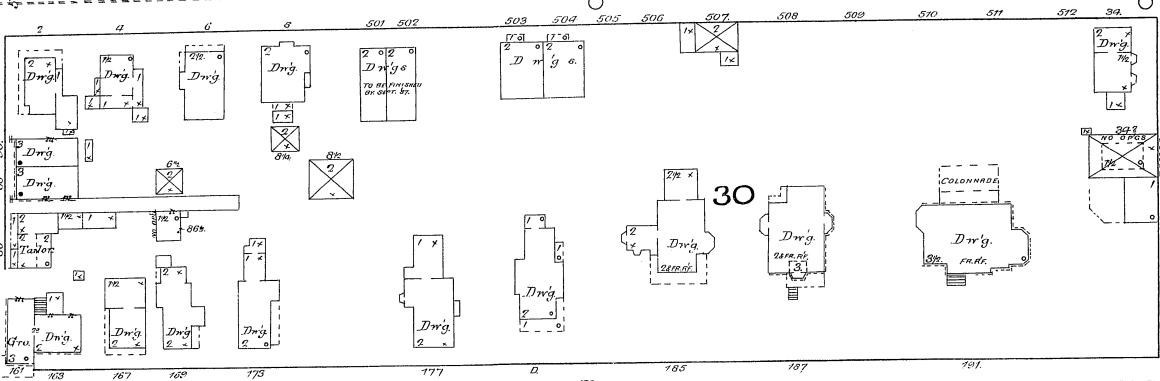


MAY 1887
BINGHAMTON
 N.Y.

PINE

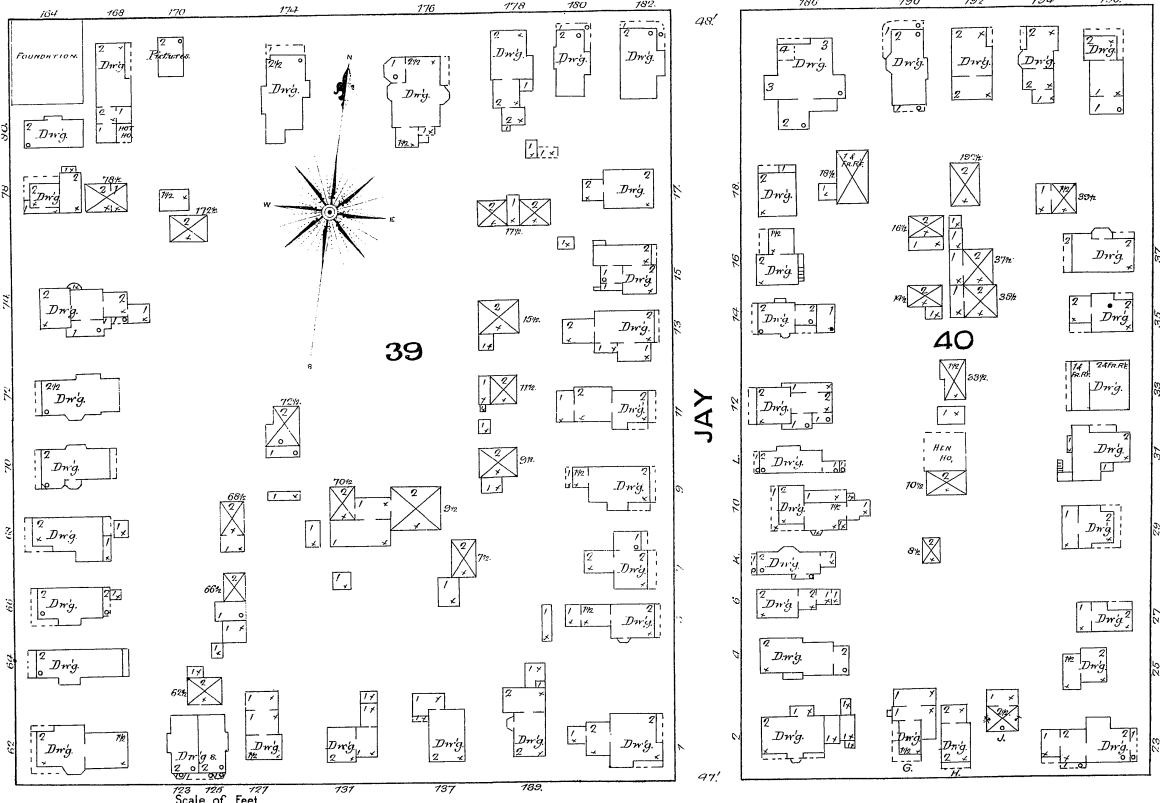
FAYETTE

CARROLL



COURT

No. 2.



HAWLEY

JAY

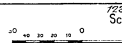
SEE SHEET

SEE SHEET

No. 14.

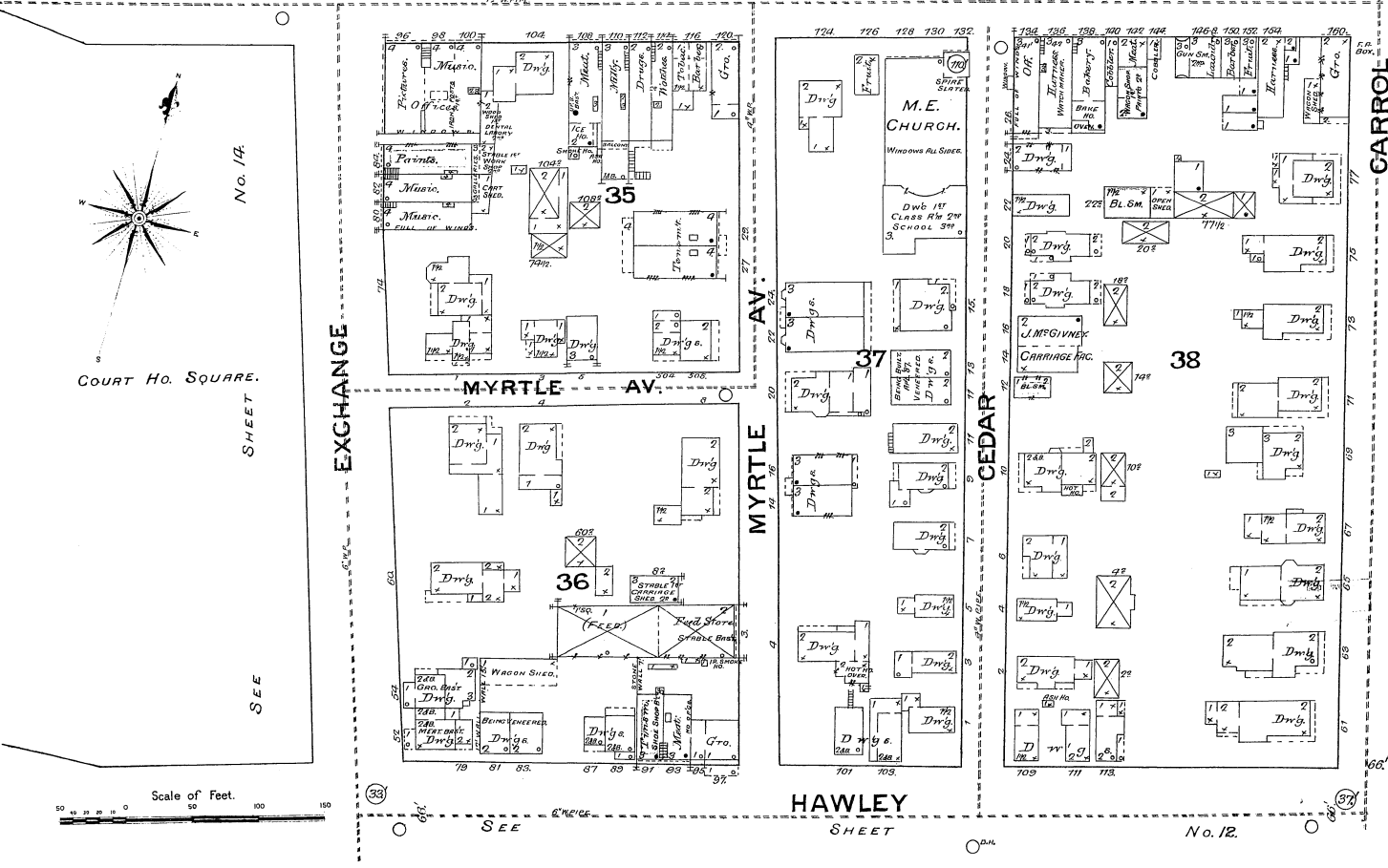
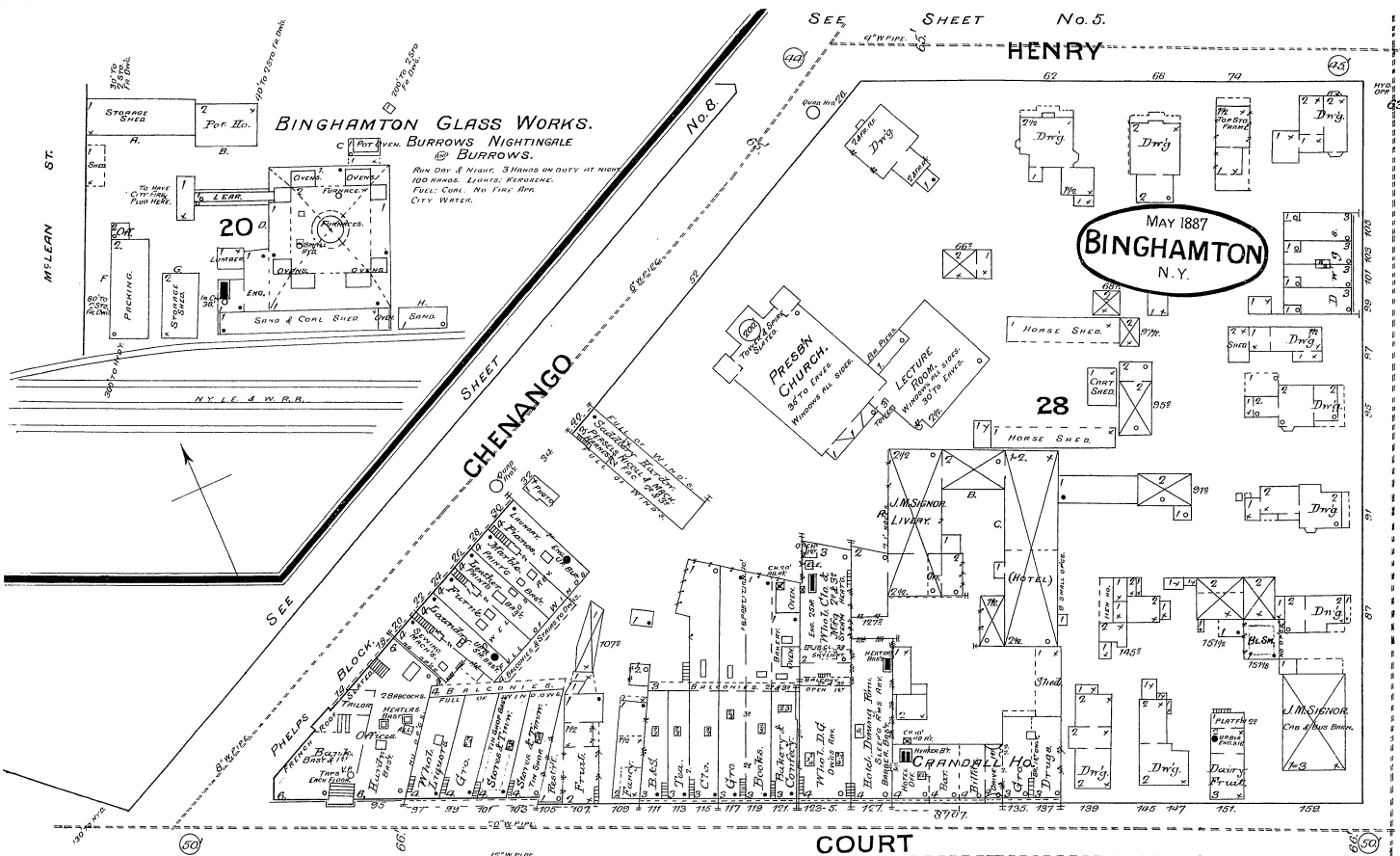
SEE

SHEET



SEE

SEE



BINGHAMTON GLASS WORKS.
 BURROWS NIGHTINGALE
 BURROWS.

MAY 1887
BINGHAMTON
 N.Y.

M.E. CHURCH.
 Windows All Sides.

No. 14.

COURT HO. SQUARE.

SHEET

SEE

Scale of Feet.



HAWLEY
 SHEET

No. 12.

MAY 1887
BINGHAMTON
N. Y.

No. 6.
S. DEPOT

SEE SHEET

SEE SHEET No. 6.

LEWIS

STATE

PROSPECT AV.

CHENANGO

WARREN

HENRY

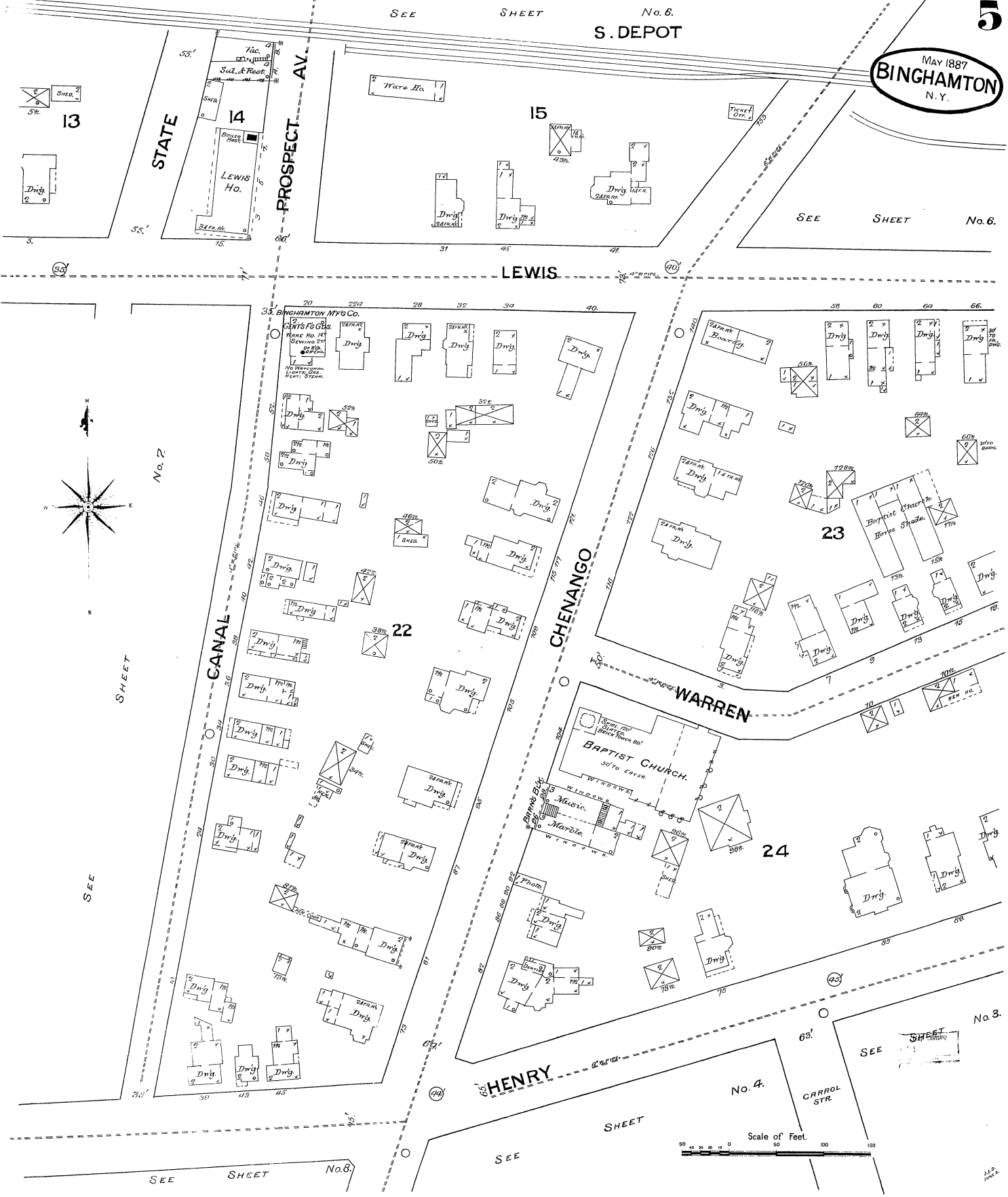
No. 4.

CARROL STR.

SEE SHEET

SEE SHEET No. 8.

Scale of Feet.
0 50 100 150



No. 2.

SEE SHEET

No. 3.

SEE SHEET

May 1887
BINGHAMTON
N. Y.

6

MAIDEN LANE

DICKINSON

KENTON

FRONT

FERRY

AV.
MCDONALD

Chenango River

Chenango River

Chenango River

PROSPECT

AV.

N. DEPOT

S. DEPOT

CHENANGO

ERIE R. R. FREIGHT DEPOT



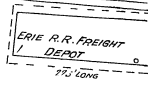
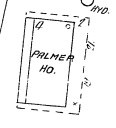
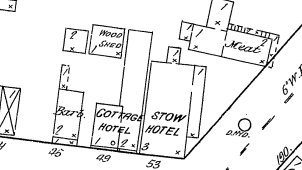
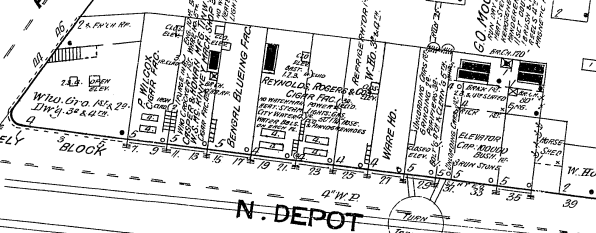
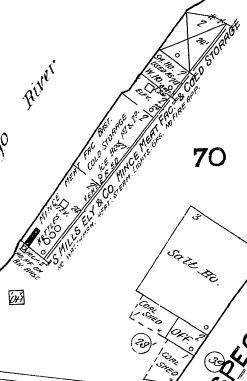
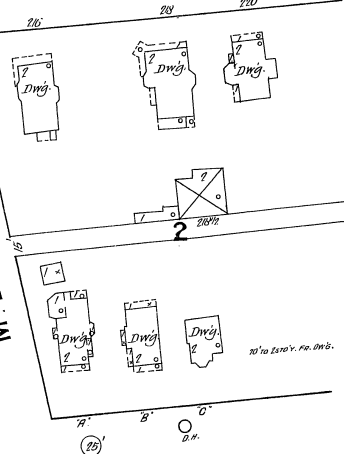
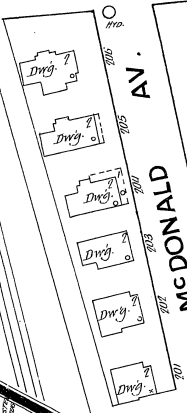
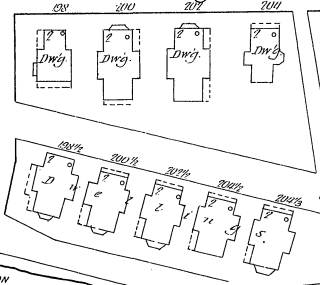
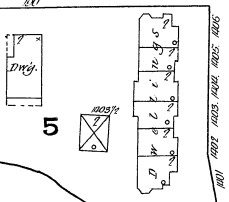
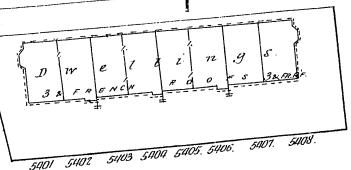
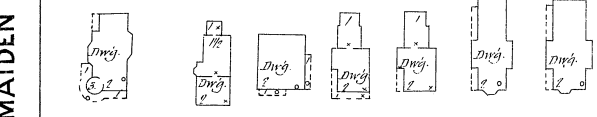
Scale of Feet.
0 50 100 150

LEWIS

SEE SHEET

NO. 5

A. Y. L. R. & WEST
R. R. OFF.



Chenango River

SEE SHEET No. 5

MAY 1887
BINGHAMTON
N.Y.

No. 5

SHEET

SEE

No. 8

HENRY

SEE SHEET

LEWIS

STATE

WASHINGTON

WATER

FERRY

JOSEPH P. NOYES & CO.
METALLIC BACK COMBS & BUTTONS.

J. ONEIL, CARRIAGE SHOP
300 1/2 HOSE CH. WATER, PROSPERITY AVE.

OPERA HO.

CHRIST CHURCH
(EPISCOPAL)

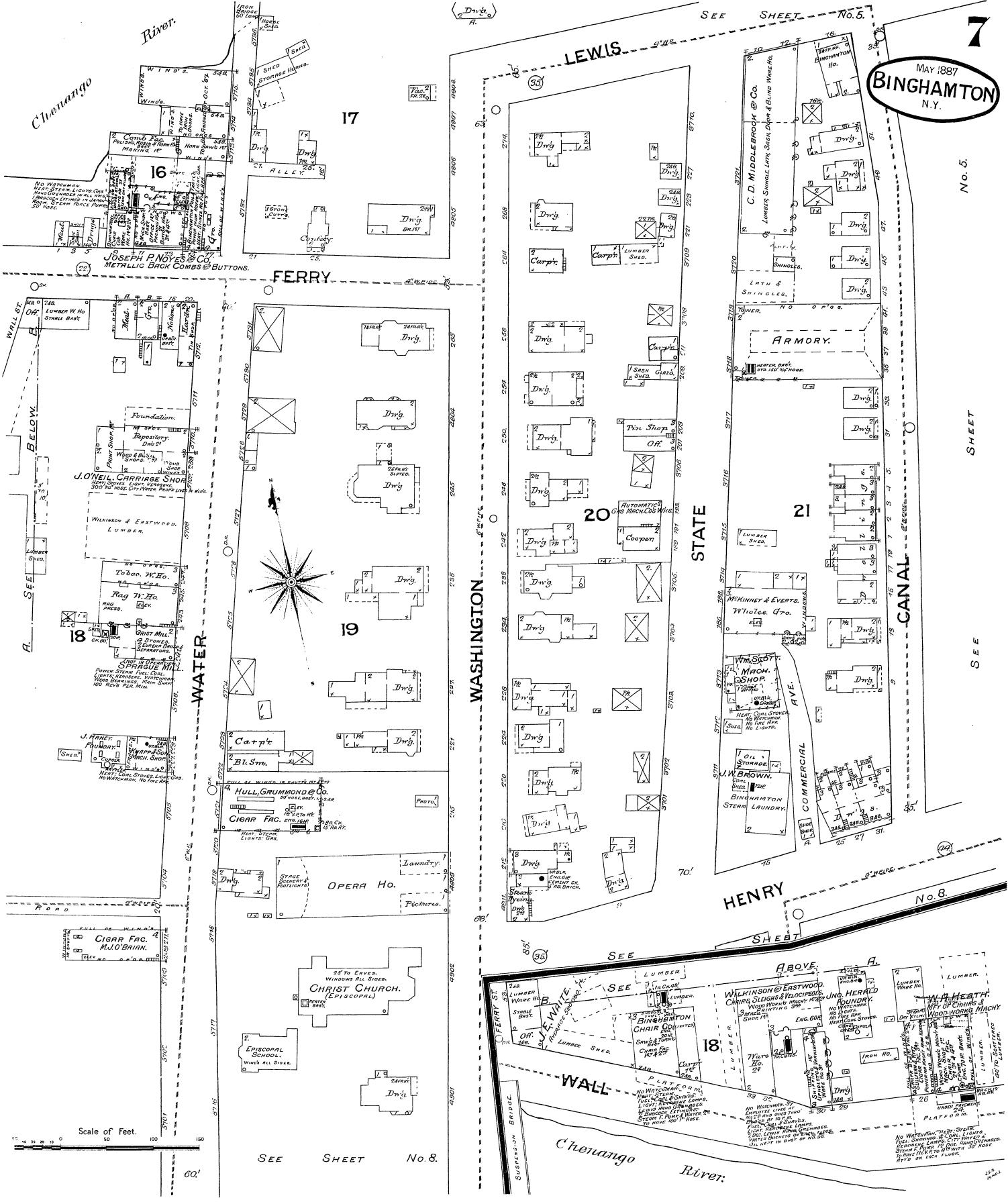
EPISCOPAL SCHOOL

WALL

Chenango River

Scale of Feet.

SEE SHEET No. 8



Chenango River.

SEE

SHEET

No. 8.

MAY 1887
BINGHAMTON
N. Y.

9

COURT



No. 14.

COLLIER SHEET

SEE

SEE

No. 10.

SEE

SEE

SEE

SEE

SEE

SEE

SEE

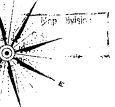
SEE

SEE

SEE

Scale of Feet.
50 100 150

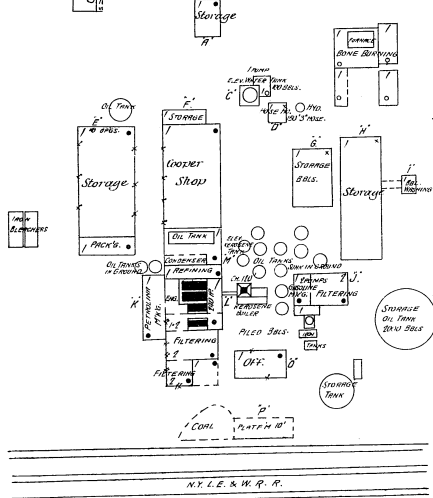
No. 10.



MAY 1887
BINGHAMTON
N.Y.

BINGHAMTON OIL REFINERY

BRANDS LIGHTS OIL, HEAT-STEAM, FUEL, COAL,
2 SHOWER EXH. PIPES, 350' 3" WIDE, 3 MIGHT WATCHMEN,
520' 3" WIDE, 100' 3" WIDE.



WASHINGTON

HAWLEY

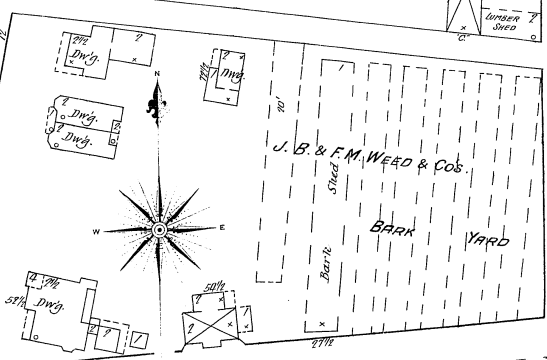
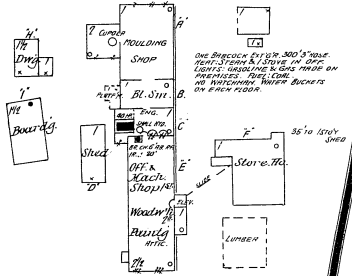
STATE

COLLIER

54

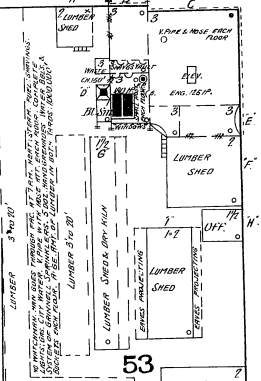
53

JONES OF BINGHAMTON SCALE WORKS

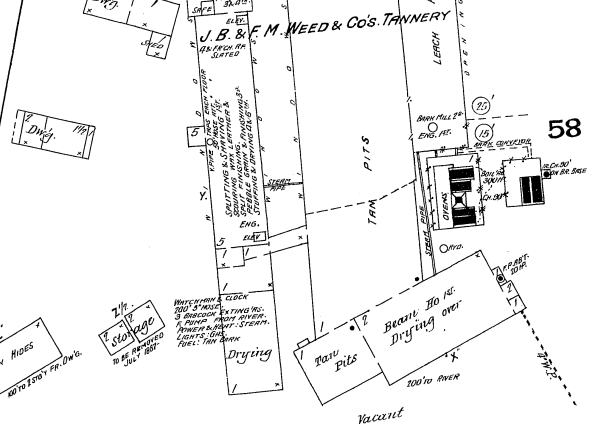
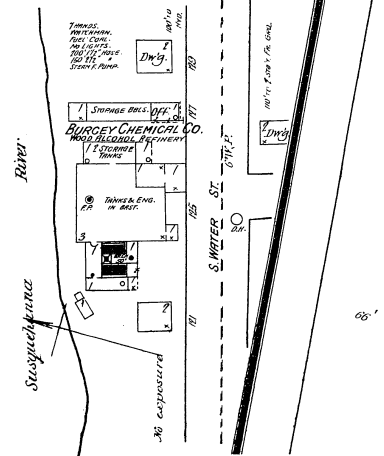
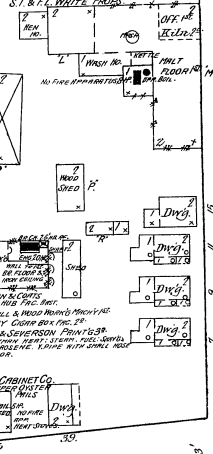


SUSQUEHANNA

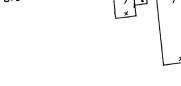
BARTLETT & Co's SASH, D & B. FAC.



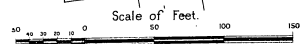
BINGHAMTON BREWERY



C.N. WHITE STONE WARE POTTERY



BARTLETT & Co's LUMBER YARD



No exposure any side
No exposure

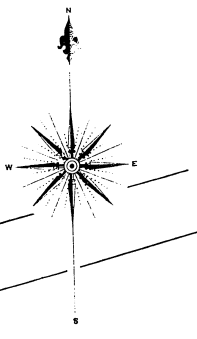
SEE SHEET N16
SEE SHEET N17
SEE SHEET N18

River
Susquehanna

SEE SHEET N11
SEE SHEET N12
SEE SHEET N13
SEE SHEET N14
SEE SHEET N15
SEE SHEET N17
SEE SHEET N18
SEE SHEET N19
SEE SHEET N20

COURT HO. SQUARE.
SEE SHEET NO 14.

MAY 1887
BINGHAMTON
N. Y.



HAWLEY

COLLIER

SAND

EXCHANGE

SUSQUEHANNA

BUTTERNUT

Susquehanna River

Scale of Feet
0 50 100 150

NO 10.

NO 12.

SEE

SEE

BARTLETT BROS LUMBER.

Lumber.

58

59

60

61

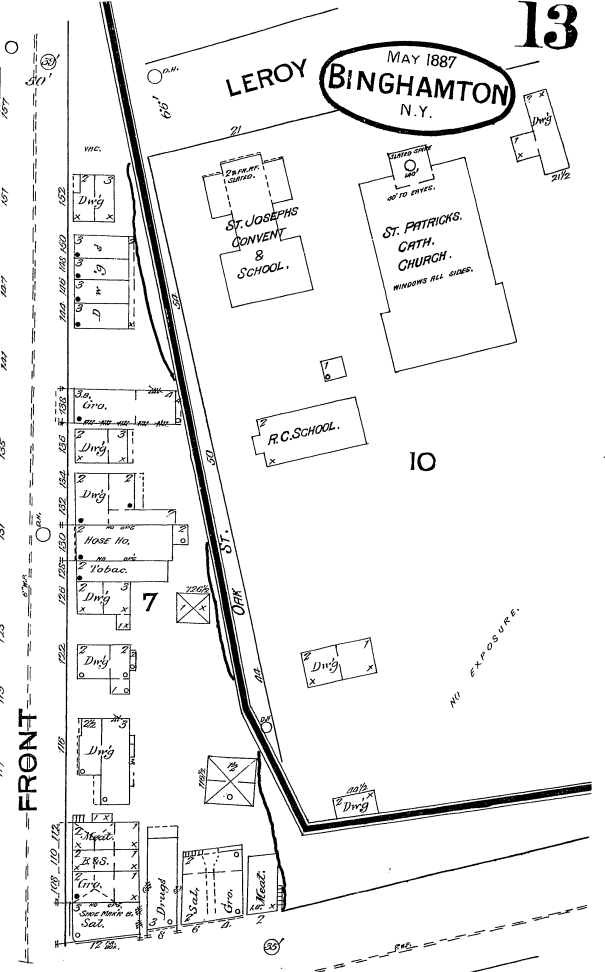
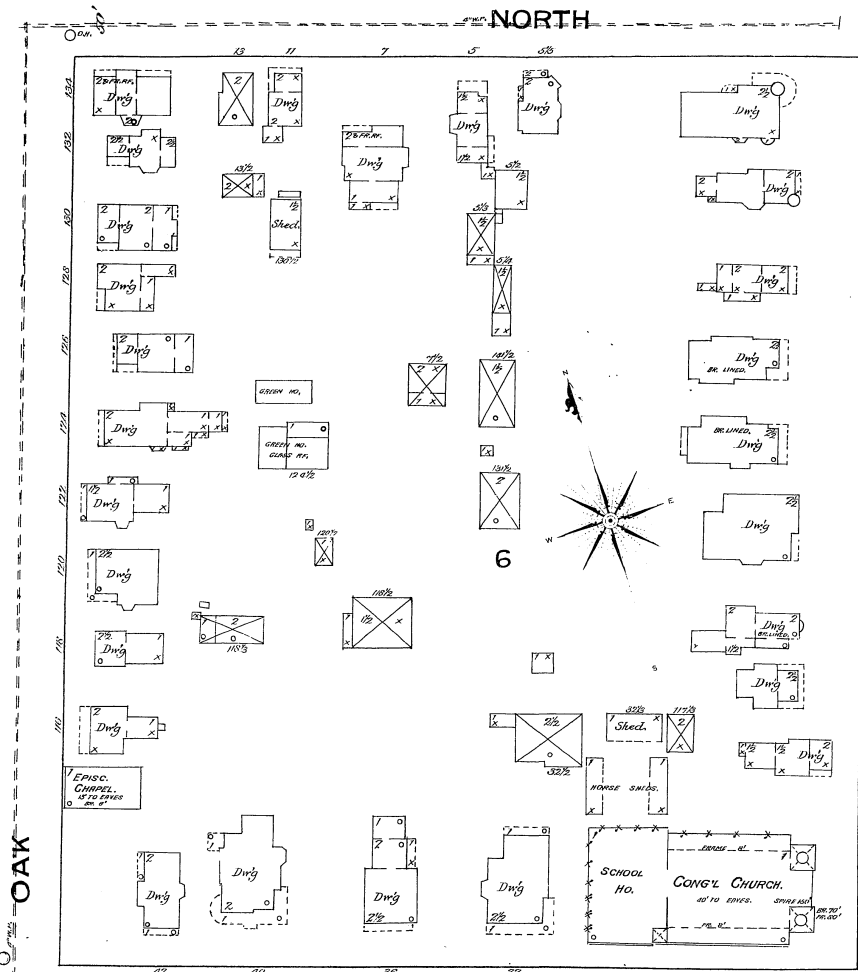
52

51

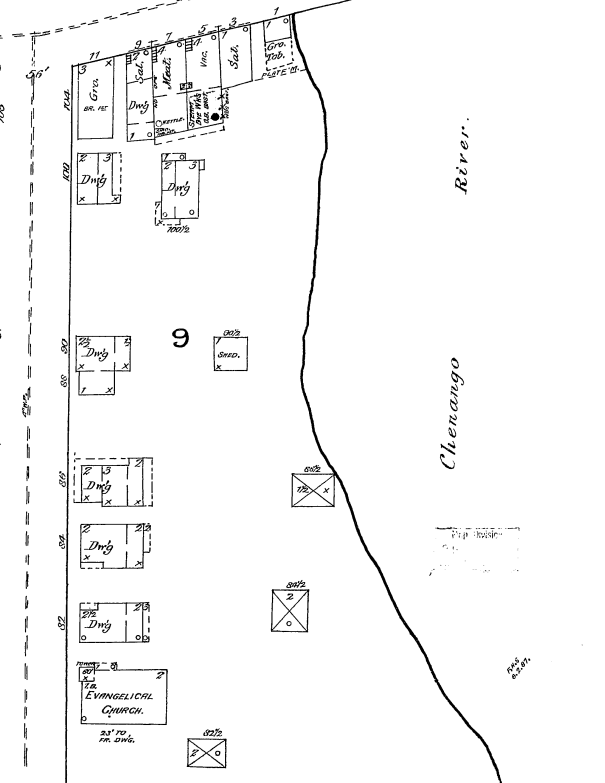
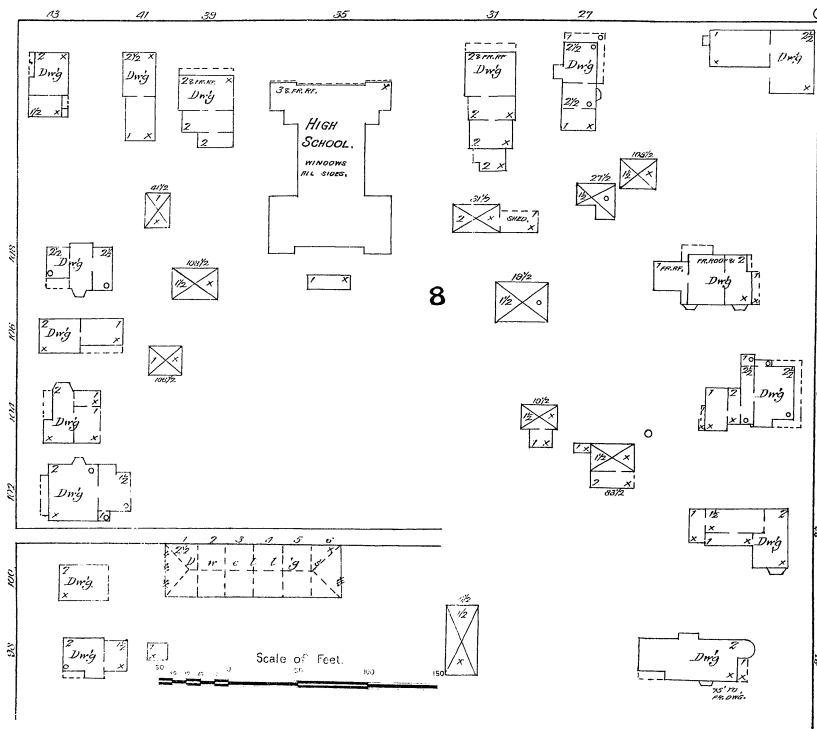


MAY 1887
BINGHAMTON
N.Y.

LEROY



MAIN



OAK

FRONT

River.

Chenango

Scale of Feet.

HAWLEY

MAY 1887
BINGHAMTON
N. Y.

No. 12.

No. 2.

CARROL

FAYETTE

WHITNEY

48

3 1/2 ACRE SITES
4TH WARD
SCHOOL.
WINDOWS ALL AROUND.

BINGHAMTON WHIP CO.
WOODRUFF & WOODRUFF

A.M.E.
CHURCH
20 TO ENVY.

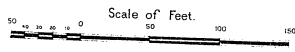
SUSQUEHANNA

SEE SHEET No. 8.
COURT

No exposure.

Court Rm.
County Offs.

County Clerks
Off.



SHERRILL
JAIL.

SEE SHEET
EXCHANGE

Laundry

ST. MARY'S INSTITUTE.
HEAT STEAM LIGHTS; KEROSENE.
CITY WATER SMALL HOSE.

SEMINARY AVE.

Parant to River

S. WATER STR.

71

72

CHURCH OF THE
GOOD SHEPHERD.

HOSPITAL
OF THE
GOOD SHEPHERD.

HAWLEY

No. 11.

SEE SHEET

SEE SHEET
COLLIER

No. 8.

SEE SHEET

SEE SHEET

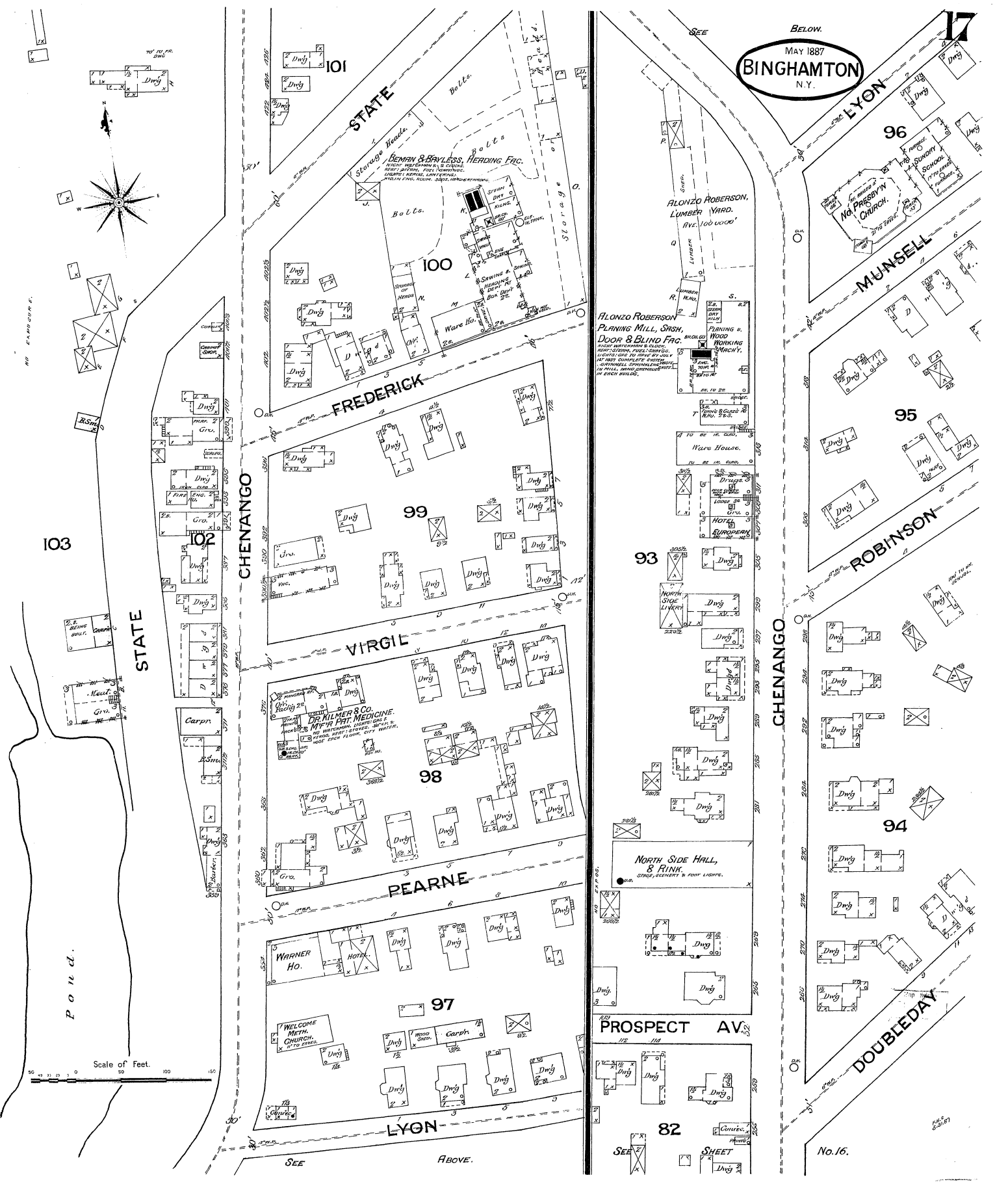
SEE SHEET

SEE SHEET

SEE SHEET

SEE SHEET

BELOW.
MAY 1887
BINGHAMTON
N.Y.



Scale of Feet.
0 50 100 150

SEE ABOVE.

SEE

No. 16.

SHEET

PROSPECT AV.

LYON

PEARNE

VIRGIL

FREDERICK

STATE

DOUBLEDAY

ROBINSON

MUNSELL

LYON

STATE

CHENANGO

CHENANGO

103

99

98

97

93

95

94

96

100

82

101

17

BEMAN & BAYLESS, HEADING FAC.
HEADING, PLANING & SAWING
MILLS, SHEDS, OFFICES
WATER, POWER, CONDUITS
MAY 1887. 100 WOOD

ALONZO ROBERSON,
PLANING MILL, SHED,
DOOR & BLIND FAC.
HEADING, PLANING & SAWING
MILLS, SHEDS, OFFICES
WATER, POWER, CONDUITS
MAY 1887. 100 WOOD

DR. MILLER & CO.
DRUGS, MEDICINE
MAY 1887. 100 WOOD

NORTH SIDE HALL,
& RINK.
STAGE, GALLERY & FOOT LIGHTS.

ALONZO ROBERSON,
LUMBER YARD.
AVE. 100 WOOD

St. PABBYN
CHURCH.
215 E. 1ST ST.

WARNER HO.
HOTEL.

WELCOMB METH.
CHURCH.
117 TO 119 E. 2ND ST.

