

Population 5000.

Prevailing Winds N.W.

LEGEND AS SHOWN FROM SURVEY. MADE BY SURVEYOR... PUBLIC LIGHTS EXCEPTED.

WATER FACILITIES

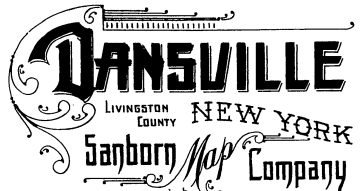
Gravity system of water works, owned by the village. Installed in 1896. Water supply from Ziegenfuss Springs and Mill Creek. Water from springs flows into 34 million gallon reservoir located 1 1/2 miles S. E. of Main and Exchange Sts. and 200 ft. above same. Mill Creek supply flows into an intake, two miles S. E. of and 100 ft. above Main and Exchange Streets. It has a capacity of about 500,000 gallons. Water flows from main reservoir through 12" pipe to village mains, and is joined by 10" pipe from Mill Creek intake at a point on Main St. 600 ft. south of Gibson St. 16 miles of water pipe, 4" to 12" diam. 125 double hydrants. Pressure from 65 lbs to 103 lbs per sq. inch. Average daily consumption, 700,000 gallons.

FIRE DEPARTMENT

Volunteer, 5 companies, 150 men. Two hose carts. Two hand hose wagons. 3750 ft. 2 1/2" hose. One hook & ladder truck (hand drawn). One La France chemical engine with two 35-gallon tanks and 50 ft. hose (hand drawn). One fire auto chemical engine with two 50-gallon chemical tanks and 150 ft. chemical hose. Fire alarm by telephone and bell on fire hose also by whistle on electric light station.

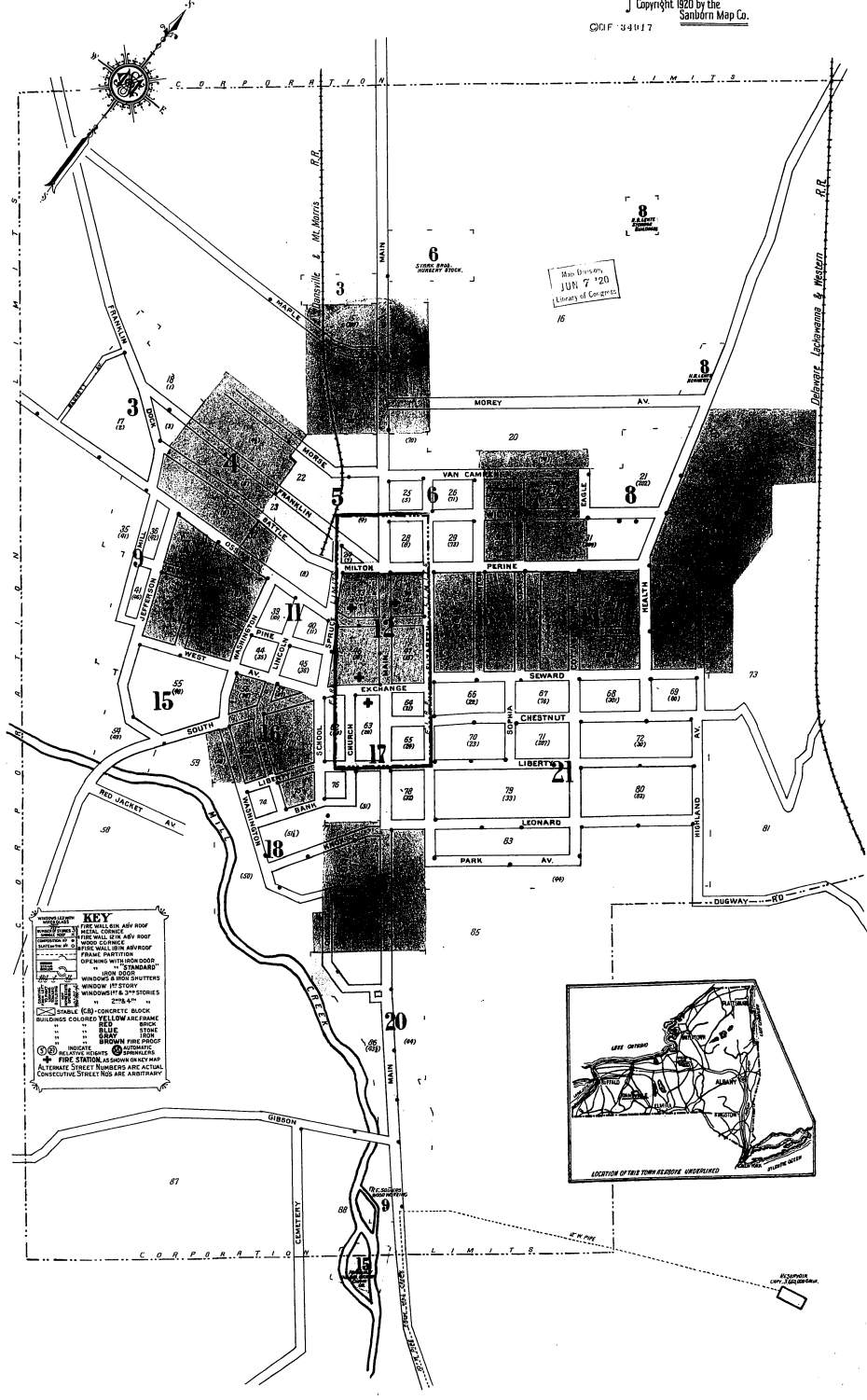
INDEX

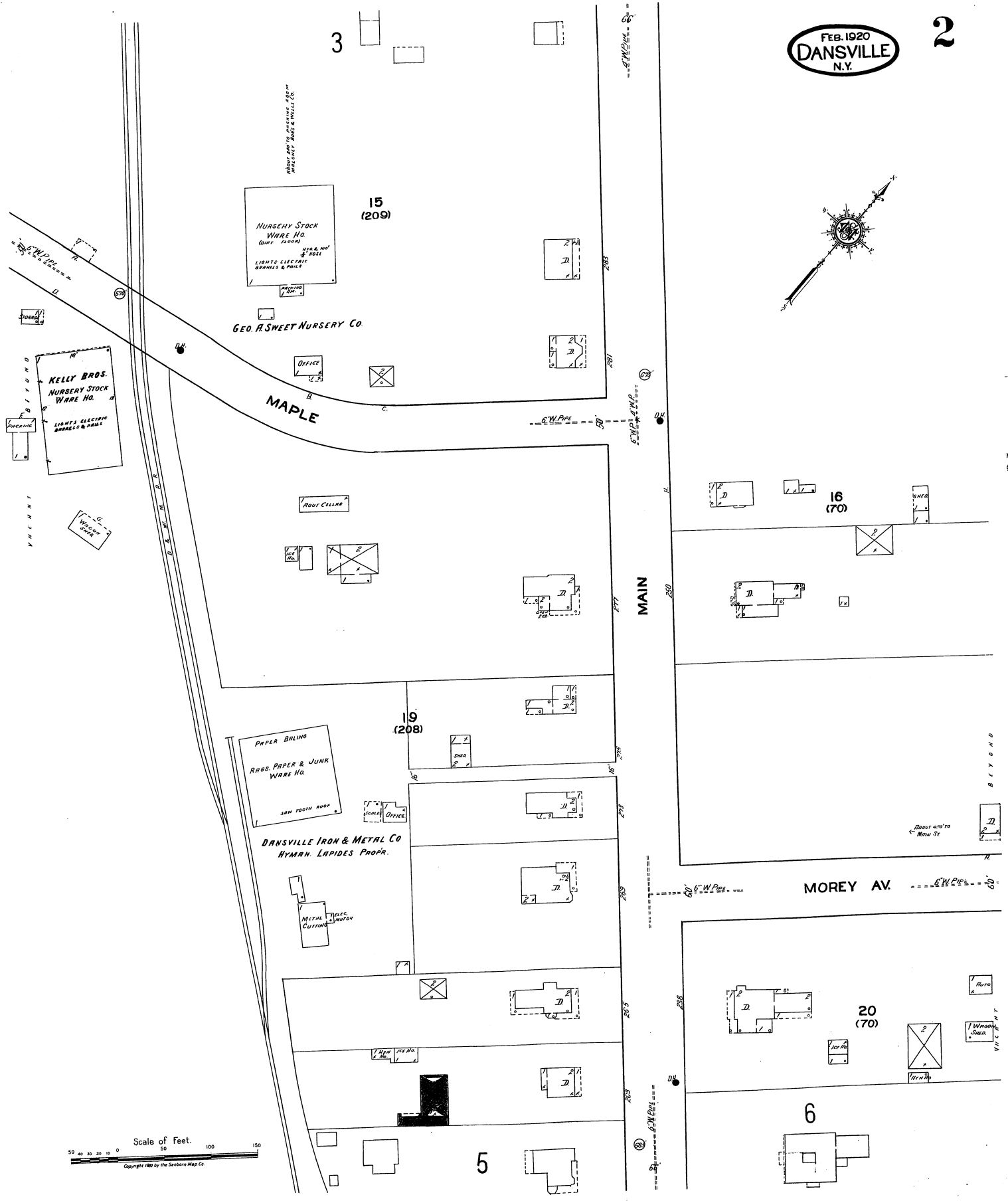
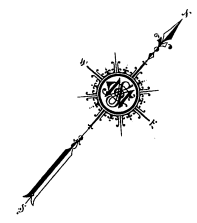
Table with columns for street names and page numbers. Includes sections for 'STREETS', 'SPECIALS', and 'KEY'. Lists streets like Adams, Bank, Chestnut, etc., and special locations like Arnott G. Chair Co., Blum Shoe Mfg Co., etc.



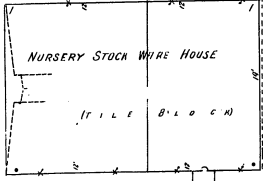
FEB. 1920

Copyright 1920 by the Sanborn Map Co. C.D.F. 3417





FEB. 1920  
DANVILLE  
N.Y.



MALONEY BROS & WELLS CO. NURSERY STOCK  
LUMBER, ELECTRIC, BRACKETS & PAINT, WILSON WARE.

15  
(209)

2

18  
(1)

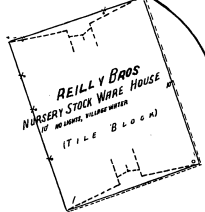
FRANKLIN

4

DOCKMILL

BATTLE

17  
(2)



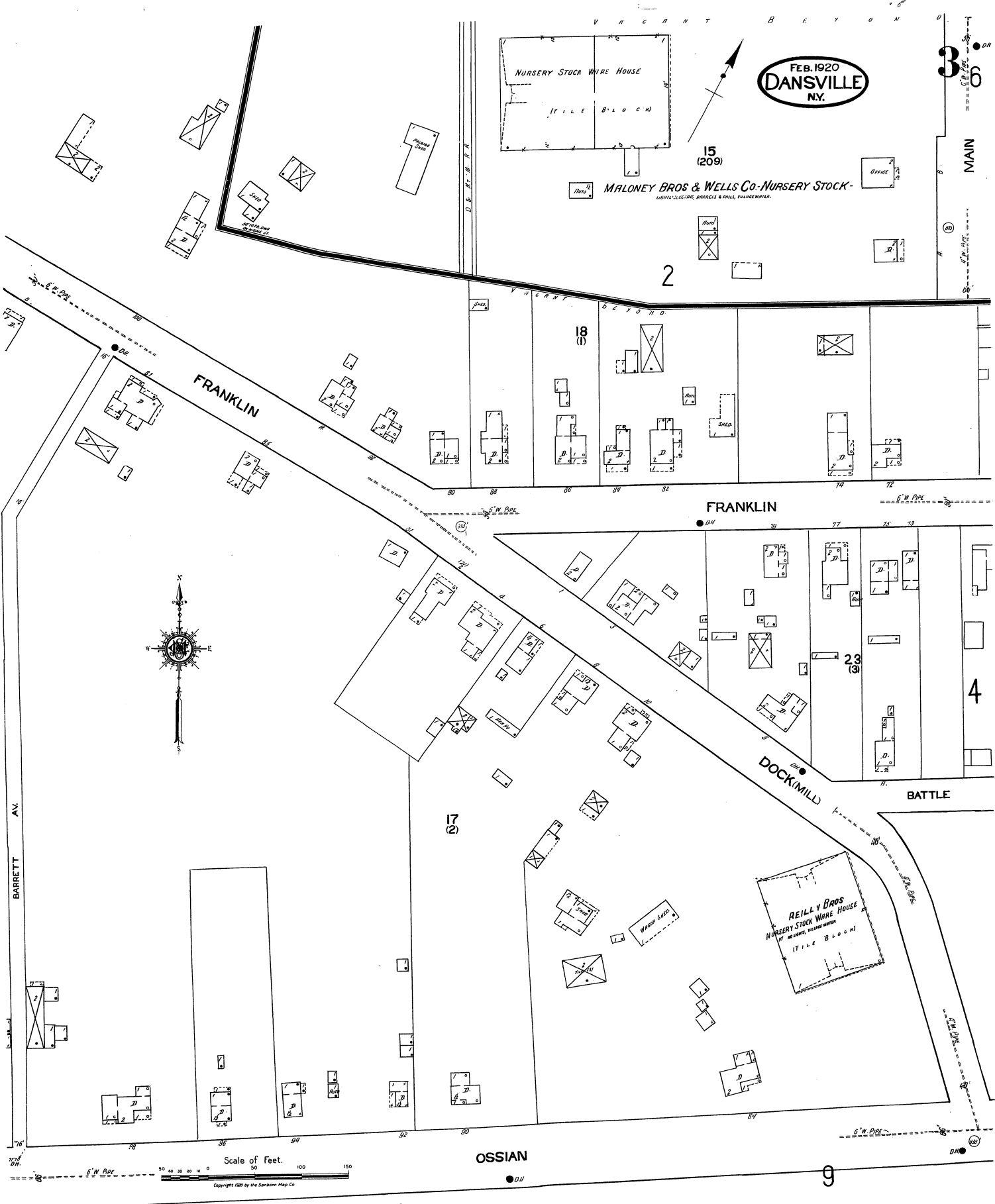
OSSIAN

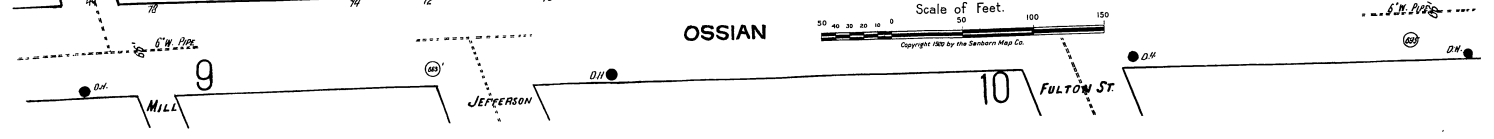
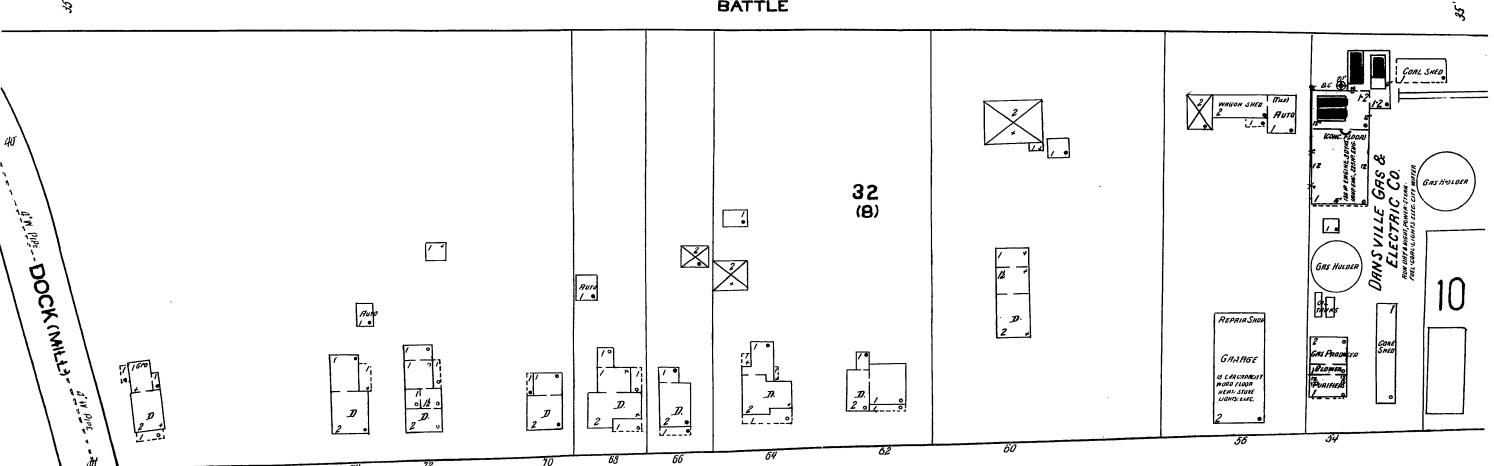
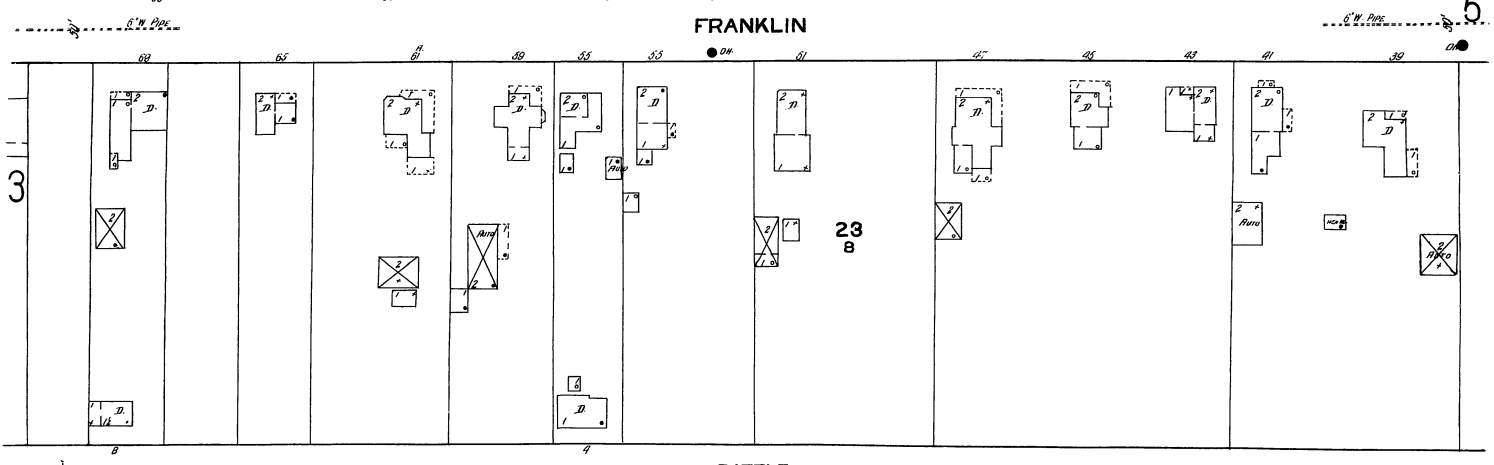
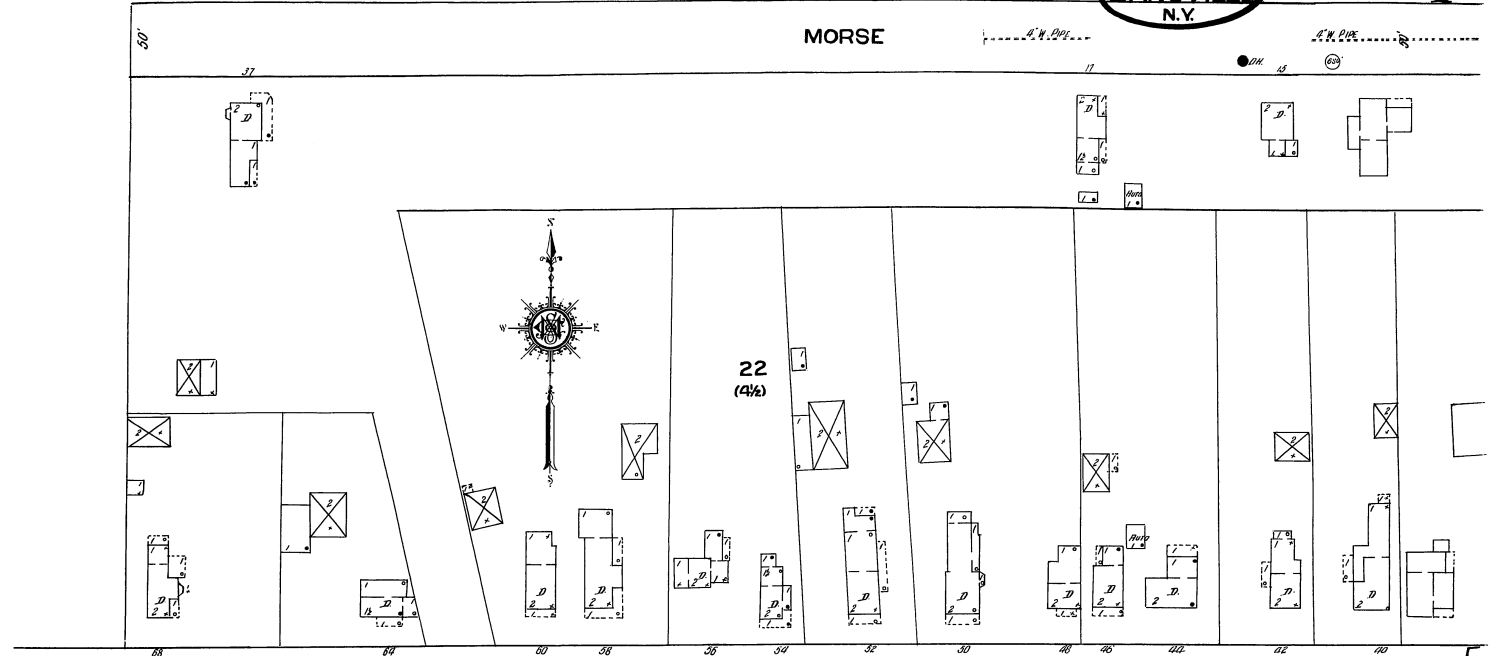
9



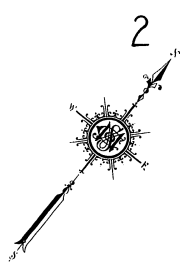
Scale of Feet.  
0 50 100 150

Copyright 1920 by the Sanborn Map Co.



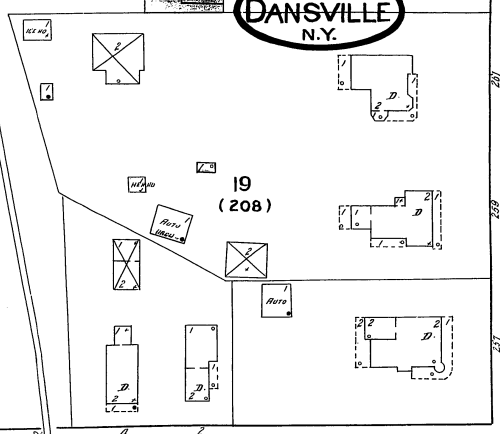


FEB. 1920  
DANSVILLE  
N.Y.



2

5



19  
(208)

MORSE

MAIN

4

(4 1/2)

10

23  
(8)

FRANKLIN

22

(4)

BATTLE

SPRUCE

24  
(7)

MILTON

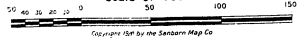
12

VAN CAMPEN

WILLIAM

PERLIN

Scale of Feet.



Copyright 1920 by the Sanborn Map Co.

11

FEB. 1920  
**DANSVILLE**  
N.Y.

6

SCALE 100 FT. TO AN INCH

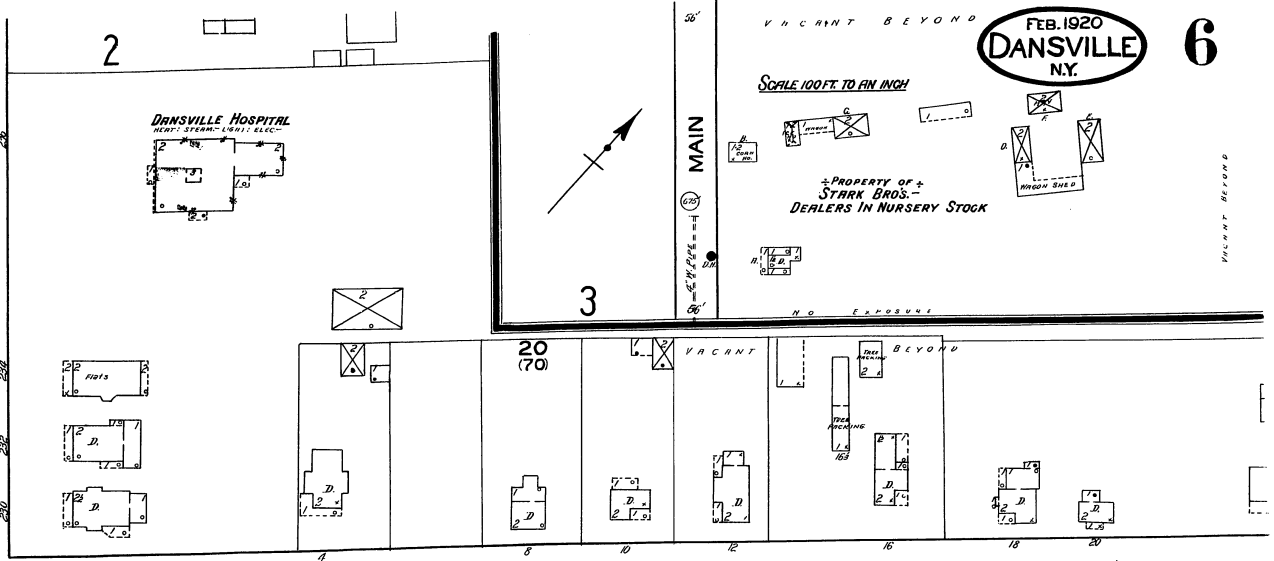
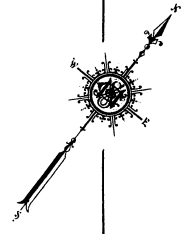
PROPERTY OF  
**STARK BROS.**  
DEALERS IN NURSERY STOCK

MAIN

3

2

**DANSVILLE HOSPITAL**  
HEAT - STEAM - LIGHT - ELECT.



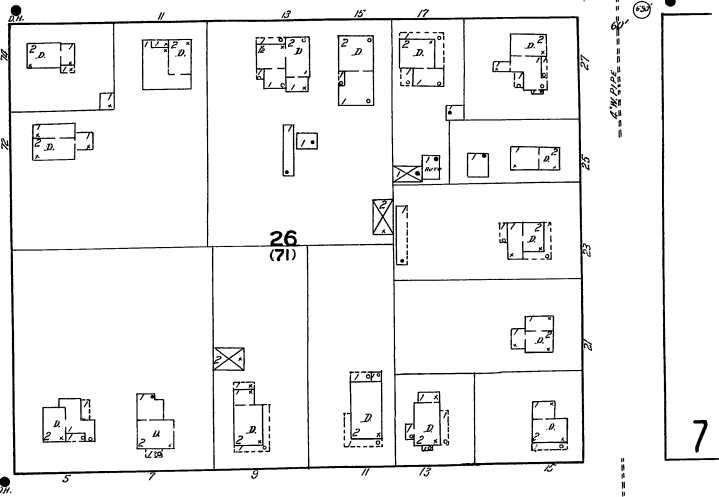
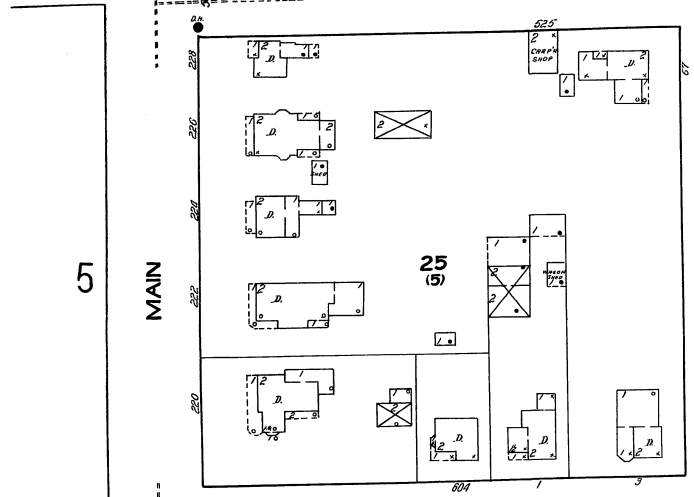
MAIN

VAN CAMPEN

5

MAIN

25  
(5)

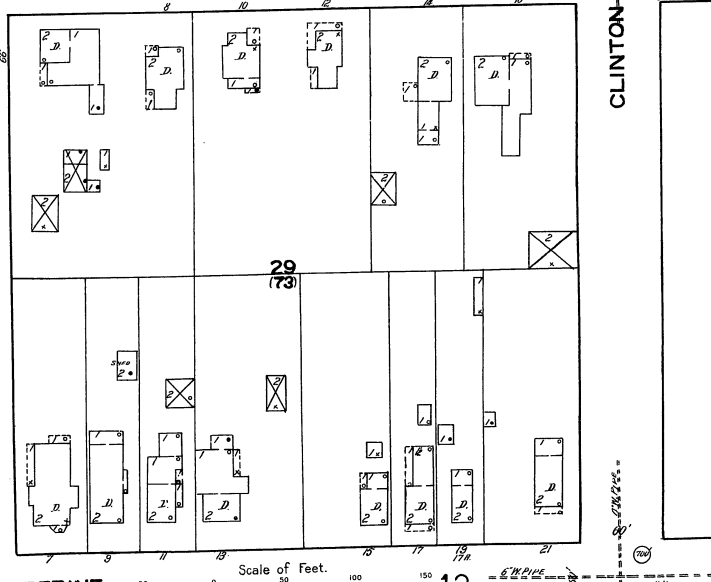
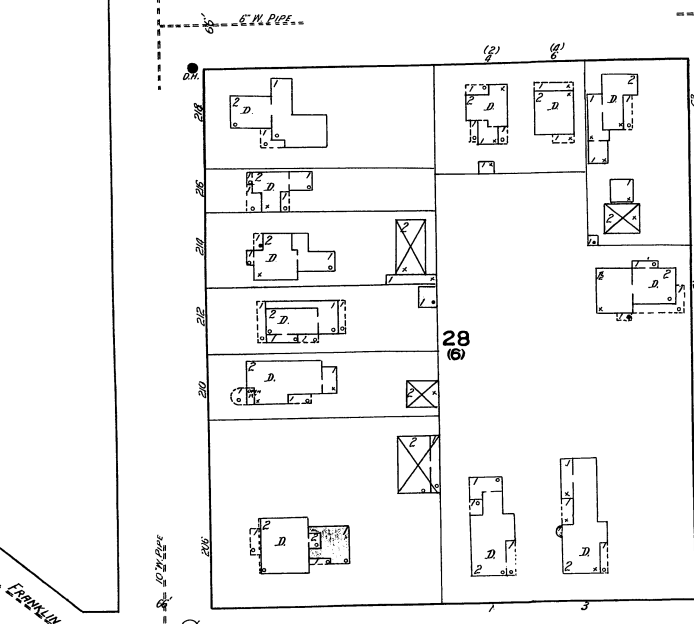


WILLIAM

CLINTON

ELIZABETH

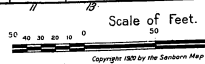
28  
(6)



PERINE

13

12

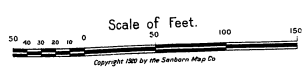
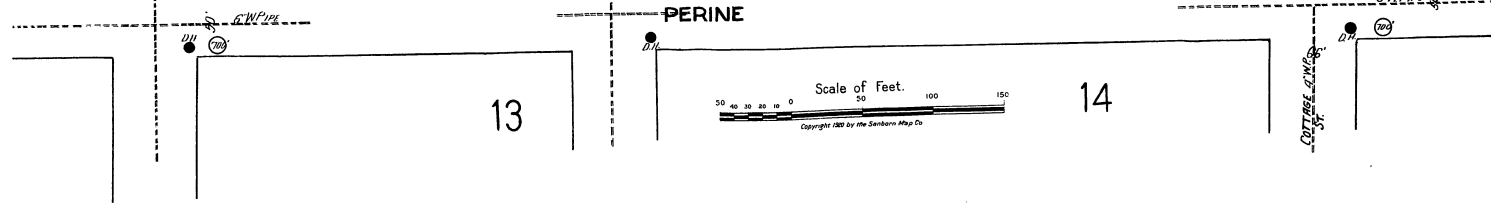
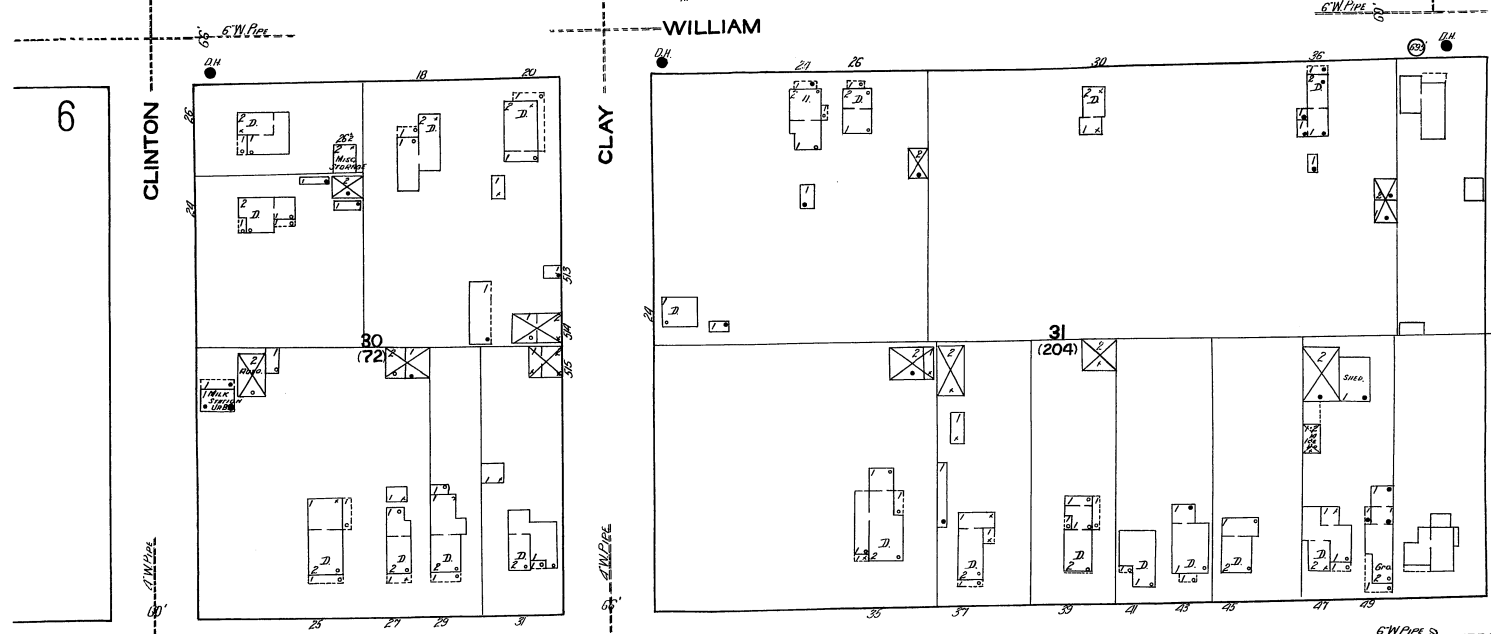
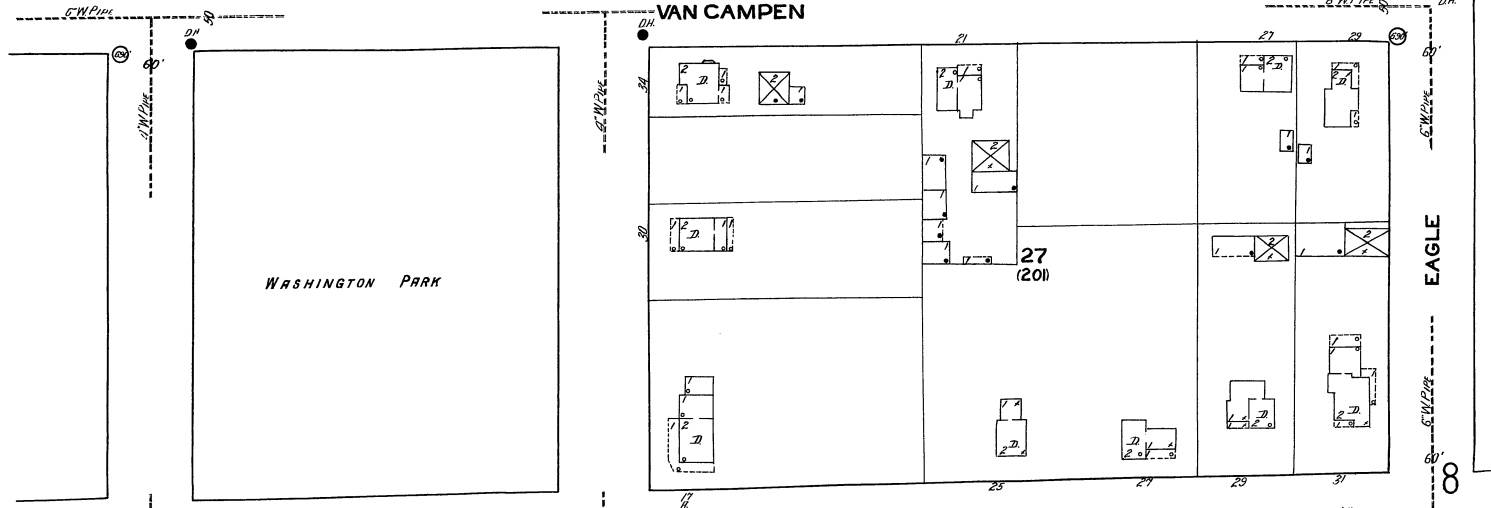
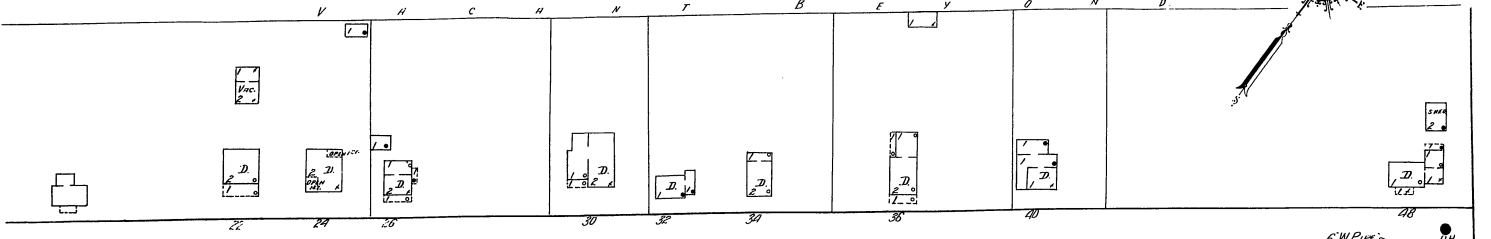
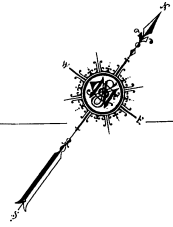


Scale of Feet.  
Copyright 1920 by the Sanborn Map Co.

FRANKLIN ST.

CLINTON

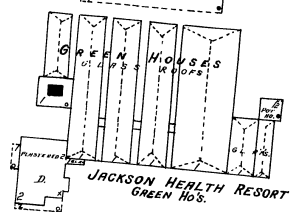
20  
(70)



FEB. 1920  
DANSVILLE  
N.Y.

8

VACANT BEYOND

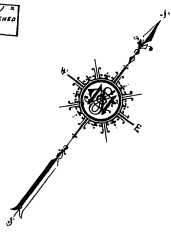


JACKSON HEALTH RESORT  
GREEN HDS.



H. B. LENT  
16  
VACANT ON ALL SIDES

VACANT BEYOND



21  
(202)

PRIVATE RD

EAGLE

7

HEALTH

22

WILLIAM

JACKSON HEALTH RESORT STRGGE

H. B. LENT  
HANNERY  
NO EXPOSURE ANY SIDE

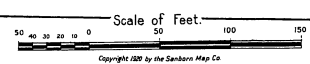
16

MOREY AV.

HEALTH

PERINE

14



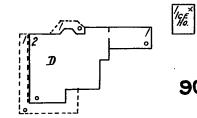
Scale of Feet.

Copyright 1920 by the Sanborn Map Co.

FEB. 1920  
**DANSVILLE**  
N.Y.

**FARM BUILDINGS OF W.H. HARTMAN**

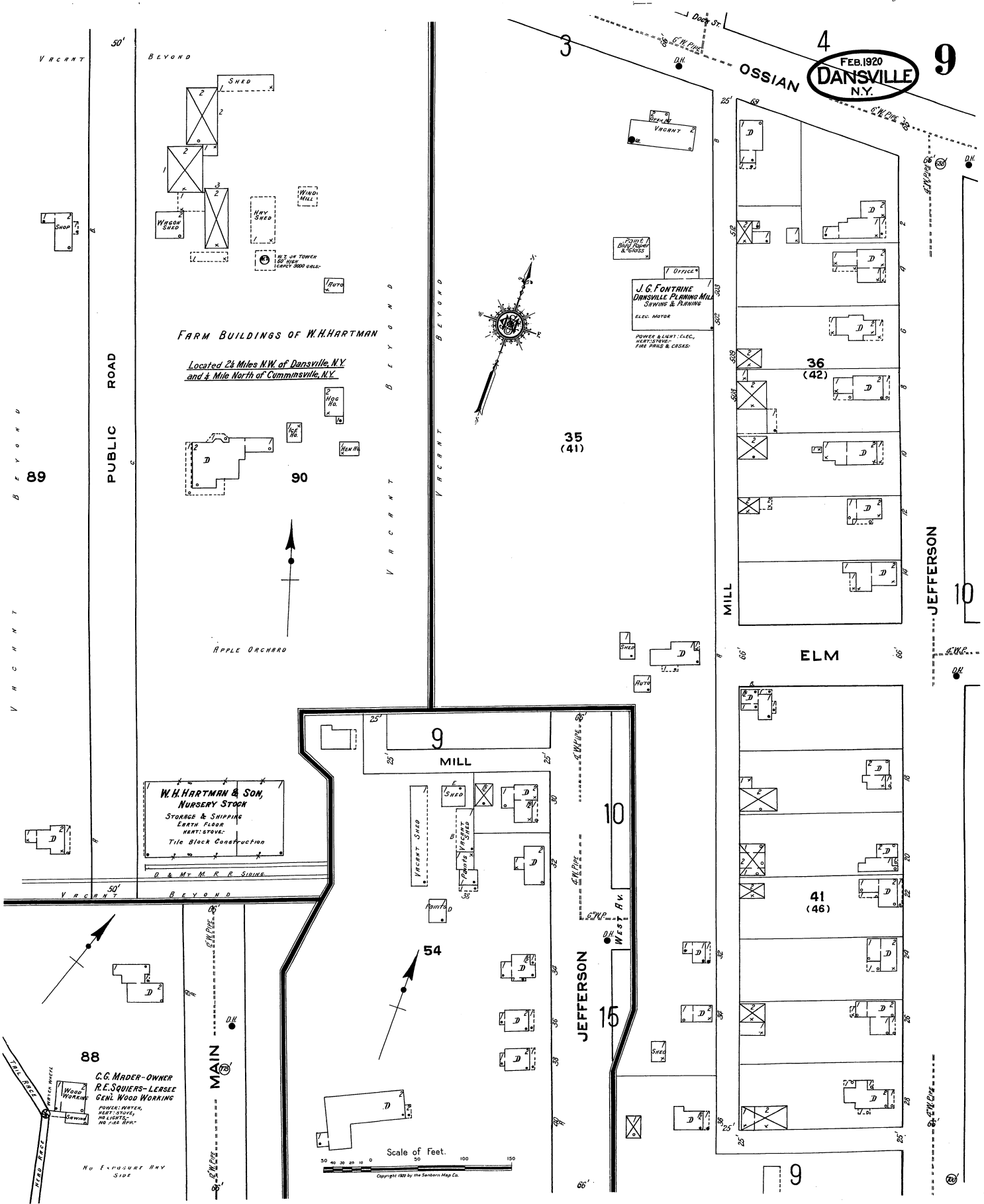
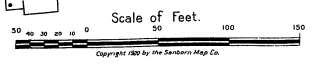
Located 2 1/2 Miles N.W. of Dansville, N.Y.  
and 4 Miles North of Cumminsville, N.Y.



APPLE ORCHARD

**W. H. HARTMAN & SON,  
NURSERY STOCK**  
STORAGE & SHIPPING  
EARTH FLOOR  
HEAT-STEAM  
Tile Block Construction  
D & M.T. M. R. R. SIDING

**J. G. FONTAINE  
DANSVILLE PLANING MILL  
SAWING & PLANING**  
ELEC. MOTOR  
POWER & LIGHT - ELEC.  
HEAT-STEAM  
FIRE PIPES & CASES



FEB. 1920  
**DANSVILLE**  
N.Y.



4  
**OSSIAN**

5  
**10**

**ELM**

**ELM**

ELM PARK.

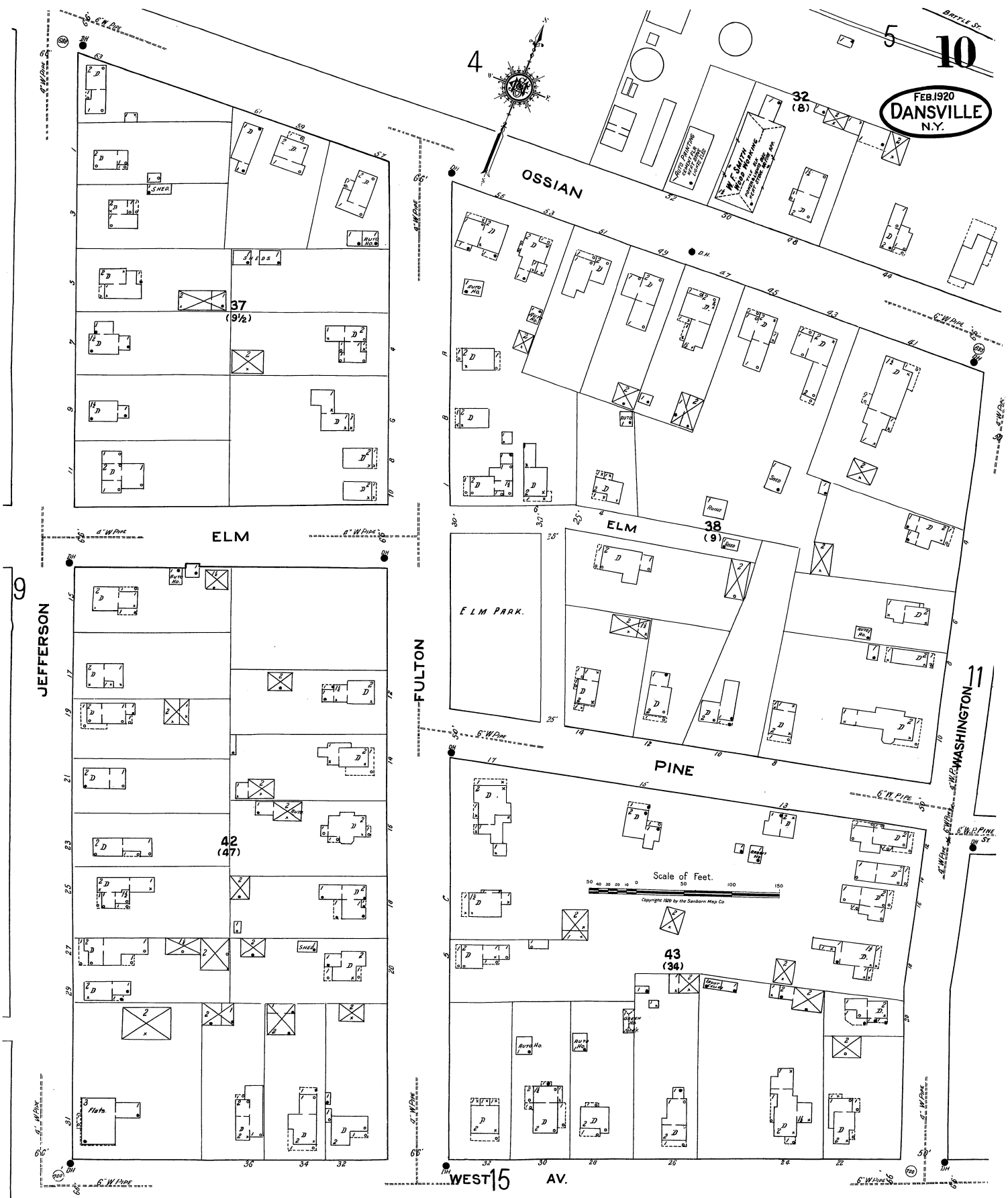
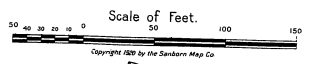
**PINE**

**JEFFERSON**

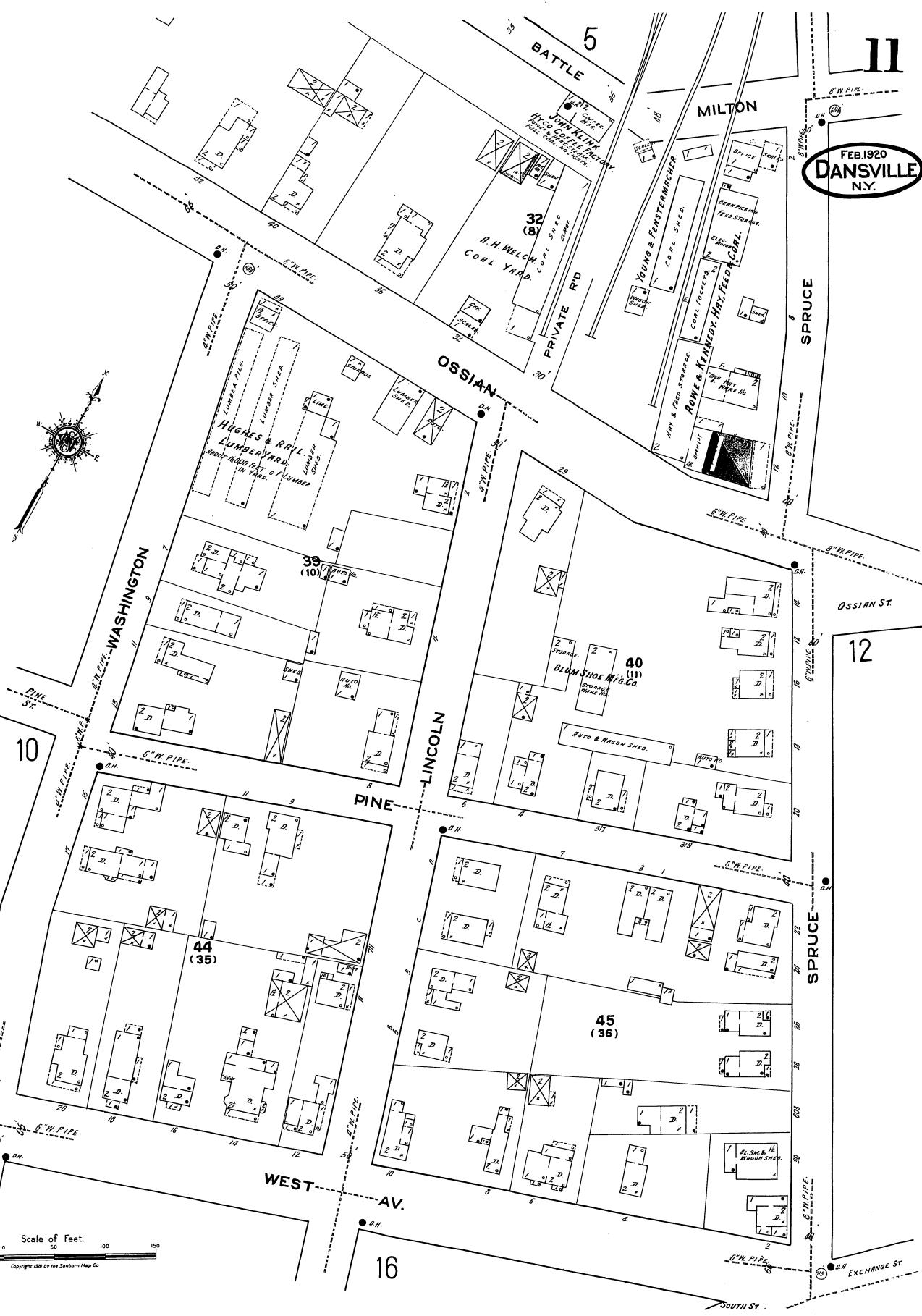
**FULTON**

**WASHINGTON**

**WEST 15 AV.**

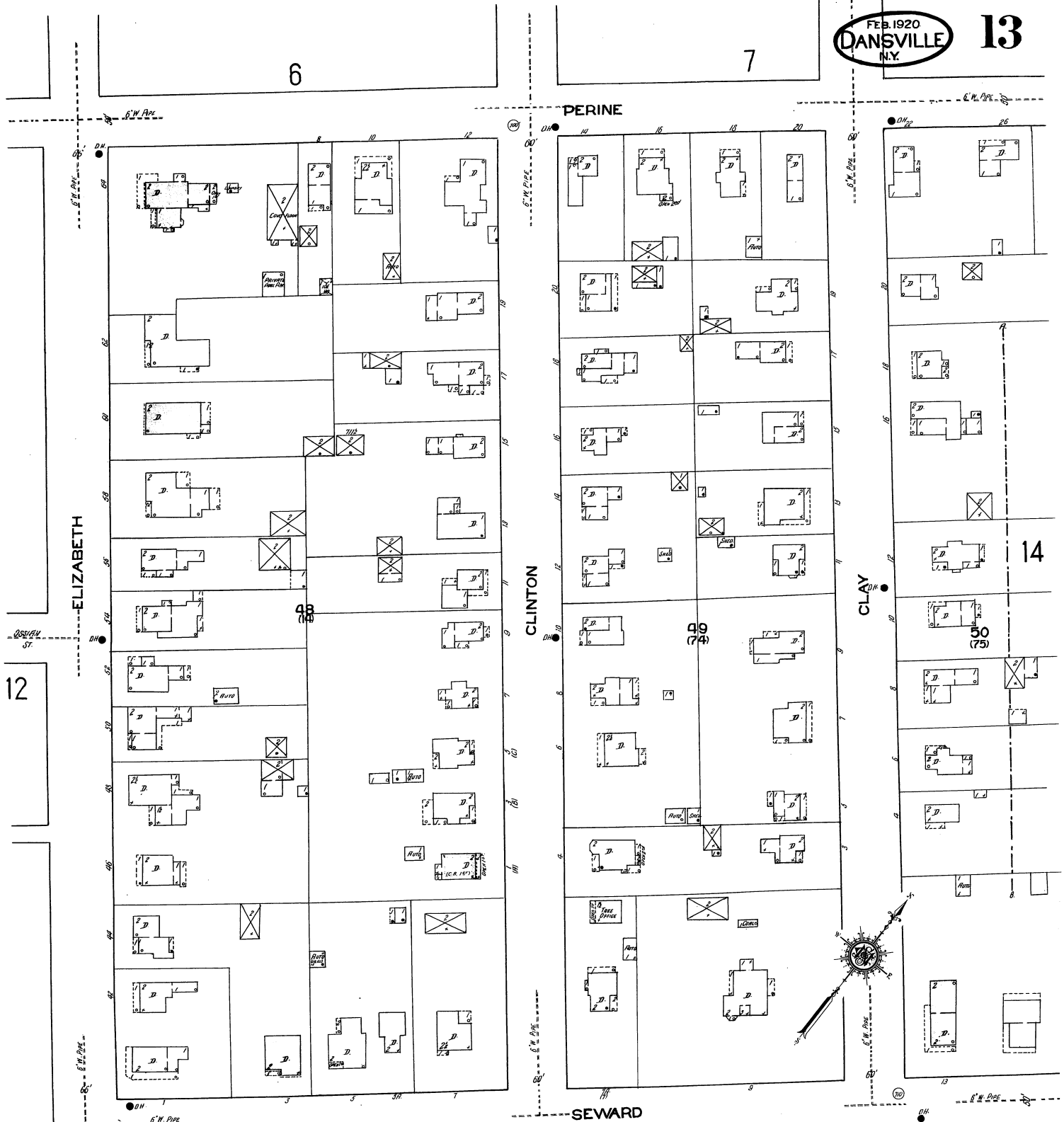


FEB. 1920  
DANSVILLE  
N.Y.



Scale of Feet.  
0 50 100 150  
Copyright 1920 by the Sanborn Map Co.





12

6

7

PERINE

ELIZABETH

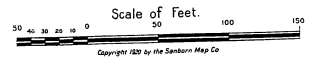
CLINTON

CLAY

14

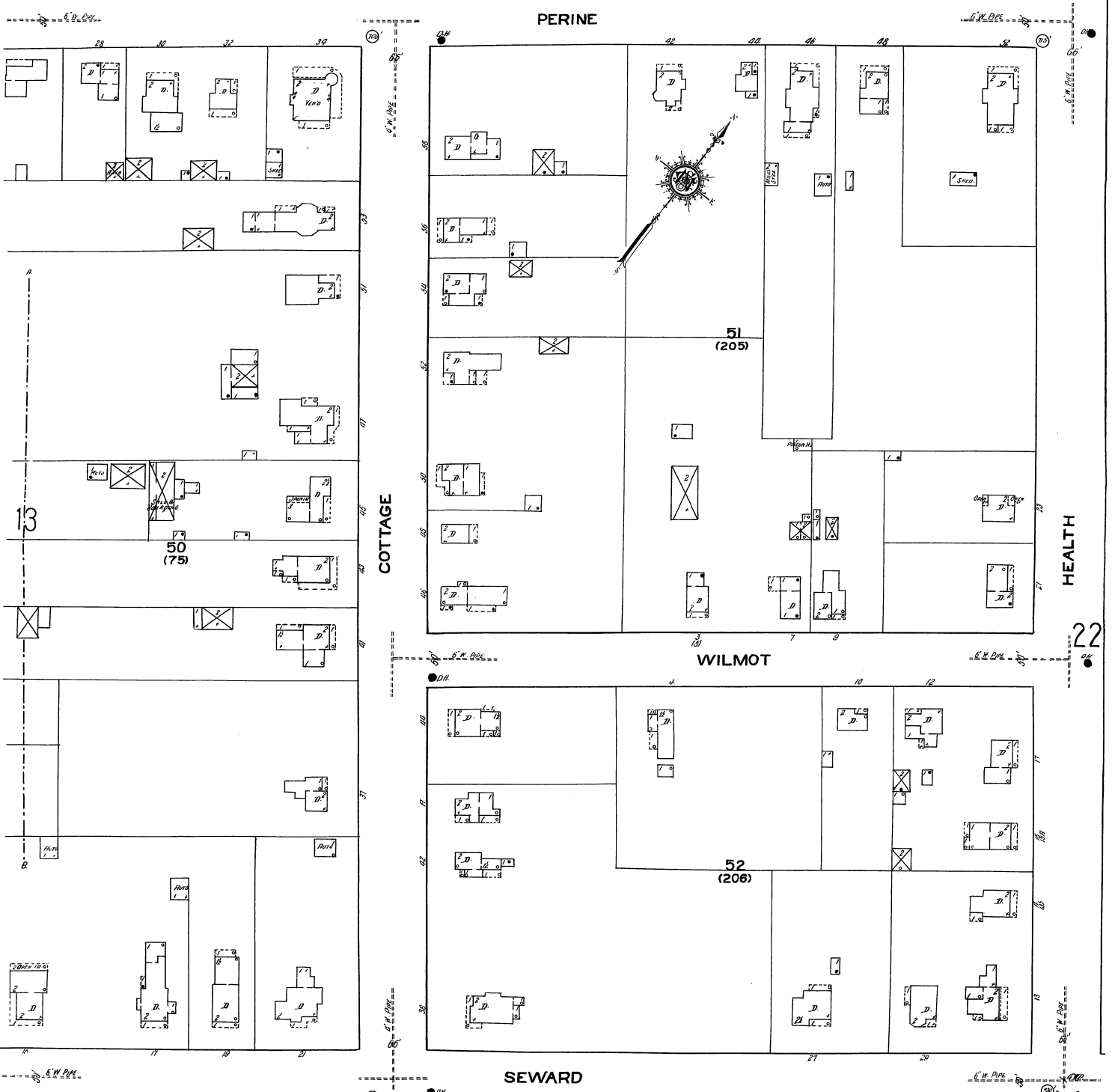
SEWARD

21

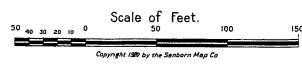


EXCHANGE ST.

SEWARD ST.



21



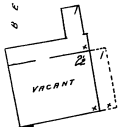
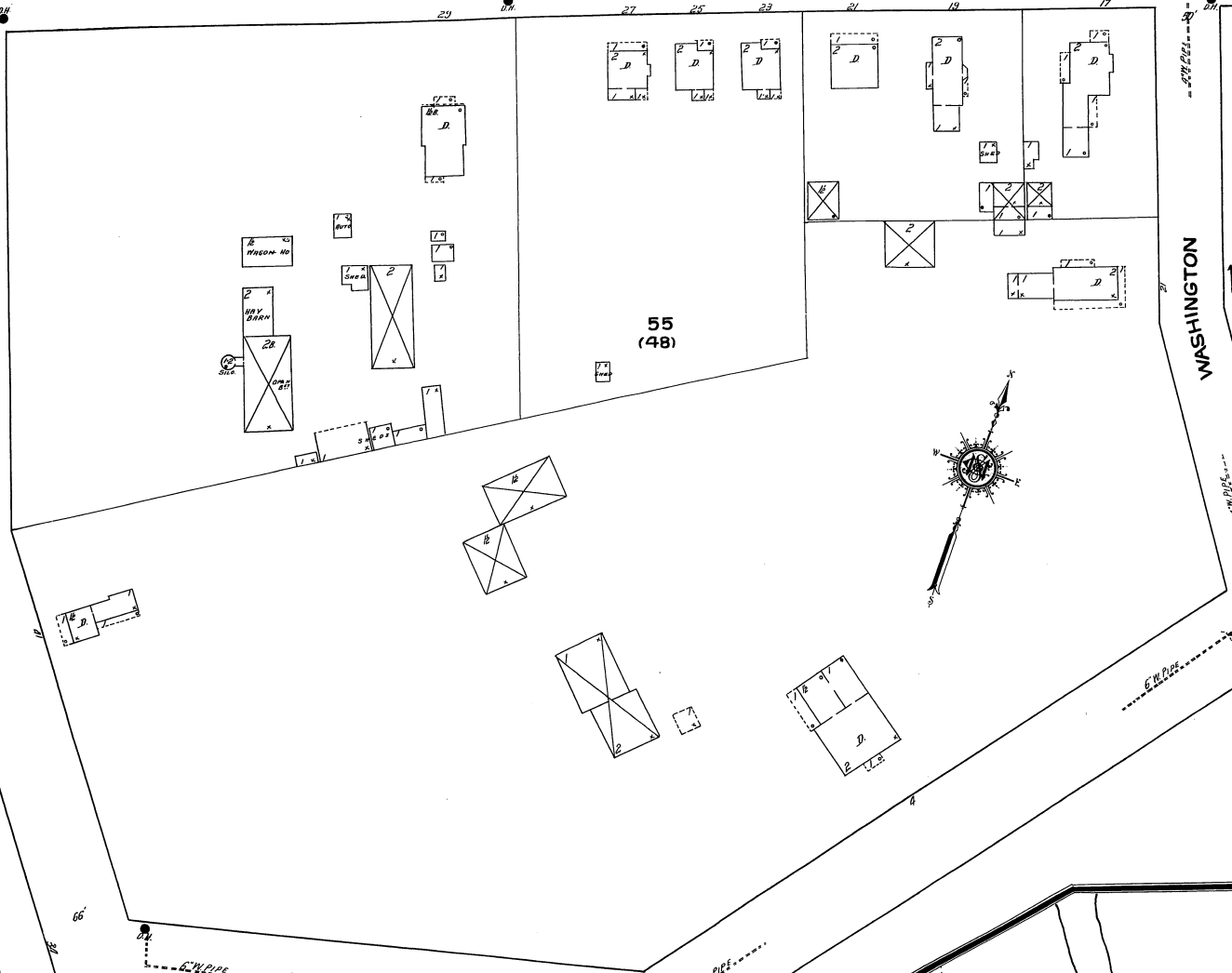
FEB. 1920  
DANSVILLE  
N.Y.

FULTON ST.  
10 WEST AV.

15

WASHINGTON  
16

JEFFERSON

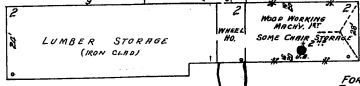


FORMERLY THE WILLIAMS MILLS BUILDINGS VACANT.

54 (49)

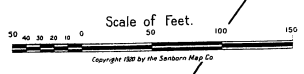
SOUTH

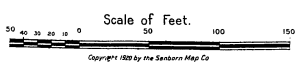
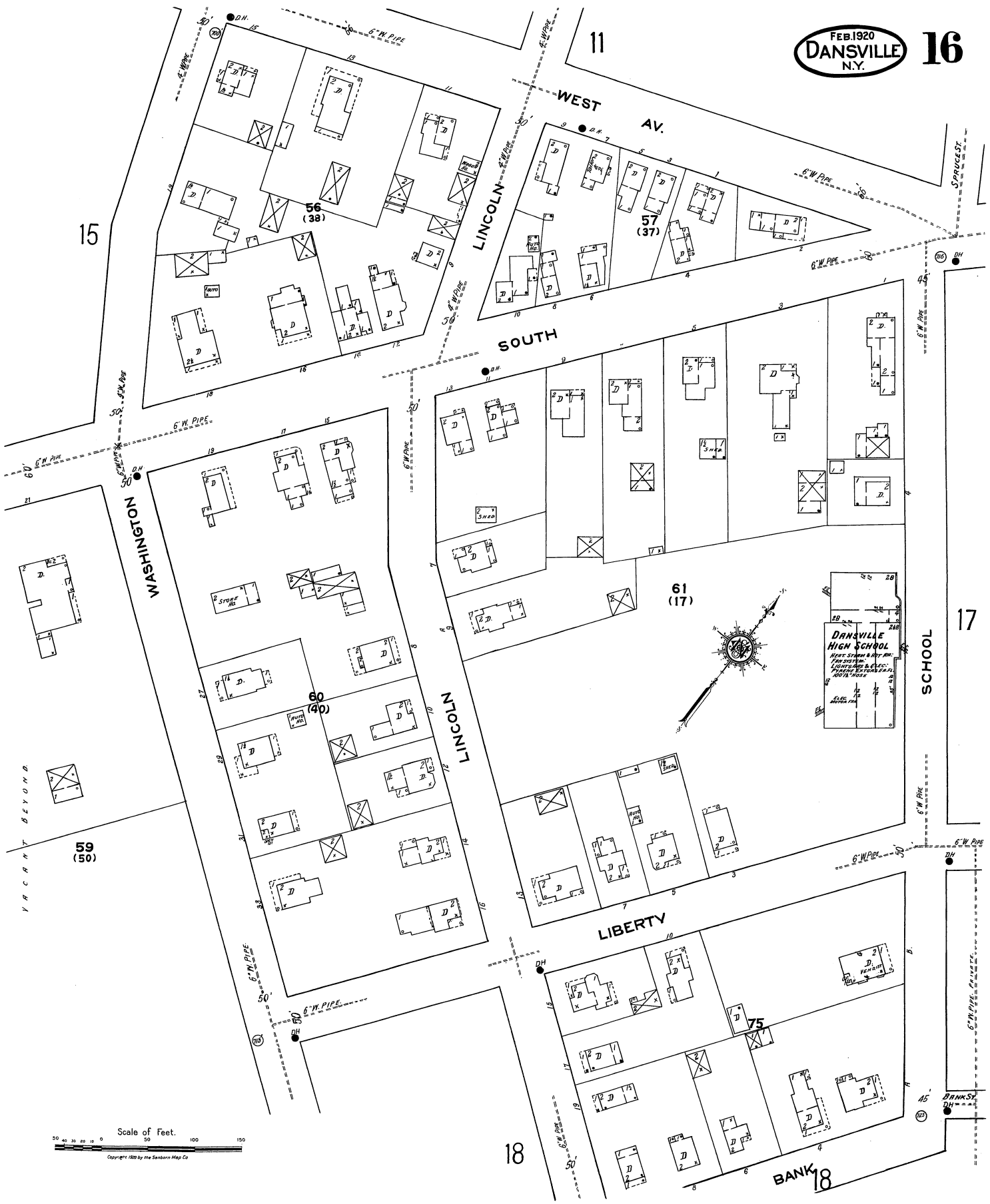
59



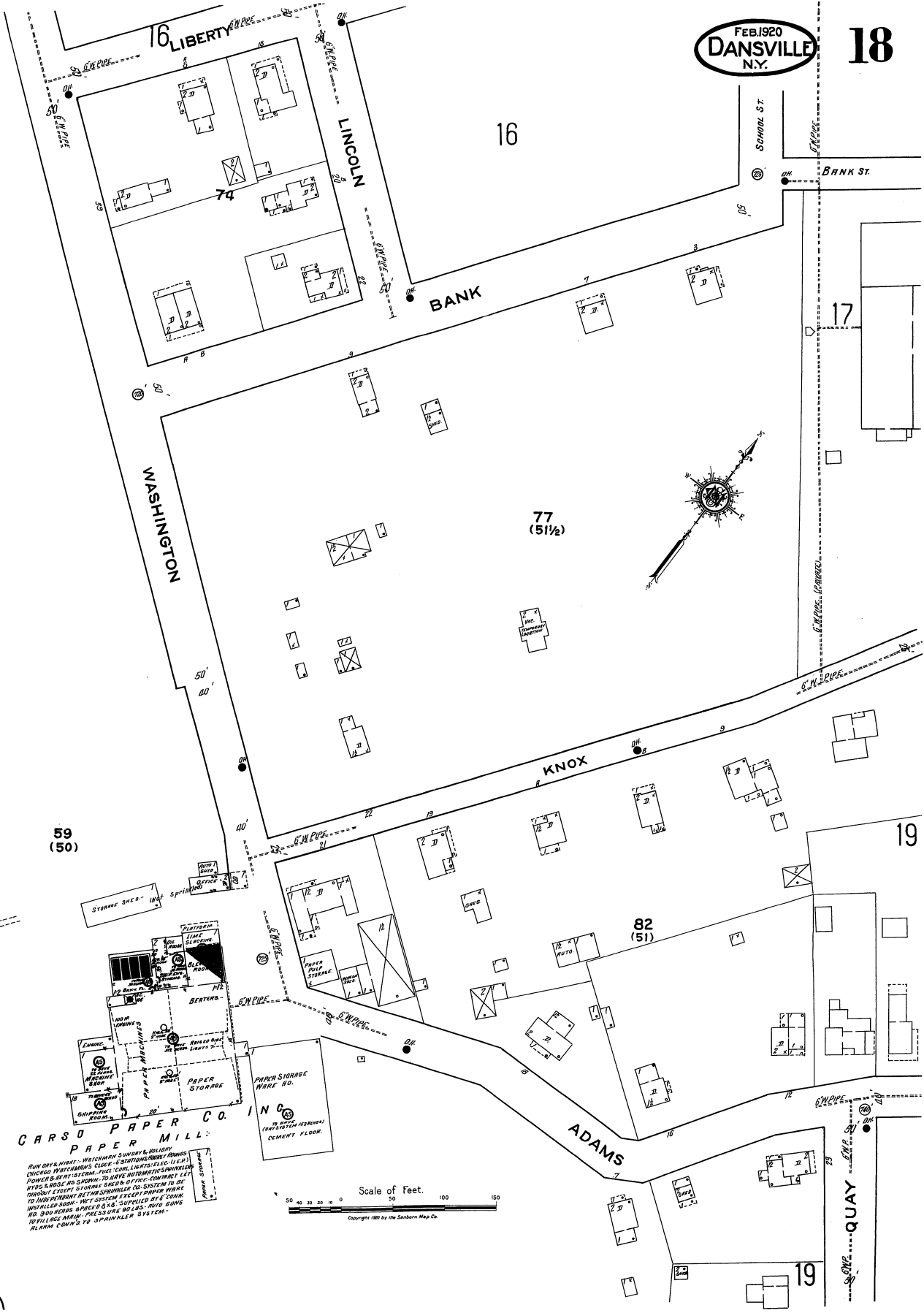
FORMERLY THE GEO. RANDY CHAIR CO. - NOT IN OPERATION  
MACHINERY IN PLACE - SOME LUMBER & CHAIR STOCKS - NO RECORDING OF THE MACHINERY

88



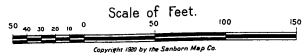






**CARSO PAPER CO. INC.**  
**PAPER MILL:**

RUN BY & NIGHT - WATCHMAN SUNDAY & HOLIDAY  
 DITCHED WATCHMAN'S CLOCK - 4 STARTING POINTS  
 POWER HEAT SYSTEM - USE COAL, LEADS FEED - LEAD  
 BY 5 BARRELS IN COLUMN - TO HAVE AUTOMATIC SHOWER  
 THROUGH EXISTING SYSTEM - BRASS OFFICE - CONTRAST LET  
 TO INDEPENDENT METERS - SHOWER CO. SYSTEM IN  
 INDUSTRIAL ROOM - HOT SYSTEM EXCEEDS PAPER WARE  
 NO. 800 HERS 6 INCH 6 1/2" SUPPLIED BY 5" CONDUIT  
 TO VILLAGE MAIN - PRESSURE 80 LBS - 1000 GPM  
 - 1/2 INCH CONDUIT TO SPRINKLER SYSTEM

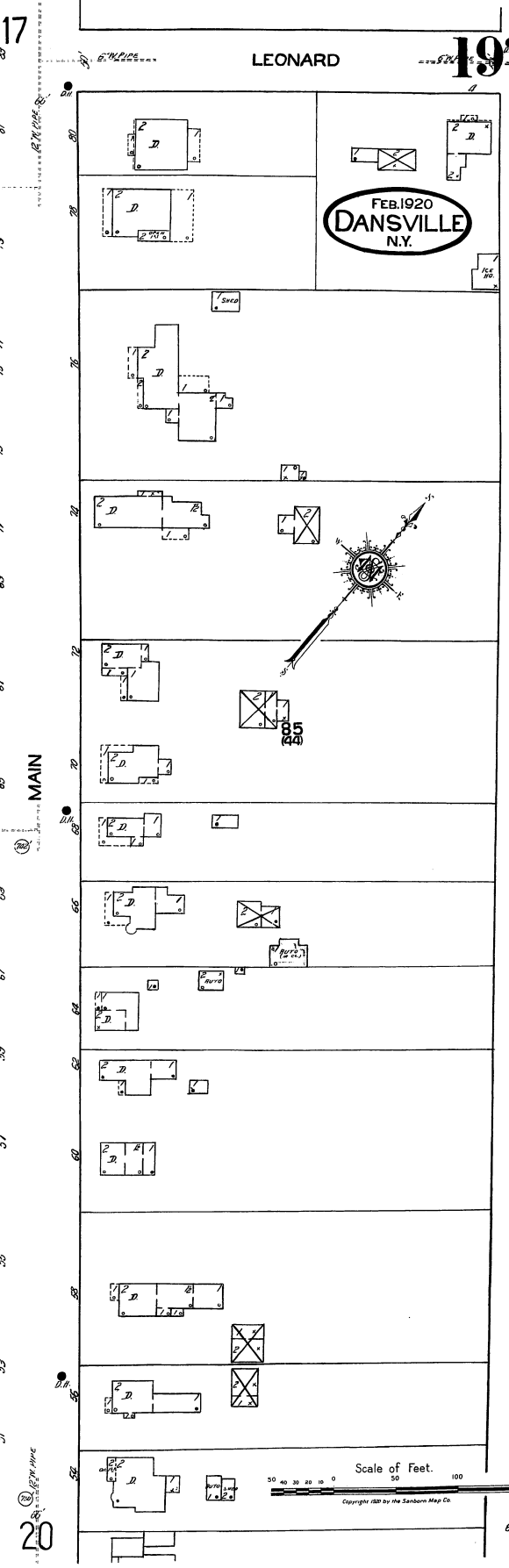
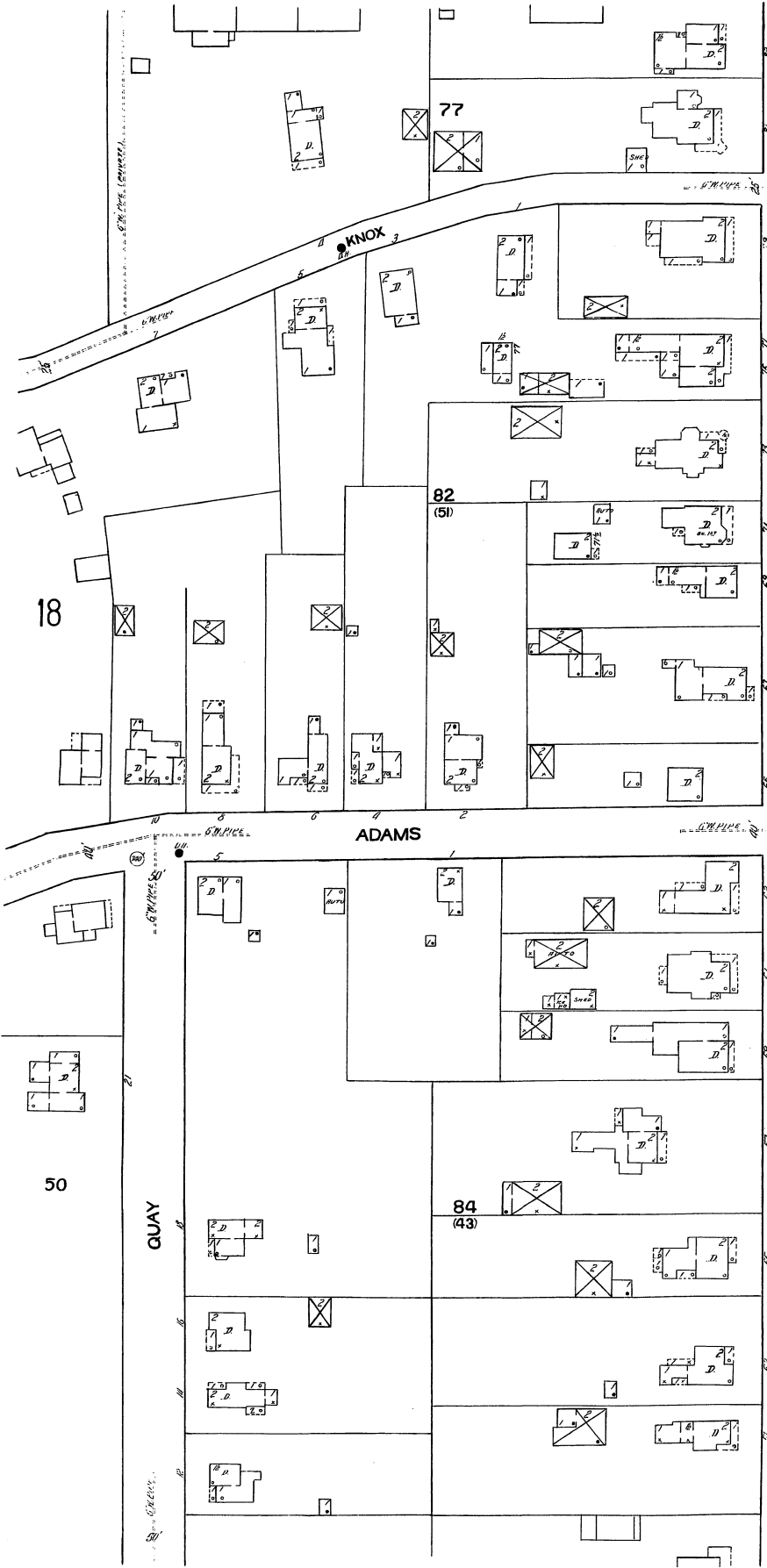


Copyright 1920 by the Sanborn Map Co.

GOLF GROUNDS BEYOND

Mill Creek

QUAY

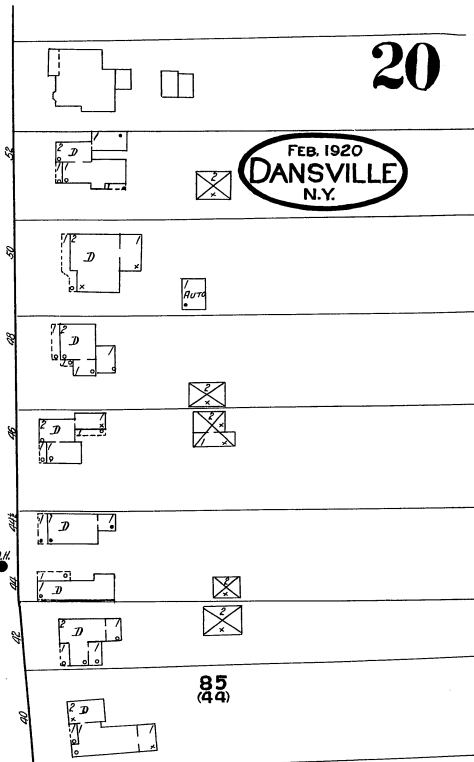
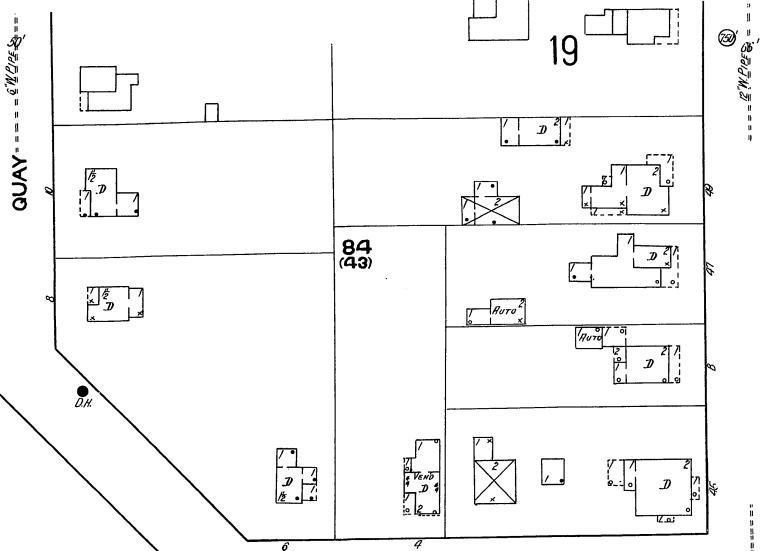


FEB. 1920  
DANVILLE  
N.Y.

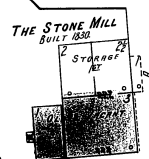
Scale of Feet.  
50 100 150  
Copyright 1920 by the Sanborn Map Co.

20

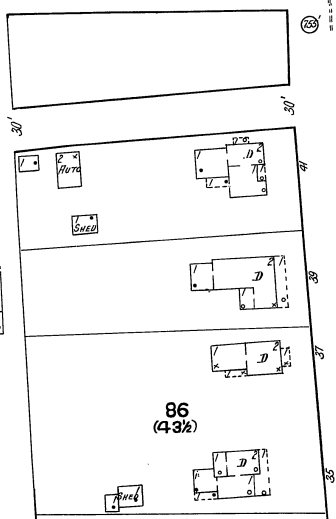
FEB. 1920  
DANSVILLE  
N.Y.



QUAY



20

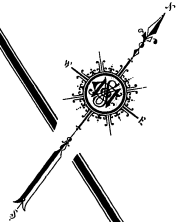


MAIN

MAIN

85 (44)

86 (43 1/2)

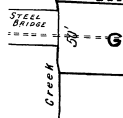
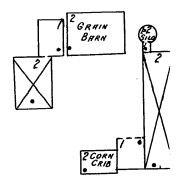


Scale of Feet.  
0 50 100 150  
Copyright 1920 by the Sanson Map Co

NO EXPOSURE

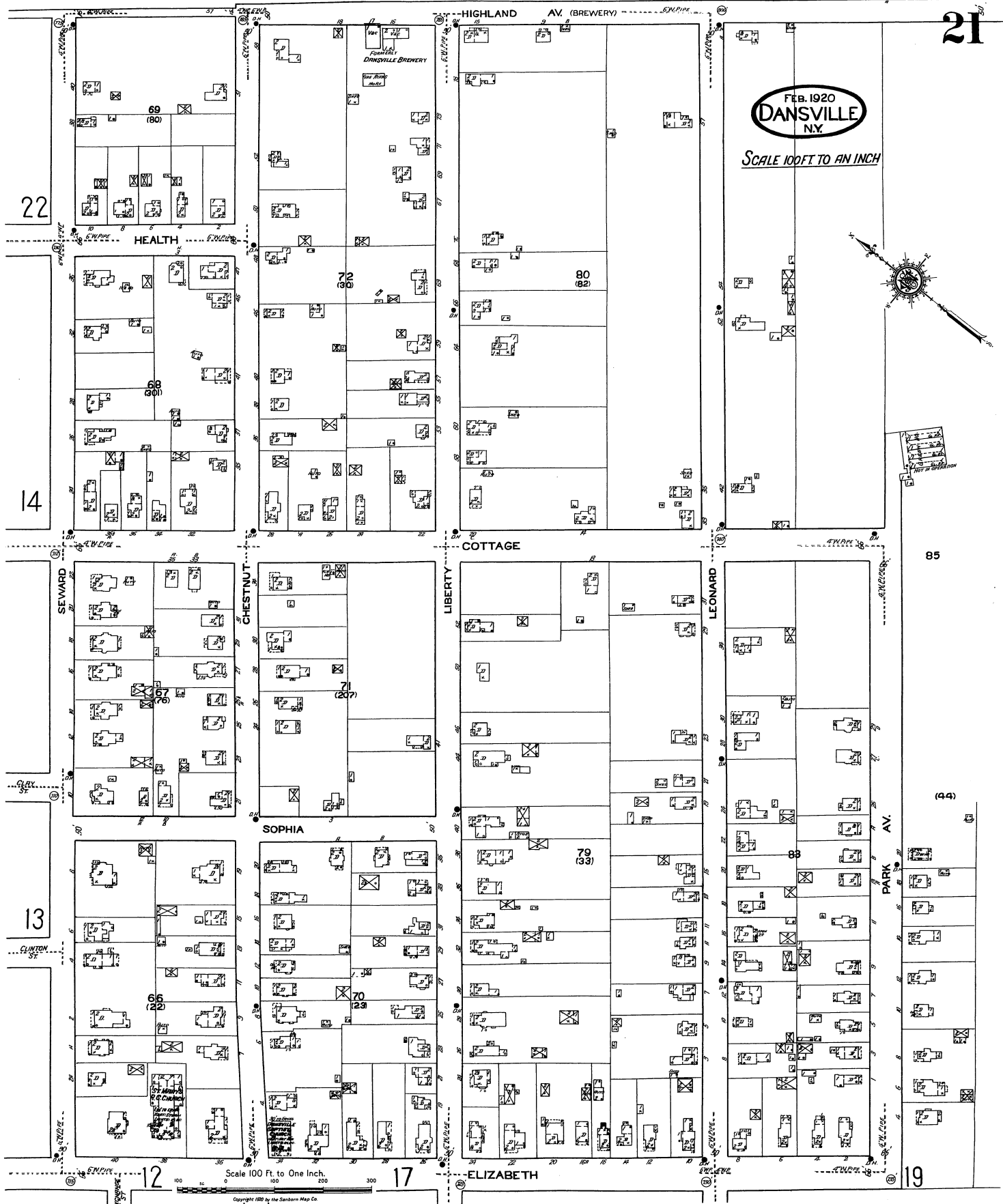
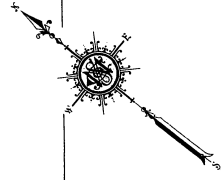
GIBSON

20



FEB. 1920  
DANVILLE  
N.Y.

SCALE 100 FT. TO AN INCH

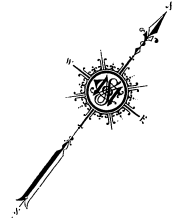


Scale 100 Ft. to One Inch.

Copyright 1920 by the Sanborn Map Co.

FEB. 1920  
DANSVILLE  
N.Y.

SCALE 100 FT. TO AN INCH

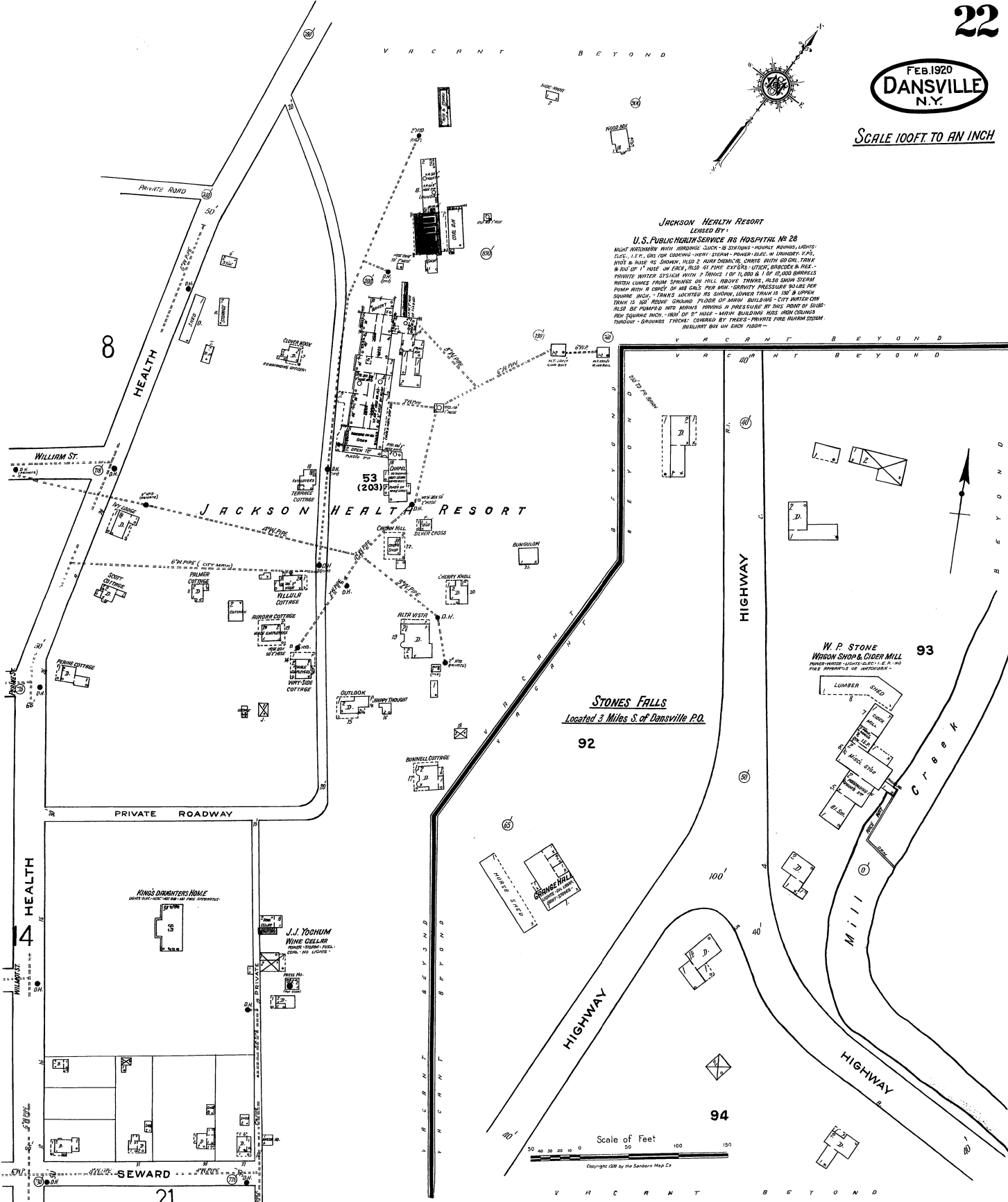


JACKSON HEALTH RESORT

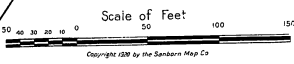
LEASED BY:

U.S. PUBLIC HEALTH SERVICE AS HOSPITAL No 28

WATER SUPPLY SYSTEM WITH STORAGE TANKS - HOT WATER SYSTEM - POWER PLANT - WINDMILL - P.S. -  
ELEC. - I. E. C. ONE FOR COOKING - HEAT SYSTEM - POWER PLANT - WINDMILL - P.S. -  
WATER & SEWER SYSTEM - 1000 GALLON STORAGE TANK WITH 20 GPM. TANK  
IN BOX OF 1' DIA. IN EACH, ALSO 41 PIPE EXITS: UTILITY, BRACKER & RES. -  
PRIVATE WATER SYSTEM WITH 7 TANKS 100' TO 150' OF 12" DIA. BRACKER  
WITH LANCE FROM SPRINGS ON HILL. WINDMILL TOWER. ALSO SMOKE SYSTEM  
PUMP WITH 10 GPM. OF 1/2" DIA. PER MIN. - SECURITY PRESSURE BOLTS FOR  
TANKS IS 30' HIGH. GROUND FLOOR OF MAIN BUILDING - CITY WATER ONLY  
SQUARE INCH. TANKS LOCATED IN SINKING LOWER THAN IS 100' IN COUNTRY  
ALSO BE PUMPED INTO MAINS HAVING A PRESSURE OF 100' IN FRONT OF BUILDING  
PER SQUARE INCH - 100' OF 1" DIA. - MAIN BUILDING HAS IRON CEILING  
THROUGH - GROUNDS TREES - COVERED BY TREES - PRIVATE FIRE ALARM SYSTEM  
RESORT ONE ON EACH FLOOR



STONES FALLS  
Located 3 Miles S. of Dansville P.O.



Copyright 1918 by the Sanborn Map Co.

FEB. 1920  
**DANSVILLE**  
 N.Y.

**CUMMINSVILLE**  
 Plant of Cummins Specialty Co. located 2 miles N. of Dansville

NIGHT, SUNDAY & HOLIDAY WATCHMAN KEYS ON CLOSE  
 IN STATIONS, RAILROADS, POWER, WATER & SEWER  
 ELEC. TRANSMISSION WIRE, STEAM, FUEL OIL, LIGHT, ETC.  
 L.E.C. PRIVATE WATER SUPPLY SYSTEM LOCATED  
 1/2 MILE S.W. OF 80' ABOVE POINT WATER PUMPED FROM MAIN  
 MADE BY 18" DIAM. IRON PIPE & CAPACITY OF 1,000  
 GALS. EACH PER. 24 HOURS CAPACITY OF RESERVOIR 400,000  
 GALS. AVERAGE PRESSURE AT PLANT 85 LBS. PER SQ. INCH  
 TO BE UNDERWRITERS FROM FURN. CAPACITY 1,000 GALS. PER  
 MIN. CONNECTED TO SYSTEM FOR DIRECT PRESSURE  
 WATER FROM CONDENSER GREEN WOOD AS SHOWN  
 WITH LOCATION OF HYD. FROM PLANS 100-23 HOSE  
 UNDERWRITERS FIRE EXTINGUISHERS DISTRIBUTED ABOUT  
 PLANT. RESISTANCE FROM DANVILLE FIRE DEPT.  
 WHEN NEEDED. STATE ROAD TO DANVILLE

TO BE FORGE SHOP.  
 (From plans)  
 (To be fire proof except  
 except exposed steel (1)  
 ground floor fr.

**POWER SPECIALTY CO.**  
 MFRS OF STEAM SPECIALTIES

**MACHINE SHOP**  
 ENGINE FLOOR  
 WOODWORK ON STEEL FRAMES  
 TUNING ROOM  
 TOOL ROOM

**B.L.S.M. & FORGE SHOP**  
 2nd FLOOR

**OFFICE BLDG.**  
 2nd FLOOR  
 UNITS:  
 OFFICE  
 OFFICE

**FRANK M. SMITH**  
 PRODUCE & FLORIST  
 WET STEAM HEAT. COOK.  
 LIGHT, OIL & GRASS

