

# DANVILLE

INCLUDING SOUTH DANVILLE, Montour County, Pennsylvania

Sauborn Map Company  
of NEW YORK

Dec 1923 Copyright 1924 by the Sauborn Map Co

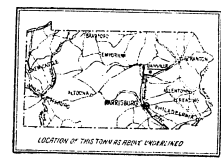
Population, 12,000.

Prevalent Winds, West

Map Shows APRIL 1 1924 Library of Congress

**WATER FACILITIES:** The water supply is derived from the Mahoning River by the Danville Water Works, which has a capacity of 1,000,000 gallons per day. The water is pumped into a reservoir and then distributed to the city through a system of pipes. The water is of good quality and is used for domestic and industrial purposes.

**FIRE DEPARTMENT:** The fire department is organized into three companies: First, Second, and Third. The first company is based at the fire station on Market Street, the second at the fire station on Chestnut Street, and the third at the fire station on North Street. The department is equipped with modern fire engines and ladders.



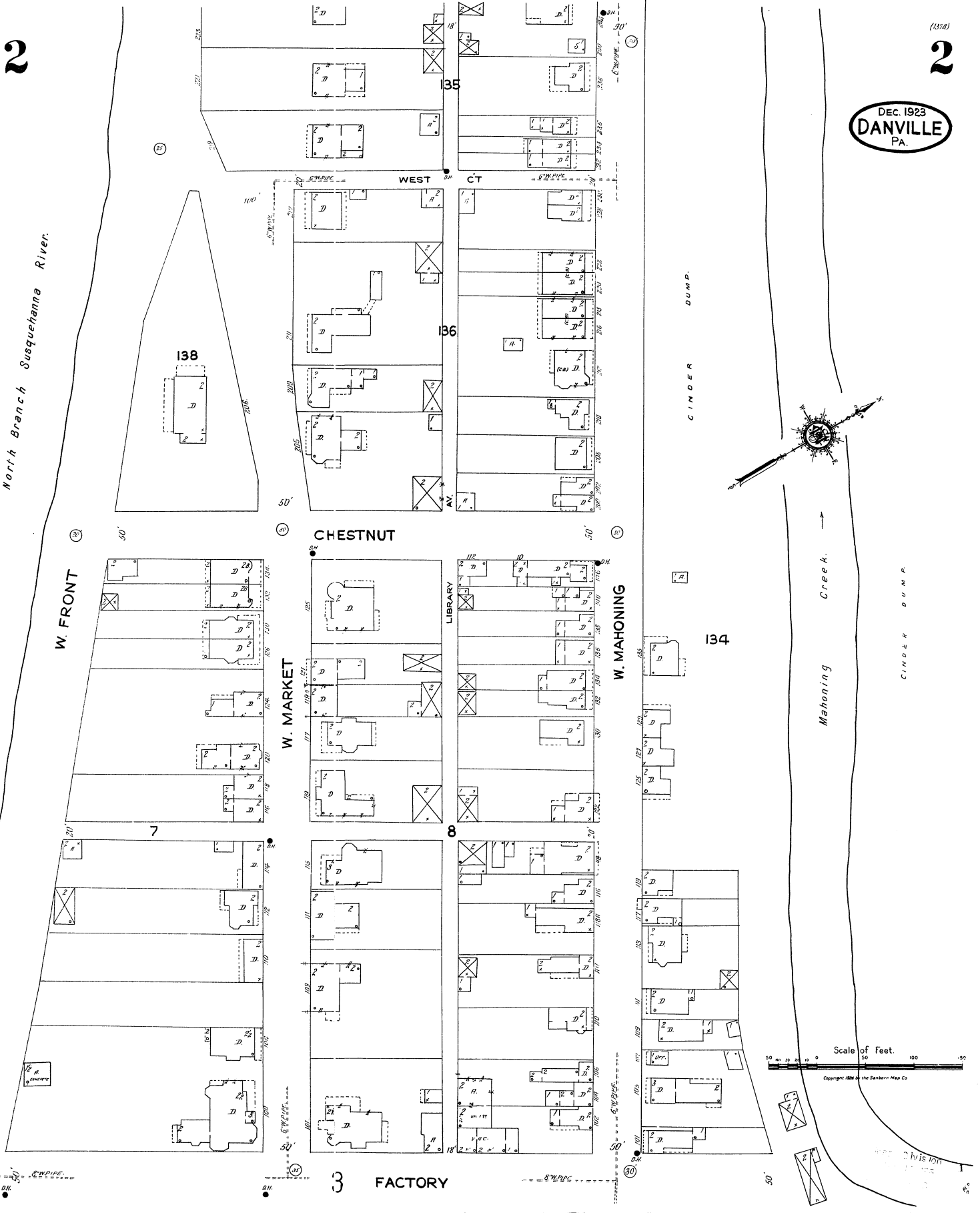
## INDEX

| STREETS                                    |                                     |                                   | SPECIALS   |                                     |                    |  |  |
|--|-------------------------------------|-----------------------------------|------------|-------------------------------------|--------------------|--|--|
| A Street, 17                               | Fifth, at South Danville, 18        | Mahoning, W., 3                   | 20-23 3    | Railroad, R                         | 8, 11, 14, 16 & 17 | Danville Knitting Mills, 13              | Nam-Trah Knitting and Spinning Co., Danville Knitting Mills, 9 |
| Ash, 1-216 17                              | Foley Court, 3, 10, 11, 12, 13 & 18 | Manly Alley, Market, E., 1-122 10 | 100-243 2  | Sixth, at South Danville, 18        |                    | Milling and Baking Co., 17               | Opera House, O   |
| 217-223 17                                 | Front, E., 1-122 10                 | Mowery to E. of Faust, 15         | 200-429 10 | Spruce, 1-215 17                    |                    | State Hospital for Insane, 19            | Palace Hotel, 4  |
| 218-222 17                                 | W., 1-24 3                          | Mowery to Faust, 15               | 400-703 11 | Stove and M'fg Co., 12 & 13         |                    | D. L. & W. R. R. Depot, 10 & 11          | P. O. S. of A. Building, 18                                    |
| 224-249 7                                  | Fulton, 100-223 2                   | Mowery to Faust, 15               | 710-703 12 | Structure Tubing Co., 10 & 11       |                    | Locomotive House, 8                      | P. R. R. Depot, 8  |
| Court (arbitrary), 18                      |                                     |                                   | 800-813 12 | Steeb, (arbitrary), 12              |                    | East End Mission, 12                     | Penn. Brake Beam Co., Brake Beam M'fg 18                       |
| Avenue E. at South Danville, 18            |                                     |                                   | 801-815 12 | Sanbury, at South Danville, 16 & 18 |                    | Emanuel Church, 12                       | P. R. R. Depot, 18   |
| Avenue F. at South Danville, 18            |                                     |                                   | 814-941 13 | Sycamore, 1-24 9                    |                    | English Evangelical Lutheran Church, 5   | Post Office, Mill St., 18                                      |
| Avenue H. at South Danville, 18            |                                     |                                   | 1-24 9     | Upper Mulberry, 1-124 17            |                    | Evans, T. L., & Son, Stone Works, 4      | Public School, Chamber St., 7                                  |
| Bloom, 1 122 5                             | Gearhart, at South Danville, 13     | Mill, Square, 1-152 8             | 200-335 4  | Vine, 1-240 17                      |                    | Farmers Hotel, F                         | Fire Dept., Central Station, Ferry St., 3                      |
| 200-208 5                                  | Geisinger, 1-185 11                 |                                   | 338-352 5  | Wall, 1-108 8                       |                    | Goodwill Hose Co. No. 4, 17              | Hose House, Mill St., 9  |
| 201-201 17                                 | Grand, 2-32 18                      |                                   | 337-351 4  | Walnut, 1-108 8                     |                    | Station, E. Market St., 12               | First Regular Baptist Tabernacle, 10                           |
| 210 625 17                                 |                                     |                                   | 400-519 5  | Water, 1-209 17                     |                    | Fourth Ward Public School, 17            | Reading Iron Co., Danville Puddling Mill 8                     |
| Canal, 10                                  |                                     |                                   | 520-542 7  | West Court, 3 & 14                  |                    | Rolling Mills, 6                         | Thomas Beaver Free Library, 3                                  |
| Cedar, 1 124 5                             |                                     |                                   | 621-629 5  |                                     |                    | Riverview House, 3                       | Hubert's German Cath. Church & Sch., 17                        |
| Center, E., 200-635 17                     |                                     |                                   | 600-725 7  |                                     |                    | St. Elmo Hotel, 4                        | John's German Lutheran Church, 10                              |
| W., 1 12 5                                 |                                     |                                   |            |                                     |                    | Joseph's Roman Catholic Church, 5        | Peter's Methodist Episcopal Church, 18                         |
| 13 150 6                                   |                                     |                                   |            |                                     |                    | Schmidt, J., Slaughter House, 4          | Shank, W. S., Marble Works, 9                                  |
| Chambers, 1 216 7                          |                                     |                                   |            |                                     |                    | Shiloh Reformed Church, 17               | Smith Block, 4   |
| Cherry, 2                                  |                                     |                                   |            |                                     |                    | South Danville Flaming Mill Co., 16      | Sauquoanna House, 16   |
| Chestnut, at South Danville, 1 312 10 & 10 |                                     |                                   |            |                                     |                    | Synagogue Congregation Binai Zion, 10    | Third Ward Public School, 5                                    |
| Church, 313 42 10                          |                                     |                                   |            |                                     |                    | Kase, J. H., Riverside Coal Yard, 16     | Thomas Beaver Free Library, 3                                  |
| 560 515 17                                 |                                     |                                   |            |                                     |                    | Leduc Greenhouses, 15                    | Town Water Works and Elec. Light Sta., 3                       |
| Clinton, 17                                |                                     |                                   |            |                                     |                    | Lana Motion Picture House, 8             | Trinity Evangelical Lutheran Church, 10                        |
| Columbia Ave., 17                          |                                     |                                   |            |                                     |                    | Magill, J. T., Coal Yard, Office, &c., 4 | Methodist Episcopal Church, 5                                  |
| Cook's Court, 1-214 11                     |                                     |                                   |            |                                     |                    | Mahoning English Presby't'n Church, 8    | Union Hotel, U   |
| Cooper, 19                                 |                                     |                                   |            |                                     |                    | Masonic Temple, 9                        | Welsh Congregational Church, 7                                 |
| Co-operative Court, 19                     |                                     |                                   |            |                                     |                    | Miller & Curry Junk Yard, 11             | Y. M. C. A. Building, 3  |
| County Road, 19                            |                                     |                                   |            |                                     |                    | Machine Department, 12                   |  |
| D & H Avenue, N., at So. Danville, 16 & 18 |                                     |                                   |            |                                     |                    |  |  |
| S., at So. Danville, 16 & 18               |                                     |                                   |            |                                     |                    |  |  |
| Deot Square, at South Danville, 10         |                                     |                                   |            |                                     |                    |  |  |
| Deve (arbitrary), 10                       |                                     |                                   |            |                                     |                    |  |  |
| Eighth, at South Danville, 18              |                                     |                                   |            |                                     |                    |  |  |
| Elmer (arbitrary), at South Danville, 18   |                                     |                                   |            |                                     |                    |  |  |
| Elmo (arbitrary), 18                       |                                     |                                   |            |                                     |                    |  |  |
| Factory, at South Danville, 2 & 3          |                                     |                                   |            |                                     |                    |  |  |
| Faust, 113 124 15                          |                                     |                                   |            |                                     |                    |  |  |
| 125-142 13                                 |                                     |                                   |            |                                     |                    |  |  |
| Ferry, 1-520 3                             |                                     |                                   |            |                                     |                    |  |  |
| 300-359 4                                  |                                     |                                   |            |                                     |                    |  |  |
| 400-616 7                                  |                                     |                                   |            |                                     |                    |  |  |
| 700-717 7                                  |                                     |                                   |            |                                     |                    |  |  |

\* Indicates only one side of Street shown.

North Branch Susquehanna River.

DEC. 1923  
DANVILLE  
PA.



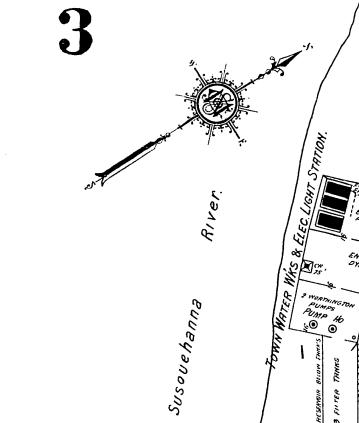
Scale of Feet.  
0 50 100  
Copyright 1923 of the Sanborn Map Co.

Division

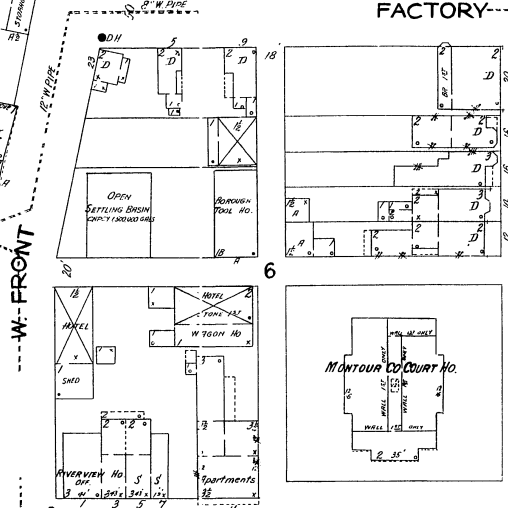
3

DEC. 1923  
DANVILLE  
PA.

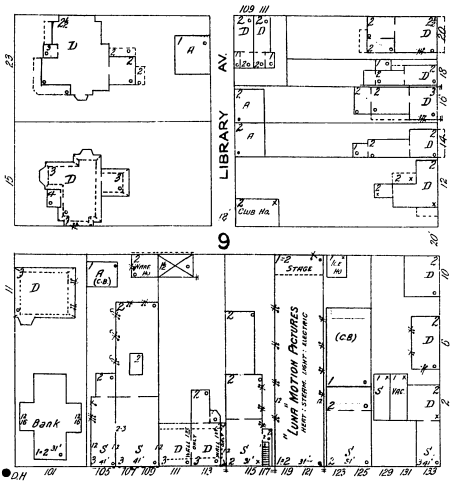
3



FACTORY

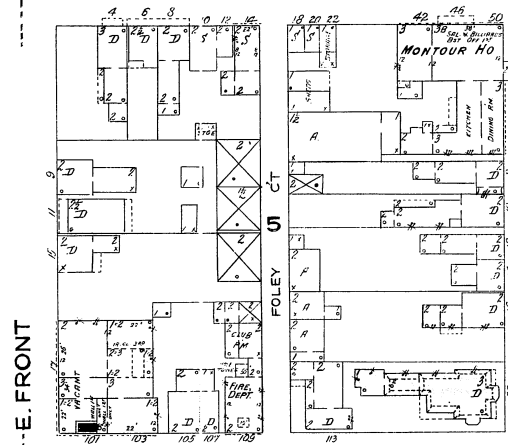


W. MARKET

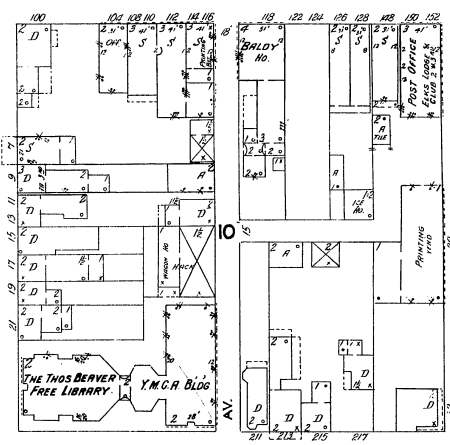


W. MAHONING

MILL

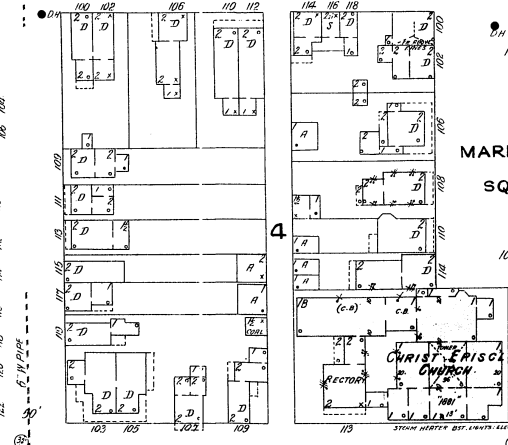


E. MARKET

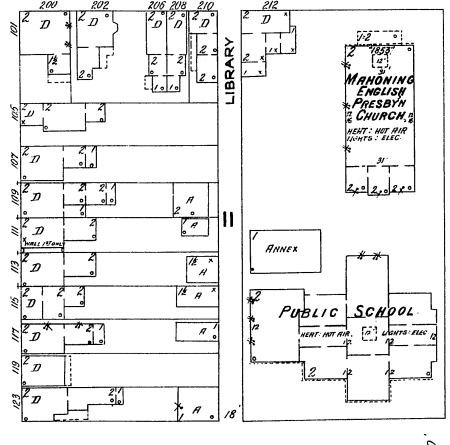


E. MAHONING

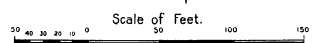
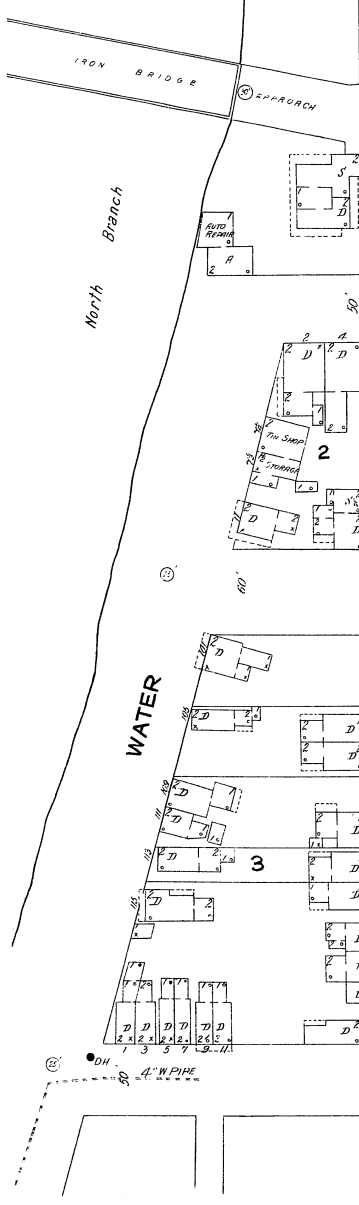
FERRY



MARKET SQ.

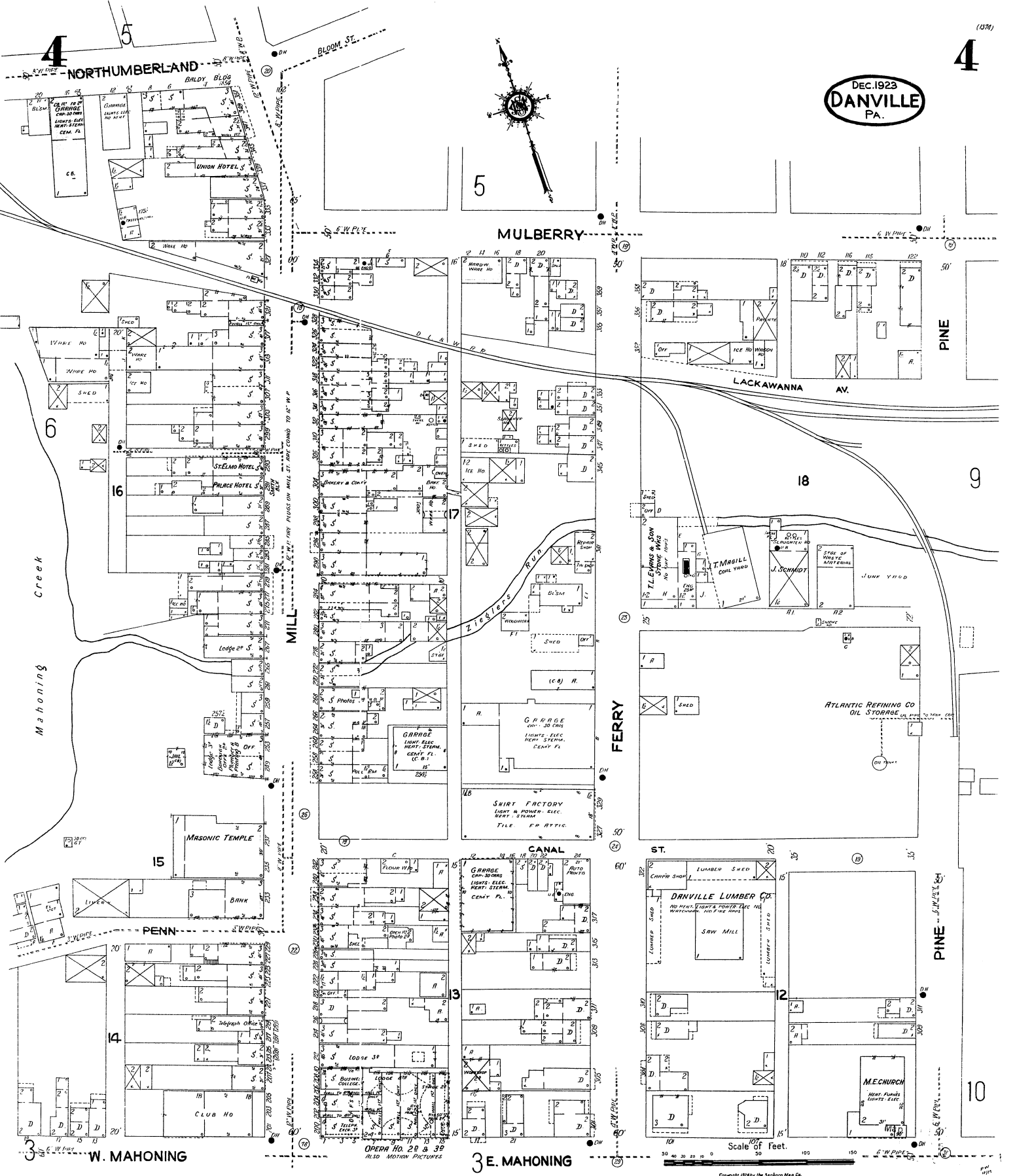


PINE



Copyright 1924 by the Sanborn Map Co.

Dec. 1923  
**DANVILLE**  
PA.



MULBERRY

LACKAWANNA AV.

PINE

FERRY

CANAL

ST.

PINE

3 E. MAHONING

10

Scale of Feet.

5

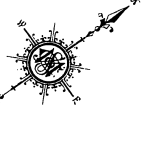
6

5

NORT Humberland St

W. CENTER

DEC. 1923 DANVILLE PA.



READING IRON CO OWNERS  
FACTORY BLDG  
HEAT: STEAM  
LIGHTS: ELEC.  
POWER: ELEC.  
ELEVATOR

S. MILL

SPRICE

4

22

29

21

E. CENTER

28

St. JOSEPH'S R. C. CHURCH  
HEAT: HOT AIR  
LIGHTS: ELEC.

MULBERRY

23

FERRY

27

20

BLOM

24

19

ENGLISH EVANGEL LUTHER CHURCH  
HEAT: HOT AIR  
LIGHTS: ELEC.

WALNUT

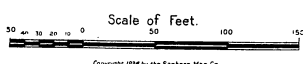
SPINE

17

9

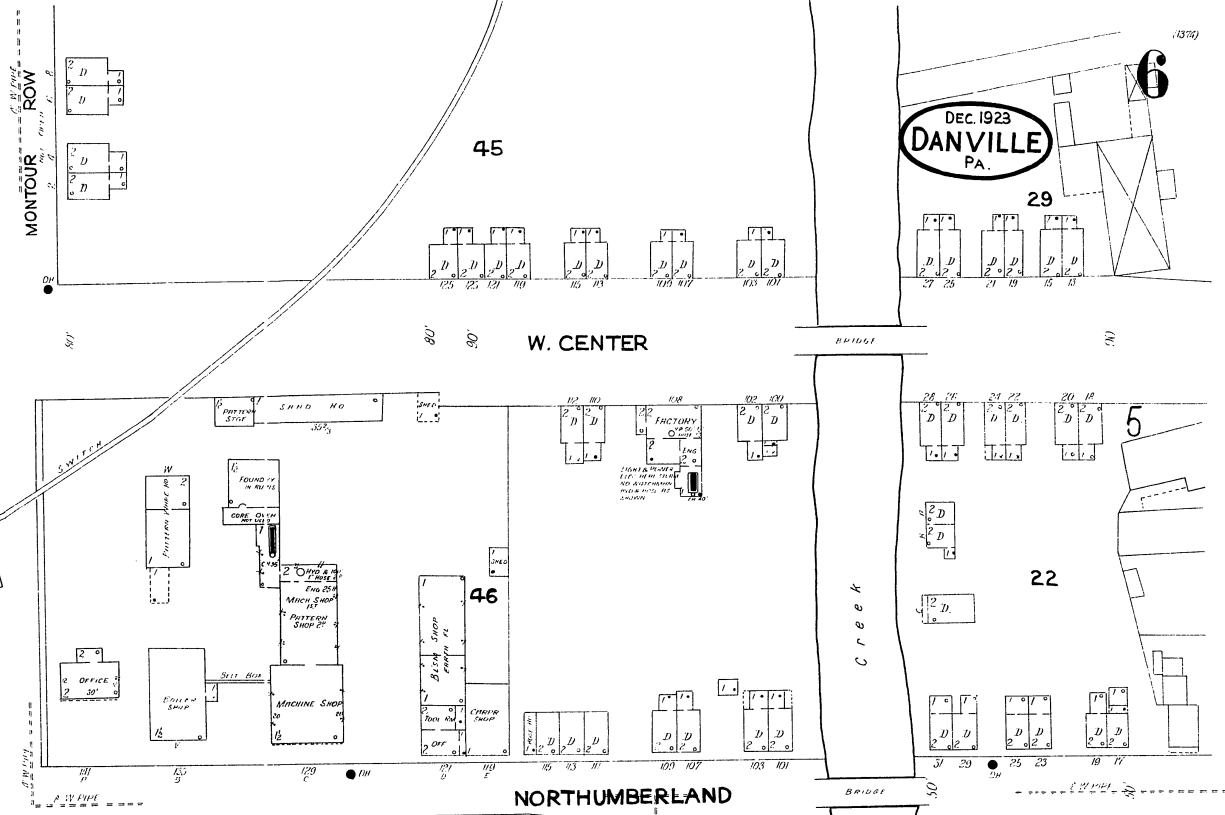
19

79th Ward PUBLIC SCHOOL  
HEAT: HOT AIR  
LIGHTS: ELEC.



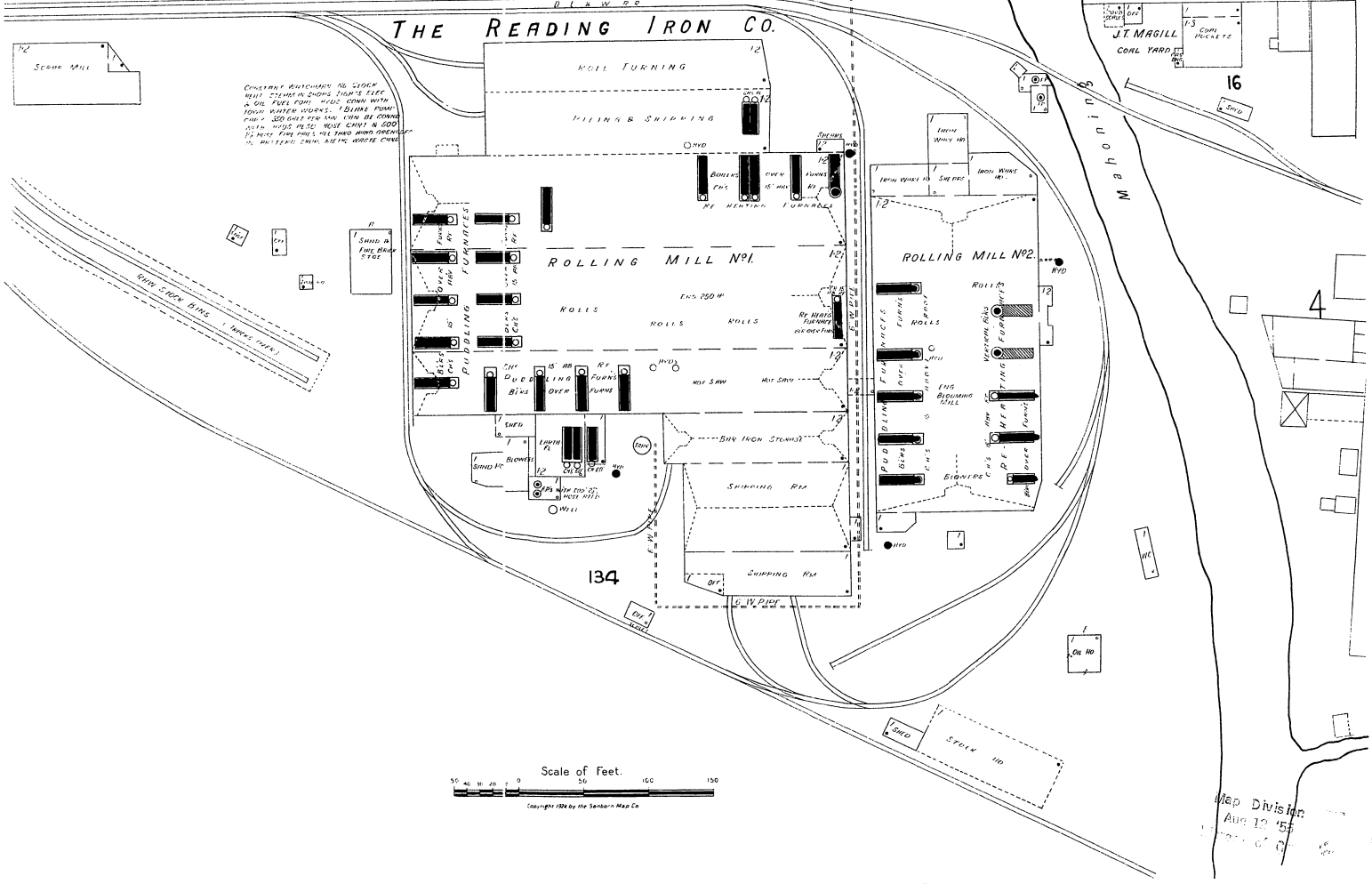
Copyright 1924 by the Sanborn Map Co

6



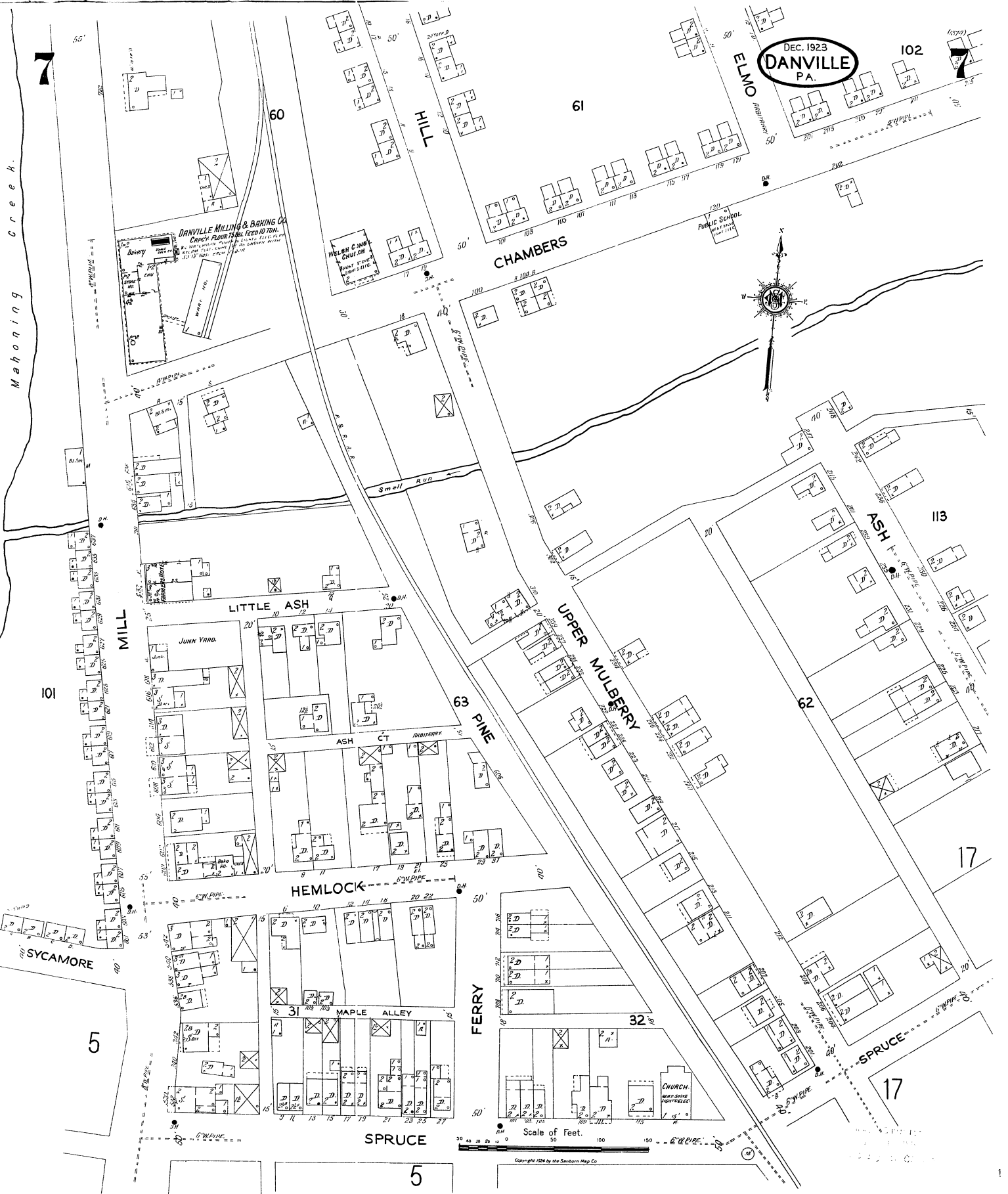
DEC. 1923 DANVILLE PA.

THE READING IRON CO.

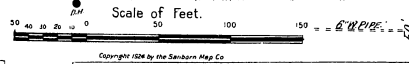


Scale of Feet. 0 50 100 150

Map Division Aug 12 1923



DEC. 1923  
DANVILLE  
P.A.



Copyright 1924 by the Sanborn Map Co

Mahoning Creek

DANVILLE MILLING & BAKING CO.  
GENUINE FLOUR FEED & TON.

WELSH CHURCH

PUBLIC SCHOOL

CHURCH

7

60

61

102

HILL

ELMO

CHAMBERS

MILL

LITTLE ASH

UPPER MULBERRY

ASH

101

63

62

ASH CT

PINE

113

17

HEMLOCK

FERRY

MAPLE ALLEY

32

SPRUCE

SYCAMORE

5

SPRUCE

5

17

8

17

8

DEC. 1923  
DANVILLE  
PA.

DANVILLE STATION

WALNUT

RIMULBERRY

ST.

4TH

82

READING IRON CO  
DANVILLE PUDDLING MILL  
HOT-BLAST, BOILER, STEAM ENGINE, ROLLING MILL, PIPE MILL, COKE OVEN, CHEMICAL WORKS, etc.

RAILROAD

44



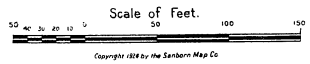
9

Genl Storage

AMERICAN SWEDD BRR CO  
MFG AMERICAN SWEDD BARS  
SHOP & FOUNDRY  
CASTS & FORGES ALL SIZES  
NO MACHINERY, NO LUMBER, NO STEEL  
EASTON, PA.

D.L. & N.E.R.  
Locomotive No.

12



11

B-----A



9

17

9



5

DEC. 1923  
DANVILLE  
PA.

MULBERRY

WALNUT

MULBERRY

LACKAWANNA AV.

CHURCH

8

83

10

PINE

PINE

19

81

133

82

18

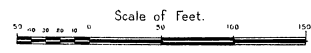
4

DANVILLE HARDWARE & SUPPLY CO.

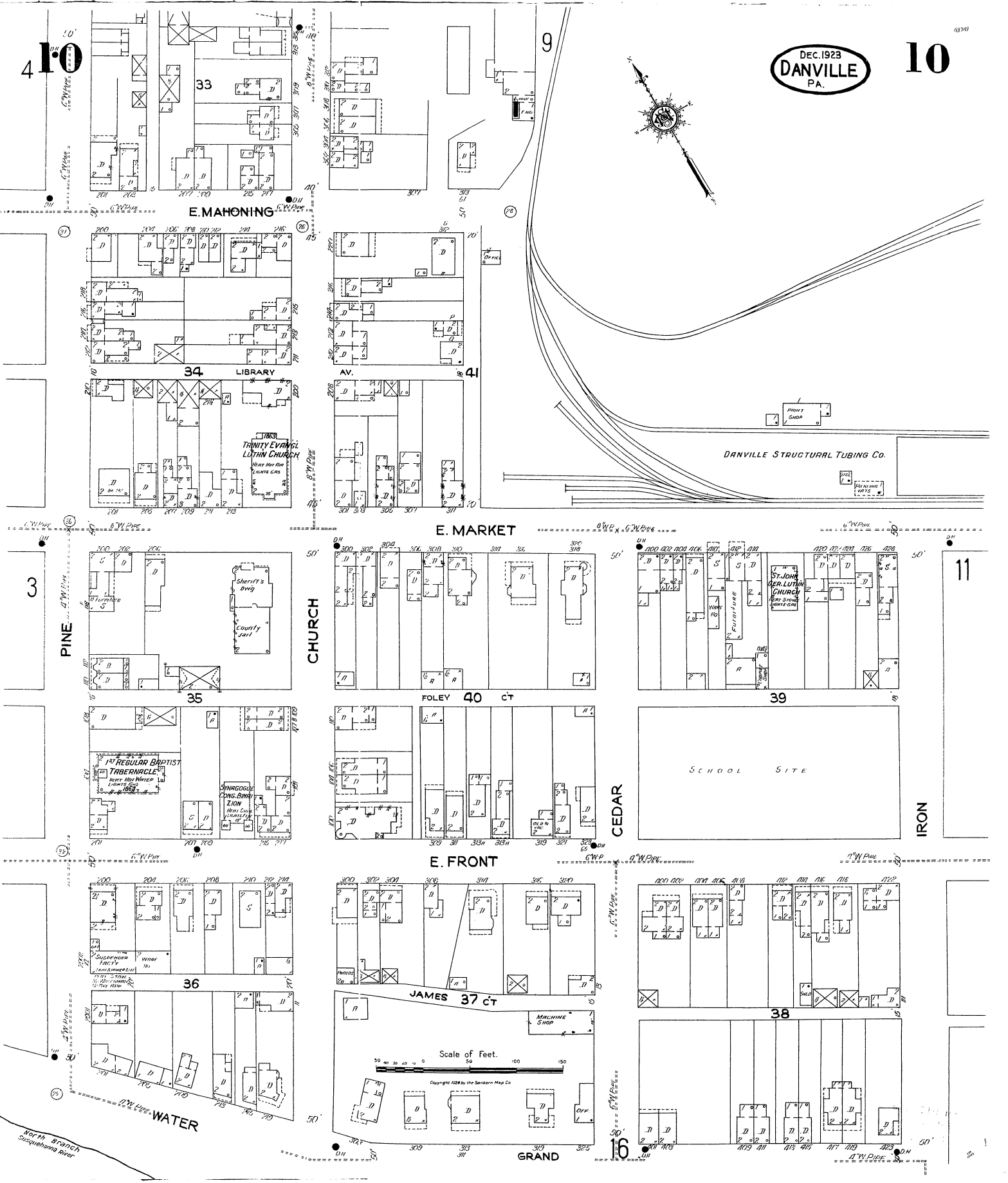
NAM-TRAH KNITTING & SPINNING CO.  
DANVILLE KNITTING MILL

MILLER & CURRY - JUNIA YARD.

A.C. AMESBURY COAL YARD.



Copyright 1923 by the Sanborn Map Co.



E. MAHONING

34 LIBRARY

TRINITY EVANGELICAL LUTHERAN CHURCH

E. MARKET

DANVILLE STRUCTURAL TUBING CO.

PINE

CHURCH

FOLEY 40 CT

39

11

SCHOOL SITE

CEDAR

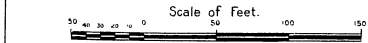
IRON

E. FRONT

JAMES 37 CT

38

WATER



Copyright 1926 by the Sandborn Map Co

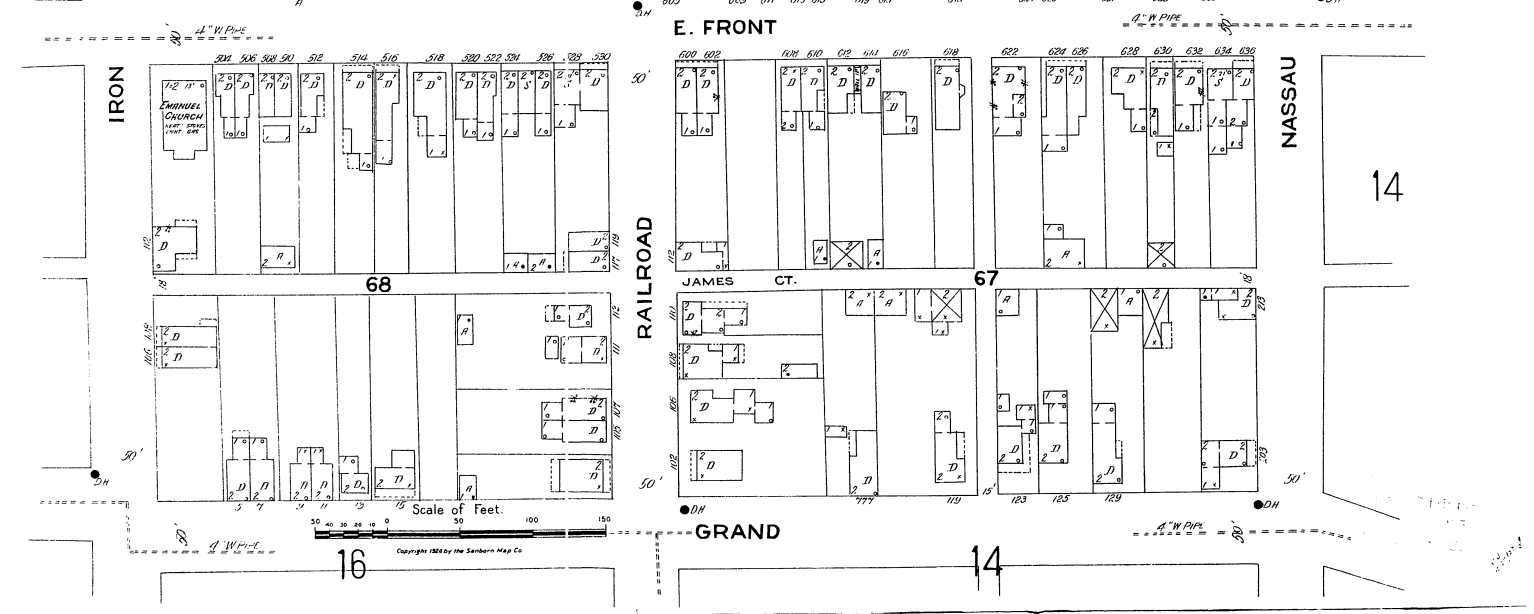
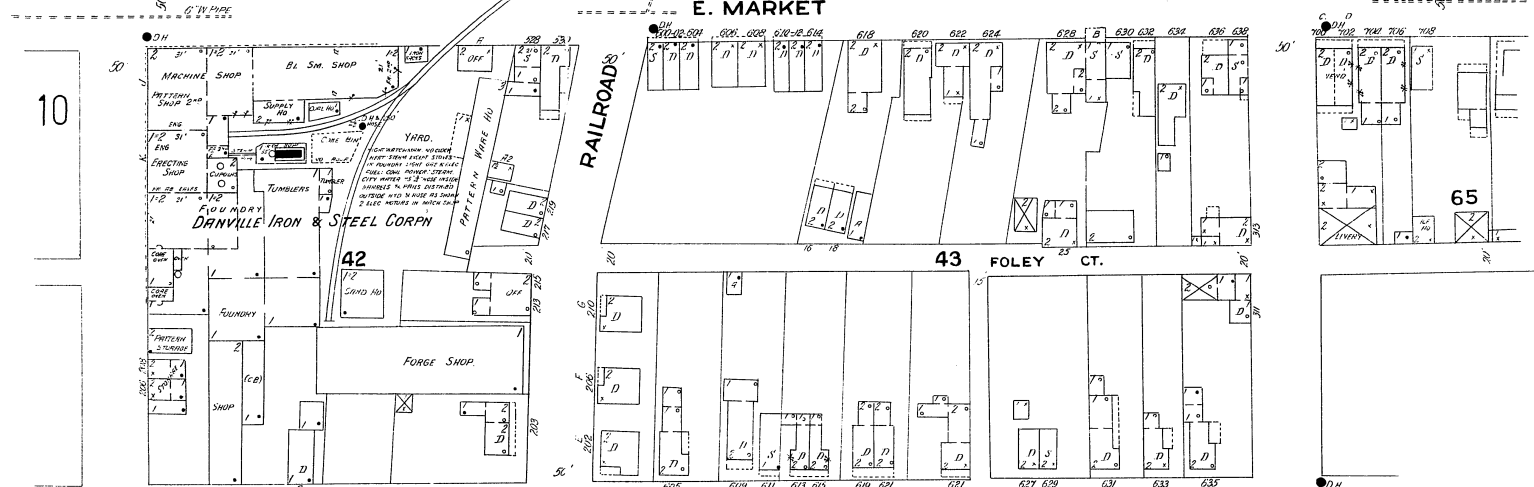
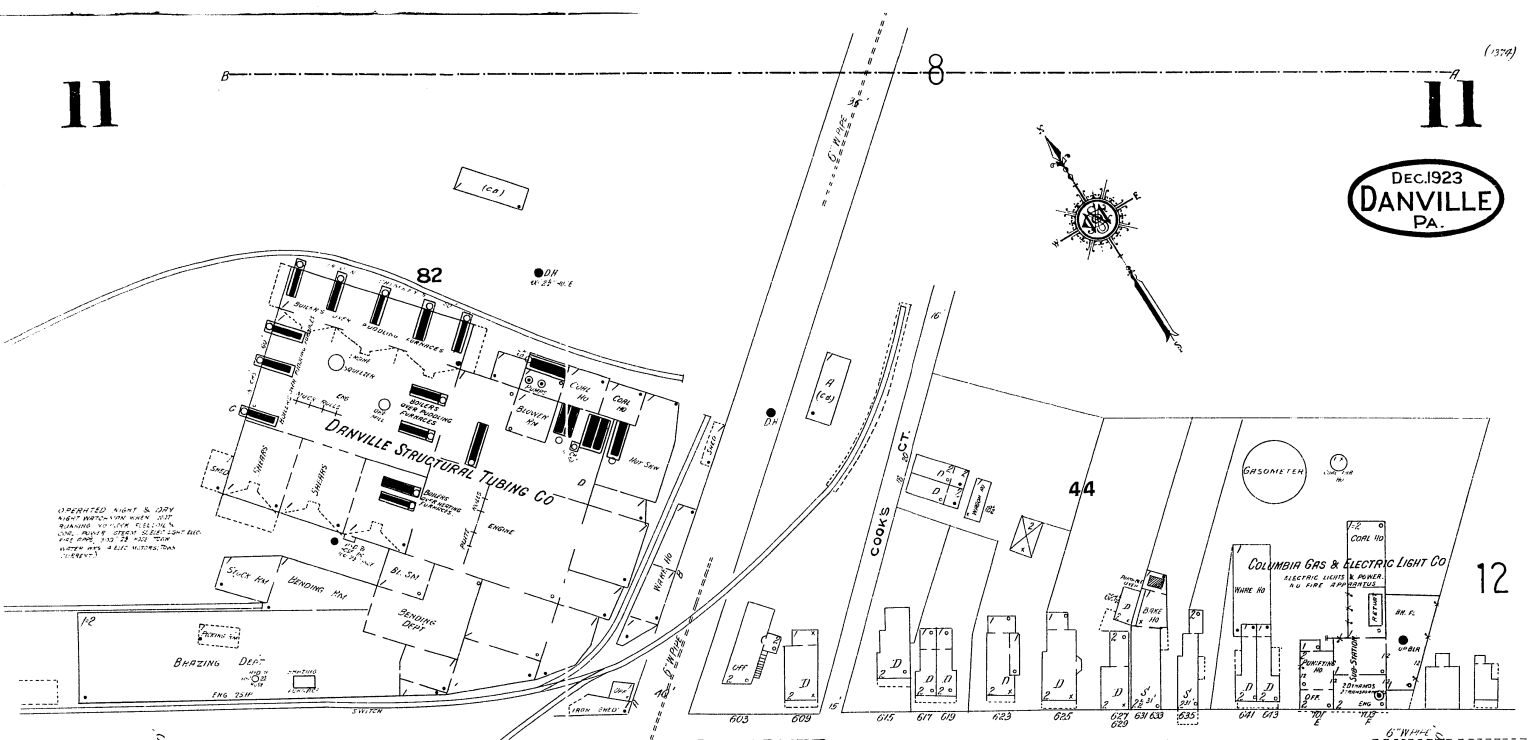
GRAND

16

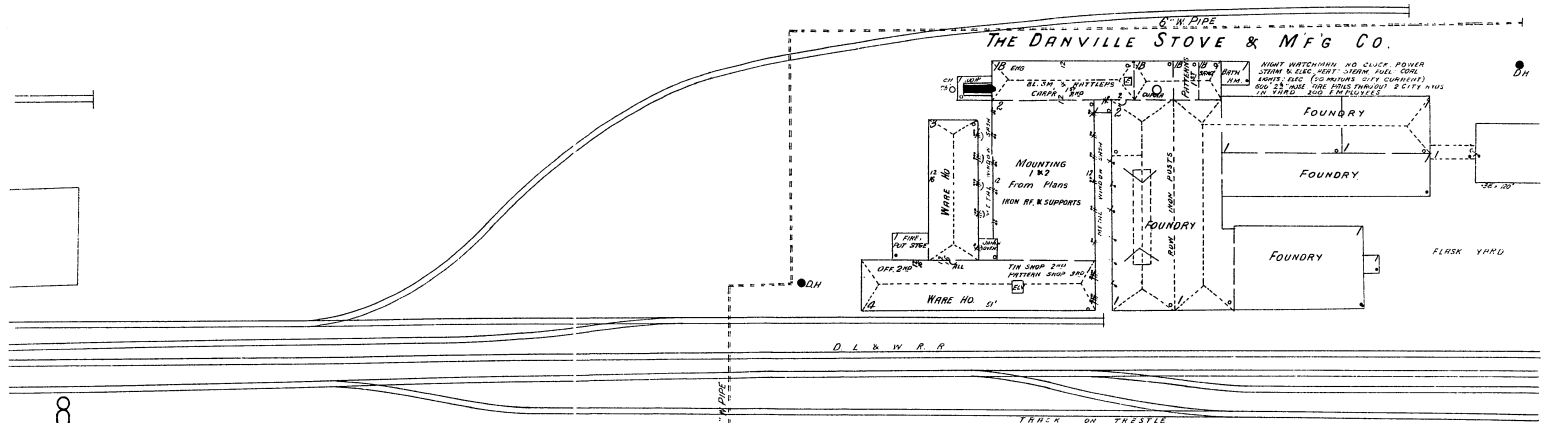
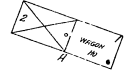
11

11

DEC. 1923  
DANVILLE  
PA.



Scale of Feet  
0 50 100 150  
Copyright 1923 by the Sanborn Map Co



8

DANVILLE IRON & STEEL CORPN  
(For Report see Sheet II.)  
MACHINE DEPT  
EARTH FL.  
LIGHT ELECTRIC. HEAT: STEHM.

STEEL PLANT  
(Dismantled)

73

13

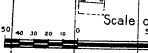
44

STOVE

11

East End  
Mission  
Warehouses

E. MARKET



Copyright 1926 by the Southern Map Co

FOLEY CT

4

HONEYMAN

65

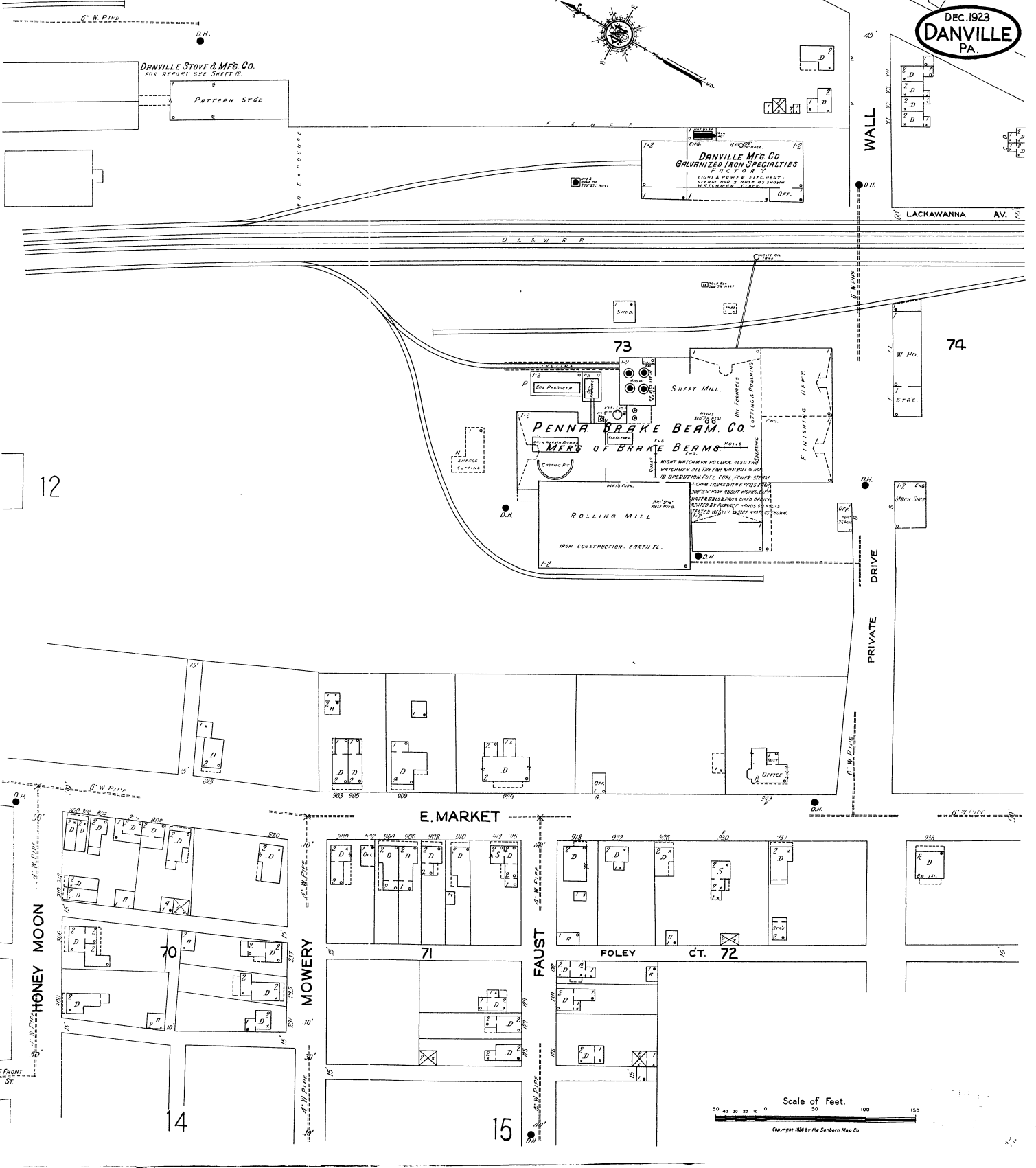
Mission St



13

13

DEC. 1923  
DANVILLE  
PA.



14

12

DEC. 1923  
DANVILLE  
PA.

14

13

E. FRONT

70

15

GRAND

GRAND

HONEYMOON

MOWERY

NASSAU

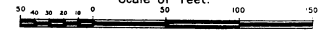
PETERS CT.

COOPER

RAILROAD

WATER

Scale of Feet.



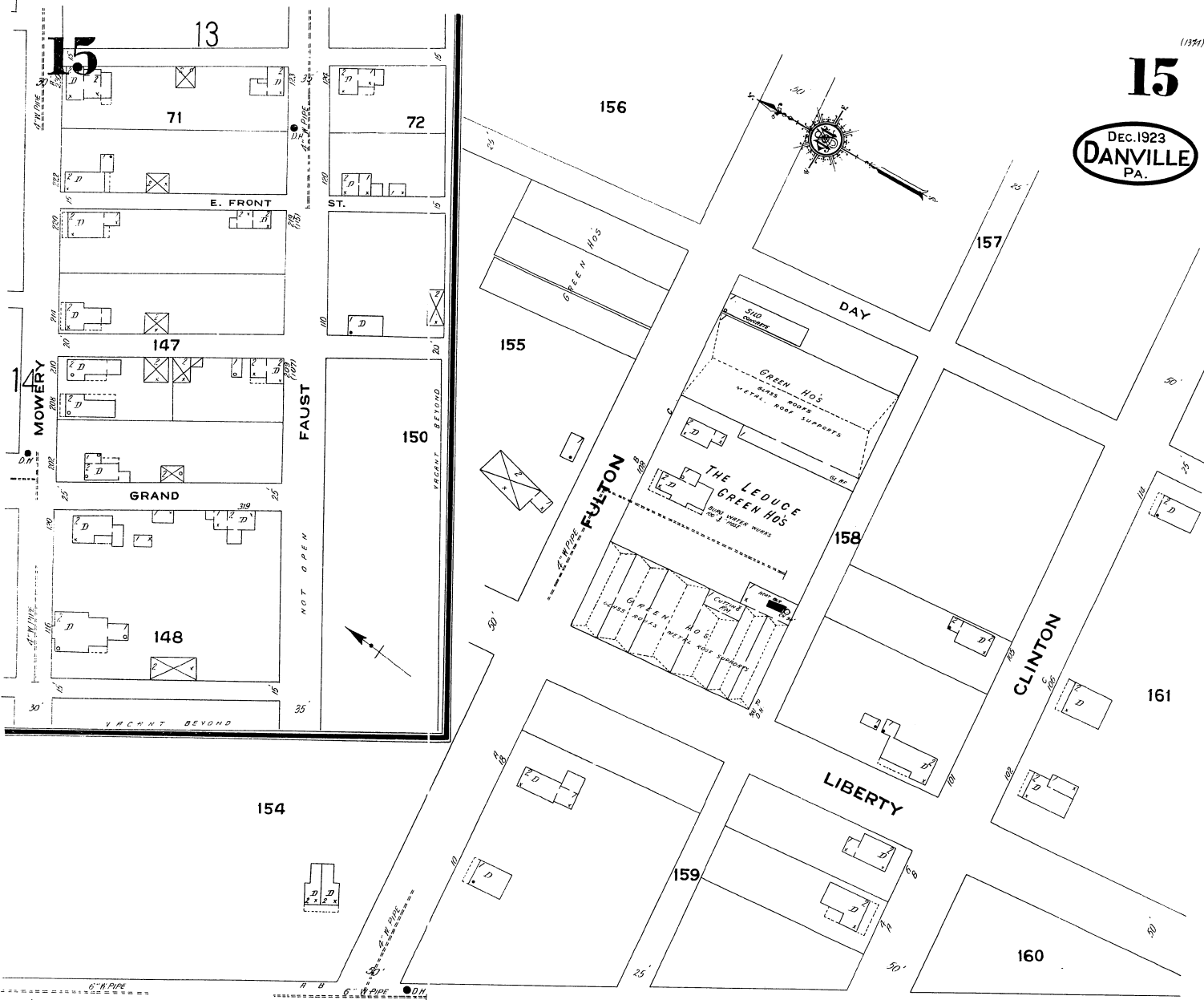
Copyright 1928 by the Sanborn Map Co.



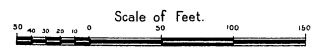
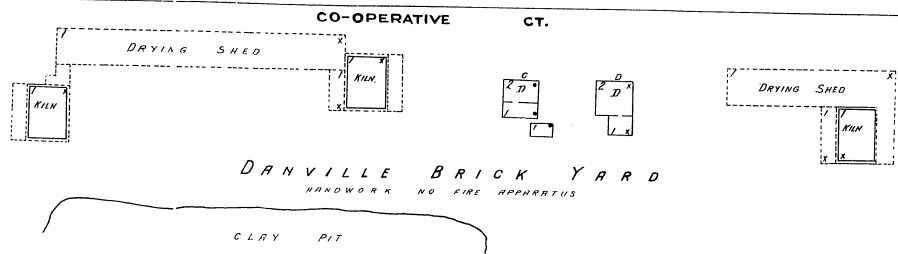
(1371)

15

DEC. 1923  
DANVILLE  
PA.

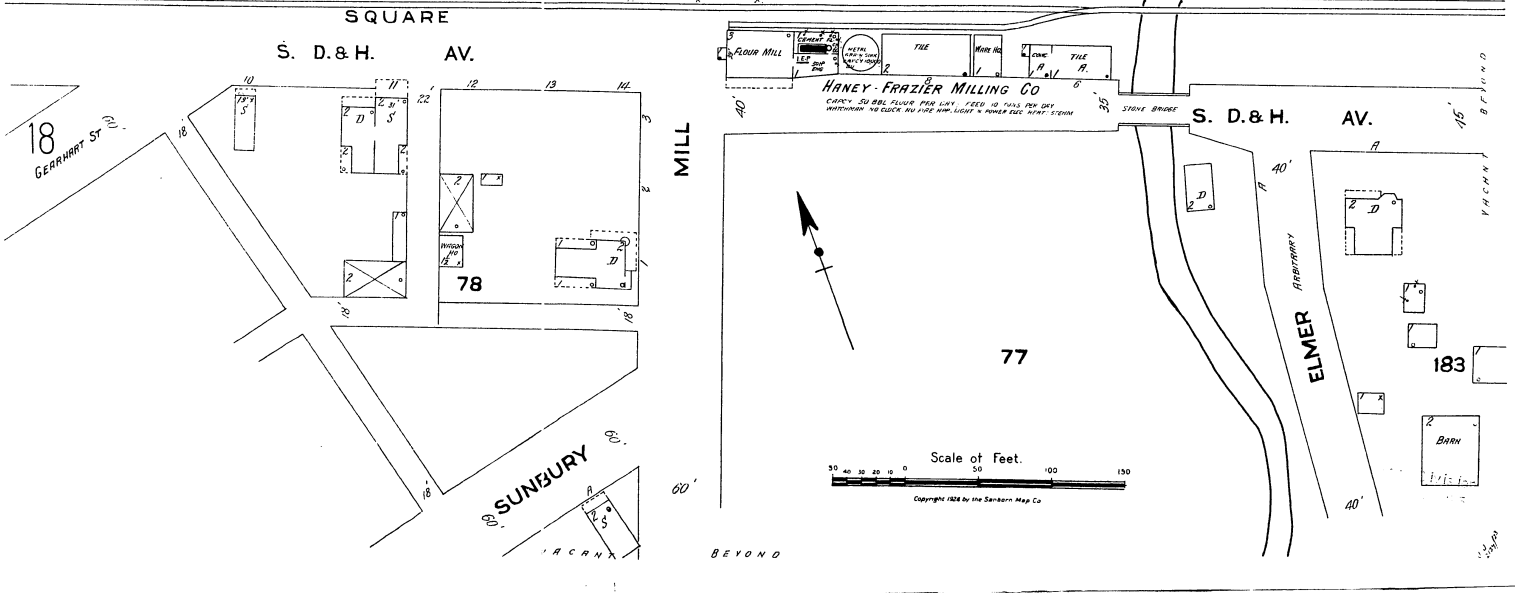
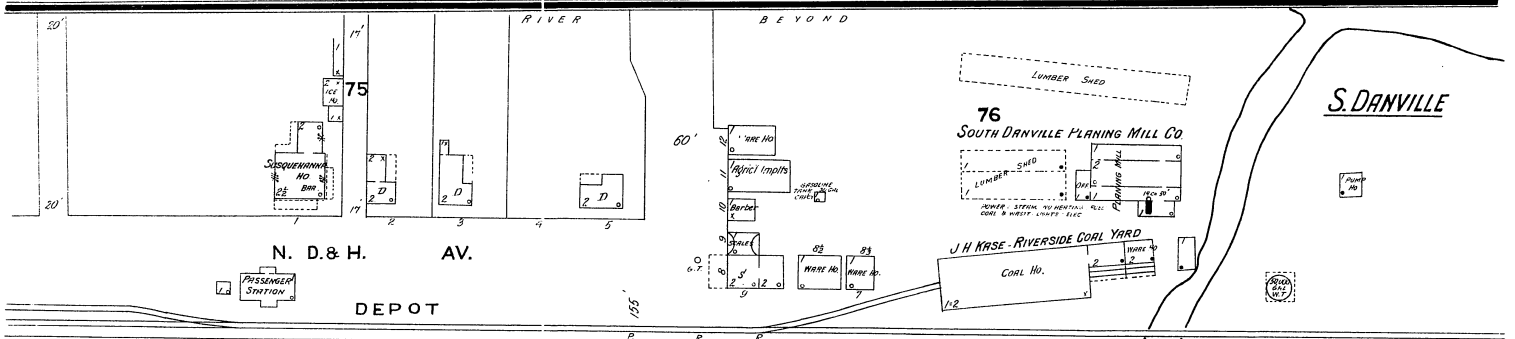
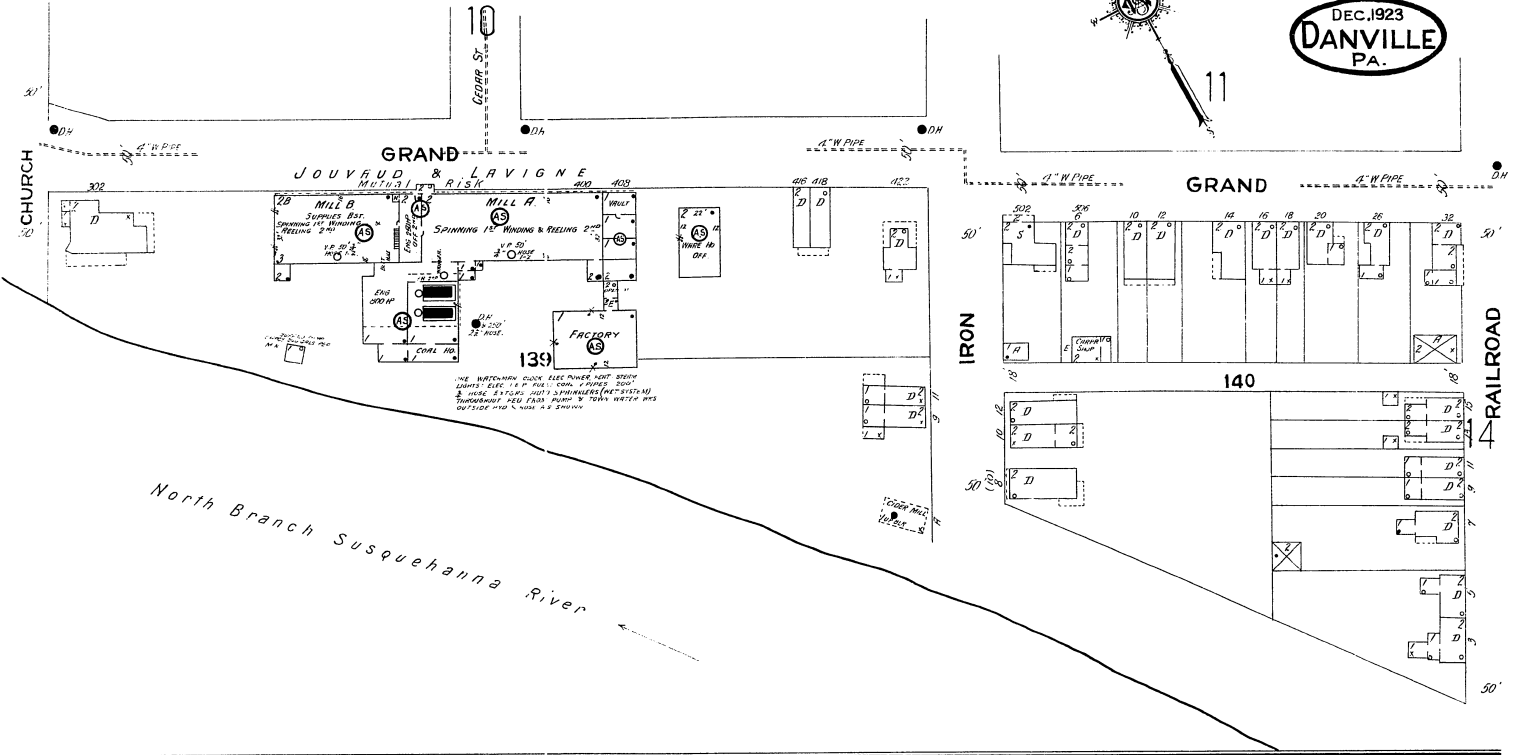


LACKAWANNA AV.



Copyright 1921 by the Searborn Map Co.

DEC. 1923  
DANVILLE  
PA.





DEC. 1923  
DANVILLE  
PA.

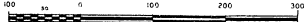
SCALE 100 FT TO AN INCH



THE GEORGE F. GEISINGER MEMORIAL HOSPITAL



Scale 100 Ft to One Inch.



Copyright 1924 by the Sinclair Map Co.

