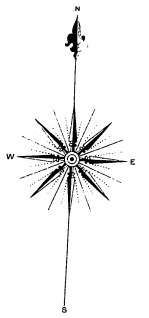
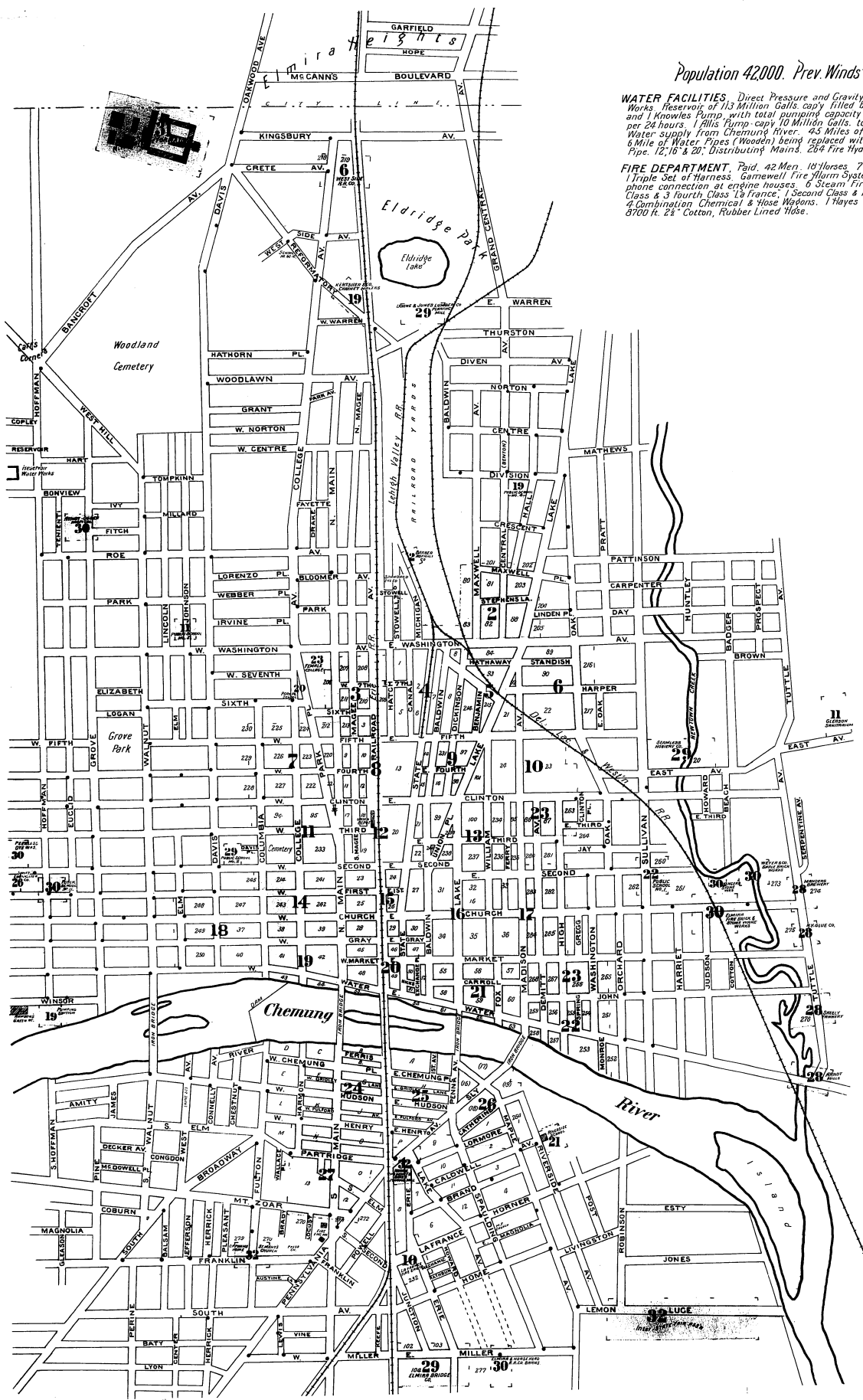


Population 42,000. Prev. Winds W & N.



WATER FACILITIES. Direct Pressure and Gravity System of Water Works. Reservoir of 113 Million Galls. capy filled by 1 Worthington and 1 Knowles Pump, with total pumping capacity of 9 Million Galls. per 24 hours. 1 Falls Pump capy 10 Million Galls. to be added 1898. Water supply from Chemung River. 4.5 Miles of Water Pipes (iron) & 6 Mile of Water Pipes (Wooden) being replaced with iron. 20" influent Pipe. 12, 16 & 20". Distributing Mains. 264 Fire Hydrants.

FIRE DEPARTMENT. Paid 42 Men, 10 Horses, 7 Double, 1 Single & 1 Triple Set of Harness, Gamewell Fire Alarm System, 62 Boxes, Telephone connection at engine houses. 6 Steam Fire Engines (1 Third Class & 5 Fourth Class 1 1/2" France; 1 Second Class & 1 Third Class Molineux) & Combination Chemical & Hose Wagons. 1 Hayes Hook & Ladder Truck. 8700 ft. 2 1/2" Cotton, Rubber Lined Hose.

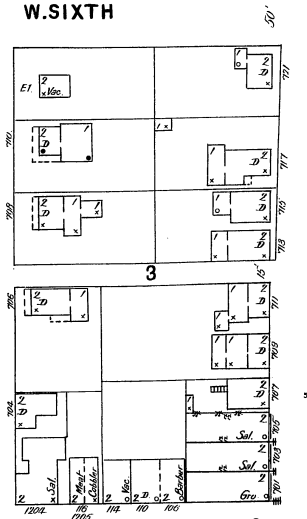
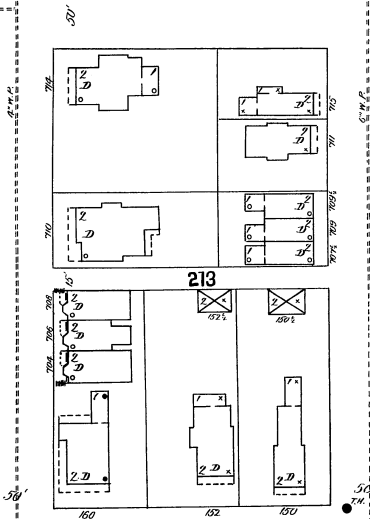
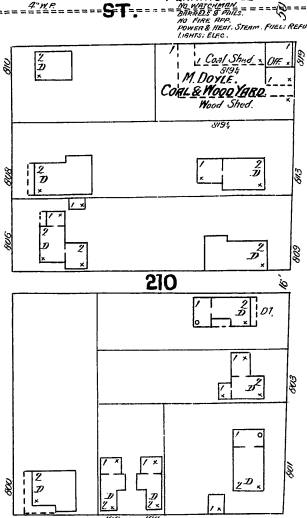
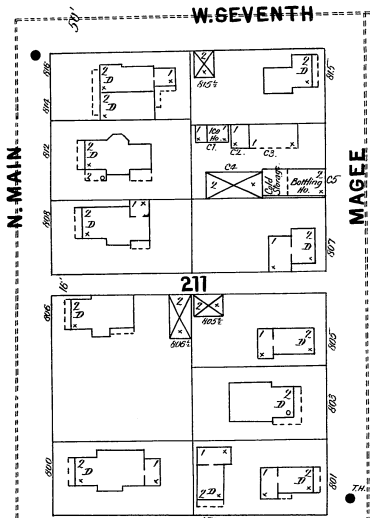
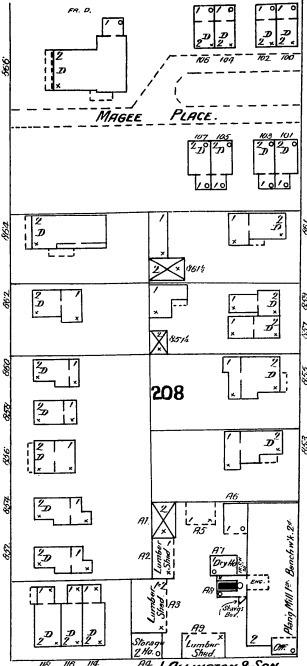
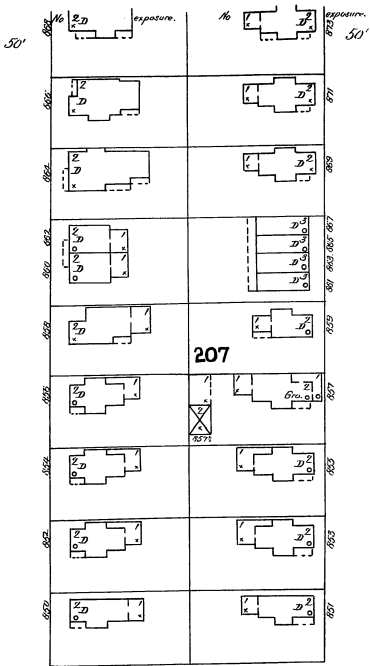


KEY

11	Fire Hydrant
12	Water Main
13	Gas Main
14	Electric Main
15	Telephone Main
16	Fire Alarm Box
17	Window in 1st Story
18	Window in 2nd Story
19	Window in 3rd Story
20	Window in 4th Story
21	Window in 5th Story
22	Window in 6th Story
23	Window in 7th Story
24	Window in 8th Story
25	Window in 9th Story
26	Window in 10th Story
27	Window in 11th Story
28	Window in 12th Story
29	Window in 13th Story
30	Window in 14th Story
31	Window in 15th Story
32	Window in 16th Story
33	Window in 17th Story
34	Window in 18th Story
35	Window in 19th Story
36	Window in 20th Story
37	Window in 21st Story
38	Window in 22nd Story
39	Window in 23rd Story
40	Window in 24th Story
41	Window in 25th Story
42	Window in 26th Story
43	Window in 27th Story
44	Window in 28th Story
45	Window in 29th Story
46	Window in 30th Story
47	Window in 31st Story
48	Window in 32nd Story
49	Window in 33rd Story
50	Window in 34th Story
51	Window in 35th Story
52	Window in 36th Story
53	Window in 37th Story
54	Window in 38th Story
55	Window in 39th Story
56	Window in 40th Story
57	Window in 41st Story
58	Window in 42nd Story
59	Window in 43rd Story
60	Window in 44th Story
61	Window in 45th Story
62	Window in 46th Story
63	Window in 47th Story
64	Window in 48th Story
65	Window in 49th Story
66	Window in 50th Story
67	Window in 51st Story
68	Window in 52nd Story
69	Window in 53rd Story
70	Window in 54th Story
71	Window in 55th Story
72	Window in 56th Story
73	Window in 57th Story
74	Window in 58th Story
75	Window in 59th Story
76	Window in 60th Story
77	Window in 61st Story
78	Window in 62nd Story
79	Window in 63rd Story
80	Window in 64th Story
81	Window in 65th Story
82	Window in 66th Story
83	Window in 67th Story
84	Window in 68th Story
85	Window in 69th Story
86	Window in 70th Story
87	Window in 71st Story
88	Window in 72nd Story
89	Window in 73rd Story
90	Window in 74th Story
91	Window in 75th Story
92	Window in 76th Story
93	Window in 77th Story
94	Window in 78th Story
95	Window in 79th Story
96	Window in 80th Story
97	Window in 81st Story
98	Window in 82nd Story
99	Window in 83rd Story
100	Window in 84th Story
101	Window in 85th Story
102	Window in 86th Story
103	Window in 87th Story
104	Window in 88th Story
105	Window in 89th Story
106	Window in 90th Story
107	Window in 91st Story
108	Window in 92nd Story
109	Window in 93rd Story
110	Window in 94th Story
111	Window in 95th Story
112	Window in 96th Story
113	Window in 97th Story
114	Window in 98th Story
115	Window in 99th Story
116	Window in 100th Story
117	Window in 101st Story
118	Window in 102nd Story
119	Window in 103rd Story
120	Window in 104th Story
121	Window in 105th Story
122	Window in 106th Story
123	Window in 107th Story
124	Window in 108th Story
125	Window in 109th Story
126	Window in 110th Story
127	Window in 111th Story
128	Window in 112th Story
129	Window in 113th Story
130	Window in 114th Story
131	Window in 115th Story
132	Window in 116th Story
133	Window in 117th Story
134	Window in 118th Story
135	Window in 119th Story
136	Window in 120th Story
137	Window in 121st Story
138	Window in 122nd Story
139	Window in 123rd Story
140	Window in 124th Story
141	Window in 125th Story
142	Window in 126th Story
143	Window in 127th Story
144	Window in 128th Story
145	Window in 129th Story
146	Window in 130th Story
147	Window in 131st Story
148	Window in 132nd Story
149	Window in 133rd Story
150	Window in 134th Story
151	Window in 135th Story
152	Window in 136th Story
153	Window in 137th Story
154	Window in 138th Story
155	Window in 139th Story
156	Window in 140th Story
157	Window in 141st Story
158	Window in 142nd Story
159	Window in 143rd Story
160	Window in 144th Story
161	Window in 145th Story
162	Window in 146th Story
163	Window in 147th Story
164	Window in 148th Story
165	Window in 149th Story
166	Window in 150th Story
167	Window in 151st Story
168	Window in 152nd Story
169	Window in 153rd Story
170	Window in 154th Story
171	Window in 155th Story
172	Window in 156th Story
173	Window in 157th Story
174	Window in 158th Story
175	Window in 159th Story
176	Window in 160th Story
177	Window in 161st Story
178	Window in 162nd Story
179	Window in 163rd Story
180	Window in 164th Story
181	Window in 165th Story
182	Window in 166th Story
183	Window in 167th Story
184	Window in 168th Story
185	Window in 169th Story
186	Window in 170th Story
187	Window in 171st Story
188	Window in 172nd Story
189	Window in 173rd Story
190	Window in 174th Story
191	Window in 175th Story
192	Window in 176th Story
193	Window in 177th Story
194	Window in 178th Story
195	Window in 179th Story
196	Window in 180th Story
197	Window in 181st Story
198	Window in 182nd Story
199	Window in 183rd Story
200	Window in 184th Story
201	Window in 185th Story
202	Window in 186th Story
203	Window in 187th Story
204	Window in 188th Story
205	Window in 189th Story
206	Window in 190th Story
207	Window in 191st Story
208	Window in 192nd Story
209	Window in 193rd Story
210	Window in 194th Story
211	Window in 195th Story
212	Window in 196th Story
213	Window in 197th Story
214	Window in 198th Story
215	Window in 199th Story
216	Window in 200th Story
217	Window in 201st Story
218	Window in 202nd Story
219	Window in 203rd Story
220	Window in 204th Story
221	Window in 205th Story
222	Window in 206th Story
223	Window in 207th Story
224	Window in 208th Story
225	Window in 209th Story
226	Window in 210th Story
227	Window in 211th Story
228	Window in 212th Story
229	Window in 213th Story
230	Window in 214th Story
231	Window in 215th Story
232	Window in 216th Story
233	Window in 217th Story
234	Window in 218th Story
235	Window in 219th Story
236	Window in 220th Story
237	Window in 221st Story
238	Window in 222nd Story
239	Window in 223rd Story
240	Window in 224th Story
241	Window in 225th Story
242	Window in 226th Story
243	Window in 227th Story
244	Window in 228th Story
245	Window in 229th Story
246	Window in 230th Story
247	Window in 231st Story
248	Window in 232nd Story
249	Window in 233rd Story
250	Window in 234th Story
251	Window in 235th Story
252	Window in 236th Story
253	Window in 237th Story
254	Window in 238th Story
255	Window in 239th Story
256	Window in 240th Story
257	Window in 241st Story
258	Window in 242nd Story
259	Window in 243rd Story
260	Window in 244th Story
261	Window in 245th Story
262	Window in 246th Story
263	Window in 247th Story
264	Window in 248th Story
265	Window in 249th Story
266	Window in 250th Story
267	Window in 251st Story
268	Window in 252nd Story
269	Window in 253rd Story
270	Window in 254th Story
271	Window in 255th Story
272	Window in 256th Story
273	Window in 257th Story
274	Window in 258th Story
275	Window in 259th Story
276	Window in 260th Story
277	Window in 261st Story
278	Window in 262nd Story
279	Window in 263rd Story
280	Window in 264th Story
281	Window in 265th Story
282	Window in 266th Story
283	Window in 267th Story
284	Window in 268th Story
285	Window in 269th Story
286	Window in 270th Story
287	Window in 271st Story
288	Window in 272nd Story
289	Window in 273rd Story
290	Window in 274th Story
291	Window in 275th Story
292	Window in 276th Story
293	Window in 277th Story
294	Window in 278th Story
295	Window in 279th Story
296	Window in 280th Story
297	Window in 281st Story
298	Window in 282nd Story
299	Window in 283rd Story
300	Window in 284th Story
301	Window in 285th Story
302	Window in 286th Story
303	Window in 287th Story
304	Window in 288th Story
305	Window in 289th Story
306	Window in 290th Story
307	Window in 291st Story
308	Window in 292nd Story
309	Window in 293rd Story
310	Window in 294th Story
311	Window in 295th Story
312	Window in 296th Story
313	Window in 297th Story
314	Window in 298th Story
315	Window in 299th Story
316	Window in 300th Story
317	Window in 301st Story
318	Window in 302nd Story
319	Window in 303rd Story
320	Window in 304th Story
321	Window in 305th Story
322	Window in 306th Story
323	Window in 307th Story
324	Window in 308th Story
325	Window in 309th Story
326	Window in 310th Story
327	Window in 311th Story
328	Window in 312th Story
329	Window in 313th Story
330	Window in 314th Story
331	Window in 315th Story
332	Window in 316th Story
333	Window in 317th Story
334	Window in 318th Story
335	Window in 319th Story
336	Window in 320th Story
337	Window in 321st Story
338	Window in 322nd Story
339	Window in 323rd Story
340	Window in 324th Story
341	Window in 325th Story
342	Window in 326th Story
343	Window in 327th Story
344	Window in 328th Story
345	Window in 329th Story
346	Window in 330th Story
347	Window in 331st Story
348	Window in 332nd Story
349	Window in 333rd Story
350	Window in 334th Story
351	Window in 335th Story
352	Window in 336th Story
353	Window in 337th Story
354	Window in 338th Story
355	Window in 339th Story
356	Window in 340th Story
357	Window in 341st Story
358	Window in 342nd Story
359	Window in 343rd Story
360	Window in 344th Story
361	Window in 345th Story
362	Window in 346th Story
363	Window in 347th Story
364	Window in 348th Story
365	Window in 349th Story
366	Window in 350th Story
367	Window in 351st Story
368	Window in 352nd Story
369	Window in 353rd Story
370	Window in 354th Story
371	Window in 355th Story
372	Window in 356th Story
373	Window in 357th Story
374	Window in 358th Story
375	Window in 359th Story
376	Window in 360th Story
377	Window in 361st Story
378	Window in 362nd Story
379	Window in 363rd Story
380	Window in 364th Story
381	Window in 365th Story
382	Window in 366th Story
383	Window in 367th Story
384	Window in 368th Story
385	Window in 369th Story
386	Window in 370th Story
387	Window in 371st Story
388	Window in 372nd Story
389	Window in 373rd Story
390	Window in 374th Story
391	Window in 375th Story
392	Window in 376th Story
393	Window in 377th Story
394	Window in 378th Story
395	Window in 379th Story
396	Window in 380th Story
397	Window in 381st Story
398	Window in 382nd Story
399	Window in 383rd Story
400	Window in 384th Story
401	Window in 385th Story
402	Window in 386th Story
403	Window in 387th Story
404	Window in 388th Story
405	Window in 389th Story
406	Window in 390th Story
407	Window in 391st Story
408	Window in 392nd Story
409	Window in 393rd Story
410	Window in 394th Story
411	Window in 395th Story
412	Window in 396th Story
413	Window in 397th Story
414	Window in 398th Story
415	Window in 399th Story
416	Window in 400th Story
417	Window in 401st Story
418	Window in 402nd Story
419	Window in 403rd Story
420	Window in 404th Story
421	Window in 405th Story
422	Window in 406th Story
423	Window in 407th Story
424	Window in 408th Story
425	Window in 409th Story
426	Window in 410th Story
427	Window in 411th Story
428	Window in 412th Story
429	Window in 413th Story
430	Window in 414th Story
431	Window in 415th Story
432	Window in 416th Story
433	Window in 417th Story
434	Window in 418th Story
435	Window in 419th Story
436	Window in 420th Story
437	Window in 421st Story
438	Window in 422nd Story
439	Window in 423rd Story
440	Window in 424th Story
441	Window in 425th Story
442	Window in 426th Story
443	Window in 427th Story
444	Window in 428th Story
445	Window in 429th Story
446	Window in 430th Story
447	Window in 431st Story
448	Window in 432nd Story
449	Window in 433rd Story
450	Window in 434th Story
451	Window in 435th Story
452	Window in 436th Story
453	Window in 437th Story
454	Window in 438th Story
455	Window in 439th Story
456	Window in 440th Story
457	Window in 441st Story
458	Window in 442nd Story
459	Window in 443rd Story
460	Window in 444th Story
461	Window in 445th Story
462	Window in 446th Story
463	Window in 447th Story
464	Window in 448th Story
465	Window in 449th Story
466	Window in 450th Story
467	Window in 45

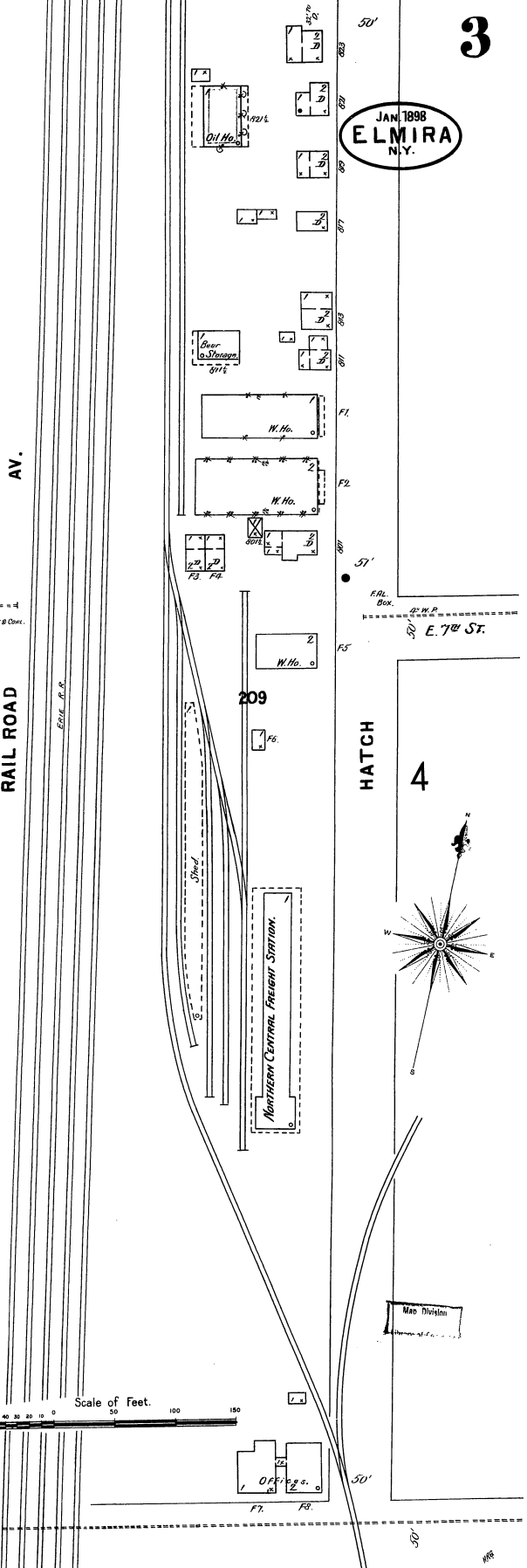
23

206

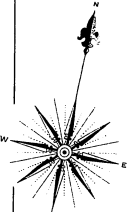


3

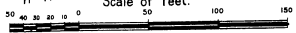
JAN 1898
ELMIRA
N.Y.



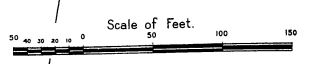
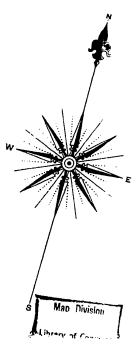
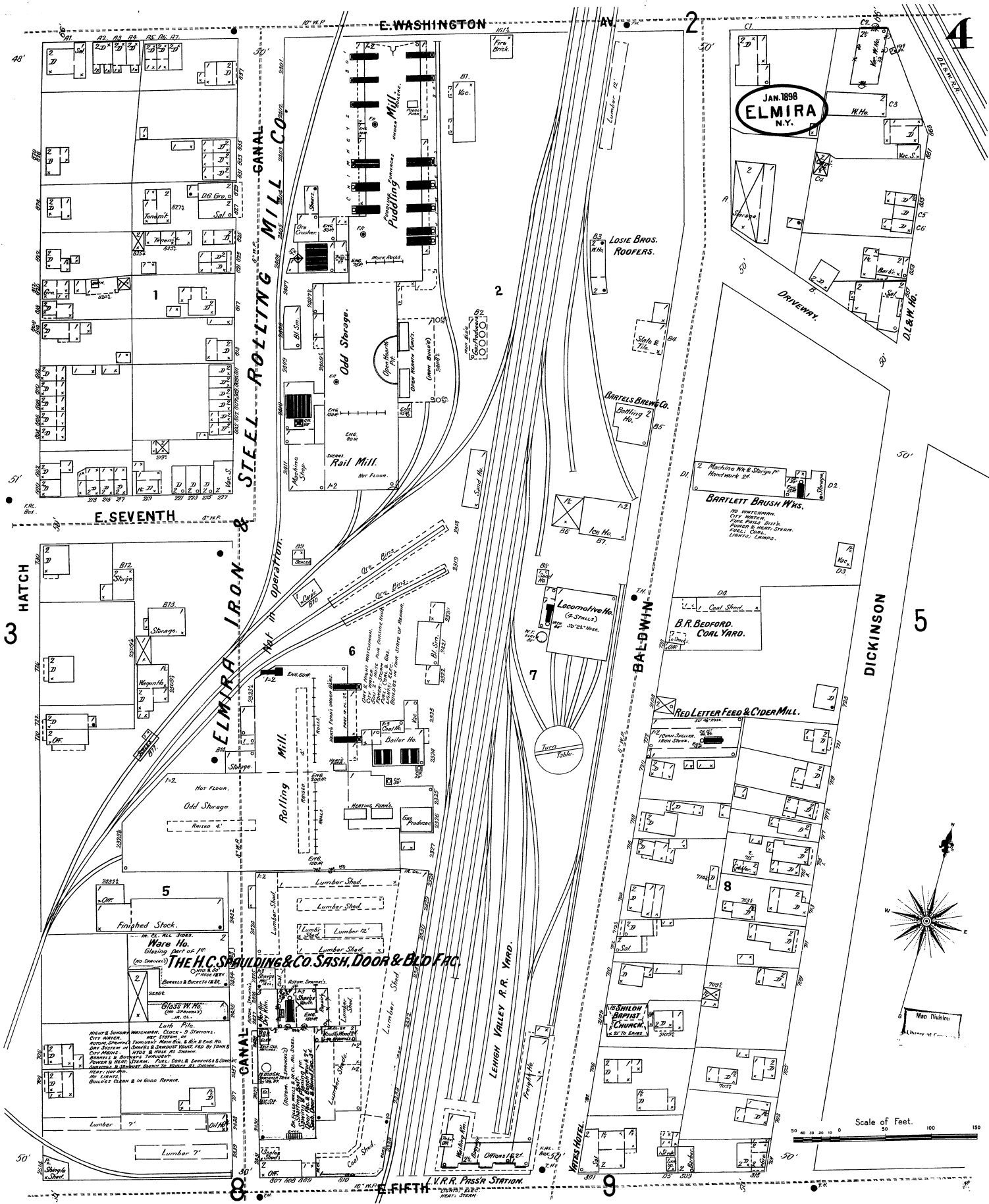
4



Scale of Feet.



8



JAN. 1898
ELMIRA
 N.Y.

LEHIGH VALLEY R.R. STATION
 NEAR ST. STEAM

JAN. 1898
ELMIRA
N.Y.

E. WASHINGTON AV. 2

HATHAWAY

E. FIFTH 10

STANDISH ST.

AV.

MADISON

DICKINSON

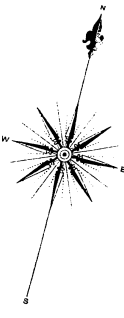
BENJAMIN

Depot

Grounds

LAKE

HARPER



4

84

93

92

6

214

215

21

9

LACKAWANNA HOTEL.

PUBLIC SCHOOL NO. 6.

ELMIRA WIRE WORKS

JOS. BIMBERG.
Leaf Tobacco W. Ho.
SLON BURNING CONSTRUCTION IN WOOD
FRAMING ON STEEL GIRDERS WITH FORMS
OF BRICKS IN STEEL TRUSS AND BRIMS
& GIRDERS. SET ON STEEL BRIDGES. UNVEILED
MAY. CONCRETE FLOOR 2.
LIGHT-ONE. STAIRS 2 & 3rd. ENTIRE BUILDING
PAINTED FOR STEAM HEAT. SEE OVER HOUSE
WITH STEEL STEAM BURNING FROM
NO. 40. 50' 50' 50' 50' 50' 50'

Map Division
Scale of Feet.
50 40 30 20 10 0 50 100 150

JAN. 1898
ELMIRA
N.Y.

STATE

E. CLINTON

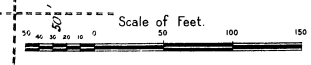
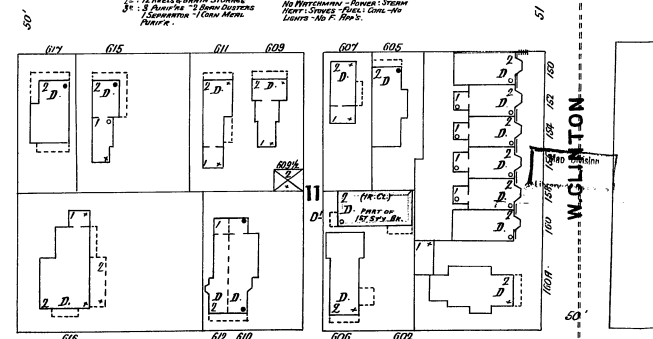
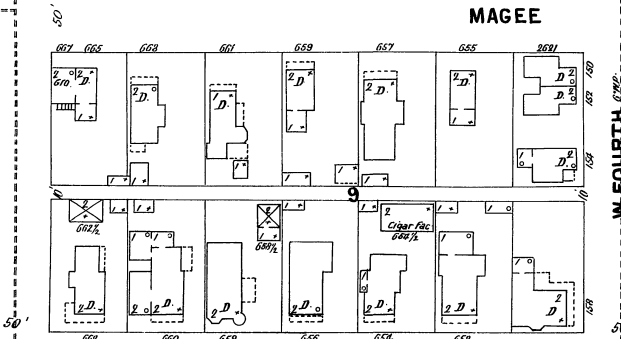
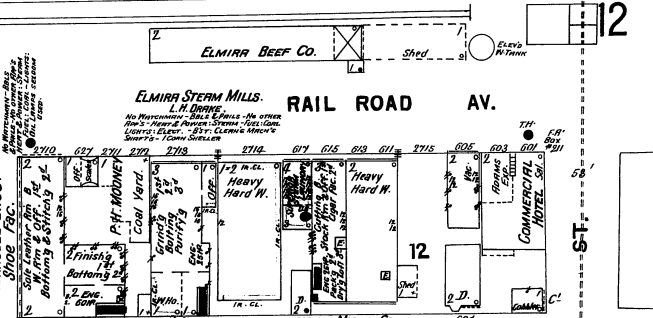
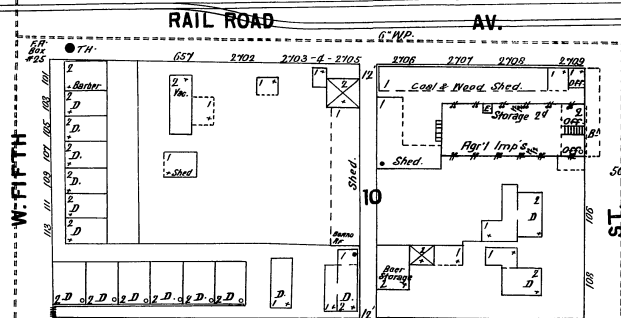
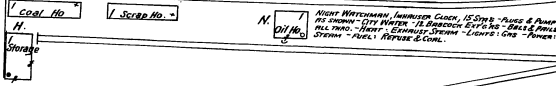
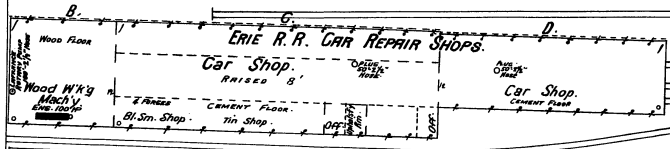
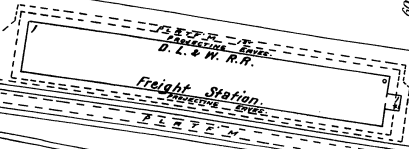
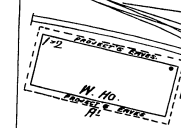
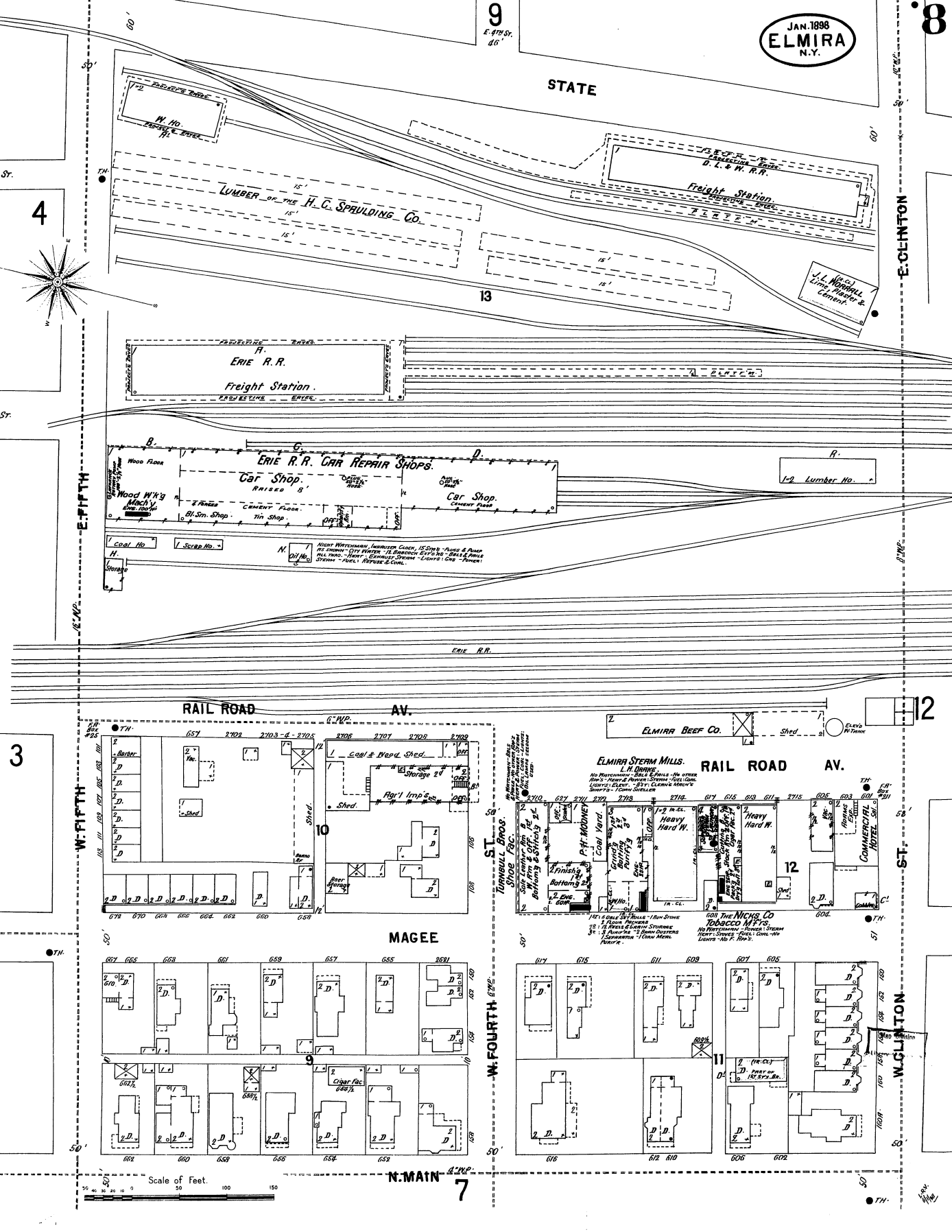
E. FIFTH

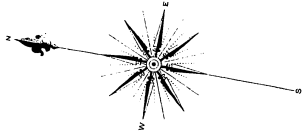
W. FIFTH

W. FOURTH

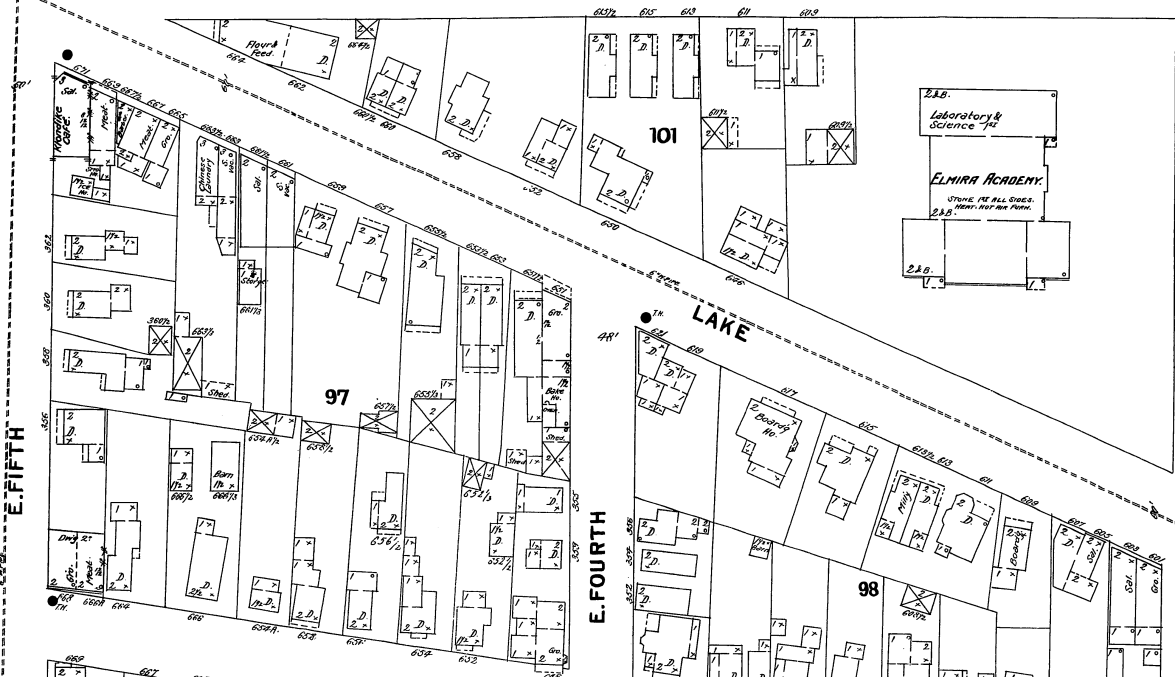
W. CLINTON

N. MAIN





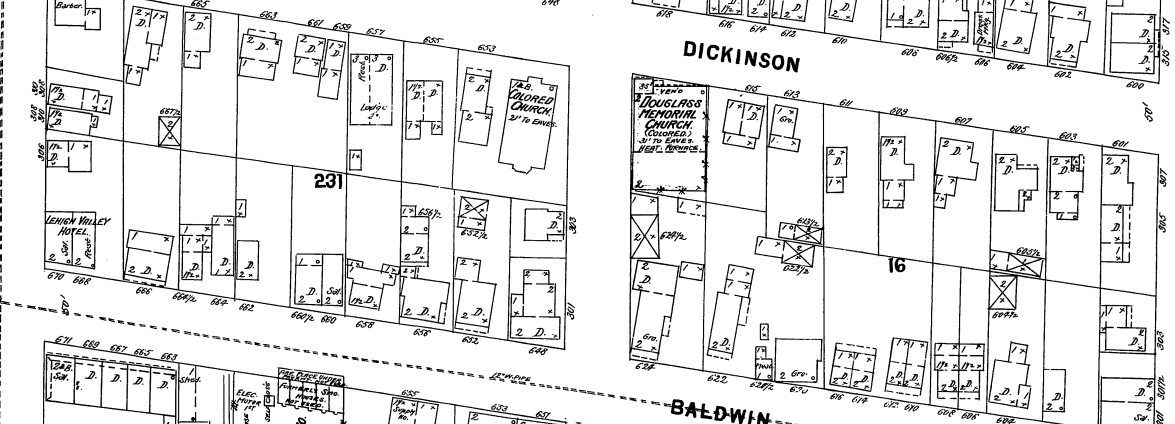
WILLIAM



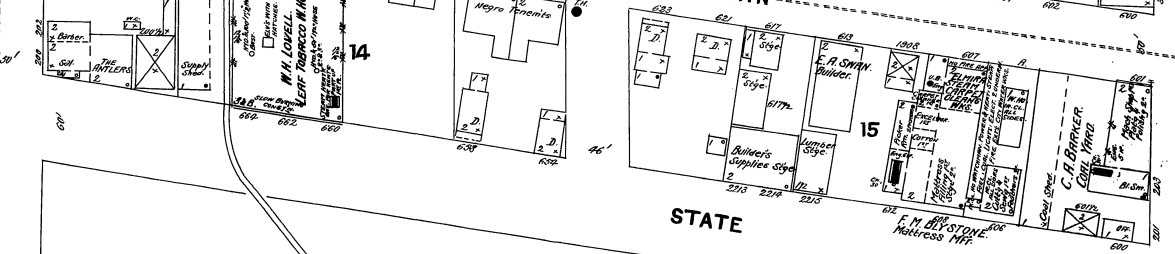
E. FOURTH

E. CLINTON

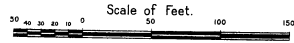
DICKINSON



BALDWIN



STATE



5

BENJAMIN ST.

4

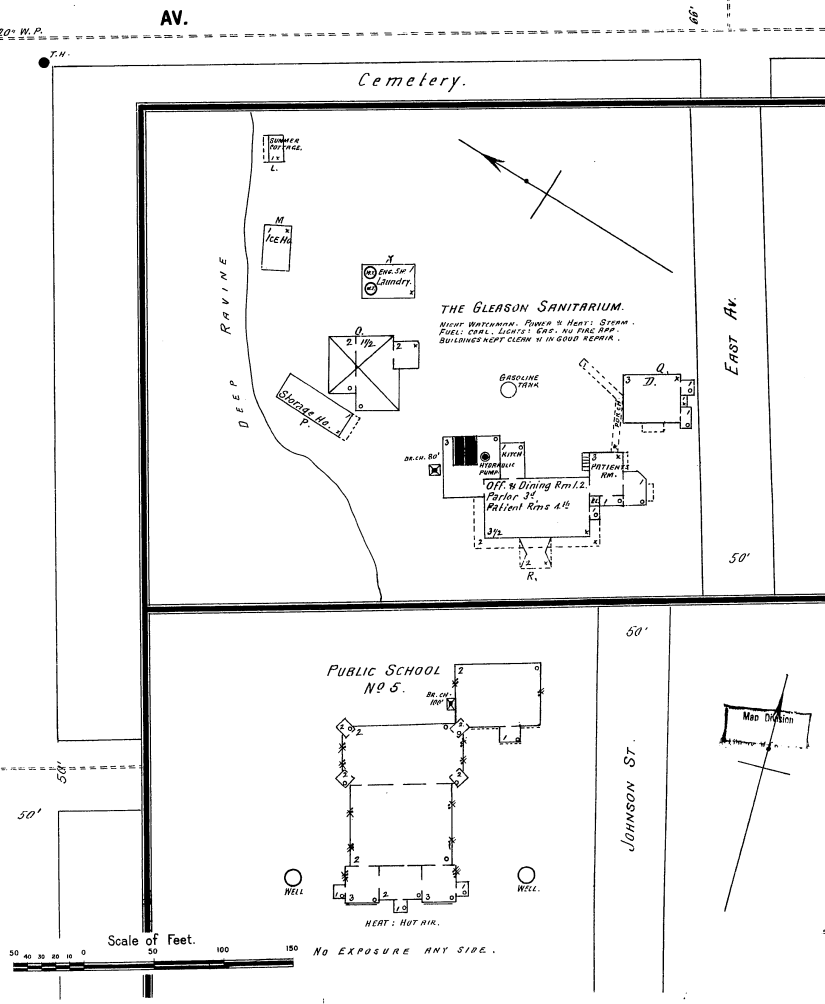
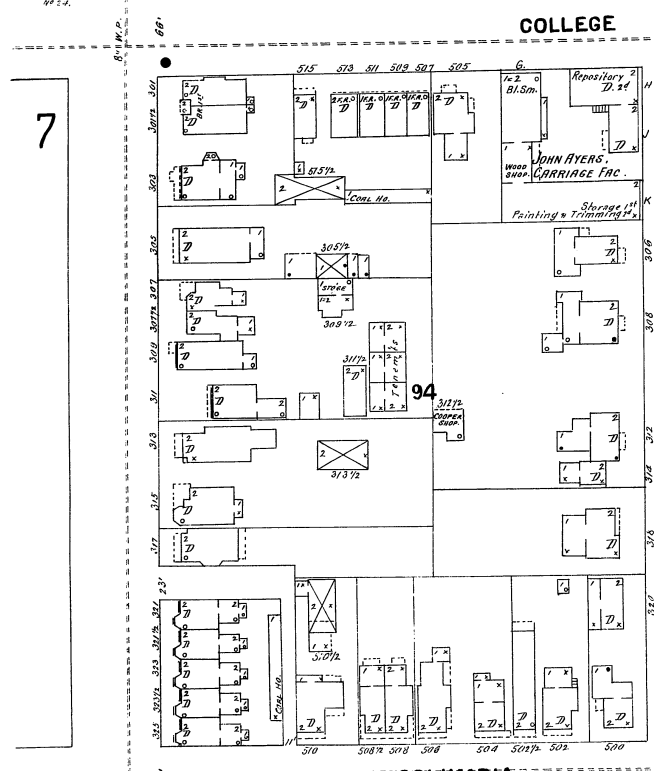
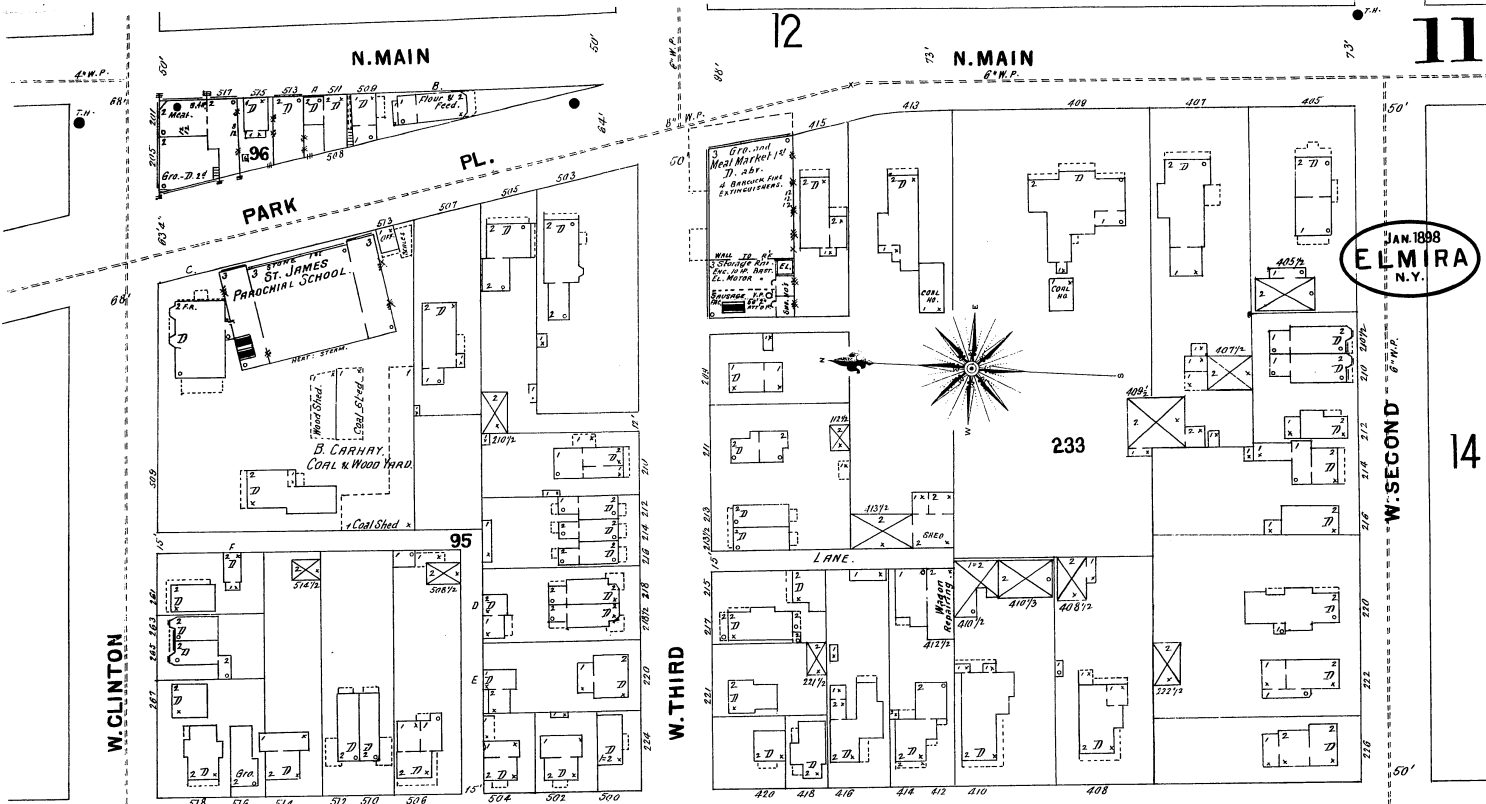
E. FIFTH

E. STATE

E. BALDWIN

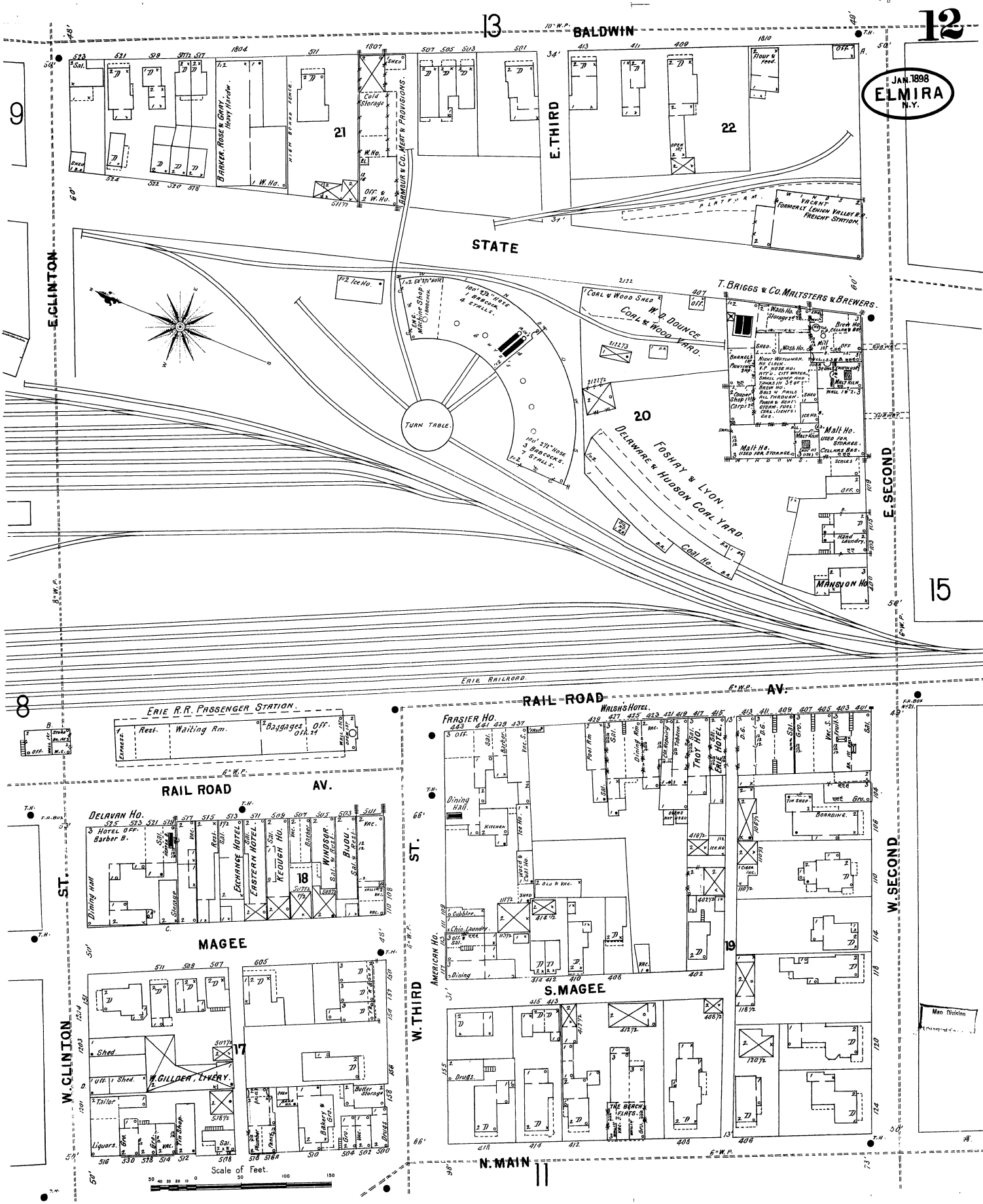
Map Division

JAN 1888
ELMIRA
N.Y.



Scale of Feet. 50 100 150 No Exposure Any Side.

JAN. 1898
ELMIRA
N.Y.



13

12

15

BALDWIN

E. THIRD

STATE

E. CLINTON

E. SECOND

RAIL ROAD

ERIE R.R. PASSENGER STATION

RAIL ROAD AV.

WALSH'S HOTEL

DELAVAN HO.
3 Hotel, Barber B.

MAGEE

ST.

W. THIRD

AMERICAN HO.

S. MAGEE

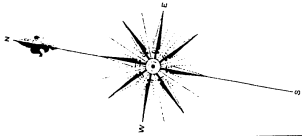
N. MAIN

W. SECOND

Man Division

Scale of Feet.
0 20 40 60 80 100 120 140 160

23



MADISON

AV.

13

PERRY

JAN. 1898
ELMIRA
N.Y.

10

234

235

236

17

WILLIAM

E. CLINTON

E. THIRD

E. SECOND

100

237

9

LAKE

16

UNION

E. SECOND

99

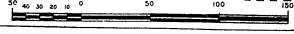
238

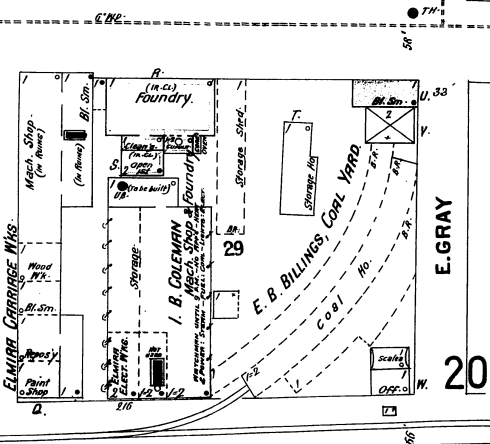
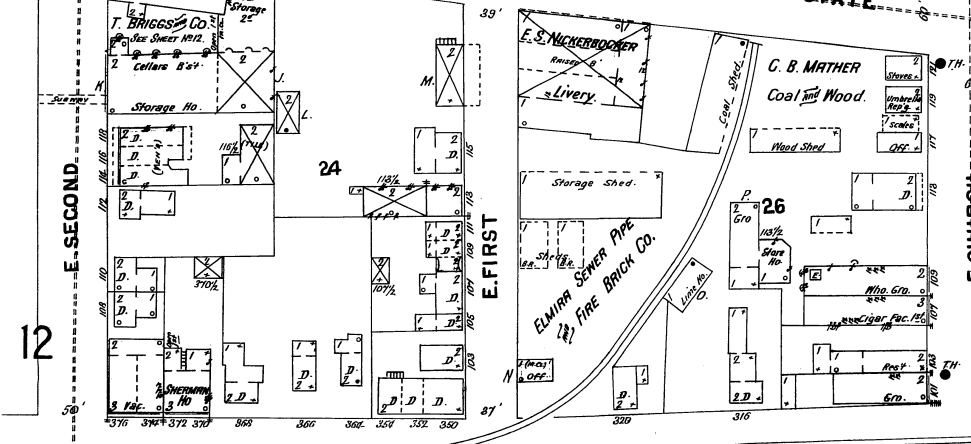
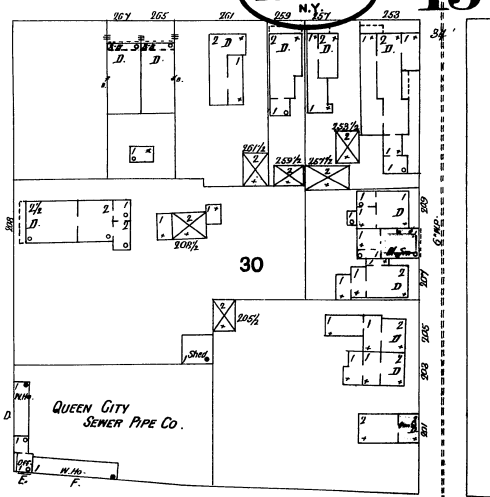
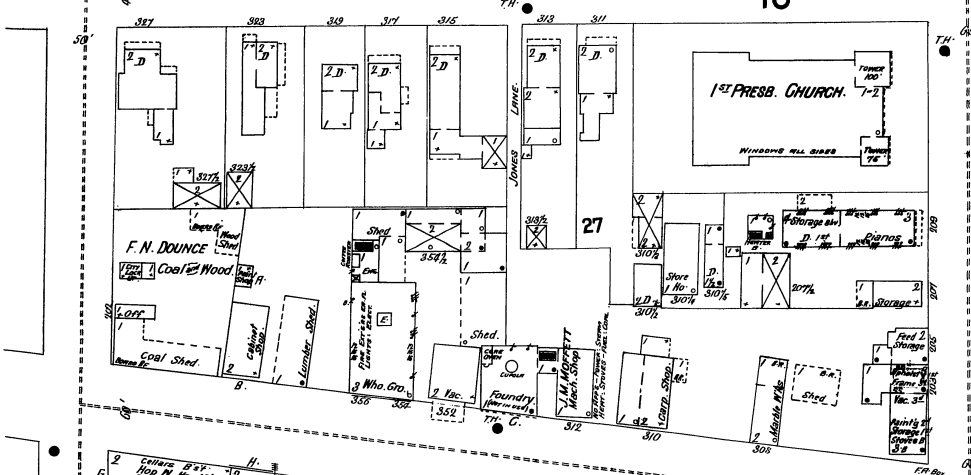
240

Scale of Feet.

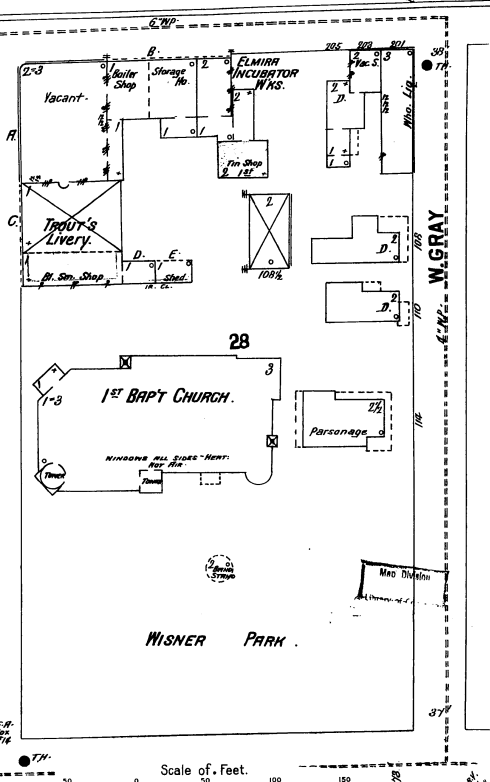
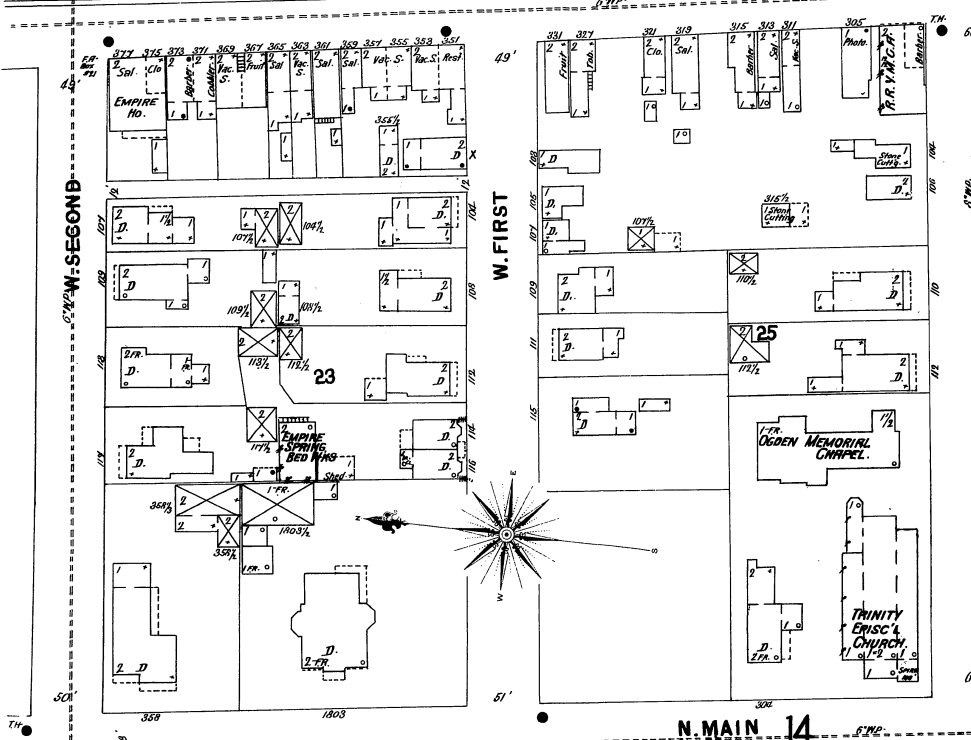
BALDWIN

12



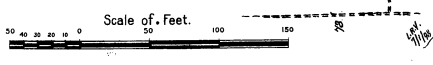
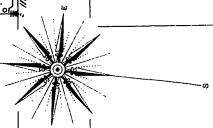


RAIL ROAD AV.



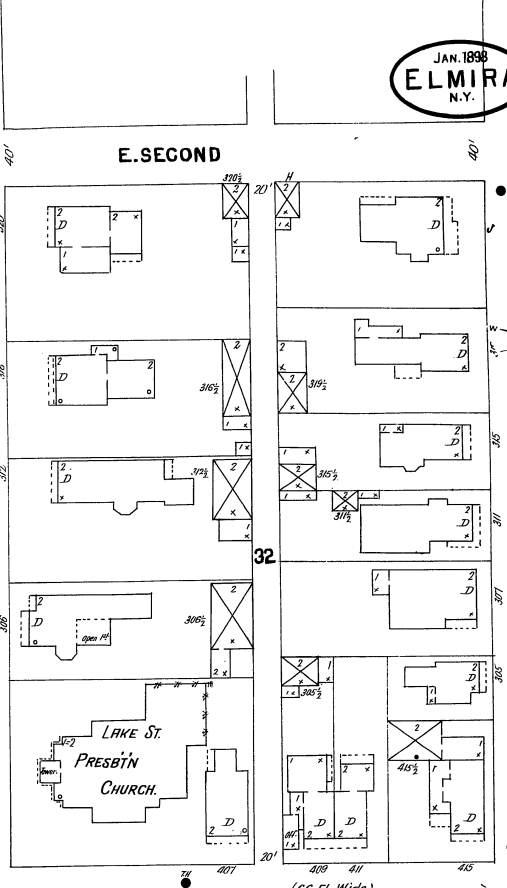
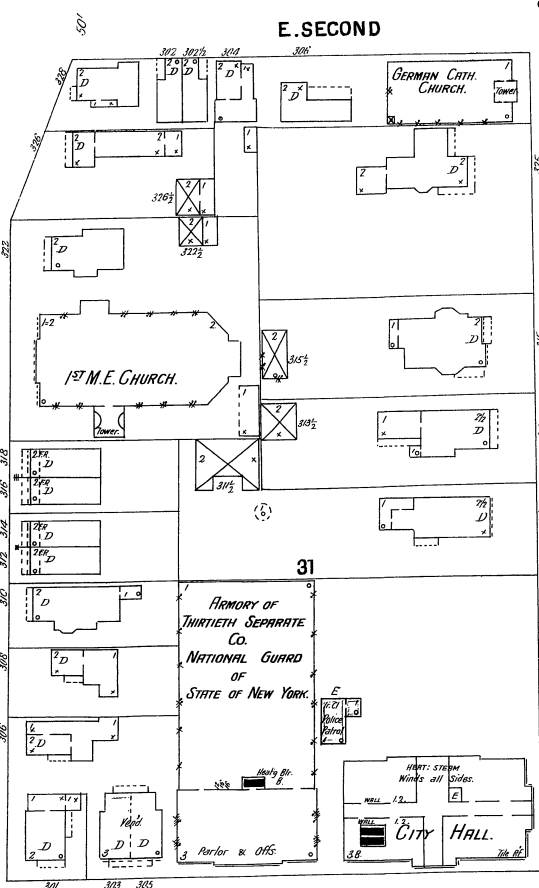
N. MAIN 14

W. CHURCH W. GRAY



JAN. 1898
ELMIRA
N.Y.

16

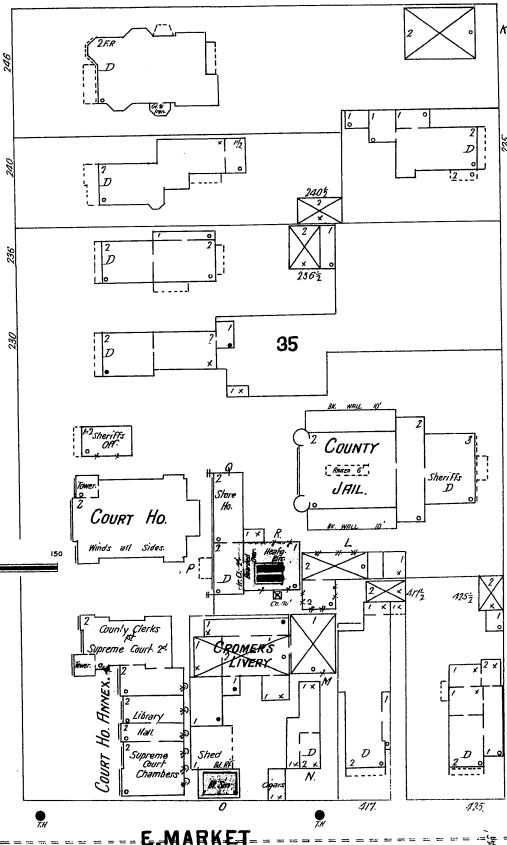
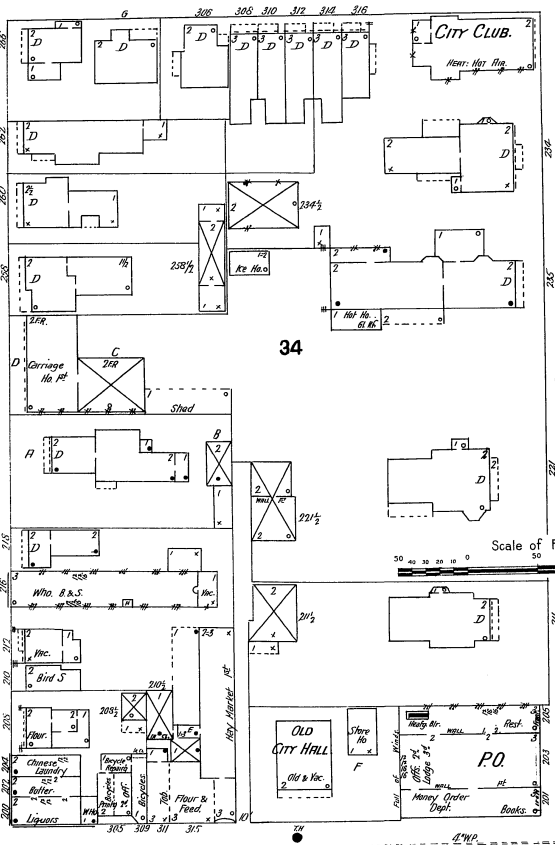


15

LAKE

WILLIAM

E. CHURCH (66 FT. Wide)



17

E. GRAY ST.

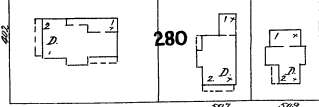
20

21

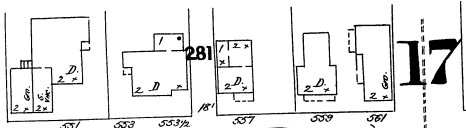
E. MARKET

13

FERRY ST.

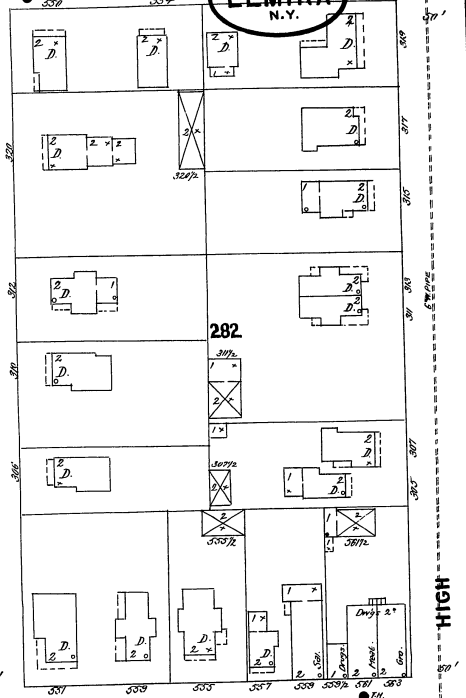
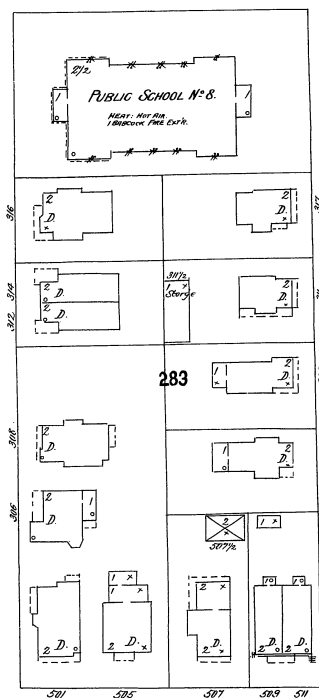


E. SECOND



17

JAN. 1898
ELMIRA
N.Y.



WILLIAM

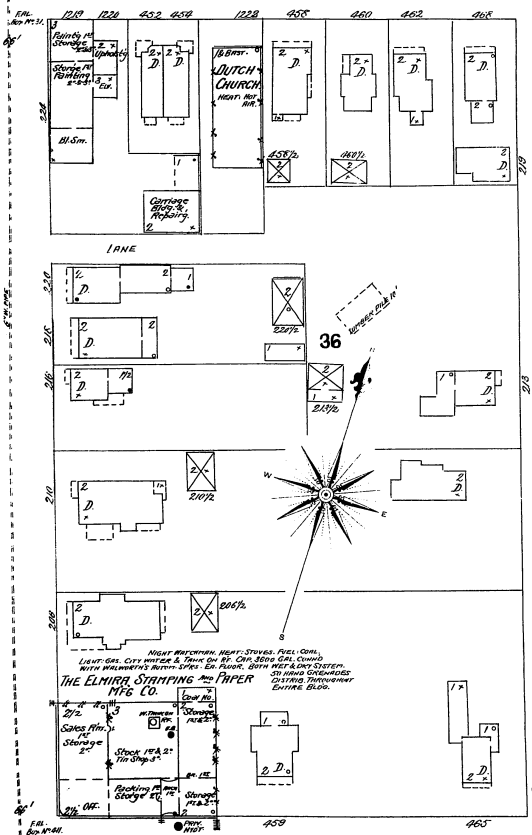
16

MADISON AV.

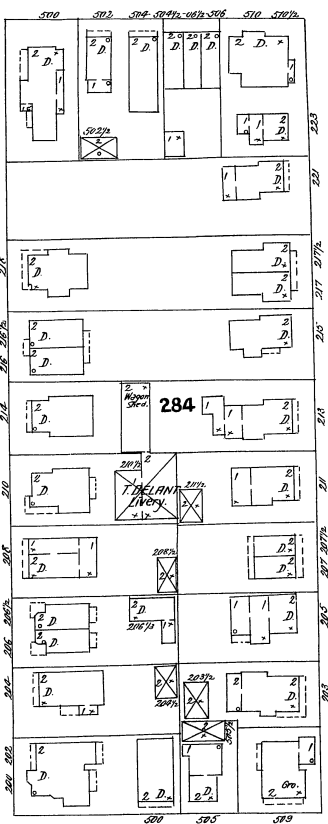
DEWITT AV.

HIGH

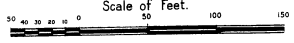
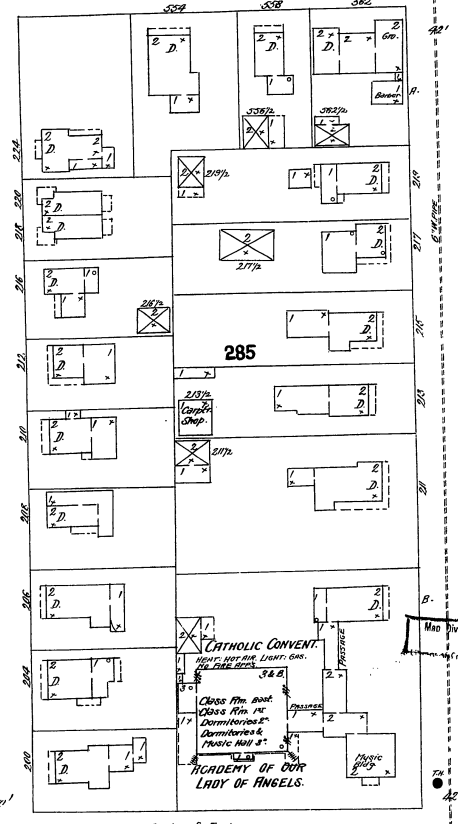
E. CHURCH



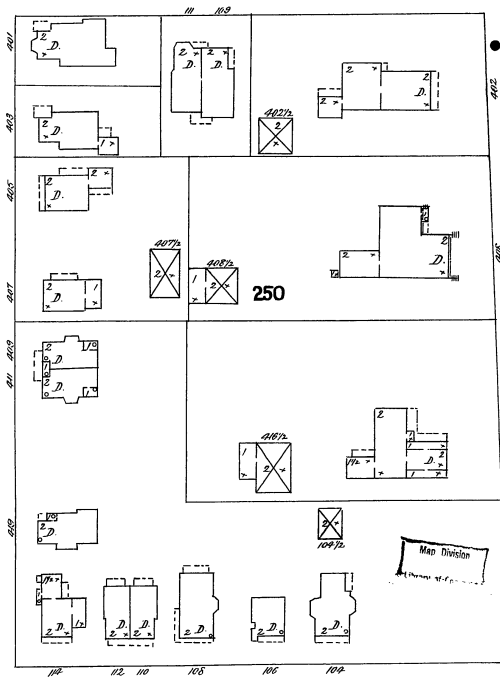
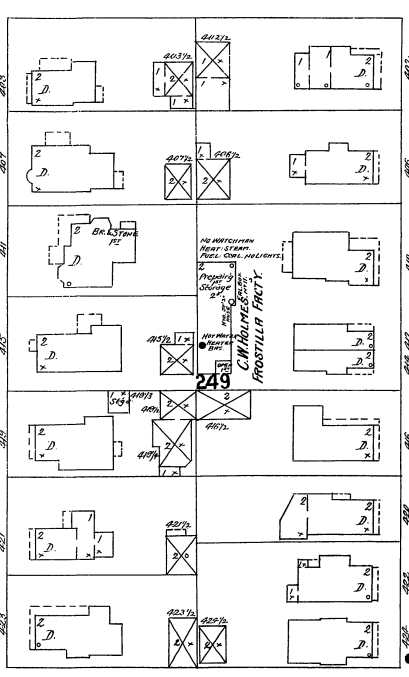
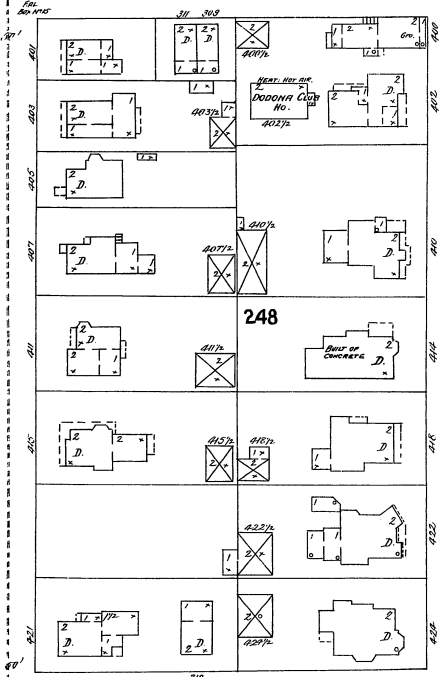
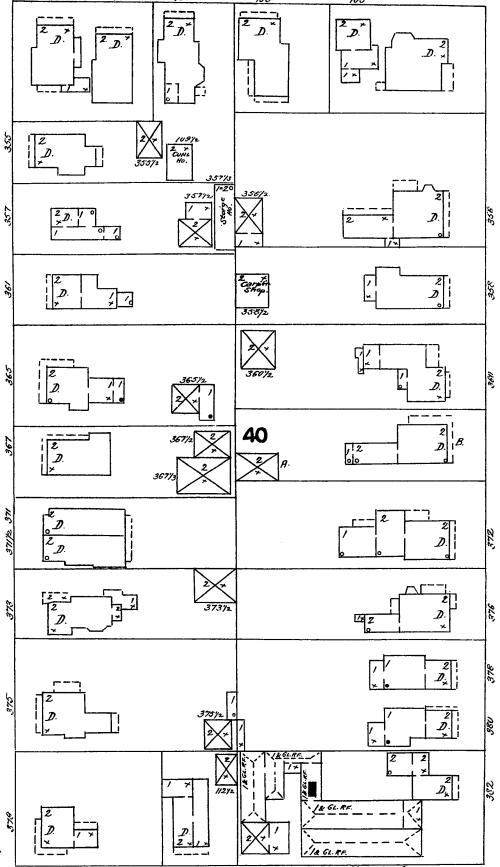
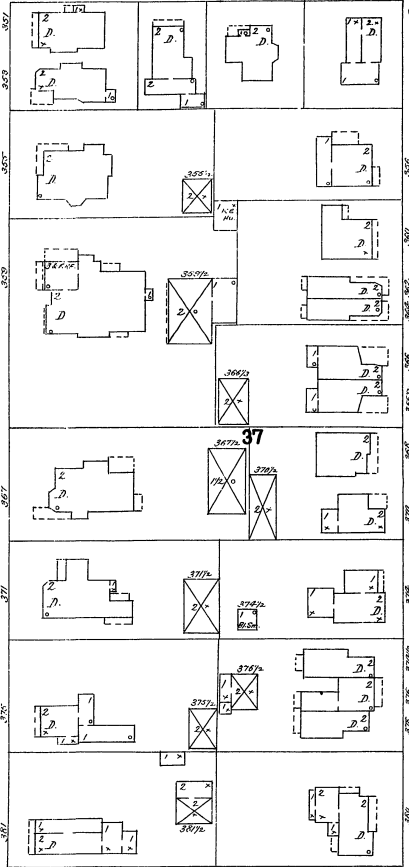
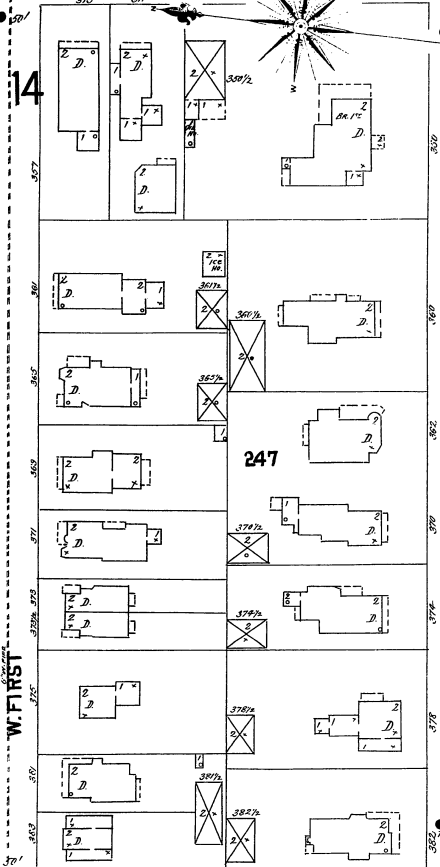
21



23 E. MARKET

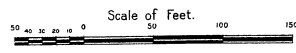


COLUMBIA



DAVIS

ELM



Frame

D w g s

Back from Str. Line

W. CHURCH

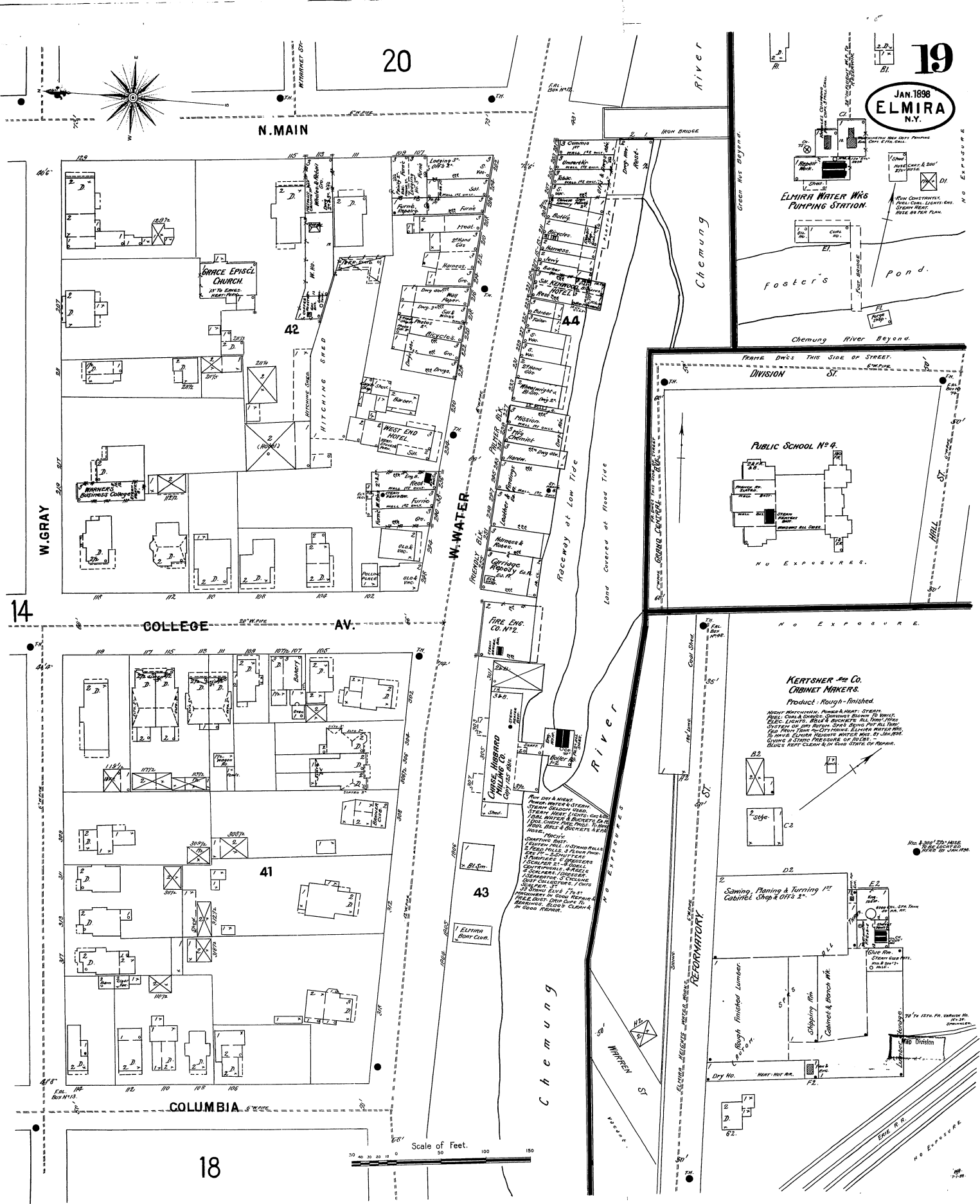
W. FIRST

W. GRAY

W. WATER

MRS. H. B. WELLS GREEN NO.

Map Division



20

N. MAIN

RIVER

Chemung

ELMIRA WATER WKS
PUMPING STATION.

foster's pond.

Chemung River Beyond.

FRAME DW'S THIS SIDE OF STREET.

PUBLIC SCHOOL No. 9.

NO EXPOSURE.

KERTSCHER & CO.
CABINET MAKERS.

Product: Rough-finished.

NIGHT WORKING. POWER & HEAT: STEAM.
FUEL: COAL & COKE. DIMENSIONAL FINISH TO ORDER.
SIZES: LENGTHS, BREADS & SQUARES. ALL THICKNESS
SYSTEM OF DRY RUBBER. SIZES: 1/2", 3/4", 1", 1 1/4", 1 1/2", 2", 2 1/2", 3", 3 1/2", 4", 4 1/2", 5", 5 1/2", 6", 6 1/2", 7", 7 1/2", 8", 8 1/2", 9", 9 1/2", 10", 10 1/2", 11", 11 1/2", 12".
TO HAVE EITHER RUBBER WHOLE OR IN SHEETS.
GIVING A STAMP FIRE-SURE OF FINISH.
BLACK'S ART CLEAN & IN TWO STYLES OF RUBBER.

Sawing, Planing & Turning 1st
Cabinet Shop & OFFICE.

Rough finished Lumber.

Shipping Rm.

Cabinet & Branch Wk.

Dry No.

NO EXPOSURE.

W. WATER

Way of Low Tide

Land Covered at Flood Tide

RIVER

NO EXPOSURE

REPAIRATORY

WARREN ST

NO EXPOSURE

NO EXPOSURE

NO EXPOSURE

NO EXPOSURE

NO EXPOSURE

NO EXPOSURE

NO EXPOSURE

NO EXPOSURE

Scale of Feet.

18

COLLEGE AV.

COLUMBIA

GRACE EPISC. CHURCH

42

WEST END HOTEL

41

43

ELMIRA BOAT CLUB

44

FIRE ENG. CO. No. 12

CHASE, HIGGARD & CHAMBERLAIN CO.

NO EXPOSURE

NO EXPOSURE

NO EXPOSURE

NO EXPOSURE

NO EXPOSURE

NO EXPOSURE

NO EXPOSURE

NO EXPOSURE

NO EXPOSURE

NO EXPOSURE

NO EXPOSURE

NO EXPOSURE

NO EXPOSURE

NO EXPOSURE

NO EXPOSURE

NO EXPOSURE

NO EXPOSURE

NO EXPOSURE

NO EXPOSURE

NO EXPOSURE

NO EXPOSURE

NO EXPOSURE

NO EXPOSURE

NO EXPOSURE

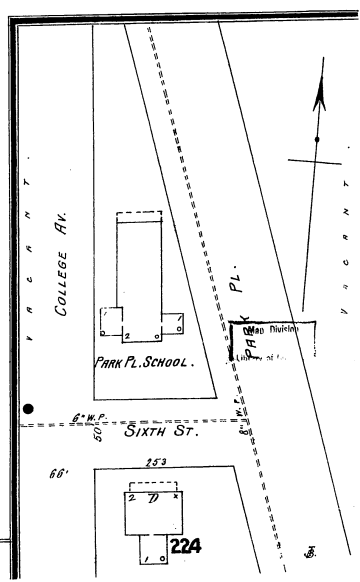
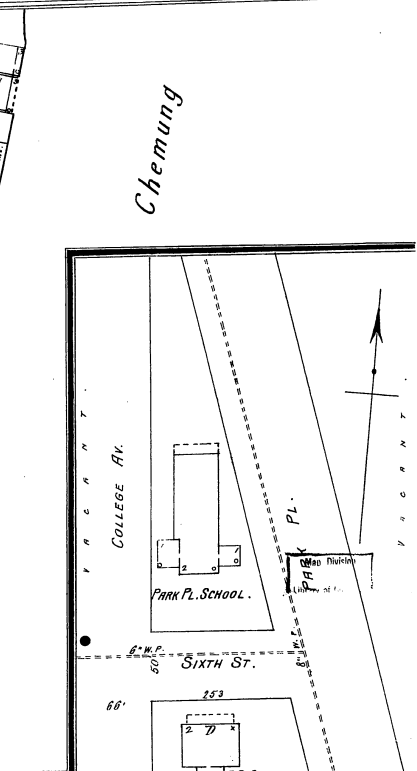
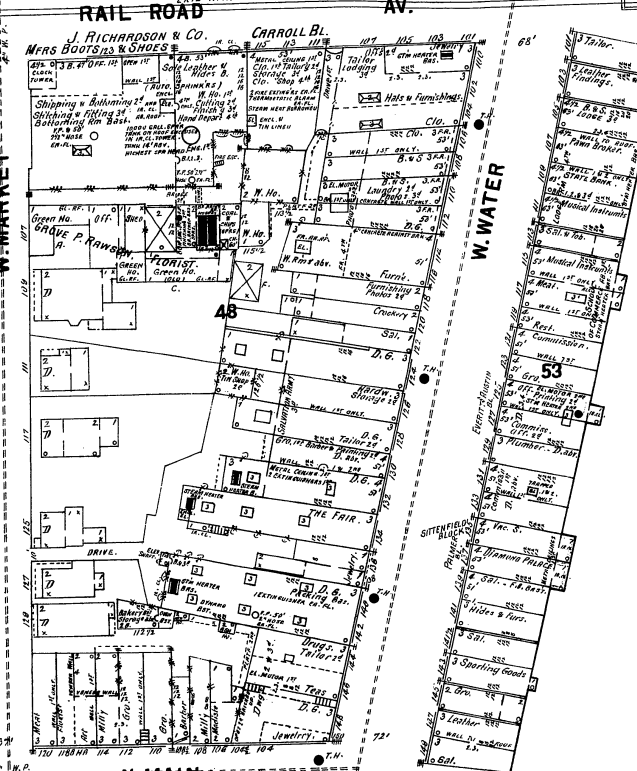
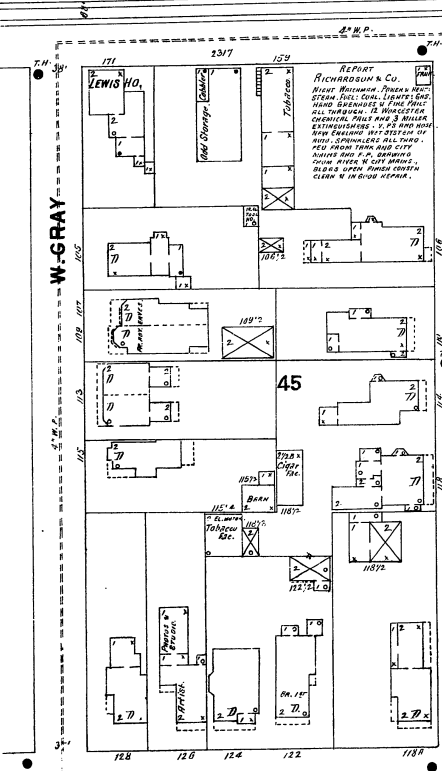
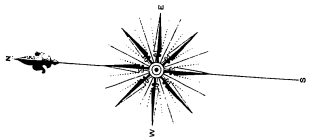
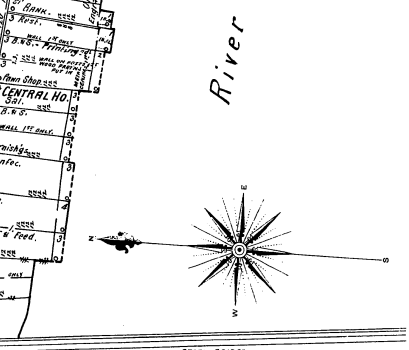
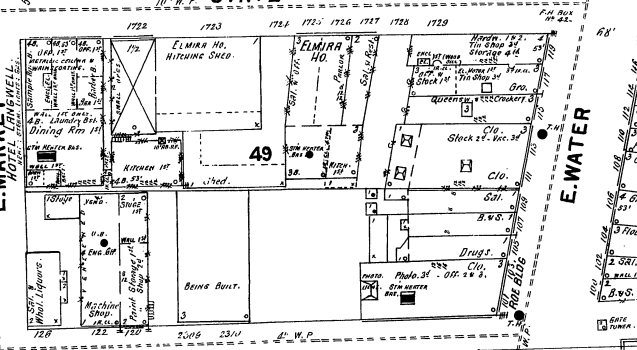
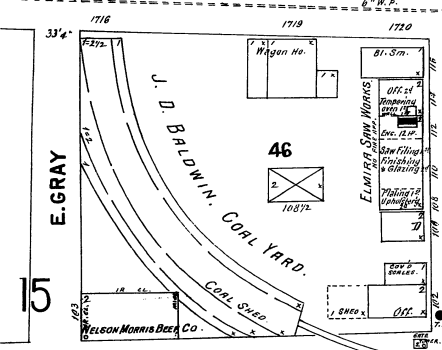
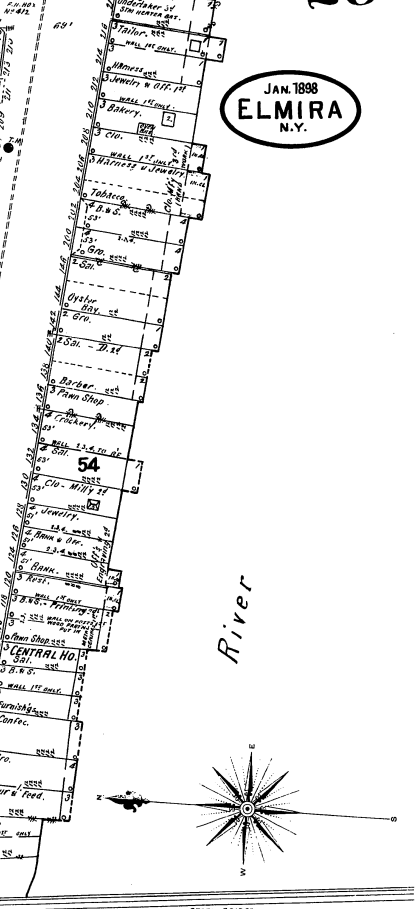
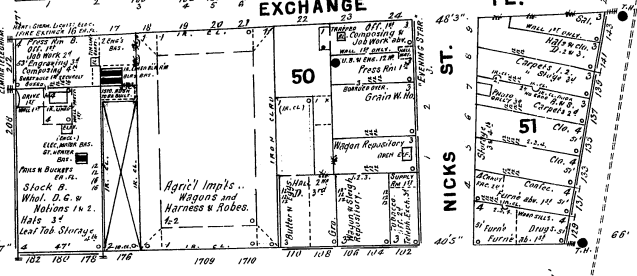
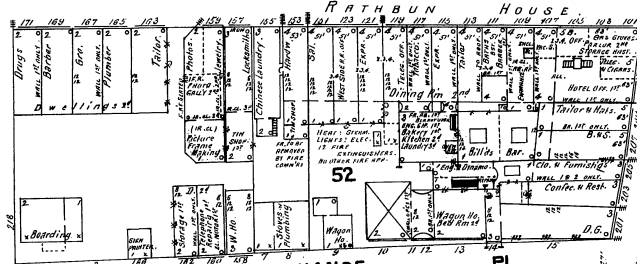
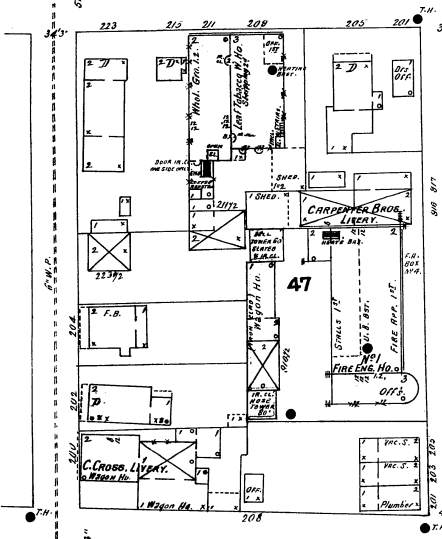
16

BALDWIN

21

20

JAN. 1898
ELMIRA
N.Y.



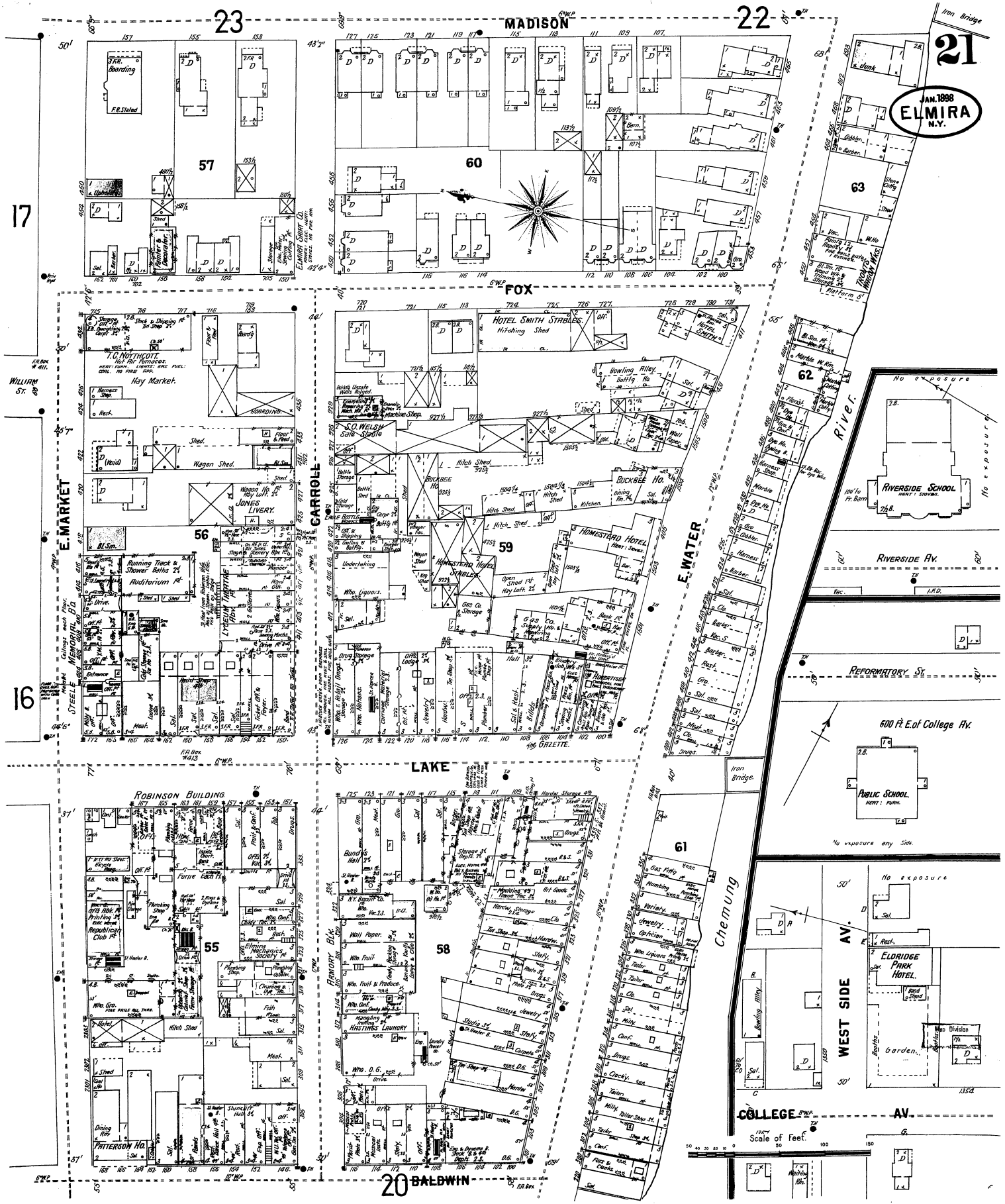
Scale of feet. 0 50 100 150

19

N. MAIN

AV.

IRON RAIL CO.



JAN. 1898
ELMIRA
N.Y.

Scale of Feet.
0 20 40 60 80 100 120 140 160 180 200

21

22

23

MADISON

60

FOX

59

LAKE

58

20 BALDWIN

17

16

ROBINSON BUILDING

55

PATTERSON HO.

HOTEL SMITH STABLES

HOMESTEAD HOTEL

61

Chemung

ELDRIDGE PARK HOTEL

COLLEGE AV.

RIVERSIDE SCHOOL

REFORMATORY ST.

PUBLIC SCHOOL

RIVERSIDE AV.

600 Ft. E. of College Av.

River.

62

63

63

63

63

63

63

63

63

63

63

63

63

63

63

63

63

63

63

63

63

63

63

63

63

63

63

63

63

63

63

63

63

63

63

63

63

63

63

63

63

63

63

63

63

63

63

63

63

63

63

63

63

63

63

63

63

63

63

63

63

63

63

63

63

63

63

63

63

63

63

63

63

63

63

63

63

63

63

63

63

63

63

63

63

63

63

63

63

63

63

63

63

63

63

63

63

63

63

63

63

63

63

63

63

63

63

63

63

63

63

63

63

63

63

63

63

63

63

63

63

63

63

63

63

63

63

63

63

63

63

63

63

63

63

63

63

63

63

63

63

63

63

63

63

63

63

63

63

63

63

63

63

63

63

63

63

63

63

63

63

63

63

63

63

63

63

63

63

63

63

63

63

63

63

63

63

63

63

63

63

63

63

63

63

63

63

63

63

63

63

63

63

63

63

63

63

63

63

63

63

63

63

63

63

63

63

63

63

63

63

63

63

63

63

63

63

63

63

63

63

63

63

63

63

63

63

63

63

63

63

63

63

63

63

63

63

63

63

63

63

63

63

63

63

63

63

63

63

63

63

63

63

63

63

63

63

63

63

63

63

63

63

63

63

63

63

63

63

63

63

63

63

63

63

63

63

63

63

63

63

63

63

63

63

63

63

63

63

63

63

63

63

63

63

63

63

63

63

63

63

63

63

63

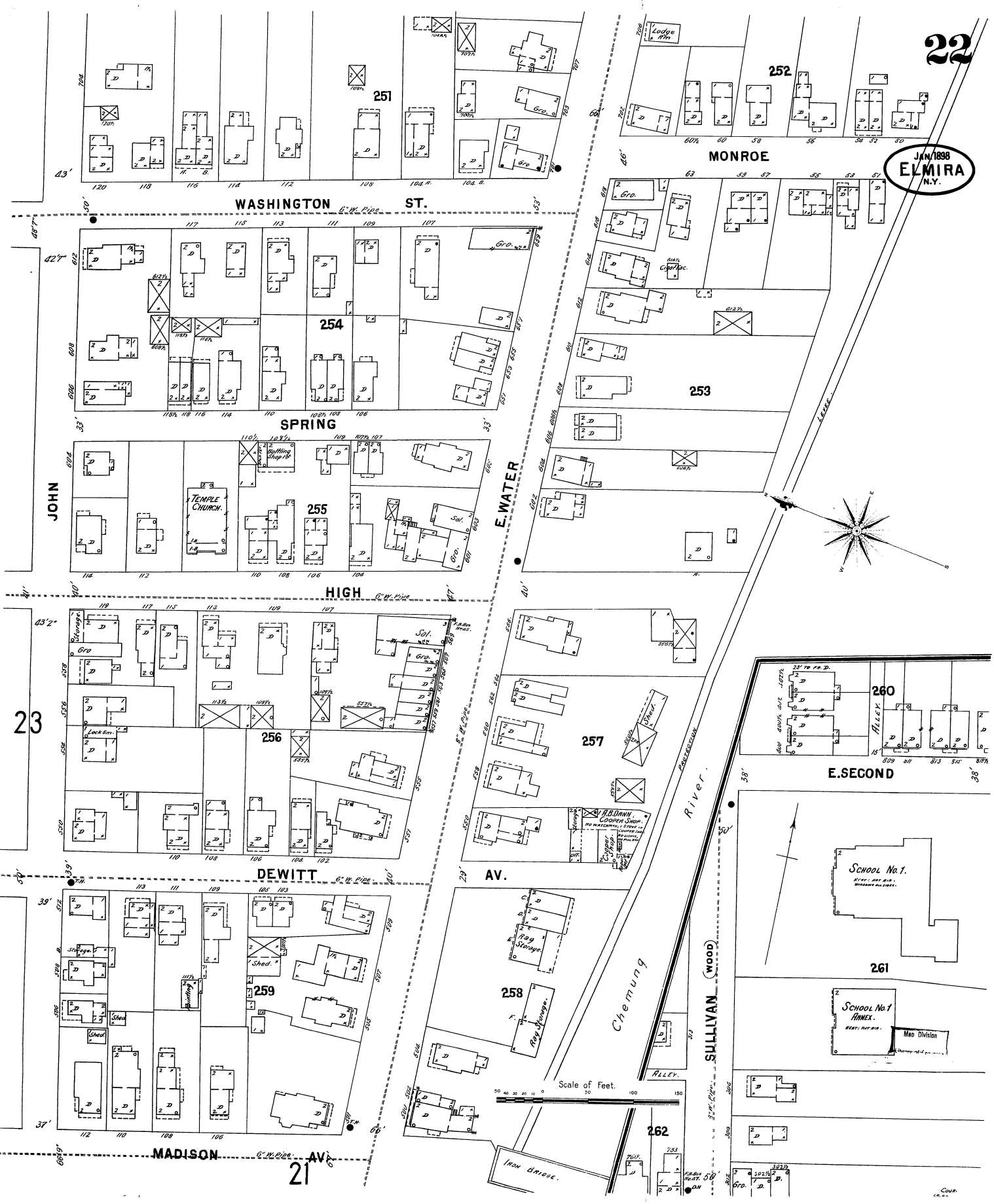
63

63

63

63

JAN 1898
ELMIRA
N.Y.



WASHINGTON ST.

SPRING ST.

HIGH ST.

DEWITT ST.

MADISON AVE.

MONROE

E. SECOND

E. WATER

AV.

River

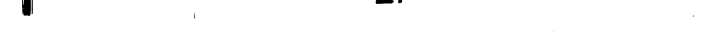
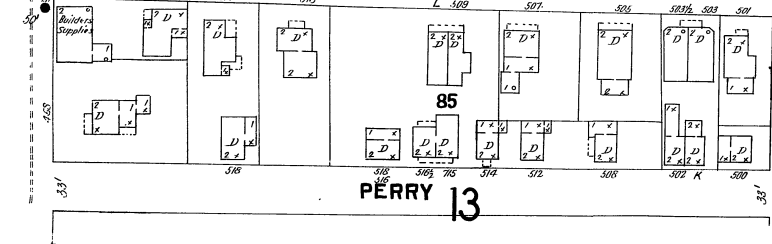
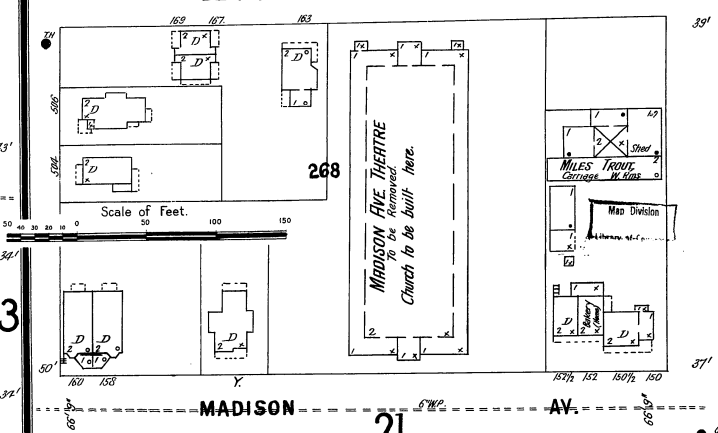
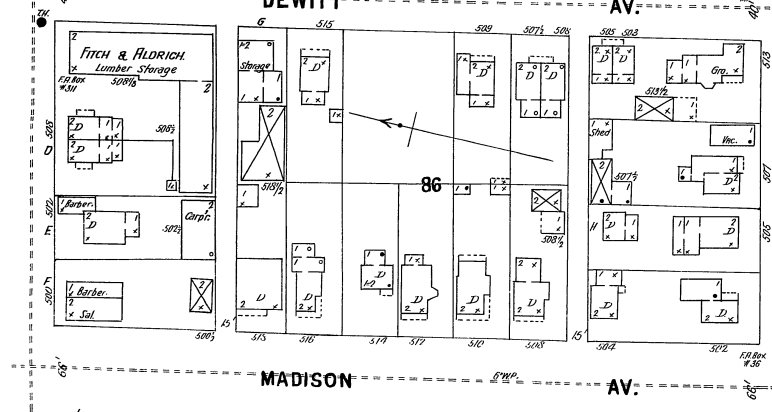
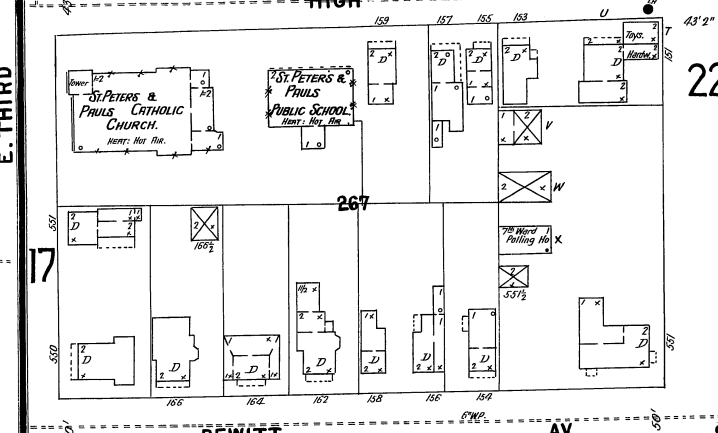
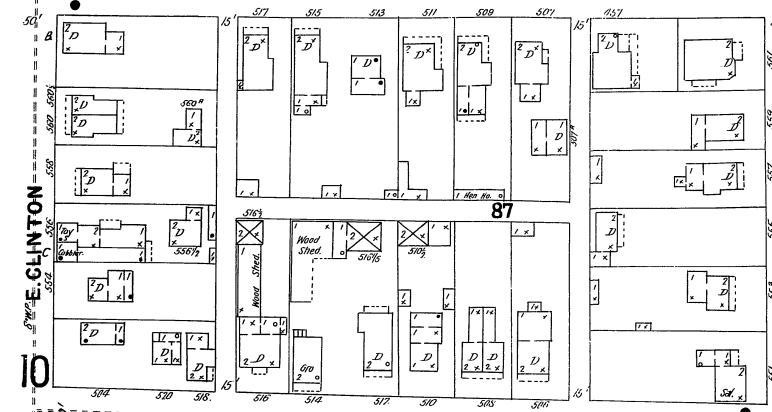
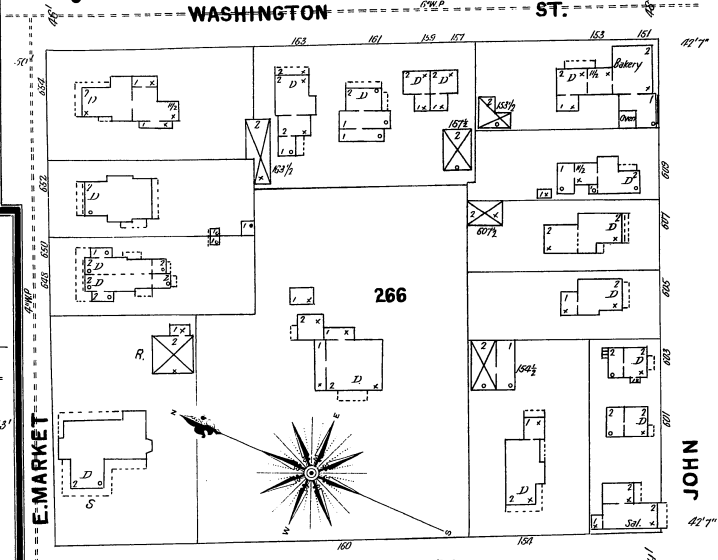
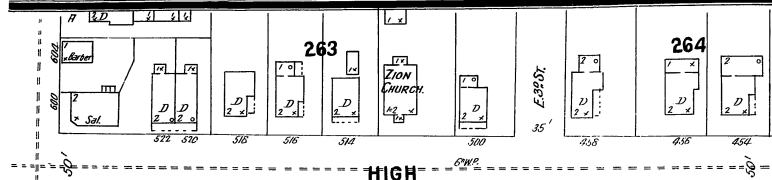
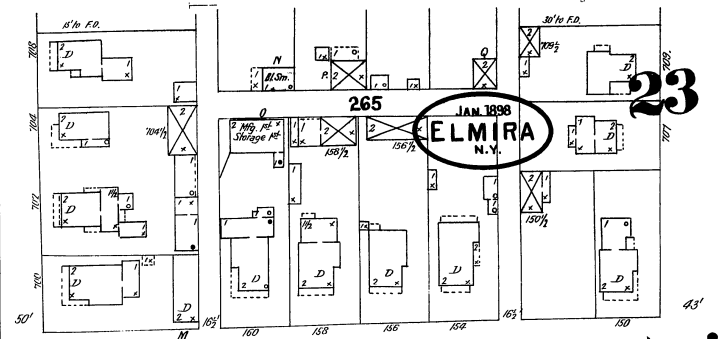
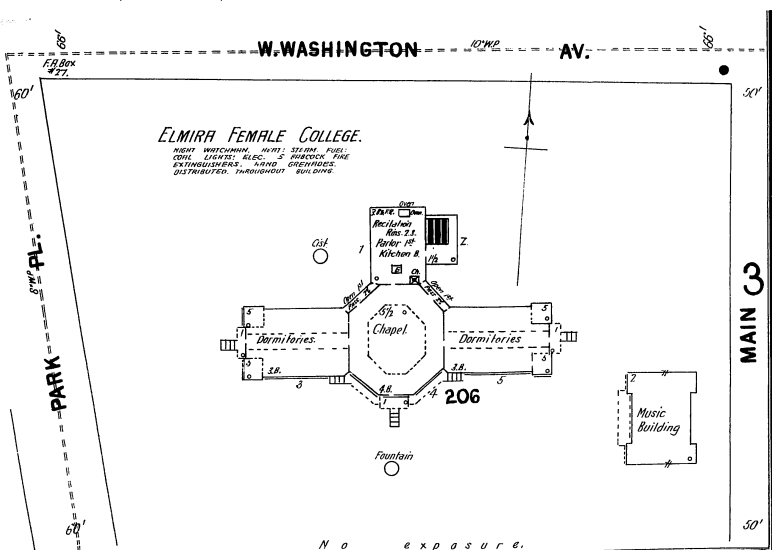
SULLIVAN WOOD

SCHOOL No. 1

SCHOOL No. 1 ANNEX

Scale of Feet

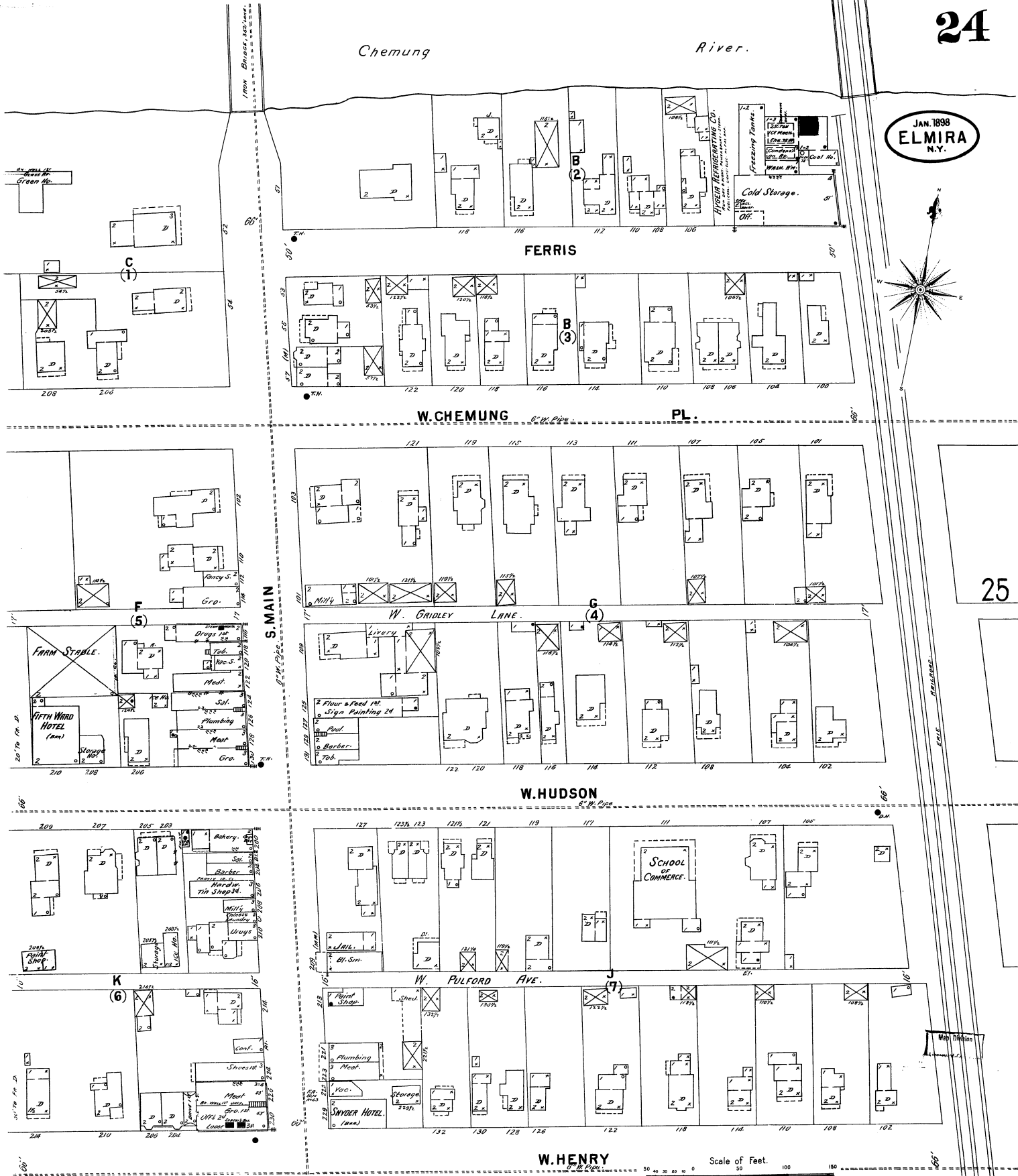
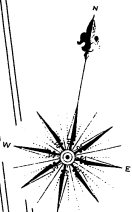
IRON BRIDGE



Chemung

River.

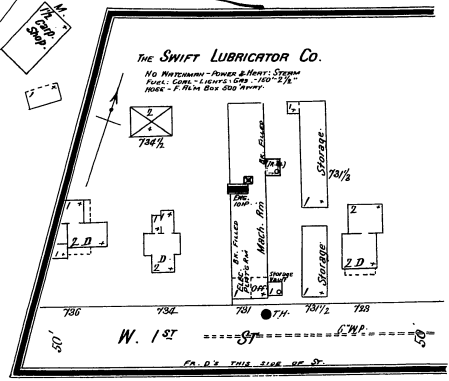
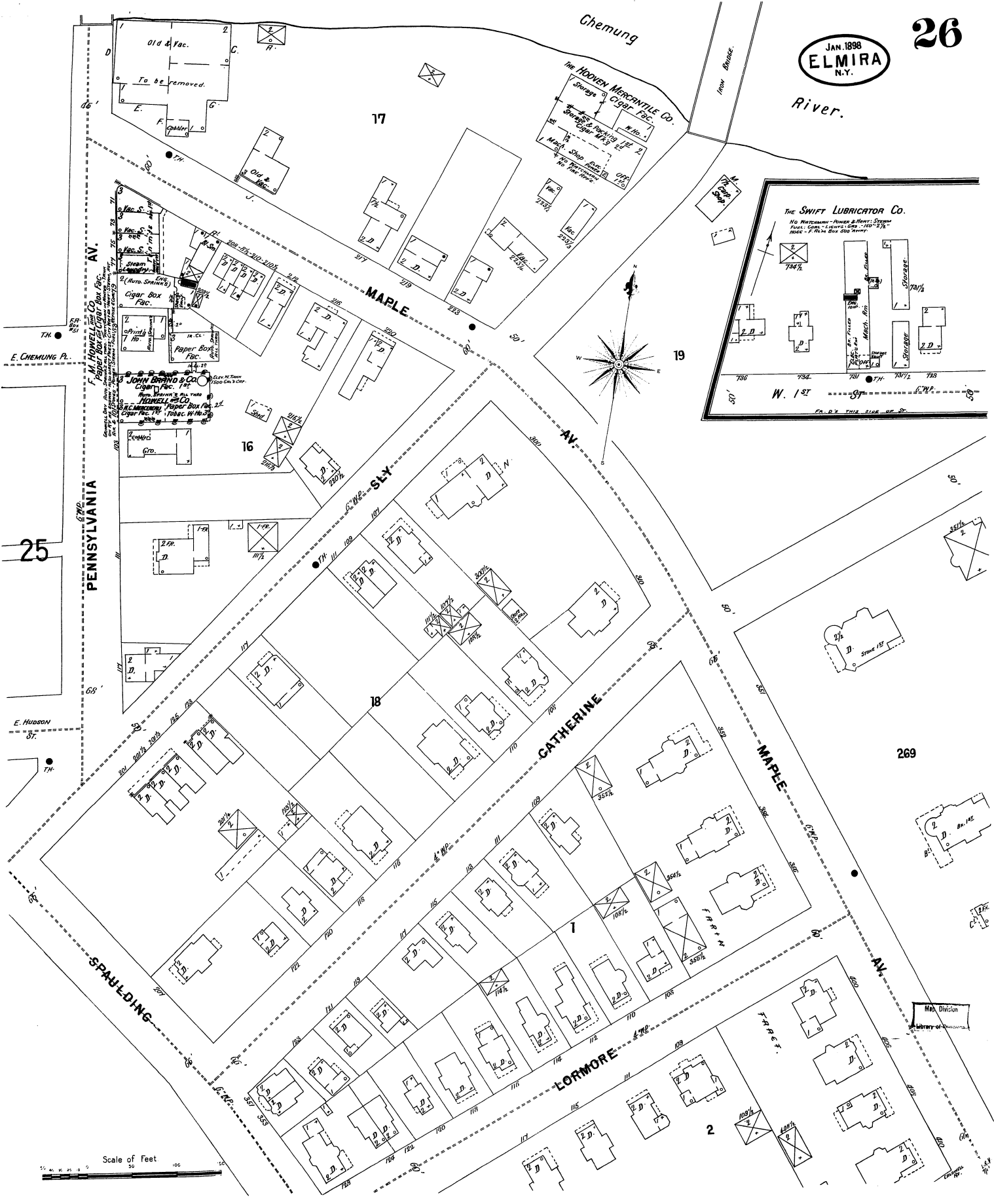
JAN. 1898
ELMIRA
N.Y.



Scale of Feet.

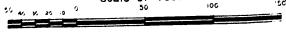
Map Division

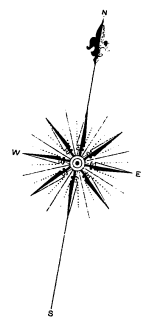
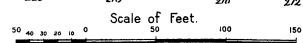
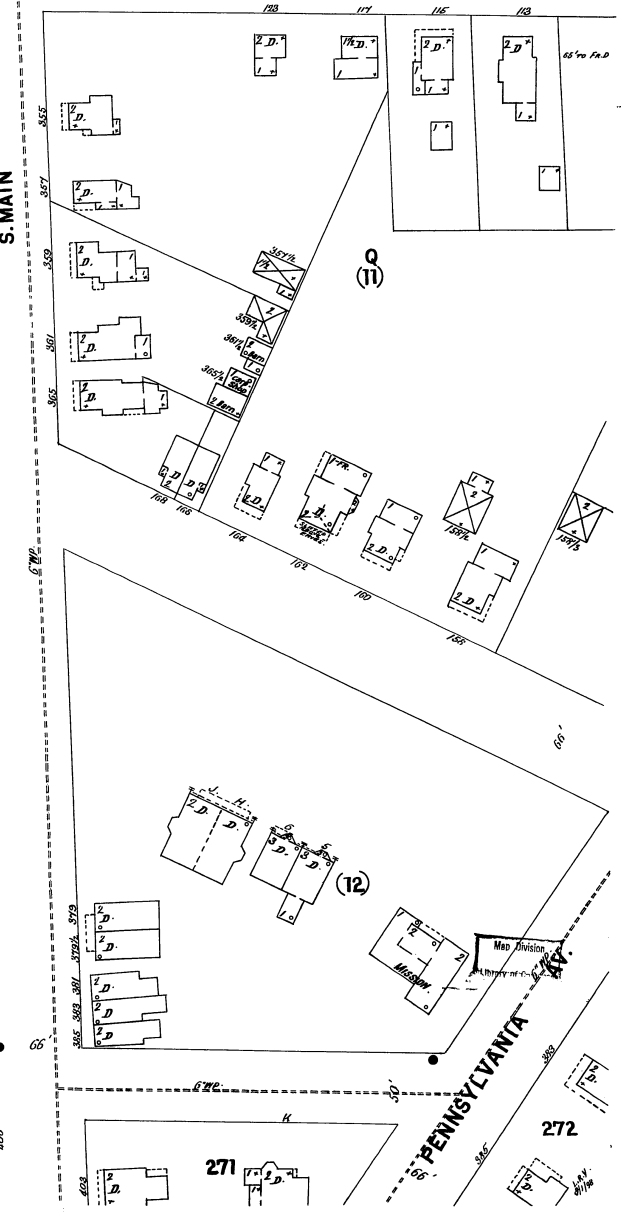
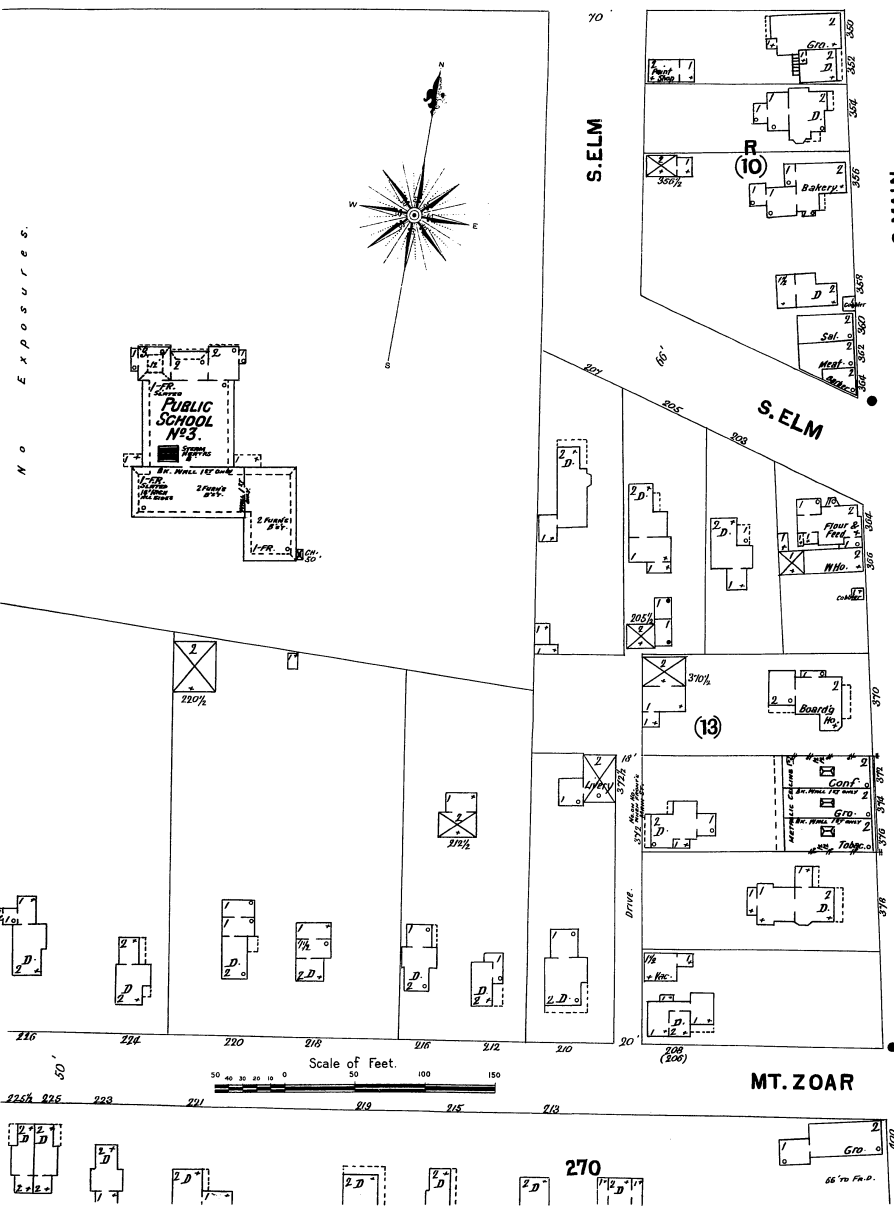
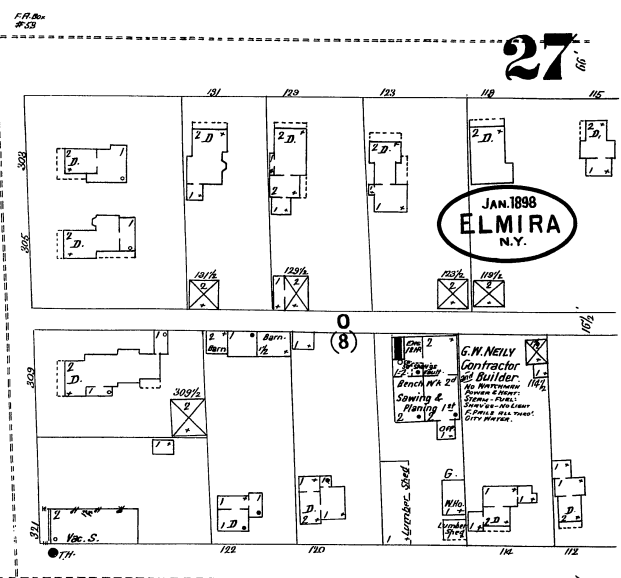
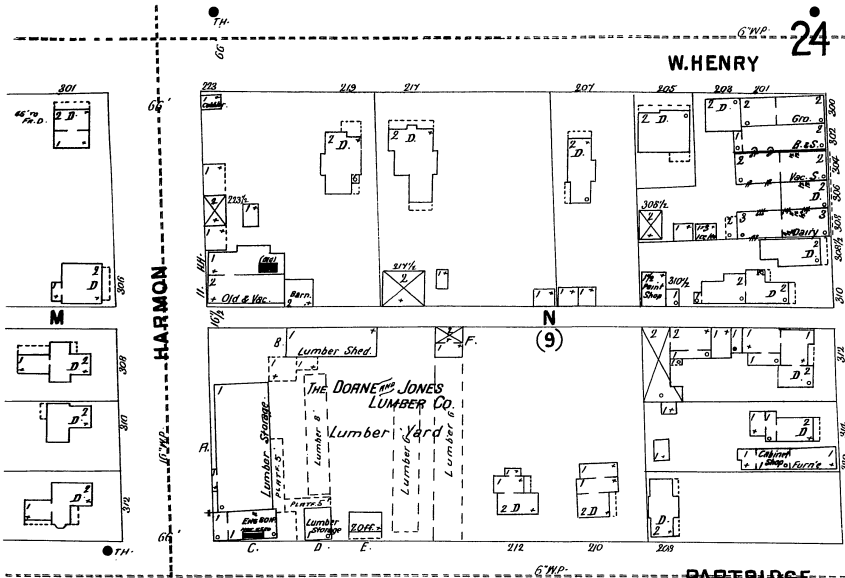
River.



269

Scale of Feet





JAN 1898
ELMIRA
N.Y.

No Exposures any side.

No Exposures.

ARNOT-OGDEN MEMORIAL HOSPITAL.

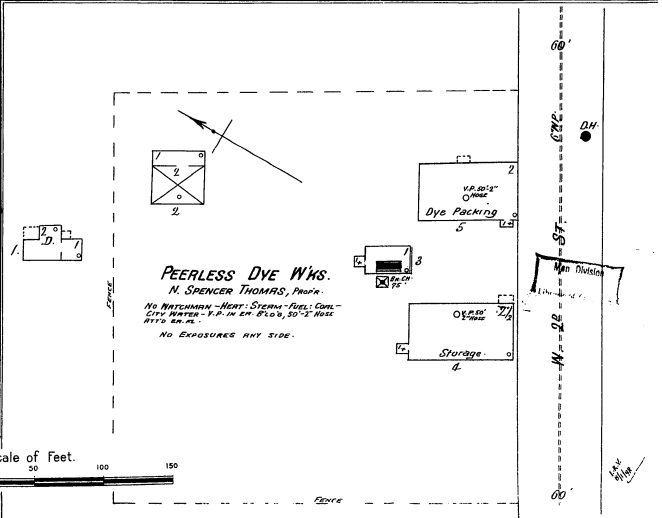
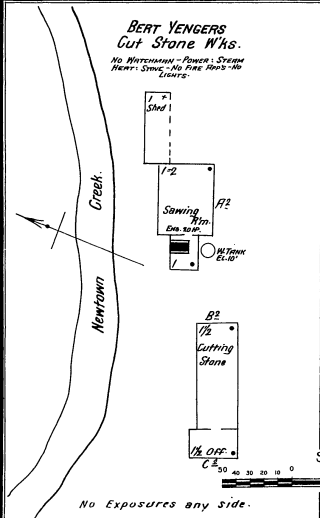
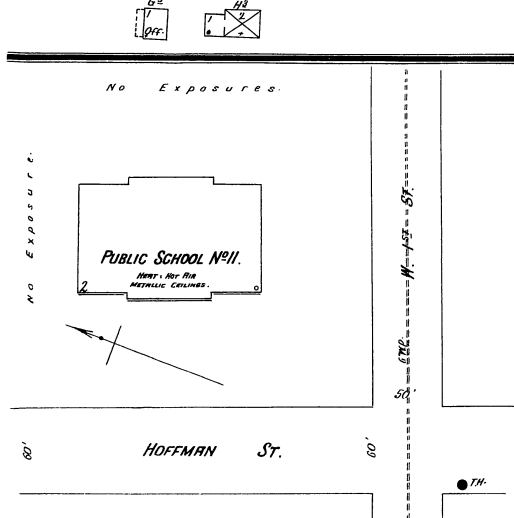
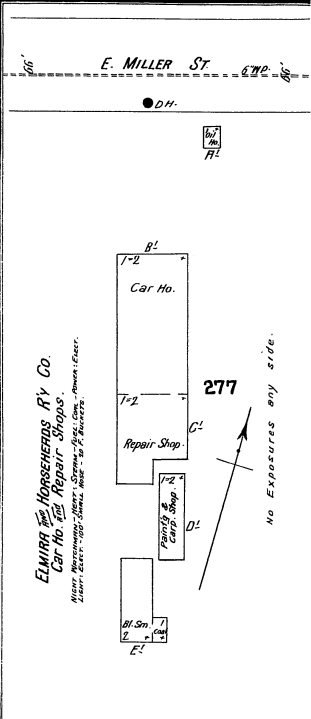
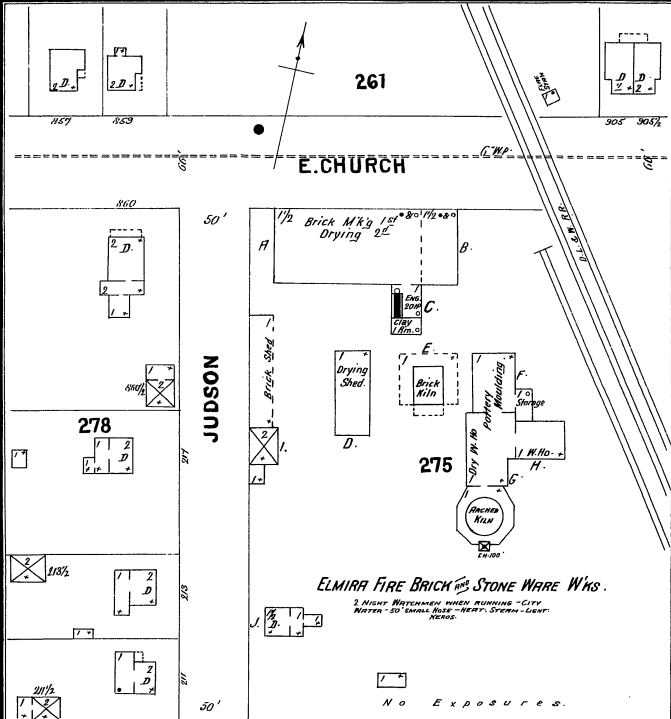
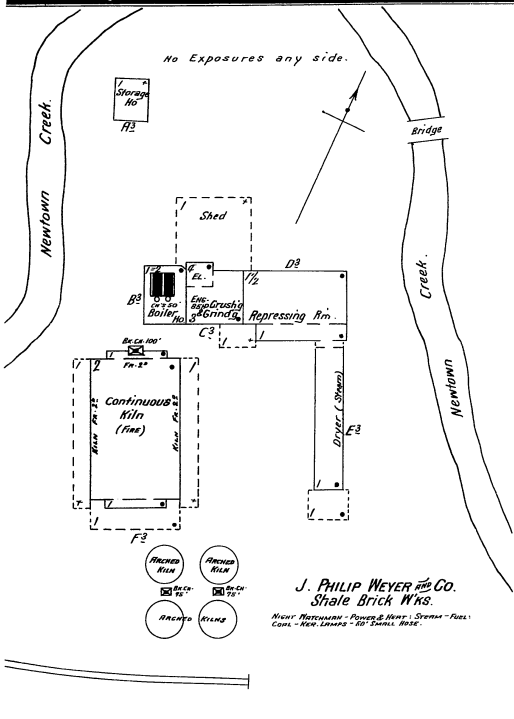
HEAT MATCHMAN - HEAT - STEAM - FUEL - COAL - LEADS - GAS
S.P. - 1 BUFFALO F. F. & R. - 3 BRADCOCK F. F. & R. -
F. BRADCOCK C. M. - 2 1/2" S. W. G. & 1/2" S. W. G. RADIATOR.

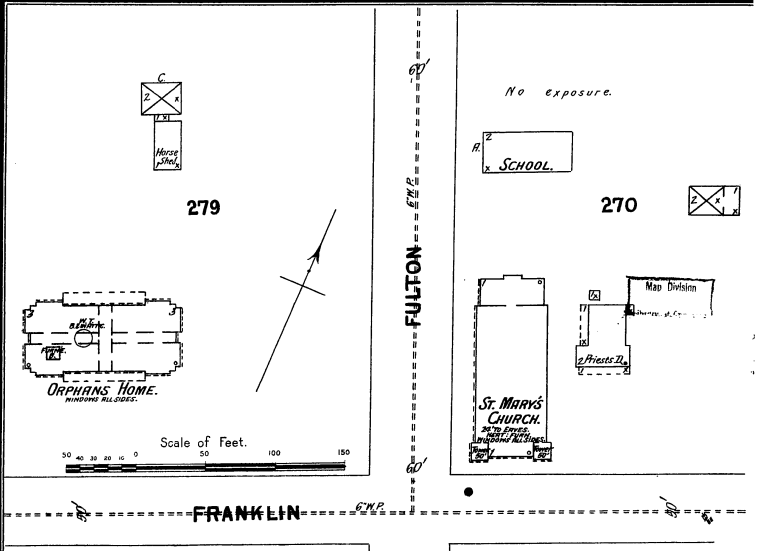
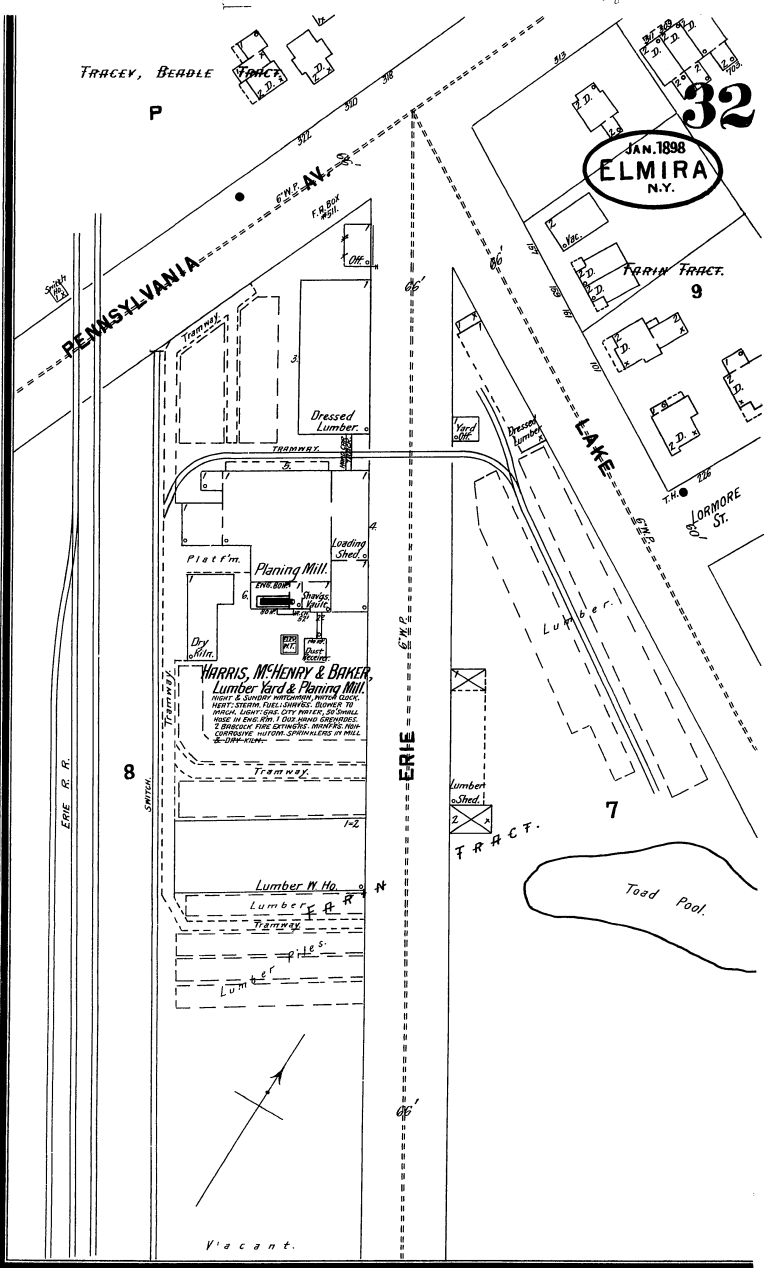
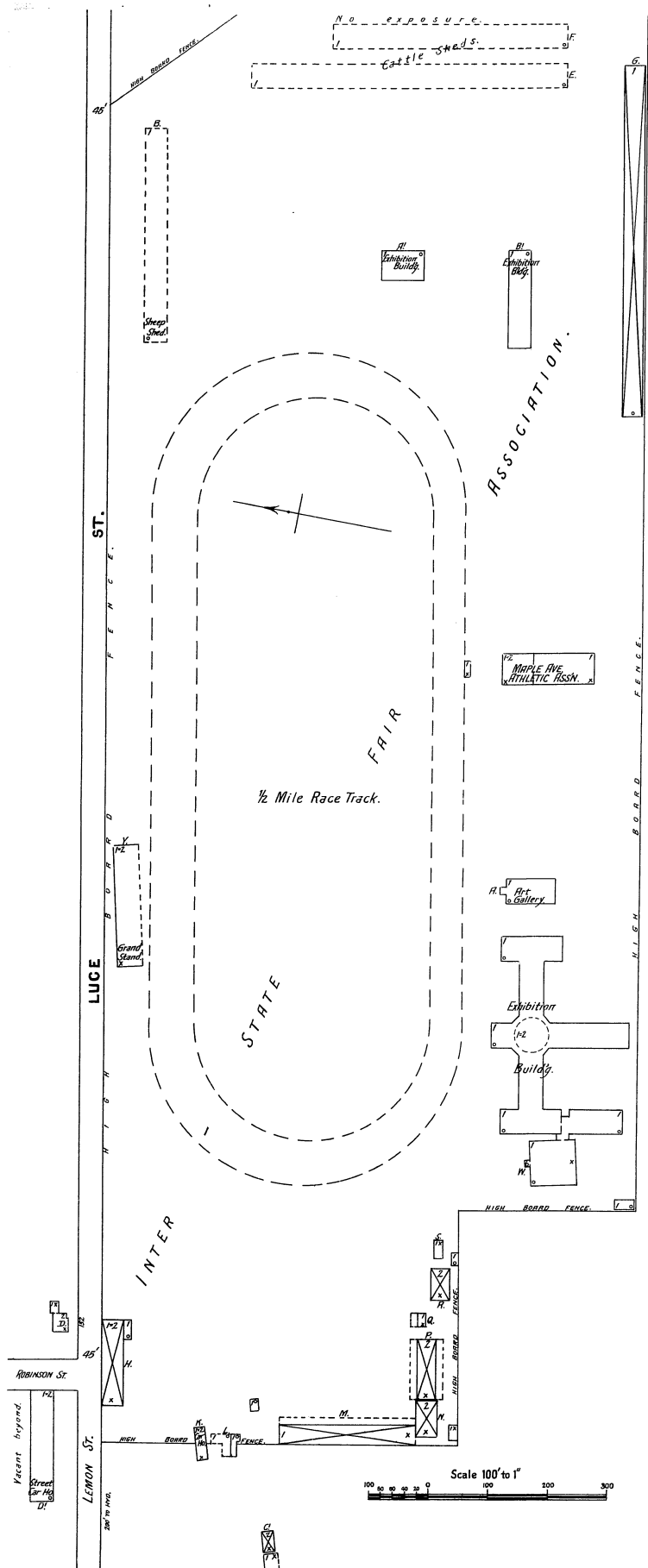
ELMIRA BREWING CO
FORMERLY ROCK SPRING BREWERY.
3 Miles S. E. of P. O.

HEAT MATCHMAN - S.P. F.P. - 600 - 2 1/2" HOSE - 2 1/2" TANKS NEXT
TO S.P. - BRADCOCK C. M. - 2 1/2" S. W. G. RADIATOR
HEAT - STEAM - FUEL - COAL - LEADS - GAS & BREWERS LEADS
& CONDENSER.

RIVER ROAD
BL. E. R. R.

GRAVE ST.





JAN. 1898
ELMIRA
N.Y.

32

PARIN TRACT. 9

7

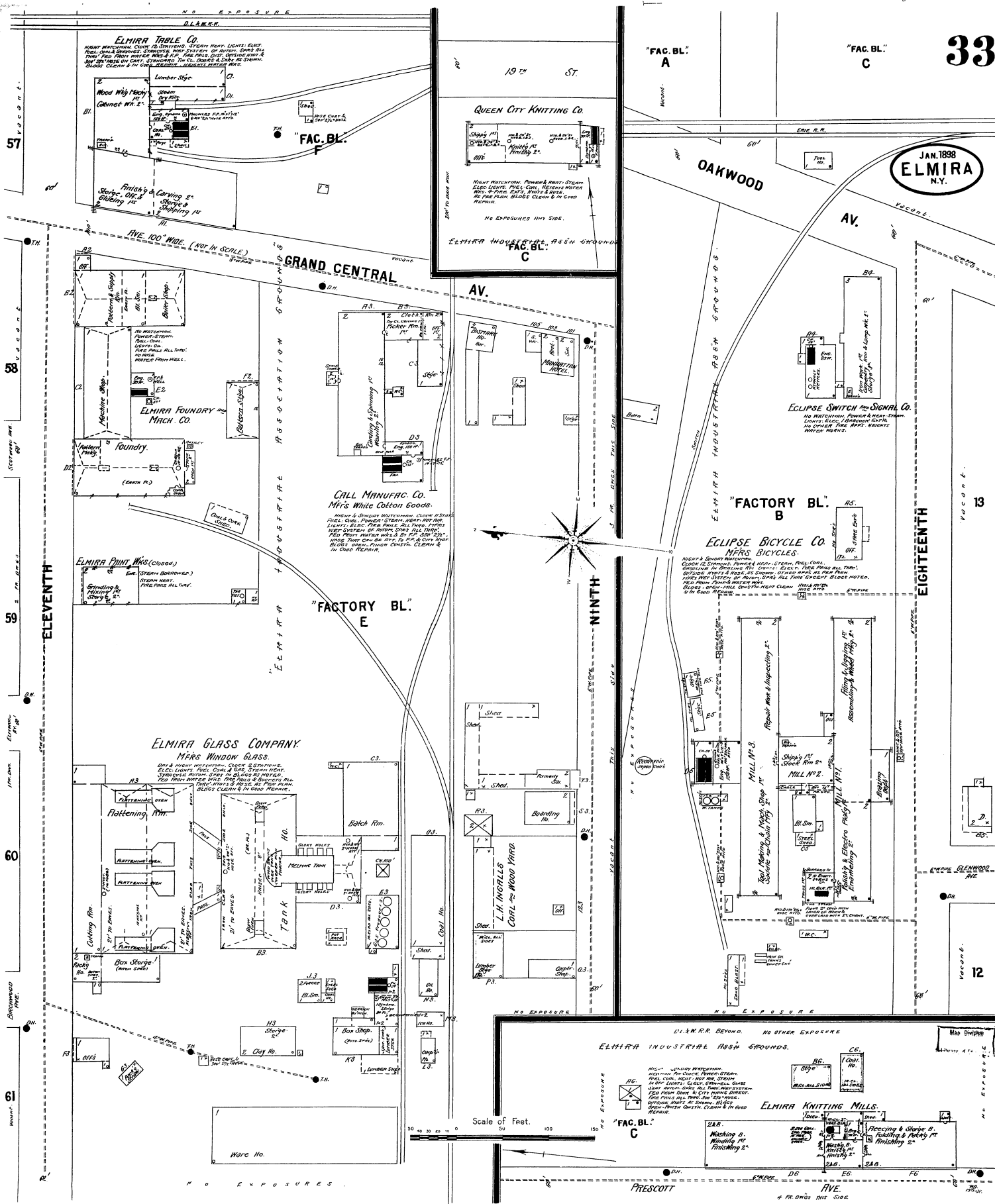
279

270

ORPHANS HOME.
WORKING CLASS.

St. MARY'S
CHURCH.
SOUTH STREET.
LUMBER YARD.

JAN. 1898
ELMIRA
N.Y.



13

12

57

58

59

60

61

ELEVENTH

NINTH

EIGHTEENTH

"FAC. BL." A

"FAC. BL." C

"FAC. BL." F

AV.

OAKWOOD

GRAND CENTRAL

"FACTORY BL." B

"FACTORY BL." E

ECLIPSE BICYCLE CO.

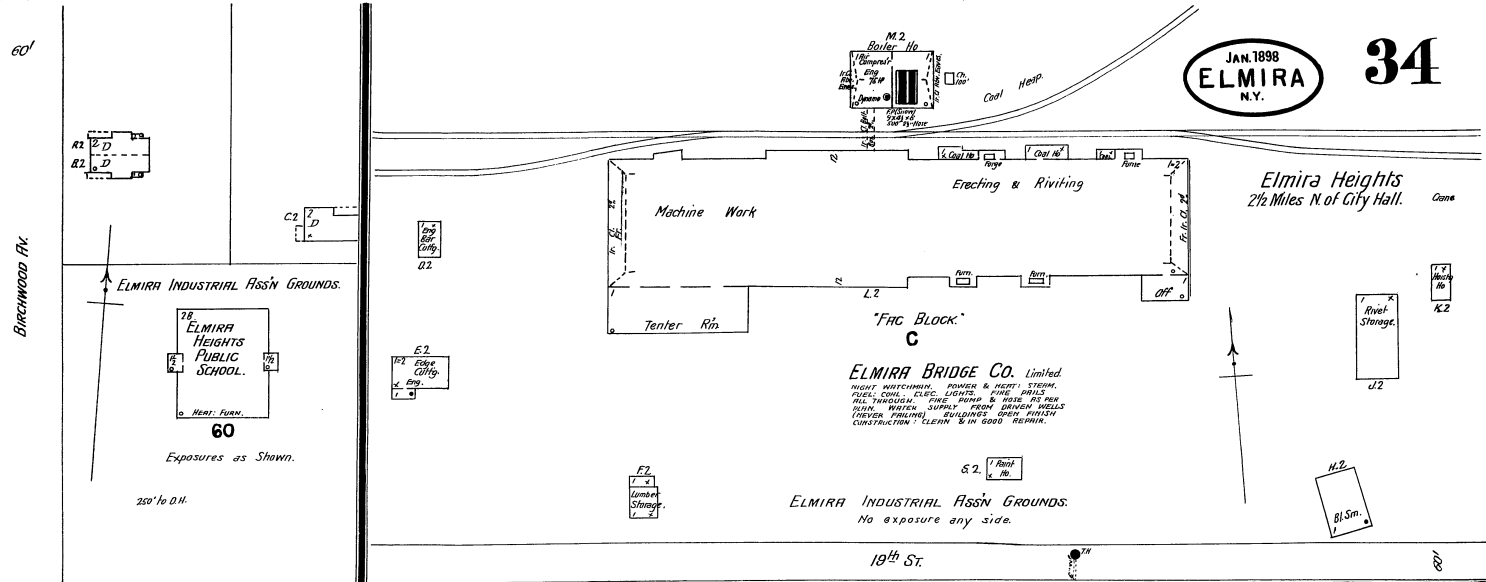
ELMIRA INDUSTRIAL RUSH GROUNDS.

"FAC. BL." C

PRESCOTT

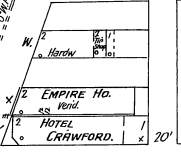
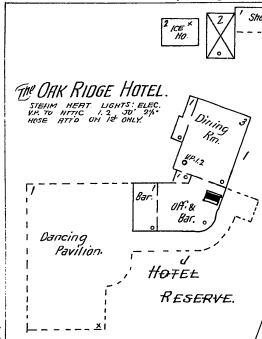
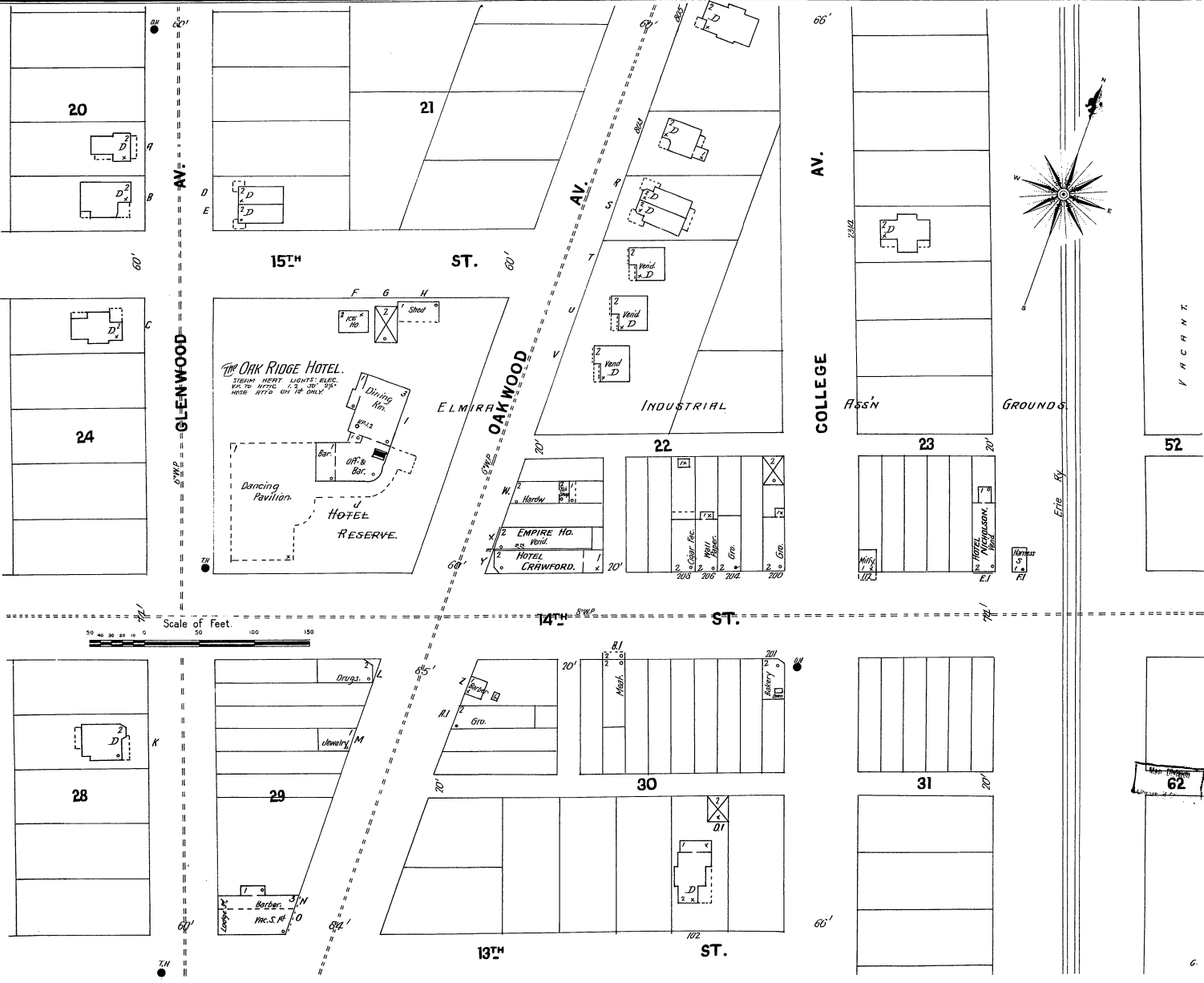
RIVE.

Elmira Heights
2 1/2 Miles N. of City Hall.



ELMIRA BRIDGE CO. Limited.
HIGH WATERWAYS, POWER & HEAT, STEAM,
PIPE, COAL, FUEL, LIGHTS, WINDMILLS,
ALL THROUGHOUT, PIPE, PUMPS & HOSE AS PER
PLAN. WATER SUPPLY FROM DENVER WHEELS
(NEVER FAILING) BRIDGES OVER RIVERS
CONSTRUCTION - CLEAN & IN GOOD REPAIR.

ELMIRA INDUSTRIAL ASSN GROUND.
No exposure any side.



Map of Elmira
Page 34