



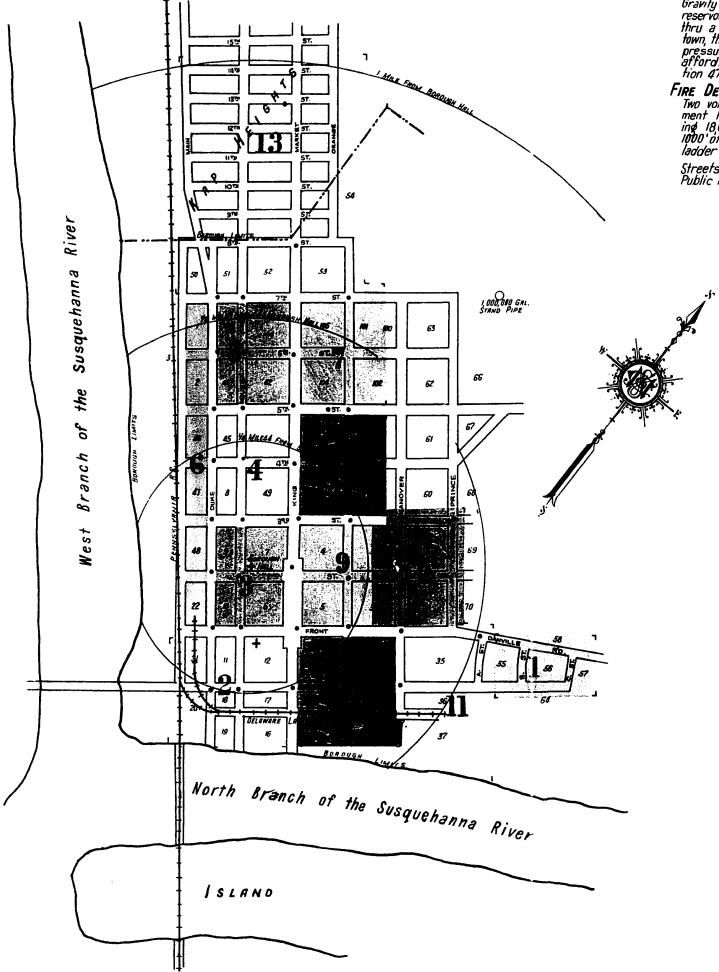
WATER FACILITIES:-
Gravily system, owned by private co. Mountain streams & 2-8" Artesian wells, feed a reservoir capacity, 6,000,000 gals. located 4 miles N. of town, thence by gravily flow thru a 10" main to a 1,000,000 distribution stand pipe located on hillside N. of the town, thence by gravily flow thru 12 miles of mains 10" to 4" carrying an average pressure of 100 lbs. at 42 hydr. In emergency booster system along the 10" main affords a pumping capacity of 2,000,000 gals. per day. Average daily consumption 470,000 gals.

FIRE DEPT:-
Two volunteer companies. No. 1 company 500 men, including 1 chief & 1 paid driver, equipment 1 American La France triple comb. Pumper capcy 750 gal. per min. carrying 18,000' of 2 1/2" hose. 1 Brockway chem. hose truck carrying 1400' of 2 1/2" hose. 1000' of 2 1/2" hose in reserve. No. 2 company 75 men. Equipment 1 Republic hose, ladder & chem. truck. No fire limits.

Streets within Borough Limits paved brick or Macadamized. Grades easy. Public lights; elec.-

Map Division
MAR 5 1924
Library of Congress

OLF 42890 R 100 14 1924

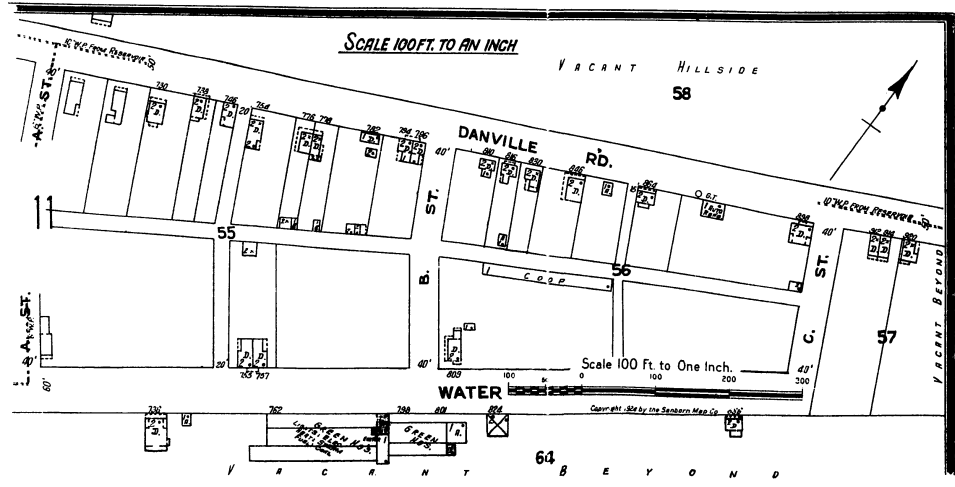
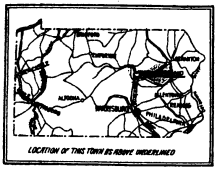


INDEX

STREETS	SECT	SIXTH	TENTH	THIRTEENTH	TWELFTH	SEVENTH
A Street,	11	1-50	6	100-265	7	800-488
B Street,	B	100-274	13	101-289	14	300-454
Brickyard Alley,	4, 6 & 8	101-289	13	301-475	14	456-674
C Street,	1	301-475	13	456-674	12	11
Church Alley,	3, 6, 9 & 12	456-674	12	11	13	13
Danville Road,	D	600-709	11	730-921	11	13
Depot Alley,	2 & 10	730-921	11	100-288	12	101-691
Duke,	100-288	101-691	12	300-496	13	500-696
Eight,	E	300-496	12	500-696	13	700-797
Eleventh,	13	700-797	13	Wallace,	W	500-685
Fifth,	F	1-50	6	Wallis Alley,	7, 8, 9, 10 & 12	1-286
Fourteenth,	13	101-289	6	Water,	300-495	10
Fourth,	4	300-478	8	West Way,	600-601	5
Front,	1-50	6	8	Wheatley,	2, 3, 4 & 5	13
Hanover,	H	1-83	10			
King,	K	1-85	12			
Main,	M	100-294	13			
Market,	13	101-293	6			
Ninth,	N	100-296	9			
North Alley,	11 & 12	101-293	8			
Orange,	O	300-454	10			
Park Alley,	P	301-463	4			
Fond Alley,	3, 9 & 12	500-694	7			
Prince,	11 & 12	501-695	11			
Queen,	Q	500-698	11			
Ropewalk Alley,	R	700-799	13			
Sawmill Alley,	S	1-99	2			
Second,	2	100-297	6			
Seventh,	7	300-497	10			
Sheets Alley,	5, 6, 7 & 13	500-699	6			
		700-899	13			

KEY

- FIRE WALLS AND ADV ROOF
- SEAL CORNER
- WOOD SHEDS AND ADV ROOF
- WOOD CORNER
- BRICK WALLS
- FRAME PARTITION
- OPENING W/ SHUTTERS
- 1000 BOND SHUTTERS
- WINDOW W/ STORY
- WINDOW W/ STORES
- 2 1/2" W/
- STABLE (C.B.) CONCRETE BLOCK
- BUILDING COLORED YELLOW W/ FRAME
- RED BRICK
- RED BRICK
- BRICK W/ FIRE PROOF
- WHEEL
- RELATIVE HEIGHTS
- FIRE STATION AS SHOWN ON KEY PLAN
- ALTERNATE STREET NUMBERS ARE ACTUAL
- CONSECUTIVE STREET NOS ARE ARBITRARY

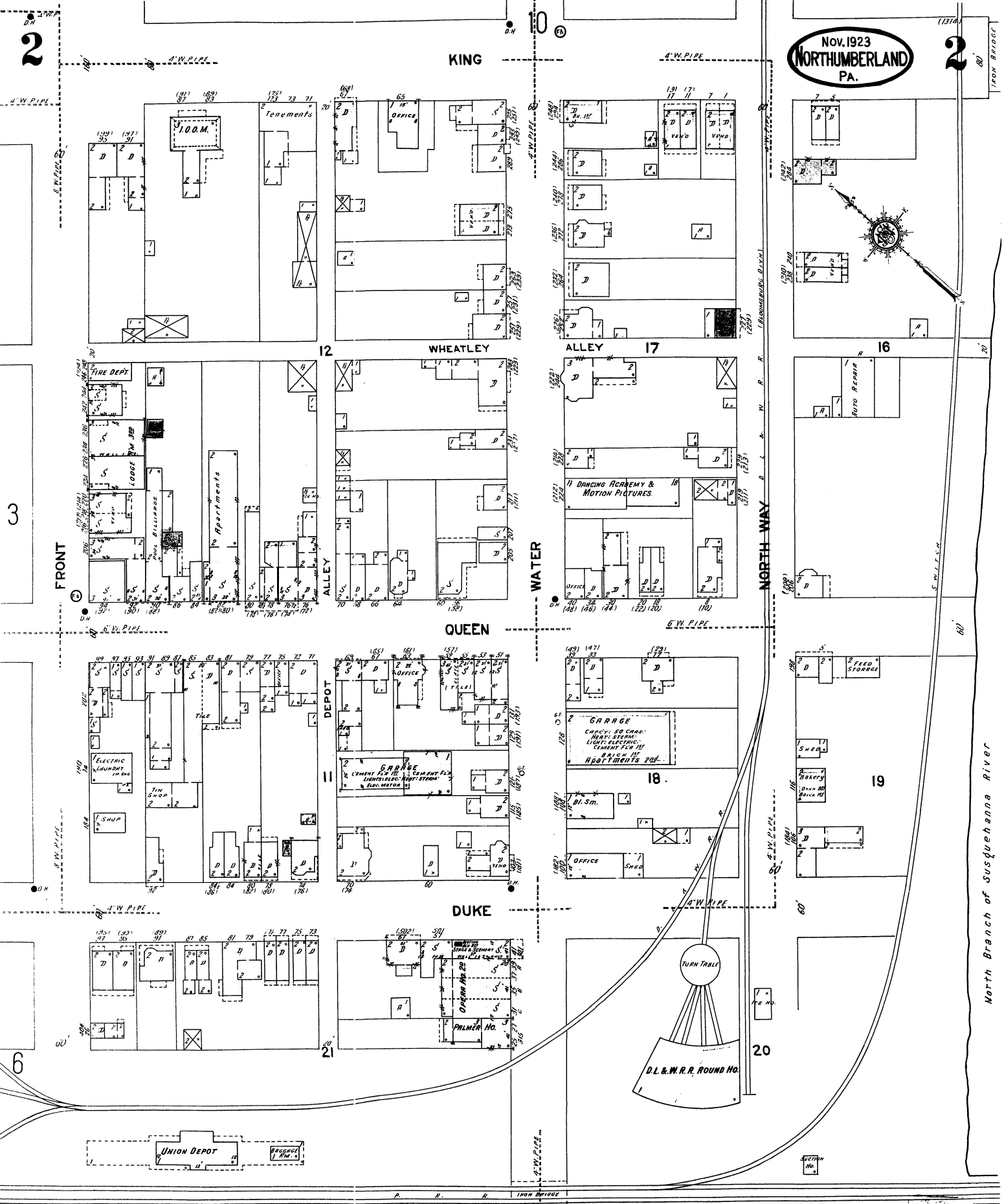


* Indicates only one side of Street shown.

Nov. 1923
NORTHUMBERLAND
PA.

2

2



Scale of Feet.
0 50 100 150
Section No. 1
Copyright 1924 by the Sanborn Map Co.

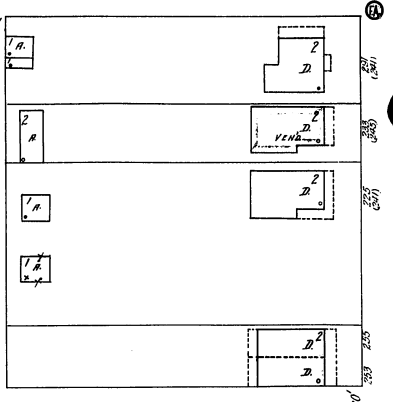
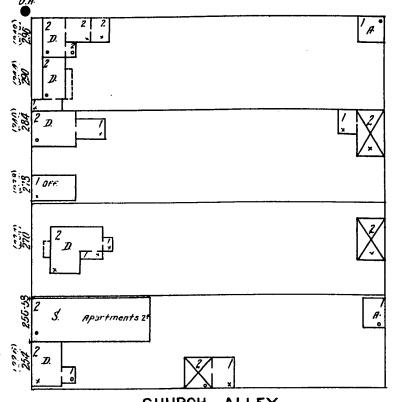
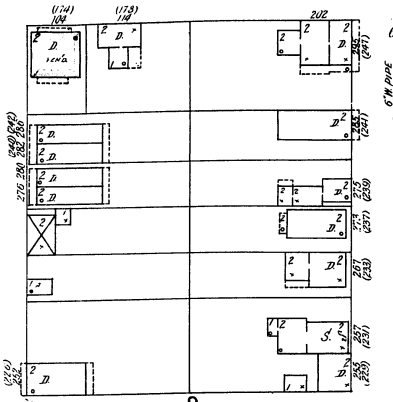
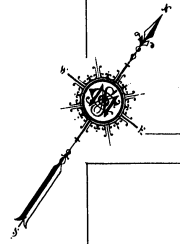
3

4

3

3RD ST.

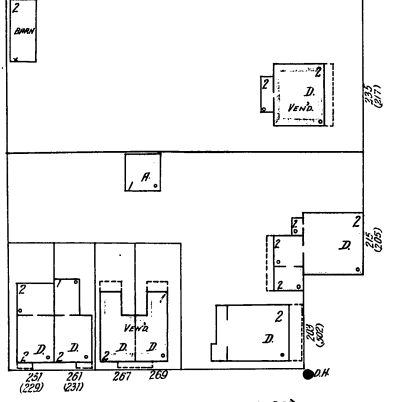
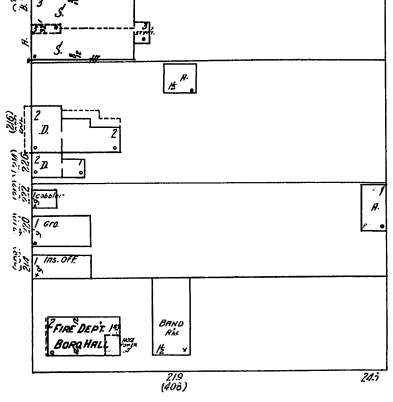
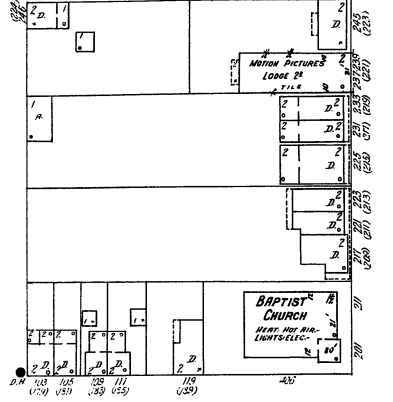
Nov. 1923
NORTHUMBERLAND
PA.



9

CHURCH ALLEY

7



2ND ST.

6

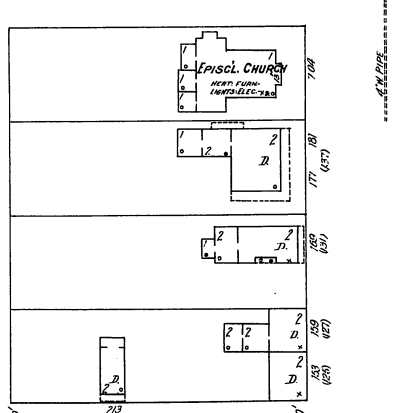
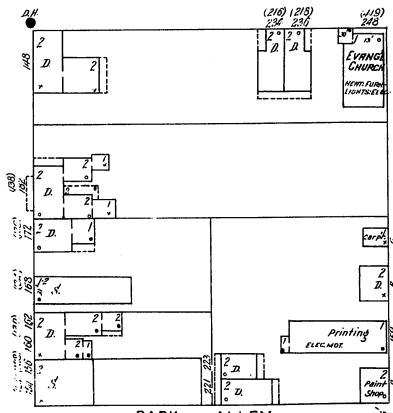
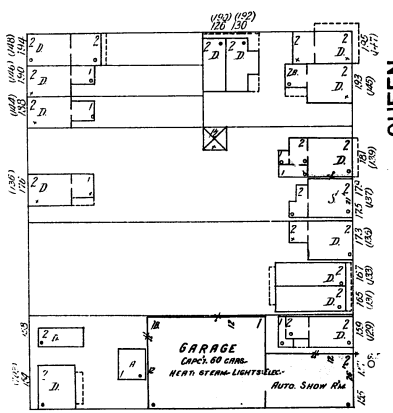
9

DUKE

QUEEN

WHEATLEY

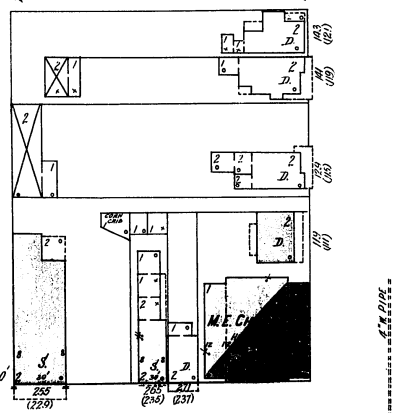
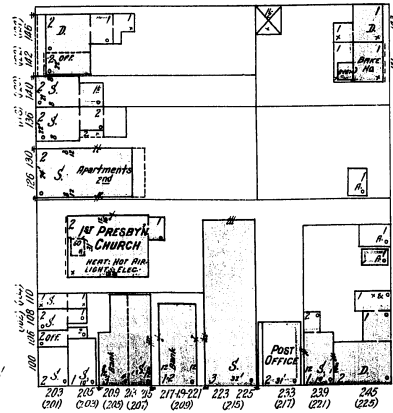
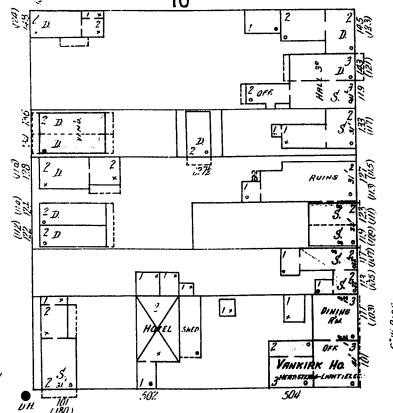
KING



10

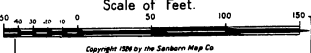
PARK ALLEY

6



FRONT

Scale of Feet.



2

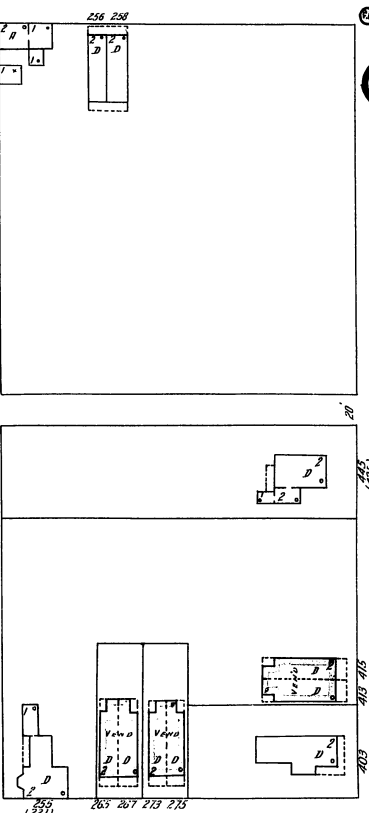
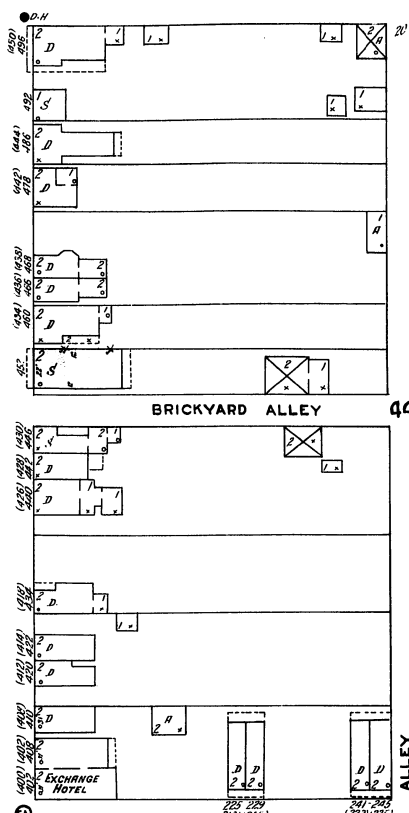
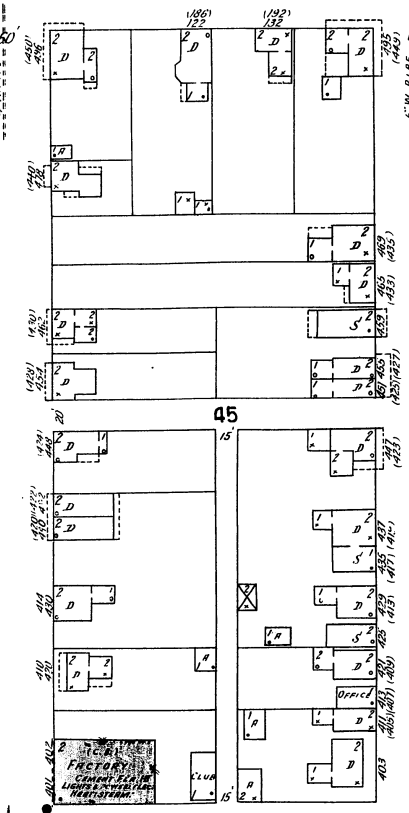
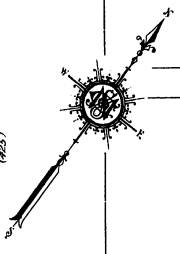
Copyright 1923 by the Sanborn Map Co

4

5

4

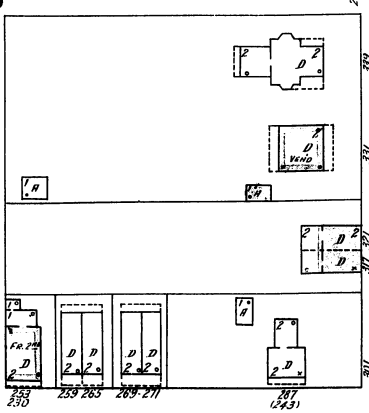
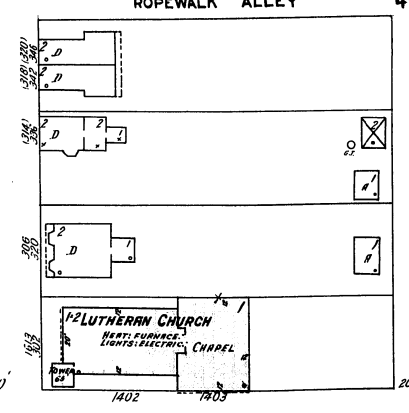
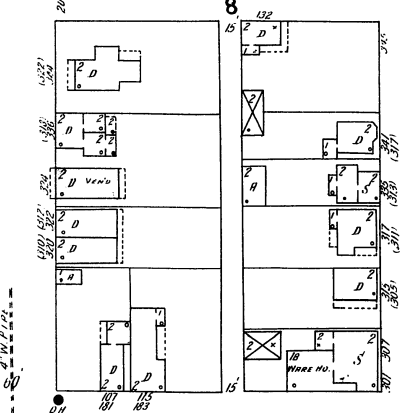
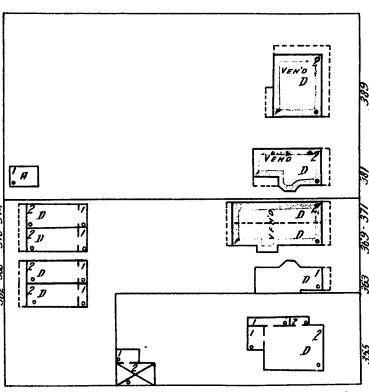
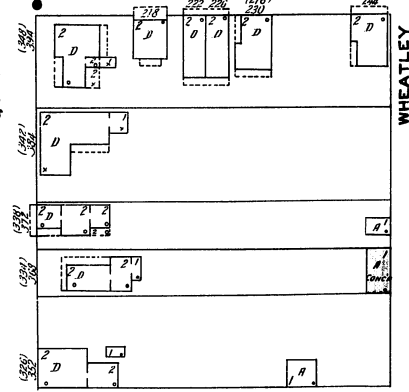
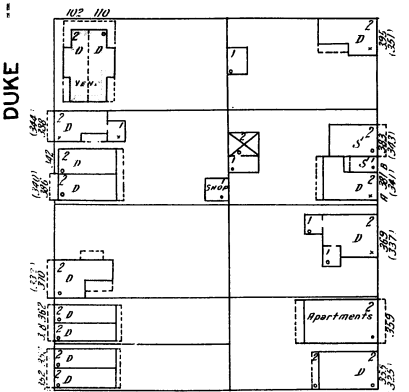
5TH ST.



6

4TH ST.

8



3RD ST.

3

Scale of Feet.

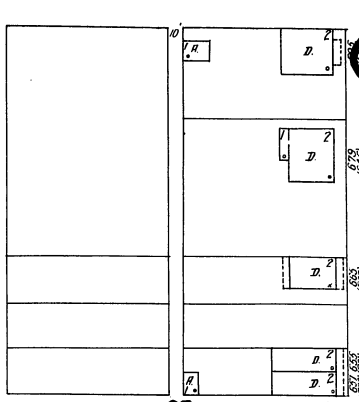
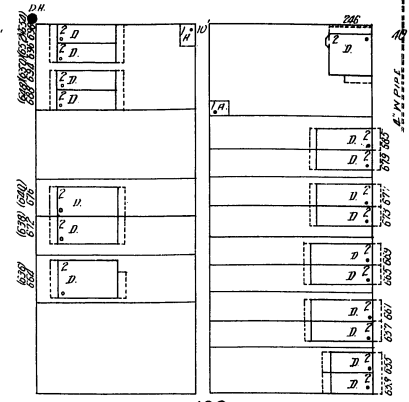
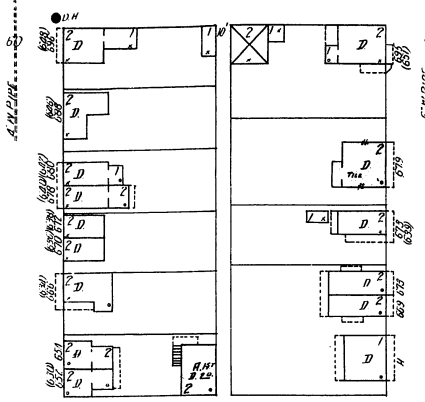


Copyright 1928 by the Sanborn Map Co.

13

7TH ST.

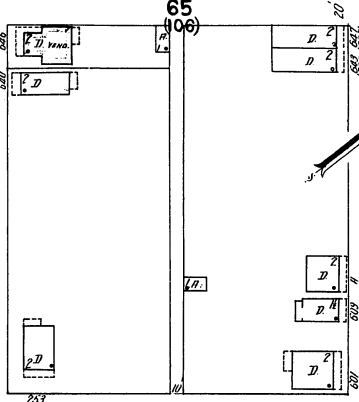
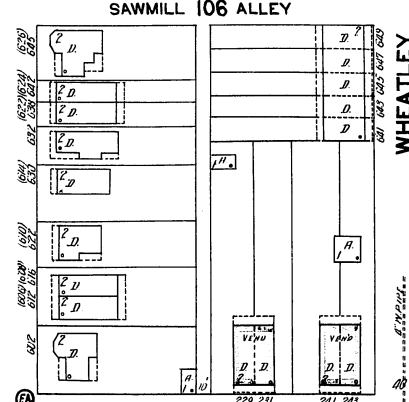
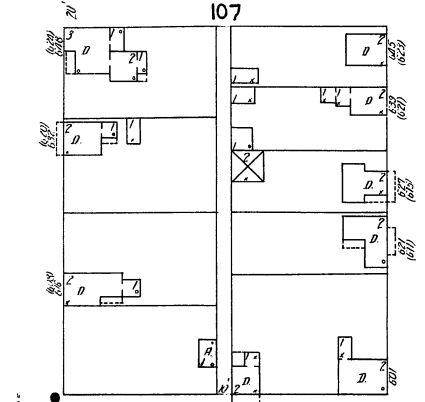
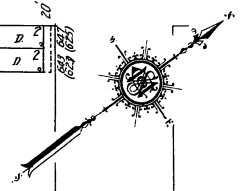
Nov 1923
NORTHUMBERLAND
PA.



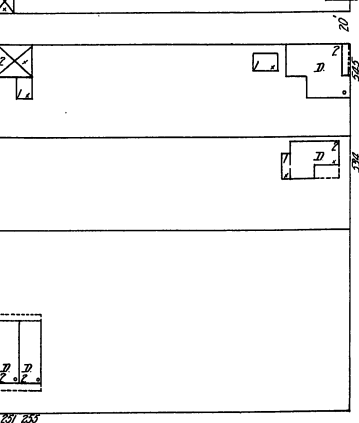
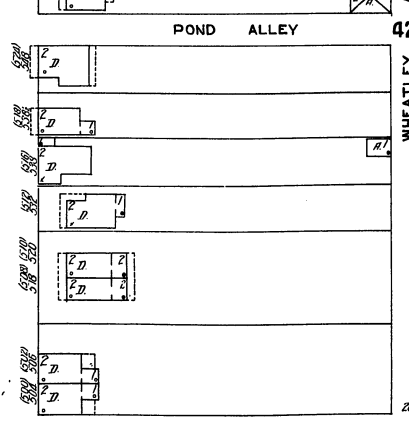
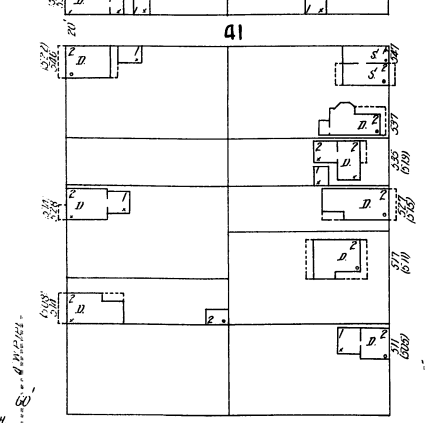
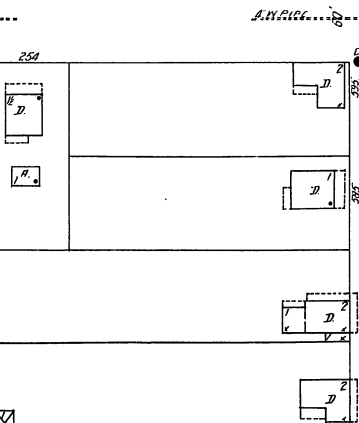
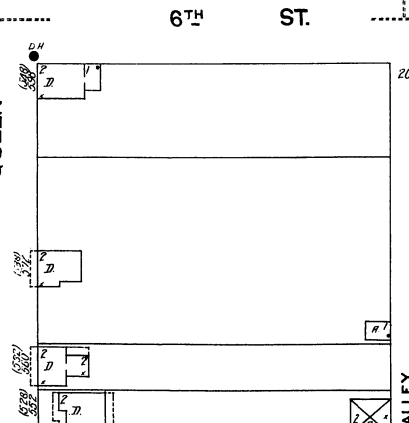
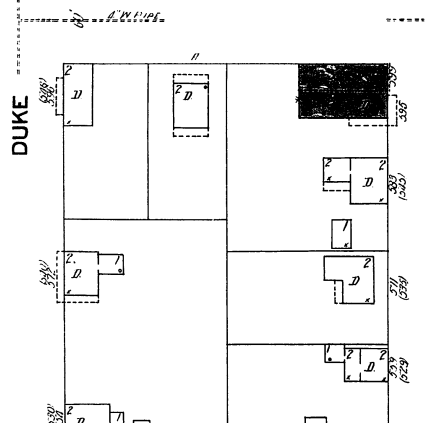
107

SAWMILL 106 ALLEY

65
106



6TH ST.



DUKE

QUEEN

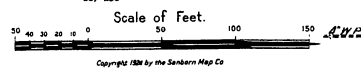
WHEATLEY ALLEY

KING

POND ALLEY

5TH ST.

4



Scale of Feet.

Copyright 1924 by the Sanborn Map Co

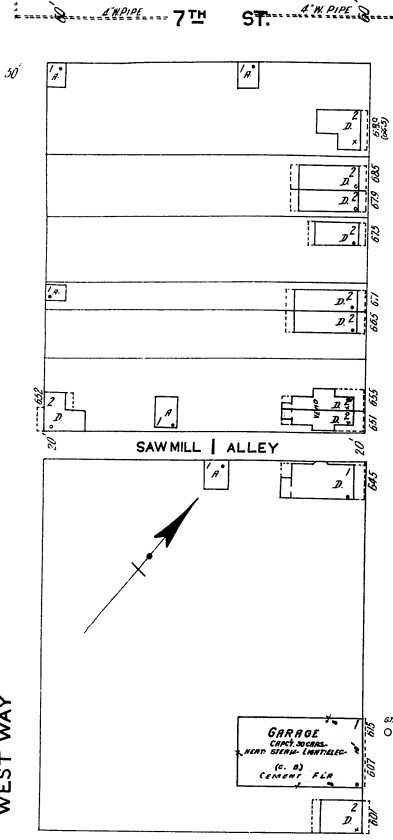
6

13

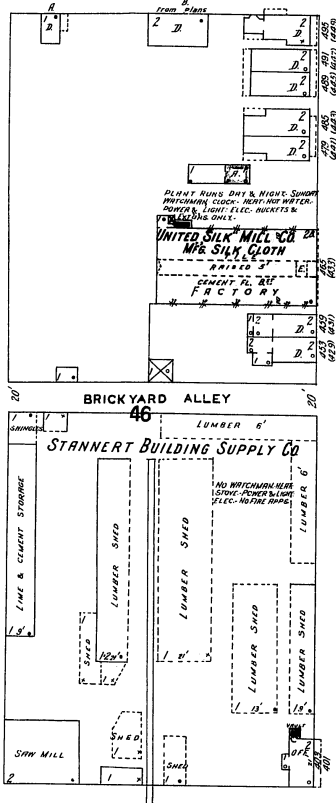
5TH ST.

6 3RD ST.

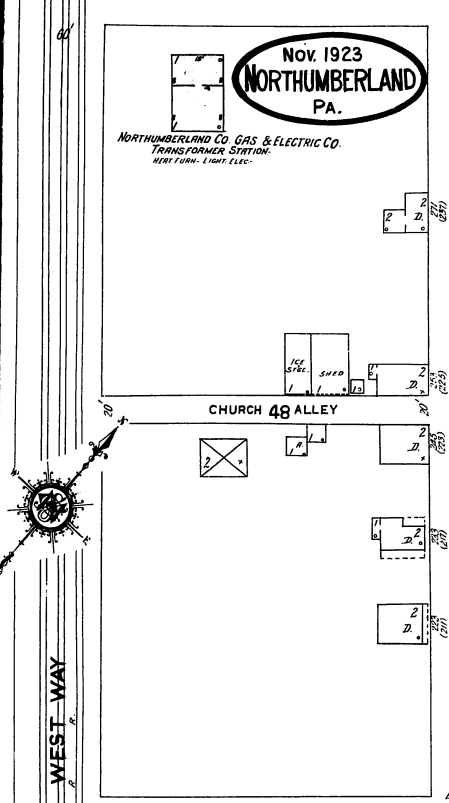
6



WEST WAY



DUKE

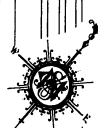
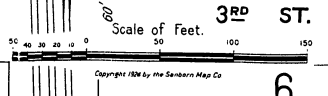
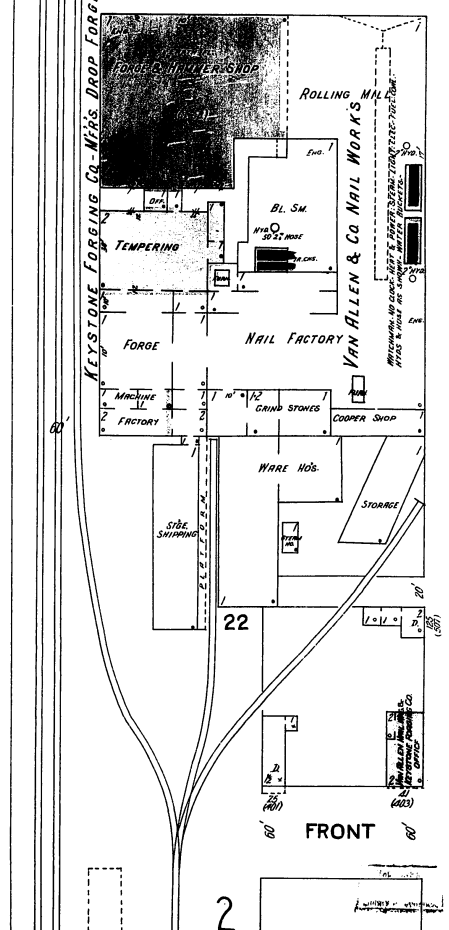
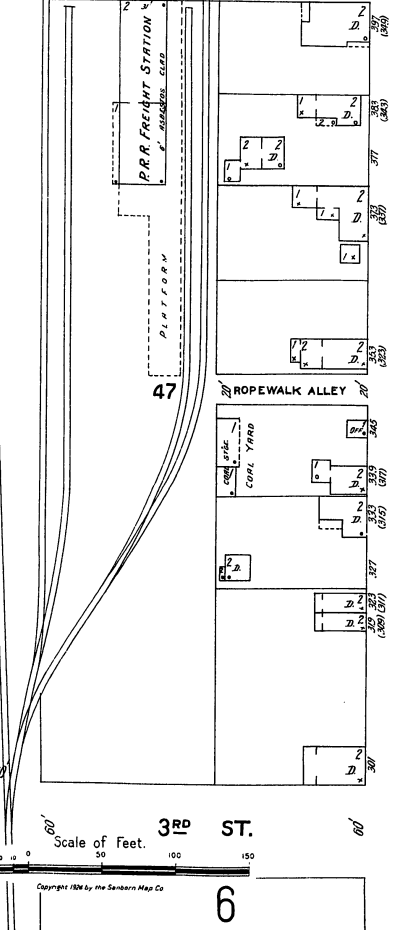
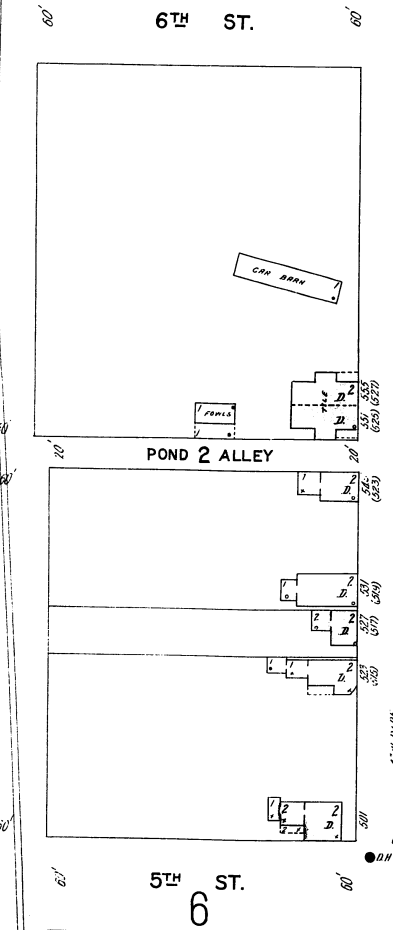


DUKE

3

4

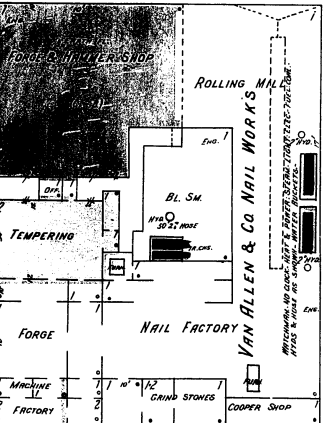
3



NOV. 1923
NORTHUMBERLAND
PA.

NORTHUMBERLAND GAS & ELECTRIC CO.
TRANSFORMER STATION
HIGH TENSION LIGHT ELEC.

KEYSTONE FORGING CO. MRS. DROP FORGES



FRONT

2

13

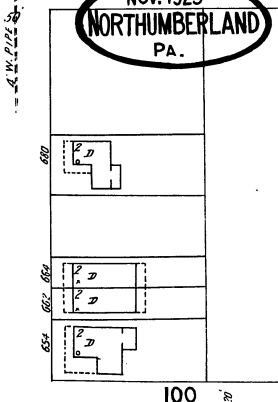
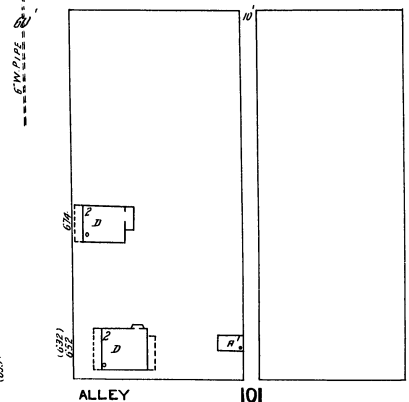
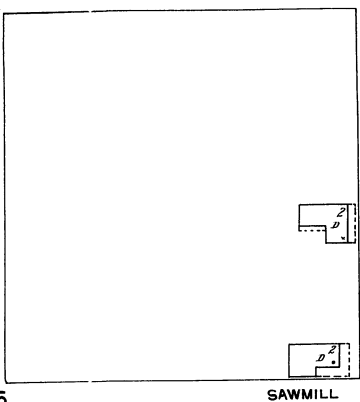
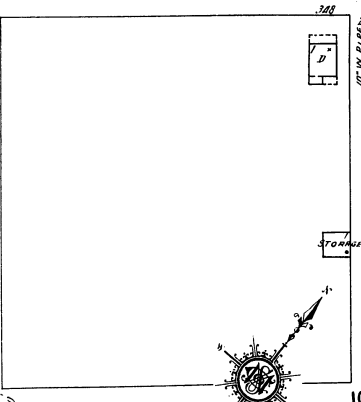
Nov. 1923
NORTHUMBERLAND
PA.

7TH ST. & W. PIPE

6" W. PIPE

4" W. PIPE

6" W. PIPE



105

SAWMILL

ALLEY

101

100

WALLACE

CHARLES STEEL
PUBLIC SCHOOL

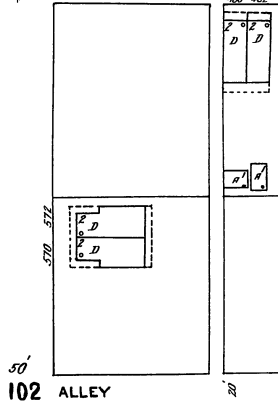
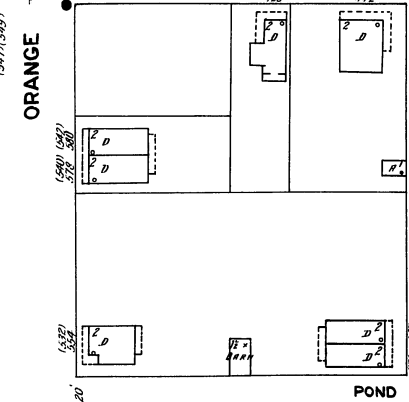
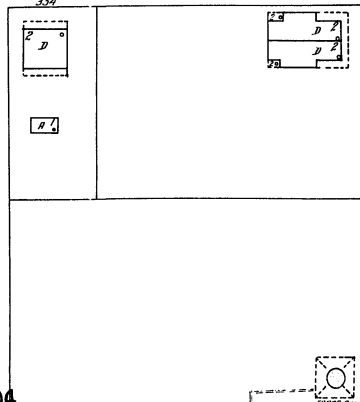
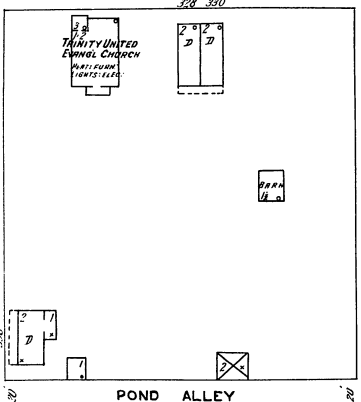
LIGHTS: ELEC:
HEAT: FURNACE

KING

6TH ST.

4" W. PIPE

4" W. PIPE



POND ALLEY

104

SUSQUEHANNA SILK MILLS
MFG BROAD SILK

F.I.A. RISK:
LIGHTS & POWER: ELEC. & HEAT: STEAM
FUEL: COAL; PLANT RUNS NIGHT & DAY; SUNDAY
WORKING: APPROX. 10000 YARDS; 10000 SPRINGERS
HANDOUT: FEED BY UNDER BELT; ELEV. 60' & CON.
TO BOND MATERIAL

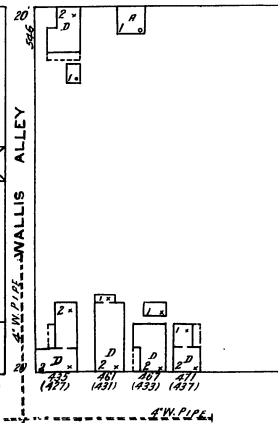
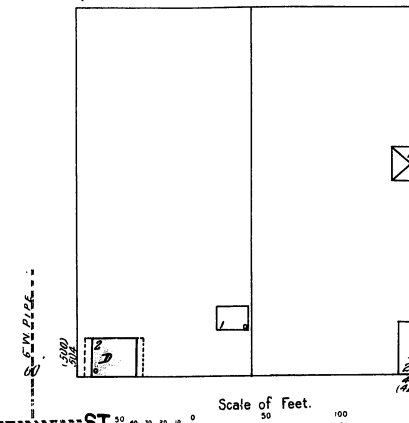
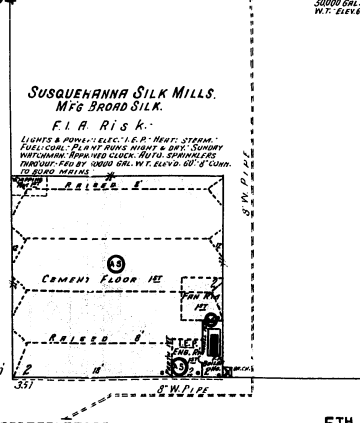
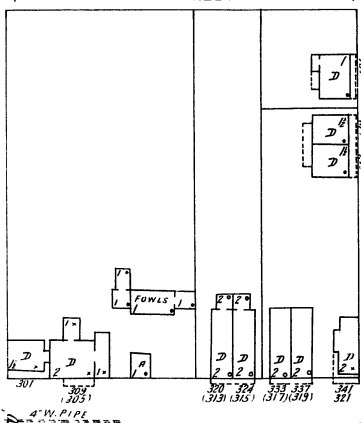
CEMENT FLOOR 1E

ORANGE

POND

102

WALLIS ALLEY

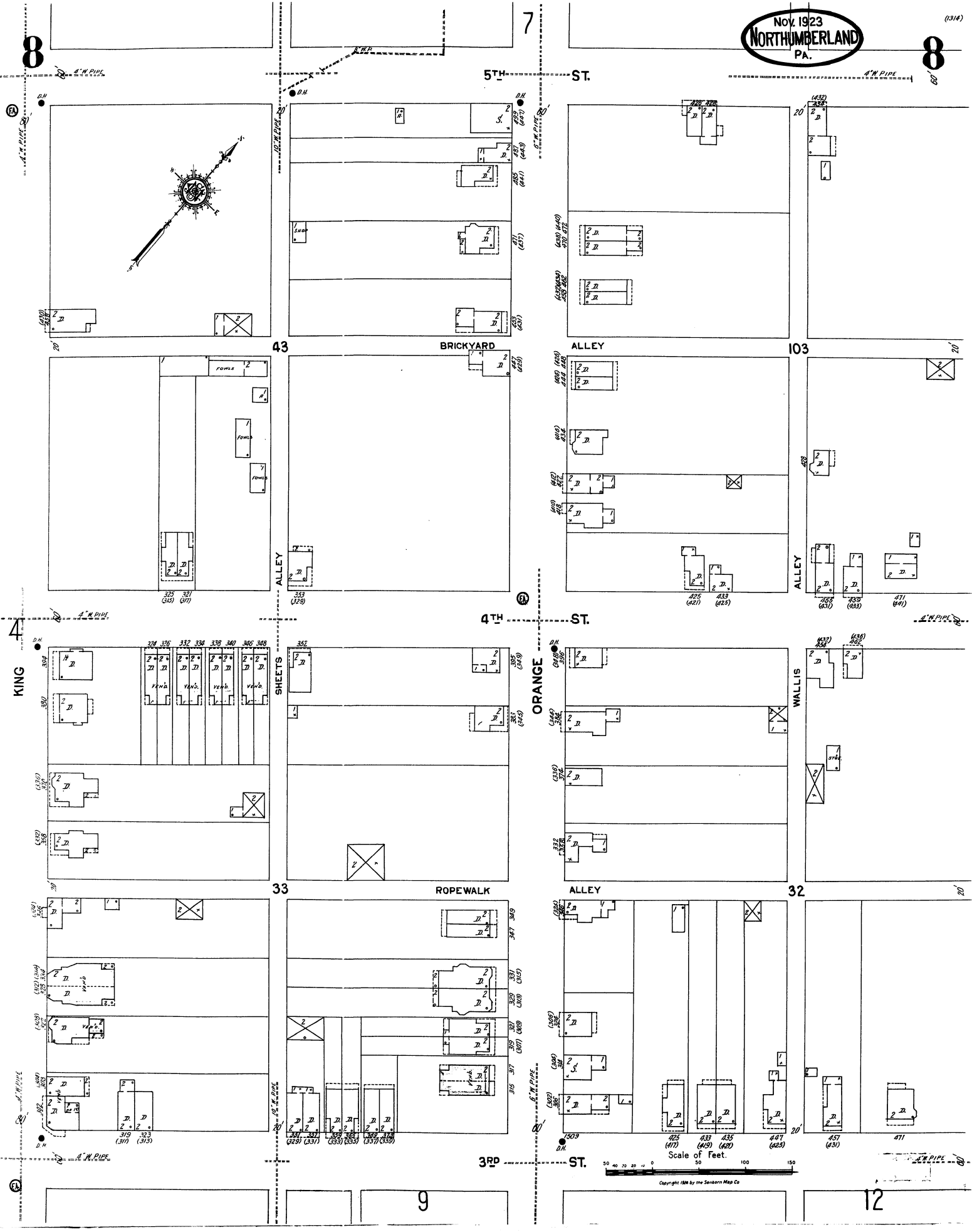


Scale of Feet.



Copyright 1928 by the Sanborn Map Co

8



8

8

7

9

12

3RD ST.

ST.

4TH ST.

ST.

5TH ST.

ST.

KING

ORANGE

WALLIS

ROPEWALK

ALLEY

ALLEY

43

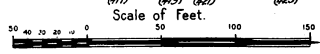
BRICKYARD

103

33

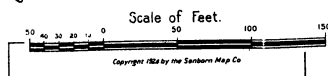
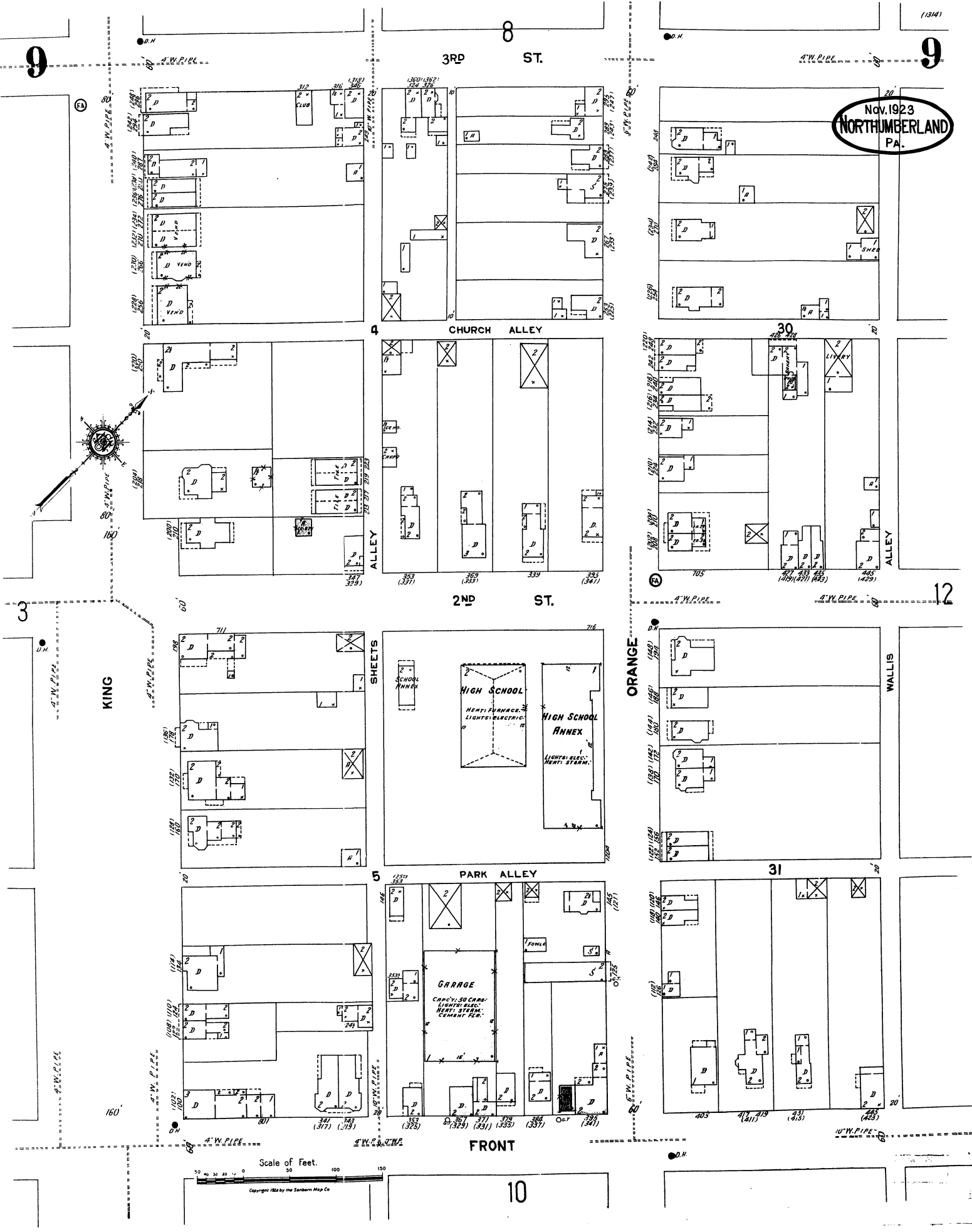
ALLEY

32



Copyright 1923 by the Seaborn Map Co

Nov. 1923
NORTHUMBERLAND
PA.



FRONT

10

Nov. 1923
NORTHUMBERLAND
PA.

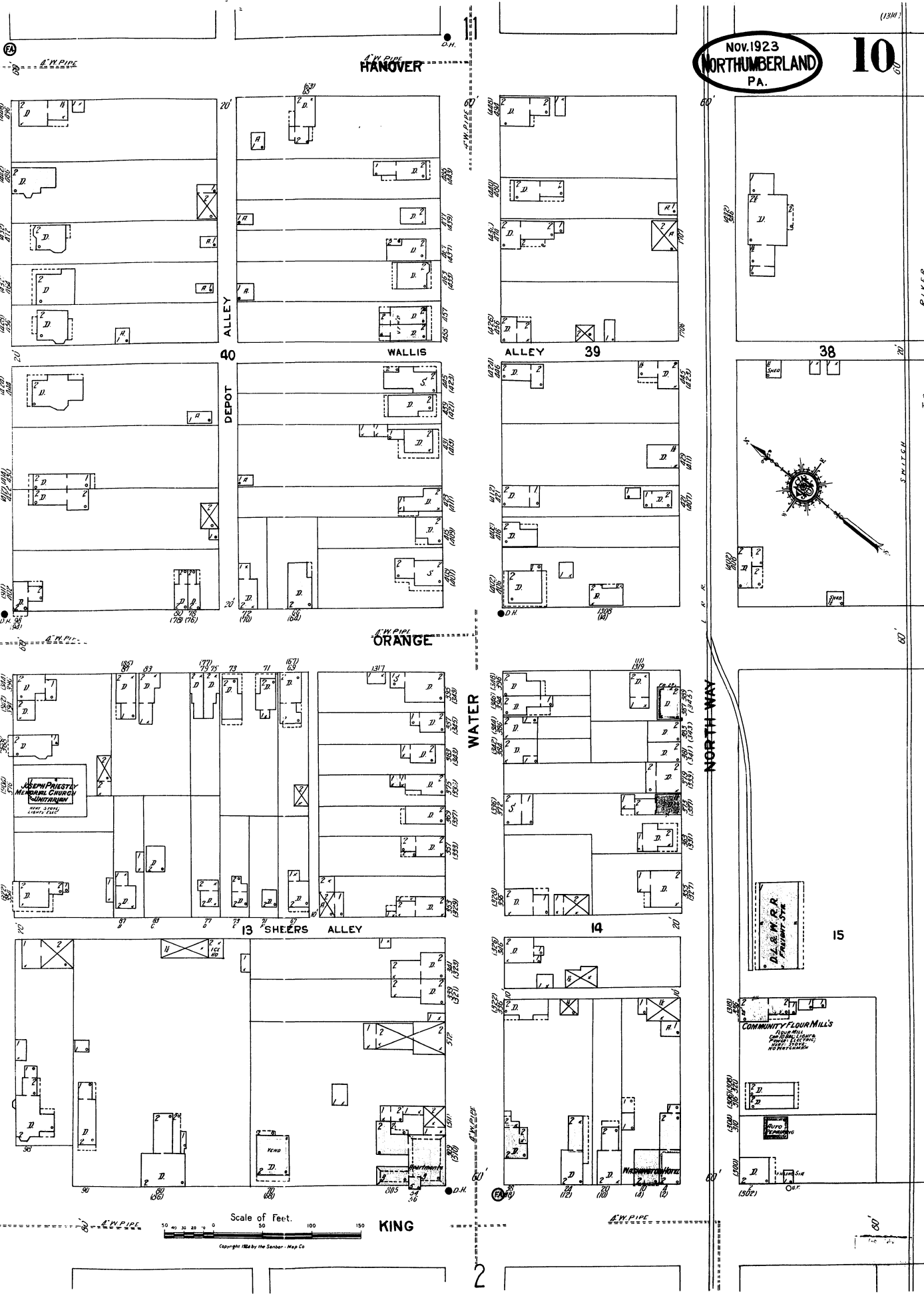
10

12

38

9

15



HANOVER

ORANGE

KING

NORTH WAY

Scale of Feet.
0 50 100 150
Copyright 1923 by the Sanborn Map Co.

D.L. & W.P.R.
FRUIT SYRUP

COMMUNITY FLOUR MILLS
200 MILL
CHAS. H. MILLER
CHAS. H. MILLER
CHAS. H. MILLER

W.M. PRUDY
MEMORIAL CHURCH
W.M. PRUDY

MARSHALL HERRICK

RIVER
MOUNTAIN

Nov. 1923
NORTHUMBERLAND

12

11

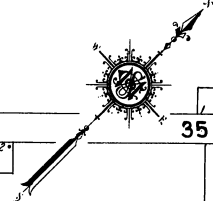
FRONT

PRINCE ST.

DANVILLE RD.

NORTH ALLEY

ST.



35

55

WATER

10

HANOVER

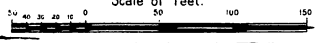
36

NORTH WAY

NORTH ALLEY

37

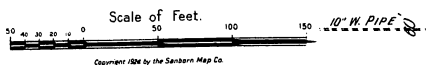
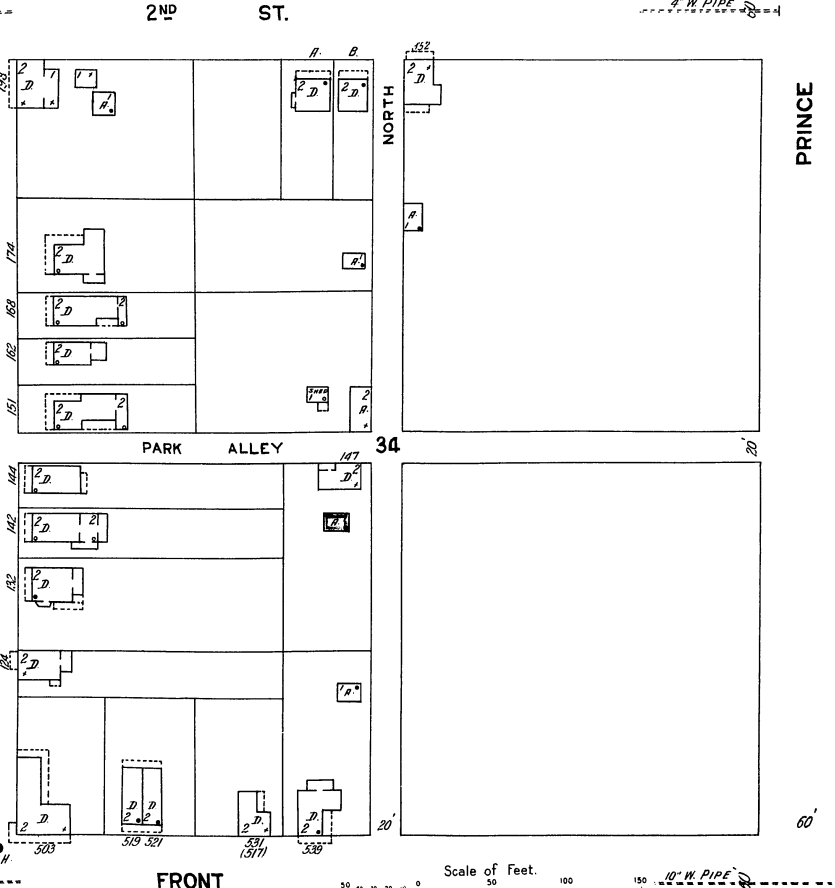
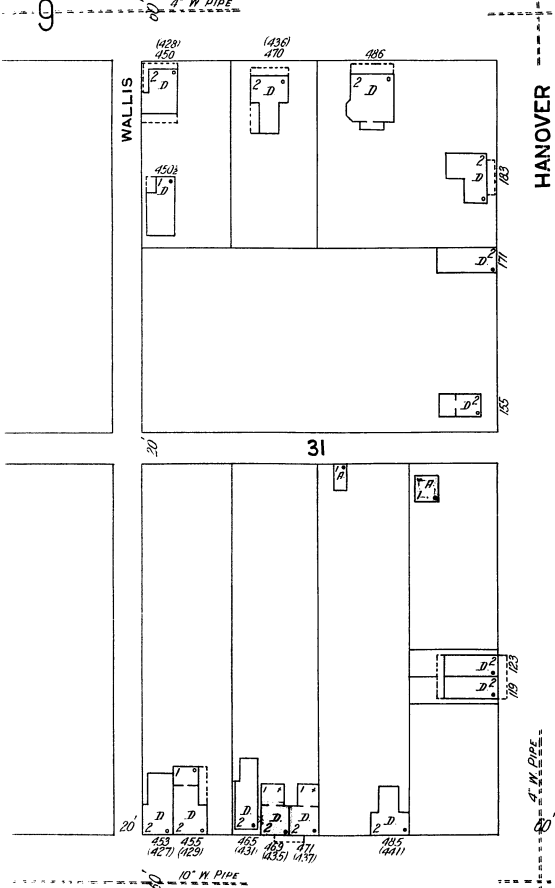
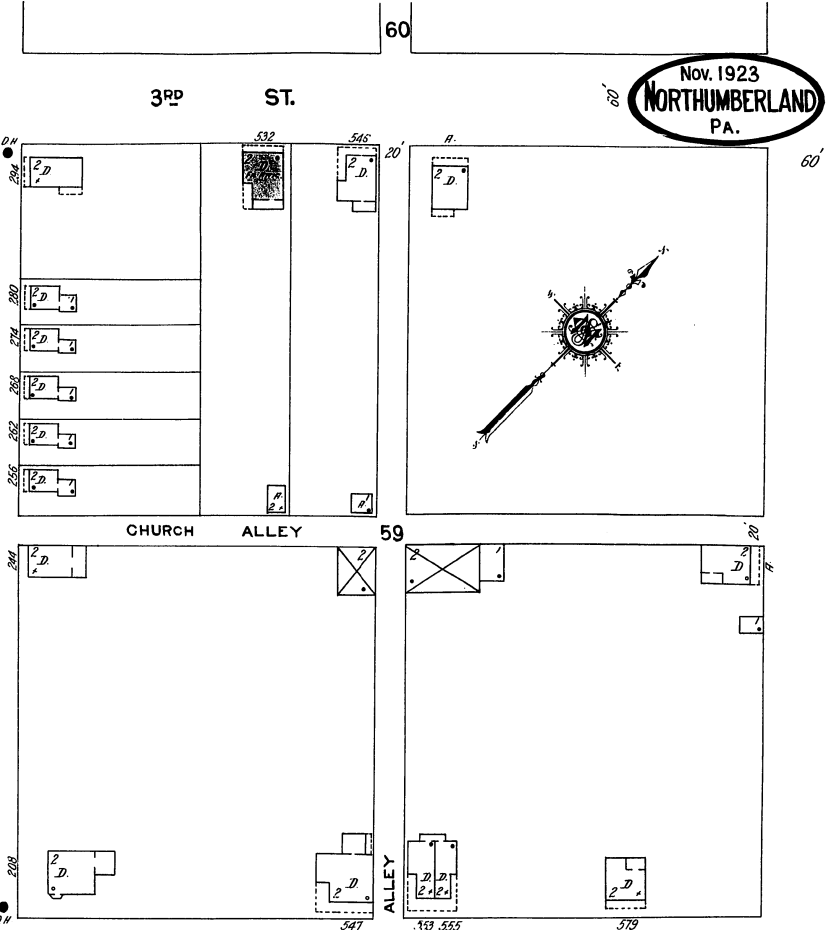
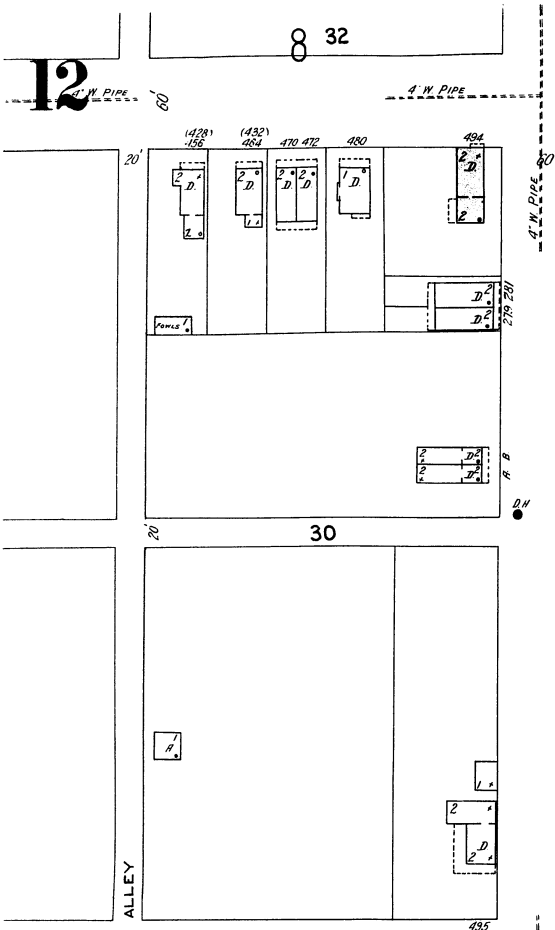
Scale of Feet.



North Branch of the Susquehanna River

Copyright 1923 by the Searborn Map Co.

Nov. 1923
NORTHUMBERLAND
PA.

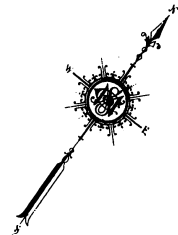


Copyright 1923 by the Sanborn Map Co.

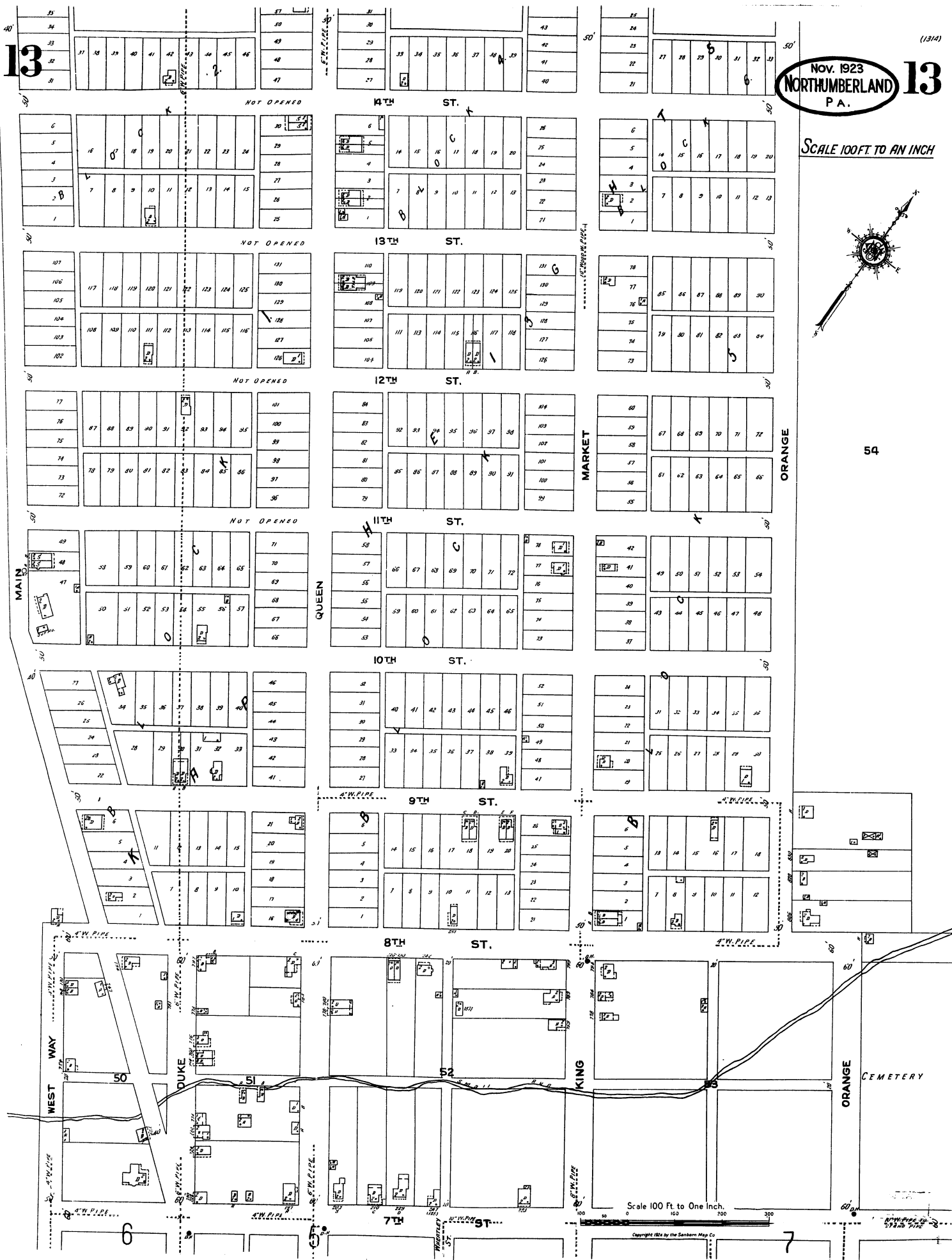
Nov. 1923
NORTHUMBERLAND
P. A.

13

SCALE 100 FT. TO AN INCH



54



Scale 100 Ft. to One Inch.

Copyright 1924 by the Sanborn Map Co.