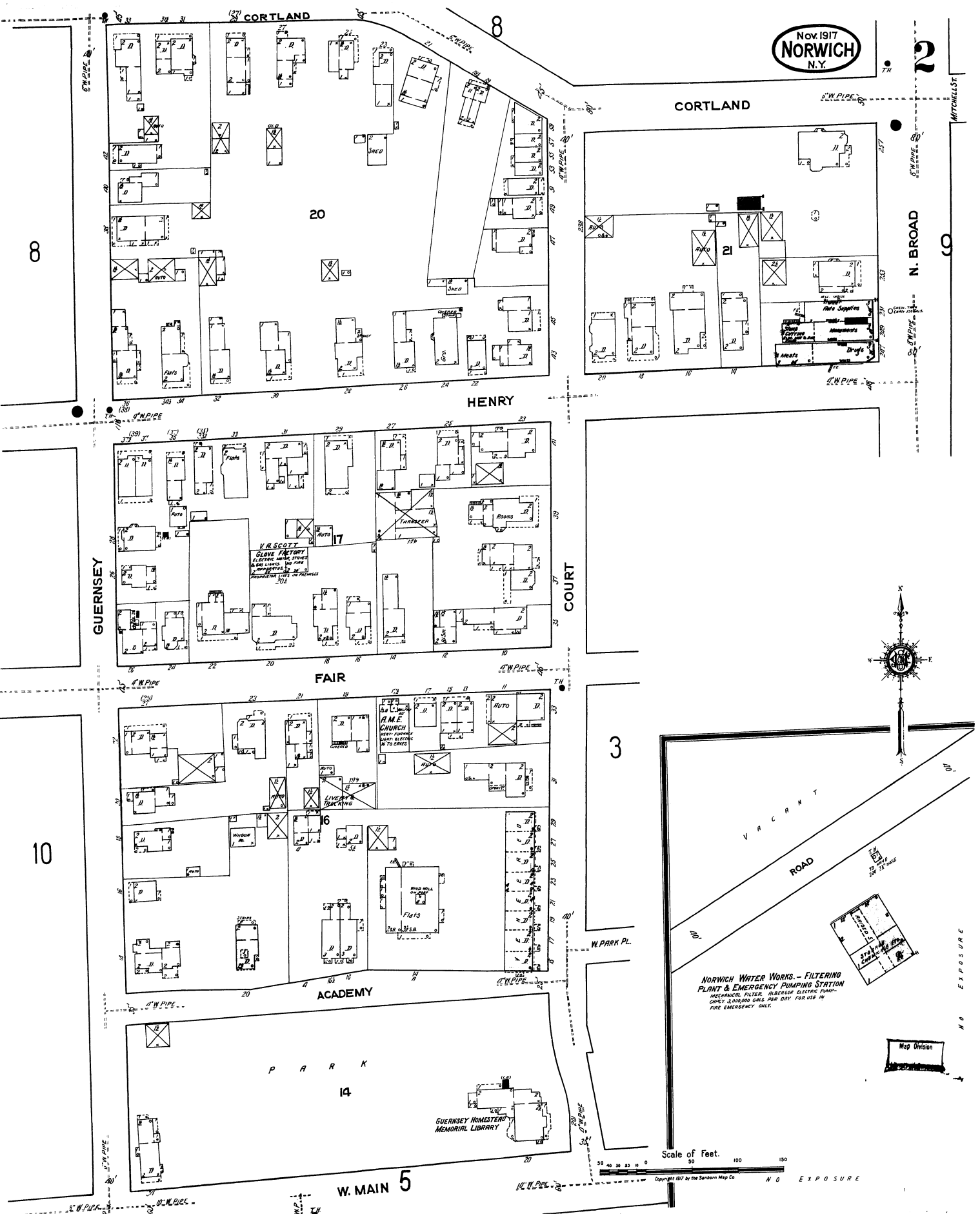




Nov. 1917  
**NORWICH**  
N.Y.



GUERNSEY

HENRY

FAIR

ACADEMY

P A R K

W. MAIN

CORTLAND

N. BROAD

COURT

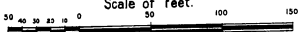
3

VACANT ROAD

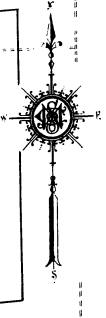
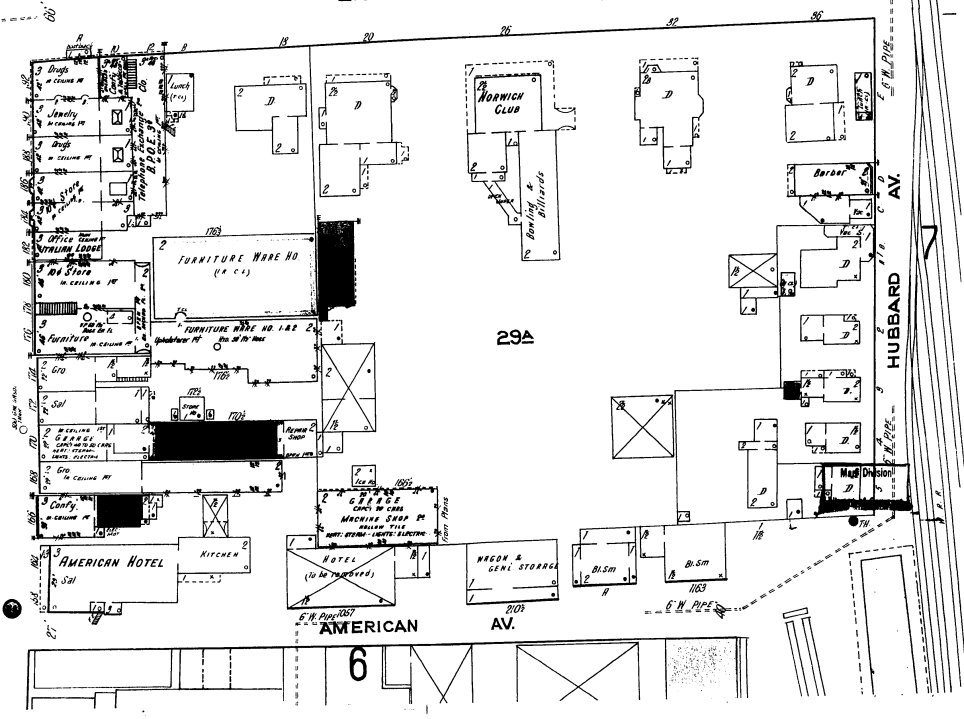
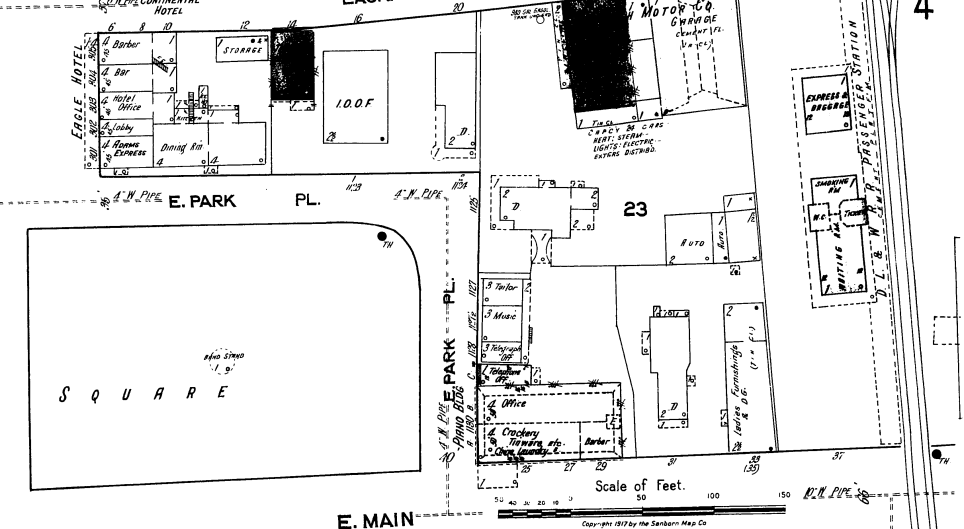
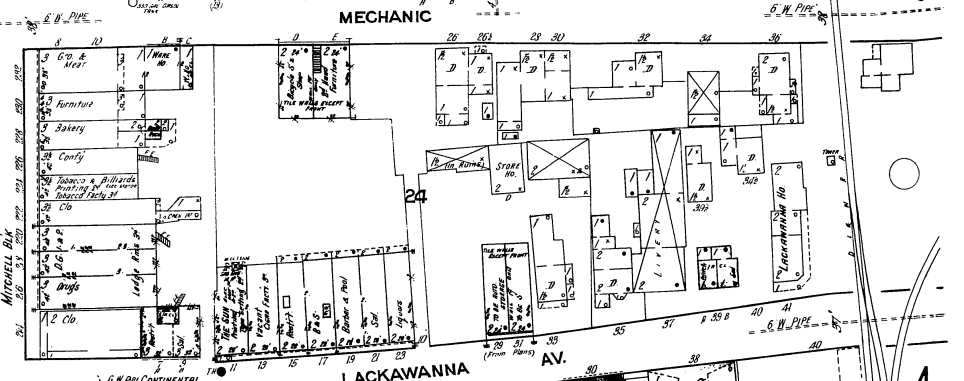
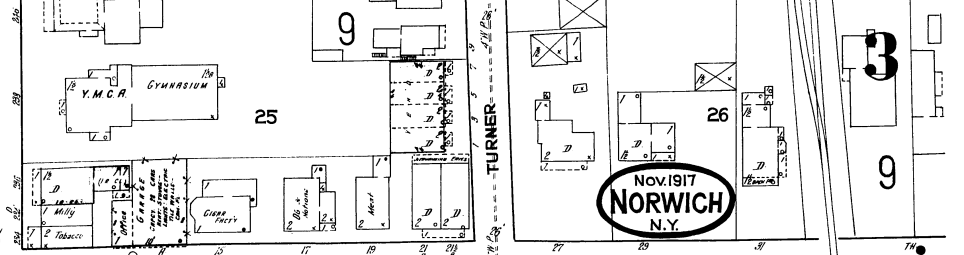
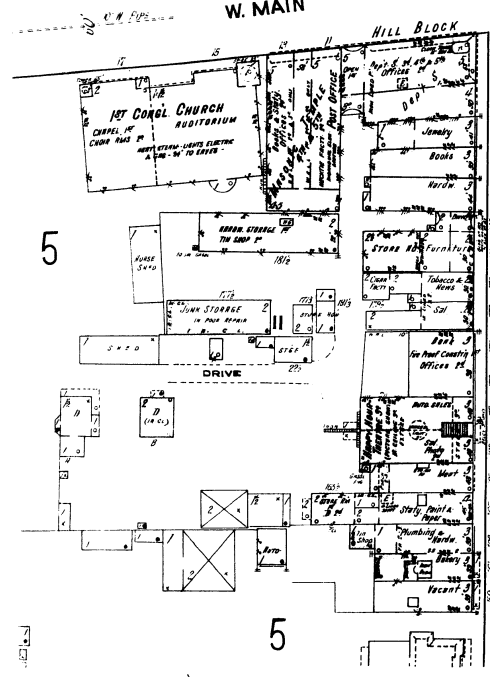
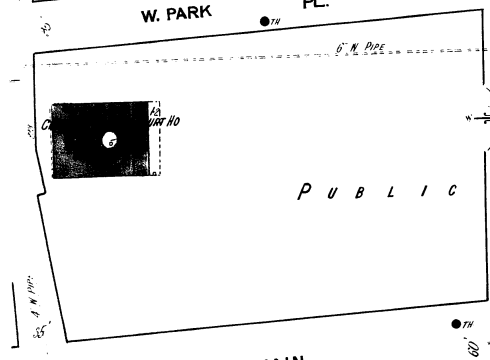
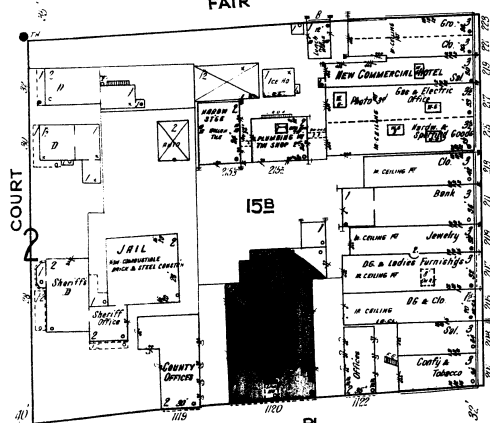
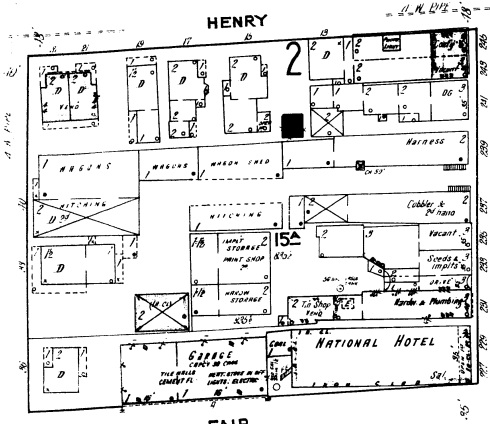
NORWICH WATER WORKS - FILTERING PLANT & EMERGENCY PUMPING STATION  
MECHANICAL FILTER, ALBERTSON ELECTRIC PUMP, COPLEY JOHNSON GEAR BOX, DITZ FOR USE IN FIRE EMERGENCY ONLY.

Map Division

Scale of Feet.



Copyright 1917 by the Sanborn Map Co. N O E X P O S U R E



Scale of Feet.  
0 50 100 150  
Copyright 1917 by the Sanborn Map Co.



2

5



W. MAIN

NORWICH HIGH SCHOOL

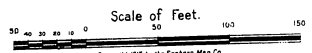
3

MAPLE

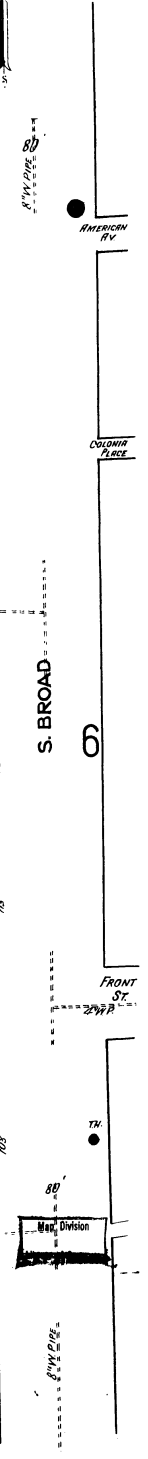
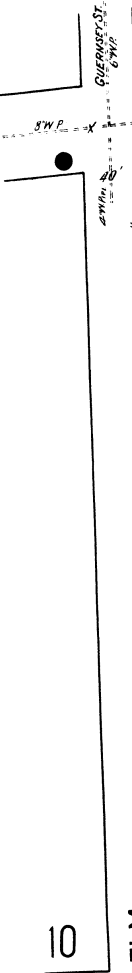
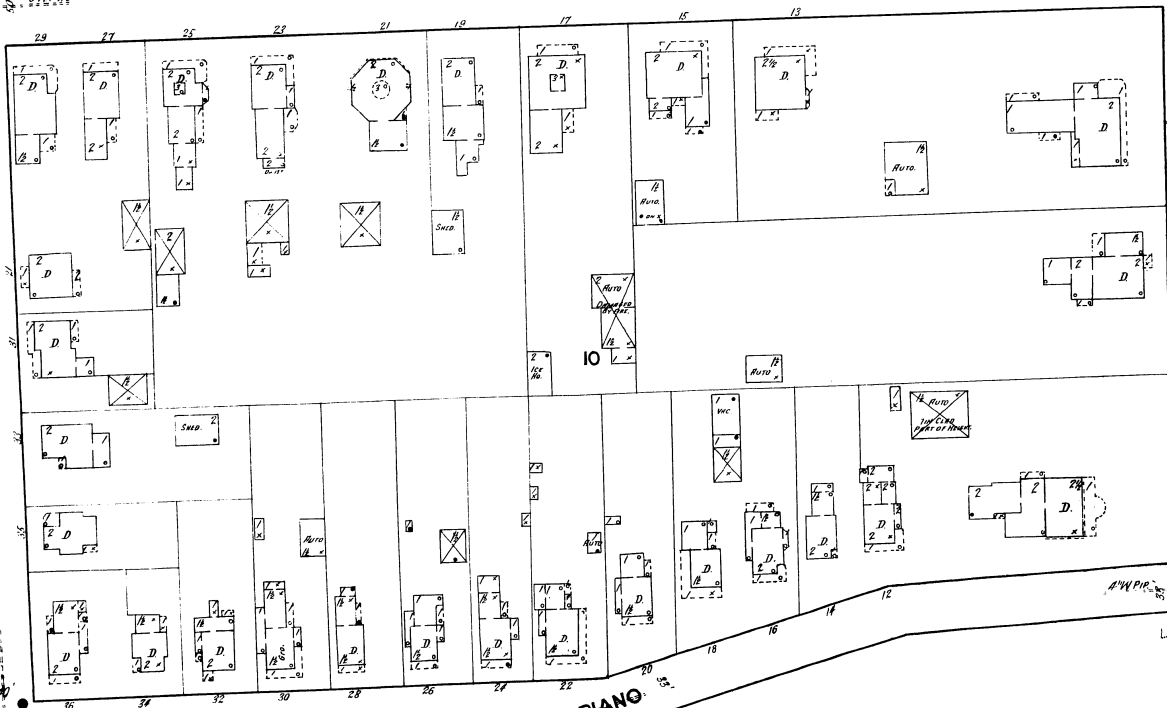
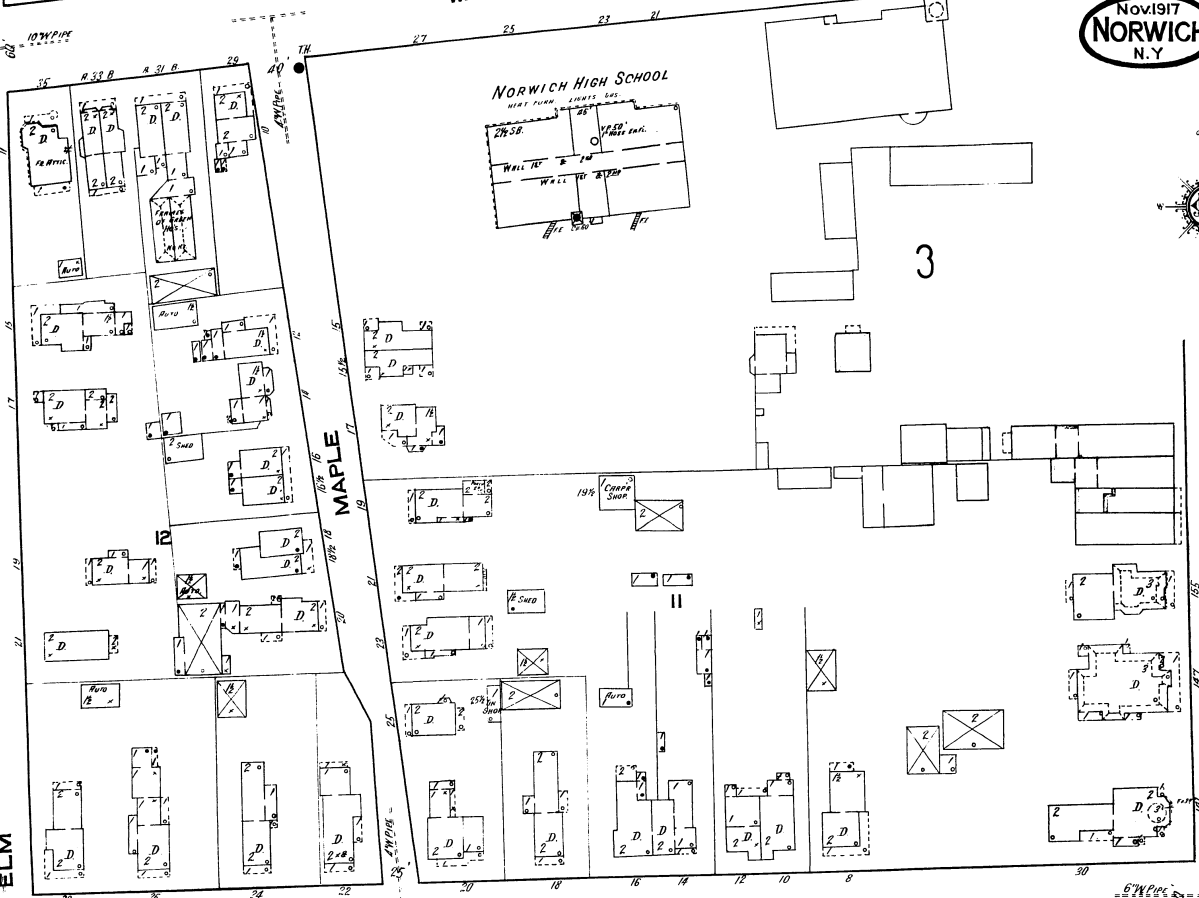
HAYES

S. BROAD

PIANO



12



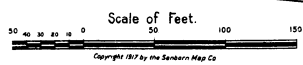
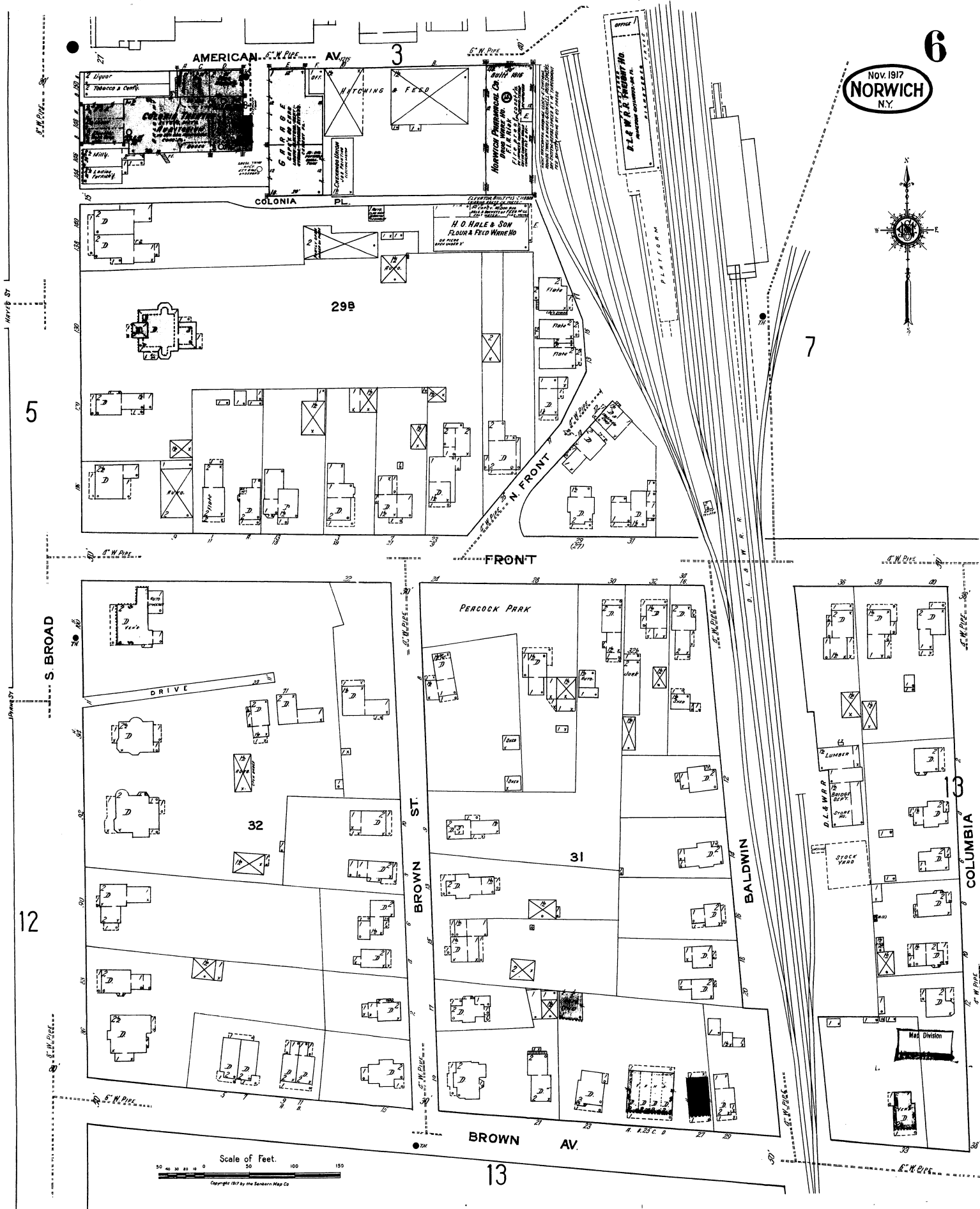
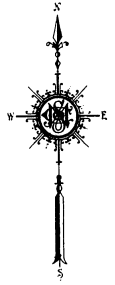
10

6

FRONT ST.

Man. Division

Copyright 1917 by the Sanborn Map Co.

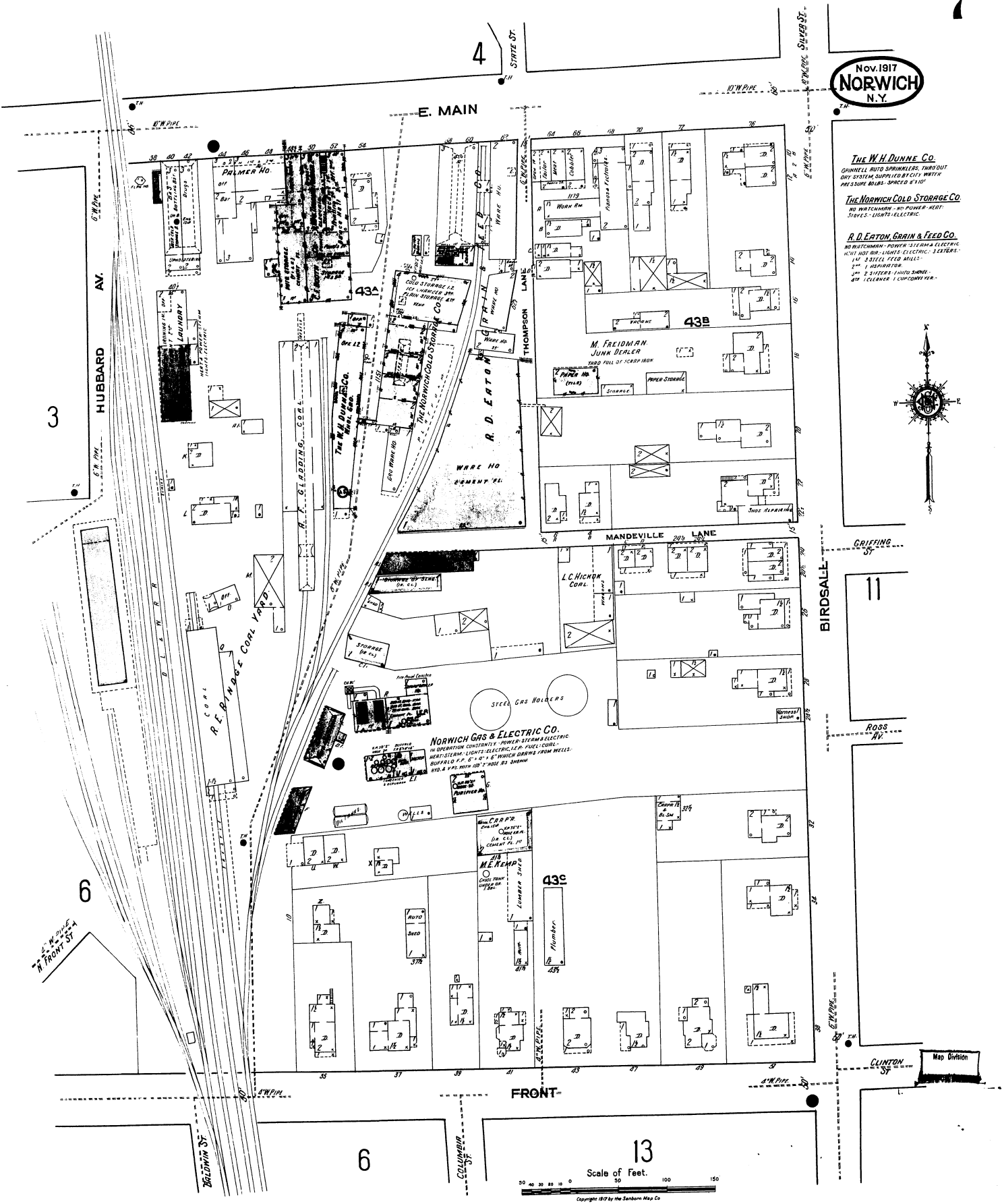


Nov. 1917  
**NORWICH**  
N.Y.

**The W.H. Dunne Co.**  
GUNNELL AUTO SPRINKLERS, THROUGH  
DRY SYSTEM, SUPPLIED BY CITY WATER  
PRESSURE REG. - SPEC. 67151

**The Norwich Cold Storage Co.**  
NO WATCHMAN - NO FLAME - NO  
STOVES - LIGHTS ELECTRIC

**R. D. Eaton, Grain & Feed Co.**  
NO WATCHMAN - POWER STEERS ELECTRIC  
HOES NOT RUB - LIGHTS ELECTRIC - 3 ELEVATORS -  
1 1/2" STEEL STEEL RAILS -  
1" 1/2" HORIZONTAL -  
3" 2" STEERS - 1000 BUSHELS  
40' TELEGRAPH - 1 CONCRETE PER.



3

HUBBARD AV.

4

E. MAIN

STATE ST.

SILVER ST.

43A

43B

M. FREIDMAN  
JUNK DEALER

R. D. EATON

MANDEVILLE LANE

L.C. HICKOX  
COAL

NORWICH GAS & ELECTRIC CO.  
IN OPERATION CONSUMERS' POWER - STEERS ELECTRIC  
HEATING - LIGHTS ELECTRIC - 1 1/2" STEEL RAILS -  
BUFFALO P. S. 10" 1/2" HORIZONTAL DRIVES FROM BELLS  
WTD. 4 1/2" HOLES - 10" HOLES AS SHOWN

STEEL GAS HOLDERS

43C

M. MEACHAM  
LUMBER SHED

FRONT

BIRDSALL

GRIFFING ST.

11

ROSS AV.

CLINTON ST.

Map Division

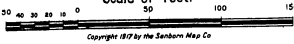
6

3

6

13

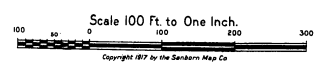
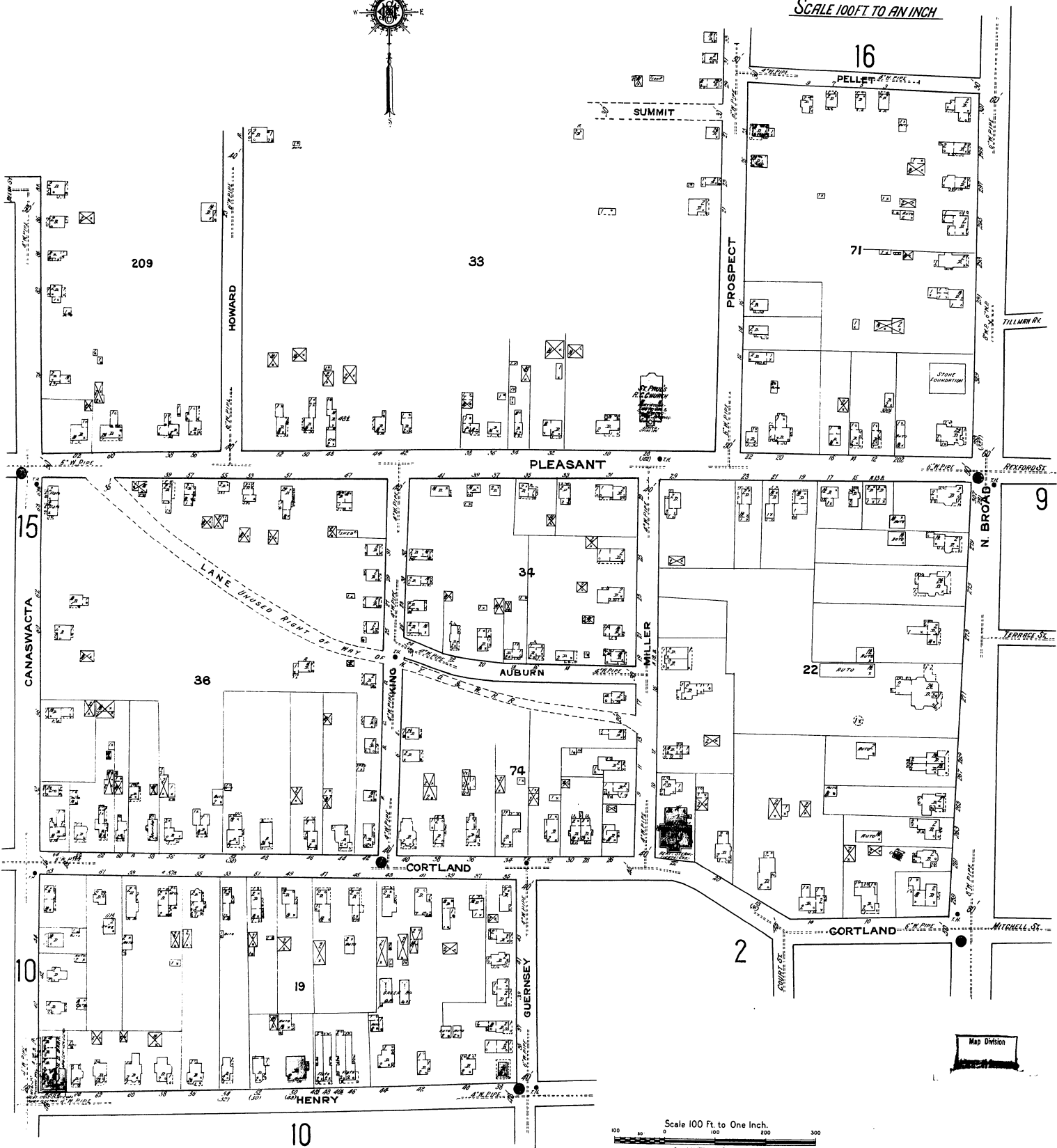
Scale of Feet.



Copyright 1917 by the Sanborn Map Co.

Nov 1917  
**NORWICH**  
NY

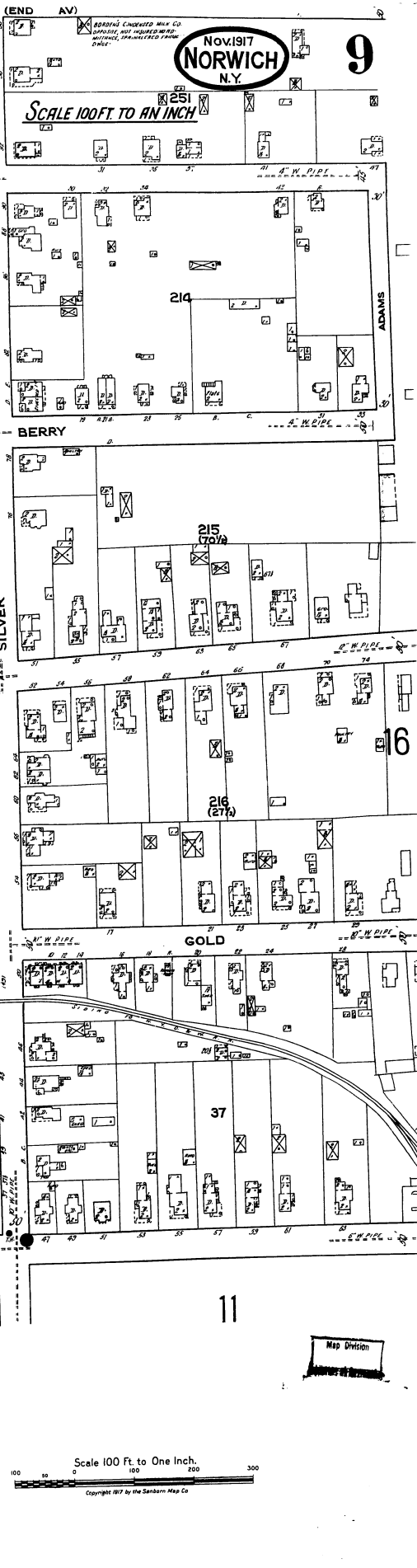
SCALE 100 FT TO AN INCH





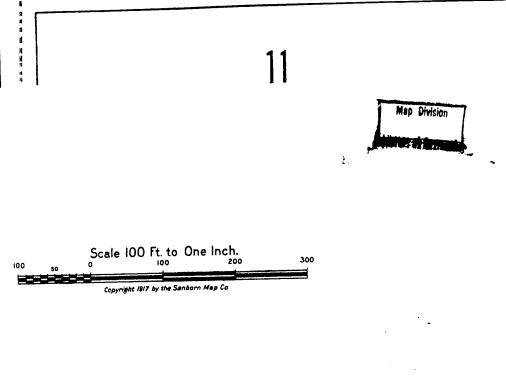
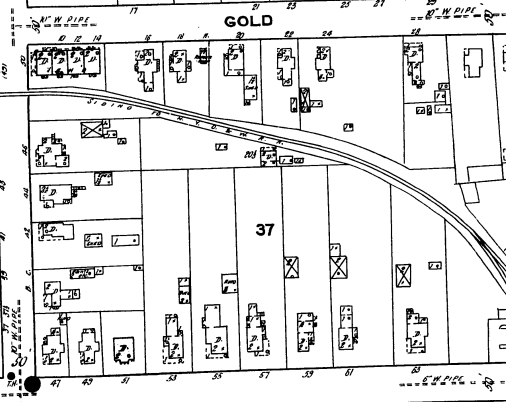
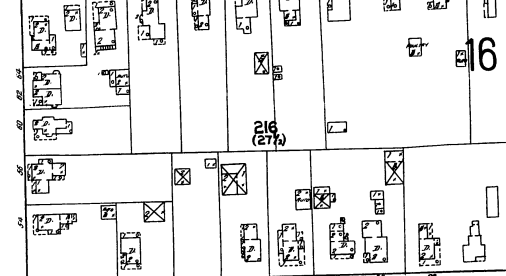
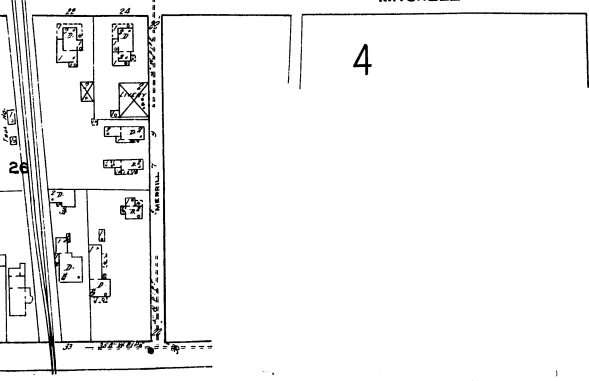
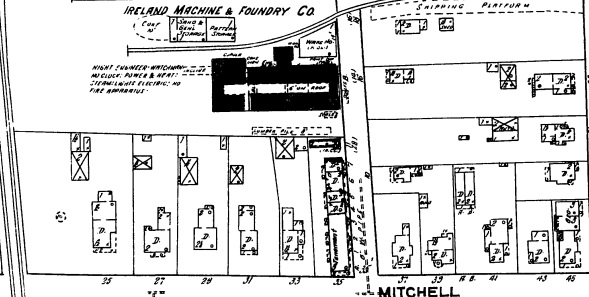
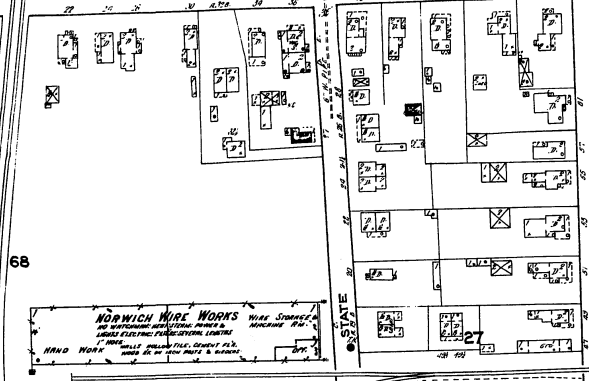
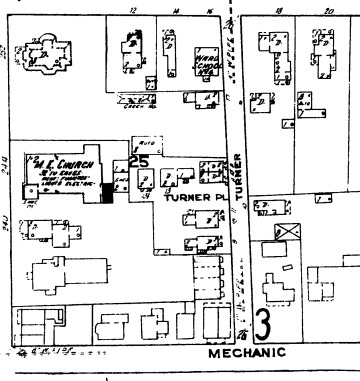
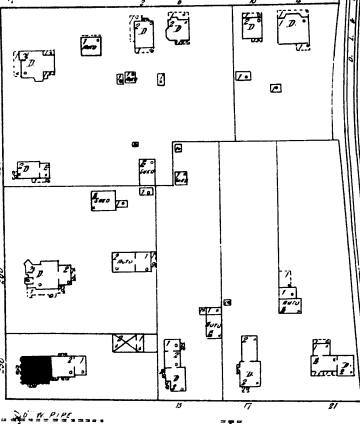
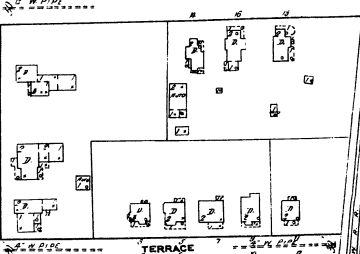
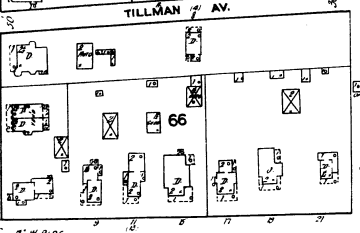
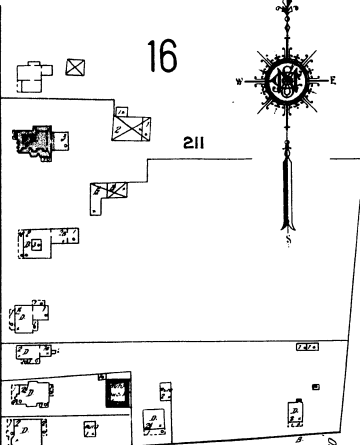
NOV 1917  
**NORWICH**  
N.Y.

SCALE 100 FT. TO AN INCH



**NORWICH WIRE WORKS**  
WIRE STRINGS  
AND ELECTRICAL SUPPLIES  
WIRE CUTTING  
WIRE BENDING  
WIRE SPLICING  
WIRE TAPPING  
WIRE STRIPPING  
WIRE SOLDERING  
WIRE BENDING  
WIRE SPLICING  
WIRE TAPPING  
WIRE STRIPPING  
WIRE SOLDERING

**IRELAND MACHINE & FOUNDRY CO**  
MACHINE PARTS  
AND REPAIRS  
MACHINE PARTS  
AND REPAIRS



Scale 100 Ft. to One Inch.  
Copyright 1917 by the Sanborn Map Co.

Map Division

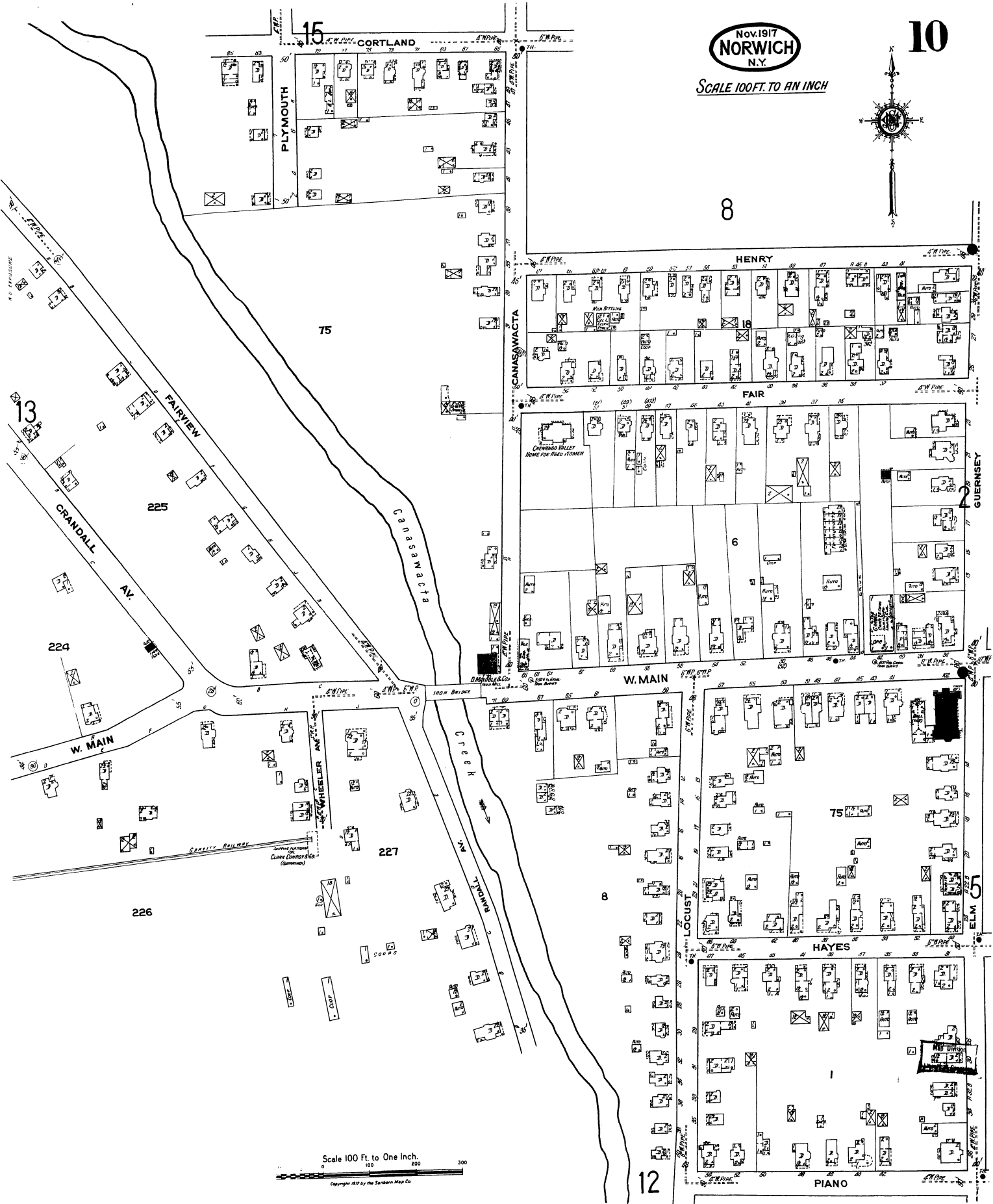
Nov. 1917  
**NORWICH**  
N.Y.

SCALE 100 FT. TO AN INCH

10



8



Scale 100 Ft. to One Inch.

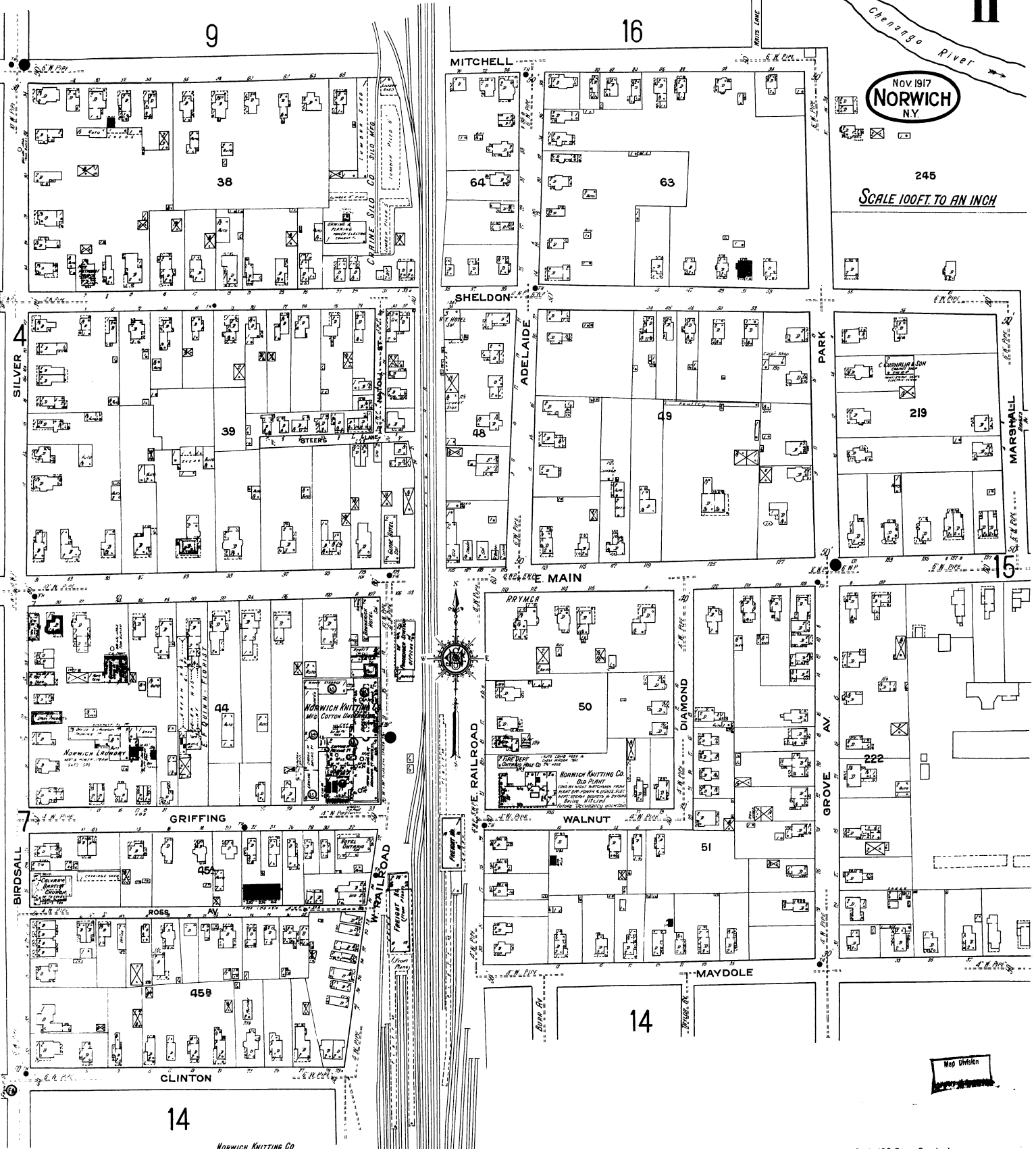
Copyright 1917 by the Sanborn Map Co.

12

Nov 1917  
**NORWICH**  
N.Y.

245

SCALE 100 FT. TO AN INCH



**NORWICH KNITTING CO**  
 740 FT. & LAUNDRY W/CHAS. 7 HIRMAN CLINGS 20 STS  
 10000 KINGS. POWER & WET STEAM (GAS CO.)  
 WATER ELECTRIC 11 P. 1000 BRIDGE OF 20 EMPLOYEES  
 SHIPLED W/CHAS. SHAWWELL BIRTH SHAWWELL  
 TARD LUT. WET SYSTEM SHIPLED B & W SUPPLIED BY  
 60 FEETERS MAIN FROM CITY WATER AS SHOWN  
 HIGHEST PRESSURE 80 LBS. 8 P.M. WITH 200 FT. HOSE 100  
 100 WITH 150 FT. HOSE WITH 5 THICK GASH EXTERIOR &  
 NUMEROUS FIRE PIPES OUTSIDE

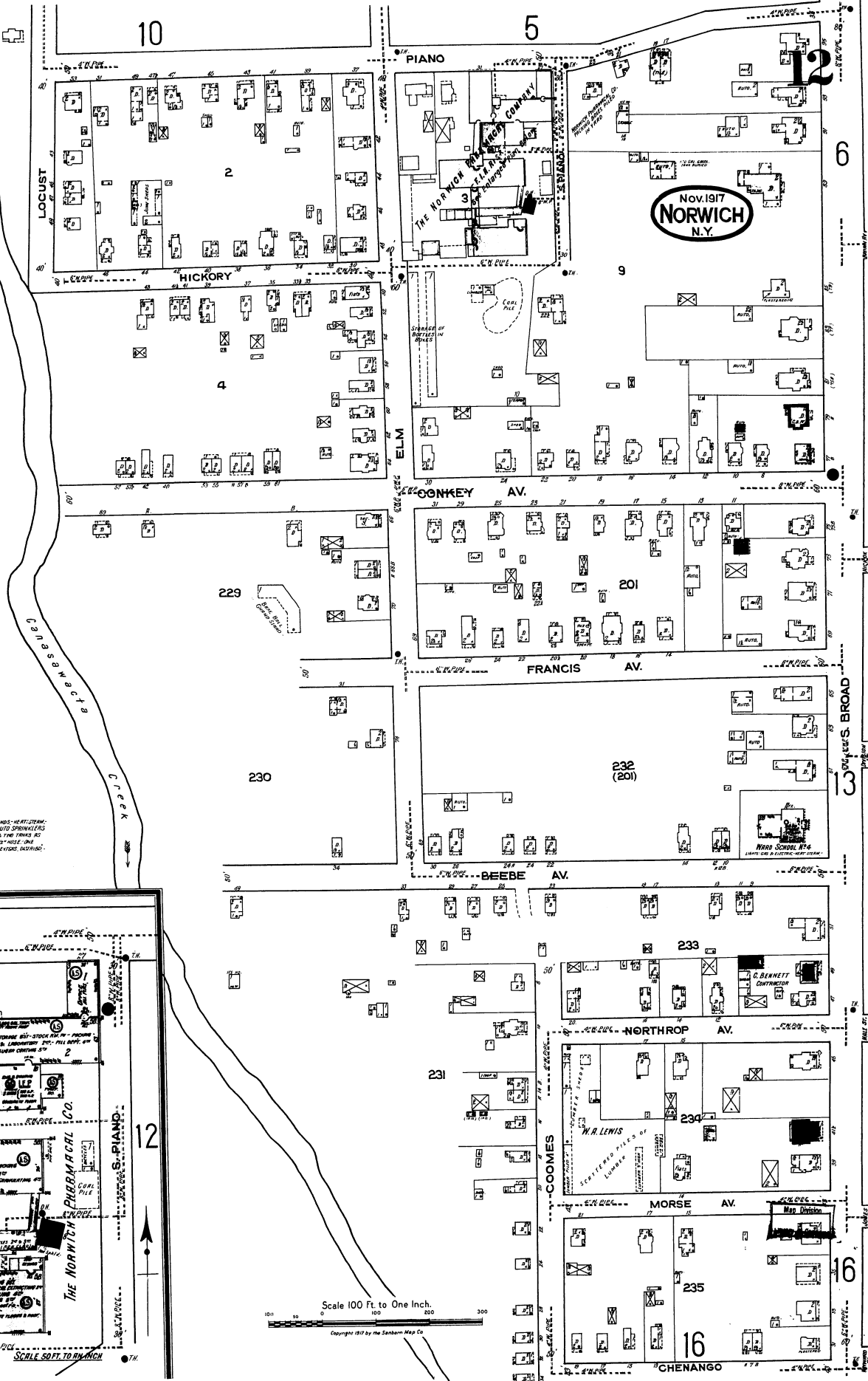
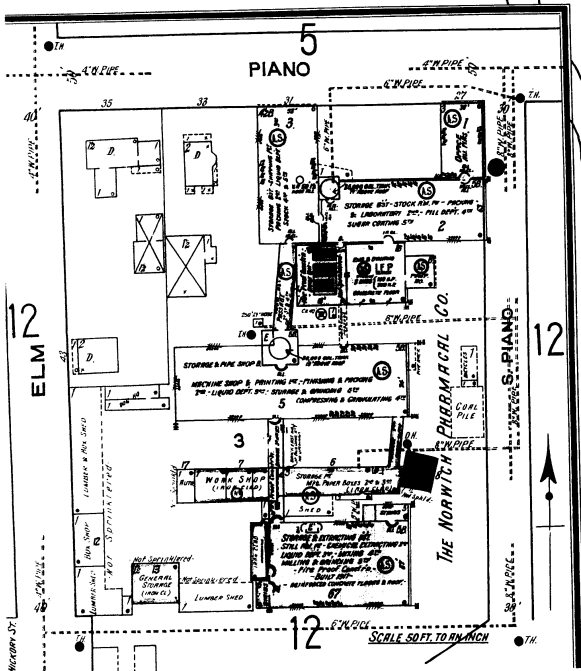
Scale 100 Ft. to One Inch.  
 Copyright 1917 by the Sanborn Map Co.



228

**The Norwich Pharmacol. Co., Mfg. Drugs**  
- F.I.R. Risk -

Two night & sundry watchmen, hand-vise clock, 35 strikers, hourly rounds, heat system, power system & electric, lights electric, E.P. fuel, coal, grinders, auto sprinklers, fire alarm, main building, fire & burg. system, supplied by city water & two tanks (one shown), spaced 8' 110" pressure about 15 lbs. vertical pipe with 350' 1/2" hole, one double & one 1 1/2" x 1/2" working with 200' 1/2" hose - four pipes & several valves installed.

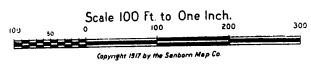
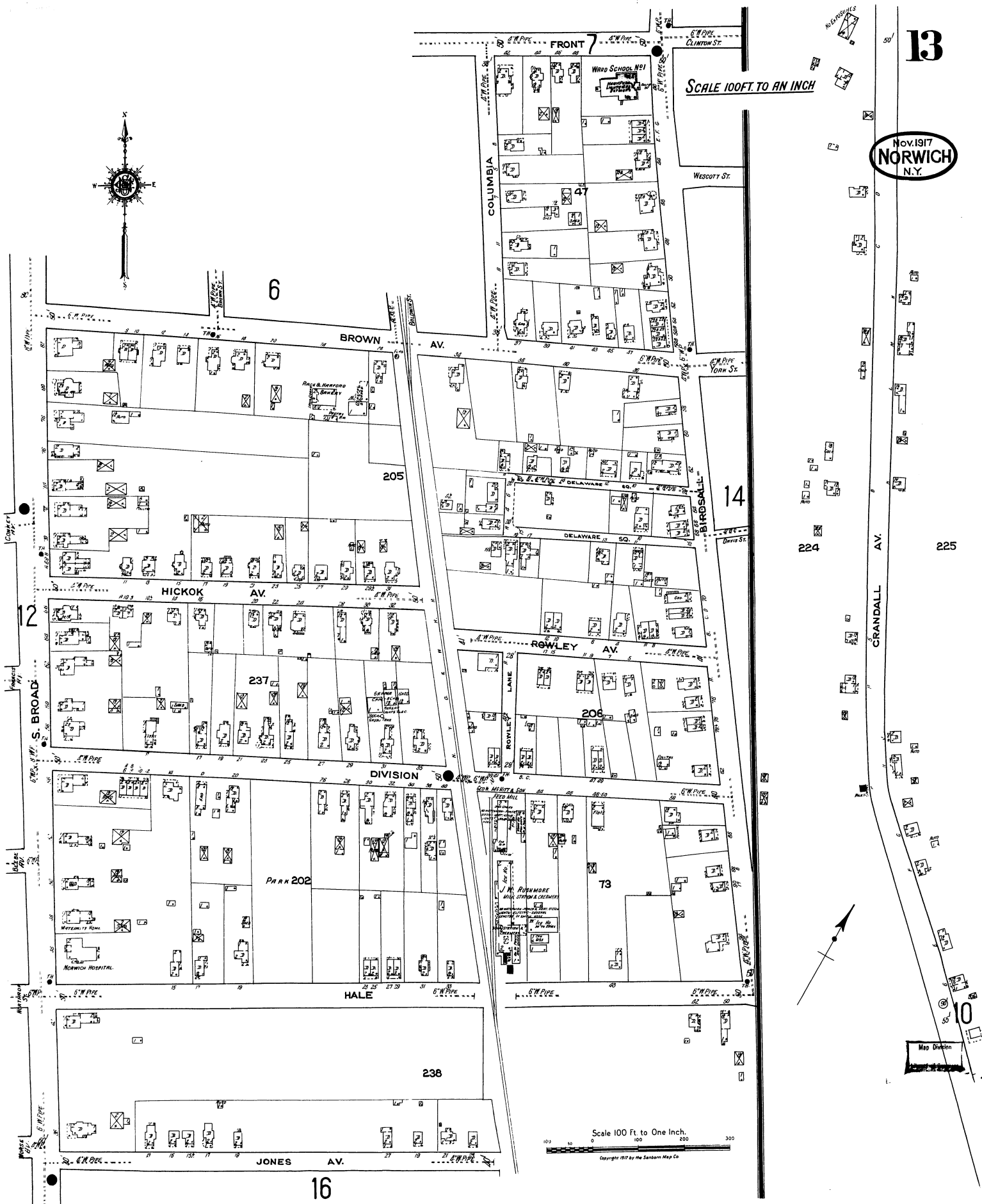


Nov. 1917  
**NORWICH**  
N.Y.

Scale 100 Ft. to One Inch.  
Copyright 1917 by the Sanborn Map Co.

Nov. 1917  
NORWICH  
N.Y.

SCALE 100 FT. TO AN INCH



Scale 100 Ft. to One Inch.

Copyright 1917 by the Sanborn Map Co

6

BROWN AV.

FRONT

COLUMBIA

WESCOTT ST.

14

12

HICKOK AV.

S. BROAD

237

ROWLEY AV.

206

DIVISION

Park 202

73

HALE

238

JONES AV.

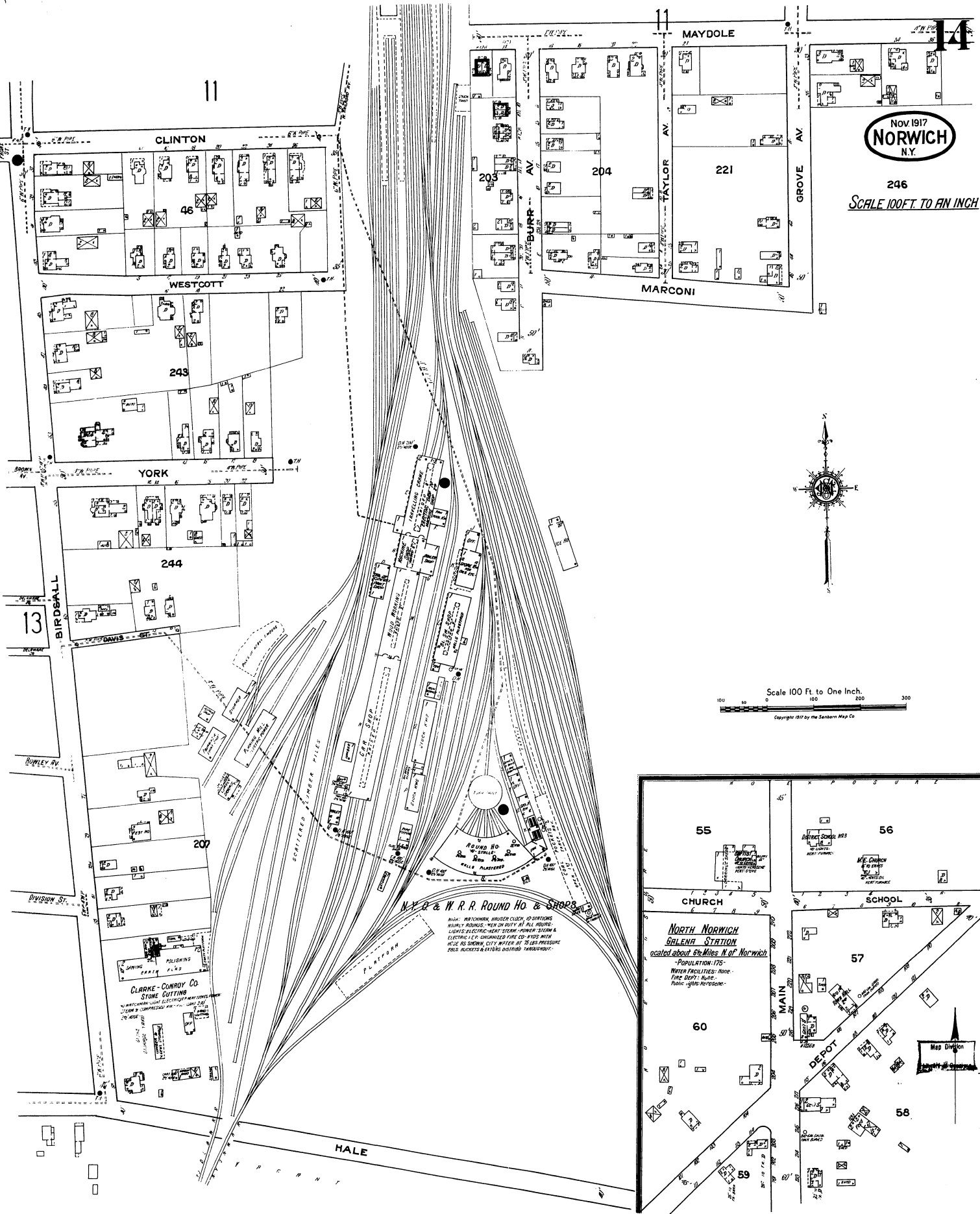
16

GRANDALL AV.

224

225

Map Division



NOV 1917  
**NORWICH**  
 N.Y.

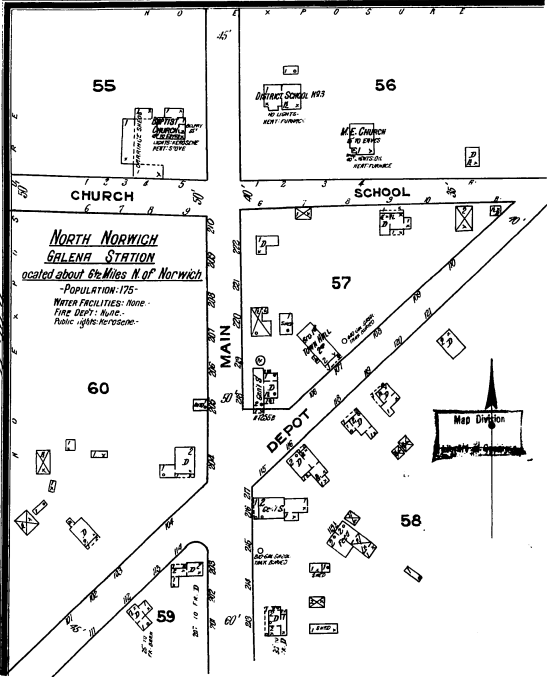
246  
 SCALE 100 FT. TO AN INCH



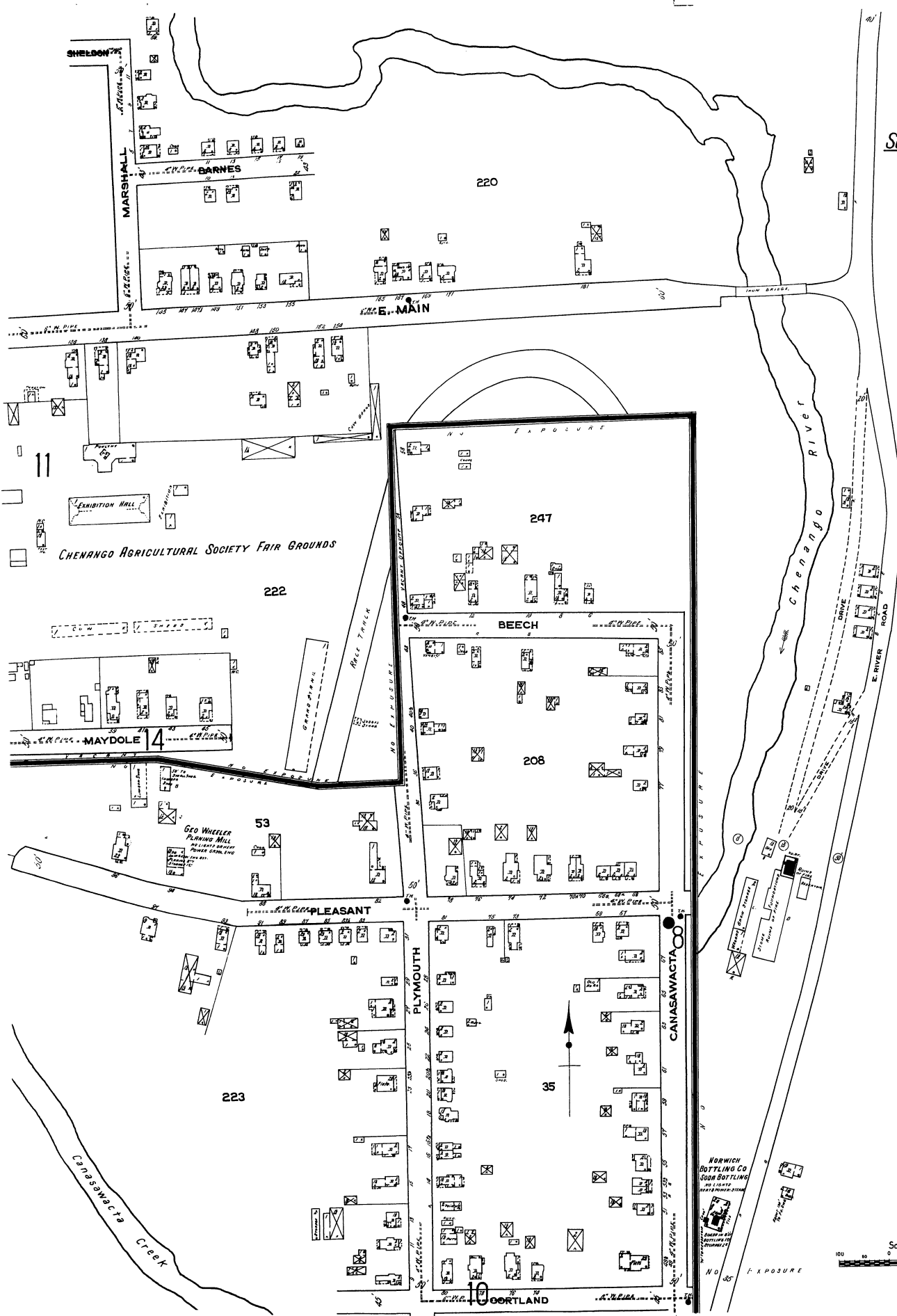
Scale 100 Ft. to One Inch.  
 0 100 200 300  
 Copyright 1917 by the Sanborn Map Co.

**N.Y. & W. R. R. Round Ho. & Stops**  
 INCL: WATCHMAN, BRASSER CLOTH, 10 STATIONS  
 BURNING ROOMS, MACHINERY AT ALL SIDES  
 LIGHTS, ELECTRIC, HEAT, STEAM, POWER, STEAM &  
 ELECTRIC C.A. BURNING FINE CO. #122 WITH  
 HOSE 60 INCH, CITY WATER AT 25 LBS PRESSURE  
 PAIL BUCKETS & STOPS OBTAIN THROUGHOUT

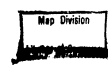
**CLARKE-CONROY CO.  
 STONE CUTTING**  
 WATCHMAN, LIGHT, ELECTRIC, HEAT, STEAM, POWER  
 STEAM & ELECTRIC C.A. BURNING FINE CO. #122  
 WITH HOSE 60 INCH



**NORTH NORWICH  
 GALETA STATION**  
 located about 6 1/2 Miles N of Norwich  
 -POPULATION-175-  
 WATER FACILITIES: None  
 FIRE DEPT: None  
 Police: 1 M.C. Parsons

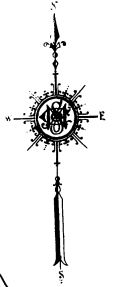
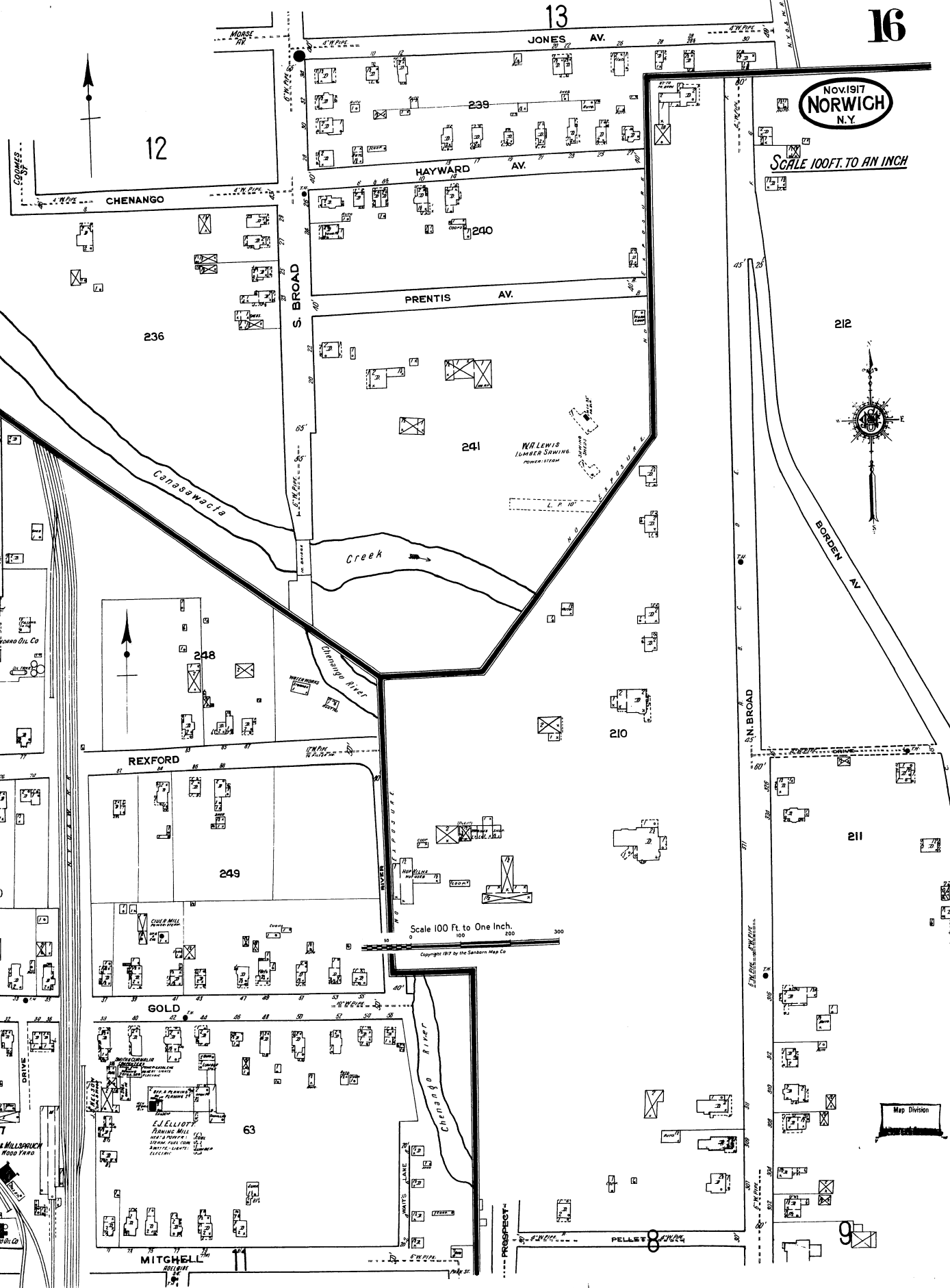


248



NOV 1917  
NORWICH  
N.Y.

SCALE 100 FT. TO AN INCH



Scale 100 Ft. to One Inch.

Copyright 1917 by The Sanborn Map Co.

Map Division

9