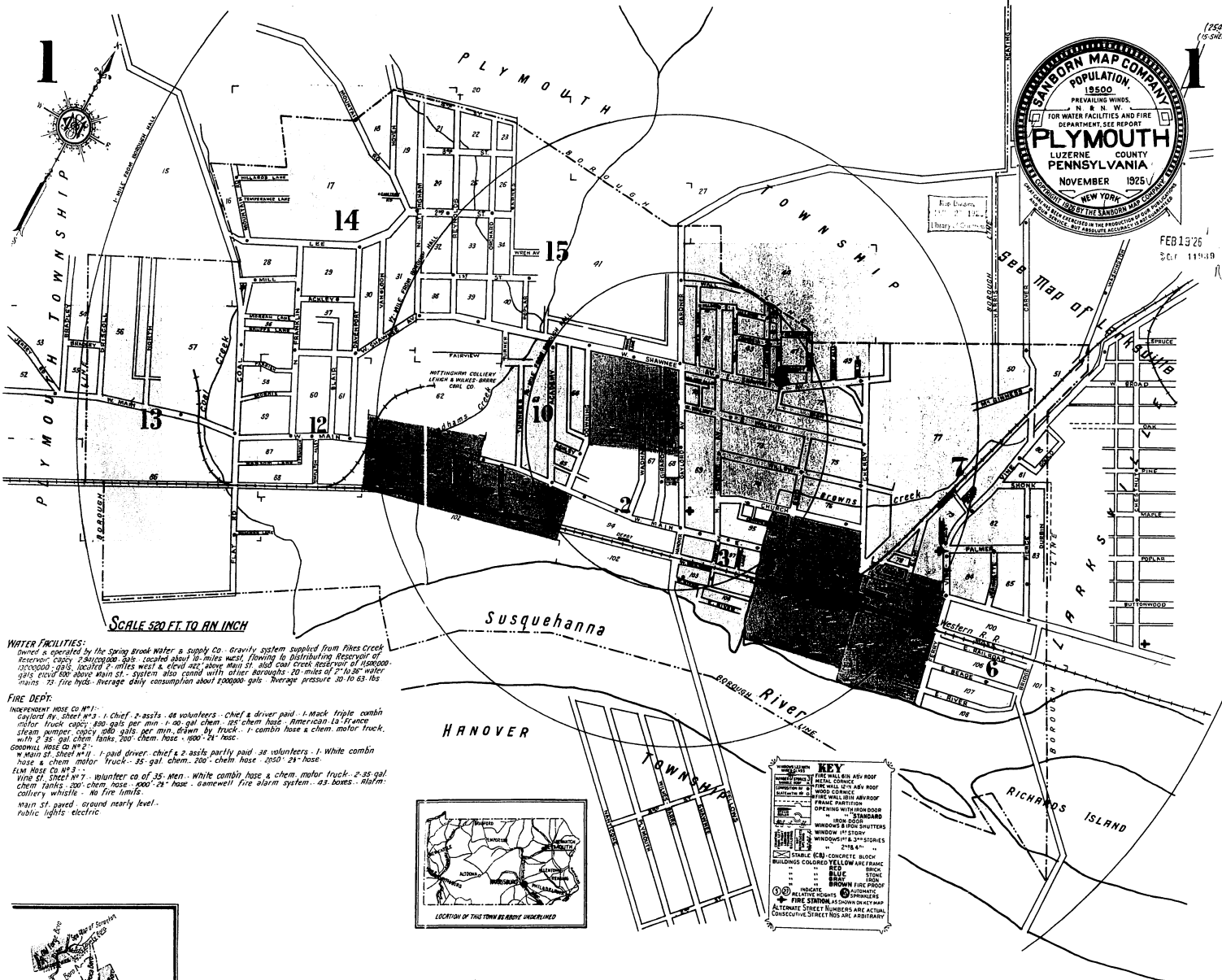


FEB 13 '26
S.C.T. 11949



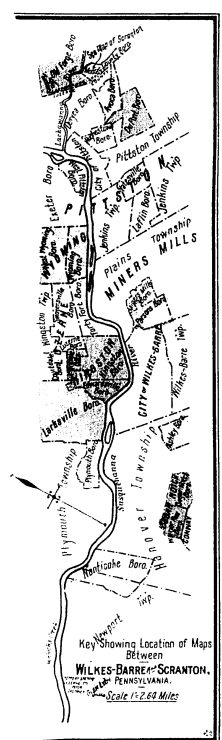
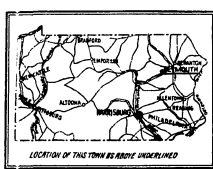
WATER FACILITIES:
Owned & operated by the Spring Brook Water & Supply Co. Gravity system supplied from Pines Creek Reservoir capacity 2,400,000 gals. located about 16 miles west. Flowing to Distributing Reservoir of 150,000 gals. located 2 miles west & elevated 227' above main st. and coal creek reservoir of 150,000 gals. elevated 600' above main st. System also control with others throughout 20 miles of 2 1/2" 50' water mains. 70 fire hydr. average daily consumption about 100,000 gals. Average pressure 30 to 63 lbs.

FIRE DEPT.
INDEPENDENT HOSE CO. NO. 1
Gaylord Av. sheet # 3 - 1 Chief, 2 assts. - 48 volunteers - Chief & driver paid. 1 Mack triple combin motor truck capacity 200 gals per min. - 1 400 gal. chem. 20' chem. hose - American La France steam pumper capacity 1000 gals per min. driven by truck. 1 combin hose & chem. motor truck with 2 25 gal. chem. tanks, 200' chem. hose - 1900' 2 1/2" hose.

GOODWILL HOSE CO. NO. 2
W. Main St. sheet # 17 - 1 paid driver - Chief & 2 assts. partly paid. 38 volunteers. 1 white combin hose & chem. motor truck - 35 gal. chem. - 200' chem. hose - 350' 2 1/2" hose.

ELM HOSE CO. NO. 3
W. 5th St. sheet # 17 - 1 volunteer co. of 35 men - white combin hose & chem. motor truck - 2 35 gal. chem. tanks, 200' chem. hose - 1900' 2 1/2" hose - gamewell fire alarm system - 43 boxes - alarm - collery whistle - No fire limits.

W. Main St. paved ground nearly level - public lights electric



INDEX

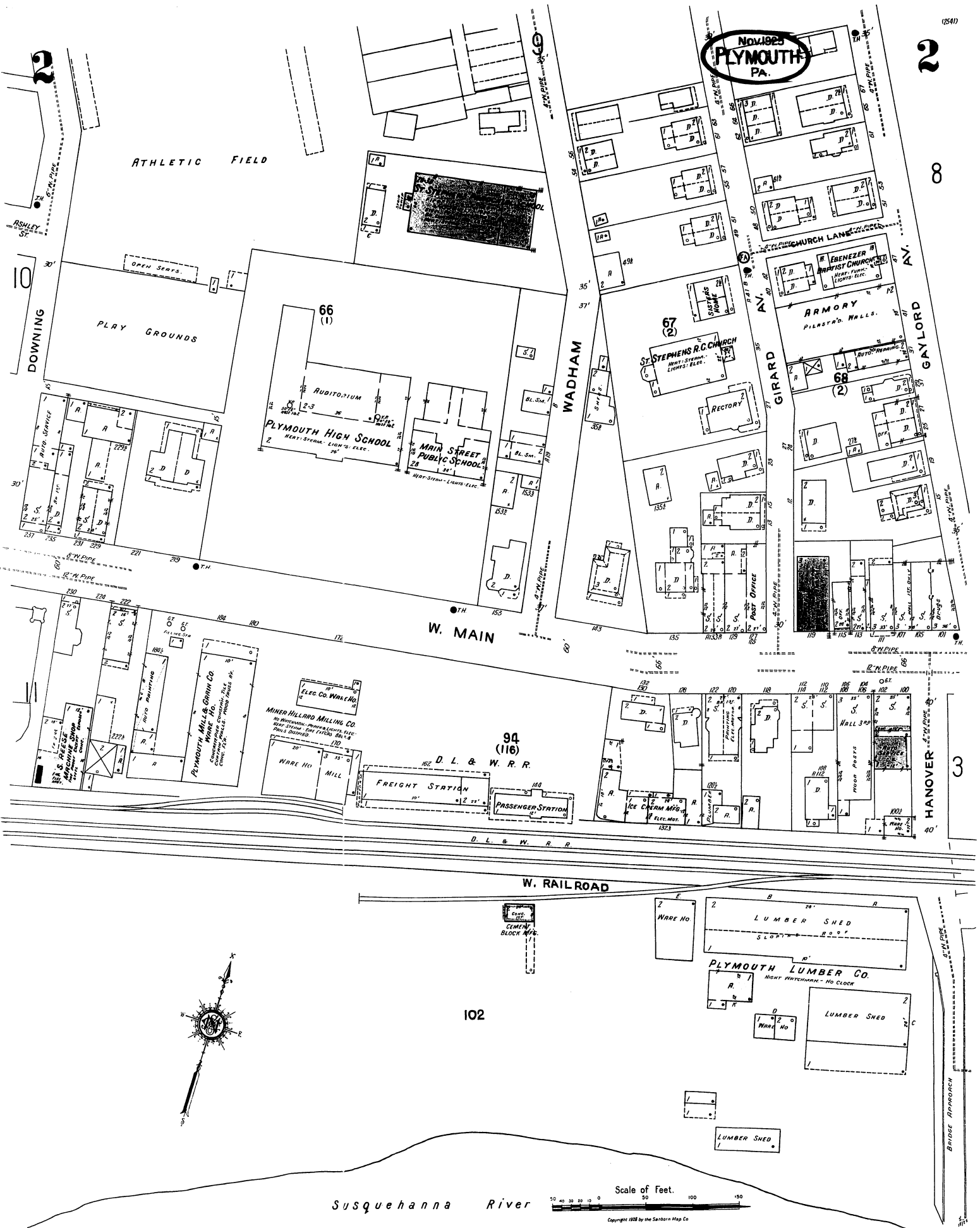
STREETS	NUMBER	STREETS	NUMBER	STREETS	NUMBER	STREETS	NUMBER
Academy, A	1-142	Duffy's Ln.,	200-215	Ruschke Lane, E	612-657	Hallroad, E	1-46
Durbin, A	11	Edwards, E	1-19	Lee, L	500-699	Second, R	100-139
Lane (arbitrary), A	500-663	Elm, E	1-18	McGuinness, M	600-201	Wadham, W	1-56
Ackley, A	200-255	Elm, E	1-18	Main, E	1-46	Walsh, W	57-120
Are (arbitrary), A	200-255	Elm, E	1-18	Hennrich, H	1-46	Walnut, W	1-184
Barnes, B	150-205	Elm, E	1-18	Major Alley, M	49-79	W. W.	1-38
Beards, B	222-249	Elm, E	1-18	Marlow (arbitrary), M	500-628	Wey Lane, W	100-161
Blair, B	300-471	Elm, E	1-18	Mechanic Alley, M	1-115	Willow, W	1-68
Bradley, B	100-155	Fairview, F	1-15	Morgan Lane, M	700-716	Wren Ave., W	317-332
Bridge, B	1-13	Fairview, F	1-15	Morgan Lane, M	700-716		
Calat Court, see E. River.		First, F	1-5	Nashit Alley, N	140-165		
Cambria, C	15-56	First, F	1-5	Nashit Alley, N	140-165		
Cameron, C	200-295	Fourth, F	1-12	North, N	1-56		
Carolina, C	1-28	Fourth, F	1-12	North, N	1-56		
Carter, C	200-389	Franklin, N	1-15	North, N	1-56		
Cemetery Road, C	1-12	Franklin, N	1-15	North, N	1-56		
Centre Ave., N	1-36	Franklin, N	1-15	North, N	1-56		
Cherry, C	1-2	Gardner, G	200-220	North, N	1-56		
Church, C	1-173	Gaylord Av., G	201-221	North, N	1-56		
Coal, C	1-2	Gaylord Av., G	201-221	North, N	1-56		
Cooper Lane, C	1-3	Gold, G	185-203	North, N	1-56		
Davenport, D	1-80	Gold, G	185-203	North, N	1-56		
Davis, D	100-157	Gold, G	185-203	North, N	1-56		
Downing, D	200-251	Gold, G	185-203	North, N	1-56		
Dracon, D	1-139	Gold, G	185-203	North, N	1-56		
	1-42	Gold, G	185-203	North, N	1-56		
	61-138	Gold, G	185-203	North, N	1-56		
	1-46	Gold, G	185-203	North, N	1-56		
	1-46	Gold, G	185-203	North, N	1-56		

* Indicates only one side of Street shown.

2

8

3



NOV 1923
PLYMOUTH
PA.

ATHLETIC FIELD

PLAY GROUNDS

66 (1)
AUDITORIUM
PLYMOUTH HIGH SCHOOL
HEAT-STEAM- LIGHTS- ELEC.

MAIN STREET
PUBLIC SCHOOL
HEAT-STEAM- LIGHTS- ELEC.

67 (2)
STEPHENS R.C. CHURCH
HEAT-STEAM- LIGHTS- ELEC.

EBENEZER BAPTIST CHURCH
HEAT-STEAM- LIGHTS- ELEC.

ARMORY
PILASTED WALLS

68 (2)

W. MAIN

WADHAM

GIRARD

GAYLORD AV.

94 (116)
D. L. & W. R. R.

FREIGHT STATION

PASSENGER STATION

W. RAILROAD

CEMENT BLOCK

102

WARE HO.

LUMBER SHED

PLYMOUTH LUMBER CO.
MOUNT WATERMAN - NO CLOCK

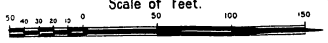
LUMBER SHED

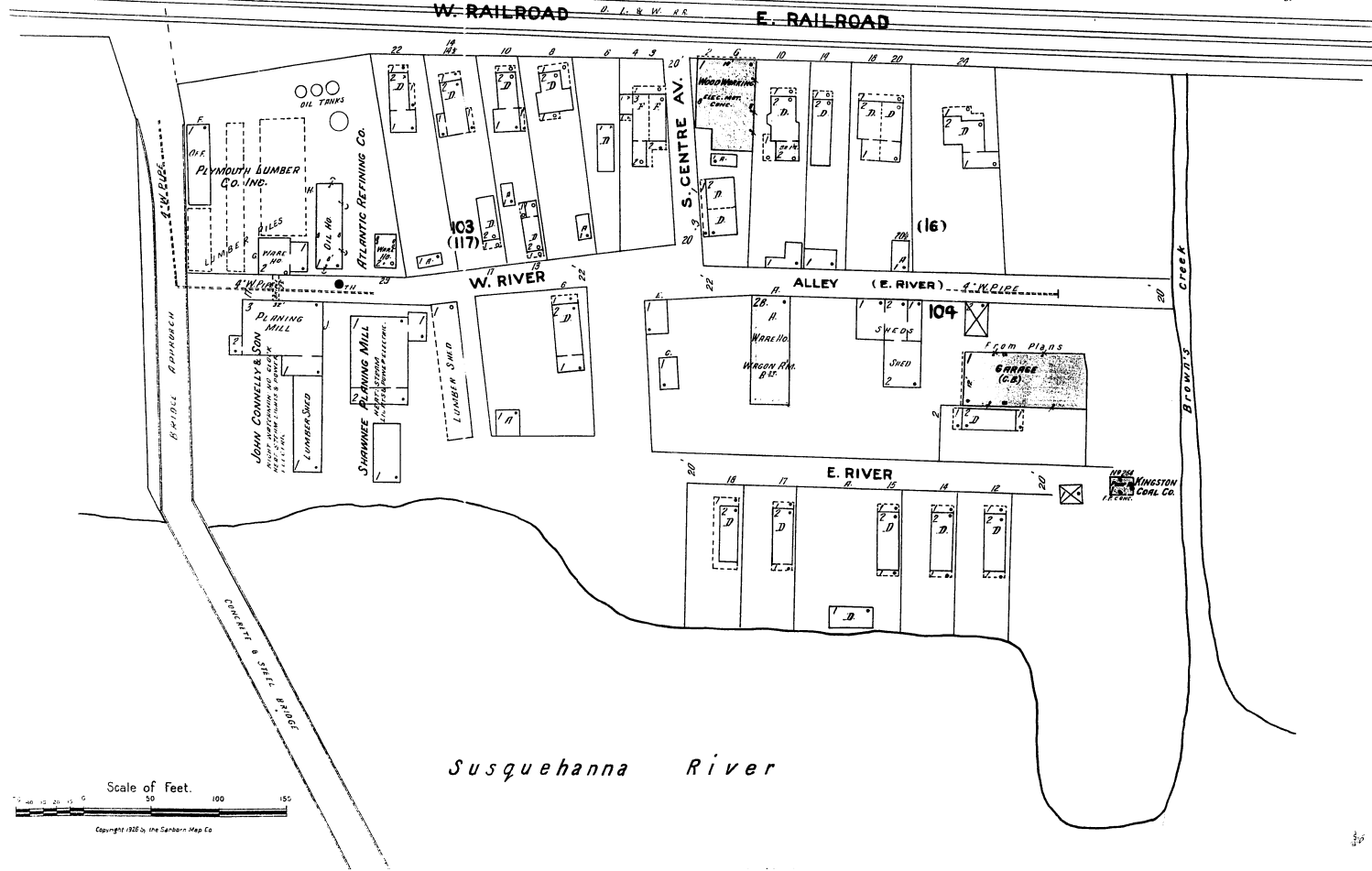
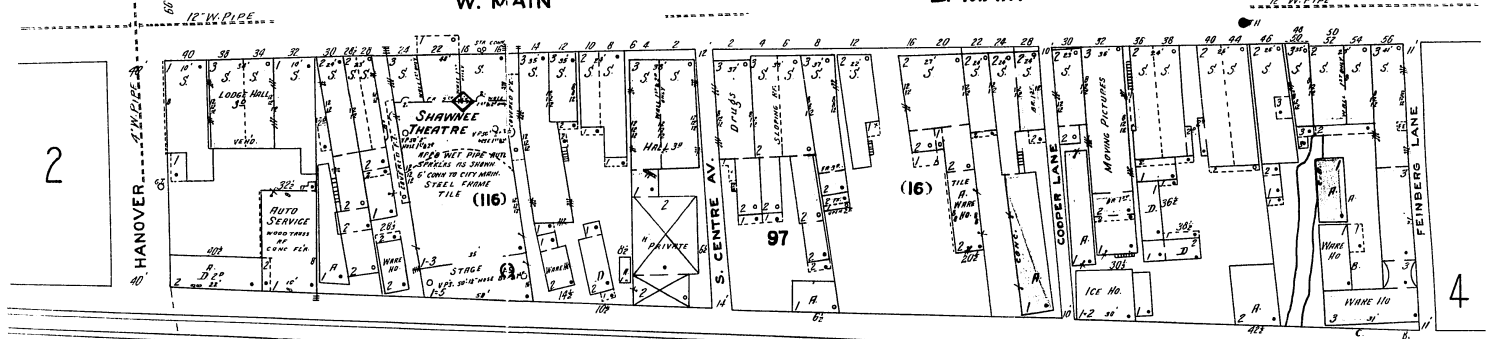
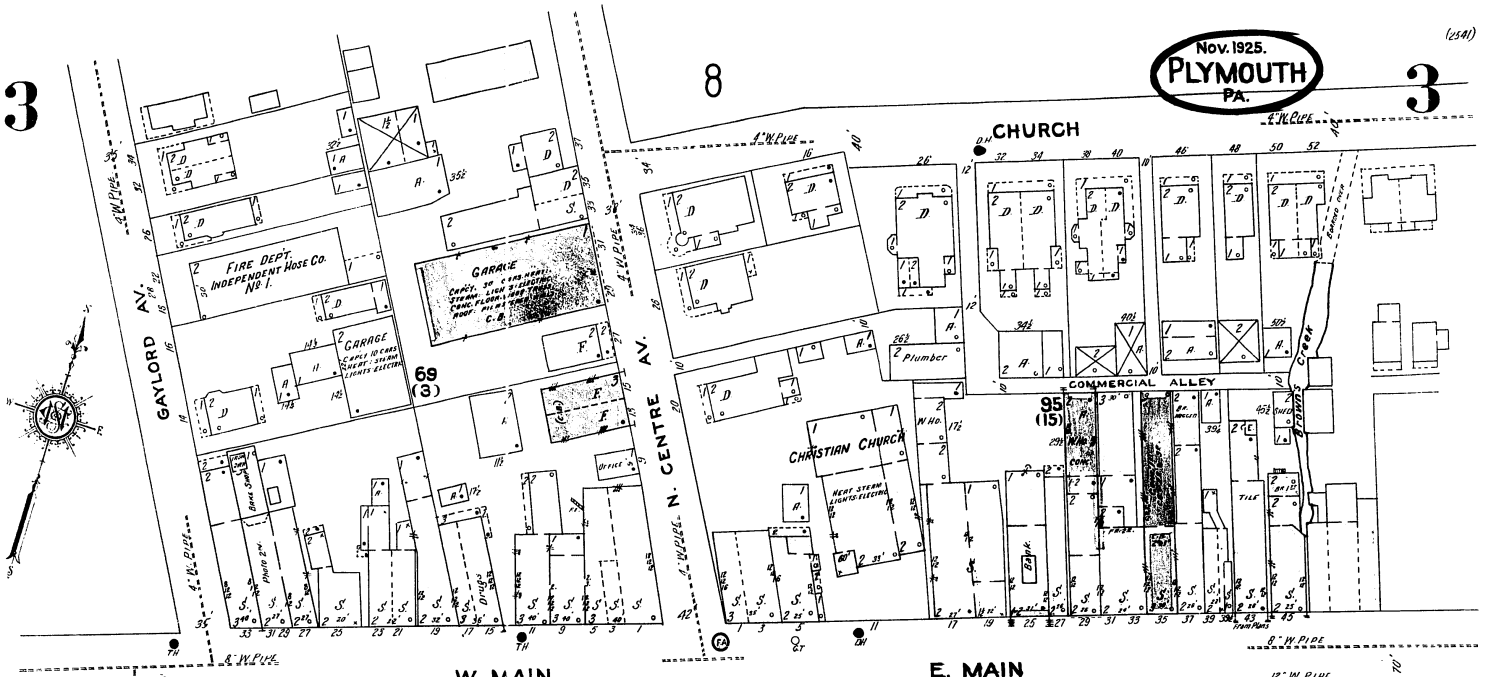
LUMBER SHED



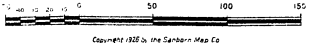
Susquehanna River

Scale of Feet.





Scale of Feet.



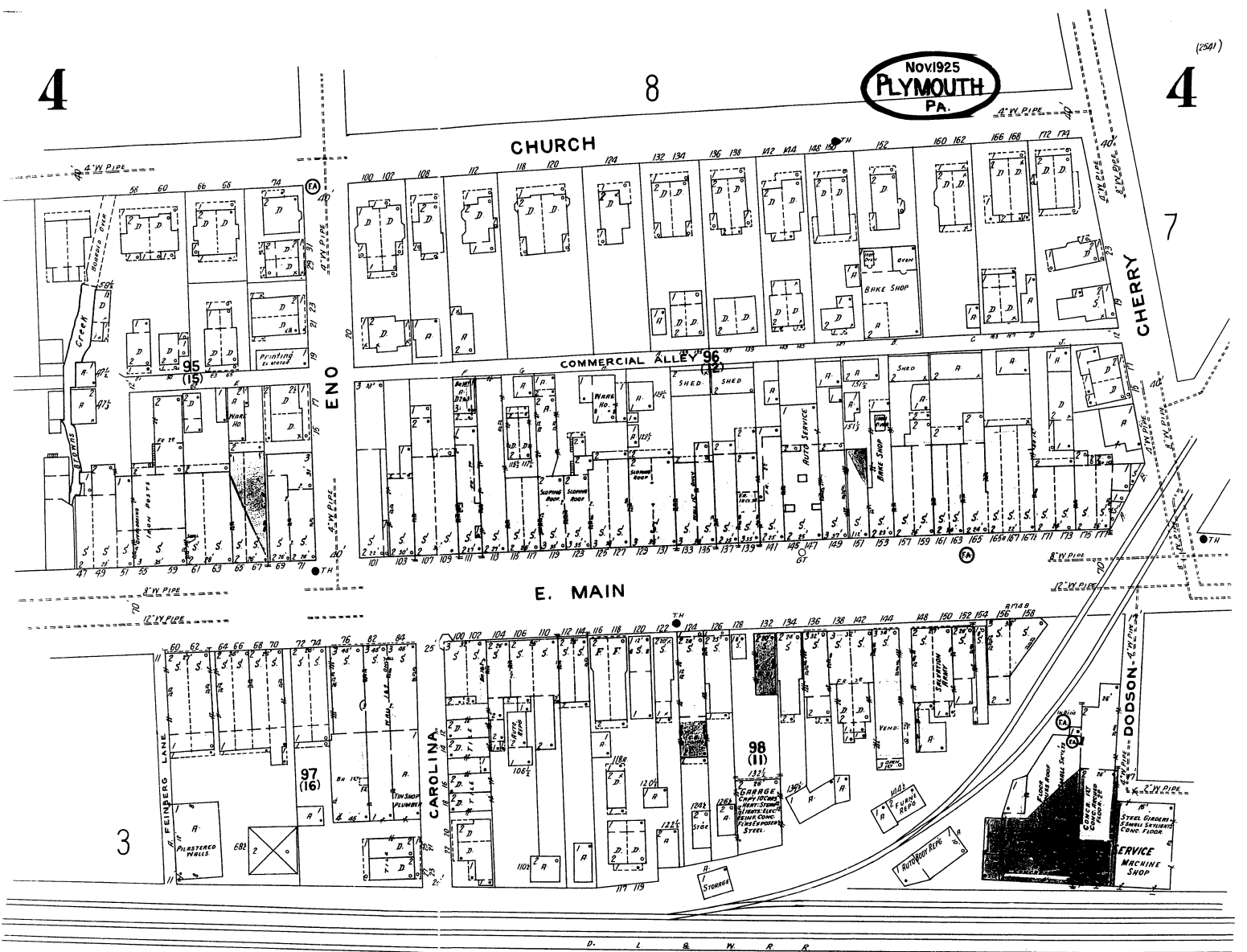
4

8

NOV 1925
PLYMOUTH
PA.

4

(2541)



3

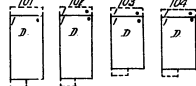
95 (15)

97 (16)

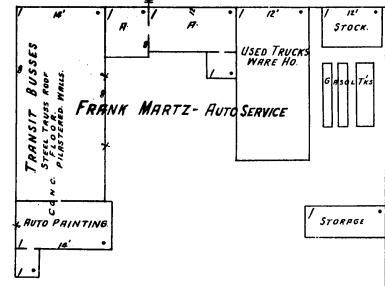
98 (11)

E. RAILROAD

MARTZ MANOR



Auto & Wagon Body Mfg
 STEEL TRUCK BODIES
 PRINTING
 ELEC. MOTOR
 WOODWORKING
 M.S.M.

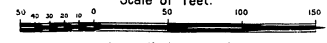


105

5



Scale of Feet.

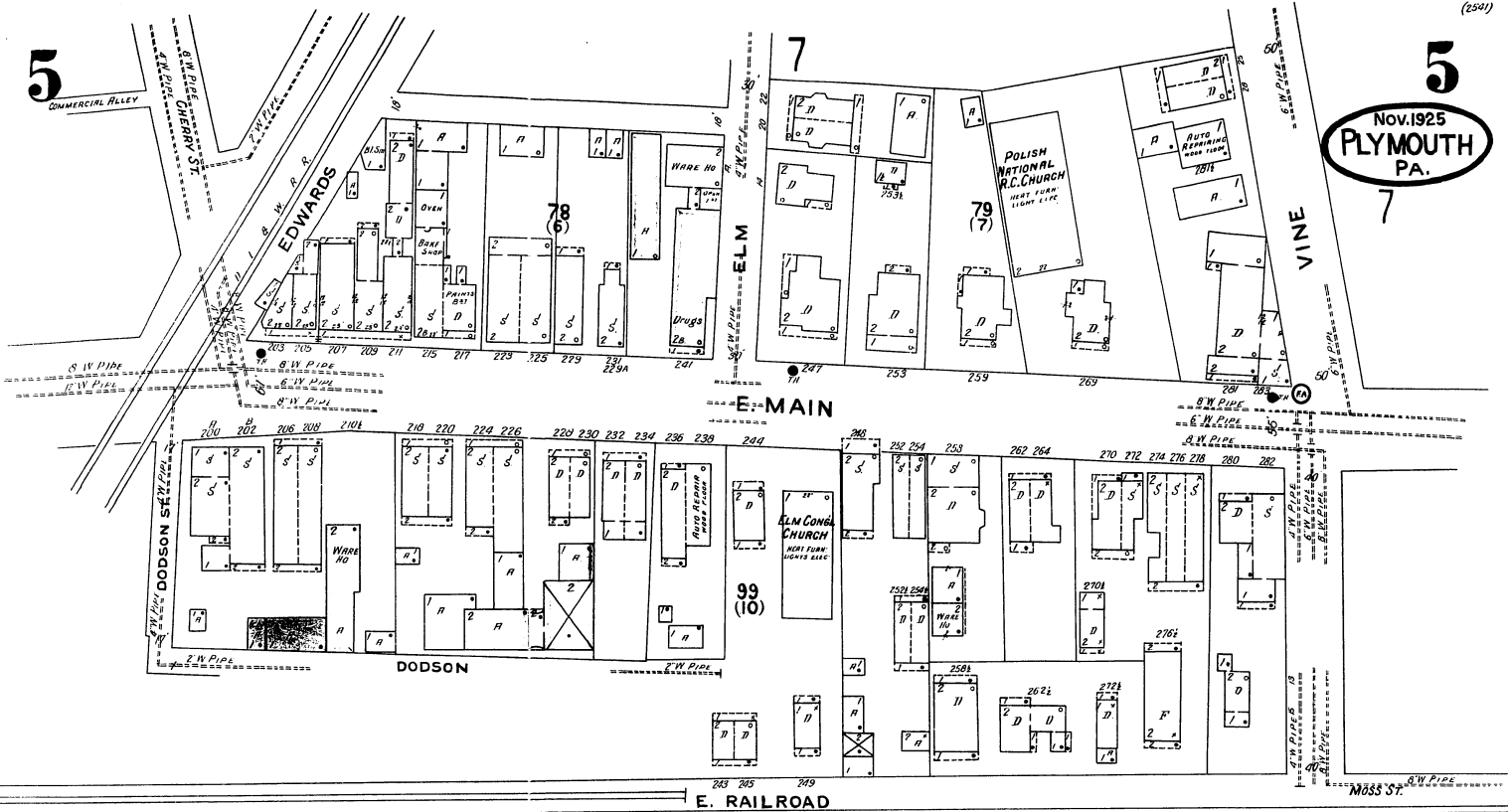


Copyright 1925 by the Sanborn Map Co.

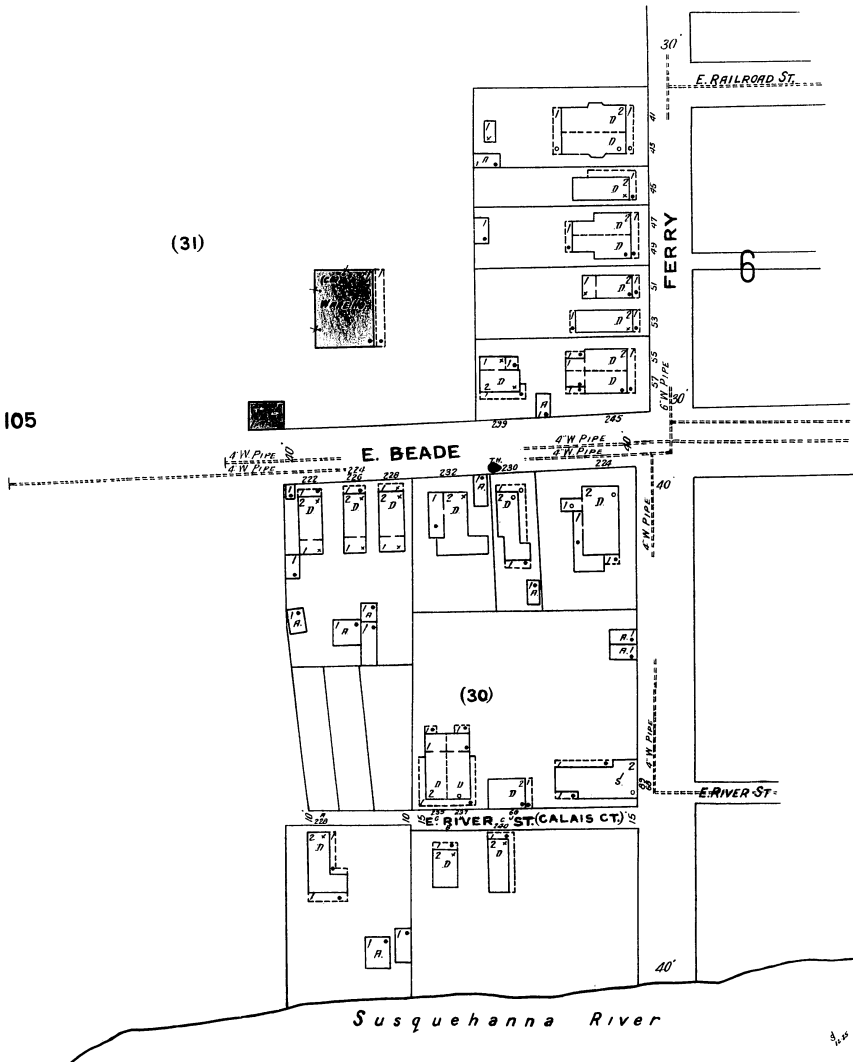
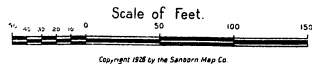
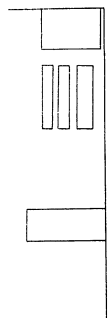
5
1725

5

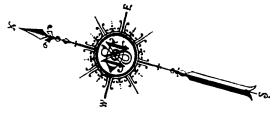
5
Nov. 1925
PLYMOUTH
PA.
7



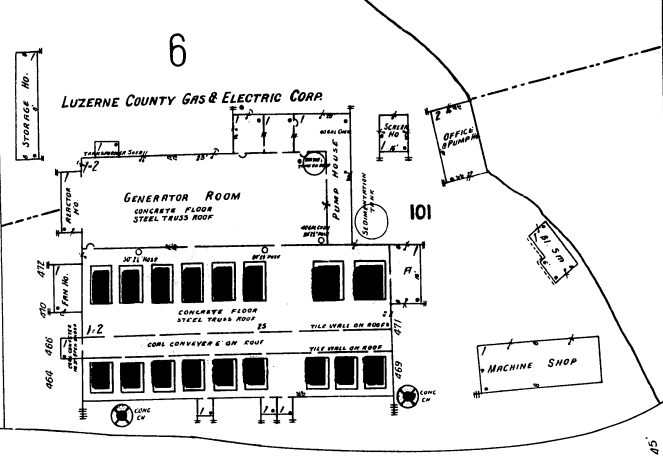
4



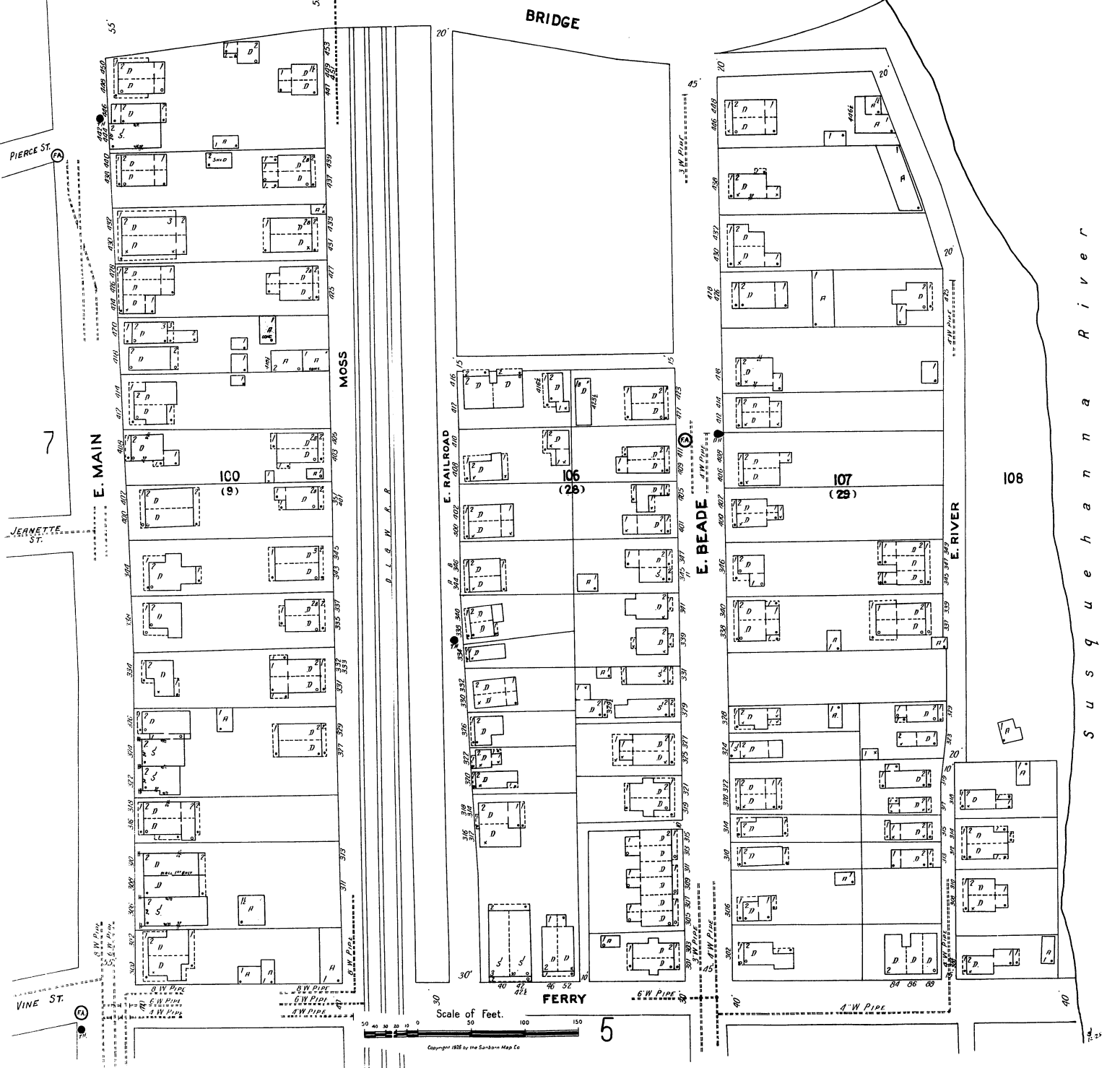
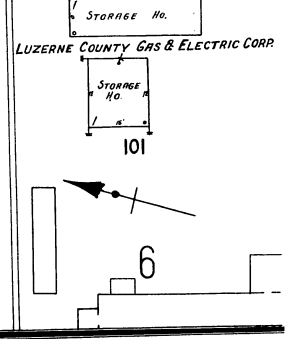
Susquehanna River



Map of Larksville
Larksville
Borough Line
Plymouth



Nov. 1925.
PLYMOUTH
PA.



Scale of Feet.
0 10 20 30 40 50 60 70 80 90 100 150

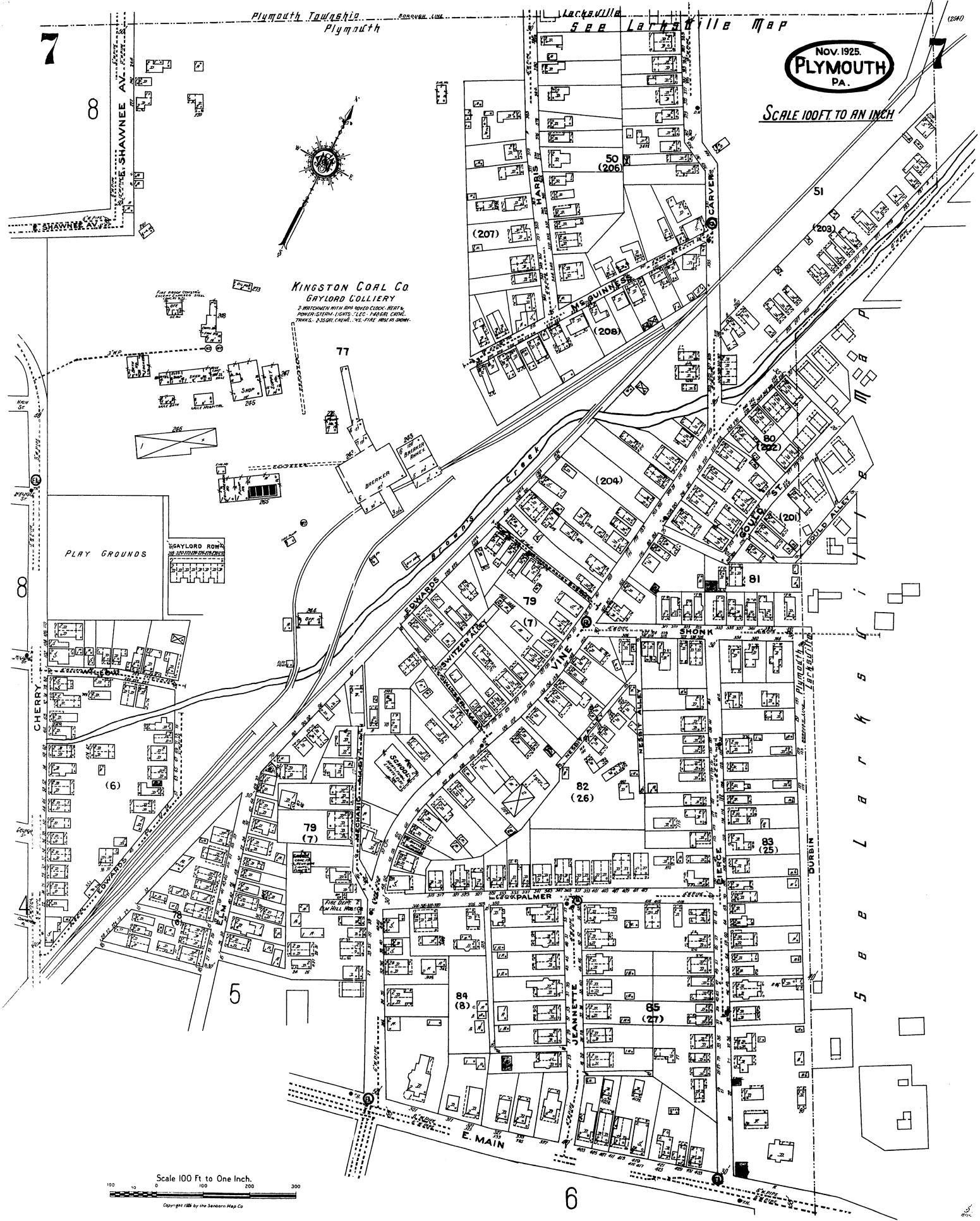
S u s q u e h a n a R i v e r

Nov. 1925
PLYMOUTH
PA.

SCALE 100 FT TO AN INCH



**KINGSTON COAL CO
GAYLORD COLLIERY**
2 WATCHMEN WITH 24 HOUR CLOCK; 200 FT. POWER STATION; LIGHTS; 1 C.C.; 14000 GALS. TANKS; 25000 GALS. 75.4000 10000 10000

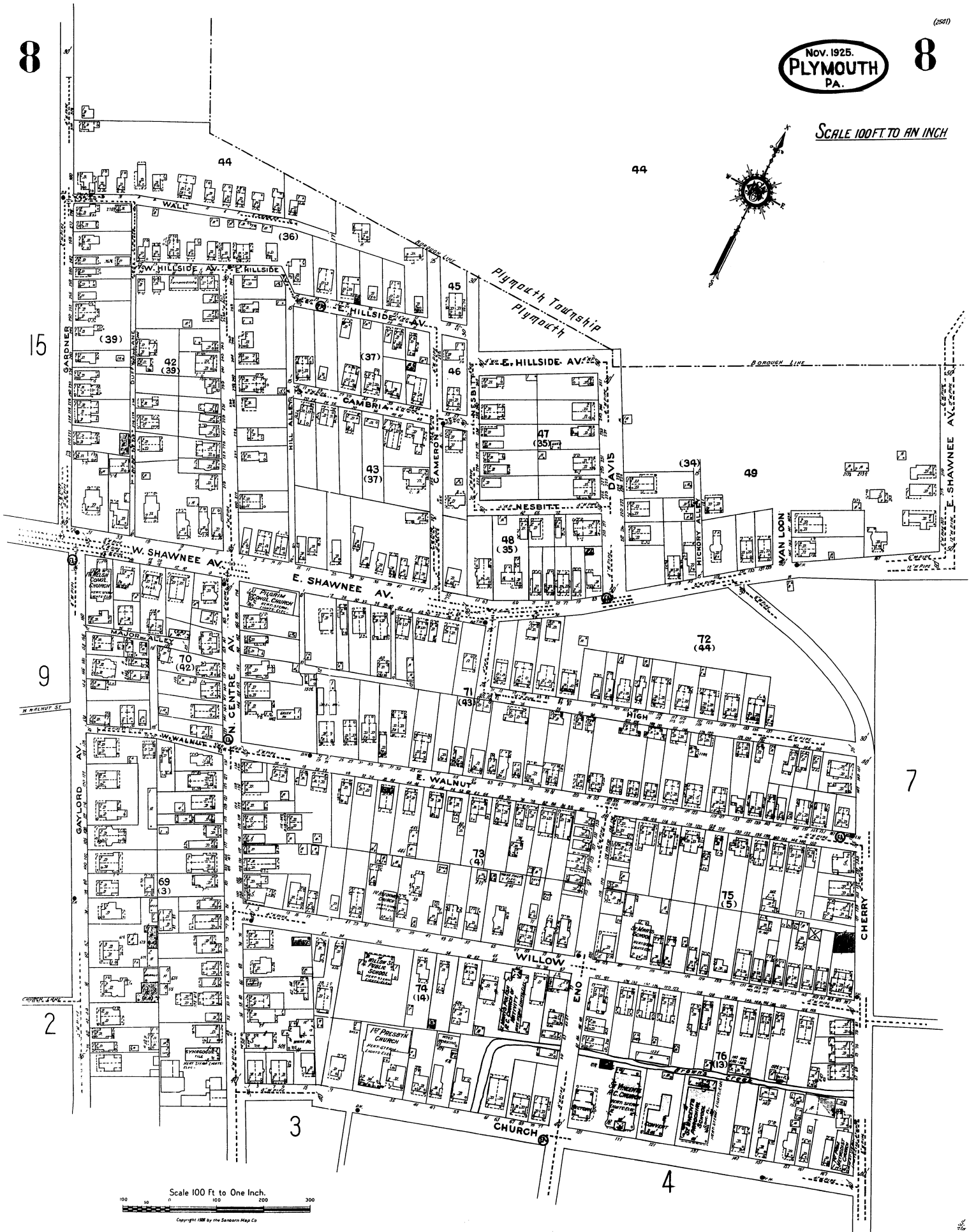


Scale 100 Ft to One Inch.



Copyright 1926 by the Sander's Map Co

SCALE 100 FT TO AN INCH



Scale 100 Ft to One Inch.
Copyright 1925 by the Sanborn Map Co.

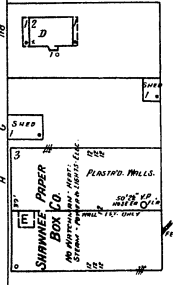
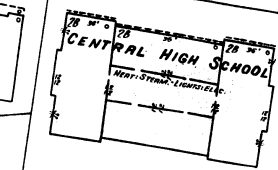
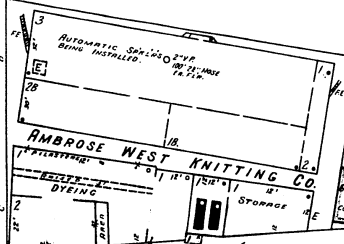
9

9



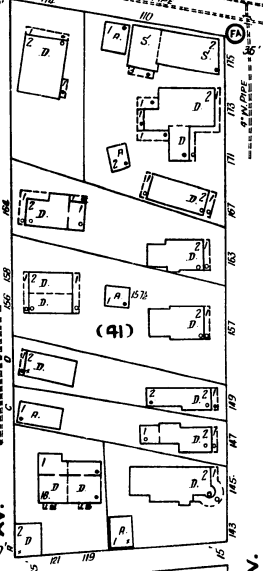
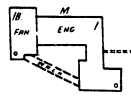
15

W. SHAWNEE AV.



LEHIGH & WILKES-BARRE COAL CO.

Admittance Refused.



MAJOR ALLEY

8

W WALNUT ST.

DOWNING

10

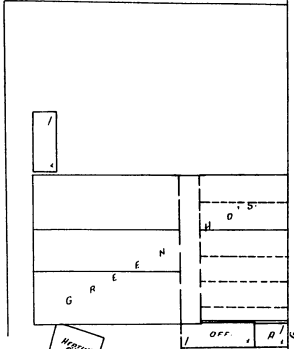
66

LEHIGH & WILKES-BARRE COAL CO.

ATHLETIC FIELD

BLEACHERS

BLEACHERS



W. WALNUT

SHELDON ROBERTSON SILK INC.

ENGINE FLY, NIGHT & SUNDAY WATCHMAN WITH TORCHES, CLOCK, HEAT-STEAM, TRAFFIC LIGHTS-ELEC.

WELSH PRESBYN CHURCH

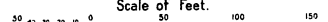
HEAT-STEAM - LIGHTS-ELEC

68 (2)

67 (2)

BOROUGH HALL

Scale of Feet.



10

15

10

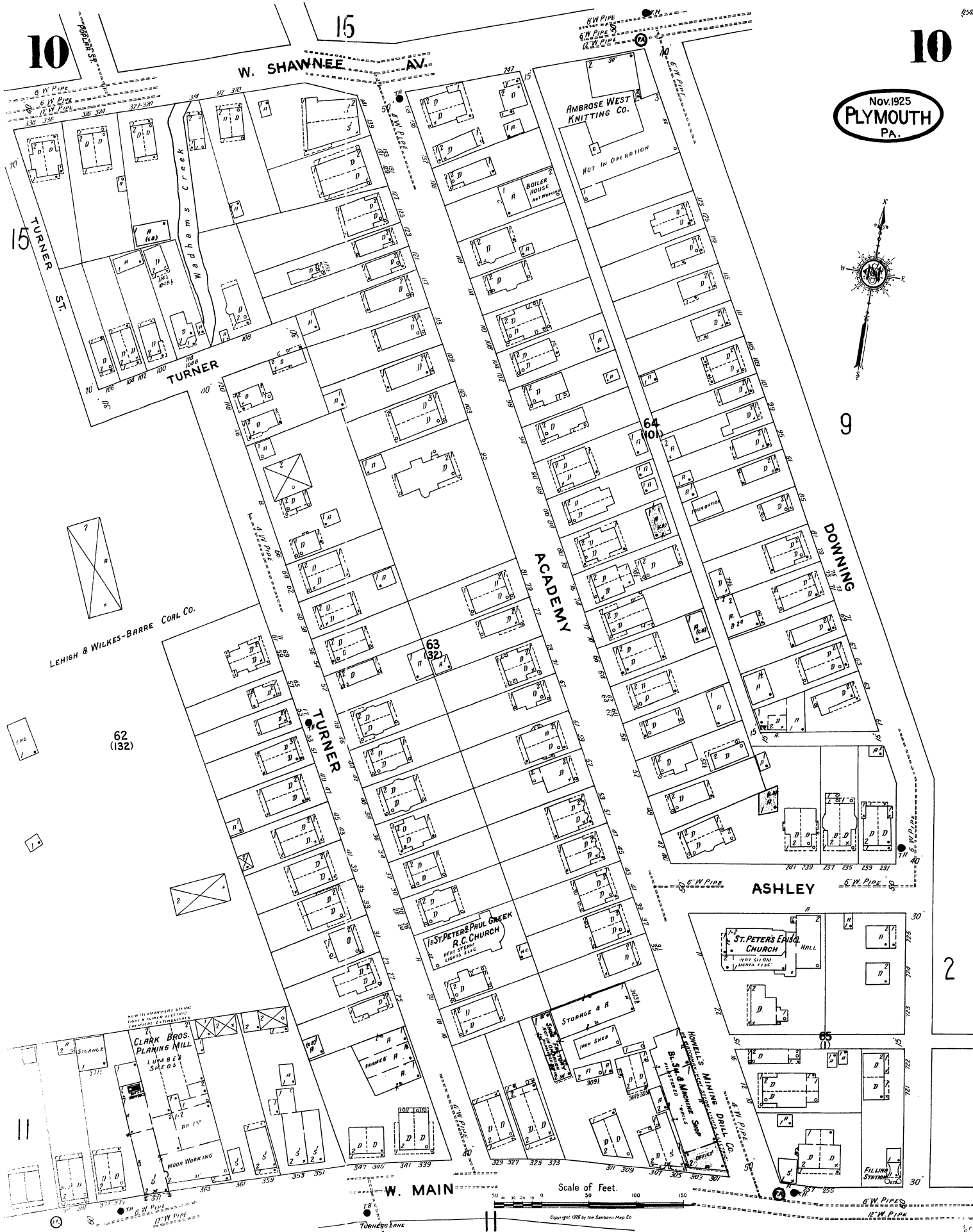
Nov. 1925
PLYMOUTH
PA.



9

DOWNING

2



W. SHAWNEE AV.

TURNER ST.

TURNER

ACADEMY

ASHLEY

W. MAIN

Scale of Feet.

Copyright 1926 by the Sanborn Map Co

62
(132)

63
(32)

64
(10)

65
(1)

CLARK BROS.
PLANING MILL

ST. PETER'S PAUL GREEK
R.C. CHURCH

AMBROSE WEST
KNITTING CO.

ST. PETER'S
EPISCOPAL CHURCH

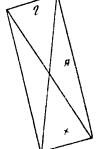
LEHIGH & WILKES-BARRE
COAL CO.

STORAGE & R.

HONELL'S
MINING DRILL CO.

FILLING
STATION

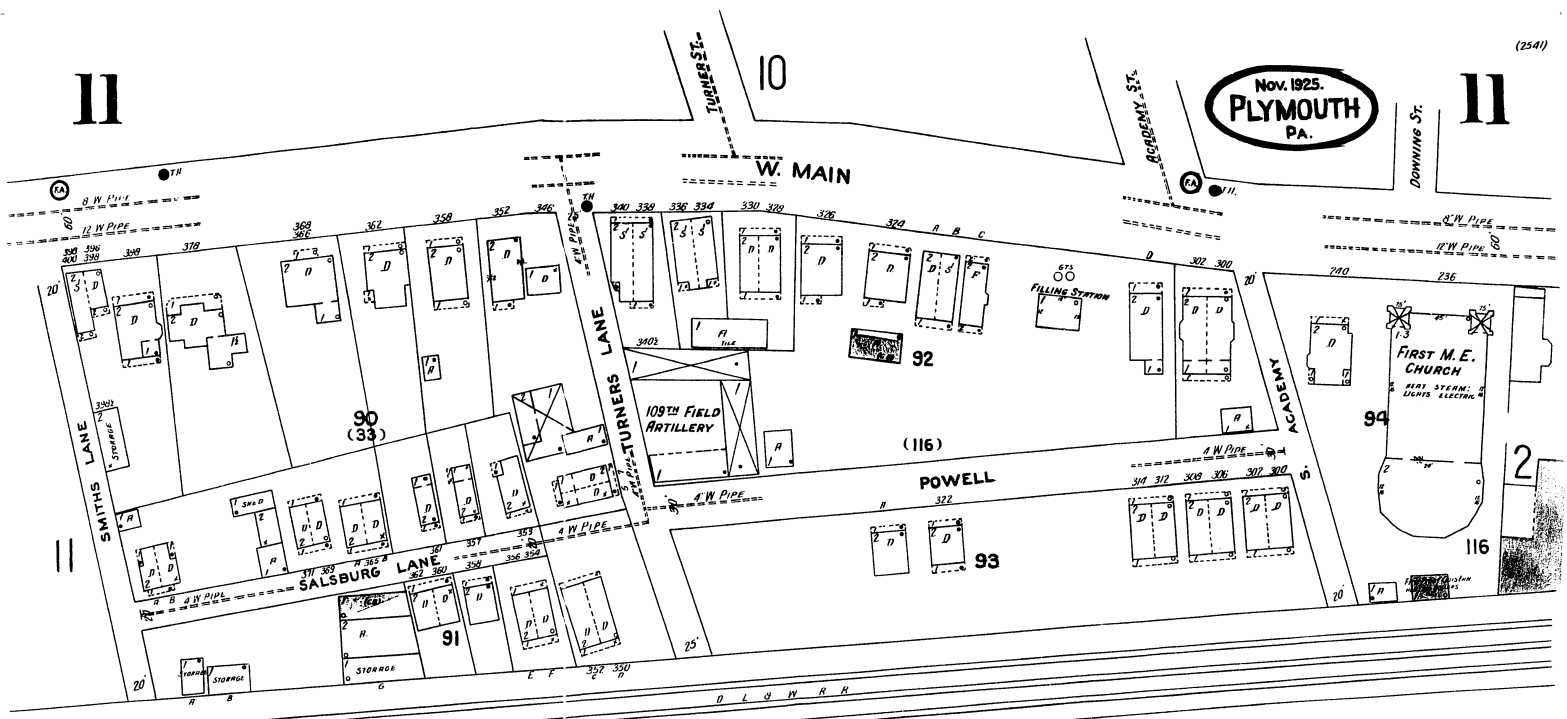
BOILER
HOUSE



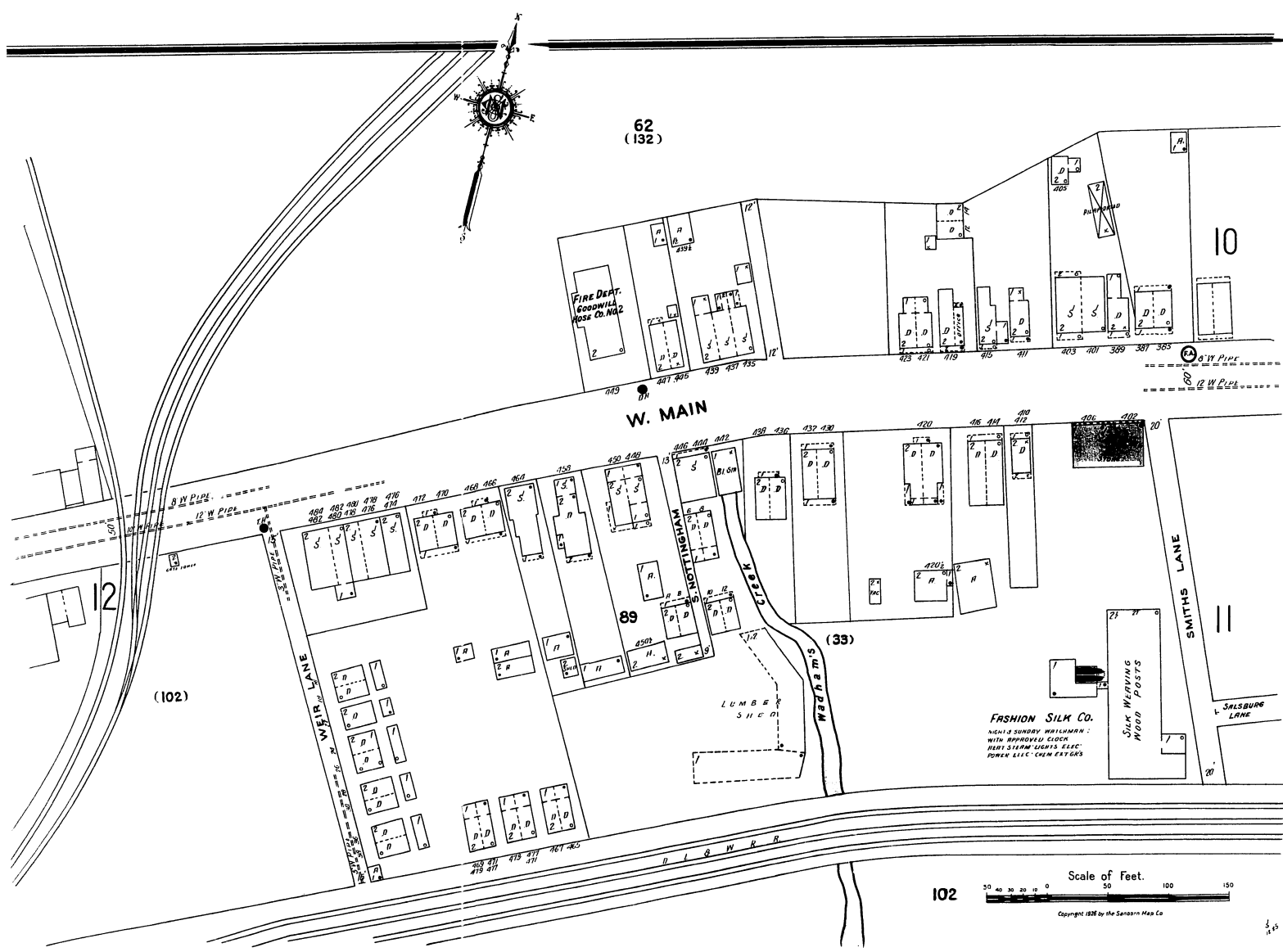
11

11

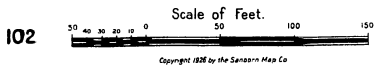
Nov. 1925.
PLYMOUTH
PA.



102
(117)



FASHION SILK CO.
NIGHT SUNDAY MAILMAN
WITH APPROVED CLOCK
HEAT STEAM LIGHTS ELEC.
POWER ELEC. CHEMISTS



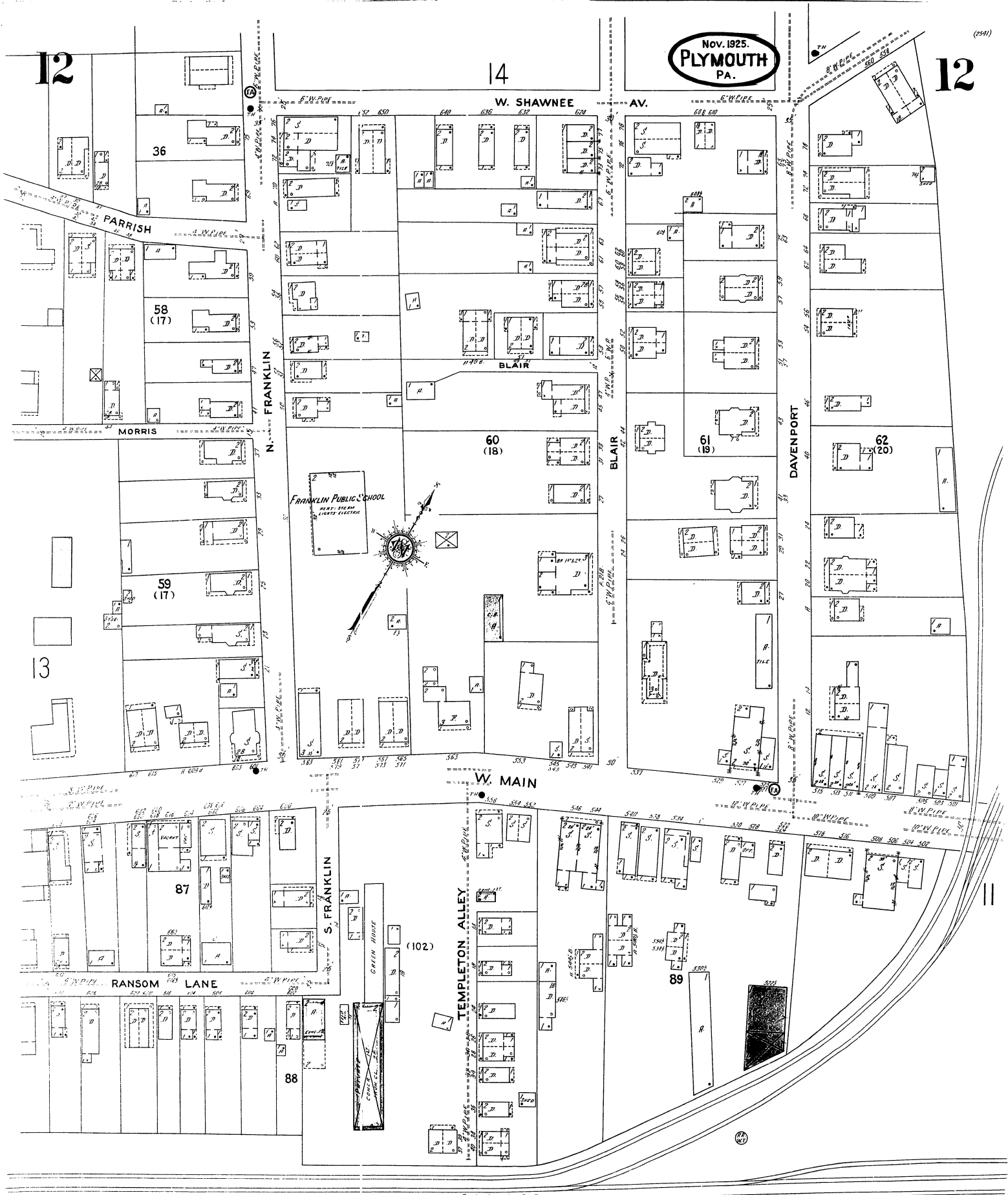
102

12

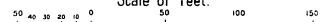
14

12

Nov. 1925.
PLYMOUTH
PA.



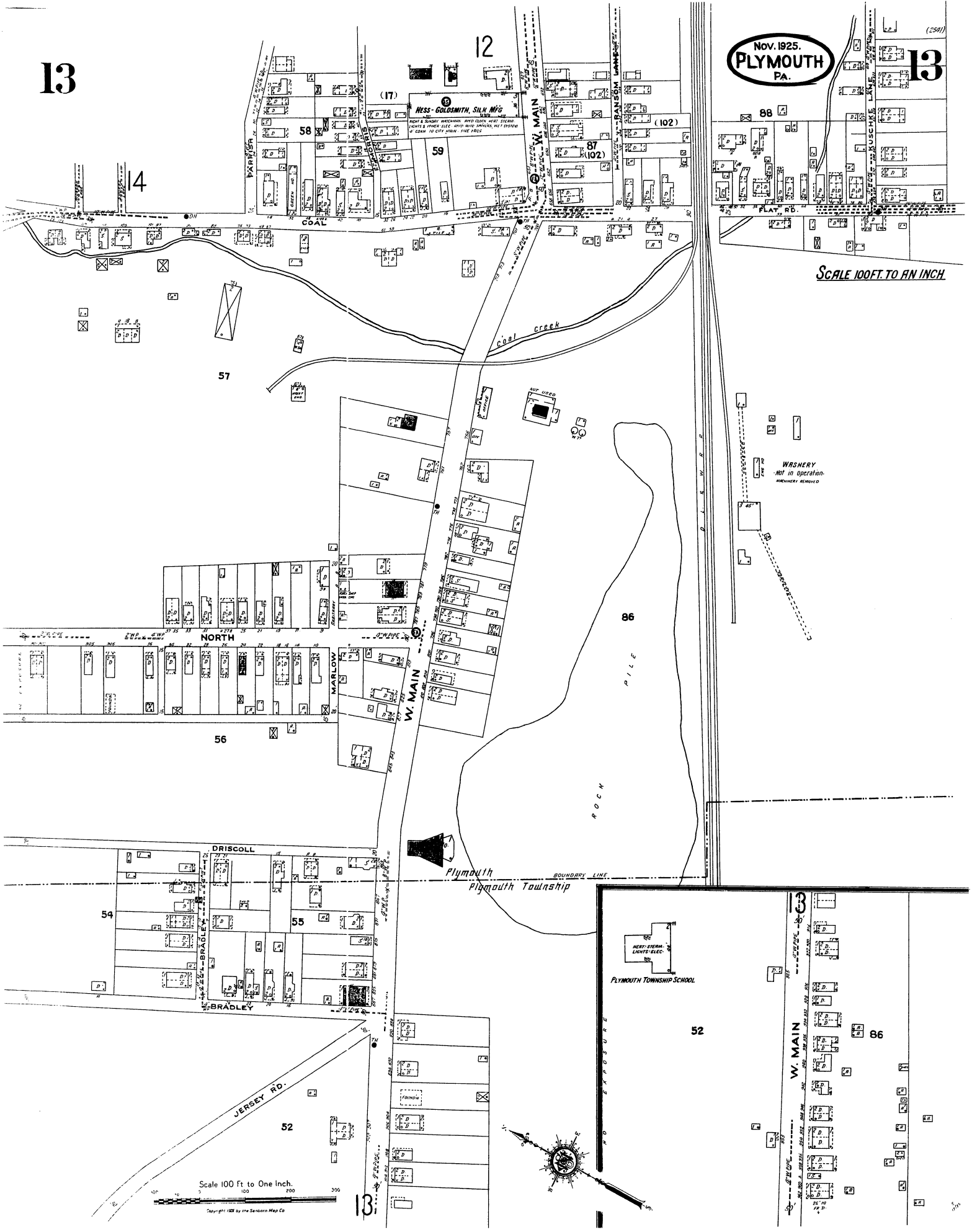
Scale of Feet.



13

Nov. 1925.
PLYMOUTH
PA.

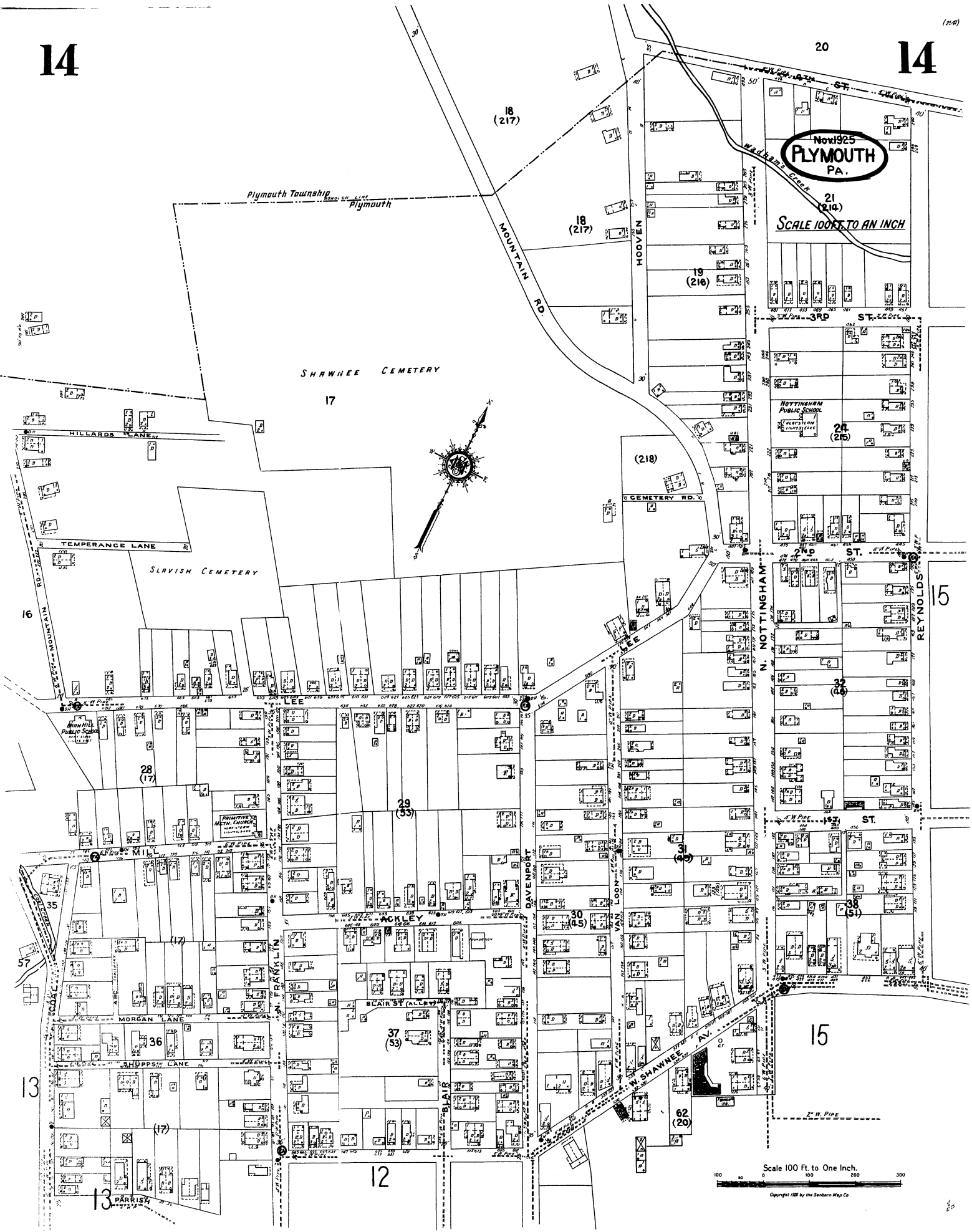
13



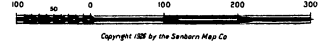
SCALE 100 FT. TO AN INCH

Scale 100 ft to One Inch.

Copyright 1925 by the Sanborn Map Co



Scale 100 Ft. to One Inch.

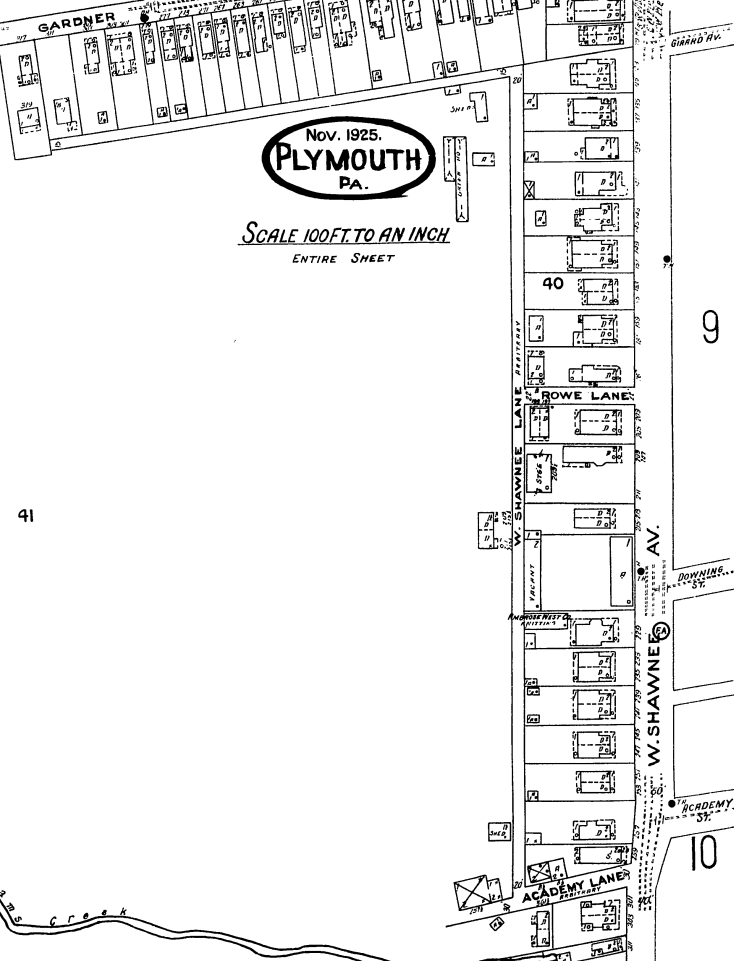
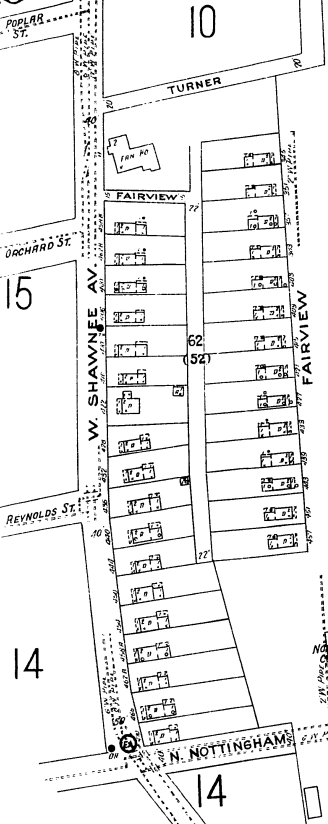


Copyright 1925 by the Sanborn Map Co.

15

8

15



Nov. 1925.
PLYMOUTH
 PA.

SCALE 100 FT. TO AN INCH
 ENTIRE SHEET



Scale 100 Ft. to One Inch.
 0 100 200 300
 Copyright 1925 by the Seacomb Map Co.