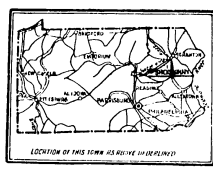


WATER FACILITIES:
 Owned by private corporation - Gravity system plant installed & pipes laid in 1883. Reservoir 3/4 mile W of town - elev 150 ft. Cor. Main Union Sts - supplied by Shickshinny Creek - 4 miles N of town - mains, pressure 50 lbs. in business section. 1/4 mi from intake to town. 24 hydrants. High pressure service to supply higher sections, installed in 1912 - intake on Creek 1/4 mile SW of Main Union Sts. Hyd. on Benscoters Alley & Union St. - pressure 100 lbs. is only high pressure hyd. in business section.

FIRE DEPT:
 Volunteer co. of 60 men. 2 hose jumpers - 100' 2 1/2" hose - 1 w. 1 truck, 77' of ladders - Gamewell fire alarm system - 7 boses - Whistle alarm.
 Main St paved with brick - other streets are gravel pitted - Public lighting electric.



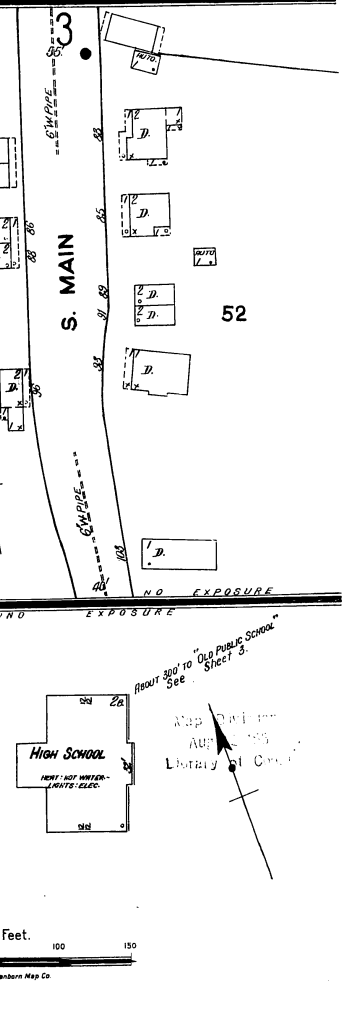
INDEX

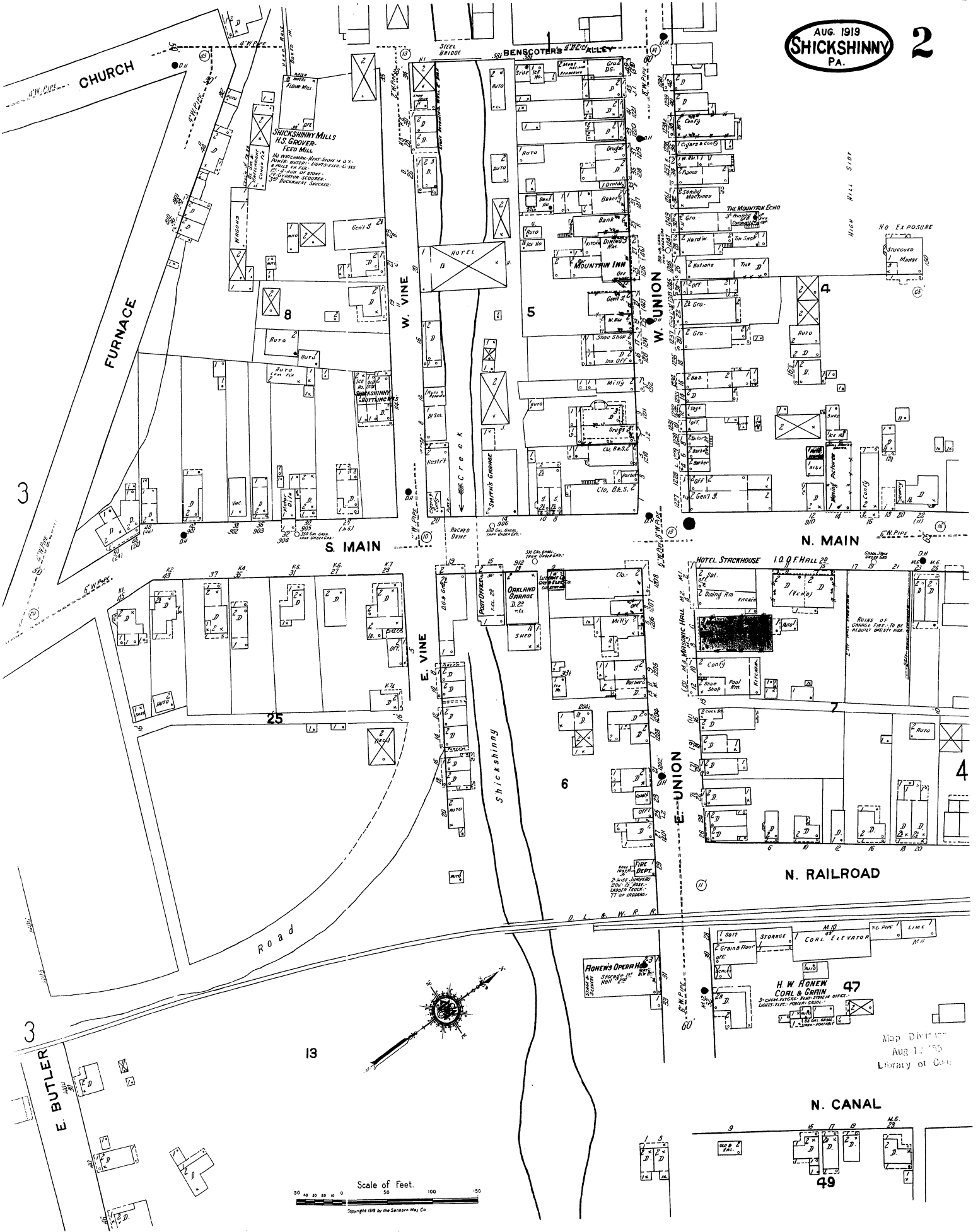
| STREETS | SHEET | SPECIALS | SHEET |
|---------------------|-------|------------------------------------|-------|
| Ash, A | 4 | Agnew, H. W., Coal and Grain Co. | 2 |
| Bear's Alley, B | 1 | Agnew's Opera House | 2 |
| Benscoters Alley, C | 1 | Anderson, J. D., & Sons, Feed Mill | 4 |
| Butler, E | 1 | D | |
| Canal, N | 1 | D. L. & W. H. R. Depot | 4 |
| Church, F | 1 | Dohi, O. J., Fertilizer | 4 |
| Furnace, G | 1 | Eagle House | 4 |
| Glen Ave, H | 2 | Fire Department | 2 |
| Green, I | 2 | Gerhart, J., Shoe Factory | 1 |
| McClintock, J | 2 | Grover, H., Feed Mill | 2 |
| Main, K | 2 | H | |
| Union, L | 2 | Harbord Silk Co. | 4 |
| Vine, M | 2 | High School | 1 |
| | | Hotel Hooper | 4 |
| | | Shickshinny | 4 |
| | | L | |
| | | Luzerne County Gas and Elec. Co. | 2 |
| | | M | |
| | | Masonic Hall | 2 |
| | | Methodist Episcopal Church | 3 |
| | | M. F. Church | 3 |
| | | Mountain Echo, Printing | 2 |
| | | Imp. | 2 |
| | | O | |
| | | Oakland Garage | 2 |
| | | R | |
| | | Rittenhouse, M. J., Planing Mill | 3 |
| | | S | |
| | | Shickshinny Bottling Works | 2 |
| | | Mills | 2 |
| | | Smith's Garage | 2 |
| | | W | |
| | | Woodworth, J. D., Sons, Garage | 3 |

* Indicates only one side of Street shown.

KEY

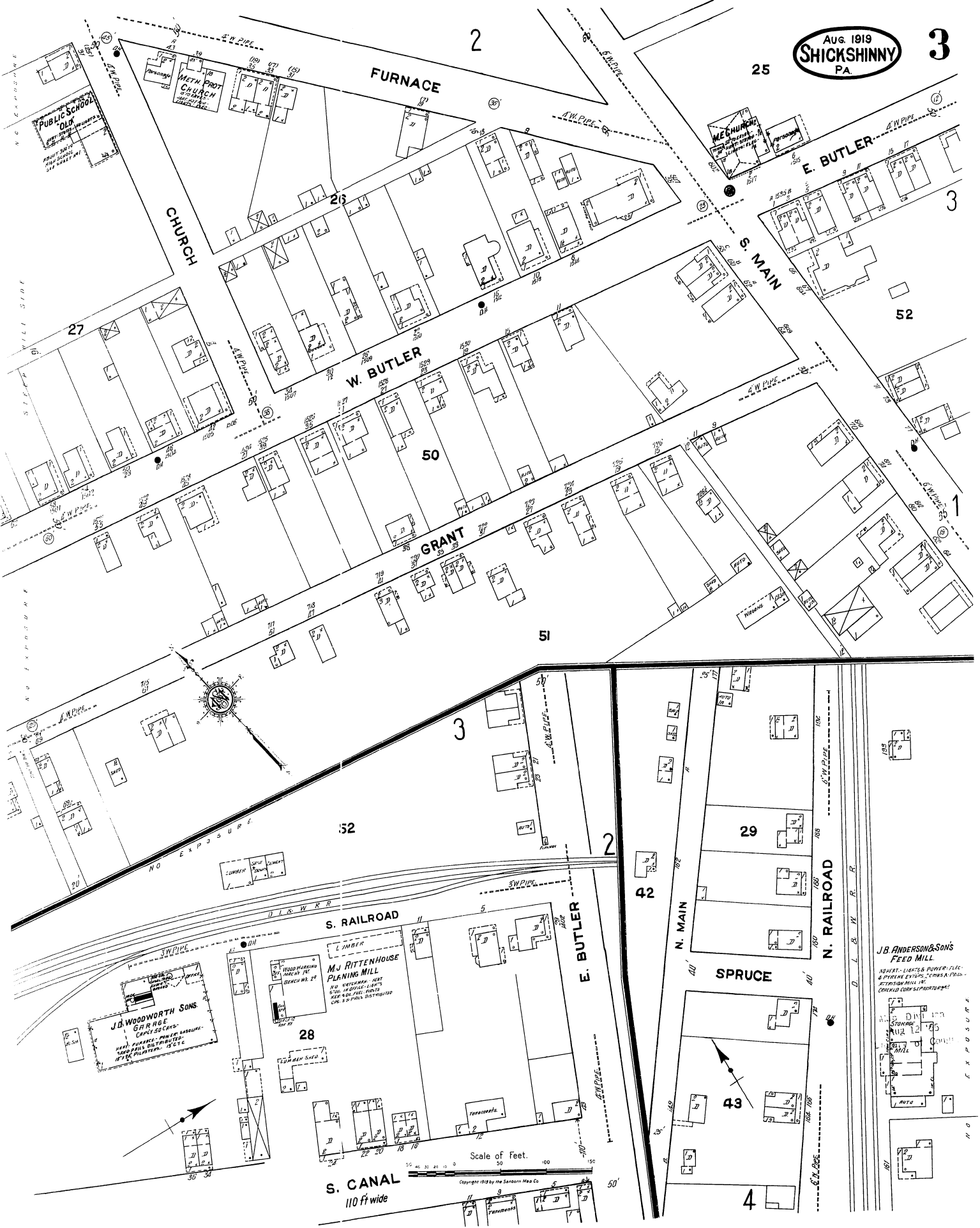
1. BUILDING FOOTPRINTS
 2. WALLS
 3. DOORS
 4. WINDOWS
 5. CHIMNEYS
 6. TOWER
 7. TANK
 8. WATER TOWER
 9. WATER TOWER
 10. WATER TOWER
 11. WATER TOWER
 12. WATER TOWER
 13. WATER TOWER
 14. WATER TOWER
 15. WATER TOWER
 16. WATER TOWER
 17. WATER TOWER
 18. WATER TOWER
 19. WATER TOWER
 20. WATER TOWER
 21. WATER TOWER
 22. WATER TOWER
 23. WATER TOWER
 24. WATER TOWER
 25. WATER TOWER
 26. WATER TOWER
 27. WATER TOWER
 28. WATER TOWER
 29. WATER TOWER
 30. WATER TOWER
 31. WATER TOWER
 32. WATER TOWER
 33. WATER TOWER
 34. WATER TOWER
 35. WATER TOWER
 36. WATER TOWER
 37. WATER TOWER
 38. WATER TOWER
 39. WATER TOWER
 40. WATER TOWER
 41. WATER TOWER
 42. WATER TOWER
 43. WATER TOWER
 44. WATER TOWER
 45. WATER TOWER
 46. WATER TOWER
 47. WATER TOWER
 48. WATER TOWER
 49. WATER TOWER
 50. WATER TOWER
 51. WATER TOWER
 52. WATER TOWER
 53. WATER TOWER
 54. WATER TOWER
 55. WATER TOWER
 56. WATER TOWER
 57. WATER TOWER
 58. WATER TOWER
 59. WATER TOWER
 60. WATER TOWER
 61. WATER TOWER
 62. WATER TOWER
 63. WATER TOWER
 64. WATER TOWER
 65. WATER TOWER
 66. WATER TOWER
 67. WATER TOWER
 68. WATER TOWER
 69. WATER TOWER
 70. WATER TOWER
 71. WATER TOWER
 72. WATER TOWER
 73. WATER TOWER
 74. WATER TOWER
 75. WATER TOWER
 76. WATER TOWER
 77. WATER TOWER
 78. WATER TOWER
 79. WATER TOWER
 80. WATER TOWER
 81. WATER TOWER
 82. WATER TOWER
 83. WATER TOWER
 84. WATER TOWER
 85. WATER TOWER
 86. WATER TOWER
 87. WATER TOWER
 88. WATER TOWER
 89. WATER TOWER
 90. WATER TOWER
 91. WATER TOWER
 92. WATER TOWER
 93. WATER TOWER
 94. WATER TOWER
 95. WATER TOWER
 96. WATER TOWER
 97. WATER TOWER
 98. WATER TOWER
 99. WATER TOWER
 100. WATER TOWER





Map Division
Aug 1, 1919
Library of Cong.

Scale of Feet.
0 50 100 150
Copyright 1919 by the Sanborn Map Co



CHURCH

FURNACE

PUBLIC SCHOOL

W. BUTLER

E. BUTLER

GRANT

S. MAIN

SPRUCE

S. RAILROAD

E. BUTLER

N. MAIN

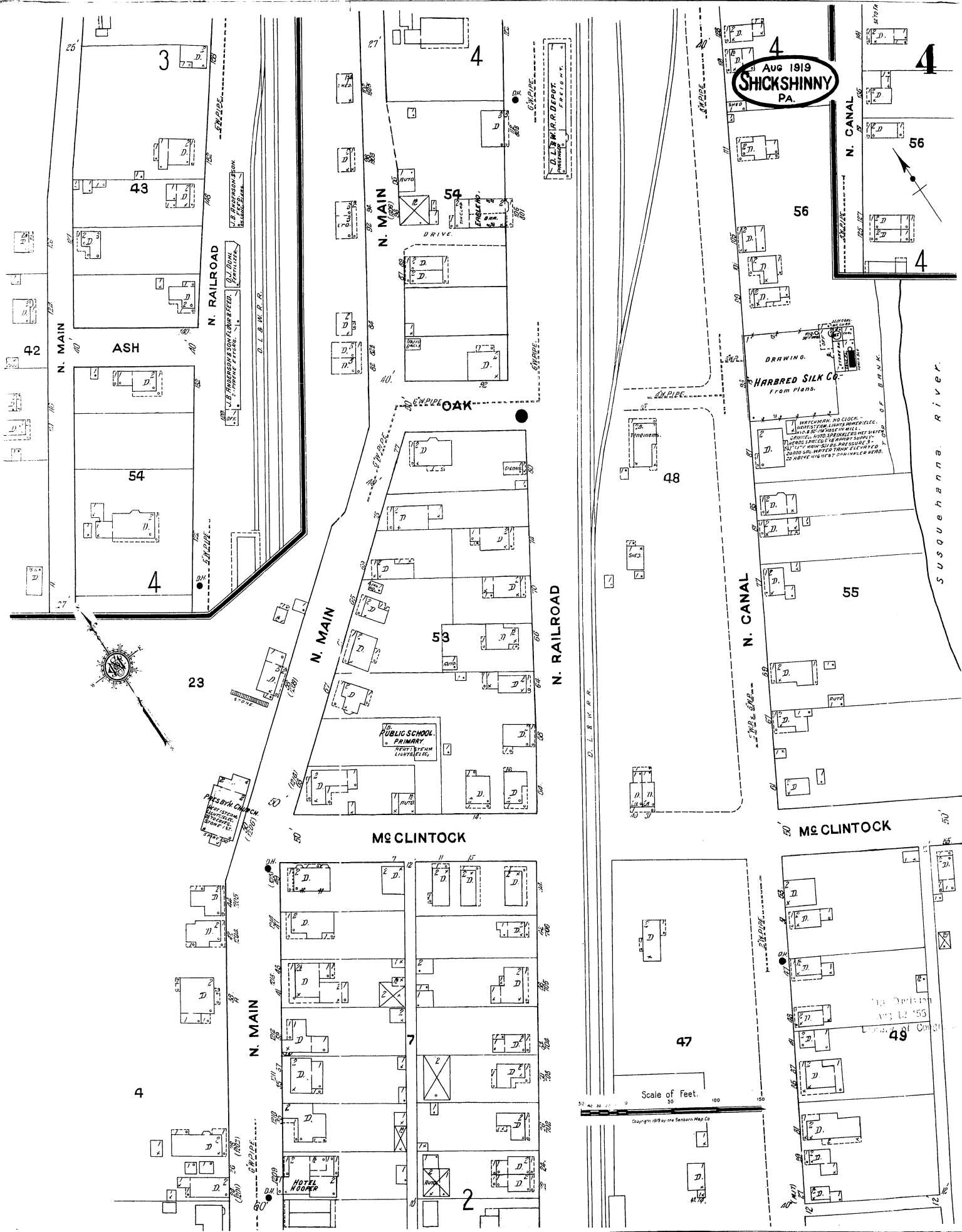
N. RAILROAD

S. CANAL
110 ft wide

J.B. ANDERSON & SONS
FEED MILL
NIGHT - LIGHTS POWER - FUEL
& STORES BINS - CONES A FEED
STATION MILL 18'
CORNED COB-SHIPPERS

Scale of Feet.

Copyright 1919 by the Sarason Map Co



AUG 1919
SHICKSHINNY
PA.



Scale of Feet.
0 50 100

Copyright 1919 by the Searborn Map Co.

HARBRED SILK CO.
From Plans.
WATCHMAN, NO CLOCK -
WATCHMAN, LUNA, WOODVILLE, PA.
NO. 25 - 26 - 27 - 28 - 29 - 30 - 31 - 32 - 33 - 34 - 35 - 36 - 37 - 38 - 39 - 40 - 41 - 42 - 43 - 44 - 45 - 46 - 47 - 48 - 49 - 50 - 51 - 52 - 53 - 54 - 55 - 56 - 57 - 58 - 59 - 60 - 61 - 62 - 63 - 64 - 65 - 66 - 67 - 68 - 69 - 70 - 71 - 72 - 73 - 74 - 75 - 76 - 77 - 78 - 79 - 80 - 81 - 82 - 83 - 84 - 85 - 86 - 87 - 88 - 89 - 90 - 91 - 92 - 93 - 94 - 95 - 96 - 97 - 98 - 99 - 100 - 101 - 102 - 103 - 104 - 105 - 106 - 107 - 108 - 109 - 110 - 111 - 112 - 113 - 114 - 115 - 116 - 117 - 118 - 119 - 120 - 121 - 122 - 123 - 124 - 125 - 126 - 127 - 128 - 129 - 130 - 131 - 132 - 133 - 134 - 135 - 136 - 137 - 138 - 139 - 140 - 141 - 142 - 143 - 144 - 145 - 146 - 147 - 148 - 149 - 150 - 151 - 152 - 153 - 154 - 155 - 156 - 157 - 158 - 159 - 160 - 161 - 162 - 163 - 164 - 165 - 166 - 167 - 168 - 169 - 170 - 171 - 172 - 173 - 174 - 175 - 176 - 177 - 178 - 179 - 180 - 181 - 182 - 183 - 184 - 185 - 186 - 187 - 188 - 189 - 190 - 191 - 192 - 193 - 194 - 195 - 196 - 197 - 198 - 199 - 200 - 201 - 202 - 203 - 204 - 205 - 206 - 207 - 208 - 209 - 210 - 211 - 212 - 213 - 214 - 215 - 216 - 217 - 218 - 219 - 220 - 221 - 222 - 223 - 224 - 225 - 226 - 227 - 228 - 229 - 230 - 231 - 232 - 233 - 234 - 235 - 236 - 237 - 238 - 239 - 240 - 241 - 242 - 243 - 244 - 245 - 246 - 247 - 248 - 249 - 250 - 251 - 252 - 253 - 254 - 255 - 256 - 257 - 258 - 259 - 260 - 261 - 262 - 263 - 264 - 265 - 266 - 267 - 268 - 269 - 270 - 271 - 272 - 273 - 274 - 275 - 276 - 277 - 278 - 279 - 280 - 281 - 282 - 283 - 284 - 285 - 286 - 287 - 288 - 289 - 290 - 291 - 292 - 293 - 294 - 295 - 296 - 297 - 298 - 299 - 300 - 301 - 302 - 303 - 304 - 305 - 306 - 307 - 308 - 309 - 310 - 311 - 312 - 313 - 314 - 315 - 316 - 317 - 318 - 319 - 320 - 321 - 322 - 323 - 324 - 325 - 326 - 327 - 328 - 329 - 330 - 331 - 332 - 333 - 334 - 335 - 336 - 337 - 338 - 339 - 340 - 341 - 342 - 343 - 344 - 345 - 346 - 347 - 348 - 349 - 350 - 351 - 352 - 353 - 354 - 355 - 356 - 357 - 358 - 359 - 360 - 361 - 362 - 363 - 364 - 365 - 366 - 367 - 368 - 369 - 370 - 371 - 372 - 373 - 374 - 375 - 376 - 377 - 378 - 379 - 380 - 381 - 382 - 383 - 384 - 385 - 386 - 387 - 388 - 389 - 390 - 391 - 392 - 393 - 394 - 395 - 396 - 397 - 398 - 399 - 400 - 401 - 402 - 403 - 404 - 405 - 406 - 407 - 408 - 409 - 410 - 411 - 412 - 413 - 414 - 415 - 416 - 417 - 418 - 419 - 420 - 421 - 422 - 423 - 424 - 425 - 426 - 427 - 428 - 429 - 430 - 431 - 432 - 433 - 434 - 435 - 436 - 437 - 438 - 439 - 440 - 441 - 442 - 443 - 444 - 445 - 446 - 447 - 448 - 449 - 450 - 451 - 452 - 453 - 454 - 455 - 456 - 457 - 458 - 459 - 460 - 461 - 462 - 463 - 464 - 465 - 466 - 467 - 468 - 469 - 470 - 471 - 472 - 473 - 474 - 475 - 476 - 477 - 478 - 479 - 480 - 481 - 482 - 483 - 484 - 485 - 486 - 487 - 488 - 489 - 490 - 491 - 492 - 493 - 494 - 495 - 496 - 497 - 498 - 499 - 500 - 501 - 502 - 503 - 504 - 505 - 506 - 507 - 508 - 509 - 510 - 511 - 512 - 513 - 514 - 515 - 516 - 517 - 518 - 519 - 520 - 521 - 522 - 523 - 524 - 525 - 526 - 527 - 528 - 529 - 530 - 531 - 532 - 533 - 534 - 535 - 536 - 537 - 538 - 539 - 540 - 541 - 542 - 543 - 544 - 545 - 546 - 547 - 548 - 549 - 550 - 551 - 552 - 553 - 554 - 555 - 556 - 557 - 558 - 559 - 560 - 561 - 562 - 563 - 564 - 565 - 566 - 567 - 568 - 569 - 570 - 571 - 572 - 573 - 574 - 575 - 576 - 577 - 578 - 579 - 580 - 581 - 582 - 583 - 584 - 585 - 586 - 587 - 588 - 589 - 590 - 591 - 592 - 593 - 594 - 595 - 596 - 597 - 598 - 599 - 600 - 601 - 602 - 603 - 604 - 605 - 606 - 607 - 608 - 609 - 610 - 611 - 612 - 613 - 614 - 615 - 616 - 617 - 618 - 619 - 620 - 621 - 622 - 623 - 624 - 625 - 626 - 627 - 628 - 629 - 630 - 631 - 632 - 633 - 634 - 635 - 636 - 637 - 638 - 639 - 640 - 641 - 642 - 643 - 644 - 645 - 646 - 647 - 648 - 649 - 650 - 651 - 652 - 653 - 654 - 655 - 656 - 657 - 658 - 659 - 660 - 661 - 662 - 663 - 664 - 665 - 666 - 667 - 668 - 669 - 670 - 671 - 672 - 673 - 674 - 675 - 676 - 677 - 678 - 679 - 680 - 681 - 682 - 683 - 684 - 685 - 686 - 687 - 688 - 689 - 690 - 691 - 692 - 693 - 694 - 695 - 696 - 697 - 698 - 699 - 700 - 701 - 702 - 703 - 704 - 705 - 706 - 707 - 708 - 709 - 710 - 711 - 712 - 713 - 714 - 715 - 716 - 717 - 718 - 719 - 720 - 721 - 722 - 723 - 724 - 725 - 726 - 727 - 728 - 729 - 730 - 731 - 732 - 733 - 734 - 735 - 736 - 737 - 738 - 739 - 740 - 741 - 742 - 743 - 744 - 745 - 746 - 747 - 748 - 749 - 750 - 751 - 752 - 753 - 754 - 755 - 756 - 757 - 758 - 759 - 760 - 761 - 762 - 763 - 764 - 765 - 766 - 767 - 768 - 769 - 770 - 771 - 772 - 773 - 774 - 775 - 776 - 777 - 778 - 779 - 780 - 781 - 782 - 783 - 784 - 785 - 786 - 787 - 788 - 789 - 790 - 791 - 792 - 793 - 794 - 795 - 796 - 797 - 798 - 799 - 800 - 801 - 802 - 803 - 804 - 805 - 806 - 807 - 808 - 809 - 810 - 811 - 812 - 813 - 814 - 815 - 816 - 817 - 818 - 819 - 820 - 821 - 822 - 823 - 824 - 825 - 826 - 827 - 828 - 829 - 830 - 831 - 832 - 833 - 834 - 835 - 836 - 837 - 838 - 839 - 840 - 841 - 842 - 843 - 844 - 845 - 846 - 847 - 848 - 849 - 850 - 851 - 852 - 853 - 854 - 855 - 856 - 857 - 858 - 859 - 860 - 861 - 862 - 863 - 864 - 865 - 866 - 867 - 868 - 869 - 870 - 871 - 872 - 873 - 874 - 875 - 876 - 877 - 878 - 879 - 880 - 881 - 882 - 883 - 884 - 885 - 886 - 887 - 888 - 889 - 890 - 891 - 892 - 893 - 894 - 895 - 896 - 897 - 898 - 899 - 900 - 901 - 902 - 903 - 904 - 905 - 906 - 907 - 908 - 909 - 910 - 911 - 912 - 913 - 914 - 915 - 916 - 917 - 918 - 919 - 920 - 921 - 922 - 923 - 924 - 925 - 926 - 927 - 928 - 929 - 930 - 931 - 932 - 933 - 934 - 935 - 936 - 937 - 938 - 939 - 940 - 941 - 942 - 943 - 944 - 945 - 946 - 947 - 948 - 949 - 950 - 951 - 952 - 953 - 954 - 955 - 956 - 957 - 958 - 959 - 960 - 961 - 962 - 963 - 964 - 965 - 966 - 967 - 968 - 969 - 970 - 971 - 972 - 973 - 974 - 975 - 976 - 977 - 978 - 979 - 980 - 981 - 982 - 983 - 984 - 985 - 986 - 987 - 988 - 989 - 990 - 991 - 992 - 993 - 994 - 995 - 996 - 997 - 998 - 999 - 1000

McCLINTOCK

McCLINTOCK

PUBLIC SCHOOL
PRIMARY
TRUSTEES: JAMES
LINTON, ET AL.

DRAWING.
HARBRED SILK CO.
From Plans.

PRESBYTERIAN CHURCH
TRUSTEES: JAMES
LINTON, ET AL.

ASH

AUG 1919
SHICKSHINNY
PA.

DRAWING.
HARBRED SILK CO.
From Plans.

McCLINTOCK

McCLINTOCK

PUBLIC SCHOOL
PRIMARY
TRUSTEES: JAMES
LINTON, ET AL.

DRAWING.
HARBRED SILK CO.
From Plans.

PRESBYTERIAN CHURCH
TRUSTEES: JAMES
LINTON, ET AL.

ASH

AUG 1919
SHICKSHINNY
PA.