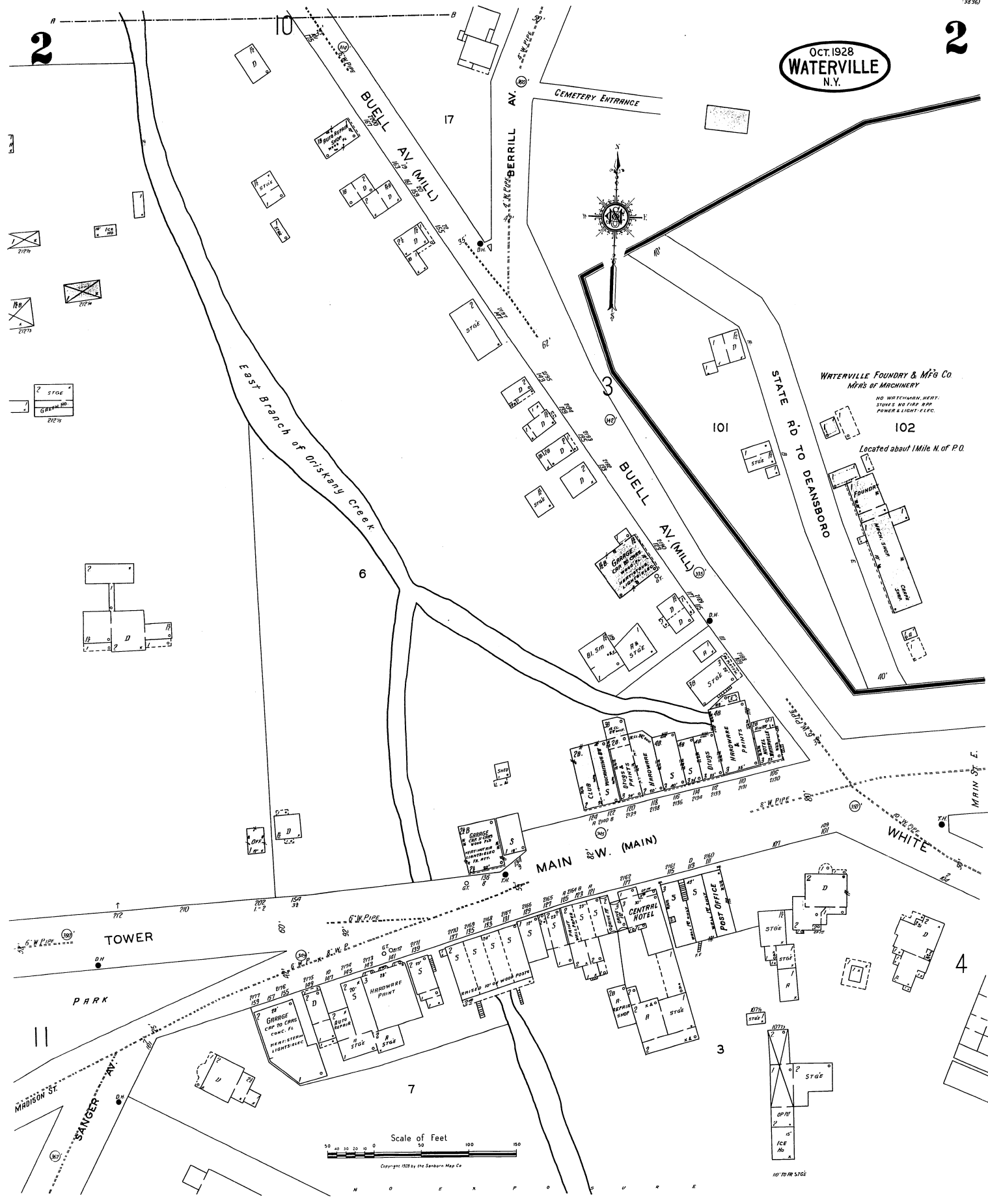




OCT. 1928  
**WATERVILLE**  
N.Y.

2

2

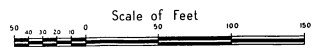


**WATERVILLE FOUNDRY & MFG Co**  
MFRS OF MACHINERY

NO WATERMOTOR, HEAT,  
STOVES, NO GAS, NO  
POWER & LIGHT, E.L.C.

Located about 1 Mile N. of P.O.

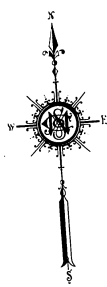
**MAIN ST. (MAIN)**



Copyright 1928 by the Searborn Map Co

10' TO 1/2" SCALE

OCT. 1928  
WATERVILLE  
N.Y.



13

3

C E M E T E R Y

C E M E T E R Y   E N T R A N C E

B A B B O T T   A V .   N .   ( U N I O N )

5

East Branch of Oriskany Creek

B U E L L   A V .   ( M I L L )

B E R R I L L   A V .   ( H A N O V E R )

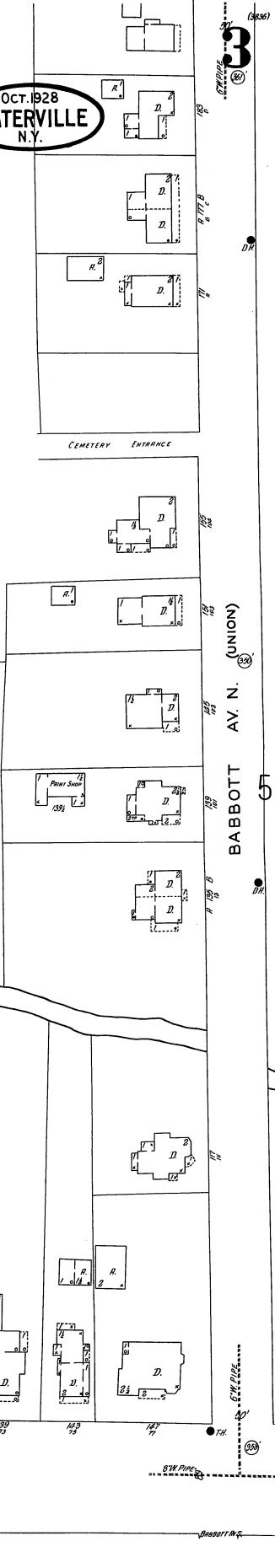
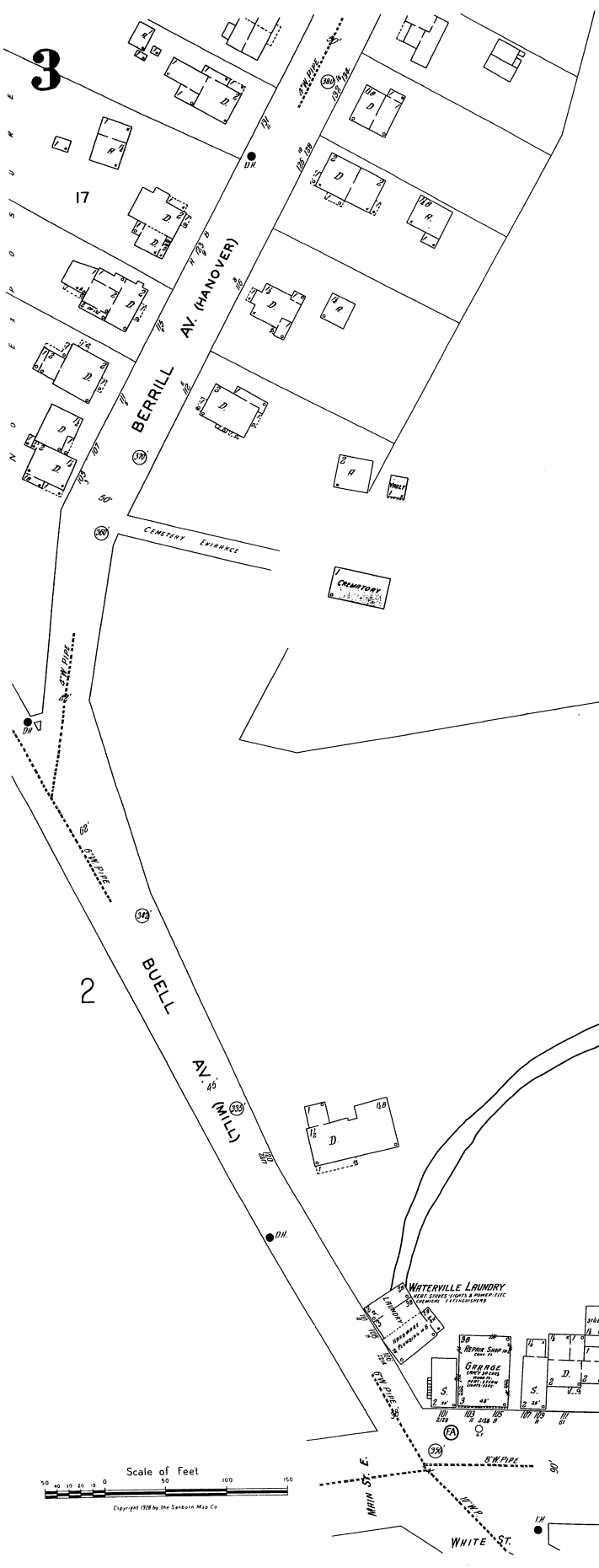
M A I N   E .   ( M A I N )

4

WATERVILLE LAUNDRY  
WATERVILLE LAUNDRY & MESSING  
WATERVILLE LAUNDRY

1st PRESBYT. CHURCH  
WATERVILLE, N.Y.

Scale of Feet  
0 50 100 150  
Copyright 1928 by the Sanborn Map Co.



W H I T E   S T .

S W W P I P E

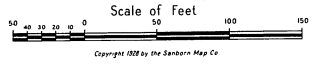
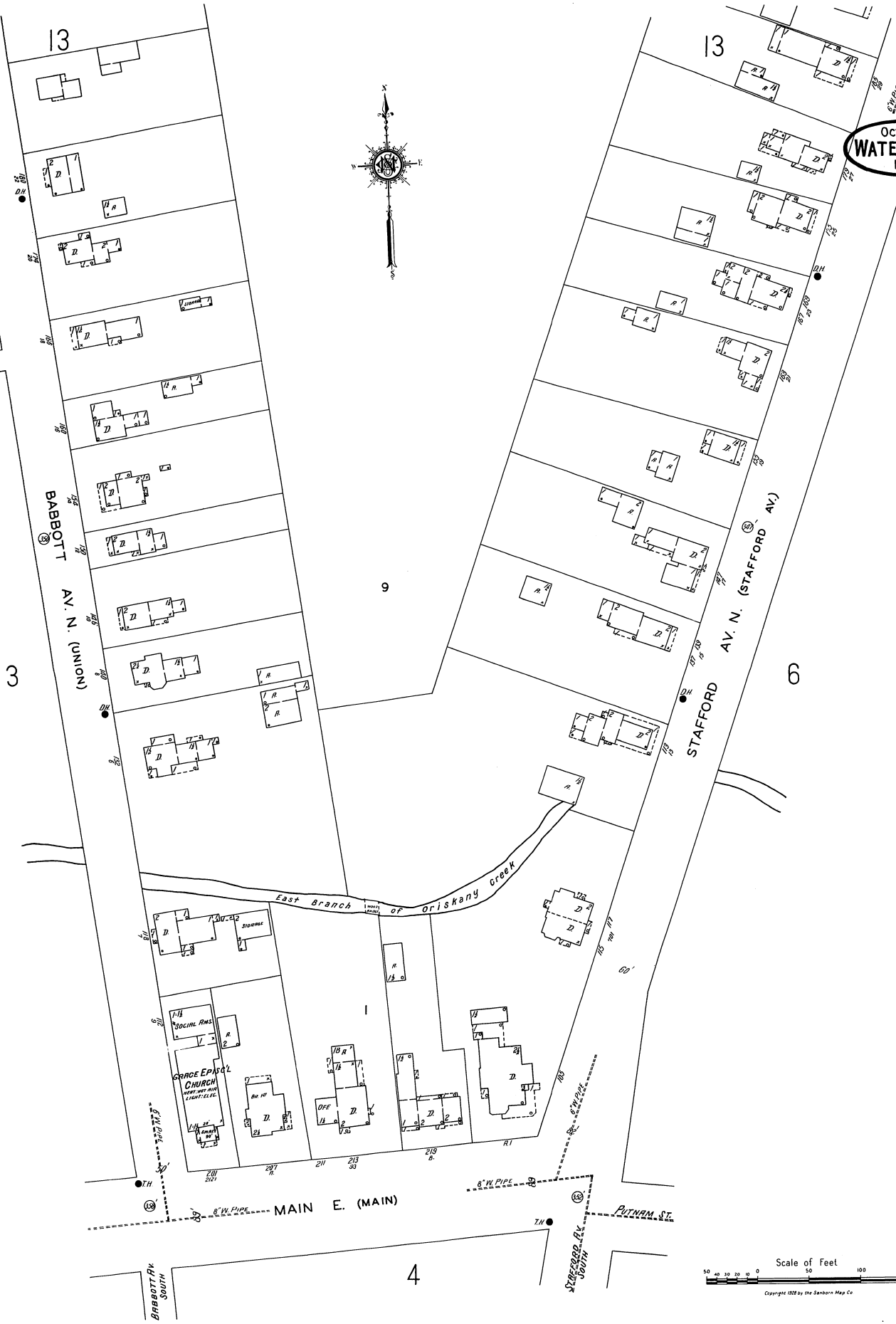
B A B B O T T   A V .



5

5

OCT. 1928  
WATERVILLE  
N. Y.



4

BABBOTT AV. N. (UNION)

STAFFORD AV. N. (STAFFORD AV.)

MAIN E. (MAIN)

PUTNAM ST.

BABBOTT AV. SOUTH

STAFFORD AV. SOUTH

East Branch of Oriskany Creek

GRACE EPISCOPAL CHURCH

SOCIAL APTS

1/4

2/1

3/1

4/1

5/1

6/1

7/1

8/1

9/1

10/1

11/1

12/1

13/1

14/1

15/1

16/1

17/1

18/1

19/1

20/1

21/1

22/1

23/1

24/1

25/1

26/1

27/1

28/1

29/1

30/1

31/1

32/1

33/1

34/1

35/1

36/1

37/1

38/1

39/1

40/1

41/1

42/1

43/1

44/1

45/1

46/1

47/1

48/1

49/1

50/1

51/1

52/1

53/1

54/1

55/1

56/1

57/1

58/1

59/1

60/1

61/1

62/1

63/1

64/1

65/1

66/1

67/1

68/1

69/1

70/1

71/1

72/1

73/1

74/1

75/1

76/1

77/1

78/1

79/1

80/1

81/1

82/1

83/1

84/1

85/1

86/1

87/1

88/1

89/1

90/1

91/1

92/1

93/1

94/1

95/1

96/1

97/1

98/1

99/1

100/1

101/1

102/1

103/1

104/1

105/1

106/1

107/1

108/1

109/1

110/1

111/1

112/1

113/1

114/1

115/1

116/1

117/1

118/1

119/1

120/1

121/1

122/1

123/1

124/1

125/1

126/1

127/1

128/1

129/1

130/1

131/1

132/1

133/1

134/1

135/1

136/1

137/1

138/1

139/1

140/1

141/1

142/1

143/1

144/1

145/1

146/1

147/1

148/1

149/1

150/1

151/1

152/1

153/1

154/1

155/1

156/1

157/1

158/1

159/1

160/1

161/1

162/1

163/1

164/1

165/1

166/1

167/1

168/1

169/1

170/1

171/1

172/1

173/1

174/1

175/1

176/1

177/1

178/1

179/1

180/1

181/1

182/1

183/1

184/1

185/1

186/1

187/1

188/1

189/1

190/1

191/1

192/1

193/1

194/1

195/1

196/1

197/1

198/1

199/1

200/1

201/1

202/1

203/1

204/1

205/1

206/1

207/1

208/1

209/1

210/1

211/1

212/1

213/1

214/1

215/1

216/1

217/1

218/1

219/1

220/1

221/1

222/1

223/1

224/1

225/1

226/1

227/1

228/1

229/1

230/1

231/1

232/1

233/1

234/1

235/1

236/1

237/1

238/1

239/1

240/1

241/1

242/1

243/1

244/1

245/1

246/1

247/1

248/1

249/1

250/1

251/1

252/1

253/1

254/1

255/1

256/1

257/1

258/1

259/1

260/1

261/1

262/1

263/1

264/1

265/1

266/1

267/1

268/1

269/1

270/1

271/1

272/1

273/1

274/1

275/1

276/1

277/1

278/1

279/1

280/1

281/1

282/1

283/1

284/1

285/1

286/1

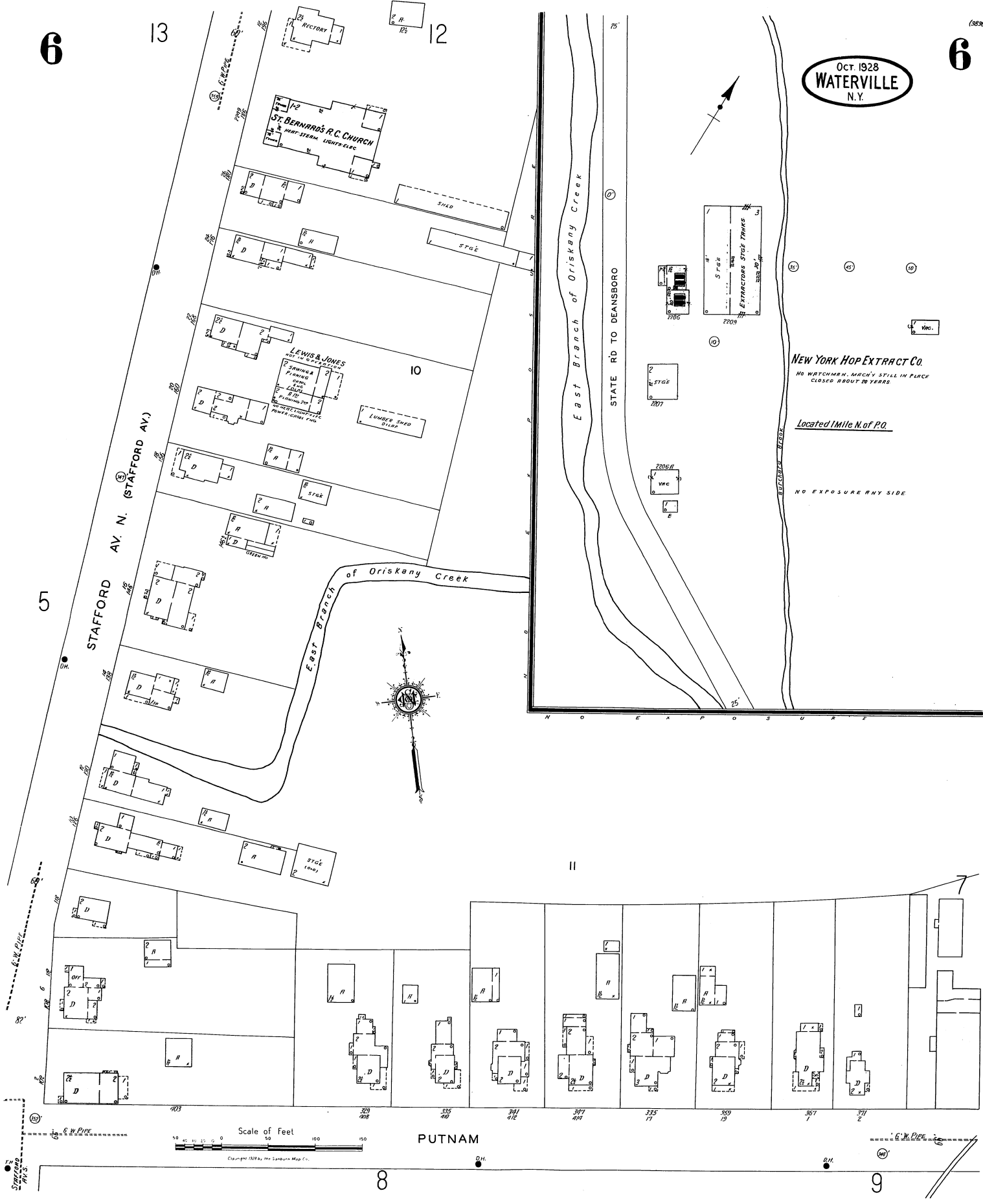
287/1

288/1

289/1

290/1

OCT. 1928  
WATERVILLE  
N.Y.



STAFFORD AV. N. (STAFFORD AV.)

East Branch of Oriskany Creek

STATE RD TO DEANSBORO

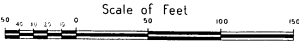
of Oriskany Creek

NEW YORK HOP EXTRACT CO.  
NO WATCHMAN MARCH STILL IN PLACE  
CLOSED ABOUT 20 YEARS

Located 1 Mile N. of P.O.

NO EXPOSURE ANY SIDE

PUTNAM



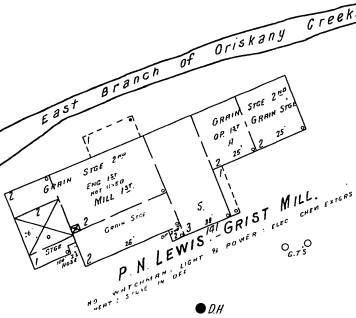
Copyright 1928 by The Standard Map Co.

7

12

OCT. 1928  
WATERVILLE  
N.Y.

7



CONGER AV. (STY)

ELMWOOD AV. N. (ELM)

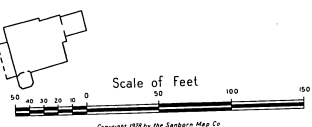
PUTNAM

ELMWOOD AV. S.

RODOLPH AV.

WATERVILLE TEXTILE MILL INC.  
BUILT BY CONGER BROTHERS, 1880. BUILT  
WITH 1000 HAY STEAM ENGIN. ELEC.  
BY GEORGE W. WATSON, 1890. 1000  
HAY STEAM ENGIN. 1000 HAY STEAM  
ENGIN. TO FORM WATER WHEEL  
BY GEORGE WATSON.

PASSENGER SYSTEM



6

9

(2836)

OCT. 1928  
WATERVILLE  
N. Y.

STAFFORD AV. S. (ACADEMY)

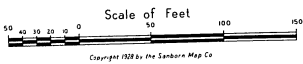
WHITE

OSBORN AV. (SOUTH)

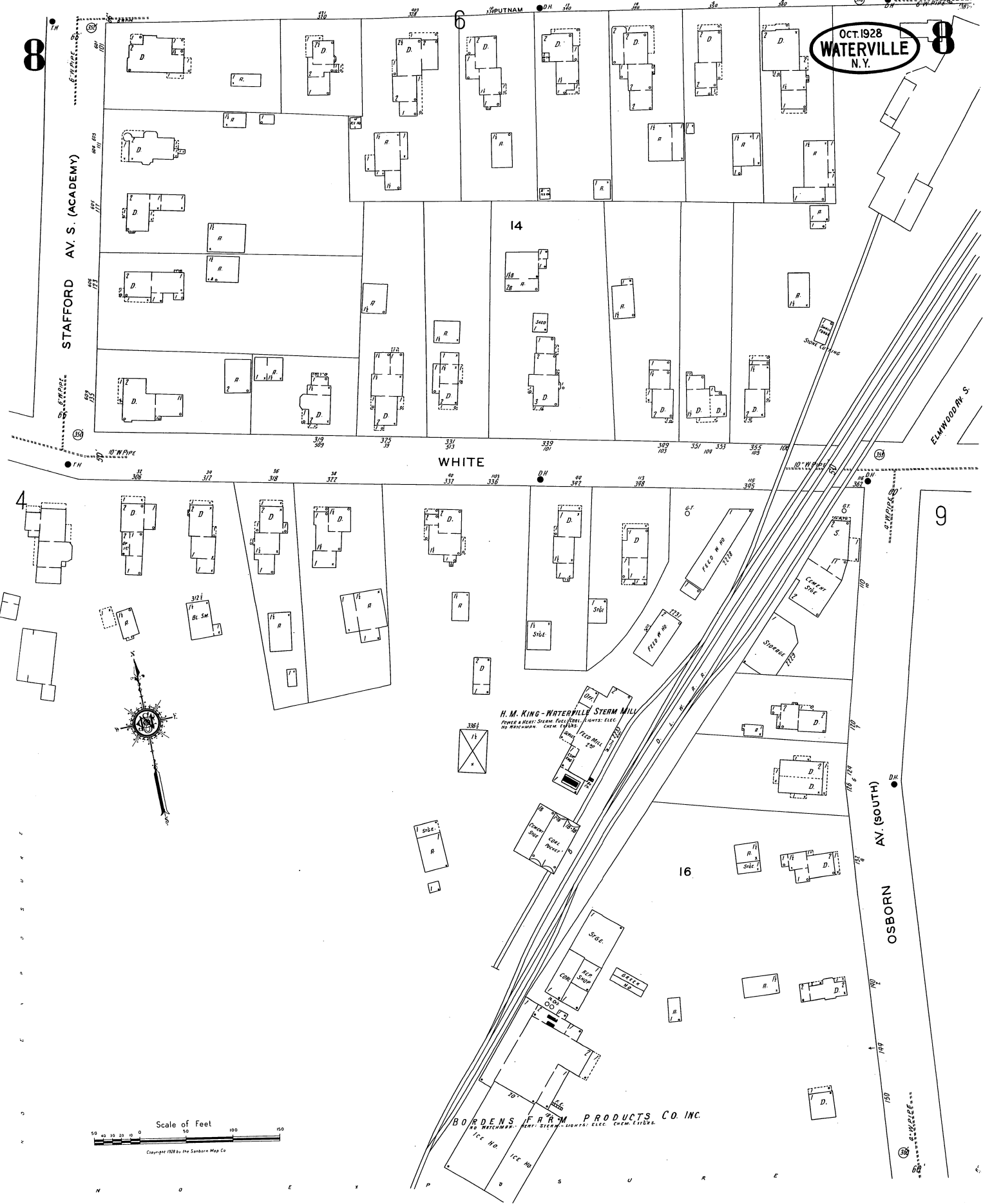
ELMWOOD DR. S.

H. M. KING - WATERVILLE STEAM MILL  
POWER & HEAT: STEAM, ELECTRICITY  
NO WATCHMAN. CHEM. SUPPLIES

BORDEN'S FARM PRODUCTS CO. INC.  
NO WATCHMAN. HEAT: STEAM. SUPPLIES: ELECT. CHEM. SUPPLIES.



Copyright 1928 by the Sanborn Map Co.



9 6

7

9

OCT. 1928  
WATERVILLE  
N.Y.

55

ELMWOOD AV. S. (RAILROAD)

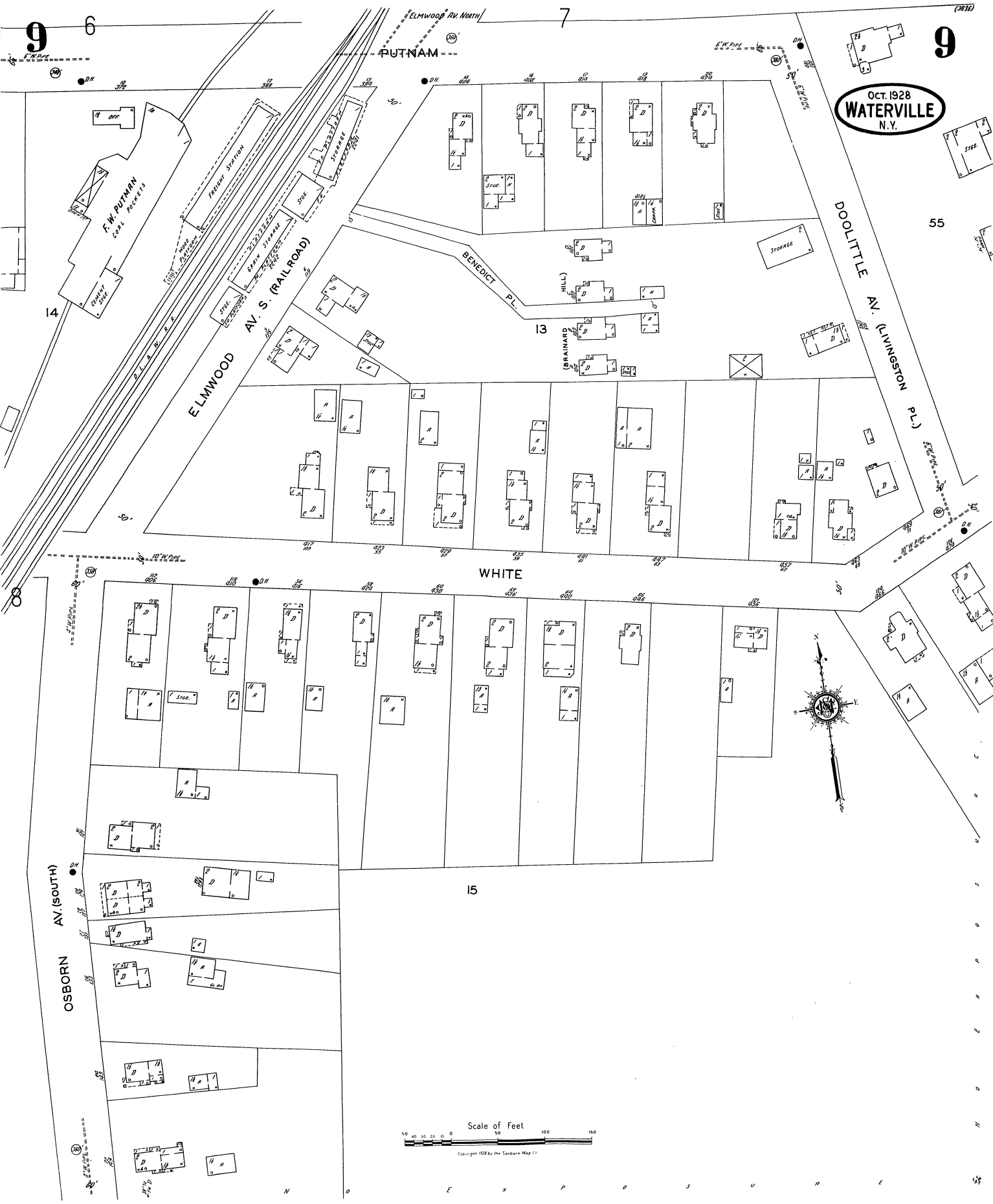
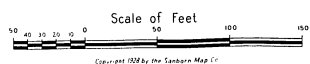
BENEDICT PL.

DOLITTLE AV. (LIVINGSTON PL.)

WHITE

OSBORN AV. (SOUTH)

15

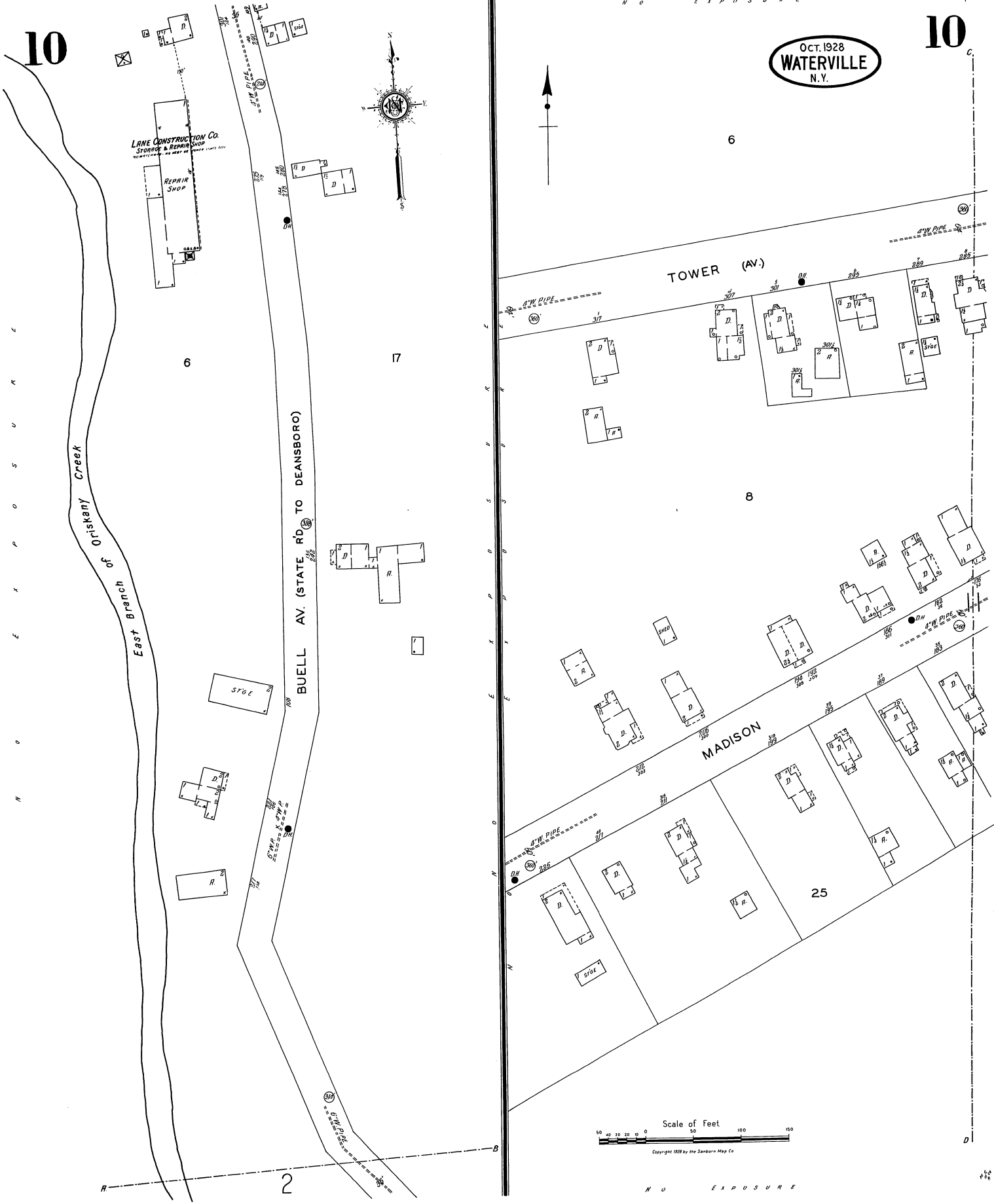


10

10

OCT. 1928  
WATERVILLE  
N. Y.

(3836)



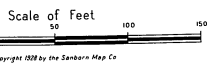
LANE CONSTRUCTION CO.  
STORAGE & REPAIR SHOP

REPAIR SHOP

BUELL AV. (STATE RD. TO DEANSBORO)

TOWER (AV.)

MADISON

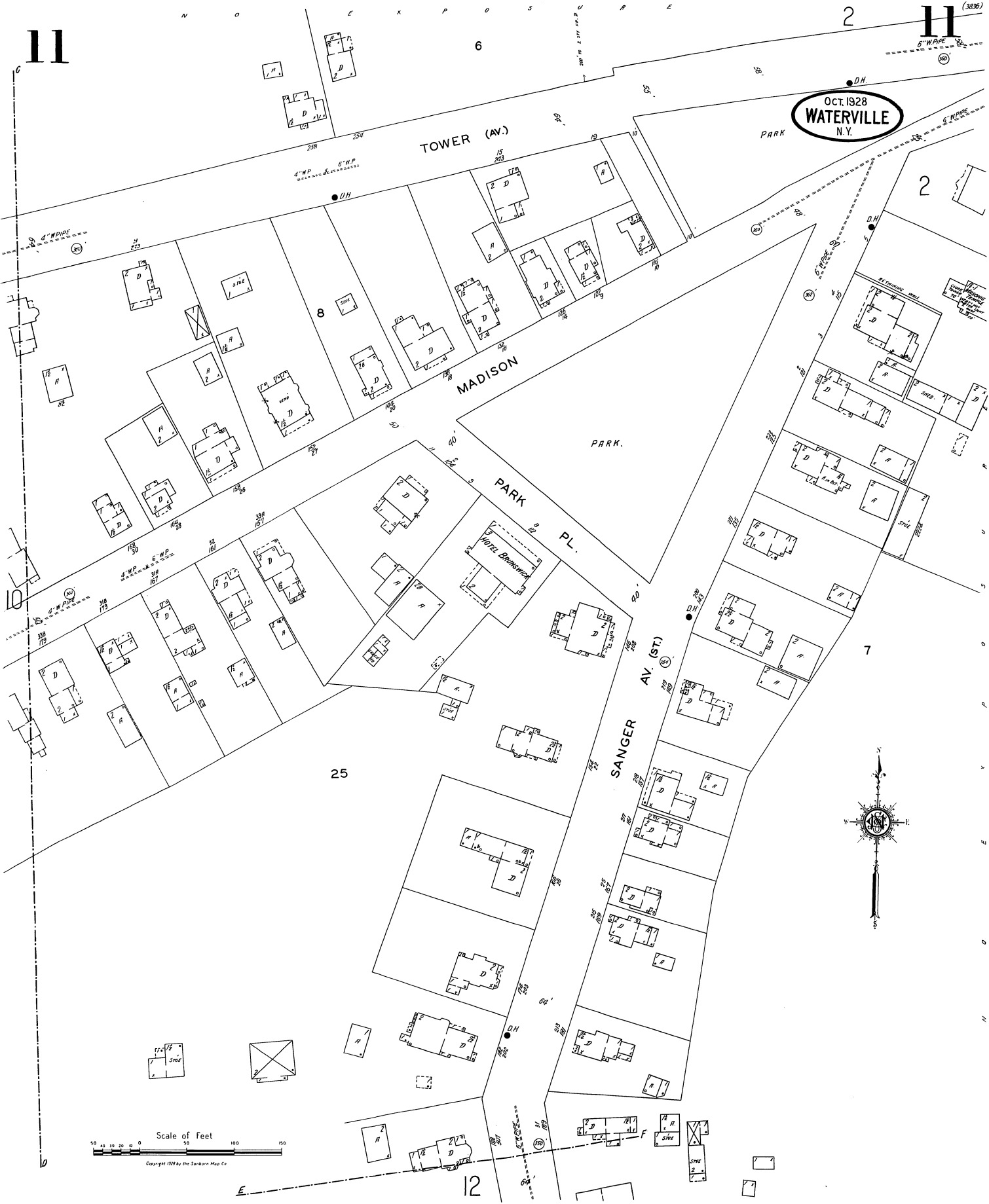


NO EXPOSURE

11

11 (3826)

OCT. 1928  
WATERVILLE  
N.Y.



Scale of Feet  
 0 10 20 30 40 50 60 70 80 90 100 110 120 130 140 150  
 Copyright 1928 by the Sanborn Map Co.



13

OCT. 1928  
WATERVILLE  
N.Y.

13

(3836)

52  
(9 1/2)

BACON W. (BACON)

13

9

12

STAFFORD AV. N. (STAFFORD)

BABBOTT AV. N. (UNION)

5

5

PUBLIC PLAY GROUND



BACON W. (BACON)

17

BERRILL AV. (HANOVER)

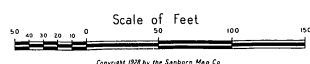
5

52  
(9 1/2)

13

BABBOTT AV. N. (UNION)

CEMETERY



Copyright 1928 by the Sanborn Map Co

3

14

STATE RD WATERVILLE TO BINGHAMTON

**SANGERFIELD**  
**ONEIDA COUNTY**  
Located 2 miles S.W. of Waterville

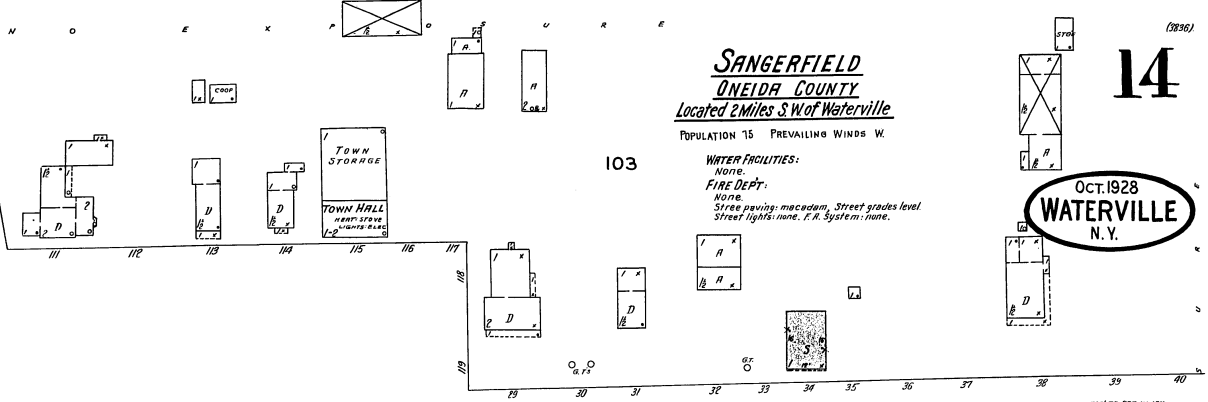
POPULATION 15 PREVAILING WINDS W.

WATER FACILITIES:  
None.  
FIRE DEPT.:  
None.  
Street paving: macadam. Street grades level.  
Street lights: none. F. S. System: none.

14

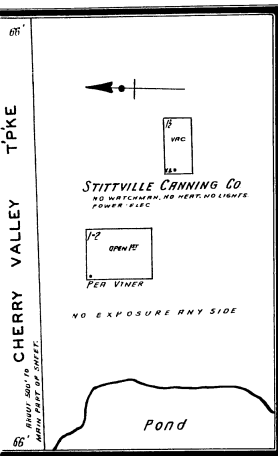
OCT. 1928  
**WATERVILLE**  
N. Y.

103



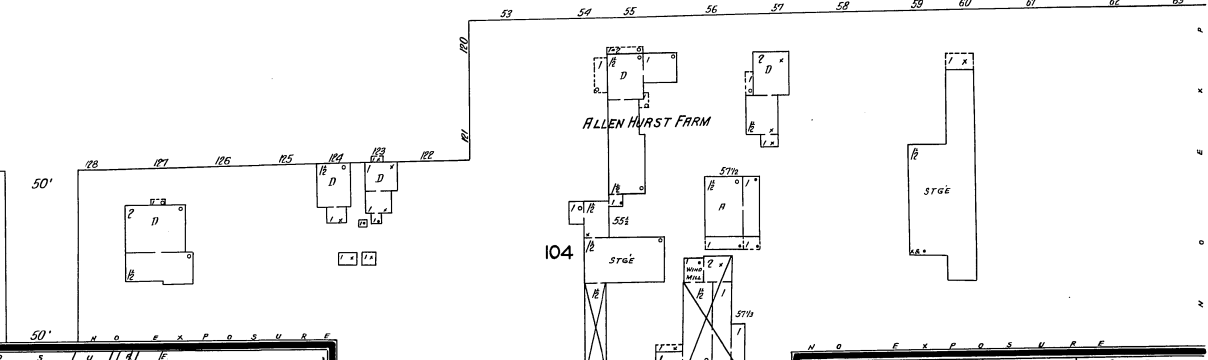
14 TOWN SQUARE

CHERRY VALLEY TPKE

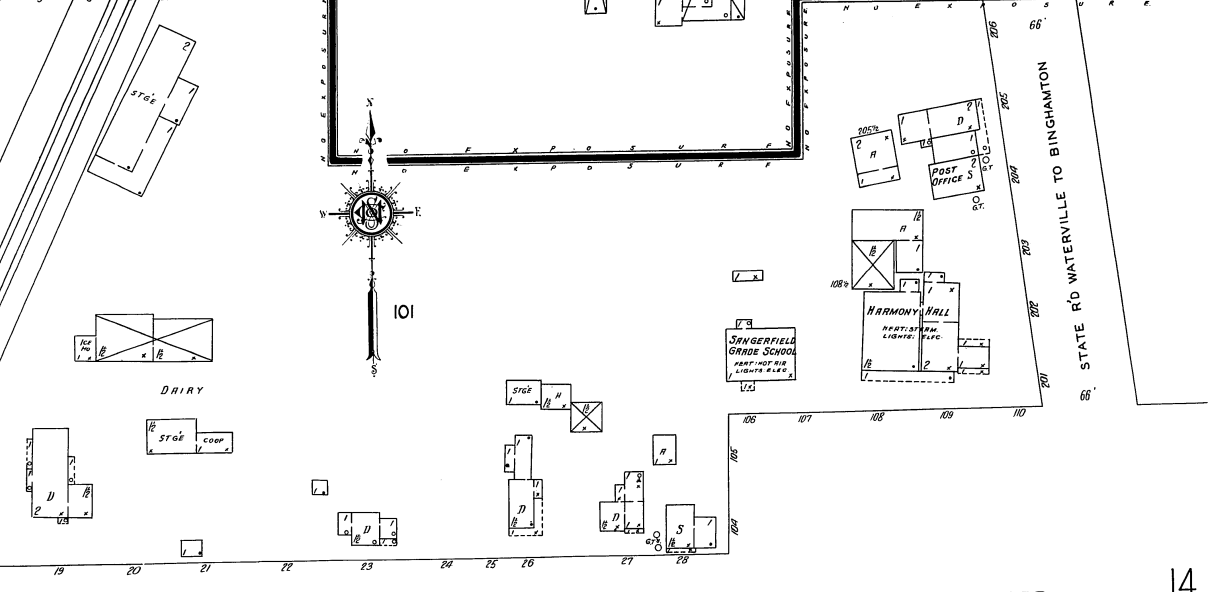


ALLEN HURST FARM

104



101



CHERRY VALLEY TPKE

TOWN SQUARE

14

102

