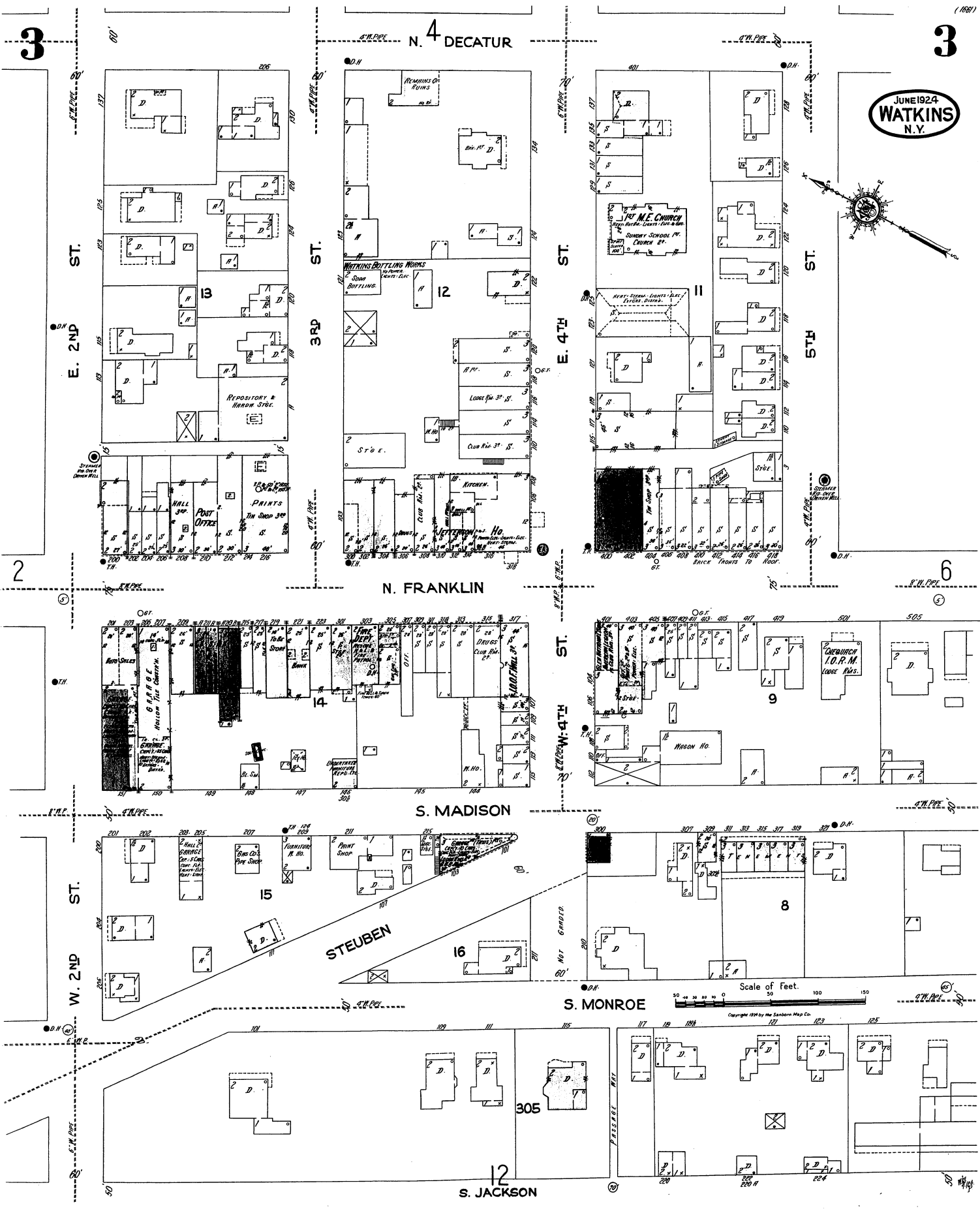
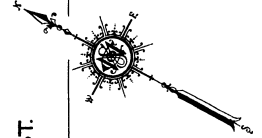


3

3

JUNE 1924
WATKINS
N.Y.



N. 4 DECATUR

N. FRANKLIN

S. MADISON

S. MONROE

S. JACKSON

E. 2ND ST.

E. 3RD ST.

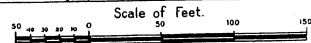
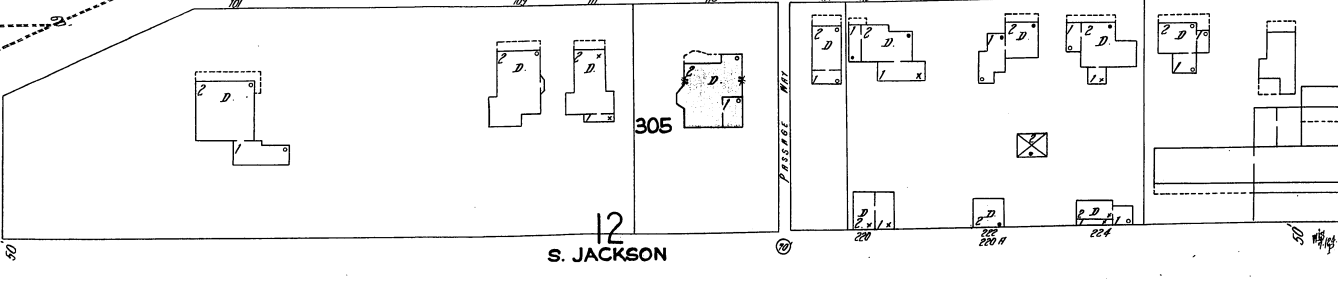
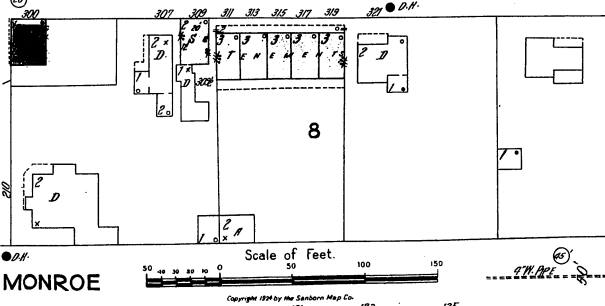
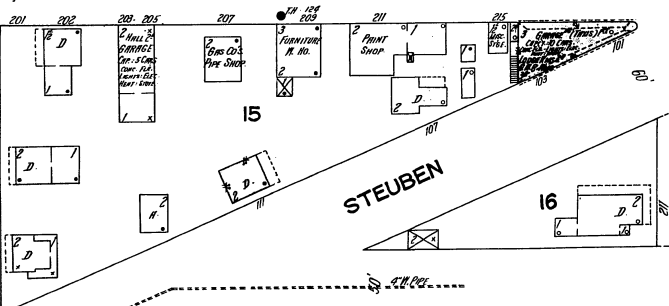
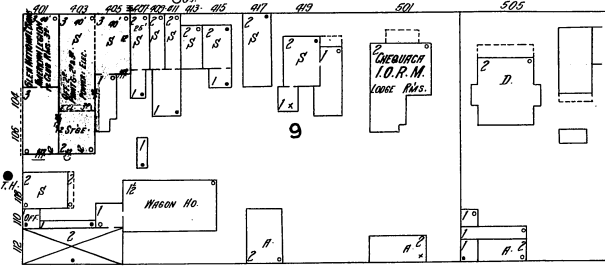
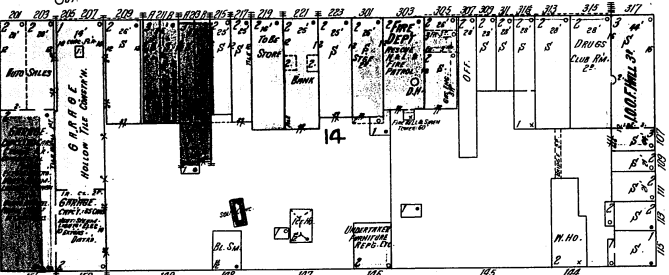
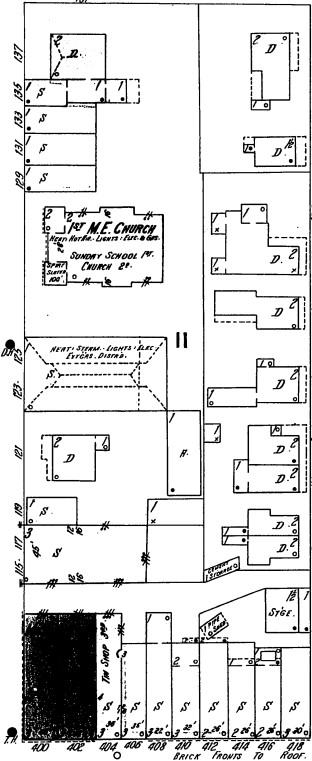
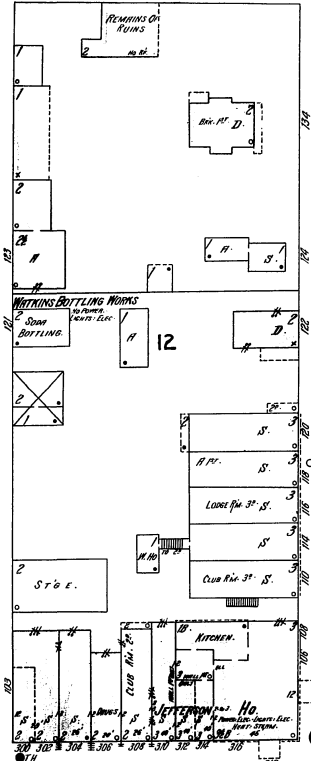
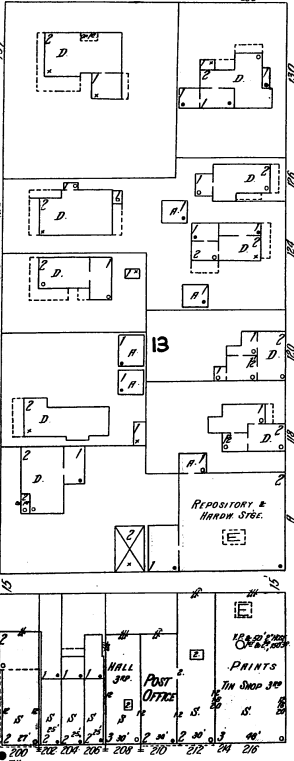
E. 4TH ST.

E. 5TH ST.

W. 2ND ST.

W. 4TH ST.

STEBUEN

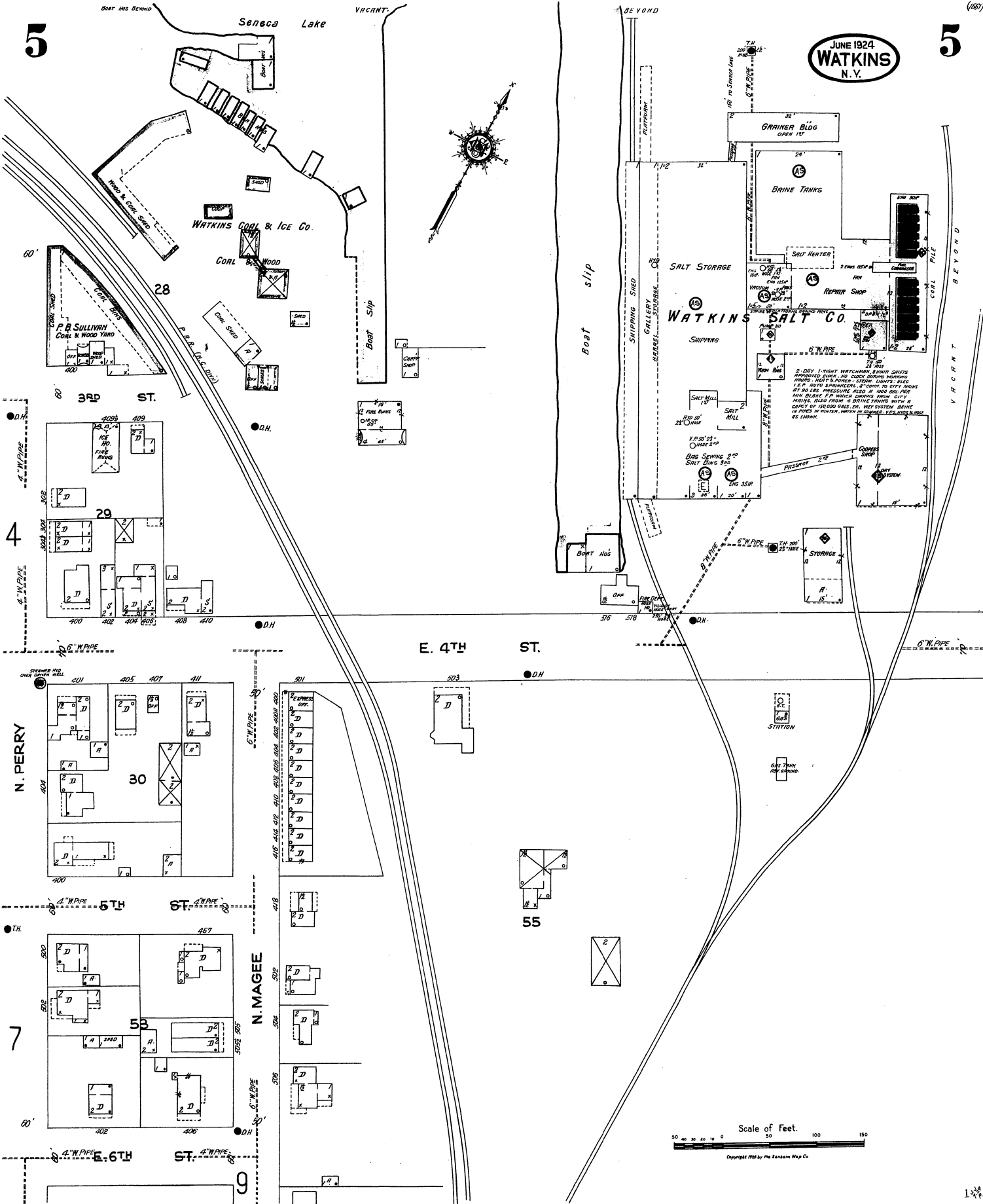


Copyright 1924 by the Sandborn Map Co.

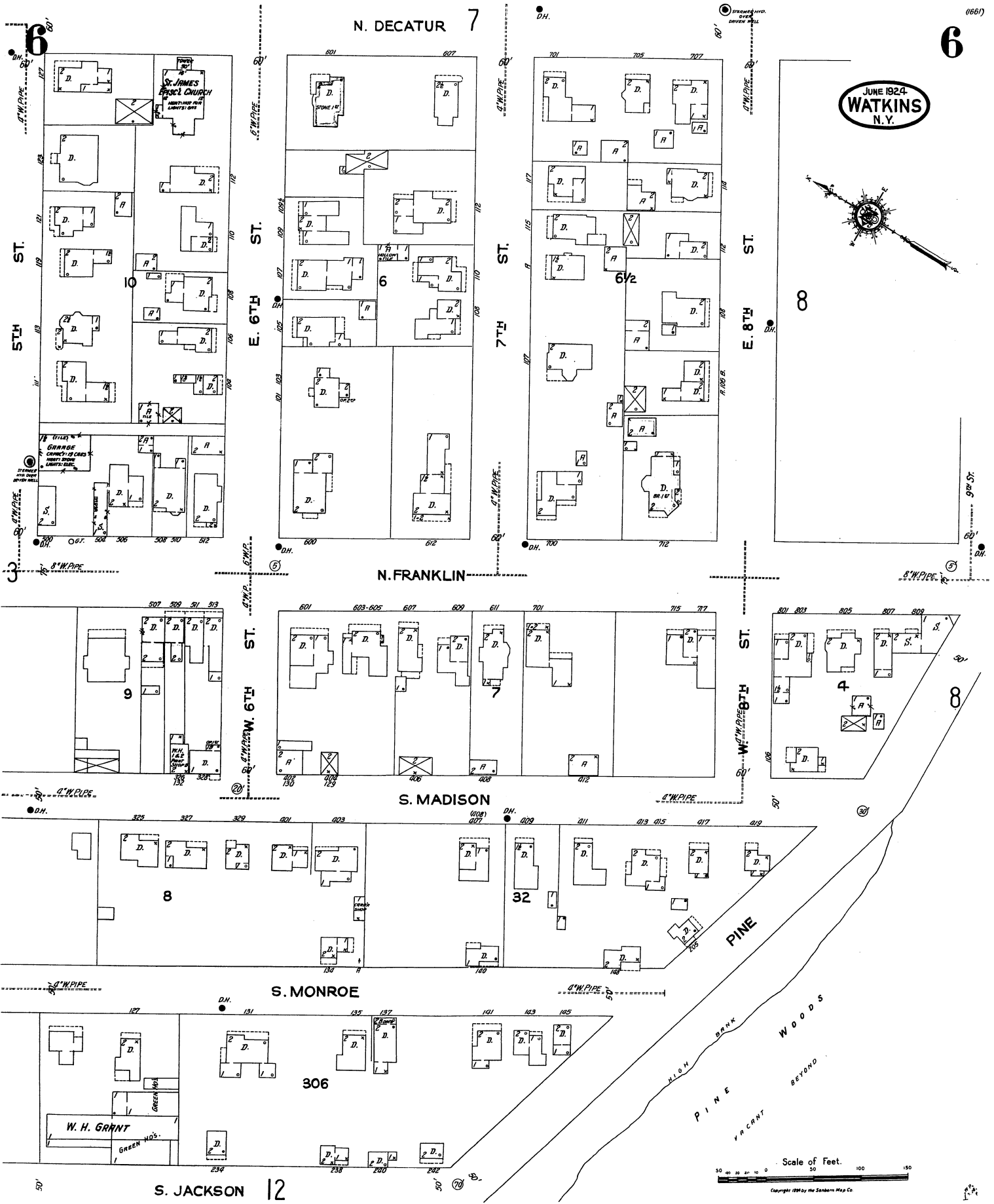
5

5

JUNE 1924
WATKINS
N.Y.



Scale of Feet.
 0 50 100 150
 Copyright 1924 by The Rankin Map Co.



JUNE 1924
WATKINS
N. Y.

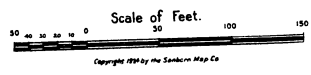
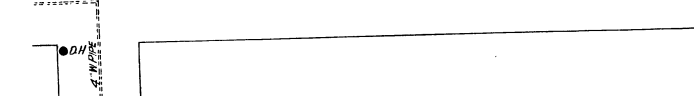
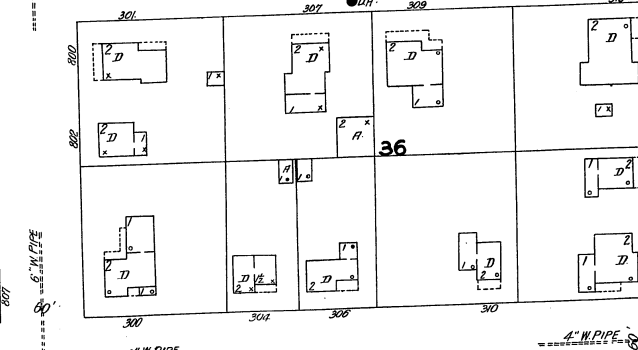
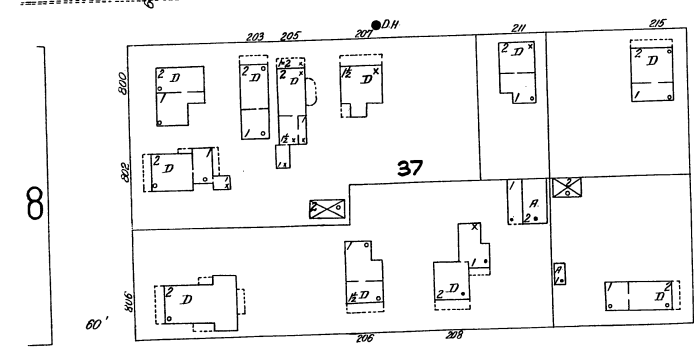
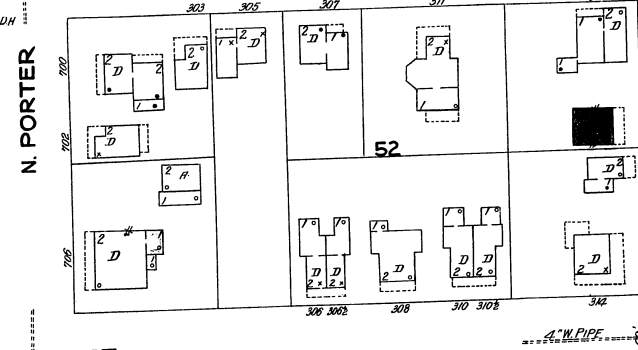
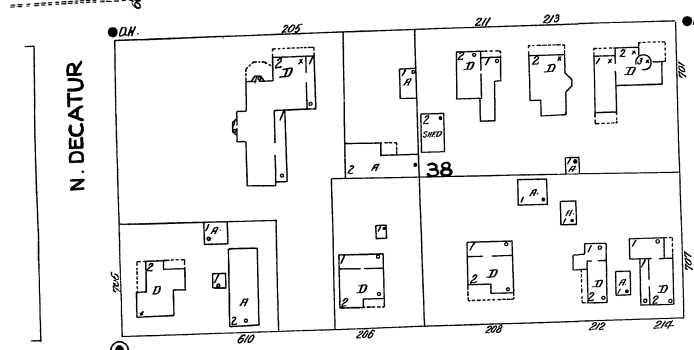
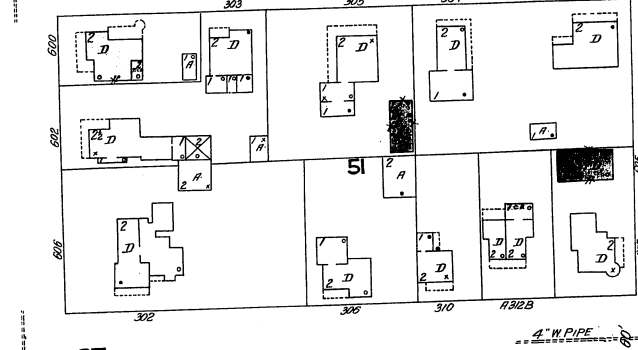
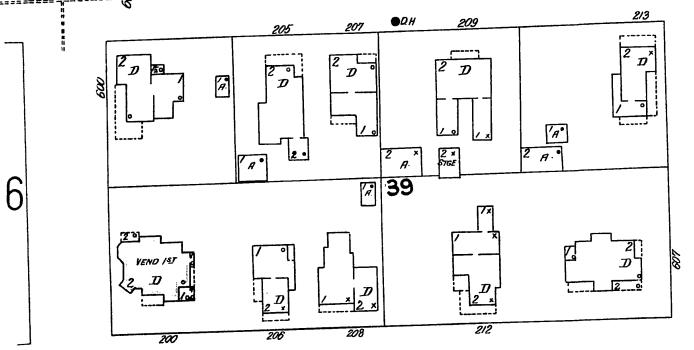
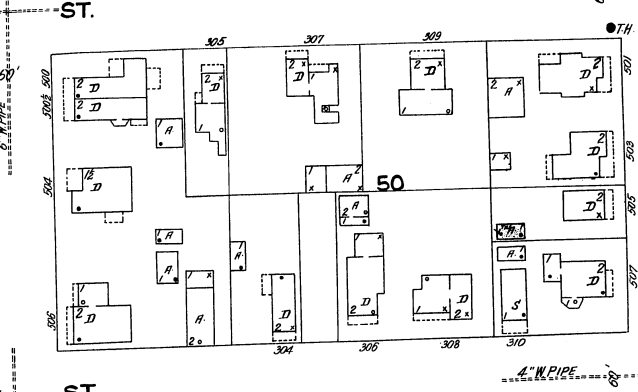
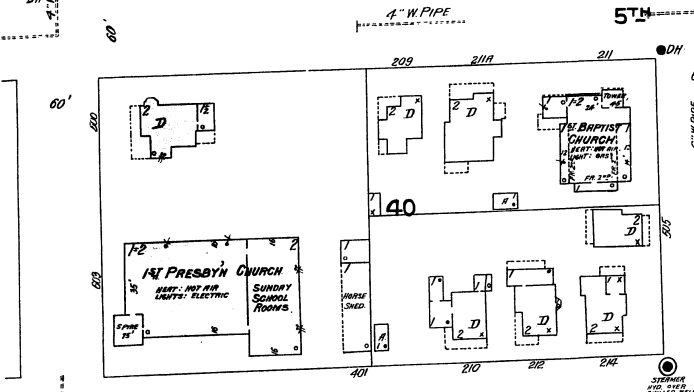
7

7

4

5

9



Copyright 1924 by the Sanborn Map Co

8

6

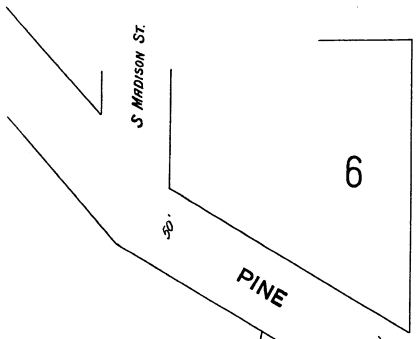
8

JUNE 1924
WATKINS
N. Y.

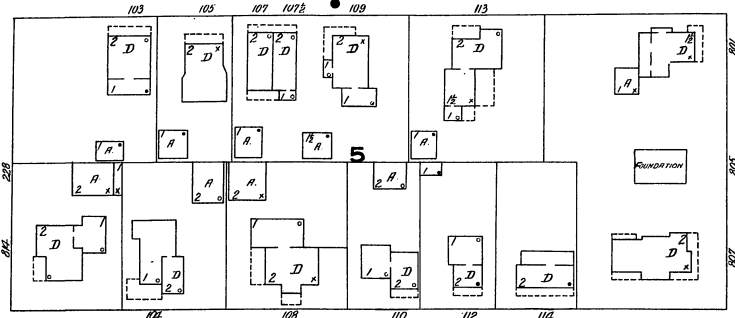
M. 8TH ST.

E. 8TH ST.

4" W. PIPE



6



7

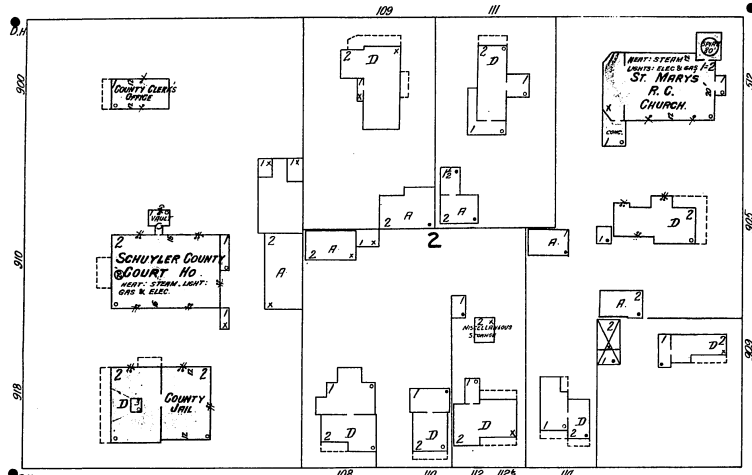
6" W. PIPE

9TH ST.

6" W. PIPE

N. FRANKLIN

N. DECATUR



9

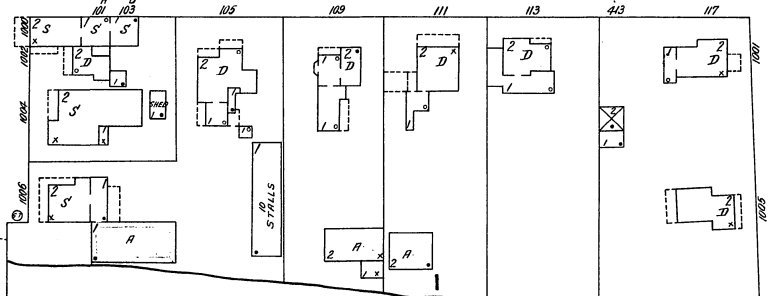
6" W. PIPE

10TH ST.

6" W. PIPE

N. FRANKLIN

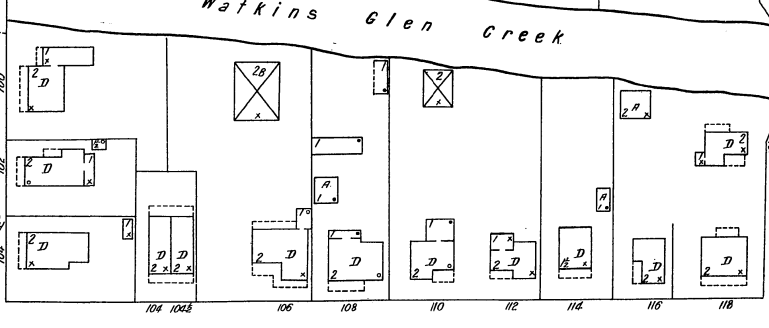
N. DECATUR



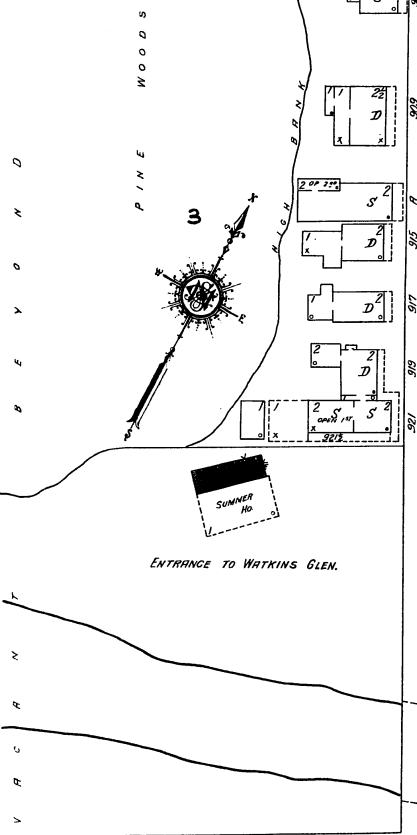
42

N. FRANKLIN

N. DECATUR



10



CORNING

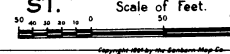
CORNING

N. FRANKLIN

11TH ST.

Scale of Feet.

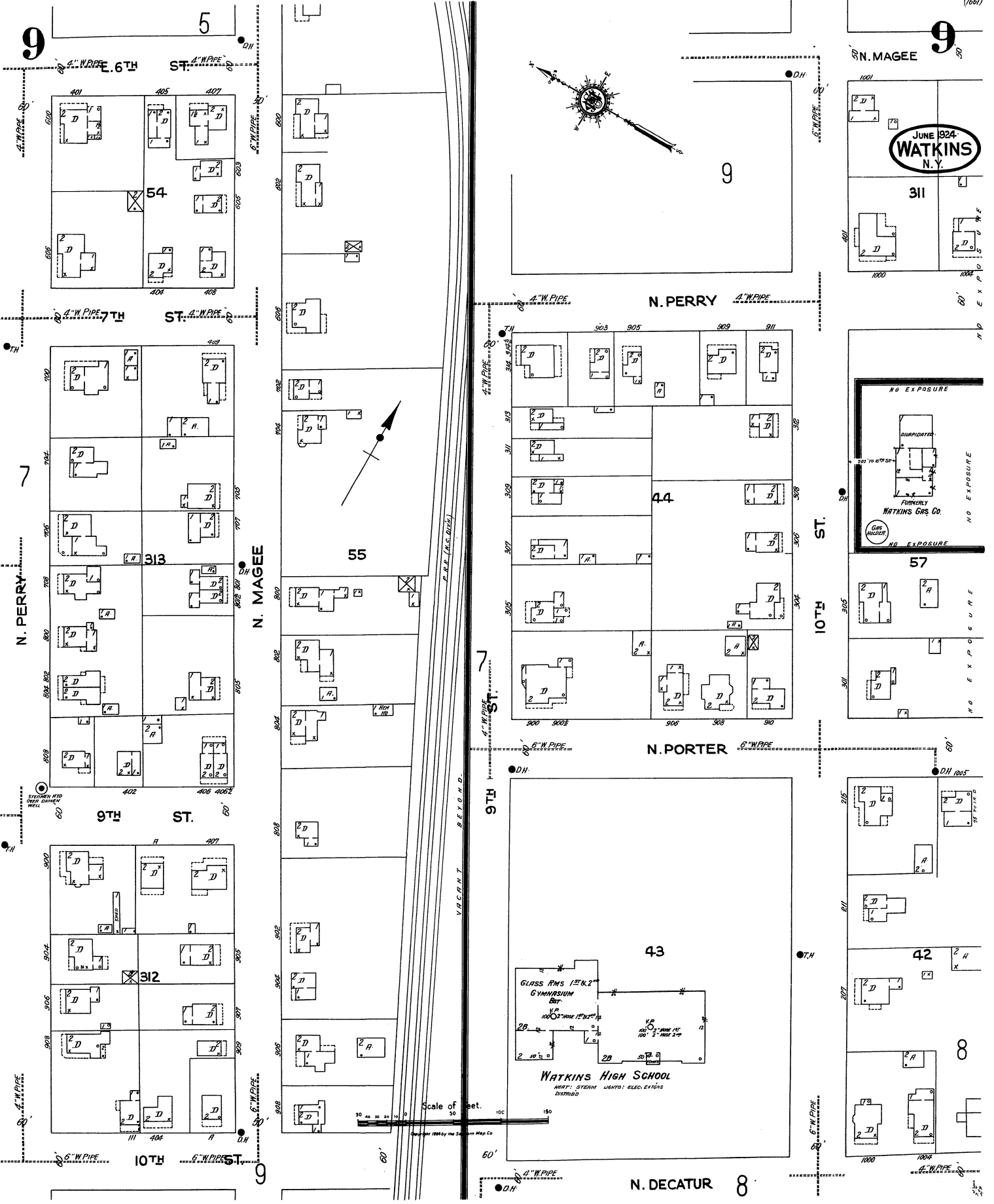
4" W. PIPE



10

CLARENCE

10

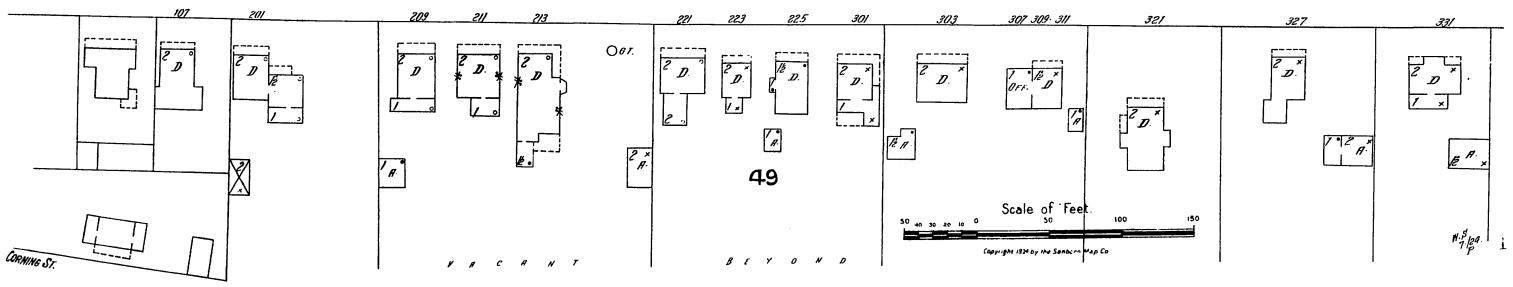
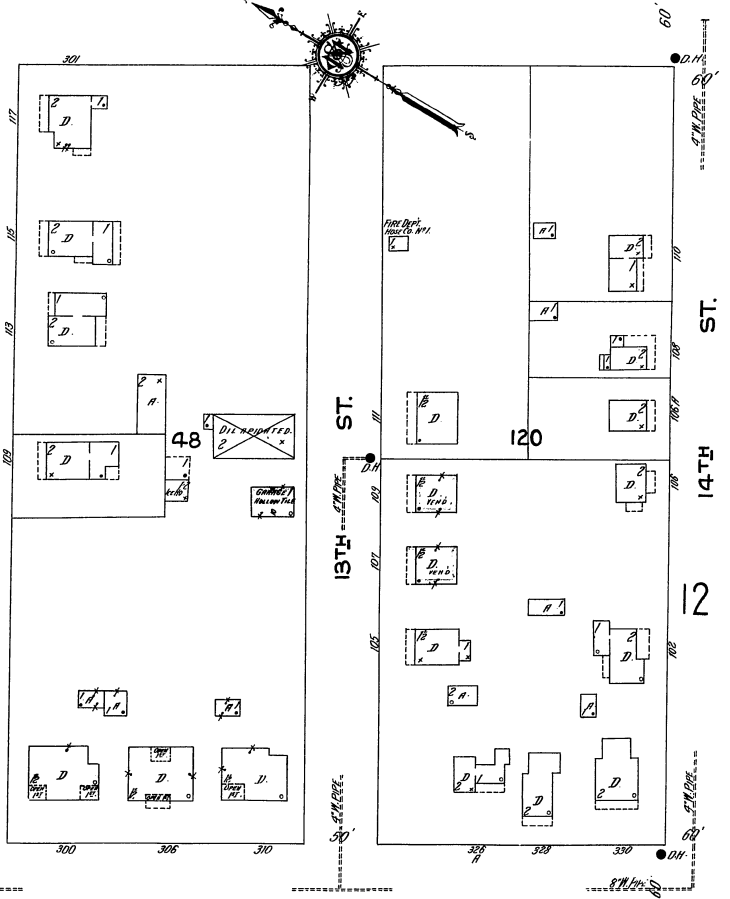
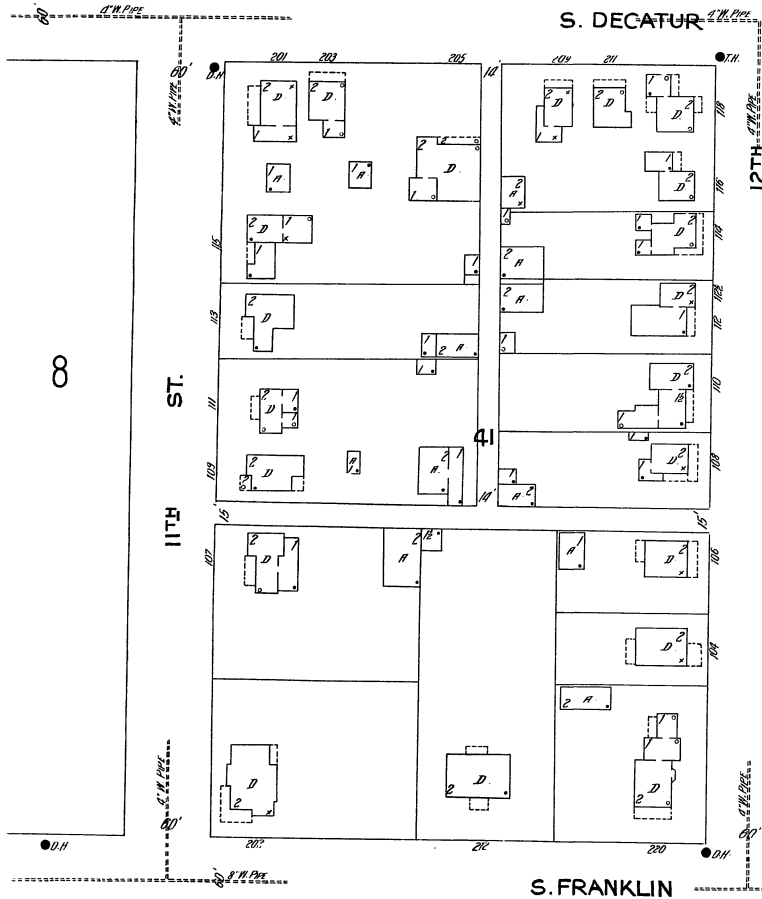
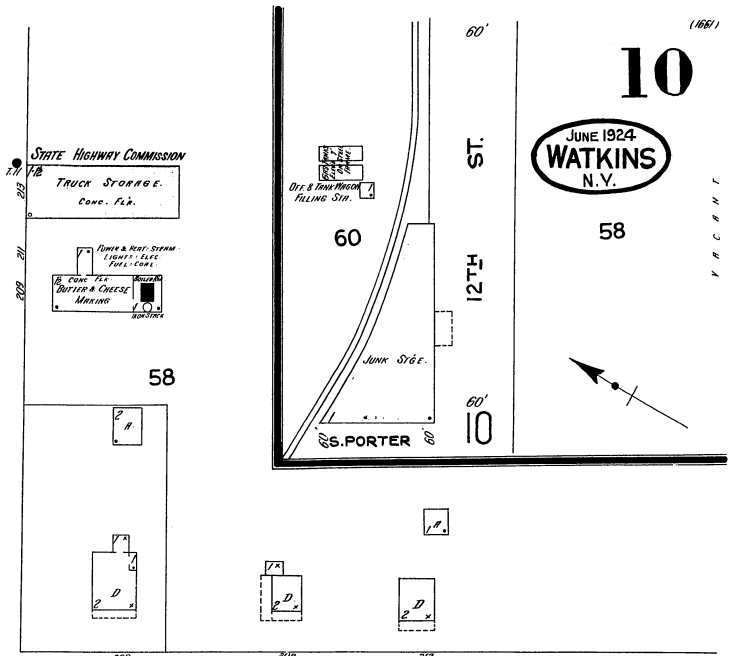
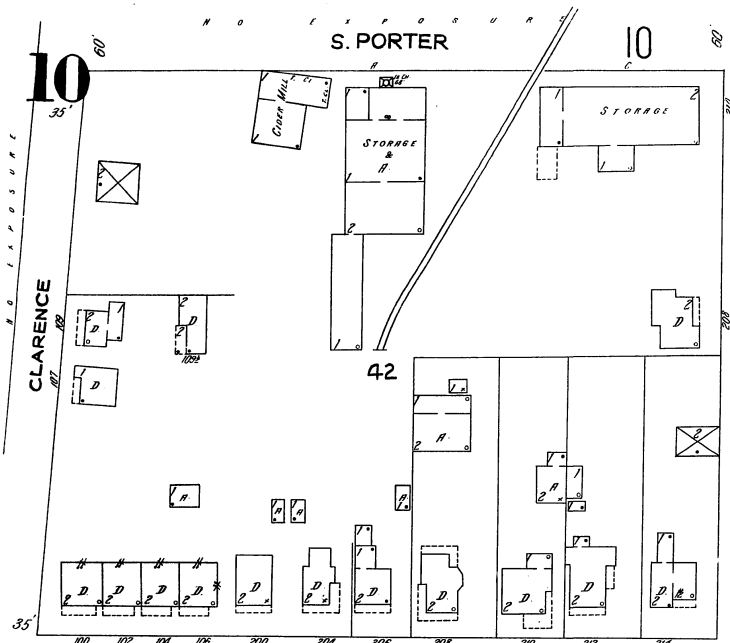


JUNE 1924
WATKINS
 N.Y.

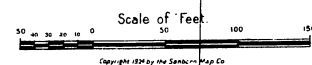


Scale of 1" = 100'

Copyright 1924 by the Standard Map Co.



JUNE 1924
WATKINS
N.V.



Copyright 1924 by the Sanborn Map Co.

11

11

JUNE 1924
WATKINS
N. Y.

1660

93

301

PRIVATE CONSERVATORY

PARTITION

24

92

N. GLEN AV.

N. MADISON

STEUBEN

91

N. JACKSON

302

N. MONROE

25

Seneca
VARIANT

87

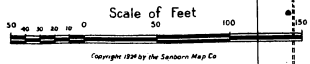
N. GLEN AV.

CROSS

2

12

90



WATKINS Map Co. Inc.
110 N. GLEN AV. SENeca FALLS, N. Y.
Map of Seneca Falls, N. Y.
Copyright 1924 by the Seneca Map Co.



Lake
Seneca

Seneca
VARIANT

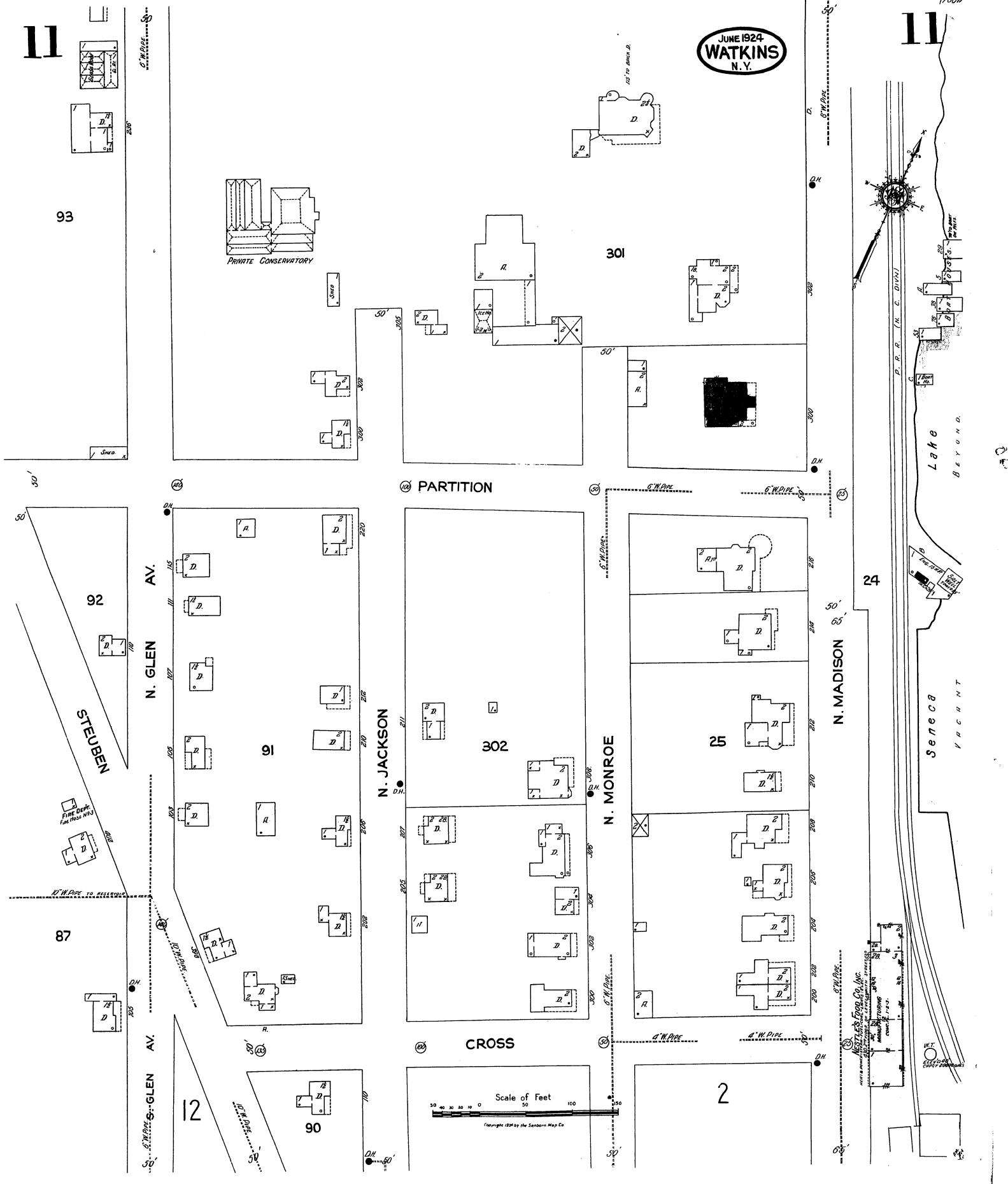
Seneca
VARIANT

Seneca
VARIANT

Seneca
VARIANT

Seneca
VARIANT

Seneca
VARIANT

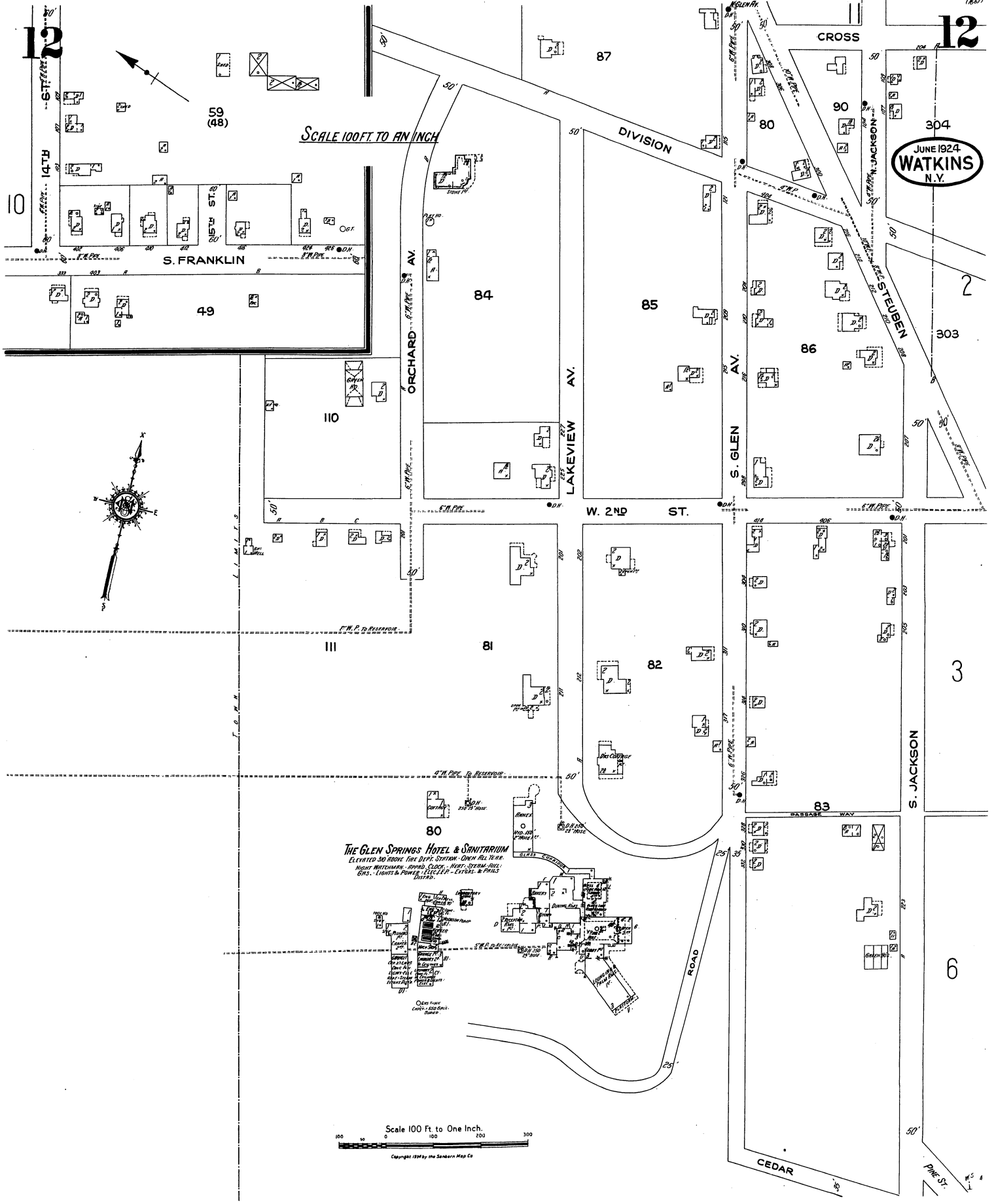


12

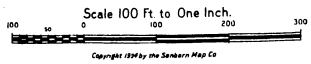
12

SCALE 100 FT. TO AN INCH

JUNE 1924
WATKINS
N.Y.



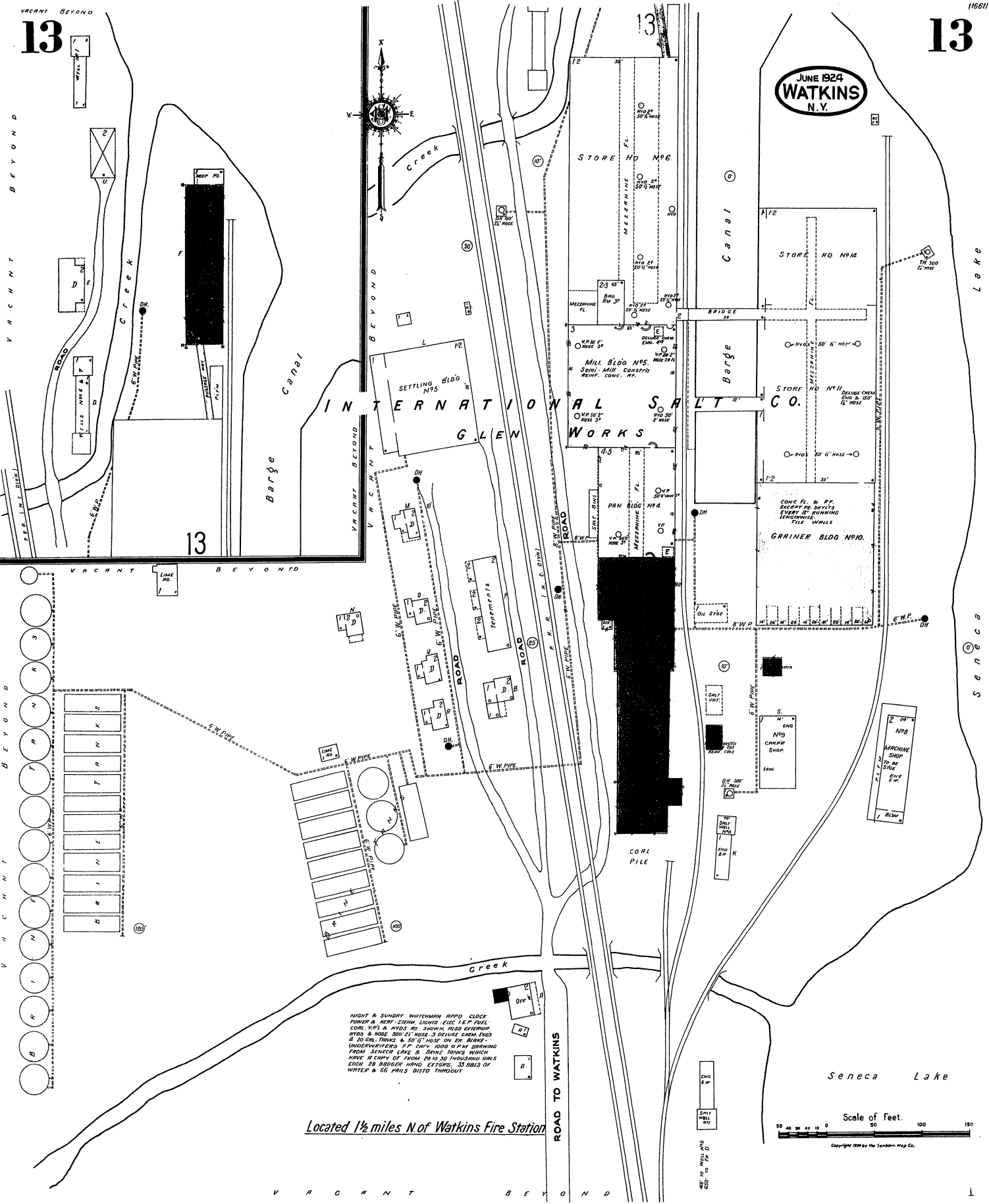
THE GLEN SPRINGS HOTEL & SANITARIUM
 ELEVATED 30 ABOVE THE DEPT. STATION - OPEN ALL YEAR.
 HIGHLY RECOMMENDED - BOARD, CLOSET, ROOF, STEAM HEAT.
 BATHS, LIONS & POWERS, ELEC. L.P.R. - EXTERIOR & PAINTS
 DISTRICT.



Copyright 1924 by the Sanborn Map Co.

VACANT BEYOND
13

13



VACANT BEYOND

VACANT BEYOND

VACANT BEYOND

Located 1 1/2 miles N. of Watkins Fire Station



NIGHT & SUNDAY WATERMEN APPRO CLOCK
POWER & HOSE SYSTEM LIGHTS 100' L.E.P. PILE
CORL. W.P.'S & W.P.'S AS SHOWN, ALSO EXTERIOR
PILES & HOSE 300' 1/2" HOSE, 3 DELIVER 2500 GALS
& 50 GAL. TRUCK & 50' HOSE ON DR. BURN-
UNDERWATER'S 4" CH. 1000 G.P.M. DRAWING
FROM SENSOR LINE & SENSOR TRUCK WHICH
HAVE A CAPY OF FROM 20 TO 30 THOUSAND GALS
EACH, 25 BOILER WIND SENSORS, 33 GALS OF
WATER & 66 PAILS DISTD THROUGH