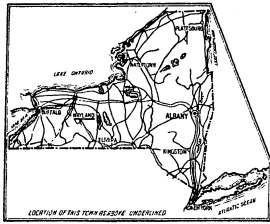
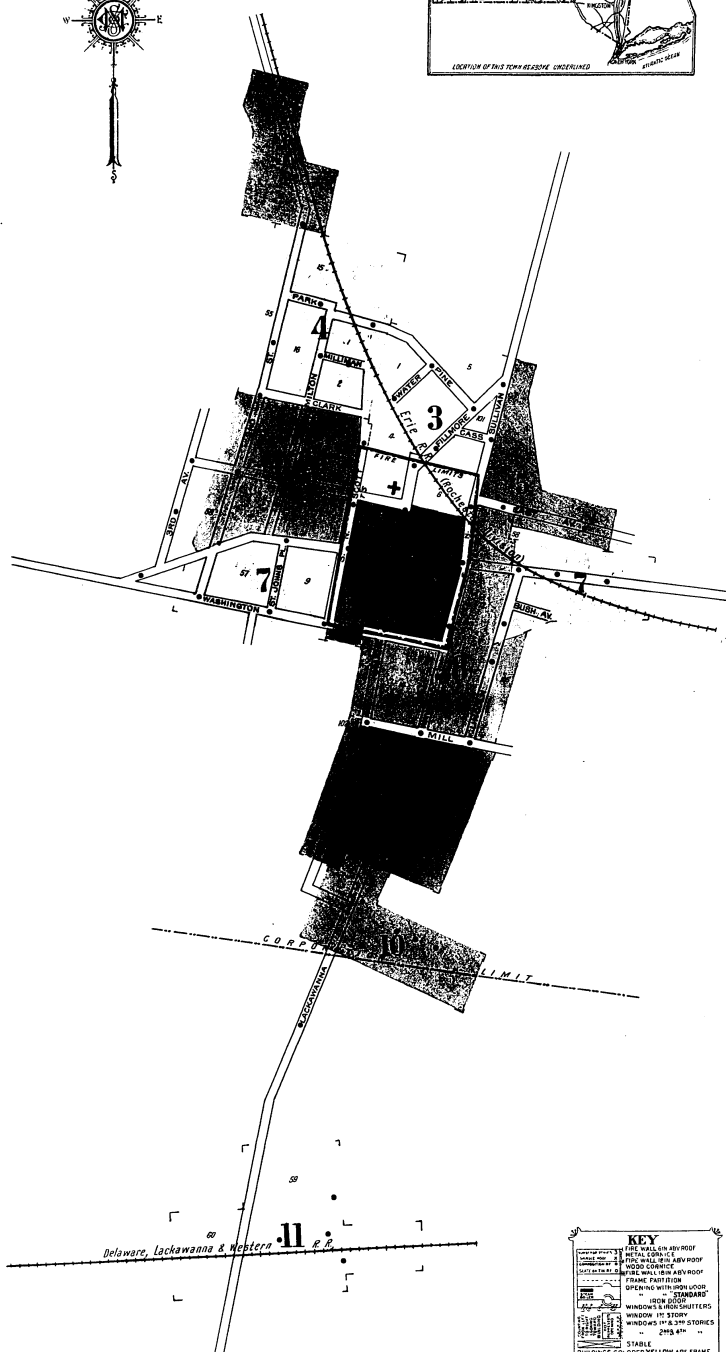


WATER FACILITIES. Gravity system, owned by Village. Reservoir of 250,000 gals. capacity, located 3/4 mile E of W at an elevation of 220 feet. Main S.W. supplied by Gould 8x8 steam pump of 420 gals. per min. capacity. 8" main from reservoir about 8 miles of 8" & 4" mains supply 65 double hydrants, average pressure 32 lbs. System installed in 1904, some extensions since.

FIRE DEPT. Volunteer, 60 men, 2 Cols. - H & L Co. 30 men, 2 R & L trucks, 200 ladders - Two 6 gal. Babcock chemical ext'rs - Hose Co. 30 men - Two 2 wheel hose carts - 300' 2 1/2" C.R.L. hose in good condition on each - Exempt firemen - 26 men act as reserve in emergency - Alarm - Bell on hose house - Grades - level - Streets - macadamized - Public lights electric - fire limit ordinance not enforced.



LOCATION OF THIS TOWN RESERVE CONCERNED



KEY

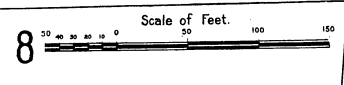
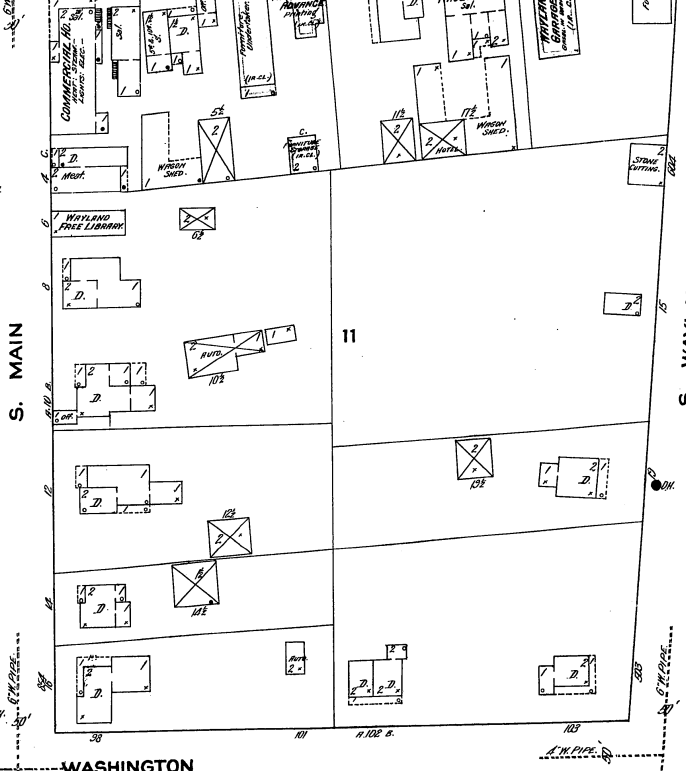
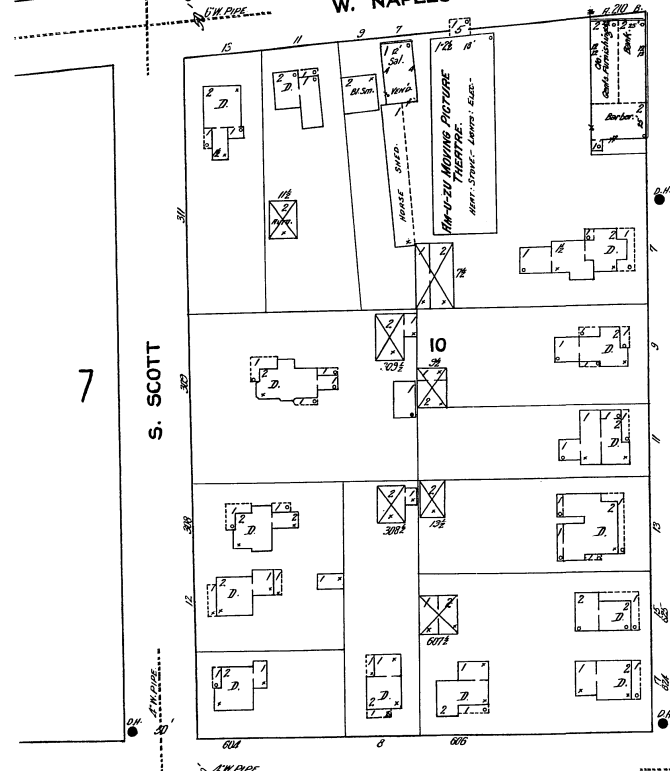
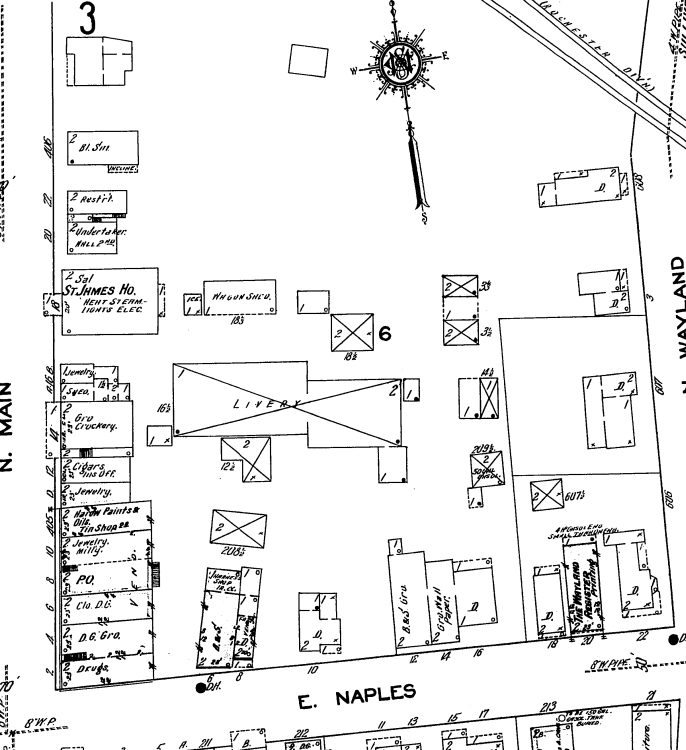
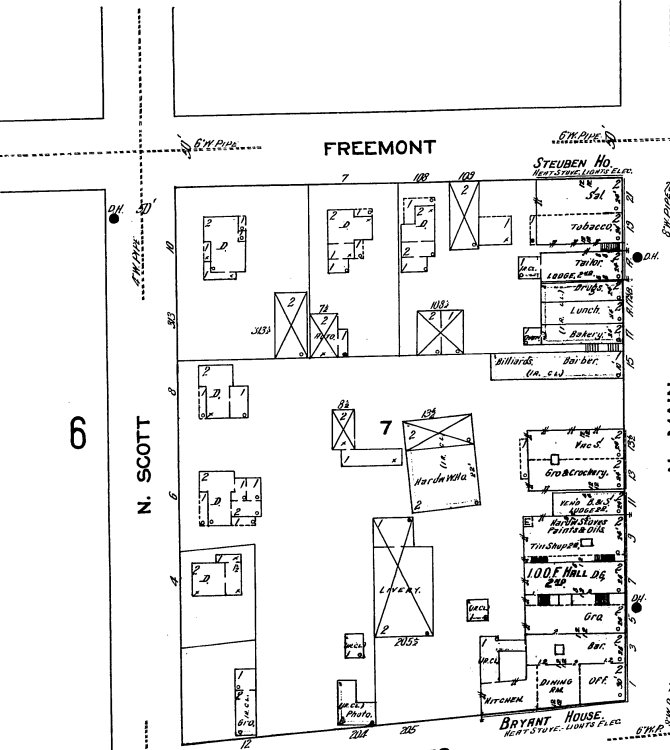
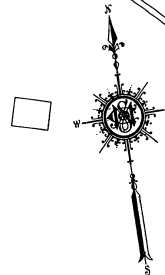
- INDICATE RELATIVE HEIGHTS- FIRE SIGNALS AS SHOWN ON KEY MAP
- ALTERNATE STREET NUMBERS ARE ACTUAL
- CONSECUTIVE STREET NUMBERS ARE ARBITRARY

INDEX

STREETS	NUMBER	W	NUMBER
Bush Ave., B	7	Water	3
		Washington	2-11 2
		arbitrary	7
Cass, C	3	88-92	8
Charles, C	9	95-103	2
Church, at Perkinsville, C	12	106-108,	8
Clark, C	12	301-323,	7
	2-30	602-603,	2
	101-107, arbitrary	604-611,	2
	108-113,	Wayland, N.	2 & 8
		S.,	2 & 8
		Road, at Perkinsville,	12
East Ave., E	5 & 8		
Fillmore, F	3		
Freemont, F	1-11		
	12-22		
	14-38		
	100-106, arbitrary		
	102-105,		
	108-109,		
Hamilton, H	4 & 6		
Lackawanna, L	2-35		
	401-424, arbitrary		
	453-490,		
	801-823,		
	901-921,		
Lincoln, L	1-11		
	12-31		
	606-708, arbitrary		
	709-713,		
	715-722,		
	724-745,		
Main, at Perkinsville, M	12		
	N., 1-22		
	23-40		
	404-408, arbitrary		
	405-406,		
	S., 1-18		
	702-808, arbitrary		
	810-823,		
	831-839,		
	840-853,		
Mill, M	1-21		
	201-224, arbitrary		
	225-234,		
Millman, M	4		
Napies, E, N	1-22		
	23-31		
	32-65		
	211-213, arbitrary		
	701-723,		
	W., 1-14		
	15-35		
	16-38		
	204-210, arbitrary		
	403-406,		
	410-418,		
Park, P	4		
Pine, P	1-20		
	near Hamilton		
Road to Carney Hollow, R	5		
	Patchville, at Perkinsville,		
	Perkinsville,		
	Rogersville, at Perkinsville,		
	Wayland,		
St. Johns Place, S	7		
Scott, N, S	1-19		
	2-12		
	305-307, arbitrary		
	314-316,		
	S., 1-13		
	2-14		
	301-302, arbitrary		
	308-311,		
Second, S	303-333,		
	318-319,		
	403-417,		
	501-502,		
	504-514,		
	515-516,		
	517-528,		
	near Wayland Canning Co.		
Sullivan, S	1-25		
	2-26		
	616-617, arbitrary		

\* Indicates only one side of Street shown.

Aug. 1913.  
WAYLAND  
N.Y.

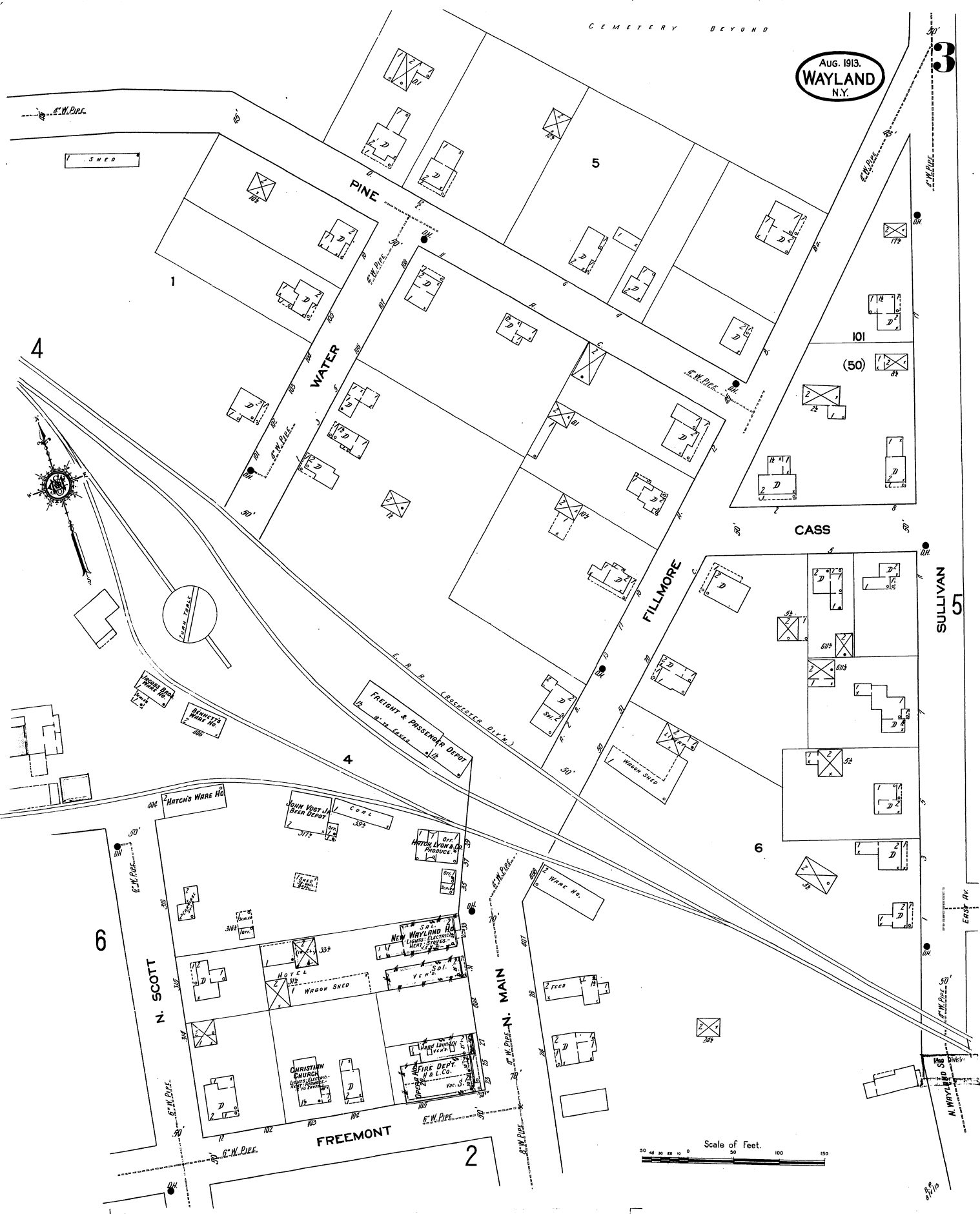


Map Division

CEMETERY BEYOND

AUG. 1913.  
WAYLAND  
N.Y.

3



Scale of feet.  
0 20 40 60 80 100 120 140 160

5

6

2

6

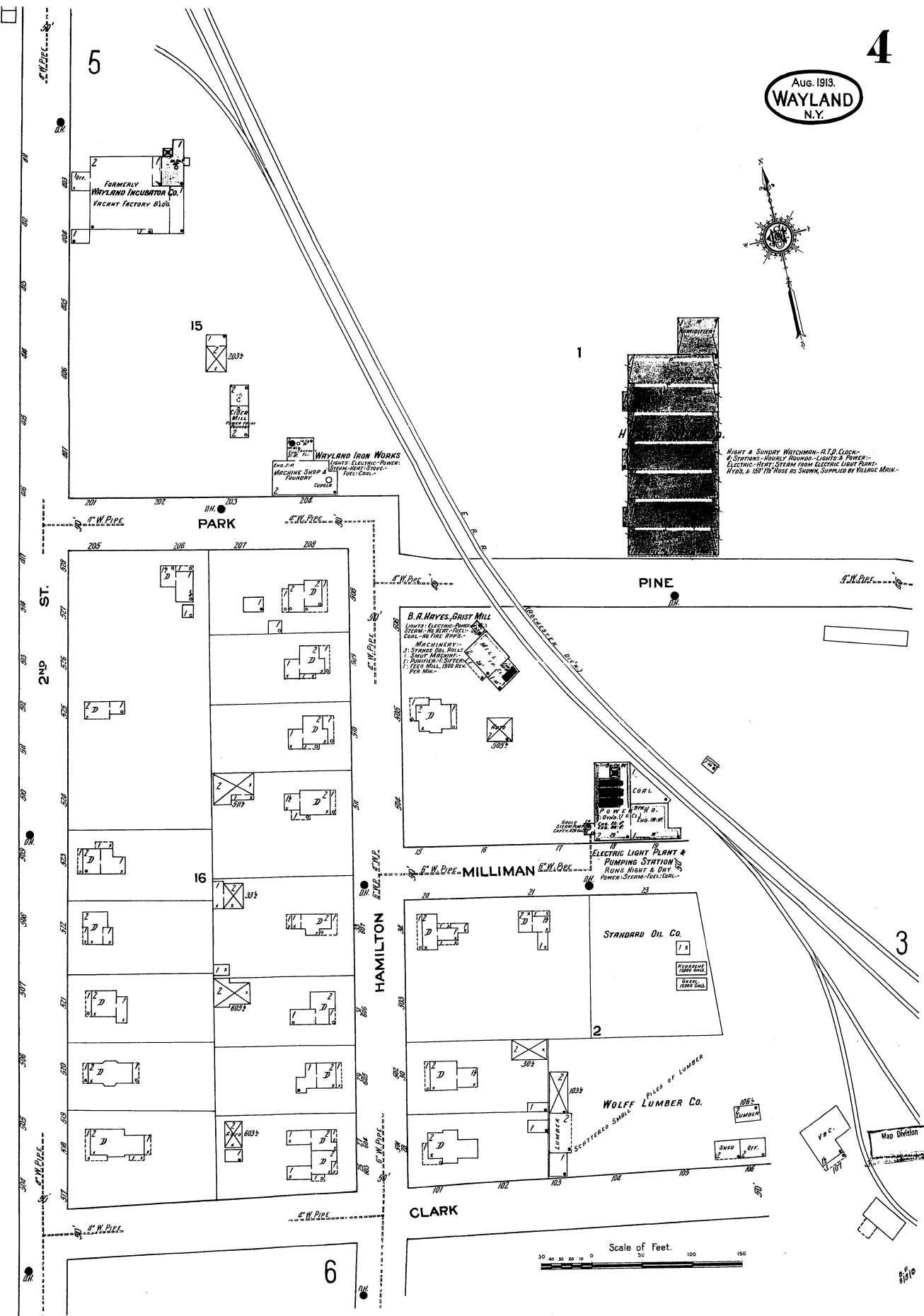
(50)

101

5

4

1



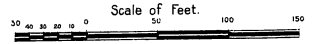
NIGHT & SUNDAY WATCHMEN - R.T.D. CLOCK-  
STATIONS - HOURLY ROUNDS - LIGHTS & POWER -  
ELECTRIC - HEAT - STEAM FROM ELECTRIC LIGHT PLANT -  
WATER & 150' ITS HOSE AS SHOWN, SUPPLIED BY VILLAGE MAIN -

**B. R. HAYES, GRIST MILL**  
LIGHTS - ELECTRIC - STEAM -  
STEAM - HEAT - FUEL -  
COAL - NO. 1000 -  
MACHINERY -  
3 STAMPS 80L. DIALS -  
1 SHARP MEASURE -  
1 POUNDING - 1 SIFTING -  
1 FEED MILL 1000 REV.  
PER MIN.

**ELECTRIC LIGHT PLANT & PUMPING STATION**  
RUNS NIGHT & DAY  
POWER - STEAM - FUEL - COAL -

**STANDARD OIL Co.**  
VERMONT  
BAPT.  
1000 GAL.

**WOLFF LUMBER Co.**  
SCATTERED SMALL PILES OF LUMBER



55



3

6

510



AUG. 1913.  
**WAYLAND**  
N.Y.

5

J.P. MORSE FLOUR MILL.  
FLOUR, BRAN, RICE, STEEL  
LUMBER, WOODS, BUTCH, SPICES,  
& POULTRY FEEDS.

PLERIL BROS. CHINA MFGS.  
PLANNING MILL  
FINISHING

HAGEDON'S MILL  
Saw & Shingle Mill.  
Power System: Full Scale  
Water Power. No Flume  
No Flume.

WAYLAND CANNING CO.  
CANNING

PER THRESHERS  
CONCRETE FL.

2. FRONT & SUNDAY MACHINERY WITH PANNING.  
ONE WAGON WHEEL - NO CLACK - POWER SYSTEM FULL  
SCALE. LIGHTS: GAS & OIL. WATER: BOILING STEAM  
ON W. W. - 4000 G. PER HOUR. PUMPERS: 4. PUMPERS  
ON VILLAGE: 4000 G. PER HOUR. PUMPERS: 4. PUMPERS  
STEAM PUMPS - ALL 2 1/2 IN. PUMPING FROM STREAM.

3

SULLIVAN

CROSS ST.

128  
V.M.E. CHURCH  
WOMEN'S PARLOR  
LADIES' LODGE  
BIBLIOTHECA

SUNDAY SCHOOL  
HOUSE SHEED

51

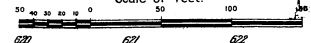
55

2ND ST.

4

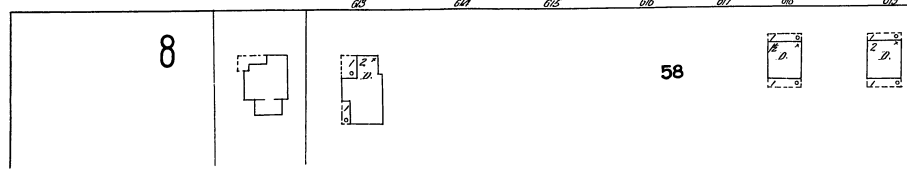
EAST AV.

Scale of Feet.



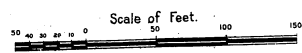
8

58



Aug. 1913.  
**WAYLAND**  
N.Y.

6



7

N. SCOTT  
2

3

4

55

17

18 OR 3

FREEMONT

HAMILTON

56

20

19 OR 8

W. NAPLES

St. JOSEPHS  
Ch.

St. JOSEPHS  
CHURCH R.C.

St. JOSEPHS  
PRODOMINA  
SCHMIDT  
Near St. Josephs  
Church R.C.

CLOCK MILL

WOLFF LUMBER CO.  
No Heat - Low Elec - Power -  
Sawm - Fuel - Coal & Waste -  
NO FIRE RISKS -  
LUMBER SHED  
Cement  
Wharf No.

ERHYDE  
GREEN RD.

N. SCOTT

ST. JOHN'S  
CHURCH R.C.

ST.

2ND

3RD

CLARK

FREEMONT

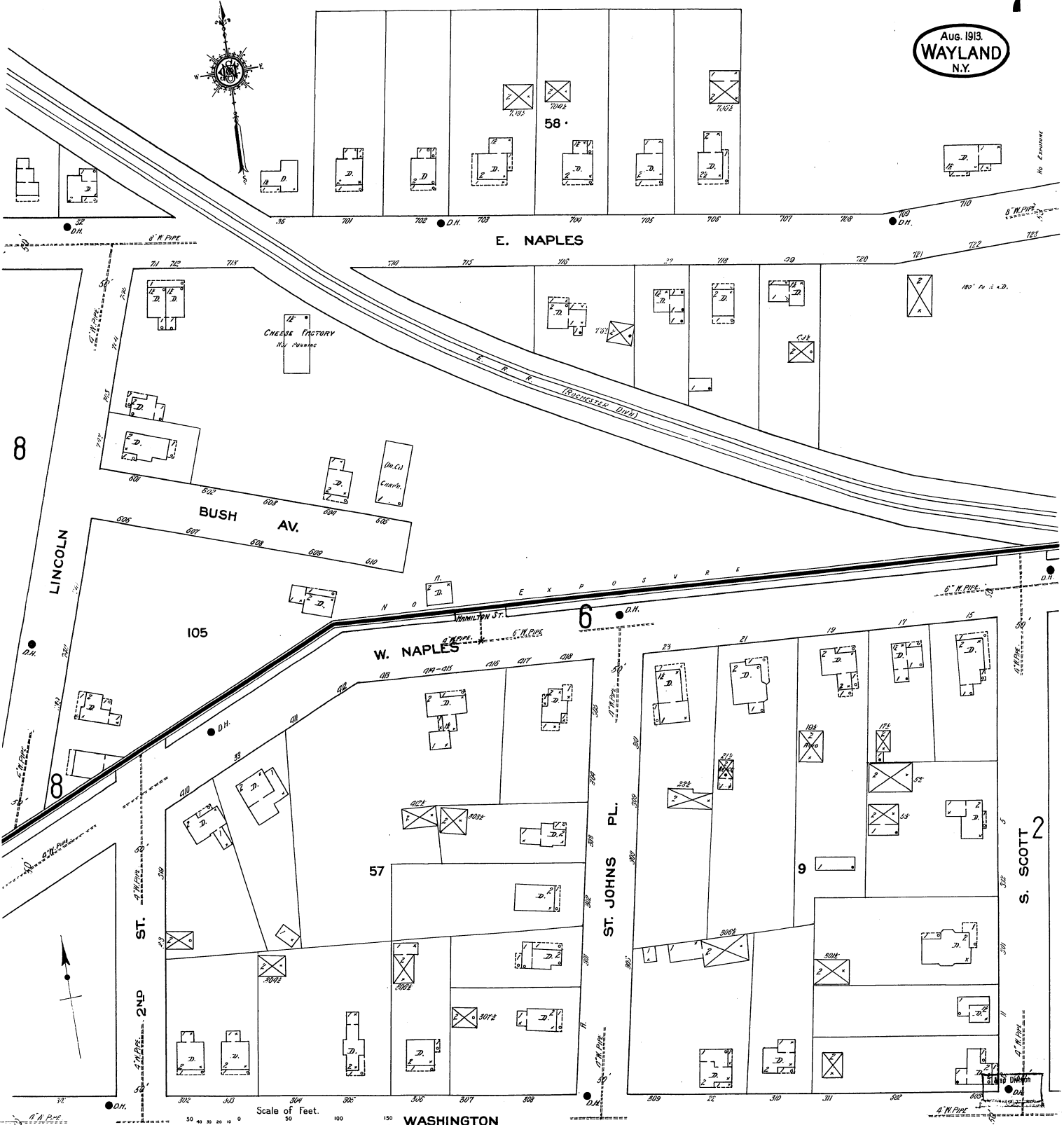
W. NAPLES

CLARK

N. SCOTT

ST. JOHN'S  
CHURCH R.C.

Aug. 1913.  
WAYLAND  
N.Y.



8

6

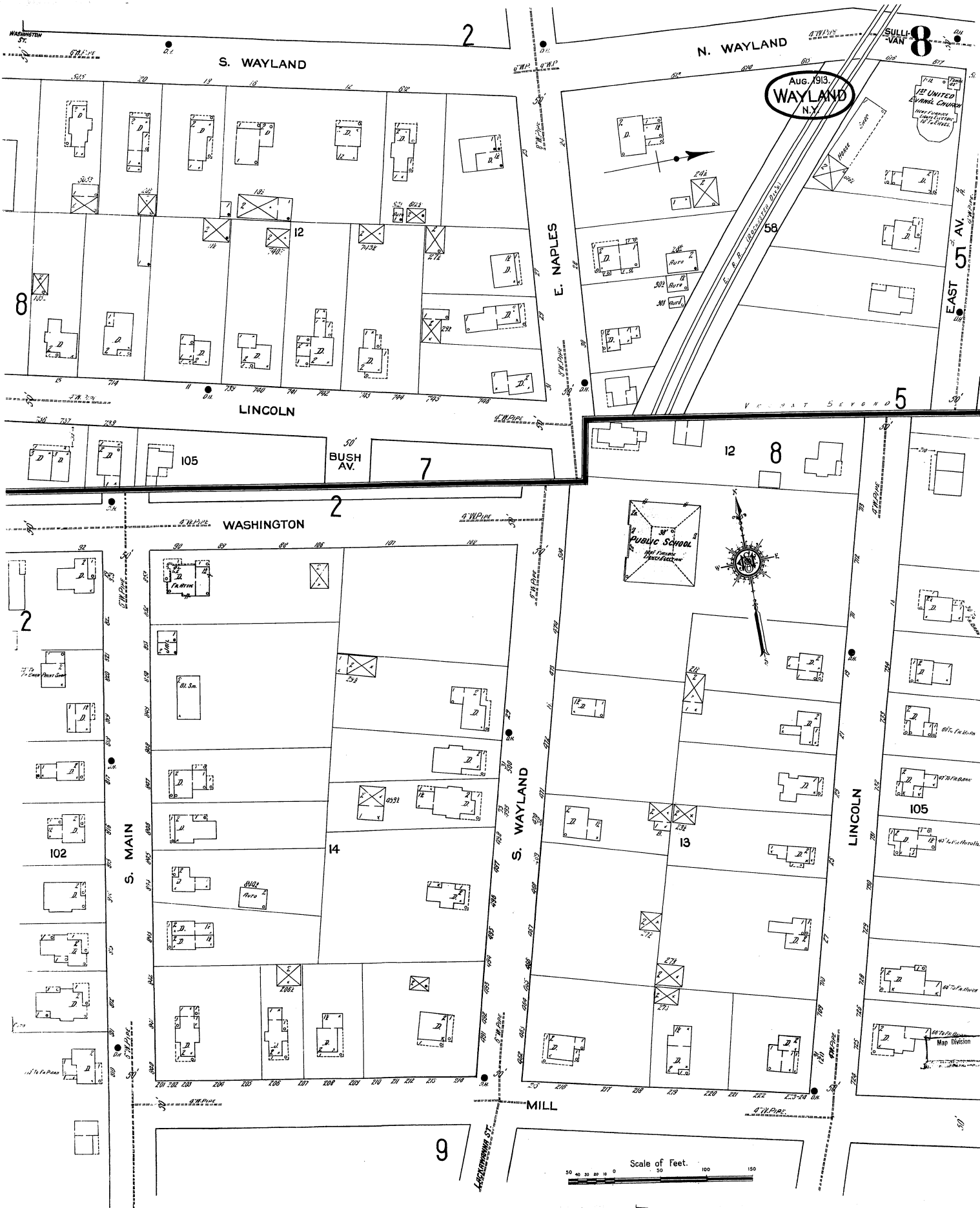
2

Scale of Feet.  
0 50 100 150  
WASHINGTON

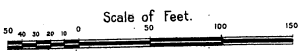
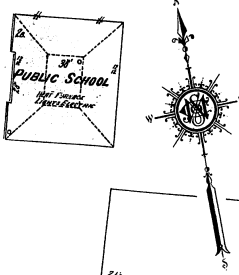
102

ST. JOHN'S PL.

ST. SCOTT



Aug. 1913.  
**WAYLAND**  
N.Y.



S. WAYLAND

N. WAYLAND

LINCOLN

WASHINGTON

E. NAPLES

S. WAYLAND

S. MAIN

LINCOLN

MILL

EAST 5<sup>TH</sup> AV.

2

8

8

7

2

12

8

2

14

13

9

105

BUSH AV.

1<sup>ST</sup> UNITED  
EVANGEL CHURCH

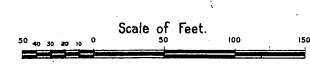
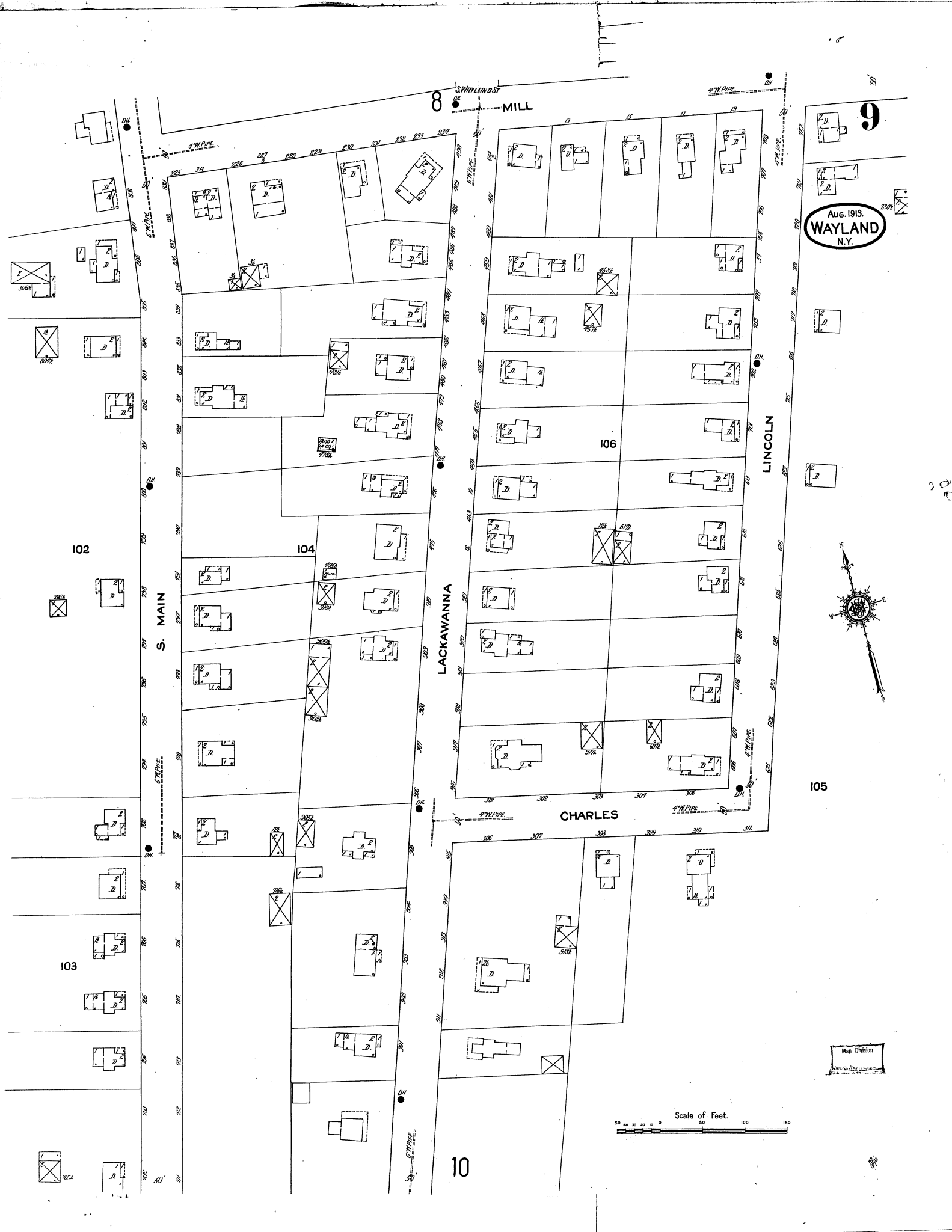
Public School

Map Division

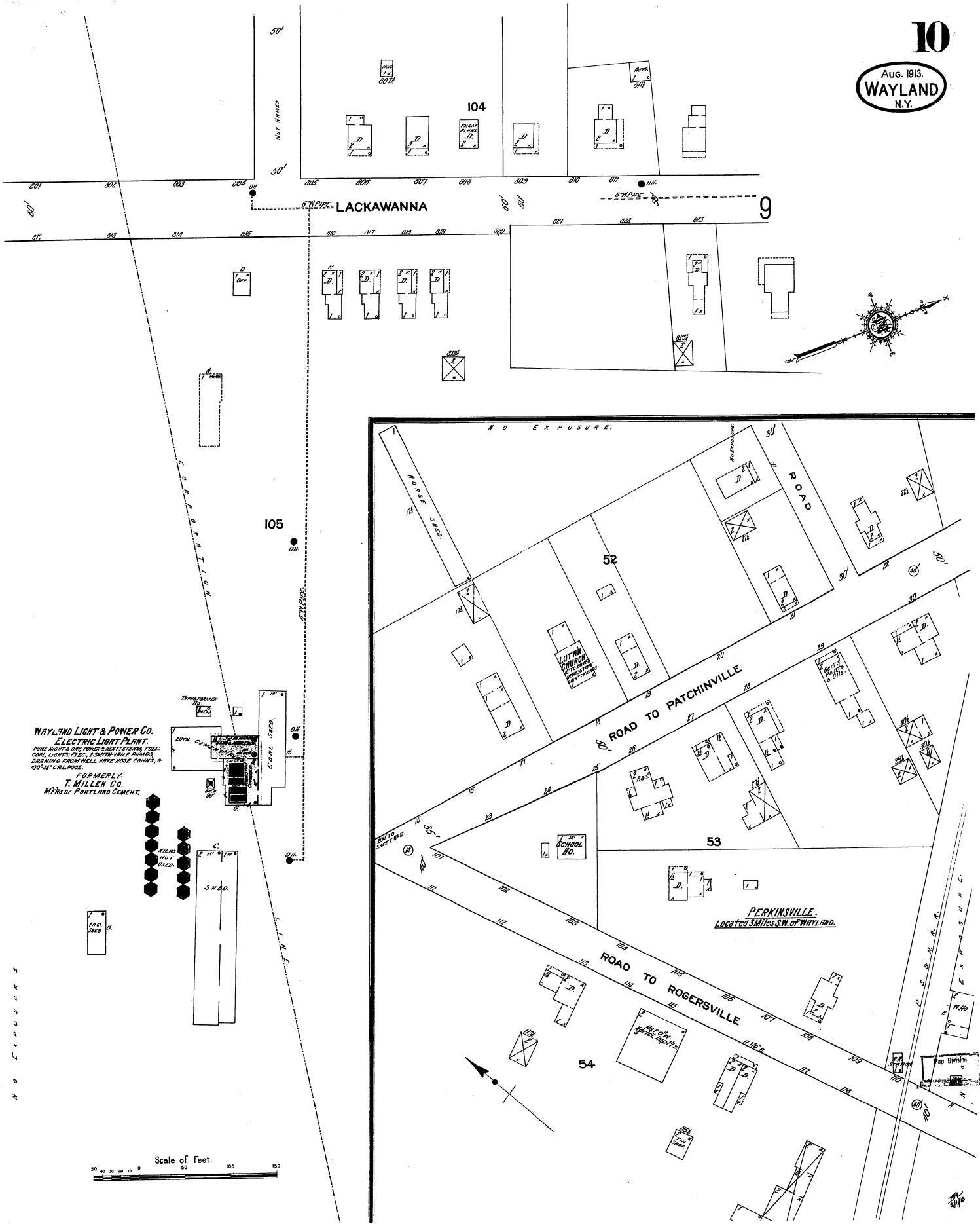


8 WAYLANDST MILL

AUG. 1913.  
WAYLAND  
N.Y.

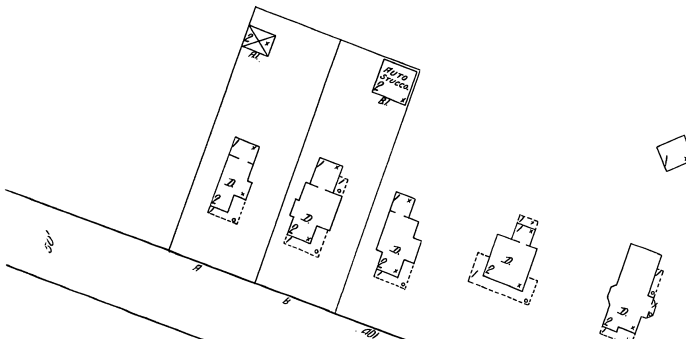
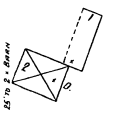


Map Division

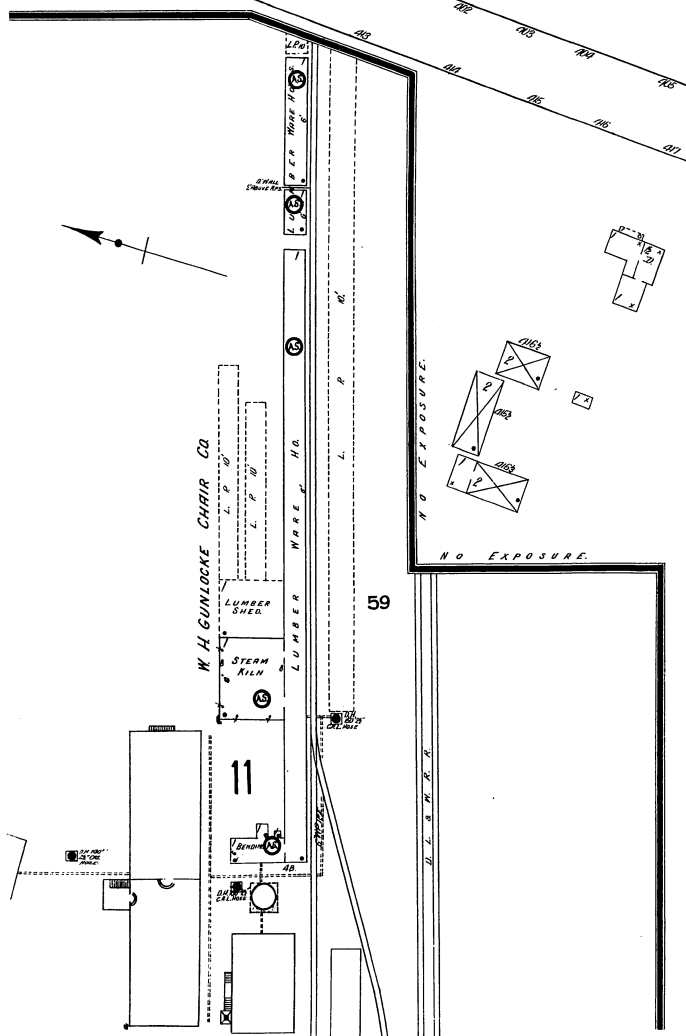


Aug. 1913.  
WAYLAND  
N.Y.

**W. H. GUNLOCKE CHAIR CO.**  
MULTI-CUT RISK  
NIGHT & SUNDAY WATERWORKS, CLOCK & STATIONS  
& HORNBY HOUSE, POWER & HEAT STEAM FUEL OIL & WASTE  
LIGHTS & CIGARETTES, BURNING BURNER, TOBACCO, WIFE  
BANKS, A PAIR, DISTRICT THROUGH FIVE & P.S. & WISE, NO  
SIGNAL, HORNBY STEAM, HORNBY STEAM, HORNBY STEAM, HORNBY  
TO HORNBY, HORNBY STEAM, HORNBY STEAM, HORNBY STEAM, HORNBY  
GIVING PRESSURE OF 80 LBS. PER SQ. IN. SUPPLIES 2000  
GAL. TANK OF WATER, HORNBY & HORNBY, HORNBY STEAM, HORNBY  
GRINWELL FIVE STEAM, THROUGH SPICED STEAM, WET SYSTEM  
INDICATOR, 200 LBS. WIDE, GIVING WATER, HORNBY 30  
SAND, PAIRS & 6 BURNER, BLANKETS TREATED WITH  
SOLUTION OF SILICATE OF SODA, 600° F. CAL. HOSE, 300° F. CAL. HOSE.



59

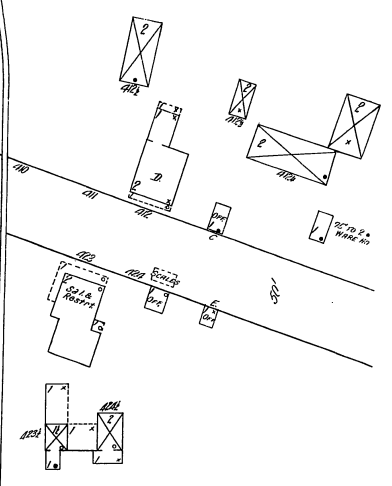


LACKAWANNA

PRINGLE HOTEL

D. L. & N. R. DEPOT  
PASSENGER & FREIGHT

60



Map Division

Scale of Feet.  
50 40 30 20 10 0 50 100 150

Aug. 1913.  
**WAYLAND**  
N.Y.

**12**

