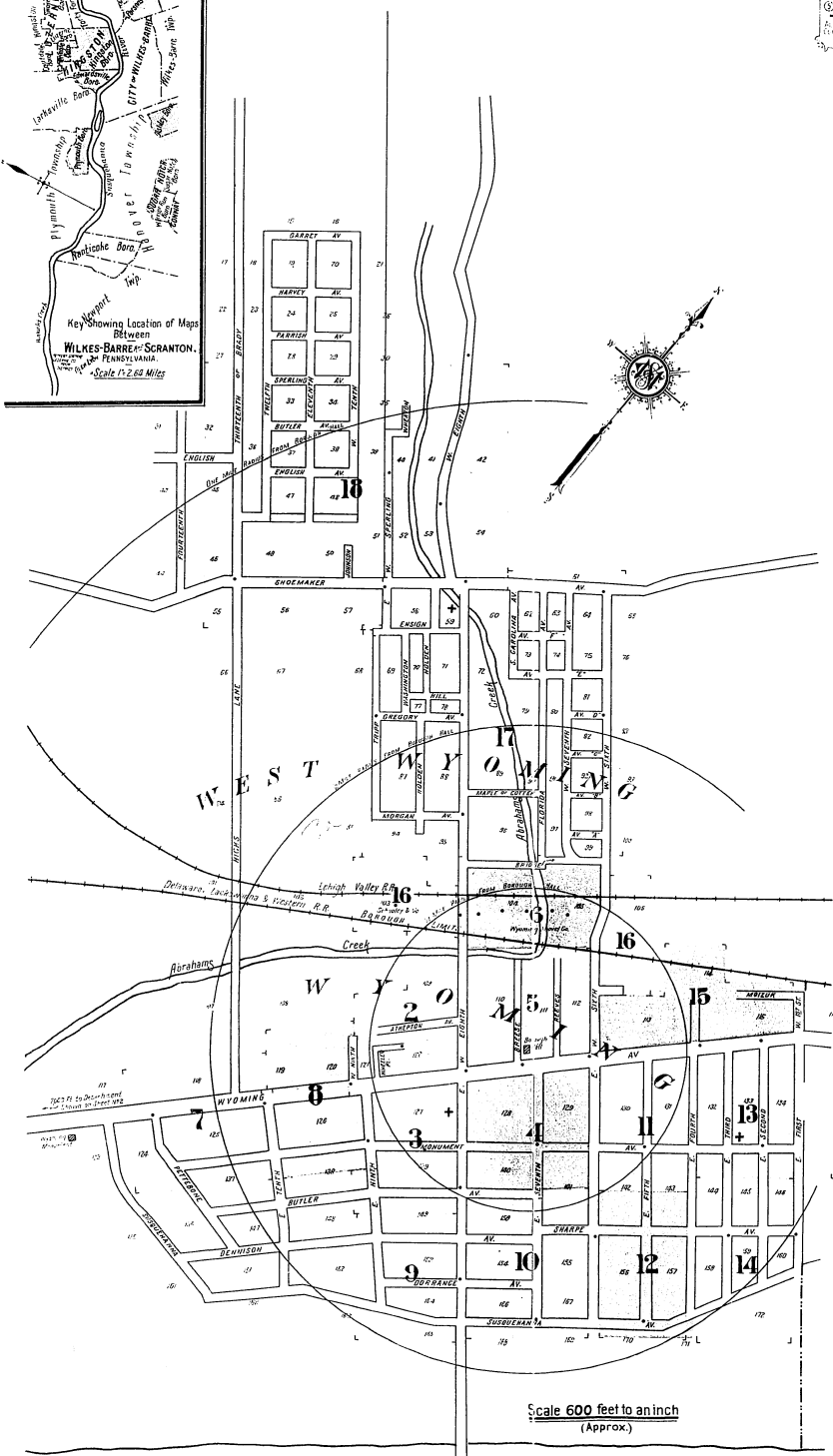
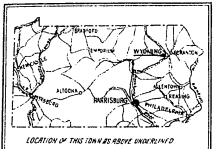
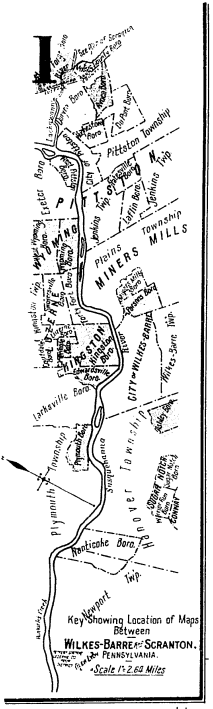


KEY: FIRE HOSE CO. NO. 1, FIRE HOSE CO. NO. 2, FIRE HOSE CO. NO. 3, FIRE HOSE CO. NO. 4, FIRE HOSE CO. NO. 5, FIRE HOSE CO. NO. 6, FIRE HOSE CO. NO. 7, FIRE HOSE CO. NO. 8, FIRE HOSE CO. NO. 9, FIRE HOSE CO. NO. 10, FIRE HOSE CO. NO. 11, FIRE HOSE CO. NO. 12, FIRE HOSE CO. NO. 13, FIRE HOSE CO. NO. 14, FIRE HOSE CO. NO. 15, FIRE HOSE CO. NO. 16, FIRE HOSE CO. NO. 17, FIRE HOSE CO. NO. 18, FIRE HOSE CO. NO. 19, FIRE HOSE CO. NO. 20, FIRE HOSE CO. NO. 21, FIRE HOSE CO. NO. 22, FIRE HOSE CO. NO. 23, FIRE HOSE CO. NO. 24, FIRE HOSE CO. NO. 25, FIRE HOSE CO. NO. 26, FIRE HOSE CO. NO. 27, FIRE HOSE CO. NO. 28, FIRE HOSE CO. NO. 29, FIRE HOSE CO. NO. 30, FIRE HOSE CO. NO. 31, FIRE HOSE CO. NO. 32, FIRE HOSE CO. NO. 33, FIRE HOSE CO. NO. 34, FIRE HOSE CO. NO. 35, FIRE HOSE CO. NO. 36, FIRE HOSE CO. NO. 37, FIRE HOSE CO. NO. 38, FIRE HOSE CO. NO. 39, FIRE HOSE CO. NO. 40, FIRE HOSE CO. NO. 41, FIRE HOSE CO. NO. 42, FIRE HOSE CO. NO. 43, FIRE HOSE CO. NO. 44, FIRE HOSE CO. NO. 45, FIRE HOSE CO. NO. 46, FIRE HOSE CO. NO. 47, FIRE HOSE CO. NO. 48, FIRE HOSE CO. NO. 49, FIRE HOSE CO. NO. 50, FIRE HOSE CO. NO. 51, FIRE HOSE CO. NO. 52, FIRE HOSE CO. NO. 53, FIRE HOSE CO. NO. 54, FIRE HOSE CO. NO. 55, FIRE HOSE CO. NO. 56, FIRE HOSE CO. NO. 57, FIRE HOSE CO. NO. 58, FIRE HOSE CO. NO. 59, FIRE HOSE CO. NO. 60, FIRE HOSE CO. NO. 61, FIRE HOSE CO. NO. 62, FIRE HOSE CO. NO. 63, FIRE HOSE CO. NO. 64, FIRE HOSE CO. NO. 65, FIRE HOSE CO. NO. 66, FIRE HOSE CO. NO. 67, FIRE HOSE CO. NO. 68, FIRE HOSE CO. NO. 69, FIRE HOSE CO. NO. 70, FIRE HOSE CO. NO. 71, FIRE HOSE CO. NO. 72, FIRE HOSE CO. NO. 73, FIRE HOSE CO. NO. 74, FIRE HOSE CO. NO. 75, FIRE HOSE CO. NO. 76, FIRE HOSE CO. NO. 77, FIRE HOSE CO. NO. 78, FIRE HOSE CO. NO. 79, FIRE HOSE CO. NO. 80, FIRE HOSE CO. NO. 81, FIRE HOSE CO. NO. 82, FIRE HOSE CO. NO. 83, FIRE HOSE CO. NO. 84, FIRE HOSE CO. NO. 85, FIRE HOSE CO. NO. 86, FIRE HOSE CO. NO. 87, FIRE HOSE CO. NO. 88, FIRE HOSE CO. NO. 89, FIRE HOSE CO. NO. 90, FIRE HOSE CO. NO. 91, FIRE HOSE CO. NO. 92, FIRE HOSE CO. NO. 93, FIRE HOSE CO. NO. 94, FIRE HOSE CO. NO. 95, FIRE HOSE CO. NO. 96, FIRE HOSE CO. NO. 97, FIRE HOSE CO. NO. 98, FIRE HOSE CO. NO. 99, FIRE HOSE CO. NO. 100.



INCLUDING WEST WYOMING

WATER FACILITIES: Supplied from Pottsville City Water System by Spruce Creek Water Gas Reservoir, capacity 60,000,000 gals. Average pressure 100 lbs. Reservoir daily consumption 250,000 gals. Rate of 4¢ to 5¢ w/ Pipe 30 Mts. FIRE DEPT. WYOMING HOSE CO. NO. 1 One American La France triple pump, capacity 750 GPM. 200 ft. hose, 40 ft. stream length. One incident, saved Street 500 Volunteers. 200 ft. hose in reserve. WYOMING HOSE CO. NO. 2 One American La France triple pump, 200 ft. hose, 40 ft. stream length. 200 Volunteers. WEST WYOMING HOSE CO. NO. 3 One American La France triple pump, 200 ft. hose, 40 ft. stream length. 200 Volunteers. Automatic magnetic alarm system in both towns. Public lights electric, Wyoming Ave. & 8th Street paved to fire limits.

INDEX

Table with three columns: STREET, FEET, and ADDRESS. It lists streets such as Atherton Ave., Avenue A through F, Brady, Breeze, Butler, Carolina, Dorrance, Eighth, Eleventh, Fifth, Florida, Fourth, Gregory, Hicks, Hill, Holden, Johnson, Maple, Morgan, Narrows, Ninth, Pettebone, Reeves, Second, Seventh, Sharp, Shoemaker, Sixth, Susquehanna, Tenth, Thirteenth, Trip, Twelfth, Washington, Wheeler, Wyoming, and York. It also lists special buildings like Wyoming Ave., Anthracite Brick and Tile Corp'n., Church W. Eighth St., Conley Concrete Block Co., D. L. & W. R. R. Depots, Diamond Mfg. Co., Forerated Metals Mfg., Eagen, J. & Son, Mining Tools, Eighth Street Grammar School, Fire Dept., Wyoming Hose Co. No. 1, 3, 17, First Baptist Church, Fowler, J. & Son, Flour Mill, Grammar Schools, G. A. R. Memorial School, Luzerne Presbyterian Institute, Marinos Theatre, Moving Pictures, Methodist Episcopal Church, Pennsylvania State Constabulary, Post Office, Rosedale Silk Co., Rosenthal, A. S. & Co., N. Y. City (owner), Silk Mill, St. Joseph's Polish R. C. Church, Schooley & Co. Lumber, Town Hall, Wyoming Baking Co., Brass and Machine Co., High School, Paper Co., Presbyterian Church, Roofing Products Co., Shovel Co., Valley Nurseries, and Washing Co., Laundry.

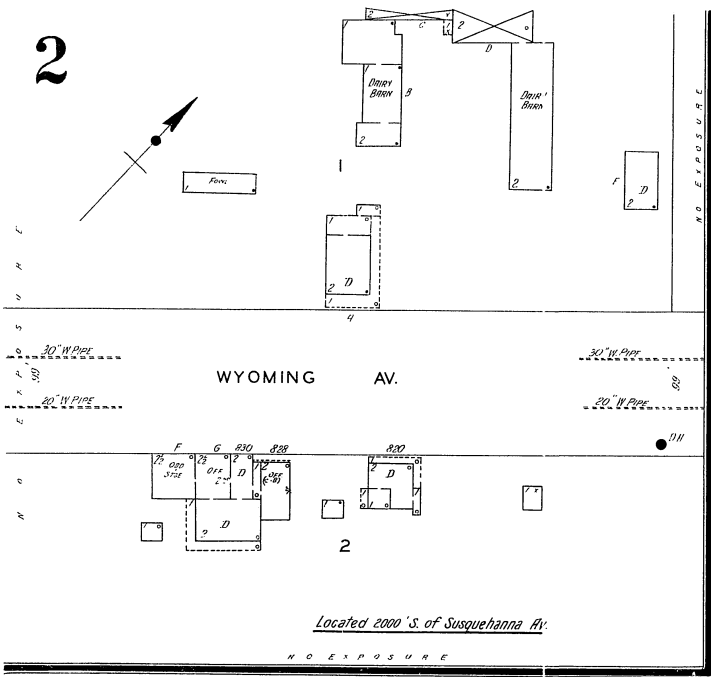
* Indicates only one side of Street shown.

Scale 600 feet to an inch (Approx.)

Susquehanna

River

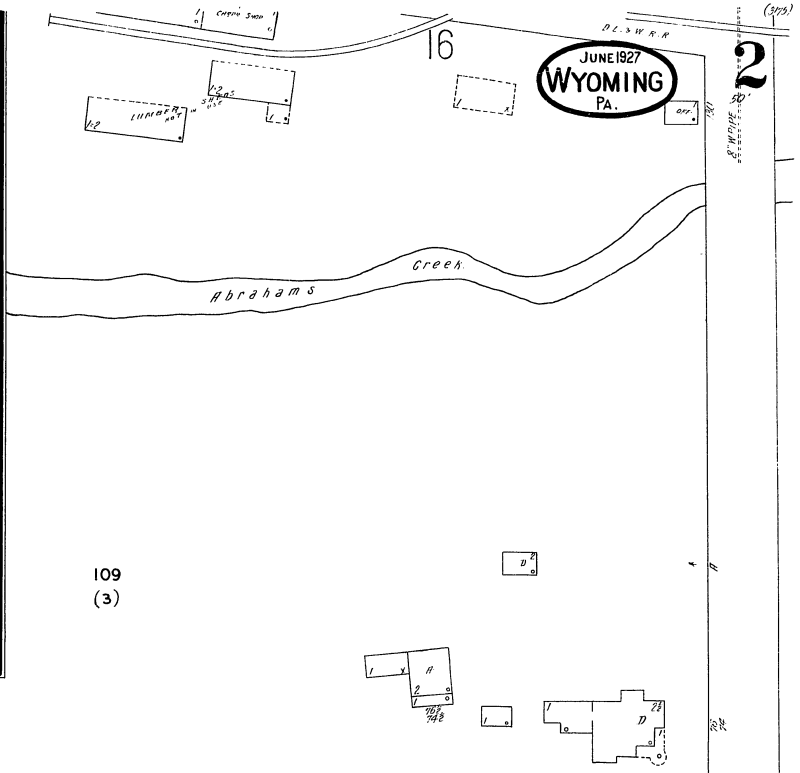
2



Located 2000' S. of Susquehanna Av.

NO EXPOSURE

JUNE 1927
WYOMING
PA.



109
(3)



W. (N.) 9TH ST.

WYOMING PRESBY CHURCH

WYOMING AV.

W. (N.) 8TH ST.

3

Scale of Feet. 0 50 100 150

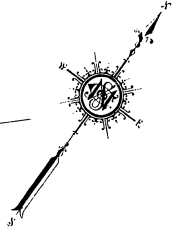
Copyright 1927 by the Sanborn Map Co.

3

2

JUNE 1927
WYOMING
PA.

3



WYOMING AV.

9 TH ST.

8 TH ST.

MONUMENT AV.

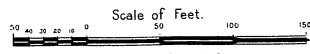
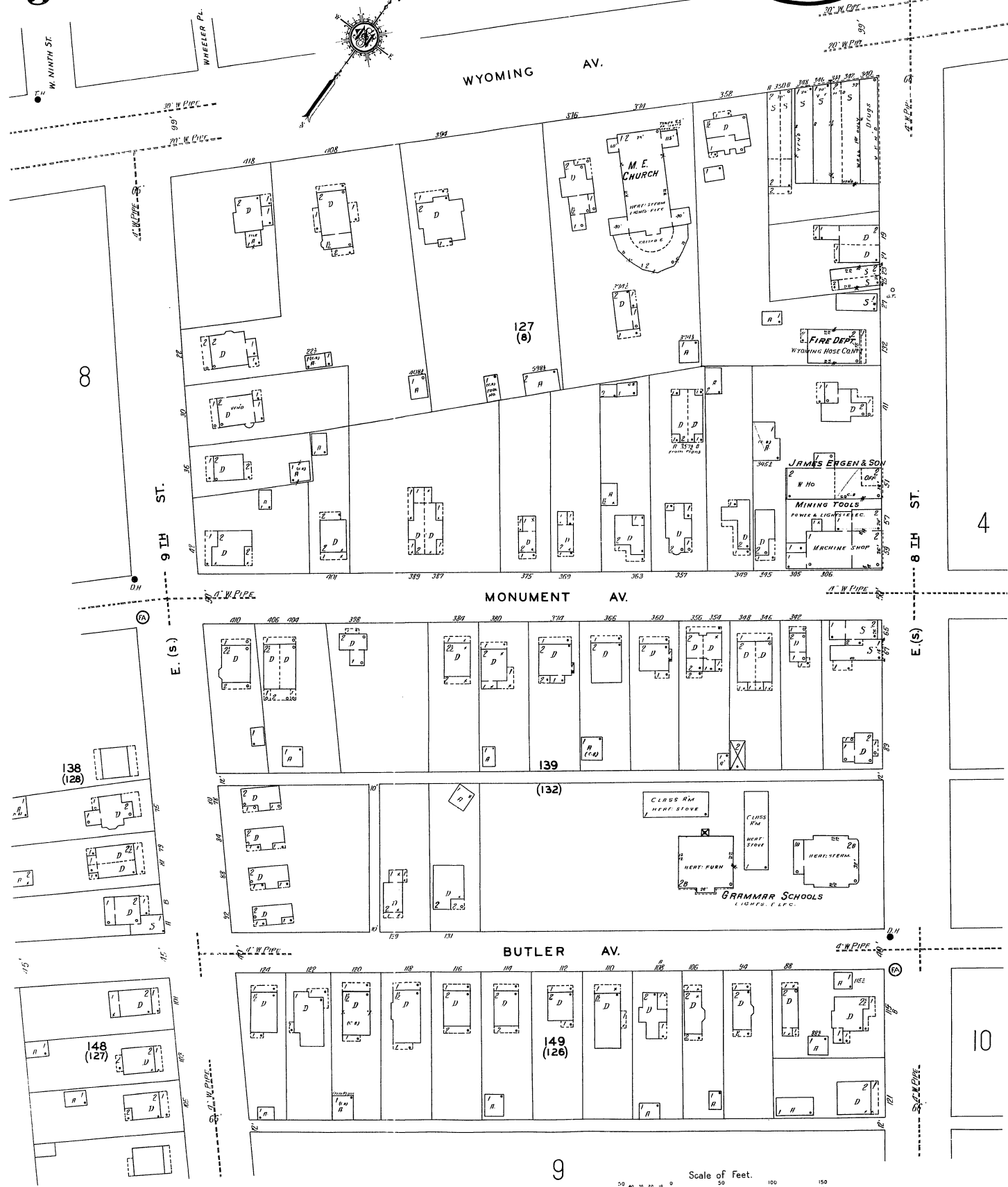
E. (S.)

E. (S.)

BUTLER AV.

9

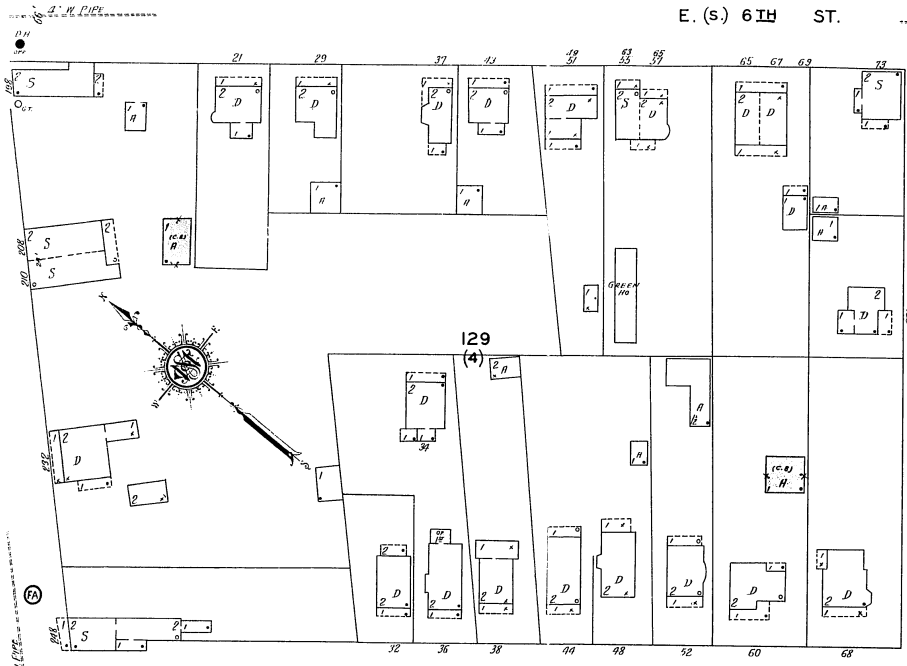
10



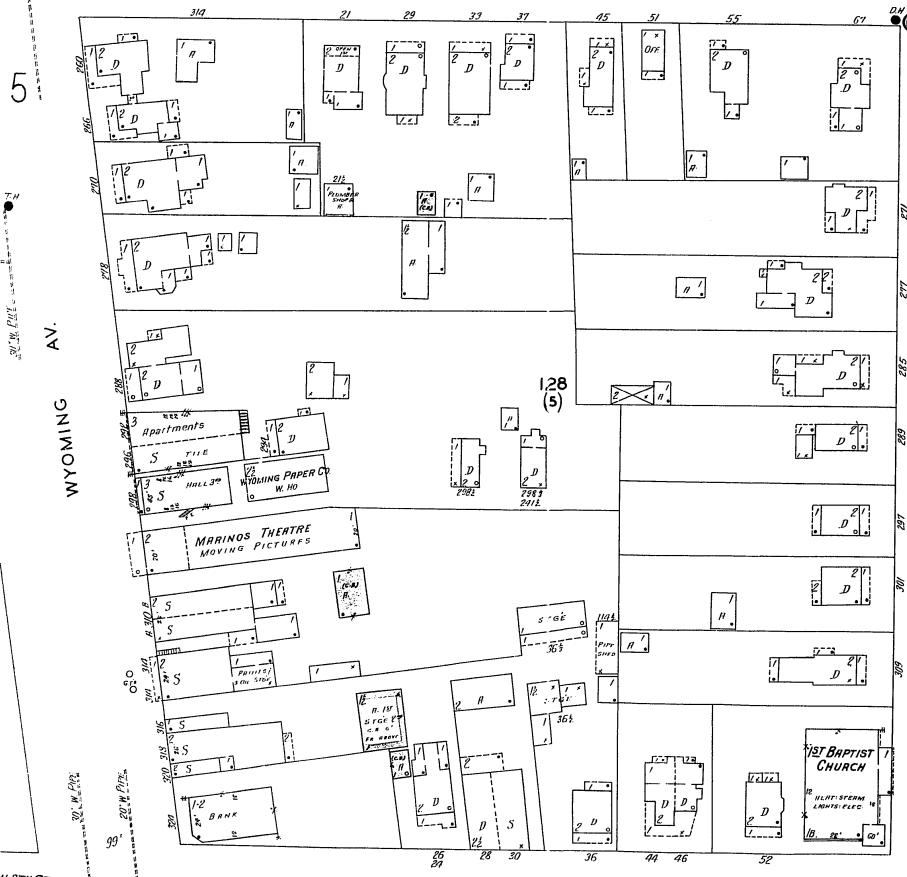
Scale of Feet.

Copyright 1927 by the Sarason Map Co.

E. (S.) 6TH ST.

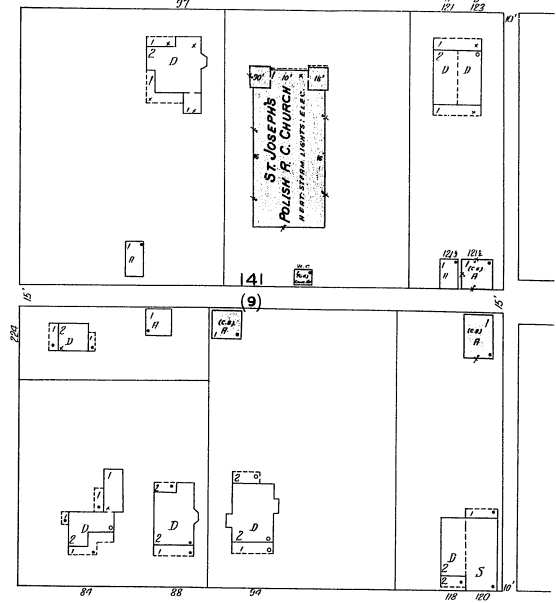


E. (S.) 7TH ST.



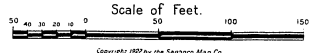
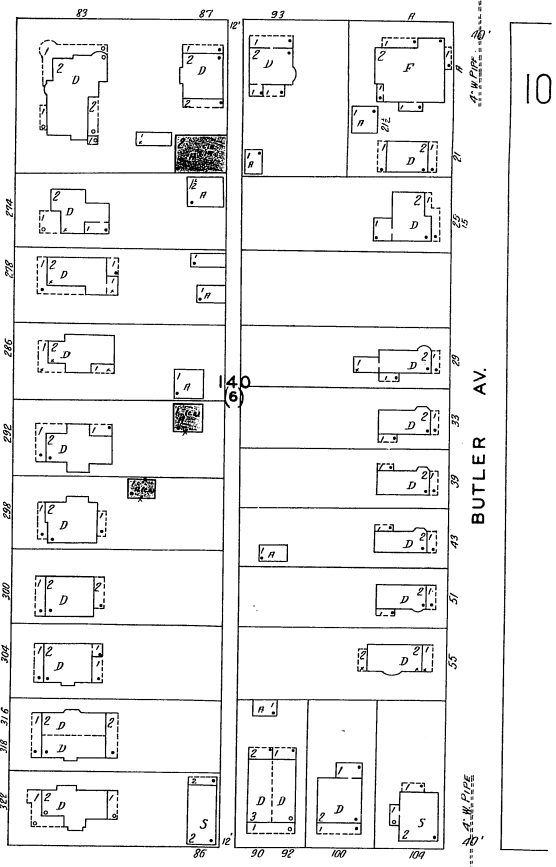
E. (S.) 8TH ST.

MONUMENT AV.



E. (S.) 7TH ST.

BUTLER AV.



Copyright 1927 by the Sarsons Map Co

5

16

CEMETERY AV.

JUNE 1927
WYOMING
PA.

15

(10:29)

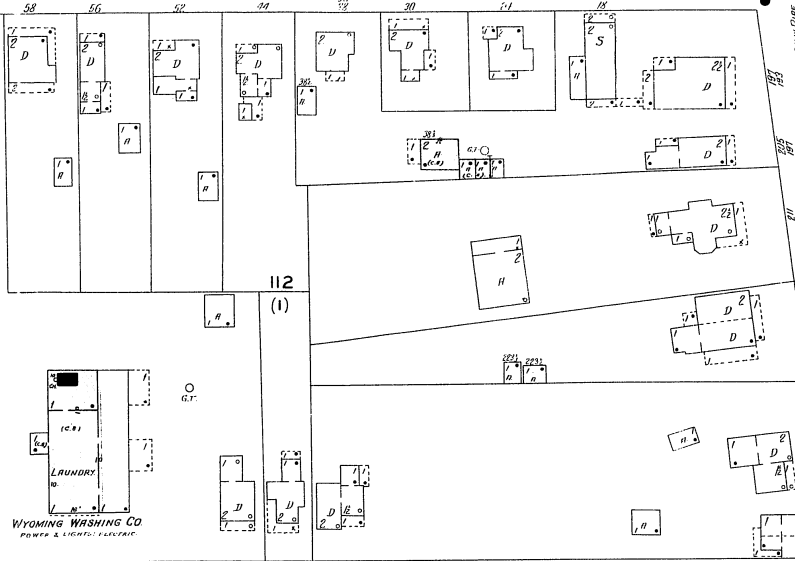
5

50' W. PIPE

W. (N.) 6TH ST.

W. PIPE

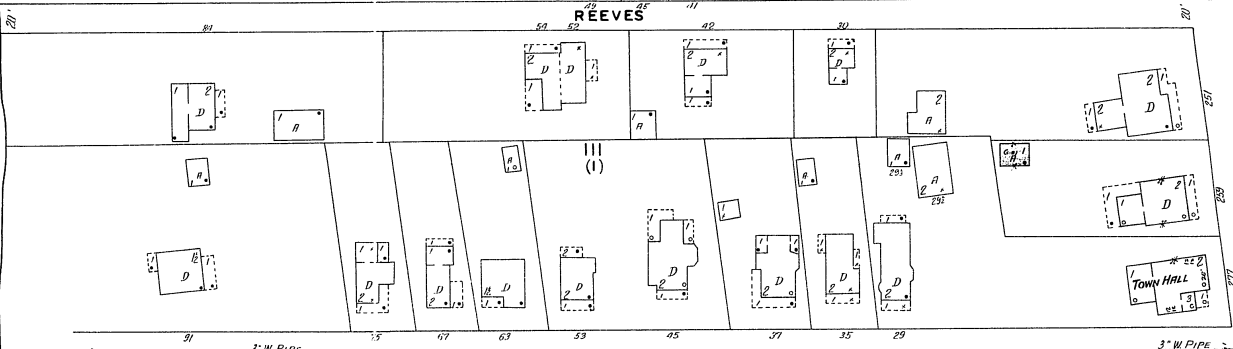
E. 6TH ST.



WYOMING WASHING CO
POWER & LIGHT CO

REEVES

6



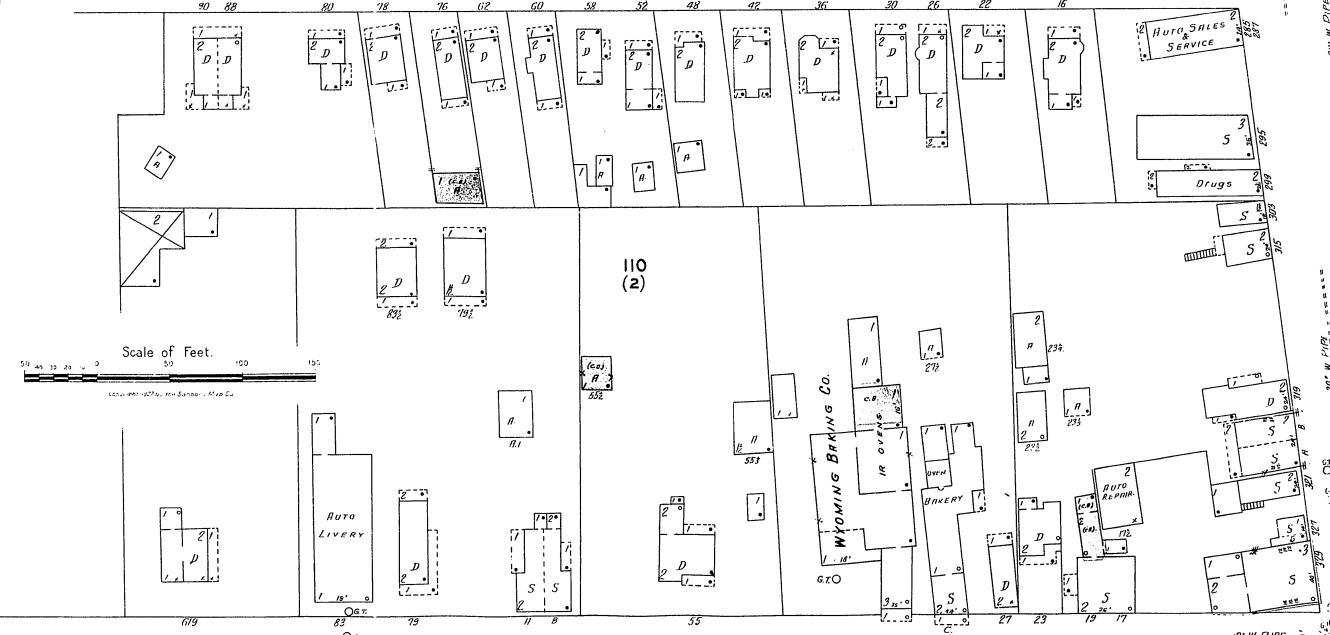
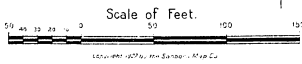
BRESE

WYOMING AV.

4

Abrahams Creek

W. PIPE



W. (N.) 8TH ST.

W. PIPE

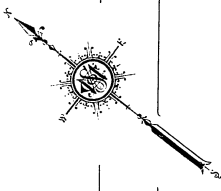
6

16

6

JUNE 1927
WYOMING
PA.
WEST WYOMING

W. (N.) 6TH ST.



W. 7TH ST.

WYOMING BRASS & MACHINE CO.
 NO. WATCHMAN, L. OILS, & POWERS; ELEC. PARTS, STOKES, EATONS, DIST.

FOUNDRY
 MACHINE SHOP

Abrahams Creek

FLORIDA AV.

17

BRIDGE

105
L O G Y A R D
S H O W I N G
104 (14)
C O I L P I L E
T H E W Y O M I N G

HANDLE SHOP
 W. H. D.
 STGE.
 DEYERS.
 FILE

STGE.
 W. H. D.

W. H. D.
 BUFFING

BL. Sm.
 ENG. RM.
 MACHINE SHOP
 Fire Proof Construction
 8" CONC. BUILT TO BE PROTECTED BY BRICK OR CONCRETE WALLS CONC. 4" THICK

FORGES
 WIRE W.

ROLLING MILL
 SHEARS

Fire Proof Constn.
 BUILT 1922.
 PROTECTED STEEL IN THE WALLS CONC. 4" THICK
 PRESS ROOM

FINISHING PLANT
 GRINDING SHED
 W. H. D.

HANDLE SHOP
 STEEL SHIPPING
 W. H. D.

OFFICE
 W. H. D.

METAL SHOP
 W. H. D.

DIAMOND MFG. CO.
 MFG. PERFORATED METALS
 NIGHT WATCHMAN, APPR. CLOCK, POWER, LIGHTS, ELEC.
 FOUNDRY
 NOT IN USE.

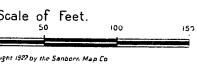
ROSEDALE SILK CO.
 H.S. ROSENTHAL & CO. INC. NYC NY
 (OWNERS)
 NIGHT WATCHMAN, APPR. CLOCK, POWER & LIGHTS, ELEC. HEAT STEAM, 200-GAL. EXTENS. PISTON
 SILK WERKING MILL

FREIGHT W.H.D.
 COAL PILE

FREIGHT PASSENGER STA.
 COAL PILE

FR. PLATFORM 10
 PLATFORM 11
 PLATFORM 12

WYOMING ROOFING PRODUCTS CO.
 Abrahams Creek



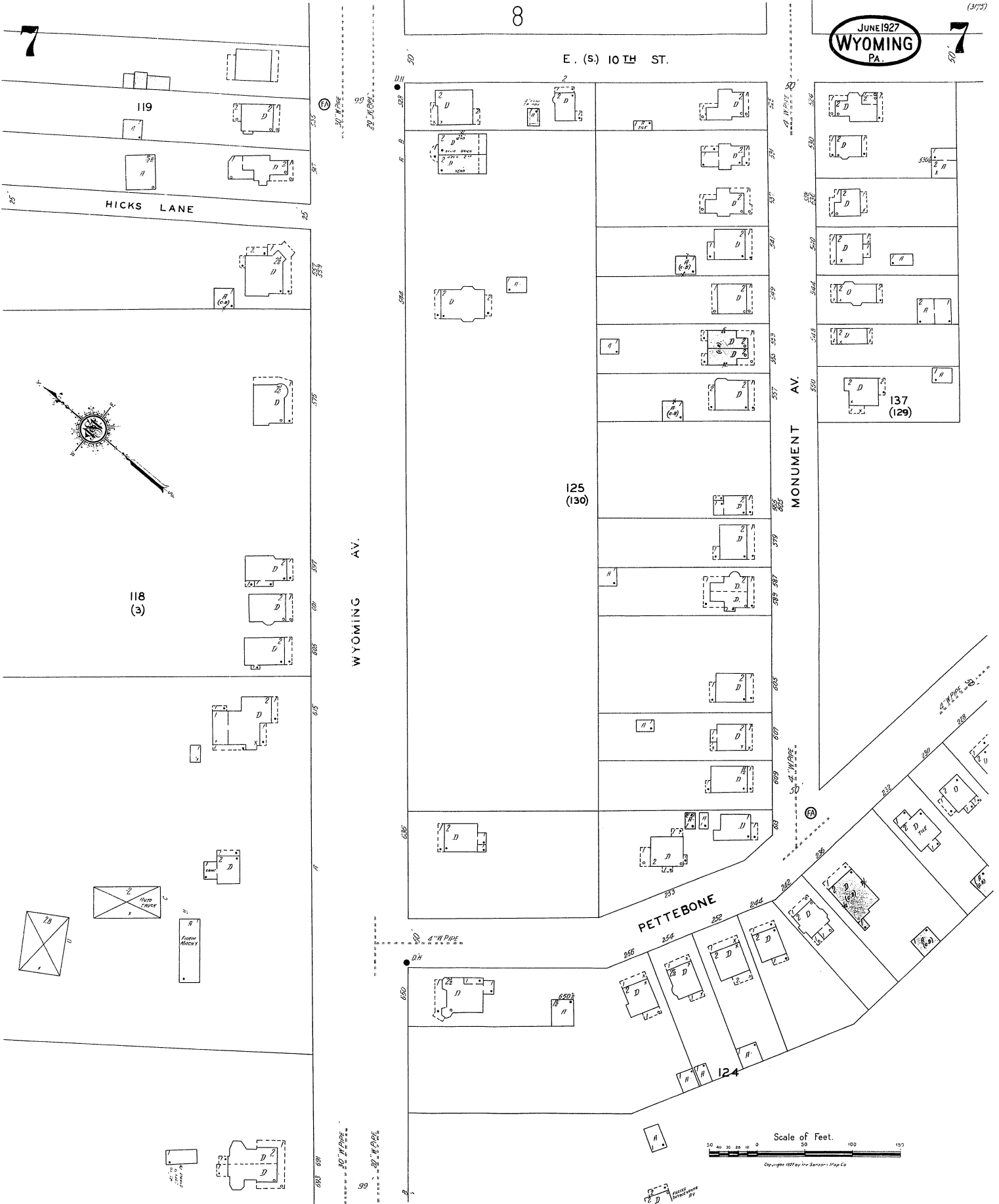
W. (N.) 8TH ST.

•D.H. 16

17

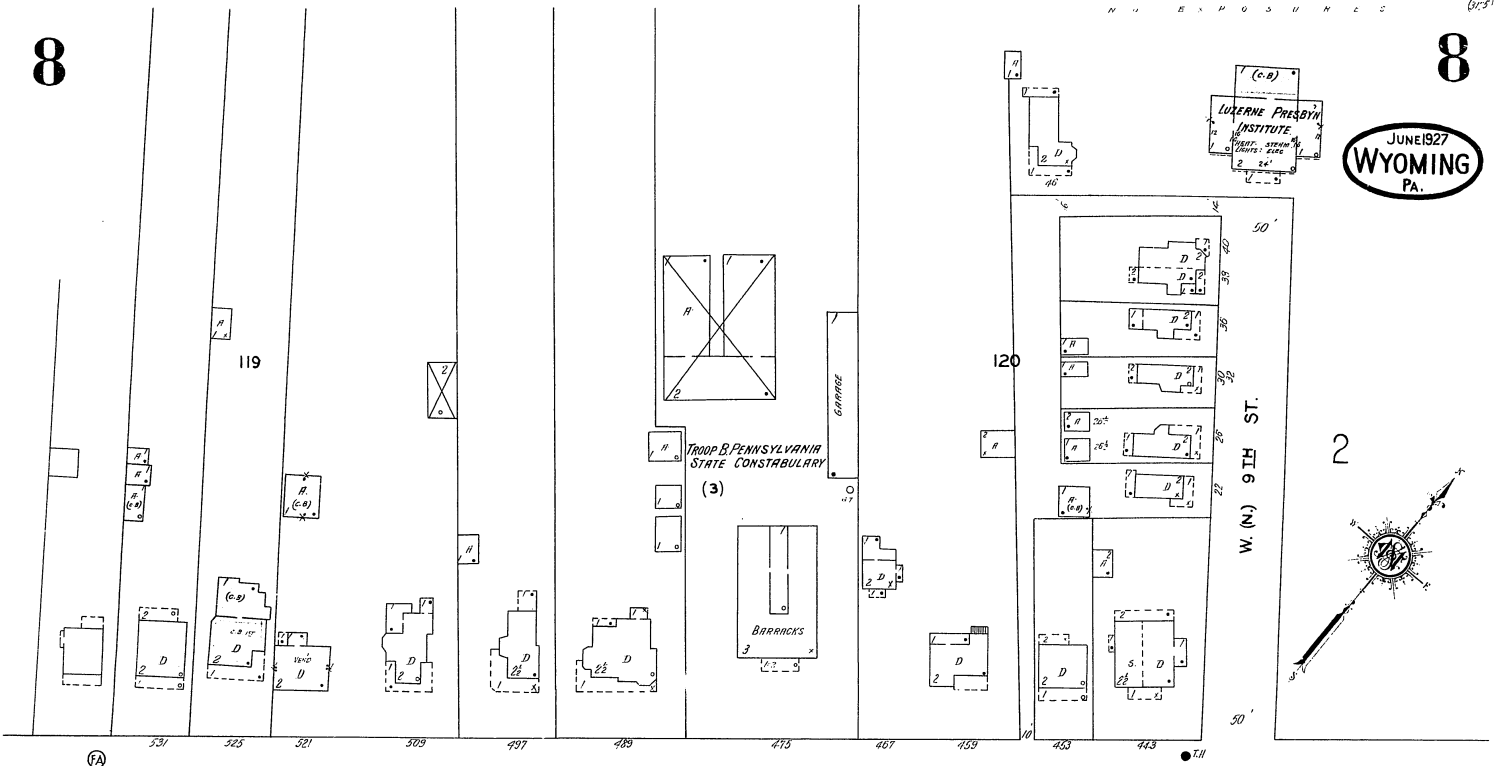
8" W. PIPE

8" W. PIPE

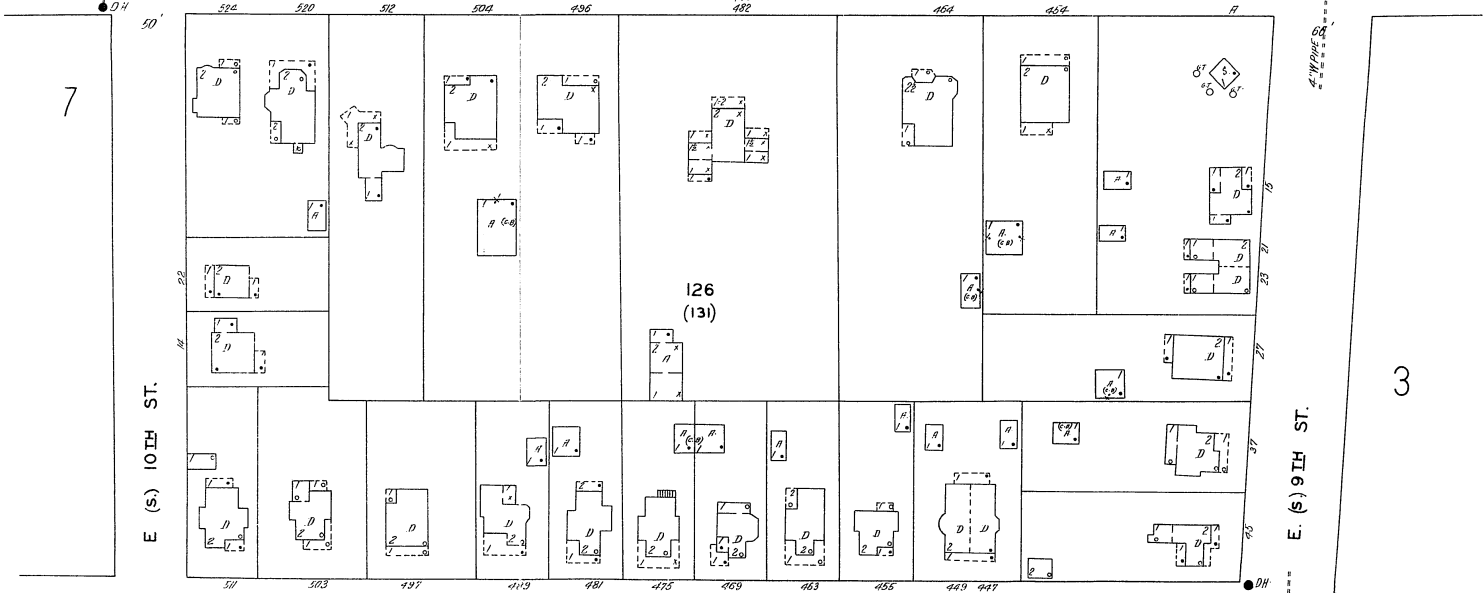


Scale of Feet.
 50 40 30 20 10 0 50 100 155
 Copyright 1927 by the Sanborn-Map Co.

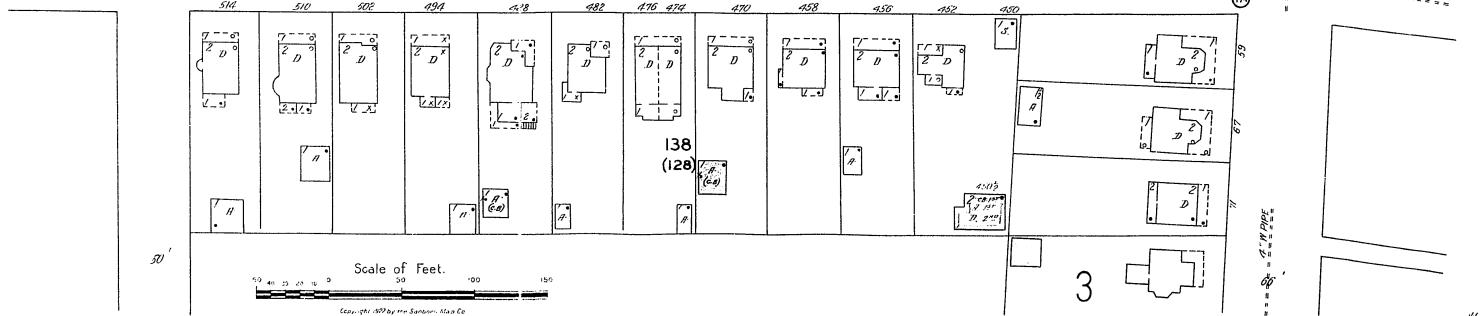
JUNE 1927
WYOMING
PA.



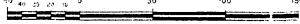
WYOMING AV.



MONUMENT AV.



Scale of Feet.



Copyright 1927 by the Esplanade, etc.

9

3

9



148 (127)

149 (126)

FORMER SALT MILL
Vac

DENNISON AV.

E. (S) 9TH ST.

E. (S) 8TH ST.

152

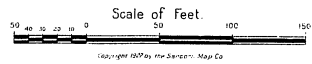
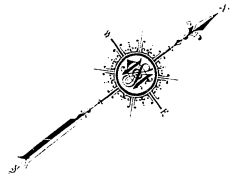
DORRANCE AV.

164

SUSQUEHANNA AV.

163

165



Copyright 1927 by the Standard Map Co

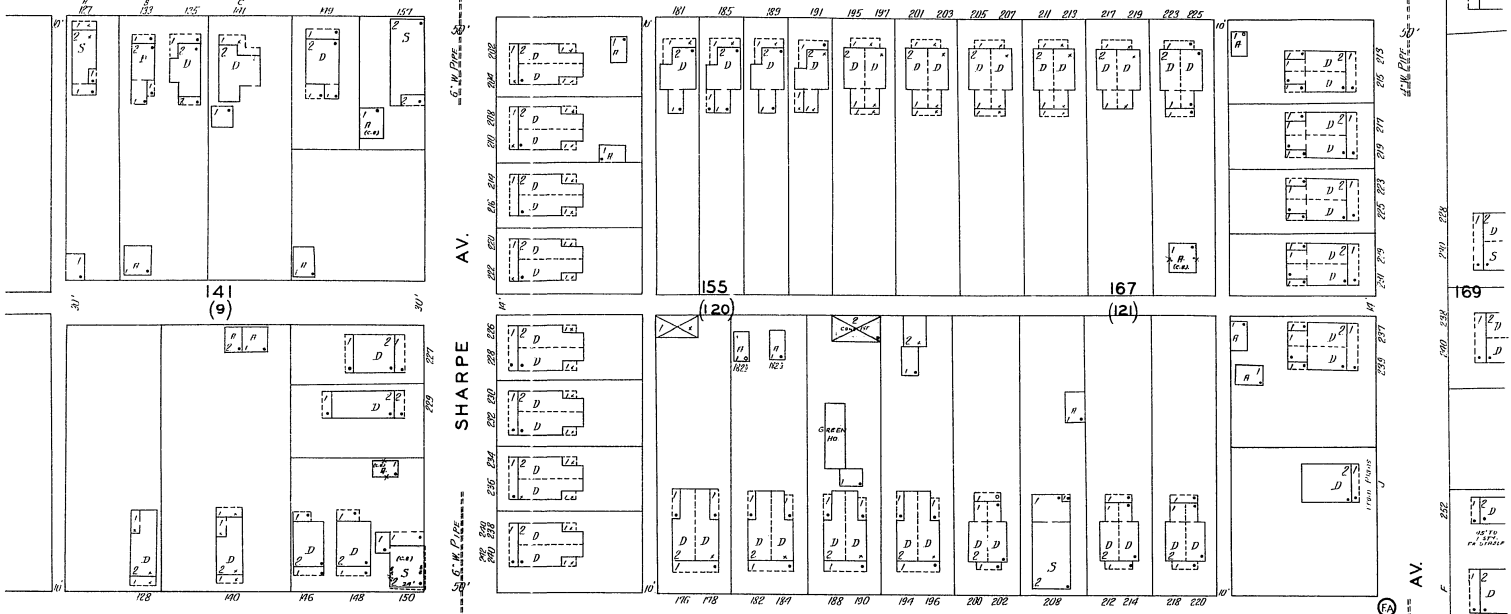
10

12

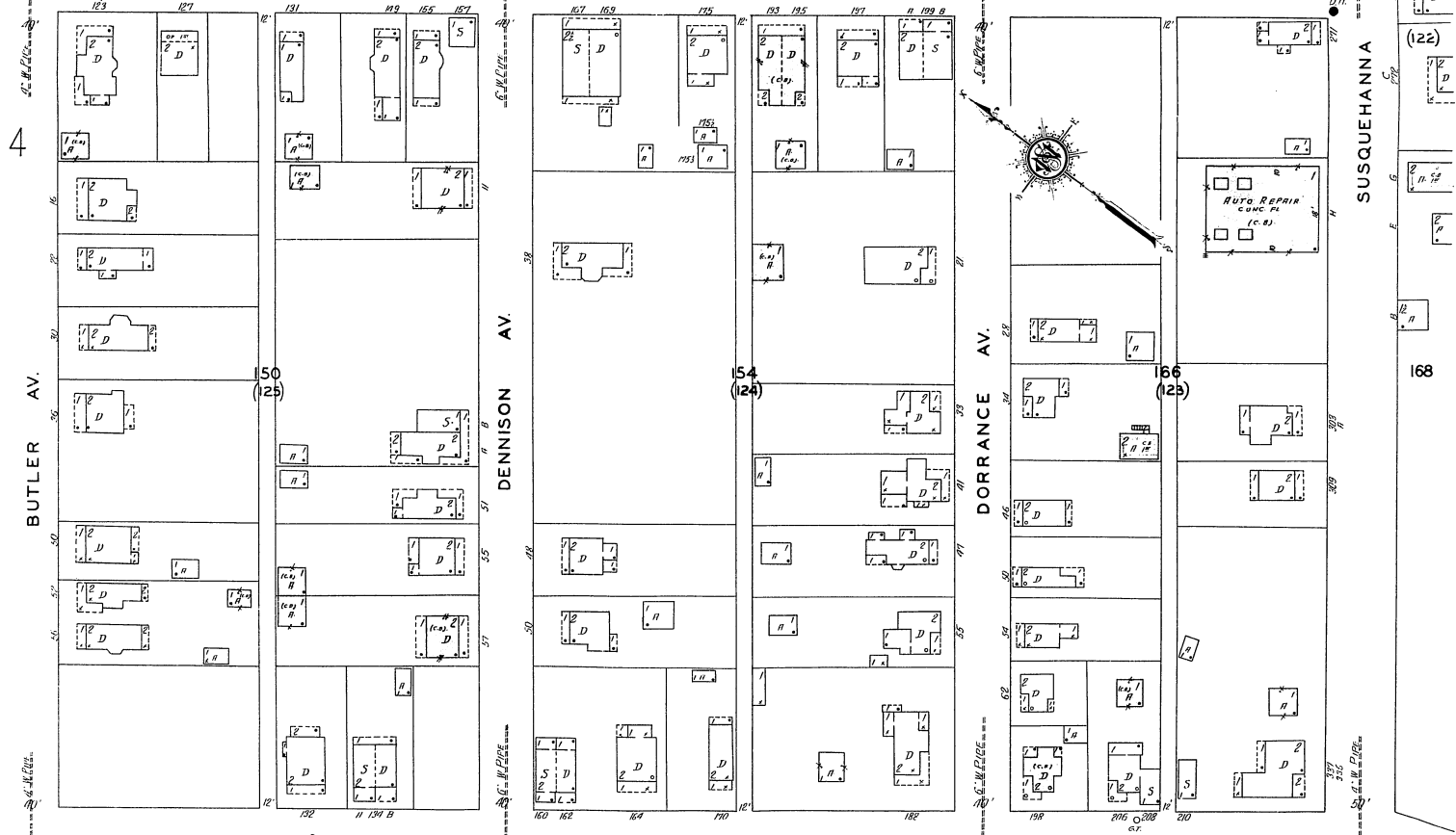


10

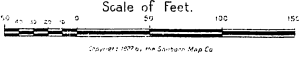
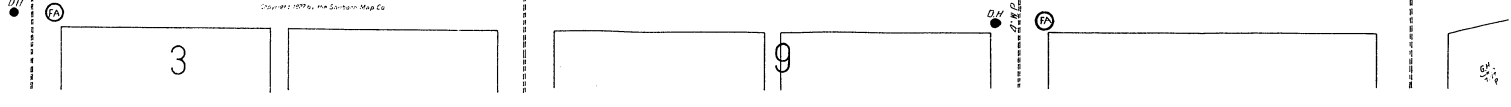
E. (S.) 6TH ST.



E. 7TH ST.



E. (S.) 8TH ST.



II

W 62nd ST.

WYOMING 15

30' W.P.P. AV.

20' W.P.P.

II

JUNE 1927
WYOMING
PA.

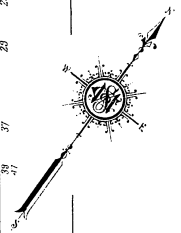
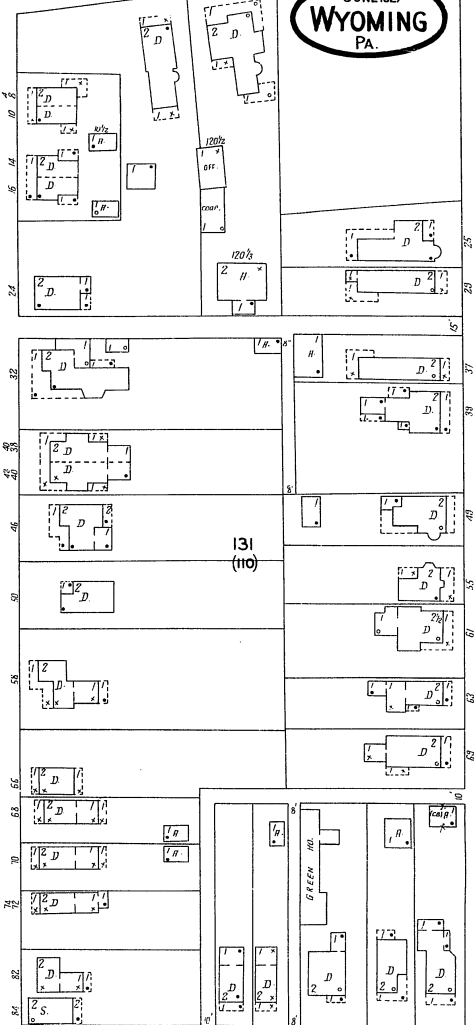
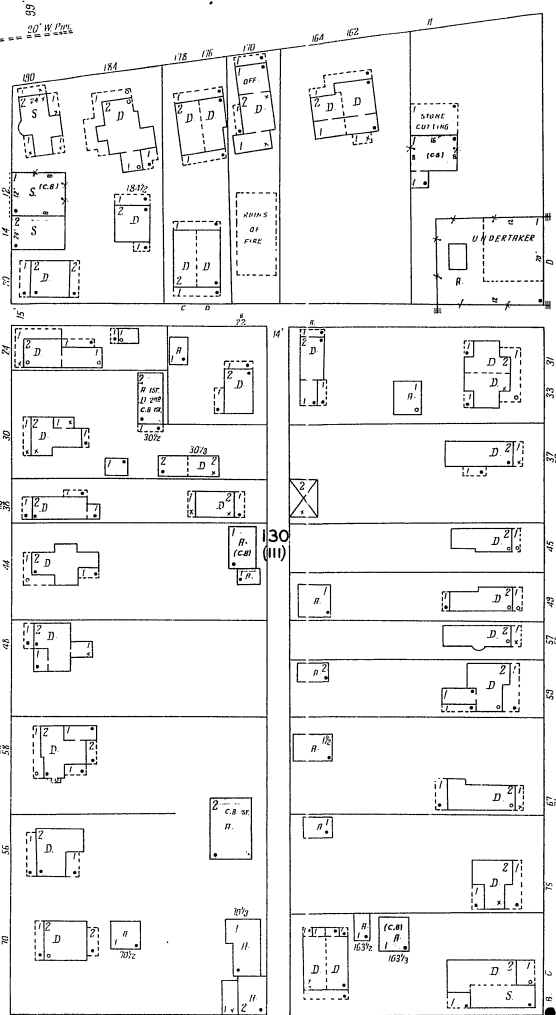
E. (S.) 6 TH ST.

E. 5 TH ST.

E. (S.) 4 TH ST.

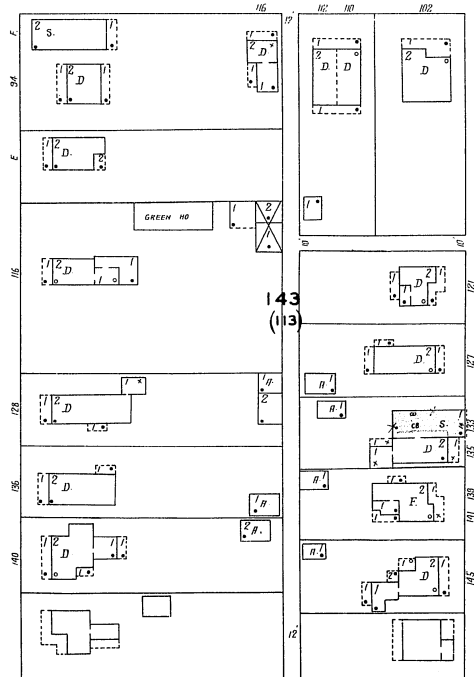
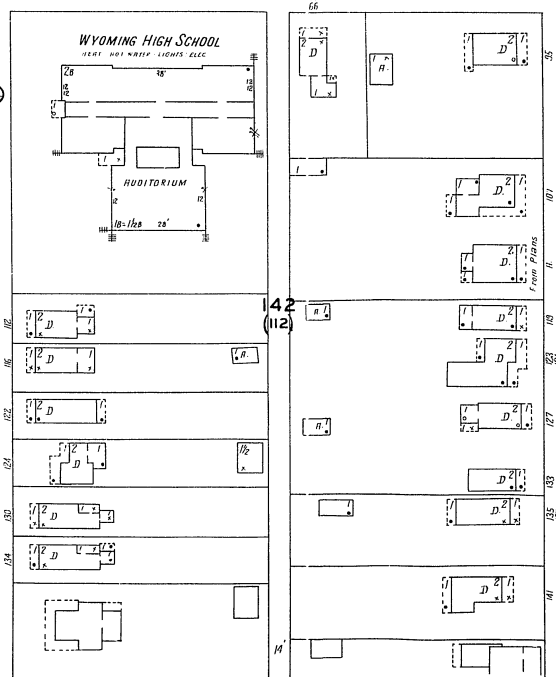
13

4



Scale of Feet.

MONUMENT AV.



12

12

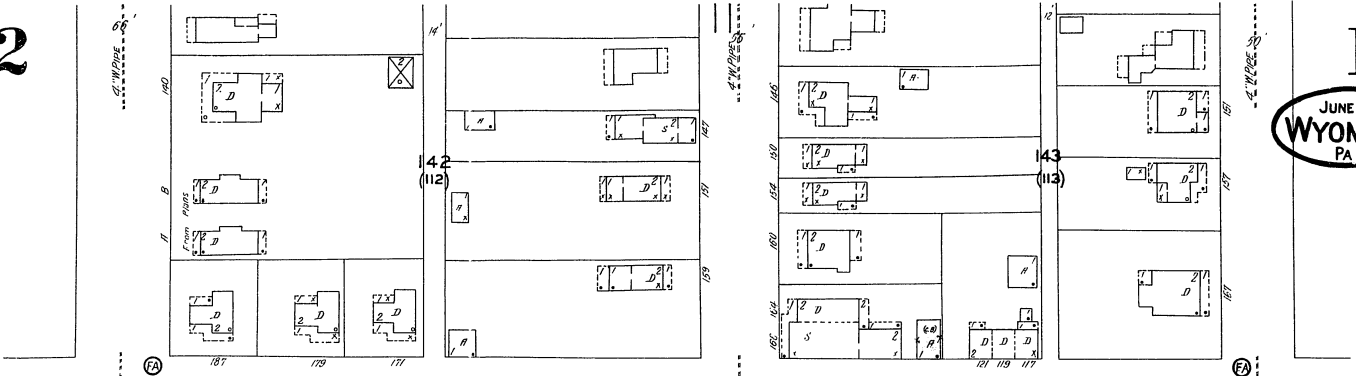
3/75

12

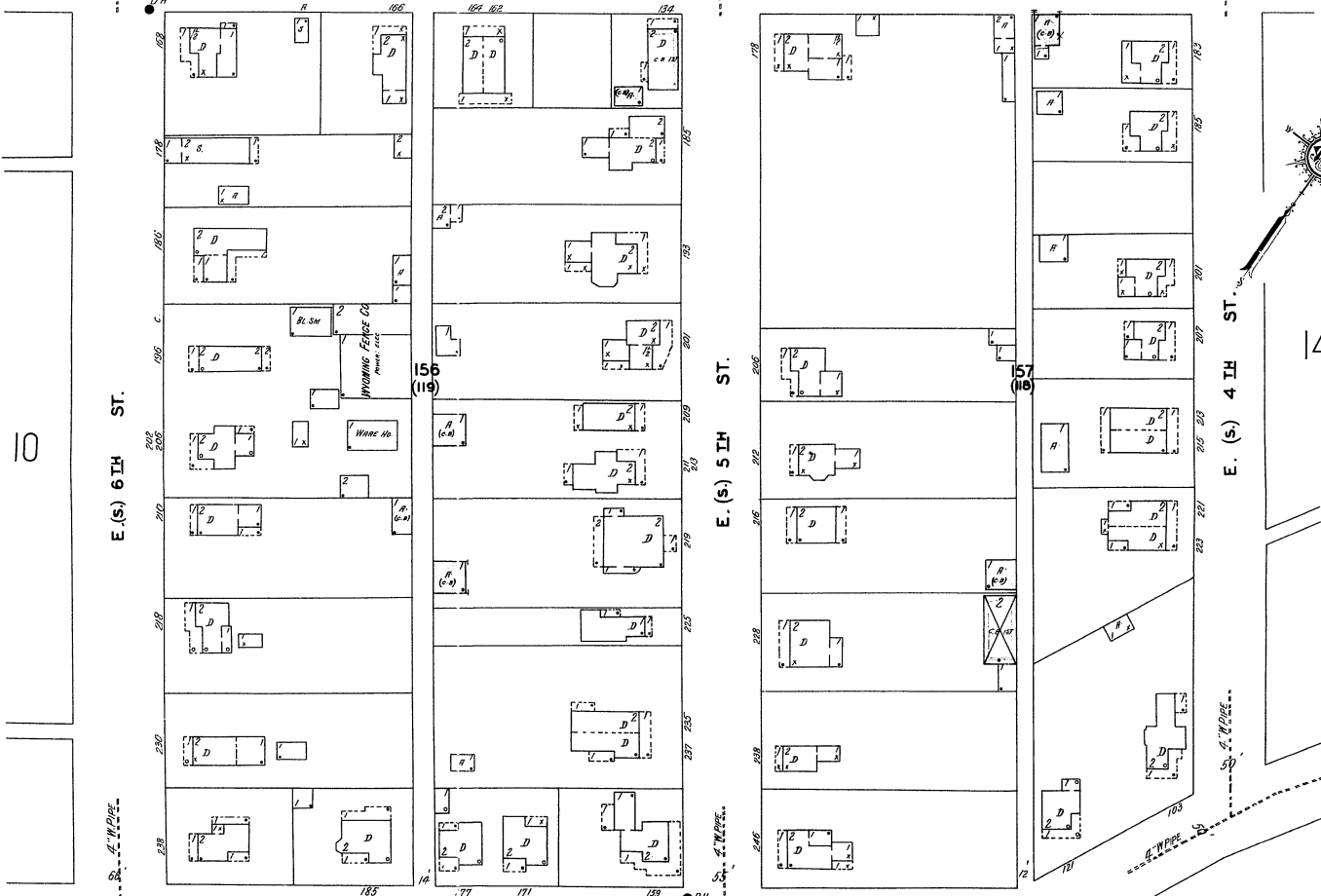
JUNE 1927

WYOMING

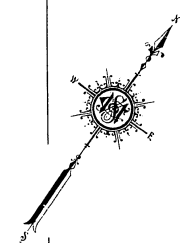
PA



SHARPE AV.

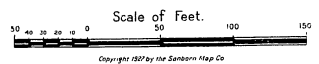
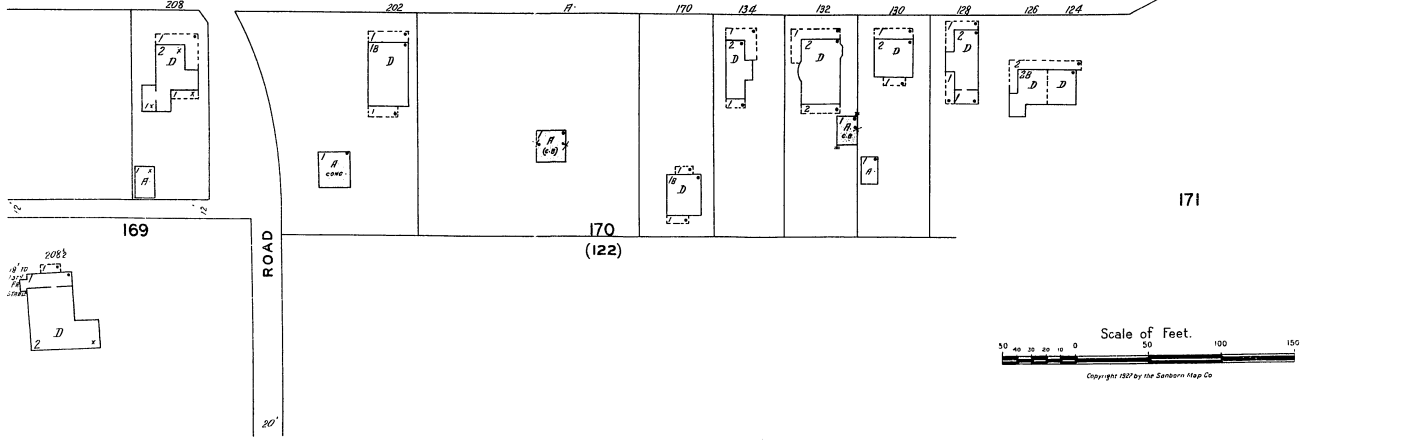


SUSQUEHANNA AV.



E. (S.) 4 TH ST.

14



13

H. 4TH ST.

20" W PIPE

20" W PIPE

20" W PIPE

20" W PIPE

20" W PIPE

20" W PIPE

20" W PIPE

20" W PIPE

20" W PIPE

20" W PIPE

20" W PIPE

20" W PIPE

20" W PIPE

20" W PIPE

20" W PIPE

20" W PIPE

20" W PIPE

20" W PIPE

20" W PIPE

20" W PIPE

20" W PIPE

20" W PIPE

20" W PIPE

20" W PIPE

20" W PIPE

20" W PIPE

20" W PIPE

20" W PIPE

20" W PIPE

20" W PIPE

20" W PIPE

20" W PIPE

20" W PIPE

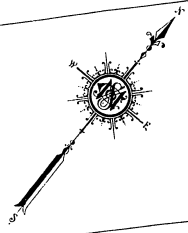
20" W PIPE

20" W PIPE

20" W PIPE

20" W PIPE

WYOMING 15 AV.



JUNE 1927
WYOMING
PA.

13

E. (S) 4 TH ST.

E. (S) 3 RD ST.

E. (S) 2 ND ST.

E. (S) 1 ST ST.

4" W PIPE

4" W PIPE

MONUMENT AV.

4" W PIPE

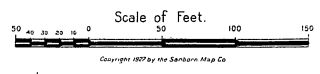
4" W PIPE

144 (114)

145 (115)

146

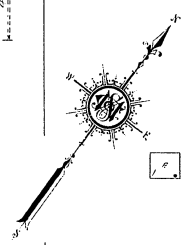
14



Copyright 1927 by the Sanborn Map Co.

B
D
F
H
J
L
N
P
R
T
V
X
Z

JUNE 1927
WYOMING
PA.



146
ANTHRACITE SILK THROWING CO
4 HUNT WATERMILL, 2000 CLOS.
POWER: 2500 LBS. - 2000 H.
HEAT: STEAM
3 3/4 IN. IRON PISTON SAWTOOTH
MILL

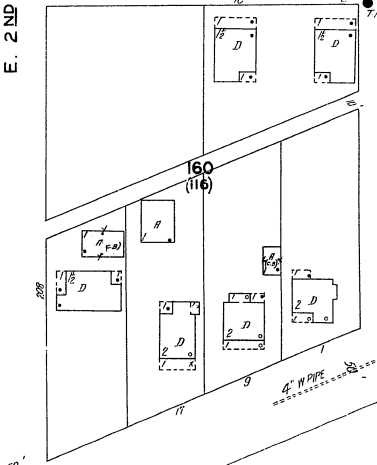
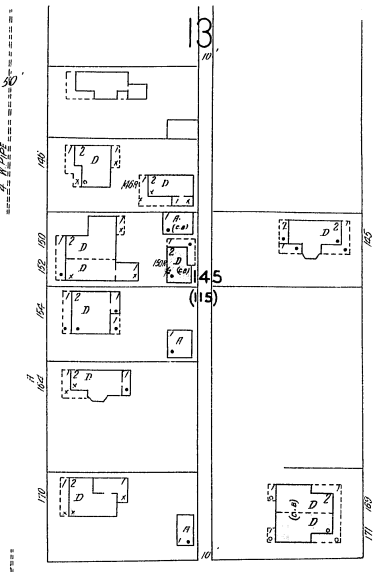
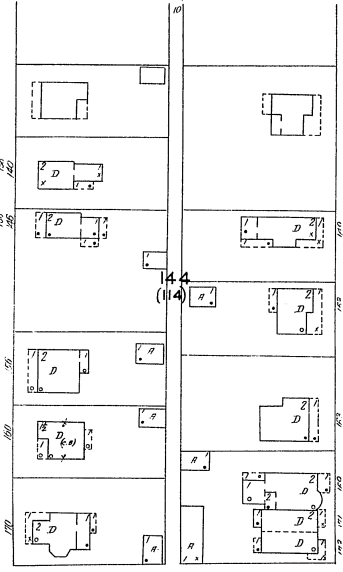
SHARPE AV.

E. 2ND ST.

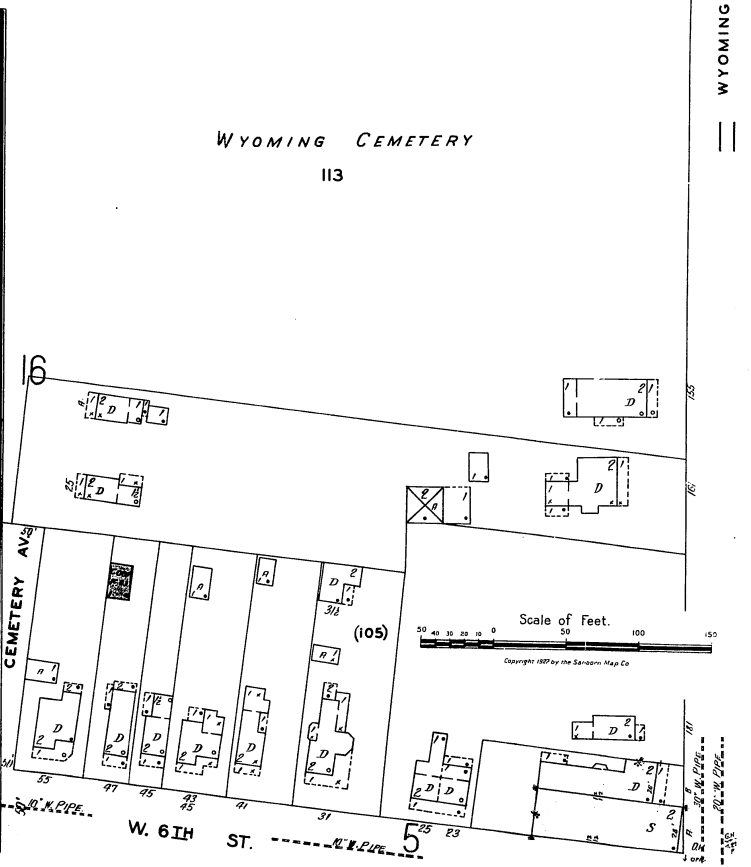
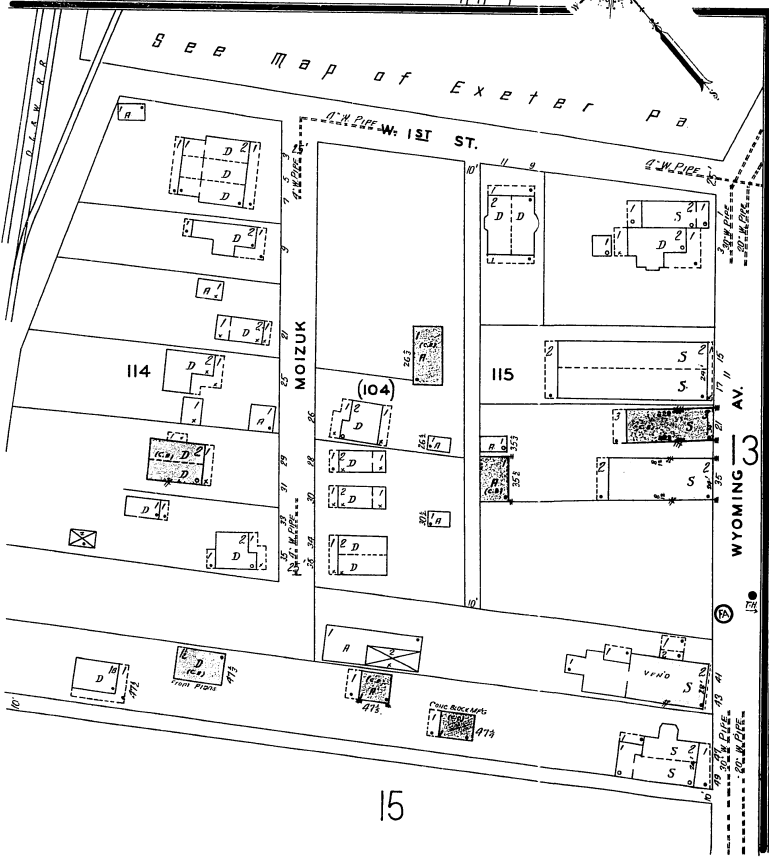
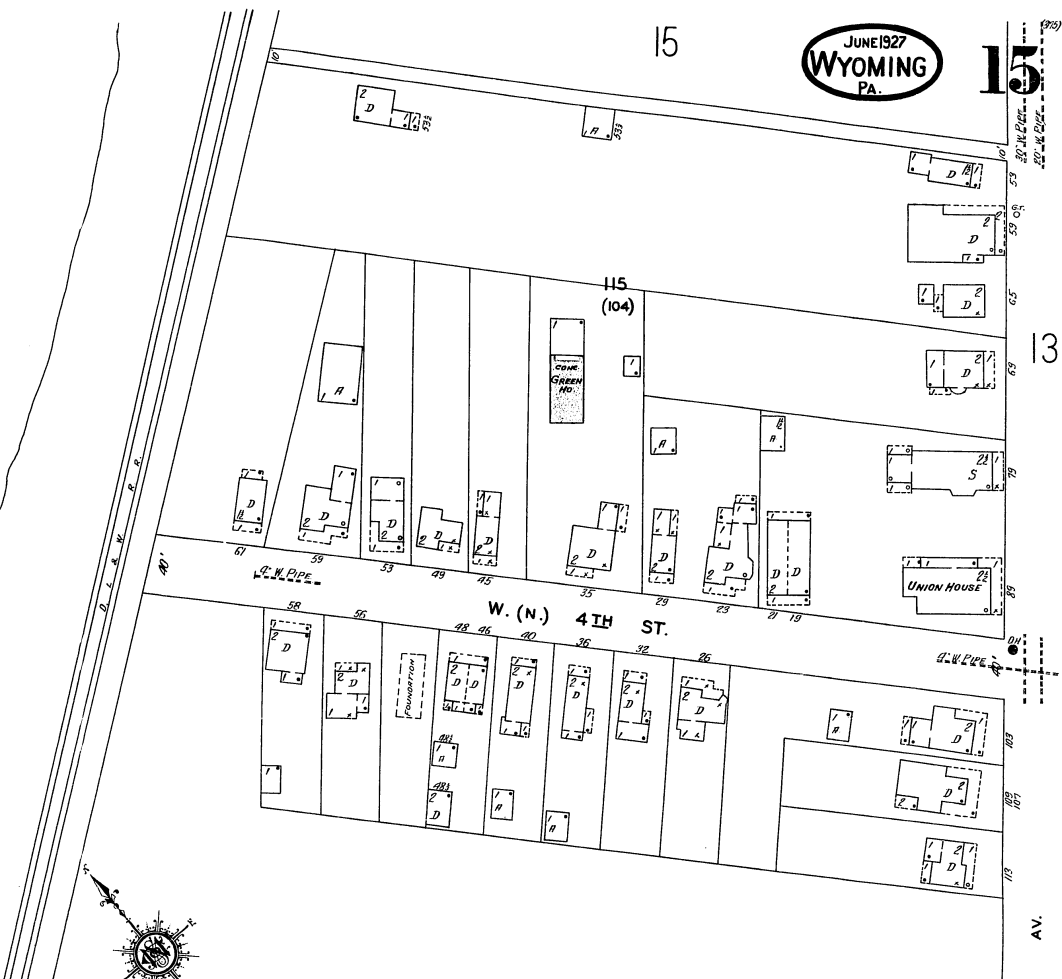
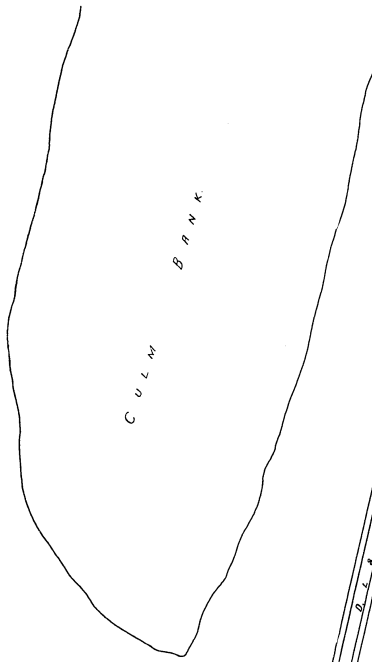
SUSQUEHANNA AV.

E. (S.) 4TH ST.

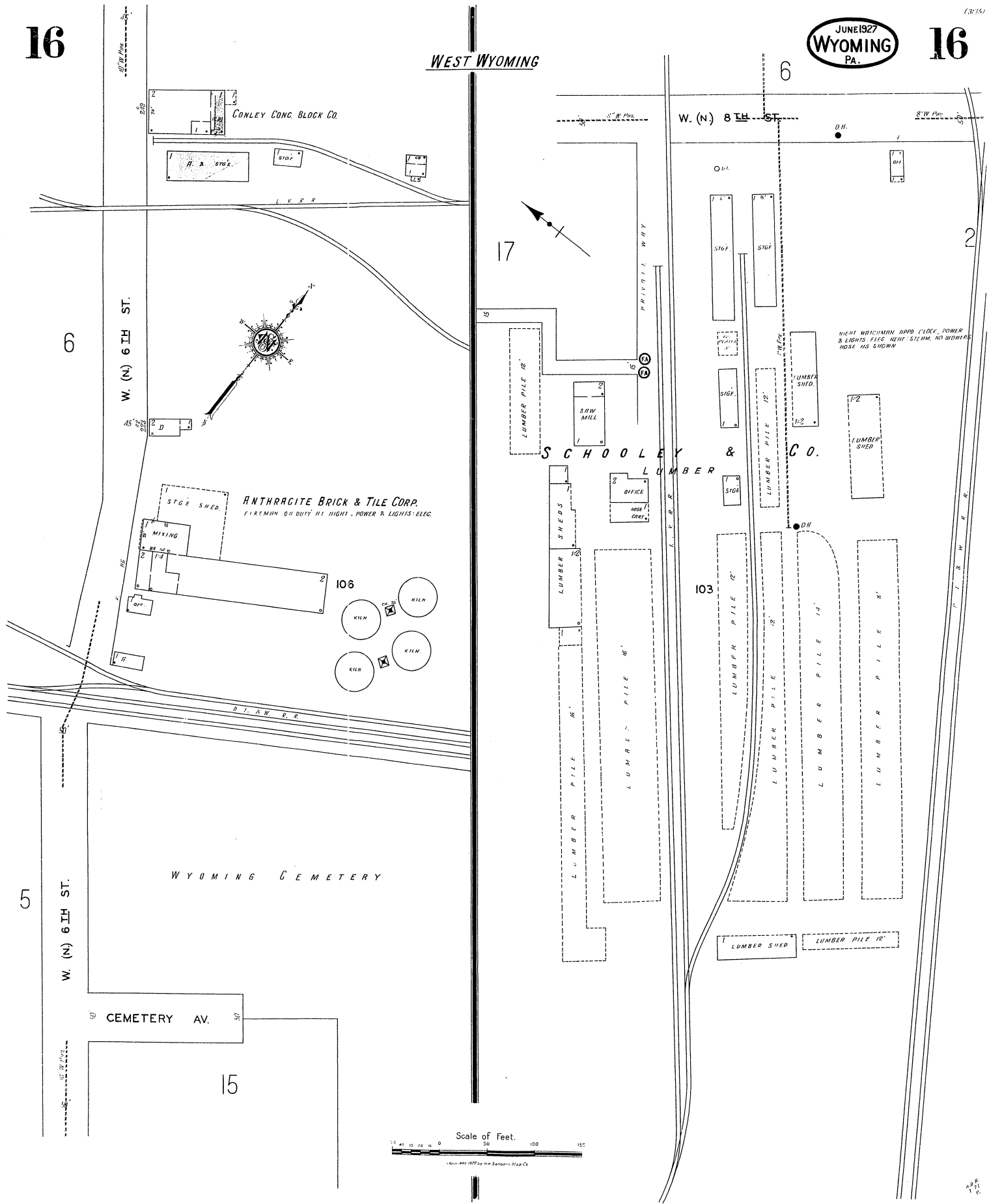
E. 3RD ST.



B O R D E R

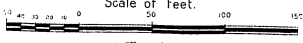


WEST WYOMING



NIGHT WHICH IN APPROX. CLOCK, POWER & LIGHTS FIG. NEXT STEAM. NO BROWNS HOSE IS SHOWN

Scale of Feet.



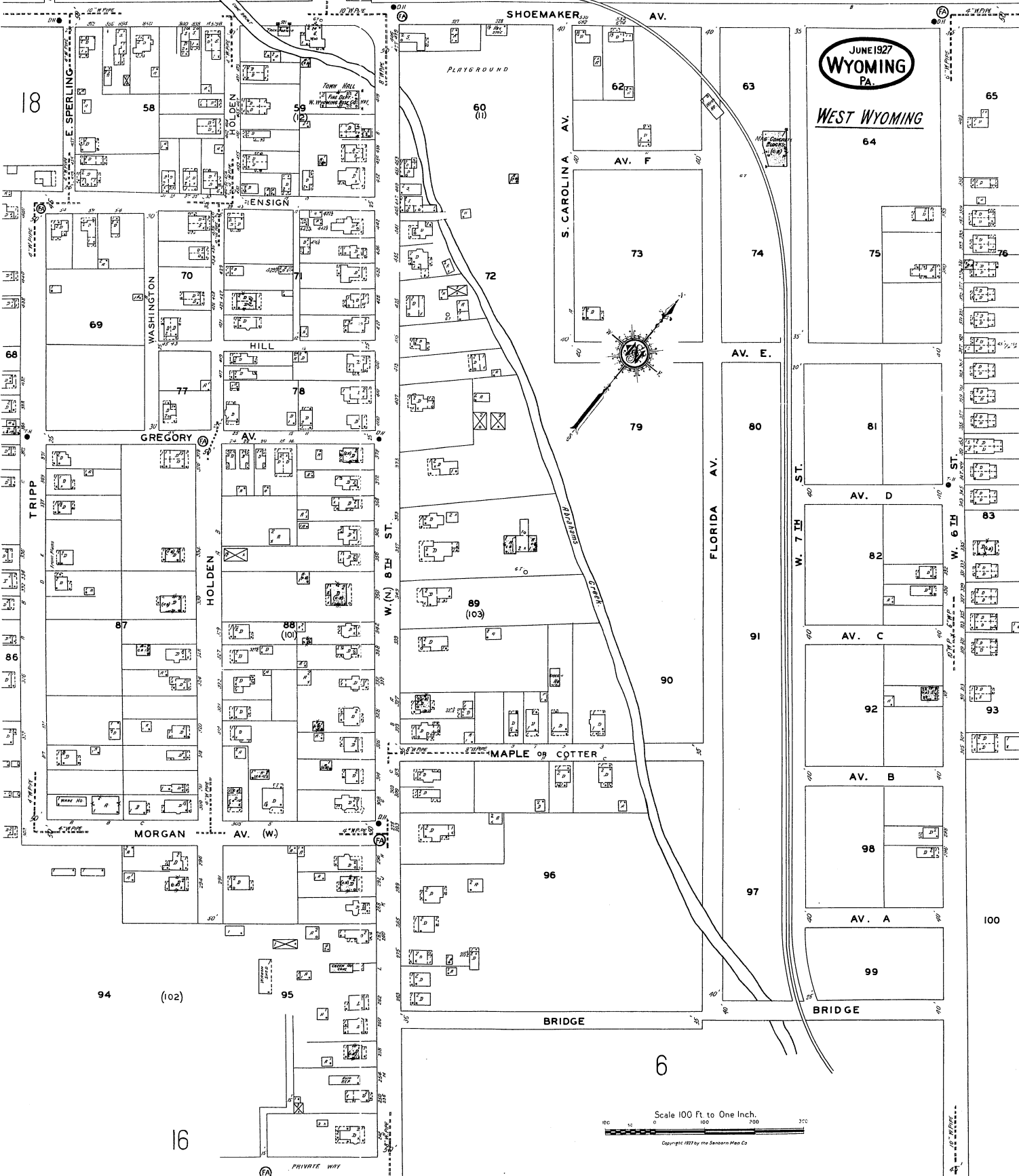
Copyright 1927 by The Sanborn Map Co.

APP. 1927

17

18

17



JUNE 1927
WYOMING
 PA.

WEST WYOMING

Scale 100 Ft. to One Inch.

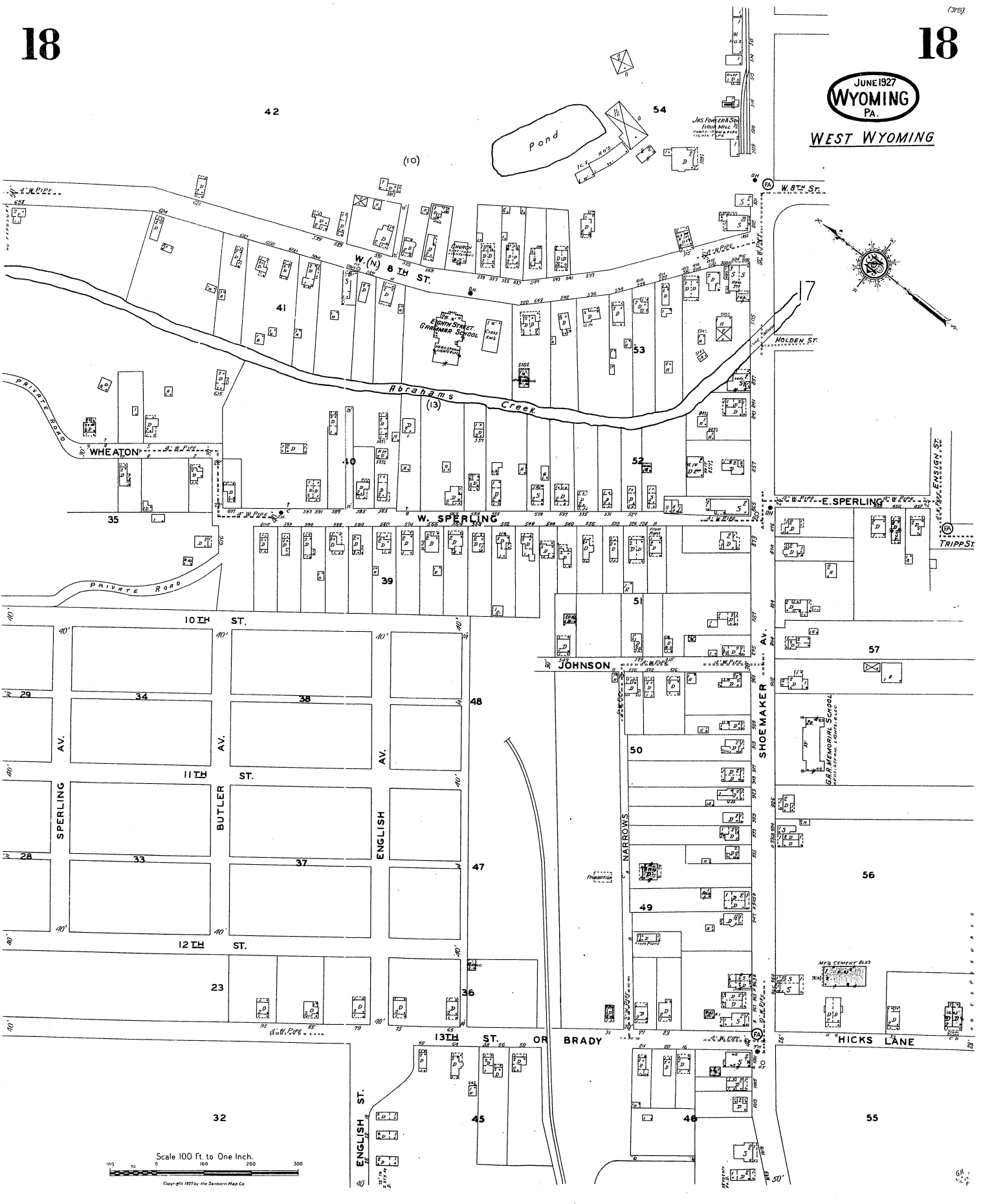
0 100 200 300

Copyright 1927 by The Searns Map Co.

PRIVATE WAY

JUNE 1927
WYOMING
PA.

WEST WYOMING



Scale 100 Ft. to One Inch.

0 100 200 300

Copyright 1927 by the Sanborn Map Co.