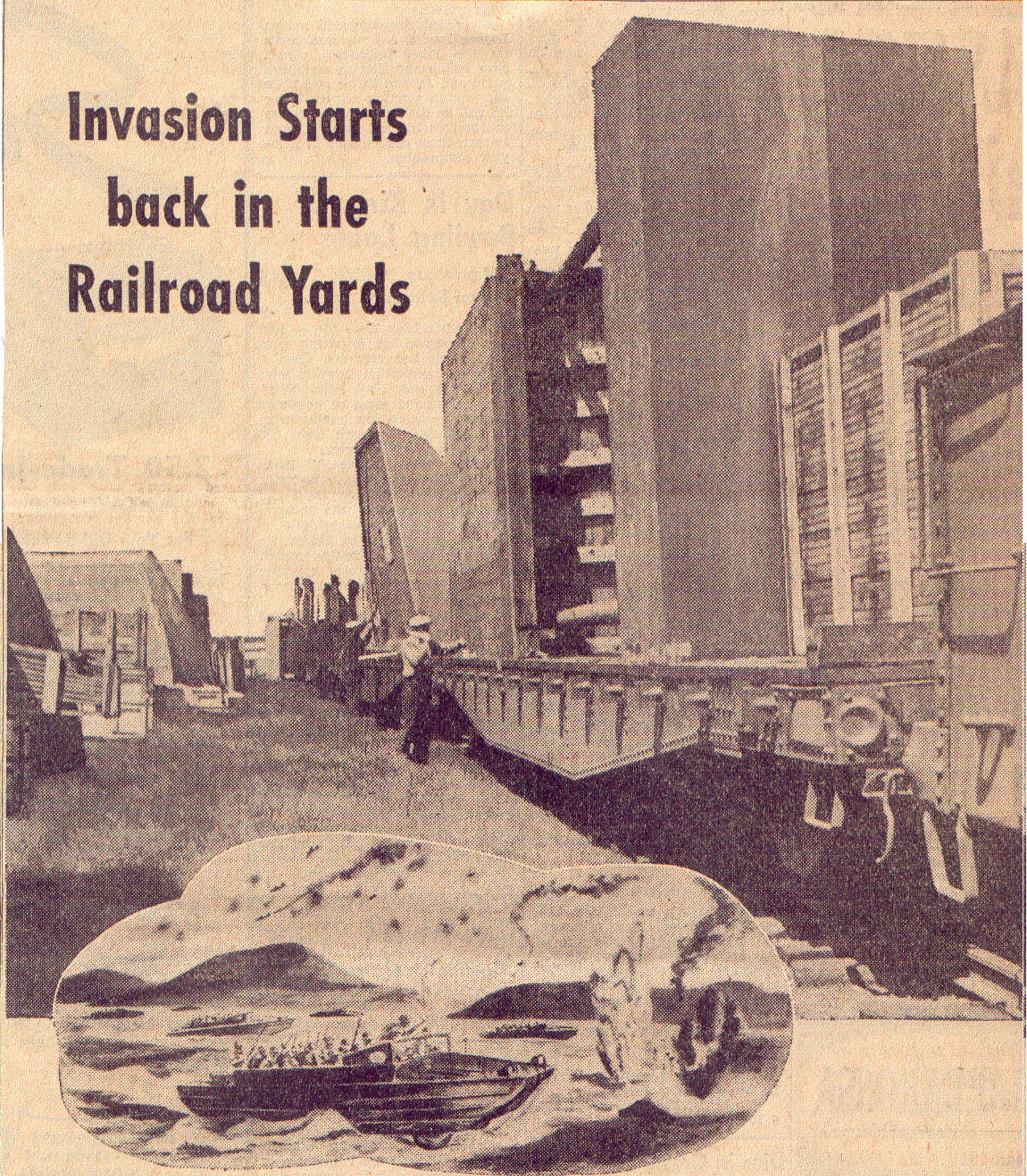


Invasion Starts back in the Railroad Yards



PREPARATION for invasion of Europe started many months ago back in the railroad yards of America.

For it was here that the thousands of landing barges, special boats, guns, munitions and supplies first started on the long journey from production lines to battle lines.

In increasing quantities, Erie and other American Railroads are carrying a steady flow of materials and equipment to assure our troops every chance of success in the greatest assault ever attempted in history.

And the job will continue to grow greater each day.

But your railroads will get the job done with the help of the public, shippers and government agencies. In war, as in peace, Erie and other American Railroads provide fast, safe, dependable transportation.

 23,578 FREIGHT TRAINS DAILY

 1,408,964 FREIGHT CARS DAILY

 25,000,000 NET TONS DAILY

AMERICAN RAILROADS AT WAR



BUY WAR BONDS AND STAMPS

Erie Railroad

ONE OF AMERICA'S RAILROADS—ALL UNITED FOR VICTORY