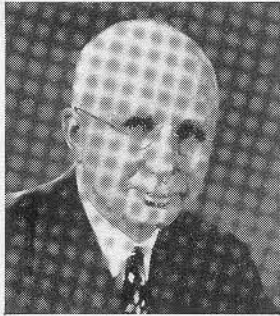
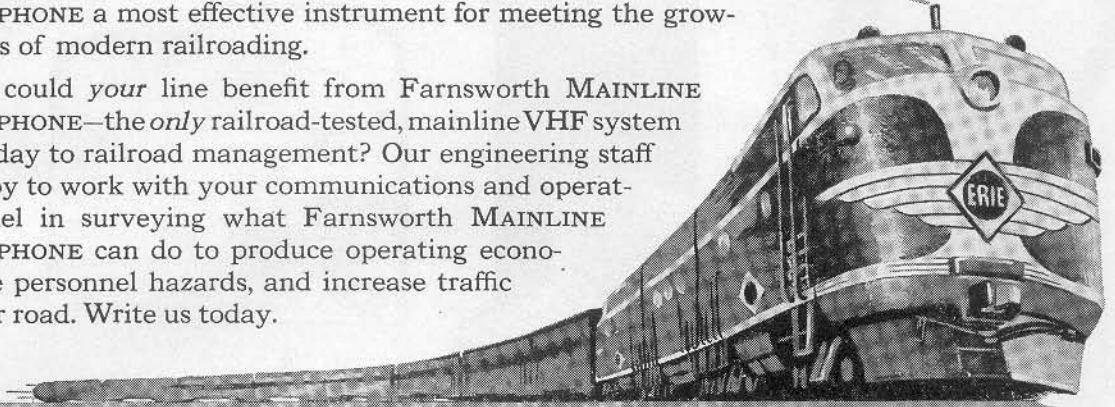


# ONE YEAR'S BENEFITS JUSTIFY COST

## That's ERIE's Report on Farnsworth MAINLINE RADIO

First to establish a comprehensive, practical, and reliable VHF radiotelephone system, the ERIE president rates Farnsworth MAINLINE RADIOTELEPHONE a most effective instrument for meeting the growing problems of modern railroading.

How much could *your* line benefit from Farnsworth MAINLINE RADIOTELEPHONE—the *only* railroad-tested, mainline VHF system available today to railroad management? Our engineering staff will be happy to work with your communications and operating personnel in surveying what Farnsworth MAINLINE RADIOTELEPHONE can do to produce operating economies, reduce personnel hazards, and increase traffic flow for your road. Write us today.



### ERIE PRESIDENT REPORTS ON RADIOTELEPHONE COMMUNICATION

To provide more dependable freight service between Chicago and New York, the Erie management seeks every means to increase the efficiency of its operations.

Radio communications offered a means to better service. Accordingly, our Communications and Operating Departments worked nearly two years to develop a reliable and comprehensive VHF radiotelephone system to meet our needs.

Over a year ago, Farnsworth radiotelephone equipment was installed on our mainline from Marion, Ohio, to Salamanca, N. Y.—a distance of 347 miles. Operating benefits from this radiotelephone installation in the first year have already justified the initial cost. Delays caused by broken drawbars or damaged knuckles, other operating difficulties, and unscheduled stops have been virtually eliminated. Radio also expedites entrance and departure of trains at terminal and yard areas—reducing elapsed time between division points. The use of radio to summon assistance has effectively increased our safety, as well as efficiency objectives.

Because of these advantages, we are now extending our radiotelephone system to Jersey City, an additional 537 miles. Already, radio equipment has been installed on all through passenger trains, as well as freights. With completion of the wayside radio stations, now under construction, 884 miles or 85 per cent of the Erie's main line will be radio-equipped.

Radiotelephone communication has already become an integral, effective factor in the entire Erie transportation system.

*Phil Woodruff*

President, ERIE RAILROAD

MOBILE COMMUNICATIONS DIVISION

# Capehart—Farnsworth

CORPORATION

AN IT & T ASSOCIATE • FORT WAYNE, INDIANA